

Coupled thermo-geophysical inversion for permafrost monitoring

Soňa Tomaškovičová¹ and Thomas Ingeman-Nielsen¹

¹Department of Environmental & Resource Engineering, Technical University of Denmark, Nordvej 119, 2800 Kongens Lyngby, Denmark

Correspondence: Soňa Tomaškovičová (soto@dtu.dk)

Abstract. This study explores an alternative way of deriving soil thermal properties from surface geophysical measurements. We combined ground surface temperature timeseries with time lapse geoelectrical acquisitions measured from the ground surface in a fully coupled inversion scheme to calibrate a heat conduction model. The quantitative link between the thermal and geoelectrical parts of the modeling framework is the temperature-dependent unfrozen water content, which is also the main factor influencing electrical response of the ground. The apparent resistivity data were incorporated into the coupled framework without being inverted separately, thus reducing the uncertainty inevitably associated with inverted resistivity models. We show that geoelectrical time lapse data are useful as alternative calibration data, and can provide as good results as borehole temperature measurements. The fully coupled modeling framework using field data achieved performance comparable to calibration on borehole temperature records in terms of model fit within 0.6 °C, inversion convergence metrics as well as the predictive performance of the calibrated model.

1 Introduction

Numerical modeling is a powerful - and often the only available - tool for assessing the current and forecasting the future thermal state of permafrost (Riseborough et al., 2008; Harris et al., 2009). Models rely on quality data for forcing, calibration and validation. In thermal modeling of permafrost, calibration data are ideally ground temperature timeseries measured in boreholes, as these provide the most direct information about ground thermal regime. Boreholes are, however, geographically sparse while providing only discrete information in one spatial dimension. Meanwhile, the ground thermal regime is highly variable due to local conditions.

Surface geophysical measurements offer an attractive way of informing permafrost thermal models. Depending on the geophysical method used, they provide a 2D or 3D picture of subsurface properties, and cover comparatively large areas. Repeated measurements have been shown to hold information about in-situ processes, guiding development of more accurate process-based models. Studies by Hoekstra (1973); Olhoeft (1975); Scott and Kay (1988); Hauck et al. (2008); Krautblatter et al. (2010); Magnin et al. (2015); Wu et al. (2017); Tomaškovičová (2018); Tang et al. (2018); Holloway and Lewkowicz (2019); Uhlemann et al. (2021); Tomaškovičová and Ingeman-Nielsen (2023) demonstrate that there is a quantitative link between electrical and thermal properties of geological materials.

In permafrost thermal modeling with field data, coupling approaches have been applied essentially in two ways: i) temperature-calibrated resistivity tomography has been used for quantitative estimation of ground ice and water content changes (Kraut-

blatter et al., 2010), and ii) inverted resistivity models have been used to constrain ground ice changes estimates (Hauck et al., 2008). Tomaškovičová et al. (2012) presented a concept of a fully coupled thermo-geophysical inversion, where apparent electrical resistivity data before inversion were used to constrain optimization of thermal model parameters. Jafarov et al. (2020) demonstrated the feasibility of the approach on synthetic datasets.

In this work, we evaluated performance of the fully coupled thermo-geophysical optimization framework on field monitoring data. We demonstrated that thermal parameters of a real ground undergoing phase change can be calibrated using time lapse geoelectrical measurements collected from the ground surface. Electrical properties of the ground depend mainly on the amount of unfrozen water available to carry the current. This unfrozen water content is temperature-dependent, and temperature at any depth depends on the surface energy balance (including water balance) and the soil thermal properties. We used electrical resistivity data for calibration because of their comparative ease of acquisition including possibility of automation, and relative ease and speed of data processing. However, any kind of geophysical data is in principle suitable, as long as the petro-physical relationship between ground temperature and the targeted geophysical property can be calibrated. Borehole temperature records are not needed for thermal model calibration in the fully coupled inversion approach; however where available, they present valuable validation data. The workflow of the fully coupled thermo-geophysical inversion is explained in the following section.

2 The concept of the fully coupled thermo-geophysical inversion

The fully coupled thermo-geophysical inversion approach aims at predicting ground temperatures using geophysical measurements for calibration of thermal parameters of a ground thermal model. When using electrical resistivity data for calibration, the approach is built on the quantitative link between ground temperature and ground electrical properties (Hauck, 2002; Hauck et al., 2008; Doetsch et al., 2015; Oldenborger and LeBlanc, 2018). The ground electrical properties depend on four main factors: soil mineralogical composition, soil porosity, fraction of unfrozen water content and geochemical composition of the pore water (e.g. Hoekstra et al. 1975; Friedman 2005). The unfrozen water is typically the dominant conducting phase in a soil. It is also the only component that substantially changes its volume fraction over the course of a year, due to temperature-dependent processes of freezing and thawing (as well as due to drying and wetting in the unfrozen part of the year). Due to the zero-curtain effect, there is no single temperature value at which ground resistivity changes from frozen to unfrozen (Hauck, 2002; Doetsch et al., 2015; Tomaškovičová and Ingeman-Nielsen, 2023). It is the unfrozen water content that quantitatively links the temporal changes in ground temperature with changes in ground electrical resistivity. The coupled inversion approach is outlined in Fig. 1 and further explained in herein.

The coupled model consists of two, essentially standalone, modules: a heat conduction model (described in Sect. 4) and an electrical resistivity model (described in Sect. 5). The 1D heat conduction model calculates a temperature distribution in the ground given a set of initial and boundary conditions, and of initial thermal parameters estimates. The calculated temperature distribution is then translated into a 1D multi-layer geoelectrical model by weighting the specific resistivities of the ground constituents by their temperature-dependent volumetric fractions. From the geoelectrical model, forward apparent resistivity response is calculated using the same electrode configurations as on the field site. The calculated apparent resistivities are

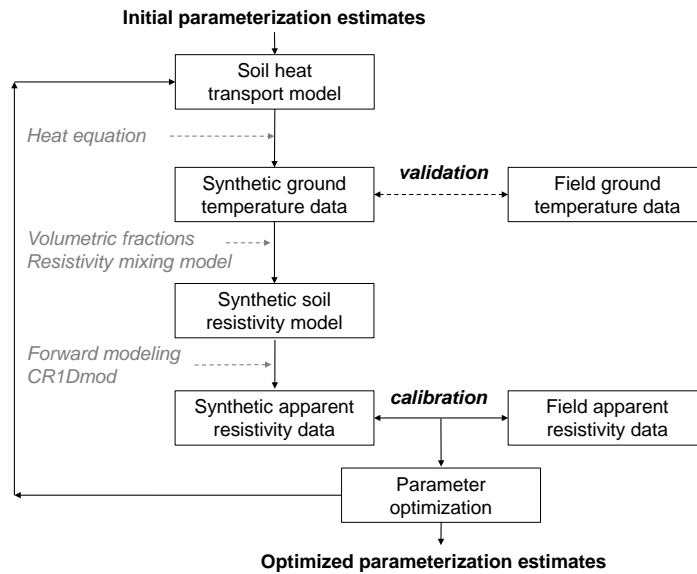


Figure 1. Flow diagram of the fully coupled thermo-geophysical inversion using ground surface temperature data as model forcing, and apparent resistivity data collected from the ground surface for calibration.

60 compared to the field geoelectrical measurements. The difference is then minimized by adjusting thermal parameters of the heat conduction model from which the forward resistivities were calculated, and the specific resistivities of the soil constituents. The key characteristic of the fully coupled approach is the use of *apparent resistivities* for calibration, instead of inverted resistivity models. The reason for using apparent resistivities is the expectation that they introduce less additional uncertainty to the calibration in form of inherent inversion assumptions and artifacts. The relationship translating a certain ground electrical

65 composition into apparent resistivity is unique, and governed by equations for conservation of charge, Ohm's law and the geometry of electrode configuration used to collect the resistivity data. Conversely, any inverted resistivity model is only one of a large number of possible realizations that explains the measured apparent resistivity data acceptably well. Interpretation of resistivity measurements from permafrost terrain in particular suffers from strong resistivity contrasts and ground ice features that may lead to over-estimating resistivity model parameters (Ingeman-Nielsen, 2005; Supper et al., 2014; Tomaškovičová

70 and Ingeman-Nielsen, 2023). The non-unique nature of the inverted resistivity models thus provides a less solid basis for quantitative calibration.

We note that while the conversion from a ground resistivity model to an apparent resistivity response is unique, the number of thermal parameter values combinations able to explain the measured apparent resistivities remains infinite. Hence the choice of parameter bounds, optimization method and constraints, as well as careful interpretation of the inverted parameters in terms

75 of their physical plausibility and modeling assumptions are necessary.

The fully coupled modeling framework does not rely on borehole temperature data for the thermal model calibration; only ground surface temperatures, or possibly downscaled air temperatures, are needed to drive the model. Naturally, when available,

borehole temperature records are a very useful resource for model validation and performance evaluation. We use borehole temperatures in our study to: i) validate the heat conduction model formulation and implementation, ii) validate the inverse problem formulation, and iii) to quantitatively assess the performance of the fully coupled inversion framework by comparing performance of the thermal model calibrated on resistivities to the performance of the thermal model calibrated on ground temperatures.

3 Field site and data

The data used in this work come from an automated permafrost monitoring station in Ilulissat, West Greenland. The Ilulissat monitoring site (69° 14' N, 51° 3' W, 33 m above sea level) is situated ca. 200 m east of the airport in Ilulissat, on the mainland, in the inner part of the Disko Bay. The mean annual air temperature (MAAT) between 2010-2019 was -3.1 °C (data from Cappelen 2020). According to Obu et al. (2019) and Brown et al. (1998), the site is located in the continuous permafrost zone. Borehole temperature records from years 2012 – 2015 from the site (Tomaškovičová and Ingeman-Nielsen, 2023) yield the following permafrost parameters: the maximum active layer thickness is around 0.9 m, the ground temperatures at 4 m depth are in the range -3.0 to -3.4 °C. The depth of zero annual amplitude is 5 m (defined as the depth of maximum annual amplitude < 0.1 °).

The sedimentary profile in Ilulissat consists of fine-grained marine sediments deposited during the sea transgression following deglaciation of the area some 9600 BP (Bennike and Björck, 2002). The bedrock — Nagsugtoquidian gneisses with amphibolitic bands — is encountered at 7m depth according to borehole 78020 drilled as part of the site investigations for the nearby airport in 1978 (Geoteknisk Institut, 1978). The soils at the site are classified as silty to very silty clays according to the Danish engineering geological practice (Larsen et al., 1995) which is normally used in Greenland. The soil column is covered by a few cm thick vegetation layer.

Tomaškovičová and Ingeman-Nielsen (2023) showed that the thermal regime in the sediments at the site is strongly influenced by hysteresis of unfrozen water content between freezing and thawing periods. The magnitude of this hysteresis justifies use of separate parameterization for the freezing and thawing periods, respectively.

4 Heat conduction model

We set up a ground thermal model based on the one-dimensional heat conduction equation with phase change (Lunardini, 1981):

$$\left(C_e + L \frac{\partial}{\partial T} \theta_w(T, x) \right) \frac{\partial}{\partial t} T(x, t) = \frac{\partial}{\partial x} \lambda_e \frac{\partial}{\partial x} T(x, t) \quad (1)$$

In this formulation T [°C] is temperature, L [J/m³] is the volumetric latent heat of phase change between water and ice, θ_w is the volumetric unfrozen water content of the bulk soil [m³_{water}/m³_{bulk}], C_e [J/m³/K] and λ_e [W/m/K] are effective heat

capacity and effective thermal conductivity, respectively, of the multi-phase media under consideration; x [m] is the depth below ground surface and t [s] is the time. Eq. 1 applies under the assumptions that there are no additional internal sources or sinks of heat, that no volume change is associated with the phase changes, that migration of water is negligible, and that there are no lateral variation in topography and soil properties (standard 1D assumption).

Dirichlet boundary conditions are applied at the top and bottom of the model (at depths $x = 0$ and $x = l$ respectively), such that $T(0, t) = T_u(t)$ and $T(l, t) = T_l(t)$, where subscripts u and l denote the upper and lower boundaries. A fixed temperature is used as bottom model boundary, as the yearly temperature amplitude at the bottom of 6 m deep borehole is < 0.09 °. The initial temperature distribution is specified throughout the model domain, such that $T(x, 0) = T_0(x)$, where $T_0(x)$ is the temperature at depth x and time $t = 0$ s.

Following Lovell Jr (1957) and Anderson and Tice (1972), we use a power function to describe the soil unfrozen water content variation at temperatures below freezing point:

$$\theta_w = \eta\phi, \quad \phi = \begin{cases} S & T \geq T^* \\ \alpha|T_f - T|^{-\beta} & T < T^* \end{cases} \quad (2)$$

where θ_w is the volumetric unfrozen water content of the bulk soil [$\text{m}^3_{\text{water}}/\text{m}^3_{\text{bulk}}$], η is the porosity [$\text{m}^3_{\text{voids}}/\text{m}^3_{\text{bulk}}$], ϕ is the volumetric unfrozen pore water fraction [$\text{m}^3_{\text{water}}/\text{m}^3_{\text{voids}}$], S is the water saturation in completely unfrozen state [$\text{m}^3_{\text{water}}/\text{m}^3_{\text{voids}}$] (assumed unity in this study) and α and β are empirical positive valued constants describing the intrinsic freezing characteristics of the given soil. T^* [°C] is the effective freezing point of the bulk soil – the lowest temperature at which all the water in the soil remains unfrozen ($\phi = S$) – and is given by:

$$T^* = T_f - \left(\frac{S}{\alpha}\right)^{-\frac{1}{\beta}} \quad (3)$$

where T_f [°C] is the freezing point of the pore water as a free substance.

Given a certain value of unfrozen water content, and under the assumption that the soil is fully saturated at all times, the volumetric fractions of soil particles θ_s and ice θ_i (constants) are derived as:

$$\theta_s = 1 - \eta, \quad \theta_i = \begin{cases} 0 & T \geq T^* \\ \eta(S - \phi) & T < T^* \end{cases} \quad (4)$$

Pronounced hysteresis in the unfrozen water content variation (e.g. Pellet and Hauck (2017); Pellet et al. (2016); Overduin et al. (2006)) and its effect on the yearly enthalpy change normally requires that two separate parameterizations – (α_f, β_f) for the freezing season and (α_t, β_t) for the thawing season in Eq. (2) – are used, to accurately model the freezing and thawing processes respectively. In this modeling exercise, we use data from the freezing seasons only, therefore our notation (α, β) relates to the freezing curve parameterization (instead of notation (α_f, β_f)).

The effective parameters of a bulk, three-phase soil are derived as a function of their respective volumetric fractions, which are essentially a function of temperature. The effective heat capacity C_e is expressed as the sum of the specific heat capacities of the soil phases weighted by their volumetric fractions (e.g., Anderson et al., 1973):

$$C_e = C_s\theta_s + C_w\theta_w + C_i\theta_i \quad (5)$$

Common Johansen's thermal parameterization (geometric mean) is used for modeling the effective thermal conductivity λ_e of a n -phase soil (Johansen, 1977; Zhang et al., 2008):

$$\lambda_e = \prod_{j=1}^N \lambda_j^{\theta_j} \quad (6)$$

To solve the heat conduction equation, we used an in-house code SOILFREEZE1D which implements a finite-difference scheme on a fixed grid with equidistant nodes. The code uses the unconditionally stable Crank-Nicholson algorithm with adaptive time-stepping to minimize errors in the solution. For sufficiently small time-steps, the analytical derivative of Eq. (2) may be used to estimate the change in unfrozen water content. However, to allow manageable step-sizes, we implemented an iterative scheme for the change in water content. The first iteration for each time-step uses the analytical derivative, while subsequent iterations use a finite difference, based on the temperature estimate resulting from the previous iteration. Iterations proceed until the maximum change in estimated temperature is less than a specified threshold, or until a specified number of iterations have completed, in which case the time-step is reduced.

The lithology at the Ilulissat field site justifies that a number of simplifying assumptions are made in the interest of maintaining the model parsimony:

1. Heat conduction is assumed to be the dominant mechanism of heat transport. This is reasonable considering the waterlogged properties of the silty clays at the site with low hydraulic conductivity. Similar assumption was previously successfully used by e.g. (Nicolson et al., 2007, 2009).
2. The ground is assumed to be fully-saturated thus consisting of up to three constituents: soil particles, water and ice. This is a realistic assumption at our site during the time period used for calibration, as evidenced by unfrozen water content measurements reported in Tomaškovičová and Ingeman-Nielsen (2023).
3. The ground is assumed to be homogeneous, thus neglecting any lithological layers or varying thermal properties. This is true in terms of the soil type, which is uniform throughout the modeled soil column. Heterogeneities, however, are present, namely in the form of ice lenses (mainly in the depth between 0.9 - 1.5 m), and increasing pore water salinity (in the depth below 4 m).
4. Specific heat capacity and specific thermal conductivity of the respective soil constituents are assumed constant, i.e. not dependent on temperature or salinity. This is an acceptable approximation, as using constant parameters resulted in errors

of less than 10% in the calculation of the effective (bulk) thermal properties in the temperature range between -20 and 0 °C (Osterkamp, 1987).

- 165 5. Latent heat of phase change varies with unfrozen water content, but using a constant value has been proved satisfactory for temperatures above -20 °C (Anderson et al., 1973).
6. A fixed temperature is used as bottom model boundary. This is an acceptable simplification when modeling relatively short temperature timeseries of 180 days, and considering that measured yearly temperature amplitude at the bottom of 6 m deep borehole is < 0.09 °C.

170 We distinguish principle limitations of the method from simplifying assumptions and further discuss their implications in Sect. 8.

The choice of model discretization in time and space was based on convergence testing. For this modeling experiment, the thermal model domain was set to be 6 m deep. The comparatively shallow model was adequate considering the relatively short timeseries we modeled – up to 180 days, given by the need for separate parameterizations of freezing and thawing seasons
175 (Sect. 3). We specified equidistant mesh for the heat conduction model solution with nodes every 0.05 m, and we limited the maximum step size of the differential equation solver to 1 h. The forcing data for the model were ground surface temperatures collected every 3 hours. The fixed temperature at the model bottom boundary was informed by the observations from the 6 m deep borehole, located ca. 10 m away from the resistivity acquisition line.

The modeling and inversion frameworks were implemented in MATLAB, with the heat equation solver SOILFREEZE1D
180 implemented in PYTHON using the *numpy* module for optimized array and matrix computations.

5 Resistivity model

The geophysical part of the modeling framework consists of a 1D forward geoelectrical model. Through convergence testing, we determined that 128 layers of equal thickness produced convergent solution for the 6 m deep model. A representative temperature was assigned to each resistivity model layer by interpolating the nearest heat conduction model solution. Fractions
185 of water, ice and soil minerals in each layer were calculated based on Eq. (2) and Eq. (4). The effective bulk resistivity ρ_e of each resistivity model layer was then derived using a resistivity mixing relationship. We considered two commonly used resistivity mixing relationships: i) the Archie's law, and ii) the geometric mean model. The choice between them was made based on their parameters' sensitivity to calibration in the fully coupled inversion scheme (Fig. 7).

The traditional Archie's law (Archie et al., 1942) derives effective bulk resistivity of ground material based on material's
190 porosity and on a resistivity of the pore fluid:

$$\rho_e = \rho_w \eta^{-m} \phi^{-n} \quad (7)$$

where ρ_e is the effective resistivity of the bulk soil, ρ_w is the specific resistivity of the pore water, η is the porosity, ϕ is the unfrozen fraction of pore water and m and n are empirical coefficients.

The geometric mean model (eg. Guéguen and Palciauskas (1994)) estimates the effective bulk resistivity as the geometric mean of specific resistivities of the respective ground components, weighted by their volumetric fractions:

$$\rho_e = \left(\prod_{i=1}^n \rho_i^{\theta_i} \right) \quad (8)$$

where ρ_i and θ_i are the specific resistivity and volumetric content of the i -th soil constituent respectively.

Based on the derived effective ground resistivity model, synthetic apparent resistivities ρ_s were forward-calculated using CR1DMOD code (Ingeman-Nielsen and Baumgartner, 2006), using the same electrode configuration as in the field acquisitions. As the apparent resistivity field measurements were launching every day at 18:00 UTC and last for up to 5.5 hours, the thermal model solutions at time steps between 18:00 – 00:00 UTC every day were averaged to provide the temperature profile corresponding to the timing of the resistivity acquisitions.

6 Validation of the heat conduction model and of the inverse problem formulation

Prior to utilizing the heat conduction model as part of the coupled inversion, we evaluate its ability to reproduce real ground temperature dynamics. We also evaluate performance of the optimization algorithm and identify a strategy for effective multi-parameter optimization.

6.1 Choice of the target parameters for optimization

Approaching an inverse problem begins with identifying a subset of model parameters to be targeted by the optimization, as optimization with respect to all model parameters is not feasible. Diagnostic statistics can measure the amount of information for parameter calibration in the available data, and can inform the choice of parameters that can be effectively recovered from the data (Hill, 1998).

Scaled sensitivities (SS) (Hill, 1998) compare the importance of different observations to the estimation of a single parameter (or, the importance of different parameters to the calculation of a simulated value). SS can help to identify the time periods in calibration data with most information for calibration of the target parameter. SS are calculated as:

$$ss_{ij} = \left(\frac{\delta y'_i}{\delta v_j} \right) v_j \sqrt{\omega_i} \quad (9)$$

where y'_i is a simulated value, v_j is the j^{th} estimated parameter, $\left(\frac{\delta y'_i}{\delta v_j} \right)$ is the sensitivity of the simulated value to the j^{th} parameter, and is evaluated at V , V is the vector which contains the parameter values at which sensitivities are evaluated, and ω_i is the weight of the i^{th} observation.

To evaluate relative importance of respective model parameters for the model predictions, we calculate the composite scaled sensitivities (CSS) (Hill, 1998) for each of the parameters of the heat conduction model. We chose to demonstrate the thermal

model's sensitivity to all parameters as per the heat conduction Eq. 1, including the ones that are in practice not calibrated (constants). This is because such constants would normally be excluded from a sensitivity analysis while they are, strictly speaking, temperature- and salinity-dependent (specific heat capacity and thermal conductivity of ice and pore water). The assumption of a constant is a standard simplifying modeling assumption in a study not focusing on the temperature- and salinity dependence of these thermal parameters, and designed following the principle of model parsimony. Nevertheless, a known temperature and salinity dependence could easily be incorporated into the current model formulation, if the model application required it and justified the increased complexity.

Fig. 2 shows the change in simulated temperature field caused by 10 % increase in each of the evaluated parameters. Because the calibration problem is nonlinear with respect to many parameters of interest, the sensitivity of the evaluated parameter will change for different values of parameters in the parameters vector V , as well as for different model discretizations in time and space. An exhaustive sensitivity analysis at every inversion iteration would, however, be computationally inefficient. Assuming some degree of linearity in the model response to each parameter input, carefully chosen starting point will be descriptive for sensitivity of each of the fitted parameters. Less influential parameters, as well as parameters with well-known table values were fixed during the actual optimization. The most sensitive parameters were then calibrated in a multi-parameter optimization. Please refer to the Table 1 for an overview of the fixed and fitted parameters.

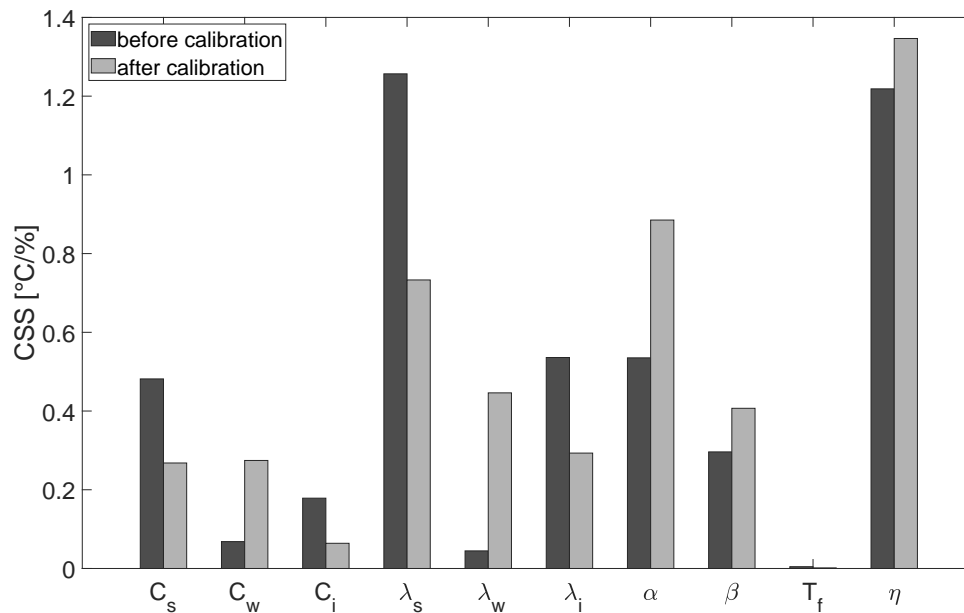


Figure 2. Composite scaled sensitivities (CSS) of 10 parameters of the 3-phase heat conduction model, before and after calibration. CSS corresponds to the change in simulated temperature field caused by 10% increase in the evaluated parameter. Parameters: C_s , C_w , C_i – heat capacities of soil grains, water and ice, resp.; λ_s , λ_w , λ_i – thermal conductivities of soil grains, water and ice, resp.; α , β – soil freezing parameters; T_f – freezing point of water as a free substance; η – porosity.

According to Fig. 2, before calibration, parameters C_w (heat capacity of water), C_i (heat capacity of ice), λ_w (thermal conductivity of water), λ_i (ice) and T_f had relatively less influence on the heat conduction model calculations and thus are fixed to table values or an empirical small value (T_f). Parameters C_s and λ_s (heat capacity and thermal conductivity of mineral grains), α and β (freezing/thawing parameters), and porosity (η) are soil-specific properties with substantial influence on model predictions. After calibration, porosity remained the key parameter for model predictions. Importance of α and β parameters slightly increased, while influence of heat capacity and thermal conductivity of mineral phase has relatively decreased.

Table 1. Parameterization of the heat conduction model. For the *fixed parameters*, we show their fixed values in the optimization. For the *fitted parameters*, we list their bounds – maximum and minimum values that the optimization algorithm is permitted to investigate when searching for the optimal parameter value.

Fixed parameters	Value	Fitted parameters	Bounds
C_w	4.19e6 J/m ³ /K	C_s	0.6e6 – 4.1e6 J/m ³ /K
C_i	1.9228e6 J/m ³ /K	λ_s	0.5 – 8 W/m/K
λ_w	0.56 W/m/K	η	0.1 – 0.9
λ_i	2.18 W/m/K	α	0.1 – 5
T_f	–0.0001 °C	β	0.01 – 5

Fig. 3 shows the scaled sensitivity for each of the five fitted parameters of the heat conduction model. As expected, the periods of time when the ground undergoes phase change contained the most information for estimation of each given parameter. Ground temperature cooling from around -2°C and lower appears to be the most important part of data acquisition for the model calibration. This could be eg. due to ice formation that have progressed enough to alter the bulk thermal properties of the ground as suggested by the highest sensitivity of porosity η to this part of the dataset.

6.2 Inverse problem formulation

To describe the inverse problem we adopt the notation from (Nicolosky et al., 2007) and (Nicolosky et al., 2009). We define the vector V as consisting of the fitted thermal parameters: $V = \{C_s, \lambda_s, \alpha, \beta, \eta\}$. For each physically realistic control vector V , it is possible to compute temperature dynamics and compare it to measured borehole data. The measured data are organized in a vector d in form of averages of eight daily temperature records at each sensor depth. The data d are related to the control vector V by $m(V) - d = e$, where m is the modeled counterparts of the data and e is the misfit vector. In theory, if there are no measurement errors or model inadequacies, the misfit vector e can be reduced to zero. If there are errors in the data or in the model, the aim is to minimize e by varying the control vector V .

The optimization of thermal parameters uses trust-region reflective algorithm based on the interior-reflective Newton method (Coleman and Li, 1996), as implemented in the MATLAB solver *lsqnonlin*. The cost function is the root mean square error (RMSE) between measured and simulated ground temperatures. Convergence is identified by meeting at least one of the two

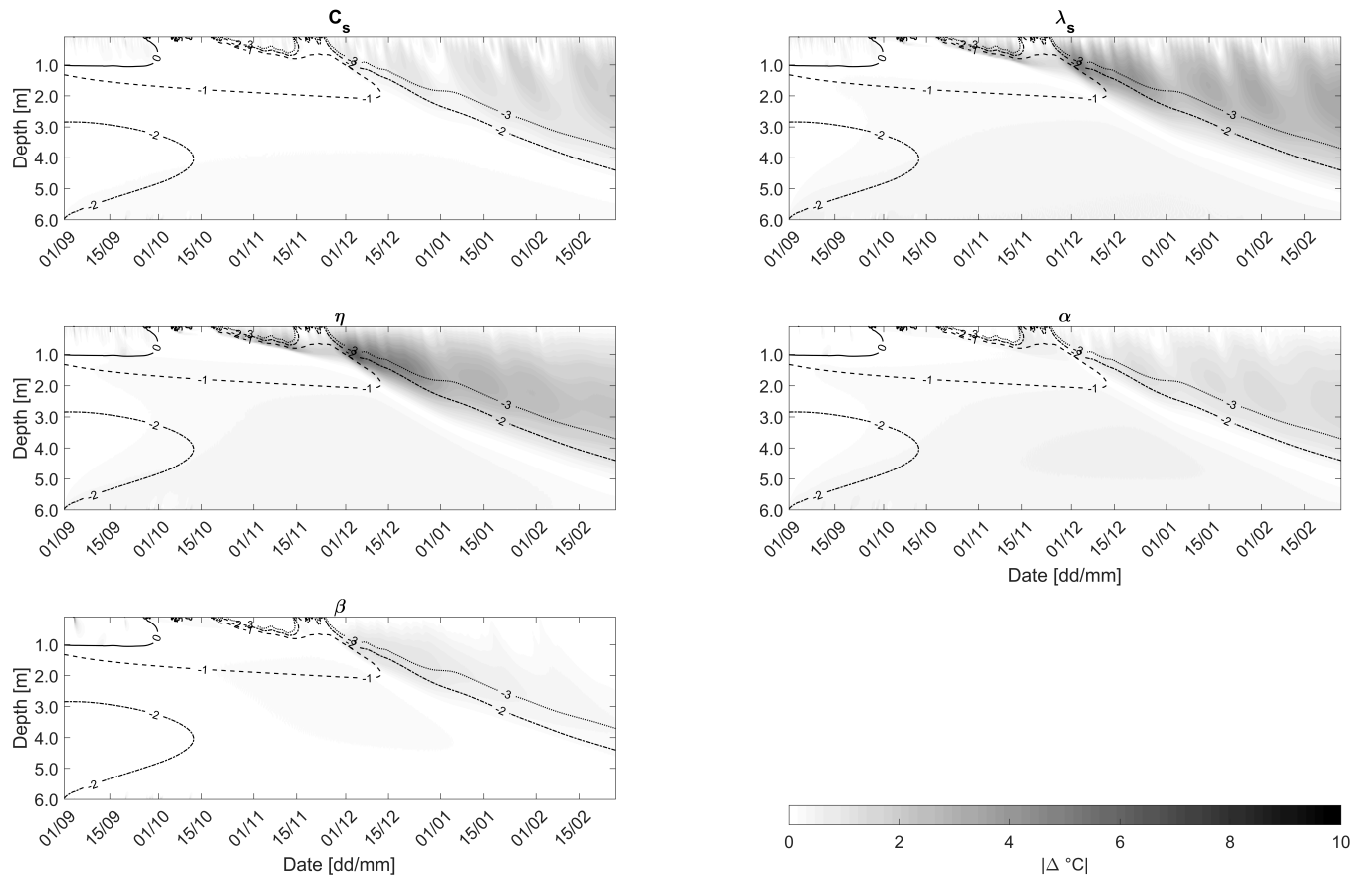


Figure 3. Scaled sensitivities of the 5 fitted parameters of the 3-phase heat conduction model. Intensity of the grey shading corresponds to the absolute value of change in the simulated temperature value caused by 10% increase in the evaluated parameter. Contour lines with various dashing correspond to isotherms of the ground freeze-up period.

criteria: either 1) the change of parameter value, or 2) the change in the RMSE between previous and current iterations should be smaller than a prescribed tolerance.

260 Specifying *bounds* for the fitted parameters spares the solver from examining physically implausible parameter values. An overview of the fixed parameter values and fitted parameter bounds is provided in Table 1. The values of the fixed C and λ parameters were chosen based on the most commonly encountered values in literature. T_f value was set to be negative but very small. The bounds for the fitted parameters were selected as the widest physically possible bounds (in case of porosity η), or the extreme values encountered in literature. The bounds could be narrowed down to further constrain the optimization, based
 265 on knowledge of site conditions.

To identify a viable combination of fitted parameters that can be calibrated simultaneously, we first test the calibration approach in two synthetic scenarios, with and without noise (Sect. 6.3), before applying it to the field data (Sect. 6.4).

6.3 Heat conduction model validation on synthetic data

Heat conduction model parameters in the control vector V were set to values drawn from within the limits of Table 2. These values were considered the *true parameter values* (V_t) and were used to calculate a temperature field $m(V_t)$ in the forward problem (Eq. 1); we termed this temperature field the *reference temperature field*. Next, the control vector V_t was perturbed with an error coefficient $e = [0.5, 1]$ so that the $V_p = V_t \pm e \times V_t$. The resulting temperature field calculated was called the *perturbed temperature field*. We then minimized the RMSE between the perturbed and the reference temperature field by optimizing for one to five of the perturbed fitted parameters at once. The heat conduction model solutions at mesh nodes every 0.1 m between 0.1 m to 1.5 m depth were used in the objective function. This corresponds to the real-life situation, where temperature measurements are typically available from only a limited portion of the soil profile. To force both the reference and perturbed temperature field calculations, we used ground surface temperatures available from a rigid thermistor string at this site (referred to as the 'MRC stick' in Tomaškovičová and Ingeman-Nielsen (2023)). Bottom boundary at 6 m was set to -3.1° based on borehole information from the area.

Each one of the fitted parameter of the heat conduction model ($C_s, \lambda_s, \alpha, \beta, \eta$) converged towards its *true value* in the single-parameter optimization on synthetic data without noise. For porosity (η), the most sensitive parameter of the model, starting the single-parameter calibration from anywhere within the parameter bounds (0.1 - 0.9), the optimization converged to the true value (0.3) within 7 iterations, with RMSE in the order of 10^{-4} . β was the least sensitive of the fitted parameters; nevertheless, the optimization converged to its true value within 4 iterations, with RMSE in the order of 10^{-4} to 10^{-3} depending on the initial guess. All the parameters were well-determined with narrow 95%-confidence intervals.

Up to four parameters could be estimated at once. The joint optimization for the four parameters λ_s, α, β and η converged within 26 iterations. The recovered parameters were found within 15 % from their true values.

In the next experiment, we added random *noise* with amplitude $\pm 0.03^\circ\text{C}$ to each of the 'measurements' of the reference temperature field. The perturbed parameters were then recovered by optimizing on this 'noisy' reference temperature field. True values of all the fitted parameters were recovered in single-parameter calibration starting from an initial guess up to 50% higher than the true parameter value. Equally, performance of the four-parameter calibration with noise was comparable to the case without noise – recovered parameters laid within 15% from their true values.

Attempting joint calibration of all five fitted heat conduction model parameters $C_s, \lambda_s, \alpha, \beta$ and η caused the optimization to converge towards a solution relatively far from the true parameter values. This approach was therefore deemed not viable. A way to get around fitting the fifth parameter C_s was to define an plausible range for the C_s values, then run a sequence of 4-parameter optimizations with C_s fixed at every step of the predefined range. In result, we obtained a RMSE value for four-parameter optimizations with C_s fixed at respective values of the predefined range (such as in Fig. 4a that shows such results for the field, instead of the synthetic, dataset). We call this the *4+1 optimization approach* and we use it in the next validation step: validation of the heat conduction model on field borehole temperature measurements (section 6.4).

The calibration tests on synthetic datasets confirmed that the trust-region reflective algorithm can recover true parameter values even in scenarios with reduced amount of calibration data, with noisy calibration data, and is not affected by the use

of daily averages instead of individual temperature records. We thus deem the inversion algorithm well-suited for handling our optimization problem, provided that right optimization settings are used. The essential settings for optimal performance of the optimization are the convergence tolerances, size of finite-difference steps, and upper and lower bounds of the permitted parameter value range.

6.4 Heat conduction model validation on field data

The next step following the synthetic tests was to confirm that our thermal model succeeds at recovering thermal parameters of a real ground. This meant to optimize the thermal parameters on borehole temperature timeseries instead of synthetic reference temperature field.

Initial and boundary conditions were identical as in the synthetic tests (Sect. 6.3) as these came from a sensor at the site. The difference was that the reference temperature field in this case were the actual in-situ ground temperature timeseries measured by the rigid thermistor string in the depth between 0.1 m to 1.5 m during freezing season 1st September 2014 – 28th February 2015 (for description of the sensors and datasets, refer to Tomaškovičová and Ingeman-Nielsen (2023)). The reason to choose the shallow rigid thermistor string records was that they provided the longest uninterrupted series of boundary conditions for forcing our model.

We used the *4+1 optimization approach* developed in the synthetic tests (Sect. 6.3). As a maximum of four parameters could be calibrated at once, we began by defining a plausible range for the fifth parameter C_s as $0.6e^6 - 4.1e^6$ J/m³/K, subsequently narrowed down to $2.4e^6 - 3.7e^6$ J/m³/K. We then ran a total of 92 4-parameter optimizations of the remaining fitted parameters α , β , η , and λ_s , with C_s fixed at $0.1e^6$ -increments of the pre-defined range. The summary of all the optimization runs is provided in Table 2, including the 'Initial' and the 'Optimized' parameter values, average error after optimization ('Minimum RMSE') and the confidence intervals.

The smallest average error ('RMSE5' = 0.5503) between the field and simulated temperature fields was found for the following parameter combination: $C_s = 2e7$ J/m³/K, $\alpha = 0.75$, $\beta = 0.10$, $\eta = 0.50$ and $\lambda_s = 1.51$ W/m/K (Table 2). This optimization run took 14 iterations to converge. The fit between the field measurements and the temperature field calculated with these parameter values is shown on Fig. 4b. It shows consistently good agreement of the simulations with observations, particularly in the portion of the dataset below the freezing point. The highest misfit is associated with temperatures above freezing point – when the ground temperature is not largely controlled by phase change processes and water movement and evaporation of the soil moisture may potentially influence the bulk thermal properties.

It is however important to point out that the changes in RMSE between all the 92 optimization runs were very small – below precision of our temperature sensor – in spite of the large range of C_s values evaluated (Fig. 4a). This suggests two conclusions; first, that our implementation of the heat conduction model is not sensitive enough to the parameter C_s to enable its calibration. Second, the optimized model parameter values depend on the initial parameter values of the starting model, which is reflected in the spread of the optimized parameter values producing practically the same model fit. We can therefore expect that the optimized parameter values are not the true ground thermal properties, however they reflect them well enough to simulate the temperature field within 0.6 °C of the field measurements, on average.

Table 2. Summary of the 92 calibration runs on field data using the *4+1 optimization approach*. The 'RMSE1' shows the 'Minimum RMSE' from 36 optimizations runs, each starting with C_s fixed at 0.1 MJ-increments between 0.6 – 4.1 MJ/m³/K and remaining parameters [$\alpha, \beta, \eta, \lambda_s$] starting from the 'Initial' values. The 'RMSE2' through 'RMSE5' show 'Minimum RMSE' from 14 calibration runs each, starting with C_s fixed at 0.1 MJ-increments between 2.4 – 3.7 MJ/m³/K (narrower C_s range) and the remaining four fitted parameters starting from the 'Initial' values as specified. The 95% confidence intervals ('95% CI') indicate the range of values that one can be 95% certain contains the true mean value of the parameter.

Run	Parameter	Initial	Optimized	95% CI	Minimum RMSE [°C]
RMSE1	C_s	0.6 – 4.1	3	–	0.5517
	α	0.21	0.7468	± 0.0064	
	β	0.60	0.1006	± 0.0089	
	η	0.30	0.5258	± 0.0198	
	λ_s	2.00	1.7136	± 0.0955	
RMSE2	C_s	2.4 – 3.7	2.9	–	0.5515
	α	0.10	0.7738	± 0.0053	
	β	0.20	0.0839	± 0.0070	
	η	0.40	0.5935	± 0.0172	
	λ_s	3.00	2.0573	± 0.1328	
RMSE3	C_s	2.4 – 3.7	2.4	–	0.5509
	α	0.40	0.7916	± 0.0040	
	β	0.55	0.0792	± 0.0059	
	η	0.35	0.6308	± 0.0145	
	λ_s	1.80	2.2407	± 0.1413	
RMSE4	C_s	2.4 – 3.7	2.5	–	0.5523
	α	0.32	0.8129	± 0.0033	
	β	0.70	0.0719	± 0.0049	
	η	0.60	0.7276	± 0.0113	
	λ_s	2.20	4.1891	± 0.3923	
RMSE5	C_s	2.4 – 3.7	2.7	–	0.5503
	α	0.50	0.7482	± 0.0061	
	β	0.58	0.1045	± 0.0090	
	η	0.20	0.5012	± 0.0188	
	λ_s	1.90	1.5080	± 0.0713	

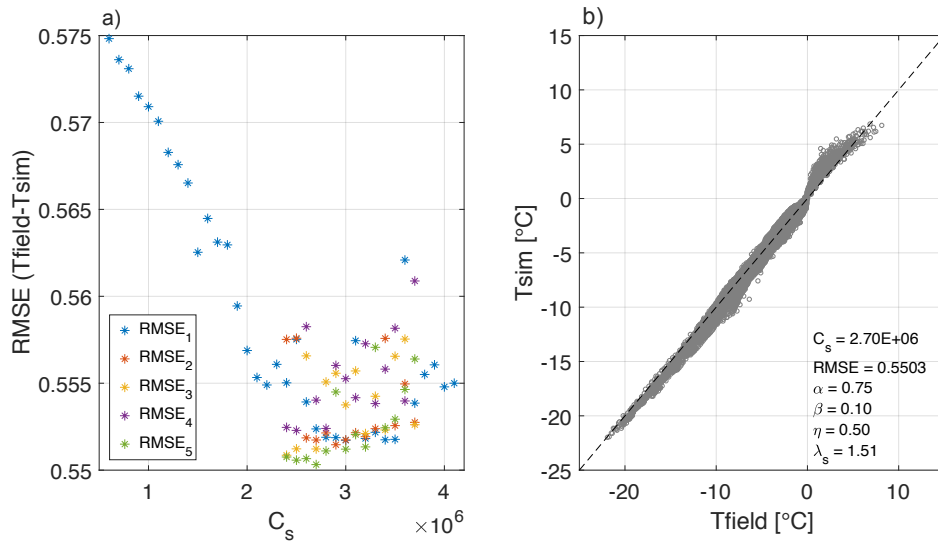


Figure 4. (a) RMSE [$^{\circ}$ C] after optimization for the 92 model runs starting from different initial parameter estimates. The same-color markers indicate the calibrations starting from the same initial values for parameters α , β , η and λ_s (as specified in Table 2), and the initial value for C_s fixed on $0.1e6$ -increments in the specified range ($0.6e^6 - 4.1e^6$ J/m³/K for the group of runs RMSE1, and $2.4e^6 - 3.7e^6$ J/m³/K for RMSE2 – RMSE5). (b) Crossplot of field-measured temperature field vs. the temperature field simulated with parameters optimized in the 'RMSE5' run; the optimized parameter estimates are indicated in the annotation. The average misfit between simulated and field temperatures is 0.55° C.

Figure 5 shows the analysis of differences between the field-measured vs. simulated (using 'RMSE5' parameterization) temperatures at five depths throughout the active layer (0 to 0.9 m) and top of permafrost (below 0.9 m). Predictably, the model struggles to accurately reproduce amplitudes of rapid temperature fluctuations in the shallow subsurface and introduces smoothing and lag into the simulated temperature timeseries. Overall, above the freezing point, the model introduces a warm bias, with simulated temperatures warmer than field measurements; conversely, below the freezing point, the model exhibits a cold bias. These observations suggest that the thermal conductivity λ_s in the model may be over-estimated compared to the properties of the real ground. Permafrost temperatures (below 0.9 m) are reproduced more accurately, possibly because the ground spends more time in the phase transition around 0° , which the model reproduces very well. This suggests that the soil freezing curve parameters (α , β) are close to the real soil values.

Since sensitivity of a model to input parameters changes with changing values of these parameters, we repeated the sensitivity analysis from Sect. 6.1 using the calibrated parameter values ('RMSE5'). The CSS analysis confirmed the importance of the fitted parameters C_s , α , β , η and λ_s for the thermal model predictions and did not reveal new optimization targets (Fig. 2, after calibration). We accepted the model calibrated in the 'RMSE5' optimization run as well performing model with physically plausible parameter values, and we proceeded to validate these in the following Sect. 6.5.

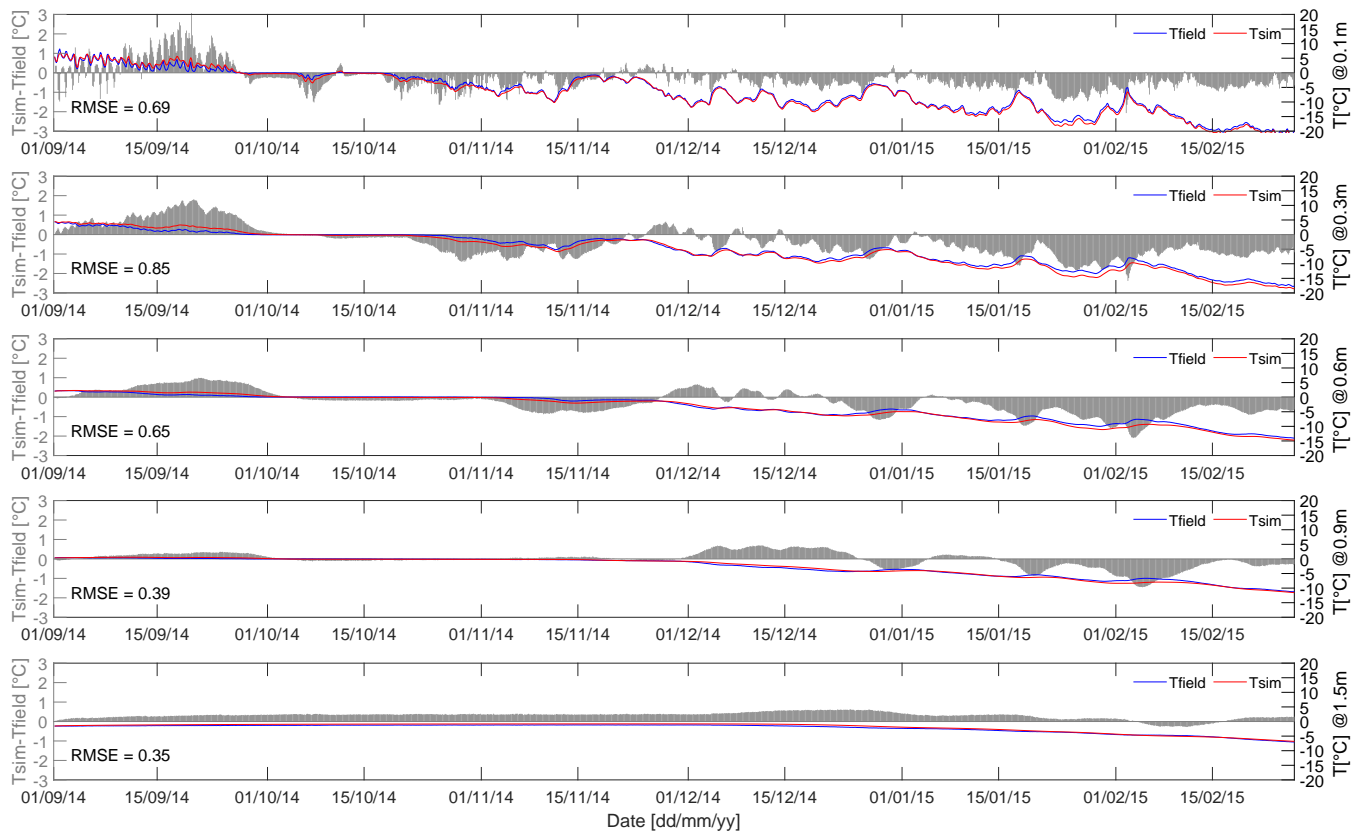


Figure 5. Performance of the thermal model calibrated on borehole temperatures evaluated shown as differences between simulated vs. measured ground temperature timeseries at five different depths across the active layer and top of permafrost (below 0.9m) during the freezing season 2014/2015. RMSE is in [$^{\circ}\text{C}$].

350 6.5 Validation of the optimized heat conduction model parameter values

Direct measurements of the heat conduction model parameters were not available, except for porosity η , which was found to be between 0.40 – 0.62 depending on the exact location near the site, and depth (Pedersen, 2013). Thus we chose to validate the model calibration by data-splitting (Power, 1993). This was done by using the parameter values optimized on the freezing season 2014/2015 to predict temperature regimes in the previous freezing seasons 2012/2013 and 2013/2014, respectively.

355 The model calibrated on freezing season 2014/2015 ('RMSE5' parameterization) predicted ground temperatures measured between 1st November 2012 – 28th February 2013 within $\pm 0.63^{\circ}$ (Fig. 6a). The measurements from freezing season 2013/2014 (only two months between 1st September 2013 — 29th October 2013 available) were reproduced within $\pm 0.32^{\circ}$ (Fig. 6b).

We consider the results of the 'RMSE5' optimization run our best approximation of the actual ground thermal properties in Ilulissat, and we refer to these values when evaluating the performance of other inversion approaches.

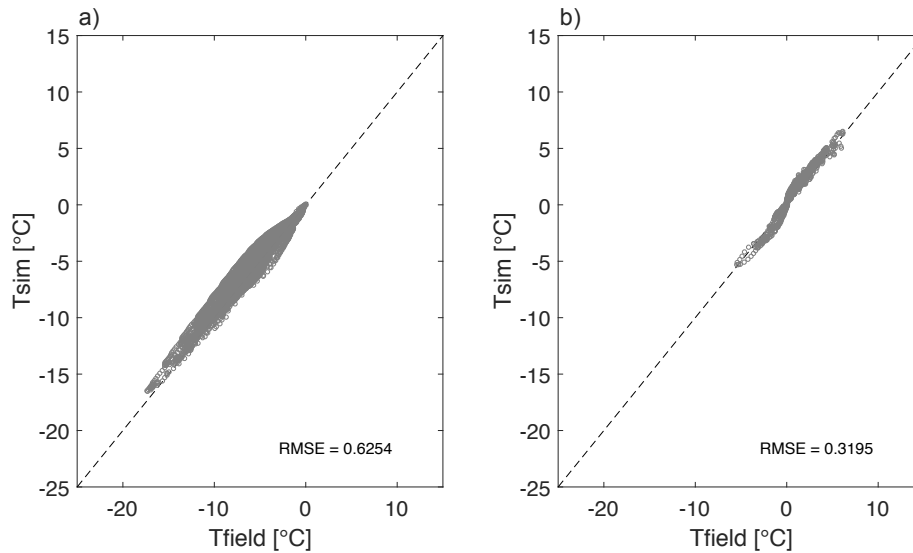


Figure 6. (a) Validation of the thermal model calibration on freezing season 2012/2013, data between 1st November 2012 – 28th February 2013. (b) Validation on freezing season 2013/2014, data between 1st September 2013 – 29th October 2013. RMSE is in [$^{\circ}\text{C}$]

360 7 The fully coupled thermo-geophysical inversion

We describe the choice of petro-physical relationship for the resistivity model, then validate the coupled optimization approach on synthetic data before evaluating performance of the fully coupled inversion scheme in comparison to calibration on borehole temperatures.

7.1 Choice of the resistivity model parameterization

365 Sensitivity analysis was repeated for the fully coupled optimization scheme to identify the more suitable petro-physical formulation for use in the resistivity model (Sect. 5). Both thermal and resistivity parameters were evaluated, as success of the coupled optimization depends on sensitivity of the forward apparent resistivity calculation to change in the heat parameters (C , λ), as well as the resistivity parameters (ρ of the water, ice and soil minerals, Archie's parameters m and n). Parameters α , β , T_f , and η describe the unfrozen water content variation with temperatures below freezing point and are common to both
 370 heat and resistivity modules in the coupled scheme. Figure 7 shows changes in simulated apparent resistivity (log-transformed) resulting from 10% change in each of the input parameters for the two petro-physical relationships evaluated – the geometric mean model and the Archie's law.

Both petro-physical relationships showed relatively little sensitivity to changes in the thermal model-only parameters C and λ . Porosity (η) was among the most influential parameters in the coupled scheme, as it was previously in the thermal model
 375 alone. This makes sense, as the total volume (in addition to inter-connectedness) of pores available for storage and movement of

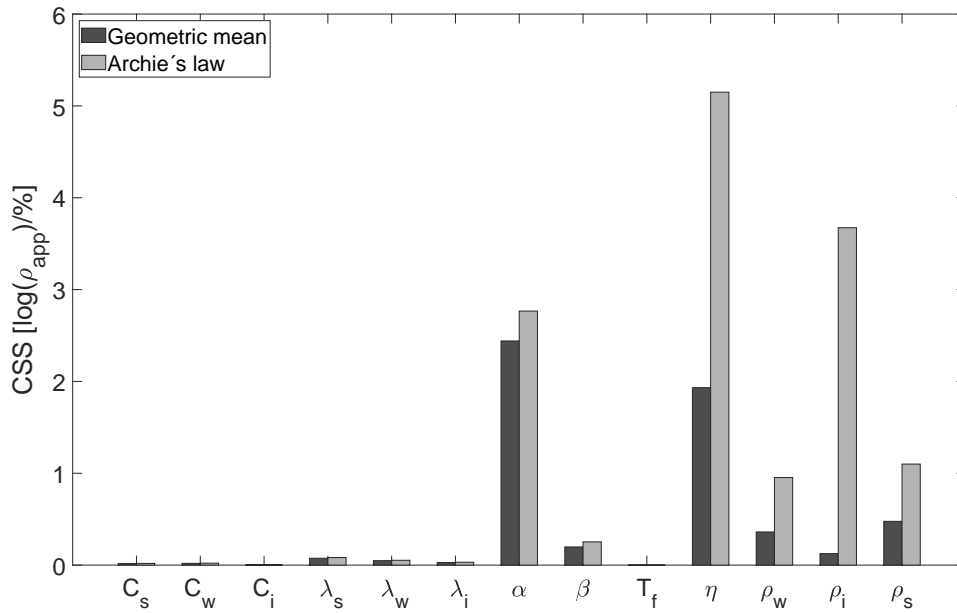


Figure 7. Composite scaled sensitivities (CSS) of the 13 parameters of the heat and the resistivity modules of the fully coupled inversion scheme. The sensitivity is expressed as change in logarithm of forward-calculated apparent resistivity following 10% change in the evaluated parameter.

soil moisture determine resistance to current flow. In terms of the resistivity parameters (ρ_w for Archie's law and the geometric mean, ρ_i and ρ_s for the geometric mean only) and the parameters of soil freezing curve α and β , the Archie's formulation was more sensitive and therefore offered better chances at model calibration. We therefore proceeded with using the Archie's law as the petro-physical relationships in the resistivity module. This was in spite of the two extra parameters to calibrate in the
 380 Archie's law (m and n). Following these considerations as well as the experience from thermal model calibration, we identified our target parameters for optimization as the following: λ_s , α , β , η , ρ_w , m and n .

Parameter optimization in the coupled inversion scheme is based on the same approach as in the thermal modeling alone: the iterative non-linear least-squares formulation using the trust-region reflective algorithm. The cost function is the RMSE between logarithms of field-measured and forward-calculated *apparent resistivities*. We use log-transformed resistivities, as this
 385 way the optimization problem becomes more linear and a more equally weighted fitting of the resistivity data is achieved. The cost function is minimized by adjusting thermal parameters of the heat conduction model from which the forward resistivities are calculated, as well as the parameters of the resistivity model.

7.2 Validation on synthetic data

We performed several optimization runs on synthetic data without noise, to get a feel for the sensitivity of the optimization
 390 algorithm, correct optimization settings and identify the combination of parameters that can be estimated at once. In the pro-

cedure common with the thermal model testing (Sect. 6.3), a set of arbitrary though realistic parameter values (termed *true parameters*) was used to produce a *reference temperature field*, which in turn produced the corresponding *synthetic effective resistivity model* of the ground. From this synthetic resistivity model, *reference apparent resistivity* response was calculated. The true parameter value(s) were then perturbed by a random error coefficient ranging from $\pm 20 - 90\%$. We then aimed to recover
395 the true parameter values by updating the perturbed heat and resistivity parameters iteratively, and comparing the forward-calculated synthetic apparent resistivity to the reference apparent resistivity. The optimization algorithm and the convergence criteria were the same as described in the analogous section on the thermal model testing (Sect. 6.3).

Porosity η as the most sensitive parameter of the coupled model was recovered accurately within 3 iterations and with narrow 95% confidence intervals. Thermal conductivity of soil grains λ_s is an essential parameter for heat conduction model
400 predictions, even though the coupled scheme appeared to be very little sensitive to it. Nevertheless, in a single-parameter optimization on synthetic data without noise, the true parameter value was recovered accurately within 4 iterations. Joint calibration of all of the 7 fitted parameters at once – α , β , η , λ_s , ρ_w , m , n – converged within 4–5 iterations, depending on the starting values, while producing very good fit between simulated and reference apparent resistivities (final RMSE after optimization in the range of $10^{-3} - 10^{-2}$). However, in spite of the good model fit, the true parameter values were not accurately
405 recovered and their optimized values depended on their starting values. In spite of the non-unique results of the inversion, all the optimized parameters lied in physically plausible range.

To improve the accuracy of recovery of the true parameters in the synthetic scenario, we experimented with fixing some of the less sensitive parameters of the coupled scheme. The optimization with 6 fitted parameters (α , β , η , ρ_w , m , n) and C_s and λ_s fixed, produced slightly lower final RMSE in comparison to the optimization with 7 and 5 fitted parameters; however,
410 it did not improve recovery of the true parameter values. We noted that the coupled inversion scheme may not arrive at a unique estimation of the accurate parameter values; nevertheless, our synthetic tests confirmed that the optimization algorithm repeatedly converged to a set of physically plausible parameters while producing very good fit with the reference dataset.

In the following section, we applied the fully coupled inversion approach to recovery of thermal and resistivity parameters of the real ground, and we compared the results to the traditional method of calibration on borehole temperatures only.

415 7.3 Fully coupled inversion with field data

Following the experience from synthetic testing (Sect. 7.2), we chose to optimize 6 fitted parameters at once: α , β , η , ρ_w , m , and n . We fixed the thermal conductivity λ_s to value 1.70 W/m/K and the heat capacity C_s to $3e^6$ J/m³/K (values from thermal model calibration RMSE1, section 6.4).

The results of the 6-parameter optimization on field resistivity data are shown in Fig. 8. Fig. 8a shows the best fit of apparent
420 resistivities after calibration on freezing season 2014/2015. Although the fit between simulated and field apparent resistivities is not ideal, the optimized parameterization produces temperature field that fits the field temperatures in freezing season 2014/2015 within $\pm 0.66^\circ$ (Fig. 8b).

To assess the predictive value of the model, we used the optimized parameterization estimates (values as listed in Fig. 8a and 8b) to forward-calculate the apparent resistivity distribution in the freezing seasons 2012/2013 (Fig. 8c) and 2013/2014

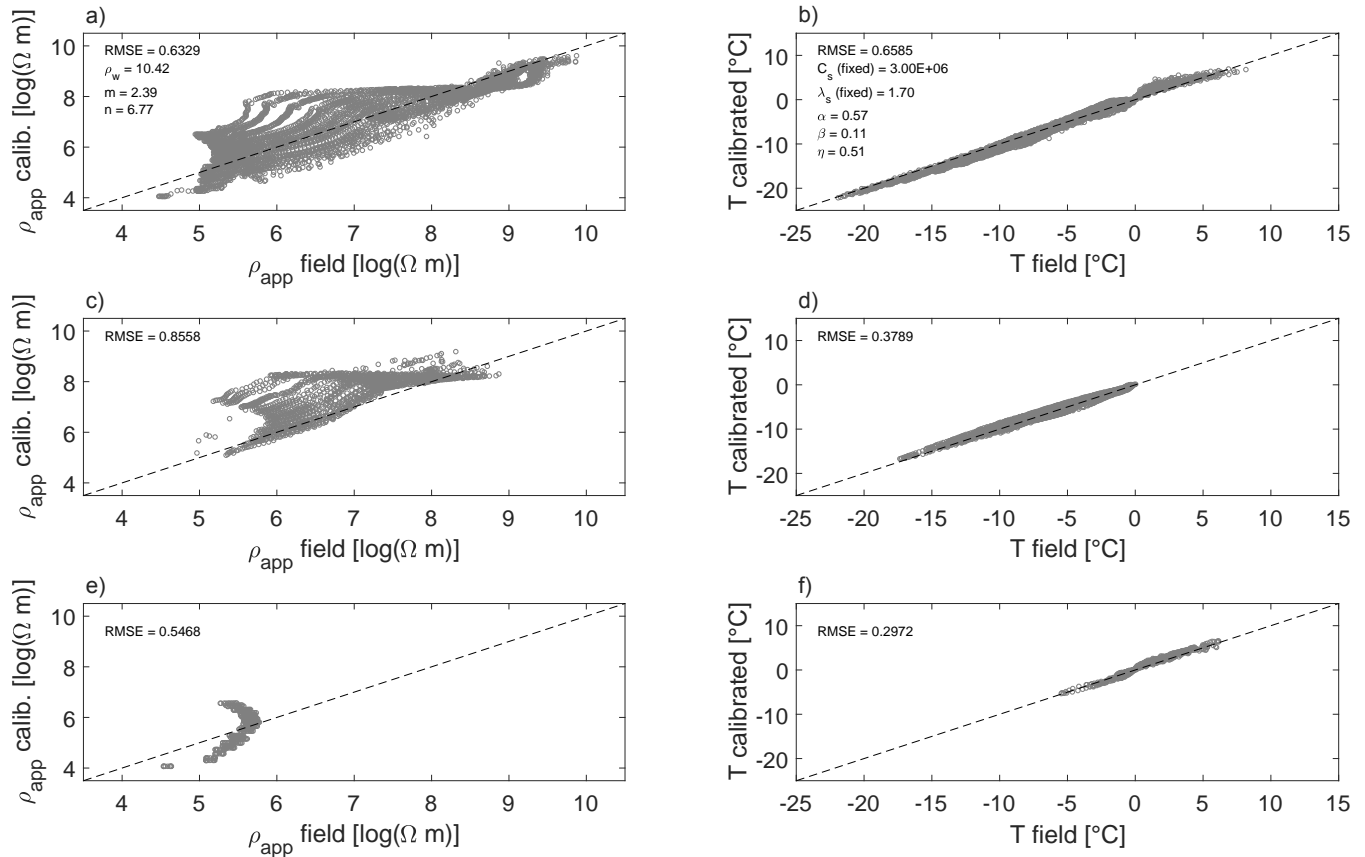


Figure 8. Results of the fully coupled inversion: a) and b) show results of calibration, c) through f) show results of validation. a) Fit of the simulated apparent resistivities (ρ_{app}) to field ρ_{app} measured during freezing season 2014 – 2015; b) fit of the heat conduction model after optimization, freezing season 2014 – 2015. c) and d) Validation of the optimized coupled model on freezing season 2012 – 2013. e) and f) Validation of the optimized coupled model on freezing season 2013 – 2014 (e and f). Values of the fixed and optimized thermal and resistivity model parameters are listed in annotations. RMSE is in $^{\circ}\text{C}$.

425 respectively (Fig. 8e). The parameter values optimized on the freezing season 2014/2015 predicted the field temperature measurements from freezing season 2012/2013 with mean error $0.38\text{ }^{\circ}\text{C}$ (Fig. 8d). The field temperature measurements from freezing season 2013/2014 (only two months are available for comparison) were predicted with mean error $0.30\text{ }^{\circ}\text{C}$ (Fig. 8f).

In terms of the model fit, the performance of the coupled optimization approach is comparable to the traditional optimization on borehole temperatures (Section 6.4). In terms of determination true parameters of the real ground, the coupled inversion
430 approach does not improve the non-uniqueness of parameter optimization; the optimized parameter values depend on their initial parameter estimates. Nevertheless, all the optimization runs come up with physically plausible parameter values and the forward-calculated temperature fields fit the field datasets with mean error of around $0.6\text{ }^{\circ}\text{C}$.

8 Discussion

Efforts using geophysical data to constrain other – especially hydrological – models are by now well documented. The coupling
435 strategies vary, from constraining inversion and interpretation of the other models with inverted geophysical data (Doetsch et al., 2013), through structurally-coupled approaches (Gallardo and Meju, 2011; Lochbühler et al., 2013), to fully coupled inversion schemes using the geophysical data before inversion (Hinnell et al., 2010; Herckenrath et al., 2013b; Tran et al., 2017). The fully coupled approaches have been encouraged by some (Gallardo and Meju, 2011), as separate data inversions lead to inconsistent models for the same subsurface target. The fully coupled framework has been shown to improve accuracy
440 and reduce the uncertainty of prediction of hydrological parameters (Hinnell et al., 2010; Herckenrath et al., 2013a).

To distinguish the principle limitations of the presented fully coupled inversion method from possible pathways for improvement, a number of conceptual simplifications and assumptions stated in Sect. 4 are hereby evaluated.

Heat conduction is assumed to be the dominant process of heat transport. This is a reasonable assumption at our site where for most of the year (from beginning of September to mid-June), we do not observe substantial lateral water movement (Jessen
445 et al., 2014; Tomaškovičová and Ingeman-Nielsen, 2023). Evaporation and increased pore water movement produce water content variations in the unfrozen period (mid-June to end-August), but this is outside of the calibration period (1. September – 28. February). Accounting for the processes of water movement and evaporation would require their description and parameterization, which could be handled effectively outside of the coupled inversion scheme. Including such modules would only be of interest if the goal was to carry out year-round ground temperature modeling.

450 Full saturation is a valid assumption at our site between the beginning of September and mid-June (Tomaškovičová and Ingeman-Nielsen, 2023); and only the data from the fully saturated periods were used in the calibration. It is important to highlight that this is *not* a principle limitation of the method. If the saturation is known, it is straightforward to include its true value in the current model formulation. If we were to optimize for saturation different from 1 but constant in time, then it would correspond to adding just another parameter to the heat conduction (and the coupled) model. However, to include saturation
455 in a realistic way, it should be included as a time-variable parameter (and as a space-variable parameter when expanding the method to more space dimensions). This could be done in one of two ways: by i) parameterizing saturation (in a way similar to the parameterization of θ_w by the two parameters α and β), which would result in additional parameters to calibrate; or

by ii) adding a hydrological model driven by the same climatological parameters that would calculate saturation and inform the coupled thermal-resistivity model about the time-variable values of saturation. This way, there would be no additional parameters in the coupled model to calibrate.

The assumption of homogeneous ground is to a certain extent a simplification at our site. While the geology on our site is indeed homogeneous in terms of soil type (silty clays, based on geotechnical drilling reported in (Geoteknisk Institut, 1978)), heterogeneities are present in the form of ice lenses (mainly in the depth between 0.9 m to 1.5 m) and increasing pore water salinity (in the depth below 4 m). In the homogeneous model setup, the specific thermal properties of soil constituents, the porosity and the freezing curve parameterization are assumed to be the same for the entire soil column. However the model does resolve varying *bulk* (effective) thermal properties, as these depend on the temperature and phase distribution of the soil constituents at a given time and depth in the soil column. We experimented with an implementation of a heterogeneous model with four layers corresponding to the field situation (active layer, ice-rich permafrost with ice lenses, saline permafrost and bedrock). The optimization algorithm searched for four different sets of the specific thermal parameters, one set for each of the model layers. The performance of the heterogeneous model was comparable to the homogeneous model in terms of the RMSE ($^{\circ}\text{C}$), and different sets of parameters were identified for each of the four layers. However, the parameters remained non-uniquely determined, as different sets of starting values converged to different optimized parameter values, all fitting the field data similarly well. We concluded that without further constraining information, the use of the more complex, heterogeneous model was not justified, neither in terms of the model fit, speed of convergence, nor the uniqueness of parameter estimation. Constraining information could be added e.g. in form of orthogonally determined fixed model parameters, or a constrain on parameter change e.g. that porosity has to be decreasing with depth.

Specific thermal properties of the soil constituents were assumed constant, i.e. independent of the temperature or salinity. This is an acceptable approximation, previously used by e.g. Nicolovsky et al. (2007) and Romanovsky et al. (2000). According to Osterkamp (1987), using constant parameters resulted in errors of less than 10% in the calculation of the effective (bulk) thermal properties in the temperature range between -20°C to 0°C . Latent heat of phase change in reality varies with unfrozen water content; however, using a constant value has been proved satisfactory for temperatures above -20°C (Anderson et al., 1973). These are standard assumptions used in modeling experiments designed following the principle of parsimony, and where the focus is not on the temperature and salinity dependence of the thermal parameters. Nevertheless, temperature- or salinity-dependent variation could be readily implemented if the requirements on model output and quality of input data justified the increased model complexity. Including effect of salinity would additionally require adaptation of the freezing curve formulation.

A fixed temperature was used as the bottom model boundary. This assumption has no impact on our calculations considering the short modeled time span (up to 180 days), and the known yearly temperature amplitude ($<0.09^{\circ}$) at the bottom of the 6 m deep borehole (Tomaškovičová and Ingeman-Nielsen, 2023). If the model was to be used for future predictions, this assumption would have to be reviewed, just as in any model expanding its domain of application. Including variable bottom temperature or geothermal heat flux boundaries is technically straightforward in the current model setup. This would however require extra

data input in the form of borehole temperature measurements (for the variable bottom boundary) or a reasonable estimate of the geothermal heat flux at the site (from a deep borehole, or from a regional geothermal heat flux model accounting for variations).

Experiences show that volumetric heat capacities C of materials are difficult to estimate from typical field and laboratory tests (Shonder and Beck, 1998; Kojima et al., 2018). Our forward temperature field calculations are relatively insensitive to the value chosen for the volumetric heat capacity of soil minerals C_s . A plausible explanation for this could be that significant phase change is necessary to separately estimate heat capacity and thermal conductivity from field data; in a system with little phase change, only thermal diffusivity can be estimated. In a saturated system, when the rate of phase change is the largest, the energy consumed by the phase transition between water and ice is much larger than the energy needed to change the temperature of soil grains, and the value of C_s becomes insignificant. Outside of the period of significant phase change, the phase change may not be enough to allow for separate calibration of the heat capacity of the soil grains.

The use of Archie's law is usually limited to sediments with low clay content, when virtually all conductivity in the bulk soil can be attributed to the pore liquid. This condition is not entirely met in our field situation, as high clay content may contribute to lowering the overall soil resistivity by surface conduction. Adaptation of the resistivity mixing relationship remains a possibility for improvement of performance of the coupled inversion framework.

Although we advocate for the use of easy-to-measure ground surface temperatures to drive the model, we do recognize that these typically suffer from rapid fluctuations influenced by short-wave radiation. Using daily averages or near-surface temperatures to drive the model instead (at ca. 10 cm depth) could improve performance in the upper portion of the modeled domain. Performance in the deeper parts of the model would be improved by using a heterogeneous model setup allowing to capture vertical variations in the specific soil properties.

The value of replacing borehole temperature data with geophysical data for thermal model calibration could be discussed, as the geoelectrical data achieved calibration comparable to the borehole calibration, though not better. Admittedly, in the absence of directly measured thermal properties, borehole data are the best calibration and validation data for a 1D thermal model. However, depending on the survey requirements and limitations, geophysical data afford a number of benefits that may constitute a practical advantage over the use of borehole temperatures, evidently without sacrificing the model performance:

1. *Measurements from the surface rather than the need for drilling.* This encompasses two advantages: larger depth reach, as well as the possibility to work in both sedimentary and bedrock settings. Hand-operated, engine-powered drilling tools are of limited depth penetration and restricted to sedimentary geology. Logistics associated with mobilizing a drilling rig able to reach larger depths or drilling through bedrock is often prohibitive in remote arctic areas. Meanwhile, the depth reach of a geoelectrical array can be more readily adjusted by the design of the largest spacing of the current electrodes.

2. *Lower impact on fragile ecosystems.* Few roads exist in the Arctic, and movement of drilling equipment on the tundra, especially outside of the frozen season, seriously damages the terrain, particularly in wetter and ice-rich permafrost areas (Rickard and Brown, 1974; Kevan et al., 1995). Arctic tundras are characterized by relatively low biological activity and diversity, and by short, cool and dry growing-seasons. This leads to the natural re-vegetation process after surface disruption to be very slow. The disruption of the surface organic layer then typically results in the accelerated thaw of

permafrost. Together with the risk of pollution from engine-operated equipment, these factors may cause issues securing the necessary permits for drilling fieldwork. In comparison, impact of the surface or airborne geophysical methods is minimal.

530 3. *Assessment of spatially varying conditions.* Geophysical mapping methods, unlike point borehole measurements, allow for a relatively quick assessment of ground conditions over a comparatively large areas. Therefore, expanding the presented approach to three-dimensional mapping presents another potential for future development of the method.

Spatial variability of the ground electrical properties is resolved by a combination of electrode layouts on a heterogeneous half-space because of the different depth sensitivity of different layouts. This applies to the 1D scenario as well as to 2D and 3D scenarios, where different layouts are necessary to cover the part of the subsurface of interest. A real concern is if the 535 equivalencies observed in the inversion of resistivity data from permafrost (Ingeman-Nielsen, 2006; Ingeman-Nielsen et al., 2008; Tomaškovičová and Ingeman-Nielsen, 2023) impact this type of inversion. Such a question is targeting a more complex situation than what we focused on in the simple conditions of this study; more work is necessary to understand how the method performs in more complex settings.

While we illustrated the coupled approach using geoelectrical data, in principle, any geophysical data could be used as 540 long as the petro-physical relationship between the ground temperatures and the geophysical parameter can be calibrated. E.g. transient electro-magnetic data (TEM), acquired by towing the instrumentation behind a snowmobile (Kass et al., 2021; Maurya et al., 2021) would exploit the same petro-physical relationship while providing greater spatial coverage. In some settings, TEM acquired from an airplane could be of interest – if the benefit of fast acquisition and great coverage would outweigh the greater cost. These considerations suggest the far-reaching potential of the concept of the coupled thermo-geophysical inversion.

545 For each new type of geophysical data to be used in the coupled inversion scheme, the required measurement repeat frequency would be of interest. This frequency would depend on the rate of phase change (which varies throughout the year) and the sensitivity of the method to these changes. We observed (Tomaškovičová and Ingeman-Nielsen, 2023) that in the temperature range between -2° and 0°C , the unfrozen water content changes very rapidly. Data from this period also contain the most information for the thermal model calibration. Hence it makes sense to collect geophysical acquisition daily, when possible. 550 When daily acquisitions are not feasible, as well as outside of the period of the fastest phase change, the acquisition frequency can be optimized by first evaluating the effect of sampling frequency on the parameter recovery in a synthetic exercise.

Other types of geophysical data may benefit from input of independently measured model parameters constraining the model. Identification of such parameters would depend on the sensitivity of the geophysical method of choice, and on the desired outcome of the model. Naturally, having a fix on an important parameter such as e.g. porosity (a single value throughout the 555 soil column, or porosity variable with depth) would improve the estimation of the remaining parameters. This would make sense to implement if the purpose of the model was to obtain as close to true parameter values as possible without directly measuring them on soil samples. However, porosity is also one of the trickiest parameters to impose. If the purpose of the modeling is to come up with a model that can reproduce the calibration and validation data within certain acceptable error limits, this can be achieved even when the true porosity is not known and is one of the calibrated parameters.

560 Performance of the coupled inversion method at sites of very different geology is of interest for expanding the applicability of the method. While definite answers cannot be given without testing, we can base our assessment on the knowledge of the behavior of the ground thermal parameters, as well as the results of our sensitivity analysis. A site where the ground consists of coarse-grained dry sediment would present a very different scenario to the saturated silty clay geology on which we developed and tested the coupled inversion method. The parameters that we would expect to differ the most in such conditions would
565 be porosity, saturation, and the freezing curve parameterization α and β . Porosity, α and β were among the most sensitive parameters of the thermal model. Sensitivity of the model to saturation was not evaluated in this study; however, as it is a property that directly controls the amount of conductive liquid phase, we would expect it to be a very sensitive parameter. Based on these considerations, we expect that the method would likely be able to resolve the thermal regime even at a site of different geology.

570 The approach described in this work constitutes one of a number of possible ways of adding a constraining information directly to the process of estimation of the heat conduction model parameters. The field geoelectrical data were shown to contain constraining information for calibration of the thermal model. Even though we did not obtain an ideal resistivity model, the thermal calibration was useful. The fit and predictive performance of the resistivity-calibrated thermal model was comparable to the fit of thermal model calibrated on borehole temperature measurements.

575 9 Conclusions

Two main conclusions of our study can be summarized as follows:

1. We evaluated the amount of information contained in the time lapse geoelectrical data for calibration of a soil heat conduction model.
2. We demonstrated that the geoelectrical calibration data are useful as an alternative calibration data for heat conduction
580 model, and can provide as useful calibration results as borehole temperature data.

This is the first time that field data have been used to demonstrate that the concept of the fully coupled thermo-geophysical inversion can work in praxis. The fully coupled model achieved performance comparable to the traditional method of calibration on borehole temperatures. While the model did not necessarily improved the estimation of thermal parameters compared to calibration on borehole temperature measurements, it provided an alternative way of deriving it from surface measure-
585 ments. Additionally, the thorough sensitivity analysis of the model parameters improved our understanding of what geological information may be necessary for constraining the model.

In the development process of the fully coupled inversion scheme, we thoroughly evaluated a comparatively simple (1D, homogeneous, 3-phase) model for heat transfer in a ground undergoing cycles of freezing and thawing. The model relies on a number of conceptual assumptions to maintain parsimony. Nevertheless, it predicts temperature variation at our test site
590 with satisfactory accuracy – within 0.55°C . Simplicity of the model is a benefit in that the requirements on input data are relatively low – only surface temperature timeseries (measured, or downscaled from air temperature data), initial temperature

distribution and bottom boundary condition are needed. On the other hand, it has to be expected that the final, optimized parameter estimates will compensate for conceptual simplifications of the model.

595 In the context of geotechnical and engineering applications (such as forecasting stability of infrastructure built on thawing permafrost), the true values of thermal parameters remain of interest, as they can be used further in geotechnical models. Further efforts in improving the structure and sensitivity of the model, constraining the optimization and including further independent validation will be required to validate the model in this context.

600 The relatively short timeseries of one freezing season (180 days) were sufficient to reach a plausible parameter estimation for the freezing season providing good fit to the validation dataset. Due to hysteretic nature of freeze-thaw processes, the heat conduction model should be calibrated for freezing and thawing seasons separately.

With the constantly improving understanding of electrical resistivity responses in the very specific permafrost settings, the resistivity coupling with thermal models opens up new possibilities for monitoring the current and forecasting the future thermal state of permafrost. The method has the demonstrated potential for offering a more resource-efficient alternative to calibration of ground thermal models on borehole temperature records.

605 *Author contributions.* ST conducted the data treatment, modeling and wrote the manuscript. TIN implemented the SOILFREEZE1D solver for heat conduction and contributed to the intellectual content of the manuscript. Both authors contributed to development of the coupled inversion scheme.

Competing interests. No competing interests are present.

610 *Acknowledgements.* This study was part of project TARAJULIK, funded by the Greenland Research Council, grant agreement 80.30. The study was also supported by the NUNATARYUK project, which is funded under the European Union's Horizon 2020 Research and Innovation Programme, grant agreement 773421.

References

References

- Anderson, D. M. and Tice, A. R.: Predicting unfrozen water contents in frozen soils from surface area measurements, Highway research record, 1972.
- 615 Anderson, D. M., Tice, A. R., and McKim, H. L.: The unfrozen water and the apparent specific heat capacity of frozen soils, in: Proceedings of the second international conference on permafrost; North American contribution. Natl Acad Sci, Washington, DC, pp. 289–295, 1973.
- Archie, G. E. et al.: The electrical resistivity log as an aid in determining some reservoir characteristics, Transactions of the AIME, 146, 54–62, 1942.
- 620 Bennike, O. and Björck, S.: Chronology of the last recession of the Greenland Ice Sheet, Journal of Quaternary Science, 17, 211–219, 2002.
- Brown, J., Ferrans Jr, O., Heginbottom, J., and Melnikov, E.: revised February 2001. Circum-Arctic map of permafrost and ground-ice conditions. Boulder, CO: National Snow and Ice Data Center/World Data Center for Glaciology, Digital media, 1998.
- 625 Cappelen, J.: Weather observations from Greenland 1958-2019. Observation data with description., Tech. Rep. 20-08, Danish Meteorological Institute, <https://www.dmi.dk/publikationer/>, 2020.
- Coleman, T. F. and Li, Y.: An interior trust region approach for nonlinear minimization subject to bounds, SIAM Journal on optimization, 6, 418–445, 1996.
- Doetsch, J., Kowalsky, M. B., Doughty, C., Finsterle, S., Ajo-Franklin, J. B., Carrigan, C. R., Yang, X., Hovorka, S. D., and Daley, T. M.: Constraining CO₂ simulations by coupled modeling and inversion of electrical resistance and gas composition data, International Journal of Greenhouse Gas Control, 18, 510–522, 2013.
- 630 Doetsch, J., Ingeman-Nielsen, T., Christiansen, A. V., Fiandaca, G., Auken, E., and Elberling, B.: Direct current (DC) resistivity and induced polarization (IP) monitoring of active layer dynamics at high temporal resolution, Cold Regions Science and Technology, 119, 16–28, 2015.
- 635 Friedman, S. P.: Soil properties influencing apparent electrical conductivity: a review, Computers and electronics in agriculture, 46, 45–70, 2005.
- Gallardo, L. A. and Meju, M. A.: Structure-coupled multiphysics imaging in geophysical sciences, Reviews of Geophysics, 49, 2011. Geoteknisk Institut: Borehole log 78020 Jakobshavn, Archive material available at Asiaq Greenland Survey, Nuuk, Greenland, 1978.
- Guéguen, Y. and Palciauskas, V.: Introduction to the physics of rocks, Princeton University Press, 1994.
- 640 Harris, C., Arenson, L. U., Christiansen, H. H., Eitzelmüller, B., Frauenfelder, R., Gruber, S., Haeberli, W., Hauck, C., Hoelzle, M., Humlum, O., et al.: Permafrost and climate in Europe: Monitoring and modelling thermal, geomorphological and geotechnical responses, Earth-Science Reviews, 92, 117–171, 2009.
- Hauck, C.: Frozen ground monitoring using DC resistivity tomography, Geophysical research letters, 29, 2002.
- Hauck, C., Bach, M., and Hilbich, C.: A 4-phase model to quantify subsurface ice and water content in permafrost regions based on geophysical datasets, in: Proceedings Ninth International Conference on Permafrost, June, pp. 675–680, 2008.
- 645 Herckenrath, D., Fiandaca, G., Auken, E., and Bauer-Gottwein, P.: Sequential and joint hydrogeophysical inversion using a field-scale groundwater model with ERT and TDEM data, Hydrology and Earth System Sciences, 17, 4043–4060, 2013a.
- Herckenrath, D., Odlum, N., Nenna, V., Knight, R., Auken, E., and Bauer-Gottwein, P.: Calibrating a Salt Water Intrusion Model with Time-Domain Electromagnetic Data, Groundwater, 51, 385–397, 2013b.

- 650 Hill, M. C.: *Methods and guidelines for effective model calibration*, US Geological Survey Denver, CO, USA, 1998.
- Hinnell, A., Ferré, T., Vrugt, J., Huisman, J., Moysey, S., Rings, J., and Kowalsky, M.: Improved extraction of hydrologic information from geophysical data through coupled hydrogeophysical inversion, *Water resources research*, 46, 2010.
- Hoekstra, P.: Electromagnetic probing of permafrost, in: *Proceedings of the Second International Conference on Permafrost*, Washington, 1973, pp. 517–526, National academy of sciences, 1973.
- 655 Hoekstra, P., Sellmann, P. V., and Delaney, A.: Ground and airborne resistivity surveys of permafrost near Fairbanks, Alaska, *Geophysics*, 40, 641–656, 1975.
- Holloway, J. and Lewkowicz, A.: Field and laboratory investigation of electrical resistivity-temperature relationships, southern Northwest Territories, in: *Cold Regions Engineering 2019*, pp. 64–72, American Society of Civil Engineers Reston, VA, 2019.
- Ingeman-Nielsen, T.: *Geophysical techniques applied to permafrost investigations in Greenland*, Ph.D. thesis, BYG. DTU, 2005.
- 660 Ingeman-Nielsen, T.: Mapping ice-bonded permafrost with electrical methods in Sisimiut, West Greenland, in: *12th European Meeting of Environmental and Engineering Geophysics*, EAGE Publications BV, 2006.
- Ingeman-Nielsen, T. and Baumgartner, F.: CR1Dmod: A matlab program to model 1D complex resistivity effects in electrical and electromagnetic surveys, *Computers & Geosciences*, 32, 1411–1419, 2006.
- Ingeman-Nielsen, T., Foged, N. N., Butzbach, R., and Jørgensen, A. S.: Geophysical Investigations of Saline Permafrost at Ilulissat, 665 Greenland, in: *Ninth International Conference on Permafrost*, Institute of Northern Engineering, University of Alaska Fairbanks, 2008.
- Jafarov, E. E., Harp, D. R., Coon, E. T., Dafflon, B., Tran, A. P., Atchley, A. L., Lin, Y., and Wilson, C. J.: Estimation of subsurface porosities and thermal conductivities of polygonal tundra by coupled inversion of electrical resistivity, temperature, and moisture content data, *The Cryosphere*, 14, 77–91, 2020.
- Jessen, S., Holmslykke, H. D., Rasmussen, K., Richardt, N., and Holm, P. E.: Hydrology and pore water chemistry in a permafrost wetland, 670 Ilulissat, Greenland, *Water Resources Research*, 50, 4760–4774, 2014.
- Johansen, O.: *Thermal conductivity of soils*, Tech. rep., Cold Regions Research and Engineering Lab Hanover NH, 1977.
- Kass, M., Maurya, P., Ingeman-Nielsen, T., Pedersen, J., Tomaškovičová, S., and Christiansen, A.: Towed transient electromagnetic survey results at Ilulissat, Greenland for water vulnerability and infrastructure planning, in: *NSG2021 2nd Conference on Geophysics for Infrastructure Planning, Monitoring and BIM*, vol. 2021, pp. 1–5, European Association of Geoscientists & Engineers, 2021.
- 675 Kevan, P., Forbes, B., Kevan, S., and Behan-Pelletier, V.: Vehicle tracks on high Arctic tundra: their effects on the soil, vegetation, and soil arthropods, *Journal of Applied Ecology*, pp. 655–667, 1995.
- Kojima, Y., Heitman, J. L., Noborio, K., Ren, T., and Horton, R.: Sensitivity analysis of temperature changes for determining thermal properties of partially frozen soil with a dual probe heat pulse sensor, *Cold Regions Science and Technology*, 151, 188–195, 2018.
- Krautblatter, M., Verleysdonk, S., Flores-Orozco, A., and Kemna, A.: Temperature-calibrated imaging of seasonal changes in permafrost 680 rock walls by quantitative electrical resistivity tomography (Zugspitze, German/Austrian Alps), *Journal of Geophysical Research: Earth Surface*, 115, 2010.
- Larsen, G., Frederiksen, J., Villumsen, A., Fredericia, J., Gravesen, P., Foged, N., Knudsen, B., and Baumann, J.: *A guide to engineering geological soil description*, Danish Geotechnical Society, 1995.
- Lochbühler, T., Doetsch, J., Brauchler, R., and Linde, N.: Structure-coupled joint inversion of geophysical and hydrological data, *Geophysics*, 78, ID1–ID14, 2013.
- 685 Lovell Jr, C.: *Temperature effects on phase composition and strength of partially-frozen soil*, Highway Research Board Bulletin, 1957.
- Lunardini, V. J.: *Heat transfer in cold climates*, Van Nostrand Reinhold Company, 1981.

- 690 Magnin, F., Krautblatter, M., Deline, P., Ravanel, L., Malet, E., and Bevington, A.: Determination of warm, sensitive permafrost areas in near-vertical rockwalls and evaluation of distributed models by electrical resistivity tomography, *Journal of Geophysical Research: Earth Surface*, 120, 745–762, 2015.
- Maurya, P. K., Auken, E., Kass, M. A., Ingeman-Nielsen, T., Tomaškovičová, S., Lorentzen, T. H., Pedersen, J. B. B., and Christiansen, A. V.: Application of a novel transient electromagnetic system (SnowTEM) for infrastructure planning and understanding impact of climate change on permafrost, in: *AGU Fall Meeting 2021*, AGU, 2021.
- 695 Nicolsky, D., Romanovsky, V., and Tzipenko, G.: Using in-situ temperature measurements to estimate saturated soil thermal properties by solving a sequence of optimization problems, *The Cryosphere*, 1, 41–58, 2007.
- Nicolsky, D., Romanovsky, V., and Panteleev, G.: Estimation of soil thermal properties using in-situ temperature measurements in the active layer and permafrost, *Cold Regions Science and Technology*, 55, 120–129, 2009.
- 700 Obu, J., Westermann, S., Bartsch, A., Berdnikov, N., Christiansen, H. H., Dashtseren, A., Delaloye, R., Elberling, B., Etzelmüller, B., Kholodov, A., et al.: Northern Hemisphere permafrost map based on TTOP modelling for 2000–2016 at 1 km² scale, *Earth-Science Reviews*, 2019.
- Oldenborger, G. A. and LeBlanc, A.-M.: Monitoring changes in unfrozen water content with electrical resistivity surveys in cold continuous permafrost, *Geophysical Journal International*, 215, 965–977, 2018.
- Olhoeft, G. R.: The electrical properties of permafrost, Ph.D. thesis, University of Toronto, 1975.
- Osterkamp, T.: Freezing and thawing of soils and permafrost containing unfrozen water or brine, *Water Resources Research*, 23, 2279–2285, 1987.
- 705 Overduin, P. P., Kane, D. L., and van Loon, W. K.: Measuring thermal conductivity in freezing and thawing soil using the soil temperature response to heating, *Cold Regions Science and Technology*, 45, 8–22, 2006.
- Pedersen, L. L.: The mechanical properties of a saline fine-grained permafrost soil, Bc. thesis, Technical University of Denmark, Denmark, 2013.
- 710 Pellet, C. and Hauck, C.: Monitoring soil moisture from middle to high elevation in Switzerland: set-up and first results from the SOMO-MOUNT network, *Hydrology and Earth System Sciences*, 21, 3199–3220, 2017.
- Pellet, C., Hilbich, C., Marmy, A., and Hauck, C.: Soil moisture data for the validation of permafrost models using direct and indirect measurement approaches at three alpine sites, *Frontiers in Earth Science*, 3, 91, 2016.
- Power, M.: The predictive validation of ecological and environmental models, *Ecological modelling*, 68, 33–50, 1993.
- 715 Rickard, W. E. and Brown, J.: Effects of vehicles on arctic tundra, *Environmental Conservation*, 1, 55–62, 1974.
- Riseborough, D., Shiklomanov, N., Etzelmüller, B., Gruber, S., and Marchenko, S.: Recent advances in permafrost modelling, *Permafrost and Periglacial Processes*, 19, 137–156, 2008.
- Romanovsky, V., Osterkamp, T., et al.: Effects of unfrozen water on heat and mass transport processes in the active layer and permafrost, *Permafrost and Periglacial Processes*, 11, 219–239, 2000.
- 720 Scott, W. and Kay, A. E.: Earth resistivities of Canadian soils, 1988.
- Shonder, J. A. and Beck, J. V.: Determining effective soil formation thermal properties from field data using a parameter estimation technique, Tech. rep., Oak Ridge National Lab.(ORNL), Oak Ridge, TN (United States), 1998.
- Supper, R., Ottowitz, D., Jochum, B., Kim, J.-H., Römer, A., Baron, I., Pfeiler, S., Lovisolo, M., Gruber, S., and Vecchiotti, F.: Geoelectrical monitoring: an innovative method to supplement landslide surveillance and early warning, *Near Surface Geophysics*, 12, 133–150, 725 2014.

- Tang, L., Wang, K., Jin, L., Yang, G., Jia, H., and Taoum, A.: A resistivity model for testing unfrozen water content of frozen soil, *Cold Regions Science and Technology*, 153, 55–63, 2018.
- Tomaškovičová, S.: Coupled thermo-geophysical inversion for permafrost monitoring, Ph.D. thesis, Department of Civil Engineering, Technical University of Denmark, 2018.
- 730 Tomaškovičová, S. and Ingeman-Nielsen, T.: Quantification of freeze–thaw hysteresis of unfrozen water content and electrical resistivity from time lapse measurements in the active layer and permafrost, *Permafrost and Periglacial Processes*, <https://doi.org/https://doi.org/10.1002/ppp.2201>, 2023.
- Tomaškovičová, S., Paamand, E., Ingeman-Nielsen, T., and Bauer-Gottwein, P.: Coupled thermo-geophysical inversion for permafrost monitoring, in: *Xth International Conference on Permafrost*, Salekhard, Russian Federation, pp. 587–588, 2012.
- 735 Tran, A. P., Dafflon, B., and Hubbard, S. S.: Coupled land surface–subsurface hydrogeophysical inverse modeling to estimate soil organic carbon content and explore associated hydrological and thermal dynamics in the Arctic tundra, *The Cryosphere*, 11, 2089–2109, 2017.
- Uhlemann, S., Dafflon, B., Peterson, J., Ulrich, C., Shirley, I., Michail, S., and Hubbard, S. S.: Geophysical monitoring shows that spatial heterogeneity in thermohydrological dynamics reshapes a transitional permafrost system, *Geophysical Research Letters*, 48, e2020GL091149, 2021.
- 740 Wu, Y., Nakagawa, S., Kneafsey, T. J., Dafflon, B., and Hubbard, S.: Electrical and seismic response of saline permafrost soil during freeze-thaw transition, *Journal of Applied Geophysics*, 146, 16–26, 2017.
- Zhang, Y., Carey, S. K., and Quinton, W. L.: Evaluation of the algorithms and parameterizations for ground thawing and freezing simulation in permafrost regions, *Journal of Geophysical Research: Atmospheres*, 113, 2008.