

Brief communication: Significant biases in ERA5 output for McMurdo Dry Valleys region, Antarctica

Ricardo Garza-Girón^{1,2*}, Slawek M. Tulaczyk¹

¹Department of Earth and Planetary Sciences, University of California, Santa Cruz, CA, 95064, USA

²Department of Geosciences, Warner College of Natural Resources, Colorado State University, Fort Collins, CO 80523, USA.

*Correspondence to: Ricardo Garza-Girón (rgarzag@ucsc.edu/r.garza_giron@colostate.edu)

Field Code Changed

Abstract. The ERA5 climate reanalysis dataset plays an important role in applications such as monitoring and modelling climate system changes in polar regions, so the calibration of the reanalysis to ground observations is of great relevance. Here, we compare the 2-metre air temperature time series of the ERA5 reanalysis and the near-surface bias-corrected reanalysis to the near-ground air temperature measured in 17 Automatic Weather Stations in the McMurdo Dry Valleys, Antarctica. We find that the reanalysis data has biases that change with the season of the year and that do not clearly correlate with elevation. Our results show that future work should rely on secondary observations to calibrate when using the ERA5 reanalysis in polar regions.

Short Summary. By analyzing temperature time series over more than 20 years, we have found a discrepancy between the 2-metre temperature values reported by the ERA5 reanalysis and the Automatic Weather Stations in the McMurdo Dry Valleys, Antarctica.

1 Introduction

ERA5 dataset represents the fifth iteration of ECMWF (European Center for Medium-Range Weather Forecasts) global climate hindcasting based on the Integrated Forecasting System (IFS) Cy41r2 derived by a combination of data assimilation and short-term simulations applying an operational numerical weather prediction (NWP) model (Hersbach et al, 2020). With its global coverage, high temporal resolution, and relatively high spatial resolution of 31 km, this dataset may prove particularly useful for research in polar regions such as Antarctica, where long-term climate observations are geographically sparse and often temporally discontinuous (Lazzara et al, 2012). A previous study found encouraging agreement between ERA5 output and AWS (Automatic Weather Station) data from 13 stations located in the southern section of Antarctic Peninsula (Tetzner et al., 2019). However, at least one other study has pointed out differences between ERA5 and selected weather stations across all Antarctica (Zhu et al., 2021).

34 Here, we report the results of a regional comparison between monthly 2-metre air temperatures in the
35 McMurdo Dry Valleys region, Antarctica, reported in the ERA5 dataset and corresponding observations from
36 17 AWS locations. We focus our analysis on this region because of the relatively high spatial and temporal
37 coverage of AWS observations and due to the high multidisciplinary research interest in this region which
38 contains the main USA and New Zealand research stations and is proximal to Italian and Korean research
39 stations.

40 Despite the encouraging results found by Tetzner et al. (2019) for the Southern Antarctic Peninsula, we find
41 significant biases in the near-surface air temperatures measured at the AWS and the temperatures reported in
42 the reanalysis datasets.

43 **2. Data and methods**

44 We analyze the daily surface temperature (2-metre temperature) recorded at 17 AWS (Figure 1) managed by
45 the McMurdo Dry Valleys Long Term Ecological Research Project (LTER) since 1992, although some of
46 the stations have been reporting data only since 1986 (Doran et al., 2002). Table 1 summarizes the AWS used
47 in this study. We compare the AWS data to the monthly ECMWF ERA5 climate reanalysis surface
48 temperature data (Muñoz Sabater, 2019) and we also tested against the near-surface bias-corrected reanalysis
49 dataset (BCR) (Cucchi et al., 2022). The latter is obtained from applying the Water and Global Change
50 (WATCH) forcing data methodology (Weedon et al., 2010) to the ERA5 dataset, which includes interpolating
51 to a $0.5^\circ \times 0.5^\circ$ grid and correcting for differences in elevation between the Climate Research Unit grid (New
52 et al., 1999; 2000) and the ERA5 grid, along with other monthly-based biases corrections (Weedon et al.,
53 2011, 2014; Cucchi et al., 2022). For each AWS, where daily 2-metre air temperature data was available, we
54 ran a 30-day moving average filter with no overlap to obtain monthly time series. The ERA5 and BCR grid
55 nodes used to compare to each individual AWS were selected by minimizing the distance between each AWS
56 and all the nodes in the reanalysis grid (Figure 1). Finally, we interpolated both time series to a regular
57 monthly sequence, and the time series for the ERA5 node data were truncated to match the periods where

Deleted: using an elevation correction

59 data was available at their corresponding AWS. The elevation of the AWS and the nearest ERA5/BCR grid
60 cells are often different, which can induce differences in the measured and calculated values of 2-metre air
61 temperature. Therefore, we correct for the difference in altitude by applying a dry adiabatic lapse rate of 9.8
62 °C/km to the ERA5/BCR data, as done elsewhere (Bromwich et al., 2013). We report the mean temperature
63 for the span of each time series and the standard error of the mean for each sample for the differences between
64 the ERA5 and BCR datasets and the AWS with and without the altitude correction.

65 Furthermore, we compare the two data sets by analyzing the correlograms of the altitude-corrected
66 temperatures and performing a linear regression. We report the squared correlation coefficients (R^2) as a
67 metric of the goodness of fit and the p-values from the F-statistic to assess the level of statistical significance.

68 Besides inspecting biases by making comparisons for all individual stations and their corresponding
69 reanalyses grid cells, we also compare the overall mean temperature across all stations with the mean
70 temperature across all grid cells within the main region of the McMurdo Dry Valleys (black box in Figure
71 1). We selected this region because it has the highest station density and including the stations outside of this
72 box would imply using a much larger subgrid for the reanalyses that would not be truly representative of the
73 area covered by the stations. This comparison is important given that the ERA5 and particularly the BCR
74 grid cells might be too large to capture local phenomena such as topographic effects or seasonal temperature
75 inversions at the AWS. Therefore, comparing average temperatures using the footprint of the whole region
76 is different than calculating the average bias across all station, and it creates intuition on whether the
77 individual elevation differences average out or not. We created median stacks of the temperature time-series
78 for all AWS and for all the grid cells of the reanalyses that fall within the area. We interpolated all the data
79 of the weather stations to a monthly time series, we patched with NaN (Not a Number) values the periods of
80 time when data was not available (some stations have longer records than others) and we obtained a mean-
81 stack of the time-series. Figure S1 shows the individual time-series for all AWS and all the ERA5 and BCR
82 grid cells and their corresponding mean stack. We also tested using median stacks to analyze the effect of
83 outliers in the data, but we did not find major differences between the mean and median stacks. Finally, we

84 use the difference between the median altitude of all weather stations and the median altitude of the selected
85 grid cells of each reanalysis product to apply the dry adiabatic lapse rate correction to the temperatures.

86 3. Results

87 Overall, the two reanalysis products show both cold and warm biases compared to the AWS temperatures.
88 Table 2 shows the results of the comparison at each station and the elevation map of the AWS as well as the
89 spatial distributions of the altitude-corrected biases are shown in Figure ~~S2~~ and Figures ~~S3~~ and ~~S4~~,
90 respectively. We find that the biases in the ERA5 dataset are of smaller magnitude than the biases observed
91 for the BCR dataset. The altitude correction applied to the grid temperatures does not eliminate but reduces
92 the average bias across all stations. However, this is not the case for all stations; for ERA5, the altitude
93 correction increases the bias at three stations (FRSM, UHDM and VIAM), and for BCR the correction
94 increases the bias at five stations (BENM, BRHM, CAAM, FLMM and VIAM).

95 Contrary to the altitude-dependent biases found by Tetzner et al. (2019), our results do not show a clear
96 correlation between bias and elevation (see Figures ~~S2~~, ~~S3~~ and ~~S4~~). Nevertheless, our results do suggest that
97 the ERA5 dataset has predominantly neutral to warm biases in the valleys, despite elevations, and neutral to
98 cold biases in the mountain ranges.

99 Figure 2 illustrates the comparison of the monthly temperature time series for one of 17 locations used in this
100 study (Lake Vida) and the temperatures from the ERA5 and BCR datasets over the time span of more than
101 two decades. In this case, the monthly temperature mismatch between the AWS and the ERA5 and BCR
102 altitude-corrected temperatures is particularly large during the winter months, when observations indicate
103 actual temperatures were about 10°C lower than ERA5 or BCR temperatures (Figure 2c,d). All the
104 correlograms shown in Figures ~~S5-S21~~ suggest that there is a strong seasonality in the relationship between
105 the data sets. During the austral winter and summer seasons the temperatures are generally closely clustered
106 together, systematically being more correlated during the winter and more dispersed during the summer. The
107 spring and fall seasons show a hysteresis that is repeated over all the comparisons. As the environment warms

Deleted: S1

Deleted: S2

Deleted: S3

Deleted: S1

Deleted: S2

Deleted: S3

Deleted: S4

Deleted: S20

116 up during the spring months the ERA5 and BCR temperatures are above the best-fit line and drop below it
117 during the fall. These seasonal biases may ultimately be helpful in revealing what climate processes must be
118 better represented in the ERA5 reanalysis to eliminate the observed temperature biases.

119 The comparison between the average stack of the AWS with the ERA5 and BCR temperatures for the selected
120 subregion (black box in Figure 1) is shown in Figure 3. Interestingly, our regional average analysis suggests
121 that the altitude corrected ERA5 temperatures (black line in Figure 3) have a cold bias of -9.6 ± 1.0 °C
122 compared the AWS temperatures, but the altitude corrected BCR temperatures (black dashed line in Figure
123 3) are much closer to the AWS temperatures. Nevertheless, the BCR temperatures do show a warm bias of
124 3.3 ± 1.0 °C.

125 4. Discussion

126 Our results differ significantly from the findings reported by Tetzner et al. (2019) for the Southern Antarctic
127 Peninsula - Ellsworth Land region. For that region there is a slight cold bias of the ERA5 surface temperatures
128 close to the coast (-0.51 ± 0.74 °C) and a slight warm bias in the mountain range escarpment (0.14 ± 0.72
129 °C) which has encouraging implications for using the reanalysis data where there is no AWS coverage, which
130 represents most of Antarctica. In contrast, we find no obvious topographic dependence on the temperature
131 differences between AWS and ERA5 data. Averaged over the whole region, the altitude-corrected
132 temperatures of the ERA5 dataset have a slight cold bias of -0.4 ± 0.8 °C, whereas the BCR data has a cold
133 bias of larger magnitude (-4.4 ± 1.9 °C). However, there are large variations from one site to another, and
134 also from one season to another. Some of the large cold biases for the altitude-corrected ERA5 and BCR data
135 are observed during the summer months, with average differences up to -4.9 ± 0.1 °C and -16.2 ± 0.3 °C,
136 respectively. This may be a particularly significant problem given the fact that warm summer temperatures
137 determine the annual melt rate of snow, glaciers, and permafrost in Antarctica. Modelling of snow or ice
138 melting driven by ERA5 temperatures (e.g., Costi et al., 2018) with a strong cold bias, as observed in our
139 study region, will result in a significant underestimate of summer melt production. Conversely, many stations

- Deleted: -
- Deleted: °C
- Deleted: +
- Deleted: °C

144 show a warm bias during the winter months, which could potentially be related to temperature inversions that
145 create air parcels with negative buoyancy and drive katabatic winds down the glacial streams and valleys
146 (Phillpot & Zillman, 1970).

147 The differences in the regional averaged temperature time series for the AWS and the ERA5 and BCR
148 reanalyses do show different biases than the ones reported above, which are based on the average difference
149 between each AWS and their corresponding grid cell. For the average stacks, the ERA5 temperatures are
150 significantly colder than the mean AWS temperatures and the BCR temperatures are slightly warmer, and
151 they have an overshoot during the Summer and the Winter alike. This finding is interesting and suggests that
152 the BCR reanalysis might be a better reference for the Dry Valleys region when studying a large area, but
153 that the ERA5 reanalysis might be a better model for more local targets.

154 In general, our findings agree with the findings of Zhu et al. (2021) in that they also find a cold bias for West
155 Antarctica. However, our results highlight the degree in which such biases can be found at a regional and
156 local scale and by using different datasets. As in situ instrumentation increases in the future in the McMurdo
157 Dry Valleys, future research on the topic could illustrate in more detail the sources of the biases between
158 reanalyses products and weather stations reported here. Particular attention should be given to the effect on
159 topography and seasonal temperature inversions at smaller scales. Although the ERA5 reanalysis and its bias-
160 corrected version are outstanding sources of global climate variables, the discrepancy between our results
161 and those obtained by Tetzner et al. (2019) suggests that secondary observations should be used to test the
162 reliability of the ERA5 and BCR dataset in polar regions, particularly when performing studies at scales
163 shorter than 0.5°.

164 **5. Conclusions**

165 We have compared the surface temperature (2-metre temperature) recorded at 17 AWS in the McMurdo Dry
166 Valleys, Antarctica with temperatures from the ERA5 reanalysis dataset. We found that the temperatures
167 reported by the global climate reanalysis and its bias-corrected version can have significant warm and cold

168 biases relative to the weather stations. The cold temperature bias appears to be the largest during the warm
169 summer months, when loss of snow and ice to melting is the largest. Warm biases are more common during
170 the winter months, when atmospheric temperature inversions are common.
171 When using the average temperature across many stations in a region and compared to the average
172 temperature of all the grid cells in that region, the bias corrected reanalysis shows a slight warm bias, whereas
173 the ERA5 temperatures show a significant cold bias. We advise using secondary observations to assess the
174 accuracy of parameters included in ERA5 reanalysis and its bias corrected version for polar regions when
175 performing studies at different scales.

176
177 *Data availability.* The AWS data were provided by the NSF-supported McMurdo Dry Valleys Long Term
178 Ecological Research program (OPP-1637708) and can be accessed at:
179 <https://mcm.lternet.edu/meteorological-stations-location-map>. The “ERA5-Land hourly data from 1950 to
180 present” (DOI: [10.24381/cds.e2161bac](https://doi.org/10.24381/cds.e2161bac)) and the “Near surface meteorological variables from 1979 to 2019
181 derived from bias-corrected reanalysis” (DOI: [10.24381/cds.20d54e34](https://doi.org/10.24381/cds.20d54e34)) were downloaded from the
182 Copernicus Climate Change Service (C3S) Climate Data Store.

183
184 *Author contributions.* ST conceived the study. RGG performed the analysis. RGG and ST prepared the
185 manuscript with equal contributions.

186
187 *Competing interests.* The authors declare that they have no conflict of interest.

188 **References**

- 189 Bromwich, D. H., Otieno, F. O., Hines, K. M., Manning, K. W., & Shilo, E.: Comprehensive evaluation of
190 polar weather research and forecasting model performance in the Antarctic. *J. Geophys. Res.-Atmos.*, *118*(2),
191 274-292, 2013.
- 192 Costi, J., Arigony-Neto, J., Braun, M., Mavlyudov, B., Barrand, N.E., Da Silva, A.B., Marques, W.C. and
193 Simoes, J.C.: Estimating surface melt and runoff on the Antarctic Peninsula using ERA-Interim reanalysis
194 data, *Antarct. Sci.*, *30*(6), 379-393, 2018.
- 195 Cucchi M., Weedon G. P., Amici A., Bellouin N., Lange S., Müller Schmied H., Hersbach H., Cagnazzo, C.
196 and Buontempo C.: Near surface meteorological variables from 1979 to 2019 derived from bias-corrected
197 reanalysis, version 2.1, Copernicus Climate Change Service (C3S) Climate Data Store (CDS),
198 [10.24381/cds.20d54e34](https://doi.org/10.24381/cds.20d54e34), 2022.

199 Doran PT, McKay CP, Clow GD, Dana GL, Fountain AG, Nylen T, Lyons WB.: Valley floor climate
200 observations from the McMurdo Dry Valleys, Antarctica, 1986–2000, *J. Geophys. Res.-Atmos.*, 107(D24),
201 ACL-13, <https://doi.org/10.1029/2001JD002045>, 2002.

202 Hersbach H, Bell B, Berrisford P, Hirahara S, Horányi A, Muñoz-Sabater J, Nicolas J, Peubey C, Radu R,
203 Schepers D, Simmons A.: The ERA5 global reanalysis, *Q. J. Roy. Meteor. Soc.*, 146(730), 1999-2049,
204 <https://doi.org/10.1002/qj.3803>, 2020.

205 Lazzara MA, Weidner GA, Keller LM, Thom JE, Cassano JJ.: Antarctic automatic weather station program:
206 30 years of polar observation, *B. Am. Meteorol. Soc.*, 93(10), 1519-37, <https://doi.org/10.1175/BAMS-D-11-00015.1>, 2012.

208 Muñoz Sabater, J.: ERA5-Land hourly data from 1981 to present, Copernicus Climate Change Service (C3S)
209 Climate Data Store (CDS), 10.24381/cds.e2161bac, 2019.

210 [New, M., Hulme, M., and Jones, P.: Representing Twentieth-Century Space–Time Climate Variability. Part](#)
211 [I: Development of a 1961–90 Mean Monthly Terrestrial Climatology, *Journal of Climate*, 12, 829–856,](#)
212 [https://doi.org/10.1175/15200442\(1999\)012<0829:RTCSTC>2.0.CO;2](https://doi.org/10.1175/15200442(1999)012<0829:RTCSTC>2.0.CO;2), 1999.

213 [New, M., Hulme, M., and Jones, P.: Representing Twentieth-Century Space–Time Climate Variability. Part](#)
214 [II: Development of 1901–96 Monthly Grids of Terrestrial Surface Climate, *Journal of Climate*, 13,](#)
215 [22172238, https://doi.org/10.1175/15200442\(2000\)013<2217:RTCSTC>2.0.CO;2](https://doi.org/10.1175/15200442(2000)013<2217:RTCSTC>2.0.CO;2), 2000.

216 Phillpot, H. R., and Zillman, J. W.: The surface temperature inversion over the Antarctic continent. *J. of*
217 *Geophys. Res.*, 75(21), 4161-4169, 1970.

218 Tetzner D, Thomas E, Allen C.: A Validation of ERA5 Reanalysis Data in the Southern Antarctic
219 Peninsula—Ellsworth Land Region, and Its Implications for Ice Core Studies, *Geosci. J.*, 9(7), 289,
220 <https://doi.org/10.3390/geosciences9070289>, 2019.

221 Weedon, G. P., Gomes, S., Viterbo, P., Österle, H., Adam, J. C., Bellouin, N., ... & Best, M.: The watch
222 forcing data 1958-2001: a meteorological forcing data set for land surface-and hydrological-models, *WATCH*
223 *technical report, 2010*

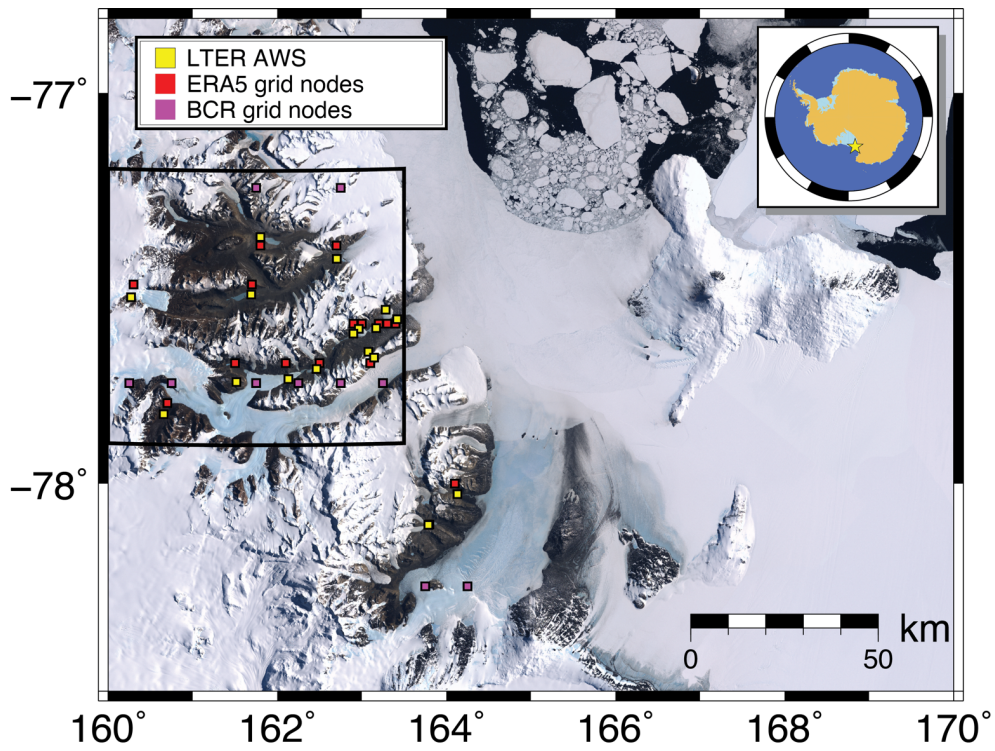
224 Weedon, G.P., Gomes, S., Viterbo, P., Shuttleworth, W.J., Blyth, E., Österle, H., Adam, J.C., Bellouin, N.,
225 Boucher, O. and Best, M.: Creation of the WATCH forcing data and its use to assess global and regional
226 reference crop evaporation over land during the twentieth century. *J. Hydrometeorol.*, 12(5), pp.823-848,
227 2011.

228 Weedon, G. P., Balsamo, G., Bellouin, N., Gomes, S., Best, M. J., & Viterbo, P.: The WFDEI meteorological
229 forcing data set: WATCH Forcing Data methodology applied to ERA-Interim reanalysis data. *Water Resour.*
230 *Res.*, 50(9), 7505-7514, 2014.

Formatted: Font color: Text 1

231 Zhu, J., Xie, A., Qin, X., Wang, Y., Xu, B., & Wang, Y.: An assessment of ERA5 reanalysis for Antarctic
232 near-surface air temperature. *Atmosphere*, 12(2), 217, 2021.

233
234
235
236
237
238
239
240
241
242
243
244
245
246
247

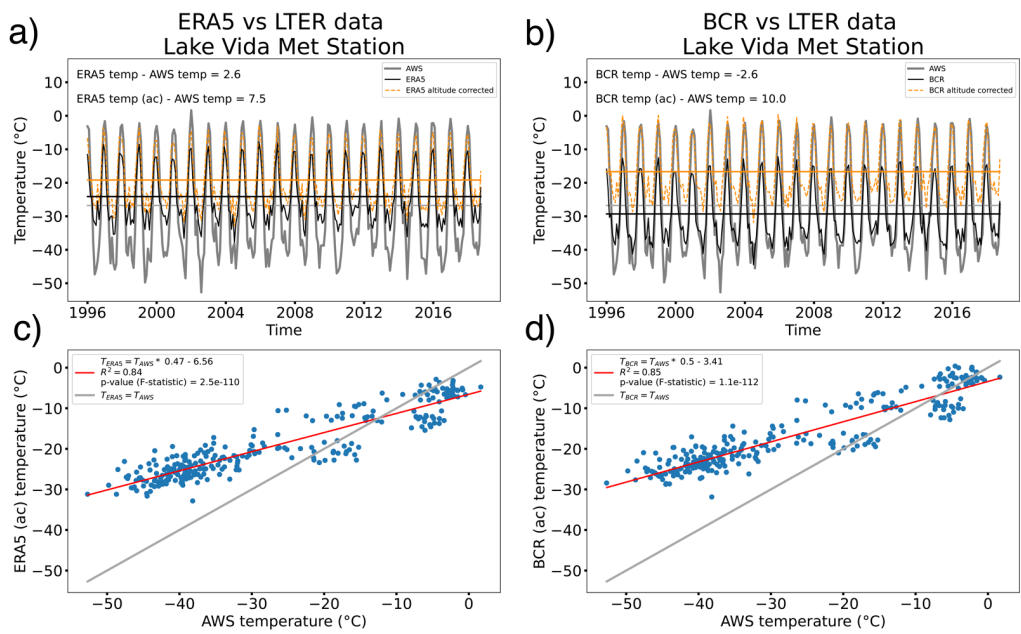


248

249
250
251
252
253
254

Figure 1. Map of the McMurdo Dry Valleys region. The location of the AWS managed by LTER is shown with yellow squares and their corresponding closest ERA5 and BCR grid nodes are shown with red squares and magenta squares, respectively. The black box represents the area where regional averages for all AWS and ERA5 and BCR grid cells were calculated. The distance to the sea and the topography of the region can be appreciated in the background satellite image.

Deleted: showing the
Formatted: Font: Bold
Deleted: (
Deleted:)
Deleted: (
Deleted:)



255
256
257
258
259
260
261
262
263
264

Figure 2. Comparison of the monthly averaged 2-metre air temperatures recorded at station Lake Vida (VIAM) and the values from the closest grid node of the ERA5 and BCR datasets. Time series of the AWS data (grey curve) compared to the reanalysis data (black curve) and the altitude-corrected (ac) reanalysis data (dashed orange curve) for the ERA5 (a) and BCR (b) datasets. The correlograms showing the best fit line (red line) to the relationship between the AWS temperatures and the ERA5 and BCR temperatures are shown in (c) and (d), respectively. Note the seasonal variation in the relationship, particularly the large bias during the winter months.

Formatted: Font: Bold

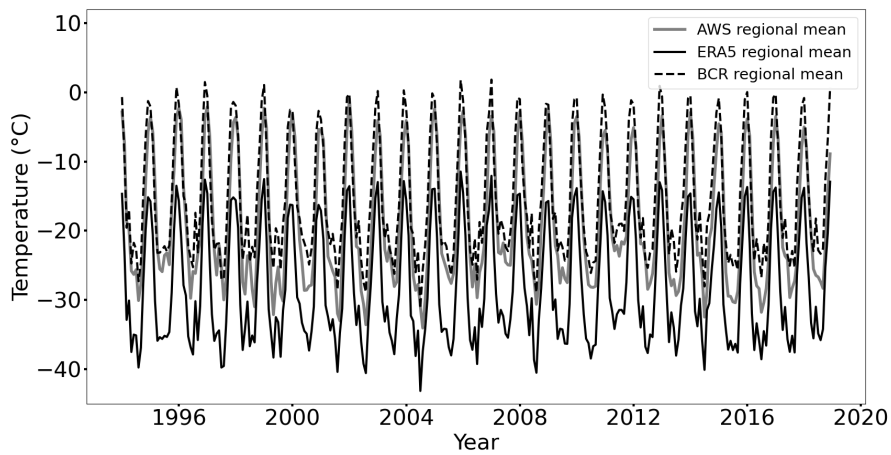


Figure 3 Regional mean stacks comparison for a subarea of the McMurdo Dry Valleys (black box in Figure 1). The average time series of temperatures across all stations is shown with a thick gray line, the average temperature from the ERA5 grid cells that are within the region is shown with a black line, and the average temperature from the BCR subgrid is shown with a black dashed line.

Formatted: Centered

270
271
272
273
274
275
276
277
278
279
280
281
282
283
284
285
286
287
288
289
290
291
292
293
294

AWS Location name	AWS ID	Latitude	Longitude	Elevation (m.a.s.l.)
Beacon Valley	BENM	-77.828	160.6569	1,176
Lake Bonney	BOYM	-77.7147	162.4646	64
Lake Brownworth	BRHM	-77.4344	162.7036	279
Canada Glacier	CAAM	-77.6133	162.9644	264
Commonwealth Glacier	COHM	-77.5646	163.2823	290
Explorer's Cove	EXEM	-77.5887	163.4175	25
Mt. Fleming	FLMM	-77.5327	160.2714	1,870
Lake Fryxell	FRLM	-77.6113	163.1701	19
Friis Hills	FRSM	-77.7474	161.5162	1,591
Garwood Ice Cliff	GAFM	-78.0259	164.1315	51
Howard Glacier	HODM	-77.6712	163.0773	472
Lake Hoare	HOEM	-77.6254	162.9005	77
Miers Valley	MISM	-78.1011	163.7877	51
Taylor Glacier	TARM	-77.74	162.1314	334
Upper Howard	UHDM	-77.686	163.145	826
Lake Vanda	VAAM	-77.5257	161.6913	296
Lake Vida	VIAM	-77.3778	161.8007	351

Table 1. List of available AWS in the McMurdo Dry Valleys region.

295
296
297
298
299
300
301
302
303
304
305
306

AWS Location name	AWS ID	Distance to closest ERA5 node (km)	AWS data date range	Average 2 m air temperature @ AWS	Average 2 m air temperature @ ERA5 node / altitude corrected	Average 2 m air temperature @ BCR node / altitude corrected	$\frac{ERA5_{mean_temp} - AWS_{mean_temp}}{ERA5_{mean_temp} - AWS_{mean_temp}}$	$\frac{BCR_{mean_temp} - AWS_{mean_temp}}{BCR_{mean_temp} - AWS_{mean_temp}}$
Beacon Valley	BENM	3.27	2000-12-11 - 2012-11-19	-21.5 ± 0.7	$-33.5/-24.2 \pm 0.7$	$-29.4/-38.3 \pm 0.7$	$-12.1/-2.8 \pm 1.4$	$-8.0/-16.8 \pm 1.4$
Lake Bonney	BOYM	1.84	1993-12-08 - 2018-10-09	-17.2 ± 0.6	$-24.0/-13.3 \pm 0.4$	$-29.3/-20.7 \pm 0.5$	$-6.7/3.9 \pm 1.0$	$-12.1/-3.4 \pm 1.1$
Lake Brownworth	BRHM	3.83	1995-01-23 - 2018-11-10	-19.9 ± 0.7	$-25.4/-20.0 \pm 0.5$	$-29.3/-31.0 \pm 0.5$	$-5.5/-0.1 \pm 1.2$	$-9.4/-11.1 \pm 1.2$
Canada Glacier	CAAM	1.71	1994-12-18 - 2011-01-05	-16.3 ± 0.7	$-23.1/-18.8 \pm 0.6$	$-29.3/-30.9 \pm 0.6$	$-6.7/-2.5 \pm 1.3$	$-13.0/-14.5 \pm 1.3$
Commonwealth Glacier	COHM	3.96	1993-12-06 - 2018-10-30	-17.6 ± 0.5	$-22.1/-21.1 \pm 0.5$	$-29.3/-16.1 \pm 0.5$	$-4.4/-3.4 \pm 1.0$	$-11.6/-1.6 \pm 1.0$
Explorer's Cove	EXEM	1.32	1997-12-05 - 2018-11-23	-18.9 ± 0.7	$-21.7/-19.0 \pm 0.5$	$-9.3/-13.5 \pm 0.5$	$-2.7/0.0 \pm 1.2$	$-10.3/5.5 \pm 1.2$
Mt. Fleming	FLMM	3.7	2011-01-22 - 2018-11-11	-24.2 ± 0.6	$-34.0/-23.5 \pm 0.8$	$-29.2/-35.9 \pm 0.8$	$-9.8/-0.7 \pm 1.4$	$-5.0/-11.7 \pm 1.4$
Lake Fryxell	FRLM	1.45	1994-12-12 - 2018-11-19	-19.7 ± 0.7	$-22.4/-17.8 \pm 0.5$	$-29.3/-13.4 \pm 0.5$	$-2.6/2.0 \pm 1.2$	$-9.5/6.4 \pm 1.2$
Friis Hills	FRSM	5.28	2011-01-04 - 2018-11-06	-22.5 ± 0.6	$-26.8/-28.6 \pm 0.7$	$-29.2/-28.7 \pm 0.8$	$-4.3/-6.0 \pm 1.3$	$-6.6/-6.2 \pm 1.4$
Garwood Ice Cliff	GAFM	2.97	2012-01-24 - 2012-12-19	-16.6 ± 2.8	$-23.6/-17.7 \pm 2.3$	$-30.7/-29.6 \pm 2.3$	$-7.0/-1.0 \pm 5.1$	$-14.0/-12.9 \pm 5.1$
Howard Glacier	HODM	3.25	1993-12-04 - 2018-10-31	-17.18 ± 0.4	$-20.8/-20.3 \pm 0.5$	$-29.3/-17.9 \pm 0.5$	$-3.6/-3.1 \pm 0.9$	$-12.1/-0.7 \pm 0.9$
Lake Hoare	HOEM	2.82	1987-11-25 - 2018-11-29	-17.61 ± 0.5	$-23.5/-15.9 \pm 0.4$	$-29.2/-28.9 \pm 0.4$	$-5.9/1.7 \pm 0.9$	$-11.6/-11.3 \pm 0.9$
Miers Valley	MISM	0.31	2012-02-11 - 2018-11-06	-16.69 ± 1.00	$-23.2/-18.2 \pm 0.9$	$-29.5/-20.0 \pm 0.9$	$-6.6/-1.5 \pm 1.9$	$-12.8/-3.3 \pm 1.9$
Taylor Glacier	TARM	4.51	1994-12-05 - 2018-11-05	-16.9 ± 0.5	$-25.4/-15.1 \pm 0.4$	$-29.3/-23.3 \pm 0.5$	$-8.5/1.8 \pm 0.9$	$-12.4/-6.4 \pm 1.0$
Upper Howard	UHDM	1.89	2001-11-28 - 2003-12-24	-16.56 ± 1.5	$-20.3/-23.3 \pm 1.7$	$-28.7/-20.8 \pm 1.7$	$-3.7/-6.8 \pm 3.2$	$-12.2/-4.2 \pm 3.2$
Lake Vanda	VAAM	2.87	1994-12-08 - 2018-12-07	-19.58 ± 0.7	$-25.1/-17.4 \pm 0.4$	$-29.2/-16.1 \pm 0.5$	$-5.5/-2.2 \pm 1.2$	$-9.6/3.5 \pm 1.1$
Lake Vida	VIAM	2.47	1995-12-08 - 2018-11-14	-26.68 ± 1.0	$-24.1/-19.2 \pm 0.5$	$-29.3/-16.7 \pm 0.5$	$2.6/7.5 \pm 1.5$	$-2.6/10.0 \pm 1.5$

307 **Table 2.** List of comparison results between the temperatures recorded at the AWS and the closest ERA5
308 and BCR nodes. For each of the reanalysis datasets, we show the reported 2 m air temperature and the
309 altitude-corrected (ac) value and their comparison to the average temperature at the AWS.