

# Basal conditions of Denman Glacier from glacier hydrology and ice dynamics modeling

Koi McArthur<sup>1</sup>, Felicity S. McCormack<sup>2</sup>, and Christine F. Dow<sup>1,3</sup>

<sup>1</sup>Department of Applied Mathematics, University of Waterloo, Waterloo, Canada

<sup>2</sup>Securing Antarctica's Environmental Future, School of Earth, Atmosphere & Environment, Monash University, Australia

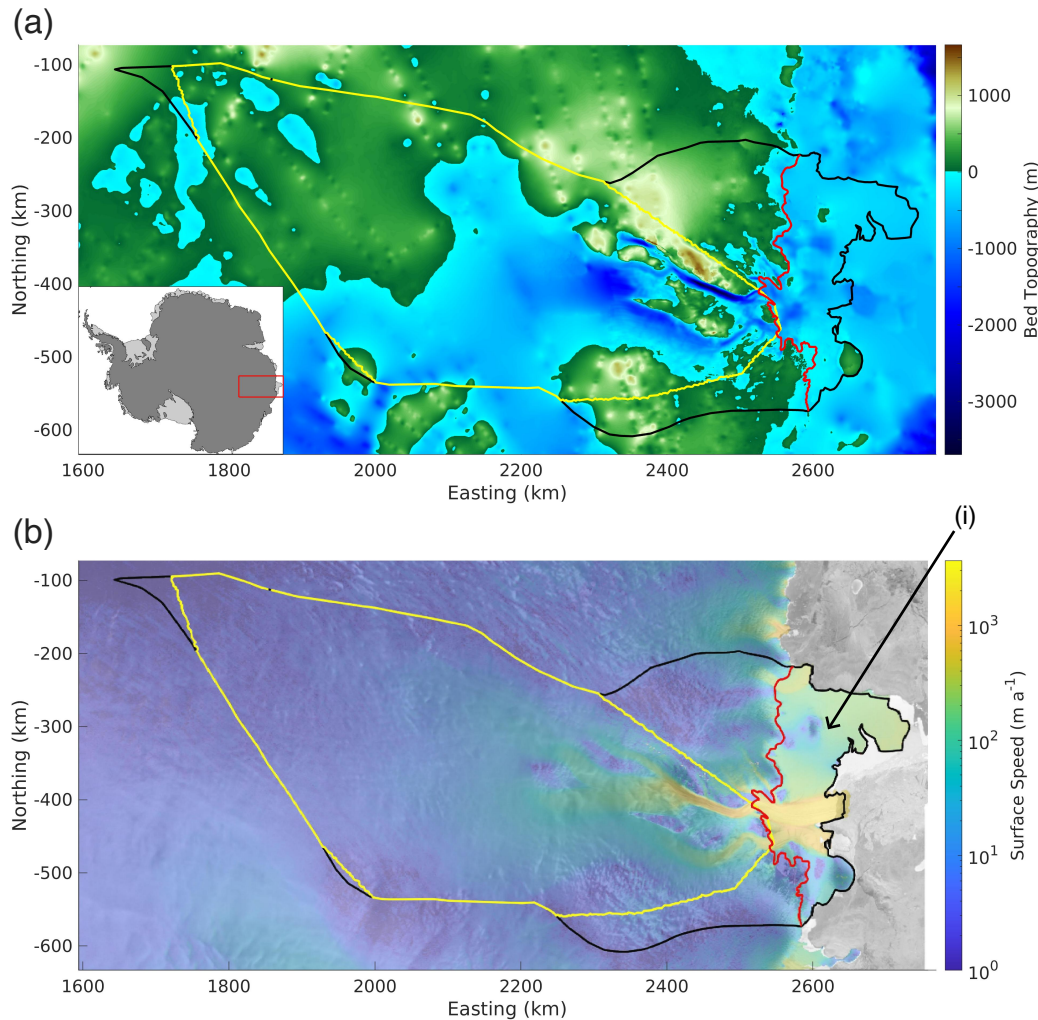
<sup>3</sup>Department of Geography and Environmental Management, University of Waterloo, Waterloo, Canada

**Correspondence:** Koi McArthur (kr2mcarthur@uwaterloo.ca)

**Abstract.** Basal sliding in Antarctic glaciers is often modeled using a friction law that relates basal shear stresses to the effective pressure. As few ice sheet models are dynamically coupled to subglacial hydrology models, variability in subglacial hydrology associated with the effective pressure is often implicitly captured in the [basal](#) friction coefficient – an unknown parameter in the [basal](#) friction law. We investigate the impact of using effective pressures calculated from the Glacier Drainage System (GlaDS) model on [basal](#) friction coefficients calculated using inverse methods in the Ice-sheet and Sea-level System Model (ISSM) at Denman Glacier, East Antarctica, for the Schoof and Budd friction laws. For the Schoof friction law, a positive correlation emerges between the GlaDS effective pressure and [basal](#) friction coefficient in regions of fast ice flow. Using GlaDS effective pressures generally leads to smoother [basal](#) friction coefficients and basal shear stresses, and ~~smaller~~-larger differences between the simulated and observed [ice surface](#) velocities, compared with using an effective pressure equal to the ice overburden pressure plus the gravitational potential energy of the water. Compared with the Budd [friction](#) law, the Schoof [friction](#) law offers improved capabilities in capturing the spatial variations associated with known physics of the subglacial hydrology. Our results indicate that ice sheet model representation of basal sliding is more realistic when using direct outputs from a subglacial hydrology model, demonstrating the importance of coupling between ice sheet and subglacial hydrological systems. However, using our outputs we have also developed an empirical parameterization [of effective pressure](#) that improves application of the Schoof [friction](#) law without requiring explicit hydrological modeling.

## 1 Introduction

The health of Antarctic glaciers and their future susceptibility to climate-driven change is often assessed by the retreat rates of their grounding lines and melt rates of adjacent ice shelves. In the East Antarctic, Denman Glacier [of the Denman-Scott catchment](#) (Fig. 1) has seen some of the fastest grounding line retreat of the last 20 years, losing 5.4 km since 1996 (Brancato et al., 2020), and the highest ice shelf melt rates of 116 m a<sup>-1</sup> from 2010-2018 (Adusumilli et al., 2020). Perched on a grounding line above a deep trough that descends 3.66 km below sea level (Morlighem, 2020), Denman [Glacier](#) is potentially at risk of marine ice sheet instability and rapid retreat, which is of significant concern given that the glacier drains a region containing 1.5 m of sea level equivalent [\(Brancato et al., 2020\)](#).



**Figure 1.** Denman-Scott catchment. (a) Bed [elevation-topography \(m\)](#) from Bechmachine v2 (Morlighem, 2020); (b) [Surface-ice surface speed \( \$\text{m a}^{-1}\$ \)](#) from MEaSURES v2 ([Rignot et al., 2011, 2017](#))([Rignot et al., 2011, 2017](#); [Mouginot et al., 2012, 2017](#)), using a logarithmic color scale; (i) [The Shackleton Ice Shelf](#). The black lines in both panels show the [ice catchment outline](#), defined by the drainage divide and calving front, the grounding line is shown in red, and the GlADS domain in yellow. The  $x$ - and  $y$ -axes are eastings and northings, defined in polar stereographic coordinates referenced to WGS84. These maps were made using the Antarctic Mapping Tools (Greene et al., 2017) and RAMP Radarsat Antarctic Mapping Project (Greene, 2022) toolboxes for MATLAB.

Determining the future of Denman Glacier, and others in the Antarctic, largely relies on ice dynamics models to capture  
 25 the evolution of ice flow under changing climates. These models frequently use inversion techniques to constrain important parameters that control ice velocity, including those related to the basal environment beneath the ice sheet (Morlighem et al., 2013). One such parameter is the basal friction coefficient, which is a key component of friction laws including the Weertman

(1957), Budd et al. (1979) and Coulomb-regularized Coulomb friction laws (Schoof, 2005; Gagliardini et al., 2007). Friction laws propose a functional dependency of the basal shear stress on the basal sliding velocity and in the case of the of the Budd and Coulomb-Budd and regularized Coulomb friction laws, the effective pressure  $N = p_i - p_w$ , which is defined as the ice overburden pressure minus the water pressure ( $p_i$ ) minus the subglacial water pressure ( $p_w$ ). However, the dependency of the if the basal shear stress on other quantities, or unexpected dependency on does not actually have the functional dependence on the basal sliding velocity and effective pressure, is proposed in the basal friction law, or if it has a functional dependence on other properties of the bed such as roughness, substrate, or temperature, then this will be implicitly captured in the basal friction coefficient. Therefore, a spatially variable basal friction coefficient suggests a friction law which either fails to capture the proper functional dependency on basal sliding velocity and effective pressure, or omits the dependency of the basal shear stress on other quantities. Therefore, a By consequence, a basal friction coefficient that is both smooth – has little local variability – and has limited domain-wide domain-wide trends is desirable. In the search for ways of describing basal friction Beaud et al. (2022) propose proposed a generalized friction law to be used on both rigid and deformable beds. They suggest that the unknown parameters in their friction law can be found using ice surface velocity time series and inversion techniques on a variety of of glaciers implemented at the global scale.

Antarctic subglacial hydrology is increasingly being shown to be varied and dynamic, with large channels that discharge into ice shelf cavities (Dow et al., 2020; Indrigo et al., 2021), and effective pressures that vary spatially both above and below zero (i.e. when subglacial water pressure exceeds the ice overburden pressure). Modeling of subglacial hydrology has shown close links between regions of low effective pressure and high ice surface velocity (Dow et al., 2018, 2020, 2022); this control of basal water pressure on sliding rates is also well known for Greenland and Alpine glacier systems (Nienow et al., 2017; Iken and Bindenschadler, 1986).

Despite the key role of basal boundary conditions, and in particular subglacial water pressure, on ice dynamics, there has not yet been a systematic investigation of the impact of the effective pressure on basal sliding in different friction laws applied in the Denman-Scott catchment. Given the critical role of the friction law for accurate ice dynamics and sea level predictions in the future (e.g. Åkesson et al., 2021; Yu et al., 2018), this is an important missing link. Here, we address this by using the Glacier Drainage System (GlaDS; Werder et al., 2013) model to characterize the effective pressure and subglacial hydrology of the Denman Glacier. We use these effective pressures as inputs in the Budd and Schoof friction laws implemented in the Ice-sheet and Sea-level System Model (ISSM; Larour et al., 2012), and calculate the resulting basal friction coefficients using inversion.

## 2 Methods

### 2.1 GlaDS Setup

GlaDS is a 2D finite element subglacial hydrology model that calculates the development of a distributed water system on the elements, and channel growth, fed by the distributed system on the element edges (Werder et al., 2013). The model runs begin are initiated with no channels and therefore channel formation is dictated entirely by the evolving pressure and flow conditions

across the model elements. GlaDS model equations are described in full in Werder et al. (2013) and its application to other Antarctic systems is covered in detail in Dow et al. (2018, 2020, 2022). The model parameters used in our simulations are summarized in Table 1. The bedrock bump height, cavity spacing, and sheet conductivity act together in the distributed system equations to either constrict or open the system to water flow as show in :

$$65 \quad w - \tilde{A}h|N|^{n-1}N + \frac{\partial h_e}{\partial t} + \vec{\nabla} \cdot \vec{q} = m \quad (1)$$

$$\vec{q} = -kh^\alpha |\vec{\nabla} \phi|^{\beta-2} \vec{\nabla} \phi \quad (2)$$

Where  $\tilde{A}$  is the rheological constant of the ice multiplied by an order one factor depending on the cavity geometry,  $h$  is the hydrology sheet thickness,  $N$  is the effective pressure,  $n$  is the exponent in Glen's flow law,  $h_e$  is the englacial storage,  $t$  is time,  $m$  is a prescribed source term,  $\vec{q}$  is the hydrology sheet discharge,  $k$  is the sheet conductivity,  $\phi$  is the hydraulic potential, and  $\alpha = 5/4$  and  $\beta = 3/2$  are exponents in the Darcy-Weisbach law describing fully turbulent flow.  $w$  is the hydrology sheet opening rate equal to  $u_b(h_r - h)/l_r$  when  $h < h_r$  and zero otherwise, here  $u_b$  is the basal ice speed,  $h_r$  is the typical bedrock bump height and  $l_r$  is the typical cavity spacing.

As discussed in Dow (2023), when the system is overconstricted the pressures are unrealistically high and the model ceases to converge. When the system is underconstricted the pressures are below ice overburden for much of the domain. While there is some variation within the range of acceptable pressures, the output we present is the median and therefore is the most appropriate for representing the hydrology pressure in ice sheet dynamics equations. Future work with full coupling of hydrology and ice dynamics can explore sensitivity to different distributed system inputs. Channel conductivity is, similarly, a median value applied in GlaDS in Antarctica (Dow et al., 2020). The ice flow constant is set for an average ice column temperature of  $-10^\circ\text{C}$ .

The domain for the GlaDS model is a subset of the grounded portion of the Denman-Scott catchment (based on the hydraulic potential (at overburden) catchment for this region (Fig. 1). The mesh includes 17,700 nodes and the domain-wide mean edge length is 3.1 km. However, we refine the mesh to a minimum edge length of 200 m in regions where surface-basal sliding velocities are greater than  $40 \text{ m a}^{-1}$  and along the Denman Glacier grounding line. The basal and surface topography used in the GlaDS run is from BedMachine version 2 (Morlighem, 2020). Basal water and sliding velocity inputs are computed from ISSM (Seroussi et al., 2019), taken from the JPL\_ISSM ISMIP6 Antarctic control run final time step (Seroussi et al., 2019) which was a thermal steady state simulation using the enthalpy formulation implemented in ISSM (Seroussi et al., 2013) and the Blatter-Pattyn (BP) approximation to the full Stokes equations. This model solved for ice viscosity of the floating ice shelf and the basal friction coefficient using data assimilation techniques (MacAyeal, 1993; Morlighem et al., 2010), which differs from our application of ISSM to assess basal boundary conditions. However, lacking an alternative starting point for basal sliding and velocity, this is the best available option prior to full coupling between hydrology and ice dynamics in ISSM. The sliding velocity acts to open up distributed system cavities and, at velocities greater than  $800 \text{ m a}^{-1}$ , can cause model instabilities and so is capped at this value. Tests of similar caps for model runs at Helheim Glacier (Poinar et al., 2019)

demonstrate it has little impact on the model results. We assume a temperate bed throughout, although regions with zero water input (in the interior or southernmost-regions of the domain) are essentially frozen to the bed not an active part of the hydrological system. The model is run for 10,000 days to near steady state (there are changes in the water sheet thickness in deep pockets on the order of  $\text{mm day}^{-1}$ ), providing outputs including channel size and discharge, distributed system discharge, water depth, and effective pressure.

Parameter	Value	Units
Bedrock bump height ( $h_r$ )	0.08	m
Cavity spacing ( $l_r$ )	2	m
Channel Conductivity-conductivity ( $k_c$ )	$5 \cdot 10^{-2}$	$\text{m}^{3/2} \cdot \text{kg}^{-1/2}$
Englacial void ratio ( $e_v$ )	$10^{-5}$	
Glen's flow constant ( $n$ )	3	
Ice density ( $\rho_i$ )	910	$\text{kg} \cdot \text{m}^{3-3}$
Ice flow constant ( $\tilde{A}$ )	$2.5 \cdot 10^{-25}$	$\text{Pa}^3 \cdot \text{s}^{-1}$
Sheet conductivity ( $k$ )	$1 \cdot 10^{-4}$	$\text{m}^{7/4} \cdot \text{kg}^{-1/2}$
Sheet Width-Below-Channel-width below channel ( $l_c$ )	2	m

**Table 1.** GlaDS model parameters described in detail in Werder et al. (2013).

## 2.2 ISSM Setup

ISSM is a finite-element model that uses an anisotropic-a non-uniform mesh to simulate ice dynamics. We employ the inverse capabilities within ISSM to estimate basal friction coefficients in the Denman-Scott catchment using various basal friction laws, as described below. The inverse model uses the shallow-shelf approximation (SSA; MacAyeal, 1989) (SSA; MacAyeal, 1989; Morland, 1998) to the full Stokes equations, described below and in full in Larour et al. (2012).

$$\frac{\partial}{\partial x} \left( 4H\bar{\mu} \frac{\partial u}{\partial x} + 2H\bar{\mu} \frac{\partial v}{\partial y} \right) + \frac{\partial}{\partial y} \left( H\bar{\mu} \frac{\partial u}{\partial y} + H\bar{\mu} \frac{\partial v}{\partial x} \right) = \rho_i g H \frac{\partial S}{\partial x} \quad (3)$$

$$\frac{\partial}{\partial y} \left( 4H\bar{\mu} \frac{\partial v}{\partial y} + 2H\bar{\mu} \frac{\partial u}{\partial x} \right) + \frac{\partial}{\partial x} \left( H\bar{\mu} \frac{\partial u}{\partial x} + H\bar{\mu} \frac{\partial v}{\partial y} \right) = \rho_i g H \frac{\partial S}{\partial y} \quad (4)$$

$$\mu = \frac{B}{2\hat{\epsilon} \hat{\epsilon}^{\frac{1-n}{n}}} \quad (5)$$

Where  $u$  and  $v$  are the  $x$  and  $y$  components of ice velocity respectively,  $H$  is the ice thickness,  $\rho_i$  is the density of ice,  $g$  is the absolute value of the gravitational acceleration,  $S$  is the surface elevation,  $\bar{\mu}$  is the depth averaged ice viscosity,  $\mu$  is the ice

viscosity given in equation Eq. (5),  $\dot{\epsilon}_e$  is the effective strain rate tensor,  $n$  is the exponent in Glen's flow law, and  $B$  is the ice rigidity.

110 The domain for the ISSM model is the full Denman-Scott catchment, extending the ~~mesh-boundary~~ used for the GlaDS simulations to include the floating ice shelves (Fig. 1). The ISSM mesh is comprised of 66,518 nodes, with ~~anisotropic non-uniform~~ mesh refinement for faster flowing ice using the MEaSURES v2 ice surface speed (~~Rignot et al., 2011, 2017~~) from (~~Rignot et al., 2011, 2017; Mouginot et al., 2012, 2017~~), described in Appendix A1. The minimum mesh edge length is 500 m. We note that the GlaDS mesh used for the subglacial hydrology simulations differs from that used in the ISSM simu-  
 115 tions for the ice dynamics as a result of differences in ice and hydrology drainage catchments; the impact of this is discussed in Appendix A1. We test the sensitivity of the ~~basal~~ friction inversion simulations to various different meshes, finding that the results are less sensitive to the effect of the mesh configuration than to the specification of effective pressure and ~~basal~~ friction law used (Appendix A1). The bed topography and surface elevation are from BedMachine v2 (Morlighem, 2020). The ice rigidity is calculated using inverse methods (~~Appendix B~~).

## 120 2.2.1 Solving for basal friction coefficients

We investigate the impact of the prescription of the effective pressure in the Budd and Schoof friction laws by calculating basal friction coefficients using inversion. The ~~scalar form of the~~ Budd friction law is given by the following expression:

$$\tau_b = \alpha N u_b^m, \quad (6)$$

where  $\tau_b$  (Pa) is the basal shear stress,  $\alpha$  ( $\text{s}^{1/2} \text{m}^{-1/2}$ ) is the ~~basal~~ friction coefficient,  $N$  (Pa) is the effective pressure and  $u_b$  ( $\text{m a}^{-1}$ ) is the basal sliding speed. ~~The~~, and  $m = 1$  is a power law exponent taken to be linear as in Åkesson et al. (2021); Åkesson et al. (2021). ~~The scalar form of the~~ Schoof friction law can be written as:

$$\tau_b = \frac{C^2 |u_b|^{m-1}}{(1 + (C^2 / (C_{\max} N))^{1/m} |u_b|)^m} \frac{C^2 |u_b|^{m-1}}{(1 + (C^2 / (C_{\max} N))^{1/m} |u_b|)^m} u_b, \quad (7)$$

where  $C$  ( $\text{kg}^{1/2} \text{m}^{-2/3} \text{s}^{-5/6}$ ) is the friction coefficient,  $m$  is the power law exponent, here given by  $m = 1/3$ , and  $C_{\max}$  ( $\text{m}^{-1/3} \text{s}^{1/3}$ ) is Iken's bound, which is the effective cap on the basal shear stress (~~Appendix A4; Iken, 1981~~).

130 For each friction law, we calculate inversion for the basal friction coefficients by minimizing a cost function that includes the contributions of absolute and logarithmic misfits between the observed and simulated ice ~~speeds (Morlighem et al., 2013)~~ surface speeds (~~Appendix B; Morlighem et al., 2013~~). Weighting parameters for the absolute and logarithmic misfit terms for the various friction laws are shown in ~~Appendix B~~, Table B1. We also add a Tikhonov regularization term to the cost function, which regulates the local variability in the ~~basal~~ friction coefficient by penalizing large gradients in the ~~basal~~ friction coefficient, making the ~~basal~~ friction coefficient smoother. The weighting parameter of the Tikhonov regularization term is determined  
 135 using an L-curve analysis (Appendix B; Hansen, 2000) which allows us to find a ~~basal~~ friction coefficient with small local variability while maintaining a good absolute and logarithmic velocity misfit. The final weighting parameters for the Tikhonov regularization term for each friction law are reported in Table B1.

140 Though it is not the primary focus of this work, we invert for ice rigidity as well, while initializing our model for the inversion for the basal friction coefficients. By inverting for the ice rigidity we capture ice rheological processes which are not explicitly accounted for in the model such as damage, anisotropy, chemical impurities, and liquid water.

145 We perform the following inversion procedure. First, we invert for the ice rigidity over the floating portion of the domain. Next, we invert for the Budd basal friction coefficient over the grounded portion of the domain, using an ice rigidity on grounded ice specified by the Paterson function from Cuffey and Paterson (2010) and surface temperatures from RACMOv2.3 (van Wessem et al., 2018). After the Budd inversion we invert for the ice rigidity over the entire domain. We next use the basal friction coefficient estimated using the Budd friction law to compute an initial estimate of the basal friction coefficient for the Schoof friction law. We perform inversions for the basal friction coefficients of the Budd and Schoof friction laws with the ice rigidity from the inversion prior, these are the main simulations discussed in the text that follows (it is worth noting that the Budd friction coefficient converges to the result of the initial Budd friction coefficient inversion). We perform a final rigidity inversion over the entire domain. The cost functions to be minimized for each inversion are described in detail in Appendix B.

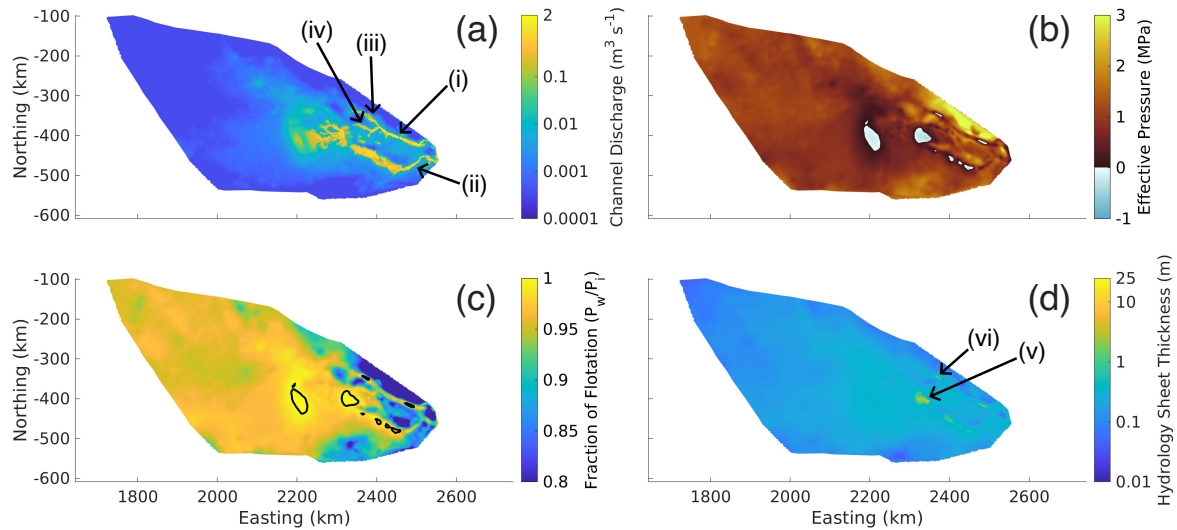
150 We compare the difference in the basal friction coefficients when we use two different prescriptions for the effective pressure:  
155 (1) ~~an~~An effective pressure given by assuming water pressure equals the ice overburden pressure plus the gravitational potential energy of the water  $N = \rho_i g H + \rho_w g B$ , which we refer to as  $N_O$ ; and  $N_G = \rho_i g H + \rho_w g B$ . Here  $\rho_i$  is the density of ice,  $\rho_w$  is the density of water,  $g$  is the absolute value of the gravitational acceleration,  $H$  is the ice thickness, and  $B$  is the bed elevation which takes negative values below sea level. (2) ~~the~~The effective pressure taken directly from the GlaDS simulations, which we refer to as  $N_G$ . We cap the effective pressure at 1 % of ice overburden pressure for Budd runs and 0.4 % of ice overburden pressure for Schoof runs, due to numerical artefacting that arises for values smaller than this. The impact of these choice of caps is discussed in Appendix A2. Inverting for the basal friction coefficient using a hydrology model output effective pressure and a friction law which explicitly depends on the effective pressure is similar to the work of  
160 Koziol and Arnold (2017).

### 3 Results

We present the results of the GlaDS modeling followed by the inversion results using ISSM, and compare the impact of using ~~the GlaDS effective pressure outputs with those using~~  $N_G$  and  $N_O$  for the Schoof and Budd friction laws.

#### 3.1 Subglacial hydrology

165 ~~Major~~ The GlaDS modeling indicates that major subglacial hydrology channels form in the Denman-Scott catchment as seen in Fig. 2a, with significant discharge through both the Denman (Fig. 2a (i)) and Scott Glaciers (Fig. 2a (ii)). For the former, the discharge is  $15.8 \text{ m}^3 \text{ s}^{-1}$  and for the latter,  $6.0 \text{ m}^3 \text{ s}^{-1}$ . The Denman channel initiates as two branches that flow for 80 and 52 km through subglacial valleys before merging at the beginning of the significantly overdeepened trough. From here, the channel flows through the base of the trough, emerging 129 km downstream at the grounding line. The Scott channel, on the  
170 other hand, converges as a single channel 95 km from the grounding line. There is substantial water ~~amalgamation~~ convergence

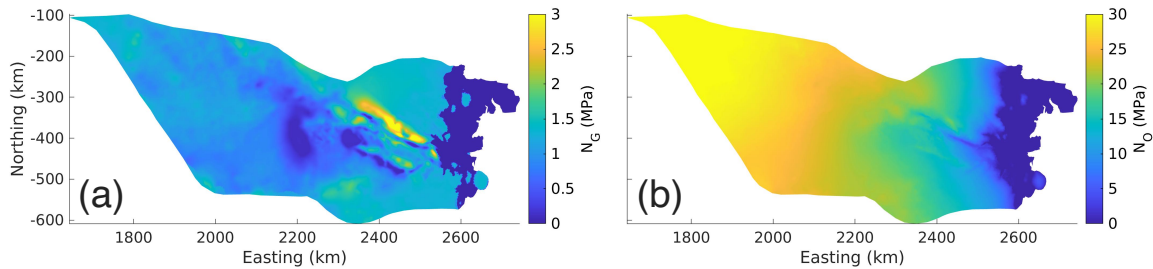


**Figure 2.** GlaDS simulation results. **(a)** Channel discharge ( $\text{m}^3 \text{s}^{-1}$ ); **(b)** effective pressure (MPa); **(c)** fraction of flotation (i.e. the fraction of ice overburden pressure that each grid cell is pressurized to,  $p_w/p_i$  with a black contour when the fraction reaches 1 (flotation)); and **(d)** water sheet thickness (m). The locations marked in panel **(a)** are the: **(i)** Denman channel; **(ii)** Scott channel; **(iii)** western branch of the Denman channel; **(iv)** eastern branch of the Denman channel. The locations marked in panel **(d)** are the: **(v)** basin like feature; and **(vi)** lake like feature.

with a maximum depth of 25 m in a basal depression (Fig. 2d (v)) that feeds the channels of both the Denman and Scott Glaciers, although with the strongest flux towards Denman the eastern branch of the Denman channel (Fig. 2a (iii)). The bed topography of this basin feature lies at 1900 m below sea level (Fig. 1a), and subglacial water flows upslope by approximately 1200 m to drain downstream. A second ‘lake-like’ feature feeds the northern-western branch of the Denman channel (Fig. 2a (iv)) and reaches a water depth of  $\sim 8$  m (Fig. 2d (vi)).

As effective pressure is the ice overburden pressure minus the subglacial water pressure, low effective pressure implies high subglacial water pressure, with negative effective pressure implying that the subglacial water pressure is greater than the ice overburden pressure. A low effective pressure corresponds to a high fraction of flotation which is defined to be the subglacial water pressure divided by the ice overburden pressure. When the subglacial water pressure is equal to the ice overburden pressure flotation is reached and the fraction of flotation is 100 %. Effective pressure in the GlaDS outputs is lowest in the basin feature (Fig. 2d (v)) and the lake-like feature (Fig. 2d (vi)), reaching  $-0.4$  MPa in the former and  $-0.25$  MPa in the latter (Fig. 2b). This translates to a maximum of 101 % fraction of flotation relative to the ice overburden pressure for both sites (Fig. 2c). Other regions of negative effective pressure occur in the troughs of Denman and Scott Glaciers. Low effective pressures, close to zero ( $>92$  % fraction of flotation), persist through the upper regions of the domain and through the subglacial





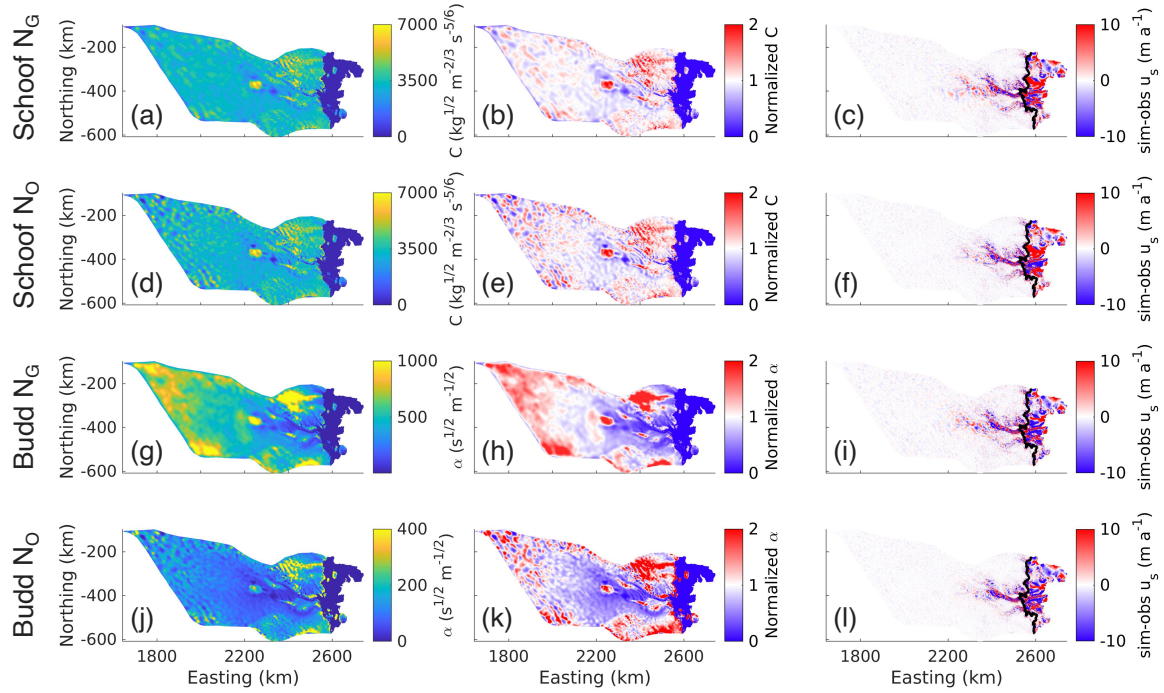
**Figure 3.** Effective pressure inputs (note the colormap scales are not all the same). (a) effective pressure (MPa) from GlaDS,  $N_G$ , capped at 0.4% of ice overburden pressure for the Schoof friction law shown here; (b) prescribed effective pressure equal to the ice overburden pressure plus the gravitational potential energy of water  $N_O = \rho_i g H + \rho_w g B$  (MPa),  $N_O$ .

185 valleys and troughs of both glaciers. Close to the grounding line, effective pressures rise to 90 % fraction of flotation in the regions where the channels of both glaciers exit into the ice shelf cavity. These low and negative effective pressures persist at near steady state and don't cause instability in the GlaDS model.

### 3.2 Ice dynamics and inversion

We first consider the results for the Schoof friction law. ~~When using the GlaDS effective pressures ((Eq. 7). When using  $N_G$~~  (Fig. 3a), the Schoof friction coefficient estimated using inversion is relatively uniform across the basin, with over 50 % of the basin recording basal friction coefficients that range between 2910 and 3580  $\text{kg}^{1/2} \text{m}^{-2/3} \text{s}^{-5/6}$  (Fig. 4a). Departures from this occur in isolated patches of very low and very high friction – corresponding to the lake-like feature feeding the northern basin-like feature (Fig. 2d (v)) feeding the eastern branch of the Denman channel and the Scott channel – and a region directly upstream of this feature where the ice surface speeds abruptly decrease. The basal friction coefficients are relatively lower in the Denman and Scott troughs, and alternating high and low “stripes” are evident in the region ~~of slow flow (ice surface speeds  $< 50 \text{ m a}^{-1}$ ) to the west of the Denman Glacier and south of the Shackleton Ice Shelf (we Fig 1b (i)) where ice surface speeds are  $< 50 \text{ m a}^{-1}$  (Fig. 1a. We~~ note that this region was excluded from the GlaDS model ~~;(see discussion in Appendix A1).~~

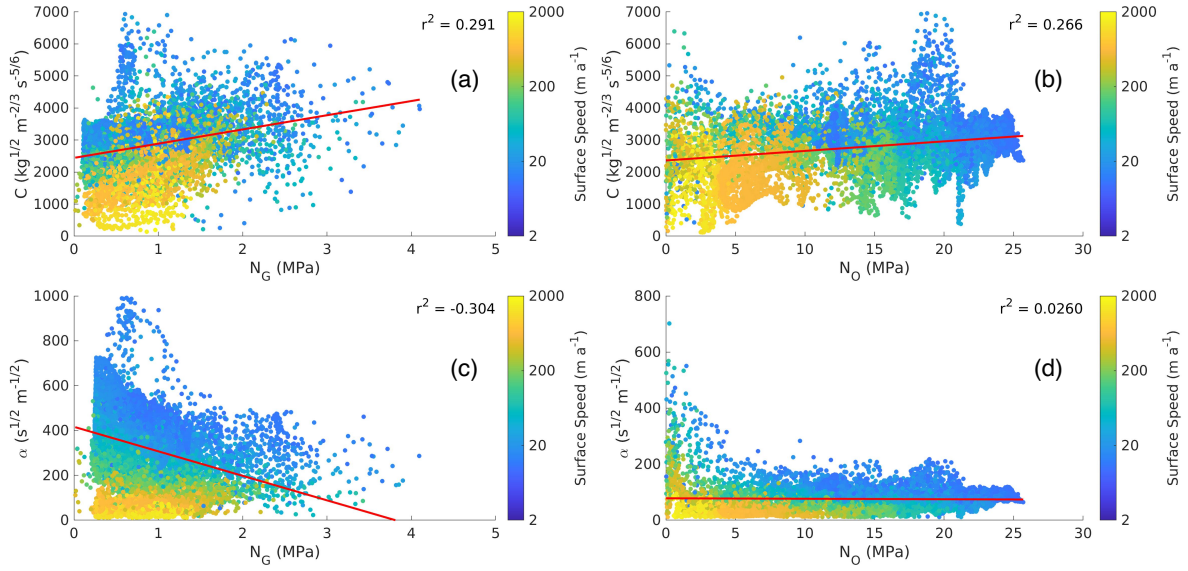
The Schoof basal friction coefficient estimated using  $N_G$  is smoother compared with that using  $N_O$  (Fig. 4a and Fig. 4e 4d; Appendix B). Here, a smoother basal friction coefficient resulted in lower median ~~and mean~~ differences and root mean square ~~errors (rmse) error (RMSE) and higher mean differences~~ between the simulated and observed ice surface speeds for the  $N_G$  simulation over the  $N_O$  simulation (Table 2; Fig. 4b,d), ~~particularly in regions of faster flow (surface speeds  $> 10 \text{ m a}^{-1}$ ) c.f.~~ We find a positive correlation ( $r^2 = 0.291$ ) between  $N_G$  and the basal friction coefficient (~~correlation coefficient  $r^2 = 0.30$ ; Fig. 5a~~), ~~and the relationship is stronger when we exclude regions of slow flow (surface speeds  $< 10$  when considering areas where ice surface speeds are  $\geq 10 \text{ m a}^{-1}$ ), where the effective pressure and friction coefficient are lowest. By contrast, in the~~ region where ice is more dynamic closer to the grounding line. Similarly, there is ~~only a slight a~~ positive correlation between  $N_O$  and the basal friction coefficient ( $r^2 = 0.15$ ) ~~when using the Schoof friction law  $r^2 = 0.266$ , Fig. 5b).~~



**Figure 4.** Ice dynamics outputs (note the colormap limits are not all the same). (a), (ed), (eg), (g) are basal friction coefficients ( $C$  for (a) and (d),  $\alpha$  for (g) and (j)), (b), (be), (dh), (k) are basal friction coefficients normalized to their respective means (normalized  $C$  for (b) and (e), normalized  $\alpha$  for (h) and (k)), (c), (f), (hi) is, (l) are the difference-differences between the simulated and observed velocity-ice surface velocities ( $\text{m a}^{-1}$ ),  $\text{sim-obs } u_s$ . (a) and (b), and (c) show outputs from the Schoof friction law with  $N_G$ ; (ed), (e), and (df) are from the Schoof friction law with  $N_O$ ; (eg), (h), and (fi) are from the Budd friction law with  $N_G$ ; and (gj), (k), and (hl) are from the Budd friction law with  $N_O$ . In each panel, the black lines are the grounding lines.

Friction Law	Effective Pressure	difference between simulated and observed surface speeds		
		median ( $\text{m a}^{-1}$ )	mean ( $\text{m a}^{-1}$ )	root mean square error ( $\text{m a}^{-1}$ )
Schoof	$N_G$	0.185-0.163	0.607-0.391	10.1-7.31
	$N_O$	0.226-0.249	0.799-0.315	11.3-7.34
Budd	$N_G$	0.0847-0.0855	-0.0700-0.0950	11.5-6.52
	$N_O$	0.265-0.268	0.265-0.179	11.7-6.04

**Table 2.** Median, mean, and root mean square error (rmseRMSE) of the differences between the simulated and observed ice surface speeds for the Schoof and the Budd friction laws using the GlADs effective pressure ( $N_G$ ) or an effective pressure equal to overburden pressure plus the gravitational potential energy of water ( $N_O$ ) and  $N_O$ .



**Figure 5.** Relationship between the effective pressure and basal friction coefficient for: **(a)** Schoof basal friction coefficient  $C$  with  $N_G$ ; **(b)** Schoof basal friction coefficient  $C$  with  $N_O$ ; **(c)** Budd basal friction coefficient  $\alpha$  with  $N_G$ ; and **(d)** Budd basal friction coefficient  $\alpha$  with  $N_O$ . In each panel, points are colored by the natural log-logarithm of the ice surface speed. The red line is the linear line of best fit, and with the slope of this line is correlation coefficient reported ( $r^2$ ).

We next compare the difference between basal friction coefficients with the Schoof and Budd friction laws and using  $N_G$ . All basal friction coefficients are relatively lower in the Denman and Scott Glacier troughs and the lake-like and basin features that feed into these troughs, and relatively higher in the region between the lake-like and basin features (Fig. 4a,e,e,g,b,h). However, the range of the basal friction coefficient across the catchment estimated with the Budd friction law is substantially greater than that with the Schoof friction law, with relatively high values in the interior of the catchment compared with towards the coast. This leads to a comparatively-greater standard deviation in the Budd friction coefficient compared with that of Schoof ( $1240 \text{ kg}^{1/2} \text{ m}^{-2/3} \text{ s}^{-5/6}$  when both are normalized to their respective means (0.228 for Schoof and  $250 \text{ s}^{1/2} \text{ m}^{-1/2}$  0.385 for Budd). Despite this Unlike the Schoof friction law, the choice of  $N_O$  or  $N_G$  has a significant impact on the distribution of the basal friction coefficient (Fig. B4) in the Budd friction law. This is because the upglacier portions of the catchment fall into a Weertman sliding regime in the Schoof friction law where  $\tau_b \ll C_{\max} N$  (Fig. A5) and  $C^2 \approx \tau_b / u_b^m$ . Here, the choice of effective pressure will have minimal effect on the Schoof friction coefficient. In the Budd friction law  $\alpha^2 = \tau_b / (N u_b)$  meaning that the effective pressure continues to play an important role in the basal friction coefficient throughout the entire catchment, which propagates the large discrepancy between  $N_O$  and  $N_G$  to the basal friction coefficients obtained from using these various effective pressures. Despite the large range of the Budd friction coefficient across the catchment, the Budd friction coefficient is generally smoother than the Schoof friction coefficient, which may be a consequence of the choice of the Tikhonov regularisation coefficient used in the inversion procedure. The Budd friction law also predicts lower mean and

median differences between the simulated and observed ice surface speeds than the Schoof friction law ~~;~~ ~~however, the rmse in the differences are higher than those using the Schoof friction law~~ (Table 2), for both  $N_O$  and  $N_G$ . Finally, in contrast with the  
225 Schoof result, there is a negative correlation between  $N_G$  and the basal friction coefficient using the Budd friction law, with basal friction coefficients increasing for decreasing effective pressures ( ~~$r^2 = -0.31$~~   $r^2 = -0.304$ ; Fig. 5c).

## 4 Discussion

### 4.1 The GlaDS effective pressure

The GlaDS-calculated effective pressure in this region of the Antarctic reflects variability in ice thickness and basal topography,  
230 with regions of negative effective pressure concentrated in deep basins, subglacial valleys and troughs. The effective pressure in the remainder of the domain, including the interior of the catchment, is close to zero with minimal spatial variation. A region of high effective pressure is found to the north of the Denman trough. In this area, the bed topography is steep and the ice thin; this causes water to drain rapidly and lower the local water pressure. It is unclear whether this is a realistic representation of the basal hydrology in this region or whether the low pressures indicate a limitation of the hydrology model – in situ data  
235 collection is necessary to investigate this further.

### 4.2 Effective pressure and basal sliding laws

Using the Schoof friction law in the ice dynamics inversions, the resulting basal friction coefficient is smoother when ~~the effective pressure is derived from the GlaDS model run ( $N_G$ ) is applied~~, compared to when  $N_O$  is applied, irrespective of the ~~degree of regularization-Tikhonov regularization coefficient~~ (Appendix B). When  $N_O$  is used, large gradients in the basal  
240 friction coefficient appear that are not aligned with or perpendicular to flow, and naturally increase as the Tikhonov parameter decreases. Previous studies have linked flow-perpendicular gradients in the basal friction coefficient to topography or hydro-mechanical feedbacks (Sergienko et al., 2014); however, that is unlikely to be the case here given that our gradients are not aligned with or perpendicular to flow. Rather, it is likely that these large gradients in the basal friction coefficient are artefacts of the inversion procedure that arise only when  $N_O$  is used.

245 Our parameterization for  $N_O$  is a function of the ice overburden pressure and bed elevation,  $N_O = \rho_i g H + \rho_w g B$ , which has been commonly used to define the effective pressure in ice sheet modeling (~~Budd and Jenssen, 1987; Johnson and Fastook, 2002; Le Broeck~~ (Huybrechts, 1990; Åkesson et al., 2022; Yu et al., 2018; Åkesson et al., 2021)). This parameterization is not the actual subglacial hydrology effective pressure, defined as  $N = p_i - p_w$ , where  $p_i$  and  $p_w$  are the pressures of ice and water respectively. Indeed, if at the overburden pressure, the effective pressure  $N$  should be zero everywhere. However, the definition for  $N_O$  ~~used~~  
250 ~~here here is in fact the overburden hydraulic potential, not an effective pressure, and~~ will produce high effective pressures (i.e. low basal water pressures) in regions of thick ice grounded above sea level, and low effective pressure in regions of thick ice grounded below sea level, yielding high friction in interior regions of the Denman catchment (Fig. 3). The water pressure in this parameterization has a dependence on bed elevation, resulting in areas of negative water pressure anywhere the bed is above

255 sea level, which is not physical. Previous studies have investigated alternative parameterizations for the effective pressure **in the**  
**absence of a coupled ice sheet-subglacial** due to the computational cost or numerical instabilities associated with coupling of an  
ice-sheet model to a complex subglacial hydrology model. Full coupling between these models is a recent development in the  
field (Cook et al., 2022). For example, Brondex et al. (2017) use  $N = \rho_i g H + \rho_w g B$   $N_B = \rho_i g H + \rho_w g B$  for areas grounded  
below sea level and  $N = \rho_i g H$   $N_B = \rho_i g H$  for areas grounded above sea level, which leads to zero water pressure above sea  
level. Kazmierczak et al. (2022) Bueler and van Pelt (2015) used a parameterization that incorporates the effects of till at the  
260 base. Our results suggest that ice sheet models would be more accurate with improved representations of the effective pressure  
in friction laws (e.g. Cook et al., 2022), highlighting the need for further investigation into appropriate parameterizations for  
the effective pressure when a subglacial hydrology model output is not directly available. To this end, we suggest an alternative  
parameterization for the effective pressure in section 4.3 below.

Our finding of a positive correlation between  $N_G$  and the basal friction coefficient for the Schoof friction law is unsurprising:  
265 effective pressures are lower where there is substantial basal lubrication, which generally leads to a lower basal friction coeffi-  
cient and faster surface flow. This is evidence for subglacial hydrology being a key control on the surface speeds in regions of  
lower effective pressures for the Denman Glacier. However, in the regions of fastest flow at Denman Glacier, particularly to-  
wards the grounding line, the model also suggests the presence of substantial channels, which have previously been associated  
with increasing effective pressures and slowing ice flow (Nienow et al., 2017). The simultaneous presence of channels, fast ice  
270 flow, and low effective pressures has also been observed at Aurora Subglacial Basin (Dow et al., 2020) and in the Weddell Sea  
region (Dow et al., 2022). This is due to the channels being near steady-state which means they operate at effective pressures  
closer to that of the surrounding distributed system, compared to alpine-like hydrology systems (Iken and Bindshadler, 1986)  
. In the inland regions of the Denman catchment, distributed system effective pressure is also near zero, yet ice flow speed in  
this region is low. Here, longitudinal friction plays a key role in restraining inland ice flow, with fast flow near the grounding  
275 line requiring a combination of high driving stress and low basal effective pressures.

The relationship between low effective pressures and low basal friction did not hold for the Budd friction law, (Fig. 3a,  
Fig. 4e) despite a stronger negative correlation between the basal friction coefficient and ice surface speed for the Budd fric-  
tion law compared to the Schoof law-friction law (Fig. 5a,c). Our study uses inverse methods to calculate the basal friction  
coefficient for a given  $\tau_b/N_G$  and  $N_G$ . For the Budd friction law, this yields a basal friction coefficient that adjusts to com-  
280 pensate for large variations in basal ice velocities – the basal friction coefficient decreases as basal ice velocities increase and  
vice versa, and there is a strong inverse relationship between these two fields. However, the requirement for such a strong  
inverse relationship between basal friction coefficient and basal ice velocity leads to a generally weaker relationship between  
the basal friction coefficient and the effective pressure, since the effective pressure depends on factors other than the basal ice  
velocity: the topography, the ice thickness, and water accumulation along with efficiency of basal channels to some extent.  
285 For the Schoof friction law there is no requirement for a strong correlation between the basal friction coefficient and basal ice  
velocities, and we find that spatial variations in the basal friction coefficient more closely mirror those of the effective pressure,  
resulting in the stronger correlation between these two fields.

The choice of friction law plays an important role in grounding line migration and mass loss, with studies showing that friction laws that incorporate effective pressure yield more realistic representation of ice sheet dynamics, grounding line retreat, and mass loss than those that do not (Åkesson et al., 2021; Brondex et al., 2019). In an idealized flow line model, Brondex et al. (2017) showed that when using a Weertman friction law, the-which does not consider the strong dependence of  $\tau_b$  on the effective pressure, the grounding line can be stable on a retrograde slope, contrary to results from theoretical analysis (Schoof, 2007), and recommended the use of the Schoof friction law due to its strong physical basis. Coulomb-type-Regularized Coulomb friction laws have also demonstrated superior performance over the Budd friction law in capturing observed grounding line migration (Joughin et al., 2019) and more realistic estimates of future ice mass loss (Brondex et al., 2019). These results are largely a consequence of the cavitation effects captured in Coulomb-type-regularized Coulomb friction laws, which prevent unphysical, unbounded basal shear stresses for increasing ice velocities (Schoof, 2005). By contrast, the basal shear stress is unconstrained for finite values of  $m$  in other friction laws, including the Weertman or Budd friction laws. Consistent with Brondex et al. (2017, 2019), our results favor the use of a Coulomb-type-regularized Coulomb friction law combined with effective pressure output from the GlaDS model for more realistic representation of the basal friction coefficient calculated using inversion.

In this work we have used an SSA ice flow model, which fails to capture bed-parallel vertical shear deformations. This may affect the results of our inversions for the basal friction coefficient in areas of non-negligible vertical shear, such as at the onset of fast-flowing ice streams of the Denman and Scott troughs. However, the use of the Glen flow relation may also impact the capacity of even higher-order models to accurately capture bed-parallel vertical shear deformations. For example, McCormack et al. (2022) showed that even when the BP approximation to the full Stokes is used, the unenhanced Glen flow relation fails to capture the vertical shear profile expected in regions where ice is frozen to the bed of the glacier. In our simulations that use the SSA approximation and the Glen flow relation, it is possible that sliding is overestimated, and the basal friction coefficient underestimated, where vertical shear is an important deformation process. However, this is a common issue to all of our model runs and is therefore unlikely to alter the main conclusions of this work that compare how the form of the effective pressure impacts the basal friction coefficient.

Initializing our temperature field with surface temperatures from RACMOv2.3 (van Wessem et al., 2018) could have an impact on the rigidity and basal friction coefficient inversions we performed in this work. Zhao et al. (2018) showed that initializing a model with a colder temperature field resulted in a decrease of the basal friction coefficient computed from inversion, due to stiffer ice. It is possible that if we used a thermal model and computed depth averaged temperatures to use in our model initialization – effectively increasing the initialization temperatures – that we could similarly see an increase in the basal friction coefficients. Like with the SSA approximation, these are issues that would be common in all of our model runs and would be unlikely to alter the main conclusions we came to regarding the effect of the form of the effective pressure on the computation of the basal friction coefficient.

The GlaDS model used here has been demonstrated to accurately represent observed properties of the Antarctic subglacial hydrology system (Dow et al., 2018, 2020, 2022). Nevertheless, it has not yet been coupled with an ice sheet model for prognostic simulations of Antarctic ice dynamics. Given the key role that effective pressure plays in basal friction laws, it is clear that

future implementations of ice dynamics models should explicitly take relevant subglacial hydrology processes into account, such as spatially and temporally-variable basal water pressure, if they are to accurately predict climate-driven changes in ice dynamics. A recent study by Kazmierczak et al. (2022) coupled simplified representations of subglacial hydrology to ice dynamics using the Budd friction law. This study by Kazmierczak et al. (2022) examined the impact of different representations of the effective pressure – approximated in turn by height above buoyancy (~~van der Veen, 1987; Winkelmann et al., 2011~~), ~~subglacial water depth (Le Brocq et al., 2009)~~, (~~van der Veen, 1987; Huybrechts, 1990; Winkelmann et al., 2011; Martin et al., 2011~~), ~~reduced by the subglacial water pressure (modified from Bueler and Brown (2009))~~ or sliding related to water flux (Goeller et al., 2013); ~~and the from a simple subglacial water routing model (Le Brocq et al., 2009)~~, and an effective pressure in ~~till (Bueler and Brown, 2009)~~ a till (Bueler and van Pelt, 2015) – on ice mass ~~loss from lost over~~ Antarctica over the 21st Century. A key finding is that when the effective pressure is low in the grounding zone, the ice sheet is more sensitive to increases in climate forcing, ultimately increasing mass loss and resulting in sea level rise. The accuracy of these simplified subglacial hydrology models in representing the full physics of the ice-bed interface still needs to be tested. However, we found that the GlaDS model predicted low effective pressures in the grounding zone of the Denman-Scott catchment, which, following Kazmierczak et al. (2022), suggests this region might be sensitive to enhanced mass loss in the future. The next step is to couple the GlaDS model for a more complex representation of the basal hydrology with an ice dynamics model for application to Antarctic glaciers – an approach that has been applied to Greenland glaciers (e.g. Cook et al., 2022).

### 4.3 Empirical Parameterization

We suggest here an alternative parameterization of effective pressure,  $N_E$ , which is empirical in nature and based on spatial patterns in the GlaDS effective pressure output of Denman Glacier. Given the high correlation of water pressure to ice overburden pressure ( $r^2 = 0.998$  over the Denman domain) and the relatively constant effective pressure in the interior of Denman, we suggest a form of the water pressure proportional to the ice overburden pressure multiplied by a ~~factor-term~~ ( $r_l + (1 - r_l)g_x(H)$ ), where  $g_x(H) = H^x / (\tilde{H}^x + H^x)$  is a ~~saturation term~~ such that the ~~effective-water~~ pressure reaches a maximum ~~value-fraction of flotation~~ in areas of high ice thickness. ~~Here,  $\tilde{H}$  is defined in Eq. (9) and  $x$  is defined in Eq. (10).~~ The proposed parameterization is as follows:

$$N_E = \rho_i g H (1 - r_l) \frac{\tilde{H}^m}{\tilde{H}^m + H^m} \frac{\tilde{H}^x}{\tilde{H}^x + H^x}, \quad (8)$$

$$\tilde{H} = \left( \frac{1 - \gamma}{\gamma - r_l} \right)^{1/m} H_t, \quad (9)$$

$$m = \frac{\ln\left(\frac{1-r_l}{\epsilon} - 1\right) + \ln(\gamma - r_l) - \ln(1 - \gamma)}{\ln(H_t) - \ln(H_s)}. \quad (10)$$

Here,  $\rho_i$  is the density of ice,  $g$  is the gravitational acceleration, and  $H$  is ice thickness. The effective pressure is given by Eq. 8(8), with  $\tilde{H}$  a constant defined by Eq. 9 and  $m$  (9) and  $x$  a constant exponent defined by Eq. 10(10).  $\gamma$  is a constant representing typical effective pressure as a fraction of ice overburden in areas of high ice thickness;  $r_l$  is the water pressure as a fraction of ~~overburden-ice overburden pressure~~ as the ice thickness goes to zero;  $H_t$  is a typical large ice thickness;  $H_s$

is a typical small ice thickness; and  $\epsilon$  is a small constant taken so that in areas of low ice thickness ( $H_s$ ) the water pressure is at a typically low value  $(r_l + \epsilon)\rho_i g H$ . GlaDS output effective pressure and ice thickness data for the Denman Glacier was used to find values for  $r_l$ ,  $\delta\gamma$ ,  $H_s$ , and  $H_t$  used in  $N_E$  ( $\epsilon$  was taken to equal 0.05). This resulted in  $r_l = 0.7$ ,  $\delta = -0.96$ ,  $\gamma = 0.96$ ,  $H_s = 500$  m, and  $H_t = 2800$  m. The empirical nature of this parameterization means that these constants are not “optimized” and use of  $N_E$  on future glaciers may require an alteration of these constants, specifically  $H_s$  and  $H_t$  which can be determined using ice thickness data. More details on the parameterization and its derivation are provided in Appendix C.

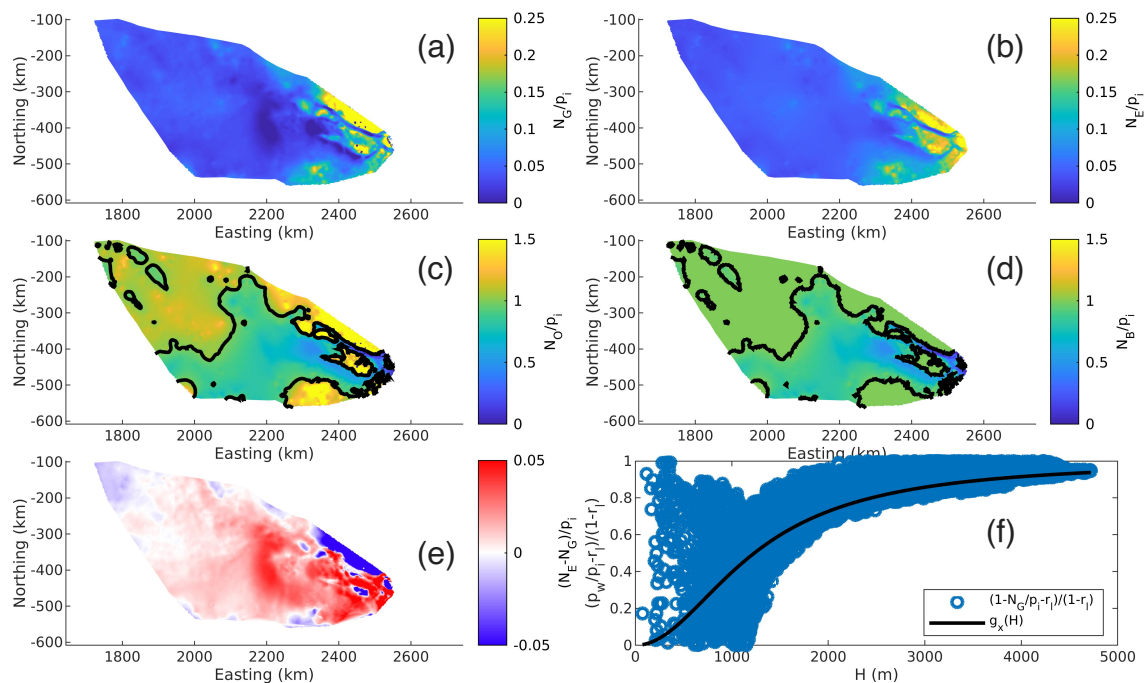
The proposed empirical effective pressure ( $N_E$ ), is compared with the GlaDS output effective pressure ( $N_G$ ), the typically prescribed effective pressure  $N_O$ , and the Brondex et al. (2017) prescribed effective pressure ( $N_B$ , Section 4.2) – all as a fraction of ice overburden pressure (Fig. 6).  $N_E$  matches the GlaDS output effective pressure  $N_G$  more closely than both  $N_O$  and the Brondex et al. (2017) prescribed effective pressures  $N_B$  (note the different color bar scalings in Fig. 6a,b compared with Fig. 6c,d). This is further illustrated in Fig. 6f, which shows the difference between  $N_E$  and  $N_G$  as a fraction of ice overburden pressure: 72.9 % of the domain has a difference of  $<0.02$ , and 95.6 % of the domain has a difference of  $<0.05$ . Fig. 6e-f shows the saturation term  $(g_x(H))$  as well as the physically equivalent scatter from the GlaDS output data,  $(1 - N_G/p_i - r_l)/(1 - r_l)$ . The form of the scatter is qualitatively similar to the saturation term in areas of moderate to high ice thickness. The mean percent difference excluding the area of the domain where  $N_G \leq 0$ , given by  $|N_E/N_G - 1|$ , is 118 %, though 45.4 % of this domain falls below 20 % and 77.0 % of the domain falls below 50 % so the data is skewed from the areas of low effective pressure. Standing alone, this does not sound impressive and it is a result of the variability of the scatter seen in Fig. 6f. This is still a substantial improvement over  $N_O$  which has a mean percent difference of 3688 % where 57.7 % of the domain falls between 2000 % and 3000 % difference.

Though this parameterization is not derived from physical principles and it lacks complete hydrological connectivity to the ocean, it produces physically realizable effective pressures  $0 < N < \rho_i g H (1 - r_l)$ , which match closely to GlaDS output effective pressures over Denman Glacier. The success of our empirical parameterization  $N_E$  over  $N_O$  on Denman Glacier combined with its improved physical implications over  $N_O$  warrants further investigation into its validity and potential use in future modeling studies, particularly on Antarctic glaciers.

## 5 Conclusions

The Denman-Scott catchment in East Antarctica is a region that is undergoing active glacial retreat and is vulnerable to ongoing mass loss as the climate warms. We have investigated the coupled interactions between the subglacial hydrological system and the ice sheet through the basal friction coefficient – an important tuning parameter used in basal friction laws – and its dependence on the form of the effective pressure. We find that when the Schoof friction law is used, a smoother there is a smoother basal friction coefficient and slightly improved match between the simulated and observed ice surface velocities is found when an effective pressure derived directly from GlaDS  $N_G$  is used, compared to when an effective pressure equal to the ice overburden pressure plus the gravitational potential energy of water ( $N_O$ ) is used. Of the two friction laws tested here – the Schoof friction law and the Budd friction law – only the Schoof friction law captures the predicted relationship between the





**Figure 6.** Effective pressures from a fraction of ice overburden pressure for: (a) the GlaDS simulation output effective pressure  $N_G/p_i$ , (b) the proposed empirical parameterization in Eq. 8 of effective pressure  $N_E/p_i$ , (c) typically prescribed ( $N_O$ ) effective pressure  $N_O/p_i$ , and (d) Brondex et al. (2017) prescribed effective pressure  $N_B/p_i$ . (e) The saturation-curve difference between the empirical parameterization of effective pressure and the physically equivalent scatter for GlaDS output effective pressure as a fraction of ice overburden pressure  $((N_E - N_G)/p_i)$ . (f) The difference between saturation curve ( $g_x(H)$ ) and the proposed empirical parameterization physically equivalent scatter for  $N_G$  ( $N_E(1 - N_G/p_i - r_i)/(1 - r_i)$ ). Black lines in (c) and (d) represent the GlaDS effective pressures as a fraction of overburden  $N/p_i = 1$  contour.

subglacial hydrological and the ice sheet dynamics. That is, using the Schoof friction law, regions of lower effective pressures (both  $N_G$  and  $N_O$ ) tend to also have lower simulated basal friction and faster flow basal friction coefficients – evidence for the controlling role of the hydrological system.

390 In their application of the GlaDS model to the Aurora Subglacial Basin, Dow et al. (2020) showed the utility of geophysical observations in validating and constraining subglacial hydrology model parameterizations. By contrast with the Aurora Subglacial Basin, the Denman-Scott catchment is a relatively sparsely observed system, with few geophysical observations available to constrain our model simulations. Similarly to previous studies (Dow et al., 2020; Schroeder et al., 2013; Hager et al., 2022), we recommend the collection of: high-resolution radar surveys, with a particular focus on the regions at the bound-  
 395 ary of the distributed and channelized subglacial hydrology systems and over the lake-like features upstream of the Denman and Scott channels; and direct measurement of subglacial hydrological flux across the grounding line to constrain simulated

subglacial meltwater volumes. Such observations are vital in understanding the role of the subglacial hydrological system and its coupled feedbacks with the ice sheet.

We proposed a new parameterization for the effective pressure based on empirical data of the Denman-Scott catchment and the GlaDS results, that more closely matches simulated effective pressures than suggestions from previous literature, and which shows promise in capturing key features of the subglacial system in the absence of a complete subglacial hydrology model output. However, given the empirical nature of this parameterization, our results highlight the importance of simulating coupled interactions between the subglacial hydrology and ice sheet systems to accurately represent ice sheet flow, and future work should focus on coupling of these two systems in transient simulations of the Antarctic Ice Sheet.

## 405 Appendix A: ~~Grid domains and effective pressure extrapolation~~ Sensitivity tests

### A1 Grid domains and effective pressure extrapolation

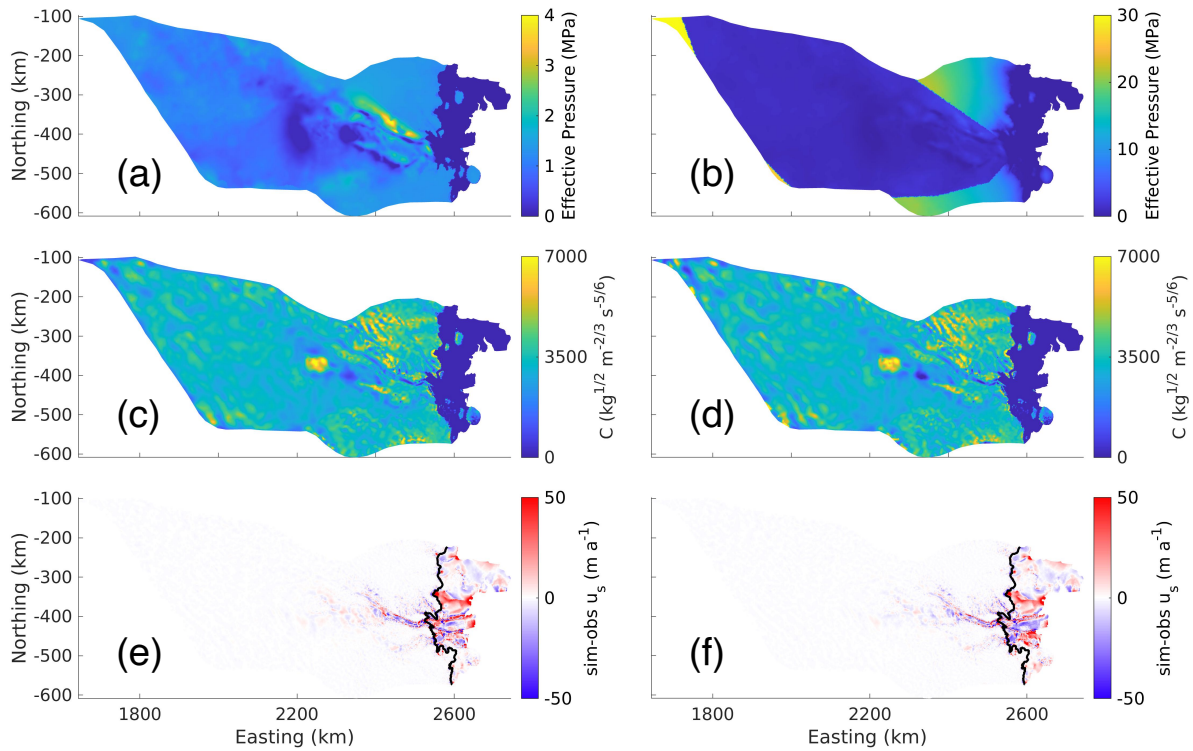
The domains of the ISSM and GlaDS models differ, with the GlaDS domain being a subset of the ISSM domain due to the differing subglacial hydrological and ice catchments and limits to the GlaDS domain size requiring restriction to the primary hydrological outlets of Denman and Scott Glaciers. This means that there are regions within the ISSM domain for which ~~GlaDS effective pressures do the~~ GlaDS effective pressure does not exist. ~~Here, we~~ We test the impact of two different methods to extrapolate the effective pressure in regions outside the GlaDS ~~domains.~~ domain.

The first method relates the GlaDS effective pressure to the bed topography and ~~surface speeds.~~ We first ice surface speed. We partition the domain into three regions based on ice surface speed, with the first encompassing areas where  $v < 500 \text{ m a}^{-1}$ , the second where  $500 \geq v < v < 1000 \text{ m a}^{-1}$ , and the third where  $v \geq 1000 \text{ m a}^{-1}$ . We then calculate a linear regression between the bed topography and the GlaDS effective pressures in each region, and linearly extrapolate the effective pressure onto the ISSM domain based on this relationship. The regression coefficients are shown in Table A1.

The second method uses ~~the ice overburden pressure plus the gravitational potential energy of the water~~  $N_Q$  in the areas of the ice sheet model domain where GlaDS was not run. The resulting effective pressure is shown in Fig. A1. The basal friction coefficient found using method two is generally more smooth than the basal friction coefficient found using method one, with the exception of transition areas between the GlaDS and extrapolated effective pressures ~~far to the~~ to the far west and south of the GlaDS domain. The match between the simulated and observed ice surface speeds are similar for the two extrapolations, though method two produces more variation in the region upstream of the grounding line than method one.

Regression coefficient	$v < 500 \text{ m a}^{-1}$	$500 \geq v < v < 1000 \text{ m a}^{-1}$	$v \geq 1000 \text{ m a}^{-1}$
$\alpha$	286	-248	136
$\beta$	$1.28 \times 10^6$	$8.03 \times 10^5$	$1.11 \times 10^6$

**Table A1.** Linear regression coefficients  $\alpha$  and  $\beta$  for the relationship  $N = \alpha B + \beta$ , where  $N$  is the GlaDS effective pressure and  $B$  is the bed elevation.



**Figure A1.** (a)-(b) Effective pressures-pressure (MPa); (c)-(d) basal friction coefficients estimated using inversion of the Schoof friction law ( $C$ ,  $\text{kg}^{1/2} \text{m}^{-2/3} \text{s}^{-5/6}$ ); and (e)-(f) mismatch-difference between the simulated and observed ice surface speeds ( $\text{sim-obs } u_s$ ,  $\text{m a}^{-1}$ ). The left column (a), (c), (e) shows results for extrapolation method 1 and the right column (b), (d), (f) shows results for method 2. In each panel, the black lines are the grounding lines, and the  $x$  and  $y$  coordinates are polar stereographic, referenced to WGS84.

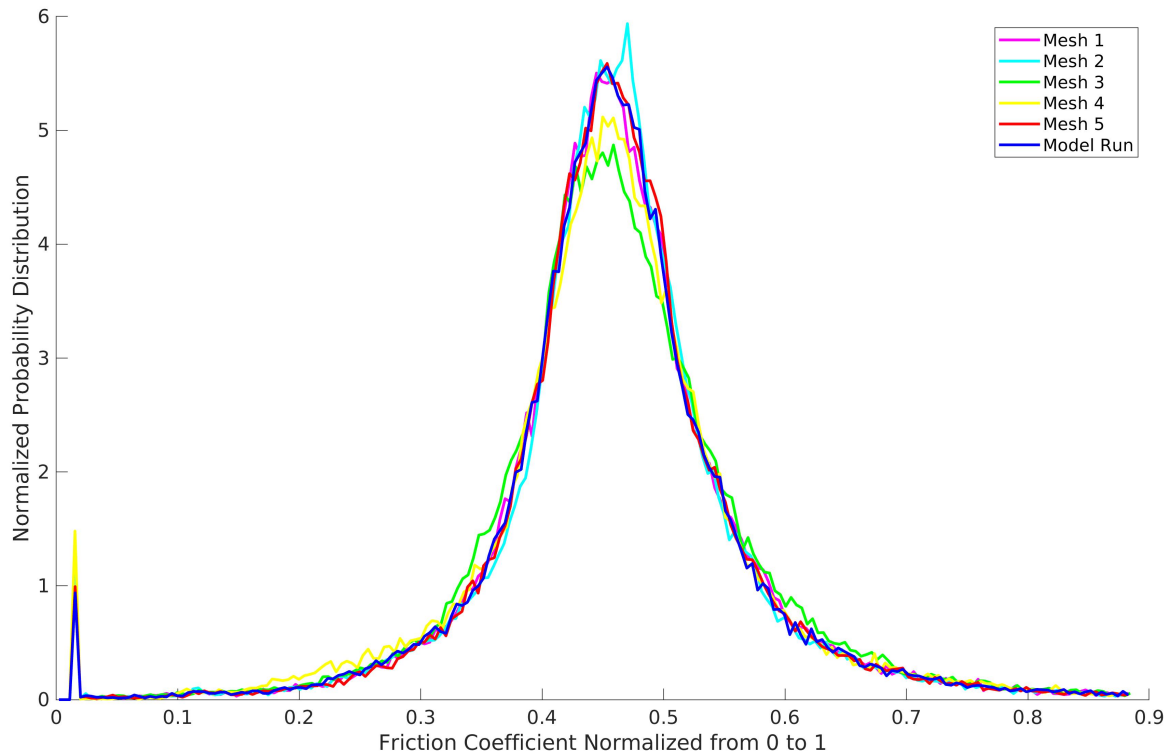
In general, there is no reason that the hydrology and ice dynamics basins-domains should match exactly, and where this is the case, we would always expect regions where we will need to extrapolate boundary conditions between the models. The fact that we have had to extrapolate effective pressure is not in itself a problem, and our results show the importance of taking into consideration the method of extrapolation. Importantly, there may be other methods for extrapolating the boundary conditions that we did not consider, including parameterising-parameterizing the effective pressure using different physical assumptions (e.g. Bueler and Brown, 2009; Goeller et al., 2013; Le Brocq et al., 2009; van der Veen, 1987; Winkelmann et al., 2011) (e.g. Bueler et al., 2012), and future studies should establish best practice in this regard.

## 430 Appendix B: Mesh sensitivity

### A1 Mesh sensitivity

Depending on the degree of regularisation in the inverse method, small-scale features may be present in the basal friction coefficient. ~~Here, we~~ We perform a sensitivity analysis to examine the extent to which such features may arise due to the ~~details of the mesh: the exact placement of the~~ location of the nodes and vertices in the mesh. We generate five different meshes by adding a  
435 random perturbation in the surface velocity field of up to 20 % of the ~~original MEaSURES velocities~~ (Rignot et al., 2011, 2017) MEaSURES velocities, and then perform ~~anisotropic non-uniform~~ anisotropic non-uniform mesh refinement on the velocity magnitude, as follows: the typical edge length of the elements is 3000 m; for regions where the ice surface speed is  $\geq 500 \text{ m a}^{-1}$ , maximum edge lengths are 500 m; and for regions where the ice surface speed is between 100 and  $500 \text{ m a}^{-1}$ , the maximum edge length is 2000 m. Elements close to the grounding line have a maximum edge length of 1000 m.

440 Using each of these five meshes, we calculate the Budd and Schoof basal friction coefficients. The probability distributions of the ~~normalized friction coefficients~~ basal friction coefficients normalized to  $3500 \text{ kg}^{1/2} \text{ m}^{-2/3} \text{ s}^{-5/6}$  (half of the maximum allowed value of  $C$ ) are shown in Fig. A1. The mean and standard deviation of the differences between both the Schoof and the Budd basal friction coefficients for the perturbed mesh simulations and that of the original mesh are smaller in magnitude than the mean and standard deviation of the difference between the basal friction coefficients using ~~GlaDS and the prescribed~~ effective pressure ~~??~~  $N_G$  and  $N_Q$ . Hence, the ~~choice details~~ choice details of the mesh ~~used has have~~ used has have less of an impact on the basal friction coefficients than the ~~effective pressure used~~ form of the effective pressure. The accumulated probability at the lower and upper bounds in Fig. A1 correspond to the regions of low/negative effective pressure near subglacial lakes and troughs and the area of negative effective pressure upstream of the subglacial lake feeding the Denman and Scott troughs (Fig 2v) respectively.



**Figure A1.** Normalized (to  $3500 \text{ kg}^{1/2} \text{ m}^{-2/3} \text{ s}^{-5/6}$ , half of the maximum allowed value of  $C$ ) probability distribution functions for the Schoof basal friction coefficient,  $C$ , for the computational mesh and five perturbed meshes. Vertical lines indicate the mean of each distribution.

## A2 Effective pressure cap

450 For regions of very low or negative effective pressure, the basal shear stresses are also very low or almost vanish. In these regions, the inverse method compensates by increasing the basal friction coefficient upstream and around the region of the anomalously low effective pressure, leading to an underestimate of ice surface speeds there compared with the observations. The ice surface speeds are also generally overestimated in the region of vanishing shear stresses.

To account for this, we adjust the effective pressure in regions of low or negative effective pressure, capping the minimum as a percentage of the ice overburden pressure. We test caps of 0.2 %, 0.4 %, 1 %, 2 % and 4 %. For a cap of 0.4 %, approximately 2 % of the domain has an effective pressure that is linearly proportional to the ice overburden pressure, that is, 98 % of the effective pressure in the ISSM simulation is derived directly from the GlaDS simulated effective pressure. Increasing the cap to 1 % – which is used in the Budd runs – decreases the area over which the GlaDS effective pressure is used to 96 % and increasing the the cap to 4 % decreases the area to 48 %. Hence, we use a cap of 0.4 % for our Schoof simulations and 1 % for our Budd simulations.

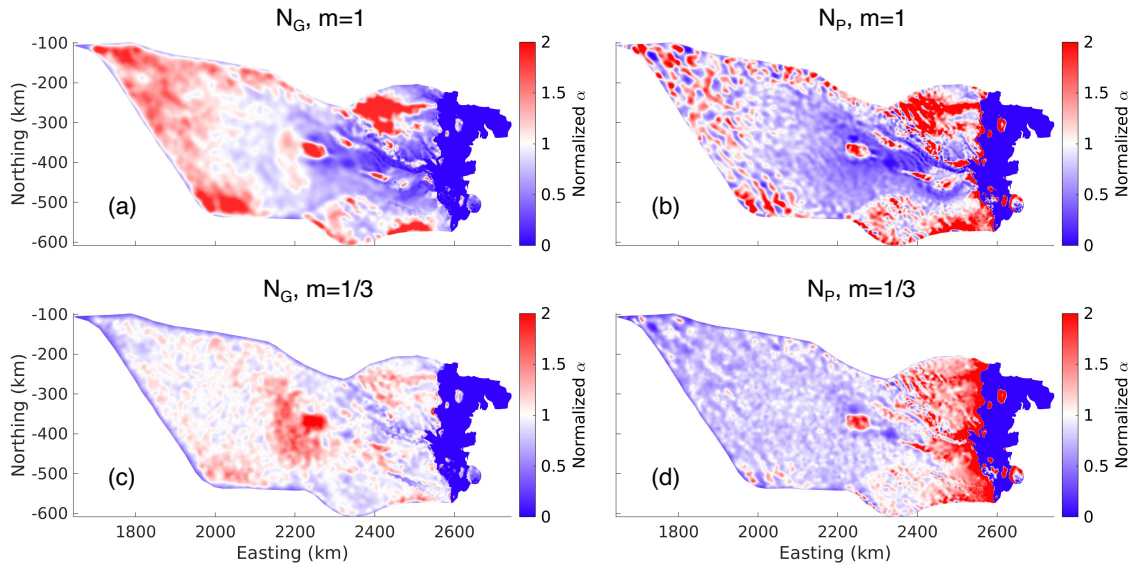
460

### A3 Nonlinear Budd friction law

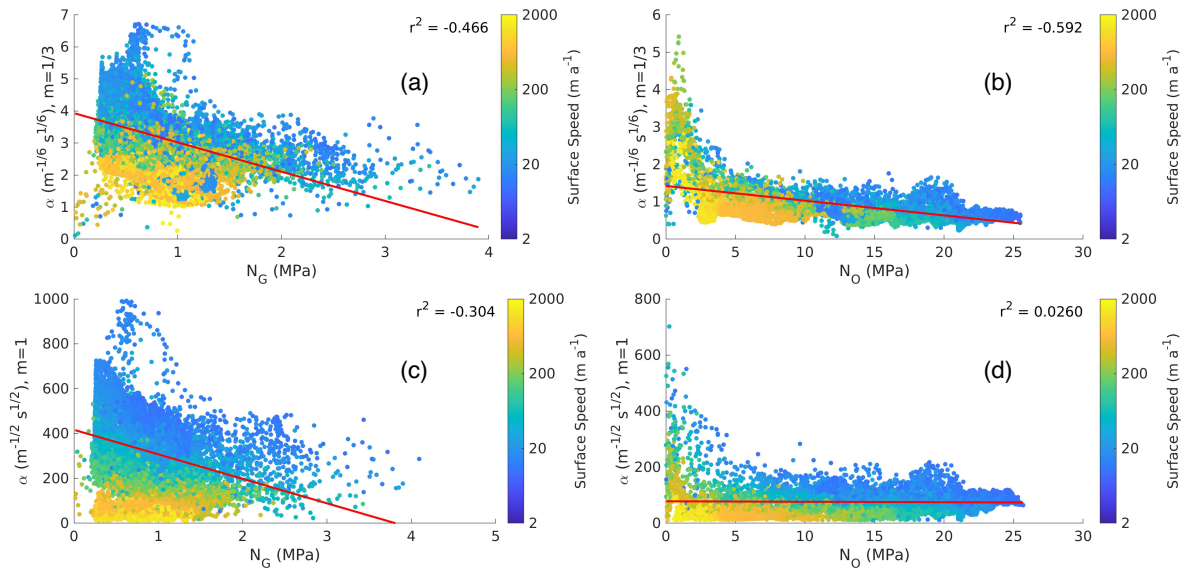
Here, we compare the impact of using a nonlinear exponent  $m = 1/3$  in the Budd friction law (Eq. 6; as per Brondex et al., 2017, 2019; Ka  
to our results with the linear exponent  $m = 1$  (as per Åkesson et al., 2021; Åkesson et al., 2022; Yu et al., 2018; Choi et al., 2021; Baldacch  
We follow the same setup outlined in the main text and in Appendix B, capping the effective pressure at 1 % of ice overburden  
465 pressure. The L-curve analysis suggests a Tikhonov regularization value of 0.1 is optimal.

The  $m = 1/3$  case had much smaller variaiance in the normalized basal friction coefficient compared to the  $m = 1$  case  
(Fig. A2). That is, using  $N_G$ , the variance of the normalized basal friction coefficient was 0.231 for  $m = 1/3$  and 0.385 for  
 $m = 1$ ; using  $N_O$ , the variance was 0.508 for  $m = 1/3$  and 0.628 for  $m = 1$ .

470 Despite the smaller normalized variance in the basal friction coefficients for the  $m = 1/3$  case, there was a stronger negative  
correlation between the basal friction coefficient and the effective pressure in areas where ice surface speeds are greater than  
10 m a<sup>-1</sup> (Fig. A3). Using  $N_G$ , the correlation was  $-0.466$  for  $m = 1/3$  and  $-0.304$  for  $m = 1$ ; using  $N_O$ , the correlation  
was  $-0.592$  for  $m = 1/3$  and  $-0.0260$  for  $m = 1$  (Fig. A3). This strong negative correlation for the  $m = 1/3$  case indicates  
that the basal friction coefficient counteracts the effects of the effective pressure, with high values in regions of low effective  
pressure and low values in regions of high effective pressure. This suggests that the dependency of the basal shear stress on  
475 the effective pressure is too strong when  $m = 1/3$ . This behaviour is particularly clear in the large area of high basal friction  
coefficient centered around 2200 km easting and -400 km northing in Fig. A2c, which corresponds to an area of low effective  
pressure (Fig. 2b). Here, the use of the effective pressure cap limits runaway values of the basal friction coefficient; increasing  
the cap to reduce this area of high basal friction coefficient would mean using less of the GlADS data. For the  $N_O$  run, the large  
increase in effective pressure upstream resulted in a strong decrease in the basal friction coefficient upstream (Fig. A2d).



**Figure A2.** Budd basal friction coefficients ( $\alpha$ ) normalized to the mean. (a) GlaDS effective pressure ( $N_G$ ) with  $m = 1/3$ ; (b) typically prescribed effective pressure ( $N_O$ ) with  $m = 1/3$ ; (c) GlaDS effective pressure ( $N_G$ ) with  $m = 1$ ; (d) typically prescribed effective pressure ( $N_O$ ) with  $m = 1$ .



**Figure A3.** Relationship between the Budd basal friction coefficient  $\alpha$  and effective pressure for (a) The GlaDS effective pressure ( $N_G$ ) with  $m = 1$ ; (b) typically prescribed effective pressure ( $N_O$ ) with  $m = 1$ ; (c) GlaDS effective pressure ( $N_G$ ) with  $m = 1/3$ ; (d) typically prescribed effective pressure ( $N_O$ ) with  $m = 1/3$ .

Iken's bound,  $C_{\max}$ , mathematically describes the idea that the bed can support a maximum stress (Iken, 1981; Schoof, 2005; Gagliardini et al., 2019). In the Schoof friction law (Eq. 7),  $\tau_b$  cannot exceed  $C_{\max}N$ , where  $C_{\max}$  represents rheological properties of the till (Brondex et al., 2019) and ranges between 0.17 and 0.84 (Cuffey and Paterson, 2010). To determine an appropriate value of  $C_{\max}$  we test the effect of using  $C_{\max} = 0.5, 0.6, 0.7$ , and  $0.8$  on the Schoof basal friction coefficient using  $N_G$  and  $N_O$ .

485 We arrive at the same qualitative conclusions as in the main text for all four values of  $C_{\max}$ . In all cases, the variance of the normalized basal friction coefficient is smaller for  $N_G$  than for  $N_O$ , and it is smaller than the variance of the normalized Budd basal friction coefficient (Table A1). Although the results for  $C_{\max} = 0.5, 0.6$ , and  $0.7$  are similar, there is a comparatively large decrease in the mean of the basal friction coefficient and increase in the variance of the normalized basal friction coefficient between  $C_{\max} = 0.7$  and  $C_{\max} = 0.8$  for both  $N_G$  and  $N_O$ . For lower values of  $C_{\max}$ , a region of higher basal friction coefficient  
490 centered around 2200 km easting and -400 km northing (Fig. A4a) develops in the  $N_G$  simulations. Solving Eq. (7) for  $C$  yields

$$C = \frac{\left(\frac{\tau_b}{|u_b|^{m-1}u_b}\right)^{m/2}}{\left(1 - \left(\frac{\tau_b}{C_{\max}N}\right)^{1/m}\right)^{m/2}}, \quad (\text{A1})$$

where we see that in the limit where  $\tau_b \rightarrow C_{\max}N$  then  $C \rightarrow \infty$ . The region of high basal friction coefficient for lower  $C_{\max}$  also has low effective pressure (Fig. 2a), resulting from  $\tau_b$  approaching  $C_{\max}N$  for larger values of  $N$  and the basal friction coefficient compensating this. To prevent potentially infinitely increasing values of the basal friction coefficient it is possible  
495 to increase the cap on the effective pressure, but again, this would reduce the area over which the GlaDS data is used and the effect of using modeled hydrology will be less impactful.

The Schoof friction law is a regularized Coulomb friction law which tends towards a Weertman sliding regime when  $\tau_b \ll C_{\max}N$  and a Coulomb sliding regime when  $\tau_b \gg C_{\max}N$ . Hence, the value of  $C_{\max}$  will have an effect on what  
500 physical processes are being represented in the Schoof friction law. Figure A5 shows  $\tau_d/(C_{\max}N)$  for various values of  $C_{\max}$ , where values close to zero correspond to a Weertman sliding regime and values close to one correspond to a Coulomb sliding regime. The choice of  $C_{\max}$  appears to have little effect on where each of the Weertman and Coulomb sliding regimes occur, with distinct locations between the two for all values of  $C_{\max}$ . This suggests that the choice of  $C_{\max}$  will not have a significant impact on which physical processes are being represented throughout the domain and does not justify the use of one value of  
505  $C_{\max}$  over another.



## Comparison Model

$C_{\max}$

Noise 1 (Budd)-height 0.5

Noise 3 (Budd)-0.6

Noise 5 (Budd)-0.7

Noise 1 (Schoof)-0.8

Noise 3 (Schoof)-21.1 411 Noise 4 (Schoof)-5.67 353 Noise 5 (Schoof)-25.7 315

Mean of Difference  $\bar{C}$  ( $\text{kg}^{1/2} \text{m}^{-2/3} \text{s}^{-5/6}$ ),  $N_G$

-0.640 3261

-0.531 3251

-2.22 3242

-23.5 3215

Mean and standard deviation of the difference between friction coefficients for various model inputs. The GlADS input effective pressure with the mesh used in the manuscript simulations is the model being compared to. "Noise x" refers to different perturbed meshes with  $N_G$  input effective pressure and "Prescribed" refers to using  $N_O$  instead of  $N_G$  but with the mesh used in the manuscript simulations. The Schoof friction coefficient has units of  $\text{kg}^{1/2} \text{m}^{-2/3} \text{s}^{-5/6}$  and the Budd friction coefficient has units of  $\text{s}^{1/2} \text{m}^{-1/2}$ .

**Table A1.** Schoof basal friction coefficient mean  $\bar{C}$  ( $\text{kg}^{1/2} \text{m}^{-2/3} \text{s}^{-5/6}$ ) and variance of normalized Schoof basal friction coefficient ( $C/\bar{C}$ ) for various  $C_{\max}$  with  $N_G$  and  $N_O$ .

### Appendix B: Inversion procedure

#### Appendix B: Inversion cost functions

The Budd friction law is given by

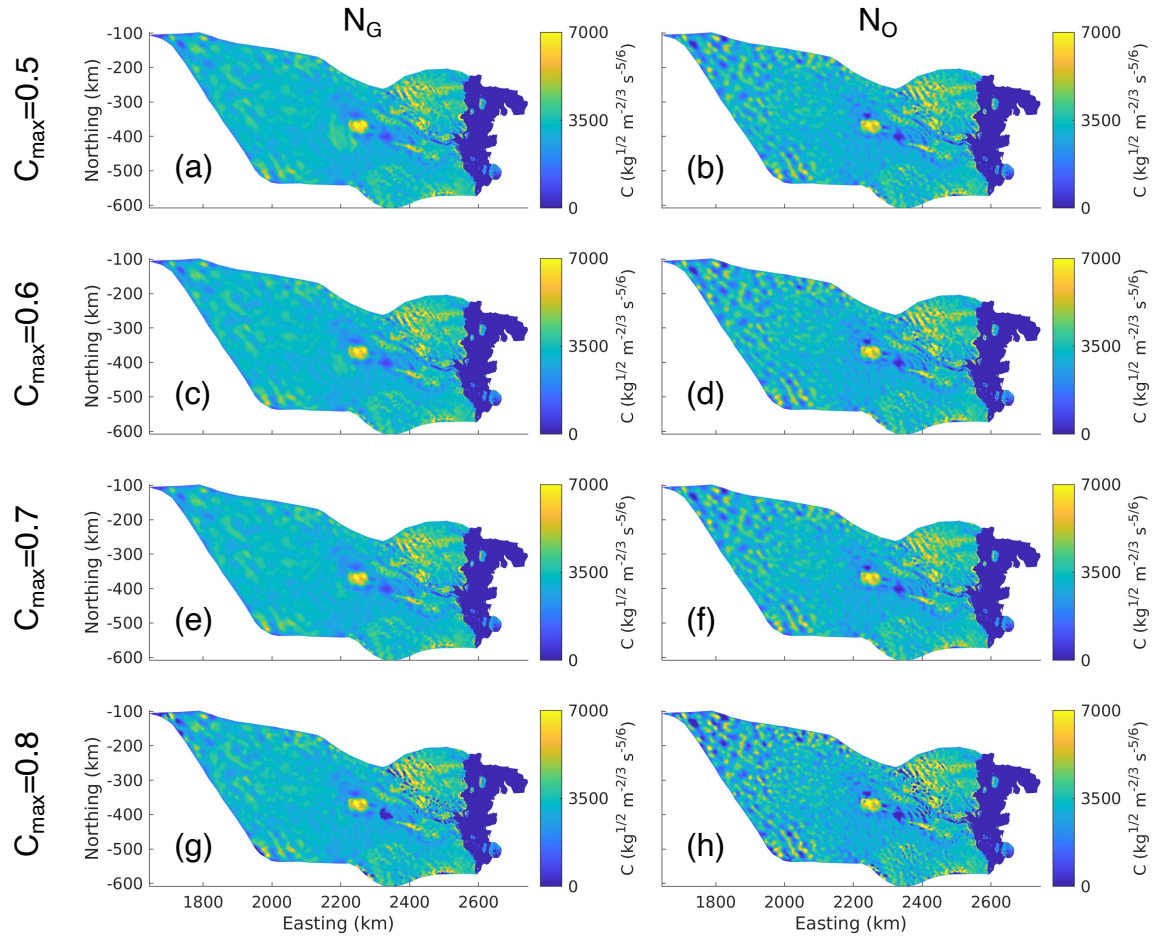
$$\tau_b = \alpha^2 N u_b,$$

510 The inversion procedure described in Section 2.2 includes six inversions for the Budd and Schoof basal friction coefficients and the ice rigidity. Each inversion minimizes a cost function which penalizes absolute ice surface velocity misfit, logarithmic ice surface velocity misfit, and gradients in the basal friction coefficient/ice rigidity. The cost functions minimized in each inversion are described below.

$$\mathcal{J}_a(\vec{u}) = \iint_s \frac{1}{2} ((u_x - u_x^{\text{obs}})^2 + (u_y - u_y^{\text{obs}})^2) dS \quad (\text{B1})$$

515 where  $\tau_b$

$$\mathcal{J}_l(\vec{u}) = \iint_s \left( \log \left( \frac{\|\vec{u}\| + \varepsilon}{\|\vec{u}^{\text{obs}}\| + \varepsilon} \right) \right)^2 dS \quad (\text{B2})$$



**Figure A4.** Schoof basal friction coefficient, ( $C$ ,  $\text{kg}^{1/2} \text{m}^{-2/3} \text{s}^{-5/6}$ ) for (a)  $N_G$  and  $C_{\max} = 0.5$ ; (b)  $N_O$  and  $C_{\max} = 0.5$ ; (c)  $N_G$  and  $C_{\max} = 0.6$ ; (d)  $N_O$  and  $C_{\max} = 0.6$ ; (e)  $N_G$  and  $C_{\max} = 0.7$ ; (f)  $N_O$  and  $C_{\max} = 0.7$ ; (g)  $N_G$  and  $C_{\max} = 0.8$ ; (h)  $N_O$  and  $C_{\max} = 0.8$ .

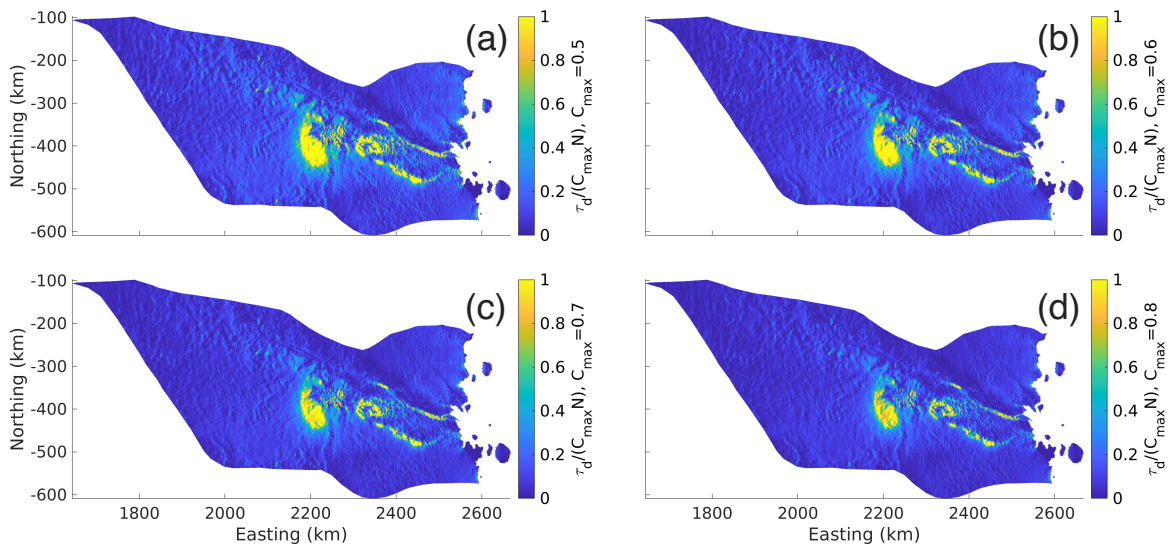
$$\mathcal{J}_t(\vec{u}) = \underbrace{\iint_s \frac{1}{2} \|\vec{\nabla} k\|^2 dS}_{\text{~~~~~}} \quad (\text{B3})$$

$$520 \quad \mathcal{J}(\vec{u}) = c_a \mathcal{J}_a + c_l \mathcal{J}_l + c_t \mathcal{J}_t \quad (\text{B4})$$

Here,  $\mathcal{J}_a$  is the basal shear stress (Pa),  $\alpha$  is the friction coefficient ( $\text{s}^{1/2} \text{m}^{-1/2}$ ),  $N$  linear velocity misfit cost function,  $\mathcal{J}_l$  is the logarithmic velocity misfit cost function,  $\mathcal{J}_t$  is the regularization cost function,  $\vec{u}$  is the modeled ice surface velocity,  $\vec{u}^{\text{obs}}$  is the effective pressure (Pa), observed ice surface velocity,  $\varepsilon$  is a small number (around machine precision) acting as

Normalized probability distribution functions for the Schoof friction coefficient for the computational mesh and five perturbed meshes.

Vertical lines indicate the mean of each



distribution.

**Figure A5.** Ratio between the driving stress and the maximum stress that the bed can support ( $\tau_d/(C_{\max}N)$ ) for (a)  $C_{\max} = 0.5$ ; (b)  $C_{\max} = 0.6$ ; (c)  $C_{\max} = 0.7$ ; (d)  $C_{\max} = 0.8$ ;

the minimum observed velocity in Eq. (B2),  $S$  is the two dimensional spatial domain of the model, and  $u_b$  is the basal sliding velocity ( $\text{m a}^{-1}$ ), which for SSA is equal to the surface velocity. Here  $k$  is taken to be  $\alpha$  in a Budd inversion,  $C$  in a Schoof inversion, and  $\bar{B}$  (the rigidity) in a rigidity inversion. The full cost function to be minimized is given in Eq. (B4) where  $c_a$ ,  $N$  is taken as direct output from the GlADS model ( $N_G$ ), or specified by  $N_O = \rho_i g H + \rho_w g B$  where  $g$  is the gravitational acceleration ( $\text{m s}^{-2}$ ),  $H$  is the ice thickness (m),  $c_b$  and  $c_t$  are the cost function coefficients for  $\mathcal{J}_a$ ,  $B$  is the bed elevation (m),  $\rho_i$  is the ice density ( $\text{kg m}^{-3}$ ), and  $\rho_w$  is the water density ( $\text{kg m}^{-3}$ ). When using  $N_G$ , we apply a lower cap of 1% of ice overburden pressure (see section A2 below).  $\mathcal{J}_l$  and  $\mathcal{J}_t$  respectively.  $c_t$  is referred to as the Tikhonov regularization coefficient.

We use inverse methods to calculate the basal friction coefficient  $\alpha$  from the Budd friction law and the ice rigidity in the Glen flow law. The inverse method works to reduce the mismatch between the simulated and observed velocities, here taken from MEASUREs v2 (Rignot et al., 2011, 2017), by minimising a cost function that includes both linear and logarithmic velocity misfit components. We also include a Tikhonov regularisation term that penalizes strong gradients in the friction coefficient, and hence prevents overfitting.

We perform the following inversion procedure. First, we invert for the ice rigidity over the floating portion of the domain. Next, we invert for the Budd friction coefficient over the grounded portion of the domain, using an ice rigidity on grounded ice specified by the Paterson function and temperatures from RACMOv2.3 (van Wessem et al., 2018). Finally, an inversion for the

540 ~~ice rigidity over the entire domain was performed.~~ The linear and logarithmic cost function coefficients ( $c_a$ ,  $c_l$ ) were chosen so that their contributions to the total cost function would differ by an order one factor in each inversion. An L-curve analysis (Fig. B1; Hansen, 2000) was used during the ~~second inversion~~ inversions for the basal friction coefficients to determine a suitable Tikhonov regularisation coefficient ( $c_t$ ). Ideally  $c_t$  is chosen such that any smaller value of  $c_t$  will not have a significant effect on  $c_a J_a + c_l J_l$ . For the ice rigidity inversions, the Tikhonov regularisation parameter was chosen so that its contribution  
545 to the total cost function differed by an order one factor from that of the linear misfit. The final basal friction coefficients are shown in Fig. B3, their distribution in Fig. B4, and the final rigidities in Fig. B.

~~L-curve analysis for the Budd friction coefficient with GlaDS input effective pressure (4.5% cap and ice overburden pressure outside the GlaDS domain)~~

550 ~~L-curve analysis for the Schoof friction coefficient with GlaDS input effective pressure (4.5% cap and ice overburden pressure outside the GlaDS domain)~~

~~Friction coefficients from inversion: (a) Schoof friction coefficient from  $N_G$  run; (b) Schoof friction coefficient from  $N_O$  run; (c) Budd friction coefficient from  $N_G$  run; and (d) Budd friction coefficient from  $N_O$  run.~~

~~Probability distributions of the normalized friction coefficients for the Budd and Schoof friction laws with GlaDS and prescribed effective pressures.~~

555 ~~The Schoof friction law is given by the following:-~~

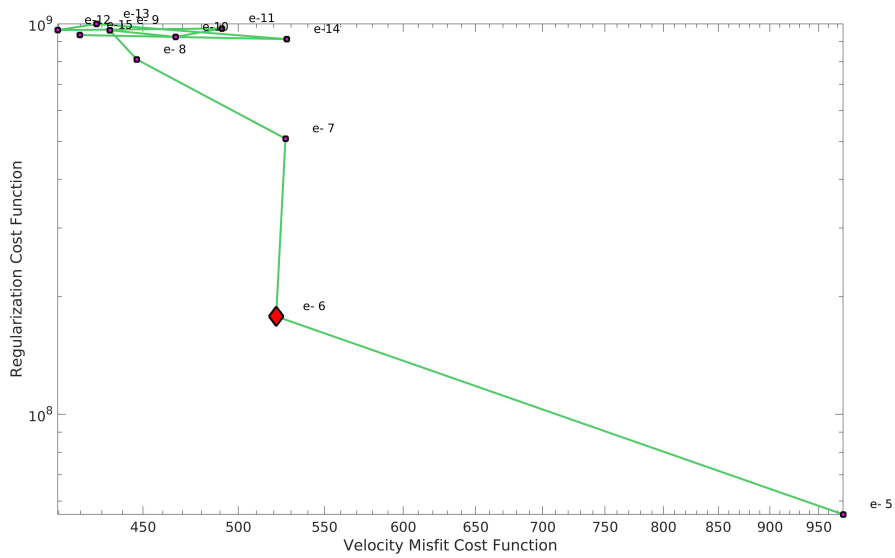
$$\tau_b = \frac{C^2 |u_b|^{m-1}}{1 + (C^2 / (C_{\max} N))^{1/m} |u_b|} u_b,$$

~~where  $C$  is the Schoof friction coefficient, and  $C_{\max}$  is Iken's bound, here  $C_{\max} = 0.8 \text{ m}^{-1/3} \text{ s}^{1/3}$ . We used the friction coefficient estimated using the Budd friction law to compute an initial estimate of the friction coefficient for the Schoof friction law. We then perform an inversion for the friction coefficient as per the method described above for the Budd friction  
560 law (capping  $N_G$  at 0.4% of overburden this time).~~

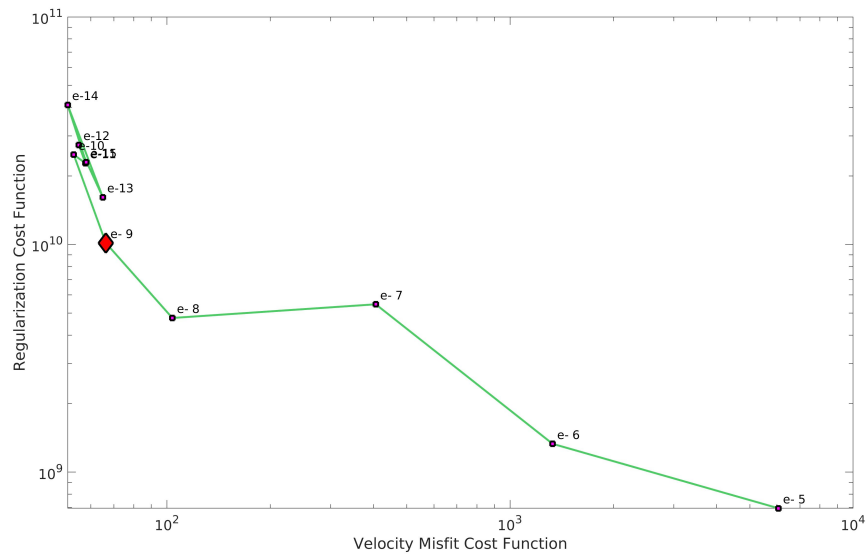
The cost function coefficients for the various model runs are displayed in Table B1.

Cost Function Coefficient	Value I1	Value I2	Value I3	<del>Value I4</del> <u>value I4- Budd</u>	<u>Value I4- Schoof</u>	Value I5
Linear ( $c_a$ )	8000	2000	8000	<u>2000</u>	200	8000
Logarithmic ( $c_l$ )	60	10	25	<u>10</u>	2	25
Tikhonov ( $c_t$ )	$10^{-18}$	$10^{-6}$	$10^{-18}$	<u><math>10^{-6}</math></u>	$10^{-9}$	$10^{-18}$

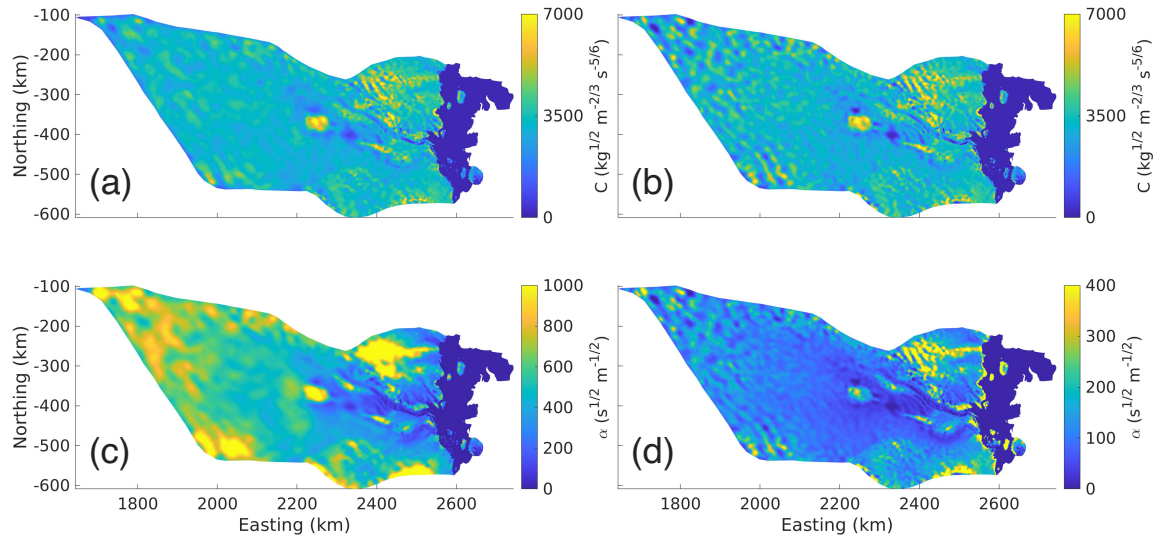
**Table B1.** Cost function coefficients for each inversion. I1-I1- ice rigidity over ice shelf; I2-I2- Budd basal friction coefficient over grounded domain; I3-I3- ice rigidity over entire domain; I4-I4-Budd- Budd basal friction coefficient over the grounded domain; I4-Schoof- Schoof basal friction coefficient over the grounded domain; and I5 ice rigidity over the entire domain.



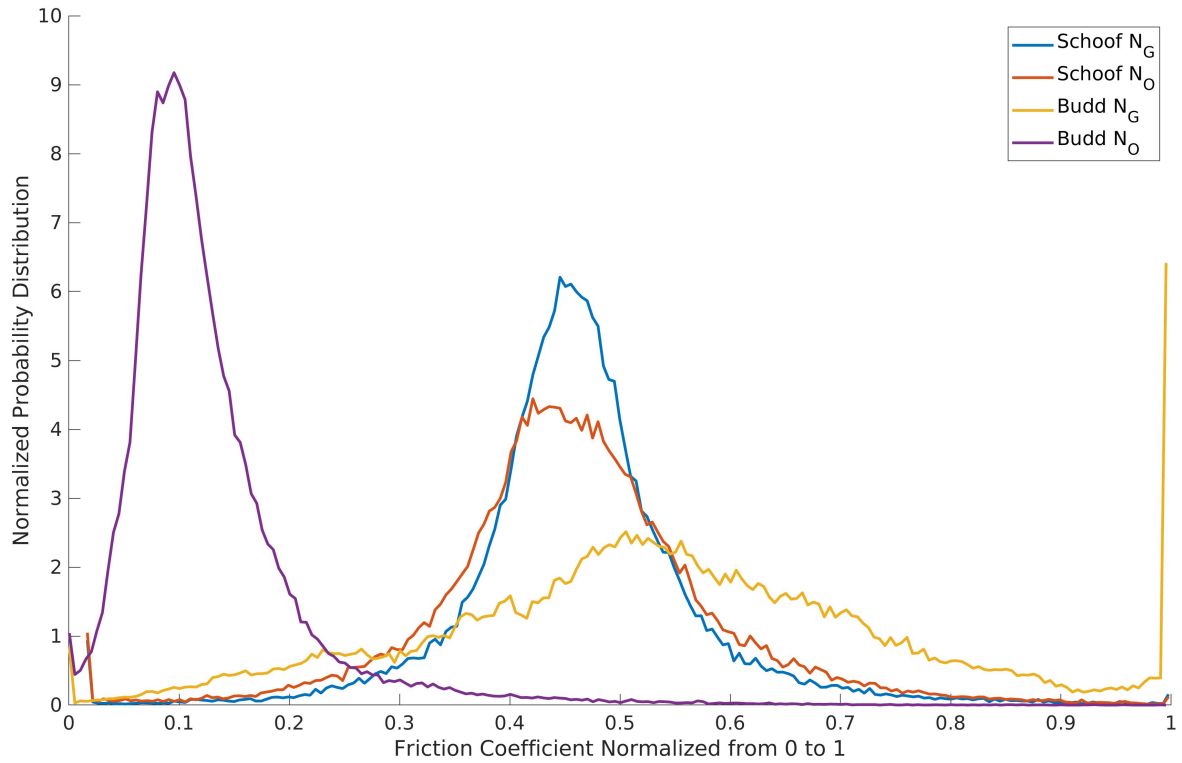
**Figure B1.** L-curve analysis for the Budd basal friction coefficient,  $\alpha$ , with the GlaDS output effective pressure,  $N_G$  (4.5% cap and the typically prescribed effective pressure,  $N_O$ , outside the GlaDS domain). The red diamond is the chosen value of the Tikhonov regularization coefficient,  $c_t$ .



**Figure B2.** L-curve analysis for the Schoof basal friction coefficient,  $C$ , with the GlaDS output effective pressure  $N_G$  (4.5% cap and the typically prescribed effective pressure,  $N_O$ , outside the GlaDS domain). The red diamond is the chosen value of the Tikhonov regularization coefficient,  $c_t$ .

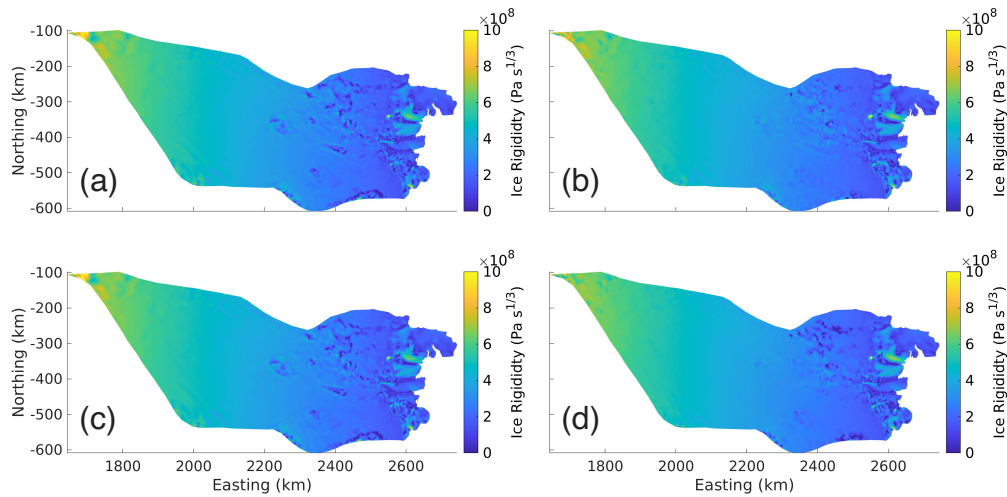


**Figure B3.** Basal Friction coefficients from inversion (note that the units and the colorbar are not the same in each subplot). **(a)** Schoof basal friction coefficient ( $C$ ,  $\text{kg}^{1/2} \text{m}^{-2/3} \text{s}^{-5/6}$ ) from  $N_G$  run; **(b)** Schoof basal friction coefficient ( $C$ ,  $\text{kg}^{1/2} \text{m}^{-2/3} \text{s}^{-5/6}$ ) from  $N_O$  run; **(c)** Budd basal friction coefficient ( $\alpha$ ,  $\text{s}^{1/2} \text{m}^{-1/2}$ ) from  $N_G$  run; and **(d)** Budd basal friction coefficient ( $\alpha$ ,  $\text{s}^{1/2} \text{m}^{-1/2}$ ) from  $N_O$  run.



**Figure B4.** Probability distributions of the normalized basal friction coefficients for the Budd ( $\alpha$ ) and Schoof ( $C$ ) friction laws with GlaDS  $N_G$  and prescribed  $N_O$  effective pressures. The distributions are normalized to their maximum allowed values ( $7000 \text{ kg}^{1/2} \text{ m}^{-2/3} \text{ s}^{-5/6}$  for Schoof and  $1000 \text{ s}^{1/2} \text{ m}^{-1/2}$  for Budd)





## Appendix C: Effective pressure cap

For regions of very low or negative effective pressure, the basal shear stresses are also very low or almost vanish. In these regions, the inverse method compensates by increasing the friction coefficient upstream of the anomalously low effective pressure, leading to an underestimate of surface speeds there compared with the observations. The surface speeds are also generally overestimated in the region of vanishing shear stresses.

To account for this, we adjust the effective pressure in regions of low or negative effective pressure, capping the minimum as a percentage of the overburden pressure. Fig. 10 shows the effective pressures from GlaDS model output interpolated onto the ISSM mesh, and for caps of 0.2%, 0.4%, 2% and 4%. We find that a cap of 0.4% of overburden is required to avoid this artefacting. For a cap of 0.4%, approximately 2% of the domain has an effective pressure that is linearly proportional to the overburden (Fig. 10). That is, 98% of the effective pressure in the ISSM simulation is derived directly from the GlaDS simulated effective pressure.

Effective pressure cap analysis. Effective pressures are shown in (a), (d), (g), (j); friction coefficients (b), (e), (h), (k); mismatch between simulated and observed surface speeds (c), (f), (i), (l). Upper row 0.2% cap; second row 0.4% cap; third row 2% cap; last row 4% cap.

Effective pressure caps. (a) and (e) show with the typically prescribed effective pressure  $-(bN_Q)$  and (d) show the area where the cap is applied (dark blue) run.

## Appendix C: Effective pressure cap

For regions of very low or negative effective pressure, the basal shear stresses are also very low or almost vanish. In these regions, the inverse method compensates by increasing the friction coefficient upstream of the anomalously low effective pressure, leading to an underestimate of surface speeds there compared with the observations. The surface speeds are also generally overestimated in the region of vanishing shear stresses.

To account for this, we adjust the effective pressure in regions of low or negative effective pressure, capping the minimum as a percentage of the overburden pressure. Fig. 10 shows the effective pressures from GlaDS model output interpolated onto the ISSM mesh, and for caps of 0.2%, 0.4%, 2% and 4%. We find that a cap of 0.4% of overburden is required to avoid this artefacting. For a cap of 0.4%, approximately 2% of the domain has an effective pressure that is linearly proportional to the overburden (Fig. 10). That is, 98% of the effective pressure in the ISSM simulation is derived directly from the GlaDS

## Appendix C: Empirical effective pressure parameterization

We propose a new effective pressure parameterization ( $N_E$ ) that is empirical in nature and based on the GlaDS effective pressure output in the Denman-Scott catchment. Effective pressure is defined as  $N = p_i - p_w$  where  $p_i = \rho_i g H$  is the ice overburden pressure and  $p_w$  is the subglacial water pressure. In this equation,  $p_i$  is well known; however,  $p_w$  is generally poorly known in Antarctica due to few direct measurements. Hence, a more robust parameterization of the effective pressure requires a physically-realistic prescription for this subglacial water pressure. The proposed parameterization uses the fact that subglacial water pressure has a high correlation with ice overburden pressure ( $r^2 = 0.998$  over the Denman domain) and that subglacial water pressure as a fraction of ice overburden pressure maintains some value for small ice thicknesses and saturates near 1-one for large ice thickness. We suggest the following parameterization for subglacial water pressure:

$$p_w = \rho_i g H \left( r_l + (1 - r_l) g_{m,x}(H) \right), \quad (C1)$$

where  $r_l$  is the maximum allowable ratio of effective pressure to ice overburden pressure and  $g_m(H) g_x(H)$  is a saturation term. We specify  $g_m(H) g_x(H)$  as follows:

$$g_{m,x}(H) = \frac{H^m}{\tilde{H}^m + H^m} \frac{H^x}{\tilde{H}^x + H^x}. \quad (C2)$$

Here,  $\tilde{H}$  is a constant thickness, which is chosen so that an area where water is expected to be pressurized with fraction of overburden  $\gamma$  will reach this level of pressurization by ice thickness  $H_t$ . This yields an  $\tilde{H}$  of the following form:

$$\tilde{H} = \left( \frac{1 - \gamma}{\gamma - r_l} \right)^{1/m+1/x} H_t \quad (C3)$$

The only parameter left to be determined is  $m,x$ , and here we choose a value of  $m,x$  so that at a typically small ice thickness,  $H_s$ , the subglacial water pressure as a fraction of overburden pressure will be slightly above the minimum allowed water pressure subglacial water pressure allowed,  $p_w(H) = (r_l + \epsilon) \rho_i g H_s$ , where  $\epsilon$  is a constant introduced with the purpose of having the saturation term concave down even in areas where there is low ice thickness on the glacier.

We rearrange Eq. (C3) to solve for  $m,x$  as follows:

$$m,x = \frac{\ln\left(\frac{1-r_l}{\epsilon} - 1\right) + \ln(\gamma - r_l) - \ln(1 - \gamma)}{\ln(H_t) - \ln(H_s)}. \quad (C4)$$

Using Eq. (C1), we derive the following expression for the effective pressure, with  $\tilde{H}$  from Eq. (C3) and  $m,x$  from Eq. (C4):

$$N_E = \rho_i g H (1 - r_l) \frac{\tilde{H}^m}{\tilde{H}^m + H^m} \frac{\tilde{H}^x}{\tilde{H}^x + H^x}. \quad (C5)$$

The empirical nature of this parameterization brings into question its physical validity. Unlike  $N_O$  and the Brondex et al. (2017) prescribed effective pressure ( $N_B$ ), the effective pressure proposed in Eq. (C5) does not have complete hydrological

connectivity to the ocean at the grounding line. However,  $N_O$  and ~~the Brondex et al. (2017) prescribed effective pressure  $N_B$~~  can obtain values of negative or zero water pressure, which is nonphysical. The effective pressure proposed in Eq. (C5) can reach a minimum water pressure of  $p_w = r_l \rho_i g H$  meaning that it will always give a physically possible value of effective pressure.

Delving further into the implications of these effective pressure parameterizations, we see that the hydraulic potential is given by  $\phi = N_O - N$  (Werder et al., 2013), which means that using  $N_O$  gives a constant hydraulic potential and a stagnant subglacial hydrology system. ~~The Brondex et al. (2017) prescribed effective pressure  $N_B$~~  implies constant hydraulic potential for bed elevations below sea level and  $\phi = \rho_w g B$ , where  $B$  is the bed elevation, for bed elevations above sea level. Which means that water does not flow when the bed elevation is below sea level, and it flows entirely due to gravity and bed slopes when the bed elevation is above sea level. Taking the gradient in the hydraulic potential for ~~the proposed effective pressure parameterization  $N_E$~~  yields the following equation:

$$\vec{\nabla} \phi = \rho_i g f_B(H) \vec{\nabla} H + \rho_w g \vec{\nabla} B, \quad \vec{\nabla} B = \rho_i g \left( \underbrace{f_B(H) \vec{\nabla} S}_{\text{surface gradient}} + \left( \frac{\rho_w}{\rho_i} - f_B(H) \right) \underbrace{\vec{\nabla} B}_{\text{bed gradient}} \right) \quad (\text{C6})$$

$$f_B(H) = \frac{r_l - (1 - r_l) \frac{1 + (1 - m)(H/\tilde{H})^m}{(1 + (H/\tilde{H})^m)^2}}{1 + (H/\tilde{H})^x} \frac{1 + (1 - x)(H/\tilde{H})^x}{(1 + (H/\tilde{H})^x)^2} \quad (\text{C7})$$

Here,  $f_B(H)$  is a dimensionless factor which describes the extent to which ice thickness gradients play a role in the hydraulic potential gradient. ~~It is seen that in the regime of larger ice thickness Cuffey and Paterson (2010) considered the gradient of the hydraulic potential with a spatially constant fraction of flotation and arrive at the form of Eq. (C6) with  $f_B(H)$  goes to 0, and the gradient in the bed elevation becomes the sole control on the direction of water flow; in the regime of small ice thickness  $f_B(H)$  goes to  $r_l$ , and gradients in the ice thickness become of similar importance to gradients in the bed elevation replaced by the fraction of flotation,  $f_w$ . Here,  $f_B$  is not the fraction of flotation but is related to it via Eq. (C8) for  $f_w \geq r_l$ . This is~~

$$f_B = -\frac{x r_l}{1 - r_l} + \frac{2 + (x - 1)(1 + r_l)}{1 - r_l} f_w - \frac{x}{1 - r_l} f_w^2. \quad (\text{C8})$$

$f_B$  is quadratic in  $f_w$  and  $f_B \geq f_w$  for  $f_w \in [r_l, 1]$ . This means that for  $N_E$ , gradients in surface elevation play a more important role in water routing than when constant fraction of flotation is considered. The importance of surface elevation gradients reaches a maximum when  $f_w = 0.924$ , corresponding to  $f_B = 1.04$ , values of  $f_w$  above this threshold will actually result in smaller values of  $f_B$  and a decreased role in the surface elevation gradient which is at odds with the analysis of Cuffey and Paterson (2010). Modeling (Dow et al., 2014, 2020) outputs, including those from our Denman analysis, suggest that the fraction of flotation is not uniform (Fig. 6). Compared to using  $N_O$ , this parameterization provides a more intuitive picture of the subglacial hydrological system, where water can flow throughout the entire domain, and where flow is dependent on both the basal topography and the ice thickness/surface topography, as is expected.

Except for the lack of complete hydrological connectivity to the ocean, the proposed parameterization in Eq. (C5) agrees more closely with our understanding of subglacial hydrology than both  $N_O$  and ~~the Brondex et al. (2017) prescribed effective~~

pressures  $N_B$ . The improved performance over  $N_O$  and ~~the Brøndex et al. (2017) prescribed effective pressures~~  $N_B$  for the  
620 Denman Glacier is encouraging, and warrants further exploration, including exploring the validity of this parameterization  
compared with subglacial hydrology model outputs and its potential use in future modeling studies where full ice sheet-  
subglacial hydrology model coupling is unfeasible. Improvements to this parameterization, such as adding in the effects of ice  
velocity, may improve upon the performance of this parameterization.

*Code and data availability.* We use version 4.21 of the open-source ISSM software, which is freely available for download from <https://issm.jpl.nasa.gov/download/>. The datasets used to initialize GlaDS and ISSM are publicly available and cited in the main body of the text.  
625 GlaDS hydrology outputs and ISSM friction coefficients for the Denman-Scott catchment are available at Zenodo repository 8139725

*Author contributions.* KRM designed and completed the ISSM model runs and produced figures; CD ran the GlaDS model; FSM and CD provided project direction. All authors wrote the manuscript.

*Competing interests.* The authors declare no competing interests are present.

630 *Acknowledgements.* FSM was supported under an Australian Research Council (ARC) Discovery Early Career Research Award (DE210101433) and the ARC Special Research Initiative Securing Antarctica's Environmental Future (SR200100005). CFD was supported by the Natural Sciences and Engineering Research Council of Canada (RGPIN-03761-2017) and the Canada Research Chairs Program (950-231237). We thank the Digital Research Alliance of Canada for access to supercomputer resources.

## References

- 635 Adusumilli, S., Fricker, H. A., Medley, B., Padman, L., and Siegfried, M. R.: Data from: Interannual variations in meltwater input to the Southern Ocean from Antarctic ice shelves. UC San Diego Library Digital Collections., <https://doi.org/https://doi.org/10.6075/J04Q7SHT>, 2020.
- Åkesson, H., Morlighem, M., O'Regan, M., and Jakobsson, M.: Future Projections of Petermann Glacier Under Ocean Warming Depend Strongly on Friction Law, *Journal of Geophysical Research: Earth Surface*, 126, e2020JF005 921, <https://doi.org/10.1029/2020JF005921>,  
640 2021.
- Baldacchino, F., Morlighem, M., Gолledge, N. R., Horgan, H., and Malyarenko, A.: Sensitivity of the Ross Ice Shelf to environmental and glaciological controls, *The Cryosphere*, 16, 3723–3738, 2022.
- Beaud, F., Aati, S., Delaney, I., Adhikari, S., and Avouac, J.-P.: Surge dynamics of Shisper Glacier revealed by time-series correlation of optical satellite images and their utility to substantiate a generalized sliding law, *The Cryosphere*, 16, 3123–3148, 2022.
- 645 Brancato, V., Rignot, E., Milillo, P., Morlighem, M., Mouginot, J., An, L., Scheuchl, B., Jeong, S., Rizzoli, P., Bueso Bello, J. L., and Prats-Iraola, P.: Grounding Line Retreat of Denman Glacier, East Antarctica, Measured With COSMO-SkyMed Radar Interferometry Data, *Geophysical Research Letters*, 47, e2019GL086 291, <https://doi.org/10.1029/2019GL086291>, 2020.
- Brondex, J., Gagliardini, O., Gillet-Chaulet, F., and Durand, G.: Sensitivity of Grounding Line Dynamics to the Choice of the Friction Law, *Journal of Glaciology*, 63, 854–866, <https://doi.org/10.1017/jog.2017.51>, 2017.
- 650 Brondex, J., Gillet-Chaulet, F., and Gagliardini, O.: Sensitivity of Centennial Mass Loss Projections of the Amundsen Basin to the Friction Law, *The Cryosphere*, 13, 177–195, 2019.
- Budd, W. F. and Jenssen, D.: Numerical Modelling of the Large-Scale Basal Water Flux under the West Antarctic Ice Sheet, in: *Dynamics of the West Antarctic Ice Sheet*, edited by Van der Veen, C. J. and Oerlemans, J., *Glaciology and Quaternary Geology*, pp. 293–320, Springer Netherlands, Dordrecht, [https://doi.org/10.1007/978-94-009-3745-1\\_16](https://doi.org/10.1007/978-94-009-3745-1_16), 1987.
- 655 Budd, W. F., Keage, P., and Blundy, N.: Empirical Studies of Ice Sliding, *Journal of Glaciology*, 23, 157–170, 1979.
- Bueler, E. and Brown, J.: Shallow Shelf Approximation as a “Sliding Law” in a Thermomechanically Coupled Ice Sheet Model, *Journal of Geophysical Research*, 114, 1–21, <https://doi.org/10.1029/2008JF001179>, 2009.
- Bueler, E. and van Pelt, W.: Mass-conserving subglacial hydrology in the Parallel Ice Sheet Model version 0.6, *Geoscientific Model Development*, 8, 1613–1635, 2015.
- 660 Choi, Y., Morlighem, M., Rignot, E., and Wood, M.: Ice dynamics will remain a primary driver of Greenland ice sheet mass loss over the next century, *Communications earth environment*, 2, 2021.
- Cook, S. J., Christoffersen, P., and Todd, J.: A Fully-Coupled 3D Model of a Large Greenlandic Outlet Glacier with Evolving Subglacial Hydrology, Frontal Plume Melting and Calving, *Journal of Glaciology*, 68, 486–502, <https://doi.org/10.1017/jog.2021.109>, 2022.
- Cuffey, K. and Paterson, W.: *The Physics of Glaciers*, Elsevier Science, <https://books.google.ca/books?id=f8fCIAEACAAJ>, 2010.
- 665 Dow, C., Werder, M., Babonis, G., Nowicki, S., Walker, R., Csatho, B., Morlighem, M., Dow, C. F., Werder, M. A., Babonis, G., Nowicki, S., Walker, R. T., Csatho, B., and Morlighem, M.: Dynamics of Active Subglacial Lakes in Recovery Ice Stream, *Journal of Geophysical Research*, 123, 837–850, <https://doi.org/10.1002/2017JF004409>, 2018.
- Dow, C., McCormack, F., Young, D., Greenbaum, J., Roberts, J., and Blankenship, D.: Totten Glacier Subglacial Hydrology Determined from Geophysics and Modeling, *Earth and Planetary Science Letters*, 531, 115 961, <https://doi.org/10.1016/j.epsl.2019.115961>, 2020.

- 670 Dow, C. F.: The role of subglacial hydrology in Antarctic ice sheet dynamics and stability: a modelling perspective, *Annals of Glaciology*, pp. 1–6, 2023.
- Dow, C. F., Kavanaugh, J. L., Sanders, J. W., and Cuffey, K. M.: A test of common assumptions used to infer subglacial water flow through overdeepenings, *Journal of Glaciology*, 60, 725–734, 2014.
- Dow, C. F., Ross, N., Jeofry, H., Siu, K., and Siegert, M. J.: Antarctic Basal Environment Shaped by High-Pressure Flow through a Subglacial  
675 River System, *Nature Geoscience*, 15, 892–898, <https://doi.org/10.1038/s41561-022-01059-1>, 2022.
- Gagliardini, O., Cohen, D., Raback, P., and Zwinger, T.: Finite-Element Modeling of Subglacial Cavities and Related Friction Law, *Journal of Geophysical Research - Earth Surface*, 112, 1–11, <https://doi.org/10.1029/2006JF000576>, 2007.
- Goeller, S., Thoma, M., Grosfeld, K., and Miller, H.: A Balanced Water Layer Concept for Subglacial Hydrology in Large-Scale Ice Sheet Models, *The Cryosphere*, 7, 1095–1106, <https://doi.org/10.5194/tc-7-1095-2013>, 2013.
- 680 Greene, C. A.: RAMP Radarsat Antarctic Mapping Project, <https://www.mathworks.com/matlabcentral/fileexchange/52031-ramp-radarsat-antarctic-mapping-project>, 2022.
- Greene, C. A., Gwyther, D. E., and Blankenship, D. D.: Antarctic Mapping Tools for Matlab, *Computers & Geosciences*, 104, 151–157, <https://doi.org/10.1016/j.cageo.2016.08.003>, 2017.
- Hager, A. O., Hoffman, M. J., Price, S. F., and Schroeder, D. M.: Persistent, Extensive Channelized Drainage Modeled beneath Thwaites  
685 Glacier, West Antarctica, *The Cryosphere*, 16, 3575–3599, <https://doi.org/10.5194/tc-16-3575-2022>, 2022.
- Hansen, P. C.: The L-Curve and Its Use in the Numerical Treatment of Inverse Problems, in: *In Computational Inverse Problems in Electrocardiology*, Ed. P. Johnston, *Advances in Computational Bioengineering*, pp. 119–142, WIT Press, Southampton, 2000.
- Huybrechts, P.: A 3-D model for the Antarctic ice sheet : a sensitivity study on the glacial-interglacial contrast, *Climate Dynamics*, 5, 79–92, 1990.
- 690 Iken, A.: The Effect of the Subglacial Water Pressure on the Sliding Velocity of a Glacier in an Idealized Numerical Model, *Journal of Glaciology*, 27, 407–421, 1981.
- Iken, A. and Bindschadler, R. A.: Combined Measurements of Subglacial Water-Pressure and Surface Velocity of Findelengletscher, Switzerland, *Journal of Glaciology*, 32, 101–119, 1986.
- Indrigo, C., Dow, C. F., Greenbaum, J. S., and Morlighem, M.: Drygalski Ice Tongue Stability Influenced by Rift Formation and Ice Mor-  
695 phology, *Journal of Glaciology*, 67, 243–252, <https://doi.org/10.1017/jog.2020.99>, 2021.
- Johnson, J. and Fastook, J. L.: Northern Hemisphere Glaciation and Its Sensitivity to Basal Melt Water, *Quaternary International*, 95–96, 65–74, [https://doi.org/10.1016/S1040-6182\(02\)00028-9](https://doi.org/10.1016/S1040-6182(02)00028-9), 2002.
- Joughin, I., Smith, B. E., and Schoof, C. G.: Regularized Coulomb Friction Laws for Ice Sheet Sliding: Application to Pine Island Glacier, Antarctica, *Geophysical Research Letters*, 46, 4764–4771, 2019.
- 700 Kazmierczak, E., Sun, S., Coulon, V., and Pattyn, F.: Subglacial Hydrology Modulates Basal Sliding Response of the Antarctic Ice Sheet to Climate Forcing, Preprint, *Ice sheets/Numerical Modelling*, <https://doi.org/10.5194/tc-2022-53>, 2022.
- Koziol, C. P. and Arnold, N.: Incorporating modelled subglacial hydrology into inversions for basal drag, *The cryosphere*, 11, 2783–2797, 2017.
- Larour, E., Seroussi, H., Morlighem, M., and Rignot, E.: Continental Scale, High Order, High Spatial Resolution, Ice Sheet Modeling Using  
705 the Ice Sheet System Model (ISSM), *Journal of Geophysical Research*, 117, 1–20, <https://doi.org/10.1029/2011JF002140>, 2012.
- Le Brocq, A., Payne, A., Siegert, M., and Alley, R.: A Subglacial Water-Flow Model for West Antarctica, *Journal of Glaciology*, 55(193), 879–888, 2009.

- MacAyeal, D.: Large-Scale Ice Flow over a Viscous Basal Sediment: Theory and Application to Ice Stream B, Antarctica, *Journal of Geophysical Research*, 94, 4071–4087, 1989.
- 710 MacAyeal, D. R.: A tutorial on the use of control methods in ice-sheet modeling, *Journal of Glaciology*, 39, 91–98, 1993.
- Martin, M. A., Winkelmann, R., Haseloff, M., Albrecht, T., Bueler, E., Khroulev, C., and Levermann, A.: The Potsdam Parallel Ice Sheet Model (PISM-PIK) – Part 2: Dynamic equilibrium simulation of the Antarctic ice sheet, *The Cryosphere*, 5, 727–740, 2011.
- McCormack, F. S., Warner, R. C., Seroussi, H., Dow, C. F., Roberts, J. L., and Treverrow, A.: Modeling the Deformation Regime of Thwaites Glacier, West Antarctica, Using a Simple Flow Relation for Ice Anisotropy (ESTAR), *Journal of Geophysical Research. Earth Surface*, 715 127, 2022.
- Morland, L. W.: Unconfined Ice-Shelf Flow, in: *Dynamics of the West Antarctic Ice Sheet*, edited by Van der Veen, C. J. and Oerlemans, J., pp. 99–116, Springer Netherlands, Dordrecht, 1987.
- Morlighem, M.: MEaSURES BedMachine Antarctica, Version 2 [Data Set]. Boulder, Colorado USA. NASA National Snow and Ice Data Center Distributed Active Archive Center., <https://doi.org/https://doi.org/10.5067/E1QL9HFQ7A8M>, 2020.
- 720 Morlighem, M., Rignot, E., Seroussi, H., Larour, E., Ben Dhia, H., and Aubry, D.: Spatial patterns of basal drag inferred using control methods from a full-Stokes and simpler models for Pine Island Glacier, West Antarctica, *Geophysical Research Letters*, 37, L14 502–n/a, 2010.
- Morlighem, M., Seroussi, H., Larour, E., and Rignot, E.: Inversion of Basal Friction in Antarctica Using Exact and Incomplete Adjoints of a Higher-Order Model, *Journal of Geophysical Research*, 118, 1746–1753, <https://doi.org/10.1002/jgrf.20125>, 2013.
- 725 Mouginot, J., Scheuchl, B., and Rignot, E.: Mapping of Ice Motion in Antarctica Using Synthetic-Aperture Radar Data, *Remote Sensing (Basel, Switzerland)*, 4, 2753–2767, 2012.
- Mouginot, J., Rignot, E., Scheuchl, B., and Millan, R.: Comprehensive Annual Ice Sheet Velocity Mapping Using Landsat-8, Sentinel-1, and RADARSAT-2 Data, *Remote Sensing (Basel, Switzerland)*, 9, 364–, 2017.
- Nienow, P. W., Sole, A. J., Slater, D. A., and Cowton, T. R.: Recent Advances in Our Understanding of the Role of Meltwater in the Greenland Ice Sheet System, *Current Climate Change Reports*, 3, 330–344, <https://doi.org/10.1007/s40641-017-0083-9>, 2017.
- 730 Poinar, K., Dow, C. F., and Andrews, L. C.: Long-Term Support of an Active Subglacial Hydrologic System in Southeast Greenland by Firn Aquifers, *Geophysical Research Letters*, 46, 4772–4781, 2019.
- Rignot, E., Mouginot, J., and Scheuchl, B.: Ice Flow of the Antarctic Ice Sheet, *Science*, 333, 1427–1430, <https://doi.org/10.1126/science.1208336>, 2011.
- 735 Rignot, E., Mouginot, J., and Scheuchl, B.: MEaSURES InSAR-Based Antarctica Ice Velocity Map, Version 2 [Data Set]. Boulder, Colorado USA. NASA National Snow and Ice Data Center Distributed Active Archive Center., <https://doi.org/https://doi.org/10.5067/D7GK8F5J8M8R>, accessed 06-10-2021., 2017.
- Schoof, C.: The Effect of Cavitation on Glacier Sliding, *Proceedings of the Royal Society A*, 461, 609–627, <https://doi.org/10.1098/rspa.2004.1350>, 2005.
- 740 Schoof, C.: Ice Sheet Grounding Line Dynamics: Steady States, Stability, and Hysteresis, *Journal of Geophysical Research*, 112, 1–19, <https://doi.org/10.1029/2006JF000664>, 2007.
- Schroeder, D. M., Blankenship, D. D., and Young, D. A.: Evidence for a Water System Transition beneath Thwaites Glacier, West Antarctica, *Proceedings of the National Academy of Sciences*, 110, 12 225–12 228, <https://doi.org/10.1073/pnas.1302828110>, 2013.

- Sergienko, O. V., Creyts, T. T., and Hindmarsh, R. C. A.: Similarity of Organized Patterns in Driving and Basal Stresses of Antarctic and Greenland Ice Sheets beneath Extensive Areas of Basal Sliding, *Geophysical Research Letters*, 41, 3925–3932, <https://doi.org/10.1002/2014gl059976>, 2014.
- 745 Seroussi, H., Morlighem, M., Rignot, E., Khazendar, A., Larour, E., and Mouginot, J.: Dependence of century-scale projections of the Greenland ice sheet on its thermal regime, *Journal of Glaciology*, 59, 1024–1034, 2013.
- Seroussi, H., Nowicki, S., Simon, E., Abe-Ouchi, A., Albrecht, T., Brondex, J., Cornford, S., Dumas, C., Gillet-Chaulet, F., Goelzer, H., Gollledge, N. R., Gregory, J. M., Greve, R., Hoffman, M. J., Humbert, A., Huybrechts, P., Kleiner, T., Larour, E., Leguy, G., Lipscomb, W. H., Lowry, D., Mengel, M., Morlighem, M., Pattyn, F., Payne, A. J., Pollard, D., Price, S. F., Quiquet, A., Reerink, T. J., Reese, R., Rodehacker, C. B., Schlegel, N.-J., Shepherd, A., Sun, S., Sutter, J., Van Breedam, J., van de Wal, R. S. W., Winkelmann, R., and Zhang, T.: initMIP-Antarctica: An Ice Sheet Model Initialization Experiment of ISMIP6, *The Cryosphere*, 13, 1441–1471, <https://doi.org/10.5194/tc-13-1441-2019>, 2019.
- 750 van der Veen, C. J.: Longitudinal Stresses and Basal Sliding: A Comparative Study, in: *Dynamics of the West Antarctic Ice Sheet*, edited by Van der Veen, C. J. and Oerlemans, J., *Glaciology and Quaternary Geology*, pp. 223–248, Springer Netherlands, Dordrecht, [https://doi.org/10.1007/978-94-009-3745-1\\_13](https://doi.org/10.1007/978-94-009-3745-1_13), 1987.
- Van der Wal, W., Barnhoorn, A., Stocchi, P., Gradmann, S., Wu, P., ry, M., and Vermeersen, L.: Glacial isostatic adjustment model with composite 3-D Earth rheology for Fennoscandia, *Geophysical Journal International*, 194, 61–77, 2013.
- 760 van Wessem, J. M., Van De Berg, W. J., Noël, B. P. Y., Van Meijgaard, E., Amory, C., Birnbaum, G., Jakobs, C. L., Krüger, K., Lenaerts, J., Lhermitte, S., Ligtenberg, S. R. M., Medley, B., Reijmer, C. H., van Tricht, K., Trusel, L. D., van Ulf, L. H., Wouters, B., Wuite, J., and van den Broeke, M. R.: Modelling the Climate and Surface Mass Balance of Polar Ice Sheets Using RACMO2: Part 2: Antarctica (1979–2016), *The Cryosphere*, 12, 1479–1498, <https://doi.org/10.5194/tc-12-1479-2018>, 2018.
- Weertman, J.: On the Sliding of Glaciers, *Journal of Glaciology*, 3, 33–38, 1957.
- 765 Werder, M. A., Hewitt, I. J., Schoof, C. G., and Flowers, G. E.: Modeling Channelized and Distributed Subglacial Drainage in Two Dimensions, *Journal of Geophysical Research*, 118, 1–19, <https://doi.org/doi:10.1002/jgrf.20146>, 2013.
- Winkelmann, R., Martin, M. A., Haseloff, M., Albrecht, T., Bueler, E., Khroulev, C., and Levermann, A.: The Potsdam Parallel Ice Sheet Model (PISM-PIK) - Part 1: Model Description, *The Cryosphere*, 5, 715–726, <https://doi.org/10.5194/tc-5-715-2011>, 2011.
- Yu, H., Rignot, E., Seroussi, H., and Morlighem, M.: Retreat of Thwaites Glacier, West Antarctica, over the next 100 Years Using Various Ice Flow Models, Ice Shelf Melt Scenarios and Basal Friction Laws, *The Cryosphere*, 12, 3861–3876, 2018.
- 770 Zhao, C., Gladstone, R. M., Warner, R. C., King, M. A., Zwinger, T., and Morlighem, M.: Basal friction of Fleming Glacier, Antarctica – Part 1: Sensitivity of inversion to temperature and bedrock uncertainty, *The Cryosphere*, 12, 2637–2652, 2018.
- Åkesson, H., Morlighem, M., Nilsson, J., Stranne, C., and Jakobsson, M.: Petermann ice shelf may not recover after a future breakup, *Nature communications*, 13, 2519–2519, 2022.