

1 Seasonal evolution of the supraglacial drainage network at 2 Humboldt Glacier, North Greenland, between 2016 and 2020

3
4 Lauren D. Rawlins^{1*}, David M. Rippin¹, Andrew J. Sole², Stephen J. Livingstone², Kang Yang³

5 ¹Department of Environment and Geography, University of York, YO10 5NG, UK,

6 ²Department of Geography, University of Sheffield, S3 7ND, UK,

7 ³School of Geography and Ocean Science, Nanjing University, Nanjing, People's Republic of China

8 *Correspondence to:* Lauren D. Rawlins (lauren.rawlins@york.ac.uk)

9 **Abstract.** Supraglacial rivers and lakes are important for the routing and storage of surface meltwater during the summer melt
10 season across the Greenland Ice Sheet (GrIS), yet remain poorly mapped and quantified across the northern part of the ice
11 sheet, which is rapidly losing mass. Here we produce, for the first time, a high-resolution record of the supraglacial drainage
12 network (including both rivers and lakes) and its seasonal behaviour at Humboldt Glacier, a wide-outlet glacier draining a
13 large hydrologic catchment (~~13,488~~ 53,442 km²), spanning the period 2016 to 2020 using 10 m spatial resolution Sentinel-2
14 imagery. Our results reveal a perennially extensive yet interannually-variable supraglacial network extending from an elevation
15 of 200 m a.s.l to a maximum of ~1440 m a.s.l recorded in 2020, with limited development of the network observed in the low
16 melt years of 2017 and 2018. The supraglacial drainage network is shown to cover an area ranging between 966 ~~965.7~~-km²
17 (2018) and ~~1566.3~~-km² (2019) at its maximum seasonal extent, with spatial coverage of up to 2685 km² recorded during the
18 early phases of the melt season when a slush zone is most prominent. Up-glacier expansion and the development of an efficient
19 supraglacial drainage network as surface runoff increases and the snowline retreats is clearly visible. Preconditioning of the
20 ice surface following a high melt year is also observed, with an extreme and long-lasting 2019 melt season, over-winter
21 persistence of liquid lakes followed by low snow accumulation the following spring culminating in ~~with the~~ earlier, widespread
22 exposure of the supraglacial drainage network in 2020 compared to other years, s; a finding that may ~~This preconditioning is~~
23 predicted to become ~~representative more common~~ with persistent warmer years into the future. Overall, this study provides
24 evidence of a persistent, yet dynamic, supraglacial drainage network at this prominent northern GrIS outlet glacier and
25 advances our understanding of such hydrologic processes, particularly under ongoing climatic warming and enhanced runoff.

26
27
28
29

30 1 Introduction

31 The Greenland Ice Sheet (GrIS) has experienced significant mass loss throughout the 21st Century and currently represents the
32 largest single cryospheric component of global sea level rise, contributing an estimated 10.6 ± 0.9 mm since 1992 (IMBIE,
33 2020). Over the last two decades, GrIS mass loss has become increasingly dominated by surface mass balance (SMB)
34 processes, accounting for 60% of ice loss annually since 1991, with the remainder attributed to dynamical mass losses from
35 marine-terminating glaciers along the ice sheet periphery (van den Broeke et al., 2016). Such SMB losses are being increasingly
36 revealed by the magnitude and spatial extent of seasonal surface melting and runoff (Trusel et al., 2018), attributed to climate-
37 driven atmospheric warming (Hanna et al., 2012; Hanna et al., 2021), summertime atmospheric circulatory behaviour (i.e.
38 Greenland Blocking Index; Hanna et al., 2012; 2021; McLeod et al., 2016; van den Broeke, 2017) and the ongoing expansion
39 (Noël et al., 2019) and darkening (Tedesco et al., 2016; Ryan et al., 2018; 2019; Riihelä et al., 2019) of the bare ice zone.
40 Between 2011 and 2020, runoff was 21% higher than any of the preceding three decades (Slater et al., 2021).

41

42 Surface runoff is transported by an expansive and complex supraglacial drainage system which is activated during the summer
43 season (Pitcher and Smith, 2019). This drainage system, made up of an ephemeral network of interconnected supraglacial
44 rivers and lakes, transports and stores large volumes of surface meltwater on the ablating ice surface (Rippin and Rawlins,
45 2021). Such runoff can become intercepted by crevasses and moulins, that provide connections to the ice sheet bed where the
46 timing and delivery of such water has been shown to affect ice velocity (Zwally et al., 2002; Bartholomew et al., 2010; 2012;
47 Hoffman et al., 2011; Sole et al., 2011; Andrews et al., 2014; Nienow et al., 2017). In particular, meltwater delivery into an
48 inefficient subglacial configuration, such as linked cavities (Kamb, 1987) which typically occurs during the early period of the
49 melt season, can temporarily overwhelm the subglacial hydrologic system, increasing water pressure and enhancing subsequent
50 sliding (Andrews et al., 2014; Davidson et al., 2019). In some regions where moulins and crevasses are absent, supraglacial
51 rivers can extend undisturbed for tens of kilometres across the bare ice surface, flowing directly into the proglacial zone (Yang
52 et al., 2019a; Li et al., 2022). Ultimately, much of this meltwater will end up in the ocean, contributing directly to global sea
53 level rise (Pitcher and Smith, 2019).

54

55 Whilst many remote sensing studies have examined components of the supraglacial drainage network in-depth across the
56 largest melt producing western and southwestern sections of the GrIS (Smith et al., 2015; Gleason et al., 2016, 2021; Yang et
57 al., 2021), it is only recently that other significant ice sheet sectors have begun to be mapped (Gledhill and Williamson, 2018;
58 [Macdonald et al., 2018](#); Yang et al., 2019a; Schröder et al., 2020; Turton et al., 2021; Lu et al., 2021; [Bogshosian et al., 2023](#)).
59 Focus has only recently shifted to the rapidly changing northern regions of the GrIS, with evidence of inland expansion of
60 supraglacial lakes observed in north east Greenland (Turton et al., 2021) which align with climate model projections (Leeson
61 et al., 2015) and the existence of a widespread supraglacial network (Lu et al., 2021). This study utilises Sentinel-2 satellite
62 imagery to map the supraglacial drainage network, including both rivers and lakes, on a major northern outlet glacier of the

63 GrIS - Humboldt Glacier (79°23.86°N, 64°20.60°W), hereby denoted to HG – to examine its seasonal behaviour at high spatial
64 (10 m) and temporal resolution over five consecutive melt years (2016 – 2020).

65 **2 Study Location**

66 The drainage basins of outlet glaciers in the northern sector of the GrIS comprise ~14% of the total ice sheet area, with 82%
67 of the northern sector predominately drained by 12 marine-terminating glaciers which together hold a sea level equivalent
68 ~~(SLE)~~ of 93 cm (Mouginot et al., 2019). Since 1990, this sector has experienced some of the most pronounced changes in
69 surface melt and runoff, attributed to the rapid expansion of the ablation (46%) and bare ice (33%) zone at rates twice as fast
70 than in southern Greenland, with this trend expected to continue with ongoing climatic warming (Noël et al., 2019). Of the
71 northern outlet glaciers that drain the GrIS, HG, also known as Sermersuaq Glacier, is the widest marine-terminating outlet
72 glacier (~91 km wide) in Greenland and is responsible for draining ~5% of the ice sheet alone north-westward into the Kane
73 Basin (Hill et al., 2017; Rignot and Kanagaratnam, 2006; Rignot et al., 2021; Fig. 1). Since the late 1990s, HG has experienced
74 rapid rates of retreat (~162 m a⁻¹) attributed to increases in mean summer air temperatures and sea-ice decline (Carr et al.,
75 2015). Holding an ice volume equivalent of 19 cm of sea level rise, HG is the fourth largest Greenland glacial contributor to
76 sea level rise (Rignot et al., 2021) having lost 161 gigatonnes (Gt) since 1972 and 311 km² of its area between 2000 and 2010
77 (Box and Decker, 2011).

78

79 Until recently, few glaciological studies had focussed on HG (Joughin, et al., 1996, 1999; Carr et al., 2015; Livingstone et al.,
80 2017; Hill et al., 2017, 2018; Mouginot et al., 2019; Gray, 2021; Rignot et al., 2001, 2021, Hillebrand et al., 2022). Studies
81 that have examined HG identified a distinctive ice velocity divide between the northern and southern sectors (Rignot et al.,
82 2001, 2021; Carr et al., 2015; Fig. 1d); the northern sector has up to four times faster ice flow than the south. In terms of
83 surface hydrology, several studies have noted the presence of supraglacial lakes (SGLs; Joughin et al., 1996; Selmes et al.,
84 2011; Carr et al., 2015), however none to-date have examined the overall drainage system, including both rivers and lakes, in-
85 detail.

86

87

88

89

90

91

92

93

94

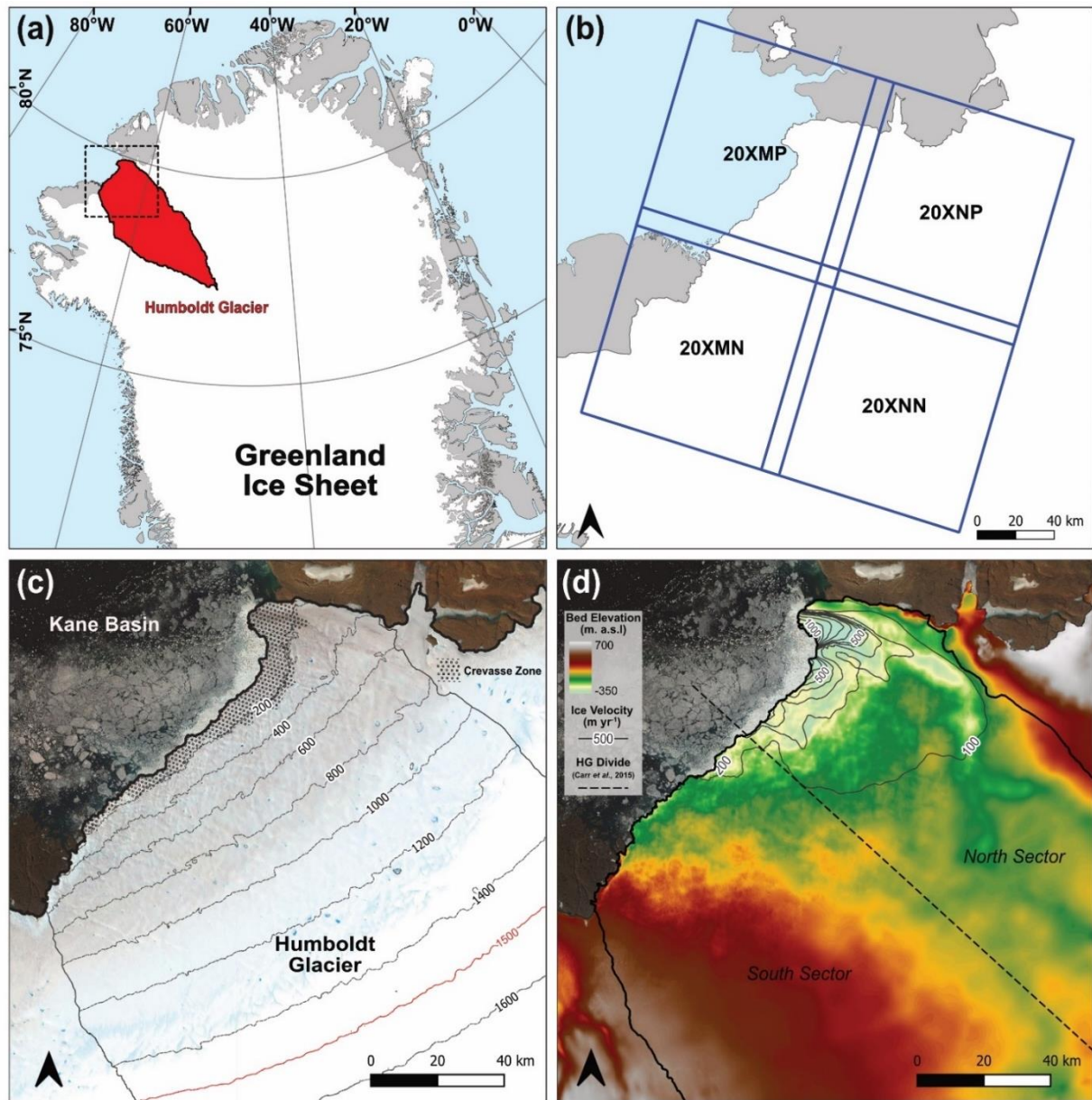


Figure 1. (a) Study location of HG, north Greenland, and its highlighted drainage basin (shaded red). The dashed box shows the inset for other figure boxes (b-d); (b) The four Sentinel-2 tiles used for extraction of the supraglacial drainage network across the study region; (c) True colour (R: band 4; G: band 3; B: band 2) Sentinel-2 image of HG acquired from 25th July 2020 courtesy of the Copernicus Open Access Hub (<https://scihub.copernicus.eu>). HG denoted drainage basin and 200 m contour lines derived from ArcticDEM (10 m) are shown. The 1500 m a.s.l contour denotes the maximum melt extent. The shaded section up to 200 m a.s.l also shows the heavily crevassed zone that exists within the northern sector of the terminus; (d) Bed topography of HG and the surrounding area from Bed Machine version 4 (Morlighem et al., 2021), ice velocity contours via NASA's MEaSUREs ITS_LIVE project (Gardener et al., 2019) and the division of Humboldt's north and south sectors (dashed line) as per Carr et al. (2015).

129 3 Data and Methodology

130 3.1 Data sources

131 Earth-observing satellites enable the study of supraglacial drainage features with broad spatial and temporal coverages
132 (Rennermalm et al., 2013; Yang and Smith, 2012; Chu, 2014). Over the last four decades, the Landsat program has provided
133 a wealth of remotely-sensed data for the mapping and quantification of a number of supraglacial features such as SGLs
134 (Lampkin and Vanderberg, 2011; [Banwell et al., 2014](#); Pope et al., 2016; [Williamson et al., 2017](#); Gledhill and Williamson,
135 [2017](#), 2018; [Williamson et al., 2018](#); Yang et al., 2019b; [Dell et al., 2022](#); Otto et al., 2022), as well as for exploring the
136 generalised configuration (i.e., main river stems) of the supraglacial drainage system (Lampkin and Vanderberg, 2014; Yang
137 et al., 2021). But, its spatial resolution in the visible spectrum (30 m) precludes the reliable delineation of numerous smaller
138 supraglacial rivers (Yang et al., 2019a). This has resulted in these complex networks being unmapped and underrepresented
139 (Chu, 2014). The application of the Multispectral Instrument (MSI) on Sentinel-2 satellites (Sentinel-2A and -2B), which
140 launched in 2015 and 2017 respectively, offers a higher-resolution (10 m) perspective of such systems (Yang et al., 2019a; Lu
141 et al., 2020; Lu et al., 2021). Sentinel-2 imagery enables the detection and delineation of both wide, main-stem river channels,
142 which have high stream orders and are perennially reoccupied (Pitcher and Smith, 2019) as well as narrower (one pixel, or 10
143 m), tributary-style channels that are lower-order and shallower in depth (Smith et al., 2015; Fig. 2). Sentinel-2 imagery has
144 also been shown to better-resolve supraglacial networks in general for mapping purposes at a glacier-wide scale, particularly
145 in terms of river continuity (Yang et al., 2019a), hence its preferred use in this study.

146

147 For the years 2016 to 2020, a total of 176 Sentinel-2 Level-1C (orthorectified top-of-atmosphere reflectance) images with sub-
148 pixel multispectral registration (Baillarin et al., 2012) were acquired over HG (Fig. 1b; Table S1) obtained from ESA's
149 Scientific Data Hub (<https://scihub.copernicus.eu/dhus/#/home>). These images covered the entirety of the study area on forty-
150 four days between the months of May and September across the study period, equating to 1-2 images per month, allowing us
151 to gain a full melt season perspective of supraglacial drainage evolution for the HG drainage catchment. For scenes with cloud
152 cover below a 20% threshold, cloud coverage was typically restricted to the Kane Basin waterway (Fig. 1c) or ice interior
153 locations beyond the melt extent, so did not pose any significant problems for river and lake mapping.

154

155

156

157

158

159

160

161

162
163
164
165
166
167
168
169
170
171
172
173
174
175
176
177
178
179
180
181
182
183
184
185
186
187
188
189
190
191
192
193
194
195

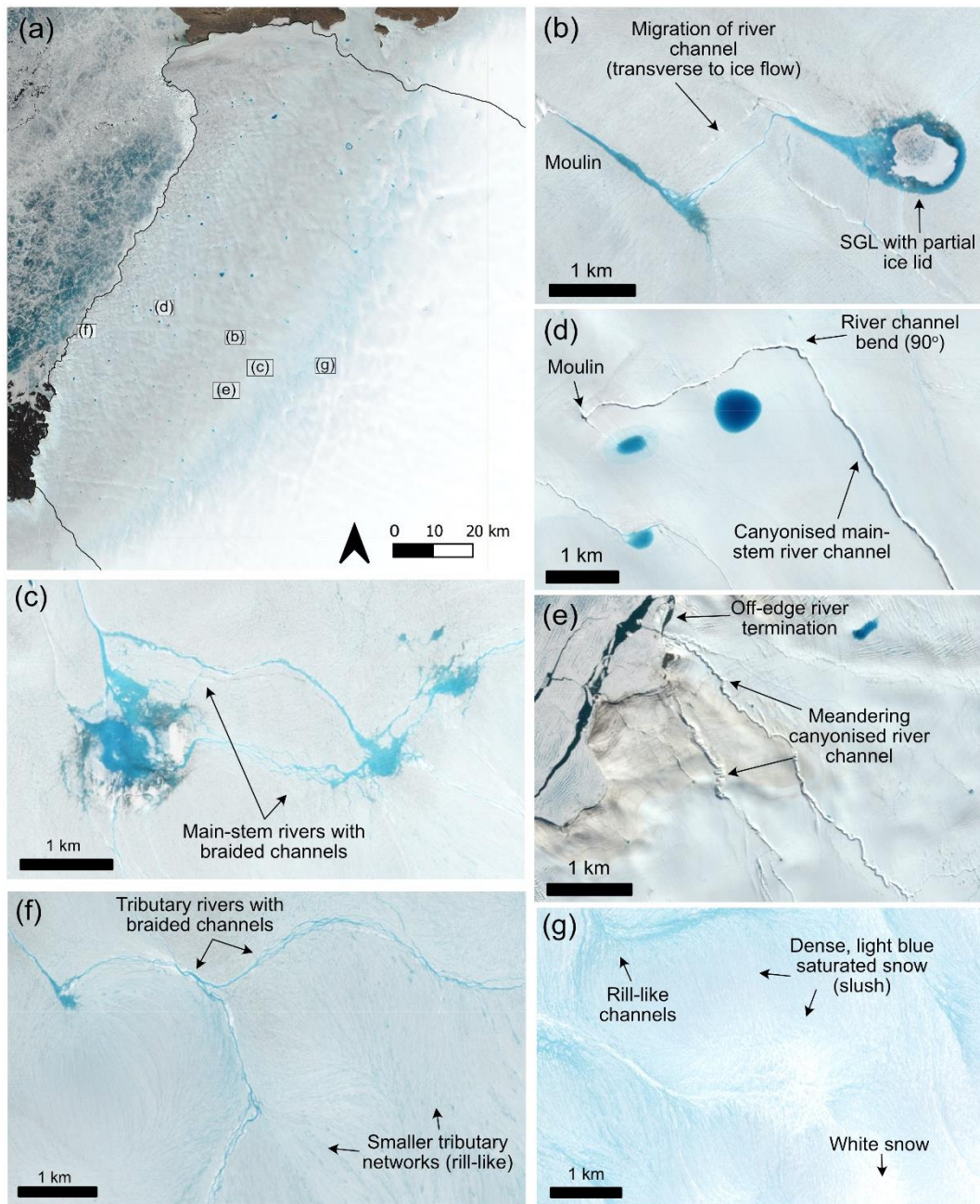


Figure 2. Example of the supraglacial drainage features found across the study region of HG, represented in panel (a), from a Sentinel-2 image taken on 23rd June 2020 (RGB). (ba) a supraglacial lake with a central ice-lid feeding an outlet supraglacial river, with evidence of river advection transverse to ice flow; (cb) braided supraglacial rivers flowing between supraglacial lakes, known as ‘connector’ lakes; a large canyonised supraglacial river with a 90-degree bend terminating abruptly in a moulin; (de) a large canyonised supraglacial river with a 90-degree bend terminating abruptly in a moulin; (e) deep, canyonised supraglacial rivers flowing off the ice edge; (ed) deep, canyonised supraglacial rivers flowing off the ice edge; (f) narrow supraglacial rivers with rill-features seen in the higher elevation regions of HG, flowing and coalescing into braided tributary rivers; (g) the slush zone, with dense areas of saturated snow (light blue) culminating in rill-like channels. Narrow supraglacial rivers with rill-features seen in the higher elevation regions of HG, flowing and coalescing into braided tributary rivers. The Sentinel-2 image is courtesy of the Copernicus Open Access Hub (<https://scihub.copernicus.eu>).

196 The HG drainage catchment was generated using the ArcticDEM 10 m mosaic product obtained from the Polar Geospatial
197 Centre (<https://www.pgc.umn.edu/data/arcticdem/>) and delineated following the method of Karlstrom and Yang (2016).
198 Elevation contours at 100 m intervals were defined across the HG basin up to 1500 m a.s.l (maximum limit of the melt-prone
199 zone), equating to a size of 13,488 km². Daily surface meltwater production and runoff for the study area were extracted from
200 the Modèle Atmosphérique Régional (MAR) regional climate model (RCM) v3.11 ~~at 6 km resolution~~ (available at
201 <ftp://ftp.climato.be/>; Fettweis et al., 2017; 2020). MAR is among the best RCM to cover the GrIS as it explicitly models
202 important polar processes (i.e., SMB) forced with ERA5 reanalysis data and has been extensively evaluated against in-situ
203 automatic weather station and satellite data (for a detailed description of MAR v3.11, see Amory et al. 2021; Fettweis et al.,
204 2020). MAR has now been widely used in other GrIS-based supraglacial hydrologic studies (Smith et al., 2017; Yang et al.,
205 2019; Lu et al., 2020) for quantifying the relationship between modelled-runoff and satellite-derived meltwater metrics for
206 RCM accuracy validation. The version MAR 3.11 used in this study was run at high spatial (6 km) and temporal (daily)
207 resolution. ~~These data were used~~ to generate estimates of daily meltwater production and runoff (R) in mm water equivalent
208 per day (mm w.e. day⁻¹) within each grid cell to assess the spatial and temporal distribution of meltwater against mapped
209 supraglacial rivers and lakes, similar to other studies (Yang et al., 2019; Lu et al., 2020; 2021; Yang et al., 2021). MAR grid
210 cells were also sampled at each 100 m interval to assess elevational gradients in both mapped drainage and runoff. A MAR
211 uncertainty value of +/- 15% was also calculated (Fettweis et al., 2020).

212 3.2 Supraglacial river and lake extraction

213 To effectively delineate supraglacial rivers from remotely sensed imagery, an automatic linear enhancement method developed
214 by Yang et al. (2015) was used, which characterises supraglacial rivers according to their Gaussian-like brightness cross
215 sections and longitudinal open channel morphology. Firstly, a Normalised Difference Water Index was performed following
216 McFeeters (1996) to differentiate active surface meltwater from the background ice and snow (Lu et al., 2020; Li et al., 2022).
217 This equation (Eq.1) utilises Band 3 ('Green') and Band 8 ('NIR') from Sentinel-2 imagery, as follows:

$$219 \quad NDWI = \frac{(Green - NIR)}{(Green + NIR)} \quad (1)$$

220
221 An ice-derived spectral index, NDWI_{ice}, has been widely applied to supraglacial mapping studies in recent years (Yang and
222 Smith, 2013; Moussavi et al., 2016; Williamson et al., 2018; Yang et al., 2021), as it produces fewer false classifications of
223 blue ice and slush areas. We use NDWI (Mcfeeters, 1996) here because of its successful implementation in other studies
224 (Stokes et al., 2019; Lu et al., 2020; 2021; Corr et al., 2022) and its ability to map all active surface melt of interest, including
225 slush zones. Additionally, preliminary testing of a small sample area found NDWI (McFeeters, 1996) produced more regularly
226 connected supraglacial river channels by 16.3% compared to NDWI_{ice} (Fig. S1). Next, an ice mask was applied, created from
227 manually digitising the HG terminus from the latest, end-of-season image (late-August/early-September) in each of the study

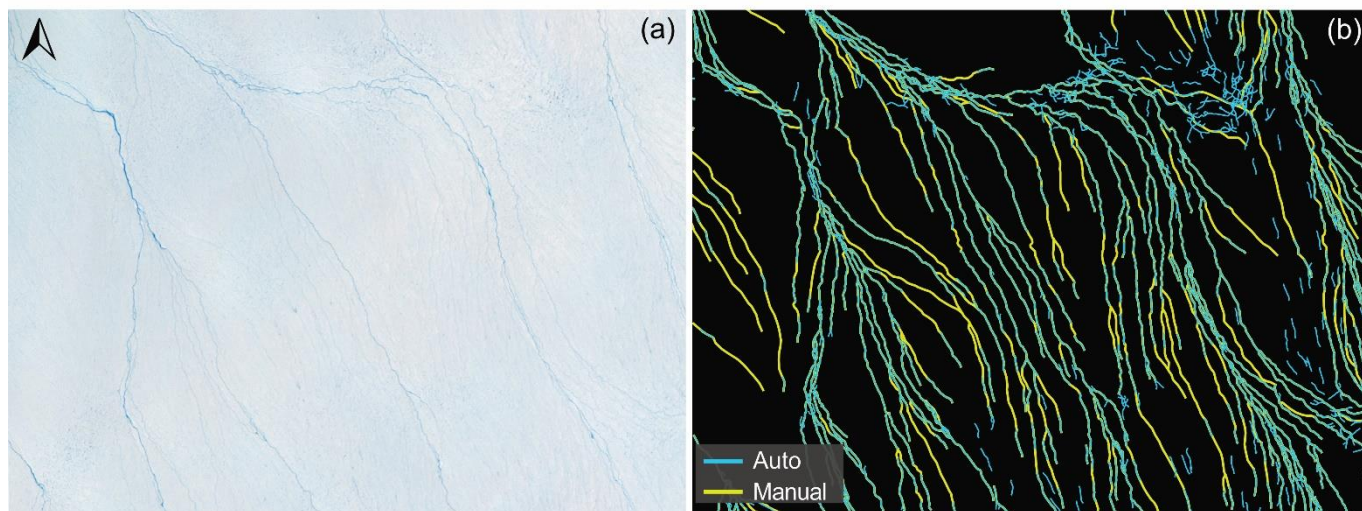
228 years, to extract ice-only regions and remove surrounding land, rocky outcrops and the ocean of the Kane Basin. A separate
229 crevasse mask was delineated from manually identifying the heavily crevassed zone known to extend up to 25 km from the
230 northern sector of the terminus, with particular prevalence across the 7 km floating section (Carr et al., 2015). This mask was
231 applied and this section of the terminus removed ~~used~~ to avoid the erroneous delineation of crevasses and crevasse shadows
232 in this area during image processing, as well as to reduce the effects of drainage overestimation in these ice marginal regions
233 in further calculations (Ignéczi et al., 2018). A ~~high value,~~ global NDWI threshold of 0.4 ($t_{ndwi}=0.4$) was then applied to
234 the masked NDWI image ~~to extract as it effectively captures~~-SGLs boundaries and wide, main-stem river segments (Lu et al.,
235 2021). To aid in delineating narrower river segments and obtain a complete and continual supraglacial network, the automatic
236 river detection algorithm for linear enhancement (Yang et al., 2015) was then applied. This involved the removal of the low-
237 frequency image background and high-frequency image noise using a band-pass filter ramped between $1/200\text{ m}^{-1}$ and $1/40\text{ m}^{-1}$
238 (Yang et al., 2019a), before the application of a Gabor filter to enhance the cross sections of smaller rivers (<2 pixel width).
239 This was followed by a parsimonious path opening (PPO) operator, which is a flexible mathematical morphological operator,
240 to stabilise linear brightness across river lengths and preserve connectivity, with a minimum path length of 20 pixels.

241

242 After Gabor-PPO filtering, the supraglacial river network becomes easier to differentiate and delineate from the surrounding
243 icy background. A global pixel brightness threshold of 5 (out of 255) denoted t^5 , was used to extract supraglacial rivers of
244 varying widths from Gabor-PPO opened filtered images (Lu et al., 2020), i.e., from tributary-style rivers to main-stem, large
245 river channels. Hydrologically-connected ~~saturated~~ slush zones, which is where the pore space of snow becomes entirely water-
246 saturated when temperatures permit melting (above freezing, 0°C) and form expansive fields of ponded surface water, were
247 retained as they play an important role in the initial mobilisation of melt as slush flows or within rill-type channels and the
248 inland expansion of the melt-prone zone as summer progresses-(Holmes, 1955; Marston, 1983; Cuffey and Paterson, 2010;
249 Chu, 2014; Ripplin and Rawlins, 2021). Slush zones can be spectrally-distinguished in true colour satellite images as dense,
250 light blue patches on the surface as snow becomes water saturated (Fig. 2g; Holmes, 1955), and partially distinguished in
251 NDWI images as bright, dense features similar to that of individual linear river channels (Lu et al., 2021). For mapping
252 conducted in this study, slush zones are mapped inclusively within the drainage network and not treated independently due to
253 their overall hydrologic importance and spectral similarity to other hydrological components. Whilst dynamic thresholding
254 techniques have been used in other studies, particularly in the identification and mapping of supraglacial lakes across
255 independent dates and/or years (Selmes et al., 2011; Williamson et al., 2017), applying these two separate thresholds ($t_{ndwi}0.4$
256 and t^5) to all images across this study period is reasonable for exploring the seasonal behaviour over the available dates used.
257 Finally, these masks were vectorised into separate river channel polylines and lake polygons for analysis, with a size threshold
258 of 0.1 km^2 applied to SGLs. To assess the ability of the automated mapping technique to capture supraglacial rivers at HG, a
259 small area was manually digitised (Fig. 3). The overall spatial pattern extracted was similar and the difference between manual
260 vs automated river area was 5.4%, with automated rivers tending to have several gaps in the network compared to manual

261 results. A similar finding was also produced by Lu et al. (2020) who found a difference of 13.6% between manual vs automated
262 supraglacial rivers also using Sentinel-2 imagery.

263



264

Figure 3. (a) RGB image of a sample area of HG with both main-stem and tributary supraglacial river channels present; (b) a performance accuracy assessment comparing the automatic river detection algorithm (blue) used in this study with manually digitised networks (yellow). Overall, automated rivers networks were 5.4% shorter than those manually derived.

265 3.3 Supraglacial river and lake quantification

266 To characterise the extracted supraglacial drainage system, metrics were calculated for both rivers and lakes. These metrics
267 are summarised in Table S2 and include meltwater area (km^2), meltwater area fraction (MF, %), drainage density (D_d), the
268 number of supraglacial lakes (L_n) and supraglacial lake area (L_a). MF is defined as the percentage total meltwater area across
269 the drainage catchment below a conservative the maximum upper melt extent limit of 1500 m a.s.l for each date mapped,
270 which is then also further divided into separate feature ratios including river area fraction (RF) and lake area fraction (LF). MF
271 was also calculated across 100 m elevation contours from above the heavily crevassed zone at 200 m a.s.l, to the maximum
272 melt extent at 1500 m a.s.l. To explore the relationship between remotely-mapped drainage and modelled RCM MAR runoff
273 (R), a Spearman's rank correlation (r_s) was performed and linear regression analysis undertaken with subsequent R^2 , r_s and P -
274 values reported.

275 4 Results

276 4.1 Spatial characteristics of the supraglacial drainage network

277 Supraglacial rivers and lakes were mapped from a total of forty-four dates across the lower, melt-prone 13,488 km² HG
278 drainage basin ~~up to a maximum melt extent of 1500 m a.s.l.~~ from the melt seasons of 2016 to 2020. The mapped supraglacial
279 drainage network across HG is shown extend up to 1440 m a.s.l, with well-developed, main-stem river channels occurring up
280 to 1000 m a.s.l, which we characterise as the persistent zone, and an ephemeral network of tributary-style rivers and slush
281 zones extending beyond 1000 m a.s.l in a transient zone up to maximum extent (Fig. [34a](#)). Active supraglacial rivers and lakes
282 form progressively up-glacier from low elevations (200 m a.s.l) to a maximum of 1440 m a.s.l as the melt seasons progress
283 across the study period, with interannual variability observed.

284

285 Within the lower elevation regions (<400 m a.s.l) of HG, collectively the supraglacial drainage network is largely fragmented,
286 with many short (<750 m long), supraglacial rivers observed alongside small SGLs with an average size of 0.23 km²: the
287 smallest observed across all elevation bands. At greater elevations, beyond 400 m a.s.l, we observe large, main-stem
288 supraglacial rivers, some with incised-canyon features (Fig. 2b), interconnected with increasingly larger SGLs. At elevations
289 >1000 m a.s.l, average SGL size is 0.41 km², with a maximum SGL size of 2.08 km². SGLs and rivers parallel to ice flow tend
290 to be highly persistent year-on-year across the study period. In Figure [34b](#), we also see some evidence of a potential main-
291 river reconfigurations, with the north-westward advection of a river channel that runs transverse to ice flow. In the upper parts
292 of the catchment, the supraglacial drainage network becomes increasingly dense, especially between 800 – 1000 m a.s.l, where
293 we see a 120% increase in average meltwater area (94.5 km²) compared to 200 – 400 m a.s.l (42.9 km²), a 79% increase
294 compared to 400 – 600 m a.s.l (54.2 km²) and a 10% increase compared to 600 – 800 m a.s.l. Not only are persistent main-
295 stem rivers still present up to 1000 m a.s.l, but an extensively connected tributary river system is also observed within this
296 persistent zone.

297
298
299
300
301
302
303
304
305
306
307
308
309
310
311
312
313
314
315
316
317
318
319
320
321
322
323
324
325

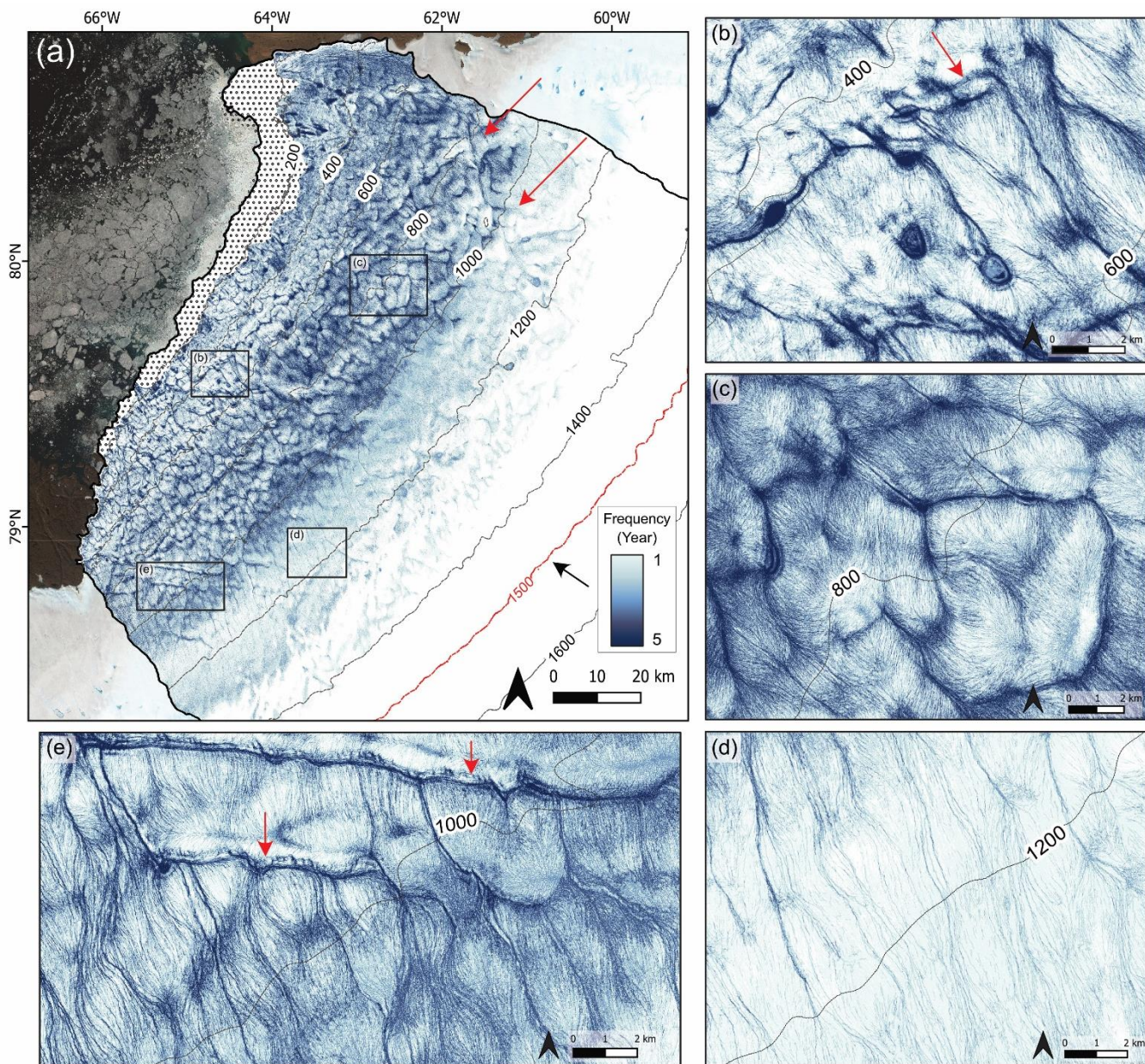


Figure 43. – (a) Map showing the recurrence frequency of the supraglacial drainage system across the study period (2016 to 2020) at HG. Dark blue shades denote a higher frequency of ~~occurrence~~^{return}, which is highly prominent in the persistent zone below 1000 m a.s.l, with rivers and lakes typically reforming in the same location each year. Red arrows denote the location and direction of two distinct parallel drainage structures. Black arrow represents ice flow direction. The background Sentinel-2 image courtesy of the Copernicus Open Access Hub (<https://scihub.copernicus.eu>); (b) close-up panel showing highly persistent rivers in the persistent zone with a prominent 90-degree angle in their channel form. Red arrow denotes some channel reconfiguration due to ice advection; (c) close-up panel showing the dendritic supraglacial drainage structure typical in the northern sector of HG; (d) close-up panel of the transient zone (> 1000 m a.s.l) where yearly river persistence is lower and characterised by lengthy tributary river channels; (e) close-up panel showing the more parallel-form of supraglacial drainage structure in the southern sector of HG with red arrows denoting some channel advection with ice motion.

326

327 The drainage network up to 1000 m a.s.l, in particular within the central and northern reaches of HG, is dendritic in nature
328 (Fig. 34c). This type of drainage, however, is not uniform across HG, with the supraglacial network to the south exhibiting a
329 more sub-parallel drainage style (Fig. 34e), with this configuration extending beyond the persistent zone and into the more
330 transient zone with slush zone development and inland evolution a key part of the temporal aspect of the network at higher
331 elevations (Fig. 34a). Even though density remains high until 1300 m a.s.l, vastly transient tributary rivers and slush zones
332 dominate, feeding meltwater from headwater regions downstream. In terms of SGLs, the maximum recorded elevation was
333 1346 m a.s.l both in 2019 and 2020. Fewer SGLs are observed in the transient zone, accounting for 16% of total SGL area
334 across the study period. However, average SGL area increases with elevation, with lakes in this zone being 54% larger (0.4
335 km²) on average than those found below 1000 m a.s.l (0.26 km²). The single largest SGL size of 2.08 km² was recorded in
336 2016 at 1150 m a.s.l.

337

338 A key feature that is particularly prominent in the supraglacial drainage network is the presence of two parallel lines that track
339 across-glacier from a south-west to north-east direction (Fig 34a). Many supraglacial rivers and lakes are aligned along these
340 two features which appear as depressions in the ice surface, including the ~~with the~~ abrupt termination of many rivers indicating
341 meltwater capture via moulins, indicating a strong structural element ~~here which~~ influences drainage configuration.

342 4.2 Temporal evolution of the supraglacial drainage network

343 Typically, the supraglacial drainage network becomes active in early-June with the on-set of melt production and runoff in the
344 region, with only a small number of large-stem supraglacial rivers becoming active and subsequently recorded (MF <3.2%)
345 during this time within the mapped elevation bands of 200 – 950 m a.s.l. By late June a widespread (500 m to 1150 m a.s.l)
346 slush zone develops and advances up-glacier as the melt season progresses runoff increases, with MF ranging between 11.4
347 and 19.9%. As bare ice is exposed below this slush zone, the drainage system becomes increasingly channelised (Fig. 54). The
348 formation of the slush zone at the end of June typically coincides with maximum melt storage in SGLs (both numbers and size
349 of lakes). The network with the largest expanse of slush zone and number of SGLs in this study was observed on 30th June
350 2019 (Fig. 54), with 2685 km² (19.9%) of the HG ice surface comprised of a hydrologically-connected, unchannelised system

351 and 111 SGLs recorded (total area 27.4 km²). As the season progresses, the slush zone shifts upglacier whilst reducing in size,
352 with average June MF decreasing by up to 33% before stagnating at a maximum inland extent, ranging between 1050 m a.s.l
353 (2018) and 1440 m a.s.l (2020) across the study period. At this elevation, the slush zone operates thereafter as headwaters,
354 feeding the complex, transient, tributary systems below and further suppling the larger, well-defined supraglacial rivers at
355 lower elevations (<1000 m a.s.l).

356

357 Towards the end of the melt season, despite melt and runoff cessation, the supraglacial drainage network remains (Fig. 45).
358 The interannual variability in seasonal behaviour of the supraglacial drainage network between 2016 and 2020 (Fig. 45)
359 corresponds to the length and intensity of the melt season. Drainage within the melt seasons of 2016, 2019 and 2020 follow a
360 similar pattern characterised by a rapid increase and peak in MF in late-June, yielding values of 11.4% (R = 7.1 mm day⁻¹),
361 19.9% (R = 19.4 mm day⁻¹) and 12.1% (R = 19.6 mm day⁻¹) respectively (Fig. 56); concurrent with early-season melt
362 production and runoff. These high MF values are largely associated with widespread slush zone initiation, with a subsequent
363 peak in MF increasing the drainage network area by 267% in 2016 (28th June) and 322% in 2019 (30th June), with its spatial
364 extent observed below 1000 m a.s.l at this time (Fig. ~~ure~~ S3+). The beginning of the melt season in 2020 is an exception, with
365 an anomalously high MF (11.6%) recorded on the 15th June reaching 1100 m a.s.l, as well as a high number (57) and cumulative
366 area of SGLs (11.2 km²; Fig. 56). This high is followed by a 66% reduction in MF by the 23rd June, after which the networks
367 behaviour is similar to that of other seasons, with a subsequent MF increase of 211% to its peak at the end of June (28th June;
368 Fig. 56). Despite high rates of melt production and runoff throughout July across these three melt seasons, MF plateaus and
369 reduces, reaching a steady-state of between 7.6% and 13.9%. The number of SGLs also reduces on average between 20% and
370 27% throughout July, with cumulative SGL area reducing between 9% and 38%.

371

372 By the end of July, the supraglacial drainage network consistently extends to 75 - 80 km inland (1440 m a.s.l) at its maximum
373 areal extent. As melt and runoff reaches declines into August, the drainage network reduces between 53% (2016) and 9%
374 (2020). In 2019, persistent high rates of melt production and runoff result in persistence of the drainage networks maximum
375 inland extent and even a late-season increase of 54% in MF from the 5th August to 13th August. 2019 is registered as an
376 exceptional year at HG, with an average meltwater area up to 75% greater in June compared to 2016, between 25% and 92%
377 greater in July compared to 2016 and 2020 and up to three times greater (300%) in August compared to both 2016 and 2020.
378 Additionally, 129% and 86% more lakes are recorded compared to 2016 and 2020 respectively, with SGLs persisting much
379 later into the melt season (mid-August) than the other years.

380

381 The supraglacial drainage network in 2017 and 2018 behaves quite differently to the other melt years (Fig. S42). Until late-
382 July, MF remains low (<7%; Fig. 56) with runoff predominately occurring within the lower 700 m of the HG basin (Fig. ~~ure~~
383 S3+). The number and area of SGLs is also low during this period, with an average of 15 lakes observed in June and July
384 across 2017 and 2018 with a cumulative average area of 21.5 km² and 31.1 km² respectively; 280% lower than average lake

385 counts and 218% lower than cumulative average area for the same monthly periods across 2016, 2019 and 2020. Unlike the
386 other study years, peak MF does not occur until much later in the melt season, reaching 10.2% on 22nd August 2017 and 7.2%
387 on 20th August 2018 with a 690 km² (197%) and 521 km² (135%) increase in meltwater area to its prior mapped date
388 respectively; concurrent with peak runoff and the widespread occurrence of a late slush zone. Similarly, SGL numbers and
389 area also peak on these dates, with 54 (15.8 km²) and 74 (20 km²) lakes recorded, comprising 32% and 39% of total lakes
390 recorded per year respectively. Examination of the maximum extent of the supraglacial drainage network is also revealed to
391 be limited, with a maximum elevation of ~1150 m in 2017 and ~1050 m in 2018, equivalent to between 48 and 51 km inland.
392

393 When comparing what could be considered as high vs low melt year seasonal patterns, the supraglacial drainage network is
394 twice as large during high melt years (2016, 2019 and 2020) and is seen to form at elevations ~300 m higher than in low melt
395 years (2017, 2018; Fig. [S2](#) and [S3](#)). In terms of the average number of SGLs, there is almost double the number of SGLs
396 observed (92%) in the high melt years compared to low melt years with average SGL area also being 111% higher, showing
397 large year-on-year variability of this system. ~~On average, the contribution of supraglacial rivers to peak meltwater area fraction
398 is 98% across all study years, with supraglacial lakes playing a less dominant role in HG's drainage network (Figure S3).~~

399

400

401

402

403

404

405

406

407

408

409

410

411

412

413

414

415

416

417

418

419

420

421

422

423

424

425

426

427

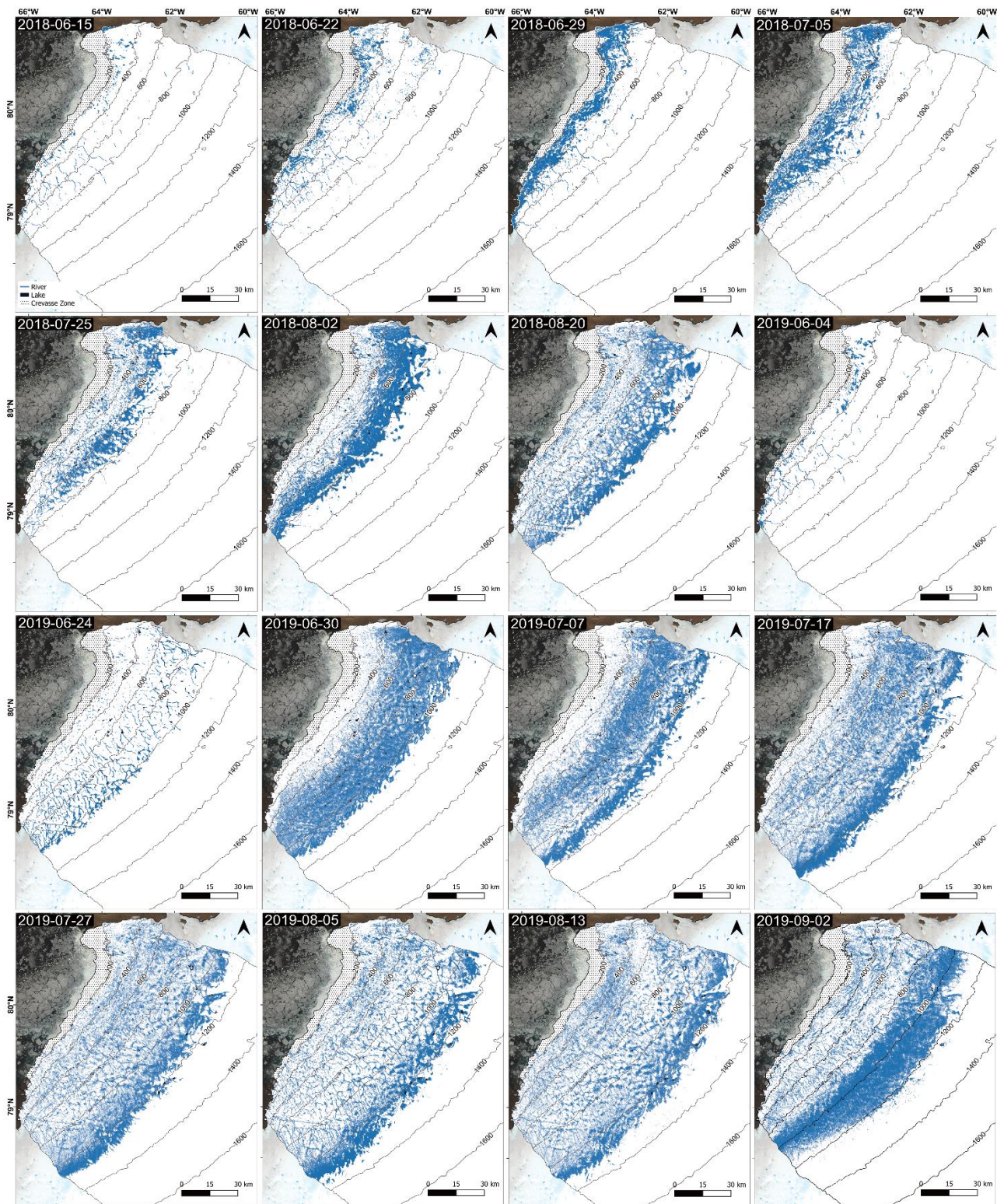
428

429

430

431

432



433

434

Figure 54. Satellite-derived mapping of the temporal evolution of the supraglacial drainage network, including rivers and lakes, across the HG drainage basin from two melt years during the study period; 2018 showing the typical behaviour of a low melt year and 2019 showing the behaviour during a high melt year. The background image is a Sentinel-2 image courtesy of the Copernicus Open Access Hub (<https://scihub.copernicus.eu>). For all mapped study dates, please refer to Fig. S32.

435

436

437

438

439

440

441

442

443

444

445

446

447

448

449

450

451

452

453

454

455

456

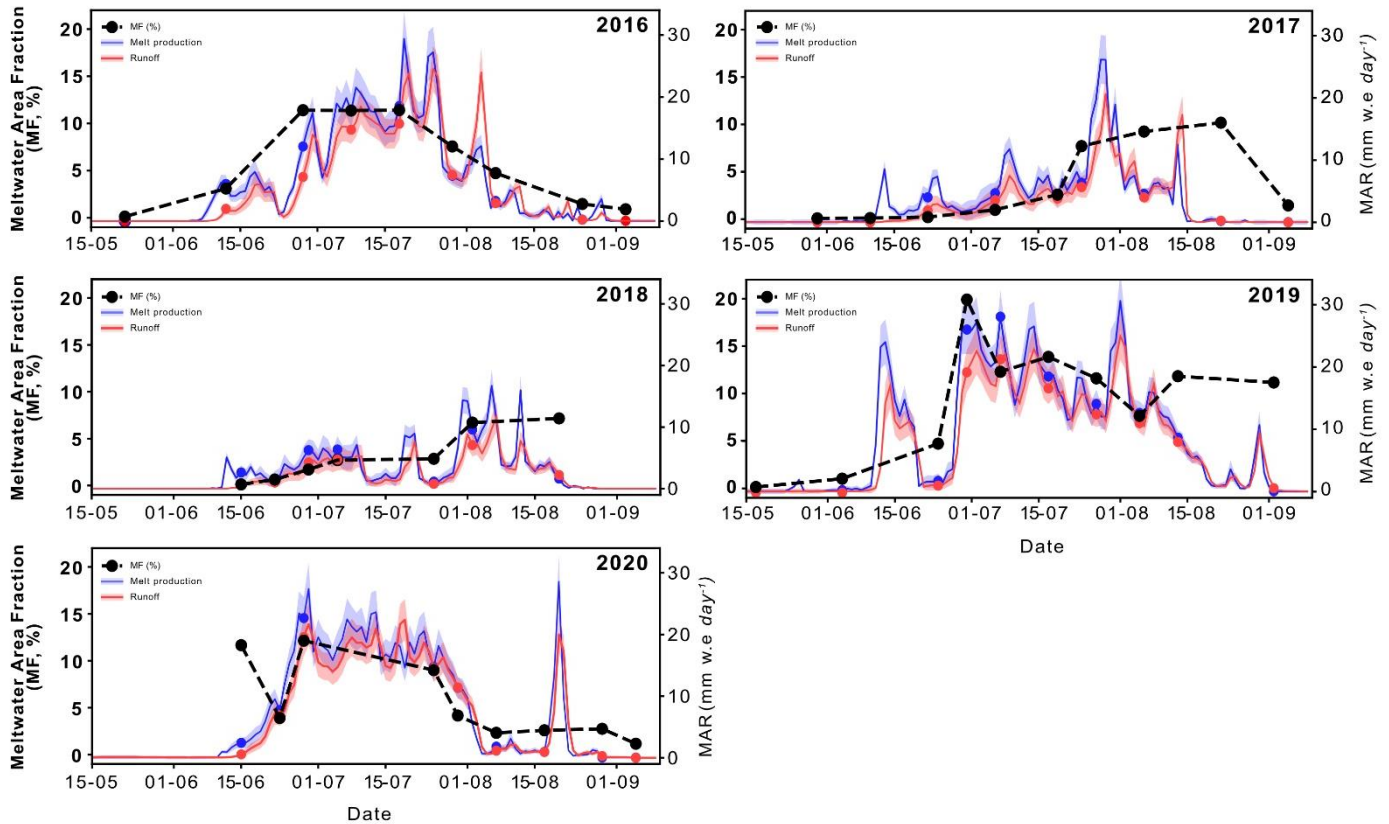


Figure 65. The satellite-derived water metric meltwater area fraction (MF, %) for each mapped date across the study period (2016-2020) alongside MAR v3.11 derived melt production and runoff values (mm w.e day^{-1}) for the HG catchment. $\pm 15\%$ uncertainty envelopes are provided for MAR-derived values (Fettweis et al., 2020).

457 The contribution of rivers and SGLs to the supraglacial drainage network follows the same general seasonal trend as MF. RF
 458 and LF (%) peak at the end of June in the high melt years of 2016, 2019 and 2020 and in mid-August for the low melt years
 459 of 2017 and 2018 (Fig. 7): when hydrologically-connected slush zones are most prominent and SGL numbers are shown to
 460 peak. Overall, the network is largely composed of supraglacial rivers, with RF accounting for an average of $6.2\% \pm 5.6\%$
 461 (mean \pm std) of the HG catchment across the study dates and is higher during high melt years ($7.8\% \pm 6.0\%$) compared to low
 462 melt years ($3.5\% \pm 3.4\%$). The highest RF recorded occurred on the 7th July 2019 and measured 24.5%; the highest RF
 463 measured in a supraglacial hydrologic study. For SGLs, average LF was much lower, accounting for an average of $0.07\% \pm$
 464 0.06% of the melt-prone area of the catchment, with slightly higher LF in high melt years ($0.08\% \pm 0.07\%$) compared to low
 465 melt years ($0.05\% \pm 0.04\%$). In terms of the overall contribution of supraglacial rivers and SGLs to peak meltwater area
 466 fraction, 98% of the network is dominated by supraglacial rivers across all study years, with SGLs playing a less dominant
 467 role in HG's drainage network. In comparison, rivers contribute $\sim 62\%$ to the drainage network in southwest Greenland, with
 468 SGLs contributing $\sim 38\%$ (Yang et al., 2021).

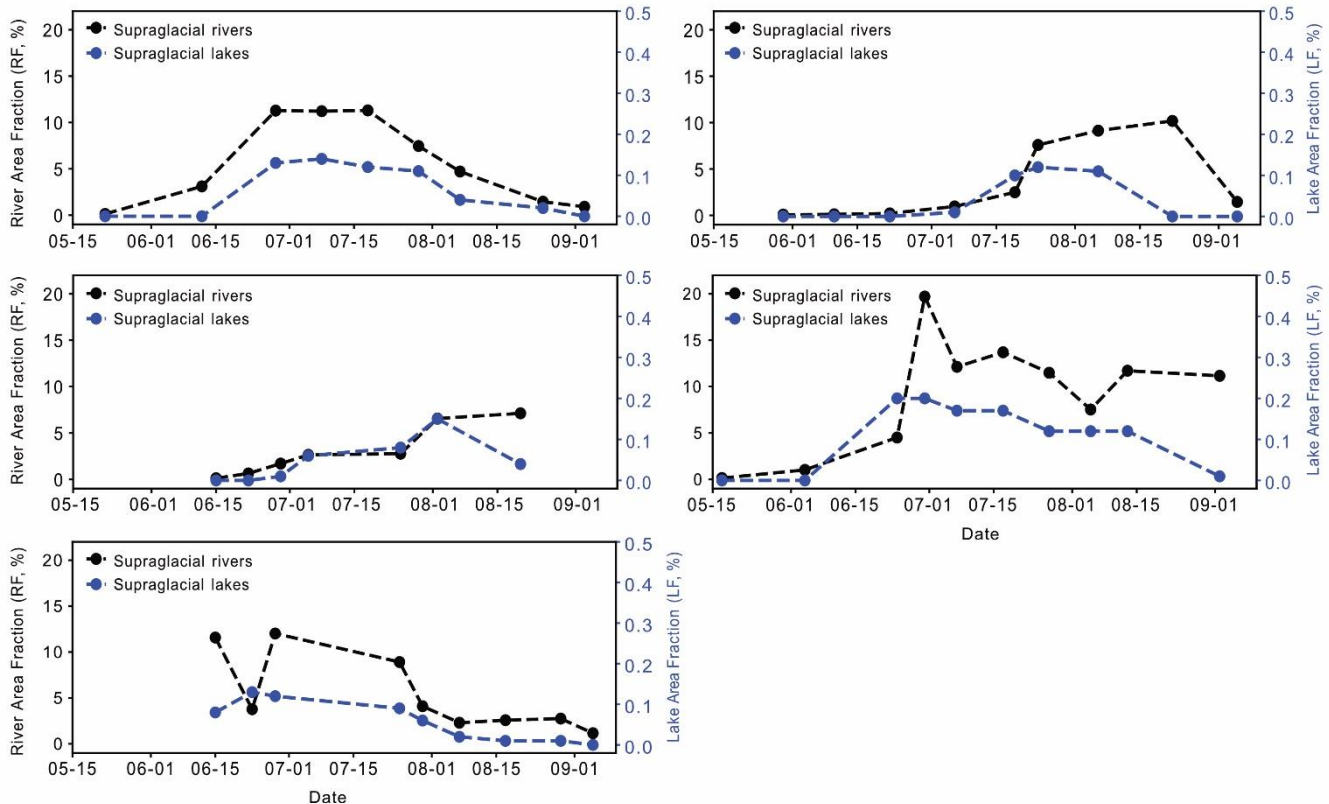


Figure 7. River area fraction (RF, %) and lake area fraction (LF, %) across the melt-prone zone of HG for each mapped date across the study period. On average, 98% of the supraglacial drainage system across the study period at HG is comprised of RF.

469 **4.3 Supraglacial hydrology and MAR runoff**

470 A strong positive linear relationship was identified between satellite-derived MF and regional climate model MAR surface R
 471 for the HG catchment across the study period 2016 to 2020 (Figure 68: $R^2 = 0.77$, $R_s = 0.91$, $p = <0.001$) up until peak MF
 472 values and rapid surface runoff decline at the end of the melt season. Both MF and R increased concurrently each year as the
 473 melt season progressed, with peak runoff often coinciding with the existence of expansive slush fields across the upper part of
 474 the catchment. Runoff remained high until maximum extent occurred, particularly for high melt years: 2016 (29th July, R =
 475 7.5 mm day^{-1}), 2019 (13th August, R = 8.2 mm day^{-1}) and 2020 (30th July, R = 11.4 mm day^{-1}). For low melt years, runoff
 476 remained relatively high until early August (6th August 2017, R = 4.0 mm day^{-1} ; 2nd August 2018, R = 7.1 mm day^{-1}), with
 477 maximum extent occurring within two-weeks (the next mapped date). This relationship between MF and R shows the reliability
 478 of simulated variations in seasonal surface meltwater runoff in capturing the behaviour of the supraglacial drainage network
 479 via satellite-derived water metrics, particularly during high melt years and until runoff declines each melt season.

480

481

482

483

484

485

486

487

488

489

490

491

492

493

494

495

496

497

498

499

500

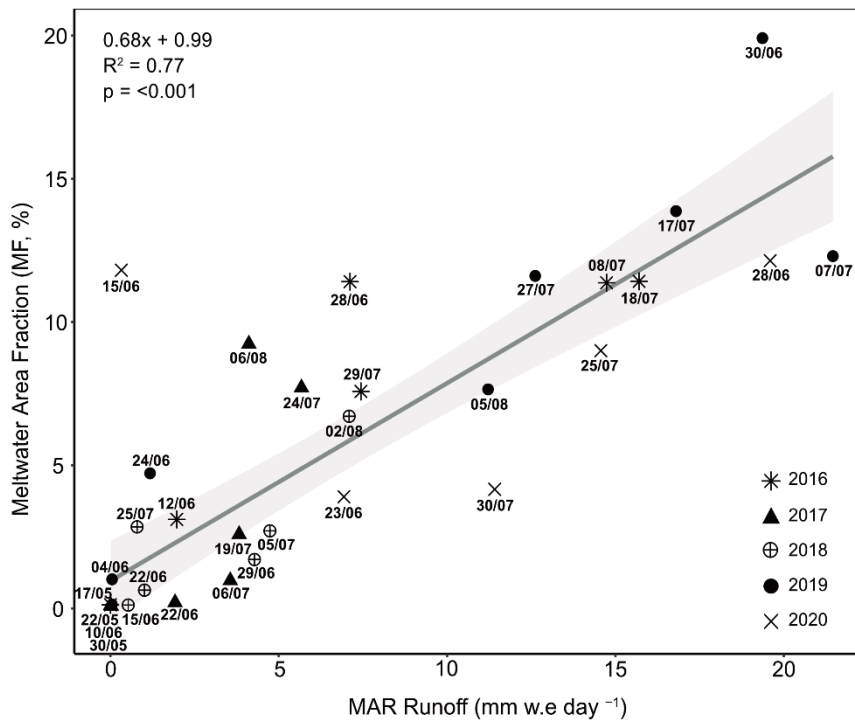


Figure 86. Linear relationship between the satellite-derived water metric meltwater area fraction (MF, %) and RCM-derived runoff from MAR v3.11 for each year studied up until runoff declines.

501 5 Discussion

502 5.1 Spatial characteristics of the supraglacial drainage network

503 Our satellite-derived mapping ~~at HG~~ reveals a complex supraglacial drainage network at HG that reaches a maximum elevation
504 of 1440 m a.s.l, recorded in 2020. This maximum elevation is 400 m lower than supraglacial drainage observations in
505 southwestern Greenland (~1800 m a.s.l; Yang et al., 2021), consistent with observations by Ryan et al. (2019) who found the
506 maximum snowline elevation to be 400 m lower in northern Greenland than southwestern Greenland. Up to elevations of 1000
507 m a.s.l, the supraglacial drainage network is highly persistent across the study period, with a ~~highly~~ variable system beyond
508 this elevation observed within the transient zone; defined in this study as a high elevation region where ~~by~~ drainage is transient
509 in time, but not necessarily space. The recurrence frequency of meltwater pixels in the supraglacial drainage network (Fig. 34)
510 demonstrates the ~~at~~ stability of SGLs in particular, which are stable between study years, re-occupying the same location year-
511 on-year despite ice advection (Smith et al., 2015; Pitcher and Smith, 2019). SGLs increase in size with elevation, with higher
512 elevation lakes persisting for longer (i.e., incapable of draining) and undergoing greater season expansion (Gledhill and
513 Williamson, 2018; Yang et al., 2021). Larger lakes at higher elevations are the result of longer wavelength bed undulations
514 being favourably transferred to the ice surface through thicker ice creating large, shallow surface depressions (Ng et al., 2018).
515 Unlike SGLs found <400 m a.s.l, which are smaller and have likely reached their maximum available melt area, higher-
516 elevation lakes are not yet topographically constrained (Krawczynski et al., 2009). This is similar to observations in
517 southwestern Greenland where SGL size was larger and more variable >1400 m a.s.l, with 21% of these lakes draining via
518 hydrofracture (Yang et al., 2021).

519
520 Whilst SGL location is known to be largely controlled by bed topography (Lampkin and Vanderberg, 2011; Igneczi et al.,
521 2018), this study also notes that many well-established rivers that are longitudinal to ice flow, including many with canyonised
522 features, also reoccupy locations (Macdonald et al., 2018; Boghosian et al., 2021). Supraglacial rivers that are transverse to ice
523 flow or have a transverse element to their channel, however, may be less stable in some areas by up ~300 m (Fig. 34a) over
524 the study period, probably due to the impact of ice advection. In the transient zone, the recurrence frequency is reduced, with
525 tributary rivers and slush zones dominating at higher elevations. Here, their persistence is highly reliant on there being enough
526 melt at higher elevations to initiate and sustain channel formation, which in 2017 and 2018, was limited and therefore drainage
527 occurrence was much reduced in this zone. Also, tributary rivers are typically lower order with narrower channels and
528 shallower depths (Smith et al., 2015; Pitcher and Smith, 2019), meaning their form has the potential to migrate, close and
529 reform quickly, if melt is available. The transient zone ~~therefore~~ is therefore not only influenced by melt availability overtime,
530 but the potential for migration in space. In agreement with previous studies (Joughin et al., 2013; Poinar et al., 2015), we also
531 show that rivers tend to be longer at higher elevations (>25 km long), consistent with observations in SW GrIS (>40 km long),
532 likely due to the basal transfer of only long-wavelength basal undulations to the surface due to thicker ice and the reduced
533 presence of surface crevassing (Gudmundsson, 2003; Lampkin and Vanderberg, 2011; Crozier et al., 2018).

534

535 Drainage patterns are also shown to vary across HG, with a dendritic-style of drainage observed in the northern sector and a
536 parallel-style drainage observed in the southern sector. These differing patterns not only highlight variations across different
537 hydrologic catchments of the GrIS, but also intra-catchment variations, which may stem from local variations in surface
538 topography via the transmission of basal topography (Raymond and Gudmundsson, 2005; Ng et al., 2018) controlled by bed
539 roughness/ structure, wavelength transfer and differing ice flow regimes (Gudmundsson et al., 1998,2003; Lampkin and
540 VanderBerg, 2011; Crozier et al., 2018; Igneczi et al., 2018). This has been shown to play an important role in mapped rivers
541 and lake hydromorphology at both 79°N Glacier (Lu et al., 2021) and across the Devon Ice Cap (Wyatt and Sharp, 2015).

542

543 In the northern sector of HG, we observed short supraglacial rivers and small SGLs at lower elevations (200 - 400 m a.s.l) and
544 a prominent dendritic-style drainage pattern of interconnected rivers and lakes up to 1000 m a.s.l, with some larger rivers
545 abruptly terminating. Such characteristics suggest the interception of runoff by crevasses and moulins, with such capture
546 directed to the en- and sub-glacial system with the potential for pronounced impacts on localised flow rates (Catania et al.,
547 2008; Schoof, 2010; Mejia et al., 2022). This drainage style is typical of that observed within the western and southwestern
548 sectors of GrIS, whereby structurally-controlled drainage of supraglacial rivers flowing between SGLs promote shorter river
549 channels, whilst high rates of crevassing at lower elevations (<1000 m a.s.l) means virtually all surface meltwater is captured
550 and diverted before reaching the ice edge. This more compact style of drainage is likely to create a ‘flashier’ response in
551 hydrographs, with a greater runoff peak and shorter rising limb (Smith et al., 2017). Additionally, as shown by Carr et al.
552 (2015) and Rignot et al. (2021), this sector of HG sits within a 475 m deep basal trough that extends ~45 km wide and >70
553 km inland and is characterised by fast rates of flow (200 – 600 m yr⁻¹). Faster basal sliding has the ability to promote the more
554 efficient transfer of basal topography to the surface and can subsequently precondition the large-scale spatial structure of the
555 surface drainage system, including drainage fragmentation due to higher rates of crevassing and moulin formation, which can
556 further supply meltwater to this faster-flowing sector-(Crozier et al., 2018; Igneczi et al., 2018).

557

558 In comparison, the sub-parallel drainage structure of the supraglacial network in the southern sector differs greatly to that of
559 the northern sector of HG and observed drainage in western and southwestern regions of the GrIS. Drainage largely consists
560 of continuously-flowing rivers that ~~drain~~drain surface meltwater from the slush zone at ~1500 m a.s.l to much lower elevations
561 (200 m a.s.l), with some rivers directly terminating off the ice sheet edge. This suggests, suggesting limited opportunities for
562 meltwater to penetrate to the ice sheet bed, with meltwater having longer transport times to travel to the catchment outlet (i.e.,
563 proglacial zone/Kane Basin) with the hydrograph expected to have a more subdued and longer rising limb (Karamouz et al.,
564 2013; Yang et al., 2019a). Within this southern sector of HG, ice velocity is significantly slower (<100 m yr⁻¹; Rignot et al.,
565 2021) than its northern counterpart, with relatively thick ice contributing to the absence of crevasses and moulins (Oswald and
566 Gogineni, 2011; Yang et al., 2019a; Andrews et al., 2022), as well as controlling the hydromorphology of the drainage network
567 found here. Similar drainage hydromorphology was also mapped at the neighbouring glacier at Inglefield Land (Yang et al.,

568 2019a; Li et al., 2022), with supraglacial rivers flowing uninterrupted into the proglacial zone, with discharge into terrestrial
569 rivers directly reflecting the timing and intensity of surface meltwater runoff from the outlet glacier catchment without
570 modification from en- and/or subglacial processes.

571

572 The supraglacial drainage configuration is also further influenced by significant structural elements which were identified by
573 Livingstone et al., (2017) via the Moderate-Resolution Imaging Spectroradiometer (MODIS) mosaic of Greenland (Haran et
574 al., 2013). Two linear structures expressed as depressions on the ice surface that run in a southwest to northeast direction across
575 HG are clearly visible on the mapped glacier surface in this study (Fig. 34a, Fig. 79), with many supraglacial rivers and SGLs
576 aligned-to or terminating at them. Some longitudinal rivers are also shown to suddenly change direction when encountering
577 these structures, with subsequent channels diverting at a 90-degree angle, transverse to ice flow (Fig. 43a, 34b). It is at the
578 intersection of such structures we observe some channel advection with spacing of 300 m (Fig. 34a), broadly representing the
579 ice displacement over the study period. Other basal structures are also reflected within the supraglacial drainage system,
580 including many V- and X- shaped patterns clearly controlled by depressions in the bed. There is a strong glacier-wide emphasis
581 here of these structures influential control on drainage, which are reproduced here in Figure 7 based on Livingstone et al.
582 (2017) from MODIS imagery (MOG2015, Haran et al., 2018) and also within bed topography data from BedMachine (version
583 4; Morlighem et al., 2017, 2021). This identification provides independent confirmation of the existence of these depressions
584 in the bed and their subsequent expression on the surface, as well as how they significantly control the multi-year surface
585 drainage configuration within the vicinity of such structures.

586

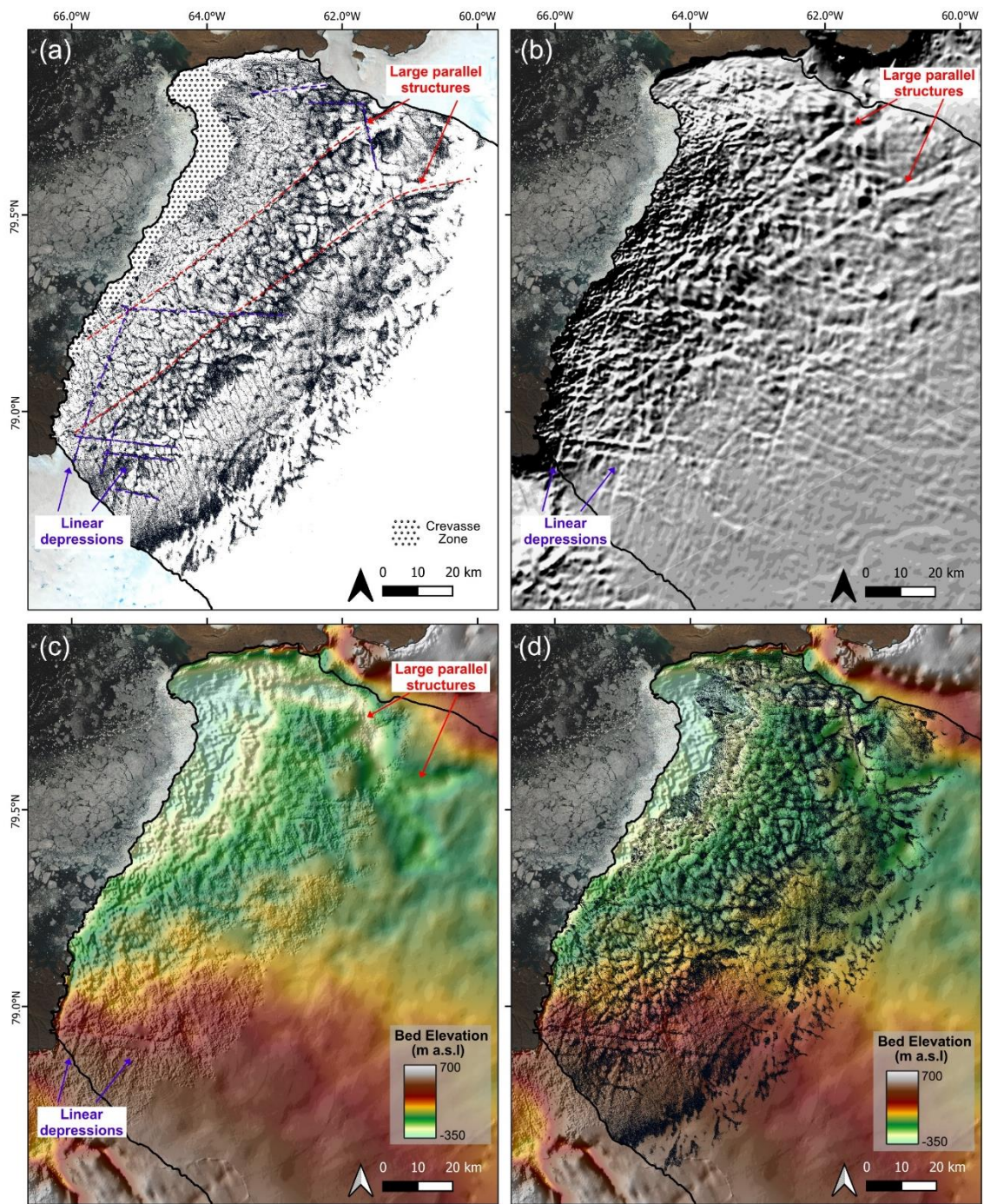
587

588

589

590

591
592
593
594
595
596
597
598
599
600
601
602
603
604
605
606
607
608
609
610
611
612
613
614
615
616
617
618
619
620
621
622
623



624 **Figure 97.** (a) Combined map of the supraglacial drainage network at its maximum extent across 2016 to 2020
625 showing the two parallel structures orientated southwest to northeast identified by red dashed lines. Other V- and
626 X-shaped structures in the drainage network are also highlighted by purple dashed lines; (b) Moderate-Resolution
627 Imaging Spectroradiometer (MODIS) Mosaic of Greenland (MOG2015, Haran et al., 2018) showing evidence of the
628 these structures on the ice surface; (c) Bed topography via BedMachine (Morlighem et al., 2020) showing the
structures as depressions within the bed; (d) the supraglacial drainage network as presented in (a) overlain on top
of bed topography presented in (c) showing the overall influence bed topography has on the surface drainage
structure at HG.

629 The supraglacial drainage network at HG is also shown to be largely dominated by supraglacial rivers (98%), consistent with
630 findings by Lu et al. (2021) in northeast Greenland where supraglacial rivers also dominate the surface drainage network
631 (83.8%). Such river contributions in northern Greenland are significantly higher than southwestern GrIS, whereby supraglacial
632 rivers account for an average of 62% of the network (Yang et al. 2021). The difference in contribution of rivers and SGLs to
633 the drainage network between north and southwest Greenland is likely the result of (i) reduced lake distributions and storage
634 >800 m a.s.l in northern Greenland due to surface topographic constraints (i.e., reduced number of available depressions due
635 to ice thickness; Ignéczi et al., 2016; Lu et al., 2021), (ii) steeper northern surface slopes promoting meltwater runoff over
636 storage, with gentler elevation gradients in southwest Greenland promoting a wider, more susceptible ablation zone to melt
637 and meltwater ponding (Mikkelsen et al., 2016; van As et al., 2017). At HG, the maximum supraglacial RF recorded for a
638 single date across the melt-prone zone reached 24.5%: the largest RF value recorded to-date from a supraglacial drainage
639 mapping study (e.g., 5.3% in northeast Greenland, 5.5% at the Devon Ice Cap and ~14% for southwest Greenland). A reason
640 for this large value is likely due to the inclusion of expansive hydrologically-connected slush zones within hydrologic mapping,
641 which are prevalent during the early-to-mid melt season when snow becomes water saturated. This slush zone progressively
642 moves upglacier and is removed to reveal the bare ice below. Additionally, a lower river threshold (t^5) was used in this study
643 compared to other studies (e.g., t^{20} , Lu et al., 2021), allowing narrower supraglacial rivers and slush zones to be captured,
644 increasing the overall supraglacial drainage and river components. Whilst supraglacial rivers are likely to dominate the
645 drainage network here, similar to northeast Greenland (Lu et al., 2021) regardless of the threshold used due to reduced lake
646 presence, care should be taken when directly comparing drainage network statistics between mapping studies from differing
647 regions of the GrIS.

649 **5.2 Temporal evolution of the supraglacial drainage network**

650 Across the study period (2016 – 2020), we observe the seasonal development and inland evolution of the supraglacial drainage
651 network as the melt season progresses and runoff increases up to the maximum melt extent, which typically occurs at the end-
652 of-July. During the early melt season and at higher elevations as melt progresses, we observe the growth and inland migration
653 of a large, poorly channelised slush zone (Greuell and Knap, 2000). Within this zone, slush flows can occur as surface melt

654 percolates and saturates the snowpack, promoting slush mobilisation into topographical lows and initiating the reopening of
655 perennially-occupied channels (Cuffey and Paterson, 2010; Irvine-Fynn et al. 2011). On higher-draining slopes, such
656 mobilisation can form slush-filled rills, which coalesce into networks of arborescent tributary channels, efficiently transporting
657 melt to larger, primary river channels and, subsequently, the transportation of melt down-glacier (Marston, 1983; Cuffey and
658 Paterson, 2010; Chu, 2014; Rippin and Rawlins, 2021). The seasonal development of the drainage network is shown to
659 transform from a system initially dominated by water percolation to one dominated by channelised, efficient flow (Fig. 45);
660 further confirming behaviour identified across multiple supraglacial drainage mapping studies across the GrIS (Lu et al., 2021;
661 Yang et al., 2021; Li et al., 2022).

662

663 The rate and extent of the spatial and temporal evolution of the supraglacial drainage network is highly variable between years.
664 Several years within the last decade have been characterised by high air temperatures and extreme melt events, including two
665 years represented within this study; 2016 and 2019. Both years, in particular 2019, experienced a strong negative North Atlantic
666 Oscillation and simultaneously a positive East Atlantic index and Greenland Blocking Index phase, which are associated with
667 persistent, anticyclonic conditions over Greenland driving enhanced surface mass loss (Lim et al., 2016; Cullather et al., 2020;
668 Zhang et al., 2022). Mass loss during summer 2019, in particular, was promoted by enhanced solar radiation, reduced cloud
669 cover and the north-westward advection of warm, moist air from the western margins as a result of such atmospheric variability
670 (Hanna et al., 2021; Cullather et al., 2020; Tedesco and Fettweis, 2020; Elmes, 2021). Combined with low snow accumulation
671 in the 2018/19 winter (Sasgen et al., 2020), extensive melting occurred along much of the Greenland coast, with surface melt
672 experienced in the north being the highest on the record since 1948 (Tedesco and Fettweis, 2020). It was during this exceptional
673 and long melt year that we observed the highest MF values (19.9% or 2685 km² recorded on the 30th June 2019) and second
674 highest areal extent of supraglacial drainage network (1375 m a.s.l.; Fig. 45). Ablation continued throughout September (Sasgen
675 et al., 2020; Tedesco et al., 2019; Tedesco and Fettweis, 2020), however this was beyond our mapped timeframe. The year
676 2019 also recorded the largest number of SGLs (527) and cumulative lake areas (151.8 km²). The hydrologic expansion of the
677 drainage network was also rapid, in-line with a record early-melt season event, which combined with low snow accumulation
678 (Tedesco and Fettweis, 2020), promoted rapid snowpack warming, disintegration and exposure of the bare ice zone, resulting
679 in an enhanced melt-albedo feedback mechanism (Tedesco and Fettweis, 2020). Similar findings by Turton et al. (2021) and
680 Hochreuther et al. (2021) at 79°N Glacier recorded the largest SGL numbers and extents of their study periods in 2019,
681 indicating the widespread impact of this extreme melt event, particularly across the GrIS northern sector.

682

683 Similar seasonal and multi-annual behavioural patterns during 2017 and 2018 were, again, also observed by Turton et al.
684 (2021) and Lu et al. (2021) on the north-eastern glacier of 79°N and Otto et al. (2022) on the northern Ryder Glacier. These
685 findings all record a slow rate of SGL increase and late area peak (early-August) in 2017 and 2018, with Lu et al. (2021)
686 confirming the late area peak in combined supraglacial drainage mapping of both lakes and rivers during August 2017. SGL
687 mapping by Turton et al. (2021) also identified the delayed development and lower SGL presence during the 2018 melt season,

688 with SGLs largely limited to <900 m a.s.l. Such findings are consistent with observations in this study, with the onset and
689 inland evolution of the supraglacial network, including both rivers and lakes, delayed by ~1 month compared to other the other
690 study years (2016, 2019, 2020) and the limited areal development of the network (<1150 m a.s.l). Both the melt seasons of
691 2017 and 2018 recorded below average melt (1981 – 2010 reference period) and melt extents (32.9% and 44% respectively)
692 across the GrIS (Tedesco et al., 2017, 2018; Sasgen et al., 2020). There was heavy springtime snowfall and late surviving snow
693 in bare ice areas (Tedesco et al., 2017, 2018); consistent with a strongly positive average summer (JJA) North Atlantic
694 Oscillation and a negative Greenland Blocking Index, hypothesised to inhibit surface melt and promote increased summertime
695 snowfall (Ruan et al., 2019; Sasgen et al., 2020), hence these anomalously cold summers.

696

697 The anomalously early spike in satellite-derived meltwater area recorded in early-June 2020 raises questions as to how extreme
698 melt years, such as 2019, may precondition the ice surface (Cullather et al., 2020) and affect surface conditions and subsequent
699 surface hydrologic behaviour the following year (Culberg et al., 2021). Some SGLs on the GrIS have been found to persist
700 throughout the winter months, due to insulation from a layer of ice and/or snow (Koenig et al., 2015; Law et al., 2020; Schröder
701 et al., 2020). This lake persistence includes the winter of 2019/2020, when late-summer surface melt and high autumnal
702 temperatures (August – November) are believed to have increased subsurface firn temperatures, delaying and even decreasing
703 the ability for subsurface meltwater freezing in northern Greenland, contributing to higher totals of liquid-buried SGLs
704 (Dunmire et al., 2020). This alongside a drier-than-average (1981 – 2020) winter and spring (Tedesco and Fettweis, 2020;
705 Moon et al., 2020), has the potential to cause the rapid disintegration of limited snow present and the subsequent swift exposure
706 of the bare ice zone the following summer. This swift exposure would also include that of perennial rivers and lakes, much
707 earlier in the melt season than expected, hence the increased MF value observed in this study despite low MAR-derived melt
708 production and runoff values.

709 **5.3 Satellite-derived MF and runoff simulations**

710 We found a positive linear relationship between satellite-derived MF and MAR simulated R before runoff declined (Fig. 68),
711 showing how the MF-R relationship can be used to reliably simulate seasonal surface meltwater variation and provide further
712 understanding into how runoff is routed and stored, at least up to peak melt events. This finding supports other studies that
713 have used satellite-derived meltwater metrics and RCM-modelled runoff which have focussed on the southwest GrIS (Yang
714 et al., 2021), Northern GrIS (Lu et al., 2021; Li et al., 2022) and the Devon Ice Cap (Lu et al., 2020). In terms of post-peak
715 melt events, surface meltwater can still cover a substantially large area even after surface runoff has reduced and ceased, as
716 seen in this study. This is known as the ‘delay’ effect (Lu et al., 2021), whereby meltwater may continue to be routed or stored
717 on the ice surface via the slow routing of melt out of snowpack/firn at higher elevations, the stagnation and subsequent
718 preservation of transported meltwater in large supraglacial rivers or the storage of melt in SGLs. Therefore, whilst this MF-R
719 relationship is promising in providing comparative assessments between satellite observations and RCM-modelled runoff at

720 HG, calculated runoff volume via satellite- (Yang et al., 2021) or field-based measurements (Smith et al., 2017) are required
721 to provide further validation of such relationships, in particular over space and time across a full melt season.

722 **5.4 Future implications**

723 Substantial changes have taken place at HG over the last two decades driven by atmospheric and oceanic change (Carr et al.,
724 2015; Rignot et al., 2021). It is therefore important to consider HG and the overall northern regions sensitivity to such warming
725 under present climate scenarios. Northern Greenland is expected to undergo the greatest warming of the 21st Century across
726 the GrIS (Hill et al., 2017), and given its already low rates of winter accumulation compared to other ice sheet sectors (Goelzer
727 et al., 2013), means this region is likely to become ever more sensitive to climatic change in the future. Mapping performed
728 within this study illustrates the multi-annual persistence of the supraglacial drainage network within this high latitudinal region
729 (Fig. 34a) and the rapid and extensive response of this system to high melt years (Fig. 45). This response, in particular to the
730 extreme melt year of 2019, can precondition the ice surface for the following melt season, resulting in earlier but widespread
731 hydrologic activity and longer-lasting melt season. This preconditioning and subsequent behaviour is likely to become
732 increasingly normalised as melt events and atmospheric variability, such as persistent blocking events, increase in frequency
733 and intensity (Rahmstorf and Coumou, 2011; McLeod and Mote, 2016).

734

735 Inland migration of the supraglacial drainage network is also projected with continued warming (Leeson et al., 2015), with
736 recent work already showing ablation area expansion and amplification of melt and runoff post-1990 across Northern
737 Greenland (Noël et al., 2019). Many more surface depressions for future SGL locations are present above the current northern
738 ELA (Ignezi et al. 2016), with the potential to accumulate high volumes of meltwater and feed lengthening overflow
739 supraglacial rivers that extend tens of kilometres downstream to non-local, low elevation moulins (Poinar et al., 2015). For
740 ponded water, if ice becomes thin enough (Poinar et al., 2015), or localised ice columns become vulnerable to fracture from
741 refrozen ice complexities within firn (ice-blobs; Culberg et al., 2022) new hydrofracture events will bring such meltwater to
742 isolated areas of the ice sheet bed. This could have knock-on impacts to ice flow, with the likely delivery of water and heat to
743 a persistent inefficient subglacial system, where thicker, flatter ice may prohibit the development of an efficient subglacial
744 system (Dow et al., 2014), enhancing ice flow (Christoffersen et al., 2018).

745

746 Persistent low-permeability ice slabs which block vertical percolation have continued to thicken overtime in the lower
747 accumulation zone. Ice slabs are expected to enhance runoff from Greenland's interior, particularly in consecutive warm
748 summers (MacFerrin et al., 2019). Enhanced runoff and inland expansion of the supraglacial drainage network will impact
749 meltwater feedback processes, not only in driving overall SMB decline (Noël et al., 2021) but further impacting dynamical
750 behaviour, including hydrofracture potential. At HG, a particular concern is the vulnerability of its northern terminus to
751 increased hydrofracture events from greater melt runoff (Carr et al., 2015). Such events at HG have the potential to promote

752 future rapid run-away retreat of HG, especially if the northern sector of the terminus retreats beyond its pinning point into the
753 deepened bed (below sea level) in which it sits (Carr et al., 2015, Hillebrand et al., 2022).

754

755 As the northern region mainly consists of fast-flowing, marine-terminating outlet glaciers, like HG, that drain a large proportion
756 of the GrIS, further understanding of the mechanisms that drive their dynamical behaviour, in particular related to enhanced
757 runoff, are required for predicting their future contribution to GrIS mass loss and subsequent sea level rise.

758 **6 Conclusion**

759 In this study, we mapped and quantified for the first time, the spatial and temporal evolution of the supraglacial drainage
760 network, including both rivers and lakes, using 10 m Sentinel-2 images from the melt seasons of 2016 to 2020 at Humboldt
761 Glacier, northern Greenland. We identify an extensive supraglacial drainage network exists at Humboldt Glacier that is
762 particularly prevalent up to 1000 m a.s.l with a further variable transient zone extending up to ~1440 m a.s.l. The seasonal
763 evolutionary behaviour of this network migrates up-glacier in response to increasing runoff as air temperatures rise throughout
764 the melt season, with the network transforming from an inefficient system dominated by water percolation and slush flows to
765 one dominated by channelised, efficient flow. Interannual variability of the extent and behaviour of the system is associated
766 with high and low melt years across the study period, with the low melt years of 2017 and 2018 having both limited and
767 delayed spatial development. The extreme melt year of 2019 showed the extensive development and persistence of the
768 supraglacial drainage network into September, which followed by low snow accumulation during the subsequent winter/spring,
769 preconditioned the ice sheet for earlier hydrologic activity in 2020; behaviour which may become more representative with
770 extreme melt events and longer-lasting melt seasons into the future. This work ultimately contributes to advancing our
771 understanding of supraglacial hydrologic processes across the Greenland Ice Sheet by expanding detailed drainage mapping
772 to other understudied regions of the ice sheet, in particular to Greenland's rapidly changing northern region, aiding in
773 projections of future mass loss as enhanced runoff continues with climatic warming.

774

775 **7 Data Availability**

776 Supraglacial river and lake shapefiles can be requested by contacting the lead author. Regional climate model MAR v3.11 data
777 was provided by Dr Xavier Fettweis and is freely available via <ftp://ftp.climato.be/>. Sentinel-2 imagery is available from the
778 Copernicus Open Access Hub (<https://scihub.copernicus.eu>) and digital elevation model ArcticDEM is available via
779 <https://www.pgc.umn.edu/data/arcticdem/>. The automatic river detection algorithm is freely available via
780 https://github.com/njuRS/River_detection.

781 **8 Supplementary Information**

782 Supplementary data related to this article is available to view in the associated PDF.

783 **9 Author Contributions**

784 LDR designed the study, conducted data collection and analysis and prepared the manuscript. KY provided the source code
785 for the automatic detection algorithm for automatic river mapping in Matlab. AJS aided with MAR data extraction for the
786 Humboldt Glacier catchment. DMR, AJS, SJL and KY provided comments on draft versions of the manuscript produced by
787 LDR.

788 **10 Competing interests**

789 Kang Yang is a member of the editorial board of The Cryosphere. The author(s) declare no other conflicts of interest.

790 **11 Acknowledgements**

791 LDR acknowledges financial support from a Natural Environment Research Council (NERC) Doctoral Training Partnership
792 (Grant number NE/L002450/1). Authors would like to acknowledge the Copernicus Open Access Hub for free access to the
793 satellite imagery used in this study and also thank Dr Xavier Fettweis for the availability of MAR data. We also thank the
794 Polar Geospatial Center for availability of the ArcticDEM. The authors would like to thank two anonymous reviewers for
795 providing constructive comments which led to improvements of the manuscript and to the editor (Caroline Clason) for handling
796 the manuscript.

797 **12 Financial Support**

798 This research has been supported by the Natural Environment Research Council (NERC) Doctoral Training Partnership (Grant
799 number NE/L002450/1).

800

801 **References**

802 Amory, C., Kittel, C., Le Toumelin, L., Agosta, C., Delhasse, A., Favier, V., and Fettweis, X.: Performance of MAR (v3.11)
803 in simulating the drifting-snow climate and surface mass balance of Adélie Land, East Antarctica. Geoscientific Model
804 Development, 14(6), 3487–3510, <https://doi.org/10.5194/gmd-14-3487-2021>, 2021.

805

806 Andrews, L. C., Catania, G. A., Hoffman, M. J., Gulley, J. D., Lüthi, M. P., Ryser, C., Hawley, R. L., and Neumann, T. A.:
807 Direct observations of evolving subglacial drainage beneath the Greenland Ice Sheet, *Nature*, 514, 80-83,
808 <https://doi.org/10.1038/nature13796>, 2014.

809 Andrews, L. C., Poinar, K., and Trunz, C.: Controls on Greenland moulin geometry and evolution from the Moulin Shape
810 model, *The Cryosphere*, 16, 2421-2448, <https://doi.org/10.5194/tc-16-2421-2022>, 2022.

811 Baillarin, S., Meygret, A., Dechoz, C., Petrucci, B., Lacherade, S., Trémas, T., Isola, C., Martimort, P., and Spoto, F.: Sentinel-
812 2 level 1 products and image processing performances, 2012 IEEE international geoscience and remote sensing symposium,
813 7003-7006, ~~doi:~~ <https://doi.org/10.1109/IGARSS.2012.6351959>, 2012.

814 [Banwell, A.F., Cabellero, M., Arnold, N., Glasser, N., Cathles, L.M., MacAyeal, D.: Supraglacial lakes on the Larsen B Ice
815 Shelf, Antarctica, and Paakitsoq Region, Greenland: a comparative study. *Annals of Glaciology*, 55\(66\),
816 <https://doi.org/10.3189/2014AoG66A049>, 2014.](https://doi.org/10.3189/2014AoG66A049)

817 Bartholomew, I., Nienow, P., Mair, D., Hubbard, A., King, M. A., and Sole, A.: Seasonal evolution of subglacial drainage and
818 acceleration in a Greenland outlet glacier, *Nature Geoscience*, 3, 408-411, <https://doi.org/10.1038/ngeo863>, 2010.

819 Bartholomew, I., Nienow, P., Sole, A., Mair, D., Cowton, T., and King, M. A.: Short-term variability in Greenland Ice Sheet
820 motion forced by time-varying meltwater drainage: Implications for the relationship between subglacial drainage system
821 behavior and ice velocity, *Journal of Geophysical Research: Earth Surface*, 117, <https://doi.org/10.1029/2011JF002220>, 2012.

822 [Boghosian, A.L., Pitcher, L.H., Smith, L.C. et al. Development of ice-shelf estuaries promotes fractures and calving. *Nature
823 Geoscience*, 14, 899–905, <https://doi.org/10.1038/s41561-021-00837-7>, 2021.](https://doi.org/10.1038/s41561-021-00837-7)

824 Box, J. E. and Decker, D. T.: Greenland marine-terminating glacier area changes: 2000–2010, *Annals of Glaciology*, 52, 91-
825 98, <https://doi.org/10.3189/172756411799096312>, 2011.

826 Carr, J. R., Vieli, A., Stokes, C., Jamieson, S., Palmer, S., Christoffersen, P., Dowdeswell, J., Nick, F., Blankenship, D., and
827 Young, D.: Basal topographic controls on rapid retreat of Humboldt Glacier, northern Greenland, *Journal of Glaciology*, 61,
828 137-150, <https://doi.org/10.3189/2015JoG14J128>, 2015.

829 Catania, G. A., Neumann, T. A., and Price, S. F.: Characterizing englacial drainage in the ablation zone of the Greenland ice
830 sheet, *Journal of Glaciology*, 54, 567-578, <https://doi.org/10.3189/002214308786570854>, 2008.

831 Christoffersen, P., Bougamont, M., Hubbard, A., Doyle, S. H., Grigsby, S., and Pettersson, R.: Cascading lake drainage on the
832 Greenland Ice Sheet triggered by tensile shock and fracture, *Nature Communications*, 9, 1064, [https://doi.org/10.1038/s41467-
833 018-03420-8](https://doi.org/10.1038/s41467-018-03420-8), 2018.

834 Chu, V. W.: Greenland ice sheet hydrology: A review, *Progress in Physical Geography*, 38, 19-54,
835 <https://doi.org/10.1177/0309133313507075>, 2014.

836 [Corr, D., Leeson, A., McMillan, M., Zhang, C., and Barnes, T.: An inventory of supraglacial lakes and channels across the
837 West Antarctic Ice Sheet, *Earth Syst. Sci. Data*, 14, 209–228, <https://doi.org/10.5194/essd-14-209-2022>, 2022.](https://doi.org/10.5194/essd-14-209-2022)

838 Crozier, J., Karlstrom, L., and Yang, K.: Basal control of supraglacial meltwater catchments on the Greenland Ice Sheet, *The
839 Cryosphere*, 12, 3383-3407, <https://doi.org/10.5194/tc-12-3383-2018>, 2018.

840 Cuffey, K. M. and Paterson, W. S. B.: The physics of glaciers, Academic Press, 2010.

841 Culberg, R., Chu, W., and Schroeder, D. M.: Shallow Fracture Buffers High Elevation Runoff in Northwest Greenland,
842 Geophysical Research Letters, doi: <https://doi.org/10.1029/2022GL101151>, 2022. e2022GL101151,
843 <https://doi.org/10.1029/2022GL101151>, 2022.

844 Culberg, R., Schroeder, D. M., and Chu, W.: Extreme melt season ice layers reduce firn permeability across Greenland, Nature
845 communications, 12, 2336, <https://doi.org/10.1038/s41467-021-22656-5>, 2021.

846 Cullather, R. I., Andrews, L. C., Croteau, M. J., Digirolamo, N. E., Hall, D. K., Lim, Y. K., Loomis, B. D., Shuman, C. A.,
847 and Nowicki, S. M.: Anomalous circulation in July 2019 resulting in mass loss on the Greenland Ice Sheet, Geophysical
848 Research Letters, 47, e2020GL087263, <https://doi.org/10.1029/2020GL087263>, 2020.

849 Davison, B. J., Sole, A. J., Livingstone, S. J., Cowton, T. R., and Nienow, P. W.: The influence of hydrology on the dynamics
850 of land-terminating sectors of the Greenland ice sheet, Frontiers in Earth Science, 7, 10,
851 <https://doi.org/10.3389/feart.2019.00010>, 2019.

852 [Dell, R., Banwell, A.F., Willis, I., Arnold, N., Halberstadt, A.R.W., Chudley, T.R., Pritchard, H.: Supervised classification of](#)
853 [slush and ponded water on Antarctic ice shelves using Landsat 8 imagery, Journal of Glaciology, 1–14, \[https://doi.org/10.1017/\]\(https://doi.org/10.1017/jog.2021.114\)](#)
854 [jog.2021.114, 2022.](#)

855 Dow, C., Kulesa, B., Rutt, I., Doyle, S. H., and Hubbard, A.: Upper bounds on subglacial channel development for interior
856 regions of the Greenland ice sheet, Journal of Glaciology, 60, 1044–1052, <https://doi.org/10.3189/2014JoG14J093>, 2014.

857 Dunmire, D., Banwell, A. F., Wever, N., Lenaerts, J., and Datta, R. T.: Contrasting regional variability of buried meltwater
858 extent over 2 years across the Greenland Ice Sheet, The Cryosphere, 15, 2983–3005, <https://doi.org/10.5194/tc-15-2983-2021>,
859 2021.

860 Elmes, A., Levy, C., Erb, A., Hall, D. K., Scambos, T. A., DiGirolamo, N., and Schaaf, C.: Consequences of the 2019 greenland
861 ice sheet melt episode on albedo, Remote Sensing, 13, 227, <https://doi.org/10.3390/rs13020227>, 2021.

862 Gardner, A. S., M. A. Fahnestock, and T. A. Scambos., ITS_LIVE Regional Glacier and Ice Sheet Surface Velocities. Data
863 archived at National Snow and Ice Data Center, <https://doi.org/10.5067/6II6VW8LLWJ7>, 2019.

864 [Fettweis, X., Box, J. E., Agosta, C., Amory, C., Kittel, C., Lang, C., Van As, D., Machguth, H., & Gallée, H.: Reconstructions](#)
865 [of the 1900–2015 Greenland ice sheet surface mass balance using the regional climate MAR model. The Cryosphere, 11\(2\),](#)
866 [1015–1033. <https://doi.org/10.5194/tc-11-1015-2017>. 2017.](#)

867 [Fettweis, X., Hofer, S., Krebs-Kanzow, U., Amory, C., Aoki, T., Berends, C. J., Born, A., Box, J. E., Delhasse, A., Fujita, K.,](#)
868 [Gierz, P., Goelzer, H., Hanna, E., Hashimoto, A., Huybrechts, P., Kapsch, M.-L., King, M. D., Kittel, C., Lang, C., Langen,](#)
869 [P. L., Lenaerts, J. T. M., Liston, G. E., Lohmann, G., Mernild, S. H., Mikolajewicz, U., Modali, K., Mottram, R. H., Niwano,](#)
870 [M., Noël, B., Ryan, J. C., Smith, A., Streffing, J., Tedesco, M., van de Berg, W. J., van den Broeke, M., van de Wal, R. S. W.,](#)
871 [van Kampenhout, L., Wilton, D., Wouters, B., Ziemen, F., and Zolles, T.: GrSMBMIP: intercomparison of the modelled 1980–](#)
872 [2012 surface mass balance over the Greenland Ice Sheet, The Cryosphere, 14, 3935–3958, \[https://doi.org/10.5194/tc-14-3935-\]\(https://doi.org/10.5194/tc-14-3935-2020\)](#)
873 [2020, 2020.](#)

874 Gleason, C. J., Smith, L. C., Chu, V. W., Legleiter, C. J., Pitcher, L. H., Overstreet, B. T., Rennermalm, A. K., Forster, R. R.,
875 and Yang, K.: Characterizing supraglacial meltwater channel hydraulics on the Greenland Ice Sheet from in situ observations,
876 *Earth Surface Processes and Landforms*, 41, 2111-2122, <https://doi.org/10.1002/esp.3977>, 2016.

877 Gleason, C. J., Yang, K., Feng, D., Smith, L. C., Liu, K., Pitcher, L. H., Chu, V. W., Cooper, M. G., Overstreet, B. T., and
878 Rennermalm, A. K.: Hourly surface meltwater routing for a Greenlandic supraglacial catchment across hillslopes and through
879 a dense topological channel network, *The Cryosphere*, 15, 2315-2331, <https://doi.org/10.5194/tc-15-2315-2021>, 2021.

880 Gledhill, L. A. and Williamson, A. G.: Inland advance of supraglacial lakes in north-west Greenland under recent climatic
881 warming, *Annals of Glaciology*, 59, 66-82, <https://doi.org/10.1017/aog.2017.31>, 2018.

882 Goelzer, H., Huybrechts, P., Fürst, J. J., Nick, F. M., Andersen, M. L., Edwards, T. L., Fettweis, X., Payne, A. J., and Shannon,
883 S.: Sensitivity of Greenland ice sheet projections to model formulations, *Journal of Glaciology*, 59, 733-749,
884 <https://doi.org/10.3189/2013JoG12J182>, 2013.

885 Gray, L.: Brief communication: Glacier run-off estimation using altimetry-derived basin volume change: case study at
886 Humboldt Glacier, northwest Greenland, *The Cryosphere*, 15, 1005-1014, <https://doi.org/10.5194/tc-15-1005-2021>, 2021.

887 Greuell, W. and Knap, W. H.: Remote sensing of the albedo and detection of the slush line on the Greenland ice sheet, *Journal*
888 *of Geophysical Research: Atmospheres*, 105, 15567-15576, <https://doi.org/10.1029/1999JD901162>, 2000.

889 Gudmundsson, G. H.: Transmission of basal variability to a glacier surface, *Journal of Geophysical Research: Solid Earth*,
890 108, <https://doi.org/10.1029/2002JB002107>, 2003.

891 Gudmundsson, G. H., Raymond, C. F., and Bindschadler, R.: The origin and longevity of flow stripes on Antarctic ice streams,
892 *Annals of Glaciology*, 27, 145-152, <https://doi.org/10.3189/1998AoG27-1-145-152>, 1998.

893 Hanna, E., Cappelen, J., Fettweis, X., Mernild, S. H., Mote, T. L., Mottram, R., Steffen, K., Ballinger, T. J., and Hall, R. J.:
894 Greenland surface air temperature changes from 1981 to 2019 and implications for ice-sheet melt and mass-balance change,
895 *International Journal of Climatology*, 41, E1336-E1352, <https://doi.org/10.1002/joc.6771>, 2021.

896 Hanna, E., Mernild, S. H., Cappelen, J., and Steffen, K.: Recent warming in Greenland in a long-term instrumental (1881–
897 2012) climatic context: I. Evaluation of surface air temperature records, *Environmental Research Letters*, 7, 045404,
898 <https://doi.org/10.1088/1748-9326/7/4/045404>, 2012.

899 Haran, T., J. Bohlander, T. Scambos, T. Painter, and M. Fahnestock. MEaSURES MODIS Mosaic of Greenland (MOG) 2005,
900 2010, and 2015 Image Maps, Version 2. Boulder, Colorado USA. NASA National Snow and Ice Data Center Distributed
901 Active Archive Center. <https://doi.org/10.5067/9ZO79PHOTYE5>, 2018, last access 21st November 2022.

902 Haran, T., J. Bohlander, T. Scambos, T. Painter, and M. Fahnestock. MEaSURES MODIS Mosaic of Greenland 2005
903 (MOG2005) Image Map, Version 1. Boulder, Colorado. NSIDC: National Snow and Ice Data Center,
904 <http://doi.org/10.5067/IAGYM8Q26QRE>, 2013.

905 Hill, E. A., Carr, J. R., and Stokes, C. R.: A review of recent changes in major marine-terminating outlet glaciers in Northern
906 Greenland, *Frontiers in Earth Science*, 4, 111, <https://doi.org/10.3389/feart.2016.00111>, 2017.

907 Hill, E. A., Carr, J. R., Stokes, C. R., and Gudmundsson, G. H.: Dynamic changes in outlet glaciers in northern Greenland
908 from 1948 to 2015, *The Cryosphere*, 12, 3243-3263, <https://doi.org/10.5194/tc-12-3243-2018>, 2018.

909 Hillebrand, T. R., Hoffman, M. J., Perego, M., Price, S. F., and Howat, I. M.: The contribution of Humboldt Glacier, North
910 Greenland, to sea-level rise through 2100 constrained by recent observations of speedup and retreat, *The Cryosphere*, *The*
911 *Cryosphere*, 16(11), 4679-4700, <https://doi.org/10.5194/tc-16-4679-2022>, 2022.

912 Hochreuther, P., Neckel, N., Reimann, N., Humbert, A., and Braun, M.: Fully automated detection of supraglacial lake area
913 for Northeast Greenland using sentinel-2 time-series, *Remote Sensing*, 13, 205, <https://doi.org/10.3390/rs13020205>, 2021.

914 Hoffman, M., Catania, G., Neumann, T., Andrews, L., and Rumrill, J.: Links between acceleration, melting, and supraglacial
915 lake drainage of the western Greenland Ice Sheet, *Journal of Geophysical Research: Earth Surface*, 116,
916 <https://doi.org/10.1029/2010JF001934>, 2011.

917 [Holmes, C. W.: Morphology and hydrology of the Mint Julep area, southwest Greenland. In Project Mint Julep Investigation](#)
918 [of Smooth Ice Areas of the Greenland Ice Cap, 1953; Part II Special Scientific Reports, Arctic, Desert, Tropic Information](#)
919 [Center; Research Studies Institute; Air University, 1955.](#)

920 Ignéczi, Á., Sole, A. J., Livingstone, S. J., Leeson, A. A., Fettweis, X., Selmes, N., Gourmelen, N., and Briggs, K.: Northeast
921 sector of the Greenland Ice Sheet to undergo the greatest inland expansion of supraglacial lakes during the 21st century,
922 *Geophysical Research Letters*, 43, 9729-9738, <https://doi.org/10.1002/2016GL070338>, 2016.

923 Ignéczi, Á., Sole, A. J., Livingstone, S. J., Ng, F. S., and Yang, K.: Greenland Ice Sheet surface topography and drainage
924 structure controlled by the transfer of basal variability, *Frontiers in Earth Science*, 6, 101,
925 <https://doi.org/10.3389/feart.2018.00101>, 2018.

926 Irvine-Fynn, T. D., Hodson, A. J., Moorman, B. J., Vatne, G., and Hubbard, A. L.: Polythermal glacier hydrology: A review,
927 *Reviews of Geophysics*, 49, <https://doi.org/10.1029/2010RG000350>, 2011.

928 Joughin, I., Das, S., Flowers, G., Behn, M., Alley, R., King, M., Smith, B., Bamber, J., van den Broeke, M., and van Angelen,
929 J.: Influence of supraglacial lakes and ice-sheet geometry on seasonal ice-flow variability, *Cryosphere*, 7, 1185-1192,
930 <https://doi.org/10.5194/tcd-7-1101-2013>, 2013.

931 Joughin, I., Fahnestock, M., Kwok, R., Gogineni, P., and Allen, C.: Ice flow in the Humboldt, Petermann, and Ryder Glaciers,
932 North Greenland, *Journal of Glaciology*, 45, 231-341, <https://doi.org/10.3189/S0022143000001738>, 1999.

933 Joughin, I., Kwok, R., and Fahnestock, M.: Estimation of ice-sheet motion using satellite radar interferometry: method and
934 error analysis with application to Humboldt Glacier, Greenland, *Journal of Glaciology*, 42, 564-575,
935 <https://doi.org/10.3189/S0022143000003543>, 1996.

936 Kamb, B.: Glacier surge mechanism based on linked cavity configuration of the basal water conduit system, *Journal of*
937 *Geophysical Research: Solid Earth*, 92, 9083-9100, <https://doi.org/10.1029/JB092iB09p09083>, 1987.

938 Karlstrom, L. and Yang, K.: Fluvial supraglacial landscape evolution on the Greenland Ice Sheet, *Geophysical Research*
939 *Letters*, 43, 2683-2692, <https://doi.org/10.1002/2016GL067697>, 2016.

940 Koenig, L. S., Lampkin, D., Montgomery, L., Hamilton, S., Turrin, J., Joseph, C., Moutsafa, S., Panzer, B., Casey, K., and
941 Paden, J. D.: Wintertime storage of water in buried supraglacial lakes across the Greenland Ice Sheet, *The Cryosphere*, 9,
942 1333-1342, <https://doi.org/10.5194/tc-9-1333-2015>, 2015.

943 Lampkin, D. and VanderBerg, J.: A preliminary investigation of the influence of basal and surface topography on supraglacial
944 lake distribution near Jakobshavn Isbrae, western Greenland, *Hydrological Processes*, 25, 3347-3355,
945 <https://doi.org/10.1002/hyp.8170>, 2011.

946 Lampkin, D. and VanderBerg, J.: Supraglacial melt channel networks in the Jakobshavn Isbræ region during the 2007 melt
947 season, *Hydrological Processes*, 28, 6038-6053, <https://doi.org/10.1002/hyp.10085>, 2014.

948 Law, R., Arnold, N., Benedek, C., Tedesco, M., Banwell, A., and Willis, I.: Over-winter persistence of supraglacial lakes on
949 the Greenland Ice Sheet: results and insights from a new model, *Journal of Glaciology*, 66, 362-372,
950 <https://doi.org/10.1017/jog.2020.7>, 2020.

951 Leeson, A., Shepherd, A., Briggs, K., Howat, I., Fettweis, X., Morlighem, M., and Rignot, E.: Supraglacial lakes on the
952 Greenland ice sheet advance inland under warming climate, *Nature Climate Change*, 5, 51-55,
953 <https://doi.org/10.1038/nclimate2463>, 2015.

954 Li, Y., Yang, K., Gao, S., Smith, L. C., Fettweis, X., and Li, M.: Surface meltwater runoff routing through a coupled
955 supraglacial-proglacial drainage system, Inglefield Land, northwest Greenland, *International Journal of Applied Earth
956 Observation and Geoinformation*, 106, 102647, <https://doi.org/10.1016/j.jag.2021.102647>, 2022.

957 Lim, Y.-K., Schubert, S. D., Nowicki, S. M., Lee, J. N., Molod, A. M., Cullather, R. I., Zhao, B., and Velicogna, I.:
958 Atmospheric summer teleconnections and Greenland Ice Sheet surface mass variations: Insights from MERRA-2,
959 *Environmental Research Letters*, 11, 024002, <https://doi.org/10.1088/1748-9326/11/2/024002>, 2016.

960 Livingstone, S. J., Chu, W., Ely, J. C., and Kingslake, J.: Paleofluvial and subglacial channel networks beneath Humboldt
961 Glacier, Greenland, *Geology*, 45, 551-554, <https://doi.org/10.1130/G38860.1>, 2017.

962 Lu, Y., Yang, K., Lu, X., Li, Y., Gao, S., Mao, W., and Li, M.: Response of supraglacial rivers and lakes to ice flow and
963 surface melt on the northeast Greenland ice sheet during the 2017 melt season, *Journal of Hydrology*, 602, 126750,
964 <https://doi.org/10.1016/j.jhydrol.2021.126750>, 2021.

965 Lu, Y., Yang, K., Lu, X., Smith, L. C., Sole, A. J., Livingstone, S. J., Fettweis, X., and Li, M.: Diverse supraglacial drainage
966 patterns on the Devon ice Cap, Arctic Canada, *Journal of Maps*, 16, 834-846, <https://doi.org/10.1080/17445647.2020.1838353>,
967 2020.

968 [Macdonald, G., Banwell, A., & MacAyeal, D.: Seasonal evolution of supraglacial lakes on a floating ice tongue, Petermann
969 Glacier, Greenland, *Annals of Glaciology*, 59\(76pt1\), 56-65. <https://doi:10.1017/aog.2018.9>, 2018.](#)

970 MacFerrin, M., Machguth, H., As, D. v., Charalampidis, C., Stevens, C., Heilig, A., Vandecrux, B., Langen, P., Mottram, R.,
971 and Fettweis, X.: Rapid expansion of Greenland's low-permeability ice slabs, *Nature*, 573, 403-407,
972 <https://doi.org/10.1038/s41586-019-1550-3>, 2019.

973 Marston, R. A.: Supraglacial stream dynamics on the Juneau Icefield, *Annals of the Association of American Geographers*,
974 73, 597-608, <https://doi.org/10.1111/j.1467-8306.1983.tb01861.x>, 1983.

975 McFeeters, S. K.: The use of the Normalized Difference Water Index (NDWI) in the delineation of open water features,
976 *International journal of remote sensing*, 17, 1425-1432, <https://doi.org/10.1080/01431169608948714>, 1996.

977 McLeod, J. T. and Mote, T. L.: Linking interannual variability in extreme Greenland blocking episodes to the recent increase
978 in summer melting across the Greenland ice sheet, *International Journal of Climatology*, 36, 1484-1499,
979 <https://doi.org/10.1002/joc.4440>, 2016.

980 Mejia, J., Gulley, J., Trunz, C., Covington, M. D., Bartholomaus, T., Breithaupt, C., Xie, S., and Dixon, T. H.: Moulin density
981 controls the timing of peak pressurization within the Greenland Ice Sheet's subglacial drainage system, *Geophysical Research*
982 *Letters*, 49, e2022GL100058, <https://doi.org/10.1029/2022GL100058>, 2022.

983 Moon, T. A., Tedesco, M., Box, J., Cappelen, J., Fausto, R., Fettweis, X., Korsgaard, N., Loomis, B., Mankoff, K., and Mote,
984 T.: Arctic Report Card 2020: Greenland Ice Sheet, <https://doi.org/10.25923/ms78-g612>, 2020.

985 Morlighem, M., Williams, C. N., Rignot, E., An, L., Arndt, J. E., Bamber, J. L., Catania, G., Chauché, N., Dowdeswell, J. A.,
986 and Dorschel, B.: BedMachine v3: Complete bed topography and ocean bathymetry mapping of Greenland from multibeam
987 echo sounding combined with mass conservation, *Geophysical research letters*, 44, 11,051-011,061,
988 <https://doi.org/10.1002/2017GL074954>, 2017.

989 Morlighem, M. et al. IceBridge BedMachine Greenland, Version 4. [Bed Topography]. Boulder, Colorado USA. NASA
990 National Snow and Ice Data Center Distributed Active Archive Center. <https://doi.org/10.5067/VLJ5YXKCNGXO>, 2021, last
991 access 30th February 2021.

992 Mouginit, J., Rignot, E., Bjørk, A. A., Van den Broeke, M., Millan, R., Morlighem, M., Noël, B., Scheuchl, B., and Wood,
993 M.: Forty-six years of Greenland Ice Sheet mass balance from 1972 to 2018, *Proceedings of the national academy of sciences*,
994 116, 9239-9244, <https://doi.org/10.1073/pnas.1904242116>, 2019.

995 [Moussavi, M.S., Abdalati, W., Pope, A., Scambos, T., Tedesco, M., MacFerrin, M. and Grigsby, S.: Derivation and validation](https://doi.org/10.1016/j.rse.2016.05.024)
996 [of supraglacial lake volumes on the Greenland Ice Sheet from high-resolution satellite imagery, *Remote sensing of*](https://doi.org/10.1016/j.rse.2016.05.024)
997 [environment, 183, pp.294-303, <https://doi.org/10.1016/j.rse.2016.05.024>, 2016.](https://doi.org/10.1016/j.rse.2016.05.024)

998 Ng, F. S., Ignéczi, Á., Sole, A. J., and Livingstone, S. J.: Response of surface topography to basal variability along glacial
999 flowlines, *Journal of Geophysical Research: Earth Surface*, 123, 2319-2340, <https://doi.org/10.1029/2017JF004555>, 2018.

1000 Nienow, P., Sole, A., Slater, D. A., and Cowton, T.: Recent advances in our understanding of the role of meltwater in the
1001 Greenland Ice Sheet system, *Current Climate Change Reports*, 3, 330-344, <https://doi.org/10.1007/s40641-017-0083-9>, 2017.

1002 Noël, B., van de Berg, W. J., Lhermitte, S., and van den Broeke, M. R.: Rapid ablation zone expansion amplifies north
1003 Greenland mass loss, *Science advances*, 5, eaaw0123, <https://doi.org/10.1126/sciadv.aaw0123>, 2019.

1004 Oswald, G. K. and Gogineni, S.: Mapping basal melt under the northern Greenland Ice Sheet, *IEEE Transactions on*
1005 *Geoscience and Remote Sensing*, 50, 585-592, <https://doi.org/10.1109/TGRS.2011.2162072>, 2011.

1006 Otto, J., Holmes, F. A., and Kirchner, N.: Supraglacial lake expansion, intensified lake drainage frequency, and first
1007 observation of coupled lake drainage, during 1985–2020 at Ryder Glacier, Northern Greenland, *Frontiers in Earth Science*, 10,
1008 978137, <https://doi.org/10.3389/feart.2022.978137>, 2022.

1009 Pitcher, L. H. and Smith, L. C.: Supraglacial streams and rivers, *Annual Review of Earth and Planetary Sciences*, 47, 421–452,
1010 <https://doi.org/10.1146/annurev-earth-053018-060212>, 2019.

1011 Poinar, K., Joughin, I., Das, S. B., Behn, M. D., Lenaerts, J. T., and Van Den Broeke, M. R.: Limits to future expansion of
1012 surface-melt-enhanced ice flow into the interior of western Greenland, *Geophysical Research Letters*, 42, 1800–1807,
1013 <https://doi.org/10.1002/2015GL063192>, 2015.

1014 Pope, A., Scambos, T. A., Moussavi, M., Tedesco, M., Willis, M., Shean, D., and Grigsby, S.: Estimating supraglacial lake
1015 depth in West Greenland using Landsat 8 and comparison with other multispectral methods, *The Cryosphere*, 10, 15–27,
1016 <https://doi.org/10.5194/tc-10-15-2016>, 2016.

1017 Rahmstorf, S. and Coumou, D.: Increase of extreme events in a warming world, *Proceedings of the National Academy of*
1018 *Sciences*, 108, 17905–17909, <https://doi.org/10.1073/pnas.1101766108>, 2011.

1019 Raymond, M. J. and Gudmundsson, G. H.: On the relationship between surface and basal properties on glaciers, ice sheets,
1020 and ice streams, *Journal of Geophysical Research: Solid Earth*, 110, <https://doi.org/10.1029/2005JB003681>, 2005.

1021 Rennermalm, A. K., Smith, L. C., Chu, V., Box, J., Forster, R., Van den Broeke, M., Van As, D., and Moustafa, S. E.: Evidence
1022 of meltwater retention within the Greenland ice sheet, *The Cryosphere*, 7, 1433–1445, <https://doi.org/10.5194/tc-7-1433-2013>,
1023 2013.

1024 Rignot, E., An, L., Chauche, N., Morlighem, M., Jeong, S., Wood, M., Mouginot, J., Willis, J. K., Klauke, I., and Weinrebe,
1025 W.: Retreat of Humboldt Gletscher, North Greenland, driven by undercutting from a warmer ocean, *Geophysical research*
1026 *letters*, 48, e2020GL091342, <https://doi.org/10.1029/2020GL091342>, 2021.

1027 Rignot, E. and Kanagaratnam, P.: Changes in the velocity structure of the Greenland Ice Sheet, *Science*, 311, 986–990,
1028 <https://doi.org/10.1126/science.1121381>, 2006.

1029 Riihelä, A., King, M. D., and Anttila, K.: The surface albedo of the Greenland Ice Sheet between 1982 and 2015 from the
1030 CLARA-A2 dataset and its relationship to the ice sheet's surface mass balance, *The Cryosphere*, 13, 2597–2614,
1031 <https://doi.org/10.5194/tc-13-2597-2019>, 2019.

1032 Rippin, D. and Rawlins, L.: Supraglacial River Networks, In *International Encyclopedia of Geography* (eds D. Richardson, N.
1033 Castree, M.F. Goodchild, A. Kobayashi, W. Liu and R.A. Marston), <https://doi.org/10.1002/9781118786352.wbieg2072>,
1034 2021.

1035 Ruan, R., Chen, X., Zhao, J., Perrie, W., Mottram, R., Zhang, M., Diao, Y., Du, L., and Wu, L.: Decelerated Greenland Ice
1036 Sheet melt driven by positive summer North Atlantic oscillation, *Journal of Geophysical Research: Atmospheres*, 124, 7633–
1037 7646, <https://doi.org/10.1029/2019JD030689>, 2019.

1038 Ryan, J., Smith, L., Van As, D., Cooley, S., Cooper, M., Pitcher, L., and Hubbard, A.: Greenland Ice Sheet surface melt
1039 amplified by snowline migration and bare ice exposure, *Science Advances*, 5, eaav3738,
1040 <https://doi.org/10.1126/sciadv.aav3738>, 2019.

1041 Ryan, J. C., Hubbard, A., Stibal, M., Irvine-Fynn, T. D., Cook, J., Smith, L. C., Cameron, K., and Box, J.: Dark zone of the
1042 Greenland Ice Sheet controlled by distributed biologically-active impurities, *Nature communications*, 9, 1065,
1043 <https://doi.org/10.1038/s41467-018-03353-2>, 2018.

1044 Sasgen, I., Wouters, B., Gardner, A. S., King, M. D., Tedesco, M., Landerer, F. W., Dahle, C., Save, H., and Fettweis, X.:
1045 Return to rapid ice loss in Greenland and record loss in 2019 detected by the GRACE-FO satellites, *Communications Earth &*
1046 *Environment*, 1, 1-8, <https://doi.org/10.1038/s43247-020-0010-1>, 2020.

1047 Schoof, C.: Ice-sheet acceleration driven by melt supply variability, *Nature*, 468, 803-806,
1048 <https://doi.org/10.1038/nature09618>, 2010.

1049 Schröder, L., Neckel, N., Zindler, R., and Humbert, A.: Perennial supraglacial lakes in Northeast Greenland observed by
1050 polarimetric SAR, *Remote Sensing*, 12, 2798, <https://doi.org/10.3390/rs12172798>, 2020.

1051 Selmes, N., Murray, T., and James, T.: Fast draining lakes on the Greenland Ice Sheet, *Geophysical Research Letters*, 38,
1052 <https://doi.org/10.1029/2011GL047872>, 2011.

1053 Slater, T., Shepherd, A., McMillan, M., Leeson, A., Gilbert, L., Muir, A., Munneke, P. K., Noël, B., Fettweis, X., and van den
1054 Broeke, M.: Increased variability in Greenland Ice Sheet runoff from satellite observations, *Nature Communications*, 12, 6069,
1055 <https://doi.org/10.1038/s41467-021-26229-4>, 2021.

1056 Smith, L. C., Chu, V. W., Yang, K., Gleason, C. J., Pitcher, L. H., Rennermalm, A. K., Legleiter, C. J., Behar, A. E., Overstreet,
1057 B. T., and Moustafa, S. E.: Efficient meltwater drainage through supraglacial streams and rivers on the southwest Greenland
1058 ice sheet, *Proceedings of the National Academy of Sciences*, 112, 1001-1006, <https://doi.org/10.1073/pnas.1413024112>, 2015.

1059 Smith, L. C., Yang, K., Pitcher, L. H., Overstreet, B. T., Chu, V. W., Rennermalm, Å. K., Ryan, J. C., Cooper, M. G., Gleason,
1060 C. J., and Tedesco, M.: Direct measurements of meltwater runoff on the Greenland ice sheet surface, *Proceedings of the*
1061 *National Academy of Sciences*, 114, E10622-E10631, <https://doi.org/10.1073/pnas.1707743114>, 2017.

1062 Sole, A. J., Mair, D. W. F., Nienow, P. W., Bartholomew, I., King, M., Burke, M. J., and Joughin, I.: Seasonal speedup of a
1063 Greenland marine-terminating outlet glacier forced by surface melt-induced changes in subglacial hydrology, *Journal of*
1064 *Geophysical Research: Earth Surface*, 116, <https://doi.org/10.1029/2010JF001948>, 2011.

1065 [Stokes, C.R., Sanderson, J.E., Miles, B.W.J. et al. Widespread distribution of supraglacial lakes around the margin of the East](#)
1066 [Antarctic Ice Sheet. *Sci Rep* 9, 13823, <https://doi.org/10.1038/s41598-019-50343-5>, 2019.](#)

1067 Tedesco, M., Box, J.E., Cappelen, J., Fausto, R.S., Fettweis, X., Hansen, K., Mote, T., Sasgen, I., Smeets, C.J.P.P., van As,
1068 D., van de Wal, R.S.W., Velicogna, I. (2017) NOAA Arctic Report Card 2018: Greenland Ice Sheet in Arctic Report Card
1069 2017. Available online: <https://arctic.noaa.gov/Report-Card/Report-Card-2017>, last access 20th November 2022.

1070 Tedesco, M., Box, J.E., Cappelen, J., Fausto, R.S., Fettweis, X., Hansen, K., Mote, T., Sasgen, I., Smeets, C.J.P.P., van As,
1071 D., van de Wal, R.S.W., Velicogna, I. (2017) NOAA Arctic Report Card 2018: Greenland Ice Sheet in Arctic Report Card
1072 2017. Available online: <https://arctic.noaa.gov/Report-Card/Report-Card-2017>, last access 20th November 2022.

1073 Tedesco, M., Box, J.E., Cappelen, J., Fausto, R.S., Fettweis, X., Anderson, J.K., Mote, T., Smeets, C.J.P.P., van As, D., van
1074 de Wal, R.S.W. (2018). NOAA Arctic Report Card 2018: Greenland Ice Sheet in Arctic Report Card 2018. Available online:
1075 <https://arctic.noaa.gov/Report-Card/Report-Card-2018>, last access 20th November 2022.

1076 Tedesco, M., Doherty, S., Fettweis, X., Alexander, P., Jeyaratnam, J., and Stroeve, J.: The darkening of the Greenland ice
1077 sheet: trends, drivers, and projections (1981–2100), *The Cryosphere*, 10, 477-496, <https://doi.org/10.5194/tc-10-477-2016>,
1078 2016.

1079 Tedesco, M. and Fettweis, X.: Unprecedented atmospheric conditions (1948–2019) drive the 2019 exceptional melting season
1080 over the Greenland ice sheet, *The Cryosphere*, 14, 1209-1223, <https://doi.org/10.5194/tc-14-1209-2020>, 2020.

1081 Tedesco, M., Moon, T., Anderson, J.K., Box, J.E., Cappelen, J., Fausto, R.S., Fettweis, X., Loomis, B., Mankoff, K.D., Mote,
1082 T., Smeets, C.J.P.P., van As, D., van de Wal, R.S.W. Greenland Ice Sheet in Arctic Report Card 2019; Available online:
1083 <https://arctic.noaa.gov/Report-Card/Report-Card-2019>, last access 21st November 2022

1084 The IMBIE Team.: Mass balance of the Greenland Ice Sheet from 1992 to 2018, *Nature*, 579, 233-239,
1085 <https://doi.org/10.1038/s41586-019-1855-2>, 2020.

1086 Trusel, L. D., Das, S. B., Osman, M. B., Evans, M. J., Smith, B. E., Fettweis, X., McConnell, J. R., Noël, B. P., and van den
1087 Broeke, M. R.: Nonlinear rise in Greenland runoff in response to post-industrial Arctic warming, *Nature*, 564, 104-108,
1088 <https://doi.org/10.1038/s41586-018-0752-4>, 2018.

1089 Turton, J. V., Hochreuther, P., Reimann, N., and Blau, M. T.: The distribution and evolution of supraglacial lakes on 79 N
1090 Glacier (north-eastern Greenland) and interannual climatic controls, *The Cryosphere*, 15, 3877-3896,
1091 <https://doi.org/10.5194/tc-15-3877-2021>, 2021.

1092 van den Broeke, M., Box, J., Fettweis, X., Hanna, E., Noël, B., Tedesco, M., van As, D., van de Berg, W. J., and van
1093 Kampenhout, L.: Greenland ice sheet surface mass loss: recent developments in observation and modeling, *Current Climate
1094 Change Reports*, 3, 345-356, <https://doi.org/10.1007/s40641-017-0084-8>, 2017.

1095 Van den Broeke, M. R., Enderlin, E. M., Howat, I. M., Kuipers Munneke, P., Noël, B. P., Van De Berg, W. J., Van Meijgaard,
1096 E., and Wouters, B.: On the recent contribution of the Greenland ice sheet to sea level change, *The Cryosphere*, 10, 1933-
1097 1946, <https://doi.org/10.5194/tc-10-1933-2016>, 2016.

1098 Williamson, A. G., Arnold, N. S., Banwell, A. F., and Willis, I. C.: A Fully Automated Supraglacial lake area and volume
1099 Tracking (“FAST”) algorithm: Development and application using MODIS imagery of West Greenland, *Remote Sensing of
1100 Environment*, 196, 113-133, <https://doi.org/10.1016/j.rse.2017.04.032>, 2017.

1101 Williamson, A. G., Banwell, A. F., Willis, I. C., and Arnold, N. S.: Dual-satellite (Sentinel-2 and Landsat 8) remote sensing
1102 of supraglacial lakes in Greenland, *The Cryosphere*, 12, 3045-3065, <https://doi.org/10.5194/tc-12-3045-2018>, 2018.

1103 Wyatt, F. R. and Sharp, M. J.: Linking surface hydrology to flow regimes and patterns of velocity variability on Devon Ice
1104 Cap, Nunavut, *Journal of Glaciology*, 61, 387-399, <https://doi.org/10.3189/2015JoG14J109>, 2015.

1105 Yang, K. and Smith, L. C.: Supraglacial streams on the Greenland Ice Sheet delineated from combined spectral–shape
1106 information in high-resolution satellite imagery, *IEEE Geoscience and Remote Sensing Letters*, 10, 801-805,
1107 <https://doi.org/10.1109/LGRS.2012.2224316>., 2012.

1108 Yang, K., Smith, L. C., Chu, V. W., Gleason, C. J., and Li, M.: A caution on the use of surface digital elevation models to
1109 simulate supraglacial hydrology of the Greenland ice sheet, *IEEE Journal of Selected Topics in Applied Earth Observations*
1110 *and Remote Sensing*, 8, 5212-5224, <https://doi.org/10.1109/JSTARS.2015.2483483>., 2015.

1111 Yang, K., Smith, L. C., Cooper, M. G., Pitcher, L. H., Van As, D., Lu, Y., Lu, X., and Li, M.: Seasonal evolution of supraglacial
1112 lakes and rivers on the southwest Greenland Ice Sheet, *Journal of Glaciology*, 67, 592-602,
1113 <https://doi.org/10.1017/jog.2021.10>, 2021.

1114 Yang, K., Smith, L. C., Sole, A., Livingstone, S. J., Cheng, X., Chen, Z., and Li, M.: Supraglacial rivers on the northwest
1115 Greenland Ice Sheet, Devon Ice Cap, and Barnes Ice Cap mapped using Sentinel-2 imagery, *International Journal of Applied*
1116 *Earth Observation and Geoinformation*, 78, 1-13, <https://doi.org/10.1016/j.jag.2019.01.008>, 2019a.

1117 Yang, K., Smith, L. C., Fettweis, X., Gleason, C. J., Lu, Y., and Li, M.: Surface meltwater runoff on the Greenland ice sheet
1118 estimated from remotely sensed supraglacial lake infilling rate, *Remote Sensing of Environment*, 234, 111459,
1119 <https://doi.org/10.1016/j.rse.2019.111459>, 2019b.

1120 Zhang, Q., Huai, B., van Den Broeke, M. R., Cappelen, J., Ding, M., Wang, Y., and Sun, W.: Temporal and Spatial Variability
1121 in Contemporary Greenland Warming (1958–2020), *Journal of Climate*, 35, 2755-2767, [https://doi.org/10.1175/JCLI-D-21-](https://doi.org/10.1175/JCLI-D-21-0313.1)
1122 0313.1, 2022.

1123 Zwally, H. J., Abdalati, W., Herring, T., Larson, K., Saba, J., and Steffen, K.: Surface melt-induced acceleration of Greenland
1124 ice-sheet flow, *Science*, 297, 218-222, <https://doi.org/10.1126/science.1072708>, 2002.

1125