

# Accumulation by avalanches as significant contributor to the mass balance of a peripheral glacier of Greenland

Bernhard Hynek<sup>1,2,3</sup>, Daniel Binder<sup>4,3</sup>, Michele Citterio<sup>5</sup>, Signe Hillerup Larsen<sup>5</sup>, Jakob Abermann<sup>2,3</sup>, Geert Verhoeven<sup>6</sup>, Elke Ludewig<sup>7</sup>, Wolfgang Schöner<sup>2,3</sup>

<sup>1</sup> Geosphere Austria, Department Climate Impact Research, Vienna, Austria

<sup>2</sup> Institut für Geographie und Raumforschung, Universität Graz, Austria

<sup>3</sup> Austrian Polar Research Institute, Vienna, Austria

<sup>4</sup> Institute for Geosciences University of Potsdam, Germany

<sup>5</sup> Geological Survey of Denmark and Greenland, Copenhagen, Denmark

<sup>6</sup> Department of Prehistoric and Historical Archaeology, Universität Wien, Austria

<sup>7</sup> Geosphere Austria, Sonnblick Observatory, Rauris, Austria

Correspondence to: B. Hynek ([bernhard.hynek@geosphere.at](mailto:bernhard.hynek@geosphere.at))

Keywords: UAV; structure from motion photogrammetry; Greenland; glacier mass balance; snow avalanches

## Abstract.

Greenland's peripheral glaciers are losing mass at an accelerated rate and are contributing significantly to sea-level rise, but only a few direct observations are available. In this study, we use the unique combination of high-resolution remote sensing data and direct mass balance observations to quantify the contribution of a singular avalanche event to the mass balance of Freya Glacier (74.38° N, 20.82° W), a small (5.5 km<sup>2</sup>, 2021) mountain glacier in Northeast Greenland. Elevation changes calculated from repeated photogrammetric surveys in August 2013 and July 2021 show a high spatial variability, ranging from -11 m to 18 m, with a glacier-wide mean of  $1.56 \pm 0.10$  m ( $1.33 \pm 0.21$  m w.e.). After applying a seasonal correction of  $-0.6 + 0.05$  m w.e., the geodetic mass balance over the entire eight years period (2013/14 - 2020/21) is found to be  $0.73 \pm 0.22$  m w.e. A significant influence on the near decadal mass balance stems from the exceptional winter mass balance of 2017/18, which was 2.5 standard deviations above average ( $1.89 \pm 0.05$  m w.e.). After heavy snowfall in mid-February 2018, snow avalanches from the surrounding slopes affected more than one third of the glacier surface and contributed  $0.35 \pm 0.04$  m w.e., which is close to 20% to the total winter mass balance of 2017/18. Remote sensing data show, that Freya Glacier is prone to avalanches also in other years, but to a lesser spatial extent. Due to a gap in mass balance point observations caused by high accumulation rates (buried stakes) and the COVID-19 pandemic the recently reported glacier-wide annual mass balance are rather crude estimates and show a negative bias of  $-0.22$  m w.e. a<sup>-1</sup> compared to the geodetic mass balance. Finally, we speculate that the projected future warming may increase the likelihood of extreme snowfall, thus potentially increasing the contribution of snow avalanches to the mass balance of mountain glaciers in NE Greenland.

hat gelöscht: High Arctic mountain glacier

hat gelöscht: Here

hat gelöscht: ,

hat gelöscht: separate and

hat gelöscht: on 11<sup>th</sup> - 18<sup>th</sup>

hat gelöscht: on 28<sup>th</sup> - 31<sup>st</sup>

hat gelöscht: e

hat gelöscht: Somewhat surprisingly, the

hat gelöscht: full

hat gelöscht: period of

hat gelöscht: 8

hat gelöscht:

hat gelöscht: is

hat gelöscht: positive, (

hat gelöscht: w.e

hat gelöscht: .)

hat gelöscht: main imprint

hat gelöscht: of

hat gelöscht: (2.5 standard deviations above average)

hat gelöscht: with

hat gelöscht: 85

hat gelöscht: , when in addition to above average precipitation.

hat gelöscht: 05

hat gelöscht:

hat gelöscht: While snow of the 2018 avalanches has still been visible on the glacier surface in summer 2021, we observed also avalanche depositions between 2012 and 2016,

hat gelöscht: much

hat gelöscht: valid

hat formatiert: Nicht Hervorheben

hat gelöscht: r

hat gelöscht: in respect

hat gelöscht: ,

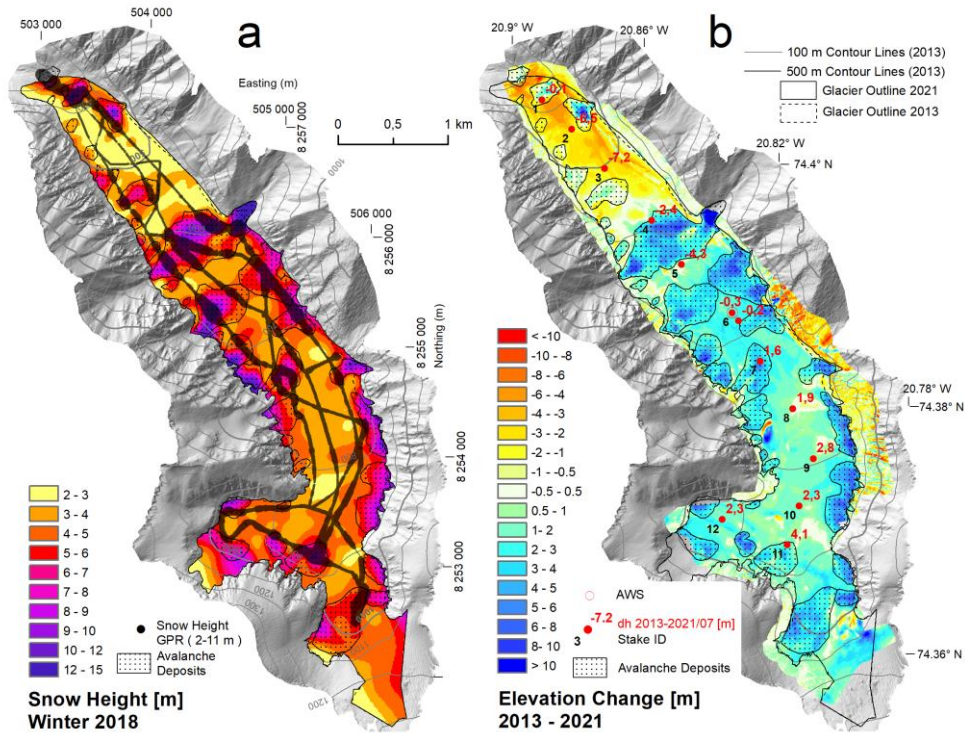
hat gelöscht: which demands a thorough reanalysis of the glaciological time series.

hat gelöscht: es

hat gelöscht: events for individual years and

hat gelöscht: might increase

Graphical Abstract.



75 a) Measured (GPR) and extrapolated snow height in winter 2018 and delineation of avalanche affected areas. b) Elevation Change between 18.8.2013 and 27.7.2021 and measured ablation at the stake locations.

hat gelöscht: delineation

## 1 Introduction

80 The ice cover of Greenland consists of the Greenland Ice Sheet and approximately 20 300 peripheral glaciers (Abermann et al., 2019b; Rastner et al., 2012). Although Greenland's peripheral glaciers comprise only 4% of the total ice cover of Greenland, their recent contribution to mass loss from Greenland (11%) and global sea-level rise is disproportionately high compared to that of the ice sheet (Khan et al., 2022). This confirms their higher sensitivity to current climate change. During the last 60 years mass loss from Greenland's peripheral glaciers comprise ~ 8% of the world's land ice contribution to sea-level rise (Frederikse et al., 2020; Zemp et al., 2019).

While the overall mass loss from Greenland's peripheral glaciers has accelerated during the last two decades, the pattern is heterogeneous on a regional scale (Hugonnet et al., 2021). In Northeast Greenland, specifically, the mass loss has decelerated, with continued thinning at lower elevations and thickening at higher elevations (Khan et al., 2022). The decelerated mass loss in Northeast Greenland has been associated with an increase in precipitation (Hugonnet et al., 2021), whereas the reduced mass loss of Icelandic and Scandinavian glaciers, for example, has been associated with North Atlantic cooling (Noël et al., 2022).

However, our knowledge of the individual drivers of mass changes of Greenland's peripheral glaciers is limited as direct observations and process studies are scarce. Machguth et al. (2016b) compiled all reported mass balance observations in Greenland and showed that while mass balance observations on the ice sheet have increased tenfold, the peripheral glaciers are still heavily undersampled despite their topographical and climatological complexity. To our knowledge, currently only 6 out of 20 300 glaciers and icecaps in Greenland are monitored (Abermann et al., 2019b). Three of these are located on the 2600 km long east coast: Mittivakkat Glacier on Ammassalik Island (65° N) (Mernild et al., 2013; Yde et al., 2014), A. P. Olsen Ice Cap (Citterio and Ahlström, (2010); Larsen et al., (2023) and Freya Glacier (both at 74° N near Zackenberg Research Station).

100 The mass balance monitoring at Freya glacier has been carried out using the direct or glaciological method (Kaser et al., 2003; Østrem and Brugmann, 1991) which is based on various point observations of ablation and accumulation distributed over different elevations on the glacier. These point observations of mass change are then extrapolated to estimate the annual mass balance of the entire glacier, often incorporating additional information such as the position of the snowline. However, the specific implementation of this step may vary among glaciers and observers (Zemp et al., 2013) and also depends on the number and distribution of available point measurements. Annual mass balance measurements are likely to accumulate systematic errors over the years (e.g. Huss et al., 2009), therefore it is recommended to compare and, if necessary, homogenise the annual mass balance time series using decadal volume changes based on geodetic surveys of the glacier surface (Huss et al., 2009; Klug et al., 2018; Zemp et al., 2013). On Freya Glacier these geodetic surveys were carried out in 2013 and 2021 using an Image-Based 3D surface Modelling (IBM) approach.

115 In the last decade, hybrid photogrammetric computer vision-based approaches have become commonplace in many academic fields. With photogrammetric methods at their core, these hybrid approaches mainly rely on the computer vision algorithms Structure from Motion (SfM) and Multi-View Stereo (MVS) to digitally extract three-dimensional (3D) surfaces from overlapping images. These 3D surfaces can then be used to produce accurate orthophotos. Often, such SfM-MVS approaches utilize terrestrial photographs acquired with consumer-grade cameras (Piermattei et al., 2015; Marcer et al., 2017) or images obtained via cameras mounted on uncrewed aerial vehicles (UAVs) (e. g. Gindraux et al., 2017; Rossini et al., 2018; Geissler et al., 2021).

hat gelöscht: ~

hat gelöscht: (11%) in

hat gelöscht: ison

hat gelöscht: ,

hat gelöscht: confirming

hat gelöscht: the

hat gelöscht: the pattern is heterogenous

hat gelöscht: particularly

hat gelöscht: in

hat gelöscht: in

hat gelöscht: decelerated

hat gelöscht: G

hat gelöscht: Cooling

hat gelöscht: at

hat gelöscht: them

hat gelöscht: whole

hat gelöscht: .

hat gelöscht: using

hat gelöscht: like

hat gelöscht: also

hat formatiert: Englisch (Vereinigte Staaten)

hat gelöscht: IBM via

hat gelöscht: s

hat gelöscht: graph

hat gelöscht: rely upon

hat gelöscht: photos

145 Interestingly, there are only a few studies on the contribution of snow avalanches to the mass balance of glaciers despite the  
apparent importance of this accumulation process. Glaciers with considerable accumulation from avalanches have been  
associated with high and steep headwalls typical for High Mountain Asia (Laha et al., 2017). (Kneib et al., 2024b) showed that  
a lot of glaciers in the European Alps are also avalanche fed. In the Arctic, rising temperatures may increase the number and  
intensity of snowfall events as observed over NE Greenland in 2018 (e.g. Schmidt et al., 2019) which will in turn enhance  
150 avalanche activity (Abermann et al., 2019a). However, the contribution of avalanches to the mass balance of individual glaciers  
is difficult to measure, therefore it has been quantified by applying precipitation factors locally at the base of headwalls to fit  
the observed ice flux (Laha et al., 2017; (Kneib et al., 2024a; Laha et al., 2017).

This study examines the effects of an extraordinary winter accumulation combined with widespread avalanche activity on the  
155 mass balance of an High Arctic mountain glacier. In particular, we quantify the contribution of avalanches to the winter mass  
balance 2017/18 of Freya Glacier by taking advantage of a detailed ground penetration radar survey of snow depth conducted  
in April 2018. Furthermore we demonstrate the imprint of avalanches in high-resolution glacier elevation changes 2013 - 2021.  
We calculate IBM-derived elevation changes and deduce the geodetic mass balance of Freya Glacier between 2013/14 and  
160 2020/21. We delineate snow avalanche deposits from February 2018 on the glacier area, quantify their mass contribution to the  
winter mass balance 2017/18 and show their imprint on the multi-year geodetic mass balance. Finally, we compare the geodetic  
mass balance to the cumulative glaciological mass balance, discuss likely error sources for the discrepancy and emphasise the  
need for a reanalysis of the glaciological record. This need arises due to the observational gaps caused by travel restrictions  
during the COVID-19 pandemic and a limited observational network that proved insufficient to account for the recent spatial  
165 variability of surface mass balance on the glacier.

## 2 Freya Glacier

Freya (Freja, Fröya) Glacier (74.38° N, 20.82° W) is a polythermal mountain glacier (Binder et al., 2009) located on Clavering  
Island in Northeast Greenland, 10 km southeast of Zackenberg Research Station (Fig. 1). The coastal glacier is oriented towards  
the Northwest, surrounded by steep ridges on both sides, spans an elevation of 1300 m to 280 m a.s.l. and covers a surface area  
170 of 5.5 km<sup>2</sup> (2021). The glacier was subject to glaciological investigations already in the late 1930s (Ahlmann, 1942, 1946) likely  
due to its relatively good accessibility. During the International Polar Year 2007/2008 a mass balance monitoring programme  
was initiated (Schöner et al., 2009) and has been ongoing since (Hynek et al., 2014; World Glacier Monitoring Service (WGMS),  
2023). The current monitoring consists of a stake network, an automatic weather station (AWS) of the PROMICE setup (Fausto  
et al., 2021) and two high-quality webcams (Hynek et al., 2018). Daily images from the two webcams are publicly available  
175 via the websites foto-webcam.eu (Freya Glacier Webcam 1: <https://www.foto-webcam.eu/webcam/freya1/> and Freya Glacier  
Webcam 2: <https://www.foto-webcam.eu/webcam/freya2/>).

hat gelöscht: although the importance of this accumulation process seems obvious  
hat gelöscht: are usually

hat gelöscht: (Kneib et al., 2024a)  
hat gelöscht: T  
hat gelöscht: influence  
hat gelöscht: on  
hat gelöscht: some Himalayan  
hat gelöscht: has  
hat gelöscht: by Laha et al. (2017)

hat gelöscht: , but to our knowledge snow avalanches have not been shown to have a significant influence on the mass balance of glaciers outside the Himalaya. With increasing temperatures in the Arctic, precipitation is expected to rise, which may lead to heavier single precipitation events as observed over NE Greenland in 2018 (e.g. Schmidt et al., 2019) which can lead to strong avalanche activity (Abermann et al., 2019a).

hat gelöscht: and we further  
hat gelöscht:  
hat gelöscht: In the following we  
hat gelöscht: of  
hat gelöscht: and  
hat gelöscht: reasons  
hat gelöscht: differences  
hat gelöscht: stress  
hat gelöscht: ,  
hat gelöscht: which suffers from  
hat gelöscht: Covid  
hat gelöscht: turned out  
hat gelöscht: to be not dense enough to

Kommentiert [HB1]: Origin of different spellings in Fußnote erklären.

hat gelöscht: situated  
hat gelöscht: rather  
hat gelöscht: which  
hat gelöscht:  
hat gelöscht: of

hat gelöscht: (Freya Glacier Webcam 1, 2023; Freya Glacier Webcam 2, 2023).

hat formatiert: Englisch (Vereinigte Staaten)  
hat formatiert: Englisch (Vereinigte Staaten)  
hat formatiert: Englisch (Vereinigte Staaten)  
hat formatiert: Englisch (Vereinigte Staaten)

<sup>1</sup> Due to technical problems the webcams are offline since April 2024, but older camera images can still be found here.

215 **3 Data and Methods**

**3.1 Geodetic Survey 2013**

Due to the ease of the process and the suitable topography, SfM-MVS-based image-based 3D surface modelling was the optimal choice for generating a DEM of Freya Glacier during the 2013 field campaign. Although no UAV was available, the ridges around the glacier provided useful natural viewpoints for a ground-based survey. Between 11<sup>th</sup> and 18<sup>th</sup> August 2013, we took oblique overlapping photographs of the glacier surface from about 450 locations on the slopes on both sides of the glacier using a Nikon D7100 digital single lens reflex camera with a 20 mm fixed lens. Simultaneously with the image acquisition, we surveyed approximately 100 natural Ground Control Points (GCPs) using a differential GNSS (Global Navigation Satellite System) receiver (Fig. 2 a-c). For post-processing of the survey, a temporary GNSS reference station was established on stable rock next to the glacier. We surveyed the upper part of the glacier on the 11<sup>th</sup> and 12<sup>th</sup> of August 2013, when the glacier surface was almost snow-free. Snowfall on 14<sup>th</sup> August followed by a period of low visibility marked the end of the melt season. On 18<sup>th</sup> August 2013, we surveyed the lower part of the glacier. Surface ablation between the survey dates was below 0.15 m and was partly compensated by an average fresh snow height of 0.10 m.

hat gelöscht: No  
hat gelöscht: but  
hat gelöscht: offered

hat gelöscht: ~

hat gelöscht:  
hat gelöscht: event

**3.2 Geodetic Survey 2021**

The second high-resolution DEM used in this study stems from 2021. On 29<sup>th</sup> and 31<sup>st</sup> July 2021, we used a UAV (DJI Phantom 4 RTK) to obtain an overlapping image series of the glacier surface. On 29<sup>th</sup> July, we photographed 80% of the glacier surface (lower part) and finished the drone flights on 31<sup>st</sup> of July. On 28<sup>th</sup> and 29<sup>th</sup> of July 2021, we surveyed approximately 100 mainly artificial GCPs on the glacier surface using a differential GNSS receiver and a base station that was put up at the same location as in 2013 (Fig. 2 d-f). During the survey, surface ablation between 28<sup>th</sup> and 31<sup>st</sup> July was less than 0.2 m. Table 1 lists the main characteristics of both photogrammetric surveys.

hat gelöscht: ~

**3.3 GNSS and IBM workflow**

GNSS raw logs containing the GCPs and the UAV trajectory were post-processed using the reference station next to the glacier. Coordinates were transformed into UTM coordinate reference system (zone 27N, epsg:32627) and to orthometric heights (egm96). For the accuracy assessment of the surface reconstruction, one subset of the GCPs was used to reference the generated 3D model (control points), and another subset was used to validate the 3D model (independent check points). All GCPs were used to reference the final DEM. GCPs that were not clearly visible in the imagery were used for elevation validation of the final DEM output. The workflow of the DEM and orthophoto generation followed the classical SfM process (e.g. Rossini et al., 2018) using Agisoft Metashape (AgiSoft LLC, 2023). Due to the different surface texture (snow covered vs snow free) of the lower and upper 2013 imagery, these parts of the glacier were processed independently and combined to one final DEM afterward (see supplement).

hat gelöscht: s  
hat gelöscht: s  
hat gelöscht: C  
hat gelöscht: -  
hat gelöscht: G  
hat gelöscht: all  
hat gelöscht: respective  
hat gelöscht: carried out

**3.4 Elevation Changes**

Elevation changes between 2013 and 2021 were calculated by DEM differencing in 1 m planar resolution. As the georeferencing of the two final DEMs is based on a large number of GCPs, a co-registration of the DEMs (Nuth and Kääb, 2011) was not necessary. Elevation differences in overlapping ice-free terrain had a mean bias of 0.1 m and a standard error of 0.45 m (see supplement). Most of the likely stable terrain is rather steep, and in some areas the DEM 2013 might have larger errors than everywhere else, so we did not correct for this bias.

hat formatiert: Nicht Hervorheben  
hat formatiert: Nicht Hervorheben  
hat gelöscht: , as the overlapping area on stable terrain outside the glacier is too small. However the small overlapping and supposed stable area was used to calculate error statistics of the two DEMs (see supplement).¶

270 **3.5 Density Assumption and Geodetic Mass Balance**

To convert the observed volume change into a mass change we use the conversion factor of  $850 \pm 60 \text{ kg/m}^3$  recommended by Huss (2013) for periods longer than 5 years, with stable mass balance gradients, the presence of a firn area and volume changes significantly different from zero. No firn density measurements have been carried out on the glacier so far, neither in the accumulation zone nor in one of the avalanche deposits. The main part of the accumulation that led to the observed positive elevation changes occurred in 2018 and has undergone densification over four melt seasons by the time of the second survey. However, percolation and the possible formation of ice lenses might create high variability in firn density (Vandecrux et al., 2018, Machguth et al., 2016a). Therefore, we decided to follow the recommendation of Huss (2013). In 2013 the survey was very close to the end of the ablation season. In 2021 an adjustment of  $-0.6 \pm 0.05 \text{ m w.e.}$  was calculated between the survey on 29<sup>th</sup> July and the end of the ablation season on 5<sup>th</sup> September based on 10 ablation stake readings.

**3.6 Glaciological mass balance**

**3.6.1 Winter mass balance**

285 Due to logistical challenges in accessing the glacier with a snow mobile, the number of snow height observations varies considerably from year to year. Distributed winter snow height is measured either by 40 - 150 manual snow depth probings, or by a 800 MHz GPR snow survey of several km in length. In April 2018, an extended GPR snow survey with a total length of 27 km was carried out to capture the spatial distribution of snow depth including the still visible avalanche deposits. To get a regular grid of snow height, a spline function was fitted to the data. In contrast, snow density was measured at only one location, which was not influenced by avalanches: in a snow pit next to the AWS at an elevation of 680 m (Fig. S4). Winter mass balance was calculated as a spatial average of snow depth over the whole glacier area multiplied with an extrapolated snow density based on the available measurement next to the AWS. Similar GPR snow surveys with comparable spatial coverages have been carried out in spring 2008 and 2017, while in other years a reduced sample network was used.

**3.6.2 Annual mass balance**

295 Until 2015 annual mass balance measurements were usually carried out in August, and seasonal mass balance was measured at several points distributed across the glacier. Annual glacierwide mass balance was then determined by extrapolating the point values onto the whole glacier area. Depending on the number of point observations the mean standard error is estimated as  $0.05 \text{ m w.e. a}^{-1}$  (e.g. Pulwiczki et al., 2018). Mainly due to high travel costs, but also in accordance with the mass balance monitoring at A.P. Olsen Ice Cap the monitoring strategy was changed in 2016 to only one visit per year in spring. At the same time an automatic monitoring system was installed, namely an automatic weather and mass balance station and an automatic camera to track the retreat of the snow line during summer. Since then annual mass balance has still been measured at eleven ablation stakes, which usually protrude from the winter snow. At each stake the mass balance of the previous year is determined by measuring the current snow depth and the height change of the stake. However, because of above average snow heights in spring 2018 and 2019 only two stakes were found. In 2020 and 2021 spring measurements were not possible due to the travel restrictions caused by the COVID-19 pandemic. Therefore, the glacierwide mass balance from 2016/2017 to 2020/21 was reconstructed using a linear relationship (see supplement for details) between the mass balance at the AWS (index stake) and the glacierwide mass balance based on observations from 2008 to 2016, introducing an estimated uncertainty of  $0.2 \text{ m w.e. a}^{-1}$ . Most stakes were found again and could be measured in July 2021 and April 2022.

hat gelöscht: et al.

hat gelöscht: had happened

hat gelöscht: already

hat gelöscht: experienced

hat gelöscht: in

hat gelöscht: 4

hat gelöscht: at the date

hat gelöscht: a

hat gelöscht: ,

hat gelöscht: so

hat gelöscht: et al.

hat gelöscht: ,

hat gelöscht: i

hat gelöscht:

hat gelöscht: was calculated

hat gelöscht: get a good picture of

hat gelöscht:

hat gelöscht: the measured

hat gelöscht: of

hat gelöscht: a

hat gelöscht: similar good point observation densityspatial

hat gelöscht: .

hat gelöscht: ablation and accumulation

hat gelöscht: over

hat gelöscht: .

hat gelöscht: and a

hat gelöscht: follow

hat gelöscht: is

hat gelöscht: stick out of

hat gelöscht: a

hat gelöscht: actual

hat gelöscht:

hat gelöscht:

hat gelöscht: In July 2021 and in spring 2022, most

hat gelöscht: .

345 **3.7 Quantifying the influence of avalanches on the winter mass balance of 2018**

To delineate the avalanche deposits of 2018 we identified areas with a strong increase of snow heights along the GPR tracks. In areas without GPR tracks, we completed the delineation using a best estimate based on pictures of avalanche cracks, remnants of avalanches in the orthophoto of 2021, above average local elevation changes 2013-2021 and likely avalanche flow paths based on topography. The GPR snow depth data was sampled down to 10 m point distance and then interpolated using a spline function onto a grid of glacier-wide snow heights. To estimate the contribution by avalanches to the winter mass balance of 2018, we calculated spatial averages of the snow height grid in avalanche affected areas and in avalanche free areas. To convert snow heights into snow water equivalent, we used the mean snow density of 385 kg m<sup>-3</sup> (measured in the snow pit next to the automatic weather station) for areas that are not influenced by avalanches. As snow density typically increases with snow depth and avalanche deposits have higher snow densities than the undisturbed snow pack we used higher snow densities for the avalanche deposits: a 5% increased snow density (404.25 kg m<sup>-3</sup>) as a best guess and 10% increase (423.5 kg m<sup>-3</sup>) which we interpret as an upper boundary.

355 **3.8 Climate data**

360 Snow height at the AWS on Freya Glacier is measured by two Campbell SR 50 ultrasonic devices, one fixed to the mast of the weather station 3.4 m above the ground and one fixed to an ablation stake. Both sensors were buried in snow by mid-February 2018. On 28<sup>th</sup> April, the weather station was reestablished on the surface (Fig. 3). The data gap of 2.5 months was reconstructed using snow height data from the main weather station at A. P. Olsen Ice Cap (Larsen et al., 2023; Greenland Ecosystem Monitoring, 2020a), which has a continuous record in 2018 (see supplement, Fig. S6). Additionally, we used temperature data from the climate station Zackenberg (Greenland Ecosystem Monitoring, 2020b) and precipitation data from the ERA5 global reanalysis (Hersbach et al., 2020).

365 **4. Results**

**4.1 DEM and orthophoto 2013**

370 The shaded relief of the 2013 DEM (Fig. 4a) shows a high level of detail, with only a few artefacts visible in the middle and uppermost part of the glacier. These artefacts occur, where the distance between the photo points and the glacier surface is high and the angle towards the glacier surface is acute. The middle part of the glacier is poorly covered, the GCPs there (Fig. 4a, set 3) could not be identified in the images and were used to check only the vertical accuracy of the DEM in that area (Table 2). The orthophoto shows almost snow-free conditions in the upper part of the glacier and the new snow on the lower part (Fig. 4b).  
375 The surface reconstruction covers the entire glacier area and the adjacent ridges. Since all GCPs are on the glacier surface, the accuracy of the surface reconstruction is expected to drop significantly in the adjacent ridges. The accuracy of the surface reconstruction expressed as RMSE at the check points is significantly worse than the RMSE at the control points, with lateral accuracy being particularly poorer than the vertical accuracy (Table 2).

hat gelöscht: used a strong increase

hat gelöscht: To complete the delineation in ...n areas without GPR tracks, we completed the delineation used ...sing a best estimate based on fotos ...ictures of avalanche cracks, remnants of avalanches in the orthoph...to of 2021, and ...bove average local elevation changes 2013-2021 together with...nd likely avalanche flow pathe... based on topography. The GPR snow depth data set ...as sampled down to 10 m point distance and then interpolated using a spline function onto a grid of glacier-wide snow heights. To estimate the contribution by avalanches to the winter mass balance of 2018, we calculated spatial averages of the snow height grid on ...n avalanche affected areas and on

hat gelöscht: transfer

hat gelöscht: without ...y avalanches deposits... As snow density typically increases with snow depth and avalanche deposits have higher snow densities than the undisturbed snow pack we used higher snow densities for the avalanche deposits, and a

hat gelöscht:

hat gelöscht: to (10%) ...increased snow density (404.25 kg m<sup>-3</sup>) as a best guess and 10% increase (423.5 forin avalanche areas...g m<sup>-3</sup>) which we interpret as an upper boundary., as snow density usually typically increases with snow depth and avalanche deposits have higher snow densities thanas the undisturbed snow packwell.

hat gelöscht: at...the mast of the weather station 3.4 m above the ground and one fixed toat...an ablation stake. Both sensors were snowed in...uried in snow byin...mid February

hat gelöscht: 5

hat gelöscht: c...p (Larsen et al., 2023; Greenland Ecosystem Monitoring, 2020a), which has a continuous record in 2018 (see supplement, Fig. S6). Further

hat formatiert

Feldfunktion geändert

hat gelöscht: -----Seitenumbruch-----

hat formatiert: Englisch (Vereinigte Staaten)

hat gelöscht: 3a

hat gelöscht: ...oO...ly a few artefacts are ...isible in the middle part of the glacier ...nd in the ...ppermost part of the glacier. These artefacts occur, where the distance of ...etween the photo points to and the glacier surface is high and the angle towo...rds the glacier surface is acute. Especially the

hat formatiert: Englisch (Vereinigte Staaten)

hat gelöscht: 3a

hat gelöscht: ...2). The orthophf...to shows almost snow- ...ree conditions in the upper part of the glacier and the new snow on the lower part of the glacier ...Fig.

hat gelöscht: 3

hat gelöscht: whole ...ntire glacier area and the adjacent ridges. SinceAs...all GCPs are on the glacier surface, the accuracy of the surface reconstruction is expected to drop significantly in the adjacent ridges. The accuracy of the surface reconstruction expressed as RMSE at the check points is significantly worse than the RMSE at the control points, where ...ith especially the ...lateral accuracy being particularly pooreris...worse

#### 4.2 DEM and orthophoto 2021

The shaded relief of the 2021 DEM (Fig. 5a) shows a much higher level of detail due to better measurement geometry and resolution. The ground sampling density (Table 1) and the accuracy of the surface reconstruction (Table 2) of the 2021 survey are both higher than those for the 2013 survey. However, only 95% of the glacier surface is reconstructed, and the DEM does not extend much to the adjacent ridges due to limited UAV battery supply during fieldwork. Avalanche affected areas are visible in the orthophoto (Fig. 5b) on the lower and middle part of the glacier, while the upper part was still covered by slush and winter snow.

#### 4.3 Elevation Changes and Geodetic Mass Balance

Elevation changes in 1 m resolution (Fig. 6) were calculated for 95% of the glacier area, missing only some parts in the upper accumulation zones and a small debris covered area next to the glacier snout. Elevation changes for these areas were calculated by fitting a spline function to the elevation changes in the surrounding areas, to avoid a bias in the geodetic mass balance. Elevation changes show a high spatial variability. Surface lowering is observed on 20% of the glacier surface, mainly at elevations below 600 m a.s.l., and reaching a minimum of -11 m in the lowest part of the glacier. Above 600 m a.s.l. elevation changes are mainly positive. At the centerline of the glacier, elevation gains are mainly smaller than 2 m. In several distinct areas predominantly along both sides of the glacier, elevation gains are up to several meters with a maximum of 17 m. These areas coincide with potential avalanche depositions from large side valleys (Fig. 7). The mean elevation change from August 2013 to July 2021 for the entire glacier is  $1.56 \pm 0.10$  m. The main sources of uncertainty include ablation during the survey, unmeasured areas, and the uncertainty in the delineation of the glacier surface area. Converting this volume change into a mass change – and hereby introducing another uncertainty using a density assumption of  $850 \pm 60$  kg/m<sup>3</sup> – we obtain the specific geodetic mass balance from August 2013 to July 2021 as  $b_{\text{geod}} = 1.33 \pm 0.21$  m w.e. After accounting for the mass losses during August 2021, the total 8-year geodetic mass balance 2013/14 - 2020/21 adds up to  $b_{\text{geod,8y}} = 0.73 \pm 0.22$  m w.e. (0.09 m w.e. a<sup>-1</sup>).

#### 4.4 Winter 2018 and avalanches

In the winter of 2017/2018, a series of low-pressure systems between the southern tip of Greenland and Iceland transported warm and moist air masses to the East Coast of Greenland with frequent snowfall leading to above average winter precipitation sums along large parts of the East Coast (Fig. 8) and also on Freya Glacier (Fig. 9). Between 12<sup>th</sup> and 18<sup>th</sup> February 2018 approximately 1.5 m of snow accumulated within five days on Freya Glacier. This led to widespread avalanche activity, and during fieldwork in April 2018, signs of large avalanche deposits were visible across the entire glacier. Particularly in the middle part of the glacier, several large avalanches originating from the tributary valleys on both sides covered large parts of the glacier. In April 2018, avalanche deposits were found on 36% of the glacier area. Individual GPR-derived snow heights ranged from 2.2 m up to 12.1 m, with a mean snow height of 4.4 m. The pattern of snow height distribution in winter 2018 and the elevation changes show a high similarity (Fig. 6). The area-averaged snow height on the entire glacier is 4.8 m, with 6.2 m on avalanche deposits, and 4.0 m in areas without avalanches. The snow height contribution from avalanches averaged over the whole glacier is 0.8 m. Mean snow density at the snow pit next to the AWS at stake 6 was 385 kg/m<sup>3</sup>. We consider this as a lower limit for the glacier-wide spatial mean snow density as avalanche snow likely has a higher density than the undisturbed snow cover in the middle of the glacier (Sovilla et al., 2001), where the snow density measurement was carried out. Assuming a 5% higher snow density on the glacier due to compaction and overburden pressure within the avalanche deposits, the specific mass balance

hat gelöscht: 4a

hat gelöscht: the

hat gelöscht: e

hat gelöscht: tha...hann...those for the 2013 survey. However, only 95% of the glacier surface is reconstructed, and the DEM does not extend much to the adjacent ridges due to limited, as...UAV battery supply was limited ...uring the ...ieldwork. Remnants of the 2018 avalanche deposits

hat gelöscht: still ...isible in the orthophoto (Fig. 4b)

hat gelöscht: 5b

hat gelöscht: smaller

hat gelöscht: s... to avoid a bias in the geodetic mass balance. Elevation changes show a high spatial variability. Surface lowering is observed on 20% of the glacier surface, mainly at elevations below 600 m a.s.l., and reaching a minimum of -11 m in the lowest part of the glacier. Above 600 m a.s.l. elevation changes are mainly positive. At the centerline of the glacier, elevation gains are mainly smaller than 2 m. In several distinct areas predominantly along both sides of the glacier, elevation gains are up to several meters with a maximum of 17 m. These areas coincide with potential avalanche depositions from large side valleys (Fig. 7). The mean elevation change 08/...rom August 2013 to...July 07/

hat gelöscht: M...in sources of uncertainty is introduced by...clude ablation during the survey, unmeasured areas, and the uncertainty in the delineation of the glacier surface area. ...onverting this volume change into a mass change – and hereby introducing another uncertainty using a density assumption of  $850 \pm 60$  kg/m<sup>3</sup> – we obtain the specific geodetic mass balance from August 2013 to July 2021 08/2013 - 07/2021

hat formatiert: Nicht unterstrichen

hat gelöscht: is...adds up to:

hat gelöscht: The 2018 avalanche cycle

hat gelöscht: ...ressure systems between the southern tip of Greenland and Iceland transported humidity ...arm and moist air masses to the East Coast of Greenland,...resulting and resulted in above...ith average ...requent snowfall leading to above average winter precipitation sums along the entire

hat gelöscht: on the whole

hat gelöscht: .

hat gelöscht: ....February2...2018 accumulated ~...pproximately 1.5 m of snow accumulated within five5...days on Freya Glacier. This led to widespread avalanche activity, and onto the glacier surface, so that...during fieldwork in April 2018, signs of large avalanche deposits were visible all over...cross the entire glacier. Especially ...articularly in the middle part of the glacier, several large avalanches originating from the tributary valleys on both sides of the glacier

hat formatiert: Hochgestellt

hat formatiert: Hochgestellt

hat gelöscht: median ...ean snow height of 4.0 ... m. The distribution ...attern of snow height distribution in winter 2018 and the elevation changes show a high similarity (Fig. 6)and the delineation of avalanche influenced-affected areas is shown in Fig. 6a...

hat gelöscht: A...ea- ...veraged value of snow...now height on the entire glacier is 4.8 m, with 6.2 m onon...avalanche deposits 6.2 m... and 4.0 m io... areas without no ...avalanches. 4.0 m.

hat gelöscht: this

hat gelöscht: e...same bulk

hat gelöscht: everywhere



contribution of avalanches is  $0.35 \pm 0.04$  m w.e., which accounts for 19% of the total winter mass balance of  $1.89 \pm 0.05$  m w.e. (Table 3).

#### 4.5 Visibility of avalanches on the glacier surface

While remnants of snow avalanches have been visible on the glacier surface over several years, particularly between 2012 and 2016 (Fig. 10, Fig. 11), their surface extent was smaller compared to 2018. In 2016 at least three avalanche deposits are visible on the orographic right side of the glacier in orthophotos taken in July 2016, and some more can be identified in August 2016 (Fig. 10).

#### 4.6 Glaciological mass balance

The time series of winter and annual mass balances (World Glacier Monitoring Service, 2022) of Freya Glacier are shown in Fig. 12. Prior to 2013, all annual mass balances were negative, with 2013 having the most negative mass balance on record so far. Higher winter mass balances between 2014 and 2018 can be associated with some positive annual mass balances in that period, while after 2019 drier winters facilitated again negative annual mass balances. Especially stake 1 and stake 4 are influenced by avalanches and show reduced ablation rates (see stake readings in Fig. 6b and supplement Table S1). The cumulative glaciological mass balance 2013/14 - 2020/21 is  $-1.0 \pm 0.4$  m w.e. The bias with respect to the geodetic mass balance is  $-1.73$  m w.e. or  $-0.22$  m w.e.  $a^{-1}$ .

### 5 Discussion

The avalanche cycle of 2018 was outstanding in regard to the mass input and the glacier area affected. However, avalanches seem to be a persistent feature on Freya Glacier, as their deposits are visible almost every year. It is difficult to date these avalanches and estimate their frequency, as older avalanche deposits might get covered by new ones. In case of the two big avalanches in the middle of the glacier which originated from opposite sides and travelled almost all the way through the other side of the glacier in 2018 (green circle in Fig. 11), we have strong evidence, that their remnants are still visible in the orthophoto of 2021, more than three years after the incident. On the one hand it takes a few ablation seasons to melt avalanche snow up to 8 meters thick, particularly, if that snowpack is located in a rather flat area on the glacier, where it is more likely to get densified by retention of meltwater. On the other hand, winter mass balances in the following years were below average (Fig. 12) and therefore unlikely to produce avalanches of this size. While avalanche deposits are easy to identify in the ablation area or in rather negative mass balance years, their presence and extent remain equivocal in the upper firm area or less negative years.

A major uncertainty in the geodetic mass balance is introduced by the density assumption. On Freya Glacier, high accumulation rates by avalanches have generated thick and possibly dense firm layers with high potential of meltwater retention and refreezing. First, it is difficult to constrain the initial snow density of snow deposited by avalanches without a direct measurement within these deposits. Li et al. (2021) and Sovilla et al. (2001) observed that the snow density of avalanche deposits might be two to three times higher than the undisturbed snowpack at the time of the avalanche release date. As a best guess, we used 5 to 10% higher snow density within the avalanche deposits compared to the undisturbed snow cover to calculate the winter mass balance. Second, there is a large uncertainty, how the density of these avalanche deposits evolves during the following four years, as this is mainly influenced by the possible formation of impermeable ice layers by percolating meltwater, as shown by Braithwaite et

- hat gelöscht: 31
- hat gelöscht: is
- hat gelöscht: 17
- hat gelöscht: 85
- hat gelöscht:
- hat gelöscht: This can be seen
- hat gelöscht: We consider this as a lower limit as the avalanche snow likely has a higher snow density than the undisturbed snowcover snow cover in the middle of the glacier (Sovilla et al., 2001), where the snow density measurement was carried out (Sovilla et al., 2001). If we assume an increase in bulk snow density of 5% (10%) % due to compaction and overburden pressure within the avalanche deposits, the mass contribution of avalanches would be  $0.35$  ( $0.39$ ) m w.e., being representing 18 (20)% of the winter mass balance of  $1.89$  ( $1.93$ ) m w.e. Remnants of the avalanches are still visible on the glacier surface 3 years after the incident (Fig. 4b, Fig. 7c, Fig 11) and have altered local surface mass balance significantly at stake 1, 4 and 11 compared to the surrounding stakes (see stake readings in Fig 6b and Table S1).
- hat gelöscht: Imprint of avalanches on the elevation changes
- hat gelöscht: small
- hat gelöscht: are
- hat gelöscht: in
- hat gelöscht: especially
- hat gelöscht: i
- hat gelöscht: rather limited
- hat gelöscht: A
- hat gelöscht: five
- hat gelöscht: on
- hat gelöscht: f
- hat gelöscht: and
- hat gelöscht: and to a lesser extent also in the orthophoto of from 2012.
- hat gelöscht: ¶
- hat gelöscht: 7
- hat gelöscht: 2013/14 - 2020/21
- hat gelöscht: timeseries
- hat gelöscht: 11
- hat gelöscht: the first DEM in
- hat gelöscht: more
- hat gelöscht: especially the mass balance of
- hat gelöscht: was so far the
- hat formatiert: Nicht Hervorheben
- hat formatiert: Nicht Hervorheben
- hat formatiert: Unterstrichen
- hat verschoben (Einfügung) [1]
- hat gelöscht: ¶

al. (1994) and Vandecrux et al. (2018). Also Machguth et al. (2016a) showed that firn loses a part of its capacity to store water after forming near-surface ice layers during strong melt events. While we observed strong melt events on Freya Glacier during the following summers, refreezing of meltwater has already been suspected to play an important role in the mass balance of Freya Glacier (Ahlmann, 1946) and was observed qualitatively during fieldwork in 2021. The bright glacier surfaces, that are the supposed remnants of avalanches, looked like snow, but proved to be as hard as ice. Given all these uncertainties and the lack of firn density measurements at Freya Glacier, we chose to stick to the recommendation of Huss (2013), who showed in a model experiment that a conversion factor between elevation change and mass change of  $850 + 60 \text{ kg m}^{-3}$  is appropriate for a wide range of conditions over longer time periods.

The cumulative glaciological mass balance for the period 2013/14 – 2020/21 was estimated in a rather crude way and carries uncertainties for several reasons. The accumulation within the avalanche deposits visible in the satellite images from 2014 to 2016 might have been underestimated. From 2017 to 2021, only one or two point observations were available, so the glacier-wide mass balance was reconstructed using a linear relationship based on the mass balance at the AWS (stake 6). Another likely reason for the bias between the glaciological and geodetic mass balance is the already mentioned unknown magnitude of meltwater retention by refreezing within deeper firn layers. This process is difficult to measure; in our case it was not feasible to measure firn density due to logistical reasons. A thorough reanalysis of the annual mass balance series using all available data and following a methodology based on Zemp et al. (2013) is necessary, but beyond the scope of this paper.

Regardless of the recent uncertainty in the glaciological mass balance time series of Freya Glacier there is a shift from rather negative to less negative mass balances starting in 2013/2014, which we attribute to higher winter accumulation between 2014 and 2018. This shift to less negative mass balances – caused by an increase in precipitation over NE Greenland in recent years – has been shown to be a regional effect by Hugonnet et al. (2021) and Khan et al. (2022).

## 6 Conclusions

Our study shows that the 8-year geodetic mass balance of Freya Glacier from 2013/14 to 2020/21 has been positive ( $0.73 \pm 0.22 \text{ m w.e.}$ ). A significant positive contribution to the mass balance stems from avalanches originating from the surrounding slopes. While avalanche deposits are visible on the glacier surface to a limited extent almost every year, the winter 2018 was clearly outstanding. After a heavy precipitation event in mid-February 2018, which caused a snow height increase of 1.5 m within 5 days, widespread avalanche activity affected more than one third of the glacier area. Based on a detailed GPR survey conducted in April 2018, we estimated the contribution of avalanches to the winter mass balance of 2018 to be  $0.35 \pm 0.04 \text{ m w.e.}$ , which is close to 20% of the winter mass balance of  $1.89 \pm 0.05 \text{ m w.e.}$  We showed that some avalanche deposits are visible on the glacier surface almost every year, leaving a strong imprint on the elevation changes. A main uncertainty in this assessment arises from a lack of snow and firn density measurements, particularly within the avalanche deposits, but also in the upper firn areas. The cumulative glaciological mass balance for 2013/14 to 2020/21 is negative ( $-1.0 \pm 0.4 \text{ m w.e.}$ ), suffering from data gaps and only a few point observations in recent years. The magnitude of the bias between geodetic and glaciological mass balance ( $-0.22 \text{ m w.e. a}^{-1}$ ) is similar to bias estimates reported by Andreassen et al. (2016) for ten glaciers in Norway and therefore as such not unexpected (see also Zemp et al., 2013). Likely reasons for this bias include the underestimation of the mass contribution by avalanches, the general lack of distributed accumulation measurements, and possibly the underestimation of refreezing meltwater leading to internal accumulation. Capturing these processes, as well as firn density measurements, should receive more attention in future mass balance monitoring at Freya Glacier. Assuming a

**hat gelösch:** Measurements of firn density in Greenland (Braithwaite et al., 1994; Vandecrux et al., 2018) have shown, that the firn density varies a lot depending on the amount of accumulation and melt at a specific site, and particularly on due to the formation of ice layers by percolating meltwater.

**hat gelösch:** ... that firn loses a part of its capacity to store water after building ...orming near-

**hat nach oben verschoben [1]:** On Freya Glacier, high accumulation rates by avalanches have generated thick and possibly dense firn layers with high potential of meltwater retention and refreezing.

**hat gelösch:** Huss (2013) has showed in a model experiment, that a conversion factor between elevation change and mass change

**hat gelösch:** However, it is difficult to constrain the snow den

**hat gelösch:** has been...as

**hat gelösch:** the 2018

**hat gelösch:** ...The accumulation within the avalanche depos

**hat gelösch:** internal accumulation by percolation of ...eltwat

**hat gelösch:** generally

**hat gelösch:** intended

**hat gelösch:** with

**hat gelösch:** ¶

**hat gelösch:** ¶

**Formatiert:** Überschrift 1

**hat gelösch:** ¶

**hat formatiert**

**hat gelösch:** to a limited extent... the winter 2018 was clearly

**hat gelösch:** ...ebruary 2018, which causing ...aused a snow

**hat formatiert:** Schriftart: (Standard) Times New Roman

**hat formatiert**

**hat gelösch:** 05

**hat formatiert:** Schriftart: (Standard) Times New Roman

**hat formatiert:** Unterstrichen

**hat formatiert**

**hat gelösch:** are

**hat gelösch:** have

**hat gelösch:** still been visible on the glacier surface three3 year

**hat gelösch:** and...leaving...a strong imprint oi... the elevat

**hat formatiert:** Schriftart: (Standard) Times New Roman

**hat formatiert:** Schriftart: (Standard) Times New Roman

**hat gelösch:** especially ...ithin the avalanche deposits, but als

**hat formatiert:** Schriftart: (Standard) Times New Roman

**hat formatiert**

**hat gelösch:** it suffers

**hat formatiert**

**hat gelösch:** (

**hat formatiert:** Schriftart: (Standard) Times New Roman

**hat formatiert**

**hat formatiert:** Schriftart:

**hat gelösch:** The reason for the large bias of the glaciological

**hat formatiert:** Schriftart: (Standard) Times New Roman

**hat gelösch:**

975 higher likelihood of strong winter precipitation events in a warmer climate, we expect accumulation by avalanches to become more important on Arctic mountain glaciers that are situated in or surrounded by steep terrain.

#### Data availability

Mass balance data of Freya Glacier are available through the WGMS (wgms.ch) and pangaea.de. The DEMs and orthophotos of 2013 and 2021 have been submitted to pangaea.de. Data which are not yet available there, can be requested from the authors.

#### 980 Author Contributions

985 BH designed the study, conducted the data analysis and wrote the manuscript. BH, DB carried out the geodetic surveys. BH, DB, MC, SHL, JA and WS carried out mass balance observations on Freya Glacier. DB analysed the GPR data. GV helped with planning and processing of the 2013 geodetic survey. WS and EL provided the funding. All authors provided insights regarding the interpretation of data and reviewed and edited the manuscript.

The authors declare that they have no conflict of interest.

#### Acknowledgements

990 The work is supported by the International School for Alpine Research at Sonnblick Observatory (ISAR-SBO), a research Grant from GeoSphere Austria. The survey in 2013 was supported by Österreichische Gesellschaft für Polarforschung. Data from the Greenland Ecosystem Monitoring Programme were provided by the Geological Survey of Denmark and Greenland (GEUS), Denmark and Asiaq – Greenland Survey, Nuuk, Greenland. The authors are grateful to the logistics team at Zackenberg Research Station for the logistical support of the fieldwork. The authors gratefully acknowledge Geo Boffi for post-processing the GNSS data of 2013 and Anders Anker Bjørk for taking overlapping imagery from an airplane in August 2016.

995

hat gelöscht: that

hat gelöscht: might

hat formatiert: Schriftart: (Standard) Times New Roman

hat gelöscht: ¶

hat gelöscht: Until the data are

hat gelöscht: they

## References

- Abermann, J., Eckerstorfer, M., Malnes, E., and Hansen, B. U.: A large wet snow avalanche cycle in West Greenland quantified using remote sensing and in situ observations, *Nat Hazards*, 97, 517–534, <https://doi.org/10.1007/s11069-019-03655-8>, 2019a.
- 1005 Abermann, J., Van As, D., Wacker, S., Langley, K., Machguth, H., and Fausto, R. S.: Strong contrast in mass and energy balance between a coastal mountain glacier and the Greenland ice sheet, *J. Glaciol.*, 65, 263–269, <https://doi.org/10.1017/jog.2019.4>, 2019b.
- AgiSoft LLC (2023):, 2023.
- Ahlmann, H. W.: Studies in Northeast Greenland: Part III: Accumulation and Ablation on the Frøya Glacier: Its Regime in 1938-39 and in 1939-40, *Geografiska Annaler*, 24, 1–22, 1942.
- 1010 Ahlmann, H. W.: The Frøya Glacier 1939-40: Accumulation and Ablation on the Frøya Glacier, *Geografiska Annaler*, 28, 239–257, 1946.
- Andreassen, L. M., Elvehøy, H., Kjølmoen, B., and Engeset, R. V.: Reanalysis of long-term series of glaciological and geodetic mass balance for 10 Norwegian glaciers, *The Cryosphere*, 10, 535–552, <https://doi.org/10.5194/tc-10-535-2016>, 2016.
- 1015 Binder, D., Schöner, W., Brückl, E., Hynek, B., and Weys, G.: Ground Penetrating Radar Investigations in the North East of Greenland, in: *Geophysical Research Abstracts*, EGU General Assembly 2009, Wien, 2009.
- Braithwaite, R. J., Laternser, M., and Pfeffer, W. T.: Variations of near-surface firn density in the lower accumulation area of the Greenland ice sheet, Pákitsoq, West Greenland, *J. Glaciol.*, 40, 477–485, <https://doi.org/10.3189/S002214300001234X>, 1994.
- 1020 Citterio, M. and Ahlstrøm, A. P.: The GlacioBasis glacier monitoring programme at A.P. Olsen Ice Cap (Zackenber, NE Greenland), in: *Nordic Glaciology. Abstract from Glaciological Society Nordic Branch Meeting, 28-30 October 2010, Copenhagen, 2010.*
- Fausto, R. S., Van As, D., Mankoff, K. D., Vandecrux, B., Citterio, M., Ahlstrøm, A. P., Andersen, S. B., Colgan, W., Karlsson, N. B., Kjeldsen, K. K., Korsgaard, N. J., Larsen, S. H., Nielsen, S., Pedersen, A. Ø., Shields, C. L., Solgaard, A. M., and Box, J. E.: Programme for Monitoring of the Greenland Ice Sheet (PROMICE) automatic weather station data, *Earth Syst. Sci. Data*, 13, 3819–3845, <https://doi.org/10.5194/essd-13-3819-2021>, 2021.
- Frederikse, T., Landerer, F., Caron, L., Adhikari, S., Parkes, D., Humphrey, V. W., Dangendorf, S., Hogarth, P., Zanna, L., Cheng, L., and Wu, Y.-H.: The causes of sea-level rise since 1900, *Nature*, 584, 393–397, <https://doi.org/10.1038/s41586-020-2591-3>, 2020.
- 1030 Greenland Ecosystem Monitoring: ClimateBasis Zackenberg - Air temperature - Air temperature, 200cm @ 60min sample (°C) (1.0), <https://doi.org/10.17897/XV96-HC57>, 2020.
- Hersbach, H., Bell, B., Berrisford, P., Hirahara, S., Horányi, A., Muñoz-Sabater, J., Nicolas, J., Peubey, C., Radu, R., Schepers, D., Simmons, A., Soci, C., Abdalla, S., Abellan, X., Balsamo, G., Bechtold, P., Biavati, G., Bidlot, J., Bonavita, M., De Chiara, G., Dahlgren, P., Dee, D., Diamantakis, M., Dragani, R., Flemming, J., Forbes, R., Fuentes, M., Geer, A., Haimberger, L., Healy, S., Hogan, R. J., Hólm, E., Janisková, M., Keeley, S., Laloyaux, P., Lopez, P., Lupu, C., Radnoti, G., De Rosnay, P., Rozum, I., Vamborg, F., Villaume, S., and Thépaut, J.: The ERA5 global reanalysis, *Quart J Royal Meteorol Soc*, 146, 1999–2049, <https://doi.org/10.1002/qj.3803>, 2020.
- 1035 Higgins, A. K.: Exploration history and place names of northern East Greenland, *GEUS Bulletin*, 21, 1–368, <https://doi.org/10.34194/geusb.v21.4735>, 2010.
- 1040 Hugonnet, R., McNabb, R., Berthier, E., Menounos, B., Nuth, C., Girod, L., Farinotti, D., Huss, M., Dussailant, I., Brun, F., and Kääh, A.: Accelerated global glacier mass loss in the early twenty-first century, *Nature*, 592, 726–731, <https://doi.org/10.1038/s41586-021-03436-z>, 2021.
- Huss, M.: Density assumptions for converting geodetic glacier volume change to mass change, *The Cryosphere*, 7, 877–887, <https://doi.org/10.5194/tc-7-877-2013>, 2013.

- 1045 Huss, M., Bauder, A., and Funk, M.: Homogenization of long-term mass-balance time series, *Ann. Glaciol.*, 50, 198–206, <https://doi.org/10.3189/172756409787769627>, 2009.
- Hynek, B., Weyss, G., Binder, D., Schöner, W., Abermann, J., and Citterio, M.: Mass balance of Freya Glacier, Greenland since 2007/2008, <https://doi.org/10.1594/PANGAEA.831035>, 2014.
- 1050 Hynek, B., Binder, D., and Citterio, M.: The Mass balance of Freya Glacier, Greenland, in 2015/2016. Technical Document, ZAMG, 2018.
- Kaser, G., Fountain, A., and Jansson, P.: A manual for monitoring the mass balance of mountain glaciers, 2003.
- Khan, S. A., Colgan, W., Neumann, T. A., van den Broeke, M. R., Brunt, K. M., Noël, B., Bamber, J. L., Hassan, J., and Björk, A. A.: Accelerating Ice Loss From Peripheral Glaciers in North Greenland, *Geophysical Research Letters*, 49, <https://doi.org/10.1029/2022GL098915>, 2022.
- 1055 Klug, C., Bollmann, E., Galos, S. P., Nicholson, L., Prinz, R., Rieg, L., Sailer, R., Stötter, J., and Kaser, G.: Geodetic reanalysis of annual glaciological mass balances (2001–2011) of Hintereisferner, Austria, *The Cryosphere*, 12, 833–849, <https://doi.org/10.5194/tc-12-833-2018>, 2018.
- Kneib, M., Dehecq, A., Gilbert, A., Basset, A., Miles, E. S., Jouvét, G., Jourdain, B., Ducasse, E., Beraud, L., Rabatel, A., Mouginot, J., Carcanade, G., Laarman, O., Brun, F., and Six, D.: Distributed surface mass balance of an avalanche-fed glacier, <https://doi.org/10.5194/egusphere-2024-1733>, 2 July 2024a.
- 1060 Kneib, M., Dehecq, A., Brun, F., Karbou, F., Charrier, L., Leinss, S., Wagnon, P., and Maussion, F.: Mapping and characterization of avalanches on mountain glaciers with Sentinel-1 satellite imagery, *The Cryosphere*, 18, 2809–2830, <https://doi.org/10.5194/tc-18-2809-2024>, 2024b.
- 1065 Laha, S., Kumari, R., Singh, S., Mishra, A., Sharma, T., Banerjee, A., Nainwal, H. C., and Shankar, R.: Evaluating the contribution of avalanching to the mass balance of Himalayan glaciers, *Ann. Glaciol.*, 58, 110–118, <https://doi.org/10.1017/aog.2017.27>, 2017.
- Larsen, S. H., Rutishauser, A., Binder, D., Korsgaard, N., Hynek, B., and Citterio, M.: Glaciological monitoring at A. P. Olsen Ice Cap in NE Greenland, oral, <https://doi.org/10.5194/egusphere-egu23-15647>, 2023.
- 1070 Li, X., Sovilla, B., Jiang, C., and Gaume, J.: Three-dimensional and real-scale modeling of flow regimes in dense snow avalanches, *Landslides*, 18, 3393–3406, <https://doi.org/10.1007/s10346-021-01692-8>, 2021.
- Machguth, H., MacFerrin, M., Van As, D., Box, J. E., Charalampidis, C., Colgan, W., Fausto, R. S., Meijer, H. A. J., Mosley-Thompson, E., and Van De Wal, R. S. W.: Greenland meltwater storage in firn limited by near-surface ice formation, *Nature Clim Change*, 6, 390–393, <https://doi.org/10.1038/nclimate2899>, 2016a.
- 1075 Machguth, H., Thomsen, H. H., Weidick, A., Ahlstrøm, A. P., Abermann, J., Andersen, M. L., Andersen, S. B., Bjørk, A. A., Box, J. E., Braithwaite, R. J., Bøggild, C. E., Citterio, M., Clement, P., Colgan, W., Fausto, R. S., Gleie, K., Gubler, S., Hasholt, B., Hynek, B., Knudsen, N. T., Larsen, S. H., Mernild, S. H., Oerlemans, J., Oerter, H., Olesen, O. B., Smeets, C. J. P. P., Steffen, K., Stober, M., Sugiyama, S., Van As, D., Van Den Broeke, M. R., and Van De Wal, R. S. W.: Greenland surface mass-balance observations from the ice-sheet ablation area and local glaciers, *Journal of Glaciology*, 62, 861–887, <https://doi.org/10.1017/jog.2016.75>, 2016b.
- 1080 Mernild, S. H., Pelto, M., Malmros, J. K., Yde, J. C., Knudsen, N. T., and Hanna, E.: Identification of snow ablation rate, ELA, AAR and net mass balance using transient snowline variations on two Arctic glaciers, *J. Glaciol.*, 59, 649–659, <https://doi.org/10.3189/2013JoG12J221>, 2013.
- 1085 Noël, B., Aðalgeirsdóttir, G., Pálsson, F., Wouters, B., Lhermitte, S., Haacker, J. M., and van den Broeke, M. R.: North Atlantic Cooling is Slowing Down Mass Loss of Icelandic Glaciers, *Geophysical Research Letters*, 49, <https://doi.org/10.1029/2021GL095697>, 2022.
- Nuth, C. and Kääb, A.: Co-registration and bias corrections of satellite elevation data sets for quantifying glacier thickness change, *The Cryosphere*, 5, 271–290, <https://doi.org/10.5194/tc-5-271-2011>, 2011.
- Østrem, G. and Brugmann, M.: *Glacier Mass Balance Measurements. A manual for field and office work.*, National Hydrology Research Institute (Canada), 1991.

hat gelöscht: .

Pulwinski, A., Flowers, G. E., Radić, V., and Bingham, D.: Estimating winter balance and its uncertainty from direct measurements of snow depth and density on alpine glaciers, *J. Glaciol.*, 64, 781–795, <https://doi.org/10.1017/jog.2018.68>, 2018.

Rastner, P., Bolch, T., Mölg, N., Machguth, H., Le Bris, R., and Paul, F.: The first complete inventory of the local glaciers and ice caps on Greenland, *The Cryosphere*, 6, 1483–1495, <https://doi.org/10.5194/tc-6-1483-2012>, 2012.

1095 Rossini, M., Di Mauro, B., Garzonio, R., Baccolo, G., Cavallini, G., Mattavelli, M., De Amicis, M., and Colombo, R.: Rapid melting dynamics of an alpine glacier with repeated UAV photogrammetry, *Geomorphology*, 304, 159–172, <https://doi.org/10.1016/j.geomorph.2017.12.039>, 2018.

Schmidt, N. M., Reneerkens, J., Christensen, J. H., Olesen, M., and Roslin, T.: An ecosystem-wide reproductive failure with more snow in the Arctic, *PLoS Biol*, 17, e3000392, <https://doi.org/10.1371/journal.pbio.3000392>, 2019.

1100 Schöner, W., Binder, D., Hynek, B., Weys, G., Abermann, J., Olefs, M., and Nicus, U.: Climate change and glacier reaction in Zackenberg Region, National Environmental Research Institute, Aarhus University, Denmark, 2009.

Sovilla, B., Somavilla, F., and Tomaselli, A.: Measurements of mass balance in dense snow avalanche events, *Ann. Glaciol.*, 32, 230–236, <https://doi.org/10.3189/172756401781819058>, 2001.

1105 Vandecrux, B., Fausto, R. S., Langen, P. L., Van As, D., MacFerrin, M., Colgan, W. T., Ingeman-Nielsen, T., Steffen, K., Jensen, N. S., Möller, M. T., and Box, J. E.: Drivers of Firn Density on the Greenland Ice Sheet Revealed by Weather Station Observations and Modeling, *JGR Earth Surface*, 123, 2563–2576, <https://doi.org/10.1029/2017JF004597>, 2018.

World Glacier Monitoring Service (WGMS): Fluctuations of Glaciers Database 2022 (wgms-fog-2022-09), <https://doi.org/10.5904/WGMS-FOG-2022-09>, 2022.

1110 World Glacier Monitoring Service (WGMS): Fluctuations of Glaciers Database, <https://doi.org/10.5904/WGMS-FOG-2023-09>, 2023.

Yde, J. C., Gillespie, M. K., Løland, R., Ruud, H., Mernild, S. H., Villiers, S. D., Knudsen, N. T., and Malmros, J. K.: Volume measurements of Mittivakkat Gletscher, southeast Greenland, *J. Glaciol.*, 60, 1199–1207, <https://doi.org/10.3189/2014JoG14J047>, 2014.

1115 Zemp, M., Thibert, E., Huss, M., Stumm, D., Rolstad Denby, C., Nuth, C., Nussbaumer, S. U., Moholdt, G., Mercer, A., Mayer, C., Joerg, P. C., Jansson, P., Hynek, B., Fischer, A., Escher-Vetter, H., Elvehøy, H., and Andreassen, L. M.: Reanalysing glacier mass balance measurement series, *The Cryosphere*, 7, 1227–1245, <https://doi.org/10.5194/tc-7-1227-2013>, 2013.

Zemp, M., Huss, M., Thibert, E., Eckert, N., McNabb, R., Huber, J., Barandun, M., Machguth, H., Nussbaumer, S. U., Gärtner-Roer, I., Thomson, L., Paul, F., Maussion, F., Kutuzov, S., and Cogley, J. G.: Global glacier mass changes and their contributions to sea-level rise from 1961 to 2016, *Nature*, 568, 382–386, <https://doi.org/10.1038/s41586-019-1071-0>, 2019.

1120

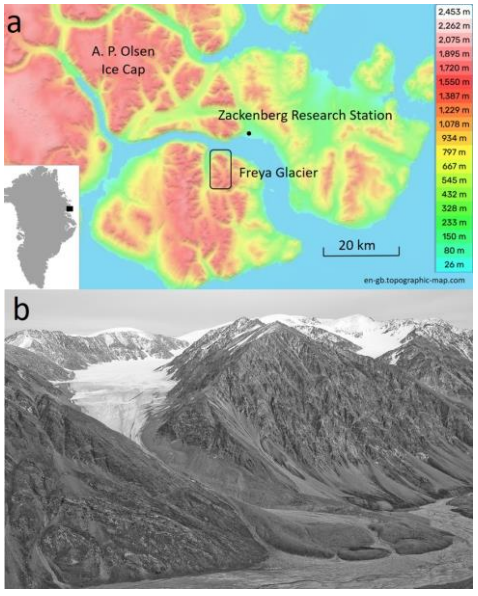


Figure 1: a) Location of Freya Glacier (74.38°N, 20.82°E) on Clavering Island in Northeast Greenland, next to Zackenberg Research Station and A. P. Olsen Ice Cap, (Map from en-gb.topographic-map.com) b) Picture of Freya Glacier and its surrounding ridges in August 2008 (Photo: B. Hynek).

- hat gelöscht: (Freja)
- hat gelöscht: c
- hat gelöscht:
- hat gelöscht: Foto
- hat gelöscht: F

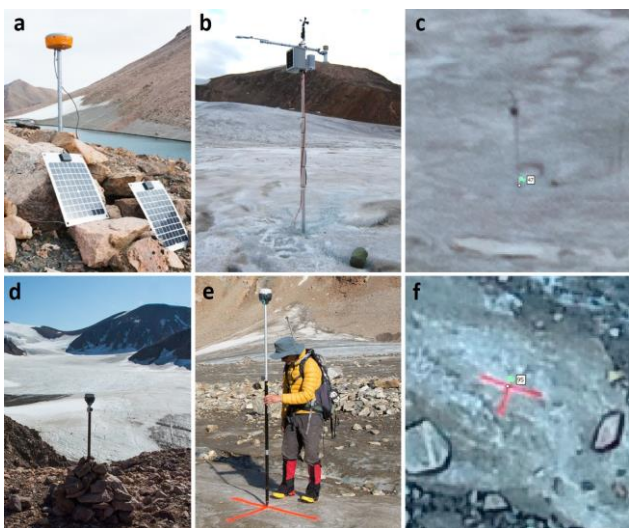
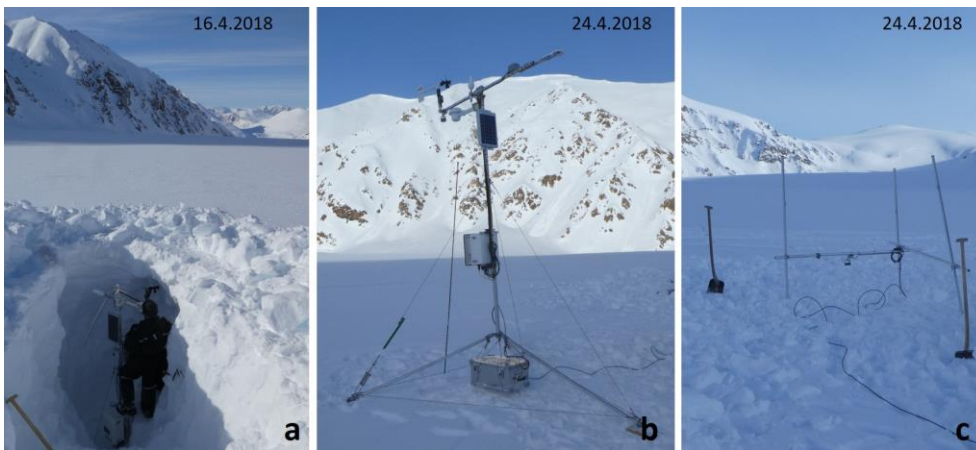


Figure 2: Upper panel: GNSS Survey 2013, a) GNSS base station b) example of a natural GCP and c) its visibility in the imagery. Lower panel: GNSS Survey of 2021, d) GNSS Base Station e) Survey of an artificial GCP and f) the visibility of the GCP in the imagery.

- hat gelöscht: its

**Table 1:** Main characteristics of the two SfM-MVS surveys.

	2013	2021
Survey dates	11. - 18.8.2013	27.-31.7.2021
Survey Geometry	Oblique (Terrestrial)	Nadir (UAV)
Camera/UAV	Nikon D7100 + 20mm	Phantom 4 RTK
Image Resolution	24 Mpix	20 Mpix
No of Images	430	6250
Height above glacier surface	10 - 400	140
Ground Sampling Distance	> 20 cm	3.8 cm
No. of visible GCPs	67	68
Density of visible GCPs [ /km <sup>2</sup> ]	12.6	13.6
Max. elevation change during survey [m]	< 0.15	< 0.20
Surface reconstruction [% of Glacier Area]	100%	94%
DEM spatial resolution [m]	1	0.2
Orthophoto spatial resolution [m]	0.25	0.05



**Fig. 3:** Maintenance of the AWS at Freya Glacier in April 2018: a) The station is 3.5 m tall and was completely covered in snow. b) The weather station and the c) stakes with the second ultrasonic device were re-established on the snow surface. (Photos: Daniel Binder).



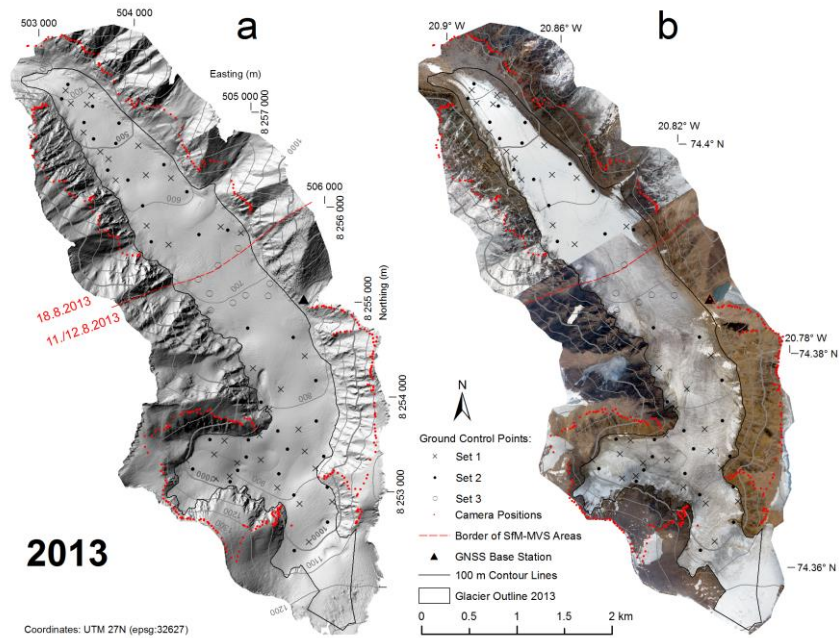


Figure 4: a) Hillshade of the resulting DEM 2013 in 1 m resolution and b) Orthophoto of the survey in August 2013. On both maps the locations of the photo points, the ground control points (GCPs) and the GNSS Base Station are indicated. The upper part of the glacier was surveyed on 11.8. and 12.8. The lower part of the glacier was surveyed on 18.8., after snowfall marked the end of the ablation season, 2013.

hat gelöscht: 3

hat gelöscht: .8.

hat gelöscht: r a

hat gelöscht: f

hat gelöscht: event that

hat gelöscht: in

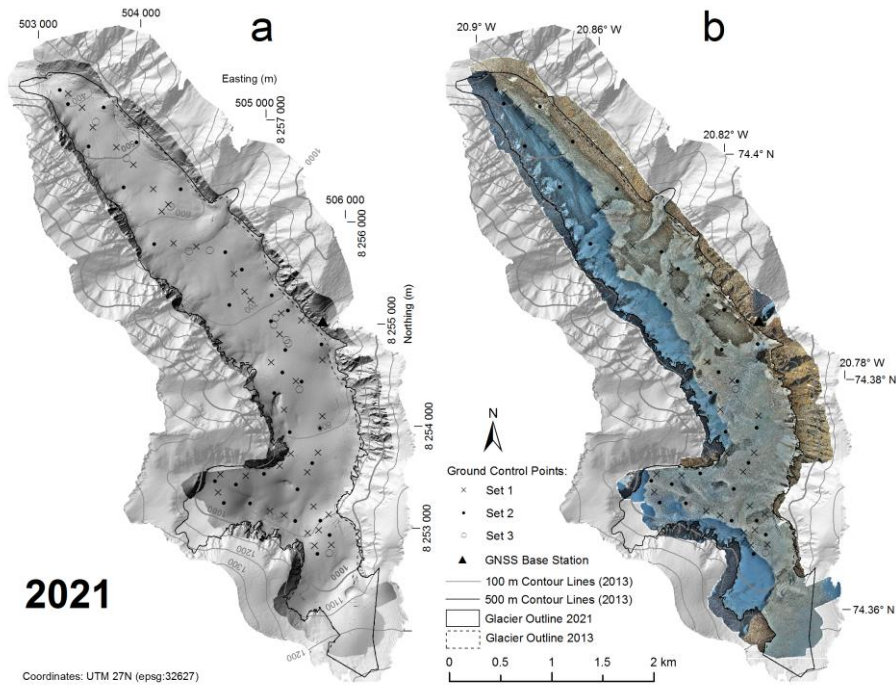


Figure 5: a) Hillshade of the 2021 DEM (dark grey) in 1 m resolution and b) Orthophoto of the survey in July 2021. On both maps the hillshade of 2013 is displayed in the background and the locations of the ground control points (GCPs) and the GNSS base station are indicated. The lower part of the glacier was photographed on 27.7.2021 and the upper part on 31.7.2021.

Table 2: Error statistics of the ground control points in both SEM-models

Model	No. of Control Points (Set 2)	RMSE Control Points [m]				No. of Check Points (Set 1)	RMSE Check Points [m]				No. of z-Val Points (Set 3)	RMSE [m]
		X	Y	Z	TOT		X	Y	Z	TOT		
2013	33	0.14	0.12	0.10	<b>0.21</b>	32	0.41	0.37	0.20	<b>0.59</b>	9	0.37
2021	31	0.20	0.10	0.16	<b>0.28</b>	36	0.21	0.10	0.18	<b>0.30</b>	11	0.12

hat gelöscht: 4

hat gelöscht: GNNS



hat gelöscht: Fig. 5: Maintenance of the AWS at Freya Glacier in April 2018: a) The station is 3.5 m tall and was completely covered in snow. b) The weather station and the c) stakes with the second ultrasonic device were reestablished on the snow surface. (Photos: Daniel Binder). ¶

hat gelöscht: sfm

hat formatiert: Englisch (Vereinigte Staaten)

hat formatiert: Englisch (Vereinigte Staaten)

hat formatiert: Englisch (Vereinigte Staaten)

hat formatiert: Englisch (Vereinigte Staaten)

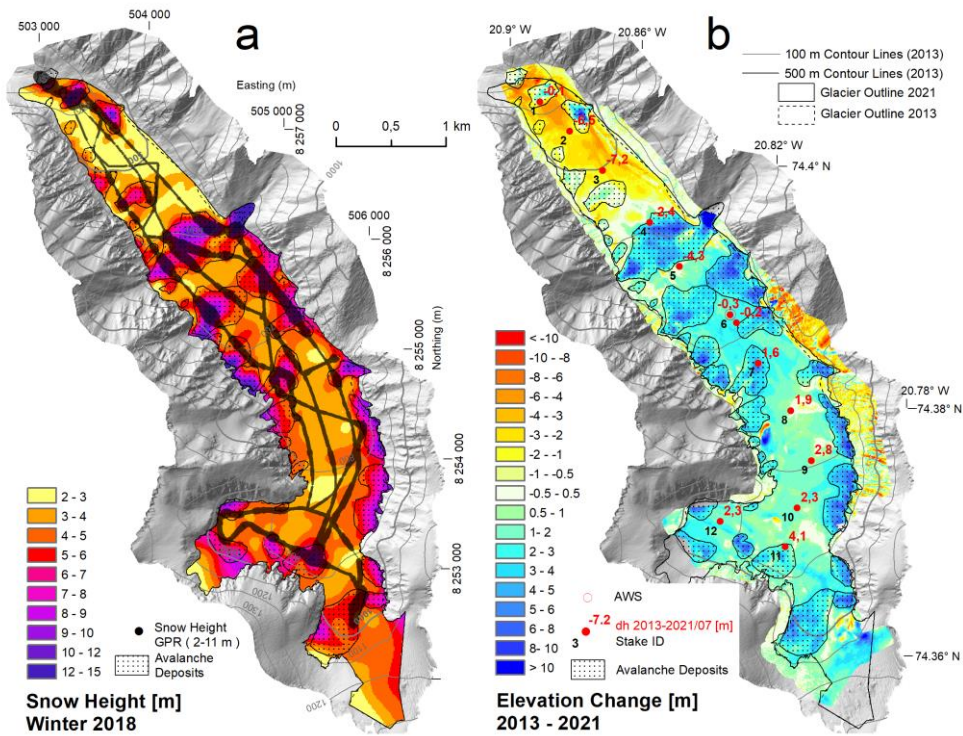


Figure 6: a) Measured (GPR) and extrapolated snow heights in winter 2018 and delineation of avalanche affected areas. b) Elevation change between 18.8.2013 and 27.7.2021. Cumulative ablation at the stakes for the same period are shown in red (in m).

hat gelöscht: delination

hat gelöscht: C

hat gelöscht: measured height changes

hat gelöscht:

hat gelöscht: ablation

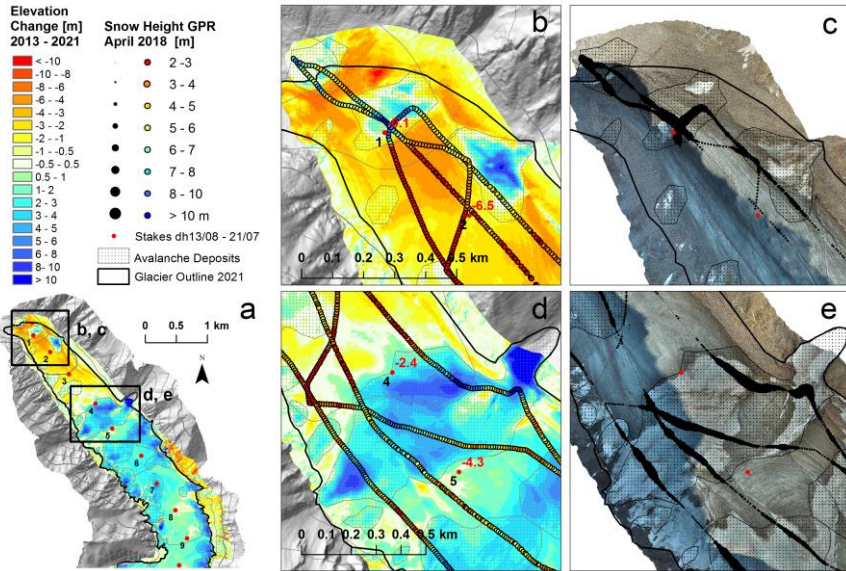


Figure 7: a) Overview and (b, d) close-ups of Elevation Changes and (c, e) Orthophoto 2021 together with GPR snow height data of spring 2018 and measured ablation at the stakes (in m).

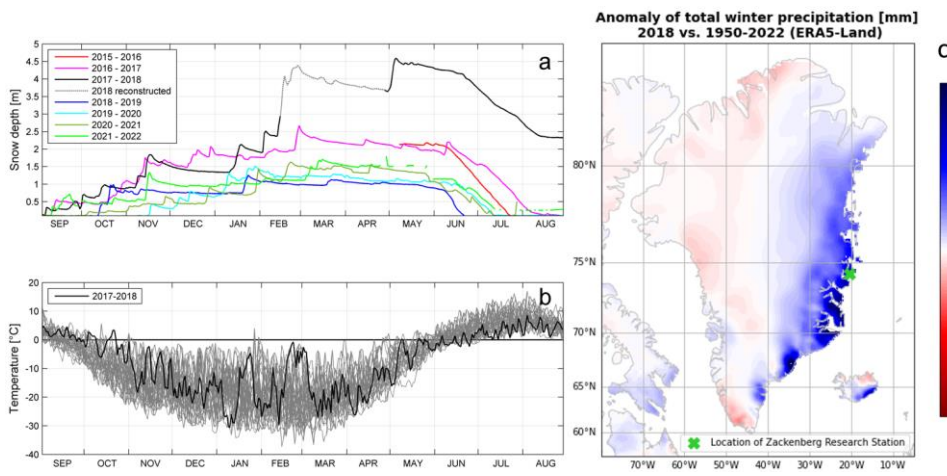
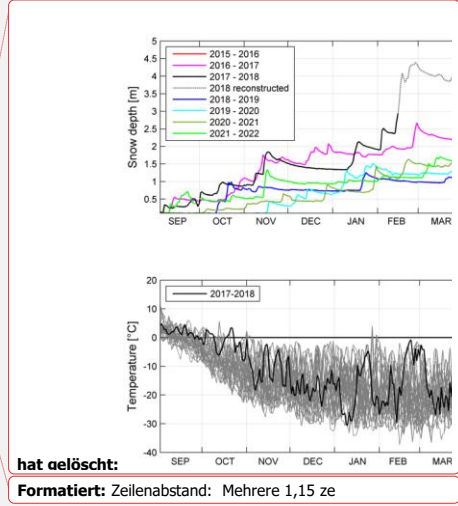


Figure 8: a) Continuous snow depth record from the AWS on Freya Glacier (680 m a.s.l.) since May 2016. b) Daily mean temperature at Zackenberg (37 m a.s.l.) c) Anomaly of ERA 5 cumulative precipitation (SEP-MAY) of 2018.

- hat formatiert: Schriftart: Fett
- Formatiert: Zeilenabstand: Mehrere 1,15 ze
- hat nach unten verschoben [3]: Table 3: Spatial mean values of the winter balance 2018 and the multi-year geodetic mass balance.
- hat gelöscht: ¶
- hat gelöscht: ¶
- hat gelöscht: ¶
- hat formatiert: Schriftart: Fett
- hat formatiert: Schriftart: Fett



- hat gelöscht:
- Formatiert: Zeilenabstand: Mehrere 1,15 ze

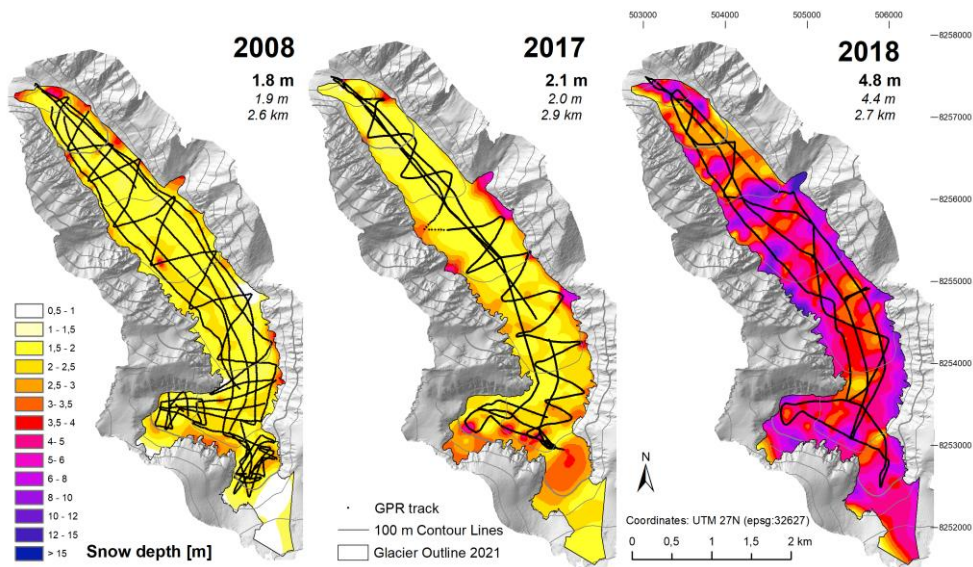


Figure 9: End of winter snow depth maps in years with a detailed GPR survey. Mean **snow depth** of the interpolated grid is given in **bolt**, **arithmetic** mean of the individual GPR snow depth points is given in *italic*. Length of the GPR track is given in km.

Table 3: Spatial mean values of the winter balance 2018 and the multi-year geodetic mass balance.

	Spatial Mean on Total Glacier Area	Spatial Mean on Glacier Area affected by avalanches 2018	Spatial Mean on Glacier Area NOT affected by avalanches 2018
Surface Area 2021 [km <sup>2</sup> ]	5.54	1.98	3.55
Surface Area [%]	100%	36%	64%
Elevation change [m] 08/2013 - 07/2021	1.56 +/- 0.15	3.18	0.67
Geodetic mass balance [m w.e.] 08/2013 - 07/2021	1.33 +/- 0.22	-	-
Winter 2018 snow height [m]	4.8	6.2	4.0
Winter mass balance [m w.e.] (constant density)	1.85	2.40	1.54
Winter mass balance [m w.e.] (5% density increase)	1.89	2.52	1.54
Winter mass balance [m w.e.] (10% density increase)	1.93	2.64	1.54

- hat gelöscht: snowdepth
- hat formatiert: Schriftart: 9 Pt.
- hat formatiert: Schriftart: 9 Pt.
- hat formatiert: Schriftart: 9 Pt.
- hat gelöscht: arithmetic
- hat formatiert: Schriftart: 9 Pt.
- hat verschoben (Einfügung) [3]
- Surface Area 2021 [km<sup>2</sup>]
- Surface Area [%]
- Elevation change [m] 08/2013 - 07/2021
- Geodetic mass balance [m w.e.] 08/2013
- Winter 2018 snow height [m]
- Winter mass balance [m w.e.] (same den
- Winter mass balance [m w.e.] (5% densit
- Winter mass balance [m w.e.] (10% dens
- hat gelöscht: \_\_\_\_\_
- hat formatiert: Englisch (Vereinigtes Königreich)
- Formatierte Tabelle
- hat formatiert: Englisch (Vereinigtes Königreich)
- hat formatiert: Englisch (Vereinigtes Königreich)
- hat formatiert: Englisch (Vereinigtes Königreich)
- hat formatiert: Englisch (Vereinigtes Königreich)
- hat formatiert: Schriftart: 9 Pt.
- Formatiert: Zeilenabstand: Mehrere 1,15 ze

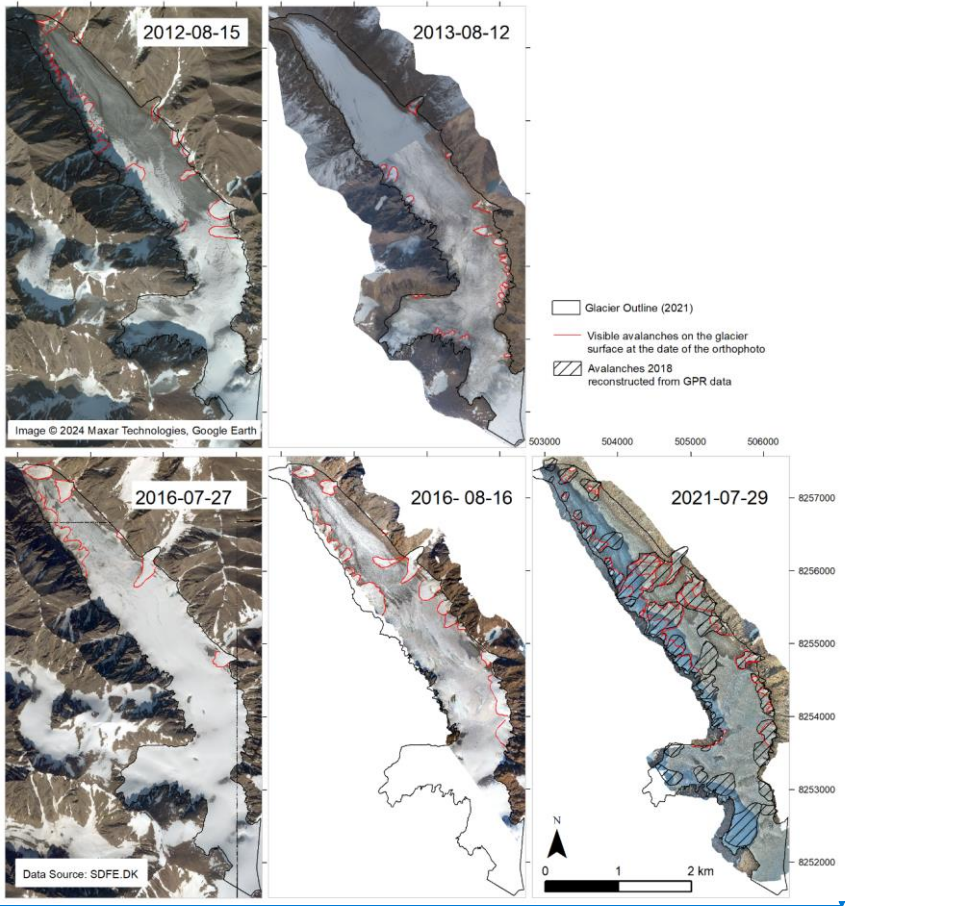


Figure 10: Visible avalanche deposits in high resolution orthophotos of Freya Glacier of 2012, 2013, 2016 and 2021.



hat gelöscht:

hat gelöscht: .

hat gelöscht: 0

hat gelöscht: f

hat gelöscht: of

hat gelöscht: in

hat formatiert: Schriftart: 9 Pt.

hat formatiert: Schriftart: 9 Pt.

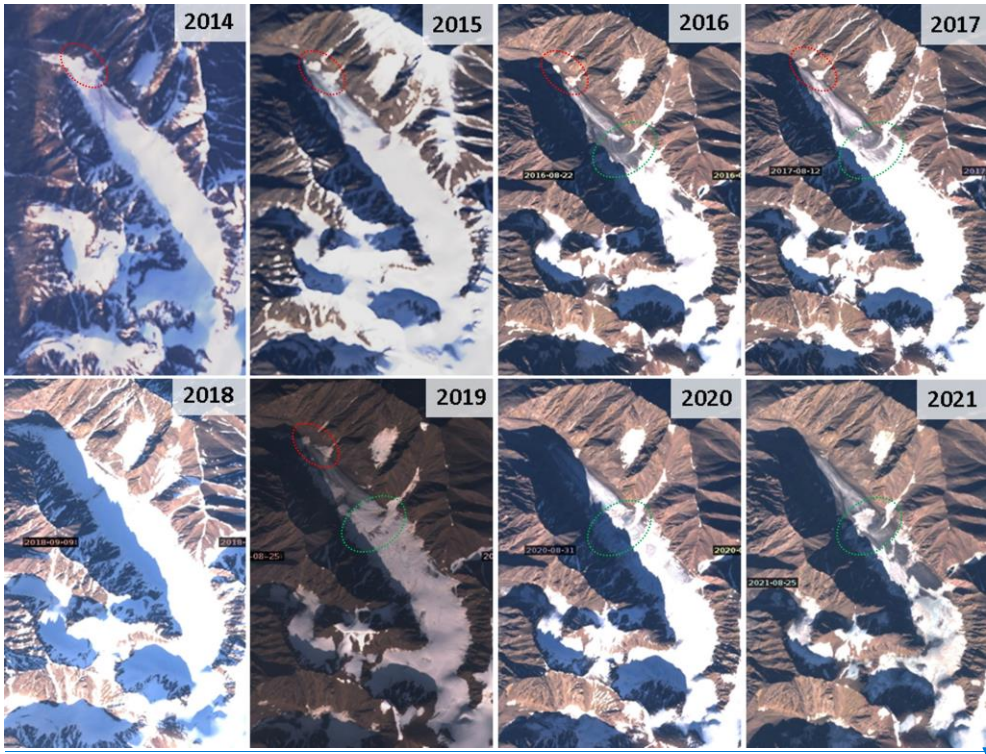
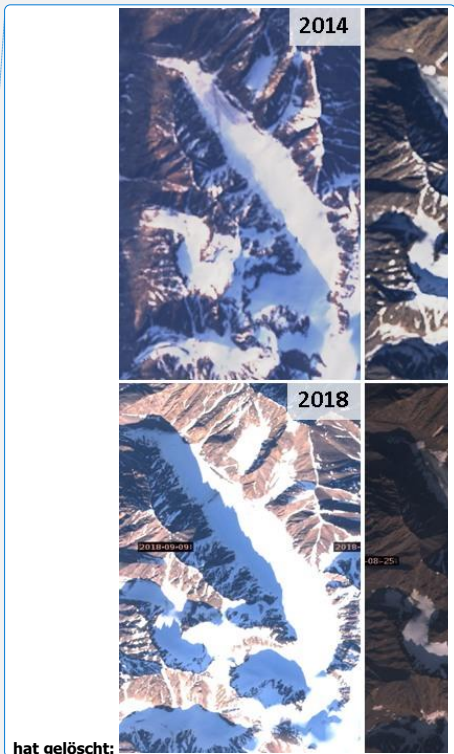


Figure 11: Landsat (2014-2015) and Sentinel 2 (2016-2021) images show the snow cover extent at the end of the ablation season in the relevant mass balance period. Avalanche affected areas are visible in the ablation zone (red) and in some years also in the middle of the glacier (green), where large side valleys are located. Landsat images 2014 and 2015 courtesy of the U.S. Geological Survey. Copernicus Sentinel 2 data 2016-2021, processed by ESA were retrieved from Sentinel Hub.



- hat gelöscht:
- hat gelöscht: Sentinel 2 (2016-2021) and
- hat gelöscht: close to the end of the ablation season
- hat formatiert: Schriftart: 9 Pt.
- hat formatiert: Schriftart: 9 Pt.
- hat formatiert: Schriftart: 9 Pt.
- Formatiert: Zeilenabstand: Mehrere 1,15 ze
- hat gelöscht: and the remnants of avalanchesavalanche
- hat gelöscht: at the end of summer
- hat formatiert: Schriftart: 9 Pt.
- hat formatiert: Schriftart: 9 Pt.
- hat formatiert: Schriftart: 9 Pt.

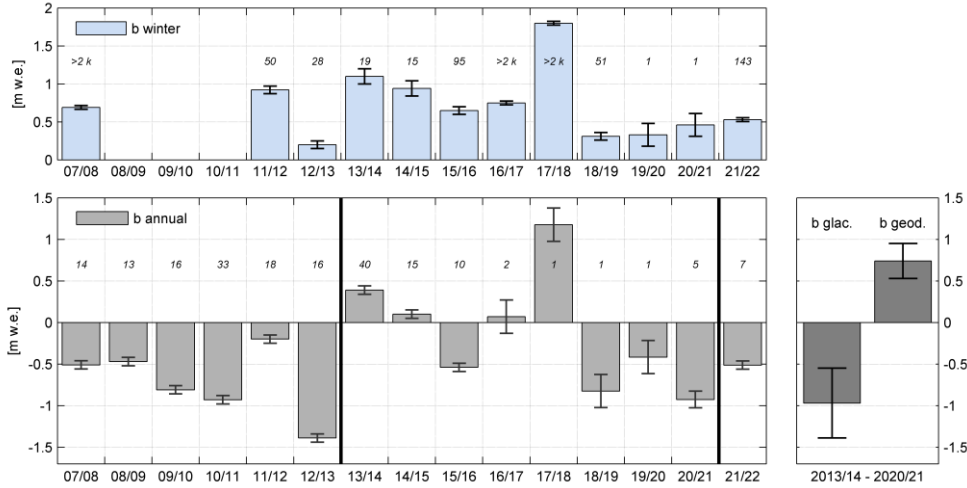


Figure 12: Left panels: Time series of specific winter mass balances (top), and specific annual mass balances (bottom) with their estimated uncertainties. The number of point observations available for the mass balance calculation of individual years (winters) is shown as italic numbers. E. g. winter mass balance 2017/18 is based on more than 2000 point, while annual balance 2017/18 is based on one point observation only. [The high number of point observations in winter 2017/18 corresponds to 10 m along track mean snow depth values of the extensive GPR survey.](#) Right panel: Comparison of the cumulative glaciological and geodetic mass balance 2013/14 – 2020/21 and their related uncertainties.

1245

hat gelöscht: observations

<sup>i</sup> According to the Language Secretariat of Greenland (Oqaasileriffik.gl) the official name is spelled as *Frejagletsjer* (formerly *Frejagletcher*). While (Ahlmann, 1946) used *Frøya Glacier*, in (Higgins, 2010) the glacier was also spelled as *Frøjabreen*, *Frøya Glacier* and *Frøya Glacier*. In recent scientific literature (Schöner et al., 2009) the spelling *Freya Glacier* has been used.

- hat formatiert: Schriftart: Kursiv
- hat formatiert: Schriftart: Kursiv
- hat formatiert: Schriftart: Kursiv
- hat formatiert: Schriftart: Kursiv
- hat formatiert: Schriftart: Kursiv
- hat formatiert: Schriftart: Kursiv