

# Assessing the Seasonal Evolution of Snow Depth Spatial Variability and Scaling in Complex Mountain Terrain

Zachary S. Miller<sup>1</sup>, Erich H. Peitzsch<sup>1</sup>, Eric A. Sproles<sup>2</sup>, Karl W. Birkeland<sup>3</sup>, and Ross T. Palomaki<sup>2</sup>

<sup>1</sup>US Geological Survey Northern Rocky Mountain Science Center, West Glacier, Montana, MT 59936, USA

5 <sup>2</sup>Geographic Snow, Water, and Ice Resources Lab, Department of Earth Sciences, Montana State University, Bozeman, Montana, MT 59717, USA

<sup>3</sup>USDA Forest Service National Avalanche Center, Bozeman, Montana, MT 59771, USA

Correspondence to: Zachary S. Miller (zsmiller@usgs.gov)

**Abstract.** Dynamic natural processes govern snow distribution in mountainous environments throughout the world.

10 Interactions of these different processes create spatially variable patterns of snow depth across a landscape. Variations in accumulation and redistribution occur at a variety of spatial scales, which are well established for moderate mountain terrain. However, spatial patterns of snow depth variability in steep, complex mountain terrain have not been fully explored due to insufficient spatial resolutions of snow depth measurement. Recent advances in uncrewed aerial systems (UAS) and structure from motion (SfM) photogrammetry provide an opportunity to map spatially continuous snow depths at high resolution in  
15 these environments. Using UAS and SfM photogrammetry, we produced 112 snow depth maps at a steep couloir site in the Bridger Range of Montana, USA, during the 2019-2020 winter. We quantified the ~~spatial scales breaks~~ of snow depth ~~distribution-variability~~ in this complex mountain terrain at a variety of resolutions over two orders of magnitude (0.02 m to 20 m) and time steps (4 to 58 days) using variogram analysis in a high-performance computing environment. We found that spatial resolutions greater than 0.5 m do not capture the complete patterns of snow depth spatial variability within complex mountain  
20 terrain and that snow depths are autocorrelated within horizontal distances of 15 m at our study site. The results of this research have the potential to reduce uncertainty currently associated with snowpack and snow water resource analysis by documenting and quantifying snow depth variability and snowpack evolution on relatively inaccessible slopes in complex terrain at high spatial and temporal resolutions.

## 1 Introduction

25 Seasonal mountain snowfall is a critical natural resource globally but can also present a natural hazard for mountainous communities. Understanding the spatial distribution and temporal evolution of seasonal snow depth, defined as the vertical distance from the snow surface to the base of the snowpack (Fierz et al., 2009), is essential for water resource managers, local governments, climate researchers, and avalanche forecasters. However, quantifying snow depth across a landscape, especially one comprised of mountainous terrain, is challenging due to the multi-scalar nature of physical processes governing the  
30 distribution of snow depth (Blöschl, 1999; Bühler et al., 2016; Egli et al., 2011; Elder et al., 1998; Grünwald et al., 2010;

Formatted: English (United States)

Formatted: Not Different first page header

Commented [MZS1]: Not "scale breaks" – changed to "spatial scales of snow depth variability"

Formatted: English (United States)

Formatted: English (United States)

Liston et al., 2007; Schweizer et al., 2008; Trujillo et al., 2009). These physical processes interact in different ways throughout the landscape, influencing the local spatial variability of snow depth in non-homogenous ways over spatial scales ranging from less than a centimeter to 100 meters (m) or greater. The international snow depth monitoring community follows guidelines for selecting research sites in wind-sheltered, flat locations (Buchmann et al., 2021). Although such relatively homogenous terrain allows for clearer differentiation of some specific processes influencing snow depth distribution, such as wind-vegetation interactions (Deems et al., 2006; Trujillo et al., 2007; Trujillo et al., 2009), previous research overlooks steep, complex slopes, an essential characteristic of mountainous terrain, where much of the seasonal snowpack exists (Deschamps-Berger et al., 2020). In this study, we define the slope scale as a spatial extent of  $< 0.2 \text{ km}^2$  and complex terrain as mountainous topographies including hillslopes  $> 25^\circ$  with interspersed rock outcrops, vertical cliff features, and variable slope geometries.

A major challenge in accurately analyzing the spatial variability of snow depth is acquiring measurements at an appropriate spatial resolution (Clark et al., 2011; Kinar and Pomeroy, 2015). Current methods for mapping snow depth in a spatially continuous manner within steeper mountain topographies are limited (López-Moreno et al., 2015; Meyer and Skiles, 2019). Traditional methods of measuring snow depth include in-situ snow surveys, snow pits, and automated weather stations (AWS), which provide a spatially incomplete measure of snow depth made up of sparse point measurements distributed heterogeneously over the landscape (Dozier, 2011; Dozier et al., 2016; Elder et al., 1998; Grünwald et al., 2010; López-Moreno et al., 2011). Point measurement locations typically avoid exposure to snow avalanches due to safety and logistical concerns, and therefore measurements collected from relatively flat, planar terrain are overrepresented compared to measurements from steeper slopes. Remotely sensed measurements, on the other hand, can acquire spatially continuous snow depth measurements across a variety of terrain at multiple resolutions without exposing observers to avalanches. Current satellite-derived snow depth data (e.g., Pléiades, WorldView-3, and WorldView-4) are easily accessed, spatially continuous, and, through stereo imagery processing, map snow depth at 2 m horizontal resolution with 0.5 m vertical accuracy (Deschamps-Berger et al., 2020; Hu et al., 2016; Marti et al., 2016). Yet the accuracy of DEMs produced through satellite imagery and stereoscopic processing are known to suffer on slopes steeper than  $35^\circ$ , common in high-relief mountain terrain (Lacroix, 2016; Shean et al., 2016; Deschamps-Berger et al., 2020). ~~Yet therefore satellite imagery derived DEMs areis horizontal resolution and vertical accuracy is~~ still insufficient for capturing some of the finer-scale processes which influence snow depth distributions in complex terrain (Eker et al., 2019). Terrestrial laser-scanning can acquire spatially continuous centimeter-scale resolution snow depth data, but is limited by its inherent field of view and shadowing by steep topographic features (Deems et al., 2013; Fey et al., 2019; Prokop et al., 2015; Trujillo et al., 2007). Airborne laser-scanning (e.g., Airborne Snow Observatory - Painter et al., 2016) circumvents the terrain-shadowing shortcomings of terrestrial laser-scanning yet remains cost-prohibitive for many researchers (Brandt et al., 2020; Bühler et al., 2015; Dozier et al., 2016; Meyer and Skiles, 2019).

Imagery captured from uncrewed aerial systems (UAS) combined with structure-from-motion (SfM) photogrammetry techniques allows for low-cost collection of spatially continuous centimeter-scale resolution snow depth data with few terrain

Formatted: English (United States)

Formatted: English (United States)

Formatted: English (United States)

65 limitations, making it an attractive tool for snow depth distribution mapping in complex, non-forested mountain terrain (Avanzi  
et al., 2018; Bühler et al., 2016; De Michele et al., 2016; Eberhard et al., 2021; Gaffey and Bhardwaj, 2020; Redpath et al.,  
2018; Revuelto et al., 2021). Numerous studies conclude that UAS and SfM techniques are effective at mapping snow depth  
variability at the slope scale, yet most focus on simpler terrain and only compare two individual timestamps of data (Adams  
et al., 2018; Avanzi et al., 2018; Boesch et al., 2016; Bühler et al., 2016; Cimoli et al., 2017; De Michele et al., 2016; Eberhard  
70 et al., 2021; Gabrlik et al., 2019; Harder et al., 2016; McCormack and Vaa, 2019; Redpath et al., 2018; Peitzsch et al., 2018;  
Vander Jagt et al., 2015).

Formatted: English (United States)

Seasonal snowpack is constantly evolving and the process scales at which it changes are variable throughout both space and  
time (Blöschl, 1999). The spatial and/or temporal resolutions of measurements in previous snow depth research have been  
75 insufficient to capture the process scales of spatial heterogeneity in the evolving snowpack (Clark et al., 2011; López-Moreno  
et al., 2011). Here, we utilize 0.02 m horizontal resolution UAS/SfM derived snow depth observations as our baseline for  
further snow depth spatial variability analysis. The observation scales in this study span multiple orders of magnitude spatially  
(0.02 m grid covering approximately 0.2 km<sup>2</sup> extent) on 112 distinct observation days over five months. These scales allow us  
to observe centimeter-scale vertical changes in snow depth across the slope scale, here defined as < 0.2 km<sup>2</sup>. Prior studies  
80 demonstrate the value of the slope scale for exploring the complex nature of snow depth variability and understanding  
avalanche formation processes (Anderton et al., 2004; Birkeland, 2001; Birkeland et al., 1995; Kronholm and Birkeland, 2007;  
López-Moreno et al., 2015; Schweizer et al., 2008; Wirz et al., 2011). The temporal resolution of this study allows us to observe  
the evolution of snow depth spatial variability throughout the winter, in comparison to previous research that inferred patterns  
of snow depth spatial variability from more sparse temporal observations (López-Moreno et al., 2015; Niedzielski et al., 2019;  
85 [Mendoza et al., 2020](#)).

Formatted: English (United States)

Formatted: English (United States)

Formatted: English (United States)

Formatted: English (United States)

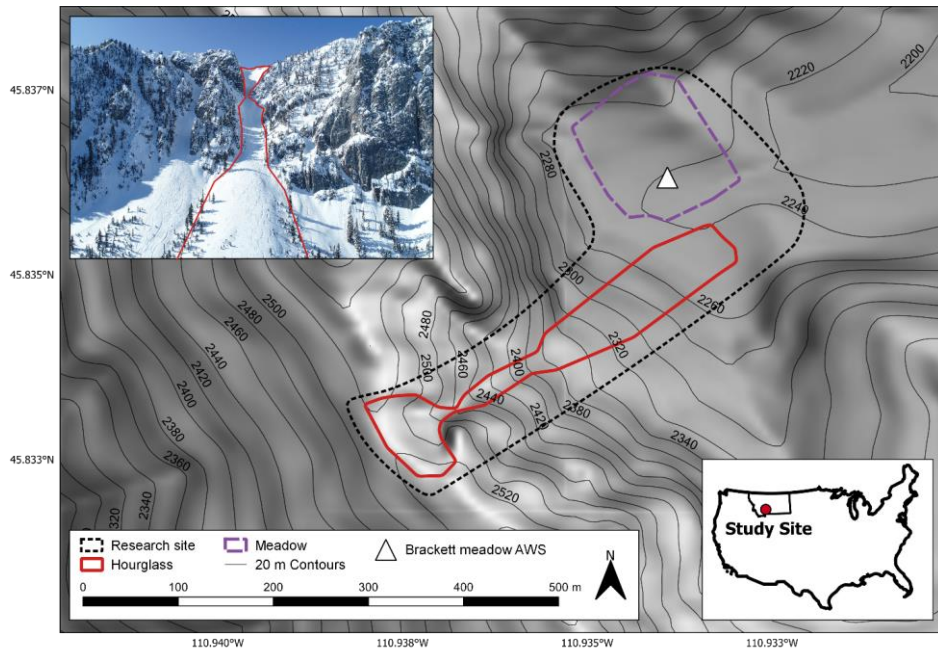
Our study considers the question: What is the optimal sample spacing that fully captures snow depth variability at the slope  
scale in complex mountain terrain? The objective of this work is to quantify the spatial resolutions necessary for accurate  
representation of snow depth spatial variability and its seasonal evolution in [the complex terrain of our study site](#). To achieve  
90 this, we analyze the differences in patterns of snow depth between complex and relatively simple mountain terrain at the slope  
scale. We also investigate the temporal evolution of snow depth spatial variability throughout the course of a winter at our  
study site.

## 2 Research Site

The research site is a steep sub-alpine mountain basin within the Bridger Range of southwest Montana, USA (45.834° N, -  
95 110.935° E), at the head of the South Fork Brackett Creek watershed (Fig. 1). The Bridger Range is classified as an  
intermountain snow and avalanche climate characterized by average December through March temperatures from -3.5 to -7°C

and average annual snowfall of approximately 7.5 m measured at Bridger Bowl Ski Area (Mock and Birkeland, 2000). The surrounding area (sometimes referred to as “wolverine basin”), has been the site of frequent snow and avalanche research over the past 20 years (Deems, 2002; Landry et al., 2004; Lundy et al., 2001; Van Peurse et al., 2016) due to its safe access, heterogeneous terrain, and proximity to Bridger Bowl Ski Area’s network of automated weather stations (AWS).

100



Formatted: English (United States)

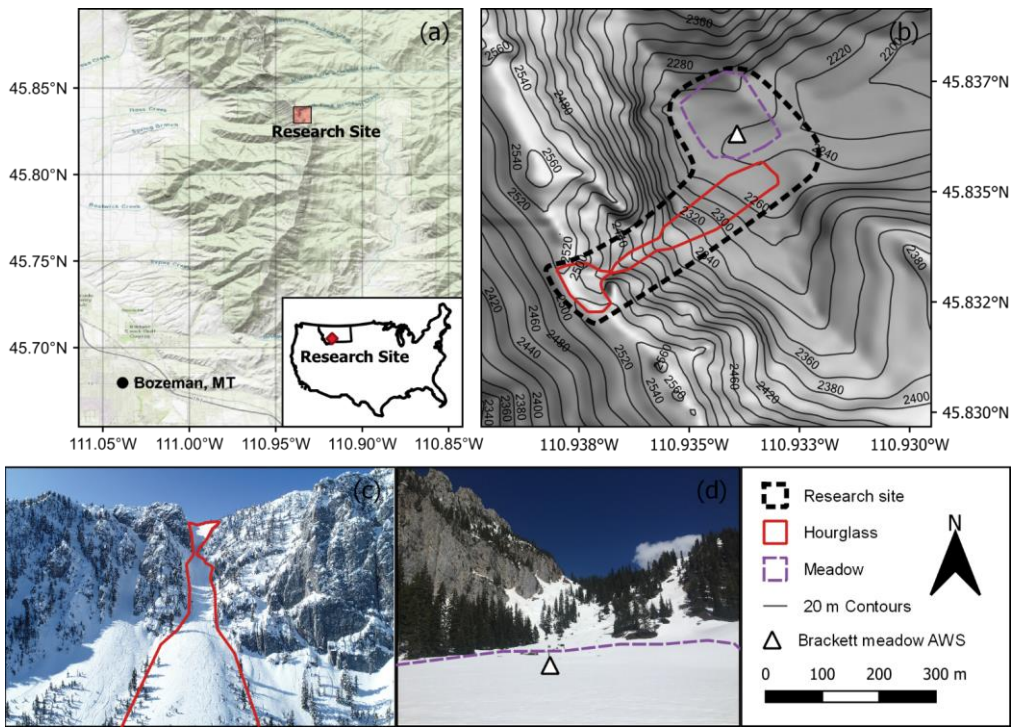


Figure 1: Overview of study location in the Bridger Range of Montana, USA (a); and overview topographic map of the study area (b), with the general research site (dotted polygon), the Hourglass couloir (solid red), the meadow (dashed purple), and the Brackett meadow AWS (white triangle) are shown. Photographs of the Hourglass couloir (c) and meadow (d) with the upper left with couloir and meadow polygons outlined. Data map source: U.S. Geological Survey, 2017.

There are two distinct mountain topographies, a steep couloir and sheltered meadow, within the research site that are subject to similar meteorological conditions. The Hourglass (2250 – 2550 m a.s.l.) is a couloir and avalanche path that has a mean slope angle of 33° and is mainly composed of rock scree, outcrops of limestone cliffs, and 1 - 2 m subalpine fir and Engelmann spruce trees. Mature, 10 - 20 m in height, coniferous trees and 1 m tall shrubs/bushes border the main avalanche path. Ridgetop wind-loading from dominant westerly storms result in large cornice growth during the winter along the top of the couloir and frequent small natural avalanches within the avalanche path (Lundy et al., 2001). The Hourglass is infrequently skied due to its avalanche-prone terrain, and we observed approximately 5 unique ski tracks throughout our field season. The meadow (2240 m a.s.l.) is adjacent to the runout of the Hourglass, has a mean slope of 5°, and consists of a mix of grasses and shrubs

Formatted: English (United States)

Formatted: English (United States)

Formatted: English (United States)

Formatted: English (United States)

Formatted: English (United States)

Formatted: English (United States)

Formatted: English (United States)

with 10 - 20 m tall mature coniferous forests on its north, west, and south sides. The meadow is sheltered from all but easterly wind directions and localized severe weather by the surrounding dense forest and steep 300 m headwall to its west.

We used meteorological data from ~~three an~~ AWS in the immediate vicinity of the research site for measuring snow depth and other related meteorological variables. The Brackett meadow AWS (2240 m), located in the meadow, measured hourly temperature, relative humidity, wind speed, wind direction, net radiation, and snow depth from 6 November 2019, to 10 June 2020. The Brackett meadow AWS's below-treeline, wind-protected location is similar to many SNOTEL sites (Molotch and Bales, 2006). ~~Additionally, our research site is within 2 km of Bridger Bowl Ski Area's Alpine AWS (2286 m) and Ridge AWS (2591 m), which measure hourly temperature, relative humidity, wind speed, wind direction and snow depth from a sheltered forest opening and an exposed ridgeline, respectively.~~

### 3 Methods

Our study aims to quantify optimal sample spacing to fully capture the spatial variability of snow accumulation and redistribution at the slope scale in complex mountain terrain. To achieve this goal, we first generated digital surface models (DSMs) with UAS-based SfM photogrammetry techniques collected on 11~~2~~ field days during the 2019 - 2020 winter. We collected in-situ snow depth measurements via manual probe for validation. Then, we used the high resolution (0.02 m horizontal) DSMs and resampled at coarser resolutions to calculate multi-resolution variograms to assess the scales of spatial variability patterns in snow depth. Finally, we used scene-wide coefficient of variation calculations to analyze seasonal patterns in snow depth spatial variability.

#### 3.1 UAS Surveys

We designed our aerial surveys to achieve horizontal spatial resolutions of  $< 0.05$  m to observe centimeter-scale differences in snow depths throughout the entire study site (De Michele et al., 2016; Fierz et al., 2009). We used a commercially available DJI Phantom 4 RTK UAS equipped with a 20-megapixel camera and Real-Time-Kinematic (RTK) Global Navigation Satellite System (GNSS) with the DJI DRTK2 GNSS mobile station. We conducted repeated ~~autonomous pre-programmed UAS missions flying in a grid pattern at a constant pre-planned missions over the research site flying the UAS autonomously in a grid pattern at~~ 50 m above ground level ~~based on a 1 m resolution DSM collected prior to winter flights. Our flight imagery was collected~~ with 70% front/side image overlap, resulting in  ~~$< 0.02$  cm~~ per pixel average ground sampling distance and approximately 550 overlapping images each field day, similar to Goetz & Brenning (2019). A data gap exists between 17 March 2020 and 14 May 2020, due to the onset of the COVID-19 pandemic.

To constrain topographic error in post-processing, we collected 25 stationary and easily recognizable ground control points with high-resolution RTK GNSS survey equipment during the snow-free season to incorporate into the digital surface models.

Formatted: English (United States)

Formatted: English (United States)

Formatted: English (United States)

Due to variable snow cover, we used a partial selection of the 25 ground control points, typically 3 - 10 points, in each individual model by selecting points that were not covered by snow. To constrain snow depth observation error, each field day we deployed and surveyed at least 4 snow depth validation point targets prior to flights in safe accessible locations within the study area and manually measured snow depths at each point immediately after the flights (described further in Sect. 3.3).

Formatted: English (United States)

Formatted: English (United States)

Formatted: English (United States)

### 3.2 Digital Surface Model (DSM) Creation

For each field date, we processed the overlapping imagery to derive snow depth maps using three steps: Post-Processing-Kinematic (PPK) location corrections, SfM processing of imagery for DSM creation, and DSM-differencing to derive snow depth.

We post-processed the UAS location data to improve the quality of the RTK GNSS positions and ensure accurate co-registration of output models using RTKLIB (Takasu, 2009) and the R software environment (R Core Team, 2021) in the WGS84 geographic coordinate system (EPSG::4326). Using the MTSU reference station (~21 km from the study site), the National Aeronautics and Space Administration's Daily Global Positioning Systems broadcast ephemeris data, and the UAS RINEX and Timestamp files, our PPK processing resulted in horizontal positional accuracies of less than 0.1 m and vertical positional accuracies of less than 0.2 m for most UAS photo locations (Table A1). This additional step was necessary due to limited satellite connectivity of the RTK system from the poor sky view of high-relief topography at our study site.

Formatted: English (United States)

Formatted: English (United States)

Formatted: English (United States)

We completed SfM photogrammetric processing using the software package Agisoft Metashape Pro Version 1.6.2/1.6.6 (Agisoft, 2020), which generates 3-D surface models from overlapping imagery and point matching (Alidoost and Arefi, 2017; Carbonneau and Dietrich, 2017; Gabrlik et al., 2018; Nolan et al., 2015). We filtered, aligned, and reduced the error of the geolocated imagery before the addition of ground control points for final batch processing. Finally, we ensured accurate co-registration by aligning the vertical and horizontal positions of the snow-covered models to available snow-free ground control points and the snow-free 8 July 2020 model (Adams et al., 2018). Utilizing fewer ground control points and UAS equipped with RTK provides similar accuracies as traditional ground control point driven SfM workflows (Eberhard et al., 2021; Revuelto et al., 2021). This processing workflow produced a DSM interpolated from a dense point cloud and an orthomosaic for further analysis. We used simple DSM-differencing techniques to calculate snow depths throughout our site by subtracting a snow-free DSM collected on 8 July 2020, from each snow-covered DSM, resulting in snow depth DSMs used for further spatial variability analysis. We removed poor quality DSMs if deemed unacceptable through comparison with probed snow depths, visual inspection, and expert judgment (Table A2). Examples of these thresholds include observed limited point matching while processing, unrealistic snow depths, inaccurate DSM reconstruction surfaces, unrealistic snow depths, and unrealistic snow depth distributions. Unrealistic snow depths are negative snow depth values and values filtered by expert judgement.

Formatted: English (United States)

Formatted: English (United States)

Formatted: English (United States)

Formatted: English (United States)

Formatted: English (United States)



### 3.3 Manual Snow Depth Collection

180 We collected traditional manual snow depth measurements through in-situ probing primarily within the lower elevations of the research area. These geolocated validation point snow depths were used for error assessment of UAS-derived snow depths We collected manual snow depth measurements at 4 or more random locations within avalanche-safe areas of the study site at deployed 1 m<sup>2</sup> markers each field day. To determine the 1 m<sup>2</sup> average, variation, and range at validation points, we probed manual in-situ snow depths at the center and four corners of each deployed marker (López-Moreno et al., 2011). We used the 1 m<sup>2</sup> averages as our individual validation point measurements. We collected location information for each of these manual snow depth measurements with handheld GPS units (3 - 5 m accuracy). Additionally, we manually collected a single in-situ avalanche crown profile in the upper elevations of the couloir on 28 February 2020, which included total snow depth, 25 individual snow layer thicknesses, grain type and size measurements, and an extended column test (ECT) as per Greene et al. (2016). We calculated summary statistics for manual snow depth measurements and their UAS-derived equivalent depths for each field day (Table A32).

195 We completed an assessment of error by calculating mean, standard deviation, root mean square error (RMSE) (Eq. 1) and normalized median absolute deviation (NMAD) (Eq. 2) values for the differences between UAS-derived and probed snow depths for both the complete set of snow depth DSMs and a subset with poor quality models of the meadow removed. RMSE is defined as

$$RMSE = \sqrt{\frac{1}{n} \sum_{i=1}^n (P_i - O_i)^2} \quad (1)$$

where  $n$  is the number of observations,  $P$  is the predicted value and  $O$  is the observed value, and NMAD is represented by

$$NMAD = 1.4826 \times \text{median}(|x_i - x_{\text{median}}|) \quad (2)$$

200 where 1.4826 is the scale factor for comparison with standard deviation,  $x_i$  is the difference in measured snow depths for point  $i$ , and  $x_{\text{median}}$  is the median of the dataset of differences.

Our error assessment followed a condensed version of the accuracy and precision measures presented in Adams et al. (2018) and Eberhard et al. (2021). The mean difference and RMSE are common measures of accuracy. Standard deviation and NMAD are common measures of precision, with NMAD being more resistant to outliers. We extracted the 1 m<sup>2</sup> median and inner quartile range (IQR) values from the corresponding snow depth DSM for each manually collected snow depth measurement location and used the median value for error assessment.

### 3.4 Digital Surface Model (DSM) Detrending

205 In preparation for variability analysis, we detrended each snow depth DSM with regular grids to focus analysis on the resultant residual surfaces as per Lutz and Birkeland (2011). Detrending This allowed us to calculate omnidirectional variograms. First,

Formatted: English (United States)

Formatted: English (United States)

Formatted: English (United States)

Formatted: English (United States)

Formatted: English (United States)

Formatted: English (United States)

Formatted: English (United States)

Formatted: English (United States)

Formatted: English (United States)

Formatted: English (United States)

Formatted: English (United States)

Formatted: English (United States)

Formatted: English (United States)

Formatted: English (United States)

Formatted: English (United States)

Formatted: English (United States)

Formatted: English (United States)

Formatted: English (United States)

Formatted: English (United States)

Formatted: English (United States)

Formatted: English (United States)

Formatted: English (United States)

we masked individual vegetation features, such as trees, out of all DSMs while attempting to retain some snow surface between features. We used QGIS version 3.20.1 (QGIS.org, 2021) and the SAGA-GIS plugin's DTM Filter tool (Vosselman, 2000) to filter out localized vertical spikes in elevation in the snow-free 8 July 2020, DSM and apply a 0.1 m buffer along the masked feature boundaries to account for minor vegetation shifts due to wind or snow creep (Table A3). We checked this mask against high resolution orthoimagery produced in the SfM workflow to ensure accuracy and applied this mask to each DSM included in our analysis.

We created detrended surfaces for each DSM using elevation, aspect, and distance-from-ridge as independent variables potentially contributing to snow depth trends. We extracted elevation, aspect, and distance-from-ridge raw surfaces from the snow-free 8 July 2020, DSM. Then, we calculated trend surfaces by selecting the most significant (lowest p-value) independent variable resulting from a least-squares linear regression for snow depth and each independent variable for each individual DSM. We subtracted the resultant trend surface from the raw snow depth DSM to produce detrended residual DSMs for each field day. If no independent variables proved significant ( $p > 0.05$ ), we detrended the DSMs by subtracting the mean snow depth from the raw snow depth DSM instead. A final correction using a 3 standard deviation filter and expert judgment removed erroneous outlier data from the detrended residual snow depth DSMs (Höhle and Höhle, 2009).

### 3.5 Variogram Calculation and Fit

To examine the spatial relationships of snow depth distributions in our two study sites, we used variogram analysis. Variograms are useful for determining spatial structure and correlation of variables whose scaling behavior is unknown. Variograms are a visual representation of semivariance values calculated between point pairs at a variety of lag distances. The experimental variogram can be calculated as

$$\hat{\gamma}(h) = \frac{1}{2N(h)} \sum_{(i,j)}^{N(h)} (z_j - z_i)^2 \quad (3)$$

where  $N(h)$  is the number of point pairs at the given lag distance  $h$ , and  $z_i$  and  $z_j$  are detrended snow depth values from individual points separated by a lag distance  $h$  (Webster and Oliver, 2007). The resultant semivariance values  $\hat{\gamma}$  can be plotted against their lag distances and we can determine the separation distance  $h$  at which point pair values are still correlated. This autocorrelation point is defined as the "sill" in terms of semivariance  $\hat{\gamma}$  and the "range" in terms of lag distance  $h$ . The sill represents the overall variance of the input data. The range represents the maximum distance where point values are still correlated and is generally calculated as the lag distance at 95% of the sill. Point pairs further apart than the range are considered not correlated and spatially independent. The nugget represents the potential measurement error and is the variance resulting from measurement error and natural variation found over distances shorter than the minimum sampling resolution. We calculated experimental omnidirectional variograms of the detrended residual snow depth DSMs at a variety of spatial resolutions and then fit spherical models in the R software environment (R Core Team, 2021).

Formatted: English (United States)

Formatted: English (United States)

Formatted: English (United States)

Formatted: English (United States)

Formatted: English (United States)

Formatted: English (United States)

Formatted: English (United States)

Formatted: English (United States)

Formatted: English (United States)

Formatted: English (United States)

Formatted: English (United States)

Formatted: English (United States)

Formatted: English (United States)

Formatted: English (United States)

Formatted: English (United States)

Formatted: English (United States)

Formatted: English (United States)

Formatted: Font: Times New Roman, Not Italic, English (United States)

Formatted: English (United States)

Formatted: Font: Italic, English (United States)

Formatted: English (United States)

Formatted: Font: Italic, English (United States)

Formatted: English (United States)

Formatted: English (United States)

Formatted: English (United States)

Formatted: English (United States)

Formatted: English (United States)

240 -First, we resampled the detrended residual DSMs from their original 0.02 m spatial resolution to 0.05, 0.1, 0.25, 0.5, 1, 2.5,  
5, 10, and 20 m horizontal spatial resolutions using a nearest-neighbor method. We chose this the nearest neighbor resampling  
245 technique to minimize further abstraction of DSM-differenced detrended observed snow depth values, to avoid over-smoothing  
of UAS-derived snow depths observed using an aggregation based resampling technique in earlier experiments, and to avoid  
the uncertainty associated with the possibility of out-of-range values calculated through cubic convolution techniques (Roy  
and Dikshit, 1994; Fassnacht and Deems, 2006), to avoid over-smoothing the residual DSMs. We then calculated experimental  
variograms of both sites for each resolution for each field day and fit spherical models to each of these independent  
experimental variograms using the R package “gstat” (Pebesma, 2004). We fit spherical models to the experimental variograms  
because they are well suited for three-dimensional spatial analysis, are commonly used in similar variogram analysis, and fit  
250 the majority of our 170 experimental variograms (Kronholm, 2004; Kronholm et al., 2004; Kronholm and Birkeland, 2007;  
Webster and Oliver, 2007). The maximum distance considered for our variogram calculations was set to one-third of the  
maximum distance between point pairs within the two scenes, respectively, and we used minimum lag distances equal to the  
minimum point pair distances. Due to the large number of points contained in the high-resolution DSMs (0.02, 0.05, and 0.1  
m) and the computing power required for variogram analysis of such large datasets, we used a simple random sampling of 3  
million points to process the experimental variograms for these three resolutions. To ensure reproducibility, we used a pre-set  
255 seed when randomly sampling. We applied a local polynomial regression (LOESS) fit from the R package ‘stats’ to the fit  
spherical models to produce the seasonally averaged resolution specific variograms (R Core Team, 2021). We utilized the  
USGS Yeti supercomputer for all of our variogram calculations and model fitting (Falgout and Gordon, 2022).

Formatted: English (United States)

Formatted: English (United States)

Formatted: English (United States)

### 3.6 Coefficient of Variation Calculation

260 We calculated the coefficient of variation (CV) (Eq. 3) of the vegetation masked and outlier removed snow depth DSMs in the  
R software environment (R Core Team, 2021) defined as

$$CV = \frac{\sigma}{\mu} \quad (43)$$

where  $\sigma$  is standard deviation and  $\mu$  is mean snow depth. We calculated the CV values for a variety of nearest neighbor  
resampled resolutions to ensure consistent results and to reduce the computational load of calculating 0.02 m resolution snow  
depth DSMs.

Formatted: English (United States)

Formatted: English (United States)

Formatted: English (United States)

Formatted: English (United States)

Formatted: English (United States)

## 4 Results

#### 4.1 Snow Depth DSM Error and Detrending Results

We compared manual in-situ validation point snow depth measurements ( $n = 70$ ) with our DSM-differenced snow depths to assess error in our UAS-derived snow depths (Fig. 2). The seasonal mean, standard deviation, RMSE, and NMAD of differences between probed and UAS-derived snow depths show the effect of poor model quality on snow depth measurements (Table 1). The daily mean, standard deviation, and RMSE of differences between UAS-derived and probed snow depths varied considerably throughout the season (Table A24) and showed an increase in accuracy and a slight decrease in precision throughout the season (Fig. A1).

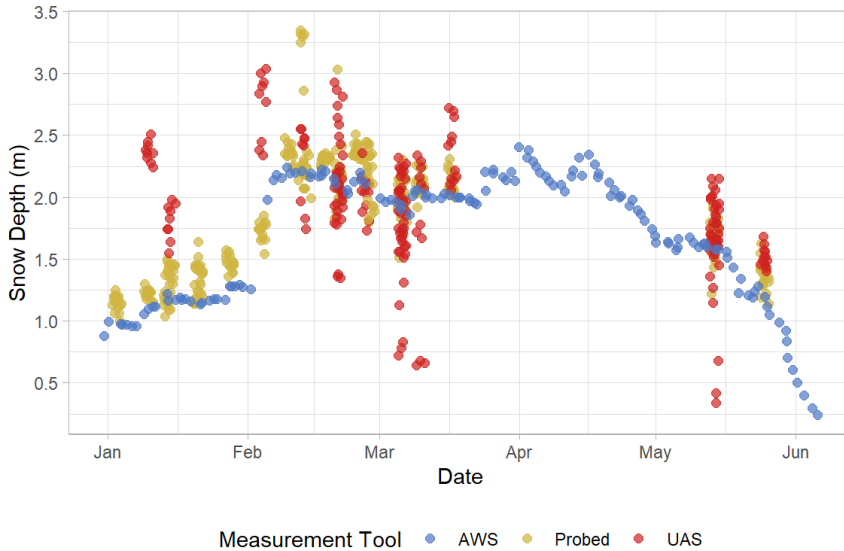


Figure 2: Measured snow depths (m) from 1 January 2020 - 5 June 2020, including additional in-situ probed measurement days where uncrewed aerial system (UAS) models were discarded due to poor surface reconstruction. Brackett meadow automated weather station (AWS, blue) represents the sonic-rangefinder measured snow depth. Probed (yellow) snow depths are collected manually in-situ as validation points. UAS (red) snow depths are derived from digital surface model (DSM)-differencing at each validation point on a given observation day. Probed points represent snow depth measurements from within the meadow and low relief and lower elevation portions of the Hourglass, and do not represent the same location as the sonic rangefinder attached to the Brackett meadow AWS.

Formatted: English (United States)

Formatted: English (United States)

Table 1: Seasonal statistics of observed snow depth differences between probed and uncrewed aerial system (UAS)-derived validation point measurements (DSM = digital surface model; RSME = root mean square error; NMAD = normalized median absolute deviation).

Snow Depth DSMs included	Mean Difference (m)	Standard Deviation of Differences (m)	RMSE of Differences(m)	NMAD of Differences (m)
All	0.44	0.60	0.74	0.21
Poor Quality Removed	0.27	0.26	0.37	0.16

We collected all validation snow depth measurements, except the crown profile of the 26 February 2020, avalanche, in the lower elevations of the Hourglass and throughout the meadow in order to avoid exposure to snow avalanches. We observed large ranges of measured snow depths within these vegetated areas. For example, the ranges of probed snow depths measured within the 1 m<sup>2</sup> validation points (n = 70) were as high as 0.49 m, with an average range of 0.13 m. This assessment is not a comprehensive assessment of error because our validation snow depths were primarily collected at random locations in the safe lower slopes, and this assessment is therefore biased towards comparisons of measurements in the meadow. Although far from a complete accuracy assessment, our single manual snow depth measurement from upper elevations at the crown of the avalanche (top of the couloir) exhibited a snow depth difference of only 0.01 m (1.90 m measured vs. 1.89 m UAS-derived), which is well within the typical error of manual measurement.

The DSM detrending analysis identified elevation as the most significant independent variable for each day at our study site. Therefore, we detrended all snow depth DSMs using the elevation surface derived from the 8 July 2020; snow-free DSM (Fig. 3). Complete timeseries plots of vegetation masked and detrended snow depth maps of the Hourglass and meadow are provided in the Appendix (Fig. A3 and A4).

Formatted: English (United States)

Formatted: English (United States)

Formatted: English (United States)

Formatted: English (United States)

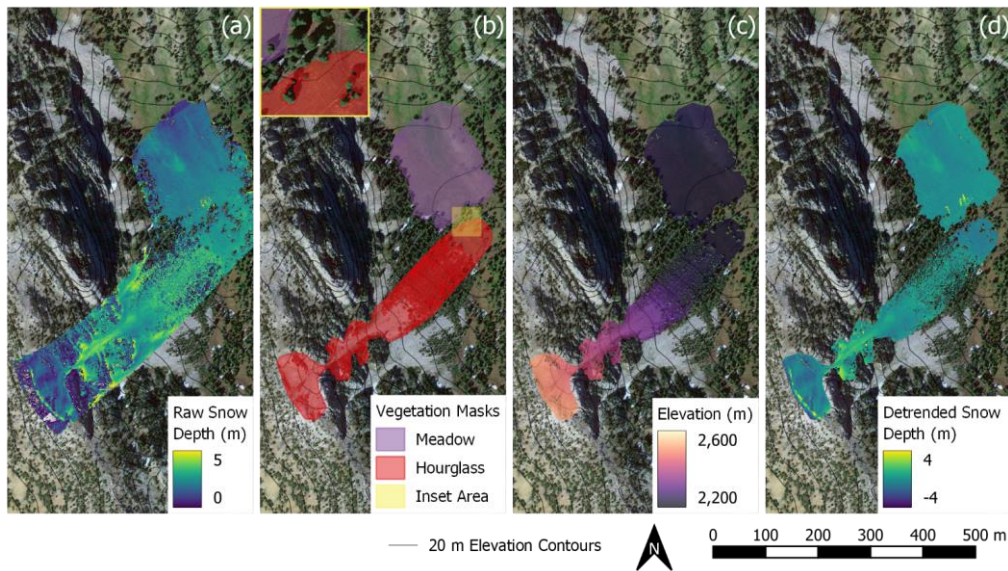


Figure 3: Vegetation masking and detrending process for raw snow depth values from 21 February 2020 derived from DSM-differencing. The scene-wide raw snow depth (a) map is shown prior to vegetation masking (b) and elevation detrending (c), resulting in the detrended snow depth map (d) used for snow depth spatial variability analysis. The inset map (yellow - upper left) of the vegetation mask map (b) illustrates the masks' removal of trees and other vegetation. Elevations (c) are from the 8 July 2022 snow free DSM. Note that detrended snow depths (d) result in negative values at upper elevations. Map satellite imagery: Google, ©2022 USDA/FPAC/GEO, Maxar Technologies.

#### 4.2 Variogram Results

We calculated experimental variograms (Fig. A2) and compared the results of the fitted spherical fit variogram models from the two distinct topographies within our study site and each field day at a variety of spatial resolutions. We found a consistent difference in the range, nugget, and sill (semivariance) values of the Hourglass and the meadow sites. The Hourglass exhibits a smaller range of autocorrelation, greater sill values, greater nugget values, and greater nugget values than the meadow, more variability than the meadow (Table 2) when including all dates and snow depth DSM resolutions (Table 2). We only show the 0.5 m resolution range values in Table 2 because they are representative of most of the other resolutions' results and to avoid the skew introduced by 10 and 20 m ranges when averaging the results of all resolutions. Additionally, specifically, the Hourglass exhibited consistently more snow depth spatial variability on individual field days (Fig. 43) and more seasonal variability in its patterns of spatial variability than the meadow (Fig. 54). These results reflect the given substratum of the two

Formatted: English (United States)

Formatted: English (United States)

Formatted: English (United States)

Formatted: English (United States)

Formatted: English (United States)

sites. The meadow's more homogenous ground cover and topography are reflected in less variability overall and spatial autocorrelation over greater distances. In contrast, the steep rocky terrain of the Hourglass is reflected in the more dynamic seasonal patterns of spatial variability and shorter distances of autocorrelation. The 20 m resolution variograms frequently misrepresent the spatial variability patterns of finer resolutions and this is perhaps due to the relatively small study sites creating far fewer point pairs of snow depths to calculate the variograms from, therefore being less resistant to outliers.

Formatted: English (United States)

325 Table 2: Average spherical fit variogram results for the Hourglass and meadow for all resolutions. Mean values from all analysis dates for each location at each resolution.

Formatted: English (United States)

Formatted: English (United States)

Calculated Variogram Value:	Hourglass	Meadow
Range @ 0.5 m resolution (m)	15.2	62.1
Mean Nugget (all resolutions)	0.2	0.1
Mean Semivariance (all resolutions)	0.6	0.2

Formatted Table

Resolution	Hourglass mean range	Meadow mean range	Hourglass mean sill	Meadow mean sill	Hourglass mean nugget	Meadow mean nugget
0.02	10.08	46.73	0.64	0.17	0.03	0.01
0.05	10.46	46.66	0.64	0.18	0.04	0.01
0.1	11.30	52.71	0.63	0.17	0.06	0.02
0.25	12.38	57.27	0.61	0.17	0.08	0.02
0.5	15.17	62.11	0.60	0.17	0.11	0.03
1	28.92	67.22	0.58	0.17	0.17	0.03
2.5	48.42	74.20	0.62	0.17	0.23	0.04
5	102.15	84.67	0.37	0.17	0.50	0.03
10	130.65	98.92	0.36	0.16	0.53	0.03
20	228.44	40.55	1.17	0.16	0.54	0.07

Formatted: Font: Bold

Formatted: Centered

Formatted Table

Formatted: Centered

Formatted: Centered

Formatted: Centered

Formatted: Centered

Formatted: Centered

Formatted: Centered

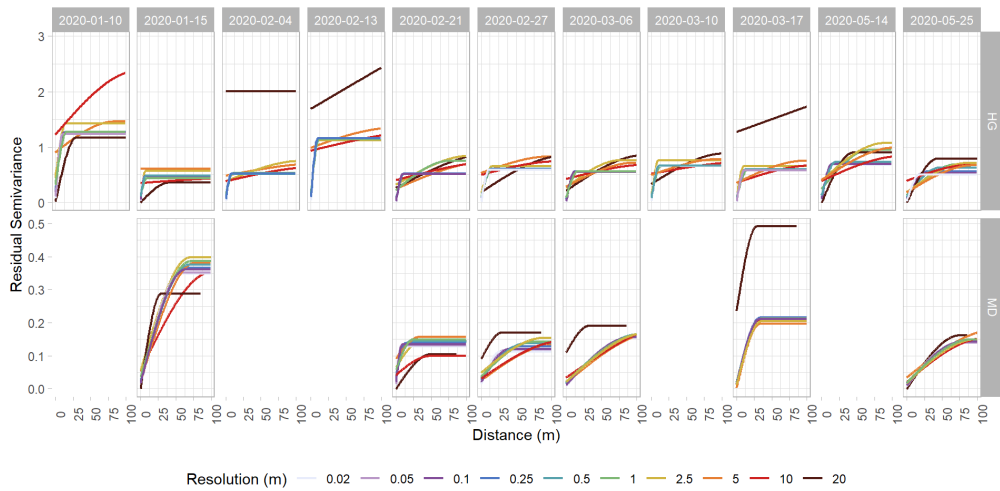
Formatted: Centered

Formatted: Centered

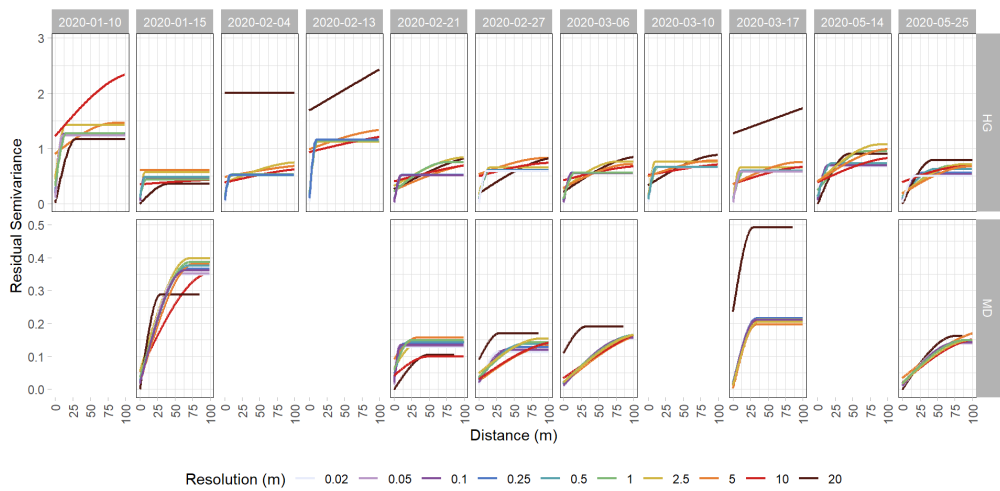
Formatted: Centered

Formatted: Centered

Formatted: English (United States)



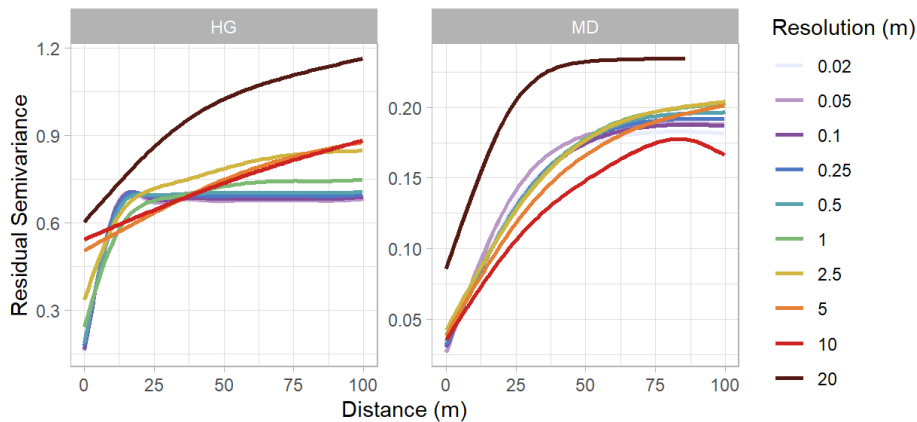
Formatted: English (United States)



Formatted: English (United States)

330 Figure 43: Spherical fit variogram models of detrended snow depth residuals from the Hourglass (HG) and the meadow (MD). Each panel depicts a specific observation day and colors represent different snow depth DSM resolutions. Five observation days were removed from the meadow site timeseries due to poor model quality. Note different y-axis scales for the HG and MD rows.





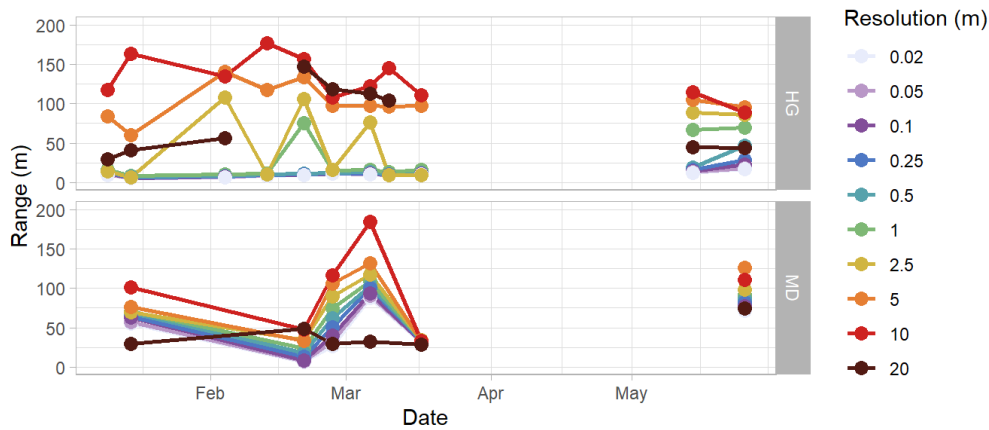
335 Figure 54: Seasonally averaged, spherical fit variogram models from the Hourglass (HG) and meadow (MD). Colors represent different resolutions. Note different y-axis scales.

340 Temporally, the greatest semivariance values variability exists earlier in the winter at both the Hourglass and meadow at all resolutions. Variability then decreases throughout mid-winter and increases slightly after the first substantial spring melt event that occurred approximately 2 weeks prior to 14 May 2020. Autocorrelation range generally increased within both the Hourglass and the meadow throughout the winter (Fig. 65) followed by pronounced increases in the spring. Sill values were consistently greater at the Hourglass compared to the meadow throughout the season (Fig. 65) and were relatively similar across all resolutions except 20 m at the Hourglass couloir where greater variability exists throughout the season. Temporally, 345 sill values generally decreased at the Hourglass couloir site and remained consistent at the meadow throughout the winter. Additionally, at the Hourglass, the sill increased at finer resolutions because of a large natural avalanche on 26 February 2020.

Formatted: English (United States)

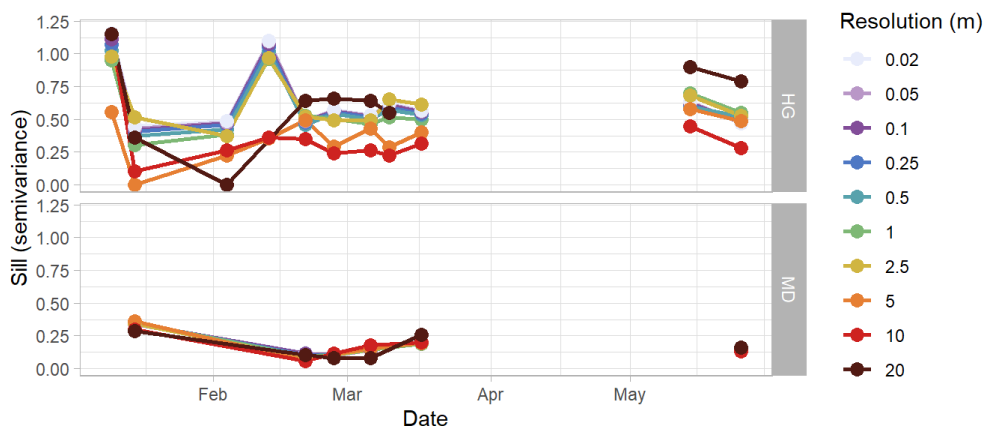
Formatted: English (United States)

Formatted: English (United States)



Formatted: English (United States)

Formatted: English (United States)



Formatted: English (United States)

Formatted: English (United States)

Figure 56: Relative range and sill patterns of spherical fit variogram models of detrended snow depth residuals in the Hourglass (HG) and meadow (MD) throughout the winter. Colors represent different snow depth digital surface model (DSM) resolutions. The range plot excludes the 20 m range values from the Hourglass for 13 February 2020 and 17 March 2020, which are greater than 200 m.

Formatted: English (United States)

Snow depth DSM spatial resolution affected the calculated variograms resulting in larger autocorrelation range, sill, and nugget values present in coarser resolution variograms (Fig. 67). At the Hourglass, 0.5 m resolution models accurately represented the spherical fit variograms of all finer resolutions (0.02, 0.05, 0.1, and 0.25 m) and consistently resulted in autocorrelation

Formatted: English (United States)

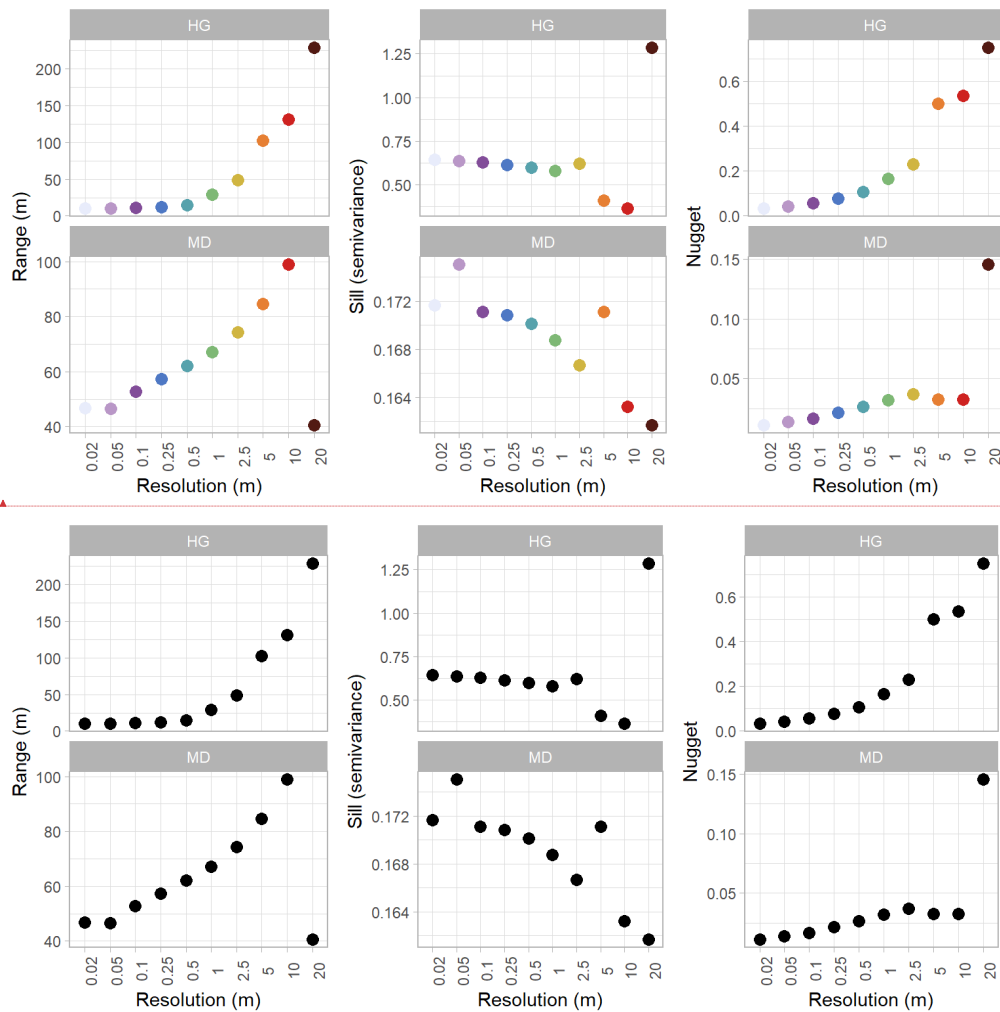
range values of ~10 m. 1 m resolution snow depth DSMs captured the pattern of the finer resolution variograms on 75% all but 3 of the observation dates (21 February, 14 May and 25 May) but aligned more closely with coarser resolution variograms (2.5, 5, 10, and 20 m) on 25% those 3 of the observation dates and exhibited larger, more variable autocorrelation ranges consistently throughout the winter. At the meadow, 2.5 m resolution models accurately represented the spherical fit variograms of all finer resolutions (0.02, 0.05, 0.1, 0.5, and 1 m) on all observation dates. The 5 m resolution differed from finer resolution patterns when seasonally averaged, and the 10 m resolution differed from the patterns on a single date and more so when seasonally averaged (Fig. 45). Snow depth DSM resolutions of 20 m in both topographies and all observation dates failed to capture the patterns of spatial variability found in finer resolutions.

360

Formatted: English (United States)

Formatted: English (United States)

Formatted: English (United States)



Formatted: English (United States)

Formatted: English (United States)

Figure 67: Seasonally averaged Mean range, sill, and nugget values for each resolution from spherical fit models in the Hourglass (HG) and meadow (MD). Colors represent different snow depth digital surface model (DSM) resolutions as shown in Fig. 5.

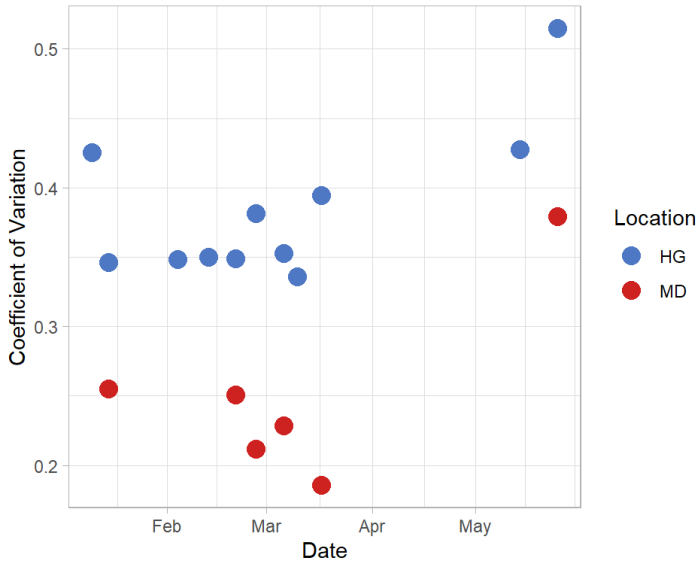
Formatted: English (United States)

Formatted: English (United States)

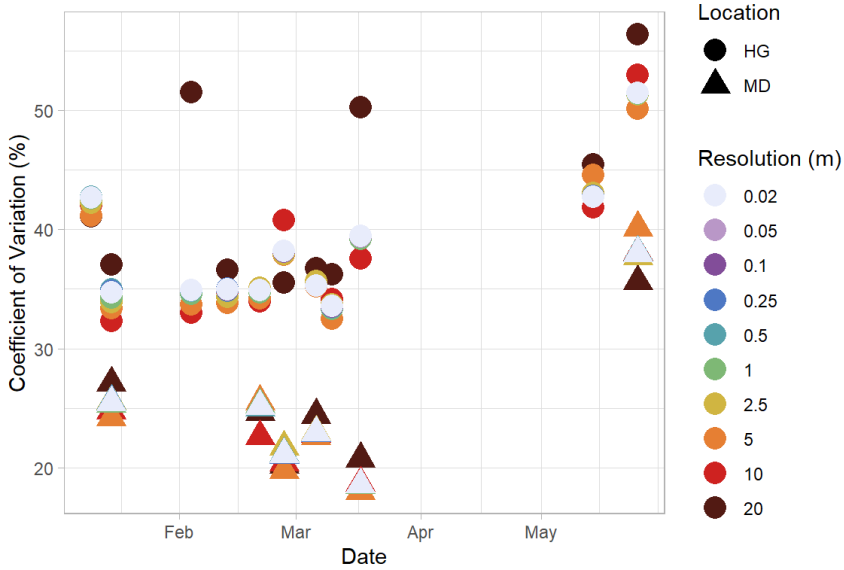
370 **4.3 Coefficient of Variation Results**

We compared the calculated coefficient of variation over time at the Hourglass and the meadow. Resultant coefficients of variation were similar across a variety of snow depth DSM resolutions. As such we present the 0.5 m resolution results here. Coefficient of variation values were greater at the Hourglass when compared to the meadow on every observation day (Fig. 78). The seasonal pattern of variability in the Hourglass started higher in January, decreased then remained consistent through March, and peaked in May concurrently with the onset of ablation. At the meadow, the variability decreased throughout the season before peaking in May with the onset of ablation.

Formatted: English (United States)



Formatted: English (United States)



Formatted: English (United States)

Figure 78: Coefficient of variation values (%) for each observation day at the Hourglass (HG, bluecircles) and meadow (MD, redtriangles) as calculated from 0.5 m resolutions of snow depth digital surface models. Colors represent different snow depth digital surface model (DSM) resolutions.

## 5 Discussion

In this study, we analyzed a time series of 112 high-resolution snow depth DSMs derived from UAS and SfM techniques in a 0.2 km<sup>2</sup> study area containing steep-complex and protected-simple terrain in the Bridger Range of Montana, USA. We collected these data to investigate the scales of spatial variability of snow depth in complex mountain terrain, compare with the spatial variability observed in adjacent simple mountain terrain, and explore the temporal evolution of spatial variability patterns of snow depth.

### 5.1 Snow Depth Differences and Detrending

Comparisons between DSM-differenced and probed snow depths highlight the challenge of sampling spatially representative snow depth measurements with underlying vegetation. The 1 m<sup>2</sup> validation point measurements had an average range of 0.13 m while the mean difference between DSM-differenced snow depths and in-situ probed snow depths was 0.27 m (Table 1). Both of these point and observational tool measurement differences, as well as our additional error estimates, could be attributed to the vegetation captured in the snow-free 8 July 2020 DSM. This vegetated surface had greater than 0.5 m of vertical variability across horizontal distances less than 1 m and compressed at an unquantified and spatially heterogenous rate under the gradually increasing snowpack. This vegetation effect is largely confined to the lower elevations of our study site, which is also primarily where we collected our validation point measurements. Vegetation effect is a recognized weakness of UAS-derived snow depth measurement and helps explain the differences we observed between the DSM-differenced snow depths and probed validation point measurements in this study (Bühler et al., 2016).

Previous research identified wind direction as a contributing variable to their spatial variability findings (Clemenzi et al., 2018; Deems et al., 2006; Mendoza et al., 2020; Mott and Lehning, 2010; Mott et al., 2018). Our results suggest that elevation is the most significant variable-predictor in directional snow distribution bias in our dataset and we detrended the DSMs on this metric. Additionally, the natural elevation gradient within our study site runs parallel to the dominant wind direction (west to east) in the Bridger Range allowing for our elevation detrending method to account for wind direction.

### 5.2 Scales of Spatial Variability

Many previous studies utilized 1 m resolution sampling grids (Clemenzi et al., 2018; De Michele et al., 2016; Deems et al., 2013; López-Moreno et al., 2015; Mendoza et al., 2020; Meyer and Skiles, 2019; Trujillo et al., 2009) but without detailed analysis to determine if this resolution is sufficient to capture the patterns of spatial variability. Our results indicate 1 m resolution is an insufficient resolution to capture the complete pattern of snow depth spatial variability in the steep complex

Formatted: English (United States)

Formatted: English (United States)

Formatted: English (United States)

Formatted: English (United States)

Formatted: English (United States)

Formatted: English (United States)

Formatted: English (United States)

Formatted: English (United States)

Formatted: English (United States)

Formatted: English (United States)

Formatted: English (United States)

Formatted: English (United States)

Formatted: English (United States)

Formatted: English (United States)

Formatted: English (United States)

Formatted: English (United States)

Formatted: English (United States)

Formatted: English (United States)

Formatted: English (United States)

Formatted: English (United States)

Formatted: English (United States)

Formatted: English (United States)

Formatted: English (United States)

Formatted: English (United States)

Formatted: English (United States)

Formatted: English (United States)

Formatted: English (United States)

Formatted: English (United States)

Formatted: English (United States)

Formatted: English (United States)

Formatted: English (United States)

Formatted: English (United States)

Formatted: English (United States)

Formatted: English (United States)

Formatted: English (United States)

Formatted: English (United States)

Formatted: English (United States)

Formatted: English (United States)

Formatted: English (United States)

410 mountain terrain of the Hourglass. At our site, 0.5 m resolution results capture the spatial variability patterns seen in all finer  
resolutions (0.02, 0.05, 0.1, and 0.25 m) in each observation day at the Hourglass (Fig. 45), while the 1 m resolution only  
415 captures these patterns on seven of our eleven observation days. Maximum variation exists within a 15 m range for all sub-0.5  
m resolution variograms with a decreasing variance as the range continues to grow beyond the sill. Coarser resolution  
variograms exhibit increasing variance at greater ranges, with increasing variance beyond the sill. While 1 m, and even 2.5 m,  
resolutions have similar ranges as finer resolution models on some observation days. Furthermore, the mean range values  
increase dramatically between 0.5 m (15 m), 1 m (29 m), and 2.5 m (48 m) resolutions and, while decreasing minimally  
below 0.5 m resolutions (10 to 12 m for 0.02 and 0.25 m resolutions, respectively) (Table 2 and Fig. 67). Our results suggest  
that a 0.5 m sampling resolution is the coarsest sampling resolution necessary to capture all small-scale spatial variability of  
snow depth in the complex mountain terrain of our study site.

420 However, our results suggest 2.5 m resolution sampling grids are adequate to capture spatial variability in the protected terrain  
at the meadow. The finer resolution patterns evident in the mean variograms of the meadow are similar to the 2.5 m resolution  
while the 5, 10 and 20 m resolutions differ distinctly with generally larger range values (Fig. 45). The autocorrelation range  
values at the meadow scale directly with snow depth DSM resolution while the sill values remain consistent across snow depth  
425 DSM resolutions (Fig. 67). Given this relationship, the 2.5 m resolution captures both the fine and coarse resolution patterns  
in the meadow. This distinct difference in snow depth spatial variability between complex and simple terrain provides evidence  
of the contrasting snow distributions in the two mountain topographies.

430 Previous research reported autocorrelation range values for snow depths of 15 - 25 m in a variety of mountain terrain with an  
additional correlated scaling break above 50 m (Fassnacht and Deems, 2006; Clemenzi et al., 2018; López-Moreno et al., 2015;  
Mendoza et al., 2020; Trujillo et al., 2009). We found similarly consistently less than 20 m range values in the steep complex  
terrain in the Hourglass at finer spatial resolutions and greater than 50 m range values in the meadow at all resolutions (Table  
2). Our results also suggest that the range of autocorrelation increased throughout the winter at both sites. We attribute this to  
435 increasingly homogenous snow depth distributions over larger distances due to wind redistribution near ridges (Mott and  
Lehning, 2010; Trujillo et al., 2007) and small-scale redistribution processes (Mott et al., 2011). Increasingly leptokurtic  
distributions evident in scene-wide violin plots, especially at the meadow, indicate that snow depth distributions were largely  
concentrated near the mean snow depth for each given observation day (Fig. A2aA5) and became more uniform as snow depth  
increases.

440 Our results show that snow depth variability generally decreased throughout the season in the complex terrain of the Hourglass  
(Fig. 78). This suggests that a deeper snowpack tends to decrease the spatial variability of snow depth as terrain and vegetation  
features become less influential on snow depth distribution across space (Deems et al., 2006; Elder et al., 1991; Harder et al.,  
2016; Trujillo et al., 2009). There was a slight increase in snow depth variability at the Hourglass following two notable events:

Formatted: English (United States)

Formatted: English (United States)

Formatted: English (United States)

Formatted: English (United States)

Formatted: English (United States)

Formatted: English (United States)

Formatted: English (United States)

Formatted: English (United States)

Formatted: English (United States)

Formatted: English (United States)

Formatted: English (United States)

Formatted: English (United States)

Formatted: English (United States)

Formatted: English (United States)

Formatted: English (United States)



445 a natural avalanche on February 26 and the first major spring melt during the first half of May (Fig. 34). An increase in sill values and a clear distribution change of snow depth residuals provide evidence for these snow depth distribution shifts (Fig. A2bA5). The spring-melt-aligned increase in spatial variability is similar to changes during ablation periods reported by López-Moreno et al. (2015) who used the coefficient of variation as the measure of variability over the course of eight observation days spread over two winters.

### 5.3 Limitations

450 Snow depth DSM creation through UAS and SfM photogrammetry workflows is distinctly challenged by snow surface conditions and their interaction with local lighting (Bühler et al., 2016, 2017; Goetz and Brenning, 2019). DSMs from certain observation days had to be removed from further analysis due to poor quality, which can be attributed to homogenous snow surfaces that occurred due to either recent snowfall with minimal wind, cloud cover producing low light, or a combination of both. The wind-sheltered and nearly flat terrain of the meadow limited the influence of surface texture creating processes, such as wind-redistribution and natural snow sluffing, resulting in uniform minimally textured snow surfaces and more observed days removed from further analysis (Table A32). These poor-quality models affected errors in snow depth measurement (Table 1, Table A43) and, once removed, the error in our remaining models was comparable to the reported error margins of other similar UAS-derived snow depth research (Adams et al., 2018; Eberhard et al., 2021; Revuelto et al., 2021). Therefore, we are confident that our retained UAS-derived snow depth observations in steep mountain terrain are accurate.

460 The analytical approach used in this study is limited by computational resource availability. ~~Processing the collected raw imagery (approximately 550 images per observation day) to produce snow depth DSMs for the 0.2 km<sup>2</sup> site required approximately 8 hours per observation day while processing on a powerful local computer, (specifications in Table A3). The processing time for variogram analysis scaled directly with snow depth DSM resolutions (Fig. A63) and increased. Processing times increased exponentially at finer resolutions, from 1 second at 2.5 m resolution to 32.5 hours at 0.1 m resolution while processing in parallel on the USGS Yeti supercomputer (specifications online). After numerous failed attempts due to memory overloading when calculating experimental variograms for the 0.02 and 0.05 m resolution DSMs, we utilized a simple random sample of 3 million points for all 0.02 and 0.05 m resolution DSMs to avoid memory overloading. Therefore, the processing times for 0.02 and 0.05 m resolutions increased solely due to the additional time to randomly sample.~~ Processing times for high-resolution DSM analysis at resolutions finer than 0.5 m offered little additional value (see Figs. 54, 65, and 76) given the computational requirements thereby supporting a spatial sampling grid of 0.5 m for snow depth spatial variability analysis.

475 Our results are from a thorough analysis of a single study site and under the influence of only the interactions of the local topography and meteorological events from one winter season. The spatially limited in-situ snow depth validation measurements are not completely representative of our entire research site, particularly at upper elevations near the ridgeline.

Formatted: English (United States)

Formatted: English (United States)

Formatted: English (United States)

Formatted: English (United States)

480 Additionally, our snow depth measurement errors from the UAS-SfM photogrammetry process may contribute to snow depth  
spatial variability error, but these errors are challenging to accurately quantify (Redpath et al., 2018) and likely contribute a  
trivial amount (Adams et al., 2018; Eberhard et al., 2021; Revuelto et al., 2021). We also attempted to account for these small  
485 errors by conducting repeated UAV flights over the course of a season, using GCPs from the same locations on both snow-  
free and snow-covered sampling flights, and choosing a site with a relatively deep snowpack (Goetz and Brenning, 2019).  
Future snow depth spatial variability research should consider observing a wider variety of complex mountain terrain features,  
different snow and avalanche climates, and using additional remote sensing tools for further validation or comparison.  
~~of complex mountain terrains and using additional remote sensing tools for further validation.~~

## 6 Conclusions

This study quantifies the relevant spatial sampling scales for accurately mapping snow depth spatial variability in the complex  
mountain terrain of a study site in the Bridger Range of Montana, USA. We used a time series of uncrewed aerial systems  
(UAS)-derived centimeter-scale models of evolving snow distribution in a steep complex couloir as well as an adjacent  
490 sheltered flat mountain meadow. We demonstrate ~~that~~ 0.5 m sample spacing resolution is necessary for accurately capturing  
the naturally occurring spatial variability of snow depth in complex terrain at our study site. This finding contrasts with  
previous research that typically utilized 1 m resolution models. However, in protected, simple mountain terrain we show that  
2.5 m sample spacing is sufficient. This test of extremely fine resolution surface models is relevant for the planning of future  
snow depth studies in mountain environments both from a spatial variability and processing perspective. Not only does  
495 capturing 0.5 m resolution data increase field efficiency, whether by traditional methods or using remote sensing approaches,  
but it also decreases the computational expense of processing and analyzing the data. This resolution improves our ability to  
observe large spatial extents with confidence that accurate measurements of snow depth spatial variability are captured.

We show consistent snow depth autocorrelation ranges to be 10-20 m in steep complex terrain of the Hourglass and 50–65 m  
500 in the meadow, which aligns with scaling breaks identified in previous literature on snow depth spatial variability (Deems et  
al., 2006; López-Moreno et al., 2015; Mendoza et al., 2020). We also show that the steep complex terrain in the Hourglass  
exhibited greater spatial variability over smaller distances throughout the winter than the protected simple terrain of the  
meadow. Additionally, we show that the seasonal evolution of spatial variability is not the same in both topographies. The  
specific spatial and temporal scales at which snow depth varies within these two terrains influence sampling strategies as they  
505 relate to topography and our understanding of snow distributions within the varied mountain landscape we depend on for water  
resource storage and recreation.

Formatted: English (United States)

## Appendices

Table A1: Average locational error for UAS collected imagery after PPK processing. Mean locational difference values are calculated from all images collected and processed on a given field day and have been calculated for x, y, and z (latitude, longitude, and elevation, respectively) directions.

Date	Post PPK diff x (m)	Post PPK diff y (m)	Post PPK diff z (m)
10 January 2020	0.003	0.001	0.19
15 January 2020	0.002	0.006	0.19
4 February 2020	0.006	0.0004	0.19
13 February 2020	0.004	0.001	0.19
21 February 2020	0.006	0.006	0.19
27 February 2020	0.015	0.006	0.19
6 March 2020	0.005	0.003	0.19
10 March 2020	0.004	0.009	0.19
17 March 2020	0.001	0.003	0.19
14 May 2020	0.0004	0.001	0.19
25 May 2020	0.005	0.004	0.19
8 July 2020	0.017	0.022	0.19

Table A2+: Models removed due to poor quality.

Location	Observation Dates Removed From Analysis
Hourglass	7 January 2020
Meadow	7 January 2020, 10 January 2020, 4 February 2020, 13 February 2020, 10 March 2020, 14 May 2020

Table A32. Summary statistics of all measured and uncrewed aerial systems (UAS)-derived snow depths (HS) from the Hourglass and meadow on all sampling days. Low-quality modelled meadow days removed from analysis filled grey. All values reported in meters.

Sampling day (all 2020)	Brackett Meadow AWS Measured HS (m)	Mean Probed HS (m)	Probed HS Range (m)	UAS-derived mean HS at Validation Points (m)	UAS-derived HS Range (m)	Mean Difference Between Probed HS and UAS-derived HS (m)	RMSE of Difference Between Probed HS and UAS-derived HS (m)	Standard Deviation of Difference Between Probed HS and UAS-derived HS (m)
7 January	0.96	1.16	0.09	1.23	0.31	0.7	0.15	0.16

Formatted: Centered

Formatted Table

Formatted: Centered

Formatted: Centered

Formatted: Centered

Formatted: Centered

Formatted: Centered

Formatted: Centered

Formatted: Centered

Formatted: Centered

Formatted: Centered

Formatted: Centered

Formatted: Centered

Formatted: Centered

Formatted: Centered

Formatted: English (United States)

Formatted: English (United States)

Formatted: English (United States)

Formatted: English (United States)

10 January	1.11	1.22	0.13	2.36	0.1	1.14	1.14	0.05
15 January	1.22	1.41	0.11	1.8	0.28	0.39	0.41	0.17
4 February	1.51	1.73	0.11	2.74	0.59	1.01	1.04	0.27
13 February	2.22	2.59	1.11	2.28	0.63	0.32	0.86	0.98
21 February	2.11	2.12	0.12	2.39	4.25	0.27	1.1	1.11
27 February	2.11	2.26	0.29	2.03	0.41	0.23	0.34	0.29
6 March	1.90	1.95	0.79	1.79	1.51	0.16	0.37	0.35
10 March	2.07	2.12	0.17	1.7	1.63	0.42	0.74	0.7
17 March	2.01	2.11	0.2	2.35	0.57	0.24	0.31	0.22
14 May	1.57	1.75	0.65	1.92	3.42	0.31	0.81	0.77
25 May	1.19	1.37	0.14	1.51	0.17	0.15	0.17	0.09

Formatted: English (United States)

Table A34: SAGA-GIS DTM Filter tool settings.

Formatted: English (United States)

Setting	Radius	Slope	Use Confidence Intervals
Value	10 m	30°	Yes

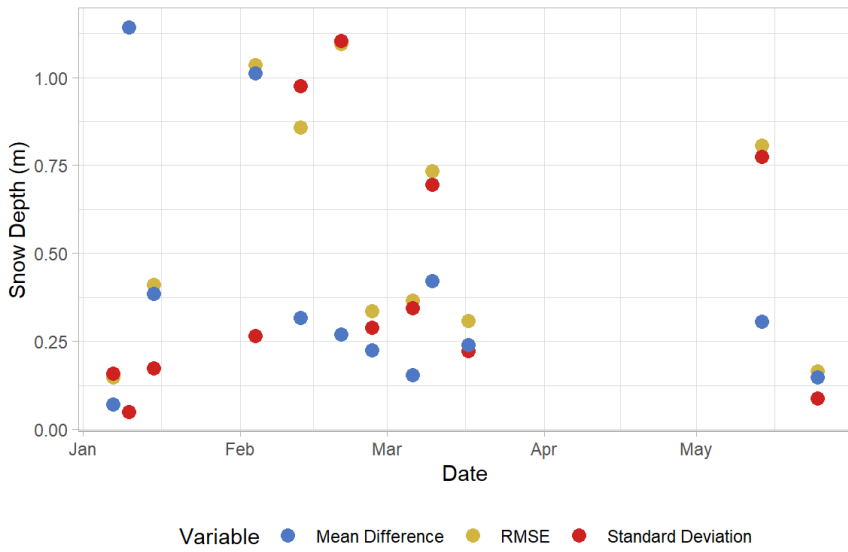
Formatted: English (United States)

520 Table A4: Local processing computer specifications

CPU Cores	RAM	GPU
32	128 GB	(4) NVIDIA GeForce RTX2080 Ti

Formatted: English (United States)

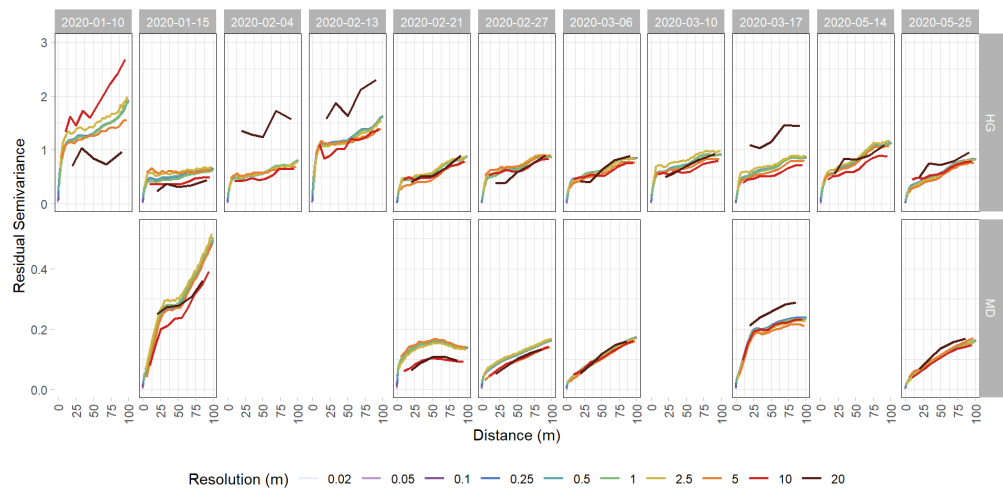
Formatted: English (United States)



Formatted: English (United States)

Formatted: English (United States)

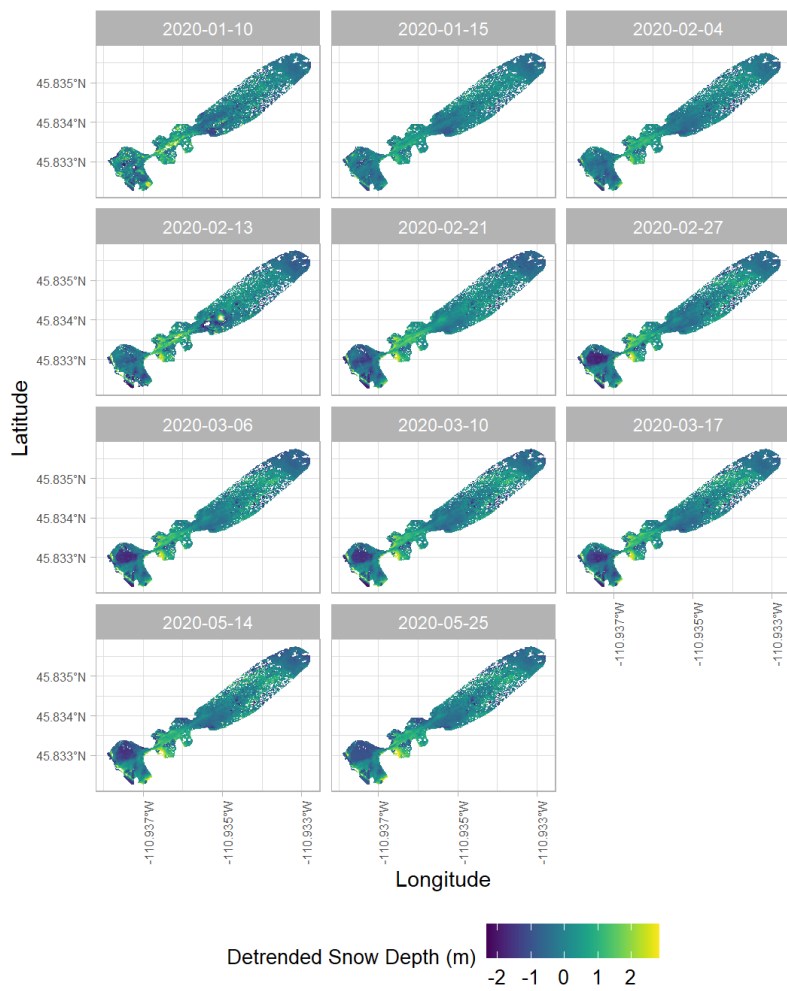
525 Figure A1: Snow depth uncrewed aerial systems (UAS)-derived error (m) throughout the 2019/2020 winter field season. Each variable is calculated with all manually probed validation points and corresponding UAS-derived snow depths for each observation day.



Formatted: English (United States)

530 **Figure A2:** Experimental variograms of detrended snow depth residuals from the Hourglass (HG) and the meadow (MD). Each panel depicts a specific observation day and colors represent different snow depth DSM resolutions. Five observation days were removed from the meadow site timeseries due to poor model quality. Note different y-axis scales for the HG and MD rows.

Formatted: English (United States)



535

Figure A3: Timeseries of detrended snow depth maps of the Hourglass study site.

Formatted: English (United States)

Formatted: English (United States)

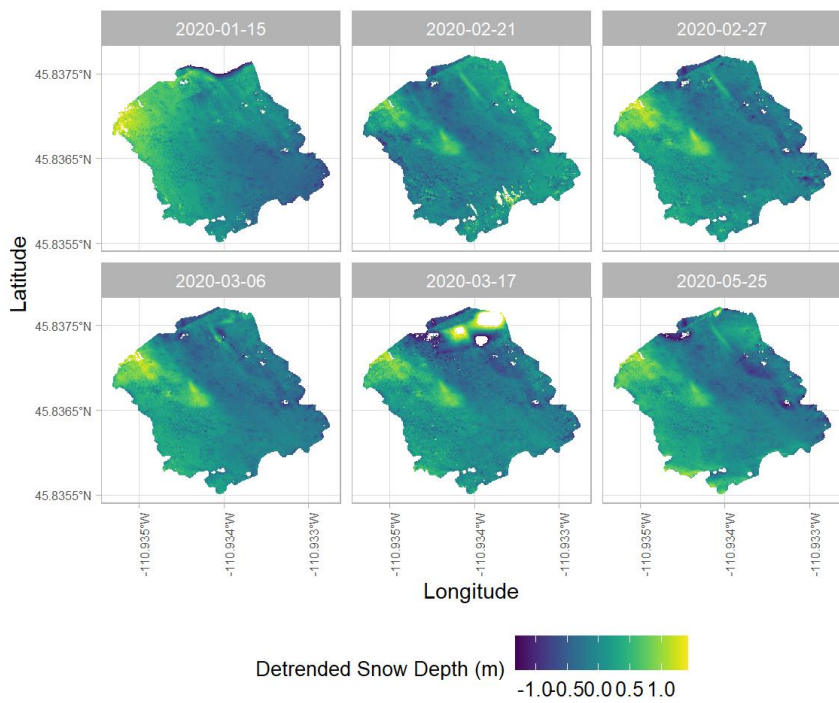


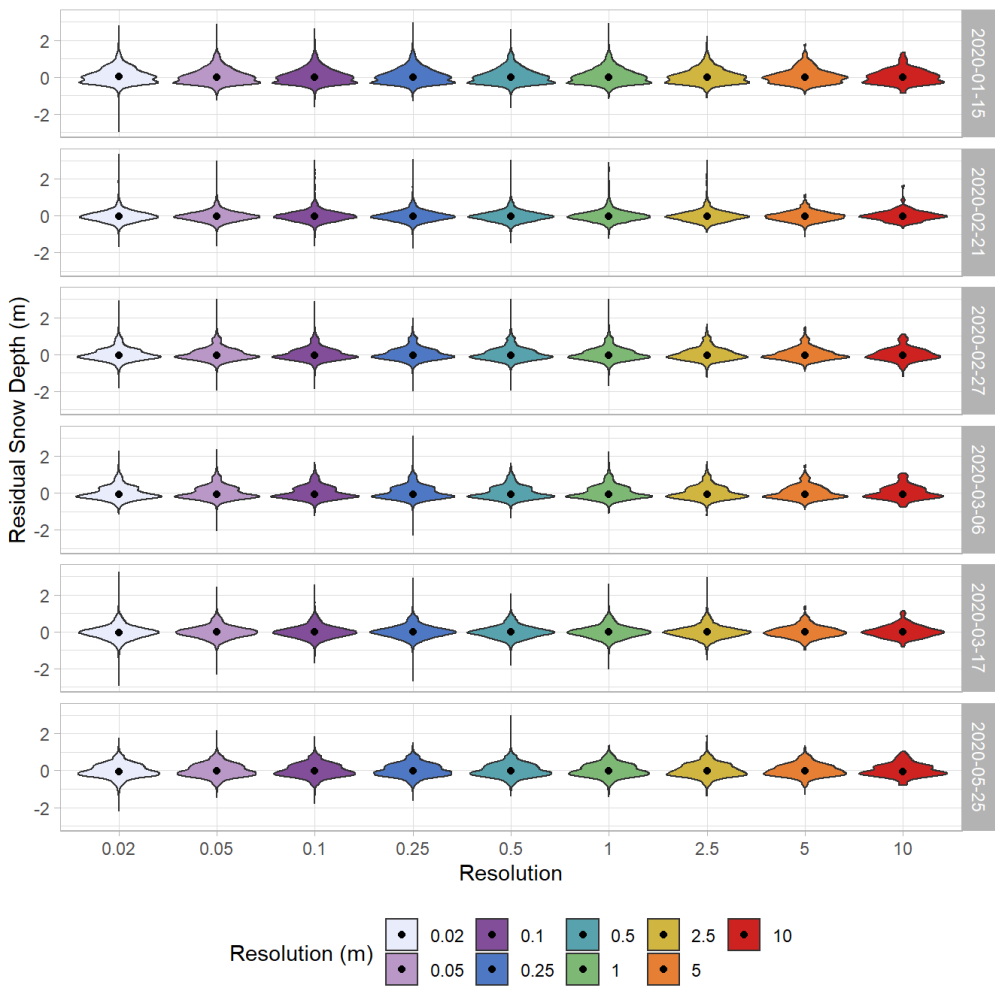
Figure A4: Timeseries of detrended snow depth maps of the meadow study site.

Formatted: English (United States)

Formatted: English (United States)

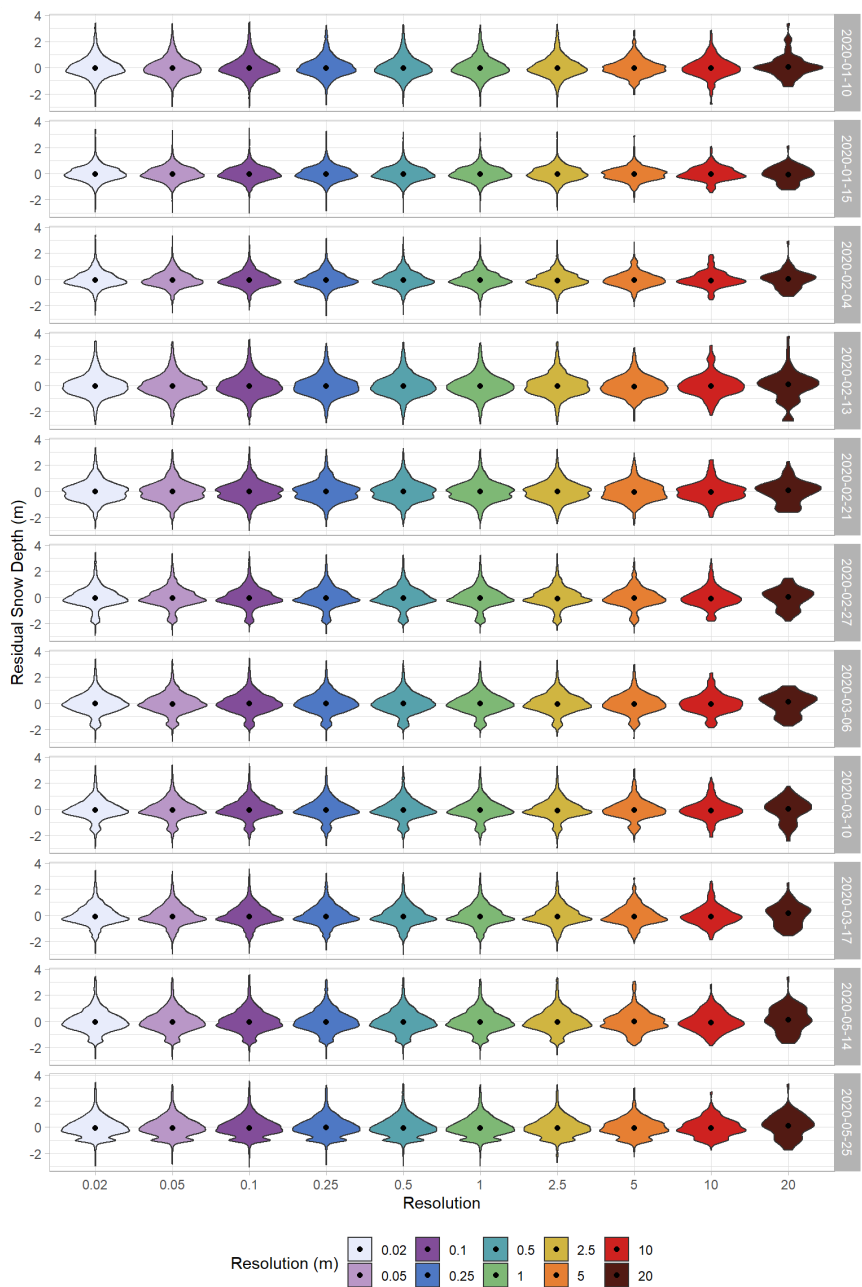


A



Formatted: English (United States)

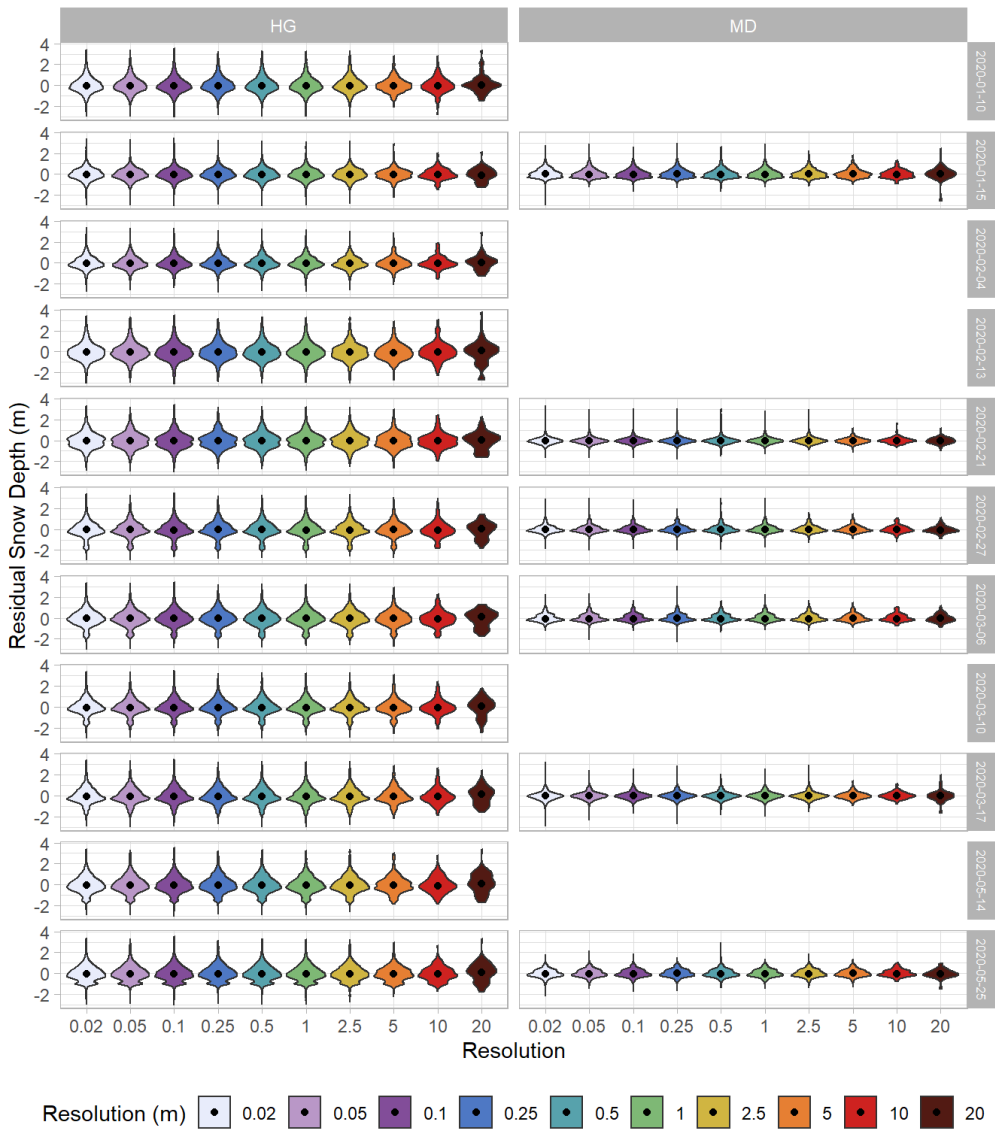
Formatted: English (United States)



**Commented [MZS2]:** Combine plot A2 A and B into one plot with clear R reformatting... and try to track down the 20m measurement data?

**Formatted:** English (United States)

**Formatted:** English (United States)



Formatted: English (United States)

Formatted: English (United States)

Figure A52b: Violin plots of detrended snow depth residuals in the Hourglass (HG) and meadow (MD) sites with colors representing different resolutions. Black dots represent median value and color shades represent the distribution of points for each resolution on each sampling day.

545

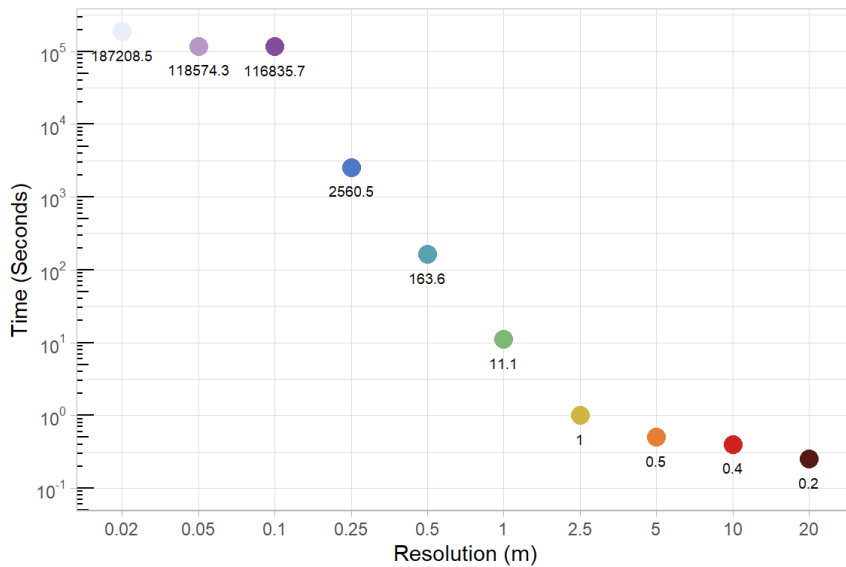


Figure A63: Variogram processing times for the 27 February 2020, observation day. Colors indicate different snow depth digital surface model (DSM) resolutions and the number labels are the variogram processing times (in seconds) for each DSM. Note that fully processing the 0.05 and 0.02 m grids was too computationally expensive even when using a supercomputer.

550

Therefore, we randomly sampled three million points from those DSMs before calculating the variograms. Thus, the processing times for 0.05 and 0.02 m are similar.

Formatted: English (United States)

Formatted: English (United States)

### **Code and Data Availability**

The timeseries of snow depth digital surface models (before vegetation masking, detrending, and outlier removal), the vegetation masked Hourglass and meadow shapefiles and .csvs of data for the figures presented are available in a US Geological Survey data release, located at: <https://doi.org/10.5066/P9YCIA1R>.

### **Author Contributions**

ZM, EP, and ES designed the study. ZM and RP collected the dataset. ZM, EP, and KB drove the theoretical discussion. ZM prepared the manuscript with contributions from all co-authors.

### **Competing Interests**

The contact author has declared that neither they nor their co-authors have any competing interests.

### **Disclaimer**

Any use of trade, firm, or product names is for descriptive purposes only and does not imply endorsement by the U.S. Government.

### **Acknowledgements**

The authors would like to acknowledge the support of the Custer-Gallatin National Forest US Forest Service office and Bridger Bowl Ski Area for permitting the research be conducted on their managed lands. The authors would like to acknowledge a review of an earlier version of this work by Jeffrey Deems and the fieldwork assistance of Madeline Beck, Gabrielle Antonioli, Zachary Keskinen, Jordy Hendrix, and Grete Gansauer.

### **Financial Support**

This research was supported by the U.S. Geological Survey Land Change Science/Climate R&D Program, Montana State University's Earth Science Department, and the Montana Association of Geographic Information Professionals (2020 scholarship).

Formatted: English (United States)

## References

- 575 Adams, M., Bühler, Y., and Fromm, R.: Multitemporal Accuracy and Precision Assessment of Unmanned Aerial System Photogrammetry for Slope-Scale Snow Depth Maps in Alpine Terrain, *Pure Appl. Geophys.*, 175, 3303–3324, <https://doi.org/10.1007/s00024-017-1748-y>, 2018.
- Agisoft: AgiSoft Metashape Professional (Version 1.6.2), 2020.
- 580 Alidoost, F. and Arefi, H.: Comparison of UAS-based photogrammetry software for 3D point cloud generation: a survey over a historical site, *ISPRS Ann. Photogramm. Remote Sens. Spatial Inf. Sci.*, IV-4/W4, 55–61, <https://doi.org/10.5194/isprs-annals-IV-4-W4-55-2017>, 2017.
- Anderton, S. P., White, S. M., and Alvera, B.: Evaluation of spatial variability in snow water equivalent for a high mountain catchment, *Hydrol. Process.*, 18, 435–453, <https://doi.org/10.1002/hyp.1319>, 2004.
- 585 Avanzi, F., Bianchi, A., Cina, A., De Michele, C., Maschio, P., Pagliari, D., Passoni, D., Pinto, L., Piras, M., and Rossi, L.: Centimetric Accuracy in Snow Depth Using Unmanned Aerial System Photogrammetry and a MultiStation, *Remote Sens.-Basel*, 10, 765, <https://doi.org/10.3390/rs10050765>, 2018.
- Birkeland, K. W.: Spatial patterns of snow stability throughout a small mountain range, *J. Glaciol.*, 47, 176–186, <https://doi.org/10.3189/172756501781832250>, 2001.
- 590 Birkeland, K. W., Hansen, K. J., and Brown, R. L.: The spatial variability of snow resistance on potential avalanche slopes, *J. Glaciol.*, 41, 183–190, <https://doi.org/10.3189/S0022143000017871>, 1995.
- Blöschl, G.: Scaling issues in snow hydrology, *Hydrol. Process.*, 13, 2149–2175, [https://doi.org/10.1002/\(SICI\)1099-1085\(199910\)13:14/15<2149::AID-HYP847>3.0.CO;2-8](https://doi.org/10.1002/(SICI)1099-1085(199910)13:14/15<2149::AID-HYP847>3.0.CO;2-8), 1999.
- 595 Boesch, R., Bühler, Y., Marty, M., and Ginzler, C.: Comparison of digital surface models for snow depth mapping with UAV and aerial cameras, *Int. Arch. Photogramm. Remote Sens. Spatial Inf. Sci.*, XLI-B8, 453–458, <https://doi.org/10.5194/isprsarchives-XLI-B8-453-2016>, 2016.
- Brandt, W. T., Bormann, K. J., Cannon, F., Deems, J. S., Painter, T. H., Steinhoff, D. F., and Dozier, J.: Quantifying the Spatial Variability of a Snowstorm Using Differential Airborne Lidar, *Water Resour. Res.*, 56, <https://doi.org/10.1029/2019WR025331>, 2020.
- 600 Buchmann, M., Begert, M., Brönnimann, S., and Marty, C.: Local-scale variability of seasonal mean and extreme values of in situ snow depth and snowfall measurements, *The Cryosphere*, 12, 2021.
- Bühler, Y., Marty, M., Egli, L., Veitinger, J., Jonas, T., Thee, P., and Ginzler, C.: Snow depth mapping in high-alpine catchments using digital photogrammetry, *The Cryosphere*, 9, 229–243, <https://doi.org/10.5194/tc-9-229-2015>, 2015.
- Bühler, Y., Adams, M. S., Bösch, R., and Stoffel, A.: Mapping snow depth in alpine terrain with unmanned aerial systems (UASs): potential and limitations, *The Cryosphere*, 10, 1075–1088, <https://doi.org/10.5194/tc-10-1075-2016>, 2016.
- 605 Bühler, Y., Adams, M. S., Stoffel, A., and Bösch, R.: Photogrammetric reconstruction of homogenous snow surfaces in alpine terrain applying near-infrared UAS imagery, *Int. J. Remote Sens.*, 38, 3135–3158, <https://doi.org/10.1080/01431161.2016.1275060>, 2017.

- 610 Carbonneau, P. E. and Dietrich, J. T.: Cost-effective non-metric photogrammetry from consumer-grade sUAS: implications for direct georeferencing of structure from motion photogrammetry, *Earth Surf. Proc. Land.*, 42, 473–486, <https://doi.org/10.1002/esp.4012>, 2017.
- Cimoli, E., Marcer, M., Vandecrux, B., Bøggild, C. E., Williams, G., and Simonsen, S. B.: Application of Low-Cost UASs and Digital Photogrammetry for High-Resolution Snow Depth Mapping in the Arctic, *Remote Sens.-Basel*, 9, <https://doi.org/10.3390/rs9111144>, 2017.
- 615 Clark, M. P., Hendrikx, J., Slater, A. G., Kavetski, D., Anderson, B., Cullen, N. J., Kerr, T., Örn Hreinsson, E., and Woods, R. A.: Representing spatial variability of snow water equivalent in hydrologic and land-surface models: A review, *Water Resour. Res.*, 47, <https://doi.org/10.1029/2011WR010745>, 2011.
- Clemenzi, I., Pellicciotti, F., and Burlando, P.: Snow Depth Structure, Fractal Behavior, and Interannual Consistency Over Haut Glacier d’Arolla, Switzerland, *Water Resour. Res.*, 54, 7929–7945, <https://doi.org/10.1029/2017WR021606>, 2018.
- 620 De Michele, C., Avanzi, F., Passoni, D., Barzaghi, R., Pinto, L., Dosso, P., Ghezzi, A., Gianatti, R., and Della Vedova, G.: Using a fixed-wing UAS to map snow depth distribution: an evaluation at peak accumulation, *The Cryosphere*, 10, 511–522, <https://doi.org/10.5194/tc-10-511-2016>, 2016.
- Deems, J. S.: Topographic effects on the spatial and temporal patterns of snow temperature gradients in a mountain snowpack, Montana State University, Bozeman, MT, 97 pp., 2002.
- 625 Deems, J. S., Fassnacht, S. R., and Elder, K. J.: Fractal Distribution of Snow Depth from Lidar Data, *J. Hydrometeorol.*, 7, 13, 2006.
- Deems, J. S., Painter, T. H., and Finnegan, D. C.: Lidar measurement of snow depth: a review, *J. Glaciol.*, 59, 467–479, <https://doi.org/10.3189/2013JG12J154>, 2013.
- 630 Deschamps-Berger, C., Gascoïn, S., Berthier, E., Deems, J., Gutmann, E., Dehecq, A., Shean, D., and Dumont, M.: Snow depth mapping from stereo satellite imagery in mountainous terrain: evaluation using airborne laser-scanning data, *The Cryosphere*, 14, 2925–2940, <https://doi.org/10.5194/tc-14-2925-2020>, 2020.
- Dozier, J.: Mountain hydrology, snow color, and the fourth paradigm, *Eos Trans. AGU*, 92, 373–374, <https://doi.org/10.1029/2011EO430001>, 2011.
- Dozier, J., Bair, E. H., and Davis, R. E.: Estimating the spatial distribution of snow water equivalent in the world’s mountains, *WIREs Water*, 3, 461–474, <https://doi.org/10.1002/wat2.1140>, 2016.
- 635 Eberhard, L. A., Sirguey, P., Miller, A., Marty, M., Schindler, K., Stoffel, A., and Bühler, Y.: Intercomparison of photogrammetric platforms for spatially continuous snow depth mapping, *The Cryosphere*, 15, 69–94, <https://doi.org/10.5194/tc-15-69-2021>, 2021.
- Egli, L., Griessinger, N., and Jonas, T.: Seasonal development of spatial snow-depth variability across different scales in the Swiss Alps, *Ann. Glaciol.*, 52, 216–222, <https://doi.org/10.3189/172756411797252211>, 2011.
- 640 Eker, R., Bühler, Y., Schlögl, S., Stoffel, A., and Aydın, A.: Monitoring of Snow Cover Ablation Using Very High Spatial Resolution Remote Sensing Datasets, *Remote Sens.-Basel*, 11, 699, <https://doi.org/10.3390/rs11060699>, 2019.
- Elder, K., Dozier, J., and Michaelsen, J.: Snow accumulation and distribution in an Alpine Watershed, *Water Resour. Res.*, 27, 1541–1552, <https://doi.org/10.1029/91WR00506>, 1991.

645 Elder, K., Rosenthal, W., and Davis, R. E.: Estimating the spatial distribution of snow water equivalence in a montane watershed, *Hydrol. Process.*, 12, 16, 1998.

Falgout, J. T. and Gordon, J.: USGS Advanced Research Computing, USGS Yeti Supercomputer, U.S. Geological Survey, <https://www.usgs.gov/advanced-research-computing/usgs-yeti-supercomputer>, 2022.

Fassnacht, S. R. and Deems, J. S.: Measurement sampling and scaling for deep montane snow depth data, *Hydrol. Process.*, 20, 829–838, <https://doi.org/10.1002/hyp.6119>, 2006.

650 Fey, C., Schattan, P., Helfricht, K., and Schöber, J.: A compilation of multitemporal TLS snow depth distribution maps at the Weisssee snow research site (Kauertal, Austria), *Water Resour. Res.*, 2019WR024788, <https://doi.org/10.1029/2019WR024788>, 2019.

655 Fierz, C., Armstrong, R., Durand, Y., Etchevers, P., Greene, E., McClung, D., Nishimura, K., Satyawali, P., and Sokratov, S.: The International Classification for Seasonal Snow on the Ground, Tech. rep., IHP-VII, Technical Documents in Hydrology No. 83, IACS Contribution No. 1, UNESCO – IHP, Paris, 2009.

Gabrlík, P., Cour-Harbo, A. la, Kalvodova, P., Zalud, L., and Janata, P.: Calibration and accuracy assessment in a direct georeferencing system for UAS photogrammetry, *Int. J. Remote Sens.*, 39, 4931–4959, <https://doi.org/10.1080/01431161.2018.1434331>, 2018.

660 Gabrlík, P., Janata, P., Zalud, L., and Harcarik, J.: Towards Automatic UAS-Based Snow-Field Monitoring for Microclimate Research, *Sensors*, 19, 1945, <https://doi.org/10.3390/s19081945>, 2019.

Gaffey, C. and Bhardwaj, A.: Applications of Unmanned Aerial Vehicles in Cryosphere: Latest Advances and Prospects, *Remote Sens.-Basel*, 12, 948, <https://doi.org/10.3390/rs12060948>, 2020.

665 Goetz, J. and Brenning, A.: Quantifying Uncertainties in Snow Depth Mapping From Structure From Motion Photogrammetry in an Alpine Area, *Water Resour. Res.*, 55, 7772–7783, <https://doi.org/10.1029/2019WR025251>, 2019.

Greene, E., Birkeland, K. W., Kelly, E., McCammon, I., Staples, M., and Sharaf, D.: Snow, Weather, and Avalanches: Observation Guidelines for Avalanche Programs in the United States, 3rd ed., edited by: Krause, D., American Avalanche Association, Victor, ID, 152 pp., 2016.

670 Grünewald, T., Schirmer, M., Mott, R., and Lehning, M.: Spatial and temporal variability of snow depth and ablation rates in a small mountain catchment, *The Cryosphere*, 4, 215–225, <https://doi.org/10.5194/tc-4-215-2010>, 2010.

Harder, P., Schirmer, M., Pomeroy, J., and Helgason, W.: Accuracy of snow depth estimation in mountain and prairie environments by an unmanned aerial vehicle, *The Cryosphere*, 10, 2559–2571, <https://doi.org/10.5194/tc-10-2559-2016>, 2016.

Höhle, J. and Höhle, M.: Accuracy assessment of digital elevation models by means of robust statistical methods, *ISPRS J. Photogramm.*, 64, 398–406, <https://doi.org/10.1016/j.isprsjprs.2009.02.003>, 2009.

675 Hu, F., Gao, X. M., Li, G. Y., and Li, M.: DEM extraction from Worldview-3 stereo-images and accuracy evaluation, *Int. Arch. Photogramm. Remote Sens. Spatial Inf. Sci.*, XLI-B1, 327–332, <https://doi.org/10.5194/isprsarchives-XLI-B1-327-2016>, 2016.

Kinar, N. J. and Pomeroy, J. W.: Measurement of the physical properties of the snowpack, *Rev. Geophys.*, 53, 481–544, <https://doi.org/10.1002/2015RG000481>, 2015.

Formatted: Default Paragraph Font, English (United States)

Formatted: English (United States)

Formatted: Font: (Default) Times New Roman, English (United States)

Formatted: Normal

Formatted: English (United States)



680 [Kronholm, K.: Spatial variability of snow mechanical properties with regard to avalanche formation, Ph.D. Dissertation, Faculty of Mathematics and Science, Department of Geography, University of Zurich, Zurich, 187 pp., 2004.](#)

685 [Kronholm, K., Schneebeli, M., and Schweizer, J.: Spatial variability of micropenetration resistance in snow layers on a small slope, \*Ann. Glaciol.\*, 38, 202–208, <https://doi.org/10.3189/172756404781815257>, 2004.](#)

[Kronholm, K. and Birkeland, K. W.: Reliability of sampling designs for spatial snow surveys, \*Comput. Geosci.\*, 33, 1097–1110, <https://doi.org/10.1016/j.cageo.2006.10.004>, 2007.](#)

690 [Lacroix, P.: Landslides triggered by the Gorkha earthquake in the Langtang valley, volumes and initiation processes, \*Earth Planets Space\*, 68, 46, <https://doi.org/10.1186/s40623-016-0423-3>, 2016.](#)

[Landry, C., Birkeland, K., Hansen, K., Borkowski, J., Brown, R., and Aspinnall, R.: Variations in snow strength and stability on uniform slopes, \*Cold Reg. Sci. Technol.\*, 39, 205–218, <https://doi.org/10.1016/j.coldregions.2003.12.003>, 2004.](#)

695 [Liston, G. E., Haehnel, R. B., Sturm, M., Hiemstra, C. A., Berezovskaya, S., and Tabler, R. D.: Simulating complex snow distributions in windy environments using SnowTran-3D, \*J. Glaciol.\*, 53, 241–256, <https://doi.org/10.3189/172756507782202865>, 2007.](#)

[López-Moreno, J. I., Fassnacht, S. R., Beguería, S., and Latron, J. B. P.: Variability of snow depth at the plot scale: implications for mean depth estimation and sampling strategies, \*The Cryosphere\*, 5, 617–629, <https://doi.org/10.5194/tc-5-617-2011>, 2011.](#)

700 [López-Moreno, J. I., Revuelto, J., Fassnacht, S. R., Azorín-Molina, C., Vicente-Serrano, S. M., Morán-Tejeda, E., and Sextone, G. A.: Snowpack variability across various spatio-temporal resolutions, \*Hydrol. Process.\*, 29, 1213–1224, <https://doi.org/10.1002/hyp.10245>, 2015.](#)

[Lundy, C. C., Brown, R. L., Adams, E. E., Birkeland, K. W., and Lehning, M.: A statistical validation of the snowpack model in a Montana climate, \*Cold Reg. Sci. Technol.\*, 33, 237–246, \[https://doi.org/10.1016/S0165-232X\\(01\\)00038-6\]\(https://doi.org/10.1016/S0165-232X\(01\)00038-6\), 2001.](#)

[Lutz, E. R. and Birkeland, K. W.: Spatial patterns of surface hoar properties and incoming radiation on an inclined forest opening, \*J. Glaciol.\*, 57, 355–366, <https://doi.org/10.3189/002214311796405843>, 2011.](#)

705 [Marti, R., Gascoin, S., Berthier, E., de Pinel, M., Houet, T., and Laffly, D.: Mapping snow depth in open alpine terrain from stereo satellite imagery, \*The Cryosphere\*, 10, 1361–1380, <https://doi.org/10.5194/tc-10-1361-2016>, 2016.](#)

[McCormack, E. and Vaa, T.: Testing Unmanned Aircraft for Roadside Snow Avalanche Monitoring, \*Transp. Res. Record\*, 2673, 94–103, <https://doi.org/10.1177/0361198119827935>, 2019.](#)

710 [Mendoza, P. A., Musselman, K. N., Revuelto, J., Deems, J. S., López-Moreno, J. I., and McPhee, J.: Interannual and Seasonal Variability of Snow Depth Scaling Behavior in a Subalpine Catchment, \*Water Resour. Res.\*, 56, <https://doi.org/10.1029/2020WR027343>, 2020.](#)

[Meyer, J. and Skiles, S. M.: Assessing the Ability of Structure From Motion to Map High-Resolution Snow Surface Elevations in Complex Terrain: A Case Study From Senator Beck Basin, CO, \*Water Resour. Res.\*, 55, 6596–6605, <https://doi.org/10.1029/2018WR024518>, 2019.](#)

715 [Mock, C. J. and Birkeland, K. W.: Snow Avalanche Climatology of the Western United States Mountain Ranges, \*Bull. Amer. Meteor. Soc.\*, 81, 2367–2392, \[https://doi.org/10.1175/1520-0477\\(2000\\)081<2367:SACOTW>2.3.CO;2\]\(https://doi.org/10.1175/1520-0477\(2000\)081<2367:SACOTW>2.3.CO;2\), 2000.](#)

Formatted: Left, Line spacing: single

Formatted: Font: (Default) Times New Roman, English (United States)

Formatted: Normal

Formatted: English (United States)

Formatted: Left

Formatted: Default Paragraph Font, English (United States)

Formatted: English (United States)

Formatted: Font: (Default) Times New Roman, English (United States)

Formatted: Normal

Formatted: English (United States)

Formatted: Default Paragraph Font

Formatted: Font: (Default) Times New Roman, English (United States)

Formatted: Normal

Formatted: English (United States)

Molotch, N. P. and Bales, R. C.: SNOTEL representativeness in the Rio Grande headwaters on the basis of physiographics and remotely sensed snow cover persistence, *Hydrol. Process.*, 20, 723–739, <https://doi.org/10.1002/hyp.6128>, 2006.

720 Mott, R. and Lehning, M.: Meteorological Modeling of Very High-Resolution Wind Fields and Snow Deposition for Mountains, *Front. Earth Sci.*, 11, 934–949, <https://doi.org/10.1175/2010JHM1216.1>, 2010.

Mott, R., Schirmer, M., and Lehning, M.: Scaling properties of wind and snow depth distribution in an Alpine catchment, *J. Geophys. Res.*, 116, D06106, <https://doi.org/10.1029/2010JD014886>, 2011.

Mott, R., Vionnet, V., and Grünwald, T.: The Seasonal Snow Cover Dynamics: Review on Wind-Driven Coupling Processes, *Front. Earth Sci.*, 6, 197, <https://doi.org/10.3389/feart.2018.00197>, 2018.

725 [Niedzielski, T., Szymanowski, M., Miziński, B., Spallek, W., Witek-Kasprzak, M., Ślopek, J., Kasprzak, M., Błaś, M., Sobik, M., Jancewicz, K., Borowicz, D., Remisz, J., Modzel, P., Męcina, K., and Leszczyński, L.: Estimating snow water equivalent using unmanned aerial vehicles for determining snow-melt runoff, \*Journal of Hydrology\*, 578, 124046, <https://doi.org/10.1016/j.jhydrol.2019.124046>, 2019.](https://doi.org/10.1016/j.jhydrol.2019.124046)

730 Nolan, M., Larsen, C. F., and Sturm, M.: Mapping snow depth from manned aircraft on landscape scales at centimeter resolution using structure-from-motion photogrammetry, *The Cryosphere*, 9, 1445–1463, <https://doi.org/10.5194/tc-9-1445-2015>, 2015.

735 Painter, T. H., Berisford, D. F., Boardman, J. W., Bormann, K. J., Deems, J. S., Gehrke, F., Hedrick, A., Joyce, M., Laidlaw, R., Marks, D., Mattmann, C., McGurk, B., Ramirez, P., Richardson, M., Skiles, S. M., Seidel, F. C., and Winstral, A.: The Airborne Snow Observatory: Fusion of scanning lidar, imaging spectrometer, and physically-based modeling for mapping snow water equivalent and snow albedo, *Remote Sens. Environ.*, 184, 139–152, <https://doi.org/10.1016/j.rse.2016.06.018>, 2016.

740 [Pebesma, E. J.: Multivariable geostatistics in S: the gstat package, \*Computers & Geosciences\*, 30, 683–691, <https://doi.org/10.1016/j.cageo.2004.03.012>, 2004.](https://doi.org/10.1016/j.cageo.2004.03.012)

Peitzsch, E., Fagre, D., Hendrikx, J., and Birkeland, K.: Detecting snow depth changes in avalanche path starting zones using uninhabited aerial systems and structure from motion photogrammetry, *Proceedings of the International Snow Science Workshop 2018*, Innsbruck, <https://pubs.er.usgs.gov/publication/70200492>, 2018.

745 Prokop, A., Schön, P., Singer, F., Pulfer, G., Naaim, M., Thibert, E., and Soruco, A.: Merging terrestrial laser scanning technology with photogrammetric and total station data for the determination of avalanche modeling parameters, *Cold Reg. Sci. Technol.*, 110, 223–230, <https://doi.org/10.1016/j.coldregions.2014.11.009>, 2015.

QGIS.org: QGIS Geographic Information System, QGIS Association, <https://QGIS.org>, 2021.

R Core Team: R: A Language and Environment for Statistical Computing, R Foundation for Statistical Computing, Vienna, Austria, 2021.

750 Redpath, T. A. N., Sirguey, P., and Cullen, N. J.: Repeat mapping of snow depth across an alpine catchment with RPAS photogrammetry, *The Cryosphere*, 12, 3477–3497, <https://doi.org/10.5194/tc-12-3477-2018>, 2018.

Revuelto, J., Alonso-Gonzalez, E., Vidaller-Gayan, I., Lacroix, E., Izagirre, E., Rodríguez-López, G., and López-Moreno, J. I.: Intercomparison of UAV platforms for mapping snow depth distribution in complex alpine terrain, *Cold Reg. Sci. Technol.*, 103344, <https://doi.org/10.1016/j.coldregions.2021.103344>, 2021.

Formatted: Default Paragraph Font

Formatted: Font: (Default) Times New Roman, English (United States)

Formatted: Normal

Formatted: English (United States)

Formatted: Default Paragraph Font, English (United States)

Formatted: English (United States)

Formatted: Font: (Default) Times New Roman, English (United States)

Formatted: Normal

Formatted: English (United States)

Formatted: English (United States)

Formatted: English (United States)

755 [Roy, D. P. and Dikshit, O.: Investigation of Image Resampling Effects upon The Textural Information Content of a High Spatial Resolution Remotely Sensed Image. \*International Journal of Remote Sensing\*, 15, 1123–1130. <https://doi.org/10.1080/01431169408954146>, 1994.](#)

760 [Schweizer, J., Kronholm, K., Jamieson, J. B., and Birkeland, K. W.: Review of spatial variability of snowpack properties and its importance for avalanche formation, \*Cold Reg. Sci. Technol.\*, 51, 253–272, <https://doi.org/10.1016/j.coldregions.2007.04.009>, 2008.](#)

765 [Shean, D. E., Alexandrov, O., Moratto, Z. M., Smith, B. E., Joughin, I. R., Porter, C., and Morin, P.: An automated, open-source pipeline for mass production of digital elevation models \(DEMs\) from very-high-resolution commercial stereo satellite imagery, \*ISPRS Journal of Photogrammetry and Remote Sensing\*, 116, 101–117, <https://doi.org/10.1016/j.isprsjprs.2016.03.012>, 2016.](#)

770 [Takasu: RTKLIB: Open Source Program Package for RTK-GPS, FOSS4G, Tokyo, 2009.](#)

775 [Trujillo, E., Ramírez, J. A., and Elder, K. J.: Topographic, meteorologic, and canopy controls on the scaling characteristics of the spatial distribution of snow depth fields, \*Water Resour. Res.\*, 43, <https://doi.org/10.1029/2006WR005317>, <https://doi.org/10.1029/2006WR005317>, 2007.](#)

780 [Trujillo, E., Ramírez, J. A., and Elder, K. J.: Scaling properties and spatial organization of snow depth fields in sub-alpine forest and alpine tundra, \*Hydrol. Process.\*, 23, 1575–1590, <https://doi.org/10.1002/hyp.7270>, <https://doi.org/10.1002/hyp.7270>, 2009.](#)

785 [U.S. Geological Survey: USGS 13 arc-second n46w111 1 x 1 degree, U.S. Geological Survey, <https://nationalmap.gov/elevation.html>, 2017, Van Peurse, K., Hendrixx, J., Birkeland, K., Miller, D., and Gibson, C.: Validation of a coupled weather and SNOWPACK model across western Montana, Proceedings of the International Snow Science Workshop 2016, Breckenridge, <https://arc.lib.montana.edu/snow-science/item.php?id=2444>, 2016.](#)

790 [Vander Jagt, B., Lucieer, A., Wallace, L., Turner, D., and Durand, M.: Snow Depth Retrieval with UAS Using Photogrammetric Techniques, \*Geosciences J.\*, 5, 264–285, <https://doi.org/10.3390/geosciences5030264>, 2015.](#)

Vosselman, G.: Slope based filtering of laser altimetry data, *IAPRS*, XXXIII, 9, 2000.

795 [Webster, R. and Oliver, M. A.: \*Modelling the Variogram\*, in: \*Geostatistics for Environmental Scientists\*, John Wiley & Sons, Ltd, 77–107, <https://doi.org/10.1002/9780470517277.ch5>, 2007.](#)

800 [Wirz, V., Schirmer, M., Gruber, S., and Lehning, M.: Spatio-temporal measurements and analysis of snow depth in a rock face, \*The Cryosphere\*, 5, 893–905, <https://doi.org/10.5194/tc-5-893-2011>, 2011.](#)

Formatted: Default Paragraph Font, English (United States)

Formatted: English (United States)

Formatted: Font: (Default) Times New Roman, English (United States)

Formatted: Normal

Formatted: English (United States)

Formatted: Default Paragraph Font

Formatted: Font: (Default) Times New Roman, English (United States)

Formatted: Normal

Formatted: English (United States)

Formatted: Default Paragraph Font, English (United States)

Formatted: English (United States)

Formatted: Normal

Formatted: Default Paragraph Font, English (United States)

Formatted: English (United States)

Formatted: Normal

Formatted: English (United States)

Formatted: English (United States)

Formatted: Default Paragraph Font, English (United States)

Formatted: English (United States)

Formatted: Font: (Default) Times New Roman

Formatted: Normal

Formatted: English (United States)