

**Figure S3: Field photos of samples collected from scoria cone for cosmogenic surface exposure dating.** The sample ID and exposure age with its corresponding external uncertainty is provided beneath each image. Photo credit: Joanne S. Johnson and Stephen J. Roberts.



CIN-101  
 $7.4 \pm 0.5$  ka



CIN-102  
 $7.5 \pm 0.5$  ka



CIN-103  
 $6.7 \pm 0.5$  ka



CIN-104  
 $7.0 \pm 0.5$  ka



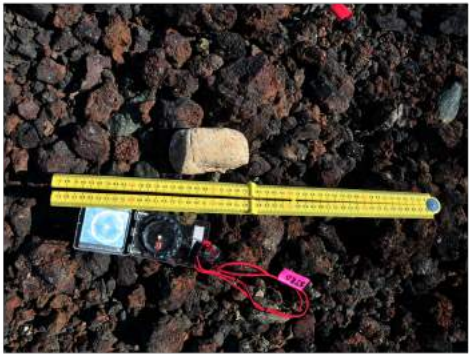
CIN-105  
 $7.1 \pm 0.5$  ka



CIN-106  
 $6.9 \pm 0.5$  ka



CIN-107  
 $6.9 \pm 0.4$  ka



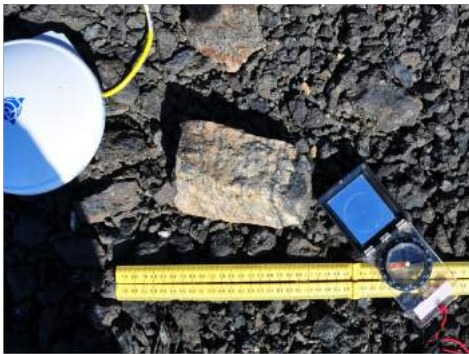
CIN-108  
 $6.2 \pm 0.4$  ka



CIN-109  
 $6.2 \pm 0.4$  ka



CIN-110  
 $6.5 \pm 0.4$  ka



CIN-111  
 $6.6 \pm 0.4$  ka



CIN-112  
 $6.6 \pm 0.4$  ka