

Mapping snow depth over lake ice in Canada's sub-arctic using ground-penetrating radar

Alicia F. Pouw, Homa Kheyrollah Pour, Alex MacLean,

Remote Sensing of Environmental Change (ReSEC) Research Group, Department of Geography and Environmental Studies,

5 Wilfrid Laurier University, Waterloo, N2L 3C5, Canada

Cold regions Research Centre, Wilfrid Laurier University, Waterloo, N2L 3C5, Canada

Correspondence to: Alicia F. Pouw (apouw@wlu.ca)

Abstract

Ice thickness across lake ice is influenced mainly by the presence of snow and its distribution, ~~as it directly impacts which~~
10 ~~affects~~ the rate of lake ice growth. The ~~spatial~~ distribution of snow depth over lake ice varies ~~and is driven by due to~~ wind
redistribution and snowpack metamorphism, ~~which affecting the variability of creating influencing variability in the~~ lake ice
thickness ~~variability~~. ~~Measuring The Accuracy and consistency~~ of snow depth ~~measurement~~ data on lake ice ~~are~~
~~sparse and are is~~ challenging ~~and sparse~~ to obtain. However, high spatial resolution lake snow depth observations are necessary
15 for the next generation of thermodynamic lake ice models. ~~Such information is required~~ to improve the ~~knowledge and~~
understanding of how the varying distribution of snow depth influences lake ice formation and growth. This study ~~was~~
~~conducted maps snow depth over lake ice~~ using ground-penetrating radar (GPR) ~~two-way travel time (TWT) acquisitions~~ with
~9 cm sampling resolution along transects totalling ~44 km, ~~over four freshwater lakes in Canada's sub-arctic to map snow~~
~~depth over four freshwater lakes in Canada's sub-arctic~~. ~~The research collected 1000 MHz GPR acquisitions and applied a~~
~~fully automated post processing method~~. ~~The lake snow depth derived from GPR TWT resulted in an average relative error of~~
20 ~~under 10% when compared to 2,430 in situ snow depth observations for the early and late winter season~~. ~~The accuracy of the~~
~~snow depth retrieval is assessed using 2,430 in situ snow depth observation points (n=2,430)~~. ~~On average, the~~ snow depth
derived from GPR TWTs for the early winter season ~~is was~~ estimated with a root mean square error (RMSE) of 1.658 cm and
a mean bias error of 0.01 cm, ~~while the accuracy for the~~. ~~For the~~ late winter season on a deeper snowpack, ~~the accuracy is was~~
25 estimated with a RMSE of 2.986 cm and a mean bias error of 0.44 cm. The GPR-derived snow depths ~~are were~~ interpolated to
create 1 m spatial resolution snow depth maps. The findings showed ~~ed~~ improved lake snow depth retrieval accuracy and
introduced ~~d~~ a fast and efficient method to obtain high spatial resolution snow depth information. ~~The results suggest that GPR~~
~~acquisitions can be used to derive lake snow depth, providing a viable alternative to manual snow depth monitoring methods~~.
The findings ~~of this research~~ can lead to an improved understanding of snow and lake ice interactions, which is essential for
northern communities' safety and wellbeing and the scientific modelling community.

The distribution of snow depth over lake ice affects the formation and thickness of ice over the entire lake. ~~While snowfall can advance the onset of lake freeze-up, once the ice has formed, the snow accumulation hinders the ice growth in the water column (Adams, 1976a). Snow present on lake ice acts as an insulative barrier due to the lower thermal conductivity of snow than that of ice and, therefore, affects the heat released from the water column to the atmosphere. This process slows the growth rate of~~
 35 ~~congelation ice (or black ice; Brown and Duguay, 2010; Leppäranta, 2015). While snowfall can accelerate the onset of lake freeze-up, once the ice has formed, the accumulation of snow hinders the ice growth in the water column (Adams, 1976a). Snow present on top of lake ice acts as an insulative barrier due to its lower thermal conductivity compared to ice. This process slows the growth rate of congelation ice (or black ice; Brown and Duguay, 2010; Leppäranta, 2015) and affects the heat released from the water column to the atmosphere. However, snow on lake ice can also impact the timing of melt and the ice-~~
 40 ~~free season. The albedo of the snow surface reflects incoming solar radiation and can lead to a longer ice-on season (Jensen et al., 2007; Brown and Duguay, 2011; Robinson et al., 2021). Moreover, snow can produce ice growth as snow ice (or white ice), if the snow on the ice surface encounters water, which formsing slush, and rerefreezes (Leppäranta, 1983). This process can occur through the upwelling of water through leads, precipitation falling as rain, or heavy snow causing the depression of ice below the water level.~~
 45 ~~While snow on lake ice can inhibit ice growth, snow can also affect the timing of melt and the ice-free season. The albedo of the snow surface reflects incoming solar radiation and can lead to a longer ice-on season (Jensen et al., 2007; Brown and Duguay, 2011; Robinson et al., 2021). Additionally, snow produces ice growth, as snow ice (or white ice), if the snow on the ice surface encounters water, forming slush, and then freezing (Leppäranta, 1983). This process can occur through the upwelling of water through leads, precipitation falling as rain, or heavy snow causing the depression of ice below the water level.~~

50 A challenge to measuring lake snow is the inconsistent snow thickness across the lake. Snow redistributed by wind commonly deposits on the leeward side of topographic features. Snow accumulation on lake ice surrounding these features (i.e., pressure ridges) leads to the formation of snowdrifts. Additionally, snow dunes will form in areas of turbulent winds on relatively level ice surfaces (Sturm and Liston, 2003; Liston et al., 2018). The formation of snowdrifts and snow dunes create a heterogenous
 55 snow thickness across the ice surface. The uneven snow depth distribution leads to spatial variability in the lake ice thickness due to the increase in heat transfer through the snow for areas of shallow snow (assuming a constant thermal conductivity). These micro-topographic snow features impact the ice mass balance and must be considered when evaluating the energy balance and fluxes on local and regional scales (Sturm et al., 2002).

Snow and lake ice are sensitive to a change in daily air temperature (Rafat et al., 2023). ~~As warming is occurring in~~ Northern
 60 Canada ~~is experiencing warming~~ at twice the global rate, and ~~it~~ is expected ~~that air temperature tōwill~~ continue to increase, ~~along with (Zhang et al., 2019), precipitation (about 10%) in all seasons, with slightly larger values in northeastern Canada (Zhang et al., 2019).~~ ~~These changes can significantly impact a change in~~ the surface-atmosphere energy balance ~~will which~~

~~can~~ directly affect snow and lake ice conditions (Brown and Duguay, 2010). ~~As a result of these changes, alterations~~ ~~Within the changing climate, a change~~ in snow cover (Brown et al., 2021; Mudryk et al., 2017), ~~snowfall~~ (Vincent et al. 2018), lake ice phenology (timing of ice formation and break-up; Magnuson et al., 2000; Lei et al., 2012; Benson et al., 2011), and ice thickness and composition (Kholoptsev et al., 2021) are being observed. Spatial and temporal observations of lake snow and ice can ~~provide insights into~~ ~~be indicators~~ to changes in climatic variables. Later freeze up and earlier break-up of ice cover leads to an extended open-season, ~~which and~~ can ~~influence the~~ ~~affect~~ lake surface water temperatures (i.e., Woolway et al., 2021), ~~affecting the~~ ~~influencing~~ lake biogeochemical processes (e.g., Adrian et al., 2009; Jeppesen et al., 2014). ~~Additionally~~ ~~Furthermore~~, northern communities rely on lake ice for cultural and recreational use, and as a source of transportation through ice roads (Knoll et al., 2019). Ice roads allow travel to neighbouring communities and alternative access to goods and supplies (instead of transport via airplane). With warming projected to increase, it can be expected that the safety of ice roads and operational duration will be affected (Stephenson et al., 2011; Mullan et al., 2021). As the presence of snow over lake ice directly affects ice thickness, measuring snow depth on lake ice is crucial for lake modelling and ice thickness estimation on a regional scale. A previous study by Kheyrollah et al. (2017) shows that accurate snow depth observations over lake ice can significantly improve thermodynamic lake ice models. Enhancing model input can lead to improved information on past, present, and future lake ice conditions to assist in climate change adaptation and decision making across Canada's North.

Improving snow depth observations and retrieving an accurate higher spatial resolution snow depth is essential for hydrological, limnological, and lake ice studies (Lei et al., 2012; Kheyrollah Pour et al., 2017; Marsh et al., 2020; Li et al., 2022). Daily snow depths are reported across Canada using instruments, such as a manual ruler or a sonic sensor, at weather stations located on land (Brown et al., 2021). However, the depth of snow on land does not compare to snow over lake ice (Sturm & Liston, 2003). Snow depth over lake ice is ~ 30 % less than that over land (Gunn et al., 2015; Kheyrollah Pour et al., 2017), such that incorporating land-based snow observations into a thermodynamic lake ice model would negatively bias the ice thickness estimations. The distribution of snow over lake ice is affected more significantly by wind due to the open nature of lakes and the lack of vegetation catchments, which also create a heterogeneous snow surface across the lake ice (Adams, 1976a).

Currently, retrieving accurate lake snow depth observations and mapping the spatial distribution and heterogeneity of snow over ice is challenging because of the limited support of point measurements using contemporary methods, such as a ruler and notebook or automatic snow depth probe. An automatic snow depth probe, such as the magnaprobe, is equipped with a metal rod probe that penetrates the snowpack to the ice surface and a sliding basket that sits on the surface of the snow, recording the snow depth and spatial location when manually placed in position (Sturm and Holmgren, 2018). The magnaprobe records the snow depth accuracy with errors ranging from near zero for hard bases to +5 cm. The Wide Area Augmentation System-enabled GPS provides a position accurate to ± 2.5 m. ~~The An~~ advantages of using a magnaprobe is the increase in speed with which a depth and position measurement can be obtained ~~by a factor of 10~~ compared to measuring with a traditional ruler and writing down the results. The highest boost in snow depth measurement efficiency occurs when the distance between

measuring locations is kept relatively small (~~<10 m~~). The snow depth probe has been commonly utilized for validation of remote sensing techniques (i.e., McGrath et al., 2019; Walker et al., 2020). However, due to the limited spatial coverage that the automated snow depth probe or ruler pose; it is not logistically feasible to measure the snow depth on lake-wide scales.

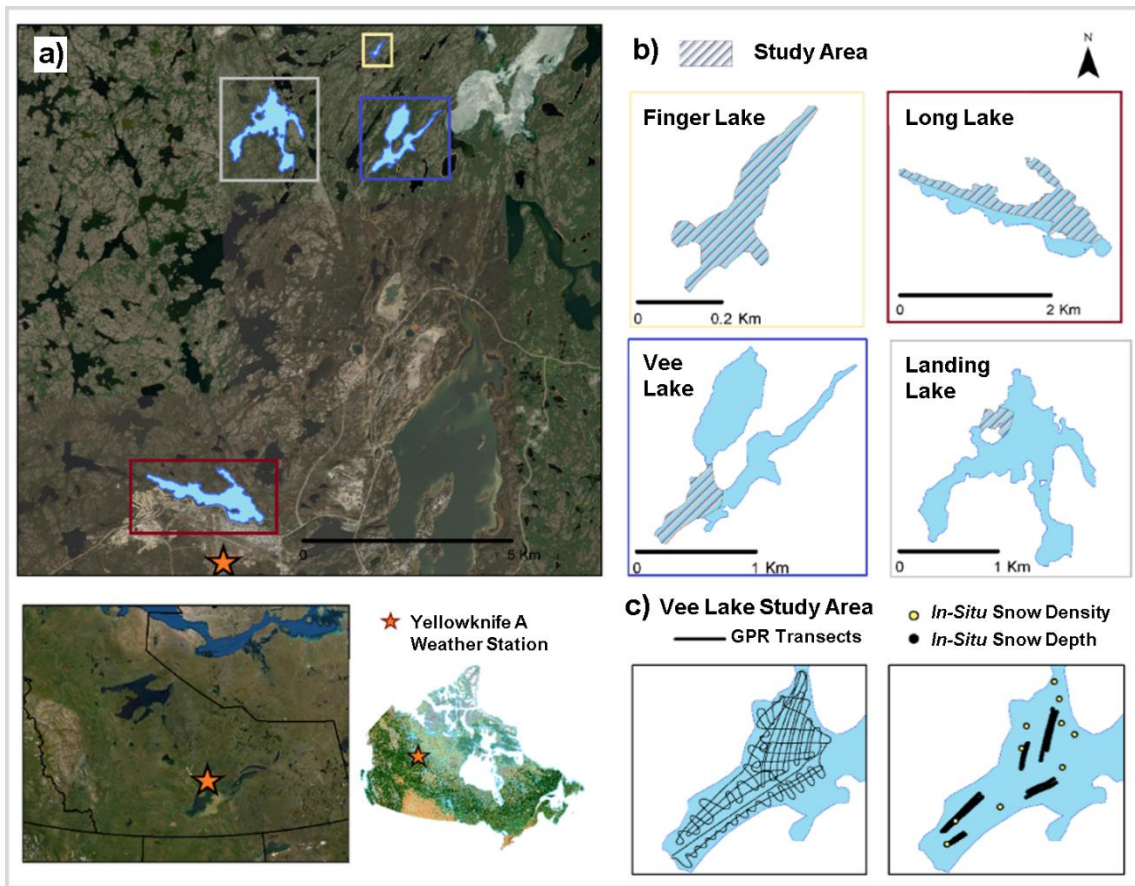
100 Recent advancements have utilized Structure from Motion (SfM) from remotely piloted aircraft system (RPAS) acquisitions to map snow depth over land (i.e., Harder et al., 2016; 2020; Walker et al., 2020; King et al., 2022). This technique is limited in representing the lake ice surface elevation because the ice surface is rarely exposed prior to snow accumulation, and the accumulation of snow, which submerges the ice, invalidates the elevation baseline (Adams, 1976b). A freeboard correction compensates for the change in ice surface elevation to the open water surface; however, this method requires prior information
105 on the snowpack and ice thickness (Gunn et al., 2021a). Ground-penetrating radar (GPR) is one technique that can simultaneously estimate snow depth and ice thickness to be applied within the freeboard correction. GPR systems transmit an electromagnetic (EM) wave and record the measured amplitude as a function of two-way travel-time (TWT) as the signal travels from the transmitting antenna, through a medium and reflects back to the receiving antenna at each interface. Although, GPR is a recognized tool for measuring the spatio-temporal patterns of deep snow over land, sea ice, and glacial firn (i.e., Webb,
110 2017; Webb et al., 2018; McGrath et al., 2019, 2022; Meehan et al., 2020; 2021; Pfaffhuber et al., 2017), it still requires observation of dry snow density (or snow depth and the radar travel-time for calibration) to derive snow depth from the GPR TWT (Marshall et al., 2005). Over lake ice, GPR is commonly used to retrieve ice thickness (i.e., Barrette, 2011; Gunn et al., 2021a; 2021b); however, lake snow depth retrieval using GPR is challenging due to the GPR signal attenuations, as well as the shallow snow-ice interface. In using GPR to derive lake ice thickness, the snow has commonly been ignored and best
115 practices suggest avoiding ununiform snow (Sensors and Software, 2016). The snow causes thicker ice thickness estimates due to the radar travel-time increase, however, areas with thicker snowpacks are expected to have a shallower ice thickness. These challenges are mitigated through additional signal processing of the radargrams to identify the snow-ice interface and derive the shallow snow depth, as presented in this work.

Our goal is to improve the knowledge and understanding of snow depth distribution over lake ice. We utilize extensive GPR
120 two-way travel-time (TWT) observations and in situ observations of lake snow depth and density to complete the following objectives: (1) ~~Improve~~ To improve the retrieval of lake-specific snow depth observations by ~~adapting~~ applying a fully automated ~~GPR snow~~ processing algorithm ~~designed for lake ice using GPR TWTs~~, (2) To validate the accuracy of the snow-depth retrieval algorithm by comparing it to using in situ observations, and (3) To spatially map the distribution of snow depth ~~spatially over~~ across lakes. The outcome will increase lake snow depth data availability which benefits the hydrological and
125 lake ice modelling communities.

2 Study area

In this study, GPR is used to derive and map snow depth over lake ice on four freshwater lakes located north of Yellowknife, NWT during the early and late winter season, such as Landing Lake (62.5587 °N, 114.4103 °W), Finger Lake (62.5750 °N, 114.3587 °W), Long Lake (62.4772 °N, 114.4422 °W), and Vee Lake (62.5555°N, 114.3502 °W) shown in Figure 1. All four lakes are located within the North Slave region. These lakes are generally covered by ice from October to April. The four lakes are close in proximity to one another but vary in shape and size (Table 1). It is expected that the wind fetch and shoreline vegetation affect the snow distribution on these lakes differently. This study uses data collected on areas within the four lakes, as identified in Figure 1b, covering regions along the shoreline, as well as open areas.

Data collection for this study took place during the 2021-2022 early winter season (between December 7th to 14th, 2021) for all lakes, as well as during the late season (March 27th, 2022) to capture the variability of snow depth in late season on a deeper snowpack on Landing Lake. Here, we will refer to Landing-D Lake to represent data collected in December and Landing-M Lake to represent data collected in March. The other three lakes will be referred to as Finger, Long and Vee Lakes. These lakes are part of a turbulent wind field, as the wind direction and speed reported at the Yellowknife weather station vary rapidly. The most predominant winds in December and November came from the east (~27%) and had an average wind speed of 2.59 km/h, with the strongest winds coming from the northeast (~15%) reaching 9.33 km/h. Throughout January to March, the strongest winds came from the northwest (~22%) reaching 10.37 km/h, but frequent winds came from the northeast in January (~22%), northwest in February (~26%) and northeast, east, and northwest in march (~21%) travelling at 4.34 km/h on average, while very little winds were recorded from the south (~6%) between October to March. During initial data collection, air temperatures ranged from -30°C to -15°C, and initial snow on the ground (December 7th, 2021) reported on land at the nearby Meteorological Service of Canada Yellowknife A weather station was 18 cm (Figure 2). During the time spent in the field, an additional 8 cm of snow fell (December 7 to 14th, 2021). Returning in March 2022, the initial snow on the ground was reported at 42 cm and air temperatures around -20°C.



150 Figure 1: This study focuses on (a) four lakes located north of Yellowknife, NWT, Canada, (b) Landing Lake, Finger Lake, Vee
 155 Lake, and Long Lake, shown on different scales depicting the area data collection took place (shaded colour). (c) The location of the
 GPR transects (Left) and in situ snow depth and density measurements (Right) on Vee Lake. (Background imagery: ESRI 2022,
 Landcover source: CCRS and NRCan, 2020)

Table 1: Data collection occurred on four lakes during early winter (December 2021) and late winter (March 2022, Landing Lake
 only) season. The surface area (A_o), Shoreline Length (S_L) and A_o/S_L ratio are reported based on the entire shape of the lakes and
 not the area surveyed.

Site	Date Visited	Latitude	Longitude	A_o (km^2)	S_L (km)	A_o/S_L (km^2/km)
Finger Lake	12/09/2021	62.5750	-114.3587	0.04	1.44	0.03
Long Lake	12/12/2021	62.4772	-114.4422	1.13	10.35	0.11
Vee Lake	12/14/2021	62.5555	-114.3502	0.70	8.63	0.08
Landing-D Lake	12/07/2021	62.5587	-114.4103	1.08	11.71	0.09
Landing-M Lake	03/27/2022					

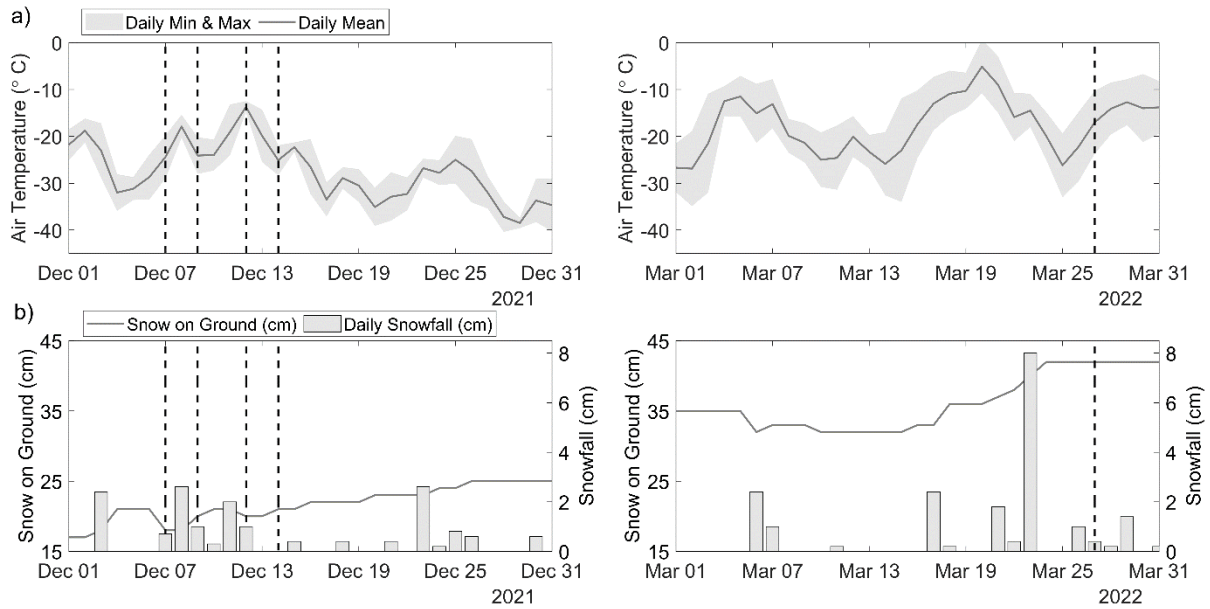


Figure 2: (a) The daily mean, minimum, and maximum air temperatures, and (b) snowfall (bar) and snow on the ground (line) collected at the Yellowknife weather station are shown for each day spent in the field (dash line).

160 3 Methodology

3.1 GPR data acquisitions

GPR transects were acquired using the IceMap system (Sensors and Software Inc, 2022) paired with the 1000MHz Noggin sensor, with both the transmitting and receiving antennas oriented parallel at a fixed separation of 7.5cm. The IceMap system is configured with a GPS capable of recording location data simultaneously with the radar pulses, providing an accuracy of $\pm < 2$ m for the horizontal position. During the data acquisition, the IceMap GPR was set up in a sled pulled by a snowmachine. In the sled (Figure 3), the 1000MHz Noggin sensor was positioned behind the IceMap box and lined up with a Leica Global Navigation Satellite System (GNSS) Real-Time Kinematic (RTK) rover (Leica Geosystems, 2018). Using the GNSS RTK rover, the location data was recorded at a higher accuracy, which was later processed and paired with the GPR pulse locations. This process improved the coordinate accuracy in 3-dimensions to $\pm < 0.02$ m (see Sect. 3.3.2). While traveling at ~ 4 m/s, the resulting GPR trace spacing were ~ 9 cm, dependent on any slight changes in the speed of the snowmachine. The average footprint of each collected trace on all four lakes in December was 19 cm, and 30 cm in March on Landing Lake based on the diameter of the first Fresnel zone (Fediuk et al., 2022). In considering the ~ 9 cm trace spacing to the footprint of each trace, the data results in over 50% overlap. The vertical imaging resolution was estimated at 6.5 cm on average across all four lakes based on the one-quarter wavelength Rayleigh criteria using the 1000 MHz sensor (Kallweit and Wood, 1982), which has a

175 vertical sampling interval of 0.1 ns. Approximately 38 km of GPR data was acquired over the four lakes initially traversed between December 7th to 14th, 2021 and an additional 6 km in March 2022, when revisiting Landing Lake. The transects were created following a gridded pattern to best cover the study area.



180 **Figure 3: (a) The GPR was pulled by a snowmachine. (b) The 1000 MHz sensor was paired with the GPR and an external GNSS rover recorded data simultaneously, to improve the spatial accuracy of the collected transects. (c) A local base station was set up on the lake for GNSS post-processing.**

3.2 In situ observations

In situ snow depth and density observations were gathered across areas of undisturbed snow and close to the GPR transects, as shown in Figure 1c. Snow depths (Table 2) were collected using a SnowHydro Magnaprobe (Sturm et al., 1999; SnowHydro, 2013) along grids or transects across the lake, with the average spacing varying between lakes (~ 2.5 m). The spatial accuracy for the magnaprobe GPS receiver with use in the Arctic has been reported as ± 5 to 10 m (Walker et al., 2020), with a 0.01 m depth precision (Sturm and Holmgren, 2018). With known limitations in the Magnaprobe GPS accuracy, we used the RTK GNSS rover to measure the location of 291 magnaprobe measurements spaced out along the sampling transects on three of the four lakes (Landing, Finger, Vee). We found the error from the magnaprobe GPS to be between 1.72 m to 8.43 m, with a mean (\pm standard deviation) error of 4.44 ± 1 m. On Landing-D Lake, there was frequent snow depression of the magnaprobe basket (~2 cm on average), where it sat below the snow surface. To account for the depression of the magnaprobe basket, we have corrected the in situ data for Landing-D Lake by 2 cm.

195 For each lake, the bulk snow density was sampled at 6 to 10 locations through measuring the specific snow volume and weight of the vertical snow profile using a 5 cm diameter snow tube and an electronic scale with a 1g accuracy. ~~which were then averaged (Table 2).~~ The bulk mean snow densities measured on each lake were averaged (Table 2) and is used as a guide in

determining the appropriate density to use for deriving the snow depth. With limitations in fully capturing the variability of density across each area of focus, in later steps (see Sect. 3.3.4), we applied densities within ± 1 standard deviation of the mean to derive the snow depth from the GPR TWT.

Table 2: In situ snow depth, h_s and density, ρ measurements were taken on the four lakes in December 2021 and, March 2022 on Landing-M Lake. The density and snow depth varied between the four lakes (r = range, σ = standard deviation, n = count).

Site			Mean	Min	Max	r	σ	n
Finger Lake	ρ	kg/m ³	160	140	190	50	15	10
	h_s	cm	13.52	4.84	18.48	13.54	2.73	583
Long Lake	ρ	kg/m ³	245	180	310	130	47	7
	h_s	cm	13.98	6.12	23.78	17.66	3.29	475
Vee Lake	ρ	kg/m ³	195	160	270	90	34	8
	h_s	cm	16.09	6.29	21.00	14.71	2.48	427
Landing-D Lake	ρ	kg/m ³	170	140	200	60	21	6
	h_s	cm	10.21	4.34	18.89	14.55	2.33	617
Landing-M Lake	ρ	kg/m ³	220	182	300	118	36	10
	h_s	cm	35.61	24.70	50.81	26.02	4.54	595

3.3 Snow depth retrievals for GPR data

3.3.1 GPR signal processing

The snow-ice interface is challenging to identify due to interference between the direct wave and the reflection from the shallow snow-ice interface, in addition to the noise caused by wavefield scattering and antenna bounce. To account for this, signal processing was applied to the radargrams to remove any noise before automatically picking the TWTs. Initial processing consisted of applying a de-WOW filter (band-pass filter with a mean subtraction) to the measured amplitudes for each trace (Gerlitz et al., 1993). Next, a time-zero correction was applied to correct the first break times to ensure the snow surface was set to zero nanoseconds (Ihamouten et al., 2010). Followed by a background median subtraction filter, which removed the coherent “ringing” noise and the direct arrivals that masked the shallow reflections (Kim et al., 2007). Additionally, trace stacking was applied to smooth the image (Yilmaz, 2001). All post-processing of the radargrams was conducted in MATLAB.

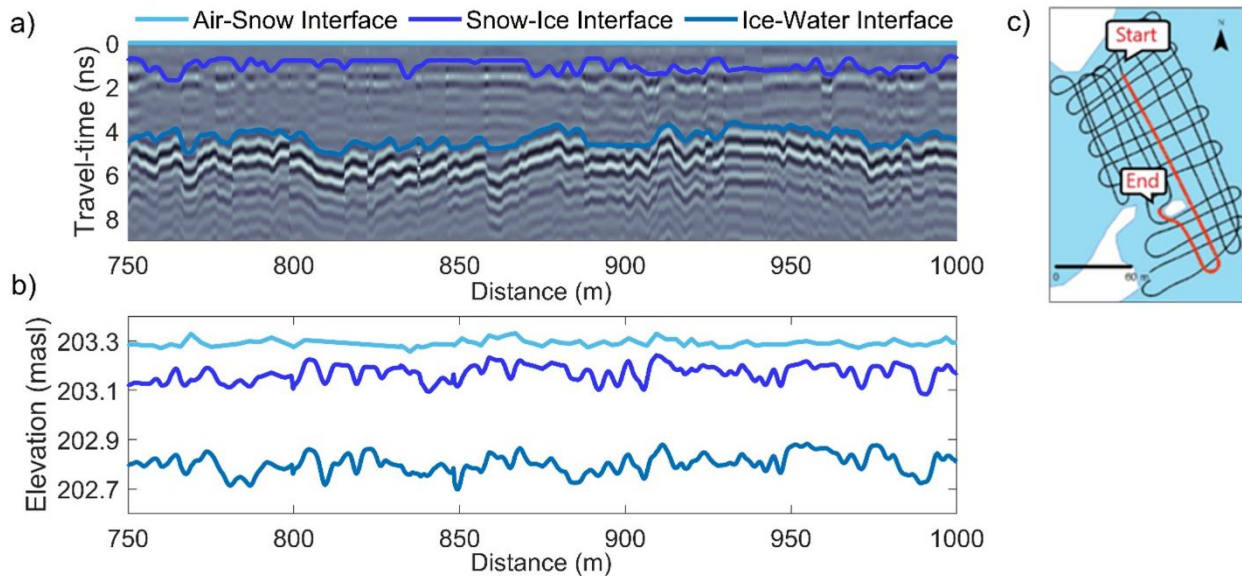
3.3.2 GPR trace location correction

Through simultaneously collecting spatial data using the RTK rover during the GPR data acquisition, the timestamps from both the RTK GNSS and GPR GPS were used to pair the points and replace the spatial data of the GPR with the location recorded from the RTK GNSS. The RTK GNSS spatial data (X, Y, Z) was set to collect every 0.5 m for each lake. To account for the lower collection frequency of the RTK rover, the GPR traces that were not paired with an RTK GNSS point were

linearly interpolated. In comparing the accuracy of the GPR GPS to the RTK GNSS for the paired locations, the error in GPS accuracy (easting & northing) was between 0.22 m to 4.97 m, with a mean Euclidean difference of 2.63 ± 1.21 m.

3.3.3 Automatically picking GPR TWT

220 The GPR TWTs were extracted using the modified energy ratio algorithm (Wong et al., 2009), which automatically picks the first break. With the input of an estimated depth and wave speed, the picker is guided to a region of the time window and picks the first initial zero crossing of the wavelet reflection, identifying the TWT. The radargram after signal processing can be seen in Figure 4a showing the TWT automatic picks along a transect on Landing-D Lake. Viewing Figure 4b as a function of elevation (meters above sea level), the variation in snow surface and thickness as well as ice surface can be seen.



225 **Figure 4:**(a) After applying signal processing, the modified energy ratio algorithm was used to automatically pick the TWTs. The air-snow interface is represented at time-zero and the snow-ice and ice-water interfaces were picked using the first initial zero crossing of the wavelet reflection. (b) The automatic TWT picks are shown as a function of elevation, where the variability in snow surface, ice surface, and the ice bottom can be seen. (c) The location for this 250 m example is on Landing-D Lake.

3.3.4 Calculating snow depth from TWTs and density

230 Snow depth was derived using the automatically picked TWTs and the wave speed of the radar signal. To determine the wave speed of the radar signal traveling through the snow, the relative permittivity was calculated. There are several empirical equations available for deriving the relative permittivity from snow density. Previous work (i.e., Di Paolo et al., 2018; Webb et al., 2021) found there is significant variability in deriving permittivity between these equations for larger snow densities,

however, based on the snow densities presented within this study, there is less variability between equations. Therefore, the
235 Kovacs et al. (1995) equation is used to calculate the relative permittivity. The measured in situ snow density within a range
of one standard deviation of the average for each lake (Finger = 175 kg/m³, Long = 245 kg/m³, Vee = 195 kg/m³, Landing-D
= 190 kg/m³, Landing -M = 200 kg/m³) was used to calculate relative permittivity using Eq. (1) as:

$$\epsilon_r = (1 + 0.845\rho)^2 \quad (1)$$

where ρ is the density of snow, ϵ_r is the relative permittivity. As the wave speed (V) at which the EM wave moves through
240 snow depends on the snow relative permittivity, V was calculated using Eq. (2) as:

$$V = \frac{c}{\sqrt{\epsilon_r}} \quad (2)$$

where C is the speed of light (0.3 m/ns) and ϵ_r is the relative permittivity. The wave speed, V is calculated for each lake (Finger
= 0.261 m/ns, Long = 0.249 m/ns, Vee = 0.258 m/ns, Landing-D = 0.259 m/ns, Landing-M = 0.257 m/ns) and therefore, snow
depth (h_s) was derived using Eq. (3) as:

$$h_s = \frac{V \times TWT}{2} \quad (3)$$

where TWT is the two-way GPR travel-time.

3.4 Comparing GPR TWT derived snow depth to in situ snow depth

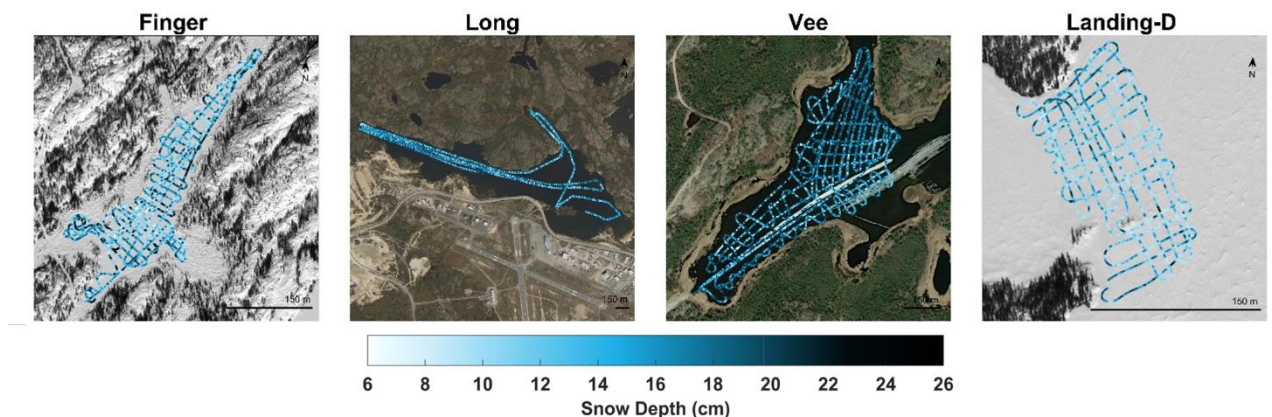
Derived snow depths from GPR TWTs were compared to in situ snow depth measurements collected during fieldwork. Around
each measured in situ snow depth, the GPR traces that fell within a 6 m radius were used to compare the accuracy of the
250 derived snow depth. The 6 m radius was chosen due to the location accuracy calculated with the in situ snow depth observations
(mean error of 4.44 ± 1 m; see Sect. 3.2.4.2). The snow depths were derived in two different scenarios: 1) *closest match*, where
the single closest matched snow depths within the 6 m radius was selected, and 2) *distance weighting*, where the closest 50 %
of total matched snow depths within the 6 m radius were selected and distance weighted. The removal of 50 % minimizes the
selection of GPR traces over the 6 m span and accounts for the spatial variability in snow depth expected over this 6 m length
255 scale.

4 Results

4.1 Snow depth from GPR TWT

Collected GPR data across the four lakes traversed in December 2021 resulted in 406,164 derived snow depth observations
(Figure 5). The GPR-derived snow depths ranged from ~ 7 cm to 25 cm (Table 3), with the shallowest mean snow depth
260 observed on Landing-D Lake on December 7th at 12.76 ± 3.25 cm, and the deepest mean snow depth on Vee Lake on December

14th at 16.06 ± 3.08 cm. The GPR transects on Landing-D Lake covered the smallest area of focus relative to the size of the lake (2.5%) and distance traversed (~ 3 km) and showed snow depth variability of 15 cm around islands, open areas, and shorelines. The entirety of Finger Lake ($A_o = 0.04$ km²) was traversed on December 9th, where the deepest snow depths were observed along shorelines (max = 24.83 cm), compared to the open stretch of the lake (min = 6.53 cm). Collected snow depth data on Long Lake on December 12th showed the largest spatial area, spanning 3 km from northwest to southeast, with a total distance covered of 16 km. Long Lake showed the largest range in snow depth (6.21 cm to 22.34 cm) and density (180 kg/m³ to 310 kg/m³).



270 **Figure 5: Maps show the 406,164 GPR-derived snow depth observations along the transects over each lake for December 2021. (Background imagery: ESRI 2022)**

Table 3: The GPR TWT-derived snow depth statistics from the four lakes during December 7–14, 2021 (r = range, σ = standard deviation, n = count, d = distance traversed, and s = average trace spacing)

Site	Mean (cm)	Min (cm)	Max (cm)	r (cm)	σ (cm)	n	d (km)	s (m)
Finger Lake	14.60	6.53	24.83	18.29	3.55	63589	5.36	0.08
Long Lake	14.68	6.21	22.34	16.13	3.29	152554	16.27	0.11
Vee Lake	16.06	6.44	23.18	16.74	3.08	151853	12.72	0.08
Landing-D Lake	12.76	7.60	22.42	14.67	3.25	38168	3.06	0.08

4.2 Comparing GPR vs. magnaprobe snow depths

275 The in situ snow depth observations (n = 1932) were used for all four lakes to validate the GPR-derived snow depth in December 2021. The comparison of in situ and GPR-derived snow depths for scenarios 1 and 2 are shown in Figures 6 and 7. We found that the minimum error snow depth exists within a 6 m radius ($R^2 = 0.92$, RMSE = 0.74 cm, MAE = 0.263 cm on average) for all four lakes (Figure 6a). The distance of each minimum error pair was, on average, 3.79 ± 1.5 m apart, compared to the measured accuracy error with the magnaprobe (4.44 ± 1 m). Through identifying the distance between each GPR and in situ snow depth pair, we confirmed that the GPR measurements further away (within 6 m radius) from the in situ snow depth are

280 the appropriate pairs in most cases (Figure 6b). Therefore, we applied scenario 2 to evaluate the accuracy of the GPR-derived snow depths (Table 4) and applied scenario 2 for further data analysis.

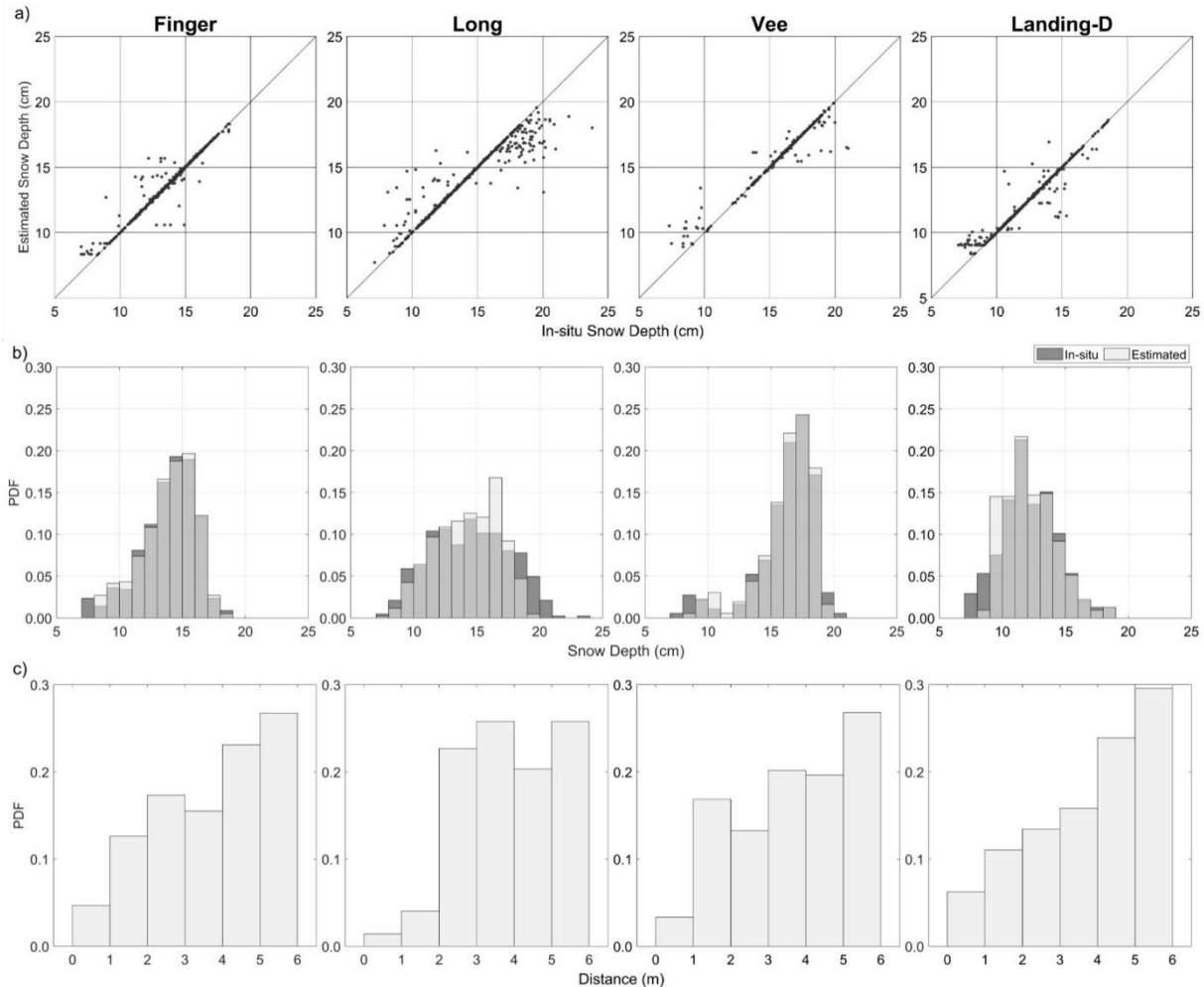
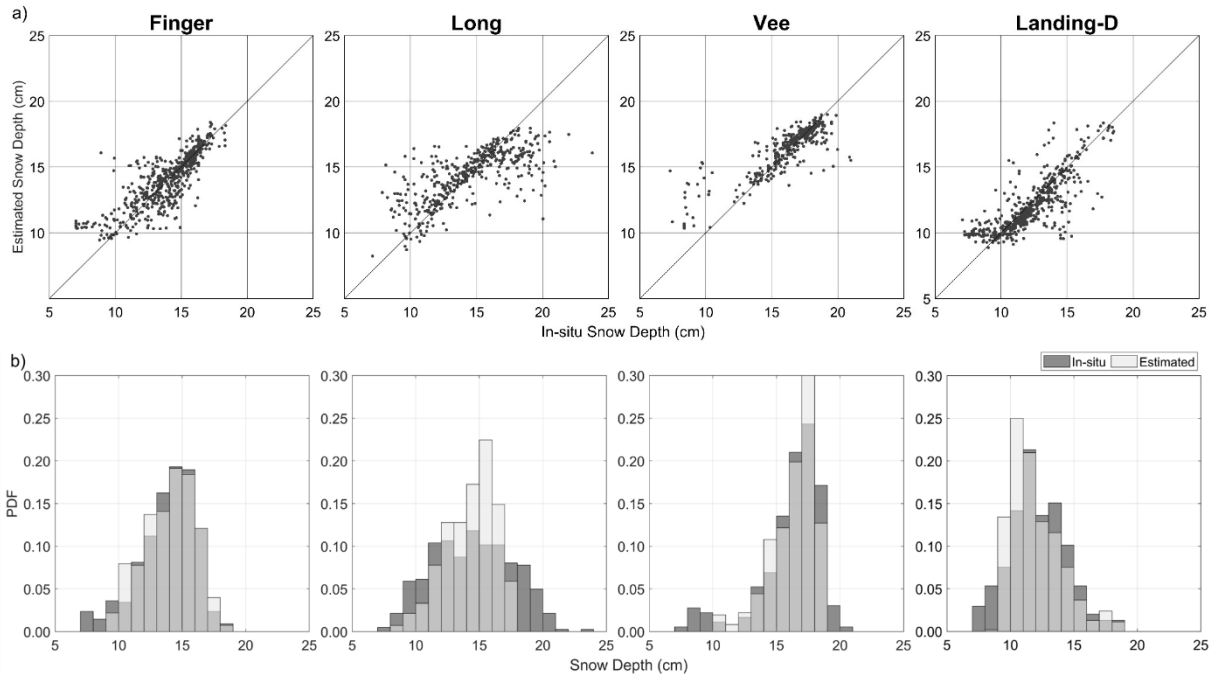


Figure 6: Validation of GPR-derived snow depths using a 6m radius, Scenario 1 (closest match), (a) scatterplots and (b) histograms of the in situ and GPR-derived snow depth, and (c) bar plots of the distance from the paired in situ to GPR-derived snow depth.

285 Scenario 2 showed strong agreement between the in situ and estimated observations (Figure 7) with $R^2 = 0.63$, $RMSE = 1.658$ and $MAE = 1.05$ cm on average for all lakes. If considering all GPR-derived snow depth observations within the 6 m radius there is minimal differences in the validation statistics ($RMSE = 2.7$ cm, $MAE = 2.0$ cm, $Bias = 0.13$ cm), however Scenario 2 is used for further analysis due to the variability in snow depth seen within the 6 m radius (2.1 cm to 4.9 cm). In using scenario 2, Long Lake showed the lowest agreement ($R^2 = 0.50$, $RMSE = 2.429$ cm, $MAE = 1.52$ cm) with the GPR-derived snow depth showing slight over and under estimations. The strongest agreement was found on Vee Lake with $R^2 = 0.74$, $RMSE = 1.40$ cm, and $MAE = 0.83$ cm. The relative error of the GPR-derived snow depth was 8 % on average for all four lakes

290

traversed in December, with Vee Lake being the most accurate (relative error = 6 %) and Long Lake the least (relative error = 11 %). The snow depth derived from the GPR-TWT was consistently overestimated when compared to in situ observation for shallower snowpacks- (<10 cm) across all four lakes.



295

Figure 7: Validation of GPR-derived snow depths using a 6m radius, Scenario 2 (*Distance weighting*), (a) scatterplots, and (b) histogram of the in situ and GPR-derived snow depth.

Table 4: Statistics of GPR derived snow depths versus the magnaprobe collected snow depths for Scenario 2.

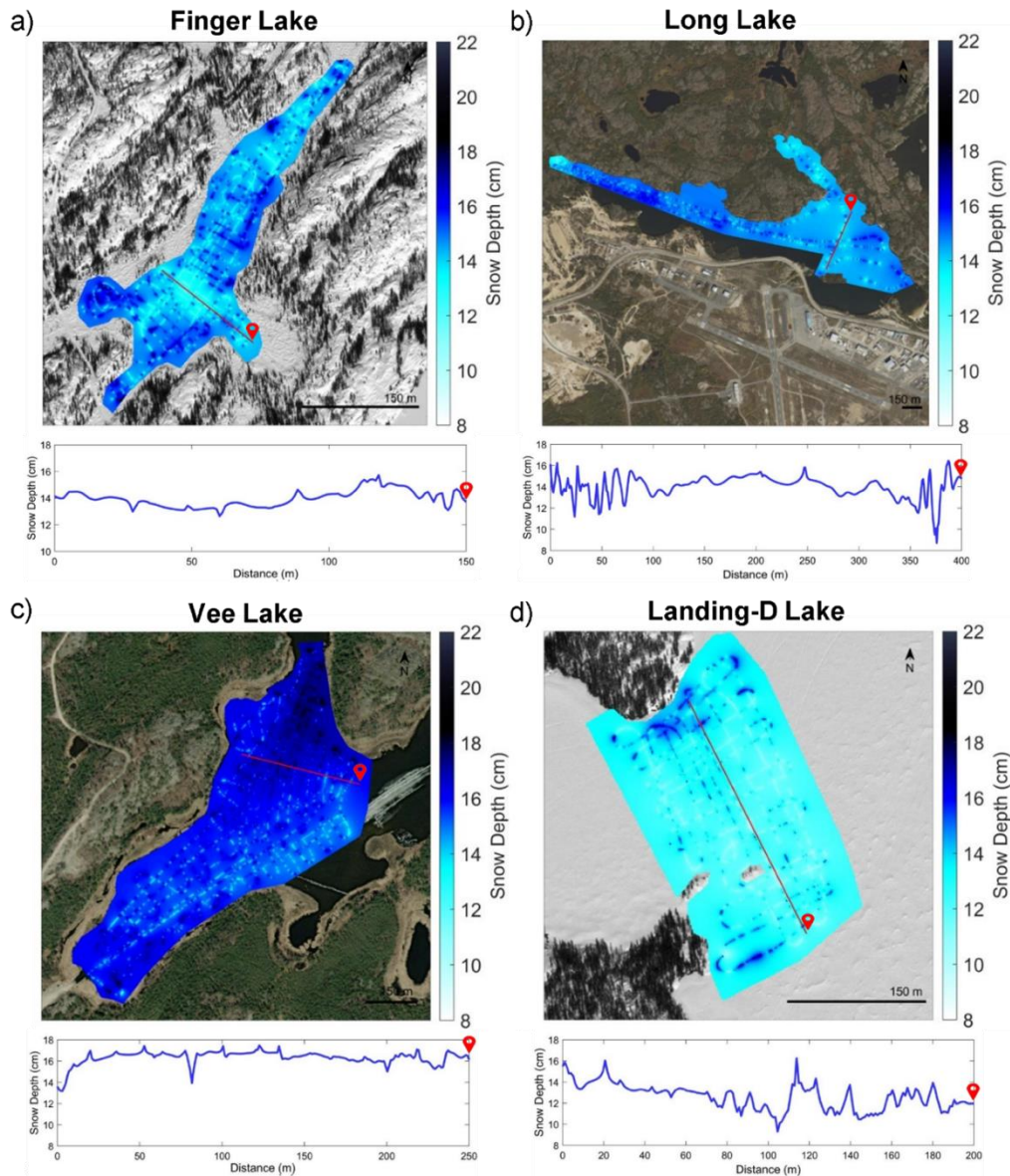
Site	R ²	MAE (cm)	RMSE (cm)	Bias (cm)	Relative Error (%)	n
Finger	0.766	0.92	1.33	0.14	8	554
Long	0.50	1.52	2.129	-0.13	11	472
Vee	0.71	0.83	1.40	0.20	6	362
Landing-D	0.63	0.94	1.438	-0.216	8	544
Mean	0.63	1.05	1.658	0.01	8	

4.3 Snow depth mapping

300

Snow depth distribution maps were generated at a 1 m resolution through interpolating (inverse-distance weighting) the GPR-derived snow depth observations (Figure 8). Through re-gridding to 1 m resolution and interpolating, the snow depths ranged from 8 cm to 22 cm in December 2021. The deepest snowpack, on average, was observed on Vee Lake (15.99 ± 0.79 cm), ~ 4 cm deeper than Landing-D Lake (12.73 ± 0.87 cm) during December 2021 field campaign. The interpolated GPR-snow depths consistently show an increase in snow depth variability closer to the lake perimeter compared to areas farther from the

305 shoreline and closer to the center of the lake. The snow depth on Finger Lake showed a decrease of ~ 2 cm per meter as the distance from the perimeter increased, however, this was not observed on the additional lakes. Transect profiles (Figure 8) created over the 1 m resolution snow depth maps show an example of the variability in snow depth across each lake. The spatial correlations of the 1 m resolution snow depths from the GPR transects were estimated using an experimental semi-variogram that was fit using an exponential model (Figure 9). The largest correlation length was observed on Vee Lake (11.25 m) in December 2021, and Landing-M Lake (18.18 m) overall. The correlation length on Landing-D Lake in the early season was measured at ~ 10 m less than that of the late winter season, while Long Lake showed the smallest distance, at 6.42m over the largest spatial area.



315 **Figure 8:** Maps show the GPR-derived snow depth using an inverse-distance weighted model to interpolate the snow depth over (a) Finger Lake, (b) Long Lake, (c) Vee Lake, (d) Landing-D Lake at 1 m resolution and showing a transect profile across a portion of the lake (profile transect ends at the red symbol marked on each lake, Background imagery: ESRI 2022).

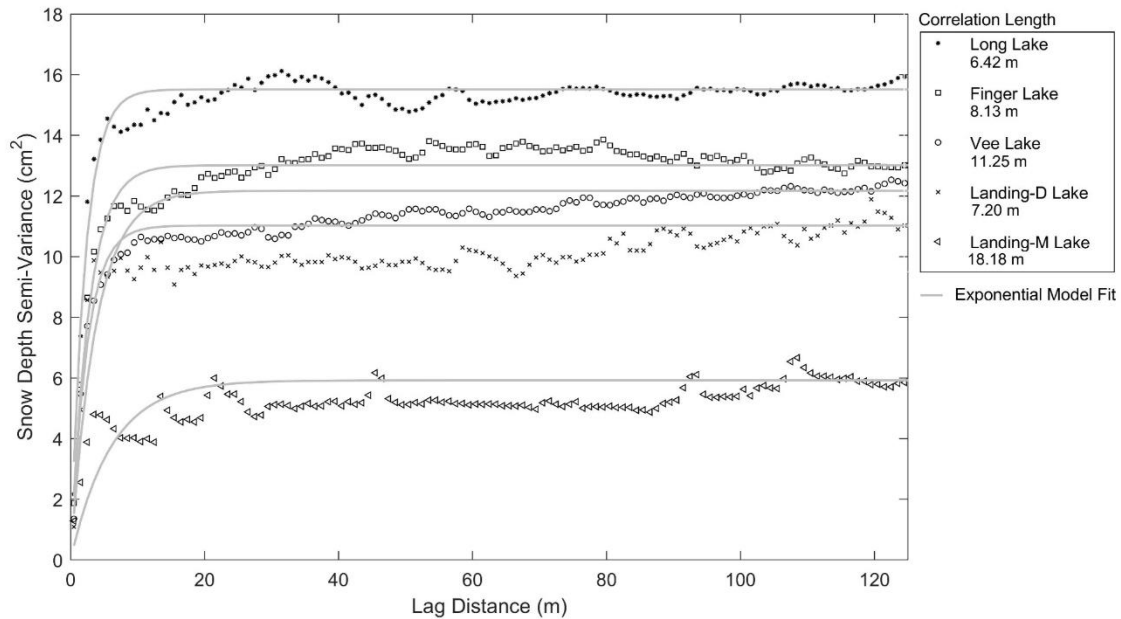


Figure 9: The experimental variograms for GPR-derived snow depth transects were fit to an exponential model to determine the correlation length.

320 4.4 Early vs. late winter season

Landing Lake was revisited for the data collection on March 27th, 2022, resulting in an additional 73,732 snow depth observations from GPR TWTs over ~6 km (Figure 10). In December 2021 and March 2022, the snow depth derived on Landing Lake varied, with Landing-D Lake ranging from ~8 to 22.50 cm and Landing-M Lake from ~10 to 50 cm. The snow depth was, on average, 12.76 (\pm 3.25) cm in December and more than twice that in March (35.83 \pm 2.54 cm). The snow density in the early season was, on average, 170 kg/m³, whereas in the later season measured at an average of 220 kg/m³ (Table 2). The results showed that agreement between in situ snow depth observations and Landing-M Lake GPR-derived snow depth ($R^2 = 0.66$, RMSE = 2.986 cm, Bias = 0.41 cm, n = 498) was not significantly improved when compared with Landing-D Lake (Figure 10). However, the relative error was improved on Landing-M Lake with a deeper snowpack (5%) than that of Landing-D Lake (8%). The GPR could derive the minimum snow depths seen on Landing Lake during the later season, as opposed to that in the early season, where the GPR-derived snow depth could not capture the shallowest snow area (4.5 – 10 cm).

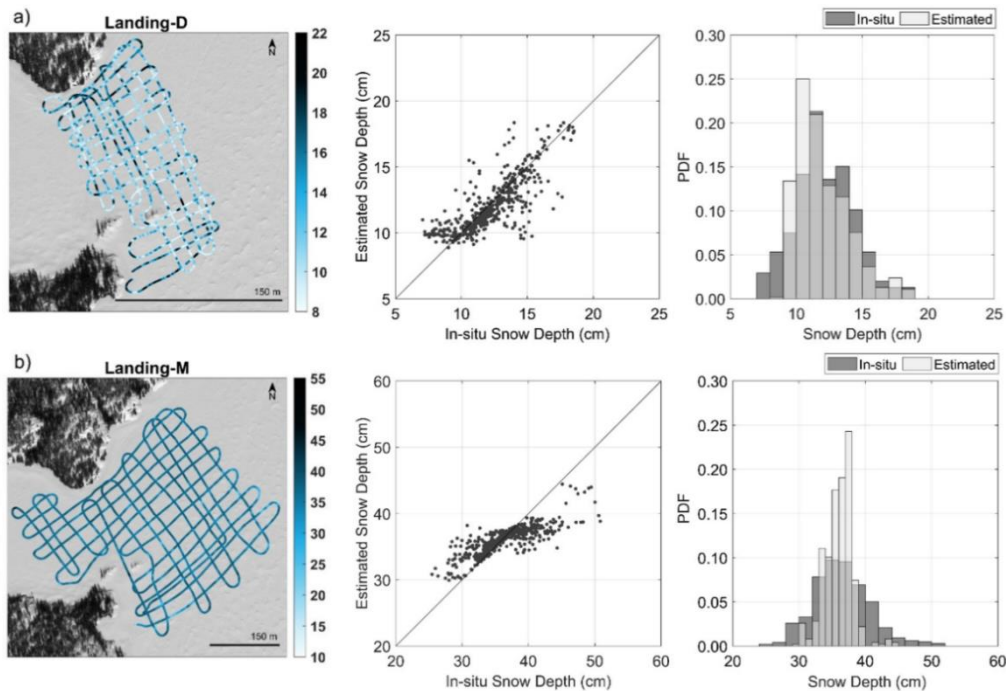
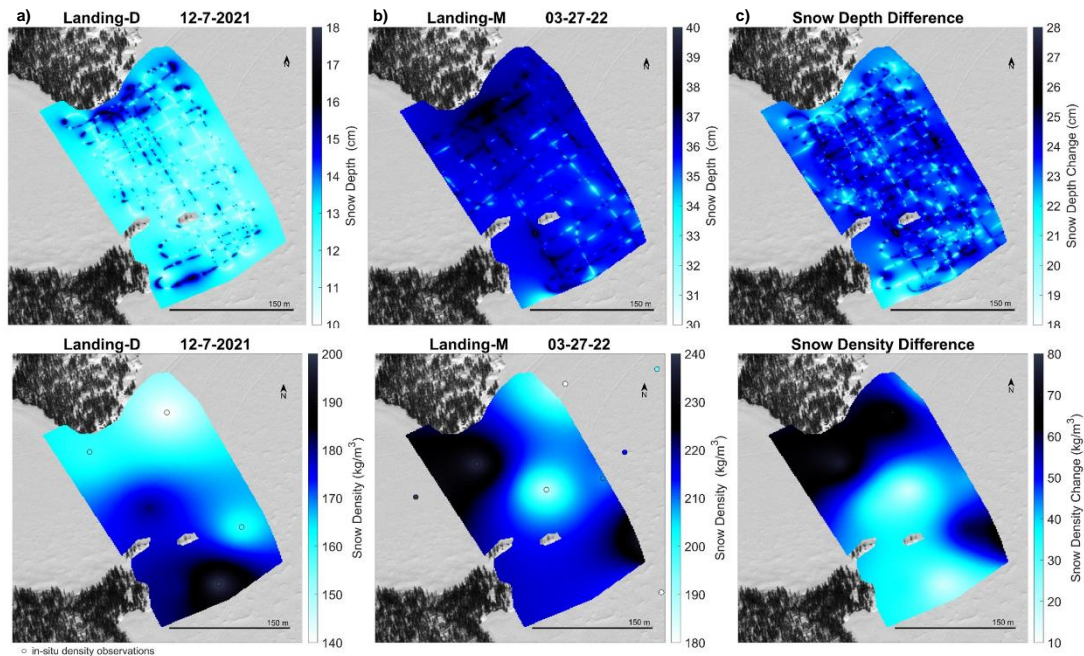


Figure 10: Maps show the GPR derived snow depth on GPR transects, and the scatterplot and bar plot compare in-situ data vs GPR-derived snow on (a) Landing-D Lake during December 2021 and (b) Landing-M Lake during March 2022 (Background imagery: ESRI 2022)

335 In comparing the difference in snow depth and snow density over the winter season, Figure 11 shows IDW 1-m snow depth maps and snow density maps (created using the in situ observations). The snow density from early season to late winter season increased between 10 to 80 kg/m³, while the snow depth increased in areas by 18 to 28 cm. There were no surveyed areas on the lake that experienced a decrease in snow density or depth based on the two field sampling dates. Areas with a shallower snowpack in December 2021 saw the largest increase in snow depth by March 2022 ($R^2 = 0.57$), which agrees with the decrease

340 in snow depth variability noted in Figure 9 by the correlation lengths. Additionally, the largest increase in density from early to late winter season occurred closest to the shoreline. More densification occurred on areas that were less dense than areas that had a higher density in December 2021 by March 2022 ($R^2 = 0.59$). In exploring the change in snowpack over the winter season, we found no spatial relationship between changes in the depth and density across the area surveyed on Landing Lake.



345 **Figure 11: Maps of Landing Lake snow depth (top) and density (bottom) in (a) December, (b) March and (c) the difference between the two were created using IDWs of the GPR-derived snow depth and the in situ snow density observations.**

5 Discussion

350 This study ~~demonstrates-reveals~~ the ~~success-effectiveness of using~~ GPR ~~can have into for~~ deriving snow depths over lake ice, where the snowpack is generally ~~shallow-not deep~~, and ~~the snow-ice interface-it~~ is challenging to capture ~~the snow-ice interface~~ accurately. ~~Theis~~ findings of this study ~~findings enhance develops~~ our ability to collect ~~accurate and efficient~~ snow depth observations over large areas of lakes ~~accurately and efficiently~~, which are comparable with previous studies using GPR TWT over land and sea ice (Pfaffhuber et al., 2017; McGrath et al., 2019). This automated method successfully derives snow depth over lake ice from GPR, ~~making it-and-can-be-a~~ a valuable tool for estimating and analysing the thermal energy balance of the ice surface ~~over-across~~ the entire lake and ~~for~~ gaining a ~~clearer-better~~ understanding of the physical processes involved in ~~snow~~ ~~the-distribution-of-snow~~.

360 ~~FLake~~ freeze-up for ~~small~~ lakes surrounding Yellowknife ~~generally-typically~~ occurs during October. ~~H,~~ however, ~~during the 2021 to 2022 season,~~ lake freeze up was reported to occur later ~~during the 2021 to 2022 year~~ compared to the 2018 to 2020 seasons based on Yellowknife's snowmobile association data. October air temperatures reported at the Yellowknife weather station showed a mean temperature increase of 4.4°C between 2020 (-1.85°C) and 2021 (2.6°C), ~~and-with~~ a 3.18°C increase ~~when-comparinged~~ to the 5-year and 10-year October mean air temperatures. ~~Within-During~~ the 2021 to 2022 water year, ~~-around~~ 75 cm of snowfall was reported by the Yellowknife weather station, ~~which~~ accounted ~~ed~~ for 46% of ~~the~~ total annual

precipitation. ~~In comparing~~ The 2021 to 2022 water year had 20% less snowfall ~~compared to the snowfall to the~~ previous water years, ~~the of 2021-2020 to 2022~~ 2021, which ~~water year~~ experienced 20% less ~~around 93 cm of snowfall than the 2020 to 2021 water year (-93 cm and 76% of total precipitation), the 2021 to -2022 water year had 20% less snowfall. On average,~~ ~~in~~ the past 5 to 10 years, ~~on average,~~ 40 to 45% more snowfall was reported ~~compared to~~ ~~than in~~ the 2021 to 2022 year. The timing and amount of snowfall ~~will influences~~ the lake ice composition, thickness, and phenology ~~of lake ice. Larger amounts of~~ ~~Increased~~ snow accumulation ~~in thin,~~ early season ~~and on thin~~ lake ice ~~with that has~~ reduced buoyancy will create leads and cause overflow ~~(the upwelling of water from the water column that submerges with the snow becoming slush),~~ which increases the likelihood of snow ice growth. Thin and patchy snow ice (0–4 cm) was observed on the lake ice surface ~~of lake~~ ~~ice~~ during the December and March field campaigns, ~~making up comprising~~ 0% to 6% of the lake ice composition. Based on observations ~~recorded up until March 2022, searee minimal~~ amounts of snow ice were ~~present~~ found, ~~indicating that there was little which suggests that minimal~~ overflow ~~that~~ occurred ~~on these four lakes throughout during~~ the winter season ~~on these four lakes~~ prior to the beginning of ice break-up. In December 2021 and March 2022, the lakes consistently showed a shallower ~~er~~ snowpack on average (Table 3) than snow on the ground ~~over land~~ (Figure 2) reported at the nearby Yellowknife weather station. The lakes ~~measured at had~~ an average of 24% to 29% less snow than measured over land in December 2021, and 15% less in March 2022. Thus, ~~assuming using~~ snow depths ~~measured on measurements from~~ land as ~~an~~ input to lake ice models will overestimate lake snow depth by a seasonally dependent factor and ~~impact affect~~ the modeled ice thickness (Kheyrollah Pour et al., 2017).

~~On relatively level ice surfaces and in turbulent wind fields,~~ sSnow dunes are formed from snow redistributed by wind ~~on~~ ~~relatively level ice surfaces and in turbulent wind fields,~~. The ~~snow depth~~ accumulation ~~of snow~~ over the lakes varied ~~during the study period, which but~~ could be explained by the total snowfall (8 cm) with consideration to wind redistribution and compaction seen between December 7th (Landing-D Lake $\bar{h}_s = 12.76$ cm) to December 14th (Vee Lake $\bar{h}_s = 16.06$ cm). ~~During both field campaigns there was evidence of s~~ Snow dunes ~~were~~ present across ~~all~~ the lakes ~~during both field campaigns~~. This study explored the distribution of snow over each lake (Figure 9), which ~~showed revealed~~ local-scale variability of snow depths from redistribution of the snow across all the lakes (correlation lengths between 6–19 m). ~~We~~ ~~The used~~ semi-variogram analyses ~~are applied to~~ ~~determined~~ the horizontal spacing of the snow dunes and found Long Lake to have the shortest correlation length (6.42 m). ~~On~~ Landing Lake, ~~we was~~ observed ~~to have~~ an increase in correlation length throughout the winter season from ~7 m to ~19 m. These ~~se~~ inferred variability length-scales are similarly supported in the literature, reporting correlation lengths from 5 to 20 m (Gunn et al., 2021a; Sturm and Liston, 2003).

In comparing the spatial snow depth variability across the four lakes, ~~we believe~~ the physical characteristics of Long Lake ~~were found to~~ explain the reduced correlation length in comparison to the three additional lakes. Long Lake has the largest shoreline length to surface area and spans ~3 km northwest to southeast, ~~resulting in~~. ~~Therefore, Long Lake exhibits~~ the largest wind fetch area ~~and the higher snow density~~ compared to the additional three study areas, ~~and can explain the higher snow density compared to the other lakes.~~ While on Landing Lake, both the snow depth and density increased over the season,

395 however, ~~to determine the reason for the decrease in snow depth variability from December to March,~~ more frequent sampling dates would ~~have to occur~~ be necessary to determine the reason for the decrease in snow depth variability from December to March between early and late season.

~~We believe the~~ The lower accuracy in GPR-derived snow depths on Long Lake ($\pm 11\%$) could be attributed to ~~using the use of~~ a radius to compare the derived and in situ snow depths that was approximately the same magnitude as the length scale of snow depth variability. Vee Lake had the highest accuracy ($\pm 6\%$) in deriving the snow depth and the largest correlation length (~11 m) in December 2021. The greatest accuracy ($\pm 5\%$) was found during the late season on Landing-M Lake, which was also found to have the largest correlation length (~19 m). Therefore, the snow depth variability within 6 m was less on Vee Lake and Landing Lake than on Long Lake. ~~Overall, we may expect t~~ The accuracy of this method to increase may be improved by ~~improving enhancing~~ the spatial location of the in situ snow depth measurements and sampling more frequently within the
400 snow depth variability. Vee Lake had the highest accuracy ($\pm 6\%$) in deriving the snow depth and the largest correlation length (~11 m) in December 2021. The greatest accuracy ($\pm 5\%$) was found during the late season on Landing-M Lake, which was also found to have the largest correlation length (~19 m). Therefore, the snow depth variability within 6 m was less on Vee Lake and Landing Lake than on Long Lake. ~~Overall, we may expect t~~ The accuracy of this method to increase may be improved by ~~improving enhancing~~ the spatial location of the in situ snow depth measurements and sampling more frequently within the
405 length scales of each lake. In improving the spatial accuracy of the in situ snow depth observations and the frequency of measurements, the accuracy of this method can be further assessed.

The snow distribution over lake ~~ice~~ ice is known to be affected by wind and surrounding vegetation (Adams, 1976a). In this study, ~~we found~~ were found weak relationships between the lake snow depth and distance to shoreline perimeter. On Finger Lake, where ~~we there was~~ have more complete coverage of the lake, ~~we found~~ the snow depth ~~to decline~~ d ~2 cm per meter
410 from the shoreline to the centre of the lake, but ~~found~~ was observed no change on the ~~additional other~~ three lakes. ~~We believe this could be due to the~~ This lack of data representativeness around the shoreline and the difficulty associated with maneuvering the snowmobile in the deep, lighter snow at slow speeds, or the turbulent winds affecting which shoreline the snow will be distributed along may be responsible for this discrepancy. Winds reported at the Yellowknife weather station reached speeds above the ~14 to 1139 ~~km/sh~~ km/h threshold required to transport snow (Li and Pomeroy, 1997), however, with the majority of
415 strong winds coming from the northeast and northwest, our lack of data on the southern perimeter on each lake may also affect our findings.

During the field campaigns, ~~we used~~ both the 1000 MHz and 500 MHz GPR antennas were used. ~~H;~~ however, we have found Our findings indicated that the 1000 MHz sensor can is more suitable for estimate estimating shallow snow depths more accurately, ~~especially particularly~~ during the early season (not shown). ~~This is~~ due to the shorter wavelength and the
420 higher vertical imaging resolution associated with the 1000 MHz sensor (not shown). ~~Overall, the results of this~~ This study also revealed a limitation showed that a 7 cm threshold exists as a limitation of in deriving shallow snow depths below 7cm from GPR TWT using the 1000 MHz sensor, identifying with a 7 cm threshold identified. This finding is consistent Showing similar agreement with previous studies (Pfaffhuber et al., 2017), and as such, the in situ observations below 7 cm were ~~not considered~~ excluded in from the validation analysis. During the March 2022 campaign, seldomly snow depth was observed
425 below 25 cm, meaning the vertical imaging resolution of 6.5 cm for the 1000 MHz sensor did not limit our data acquisition.

The analysis showed that no correction is required for compaction caused by the GPR sled. In considering the crossover locations ($n = 533$) on each of the lakes, we assessed the difference in TWT between the initial pass and the second pass and found that the average TWT difference was 0.02 ± 0.31 ns. Given the average velocity of 0.26 m/ns for the four lakes, and

430 applying the one-quarter wavelength Rayleigh criterion, the uncertainty of the TWT picks is approximately three samples (~0.3 ns). Therefore, the average TWT difference at crossover locations is within our uncertainty estimates of the TWT picks. In further exploring the change in TWT from the initial pass to the second, 56% of the observations show the TWT for the second crossover to be larger than the initial. We found that shallower snow depths (or smaller TWTs) resulted in a decrease in travel time for the second pass, while deeper snow depths (or larger TWTs) showed an increase for the second pass for both early ($R^2 = 0.30$, $p < 0.05$) and late winter season ($R^2 = 0.46$, $p < 0.05$). However, these trends do not show dependency on the
435 total snow depth accumulated throughout the winter season, as the average crossover differences of the data collections for early and late seasons (shallow and deep snow depths) are unbiased. Overall, although there is a change in density on the sled track ($\rho_{\text{sled}} = 340 \pm 20 \text{ kg/m}^3$) compared to the density of the fresh snow (Table 2), the effects of a decrease in depth and increase in density under compaction from the snowmachine are naturally compensated and were confirmed with the crossover location TWT differences. The snow depth was measured at 1.5 cm less on average by using the density of the sled track for
440 depth estimation rather than fresh snow density. Therefore, the effect on GPR derived snow depth is minimal because minimal snow mass was lost.

Lake snow is not well characterized in the various dielectric permittivity models used for wave speed estimation. In this study we found the snow depth retrieval is weakly dependent on the choice of empirical equation used to derive the snow depth from density. Within our analysis we used the Kovacs et al. (1995) equation to derive the permittivity. In addition, we also tested
445 different empirical relationships to calculate the permittivity (i.e., Robin et al., 1969; Robin, 1975; Tiuri et al., 1984; Stein et al., 1997; Frolov and Macheret, 1999, Webb et al., 2021) and found very slight differences in the dielectric constant, if any at all. The results ($\overline{\epsilon_r} = 1.37$) from the Kovacs et al. (1995) method are identical to using the Robin et al. (1969), Robin (1975), Tiuri et al. (1984), Frolov and Macheret (1999), and very similar to Stein et al. (1997) equation ($\overline{\epsilon_r} = 1.34$), with the largest difference using the Webb et al. (2021) equation ($\overline{\epsilon_r} = 1.29$). In exploring the permittivity for the snow densities presented
450 within this study (175 kg/m^3 to 245 kg/m^3), the numerous empirical relationships result in very similar permittivity's for these lower densities and sub-millimetre differences in the snow depth accuracy statistics (not shown). Di Paolo et al. (2018) shows in comparing 19 different empirical formulas to calculate permittivity, there is less variability for lower densities than there is for higher density snowpacks (i.e., 300 kg/m^3 to 550 kg/m^3). Lake snow has generally been reported to be shallower and less dense than snow types used to parameterize these models. However, based on the agreement among models and the limited
455 representation for a model based on lake snow observations we have sided with the Kovacs et al. (1995) equation.

Additionally, ~~we-our study~~ found that ~~when deriving the sensitivity in derived~~ snow depth ~~from GPR TWT, the sensitivity in~~ ~~derived snow depth~~ due to snow density was minor for shallow snowpacks. ~~when deriving snow depth from GPR TWT. As a~~ ~~result~~Therefore, the ~~impact of spatial density variability on~~ retrieved snow depth was minimally ~~affected by spatial density~~ ~~variability~~. The uncertainty in snow density, based on the mean and ± 1 standard deviation measured in the field, propagates
460 as 0.16 to 0.50 cm uncertainty in GPR-derived snow depth in December 2021 and 0.90 cm in March 2022. ~~Although S~~ snow density ~~varies is known to vary~~ spatially in three-dimensions (King et al., 2020), ~~we did not account for this variability in our~~

study. However, due to the shallow nature of snow on the lake ice, ~~w~~but this was not well represented in this study. We found that this effect ~~of spatial dsensity variability~~ on ~~the~~ snow depth retrieval was minimal ~~due to the shallow nature of snow on the lake ice~~, thus permitting the use of a uniform spatial density in deriving shallow snow depth from GPR. Overall, ~~we found the impact of snow density snow density on deriving snow depth has was minimal effect, however, further investigation on the spatial variability of snow density over lake ice can improve the knowledge and understanding of the impact density variability has on lake ice formation, needs to be further investigated.~~

6 Conclusion

GPR has proven ~~an~~ effective ~~tool~~ for mapping ~~many-various~~ components of the cryosphere ~~such as, including~~ snow over land, glacial firn, sea ice, and lake ice thickness. However, ~~from our knowledge~~ no studies had applied GPR to derive snow depth over lake ice, where there are challenges associated with capturing the shallower snow thickness. The snow over lake ice has commonly been ignored when deriving lake ice thickness. ~~In this study, we, with best practices for mapping ice thickness suggesting to avoid snow drifts and variable snowpacks, as it will estimate a thicker ice thickness due to the radar travel time, but in reality, areas of snow drifts are expected to have a shallower ice thickness due to snow insulating the ice thickness and slowing ice growth. Variable snow depths are important areas across the lake to map for monitoring lake ice conditions as the ice thickness is expected to vary spatially.~~

~~By~~collecting 1000 MHz GPR acquisitions over four neighbouring sub-arctic lakes and ~~by~~ applying a fully automated post-processing method, ~~we accurately derived~~ ~500,000 snow depth retrievals ~~were accurately derived~~ covering ~38 km in December 2021 and ~6 km in March 2022. The lake snow depths derived from GPR TWT resulted in an average relative error under 10% when compared to in situ observations for ~~the~~ early and late winter season. ~~These~~ results ~~suggest that the of this method suggest the use of~~ GPR acquisitions ~~can be used~~ to derive ~~lake~~ snow depth ~~and~~ can substitute manual snow depth observations, ~~requiring with~~ only an observation of dry snow density, or snow depth and the radar travel-time for calibration ~~required~~. The spatial variability of snow density and ~~the~~ choice of empirical relative permittivity equation had little affect on the derivation of ~~relatively~~ shallow lake snow depth using GPR TWTs. Overall, this method can ease data collection to assist ~~in validation-validating of~~ snow distribution models or remote sensing products, as well as input for climate, thermodynamic, and hydrological modelling.

The four small lakes, Landing Lake (62.5587 °N, 114.4103 °W), Finger Lake (62.5750 °N, 114.3587 °W), Long Lake (62.4772 °N, 114.4422 °W), and Vee Lake (62.5555°N, 114.3502 °W), have varying morphometry in terms of the surface area and shoreline length. Findings suggest lakes with a larger surface area to shoreline length ratio have higher spatial variability when compared during the same time period. ~~Fuller A fullerFull~~ -spatial coverage across each lake during data acquisitions ~~s~~ can lead to a better understanding of the impact ~~of~~ wind and shoreline vegetation have on the spatial variability. Simultaneously collecting ice thickness observations further ~~improves ours~~ understanding of the spatial relation between snow depth and ice

thickness, ~~and this research makes GPR a suitable tool to do so.~~ The findings of this research can lead to an improved understanding of snow and lake ice interactions, which is essential for northern communities' safety and wellbeing and the scientific modelling community.

Code and data availability

Data will be available through the Government of Northwest Territories' Discovery Portal (GNWT Discovery Portal) as well as ReSEC Lab data portal - **DOI (will be replaced after review process with public DOI)**. [All code used for data processing and analysis of this study are available from the corresponding author upon request.](#) This manuscript is a slightly modified version of AP master thesis (Pouw, 2023).

Author contributions

AP: Methodology design, Data collection, Data processing, analysis, & visualization, Writing –original draft & revisions. HP: Supervision, Resources, Methodology design, Data collection. AM: Methodology design, Data collection.

Competing interests

Some authors are members of the editorial board of *The Cryosphere*. The peer-review process was guided by an independent editor, and the authors have also no other competing interests to declare.

Acknowledgments

The authors respectfully acknowledge that this research was conducted within the Chief Drygeese territory on the traditional land of the Yellowknives Dene First Nation. The authors are grateful to the Indigenous Peoples for allowing the opportunity to learn and conduct field work on their lands. This research is supported by Government of Northwest Territories, Environment and Natural Resources, Cumulative Impact Monitoring Program (CIMP-212), Natural Sciences and Engineering Research Council of Canada (NSERC) Canada Research Chair and Discovery Grant to H. Kheyrollah Pour, Canada Excellent Research Chair-Global Water Futures (CERC-GWF), and Polar Knowledge Canada Northern Scientific Training Program (NSTP). The authors also wish to acknowledge Tate Meehan for providing the initial code and insight for data processing.

- Adams, W.P.: Diversity of lake cover and its implications. *Musk-Ox*, 181, 86–98, 1976a.
- Adams W.P.: A classification of freshwater ice. *Musk-Ox*, 18, 99–102, 1976b.
- Adrian, R., O'Reilly, C. M., Zagarese, H., Baines, S. B., Hessen, D. O., Keller, W., Livingstone, D. M., Sommaruga, R., Straile, D., Van Donk, E., Weyhenmeyer, G. A., and Winder, M.: Lakes as sentinels of climate change. *L. & O.*, 54, 2283–2297, doi:10.4319/lo.2009.54.6_part_2.2283, 2009.
- 520 Barrette, P.D.: The Tibbitt to Contwoyto winter road in the NWT: identification of available data and research needs. NRC Publications Archive. National Research Council of Canada. Canadian Hydraulics Centre. No. CHC-LM-006, doi: 10.4224/40000399, 2011.
- Benson, B. J., Magnuson, J. J., Jensen, O. P., Card, V. M., Hodgkins, G., Korhonen, J., Livingstone, D. M., Stewart, K. M., Weyhenmeyer, G. A., and Granin, N. G.: Extreme events, trends, and variability in Northern Hemisphere Lake-ice phenology (1855–2005). *Climatic Change*, 112, 299–323, doi:10.1007/s10584-011-0212-8, 2011.
- 525 Brown, L. C. and Duguay, C. R.: The response and role of ice cover in lake-climate interactions. *Prog. Phys Geog.*, 34, 671–704, doi:10.1177/0309133310375653, 2010.
- Brown, L. C., and Duguay, C. R.: The fate of lake ice in the North American Arctic. *The Cryosphere*, 5, 869–892. doi:10.5194/tc-5-869-2011, 2011.
- 530 Brown, R. D., Smith, C., Derksen, C., and Mudryk, L.: Canadian in situ snow cover trends for 1955–2017 including an assessment of the impact of automation. *Atmos. Ocean*, 1–16, doi:10.1080/07055900.2021.1911781, 2021.
- Canada Centre for Remote Sensing (CCRS) and Natural Resources Canada (NRCan). 2015 Land Cover of North America at 30 meters. North American Land Change Monitoring System. Ottawa, Ont. Data available: <http://www.cec.org/north-american-environmental-atlas/land-cover-30m-2015-landsat-and-rapideye/>, 2020.
- 535 Di Paolo, F., Cosciotti, B., Lauro, S. E., Mattei, E., and Pettinelli, E.: Dry snow permittivity evaluation from density: A critical review. 17th International Conference on GPR, doi:10.1109/icgpr.2018.8441610, 2018.
- Fediuk, A., Wunderlich, T., Wilken, D., and Rabbel, W.: Ground penetrating radar measurements in shallow water environments—a case study. *Remote Sensing*, 14, doi:10.3390/rs14153659, 2022.
- 540 Frolov, A. D, and Macheret, Y.Y.: On dielectric properties of dry and wet snow. *Hydrol. Processes*, 13, 1755–1760, doi:10.1002/(SICI)1099-1085(199909)13:12<13%3C1755::AID-HYP854%3E3.0.CO;2-T, 1999.
- Gerlitz, K., Knoll, M. D., Cross, G. M., Luzitano, R. D., and Knight, R.: Processing Ground Penetrating Radar Data to Improve Resolution of Near Surface Targets. *Symp. Appl. Geophys. to Eng. Environ. Probl. Environment and Engineering Geophysical Society*, 561–574, doi:10.4133/1.2922036, 1993.
- 545 Gunn, G. E., Duguay, C. R., Brown, L. C., King, J., Atwood, D., and Kasurak, A.: Freshwater lake ice thickness derived using surface-based X- and ku-band FMCW scatterometers. *Cold Reg. Sci. Technol.*, 120, 115–126. doi: 10.1016/j.coldregions.2015.09.012, 2015.

- Gunn, G. E., Jones, B. M. and Rangel, R. C.: Unpiloted Aerial Vehicle Retrieval of snow depth over freshwater lake ice using structure from Motion. *Frontiers in Remote Sensing*, 2, doi:10.3389/frsen.2021.675846, 2021a.
- 550 Gunn, G. E., Tarabara, V., Rutty, M., Bessette, D. L., and Richardson, R. B.: Roughness and storage capacity of freshwater ice in the straits of Mackinac. *Cold Reg. Sci. Technol.*, 186, 103278. doi:10.1016/j.coldregions.2021.103278, 2021b.
- Harder, P., Schirmer, M., Pomeroy, J., and Helgason, W.: Accuracy of snow depth estimation in mountain and prairie environments by an unmanned aerial vehicle. *The Cryosphere*, 10, 2559–2571, doi:10.5194/tc-10-2559-2016, 2016.
- Harder, P., Pomeroy, J. W., and Helgason, W. D.: Improving sub-canopy snow depth mapping with unmanned aerial vehicles: Lidar versus structure-from-motion techniques. *The Cryosphere*, 14, 1919–1935, doi:10.5194/tc-14-1919-2020, 555 2020.
- Ihamouten, A., Dérobert X., and Villain G.: The effect of coupling on the determination of time zero for radar antennae. *Proceedings of the XIII International Conference on Ground Penetrating Radar*, doi:10.1109/icgpr.2010.5550082, 2010.
- 560 Jensen, O. P., Benson, B. J., Magnuson, J. J., Card, V. M., Futter, M. N., Soranno, P. A., and Stewart, K. M.: Spatial analysis of ice phenology trends across the Laurentian Great Lakes region during a recent warming period. *Limnol. Oceanogr.*, 52, 2013–2026, doi:10.4319/lo.2007.52.5.2013, 2007.
- Jeppesen, E., Meerhoff, M., Davidson, T. A., Trolle, D., Søndergaard, M., Lauridsen, T. L., Beklioglu, M., Brucet, S., Volta, P., González-Bergonzoni, I., and Nielsen, A.: Climate change impacts on lakes: An integrated ecological perspective 565 based on a multi-faceted approach, with special focus on Shallow Lakes. *J. Limnol.*, 73, doi:10.4081/jlimnol.2014.844, 2014
- Kallweit, R. S., and Wood, L. C.: The limits of resolution of Zero-phase wavelets. *Geophysics*, 47, 1035–1046. doi:10.1190/1.1441367, 1982.
- Kheyrollah Pour, H., Duguay, C. R., Scott, K. A. and Kang, K.: Improvement of lake ice thickness retrieval from MODIS 570 satellite data using a thermodynamic model. *IEEE T. Geosci. Remote.*, 55, 5956-5965 doi:10.1109/tgrs.2017.2718533, 2017.
- Kholoptysev, A. V., Podporin, S. A., and Karetnikov, V. V.: Current trends in the ice thickness and concentration on the waterways of the Arctic. *IOP Conference Series: Earth and Environmental Science*, 867, 012013, doi:10.1088/1755-1315/867/1/012013, 2021.
- 575 Kim, J.H., Cho, S.J. and Yi, M.J.: Removal of ringing noise in GPR data by signal processing. *Geosci. J.*, 11, 75-81. doi:10.1007/BF02910382, 2007.
- King, J., Howell, S., Brady, M., Toose, P., Derksen, C., Haas, C., and Beckers, J.: Local-scale variability of snow density on Arctic sea ice. *The Cryosphere*, 14, 4323-4339. doi:10.5194/tc-14-4323-2020, 2020.
- King, F., Kelly, R., and Fletcher, C.G.: Evaluation of lidar-derived snow depth estimates from the iPhone 12 pro. *IEEE Geosci. 580 Remote Sens. Lett.*, 19, 1–5. doi:10.1109/lgrs.2022.3166665, 2022.

- Knoll, L. B., Sharma, S., Denfeld, B. A., Flaim, G., Hori, Y., Magnuson, J. J., Straile, D., and Weyhenmeyer, G. A.: Consequences of lake and river ice loss on Cultural Ecosystem Services. *Limnol. Oceanogr.*, 4, 119–131, doi:10.1002/lol2.10116, 2019.
- Kovacs, A., Gow, A. J. and Morey, R. M.: The in-situ dielectric constant of polar firn revisited. *Cold Reg. Sci. Technol.*, 23, 245-256, doi:10.1016/0165-232X(94)00016-Q, 1995. Li, X., Peng, S., Xi, Y., Woolway, R., and Liu, G.: Earlier ice loss accelerates lake warming in the Northern Hemisphere. *Nature Comm.*, 13, 2022.
- Lei, R., Leppäranta, M., Cheng, B., Heil, P. and Li Z.: Changes in ice-season characteristics of a European Arctic lake from 1964 to 2008. *Climatic change*, 115; 725-739, 2012.
- Leica Geosystems.: Leica GS10. St. Gallen, Switzerland, 2018.
- 590 Leppäranta, M.: A growth model for black ice, snow-ice and snow thickness in subarctic basins. *Nordic Hydrol.*, 14, 59–70, 1983.
- Leppäranta, M.: *Freezing of Lakes and the Evolution of their Ice Cover*; Springer: Berlin/Heidelberg, Germany, 84–265, 2015.
- Li, L., and Pomeroy, J. W.: Estimates of threshold wind speeds for snow transport using Meteorological Data. *Journal of Applied Meteorology*, 36, 205–213, doi:10.1175/1520-0450(1997)036<0205:EOTWSF>3E2.0.CO;2, 1997.
- 595 Liston, G. E., Polashenski, C., Rösel, A., Itkin, P., King, J., Merkouriadi, I., Haapalaand, J.: A distributed snow-evolution Model for sea-ice applications (SnowModel). *J. Geophys. Res. Oceans*, 123, 3786–3810, doi:10.1002/2017jc013706, 2018.
- Magnuson, J. J., Robertson, D. M., Benson, B. J., Wynne, R. H., Livingstone, D. M., Arai, T., Raymond, A.A., Barry, R.G., 600 Card, V., Kuusito, E., Granin, N.G., Prowse, T.D., Stewart, K.M., and Vuglinski, V. S.: Historical Trends in Lake and River Ice Cover in the Northern Hemisphere. *Science*, 289, 1743 LP – 1746. doi:10.1126/science.289.5485.1743, 2000.
- Marsh, C. B., Pomeroy, J. W., Spiteri, R. J., and Wheeler, H. S.: A finite volume blowing snow model for use with variable resolution meshes. *Water Resour. Res.*, 56. doi:10.1029/2019wr025307, 2020.
- 605 Marshall, H., Koh, G., and Forster, R. R.: Estimating alpine snowpack properties using FMCW radar. *Ann. Glaciol.*, 40, 157-162. doi:10.3189/172756405781813500, 2005.
- McGrath, D., Webb, R., Shean, D., Bonnell, R., Marshall, H. P., Painter, T. H., Molotch, N. P., Elder, K., Hiemstra, C. and Brucker, L.: Spatially extensive ground-penetrating radar snow depth observations during NASA's 2017 SnowEx campaign: Comparison with in-situ, airborne, and satellite observations. *Water Resour. Res.*, 55, 10026–10036, 610 doi:10.1029/2019wr024907, 2019.
- McGrath, D., Bonnell, R., Zeller, L., Olsen-Mikitowicz, A., Bump, E., Webb, R., and Marshall, H.-P.: A time series of snow density and snow water equivalent observations derived from the integration of GPR and UAV SFM Observations. *Frontiers Remote Sens.*, 3. doi:10.3389/frsen.2022.886747, 2022.

- Meehan, T.G., Marshall, H.P., Deeb, E., McGrath, D., and Webb, R.: Automatic detection of the ground through snow cover
 615 using multi-polarization coherency. International Conference on Ground Penetrating Radar, 18,85-88, doi:
 10.1190/gpr2020-023.1, 2020.
- Meehan, T. G., Marshall, H. P., Bradford, J. H., Hawley, R. L., Overly, T. B., Lewis, G., Graeter, K., Osterberg, E., and
 McCarthy, F.: Reconstruction of Historical Surface Mass Balance, 1984-2017 from GreenTrACS Multi-Offset
 Ground-Penetrating Radar. *J. Glaciol.* 67, 219–228. doi:10.1017/jog.2020.91, 2021.
- 620 Mullan, D. J., Barr, I. D., Flood, R. P., Galloway, J. M., Newton, A. M., and Swindles, G. T.: Examining the viability of the
 world’s busiest winter road to climate change using a process-based Lake Model. *Bull. Am. Meteorol. Soc.*, 102,
 doi:10.1175/bams-d-20-0168.1, 2021.
- Mudryk, L. R., Kushner, P. J., Derksen, C., and Thackeray, C.: Snow cover response to temperature in observational and
 Climate model ensembles. *Geophys. Res. Letters*, 44, 919–926, doi: 10.1002/2016gl071789, 2017.
- 625 Pfaffhuber, A. A., Lieser, J. L., and Hass, C.: Snow thickness profiling on Antarctic sea ice with GPR— Rapid and accurate
 measurements with the potential to upscale needles to a haystack. *Geophys. Res. Lett.*, 44, 7836-7844,
 doi:10.1002/2017GL074202, 2017.
- Pouw, A. F.: Utilizing Ground-Penetrating Radar to Estimate the Spatial Distribution of Snow Depth over Lake Ice in Canada’s
 Sub-Arctic, Theses and Dissertations (Comprehensive), 2510, <https://scholars.wlu.ca/etd/2510>, 2023.
- 630 Rafat, A., Kheyrollah Pour, K., Spence, C., Palmer, M., and MacLean, A.: An Analysis of Ice Growth and Temperature
 Dynamics in Two Canadian Subarctic Lakes, *Cold Reg. Sci. Technol.*, doi: 10.1016/j.coldregions.2023.103808, 2023.
- Robin, G. D. Q.: Velocity of radio waves in ice by means of a bore-hole interferometric technique. *J. Glaciology*, 15, 151–
 159, doi:10.3189/s0022143000034341, 1975.
- Robin, G. D. Q., Evans, S., and Bailey, J. T.: Interpretation of radio echo sounding in Polar Ice Sheets. *Philosophical
 635 Transactions of the Royal Society of London. Series A, Mathematical and Physical Sciences*, 265, 437–505,
 doi:10.1098/rsta.1969.0063, 1969.
- Robinson, A. L., Ariano, S. S., and Brown, L. C.: The Influence of Snow and Ice Albedo towards Improved Lake Ice
 Simulations. *Hydrology*, 8, 11. doi:10.3390/hydrology8010011, 2021.
- Sensors & Software.: IceMap:Real-time, high-accuracy ice thickness measurements. [WWW Document]. Available from
 640 https://www.sensoft.ca/wp-content/uploads/2022/01/Icemap-Brochure_2022.pdf, 2022.
- Sensors & Software.: Measuring Ice Thickness using Ground Penetrating Radar (GPR). [WWW Document]. Available from
[https://www.sensoft.ca/wp-content/uploads/2016/01/Best-Practices-for-Measuring-Winter-Road-Ice-Thickness-
 Using-GPR.pdf](https://www.sensoft.ca/wp-content/uploads/2016/01/Best-Practices-for-Measuring-Winter-Road-Ice-Thickness-Using-GPR.pdf), 2016.
- SnowHydro.: GPS snow depth probe [WWW Document]. Available from
 645 <http://www.snowhydro.com/products/column2.html>, 2013.
- Stein, J., Laberge, G., and Lévesque, D.: Monitoring the dry density and the liquid water content of snow using Time Domain
 Reflectometry (TDR). *Cold Reg. Sci. Technol.*, 25, 123–136, doi:10.1016/s0165-232x(96)00022-5, 1997

- Stephenson, S.R., Smith, L.C., and Agnew, J.A.: Divergent long-term trajectories of human access to the Arctic. *Nature Climate Change*, 1, 156–160. doi:10.1038/nclimate1120, 2011.
- 650 Sturm, M., Holmgren, J., and Liston, G.E.: Self-recording snow depth probe. 1741, 1999.
- Sturm, M., Perovich, D. K., and Holmgren, J.: Thermal conductivity and heat transfer through the snow on the ice of the Beaufort Sea. *Journal of Geophysical Research*, 107, doi:10.1029/2000jc000409, 2002.
- Sturm, M. and Liston, G. E.: The snow cover on lakes of the Arctic Coastal Plain of Alaska, U.S.A. *J. Glaciol.*, 49, 370–380. doi: 10.3189/172756503781830539, 2003.
- 655 Sturm, M., & Holmgren, J.: An automatic snow depth probe for field validation campaigns. *Water Resour. Res.*, 54, 9695–9701. doi:10.1029/2018wr023559, 2018.
- Tiuri, M., Sihvola, A., Nyfors, E., and Hallikaiken, M.: The complex dielectric constant of snow at microwave frequencies. *IEEE J. Oceanic Eng.*, 9, 377–382, doi:10.1109/joe.1984.1145645, 1984.
- Walker, B., Wilcox, E. J. and Marsh, P.: Accuracy assessment of late winter snow depth mapping for tundra environments using structure-from-motion photogrammetry. *Arctic Science*, 7, 588–604, doi:10.1139/as-2020-0006, 2020.
- 660 Webb, R. W.: Using ground penetrating radar to assess the variability of snow water equivalent and melt in a mixed canopy forest, Northern Colorado. *Frontiers Earth Sci.*, 11, 482–495. doi:10.1007/s11707-017-0645-0, 2017.
- Webb, R. W., Jennings, K. S., Fend, M., and Molotch, N. P.: Combining ground-penetrating radar with terrestrial lidar scanning to estimate the spatial distribution of liquid water content in seasonal snowpacks. *Water Resour. Res.*, 54, doi: 665 10.1029/2018wr022680, 2018.
- Webb, R. W., Marziliano, A., McGrath, D., Bonnell, R., Meehan, T. G., Vuyovich, C., and Marshall, H.-P.: In situ determination of dry and wet snow permittivity: Improving equations for low frequency radar applications. *Remote Sensing*, 13, doi:10.3390/rs13224617, 2021.
- Woolway, R. I., Anderson, E. J., and Albergel, C.: Rapidly expanding Lake Heatwaves under climate change. *Environmental Research Letters*, 16, doi:10.1088/1748-9326/ac1a3a, 2021.
- 670 Wong, J., Han, L., Bancroft, J. C. and Stewart, R. R.: Automatic time-picking of first arrivals on noisy microseismic data. *CREWS*, 1–6, 2009.
- Yilmaz, Ö.: *Seismic Data Analysis*. SEG. doi:10.1190/1.9781560801580, 2001.
- Zhang, X., Flato, G., Kirchmeier-Young, M., Vincent, L., Wan, H., Wang, X., Rong, R., Fyfe, J., Li, G., Kharin, V.V.: Changes 675 in Temperature and Precipitation Across Canada; Chapter 4 in Bush, E. and Lemmen, D.S. (Eds.) *Canada’s Changing Climate Report*. Government of Canada, Ottawa, Ontario, pp 112-193, 2019.