

# Attributing near-surface atmospheric trends in the Fram Strait region to regional sea ice conditions

Amelie U. Schmitt<sup>1,2</sup> and Christof Lüpkes<sup>3</sup>

<sup>1</sup>Meteorological Institute, Center for Earth System Research and Sustainability (CEN), Universität Hamburg, Hamburg, Germany

<sup>2</sup>now at Climate Service Center Germany (GERICS), Helmholtz-Zentrum Hereon, Hamburg, Germany

<sup>3</sup>Alfred Wegener Institute, Helmholtz Centre for Polar and Marine Research, Bremerhaven, Germany

**Correspondence:** Amelie Schmitt (amelie.schmitt@hereon.de), Christof Lüpkes (christof.luepkes@awi.de)

**Abstract.** Arctic sea ice has declined in all seasons accompanied by a rapid atmospheric warming. Here, the focus lies on the wider Fram Strait region where the connection between trends in observed near-surface variables (temperature, humidity, wind speed) and local sea ice conditions are analyzed. Reanalysis data from ERA5 and MERRA-2 and SSM/I-ASI sea ice concentrations for the winters of 1992 to 2022 are used for the analyses. To disentangle the impact of the upstream sea ice conditions from other factors influencing atmospheric conditions, separate calculations are applied for on-ice and off-ice flow. During off-ice flow, temperatures increased by more than 9 within 31 years in

Two focus regions are identified for which trends are largest. In the Western Nansen Basin (WNB) and by about 5 in the Greenland Sea region (GRL). Humidity also increased significantly in both regions but with smaller trends in the GRL region. Trends for wind speed were mostly not significant.

Corresponding trends of winter sea ice concentrations based on SSM/I-ASI data show a decrease of sea ice cover decreased by  $-10\% \text{ dec}^{-1}$  in the WNB region with especially large open water areas in 2022. There are clear hints that sea ice variability in the GRL region is strongly influenced by the presence of the Odden ice tongue and thus it shows a decrease of 2022, and temperature and humidity increased by up to 3.7 K and  $0.29 \text{ g kg}^{-1}$  per decade, respectively. In the Greenland sea region (GRL), trends were slightly smaller with  $-4.7\% \text{ dec}^{-1}$ . For sea ice and up to 1.3 K and  $0.15 \text{ g kg}^{-1}$  per decade for temperature and humidity. Trends for wind speed were mostly not significant.

As a next step, two typical flow directions for this region were studied: cold-air outbreaks during off-ice flow, upstream sea ice conditions in the Fram Strait region influence atmospheric temperatures and humidity up to 500 km downstream of the ice edge and warm-air intrusions during on-ice flow. To identify possible relationships between sea ice changes and atmospheric trends, correlation maps were calculated and the results for off- and on-ice flow were compared. Up to two thirds of the observed temperature and humidity variability in both regions can be explained by are related to upstream sea ice variability, which is about 10 and an influence of sea ice cover is still present up to 500 km more than for all other wind directions km downstream of the ice edge. In the marginal sea ice zone the impact of a decreasing sea ice cover in this region is largest for off-ice flow conditions during cold air outbreaks.

## 1 Introduction

25 In the last decades the Arctic climate changed rapidly with a much stronger increase of atmospheric temperatures than in mid latitudes. This phenomenon, called the Arctic Amplification, has been described in many articles (e.g. Cohen et al., 2014; Graversen et al., 2008). Temperature increase went along with an unprecedented decrease of sea ice extent (SIE) (Stroeve et al., 2012, 2014). Shu et al. (2020) analyzed different satellite datasets from 1979 to 2014 and found that SIE decreased in all seasons with trends of about -0.82 and -0.35 million km<sup>2</sup> per decade in September and March, respectively.

30 ~~Stroeve and Notz (2018) and Onarheim et al. (2018) found that the~~ The strength of the trend also highly depends on region ~~where the region.~~ Stroeve and Notz (2018) and Onarheim et al. (2018) found that the regions with the largest decrease of SIE ~~was located in~~ were the Beaufort and East Siberian Seas in September and in the Barents and Greenland ~~seas~~ Seas in March.

In this study, we focus on winter conditions in the Fram Strait region, which contains parts of the Greenland and Barents ~~seas~~ Seas. Our aim is to identify ongoing changes of regional atmospheric near-surface conditions and their relations to observed changes in sea ice cover. Various studies have already addressed the close connection of sea ice loss with processes in the atmosphere and ocean. For example, sea ice changes can influence atmospheric variables such as the regional pressure field (Schneider et al., 2021) or cloud radiative forcing ~~(?)~~ (Stapf et al., 2020). Decreasing sea ice concentration also impacts atmospheric temperature, wind and density stratification in the atmospheric boundary layer (e.g. Lüpkes et al., 2008; Tetzlaff et al., 2015; Chechin et al., 2019; Michaelis et al., 2021; Wang et al., 2019).

40 One area of specific interest for regional studies has been the Greenland Sea. Moore et al. (2015) showed that the wintertime retreat of sea ice in the Greenland and Iceland seas reduced the magnitude of air-sea fluxes by 20 % since 1979 with potential future implications for the Atlantic Meridional Overturning Circulation. Selyuzhenok et al. (2020) found a link between the decrease of sea ice volume in the Greenland Sea between 1979 and 2016 and an increase of the amount of upper-ocean heat content available for sea ice melt related to increased temperatures of the Atlantic Water inflow in this region. An interesting

45 local phenomenon in this region is the so-called Odden ice tongue, which occurred regularly until the early 1990ies in the region influenced by the Jan Mayen current (Wadhams and Wilkinson, 1999). Comiso et al. (2001) showed that the extent of the Odden ice tongue between 1979 and 1998 was affected by surface winds and had a strong negative correlation with the monthly surface air temperature recorded at Jan Mayen island.

Several other studies also considered the region around Svalbard and proposed different mechanisms that could explain

50 recent sea ice trends. Ivanov et al. (2012) concentrated on the role of Atlantic water inflow in shaping the ice conditions between Svalbard and Franz Joseph Land. They found that sea ice conditions around Svalbard substantially affect the temperature regime of the Spitsbergen archipelago, particularly in winter. They conclude that in the Atlantic Water inflow, heat flux from the ocean reduces the sea ice thickness and thus trends in the ocean currents around Svalbard could have a profound effect on Svalbard climate. Dahlke et al. (2020) analyzed the sea ice variability around Svalbard from 1980 to 2016 and found a different

55 explanation for decreasing SIE in the northern fjords in winter in the last 15-20 years. They calculated lag correlations with a time shift of 1 month, which indicate that atmospheric warming leads the sea ice signal and not vice versa. Lundesgaard et al. (2021) considered the water inflow region north of Svalbard and state that the sea ice concentration in this region is influenced

by many different factors including atmospheric and oceanic forcing. They find, e.g. that between 2012 and 2019, heat flux from the ocean could not explain the ~~interannual~~inter-annual variability in sea ice concentration but sea ice drift was playing a key role. Isaksen et al. (2016) relate the recent strong warming of Spitsbergen to variations in the large scale atmospheric circulation, air mass characteristics and sea ice concentration around Spitsbergen. They find a high correlation between the land-based surface air temperature and local and regional sea ice concentration and finally that the strong warming in recent decades over the Svalbard Archipelago is driven by higher sea surface temperature and sea ice decline.

In this study, we consider ~~the connection between~~changes in meteorological quantities and sea ice cover in two regions, which are the region north of Spitsbergen and the region along the eastern Greenland coast. The first one was in the center of two studies, one by Onarheim et al. (2014) and another one by Tetzlaff et al. (2014), which we refer to as Tetz14 in the following. Both showed a strong sea ice decline in the region of the Whalers Bay polynya at the northern coast of Spitsbergen. Onarheim et al. (2014) shows that in this region loss of sea ice concerns especially winter, while in the entire Arctic Ocean sea ice is shrinking mainly during summer. ~~Tetzlaff et al. (2014)~~Tetz14 find a close connection with local atmospheric processes such as an unprecedented high value of the atmospheric convective boundary-layer height in cold-air outbreaks during spring 2013 caused by the northward shift of the ice edge.

~~Here, we~~Besides focusing on sea ice trends, we also analyze regional trends of near-surface air temperatures and - departing from previous studies - also of humidity and wind speed between January and March for the years 1992 to 2022. Our results are based on data from the ERA5 and MERRA-2 reanalyses, which have a high spatial resolution and are thus ideal for studying also smaller regional differences. We then aim to answer the following ~~question: can we attribute the observed changes in atmospheric quantities to changes in sea ice cover? For this purpose, we calculate regional sea ice trends and corresponding correlation coefficients between sea ice and atmospheric conditions. To separate the impact of sea ice changes from other factors influencing atmospheric conditions (e.g. warm air intrusions), we separately analyze results for different wind directions~~questions:

1. What are the trends of sea ice concentrations and near surface atmospheric variables in the Fram Strait region? (Sect. 3.1)
2. Two typical synoptic situations in this region are cold air outbreaks (CAOs) with cold, dry air flowing from sea ice covered regions towards the open ocean and warm-air intrusions bringing in warm and moist air during southerly flows. What atmospheric trends can we observe for these two situations – off-ice flow during CAOs and on-ice flow during warm-air intrusions? (Sect. 3.2)
3. One factor influencing the strength of CAOs in this region is the open water fetch or the fraction of ocean covered by sea ice. Can we find a relationship between the atmospheric trends over the open ocean in the Fram Strait region and a decrease of sea ice in the upstream region? We address this question by calculating correlation coefficients between sea ice cover and atmospheric quantities and then separately analyzing results for off- and on-ice flow conditions. The idea behind this is that especially during off-ice flow (~~so-called cold air outbreaks~~) strong convection occurs over the open ocean, and the highest vertical fluxes of heat and humidity occur near the ice margins where they have a profound

95 impact on processes in the atmospheric boundary layer. ~~Tetzlaff et al. (2014) showed that a sea ice reduction caused an extension of the ocean region that is strongly influenced by cold air outbreaks and related atmospheric convection to the north of Svalbard in 2013.~~ On the other hand, ~~warm air~~ warm-air intrusions transport warm and humid air masses northward, so that there are two competing ~~mechanism~~ mechanisms related to on- and off-ice flow. Thus ~~,-~~ even though we cannot completely exclude additional impacts by large scale atmospheric processes or changed ocean currents - comparing correlations for different wind direction sectors helps us to ~~disentangle the complex interactions influencing near-surface~~ identify regions where sea ice retreat is very likely responsible for atmospheric trends. (Sect. 3.3)

100 The used datasets and applied methods are described in Sect. 2. ~~First, we analyze trends in meteorological variables (Sect. 3.2) and sea ice (Sect. ??) separately. This is,~~ followed by a ~~correlation analysis in Sect. 3.3 and a presentation and discussion of the results and conclusions in Sect. 3. A summary and conclusions are presented~~ in Sect. 4.

## 2 Data and methods

### 2.1 Sea ice concentration

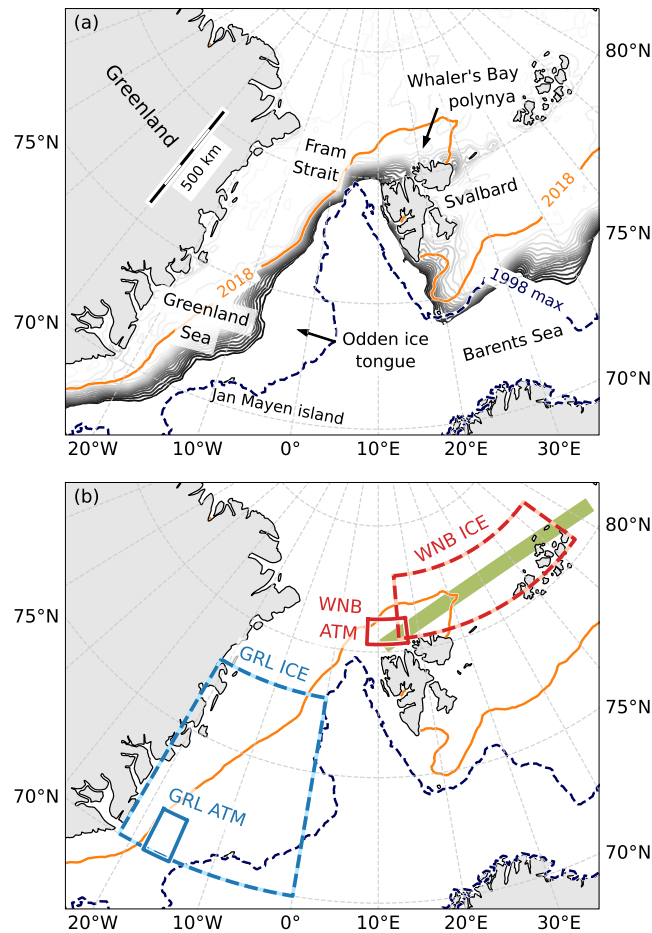
105 To analyze sea ice trends in the Fram Strait region we use the SSM/I-ASI sea ice concentration dataset provided by Ifremer. Sea ice concentration is derived from space-borne passive microwave measurements – namely brightness temperatures measured at the 85 GHz channel of the Special Sensor Microwave / Imager (SSM/I) and its successor, the Special Sensor Microwave / Imager Sounder (SSM/IS). The ARTIST Sea Ice (ASI) algorithm (Kaleschke et al., 2001; Spreen et al., 2008) is applied to compute sea ice concentration, followed by a 5-day median filter to reduce the weather impact (Kern et al., 2010). The data are provided on a polar-stereographic grid with a resolution of 12.5 km x 12.5 km. In this study, we use 31 years of winter data 110 (January – March) from 1992 to 2022.

### 2.2 Reanalysis datasets

115 The fifth generation of the ECMWF atmospheric reanalysis (ERA5) provides hourly data with a horizontal resolution of 0.25°x 0.25° on 137 vertical levels (Hersbach et al., 2020). Here, we use air temperature, specific humidity and horizontal wind components from the lowest model level, which has an average height of about 9 m for this region and season. Data for the years 1992 to 2022 were downloaded from the Copernicus Climate Change Service (C3S) Climate Data Store (Hersbach et al., 2017).

120 Version 2 of the Modern-Era Retrospective analysis for Research and Applications (MERRA-2) provides hourly data on a 0.5°-latitude and 0.625°-longitude grid and on 72 vertical levels (Gelaro et al., 2017). Here, we use air temperature, specific humidity and horizontal wind components at 10 m height for the years 1992 to 2022 from the single level diagnostics dataset provided by Global Modeling and Assimilation Office (GMAO) (2015).

### 2.3 Study region and WNB fetch length



**Figure 1.** Overview ~~map-maps~~ of the study region. (a) January to March averages of the SSM/I-ASI sea ice concentration are displayed as grey contours from 15 % upward in 5%-steps for 1996 (a year with large SIE) and as orange 15 %-contour for 2018 (a year with small SIE). The 15 %-contour of the maximum sea ice concentration in 1998 (a year with a pronounced Odden ice tongue) is shown as dashed line. (b) Location of the specific study areas: Large ICE boxes indicate the areas considered for trends of sea ice conditions and small ATM boxes indicate areas considered for atmospheric trends in the Greenland Sea (GRL, blue) and the Western Nansen Basin (WNB, red) regions, respectively. The ~~green~~-thick green line indicates the path considered for WNB fetch calculations.

~~We selected two focus areas-~~

We study changes of sea ice and atmospheric conditions in the wider Fram Strait region. Based on the trends presented in Sect. 3.1 we select two specific focus areas (Fig. 1). The first one is located at the Western Nansen Basin (WNB) north-east of Svalbard - also called the Whaler's Bay polynya - which has been the study area in previous works by Ivanov et al. (2012), Onarheim et al. (2014) and ~~Tetzlaff et al. (2014).~~ ~~The exact location of all boxes considered for trends in sea ice (ICE-box) and~~

atmospheric variables (ATM box) can be found in Tab. 1 [Tetz14](#). The second focus area is located in the Greenland Sea (GRL) at the east coast of Greenland.

130 We specify areas for which we calculate sea ice trends (ICE boxes), which are presented in Sect. 3.1 (see Fig. 1). For the WNB region we place the ICE box in a similar location as used in previous studies by Ivanov et al. (2012) and Tetz14. Our aim was to place the GRL ICE box in such a position that it covers the full most of the extent of the Odden ice tongue, which is present in some of the considered years, and thus we chose the location of the box accordingly. This means, however, that the GRL ICE box contains much more open ocean regions than the WNB ICE box and thus the sea ice cover trends are expected to be smaller.

135 We also study trends of atmospheric variables in a region influenced by the changing sea ice cover in the WNB and GRL regions. Besides focusing on regional patterns within and downwind of the ICE boxes, we also conduct time series analyses in two small smaller ATM boxes. ~~The boxes are chosen because the two reanalyses do not have the same grid size and the boxes of roughly 110 times 110 (see Tab. 1) ensure that the reanalysis datasets cover almost the same area. To be able to attribute the observed trends in atmospheric variables to sea ice changes we consider only times with wind from north-east. More details about how the locations of the ATM boxes were chosen can be found in Sect. 3.1. The exact location of all boxes considered for trends in sea ice (30° to 60°) for WNB and from west to north (-45° to 15°) for GRL, which is roughly perpendicular to the ice edge and thus represents off-ice flow conditions. In the following we use the expression off-ice only in this sense, for which the fetch over open water is largest. By comparing these results for off-ice flow to the results using data for all other wind directions we are able to separate effects related to sea ice cover from other effects influencing atmospheric conditions, e.g. warm air intrusions from the south or changes in ocean currents. We place the ATM boxes in those regions where we observe the largest trend differences between off-ice flow and other wind directions (see Sect. 3.2 for details), which is close to the location of the sea ice edge during the maximum observed regional sea ice extent at the downwind side of the ICE boxes.~~  
140 ICE box) and atmospheric variables (ATM box) can be found in Tab. 1.

145 [Tetzlaff et al. \(2014\)](#) [Tetz14](#) determined the distance an air parcel traveled over open ocean in the WNB region and showed that air temperatures downstream of this region correlate with this so-called fetch length. Here, we also calculate the WNB fetch length along the thick green line indicated in Fig. 1b and consider grid cells with less than 70 % sea ice concentration as open water ([see Sect. 3.3](#)).

## 2.4 Statistical methods

We calculate the slopes  $b$  of all trend lines using a linear least-squares regression. The uncertainty of the slopes is given as the 95 %-confidence interval according to a t-test. Using the t-value  $t$  for  $n - 2$  degrees of freedom (with  $n = 31$  years) and the standard error  $s_b$  of the slope, the confidence interval is calculated as  $\pm s_b t_{n-2}$ . To determine whether two different trends (e.g. for off- and on-ice flow) differ significantly from each other we calculate a t-test of the slopes:

$$t = \frac{b_1 - b_2}{\sqrt{s_{b_1}^2 + s_{b_2}^2}}, \quad (1)$$

with  $df = n_1 + n_2 - 4$  degrees of freedom.

**Table 1.** Coordinates of the Western Nansen Basin (WNB) and Greenland sea-Sea (GRL) boxes considered for the statistical analyses of sea ice (ICE) and atmospheric (ATM) conditions (see also Fig. 1).

Region	Latitude	Longitude
<b>WNB</b>		
ICE box	80.5 - 83.0 °N	15.0 - 65.0 °E
<del>ERA5-ATM box 79.9 - 80.9 N 5.9 - 13.1 E</del> MERRA-2-ATM box	<del>79.8</del> <u>80.3</u> - <del>80.8</del> <u>81.3</u> °N	<del>5.9</del> <u>7.3</u> - <del>12.8</del> <u>17.1</u> °E
<b>GRL</b>		
ICE box	70.0 - 78.0 °N	21.5 - 0.0 °W
<del>ERA5-ATM box</del>	<del>69.4</del> <u>69.9</u> - <del>70.4</del> <u>71.7</u> °N	<del>18.1</del> <u>18.2</u> - 14.9 °W
<del>MERRA-2-ATM box 69.3 - 70.3 N 17.8 - 14.7 W</del> height		

160 Correlations are calculated to determine the relationship between sea ice and meteorological variables. Since the relationship is non-linear (see Fig. 12), we use the Spearman's rank correlation coefficient  $r$ , which is a measure of the strength of a monotonic relationship. A t-test is applied for significance testing of correlation coefficients. To test whether two different correlation coefficients differ significantly from each other, we use the formula ~~suggested by Steiger (1980) for dependent correlation coefficients~~ for independent correlation coefficients (Steiger, 1980), which is based on Fisher's z-transform:

$$165 \quad z = \frac{1}{2} \ln \left( \frac{1+r}{1-r} \right). \quad (2)$$

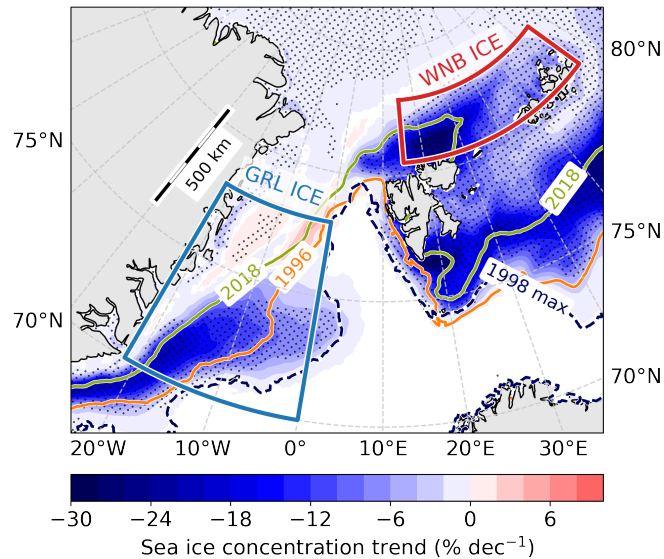
A t-test is then applied to the difference of the z-values.

### 3 Results and discussion

In this section we analyze first present trends in atmospheric variables and sea ice concentrations in the wider Fram Strait region ~~.Trends of atmospheric temperature, humidity and wind speed for both the~~ (Sect. 3.1). We then choose two focus regions (WNB and GRL regions are presented in Sect. 3.2, followed by sea ice trends in) based on the locations of the largest trends in the wider region, calculate atmospheric trends separately for off- and on-ice flow directions and compare the results (Sect. ~~??~~ 3.2). Finally, to assess the impact of the observed sea ice variability on atmospheric conditions, we calculate correlation maps (Sect. 3.3) and discuss possible mechanisms for these correlations in Sect. 3.4.

#### 3.1 Trends in the Fram Strait region

175 Using data from two reanalyses and a sea ice concentration dataset from 1992 to 2022, we calculate long-term trends in the Fram Strait region. Trends of sea ice concentration based on SSM/I-ASI data indicate that in the 31 years since 1992 sea ice cover has declined in large parts of the Fram Strait region (Fig. 2). The largest trends exceeding -20 % per decade are observed in the Barents Sea south-east of Svalbard, in the region of the Whaler's Bay polynya north of Svalbard and in the region of the



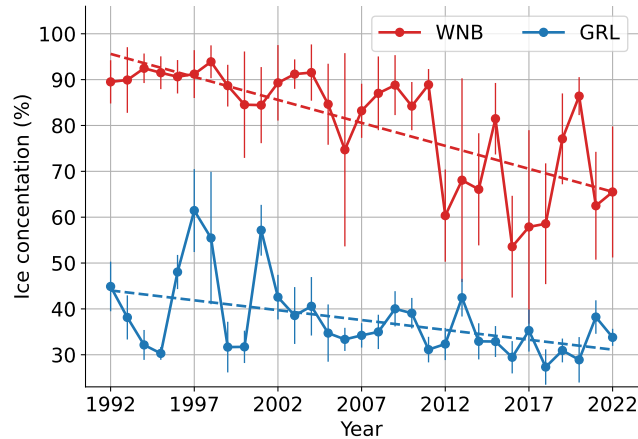
**Figure 2.** Sea ice concentration trends based on SSM/I-ASI data for the years 1992 to 2022. Dotted areas are ~~not~~ significant at the 95 %-level. Colored lines denote the 80 % SSM/I-ASI sea ice concentration contours averaged from January to March for two years with large and small SIE, respectively. The dashed contour shows the maximum SIE between January and March in 1998, which roughly represents a typical outline of the Odden ice tongue. ICE boxes used for the calculation of sea ice concentration time series are shown in blue for the GRL region and in red for the WNB region.

180 Odden ice tongue in the Greenland Sea. Based on these results, we choose the region of the Whaler’s Bay polynya/Western Nansen Basin (WNB) and the Greenland Sea region (GRL) as the two main focus areas for the analyses in this study (see also Sect. 2.3).

185 We calculate average ice concentrations within the ICE boxes indicated in Fig. 1b and Fig. 2 for the months January to March. Both the WNB and the GRL regions exhibit decreasing trends since 1992 (Fig. 3). In the WNB region the trend is  $-10.0 \pm 3.5$  % per decade with changing variability over time. In the 1990s, inter-annual variability was small with almost constant average sea ice concentrations around 90 %. Between 2000 and 2011 the variability increased and sea ice concentration approached 80 %. After 2012, we observe another shift in mean sea ice conditions with a strong inter-annual variability. In the GRL region the trend is also negative with  $-4.3 \pm 3.1$  % per decade (Fig. 3). It is smaller than in the WNB region, which is partly because the GRL ICE box contains open ocean areas and thus the maximum observed average sea ice concentration is more than 10 % lower than for the WNB region.

190 These results are in line with sea ice trends in the winter seasons reported by previous studies. Based on NASA-Team passive microwave sea ice concentration data from 1979 to 2018, Stroeve and Notz (2018) found trends of the same order of magnitude in both the WNB and GRL regions for March. Wang et al. (2019) considered a slightly larger region in the Greenland Sea,



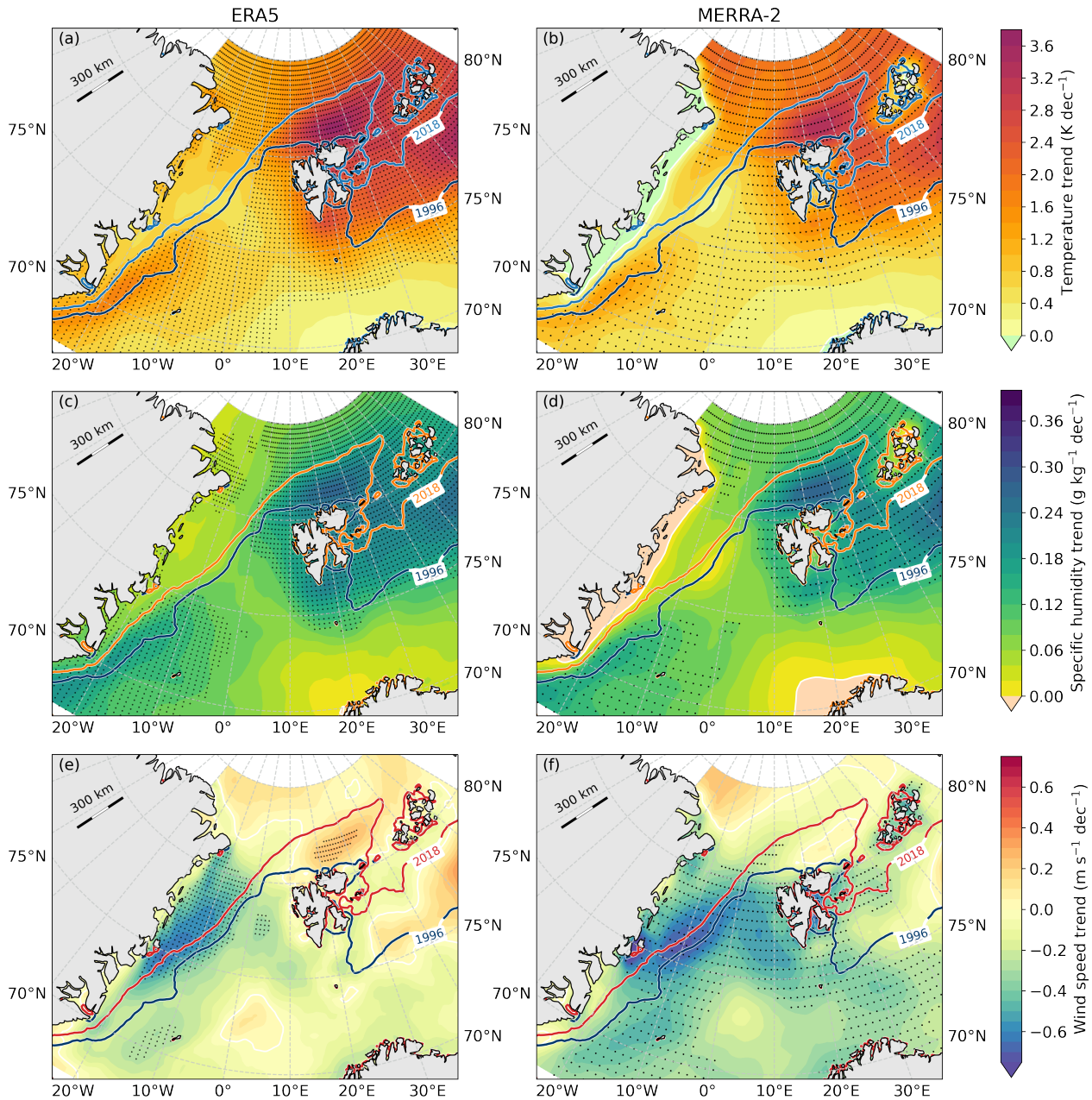


**Figure 3.** Winter mean sea ice concentrations from SSM/I-ASI in the ICE boxes in Fig. 1b and 2 for the WNB and GRL regions averaged from January to March. Errorbars denote standard deviations of daily values. Dashed lines represent linear trends.

which extended further south and thus contained more open ocean areas. Consequently, they found a slightly smaller trend of about -2 % per decade in winter from 1982 to 2016.

195 Like in the WNB region, the inter-annual variability also changes in the GRL region during the considered period. There, larger variability is observed in the first half of the period while it is vice versa in the WNB region, as already mentioned. One possible explanation for the larger variability in the GRL region is the presence of the Odden ice tongue, which increases the average ice concentration in this region. From Fig. A1 it is evident that for example 1997 and 1998 are years with a large Odden ice tongue and also two of the years with the overall largest observed mean sea ice concentrations since  
 200 1992. After 2006 the Odden ice tongue does not occur frequently any more and thus the inter-annual sea ice variability decreases. Sumata et al. (2023) analyzed the sea ice thickness distribution in the Arctic and found a regime shift from thicker and deformed to thinner and more uniform ice cover around the year 2007. This timing also coincides with the change in inter-annual variability of the sea ice concentration in the WNB region, where standard deviations of 4.6 % from 1992 to 2006 where much lower than the values of 12.3 % observed from 2007 to 2022.

205 We also calculated trends of atmospheric variables in the Fram Strait region based on reanalysis data (Fig. 4). Trend maps for near-surface air temperatures and specific humidity look very similar for the two different reanalyses ERA5 and MERRA-2. Temperature trends are generally positive and they are the largest north-east and east of Svalbard (Fig. 4a,b) roughly in the same regions where we also observe the largest sea ice reductions over the 31-year period (see Fig. 2). The maximum warming of about 3.7 K per decade for ERA5 and 3.4 K per decade for MERRA-2 can be found in the region of the Whaler's Bay polynya (see Fig. 1a for region names). This coincides with the region of the maximum humidity trends of 0.27 g kg<sup>-1</sup> per decade for ERA5 and 0.29 g kg<sup>-1</sup> per decade for MERRA-2. A second area with locally increased trends is located in the southern Greenland Sea region where observed trends are, however, less than half as large as in the Whaler's Bay region. These  
 210



**Figure 4.** Trend maps for atmospheric variables in the Fram Strait region based on ERA5 (left) and MERRA-2 (right) reanalysis data from January to March of the years 1992 to 2022. Trends are shown for air temperature (a,b), specific humidity (c,d) and wind speed (e,f). Dotted areas are significant at the 95%-level. Blue lines denote the 80 % SSM/I-ASI sea ice concentration contours averaged from January to March for two years with large and small SIE, respectively.

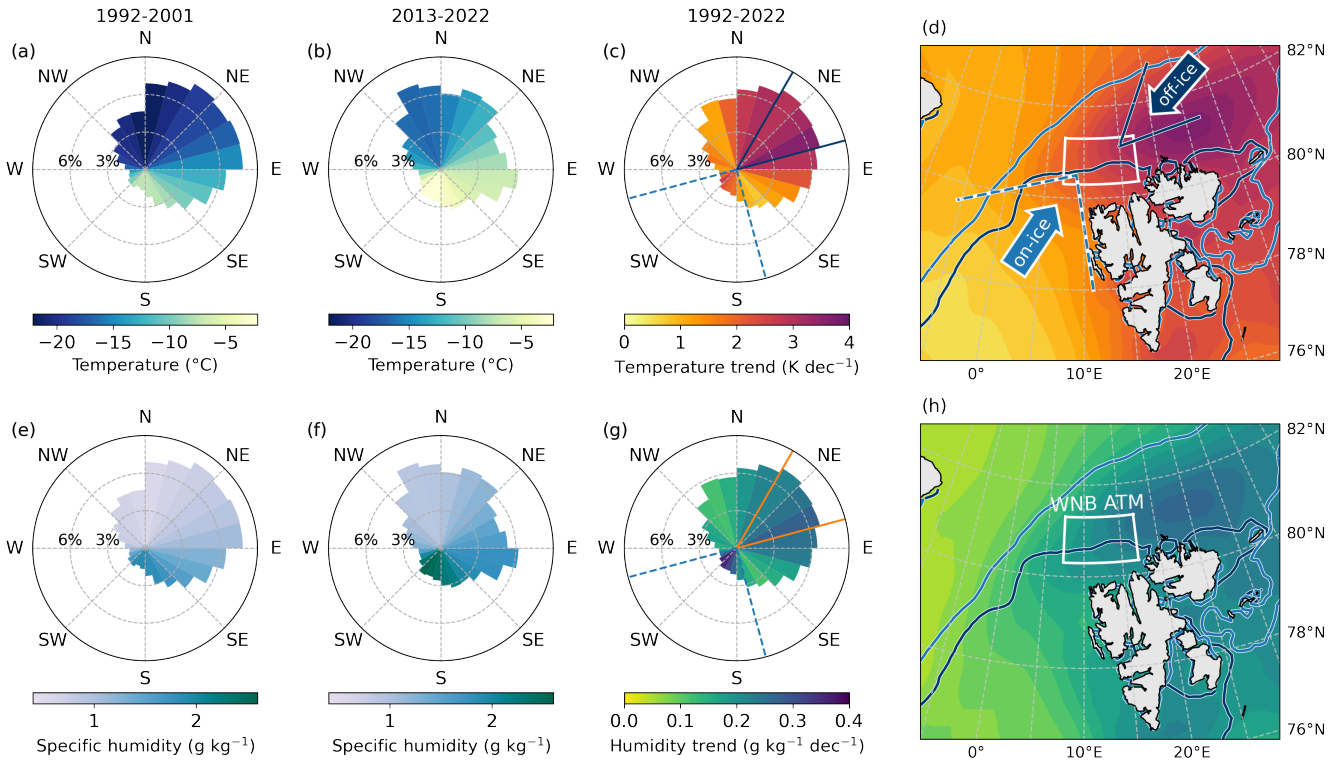
maxima also coincide with the area of largest sea ice decreases in the Greenland Sea region. Trends at the northern coast of Norway and the north-eastern coast of Greenland are smaller and not significant at the 95%-level. Trends for wind speed are generally smaller and less significant than for temperature and humidity. Also, there are a few notable differences between the two reanalysis datasets (Fig. 4e,f). The only significant increase of wind speed over the 31-year period can be found in the region of the Whaler's Bay polynya for ERA5 data, while MERRA-2 trends in this region are close to zero. Both reanalyses show the largest negative trends at the east coast of Greenland but only for MERRA-2 significant negative trends also extend further across the Fram Strait towards the coast of Svalbard.

Temperature trends for similar regions have previously been calculated by other authors. Johannessen et al. (2016) analyzed the Nansen surface air temperature dataset, which incorporates data from land stations, buoys and ship measurements in a larger region containing the Greenland and Barents Seas and the Fram Strait region. They found that running 30-year temperature trends increased since the 1970s with a value exceeding 1.5 K per decade from 1985 to 2014. Even though they considered a larger region, our results for WNB indicate that temperature trends might have further increased since 2014. Based on air temperature data from the NCEP-DOE reanalysis from 1979 to 2016, Wang et al. (2019) reported trends of about 1.5 K per decade in the GRL region and of about 2 K at the north-west corner of Svalbard, which is in line with our findings.

As a next step, we analyze wind roses for selected sub-regions, focusing especially on those regions where observed trends for sea ice cover and air temperature and humidity were largest - namely the WNB and GRL regions. We calculate the wind roses for smaller sub-regions, which we refer to as ATM boxes. The exact placement of these boxes is somewhat arbitrary and could be based on many different factors. We decided to choose locations where observed temperature and humidity trends in Fig. 4 are large. Furthermore, we choose areas that were only covered by sea ice in years with a large ice extent but were mostly ice-free in years with a small sea ice cover. Due to the large change in local ice cover we also expect to see a notable impact on atmospheric conditions in these areas. For the exact locations of the WNB and GRL ATM boxes see Fig. 5d,h and 6d,h and Tab. 1. Results based on ERA5 and MERRA-2 data show only small differences, and thus we only present and discuss ERA5 results in the following. In the WNB ATM box, winds originate mostly from northerly and north-easterly directions. Air masses originating from north are the coldest and driest (Fig. 5a,b,e,f) and air masses originating from the south and south-west are warmer and more humid. Wind directions in the GRL ATM box show much less variability than in the WNB ATM box with winds coming most often from northerly directions (about 40 % of the time). Similar to the WNB region the coldest and driest air masses originate from the north and north-west while air masses from the south-east are warmer and more humid (Fig. 6a,b,e,f).

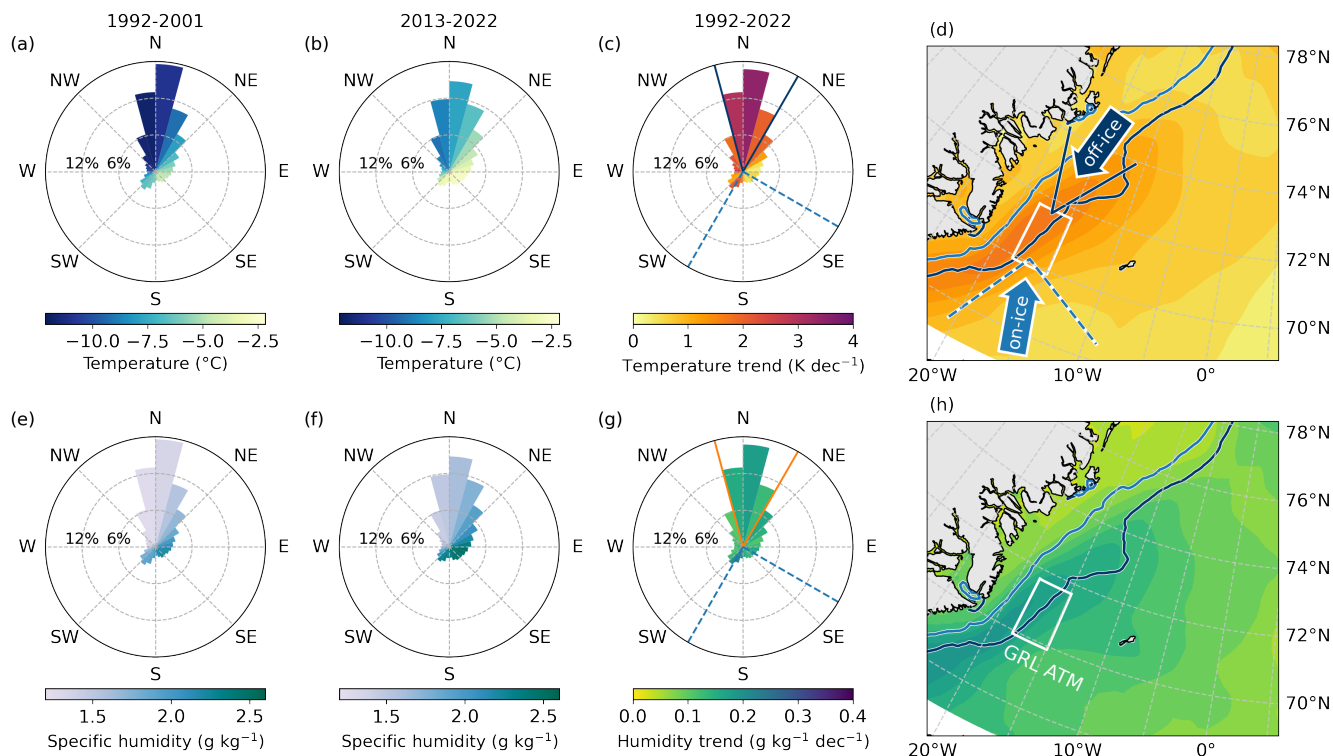
### 3.2 Atmospheric trends for off-ice and on-ice flow

The analysis of wind roses in the previous section also enables us to analyze whether the trends observed in Fig. 4 are stronger for certain wind directions. In the WNB ATM box, temperature trends of about 3.5 K per decade are observed for north-easterly wind directions and a second maximum can be found for south-westerly winds (Fig. 5c). The same wind sectors also show maximum humidity trends, though trends are larger for south-westerly than for north-easterly winds (Fig. 5g). The situation is similar in the GRL ATM box with maximum trends for both northerly and southerly winds.



**Figure 5.** Wind roses with corresponding average air temperature and specific humidity for the first (a,e) and last (b,f) ten years of the study period based on ERA5 data in the WNB ATM box. Panels (c) and (g) show the corresponding trends over the whole 31 years. Blue and orange lines denote the sectors considered for off- and on-ice flow. Maps illustrating the locations of the WNB ATM box and the flow directions for off- and on-ice flow are shown with trends for all wind directions of temperature (d) and specific humidity (h) as background shading. Blue lines denote the 80% SSM/I-ASI sea ice concentration contours averaged from January to March for two years with large (1996) and small (2018) SIE, respectively.

In the following, we analyze trend differences for different wind sectors in more detail. For this purpose, we define off-ice and on-ice flow directions based on the wind roses presented in the previous section. In the WNB ATM box, all air masses flowing from west, north or north-west originate from sea ice covered regions. However, we only select a sector of 45° those wind directions for which atmospheric trends are the largest. We thus define off-ice flow as winds from 30° to 75° north-easterly winds) for WNB and from -15° to 30° (northerly winds) for GRL. The obvious choice to define on-ice winds is then the sector directly opposite of the off-ice sectors. However, since the resulting sectors only contain a small fraction of less than 10% of all wind directions, we decided to widen the on-ice sector to 90°. On-ice flow is then defined as winds from 165° to 255° (south to south-westerly winds) for WNB and from 120° to 210° (south to south-easterly winds) for GRL. Sketches illustrating the off- and on-ice flow directions are presented in Fig. 5d for WNB and Fig. 6d for GRL.

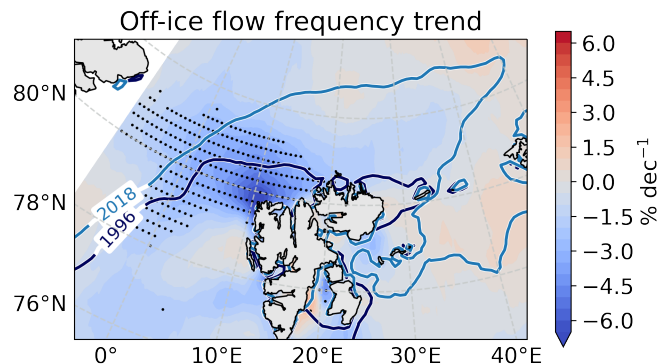


**Figure 6.** Same as Fig. 5 but for the GRL region.

Only the average wind directions in the respective ATM boxes for both regions are considered to define off- and on-ice flow conditions. We want to stress, however, that this is a simplification and that further away from the ATM box wind directions might be different. For example, when the center of a low pressure system is located over Svalbard, we would expect southerly winds in the region east of Svalbard during conditions which were labeled as "off-ice flow" for the whole region. Thus, results from regions close to the ATM boxes are most reliable and especially the results from the region east of Svalbard should be considered with care.

Off-ice flow conditions are present for about 1621 % of the time in the WNB region (north-easterly winds) and for about 3340 % in the GRL region (westerly to northerly winds), which is roughly double of much larger than what would be expected for a uniform distribution of wind directions (12.5 %). Trends of the frequencies of occurrence of off-ice flow are only significant in a region north-west of Svalbard (Fig. 7). Here, trends weaken with distance from Svalbard from about -5 to -1 % per decade. A trend of about -3 where we observe an overall reduction of up to 15 % per decade results in roughly a halving of the off-ice flow frequency over the 31-year period in this area. Trends in the GRL region are not significant at the 95 %-level (not shown).

Fig. As a next step, we compare atmospheric trends during times with off- and on-ice flow and analyze in which regions they differ from each other. Figure 8 shows temperature and humidity trends in the WNB region for both off-ice flow trend



**Figure 7.** Trend map in the greater WNB region for the frequency of occurrence of off-ice flow ( $30^{\circ}$ - $75^{\circ}$ ) based on ERA5 wind directions for January to March of the years 1992 to 2022. Dotted areas are significant at the 95 %-level. Blue lines denote the 80 % SSM/I-ASI sea ice concentration contours averaged from January to March for two years with large and small SIE, respectively.

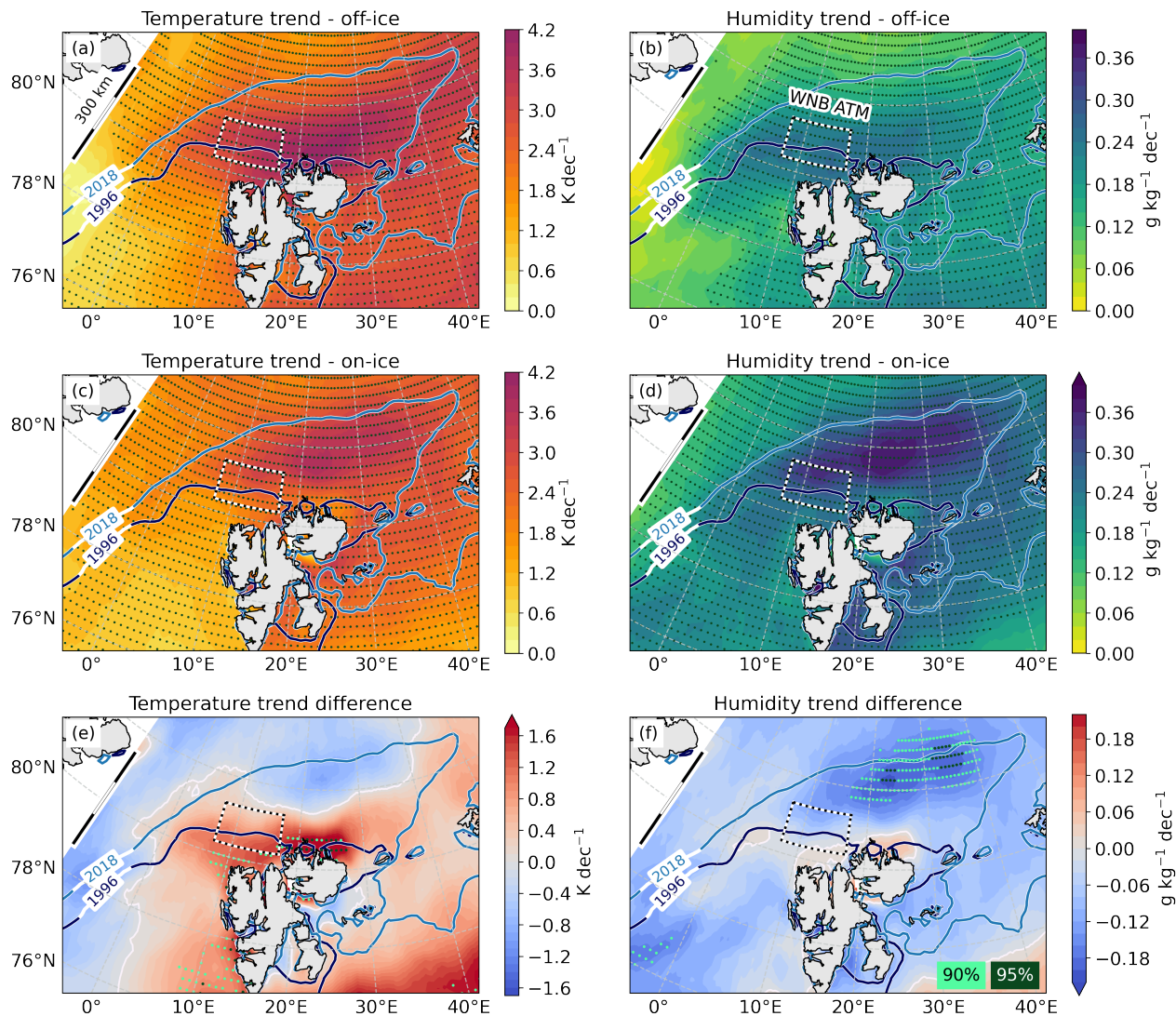
maps in the region around Svalbard. Since results based on ERA5 and other wind directions and their respective differences. For north-easterly flow, the MERRA-2 are very similar, we only present the ERA5 maps here. For wind speed, the differences of trends for off- and on-ice flow are very small and we thus only show maps for temperature and specific humidity. The result for wind trends in the ATM boxes are discussed later in this section.

275 The largest temperature trends are observed for off-ice flow are observed directly north and north-east of Svalbard, so over the Whaler's bay polynya region, Bay polynya region - and exceed 4 K per decade (Fig. 8a). Along the off-ice flow direction towards south-west, trends gradually decrease but are still above 1 per decade significant 300 km further downstream. It is interesting to note that positive air temperature trends are not restricted to open ocean regions but also extend westwards over regions with closed sea ice cover. Trends for on-ice flow are up to 2 K larger than for off-ice flow directly at the northern and  
 280 western coast of Svalbard (Fig. 8e). Only these differences close to the coast of Svalbard are significant at the 90 to 95 %-level. Further towards north and west - in regions that were covered by sea ice in most of the considered years - trends are slightly larger for on-ice flow but differences to off-ice flow are not significant.

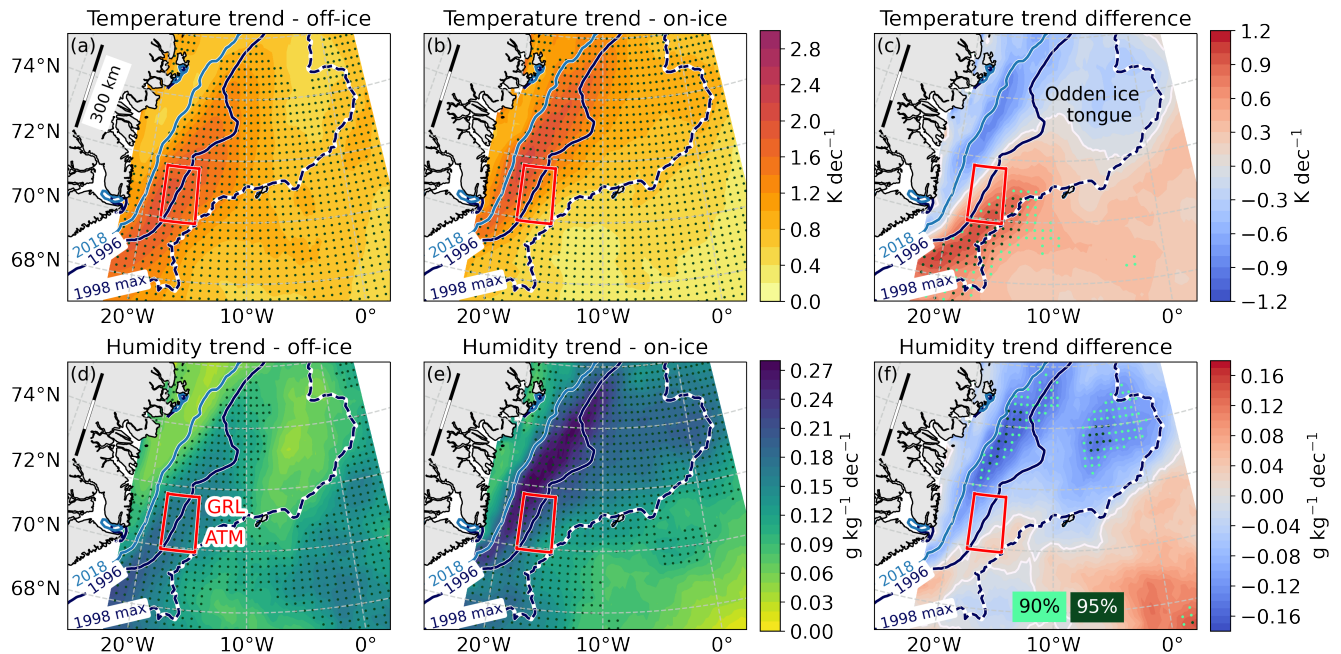
For specific humidity, the patterns of the trends for off-ice flow look very similar to the temperature trends (Fig. 8b) with a maximum exceeding 250.25 g kg<sup>-1</sup> per decade.

285 Humidity trends for on-ice flow are even larger and the maximum is located slightly further to the north (Fig. 8e,d). In this region, trends for on-ice flow are about twice as large as for off-ice flow (Fig. 8f) but unlike for temperature, we do not observe significant differences of humidity trends close to the northern and western coast of Svalbard.

In the Greenland Sea region we find the largest trends for both considered flow directions in areas that are covered in only some years by sea ice (Fig. 9). For off-ice flow, the maximum trends are located along the 80 % sea ice contour from  
 290 1996, which was a year with large sea ice extent (Fig. 9a,d). For on-ice flow, the largest trends are located slightly further towards the coast of Greenland than for off-ice flow (area between the 1996 and 2018 contours in Fig. 9). There, on-ice temperature (humidity) trends are about 1 K (0.17 g kg<sup>-1</sup>) per decade larger than for off-ice flow. The local maximum for



**Figure 8.** Trend maps in the greater-WNB region for the frequency of off-ice flow-ERA5 air temperature (30°–60°a.c) and specific humidity (b,d) based on ERA5 wind directions for January to March of the years 1992 to 2022. Dotted areas are not significant at 2022 using only periods with off-ice (a,b) and on-ice winds (c,d) in the 95%-level WNB region. Blue lines denote the 80 % SSM/I-ASI sea ice concentration contours averaged from January to March for two years with large and small SIE, respectively. The boxes mark the location of the WNB ATM box used for time series analyses in Fig. 10 and Tab. 2. Panel (e) shows the differences of air temperature trends for off- and on-ice winds (panel (a) minus panel (c)) and panel (f) shows the corresponding trend differences for specific humidity. Dotted areas denote trends and differences of trends that are significant at the 95 %-level (dark green). For trend differences, light green dots additionally mark the 90 % significance level.



**Figure 9.** Trend maps for ERA5 air temperature (a,b) and specific humidity (d,e) for January to March of the years 1992 to 2022 using only periods with off-ice (a,d) and on-ice winds (b,e) in the GRL region. Blue lines denote the 80 % SSM/I-ASI sea ice concentration contours averaged from January to March for two years with large and small SIE, respectively. The boxes mark the location of the GRL ATM box used for time series analyses in Fig. 10 and Tab. 2. Panel (c) shows the differences of air temperature trends for off- and on-ice winds (panel (a) minus panel (b)) and panel (f) shows the corresponding trend differences for specific humidity. Dotted areas denote trends and differences of trends that are significant at the 95 %-level (dark green). For trend differences, light green dots additionally mark the 90 % significance level.

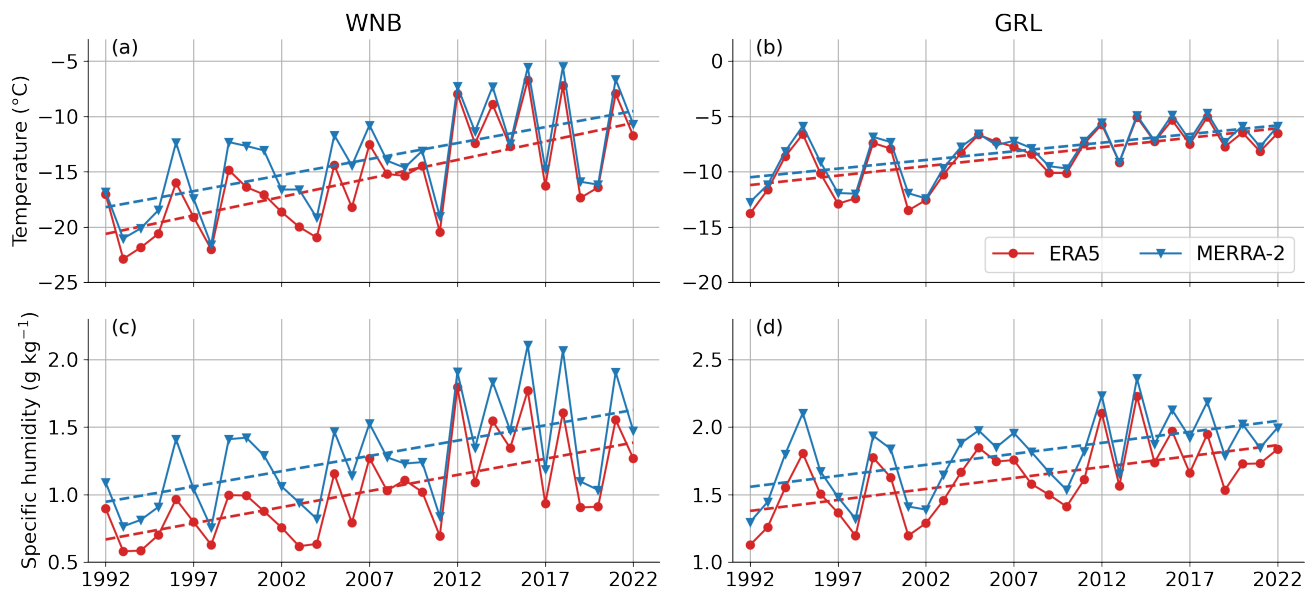
off-ice temperature trends extends to the region south and south-east of Jan Mayen island, which is south of the area covered by the Odden ice tongue in some of the considered years. When comparing trends for off-ice and on-ice flow (Fig. 9e,f) we also see a pattern that is related to the Odden ice tongue, with larger trends for off-ice flow south of the Odden region. For humidity, trends in the Odden region are significantly larger for on-ice than for off-ice flow.

In the following, we study time series of atmospheric variables for both reanalyses in more detail. For this purpose, we present time series of January to March means for each year averaged over the ATM-boxes are presented in Figure WNB and GRL ATM boxes in Fig. 10 and list trends with corresponding 95 % confidence intervals are listed in Tab. 2. In the WNB ATM box, air temperatures and specific humidity show significant positive trends with slightly smaller numbers for MERRA-2 than for ERA5 (Fig. 10) for off-ice flow. During the 31-year period, air temperatures increased by up to 10 K and the humidity by  $0.7 \text{ g kg}^{-1}$ . The wind speed change is close to zero and not significant at the 95 %-level for both reanalyses. For on-ice flow, trends for temperature are up to 50 % smaller, while trends for humidity are up to 25 % larger than for off-ice flow.



**Table 2.** Trends of meteorological variables in the WNB and GRL regions-ATM boxes based on ERA5 and MERRA-2 reanalysis data. Trends are calculated either using only periods with flow from north-east for WNB and from west to north for GRL ("off-ice ") or using only periods with all other wind directions, which are not off-ice ("other") on-ice flow. Confidence intervals are calculated based on a t-test with 95 % confidence level. Bold face denotes trends that differ significantly from each other at the 90 %-level.

Meteorological variable	ERA5 off-ice	ERA5 other-on-ice	MERRA-2 off-ice	MERRA-2 other-on-ice
<b>WNB</b>				
Temperature trend (K dec <sup>-1</sup> )	$3.0 \pm 1.3$ $1.9 \pm 1.3$ $2.3$ $3.3 \pm 1.4$	$1.6$ $2.6 \pm 1.2$	$2.9 \pm 1.5$	$1.5 \pm 0.9$
Specific humidity trend (g kg <sup>-1</sup> dec <sup>-1</sup> )	$0.24 \pm 0.11$	$0.17$ $0.30 \pm 0.12$ $0.14$	$0.19$ $0.23 \pm 0.13$	$0.15$ $0.21 \pm 0.12$ $0.10$
Wind speed trend (m s <sup>-1</sup> dec <sup>-1</sup> )	$0.0 \pm 0.3$ $0.0 \pm 0.3$	$0.0 \pm 0.2$ $0.5 \pm 0.4$	$-0.4$ $-0.2 \pm 0.4$ $0.3$	$-0.2$ $0.0 \pm 0.2$ $0.3$
<b>GRL</b>				
Temperature trend (K dec <sup>-1</sup> )	$1.6$ $1.7 \pm 0.7$ $0.8$	$0.9$ $1.2 \pm 0.5$	$1.5$ $1.6 \pm 0.6$ $0.8$	$0.7$ $1.0 \pm 0.4$
Specific humidity trend (g kg <sup>-1</sup> dec <sup>-1</sup> )	$0.15$ $0.16 \pm 0.08$ $0.09$	$0.12$ $0.19 \pm 0.08$ $0.10$	$0.15$ $0.16 \pm 0.07$ $0.10$	$0.11$ $0.18 \pm 0.07$ $0.10$
Wind speed trend (m s <sup>-1</sup> dec <sup>-1</sup> )	$-0.5$ $-0.3 \pm 0.3$ $0.4$	$-0.1$ $0.0 \pm 0.3$	$-0.7$ $-0.5 \pm 0.3$ $0.4$	$-0.3$ $-0.1 \pm 0.3$ $0.4$



**Figure 10.** January to March averages of air temperature (a,b) and specific humidity (c,d) based on ERA5 (red) and MERRA-2 (blue) reanalyses for off-ice flow -i.e. north-easterly flow-in the WNB region (a,c) and westerly to northerly flow-in-the GRL region (b,d) ATM boxes. Dashed lines indicate trends.

Temperature and humidity trends in the GRL ATM box are generally smaller than for WNB but still significant at the 95 %-  
305 level (Tab. 2). Both reanalyses agree well on the magnitude of the trends for off-ice flow with overall temperature and humidity

increases of up to almost 5 K and  $0.5 \text{ g kg}^{-1}$  within 31 years, respectively. Wind speed trends are negative but only barely significant for MERRA-2 with an overall decrease of up to  $2.015 \text{ m s}^{-1}$  within 31 years. As Like for WNB, trends calculated using periods with all other wind directions are more than 40% (20%) smaller for temperature (humidity) temperature trends for on-ice flow are smaller and humidity trends are larger than for off-ice flow.

310 Our comparison of trends calculated based on ERA5 and MERRA-2 data indicate that the results are robust with respect to the choice of reanalysis dataset. Especially in the GRL region, trend values are almost identical. The largest trend differences occur for temperature in the WNB ATM box. It is evident from Fig. 10a that MERRA-2 temperatures are up to 34 K higher than ERA5 temperatures in the first half of the considered period, while differences decrease to about 1 to 1.5 K in the second half. Thus, even though trends are smaller for MERRA-2, overall temperatures in the last decade were even larger than for ERA5.

315 A few previous studies focusing on the analysis of systematic differences between reanalyses in this region have provided similar results. Graham et al. (2019) compared reanalysis data to meteorological observations during the N-ICE campaign in winter 2015 and found that ERA5 has a stronger overestimation of winter temperatures, while MERRA-2 has a stronger overestimation of the downward longwave radiation flux. Comparing reanalyses with remote sensing data also revealed that MERRA-2 overestimates the near-surface cloud fraction, which increases longwave cloud radiative effects (Yeo et al., 2022).

320 More research is necessary to assess the underlying causes for these biases in more details.

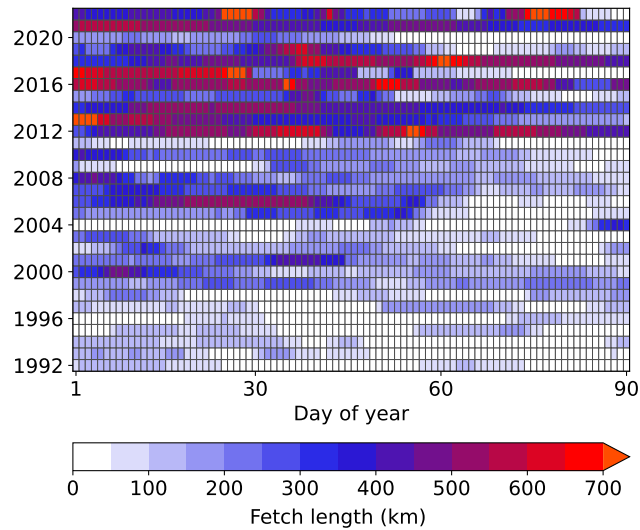
In this section, we have identified regions in which atmospheric flows differ from each other for off- and on-ice flow conditions. These differences are, however, only statistically significant in very small region (see dotted areas in Fig. 8 and 9). This trend comparison was only descriptive and did not further analyze the underlying processes. As a next step, we thus study how these trends are related to the sea ice cover (Sect. 3.3).

### 325 3.3 Assessing relationships between sea ice trends and meteorological variables

It is likely that the positive temperature and moisture trends for different flow directions analysed in Sect. 3.2 are related to different processes. During off-ice flow, cold and dry air masses from sea ice covered regions (e.g. the Central Arctic) flow towards the open ocean. These so-called cold air outbreaks (CAOs) typically occur in the Fram Strait region when a low-pressure system is present over or east of Svalbard and a high-pressure system prevails over Greenland (Knudsen et al., 2018; Kolstad, 2018).

330 Sea ice insulates the atmosphere from the underlying ocean and thus, decreased sea ice cover causes enhanced turbulent exchange of heat and moisture. Consequently, we expect that positive temperature and humidity trends during off-ice flow conditions show negative correlations to the upstream sea ice extent. Tetzlaff found such a negative correlation for the Whaler's Bay polynya region, which weakened over the open ocean with increasing distance from the ice edge.

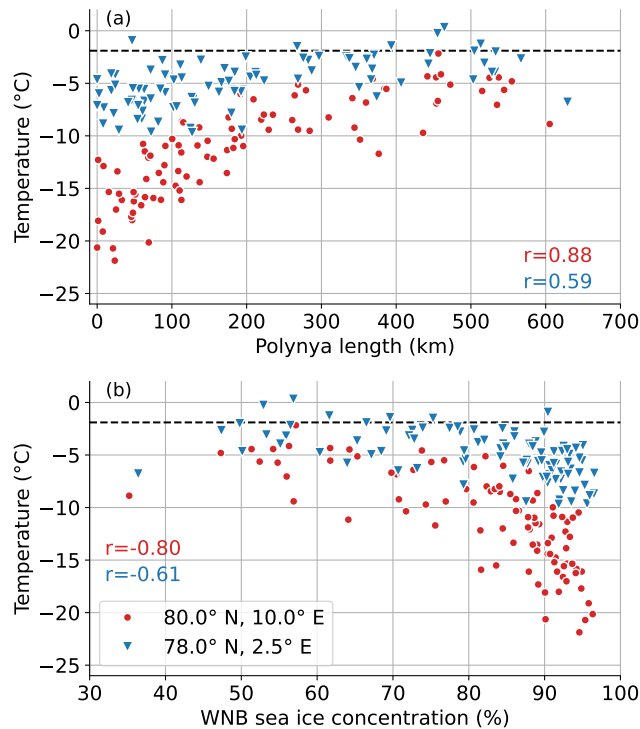
During on-ice flow, air masses with higher temperatures and moisture content are brought in from the south. In the Fram Strait region such warm-air intrusions are typically caused by a low-pressure system over Greenland and/or a high-pressure system in the Svalbard region. One likely reason for the positive temperature and moisture trends found for on-ice flow in Sect. 3.2 is thus first of all a general temperature and moisture increase of the advected air-masses originating from mid-latitudes. However, southerly winds push the sea ice northward (see also Sect. C) and warmer air leads to an increased melting of sea ice. Both effects result in an increase of the open ocean area so that in turn turbulent exchange between the ocean



**Figure 11.** Daily fetch length over the WNB polynya region. Updated from Tetz14.

340 and atmosphere is enhanced. This feedback would result in negative correlations between atmospheric and sea ice changes. However, sensible heat fluxes are stronger during cold-air outbreaks than during on-ice flow because of larger temperature contrasts. Despite further processes related to radiation and cloud formation (Stapf et al., 2020), we expect therefore, that during off-ice flow the local warming effect on the near-surface temperature is more effective than during on-ice flow. Especially the existence of a maximum trend in the region with reduced sea ice points to the local feedback mechanism as the dominating  
 345 process.

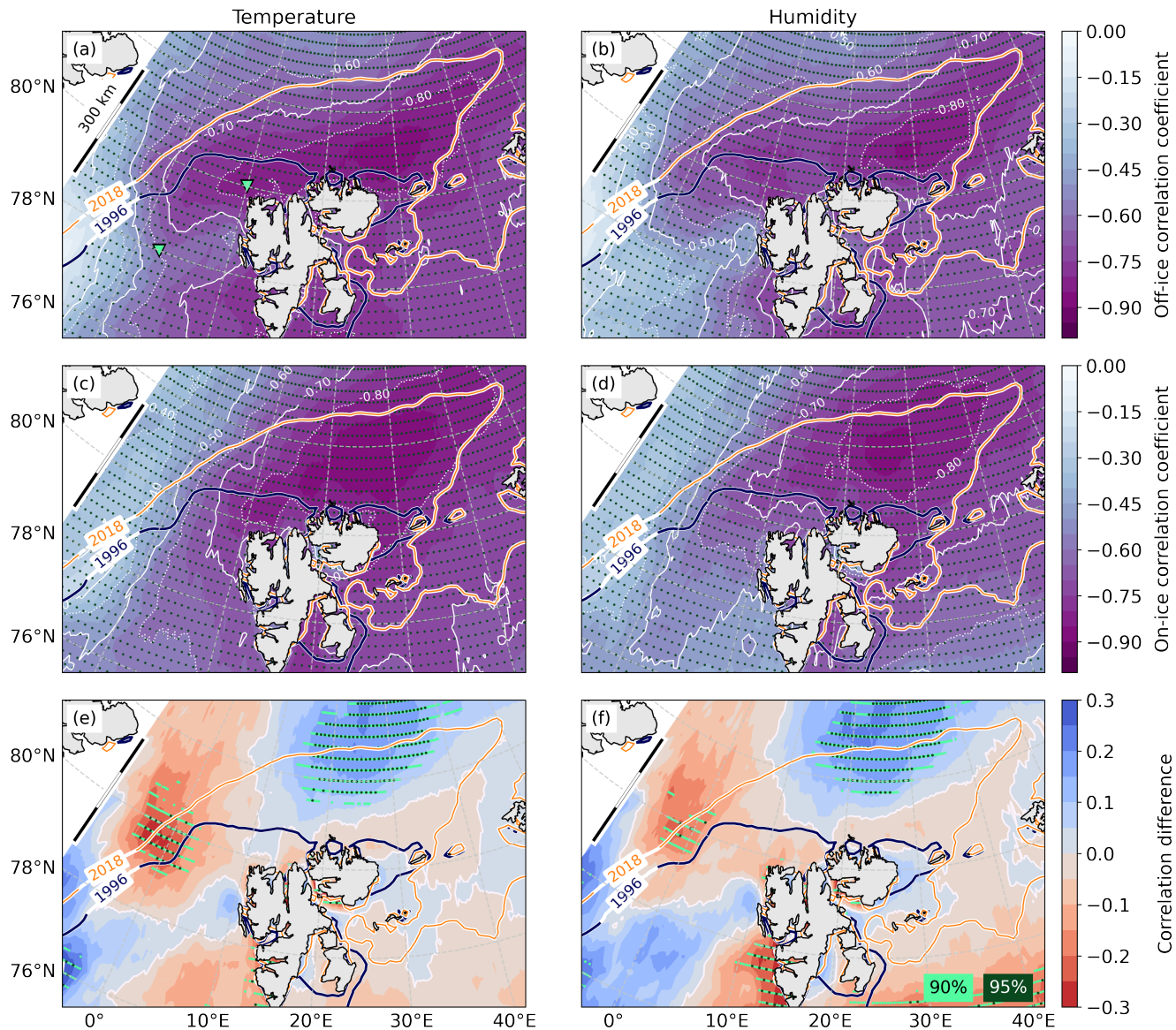
Consequently, we analyze in this section how atmospheric changes are related to sea ice changes using a method inspired by the study by Tetz14. They calculated the polynya or fetch length as a measure for daily sea ice conditions in the WNB region until the year 2014. Here, we ~~extent~~ extend their time series until the year 2022 (Fig. 11). While WNB fetch lengths exceeding 600 km did not occur in the 1990s and 2000s, such high values were much more common from 2012 onward. However, WNB  
 350 fetch lengths during the last 10 years were highly variable with a more closed-up polynya in 2015 and 2020, for example. This explains the higher variability of mean sea ice concentrations in Fig. 3. ~~When looking at WNB fetch length, 2022 was an exceptional year, even~~ Even though average sea ice concentrations ~~were not among the 5 in 2022 were not even among the five~~ lowest observed years-, WNB fetch values exceeded 830 km during four days in January and two days in March 2022. The event in March was a consequence of a period with strong southerly winds causing a warm-air intrusion into the Arctic across the Fram Strait region (Walbröl et al., 2023). See Fig. C1 for an example of the flow conditions on 13 March 2022. The only  
 355 other period with such high WNB fetch values was during the first days of January of 2013, however, the sea ice cover quickly closed up during the next weeks in this year.



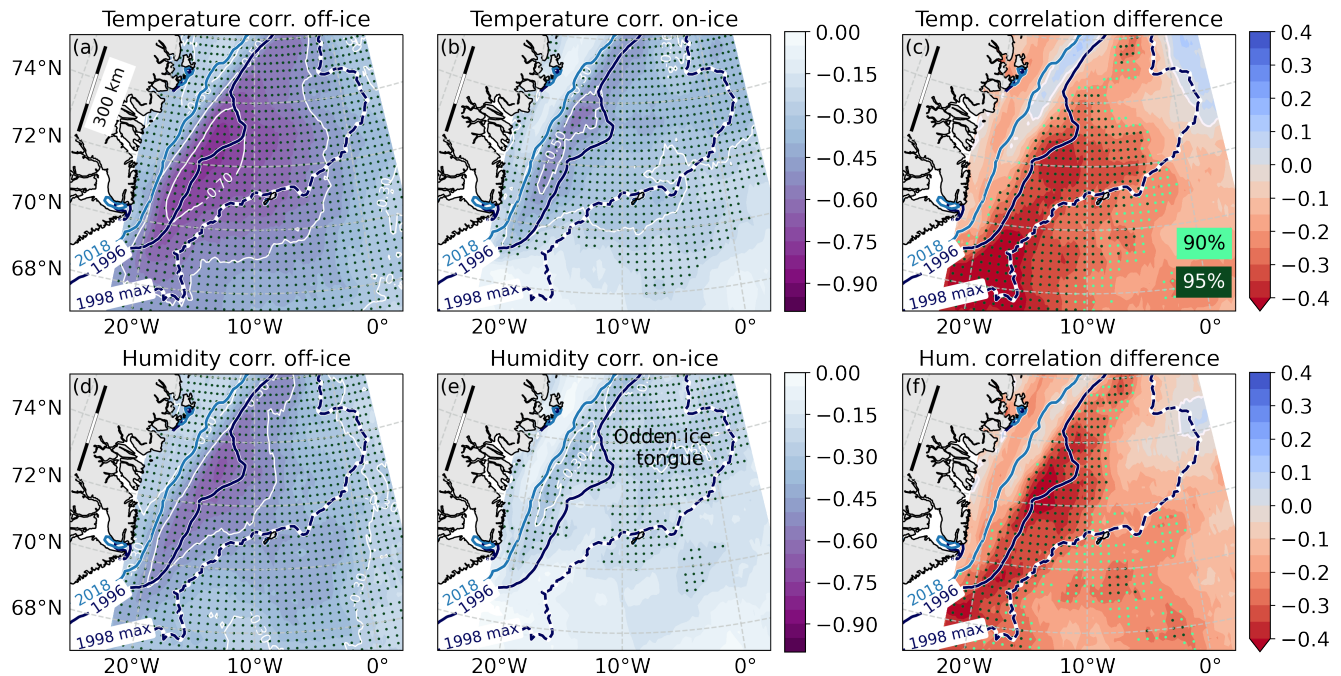
**Figure 12.** ERA5 air temperature at two locations (marked with triangles in Fig. 13) averaged monthly [for January to March from 1992 to 2022](#) for periods with off-ice flow as function of WNB fetch (a) and of average sea ice concentrations in the WNB [ICE box](#) (b). Numbers are Spearman rank correlations. [The dashed line indicates the freezing temperature of sea water.](#)

For this purpose, we follow the method of [Tetzlaff et al. \(2014\)](#) who [Tetz14](#) then analyzed ERA-Interim near-surface temperatures averaged over the winter season from January to March for the years 1992 to 2014 [during off-ice flow](#) at three grid points in the region north-west of Svalbard and found high correlations with the open-water fetch over the WNB region. In Fig. 12a we extend their analysis to the year 2022 and use a higher temporal resolution [with and consider](#) January to March monthly means instead of winter means. [Exemplarily, we show data from two points with locations close to P1 and P3 in Tetz14.](#) We find similarly high Spearman rank correlations of  $r = 0.86-0.88$  also for the extended period at a point north-west of Svalbard (see triangles in Fig. 13), which decreases to  $r = 0.58-0.59$  at a point more than 200 km downstream. We performed a similar analysis to determine the relationship between average WNB sea ice concentration and atmospheric temperatures and found very similar correlations at the two considered points (Fig. 12b). Thus, instead of using the open-water fetch as in [Tetzlaff et al. \(2014\)](#) [Tetz14](#), we consider sea ice concentrations in the ICE boxes for the following correlation analysis.

[As](#) [By looking at single points we can only get very localized results. Not only the magnitude of correlations but also the differences between correlation coefficients for off- and on-ice flow highly depend on the considered areas \(see Fig. B1 for scatter plots for off- and on-ice flow\).](#) Therefore, as a next step [, we then extend our correlation analysis to larger areas in the](#)



**Figure 13.** Spearman rank correlation coefficients between monthly WNB sea ice concentrations and air temperatures (a,c) and specific humidity (b,d) from ERA5 averaged for periods with north-easterly wind directions off-ice (a,d) and all other wind directions (b,e). Panels (e) and on-ice flow (f,c,d) show correlation differences between off-ice flow and other wind directions. Dotted areas are not significant at the 95%-level. Blue and orange lines denote the 80% SSM/I-ASI sea ice concentration contours averaged from January to March for two years with large and small SIE, respectively. Triangles indicate the locations used in Fig. 12. Panels (e) and (f) show the corresponding differences of correlation coefficients between off-ice and on-ice flow. Dotted areas denote correlations and differences of correlations that are significant at the 95%-level (dark green). For correlation differences, light green dots additionally mark the 90% significance level.



**Figure 14.** Spearman rank correlation coefficients between monthly GRL sea ice concentrations and air temperatures (a-e) and specific humidity (d-e) from ERA5 averaged for periods with westerly to northerly wind directions off-ice (a,d) and all other wind directions on-ice flow (b,e). Panels (c) and (f) show correlation differences between off-ice flow and other wind directions. Dotted areas are not significant at the 95 %-level. Blue lines denote the 80 % SSM/I-ASI sea ice concentration contours averaged from January to March for two years with large and small SIE, respectively. The dashed contour shows Panels (c) and (f) show the maximum SIE corresponding differences of correlation coefficients between January off-ice and March in 1998, which roughly represents a typical outline on-ice flow. Dotted areas denote correlations and differences of correlations that are significant at the Odden-ice-tongue 95 %-level (dark green). For correlation differences, light green dots additionally mark the 90 % significance level.

WNB and GRL regions we calculate correlation maps between atmospheric temperatures and humidity in the region around Svalbard and the Greenland Sea and the average sea ice concentrations in the respective ICE boxes. This allows us to identify regions where the impact of upstream sea ice concentration is largest. The squared correlation coefficient  $r^2$  can also be used as a measure of the observed variance of the meteorological variables that can be explained by sea ice variability. As for Similar to the trends in Sect. 3.2, the maps based on ERA5 and MERRA-2 look very similar and thus we only present the ERA5 results, here.

Correlation maps for WNB for off-ice flow are presented in Fig. 13. As for the atmospheric trends (Sect. 3.2), the general patterns The general patterns for both off- and on-ice flow look very similar for temperature and humidity with the strongest negative correlation correlations exceeding  $-0.85$  for temperature and  $-0.8$  for humidity in the area north-east of Svalbard over the center of the Whaler's Bay polynna. Downstream of the ice edge, correlations decrease with downstream distance for both

temperature and humidity until correlations are not significant any more at about 500 km downstream. ~~We~~ For off-ice flow, ~~we~~ also observe smaller correlations directly at the west coast of Svalbard (at about 78.5° N, 10° E), which can be attributed to a sheltering effect of the Svalbard land mass. Over land, air masses ~~flowing~~ from north-east do not experience any further warming ~~an and~~ moistening and thus correlations decrease.

385 In the WNB region, the maps showing differences between correlation coefficients for off- and on-ice flow look almost identical for temperature and humidity (Fig. 13e,f) with two areas of distinct differences. In the first one, which is located north-west of Svalbard close to the ice edge (around 80° N, 0° E), correlations are up to 0.3 larger for off-ice flow. In this area, up to 50 % of the observed temperature and humidity variance are related to sea ice changes for off-ice flow and only about 20 % for on-ice flow. The second area is located at the northern end of the Whaler's Bay polynya (around 86° N, 25° E), where  
390 correlations are by about 0.25 larger for on-ice flow. Here the explained variance is about 40 % for off-ice flow and about two-thirds for on-ice flow.

The corresponding correlation maps for the GRL region are presented in Fig. 14. ~~As~~ Unlike for the WNB region, ~~the observed patterns look similar to the trends of meteorological variables presented in Sect. 3.2. Negative~~ correlations are generally slightly larger for temperature than for humidity. For both flow directions, negative correlations are largest in the region that is only  
395 covered by sea ice in some of the considered years~~with~~. Correlation values for off-ice flow show a maximum exceeding -0.7 for temperature and ~~-0.6 for humidity~~ -0.5 for humidity, which is more than twice as large than for on-ice flow. This means that up to half of the observed ~~variance can be explained by~~ temperature variance close to the ice edge is related to sea ice variability for off-ice flow. Correlation differences are most pronounced and ~~only significant~~ significant at the western part and south-west of the Odden region where the explained variance is more than 10 up to 20 % larger for periods with off-ice flow  
400 than for all other wind directions than for on-ice flow (Fig. 14e,c,f).

Another study by Wang et al. (2019) also correlated atmospheric temperatures with sea ice conditions in all seasons and found a value of -0.46 for the whole Greenland Sea region, which is slightly smaller than our maximum values of about  $r = -0.7$ . Since they averaged over a much larger region and did not consider different wind directions separately, they were not able to study more local effects and specifically the impact of upstream sea ice conditions during off-ice flow.

### 405 **3.4 Discussion of mechanisms responsible for atmospheric changes**

In the previous sections we described atmospheric trends in the Fram Strait region, both in general and by looking specifically at two typical flow situations, which are cold-air outbreaks with off-ice flow and warm-air intrusions with on-ice flow. While temperature trends for both flow directions have similar maximum values but at slightly shifted locations, humidity trends are mostly larger for on-ice flow. Even though trend differences are mostly not significant we can draw valuable qualitative  
410 conclusions from the results. Firstly, most of the warming trends during on-ice flow can be explained by a temperature increase in the last decades of the air masses advected from south. This trend is comparable with the local warming due to reduced sea ice cover during off-ice flow. The increase of moisture during on-ice flow is even larger than the moistening effect over areas with reduced sea ice cover in off-ice wind conditions but also the latter is important for the observed changes.

415 To further analyze the impact of changes in sea ice cover on atmospheric conditions we calculated correlation maps between temperature and humidity and the respective upstream sea ice conditions for both regions. Off-ice flow consists of relatively cold and dry air masses becoming warmer and more humid the longer they are in contact with open ocean. A smaller sea ice concentration means more open water areas and thus correlations between sea ice cover and air temperature and humidity are negative. Such negative correlations for off-ice flow are found in those regions where sea ice changes are largest. However, significant correlations extend further along the off-ice flow directions. This leads to an extended area of positive correlations south of the ice edge in the GRL region and towards the south-west of the Whaler's Bay polynya . The impact of sea ice decrease was the largest during off-ice flow but significant negative correlations were also found during on-ice flow, although the effect was smaller. However, during on-ice flow atmospheric changes lead to sea ice changes and thus the causality is reversed compared to off-ice flow. Our results suggest that the only region where this mechanism is significantly more important than the sea-ice related changes during off-ice flow is located at the northern edge of the Whaler's Bay polynya.

425 Our results hint to an important role of sea ice conditions for atmospheric warming and moistening in certain areas. However, with our present analysis we cannot exclude further possible explanations for the observed atmospheric trends. For example, cases during which warm air is advected first to the north and is flowing back to the south afterwards might impact on our correlations. We mentioned already that large scale effects (especially during on-ice flow) influence the correlations. Besides the effect due to warmer air masses from the south, for example, Wickström et al. (2020) found an increase of the winter cyclone occurrence around Svalbard from 1979 to 2016. The presence of cyclones in this region was accompanied by positive temperature anomalies east of Svalbard. Such large scale synoptic changes certainly influence the general trends presented in Sect. 3.1, but not the analyses in Sect. 3.2 and 3.3, where results are separated by wind sectors. Warming due to large scale advection would result in much smoother and more homogeneous trend maps for the different wind direction sectors than we showed here in several figures. For example, it is evident from Fig. 8c and d for on-ice flow that trends are even larger north of Svalbard than further south, which would not be the case if trends were purely caused by trends within the inflow air masses or by altered cyclone tracks.

440 Our analysis also does not consider changes in sensible and latent heat transport over the ocean due to modified water temperatures that cannot be explained by sea ice decrease. The underlying processes governing the variability of ocean heat flux are very complex and not yet accurately quantified (Carmack et al., 2015; Peterson et al., 2017). Nilsen et al. (2021) found that while long-term trends in the heat transport into the Arctic Ocean could be dominated by variations in the temperature of the Atlantic Water inflow, changes on shorter time-scales are more likely due to air-ocean interaction dynamics. Their analysis indicates that wind stress is an important factor influencing the variability of the West Spitsbergen Current branches flowing over the Yermak Plateau and thus the overall heat exchange in this region.

445 Since the focus of this study is mainly on the impact of sea ice changes on the atmosphere, we do not disentangle whether those sea ice changes were caused by changing wind directions, increased melting by a warmer ocean or by other factors. The sea ice cover in our two study regions has changed drastically over the last 30 years resulting in a much larger area where the atmosphere comes into direct contact with the ocean without an insulating sea ice layer. Here, we assume that an increase of the open ocean area will have a much larger impact on air temperature and humidity than an increase of the ocean temperature of



450 a few degrees in these specific regions and thus we do not consider the latter effect explicitly. We suggest that the investigation of a combined impact of ocean and sea ice conditions should be the topic of future extended work.

#### 4 Summary and conclusions

455 The goal of this study was to analyze recent regional trends in ~~line with our findings~~ near-surface atmospheric variables in the Fram Strait region in winter and their connection to regional sea ice cover. Based on trend maps for the period from 1992 to 2022 we identified two specific focus regions, for which the decrease in sea ice cover and increase of atmospheric temperatures and humidity were largest. The first one is located north-east of Svalbard in the Western Nansen Basin (WNB) and the second one in the Greenland Sea (GRL).

~~As a second step, we~~ We calculated mean January to March sea ice conditions based on SSM/I-ASI sea ice concentration data ~~from 1992 to 2022~~ averaged over two ICE boxes for the two considered regions. WNB shows a strong declining trend of -10.0 % per decade with increasing inter-annual variability within the last 10 years. While the ice edge was mostly located at 460 the north-west corner of Svalbard during the 1990s, it retreated by more than 500 km toward the north-east during many days in January to March since 2012. 2022 was an extreme year since the open water fetch exceeded 800 km during two separate weeks. ~~The event in March was a consequence of a period with strong southerly winds causing a warm air intrusion into the Arctic across the Fram Strait region.~~

465 ~~The~~ The negative sea ice trend in the GRL region is also significant but with -4.7 % per decade smaller than for WNB, which is partly due to a larger fraction of open ocean within the GRL box already at the beginning of the analysed period. Inter-annual variability is largest within the first half of the considered period, which is likely related to the presence of the Odden ice tongue in some of the years before 2006. ~~Our results are in line with sea ice trends in the winter seasons reported by previous studies. Based on NASA Team passive microwave sea ice concentration data from 1979 to 2018, Stroeve and Notz (2018) found trends of the same order of magnitude in~~

470 We also calculated trends of atmospheric variables in the Fram Strait region based on ERA5 and MERRA-2 reanalysis data. Generally, we find a very good agreement of the two datasets in terms of the location of regional maxima and the magnitude of trends. Trend maps for air temperature and specific humidity show very similar patterns and maxima roughly coincide with the regions of the largest sea ice reductions. We find trends of up to 3.7 K and 0.29 g kg<sup>-1</sup> per decade in the Whaler's Bay region and of up to 1.3 K and 0.15 g kg<sup>-1</sup> per decade in the southern Greenland Sea region for temperature and humidity, respectively.

475 Trends for wind speed are generally smaller and less significant than for temperature and humidity.

As a next step, we calculated trends for two common flow situations in this region separately and compared the results. Based on wind roses we identified wind direction sectors for off-ice flow (which is present during cold-air outbreaks) and for on-ice flow (warm-air intrusions) for both the WNB and GRL regions~~for March. Wang et al. (2019) considered a slightly larger region in the Greenland sea, which extended further south and thus contained more open ocean areas. Consequently, they found~~  
480 ~~a slightly smaller trend of about -2. The general patterns look somewhat similar for both off- and on-ice flow but differences are more distinct between the trends for temperature and humidity in both of the regions. In both regions, the maxima of~~

temperature trends have a similar magnitude (3-4 % per decade in winter from 1982 to 2016. K per decade for WNB, 2 K per decade for GRL) but their exact locations differ from each other dependent on the wind regimes. In the WNB region maxima always occur over the Whaler's Bay polynya, but for off-ice flow they are located close to the northern coast of Svalbard and 100 km further north for on-ice flow. In the GRL region, the maxima are located in areas that are covered by sea ice in only some of the years but about 100 km further north for on-ice than for off-ice flow. As a result, temperature trends are larger for off-ice flow in certain areas and larger for on-ice flow in others. Humidity trend maxima mostly coincide with the temperature maxima, however humidity trends are mostly larger for on- than for off-ice flow. Maxima for on-ice flow are up to 50 % larger in the WNB region and almost twice as large in the GRL region than for off-ice flow.

485  
490 Additionally, we Since the presence of sea ice limits the heat and moisture exchange between ocean and atmosphere, the fractional sea ice cover is an important factor influencing the strength of atmospheric convection and related atmospheric warming during cold-air outbreaks. Thus, we additionally conducted a spatial analysis of trends in meteorological variables and their correlations to the upstream ice conditions. The results indicate that the impact of changing sea ice conditions on air temperature and humidity is largest at the ice margins but besides that it is not localized and extends hundreds of kilometers further downstream and compared results for off- and on-ice flow. Generally, correlation maps display great similarities with trend maps. In the WNB region, we also find the largest differences between off-ice flow and other wind directions at the north-western corner of Svalbard. In this area, correlations for off-ice flow exceed -0.8 for both temperature and humidity and thus sea ice changes in the upstream region can explain maximum correlations are located at the center of the Whaler's Bay polynya, where up to two thirds of the observed variability in this region, which is about 10 % larger than for other wind directions.

500 In is related to sea ice changes. The impact is not localized to this area and extends hundreds of kilometers further downstream of the sea ice edge. Maximum correlations in the GRL region, the largest trends and correlations are found in the region containing sea ice in only some of the years. Up also coincide with the maximum trends close to the ice edge. Here, up to 50 % of observed temperature and humidity variability can be explained by local the observed variability for temperature and 25 % for humidity are related to sea ice changes for. Over and downwind of the Odden region explained variances during off-ice flow, which is about 10 exceed those for on-ice flow by up to 20 % larger than for other wind directions. A secondary local maximum can also be found in the region south of the Odden ice tongue. Another study by Wang et al. (2019) also correlated atmospheric temperatures with sea ice conditions in all seasons and found a value of -0.46 for the whole Greenland sea region, which is slightly smaller than our maximum values of about  $r = -0.7$ . Since they averaged over a much larger region and did not consider different wind directions separately, they were not able to study more local effects and specifically the impact of upstream sea ice conditions during.

510 Unlike for trend maps - where results differed for temperature and humidity - the differences between correlation for off- and on-ice flow look very similar for both variables. In the WNB region we found two areas of distinct differences. North-west of Svalbard - over the sea ice covered region - correlations are up to 0.3 larger for off-ice flow. The situation is reversed at the northern end of the Whaler's Bay polynya, where correlations for on-ice flow exceed those for off-ice flow by 0.2. These results are related to two different mechanisms. Large negative correlations for off-ice flow are caused by the increased heat

and moisture exchange during CAOs when the sea ice cover decreases. On-ice flow - consisting of warm and moist air during warm-air intrusions - pushes the sea ice further northward and thus increases the open water area, which also leads to negative correlations. In the GRL region we found more areas in which the first mechanism dominates. Correlations for off-ice flow exceed those for on-ice flow by up to 0.3 especially in the region south-east of the Odden ice tongue.

Our ~~analyzes~~ analyses show that the impact of a decreasing sea ice cover in the Fram Strait region is largest in the marginal sea ice zone for off-ice flow during cold air outbreaks. ~~By comparing our results for off-ice flow to those using all wind directions, we were able to identify regions for which increasing temperatures and humidity can be clearly attributed to upstream sea ice conditions~~ Further north, we also see a relationship between warm-air intrusions and decreasing sea ice cover. The occurrence of maximum trends for off-ice flow at the sea ice margin, where sea ice changes a lot, is a clear hint to the important role of declining sea ice cover for the observed atmospheric trends.

A plausible explanation for the observed atmospheric changes is the increased atmospheric convection and related boundary-layer warming when the cold and dry air originating from the Central Arctic flows over extended areas of open ocean. ~~Such events have been documented,~~ (e.g. ~~for the Whaler's Bay polynya region by Tetzlaff et al. (2014).~~ Tetz14).

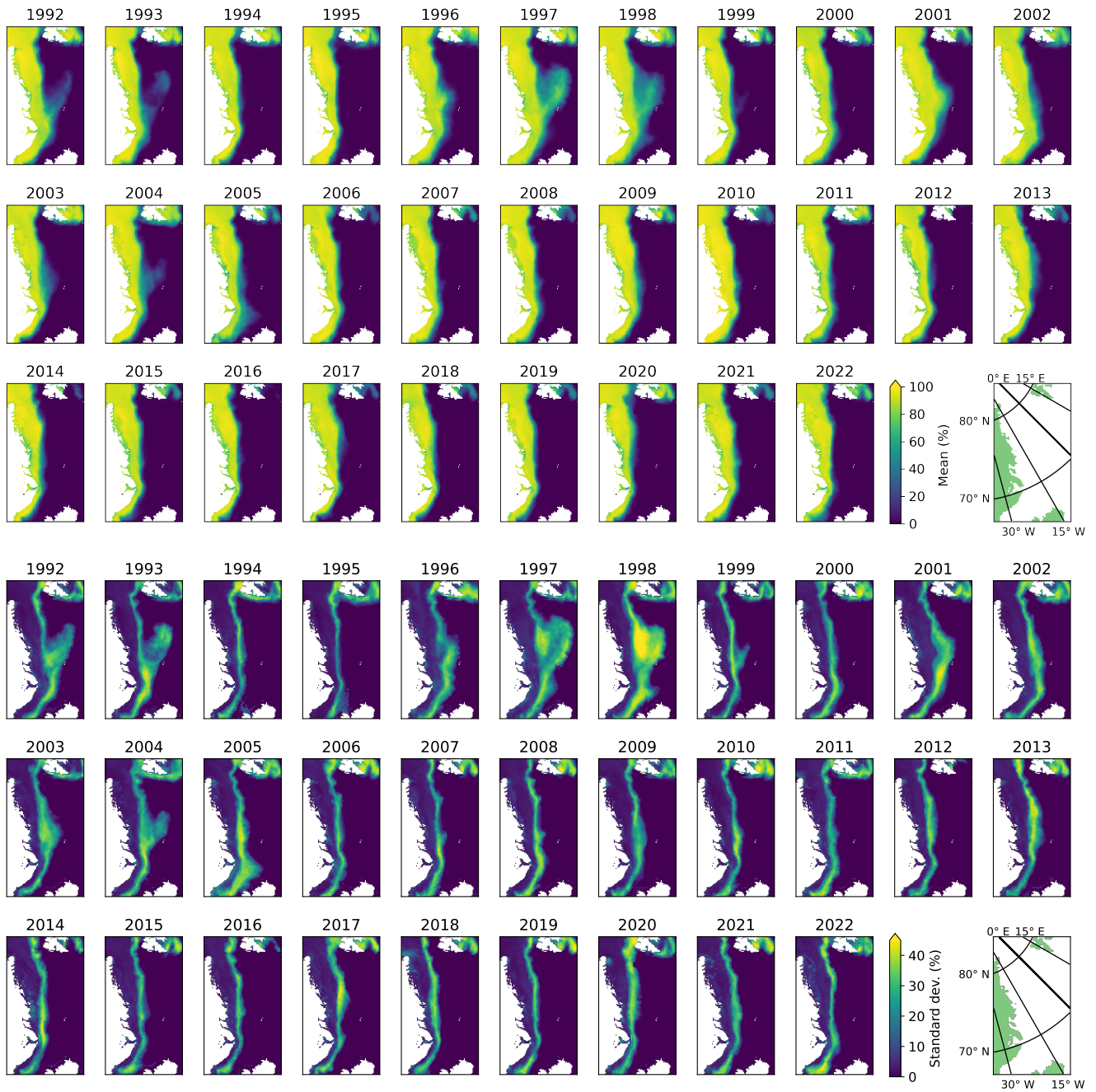
Even though our results suggest the important role of sea ice conditions for atmospheric warming and moistening, with our present analysis we cannot exclude further possible explanations for the observed atmospheric trends. For example, ~~eases when warm air is advected first to the north and flowing back to the south afterwards might impact on our correlations.~~ ~~Also, long-term changes in large-scale synoptic conditions and circulation patterns could influence atmospheric conditions and~~ changing ocean currents might also increase sea surface temperatures in regions of a retreating sea ice margin. The investigation of such impact factors can be the topic of future extended work.

Our analyses revealed an ongoing decrease of sea ice extent in the wider Fram Strait region and a concurrent increase of near-surface atmospheric temperature and humidity in winter. Studying related changes to the structure of the atmospheric boundary layer and to cloud processes in this region is an emerging topic, which will be partly addressed using data from the HALO-(AC)<sup>3</sup> campaign ~~(?)~~ (Wendisch et al., 2021) that took place in spring 2022 in this region. We also suggest conducting modeling studies in future research to strengthen the conclusions found in this paper.

## Appendix A: Odden ice tongue

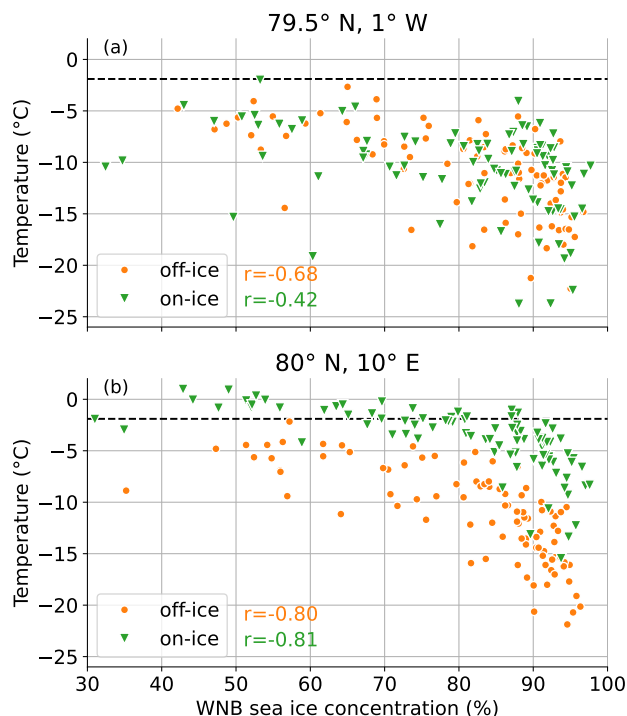
The Odden ice tongue is a local phenomenon in the Greenland ~~sea~~ Sea region where sea ice episodically covers a large area north of Jan Mayen island. It occurred most frequently before 1990 (Wadhams and Wilkinson, 1999; Comiso et al., 2001) but could still be observed in some of the years in our study period from 1992 to 2022. Figure A1 shows the mean and standard deviation of daily sea ice concentration data from SSM/I-ASI from January to March, which allows for a good visual detection of the extent of the Odden ice tongue.

## Appendix B: Correlation scatter plots for off- and on-ice flow



**Figure A1.** Standard-Mean (top) and standard deviation (bottom) of daily SSM/I-ASI sea ice concentrations from January to March of each year in the Greenland sea-Sea and Fram Strait regions.

550 We demonstrated in Sect. 3.3 that during off-ice flow atmospheric temperatures northwest of Svalbard are negatively correlated to the upstream sea ice cover in the WNB ICE box (see Fig. 12). Here, we also present the corresponding scatter plots for on-ice flow condition. It is evident from Fig. B1 that it highly depends on the specific region whether correlations for off- and on-ice flow differ from each other. For a point located at the north-west corner of Svalbard (Fig. B1b) correlation coefficients are almost identical, while off-ice correlations are larger than those for on-ice flow in a region slightly further toward the west (Fig. B1a). More details about these pattern can also be seen in Fig. 13e.

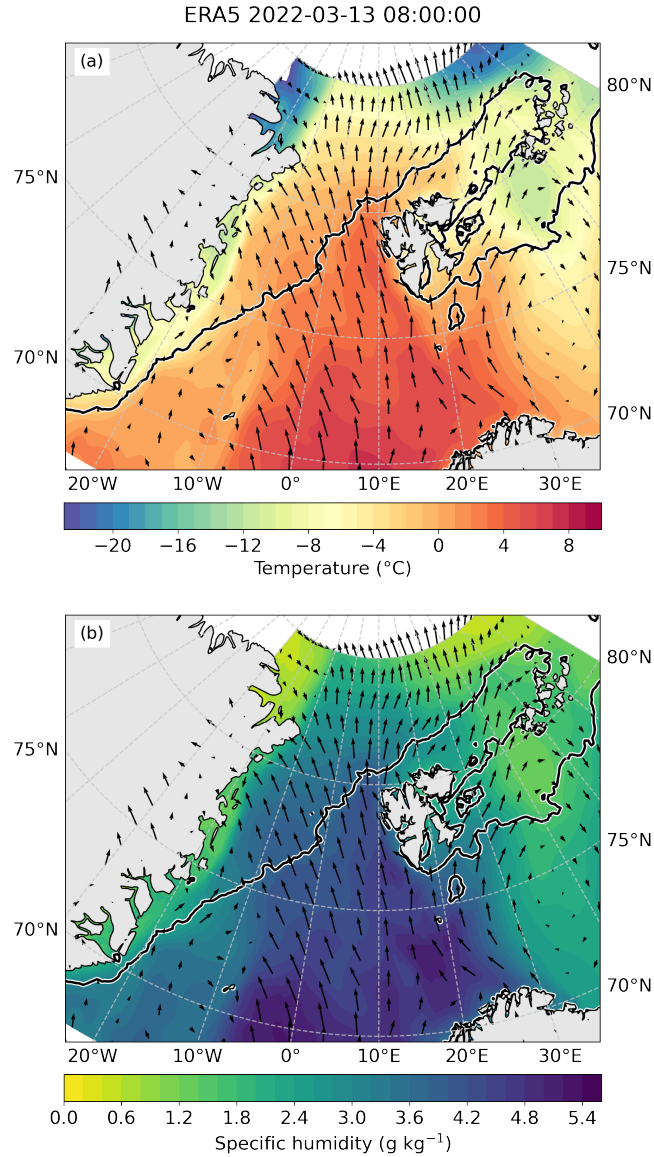


**Figure B1.** ERA5 air temperature averaged monthly for periods with off-ice (orange) and on-ice (green) flow as function of average sea ice concentrations in the WNB ICE box. Numbers are Spearman rank correlations. Results are shown for a point located in the area where correlation differences in Fig. 13e,f are largest (a) and for the more northern point indicated in Fig. 13a (b). Note that the orange dots in (b) are the same as the red dots in Fig. 12b. The dashed line indicates the freezing temperature of sea water.

### Appendix C: Synoptic conditions in 2022

555 2022 was a year with two periods with very low sea ice concentration in the Whaler's Bay polynya - one at the end of January and one in the middle of March (see Fig. 11). During the event in March 2022 the HALO-(AC)<sup>3</sup> aircraft campaign took place in the Fram Strait region. A paper describing the synoptic conditions during this period is currently under review (Walbröl et al., 2023). It identifies two distinct periods of warm-air intrusions on 12./13. March and 15./16. March causing

560 advection of warm and moist air as far north as the Central Arctic Ocean (close to the North Pole). This effect can also be seen from the maps of temperature, humidity and wind vectors from ERA5 for a day during this period presented in Fig. C1. Southerly winds push the sea ice northward and thus are one of the factors causing a large open water area north of Svalbard.



**Figure C1.** Contours of air temperature (a) and specific humidity (b) at about 10 m height from ERA5 reanalysis data on 13 March 2022. Arrows represent the corresponding wind vectors. The black line denotes the 80%-sea ice concentration contour from the same day.

*Code and data availability.* Kaleschke, L., F. Girard-Ardhuin, G. Spreen, A. Beitsch, and S. Kern, ASI Algorithm SSMI-SSMIS sea ice concentration data, originally computed at and provided by IFREMER, Brest, France, were obtained as 5-day median-filtered and gap-filled product for 1992–2021 from the Integrated Climate Data Center (ICDC, [icdc.cen.uni-hamburg.de](https://icdc.cen.uni-hamburg.de), University of Hamburg, Hamburg, Germany). MERRA-2 data were provided by the Goddard Earth Sciences Data and Information Services Center (<https://disc.gsfc.nasa.gov/>). ERA5 profile data on model levels were obtained from ECMWF’s MARS tape archive. The analysis scripts are available from the authors on request.

*Author contributions.* AS and CL developed the original idea. AS analyzed and plotted the data. AS and CL interpreted the results and wrote the manuscript.

570 *Competing interests.* We declare that no competing interests are present.

*Acknowledgements.* This work was partly funded by the Deutsche Forschungsgemeinschaft (DFG, German Research Foundation) under Germany’s Excellence Strategy – EXC 2037 ‘CLICCS - Climate, Climatic Change, and Society’ – Project Number: 390683824, contribution to the Center for Earth System Research and Sustainability (CEN) of Universität Hamburg. It was also funded by the Deutsche Forschungsgemeinschaft (DFG; German Research Foundation) Project 268020496 TRR 172, within the Transregional Collaborative Research Center Arctic Amplification ((AC)<sup>3</sup>). The results contain modified Copernicus Climate Change Service information (2014–2018). Neither the European Commission nor ECMWF is responsible for any use that may be made of the Copernicus information or data it contains.

## References

- Carmack, E., Polyakov, I., Padman, L., Fer, I., Hunke, E., Hutchings, J., Jackson, J., Kelley, D., Kwok, R., Layton, C., et al.: Toward quantifying the increasing role of oceanic heat in sea ice loss in the new Arctic, *Bulletin of the American Meteorological Society*, 96, 2079–2105, <https://doi.org/10.1175/BAMS-D-13-00177.1>, 2015.
- 580 Chechin, D. G., Makhotina, I. A., Lüpkes, C., and Makshtas, A. P.: Effect of wind speed and leads on clear-sky cooling over Arctic sea ice during polar night, *Journal of the Atmospheric Sciences*, 76, 2481–2503, 2019.
- Cohen, J., Screen, J. A., Furtado, J. C., Barlow, M., Whittleston, D., Coumou, D., Francis, J., Dethloff, K., Entekhabi, D., Overland, J., et al.: Recent Arctic amplification and extreme mid-latitude weather, *Nature geoscience*, 7, 627–637, 2014.
- 585 Comiso, J. C., Wadhams, P., Pedersen, L. T., and Gersten, R. A.: Seasonal and interannual variability of the Odden ice tongue and a study of environmental effects, *Journal of Geophysical Research: Oceans*, 106, 9093–9116, <https://doi.org/10.1029/2000JC000204>, 2001.
- Dahlke, S., Hughes, N. E., Wagner, P. M., Gerland, S., Wawrzyniak, T., Ivanov, B., and Maturilli, M.: The observed recent surface air temperature development across Svalbard and concurring footprints in local sea ice cover, *International Journal of Climatology*, 40, 5246–5265, <https://doi.org/https://doi.org/10.1002/joc.6517>, 2020.
- 590 Gelaro, R., McCarty, W., Suárez, M. J., Todling, R., Molod, A., Takacs, L., Randles, C. A., Darmenov, A., Bosilovich, M. G., Reichle, R., Wargan, K., Coy, L., Cullather, R., Draper, C., Akella, S., Buchard, V., Conaty, A., da Silva, A. M., Gu, W., Kim, G.-K., Koster, R., Lucchesi, R., Merkova, D., Nielsen, J. E., Partyka, G., Pawson, S., Putman, W., Rienecker, M., Schubert, S. D., Sienkiewicz, M., and Zhao, B.: The Modern-Era Retrospective Analysis for Research and Applications, Version 2 (MERRA-2), *Journal of Climate*, 30, 5419–5454, <https://doi.org/10.1175/JCLI-D-16-0758.1>, 2017.
- 595 Global Modeling and Assimilation Office (GMAO): MERRA-2, Greenbelt, MD, USA, Goddard Earth Sciences Data and Information Services Center (GES DISC), [https://doi.org/10.5067/VJAFPLIICSIV\\_tavg1\\_2d\\_slv\\_Nx](https://doi.org/10.5067/VJAFPLIICSIV_tavg1_2d_slv_Nx): 2d,1-Hourly,Time-Averaged,Single-Level,Assimilation,Single-Level–Diagnostics V5.12.4, Accessed: 28/04/2021, 2015.
- Graham, R. M., Cohen, L., Ritzhaupt, N., Segger, B., Graversen, R. G., Rinke, A., Walden, V. P., Granskog, M. A., and Hudson, S. R.: Evaluation of six atmospheric reanalyses over Arctic sea ice from winter to early summer, *Journal of Climate*, 32, 4121–4143, <https://doi.org/10.1175/JCLI-D-18-0643.1>, 2019.
- 600 Graversen, R. G., Mauritsen, T., Tjernström, M., Källén, E., and Svensson, G.: Vertical structure of recent Arctic warming, *Nature*, 451, 53–56, 2008.
- Hersbach, H., Bell, B., Berrisford, P., Hirahara, S., Horányi, A., Muñoz-Sabater, J., Nicolas, J., Peubey, C., Radu, R., Schepers, D., Simmons, A., Soci, C., Abdalla, S., Abellan, X., Balsamo, G., Bechtold, P., Biavati, G., Bidlot, J., Bonavita, M., De Chiara, G., Dahlgren, P., Dee, D., Diamantakis, M., Dragani, R., Flemming, J., Forbes, R., Fuentes, M., Geer, A., Haimberger, L., Healy, S., Hogan, R., Hólm, E., Janisková, M., Keeley, S., Laloyaux, P., Lopez, P., Lupu, C., Radnoti, G., de Rosnay, P., Rozum, I., Vamborg, F., Villaume, S., and Thépaut, J.-N.: Complete ERA5: Fifth generation of ECMWF atmospheric reanalyses of the global climate, Copernicus Climate Change Service (C3S) Data Store (CDS). (Accessed on 13-04-2021), 2017.
- 610 Hersbach, H., Bell, B., Berrisford, P., Hirahara, S., Horányi, A., Muñoz-Sabater, J., Nicolas, J., Peubey, C., Radu, R., Schepers, D., Simmons, A., Soci, C., Abdalla, S., Abellan, X., Balsamo, G., Bechtold, P., Biavati, G., Bidlot, J., Bonavita, M., De Chiara, G., Dahlgren, P., Dee, D., Diamantakis, M., Dragani, R., Flemming, J., Forbes, R., Fuentes, M., Geer, A., Haimberger, L., Healy, S., Hogan, R. J., Hólm, E., Janisková, M., Keeley, S., Laloyaux, P., Lopez, P., Lupu, C., Radnoti, G., de Rosnay, P., Rozum, I., Vamborg, F., Vil-



- laume, S., and Thépaut, J.-N.: The ERA5 global reanalysis, *Quarterly Journal of the Royal Meteorological Society*, 146, 1999–2049, <https://doi.org/10.1002/qj.3803>, 2020.
- 615 Isaksen, K., Nordli, Ø., Førland, E. J., Łupikasza, E., Eastwood, S., and Niedźwiedź, T.: Recent warming on Spitsbergen—Influence of atmospheric circulation and sea ice cover, *Journal of Geophysical Research: Atmospheres*, 121, 11,913–11,931, <https://doi.org/https://doi.org/10.1002/2016JD025606>, 2016.
- Ivanov, V. V., Alexeev, V. A., Repina, I., Koldunov, N. V., and Smirnov, A.: Tracing Atlantic Water signature in the Arctic sea ice cover east of Svalbard, *Advances in Meteorology*, 2012, <https://doi.org/10.1155/2012/201818>, 2012.
- 620 Johannessen, O. M., Kuzmina, S. I., Bobylev, L. P., and Miles, M. W.: Surface air temperature variability and trends in the Arctic: new amplification assessment and regionalisation, *Tellus A: Dynamic Meteorology and Oceanography*, 68, 28 234, <https://doi.org/10.3402/tellusa.v68.28234>, 2016.
- Kaleschke, L., Lüpkes, C., Vihma, T., Haarpaintner, J., Bochert, A., Hartmann, J., and Heygster, G.: SSM/I Sea Ice Remote Sensing for Mesoscale Ocean-Atmosphere Interaction Analysis, *Canadian Journal of Remote Sensing*, 27, 526–537, <https://doi.org/10.1080/07038992.2001.10854892>, 2001.
- 625 Kern, S., Kaleschke, L., and Spreen, G.: Climatology of the Nordic (Irminger, Greenland, Barents, Kara and White/Pechora) Seas ice cover based on 85 GHz satellite microwave radiometry: 1992–2008, *Tellus A: Dynamic Meteorology and Oceanography*, 62, 411–434, <https://doi.org/10.1111/j.1600-0870.2009.00457.x>, 2010.
- Knudsen, E. M., Heinold, B., Dahlke, S., Bozem, H., Crewell, S., Gorodetskaya, I. V., Heygster, G., Kunkel, D., Maturilli, M., Mech, M., et al.: Meteorological conditions during the ACLOUD/PASCAL field campaign near Svalbard in early summer 2017, *Atmospheric Chemistry and Physics*, 18, 17 995–18 022, <https://doi.org/10.5194/acp-18-17995-2018>, 2018.
- 630 Kolstad, E. W.: Higher ocean wind speeds during marine cold air outbreaks, *Quarterly Journal of the Royal Meteorological Society*, 143, 2084–2092, <https://doi.org/10.1002/qj.3068>, 2017.
- Lundesgaard, Ø., Sundfjord, A., and Renner, A. H. H.: Drivers of Interannual Sea Ice Concentration Variability in the Atlantic Water Inflow Region North of Svalbard, *Journal of Geophysical Research: Oceans*, 126, e2020JC016 522, <https://doi.org/https://doi.org/10.1029/2020JC016522>, e2020JC016522 2020JC016522, 2021.
- 635 Lüpkes, C., Vihma, T., Birnbaum, G., and Wacker, U.: Influence of leads in sea ice on the temperature of the atmospheric boundary layer during polar night, *Geophysical Research Letters*, 35, <https://doi.org/https://doi.org/10.1029/2007GL032461>, 2008.
- Michaelis, J., Lüpkes, C., Schmitt, A. U., and Hartmann, J.: Modelling and parametrization of the convective flow over leads in sea ice and comparison with airborne observations, *Quarterly Journal of the Royal Meteorological Society*, 147, 914–943, <https://doi.org/https://doi.org/10.1002/qj.3953>, 2021.
- 640 Moore, G. W. K., Våge, K., Pickart, R. S., and Renfrew, I. A.: Decreasing intensity of open-ocean convection in the Greenland and Iceland seas, *Nature Climate Change*, 5, 877–882, <https://doi.org/10.1038/nclimate2688>, 2015.
- Nilsen, F., Ersdal, E. A., and Skogseth, R.: Wind-Driven Variability in the Spitsbergen Polar Current and the Svalbard Branch Across the Yermak Plateau, *Journal of Geophysical Research: Oceans*, 126, e2020JC016 734, <https://doi.org/10.1029/2020JC016734>, 2021.
- 645 Onarheim, I. H., Smedsrud, L. H., Ingvaldsen, R. B., and Nilsen, F.: Loss of sea ice during winter north of Svalbard, *Tellus A: Dynamic Meteorology and Oceanography*, 66, 23 933, <https://doi.org/10.3402/tellusa.v66.23933>, 2014.
- Onarheim, I. H., Eldevik, T., Smedsrud, L. H., and Stroeve, J. C.: Seasonal and Regional Manifestation of Arctic Sea Ice Loss, *Journal of Climate*, 31, 4917 – 4932, <https://doi.org/10.1175/JCLI-D-17-0427.1>, 2018.

- 650 Peterson, A. K., Fer, I., McPhee, M. G., and Randelhoff, A.: Turbulent heat and momentum fluxes in the upper ocean under Arctic sea ice, *Journal of Geophysical Research: Oceans*, 122, 1439–1456, <https://doi.org/10.1002/2016JC012283>, 2017.
- Schneider, T., Lüpkes, C., Dorn, W., Chechin, D., Handorf, D., Khosravi, S., Gryanik, V. M., Makhotina, I., and Rinke, A.: Sensitivity to changes in the surface-layer turbulence parameterization for stable conditions in winter: A case study with a regional climate model over the Arctic, *Atmospheric Science Letters*, p. e1066, <https://doi.org/https://doi.org/10.1002/asl.1066>, 2021.
- 655 Selyuzhenok, V., Bashmachnikov, I., Ricker, R., Vesman, A., and Bobylev, L.: Sea ice volume variability and water temperature in the Greenland Sea, *The Cryosphere*, 14, 477–495, <https://doi.org/10.5194/tc-14-477-2020>, 2020.
- Shu, Q., Wang, Q., Song, Z., Qiao, F., Zhao, J., Chu, M., and Li, X.: Assessment of Sea Ice Extent in CMIP6 With Comparison to Observations and CMIP5, *Geophysical Research Letters*, 47, e2020GL087965, <https://doi.org/https://doi.org/10.1029/2020GL087965>, 2020.
- Spreen, G., Kaleschke, L., and Heygster, G.: Sea ice remote sensing using AMSR-E 89-GHz channels, *Journal of Geophysical Research: Oceans*, 113, <https://doi.org/https://doi.org/10.1029/2005JC003384>, 2008.
- 660 Stapf, J., Ehrlich, A., Jäkel, E., Lüpkes, C., and Wendisch, M.: Reassessment of shortwave surface cloud radiative forcing in the Arctic: consideration of surface-albedo–cloud interactions, *Atmospheric Chemistry and Physics*, 20, 9895–9914, <https://doi.org/10.5194/acp-20-9895-2020>, 2020.
- Steiger, J. H.: Tests for comparing elements of a correlation matrix, *Psychological Bulletin*, 87, 245–251, <https://doi.org/10.1037/0033-2909.87.2.245>, 1980.
- 665 Stroeve, J. and Notz, D.: Changing state of Arctic sea ice across all seasons, *Environmental Research Letters*, 13, 103001, <https://doi.org/10.1088/1748-9326/aade56>, 2018.
- Stroeve, J., Hamilton, L. C., Bitz, C. M., and Blanchard-Wrigglesworth, E.: Predicting September sea ice: Ensemble skill of the SEARCH sea ice outlook 2008–2013, *Geophysical Research Letters*, 41, 2411–2418, 2014.
- 670 Stroeve, J. C., Kattsov, V., Barrett, A., Serreze, M., Pavlova, T., Holland, M., and Meier, W. N.: Trends in Arctic sea ice extent from CMIP5, CMIP3 and observations, *Geophysical Research Letters*, 39, 2012.
- Sumata, H., de Steur, L., Divine, D. V., Granskog, M. A., and Gerland, S.: Regime shift in Arctic Ocean sea ice thickness, *Nature*, 615, 443–449, <https://doi.org/10.1038/s41586-022-05686-x>, 2023.
- Tetzlaff, A., Lüpkes, C., Birnbaum, G., Hartmann, J., Nygård, T., and Vihma, T.: Brief Communication: Trends in sea ice extent north of Svalbard and its impact on cold air outbreaks as observed in spring 2013, *The Cryosphere*, 8, 1757–1762, <https://doi.org/10.5194/tc-8-1757-2014>, 2014.
- 675 Tetzlaff, A., Lüpkes, C., and Hartmann, J.: Aircraft-based observations of atmospheric boundary-layer modification over Arctic leads, *Quarterly Journal of the Royal Meteorological Society*, 141, 2839–2856, <https://doi.org/https://doi.org/10.1002/qj.2568>, 2015.
- Wadhams, P. and Wilkinson, J.: The physical properties of sea ice in the Odden ice tongue, *Deep Sea Research Part II: Topical Studies in Oceanography*, 46, 1275–1300, [https://doi.org/https://doi.org/10.1016/S0967-0645\(99\)00023-5](https://doi.org/https://doi.org/10.1016/S0967-0645(99)00023-5), 1999.
- 680 Walbröl, A., Michaelis, J., Becker, S., Dorff, H., Gorodetskaya, I., Kirbus, B., Lauer, M., Maherndl, N., Maturilli, M., Mayer, J., Müller, H., Neggens, R. A. J., Paulus, F. M., Röttenbacher, J., Rückert, J. E., Schirmacher, I., Slättberg, N., Ehrlich, A., Wendisch, M., and Crewell, S.: Environmental conditions in the North Atlantic sector of the Arctic during the HALO–(AC)<sup>3</sup> campaign, *EGU sphere* [preprint], 2023, 1–48, <https://doi.org/10.5194/egusphere-2023-668>, 2023.
- 685 Wang, Y., Bi, H., Huang, H., Liu, Y., Liu, Y., Liang, X., Fu, M., and Zhang, Z.: Satellite-observed trends in the Arctic sea ice concentration for the period 1979–2016, *Journal of Oceanology and Limnology*, 37, 18–37, <https://doi.org/10.1007/s00343-019-7284-0>, 2019.

- Wendisch, M., Handorf, D., Tegen, I., Neggers, R., and Spreen, G.: Glimpsing the ins and outs of the Arctic atmospheric cauldron, *Eos*, 102, <https://doi.org/10.1029/2021EO155959>, 2021.
- Wickström, S., Jonassen, M., Vihma, T., and Uotila, P.: Trends in cyclones in the high-latitude North Atlantic during 1979–2016, *Quarterly Journal of the Royal Meteorological Society*, 146, 762–779, <https://doi.org/10.1002/qj.3707>, 2020.
- 690 Yeo, H., Kim, M.-H., Son, S.-W., Jeong, J.-H., Yoon, J.-H., Kim, B.-M., and Kim, S.-W.: Arctic cloud properties and associated radiative effects in the three newer reanalysis datasets (ERA5, MERRA-2, JRA-55): Discrepancies and possible causes, *Atmospheric Research*, 270, 106080, <https://doi.org/10.1016/j.atmosres.2022.106080>, 2022.