

Brief communication: The ~~Impact~~ impact of ~~Interannual Melt~~ surface melt rate and catchment characteristics on Greenland Ice Sheet ~~Moulin Inputs~~ moulin inputs

Tim Hill^{1,*} and Christine F. Dow^{1,2}

¹Department of Applied Mathematics, University of Waterloo, Waterloo, Canada

²Department of Geography and Environmental Management, University of Waterloo, Waterloo, Canada

*Current address: Department of Earth Sciences, Simon Fraser University, Burnaby, Canada

Correspondence: Tim Hill (tim_hill_2@sfu.ca)

Abstract. The supraglacial drainage system of the Greenland Ice Sheet, in combination with surface melt rate, controls the rate of water flow into moulins, ~~driving a major driver of~~ subglacial water pressure. We apply SaDS, a physically-based surface meltwater flow model, to a $\sim 20 \times 27 \text{ km}^2$ catchment on the southwestern Greenland Ice Sheet ~~in high and low melt years~~ for four years of melt forcing (2011, 2012, 2015, and 2016) to examine the ~~impact of relationship between~~ surface melt rate and ~~variability on moulin inputs~~. ~~The model outputs predict important differences in moulin inputs between high and low melt years. These dynamic model outputs will be important in driving future process-scale subglacial hydrology models~~ the rate, diurnal amplitude, and timing of surface inputs to moulins, to compare SaDS to contemporary models, and to present a framework for selecting appropriate supraglacial drainage models for different modelling objectives. We find that the extent to which surface melt rate controls moulin inputs is proportional to annually integrated surface melt volume, and that variations in the rate and timing of modelled moulin inputs related to the development of supraglacial channels are relatively more important in years with low melt volumes than years with high melt volumes. We suggest that a process-resolving supraglacial hydrology model (e.g., SaDS) should be considered when modelling outcomes are sensitive to sub-diurnal and long-term seasonal changes in the rate of discharge into moulins.

1 Introduction

The supraglacial drainage system acts as a mediator in the relationship between surface melt and subglacial water pressure (e.g., Bartholomew and others, 2012; Sole and others, 2013; Andrews and others, 2014) since meltwater generated at the surface must first flow through supraglacial catchments before being transported through the depth of the ice via moulins and crevasses. Since supraglacial drainage in part controls the form of inputs to moulins, it has the potential to significantly affect the relationship between surface melt and ice velocity (e.g. Banwell and others, 2016).

Water flow through the supraglacial drainage system is understood to occur through both distributed, or hillslope/interfluvial, drainage (e.g. Pitcher and Smith, 2019), and through discrete supraglacial channels. The density of supraglacial channels (which we refer to as “drainage density”) is a key control on the amplitude and timing of moulin inputs, since transport through

channels is more efficient than through distributed drainage (Yang and others, 2018; Pitcher and Smith, 2019; Yang and others, 2022). The evolution of drainage density is controlled by processes including downward incision of supraglacial streams by frictional potential energy dissipation and shortwave radiation penetration (Pitcher and Smith, 2019), aspect-dependent erosion of exposed channel walls (St Germain and Moorman, 2019), and ablation of the ice surface according to the local energy balance *St Germain and Moorman*. Supraglacial drainage is made more complex by supraglacial lakes, which form in topographic depressions and may drain by slow overtopping once the lake level reaches the minimum outlet elevation (e.g., Chudley and others, 2019), rapid incision of outlet channels (e.g., Kingslake and others, 2015), or rapidly through hydrofracture at the lake bed e.g., *Das and others* [2008].

Supraglacial drainage characteristically acts to reduce the diurnal amplitude and delay the timing of moulin inputs relative to the diurnal cycle of surface melt (e.g., Smith and others, 2017; Muthyala and others, 2022). This behaviour has previously been captured by supraglacial water flow models based on explicit flow routing and cascading supraglacial lake filling (Banwell and others, 2012; Koziol and Arnold, 2018), the transient filling of supraglacial lakes (Leeson and others, 2012), and flow through predefined channel networks (Yang and others, 2018; Gleason and others, 2021; Yang and others, 2022).

Each of these models makes a tradeoff between process representation and computational cost. Here, we apply the physics-based Subaerial Drainage System (SaDS) model, which aims to include a wide variety of processes (at the expense of computational efficiency), including the seasonal evolution of drainage density (Hill and Dow, 2021). The process-based formulation results in dynamic moulin inputs that are driven by changes in surface melt rate and previous melt conditions through the configuration of incised supraglacial channels.

We use SaDS to investigate the behaviour of modelled supraglacial drainage in southwest Greenland in order to: (1) explore the impacts of seasonally and annually varying melt volumes on moulin input rates, (2) compare SaDS to a suite of contemporary models, and (3) provide suggestions about how to select appropriate supraglacial drainage models for different modelling objectives.

2 Data and Methods

2.1 Study Site

We model meltwater flow across a $\sim 20 \times 27 \text{ km}^2$ portion of the southwestern Greenland Ice Sheet, centered on ~~67°7'11"N, 48°57'37"W~~ 67.639°N, 48.960°W (Fig. 1). The site contains ~~several supraglacial catchments that drain through seven moulins. Elevations range~~ seven internally drained supraglacial catchments varying in surface area from $<1 \text{ km}^2$ to $>100 \text{ km}^2$ (Table 1). The surface elevation of the modelled domain ranges from approximately 1150 m to 1450 m, and the ~~study site area~~ falls entirely within the bare-ice ablation zone. This ~~region area~~ has been the site of previous supraglacial hydrology mapping (Yang and Smith, 2016) and modelling (Hill and Dow, 2021), which have shown that an extensive system of meltwater channels and lakes forms each summer. The four largest lakes in ~~our the~~ domain are labelled L1 (~~elevation to L4, and range in elevation from~~ 1215 m, ~~modelled surface area~~ $1.39 \times 10^6 \text{ m}^2$), L2 (~~elevation 1218 m, to 1387 m and in maximum~~ modelled surface area $4.50 \times 10^5 \text{ m}^2$), L3 (~~elevation 1276 m, modelled surface area~~ $1.04 \times 10^6 \text{ m}^2$), and L4 (~~elevation 1387 m, modelled surface area~~

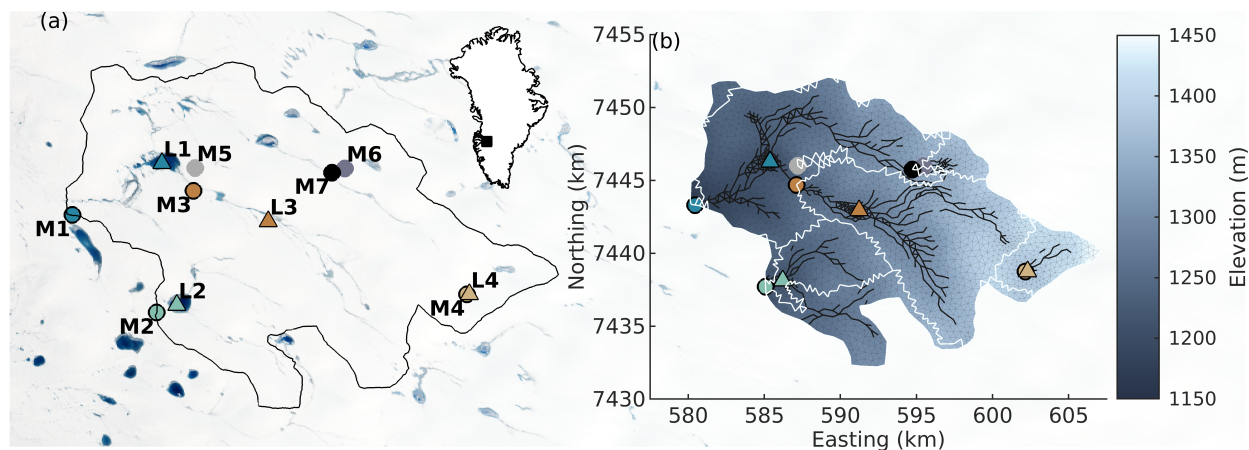


Figure 1. (a) Study domain with moulin locations (circles) previously mapped from a Landsat 8 image (Yang and Smith, 2016) and the four largest supraglacial lakes (triangles; L1–L4). Moulins indicated with a black outline (M1–M4) drain one of the four large-modelled labelled supraglacial lakes. Background image is a Landsat 8 scene from 8 July 2021. Inset shows location of study site within the Greenland Ice Sheet. (b) Model domain with surface elevation derived from 32 m-resolution ArcticDEM mosaic data (Porter and others, 2018) and modelled supraglacial channel network (black line segments), computational mesh (thin black triangles), and supraglacial sub-catchments for each moulin (white lines). Moulins (circles) and lakes (triangles) are as in (a). Coordinates are in UTM 22N projection.

Table 1. Catchment characteristics and catchment-averaged melt rates for the seven sub-catchments identified in Fig. 1). For catchments 1–4 that contain labelled supraglacial lakes, lake area and lake elevation are computed from modelled water depth fields. Catchments 5–7 do not contain labelled supraglacial lakes.

Catchment	Lake Area (km ²)	Lake Elevation (m asl)	Catchment Area (km ²)	Mean elevation (m asl)	Mean melt (m w.e.)			
					2011	2012	2015	2016
1	1.39	1215	102.1	1258	2.39	2.71	1.28	2.44
2	0.45	1218	27.8	1264	2.40	2.73	1.24	2.49
3	1.04	1276	94.4	1335	2.05	2.41	1.00	2.06
4	0.49	1387	18.8	1408	1.66	2.02	0.82	1.57
5	N/A	N/A	1.70	1278	2.34	2.67	1.22	2.41
6	N/A	N/A	7.73	1366	1.95	2.35	0.92	1.96
7	N/A	N/A	0.73	1345	2.08	2.46	0.99	2.11

$4.86 \times 10^5 \text{ m}^2$ from 0.45 km^2 to 1.39 km^2 (Table 1). These lakes are small to average size for this portion of western Greenland, e.g. Johansson and others (2013) report median lake sizes between 1.41 to 2.12 km^2 for west Greenland.

2.2 Model

We model water flow across the domain and meltwater inputs to moulins using the Subaerial Drainage System (SaDS) model (Hill and Dow, 2021). SaDS is a physics-based model that combines distributed hillslope flow with channelized flow in discrete supraglacial streams. Since the flow velocity is dictated by the hydraulic potential of the water surface, lakes naturally form in topographic depressions (e.g., Leeson and others, 2012). The model explicitly computes changes to supraglacial stream cross-section area and channel network capacity based on the balance between stream incision by frictional melt along the wetted perimeter and ablation of the adjacent ice surface in order to capture seasonal changes in moulin inputs. Flow is exchanged between the distributed and channelized drainage systems through an explicit mass exchange term that is proportional to the hydraulic potential difference between the two systems. The model is posed on an unstructured triangular mesh, with hillslope flow across elements, channelized flow on edges, and moulins on nodes. The primary model outputs are the rate of supraglacial discharge into moulins, the water depth in supraglacial channels and in the distributed system, and the incised cross-sectional area of supraglacial channels. For more details about the model, refer to Appendix A and Hill and Dow (2021). To apply SaDS to our domain, we use a mesh with 1984 nodes, 3768 elements, 5751 edges, a maximum element area of $1.5 \times 10^5 \text{ m}^2$ 0.15 km², and a minimum area of $1.47 \times 10^4 \text{ m}^2$ 0.015 km² (Fig. 1).

2.3 Data

Surface elevations of each element in our triangular numerical mesh are computed from ArcticDEM 32 m-resolution mosaic data (Porter and others, 2018). We first smooth the ArcticDEM with a moving average filter with an edge length of 1.44 km, and then average the pixels that lie within each triangular element to define the centroid elevation.

Moulin locations are adjusted from the Landsat-derived map of Yang and Smith (2016) to correct for ~~off-by-one errors when interpolating onto our triangular mesh and for changes in supraglacial water flow paths arising from differences in acquisition time between data used to produce ArcticDEM and the data~~ potential discrepancy in in-situ flow routing between the acquisition time of the Landsat scene used to map moulins. ~~Yang and Smith (2016) used a Landsat scene from hydrology features (19 August 2013 to visually map moulins and supraglacial streams, whereas our DEM represents a combination of data from 2011–2017 (Porter and others, 2018). Since it's possible that supraglacial water flow paths that were present during the acquisition window of ArcticDEM differ from those mapped by Yang and Smith (2016), we have moved moulins by up to 1.29 km (approximately 3× the median edge length in the triangular mesh) to align with flow paths predicted by ArcticDEM;~~ Yang and Smith, 2016) and the acquisition time of ArcticDEM (2011–2017; Porter et al., 2018). Some evidence of this type of discrepancy is provided by our sub-catchment boundaries in Fig. 1b that don't all extend to the domain boundary, which instead follows the catchment boundaries from Yang and Smith (2016).

Surface melt is computed for our domain from RACMO2.3p2 surface melt data at 5.5 km horizontal resolution and 3 hour temporal resolution (Noël and others, 2019). Melt rates from RACMO tiles are ~~linearly interpolated in space and interpolated in time to our time and linearly interpolated in space to the~~ triangular mesh and to run the model with a timestep of 20 s. Based on tests applying RACMO melt with linear and piecewise cubic modified Akima interpolation (Akima, 1970) (implemented

with the MATLAB option 'makima'), the discrepancy in the timing of peak moulin inputs is <0.5 hours and the discrepancy in the magnitude of peak moulin inputs is ~1% between linear and Akima interpolation (Fig. B1). Therefore, since the model outputs are only weakly sensitive to the interpolation scheme, and since we don't have information on how melt rate varies on timescales shorter than the RACMO timestep (3 hours), we use the simplest numerically feasible option and linearly interpolate melt rates in time. We model the years 2011, 2012, 2015, and 2016 so that we can compare moulin inputs for a range to explore how the duration, intensity, and variability of surface melt forcings (Table S1) to investigate the complete range of model behaviours impact the supraglacial drainage system.

2.4 Model initialization

In all years, SaDS is initialized with zero water depth across the supraglacial drainage system and with a bare-ice surface. This initialization neglects the confounding impacts of impact of early season snow cover and rapid snowmelt runoff in the early season who?. However, an appropriately detailed runoff model accounting for snow and firn (Meyer and Hewitt, 2017; interannual water storage in supraglacial lakes (Law and others, 2020) on moulin inputs. While seasonal snow cover persists, surface meltwater should be retained within the snowpack, with lateral transport occurring within saturated layers within the snowpack (e.g., Colbeck, 1974), therefore delaying early season moulin inputs. A physics-based snowpack and firn model (e.g.) is not computationally feasible to add to SaDS in its current configuration. The initialization potentially also neglects interannual water storage in supraglacial lakes who?. Meyer and Hewitt, 2017) is an attractive candidate to combine with SaDS. Such a model would allow SaDS to be applied across a larger elevation range and more robustly in the early melt season. However, since this type of snow model would further increase the computational cost and significantly complicate the input data requirements of SaDS, this coupling is not pursued here.

The depth and location of supraglacial channels is spun up using a melt year with nearly the melt year in our series with average total surface melt (2013) to naturally form an initial channel network. This channel configuration is used as the initial condition for channel depth for 2011 and 2015. The channel depth from the end of 2011 and 2015 are used as initial conditions for 2012 and 2016, respectively. We expect that incorporating memory of past melt seasons in this way is key to capturing important interannual changes in moulin inputs (Hill and Dow, 2021).

3 Results

Peak discharge happens for Moulin ??, 70.3 m³/s, at 20:00 11 July From model outputs for 2011, 2012, driven by domain-averaged melt rates of 7.3 cm/day on 10 July (note 1 day lag) Rapid fluctuations in melt: local minimum of 8.6 m³s⁻¹ at 082015, and 2016, we extract the rate of surface inputs to moulins (Fig. 2), the relative diurnal amplitude of inputs to moulins (measured as the peak-to-peak range in moulin inputs, normalized by the average moulin input) (Fig. 3), the lag time between local solar noon (~15:00 local time on 23 July 22) and peak moulin inputs (Fig. 4), and the water depth in the four largest supraglacial lakes (Fig. 5).

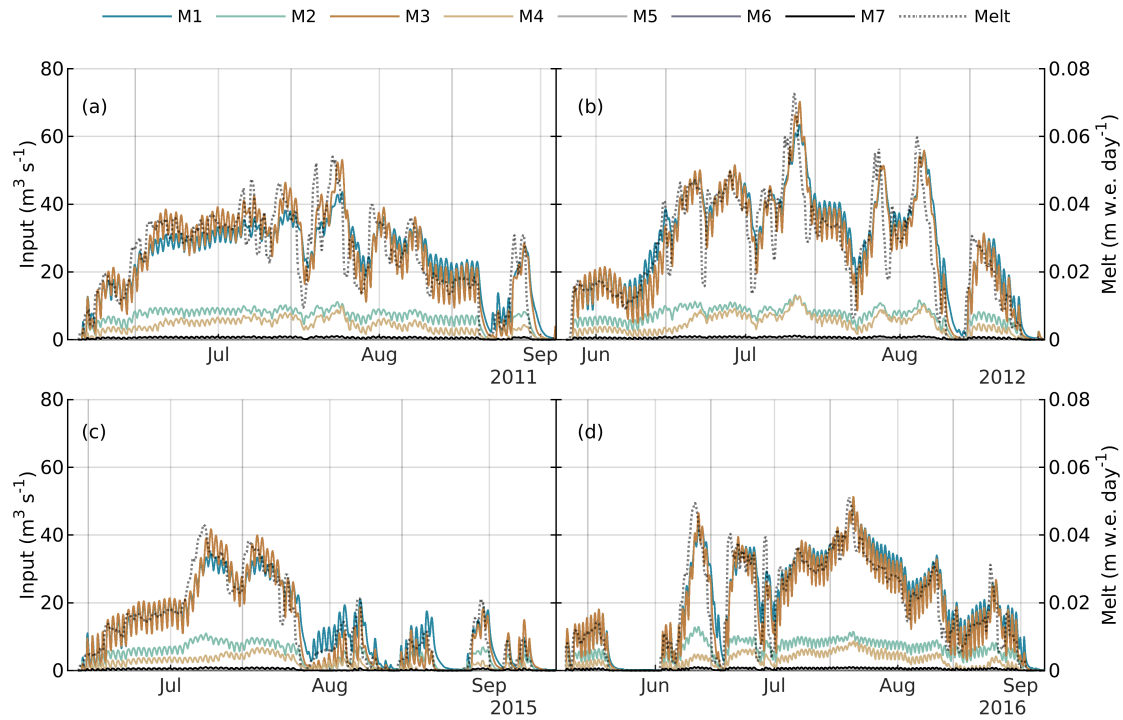


Figure 2. Surface inputs to moulins M1–M7 and domain-averaged 24-hour rolling mean RACMO2.3p2 surface melt rate (right axis, dotted grey curve) for (a) 2011, (b) 2012, (c) 2015, and (d) 2016.

For all seven catchments, moulin inputs generally track surface melt rate (Fig. 2), but with diminished diurnal amplitude (Fig. 3) and a phase lag of ~ 2 to ~ 8 hours (Fig. 4e, f). In all four years, the rate of surface inputs to moulins is closely tied to surface melt rate (Fig. 2), with a range of 0 to $\sim 70 \text{ m}^3 \text{ s}^{-1}$ depending on catchment size and surface melt rate (Table 1).

125 The relative diurnal amplitude of moulin inputs varies between $\sim 15\%$ and $>90\%$. The diurnal amplitude shows some sensitivity to surface melt rate (Fig. 3). For example, the relative diurnal amplitude for the highest melt year (e.g., 10–30% for M1–M4 in mid-July 2012 with surface melt rate $>0.07 \text{ m w.e. day}^{-1}$) is typically less than for the lowest melt year (e.g., $>30\text{--}60\%$ for M1–M4 in July 2015 with surface melt $<0.06 \text{ m w.e. day}^{-1}$).

130 Peak moulin input rates lag behind solar noon by ~ 2.5 to 7.5 hours. The time lag does not show clear trends with volume of surface melt rate, since a similar magnitude and range of lag time is observed in all years (Fig. 4). However, the lag time appears sensitive to rate of change of surface melt rate, with the highest lag times observed during transient peak melt events, especially with melt greater than $0.04 \text{ m w.e. day}^{-1}$ (e.g., July 2011, and a maximum of $51.1 \text{ m}^3 \text{ s}^{-1}$ five days later at 14:00 on 28 July 2012 for moulin XX. Relative amplitude is, June 2016).

135 The four labelled supraglacial lakes fill quickly in the early melt season. Once the lakes have filled (the storage volume in the absence of surface melt can be approximated by the lake depth at the end of the melt season), lake depth remains dynamically

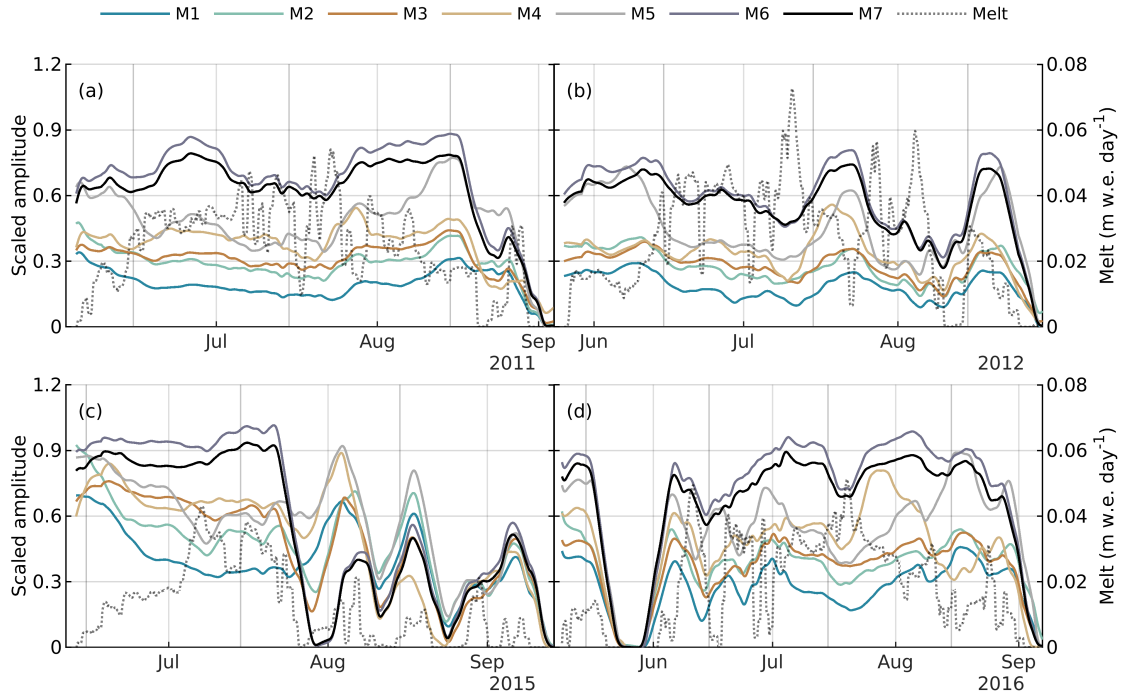


Figure 3. Relative diurnal amplitude of surface inputs to moulins (scaled by mean moulin input) and domain-averaged 24-hour rolling mean RACMO2.3p2 surface melt rate (right axis, dotted grey curve) for (a) 2011, (b) 2012, (c) 2015, and (d) 2016.

controlled by surface melt rate and by the hydraulic potential in the channel draining the lake (Fig. 5). Our model outputs show that only two lakes retain a significant depth of water at the end of the melt season (L1 & L2), while L3 & L4 drain nearly completely once melt ceases.

140 The three small, lake-free catchments (M5, M6, M7; Area $\leq 8 \text{ km}^2$) tend to have a larger relative diurnal amplitude and a shorter lag time than the large catchments with lakes (M1, M2, M3, M4; Area $\geq 19 \text{ km}^2$). From June to August 2012, for example, the diurnal amplitude for catchments M5–M7 is between 50–80% and only 20–50% for moulins that drain lakes, catchments M1–M4. For the same period, the lag time for M5–M7 is consistently 1–3 hours less than for M1–M4 (Fig. 3b, 4b). The separation is less clear for August–September 2015, where recurring periods with no surface melt seem to obscure the trend (Fig. 3c, 4c).

145 Figures 2, 3, 4, and 5 suggest that surface melt is an important explanatory variable for the rate and diurnal amplitude of surface inputs to moulins, lag time between solar noon and peak moulin input, and lake water level. The extent to which surface melt rate controls these features can be quantified by comparing the squared correlation coefficient, R^2 , between melt rate and each of the moulin input rate, diurnal amplitude, lag time, and lake water level (R^2 is also equal to the proportion of variance explained by melt rate), and the p -value for the null hypothesis that the quantities are not related (Table 2). Quantities with a significant p -value (mostly) $50\text{--}80\% p \lesssim 0.05$) can be interpreted as primarily driven by surface melt, while quantities with a low

150

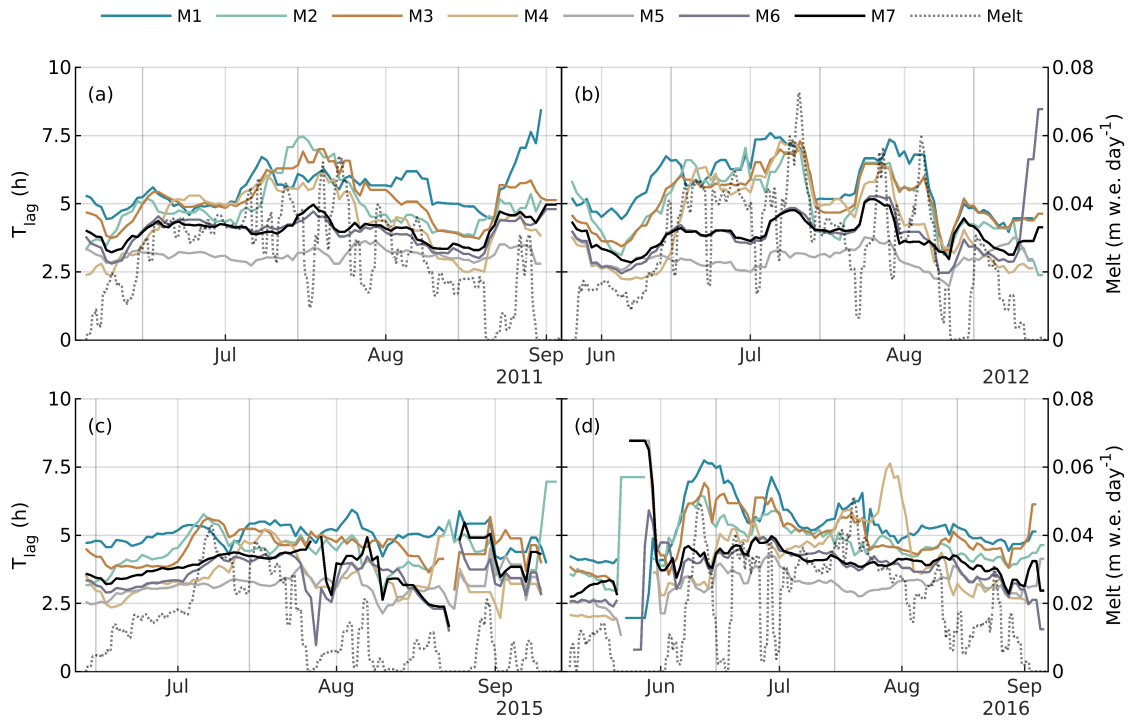


Figure 4. Seven-day moving-average time lag between local solar noon (~15:22) and peak moulin input, and domain-averaged 24-hour rolling mean RACMO2.3p2 surface melt rate (right axis, dotted grey curve), for (a) 2011, (b) 2012, (c) 2015, and (d) 2016.

R^2 and/or $p > 0.05$ are instead dominated by internal or other external variability in the system, including seasonal changes in the extent of supraglacial channels (Fig. C1). The R^2 and p -values are computed for direct model outputs at 2-hour resolution and for daily means. Table S1 provides complete statistics for all quantities, sub-catchments, and years. For the remainder of the text, significant p -values below 0.01 are represented as $p < 0.01$. In Table 2 and S1, significant p -values below 10^{-16} are represented as 0.

155 Three of the five relationships considered in Table 2 are consistently significant across sub-catchments. Surface melt exerts the strongest control on the rate of inputs to moulins, with between 24% and 90% of the variance in daily mean moulin input explained by variations in diurnal-averaged melt rate ($p < 0.01$). The strength of the relationship varies year-to-year. In 2012, 70–90% of variance is explained by melt rate ($p < 0.01$), while the maximum aside from 2012 is only 38% for moulins that

160 don't drain lakes. Amplitude can be difficult to interpret during rapid changes in melt rate. M1 and M2 in 2011 ($p < 0.01$). When we analyze 2-hour model outputs rather than the diurnal averages, the relationship is significant, but the proportion of variance in moulin input rate explained by surface melt rate is lower for all catchments and all years (9–31%; $p < 10^{-23}$; Table S1).

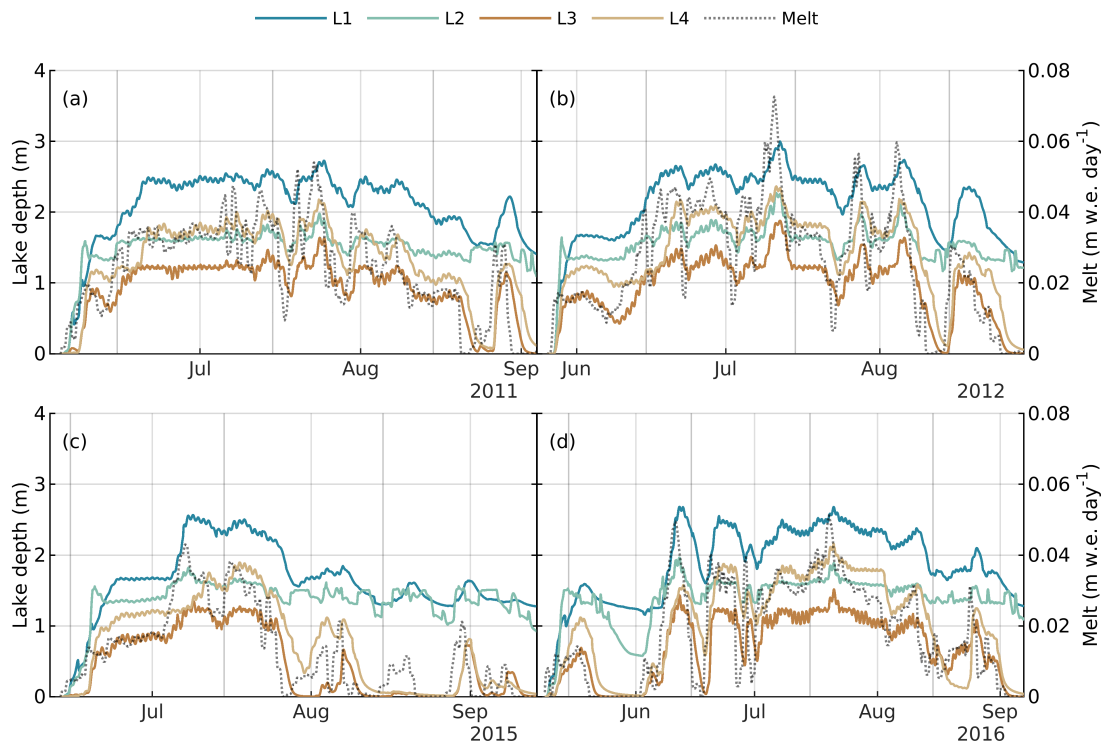


Figure 5. Supraglacial lake water depths and domain-averaged 24-hour rolling mean RACMO2.3p2 surface melt rate (right axis, dotted grey curve) for (a) 2011, (b) 2012, (c) 2015, and (d) 2016.

The relationships between surface melt and relative amplitude, and surface melt and lag time, are not robust across all years and sub-catchments. Outside of specific examples (e.g., 2015 for relative amplitude and 2012 for lag), variance in the amplitude and lag of moulin inputs is not significantly related to surface melt rate.

The water level in the four labelled supraglacial lakes is significantly controlled by melt rate, however this again varies between years. In 2012, or during periods with 0 melt. However, lake catchments are also larger. Lag time is consistently higher for moulines that drain lakes. 52–74% of variance in diurnal-averaged lake level for all four lakes is explained by diurnal-averaged melt rate ($p < 0.01$). In other years, $\leq 49\%$ of variance is explained by melt rate ($p < 0.01$), and in 2015 it is not clear the relationship is significant for L2 ($p = 0.06$). Melt rate exerts a weaker, yet still significant, control on lake level at the 2-hour timescale ($R^2 \leq 16\%$ for significant relationships with $p < 0.01$).

The relationship between lake level and the rate of input to the downstream moulin is significant in all years and all sub-catchments, at both daily and sub-daily timescales. Between 19–85% of variance in moulin input is explained by lake level at the sub-daily timescale, and 22–92% of variance in diurnal-averaged moulin input is explained by diurnal-averaged lake level with $p < 0.01$. However, these are also larger catchments. Lake depth responds

Table 2. Squared correlation coefficients (R^2) and p -values for the null hypothesis that there is no relationship between the specified variables. Correlations and p -values are computed for each of the seven sub-catchments. The minimum and maximum R^2 values are the minimum and maximum values across the seven catchments, and the p values are the maximum value for the seven catchments. Correlation coefficients and p -values are computed for model outputs at native 2-hour resolution and binned into 24-hour increments. p -values $< 10^{-16}$ are represented by $p = 0$.

Variables		2011		2012		2015		2016	
		2-hour	24-hour	2-hour	24-hour	2-hour	24-hour	2-hour	24-hour
	N	1105	93	1153	97	1129	94	1453	122
Moulin input – surface melt	Min R^2	0.10	0.34	0.21	0.78	0.09	0.24	0.09	0.25
	Max R^2	0.12	0.38	0.31	0.90	0.14	0.36	0.12	0.36
	p	0	<0.01	0	0	0	0	0	<0.01
Moulin input amplitude – surface melt	Min R^2	0.00	0.00	0.00	0.00	0.06	0.16	0.00	0.01
	Max R^2	0.07	0.20	0.02	0.10	0.13	0.39	0.06	0.17
	p	0.1	0.5	0.4	0.8	<0.01	<0.01	0.01	0.26
Lag – surface melt	Min R^2	0.00	0.00	0.00	0.07	0.00	0.00	0.01	0.02
	Max R^2	0.07	0.29	0.13	0.62	0.02	0.06	0.08	0.29
	p	0.2	0.7	0.7	0.04	0.4	0.8	0.013	0.23
Lake depth– surface melt	Min R^2	0.03	0.15	0.11	0.52	0.01	0.04	0.06	0.18
	Max R^2	0.09	0.39	0.16	0.74	0.13	0.4	0.13	0.38
	p	<0.01	<0.01	0	0	0.01	0.06	0	<0.01
Lake depth– moulin input	Min R^2	0.41	0.47	0.55	0.59	0.19	0.22	0.50	0.54
	Max R^2	0.84	0.90	0.89	0.92	0.85	0.90	0.86	0.92
	p	0	<0.01	0	0	0	<0.01	0	0

4 Discussion

4.1 Interannual variability in supraglacial drainage

The supraglacial drainage model predicts variations in the diurnal amplitude and time lag of moulin inputs in response to interannual variation in melt forcing intensity and duration (Fig. 3, 4). Different realizations of surface melt forcing, with different rates and durations of surface melt, result in differences in the relationship (e.g., R^2 and p -values) between surface melt and these quantities of interest. The significant relationships (moulin input–melt rate, lake level–melt rate, and lake level–moulin input) are strongest in the intense melt year 2012 and weakest in the lowest melt year (2015) (Table S1). For example, 78–90% of variance in diurnal-averaged moulin input is related to surface melt forcing, where the proportion is <38% in all other years.

185 These relationships suggest that intense surface melt rates in 2012 (domain-averaged melt of 3.03 m w.e. a⁻¹ compared
to 2.81 m w.e. a⁻¹ in 2016, the second most intense melt year) overwhelm internal variability (e.g., changes in supraglacial
flow routing as lakes fill and drain, and as the channel network expands or contracts) and other external sources of variability.
Internal variability instead becomes relatively more important in years with moderate melt forcing (2011, saturates eventually
unlike discharge. Two lakes 2015, 2016). The discrepancy between the daily and sub-daily correlations (Table 2) suggests that
190 internal variability is most important on timescales shorter than one day.

4.2 Seasonal trends in supraglacial drainage

Continuous seasonal trends in the amplitude and time lag of moulin inputs, as suggested by synthetic modelling (Yang and others, 2018;
Hill and Dow, 2021), are not clear except in a few atypical cases. For example, in the year with the lowest surface melt (2015),
the diurnal amplitude of inputs to moulins M1–M5 steadily decreases with a statistically significant trend ($p < 0.01$) from the
195 onset of surface melting on 13 June until a sharp increase in melt rates on 2 July despite relatively steady surface melt rates,
perhaps as a result of a reduction in the extent of small supraglacial channels (Fig. C1). Over the same period, lag time is steady
or slightly increasing aside from some transient behaviour in the first week of melting between 13 June and ~19 June (Fig. 3c,
4c).

Aside from limited examples of smooth, continuous seasonal trends, we observe discontinuous shifts in amplitude and time
200 lag coinciding with rapid changes in surface melt rates. For example, in 2015 the relative diurnal amplitude of inputs to all
seven moulins is tied to irregular melt intensities from ~27 July until the end of the melt season, ~12 September (Fig. 3c).
The lack of continuous trends suggests that variations in surface melt rate are the primary control on moulin inputs compared
to seasonal expansion and contraction of the supraglacial channel network (Fig. C1). The few examples of continuous trends
(e.g., 13 June to 2 July 2015) occur during periods of steady surface melt rates, when the impact of the secondary controls
205 (e.g., supraglacial channel evolution) are not obscured by melt rate variability.

4.3 Impact of supraglacial lakes

When they are present, supraglacial lakes influence the character of inputs to moulins. Large sub-catchments with lakes
(M1–M4) have predominantly lower relative diurnal amplitude and longer lag times than the small catchments without lakes
(M5–M7) (Fig. 4). The relationship between lake level and moulin inputs is evidenced by their correlation on diurnal ($0.22 < R^2 < 0.92$;
210 $p < 0.01$) and sub-diurnal (blue; L1 & L2) have persistent storage $0.19 < R^2 < 0.89$; $p < 0.01$) timescales (Table 2). At least
some of the remainder of the variance in moulin inputs is likely attributable to the fact that not all of the inputs to a moulin
flow through the upstream lake, so that a proportion of the moulin inputs are unaffected by lake water level. The relationship
between lake level and downstream moulin input is consistently stronger for lakes L3 and L4 (water depth > 0 at end of season;
Fig. ??). 79–86%, $p < 0.01$ at daily scale), which do not have significant long-term storage, than for lakes L1 and L2 (19–77%;
215 $p < 0.01$ at daily scale), which do store large volumes of water.

Compared to Lakes L1 and L2, there is negligible water depth stored in L3 at the end of each melt season (5), and despite
similar input rates through M3 as M1 (Fig. 2), moulin M3 has consistently higher relative diurnal amplitude and a shorter lag

time than M1 (Fig. 5, Fig. 4). Since lake L3 ~~acts is~~ also the only lake to fully drain following a pause in surface melt from 26–28 July 2015 (Fig. 5c), Lake L3 appears to behave more like a floodplain ~~—rapidly returns to 0 following melt reduction.~~
220 along the main channel through its sub-catchment than a lake with storage. This proposition is supported by the elongated shape of L3, lying directly along a main drainage channel, in the 8 July 2021 Landsat 8 scene (Fig. 1a).

Given the position of M4 directly within the ~~L4 is somewhere in-between: slowly decays to 0~~ basin (this position explains the lack of long-term storage in L4), it's possible that L4 rapidly drains directly through M4, in contrast to the other lakes in the domain which could drain through unstable incision of their outlet channel (Kingslake and others, 2015). Satellite imagery
225 from 8 July 2021 does not show a lake in the location of L4, despite visible lakes upstream from our study site at higher elevations (Fig. 1a). Unfortunately, the dataset used to derive moulin locations (Yang and Smith, 2016) does not discriminate between stable and rapidly draining lakes, so we do not know if this is the case.

~~(a, b) Moulin hydrographs (colours, corresponding to moulin markers in Fig. 1) and 24-hour moving average RACMO2.3p2 ice surface melt rates (black). Right axis (dotted line) shows 24-hour rolling average melt rate. (c, d) Diurnal amplitude of discharge into moulins in 2012 and 2015. Light colours show instantaneous diurnal amplitude, and bold colours show the seven-day moving average diurnal amplitude. (e, f) Lag time between local solar noon (~15:22) and peak moulin discharge for the two moulins with the highest discharge rates. (g, h) Supraglacial lake water depths for lakes L1 (green, elevation 1215 m), L2 (gold, elevation 1218 m), L3 (red, elevation 1276 m), and L4 (blue, elevation 1387 m). Aside from the combined influence of domain size and supraglacial lakes in modulating the amplitude and time lag of moulin inputs, there is no significant difference
230 in the strength or significance of the relationship between surface melt and moulin inputs, the amplitude of moulin inputs, or their timing between catchments with and without lakes (Table 2, S1). An unfortunate limitation of our model domain is that we can not completely disentangle the effects of catchment size and supraglacial lakes, since the four labelled lakes occupy the four largest catchments, so it's not possible to determine exactly the contrasting drivers of moulin input dynamics in catchments with and without lakes.~~

240 ~~Channel & sheet mass correlation and saturation~~

4.4 Streamflow observations

It remains difficult to constrain supraglacial drainage models such as SaDS due to a limited number of sufficiently long in-situ discharge records. We require a long (ideally entire melt-season) record since one of the primary advantages of SaDS is that it dynamically represents seasonal changes in the supraglacial drainage system efficiency. Muthyala and others (2022)
245 present one of the only sufficiently long continuous records (62 days from 2016) from a small (0.6 km²) lake-free catchment in southwest Greenland. Within our study site, catchments M6 & M7 are the most similar to the catchment instrumented by Muthyala and others (2022). A detailed quantitative comparison by applying SaDS to the same catchment is not presently possible without complete in-situ data, since it would not be possible to separate discrepancy arising from differences in surface melt forcing and DEM surface elevations from discrepancy arising from model error. Despite this limitation, we can compare
250 moulin inputs qualitatively.

For M6 & M7 (combined catchment area of 8.5 km^2), we have modelled lag times between 2–5 hours, compared to 1–3 hours from Muthyala and others (2022). SaDS predicts a relative diurnal amplitude of 50–100%, i.e., flow nearly pauses overnight, in qualitative agreement with data collected by Muthyala and others (2022) showing stream discharge minimums near zero except during periods of elevated positive overnight energy balance. Muthyala and others (2022) report similar abrupt shifts in the timing and amplitude of streamflow related to rapid changes in melt forcing as are observed from the SaDS outputs (Fig. ??)

~~Moulin discharge // lake depth relationship for four lakes:-~~

- ~~- L1 & L2: Storage is obvious at low end of moulin discharge. L2: moulin discharge independent of lake depth for discharge $< 4 \text{ m}^3/\text{s}$; L1 doesn't show this. Instead, L1 seems to control slow taper off-~~
- ~~- L3 & L4: No storage. Seem to follow a similar power-law behaviour, without the linear behaviour suggested by L1 (maybe L2?).-~~
- ~~- L1: great (linear) correlation for high water levels (??)-~~

2, 3, 4). Muthyala and others (2022) also report a statistically significant decrease in the lag time between solar noon and peak streamflow from 25 June until 4 August 2016, terminating when daily minimum air temperatures decreased from $\sim 3^\circ\text{C}$ to $\sim 1^\circ\text{C}$. We do not capture similar trends in lag time in our model outputs, however we have identified periods of continuous trends in the diurnal amplitude of moulin inputs that terminate with a rapid shift in surface melt rates. Since we have observed that melt rate variations mask seasonal trends, it remains possible that we would observe such a trend in lag time with a different melt forcing timeseries. Despite these specific details, the streamflow measurements (Muthyala and others, 2022) demonstrate a similar pattern of a melt rate-dominated system, with internal dynamics (e.g., changes in the extent of supraglacial streams, filling and drainage of supraglacial lakes) as a secondary control that becomes important during periods of steady surface melt rates.

(a) Relationship between total water mass flowing through supraglacial channels and within the distributed water sheet for the 2012 melt season. (b) Relationship between moulin discharge and lake depth for 2012 for lake L1 (green in Fig. 1; elevation 1215 m) and its outlet moulin (red in Fig. 1, coordinates (580.4 km N, 7443 km E)). The black line is a linear fit through the data points with lake depth $\geq 1.75 \text{ m}$ ($r^2 = 0.84$). It is also possible to compare our model results to shorter measurement campaigns, however these comparisons do not constrain the seasonal evolution of supraglacial behaviour. For the $\sim 60 \text{ km}^2$ Rio Behar catchment (67.047°N , -49.033°W) with flow $< 40 \text{ m}^3 \text{ s}^{-1}$ in the main river stem leading to the terminal moulin, Smith and others (2017) report a lag time of 5.5 hours from Acoustic Doppler Current Profiler (ADCP) measurements from 20 to 23 July 2015, and Smith and others (2021) report a lag time of 6 hours from repeated ADCP measurements on the same river segment from 6 to 13 July 2016. Our modelled inputs for moulins M1 and M3 ($< 40 \text{ m}^3 \text{ s}^{-1}$ in 2011, 2015, and 2016) have similar input rates to the Rio Behar measurements and show a similar lag time ($\sim 4\text{--}7$ hours). Lag times for M1 and M3 are higher in 2012 ($\sim 5\text{--}7$ hours) when the absolute magnitude of moulin inputs is also much larger (up to $> 60 \text{ m}^3 \text{ s}^{-1}$).

285 These comparisons suggest that SaDS predicts reasonable lag times and amplitudes compared to observations with similar discharges. However, given the currently available observational data, it remains difficult to calibrate the model and determine the most relevant mechanisms by which supraglacial drainage evolves. A full calibration dataset would ideally contain streamflow observations spanning multiple orders of discharge magnitude, measurements of lake water level, and the evolution of channel cross sections, for a significant portion of the melt season.

4.5 Model intercomparison and selection

290 SaDS is among the models with the most complete supraglacial hydrologic process representation, including both channelized and distributed drainage, filling and draining of supraglacial lakes, and dynamically computed seasonal evolution of supraglacial stream density. Compared to flow-routing type models (e.g. Banwell and others, 2012; Yang and others, 2018), travel times in SaDS depend on upstream flow accumulation and melt rate, so that the time lag and relative diurnal amplitude of moulin inputs varies in a complex way with melt forcing.

295 Modelled water levels in supraglacial lakes fluctuate by several centimeters in response to diurnal melt variations and by up to a meter over a few days in response to larger changes in melt intensity. It is not clear how this variation is partitioned between nonlocal processes such as downstream channel capacity adjustment and local processes such as excess meltwater transiently being stored in lakes. These rapid fluctuations in lake level may partly explain the residual variance in the timing of rapid lake drainage not explained by strain rates (Poinar and Andrews, 2021). However, these fluctuations may not be captured by models treating lakes as holding a prescribed storage volume (e.g. Banwell and others, 2012).

300 An incised channel network (c.f. Leeson and others, 2012) is important for efficiently routing large volumes of meltwater into moulins (Yang and others, 2018; Gleason and others, 2021). Channel density may also change through the melt season, changing the response of moulin inputs to melt forcing (Yang and others, 2022). Compared to these models, SaDS dynamically evolves channel density based on the local balance between incision and melt-out.

305 The process-based approach taken by SaDS increases the computational cost well over that of other models (~7 days per year of simulation time in the configuration presented here). This tradeoff between physics and computational cost yields a spectrum of models from which the appropriate model must be chosen for each application so as not to neglect key features of supraglacial drainage.

310 We recommend choosing the appropriate supraglacial drainage model based on the sensitivity of a prospective modelling study to the supraglacial drainage characteristics that we have highlighted here. If short-term (<1 day) variations in the rate, amplitude, and time lag of moulin inputs will materially change the results of the modelling study, for example when modelling the short-timescale variations in moulin water storage (e.g. Andrews and others, 2022), it may be important to use a detailed process-resolving model such as SaDS. If only aggregate quantities, e.g. the total volume of moulin inputs on seasonal timescales for assessing centennial-scale changes in ice sheet subglacial hydrology, are relevant, it should be possible to carefully select a less expensive model that captures moulin inputs with an appropriate level of detail (e.g.,
315 Banwell and others, 2012; Leeson and others, 2012; Yang and others, 2018). The more difficult case is where day-to-day variation in the character of moulin inputs will impact the modelling study results in a noticeable way, and where the computational cost

of a process-resolving supraglacial hydrology model will be a rate-limiting step in the modelling workflow. For example, this may be the case when modelling subglacial drainage on seasonal timescales. Here, the sensitivity of the outcomes of the modelling study (e.g., diurnal and seasonal variations in subglacial effective pressure) to the character of moulin inputs could be quantified by carrying out benchmark simulations with simpler models e.g., *Yang and others* [2018] with varying parameters. The experimenter can then make an informed decision on the appropriate supraglacial drainage model based on the known sensitivity. For example, it would be valuable to combine process-resolving supraglacial (e.g., SaDS), englacial (*Andrews and others*, 2022), and subglacial (e.g., *GlaDS*; *Werder and others*, 2013) models to quantify the sensitivity of subglacial drainage to supraglacial and englacial processes.

325 5 Discussion

5 Conclusions

We have presented model outputs of supraglacial meltwater flow, lake filling and draining, and surface inputs to moulins for a small ($\sim 20 \times 27 \text{ km}^2$) catchment on the Greenland Ice Sheet for four years, including the extreme melt year in 2012. The relationship between surface melt and the magnitude, relative diurnal amplitude, and timing of surface inputs to moulins is complex and sensitively depends on the duration and intensity of surface melt. In years with intense surface melt (e.g., 2012), surface melt is the primary driver of variations in moulin inputs ($R^2 > 0.78$; $p < 0.01$). In years with more moderate melt rates, melt rate is a weaker control ($R^2 < 0.38$; $p < 0.01$), since internal variability (e.g., the physics captured by the SaDS model) becomes more important.

5.1 A dynamic drainage system

335 Supraglacial lakes exert a strong control on moulin inputs. The four large catchments with supraglacial lakes within our domain have consistently lower diurnal amplitude in moulin inputs and a longer time lag between solar noon and peak moulin input than the three small catchments without lakes. However, since we find lakes only in the largest catchments, the relative contributions of catchment scale and lakes can not be fully disentangled with the current model outputs.

5.1 Streamflow observations

340 SaDS model outputs contain similar key features (time lag and diurnal amplitude) to in-situ streamflow observations from a nearby catchment (*Muthyala and others*, 2022). However, given the two orders of magnitude spanned by moulin inputs within our study site, we can not yet observationally constrain SaDS without additional long-term stream discharge records spanning a wide range of discharge magnitudes and for catchments with and without lakes.

5.1 Model intercomparison

345 By placing these results in the context of existing drainage models with differing levels of process representation and computational expense, we have suggested a conceptual model for selecting the appropriate drainage model for a prospective modelling study. The supraglacial model should be chosen based on expected or demonstrated sensitivity to the exact nature of moulin inputs. A process-resolving model such as SaDS is expected to be advantageous when variations in the amplitude and timing of moulin inputs on sub-daily timescales will substantially change the outcomes of the prospective modelling study. When only a broad representation of moulin inputs is required, simpler routing models are expected to be appropriate and come with a substantially reduced computational cost.

Appendix A: Model description

355 SaDS follows the general structure of the GlaDS model (Werder and others, 2013). The model is posed on an unstructured triangular mesh with distributed sheet-like flow across elements and discrete channelized flow along edges. The key dynamic equations are reviewed here; for full details refer to Hill and Dow (2021).

A1 Distributed drainage

Distributed flow across the ice surface is governed by conservation of mass, written in terms of the flow depth h_s ,

$$\frac{\partial h_s}{\partial t} + \nabla \cdot \mathbf{q}_s = m_s + \frac{\Xi_s}{\rho_w L} - \frac{m_e}{l}, \quad (\text{A1})$$

360 for discharge per unit width \mathbf{q}_s , distributed melt rate m_s , and potential energy dissipation Ξ_s . The final term represents the rate of mass transfer m_e into a channel with length l . Constants are density of water ρ_w and latent heat of fusion L . The discharge \mathbf{q}_s is approximated with a Darcy-Weisbach-like equation,

$$\mathbf{q}_s = -k_s h_s^{\alpha_s} \left| \frac{\nabla \phi_s}{\rho_w g} \right|^{\beta_s - 2} \frac{\nabla \phi_s}{\rho_w g}, \quad (\text{A2})$$

for hydrostatic potential ϕ_s , conductivity k_s , and gravity g . Exponents α_s and β_s control the form of the equivalent Darcy friction factor.

365 A2 Channelized drainage

Supraglacial channels are parameterized by the total incision depth of the channel H_c and the depth of water flowing in the channel h_c . The channel width is assumed to be related to channel depth by $w_c = r H_c$ for a constant and uniform width-to-depth ratio r . The dynamic evolution of channel incision depth is governed by the balance between melt along the channel bed and walls by potential energy dissipation and melt-out of the adjacent ice surface,

$$370 \frac{dH_c}{dt} = \frac{1}{2} \frac{\rho_w}{\rho_i} (m_c - m_s) + \frac{1}{2w_c} \frac{\Xi_c}{\rho_i L}, \quad (\text{A3})$$

for channel bed melt rate m_c , sheet melt rate m_s , potential energy dissipation Ξ_c , and ice density ρ_i .

The dynamic evolution of channel flow depth is given by conservation of mass,

$$w_c \frac{\partial h_c}{\partial t} + \frac{\partial q_c}{\partial t} = w_c m_c + \frac{\Xi_c}{\rho_w L} - h_c \frac{\partial w_c}{\partial t} + m_e, \quad (\text{A4})$$

where the channel discharge q_c is computed with an analogous expression to (A2) using the channel hydrostatic potential,

$$\phi_c = \rho_w g z_c + \rho_w g (h_c - H_c), \quad \text{for channel lip elevation } z_c, \quad m_e \text{ represents mass transfer from the distributed system into the channel.}$$

A3 Drainage system coupling

Unlike GlaDS, SaDS uses different hydraulic potentials in distributed (ϕ_s) and channelized (ϕ_c) systems, so SaDS requires an explicit rule to exchange mass between the systems. The mass exchange over an edge of length l is computed as

$$m_e = flq_n, \quad (\text{A5})$$

for exchange fraction f and normal flux $q_n = \mathbf{q}_s \cdot \mathbf{n}$ where \mathbf{n} is the outward unit normal of the edge. The exchange fraction f depends on the difference in potential between the channel and adjacent sheets such that mass is only transferred into the channel when the channel potential is less than the sheet potential.

Table A1. SaDS model parameters.

Parameter	Description	Value	Units
α_s	Distributed sheet flow exponent	$\frac{5}{4}$	-
β_s	Distributed sheet flow exponent	$\frac{3}{2}$	-
α_c	Channel flow exponent	$\frac{5}{3}$	-
β_c	Channel flow exponent	$\frac{3}{2}$	-
k_s	Distributed sheet hydraulic conductivity	1.0	$\text{m}^{(2-\alpha_s)} \text{s}^{-1}$
k_c	Channel hydraulic conductivity	15	$\text{m}^{(2-\alpha_c)} \text{s}^{-1}$
r	Channel width-to-depth ratio	5.0	-
ζ	Exchange ratio	0.2	-
dt	Timestep	20	s
ρ_i	Density of ice	910	kg m^{-3}

Appendix B: Temporal interpolation of RACMO melt rate

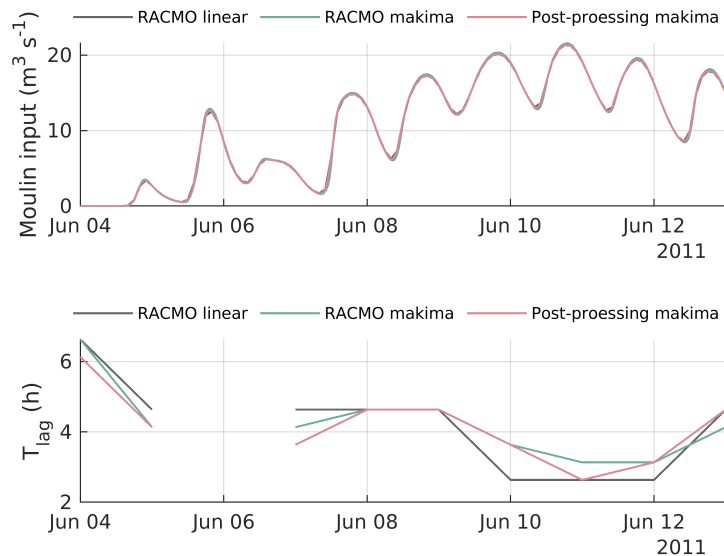


Figure B1. Comparison of the rate of surface inputs to moulins (a) and the time lag between local solar noon and peak moulin inputs (b) for the beginning of the 2011 melt season for three interpolation schemes. (1) 'RACMO linear' uses linear interpolation to downscale RACMO from native 3 hour resolution to the 20 s model timestep and no post-processing interpolation to compute time lag. (2) 'RACMO makima' uses modified Akima interpolation to downscale RACMO from 3 hour to 20 s timestep and no post-processing interpolation to compute time lag. (3) 'Post-processing makima' uses linear interpolation to run the model, and interpolates model outputs onto 30 min timesteps using modified Akima interpolation before computing lag time.

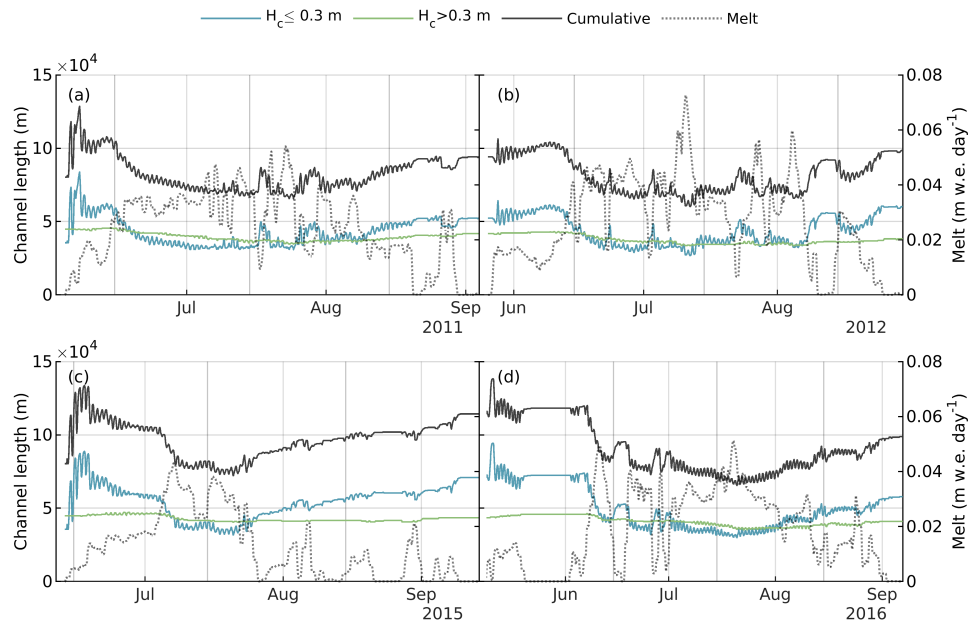


Figure C1. Total length of incised supraglacial channel network, partitioned between small (incision depth less than or equal to 0.3 m) and large (incision depth greater than 0.3 m) channels, for (a) 2011, (b) 2012, (c) 2015, (d) 2016, and domain-averaged 24-hour rolling mean RACMO2.3p2 surface melt rate (right axis, dotted grey curve).

Code and data availability. ArcticDEM data are freely available from the Polar Geospatial Center (<https://www.pgc.umn.edu/data/arcticdem/>). RACMO surface melt data are available by contacting the Institute for Marine and Atmospheric research Utrecht University (<https://www.projects.science.uu.nl/iceclimate/models/racmo.php>). The SaDS model is described fully in Hill and Dow (2021) including equations and implementation. Table S1 and all model outputs and code to produce the figures are available at <https://doi.org/10.5281/zenodo.7776530>.

390 *Author contributions.* T Hill contributed to conceptualization, analysis, methodology, software, visualization, writing and reviewing. C Dow contributed to conceptualization, analysis, methodology, supervision, and reviewing & editing.

Competing interests. The authors declare that they have no conflict of interest.

Acknowledgements. T Hill was supported by the Ontario Graduate Scholarship and NSERC Canada Graduate Scholarship programs. C Dow was supported by the Natural Sciences and Engineering Research Council of Canada (RGPIN-03761-2017) and the Canada Research Chairs
395 Program (950-231237). The authors declare that they have no conflicts of interest. DEM provided by the Polar Geospatial Center under NSF-OPP awards 1043681, 1559691, and 1542736. The authors would like to thank Brice Noël and Michiel van den Broeke for providing RACMO surface melt data.

References

- Akima, H.: A new method of interpolation and smooth curve fitting based on local procedures, *Journal of the ACM (JACM)*, 17, 589–602, 400 1970.
- Andrews, L. C., Catania, G. A., Hoffman, M. J., Gulley, J. D., Lüthi, M. P., Ryser, C., Hawley, R. L., and Neumann, T. A.: Direct observations of evolving subglacial drainage beneath the Greenland Ice Sheet, *Nature*, 514, 80–83, 2014.
- Andrews, L. C., Poinar, K., and Trunz, C.: Controls on Greenland moulin geometry and evolution from the Moulin Shape model, *The Cryosphere*, 16, 2421–2448, 2022.
- 405 Banwell, A., Hewitt, I., Willis, I., and Arnold, N.: Moulin density controls drainage development beneath the Greenland ice sheet, *Journal of Geophysical Research: Earth Surface*, 121, 2248–2269, <https://doi.org/https://doi.org/10.1002/2015JF003801>, 2016.
- Banwell, A. F., Arnold, N. S., Willis, I. C., Tedesco, M., and Ahlström, A. P.: Modeling supraglacial water routing and lake filling on the Greenland Ice Sheet, *Journal of Geophysical Research: Earth Surface*, 117, <https://doi.org/10.1029/2012JF002393>, 2012.
- Bartholomew, I., Nienow, P., Sole, A., Mair, D., Cowton, T., and King, M. A.: Short-term variability in Greenland Ice Sheet motion forced by 410 time-varying meltwater drainage: Implications for the relationship between subglacial drainage system behavior and ice velocity, *Journal of Geophysical Research: Earth Surface*, 117, <https://doi.org/10.1029/2011JF002220>, 2012.
- Chudley, T. R., Christoffersen, P., Doyle, S. H., Bougamont, M., Schoonman, C. M., Hubbard, B., and James, M. R.: Supraglacial lake drainage at a fast-flowing Greenlandic outlet glacier, *Proceedings of the National Academy of Sciences*, 116, 25468–25477, 2019.
- Colbeck, S.: Water flow through snow overlying an impermeable boundary, *Water Resources Research*, 10, 119–123, 1974.
- 415 Das, S. B., Joughin, I., Behn, M. D., Howat, I. M., King, M. A., Lizarralde, D., and Bhatia, M. P.: Fracture propagation to the base of the Greenland Ice Sheet during supraglacial lake drainage, *Science*, 320, 778–781, 2008.
- Gleason, C. J., Yang, K., Feng, D., Smith, L. C., Liu, K., Pitcher, L. H., Chu, V. W., Cooper, M. G., Overstreet, B. T., Rennermalm, A. K., et al.: Hourly surface meltwater routing for a Greenlandic supraglacial catchment across hillslopes and through a dense topological channel network, *The Cryosphere*, 15, 2315–2331, <https://doi.org/10.5194/tc-15-2315-2021>, 2021.
- 420 Hill, T. and Dow, C. F.: Modeling the Dynamics of Supraglacial Rivers and Distributed Meltwater Flow With the Subaerial Drainage System (SaDS) Model, *Journal of Geophysical Research: Earth Surface*, 126, e2021JF006309, <https://doi.org/https://doi.org/10.1029/2021JF006309>, 2021.
- Johansson, A., Jansson, P., and Brown, I.: Spatial and temporal variations in lakes on the Greenland Ice Sheet, *Journal of Hydrology*, 476, 314–320, <https://doi.org/https://doi.org/10.1016/j.jhydrol.2012.10.045>, 2013.
- 425 Kingslake, J., Ng, F., and Sole, A.: Modelling channelized surface drainage of supraglacial lakes, *Journal of Glaciology*, 61, 185–199, 2015.
- Kozioł, C. P. and Arnold, N.: Modelling seasonal meltwater forcing of the velocity of land-terminating margins of the Greenland Ice Sheet, *The Cryosphere*, 12, 971–991, 2018.
- Law, R., Arnold, N., Benedek, C., Tedesco, M., Banwell, A., and Willis, I.: Over-winter persistence of supraglacial lakes on the Greenland Ice Sheet: Results and insights from a new model, *Journal of Glaciology*, 66, 362–372, 2020.
- 430 Leeson, A. A., Shepherd, A., Palmer, S., Sundal, A., and Fettweis, X.: Simulating the growth of supraglacial lakes at the western margin of the Greenland ice sheet, *The Cryosphere*, 6, 1077–1086, <https://doi.org/10.5194/tc-6-1077-2012>, 2012.
- Meyer, C. R. and Hewitt, I. J.: A continuum model for meltwater flow through compacting snow, *The Cryosphere*, 11, 2799–2813, 2017.
- Muthyala, R., Rennermalm, Å. K., Leidman, S. Z., Cooper, M. G., Cooley, S. W., Smith, L. C., and van As, D.: Supraglacial streamflow and meteorological drivers from southwest Greenland, *The Cryosphere*, 16, 2245–2263, <https://doi.org/10.5194/tc-16-2245-2022>, 2022.

- 435 Noël, B., van de Berg, W. J., Lhermitte, S., and van den Broeke, M. R.: Rapid ablation zone expansion amplifies north Greenland mass loss, *Science Advances*, 5, <https://doi.org/10.1126/sciadv.aaw0123>, 2019.
- Pitcher, L. H. and Smith, L. C.: Supraglacial streams and rivers, *Annual Review of Earth and Planetary Sciences*, 47, 421–452, 2019.
- Poinar, K. and Andrews, L. C.: Challenges in predicting Greenland supraglacial lake drainages at the regional scale, *The Cryosphere*, 15, 1455–1483, <https://doi.org/10.5194/tc-15-1455-2021>, 2021.
- 440 Porter, C., Morin, P., Howat, I., Noh, M.-J., Bates, B., Peterman, K., Keeseey, S., Schlenk, M., Gardiner, J., Tomko, K., Willis, M., Kelleher, C., Cloutier, M., Husby, E., Foga, S., Nakamura, H., Platson, M., Wethington, Michael, J., Williamson, C., Bauer, G., Enos, J., Arnold, G., Kramer, W., Becker, P., Doshi, A., D’Souza, C., Cummins, P., Laurier, F., and Bojesen, M.: ArcticDEM, <https://doi.org/10.7910/DVN/OHHUKH>, 2018.
- Smith, L., Andrews, L. C., Pitcher, L. H., Overstreet, B., Rennermalm, Å., Cooper, M. G., Cooley, S., Ryan, J. C., Miège, C., Kershner, C., et al.: Supraglacial river forcing of subglacial water storage and diurnal ice sheet motion, *Geophysical Research Letters*, 48, e2020GL091418, 2021.
- 445 Smith, L. C., Yang, K., Pitcher, L. H., Overstreet, B. T., Chu, V. W., Rennermalm, Å. K., Ryan, J. C., Cooper, M. G., Gleason, C. J., and Tedesco, M.: Direct measurements of meltwater runoff on the Greenland ice sheet surface, *Proceedings of the National Academy of Sciences*, 114, E10622–E10631, <https://doi.org/10.1073/pnas.1707743114>, 2017.
- 450 Sole, A., Nienow, P., Bartholomew, I., Mair, D., Cowton, T., Tedstone, A., and King, M. A.: Winter motion mediates dynamic response of the Greenland Ice Sheet to warmer summers, *Geophysical Research Letters*, 40, 3940–3944, <https://doi.org/10.1002/grl.50764>, 2013.
- St Germain, S. L. and Moorman, B. J.: Long-term observations of supraglacial streams on an Arctic glacier, *Journal of Glaciology*, 65, 900–911, 2019.
- Werder, M. A., Hewitt, I. J., Schoof, C. G., and Flowers, G. E.: Modeling channelized and distributed subglacial drainage in two dimensions, *Journal of Geophysical Research: Earth Surface*, 118, 2140–2158, 2013.
- 455 Yang, K. and Smith, L. C.: Internally drained catchments dominate supraglacial hydrology of the southwest Greenland Ice Sheet, *Journal of Geophysical Research: Earth Surface*, 121, 1891–1910, <https://doi.org/10.1002/2016JF003927>, 2016.
- Yang, K., Smith, L. C., Karlstrom, L., Cooper, M. G., Tedesco, M., van As, D., Cheng, X., Chen, Z., and Li, M.: A new surface meltwater routing model for use on the Greenland Ice Sheet surface, *The Cryosphere*, 12, 3791–3811, <https://doi.org/10.5194/tc-12-3791-2018>,
- 460 2018.
- Yang, K., Smith, L. C., Andrews, L. C., Fettweis, X., and Li, M.: Supraglacial Drainage Efficiency of the Greenland Ice Sheet Estimated From Remote Sensing and Climate Models, *Journal of Geophysical Research: Earth Surface*, 127, e2021JF006269, <https://doi.org/https://doi.org/10.1029/2021JF006269>, 2022.
-