

# Smoothed Particle Hydrodynamics Implementation of the Standard Viscous-Plastic Sea-Ice Model and Validation in Simple Idealized Experiments

Oreste Marquis<sup>1</sup>, Bruno Tremblay<sup>1</sup>, Jean-François Lemieux<sup>2</sup>, and Mohammed Islam<sup>3</sup>

<sup>1</sup>Department of Atmospheric and Oceanic Sciences, McGill University, Montréal, Québec, Canada

<sup>2</sup>Environnement et Changement Climatique Canada, Dorval, Québec, Canada

<sup>3</sup>The Ocean Coastal and River Engineering Research Centre of the National Research Council, Canada

**Correspondence:** Oreste Marquis (oreste.marquis@mail.mcgill.ca)

**Abstract.** The Viscous-Plastic (VP) rheology with an elliptical yield curve and normal flow rule is implemented in a Lagrangian modelling framework using the Smoothed Particle Hydrodynamics (SPH) meshfree method. Results show, from perturbation analysis of SPH sea-ice dynamic equations, that the classical SPH particle density formulation expressed as a function of sea-ice concentration and mean ice thickness, leads to incorrect plastic wave speed. We propose a new formulation for particle density that gives a plastic wave speed in line with theory. In all cases, the plastic wave in the SPH framework is dispersive and depends on the smoothing length (i.e., the spatial resolution) and on the SPH kernel employed in contrast with its finite difference method (FDM) implementation counterpart. The steady-state solution for the simple 1D ridging experiment is in agreement with the analytical solution within an error of 1%. SPH is also able to simulate a stable upstream ice arch in an idealized domain representing the Nares Strait in low wind regime ( $5.3 \text{ [m} \cdot \text{s}^{-1}\text{]})$  with an ellipse aspect ratio of 2, an average thickness of 1 [m] and free-slip boundary conditions in opposition to the FDM implementation that requires higher shear strength to simulate it. In higher wind regime ( $7.5 \text{ [m} \cdot \text{s}^{-1}\text{]})$  no stable ice arches are simulated — unless the thickness is increased — and the ice arch formation showed no dependence on the size of particles contrary to what is observed in the discrete element framework. Finally, the SPH framework is explicit, can take full advantage of parallel processing capabilities and show potential for ~~pan-arectic~~ pan-Arctic climate simulations.

Sea-ice is an important component of the Earth's system to consider for accurate climate projection. ~~Numerical models~~ Generally, numerical models used for geophysical sea-ice ~~have historically employed a continuum approach where the material is discretized on an Eulerian mesh using~~ simulations and projections are based on a system of differential equations assuming a continuum. The equations that predict the sea ice dynamics are a combination of the momentum equations, which describe the drift of sea ice under external and internal forces, and the continuity equations which ensure mass conservation. The external forces (per unit area) generally include surface air stress, water drag, sea surface tilt and the Coriolis effect and the internal forces are related to the ice stress term. This internal stress term is based on various constitutive relations. ~~For example, which can differ between models. The more commonly used constitutive laws are~~ the standard Viscous-Plastic model (Hibler, 1979) or modifications thereof (e.g., Elastic-Viscous-Plastic or EVP and Elastic-Plastic-Anisotropic or EPA; Hunke and Dukowicz, 1997; Tsamados et al., 2013), ~~solves a set of partial differential equations using the~~. They are typically discretized on an Eulerian mesh using finite-difference method (FDM). FDM is the simplest method to discretize and solve partial differential equations numerically. However, it is based on a local Taylor series expansion to approximate the continuum equations and construct a topologically rectangular network of relations between nodes (e.g., Arakawa grids).

Even though the VP (and EVP) rheologies are commonly used to describe sea-ice dynamics and are able to capture important large-scale deformation features (Bouchat et al., 2022; Hutter et al., 2022), they still have difficulties to represent smaller scale properties (Schulson, 2004; Weiss et al., 2007; Coon et al., 2007) such as Linear Kinematic Features (LKFs) unless run at very high resolution ( $\approx 2$  km, Ringeisen et al., 2019; Hutter et al., 2022). To improve the simulation of small-scale ice features and to alleviate the problem of FDM with complex geometries (Peiró and Sherwin, 2005), the community also considered new sea-ice rheologies (Schreyer et al., 2006; Girard et al., 2011; Dansereau et al., 2016; Ringeisen et al., 2019) and explored different space discretization frameworks like the finite-element method (FEM) (Rampal et al., 2016; Mehlmann et al., 2021), the finite-volume method (FVM) (Losch et al., 2010; Adcroft et al., 2019) or the discrete-element method (DEM) (Hopkins and Thorndike, 2006; Herman, 2016; Damsgaard et al., 2018).

In recent decades, spatial resolution of sea-ice models became comparable to the characteristic length of the ice floes. This makes the continuum assumption of current FDM, FVM and FEM models questionable. Also, Eulerian models are known to have difficulties determining the precise locations of inhomogeneity, free surfaces, deformable boundaries and moving interfaces (Liu and Liu, 2010). These shortcomings have led to an ~~increase~~ increased interest in the DEM approach. Another advantage of using DEM is that the granularity of the material (Overland et al., 1998) is directly represented using discrete rigid bodies from which the physical interactions are calculated explicitly in the hope that large-scale properties naturally emerge. In practice, the emergent properties of a granular medium still depend on the assumed floe size and the nature of collisions in contrast with the continuous numerical methods which can which indirectly account for floe interactions through the formulation of a constitutive law. Nevertheless, DEM easily captures formation of cracks, leads and large deformation making it a consistent framework for the numerical simulation of granular material like sea-ice (Fleissner et al., 2007).

Despite the shortcomings of the continuum approaches, FDM, FVM and FEM are still the most commonly used framework in the community because they have been developed and tested for a longer period, they are well understood, more computationally more efficient and easily coupled for synoptic-scale-large-scale simulations. In an attempt to take advantages advantage of both continuum and discrete formulation, blends between the two approaches have been proposed — e.g., the finite-discrete element (Lilja et al., 2021) or the material-point method (Sulsky et al., 2007). Those framework, however, still use a mesh to solve the dynamic equations in addition to considering sea ice as discrete elements, making them even more computationally expensive. Finally, a fairly new approach for-in-the-context-of sea-ice modelling — also taking from both continuum and discrete framework — uses a Lagrangian meshfree continuous method called smoothed particle hydrodynamics (SPH) (Lucy, 1977; Gingold and Monaghan, 1977)developed by Lucy (1977); Gingold and Monaghan (1977). This meshfree method is known to facilitates the numerical treatment and description of free surfaces (Liu and Liu, 2010) which are common in sea-ice dynamics with polynyas, LKFs, free drifting ice floes and unbounded ice extent. As in DEM, the physical quantities are carried out by particles in space (an analogy for ice floes in the real world), but evolve according to the same dynamic equations used in the continuum approach. Furthermore, the method has the advantage of treating the system of equations in a Lagrangian framework discretized explicitly making it well suited for parallelization.

SPH has been used-successfully-for-the-modelling-of-applied successfully for modelling other granular materials such as sand, gravels and soils (Salehizadeh and Shafiei, 2019; Yang et al., 2020; Sheikh et al., 2020). In the context of mesoscale and larger sea-ice modelling, Gutfraind and Savage (1997) initiated the SPH study of sea-ice dynamics using a VP rheology based on a Mohr-Coulomb failure criterion. The ice concentration and thickness were fixed at 100% and 1 [m] with a continuity equation expressed in terms of a particle density. The internal ice strength between partiele-particles was derived diagnostically from ice density assuming ice was a nearly incompressible material. Later, Wang et al. (1998) developed a sea ice model of the Bohai Sea (east coast of China) using an SPH viscous-plastic rheology (Hibler, 1979) with continuity equations for ice concentration and mean thickness, and ice strength calculated from static ice jam theory (Shen et al., 1990). Following Wang et al. (1998), Ji et al. (2005) implemented a new viscoelastic-plastic rheology that was in better agreement with observations from the Bohai Sea. Recently, Staroszczyk (2017) proposed a sea ice model considering ice to behave as a compressible non-linear viscous material with a (dimensionless) contact length dependent parameterization for floe collisions and rafting (Gray and Morland, 1994; Morland and Staroszczyk, 1998). In all of the above, except for Gutfraind and Savage (1997), the same ice particle density definition is used.

In this work, we use the standard VP sea-ice model with an elliptical yield curve and normal flow rule (Hibler, 1979) ,and as a proof-of-concept. Further development of the SPH model should consider a broader range of rheologies. We propose a reformulation of the ice particle density that is internally consistent with the model physics. One goal of the study is to investigate differences coming from the numerical framework. To this end, we theoretically investigate the plastic wave propagation, a fundamental property of a sea-ice physical model, throughout-using a 1D perturbations analysis and we test the model in a ridging and ice arch experiment following earlier works by Lipscomb et al. (2007); Dumont et al. (2009); Rabatel et al. (2015); Dansereau et al. (2017); Williams et al. (2017); Damsgaard et al. (2018); Ranta et al. (2018); Plante et al. (2020); West et al. (2022). We chose to investigate the SPH method performance on a ridging experiment since it has an analytical steady-state

solution that can be used to establish the model accuracy and it is possible to evaluate ~~the coherent evolution of the continuity equations whether the coupling with the mass equations is coherent.~~ We also test SPH performance on ice arches simulation since this classic problem is an example of large-scale features resulting from small-scale ~~interaction-interactions~~ involving fractures of the material. The two experiments allow a direct comparison with previous work and identify advantages and disadvantages with the continuum and discrete sea-ice dynamic. The long-term goal is to lay the foundation for an SPH sea-ice formulation that can be used in ~~synoptic-scale-large-scale~~ models.

The paper is organized as follows. In section 2, ~~the SPH framework and how a description of~~ the sea-ice VP rheology, momentum and continuity equations ~~can be implemented in this framework are described~~ implementation in the SPH framework is presented. Results of a plastic wave propagation analysis, ridging experiments, and ice-arching simulations are presented in the section 3. Finally, section 4 discuss the SPH advantages and limitations of the ~~framework and model developed and concludes.~~

## 2 Model

### 95 1.1 Smoothed Particle Hydrodynamics (SPH)

~~The SPH method is at the interface between finite element method and discrete element methods. In this framework any function  $f(\mathbf{r})$  at a point  $\mathbf{r}$  is approximated from neighbouring values in the parameter space  $f(\mathbf{r}')$  using an integral interpolant (see figure A1):~~

$$f(\mathbf{r}) = \int_{\mathcal{V}} f(\mathbf{r}') W(|\mathbf{r} - \mathbf{r}'|, l) d\mathbf{r}',$$

100 ~~where  $W(|\mathbf{r} - \mathbf{r}'|, l)$  is the interpolating kernel and  $\mathcal{V}$  is the entire space volume. In two dimensions, the space volume is an area  $\mathcal{A}$  and the kernel has units of  $1/\mathcal{A}$ . This integral interpolant approximation is based on the singular integral mathematical framework of Natanson (1961) and imposes the following restrictions on the kernel:-~~

$$\int_{\mathcal{A}} W(|\mathbf{r} - \mathbf{r}'|, l) d\mathbf{r}' = 1,$$

~~and-~~

105  $\lim_{l \rightarrow 0} W(|\mathbf{r} - \mathbf{r}'|, l) = \delta(\mathbf{r} - \mathbf{r}')$ ,

where  $l$  is the smoothing length of the kernel and  $\delta$  is the Dirac delta function. Using the particle approximation, Eq. (A1) can be written as a weighted summation over all neighbouring points within the area  $\mathcal{A}$ :

$$\underline{f(\mathbf{r}_p) \approx \sum_{q=1}^N f(\mathbf{r}_q) W(|\mathbf{r}_p - \mathbf{r}_q|, l_p) \Delta \mathcal{A}_q \approx \sum_{q=1}^N f(\mathbf{r}_q) W(|\mathbf{r}_p - \mathbf{r}_q|, l_p) \frac{m_q}{\rho_q},}$$

where  $N$  is the number of points in space referred as neighbour particles,  $\Delta \mathcal{A}_q (= m/\rho)$  is the area associated with the particle   
110 [SPH framework](#),  $m$  represent the mass and  $\rho$  is the 2D density. Graphical representation of the SPH kernel  $W(|\mathbf{r}_p - \mathbf{r}_q|, l_p)$  (solid red line), the smoothing length  $l_p$  (red arrow), the particle  $p$ , the neighbouring particles  $q$ , the support domain  $\mathcal{A}$  (dashed red line) and the distance between any neighbour particle  $q$  and the particle  $p$  within the support domain  $\mathbf{r}_p - \mathbf{r}_q$  (black arrow). Note that particles are points in space and that their size in this schematic is arbitrary. From the above approximations, we reformulate differential operators relevant to our study in their discrete SPH forms. We write the divergence of a vector field   
115  $(\mathbf{V})$ , the divergence of a tensor  $(\mathbf{T})$  and the gradient of a vector field  $(\mathbf{V})$  (Monaghan, 2005) as (see Appendix B for complete derivation):

$$\underline{(\nabla \cdot \mathbf{V})_p = \frac{1}{\rho_p} \sum_{q=1}^N m_q (\mathbf{V}(\mathbf{r}_q) - \mathbf{V}(\mathbf{r}_p)) \cdot \nabla_p W_{pq},}$$

$$\underline{(\nabla \cdot \mathbf{T})_p = \rho_p \sum_{q=1}^N m_q \left( \frac{\mathbf{T}(\mathbf{r}_q)}{\rho_q^2} + \frac{\mathbf{T}(\mathbf{r}_p)}{\rho_p^2} \right) \cdot \nabla_p W_{pq},}$$

$$\underline{(\nabla \mathbf{V})_p = \sum_{q=1}^N \frac{m_q}{\rho_q} (\mathbf{V}(\mathbf{r}_q) - \mathbf{V}(\mathbf{r}_p)) \otimes \nabla_p W_{pq}.}$$

120 In Eq. (A7),  $\otimes$  denotes the outer product.  $\nabla_p W_{pq}$  is the gradient of the kernel at the coordinate  $\mathbf{r}_p - \mathbf{r}_q$  in the reference frame of particle  $p$  and is written as :-

$$\underline{\nabla_p W_{pq} = \frac{\mathbf{r}_p - \mathbf{r}_q}{|\mathbf{r}_p - \mathbf{r}_q|} \frac{\partial W(|\mathbf{r}_p - \mathbf{r}_q|, l_p)}{\partial |\mathbf{r}_p - \mathbf{r}_q|}.}$$

Note that  $W_{pq}$  is a scalar function and consequently  $\nabla_p W_{pq}$  is a vector, the inner product in Eq. (A5) is a scalar, the inner product in Eq. (A6) is a 2D vector and the outer product in Eq. (A7) is a 2D tensor of rank 2. In addition to Eq. (A2-   
125 A3), the smoothing kernel must have the following set of properties to avoid non-physical behaviour and costly computation

(Liu and Liu, 2003):-

Compact support :  $W(|\mathbf{r}_p - \mathbf{r}_q|, l_p) = 0, \text{ for } |\mathbf{r}_p - \mathbf{r}_q| > l_p,$

Positive definite :  $W(|\mathbf{r}_p - \mathbf{r}_q|, l_p) \geq 0,$

Monotonically decreasing :  $\frac{\partial W(|\mathbf{r}_p - \mathbf{r}_q|, l_p)}{\partial (|\mathbf{r}_p - \mathbf{r}_q|)} \leq 0,$

130 Symmetric :  $W(|\mathbf{r}_p - \mathbf{r}_q|, l_p) = W(-|\mathbf{r}_p - \mathbf{r}_q|, l_p),$

Differentiable :  $\frac{\partial^n W(|\mathbf{r}_p - \mathbf{r}_q|, l_p)}{\partial (|\mathbf{r}_p - \mathbf{r}_q|)^n} \exists,$

where  $\exists$  stands for *exist*. In the above, differentiable means that the kernel derivatives exist up to the highest order present in the equations. Finally, to ensure the consistency of the SPH method approximations to the  $n^{th}$  order, all kernel moments of order 1 to  $n$  need to vanish. In practice, the consistency conditions are satisfied when the number of neighbouring particles is sufficiently large to be evenly distributed in the domain of influence (Fraga Filho, 2019). Note that, at the boundaries, the domain of influence of the particle is truncated making it impossible to satisfy the kernel moments equations. This phenomenon is referred as the particle inconsistency and leads to poorer approximations of physical properties. No clear solutions to this problem are proposed in the literature yet [future model development and the main conclusions from the work](#).

135

## 2 [Model](#)

### 140 2.1 Momentum and continuity equations

Following Plante et al. (2020), we consider sea-ice to behave as a two-dimensional granular material described by the 2D momentum equation (neglecting the Coriolis and sea surface tilt terms):

$$\rho_i h \frac{D\mathbf{u}}{Dt} = \nabla \cdot \boldsymbol{\sigma} + \boldsymbol{\tau}, \quad (1)$$

where  $\rho_i$  is the ice density,  $h$  is the mean ice thickness (ice volume over an area),  $\mathbf{u} = u\hat{\mathbf{x}} + v\hat{\mathbf{y}}$  is the ice velocity vector,  $\boldsymbol{\sigma}$  is the vertically integrated internal stress tensor acting in the  $\hat{\mathbf{y}}$  direction on a face with a unit outward normal pointing in the  $\hat{\mathbf{x}}$  direction,  $\boldsymbol{\tau}$  is the sum of water [drag stress](#) and surface air stress and  $\frac{D}{Dt} = \frac{\partial}{\partial t} + \mathbf{u} \cdot \nabla$  is the Lagrangian derivative operator. ~~We neglected the~~ [The Coriolis and sea surface tilt force in terms are neglected from](#) the momentum equation to [make it easier to validate the model and study the ice arch formation](#) [ease the comparison with analytical solution and simple 1D problem](#). Note that using the Lagrangian derivative operator naturally incorporates the advection of momentum in the ice dynamics — a term

150 that is typically neglected for most continuum based Eulerian sea-ice models. The surface air stress and the water stress can be

written using bulk formulation as (McPhee, 1979):

$$\boldsymbol{\tau} = \rho_a C_a |\mathbf{u}_a - \mathbf{u}| (\mathbf{u}_a - \mathbf{u}) + \rho_w C_w |\mathbf{u}_w - \mathbf{u}| (\mathbf{u}_w - \mathbf{u}), \quad (2)$$

$$\approx \rho_a C_a |\mathbf{u}_a| (\mathbf{u}_a) + \rho_w C_w |\mathbf{u}_w - \mathbf{u}| (\mathbf{u}_w - \mathbf{u}), \quad (3)$$

where  $\rho_a$  and  $\rho_w$  are air and water densities,  $\mathbf{u}_a$  and  $\mathbf{u}_w$  are air and water velocity vectors,  $C_a$  and  $C_w$  are the air and water  
 155 drag coefficients and where  $\mathbf{u}$  is neglected in the formulation of the wind stress since  $\mathbf{u} \ll \mathbf{u}_a$ . The continuity equations for  
 the mean ice thickness  $h$  and the ice concentration  $A$  can be written as:

$$\frac{Dh}{Dt} + h \nabla \cdot \mathbf{u} = 0, \quad (4)$$

$$\frac{DA}{Dt} + A \nabla \cdot \mathbf{u} = 0, \quad (5)$$

where the thermodynamic source terms are omitted. Note that the thickness and concentration are independent prognostic  
 160 variables in a two-category model Hibler (1979), resulting in a singularity when thickness is reaches zero. To avoid this  
 singularity and for a more mathematically correct treatment of the mass equation, Gray and Morland (1994) introduced a  
 continuous solution where the concentration asymptotes to zero and one. In the following, we ignore melting and consider  
 cases where only convergent motion is present only, and the use of a two-category model does not have an impact on the  
 simulated results.

## 165 2.2 Constitutive laws

The constitutive relations for the viscous-plastic ice model with an elliptical yield curve, a normal flow rule and tensile strength  
 can be written as (Beatty and Holland, 2010):

$$\sigma_{ij} = 2\eta \dot{\epsilon}_{ij} + \left[ (\zeta - \eta) \dot{\epsilon}_{kk} - \frac{P_r (1 - k_t)}{2} \right] \delta_{ij}, \quad (6)$$

$$\dot{\epsilon}_{ij} = \frac{1}{2} \left( \frac{\partial u_j}{\partial x_i} + \frac{\partial u_i}{\partial x_j} \right) = \frac{1}{2} \left( \nabla \mathbf{u} + \nabla \mathbf{u}^\top \right), \quad (7)$$

170 where  $\dot{\epsilon}_{ij}$  is the symmetric part of the strain-rate tensor,  $\zeta$  and  $\eta$  are the non-linear bulk and shear viscosities,  $P_r$  is the  
 replacement pressure,  $k_t$  is the tensile strength factor and  $\delta_{ij}$  is the Kronecker delta. Following Bouchat and Tremblay (2017)

we write :

$$\zeta = \frac{P(1+k_t)}{2\Delta^*}, \quad (8)$$

$$\eta = \frac{\zeta}{e^2} = \zeta \left( \frac{2S}{P(1+k_t)} \right)^2, \quad (9)$$

$$175 \quad \Delta^* = \max(\Delta, \Delta_{min}), \quad (10)$$

$$\Delta = \left[ (\dot{\epsilon}_{11}^2 + \dot{\epsilon}_{22}^2)(1 + e^{-2}) + 4e^{-2}\dot{\epsilon}_{12}^2 + 2\dot{\epsilon}_{11}\dot{\epsilon}_{22}(1 - e^{-2}) \right]^{1/2}, \quad (11)$$

where  $P = P^*h \exp(-C(1 - A))$  is the ice strength (Hibler, 1979),  $P^*$  and  $C$  are respectively the ice compressive strength and ice concentration parameters,  $S$  is the ice shear strength and  $e$  is the ellipse aspect ratio. In the limit where [the strain rates  \$\dot{\epsilon}\$  go to zero](#),  $\zeta$  and  $\eta$  [would](#) tend to infinity. To avoid this situation, the deformation  $\Delta$  is capped to  $\Delta_{min} = 2 \times 10^{-9} \text{s}^{-1}$ .

180 Using the  $\Delta^*$  formulation, the replacement pressure  $P_r$  can be written as

$$P_r = P \frac{\Delta}{\Delta^*}, \quad (12)$$

which ensures that the stresses are zero when the strain rates are zero.

### 2.3 Governing differential equations: SPH framework

To solve [ice dynamic the](#) system of equations in the SPH framework, equations involving spatial derivatives (Eqs. 1 - 4 - 5 - 7) are reformulated ([see section A for more details on the SPH theory](#)) using Eqs. (A5 - A6 - A7) with the particle subscripts  $p$  and  $q$  (see Fig. A1) and a temporal evolution for the ice particle position is defined:

$$\frac{D\mathbf{x}_p}{Dt} = \mathbf{u}_p, \quad \text{Momentum} \quad (13)$$

$$\rho_i h_p \frac{D\mathbf{u}_p}{Dt} = \rho_p \sum_{q=1}^N m_q \left( \frac{\boldsymbol{\sigma}_q}{\rho_q^2} + \frac{\boldsymbol{\sigma}_p}{\rho_p^2} \right) \cdot \nabla_p W_{pq} + \boldsymbol{\tau}_p, \quad \text{Momentum} \quad (14)$$

$$\frac{Dh_p}{Dt} + \frac{h_p}{\rho_p} \sum_{q=1}^N m_q (\mathbf{u}_q - \mathbf{u}_p) \cdot \nabla_p W_{pq} = 0, \quad \text{Continuity} \quad (15)$$

$$190 \quad \frac{DA_p}{Dt} + \frac{A_p}{\rho_p} \sum_{q=1}^N m_q (\mathbf{u}_q - \mathbf{u}_p) \cdot \nabla_p W_{pq} = 0, \quad \text{Continuity} \quad (16)$$

$$(\dot{\epsilon}_{ij})_p = \frac{1}{2} \left[ \left( \sum_{q=1}^N \frac{m_q}{\rho_q} (\mathbf{u}_q - \mathbf{u}_p) \otimes \nabla_p W_{pq} \right) + \left( \sum_{q=1}^N \frac{m_q}{\rho_q} (\mathbf{u}_q - \mathbf{u}_p) \otimes \nabla_p W_{pq} \right)^\top \right]. \quad \text{Constitutive} \quad (17)$$

It is important to make the distinction between the intrinsic ice density  $\rho_i$  and the particle densities  $\rho_p$ . For consistency reasons with the standard VP rheology, we consider the following definition of density independent of ice concentration in



contrast with previous work (Wang et al., 1998; Ji et al., 2005; Staroszczyk, 2017) (see results section for discussion):

$$195 \quad \rho_p = \rho_i h_p. \quad (18)$$

By formulating density as [in](#) Eq. (18), the continuity Eq. (15) has the same form as the more commonly used continuity density equation (Monaghan, 2012) :

$$\frac{D\rho_p}{Dt} = -\rho_p \nabla \cdot \mathbf{u}_p = \sum_{q=1}^N m_q (\mathbf{u}_p - \mathbf{u}_q) \cdot \nabla_p W_{pq}, \quad (19)$$

except for the fact that the divergence of the velocity field is scaled by the ice material density  $\rho_i$  ( $\frac{D\rho_p}{Dt} = \rho_i \frac{Dh_p}{Dt}$ ). ~~Note that since the particle density  $\rho_p$  is independent of the concentration, the particle concentration  $A_p$  is a quantity that measures the compactness of the floes at the particle location, but does not relate to the amount of ice carried by a particle. With this formulation, the concentration can be interpreted as the probability of ice floes carried by a particle to come in contact with ice floes of another particle (and repel each other) within the unresolved area  $\Delta A_p$ .~~

~~Note that since the particle density  $\rho_p$  is independent of the particle concentration  $A_p$  (a measure of compactness of the floes at a particle location), it no longer relates to the amount of ice carried by a particle.~~ Overall, a particle can be seen as an unresolved collection of floes scattered within the support domain  $\mathcal{A}$  that can ~~compact, ridge-, break or converge, ridge over one another, break and~~ drift apart. ~~Consequently~~ Note that since the particle density  $\rho_p$  definition is independent of  $A_p$ , the concentration can be interpreted as a quantity that measures the compactness of the sea-ice at the particle location. It describes the probability of ice floes carried by a particle, which is a point in space, to come in "contact" with ice floes of another particle — ~~recall that particles are points in space, never touch each other and experience a repulsive force that is proportional and get repulsed according~~ to the ice strength.

## 2.4 Numerical approach

Following Hosseini et al. (2019), we use a second order predictor-corrector scheme to evolve in time the SPH ice system of ~~equation equations~~ (see algorithm 1 below). This integration scheme takes a given function  $f$  (here  $f$  can be  $x$ ,  $\mathbf{u}$ ,  $A$  and  $h$ ) and ~~used-uses~~ a predictor step to calculate its value  $f^{n+1/2}$  at time  $t = (n + \frac{1}{2})\Delta t$  (where  $\Delta t$  is the time step) followed by a correction step to calculate the solution  $f^{n+1}$  at time  $t = (n + 1)\Delta t$  from  $f^{n+1/2}$ :

$$f_p^{n+1/2} = f_p^n + \frac{\Delta t}{2} \frac{Df_p^n}{Dt} + O(\Delta t^2), \quad (20)$$

$$f_p^{n+1/2} \text{ corrected} = f_p^n + \frac{\Delta t}{2} \frac{Df_p^{n+1/2}}{Dt}, \quad (21)$$

$$f_p^{n+1} = 2f_p^{n+1/2} \text{ corrected} - f_p^n + O(\Delta t^3). \quad (22)$$

220 In the above equations,  $O(\Delta t^2)$  and  $O(\Delta t^3)$  represent higher-order terms, which are ignored in the proposed scheme. Following Lemieux and Tremblay (2009), a simple 1D model taking into account only the viscous term — the most restrictive condition — leads to the following stability criterion:

$$\Delta t \leq \frac{\rho_i h l_{min}^2}{\eta_{max}} = \frac{e^2 \rho_i l_{min}^2 \Delta_{min}}{P^*(1+k_t)}, \quad (23)$$

where  $l_{min}$  is the minimum smoothing length across all the particles. The stability criterion imposes a strict limitation on the time step ( $\sim 10^{-4}$  to  $10^{-2}$  seconds for particles of radius of 1 to 10 kilometres); this cannot be avoided using a pseudo-time step because particles in an SPH framework are irregularly placed and move within the domain at each time step. This makes the parallelization of the particle interactions algorithm mandatory for any practical applications. On the positive side, the explicit time stepping also eliminate possible convergence issues of the numerical solver. A pseudo-code for the proposed algorithm is shown below (Algorithm 1).

---

**Algorithm 1** Sea-ice SPH

---

**Require:** Domain shape and boundaries, Spatial resolution, Total integration time  
 initialize particle and boundary according to input  
**for**  $i = 0$  **to**  $IntegrationTime$  **do**  
    $nInteraction \leftarrow nearestNeighbourParticleSearch$   
   **for**  $j = 0$  **to**  $nInteraction$  **do**  
      $kernel \leftarrow smoothingFunctionCalculation$   
      $internalForce \leftarrow kernel$   
   **end for**  
   **for all**  $particles$  **do**  
      $externalForce$   
      $physicalQuantities \leftarrow (externalForce, internalForce)$   
      $density \leftarrow iceThickness$   
      $smoothingLength \leftarrow density$   
   **end for**  
    $timeStep \leftarrow smoothingLength$   
   monitor particle interaction statistics  
   output  
**end for**

---

230 **2.5 Particle interactions**

Following Rhoades (1992), we use the bucket search algorithm parallelized using shared memory multiprocessing (OpenMP) to find all the neighbours of each particle in favour of the explored tree algorithm (Cavelan et al., 2019) which involve pointers and complex memory structure that are not easy to manipulate in OpenMP. The proposed OpenMP parallelization is rudimentary and one time step in a domain with 40000 particles takes  $\approx 0.1$  second. For this reason, the model requires more computational resources for the effective resolution when compared with a continuum approach. This could be greatly improved by taking advantage of CPU clusters (Yang et al., 2020) or GPUs (Xia and Liang, 2016).

After the neighbour search, the interactions between pairs of particles are computed using the Wendland  $C^6$  kernel — Wendland kernels have the best stability properties for wavelengths smaller than the smoothing kernel (Dehnen and Aly, 2012) — which is written as:

$$240 \quad W(|\mathbf{r}_p - \mathbf{r}_q|, l_p) = W_{C^6}(R) = \alpha_d \begin{cases} (1 - R)^8(32R^3 + 25R^2 + 8R + 1), & 0 \leq R < 1, \\ 0, & R \geq 1, \end{cases} \quad (24)$$

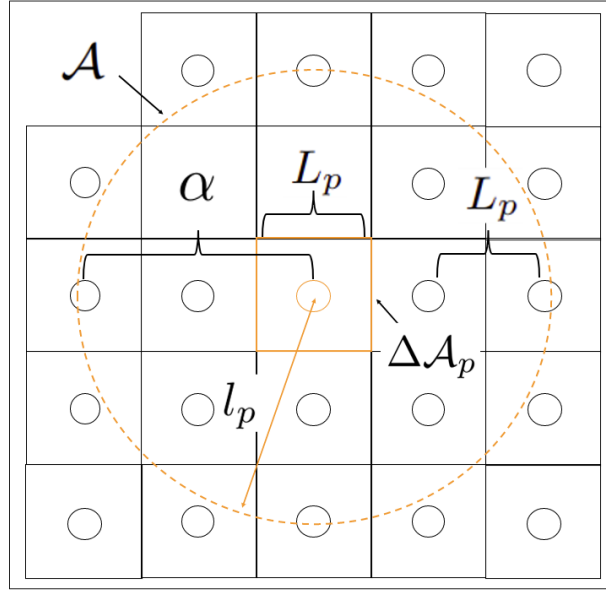
$$\frac{\partial W(|\mathbf{r}_p - \mathbf{r}_q|, l_p)}{\partial |\mathbf{r}_q - \mathbf{r}_p|} = \frac{\partial W_{C^6}(R)}{\partial |\mathbf{r}_q - \mathbf{r}_p|} = \alpha_d \begin{cases} -22R(16R^2 + 7R + 1)(1 - R)^7 \frac{\kappa}{l_p}, & 0 \leq R < 1, \\ 0, & R \geq 1, \end{cases} \quad (25)$$

where  $\alpha_d$  is a normalization factor depending on the dimension of the problem. Note that  $R (= \kappa|\mathbf{r}_p - \mathbf{r}_q|/l_p)$  is the normalized distance between particles in the referential  $\mathbf{r}_p - \mathbf{r}_q$ . Consequently, we always integrate from 0 to  $l_p$  (the smoothing length) independently of the kernel instead of 0 to  $\kappa l_p$  as shown in (Liu and Liu, 2010) by Liu and Liu (2010). The constant  $\alpha_d$  becomes  $\frac{78\kappa^2}{7\pi l^2}$  in 2D, with a factor of  $\kappa^2$  different from the usual definition. Note that the scaling factor  $\kappa$  has a value of 1 for the Wendland  $C^6$  kernel. The choice of kernel was validated using stability tests with six different kernels including the original Gaussian kernel (Gingold and Monaghan, 1977), a quartic spline Gaussian approximation (Liu and Liu, 2010), a quintic spline Gaussian approximation (Morris et al., 1997), a quadratic kernel (Johnson and Beissel, 1996) and the Wendland  $C^2$ ,  $C^4$  and  $C^6$  kernels (Wendland, 1995).

## 250 2.6 Smoothing length

The smoothing or correlation length is a key element of SPH and has a direct influence on the accuracy of the solution and the efficiency of the computation. For instance, if  $l_p$  is too small, there may not be enough particles in the support domain violating the kernel moments requirements. If the smoothing length  $l_p$  is too large, all the local properties of particles would be smoothed out over a large number of neighbours and the computation time would increase with the number of interactions. In two dimensions, the optimal number of neighbours interacting with any particle  $p$  should be about 20 to balance the precision and the computational cost (Liu and Liu, 2003). We therefore implement a variable smoothing length that evolves in time and space to maintain this approximate number of neighbours. To this end, we keep the mass of particles constant in time and evaluate the smoothing length from the particle density. Note that keeping the mass of a particle constant has the advantage of ensuring mass conservation. This assumption is justified in our case since we are only interested in sea-ice dynamics and ridging change the area cover by ice floes but not their mass. However, fixing the ice mass is only valid when neglecting the thermodynamics and need to be modified for synoptic scale simulation.

The initial mass of a particle is defined from the ice area it represents within its support domain ( $\Delta\mathcal{A}_p$  in Fig. 1). To avoid creating porosity in the medium, we divide the space in equal square area ( $= L_p^2$ ) that covers the whole domain. Since we want approximately 20 neighbours for every particle, we introduce  $\alpha (= 3$  in all simulations) a parameter that stands for the approximate number of particles desired in any direction within the support domain. The parameter  $\alpha$  can also be interpreted



**Figure 1.** Graphical representation of the initial position of the particles and the relevant parameter for the smoothing length evolution : the ice area carried by the particle  $\Delta\mathcal{A}_p$  (solid red-orange square), the parameter  $\alpha$  ( $= 2$  in this schematic for visibility), the support domain  $\mathcal{A}$  (dashed red-orange line), the smoothing length  $l_p$  (red arrow) and the initial distance between particle  $q$  and the red-orange circle is the current particle  $p$ . Note that, as for the figure A1, the particle sizes in this schematic are also arbitrary.

as the proportionality constant between the particle spacing  $L_p$  and the smoothing length  $l_p$ . Note that to increase the accuracy of the particle approximation,  $\alpha$  can be increased by any desired factor (see Fig. 1). The mass carried by a particle is therefore written as :

$$m_p = \Delta\mathcal{A}_p \rho_i h_{0p} = L_p^2 \rho_i h_{0p}, \quad (26)$$

270 where  $h_{0p}$  is the initial mean thickness of the particle. The smoothing length is then updated at each time step diagnostically from:

$$l_p = \alpha L_p = \alpha \sqrt{\frac{m_p}{\rho_p}}. \quad (27)$$

The smoothing length  $l_p$  is capped to 10 times its initial value when the particle density tends to zero. This capping prevents conservation of mass for density lower than 1% of its initial value (see Eq. (26)). We justify this capping because such small  
275 densities do not affect the ice dynamics.

**Table 1.** Physical parameters used in ridging and arch simulations.

Parameter	Symbol	Value	Unit
Ice concentration parameter	$C$	20	-
Ice compressive strength	$P^*$	27.5	$\text{kN} \cdot \text{m}^{-2}$
Air density	$\rho_a$	1.3	$\text{kg} \cdot \text{m}^{-3}$
Water density	$\rho_w$	1026	$\text{kg} \cdot \text{m}^{-3}$
Ice density	$\rho_i$	900	$\text{kg} \cdot \text{m}^{-3}$
Wind <del>drag-stress</del> coefficient	$C_a$	$1.2 \times 10^{-3}$	-
Water <del>drag-stress</del> coefficient	$C_w$	$5.5 \times 10^{-3}$	-
Minimal total deformation	$\Delta_{min}$	$2 \times 10^{-9}$	$\text{s}^{-1}$

Values of the parameter used for the simulations are the same as the one presented in (Williams et al., 2017) to facilitate comparison in the results section.

## 2.7 Boundary treatment

We implemented the boundary treatment of Monaghan and Kajtar (2009) because of its simplicity, versatility and low computational cost. The boundaries are set up by placing stationary particles with fixed smoothing length  $l_b$  and a mass  $m_b$  equal to the average ice particle mass  $m_p$ . The boundary smoothing length  $l_b$  is chosen in a way that only one layer of ice particles initially interact with the boundary (this makes  $l_b$  resolution dependent). The boundary particles are (equally) spaced apart by a factor one quarter of their smoothing length ( $l_b/4$ ). In this manner, all ice particles  $p$  within a support domain  $l_b$  will interact with approximately four boundary particles (denoted by the subscript  $b$ ) at a time resulting in a net normal repulsive force  $\mathbf{F}_{Np}$ :

$$\mathbf{F}_{Np} = \sum_{b=1}^{N_b} \frac{\kappa_n \mu}{|\mathbf{r}_p - \mathbf{r}_b|^2} W_{pb} \frac{2m_b}{m_p + m_b}, \quad (28)$$

that is added to their momentum equation. In Eq. (28),  $\kappa_n \mu$  is a constant with units of  $[\text{kg} \cdot \text{m}^4 \cdot \text{s}^{-2}]$  used to adjust the repulsion strength and is also simulation dependent because it needs to counterbalance the particle acceleration, and prevent them from escaping the domain. This free parameter is not suited for complex pan-arctic simulations, but is sufficient in our idealize experiment study. A idealized experiments. For all the simulations, a free-slip boundary condition in all simulations, i.e., no tangential friction force between boundary particle and ice particle is applied.

## 290 3 Results

### 3.1 Plastic wave propagation

We first compare the plastic wave speed for the VP dynamic equations with and without the SPH approximations. To this end, we do a perturbation analysis for a one-dimensional case with a fixed sea-ice concentration ( $A = 1$ ). In this case, the 1D SPH

sea-ice dynamic equations (Eqs. 13 - 16) form a system of three equations and three unknowns ( $x$ ,  $u$  and  $h$ ) :

$$295 \quad \frac{Dx_p}{Dt} = u_p \quad (29)$$

$$\frac{Du_p}{Dt} = \Gamma \sum_{q=1}^N \frac{m_q}{\rho_i^2} \left( \frac{1}{h_q} + \frac{1}{h_p} \right) \frac{x_{pq}}{|x_{pq}|} \frac{\partial W}{\partial x_{pq}} + \tau_p, \quad (30)$$

$$\frac{Dh_p}{Dt} = -\frac{1}{\rho_i} \sum_{q=1}^N m_q (u_q - u_p) \frac{x_{pq}}{|x_{pq}|} \frac{\partial W}{\partial x_{pq}}, \quad (31)$$

where  $x_{pq}$  is a short form for  $x_p - x_q$  and  $\Gamma = \frac{P^*}{2} \left[ \pm (e^{-2} + 1)^{1/2} - 1 \right]$ .

$$\Gamma = \frac{P^*}{2} \left[ \pm (e^{-2} + 1)^{1/2} - 1 \right]. \quad (32)$$

300 In the above, we made use of the following 1D normal stress for convergent plastic motion (see Gray, 1999; Williams et al., 2017, for 1D normal stress derivation):

$$\sigma = \sigma_{xx} = \frac{P^*}{2} \left[ \pm (e^{-2} + 1)^{1/2} - 1 \right] h = \Gamma h. \quad (33)$$

Linearizing around a mean state ( $\bar{u} = 0$  and  $\bar{h} = h_0$ ), considering small perturbations ( $\delta x$ ,  $\delta u$  and  $\delta h$ ) and ignoring  $2^{nd}$  order term, we obtain:

$$305 \quad \frac{D\delta x_p}{Dt} = \delta u_p \quad (34)$$

$$\frac{D\delta u_p}{Dt} = \frac{\Gamma}{\rho_i} \sum_{q=1}^N \Delta \mathcal{A}_q \frac{\bar{x}_{pq}}{|\bar{x}_{pq}|} \left( \frac{-1}{h_0} (\delta h_q + \delta h_p) \frac{\partial W}{\partial \bar{x}_{pq}} + 2(\delta x_p - \delta x_q) \frac{\partial^2 W}{\partial \bar{x}_{pq}^2} \right), \quad (35)$$

$$\frac{D\delta h_p}{Dt} = -h_0 \sum_{q=1}^N \Delta \mathcal{A}_q \frac{\bar{x}_{pq}}{|\bar{x}_{pq}|} (\delta u_q - \delta u_p) \frac{\partial W}{\partial \bar{x}_{pq}}, \quad (36)$$

where  $\Delta \mathcal{A}_q = \frac{m_q}{\rho_i h_0} = \frac{m_q}{\rho_q}$  (Eq. A4) and where we have used the binomial expansion  $\frac{1}{h} = \frac{1}{h_0 + \delta h} \approx \frac{1}{h_0} \left( 1 - \frac{\delta h}{h_0} \right)$ . ~~Assuming perturbations have a wavelike~~ Following Williams et al. (2017), we do a perturbation analysis on the system of equations

310 (34 - 36) and assume a wave solution of the form  $\delta f = \hat{f} \exp(i(k\bar{x} - \omega t))$ , where  $i$  is the imaginary number,  $k$  is the wavenumber and  $\omega$  is the angular velocity ~~the~~ and  $f$  is a dummy variable standing for  $u$ ,  $x$  and  $h$ . Substituting  $\delta f$  in

equations (34 - 36), the resulting set of equations in the reference frame following the ice motion reduces to:

$$\hat{x} = \frac{i}{\omega} \hat{u}, \quad (37)$$

$$\hat{u} = \frac{i\Gamma}{\omega\rho_i} \sum_{q=1}^N \mathcal{A}_q \frac{\bar{x}_{pq}}{|\bar{x}_{pq}|} \left( \left[ -\frac{\hat{h}}{h_0} (1 + \exp(-ik\bar{x}_{pq})) \right] \frac{\partial W}{\partial \bar{x}_{pq}} + 2\hat{x} (1 - \exp(-ik\bar{x}_{pq})) \frac{\partial^2 W_{pq}}{\partial \bar{x}_{pq}^2} \right), \quad (38)$$

$$315 \quad \hat{h} = -\frac{ih_0\hat{u}}{\omega} \sum_{q=1}^N \mathcal{A}_q \frac{\bar{x}_{pq}}{|\bar{x}_{pq}|} (\exp(-ik\bar{x}_{pq}) - 1). \quad (39)$$

Note that since the ice is initially at rest, the Lagrangian and the Eulerian frameworks are equivalent. For large enough wavelength (so that the perturbation can be resolved across multiple particles with high accuracy i.e.,  $\lambda \geq l_p$  and  $N \rightarrow \infty$ ), the summations can be ~~written as integrals~~ approximated by integrals over the space, i.e.,  $\sum_{q=1}^N \mathcal{A}_q \frac{\bar{x}_{pq}}{|\bar{x}_{pq}|}$  becomes  $\int_{-\infty}^{\infty} d\bar{x}_{pq}$ . Taking advantage of the kernel properties — i.e., all moments higher than 0 vanish — we can write Eqs. 38 - 39 as:

$$320 \quad \hat{u} = \frac{-i\Gamma}{\omega\rho_i} \int_{-\infty}^{\infty} \left( \frac{\hat{h}}{h_0} \frac{\partial W}{\partial \bar{x}_{pq}} + 2\hat{x} \frac{\partial^2 W_{pq}}{\partial \bar{x}_{pq}^2} \right) \exp(-ik\bar{x}_{pq}) d\bar{x}_{pq} = \frac{\Gamma}{\omega\rho_i} \left( \frac{\hat{h}}{h_0} k + i2k^2\hat{x} \right) \tilde{W}, \quad (40)$$

$$\hat{h} = -\frac{ih_0\hat{u}}{\omega} \int_{-\infty}^{\infty} \exp(-ik\bar{x}_{pq}) \frac{\partial W}{\partial \bar{x}_{pq}} d\bar{x}_{pq} = \frac{h_0\hat{u}k}{\omega} \tilde{W}, \quad (41)$$

where the integrals have been converted to Fourier transform using  $\mathcal{F}\left(\frac{\partial W}{\partial \bar{x}_{pq}}\right) = ik\mathcal{F}(W) = ik\tilde{W}$ ,  $\mathcal{F}\left(\frac{\partial^2 W}{\partial \bar{x}_{pq}^2}\right) = \int_{-\infty}^{\infty} \left(\frac{\partial W}{\partial \bar{x}_{pq}}\right) \exp(-ik\bar{x}_{pq}) d\bar{x}_{pq}$ . Finally, ~~combining Eqs.~~ combining Eqs. (37-40 - 41) ~~represents a system of three equations for three unknowns~~ represents a system of three equations for three unknowns ( $\hat{x}, \hat{u}, \hat{h}$ ) ~~that we solve by substitution. This leads to the following form for the phase speed~~ that we solve by substitution. This leads to the following form for the phase speed ~~for of the plastic wave~~ for of the plastic wave ( $\frac{\omega}{k}$ ) ~~can be written as:~~ can be written as:

$$325 \quad c_{\text{SPH}} = \frac{\omega}{k} = \pm \tilde{W} \sqrt{-\frac{\Gamma}{\rho_i} \left( \frac{2}{\tilde{W}} - 1 \right)}. \quad (42)$$

For wavelengths much larger than the smoothing length ( $\lambda \propto \frac{1}{k} \gg l_p$ ), the Fourier transform of the kernel tends to 1 ( $\tilde{W} \approx 1$ ) and the SPH formulation reduces to the Viscous-Plastic theory without SPH approximations (see for instance Williams et al., 2017), i.e.:

$$c_{\text{VP}} = \pm \sqrt{-\frac{\Gamma}{\rho_i}}, \quad (43)$$

330 with a plastic wave propagation speed  $c_{\text{VP}} \approx 5.7 \text{ [m} \cdot \text{s}^{-1}]$  for typical sea-ice parameters (see Table 1). Consequently, a major difference of SPH with the FDM framework is that the plastic wave speed is dispersive with a phase velocity  $c_{\text{SPH}}$  that is dependent on the wavelength and the smoothing length. In general, only the plastic waves with a wavelength between approximately 1 and 11 times the smoothing length will have their travelling speed modified by more than 1%. More specifically, in

the limit where the wavelength  $\lambda$  approaches the smoothing length  $l_p$ , the plastic wave speed increases in the SPH framework for a maximum value of  $\approx 6.7$  [ $\text{m} \cdot \text{s}^{-1}$ ] (see Fig. 2 panel a). Note that for wavelength smaller than the smoothing length, the summations in Eqs. (40- 41) cannot be written as integrals but the particles still respond partially to the perturbations. This sometimes leads to the tensile and the zero-energy modes instabilities (Swegle et al., 1995). As mentioned above, Dehnen and Aly (2012) showed that Wendland kernels, can diminish the tensile instability and the pairing of particles. A deeper analysis of unresolved waves ( $\lambda < l_p$ ) in the context of sea-ice SPH dynamic equations is beyond the scope of the current study.

For the more general case when the base state allows for a variable concentration (linearized around a mean state  $\bar{A} = A_0$ ) and considering the classical — denoted by a superscript  $C$  — particle density definition ( $\rho_p^C = \rho_i h_p A_p$ ) used by Wang et al. (1998); Ji et al. (2005); Staroszczyk (2017), the plastic wave speed becomes:

$$c_{A,\text{SPH}}^C = \pm \tilde{W} \sqrt{-\frac{\Gamma^*}{\rho_i} \left( CA_0 - 3 + \frac{2}{\tilde{W}} \right)}, \quad (44)$$

where  $\Gamma^* = \Gamma \exp(-C(1 - A_0))$ . We argue that the plastic wave speed  $c_{A,\text{SPH}}^C$  obtained with the classical density definition does not converge (see Fig. 2 panel b) to the Viscous-Plastic theory,  $c_{A,\text{VP}}$ , derived from FDM (see Williams et al., 2017, for derivation):

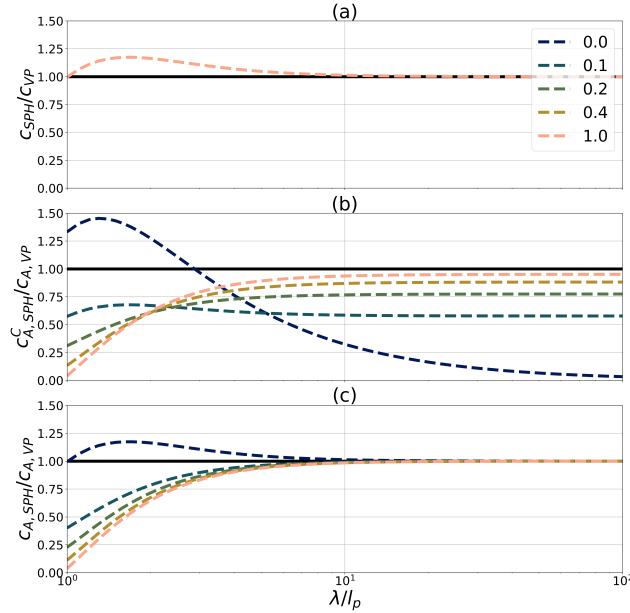
$$c_{A,\text{VP}} = \pm \sqrt{-\frac{\Gamma^*}{\rho_i} (CA_0 + 1)}, \quad (45)$$

because the ice concentration is taken into account in both the definition of  $\rho_p^C$  and implicitly in the definition of the average thickness  $h_p$ . When we consider the new formulation of particle density independent of concentration as proposed above (Eq. 18) the wave speed equation becomes:

$$c_{A,\text{SPH}} = \pm \tilde{W} \sqrt{-\frac{\Gamma^*}{\rho_i} \left( CA_0 - 1 + \frac{2}{\tilde{W}} \right)}, \quad (46)$$

which reduces to the FDM VP theory (Eq. 45) when the wavelength is large compared to the smoothing length (see Fig. 2 panel c). ~~However, Note that the perturbation analysis presented above is not valid for the classical density definition is not wrong, proposed by Wang et al. (1998); Ji et al. (2005); Staroszczyk (2017) used different formulation of the continuity equation in their model which makes our perturbation analysis only valid in the current study since they use a different set of momentum, continuity and constitutive equations to describe sea-ice.~~ In a similar manner as for the plastic wave speed with a fixed concentration (Eq. 42), the wave speed  $c_{A,\text{SPH}}$  (Eq. 46) is dispersive and the wavelength between 1 and 11 times the smoothing length are those that are mostly affected (more than 1%). However, in this case, the plastic wave speed is damped for wavelengths close to the smoothing length for mean concentration state higher than 0.1. Note that while the plastic wave speed is defined for all  $A$ , it does not have a physical meaning for  $A < 0.85$  since there are negligible ice-ice interactions.





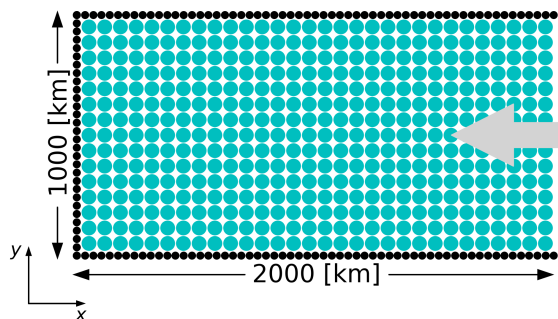
**Figure 2.** SPH plastic wave speed as a function of the normalized wavelength ( $\lambda/l_p$ ) for the Wendland  $C^6$  kernel. Panel a) show the classical VP rheology with fixed concentration (Eq. 42) normalized by the FDM plastic wave speed with fixed concentration (Eq. 43), panel b) show the classical VP rheology with a variable concentration and the density definition  $\rho_p^C = \rho_i h_p A_p$  (Eq. 44) normalized by the FDM plastic wave speed with a variable concentration (Eq. 45) and panel c) show the classical VP rheology with a variable concentration and the density definition  $\rho_p = \rho_i h_p$  (Eq. 46) normalized by the FDM plastic wave speed with a variable concentration (Eq. 45). Different homogeneous base state of concentration  $A_0$  are shown varying from 0 to 1.

### 3.2 Ridging experiments

We validate our implementation of the SPH model (with the new definition of particle density  $\rho_p$ ) in a 1D ridging experiment for which we ~~have an~~ can validate against the simulated field from a viscous-plastic sea ice model based on the FDM — the one-dimensional version of McGill-SIM model used in the SIREx studies (Bouchat et al., 2022; Hutter et al., 2022) — and   
 365 against the analytical solution (see Williams and Tremblay, 2018, for derivation):

$$-\frac{d\sigma}{dx} = \rho_a C_a |u_a| u_a \implies \frac{dh}{dx} = \frac{2\rho_a C_a |u_a| u_a}{P^*(\sqrt{e^{-2} + 1} + 1)}, \quad (47)$$

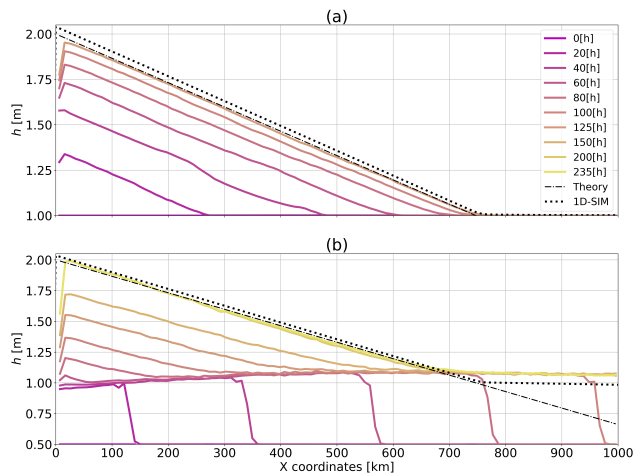
i.e., a linear profile in thickness with a slope proportional to the square of the wind velocity and inversely proportional to the ice strength. We consider a rectangular domain of 1000 by 2000 [km] including the boundary (the ice field is 1900 [km] to ensure that no particle escape on the open side) with 37240 particles, an initial homogeneous smoothing length  $l_p$  of 21.429   
 370 [km] (spacing  $l_p/\alpha = 7.14$  [km]) and a smaller — to limit boundary effect — boundary particle smoothing length  $l_b$  of 4 [km] (spacing  $l_b/4 = 1.0$  [km]) to represent the wall (see Fig. 3). Particles are initialized with an average thickness  $h = 1$  [m] and a concentration  $A = 1$ . They are forced against the wall by a constant unidirectional wind of  $5$  [ $\text{m} \cdot \text{s}^{-1}$ ]. Note that the water ~~drag force~~ stress is removed in the simulation for a faster convergence to the ~~steady state~~ steady-state which enables higher



**Figure 3.** Idealized domain of the ridging experiment. The blue circles represent the ice particles and the black ones are the boundary particles. The grey arrow shows the wind forcing. More particles than shown in this schematic were used during simulation.

resolution — a water current of  $0 \text{ [m} \cdot \text{s}^{-1}]$  would slow down the ice and the ridge formation since it is driven by the advection  
 375 speed. The Coriolis force should normally also have to be considered with this domain size and classical polar latitude — the  
 Rossby number is  $\mathcal{O}(10^{-2})$  —, but is neglected in this idealized experiment to conserve the symmetry of the solution and  
 compare it to the theoretical 1D equation ( Eq. 47). In results presented below (Fig. 4 - 5), the particles properties are averaged  
 over a grid of approximately 10 by 5 [km] cells for plotting purposes. Results show that the simulated thickness field converges  
 to the analytical solution (within an error of  $\approx 1\%$ ) after  $\approx 5$  days with a slope of  $1.33 \times 10^{-3} \text{ [m} \cdot \text{km}^{-1}]$ , compared with  
 380  $1.34 \times 10^{-3} \text{ [m} \cdot \text{km}^{-1}]$  for the theory — lower resolution simulations were run for a longer time and also converged to this  
 stable state (results not shown). This is comparable to the precision obtain by the 1D-SIM FDM model which reaches a slope  
 of  $1.35 \times 10^{-3} \text{ [m} \cdot \text{km}^{-1}]$ . Artifacts are observed close to the boundary where the repulsive force ~~prevent the particle~~  
prevents the particles  
 from reaching the "wall". Additionally, when a particle comes into contact with the boundary with a certain inertia  
 (due to the  $1/r$  dependence of the boundary force), we observe oscillations in the motion of particles which can propagate far  
 385 in the domain ( e.g., Fig. 4 panel a, at  $x \approx [50, 300] \text{ [km]}$  and  $t = [30, 45] \text{ [h]}$ ). The oscillations are damped and the energy is  
 dissipated by the rheology term with time until an equilibrium is reached. Note that reintroducing the water drag diminish the  
 oscillation coming from the boundary, but does not remove them completely. A more physical boundary treatment is beyond  
 the scope of this study.

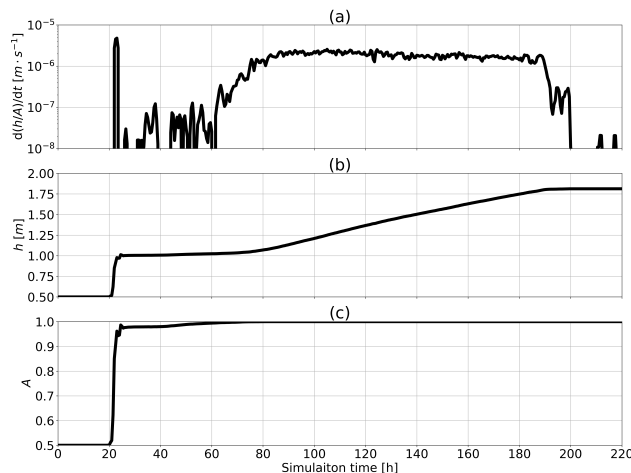
We also repeated the ridge experiment with the same forcing and total sea-ice volume but letting the sea ice concentration  
 390 evolve with time, ~~specifically with an~~. Specifically, the initial average thickness and concentration ~~of were set to~~  $h = 0.5 \text{ [m]}$   
 and  $A = 0.5$ , ~~to ensure~~. This ensures that both  $h$  and  $A$  covary in time such that  $\frac{h}{A}$  remains constant — note that,  $A$  and  
 $h$  follow the same continuity equations (15,16), or (4,5) when omitting the SPH approximations, and therefore should vary  
 identically in time until  $A$  reaches 1 — in the marginal ice zone (MIZ)~~until significant ice interactions take place~~, which we  
 define as the area where the sea ice concentration ranges between 0.15 and 0.85 and where low ridging by ice collision occurs  
 395 (see Fig. 4 panel b). To accomplish this, the domain was extended to 4000 [km] (3800 [km], excluding the boundaries) and the  
 initial particles spacing changed from 7.14 [km] to 10.0 [km] for a corresponding initial smoothing length  $l_p$  of 30.0 [km] and



**Figure 4.** Temporal evolution of simulated sea-ice thickness along the central horizontal line of the domain for (a) the ridge experiment initialized with a concentration  $A = 1$  and average thickness  $h = 1$  and (b) the ridge experiment initialized with a concentration  $A = 0.5$  and average thickness  $h = 0.5$ . The wall is located at  $x = 0$  and the wind speed is  $-5\hat{x}$  [ $\text{m} \cdot \text{s}^{-1}$ ]. The theory follows Eq. (47).

total number of particles of 38000. In this configuration, the model converges to a ~~steady-state~~ steady-state solution in  $\approx 10$  days with a slope  $1.36 \times 10^{-3}$  [ $\text{m} \cdot \text{km}^{-1}$ ], in agreement with theory within an error of  $\approx 1\%$  (see Fig. 4 panel b). Results at  $x = 300$  [km], away from boundary effects, show that (as desired) thickness and concentration evolve coherently —  ~~$h/A$  is~~ constant in time  $\frac{d(h/A)}{dt} \approx 0$  — before ice concentration reaches  $\approx 85\%$  (see Fig. 5 panel a). At that point ( $t \approx 22$  [h]), ice-ice interactions emerge and the ridging process starts ( $\frac{d(h/A)}{dt} > 0$ ). One key difference with the simulation initialized at  $A = 1$  is a thickness build-up (above 1 m) at the edge of the ridge in MIZ. At this location, the continuity equation for sea ice concentration is capped while that of the mean ice thickness remains continuous. This results in a local increase in ice thickness to  $\approx 1.1$  [m]. This process is akin to the wave radiation drag in the MIZ (Sutherland and Dumont, 2018). A detailed analysis of simulations in simple convergent ice flow in the MIZ with ice concentration close to 100 % will be considered in future work.

In the ridge building phase, the speed of advance of the ridge front increases until a maximum concentration is reached after  $\approx 70$  [h] (see Fig. 5 panel c). Subsequently, the ice drift speed reduces and the rate of advance of the ridge slows down. When the ice thickness gradient is in balance with the surface wind stress (after  $\approx 200$  [h]),  $\frac{d(h/A)}{dt}$  reaches ~~steady-state~~ steady-state. Overall, we can observe three stages in the ridge formation (see Fig. 5). First, a rapid compaction stage, when ice particles are drifting close to their free drift speed since the ice strength is weak. Second, a transition stage between  $A \approx 0.85 - 1.00$  when ridging occurs in the MIZ analogous to the wave radiation drag mentioned above. Third, a ridging stage with changes in ice thickness that are about one order of magnitude higher than during the transition stage. Note that the amplitude of oscillations between particles within the domain or at the boundaries in ridging experiments diminishes when incorporating the water drag (a damping term). The water drag also ~~lead to a longer time scale to reach steady-state, since~~ increases the time needed to reach steady-state, because the ice drift speed is ~~slower~~ lower.



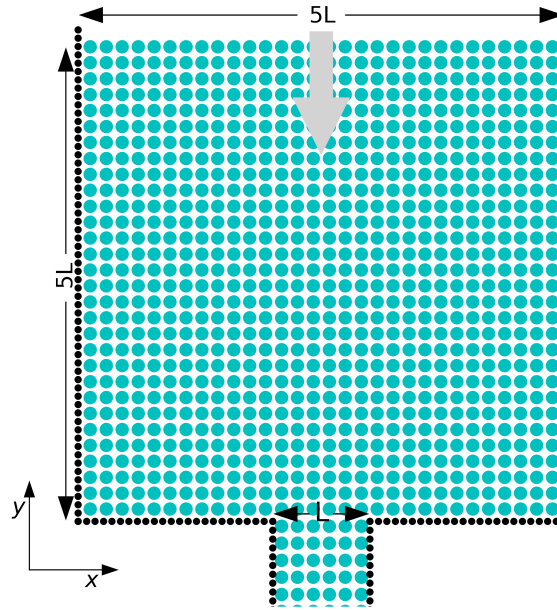
**Figure 5.** Evolution in time of a) the thickness normalized by concentration rate of change in time  $\frac{d(h/A)}{dt}$ , b) the average thickness  $h$  and c) the concentration  $A$  at  $x = 300$  [km]. The rate of change in time is computed from  $\frac{df}{dt}(x, t) = \frac{f(x, t+\Delta t) - f(x, t-\Delta t)}{2\Delta t}$ .

### 3.3 Arch experiments

We next compare the SPH approach with the FDM and DEM sea-ice model in a second well-studied idealized experiment: the ice arches formation. To this end, we run the SPH model in an idealized domain representing the Nares Strait (see Fig. 6) with an upstream reservoir 5 times the length of the channel ( $L$ ) to minimize boundary confinement effect without sacrificing the  
420 spatial resolution.

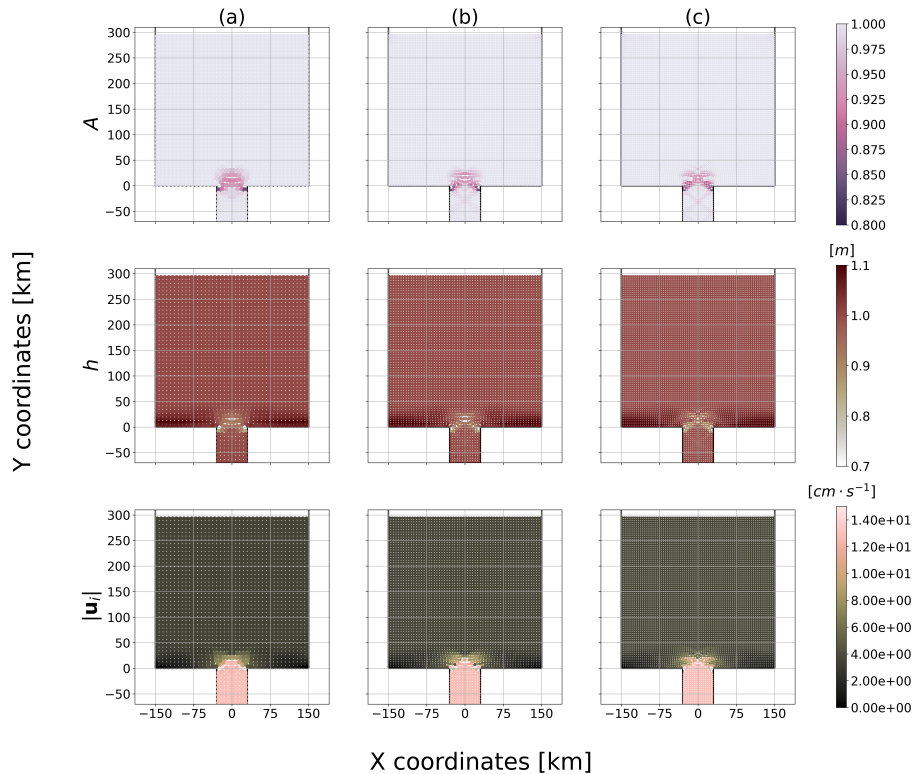
The set of simulations uses a domain with  $L = 60$  [km]. The initial condition for ice thickness, concentration and velocity are  $h = 1$  [m],  $A = 1$  and  $\mathbf{u} = 0$  [ $\text{m} \cdot \text{s}^{-1}$ ]. The ice is forced with a constant unidirectional wind of  $-7.5$  [ $\text{m} \cdot \text{s}^{-1}$ ] in the  $\hat{\mathbf{y}}$ -direction and ocean current is fixed to  $\mathbf{u}_w = 0$  [ $\text{m} \cdot \text{s}^{-1}$ ]. The corresponding surface stress is  $\approx 0.04$  [ $\text{kN} \cdot \text{m}^{-2}$ ] and the total integrated stress at the entry of the channel is slightly smaller than  $P^*$  ( $\int_0^{5L} \tau_a dx = 26.325$  [ $\text{kN} \cdot \text{m}^{-1}$ ]). We use a weaker wind  
425 than ~~what is common~~ commonly used in Nares Strait ice arches simulations ( $\approx 10$  [ $\text{m} \cdot \text{s}^{-1}$ ]) to limit the ridging phase prior to the formation of the ice arch. In this experiment, we limit ourselves to ice with no tensile strength ( $k_t = 0$ ) and a shear strength of  $6.875$  [ $\text{kN} \cdot \text{m}^{-2}$ ], i.e., an ellipse aspect ratio of 2.

We suspect that the SPH and DEM frameworks have a similar behaviour in certain circumstances even though they have different (implicit) rheologies, because of their Lagrangian nature. Indeed, the interpretation of the numerical representation of a particle in SPH as a collection of ice floes is also present in DEM (Li et al., 2014) and the two numerical frameworks compute their quantities with one-to-one interactions. Consequently, we first test whether the SPH approach has the same sensitivity to the relative size of ~~partiele~~ particles with respect to the channel width as in DEM (Damsgaard et al., 2018). Results showed that no stable arch can be formed with the specified forcing for all particle diameter size tested (7.5, 5, 3.75 [km]) (see ice velocity field Fig.7). Instead, a "continuous" slow flow of ice is present in the channel. The discontinuity at the entry of the  
435 channel is visible in the concentration, thickness and velocity fields (Fig. 7) can be interpreted as an intermittent (unstable) ice



**Figure 6.** Idealized domain of the ice arch experiments. The blue circles represent the ice particles and the black ones are the boundary particles. The grey arrow shows the wind forcing.

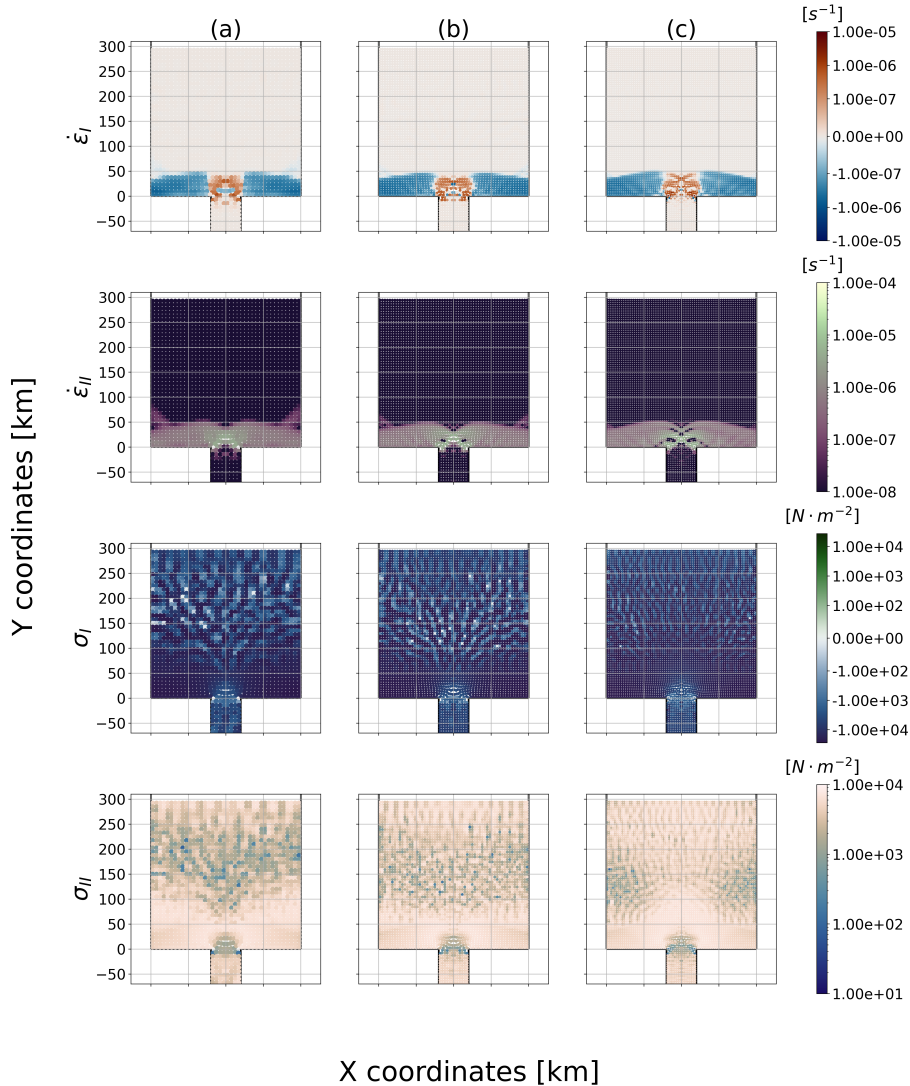
arch formation. Also, we noted that larger particles are not more prone to ice jam than smaller ones. This is contrary to what is ~~known~~ from granular material theory and to results from Damsgaard et al. (2018) that show a transition from stable to no ice arch formation for floe sizes ranging from approximately one quarter to one sixteenth of the strait width. We explain this difference between SPH and DEM from the continuum description of the ice dynamics equation ~~which describes~~. In the present model, the constitutive laws prescribe the repulsion of the particles with one another according to the ice strength as a function of, which is a function dependent on the ice concentration and mean thickness, not on the particle size. ~~Even~~ We conclude that to enforce granularity within the SPH framework, the constitutive laws would need to be adapted to account for contact force and particle size which could then reproduce similar behaviour as observed in DEM. However, even though the increase in resolution — or particle size — has no effect on the arch stability, it enables smaller fractures resolution that are visible at the entrance of the channel (see  $\epsilon_I$  and  $\epsilon_{II}$  Fig. 8). In our SPH model, the stress invariants  $\sigma_I$  and  $\sigma_{II}$  shows oscillation patterns in regions where the ice is in the viscous regime (see the tree-like structure in the normal and shear stress fields in Fig. 8). From our experiments, the “tree-like” peak stresses appear during transient and at steady-state. However, the particles never stop moving even in a steady-state because viscous deformations are always present. We hypothesized that ~~those stress patterns~~ are associated with over-damped ~~viscous waves occurring elastic waves associated~~ with small movement (but large internal stresses) of the particle ~~undergoing viscous deformation in the viscous regime~~. Those structures are not symmetric, despite symmetrical initial conditions, because of the domino effect between interacting viscous waves. Note that they are absent from the strain-rate fields since viscous ~~deformation deformations~~ are extremely small. They are also absent in sea-ice



**Figure 7.** Strain-rate, Ice concentration, thickness and stress invariants total velocity ( $\dot{\epsilon}_I, \dot{\epsilon}_{II}h, \sigma_{IA}, \sigma_{II}|u_i|$ ) at time  $t = 24$  [h] for an initial particle spacing of a) 7.5, b) 5 and c) 3.75 [km] (8, 12 and 16 particles can fit in the strait respectively) and the initial total integrated surface stress at the entry of the channel is  $26.325$  [ $\text{kN} \cdot \text{m}^{-1}$ ].

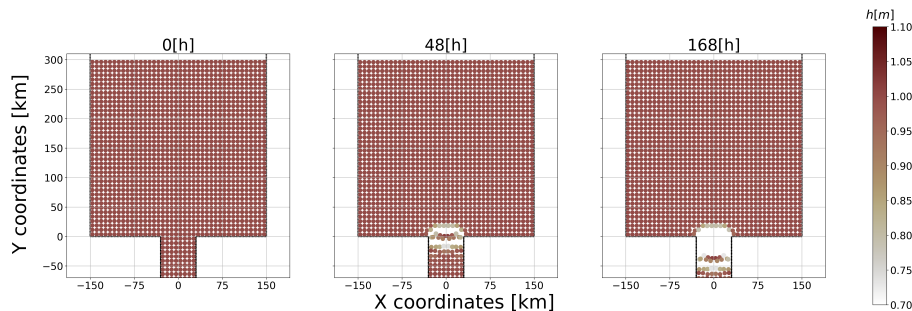
model based on a continuum approach (Dumont et al., 2009; Dansereau et al., 2017; Plante et al., 2020), but these tree-like structures are qualitatively similar to the stress structure between floes observed in DEM (e.g., Damsgaard et al., 2018, Fig. 455 5c). Despite the fact that the model solves the same continuum equations as other FDM models, we believe that stress networks can be observed with the SPH method because particles interact in a pairwise fashion according to their relative distance. This can create less dense ice areas within the medium which can lead to oscillations in the stress field. It is known that SPH can have spurious behaviour in some cases when the stress is solved at the same location as the particle centre (as done here). This can be avoided using stress particles (see Chalk et al., 2020, for details). More investigations are required to test whether this behaviour is physical. This is left for future work. 460

Second, we explored the ability of the model to produce stable ice arches. To this end, we reduce the total integrated surface stress at the entry of the channel to  $13.146$  [ $\text{kN} \cdot \text{m}^{-1}$ ] (or wind speed of  $5.3$  [ $\text{m} \cdot \text{s}^{-1}$ ]) to a value below the ice compressive strength ( $P^*$ ) to avoid completely ridging north of the channel and jump immediately in the arch-forming stage. In this case, the results show a clear stable arch (see Fig. 9) with a shape that is qualitatively similar to the one presented by Dansereau et al. (2017); Plante et al. (2020); West et al. (2022). The formation of a stable arch in an SPH model is possible with the 465



**Figure 8.** Ice concentration, thickness Strain rate and total velocity-stress invariants ( $h\dot{\epsilon}_I$ ,  $A\dot{\epsilon}_{II}$ ,  $|\mathbf{u}_\tau|$ ,  $\sigma_I$ ,  $\sigma_{II}$ ) at time  $t = 24$  [h] for an initial particle spacing of a) 7.5, b) 5 and c) 3.75 [km] (8, 12 and 16 particles can fit in the strait respectively) and the initial total integrated surface stress at the entry of the channel is  $26.325 \text{ [kN} \cdot \text{m}^{-1}]$ .

standard shear strength ( $e = 2$ ), contrary to continuum model in contrast with continuum models that required an increase in shear strength (Dumont et al., 2009; Dansereau et al., 2017; Plante et al., 2020, e.g.,) — it is important to keep in mind that the domain configurations were different in each of those studies. This suggests that SPH has a different sensitivity of ice arching to the ellipse aspect ratio  $e$  and ice thickness  $h$ . With a no slip boundary condition and the same default yield curve (same  $P^*$  and ellipse aspect ratio  $e$ ), preliminary results suggest that no arches form — the pack is undeformed — and instead a higher surface wind stress is required to form an arch. Note that in the SPH simulations, only one arch forms close to the outlet.



**Figure 9.** Thickness field at time  $t = 0, 48, 168$  [h] for an initial particle spacing of  $7.5$  [km] and a total integrated stress at the entry of the channel of  $13.146$  [ $\text{kN} \cdot \text{m}^{-1}$ ].

Presumably, the number of arches would increase and location would change if the model was run at higher resolution, with different boundary conditions or in a non-idealized domain geometry. Overall, this shows that SPH is able to capture large-scale features coming from small-scale interactions. The simulation of a stable ice arch (Fig. 9) also shows how SPH can fracture and create discontinuities in the ice field as seen in DEM models. This behaviour is similar to that of the elastic-decohesive sea-ice constitutive of Schreyer et al. (2006) or the FEM model of Rampal et al. (2016). Finally, in the SPH framework, a lead or polynya can be defined by an absence of particles for leads larger than particle size — akin to DEM — or by particles with reduced concentration for sub-particle size leads — akin to FDM.

#### 4 Discussion and Conclusion

In this paper, we have presented a first implementation of the Viscous-Plastic rheology with an elliptical yield curve and normal flow rule in the framework of SPH with the long-term goal of simulating synoptic scale sea-ice dynamics. We have described the basics of the SPH approach and how the sea-ice dynamic equations can be formulated in this framework along with the implementation of key components of the numerical method such as the smoothing length, the kernel, the boundaries and the time integration technique. We proposed a different definition of the particle density and showed that the more commonly used density definition involving the ice concentration (Wang et al., 1998; Ji et al., 2005; Staroszczyk, 2017) when used together with the average ice thickness leads to erroneous plastic wave speed propagation. A particle density definition independent of the ice concentration corrects this and leads to results that are inline with the VP theory. The SPH model thus developed is in excellent agreement (error of  $\approx 1\%$ ) with an analytical solution of the VP ice dynamic for a simple 1D ridging experiment. The approximations used at the core of the SPH framework, result in a dispersive plastic wave speed in the medium — contrary to its FDM counterpart — which is dependent on the smoothing length (or resolution) and the choice of the kernel. The plastic wave speed is mostly affected for wavelengths 11 times the smoothing length and lower.

From the simple ridging experiment with fixed sea-ice concentration ( $A = 1$ ), we observe nonphysical damped oscillations that propagate in the domain associated with our choice of boundary conditions. The conclusions drawn from our simulations are robust to the choice of boundary conditions. Nevertheless, this behaviour needs to be removed for a proper simulation of



495 sea-ice near coastlines. The ridging experiment with an initial ice concentration below 100% showed that continuity equations for concentration and thickness evolve coherently until a concentration of 85%. At that point, SPH particles start to ridge locally in the MIZ in addition to the wall where the maximum stress is located. This effect is not observed in continuum approach and is presumably related to particle collisions in converging motion.

When compared to other numerical framework, the SPH model is able to reproduce stable ice arches in an idealized domain of a strait with an ellipse aspect ratio of 2 and a wind forcing of  $5.3 [\text{m} \cdot \text{s}^{-1}]$ , contrary to other continuum approaches that require higher material shear strength. However, when using a stronger wind field of  $7.5 [\text{m} \cdot \text{s}^{-1}]$ , no stable arches are formed when increasing the particles size in the strait (stable arches are only achieved when increasing particle average thickness). We concluded that the number of particles in the strait does not influence the formation of ice arches contrary to DEM and is analogous to an increase in resolution in a continuum framework : a larger number of particles influence the number of fractures that can form and the resolution of fine-scale structures. The stress fields produced by the SPH model in the channel experiment show tree-like pattern upstream of the channel where there are low total deformations. This is not observed in FDM ~~experiment but~~ experiments but it is qualitatively similar to tensile stress network exhibited in DEM simulations (Damsgaard et al., 2018) that comes from individual contact force between the ice floes and is hypothesized to be associated with damped viscous sound waves.

510 Even though we successfully implemented the standard sea-ice Viscous-Plastic rheology with an elliptical yield curve and a normal flow rule in an SPH framework, the current model does not outperform classical FDM model. In fact, there are inherent difficulties and instabilities in SPH that do not exist in FDM. It is known that the SPH framework ~~trade~~ trades consistency — i.e., the ability to correctly represent a differential equation in the limit of an infinite number of points with a null spacing between them — for stability, which gives the SPH a distinct feature of working well for many complicated problems with good efficiency, but less accuracy. However, the classical formulation of SPH used and described in the present work does not usually respect zeroth-order consistency because of the unstructured particle position in space (see Belytschko et al., 1998, section 3 for derivation). Nevertheless, consistency can be improved at the expense of computational cost (Chen and Beraun, 2000; Liu et al., 2003) by reformulating the SPH core approximation (Eq. A1). Also, the boundary description has been identified as a weak point of the SPH framework ~~since prescribing a Dirichlet or Neumann boundary condition~~. Prescribing a Dirichlet, Neumann or Robin boundary conditions is not as straightforward as in continuum approaches ~~and~~. Moreover, preventing particle penetration through a boundary is still a challenging task (Liu and Liu, 2010) and the SPH consistency is usually at its worst at the boundary because the support domain is truncated. In the present study, a proper physical representation of the boundary was not adopted and the boundary treatment was chosen for its numerical simplicity and should be modified in future work. Other major issues with SPH are the zero-energy modes and the tensile instability previously mentioned. The zero-energy modes can be found in FDM and FEM and they correspond to modes at which the strain energy calculated is erroneously zero (Swegle et al., 1995). The tensile instability results in particle clumping or nonphysical fractures in the material. In the present work, we adopted a different kernel from the usual Gaussian spline to avoid those instabilities, but other methods such as the independent stress point (Dyka and Ingel, 1995; Chalk et al., 2020), artificial short length repulsive force (Monaghan, 2000), particle repositioning (Sun et al., 2018), adaptive kernel (Lahiri et al., 2020), etc. can be used if more stabilization is needed.

530 For example, at a smaller scale, SPH simulation of ice in uniaxial compression was improved by a simplified finite difference interpolation scheme (Zhang et al., 2017). More specifically for sea-ice model, Kreyscher et al. (2000) pressure closure is not well suited for long simulation. Indeed, ~~particle-particles~~ can still move when they are in the viscous state but, have low internal ice pressure because of the replacement pressure scheme. Consequently, particles could pass through each other resulting in erroneous location of the parameters carried. Finally, using SPH for sea-ice modules in grid-based continuum global climate  
535 ~~model-models~~ (GCM) complicates the coupling with ocean and atmosphere components since particle quantities need to be converted on a grid and vice versa.

~~Nevertheless, In its current state, the model reproduces very similar behaviour as other FDM continuum models and does not constitute a large improvement. Nevertheless, we believe that SPH enables the possibility to describe sea ice as a continuum at large scale using what is already known from continuum models and explore some new avenues at small scales, where the continuity approximation is questionable. Indeed,~~ SPH also has interesting properties that could be exploited. For example, SPH can be used with little change for problems involving several fluids whether liquid, gas, or dust fluids (Monaghan, 2012). This feature could be exploited in the creation of a general approach for all components of a GCM (atmosphere, ocean and sea-ice). The method developed is also a proper option for nowcasting sea-ice prediction because only the ice dynamics need to be considered in nowcasting applications and the model has a good ability to carry the ice property in space. SPH can fracture  
545 and transitions from the continuum to fragments seamlessly  ~~, which is the main reason for our investigation of the method for sea-ice dynamics~~ since it is not restricted on a grid which also has the advantage of enabling ice edge shapes independent of it. The ability of SPH to move around particles has the interesting property to concentrate them in converging motion, effectively increasing the spatial resolution of the model in regions under high stress activity and to disperse particles when the flow is divergent which decreases the resolution in low ice concentration areas. This property should result in higher accuracy  
550 than typical continuum models. The elastic behaviour assumed for sea-ice in certain rheology can be associated to the weak compressibility inherent in the classical formulation of SPH. Finally, the SPH discretization of the continuum into particles enables the implementation of several new features. For example, angular momentum to individual floes (or pack of floes) can be added to take into account rotation along LKFs. A direct measure of the concentration from the number of particles within a support domain (this takes ~~advantages-advantage~~ of already computed number of neighbours and help ensuring the desired  
555 number of neighbours in converging flow) can be computed. A subscale parametrization of floe-floe contact force (this short length repulsive force could also help for the tensile instability) can be implemented. A varying floe size distribution ~~can~~ could be incorporated by varying the mass carried by a particle for a given particle density.

For future work, ~~and before exploring new features enabled by the SPH numerical framework,~~ a more physical treatment of the boundary conditions should be investigated ~~— e.g., using the immerse boundary method (Tu et al., 2018) with a fixed grid for the boundary and an interpolation scheme to apply force on the particle to to properly~~ simulate the grounding of sea-ice near the coast ~~. In enabling the no-slip conditions. Subsequently, the model could be tested against other benchmark problems in idealized domain to further understand and compare the effect of the SPH method (Flato, 1993; Hunke, 2001; Hibler et al., 2006; ?)~~. Also, in order to use the model for pan-Arctic simulations, the Coriolis and sea surface tilt force along with the treatment of the thermodynamics source and sink terms should be implemented in the SPH framework (see preliminary work by Staroszczyk,

565 2018). In addition, the parallelization of the code should be improved in order to bring the computational time down to a value comparable to that of an FDM model. Finally, while there still is a significant amount of work to be completed before SPH can be used in large-scale climate simulations, the method shows promises and deserves further investigations and development.

*Code availability.* Our *FORTTRAN* SPH sea-ice model code is public and can be found at <https://github.com/McGill-sea-ice/SIMP>.

570 *Code and data availability.* Output data from the SPH sea-ice model simulations along with a version of the model used and the analyzing programs are available at <https://doi.org/10.5281/zenodo.6950156>

## Appendix A: Smoothed Particle Hydrodynamics Basics

The SPH method is at the interface between finite element method and discrete element methods. In this framework any function  $f(\mathbf{r})$  at a point  $\mathbf{r}$  is approximated from neighbouring values in the parameter space  $f(\mathbf{r}')$  using an integral interpolant (see figure A1) :

$$575 \quad \underbrace{f(\mathbf{r}) = \int_{\mathcal{V}} f(\mathbf{r}') W(|\mathbf{r} - \mathbf{r}'|, l) d\mathbf{r}'}_{\mathcal{V}} \quad (\text{A1})$$

where  $W(|\mathbf{r} - \mathbf{r}'|, l)$  is the interpolating kernel and  $\mathcal{V}$  is the entire space volume. In two dimensions, the space volume is an area  $\mathcal{A}$  and the kernel has units of  $[\text{m}^{-2}]$ . This integral interpolant approximation is based on the singular integral mathematical framework of Natanson (1961) and imposes the following restrictions on the kernel:

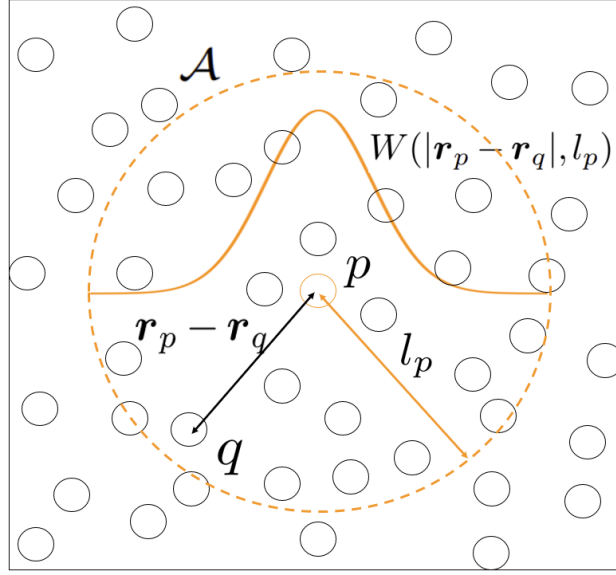
$$\underbrace{\int_{\mathcal{A}} W(|\mathbf{r} - \mathbf{r}'|, l) d\mathbf{r}' = 1,}_{\mathcal{A}} \quad (\text{A2})$$

580 and

$$\underbrace{\lim_{l \rightarrow 0} W(|\mathbf{r} - \mathbf{r}'|, l) = \delta(\mathbf{r} - \mathbf{r}')}_{\mathcal{A}} \quad (\text{A3})$$

where  $l$  is the smoothing length of the kernel and  $\delta$  is the Dirac delta function. Using the particle approximation, Eq. (A1) can be written as a weighted summation over all neighbouring points within the area  $\mathcal{A}$ :

$$\underbrace{f(\mathbf{r}_p) \approx \sum_{q=1}^N f(\mathbf{r}_q) W(|\mathbf{r}_p - \mathbf{r}_q|, l_p) \Delta \mathcal{A}_q \approx \sum_{q=1}^N f(\mathbf{r}_q) W(|\mathbf{r}_p - \mathbf{r}_q|, l_p) \frac{m_q}{\rho_q}}_{\mathcal{A}} \quad (\text{A4})$$



**Figure A1.** Graphical representation of the SPH kernel  $W(|\mathbf{r}_p - \mathbf{r}_q|, l_p)$  (solid orange line), the smoothing length  $l_p$  (red arrow), the particle  $p$ , the neighbouring particles  $q$ , the support domain  $\mathcal{A}$  (dashed orange line) and the distance between any neighbour particle  $q$  and the particle  $p$  within the support domain  $\mathbf{r}_p - \mathbf{r}_q$  (black arrow). Note that particles are points in space and that their size in this schematic is arbitrary.

585 where  $N$  is the number of points in space referred as neighbour particles,  $\Delta\mathcal{A}_q (= m/\rho)$  is the area associated with the particle  $q$ ,  $m$  represent the mass [kg] and  $\rho$  is the 2D density [ $\text{kg} \cdot \text{m}^{-2}$ ]. From the above approximations, we reformulate differential operators relevant to our study in their discrete SPH forms. We write the divergence of a vector field ( $\mathbf{V}$ ), the divergence of a tensor ( $\mathbf{T}$ ) and the gradient of a vector field ( $\mathbf{V}$ ) (Monaghan, 2005) as (see Appendix B for complete derivation) :

$$(\nabla \cdot \mathbf{V})_p = \frac{1}{\rho_p} \sum_{q=1}^N m_q (\mathbf{V}(\mathbf{r}_q) - \mathbf{V}(\mathbf{r}_p)) \cdot \nabla_p W_{pq}, \quad (\text{A5})$$

590 
$$(\nabla \cdot \mathbf{T})_p = \rho_p \sum_{q=1}^N m_q \left( \frac{\mathbf{T}(\mathbf{r}_q)}{\rho_q^2} + \frac{\mathbf{T}(\mathbf{r}_p)}{\rho_p^2} \right) \cdot \nabla_p W_{pq}, \quad (\text{A6})$$

$$(\nabla \mathbf{V})_p = \sum_{q=1}^N \frac{m_q}{\rho_q} (\mathbf{V}(\mathbf{r}_q) - \mathbf{V}(\mathbf{r}_p)) \otimes \nabla_p W_{pq}. \quad (\text{A7})$$

In Eq. (A7),  $\otimes$  denotes the outer product.  $\nabla_p W_{pq}$  is the gradient of the kernel at the coordinate  $\mathbf{r}_p - \mathbf{r}_q$  in the reference frame of particle  $p$  and is written as :

$$\nabla_p W_{pq} = \frac{\mathbf{r}_p - \mathbf{r}_q}{|\mathbf{r}_p - \mathbf{r}_q|} \frac{\partial W(|\mathbf{r}_p - \mathbf{r}_q|, l_p)}{\partial |\mathbf{r}_p - \mathbf{r}_q|}. \quad (\text{A8})$$

595 Note that  $W_{pq}$  is a scalar function and consequently  $\nabla_p W_{pq}$  is a vector, the inner product in Eq. (A5) is a scalar, the inner product in Eq. (A6) is a 2D vector and the outer product in Eq. (A7) is a 2D tensor of rank 2. In addition to Eq. (A2 - A3), the smoothing kernel must have the following set of properties to avoid non-physical behaviour and costly computation (Liu and Liu, 2003):

$$\text{Compact support : } W(|\mathbf{r}_p - \mathbf{r}_q|, l_p) = 0, \text{ for } |\mathbf{r}_p - \mathbf{r}_q| > l_p, \quad (\text{A9})$$

600 Positive definite :  $W(|\mathbf{r}_p - \mathbf{r}_q|, l_p) \geq 0,$  (A10)

$$\text{Monotonically decreasing : } \frac{\partial W(|\mathbf{r}_p - \mathbf{r}_q|, l_p)}{\partial (|\mathbf{r}_p - \mathbf{r}_q|)} \leq 0, \quad (\text{A11})$$

$$\text{Symmetric : } W(|\mathbf{r}_p - \mathbf{r}_q|, l_p) = W(-|\mathbf{r}_p - \mathbf{r}_q|, l_p), \quad (\text{A12})$$

$$\text{Differentiable : } \frac{\partial^n W(|\mathbf{r}_p - \mathbf{r}_q|, l_p)}{\partial (|\mathbf{r}_p - \mathbf{r}_q|)^n} \exists, \quad (\text{A13})$$

605 where  $\exists$  stands for *exist*. In the above, differentiable means that the kernel derivatives exist up to the highest order present in the equations. Finally, to ensure the consistency of the discretization of PDEs (as defined in Belytschko 1998) of the SPH method approximations to the  $n^{\text{th}}$  order, all kernel moments of order 1 to  $n$  need to vanish. In practice, the consistency conditions are satisfied when the number of neighbouring particles is sufficiently large to be evenly distributed in the domain of influence (Fraga Filho, 2019). Note that, at the boundaries, the domain of influence of the particle is truncated making it impossible to satisfy the kernel moments equations. This phenomenon is referred to as the particle inconsistency and leads to poorer approximations of physical properties. No clear solutions to this problem are proposed in the literature yet.

610

## Appendix B: Vector operators in SPH

Vector operators take different forms in the SPH framework because they only operate on the smoothing kernel  $W$  and they need to ensure symmetric interactions between particles. The following subsections show the demonstrations to obtain the relevant one to our study.

### 615 B1 Divergence of a vector

First, the divergence of vector needs to be changed into a form that can be symmetrized. To do so, we use the identity of the divergence of a scalar function times a vector and chose the scalar function to be the density as follow:

$$\nabla \cdot \mathbf{V} = \frac{1}{\rho} \left( \nabla \cdot (\rho \mathbf{V}) - \mathbf{V} \cdot \nabla \rho \right). \quad (\text{B1})$$

Now applying the integral interpolant approximation (A1) to the divergence term ( $\nabla \cdot (\rho \mathbf{V})$ ) and to the density ( $\rho$ ) gives:

$$620 \quad \nabla \cdot (\rho \mathbf{V}) = \int_{\mathcal{V}} \nabla' \cdot (\rho' \mathbf{V}') W \, d\mathbf{r}' = \int_{\mathcal{V}} \nabla' \cdot (\rho' \mathbf{V}' W) \, d\mathbf{r}' - \int_{\mathcal{V}} \rho' \mathbf{V}' \cdot \nabla' W \, d\mathbf{r}', \quad (\text{B2})$$

$$\rho = \int_{\mathcal{V}} \rho' W \, d\mathbf{r}'. \quad (\text{B3})$$

In the above equations, the prime quantities represents the surrounding values. Note that the kernel is the only function that depends on both primed and non-primed position as defined at (A1). Using ~~divergence theorem~~ the divergence theorem, the first term in (B2) can be cancelled :

$$625 \quad \int_{\mathcal{V}} \nabla' \cdot (\rho' \mathbf{V}' W) \, d\mathbf{r}' = \int_{\mathcal{S}} (\rho' \mathbf{V}' W) \cdot d\mathbf{s}' = 0, \quad (\text{B4})$$

since the integration surface  $\mathcal{S}$  encompassing the volume  $\mathcal{V}$  is arbitrary and the kernel  $W$  has the compact support property (Eq. A9). Applying the particle approximation (A4) to the Eqs. (B2) - (B3), we obtain:

$$(\nabla \cdot (\rho \mathbf{V}))_p = - \sum_q m_q \mathbf{V}_q \cdot \nabla_q W_{pq} = \sum_q m_q \mathbf{V}_q \cdot \nabla_p W_{pq}, \quad (\text{B5})$$

$$\rho_p = \sum_q m_q W_{pq}, \quad (\text{B6})$$

630 where we used the identity  $\nabla_p = -\nabla_q$  and  $p$  and  $q$  represent the current particle and neighbour. Finally, substituting the last two Eqs. (B5 - B6) in (B1) gives the desired form of the operator:

$$(\nabla \cdot \mathbf{V})_p = \frac{1}{\rho_p} \left( \sum_q m_q \mathbf{V}_q \cdot \nabla_p W_{pq} - \mathbf{V}_p \cdot \nabla_p \sum_q m_q W_{pq} \right) \quad (\text{B7})$$

$$= \frac{1}{\rho_p} \left( \sum_q m_q (\mathbf{V}_q - \mathbf{V}_p) \cdot \nabla W_{pq} \right). \quad (\text{B8})$$

## B2 Divergence of a 2D tensor field

635 Note that in the following demonstration, the Einstein summation convention is used to simplify the calculation and the tensor representation. We start with the divergence of a 2D tensor divided by the density:

$$\frac{\partial}{\partial x_i} \left( \frac{T_{ij}}{\rho} \right) = \frac{1}{\rho} \frac{\partial T_{ij}}{\partial x_i} - \frac{T_{ij}}{\rho^2} \frac{\partial \rho}{\partial x_i}. \quad (\text{B9})$$

Reorganizing the terms gives :

$$\frac{\partial T_{ij}}{\partial x_i} = \rho \left[ \frac{\partial}{\partial x_i} \left( \frac{T_{ij}}{\rho} \right) + \frac{T_{ij}}{\rho^2} \frac{\partial \rho}{\partial x_i} \right]. \quad (\text{B10})$$

640 Now applying the interpolant approximation (A1) to the first term in the bracket leads to :

$$\frac{\partial}{\partial x_i} \left( \frac{T_{ij}}{\rho} \right) = \int_{\mathcal{V}} \frac{\partial}{\partial x'_i} \left( \frac{T'_{ij}}{\rho'} \right) W d\mathbf{r}' \quad (\text{B11})$$

$$= \int_{\mathcal{V}} \frac{\partial}{\partial x'_i} \left( \frac{T'_{ij}}{\rho'} W \right) d\mathbf{r}' - \int_{\mathcal{V}} \left( \frac{T'_{ij}}{\rho'} \right) \frac{\partial W}{\partial x'_i} d\mathbf{r}'. \quad (\text{B12})$$

As for the divergence of a vector demonstration (section B1), the first integral above vanish by using the divergence theorem and applying the particle approximation gives:

$$645 \left( \frac{\partial}{\partial x_i} \left( \frac{T_{ij}}{\rho} \right) \right)_p = - \sum_q \left( m_q \frac{(T_{ij})_q}{\rho_q^2} \right) \frac{\partial W_{pq}}{\partial (x_i)_q} = \sum_q \left( m_q \frac{(T_{ij})_q}{\rho_q^2} \right) \frac{\partial W_{pq}}{\partial (x_i)_p}. \quad (\text{B13})$$

Substituting this in the Eq. (B10) and using the equality B6 we get the following expression :

$$\left( \frac{\partial T_{ij}}{\partial x_i} \right)_p = \rho_p \left[ \sum_q \left( m_q \frac{(T_{ij})_q}{\rho_q^2} \right) \frac{\partial W_{pq}}{\partial (x_i)_p} + \frac{(T_{ij})_p}{\rho_p^2} \frac{\partial}{\partial (x_i)_p} \left( \sum_q m_q W_{pq} \right) \right] \quad (\text{B14})$$

$$= \rho_p \left[ \sum_q m_q \left( \frac{(T_{ij})_q}{\rho_q^2} + \frac{(T_{ij})_p}{\rho_p^2} \right) \frac{\partial W_{pq}}{\partial (x_i)_p} \right] \quad (\text{B15})$$

$$= \rho_p \sum_q m_q \left( \frac{\mathbf{T}_q}{\rho_q^2} + \frac{\mathbf{T}_p}{\rho_p^2} \right) \cdot \nabla_p W_{pq}, \quad (\text{B16})$$

650 which is the form presented at Eq. (A6).

### B3 Gradient of a vector field

To demonstrate the Eq. (A7) we first write:

$$\nabla(\underline{a} \mathbf{V} \underline{1}) = \underline{1} \underline{a} \nabla \mathbf{V} + \mathbf{V} \cdot \nabla \underline{1} = \underline{\nabla} \cdot \underline{\nabla} \underline{1} \underline{a}. \quad (\text{B17})$$

Recall that one property of the kernel is that its Choosing  $a = 1$  and recalling that the zeroth-order moment of the kernel also

655 equals 1:

$$\underline{M_0} = \underline{\int_{\mathcal{V}} W(\mathbf{r} - \mathbf{r}', l_p) d\mathbf{r}' = 1}$$

$$= \underline{\sum_q \frac{m_q}{\rho_q} W_{pq}}.$$

Now substituting it with the ones in the-, we can substitute it in the last term of the expression B17 and obtain:

$$\nabla(\mathbf{V}) = \nabla\mathbf{V} + \mathbf{V} \cdot \nabla M_0 \quad (\text{B18})$$

$$660 \quad = \nabla\mathbf{V} + \mathbf{V} \cdot \nabla \int W(\mathbf{r} - \mathbf{r}', l_p) d\mathbf{r}'. \quad (\text{B19})$$

Finally using the particle approximation (A4) we get:

$$(\nabla\mathbf{V})_p = \frac{\partial}{\partial(x_i)_p} \sum_q \frac{m_q}{\rho_q} (V_j)_q W_{pq} - (V_j)_p \frac{\partial}{\partial(x_i)_p} \sum_q \frac{m_q}{\rho_q} W_{pq} \quad (\text{B20})$$

$$= \sum_q \frac{m_q}{\rho_q} ((V_j)_q - (V_j)_p) \frac{\partial}{\partial(x_i)_p} W_{pq} \quad (\text{B21})$$

$$= \sum_q \frac{m_q}{\rho_q} (\mathbf{V}_q - \mathbf{V}_p) \otimes \nabla_p W_{pq}, \quad (\text{B22})$$

665 which is Eq. (A7) and where Einstein summation convention was once again used to simplify the derivation.

*Author contributions.* OM coded the model, ran all the simulations, analyzed results and led the writing of the manuscript. BT participated in weekly discussions during the course of the work and edited the manuscript. JFL and MI participated in monthly discussion during the course of the work and edited the manuscript.

*Competing interests.* The authors declare that they have no conflict of interest.

670 *Acknowledgements.* Oreste Marquis is grateful for the support from McGill University, Québec-Océan, and Arctrain Canada. This project was partially funded by a Grant & Contribution from Natural Science and Engineering Research Council Discovery Program and a Grant & Contributions from Environment and Climate Change Canada awarded to Bruno Tremblay.



## References

- Adcroft, A., Anderson, W., Balaji, V., Blanton, C., Bushuk, M., Dufour, C. O., Dunne, J. P., Griffies, S. M., Hallberg, R., Harrison, M. J.,  
675 Held, I. M., Jansen, M. F., John, J. G., Krasting, J. P., Langenhorst, A. R., Legg, S., Liang, Z., McHugh, C., Radhakrishnan, A., Reichl,  
B. G., Rosati, T., Samuels, B. L., Shao, A., Stouffer, R., Winton, M., Wittenberg, A. T., Xiang, B., Zadeh, N., and Zhang, R.: The GFDL  
Global Ocean and Sea Ice Model OM4.0: Model Description and Simulation Features, *Journal of Advances in Modeling Earth Systems*,  
11, 3167–3211, <https://doi.org/10.1029/2019ms001726>, 2019.
- Beatty, C. and Holland, D.: Modeling landfast sea ice by adding tensile strength, *Journal of Physical Oceanography*, 40, 185–198,  
680 <https://doi.org/10.1175/2009JPO4105.1>, copyright: Copyright 2010 Elsevier B.V., All rights reserved., 2010.
- Belytschko, T., Krongauz, Y., Dolbow, J., and Gerlach, C.: On the completeness of meshfree particle methods, *International Journal for  
Numerical Methods in Engineering*, 43, 785–819, [https://doi.org/10.1002/\(sici\)1097-0207\(19981115\)43:5<785::aid-nme420>3.0.co;2-9](https://doi.org/10.1002/(sici)1097-0207(19981115)43:5<785::aid-nme420>3.0.co;2-9),  
1998.
- Bouchat, A. and Tremblay, B.: Using sea-ice deformation fields to constrain the mechanical strength parameters of geophysical sea ice,  
685 *Journal of Geophysical Research: Oceans*, 122, 5802–5825, <https://doi.org/10.1002/2017jc013020>, 2017.
- Bouchat, A., Hutter, N., Chanut, J., Dupont, F., Dukhovskoy, D., Garric, G., Lee, Y. J., Lemieux, J.-F., Lique, C., Losch, M., Maslowski,  
W., Myers, P. G., Ólason, E., Rampal, P., Rasmussen, T., Talandier, C., Tremblay, B., and Wang, Q.: Sea Ice Rheology Experi-  
ment (SIREx): 1. Scaling and Statistical Properties of Sea-Ice Deformation Fields, *Journal of Geophysical Research: Oceans*, 127,  
<https://doi.org/10.1029/2021jc017667>, 2022.
- 690 Cavelan, A., Cabezón, R. M., Korndorfer, J. H. M., and Ciorba, F. M.: Finding Neighbors in a Forest: A b-tree for Smoothed Particle  
Hydrodynamics Simulations, <https://doi.org/10.48550/ARXIV.1910.02639>, 2019.
- Chalk, C., Pastor, M., Peakall, J., Borman, D., Sleigh, P., Murphy, W., and Fuentes, R.: Stress-Particle Smoothed Particle Hydrodynamics: An  
application to the failure and post-failure behaviour of slopes, *Computer Methods in Applied Mechanics and Engineering*, 366, 113 034,  
<https://doi.org/10.1016/j.cma.2020.113034>, 2020.
- 695 Chen, J. and Beraun, J.: A generalized smoothed particle hydrodynamics method for nonlinear dynamic problems, *Computer Methods in  
Applied Mechanics and Engineering*, 190, 225–239, [https://doi.org/10.1016/s0045-7825\(99\)00422-3](https://doi.org/10.1016/s0045-7825(99)00422-3), 2000.
- Coon, M., Kwok, R., Levy, G., Pruis, M., Schreyer, H., and Sulsky, D.: Arctic Ice Dynamics Joint Experiment (AIDJEX) assumptions  
revisited and found inadequate, *Journal of Geophysical Research*, 112, <https://doi.org/10.1029/2005jc003393>, 2007.
- Damsgaard, A., Adcroft, A., and Sergienko, O.: Application of Discrete Element Methods to Approximate Sea Ice Dynamics, *Journal of  
700 Advances in Modeling Earth Systems*, 10, 2228–2244, <https://doi.org/10.1029/2018ms001299>, 2018.
- Dansereau, V., Weiss, J., Saramito, P., and Lattes, P.: A Maxwell elasto-brittle rheology for sea ice modelling, *The Cryosphere*, 10, 1339–  
1359, <https://doi.org/10.5194/tc-10-1339-2016>, 2016.
- Dansereau, V., Weiss, J., Saramito, P., Lattes, P., and Coche, E.: Ice bridges and ridges in the Maxwell-EB sea ice rheology, *The Cryosphere*,  
11, 2033–2058, <https://doi.org/10.5194/tc-11-2033-2017>, 2017.
- 705 Dehnen, W. and Aly, H.: Improving convergence in smoothed particle hydrodynamics simulations without pairing instability, *Monthly  
Notices of the Royal Astronomical Society*, 425, 1068–1082, <https://doi.org/10.1111/j.1365-2966.2012.21439.x>, 2012.
- Dumont, D., Gratton, Y., and Arbetter, T. E.: Modeling the Dynamics of the North Water Polynya Ice Bridge, *Journal of Physical Oceanog-  
raphy*, 39, 1448–1461, <https://doi.org/10.1175/2008jpo3965.1>, 2009.

- Dyka, C. and Ingel, R.: An approach for tension instability in smoothed particle hydrodynamics (SPH), *Computers & Structures*, 57, 573–710 580, [https://doi.org/10.1016/0045-7949\(95\)00059-p](https://doi.org/10.1016/0045-7949(95)00059-p), 1995.
- Flato, G. M.: A particle-in-cell sea-ice model, *Atmosphere-Ocean*, 31, 339–358, <https://doi.org/10.1080/07055900.1993.9649475>, 1993.
- Fleissner, F., Gaugele, T., and Eberhard, P.: Applications of the discrete element method in mechanical engineering, *Multibody System Dynamics*, 18, <https://doi.org/10.1007/s11044-007-9066-2>, 2007.
- Fraga Filho, C. A.: *Smoothed Particle Hydrodynamics: Fundamentals and Basic Applications in Continuum Mechanics*, Springer, 715 <https://doi.org/10.1007/978-3-030-00773-7>, 2019.
- Gingold, R. A. and Monaghan, J. J.: Smoothed particle hydrodynamics: theory and application to non-spherical stars, *Monthly Notices of the Royal Astronomical Society*, 181, 375–389, <https://doi.org/10.1093/mnras/181.3.375>, 1977.
- Girard, L., Bouillon, S., Weiss, J., Amitrano, D., Fichet, T., and Legat, V.: A new modeling framework for sea-ice mechanics based on elasto-brittle rheology, *Annals of Glaciology*, 52, 123–132, <https://doi.org/10.3189/172756411795931499>, 2011.
- 720 Gray, J. and Morland, L.: A Two-Dimensional Model for the Dynamics of Sea Ice, *Philosophical Transactions of The Royal Society B: Biological Sciences*, 347, 219–290, <https://doi.org/10.1098/rsta.1994.0045>, 1994.
- Gray, J. M. N. T.: Loss of Hyperbolicity and Ill-posedness of the Viscous–Plastic Sea Ice Rheology in Uniaxial Divergent Flow, *Journal of Physical Oceanography*, 29, 2920–2929, [https://doi.org/10.1175/1520-0485\(1999\)029<2920:lohaip>2.0.co;2](https://doi.org/10.1175/1520-0485(1999)029<2920:lohaip>2.0.co;2), 1999.
- Gutfraund, R. and Savage, S. B.: Smoothed Particle Hydrodynamics for the Simulation of Broken-Ice Fields: Mohr–Coulomb-Type Rheology 725 and Frictional Boundary Conditions, *Journal of Computational Physics*, 134, 203–215, <https://doi.org/10.1006/jcph.1997.5681>, 1997.
- Herman, A.: Discrete-Element bonded-particle Sea Ice model DESIgn, version 1.3a – model description and implementation, *Geoscientific Model Development*, 9, 1219–1241, <https://doi.org/10.5194/gmd-9-1219-2016>, 2016.
- Hibler, W., Hutchings, J., and Ip, C.: sea-ice arching and multiple flow States of Arctic pack ice, *Annals of Glaciology*, 44, 339–344, <https://doi.org/10.3189/172756406781811448>, 2006.
- 730 Hibler, W. D.: A Dynamic Thermodynamic Sea Ice Model, *Journal of Physical Oceanography*, 9, 815–846, [https://doi.org/10.1175/1520-0485\(1979\)009<0815:adtsim>2.0.co;2](https://doi.org/10.1175/1520-0485(1979)009<0815:adtsim>2.0.co;2), 1979.
- Hopkins, M. A. and Thorndike, A. S.: Floe formation in Arctic sea ice, *Journal of Geophysical Research*, 111, <https://doi.org/10.1029/2005jc003352>, 2006.
- Hosseini, K., Omidvar, P., Kheirkhahan, M., and Farzin, S.: Smoothed particle hydrodynamics for the interaction of Newtonian and non- 735 Newtonian fluids using the  $\mu(I)$  model, *Powder Technology*, 351, 325–337, <https://doi.org/10.1016/j.powtec.2019.02.045>, 2019.
- Hunke, E. C.: Viscous–Plastic Sea Ice Dynamics with the EVP Model: Linearization Issues, *Journal of Computational Physics*, 170, 18–38, <https://doi.org/10.1006/jcph.2001.6710>, 2001.
- Hunke, E. C. and Dukowicz, J. K.: An Elastic–Viscous–Plastic Model for Sea Ice Dynamics, *Journal of Physical Oceanography*, 27, 1849–1867, [https://doi.org/10.1175/1520-0485\(1997\)027<1849:aevpmf>2.0.co;2](https://doi.org/10.1175/1520-0485(1997)027<1849:aevpmf>2.0.co;2), 1997.
- 740 Hutter, N., Bouchat, A., Dupont, F., Dukhovskoy, D., Koldunov, N., Lee, Y. J., Lemieux, J.-F., Lique, C., Losch, M., Maslowski, W., Myers, P. G., Ólason, E., Rampal, P., Rasmussen, T., Talandier, C., Tremblay, B., and Wang, Q.: Sea Ice Rheology Experiment (SIREx): 2. Evaluating Linear Kinematic Features in High-Resolution Sea Ice Simulations, *Journal of Geophysical Research: Oceans*, 127, <https://doi.org/10.1029/2021jc017666>, 2022.
- Ji, S., Shen, H., Wang, Z., Shen, H., and Yue, Q.: A viscoelastic-plastic constitutive model with Mohr-Coulomb yielding criterion for sea ice 745 dynamics, *Acta Oceanologica Sinica*, 24, 54–65, 2005.

- Johnson, G. R. and Beissel, S. R.: NORMALIZED SMOOTHING FUNCTIONS FOR SPH IMPACT COMPUTATIONS, *International Journal for Numerical Methods in Engineering*, 39, 2725–2741, [https://doi.org/https://doi.org/10.1002/\(SICI\)1097-0207\(19960830\)39:16<2725::AID-NME973>3.0.CO;2-9](https://doi.org/https://doi.org/10.1002/(SICI)1097-0207(19960830)39:16<2725::AID-NME973>3.0.CO;2-9), 1996.
- 750 Kreyscher, M., Harder, M., Lemke, P., and Flato, G. M.: Results of the Sea Ice Model Intercomparison Project: Evaluation of sea ice rheology schemes for use in climate simulations, *Journal of Geophysical Research: Oceans*, 105, 11 299–11 320, <https://doi.org/10.1029/1999jc000016>, 2000.
- Lahiri, S. K., Bhattacharya, K., Shaw, A., and Ramachandra, L. S.: A stable SPH with adaptive B-spline kernel, *ArXiv*, abs/2001.03416, <https://doi.org/10.48550/ARXIV.2001.03416>, 2020.
- Lemieux, J.-F. and Tremblay, B.: Numerical convergence of viscous-plastic sea ice models, *Journal of Geophysical Research*, 114, 755 <https://doi.org/10.1029/2008jc005017>, 2009.
- Li, B., Li, H., Liu, Y., Wang, A., and Ji, S.: A modified discrete element model for sea ice dynamics, *Acta Oceanologica Sinica*, 33, 56–63, <https://doi.org/10.1007/s13131-014-0428-3>, 2014.
- Lilja, V.-P., Polojärvi, A., Tuhkuri, J., and Paavilainen, J.: Finite-discrete element modelling of sea ice sheet fracture, *International Journal of Solids and Structures*, 217–218, 228–258, <https://doi.org/10.1016/j.ijsolstr.2020.11.028>, 2021.
- 760 Lipscomb, W. H., Hunke, E. C., Maslowski, W., and Jakacki, J.: Ridging, strength, and stability in high-resolution sea ice models, *Journal of Geophysical Research*, 112, <https://doi.org/10.1029/2005jc003355>, 2007.
- Liu, G. and Liu, M.: *Smoothed Particle Hydrodynamics: A Meshfree Particle Method*, World Scientific, <https://books.google.ca/books?id=j4ZpDQAAQBAJ>, 2003.
- Liu, M. B. and Liu, G. R.: Smoothed Particle Hydrodynamics (SPH): an Overview and Recent Developments, *Archives of Computational 765 Methods in Engineering*, 17, 25–76, <https://doi.org/10.1007/s11831-010-9040-7>, 2010.
- Liu, M. B., Liu, G. R., and Lam, K. Y.: A one-dimensional meshfree particle formulation for simulating shock waves, *Shock Waves*, 13, 201–211, <https://doi.org/10.1007/s00193-003-0207-0>, 2003.
- Losch, M., Menemenlis, D., Campin, J.-M., Heimbach, P., and Hill, C.: On the formulation of sea-ice models. Part 1: Effects of different solver implementations and parameterizations, *Ocean Modelling*, 33, 129–144, <https://doi.org/10.1016/j.ocemod.2009.12.008>, 2010.
- 770 Lucy, L. B.: A numerical approach to the testing of the fission hypothesis, *The Astronomical Journal*, 82, 1013, <https://doi.org/10.1086/112164>, 1977.
- McPhee, M. G.: The Effect of the Oceanic Boundary Layer on the Mean Drift of Pack Ice: Application of a Simple Model, *Journal of Physical Oceanography*, 9, 388–400, [https://doi.org/10.1175/1520-0485\(1979\)009<0388:teotob>2.0.co;2](https://doi.org/10.1175/1520-0485(1979)009<0388:teotob>2.0.co;2), 1979.
- Mehlmann, C., Danilov, S., Losch, M., Lemieux, J. F., Hutter, N., Richter, T., Blain, P., Hunke, E. C., and Korn, P.: Simulating Linear 775 Kinematic Features in Viscous-Plastic Sea Ice Models on Quadrilateral and Triangular Grids With Different Variable Staggering, *Journal of Advances in Modeling Earth Systems*, 13, <https://doi.org/10.1029/2021ms002523>, 2021.
- Monaghan, J.: SPH without a Tensile Instability, *Journal of Computational Physics*, 159, 290–311, <https://doi.org/10.1006/jcph.2000.6439>, 2000.
- Monaghan, J.: Smoothed Particle Hydrodynamics and Its Diverse Applications, *Annual Review of Fluid Mechanics*, 44, 323–346, 780 <https://doi.org/10.1146/annurev-fluid-120710-101220>, 2012.
- Monaghan, J. and Kajtar, J.: SPH particle boundary forces for arbitrary boundaries, *Computer Physics Communications*, 180, 1811–1820, <https://doi.org/https://doi.org/10.1016/j.cpc.2009.05.008>, 2009.

- Monaghan, J. J.: Smoothed particle hydrodynamics, *Reports on Progress in Physics*, 68, 1703–1759, <https://doi.org/10.1088/0034-4885/68/8/r01>, 2005.
- 785 Morland, L. W. and Staroszczyk, R.: A material coordinate treatment of the sea–ice dynamics equations, *Proceedings of the Royal Society of London. Series A: Mathematical, Physical and Engineering Sciences*, 454, 2819–2857, <https://doi.org/10.1098/rspa.1998.0283>, 1998.
- Morris, J. P., Fox, P. J., and Zhu, Y.: Modeling Low Reynolds Number Incompressible Flows Using SPH, *Journal of Computational Physics*, 136, 214–226, <https://doi.org/https://doi.org/10.1006/jcph.1997.5776>, 1997.
- Natanson, I. P.: *Theory of Functions of a Real Variable*, vol. 2, Frederick Ungar Publishing Co., New York, 1961.
- 790 Overland, J. E., McNutt, S. L., Salo, S., Groves, J., and Li, S.: Arctic sea ice as a granular plastic, *Journal of Geophysical Research: Oceans*, 103, 21 845–21 867, <https://doi.org/10.1029/98jc01263>, 1998.
- Peiró, J. and Sherwin, S.: Finite difference, finite element and finite volume methods for partial differential equations, in: *Handbook of materials modeling*, pp. 2415–2446, Springer, 2005.
- Plante, M., Tremblay, B., Losch, M., and Lemieux, J.-F.: Landfast sea ice material properties derived from ice bridge simulations using the Maxwell elasto-brittle rheology, *The Cryosphere*, 14, 2137–2157, <https://doi.org/10.5194/tc-14-2137-2020>, 2020.
- 795 Rabatel, M., Labbé, S., and Weiss, J.: Dynamics of an assembly of rigid ice floes, *Journal of Geophysical Research: Oceans*, 120, 5887–5909, <https://doi.org/10.1002/2015jc010909>, 2015.
- Rampal, P., Bouillon, S., Ólason, E., and Morlighem, M.: neXtSIM: a new Lagrangian sea ice model, *The Cryosphere*, 10, 1055–1073, <https://doi.org/10.5194/tc-10-1055-2016>, 2016.
- 800 Ranta, J., Polojärvi, A., and Tuhkuri, J.: Limit mechanisms for ice loads on inclined structures: Buckling, *Cold Regions Science and Technology*, 147, 34–44, <https://doi.org/10.1016/j.coldregions.2017.12.009>, 2018.
- Rhoades, C. E.: A fast algorithm for calculating particle interactions in smooth particle hydrodynamic simulations, *Computer Physics Communications*, 70, 478–482, [https://doi.org/10.1016/0010-4655\(92\)90109-c](https://doi.org/10.1016/0010-4655(92)90109-c), 1992.
- Ringeisen, D., Losch, M., Tremblay, L. B., and Hutter, N.: Simulating intersection angles between conjugate faults in sea ice with different viscous–plastic rheologies, *The Cryosphere*, 13, 1167–1186, <https://doi.org/10.5194/tc-13-1167-2019>, 2019.
- 805 Salehizadeh, A. M. and Shafiei, A. R.: Modeling of granular column collapses with  $\mu(I)$  rheology using smoothed particle hydrodynamic method, *Granular Matter*, 21, <https://doi.org/10.1007/s10035-019-0886-6>, 2019.
- Schreyer, H. L., Sulsky, D. L., Munday, L. B., Coon, M. D., and Kwok, R.: Elastic-decohesive constitutive model for sea ice, *Journal of Geophysical Research*, 111, <https://doi.org/10.1029/2005jc003334>, 2006.
- 810 Schulson, E. M.: Compressive shear faults within arctic sea ice: Fracture on scales large and small, *Journal of Geophysical Research*, 109, <https://doi.org/10.1029/2003jc002108>, 2004.
- Sheikh, B., Qiu, T., and Ahmadipur, A.: Comparison of SPH boundary approaches in simulating frictional soil–structure interaction, *Acta Geotechnica*, 16, 2389–2408, <https://doi.org/10.1007/s11440-020-01063-y>, 2020.
- Shen, H. T., Shen, H., and Tsai, S.-M.: Dynamic transport of river ice, *Journal of Hydraulic Research*, 28, 659–671, <https://doi.org/10.1080/00221689009499017>, 1990.
- 815 Staroszczyk, R.: SPH Modelling of Sea-ice Pack Dynamics, *Archives of Hydro-Engineering and Environmental Mechanics*, 64, 115–137, <https://doi.org/10.1515/heem-2017-0008>, 2017.
- Staroszczyk, R.: Simulation of Sea-ice Thermodynamics by a Smoothed Particle Hydrodynamics Method, *Archives of Hydro-Engineering and Environmental Mechanics*, 65, 277–299, <https://doi.org/10.1515/heem-2018-0017>, 2018.

- 820 Sulsky, D., Schreyer, H., Peterson, K., Kwok, R., and Coon, M.: Using the material-point method to model sea ice dynamics, *Journal of Geophysical Research*, 112, <https://doi.org/10.1029/2005jc003329>, 2007.
- Sun, P., Colagrossi, A., Marrone, S., Antuono, M., and Zhang, A.: Multi-resolution Delta-plus-SPH with tensile instability control: Towards high Reynolds number flows, *Computer Physics Communications*, 224, 63–80, <https://doi.org/10.1016/j.cpc.2017.11.016>, 2018.
- Sutherland, P. and Dumont, D.: Marginal Ice Zone Thickness and Extent due to Wave Radiation Stress, *Journal of Physical Oceanography*, 825 48, 1885–1901, <https://doi.org/10.1175/jpo-d-17-0167.1>, 2018.
- Swegle, J., Hicks, D., and Attaway, S.: Smoothed Particle Hydrodynamics Stability Analysis, *Journal of Computational Physics*, 116, 123–134, <https://doi.org/10.1006/jcph.1995.1010>, 1995.
- Tsamados, M., Feltham, D. L., and Wilchinsky, A. V.: Impact of a new anisotropic rheology on simulations of Arctic sea ice, *Journal of Geophysical Research: Oceans*, 118, 91–107, <https://doi.org/10.1029/2012jc007990>, 2013.
- 830 Tu, J., Yeoh, G.-H., and Liu, C.: Chapter 9 - Some Advanced Topics in CFD, in: *Computational Fluid Dynamics (Third Edition)*, edited by Tu, J., Yeoh, G.-H., and Liu, C., pp. 369–417, Butterworth-Heinemann, third edition edn., <https://doi.org/https://doi.org/10.1016/B978-0-08-101127-0.00009-X>, 2018.
- Wang, Z., Shen, H. T., and Wu, H.: A Lagrangian sea ice model with discrete parcel method, in: *Proceedings of the 14 th International Symposium on Ice*, vol. 1, pp. 313–320, 1998.
- 835 Weiss, J., Schulson, E. M., and Stern, H. L.: Sea ice rheology from in-situ, satellite and laboratory observations: Fracture and friction, *Earth and Planetary Science Letters*, 255, 1–8, <https://doi.org/10.1016/j.epsl.2006.11.033>, 2007.
- Wendland, H.: Piecewise polynomial, positive definite and compactly supported radial functions of minimal degree, *Advances in Computational Mathematics*, 4, 389–396, <https://doi.org/10.1007/bf02123482>, 1995.
- West, B., O’Connor, D., Parno, M., Krackow, M., and Polashenski, C.: Bonded Discrete Element Simulations of Sea Ice With Non-Local Failure: Applications to Nares Strait, *Journal of Advances in Modeling Earth Systems*, 14, <https://doi.org/10.1029/2021ms002614>, 2022.
- 840 Williams, J. and Tremblay, L. B.: The dependence of energy dissipation on spatial resolution in a viscous-plastic sea-ice model, *Ocean Modelling*, 130, 40–47, <https://doi.org/10.1016/j.ocemod.2018.08.001>, 2018.
- Williams, J., Tremblay, L. B., and Lemieux, J.-F.: The effects of plastic waves on the numerical convergence of the viscous–plastic and elastic–viscous–plastic sea-ice models, *Journal of Computational Physics*, 340, 519–533, <https://doi.org/10.1016/j.jcp.2017.03.048>, 2017.
- 845 Xia, X. and Liang, Q.: A GPU-accelerated smoothed particle hydrodynamics (SPH) model for the shallow water equations, *Environmental Modelling & Software*, 75, 28–43, <https://doi.org/https://doi.org/10.1016/j.envsoft.2015.10.002>, 2016.
- Yang, E., Bui, H. H., Sterck, H. D., Nguyen, G. D., and Bouazza, A.: A scalable parallel computing SPH framework for predictions of geophysical granular flows, *Computers and Geotechnics*, 121, 103474, <https://doi.org/10.1016/j.compgeo.2020.103474>, 2020.
- Zhang, N., Zheng, X., and Ma, Q.: Updated Smoothed Particle Hydrodynamics for Simulating Bending and Compression Failure Progress 850 of Ice, *Water*, 9, 882, <https://doi.org/10.3390/w9110882>, 2017.