

1 Annual evolution of the ice–ocean interaction beneath landfast ice in 2 Prydz Bay, East Antarctica

3
4 Haihan Hu¹, Jiechen Zhao^{2,3*}, Petra Heil⁴, Zhiliang Qin^{2,3}, Jingkai Ma⁵, Fengming Hui^{1*}, Xiao Cheng¹

5 ¹School of Geospatial Engineering and Science, Sun Yat-sen University, and Southern Marine Science and Engineering
6 Guangdong Laboratory (Zhuhai), Zhuhai 519082, China;

7 ²Qingdao Innovation and Development Base (Centre) of Harbin Engineering University, Qingdao, 266500, China;

8 ³College of Underwater Acoustic Engineering, Harbin Engineering University, Harbin 150001, China;

9 ⁴Australia Antarctic Division & Australian Antarctic Programmer Partnership, Private Bag 80, Hobart TAS 7001, Australia;

10 ⁵Key Laboratory of Research on Marine Hazards Forecasting, National Marine Environmental Forecasting Centre, Beijing
11 100081, China.

12 Correspondence to: Jiechen Zhao (zhaojiechen@hrbeu.edu.cn) and Fengming Hui (huifm@mail.sysu.edu.cn)

13

14 **Abstract:** High-frequency observations of the ice–ocean interaction and high-precision estimation of the ice–ocean heat
15 exchange are critical to understanding the thermodynamics of the landfast ice mass balance in Antarctica. To investigate the
16 oceanic contribution to the evolution of the landfast ice, an integrated ocean observation system, including an acoustic Doppler
17 velocimeter (ADV), conductivity–temperature–depth (CTD) sensors, and a sea ice mass balance array (SIMBA), was deployed
18 on the landfast ice near Chinese Zhongshan Station in Prydz Bay, East Antarctica from April to November 2021. The CTD
19 sensors recorded the ocean temperature and salinity. The ocean temperature experienced a rapid increase in late April, from
20 -1.62°C to the maximum of -1.30°C , and then, it gradually decreased to -1.75°C in May and remained at this temperature
21 until November. The seawater salinity and density exhibited similar increasing trends during April and May, with mean rates
22 of 0.04 psu day^{-1} and $0.03\text{ kg m}^{-3}\text{ day}^{-1}$, respectively, which was related to the strong salt rejection caused by freezing of the
23 landfast ice. The ocean current observed by the ADV had annual mean horizontal and vertical velocities of $9.5\pm 3.9\text{ cm s}^{-1}$ and
24 $0.2\pm 0.8\text{ cm s}^{-1}$, respectively. The domain current direction was SEE (120°)–SWW (240°), and the domain velocity (79%) was
25 $5\text{--}15\text{ cm s}^{-1}$. The oceanic heat flux (F_w) estimated using the residual method reached a peak of $41.3\pm 9.8\text{ W m}^{-2}$ in April, and
26 then, it gradually decreased to a stable level of $7.8\pm 2.9\text{ W m}^{-2}$ from June to October. The F_w values calculated using three
27 different bulk parameterizations exhibited similar trends with different magnitudes due to the uncertainties of the empirical
28 friction velocity. The spectral analysis results suggest that all of the observed ocean variables exhibited a typical half-day
29 period, indicating the strong diurnal influence of the local tidal oscillations. The large-scale sea ice distribution and ocean
30 circulation contributed to the seasonal variations in the ocean variables, revealing the important relationship between the large-
31 scale and local phenomena. The high frequency and long-term observations of oceanic variables obtained in this study allow
32 us to deeply investigate their diurnal and seasonal variations and to evaluate their influences on the landfast ice evolution.

33 1 Introduction

34 Since the late 19th century, the Earth has warmed by 0.8°C, while the Arctic warmed by 2–3°C during the same period
35 (Overland et al., 2014). In contrast, there has been no significant warming trend in Antarctica in the past 20 years (Post et al.,
36 2019). Antarctic sea ice plays a critical role in driving and modulating global climate change and local marine and ecosystem
37 systems (Massom and Stammerjohn, 2010). However, in contrast to the rapid decline of the sea ice extent in the Arctic, the
38 Antarctic has experienced a slight increase since the late 1970s (Comiso et al., 2008; Liu and Curry, 2010), with an extended
39 peak of 20 million km² observed in 2014, after which the summer minima and winter maxima exhibited decreasing trend until
40 they reached a new low in 2021/22 (Parkinson and DiGirolamo, 2021; Raphael and Handcock, 2022; Wang et al., 2022).

41
42 Landfast ice commonly exists along the Antarctic coast and is usually attached to the shorelines, ice shelves, glacier tongues,
43 grounded icebergs, or shoals (Massom et al., 2001; Li et al., 2020; Fraser et al., 2021). In contrast to pack ice floes, landfast
44 ice generally has a longer annual duration and a larger thickness, and its width can reach tens to hundreds of kilometres from
45 the shore (Fraser et al., 2021). In winter in the Southern Hemisphere, landfast ice accounts for 3–4% of the total sea ice area
46 (Li et al., 2020) and a larger percentage, approximately 14–20%, of the total sea ice volume (Fedotov et al., 2013). In particular,
47 the proportion of landfast ice off the coast of East Antarctica is larger than that in other Antarctic regions (Giles et al., 2008;
48 Li et al., 2020). As a natural boundary between the ocean and atmosphere, landfast ice strongly influences air–ocean
49 interactions and heat and momentum exchange (Maykut and Untersteiner, 1971; Heil et al., 1996; Heil, 2006). The existence
50 of landfast ice provides an efficient barrier to glaciers and ice sheets, preventing them from calving and vanishing into the
51 Southern Ocean (Massom and Stammerjohn, 2010; Miles et al., 2017).

52
53 The growth of landfast ice is mainly attributed to thermodynamic processes. The oceanic heat flux plays a critical role in the
54 ice mass balance and influences the annual growth of landfast ice (Parkinson and Washington, 1979). **The main challenge in**
55 **studying ice–sea heat exchange is developing a method for accurately quantifying the oceanic heat flux and its seasonal**
56 **variations.** However, the oceanic heat flux is difficult to observe directly and is usually estimated by measuring the ice
57 temperature and thickness, known as the residual energy method (McPhee and Untersteiner, 1982). Heil et al. (1996) estimated
58 the annual oceanic heat flux to be 5–12 W m⁻² based on ice observations at Australia’s Antarctica Mawson Station. Lei et al.
59 (2010) studied the seasonal variations in landfast ice in Prydz Bay in 2006 and obtained an oceanic heat flux of 11.8±3.5 W
60 m⁻² in April and an annual minimum of 1.9±2.4 W m⁻² in September based on the residual method. Yang et al. (2016) analysed
61 the oceanic heat flux in Prydz Bay using the high-resolution thermodynamic snow and ice (HIGHTSI) model (Launiainen and
62 Cheng, 1998; Vihma, 2002; Cheng et al., 2006) and concluded that it gradually decreased from 25 W m⁻² to 5 W m⁻² in winter.
63 Zhao et al. (2019) estimated the oceanic heat flux using the residual method and found that the monthly oceanic heat flux in
64 2012 was 30 W m⁻² in March–May, decreased to 10 W m⁻² during July–October, and increased back to 15 W m⁻² in November.
65 In terms of the evolution mechanism of the oceanic heat flux, Allison (1981) found that the oceanic heat flux under the landfast

66 ice near Mawson Station exhibited two peaks throughout the season due to the influence of the thermohaline convection caused
67 by salt rejection and seasonal variations in the large-scale meridional thermal advection in the Southern Ocean. McPhee et al.
68 (1996) found that the oceanic heat flux changed on the sub-diurnal scale due to the sub-glacial cold and warm currents. High-
69 frequency processes such as ocean tides and salt flux have an hourly impact on the oceanic heat flux, making it difficult for
70 the residual method to capture short-term changes (Lei et al., 2010). Another more accurate approach to estimating the oceanic
71 heat flux involves direct measurements of the turbulent vertical velocity and high-frequency temperature fluctuations or
72 measurements of the frictional velocity and temperature difference from the ice–ocean interface to the mixed layer. However,
73 this method requires precise and high-frequency measurements of the ocean current under the ice and the mixed layer
74 temperature. This method has been widely used in previous studies conducted in the Arctic and Antarctic (McPhee, 1992;
75 McPhee et al., 1996, 2008; Maykut and McPhee, 1995; Sirevaag, 2009; Sirevaag and Fer, 2009; Kirillov et al., 2015; Peterson
76 et al., 2017; Lei et al., 2022). Nonetheless, there is a lack of such detailed and high-frequency landfast ice–ocean observation
77 data for Prydz Bay, Antarctica.

78

79 Direct observations of high-frequency ocean temperature, salinity, and velocity beneath landfast ice are important for filling
80 the data gap of the ice–ocean interaction near the Chinese Antarctic Zhongshan Station and for more accurately understanding
81 how the oceanic heat flux affects the growth of sea ice in Prydz Bay on the diurnal and seasonal scales. In this study, a set of
82 ice–ocean equipment, including an acoustic Doppler velocimeter (ADV), conductivity–temperature–depth (CTD) sensors, and
83 a sea ice mass balance array (SIMBA), was deployed at a landfast ice site located approximately 1 km far from Zhongshan
84 Station during April–November 2021. The details of the field observations are presented in Section 2. The observations were
85 deeply analysed and the oceanic heat flux was estimated using two different methods, i.e., the residual method and the bulk
86 parameterization method, which are described in Section 3. The relationship between the tides and the oceanic heat flux, as
87 well as the large-scale and local phenomena, are discussed in Section 4. The conclusions are presented in Section 5.

88 **2 Data and Methods**

89 **2.1 Field observations**

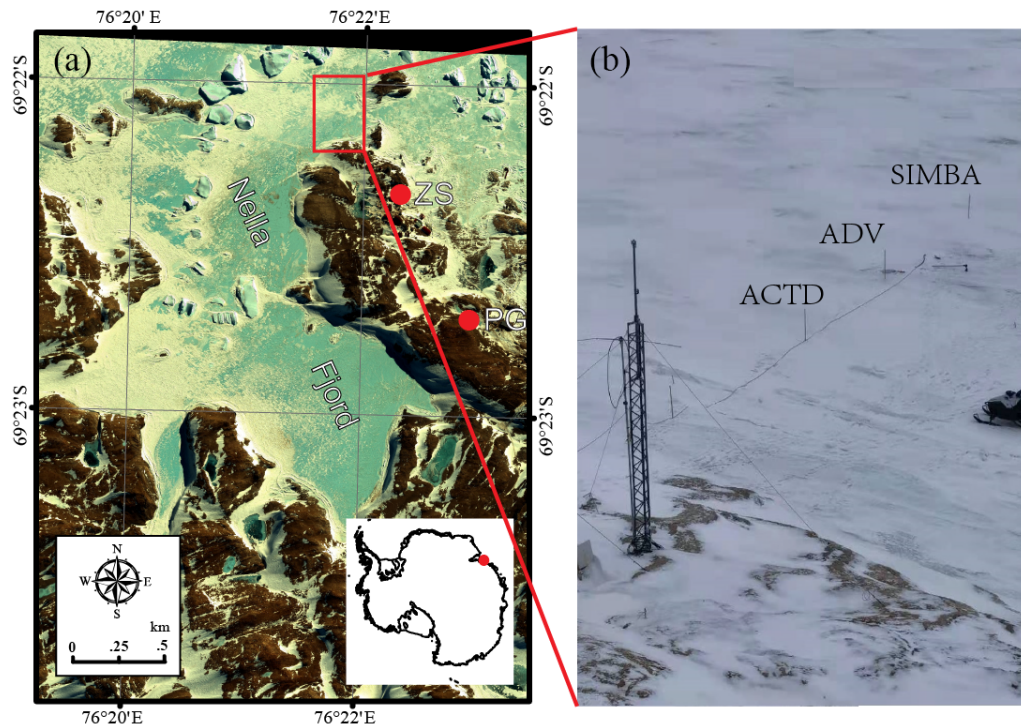
90 The field observations were conducted at Zhongshan Station (69°22' S, 76°22' E), the second Chinese Antarctic scientific
91 research station, which was established in February 1989 and has been operated year-round since its establishment. Zhongshan
92 Station is located in Prydz Bay, East Antarctica (Fig. 1a), and is surrounded by a 40–100 km wide section of landfast ice in
93 the cold season, from February to December (Zhao et al., 2020). In the austral summer (i.e., late January), the landfast ice
94 usually breaks into small floes due to mechanical forcings such as wind, waves, and tides, and then, it completely disappears
95 (Li et al., 2020), with the exception of some small ice floes in the narrow fjords that survive to become second or multi-year
96 sea ice in the subsequent winter.

97

98 From April 16 to November 7, 2021, an integrated ice–ocean interaction observation system was established by the wintering
99 team at the coastal landfast ice site, approximately 1 km from Zhongshan Station (Fig. 1b). A cable-type CTD sensor (model:
100 ALEC ACTD–DF, Japanese JFE Advantech Co., Ltd.) (for more information, see
101 <https://www.xylem.com/siteassets/brand/sontek/resources/specification/sontek-argonaut-adv-brochure-s11-02-1119.pdf>, last
102 access: February 24, 2023) was deployed 2 m beneath the ice surface and 15 m from the shoreline. The CTD measured the
103 ocean conductivity, temperature, and depth at a frequency of 30 s, with accuracies of ± 0.02 mS cm^{-1} (± 0.03 psu) for
104 conductivity (salinity) and $\pm 0.02^\circ\text{C}$ for temperature. An ADV (model: SonTek Argonaut–ADV, the xylem company) (for more
105 information, see https://www.analyticalsolns.com.au/product/conductivity_temperature_depth_logger_miniature_.html, last
106 access: February 24, 2023) was deployed to observe the 3-D ocean velocity at 5 m below the ice surface and 5 m north of the
107 CTD. The frequency of the ocean velocity observations was 40 s, and the accuracy was ± 0.001 m s^{-1} . A SIMBA (model: SRSL
108 SIMBA) (for more information, see <https://www.sams-enterprise.com/services/autonomous-ice-measurement/>, last access:
109 February 24, 2023) was deployed 5 m north of the ADV, which contained 240 temperature sensors at 2-cm intervals mounted
110 on a thermistor string. The 4.8 m long SIMBA temperature chains recorded the vertical temperature profiles of the air–snow–
111 ice–ocean every 6 hours. The SIMBA had a resolution of $\pm 0.0625^\circ\text{C}$. The water depths at the CTD, ADV, and SIMBA sites
112 were 4.5 m, 13 m, and 13 m, respectively. Manual observations, including snow and ice thickness measurements, were
113 conducted around the integrated ice–ocean interaction observation system every five days by the wintering team.

114

115 Due to the effect of the extremely cold conditions on the battery power supply, the observation system stopped working during
116 part of the period, April 24–May 11 for the ADV and July 7–15 for the CTD. A data quality control was applied to the original
117 time series to pick out the anomalous values. To match the different frequencies of the ADV and CTD in the inter-comparisons
118 and the analysis of the oceanic heat flux, the observations were averaged and integrated into a new time series with 2-minute
119 intervals. Regarding the processing of the SIMBA observation data, 3-point smoothing was introduced to minimize the noise
120 influences, which has been used by Zhao et al. (2017) and Tian et al. (2017).



121

122 **Figure 1. (a) Satellite image of the observation site in Nella Fjord near Zhongshan Station, modified from the WorldView-2 multi-**
 123 **bands image taken on October 20 2012 (<https://worldview.earthdata.nasa.gov>); (b) Photo of the observation site shot down from a**
 124 **30-m high slope on April 12, 2021, by Jinkai Ma, one of the co-authors. The photo is not planar as the red box in (a) because of the**
 125 **angle of the shot. The distances among ACTD, ADV and SIMBA were about 5 meters.**

126 2.2 Satellite and reanalysis products

127 To further investigate the large-scale influences, satellite and reanalysis products were used. The advanced microwave
 128 scanning radiometer 2 (AMSR2) sea ice concentration based on the Arctic Radiation and Turbulence Interaction Study
 129 (ARTIST) sea ice (ASI) algorithm developed at the University of Bremen ([https://seaice.uni-bremen.de/sea-ice-](https://seaice.uni-bremen.de/sea-ice-concentration/amsre-amsr2/)
 130 [concentration/amsre-amsr2/](https://seaice.uni-bremen.de/sea-ice-concentration/amsre-amsr2/)) was adopted to obtain the percentage of open water in Prydz Bay. These data are updated daily
 131 and have a spatial resolution of 6.25 km (Spren et al., 2008). The Operational Mercator global ocean reanalysis products,
 132 produced by the Copernicus-Marine Environment Monitoring Service (CMEMS), provide the daily and monthly ocean
 133 currents and mixed layer depth of the global ocean with a 1/12 degree spatial resolution and 3-hour frequency (for more
 134 information, see <https://catalogue.marine.copernicus.eu/documents/QUID/CMEMS-GLO-QUID-001-030.pdf>, last access:
 135 February 24, 2023). To facilitate comparative analysis, in this study, the nearest neighbour method was employed to interpolate
 136 the CMEMS products to the same projection and spatial resolution as the AMSR2 sea ice concentration.

137

138 2.3 Oceanic heat flux estimation methods

139 2.3.1 Residual method

140 The residual method was adapted from the classical Stefan Law. By obtaining measurements of the ice vertical temperature
141 profiles and ice bottom growth or ablation, the residual method has been widely used to estimate the oceanic heat fluxes in
142 previous studies (McPhee and Untersteiner, 1982; Lytle et al., 2000; Perovich and Elder, 2002; Purdie et al., 2006; Lei et al.,
143 2010; Zhao et al., 2019). At the bottom of the sea ice, the heat balance can be expressed by an equilibrium equation as follow:

$$144 F_w = F_c + F_l + F_s, (1)$$

145 where F_w is the heat flux from the ocean to the sea ice, F_c is the heat conduction flux through the sea ice, F_l is the latent heat
146 flux caused by the freezing or melting of the ice, and F_s is the specific heat flux generated by the change in the ice temperature.
147 In Eq. (1), the signs of the melting, heating, and upward heat flow are positive, while the signs of the cooling, freezing, and
148 downward heat flow are negative.

149

150 The three heat flux terms can be further expressed as follows (Semtner, 1976; Lei et al., 2014):

$$151 F_c = k_i \frac{T_0 - T_f}{H}, (2)$$

$$152 F_l = -\rho_i L_i \frac{dH}{dt}, (3)$$

$$153 F_s = \rho_i c_i \Delta H \frac{dT}{dt}, (4)$$

154 where k_i is the thermal conductivity of the sea ice; T_0 is the temperature of the ice in the reference layer (details are provided
155 in Section 3.4); H is the corresponding sea ice thickness; T_f is the freezing point; ρ_i is the density of the ice; L_i and c_i are the
156 latent and specific heat capacity of the sea ice; ΔH is the sea ice thickness of the reference layer; dH/dt is the ice growth rate;
157 and dT/dt is the change in the sea ice temperature (Untersteiner, 1961; Millero, 1978; MCPhee and Untersteiner, 1982; Lei et
158 al., 2010). The density and salinity of the landfast ice used in this study were 910 kg m^{-3} and 4 psu based on previous
159 observations reported by Lei et al. (2010). k_i , L_i , and c_i are functions of the salinity and temperature of the ice, and T_f is a
160 function of seawater salinity. These parameters were re-estimated based on the CTD observations. The vertical ice temperature
161 gradient, ice growth/melt rate, and ice temperature changes were calculated from the SIMBA observations.

162

163 2.3.2 Bulk parameterization method

164 The oceanic heat flux can be determined from direct measurements of the high-frequency current velocity, temperature, and
165 salinity in the mixed layer in the upper ocean beneath the ice cover in order to evaluate the turbulent heat flux at the ice–ocean
166 interface, which is called the turbulent parameterization method (McPhee, 1992; MCPhee et al., 2008). The oceanic heat flux
167 F_w from the ocean mixed layer to the bottom of the sea ice can be expressed as follow (Guo et al., 2015):

168

$$F_w = \rho_w c_w \langle w'T' \rangle, (5)$$

169 where ρ_w and c_w are the density and specific heat capacity of the ocean mixed layer; and $\langle w'T' \rangle$ is the turbulent heat flux. The
 170 heat transferred from the ocean to the ice depends on both the turbulent stress at the ice–ocean interface (characterized by the
 171 frictional velocity u_0^* as the square root of the kinetic stress at the interface) and the effective heat content of the fluid in the
 172 turbulent boundary layer, which is roughly proportional to the deviation of the ocean temperature above the freezing point
 173 (McPhee, 1992; MCPhee et al., 1999; Kirillov et al., 2015). Therefore, the turbulent heat flux can be further parameterized as
 174 follow:

175

$$\langle w'T' \rangle = c_H u_0^* \Delta T, (6)$$

176 where c_H is the Stanton number of heat exchange efficiency; ΔT is usually expressed as the difference between the ocean
 177 temperature and the freezing point; and u_0^* is the friction velocity at the interface. For the boundary layer beneath the sea ice,
 178 the Stanton number c_H is usually assumed to be a constant value of 0.0057 (McPhee, 2002). Therefore, Eq. (5) can be expressed
 179 as follow:

180

$$F_w = \rho_w c_w c_H u_0^* \Delta T. (7)$$

181 Owing to the roughness beneath sea ice and the fact that the data lack an ocean velocity profile, the friction velocity u_0^* is
 182 usually parameterized using the law of quadratic resistance related to the free-stream current. In this study, three different bulk
 183 parameterization methods were used to estimate the friction velocity (Table 1). V is the absolute flow velocity relative to the
 184 motionless landfast ice, which was observed by the ADV in this study. The velocity perturbation u' , v' , and w' were estimated
 185 by removing the mean from the original time series with 15-minute windows.

186

187 **Table 1. Three different parameterizations of the friction velocity u_0^***

Parameterizations	Friction velocity equations	References
Bulk A	$u_0^* = (\langle u'w' \rangle^2 + \langle v'w' \rangle^2)^{1/4}$ (8)	Sirevaag, 2009
Bulk B	$u_0^* = \sqrt{0.0055 * V^2}$ (9)	Kirillov et al., 2015
Bulk C	$u_0^* = \sqrt{0.0104 * V^{1.78}}$ (10)	McPhee, 1979

188 **3 Results**189 **3.1 Snow and ice evolution**

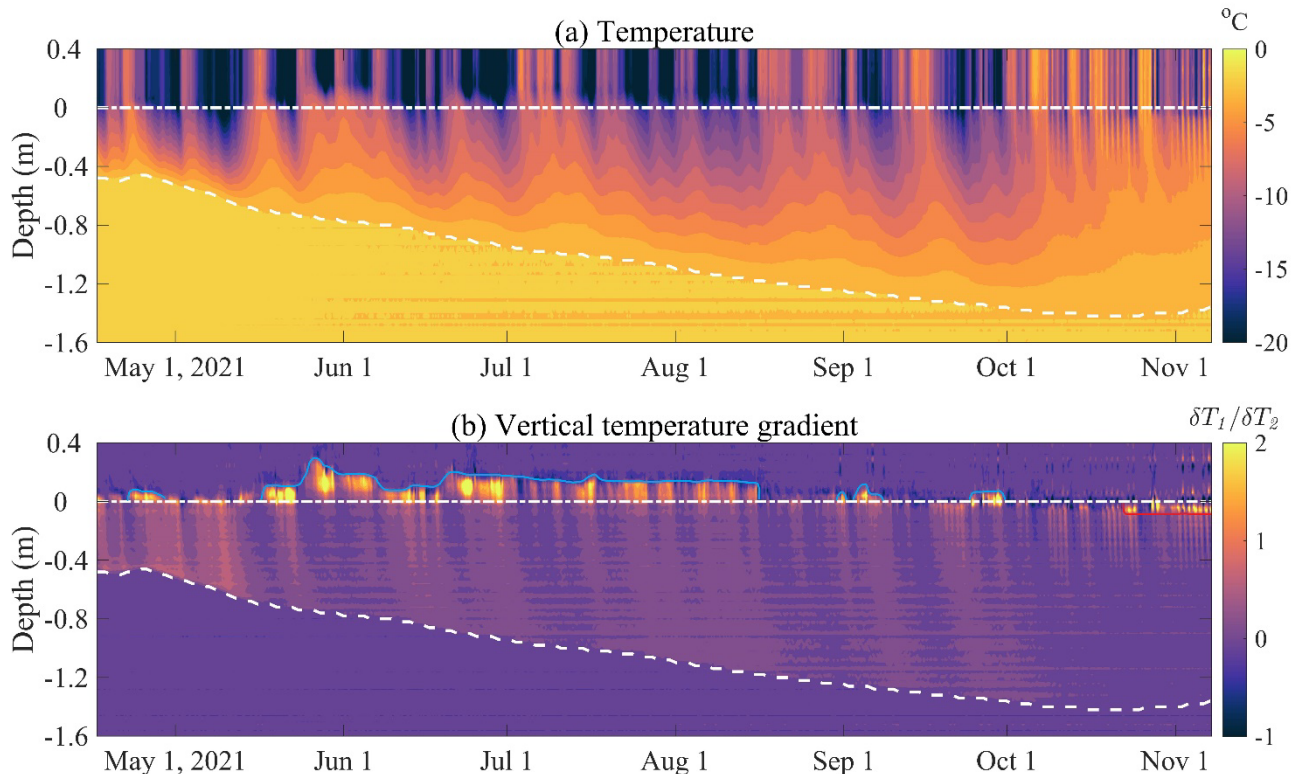
190 Figure 2a shows the SIMBA observations from April 16 to November 7, 2021. The serial numbers of the thermistors start
 191 from the deep end of the string in the ocean. Sensor NO. 180 represents the initial location of the ice surface on April 16 when
 192 the SIMBA was deployed in the field (dotted lines in Fig. 2). Typically, the sensors above the dotted lines were located in the
 193 air and their temperature data exhibited significant daily variations. The sea ice temperature exhibited an obvious gradient of
 194 0.11–0.24°C cm⁻¹. The ocean temperature was stable, ranging from –1.7°C to –1.9°C, which was close to the freezing point.

195 The bottom of the ice (dashed lines in Fig. 2) was identified through visual interpretation according to the method of Zhao et
196 al. (2017). The ice surface did not experience obvious changes during the cold season, and therefore, the changes in the ice
197 thickness mainly occurred at the bottom of the ice. The landfast ice was 44 cm thick on the first observation day (April 16),
198 continued to freeze from May to mid-October, and reached the maximum thickness of 142 cm on October 22. After this, the
199 bottom of the ice began to melt at a mean rate of -0.4 ± 0.2 cm d^{-1} until the end of the observation period. The annual mean
200 growth rate was 0.5 ± 0.3 cm d^{-1} , and the maximum daily growth rate was 1.6 cm d^{-1} on May 10, 2021. The monthly mean
201 growth rate was the largest in May (0.8 ± 0.4 cm d^{-1}) and smallest in October (0.1 ± 0.2 cm d^{-1}), which are similar to previous
202 observations at Zhongshan Station in 2006 (Lei et al., 2010) and in 2012 (Zhao et al., 2019).

203

204 The vertical gradient of the ice temperature profiles shows that snow accumulation on top of the ice cover occurred from May
205 to August and experienced discontinuous disappearance due to strong winds after September (thin blue lines in Fig. 2b). Finally,
206 the snow completely disappeared in October when the air temperature rose up to -2.7°C . The ice surface began to melt under
207 the strong solar radiation, and 6–8 cm of sublimation was observed by the SIMBA (thin red lines in Fig. 2b). In particular,
208 shortly after the SIMBA was deployed, the landfast ice thickness experienced a 4-cm decrease during April 21–26, when the
209 warm air reached the observation site in the cold winter, and the oceanic heat flux exhibited significant high values during this
210 period, indicating the influence of the air–ice–ocean interactions on the ice evolution.

211



212

213 **Figure 2. (a) Temperature profiles and (b) vertical gradient of the temperature profiles recorded by the SIMBA every 6 hours during**
 214 **April–November 2021. The white dashed line and dotted lines in (a) and (b) represent the bottom of the ice and the initial ice surface,**
 215 **respectively. The blue lines and red lines in (b) represent the snow surface and new ice surface after sublimation in summer.**

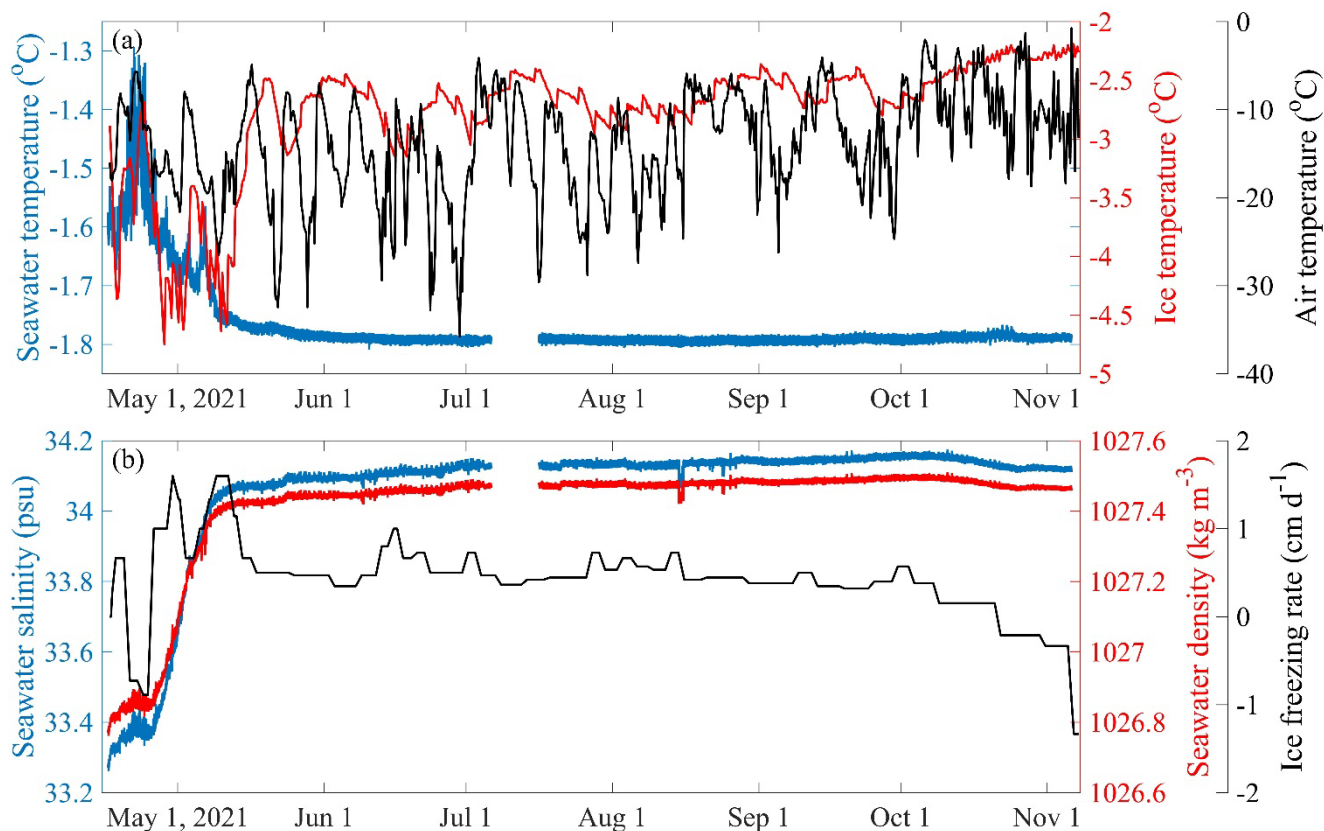
216 3.2 Ocean temperature, salinity, and density

217 The times series of the ocean temperature were observed by the CTD deployed 2 m below the surface of the landfast ice.
 218 Figure 3a shows the 194 days high-frequency temperature record with a 2-minute interval obtained from April 16 to November
 219 6, 2021. The ocean temperature experienced a rapid increase during April 16–23, from -1.62°C to -1.30°C , and then, it
 220 gradually decreased to -1.75°C in the middle of May. In the following months, the ocean temperature remained at around
 221 -1.79°C , with a small standard deviation of 0.01°C , until the end of the observations. Therefore, the ocean beneath the ice was
 222 relatively warm and was highly variable before the middle of May ($-1.64 \pm 0.10^{\circ}\text{C}$), while the ocean temperature dropped and
 223 remained close to the freezing point from then on ($-1.79 \pm 0.01^{\circ}\text{C}$). Based on the spectral analysis, the time series of the ocean
 224 temperature exhibited an obvious half-day period, which may be related to the tidal oscillations.

225

226 The temperature at the bottom of the sea ice (defined as the mean SMIBA sensor temperature at the lowest 10 cm of the sea
 227 ice) was lower than the ocean temperature, indicating that heat was transferred from the warm water to the cold sea ice and

228 inhibited ice growth at the bottom of the ice. During April–May, the temperature at the bottom of the sea ice exhibited large
 229 variations (-5 to -2.5°C) in response to the variations in the air temperature when the ice was thin and nearly no snow existed.
 230 After the thick snow cover formed, the temperature at the bottom of the sea ice became steady (-2 to -3°C) from June to
 231 November, and the ocean temperature remained stable at around -1.8°C . In particular, the SIMBA recorded a basal ice melting
 232 of 4 cm during April 16–26. **This event was accompanied by a concurrent increase in both the air temperature and ocean**
 233 **temperature, suggesting a heightened transfer of heat from both the air and ocean to the sea ice.**
 234



235

236

237 **Figure 3. (a) The seawater temperature observed by the CTD at 2 m beneath the landfast ice surface (blue lines), the ice temperature**
 238 **at the bottom (red lines; defined as the mean temperature derived by the SMIBA sensor located 0.1 m above the bottom of the ice),**
 239 **and air temperature observed by the SIMBA at 1 m above the landfast ice surface. (b) The seawater salinity observed by the CTD**
 240 **(blue lines), the seawater density calculated from the observed temperature and salinity (red lines), and the ice freezing rate at the**
 241 **bottom (black lines) observed by the SIMBA from April 16 to November 7.**

242 The seawater salinity experienced a rapid increase from 33.34 psu in April to 34.08 psu in May, which was related to the salt
 243 rejection process caused by the high freezing rate of $1.1 \pm 0.3 \text{ cm d}^{-1}$ at the bottom of the ice (Fig. 3b). More specifically, from
 244 April 19 to 23, the seawater salinity experienced a short period of decrease, different from the long and quick increasing trend,
 245 which may have been related to the slowdown of the freezing at the bottom of the ice during this period due to the obvious

246 warming of the air and ocean (Fig. 3a). From then on, the seawater salinity (around 34.13 ± 0.02 psu) largely remained stable
247 with small daily and seasonal deviations. This corresponded with the occurrence of a relatively large and stable freezing rate
248 at the bottom of the ice (around 0.5 ± 0.2 cm d⁻¹) until the middle of October. When the warm season began, the bottom of the
249 sea ice started to melt at a mean rate of -0.4 ± 0.3 cm d⁻¹ (from the middle of October to the middle of November), and the
250 seawater salinity slightly decreased, indicating that the salt rejection became weaker.

251

252 As a function of the seawater temperature and salinity, the seawater density was calculated using the observations measured
253 by the CTD and the equation proposed by Millero and Poisson (1981). The seawater density exhibited a trend similar to that
254 of the seawater salinity, which increased significantly during the early winter, with a mean trend of 0.03 kg m⁻³ day⁻¹ (Fig.
255 3b). In the following observation period, the seawater density was stable, with a mean value of 1027.5 ± 0.02 kg m⁻³.

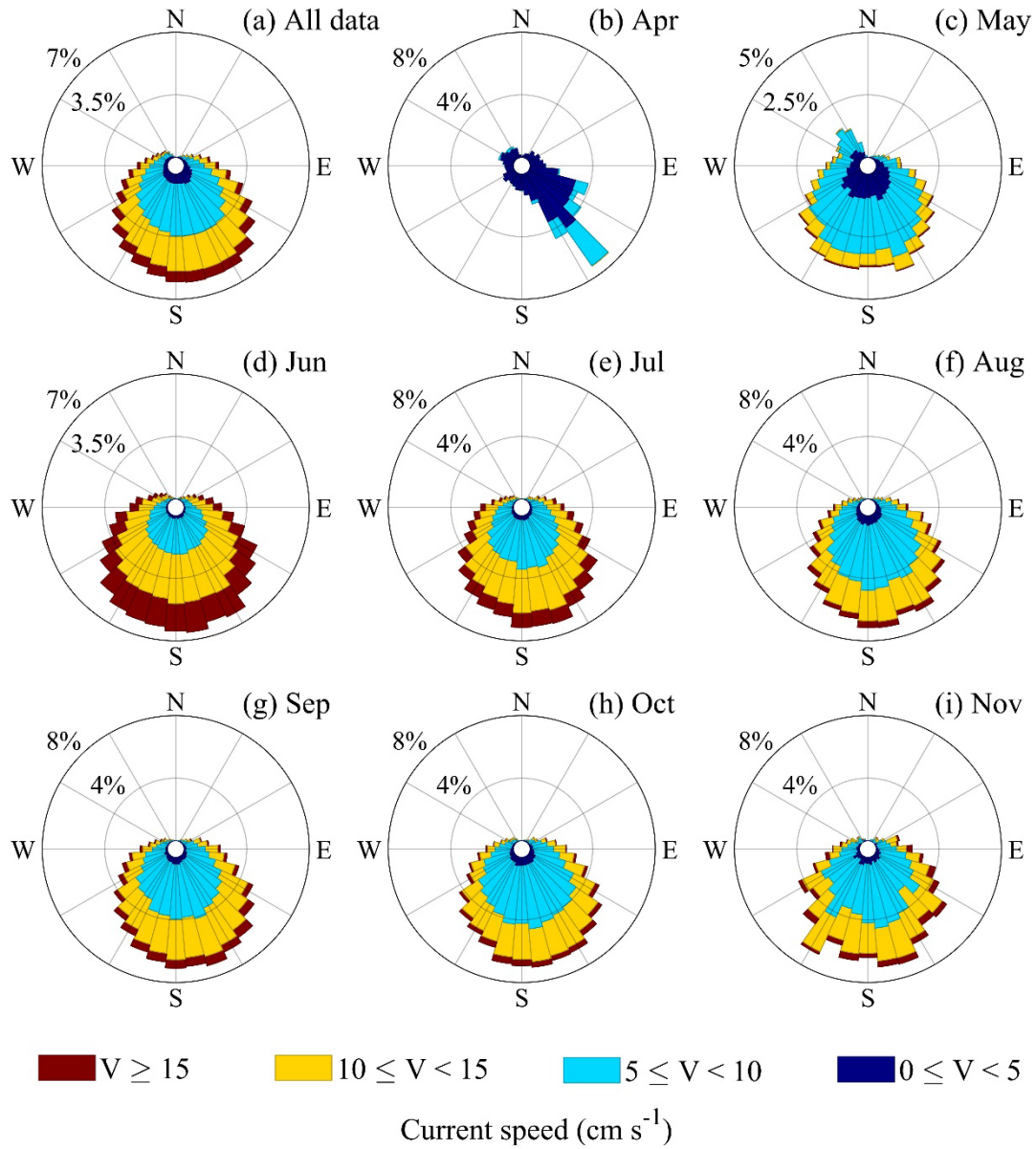
256 3.3 Ocean current

257 The 3-D current velocity in the meridional (U), zonal (V), and vertical (W) directions at 5 m beneath the surface of the landfast
258 ice was obtained by the ADV every 40 seconds. A rose diagram of the 2-minute records of the horizontal current is shown in
259 Fig. 4. The 2-minute frequency records of U and V exhibited large oscillations, mainly varying within ± 20 cm s⁻¹. In particular,
260 97% of the U values and 96% of the V values were within ± 10 cm s⁻¹. W exhibited relatively small oscillations, mainly within
261 ± 4 cm s⁻¹, and 98% of the W values were within ± 2 cm s⁻¹. The typical periods of U, V, and W were all half-day periods.

262

263 The domain direction was SEE (120°)–SWW (240°), and 79% of the velocity measurements were within 5–15 cm s⁻¹ (Fig.
264 4a). The horizontal velocity was relatively small in April, less than 10 cm s⁻¹, and it gradually increased to the maximum value
265 in June when 75% of the velocity measurements were greater than 10 cm s⁻¹. From then on, the horizontal current exhibited a
266 similar distribution in all three directions, while the range of the dominant velocity changed from 10–15 cm s⁻¹ to 5–10 cm s⁻¹
267 (Figs. 4b–i). The horizontal speed exhibited an annual mean velocity of 9.5 ± 3.9 cm s⁻¹ and a maximum velocity of 29.8 cm
268 s⁻¹ for the 2-minute interval records.

269



270

271 **Figure 4. Roses diagram of the horizontal current speed with a 2-minute resolution for (a) the total time series and (b-i) different**
 272 **months. The different colours represent the different ranges of the current speed. Due to technical issues, only 8 days were available**
 273 **in April and 20 days in May. Please note that the percentage scales are different in the different sub-panels.**

274 3.4 Oceanic heat flux

275 In the residual method, the vertical gradient of the sea ice temperature is a key term for calculating the conductive heat flux
 276 (F_c). Under cold and snow-free conditions, the surface air temperature and freezing point are usually used to calculate the

277 vertical gradient (Lei et al., 2010; Zhao et al., 2019). However, in thick snow or warm cases, the vertical temperature profile
278 of the sea ice is not linear. In this study, a reference layer close to the bottom of the ice was used to calculate the vertical
279 gradient to avoid nonlinear biases. McPhee and Untersteiner (1982) set the reference layer at 0.4 m above the bottom of the
280 ice. Perovich and Elder (2002) set the reference layer at 0.4–0.8 m above the bottom of the ice for different ice thickness
281 conditions. Lei et al. (2014) set the reference layer at 0.4–0.7 m above the bottom of the ice. In this study, we defined the
282 reference layer as 0.2 m above the bottom of the ice, and the mean vertical gradient was calculated using the 2 cm interval
283 temperature profile obtained by the SIMBA.

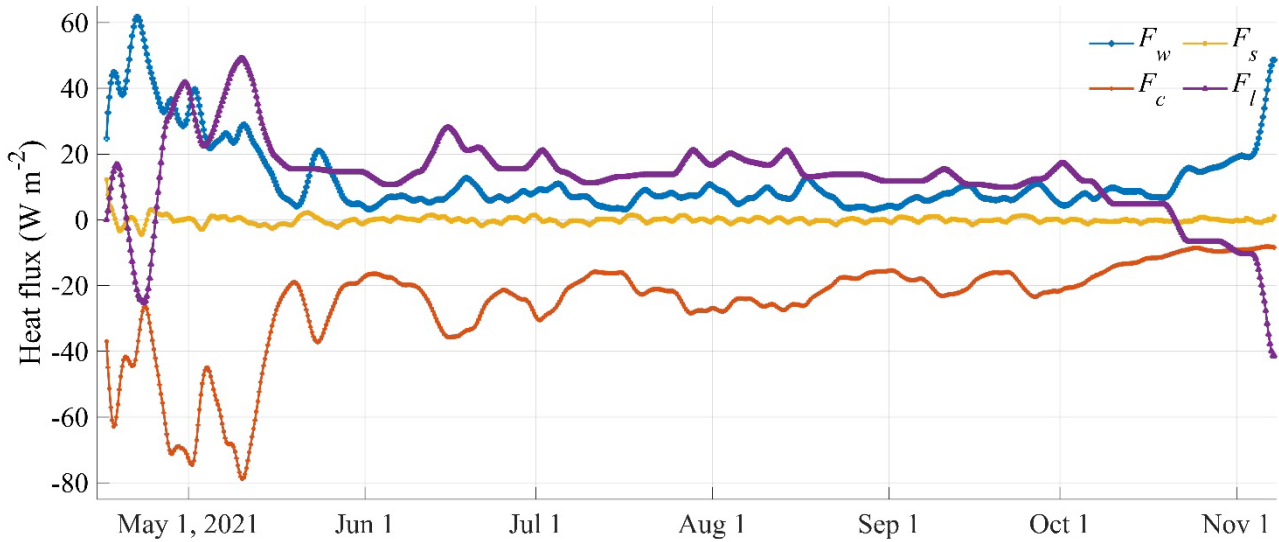
284

285 In previous studies, the empirical value of the freezing point was usually used, but a practical value is more realistic in the F_c
286 calculation. Based on the seawater salinity observations recorded by the CTD, the freezing points were estimated following
287 the equation derived by Millero (1978). During the observation period, the freezing point was around -1.83°C in April,
288 gradually decreased to -1.87°C in June, and remained at this value until November.

289

290 Figure 5 shows the heat fluxes calculated using the residual method. The variation in the latent heat flux (F_l) was strongly
291 correlated with the growth and ablation of the sea ice. During the study period, F_l was positive in the cold season, except for a
292 short melting period in April. During April 21–24, due to the influences of the warm air and ocean, the SIMBA recorded
293 obvious melting at the bottom of the ice and F_l exhibited a negative value of -20 W m^{-2} . In October, the melt season began
294 and F_l became negative. The specific heat flux F_s was smaller throughout the study period, oscillating around 0 W m^{-2} . The
295 conductive heat flux F_c was relatively large before the middle of May (up to -80 W m^{-2}), gradually decreased to -20 W m^{-2}
296 in September, and finally reached -10 W m^{-2} in October and November. The oceanic heat flux exhibited a larger value of
297 $41.3 \pm 9.8 \text{ W m}^{-2}$ in April and then decreased to around 10 W m^{-2} from June to October, but it quickly increased to 50 W m^{-2}
298 in November before the observation period ended. The annual mean oceanic heat flux for the entire study period was 12.2 ± 10.9
299 W m^{-2} .

300



301

302 **Figure 5. Conductive heat flux (F_c), latent heat flux (F_l), specific heat flux (F_s), and oceanic heat flux (F_w) were estimated using the**
 303 **residual method and a reference layer located 0.2 m above the bottom of the ice. The time interval is 6 hours.**

304 In contrast to the residual method, previous studies have developed bulk parameterization methods for calculating the oceanic
 305 heat flux when the observations of ocean parameters are available (McPhee, 1979, 1992; Sirevaag, 2009; Kirillov et al., 2015).
 306 In this study, the ocean velocity, temperature, and salinity in the ice–ocean boundary layer were recorded at a high frequency
 307 by the ADV and CTD, which provided a chance to evaluate the oceanic heat flux using bulk parameterization methods.

308

309 During the observation period, the ocean temperature was always warmer than the freezing point, indicating that the heat flux
 310 was from the ocean to the ice. The temperature difference (ΔT) between the ocean and the freezing point was $0.26 \pm 0.08^\circ\text{C}$ in
 311 April and decreased gradually to 0.08°C from June to November. Three different bulk parameterization methods were used in
 312 this study (Bulk A: Sirevaag, 2009; Bulk B: Kirillov et al., 2015; Bulk C: MCPhee, 1979), and their main differences were due
 313 to the expressions of the fractional velocity and empirical parameters (Table 1).

314

315 The hourly oceanic heat flux values calculated using three bulk parameterization methods exhibit variations similar to that of
 316 the results of the residual method, that is, high values of $60\text{--}80\text{ W m}^{-2}$ in April and then gradually decreasing to $10\text{--}30\text{ W m}^{-2}$.
 317 The annual mean oceanic heat flux values were $19.7 \pm 5.3\text{ W m}^{-2}$, $13.6 \pm 3.1\text{ W m}^{-2}$, and $24.4 \pm 5.4\text{ W m}^{-2}$ for the Bulk A, Bulk
 318 B, and Bulk C methods, respectively, and $12.2 \pm 10.9\text{ W m}^{-2}$ for residual method (Fig. 6a). The values obtained using the bulk
 319 methods were $9.0 \pm 8.9\text{ W m}^{-2}$ larger on average than that obtained using the residual method during the study period.

320

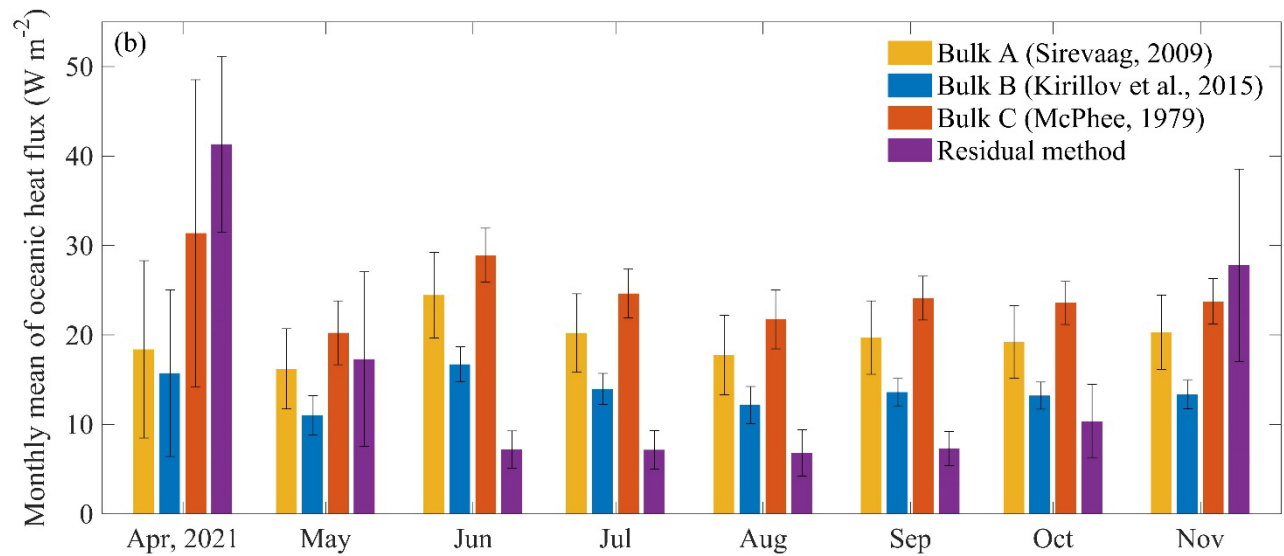
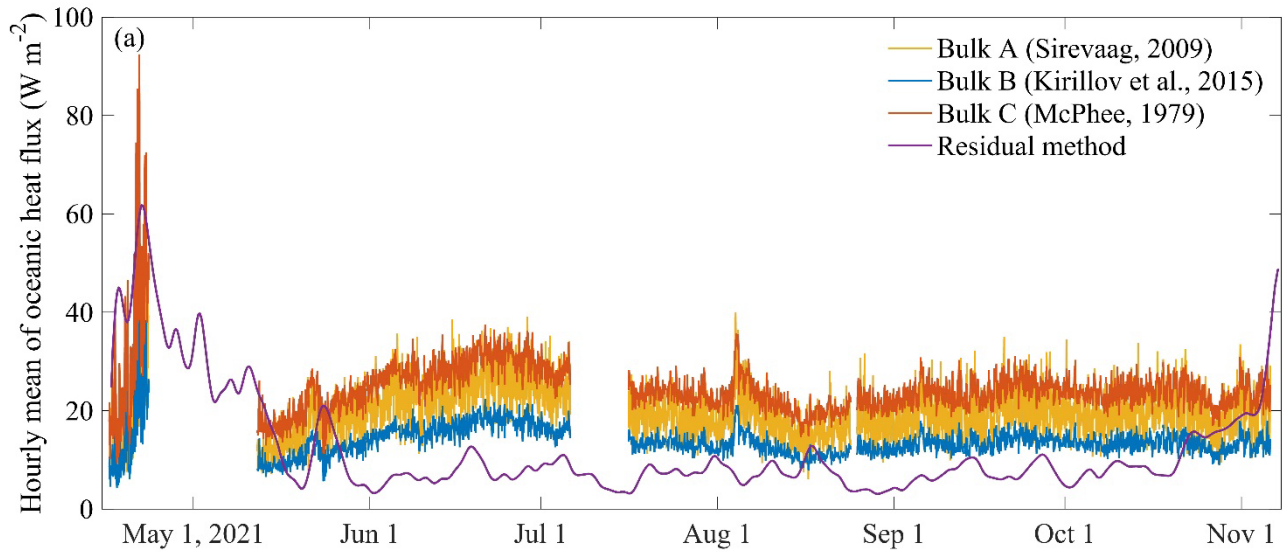
321 According to the monthly oceanic heat flux trends shown in Fig. 6b, the oceanic heat flux values were 18.4 W m^{-2} , 15.7 W
 322 m^{-2} , 31.4 W m^{-2} , and 41.3 W m^{-2} in April for the Bulk A, Bulk B, Bulk C, and residual methods, respectively. In addition, the

323 oceanic heat flux had large standard deviations in April, 10–20 W m⁻² for the bulk methods and 10 W m⁻² for the residual
324 method, indicating a large variation in the hourly time series. From May to October, the standard deviations were generally
325 less than 5 W m⁻². Among the three bulk parameterization methods, the results of the Bulk C method were relatively larger
326 than those of the Bulk A and B methods.

327

328 Previous studies estimated the oceanic heat flux under landfast ice in Prydz Bay using different methods. Allison (1981)
329 estimated the oceanic heat flux near Mawson Station from monthly mean temperature and ice growth data. In the early stage
330 of sea ice growth, the thermohaline convection caused by the brine rejection made the flux very high, and it could reach 50 W
331 m⁻². Heil et al. (1996) used a multilayer thermodynamic model to simulate sea ice growth at Mawson Station. The multi-year
332 average oceanic heat flux estimated from daily values was 7.9 W m⁻², and the annual mean was 5–12 W m⁻² from 1958 to
333 1986. Lei et al. (2010) estimated the oceanic heat flux near Zhongshan Station in early April to be 15–20 W m⁻². Yang et al.
334 (2016) estimated the oceanic heat flux to be 25 W m⁻² in March–April using a thermodynamic model. According to weekly
335 observations near Zhongshan Station, Zhao et al. (2019) interpolated and calculated the daily oceanic heat flux from March to
336 May to be 30 W m⁻². In this study, the average oceanic heat flux calculated using the residual method and the bulk methods
337 are consistent with those of previous studies on the seasonal scale, and the quantitative difference may be related to the specific
338 methods and environmental parameters for the given years. In this study, we utilized a higher temporal resolution (6 hours for
339 the residual method and 2 minutes for the bulk methods), which provide more details and insights for the readers and
340 communities, while the estimation of the oceanic heat flux at the bottom of the ice based on the residual method may produce
341 great errors within a short time window (Lei et al., 2010).

342



343

344 **Figure 6. (a) Hourly mean F_w was calculated using the three bulk parameterization methods and the 6-hourly mean F_w was calculated**
 345 **using the residual method and (b) the monthly mean F_w . The error bars in (b) represent ± 1 standard deviation of the hourly mean**
 346 **values.**

347 **Table 2. Inter-comparisons of the mean \pm standard deviation of the oceanic heat flux values ($W m^{-2}$) were calculated using different**
 348 **methods.**

Methods	Apr.	May	June	July	Aug.	Sept.	Oct.	Nov.	Total
Residual method	41.3 \pm 9.8	17.3 \pm 9.8	7.2 \pm 2.1	7.2 \pm 2.2	6.8 \pm 2.6	7.3 \pm 1.9	10.4 \pm 4.1	27.8 \pm 10.8	12.2 \pm 10.9
Bulk A	18.4 \pm 9.9	16.2 \pm 4.5	24.5 \pm 4.8	20.2 \pm 4.4	17.8 \pm 4.4	19.7 \pm 4.1	19.2 \pm 4.0	20.3 \pm 4.2	19.7 \pm 5.3

Bulk B	15.7±9.3	11.0±2.2	16.7±2.0	14.0±1.7	12.2±2.1	13.6±1.5	13.2±1.5	13.2±1.6	13.6±3.1
Bulk C	31.4±17.2	20.2±3.6	28.9±3.0	24.6±2.7	21.8±3.3	24.1±2.5	23.6±2.4	23.8±2.5	24.4±5.4

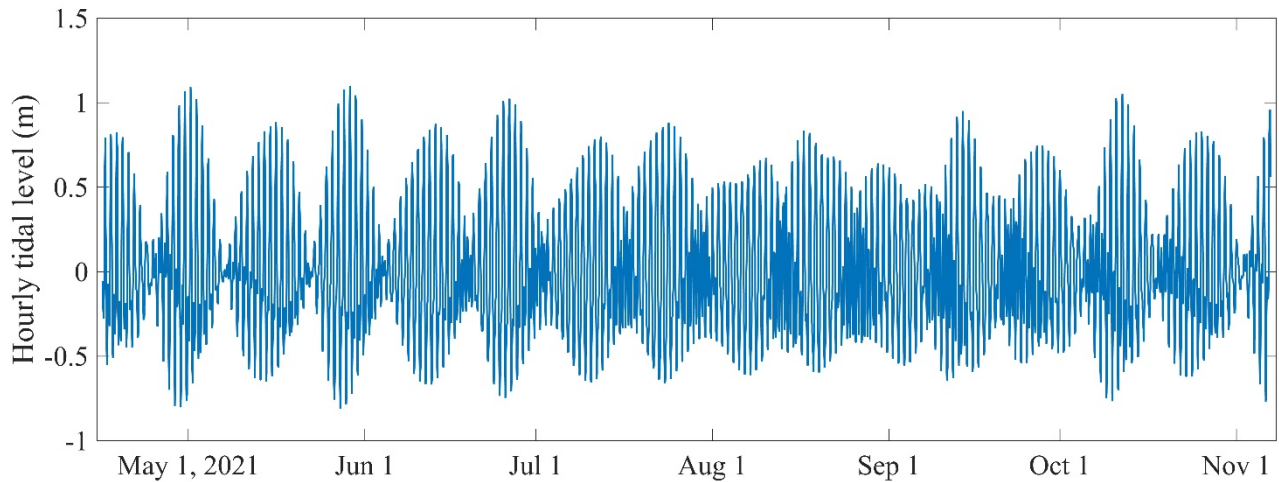
349 4. Discussion

350 The minute-frequency annual observations of variables in the ice-ocean interface in this study provide a clear picture of how
351 they varied on an hourly, daily or seasonal scale, and fill up the data gap in Zhongshan Station. As the relative studies in other
352 regions, those variables may be affected by the short-term cycle of sub-glacial current (McPhee et al., 1996) and ocean tide
353 current (Lei et al., 2010). To further enrich our analysis, the relationships between processes on the local scale and pan-Prydz
354 Bay scale were discussed here.

355 4.1 Potential influences of local tidal oscillations

356 The local tides may influence the evolution of sea ice (Lei et al., 2009). The tidal oscillations were reconstructed using the
357 harmonic analysis method (Pan et al., 2018) and the harmonic constants from E et al. (2013). In this study, the periodogram
358 method (Welch, 1967) was used to detect the periodicity of the long time-series observation data. Power spectrum analysis of
359 the signal revealed that the tidal oscillations exhibited two peaks. The largest peak had a period of 1 day, and the second largest
360 peak had a half-day period, indicating that the tide near Zhongshan Station was an irregular diurnal tide (Fig. 7). To further
361 investigate the relationships between the tidal oscillations and oceanic variables, the same spectral analysis was employed for
362 all of the observed ocean variables. The ocean temperature exhibited the largest peak with a period of 1 day and a relatively
363 low peak with a half-day period. In contrast, the seawater salinity, U, V, W, and the results of the three bulk parameterization
364 methods exhibited the largest peak with a half-day period and a relatively low peak with a 1-day period (Fig. 8). The results
365 of the spectral analysis indicate that the ocean temperature, salinity, U, V, W, and oceanic heat flux were greatly affected by
366 the tidal oscillations.

367

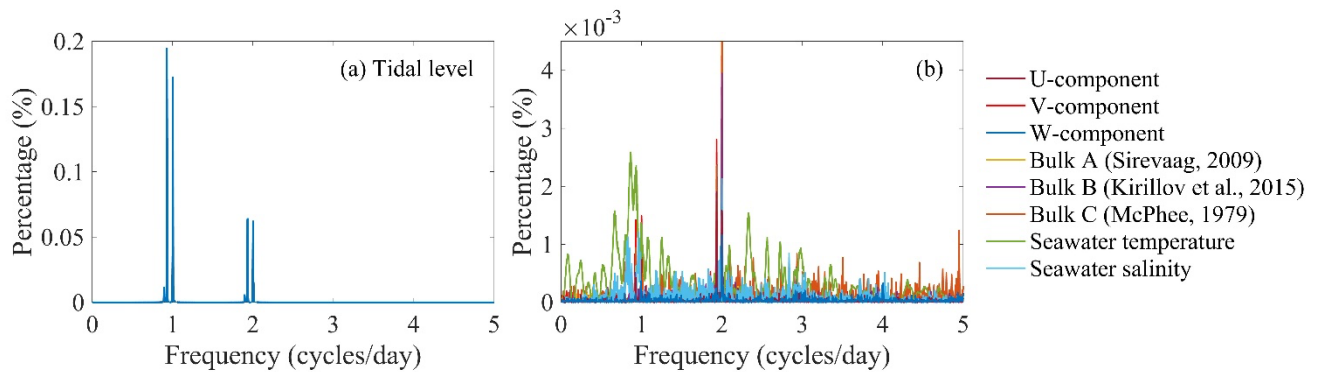


369

370 **Figure 7. The tidal oscillations were constructed using the harmonic analysis method (Pan et al., 2018) and the harmonic constants**
 371 **of E et al., (2013). The temporal resolution of this dataset is 1 hour.**

372

373



374

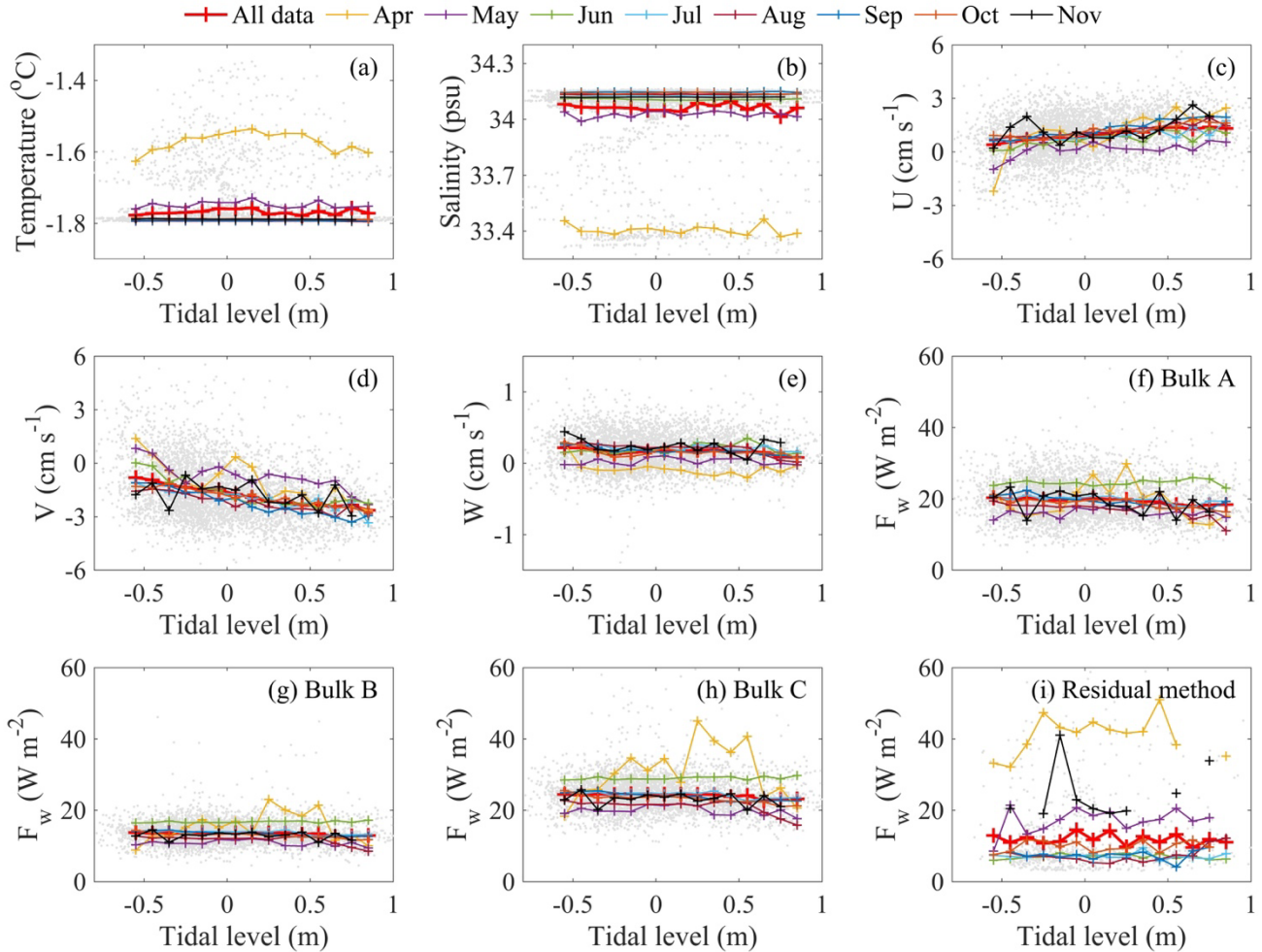
375 **Figure 8. (a) The results of the spectral analysis of the tidal oscillations and the observed ocean variables, and (b) the calculated F_w .**
 376 **The periodogram method was used to detect the periodicity (Welch, 1967).**

377 In April, the observed seawater temperature and salinity exhibited a special pattern, that is, the water was relatively warm and
 378 fresh in the equilibrium tide state, while it was cold and salty in the low and high tide states (Figs. 9a, b), which may have been
 379 related to the efficient horizontal heat transport when the surrounding area was not completely covered by ice. However, in
 380 the other months, the larger observed vertical velocity enhanced the vertical mixing, and therefore, no significant variations in
 381 the seawater temperature and salinity and the oceanic heat flux were observed during the same period.

382

383 Furthermore, when the tide level changed from low to high, the hourly U changed from a slightly positive distribution (0.7 ± 1.2
 384 cm s^{-1}) to a deeply positive distribution ($1.2 \pm 1.1 \text{ cm s}^{-1}$), indicating predominantly eastward flow during the high tide level

385 conditions (Fig. 9c). V changed from a slightly negative distribution ($-1.3 \pm 1.6 \text{ cm s}^{-1}$) to an intensely negative distribution
 386 ($-2.1 \pm 1.3 \text{ cm s}^{-1}$), suggesting that the southward flow became stronger when the tide level was high (Fig. 9d). W did not vary
 387 prominently, and the mean values were almost the same, $0.2 \pm 0.3 \text{ cm s}^{-1}$ and $0.2 \pm 0.2 \text{ cm s}^{-1}$ during the low and high tide levels,
 388 respectively (Fig. 9e).
 389



390
 391 **Figure 9. Scatter plots of the tidal level versus the oceanic variables: (a) seawater temperature, (b) seawater salinity, (c) U-component**
 392 **velocity, (d) V-component velocity, (e) W-component velocity, and (f-i) F_w from the Bulk A, B, C, and residual methods. The grey**
 393 **dots are the hourly mean values of the variables, and the different lines represent the monthly mean values for 0.1 m tidal level bins.**

394 4.2 Relationships between large-scale and local phenomena

395 Prydz Bay was covered by sea ice in the cold season. Ice floes appeared widely in March, and landfast ice started to form one
 396 month later in April near Zhongshan Station. From May to October, ice floes completely covered Prydz Bay, except for several
 397 large polynyas (Fig. 10d), for example, Davis Polynya (DaP) and the Four Ladies Bank Polynya (FLBP) on the east side and

398 the Mackenzie Bay Polynya (MBP) and Cape Darnley Polynya (CDP) on the west side (Hou and Shi, 2021; Nihashi and
399 Ohshima, 2015; Williams et al., 2016). In addition, the landfast ice gradually extended to around 100 km along the zonal
400 direction. In November, the ice floe concentration decreased, and the landfast ice cover reached the maximum extent (Fig. 10).
401 The open water area accounted for nearly 80% of the entire ocean grid in March, allowing more solar heat flux to be absorbed
402 by the ocean, which was the energy basis for the warm ocean in April (Fig. 11). The large-scale circulation in Prydz Bay
403 indicated the existence of a westward current along the Antarctic coastline, which was stronger in the ice-free and low ice
404 concentration months and weaker in the high ice concentration months. In April, the large-scale current carried the warm water
405 from low latitudes to high latitudes, contributing to the observed rise in the ocean temperature near Zhongshan Station. From
406 then on, the large-scale current weakened, and the horizontal heat transport decreased.

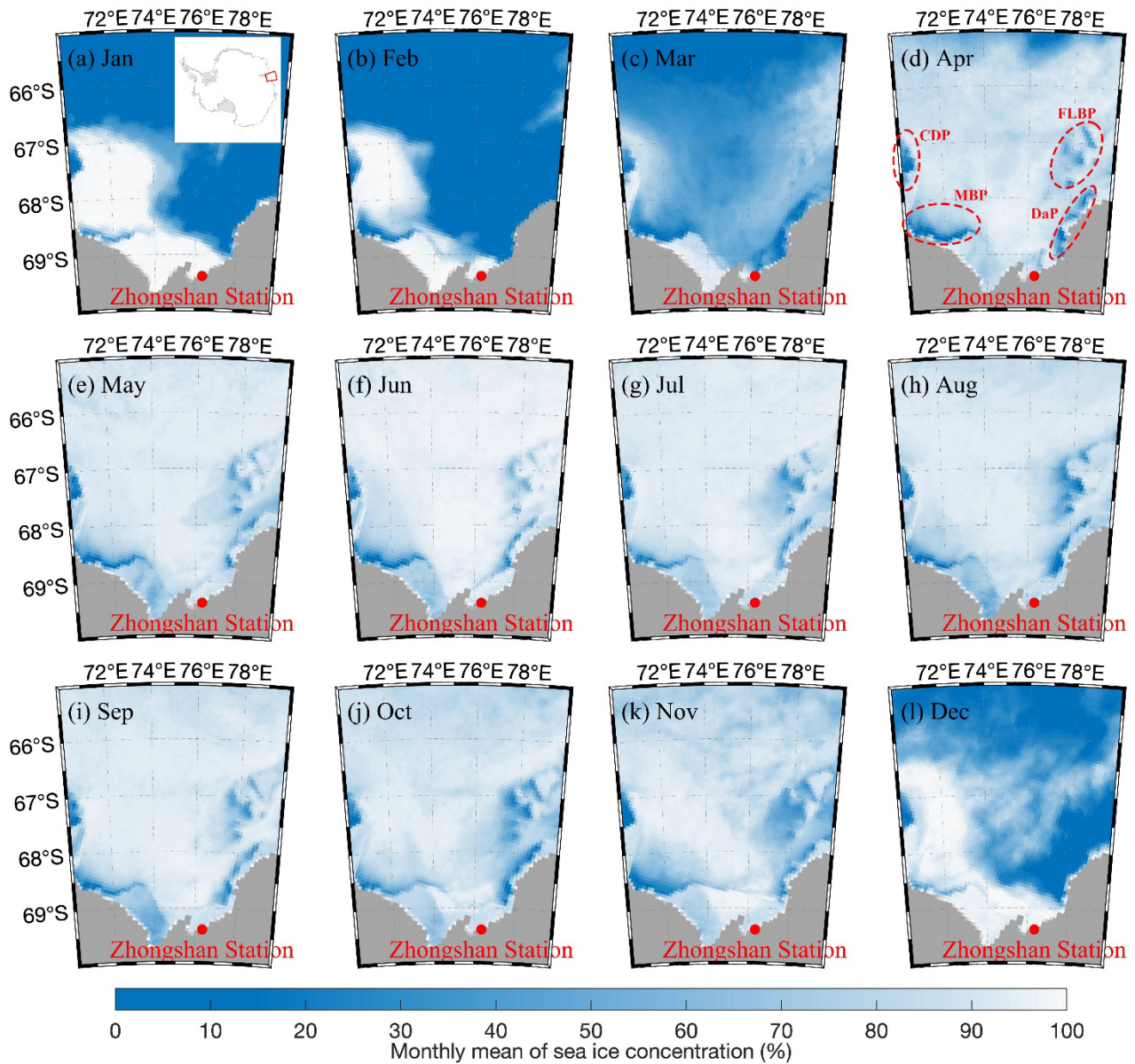
407

408 The four large polynyas shown in Fig. 10d started to form in April, which led to the release of a large amount of salt through
409 new ice production during their existence. As a result, the ocean mixed layer in the corresponding locations derived from
410 Mercator global ocean reanalysis products exhibited obvious thickening from May to October (figure not shown). In addition,
411 the thickening of the entire ice region in Prydz Bay contributed to the strengthened vertical mixing caused by the salt rejection
412 as the sea ice continued to grow. The high seawater salinity observed by the CTD near Zhongshan Station (yellow lines in Fig.
413 11) confirms this assumption. Considering the reduced horizontal heat transport, the evolution of the ocean temperature was
414 mainly affected by local factors. In this study, the observations were conducted close to the shore at a water depth of around
415 10 m, making full mixing of the shallow water possible. Therefore, the seawater temperature remained at a stable level from
416 June to November (red lines in Fig. 11).

417

418 The water depth near the shoreline may have affected the vertical mixing capacity. The observations of the seawater
419 temperature from the SIMBA sensors at 2 m beneath the ice surface and the CTD were obviously different (annual mean
420 difference of $-0.17 \pm 0.03^\circ\text{C}$), which was largely beyond the errors of the instruments. The water depths of the SIMBA and
421 CTD sensors were 4.5 m and 13 m, respectively, and this difference is believed to have caused the different vertical mixing
422 strengths and thus the different seawater temperatures.

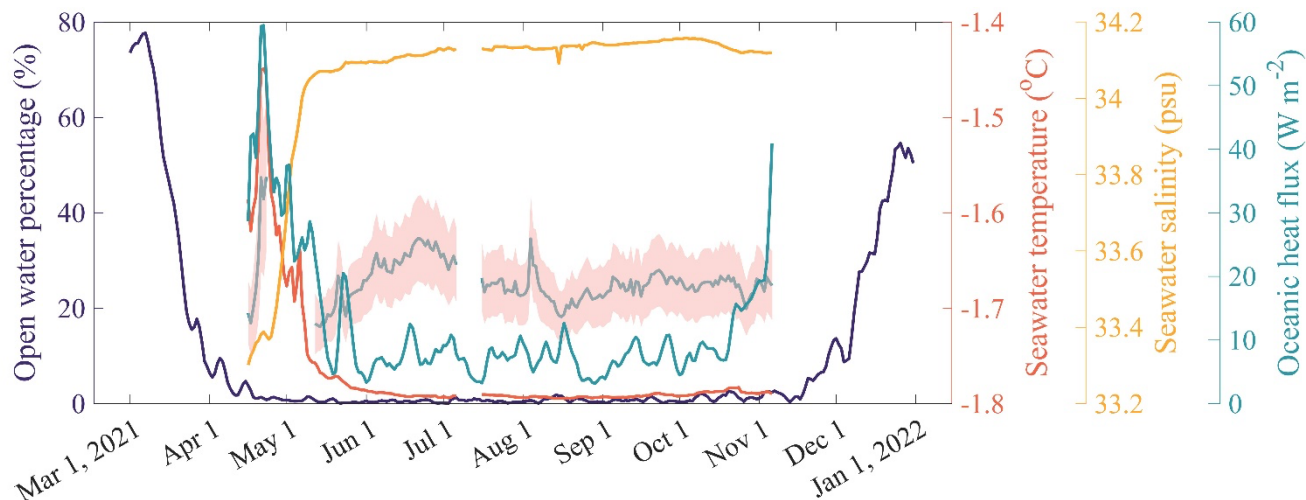
423



424

425 **Figure 10. (a–i) Evolution of the monthly sea ice concentration in Prydz Bay from January to December 2021. The domain of Prydz**
 426 **Bay (70–80°E, 65–70°S) in Antarctica is shown in the right-top corner of (a). The sea ice concentration dataset was retrieved from**
 427 **the AMSR2 product provided by Bremen University (<https://seoice.uni-bremen.de>), with a spatial resolution of 6.25 km. The**
 428 **locations of four large Polynyas are marked in (d), i.e., the Davis Polynya (DaP) and Four Ladies Bank Polynya (FLBP) on the east**
 429 **side and the Mackenzie Bay Polynya (MBP) and Cape Darnley Polynya (CDP) on the west side.**

430



431

432 **Figure 11. The time series of the daily percentage of open water (purple lines) relative to the domain of Prydz Bay (shown in Fig. 10)**
 433 **and the seawater temperature (red lines), seawater salinity (yellow lines), mean oceanic heat flux from the Bulk A, B, and C methods**
 434 **(grey lines with rose shading), and the oceanic heat flux from the residual method (green lines). The open water area was defined as**
 435 **the sum of the grid cells where the sea ice concentration was less than 15%. The rose shading indicates ± 1 standard deviation.**

436 5 Conclusions

437 The heat and momentum balances among the air–ice–ocean are some of the most important processes in the polar regions. The
 438 air–ice interactions have been well investigated due to the fact that on-ice observations are relatively easy to conduct. However,
 439 the ice–ocean interactions have rarely been studied due to the difficulty and limitations of underwater observations. The
 440 oceanic boundary layer beneath sea ice plays an important role in the growth and melting of sea ice. In this study, an integrated
 441 ice–ocean observation system, including an ADV, CTD, and SIMBA, was deployed on the landfast ice 1 km far from
 442 Zhongshan Station in Prydz Bay, East Antarctica. The ocean temperature, salinity, and velocity were observed with a 40-
 443 second resolution and 8-month observation period and were investigated for the first time in this region.

444

445 The SIMBA temperature chain recorded the vertical temperature profiles of the air–snow–ice–ocean, which were used to
 446 estimate the snow and ice thicknesses and oceanic heat flux using the residual method. The results show that 98 cm of landfast
 447 ice formed from April to October, with a mean growth rate of $0.5 \pm 0.3 \text{ cm d}^{-1}$; and 4 cm melted in November, with a rate of
 448 $-0.4 \pm 0.2 \text{ cm d}^{-1}$ until the observation period ended. Approximately 6–8 cm of surface sublimation was observed in summer.
 449 The maximum snow thickness was around 30 cm in May and remained at 10–20 cm until August. The CTD recorded the 40-
 450 second resolution seawater temperature and salinity at a depth of 5 m beneath the ice surface. The seawater temperature rapidly
 451 increased from -1.62°C to -1.30°C in April and then gradually decreased to -1.75°C in May. The seawater temperature
 452 remained stable from June to November, with a mean of $-1.79 \pm 0.01^\circ\text{C}$. In April, the landfast ice was 44–50 cm thick and the
 453 ice surface was snow free; therefore, the variations in the air temperature exerted a larger influence on the ice and seawater

454 temperatures. The significant increases in the air and seawater temperatures led to an increase in the temperature of the bottom
455 of the ice, which contributed to the sudden melting of 4 cm from the bottom of the ice observed by the SIMBA. The thick
456 snow cover from May to August provided an isolation layer for the ice and ocean, which contributed to the stability of the
457 seawater temperature during this period.

458

459 The seawater salinity increased from 33.34 psu in April to 34.08 psu in May, with a rate of 0.04 psu d⁻¹. From June to November,
460 the seawater salinity was stable at around 34.13±0.02 psu. The seawater density calculated from the observed seawater salinity
461 increased from 1026.8 kg m⁻³ to 1027.4 kg m⁻³ from April to May and remained at 1027.5±0.02 kg m⁻³ from then on. The
462 current velocity was recorded by the ADV from April to November. The analysis of the 2-minute resolution time series
463 revealed that 79% of the ocean velocity values were within 5–15 cm s⁻¹, and the annual mean was 9.5±3.9 cm s⁻¹. The
464 maximum velocity of 29.8 cm s⁻¹ was observed on June 25, 2021. The dominant current direction was SEE(120°)–SWW(240°).
465 The spectral analysis results suggest typical half-day periods for U, V, and W, which may be related to the tidal oscillations
466 near Zhongshan Station. The meridional velocity V was dominated by the southward flow and became stronger when the tide
467 level was higher.

468

469 The oceanic heat flux was estimated using the residual method and three different bulk parameterization methods. The results
470 exhibit a similar peak of 60–80 W m⁻² in April–May and a decreasing trend to a stable level of 10–30 W m⁻² from then on.
471 The annual mean values were 12.2±10.9 W m⁻², 19.7±5.3 W m⁻², 13.6±3.1 W m⁻², and 24.4±5.4 W m⁻², respectively, for the
472 residual and Bulk, A, B, and C methods. The large differences were mainly caused by the different formulas for the friction
473 velocity, indicating the uncertainties of the empirical equations. The estimated results obtained in this study are consistent with
474 those of previous studies, which were usually based on low-frequency ice thickness observations. The oceanic heat fluxes
475 exhibited similar half-day periods, which are also believed to be related to the tidal oscillations.

476

477 The observations of seawater temperature, salinity, U, V, and W and the estimation of the seawater density and oceanic heat
478 flux exhibited periods similar to that of the local tidal oscillations, suggesting that the tides were one of the main drivers of the
479 oceanic variations near Zhongshan Station. The large-scale sea ice distribution and current transformation affected the
480 absorption of solar radiation by the upper ocean and the horizontal heat transport, which was another main driver of the oceanic
481 variations near Zhongshan Station. Both the local and large-scale influences played important roles in the oceanic heat flux
482 and thus the ice–ocean interactions.

483

484 In this study, the attainment of high-frequency oceanic measurements provided an opportunity to investigate the details of the
485 ice–ocean interactions beneath landfast ice on the diurnal and seasonal scales. The bulk parameterization was used to estimate
486 the oceanic heat flux near Zhongshan Station, providing more interesting information than the residual method does. The use

487 of more ice and ocean equipment, such as ice thickness radar, ocean temperature chains, and ice salinity gauges, will be
488 considered in the future, to fill the remaining data gap.

489

490 **Data availability**

491 The observation data are available from the Science Data Bank. The seawater temperature and salinity recorded from a cable-
492 type CTD are publicly available at <https://doi.org/10.57760/sciencedb.07693> (Zhao and Hu, 2023). The air-ice-ocean
493 temperature profile derived from Sea Ice Mass Balance Array (SIMBA) is publicly available at
494 <https://doi.org/10.57760/sciencedb.07684> (Zhao and Hu, 2023). The 3-D current velocity 5-m beneath landfast ice recorded
495 from an Acoustic Doppler Velocimeter (ADV) are publicly available at <https://doi.org/10.57760/sciencedb.07692> (Zhao and
496 Hu, 2023).

497 **Author contributions**

498 JC conceptualized this study and designed the numerical methods. HH carried out the experiments and wrote the manuscript.
499 JC, PH, ZL and FH helped analyse the results and revised the manuscript. JM provided and helped process the sea ice
500 observation data. XC assisted during the writing process and critically discussed the contents.

501 **Competing interests**

502 One of the co-authors is a member of the editorial board of *The Cryosphere*, and the authors have no other competing interests
503 to declare.

504 **Acknowledgement**

505 This study was financially supported by the National Natural Science Foundation of China (42276251, 42211530033,
506 41876212). PH was supported by the Australian Government through Australian Antarctic Science Projects (no. 4506) and the
507 International Space Science Institute (grant no. 406).

508 **References**

509 Allison, I.: Antarctic ice growth and oceanic heat flux, Sea level, ice and climatic change, 131, 161–170, 1981.
510 Cheng, B., Vihma, T., Pirazzini, R., and Granskog, M. A.: Modelling of superimposed ice formation during the spring
511 snowmelt period in the Baltic Sea, *Ann. Glaciol.*, 44, 139–146, <https://doi.org/10.3189/172756406781811277>, 2006.

- 512 Comiso, J. C., Parkinson, C. L., Gersten, R., and Stock, L.: Accelerated decline in the Arctic sea ice cover, *Geophys. Res. Lett.*,
513 35, L01703, <https://doi.org/10.1029/2007GL031972>, 2008.
- 514 E, D., Huang, J., and Zhang, S.: Analysis of Tidal Features of Zhongshan Station, East Antarctic, *Geomatics and information
515 science of WUHAN UNIVERSITY*, 379-382+464, <https://doi.org/10.13203/j.whugis2013.04.025>, 2013 (in Chinese).
- 516 Fedotov, V. I., Cherepanov, N. V., and Tyshko, K. P.: Some Features of the Growth, Structure and Metamorphism of East
517 Antarctic Landfast Sea Ice, in: *Antarctic Research Series*, edited by: Jeffries, M. O., American Geophysical Union, Washington,
518 D. C., 343–354, <https://doi.org/10.1029/AR074p0343>, 2013.
- 519 Fraser, A. D., Massom, R. A., Handcock, M. S., Reid, P., Ohshima, K. I., Raphael, M. N., Cartwright, J., Klekociuk, A. R.,
520 Wang, Z., and Porter-Smith, R.: Eighteen-year record of circum-Antarctic landfast-sea-ice distribution allows detailed baseline
521 characterisation and reveals trends and variability, *The Cryosphere*, 15, 5061–5077, <https://doi.org/10.5194/tc-15-5061-2021>,
522 2021.
- 523 Giles, K. A., Laxon, S. W., and Ridout, A. L.: Circumpolar thinning of Arctic sea ice following the 2007 record ice extent
524 minimum, *Geophys. Res. Lett.*, 35, L22502, <https://doi.org/10.1029/2008GL035710>, 2008.
- 525 Guo, G., Shi, J., and Jiao, Y.: Temporal variability of vertical heat flux in the Makarov Basin during the ice camp observation
526 in summer 2010, *Acta Oceanol. Sin.*, 34, 118–125, <https://doi.org/10.1007/s13131-015-0755-z>, 2015.
- 527 Heil, P.: Atmospheric conditions and fast ice at Davis, East Antarctica: A case study, *J. Geophys. Res.*, 111, C05009,
528 <https://doi.org/10.1029/2005JC002904>, 2006.
- 529 Heil, P., Allison, I., and Lytle, V. I.: Seasonal and interannual variations of the oceanic heat flux under a landfast Antarctic sea
530 ice cover, *J. Geophys. Res.*, 101, 25741–25752, <https://doi.org/10.1029/96JC01921>, 1996.
- 531 Hou, S. and Shi, J.: Variability and Formation Mechanism of Polynyas in Eastern Prydz Bay, Antarctica, *REMOTE SENSING*,
532 13, <https://doi.org/10.3390/rs13245089>, 2021.
- 533 Kirillov, S., Dmitrenko, I., Babb, D., Rysgaard, S., and Barber, D.: The effect of ocean heat flux on seasonal ice growth in
534 Young Sound (Northeast Greenland): THE OCEAN HEAT FLUX IN YOUNG SOUND FJORD, *J. Geophys. Res. Oceans*,
535 120, 4803–4824, <https://doi.org/10.1002/2015JC010720>, 2015.
- 536 Launiainen, J. and Cheng, B.: Modelling of ice thermodynamics in natural water bodies, *Cold Regions Science and Technology*,
537 27, 153–178, [https://doi.org/10.1016/S0165-232X\(98\)00009-3](https://doi.org/10.1016/S0165-232X(98)00009-3), 1998.
- 538 Lei, R., Li, Z., Cheng, Y., Wang, X., and Chen, Y.: A New Apparatus for Monitoring Sea Ice Thickness Based on the
539 Magnetostrictive-Delay-Line Principle, *Journal of Atmospheric and Oceanic Technology*, 26, 818–827,
540 <https://doi.org/10.1175/2008JTECHO613.1>, 2009.
- 541 Lei, R., Li, Z., Cheng, B., Zhang, Z., and Heil, P.: Annual cycle of landfast sea ice in Prydz Bay, east Antarctica, *J. Geophys.
542 Res.*, 115, C02006, <https://doi.org/10.1029/2008JC005223>, 2010.
- 543 Lei, R., Li, N., Heil, P., Cheng, B., Zhang, Z., and Sun, B.: Multiyear sea ice thermal regimes and oceanic heat flux derived
544 from an ice mass balance buoy in the Arctic Ocean: ARCTIC SEA-ICE THERMAL REGIMES, *J. Geophys. Res. Oceans*,
545 119, 537–547, <https://doi.org/10.1002/2012JC008731>, 2014.
- 546 Lei, R., Cheng, B., Hoppmann, M., Zhang, F., Zuo, G., Hutchings, J. K., Lin, L., Lan, M., Wang, H., Regnery, J., Krumpfen,
547 T., Haapala, J., Rabe, B., Perovich, D. K., and Nicolaus, M.: Seasonality and timing of sea ice mass balance and heat fluxes in

- 548 the Arctic transpolar drift during 2019–2020, *Elementa: Science of the Anthropocene*, 10, 000089,
549 <https://doi.org/10.1525/elementa.2021.000089>, 2022.
- 550 Li, X., Shokr, M., Hui, F., Chi, Z., Heil, P., Chen, Z., Yu, Y., Zhai, M., and Cheng, X.: The spatio-temporal patterns of landfast
551 ice in Antarctica during 2006–2011 and 2016–2017 using high-resolution SAR imagery, *Remote Sensing of Environment*,
552 242, 111736, <https://doi.org/10.1016/j.rse.2020.111736>, 2020.
- 553 Liu, J. and Curry, J. A.: Accelerated warming of the Southern Ocean and its impacts on the hydrological cycle and sea ice,
554 *Proceedings of the National Academy of Sciences*, 107, 14987–14992, <https://doi.org/10.1073/pnas.1003336107>, 2010.
- 555 Lytle, V. I., Massom, R., Bindoff, N., Worby, A., and Allison, I.: Wintertime heat flux to the underside of East Antarctic pack
556 ice, *J. Geophys. Res.*, 105, 28759–28769, <https://doi.org/10.1029/2000JC900099>, 2000.
- 557 Massom, R. A. and Stammerjohn, S. E.: Antarctic sea ice change and variability – Physical and ecological implications, *Polar
558 Science*, 4, 149–186, <https://doi.org/10.1016/j.polar.2010.05.001>, 2010.
- 559 Massom, R. A., Hill, K. L., Lytle, V. I., Worby, A. P., Paget, M. J., and Allison, I.: Effects of regional fast-ice and iceberg
560 distributions on the behaviour of the Mertz Glacier polynya, East Antarctica, *Ann. Glaciol.*, 33, 391–398,
561 <https://doi.org/10.3189/172756401781818518>, 2001.
- 562 Maykut, G. A. and McPhee, M. G.: Solar heating of the Arctic mixed layer, *J. Geophys. Res.*, 100, 24691,
563 <https://doi.org/10.1029/95JC02554>, 1995.
- 564 Maykut, G. A. and Untersteiner, N.: Some results from a time-dependent thermodynamic model of sea ice, *J. Geophys. Res.*,
565 76, 1550–1575, <https://doi.org/10.1029/JC076i006p01550>, 1971.
- 566 McPhee, M. G.: The Effect of the Oceanic Boundary Layer on the Mean Drift of Pack Ice: Application of a Simple Model, *J.
567 Phys. Oceanogr.*, 9, 388–400, [https://doi.org/10.1175/1520-0485\(1979\)009<0388:TEOTOB>2.0.CO;2](https://doi.org/10.1175/1520-0485(1979)009<0388:TEOTOB>2.0.CO;2), 1979.
- 568 McPhee, M. G.: Turbulent heat flux in the upper ocean under sea ice, *J. Geophys. Res.*, 97, 5365,
569 <https://doi.org/10.1029/92JC00239>, 1992.
- 570 McPhee, M. G.: Turbulent stress at the ice/ocean interface and bottom surface hydraulic roughness during the SHEBA drift, *J.
571 Geophys. Res.*, 107, 8037, <https://doi.org/10.1029/2000JC000633>, 2002.
- 572 McPhee, M. G. and Untersteiner, N.: Using sea ice to measure vertical heat flux in the ocean, *J. Geophys. Res.*, 87, 2071,
573 <https://doi.org/10.1029/JC087iC03p02071>, 1982.
- 574 McPhee, M. G., Ackley, S. F., Guest, P., Stanton, T. P., Huber, B. A., Martinson, D. G., Morison, J. H., Muench, R. D., and
575 Padman, L.: The Antarctic Zone Flux Experiment, *Bull. Amer. Meteor. Soc.*, 77, 1221–1232, [https://doi.org/10.1175/1520-0477\(1996\)077<1221:TAZFE>2.0.CO;2](https://doi.org/10.1175/1520-0477(1996)077<1221:TAZFE>2.0.CO;2), 1996.
- 577 McPhee, M. G., Kottmeier, C., and Morison, J. H.: Ocean Heat Flux in the Central Weddell Sea during Winter, *J. Phys.
578 Oceanogr.*, 29, 1166–1179, [https://doi.org/10.1175/1520-0485\(1999\)029<1166:OHFITC>2.0.CO;2](https://doi.org/10.1175/1520-0485(1999)029<1166:OHFITC>2.0.CO;2), 1999.
- 579 McPhee, M. G., Morison, J. H., and Nilsen, F.: Revisiting heat and salt exchange at the ice-ocean interface: Ocean flux and
580 modeling considerations, *J. Geophys. Res.*, 113, C06014, <https://doi.org/10.1029/2007JC004383>, 2008.

- 581 Miles, B. W. J., Stokes, C. R., and Jamieson, S. S. R.: Simultaneous disintegration of outlet glaciers in Porpoise Bay (Wilkes
582 Land), East Antarctica, driven by sea ice break-up, *The Cryosphere*, 11, 427–442, <https://doi.org/10.5194/tc-11-427-2017>,
583 2017.
- 584 Millero, F.: Freezing point of seawater, Eighth Report of the Joint Panel on Oceanographic Tables and Standards, 28, 29–31,
585 1978.
- 586 Millero, F. J. and Poisson, A.: International one-atmosphere equation of state of seawater, *Deep Sea Research Part A*.
587 *Oceanographic Research Papers*, 28, 625–629, [https://doi.org/10.1016/0198-0149\(81\)90122-9](https://doi.org/10.1016/0198-0149(81)90122-9), 1981.
- 588 Nihashi, S. and Ohshima, K. I.: Circumpolar Mapping of Antarctic Coastal Polynyas and Landfast Sea Ice: Relationship and
589 Variability, *JOURNAL OF CLIMATE*, 28, 3650–3670, <https://doi.org/10.1175/JCLI-D-14-00369.1>, 2015.
- 590 Overland, J. E., Wang, M., Walsh, J. E., and Stroeve, J. C.: Future Arctic climate changes: Adaptation and mitigation time
591 scales, *Earth's Future*, 2, 68–74, <https://doi.org/10.1002/2013EF000162>, 2014.
- 592 Pan, H., Lv, X., Wang, Y., Matte, P., Chen, H., and Jin, G.: Exploration of Tidal-Fluvial Interaction in the Columbia River
593 Estuary Using S_TIDE, *J. Geophys. Res. Oceans*, 123, 6598–6619, <https://doi.org/10.1029/2018JC014146>, 2018.
- 594 Parkinson, C. L. and DiGirolamo, N. E.: Sea ice extents continue to set new records: Arctic, Antarctic, and global results,
595 *Remote Sensing of Environment*, 267, 112753, <https://doi.org/10.1016/j.rse.2021.112753>, 2021.
- 596 Parkinson, C. L. and Washington, W. M.: A large-scale numerical model of sea ice, *J. Geophys. Res.*, 84, 311,
597 <https://doi.org/10.1029/JC084iC01p00311>, 1979.
- 598 Perovich, D. K. and Elder, B.: Estimates of ocean heat flux at SHEBA: ESTIMATES OF OCEAN HEAT FLUX AT SHEBA,
599 *Geophys. Res. Lett.*, 29, 58-1-58-4, <https://doi.org/10.1029/2001GL014171>, 2002.
- 600 Peterson, A. K., Fer, I., McPhee, M. G., and Randelhoff, A.: Turbulent heat and momentum fluxes in the upper ocean under
601 Arctic sea ice: TURBULENT FLUXES UNDER ARCTIC SEA ICE, *J. Geophys. Res. Oceans*, 122, 1439–1456,
602 <https://doi.org/10.1002/2016JC012283>, 2017.
- 603 Post, E., Alley, R. B., Christensen, T. R., Macias-Fauria, M., Forbes, B. C., Gooseff, M. N., Iler, A., Kerby, J. T., Laidre, K.
604 L., Mann, M. E., Olofsson, J., Stroeve, J. C., Ulmer, F., Virginia, R. A., and Wang, M.: The polar regions in a 2°C warmer
605 world, *Science Advances*, 5, eaaw9883, <https://doi.org/10.1126/sciadv.aaw9883>, 2019.
- 606 Purdie, C. R., Langhorne, P. J., Leonard, G. H., and Haskell, T. G.: Growth of first-year landfast Antarctic sea ice determined
607 from winter temperature measurements, *Ann. Glaciol.*, 44, 170–176, <https://doi.org/10.3189/172756406781811853>, 2006.
- 608 Raphael, M. N. and Handcock, M. S.: A new record minimum for Antarctic sea ice, *Nat Rev Earth Environ*, 3, 215–216,
609 <https://doi.org/10.1038/s43017-022-00281-0>, 2022.
- 610 Semtner, A. J.: A Model for the Thermodynamic Growth of Sea Ice in Numerical Investigations of Climate, *J. Phys. Oceanogr.*,
611 6, 379–389, [https://doi.org/10.1175/1520-0485\(1976\)006<0379:AMFTTG>2.0.CO;2](https://doi.org/10.1175/1520-0485(1976)006<0379:AMFTTG>2.0.CO;2), 1976.
- 612 Sirevaag, A.: Turbulent exchange coefficients for the ice/ocean interface in case of rapid melting, *Geophys. Res. Lett.*, 36,
613 L04606, <https://doi.org/10.1029/2008GL036587>, 2009.
- 614 Sirevaag, A. and Fer, I.: Early Spring Oceanic Heat Fluxes and Mixing Observed from Drift Stations North of Svalbard*,
615 *Journal of Physical Oceanography*, 39, 3049–3069, <https://doi.org/10.1175/2009JPO4172.1>, 2009.

- 616 Spreen, G., Kaleschke, L., and Heygster, G.: Sea ice remote sensing using AMSR-E 89-GHz channels, *J. Geophys. Res.-*
617 *Oceans*, 113, C02S03, <https://doi.org/10.1029/2005JC003384>, 2008.
- 618 Tian, Z., Cheng, B., Zhao, J., Vihma, T., Zhang, W., Li, Z., and Zhang, Z.: Observed and modelled snow and ice thickness in
619 the Arctic Ocean with CHINARE buoy data, *Acta Oceanol. Sin.*, 36, 66–75, <https://doi.org/10.1007/s13131-017-1020-4>, 2017.
- 620 Untersteiner, N.: On the mass and heat budget of arctic sea ice, *Arch. Met. Geoph. Biokl. A.*, 12, 151–182,
621 <https://doi.org/10.1007/BF02247491>, 1961.
- 622 Vihma, T.: Surface heat budget over the Weddell Sea: Buoy results and model comparisons, *J. Geophys. Res.*, 107, 3013,
623 <https://doi.org/10.1029/2000JC000372>, 2002.
- 624 Wang, J., Luo, H., Yang, Q., Liu, J., Yu, L., Shi, Q., and Han, B.: An Unprecedented Record Low Antarctic Sea-ice Extent
625 during Austral Summer 2022, *Adv. Atmos. Sci.*, s00376-022-2087–1, <https://doi.org/10.1007/s00376-022-2087-1>, 2022.
- 626 Welch, P.: The use of fast Fourier transform for the estimation of power spectra: A method based on time averaging over short,
627 modified periodograms, *IEEE Trans. Audio Electroacoust.*, 15, 70–73, <https://doi.org/10.1109/TAU.1967.1161901>, 1967.
- 628 Williams, G. D., Herraiz-Borreguero, L., Roquet, F., Tamura, T., Ohshima, K. I., Fukamachi, Y., Fraser, A. D., Gao, L., Chen,
629 H., McMahon, C. R., Harcourt, R., and Hindell, M.: The suppression of Antarctic bottom water formation by melting ice
630 shelves in Prydz Bay, *Nat Commun*, 7, 1–9, <https://doi.org/10.1038/ncomms12577>, 2016.
- 631 Yang, Y., Zhijun, L., Leppäranta, M., Cheng, B., Shi, L., and Lei, R.: Modelling the thickness of landfast sea ice in Prydz Bay,
632 East Antarctica, *Antarctic Science*, 28, 59–70, <https://doi.org/10.1017/S0954102015000449>, 2016.
- 633 Zhao, J., Yang, Q., Cheng, B., Leppäranta, M., Hui, F., Xie, S., Chen, M., Yu, Y., Tian, Z., Li, M., and Zhang, L.: Spatial and
634 temporal evolution of landfast ice near Zhongshan Station, East Antarctica, over an annual cycle in 2011/2012, *Acta Oceanol.*
635 *Sin.*, 38, 51–61, <https://doi.org/10.1007/s13131-018-1339-5>, 2019.
- 636 Zhao, J., Cheng, B., Vihma, T., Heil, P., Hui, F., Shu, Q., Zhang, L., and Yang, Q.: Fast Ice Prediction System (FIPS) for land-
637 fast sea ice at Prydz Bay, East Antarctica: an operational service for CHINARE, *Ann. Glaciol.*, 61, 271–283,
638 <https://doi.org/10.1017/aog.2020.46>, 2020.
- 639 Zhao, J., Yang, Q., Cheng, B., Wang N., Hui, F., Shen H., Han S., Zhang, L., and Timo Vihma.: Snow and land-fast sea ice
640 thickness derived from thermistor chain buoy in the Prydz Bay, Antarctic, *Haiyang Xuebao*, 115-127,
641 <https://doi.org/10.3969/j.issn.0253-4193.2017.11.011>, 2017 (in Chinese).
- 642 Zhao J. and Hu H.: Air-ice-ocean temperature profile recorded in the landfast ice region in Prydz Bay, East Antarctica, derived
643 from Sea Ice Mass Balance Array (SIMBA) from April to November 2021 (V1),
644 <https://doi.org/10.57760/sciencedb.07684,2023>.
- 645 Zhao J. and Hu H.: Seawater temperature and salinity 2-m beneath landfast ice in Prydz Bay, East Antarctica, recorded from
646 a cable-type CTD from April to November 2021 (V1), <https://doi.org/10.57760/sciencedb.07693, 2023>.
- 647 Zhao J. and Hu H.: The 3-D current velocity 5-m beneath landfast ice in Prydz Bay, East Antarctica, recorded from an Acoustic
648 Doppler Velocimeter (ADV) from April to November 2021 (V1), <https://doi.org/10.57760/sciencedb.07692, 2023>.
- 649