



## Anthropogenic and internal drivers of wind changes over the Amundsen Sea, West Antarctica, during the 20th and 21st centuries

5 Paul R. Holland<sup>1</sup>, Gemma K. O'Connor<sup>2</sup>, Thomas J. Bracegirdle<sup>1</sup>, Pierre Dutrieux<sup>1</sup>, Kaitlin A. Naughten<sup>1</sup>, Eric J. Steig<sup>2</sup>, David P. Schneider<sup>3,4</sup>, Adrian Jenkins<sup>5</sup>, and James A. Smith<sup>1</sup>

<sup>1</sup>British Antarctic Survey, High Cross, Madingley Road, Cambridge, CB3 0ET, UK.

<sup>2</sup>University of Washington, Seattle, USA.

10 <sup>3</sup>National Center for Atmospheric Research, Boulder, USA.

<sup>4</sup>University of Colorado, Boulder, USA.

<sup>5</sup>Northumbria University, Newcastle, UK.

*Correspondence to:* Paul Holland (p.holland@bas.ac.uk)

**Abstract.** Ocean-driven ice loss from the West Antarctic Ice Sheet is a significant contributor to sea-level rise.  
15 Recent ocean variability in the Amundsen Sea sector is primarily controlled by near-surface winds. We combine paleoclimate reconstructions and climate model simulations to understand past and future influences on Amundsen Sea winds from anthropogenic forcing and internal climate variability. The reconstructions show strong historical wind trends. External forcing from greenhouse gases and stratospheric ozone depletion drove zonally-uniform westerly wind trends centred over the deep Southern Ocean. Internally-generated trends resemble  
20 a south Pacific Rossby wave train, and were highly influential over the Amundsen Sea continental shelf. There was strong interannual and interdecadal variability over the Amundsen Sea, with periods of anticyclonic wind anomalies in the 1940s and 1990s, when rapid ice loss was initiated. Similar anticyclonic anomalies probably occurred prior to the 20th century, but without causing the present ice loss. This suggests that ice loss may have been triggered naturally in the 1940s, but failed to recover subsequently due to the increasing importance of  
25 anthropogenic forcing from greenhouse gases (since the 1960s) and ozone depletion (since the 1980s). Future projections also feature strong wind trends. Emissions mitigation influences wind trends over the deep Southern Ocean but has less influence on winds over the Amundsen Sea shelf, where internal variability creates a large and irreducible uncertainty. This suggests that strong emissions mitigation is needed to minimise ice loss this century, but that the uncontrollable future influence of internal climate variability could be equally important.

### 30 1 Introduction

The West Antarctic Ice Sheet (WAIS) is losing ice at an increasing rate (Shepherd et al., 2019) and forms a major source of uncertainty in projections of global sea-level rise (IPCC, 2019). The most rapid ice loss is occurring in the Amundsen Sea sector, where thinning and retreat of the floating ice shelves is causing acceleration of their tributary glaciers (De Rydt et al., 2021). The ice loss is caused by changes in melting of ice shelves by the ocean  
35 (Shepherd et al., 2004), but it is not clear why this melting has increased, leading to the current ice-sheet mass imbalance.

Several lines of evidence document the history of ice loss in this region. A synthesis of geological and geophysical datasets implies that the ice sheet geometry was broadly stable in this region for ~10,000 years prior to the current



40 retreat (Larter et al., 2014). Sediment records from beneath Pine Island Glacier ice shelf show that its grounding  
line started to retreat from a prominent seabed ridge in the 1940s, with the ice shelf finally detaching from this  
ridge in the 1970s (Jenkins et al., 2010; Smith et al., 2017). Ice velocity records from satellite data suggest that  
Amundsen Sea glacier discharge was accelerating from the earliest observations in the 1970s (Mouginot et al.,  
2014), while satellite altimetry and interferometry data show glacier thinning and grounding-line retreat occurring  
45 since at least the early 1990s (Rignot et al., 2014; Paolo et al., 2015; Konrad et al., 2017). Glacier discharge and  
thinning have accelerated markedly in recent decades (Mouginot et al., 2014; Paolo et al., 2015; Konrad et al.,  
2017; Shepherd et al., 2019). Overall, this evidence suggests that ice loss was triggered in the 1940s and evolved  
slowly but continually thereafter, until accelerating from the 1990s onwards.

50 There are several possible explanations for this history of ice loss. First, there is evidence that the 1940s ice retreat  
was triggered by a period of strong climate variability associated with the tropical Pacific (Schneider and Steig,  
2008; Steig et al., 2012; Steig et al., 2013; Jenkins et al., 2018; Holland et al., 2019). If this is the sole cause of  
the changes the climatic anomaly must have been an extremely unusual event, because the ice sheet was  
previously stable for millennia in this region (Larter et al., 2014). Second, it is likely that ongoing ice loss is  
55 sustained by a range of ice and ocean feedbacks (De Rydt et al., 2014; Favier et al., 2014; Lhermitte et al., 2020;  
Bett et al., 2020). However, the WAIS cannot be experiencing a purely unstable, self-sustaining retreat because  
the rate of ice discharge remains responsive to ocean variability (Christianson et al., 2016; Jenkins et al., 2018).  
Finally, an overall warming of the Amundsen Sea over the 20th century may have caused an increase in melting  
that sustains the current ice loss (Holland et al., 2019; Naughten et al., 2022). Any such centennial change could  
60 be caused by a combination of anthropogenic forcing and internal climate variability. All of these different  
processes may be contributing to the ongoing ice loss, but the relative contributions of a historical trigger, ice-  
ocean feedbacks, and changes in climatic forcing are not yet known.

The Amundsen Sea is subject to strong wind-driven variability – primarily linked to the tropical Pacific (Lachlan-  
65 Cope and Connolley, 2006; Ding et al., 2011; Steig et al., 2012) – that is clearly reflected in ice-shelf melting  
(Dutrieux et al., 2014; Jenkins et al., 2018) and the ice-sheet response (Christianson et al., 2016; Jenkins et al.,  
2018). Variable winds modulate the supply of relatively warm Circumpolar Deep Water onto the continental shelf,  
driving decadal anomalies in ocean thermocline depth and ice-shelf melting (Thoma et al., 2008; Kimura et al.,  
2017). This strong decadal variability means that any trends caused by anthropogenic climate forcing may not be  
70 detectable in the short ocean and ice sheet observational records (commencing in the 1990s) or atmospheric  
reanalysis data (reliable only since 1979).

Climate model simulations suggest that a gradual eastward wind trend occurred over the Amundsen Sea shelf  
break during the 20<sup>th</sup> century (Holland et al., 2019). Such westerly wind trends are a very well-established response  
75 of the Southern Hemisphere climate to anthropogenic forcings (Arblaster and Meehl, 2006; Son et al., 2010;  
Thompson et al., 2011; Gillett et al., 2013; Bracegirdle et al., 2014; Bracegirdle et al., 2020; Goyal et al., 2021).  
In ocean simulations, this wind trend drives an increased prevalence of warm decadal ocean anomalies and an  
increase in ice shelf melting (Naughten et al., 2022), providing the first evidence that anthropogenic forcings may  
have contributed to ice loss from the WAIS. However, the importance of these externally-forced westerly wind



80 trends has recently been challenged by paleoclimate reconstructions (Dalaiden et al., 2021; O'Connor et al., 2021).  
These reconstructions show that a deepening of the Amundsen Sea Low dominates the local wind trends, leading  
to westward trends over the Amundsen Sea shelf. The larger-scale westerly trends are also found in the  
reconstructions, but shifted further north. An analogous deepening of the Amundsen Sea Low in recent decades  
(since 1979) is thought to be primarily driven by natural tropical Pacific variability (Raphael et al., 2016; Meehl  
85 et al., 2016; Purich et al., 2016; Schneider and Deser, 2018). Therefore, the reconstructions suggest that 20th  
century wind trends over the Amundsen Sea shelf, associated with the Amundsen Sea Low deepening pattern,  
were primarily internally generated. Thus, the contribution of anthropogenic forcings to centennial wind changes  
in this region remains unclear.

90 It is crucial to quantify the contribution of anthropogenically-forced climate change to past and future ice loss  
from the WAIS. If the ice loss is dominated by internal climate variability and ice/ocean feedbacks, it may be  
unavoidable and/or irreversible on centennial timescales. If the ice loss has a substantial anthropogenic  
component, it may respond to future reductions in anthropogenic forcing. Quantifying the interplay between these  
factors is therefore crucial to adaptation and mitigation decisions. It is also important to distinguish the influence  
95 of different anthropogenic forcings (e.g. greenhouse gases (GHGs) versus ozone depletion), as their mitigation is  
different. In this study, we combine paleoclimate reconstructions and climate model simulations to investigate  
historical wind trends over the Amundsen Sea and their attribution to different forcings, and projected future wind  
trends and their sources of uncertainty. Since wind-forced ocean variability is known to influence ice loss in the  
Amundsen Sea, understanding these wind changes is informative about the drivers of change in the WAIS.

## 100 **2 Methods**

### **2.1 Paleoclimate reconstructions**

Paleoclimate reconstructions are used to understand historical changes in wind forcing over the Amundsen Sea,  
which arise through the combined influence of external forcing and internal variability. We use 1°-resolution  
annually-resolved reconstructions of near-surface zonal winds and sea-level pressure (SLP) spanning 1900 to  
105 2005 from O'Connor et al. (2021). In addition, for this study, we extend the technique to reconstruct near-surface  
meridional winds and sea-surface temperatures (SSTs). The reconstructions are created using an offline data  
assimilation method that combines the temporal variability from a sparse set of climate proxies with the spatial  
covariance fields obtained from climate model simulations. Annually-averaged anomaly states (relative to the  
1961-1990 mean) are randomly drawn from climate-model output to form a 'prior' ensemble, and this prior is  
110 used for every year reconstructed (Hakim et al., 2016; Tardif et al., 2019). This ensures that all temporal variance  
and trends in the final reconstruction are generated from the proxy data rather than the climate model. Proxy data  
used here include the global PAGES2k proxy database (PAGES2k, 2017), supplemented with additional ice-core  
accumulation and coral records. This means that the reconstructions are well-constrained over West Antarctica  
and the tropical Pacific, the crucial regions of importance to this study.

115

O'Connor et al. (2021) assess the interannual variability in their reconstructed SLP and zonal winds against  
reanalysis fields. Owing to the availability of proxy data used in the reconstructions and the dominant climate



120 modes in this region, the reconstructions are most skilful over the south Pacific. The reconstructions are also qualitatively in agreement with those of Dalaiden et al. (2021), who use a different data assimilation method and a proxy database focussed on the Southern high latitudes. O'Connor et al. (2021) assess the different sources of uncertainty in the reconstructions and pay particular attention to the influence of the climate simulations used as the prior, finding that reconstructed trends are sensitive to the inclusion of anthropogenic forcing in the prior simulations. In this study, we focus on reconstructions using the Community Earth System Model (CESM1) 'Pacific Pacemaker' simulations as the prior. This is an ensemble of historical simulations that contain all anthropogenic forcings but also have eastern tropical Pacific SSTs constrained to follow observations – the 'pacemaker' (Schneider and Deser, 2018). We favour these simulations because they should best represent both externally-forced and Pacific modes of variability. O'Connor et al. (2021) show that this prior creates reconstructions with high skill throughout the south Pacific, and we find that the reconstructions perform well when compared to ERA5 reanalysis wind anomalies for the timeseries of interest in this study (see section 3.1.3 below).

135 We found that reconstructed near-surface wind trends near the coastal regions of the Amundsen Sea are noisy, and deviate significantly from geostrophic winds derived from the reconstructed SLP. The derived geostrophic wind anomalies are also better correlated with ERA5 reanalysis surface wind anomalies. This is unsurprising because the reconstructed SLP patterns show greater skill than near-surface winds (O'Connor et al., 2021) and should better reflect the large-scale climate modes that are constrained by the remote proxies. Near-surface winds are driven by the same SLP of course, but are also influenced by uncertain features of the reconstructed near-surface atmospheric structure. Therefore, throughout this study we use geostrophic wind anomalies from the reconstructed SLP. To make these geostrophic winds most comparable to the climate model winds considered next, a simple near-surface correction was derived by comparing geostrophic and near-surface winds in the CESM1 Large Ensemble, which is described below. The correction consists of rotating the geostrophic winds by 10 degrees clockwise and multiplying their amplitude by 0.9. This correction marginally improved the correlation of annual wind anomalies to ERA5 reanalysis winds (see section 3.1.3).

## 2.2 Climate model simulations

145 Climate simulations are used to understand the role of anthropogenic forcing in the past and future. By comparing these simulations with the reconstructions, we are also able to estimate the historical role of internal climate variability. We consider near-surface winds, SLP and SST from a total of 180 simulations within ten ensembles of simulations using CESM1 under different forcings (Kay et al., 2015; England et al., 2016; Sanderson et al., 2017; Sanderson et al., 2018; Schneider and Deser, 2018; Deser et al., 2020). These simulations use the CAM5 atmospheric model, POP2 ocean model, and CICE4 sea ice model, all run at approximately 1° resolution (Hurrell et al., 2013; Kay et al., 2015). The ensembles are fully described in Table 1. Near-surface wind components were not available on standard height levels, so we used winds at the bottom pressure level of the atmospheric model, whose height varies in time and space, but is around 50 m over our domain. The atmospheric model uses a 0.9° latitude × 1.2° longitude grid, so all winds are binned onto a polar stereographic grid with 200 km resolution to clarify the plotting over the region of interest. SLP and SST fields are considered on the native model atmosphere and ocean grids, respectively.



Many features of this study are only possible because such a wide range of simulations are available for CESM1. The use of a single model is also necessary to ensure that the responses studied are driven only by the prescribed forcings. However, this also means that our conclusions do not account for model structural uncertainty. Fortunately, the CESM1 features a good representation of winds over the Amundsen Sea (Holland et al., 2019) and contains a faithful representation of the Amundsen Sea Low (England et al., 2016) and its crucial teleconnection to the tropical Pacific (Holland et al., 2019). It also produces a good general representation of a wide range of other variables around Antarctica, including sea-surface temperatures, sea ice, sea-level pressure, ice-sheet surface mass balance (Agosta et al., 2015; Lenaerts et al., 2016), and ocean conditions in the Amundsen Sea (Barthel et al., 2020). However, CESM1 has some biases that are pertinent to the present study. The westerly winds and absorbed shortwave radiation over the Southern Ocean are both too strong (Kay et al., 2016), and this may bias the model response to external forcing, as suggested by the inability of the model to reproduce recent sea ice trends (Schneider and Deser, 2018). These biases should be kept in mind as a source of uncertainty in using the model results to separate the forced and internal components of this circulation history. Crucially, however, the use of CESM1 simulations as the prior model for the reconstruction ensures that our methodology is internally consistent in this regard.

This study considers trends during the period 1920-2080, for which most simulations are available (Table 1). This is divided into two equal 'historical' (1920-2000) and 'future' (2000-2080) periods, which are appropriate to climatic forcing of the WAIS. The year 1920 pre-dates the recent ice-sheet retreat (Smith et al., 2017), a modelled warming of the Amundsen Sea (Naughten et al., 2022), and most anthropogenic climate forcing (Kay et al., 2015). The WAIS was rapidly losing mass well before 2000 (Mouginot et al., 2014; Konrad et al., 2017). Therefore, any changes during 1920-2000 are pertinent to the attribution of the ongoing ice loss. The full consequences of ice-sheet melting will take centuries to emerge, but climatic forcing in the decades prior to 2080 are the subject of immediate adaptation and mitigation decisions.

The central ensemble considered is the CESM1 'Large Ensemble' (LENS) (Kay et al., 2015), a perturbed-initial-condition ensemble from 1920-2100 using known external forcings (GHGs, stratospheric ozone depletion, aerosols, land-use change, solar, volcanic) up to 2005 and the strong radiative forcing RCP8.5 scenario thereafter. All other ensembles use the same model as LENS, but with different forcings. By calculating the differences between ensembles with and without particular forcings, we are able to isolate the local climate 'responses' to those forcings.

The 'Pacific Pacemaker' ensemble (PACE) is used in the reconstruction prior. PACE uses the same external forcings as LENS, but is additionally constrained to follow the observed history of SST anomalies in the central and eastern tropical Pacific Ocean (Schneider and Deser, 2018). In a previous study (Holland et al., 2019), PACE was used to estimate the role of internal variability associated with the tropical Pacific. In the present study this function is performed by the paleoclimate reconstructions, which allow us to estimate the influence of variability from all sources, Pacific and otherwise. This change in approach has important consequences for the results, as discussed below.



200 A ‘pre-industrial control’ ensemble (PIctrl) is used to assess the significance of externally-forced signals. PIctrl is constructed from a long simulation without external forcings (Kay et al., 2015), by splitting it into 22 non-overlapping 80-year periods, and then using the resulting ensemble for both the historical and future periods.

205 We consider four ensembles of projections under different future forcing scenarios. LENS experiences an extreme high forcing scenario, RCP8.5 (van Vuuren et al., 2011). The CESM1 ‘Medium Ensemble’ (MENS) (Sanderson et al., 2018) follows RCP4.5, an intermediate forcing scenario. The CESM1 ‘low warming’ ensembles (1.5degC and 2.0degC) are subjected to forcings designed never to exceed global warming of 1.5°C and 2°C above pre-industrial levels, targets that are associated with the Paris Agreement (Sanderson et al., 2017). In the CESM1, both scenarios require negative net carbon emissions before 2100. Each member of these future ensembles starts in 2005 and is a continuation of a historical member from LENS, so we concatenate the appropriate historical and future simulations in order to study ‘future’ trends from 2000.

210

Four further ensembles allow us to determine the individual influences of GHGs, ozone depletion, industrial aerosols, and biomass-burning aerosols (England et al., 2016; Deser et al., 2020). For each of these forcings, we consider an ensemble of ‘leave-one-out’ simulations in which the forcing is held fixed, while all other forcings evolve. Subtracting each of these ensembles from LENS isolates the response to each excluded forcing (Deser et al., 2020). For example, we introduce a ‘no greenhouse gas’ (XGHG) ensemble, which uses the same forcings as LENS apart from GHG concentrations, which are fixed at the 1920 level. We then derive the ‘GHG response’ by subtracting XGHG from LENS, yielding the influence of GHGs that are increasing in LENS but fixed in XGHG. This procedure is repeated for each of the forcings. An advantage of this ‘leave-one-out’ methodology is that the derived difference includes nonlinear interactions between the excluded forcing and all other forcings.

220

We consider a set of such climate ‘responses’, defined as the difference in ensemble-mean winds between two ensembles that have a difference in forcing. This has the advantage that the significance of a ‘response’ can be assessed by comparing the distributions of wind trends in the two ensembles. Specifically, we conduct a two-sample *t*-test with unequal sample size and variance to test the null hypothesis that the ensembles have the same mean trend, and treat the response as significant if that hypothesis is rejected at the 95% confidence level (two-sided). For example, the GHG wind trend response is significant if the distribution of LENS ensemble trends differs from the distribution of XGHG ensemble trends. We note that the number of simulations in each ensemble varies (Table 1) and this affects the significance of the derived responses.

### 3 Results

#### 230 3.1 Historical changes

##### 3.1.1 Global patterns of change

Figure 1a shows a global map of the reconstructed historical trends in SST and SLP. We re-iterate that this reconstruction is most skilful over the south Pacific, the focus of this study, and may be less trustworthy in other regions (O’Connor et al., 2021). The reconstruction shows a widespread SST increase, particularly strong in the



235 eastern and central tropical Pacific, and a strengthening and southward shift of the Southern Hemisphere westerly  
winds (O'Connor et al., 2021). Crucially, there is a substantial regional deepening of SLP over the Amundsen Sea.

We interpret these features by separating their climatic drivers using the climate model simulations. Figure 1b  
shows the total externally-forced changes (from GHGs, ozone depletion, aerosols, land-use change, solar, and  
240 volcanic sources) during this period, which is estimated as the ensemble mean of the LENS trends. The LENS  
members contain 40 different random realisations of internal climate variability, but they all have the same  
external forcing. Thus, if we average over all members the internal variability cancels out, and the externally-  
forced trends appear. This estimate agrees with many previous studies that historical external forcing drove broad  
background warming over the South Pacific (e.g. Deser et al., 2020; IPCC, 2019), and a zonally uniform  
245 southward shift and acceleration of the westerlies (e.g. Arblaster and Meehl, 2006; Goyal et al., 2021).

We isolate the contribution of individual external forcings using the set of 'leave-one-out' ensembles, as described  
above. The 'GHG response' in Figure 1d is derived by subtracting the XGHG ensemble mean trends from the  
LENS ensemble mean trends, since the only difference between these ensembles is the increasing GHGs in LENS.  
250 The historical increase in atmospheric GHG concentrations causes a strong SST warming (Figure 1d), which  
exceeds the total externally-forced warming (Figure 1b) because aerosol forcing drove cooling during this period  
(not shown), particularly in the Northern Hemisphere (Deser et al., 2020). GHG forcing drove over half of the  
historical changes in the westerly winds (Arblaster and Meehl, 2006; Gillett et al., 2013). Similarly deriving an  
'ozone response' in Figure 1f by subtracting XOZO from LENS, we see that ozone depletion drove no strong SST  
255 trends, but made a substantial contribution to the wind trends (Thompson et al., 2011; Son et al., 2010). The  
response to ozone depletion is slightly weaker than the response to GHGs because our chosen historical trend  
period includes many decades before the onset of rapid ozone depletion. Aerosols drove no substantial Southern  
Hemisphere wind trends over this period and are not considered further.

260 By subtracting the externally-forced changes in Figure 1b from the total reconstructed trends in Figure 1a, we  
may estimate the part of the trends caused by internally-generated variability (Figure 1c). This estimate reveals a  
coherent pattern of alternating SLP anomalies over the south Pacific that feature a prominent trend towards low  
pressure over the Amundsen Sea. These SLP trends are also supported by SST trends, with warm anomalies  
wherever the associated wind trend is southward, and cold anomalies wherever it is northward (Ciasto and  
265 Thompson, 2008). This demonstrates that the reconstructed historical deepening of the Amundsen Sea Low  
(Dalaiden et al., 2021; O'Connor et al., 2021) is internally generated. This pattern of alternating SLP anomalies is  
suggestive of a Rossby wave train, a well-established mechanism for the poleward propagation of atmospheric  
anomalies over the south Pacific (Karoly, 1989; Lachlan-Cope and Connolley, 2006; Ding et al., 2011; Steig et  
al., 2012; Holland et al., 2019). However, the anomaly pattern in Figure 1c also contains features that are unusual.

270 It is well known that Pacific modes of variability – e.g. the El Niño—Southern Oscillation (ENSO) and  
Interdecadal Pacific Oscillation (IPO) – induce a global-scale atmospheric response that is highly influential over  
the Amundsen Sea (Karoly, 1989; Lachlan-Cope and Connolley, 2006; Ding et al., 2011; Steig et al., 2012;  
Dutrieux et al., 2014; Jenkins et al., 2018; Holland et al., 2019). Figure 1e illustrates the spatial structure of the



275 IPO response. This figure is constructed from the regression of monthly ERA5 reanalysis SLP and SST fields  
(Hersbach, 2020) onto the IPO tripole index (Henley et al., 2015) during the period 1979-2020. This tripole index  
is based on the temperature difference between tropical and subtropical Pacific SSTs (Henley et al., 2015) from  
the HadISST1.1 dataset (Rayner et al., 2003) and has units of °C. To compare this panel with the others, it is  
plotted as the response of SLP and SST to a hypothetical trend of -1 °C/century in the IPO index. (For example,  
280 the hypothetical SLP trend (hPa/century) is calculated by multiplying the SLP regression onto the IPO index  
(hPa/°C) by the hypothetical trend in the IPO index (-1 °C/century).) The illustrative value of -1 °C/century was  
arbitrarily chosen to produce a deepening pressure over the Amundsen Sea (Figure 1e) that is comparable to the  
internally-generated trend in the reconstruction (Figure 1c).

285 Comparing Figures 1c and 1e suggests that the reconstructed internally-generated trends cannot be simply related  
to the classical IPO and ENSO modes of Pacific variability. Trends associated with these modes typically feature  
a zonal dipole of SST and SLP anomalies over the tropical Pacific, and a Rossby wave train radiating southwards  
from the western tropical Pacific (Figure 1e). Instead, the internally-generated trends appear to originate in the  
sub-tropical south Pacific at approximately 30 °S (Figure 1c). Crucially, the deepening pressure trend over the  
290 Amundsen Sea in the reconstruction occurs alongside a warming of the eastern tropical Pacific (Figure 1c), not  
the cooling expected from IPO or ENSO variability (Figure 1e). We conclude that the internally-generated trends  
are not associated with these classical modes, but do follow a similar (Rossby wave) propagation. Similar results  
are obtained with an alternative paleoclimate reconstruction (Q. Dalaiden, personal communication, 2022). It is  
not necessarily surprising that this centennial variability has a different pattern to interannual (ENSO) and  
295 interdecadal (IPO) variability. Little is known about variability on these centennial timescales. It is important to  
note that this discussion refers only to 80-year trends, which arise through the residual of many shorter IPO/ENSO  
anomalies of opposing sign. This aspect is revisited in section 3.1.3 below.

### 3.1.2 Winds over the Amundsen Sea

Figure 2 has the same six panels as Figure 1, but with the analysis repeated for near-surface wind trends rather  
300 than SLP and SST, and focussing on the Pacific sector of the Southern Ocean. The magenta boxes show three  
areas of the Amundsen Sea that illustrate wind changes of potential relevance to the WAIS - shelf sea, shelf break,  
and deep ocean. The wind trends reflect the SLP trends in Figure 1. Figure 2a shows the reconstructed historical  
wind trends, with vectors coloured black if either the zonal or meridional wind trend is significant relative to the  
interannual variability in the reconstruction. The reconstruction features significant westerly wind trends over  
305 almost the entire Southern Ocean, apart from the Amundsen Sea shelf. A cyclonic pattern of wind trends is centred  
on the Amundsen Sea shelf break, arising from the negative pressure trend in Figure 1a. This means that the  
westerly trends to the north transition to easterly trends near the Amundsen Sea coast.

Figures 2b, 2d, and 2f show the externally-forced wind trends derived from the climate model simulations. These  
310 figures are derived in the same way as their counterparts in Figure 1. Wind trend vectors are coloured black if  
either the zonal or meridional wind trend is significant according to a two-sample *t*-test that compares the  
distribution of trends within two ensembles. For example, in Figure 2b the externally-forced wind trends are  
estimated as the LENS ensemble-mean trends. At each location, these are considered significant if the distribution





of trends in the LENS ensemble has a significantly different mean from the distribution of trends in the PIctrl  
315 ensemble under the  $t$ -test. Figure 2d shows the GHG-induced trends derived by subtracting XGHG ensemble-  
mean trends from LENS ensemble-mean trends, with vectors shown as significant if the distributions of trends in  
LENS and XGHG have a different mean under the  $t$ -test. Figure 2f is the same for ozone.

Figures 2b, 2d, and 2f show that the historical westerly wind trends are clearly associated with radiative forcing  
320 from GHGs and ozone depletion. (Arblaster and Meehl, 2006; Son et al., 2010; Thompson et al., 2011; Gillett et  
al., 2013). In a feature that may be important to climatic forcing of the WAIS, these anthropogenic changes are  
strongest over the deep ocean, but not significant over the Amundsen Sea shelf. The shelf break sits in a transition  
zone, where externally-forced trends are significant overall (Figure 2b), but neither GHG nor ozone responses are  
325 significant individually (Figures 2d and 2f). This spatial pattern of response to external forcings is also found in  
the wider ensemble of climate models (Bracegirdle et al., 2014). The broader westerly trends are driven by  
meridional gradients in atmospheric warming (Harvey et al., 2014; Shaw, 2019), but local controls on wind trends  
over the Amundsen Sea are complex and require further study.

Over the time period considered, internal variability induces wind trends of comparable magnitude to the  
330 externally-forced trends (Figure 2c). As expected from the deepening SLP trends described above, these  
internally-generated wind trends have a cyclonic orientation, centred over the deep ocean north of the Amundsen  
Sea. As a result, internal variability is associated with an easterly trend over the Amundsen Sea, in direct  
opposition to the externally-forced westerly trend. The internally-generated trends are strongest on the shelf and  
weaken to the north, in contrast to the externally-forced trends. Considering this region alone, the internally-  
335 generated trends closely resemble those expected from the hypothetical negative trend in the IPO index (Figure  
2e).

It is important to understand the level of consistency between the paleoclimate reconstruction and climate model  
simulations, since the role of internal variability is derived by taking their difference. Since the reconstructions  
340 use CESM1 simulations as their prior ensemble, in principle there is no structural difference between the two.  
This can be illustrated by comparing the reconstruction to individual simulations from the LENS ensemble. The  
LENS ensemble members all have the same externally-forced trends, but have 40 different realisations of the  
trends generated by internal variability. Figure 3 shows the reconstruction (top row) alongside two ensemble  
members chosen manually to illustrate the range of internal variability (other rows). For each of these sources,  
345 both the total historical trends are shown (left panels) and the internally-generated part only (right panels). The  
internally-generated trends are calculated, as before, by subtracting the externally-forced trends (the LENS  
ensemble mean) from the total trends. The LENS ensemble members produce a wide variety of internally-  
generated trends. By chance, LENS member 9 has a realisation of internal variability that produces cyclonic  
trends, with a similar influence over the Amundsen Sea to the reconstruction. This is not unusual within the  
350 ensemble, and illustrates the consistency between the reconstruction and LENS. By contrast, LENS member 18  
exhibits anticyclonic internally-generated trends. This highlights the importance of the reconstruction to this study.  
Without the reconstruction we would have to treat all LENS members as being equally plausible estimates of the  
real historical trends, and would not be able to constrain the important role of internal climate variability.



### 3.1.3 Temporal evolution of the anomalies

- 355 So far, we have only considered 80-year historical wind trends, but there is substantial variability in the winds on shorter timescales, and this is known to influence WAIS ice loss (Christianson et al., 2016; Jenkins et al., 2018). Figure 4 shows timeseries of zonal wind anomalies within the three magenta regions shown in Figure 2 during 1900-2020, the full time period of the paleoclimate reconstruction and ERA5 reanalysis. The regions extend zonally from 102-115 °W, and meridionally from 73-75 °S (shelf), 70.2-71.8 °S (shelf break), and 61-63 °S (deep
- 360 ocean). The statistics shown in each panel quantify the interannual correlation in zonal wind anomalies between the reconstruction and ERA5 during their period of overlap, showing that the reconstruction skill decreases towards the south (O'Connor et al., 2021). Consistent with the cyclonic trends in Figure 2a, over the 1920-2000 period the reconstruction features westerly trends in the deep ocean, no trend at the shelf break, and easterly trends over the shelf. However, there is substantial variability in all three regions on both interannual and interdecadal
- 365 timescales. Several large multi-annual anomalies are visible in the record, which overall appears to be dominated by interdecadal variability. Shelf break winds contain variability that reverses on a timescale of approximately 50 years (Figure 4b). We are not aware of any previous studies documenting this slow wind variability in this region, which may be crucial to the WAIS.
- 370 In principle, this wind variability arises through a combination of external forcing and internal climate variability. In common with the previous sections, the individual contributions can be separated by combining reconstructions and simulations. Figure 5 shows timeseries of the separate contributions to the zonal wind anomalies, for the three selected regions, over the historical and future time periods. The two columns both show the same annual timeseries in thin lines, but then emphasise either interdecadal evolution (left) or centennial trends (right) in thick
- 375 lines. The total externally-forced zonal wind anomalies for each location are the LENS ensemble mean. Historical GHG-forced and ozone-forced anomalies are the LENS ensemble mean minus the XGHG and XOZO ensemble means respectively. The internally-generated anomalies are the reconstructed anomalies minus the externally-forced anomalies (the LENS ensemble mean).
- 380 Significant externally-generated westerly wind changes occur over the deep ocean and shelf break during the historical period (Figures 5a-d, black lines). Over the deep ocean, GHG-forced changes are established from approximately 1960 onwards, while ozone-induced changes increase rapidly after approximately 1980 (Figure 5a, blue and green lines). This leads to significant historical GHG- and ozone-forced trends (Figure 5b). As noted above, the shelf break region sits in a transition zone where the forced responses are much weaker (Figure 5c).
- 385 While the overall externally-forced trend is significant, neither the GHG-forced or ozone-forced trends are significant individually (Figure 5d). There are no significant externally-forced changes over the shelf region (Figures 5e-f). All of these results are consistent with the spatial patterns in Figure 2, since the derivation of the trends and significance test are identical.
- 390 The internally-generated variability is substantial in all regions and shows many important features (Figure 5, red lines). Annual anomalies (thin red lines) are large in amplitude relative to the externally-forced changes. A particularly large westerly wind anomaly occurred over the shelf and shelf break in 1940 (Figures 5c and 5e), which is clearly part of an anticyclonic feature as it is accompanied by an easterly anomaly over the deep ocean



to the north (Figure 5a). The exceptional strength of this climatic anomaly is well known from ice cores (Schneider  
395 and Steig, 2008; Steig et al., 2013), which are constraining the reconstruction here. Interdecadal anomalies (thick  
red lines, left column) also show substantial variability. This variability broadly shows a 50-year reversal, with  
opposing easterly and westerly anomalies between the deep ocean and shelf break. Internally-generated easterly  
trends (right column) are also large, and play an important role in counteracting the externally-forced westerly  
trends. At the shelf break the externally-forced trend is cancelled completely by the internally-generated trend,  
400 while in the deep ocean approximately half of the externally-forced trend is cancelled. On the shelf, all variability  
and trends are internally generated.

Given the known importance of Pacific variability to this region, Figure 6 examines the extent to which this  
internal variability is related to the IPO tripole index. The IPO emerges only on long timescales (Newman et al.,  
405 2016), so the tripole index is usually calculated from monthly SSTs, and then subjected to a 13-year filter to yield  
the IPO. In Figure 6, we plot the standardised annual-mean and 13-year mean time series of both the IPO index  
and the reconstructed internal variability in zonal winds. The statistics of the annual-mean and 13-year mean  
correlations are shown in each panel. For the deep ocean region the correlations are negative, so the IPO index is  
reversed in Figure 6a for illustrative purposes.

410 Annual anomalies in reconstructed internal variability are significantly correlated to the annual-mean values of  
the IPO index in all regions (Figure 6). This is remarkable considering the independent origin of these datasets.  
The IPO index is obtained from optimal interpolation of historical ocean temperature measurements (Rayner et  
al., 2003), while the internal variability in winds is derived by combining climate model simulations and a  
415 reconstruction that uses proxy records from ice cores, tree rings, and coral records. The most extreme annual  
events in the record, around 1940 and 2000, seem very well explained by the tropical Pacific. The reversing sign  
of the correlations between shelf and deep ocean illustrates the fact that a positive ENSO or IPO anomaly is  
associated with anticyclonic wind anomalies associated with a local high pressure anomaly (Holland et al., 2019).

420 Unfortunately, there are insufficient data to assess the linkage on longer timescales. 13-year mean internally-  
generated wind anomalies are not significantly correlated to the IPO (Figure 6), which is unsurprising given that  
there are only ~70 years of data, and there appears to be a ~50-year reversal within the records. The change in  
sign between shelf and deep ocean correlations appears to persist on 13-year timescales, suggesting the local  
pressure anomaly pattern. On centennial timescales this reversal disappears, with all internally-generated trends  
425 being easterly (Figures 2c and 5b, 5d, 5f). We know very little about the characteristics of internal variability on  
centennial timescales. As noted above, the internally-generated centennial trends do not follow the IPO pattern  
around the tropics (Figure 1), but that does not preclude the sub-centennial variability from being strongly  
influenced by the IPO. Similar results are obtained with an alternative paleoclimate reconstruction (Q. Dalaiden,  
personal communication, 2022).

430 Holland et al. (2019) found a significant historical westerly wind trend at the shelf break, but the same shelf-break  
box is found to have no zonal wind trend in the present study (Figure 4b). These studies consider the same  
externally-forced trends (from LENS), but differ in their consideration of internally-generated trends. Holland et



al. (2019) used the Pacific Pacemaker (PACE) ensemble mean to estimate the role of internal variability associated  
435 with the tropical Pacific, and were unable to constrain variability from other sources. The present study uses the  
paleoclimate reconstruction to estimate the role of variability from all sources, Pacific and otherwise. In the PACE  
ensemble mean the Pacific variability enhances the externally-forced westerly trend (Holland et al., 2019), while  
in the reconstruction the internal variability cancels the externally-forced trend (Figure 5d). On further  
investigation, we found that the internally-generated trends in the reconstruction sit within the PACE ensemble  
440 spread, but do not follow the PACE ensemble mean. We conclude that additional non-tropical-Pacific variability  
is captured in the reconstruction that modifies the mean tropical Pacific trend captured by PACE. This is supported  
by the fact that the reconstructed trends deviate significantly from a classical Pacific pattern (Figure 1). This is a  
further illustration of the value in using the paleoclimate reconstruction to estimate the real historical trajectory of  
internal variability. While the details of this study differ from Holland et al. (2019) within the shelf-break box, the  
445 present results support the overall conclusion of that study that the region is impacted by westerly wind trends  
with a substantial anthropogenic component, modulated by internal variability on all timescales.

In summary, the paleoclimate reconstruction indicates that zonal winds are subject to strong variability on all  
timescales. Centennial trends feature a cyclonic pattern that switches from westerly over the deep ocean to easterly  
450 on the shelf (Figure 4). The variability is strong on interannual timescales, and also expressed on interdecadal  
timescales, with a ~50 year reversal. Wind anomalies are driven by both external forcing and internal variability  
(Figure 5). The externally-forced part has distinct GHG and ozone signatures. The internally-generated component  
is partly related to the tropical Pacific, which induces variability on interannual and interdecadal timescales  
(Figure 6).

### 455 3.2 Future changes

We next consider the ‘future’ period for which consistent projections are available, 2001-2080. These analyses  
are necessarily different as we cannot use the paleoclimate reconstructions. We first consider externally-forced  
changes. Figure 7a shows the externally-forced wind trends following RCP8.5 (i.e. the LENS ensemble mean),  
and Figures 7b-d show the other scenarios. Historical and future responses are directly comparable in Figures 2  
460 and 7 as the plotting is identical.

High (RCP8.5) and intermediate (RCP4.5) forcing scenarios (Figures 7a and 7b) feature strong externally-forced  
westerly wind trends over most of the Southern Ocean (Bracegirdle et al., 2020; Goyal et al., 2021) but much  
weaker trends over the Amundsen Sea shelf (Bracegirdle et al., 2014). Weaker forcing scenarios are cast in the  
465 context of the Paris Agreement, which commits nations to “holding the increase in the global average temperature  
to well below 2°C above pre-industrial levels and pursuing efforts to limit the temperature increase to 1.5°C”. The  
2.0degC scenario substantially reduces future wind trends in this region (Figure 7c), while 1.5degC eliminates the  
westerly trends entirely (Figure 7d). Stabilising global warming removes the equator-to-pole gradient in  
temperature trends that drives the westerly wind trends. We speculate that the small remaining wind trends are  
470 likely to be very sensitive to the forcing pathway by which temperatures are stabilised. The 1.5degC scenario  
involves aggressive emissions mitigation and a rapid transition to negative carbon emissions (Sanderson et al.,  
2017). Historical GHG emissions commit Earth’s climate to warming and wind changes for most of the ‘future’



period studied, so extreme emissions changes are required to reverse these by 2080. Even then, the 1.5degC scenario merely prevents any future trends, and does not reverse the historical changes.

475

As with the historical changes, we may combine ensembles to derive the role of individual external forcings. Figure 7e shows the GHG-forced changes in the RCP8.5 scenario (i.e. LENS minus XGHG). This future GHG response is approximately twice as strong as the historical GHG response (Figure 2d), with a similar pattern. We cannot directly determine future ozone-forced changes because the fixed-ozone ensemble XOZO terminates in 480 2005 (Table 1). However, Figure 7f shows the combined response to all non-GHG external forcings (XGHG minus P1ctrl), which we are confident is dominated by the ozone response. For the historical period the non-GHG response closely resembles the ozone response, and in future scenarios the influence of external forcings other than GHGs and ozone (e.g. aerosols) are even weaker (van Vuuren et al., 2011). The future non-GHG response (Figure 7f) shows a weakening of the westerlies, as expected from the prescribed recovery of stratospheric ozone 485 (Son et al., 2010; Sigmond et al., 2011; Barnes et al., 2014), and in almost exact opposition to the historical ozone-induced changes (Figure 2f). Thus the models yield the expected result that the future westerly wind trends are driven by GHGs, but partially compensated by ozone recovery (Thompson et al., 2011). The influence of ozone recovery is expected to be very similar between forcing scenarios (Keeble et al., 2021), so the difference between scenarios in Figures 7a-7d is determined by the extent to which increasing GHGs outweigh this recovery.

490

The future evolution of the different components of the externally-forced wind changes is shown in Figure 5, which again shows results for RCP8.5. In this strong forcing scenario, future externally-forced trends are of similar magnitude to historical externally-forced trends in all regions. Over the deep ocean (Figure 5b), an increase in the GHG-forced westerly wind trend is compensated by a negative westerly trend from stratospheric ozone recovery 495 (represented by the non-GHG response). Over the shelf break (Figure 5d), the ozone-forced trend remains insignificant, but the GHG-forced trend becomes significant in the future period. The recovery of ozone-forced wind trends is focussed earlier in the 'future' period (Keeble et al., 2021), so the overall externally-forced trends are weaker during this period and stronger after (Figure 5a).

500 Internal variability was an important contributor to wind trends over the Amundsen Sea in the past (Figures 2 and 5), and could also be important in future. The evidence suggests that tropical Pacific variability is primarily natural in origin (Stevenson et al., 2012; Cai et al., 2015; Yeh et al., 2018), and cannot be predicted on timescales longer than a few years (Lou et al., 2019). Furthermore, centennial variability in this region does not even appear to follow the recognised modes of tropical Pacific variability (Figure 1). Therefore, the role of internal variability 505 places a substantial and potentially irreducible uncertainty on any projection of future wind changes over the Amundsen Sea, particularly in the shelf region.

One way to quantify the influence of internal variability on future wind trends is by considering the ensemble spread in the projections. Figure 8a shows the LENS ensemble-mean trends (i.e. the RCP8.5 externally-forced trends in Figure 7a). Figure 8b quantifies the associated ensemble spread, plotted as the wind trends associated with +1 standard deviation in both zonal and meridional wind trends. This figure shows that there is substantial 510 intra-ensemble variance in the trends, which is evenly spatially distributed and has no obvious preferential wind



direction. Figures 8c and 8e show the future wind trends in two LENS members, chosen manually to illustrate the range of intra-ensemble variance. Both members have strong westerly wind trends overall, but differ in their trends over the Amundsen Sea shelf. Figures 8d and 8f isolate the differing contribution of internal variability in these two members, by subtracting the LENS ensemble mean (the externally-forced trends) from both. The internally-generated trends have a centre of action north of the Amundsen Sea shelf in both cases, but the trends have either a cyclonic or anticyclonic orientation depending upon the particular trajectory of internal variability manifested in each simulation.

520

Another way to illustrate the potential role of future internal variability is to simply imagine that the historical variability could be repeated, or exactly reversed. The advantage of this approach is that our knowledge of the historical variability is constrained by observations. Comparing the historical internally-generated trends (Figure 2c) to the LENS ensemble spread of future internally-generated trends (Figures 8b, 8d and 8f) shows that this is a representative illustration. Following this rationale, Figure 9 illustrates possible future wind trends that combine forcing scenario uncertainty with the historically-based estimate of future internal variability. This is illustrated simply by adding or subtracting the historical internally-generated trends (Figure 2c) to the externally-forced trends in the 1.5degC and RCP8.5 forcing scenarios (Figures 7d and 7a). It is clear that external forcing and its scenario uncertainty controls westerly trends over the deep ocean, while internal variability and its irreducible uncertainty controls wind trends over the Amundsen Sea shelf and shelf break.

530

#### 4 Discussion

Recent wind anomalies are known to have driven variability in Amundsen Sea ocean conditions and ice-shelf melting that have influenced ice loss from the WAIS (Thoma et al., 2008; Dutrieux et al., 2014; Christianson et al., 2016; Jenkins et al., 2018). Reconstructed winds show that even larger anomalies occurred in the past (Figure 4), so it is reasonable to assume that these anomalies also induced an ice-sheet response. The reconstructions also reveal interdecadal (~50-year) variability with an amplitude approximately half that of the annual anomalies. Since ice sheets respond more fully to slower variability (Williams et al., 2012; Snow et al., 2017; Hoffman et al., 2019), it is very likely that these interdecadal anomalies have influenced the WAIS.

535

On centennial time scales, the reconstruction shows that strong westerly wind trends were prevalent over most of the Southern Ocean (Figure 2). These overall trends were driven by external forcing but partly compensated by internally-generated trends. Over the Amundsen Sea shelf break these contributions cancelled, leaving no significant overall trend, in contrast to earlier results based on climate models alone (Holland et al., 2019). Over the Amundsen Sea shelf, externally-forced trends were absent entirely and an internally-generated easterly trend occurred. Where present, the compensating externally-forced and internally-generated trends are both of similar magnitude to the recent wind variability that we know to be influential over WAIS ice loss. This implies that both the trends, and their compensation, have been important to the historical evolution of the ice loss.

545

This evidence suggests a possible narrative for the historical changes in the WAIS. Sediment records show that the ungrounding of Pine Island Glacier commenced in the 1940s (Smith et al., 2017), when the reconstruction shows extreme annual wind events within a multi-decadal period of anomalously anticyclonic winds (Figure 4).

550



These anomalies were all internally generated (Figure 5) and partly associated with tropical Pacific variability (Figure 6). By the mid-1970s the ice shelf was fully ungrounded (Jenkins et al., 2010; Smith et al., 2017), following a period of retreat that was probably enhanced by ice and ocean feedbacks (De Rydt et al., 2014; De Rydt and Gudmundsson, 2016). The triggering internal variability had reversed by the 1960s, but by then the GHG-forced wind anomalies had appeared (Figure 5). Perhaps, without external forcing, the reversed internal variability might have allowed the ice to re-advance and fully re-ground on the ridge. In the 1980s the external forcing increased further with ever-increasing GHGs and the onset of ozone depletion, and the internally-generated anomalies became anticyclonic again. The wind changes resulting from these anthropogenic and natural drivers were of approximately equal magnitude, suggesting that a combination of these factors drove the current period of rapid, accelerating ice loss (Mouginot et al., 2014; Konrad et al., 2017; Shepherd et al., 2019).

While much remains uncertain, this narrative can simultaneously satisfy lines of evidence from paleoclimate proxies, Amundsen Sea sediment records, ocean observations, climate model simulations, and the satellite record of ice loss. Importantly, it also resolves an apparent paradox. The WAIS is thought to have been broadly stable for ~10,000 years in this region (Larter et al., 2014) before the current retreat was initiated in the 1940s (Smith et al., 2017) by internal climate variability (Figures 4 and 5). However, by definition it is very unlikely that this natural variability was unprecedented in the previous millennia, so why did it trigger an exceptional ice retreat? One way to resolve this apparent paradox is if the initial retreat was natural, but the subsequent failure of the ice sheet to re-advance was influenced by anthropogenic forcing. Perhaps the ice sheet experienced several short-lived retreats during the last few millennia, from which it recovered, but it failed to recover from the 1940s retreat because external forcing over-rode the subsequent reversal of the natural climatic variability (Figures 4 and 5). We emphasise that this is not the only possible resolution of this ‘paradox’, however. For example, if some slow background change had occurred over the millennia, such as a reduction in surface accumulation, this could have gradually reduced the stability of the glaciers in the region. The 1940s variability may then have been able to destabilise the glaciers simply because they were more vulnerable.

Turning to the future changes, 2000-2080, we again find that both external forcing and internal variability are of comparable importance. Remarkably, the choice of emissions scenario is important to wind trends everywhere apart from the Amundsen Sea shelf. On the shelf, future wind trends are dictated solely by internal variability, while over the deep ocean the external forcing plays a larger role. Under an aggressive emissions mitigation scenario that limits global warming to 1.5°C, there are no externally-forced zonal wind trends during the future period. Under high (RCP8.5) or even intermediate (RCP4.5) emissions scenarios, future externally-forced zonal wind trends approximately equal the historical externally-forced trends. Thus, future forcing will range between maintaining the existing externally-forced changes (1.5degC scenario) and approximately doubling them (RCP8.5). To the extent that ice loss from the WAIS is driven by externally-forced wind trends, that part of the ice loss cannot be reversed before 2080 and will probably increase.

Internally-generated trends provided an important compensation of the externally-forced trends during the historical period, and could be similarly influential in future. If externally-forced trends were eliminated in future, internally-generated trends could dictate the future trajectory of the WAIS (Figure 9). On the other hand, if higher



emissions scenarios are followed, internal variability may do little more than influence the timing and rate of the ongoing ice loss. Minimising future wind-driven WAIS ice loss will require strong emissions mitigation, but the uncontrollable future influence of internal climate variability could be equally important.

595

There are, of course, many caveats to these findings. This study considers a single paleoclimate reconstruction and climate model, and is therefore subject to the structural uncertainty inherent in these sources (see section 2). The study also only considers wind forcing of changes in the ocean, and thermodynamic forcings may also be important. Ice sheet dynamics and ice/ocean feedbacks certainly modulate the ice response to any climatic forcing.

600 We urgently require further information about the oceanographic implications of the wind changes found in this study. However, we emphasise that all of the wind changes discussed are comparable in magnitude to the recent variability, which we know to have been influential over WAIS ice loss.

## 5 Conclusions

Over recent decades, wind-driven variability in the Amundsen Sea has regulated ocean melting of the WAIS. This study combines paleoclimate reconstructions and climate model simulations to understand wind changes over the Amundsen Sea during the 20th and 21st centuries.

By combining these two sources of information, we are able to separate natural internally-generated wind changes from anthropogenic externally-forced changes. Both are important. Firstly, internal variability on interannual and interdecadal time scales has a comparable magnitude to centennial trends. Secondly, the centennial trends themselves are generated by comparable contributions from external forcing and internal variability. To the extent that wind-driven changes control WAIS ice loss, both external forcing and internal variability are important contributors.

615 Historical wind trends (1920-2000) have two components: acceleration of the westerlies over the deep ocean, forced by GHGs and ozone depletion, and an internally-generated cyclonic trend pattern centred over the Amundsen Sea. Over most of the region, internally-generated easterly wind trends compensate externally-forced westerly wind trends. Historical winds also exhibit strong variability, linked to the tropical Pacific, including both strong interannual anomalies and also interdecadal variability that reverses on a timescale of approximately 50 years.

This evidence suggests a possible narrative for historical ice loss from the WAIS. Ice retreat was triggered in the 1940s by internal variability. This variability had reversed by the 1960s, but by then GHG-forced wind changes had started to increase. Perhaps without external forcing, the reversed internal variability may have allowed the ice sheet to re-advance. In the 1980s the external forcing increased further with the onset of ozone depletion, and the internal variability changed sign again. These changes drove the current period of rapid, accelerating ice loss. There remain many uncertainties with this narrative, but it resolves an apparent ‘paradox’ whereby the present ice loss appears to have been triggered naturally, but involves a retreat unprecedented in millennia. Perhaps short-lived retreats have occurred several times in the past, but the ice always re-advanced in the absence of anthropogenic forcing.

630





During the future period (2000-2080), westerly wind trends driven by GHGs are partially offset by stratospheric ozone recovery. Wind trends are responsive to forcing scenario, but only extreme emissions mitigation consistent with a Paris Agreement target of 1.5°C warming above pre-industrial is able to prevent further wind trends during this period (let alone offset historical trends). The choice of anthropogenic forcing scenario is most influential on westerly trends over the deep ocean, while the irreducible uncertainty associated with internally-generated variability is strongest on the Amundsen Sea shelf. The minimal future wind-driven WAIS ice loss will require strong emissions mitigation and a favourable evolution of natural climate variability.

#### Author Contributions

640 PH and GKO conceived the study and led the data processing. All authors discussed the results and implications and collaborated on writing the manuscript at all stages.

#### Acknowledgements

We are grateful to the originators of the many open-access datasets synthesised in this study, particularly the PAGES2K paleoclimate proxy database and the CESM1 climate model simulations. We thank all the scientists, software engineers, and administrators who contributed to the development of CESM1, which is primarily supported by the National Science Foundation (NSF). GKO was supported by the NSF Graduate Research Fellowship Program. KN was supported by award NE/S011994/1. DPS was partially supported by NSF grant 1952199, and partially supported by the National Center for Atmospheric Research (NCAR), which is a major facility sponsored by the NSF under Cooperative Agreement no. 1852977.

#### 650 Data Availability

The CESM1 simulations are available at the NCAR Climate Data Gateway, as detailed in the references in Table 1. The paleoclimate reconstruction are available through O'Connor et al. (2021).

#### Competing Interests

The authors declare no competing interests.

#### 655 References

- Agosta, C., Fettweis, X., and Datta, R.: Evaluation of the CMIP5 models in the aim of regional modelling of the Antarctic surface mass balance, *The Cryosphere*, 9, 2311-2321, 10.5194/tc-9-2311-2015, 2015.
- Arblaster, J. M. and Meehl, G. A.: Contributions of external forcings to Southern Annular Mode trends, *Journal of Climate*, 19, 2896-2905, 10.1175/Jcli3774.1, 2006.
- 660 Barnes, E. A., Barnes, N. W., and Polvani, L. M.: Delayed Southern Hemisphere Climate Change Induced by Stratospheric Ozone Recovery, as Projected by the CMIP5 Models, *Journal of Climate*, 27, 852-867, 10.1175/Jcli-D-13-00246.1, 2014.
- Barthel, A., Agosta, C., Little, C. M., Hattermann, T., Jourdain, N. C., Goelzer, H., Nowicki, S., Seroussi, H., Straneo, F., and Bracegirdle, T. J.: CMIP5 model selection for ISMIP6 ice sheet model forcing: Greenland and Antarctica, *The Cryosphere*, 14, 855-879, 10.5194/tc-14-855-2020, 2020.



- 665 Bett, D. T., Holland, P. R., Naveira Garabato, A. C., Jenkins, A., Dutrieux, P., Kimura, S., and Fleming, A.: The impact of the Amundsen Sea freshwater balance on ocean melting of the West Antarctic Ice Sheet., *Journal of Geophysical Research-Oceans*, 125, e2020JC016305, 10.1029/2020JC016305, 2020.
- Bracegirdle, T. J., Turner, J., Hosking, J. S., and Phillips, T.: Sources of uncertainty in projections of 21st century westerly wind changes over the Amundsen Sea, West Antarctica, in CMIP5 climate models., *Climate Dynamics*, 43, 2093-2104, 10.1007/s00382-013-2032-1, 2014.
- 670 Bracegirdle, T. J., Krinner, G., Tonelli, M., Haumann, F. A., Naughten, K. A., Rackow, T., Roach, L. A., and Wainer, I.: Twenty first century changes in Antarctic and Southern Ocean surface climate in CMIP6, *Atmospheric Science Letters*, 21, e984, 10.1002/asl.984, 2020.
- Cai, W. J., Santoso, A., Wang, G. J., Yeh, S. W., An, S. I., Cobb, K. M., Collins, M., Guilyardi, E., Jin, F. F., Kug, J. S., Lengaigne, M., McPhaden, M. J., Takahashi, K., Timmermann, A., Vecchi, G., Watanabe, M., and Wu, L. X.: ENSO and greenhouse warming, *Nature Climate Change*, 5, 849-859, 10.1038/nclimate2743, 2015.
- 675 Christianson, K., Bushuk, M., Dutrieux, P., Parizek, B. R., Joughin, I. R., Alley, R. B., Shean, D. E., Abrahamsen, E. P., Anandakrishnan, S., Heywood, K. J., Kim, T. W., Lee, S. H., Nicholls, K., Stanton, T., Truffer, M., Webber, B. G. M., Jenkins, A., Jacobs, S., Bindshadler, R., and Holland, D. M.: Sensitivity of Pine Island Glacier to observed ocean forcing, *Geophysical Research Letters*, 43, 10817-10825, 10.1002/2016gl070500, 2016.
- 680 Ciasto, L. M. and Thompson, D. W. J.: Observations of large-scale ocean-atmosphere interaction in the Southern Hemisphere, *Journal of Climate*, 21, 1244-1259, 10.1175/2007jcl11809.1, 2008.
- Dalaiden, Q., Goosse, H., Rezsöghazy, J., and Thomas, E. R.: Reconstructing atmospheric circulation and sea-ice extent in the West Antarctic over the past 200 years using data assimilation, *Climate Dynamics*, 57, 3479-3503, 10.1007/s00382-021-05879-6, 2021.
- 685 De Rydt, J. and Gudmundsson, G. H.: Coupled ice shelf-ocean modeling and complex grounding line retreat from a seabed ridge, *Journal of Geophysical Research-Earth Surface*, 121, 865-880, 10.1002/2015jf003791, 2016.
- De Rydt, J., Holland, P. R., Dutrieux, P., and Jenkins, A.: Geometric and oceanographic controls on melting beneath Pine Island Glacier, *Journal of Geophysical Research-Oceans*, 119, 2420-2438, 10.1002/2013JC009513, 2014.
- 690 De Rydt, J., Reese, R., Paolo, F. S., and Gudmundsson, G. H.: Drivers of Pine Island Glacier speed-up between 1996 and 2016, *The Cryosphere*, 15, 113-132, doi: 10.5194/tc-15-113-2021, 2021.
- Deser, C., Phillips, A. S., Simpson, I. R., Rosenbloom, N., Coleman, D., Lehner, F., Pendergrass, A. G., DiNezio, P., and Stevenson, S.: Isolating the Evolving Contributions of Anthropogenic Aerosols and Greenhouse Gases: A New CESM1 Large Ensemble Community Resource, *Journal of Climate*, 33, 7835-7858, 10.1175/JCLI-D-20-0123.1, 2020.
- 695 Ding, Q. H., Steig, E. J., Battisti, D. S., and Kuttel, M.: Winter warming in West Antarctica caused by central tropical Pacific warming, *Nature Geoscience*, 4, 398-403, 10.1038/NGEO1129, 2011.
- Dutrieux, P., De Rydt, J., Jenkins, A., Holland, P. R., Ha, H. K., Lee, S. H., Steig, E. J., Ding, Q. H., Abrahamsen, E. P., and Schroder, M.: Strong Sensitivity of Pine Island Ice-Shelf Melting to Climatic Variability, *Science*, 343, 174-178, 10.1126/science.1244341, 2014.
- 700 England, M. R., Polvani, L. M., Smith, K. L., Landrum, L., and Holland, M. M.: Robust response of the Amundsen Sea Low to stratospheric ozone depletion, *Geophysical Research Letters*, 43, 8207-8213, 10.1002/2016GL070055, 2016.
- Favier, L., Durand, G., Cornford, S. L., Gudmundsson, G. H., Gagliardini, O., Gillet-Chaulet, F., Zwinger, T., Payne, A. J., and Le Brocq, A. M.: Retreat of Pine Island Glacier controlled by marine ice-sheet instability, *Nature Climate Change*, 4, 117-121, 10.1038/nclimate2094, 2014.
- 705 Gillett, N. P., Fyfe, J. C., and Parker, D. E.: Attribution of observed sea level pressure trends to greenhouse gas, aerosol, and ozone changes, *Geophysical Research Letters*, 40, 2302-2306, 10.1002/grl.50500, 2013.
- Goyal, R., Gupda, A. S., Jucker, M., and England, M. H.: Historical and projected changes in the Southern Hemisphere surface westerlies., *Geophysical Research Letters*, 48, e2020GL090849, 10.1029/2020GL090849, 2021.
- 710 Hakim, G. J., Emile-Geay, J., Steig, E. J., Noone, D., Anderson, D. M., Tardif, R., Steiger, N., and Perkins, W. A.: The last millennium climate reanalysis project: Framework and first results, *Journal of Geophysical Research - Atmospheres*, 121, 6745-6764, 10.1002/2016JD024751, 2016.
- Harvey, B. J., Shaffrey, L. C., and Woollings, T. J.: Equator-to-pole temperature differences and the extra-tropical storm track responses of the CMIP5 climate models, *Climate Dynamics*, 43, 1171-1182, 10.1007/s00382-013-1883-9, 2014.
- 715 Henley, B. J., Gergis, J., Karoly, D. J., Power, S., Kennedy, J., and Folland, C. K.: A Tripole Index for the Interdecadal Pacific Oscillation, *Climate Dynamics*, 45, 3077-3090, 10.1007/s00382-015-2525-1, 2015.
- Hersbach, H.: The ERA5 global reanalysis, *Quarterly Journal of the Royal Meteorological Society*, 146, 1999-2049, 10.1002/qj.3803, 2020.
- Hoffman, M. J., Asay-Davis, X., Price, S. F., Fyke, J., and Perego, M.: Effect of Subshelf Melt Variability on Sea Level Rise Contribution From Thwaites Glacier, Antarctica, *Journal of Geophysical Research-Earth Surface*, 124, 2798-2822, 10.1029/2019JF005155, 2019.
- 720 Holland, P. R., Bracegirdle, T. J., Dutrieux, P., Jenkins, A., and Steig, E. J.: West Antarctic ice loss influenced by internal climate variability and anthropogenic forcing, *Nature Geoscience*, 12, 718-724, 10.1038/s41561-019-0420-9, 2019.
- Hurrell, J. W., Holland, M. M., Gent, P. R., Ghan, S., Kay, J. E., Kushner, P. J., Lamarque, J.-F., Large, W. G., Lawrence, D., Lindsay, K., Lipscomb, W. H., Long, M. C., Mahowald, N., Marsh, D., Neale, R. B., Rasch, P., Vavrus, S., Vertenstein, M., Bader, D., Collins, W. D., Hack, J. J., Kiehl, J., and Marshall, S.: The Community Earth System Model: A Framework for Collaborative Research, *Bulletin of the American Meteorological Society*, 94, 1339-1360, 10.1175/BAMS-D-12-00121.1, 2013.
- 725 IPCC: IPCC Special Report on the Ocean and Cryosphere in a Changing Climate, Special Report on the Ocean and Cryosphere in a Changing Climate, 2019.



- 730 Jenkins, A., Dutrieux, P., Jacobs, S. S., McPhail, S. D., Perrett, J. R., Webb, A. T., and White, D.: Observations beneath Pine Island Glacier in West Antarctica and implications for its retreat, *Nature Geoscience*, 3, 468-472, 10.1038/Ngeo890, 2010.
- Jenkins, A., Shoosmith, D., Dutrieux, P., Jacobs, S., Kim, T. W., Lee, S. H., Ha, H. K., and Stammerjohn, S.: West Antarctic Ice Sheet retreat in the Amundsen Sea driven by decadal oceanic variability, *Nature Geoscience*, 11, 733-738, 10.1038/s41561-018-0207-4, 2018.
- 735 Karoly, D.: Southern Hemisphere Circulation Features Associated with El Niño-Southern Oscillation Events, *Journal of Climate*, 2, 1239-1252, 1989.
- Kay, J. E., Deser, C., Phillips, A., Mai, A., Hannay, C., Strand, G., Arblaster, J. M., Bates, S. C., Danabasoglu, G., Edwards, J., Holland, M., Kushner, P., Lamarque, J. F., Lawrence, D., Lindsay, K., Middleton, A., Munoz, E., Neale, R., Oleson, K., Polvani, L., and Vertenstein, M.: The Community Earth System Model (CESM) Large Ensemble Project: A Community Resource for Studying Climate Change in the Presence of Internal Climate Variability, *Bulletin of the American Meteorological Society*, 96, 1333-1349, 10.1175/Bams-D-13-00255.1, 2015.
- 740 Keeble, J., Hassler, B., Banerjee, A., Checa-Garcia, R., Chiodo, G., Davis, S., Eyring, V., Griffiths, P. T., Morgenstern, O., Nowack, P., Zeng, G., Zhang, J., Bodeker, G., Burrows, S., Cameron-Smith, P., Cugnet, D., Danek, C., Deushi, M., Horowitz, L. W., Kubin, A., Li, L., Lohmann, G., Michou, M., Mills, M. J., Nabat, P., Olivé, D., Park, S., Seland, Ø., Stoll, J., Wieners, K. H., and Wu, T.: Evaluating stratospheric ozone and water vapour changes in CMIP6 models from 1850 to 2100, *Atmos. Chem. Phys.*, 21, 5015-5061, 10.5194/acp-21-5015-2021, 2021.
- 745 Kimura, S., Jenkins, A., Regan, H., Holland, P. R., Assmann, K. M., Whitt, D. B., Van Wessem, M., van de Berg, W. J., Reijmer, C. H., and Dutrieux, P.: Oceanographic Controls on the Variability of Ice-Shelf Basal Melting and Circulation of Glacial Meltwater in the Amundsen Sea Embayment, Antarctica, *Journal of Geophysical Research-Oceans*, 122, 10131-10155, 10.1002/2017jc012926, 2017.
- 750 Konrad, H., Gilbert, L., Cornford, S. L., Payne, A. J., Hogg, A., Muir, A., and Shepherd, A.: Uneven onset and pace of ice-dynamical imbalance in the Amundsen Sea Embayment, West Antarctica, *Geophysical Research Letters*, 910-918, 10.1002/2016GL070733, 2017.
- 755 Lachlan-Cope, T. and Connolley, W.: Teleconnections between the tropical Pacific and the Amundsen-Bellinghausens sea: Role of the El Niño Southern Oscillation, *Journal of Geophysical Research-Atmospheres*, 111, D23101, 10.1029/2005jd006386, 2006.
- Larter, R. D., Anderson, J. B., Graham, A. G. C., Gohl, K., Hillenbrand, C.-D., Jakobsson, M., Johnson, J. S., Kuhn, G., Nitsche, F., Smith, J. A., Witus, A. E., Bentley, M. J., Dowdeswell, J. A., Ehrmann, W., Klages, J. P., Lindow, J., O Cofaigh, C., and Spiegel, C.: Reconstruction of changes in the Amundsen Sea and Bellingshausen Sea sector of the West Antarctic Ice Sheet since the Last Glacial Maximum, *Quaternary Science Reviews*, 100, 55-86, 10.1016/j.quascirev.2013.10.016, 2014.
- 760 Lenaerts, J. T. M., Vizcaino, M., Fyke, J., van Kampenhout, L., and van den Broeke, M. R.: Present-day and future Antarctic ice sheet climate and surface mass balance in the Community Earth System Model, *Climate Dynamics*, 47, 1367-1381, 10.1007/s00382-015-2907-4, 2016.
- 765 Lhermitte, S., Sun, S., Shuman, C., Wouters, B., Pattyn, F., Wuite, J., Berthier, E., and Nagler, T.: Damage accelerates ice shelf instability and mass loss in Amundsen Sea Embayment, *Proceedings of the National Academy of Sciences*, 117, 24,735-724,741, 10.1073/pnas.1912890117, 2020.
- Lou, J., Holbrook, N. J., and O'Kane, T. J.: South Pacific Decadal Climate Variability and Potential Predictability, *Journal of Climate*, 32, 6051-6069, 10.1175/JCLI-D-18-0249.1, 2019.
- 770 Meehl, G. A., Arblaster, J. M., Bitz, C. M., Chung, C. T. Y., and Teng, H. Y.: Antarctic sea-ice expansion between 2000 and 2014 driven by tropical Pacific decadal climate variability, *Nature Geoscience*, 9, 590-+, 10.1038/Ngeo2751, 2016.
- Mouginot, J., Rignot, E., and Scheuchl, B.: Sustained increase in ice discharge from the Amundsen Sea Embayment, West Antarctica, from 1973 to 2013, *Geophysical Research Letters*, 41, 1576-1584, 10.1002/2013gl059069, 2014.
- 775 Naughten, K. A., Holland, P. R., Dutrieux, P., Kimura, S., Bett, D. T., and Jenkins, A.: Simulated twentieth-century ocean warming in the Amundsen Sea, West Antarctica, *Geophysical Research Letters*, 49, e2021GL094566, 10.1029/2021GL094566, 2022.
- Newman, M., Alexander, M. A., Ault, T. R., Cobb, K. M., Deser, C., Di Lorenzo, E., Mantua, N. J., Miller, A. J., Minobe, S., Nakamura, H., Schneider, N., Vimont, D. J., Phillips, A. S., Scott, J. D., and Smith, C. A.: The Pacific Decadal Oscillation, Revisited, *Journal of Climate*, 29, 4399-4427, 10.1175/Jcli-D-15-0508.1, 2016.
- 780 O'Connor, G. K., Steig, E. J., and Hakim, G. J.: Strengthening Southern Hemisphere westerlies and Amundsen Sea Low deepening over the 20th century revealed by proxy-data assimilation, *Geophysical Research Letters*, 48, e2021GL095999, 10.1029/2021GL095999, 2021.
- PAGES2k: A global multiproxy database for temperature reconstructions of the Common Era, *Scientific Data*, 4, 170088, 10.1038/sdata.2017.88, 2017.
- 785 Paolo, F. S., Fricker, H. A., and Padman, L.: Volume loss from Antarctic ice shelves is accelerating, *Science*, 348, 327-331, 10.1126/science.aaa0940, 2015.
- Purich, A., England, M. H., Cai, W., Chikamoto, Y., Timmermann, A., Fyfe, J. C., Frankcombe, L., Meehl, G. A., and Arblaster, J. M.: Tropical Pacific SST Drivers of Recent Antarctic Sea Ice Trends, *Journal of Climate*, 29, 8931-8948, 10.1175/Jcli-D-16-0440.1, 2016.
- 790 Raphael, M. N., Marshall, G. J., Turner, J., Fogt, R. L., Schneider, D., Dixon, D. A., Hosking, J. S., Jones, J. M., and Hobbs, W. R.: The Amundsen Sea Low: Variability, Change, and Impact on Antarctic Climate, *Bulletin of the American Meteorological Society*, 97, 111-121, 10.1175/Bams-D-14-00018.1, 2016.
- Rayner, N. A., Parker, D. E., Horton, E. B., Folland, C. K., Alexander, L. V., Rowell, D. P., Kent, E. C., and Kaplan, A.: Global analyses of sea surface temperature, sea ice, and night marine air temperature since the late nineteenth century, *Journal of Geophysical Research-Atmospheres*, 108, 4407, 10.1029/2002jd002670, 2003.
- 795



- Rignot, E., Mouginot, J., Morlighem, M., Seroussi, H., and Scheuchl, B.: Widespread, rapid grounding line retreat of Pine Island, Thwaites, Smith, and Kohler glaciers, West Antarctica, from 1992 to 2011, *Geophysical Research Letters*, 41, 3502-3509, 10.1002/2014GL060140, 2014.
- 800 Sanderson, B. M., Oleson, K. W., Strand, W. G., Lehner, F., and O'Neill, B. C.: A new ensemble of GCM simulations to assess avoided impacts in a climate mitigation scenario, *Climatic Change*, 146, 303-318, 10.1007/s10584-015-1567-z, 2018.
- Sanderson, B. M., Xu, Y., Tebaldi, C., Wehner, M., O'Neil, B., Jahn, A., Pendergrass, A. G., Lehner, F., Strand, W. G., Lin, L., Knutti, R., and Lamarque, J.-F.: Community climate simulations to assess avoided impacts in 1.5 and 2°C futures, *Earth System Dynamics*, 8, 827-847, 10.5194/esd-8-827-2017, 2017.
- 805 Schneider, D. P. and Deser, C.: Tropically driven and externally forced patterns of Antarctic sea ice change: reconciling observed and modeled trends, *Climate Dynamics*, 50, 4599-4618, 10.1007/s00382-017-3893-5, 2018.
- Schneider, D. P. and Steig, E. J.: Ice cores record significant 1940s Antarctic warmth related to tropical climate variability, *Proceedings of the National Academy of Sciences of the United States of America*, 105, 12154-12158, 10.1073/pnas.0803627105, 2008.
- 810 Shaw, T. A.: Mechanisms of Future Predicted Changes in the Zonal Mean Mid-Latitude Circulation, *Current Climate Change Reports*, 5, 345-357, 10.1007/s40641-019-00145-8, 2019.
- Shepherd, A., Wingham, D., and Rignot, E.: Warm ocean is eroding West Antarctic Ice Sheet, *Geophysical Research Letters*, 31, L23402, 10.1029/2004gl021106, 2004.
- 815 Shepherd, A., Gilbert, L., Muir, A. S., Konrad, H., McMillan, M., Slater, T., Briggs, K. H., Sundal, A. V., Hogg, A. E., and Engdahl, M. E.: Trends in Antarctic Ice Sheet Elevation and Mass, *Geophysical Research Letters*, 46, 8174-8183, 10.1029/2019gl082182, 2019.
- Sigmond, M., Reader, M. C., Fyfe, J. C., and Gillett, N. P.: Drivers of past and future Southern Ocean change: Stratospheric ozone versus greenhouse gas impacts, *Geophysical Research Letters*, 38, L12601, 10.1029/2011GL047120, 2011.
- 820 Smith, J. A., Andersen, T. J., Shortt, M., Gaffney, A. M., Truffer, M., Stanton, T. P., Bindschadler, R., Dutrieux, P., Jenkins, A., Hillenbrand, C. D., Ehrmann, W., Corr, H. F. J., Farley, N., Crowhurst, S., and Vaughan, D. G.: Sub-ice-shelf sediments record history of twentieth-century retreat of Pine Island Glacier, *Nature*, 549, 292-292, 10.1038/nature23650, 2017.
- Snow, K., Goldberg, D. N., Holland, P. R., Jordan, J. R., Arthern, R. J., and Jenkins, A.: The Response of Ice Sheets to Climate Variability, *Geophysical Research Letters*, 44, 11878-11885, 10.1002/2017gl075745, 2017.
- 825 Son, S.-W., Gerber, E. P., Perlwitz, J., and al., e.: Impact of stratospheric ozone on Southern Hemisphere circulation change: A multimodel assessment, *Journal of Geophysical Research-Atmosphere*, 115, D00M07, 10.1029/2010JD014271, 2010.
- Steig, E. J., Ding, Q., Battisti, D. S., and Jenkins, A.: Tropical forcing of Circumpolar Deep Water Inflow and outlet glacier thinning in the Amundsen Sea Embayment, West Antarctica, *Annals of Glaciology*, 53, 19-28, 10.3189/2012AoG60A110, 2012.
- 830 Steig, E. J., Ding, Q. H., White, J. W. C., Kuttel, M., Rupper, S. B., Neumann, T. A., Neff, P. D., Gallant, A. J. E., Mayewski, P. A., Taylor, K. C., Hoffmann, G., Dixon, D. A., Schoenemann, S. W., Markle, B. R., Fudge, T. J., Schneider, D. P., Schauer, A. J., Teel, R. P., Vaughn, B. H., Burgener, L., Williams, J., and Korotkikh, E.: Recent climate and ice-sheet changes in West Antarctica compared with the past 2,000 years, *Nature Geoscience*, 6, 372-375, 10.1038/Ngeo1778, 2013.
- 835 Stevenson, S., Fox-Kemper, B., Jochum, M., Neale, R., Deser, C., and Meehl, G.: Will There Be a Significant Change to El Niño in the Twenty-First Century?, *Journal of Climate*, 25, 2129-2145, 10.1175/JCLI-D-11-00252.1, 2012.
- Tardif, R., Hakim, G. J., Perkins, W. A., Horlick, K. A., Erb, M. P., Emile-Geay, J., Anderson, D. M., Steig, E. J., and Noone, D.: Last Millennium Reanalysis with an expanded proxy database and seasonal proxy modeling, *Climate of the Past*, 15, 1251-1273, 10.5194/cp-15-1251-2019, 2019.
- 840 Thoma, M., Jenkins, A., Holland, D., and Jacobs, S.: Modelling Circumpolar Deep Water intrusions on the Amundsen Sea continental shelf, Antarctica, *Geophysical Research Letters*, 35, L18602, 10.1029/2008gl034939, 2008.
- Thompson, D. W. J., Solomon, S., Kushner, P. J., England, M. H., Grise, K. M., and Karoly, D. J.: Signatures of the Antarctic ozone hole in Southern Hemisphere surface climate change, *Nature Geoscience*, 4, 741-749, 10.1038/Ngeo1296, 2011.
- 845 van Vuuren, D. P., Edmonds, J., Kainuma, M., Riahi, K., Thomson, A., Hibbard, K., Hurtt, G. C., Kram, T., Krey, V., Lamarque, J.-F., Masui, T., Meinshausen, M., Nakicenovic, N., Smith, S. J., and Rose, S. K.: The representative concentration pathways: an overview, *Climatic Change*, 109, 5-31, 10.1007/s10584-011-0148-z, 2011.
- Williams, C. R., Hindmarsh, R. C. A., and Arthern, R. J.: Frequency response of ice streams, *Proceedings of the Royal Society A*, 468, 3285-3310, 10.1098/rspa.2012.0180, 2012.
- 850 Yeh, S. W., Cai, W. J., Min, S. K., McPhaden, M. J., Dommenget, D., Dewitte, B., Collins, M., Ashok, K., An, S. I., Yim, B. Y., and Kug, J. S.: ENSO Atmospheric Teleconnections and Their Response to Greenhouse Gas Forcing, *Reviews of Geophysics*, 56, 185-206, 10.1002/2017rg000568, 2018.

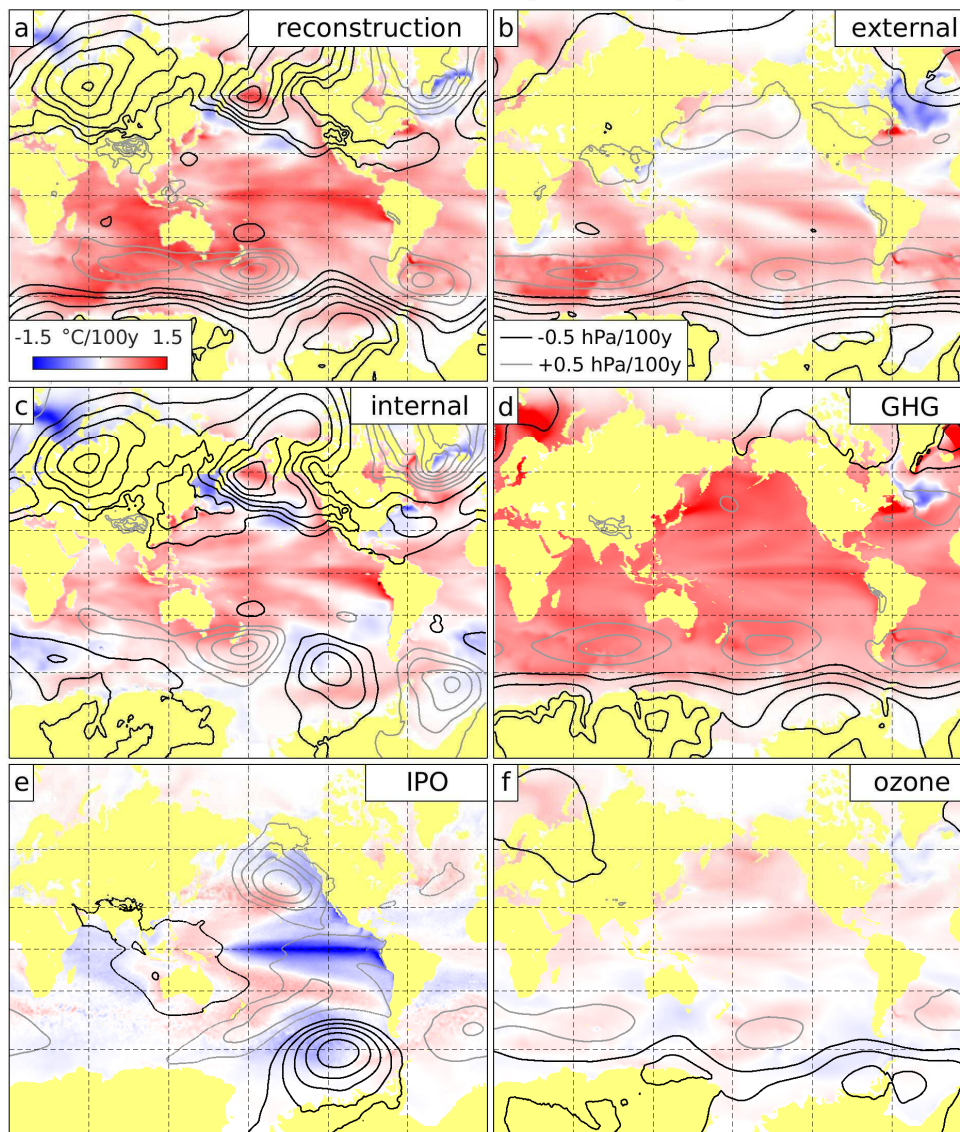


Name	Description	Years	n	Reference
LENS	Large Ensemble. Initial-condition ensemble of historical and projection simulations under all external forcings, following RCP8.5 scenario for projections.	1920-2100	40	Kay et al. (2015)
P1ctrl	Pre-industrial control ensemble. 1,760 years of control simulation treated as ensemble of 22 non-overlapping 80-year simulations, used for both historical and projection periods.	80 (see left)	22	Kay et al. (2015)
PACE	Pacific Pacemaker ensemble. Same as LENS historical, but with tropical Pacific SST anomalies constrained to follow observations.	1920-2013	20	Schneider and Deser (2018)
MENS	Medium Ensemble. Same as LENS projections, but following RCP4.5 forcing scenario.	2006-2080	15	Sanderson et al. (2018)
2.0degC	Same as LENS projections, but following a forcing scenario designed to keep global-mean temperatures below 2°C above pre-industrial.	2006-2100	10	Sanderson et al. (2017)
1.5degC	Same as LENS projections, but following a forcing scenario designed to keep global-mean temperatures below 1.5°C above pre-industrial.	2006-2100	10	Sanderson et al. (2017)
XOZO	No-Ozone-Depletion ensemble. As LENS, but with stratospheric ozone fixed after 1955.	1920-2005	8	England et al. (2016)
XGHG	No-GHG ensemble. As LENS, but with atmospheric GHGs fixed at 1920.	1920-2080	20	Deser et al. (2020)
XIND	No-Industrial-Aerosol ensemble. As LENS, but with industrial aerosols fixed at 1920.	1920-2080	20	Deser et al. (2020)
XBMB	No-Biomass-Burning ensemble. As LENS, but with biomass-burning aerosols fixed at 1920.	1920-2029	15	Deser et al. (2020)

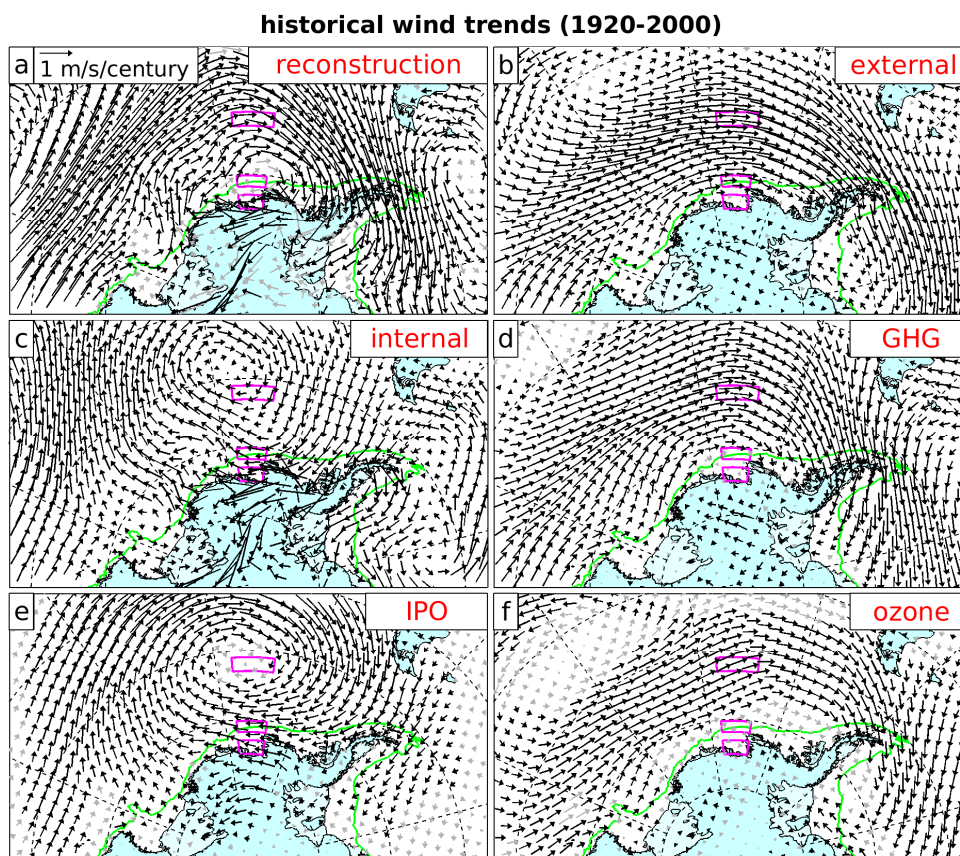
**Table 1: Description of the CESM1 model ensembles considered in this study.**



historical trends (1920-2000)



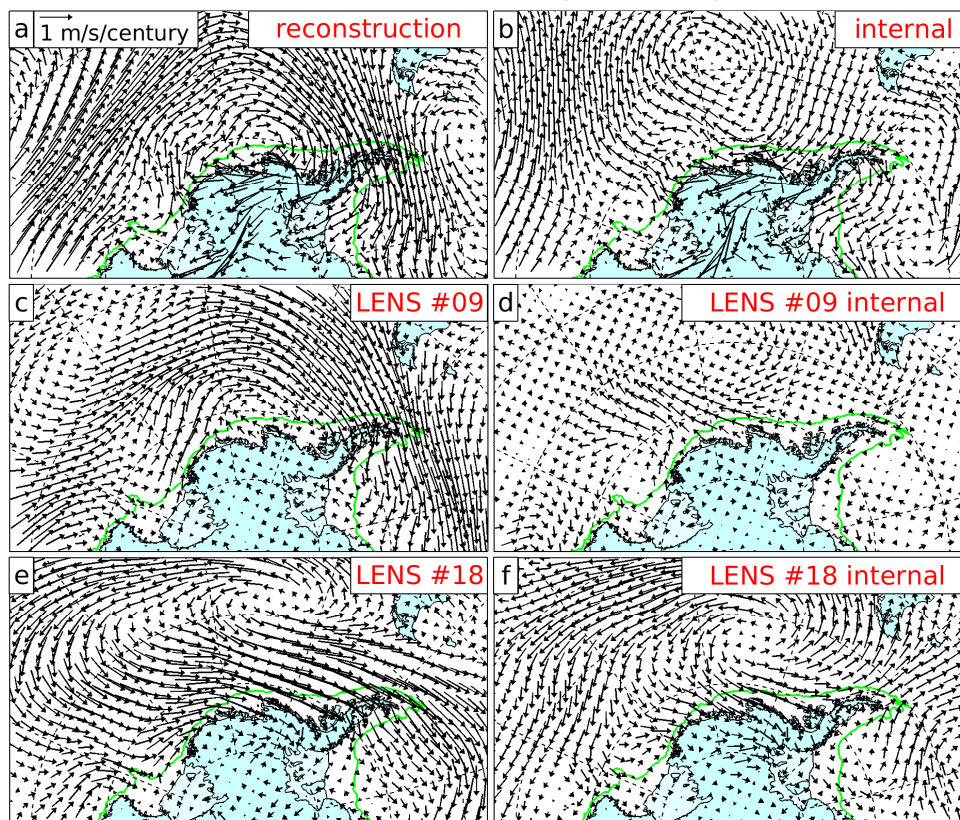
855 Figure 1: Global trends in sea-surface temperature (colour) and sea-level pressure (contours) over the historical period.  
For SLP, positive and negative contours are plotted in grey and black respectively, and the zero contour is omitted. a)  
Trends in the paleoclimate reconstruction. b) Trends caused by external forcing. c) Trends associated with internal  
variability (panel a minus panel b). d) and f) Trends caused by greenhouse-gas forcing and ozone depletion,  
860 respectively. e) Trends associated with a hypothetical trend of  $-1^{\circ}\text{C}/\text{century}$  in the Interdecadal Pacific Oscillation  
index.



865 Figure 2: Historical trends in near-surface winds over West Antarctica and the South Pacific. The six panels are analogous to Figure 1, but with the analysis repeated for near-surface wind trends rather than SLP and SST, and focusing on the Pacific sector of the Southern Ocean. Black vectors have a zonal or meridional wind trend significant at the 95% confidence level. The significance test is different for the different panels (see main text). Green contour is the 1000-m isobath at the continental shelf break. Magenta boxes show three selected regions of interest, including (south to north) the Amundsen Sea shelf, shelf break, and deep ocean. These are the locations of timeseries in Figures 4-6.



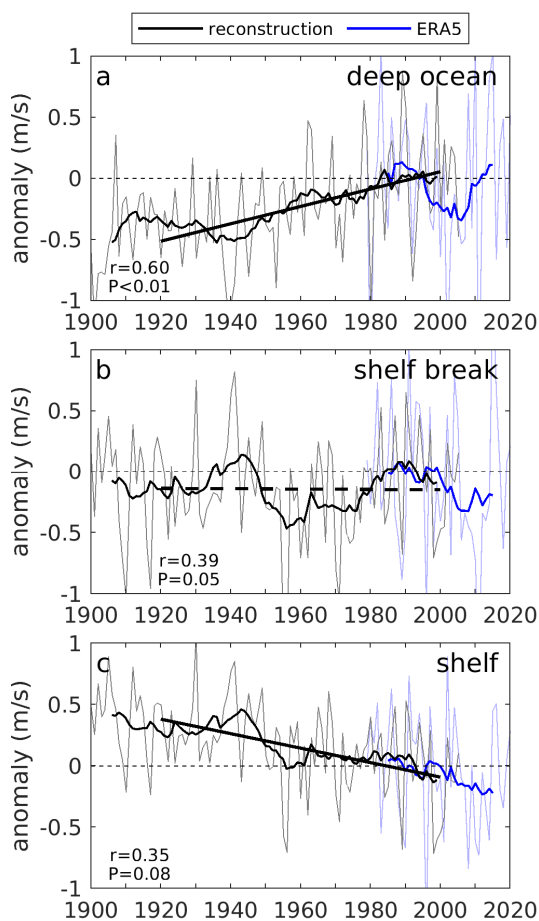
### historical wind trends (1920-2000)



870

Figure 3: Comparison between paleoclimate reconstruction and selected LENS ensemble members. a) Reconstructed historical wind trends. c) and e) Wind trends in selected illustrative ensemble members. b), d) and f) Deviation of each of these fields from the externally-forced trends in the LENS ensemble mean, illustrating the role of internal climate variability in each field.





875

880 **Figure 4: Historical evolution of zonal wind anomalies during 1900–2020.** Time series are calculated in the three regions highlighted in Figure 1 from the paleoclimate reconstruction and ERA5 reanalysis. Thin lines show annual anomalies, while thick lines show the 13-year running mean, selected because it is characteristic of the Interdecadal Pacific Oscillation. 1920–2000 trend lines are shown solid if the trend is significant at the 95% confidence level and dashed otherwise. Anomalies are plotted relative to mean values over 1979–2005, the period of overlap between the reconstruction and ERA5. Statistics are given for the correlation between datasets during this overlap.

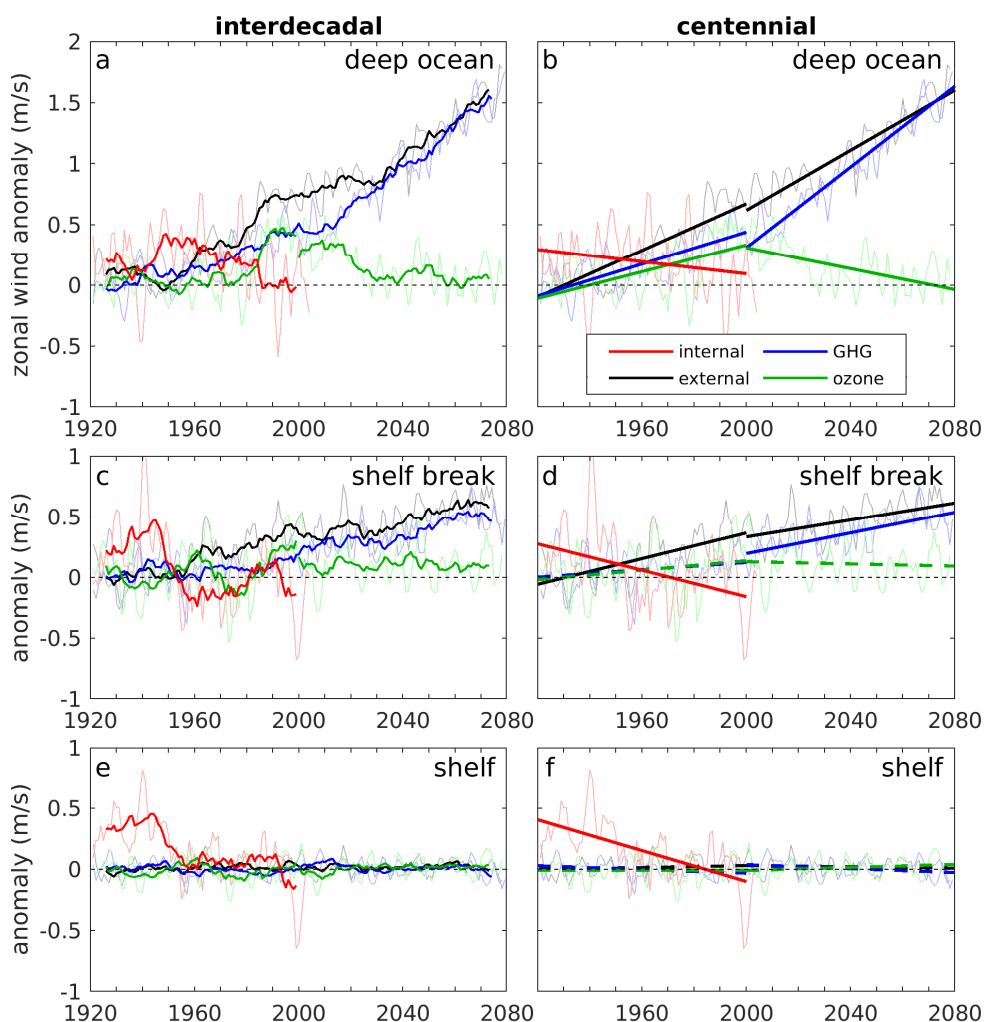
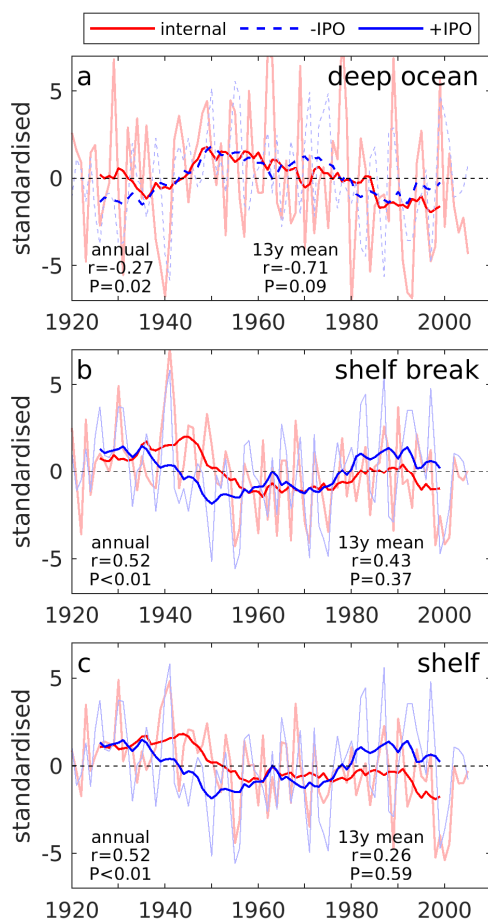
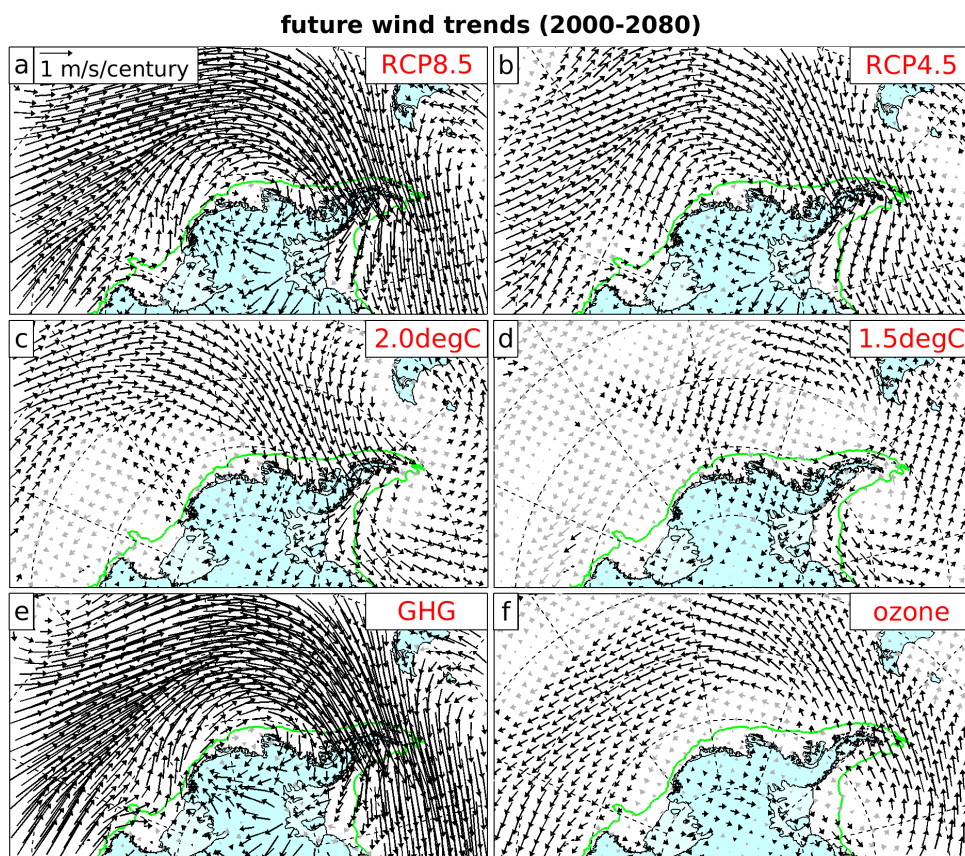


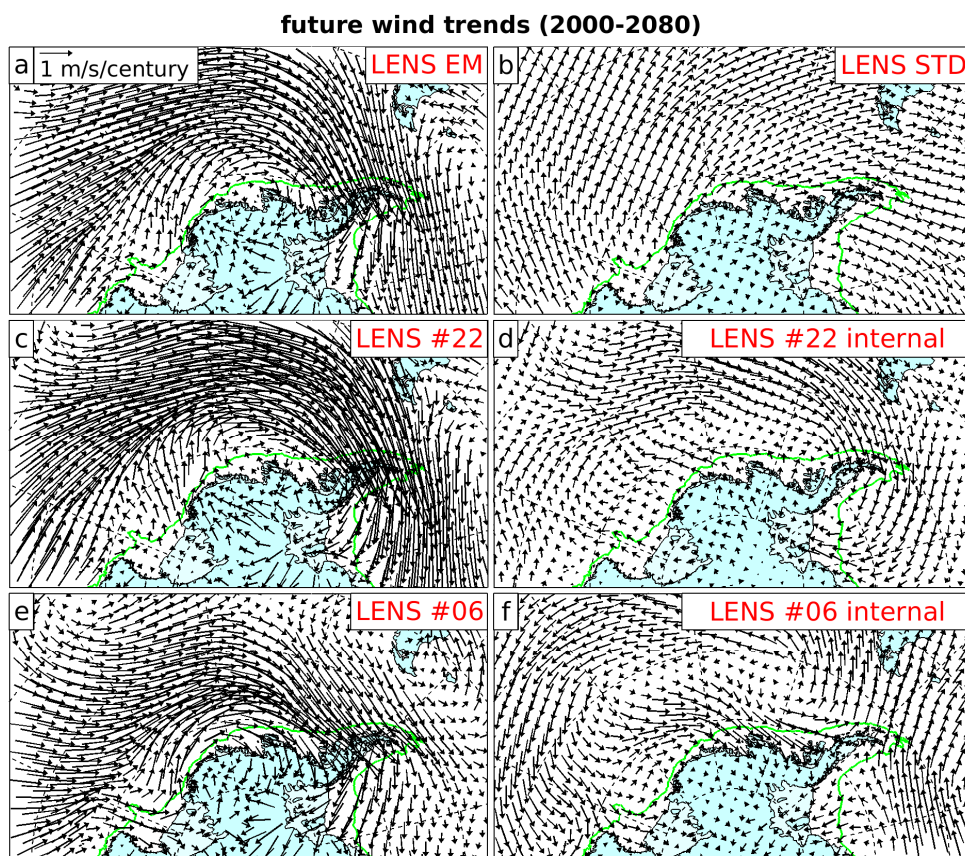
Figure 5: Historical and future influences on zonal wind anomalies. Panels show the internally-generated, total  
 885 externally-forced, and GHG- and ozone-forced contributions to wind changes in the three regions shown in Figure 2.  
 Future changes are shown under the strong forcing RCP8.5 scenario. All panels show annual-mean timeseries (thin  
 lines). The left column also shows the same timeseries after a 13-year running mean (thick lines) to highlight the  
 interdecadal evolution of the responses. The right column also shows historical and future trends, plotted solid if the  
 trend is significant at the 95% confidence level (see text) and dashed otherwise. Ozone is plotted as the ozone response  
 890 before 2000 and the non-GHG response afterwards. Internally-generated anomalies are plotted relative to 1979-2005,  
 as in Figure 4.



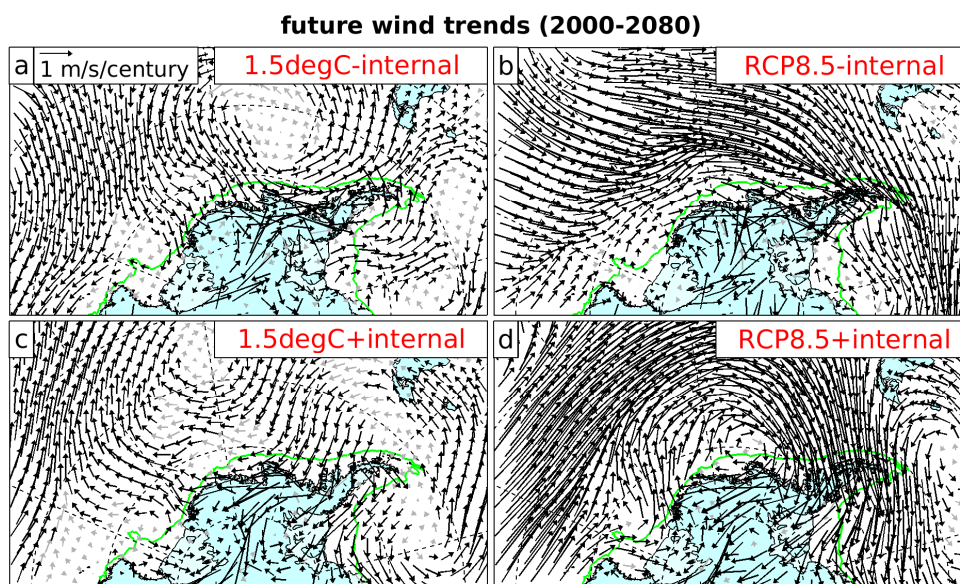
895 **Figure 6: Evolution of internally-generated zonal wind anomalies and their relationship to the Interdecadal Pacific Oscillation. Panels show the internally-generated anomalies and IPO index in the three regions shown in Figure 2. Thin lines show annual anomalies, while thick lines show a 13-year running mean. All time series are standardised by the 13-year-running-mean data. The IPO index is inverted in panel a for illustrative purposes because its correlation to wind anomalies is negative in the deep ocean region. Statistics show the correlation between the two time series on annual and 13-year timescales.**



900 Figure 7: Projected wind trends over West Antarctica and their attribution. Panels a-d show externally-forced wind trends in four different forcing scenarios, progressing from the strongest anthropogenic forcing (RCP8.5) to an aggressive emissions mitigation scenario (1.5degC). Panels e and f show the individual contributions of greenhouse gases and ozone depletion in the RCP8.5 scenario.



905 Figure 8: Influence of internal variability on projected wind trends over West Antarctica. a) LENS ensemble-mean wind trends (the RCP8.5 externally-forced trend in Figure 7a). b) LENS intra-ensemble standard deviation in wind trends, plotted as vectors illustrating one positive standard deviation in both zonal and meridional trends. c) and e) Wind trends in selected illustrative LENS members. d) and f) Deviation of the trends in these selected members from the ensemble-mean trend, illustrating the role of internal climate variability.



910 Figure 9: Illustrative wind trend projections under different combinations of external forcing scenario and a single  
915 2c. realisation of internal variability. The columns denote wind trends projected under weak (left) and strong (right)  
externally-forced wind trends are shown in Figures 7a and 7d, while the historical internally-generated wind trends are shown in Figure