

# Observed mechanism for sustained glacier retreat and acceleration in response to ocean warming around Greenland

Evan Carnahan<sup>1,2</sup>, Ginny Catania<sup>1,3</sup>, and Timothy C. Bartholomaus<sup>4</sup>

<sup>1</sup>Institute for Geophysics, The University of Texas, Austin, TX, USA

<sup>2</sup>Oden Institute for Computational Engineering and Sciences, The University of Texas, Austin, TX, USA

<sup>3</sup>Department of Geological Sciences, The University of Texas, Austin, TX, USA

<sup>4</sup>Department of Geological Sciences, University of Idaho, Moscow, ID, USA

**Correspondence:** Evan Carnahan (evan.carnahan@utexas.edu)

**Abstract.** The dynamic loss of ice via outlet glaciers around the Greenland Ice Sheet is a major contributor to sea level rise. However, the retreat history and ensuing dynamic mass loss of neighboring glaciers are disparate, complicating projections of sea level rise. Here, we examine the stress balance evolution for three neighboring glaciers prior to, at the onset of, during, and, where possible, after retreat. We find no dynamic or thickness changes precede retreat, implicating a retreat trigger at the ice-ocean boundary. Terminus retreat initiates large-scale changes in the stress state at the terminus. This includes a drop in along-flow resistance to driving stress followed by an increase in lateral drag and associated glacier acceleration. We find that the pre-retreat spatial pattern in stresses along-fjord may control retreat duration and thus the long-term dynamic response of a glacier to terminus retreat. Specifically, glaciers with large regions of low basal drag extending far inland from the terminus permit a chain of stress changes that results in sustained acceleration, increased mass loss, and continued retreat. [Glaciers with similar basal stress conditions occur around Greenland.](#) Our results suggest that ~~vulnerable conditions for prolonged retreat may exist around Greenland, and thus for such glaciers~~ dynamic mass loss ~~may can~~ be sustained into the future despite a ~~reduction-pause~~ in ocean forcing.

## 1 Introduction

Currently, ice loss from the Greenland Ice Sheet (GrIS) is responsible for nearly a quarter of the total contributions to global sea level rise (IPCC, 2021) with up to two-thirds of mass loss from 1972 to 2018 from dynamic changes of marine-terminating outlet glaciers (Mouginot et al., 2019). Much of this dynamic change began in the mid to late 1990s when widespread terminus retreat began (Murray et al., 2015; Catania et al., 2018; Wood et al., 2021). The initiation of glacier retreat may occur through two mechanisms including an increase in terminus ablation at the ice-ocean boundary (Wood et al., 2021; Straneo and Heimbach, 2013) or a climate induced imbalance in ice flux arriving at the terminus - either due to thinning (Thomas and Bentley, 1978) or changes in glacier dynamics (Nick et al., 2009; van der Veen et al., 2011; Howat et al., 2010). While there is growing scientific consensus on the importance of increased ocean thermal forcing as the trigger of retreat in Greenland (Wood et al., 2021; Holland et al., 2008), glacier retreat and dynamic mass loss has continued, and in some cases accelerated, even after a widespread reduction in ocean thermal forcing (Wood et al., 2021). This indicates that factors other than

ocean thermal forcing must control the evolution of multi-year retreat after the initial climate forcing. Furthermore, at the glacier scale, the ensuing dynamic adjustment in response to ~~climate-forced~~ terminus retreat results in heterogeneous ~~elevation~~ (Felixson et al., 2017; Csatho et al., 2014) and ~~velocity~~ (Moon et al., 2020) changes. ~~This changes in elevation and velocity~~ (Felixson et al., 2017; Csatho et al., 2014; Moon et al., 2020). ~~This variability~~ means that, despite widespread observations of correlated retreat and glacier acceleration (King et al., 2020), we lack a physical understanding of the feedbacks between the different elements of glacier dynamic change.

30 Isolating the potential causes, and even the ordering, of terminus retreat and glacier dynamic changes requires frequent glacier and climate state information. Recent advances have filled in much of this state information for GrIS prior to, and through the onset of, retreat, ~1990s (Murray et al., 2015), to the present, e.g., ~~Wood et al. (2021); Gardner et al. (2019); Mankoff et al. (2020)~~ Wood et al. (2021); Gardner et al. (2019); Mankoff et al. (2020); Morlighem et al. (2019); Goliber et al. (2022). However, elevation data with high-resolution coverage of narrow outlet glaciers is scarce prior to 2010 (Shean et al., 2016). This dearth of elevation data has restricted analysis of glacier dynamic evolution throughout retreat to a subset of glaciers in Greenland with long-standing observations, primarily Jakobshavn Isbrae (Thomas et al., 2003; Joughin et al., 2008; Amundson et al., 2010). However, even in regions with rich data, observations of stress fields prior to, and at the onset of, retreat do not include the terminus region (van der Veen et al., 2011), involve only one stress component, e.g., longitudinal coupling (Thomas, 2004), or require extensive interpolation of sparse spatio-temporal elevation data (Joughin et al., 2012). Studies attempting

40 to ~~circumnavigate~~ circumvent elevation data scarcity augment observations with model simulations (Joughin et al., 2012; Bondzio et al., 2017). These studies reveal that a complex set of stress changes potentially link retreat and glacier dynamic changes (Bondzio et al., 2017), including the loss of longitudinal coupling resistance from melange breakup (Howat et al., 2010; Amundson et al., 2010) or a reduction in backstress (Nick et al., 2009), loss of basal resistance (Zwally et al., 2002), and decreases in lateral drag from shear margin weakening (van der Veen et al., 2011).

45 To elucidate the causal mechanisms for the onset, persistence, and possible cessation of outlet glacier retreat, it is necessary to have comprehensive observations that span transitions in glacier behavior. Here, we present such observations for three neighboring glaciers in Central Western Greenland with divergent retreat histories (Fig. 1) despite largely homogeneous oceanic and atmospheric forcing (Felixson et al., 2017; Wood et al., 2021). To fill in the gap in elevation data during the onset of retreat, we use an image processing pipeline (Girod et al., 2017) to remove systematic errors in ASTER imagery (Fujisada et al., 2005),

50 enabling a new time series of Digital Elevation Models (DEMs) for GrIS outlet glaciers during a critical time period in their evolution. We produce DEMs and integrate them with velocity and bed elevation data sets to elucidate dynamic changes through inverse methods (MacAyeal, 1992; van der Veen and Whillans, 1989). We use this comprehensive multi-glacier ~~data set~~ dataset to investigate the potential forcing mechanism responsible for retreat, and to determine why the glacier dynamic response to retreat diverges across time and space.

## 55 2 Methods

Our region of interest includes three neighboring outlet glaciers in Central Western Greenland with divergent histories (Fig. 1). The terminus of Ingia Isbrae was stable from 1985 to 2002, after which it began a steady retreat of over 8 km, continuing through 2021. Umiamakko Isbrae, began retreating a year earlier, in 2001. Unlike Ingia, Umiamakko retreated only 4 km before abruptly restabilizing in 2009, where the terminus has remained since. Finally, Rink Isbrae may have retreated from 1998 to 2010, however ~~the overall retreat, ~1 km, barely~~ no secular trend emerges from seasonal fluctuations (Catania et al., 2018). Rink also notably has a floating terminus and an ice flux that is nearly 10 times larger than neighboring Ingia and Umiamakko (Catania et al., 2018).

We use time series elevation and velocity data to calculate the evolving stress fields for each glacier in this region using the force balance method following ~~(van der Veen and Whillans, 1989).~~ van der Veen and Whillans (1989). This method provides snapshots of the glacier stress state in time and is therefore useful to examine how the stress state varies during changes in terminus position. The force balance method has previously been used in Greenland to understand the behavior of individual glaciers (van der Veen et al., 2011) or multiple glaciers during single time periods (Bartholomaeus et al., 2016; Stearns and van der Veen, 2018; van der Veen et al., 2011; Enderlin et al., 2016; Meierbachtol et al., 2016), as well as in Antarctica (Price et al., 2002; Stearns et al., 2005) and Alaska (O’Neel, 2005; Enderlin et al., 2018). The force balance method assumes that the driving stress,  $\tau_d$ , is supported by basal drag,  $\tau_b$ , and depth-integrated longitudinal coupling and lateral drag,  $F_{lon}$  and  $F_{lat}$ , respectively. We choose a sign convention where positive values of driving stress act in the direction of flow and positive values of all other stresses oppose flow,

$$\tau_b = \tau_d - F_{lat} - F_{lon}. \quad (1)$$

The depth-integrated components in the x-direction are given by

$$F_{lat} = -\frac{\partial}{\partial y}(HR_{xy}) \quad \text{and} \quad F_{lon} = -\frac{\partial}{\partial x}(HR_{xx}), \quad (2)$$

where  $H$  is the ice thickness and  ~~$R_{ij}$  is the tensile or compressional resistive stress and  $R_{ij}$  is the shear resistive stresses.~~ the resistive stresses, neglecting vertical shearing, are given by

$$R_{xx} = B\dot{\epsilon}_e^{1/n-1}(2\dot{\epsilon}_{xx} + \dot{\epsilon}_{yy}), \quad (3)$$

$$R_{yy} = B\dot{\epsilon}_e^{1/n-1}(\dot{\epsilon}_{xx} + 2\dot{\epsilon}_{yy}), \quad (4)$$

$$R_{xy} = B\dot{\epsilon}_e^{1/n-1}\dot{\epsilon}_{xy}, \quad (5)$$

where  $B$  is the viscosity rate factor,  $n$  is the stress exponent in Glen’s Flow Law,  $\dot{\epsilon}_{ij}$  is the surface strain rate, and the effective strain rate is given by

$$\dot{\epsilon}_e = (\dot{\epsilon}_{xx}^2 + \dot{\epsilon}_{yy}^2 + \dot{\epsilon}_{xx}\dot{\epsilon}_{yy} + \dot{\epsilon}_{xy}^2)^{1/2}. \quad (6)$$

Depth integrated resistive stresses are estimated ~~using Glen's Flow Law~~ with a stress exponent of  $n = 3$  and a viscosity rate factor of ~~300~~  $B = 300$  kPa yr<sup>1/3</sup>, similar to that used for nearby Jakobshavn Isbrae (van der Veen et al., 2011). The driving stress in the x-direction takes the form,

$$\tau_d = -\rho g H \frac{\partial h}{\partial x} \quad (7)$$

85 where  $\rho$  is the density of ice,  $g$  is the gravitational driving stress, and  $h$  is the glacier surface elevation. Basal drag is calculated as the residual of the depth-integrated stresses and driving stress, Eq. (1). We calculate the force balance in 2D, and each stress component is then oriented into an along-flow across-flow coordinate system. Results are shown for the along-flow coordinate system. A thorough overview of the force balance method is given in ~~van der Veen, C.J. (2013)?~~.

The calculation of stresses requires glacier-wide observations of velocity, bed, and surface elevation at coincident time periods (van der Veen and Whillans, 1989; MacAyeal, 1992). Such observations are integrated into a model of glacier flow that can range in complexity from shallow-shelf approximations (van der Veen and Whillans, 1989) to time-dependent 2D flow (Goldberg et al., 2015) to 3D inversions (Shapiro et al., 2016). We assume a simple shallow-shelf approximation with basal drag, Eq. (1) (MacAyeal, 1989), which is appropriate for our study area as basal sliding likely dominates viscous deformation (~~?Bartholomaeus et al., 2016~~) (Bartholomaeus et al., 2016). Such simplicity is particularly useful considering the ~~present~~ 95 ~~uncertainty in longstanding debate on~~ an appropriate relation between basal drag and sliding speed for fast-flowing outlet glaciers in Greenland (~~Stearns and van der Veen, 2018; Minchew et al., 2019; Zoet and Iverson, 2020; Joughin et al., 2019~~) (Stearns and van der Veen, 2018; Kamb, 1970; Nye, 1970; Lliboutry, 1979; Zoet and Iverson, 2020; Joughin et al., 2019), which more complex models must assume.

We use a range of data sets to piece together surface elevation ~~change changes~~ for this region. Prior to the onset of retreat, 100 the best available DEM comes from historical air photos taken in 1985 (Korsgaard et al., 2016). We use ASTER stereo pairs and the MicMac processing scheme (Girod et al., 2017) to produce improved ASTER DEMs for  $\sim 2002$  ~~, which encompasses~~ (Ingia: June 2003, Umiamako: July 2002, Rink: July 2001), which neighbors the retreat onset for Ingia and Umiamako. Finally, we use the GIMP DEM with a nominal year of 2007 (data from 2003 - 2009) and DigitalGlobe DEMs from  $\sim 2015$  (data from 2012 - 2015 for our region) (Howat et al., 2014), which provide continuous glacier coverage and surface slopes. We use a land 105 mask (Howat et al., 2014) to mask stable terrain for coregistration of DEMs (Nuth and Kääb, 2011) and the 1985 DEM as a baseline reference. We find random errors over stable terrain with root mean squared errors less than 10 m for the corrected ASTER imagery, comparable to the agreement we find between the other (non-ASTER) co-registered DEMs of  $\sim 15$  m.

We consider surface elevation only within the up-glacier confined outlet glacier trough, shown in Figure 1, due to the limits of the 1985 DEM and the dominance of sliding within this fast flowing region, which the force balance method assumes. 110 The down glacier extent of surface elevation DEMs is cropped using the July terminus location for each epoch examined (Catania et al., 2018). We evaluate the surface elevation change in this region using DEM differencing for all glaciers prior to, at the onset ~~of~~, during, and after retreat. We further calculate the amount of thinning prior to retreat resulting from changing ice dynamics alone by removing the surface mass balance anomaly, integrated over the roughly 15 years preceding retreat, from total thinning (Felixson et al., 2017). This allows us to isolate the source of surface elevation changes that may have

115 occurred pre-retreat ~~to investigate possible causes of retreat~~. Surface mass balance is provided from the regional climate model RACMO2.3p2, downscaled to 1 km (Noël et al., 2018).

Two additional data products are necessary for the force balance method: velocity data at each epoch and bed elevation. We use annual mean surface velocity mosaics derived from Landsat imagery for ~~all years each year~~ in our study period (Gardner et al., 2019). We remove and interpolate velocity data with low annual scene pair counts and high ~~potential errors, errors~~ (< 1% of points on each glacier). During 2002 several of the points removed are clustered in the near-terminus region of Umiamakko, which results in a slight apparent decrease in velocity. Bed elevation is assumed to be invariant throughout the study period and given by ~~BedMachineV4 (Morlighem et al., 2017). Errors in inferred basal drag using the force balance with BedMachineV4 are estimated to be <15 kPa and are consistent in time, i.e., do not effect temporal changes in stress (Stearns and van der Veen, 2018). BedMachineV3 (Morlighem et al., 2017).~~ The 1985 surface elevation DEM is posted at a  
125 25 m resolution, whereas all other DEMs have a 30 m resolution. Velocity data has a grid resolution of 240 m and the bed ~~elevation data topography~~ has 150 m resolution. All data products are smoothed to a regular 250 m grid using a 500 m Gaussian kernel, which both allows for collocation of data points and helps to reduce errors in input data that can impact stress estimation (Meierbachtol et al., 2016; O'Neel, 2005).

Calculated stresses are smoothed with a 1 km Gaussian kernel, and are shown for the centerline of each glacier using centerlines derived by Felikson et al. (2017). This final smoothing follows previous studies, and is necessary for physical interpretation of stresses, as calculated stresses can not be interpreted at length scales below the stress coupling length of each glacier (O'Neel, 2005; Bartholomaus et al., 2016; Meierbachtol et al., 2016; Enderlin et al., 2016; Stearns and van der Veen, 2018). For the glaciers in our study region, the stress coupling length is at a minimum ~2 km, i.e., the length across the kernel used for smoothing. Furthermore, quantitative results presented here for stress changes are averaged over a stress coupling length, which is calculated individually for each glacier as four times the ice thickness in the terminus region (Enderlin et al., 2016). We define the area within one stress coupling length of the terminus as the 'near-terminus' region.

130

135

Errors in calculated stresses arise from errors in all input ~~data products and, in combination, result in a maximum of 60 kPa uncertainty in inferred basal resistance (Stearns and van der Veen, 2018), or 12% of maximum basal drag for the outlet glaciers in this study. Calculated datasets, i.e., bed topography, surface DEMs, and velocity data. Bed topography is assumed to be~~  
140 ~~invariant in time, thus errors associated with bed topography are similarly consistent. Errors in inferred basal drag using the force balance with BedMachineV3 are estimated to be <15 kPa (Stearns and van der Veen, 2018). As we are largely concerned with year-to-year changes in stress we ignore uncertainty from errors in bed elevation. Errors in surface DEMs and velocity data result in relative errors in stress between study years. We ignore errors in the surface DEM as velocity errors make up the vast majority of uncertainty in stress estimation (O'Neel, 2005; ?). We analytically propagate errors in velocity through our model following Taylor (1996); ?. We assume errors in annual velocity maps and stress fields arise independently, i.e., spatial averaging reduces error. It is important to note that the values given for velocity errors "allow for the formal propagation of errors" but "provided errors... should be used as qualitative metrics for assessing errors" (Gardner et al., 2019). As a result, the formal propagation of errors through our model should be taken as a similarly qualitative metric. The resulting uncertainty for~~

145

each glacier, year, and stress term is given in the supplementary materials. When the changes in stress we observe are on the order of uncertainty, the result will be discussed in context of that uncertainty.

On average, we find comparable uncertainty in stress terms to previous studies in Greenland, e.g., Enderlin et al. (2018); Stearns and van der Veen (2011). However, during certain years we find some regions of very high uncertainty due to small regions of coincident low strain rates and high velocity errors (Supplementary Figs. 1-3). We also observe some locations in the near-terminus region with negative basal drag. After averaging over a stress coupling length, values of negative basal drag that exceed uncertainty only occur for Ingia in 2015. Such values of negative basal drag are not physical and are likely related to our models-model's assumption of no vertical deformation (Enderlin et al., 2016) or a temporally invariant viscosity rate factor (van der Veen et al., 2011). One possible solution is to adjust the viscosity rate factor such that basal drag remains above zero for all years (van der Veen et al., 2011). However, changing the rate factor only scales year-to-year changes in stress, and since we are largely concerned with relative temporal, temporal, changes in stress components during retreat, such a scaling would not fundamentally change our findings. Importantly, we do not observe values larger than uncertainty in inferred basal drag from input data errors. Finally, the region of negative basal drag larger than uncertainty in inferred basal drag from input data errors. Finally, regions of negative, or and those that are zero within error, basal drag are almost exclusively limited are largely restricted to the near-terminus region, where all glaciers approach flotation and near-zero values of basal drag are expected, providing an independent source of validation for the rate factor used (Fig. 1).

Calculated stresses are smoothed with a 1 km Gaussian kernel, and are shown for the centerline of each glacier using centerlines derived by Felikson et al. (2017). This final smoothing follows previous studies, and is necessary for physical interpretation of stresses as calculated stresses can not be interpreted at length scales below the stress coupling length of each glacier (O'Neel, 2005; Bartholomaus et al., 2016; Meierbaechtol et al., 2016; Enderlin et al., 2016; Stearns and van der Veen, 2018) ; which is approximately four ice thicknesses (Enderlin et al., 2016). For the glaciers in our study region, the stress coupling length is at a minimum ~2 km, i.e., the length across the kernel used for smoothing. Furthermore, quantitative results presented here for stress changes are averaged over a stress coupling length, which is calculated individually for each glacier following Enderlin et al. (2016). We define the area within one stress coupling length of the terminus as the 'near-terminus' region.

### 3 Results

The three glaciers exhibit distinctly different force balance configurations and a high degree of spatial variability along flow (Fig. 2, 3, and 4). Excluding the regions within ~5 km of the glacier termini, all glacier stress profiles maintain consistent spatial patterns along-flow over the 30-year observation period. Average per point absolute changes in inferred basal drag above the near-terminus region along the centerline of each glacier between each epoch are 16 kPa for Rink 11 kPa for Ingia (Fig. 4); 2, 25 kPa for Umiyamako ; and 11 kPa for Ingia (Fig. 3), and 16 kPa for Rink (Fig. 3 and 2). The 4). Estimated average error for basal drag along the centerline of each glacier is 43 kPa, 69 kPa, and 29 kPa for Ingia, Umiyamako, and Rink, respectively. Notably, each of these changes in basal drag are potentially zero within error for all epochs. This lack of up-glacier stress changes for both retreating and stable glaciers implies that changes in stresses in the near-terminus region are primarily responsible for the pronounced acceleration observed during retreat. Thus, we focus our analysis on changes that

occur in this near-terminus region. This region is identified by the horizontal bars in Figs. 2, 3, and 4. Near-terminus stress changes predominantly occur after the onset of retreat (Fig. 2 and 3); coupled with the lack of dynamic changes ~~without in glaciers not experiencing~~ retreat (Fig. 4), implies that in the absence of ~~terminus retreat retreat secular~~ glacier dynamics are largely invariant for these three glaciers during our study period.

### 3.1 Pre-retreat

All three glaciers approach flotation at their termini pre-retreat as shown by height above buoyancy approaching zero (Fig. 1e). For Umiyamako pre-retreat, height above buoyancy rapidly increases inland of the terminus, whereas Ingia's pre-retreat height above ~~buoyant buoyancy~~ remains within 200 meters of flotation for 10s of kilometers inland (Fig. 1e). A portion of the Rink terminus (up to 3 km) remains floating throughout the observational period.

We examine changes in ice thickness and glacier dynamics prior to retreat to deduce potential retreat mechanisms. Climate-induced changes in ice flux to the terminus can cause terminus retreat and may result from several mechanisms including ~~1) shear margin weakening through the release of latent heat due to melt-refreezing in crevasses (van der Veen et al., 2011); 2) reduction in bed resistance due to enhanced basal slip (Zwally et al., 2002); 3) decreases in backstress that cause acceleration~~ terminus backstress forced by ice-ocean interactions that causes acceleration and subsequent retreat (Nick et al., 2009); 4) or enhanced surface melt leading to thinning induced retreat (Thomas and Bentley, 1978). In all of these cases, we would anticipate observations of significant surface elevation lowering or stress changes prior to retreat. ~~The Similar to 3), but in the reverse order, the~~ climate system can also force retreat through ~~processes at the ice-ocean boundary increased frontal ablation and successive dynamic changes~~ (Motyka et al., 2011). In this case, we would not expect to observe surface lowering and/or dynamic changes prior to retreat.

We examine total ice thickness changes and ice thickness changes due to ice dynamics alone. Prior, and up to the onset of its retreat in 2002, Ingia experienced a small, near-uniform, thickening of  $5 \pm 6$  m across its trunk from 1985 to 2003 with 11 m of thickening resulting from ice dynamics alone (Fig. 1). Similar to Ingia, Umiyamako experienced small thickness changes ~~prior to up to the onset of~~ retreat ( $< 10 \pm 14$  m of near-uniform total thinning ~~with~~, 5 m of dynamic thinning from 1985 to 2002). ~~Small Although, this thinning is small and potentially zero, it is still possible that this thinning may have contributed to the retreat of Umiyamako. We follow Wood et al. (2021) and calculate the amount of retreat induced by thinning alone on Umiyamako. We find that only 0.5 meters of retreat from 1985 to 2003 can be explained by thinning. Negligible~~ rates of dynamic thickness change are consistent with observed negligible changes in inland ice flux/velocity and minor changes in all components of the stress balance prior to retreat for both glaciers (Fig. 2 and 3). The lack of changing ice flux and thinning prior to retreat thus implicates ice-ocean calving front processes as being primarily responsible for the retreat of Ingia and Umiyamako.

### 3.2 Dynamics of retreating glaciers

During the initial stage of retreat Ingia and Umiyamako experience a drop in the degree to which along-flow ~~gradients in~~ longitudinal stresses support driving stress. For Ingia (retreat onset in 2002), we observe a drop in longitudinal coupling resistance in the near-terminus region of 10 kPa from 2003 to 2007, representing a 20% reduction in overall resistance to

215 driving stress (Fig. 2e). Conversely, ~~Umi~~Umi~~amako~~amako ~~near-terminus~~ (retreat onset in 2001) experiences an increase in longitudinal coupling between 1985 and 2007 of 20 kPa, however driving stress substantially ~~increased~~increases over this same time period (Fig. 3b and e). As a result of this driving stress increase, the proportion of Umiamako's driving stress ~~resisted~~resisted ~~by~~by ~~resisting~~resisting longitudinal coupling actually ~~dropped~~drops by  $\sim 16\%$  at the terminus between 1985 and 2007, ~~comparable to that~~comparable to that ~~observed~~observed ~~a comparable drop to what we observe~~a comparable drop to what we observe at Ingia. Such ~~reductions~~a reduction in the percent of driving stress supported  
220 by longitudinal coupling occurs largely because as these glaciers retreat, they enter parts of the fjord where longitudinal coupling is lower. For both glaciers, the along-flow pattern of longitudinal coupling decreases upglacier from the terminus. The changes in longitudinal coupling in the near-terminus region that we observe are on the order of estimated uncertainty in stress. For Umi though, the decrease in longitudinal coupling resistance to driving stress is due to an increase in driving stress and thus the reduction in fractional resistance to driving stress is well outside uncertainty. For Ingia, the decrease in longitudinal  
225 coupling from pre-retreat to during retreat, 2007, is present for both pre-retreat years, 1985 and 2002. Furthermore, the pattern of decreasing longitudinal coupling inland of the terminus, which drives the decrease in resistance during retreat, is visible in all three years. These points provide evidence that the observed decrease in longitudinal coupling resistance to driving stress at Ingia is real, however the magnitude of the decrease is uncertain.

During the next phase of retreat the stress state at the terminus begins to differ from the spatial pattern that existed prior to  
230 retreat, and each glacier experiences large changes in velocity that occur shortly after the onset of retreat. The Ingia terminus region does not experience a significant change in driving stress ~~or basal drag even~~ as the terminus retreats (Fig. 2a and b). Instead, the drop in terminus backstress on Ingia is followed by an almost three-fold increase in lateral drag (30 to 85 kPa) and a commensurate drop in basal resistance from 2007 to 2015 (Fig. 2d). This increase in lateral drag results from large temporal increases in across-glacier gradients in velocity, as Ingia undergoes a 56% increase in centerline velocity. The Umiamako  
235 terminus also experiences a major increase in lateral drag in response to retreat (from 24 kPa in 1985 to 162 kPa in 2007) associated with a  $\sim 50\%$  increase in centerline velocity (Fig. 3). However, for Umiamako, and in contrast to Ingia, all resistive stresses increase as the terminus retreats, not ~~just~~only lateral drag.

### 3.3 Dynamics of abbreviated versus sustained retreat

The stress balance at the terminus can change due to the retreat of the terminus to locations along-fjord where spatial patterns in  
240 stress are variable (determined by the pre-retreat geometry). In addition, the stress balance at the terminus can change because of temporal changes in stress at a fixed location. For Umiamako, we find that the near-terminus region experiences pronounced increases in driving stress, lateral drag, and basal drag, largely because the terminus retreats to locations along fjord where these values were high pre-retreat, thus these apparent increases in stresses are not due to temporal increases at fixed locations. For example, during the retreat of Umiamako from 1985 to 2007, near-terminus driving stresses increase by nearly 300 kPa, but  
245 the vast majority (260 kPa) of this increase arises because of an along-fjord increase in stress between 0 and 4 km, with only a fraction of the total (40 kPa) due to a temporal increase in driving stress at 4 km (Fig. 3b). Umiamako experiences a similar magnitude ~~near-terminus increase in~~increase in near-terminus basal drag, also due to along-fjord variability, and stabilizes at a bed high,  $\sim 4$  km, at a pre-retreat fjord maximum in basal drag (Fig. 3c). After the terminus stabilizes, Umiamako continues to



thin from 2007 to 2015 (Fig. 1c) with resulting decreases in near-terminus driving stress ( $\sim 30\%$ ) and all resistive stresses (Fig. 250 3). Importantly, basal drag remains high within a coupling length of the stable 2015 terminus position, possibly explaining the persistence in terminus position at this location.

Unlike Umiamako, Ingia has very little along-fjord variability in stress components within the first 15 km of its terminus (Fig. 2), and maintains persistently low basal drag at the terminus throughout its retreat. The spatially prevalent low-drag conditions throughout the terminus of Ingia are similar to ice shelf conditions. Because the bed cannot support an increase in 255 stress, any reduction in backstress during retreat must be compensated by an increase in lateral drag. Indeed, subsequent to its retreat and drop in longitudinal backstress, Ingia experiences ~~a~~ an acceleration in ice flow velocity and associated two-fold temporal increase in lateral drag ~~and associated acceleration in ice flow velocity~~ (Fig. 2a and d). These results demonstrate that the unique pre-retreat along flow variability in stress state, largely a reflection of glacier geometry, dictates the dynamic changes that ensue after a period of terminus retreat.

### 260 3.4 Dynamics of ~~persistently~~ stable glaciers

Unlike Umiamako and Ingia, Rink Isbrae ~~has not experienced~~ does not experience a significant retreat over the observational period. Rink has nearly double the driving stress, velocity, and thickness of Ingia and Umiamako, and delivers a much larger ice flux to the terminus (Fig. 4). This high ice flux drains a large inland ice catchment (Mouginot et al., 2019) and results in ~~highly compressional flow throughout its trough. This compressional regime is evidenced by large gradients in longitudinal~~ 265 ~~stress~~ high resistance to driving stress from longitudinal stresses as flow is funnelled through the outlet trough ( $\sim 31\%$  of driving stress, Fig. 4e) ~~upstream of the near-terminus region~~. The large contribution of longitudinal resistance to driving stress is unique to Rink; Ingia and Umiamako have longitudinal resistance that is just 4% of driving stress on average upstream of the near-terminus region. Furthermore, ~~the pattern of~~ for two kilometers behind the near-terminus ~~resistance from gradients in longitudinal coupling is opposite for Rink than Ingia and Umiamako; for Rink, the proportion of the driving stress supported~~ 270 ~~by longitudinal resistance increases upstream of the terminus region (first region of Rink, the fraction of longitudinal coupling supporting driving stress stays roughly the same (increases by  $\sim 7$  km; 2% when averaged over the stress coupling length,~~ Fig. 4e). As a result, and opposite to Umiamako and Ingia, a small terminus retreat on Rink would ~~result in increased~~ not result in a drop in near-terminus backstress, ~~further stabilizing the terminus against stress changes from climate induced terminus perturbations~~. It is worth noting that once Umiamako restabilized in 2009, it exhibits an along-flow pattern in the fractional 275 resistance from longitudinal coupling to driving stress that is close to that found on Rink (Fig. 3e), while Ingia maintains a pattern of decreasing longitudinal resistance inland from the terminus through 2015 (Fig. 2e)

## 4 Discussion

Recent work by Wood et al. (2021) shows that ocean warming has likely enhanced terminus melt and melt-induced calving at hundreds of glaciers across Greenland, inducing widespread retreat. Their analysis of Umiamako and Ingia suggests that the 280 termini of these glaciers have easier access to warm ocean waters compared to Rink, which sits on a protective submarine ridge.

Our results are in good agreement with their observations. We show a lack of dynamic change and thinning prior to the retreat of both Ingia and Umiamako, which implicates ocean forcing as the driver for retreat. While an exhaustive study, Wood et al. (2021) were not able to attribute the retreat mechanism for 87 glaciers due to the lack of ocean thermal and bathymetry data within these fjords, which are required for their methods. Our results suggest that an examination of comprehensive glacier elevation, velocity, and surface mass balance data at the onset of retreat provides an independent measure of retreat attribution that can be assessed regardless of ocean data availability.

Through the examination of the time-varying stress state after the onset of retreat, we observe a consistent reduction in longitudinal resistance to driving stress of  $\sim 20\%$  for both Umiamako and Ingia, which is followed by increases in lateral drag and associated acceleration during retreat; although their is uncertainty in the exact magnitude of this drop in longitudinal backstress ~~amounts to a roughly~~, our estimates suggest it amounts to roughly a halving of its role in resisting driving stress. Such observations agree well with previous modeling of dynamic changes during the retreat of outlet glaciers ~~on around~~ Greenland, which indicate longitudinal backstress reductions ~~as are~~ the initial dynamic change during retreat (Nick et al., 2009; Bondzio et al., 2017). ~~If these observations are representative of the ice sheet as a whole, these findings lead us to suggest that the widespread~~ These observation suggest that one potential mechanism for the widely observed acceleration of outlet glaciers around Greenland ~~(King et al., 2018, 2020) is in~~ (Moon et al., 2020; King et al., 2018, 2020) is a response to coupled changes in lateral drag and near-terminus longitudinal backstress initiated by ~~ocean forced retreat. terminus retreat. However, glaciers around Greenland inhabit a wide range of geometries, climate regimes, and fjord geometries (Morlighem et al., 2017; Catania et al., 2018; Felikson et al., 2021) so future study is likely necessary to understand the prevalence of this proposed dynamic connection between retreat and acceleration.~~

Our results provide insight into how long-term retreat and dynamic change can continue even after ocean thermal forcing decreased in 2008 (Wood et al., 2021). We find that retreat persists due to fjord-specific patterns in stress state that are set by the glacier geometry. For some glaciers, like Ingia, the fjord geometry permits low basal drag extending far inland. ~~Thus~~ This region of low basal drag occurs where the submarine bed topography is shallowly retrograde extending far inland up to 15 km (Fig. 2a). As a result of this topography, as Ingia retreats, the near-terminus region continuously experiences ~~no little~~ resistance from basal drag, and the post-retreat drop in backstress is compensated by a large temporal increase in lateral drag and high across-glacier gradients in velocity. Glacier acceleration increases ice discharge, further exacerbating the initial retreat, leading to prolonged mass loss ~~which that~~ continues beyond the initial climate forcing. In contrast, Umiamako has a highly variable spatial pattern in along-fjord basal drag that is conducive to stabilization against continued retreat. A pre-retreat basal drag ~~maxima~~ maximum is maintained throughout retreat ~~4 km~~ four kilometers behind the 1985 terminus, where the bed topography shallows. The initial drop in backstress for Umiamako is thus followed by an abbreviated increase in lateral drag and velocity before restabilization at the basal drag maximum. The role of glacier geometry in dictating retreat length post-climate perturbation is documented both theoretically (Schoof, 2007) and through observations (Catania et al., 2018). We further find a strong role for glacier geometry in setting the terminus stress state and ensuing dynamic changes throughout retreat, both during and after climate forcing.

315 Beyond retreat duration, glacier geometry has been shown to control the amount of thinning that occurs after a terminus  
perturbation (Felikson et al., 2017, 2021). Felikson et al. (2017) identifies points in the along flow glacier domain where a  
thinning wave initiated by terminus retreat will diffuse to, i.e., the Peclet limit. The Peclet limit occurs at 15 kilometers for Ingia  
but outside the area covered by DEMs for Umiamako and Rink (>45 km inland). For Ingia, the flow regime from the terminus  
320 to the Peclet limit is characterized by low driving stress and basal drag (Fig. 2b and c). At the Peclet limit both driving stress and  
basal drag increase by nearly a factor of two. This suggests that the ability for thinning waves to diffuse up glacier is linked to  
the stress state of the glacier, and potentially to the ability for stress changes to be transferred upstream (Bondzio et al., 2017).  
Fundamentally, both the pre-retreat stress state that we identify and the Peclet thinning limit identified by Felikson et al. (2017)  
highlight the importance of glacier geometry in determining the dynamic response to retreat. Furthermore, we find here that  
325 thinning is subsequent and in response to retreat. This ordering is consistent with, and helps to fill in, the chain of events  
suggested by Felikson et al. (2017).

We find a strong imprint of geometry on the observed basal drag, e.g., the first 15 km of Ingia (Fig. 2a and c). This primacy of  
geometry is largely due to the long time scales over which we analyse changes in stress, our focus on relative temporal changes,  
and our analysis of an area that is likely dominated by sliding over soft beds (Andrews et al., 1994). However, subglacial  
hydrology and bed materials play a strong role in regulating basal friction as well, e.g., Joughin et al. (2019); Schoof (2005); Zoet and Iversen  
330 . There are clear examples where changes in subglacial hydrology are almost wholly responsible for basal drag changes.  
For example, on seasonal timescales the glacier geometry is marginally different and yet glacier dynamics show substantial  
variability that is best explained by changes in subglacial hydrology (Howat et al., 2010). Such changes are far below the  
temporal resolution of our analysis, but provide a potential avenue for future work to decipher where and when geometric or  
subglacial processes are paramount in setting basal drag.

335 The catastrophic retreat of Ingia mirrors two other glaciers with observed or modeled stress fields: Columbia Glacier  
in Alaska and Jakobshavn Isbrae-Sermeq Kujalleq (also known as Jakobshavn Isbrae) in Greenland. On Columbia, loca-  
tions of maximum basal drag are located far upstream, ~10 km from the pre-retreat terminus position, and the terminus  
region is characterized by low basal drag throughout retreat, as it approaches flotation (O'Neel, 2005). During retreat lateral  
drag rapidly increases, resulting in a four fold increase in terminus lateral drag from 1980 to 2005 (O'Neel, 2005).  
340 On Jakobshavn, basal drag supports only a small fraction of the driving stress, likely due to a weak bed and low effective  
pressures (Shapero et al., 2016). As a result of these low drag conditions, changes in terminus backstress initiated  
during retreat are rapidly transmitted upstream (Bondzio et al., 2017; Joughin et al., 2012). The contrasting dynamics be-  
tween Umiamako and Ingia, along with the agreement between Ingia, Columbia, and Jakobshavn, suggest that the size of  
the region of low basal resistance upstream of the terminus preconditions the magnitude of glacier retreat and dynamic  
345 change in response to climate forcing. Furthermore, and similar to Umiamako, the retreat of Columbia slowed at a con-  
striction with an along-fjord maximum in basal drag (O'Neel, 2005), indicating that such locations may present points of  
stability during, or after, climate forced retreat. Conditions of low basal drag throughout the near-terminus region of glaciers  
are not restricted to ~~these well-studied glaciers~~ the glaciers in this study, but occur around Greenland (Shapero et al., 2016)  
(Shapero et al., 2016; Sergienko et al., 2014; Seddik et al., 2018; Bartholomaeus et al., 2016; Nick et al., 2009; Meierbachtol et al., 2016; S

350 as many glaciers approach flotation conditions at the ice-ocean boundary. Thus, ~~the widespread one explanation for the~~ on-  
going acceleration and retreat of outlet glaciers in Greenland, despite ~~reduced a pause in~~ ocean thermal forcing (Wood et al.,  
2021), is ~~likely indicative of~~ the continued dynamic evolution of glaciers with sustained low basal drag conditions extending  
far inland.

## 5 Conclusions

355 We use the force balance method to examine the evolving stress fields for three neighboring glaciers with divergent retreat  
histories. Pre-retreat glacier dynamic changes and thinning are either small or non-existent; thus we suggest that these glaciers  
retreated as a result of change in processes at the ice ocean-boundary that occurred due to ocean warming. We find the stress  
state pre-retreat, largely a reflection of fjord-specific glacier geometry, uniquely ~~dietates~~ determines how each glacier responds  
to ocean forced terminus retreat. Without terminus retreat the stress state is largely invariant, particularly for regions upstream of  
360 the terminus. Terminus retreat initiates pronounced changes in stress, but these changes are subsequent to retreat and are largely  
confined to the near-terminus region (within a stress coupling length of the terminus). For retreating glaciers, we find a ~~halving~~  
drop in the fractional resistance to driving stress from longitudinal coupling after the onset of terminus retreat. This is followed  
by a temporal increase in lateral drag and associated glacier acceleration. For glaciers with low basal drag conditions near the  
terminus, acceleration leads to sustained retreat and greater mass loss in response to a period of climate forcing, e.g., Ingia  
365 Isbrae. For glaciers with regions of highly variable basal resistance upstream of the terminus, e.g., Umiamako Isbrae, terminus  
retreat is more readily stabilized. Together, these observations physically link the observed changes in glacier dynamics to  
ocean forced terminus retreat; explain the sometimes contrasting dynamics of neighboring glaciers around Greenland; and  
provide a mechanism for the sustained retreat of glaciers, despite ~~reductions a pause~~ in ocean heat delivery to termini.

*Code and data availability.* Processed ASTER data and merged data for figures are available at <https://github.com/ecFlo/greenlandForceBalance>  
370 along with scripts to make figures and calculate the force balance. All other data products used are publicly available.

*Author contributions.* EC processed the data, wrote the ice flow model, and wrote the original manuscript. All authors designed the study,  
analyzed the results, and contributed to the final manuscript.

*Competing interests.* The authors declare no competing competing interests.

*Acknowledgements.* We thank L. Girod, B. Csatho, and M. Weidersphan who provided assistance with DEM processing-, M. Wood and  
375 D. Felikson for helpful discussions, A. Robinson for handling this manuscript, and L. Ultee and one anonymous reviewer for thoughtful

[comments that improved this manuscript.](#) We acknowledge NASA Grant #80NSSC18K1477 and a JSG Fellowship to E. Carnahan for funding in support of this work.

## References

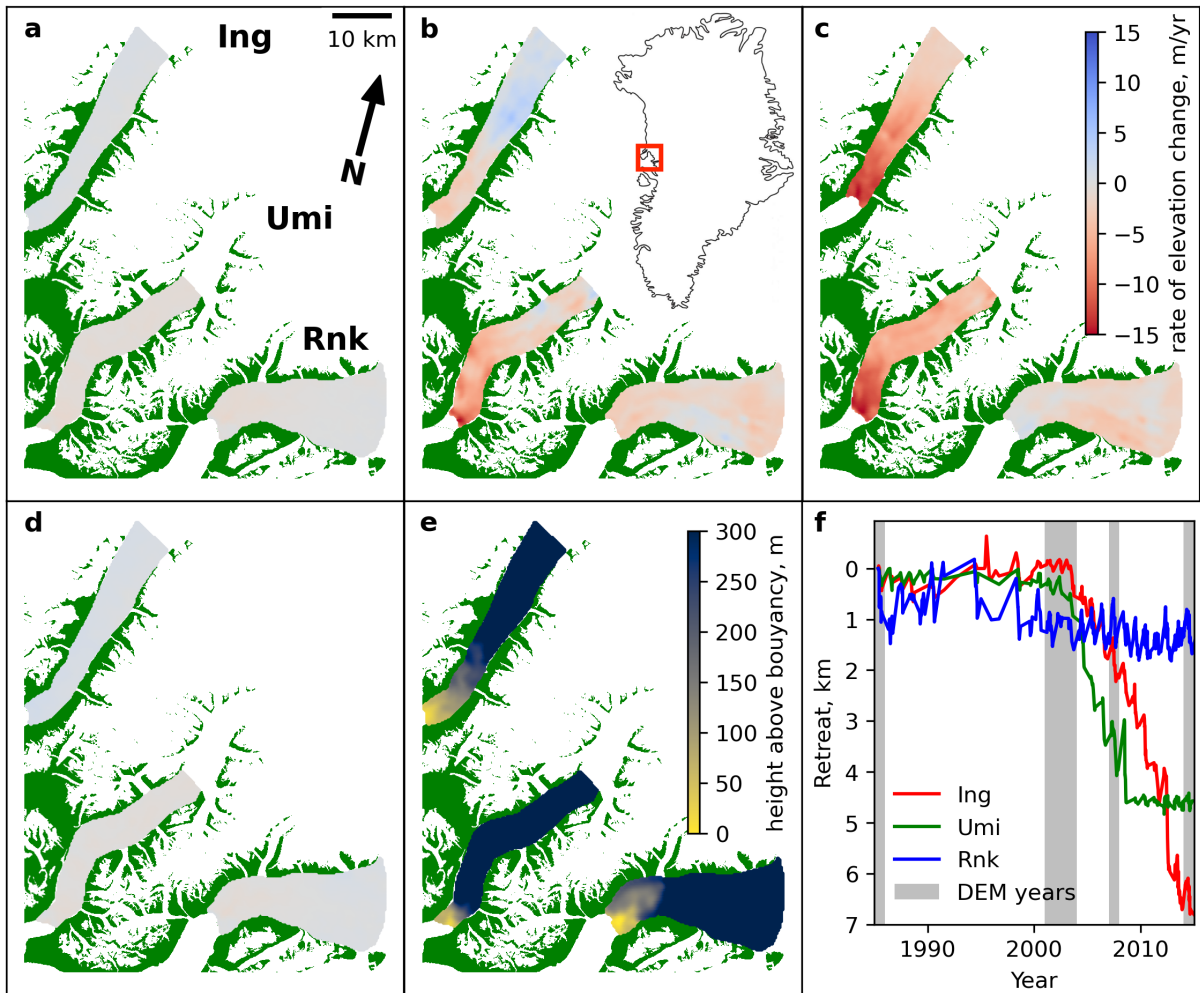
- Amundson, J. M., Fahnestock, M. A., Truffer, M., Brown, J., Brown, J., Lüthi, M. P., and Motyka, R. J.: Ice mélange dynamics and implications for terminus stability, Jakobshavn Isbræ, Greenland, *Journal of Geophysical Research*, 115, F01005, <https://doi.org/10.1029/2009jf001405>, 2010.
- Andrews, J. T., Milliman, J. D., Jennings, A. E., Rynes, N., and Dwyer, J.: Sediment Thicknesses and Holocene Glacial Marine Sedimentation Rates in Three East Greenland Fjords (ca. 68°N), *Journal of Geology*, 102, 669 – 683, 1994.
- Bartholomäus, T. C., Stearns, L. A., Sutherland, D. A., Shroyer, E. L., Nash, J. D., Walker, R. T., Catania, G. A., Felikson, D., Carroll, D., Fried, M. J., Noël, B. P. Y., and Broeke, M. R. v. d.: Contrasts in the response of adjacent fjords and glaciers to ice-sheet surface melt in West Greenland, *Annals of Glaciology*, pp. 1 – 14, <https://doi.org/10.1017/aog.2016.19>, 2016.
- Bondzio, J. H., Morlighem, M., Seroussi, H., Kleiner, T., Rückamp, M., Mouginot, J., Moon, T., Larour, E. Y., and Humbert, A.: The mechanisms behind Jakobshavn Isbræ's acceleration and mass loss: A 3-D thermomechanical model study, *Geophysical Research Letters*, 44, 6252 – 6260, <https://doi.org/10.1002/2017gl073309>, 2017.
- Catania, G. A., Stearns, L. A., Sutherland, D. A., Fried, M. J., Bartholomäus, T. C., Morlighem, M., Shroyer, E. L., and Nash, J. D.: Geometric Controls on Tidewater Glacier Retreat in Central Western Greenland, *Journal of Geophysical Research: Earth Surface*, 123, 2024 – 2038, <https://doi.org/10.1029/2017jf004499>, 2018.
- Csatho, B. M., Schenk, A. F., van der Veen, C. J., Babonis, G. S., Duncan, K., Rezvanbehbahani, S., Broeke, M. R. v. d., Simonsen, S. B., Nagarajan, S., and Angelen, J. H. v.: Laser altimetry reveals complex pattern of Greenland Ice Sheet dynamics, *Proceedings of the National Academy of Sciences*, 111, 18478 – 18483, <https://doi.org/10.1073/pnas.1411680112>, 2014.
- Enderlin, E. M., Hamilton, G. S., Straneo, F., and Sutherland, D. A.: Iceberg meltwater fluxes dominate the freshwater budget in Greenland's icebergs-congested glacial fjords, *Geophysical Research Letters*, 43, 11,287 – 11,294, <https://doi.org/10.1002/2016gl070718>, 2016.
- Enderlin, E. M., O'Neel, S., Bartholomäus, T. C., and Joughin, I. R.: Evolving Environmental and Geometric Controls on Columbia Glacier's Continued Retreat, *Journal of Geophysical Research: Earth Surface*, 28, 2034 – 2018, <https://doi.org/10.1029/2017jf004541>, 2018.
- Felikson, D., Bartholomäus, T. C., Catania, G. A., Korsgaard, N. J., Kjær, K. H., Morlighem, M., Noël, B. P. Y., Broeke, M. R. v. d., Stearns, L. A., Shroyer, E. L., Sutherland, D. A., and Nash, J. D.: Inland thinning on the Greenland ice sheet controlled by outlet glacier geometry, *Nature Geoscience*, 10, 366 – 369, <https://doi.org/10.1038/ngeo2934>, 2017.
- Felikson, D., Catania, G., Bartholomäus, T. C., Morlighem, M., and Noël, B. P. Y.: Steep Glacier Bed Knickpoints Mitigate Inland Thinning in Greenland, *Geophysical Research Letters*, 48, e2020GL090112, <https://doi.org/10.1029/2020gl090112>, 2021.
- Fujisada, H., Bailey, G. B., Kelly, G. G., Hara, S., and Abrams, M. J.: ASTER DEM Performance, *IEEE Transactions on Geoscience and Remote Sensing*, 43, 2707 – 2714, <https://doi.org/10.1109/tgrs.2005.847924>, 2005.
- Gardner, A., Fahnestock, M. A., and Scambos, T. A.: ITS\_LIVE Regional Glacier and Ice Sheet Surface Velocities, National Snow and Ice Data Center, 2019.
- Girod, L., Nuth, C., Kääb, A., McNabb, R., and Galland, O.: MMASTER: Improved ASTER DEMs for Elevation Change Monitoring, *Remote Sensing*, 9, 704 – 25, <https://doi.org/10.3390/rs9070704>, 2017.
- Goldberg, D. N., Heimbach, P., Joughin, I. R., and Smith, B. E.: Committed retreat of Smith, Pope, and Kohler Glaciers over the next 30 years inferred by transient model calibration, *The Cryosphere*, 9, 2429 – 2446, <https://doi.org/10.5194/tc-9-2429-2015>, 2015.

- Goliber, S., Black, T., Catania, G., Lea, J. M., Olsen, H., Cheng, D., Bevan, S., Bjørk, A., Bunce, C., Brough, S., Carr, J. R., Cowton,  
415 T., Gardner, A., Fahrner, D., Hill, E., Joughin, I., Korsgaard, N., Luckman, A., Moon, T., Murray, T., Sole, A., Wood, M., and Zhang,  
E.: TermPicks: A century of Greenland glacier terminus data for use in machine learning applications, *The Cryosphere*, 2021, 1–41,  
<https://doi.org/10.5194/tc-2021-311>, 2022.
- Holland, D. M., Thomas, R. H., Young, B. D., Ribergaard, M. H., and Lyberth, B.: Acceleration of Jakobshavn Isbræ triggered by warm  
subsurface ocean waters, *Nature Geoscience*, 1, 659 – 664, <https://doi.org/10.1038/ngeo316>, 2008.
- 420 Howat, I. M., Box, J. E., Ahn, Y., Herrington, A., and McFadden, E. M.: Seasonal variability in the dynamics of marine-terminating outlet  
glaciers in Greenland, *Journal of Glaciology*, 56, 601–613, 2010.
- Howat, I. M., Negrete, A., and Smith, B. E.: The Greenland Ice Mapping Project (GIMP) land classification and surface elevation data sets,  
*The Cryosphere*, 8, 1509–1518, <https://doi.org/10.5194/tc-8-1509-2014>, 2014.
- IPCC: Climate Change 2021: The Physical Science Basis. Contribution of Working Group I to the Sixth Assessment Report of the Intergov-  
425 ernmental Panel on Climate Change, Tech. rep., Cambridge University Press, 2021.
- Joughin, I. R., Das, S. B., King, M. A., Smith, B. E., Howat, I. M., and Moon, T.: Seasonal speedup along the western flank of the Greenland  
Ice Sheet., *Science*, 320, 781–783, <https://doi.org/10.1126/science.1153288>, 2008.
- Joughin, I. R., Smith, B. E., Howat, I. M., Floricioiu, D., Alley, R. B., Truffer, M., and Fahnestock, M. A.: Seasonal to decadal scale variations  
in the surface velocity of Jakobshavn Isbrae, Greenland: Observation and model-based analysis, *Journal of Geophysical Research*, 117,  
430 <https://doi.org/10.1029/2011jf002110>, 2012.
- Joughin, I. R., Smith, B. E., and Schoof, C. G.: Regularized Coulomb Friction Laws for Ice Sheet Sliding: Application to Pine Island Glacier,  
Antarctica, *Geophysical Research Letters*, 310, 456 – 458, <https://doi.org/10.1029/2019gl082526>, 2019.
- Kamb, W. B.: Sliding Motion of Glaciers: Theory and Observation., *Reviews of Geophysics and Space Physics*, 8, 673 – 728, 1970.
- King, M. D., Howat, I. M., Jeong, S., Noh, M.-J., Wouters, B., Noël, B. P. Y., and Broeke, M. R. v. d.: Seasonal to decadal variability in ice  
435 discharge from the Greenland Ice Sheet, *The Cryosphere*, 12, 3813 – 3825, <https://doi.org/10.5194/tc-12-3813-2018>, 2018.
- King, M. D., Howat, I. M., Candela, S. G., Noh, M.-J., Jeong, S., Noël, B. P. Y., Broeke, M. R. v. d., Wouters, B., and Negrete, A.:  
Dynamic ice loss from the Greenland Ice Sheet driven by sustained glacier retreat, *Nature Communications Earth & Environment*, 1, 1,  
<https://doi.org/10.1038/s43247-020-0001-2>, 2020.
- Korsgaard, N. J., Nuth, C., Khan, S. A., Kjellerup, K. K., Bjørk, A. A., Schomacker, A., and Kjær, K. H.: Digital elevation model  
440 and orthophotographs of Greenland based on aerial photographs from 1978–1987, *Nature Scientific Data*, 3, 160032 – 160015,  
<https://doi.org/10.1038/sdata.2016.32>, 2016.
- Lliboutry, L. A.: Local frictions laws for glaciers: a critical review and new openings, *Journal of Glaciology*, 23, 67 – 95, 1979.
- MacAyeal, D. R.: Large-scale ice flow over a viscous basal sediment: Theory and Application to Ice Stream B, Antarctica, *Journal of*  
*Geophysical Research*, 94, 4071 – 4078, 1989.
- 445 MacAyeal, D. R.: The basal stress distribution of Ice Stream E, Antarctica, inferred by control methods, *Journal of Geophysical Research*  
*Solid Earth*, 97, 595 – 603, <https://doi.org/10.1029/91jb02454>, 1992.
- Mankoff, K. D., Solgaard, A., Colgan, W., Ahlstrøm, A. P., Khan, S. A., and Fausto, R. S.: Greenland Ice Sheet solid ice discharge from  
1986 through March 2020, *Earth System Science Data*, 12, 1367–1383, <https://doi.org/10.5194/essd-12-1367-2020>, 2020.
- Meierbachtol, T., Harper, J., and Johnson, J.: Force Balance along Isunnguata Sermia, West Greenland, *Frontiers in Earth Science*, 4, 87,  
450 <https://doi.org/10.3389/feart.2016.00087>, 2016.

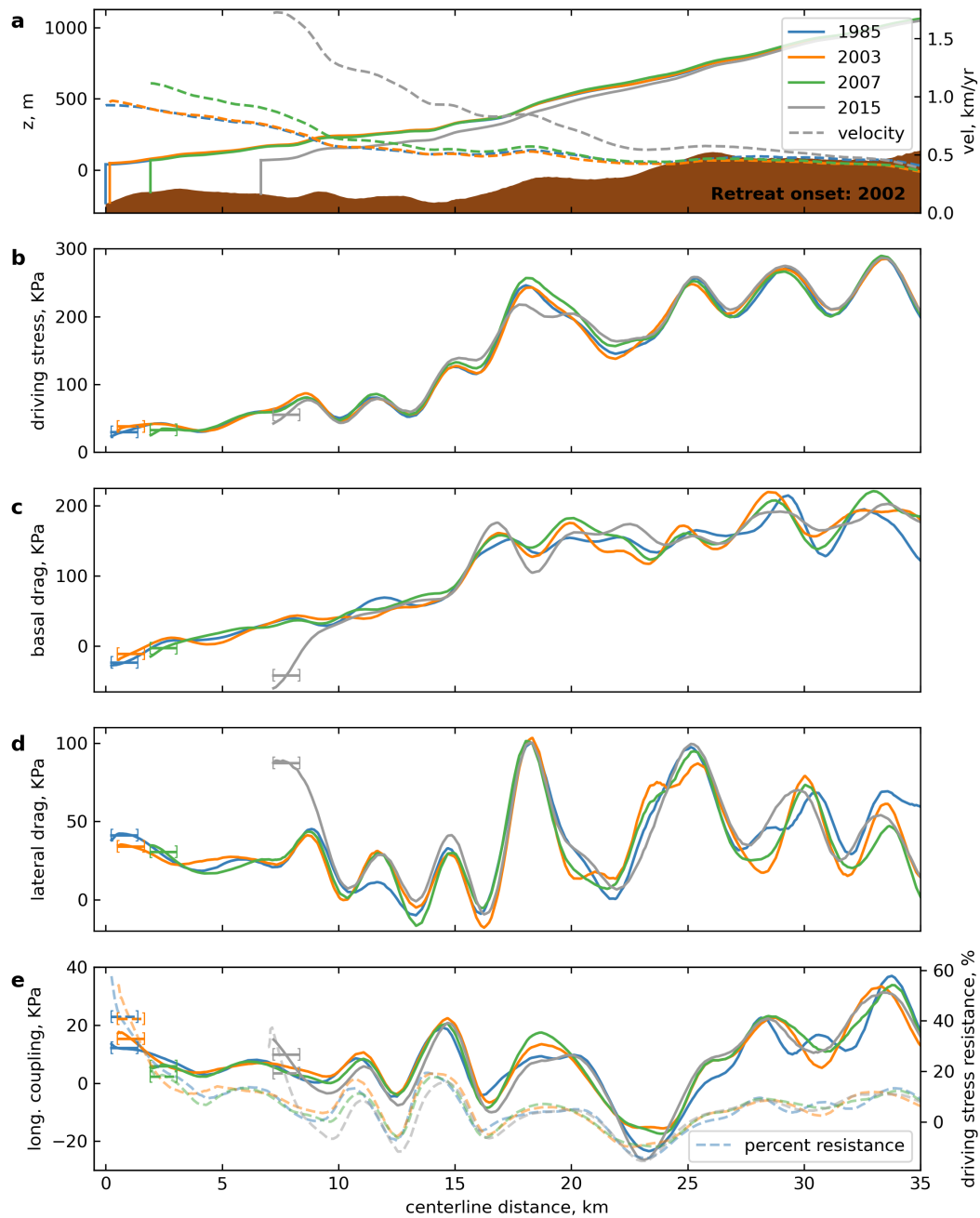
- Minchew, B. M., Meyer, C. R., Pegler, S. S., Lipovsky, B. P., Rempel, A. W., Gudmundsson, G. H., and Iverson, N. R.: Comment on “Friction at the bed does not control fast glacier flow”, *Science*, 363, <https://doi.org/10.1126/science.aau6055>, 2019.
- Moon, T., Gardner, A., Csatho, B. M., Parmuzin, I., and Fahnestock, M. A.: Rapid reconfiguration of the Greenland Ice Sheet coastal margin, *Journal of Geophysical Research: Earth Surface*, in press, 2020.
- 455 Morlighem, M., Williams, C. N., Rignot, E. J., An, L., Arndt, J. E., Bamber, J. L., Catania, G. A., Chauché, N., Dowdeswell, J. A., Dorschel, B., Fenty, I. G., Hogan, K. A., Howat, I. M., Hubbard, A. L., Jakobsson, M., Jordan, T. M., Kjellerup, K. K., Millan, R., Mayer, L. A., Mouginit, J., Noël, B. P. Y., O’Cofaigh, C., Palmer, S. J., Rysgaard, S., Seroussi, H., Siegert, M. J., Slabon, P., Straneo, F., Broeke, M. R. v. d., Weinrebe, W., Wood, M. H., and Zinglensen, K. B.: BedMachine v3: Complete Bed Topography and Ocean Bathymetry Mapping of Greenland From Multibeam Echo Sounding Combined With Mass Conservation, *Geophysical Research Letters*, 44, 11,051 – 11,061, 460 <https://doi.org/10.1002/2017gl074954>, 2017.
- Morlighem, M., Wood, M. H., Seroussi, H., Choi, Y., and Rignot, E. J.: Modeling the response of northwest Greenland to enhanced ocean thermal forcing and subglacial discharge, *The Cryosphere*, 13, 723 – 734, <https://doi.org/10.5194/tc-13-723-2019>, 2019.
- Motyka, R. J., Truffer, M., Fahnestock, M. A., Mortensen, J., Rysgaard, S., and Howat, I. M.: Submarine melting of the 1985 Jakobshavn Isbræ floating tongue and the triggering of the current retreat, *Journal of Geophysical Research*, 116, n/a – n/a, 465 <https://doi.org/10.1029/2009jf001632>, 2011.
- Mouginit, J., Rignot, E. J., Bjørk, A. A., Broeke, M. R. v. d., Millan, R., Morlighem, M., Noël, B. P. Y., Scheuchl, B., and Wood, M. H.: Forty-six years of Greenland Ice Sheet mass balance from 1972 to 2018, *Proceedings of the National Academy of Sciences*, 116, 9239 – 9244, <https://doi.org/10.7280/d1mm37>, 2019.
- Murray, T., Scharer, K., Selmes, N., Booth, A. D., James, T. D., Bevan, S. L., Bradley, J. A., Cook, S., Llana, L. C., Drocourt, Y., Dyke, 470 L. M., Goldsack, A., Hughes, A. L. C., Luckman, A. J., and McGovern, J.: Extensive Retreat of Greenland Tidewater Glaciers, 2000–2010, *Arctic, Antarctic, and Alpine Research*, 47, 427 – 447, <https://doi.org/10.1657/aaar0014-049>, 2015.
- Nick, F. M., Vieli, A., Howat, I. M., and Joughin, I. R.: Large-scale changes in Greenland outlet glacier dynamics triggered at the terminus, *Nature Publishing Group*, 2, 110 114, <https://doi.org/10.1038/ngeo394>, 2009.
- Noël, B., Berg, W. J. v. D., Wessem, J. M. v., Meijgaard, E. v., As, D. v., Lenaerts, J. T. M., Lhermitte, S., Munneke, P. K., Smeets, C. J. 475 P. P., Ulft, L. H. v., Wal, R. S. W. v. d., and Broeke, M. R. v. d.: Modelling the climate and surface mass balance of polar ice sheets using RACMO2 – Part 1: Greenland (1958–2016), *The Cryosphere*, 12, 811 831, <https://doi.org/10.5194/tc-12-811-2018>, 2018.
- Nuth, C. and Kääb, A.: Co-registration and bias corrections of satellite elevation data sets for quantifying glacier thickness change, *The Cryosphere*, 5, 271 290, <https://doi.org/10.5194/tc-5-271-2011>, 2011.
- Nye, J. F.: Glacier sliding without cavitation in a linear viscous approximation, *Proceedings of the Royal Society A: Mathematical, Physical 480 and Engineering Sciences*, 315, 381 – 403, 1970.
- O’Neel, S.: Evolving force balance at Columbia Glacier, Alaska, during its rapid retreat, *Journal of Geophysical Research*, 110, F03 012, <https://doi.org/10.1029/2005jf000292>, 2005.
- Price, S. F., Bindschadler, R. A., and Hulbe, C. L.: Force balance along an inland tributary and onset to Ice Stream D, West Antarctica, 2002.
- Schoof, C. G.: The effect of cavitation on glacier sliding, *Proceedings of the Royal Society A: Mathematical, Physical and Engineering 485 Sciences*, 461, 609 627, <https://doi.org/10.1098/rspa.2004.1350>, 2005.
- Schoof, C. G.: Ice sheet grounding line dynamics: Steady states, stability, and hysteresis, *Journal of Geophysical Research*, 112, 1720, <https://doi.org/10.1029/2006jf000664>, 2007.



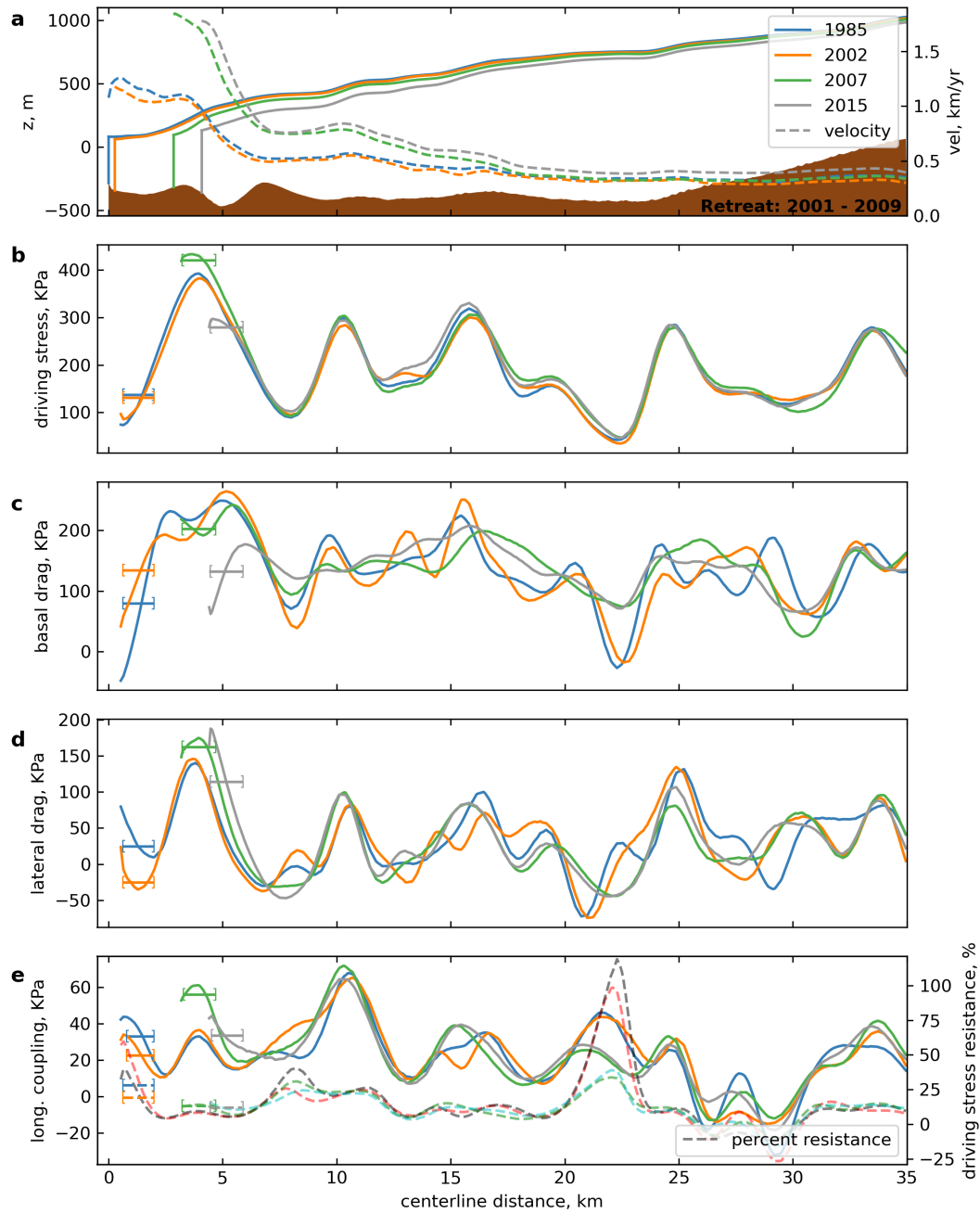
- Seddik, H., Greve, R., Sakakibara, D., Tsutaki, S., Minowa, M., and Sugiyama, S.: Response of the flow dynamics of Bowdoin Glacier, northwestern Greenland, to basal lubrication and tidal forcing, *Journal of Glaciology*, 65, 225–238, <https://doi.org/10.1017/jog.2018.106>, 2018.
- 490 Sergienko, O., Creyts, T. T., and Hindmarsh, R. C. A.: Similarity of organized patterns in driving and basal stresses of Antarctic and Greenland ice sheets beneath extensive areas of basal sliding, *Geophysical Research Letters*, pp. n/a – n/a, <https://doi.org/10.1002/2014gl059976>, 2014.
- Shapero, D. R., Joughin, I. R., Poinar, K., Morlighem, M., and Gillet-Chaulet, F.: Basal resistance for three of the largest Greenland outlet glaciers, *Journal of Geophysical Research: Earth Surface*, 121, 168 – 180, <https://doi.org/10.1002/2015jf003643>, 2016.
- 495 Shean, D. E., Alexandrov, O., Moratto, Z. M., Smith, B. E., Joughin, I. R., Porter, C., and Morin, P.: An automated, open-source pipeline for mass production of digital elevation models (DEMs) from very-high-resolution commercial stereo satellite imagery, *ISPRS Journal of Photogrammetry and Remote Sensing*, 116, 101 – 117, <https://doi.org/10.1016/j.isprsjprs.2016.03.012>, 2016.
- Stearns, L. A. and van der Veen, C. J.: Friction at the bed does not control fast glacier flow, *Science*, 361, 273 – 277, 500 <https://doi.org/10.1126/science.aat2217>, 2018.
- Stearns, L. A. and van der Veen, C. J.: Response to Comment on “Friction at the bed does not control fast glacier flow”, *Science*, 363, <https://doi.org/10.1126/science.aau8375>, 2019.
- Stearns, L. A., Jezek, K. C., and van der Veen, C.: Decadal-scale variations in ice flow along Whillans Ice Stream and its tributaries, West Antarctica, *Journal of Glaciology*, 51, 147–157, <https://doi.org/10.3189/172756505781829610>, 2005.
- 505 Straneo, F. and Heimbach, P.: North Atlantic warming and the retreat of Greenland’s outlet glaciers, *Nature*, 504, 36–43, <https://doi.org/10.1038/nature12854>, 2013.
- Taylor, J.: *An Introduction to Error Analysis: The Study of Uncertainties in Physical Measurements*, vol. 2, University Science Books, 1996.
- Thomas, R. H.: Force-perturbation analysis of recent thinning and acceleration of Jakobshavn Isbræ, Greenland, *Journal of Glaciology*, 50, 57–66, <https://doi.org/10.3189/172756504781830321>, 2004.
- 510 Thomas, R. H. and Bentley, C. R.: A model for Holocene retreat of the West Antarctic Ice Sheet, *Quaternary Research*, 10, 150–170, [https://doi.org/10.1016/0033-5894\(78\)90098-4](https://doi.org/10.1016/0033-5894(78)90098-4), 1978.
- Thomas, R. H., Abdalati, W., Friderick, E., Krabill, W. B., Manizade, S. S., and Steffen, K.: Investigation of surface melting and dynamic thinning on Jakobshavn Isbrae, Greenland, *Journal of Glaciology*, 49, 231 – 239, 2003.
- van der Veen, C. J. and Whillans, I. M.: Force Budget: I. Theory and Numerical Methods, *Journal of Glaciology*, 35, 68–80, 515 <https://doi.org/10.3198/1989jog35-119-53-60>, 1989.
- van der Veen, C. J., Plummer, J., and Stearns, L. A.: Controls on the recent speed-up of Jakobshavn Isbrae, West Greenland, *Journal of Glaciology*, 57, 770 – 782, 2011.
- van der Veen, C.J.: *Fundamentals of Glacier Dynamics*, vol. 2, CRC Press, 2013.
- Wood, M. H., Rignot, E. J., Fenty, I. G., An, L., Bjørk, A., Broeke, M. R. v. d., Cai, C., Kane, E., Menemenlis, D., Millan, R., Morlighem, M., 520 Mouginit, J., Noël, B. P. Y., Scheuchl, B., Velicogna, I., Willis, J. K., and Zhang, H.: Ocean forcing drives glacier retreat in Greenland., *Science Advances*, 7, <https://doi.org/10.1126/sciadv.aba7282>, 2021.
- Zoet, L. K. and Iverson, N.: A slip law for glaciers on deformable beds, *Science*, 368, 76 – 78, 2020.
- Zwally, H. J., Abdalati, W., Herring, T., Larson, K. M., Saba, J. L., and Steffen, K.: Surface Melt-Induced Acceleration of Greenland Ice-Sheet Flow, *Science*, 297, 218 – 222, 2002.



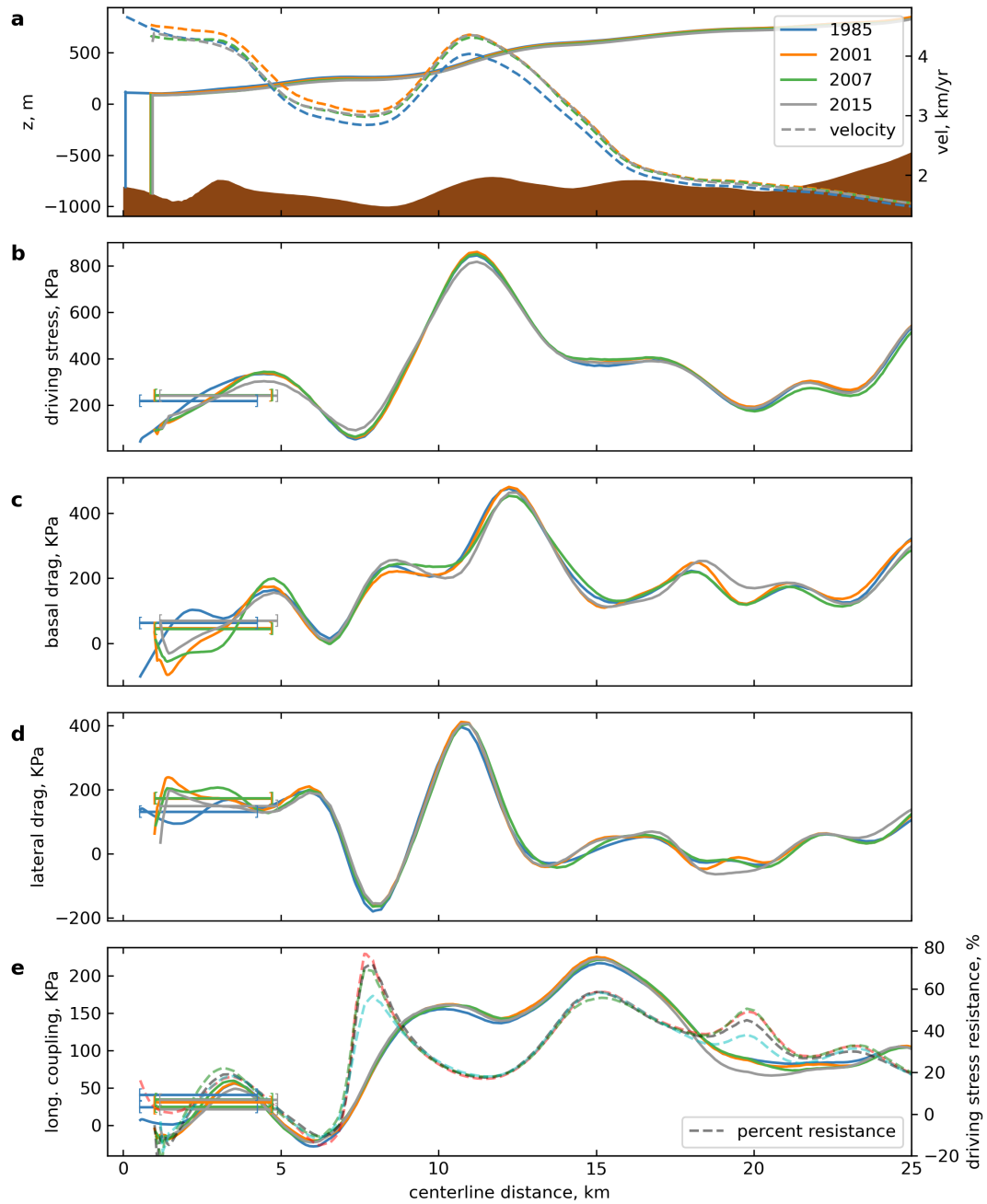
**Figure 1.** Rate of total elevation change for Ingia Isbrae ([Ing](#)), Umiamakko Sermia ([Umi](#)), and Rink Isbrae ([Rnk](#)) from (a) 1985 to ~2002 ([Ingia: 2003, Umiamakko: 2002, Rink: 2001](#)) (b) ~2002 to ~2007 and (c) ~2007 to ~2015. (d) Dynamic thinning, (total thinning minus thinning from surface mass balance prior to glacier retreat) from 1985 to ~2002. (e) Glacier height-above-buoyancy assuming an open connection to sea level, an ice overburden pressure upper bound, in 1985. [In green is the land around the glaciers. All glaciers shown flow from the interior of Greenland on the right hand side of the figures to the ocean on the left where they terminate.](#) (f) Glacier retreat histories since 1985 (Catania et al., 2018), along with dates of [available](#)-DEMs used.



**Figure 2.** Time series of centerline dynamic components for Ingia Isbrae. Marked by the bracketed lines are the average values within one stress coupling length of the **current terminus at that time**. (a) Surface and bed elevation and velocity profiles along flow. Along flow (b) driving stress, (c) basal drag, (d) lateral drag, (e) and longitudinal coupling and percentage of driving stress supported by longitudinal coupling. Positive values of driving stress act in the direction of flow, positive values of all other stresses oppose flow.



**Figure 3.** Time series of centerline dynamic components for Umiamik Sermia. Marked by the bracketed lines are the average values within one stress coupling length of the **current** terminus at that time. (a) Surface and bed elevation profiles, and along flow velocity. Along flow (b) driving stress, (c) basal drag, (d) lateral drag, (e) and longitudinal coupling and percentage of driving stress supported by longitudinal coupling. Positive values of driving stress act in the direction of flow, positive values of all other stresses oppose flow.



**Figure 4.** Time series of centerline dynamic components for Rink Isbrae. Marked by the bracketed lines are the average values within one stress coupling length of the **current-terminus at that time**. (a) Surface and bed elevation profiles, and along flow velocity. Along flow (b) driving stress, (c) basal drag, (d) lateral drag, (e) and longitudinal coupling and percentage of driving stress supported by longitudinal coupling. Positive values of driving stress act in the direction of flow, positive values of all other stresses oppose flow.