

High-resolution debris cover mapping using UAV-derived thermal imagery: limits and opportunities

Deniz Tobias Gök¹, Dirk Scherler^{1,2}, Leif Stefan Anderson^{1,3}

¹GFZ German Research Centre for Geosciences, Telegrafenberg, 14473 Potsdam, Germany

5 ²Institute of Geological Sciences, Freie Universität Berlin, 12249 Berlin, Germany

³University of Utah, Salt Lake City, 000, United States

Correspondence to: Deniz Tobias Gök (d_goek@gfz-potsdam.de)

Abstract. Debris-covered glaciers are widespread in high mountain ranges on Earth. However, the dynamic evolution of debris-covered glacier surfaces is not well understood, in part due to difficulties ~~of in~~ mapping debris ~~cover~~ thickness in high
10 spatiotemporal resolution. In this study, we present land surface temperatures (LST) ~~of supraglacial debris cover~~ and its diurnal variability measured from an unpiloted aerial vehicle (UAV) at ~~a high (15cm)~~ spatial resolution. We test two common approaches to derive debris thickness maps by (1) solving a surface energy balance model (SEBM) in conjunction with meteorological reanalysis data and (2) least squares regression of a rational curve using debris thickness field measurements. In addition, we take advantage of the measured diurnal temperature cycle and estimate the rate of change of heat storage within
15 the debris cover. Both approaches resulted in debris thickness estimates with ~~an~~ RMSE of 6 to 8 cm between observed and ~~modelled-modelled~~ debris thicknesses, depending on the time of the day. ~~Although the rational curve approach requires in-situ field measurements, the approach is less sensitive to uncertainties in LST measurements compared to the SEBM approach. The rational curve approach is less sensitive to errors in LST compared to the SEBM approach and therefore results in more accurate debris thickness estimates. However, the requirement of debris thickness measurements can be an inhibiting factor~~
20 ~~that supports the SEB approach. Because LST varies throughout the day, the success of a rational function to express the relationship between LST and debris thickness also varies predictably with the time of day. The diurnal variability of the LST controls the relationship between LST and debris thickness and the non-linearity increases with increasing LST.~~ During the warming phase of the debris cover, the LST depends strongly on the terrain aspect, rendering clear-sky morning flights that do not account for aspect-effects problematic. ~~We find the rational curve approach with LST measured in the evening hours~~
25 ~~to yield the best result.~~ Our sensitivity analysis of various parameters in the SEBM highlights the relevance of the effective thermal conductivity when LST is high. ~~The R~~residual and variable bias of UAV-derived LSTs during a flight requires calibration, which we achieve with bare ice surfaces. The model performance would benefit from more accurate LST measurements, which are ~~difficult-challenging~~ to achieve with uncooled sensors ~~in high mountain landscapes~~.

1 Introduction

30 Debris-covered glaciers are common in many mountain ranges globally (Herreid and Pellicciotti, 2020; Scherler et al., 2018). Although debris cover is generally rather thin, usually less than a meter, it ~~can has have a profound influence on~~profoundly influence surface melt rates, and thus the mass balance of glaciers (Rounce et al., 2021). Whereas thin debris cover (< 2 cm) accelerates melt rates, due to the lower albedo compared to clean ice, thick debris cover insulates the ice surface and reduces melt rates (e.g., Østrem, 1959; Nicholson and Benn, 2006). Consequently, ~~heavily debris-covered~~glaciers ~~with widespread~~
35 ~~and thick debris cover~~ can persist longer at lower elevations than debris-free glaciers (Scherler et al., 2011a). Debris-free glaciers worldwide respond to climate change by thinning and retreating (Bolch et al., 2012; Hock et al., 2019; Hock and Huss, 2021). Debris-covered glaciers in contrast show a broad range of responses to climate change ~~with some glaciers being stationary and some retreating as some glaciers are advancing, others are stationary, and some are retreating~~ (Scherler et al., 2011b; Benn et al., 2012; Gardelle et al., 2012; Kirkbride and Deline, 2013; Benn and Evans, 2014). Therefore, regional to

40 global scale predictions of glacier evolution in response to climate change need to account for debris cover (Rounce and McKinney, 2014; Pellicciotti et al., 2015) (~~Rounce and McKinney, 2013; Pellicciotti et al., 2015~~).

Complex interactions between the various elements of debris-covered glaciers (~~Benn et al., 2012; Anderson et al., 2021~~), including differential melt, the overall ~~downglacier down glacier~~ thickening of the debris layer, and the presence of ice cliffs and surface ponds remain not well understood (Benn et al., 2012; Anderson et al., 2021; Kirkbride, 1993; Irvine-Fynn et al., 45 2017; Miles et al., 2018; Anderson and Anderson, 2018). Processes responsible for the extent and thickness of debris cover are the rate of debris supply from bedrock hillslopes, the rate of ablation, which exposes englacially transported debris, and surface processes as well as ice dynamics (Hartmeyer et al., 2020~~ab~~, 2020~~ab~~; Kirkbride and Deline, 2013). As all these processes vary with time, supraglacial debris cover ~~ought to~~ changes in time, too. Indeed, recent studies document changes in debris cover thickness in various mountain ranges on Earth. Most studies, however, focus on changes in the extent of debris 50 cover (Shukla et al., 2009; Bhambri et al., 2011; Glasser et al., 2016; ~~Gibson et al., 2017~~; Tielidze et al., 2020, (Kaushik et al., 2022)), whereas studies documenting changes in thickness are relatively rare (Stewart et al., 2021; Gibson et al., 2017) (~~Stewart et al., 2021~~). In addition, debris thickness observations based on satellite imagery are at best limited to a relatively coarse spatial resolution of tens of meters. In particular, ~~surface processes, the abundance of such as~~ supraglacial streams, ~~the growth and decay of~~ ponds and ice cliffs ~~can increase or decrease are expected to vary~~ rapidly across the glacier 55 surface (Anderson et al., 2021). A better understanding of transport ~~and and the~~ emergence of supraglacial debris over short timescales requires the development of quantitative models. Therefore, comprehensive observations of debris-cover extent ~~and~~ thickness ~~and distribution~~ at high resolution are essential for understanding the dynamic evolution of debris-covered glacier surfaces.

Existing approaches to spatially quantify debris thickness comprise (1) the extrapolation of point or ~~cross-section~~ cross-section 60 field data (McCarthy et al., 2017; Nicholson and Mertes, 2017), (2) the exploitation of the relationship between the land surface temperature (LST) and debris thickness (~~Østrem, 1959~~; Nakawo and Young, 1981), (3) the estimation of sub-debris melt by DEM differencing and converting melt rate to debris thickness based on the Østrem-curve ~~the estimation of melt by DEM differencing and inversion of the Østrem curve~~ (Rounce et al., 2018), (4) a combination of 2 and 3 (Rounce et al., 2021) and (4) the use of synthetic-aperture radar (Huang et al., 2017). It has been shown that the LST can be related to debris thickness 65 by ~~extrapolating-fitting~~ empirical functions (e.g. linear, exponential, rational) using ground data (Mihalcea et al., 2008; McCarthy, 2019; Boxall et al., 2021; Gibson et al., 2017) (~~Mihalcea et al., 2008; McCarthy, 2019; Boxall et al., 2021~~), exponential scaling assuming the lowest measured LST corresponds to 1 cm debris thickness (Kraaijenbrink et al., 2017), or solving a surface energy balance model for debris thickness with meteorological data input from either automated weather stations or reanalysis data (Zhang et al., 2011; Foster et al., 2012; Rounce and McKinney, 201~~43~~; Schauwecker et al., 2015; 70 Stewart et al., 2021).

Most LST-based approaches to estimate debris-cover thickness have focussed on satellite imagery, whereas studies employing near-ground image acquisition in high resolution are less frequent. Recent technological advancements allow for the estimation of LST at high spatial resolutions on glaciers. LST can be measured in high resolution using uncooled microbolometers applied either obliquely from the ground surface (Hopkinson et al., 2010; Aubry-Wake et al., 2015; Aubry-Wake et al., 2018) or in 75 nadir mounted to an unpiloted aerial vehicle (UAV) (Kraaijenbrink et al., 2018). ~~Both applications to measure LST hold various opportunities and limits.~~ Debris thickness was recently mapped using oblique LST (Herreid, 2021), but the quantification of debris thickness from UAV thermal imagery has remained elusive. The possibility to measure the spatiotemporal variability of LST from the ground or UAV is a particular advantage, as most thermal infrared measurements from space do not have a sub-daily temporal resolution.

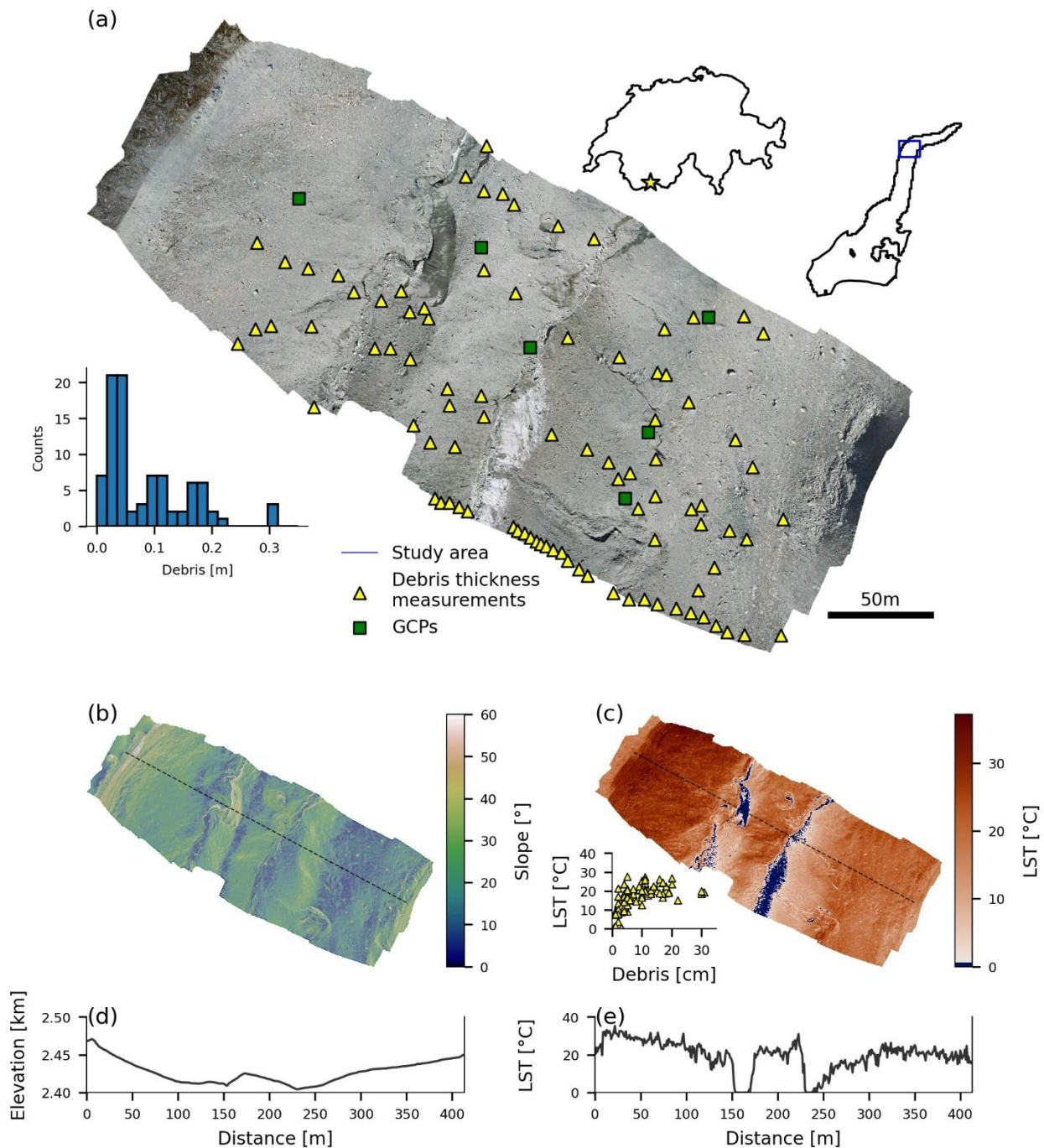
80 Here, we present UAV-derived LST~~s~~ and its diurnal variability to estimate debris thickness as it varies in space ~~for at~~ various times of the day. To estimate debris thickness we, solve a surface energy balance model using ERA-5 reanalysis data and the measured LST~~s~~. We take advantage of the diurnal measurements and consider the debris's change in heat storage as part of the

surface energy balance model. We then compare the results with debris thickness maps derived from the empirical relationship of LST and in-situ measured debris thicknesses using a rational curve.

85

2 Study Area

Tsijiore-Nouve Glacier (TNG) (Fig. 1) located in southwest Switzerland (46.01 °N, 7.46 °E) is around 5 km long with an average width of ~300 m. The surface area of TNG covers ~2.73 km². The glacier is characterized by an ice fall in the central part, separating the debris-covered and the debris-free part of the surface. The flow direction is north and shows a strong eastward knickpoint within the ablation zone. The lateral moraines are very steep and partly vegetated. The surface of TNG hosts steep ice cliffs (Fig. 1b), supraglacial streams, debris-free bare ice parts, partly continuous as well as partly patchy debris-cover of heterogenic thicknesses and grain sizes. The glacier is easily accessible at day and night and therefore well suited for our study. The study focuses on a nearly continuously debris-covered portion of TNG. A relatively small study area of 60000 m² allowed for numerous UAV flights covering the entire study area throughout the day.



95 Fig. 1. Overview of study area on Tsjiore-Nouve Glacier, Switzerland. (a) Orthomosaic from optical unpiloted aerial vehicle (UAV)
 data obtained on 30.08.2019. Yellow triangles indicate locations of debris thickness measurements, and green squares indicate
 ground control points. The histogram shows the distribution of the debris thicknesses measured in the field. (b) Slope map obtained
 from UAV-derived digital elevation model (15 cm resolution). (c) UAV-derived land surface temperature (LST) at 13h. Blue areas
 100 depict LST < 0.5 °C. ~~Inset~~ The inset scatter plot shows in-situ debris thickness measurements versus LST. Black dashed lines in (b)
 and (c) indicate profiles shown in (d) (elevation) and (e) (LST).

3 Materials & Methods

3.1 Field Data

Field data were collected on 30.08.2019 on an area of approximately 60000 m² (Fig. 1a). ~~The meteorological~~
~~conditions were mostly~~ under blue sky conditions (isolated clouds in the late afternoon). Spatially distributed debris surface
 105 temperature was measured between 9 h and 22 h at 2-h intervals to capture the diurnal temperature cycle. Temperature
 measurements were done using a radiometric uncooled microbolometer (FLIR Tau2 longwave infrared thermal camera)
 mounted to a DJI Mavic Pro UAV. The UAV followed the same pre-defined path for all 8 flights at 80 m elevation above the
 glacier surface (terrain adjusted). Optical UAV imagery (12 MP) was recorded simultaneously with the thermal images. The
 thermal sensor operates within a temperature range of -40 °C to 160 °C, has a resolution of 640x512 pixels, which, given the
 110 flight altitude, equating roughly to yields a thermal image resolution of approximately 0.1796-m x 76.80.16 m, and measures
 longwave radiation within a range of 7.5 to 13.5 µm. Recording of the thermal infrared images was done in conjunction with
 the ThermalCapture 2.0 OEM (Teax Technology GmbH), allowing for the storage of images on an SD card. The recording
 was done with a reduced framerate (default 9 Hz). Each flight took between 12 and 15 minutes and captured around 600
thermal images. The ~~set-up~~ setup is suitable for high-mountain UAV applications due to ~~this~~ very low size and weight. Prior
 115 to the UAV flights 6 ground control points (GCPs) were distributed across the area of interest (Fig. 1a). The GCPs ~~we~~ are made
 from aluminium foil ~~what makes them to be~~ clearly recognizable in the thermal images due to the very low emissivity.

Debris thickness measurements were made at 90 locations within the study area (Fig. 1). Coordinates of measurement
 locations were documented using a Garmin Handheld GPS device (horizontal accuracy: ±3.6 m). The debris cover on the
 TNG is generally thin: measured thicknesses are below 30 cm, with a mean of 9 cm, a median of 5 cm, and a standard deviation
 120 of 10 cm. The debris cover close to lateral moraines consists of very large boulders (>0.5 m) that rendered measurements
 impractical and thus introduced a bias on the point measurements. Furthermore, it was not entirely clear where debris-covered
 ice transitioned to lateral moraines near the glacier margin.

3.2 ~~Thermal image correction~~ Thermal drift and offset correction

Uncooled microbolometers are sensitive to environmental temperature fluctuations (Heinemann et al., 2020).
 125 Specifically, the sensor's detector focal plane array, the sensor housing, and the lens of uncooled microbolometers are sensitive
 to temperature changes. Accurate radiometric temperature measurements require a thermal equilibrium between the sensor's
 components and the environment. Unbalanced thermal conditions (e.g. the sensor cools down after UAV take-off, changing
wind conditions, or device heats uping by direct incident shortwave radiation) introduce a temperature bias. ~~Unbalanced~~
~~thermal conditions (e.g. when the sensor casing is cooling down after takeoff) introduce a temperature bias.~~ The thermal
 130 adjustment of the sensor can thus lead to changes in measurements, known as thermal drift: the recorded temperature changes
 while the object's temperature remains the same (Ribeiro-Gomes et al., 2017; Malbêteau et al., 2018; Dugdale et al., 2019a;
 Aragon et al., 2020). Furthermore, the ever-changing micro-meteorological conditions under a drone prevent the perpetuation
 of a thermal equilibrium and hamper accurate radiometric measurements.

The FLIR Tau2 sensor performs an internal calibration, the flat field correction (FFC), to correct for non-uniformities
 135 by lens distortions and variations in the thermal pixel-to-pixel sensitivity. FFC is performed using the shutter at power up,
 when the camera changes temperature, and periodically during operation. The shutter is considered to be a uniform temperature

source for each pixel and is used to update the offset correction coefficients. This internal calibration leads to in-flight temperature jumps that are accounted for in a post-processing step, called drift compensation. The occurrence of the FFC events is used to calculate linearly backward-backwards an offset value for each frame (Teax, personal communication). Usually, this is done automatically by the ThermalViewer software but in our case, the reduced framerate resulted in the loss of several frames containing the FFC occurrence metadata entry. A drawback of the system one should be aware of. However, we identified the frames following the internal calibration and implemented the drift compensation ourselves (Fig. 2b). To find the temperature jumps within the images, we used a threshold of 2 K differences in the mean temperature of the overlapping part in consecutive image pairs. The temperature jumps are clearly visible in the histogram time series (Fig. 2a) and we found this threshold to match the temperature jumps best. The overlap was defined as the bounding box of matching keypoints keypoints_detected in successive images using the Oriented FAST and Rotated BRIEF (ORB) algorithm (Rublee et al., 2011) implemented in the scikit-image python library (Van Der Walt et al., 2014).

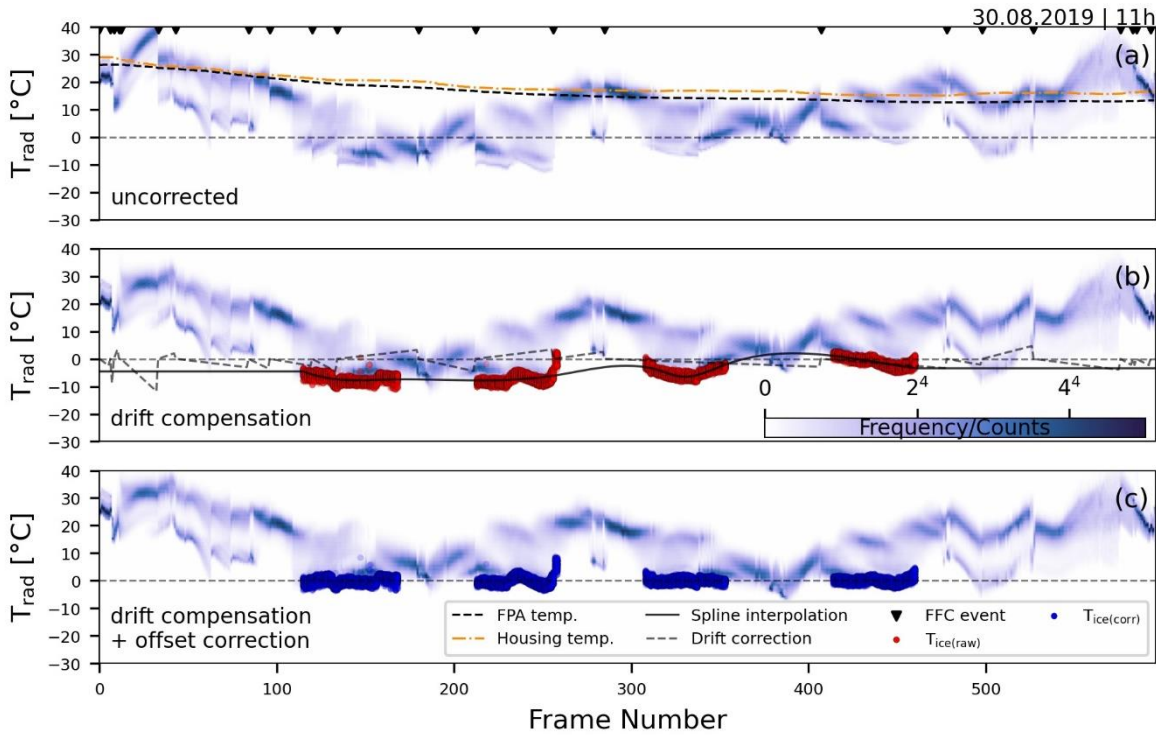


Fig. 2. Thermal correction and calibration using bare ice temperatures on 2019-08-30 at 11:00 local time. Histogram time series, each vertical stripe shows the frequency of measured temperatures of a one thermal infrared image. (a) Raw at-sensor (brightness) temperature with detected flat field correction events (black triangles). The temperatures of the focal plane array (FPA) and housing case returned by the sensor are shown in orange and bold black dashed line and thermal drift correction offset (dashed line). (b) Drift compensated temperatures with ice surface temperatures (red dots) and thermal drift correction offset (dashed line). The black line shows the spline interpolation of the measured ice surface temperatures with the edges set to a constant value. (c) Offset corrected temperatures, each frame based on the spline interpolation that the ice surface temperatures are at 0 °C.

Despite the successful detection of FFC events and applied drift compensation during postprocessing of the temperature data, we still observed bare-ice surfaces with considerable temperature deviations from 0 °C, the expected temperature for a melting ice surface. Furthermore, the remaining temperature bias appears to be not constant with time (Fig. 2b). Therefore, we applied a further calibration step that employs the ice surface as a reference. The air temperature during the day of measurements was well above 0 °C and the ice surface, where visible, was melting. Therefore we asserting assume the LST of the ice surface to be at 0 °C-LST. The extraction of the ice surface was done by a color-based segmentation algorithm using k-means clustering (Pedregosa et al., 2011) and subsequently manually confirmed, similar to the approach of Aubry-Wake et al. (2015). We then interpolated the ice temperatures using splines and calculated an offset correction for each frame, in a manner that the LST of the ice will be 0 °C (Fig. 2c). The drift and offset were similar for most flights, but with the evening flights showed less variation in the ice temperatures. However, for large ice temperature variations, the spline

interpolation may not capture the temperature offset as shown in Fig. 2c (frame ~250). The correction and calibration procedure was applied for each flight.

3.3 Orthomosaic generation (photogrammetry)

Each flight yielded around 600 thermal infrared frames (Fig. 2), of which around 400 have been used to generate orthomosaic maps and 200 were omitted as they recorded the take-off and landing of the UAV. The diurnal variation of the surface temperature and relatively low contrast of thermal images led to spatiotemporal variations in the reconstruction of the 3D point clouds. Instead of additional point cloud alignment (Rusinkiewicz and Levoy, 2001), we orthorectified the thermal images using the same digital surface model (DSM) obtained from simultaneously recorded optical images. Therefore, we identified and marked all GCPs in both the optical and thermal images prior to the photogrammetric processing to improve the image alignment and improving the calculation of the camera calibration parameters (Cook, 2017). As the footprint of the images is relatively large with respect to our area of interest, the 6 GCPs were visible in almost all thermal images. The generated DSM from the optical images was then used as the basis for the thermal image orthorectification. The overlapping parts were reduced by a weighted average during the orthomosaic generation. Agisoft Metashape software offers several options on how to handle overlap areas and we found the default setting to produce the most reasonable results. The generation of orthomosaic maps of both the optical and thermal image datasets (Fig. 1) was accomplished using the program Agisoft Metashape (Agisoft, 2020). The diurnal variation of the surface temperature and relatively low contrast of thermal images lead to spatiotemporal variations in the reconstruction of the 3D point clouds. Instead of additional point cloud alignment (Rusinkiewicz and Levoy, 2001), we orthorectified the thermal images using the same digital surface model (DSM) obtained from simultaneously recorded optical images. Therefore, we identified and marked all GCPs in both the optical and thermal images prior to the photogrammetric processing to improve the image alignment and improving the calculation of the camera calibration parameters (Cook, 2017). The generated DSM from the optical images was then used as the basis for the thermal image orthorectification.

3.3.4 Land surface temperature (LST)

The temperature measured by the sensor, the brightness temperature, is influenced by (1) the upward-directed path radiance, (2) the radiation emitted by the surface towards the sensor and (3) the reflected portion of the incoming atmospheric longwave radiation. Due to the low flight elevation of 80 m above ground we neglect the path radiance. The reflected portion of incoming atmospheric longwave radiation (3) was taken from the downward thermal flux of ERA5 Land hourly reanalysis data (Muñoz Sabater, 2019) with respect to the time of flight. The large footprint of the reanalysis data ($0.1^\circ \times 0.1^\circ$) compared to the small test site ($\sim 150 \text{ m} \times 350 \text{ m}$) might introduce additional uncertainties. However, the influence on the LST is small, as the magnitude of the reflected radiation is also very small. The retrieval of the LST (2) is then a function of the emissivity of the surface material and the atmospheric transmissivity between the ground and the sensor. We assume the transmissivity to be negligible under the meteorological conditions and flight altitude (Kraaijenbrink et al., 2018; Malbêteau et al., 2018). Following Stefan-Boltzmann law we calculated the LST using:

$$LST = \sqrt[4]{\frac{\sigma T_{rad}^4 - (1 - \varepsilon) \cdot LW \downarrow}{\sigma \varepsilon}} \quad \text{Eq. 1,}$$

where σ is the Stefan-Boltzmann constant ($5.67 \times 10^{-8} \text{ W m}^{-2} \text{ K}^{-4}$), ε the emissivity of the surface type (debris=0.94, rough ice=0.97) (Rounce and McKinney, 2014; Aubry-Wake et al., 2015), and $LW \downarrow$ the incoming longwave radiation (W m^{-2}). Some authors point out the relevance of atmospheric transmissivity (Torres-Rua, 2017; Herreid, 2021), while others neglect it

due to low UAV flight elevations above the ground surface (D. G. Sullivan et al., 2007; Hill-Butler, 2014). ~~We think radiation attenuated by water vapour in the atmosphere between the sensor and ground would be spatially uniform and thus compensated by our calibration procedure. We think our calibration procedure compensates for possible radiation attenuation by water vapor content in the atmospheric column.~~ To assign emissivity values across the glacier surface, we distinguished between ice and debris using a supervised random forest classification with manually created training data (Breiman, 2001). ~~By comparison with the optical imagery and according to the algorithm's mean prediction error, we found the best classification results were found~~ when the temperature differences between ice and debris were the largest, ~~at 15 h. Data, in the imagery obtained at 15 h from this time stamp~~ flight were used to classify the thermal imagery.

3.2.3.5 Surface energy balance model

~~Thermal energy fluxes Radiative, convective, and conductive energy fluxes~~ at the earth's surface are described in the surface energy balance approach used here. For a layer of supraglacial debris, the rate of change of heat stored in the debris (ΔS) must balance all incoming and outgoing energy fluxes (all fluxes have units of W m^{-2} and are positive when directed towards the debris layer):

$$\Delta S = SW + LW + LE + H + G \quad \text{Eq. 2,}$$

where SW and LW are the net shortwave and longwave radiation fluxes, H and LE are the sensible and latent heat fluxes, and G is the conductive ~~ground~~ heat flux ~~from the debris into the underlying ice~~. The ~~P~~parameters used in the surface energy balance are listed in Table 1.

Table 1 Parameters used in the surface energy balance model

Model parameter	Symbol	Unit	Value
Debris albedo	α_d	-	0.30
Ice albedo	α_i	-	0.64
Debris emissivity	ϵ_d	-	0.94
Ice emissivity	ϵ_i	-	0.97
Effective thermal conductivity	k	$\text{W m}^{-1} \text{K}^{-1}$	0.96
Surface roughness length	z_0	m	0.016
Measurement height air temperature	z_t	m	2
Measurement height wind speed	z_u	m	10
Debris density	ρ_d	kg m^{-3}	1496
Debris specific heat capacity	c_d	$\text{J kg}^{-1} \text{K}^{-1}$	948
Specific heat capacity of dry air	c_a	$\text{J kg}^{-1} \text{K}^{-1}$	1010
Standard sea-level pressure	P_0	Pa	101325
Air density at sea-level elevation	ρ_{air}	kg m^{-3}	1.29

The net shortwave radiation is a function of the albedo and the amount of incoming solar radiation. We assumed a constant debris surface albedo of 0.3 (Rounce and McKinney, 2014; Schauwecker et al., 2015). Computation of the insolation at the time of the UAV flights was done using a python implementation of the R package 'insol' (Corripio, 2003). The model determines the solar geometry (Iqbal, 1983) and estimates the atmospheric transmissivities (Bird and Hulstrom, 1981) based on a digital elevation model, which in our case was generated from the optical UAV images. Atmospheric attenuation was calculated using the relative humidity and air temperature, from ERA5 Land hourly reanalysis data at each time of flight (Muñoz Sabater, 2019). We also accounted for cast shadows by the surrounding topography, based on a 0.5-m resolution digital elevation model with a larger footprint (Swisstopo, 2010).

Net longwave radiation results from the difference between incoming longwave radiation ($LW\downarrow$) and outgoing longwave radiation ($LW\uparrow$). $LW\downarrow$ is the same as in Eq. 1 and based on ERA5 Land data (see section 3.4). $LW\uparrow$ is a function of the LST and the surface emissivity (see section 3.4) and calculated following Stefan-Boltzmann's law $LW\uparrow = \epsilon \sigma LST^4$. The latent heat flux (LE) is assumed to be 0, as the debris surfaces were dry during the UAV flights.

The sensible heat flux H was estimated using the bulk aerodynamic approach assuming a neutral atmosphere (Nicholson and Benn, 2006; Steiner et al., 2018; Nakawo and Young, 1982; Rounce and McKinney, 2014):

$$H = \rho_{air} \frac{P}{P_0} c_a C_{bt} u (T_{air} - LST) \quad \text{Eq. 3,}$$

where ρ_{air} is the air density at sea level pressure (kg m^{-3}), P_0 is atmospheric pressure at sea level (Pa) and P atmospheric pressure at site elevation (Pa), calculated following Iqbal (1983), c_a is the specific heat capacity of air ($\text{J}^{-1}\text{kg}^{-1}\text{K}^{-1}$) (Brock et al., 2010; Barry et al., 2021), u the wind speed (ms^{-1}), T_{air} the air temperature and C_{bt} the bulk transfer coefficient given as:

$$C_{bt} = \frac{k_*^2}{\ln\left(\frac{z_u}{z_0}\right) \ln\left(\frac{z_t}{z_0}\right)} \quad \text{Eq. 4,}$$

where k_* is the Kármán constant (0.41), z_0 is the surface roughness length (Rounce and McKinney, 2014; Stewart et al., 2021) and z_u and z_t are the measuring height (m) for wind speed and air temperature. The meteorological input data u and T_{air} were taken from ERA5 Land hourly reanalysis data (Muñoz Sabater, 2019).

The conductive heat transfer through the layer of debris and into the ice can be described by Fourier's law assuming a homogeneous layer of debris:

$$G = -k \frac{\partial T}{\partial z} \approx -k \frac{LST - T_{di}}{d} \quad \text{Eq. 5,}$$

where $\frac{\partial T}{\partial z}$ is the temperature gradient in the debris layer and k the effective thermal conductivity ($\text{W m}^{-1}\text{K}^{-1}$). We assume a linear temperature gradient in the debris layer and thus $\frac{\partial T}{\partial z}$ to be equal to the difference between the LST and the temperature of the debris-ice interface (T_{di}), which we assume to be at the melting point 0°C . The assumption of a linear temperature gradient applies only approximately and for thin debris thicknesses ($<10 \text{ cm}$) (Conway and Rasmussen, 2000; Nicholson and Benn, 2006; Rounce and McKinney, 2014). The average diurnal temperature profile through a layer of debris can be considered linear but at sub-daily time intervals, the profile varies in its degree of linearity (Reid and Brock, 2010). We will come back to this point in the discussion.

Solving the surface energy balance at sub-daily time intervals requires knowledge of the energy flux due to the change of heat stored in the layer of debris (ΔS) (Brock et al., 2010).

$$\Delta S = \rho_d c_d \frac{\partial \bar{T}_d}{\partial t} d \quad \text{Eq. 6,}$$

where ρ_d is the debris density (kg m^{-3}), c_d is the specific heat capacity of debris ($\text{J kg}^{-1}\text{K}^{-1}$), d the debris thickness (m) and $\frac{\partial \bar{T}_d}{\partial t}$ the average rate of mean debris temperature change (K s^{-1}) with \bar{T}_d as the mean debris temperature, $(LST + T_{di})/2$, and t the time. Our sub-daily multitemporal LST measurements allow us to estimate temporal changes in LST, but these are very sensitive to uncertainties in the LST measurements (see section 3.2). To avoid such issues, we rely on the diurnal temperature cycle and fitted a linearized harmonic sine function (Shumway and Stoffer, 2016) to the temperature data of each pixel. The first derivative with respect to time of this function is the warming/cooling rate and can be used to calculate the change in the heat storage term.

3.3.3.6 Debris thickness estimation

As both the ~~storage-stored~~ heat flux (ΔS) and the ~~conductive ground~~ heat flux (G) in the surface energy balance model (SEBM) are a function of the debris thickness, the surface energy balance model (section 3.5) can be described by a quadratic equation in form of:

$$d^2 \left(-\rho_d c_d \frac{\partial \bar{T}_d}{\partial t} \right) + d(SW + LW + H) - k(LST - T_{di}) = 0 \quad \text{Eq. 7,}$$

Solving for debris thickness was done using the quadratic formula:

$$d = \frac{-b + \sqrt{b^2 - 4ac}}{2a} \quad \text{Eq. 8,}$$

with $a = -\rho_d c_d \frac{\partial \bar{T}_d}{\partial t}$, $b = S + L + H$ and $c = -k(LST - T_{di})$. Note that the quadratic equation has mathematically two solutions whereas only one is physically plausible.

In addition to the SEBM approach, we also estimated debris thickness for each LST map using a rational curve (McCarthy, 2019; Boxall et al., 2021) of the form

$$d = \frac{LST}{c_1 + c_2 LST} \quad \text{Eq. 9,}$$

where c_1 and c_2 are empirically derived coefficients by a least squares regression.

To evaluate the performance of the two approaches for predicting debris thickness, we used the RMSE between the predicted and the observed debris thickness at the sites surveyed in the field (section 3.1). To account for the accuracy of the handheld GPS device, we used the mean variable values within a 2-m-radius buffered region around the GPS coordinate. Sites for which the SEBM approach did not yield a real and positive number were excluded from the comparison. We discuss the causes for these unphysical solutions in detail in section 5.1. To evaluate the least squares regression of the rational curve we divided the observed debris thickness data into a testing (n=45) and training (n=45) dataset. The testing-training dataset has been used to derive the model coefficients c_1 and c_2 while the testing dataset was used to compare the modelled debris thickness estimates with the field observations.

4 Results

4.1 Land surface temperature and its diurnal variation

The LST changes over the day in a cyclic manner (early morning cool – afternoon hot – evening cool) and consequently the relationship ability to estimate debris thickness using between LST and debris thickness changes accordingly (Fig. 3). Unlike satellite-derived LST observations, our diurnal LST measurements allow us to show how this relationship changes throughout the day.

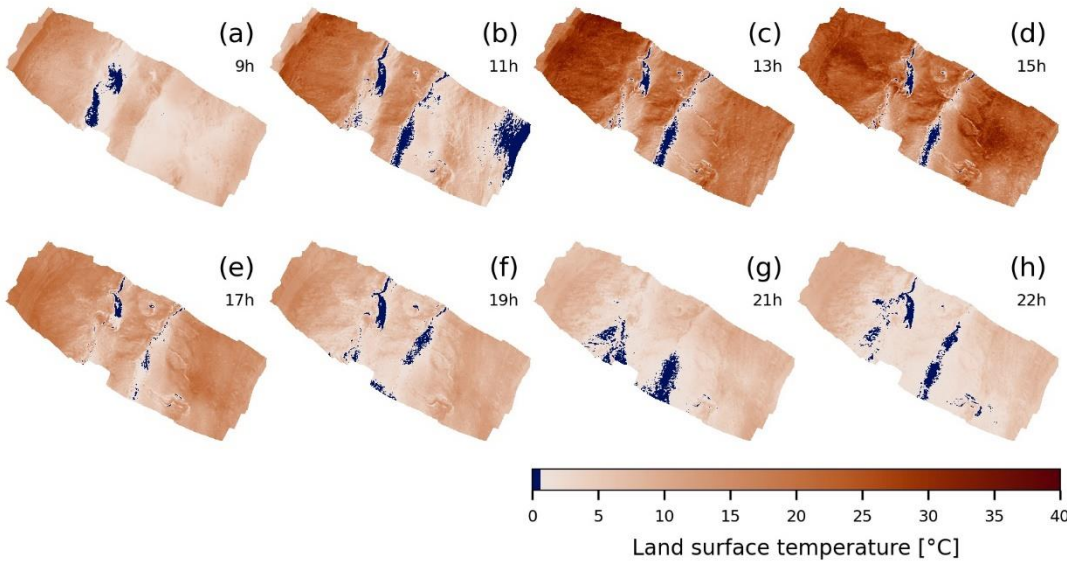


Fig. 3. Spatiotemporal distribution of the land surface temperature (LST). The panels (a-h) show the 8 individual flights describing a large fraction of the diurnal land surface temperature variation. The maps have a spatial resolution of 15 cm and are colored in

dark blue for $LST < 0.5^\circ\text{C}$. Due to the residual uncertainties of the LST, ice surface geometries appear inconsistent with time. The southeast region of the panel (b) (11 h) shows an unreasonable cold temperature due to a failed calibration.

LST and debris thickness are generally positively correlated, but the suitability of a linear model to describe the relationship varies throughout the day with better correlation for cooler temperatures in the evening hours (Fig. 4f-h). For generally cooler temperatures, LST appears to linearly increase with increasing debris thickness (Fig. 4a, b, f h). In the afternoon hours when the debris surface reaches its maximum diurnal temperature, the relationship between debris thickness and LST shows its non-linear nature (Fig. 4c-e). Additionally, we observe the influence of the terrain aspect: east and south-facing slopes heat up earlier compared to west and north-facing slopes (Fig. 4a, b) (Crameri et al., 2020).

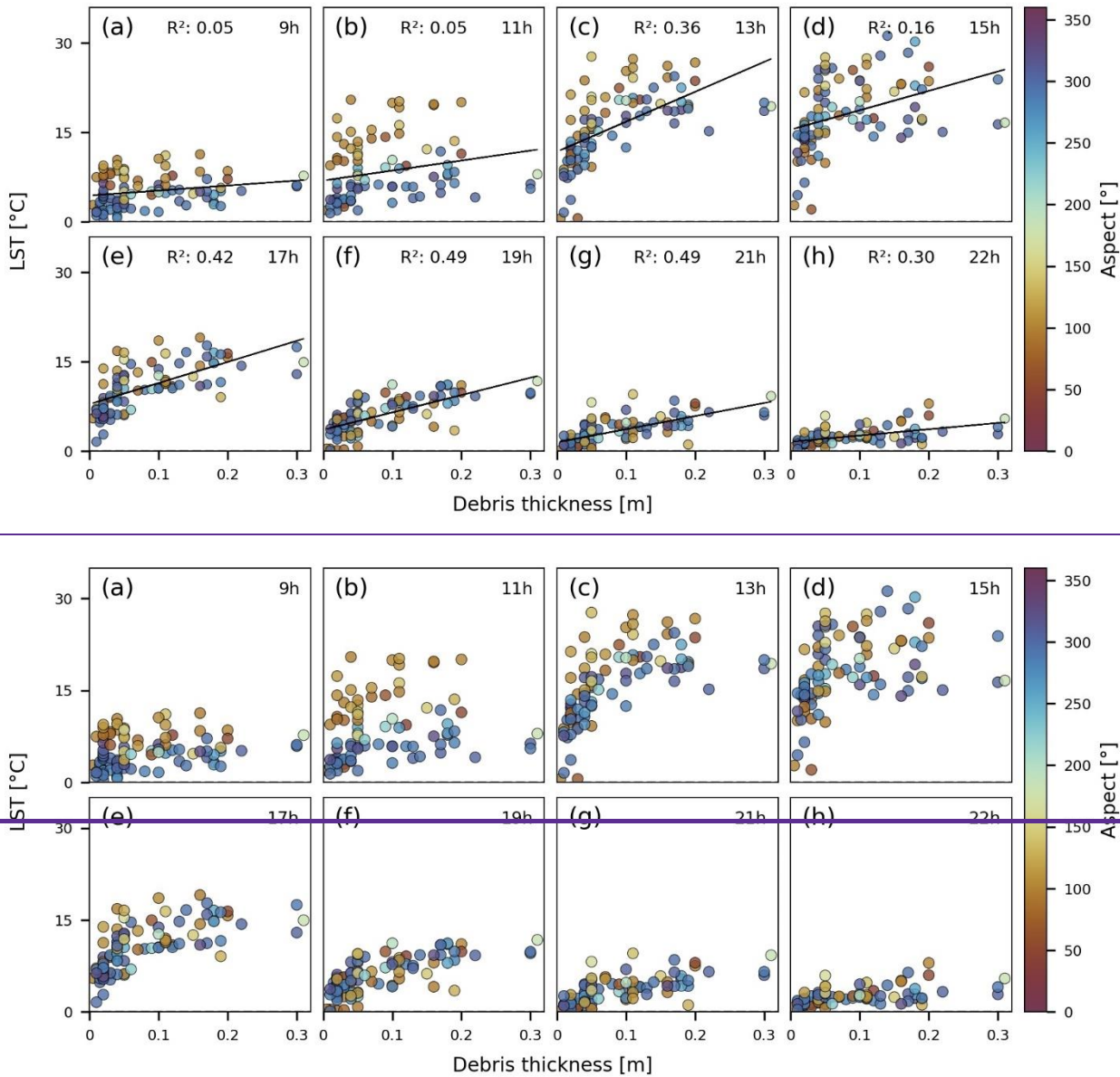


Fig. 4. The temporal variation of the land surface temperature (LST) against in-situ measured debris thickness. Panels (a-h) show the arithmetic mean land surface temperature of a 2 m buffered region around the GPS coordinates of debris thickness measurements colorized for terrain aspect with $0/360^\circ$ facing north. The LST of the warming phases (a-d) is more strongly influenced by the aspect than the cooling phases (e-h). The non-linear nature of the relationship between the LST and debris thickness is noticeably pronounced for higher LST (c-e) while the relationship for low LST appears almost linear (f-h).

The effect of the terrain aspect is not evident during the cooling phase in the afternoon and evening. The spatial and temporal variability of the LST (Fig. 3) shows that at all flight times, surface temperatures are higher at the edges of the glacier (NW and SE) and lower in the central part of the test area. This pattern corresponds to high debris thicknesses at the glacier margins

and thin debris thicknesses or no debris occurrence in the middle part. The mean LSTs of the debris cover follows the expected pathway of a diurnal temperature cycle (Table 2).

Table 2 Mean LST and standard deviation (1σ) of the debris and ice surface type.

Local flight time (h)	Mean $\pm 1\sigma$ (debris) °C	Mean $\pm 1\sigma$ (ice) °C
09 h	7.28 \pm 4.60	1.71 \pm 1.43
11 h	10.68 \pm 7.69	0.87 \pm 1.87
13 h	19.52 \pm 7.13	1.43 \pm 2.87
15 h	21.44 \pm 6.16	1.51 \pm 2.32
17 h	13.31 \pm 4.46	2.26 \pm 2.84
19 h	8.10 \pm 3.76	1.16 \pm 1.56
21 h	5.31 \pm 2.80	1.31 \pm 1.56
22 h	4.59 \pm 2.99	0.72 \pm 0.77

While the general spatial and temporal pattern of LST seems to be reasonable, some areas of concern exist locally. First, the southeastern region of the 11 h flight shows an unreasonable cold temperature patch, which most likely does not represent the actual LST at that time. Instead, we suspect that this artefact corresponds to an uncorrected bias of the thermal correction and calibration process. We will come back to this point in the discussion. Second, the 15 h flight shows a centrally located, transverse-oriented strip of higher LST, which seems to follow the flight path of the UAV. The directional temperature mismatch could be related to an oblique viewing angle of the sensor as the nadir alignment was set up manually and the angle of observation might partly control the amount of radiation received by the sensor and thus the temperature measurement (Norman and Becker, 1995).

In the absence of any other means to assess the precision of the LST values, we suggest that the variability of the bare ice surface temperatures, which ought to be at 0°C, might indicate the bias and precision of the LST. The LST values of ice surface temperatures vary by several degrees with a standard deviation of up to 2.87 °C (Table 2). Mean ice LSTs range between 0.72 and 2.26 °C throughout the day (Table 2). Field observations show that ice cliffs on TNG are often sprinkled with small rocks and/or a thin layer of dust, which might influence the ice LST towards warmer temperatures.

Based on the LST measurements, we estimated the diurnal variation of the depth-integrated mean debris temperature. The pixel-wise fitted harmonic sine functions allow us to estimate the spatially distributed warming and cooling rates, as the first derivative with respect to time. The RMSE of the fit ($mean \pm 1\sigma$) is 1.51 \pm 0.54°C. The spatial distribution of the RMSE (Fig. 5b) is relatively continuous but shows variability where the [before mentioned](#) local LST discrepancies occur. Fig. 5a shows that, depending on the aspect, at 13 h and 15 h the debris surface reaches its maximum LST and consequently the temperature change rate converges to zero.

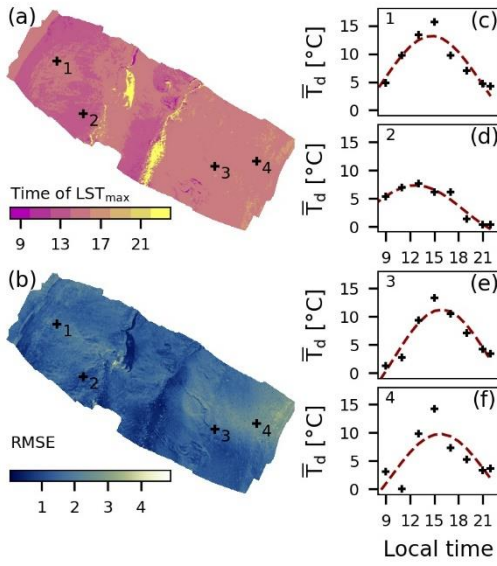


Fig. 5. Sinusoidal regression of mean debris temperature (\bar{T}_d), estimated from LST (Eq. 6.) for each pixel. (a) The panel shows the time at which \bar{T}_d reaches its maximum diurnal temperature as a function of terrain aspect and thereby emphasizes the effect terrain aspect. (b) The RMSE of the regression for each pixel. The southeastern/south-eastern region with larger errors is due to the anomalies in the LST at 11 h, see text for details. The spatial mean of the RMSE is 1.51 °C and the standard deviation is 0.54 °C. The panels (c-f) are example points of the sine function used to derive the warming/ cooling rate in each pixel. Locations of the examples are indicated in panels (a) and (b).

4.2 Surface energy balance modelling

To solve the surface energy balance (Eq. 2) we determined the LST-independent energy flux component SW and the LST-dependent components LW , H , ΔS and G based on the UAV-derived LST maps shown in Fig. 3. In Fig. 6, we show the diurnal variation of each component, evaluated at all locations where we obtained debris thickness measurements. To account for the accuracy of the handheld GPS device, we used the mean variable values within a 2-m radius buffered region around the GPS coordinate.

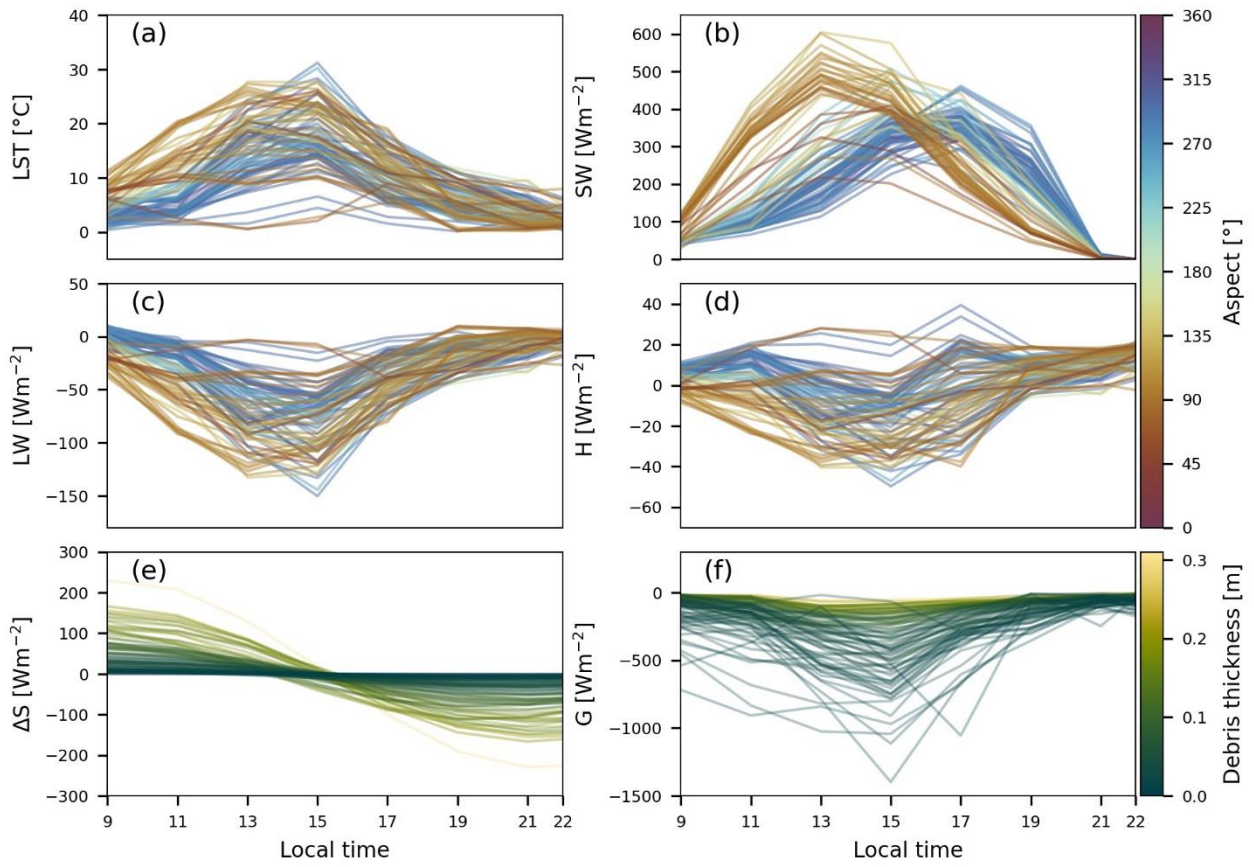


Fig. 6. Energy fluxes at debris thickness measurement locations. Diurnal variations of (a) land surface temperature, LST, (b) net shortwave radiation, SW , (c) net longwave radiation, LW , and (d) sensible heat flux, H , with lines colorized by terrain aspect with 0/360 ° facing north. Diurnal variations of (e) the change in heat storage, ΔS , and (f) the conductive ground heat flux, G , with lines colorized by debris thickness measured in the field. Note that only SW (b) is independent of LST, whereas data in panels (c-f) are a function of LST.

East and south-facing slopes receive their maximum net shortwave radiation (SW) prior to the west and north-facing slopes (Fig. 6b), which explains their earlier increase in LST (Fig. 6a). By 15 h, all sites attained the daily maximum LST and cool down from then on. Despite the remaining differences in SW , no more aspect-related differences in LST can be observed. All the remaining SEBM components are a function of the LST and thus also show an aspect dependency before 15 h. The net longwave component (LW) expectedly mirrors the LST (Fig. 6c). The sensible heat flux (H), calculated using the bulk approach (Eq. 3Eq-3), attains only low flux values close to 0, which is likely related to the low wind velocities ($<1 \text{ ms}^{-1}$) obtained from reanalysis data (Table 3). The rate of change in heat storage within the debris (ΔS) and the conductive ground-heat flux (G) are, besides the LST, a function of the debris thickness (Eq. 6Eq-6, Fig. 6e, f). Whereas ΔS attains the largest magnitudes in the morning and evening hours and where the debris is thick, the opposite is true for G , which is largest at 15h and where the debris is thin.

Table 3 ERA5 Land hourly reanalysis data on 30.08.2019 interpolated at Tsijiore-Nouve Glacier, Switzerland (46.01° N, 7.46° E)

Local flight time (h)	Incoming longwave radiation, $LW \downarrow$ (W m^{-2})	Wind speed, u (m s^{-1})	Air temperature, T_a ($^{\circ}\text{C}$)
09 h	311.03	0.35	6.64
11 h	304.38	0.45	10.29
13 h	304.05	0.48	11.69
15 h	307.31	0.85	12.09
17 h	308.26	0.87	10.24
19 h	307.46	0.41	8.98
21 h	306.71	0.46	7.74
22 h	306.19	0.60	7.20

4.3 Debris thickness estimates from SEBM

The SEBM-derived predictions of debris thickness (Fig. 7) show a general pattern that matches observations in the field and the pattern of measured LST. Predicted debris thicknesses generally range between 0 and 30 cm. Given the chosen input parameters, Eq. 8Eq-8 cannot be solved for all pixels in the first half of the day (9 h to 15 h) (Fig. 7a-d).

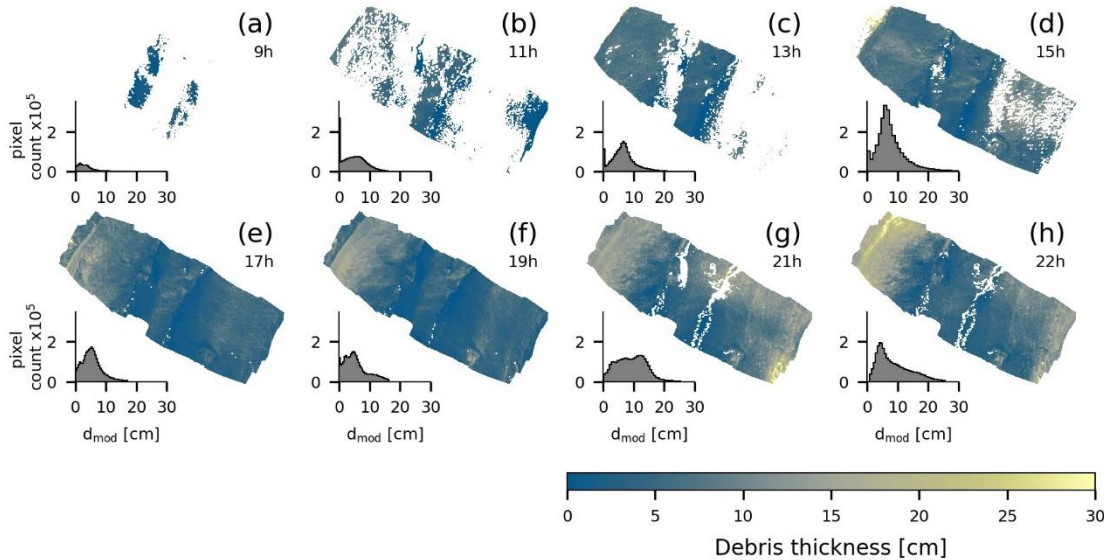


Fig. 7. Estimated debris thicknesses for each flight time. White regions show regions where the surface energy balance model has no valid solution for debris thickness due to high uncertainties in the land surface temperature and reanalysis data. The histograms show the distribution of the predicted debris thicknesses displayed in the maps.

At these times the quantities of the surface energy balance components and the relatively low LST, lead to a negative term under the root in Eq. 8Eq-8, and thus to no valid solution. Predictions of thicker ($>10 \text{ cm}$) debris are primarily found in the

afternoon and evening hours (17 h to 22 h) and the pattern of thin debris (<10 cm) predictions, primarily in the central part of the glacier, is relatively consistent in time.

Comparing the predictions to field observations (Fig. 8) shows that the accuracy of the prediction remains comparable throughout the day with an RMSE of 6 to 8 cm. For ~~some-most~~ of the flights, ~~we find a positive correlation between~~ the predictions ~~correlate well with the~~ and observations, even if they do not follow the 1:1 line. During the warming phase of the day, when the aspect has a strong influence on LST (Fig. 4a-c), the associated debris predictions do not show an aspect-related pattern. In contrast, debris thickness predictions based on the afternoon flights at 17 h and 19 h, seem to correlate with aspect whereas the LST data does not.

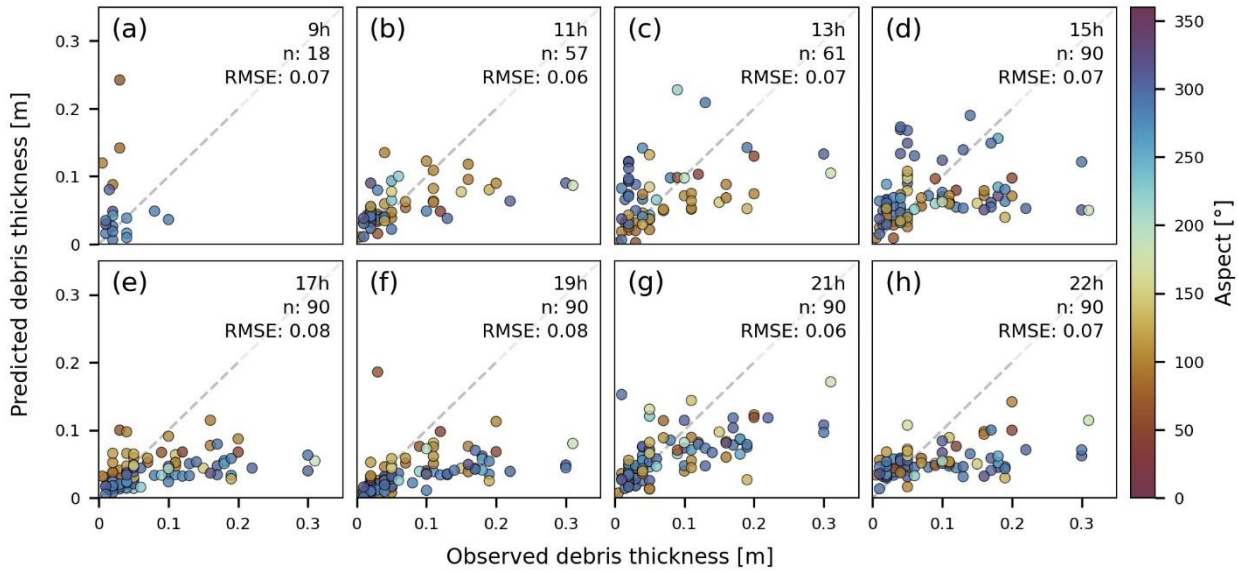


Fig. 8. Comparison of modelled and observed debris thickness for each flight time (a-h) with RMSE values (m) for model evaluation. Sample points are colorized by terrain aspect and the grey dashed line shows the 1:1 line. RMSE for flights (a, b and c) is based on a reduced sample number.

~~Absolute values of Ppredictions of~~ thin debris cover are less sensitive to the time of the day, compared to thick debris. Figure 9a shows the variation of the predicted thicknesses with time along the profile introduced in Fig. 1b as the mean value $\pm 1\sigma$. ~~The spatial variability of the standard deviation is shown in Fig. 9d. As the SEBM does not yield a valid solution for all times of the day, Fig. 9e additionally shows the number of valid predictions in time.~~ Towards the glacier edges where the debris is greater than 10 cm, the spread in the standard deviation increases, compared to the central part, showing that the prediction of thick debris cover varies stronger in time than for thin debris cover.

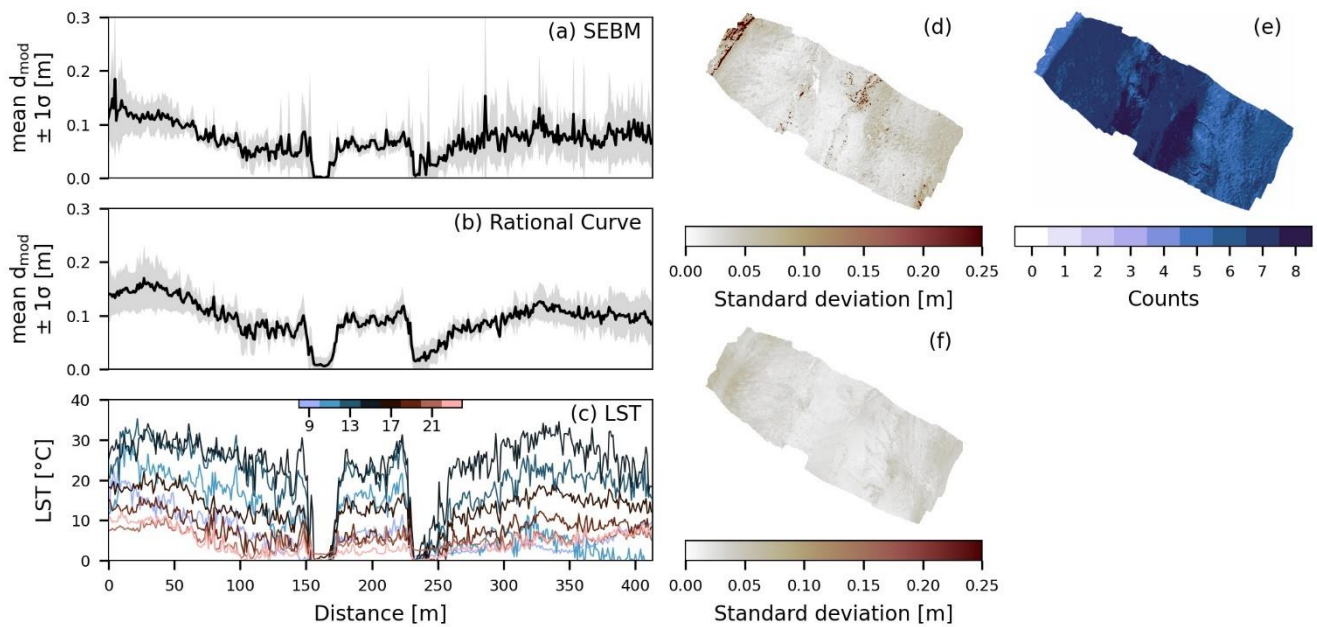


Fig. 9. Diurnal mean $\pm 1\sigma$ debris thickness predictions along the profile line shown in Figure 1. (a) The predictions using the surface energy balance model (SEBM) show a larger spread of the standard deviation (grey) towards the edges and smaller towards the central part corresponding to regions of thicker and thinner debris cover. Panel (b) shows the results of the rational curve extrapolation approach. A smaller spread indicates greater consistency in the prediction over the day. (c) The diurnal variability of the land surface temperature along the profile line. Panel (d, f) shows the spatial variation of the standard deviation and (e) the number of valid solutions in the SEBM approach.

4.4 Debris thickness estimates by extrapolating a rational curve

The debris thickness maps created by the extrapolation approach using a rational curve result in slightly thicker predictions than following the SEBM approach (Fig. 10). The general pattern of the spatial debris thickness distribution follows the field observations and the pattern of measured LST, similar to the results of the SEBM approach. Predicted-The modelled debris thicknesses range-vary between 0 cm and 30 cm, but with early flights at 9 h and 11 h lacking predictions greater than 10 cm and predictions of the first two flights at 9 h and 11 h, but do not exceed 10 cm (Fig. 10a, b).

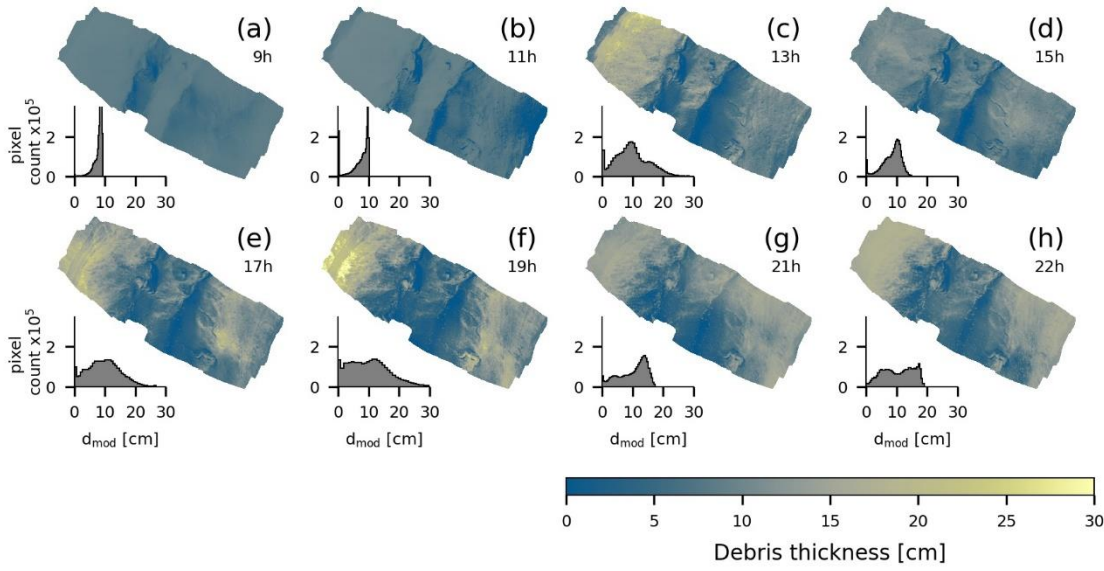


Fig. 10. Estimated debris thickness using a rational function for each flight time. The histograms show the distribution of the predicted debris thicknesses displayed in the maps.

We divided (Pedregosa et al., 2011) the dataset of $n = 90$ samples into a training ($n = 45$) and testing ($n = 45$) dataset. Fig. 11 shows training and testing data for each flight time including the coefficients c_1 and c_2 , derived by least squares regression of Eq. 9 and the RMSE between the predictions and the observations of the testing data (Fig. 11). Similar to the SEBM, the RMSE ranges between 6 cm and 8 cm, but debris thicknesses > 10 cm are better represented in the extrapolation approach and thus follow more closely the 1:1 line. At 9 h, 11 h and 15 h the RMSE is highest at 8 cm and the shape of the curve already shows that the model does not represent the data well. The afternoon flights between 17 h and 22 h have the lowest RMSE with 6-7 cm.

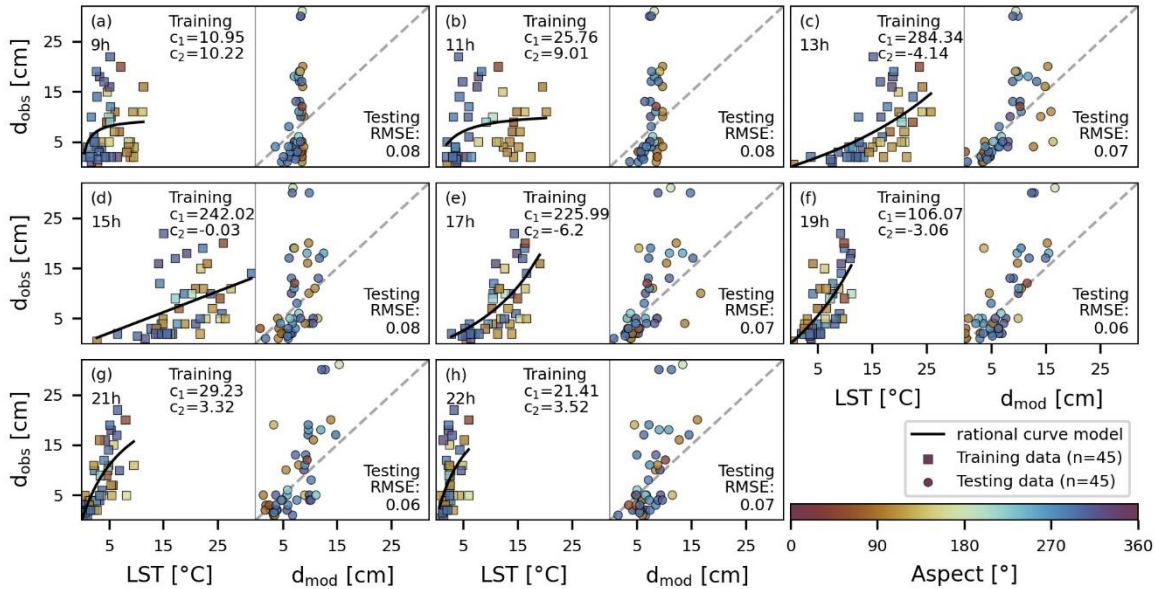


Fig. 11. Least squares regression of a rational function of 50 % of the debris thickness measurements ($n=45$) with the arithmetic mean land surface temperature of a 2 m buffered region around the GPS coordinates of debris thickness measurement locations (training data) (a-h). The adjacent panels show the comparison of modelled and observed debris thickness of the other 50 % ($n=45$) with RMSE values to evaluate the prediction (testing data). Sample points are colored by terrain aspect.

The diurnal stability in predicting debris thickness (Fig. 9. Diurnal mean $\pm 1\sigma$ debris thickness predictions along the profile line shown in Figure Fig. 9. Diurnal mean $\pm 1\sigma$ debris thickness predictions along the profile line shown in Figure, fb) shows

that thin debris cover, as found in the central part of the profile line, remains stable throughout the day and is thus comparable to the results of the SEBM approach. For thicker debris the spread of the standard deviation is higher, showing that predicting thick debris cover depends more on the time of the day than thin debris. Even though the range of the RMSE throughout the day remains comparable to the SEBM results, for some flights (e.g., 19 h) the average prediction accuracy improves by about 2 cm.

5 Discussion

5.1 Predicted versus observed debris thickness

Debris thickness predictions with the SEBM approach yielded mixed results. The fact that the modelled debris thickness does not vary in unreasonable ways across the glacier surface, but in a systematic pattern, shows that mapping high-resolution debris thickness with UAVs has some potential. ~~The fact that the modelled debris thickness does not vary in unreasonable ways across the glacier surface, but in a systematic pattern shows that mapping high resolution debris thickness with UAVs is viable.~~

During most of the flights, we observe a general positive correlation between the modelled and observed debris thickness (Fig. 8b-h). The overall relationship between higher surface temperature and thicker debris that is evident in the input data (Fig. 4) can be reproduced. However, given the chosen parameters, we are unable to obtain a non-biased match between the observed and modelled debris thickness. The SEBM approach mostly underestimates debris thickness at all flight times compared to field measurements. For thick debris cover, this underestimation is more pronounced than for thin debris (<10 cm).

Over the course of the day, the RMSEs between observed and predicted debris thicknesses range from 6 to 8 cm. For many pixels in the flights at 9 h, 11 h, and 13 h and some pixels at 15 h (Fig. 7 a-d) the quadratic equation (Eq. 7) has no real solution, and the SEB cannot be solved for debris thickness. The reason for this is a negative term in the square root of Eq. 8, which occurs if $b^2 < 4ac$. Recall that b accounts for the radiative and sensible heat fluxes ($SW+LW+H$), whereas a and c are the conductive ground heat flux and the storage term, respectively. As long as $LST > 0^\circ\text{C}$, c is always negative. The inequality condition above can thus only occur if also a is negative, which is only possible when the debris is heating up, in our case until about 15 h (Fig. 5a, Fig. 6e). That explains, why many pixels in the morning flights have no debris thickness solution. Furthermore, at 9 h, the term b^2 is rather small, mostly because of low SW values. However, at 11 h and 13 h southeast-exposed pixels receive higher SW (Fig. 6b), which causes b to increase, making the inequality condition less likely. The most likely reason for no physical solution to Eq. 7 is inaccurate values of LST and reanalysis-derived variables. Mostly during the morning, even small deviations from true values are sufficient to find no physically meaningful debris thickness solution. For thin debris (< 2cm), G is very sensitive to uncertainties in LST and leads to large negative numbers. This is a major drawback of the SEB approach, and it highlights the sensitivity of the approach to uncertainties in the input data. We note that these uncertainties prevail, even if a solution is found. However, compared to the ground observations of debris thickness the model predictions show a positive correlation.

As a result of spatially incomplete debris thickness maps, the number of sample points to evaluate the quality of the prediction is reduced (see low 'n' in Fig. 8a-c) and should be kept in mind when comparing the RMSE with respect to the time of the day. Previous studies did not face this issue, in part because ΔS was incorporated as a fraction of the conductive ground heat flux G , which is always negative (Foster et al., 2012; Schauwecker et al., 2015). Comparison of ΔS and G for the sites where we measured debris thickness shows that such an assumption appears to be invalid for most times of the day (Fig. 5). By estimating ΔS using the warming/cooling rate from multitemporal LST measurements, we can better account for this energy balance component, but these estimates are also prone to uncertainties in LST. In general, however, the magnitude and distribution of SW , LW and ΔS ~~and G~~ for most of the sample locations compare well to values determined by Brock et al. (2010) with an automatic weather station (AWS) at the Miage Glacier at comparable latitude, time of the year, and elevation (500 m difference).

Debris thickness predictions below ~10 cm seem to correlate reasonably well with field observations, whereas predictions of thicker debris cover are generally too low (Fig. 8). This may indicate that uncertainties in parameters that are unlikely to vary spatially or as a function of debris thickness are not particularly relevant. To further test this hypothesis, we performed sensitivity tests of SEBM-derived debris thickness estimates to variations in the input parameters air temperature, wind speed, thermal conductivity, albedo, and surface roughness length (Fig. 12). Variations of the parameters air temperature, albedo, and surface roughness length across value ranges commonly found in the literature (Brock et al., 2000; Foster et al., 2012; Schauwecker et al., 2015; Shaw et al., 2016; Miles et al., 2017) result in generally small variations of the mean debris thickness (averaged across the entire studied surface). In consequence, the impact on the RMSE when evaluated against our field observations of debris thickness is also small. Only the flights at 9 h, 11 h, and 13 h show more significant variations in the RMSE, but these correspond to simultaneously low coverage of valid predictions and thus only small numbers of sample points to estimate the RMSE (Fig. 9. Diurnal mean $\pm 1\sigma$ debris thickness predictions along the profile line shown in Figure Fig. 9. Diurnal mean $\pm 1\sigma$ debris thickness predictions along the profile line shown in Figure).

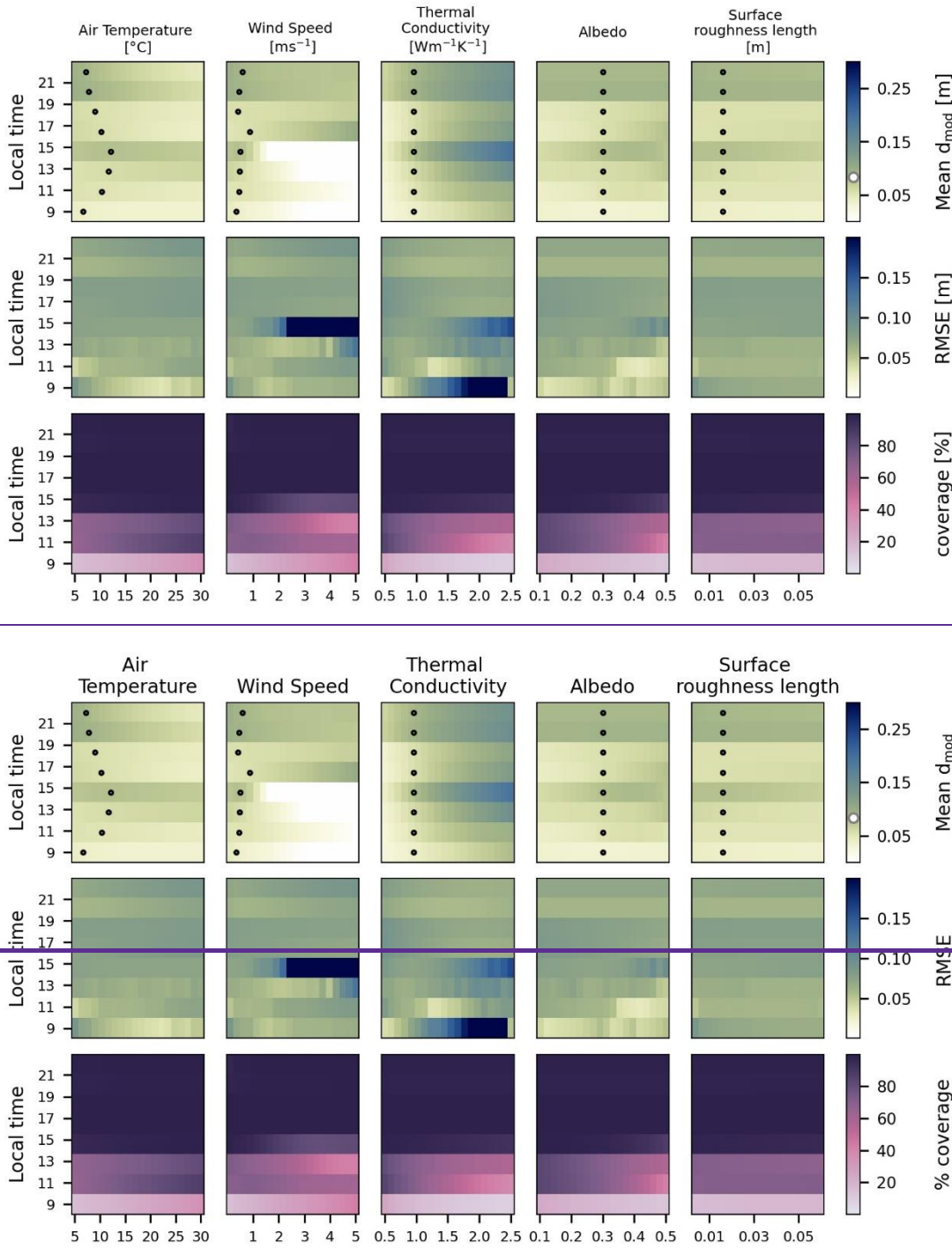


Fig. 12 Sensitivity of debris thickness prediction using a surface energy balance model (SEBM) to the parameters air temperature, wind speed, effective thermal conductivity, albedo and surface roughness length. For each flight time, each parameter was varied across a range of values and debris thickness maps were created. Each column shows colorized (1) the modelled mean debris thickness averaged over all pixels in the test area, (2) the RMSE between the observed and predicted debris thicknesses and (3) the coverage of valid predictions as the surface energy balance model cannot always be solved. The white dot in modelled mean debris thickness shows the mean debris thickness observed in the field.

The same is essentially true for wind speed, which is a notoriously difficult parameter to constrain in any surface energy balance model (Schauwecker et al., 2015; Stewart et al., 2021) and is a strong control of the sensible heat flux (Eq. 3Eq-3). ERA5-derived wind speed during the time of our experiment is relatively low at $<1 m s^{-1}$, whereas wind speeds of $\sim 2-4 m s^{-1}$ are not uncommon in the vicinity of glaciers (e.g., Oerlemans and Greuell, 1986; Brock et al., 2010; Steiner et al., 2018). During a different visit to the TNG in 2021, we operated a small AWS for a full day and obtained wind speeds of $2.5-4 m s^{-1}$, which were higher than ERA5-derived wind speeds of $0.5-2 m s^{-1}$ for the same day. Although we don't know what the actual wind speed was during our experiment in 2019, increasing the wind speed and solving for debris thickness has a minor effect

on flights from 17 h onwards, whereas for earlier flights, the coverage quickly drops to low values. This is related to the fact that larger negative H values reduce b (i.e., the sum of the radiative and sensible heat fluxes, $SW+LW+H$), thereby increasing the likelihood to obtain a negative term in the square root of [Eq. 8](#). Similar effects also account for changes in coverage for the other parameters. We thus emphasize that changes in RMSE during flights until about 15 h that are associated with changes in coverage do not necessarily indicate better model performance. [The high sensitivity of the SEBM approach to uncertainties in LST and the reanalysis data](#) reduces ~~the suitability to estimate~~ [reliably estimate](#) debris thickness.

The only tested parameter that has a more pronounced effect on the mean debris thickness and RMSE without changing the coverage is the thermal conductivity (k) through its influence on the [conductive ground](#) heat flux, G . Higher k values result in greater energy losses to the ice and a higher debris thickness for the same LST. A similar effect has been achieved by Rounce and McKinney (2014) by introducing a factor to account for the non-linearity of the temperature profile in the debris cover. (Bird and Hulstrom, 1981)

It should also be noted that the effective thermal conductivity k is likely to vary spatially, as thick debris cover can hold more moisture, which thus leads to higher values of k (Steiner, 2021). Additionally, a thin debris cover composed of smaller grain sizes may have different pore space than a layer of thick debris cover consisting of larger grain sizes. The bulk debris-void space and thus the effective conductivity could vary with debris thickness, too. Because the effective thermal conductivity of a debris layer and its spatial variability is a rather complex quantity that is not easily measured, this parameter could be used as a free parameter to tune the debris thickness map against field observations.

Debris thickness predictions using least squares regression of a rational curve yield [RMSE values between 6 and 8 cm](#), similar ~~to the results of the~~ [and in parts more accurate results compared to the](#) SEBM approach. The pattern of spatially distributed debris thickness estimates (Fig. 10) follows the expected spatial pattern of the LST for each time of the day. The range of predicted debris thicknesses corresponds to the field observations with values similar to the SEBM approach, between 0 cm and 30 cm. As the ~~relationship of LST and debris thickness~~ varies throughout the day, the suitability of the rational curve regression [to estimate debris thickness](#) varies too. For instance, at 9 h and 11 h, LST depends strongly on the terrain aspect and thus the results are biased towards the aspect (Fig. 11a,b). Nevertheless, at 13 h the RMSE between observations and predictions (Fig. 11c, testing data) is still 7 cm. This suggests that during the times when the debris is heating up, the regression of a rational curve would benefit from taking the terrain aspect into account, i.e., by fitting a parametric surface to the data. In addition, the strongly non-linear relationship between LST and debris thickness at 9 h and 11 h limits predicted debris thicknesses to <10 cm. The predictions at these flight times show unrealistic uniform values in the same regions at which the SEBM approach cannot be solved. This supports the SEBM approach and indicates that the LST at this time is too low to relate it to debris thickness. When the debris is cooling down in the evening (Fig. 11e-h), the aspect has a minor effect, and the curve appears to satisfy the available data. When LST is low (morning and evening), the relationship between LST and debris thickness seems to be almost linear, and a simple linear regression is expected to result in comparable accuracy. This agrees with the findings of Boxall et al. (2021), based on satellite-derived LST.

5.2 Opportunities and limits of UAV-derived LST for debris thickness mapping

High-resolution studies can improve our understanding of processes that move and distribute debris on glacier surfaces ([Westoby et al., 2020](#)). [Spatiotemporal debris thickness estimates using UAV-derived thermal images](#) have [the potential to serve as a new approach to quantify how debris is mobilised across](#) the surface of the glacier [over short times scales](#). ~~Multitemporal UAV-derived debris thickness maps would thus allow to quantify how debris is mobilised across the glaciers surface over short times scales.~~ The detailed representation of surface features, such as ice cliffs, large boulders (Fig. 13), or surface ponds makes UAV-derived LST measurements a valuable tool for debris cover research.

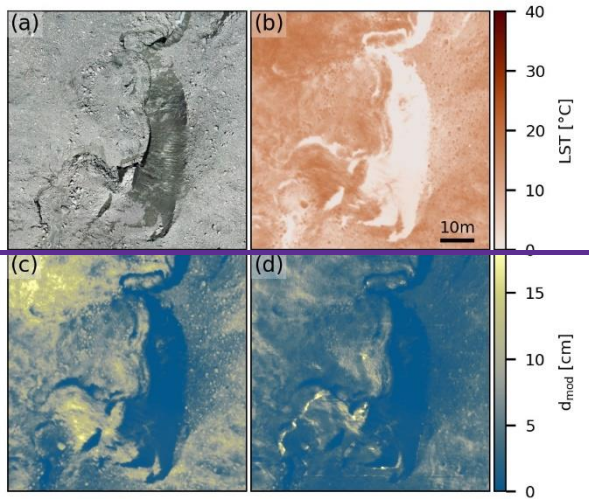
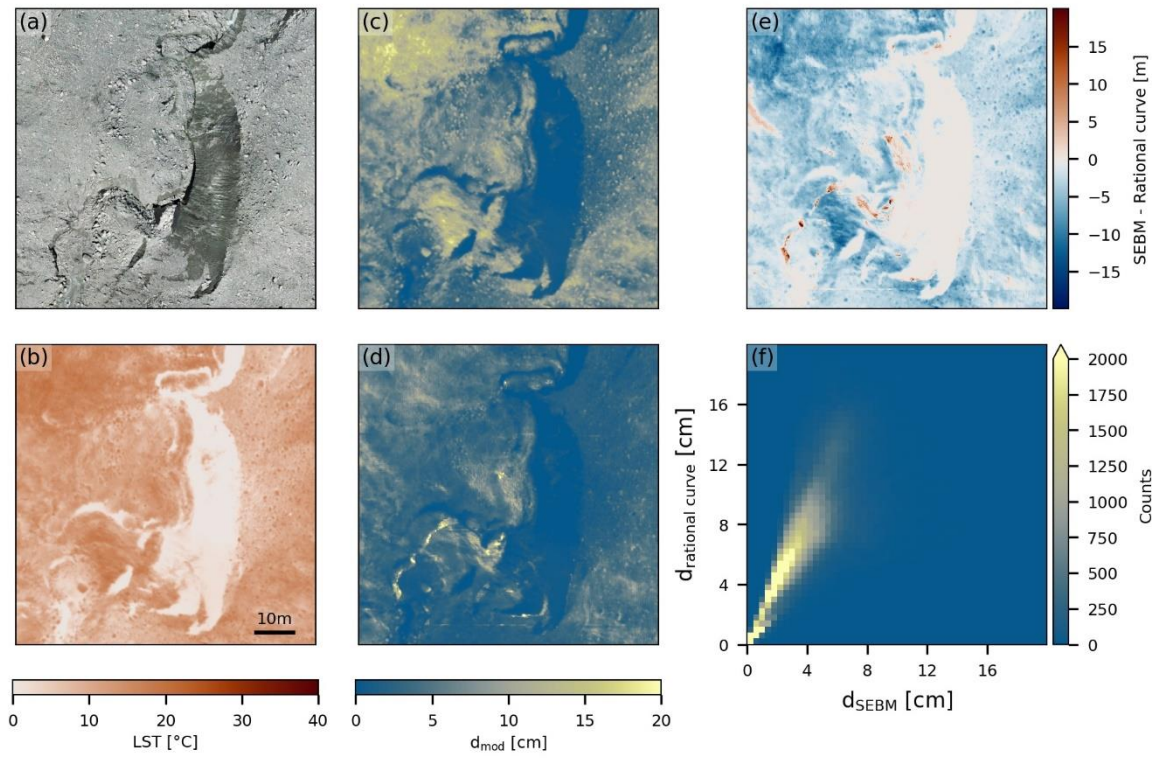


Fig. 13. High-resolution subsection of the unpiloted aerial vehicle imagery (UAV) with debris cover, large boulders and ice cliff. The panels show (a) the RGB image, (b) the land surface temperature at 15 h, (c) debris thickness prediction using the rational curve approach and (d) debris thickness prediction by solving the surface energy balance model. The difference map (e) and 2d histogram (f) show how the model predictions compare spatially.

So far, the conversion of LST to debris thickness in high resolution was only studied using ground-based oblique viewing angles (Herreid, 2021) using empirical equations. However, challenges in this approach include (1) the area covered by the field of view, (2) the variable path radiance and (3) the viewing angle that controls the amount of radiation received by the sensor. UAV offers opportunities to overcome these issues, but also face challenges that we discuss here. These challenges stem from the specifics of image acquisition, limited battery lifetime, post-processing requirements, and the conversion of the brightness temperature to LST.

All high-resolution studies, including ours, have so far used uncooled microbolometers, a sensor type that requires thermal equilibrium between the sensor device and the environment for accurate measurements (Budzier and Gerlach, 2015). As these conditions are difficult to achieve and maintain in high mountain settings, the obtained thermal infrared images require calibration and correction. The ambient temperature difference between the ground and the flight elevation requires the sensor device to thermally adjust after take-off, which thus introduces a measurement bias that varies with time (Fig. 2a). While this

effect is primarily relevant for UAV applications, the maintenance of stable environmental conditions (e.g., changing wind speeds) cannot be guaranteed even for ground-based measurements and temporal variance of the measurement bias should be considered. While the sensor device cools down after take-off due to flight altitude, direct incident shortwave radiation may cause the device to heat up (Dugdale et al., 2019). The change in the measurement bias with time, the thermal drift, is partially
555 balanced by the internal in-flight calibration of uncooled microbolometers (Mesas-Carrascosa et al., 2018), leading to recurring systematic jumps in the measured temperature (Fig. 2) that can be compensated for in a postprocessing step (see section 3.2). Long flight times, slow flight speeds and no direct shortwave radiation would thus minimize the effect of thermal drift but would likely not substitute for additional calibration.

The thermal correction during post-processing in our case included (1) recovering the occurrence of flat field correction (FFC) events that were “lost” by the reduced sampling rate, (2) identifying and correcting the thermal drift, and (3) correcting the residual measurement bias using bare ice surfaces. During all flight times, thermal drift corrected for by FFC events was rather large and resulted in changes by up to ~8 K over 50 frames (Fig. 2a). With a frame rate of 1/s, this means a thermal drift of up to 0.16 K s⁻¹. Assuming that the thermal drift is indeed linear with time, the in-flight FFC or, as in our case, post-processing identification of FFC is relatively straightforward, due to the step change in LST across an FFC event. Figure 2a also shows
560 the internal housing temperature and the temperature of the focal plane array, as recorded by the thermal sensor. The rapid decline, in the beginning, shows the thermal adjustment due to the vertical temperature gradient between the ground and flight elevation. While UAVs with larger battery capacity might offset this effect to some extent, our setup was limited at that point. To convert the brightness temperature to LST, we accounted for the reflected portion of the incoming longwave radiation and surface-type emissivity but neglected the path radiance between the sensor and the ground. As the elevation of the UAV above
570 ground does not change significantly throughout the flight, the potential measurement bias of longwave radiation emitted by atmospheric water vapour content is minimized and assumed to be constant. Our ‘bulk’ calibration approach using spline interpolation of measured ice surface temperatures compensates for the systematic temporal variability of the measurement bias (Fig. 2b) introduced by (1) thermal adjustment after take-off, (2) fluctuations of atmospheric conditions by wind or incident direct shortwave radiation or (3) longwave radiation emitted from atmospheric water vapour content or the
575 surrounding terrain (Aubry-Wake et al., 2015; Aragon et al., 2020; Herreid, 2021).

Because of the need to calibrate all thermal images, the requirement of spatially well-distributed reference temperatures is the main drawback of the proposed method. In our case, bare ice surfaces were present in the central part but not at the glacier’s sides. Two image regions are found to be severely erroneous, an anomalously low-temperature patch on the eastern edge at 11 h and a warm temperature stripe in the centre that seems to follow the flight path of the UAV at 15 h (Fig. 3b,d). We think the
580 cold region at 11 h could be due to a failed drift compensation, as the spline interpolation assumes a constant correction value before the first and after the last occurrence of bare ice in the thermal images. The warm temperature strip could be related to an oblique viewing angle of the sensor during that flight, as the sensor alignment was done manually (Sobrino and Cuenca, 1999; Byerley et al., 2020; FLIR, 2020).

So far, we discussed the challenges and needs to derive glacier surface LSTs. Provided the measurements obtained in our
585 experiment, we also observed differences in the resulting debris thickness that we derived from the SEBM and the rational curve approaches. The SEBM approach requires meteorological input data, assumptions on debris properties (in space and time) and substantial simplifications of SEB components. Because the conservation of energy represents a balance among all energy fluxes, it follows that any simplification in one component will have a quantitative effect on the others (Price, 1985). However, when comparing the diurnal variation of the energy flux components with measured quantities in a comparable
590 setting regarding location, time, and debris thickness (Brock et al., 2010), we find good agreement in magnitude and distribution for net shortwave, net longwave and change in heat storage and the [conductive ground](#) heat flux (Fig. 6). The possibility to estimate sub-daily surface energy balance components improves our understanding of ΔS . Repeated LST

measurements might additionally increase understanding of the spatial variability of debris properties (e.g., thermal conductivity, debris density or specific heat capacity) by quantifying the thermal inertia.

595 The accuracy of predicting debris thickness using a SEBM and empirically using a rational curve yielded comparable results with RMSEs of 6-8 cm depending on the time of the day. Both methods yield a terrain aspect bias. The SEBM approach compensates for the terrain effect to some degree as the amount of incident shortwave radiation is a function of aspect, too. The terrain bias in the early flights using the rational curve approach is more pronounced as it is only based on the LST. However, as this approach is less sensitive to uncertainties in LST, we recommend the rational curve approach to estimate debris thickness as long as enough debris thickness measurements are available. Steep moraines of debris or hummocky-shaped debris-covered surfaces are likely to introduce bias via mixed-pixel effects, when predicting debris thickness using coarse spatial resolution LST from remote sensing data, especially in the case of empirically derived debris thicknesses. For example, the time of overpass of the Landsat satellite is typically between 10 h to 11 h locally, a time when debris cover is still heating up. Therefore, the effect of aspect on satellite-derived LST debris thickness estimates should be studied in more detail.

6 Conclusions

In our experiment, we mapped supraglacial debris cover using high-resolution UAV-derived LST measurements at various times of the day and using two common approaches to create debris thickness maps: a surface energy balance model approach and a simple extrapolation approach using a rational curve that relies on field measurements. We conclude that:

610

- 1) Measuring the LST from a UAV using an uncooled microbolometer requires temperature calibration that varies with time. Here we determine an offset correction value for each thermal infrared frame by interpolating splines of spatially well-distributed bare ice surfaces, assuming the ice to be at melting point of 0 °C. This bulk correction compensates for several sources of ~~uncertainties, but~~uncertainties but requires the presence of bare ice surfaces.
- 615 2) Quantifying the surface energy balance components based on the UAV-derived LST measurements led to debris thicknesses predictions with an RMSE of 6-8 cm, depending on the time of the day. Debris thicknesses were underestimated at all flight times. Measuring the diurnal variability of LST allowed us to extend the commonly used surface energy balance approach by quantifying the rate of change of heat storage.
- 620 3) The non-linearity of the relationship between LST and debris thickness increases with LST. Choosing the best empirical function for predicting debris thickness thus depends on the time of the day. Morning conditions yield a strong terrain aspect bias, which is better accounted for in the SEBM approach. When the LST reaches its diurnal maximum, here at 13 h or 15 h, the non-linearity is most evident. Towards the evening the relationship between debris thickness and LST appears almost linear and aspect plays a minor role.
- 625 4) Practical considerations for quantifying supraglacial debris cover using UAV-derived LST comprise LST calibration, choosing the model based on the time of the day and debris thickness measurements for evaluation. In our case, the ultra-lightweight UAV set-up was suitable for remote high mountain field work but had a significant drawback due to the limited battery capacity, resulting in short flight times of 10 to 15 minutes and small spatial coverage. Consequently, the thermal adjustment of the device led to strong thermal drift and thus to many in-flight calibration events that had to be considered. Maximizing the flight time by using a larger UAV could offset this effect to some degree. The measurement bias varies with time and spatially well-distributed reference temperatures should be used for calibration.
- 630

7 Code availability

The source code and input files of the surface energy balance model, and the debris thickness data are available from Gök et al. (2022), Repository:

635 <https://dataservices.gfz-potsdam.de/panmetaworks/review/f56042df84c0684384b1a1ce8171d3e488b234d46cb4fd6b3fb9b2abf545a112/>

Author contributions

640 The study was designed by DTG and DS. DTG developed the hardware set-up and conducted UAV flights. LSA conducted debris thickness measurements. DTG performed the analysis with support from DS. DTG wrote the initial version of the manuscript. DS and LSA commented on the initial manuscript and helped improve this version.

8 Funding

This research received funding from the European Research Council under the European Union's Horizon 2020 research and innovation programme under grant agreement 759639.

645 9 Acknowledgements

We are grateful to K. Wetterauer and D. Dennis for field support, to T. Walter for advice with the drone equipment, and to Marcel Ludwig for help in assembling the hardware setup.

10 Reference

- Agisoft (2020). Agisoft Metashape User Manual. *Agisoft Metashape*.
- 650 Anderson, L. S., and Anderson, R. S. (2018). Debris thickness patterns on debris-covered glaciers. *Geomorphology* 311. doi: 10.1016/j.geomorph.2018.03.014.
- Anderson, L. S., Armstrong, W. H., Anderson, R. S., Scherler, D., and Petersen, E. (2021). The Causes of Debris-Covered Glacier Thinning: Evidence for the Importance of Ice Dynamics From Kennicott Glacier, Alaska. *Frontiers in Earth Science* 9. doi: 10.3389/feart.2021.680995.
- 655 Aragon, B., Johansen, K., Parkes, S., Malbeteau, Y., Al-mashharawi, S., Al-amoudi, T., et al. (2020). A calibration procedure for field and UAV-based uncooled thermal infrared instruments. *Sensors (Switzerland)* 20. doi: 10.3390/s20113316.
- Aubry-Wake, C., Baraer, M., McKenzie, J. M., Mark, B. G., Wigmore, O., Hellström, R., et al. (2015). Measuring glacier surface temperatures with ground-based thermal infrared imaging. *Geophysical Research Letters* 42. doi: 10.1002/2015GL065321.
- 660 Aubry-Wake, C., Zéphir, D., Baraer, M., McKenzie, J. M., and Mark, B. G. (2018). Importance of longwave emissions from adjacent terrain on patterns of tropical glacier melt and recession. *Journal of Glaciology* 64. doi: 10.1017/jog.2017.85.
- Barry, R., Chorley, R., Barry, R. G., and Chorley, T. late R. (2021). "Boundary layer climates," in *Atmosphere, Weather and Climate* doi: 10.4324/9780203428238-12.
- Benn, D., and Evans, D. J. A. (2014). *Glaciers and Glaciation, 2nd edition*. doi: 10.4324/9780203785010.
- 665 Benn, D. I., Bolch, T., Hands, K., Gulley, J., Luckman, A., Nicholson, L. I., et al. (2012). Response of debris-covered glaciers in the Mount Everest region to recent warming, and implications for outburst flood hazards. *Earth-Science Reviews* 114. doi: 10.1016/j.earscirev.2012.03.008.

- Bhambri, R., Bolch, T., Chaujar, R. K., and Kulshreshtha, S. C. (2011). Glacier changes in the Garhwal Himalaya, India, from 1968 to 2006 based on remote sensing. *Journal of Glaciology* 57. doi: 10.3189/002214311796905604.
- 670 Bird, R. E., and Hulstrom, R. L. (1981). *A Simplified Clear Sky Model for Direct and Diffuse Insolation on Horizontal Surfaces*.
 Bolch, T., Kulkarni, A., Kääb, A., Huggel, C., Paul, F., Cogley, J. G., et al. (2012). The state and fate of himalayan glaciers. *Science* (1979) 336. doi: 10.1126/science.1215828.
- Boxall, K., Willis, I., Giese, A., and Liu, Q. (2021). Quantifying Patterns of Supraglacial Debris Thickness and Their Glaciological Controls in High Mountain Asia. *Frontiers in Earth Science* 9. Doi: 10.3389/feart.2021.657440.
- 675 Breiman, L. (2001). Random forests. *Machine Learning* 45. doi: 10.1023/A:1010933404324.
- Brock, B. W., Mihalcea, C., Kirkbride, M. P., Diolaiuti, G., Cutler, M. E. J., and Smiraglia, C. (2010). Meteorology and surface energy fluxes in the 2005-2007 ablation seasons at the Miage debris-covered glacier, Mont Blanc Massif, Italian Alps. *Journal of Geophysical Research Atmospheres* 115. doi: 10.1029/2009JD013224.
- Brock, B. W., Willis, I. C., and Sharp, M. J. (2000). Measurement and parameterization of albedo variations at haut glacier d'arolla, Switzerland. *Journal of Glaciology* 46. doi: 10.3189/172756500781832675.
- 680 Budzier, H., and Gerlach, G. (2015). Calibration of uncooled thermal infrared cameras. *Journal of Sensors and Sensor Systems* 4. doi: 10.5194/jsss-4-187-2015.
- Byerlay, R. A. E., Coates, C., Aliabadi, A. A., and Kevan, P. G. (2020). In situ calibration of an uncooled thermal camera for the accurate quantification of flower and stem surface temperatures. *Thermochimica Acta* 693. doi: 10.1016/j.tca.2020.178779.
- 685 Conway, H., and Rasmussen, L. A. (2000). Summer temperature profiles within supraglacial debris on Khumbu Glacier, Nepal. in *IAHS-AISH Publication*.
- Cook, K. L. (2017). An evaluation of the effectiveness of low-cost UAVs and structure from motion for geomorphic change detection. *Geomorphology* 278. doi: 10.1016/j.geomorph.2016.11.009.
- 690 Corripio, J. G. (2003). Vectorial algebra algorithms for calculating terrain parameters from DEMs and solar radiation modelling in mountainous terrain. *International Journal of Geographical Information Science* 17. doi: 10.1080/713811744.
- D. G. Sullivan, J. P. Fulton, J. N. Shaw, and G. Bland (2007). Evaluating the Sensitivity of an Unmanned Thermal Infrared Aerial System to Detect Water Stress in a Cotton Canopy. *Trans ASABE* 50. doi: 10.13031/2013.24091.
- 695 Dugdale, S. J., Kelleher, C. A., Malcolm, I. A., Caldwell, S., and Hannah, D. M. (2019a). Assessing the potential of drone-based thermal infrared imagery for quantifying river temperature heterogeneity. *Hydrological Processes* 33. doi: 10.1002/hyp.13395.
- Dugdale, S. J., Kelleher, C. A., Malcolm, I. A., Caldwell, S., and Hannah, D. M. (2019b). Assessing the potential of drone-based thermal infrared imagery for quantifying river temperature heterogeneity. *Hydrological Processes* 33. doi: 10.1002/hyp.13395.
- 700 FLIR (2020). UAS Radiometric Temperature Measurements. 1–1. Available at: <https://www.flir.com/discover/suas/uas-radiometric-temperature-measurements/> [Accessed April 26, 2022].
- Foster, L. A., Brock, B. W., Cutler, M. E. J., and Diotri, F. (2012). A physically based method for estimating supraglacial debris thickness from thermal band remote-sensing data. *Journal of Glaciology* 58. doi: 10.3189/2012JoG11J194.
- 705 Gardelle, J., Berthier, E., and Arnaud, Y. (2012). Slight mass gain of Karakoram glaciers in the early twenty-first century. *Nature Geoscience* 5. doi: 10.1038/ngeo1450.
- Gibson, M. J., Glasser, N. F., Quincey, D. J., Mayer, C., Rowan, A. v., and Irvine-Fynn, T. D. L. (2017). Temporal variations in supraglacial debris distribution on Baltoro Glacier, Karakoram between 2001 and 2012. *Geomorphology* 295. doi: 10.1016/j.geomorph.2017.08.012.

- 710 Glasser, N. F., Holt, T. O., Evans, Z. D., Davies, B. J., Pelto, M., and Harrison, S. (2016). Recent spatial and temporal variations in debris cover on Patagonian glaciers. *Geomorphology* 273. doi: 10.1016/j.geomorph.2016.07.036.
- Gök, Deniz; Scherler, Dirk; Anderson, Leif S. (2022): High-resolution debris cover mapping using UAV-derived thermal imagery. GFZ Data Services. <https://doi.org/10.5880/GFZ.3.3.2022.003>
- 715 [Hartmeyer, I., Delleske, R., Keuschnig, M., Krautblatter, M., Lang, A., Schrott, L. and Otto, J.C., 2020. Current glacier recession causes significant rockfall increase: the immediate paraglacial response of deglaciating cirque walls. *Earth Surface Dynamics*, 8\(3\), pp.729-751.](#)
- [Hartmeyer, I., Keuschnig, M., Delleske, R., Krautblatter, M., Lang, A., Schrott, L., Prasicek, G. and Otto, J.C., 2020. A 6-year lidar survey reveals enhanced rockwall retreat and modified rockfall magnitudes/frequencies in deglaciating cirques. *Earth Surface Dynamics*, 8\(3\), pp.753-768.](#)
- 720 Heinemann, S., Siegmann, B., Thonfeld, F., Muro, J., Jedmowski, C., Kemna, A., et al. (2020). Land surface temperature retrieval for agricultural areas using a novel UAV platform equipped with a thermal infrared and multispectral sensor. *Remote Sensing* 12. doi: 10.3390/rs12071075.
- Herreid, S. (2021). What Can Thermal Imagery Tell Us About Glacier Melt Below Rock Debris? *Frontiers in Earth Science* 9. doi: 10.3389/feart.2021.681059.
- 725 Hill-Butler, C. (2014). Thermal infrared remote sensing: sensors, methods, applications, edited by C. Kuenzer. *International Journal of Remote Sensing* 35. doi: 10.1080/01431161.2014.928448.
- Hock, R., and Huss, M. (2021). "Chapter 9 - Glaciers and climate change," in *Climate Change (Third Edition)*, ed. T. M. Letcher (Elsevier), 157–176. doi: <https://doi.org/10.1016/B978-0-12-821575-3.00009-8>.
- Hock, R., Rasul, G., Adler, C., Cáceres, B., Gruber, S., Hirabayashi, Y., et al. (2019). "Chapter 2: High Mountain Areas. IPCC Special Report on the Ocean and Cryosphere in a Changing Climate," in *IPCC Special Report on the Ocean and Cryosphere in a Changing Climate*.
- 730 Hopkinson, C., Barlow, J., Demuth, M., and Pomeroy, J. (2010). Mapping changing temperature patterns over a glacial moraine using oblique thermal imagery and lidar. *Canadian Journal of Remote Sensing* 36. doi: 10.5589/m10-053.
- Huang, L., Li, Z., Tian, B. S., Han, H. D., Liu, Y. Q., Zhou, J. M., et al. (2017). Estimation of supraglacial debris thickness using a novel target decomposition on L-band polarimetric SAR images in the Tianshan Mountains. *Journal of Geophysical Research: Earth Surface* 122. doi: 10.1002/2016JF004102.
- 735 Iqbal, M. (1983). *An Introduction to Solar Radiation*. Elsevier doi: 10.1016/b978-0-12-373750-2.x5001-0.
- Irvine-Fynn, T. D. L., Porter, P. R., Rowan, A. v., Quincey, D. J., Gibson, M. J., Bridge, J. W., et al. (2017). Supraglacial Ponds Regulate Runoff From Himalayan Debris-Covered Glaciers. *Geophysical Research Letters* 44. doi: 10.1002/2017GL075398.
- 740 [Kaushik, S., Singh, T., Bhardwaj, A., Joshi, P. K., and Dietz, A. J.: Automated Delineation of Supraglacial Debris Cover Using Deep Learning and Multisource Remote Sensing Data, 14, <https://doi.org/10.3390/rs14061352>, 2022.](#)
- Kirkbride, M. P. (1993). The temporal significance of transitions from melting to calving termini at glaciers in the central Southern Alps of New Zealand. *Holocene* 3. doi: 10.1177/095968369300300305.
- 745 Kirkbride, M. P., and Deline, P. (2013). The formation of supraglacial debris covers by primary dispersal from transverse englacial debris bands. *Earth Surface Processes and Landforms* 38. doi: 10.1002/esp.3416.
- Kraaijenbrink, P. D. A., Bierkens, M. F. P., Lutz, A. F., and Immerzeel, W. W. (2017). Impact of a global temperature rise of 1.5 degrees Celsius on Asia's glaciers. *Nature* 549. doi: 10.1038/nature23878.
- Kraaijenbrink, P. D. A., Shea, J. M., Litt, M., Steiner, J. F., Treichler, D., Koch, I., et al. (2018). Mapping surface temperatures on a debris-covered glacier with an unmanned aerial vehicle. *Frontiers in Earth Science* 6. doi: 10.3389/feart.2018.00064.
- 750

- Malbêteau, Y., Parkes, S., Aragon, B., Rosas, J., and McCabe, M. F. (2018). Capturing the diurnal cycle of the land surface temperature using an unmanned aerial vehicle. *Remote Sensing* 10. doi: 10.3390/rs10091407.
- McCarthy, M. J. (2019). Quantifying supraglacial debris thickness at local to regional scales.
- 755 McCarthy, M., Pritchard, H., Willis, I., and King, E. (2017). Ground-penetrating radar measurements of debris thickness on Lirung Glacier, Nepal. *Journal of Glaciology* 63. doi: 10.1017/jog.2017.18.
- Mesas-Carrascosa, F. J., Pérez-Porras, F., de Larriva, J. E. M., Frau, C. M., Agüera-Vega, F., Carvajal-Ramírez, F., et al. (2018). Drift correction of lightweight microbolometer thermal sensors on-board unmanned aerial vehicles. *Remote Sensing* 10. doi: 10.3390/rs10040615.
- 760 Mihalcea, C., Brock, B. W., Diolaiuti, G., D'Agata, C., Citterio, M., Kirkbride, M. P., et al. (2008). Using ASTER satellite and ground-based surface temperature measurements to derive supraglacial debris cover and thickness patterns on Miage Glacier (Mont Blanc Massif, Italy). *Cold Regions Science and Technology* 52. doi: 10.1016/j.coldregions.2007.03.004.
- Miles, E. S., Steiner, J. F., and Brun, F. (2017). Highly variable aerodynamic roughness length (z_0) for a hummocky debris-covered glacier. *Journal of Geophysical Research: Atmospheres* 122. doi: 10.1002/2017JD026510.
- 765 Miles, E. S., Willis, I., Buri, P., Steiner, J. F., Arnold, N. S., and Pellicciotti, F. (2018). Surface Pond Energy Absorption Across Four Himalayan Glaciers Accounts for 1/8 of Total Catchment Ice Loss. *Geophysical Research Letters* 45. doi: 10.1029/2018GL079678.
- Muñoz Sabater, J. (2019). ERA5-Land hourly data from 1981 to present. *Climate Data Store*.). (Accessed on < 28-Dec-2020 >), doi: 10.24381/cds.e2161bac
- 770 Nakawo, M., and Young, G. J. (1981). Field Experiments to Determine the Effect of a Debris Layer on Ablation of Glacier Ice. *Annals of Glaciology* 2. doi: 10.3189/172756481794352432.
- Nicholson, L., and Benn, D. I. (2006). Calculating ice melt beneath a debris layer using meteorological data. *Journal of Glaciology* 52. doi: 10.3189/172756506781828584.
- Nicholson, L., and Mertes, J. (2017). Thickness estimation of supraglacial debris above ice cliff exposures using a high-resolution digital surface model derived from terrestrial photography. *Journal of Glaciology* 63. doi: 10.1017/jog.2017.68.
- 775 Norman, J. M., and Becker, F. (1995). Terminology in thermal infrared remote sensing of natural surfaces. *Agricultural and Forest Meteorology* 77. doi: 10.1016/0168-1923(95)02259-Z.
- Oerlemans, J., and Greuell, W. (1986). Sensitivity studies with a mass balance model including temperature profile calculations inside the glacier. *Zeitschrift für Gletscherkunde und Glazialgeologie* 22.
- 780 Østrem, G. (1959). Ice Melting under a Thin Layer of Moraine, and the Existence of Ice Cores in Moraine Ridges. *Geografiska Annaler* 41. doi: 10.1080/20014422.1959.11907953.
- Pellicciotti, F., Stephan, C., Miles, E., Herreid, S., Immerzeel, W. W., and Bolch, T. (2015). Mass-balance changes of the debris-covered glaciers in the Langtang Himal, Nepal, from 1974 to 1999. *Journal of Glaciology* 61. doi: 10.3189/2015JoG13J237.
- 785 Price, J. C. (1985). On the analysis of thermal infrared imagery: The limited utility of apparent thermal inertia. *Remote Sensing of Environment* 18. doi: 10.1016/0034-4257(85)90038-0.
- Reid, T. D., and Brock, B. W. (2010). An energy-balance model for debris-covered glaciers including heat conduction through the debris layer. *Journal of Glaciology* 56. doi: 10.3189/002214310794457218.
- 790 Ribeiro-Gomes, K., Hernández-López, D., Ortega, J. F., Ballesteros, R., Poblete, T., and Moreno, M. A. (2017). Uncooled thermal camera calibration and optimization of the photogrammetry process for UAV applications in agriculture. *Sensors (Switzerland)* 17. doi: 10.3390/s17102173.

- Rounce, D. R., Hock, R., McNabb, R. W., Millan, R., Sommer, C., Braun, M. H., et al. (2021). Distributed Global Debris Thickness Estimates Reveal Debris Significantly Impacts Glacier Mass Balance. *Geophysical Research Letters* 48. doi: 10.1029/2020GL091311.
- Rounce, D. R., King, O., McCarthy, M., Shean, D. E., and Salerno, F. (2018). Quantifying Debris Thickness of Debris-Covered Glaciers in the Everest Region of Nepal Through Inversion of a Subdebris Melt Model. *Journal of Geophysical Research: Earth Surface* 123. doi: 10.1029/2017JF004395.
- Rounce, D.R. and McKinney, D.C., 2014. Debris thickness of glaciers in the Everest area (Nepal Himalaya) derived from satellite imagery using a nonlinear energy balance model. *The Cryosphere*, 8(4), pp.1317-1329.
- Rounce, D. R., and McKinney, D. C. (2013). Debris thickness of glaciers in the Everest area (Nepal Himalaya) derived from satellite imagery using a nonlinear energy balance model. *Cryosphere* 8. doi: 10.5194/tc-8-1317-2014.
- Ruble, E., Rabaud, V., Konolige, K., and Bradski, G. (2011). ORB: An efficient alternative to SIFT or SURF. in *Proceedings of the IEEE International Conference on Computer Vision* doi: 10.1109/ICCV.2011.6126544.
- Rusinkiewicz, S., and Levoy, M. (2001). Efficient variants of the ICP algorithm. *Proceedings of International Conference on 3-D Digital Imaging and Modeling, 3DIM*. doi: 10.1109/IM.2001.924423.
- Schauwecker, S., Rohrer, M., Huggel, C., Kulkarni, A., Ramanathan, A. L., Salzmann, N., et al. (2015). Remotely sensed debris thickness mapping of Bara Shigri Glacier, Indian Himalaya. *Journal of Glaciology* 61. doi: 10.3189/2015JoG14J102.
- Scherler, D., Bookhagen, B., and Strecker, M. R. (2011a). Hillslope-glacier coupling: The interplay of topography and glacial dynamics in High Asia. *Journal of Geophysical Research: Earth Surface* 116. doi: 10.1029/2010JF001751.
- Scherler, D., Bookhagen, B., and Strecker, M. R. (2011b). Spatially variable response of Himalayan glaciers to climate change affected by debris cover. *Nature Geoscience* 4. doi: 10.1038/ngeo1068.
- Shaw, T. E., Brock, B. W., Fyffe, C. L., Pellicciotti, F., Rutter, N., and Diotri, F. (2016). Air temperature distribution and energy-balance modelling of a debris-covered glacier. *Journal of Glaciology* 62. doi: 10.1017/jog.2016.31.
- Shukla, A., Gupta, R. P., and Arora, M. K. (2009). Estimation of debris cover and its temporal variation using optical satellite sensor data: A case study in Chenab basin, Himalaya. *Journal of Glaciology* 55. doi: 10.3189/002214309788816632.
- Shumway, R. H., and Stoffer, D. S. (2016). *Time series analysis and its applications With R Examples EZ Edition*.
- Sobrinho, J. A., and Cuenca, J. (1999). Angular variation of thermal infrared emissivity for some natural surfaces from experimental measurements. *Applied Optics* 38. doi: 10.1364/ao.38.003931.
- Steiner, J. F., Kraaijenbrink, P. D. A., and Immerzeel, W. W. (2021). Distributed Melt on a Debris-Covered Glacier: Field Observations and Melt Modeling on the Lirung Glacier in the Himalayas. *Frontiers in Earth Science* 9. doi: 10.3389/feart.2021.678375.
- Steiner, J. F., Litt, M., Stigter, E. E., Shea, J., Bierkens, M. F. P., and Immerzeel, W. W. (2018). The Importance of Turbulent Fluxes in the Surface Energy Balance of a Debris-Covered Glacier in the Himalayas. *Frontiers in Earth Science* 6. doi: 10.3389/feart.2018.00144.
- Stewart, R. L., Westoby, M., Pellicciotti, F., Rowan, A., Swift, D., Brock, B., et al. (2021). Using climate reanalysis data in conjunction with multi-temporal satellite thermal imagery to derive supraglacial debris thickness changes from energy-balance modelling. *Journal of Glaciology* 67. doi: 10.1017/jog.2020.111.
- Swisstopo (2010). Bundesamt für Landestopografie swisstopo-swissALTI3D-Das hoch aufgelöste Terrainmodell der Schweiz.
- Tielidze, L. G., Bolch, T., Wheate, R. D., Kutuzov, S. S., Lavrentiev, I. I., and Zemp, M. (2020). Supra-glacial debris cover changes in the Greater Caucasus from 1986 to 2014. *Cryosphere* 14. doi: 10.5194/tc-14-585-2020.
- Torres-Rua, A. (2017). Vicarious calibration of sUAS microbolometer temperature imagery for estimation of radiometric land surface temperature. *Sensors (Switzerland)* 17. doi: 10.3390/s17071499.

- 835 [Westoby, M.J., Rounce, D.R., Shaw, T.E., Fyffe, C.L., Moore, P.L., Stewart, R.L. and Brock, B.W., 2020. Geomorphological evolution of a debris-covered glacier surface. *Earth Surface Processes and Landforms*, 45\(14\), pp.3431-3448.](#)
- Zhang, Y., Fujita, K., Liu, S., Liu, Q., and Nuimura, T. (2011). Distribution of debris thickness and its effect on ice melt at Hailuoguo glacier, southeastern Tibetan Plateau, using in situ surveys and ASTER imagery. *Journal of Glaciology* 57. doi: 10.3189/002214311798843331.

840