

# Impact of the melt–albedo feedback on the future evolution of the Greenland Ice Sheet with PISM-dEBM-simple

Maria Zeitz<sup>1,2</sup>, Ronja Reese<sup>1</sup>, Johanna Beckmann<sup>1</sup>, Uta Krebs-Kanzow<sup>3</sup>, and Ricarda Winkelmann<sup>1,2</sup>

<sup>1</sup>Potsdam Institute for Climate Impact Research (PIK), Member of the Leibniz Association, P.O. Box 60 12 03, 14412 Potsdam, Germany

<sup>2</sup>University of Potsdam, Institute of Physics and Astronomy, Karl-Liebknecht-Str. 24-25, 14476 Potsdam, Germany

<sup>3</sup>Alfred Wegener Institute Helmholtz Centre for Polar and Marine Research, Bremerhaven, Germany

**Correspondence:** Maria Zeitz (maria.zeitz@pik-potsdam.de) and Ricarda Winkelmann (ricarda.winkelmann@pik-potsdam.de)

**Abstract.** Surface melting of the Greenland Ice Sheet contributes a large amount to current and future sea-level rise. Increased surface melt ~~-, algae growth, debris, and dust deposition may~~ lower the reflectivity of the ~~ice-ice-sheet~~ surface and thereby increase melt rates: the so-called melt–albedo feedback describes this ~~potentially~~ self-sustaining increase in surface melting. ~~Here we present~~ In order to test the effect of the melt-albedo feedback in a prognostic ice sheet model, we implement dEBM-simple, a  
5 simplified version of the diurnal Energy Balance Model (dEBM-simple) which is implemented as a surface melt module dEBM,  
in the Parallel Ice Sheet Model (PISM). ~~dEBM-simple is a modification of diurnal Energy Balance Model (dEBM), a surface melt scheme of intermediate complexity useful for simulations over centennial to multi-millennial timescales. dEBM-simple is computationally efficient, suitable for standalone ice-sheet modeling and~~ The implementation includes a simple representation of the melt–albedo feedback ~~-. Using dEBM-simple and PISM and can thereby replace the positive degree day melt scheme.~~  
10 Using PISM-dEBM-simple, we find that this feedback increases ice loss until 2300 through surface warming by 60 % for the high-emission scenario RCP8.5 compared to a scenario in which albedo remains constant at its present day values. With an increase of 90 % compared to a fixed-albedo scenario, the effect is more pronounced for lower surface warming under RCP2.6. Furthermore, assuming an immediate darkening of the ice surface over all summer months, we estimate an upper bound for this effect to be +70% in the RCP8.5 scenario and a more than fourfold increase under RCP2.6. With dEBM-simple implemented in  
15 PISM, we find that the melt–albedo feedback is an essential contributor to mass loss in dynamic simulations of the Greenland Ice Sheet under future warming.

*Copyright statement.* ©2020. This work is distributed under the Creative Commons Attribution 4.0 License.

## 1 Introduction

20 The Greenland Ice Sheet is currently one of the main contributors to sea-level rise (Frederikse et al., 2020). Roughly 35% of the observed mass loss during the last 40 years is attributed to changes in surface mass balance and 65% of the mass loss is

due to an increase in discharge fluxes (Mouginot et al., 2019). Overall, the contribution of changes in surface mass balance is expected to increase with ongoing warming (Shepherd et al., 2020).

Observations show that the surface of the Greenland Ice Sheet has been darkening over the last decades (He et al., 2013; Tedesco et al., 2016), and projections show that it is likely to darken further with increasing warming (Tedesco et al., 2016).  
5 Changes in albedo are driven by melt, the retreat of the snow line, black carbon, dust, and algae growth (Cook et al., 2020; Williamson et al., 2020; Box et al., 2012; Box, 2013; Box et al., 2017; Tedstone et al., 2017, 2020; Ryan et al., 2019). In particular the dark zone in the south-west of the Greenland Ice Sheet is subject to increased darkening, where ice-albedo values reach values as low as 0.27 due to surface water and impurities at the surface (for comparison, clean ice has typically an albedo between 0.45 and 0.55) (Ryan et al., 2019). As darker ~~snow and bare ice surfaces~~ absorb more radiation, ~~thereby~~  
10 ~~increasing melt rates, these processes~~ than lighter surface, the effect of darkening due to increased melt could trigger a positive feedback mechanism: surface darkening increases melting, which in turn can lead to further darkening (Stroeve, 2001). ~~Studies~~ In addition to the darkening through melt, studies suggest a positive feedback mechanism between microbes, minerals, and melting, where algae-induced melting releases ice-bound dust, which in turn increases glacier algal blooms, leading to more melt (Di Mauro et al., 2020; McCutcheon et al., 2021). ~~This~~ The melt–albedo feedback is usually interrupted by winter snow  
15 accumulation and snow events in summer (Gardner and Sharp, 2010; Noël et al., 2015). In the light of recent extreme melting events as in 2010 (Tedesco et al., 2011), 2012 (Nghiem et al., 2012) or 2019 (Tedesco and Fettweis, 2020), ~~where~~ when large parts of the surface area were ~~covered by melt water at melting point~~ and therefore darker than usual, it is important to model the response of the ice sheet to such large-scale changes in albedo.

To assess the influence of the atmosphere on the surface mass balance of ice sheets a range of models is available and typically used: from process-based snow pack models coupled to regional climate models, which explicitly compute the regional  
20 climate and energy fluxes in the snow and at the ice surface (Fettweis et al., 2013, 2017; Noël et al., 2015; Langen et al., 2015; Niwano et al., 2018; Krapp et al., 2017), to simpler parameterizations like the positive degree day (PDD) models (e.g. Reeh, 1991). Regional climate models, for example, can be coupled with an ice-sheet model to compute interactions of the ice and the atmosphere while explicitly resolving all relevant feedbacks (Le clec’h et al., 2019). Since this is computationally expensive,  
25 often a simpler approach is required in order to run simulations over centuries to millennia or large ensembles of simulations. In such cases, the surface mass balance is typically calculated from near-surface air temperatures with a positive degree day approach (Wilton et al., 2017; Aschwanden et al., 2019; Rückamp et al., 2019), which is computationally much less expensive but lacks the direct contribution of shortwave radiation and albedo to melting. The insolation–temperature–melt equation ~~is~~  
30 ~~one of the few examples, which~~ used by van den Berg et al. (2008) and Robinson et al. (2010) uses explicit albedo and insolation on long time scales (~~van den Berg et al., 2008; Robinson et al., 2010~~). The Surface Energy and Mass balance model of Intermediate Complexity (SEMIC) uses the explicit energy balance and albedo parameterization and an implicit diurnal cycle for the temperature (Krapp et al., 2017) and is therefore capable to predict present and future melt.

The recent development of the diurnal energy balance model dEBM presented by ~~Krebs-Kanzow et al. (2020)~~ Krebs-Kanzow et al. (2021) (with a simpler version introduced in Krebs-Kanzow et al. (2018)) is computationally efficient, works well for the Greenland  
35 Ice Sheet, and can represent melt contributions from changes in albedo as well as seasonal and latitudinal variations of the

diurnal cycle. In the Greenland Surface Mass Balance Model Intercomparison Project (Goelzer et al., 2020), dEBM shows a good correlation with ~~ice core data, air-borne radar and PROMICE data and observations and~~ is among the models which compare the closest with observed integrated mass losses from 2003-2012 (Fettweis et al., 2020a). Thus it fills the gap between a process-based snow pack model coupled to a regional climate model and a simple and efficient temperature-index approach such as PDD.

~~To this end, we~~ We here expand the Parallel Ice Sheet Model (PISM) (the PISM authors, 2018; Winkelmann et al., 2011; Bueler and Brown, 2009) by the surface module dEBM-simple, which includes melt driven by changes in albedo based on Krebs-Kanzow et al. (2018), in order to explore their effects on the future ice evolution. ~~In addition, we~~ Beyond the work of Krebs-Kanzow et al. (2018), we additionally introduce parameterizations of albedo and atmospheric transmissivity to make it possible to run the model in standalone, prognostic mode (see Section 2). In particular the nonlinear albedo–melt relation (see Section 2.3.2) serves as an approximation to the melt–albedo feedback and allows to estimate its importance. ~~We~~ First, we compare the model against regional climate model simulations from ~~MAR~~ the Regional Atmosphere Model (Modèle Atmosphérique Régional, MAR, Fettweis et al. (2013, 2017)) and find a good fit (Sect. 3). ~~We~~ In order to explore the minimal and maximal contribution of the melt–albedo feedback to future mass losses ~~and we~~ test the effect of albedo changes on future mass loss under RCP2.6 and RCP8.5 warming (Sect. 4). ~~The results~~ Here we distinguish between simulations, which do not allow for changes in albedo, simulations with adaptive albedo and darkening simulations, where the surface of the whole ice sheet is at the bare ice value. While the latter experiments are inspired by the large-scale melt events (see Sect. 4.3), the dark zone in Greenland serves as motivation to explore the influence of the ice-albedo value (see Sect. 4.4 and Appendix B). We compare dEBM simple with PDD and find a better performance for the historic period (Appendix D). A detailed comparison of dEBM and PDD can be found in (Krebs-Kanzow et al., 2018, 2021). The results considering future warming are discussed in Sect. 5.

## 2 Methods

We first present the Parallel Ice Sheet Model PISM, then describe the diurnal Energy Balance Model as introduced in Krebs-Kanzow et al. (2018) and its implementation in PISM. To be able to run the model in standalone, prognostic mode, we introduce parameterizations of the surface albedo and transmissivity in Sections 2.3.2 and 2.3.1 (see Appendix A for more detail). In the last two subsections, we describe the spin-up of PISM for the Greenland Ice Sheet and the experiments conducted in the next sections.

### 2.1 Ice-sheet model PISM

PISM is a thermomechanically coupled ice-sheet model which uses a superposition of the shallow-ice approximation (SIA) for slow-flowing ice, and the shallow shelf approximation (SSA) for fast-flowing ice streams and ice shelves (Bueler and Brown, 2009; Winkelmann et al., 2011; the PISM authors, 2018). PISM was shown to be capable of reproducing the complex flow patterns evident in Greenland’s outlet glaciers at high resolution of less than 1km (Aschwanden et al., 2016).

The SSA basal sliding velocities are related to basal shear stress via a power law with a Mohr–Coulomb criterion that relates the yield stress to parameterized till material properties and the effective pressure of the overlaying ice on the saturated till (Bueler and Pelt, 2015). We use a non-conserving simple hydrology model that connects the till water content to the basal melt rate (Bueler and van Pelt, 2015). The internal deformation of the ice is described by *Glen’s flow law* with the flow  
 5 exponent  $n = 3$  for both, SIA and SSA flow and with the enhancement factors  $E_{\text{SSA}} = 1$  and  $E_{\text{SIA}} = 1.5$  for SSA and SIA flow respectively.

Using PISM, we first create an initial configuration of the Greenland Ice Sheet under present-day climate conditions, [using a climatology averaged over 1971-1990](#). Then we run a suite of experiments to validate dEBM simple for present-day as well as to test the role of insolation and temperature melting in future warming scenarios.

10 In this manuscript we concentrate on the changes in the surface mass balance, which ~~is~~ are modelled using the newly implemented dEBM-simple. The atmospheric conditions, namely the monthly 2D temperature and precipitation fields, are read in as input fields. The precipitation fields remain fixed and the share of snowfall and rain is determined from the local near-surface air temperature, [with rain at temperatures above 2°C and snow at temperatures below 0°C](#). We neglect effects from changing ocean temperatures, thus the sub-shelf melting is constant in space and time at ~~0.0470.05193~~ m/yr. Also, calving  
 15 is not modeled explicitly, but induced by a fixed calving front at its present-day location based on Morlighem et al. (2017), thus changes in mass losses from ice-ocean interaction are not considered here. Isostatic adjustment of the bedrock is not considered here. All experiments were run on a 4.5 km horizontal grid with a constant vertical resolution of 16 m. [While this resolution is too low to reproduce the details of the outlet glacier flow, it still preserves the general flow pattern. Moreover the focus of the paper on climatic mass balance justifies this choice.](#)

## 20 2.2 Adapted diurnal energy balance model dEBM-simple

For the simple version of the diurnal energy balance model (dEBM-simple) we follow the parametrization as laid out by Krebs-Kanzow et al. (2018). The melt equation reads

$$M = \frac{\Delta t_{\Phi}}{\Delta t \rho_w L_m} \left( \tau_{\alpha} (1 - \alpha_s) \bar{S}_{\Phi} + c_1 T_{\text{eff}} + c_2 \right), \quad (1)$$

with fresh water density  $\rho_w$ , latent heat of fusion  $L_m$ , ~~and the~~ surface albedo  $\alpha_s$ , ~~atmospheric transmissivity  $\tau_{\alpha}$ . The parameters describing the effective temperature influence on melting  $c_1$  and the melt intercept  $c_2$  are estimated from MAR v3.11 simulations (Fettweis et al., 2017), see Section 3. The values used here are given in Table A2.~~ ~~dEBM-dEBM-simple~~  
 25 ~~dEBM-dEBM-simple~~ is based on the assumption that melting occurs only during daytime, when the sun is above an elevation angle  $\Phi$ , which is estimated to be constant in space and time  $\Phi = 17.5^\circ$ , [see \(Krebs-Kanzow et al., 2018\)](#). The time period of a day when the sun is above the elevation angle  $\Phi$  is denoted by  $\Delta t_{\Phi}$ . The length of a day is  $\Delta t$  and the fractional time that the sun is above the  
 30 elevation angle  $\Phi$  is given by:

$$\frac{\Delta t_{\Phi}}{\Delta t} = \frac{h_{\Phi}}{\pi} = \frac{1}{\pi} \frac{\sin \Phi - \sin \varphi \sin \delta}{\cos \varphi \cos \delta} \quad (2)$$

with  $h_{\Phi}$  being the hour angle when the sun has an elevation angle of at least  $\Phi$ ,  $\delta$  being the solar declination angle and  $\varphi$  the latitude. The incoming radiation over the time  $\Delta t_{\Phi}$  ~~(when the sun is above the declination angle  $\Phi$ ) drives the melting. It is~~

obtained from the insolation at the top of the atmosphere (TOA),  $\bar{S}_\Phi$ , and the parameterized transmissivity  $\tau_{\alpha-T_A}$  (see equation (6)), drives the insolation melt described in the first term of the Equation (1).

~~In addition, the~~ The temperature-dependent melting ~~is not described in the second term of Equation (1) is not simply~~ a function of the air temperature directly as in, e.g., Pellicciotti et al. (2005); van den Berg et al. (2008), but a function of the cumulative temperature exceeding the melting point in a given month  $T_{\text{eff}}$  as in ~~Krebs-Kanzow et al. (2018, 2020)~~ Krebs-Kanzow et al. (2018, 2021).

$$T_{\text{eff}}(\bar{T}, \sigma) = \frac{1}{\sigma\sqrt{2\pi}} \int_0^{\infty} dTT \exp\left(-\frac{(T - \bar{T})^2}{2\sigma^2}\right) \quad (3)$$

Here,  $T$  is the fluctuating daily temperature,  $\bar{T}$  is the monthly average temperature, which is used as an input, and  $\sigma$  is the standard deviation of the temperature. The melting point is at  $0^\circ\text{C}$ .

The parameters describing the effective temperature influence on melting  $c_1$  and the melt intercept  $c_2$  are estimated from MAR v3.11 simulations (Fettweis et al., 2017), see Section 3. The values used here are given in Table A2.

Refreezing is assumed to be constant, with 60% of snow melt refreezing independent of temperature or melt. Ice melt does not refreeze but immediately runs off.

### 2.3 Implementation of dEBM-simple in PISM

The diurnal energy balance model is implemented in PISM as a climatic mass balance module. It takes the local near-surface air temperature and the precipitation as an input and computes the local climatic mass balance. The shortwave downward radiation and the broadband albedo are not needed as inputs, as they are parameterized internally, with the possibility to use other orbital parameters than the present day values. The melt module is evaluated at least weekly, independent of the adaptive time step used for the ice dynamics in PISM. The amount of melt is balanced with refreezing and snowfall before the surface mass balance is aggregated over the adaptive time steps in PISM. The aggregated values feed into the update of the ice geometry. On the other hand, the ice geometry is used as an input for the dEBM melt, as it feeds into the parameterization of the atmospheric transmissivity (see Equation (6)) and updates the local temperature when the atmospheric temperature lapse rate is considered. If a run is started without knowledge about melting in the previous time step, the albedo is assumed to be at the fresh snow value everywhere on the ice sheet or can be read in from an input file. In line with Krebs-Kanzow et al. (2018), no melting is allowed below  $-6.5^\circ\text{C}$  even if the insolation alone would be sufficient to cause melting.

#### 2.3.1 Parametrization of shortwave downward radiation

The shortwave downward radiation is computed from the top of the atmosphere (TOA) insolation and a linear model of the transmissivity of the atmosphere. Daily average TOA insolation  $\bar{Q}^{\text{day}}$  is computed from

$$\bar{Q}^{\text{day}} = \frac{S_0}{\pi} \left(\frac{\bar{d}}{d}\right)^2 (h_0 \sin \varphi \sin \delta + \cos \varphi \cos \delta \sin h_0), \quad (4)$$

where  $S_0 = 1367 \text{ W/m}^2$  is the annual mean of the total solar irradiance (solar constant),  $\bar{d}$  is the annual mean distance of the earth to the sun,  $d$  is the current distance,  $\varphi$  is the latitude,  $\delta$  is the declination angle, and  $h_0$  is the hour angle of sunrise and sunset. The average TOA insolation during the daily melt period  $\bar{S}_\Phi$  is given by

$$\bar{S}_\Phi = \frac{S_0}{\Delta t_\Phi \pi} \left( \frac{\bar{d}}{d} \right)^2 (h_\Phi \sin \varphi \sin \delta + \cos \varphi \cos \delta \sin h_\Phi) \quad (5)$$

5 Under present day conditions the declination angle  $\delta$  and the sun-earth distance  $d$  are approximated with trigonometric expansions depending on the day of the year, see Liou (2002, Chapter 2.2.). This approximation is used, as long as the used does not specifically demand paleo simulations.

To scale the insolation to the ice surface, we assume that the transmissivity of the atmosphere depends only on the local surface altitude in a linear way (similar to Robinson et al. (2010)). The linear fit for the shortwave downward radiation from TOA insolation is obtained from a linear regression of MAR v3.11 data averaged over the years 1958 to 2019, considering only the summer months (June, July and August ~~from 1958 to 2019~~) (see Appendix A2 and Figure A3). The ~~transmissivity is parametrization relies on the assumption that the mean transmissivity does not change in a changing climate. In particular the impact of cloud conditions and events like e.g. Greenland blocking, which might become more frequent in future, is not captured with this approach.~~ transmissivity is given by:

$$15 \quad \tau_{\alpha A} = a + b \cdot z, \quad (6)$$

where  $a$  and  $b$  are parameters (here  $a = 0.57$  and  $b = 0.037 \text{ km}^{-1}$ ) and  $z$  is the surface altitude in km. The approach to calculate shortwave downward radiation is further described in Appendix A2, in particular it is described how TOA conditions different than present-day, e.g. during the Eemian, can be modeled.

### 2.3.2 Albedo parametrization

20 PISM-dEBM-simple allows to read in the albedo field as an input. However, in order to keep the input requirements for a standalone version of the model minimal and to allow for a melt-dependent albedo, a simple albedo parametrization is implemented. ~~Regional climate models such as MAR or RACMO use Snow albedo in MAR is calculated using a snowpack model to determine the albedo (van Dalum et al., 2020). Snow albedo there is explicitly calculated, explicitly~~ based on snow grain size, cloud optical thickness, solar zenith angle and impurity concentration in snow ~~or parameterized. Ice albedo there~~ can be (van Dalum et al., 2020). In MAR, ice albedo is explicitly calculated as a function of ice density, time of the day, solar angle, spectrum of the solar radiation etc. Here, in contrast, albedo is parametrized in an ad-hoc way as a function of the melt in the last (weekly) timestep. As the time step in the climatic mass balance module is typically smaller than the adaptive ice-dynamics time-step, and the temporal resolution of the 2d air-temperature input, this approach allows for several iterations of the melt-dependent albedo under otherwise same conditions.

30 The corresponding parameters are fitted using MAR data MARv3.11 data (Fettweis). The advantage of this approach is that it requires no further information in PISM (e.g., a fully resolved firn-layer) but still ~~allows us to capture melt processes captures~~ melt processes driven by changes in albedo or insolation. In this approach, the albedo decreases linearly with increasing melt

from the maximal value  $\alpha_{\max} = 0.81$  (close to the fresh-snow albedo) for regions with no melting to  $\alpha_{\min} = 0.47$  (close to the bare-ice albedo). The albedo cannot drop below the value of  $\alpha_{\min}$ .

$$\alpha_s = \max[\alpha_{\max} - c \cdot M, \alpha_{\min}] \quad (7)$$

The slope  $c = -0.025$  yr/m is estimated from MAR data (see appendix Figure A1 and Section A1). We will later on test the sensitivity of the melting to the ~~parameters, slope and the value of  $\alpha_{\min}$ .~~ Lowering the value of  $\alpha_{\min}$  may indicate the sensitivity to darker ice. While an explicit darkening of the ice, possibly with a different albedo to melt relation, is not captured in this framework, it can be easily expanded to incorporate darkening ice.

For comparison, the observed albedos are shown in Figure A2.

## 2.4 Initial state

All simulations are started from a spun-up state and run with full ice dynamics (SIA and SSA as well as temperature evolution and a thermomechanical coupling). ~~For the spin-up the~~ The procedure detailed in Aschwanden et al. (2019) is used for the spin-up: a temperature anomaly is applied over the last 125 ka to the climatological mean (1971 to 1990 monthly averages) of the 2D temperature field of MAR v3.9 in order to obtain a realistic temperature distribution within the ice ~~while the topography is allowed to evolve.~~ Ice geometry and bedrock topography are from BedMachine V3 (Morlighem et al., 2017). ~~Basal heat flux is obtained from Maule (2005)~~ During the spin-up the more conventional positive-degree day model is used to compute changes in climatic mass balance. In the simulations, surface temperatures are scaled with changes surface elevation (atmospheric temperature lapse rate of -6 K/km) to include the melt–elevation feedback in the simulations. ~~Precipitation is not scaled with changing temperature. The spin-up is performed using the more conventional positive-degree day model~~

Initial ice geometry and bedrock topography are taken from BedMachine V3 (Morlighem et al., 2017). Basal heat flux is obtained from Maule (2005). The yearly cycle of precipitation is kept fixed but during the spin-up the precipitation fields are scaled: for each degree of warming we apply 7.3% precipitation increase for each degree of surface warming (Huybrechts, 2002)

~~The thickness and~~ The root mean square error in thickness amounts to 237 m, overestimating the thickness values in the West and North West (Morlighem et al., 2017). The velocity anomalies of the initial state ~~at the end of the spin-up~~ are detailed in Beekmann and Winkelmann (submitted). show a root mean square error of 145 m/yr compared to observed data (Rignot and Mouginot, 2012). The North East Greenland Ice Stream and several other fast flowing outlet glaciers are underestimated in the surface velocities. See Supplementary Figure S1 for anomaly maps.

## 2.5 Calibration-Validation experiments

To calibrate the model parameters and test the parameterizations, we perform diagnostic experiments with PISM-dEBM-simple over the period between 1958 and 2019. In order to disentangle the surface module from indirect effects of ice dynamics, e.g. dynamic thinning and thus a temperature increase through the temperature lapse rate, changes in the ice topography are

suppressed in these diagnostic experiments. Monthly MAR v3.11 near-surface air temperature and precipitation fields from 1958 to 2019 are used as atmosphere input while the albedo, the transmissivity and the melt rate are computed as shown above.

~~The sensitivity to~~ In order to explore the sensitivity to insolation, Eemian insolation values ~~is tested~~ are used in an analogous experiment where only the orbital parameters, which determine the top of the atmosphere insolation, are changed. The  
5 temperature and precipitation input remains the same as described above. Precipitation and albedo are calculated using the  
respective parametrizations.

## 2.6 Warming and darkening experiments over the next centuries

Here, we describe the series of experiments which are performed to assess the impact of the melt–albedo feedback onto the mass losses of the Greenland Ice Sheet. All experiments start from the same initial state, described in Sect. 2.4 and run over  
10 the period from 2000 to 2300. In contrast to the previously described experiments in Section 2.5, the ice topography is now  
allowed to change and the results are expressed in terms of cumulated mass losses since 2000 in meters sea level equivalent (m  
SLE). Melt rates are calculated by PISM-dEBM-simple using periodic monthly temperature fields given by the climatological mean ~~from over the period~~ 1971 to ~~1990.~~ ~~The 1990 from the~~ regional climate model MAR v3.11. MAR was forced with  
15 ERA reanalysis data (ERA-40 from 1958-1978 and ERA-5 after) (Kittel et al., 2021; Fettweis et al., 2020b). In the warming  
experiments, scalar temperature anomalies are applied uniformly over the entire ice sheet. The temperature anomalies are  
obtained from averaging the output of the IPSL-CM5A-LR model (Dufresne et al., 2013), which is one of four CMIP5 models  
extended until 2300, over the simulation domain containing the Greenland Ice Sheet and computing the anomaly relative to the  
1971-1990 period over the same domain.

In addition to forced temperature changes, the local near-surface air temperature adapts to topography changes of the ice  
20 sheet with a lapse rate of -6 K / km, thus taking the melt–elevation feedback into account. Note that in all experiments changes  
in albedo do not feed back onto the atmosphere, in particular albedo changes do not affect near-surface air temperatures.

~~We perform the following experiments:-~~

- ~~– **Ctrl:** Control run without darkening or temperature anomalies, using the parameters from Table A2 consistent with the present day experiments presented in Section 3.-~~
  - 25 ~~– **RCP2.6 and RCP8.5:** Similar to Ctrl, with a scalar temperature anomaly from the RCP2.6 and the RCP8.5 scenarios of the IPSL-CM5A-LR model (Dufresne et al., 2013), respectively, which is one of four CMIP5 models extended until 2300. The scalar temperature anomaly was obtained by averaging the monthly near-surface temperature over the Greenland Ice Sheet and computing the anomalies to the average yearly cycle of 1971-1990 over the same spatial domain.-~~
  - ~~– **Ctrl**  $\alpha_{1990}$ , **RCP2.6**  $\alpha_{1990}$ , and **RCP8.5**  $\alpha_{1990}$ : Control and warming experiments with a fixed yearly cycle of albedo values instead of the melt-dependent parameterization. The 2-dimensional albedo fields are obtained from monthly averages from the MAR v3.11 data, averaged over the period before 1990. Scalar temperature anomalies as detailed above in RCP2.6, RCP8.5.-~~
- 30



- ~~Ctrl  $\alpha_{\text{dark}}$ , RCP2.6  $\alpha_{\text{dark}}$ , and RCP8.5  $\alpha_{\text{dark}}$~~ : In these experiments the albedo over the entire ice sheet is lowered to the bare ice value of 0.47 during the summer months June, July and August. During all other months the albedo parametrization (with the optimized values as described in Appendix A1) is used to compute the albedo. Scalar temperature anomalies as detailed above in RCP2.6, RCP8.5.
- 5 - ~~Ctrl  $\alpha_{\text{ls}}$ , RCP2.6  $\alpha_{\text{ls}}$ , and RCP8.5  $\alpha_{\text{ls}}$~~ : The slope of the albedo parametrization is decreased to half the optimal value (which correspond to -0.013 yr/m). Thus the bare ice value of the albedo is reached at melt rates of 28 m/yr, (compared to 14 m/yr with the optimal value for the slope). Scalar temperature forcing for the RCP experiments as described above.
- 10 - ~~Ctrl  $\alpha_{\text{hs}}$ , RCP2.6  $\alpha_{\text{hs}}$ , and RCP8.5  $\alpha_{\text{hs}}$~~ : The slope of the albedo parametrization is increased to twice the optimal value (which correspond to -0.05 yr/m). Thus the bare ice value of the albedo is reached at melt rates of 7 m/yr, (compared to 14 m/yr with the optimal value for the slope). Scalar temperature forcing for the RCP experiments as described above.
- 15 - ~~Ctrl  $\alpha_{\text{min}x}$ , RCP2.6  $\alpha_{\text{min}x}$ , and RCP8.5  $\alpha_{\text{min}x}$~~ : The lower limit for albedo values is reduced from the standard value of 0.47 to  $x=0.4$  and  $x=0.3$ . The slope of the albedo parametrization remains unchanged, but albedo values decrease further for melt rates above 14 m/yr until the new minimal albedo value is reached. Scalar temperature forcing for the RCP experiments as detailed above.
- ~~Ctrl  $T_{\text{noLR}}$ , RCP2.6  $T_{\text{noLR}}$ , and RCP8.5  $T_{\text{noLR}}$~~ : Experiments analogous to Ctrl, RCP2.6 and RCP8.5, but neglecting the atmospheric temperature lapse rate. Thus the local temperature is independent of the ice-sheet topography and the representation of the melt-elevation feedback is interrupted.

The  ~~$\alpha_{1990}$  experiments use a constant~~ experiments can be summarized into seven groups: The  $\alpha_{1990}$  experiments use an interannually constant yearly albedo cycle, and therefore suppress the adaptation of albedo to increased melt rates under warming. They are used to estimate future ice loss without the melt-albedo feedback ~~.The and serve as a reference.~~ The std experiments include the melt-albedo feedback through the standard parameterization for albedo. The  $\alpha_{\text{dark}}$  experiments represent an extreme scenario, assuming that the whole ice surface will be snow free or covered with melt water during the months June, July and August in each year. This is not a realistic scenario but rather an upper limit to the possible impact of albedo changes on ice losses. The ~~,and  $\alpha_{\text{ls}}$ ,  $\alpha_{\text{hs}}$  and  $\alpha_{\text{min}}$~~  experiments explore the uncertainty from the albedo parameterization. Doubling the slope to -0.05 yr/m leads to a steeper decrease in albedo with increasing melt rates, which is closer to the conditions in August (see Appendix Figure A1). Assuming that in the future the melting period over the Greenland Ice Sheet is longer and therefore the conditions we observe in August might be more characteristic over the melting period, justifies to explore the impact of an increased sensitivity in the  $\alpha_{\text{hs}}$  experiments. However, in this approach the minimal albedo for bare ice remains at 0.47, and is therefore reached with melt rates of 7 m/yr (instead of 14 m/yr in the standard parameterization). Halving the slope to -0.013 yr/m explores the lower boundary of albedo-melt sensitivity (see Figure A1) in the  $\alpha_{\text{ls}}$  experiments. In the  $\alpha_{\text{min}}$  experiments, we test the influence of a reduced minimum albedo, as observed today in the dark zone of the Greenland

**Table 1.** Overview over the experiments performed in this study

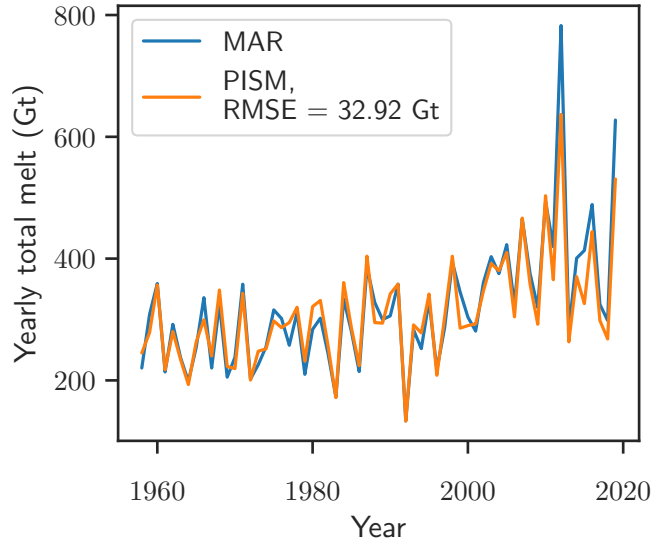
<u>Experiment group</u>	<u>Name</u>	<u>Temperature forcing</u>	<u>Albedo</u>	<u>Lapse rate</u>
<u><math>\alpha_{1990}</math></u>	<u>Ctrl<math>\alpha_{1990}</math></u>	<u>none</u>	<u>fixed yearly cycle</u>	<u>-6K/km</u>
	<u>RCP2.6<math>\alpha_{1990}</math></u>	<u>RCP2.6</u>	<u>fixed yearly cycle</u>	<u>-6K/km</u>
	<u>RCP8.5<math>\alpha_{1990}</math></u>	<u>RCP8.5</u>	<u>fixed yearly cycle</u>	<u>-6K/km</u>
<u>std</u>	<u>Ctrl</u>	<u>none</u>	<u>std parameterized</u>	<u>-6K/km</u>
	<u>RCP2.6</u>	<u>RCP2.6</u>	<u>std parameterized</u>	<u>-6K/km</u>
	<u>RCP8.5</u>	<u>RCP8.5</u>	<u>std parameterized</u>	<u>-6K/km</u>
<u><math>\alpha_{\text{dark}}</math></u>	<u>Ctrl<math>\alpha_{\text{dark}}</math></u>	<u>none</u>	<u>bare ice value</u>	<u>-6K/km</u>
	<u>RCP2.6<math>\alpha_{\text{dark}}</math></u>	<u>RCP2.6</u>	<u>bare ice value</u>	<u>-6K/km</u>
	<u>RCP8.5<math>\alpha_{\text{dark}}</math></u>	<u>RCP8.5</u>	<u>bare ice value</u>	<u>-6K/km</u>
<u><math>\alpha_{\text{ls}}</math></u>	<u>Ctrl<math>\alpha_{\text{ls}}</math></u>	<u>none</u>	<u>parameterized, low slope</u>	<u>-6K/km</u>
	<u>RCP2.6<math>\alpha_{\text{ls}}</math></u>	<u>RCP2.6</u>	<u>parameterized, low slope</u>	<u>-6K/km</u>
	<u>RCP8.5<math>\alpha_{\text{ls}}</math></u>	<u>RCP8.5</u>	<u>parameterized, low slope</u>	<u>-6K/km</u>
<u><math>\alpha_{\text{hs}}</math></u>	<u>Ctrl<math>\alpha_{\text{hs}}</math></u>	<u>none</u>	<u>parameterized, high slope</u>	<u>-6K/km</u>
	<u>RCP2.6<math>\alpha_{\text{hs}}</math></u>	<u>RCP2.6</u>	<u>parameterized, high slope</u>	<u>-6K/km</u>
	<u>RCP8.5<math>\alpha_{\text{hs}}</math></u>	<u>RCP8.5</u>	<u>parameterized, high slope</u>	<u>-6K/km</u>
<u><math>\alpha_{\text{minX}}</math></u>	<u>Ctrl<math>\alpha_{\text{minX}}</math></u>	<u>none</u>	<u>parameterized, changed ice albedo</u>	<u>-6K/km</u>
	<u>RCP2.6<math>\alpha_{\text{minX}}</math></u>	<u>RCP2.6</u>	<u>parameterized, changed ice albedo</u>	<u>-6K/km</u>
	<u>RCP8.5<math>\alpha_{\text{minX}}</math></u>	<u>RCP8.5</u>	<u>parameterized, changed ice albedo</u>	<u>-6K/km</u>
<u><math>T_{\text{noLR}}</math></u>	<u>Ctrl<math>T_{\text{noLR}}</math></u>	<u>none</u>	<u>std parameterized</u>	<u>none</u>
	<u>RCP2.6<math>T_{\text{noLR}}</math></u>	<u>RCP2.6</u>	<u>std parameterized</u>	<u>none</u>
	<u>RCP8.5<math>T_{\text{noLR}}</math></u>	<u>RCP8.5</u>	<u>std parameterized</u>	<u>none</u>

Ice Sheet. The  $T_{\text{noLR}}$  experiments neglect the atmospheric temperature lapse rate. Thus the local temperature is independent of the ice-sheet topography and the representation of the melt–elevation feedback is interrupted.

An overview over all experiments is given in Table 1.

### 3 Validation for the Greenland Ice Sheet

- 5 In this section, we validate the dEBM-simple melt for present-day conditions and show as and-an example melt rates with Eemian insolation. The experiments are performed as described in the Methods Section 2.5.



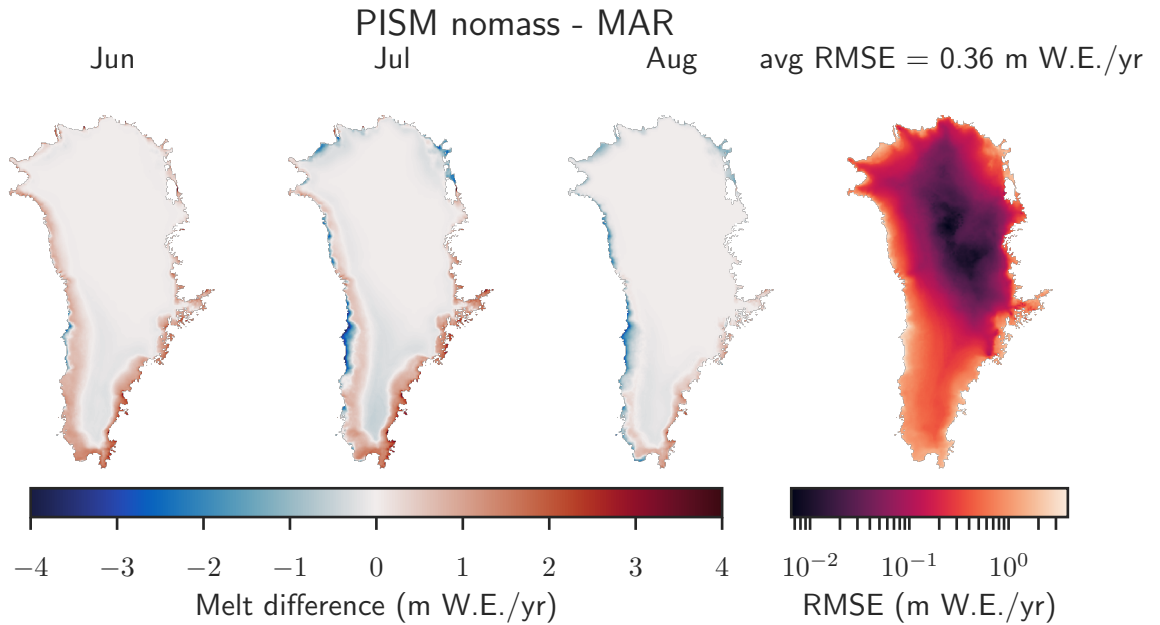
**Figure 1. Comparison of annual total melt of the Greenland Ice Sheet as calculated with MAR v3.11 and PISM-dEBM-simple.** The diagnostic simulation with PISM-dEBM-simple (orange line) is performed using monthly MAR 2D temperature fields as forcing. The albedo  $\alpha_s$  is parameterized with the local melt rate  $m$  as  $\alpha_s = 0.82 - 0.025 \text{ yr/m} \cdot m$  and the shortwave downward radiation is approximated by the top of the atmosphere radiations and the transmissivity  $\tau_\alpha - \tau_A$  parameterized with surface altitude  $z$  as  $\tau_\alpha = 0.037 \text{ km}^{-1} \cdot z + 0.57$ ,  $\tau_A = 0.037 \text{ km}^{-1} \cdot z + 0.57$ . The root mean square difference between the PISM-dEBM-simple simulation and total melt as given by MAR (blue line) is 32.92 Gt.

### 3.1 Present-day melt rates

~~As described in Section 2.5, we use historic and present day experiments to optimize for the melt parameters in equation . We compare the resulting modeled melt~~ Here, we compare the melt modeled with PISM-dEBM-simple over the historic period with ~~melting melt~~ modeled by MARv3.11 in Figure 1. ~~The experimental~~ (see Figure 1). The setup is described in Section 2.5.

- 5 Note that here the evolution of the ice-sheet topography is suppressed, that is the melt rates are calculated over a fixed geometry corresponding to present day.

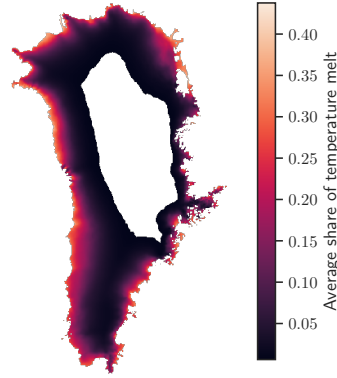
Due to the parameterization of the albedo and the transmissivity (and thus the shortwave downward radiation) detailed in Section 2.3 and in Table A2, the parameters of the dEBM-simple model are adjusted from Krebs-Kanzow et al. (2018). The chosen dEBM-simple parameters  $c_1$  and  $c_2$  (see Table A2) minimize the product of spatial and temporal root mean square error ~~in the melt rate~~ over the whole period from 1958 to 2019 while using the parametrizations for albedo and shortwave downward radiation. The temporal root mean square error is computed from a comparison of total yearly melt (see Figure 1) and the spatial root mean square error is computed from a comparison of the 2D fields of summer (JJA) melt rates averaged over the whole period (see Figure 2), ~~both with respect to MAR data. Both of the root mean square errors are minimized by the dEBM-simple parameters  $c_1$  and  $c_2$  given in table A2.~~



**Figure 2. Local differences between the monthly averaged June, July, and August melt rates as diagnosed with PISM-dEBM-simple compared to MAR.** The PISM simulation uses monthly 2D temperature fields from MAR as forcing and parametrizes albedo and shortwave downward radiation as detailed in 2.3.1 and 2.3.2. Positive numbers mean that PISM overestimates the melt and negative numbers mean that PISM underestimates the melt. The local root mean square error averaged over June, July and August from 1958-2019 is shown in the right plot. The spatial average of the RMSE is 0.36 m/yr.

Yearly total melt computed with [PISM-PISM-dEBM-simple](#) follows the MAR data closely (see Figure 1). That extreme melt years such as 2012 and 2019 are underestimated can be explained by the parametrization of shortwave downward radiation, which neglects temporal variability in the cloud cover, one of the drivers of recent mass loss in Greenland (Hanna et al., 2014; Hofer et al., 2017). We also test dEBM-simple with shortwave downward radiation and albedo from MAR directly. Figure A4 shows, that in this case the extreme melt in 2019 is better captured, while melting in 2012 is still underestimated.

As Figure 2 shows, melt is generally overestimated in June, at the beginning of the melt season and underestimated as the melt season progresses. In July dEBM-simple underestimates melt mostly at the western margin, where ablation is highest. In August, toward the end of the melt season, melt is systematically underestimated by the dEBM-simple module, [in particular in the regions where the darkest albedo values are observed. The systematic underestimation could be caused by taking a constant minimal value for the ice albedo and not allowing for processes which would lead to a natural darkening of the surface, i.e. algae growths, supra-glacial lakes or darkening related to the ageing of snow or exposed ice. On the other hand, many of those processes, in particular bio-albedo feedbacks or dust deposition, are not yet represented in the MAR model neither, and thus should not induce a systematic bias when comparing to MAR data.](#)

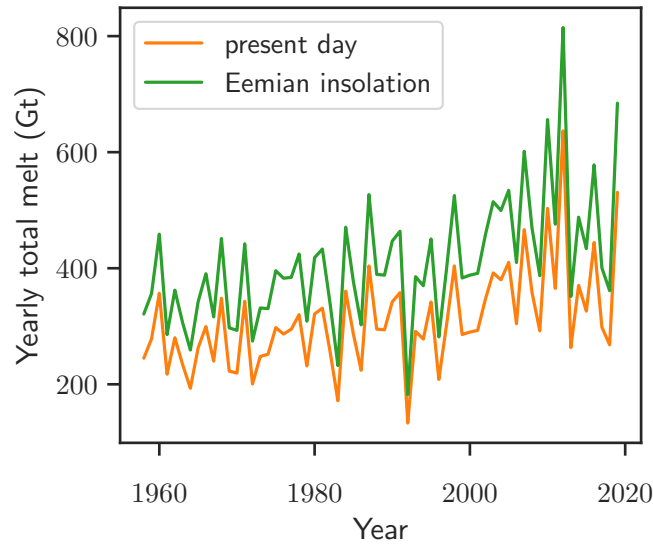


**Figure 3. Share of temperature-induced melt.** The fraction of temperature-induced melt, defined as  $M_t/(M_t + M_i)$ , is diagnosed with PISM-dEBM-simple and averaged over the months June, July and August over the whole simulation period from 1958-2019. The white part in the center illustrates areas of the Greenland Ice Sheet where the average melt is zero at present.

The melt equation (1) can be used to attribute the melt rates of the present day to temperature- or insolation driven melt in a first order approximation. To this end we compare both contributions to the total melt rate, with the temperature driven melt  $M_t = \frac{\Delta t_{\Phi}}{\Delta t_{\rho_w} L_m} c_1 T_{\text{eff}}$  and the insolation driven melt  $M_i = \frac{\Delta t_{\Phi}}{\Delta t_{\rho_w} L_m} \tau_{\alpha} (1 - \alpha_s) \bar{S}_{\Phi}$ . The share is then defined by  $M_t/(M_t + M_i) = (c_1 T_{\text{eff}})/(c_1 T_{\text{eff}} + \tau_{\alpha} (1 - \alpha_s) \bar{S}_{\Phi})$  over the regions which experience melt. Under present day conditions, this approach indicates that the melt over the whole ice-sheet is mainly driven by the insolation (see Figure 3). Even at the margins, where monthly mean temperatures and the fraction of temperature driven melt are highest, the fraction does not exceed one half. In particular over the high and cold regions of the ice sheet, the melt seems to be entirely driven by the insolation, with an indirect effect of the temperature only allowing melt if monthly mean air temperatures are above  $-6.5^{\circ}\text{C}$ .

The model is able to capture melt patterns of the Greenland ice sheet over the historic period between 1958 - 2019 with a root mean square error of 32.92 Gt for the yearly total melt and an average root mean square error of 0.36 m W.E./yr for the local summer melt rates. A more thorough discussion on the performance and the sensitivity of the melt equation (1) (without the parametrization of albedo and transmissivity) and a comparison to the positive degree day model can also be found in (Krebs-Kanzow et al., 2018). An overview over the performance of the full dEBM model compared with other state of the art models can be found in (Fettweis et al., 2020a).

Overall, the skill of the PISM-dEBM-simple model under present-day conditions and using high resolution forcing from MAR is similar to the skill of the dEBM model (Krebs-Kanzow et al., 2020) full dEBM model (Krebs-Kanzow et al., 2021). Compared to MAR, dEBM revealed a RMSE of 27Gt for the annual mean 1979-2016 SMB in an experiment which was forced with reanalysis data (Krebs-Kanzow, pers. com.). However dEBM better reproduces extreme years such as 2012 as this version also The dEBM full model accounts for changes in the atmospheric emissivity and transmissivity, both caused by changes in



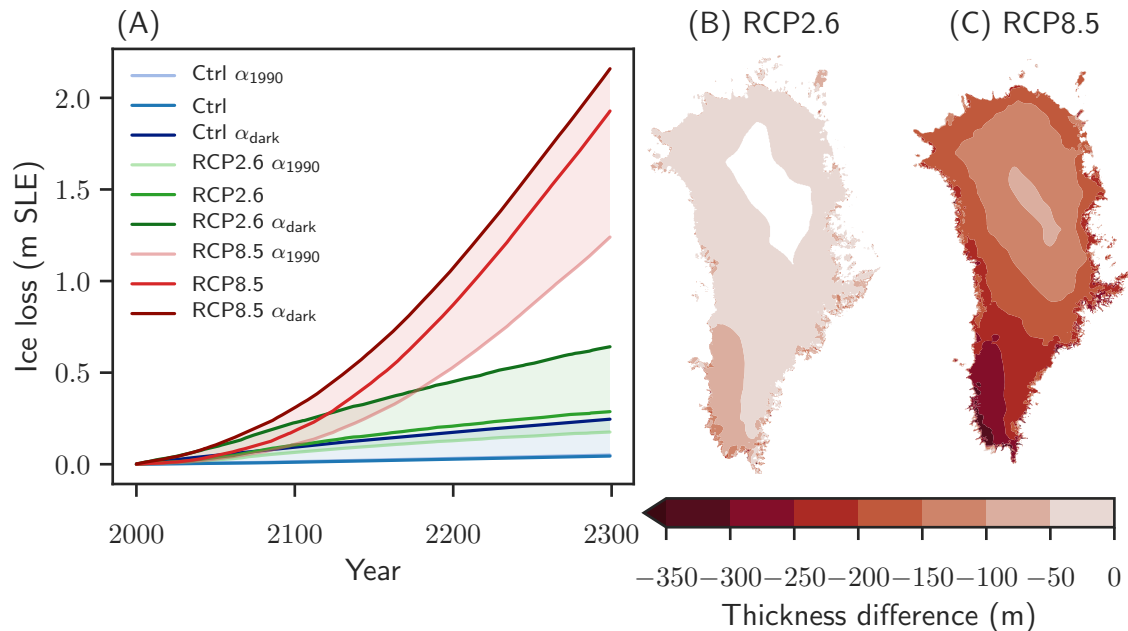
**Figure 4. Comparison of Eemian vs. present-day insolation in dEBM simple** Yearly total melt of the Greenland Ice Sheet as diagnosed with PISM-dEBM-simple under present day insolation (orange) and Eemian insolation (green). The diagnostic simulation with PISM were performed using monthly MAR 2D temperature fields as forcing and the parameterizations for shortwave downward radiation and albedo mentioned in the text.

cloud cover. As the cloud cover, as drivers of melt, and is therefore was the main driver in the 2012 melt event, the full dEBM model therefore is better suited to represent melt events such as in 2012, reproduce this and similar melt events. Furthermore dEBM computes the refreezing on the basis of the surface energy balance.

### 3.2 Sensitivity to Eemian solar radiation

5 The dEBM approach together with the approximations for albedo and transmissivity allows to include changing orbital parameters for simulations on paleo timescales. Here we ~~use as an example the orbital parameters corresponding to the Eemian, explore the melt response to Eemian (125 ka before present, with the) orbital parameters in order to test for the sensitivity to insolation values and compare with other results from the literature. Therefore we use the~~ eccentricity  $e = 0.0400$ , the obliquity  $\varepsilon = 23.79^\circ$  and the longitude of the perihelion  $\omega = 307.13^\circ$ . The insolation at the top of the atmosphere is then calculated as  
 10 detailed in Section A1. We use the present day topography for the diagnosis of melt rates and keep the surface air temperature fields unchanged from the previous experiment (MAR v3.11 in the period of 1958-2019).

The increase in solar radiation leads to increased melt, as seen in Figure 4. The inter-annual variability in yearly total melt is very close to the ~~historic variability~~ present day variability computed with MAR, mainly driven by inter-annual temperature changes. Averaged over the whole time period (1958-2019) the yearly total melt increases by 98 Gt/yr, which corresponds to  
 15 a relative increase of 31%. This is in line with findings of Van De Berg et al. (2011), who find that Eemian insolation alone

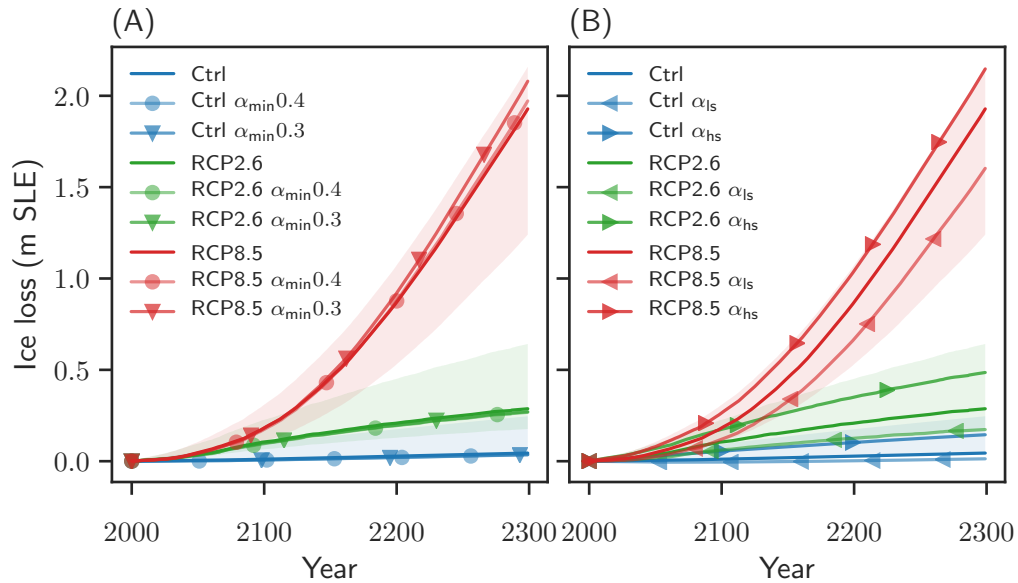


**Figure 5. Influence of the melt–albedo feedback on Greenland’s ice loss under future warming.** The scenarios consist of a control experiment (blue), and temperature forcing with RCP2.6 (green) and RCP8.5 (red). (A) Ctrl, RCP2.6, RCP8.5: ice loss between 2000 and 2300 modelled with PISM-dEBM-simple using the standard parameters and the respective temperature forcing.  $\alpha_{1990}$ : ice loss for the respective temperature forcing with the respective temperature forcing with monthly albedo fixed to the average pre-1990 values, thereby interrupting the melt–albedo feedback.  $\alpha_{dark}$ : ice loss with the respective temperature forcing with summer albedos (June, July, August) set to the bare-ice value over the whole ice sheet. This yields an upper limit of ice losses driven by albedo changes. [The shading is to illustrate the corridor between the lower and upper limit. Ice loss is given in meter sea-level equivalent. 1 mSLE corresponds to approx. 361800 Gt of ice.](#) Panel (B) and (C) show the ice thickness difference between the lower bound experiments  $\alpha_{1990}$  and the standard experiments for RCP2.6 (B) and RCP8.5 (C) in the year 2300.

leads to 40 Gt/yr increase in runoff compared to present day and to 113 Gt/yr increase in runoff when compared to preindustrial values.

#### 4 Influence of the melt–albedo feedback on Greenland’s ice loss under future warming

Here ~~we analyse,~~ [we analyse](#) how changes in albedo may impact the melt rates and the ice losses of the Greenland Ice Sheet under the greenhouse gas emission scenarios RCP2.6 and RCP8.5. In particular we focus on the melt–albedo feedback, and on the additional ice losses driven by changes in albedo. The experiments are motivated and described in detail in Section 2.6. The volume of the ice sheet and the mass losses until the years 2100 and 2300 due to the respective warming scenarios are summarized in Table 2.



**Figure 6. Uncertainty of albedo-change driven ice loss.** Ice losses of the Greenland ice sheet under the Ctrl, RCP2.6, and RCP8.5 scenarios, exploring the effect of different albedo sensitivities, as described in detail in Sect. 2.3.2 and Figure A1. Shaded regions correspond to the corridor between lower and upper bound for ice losses, as shown in Figure 5. (A) Ice losses with variations in the minimal value for albedo. Lower  $\alpha_{\min}$  corresponds to darker bare-ice. (B) Ice losses with variation in the slope of the albedo parametrization.  $\alpha_{ls}$  experiments use a lower slope (half of the standard value), thus the sensitivity of albedo to melt is reduced.  $\alpha_{hs}$  experiments use a higher slope (double of the standard value), thus increasing the sensitivity of albedo to melt. [Ice loss is given in meter sea-level equivalent. 1 mSLE corresponds to approx. 361800 Gt of ice.](#)

#### 4.1 Ice losses under warming without the melt–albedo feedback

~~Experiments with a~~ The experiments  $\alpha_{1990}$  use fixed monthly albedo fields and thereby interrupt the melt–albedo feedback and allow to explore the. Those experiments illustrate a lower bound of ice-losses due to warming – in this model setup. Note that the lower bound of projected future ice losses under global warming likely differs due to the coarse resolution and the lack of ice-ocean interaction in this study. As described in Section 2.6, the monthly albedo in the ~~experiments the monthly albedo~~  $\alpha_{1990}$  experiments is fixed to an average yearly cycle given by the pre-1990 values in MARv.3.11. In consequence the insolation related melt, as given by the first term of Equation (1), remains constant or even decreases due to decreasing transmissivity of the atmosphere, and only the temperature dependent term increases due to the warming.

In this scenario, the Ctrl  $\alpha_{1990}$  experiment remains constant in volume, while the RCP2.6  $\alpha_{1990}$  shows 5.2 cm ice loss until 2100 and 12.6 cm until 2300. In the RCP8.5  $\alpha_{1990}$  experiment the ice losses amount to 9.8 cm until 2100 and to 119 cm until 2300 (see Figure 5). The mass loss until 2100 is in line with the estimate of  $9 \pm 5$  cm in the community-wide ISMIP6 projections (Goelzer et al., 2020). Note that in contrast to ISMIP6, the ocean driven melting remains constant, even under



**Table 2.** Sea-level relevant volume (in m sea-level rise equivalent) and mass loss (in cm sea-level rise equivalent). All values are relative to the respective control simulation. Only  $\alpha_{\text{dark}}$  simulations are given in absolute values, since the Ctrl  $\alpha_{\text{dark}}$  is an extreme scenario which does not qualify as a control experiment.

Experiments	Volume (m SLE)		$\Delta$ Volume (cm SLE)	
	2100	2300	2100	2300
Ctrl $\alpha_{1990}$	7.59	7.55	-	-
Ctrl	7.59	7.55	-	-
Ctrl $\alpha_{\text{dark}}$	7.51	7.35	8.3	20.1
Ctrl $\alpha_{\text{ls}}$	7.60	7.59	-	-
Ctrl $\alpha_{\text{hs}}$	7.54	7.45	-	-
Ctrl $\alpha_{\text{min}0.4}$	7.59	7.56	-	-
Ctrl $\alpha_{\text{min}0.3}$	7.59	7.56	-	-
RCP2.6 $\alpha_{1990}$	7.53	7.42	5.2	12.6
RCP2.6	7.49	7.31	9.4	24.3
RCP2.6 $\alpha_{\text{dark}}$	7.37	6.96	21.4	59.7
RCP2.6 $\alpha_{\text{ls}}$	7.54	7.43	6.7	16.0
RCP2.6 $\alpha_{\text{hs}}$	7.42	7.11	11.9	34.1
RCP2.6 $\alpha_{\text{min}0.4}$	7.50	7.33	9.0	23.3
RCP2.6 $\alpha_{\text{min}0.3}$	7.50	7.33	9.2	23.5
RCP8.5 $\alpha_{1990}$	7.49	6.36	9.3	119.0
RCP8.5	7.42	5.67	16.8	188.4
RCP8.5 $\alpha_{\text{dark}}$	7.29	5.44	29.3	211.5
RCP8.5 $\alpha_{\text{ls}}$	7.48	6.00	12.2	159.0
RCP8.5 $\alpha_{\text{hs}}$	7.34	5.45	20.5	200.2
RCP8.5 $\alpha_{\text{min}0.4}$	7.43	5.63	16.4	193.7
RCP8.5 $\alpha_{\text{min}0.3}$	7.42	5.52	17.0	204.4

increased temperatures, and there is no glacier retreat due to ice-ocean interactions. ~~But, also~~ However, the mitigating effect of an precipitation increase ~~under~~ in a warmer climate is also missing.

#### 4.2 Increased ice loss through the melt–albedo feedback

In the following we present the results for ~~ice loss~~ the std experiments with PISM-dEBM-simple, taking into account the melt–albedo feedback through the melt-dependent albedo parameterizations as described in Section 2. In the control simulation Ctrl, without temperature forcing or artificial darkening, the ice sheet is stable in volume on the timescale of 300 years.

In the RCP2.6 simulations, the moderate increase in temperatures leads to a approximately linear decline in ice-volume with an ice loss of 9.4 cm until 2100 and 24.3 cm until ~~2300~~. 2300 in comparison to the year 2000. This is an increase in ice loss of +82 % in 2100 and +93 % in 2300 in comparison to the simulation without ~~melt-albedo~~ melt-albedo feedback  $\alpha_{1990}$ , see Fig. 5 and Table 2. The RCP8.5 simulations show a strong and non-linear decline in ice-volume, with ice losses of 16.8 cm in 2100 and 1.88 m in 2300. This corresponds to a relative increase of +80 % and +58 % respectively due to the melt–albedo feedback. The relative contribution of the melt–albedo feedback to ice loss keeps increasing with time for the RCP2.6 experiment, while it becomes less important with time for the RCP8.5 experiment, as the whole ice sheet approaches the minimal albedo value  $\alpha_{\min}$ . However, in absolute terms the melt–albedo feedback still contributes almost 70 cm SLE mass loss in the RCP8.5 experiment until the year 2300.

10 We compare these values with the influence of the melt–elevation feedback, ( $T_{\text{noLR}}$ , see Fig. C1). This feedback is weaker, it increases the ice loss by 18 % and 13 % in the RCP2.6 and RCP8.5 simulations respectively.

The melt–albedo feedback is particularly important in the south of Greenland, where the insolation averaged over the daily melt period  $\bar{S}_{\Phi}$  (see Eq. (1)) is highest. Until the year 2300 it initiates up to 100 m additional thinning in the South-West for the RCP2.6 scenario compared to RCP2.6  $\alpha_{1990}$  (Figure 5 (B)). In the RCP8.5 experiment, the melt–albedo feedback is impacting 15 the thinning over the whole ice sheet (Figure 5 (C)). However, the most important contribution remains in the south-west of Greenland, with additional 300 m thinning compared to RCP8.5  $\alpha_{1990}$ .

### 4.3 An upper limit for ice loss through extreme surface darkening

As a next step, the upper limit of the melt–albedo feedback is explored via prescribing summer albedos equal to the bare ice albedo over the whole ice sheet in each year (see details in Section 2.6). First, the effect of such a surface darkening is explored 20 without any temperature forcing in the Ctrl  $\alpha_{\text{dark}}$  scenario. In this experiment approximately linear mass loss is observed, with a rate of 8 mm SLE per decade (see Fig. 5 (A)) and induces ice losses of 8.3 cm until 2100 and 20.1 cm until 2300. The condition that the local monthly mean air temperature needs to be higher than  $-6.5^{\circ}\text{C}$  to allow melt, prevents further melting in the ice sheet’s interior. Topographic changes together with the temperature-lapse rate feedback increase the melt area slowly, but do not have a major impact over the 300 years. Note that this extreme darkening Ctrl  $\alpha_{\text{dark}}$  scenario alone induces more ice loss 25 than the RCP2.6  $\alpha_{1990}$  scenario (see Fig. 5 and table 2).

The RCP2.6  $\alpha_{\text{dark}}$  experiment combines the extreme summer darkening with the RCP2.6 temperature anomaly, thereby increasing ice losses from the RCP2.6  $\alpha_{1990}$  experiment by more than a factor of four in comparison to the  $\alpha_{1990}$  experiments (Figure 5 and Table 2). This corresponds to a more than fourfold increase in ice losses. The darkening together with the moderate temperature increase induces an expansion of the melt zone and thus strong melt in areas that are not affected in the 30 Ctrl or RCP2.6 experiments. The ice-volume evolution in the RCP2.6 experiment is closer to the lower than to the upper bound of the melt–albedo feedback.

In the RCP8.5  $\alpha_{\text{dark}}$  experiment the summer darkening leads to an increase in ice loss of 214 % in 2100 and 77 % in 2300 in comparison to the no-feedback RCP8.5  $\alpha_{1990}$  experiment (see Fig. 5 and table 2). The strong shock of albedo darkening is particularly relevant when overall temperature increases are still low. In contrast to the RCP2.6  $\alpha_{\text{dark}}$  experiment, where the

additional mass losses increase with time, here the relative impact of extreme summer darkening decreases on long time scales. As the warming progresses the temperature becomes a more important driver to melt.

- Reducing the frequency of ~~the~~ darkening in the RCP2.6  $\alpha_{\text{dark}}$  and RCP8.5  $\alpha_{\text{dark}}$  ~~experiments linearly~~ experiments to darkening events every two or every five years instead of every year reduces the difference in mass loss between the ~~dark-RCP~~ RCP  $\alpha_{\text{dark}}$  and the RCP experiments (see Appendix Figure B1). When the darkening happens every two years the additional ice losses decrease to approximately half of the ice losses with darkening every year. Similarly, a darkening event every five years leads to only 20% of the additional ice losses coming of the darkening in each year. The effect is approximately linear in the frequency of darkening years. This might help to estimate additional albedo-driven ice losses in extreme years as 2012, if projections for the frequency of such extreme event are available.
- Reducing the length of the dark period from the whole summer (i.e. June, July and August) to only one month reveals that the month of June is most sensitive to additional darkening, inducing more than half of the additional ice losses between the RCP8.5 and the RCP8.5  $\alpha_{\text{dark}}$  experiments (see Appendix Figure B1). The increased sensitivity to darkening in June could be due to the fact that the northern hemisphere receives the most insolation during the month of June. Moreover, in the beginning of the melt season the albedo has not yet decreased due to the melt processes, so an artificial darkening has the strongest effect, compared to the following summer months.

#### 4.4 Exploring uncertainty in albedo-change driven ice losses

- The standard parameters for the albedo parameterization used in the RCP2.5 and the RCP8.5 experiments provide the best fit to the MARv3.11 data over the historic period. However, the corridor for possible contributions of the melt–albedo feedback is large, therefore we test how changes in the albedo parameterization affect the ice losses driven by albedo changes. The albedo parametrization can affect the strength of the melt–albedo in two ways: first by changing  $\alpha_{\text{min}}$ , the lowest albedo possible, and second by changing the sensitivity of albedo to melt via the slope in Equation (7). To ensure that the subsequent mass changes are not primarily due to model drift, they are corrected by a Ctrl experiment without warming but with otherwise same parameters.

- A decreased value of  $\alpha_{\text{min}}$  does not affect regions where melt rates are below 14 m/yr. Consequently, strong melt rates are necessary to observe its impacts: in the RCP8.5  $\alpha_{\text{min}}$  simulations with  $\alpha_{\text{min}} = 0.4$  the lowered  $\alpha_{\text{min}}$  value causes additional 5.3 cm of ice loss in 2300 (compared to RCP8.5) and the RCP8.5  $\alpha_{\text{min}}$  simulations with  $\alpha_{\text{min}} = 0.3$ , it causes additional 16 cm until 2300 (Figure 6 (A)).

- In contrast to the  $\alpha_{\text{min}}$  experiments, changing the slope in the albedo parameterization in Equation (7) affects the sensitivity of the albedo to melt already at low melt rates. In the Ctrl  $\alpha_{\text{hs}}$  experiment, the ice sheet loses 10 cm SLE until 2300 from the increase in the albedo sensitivity alone, ~~indicating that this is not consistent with the standard parameters~~ twice as much as with standard parameters. The increased melt sensitivity, although at the upper end of the uncertainty of the parameters presented in Sect. 2.5, might not be optimal in representing historical melt when the other parameters remain unchanged. We test thus the mass losses of the warming scenarios with respect to the Ctrl  $\alpha_{\text{hs}}$  experiment, in order to explore the interplay of an increased melt–albedo feedback and warming.

The additional effect of the increased sensitivity on ice-volume evolution depends on the warming scenario. The RCP2.6  $\alpha_{hs}$  experiment with moderate warming is affected by a more sensitive albedo parameterization, with up to 40 % increases in ice loss until 2300 with respect to the RCP2.6 experiment (see Figure 6). In contrast, the additional mass loss in the RCP8.5  $\alpha_{hs}$  is lower with +6 % in 2300 compared to the RCP8.5 scenario. This ~~is because already in the~~ can be explained by the fact that  
5 in the high melt rates in the RCP8.5 scenario ~~melt is quickly high enough to reach quickly induce~~ the minimal albedo over the  
whole ice sheet and thereby interrupt the feedback. Once the minimal albedo is reached, further increase in melt rates does not affect the albedo any more, thus the melt is not affected by the stronger feedback any more.

If the sensitivity of albedo to melt is reduced, the ice sheet in the the Ctrl  $\alpha_{1s}$  experiment shows slight mass gains (4 cm over 300 years). The lower sensitivity mitigates mass losses from both, the RCP2.6  $\alpha_{1s}$  and the RCP8.5  $\alpha_{1s}$  experiments, with  
10 8.3 cm and 29.4 cm less mass loss until 2300 respectively. However, even with the reduced melt–albedo feedback the ice losses increase by approximately one third when compared to the  $\alpha_{1990}$  experiment without albedo-melt feedback.

## 5 Discussion

We have presented an implementation of a simple version of the diurnal energy balance model (dEBM-simple) as a module in the Parallel Ice Sheet Model PISM. Using this model we evaluate how changes in albedo impact future mass loss of the  
15 Greenland Ice Sheet under the RCP2.6 and the RCP8.5 warming scenarios.

### 5.1 Implementation and validation

In dEBM, the surface melt is calculated as a function of near-surface air temperature and shortwave downward radiation. A first version of the dEBM was tested and validated in Krebs-Kanzow et al. (2018) and a full version was presented in ~~Krebs-Kanzow et al. (2020)~~ Krebs-Kanzow et al. (2021). dEBM-simple adapts the approach taken in Krebs-Kanzow et al.  
20 (2018) and adds additional modules to calculate the albedo as a function of melt, as well as the shortwave downward radiation. Therefore the only inputs needed to compute the melt rate are two-dimensional near-surface temperature fields including the yearly cycle, and further a precipitation field in order to complete the climatic mass balance. This approach makes the model as input-friendly as a temperature-index model such as the ~~classical~~ widely-used positive degree day model, but with the advantage to capture the melt–albedo feedback. The dEBM-simple surface mass balance module can therefore be used with PISM in  
25 a standalone setting to simulate past and future ice-sheet evolution, requiring only a temperature field, a precipitation field, and the time-series of the temperature anomaly as inputs. As PISM is an open-source project, the module can easily be expanded or implemented in other standalone ice-sheet models.

Being a simple model, dEBM-simple does not fully resolve the spatial pattern and temporal evolution of melt over the Greenland Ice Sheet, the melt rates are slightly overestimated towards the beginning of the melt season (June) and underestimated towards the end of the melt season (August) and at the margins of the ice sheet. This is possibly related to the albedo parameterization, which in turn underestimates the albedos in June and overestimates the albedo in August, not capturing important processes like exposure of firm or ice, or darkening of the ice via algae or meltwater. However, the total yearly melt

rates match well with those of MAR over the period 1958-2019 and on this timescale the skill of the model is comparable to the dEBM (Krebs-Kanzow et al., 2020)(Krebs-Kanzow et al., 2021). The exception of the extreme melt in the years 2012 and 2019, where dEBM-simple clearly underestimates melt rates, are related to changes in cloud cover or blocking events (Delhasse et al., 2021; Hanna et al., 2014; Hofer et al., 2017), which are not captured by the parameterization of the transmissivity of the atmosphere.

Increased insolation values like during the Eemian increase the melt on average by 97 Gt/yr under otherwise same conditions. This is in line with the findings of Van De Berg et al. (2011). While this is only an approximation with several strong assumptions, e.g. the present-day topography of the ice sheet is preserved and we did not apply changes in the temperature, it illustrates the possibility of extending this model to paleo timescales with relatively low efforts.

The implemented parametrization for albedo is based on a phenomenological relation of albedo to the melt rate. It is a coarse representation of the effects, which are important for the ~~albedo of snow and ice~~ snow albedo, such as the grain size of snow, surface water and melt ponds, impurities ~~on snow or ice~~ (e.g. black carbon or algae) or any dependence on the spectral angle or the cloudiness condition of the sky. ~~Moreover, it~~ The possible darkening of ice is considered only indirectly in this approach. In particular lowering the minimal allowed albedo to values which are typical for either dirty ice or supraglacial melt ponds could allow to estimate albedo changes of the ice. Moreover, the parameterization neglects the impact of the snow-cover thickness, which might mitigate melt-driven reduction in albedo after a winter with heavy precipitation (Box et al., 2012). As the parameters of the albedo scheme are fitted against monthly averages of the MAR albedo, processes which happen on a sub-monthly time scale are not well captured. The aging or renewal of snow, associated with the frequency of snowfall events, is not directly represented in the monthly averaged MAR data used to fit the parameterization. Neither are the influence of shading, wind exposure or rain spells. These could induce additional variability associated to the albedo-melt relations.

Similarly, the parametrization introduced for the shortwave downward radiation does not take into account temporal or spatial patterns. The inter-annual variability of the cloudiness over Greenland and blocking events can therefore not be represented with this approach.

However, the introduced parametrizations do not introduce a systematic bias or a large additional error in comparison to a purely diagnostic mode of dEBM-simple, where instead of parametrized albedo and shortwave downward radiation the 2D fields of MAR output are used to calculate the melt rates (see Figure A4), while all other parameters are kept constant.

In this manuscript we optimize the dEBM parameters  $c_1$  and  $c_2$  independently from the parameters for the albedo and the transmissivity. All parameters are based on MAR data. While this procedure gives an overall good fit, as seen in Section 2.5, it is not necessarily the optimal solution in combination. However, this procedure does keep the parameters independent from the forcing. A first statistical analysis reveals, that the ice loss under a strong warming scenario (RCP8.5) is sensitive towards variations in the slope of the transmissivity parameterization, in the dEBM parameter  $c_1$  and in the slope of the albedo parameterization. The dEBM parameter  $c_2$  and the slope of the transmissivity parameterization seem to have less influence on ice losses (see Appendix E). One could, based on the application, choose to change the parameterizations independently from the dEBM parameters and thereby study the influence on the ice losses, as we have shown in Section 4.4.

## 5.2 Sensitivity of the Greenland Ice Sheet to warming and surface darkening

In this manuscript we use the PISM-dEBM-simple model in order to assess the influence of albedo changes and surface warming on the Greenland Ice Sheet. The simple surface mass balance model allows a first estimate of the influence of the melt–albedo feedback on the future evolution of the Greenland Ice Sheet in two temperature scenarios: moderate warming RCP2.6, a scenario compatible with the Paris Agreement, and high warming RCP8.5, a worst-case scenario. Experiments with a fixed yearly cycle of the albedo suppress the melt–albedo feedback and thus serve as a lower bound to future ice losses. In contrast, the extreme scenario in the  $\alpha_{\text{dark}}$  experiments with the surface albedo lowered to the bare ice value over the whole ice sheet for the months June, July and August serves as an upper bound for future melt through the melt–albedo feedback. The experiments with adaptive albedo serve as a more realistic estimate of future mass losses.

This experimental design allows to attribute ice losses to the melt–albedo feedback. Overall we find that the melt–albedo feedback has a strong influence on melt under future warming. For example in the RCP2.6 scenario, the ice loss almost doubles through the albedo feedback (compare RCP2.6 with RCP2.6  $\alpha_{1990}$ ). Moreover, the relative amount of ice loss driven by changes in albedo keeps increasing over time. In contrast, the share of melt driven by albedo changes is lower in the high temperature RCP8.5 scenario and decreases as the temperature increases, indicating that temperature is a more important driver under these conditions. Note however, that the absolute increase in mass loss through the feedback is higher for RCP8.5 than for RCP2.6. We also find that extreme darkening alone, without any temperature anomaly, can initiate mass losses comparable to the RCP2.6 scenario.

Moreover, the interaction between the extreme darkening and warming initiates additional ice losses. In particular the RCP2.6  $\alpha_{\text{dark}}$  scenario loses 23 % more mass until 2300 than the sum of RCP2.6 and the Ctrl  $\alpha_{\text{dark}}$  simulations, suggesting that other feedbacks, such as the melt–elevation feedback, enhance the mass loss of the RCP2.6  $\alpha_{\text{dark}}$  scenario.

In this setup the melt–elevation feedback has a smaller impact on ice losses than the melt–albedo feedback: experiments which neglect the melt–elevation feedback (here ~~parameterized~~parameterized through the atmospheric temperature lapse rate of -6K/km) lose 18 % less mass in the RCP2.6  $T_{\text{noLR}}$  scenario and 13% less in the RCP8.5  $T_{\text{noLR}}$  scenario until 2300, respectively (see Figure C1). This is in line with previous studies (Le clec’h et al., 2019) and suggests that the melt–elevation feedback, although weaker than the melt–albedo feedback, should not be neglected on the time scale of several centuries.

In this study, we assume simplified representations of both the melt–elevation and the melt–albedo feedbacks. However, certain effects such as the feedbacks between the topography of the ice sheet and the atmospheric conditions which affect the surface mass balance cannot be expressed in the atmospheric temperature lapse rate alone. Similarly, the albedo is affected not only by melt, but also the sky conditions, snow events, and impurities. While PISM-dEBM-simple is computationally efficient and represents the ice dynamics well, it cannot compete with an explicit process-based snow-pack model as used by the regional climate models MAR or RACMO (Le clec’h et al., 2019; Kuipers Munneke et al., 2011) or represent the effect of summer snowfall on albedo (Noël et al., 2015). Moreover, here the melt–albedo feedback is represented by a relation linear at low melt rates and obtained from a MAR simulation over the historic period 1958-2019. This relation might not apply under future warming. Therefore we test uncertainties related to the albedo parameterization with the resulting mass losses lying in

the corridor between the lower bound, i.e., the no-feedback scenario, and the upper bound, i.e., the extreme darkening scenario. Further analysis of the influence of the melt–albedo feedback with models that fully resolve the firn layer would be helpful to analyse processes that are neglected or simplified in this manuscript.

In observations, long-lasting albedo changes are already found as a consequence of heat waves which initiate strong surface melt (Nghiem et al., 2012; Tedesco and Fettweis, 2020). While the regions with the most rapid darkening in Greenland are located in the ablation zones, ice-sheet wide melt events trigger albedo changes over the whole ice sheet (Tedesco et al., 2016). Studies suggest that heat waves in the Arctic may become more frequent with future warming (Dobricic et al., 2020), with still unknown consequences to ice-sheet melt and albedo. Currently, there are no explicit albedo projections, which take all processes and feedbacks like the distribution of surface meltwater, algae growths, dust deposition, and dust meltout into account. While PISM-dEBM-simple does not explicitly model all these processes, it adds a tool to explore albedo-change scenarios and their influence on the future evolution of the ice sheet in a numerically efficient way, which takes the ice dynamics into account.

## 6 Conclusion

The module dEBM-simple is implemented in the open-source Parallel Ice Sheet Model PISM and allows to capture albedo and insolation as well as temperature-driven melt in standalone ice-sheet simulations. Due to its simplicity it can be used to perform large-scale ensemble studies or long-term simulations over centuries to millennia. The source code is fully accessible and documented, as we want to encourage improvements and implementation in other ice-sheet models. This includes the adaption to other ice sheets than the Greenland Ice Sheet.

Using PISM-dEBM-simple we find that the melt–albedo feedback can lead to additional 12 cm sea-level equivalent of mass loss in RCP2.6 and additional 70 cm in RCP8.5 [in the projected mass loss](#) until the year ~~2300~~-[2300 with PISM](#). While our experiments rely on a simple parameterization of albedo with surface melt, they show that future albedo changes can make an important contribution to Greenland’s future mass loss.

*Code and data availability.* The PISM source code including the dEBM-simple module is freely available through [https://github.com/mariazeitz/pism/tree/pik/dEBM\\_dev](https://github.com/mariazeitz/pism/tree/pik/dEBM_dev). The code of the regional climate model MAR is available through <https://mar.cnrs.fr/>. The MAR data is available at [ftp://ftp.climato.be/fettweis/MAR\\_v3.11/Greenland/ERA\\_1958-2019-10km/monthly\\_1km/](ftp://ftp.climato.be/fettweis/MAR_v3.11/Greenland/ERA_1958-2019-10km/monthly_1km/). The CMIP5 datasets for the RCP2.6 and the RCP8.5 warming scenarios are available through <https://esgf-node.llnl.gov/search/cmip5/>.

**Table A1.** Variables used in dEBM-simple

Name	Variable	Unit
$z$	ice surface elevation	km
$\alpha_s$	albedo	
$\bar{T}$	monthly average near surface temperature	$^{\circ}\text{C}$
$T_{\text{eff}}$	cumulative temperature exceeding the melting point	$^{\circ}\text{C}$
$\tau_{\alpha}$	transmissivity of the atmosphere	
$\bar{S}_{\Phi}$	TOA insolation, averaged over $\Delta t_{\Phi}$	$\text{W}/\text{m}^2$
$SW$	shortwave downward radiation at the surface	$\text{W}/\text{m}^2$
$M$	melt rate	$\text{kg m}^{-2}\text{s}^{-1}$
$\Delta t_{\Phi}$	time period with sun above elevation angle $\Phi$	s
$\bar{Q}^{\text{day}}$	daily average TOA insolation	$\text{W}/\text{m}^2$
$\epsilon, \omega, e$	orbital parameters	$^{\circ}, ^{\circ},$

**Table A2.** Parameters used in dEBM-simple

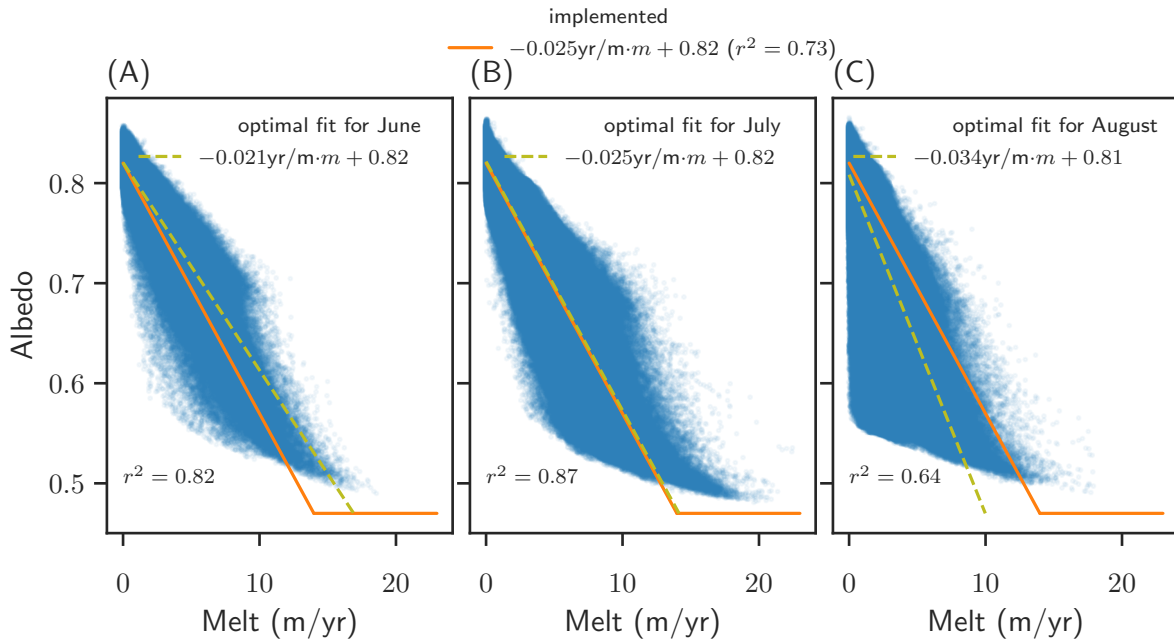
Name	Parameter	Value	
$\rho_w$	fresh water density	1000 $\text{kg}/\text{m}^3$	
$L_m$	latent heat of fusion	$3.34 \cdot 10^5 \text{ J}/\text{kg}$	
$c_1, c_2$	dEBM parameters	<del>29, -93</del> <u><math>29 \text{ W}/\text{m}^2\text{K}, -93 \text{ W}/\text{m}^2</math></u>	
$S_0$	solar constant	1367 $\text{W}/\text{m}^2$	
$\Phi$	minimal elevation angle for melt	$17.7^{\circ}$	Krebs-Kanzow et al.
$\sigma$	standard deviation of daily temperature	5K	
$a, b$	parameters for transmissivity	0.57, $0.0037 \text{ km}^{-1}$	op
$\alpha_{\text{max}}, \alpha_{\text{min}}$	maximal and minimal albedo values	0.82, 0.47	op
<del><math>\epsilon</math></del> <u><math>\alpha_{\text{s}}</math></u>	slope in albedo parametrization	$-0.025 \text{ yr}/\text{m}$	op
$\gamma$	atmospheric temperature lapse rate	$-6 \text{ K}/\text{km}$	typ
$T_{\text{min}}$	temperature threshold for melt	$-6.5^{\circ}\text{C}$	<del>Krebs-Kanzow et al. (2018, 2020)</del> <u>Krebs-Kanzow et al. (2020)</u>

## Appendix A: Parametrizations for standalone ice-sheet models

### A1 Parametrization of albedo as a function of melt

Albedo is complicated to parametrize correctly, because of its dependence on a number of factors: the snow or firn albedo depends on grain size, impurities, surface water, refrozen ice, compaction, sky conditions and spectral angle, while the ice albedo depends on impurities, surface water, sky conditions and spectral angle. Here we aim for a very simple phenomenological





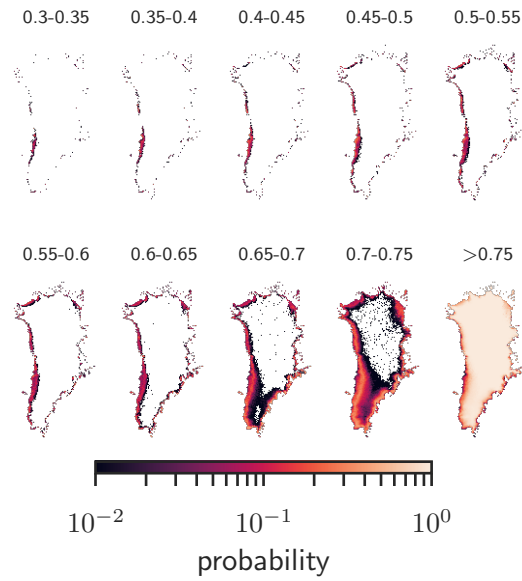
**Figure A1. Fit for albedo parametrization** Albedo vs. melt of June (A), July (B) and August (C) over the period 1958 - 2019 in the MAR v3.11 dataset. Each dot represents values in one cell of the ice sheet, averaged over a month. Orange lines show the parametrization with parameters as used in PISM. Light green lines show the best linear fit for each month, with the parameters given in the legend.

parametrization of albedo, which is good enough to be valid on large spatial scales and on long time scales. Only the broadband albedo is parametrized here, assuming that the average cloudiness of the sky does not change over long time scales. Further, it is assumed that grain size and surface water can be summarized in a single dependence of the albedo on the melt rate. In the MAR v3.11 dataset, a negative correlation of albedo with melt is found (see Figure A1). The average relation over the months

5 June, July and August in the period of 1958-2019 can be best described by the linear relation  $\alpha = -0.025 \text{ yr/m} \cdot m + 0.82$ , indicated by the dashed orange lines in Figure A1. The intersection with the y-axis is interpreted as average snow albedo. At very high melt rates the albedo is less sensitive to additional increases with melt, which might be caused when e.g. the snow cover disappeared and bare ice is exposed. In this parametrization we introduce a lower limit to the albedo such that it can not be lower than 0.47 (approximately the value for bare ice (Gardner and Sharp, 2010; Bøggild et al., 2010)). This value is lower

10 than the MAR value for bare ice, but in line with MODIS and RACMO at the ice margin, where impurities can accumulate (Noël et al., 2018; van Dalum et al., 2020; Stroeve et al., 2013). There is a large variance in how sensitively albedo is related to melt, which is due to both, spatial and temporal (intra-annual as well as inter-annual) variability. However, a clear long-term trend of how the albedo depends on surface melt could not be established. In July, the albedo is on average less sensitive to melt, with an average slope of  $-0.021 \text{ yr/m}$ , in June the monthly fit is identical to the the whole summer and in August the albedo

15 decreases on average more strongly with melt, corresponding to a slope of  $-0.034 \text{ yr/m}$ . In addition, in August there is a broad



**Figure A2. Observed Albedo** Local probability to find an albedo value within the given bracket on any day in June, July or August from 2000-2019. Data: MODIS Greenland Albedo, see Box et al. (2017).

distribution of albedo values at zero melt, ranging from approximately 0.57 to the fresh snow value, which underlines that the correct albedo depends not only on the current condition but also on the melt during the past months. In order to estimate the sensitivity of future ice evolution to the exact parameters of the albedo parameterization, we vary the slope of the albedo over a broad range, by taking the double or half slope found with the linear regression, here indicated with the grey lines.

5 We tested ~~discrete albedo classes, that other albedo parameterizations, which~~ are successfully used in other models (e.g. ~~Krebs-Kanzow et al. (2020); Krapp et al. (2017); Robinson et al. (2010)). In our implementation, we found that the continuous relation of albedo to melt was better to predict melt.~~ [Krebs-Kanzow et al. \(2021\); Krapp et al. \(2017\); Robinson et al. \(2010\)\).](#)

We found that it is also better suited than a parametrization with the snow thickness, successfully used by many models as well (Krapp et al., 2017). The parameterization with snow thickness did lead to too low albedo values and thus too high melting  
 10 in North West Greenland, where precipitation is generally low. [In our implementation, we found that the continuous relation of albedo to melt performed better to predict melt.](#) Our approach comes with the caveat, that the snow thickness is not considered for the calculation of the albedo, although observations suggest that increased winter snow can mitigate summer melt due to the higher albedo of the snow (Box et al., 2012; Riihelä et al., 2019).

[The spatial distribution of summer albedos is shown in Figure A2.](#)

## A2 Parametrization of shortwave downward radiation

Shortwave downward radiation that reaches the ice sheet's surface depends on the incoming radiation at the top of the atmosphere, the solar zenith angle, the surface altitude, and the cloud cover. In order to get the most correct estimate of shortwave downward radiation at the ice sheet's surface, it would be ideal to know the monthly average cloud cover. Since here, we aim for a parametrization, which makes the model as simple as a temperature index model concerning the inputs needed, we instead parametrize the transmissivity of the atmosphere with the assumption that the average cloud cover does not change, neither during the summer months nor on longer time scales. Following Robinson et al. (2012) we assume that the transmissivity is solely a function of the surface altitude. In order to get a best estimate to this relation, the top of the atmosphere (TOA) radiation, which depends only on season and latitude, is compared to the MAR output for shortwave downward radiation. The daily average TOA radiation  $\bar{Q}^{\text{day}}$  is described by Equation (4). The local shortwave downward radiation  $SW$  would then be

$$SW = \bar{Q}^{\text{day}} \cdot \tau_{\alpha}.$$

A linear relation of the transmissivity to the surface altitude is given by

$$\tau_{\alpha} = a + b \cdot z$$

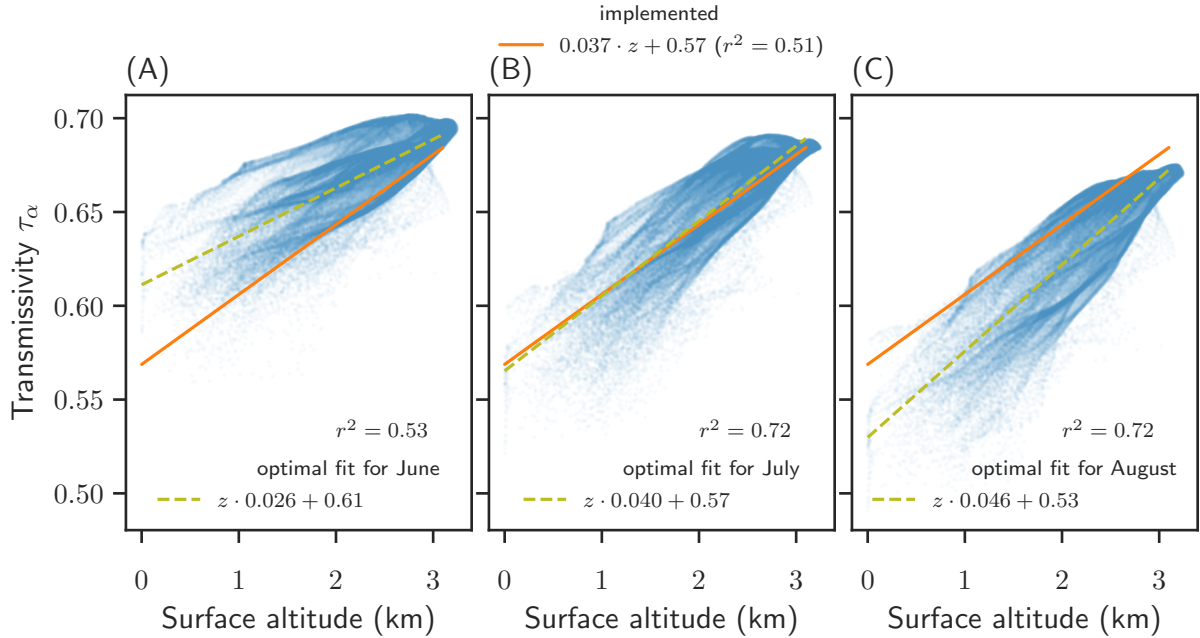
with the surface elevation in meters  $z$  and the fit parameters  $a$  and  $b$ . The linear fit for the shortwave downward radiation from TOA insolation was obtained from a linear regression of MAR v3.11 data averaged over June, July and August from 1958 to 2019 (see Figure A3).

- 5 Because melting occurs predominantly over the summer months June, July and August, we derive the average transmissivity of the atmosphere based on the transmissivity calculated in MAR in June, July and August. The best fit over these three months simultaneously is obtained with  $a = 0.57$  and  $b = 0.037$  1/km, as indicated by the orange dashed line in Figure A3. A seasonality can be observed, the transmissivity is on average higher in June ( $a = 0.61$  and  $b = 0.026$  1/km) than in July ( $a = 0.57$  and  $b = 0.040$  1/km) and August ( $a = 0.053$  and  $b = 0.046$  1/km).
- 10 For simulations under paleo-conditions, changes in orbital parameters affect the insolation at the top of the atmosphere and the trigonometric expansion used under present day conditions (see Section 2.3.1) does not hold. The declination angle is then described by  $\sin \delta = \sin(\epsilon) \sin(\lambda)$  and the sun-earth distance

$$\left(\frac{\bar{d}}{d}\right)^2 = \frac{(1 + e \cos(\lambda - \omega))^2}{(1 - e^2)^2} \quad (\text{A1})$$

with the oblique angle  $\epsilon$ , the eccentricity  $e$ , the precession angle  $\omega$  and the true longitude of the earth  $\lambda$ . The orbital parameters  $e$ ,  $\epsilon$  and  $\omega$  are given in the input, while  $\lambda$  varies over the time of the year and is computed internally using an approximation of Berger (1978) :

$$\lambda = \lambda_m + \left(2e - \frac{e^3}{4}\right) \sin(\lambda_m - \omega) + \frac{5}{4} e^2 \sin(2(\lambda_m - \omega)) + \frac{13}{12} e^3 \sin(3(\lambda_m - \omega)), \quad (\text{A2})$$



**Figure A3. Fit for the parametrization of transmissivity** Shortwave downward radiation vs. surface altitude in June (A), July (B) and August (C) over the period 1958 - 2019 in the MAR v3.11 dataset. Each dot represents values in one cell of the ice sheet, averaged over a month. Orange lines show the parametrization with parameters as implemented, which is the best fit over the three months, June, July, and August together. Light green lines show the best linear fit for each month, with the parameters given in the legend.

with

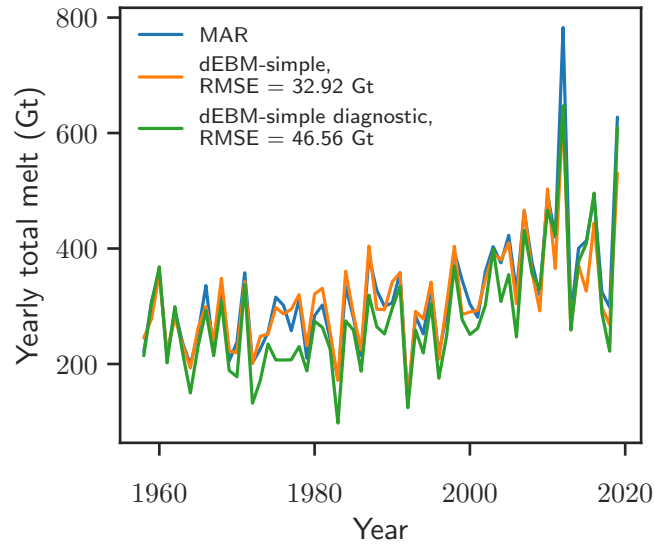
$$\lambda_m = -2 \left( \left( \frac{e}{2} + \frac{e^3}{8} \right) \left( 1 + \sqrt{1 - e^2} \right) \sin(-\omega) - \frac{e^2}{4} \left( \frac{1}{2} + \sqrt{1 - e^2} \right) \sin(-2\omega) + \frac{e^3}{8} \left( \frac{1}{3} + \sqrt{1 - e^2} \right) \sin(-3\omega) \right) + \Delta\lambda$$

$$\Delta\lambda = 2\pi(\text{day} - 80)/\text{days per year}.$$

Here  $\lambda = 0$  at the spring equinox. [This approximation is used only for explicit paleo simulations.](#)

## 5 A3 Validation of parameterization

In order to assess the validity of the parameterizations in PISM-dEBM-simple, the yearly melt with the fully parameterized model, as shown in Figure 1, is compared to the yearly melt of a diagnostic analysis of the dEBM-simple with otherwise fixed parameters. Instead of computing the albedo and the shortwave downward radiation internally, monthly fields of those variables from the MAR v3.11 date are given as input to compute the melt rates via Equation (1) with the same parameters  $c_1$  and  $c_2$ . While the diagnostic experiment performs better in the extreme melt years 2012 and particularly 2019, we find an increased mismatch, in particular in the 1970s and a resulting larger root mean square error. This can be attributed to the fact, that the parameters  $c_1$  and  $c_2$  were optimized for a low temporal and spatial RMSE with the parameterizations for albedo and



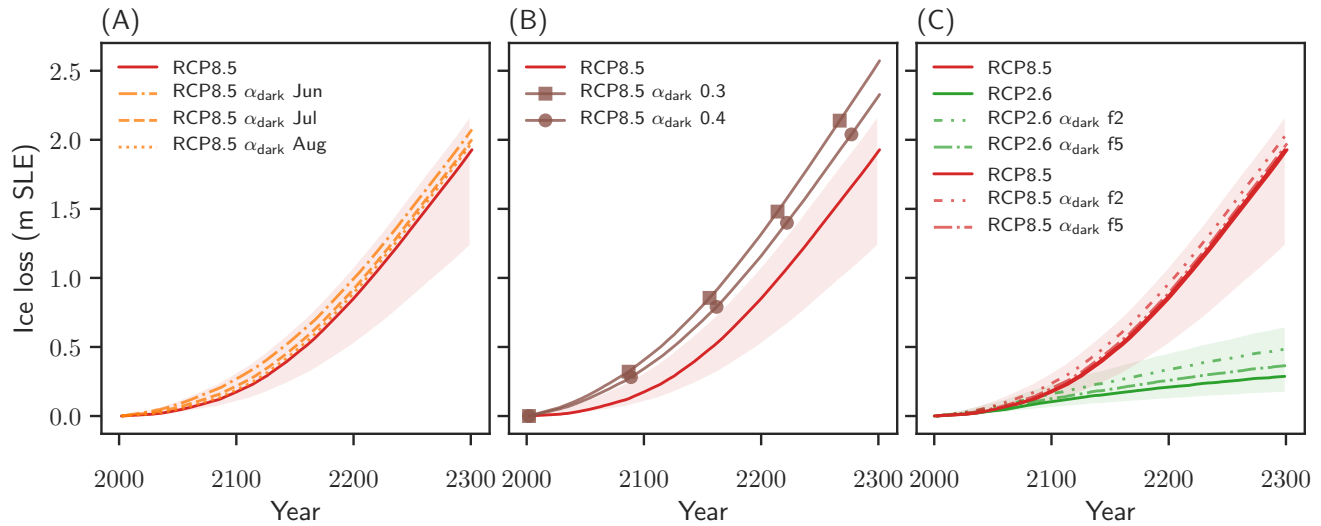
**Figure A4.** Yearly total melt of the Greenland Ice Sheet as calculated with MAR (blue), diagnosed with the fully parameterized PISM-dEBM-simple simulation (orange), which uses only the monthly 2D temperature fields as input, and diagnosed with a non-parameterized diagnostic dEBM-simple version, which takes the 2D-temperature field, the shortwave downward radiation and the albedo as inputs. The root mean square error for the individual time-series are given in the legend.

transmissivity as described above.  $c_1$  and  $c_2$  differ from Krebs-Kanzow et al. (2018) and from an optimal value for the diagnostic melt rate.

## Appendix B: Sensitivity to the darkening scenario

In order to test how the results are impacted by a shorter darkening period or even stronger albedo forcing, we study the upper limit RCP8.5  $\alpha_{\text{dark}}$  scenario in greater detail.

Shortening the darkening period to only one month reduces, as expected, the impact of darkening. Moreover, it reveals which months are the most vulnerable to darkening. In particular, we observe that darkening in June leads to the highest mass losses (see dash-dotted line in Figure B1 (A)). Darkening in June alone leads to 9.6 cm additional mass loss in 2100 and to 14.8 cm additional mass loss in 2300 compared to the Warming RCP8.5 scenario without darkening. In contrast, darkening in only July or August has a less significant effect, with 4.3 cm and 1.4 cm additional mass loss in 2100 and 7.5 cm and 5.4 cm in 2300. On the one hand this might be caused by the larger insolation and longer days during the month of June. In June average daily insolation at latitudes above  $60^\circ\text{N}$  is approximately 7% larger than in July and 50% larger than in August. Moreover, due to the high melt in the Warming RCP8.5 scenario, albedo values are already low in July and August, even without darkening.



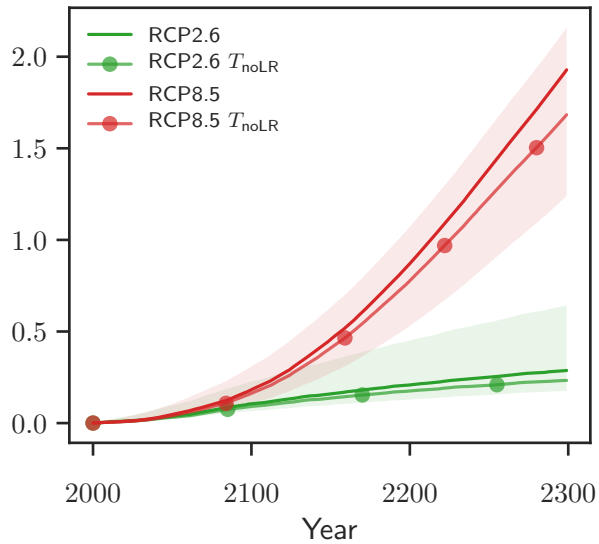
**Figure B1. Sensitivity to the darkening scenario** Ice volume evolution for different implementations of the darkening scenario. The envelopes of minimal and maximal mass loss, given by  $\alpha_{1990}$  and  $\alpha_{\text{dark}}$  experiments, and the RCP simulations with standard parameters are shown for reference. (A) Period of extreme darkening in the  $\alpha_{\text{dark}}$  scenario are shortened to one month (orange broken lines). (B) The albedo value for extreme summer darkening is lowered to 0.3 (brown line with square markers) or 0.4 (brown line with circle markers). (C) Reducing the frequency of extreme darkening summers to every 2 (f2) and every 5 years (f5). [Ice loss is given in meter sea-level equivalent. 1 mSLE corresponds to approx. 361800 Gt of ice.](#)

Using an albedo value which is lower than the value for bare ice leads to increased ice losses. An albedo value of 0.4 instead of 0.47 over the whole ice sheet increases ice loss by additional 16 % or 4.6 cm by the year 2100 and by additional 8 % or 17 cm by the year 2300 compared to the RCP8.5  $\alpha_{\text{dark}}$  scenario. An even lower albedo value of 0.3 increases ice losses by additional 37 % or 11 cm by 2100 and by additional 19 % or 41 cm by 2300 compared to the RCP8.5  $\alpha_{\text{dark}}$  scenario.

- Reducing the frequency of dark summers to every 2 years leads to additional mass losses which are approximately half of the additional mass losses caused by the darkening in every year for both warming scenarios. A darkening frequency of every 5 years leads to additional mass losses of about 20 % of the additional mass loss with darkening in every year. This suggests that, at least on time scales of 300 years, the effects of more or less frequent darkening remain linear.

### Appendix C: Effect of the melt–elevation feedback

- The melt–elevation feedback is generally represented in all experiments by adjusting surface temperatures with height changes by 6 K/km. The influence of the feedback on the simulations is tested by switching off this lapse-rate correction, with the resulting mass loss shown in Fig. C1.

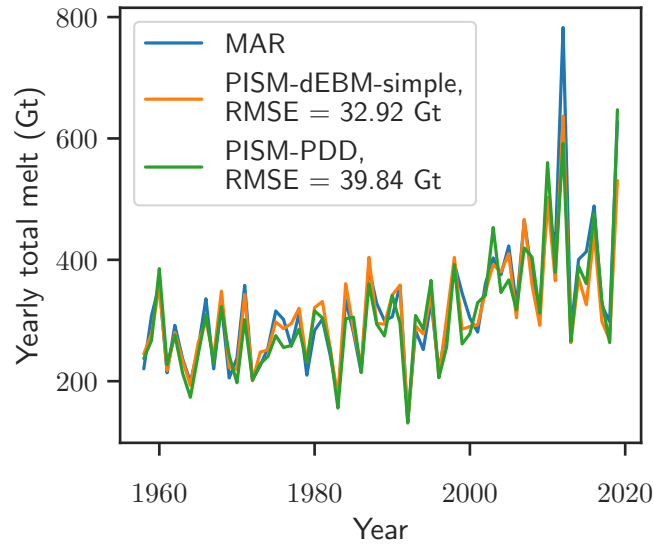


**Figure C1. Impact of the melt–elevation feedback.** PISM-dEBM-simple simulations of the Greenland Ice Sheet with RCP2.6 (green lines) and RCP8.5 (red lines) warming. Dark solid lines take the melt–elevation-feedback through the atmospheric temperature lapse rate into account. Shaded lines with markers neglect the melt–elevation feedback and assume a zero atmospheric temperature lapse rate. Ice loss is given in meter sea-level equivalent. 1 mSLE corresponds to approx. 361800 Gt of ice.

#### Appendix D: Surface melt computed with the positive degree day method (PDD)

During the historic validation period, the simulation with the positive degree day method (PDD) for melt has a similar performance to PISM-dEBM-simple (see Figure D1). The standard parameters were used for this simulation: The standard deviation of the temperature  $\sigma = 5\text{K}$ , the melt factor for ice  $f_i = 8(\text{mm liquid-water-equivalent})/(\text{pos degree day})$  and the melt factor for snow  $f_s = 3(\text{mm liquid-water-equivalent})/(\text{pos degree day})$ . However, the spatial distribution of melt anomalies shows a distinct north-south-gradient, with an overestimate of melt in the north and an underestimate of melt in the south, see Figure D2.

In the warming simulations, the simulations with pdd melting show increased melt compared to the dEBM simple in the high temperature scenario (see Figure D3). In RCP2.6 the north south bias in the melt rates, compared with PISM-dEBM-simple persists. However, the positive and negative biases balance each other out and lead to mass losses very similar to those computed with PISM-dEBM-simple. In contrast, the melt rates in the RCP8.5 scenario are almost consistently higher with the PDD melt module, only in the south-west PISM-dEBM-simple produces higher melt rates than PDD. We find an increase of ice loss of 12% in the year 2100 and of 47% in the 2300, compared to the standard dEBM run. The difference between ice losses computed with dEBM or with PDD is not only due to different sensitivities to temperature increase.



**Figure D1.** Comparison of annual total melt of the Greenland Ice Sheet as calculated with MAR v3.11 and PISM-PDD. The diagnostic simulation with PISM-PDD (green line) is performed using monthly MAR 2D temperature fields as forcing. The root mean square difference between the PISM-PDD simulation and total melt as given by MAR (blue line) is 39.84 Gt. Details on the PISM-dEBM-simple simulation are found in Figure 1 and in Section 3.

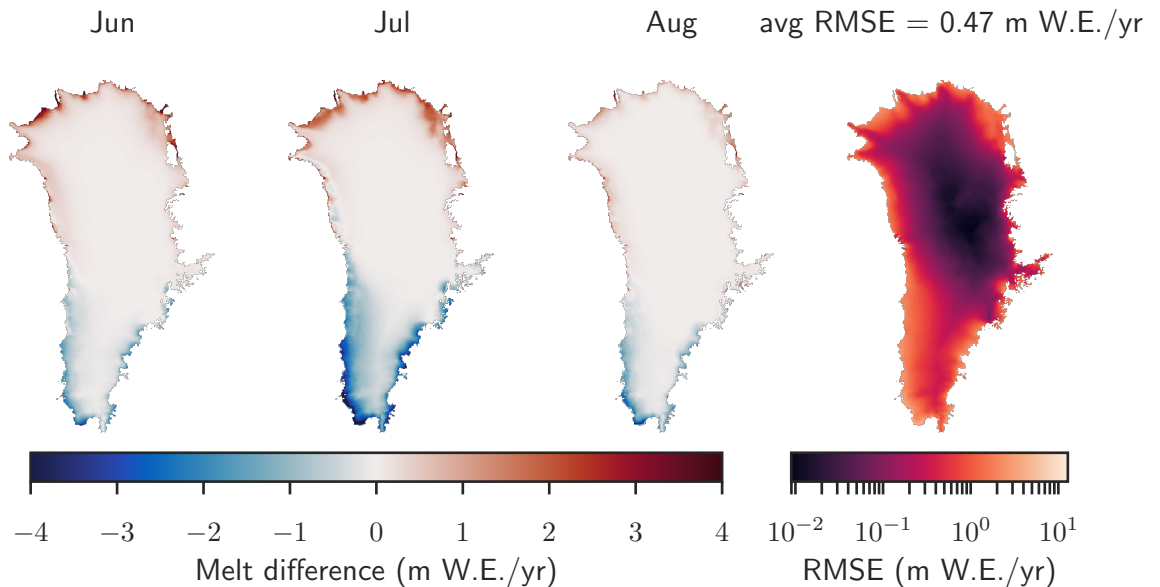
**Table E1.** Overview over the experiments performed in this study

<u>Name</u>	<u>Variable</u>	<u>Range</u>
$c_1$	dEBM parameter	[27, 31] W/m <sup>2</sup> K
$c_2$	dEBM parameter	[-95, -93] W/m <sup>2</sup>
$\alpha_{sl}$	slope in albedo parametrization	[-0.034, 0.021] yr/m
$\tau_{A,sl}$	slope in transmissivity parametrization	[0.026, 0.046] km <sup>-1</sup>
$\tau_{A,0}$	intercept in transmissivity parametrization	[0.53, 0.65]

## Appendix E: Variability of RCP8.5 simulations

In addition to the RCP8.5 simulation with standard parameters, we tested how the variability of the parameters impacts the volume changes under an RCP8.5 forcing. Here, the experimental protocol is analogous to the protocol for standard parameters, described in the main paper in Section 2. However, instead of using only the standard set of parameters, the values for five parameters have been drawn randomly, creating an ensemble of 100 members. The varied parameters are summarized in table E1.





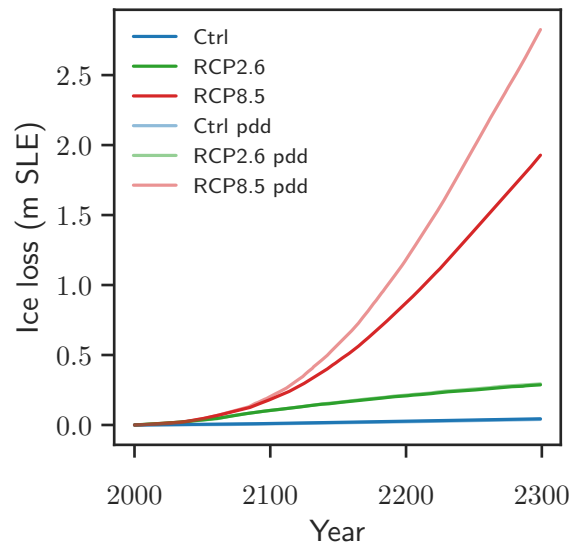
**Figure D2.** Local differences between the monthly averaged June, July, and August melt rates as diagnosed with PISM-PDD compared to MAR. The PISM simulation uses monthly 2D temperature fields from MAR as forcing. Positive numbers mean that PISM overestimates the melt and negative numbers mean that PISM underestimates the melt. The local root mean square error averaged over June, July and August from 1958-2019 is shown in the right plot. The spatial average of the RMSE is 0.47 m/yr.

We use uniform random distributions instead of Gaussian for all parameters. The dEBM parameters  $c_1$  and  $c_2$  were derived by optimization of historic melt rates (see Section 3, therefore we do not have an estimate of a mean or a standard deviation. The range of parameters, which was used for this ensemble, was chosen such that all parameters  $c_1$  and  $c_2$  for which the root mean squared error in the historic melt rates does not increase by more than 10% compared to the standard values.

5 The parameters which describe the albedo and the transmissivity parameterizations were chosen such that the intra-annual variability is represented (see Appendix A).

The volume change of each ensemble member remains in the envelope given by the RCP8.5  $\alpha_{1990}$  simulations as a lower bound and the RCP8.5  $\alpha_{\text{dark}}$  as an upper bound (see Figure E1 (A)). The variability of the intercept of the transmissivity parameterization has the largest influence on the variability in ice loss after 300 years due to warming. The ice loss until 2300

10 also seems to be correlated (or anti-correlated) to the dEBM parameter  $c_1$  and the slope of the albedo parameterization, while the dEBM parameter  $c_2$  and the slope of the transmissivity parameterization seem to have only negligible influence on the ice loss due to warming (see Figure E1, (B)-(F)). However, the ensemble size of 100 is not large enough for a thorough statistical analysis.

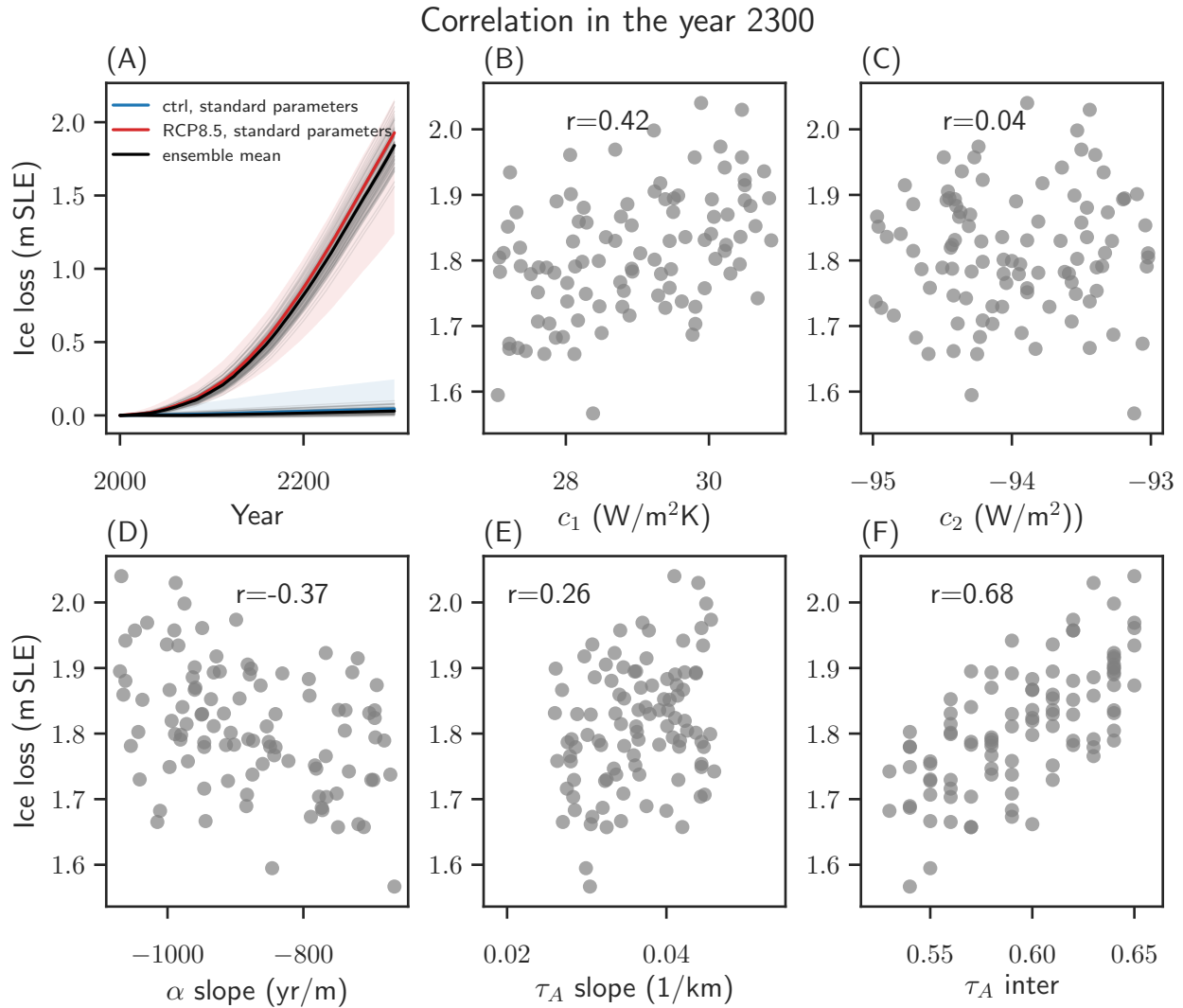


**Figure D3.** Comparison with the positive degree day model PISM-dEBM-simple and PISM-PDD simulations of the Greenland Ice Sheet with RCP2.6 (green lines) and RCP8.5 (red lines) warming. Ice loss is given in meter sea-level equivalent. 1 mSLE corresponds to approx. 361800 Gt of ice.

*Author contributions.* MZ implemented the dEBM-simple module with the parameterizations for albedo and shortwave downward radiation and performed the analysis. RW conceived the study. JB contributed the initial state for PISM simulations. UKK developed the dEBM model, the basis for dEBM-simple, and provided support with the setup. MZ and RR designed and wrote the manuscript with input and feedback from all coauthors.

5 *Competing interests.* The authors declare that they have no conflict of interest

*Acknowledgements.* M.Z. and R.W. are supported by the Leibniz Association (project DOMINOES). M.Z. and R.R. are supported by the Deutsche Forschungsgemeinschaft (DFG) by grant WI4556/3-1. R.R. was further supported through the TiPACCs project that receives funding from the European Union’s Horizon 2020 Research and Innovation program under grant agreement no. 820575. J.B. is supported by the Deutsche Forschungsgemeinschaft through project 422877703. R.W. is grateful for support by the Deutsche Forschungsgemeinschaft (DFG) through grants WI4556/3-1 and WI4556/5-1 and by the PalMod project (FKZ: 01LP1925D), supported by the German Federal Ministry of Education and Research (BMBF) as a Research for Sustainability initiative (FONA). Development of PISM is supported by NASA grant NNX17AG65G and NSF grants PLR-1603799 and PLR-1644277. The authors gratefully acknowledge the European Regional Development Fund (ERDF), the German Federal Ministry of Education and Research and the Land Brandenburg for supporting this project by providing resources on the high performance computer system at the Potsdam Institute for Climate Impact Research.



**Figure E1. Impact of the parameter variability.** (A) Timeseries of PISM-dEBM-simple simulations of the Greenland Ice Sheet with RCP8.5 warming and control simulations. The thick red and blue line are simulations with standard parameters, the shading shows the upper and the lower bound of the melt-albedo feedback, as shown in Figure 5 and discussed in Section 4. The thin black lines are the ensemble simulations, with parameters drawn in random as shown in Table E1. Thick black lines show the ensemble average. Ice loss is given in meter sea-level equivalent. 1 mSLE corresponds to approx. 361800 Gt of ice. (B)-(F) Ice loss until year 2300 in mSLE vs. each of the varied parameters. Note that here the ice loss is corrected by the respective control simulation, which uses the same set of parameters but has no temperature forcing. The Spearman correlation coefficient is given in each of the panels.

## References

- Aschwanden, A., Fahnestock, M. A., and Truffer, M.: Complex Greenland outlet glacier flow captured, *Nature Communications*, 7, 10524, <https://doi.org/10.1038/ncomms10524>, <http://dx.doi.org/10.1038/ncomms10524>, 2016.
- Aschwanden, A., Fahnestock, M. A., Truffer, M., Brinkerhoff, D. J., Hock, R., Khroulev, C., Mottram, R. H., and Khan, S. A.: Contribution  
5 of the Greenland Ice Sheet to sea level over the next millennium, *Science Advances*, 5, eaav9396, <https://doi.org/10.1126/sciadv.aav9396>, <http://advances.sciencemag.org/lookup/doi/10.1126/sciadv.aav9396>, 2019.
- Beckmann, J. and Winkelmann, R.: Effects of extreme melt events on ice flow and sea-level rise of the Greenland Ice Sheet, submitted.
- Berger, A. L.: Long-Term Variations of Daily Insolation and Quaternary Climatic Changes, *Journal of Atmospheric Sciences*, 35, <http://library1.nida.ac.th/termpaper6/sd/2554/19755.pdf>, 1978.
- 10 Bøggild, C. E., Brandt, R. E., Brown, K. J., and Warren, S. G.: The ablation zone in northeast Greenland: Ice types, albedos and impurities, *Journal of Glaciology*, 56, 101–113, <https://doi.org/10.3189/002214310791190776>, 2010.
- Box, J. E.: Greenland ice sheet mass balance reconstruction. Part II: Surface mass balance (1840–2010), *Journal of Climate*, 26, 6974–6989, <https://doi.org/10.1175/JCLI-D-12-00518.1>, 2013.
- Box, J. E., Fettweis, X., Stroeve, J. C., Tedesco, M., Hall, D. K., and Steffen, K.: Greenland ice sheet albedo feedback: Thermodynamics and  
15 atmospheric drivers, *Cryosphere*, 6, 821–839, <https://doi.org/10.5194/tc-6-821-2012>, [www.the-cryosphere.net/6/821/2012/](http://www.the-cryosphere.net/6/821/2012/), 2012.
- Box, J. E., van As, D., Steffen, K., Fausto, R. S., Ahlstrøm, A. P., Citterio, M., and Andersen, S. B.: Greenland, Canadian and Icelandic land-ice albedo grids (2000–2016), *Geological Survey of Denmark and Greenland Bulletin*, 38, 53–56, 2017.
- Bueler, E. and Brown, J.: Shallow shelf approximation as a "sliding law" in a thermomechanically coupled ice sheet model, *Journal of Geophysical Research: Solid Earth*, 114, 1–21, <https://doi.org/10.1029/2008JF001179>, 2009.
- 20 Bueler, E. and van Pelt, W.: Mass-conserving subglacial hydrology in the Parallel Ice Sheet Model version 0.6, *Geoscientific Model Development*, 8, 1613–1635, <https://doi.org/10.5194/gmd-8-1613-2015>, <https://gmd.copernicus.org/articles/8/1613/2015/>, 2015.
- Cook, J. M., Tedstone, A. J., Williamson, C., McCutcheon, J., Hodson, A. J., Dayal, A., Skiles, M., Hofer, S., Bryant, R., McAree, O., McGonigle, A., Ryan, J., Anesio, A. M., Irvine-Fynn, T. D. L., Hubbard, A., Hanna, E., Flanner, M., Mayanna, S., Benning, L. G., van  
As, D., Yallop, M., McQuaid, J. B., Gribbin, T., and Tranter, M.: Glacier algae accelerate melt rates on the south-western Greenland Ice  
25 Sheet, *The Cryosphere*, 14, 309–330, <https://doi.org/10.5194/tc-14-309-2020>, <https://tc.copernicus.org/articles/14/309/2020/>, 2020.
- Delhasse, A., Hanna, E., Kittel, C., and Fettweis, X.: Brief communication: CMIP6 does not suggest any atmospheric blocking increase in summer over Greenland by 2100, *International Journal of Climatology*, p. joc.6977, <https://doi.org/10.1002/joc.6977>, <https://onlinelibrary.wiley.com/doi/10.1002/joc.6977>, 2021.
- Di Mauro, B., Garzonio, R., Baccolo, G., Franzetti, A., Pittino, F., Leoni, B., and Remias, D.: Glacier algae foster ice-albedo feedback in the  
30 European Alps, *Scientific Reports*, 10, 1–9, <https://doi.org/10.1038/s41598-020-61762-0>, <http://dx.doi.org/10.1038/s41598-020-61762-0>, 2020.
- Dobricic, S., Russo, S., Pozzoli, L., Wilson, J., and Vignati, E.: Increasing occurrence of heat waves in the terrestrial Arctic, *Environmental Research Letters*, 15, 024022, <https://doi.org/10.1088/1748-9326/ab6398>, <https://iopscience.iop.org/article/10.1088/1748-9326/ab6398>, 2020.
- 35 Dufresne, J.-L., Foujols, M.-A., Denvil, S., Caubel, A., Marti, O., Aumont, O., Balkanski, Y., Bekki, S., Bellenger, H., Benshila, R., Bony, S., Bopp, L., Braconnot, P., Brockmann, P., Cadule, P., Cheruy, F., Codron, F., Cozic, A., Cugnet, D., de Noblet, N., Duvel, J.-P., Ethé, C., Fairhead, L., Fichefet, T., Flavoni, S., Friedlingstein, P., Grandpeix, J.-Y., Guez, L., Guilyardi, E., Hauglustaine, D., Hourdin, F., Idelkadi,

- A., Ghattas, J., Joussaume, S., Kageyama, M., Krinner, G., Labetoulle, S., Lahellec, A., Lefebvre, M.-P., Lefevre, F., Levy, C., Li, Z. X., Lloyd, J., Lott, F., Madec, G., Mancip, M., Marchand, M., Masson, S., Meurdesoif, Y., Mignot, J., Musat, I., Parouty, S., Polcher, J., Rio, C., Schulz, M., Swingedouw, D., Szopa, S., Talandier, C., Terray, P., Viovy, N., and Vuichard, N.: Climate change projections using the IPSL-CM5 Earth System Model : from CMIP3 to CMIP5, *Climate Dynamics*, 40, 2123–2165, <https://doi.org/10.1007/s00382-012-1636-1>, 2013.
- 5 Fettweis, X.: MAR data, TheMARDataisavailableatftp://ftp.climato.be/fettweis/MARv3.11/Greenland/ERA\_1958-2019-10km/monthly\_1km/.
- Fettweis, X., Franco, B., Tedesco, M., van Angelen, J. H., Lenaerts, J. T. M., van den Broeke, M. R., and Gallée, H.: Estimating the Greenland ice sheet surface mass balance contribution to future sea level rise using the regional atmospheric climate model MAR, *The Cryosphere*, 7, 469–489, <https://doi.org/10.5194/tc-7-469-2013>, <https://tc.copernicus.org/articles/7/469/2013/>, 2013.
- 10 Fettweis, X., Box, J. E., Agosta, C., Amory, C., Kittel, C., Lang, C., van As, D., Machguth, H., and Gallée, H.: Reconstructions of the 1900–2015 Greenland ice sheet surface mass balance using the regional climate MAR model, *The Cryosphere*, 11, 1015–1033, <https://doi.org/10.5194/tc-11-1015-2017>, <https://tc.copernicus.org/articles/11/1015/2017/>, 2017.
- Fettweis, X., Hofer, S., Krebs-Kanzow, U., Amory, C., Aoki, T., Berends, C. J., Born, A., Box, J. E., Delhasse, A., Fujita, K., Gierz, P., 15 Goelzer, H., Hanna, E., Hashimoto, A., Huybrechts, P., Kapsch, M.-l., King, M. D., Kittel, C., Lang, C., Langen, P. L., Lenaerts, J. T. M., Liston, G. E., Lohmann, G., Mernild, S. H., Mikolajewicz, U., Modali, K., Mottram, R. H., Niwano, M., Noël, B. P. Y., Ryan, J. C., Smith, A., Streffing, J., Tedesco, M., van de Berg, W. J., Van Den Broeke, M. R., van de Wal, R. S. W., van Kampenhout, L., Wilton, D., Wouters, B., Ziemen, F., and Zolles, T.: GrSMBMIP: intercomparison of the modelled 1980–2012 surface mass balance over the Greenland Ice Sheet, *The Cryosphere*, 14, 3935–3958, <https://doi.org/10.5194/tc-14-3935-2020>, <https://tc.copernicus.org/articles/14/3935/2020/>, 2020a.
- 20 Fettweis, X., Hofer, S., Séférian, R., Amory, C., Delhasse, A., Doutreloup, S., Kittel, C., Lang, C., Van Bever, J., Veillon, F., and Irvine, P.: Brief Communication: Reduction of the future Greenland ice sheet surface melt with the help of solar geoengineering, *The Cryosphere Discussions*, pp. 1–10, <https://doi.org/10.5194/tc-2020-347>, 2020b.
- Frederikse, T., Landerer, F., Caron, L., Adhikari, S., Parkes, D., Humphrey, V. W., Dangendorf, S., Hogarth, P., Zanna, L., Cheng, L., and Wu, Y. H.: The causes of sea-level rise since 1900, *Nature*, 584, 393–397, <https://doi.org/10.1038/s41586-020-2591-3>, <http://dx.doi.org/10.1038/s41586-020-2591-3>, 2020.
- 25 Gardner, A. S. and Sharp, M. J.: A review of snow and ice albedo and the development of a new physically based broadband albedo parameterization, *Journal of Geophysical Research: Earth Surface*, 115, 1–15, <https://doi.org/10.1029/2009JF001444>, 2010.
- Goelzer, H., Nowicki, S. M. J., Payne, A., Larour, E., Seroussi, H., Lipscomb, W. H., Gregory, J., Abe-Ouchi, A., Shepherd, A., Simon, E., Agosta, C., Alexander, P., Aschwanden, A., Barthel, A., Calov, R., Chambers, C., Choi, Y., Cuzzone, J. K., Dumas, C., Edwards, T. L., 30 Felikson, D., Fettweis, X., Golledge, N. R., Greve, R., Humbert, A., Huybrechts, P., Le Clec'H, S., Lee, V., Leguy, G., Little, C., Lowry, D. P., Morlighem, M., Nias, I., Quiquet, A., Rückamp, M., Schlegel, N.-J. J., Slater, D. A., Smith, R. S., Straneo, F., Tarasov, L., van de Wal, R. S. W., and Van Den Broeke, M. R.: The future sea-level contribution of the Greenland ice sheet: a multi-model ensemble study of ISMIP6, *The Cryosphere*, 14, 3071–3096, <https://doi.org/10.5194/tc-14-3071-2020>, <https://tc.copernicus.org/articles/14/3071/2020/>, 2020.
- 35 Hanna, E., Fettweis, X., Mernild, S. H., Cappelen, J., Ribergaard, M. H., Shuman, C. A., Steffen, K., Wood, L., and Mote, T. L.: Atmospheric and oceanic climate forcing of the exceptional Greenland ice sheet surface melt in summer 2012, *International Journal of Climatology*, 34, 1022–1037, <https://doi.org/10.1002/joc.3743>, <http://doi.wiley.com/10.1002/joc.3743>, 2014.

- He, T., Liang, S., Yu, Y., Wang, D., Gao, F., and Liu, Q.: Greenland surface albedo changes in July 1981-2012 from satellite observations, *Environmental Research Letters*, 8, <https://doi.org/10.1088/1748-9326/8/4/044043>, 2013.
- Hofer, S., Tedstone, A. J., Fettweis, X., and Bamber, J. L.: Decreasing cloud cover drives the recent mass loss on the Greenland Ice Sheet, *Science Advances*, 3, e1700584, <https://doi.org/10.1126/sciadv.1700584>, <https://advances.sciencemag.org/lookup/doi/10.1126/sciadv.1700584>, 2017.
- Huybrechts, P.: Sea-level changes at the LGM from ice-dynamic reconstructions of the Greenland and Antarctic ice sheets during the glacial cycles, *Quaternary Science Reviews*, 21, 203–231, [https://doi.org/10.1016/S0277-3791\(01\)00082-8](https://doi.org/10.1016/S0277-3791(01)00082-8), 2002.
- Kittel, C., Amory, C., Agosta, C., Jourdain, N. C., Hofer, S., Delhasse, A., Doutreloup, S., Huot, P.-V., Lang, C., Fichefet, T., and Fettweis, X.: Diverging future surface mass balance between the Antarctic ice shelves and grounded ice sheet, *The Cryosphere*, 15, 1215–1236, <https://doi.org/10.5194/tc-15-1215-2021>, <https://tc.copernicus.org/articles/15/1215/2021/>, 2021.
- Krapp, M., Robinson, A., and Ganopolski, A.: SEMIC: an efficient surface energy and mass balance model applied to the Greenland ice sheet, *The Cryosphere*, 11, 1519–1535, <https://doi.org/10.5194/tc-11-1519-2017>, <http://www.the-cryosphere-discuss.net/tc-2016-252/> <https://www.the-cryosphere.net/11/1519/2017/>, 2017.
- Krebs-Kanzow, U., Gierz, P., and Lohmann, G.: Brief communication: An ice surface melt scheme including the diurnal cycle of solar radiation, *The Cryosphere*, 12, 3923–3930, <https://doi.org/10.5194/tc-12-3923-2018>, <https://www.the-cryosphere.net/12/3923/2018/>, 2018.
- Krebs-Kanzow, U., Gierz, P., Rodehacke, C. B., Xu, S., Yang, H., and Lohmann, G.: The diurnal Energy Balance Model ( dEBM ): A convenient surface mass balance solution for ice sheets in Earth System modeling, *The Cryosphere Discussions*, 2020.
- Krebs-Kanzow, U., Gierz, P., Rodehacke, C. B., Xu, S., Yang, H., and Lohmann, G.: The diurnal Energy Balance Model (dEBM): a convenient surface mass balance solution for ice sheets in Earth system modeling, *The Cryosphere*, 15, 2295–2313, <https://doi.org/10.5194/tc-15-2295-2021>, <https://tc.copernicus.org/articles/15/2295/2021/>, 2021.
- Kuipers Munneke, P., Van Den Broeke, M. R., Lenaerts, J. T., Flanner, M. G., Gardner, A. S., and Van De Berg, W. J.: A new albedo parameterization for use in climate models over the Antarctic ice sheet, *Journal of Geophysical Research Atmospheres*, 116, 1–10, <https://doi.org/10.1029/2010JD015113>, 2011.
- Langen, P. L., Mottram, R. H., Christensen, J. H., Boberg, F., Rodehacke, C. B., Stendel, M., van As, D., Ahlstrøm, A. P., Mortensen, J., Rysgaard, S., Petersen, D., Svendsen, K. H., Aðalgeirsdóttir, G., and Cappelen, J.: Quantifying Energy and Mass Fluxes Controlling Godthåbsfjord Freshwater Input in a 5-km Simulation (1991–2012)\*,+, *Journal of Climate*, 28, 3694–3713, <https://doi.org/10.1175/JCLI-D-14-00271.1>, <http://journals.ametsoc.org/doi/10.1175/JCLI-D-14-00271.1>, 2015.
- Le clec’h, S., Charbit, S., Quiquet, A., Fettweis, X., Dumas, C., Kageyama, M., Wyard, C., and Ritz, C.: Assessment of the Greenland ice sheet–atmosphere feedbacks for the next century with a regional atmospheric model coupled to an ice sheet model, *The Cryosphere*, 13, 373–395, <https://doi.org/10.5194/tc-13-373-2019>, <https://www.the-cryosphere.net/13/373/2019/>, 2019.
- Liou, K. N.: Solar Radiation at the Top of the Atmosphere, in: *An Introduction to Atmospheric Radiation*, pp. 37–64, Elsevier, 2 edn., [https://doi.org/10.1016/S0074-6142\(02\)80017-1](https://doi.org/10.1016/S0074-6142(02)80017-1), <https://linkinghub.elsevier.com/retrieve/pii/S0074614202800171>, 2002.
- Maule, C. F.: Heat Flux Anomalies in Antarctica Revealed by Satellite Magnetic Data, *Science*, 309, 464–467, <https://doi.org/10.1126/science.1106888>, <https://www.sciencemag.org/lookup/doi/10.1126/science.1106888>, 2005.
- McCutcheon, J., Lutz, S., Williamson, C., Cook, J. M., Tedstone, A. J., Vanderstraeten, A., Wilson, S. A., Stockdale, A., Bonneville, S., Anesio, A. M., Yallop, M. L., McQuaid, J. B., Tranter, M., and Benning, L. G.: Mineral phosphorus drives glacier algal blooms on the Greenland Ice Sheet, *Nature Communications*, 12, 570, <https://doi.org/10.1038/s41467-020-20627-w>, <http://dx.doi.org/10.1038/s41467-020-20627-whhttp://www.nature.com/articles/s41467-020-20627-w>, 2021.

- Morlighem, M., Williams, C. N., Rignot, E., An, L., Arndt, J. E., Bamber, J. L., Catania, G., Chauché, N., Dowdeswell, J. A., Dorschel, B., Fenty, I. G., Hogan, K., Howat, I., Hubbard, A., Jakobsson, M., Jordan, T. M., Kjeldsen, K. K., Millan, R., Mayer, L., Mouginot, J., Noël, B. P. Y., O’Cofaigh, C., Palmer, S., Rysgaard, S., Seroussi, H., Siegert, M. J., Slabon, P., Straneo, F., Van Den Broeke, M. R., Weinrebe, W., Wood, M., and Zinglensen, K. B.: BedMachine v3: Complete Bed Topography and Ocean Bathymetry Mapping of Greenland From Multibeam Echo Sounding Combined With Mass Conservation, *Geophysical Research Letters*, 44, 11,051–11,061, <https://doi.org/10.1002/2017GL074954>, 2017.
- Mouginot, J., Rignot, E., Bjørk, A. A., Van Den Broeke, M. R., Millan, R., Morlighem, M., Noël, B. P. Y., Scheuchl, B., and Wood, M.: Forty-six years of Greenland Ice Sheet mass balance from 1972 to 2018, *Proceedings of the National Academy of Sciences*, 116, 201904 242, <https://doi.org/10.1073/pnas.1904242116>, <http://www.pnas.org/lookup/doi/10.1073/pnas.1904242116>, 2019.
- 10 Nghiem, S. V., Hall, D. K., Mote, T. L., Tedesco, M., Albert, M. R., Keegan, K., Shuman, C. A., DiGirolamo, N. E., and Neumann, G.: The extreme melt across the Greenland ice sheet in 2012, *Geophysical Research Letters*, 39, 6–11, <https://doi.org/10.1029/2012GL053611>, 2012.
- Niwano, M., Aoki, T., Hashimoto, A., Matoba, S., Yamaguchi, S., Tanikawa, T., Fujita, K., Tsushima, A., Iizuka, Y., Shimada, R., and Hori, M.: NHM–SMAP: spatially and temporally high-resolution nonhydrostatic atmospheric model coupled with detailed snow process model for Greenland Ice Sheet, *The Cryosphere*, 12, 635–655, <https://doi.org/10.5194/tc-12-635-2018>, <https://tc.copernicus.org/articles/12/635/2018/>, 2018.
- 15 Noël, B., van de Berg, W. J., van Wessem, J. M., van Meijgaard, E., van As, D., Lenaerts, J. T. M., Lhermitte, S., Kuipers Munneke, P., Smeets, C. J. P. P., van Uft, L. H., van de Wal, R. S. W., and van den Broeke, M. R.: Modelling the climate and surface mass balance of polar ice sheets using RACMO2 – Part 1: Greenland (1958–2016), *The Cryosphere*, 12, 811–831, <https://doi.org/10.5194/tc-12-811-2018>, <https://tc.copernicus.org/articles/12/811/2018/>, 2018.
- Noël, B. P. Y., van de Berg, W. J., van Meijgaard, E., Kuipers Munneke, P., van de Wal, R. S. W., and van den Broeke, M. R.: Evaluation of the updated regional climate model RACMO2.3: summer snowfall impact on the Greenland Ice Sheet, *The Cryosphere*, 9, 1831–1844, <https://doi.org/10.5194/tc-9-1831-2015>, <https://tc.copernicus.org/articles/9/1831/2015/>, 2015.
- Pellicciotti, F., Brock, B., Strasser, U., Burlando, P., Funk, M., and Corripio, J.: An enhanced temperature - index glacier melt model including the shortwave radiation balance : development and testing for Haut Glacier d’ Arolla , Switzerland, *Journal of Glaciology*, 51, 573 – 587, <https://doi.org/10.3189/172756505781829124>, 2005.
- 25 Reeh, N.: Parameterization of melt rate and surface temperature on the Greenland ice sheet, *Polarforschung*, 59, 113–128, <http://epic.awi.de/2522/1/Ree1989c.pdf>{%}0Apapers3://publication/uuid/EE2F413B-59F1-4D0B-A26F-7D6EB53624F8, 1991.
- Rignot, E. and Mouginot, J.: Ice flow in Greenland for the International Polar Year 2008-2009, *Geophysical Research Letters*, 39, 1–7, <https://doi.org/10.1029/2012GL051634>, 2012.
- 30 Riihelä, A., King, M. D., and Anttila, K.: The surface albedo of the Greenland Ice Sheet between 1982 and 2015 from the CLARA-A2 dataset and its relationship to the ice sheet’s surface mass balance, *The Cryosphere*, 13, 2597–2614, <https://doi.org/10.5194/tc-13-2597-2019>, <https://tc.copernicus.org/articles/13/2597/2019/>, 2019.
- Robinson, A., Calov, R., and Ganopolski, A.: An efficient regional energy-moisture balance model for simulation of the Greenland Ice Sheet response to climate change, *The Cryosphere*, 4, 129–144, <https://doi.org/10.5194/tc-4-129-2010>, <https://tc.copernicus.org/articles/4/129/2010/>, 2010.
- 35 Robinson, A., Calov, R., and Ganopolski, A.: Multistability and critical thresholds of the Greenland ice sheet, *Nature Climate Change*, 2, 429–432, <https://doi.org/10.1038/nclimate1449>, <http://dx.doi.org/10.1038/nclimate1449>, 2012.

- Rückamp, M., Greve, R., and Humbert, A.: Comparative simulations of the evolution of the Greenland ice sheet under simplified Paris Agreement scenarios with the models SICOPOLIS and ISSM, *Polar Science*, 21, 14–25, <https://doi.org/10.1016/j.polar.2018.12.003>, <https://doi.org/10.1016/j.polar.2018.12.003https://linkinghub.elsevier.com/retrieve/pii/S1873965218301403>, 2019.
- Ryan, J. C., Smith, L. C., van As, D., Cooley, S. W., Cooper, M. G., Pitcher, L. H., and Hubbard, A.: Greenland Ice Sheet surface melt amplified by snowline migration and bare ice exposure, *Science Advances*, 5, eaav3738, <https://doi.org/10.1126/sciadv.aav3738>, <http://advances.sciencemag.org/lookup/doi/10.1126/sciadv.aav3738>, 2019.
- Shepherd, A., Ivins, E. R., Rignot, E., Smith, B., Van Den Broeke, M. R., Velicogna, I., Whitehouse, P., Briggs, K. H., Joughin, I., Krinner, G., Nowicki, S. M. J., Payne, T., Scambos, T., Schlegel, N., A, G., Agosta, C., Ahlstrøm, A. P., Babonis, G., Barletta, V. R., Bjørk, A. A., Blazquez, A., Bonin, J., Colgan, W. T., Csatho, B., Cullather, R. I., Engdahl, M. E., Felikson, D., Fettweis, X., Forsberg, R., Hogg, A. E., Gallee, H., Gardner, A. S., Gilbert, L., Gourmelen, N., Groh, A., Gunter, B., Hanna, E., Harig, C., Helm, V., Horvath, A., Horwath, M., Khan, S. A., Kjeldsen, K. K., Konrad, H., Langen, P. L., Lecavalier, B., Loomis, B., Luthcke, S., McMillan, M., Melini, D., Mernild, S., Mohajerani, Y., Moore, P., Mottram, R., Mougino, J., Moyano, G., Muir, A., Nagler, T., Niell, G., Nilsson, J., Noël, B. P. Y., Otsaka, I., Pattle, M. E., Peltier, W. R., Pie, N., Rietbroek, R., Rott, H., Sandberg Sørensen, L., Sasgen, I., Save, H., Scheuchl, B., Schrama, E., Schröder, L., Seo, K. W., Simonsen, S. B., Slater, T., Spada, G., Sutterley, T., Talpe, M., Tarasov, L., van de Berg, W. J., van der Wal, W., van Wessem, M., Vishwakarma, B. D., Wiese, D., Wilton, D., Wagner, T., Wouters, B., and Wuite, J.: Mass balance of the Greenland Ice Sheet from 1992 to 2018, *Nature*, 579, 233–239, <https://doi.org/10.1038/s41586-019-1855-2>, 2020.
- Stroeve, J.: Assessment of Greenland albedo variability from the advanced very high resolution radiometer Polar Pathfinder data set, *Journal of Geophysical Research: Atmospheres*, 106, 33 989—34 006, <https://doi.org/10.1029/2001JD900072>, 2001.
- Stroeve, J. C., Box, J. E., Wang, Z., Schaaf, C., and Barrett, A.: Re-evaluation of MODIS MCD43 greenland albedo accuracy and trends, *Remote Sensing of Environment*, 138, 199–214, <https://doi.org/10.1016/j.rse.2013.07.023>, <http://dx.doi.org/10.1016/j.rse.2013.07.023>, 2013.
- Tedesco, M. and Fettweis, X.: Unprecedented atmospheric conditions (1948–2019) drive the 2019 exceptional melting season over the Greenland ice sheet, *The Cryosphere*, 14, 1209–1223, <https://doi.org/10.5194/tc-14-1209-2020>, <https://tc.copernicus.org/articles/14/1209/2020/>, 2020.
- Tedesco, M., Fettweis, X., Van Den Broeke, M. R., van de Wal, R. S. W., Smeets, C. J. P. P., van de Berg, W. J., Serreze, M. C., and Box, J. E.: The role of albedo and accumulation in the 2010 melting record in Greenland, *Environmental Research Letters*, 6, 014005, <https://doi.org/10.1088/1748-9326/6/1/014005>, <https://iopscience.iop.org/article/10.1088/1748-9326/6/1/014005>, 2011.
- Tedesco, M., Doherty, S., Fettweis, X., Alexander, P., Jeyaratnam, J., and Stroeve, J. C.: The darkening of the Greenland ice sheet: trends, drivers, and projections (1981–2100), *The Cryosphere*, 10, 477–496, <https://doi.org/10.5194/tc-10-477-2016>, <https://tc.copernicus.org/articles/10/477/2016/>, 2016.
- Tedstone, A. J., Bamber, J. L., Cook, J. M., Williamson, C. J., Fettweis, X., Hodson, A. J., and Tranter, M.: Dark ice dynamics of the south-west Greenland Ice Sheet, *The Cryosphere Discussions*, 2011, 1–22, <https://doi.org/10.5194/tc-2017-79>, 2017.
- Tedstone, A. J., Cook, J. M., Williamson, C. J., Hofer, S., McCutcheon, J., Irvine-Fynn, T. D. L., Gribbin, T., and Tranter, M.: Algal growth and weathering crust state drive variability in western Greenland Ice Sheet ice albedo, *The Cryosphere*, 14, 521–538, <https://doi.org/10.5194/tc-14-521-2020>, <https://tc.copernicus.org/articles/14/521/2020/>, 2020.
- the PISM authors: PISM, a Parallel Ice Sheet Model, <http://www.pism-docs.org>, 2018.



- van Dalum, C. T., van de Berg, W. J., Lhermitte, S., and van den Broeke, M. R.: Evaluation of a new snow albedo scheme for the Greenland ice sheet in the Regional Atmospheric Climate Model (RACMO2), *The Cryosphere*, 14, 3645–3662, <https://doi.org/10.5194/tc-14-3645-2020>, <https://tc.copernicus.org/articles/14/3645/2020/>, 2020.
- 5 Van De Berg, W. J., Van Den Broeke, M., Ettema, J., Van Meijgaard, E., and Kaspar, F.: Significant contribution of insolation to Eemian melting of the Greenland ice sheet, *Nature Geoscience*, 4, 679–683, <https://doi.org/10.1038/ngeo1245>, 2011.
- van den Berg, J., van de Wal, R. S. W., and Oerlemans, H.: A mass balance model for the Eurasian Ice Sheet for the last 120,000 years, *Global and Planetary Change*, 61, 194–208, <https://doi.org/10.1016/j.gloplacha.2007.08.015>, 2008.
- Williamson, C. J., Cook, J. M., Tedstone, A., Yallop, M., McCutcheon, J., Poniecka, E., Campbell, D., Irvine-Fynn, T. D. L., McQuaid, J., Tranter, M., Perkins, R., and Anesio, A. M.: Algal photophysiology drives darkening and melt of the Greenland Ice Sheet, *Proceedings of the National Academy of Sciences of the United States of America*, 117, 5694–5705, <https://doi.org/10.1073/pnas.1918412117>, 2020.
- 10 Wilton, D. J., Jowett, A., Hanna, E., Bigg, G. R., Van Den Broeke, M. R., Fettweis, X., and Huybrechts, P.: High resolution (1 km) positive degree-day modelling of Greenland ice sheet surface mass balance, 1870-2012 using reanalysis data, *Journal of Glaciology*, 63, 176–193, <https://doi.org/10.1017/jog.2016.133>, 2017.
- Winkelmann, R., Martin, M. A., Haseloff, M., Albrecht, T., Bueler, E., Khroulev, C., and Levermann, A.: The Potsdam Parallel Ice Sheet Model (PISM-PIK) – Part 1: Model description, *The Cryosphere*, 5, 715–726, <https://doi.org/10.5194/tc-5-715-2011>, <https://www.the-cryosphere.net/5/715/2011/>, 2011.
- 15