

A sensor-agnostic albedo retrieval method for realistic sea ice surfaces - Model and validation

Yingzhen Zhou¹, Wei Li¹, Nan Chen¹, Yongzhen Fan², and Knut Stamnes¹

¹Light and Life Laboratory, Department of Physics, Stevens Institute of Technology, Hoboken, NJ 07307, USA

²Cooperative Institute for Satellite Earth System Studies (CISESS), Earth System Science Interdisciplinary Center (ESSIC), University of Maryland, College Park, MD 20740, USA,

Correspondence: Yingzhen Zhou (yzhou64@stevens.edu)

Abstract. ~~The cryosphere's surface (snow, sea ice, and water) regulates global climate through several feedback mechanisms. Broadband albedo is a critical parameter determining the radiative energy balance of the complex atmosphere-cryosphere system, but there is currently no reliable, operational albedo retrieval product capable of assessing the global sea ice albedo with sufficient spatial-temporal resolution for studies of sea ice dynamics and for use in global climate models.~~

5 A framework was established for remote sensing of sea ice albedo that integrates sea-ice physics with high computational efficiency, and can be applied to ~~any optical sensor that measures~~ optical sensors that measure appropriate radiance data. A scientific machine learning (SciML) approach was developed and trained on a large synthetic dataset (SD) constructed using a coupled atmosphere-surface radiative transfer model (RTM). The resulting RTM/SciML framework combines the RTM with a multi-layer artificial neural network SciML model. In ~~comparison to the NASA MODIS~~ contrast to the Moderate Resolution
10 Imaging Spectroradiometer (MODIS) MCD43 albedo product, this framework does not depend on observations from multiple days, and can be applied to single angular observations obtained under clear-sky conditions. Compared to the existing melt pond ~~fraction-based detection (MPD)-based~~ approach for albedo retrieval, the RTM/SciML framework has the advantage of being applicable to a wide variety of cryosphere surfaces, both heterogeneous and homogeneous. ~~Validation of~~ Excellent agreement
15 was found between the RTM/SciML ~~albedo product using MODIS and SGLI data against measurements obtained from aircraft~~ campaigns revealed excellent agreement, with mean absolute error of 0.047 for above 2000 clear-sky pixels albedo retrieval
results and measurements collected from airplane campaigns. Assessment against pyranometer data (N = 4144) yields RMSE = 0.094 for the shortwave albedo retrieval, while evaluation against albedometer data (N = 1225) yields RMSE = 0.069, 0.143, 0.085 for the broadband albedo in the visible, near infrared, and shortwave spectral ranges, respectively.

1 Introduction

20 ~~Sea ice in the Arctic~~

Sea ice regulates global climate through ~~multiple feedback processes (Robock, 1983; Bitz and Roe, 2004), and the ice-albedo feedback is perceived as one of the most important factors contributing to sea ice thinning in the Arctic (Curry et al., 1995; Gildor et al., 2002). Sea ice cools Earth by reflecting solar energy back to space and by insulating the ocean water underneath from the atmosphere. An initial warming of sea ice can accelerate the melting process dramatically and thus~~

25 amplify the surface warming, which makes the ice-covered regions more sensitive to small changes in global temperature and carbon emissions (Pithan and Mauritsen, 2014; Comiso and Hall, 2014) several feedback mechanisms¹. Broadband albedo is a critical parameter determining the radiative energy balance of the complex atmosphere-cryosphere system.

30 ~~It is not new that Arctic sea ice has been on the decline in the past years (Stroeve et al., 2007; Serreze et al., 2007; Kwok and Rothrock, 2009; Tschudi et al., 2016). In some areas of the Arctic, the average sea ice thickness near the end of the melt season has decreased by two-third over the last six decades (Kwok, 2018). Some researchers even made postulations, forecasting the year when the first ice-free summer would occur in the Arctic (Wang and Overland, 2012).~~

For decades, optical sensors deployed on geostationary and polar-orbiting satellites have been used to derive the global-scale surface broadband albedo. However, ~~geostationary satellites can only offer data within the latitude range of 60°S to 60°N, omitting the polar regions entirely. With regard to polar-orbiting satellites, the~~ the majority of albedo products are land-surface products, while ocean surface albedo data (including sea-ice) are left blank (Qu et al., 2015). Table 1 compares the currently operational products and algorithms capable of retrieving albedo at the ~~cryosphere's~~ sea ice surface.

Table 1. Summary of the currently operational products and algorithms capable of retrieving albedo at the cryosphere's surface.

Retrieval Method	Albedo Product (sensor)	Spatial resolution	Temporal resolution	Temporal Coverage	Reference
Narrow-to-broadband conversion (NTBC)	APP-x (AVHRR)	25km	1 d	1982 - now	Key et al. (2016)
	CLARA-SAL (AVHRR)	25km	5 day or 1 month	1981 - 2015, 2019-now	Riihelä et al. (2013); Karlsson et al. (2017)
Spectral-to-broadband conversion (STBC)	QA4ECV (MISR)	1km	1, 5, 15 and 31 days	2000 - 2016	Kharbouche and Muller (2018)
Kernel method (BRDF angular modeling)	MCD43D (MODIS)	1km	1 d	2000 - now	Lucht et al. (2000); Schaaf et al. (2002)
Melt-pond-detection (MPD) algorithm	MERIS MPF V1.5 (MERIS)	12.5km	1 d	2002 - 2012	Zege et al. (2015); Istomina et al. (2015)
	OLCI MPF V1.5 (OLCI)	12.5km	1 d	2016 - now	Istomina (2020)
Direct-estimation method	GLASS (MODIS, AVHRR)	1km or 0.05 °	8 d	1981 - 2019	Qu et al. (2016)
	SURFALB L2, L3 (VIIRS)	1km	1 d	2020 - now	Peng et al. (2018)

40 ~~Notably, due to a scarcity of validation data over the sea-ice surface, only the MERIS-albedo product was validated using a sufficient number of data points (>100) against actual sea-ice albedo measurements. However, the MERIS sensor has been inactive since 2012 (Istomina et al., 2015). Although the OLCI-albedo product is the successor of MERIS (Istomina, 2020), which was also generated based on the melt-pond detector (MPD) algorithm (Zege et al., 2015), a comparison of the OLCI-albedo with aircraft observations (see Section 5.3) reveals an overestimation of the OLCI-albedo over the snow-covered sea-ice surface. The two direct-estimation products (hereafter referred as Qu's and Peng's, Qu et al. (2016); Peng et al. (2018)) have been validated using ground truths from the Greenland Ice Sheet and snow-covered land, but the validation is not representative of the highly variable sea-ice surface. While Qu's product was also compared to measurements from the Tara polar ocean expedition, an R-squared value of 0.67, based on daily-average albedo from cruise measurements with fewer than 50 matched retrieval-measurement data points during the 90-day expedition, indicates that the two data sources (measurements and retrieval) are similar, but does not provide statistical evidence for the albedo product's reliability.~~

¹In this paper, 'sea ice' refers to the surface conditions of sea-ice's entire lifecycle: open-water, bare sea-ice, melt-pond, snow-covered sea ice and their mixtures. The phrase 'bare sea-ice' is used to refer to the sea-ice that is not covered by melt-pond or snow.

Three terminologies are used to refer to the albedo of a surface (Schaepman-Strub et al., 2006):-

- 50 – Directional-hemispherical reflectance (DHR), or alternatively, ‘black-sky albedo’ (BSA): the surface albedo in the absence of a diffuse radiance component (i.e., atmosphere); incoming radiation is unidirectional, and the albedo is a function of solar zenith angle.-
- Bi-hemispherical reflectance (BHR), alternatively referred to as ‘white-sky albedo’ (WSA): the incident radiation is devoid of a direct component (i.e. completely diffuse and isotropic illumination).-
- 55 – Blue-sky albedo: the real albedo under given atmospheric and illumination conditions (eq. ??), which can be approximated as the weighted average of DHR and BHR, with weights corresponding to the proportions of the beam and diffuse illumination.-

The CLARA-SAL product (Riihelä et al., 2013) calculates the ‘black-sky albedo’, the App-x and MCD43 products generate both black and white-sky albedo (Schaaf et al., 2002), and all other albedo products directly yield ‘blue-sky albedo’, which is also the albedo that can be directly compared to with *in situ* measurements.-

Note that the broadband albedo estimated by APP-x is based on a narrow-to-broadband conversion (NTBC) of reflectance under a Lambertian-surface assumption (Key et al., 2016), which implies that the radiance reflected from the surface is isotropic and the value of albedo equals π times the reflected radiance. However, fresh snow and white ice surfaces cannot be considered Lambertian; dry snow and ice surfaces exhibit strong forward-scattering, and the impact of the bidirectional distribution of radiance reflected must be rectified in a post-processing step as discussed by Li et al. (2007).

~~Apart from the definitional difference and Lambertian reflector invalidity of CLARA-SAL and APP-x, the spatial resolution of the two products~~ Taking into account the anisotropic properties of the sea ice surface, the (broadband) albedo retrieval procedure requires three steps: (1) atmospheric correction; (2) anisotropy correction to obtain narrow-band or spectral albedo; and (both 25 km) is insufficient for characterizing the heterogeneous cryosphere surface. As a result, comparisons to the two legacy products will not be considered in this study. 3) use of spectral to broadband conversion (STBC) to integrate over the spectral range to obtain, or alternatively derive coefficients to estimate, broadband albedo (Knap et al., 1999; Liang, 2000; Xiong et al., 2002; Stroeve et al., 2005). The STBC coefficients derived by Liang et al. (1999); Liang (2000) were applied to retrieve sea ice albedo using MEdium Resolution Imaging Spectrometer (MERIS) and Multi-angle Imaging SpectroRadiometer (MISR) instruments, respectively (Gao et al., 2004; Kharbouche and Muller, 2018). The retrievals are based on atmospherically corrected Level-2 (reflectance) data from the instruments, as opposed to Level-1 (radiance) data measured at the top of the atmosphere (TOA).

The Moderate Resolution Imaging Spectroradiometer (MODIS) MCD43A and MCD43D products describe the effect of reflectance anisotropy on land/ocean surfaces using the RossThick-LiSparse (RTLRSR) model provided by Lucht et al. (2000), which is a semi-empirical linear kernel-driven model that requires a sufficient amount of cloud-free observations within a 16-day window. Because MCD43 is a land albedo product, it only delivers very limited shortwave albedo values near the coast due to the lack of a spectral bi-directional reflectance distribution function (BRDF) for sea ice surfaces. In fact, there are only a

few BRDF measurements that can be used to describe the angular distribution of surface scattering as functions of illumination and viewing geometries at a particular wavelength. It is denoted by $R(\theta, \theta_0, \varphi, \lambda)$, where θ and θ_0 are the zenith angles of the observation and illumination directions, respectively, and φ is the azimuth angle between them (Martonchik et al., 2000).
85 Currently, two methods are available for estimating surface broadband albedo that take the cryosphere's BRDF into account: BRDF angular modeling and the direct estimation algorithm (Qu et al., 2015). The MCD43 product uses BRDF angular modeling, the melt-pond detector (MPD)-based products use radiative transfer model (RTM) simulations to obtain analytical solutions to BRDF (which can be considered a form of angular modeling), and Qu's as well as Peng's VIIRS assist in correcting the anisotropy of snow and sea ice surfaces (e.g. Gatebe et al. (2005); Dumont et al. (2010); Gatebe and King (2016)), and they
90 are far from conclusive in covering the complicated sea ice surface or encompassing a sufficient angular and spectral range.

Due to the scarcity of observations, in more recent efforts, the BRDF of the cryosphere surface are approximated using radiative transfer models (RTMs). Examples of such efforts are the sea ice albedo (VSI) products both use retrieval based on the melt-pond-detection (MPD) algorithm (Zege et al., 2015) and the direct-estimation method.

From a methodological standpoint, none of the aforementioned algorithms can establish a direct algorithm (Qu et al., 2016).
95 Both algorithms try to establish a relation between TOA-measured radiance and surface albedo in two steps; the radiative processes in the atmosphere and on the cryosphere surface were considered independently (i.e. 'uncoupled'). The atmospheric reflectance and transmittance are calculated with RTMs (for the Melt-Pond-Detection (MPD)-based algorithm, the RAY model is used (Tynes et al., 2001); for the direct-estimation approach, the 6S model is used (Vermote et al., 1997) (Tynes et al., 2001; Vermote et al., 1997). Following this step, the calculated values are used to determine the TOA radiance/reflectance that corresponds to the some specific surface conditions as defined by the surface BRDF values, and the surface is modeled as the 'linear-blend' of sea ice/snow/melt-pond/water components.
100

In contrast, we present a framework that integrates a coupled atmosphere-surface radiative transfer model (RTM), AccuRTM (Stamnes et al., 2018), with scientific machine learning (SciML) models. The coupled RTM model considers all radiative processes occurring in the coupled atmosphere, snow/ice system, including the atmosphere-surface interface, as well as multiple. Multiple reflections between the surface and the atmosphere. Atmospheric as well as the atmospheric molecular and aerosol-induced modifications to the incident spectral distribution of the solar radiation are also both taken into account. At the atmosphere-surface interface, Fresnel's equations and Snell's law appropriately describe light interactions as required if the index of refraction changes across the interface. Additionally, this RTM is combined with a snow/ice/water model that accurately simulates the snow/ice crystals and their inherent optical properties (IOPs), the snow/ice/melt-pond layering, and
110 the impurities included within the snow/ice/water layers (Stamnes et al., 2011).

To retrieve albedo, a In the direct-estimation method, the same IOPs were deployed to derive the BRDFs of the snow surface (Qu et al., 2016). However, because the direct-estimation algorithm decouples the atmosphere from the ocean layer, it is unable to accurately simulate the 'snow-covered sea ice' situation; the 'snow surface' scenario refers to snow that has been placed on land. In a coupled RTM, snow is correctly simulated as a layer of snow on the surface above the air-sea ice interface. Similarly,
115 the MPD algorithm uses an uncoupled RTM. Based on the absorption of yellow pigments in ice, it models sea ice's BRDF

exclusively for dry and white ice, ignoring the effects of air bubbles and brine pockets (Zege et al., 2015). In a coupled RTM, sea ice is simulated as a layer of ice with brine pockets and air bubble inclusions floating on deep ocean water.

This paper is structured as follows: Section 2 provides a summary of the RTM/SciML framework for albedo retrieval, describes the cloud screening and surface classification model, and introduces the validation and comparison datasets used in this study. Section 3 is devoted to validation of the albedo-retrieval products, and Section 4 addresses the possible sources of uncertainty in the validation data. In Section 5, the albedo product is compared to the MCD43 product (Section 5.1), two MPD-based products (MERIS and OLCI, respectively in Sections 5.2 and 5.3) and two direct-estimation products (GLASS and VIIRS, in Section 5.4). A conclusion and summary is provided in Section 6.

2 Methodology

2.1 Overall framework

In this work, we present a new method for albedo retrieval: scientific machine learning based on a coupled RTM (hereafter RTM/SciML-albedo algorithm). Figure 1 shows a flowchart of the proposed RTM/SciML framework for albedo retrieval, while Sections 2.1~2.2 discuss the steps in more detail.

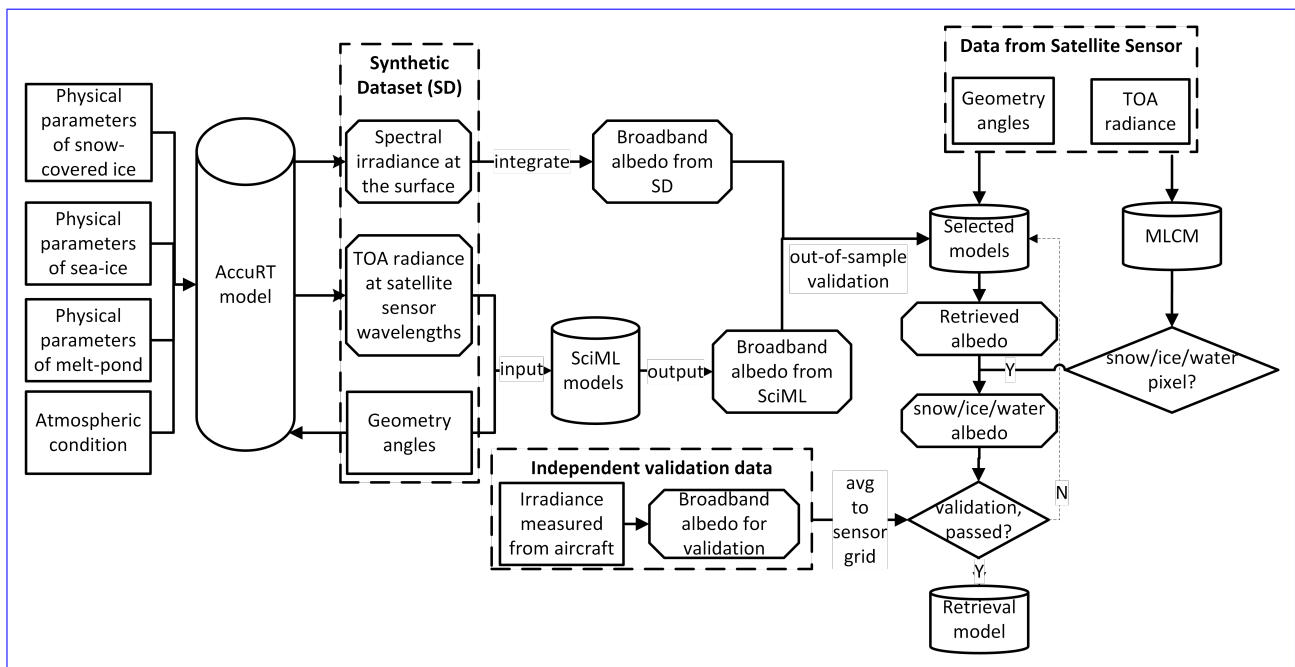


Figure 1. Flowchart of the proposed RTM/SciML framework for albedo retrieval.

First, a synthetic dataset (SD) was constructed using the is constructed using a coupled-RTM, AccuRT (Stamnes et al., 2018). It consists of TOA radiances observed-simulated in suitable satellite channels as a function of observational and solar angles,

as well as the associated broadband albedo at the surface. This SD encompasses a range of different surface types, including snow-covered ice, melt ponds, and bare sea ice, as well as their mixtures. All optical properties of surface and atmospheric constituents, as well as radiative processes within the coupled ~~atmosphere-surface-atmosphere-snow-sea ice-water~~ system, are deduced from first principles. ~~The accurate; information of both the surface BRDF and the IOPs of the atmosphere is implicitly~~
135 ~~taken into account. We are thus saved from the procedure to perform atmospheric corrections.~~

~~The coupled~~ RTM ensures that the ‘forward problem’ is solved correctly, yielding reliable total radiance and irradiance values at any location of the ~~atmosphere-ice-snow-water-coupled~~ system given the ~~inherent optical properties-IOPs~~ of the system constituents.

Following the physically consistent SD, ~~which is designed to be representative of the cryosphere surface in the real world,~~
140 ~~SciML~~ scientific machine learning (SciML) models can be used to solve the ‘inverse problem’, which answers the question, ‘given the observed TOA radiance and the sun-satellite geometry angles, what is the ~~surface~~-albedo of the sea ice surface?’ through an implicit iterative process (i.e. by minimizing a loss function repeatedly during the training of ~~the neural network based-SciML-methods~~).

~~This paper is structured as follows: Section 2 summarizes previous algorithms for sea ice albedo retrieval, introduces the~~
145 ~~SciML technique, and discusses the cloud screening and surface classification model used in this study. Section 3 is devoted to validation of the albedo retrieval product, discussion of potential causes of uncertainty, and a sensor-to-sensor comparison of the retrieval outcomes using MODIS and SGLI radiance data. Following validation, the albedo product is compared to the MCD43 product (Section 5.1) and two MPD-based products (MERIS and OLCI, respectively in Sections 5.2 and 5.3.~~

~~While prior uses of SciML in remote sensing remained at the “application” stage, we went one step further and extracted~~
150 ~~global and local interpretations from trained SciML modelsto determine whether they had learned the physics inherent in the physical model (i.e. physical consistency of the SciML models with the radiative transfer simulationsSciML models). The physical consistency of the albedo retrieval model is described in Zhou et al. (2021 (ready to submit), as well as its applicability to cloud radiative forcing (CRF) analysis and to enhancement of current regional/global climate models~~ SciML models perform without reliance on predefined spectral reflectance threshold values for individual types of surface, which eliminates errors
155 caused by incorrect surface condition assumptions. When deployed in practice, the surface classification and albedo retrieval are separate processes; an independent machine learning classification mask (MLCM, described briefly in Section 2.3) performs both cloud screening and surface pixel classification.

3 Methodology

~~The spectral albedo at a particular wavelength (λ) is where $F^{\pm}(\lambda)$ and $F^-(\lambda)$ are the upward and downward spectral~~
160 ~~irradiance.~~

~~The broadband (wavelength-integrated) albedo ($\alpha_{\tau-j}$) is the ratio of the integrated upward irradiance (F^+) to the downward irradiance (F^-), which can be expressed as~~ The limits of integration span the incident solar spectrum (300-2800 nm), 300-700 nm for the visible band (VIS), 700-2800 nm for the near-infrared band (NIR), and 300-2800 nm for the shortwave band (SW).

2.1 Existing albedo retrieval procedures and their constraints

165 In general, the (broadband) albedo retrieval models developed to date require three steps: (1) atmospheric correction (De Keukelaere et al., 2018; Kokhanovsky et al., 2020); (2) anisotropy correction to obtain narrow-band or spectral albedo (Lucht et al., 2000; Ren et al., 2021); and (3) use of NTBC to integrate over the appropriate spectral range to obtain, or alternatively, derive coefficients to estimate, broadband albedo (Knap et al., 1999; Liang, 2000; Xiong et al., 2002; Stroeve et al., 2005).

170 The MCD43 product describes the effect of reflectance anisotropy on land/ocean surfaces using the RossThick-LiSparse (RTLSR) model provided by Lucht et al. (2000), which is a semi-empirical linear kernel-driven model that requires a sufficient amount of cloud-free observations within a 16-day window. As a result, data gaps of between 20% and 40% have been detected (Liu et al., 2013). Additionally, because MCD43 is a land-albedo product, it only delivers very limited shortwave albedo values near the coast due to the lack of a BRDF value for sea ice surface (discussed in detail in Section 5.1). In fact,
175 there are only a few BRDF measurements that can be used to assist in correcting the anisotropy of snow and sea ice surfaces (e.g. Gatebe et al. (2005); Dumont et al. (2010); Gatebe and King (2016)), and they are far from conclusive in covering the complicated sea ice surface or encompassing a sufficient angular and spectral range.

Due to the scarcity of observations, in the two proposed methods, the BRDF values of the cryosphere surface are approximated using radiative transfer models. The MPD-based and direct-estimation methods compute the BRDF by
180 characterizing each pixel as a ‘linear blended’ surface of sea-ice/snow/melt-pond/water. In the MPD-based method, the surface BRDF is linearly weighted with the sea ice and melt pond BRDFs; open water is excluded, and snow-covered ice conditions are approximated by modifying the threshold reflectance values (more specifically, the spectral reflection coefficients, Zege et al. (2015)). In Qu’s algorithm, the BRDF is the weighted average of sea ice, snow-covered ice, and open water, with melt-pond conditions omitted (Qu et al., 2016). Based on Qu’s algorithm, the VSIA product (Peng’s algorithm,
185 Peng et al. (2018)) evaluates all four surface conditions and derives the melt-pond’s BRDF based on the MPD algorithm.

While the two BRDF approaches (Zege et al., 2015; Qu et al., 2016), in comparison to the MCD43 product, do not rely on *a priori* observations to construct the BRDF values and can be applied to any angular observation from the satellite sensor during any transit, they do share a common limitation in that they typically rely on certain empirically-derived criteria (or threshold values) to determine the exact type and composition of the corresponding pixel in order to assign an appropriate BRDF or
190 filling value (for invalid observations). In other words, the surface type was empirically designated prior to albedo estimation. Misclassification or improper manual assignment would result in a considerable uncertainty in the final albedo estimate.

The narrow-band to broadband albedo conversion stage introduces an additional source of uncertainty, as it requires fitting yet another function. Due to the scarcity of observational data and persistent cloud cover, obtaining the spectral albedo over all possible combinations of sea ice surfaces is challenging. Even when fitted with spectral albedo values calculated from
195 in-situ irradiance measurements, an RMSE of 0.02 to 0.032 is introduced during the fitting procedure; these values correspond to the NTBC in Pohl et al. (2020) and Zege et al. (2015), where coefficients were fitted using ground-based land-fast ice measurements and airborne pyranometer measurements, respectively. On the other hand, in the BRDF-based direct estimation

method, the NTBC coefficients are acquired directly from the BRDF database (Liang, 2005; Wang et al., 2013). Additionally, due to the differences in the central wavelengths and saturation conditions of various sensors, the NTBC coefficients need to be adjusted on a sensor-by-sensor basis (Liang, 2000; Stroeve et al., 2005).

To conclude, all available retrieval methods require fitting of at least two functions to obtain the broadband albedo: one for integrating the spectral bands and another for dealing with the angular dependence of the reflected radiance. The primary issues with these methods are twofold: (1) the decoupling of radiative transfer processes in the atmosphere-surface system and (2) the discordance of adopted snow/sea ice optical characteristics with those found in nature. A coupled RTM that is used in conjunction with a realistic modeling of the system based on its IOPs can address both of these challenges.

2.1 **A new method for albedo retrieval: Scientific machine learning based on a coupled RTM Synthetic Dataset (SD) generated by coupled-RTM**

The AccuRT Radiative Transfer model (Stamnes et al., 2018) is able to simulate a coupled system with changes of refractive index across the atmosphere-ocean-atmosphere-water (in solid or liquid form) interface. Inputs to the coupled RTM are the inherent optical properties (IOPs) AccuRT are the IOPs of the two adjacent coupled slabs (upper slab is atmosphere/snow and lower slab is ocean/ice). Each slab can be partitioned into many adjacent layers, with the IOPs being constant within each layer but varying between them. The IOPs depend on the medium's absorption and scattering coefficients, as well as the scattering phase functions. Within the AccuRT computer code, Mie theory and the particle size distributions are used to generate IOPs based on user-defined physical properties of the medium (Stamnes et al., 2011). Table 2 summarizes the parameters used to calculate the IOPs of bare ice, snow-covered ice, open water, melt-ponds, and aerosols. Appendix A discusses the value ranges of the physical parameters in more detail.

Among the sea ice inclusions, air bubbles are modeled as pure scatterers, brine pockets scatter and absorb light, and black carbon impurities mainly absorb light. The effective grain size r_e of snow particles closely resembles the effective light path traveled by a photon, and hence a larger r_e suggests a lower reflectance (and albedo). Additionally, bulk properties such as ice/pond/snow thickness (h , h_m , h_s) and snow density (ρ_s) also impact the optical depth of the medium. Notably, the parameterizations employed here are consistent with the physics of sea ice/snow/water (Grenfell and Maykut, 1977; Grenfell and Perovich, 1984; Warren, 2019).

Pseudo-random values of the physical parameters of ice, water, and snow within realistic ranges were applied to generate 158,000 cases each for (i) bare-ice, (ii) ice with melt water, and (iii) ice with snow cover (the value ranges are shown in Tables A1-A3). These surface and atmospheric parameters, together with randomly distributed solar/viewing geometries (Table A4) form a dataset suitable for generating a SD of TOA radiances and corresponding albedo values that can be used to train a SciML algorithm.

Altogether, the $158,000 \times 3 = 474,000$ configurations cover most expected combinations of surface types and atmospheric conditions encountered during the sea ice life cycle. For each case, TOA radiances at appropriate sensor channels as well as the three broadband albedo values (α_{VIS} , α_{NIR} , α_{SW}) were computed based on downward and upward irradiances simulated using AccuRT (Stamnes et al., 2018).

Table 2. Properties [used](#) to [acquire](#) [compute](#) the inherent optical properties (IOPs) of bare ice, snow-covered ice, open water, melt-pond, and aerosol, which are utilized as inputs to the radiative transfer model (Stamnes et al., 2011).

Type	Parameter	Properties	Description
bare ice	X_{ice}	h	sea ice thickness
		V_{br}	brine pocket volume fraction
		r_{br}	brine pocket radius
		V_{bu}	air bubble volume fraction
		r_{br}	air bubble radius
		$f_{bc,i}$	black carbon impurity fractions in ice
		X_{water}	physical properties of the ocean water beneath the sea ice layer
snow-covered ice	X_{snow}	r_e	effective grain size of snow particles
		ρ_s	snow density
		h_s	snow depth
		$f_{bc,s}$	black carbon impurity fractions in snow
		X_{ice}	physical properties of the sea ice below the snow-cover layer
		X_{water}	physical properties of the ocean water beneath the sea ice layer
ocean water	X_{water}	h_w	open-water depth
		f_{chl}	chlorophyll-a concentration
		f_{CDOM}	colored dissolved organic matter (CDOM) concentration
melt-pond	X_{melt}	h_m	melt pond thickness
		X_{ice}	physical properties of the sea ice below the melt pond layer
		X_{wat}	physical properties of the ocean water below sea ice layer
aerosol	$X_{aerosol}$	τ_{aero}	aerosol optical depth in the atmospheric layer

To summarize, AccuRT’s nature as a coupled RTM and as a model that incorporates the physical properties of ice/snow/water to calculate their IOPs provides the following benefits in order to tackle the ‘forward problem’:

1. There is no need to (i) perform atmospheric correction, (ii) build a BRDF dataset, or (iii) employ angular modeling or anisotropy correction. All these effects are implicitly included in the coupled RTM.
2. Because each simulation performed by the coupled RTM represents a combination of (atmosphere/surface conditions, sun-sensor zenith and azimuth angles), a SD can be constructed that is designed to include (i) the complicated surface and atmosphere conditions by varying the optical properties in Table 2, and (ii) the possible combinations of illumination/viewing geometries ([Table A4](#)).

With a comprehensive SD, we are not restricted to a linear regression model (as in the direct-estimation method) to derive the relationship between the spectral radiance at TOA and the blue-sky albedo at the surface; any reliable SciML model may be evaluated and compared as long as it is capable of solving the ‘inverse problem’ (i.e. a regression model, with albedo being the target and the radiances as well as sun-satellite geometry angles being the features).

245 In the SD we constructed, the temperature, pressure, and concentrations of the major atmospheric elements were described using the ‘subarctic summer’ atmospheric profile (Anderson et al., 1986). The aerosol optical depth (AOD) values were taken with ranges reasonable in cryosphere areas (Mehta et al., 2016; Winker et al., 2013).

2.2 Selection of radiance channels for albedo retrieval

250 Pseudo-random values of the physical parameters of ice, water, and snow within realistic ranges were applied to generate 158,000 cases each for (i) bare ice, (ii) ice with melt water, and (iii) ice with snow cover. These surface and atmospheric parameters, together with randomly distributed solar/viewing geometries form a dataset suitable for generating a SD of TOA radiances and corresponding albedo values that can be used to train a MLANN algorithm (see Zhou et al. (2021 (submitted) for detail).

255 Altogether, With our knowledge of radiative transfer theory and the differences in the radiative properties of the constituents in the 474,000 configurations cover most expected combinations of surface types and atmospheric conditions during the sea ice life cycle. For each case, TOA radiances at appropriate sensor channels (channel specifications in Section 2.1.1) as well as the three broadband albedo values (α_{VIS} , α_{NIR} , α_{SW}) were computed based on downward and upward irradiances simulated using the coupled-RTM (Stamnes et al., 2018). coupled atmosphere-surface system, we first chose the input channels based on the following criteria:

260 After appropriately training a SciML model and evaluating the retrieval results against the validation data (in-situ measured albedo)

- Avoid wavelengths with significant absorption by water vapor and/or other atmospheric constituents.
- Avoid sensor channels that have been found to be saturated in previous sensitivity investigations.
- Select wavelengths that, based on their albedo spectra, can best identify snow cover, bare ice, the model is ready for deployment to retrieve albedos using data obtained from satellite sensors open water, and melt-pond surface conditions.

265 With the assistance of the auto-associative neural network (AANN) technique, channels with a significant reconstruction error are deemed unsuitable for use as input to the retrieval model. More specifically, using Level 1B radiance data and the corresponding illumination-observation angles, this albedo product is stored in an H5 file containing the three broadband albedos, one for each pixel in the input. In other words, the albedo product is compatible with any optical sensor capable of measuring TOA radiance in suitable wavelength channels, and the albedo map’s spatial resolution matches that of the sensor footprint.

275 Additionally, rather than relying on empirical relationships between radiances to establish threshold values for surface classification, a separate SciML model was trained using the RTM to address the ‘inverse problem’ of surface classification and cloud screening. The independent surface classification model ensures that even on highly heterogeneous surfaces or in conditions where classification on certain pixels is difficult (e.g. the long-standing difficulty in distinguishing between slushy mixtures of ice and water, very thin ice, and melt ponds), the retrieval of their surface albedo values is unaffected.

In this study, the TOA radiances from the Moderate Resolution Imaging Spectroradiometer (MODIS) and the Second-generation Global Imager (SGLI) were employed for albedo retrieval. While only two sensors are discussed, the retrieval method is generic and applicable to any satellite sensor having suitable radiance data (e. g. the Visible Infrared Imaging Radiometer Suite, abbreviated as VIIRS) an AANN is trained using the synthetic data generated by the RTM, which takes as
280 input the three sun-satellite geometry angles as well as all radiance data that meet the aforementioned requirements and outputs
all radiances. The trained AANN is believed to have picked up on the patterns in the RTM-generated dataset. Following that,
the AANN is fed the same input features derived from the satellite sensor. We calculate the absolute percentage error of the
reconstruction output and prune channels with an error greater than 5%.

2.3 Radiance data from the MODIS and SGLI sensors

285 MODIS Level 1B calibrated radiance data (MOD021) and Level 1A geolocation fields (MOD03) are used to retrieve the albedo and obtain the cloud screening and surface classification. We employ the radiances of seven channels: blue (459-479 nm), green (545-565 nm), red (620-670 nm), near infrared (841-876 nm), and the three shortwave infrared bands 1230-1250 nm, 1628-1652 nm, and 2105-2155 nm. All channels have been aggregated at a common resolution of 1 km. The data are acquired from the Atmosphere Archive & Distribution System (LAADS) of the Distributed Active Archive Center (DAAC).

290 Onboard the Global Change Observation Mission-Climate (GCOM-C) satellite, the Second-generation Global Imager (SGLI) has 11 channels with a spatial resolution of 250 meters. The retrievals were performed using TOA radiances from three channels provided by the infrared scanner (SGLI-IRS) and three channels provided by the visible and near-infrared radiometer (SGLI-VNR) on the SGLI sensor. These six channels are: VN3 (443 nm), VN5 (530 nm) and VN11 (868.5 nm), SW1 (1050 nm), SW3 (1630 nm), and SW4 (2210 nm). Due of the 1-km spatial resolution of the VN9 This method is intended to avoid
295 'covariate shift' — a phrase used in machine learning to refer to the difference between independent variables in training and
real-world data. Covariate shift is due to either (a) the saturation of certain satellite channels, which results in a much narrower
dynamic range of radiance data from the satellite sensor (real world) than that calculated using the RTM (training data), SW1,
and SW4 channels, all 250-m data were mapped to fit the 1-km grid. or (b) the response function and wide wavelength range
results in a non-negligible difference between the radiance derived from the central wavelength and that obtained from the
300 sensor. It has been demonstrated that the AANN technique is effective in detecting mismatches between data acquired for the
retrieval task and data utilized for training; A recent paper (Fan et al., 2021) discusses how the AANN approach was used to
identify optimal channels for retrieving ocean color products using a variety of sensors.

It is important to note that the observation by MODIS on Terra and by SGLI on GCOM-C are only 15 minutes apart. The retrieval results from the MODIS and SGLI sensors are compared in Section 3.

305 2.3 Neural network model

Neural network models, specifically models with the multi-layer artificial neural network (MLANN, also known as a Multi-layer Perceptron, MLP) structure, have been demonstrated to be useful for retrieving and estimating snow and sea ice parameters. Successful implementations include the sea ice and snow thickness retrievals using microwave data

(Herbert et al., 2021; Hu et al., 2021; Zhu et al., 2021; Wang et al., 2020; Braakmann-Folgmann and Donlon, 2019; Lee et al., 2019; Tedesco et al., 2019) and sea ice concentration (SIC) or melt pond fraction (MPF) retrievals using radiance or reflectance data (Chi et al., 2019; Karvonen, 2017; Rösel and Kaleschke, 2012).

A MLANN's computational unit is a neuron (alternatively called a perceptron), which is organized in a network topology. A set of functions $f_j(x; w_j, b_j)$ connected in a chain can be used to describe the architecture of a fully connected neural network with n layers in total (including the input and output layers): The previous layer's output is transformed by $f_j(x) \times w_j + b_j$, and then an activation function f_{j+1} (which is typically non-linear) is applied to perform an element-wise operation.

Generally, as the network grows deeper, the features become more abstract and complicated, as each succeeding layer is constructed from the already transformed features of the prior layer (LeCun et al., 2015). The network's $n - 2$ hidden layers enable it to describe non-linear relations between the independent and dependent variables (x, y) . The matrices w_j define the weights for linear transformations between layers, whereas the vectors b_j define the biases. The final layer (output layer) has three neurons encoding the predicted albedo values $(\hat{\alpha}_{\text{VIS}}, \hat{\alpha}_{\text{NIR}}, \hat{\alpha}_{\text{SW}})$.

To obtain an efficient MLANN, both the network structure's topology and hyperparameters should be tweaked properly. The network architecture selection (NAS) in this study was determined using Auto-Keras and numerical experimentation. Auto-Keras (Jin et al., 2019) is an open-source library for performing automatic machine learning (AutoML) on deep learning models.

Two MLANN models were trained. In Section 3, results from one MLANN was used Similar approaches have been used to identify acceptable channels for albedo retrieval. Table 3 lists the MODIS channels that were utilized to retrieve albedo values for comparison with the albedometer measurements ($\alpha_{\text{VIS}}, \alpha_{\text{NIR}}, \alpha_{\text{SW}}$) and results from another MLANN was used to retrieve albedo values for comparison against pyranometer measurements (α_{SW}), as well as the Global Change Observation Mission - Climate (GCOM-C)/SGLI channels that were evaluated and eventually employed².

2.3 Surface classification and cloud filtering

Imperfect cloud screening brings considerable uncertainty to the retrieved sea ice albedo. To mitigate this uncertainty, pixels covered by clouds are detected and removed by a ~~machine learning (neural network)~~ neural network based cloud screening and surface classification algorithm (MLCM) developed by Chen et al. (2018). The MLCM (short for Machine Learning Classification Mask) is a threshold-free algorithm trained by extensive radiative transfer simulations. It can be applied to a great variety of surface types to provide reliable cloud mask and surface classification. ~~The MLCM also has the capability to distinguish snow-covered sea ice pixels (with a minimum snow depth of 1 cm) from bare sea ice pixels.~~ A comparison between the MLCM and other standard cloud mask algorithms showed that the MLCM is better able to detect cloud edges and deal with high solar zenith angles (Chen et al., 2018). Section 3 indicates that the MLCM can assist in filtering cloud, fog (sea smoke) and hazy atmospheric conditions.

²Our team initially discovered the saturation issue in the 673.5 nm channel using AANN, submitted the finding to the GCOM-C/SGLI team, and obtained confirmation of the issue.

The MLCM also has the capability to distinguish snow-covered sea ice pixels (with a minimum snow depth of 1 cm) from bare sea ice pixels. Independent treatment of classification and albedo retrieval ensures that even on highly heterogeneous surfaces or in conditions where classification of certain pixels is difficult (e.g. the long-standing difficulty in distinguishing between slushy mixtures of ice and water, very thin ice, and melt ponds), the retrieval of their surface albedo values is unaffected.

345 **2.1 Data**

2.1.1 Radiance data from the MODIS and SGLI sensors

In this study, the Level 1B calibrated radiance data (MOD021) from the MODIS sensor and the infrared scanner (IRS) as well as the near-infrared radiometer (VNR) on the Second-generation GLocal Imager (SGLI, data available at JAXA page) were employed for albedo retrieval and surface classification. While only two sensors are discussed, the retrieval method described in Section 2 is generic and applicable to any satellite sensor having suitable radiance data (e.g. the Visible Infrared Imaging Radiometer Suite, abbreviated as VIIRS).

Central wavelengths used by MODIS and SGLI sensors to retrieve albedo and obtain cloud / surface-classification mask are provided in Table 3. Data in all channels have been aggregated at a common spatial resolution of 1 km.

Table 3. Central wavelengths used by SGLI and MODIS to retrieve albedo and obtain cloud and surface classification mask. The 673.5 nm wavelength channel from SGLI was proven to be saturated and hence was not used to derive albedo.

λ (nm)	SGLI channels		λ (nm)	MODIS channels	
	albedo	cloud & classification		albedo	cloud & classification
380		x			
443	x	x	469	x	x
530	x	x	555	x	x
673.5		x	645	x	x
868.5	x	x	858.5	x	x
1050	x	x	1240	x	x
1630	x	x	1640	x	x
2210	x	x	2130	x	x

2.1.2 Independent validation data

355 Three campaigns conducted in the Arctic provided broadband irradiance data across the Arctic sea ice surface. They are: the ACLOUD (Arctic Cloud Observations Using Airborne Measurements During Polar Day) campaign conducted during the 2017 spring-summer transition, the AFLUX (airborne measurements of radiative and turbulent FLUXes of energy and momentum in

the Arctic boundary layer) campaign, which took place in April 2019 north of Svalbard, and the MOSAiC (Multidisciplinary drifting Observatory for the Study of Arctic Climate) campaign, which was conducted in late August to September 2020 (Wendisch and Brenguier, 2013; Lüpkes, 2017; 201, 2016).

~~The broadband albedo was estimated using~~ With the MLCM, we performed cloud filtering and compared the flight transits to the cloud-free area. By calculating the percentage of cloud coverage (f_c) for the matching dates in the latitude-longitude range of flight operations, only seven days were found to include clear-sky sea ice observations ($f_c \leq 90\%$), and the flight transits were retained (Table 5). Measurements from two days during the AFLUX campaign were partly from clear-sky, while the remainder were entirely from broken clouds (for a description of the AFLUX data, see Stapf et al. (2021b)). The MOSAiC campaign included fewer than 50 valid data points (Jäkel et al., 2021b), and all obtained for broken cloud conditions. To eliminate errors caused by dense cloud cover, MOSAiC data were omitted from validation.

During the ACloud and AFLUX campaigns, the upward and downward irradiance data collected by two pairs of CMP-22 pyranometers (0.2 ~ 3.6 μm) were collected by two pairs of CMP-22 pyranometers (Stapf et al., 2019, 2021a). The pyranometers operate/operated at a frequency of 20 Hz and were mounted on the Polar 5 (the ACloud campaign used an additional aircraft, Polar 6) research aircraft. Pre-processing was used to avoid data received during high aircraft pitch/roll angles and suspicious equipment frost conditions. Technical details of the pyranometer are provided by Wendisch and Brenguier (2013).

~~Although the SciML models were trained using irradiance in the wavelength range of 0.3 to 2.8 μm rather than the pyranometer's 0.2 to 3.6 μm range, we would expect a small error due to the wavelength range difference, because there is virtually no radiation reaching the surface of the Earth for wavelengths shorter than 0.3 μm due to ozone absorption in the stratosphere, and because the contribution to the albedo for wavelengths beyond 2.5 μm is negligible.~~

Along with the pyranometers on Polar 5 and 6, a Spectral Modular Airborne Radiation measurement system (“SMART Albedometer”) on Polar 5 measured spectral irradiances between 0.4 and 2.155 μm at a frequency of 2 Hz during the ACloud and MOSAiC campaigns (Jäkel et al., 2018, 2021b). To make use of the spectral range provided by the campaign (Jäkel et al., 2018).

~~Gröbner et al. (2014); Ehrlich et al. (2019) reported that the pyranometer's uncertainty was less than 3%, whereas the uncertainty of the “SMART Albedometer” ; we adjusted the broadband integration ranges for visible (α_{VIS} , 0.4~0.7 μm); near infrared (α_{NIR} , 0.7~2.1 μm), and shortwave (α_{SW} , 0.4~2.1 μm), for a more detailed comparison of albedo was 7%.~~

2.1.3 Pre-processing of validation data

The albedo obtained from SciML has the same spatial resolution as the geolocation data (MOD03), which is 1 km, whereas the aircraft's pyranometers/albedometer have a significantly smaller footprint. As a result, when evaluating SciML models, the estimated albedo is collocated with the MODIS grid and the average value of about 170 measurements from each flight is mapped to a single MODIS pixel. With the MLCM (Chen et al., 2018), the pixels with cloud contamination are filtered, and only three surface types were kept in the validation dataset (i.e. sea ice, snow-covered sea ice, and water).

Finally, while the SciML-derived albedo is valid for surface observations, there may be a bias between it and the albedo measured at aircraft height. The Polar 5 and Polar 6 aircraft reached 3000 m height during the mission, and therefore, the albedo

measurements were influenced by the entire atmospheric layer below the aircraft, resulting in a significant variance in albedo results. To account for the difference caused by the atmospheric constituents, we used the coupled RTM (Stamnes et al., 2018) (AccuRT) to simulate the albedo of snow, bare ice, melt pond, and open water surface at three different levels: surface (α_s),
 395 low flight level (α_l , $l = 350$ m), and high flight level (α_h , $h = 3000$ m). Albedo ratios, $r_l = \frac{\alpha_l}{\alpha_s}$ and $r_h = \frac{\alpha_h}{\alpha_s}$, were calculated to determine the difference in albedo induced by the atmospheric layer below the flight height.

Figure 2 illustrates the aforementioned spectral and broadband albedos, as well as the ratios. There is ~~greater significant~~ influence of multiple scattering above the open water surface due to atmospheric components, particularly in the visible (VIS) range; the albedo at $h = 3000$ m is double that on the surface, whereas the presence of an atmosphere ~~and with~~ aerosols results
 400 in a decrease in albedo over a bright surface. Among these, the reduction is particularly noticeable in the near-infrared (NIR) band, where air absorption results in a 4% and a 22% decrease in albedo at low and high levels, respectively. Similar simulation results were found by Jäkel et al. (2021a), using the Two-streAm Radiative TransfER in Snow (TARTES) model (Libois et al., 2013). As can be observed, the difference between low-level and surface albedo is less than 5%, whereas the difference between high-level and low-level albedo is significantly greater. As a result, we did not use aircraft observations taken above 350 m in
 405 order to improve the validation of the ~~surface~~ 'surface' albedo retrieval.

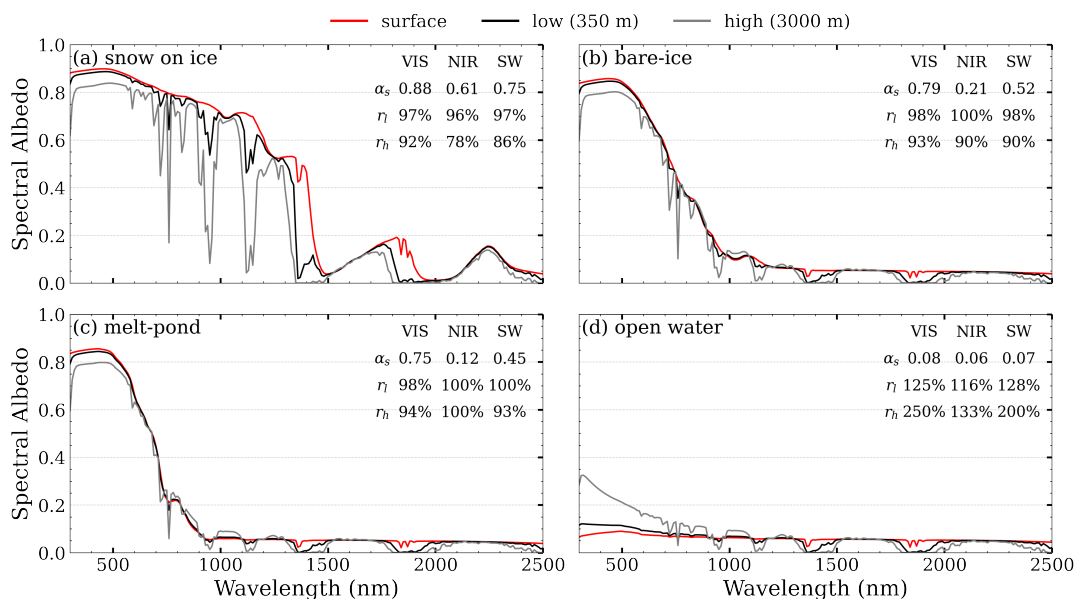


Figure 2. Spectral albedo computed by the RTM at various altitudes (350-m in black line, and 3000-m in gray line) and the surface (red line).

~~With aforementioned pre-processing steps including geographic collocation and observational altitude restrictions, measurements from two days during the AFLUX campaign were partly from clear-sky, while the remainder were entirely from broken clouds (for a description of the AFLUX data, see Stapf et al. (2021b)), and seven flight transits from ALOUD~~

were retained. The MOSAiC campaign included fewer than 50 valid data points, and all obtained for broken cloud conditions. To eliminate errors caused by dense cloud cover, MOSAiC data were omitted from validation.

In all, the selected flight sections are depicted in Fig. 3. Up to four satellite images per day could be employed for retrieval and evaluation in the polar regions. When flight transits were compared to the percentage of cloud coverage (f_c) for the matching dates in the latitude-longitude range of flight operations (identified using the MLCM, Chen et al. (2018)), only seven days had clear-sky sea ice observations ($f_c \leq 90\%$). June 25, 2017 had the lowest cloud coverage ($f_c \leq 30\%$) of them all. The MODIS transits that correspond to the aircraft operation time and f_c are listed in Table 5.

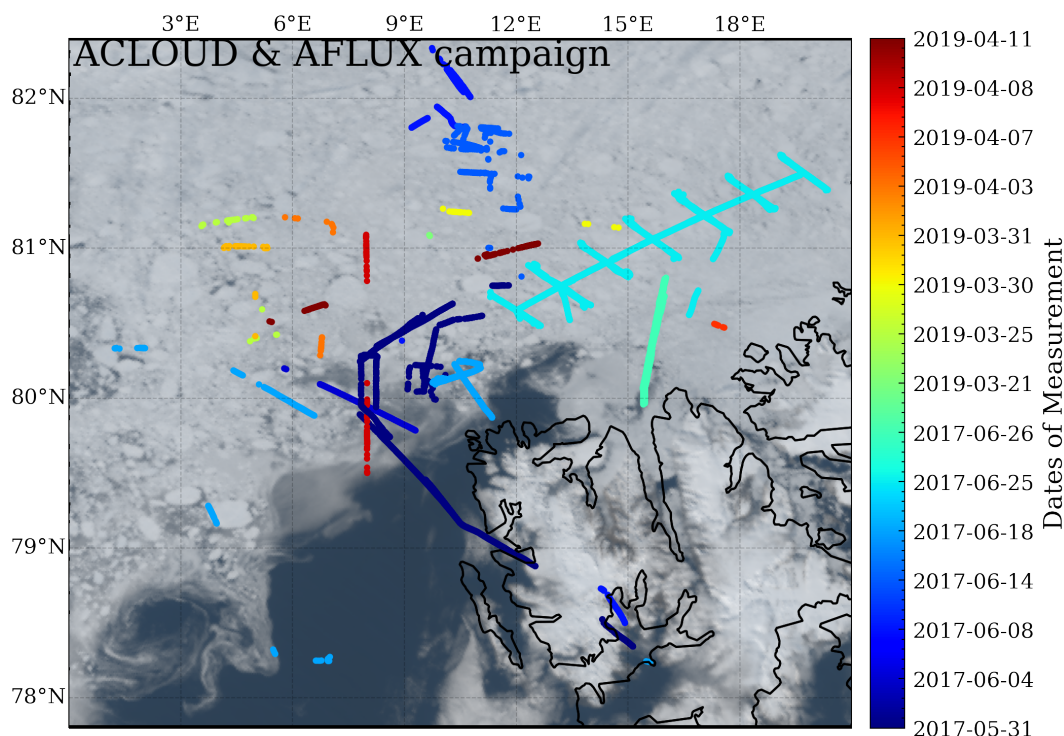


Figure 3. ACLOUD and AFLUX transits of selected flight segments from Polar 5 and Polar 6. In the background, the true color composite from June 25th, 2017 is shown; MODIS channels 645 nm, 555 nm, and 469 nm are used as (R,G,B) bands for the true color RGB. [The dates of flight operations are denoted by hues defined in a colorbar placed on the right.](#)

2.1.4 [Comparison data](#)

[The retrieval results from RTM/SciML models are compared to the currently operational albedo retrieval products listed in Table 1.](#)

MODIS MCD43D: [The 1-km spatial resolution MODIS MCD43D products are the successors to the MCD43B products. The retrievals are performed daily using kernel weights that best represent the majority of situations across the 16-day period.](#)

with the day of interest emphasized. MCD43D49~51 correspond to the Black Sky Albedo (BSA) for the visible (0.3~0.7 μm , VIS), near infrared (0.7~5.0 μm , NIR), and shortwave (0.3~5.0 μm , SW) bands, while MCD43D59~61 correspond to the White Sky Albedo (WSA) for the three broadband ranges (Schaaf and Wang, 2015b).

425 **MERIS MPF V1.5 and OLCI MPF V1.5:** Istomina et al. (2015; 2020) developed two albedo retrieval products, utilizing
MERIS data from Envisat-1 and Ocean and Land Colour Instrument (OLCI) data from Sentinel-3, respectively. The
MERIS sensor was only operational from 2002 to 2012, and the OLCI-product is the successor to the MERIS-albedo
product (Istomina, 2020); both products are based on the MPD algorithm proposed by Zege et al. (2015). Daily retrieval
data are gridded onto a polar stereographic grid with a 12.5 km resolution (the NSIDC grid). In Istomina et al. (2015), the
MERIS-albedo product was evaluated by comparing the estimated albedo values to aerial measurements from the MELTEX
430 campaign. Land-fast ice showed the best agreement, with an R-squared value of 0.84 and an RMSE of 0.068 for 169 matched
pixels.

GLASS (AVHRR) and GLASS (MODIS): Global Land Surface Satellite (GLASS) products are primarily derived from
NASA's Advanced Very High Resolution Radiometer (AVHRR) long-term data record and MODIS data, together with
other satellite data and auxiliary information (Liang et al., 2021). The sea ice surface albedo in GLASS is derived using
435 the direct-estimation algorithm (Qu et al., 2016); a spatiotemporal filtering algorithm Liu et al. (2013) is utilized to provide
gap-free albedo with an 8-day temporal resolution. The spatial resolution of GLASS-albedo retrieved from the AVHRR sensor
is 0.05° and from MODIS sensor is 1 km. In Qu et al. (2016), the GLASS (MODIS) product was compared to Tara polar ocean
expedition measurements. During the 90-day expedition, the daily average albedo from cruise measurements with around 50
matched retrieval-measurement data points yielded an R-squared value of 0.67.

440 **VIIRS L3-SURFALB:** Peng et al. (2018) improved the direct-estimation method for sea-ice retrieval proposed by
Qu et al. (2016) and made it applicable to the VIIRS. The BRDF in Qu et al. (2016) is a weighted average of sea ice,
snow-covered ice, and open water, with melt-pond conditions omitted. In Peng et al. (2018), all four surface conditions are
evaluated and the MPD algorithm is used to derive the BRDF of melt-pond. The VIIRS surface albedo (SURFALB) product
has been validated using ground truth from the Greenland Ice Sheet and snow-covered land (Peng et al., 2018). Note that the
445 validation data are not applicable to the highly fluctuating sea ice surface; sea ice refers to a floating sheet of ice formed from
ocean water, which might be covered by melt-ponds or snow during its lifecycle. The spatial resolution of both the SURFALB
Level-2 (L2) Granule product and the Level-3 (L3) Gridded product is 1 km, and the L3 data is used for comparison in this
study.

When computing the statistical values (albedo, Pearson-r, mean, etc.), the RTM/SciML-retrievals are regridded to
450 the same spatial and temporal resolution as their counterparts (e.g. 12.5km for OLCI/MERIS and 8-day average
for GLASS), and if matching validation data are available, the flight measurements are likewise rescaled to the
same grids. In retrieval-map figures, data are represented with their original spatial resolution. The CLARA-SAL
(Karlsson, Karl-Göran et al., 2012; Karlsson et al., 2017) and APP-x (Key et al., 2016) albedo products produced from the
AVHRR sensor are also provided for reference.

455 2.2 Scientific Machine Learning (SciML) model

Neural network models, specifically models with the multi-layer artificial neural network (MLANN) structure, have been demonstrated to be useful for retrieving and estimating snow and sea ice parameters. Successful implementations include the sea ice and snow thickness retrievals using microwave data (Herbert et al., 2021; Hu et al., 2021; Zhu et al., 2021; Wang et al., 2020; Braakmann-Folgmann and Donlon, 2019; Lee et al., 2019; Tede
460 , and sea ice concentration (SIC) or melt pond fraction (MPF) retrievals using radiance or reflectance data (Chi et al., 2019; Karvonen, 2017; Rösel and Kaleschke, 2012).

A MLANN's computational unit is a neuron (alternatively called a perceptron), which is organized in a network topology. A set of functions $f_j(x; w_j, b_j)$ connected in a chain can be used to describe the architecture of a fully connected neural network with n layers in total (including the input and output layers):

$$465 F(y) = f_n(\dots f_3(f_2(f_1(x) \times w_1 + b_1) \times w_2 + b_2)\dots). \quad (1)$$

The previous layer's output is transformed by $f_j(x) \times w_j + b_j$, and then an activation function f_{j+1} (which is typically non-linear) is applied to perform an element-wise operation.

Generally, as the network grows deeper, the features become more abstract and complicated, as each succeeding layer is constructed from the already transformed features of the prior layer (LeCun et al., 2015). The network's $n - 2$ hidden layers
470 enable it to describe non-linear relations between the independent and dependent variables (x, y) . The matrices w_j define the weights for linear transformations between layers, whereas the vectors b_j define the biases. The final layer (output layer) has three neurons encoding the predicted albedo values $(\hat{\alpha}_{\text{VIS}}, \hat{\alpha}_{\text{NIR}}, \hat{\alpha}_{\text{SW}})$.

Neural network models with different configurations are trained using 80% of the SD. To obtain an efficient MLANN, both the network structure's topology and hyperparameters should be tweaked properly. A stochastic gradient descent (SGD) optimization is used to update the weights and biases in an MLANN during back-propagation. To perform
475 the SGD, the adaptive moment estimation (Adam, Kingma and Ba (2014)) was chosen, which trains the models in 200 epochs with a batch size of 64. A MLANN's hyperparameters include the learning rate and the activation function. To determine the optimal learning rate, Bayesian optimization was employed (Brochu et al., 2010), and the Rectified Linear Units (ReLU, (Nair and Hinton, 2010)) were used as the activation function in the hidden layers. Batch normalization (Ioffe and Szegedy, 2015) is performed to enhance the MLANN's generalization capabilities and make the network less
480 sensitive to random initialization of the weights and biases (Santurkar et al., 2019). To avoid overfitting, dropout layers (Srivastava et al., 2014) were included as a regularization for networks with more than two hidden layers. In our evaluation, dropout layers with a rate of 0.2 were found to be optimal, implying that one in every five inputs is randomly eliminated from each update cycle.

A hidden-layer structure of $(16 \times 10 \times 8)$ was found to perform effectively with input data from both SGLI and MODIS
485 sensors. A deeper structure was also tested, but the error from a network with more than three hidden layers doubles. Liu et al. and Rösel et al. previously employed fewer neurons in each layer (no more than 15) and assigned the first hidden layer the same number of neurons as the feature input, in the hope that after the model training, each neuron represents exactly one

satellite channel or one of the geometry angles (i.e. the lingo ‘semantics’ in deep learning). However, there is no guarantee that these input-neuron relations will remain one-to-one during actual neural network training. In fact, the back-propagation process combines all of the inputs in the ‘×’ operation (the so-called ‘non-locality’ effect).

To make use of the spectral range provided by the “SMART Albedometer” and the broadband values provided by the pyranometer, two MLANN models were trained. Table 4 summarizes the wavelength ranges of their retrievals. Although Model 1 was trained using irradiance in the wavelength range of 0.3 to 2.5 μm rather than the pyranometer’s 0.2 to 3.6 μm range, we would expect a small deviation due to the wavelength range difference, because there is virtually no radiation reaching the surface of the Earth for wavelengths shorter than 0.3 μm due to ozone absorption in the stratosphere, and because the contribution to the albedo for wavelengths longer than 2.5 μm is negligible.

Table 4. Difference between the wavelength ranges of the retrievals from the two MLANN models. The validation of retrieval results are shown in Figures 3, 6 and Table A2.

	Model 1		Model 2	
	λ range (nm)	validation data	λ range (nm)	validation data
Visible	300-700	/	400-700	albedometer
Near Infrared	700-2500	/	700-2100	albedometer
Shortwave	300-2500	pyranometer	400-2100	albedometer

As depicted in Fig. 1, the final models are selected after two levels of validation: the first filter is on the out-of-sample validation, which uses the portion of the SD that was not included in the network training process (20% of SD); and the second filter is on data sampled from campaign measurements (50% of data from the pyranometer measurements, Section 2.1.2). Adopted are the MLANN models with the least RMSEs throughout both levels of validation³.

The SGLI on GCOM-C was launched in late 2017. The data included in Fig 12 are, to our knowledge, the only cloud-free validation data during its operational periods. The RTM/SciML-MODIS albedo model was used as a reference in the ‘second level of validation’ for SGLI retrievals, taking advantage of the fact that the observation by MODIS and by SGLI are only 15 minutes apart. The final MLANN model for the SGLI sensor was chosen based on the R-squared between the SGLI and MODIS retrieval results.

3 Validation

3.1 Validation of MODIS-retrievals

³In addition to neural network models, the authors also evaluated various machine learning models. Table B1 provides an overview of the evaluation outcomes for all SciML models.

510 Polar-orbiting satellites transit the two polar areas up to four times per day, and cloud-free retrievals from all transits (Table 5) are used to compare with the independent validation data measured on Polar 5 and Polar 6 aircraft. Due to the absence of a time constraint on the retrieval data, a single gridded airplane measurement can match many satellite retrievals.

Table 5. Time stamps for airborne observations, satellite overflights in UTC, and cloud pixel percentages in the latitude-longitude ranges of aircraft during the ACLOUD and AFLUX campaigns (77.8~82.4°N, and -0.25~20.5°E.). Note that days with just broken-cloud observations (cloud coverage greater than 90%) are not included in the table.

Date	Polar 5	Polar 6	MODIS	f_{cloud} (%)
31 May 2017	15:05-18:57	14:59-19:03	14:30, 16:05, 17:45	31.35%
8 June 2017	7:36-12:51	7:30-12:20	12:00, 13:40, 15:15	74.37%
18 June 2017	12:03-17:55	12:25-17:50	11:00, 12:40 14:15, 15:55	82.69%
25 June 2017	11:09-17:11	11:03-16:56	11:05, 12:45 14:20, 16:00	28.06%
26 June 2017	12:34-15:17	12:32-14:48	11:50, 13:25 15:05, 16:40	33.74%
April 08 2019	9:11-13:50	/	11:30, 13:10	46.52%
April 11 2019	9:42-12:46	/	12:00, 13:40	81.12%

515 Figure 4 indicates that the RTM/SciML retrieval method is capable of producing satisfactory albedo outputs with low errors and high Pearson-r coefficients. Additionally, the The agreement between the retrieved shortwave albedo and the pyranometer-measured albedo is better than with the albedometer; the regression line (marked in red) connecting the pyranometer-measured albedo and the retrieval almost completely overlaps the (0,1) line, indicating a perfect one-to-one correspondence. Apart from the obvious advantage of having more measurements (i.e., twice the data size of data from Note that due to the addition of data from two aircraft during the ACLOUD campaign with two aircraft and the addition of data obtained and two flights from the AFLUX campaign) for evaluation, another reason could be that the equipment has a lower, the acquired pyranometer-data is twice as extensive as the albedometer measurements (7964 versus 3936).

520 The highest inaccuracy of retrieval occurs in the near-infrared band: around 15 percent over-estimation for bare sea ice and snow-covered ice pixels. Apart from the larger positive bias inherent in the SciML algorithm (as compared to the visible band), the disparity in NIR values could be partly caused by the measurement uncertainty; the uncertainty of the “SMART Albedometer” was albedometer’s overall uncertainty in the near-infrared wavelength band is reported to be 7%, whereas the pyranometer’s uncertainty is less than 3%(Gröbner et al., 2014; Ehrlich et al., 2019)the greatest (Jäkel et al., 2021a). It is also worth noting that even though the comparison is confined to low-level (< 350 m) flight measurements, there still is a non-negligible height-induced error in the NIR values (refer to the RTM simulation findings in Fig. 2): On snow-covered sea ice, the error is - 4% (lower than the surface), which increases the gap between the retrieval (of ground) and the measurements (of low-altitudes). For open water, the near-infrared albedo at 350 m is + 16%.

525

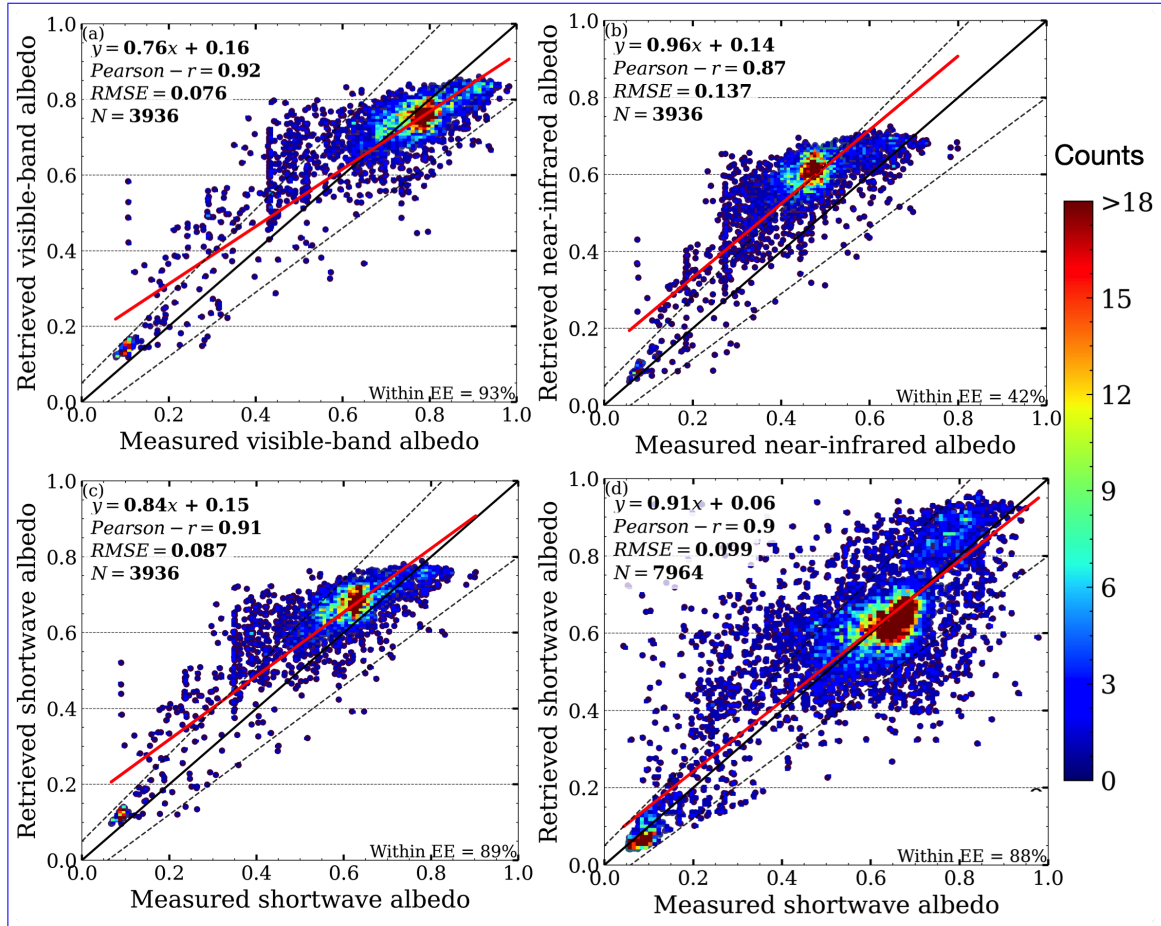


Figure 4. Correlation between ACLOUD-AFLUX albedo measurements and MODIS overflight. The comparisons with the albedometer in the VIS, NIR, and SW ranges are shown in panels (a)-(c), whereas panel (d) shows the comparison with the pyranometer. The wavelength-range difference between the two instruments and the corresponding retrieval models can be found in Table 4. The color scheme indicates the density of the numbers. On the figure panels, the correlation equation ($\hat{y} = a \cdot y + b$), Pearson r coefficient (r), root mean square error (RMSE), the percentage of data within a 15% expected error ($f_{EE \leq 15}$), and number of pixels (N) used to compute the statistics are provided. The red lines represent the linear correlation between \hat{y} and y ; the solid black lines represent $(0, 0) - (1, 1)$, and the dashed black lines represent the 15% error range.

As Overall, as illustrated in Fig. B1, the correlation coefficients for ~~snow and water snow-covered ice and open water~~ are relatively high across the wavelength ranges ~~-, ($r = 0.75$ and $r = 0.81$, respectively),~~ whereas the correlation coefficients for sea ice are lower. The correlation coefficients for water are greater than 0.8, those for snow are greater than 0.6, and those for sea ice are less than 0.6. ~~The bare sea ice and ice with melt-pond coverage are lower ($r = 0.54$). The~~ reason is that in contrast to the more stable glacier, sea ice ~~-, particularly ponded sea ice,~~ is more variable. ~~The flight operations occurred between late May and late June, indicating the likelihood of intra-daily variation caused by pond development, pond drainage, and ice drift.~~

530 For the days covered, the mean time discrepancy between MODIS transit and flight measurements is about two hours, with a maximum time difference of three to five hours (4 h, 4.85 h, and 3 h for May 31, June 8, and June 25, respectively). Examination of the daily retrievals revealed that the three days with the widest temporal window also had the lowest agreement.

When a time window of 1.5 hours was used for time restriction, a ~~higher-greater~~ degree of agreement was found (Fig. 8) ~~-and smaller error was found;~~ evaluating against pyranometer data ($N = 4144$) reveals $r = 0.92$ and $RMSE = 0.094$ for the shortwave albedo retrieval (Model 1), and evaluating with albedometer data ($N = 1225$) shows $r = 0.93, 0.89, 0.92$, $RMSE = 0.069, 0.143, 0.085$, in the visible, near infrared and shortwave bands, respectively (Model 2).

540

Additionally, we observe that the highest inaccuracy occurs in the near-infrared band, with the error for white surfaces (sea ice and snow) being the most pronounced (around 15 percent over-estimation). Apart from the larger positive bias inherent in the SciML algorithm (as compared to the visible band) ~~In our most recent work, the RTM/SciML-retrievals from the MODIS sensor in the Okhotsk region between 2002 and 2014 are validated using Soya icebreaker data. With a 1-hour time window ($N=359$), the disparity in NIR values could be caused by the following two factors:-~~

545

(1) Measurement uncertainty: The albedometer's overall uncertainty in the near-infrared wavelength band is reported to be the greatest (Jäkel et al., 2021a) ~~RMSE is 0.097, and with a 3-hour time window ($N = 911$), the RMSE is 0.11.~~

(2) Error related to the flight height of the aircraft: On snow-covered sea ice, the height-induced error is 4% (lower than the surface), which increases the gap between the retrieval (of ground)

550

3.2 Validation of SGLI retrievals

Frequently, fog (sea smoke) forms above sea ice and polynyas (Vihma et al., 2014). On April-08 2019, data taken south of $80.6^{\circ}N$ were in such a condition. On April-11, a thick cloud with a sharp edge moved from $15^{\circ}E$ at 5:50 UTC to $7^{\circ}E$ at 12:25 UTC (Stapf et al., 2021b). As seen in the RGB and surface classification images (Fig. 12), the fog from April-08 and the cloud from April-11 was correctly identified by the MLCM for both sensors.

555

On April 11, the cloud-free area was seen to have a hazy atmosphere (Stapf et al., 2021b), and RTM models showed a thick aerosol optical depth of 0.065 (wavelength unspecified). The MLCM also detected the haze, which was classified in Fig. 12 as 'cloud/fog'. Figure 12 indicates that, even with the impact of cloud/fog/hazy atmosphere, the SGLI- and the measurements (of low-altitudes). In contrast, for open water, the near-infrared albedo at MODIS-retrieved albedo values (α) for difference surface types are within reasonable ranges: melt pond ($\alpha \leq 0.3$), bare sea ice ($\alpha \approx 0.6$) and sea ice with snow coverage ($\alpha \geq 0.7$). When compared to data from low-level (≤ 350 m) ~~mis-16% greater than that just above the ocean surface (refer to the~~

560

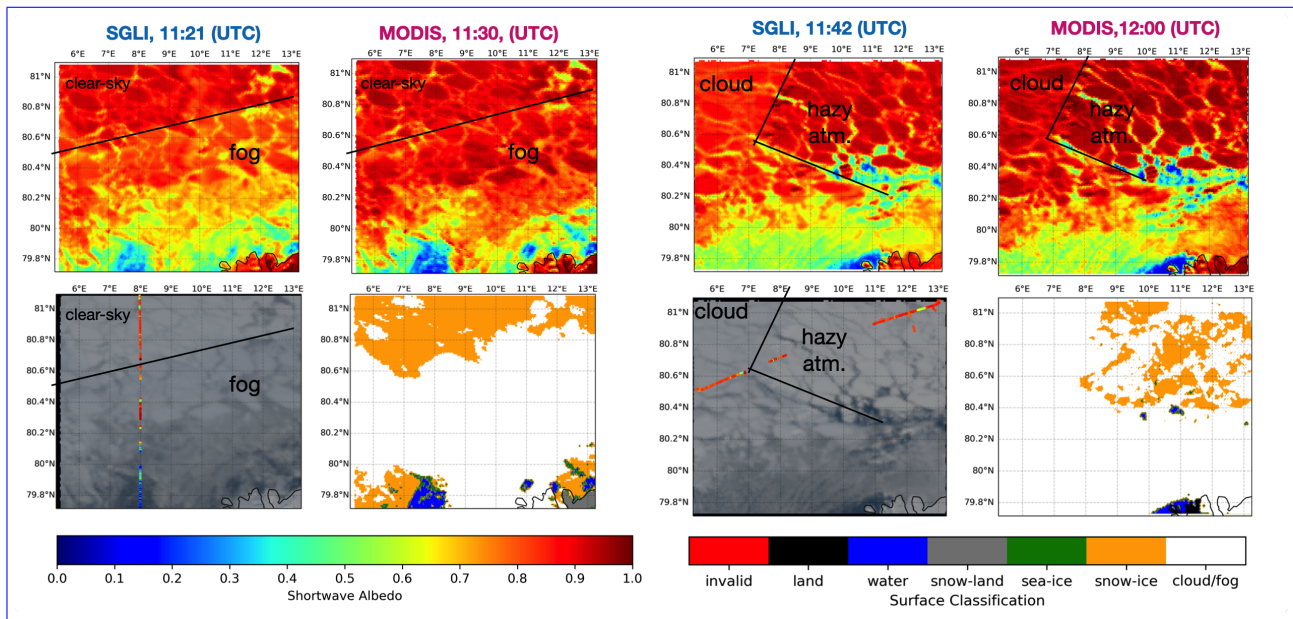


Figure 5. Albedo-retrieval maps, RGB maps, and surface classification maps from April 08, 2019 (left) and April 11, 2019 (right). The top-left column represents the albedo values retrieved with the SGLI sensor, the top-right column represents the albedo values retrieved with the MODIS sensor, the bottom-left column represents the spatial overlay of surface albedo measurements made on low-level (≤ 350 m) flights (dots) on true color composite images, and the bottom-right column represents the surface classification results. The black lines represent the distinctions between various atmospheric conditions.

RTM simulation findings) aircraft at the same location and to cloud-free MODIS retrievals (Fig. 12), the values are largely consistent.

565 The scatter plot in Fig. 2), which nearly cancels out the retrieval error. 13 illustrates the correlation between the measured and retrieved albedo (under clear-sky conditions on April 8) using SGLI-channel and MODIS-channel radiances. Both results were derived with the same retrieval methods as those outlined in Section 2. For retrieval using SGLI data, 82% of the data were under the 15% expected error (EE), demonstrating a higher degree of agreement than the results produced from MODIS radiance data for this date. Correlation coefficients of 0.984 and 0.892, as well as RMSE of 0.082 and 0.136, indicating that RTM/SciML models can produce satisfactory results for cryosphere surface albedo retrieval.

570 4 Discussion on the source of validation error

Independent of the surface type or spectral range, all of the evaluations outlined above are prone to uncertainty due to equipment error, cloud contamination, surface metamorphism (drift and melt/refreeze), as well as differences in observation height, footprint, and solar zenith angle (SZA).

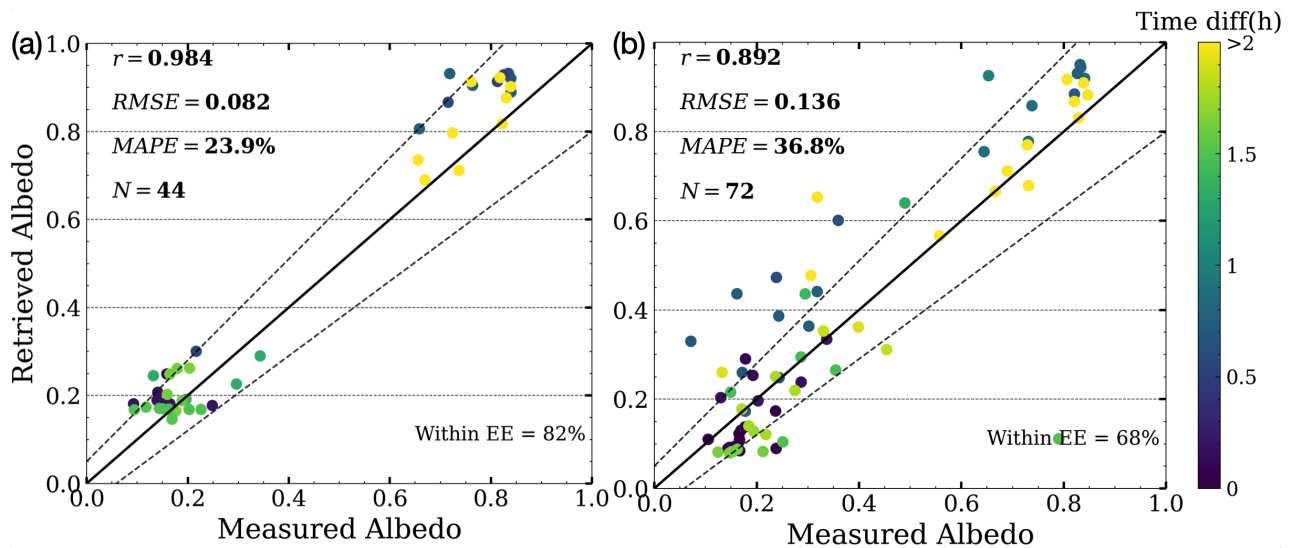


Figure 6. Correlation between shortwave albedo measurements from the AFLUX campaign and satellite overflight (SGLI (a), and MODIS (b)), April-08 2019. The color indicates the time interval between campaign measurements and satellite overpass. On the figure panels, the Pearson r coefficient (r), root mean square error (RMSE), mean absolute percentage error (MAPE) and the number of pixels (N) used to calculate the statistics are provided.

In the following discussion, we will break down and analyze the errors by their sources. The data were subjected to a more stringent temporal constraint of $\delta_t = 1.5$ -h in order to allow for a more precise characterization of specific sources of inaccuracy. Figure 7 depicts the % difference between the observed and retrieved shortwave albedo when a maximum time difference between aircraft and satellite of 1.5 hours is allowed. Still, the percentage difference between the MLANN-estimated RTM/SciML-estimated values and pyranometer measurements are smaller than those with albedometer measurements. Meanwhile, the error for the open-water surface (flight segments within the dashed red line) is significantly larger when compared to the albedometer data than when compared to the pyranometer data.

4.1 Distinction in the footprint of observation

Due to the disparity between the aircraft and When aircraft measurements are up-scaled to MODIS footprints, around 170 aircraft measurements were up-scaled taken to match one satellite pixel. According to prior research, an albedo line 100 meters long surrounding melt ponds would have a standard deviation of roughly 0.4 (Perovich, 2002), while the albedo of thin ice inside a grid cell would have a standard deviation of up to 0.29 (Lindsay, 2001). Due to the fact that measurements along the aircraft transit do not accurately reflect the area's average albedo (as determined by satellite sensors), the uncertainty introduced by different observation footprints (i.e. subpixel effects) is not negligible but difficult to quantify. On a homogeneous surface such as fresh snow, subpixel effects could be small, but for the heterogeneous surface consisting of a snow-ice-water mixture, the influence is large.

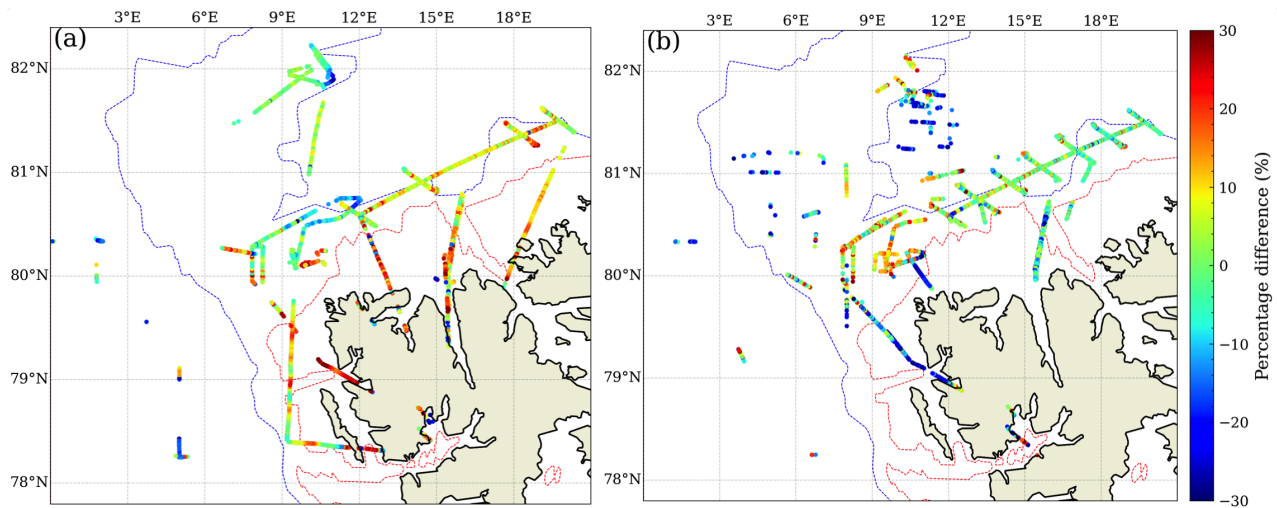


Figure 7. A map illustrating the percentage difference between the MLANN-estimated RTM/SciML-estimated broadband albedo and the albedo measured in-situ using (a) the “SMART” albedometer, and (b) the pyranometer. To choose the matching MODIS retrieval, a tight time constraint of 1.5 hours ($\delta_t \leq 1.5\text{-h}$) was applied. On the right, the colorbar indicates the scale of the % difference value for each dot/pixel ($\frac{\hat{y}-y}{y} \cdot 100\%$). Additionally, red and blue dashed lines represent the 200-meter and 1000-meter isobaths. Each flight segment’s dates are listed in Fig. 3.

590 4.2 Cloud contamination effects

While cloud screening eliminates cloudy pixels in satellite data, data acquired during airplane flights are not corrected for cloud cover. Given that more than one-third of the operational spatial range is obscured by clouds, it is possible that some pixels labeled as ‘clear sky’ by the MLCM are cloud-contaminated as a result of (i) a time mismatch between the MODIS overpass and aircraft data collection, or (ii) simply imperfect cloud screening. Multiple reflections between the surface and cloud base would introduce uncertainty into the albedo measured by the airplane.

As illustrated in Fig. 8, the agreement is negatively correlated with cloud coverage, with the exception of panel (b). On June 8, 2017, the date depicted in panel (b), a considerable decrease in temperature and an increase in liquid water vapor (IWV) were recorded (Wendisch et al., 2019). Following a day of dense cloud cover, the surface temperature measured on ice floe camps increased by 2 degrees on June 10, 2017 (Barrientos Velasco et al., 2018). A Magna probe (Sturm and Holmgren, 2018) recorded that snow depths on the ice floe on June 14 were down to 22 ± 18 cm (with 32% of data below 10 cm), while on June 5 the snow depth was 37 ± 24 cm (with 9% of data below 10 cm) (Jäkel et al., 2019). These data indicate that the surface conditions changed radically around June 08, which possibly led to the larger mean-absolute-error (of 0.122 root mean squared error (RMSE of 0.149)). The mean-absolute-error RMSE is all minor on the three days with significantly less cloud cover (panels a, d, and e). The best agreement occurs on June 25, when an analysis of 2245 accessible MODIS pixels reveals an error of only 0.047 0.066; 96 percent of the data are within an error of 15%.

The spatial overlay of observations from June 25, 2017 on a retrieval image utilizing MODIS's 12:45 UTC transit is shown in Fig. 9. [Snow](#)[Snow-covered ice](#), open water, and bare ice albedo values are all within acceptable limits and are in good agreement with albedometer/pyranometer determinations.

4.3 [Albedo variations caused by changes in the solar zenith angle](#)

610 [Fortunately, three consecutive days](#) during the campaign, the [above-mentioned](#) latitude-longitude range experienced [three consecutive days](#) of clear skies, from June 24 to June 26, 2017. The data from four MODIS overflights per day (see Table 5) can be used to determine changes in surface albedo caused by changes in solar zenith angle and surface metamorphism.

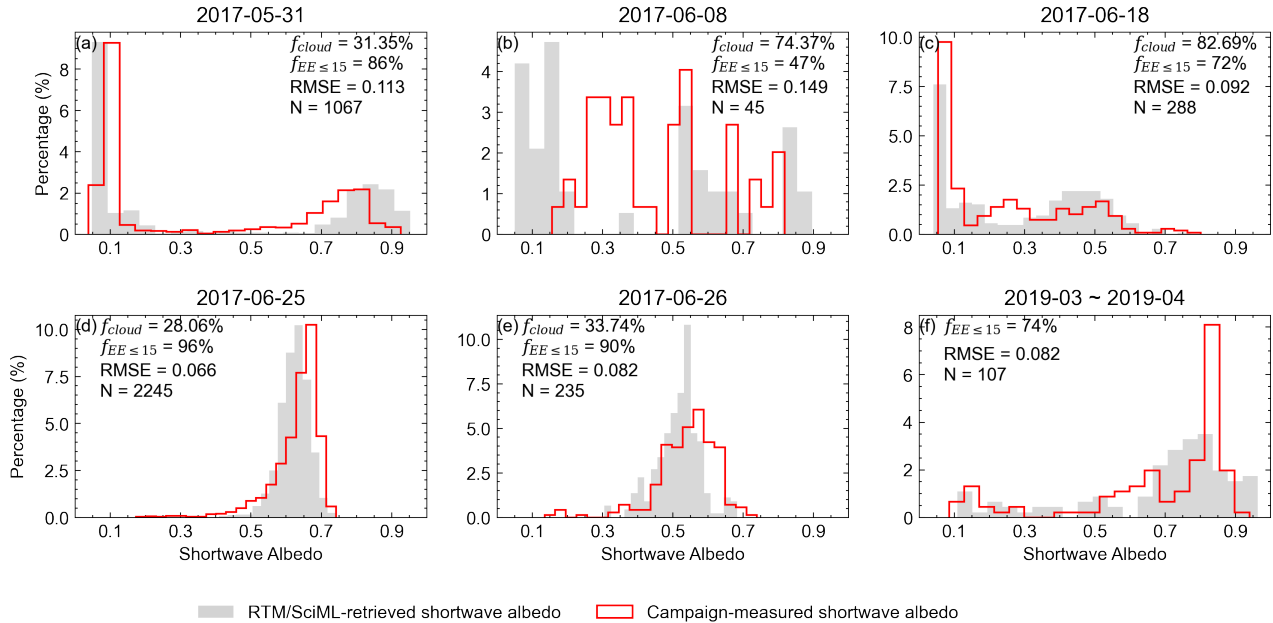


Figure 8. Histograms of the shortwave albedo measured during the cloud-free ALOUD-AFLUX flights (red columns) and the RTM/SciML's corresponding retrieval (gray columns). To choose the matching MODIS retrieval, a tight time constraint of 1.5 hours ($\delta_t \leq 1.5$ -h) was applied. The dates are displayed at the top of each panel. Additionally, the upper right corner displays the cloud fraction (f_{cloud}), the percentage of data within 15% expected error ($f_{EE \leq 15}$), the root mean squared error (RMSE), and the number of pixels for each evaluation (N). Due to a lack of appropriate data, all AFLUX measurements were combined together for examination, as illustrated in panel (f).

4.4 [Albedo variations caused by changes in the solar zenith angle](#)

Visual examination of the RGB images of the eight MODIS transits from June 24 to June 25 revealed no apparent ice drift during the two days. [Following that, we used](#) (refer to the accompanied gif image in the supplementary files). [Following this, we employed](#) the MLCM to filter out [pixels that were tainted by cloud regions that were cloud-contaminated](#) during any of the four MODIS transits on June 25, [allowing us to detect cloud-free sea ice, snow, and water surface.](#) 25. In other words, assuming

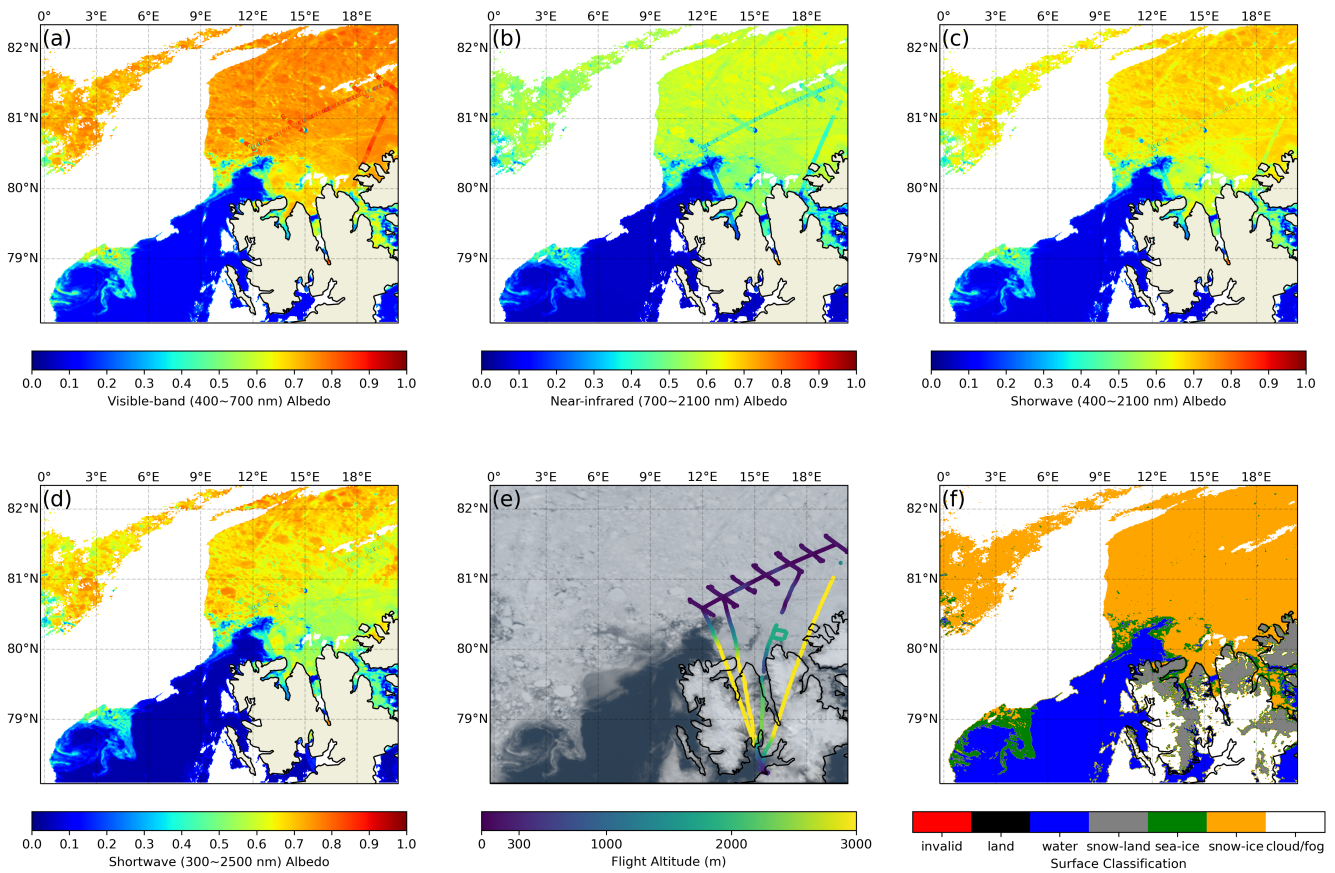


Figure 9. (a)-(c): spatial overlay of albedometer measurements on top of the RTM/SciML-derived albedo in the VIS, NIR, and SW ranges from 12:45 UTC, June 25 2017; (d): spatial overlay of pyranometer measurements on the RTM/SciML-derived SW albedo; (e): spatial overlay of aircraft altitudes on the true color composite; and (f): surface classification results. Cloud-contaminated pixels (shown in white in (f)) were removed during the retrieval.

there is no ice drift, the changes in the albedo value over the course-of-the-period-of four satellite transits are caused-by-due-to either surface metamorphosis or a changing-shifting solar zenith angle.

620 The probability density functions (PDFs) of the surface albedo in the region shown in Fig. 9 were produced using the selected data (Fig. 10(a)). A Gaussian kernel probability density (Turlach, 1993) was used to estimate the PDF. The probability of albedo values falling within the interval $P(a < x \leq b)$ is measured by subtracting the two integral values $P(a < x \leq b) = F_x(b) - F_x(a) = \int_a^b f(x)dx$, where $F(x)$ is the cumulative density function (CDF) and $f(x)$ is the PDF. The area between the PDF-curve and the x -axis is equal to one (Scott, 2015). The bimodal distribution with one mode at 0.1 and the other at 0.65
 625 indicates that the most prevalent surface types are water and snow-covered sea-ice, with bare ice accounting for a small portion of the data.

We noted the difference in SZA over the four MODIS transits, from 55~59 at 11:05 UTC to a higher value of 61~65 at 16:00 UTC, and the difference increased the albedo for snow and water by 6% and 30%, respectively, while the values on the bare-ice surface remained relatively stable (5% fluctuations).

630 The variations in albedo caused by increasing SZA were investigated in RTM simulations (see insert table in Fig. 10(b)). The relevant parameters for the simulation are: snow thickness $h_s = 0.2$ m, effective grain size of snow $r_e = 100 \mu\text{m}$, pond depth $h_w = 0.1$ m, and black carbon impurity fractions for snow and ice $f_{bc} = 1.0 \times 10^{-7}$. Although the difference in broadband albedo values indicates that the snow, ice, and water conditions in the RTM simulations do not match the surface conditions at this location, they may serve as a reference for the portion of the albedo difference caused by SZA, which is 2.7%, 50% and 4% for snow-covered ice, water, and bare-ice, respectively.

635 With these numbers in mind, we can conclude that the lower variance in snow/ice surface albedo (despite increasing SZA) and the less noticeable increase in water albedo are both related to surface melting.

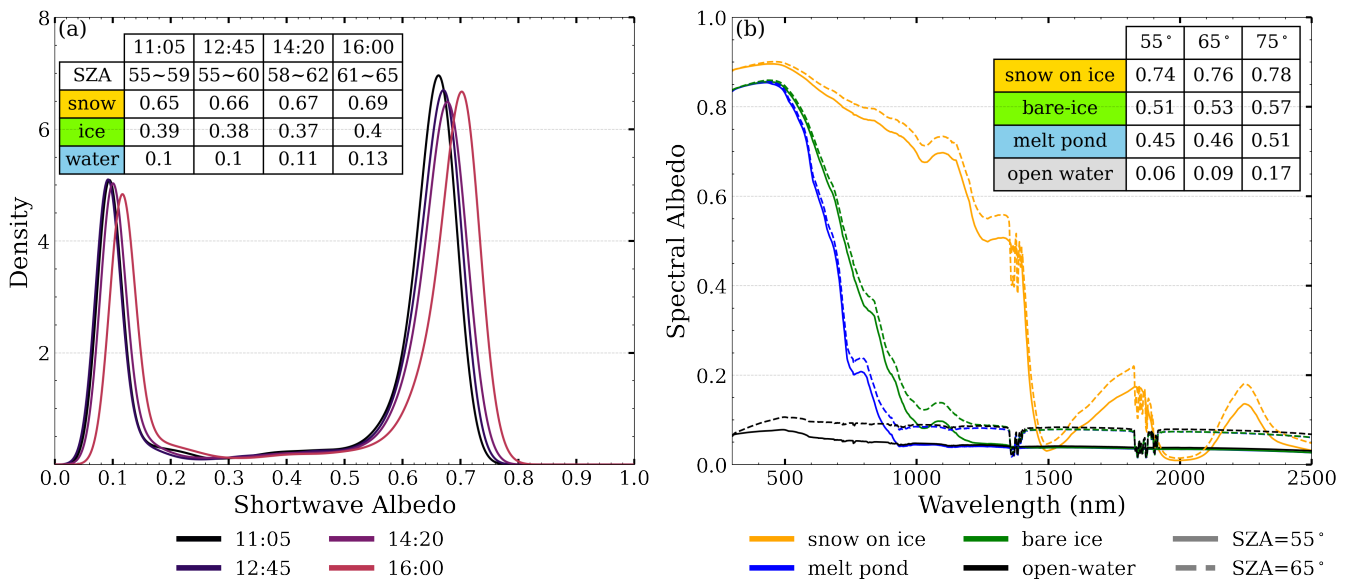


Figure 10. (a) Probability density curves of albedo on June 25. The colors denote the retrievals from several MODIS overflights. The average albedo estimated for each surface is provided in the upper left table, along with the solar zenith angle (SZA) ranges. (b) RTM-simulated spectral albedo of snow, melt-pond, bare-ice and open-water surfaces; dashed and solid lines indicate spectral albedo with varying SZA. The table to the right shows the calculated shortwave albedo of each (surface, SZA) pair.

4.4 Changes in albedo as a result of surface metamorphism

To analyze the ~~variation in albedo induced~~ fluctuation in albedo caused by surface metamorphism, ~~we used the albedo derived~~
 640 ~~from (intra-daily variation due to snow melting, pond development, or pond drainage), we picked the 'consistently clear'~~
latitude-longitude coordinates throughout the eight MODIS overflights over a two-day period, ~~selecting 'consistently clear~~

pixels'—using the same approach as stated previously. The pixels that have been filtered out due to cloud cover happen to be snow cases. As a result, the following analysis focuses on the phase transitions at the marginal sea ice zone, which is a system composed of bare ice thicker than 30 cm (typical albedo values between 0.4 and 0.5, Brandt et al. (2005); Petrich and Eicken (2009)), melt ponds (typical albedo values between 0.2~0.4, Grenfell and Maykut (1977); Grenfell and Perovich (1984); Grenfell (2004); Petrich and Eicken (2009)), and open water (typical albedo below 0.2, Toyota et al. (1999); Petrich and Eicken (2009)).

645 Interestingly, the decrease in albedo of a single fixed pixel over about 24 hours can be as significant as -0.4 and -0.3, respectively, when evaluated in the afternoon and when the two values based on morning overflights are subtracted. The histograms appear to be similar in shape when comparing Figure 11 depicts the distribution of albedo values at the eight MODIS overflights. Comparing the distributions of α_{24} and α_{25} at the same SZA (i.e. compare the columns) the first two columns of Fig. 11), the histograms appear to have a similar shape. However, the change in albedo at a fixed location over about 24 hours ($\Delta\alpha$, the third column of Fig. 11) can be as significant as 0.4. As no apparent ice drift was observed and the location was at the intersection between open water and sea-ice regions, this circumstance indicates that the surface was
655 undergoing intermittent melting and refreezing, akin to the situation of a polynya.

4.5 Comparison of SGLI and MODIS retrievals

Thus far, the focus has been on MODIS retrievals. In this section, the SGLI sensor retrievals will be compared to the MODIS-derived results using data from the AFLUX campaign.

660 Frequently, fog (sea smoke) forms above sea ice and polynyas (Vihma et al., 2014). On April 08 2019, data taken south of 80.6°N were in such a condition. On April 11, a thick cloud with a sharp edge moved from 15°E at 5:50 UTC to 7°E at 12:25 UTC (Stapf et al., 2021b). As seen in the RGB and surface classification images (Fig. 12), the fog from April 08 and the cloud from April 11 was correctly identified by the MLCM for both sensors.

665 On April 11, the cloud-free area was seen to have a hazy atmosphere (Stapf et al., 2021b), and RTM models showed a thick aerosol optical depth of 0.065 (wavelength unspecified). The MLCM also detected the haze, which was classified in Fig. 12 as 'cloud/fog'. Figure 12 indicates that, even with the impact of cloud/fog/hazy atmosphere, the SGLI and MODIS retrieved albedo values (α) for difference surface types are within reasonable ranges: melt pond ($\alpha \leq 0.3$), bare sea ice ($\alpha \approx 0.6$) and sea ice with snow coverage ($\alpha \geq 0.7$). When compared to data from low-level (≤ 350 m) aircraft at the same location and to cloud-free MODIS retrievals (Fig. 12), the values are largely consistent.

670 The scatter plot in Fig. 13 illustrates the correlation between the measured and retrieved albedo (under clear-sky conditions on April 8) using SGLI channel and MODIS channel radiances. Both results were derived with the same retrieval methods as those outlined in Section 2. For retrieval using SGLI data, 82% of the data were under the 15% expected error (EE), demonstrating a higher degree of agreement than the results produced from MODIS radiance data for this date. Correlation coefficients of 0.984 and 0.892, as well as RMSE of 0.082 and 0.136, indicating that combining RTM and MLANN for cryosphere surface albedo retrieval can produce satisfactory results.

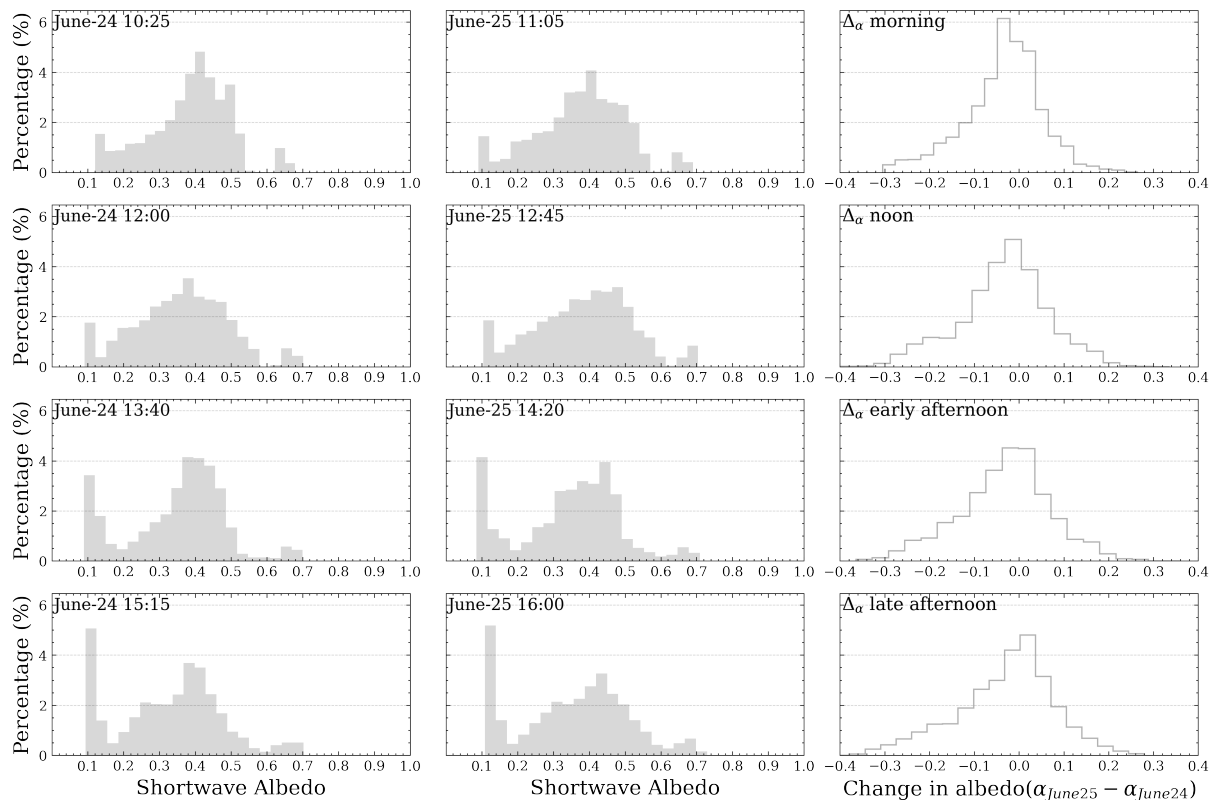


Figure 11. Histogram of the distribution of albedo values observed during the eight MODIS overflights on June 24 ~ 25. The albedo histograms for June 24 (α_{24}), June 25 (α_{25}), and the difference ($\Delta\alpha = \alpha_{25} - \alpha_{24}$) are shown in the columns from left to right. From top to bottom, the rows represent the four satellite overpasses that occurred throughout the day: in the morning, at midday, in the early afternoon, and in the late afternoon.

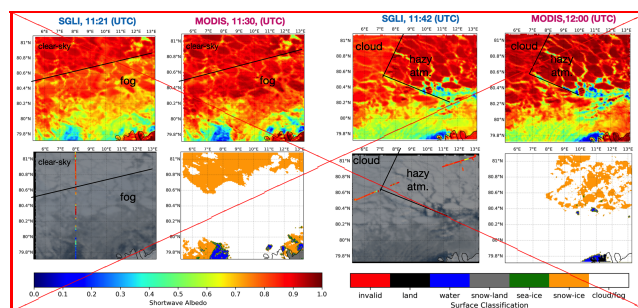


Figure 12. Albedo-retrieval maps, RGB maps, and surface classification maps from April 08, 2019 (left) and April 11, 2019 (right). The top-left column represents the albedo values retrieved with the SGLI sensor, the top-right column represents the albedo values retrieved with the MODIS sensor, the bottom-left column represents the spatial overlay of surface albedo measurements made on low-level (≤ 350 m) flights (dots) on true color composite images, and the bottom-right column represents the surface classification results. The black lines represent the distinctions between various atmospheric conditions.

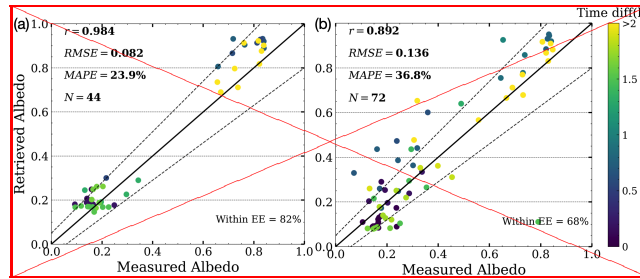


Figure 13. Correlation between shortwave albedo measurements from the AFLUX campaign and satellite overflight (SGLI (a), and MODIS (b)), April-08 2019. The color indicates the time interval between campaign measurements and satellite overpass. On the figure panels, the Pearson r coefficient (r), root mean square error (RMSE), mean absolute percentage error (MAPE) and the number of pixels (N) used to calculate the statistics are provided.

675 ~~To summarize, we evaluated the MLANN model SciML retrieval results~~ using *in-situ* measurements. The uncertainties associated with the evaluation were explained in detail, per source of error, in order to evaluate their impact. Despite these uncertainties, the current technique for albedo retrieval, which is based on (1) an AccuRT-generated SD and (2) a SciML ~~MLANN~~ model trained using the SD as prior knowledge, can indeed produce reasonable albedo outputs, with a ~~mean absolute error of 0.046~~ ~~RMSE = 0.094 evaluated on over 4000 pyranometer measurements~~ under clear-sky conditions. ~~Following that,~~
 680 ~~in the SGLI-to-MODIS comparison, we demonstrated the capability of the SciML/MLANN technique and the possibility of using the same framework to other satellite sensors that measure similar radiance data.~~

5 Comparison of ~~the retrieval product RTM/SciML retrievals~~ with the existing methods

In this section, the ~~MLANN-albedo retrievals using MODIS-channel radiances~~ ~~RTM/SciML-albedo retrievals~~ are compared with the ~~two MPD-based products (derived using MERIS and OLCI sensors) as well as with the MCD43 product (derived using~~
 685 ~~MODIS-channel reflectances) products listed in Table 1.~~ A brief description of the relevant products and sensors are provided in ~~Sections ?? and 2~~ ~~Section 2.1.4.~~

5.1 Comparison with the MCD43D49~51 BSA products

The MCD43D products, with 1-km spatial resolution, are the successors to the MCD43B products. The retrievals are carried out daily, using kernel weights that best represent the majority of situations across the 16-day period, with the day of interest emphasized. MCD43D49~51 correspond to the Black Sky Albedo (BSA) for the visible ($0.3\sim 0.7\ \mu\text{m}$, VIS), near-infrared ($0.7\sim 5.0\ \mu\text{m}$, NIR), and shortwave ($0.3\sim 5.0\ \mu\text{m}$, SW) bands, while MCD43D59~61 correspond to the White Sky Albedo (WSA) for the three broadband ranges (Schaaf and Wang, 2015b).
 690 ~~Due to the fact that MCD4 is a land-albedo~~ ~~MODIS MCD43 is a land albedo~~ product; only a small amount of sea ice surface albedo is available near the shore (in the ‘shallow ocean’ zone denoted by the BRDF/Albedo Quality Product, MCD43A2,

695 (Schaaf and Wang, 2015a)). While prior research ~~have~~ has validated the albedo product for glacier, tundra, and snow-covered land surfaces, the small amount of sea ice albedo on the shallow ocean has not been validated previously (Ren et al., 2021; An et al., 2020; Pope et al., 2016; Wang et al., 2012). Using ALOUD-campaign measurements, the MCD43's reliability in the sea ice zone may be assessed.

On the same days, Figs. 14 and 15 compare the ~~MLANN-derived~~ RTM/SciML-derived broadband albedo values utilizing
700 MODIS TOA radiances (i.e. MOD021KM) as input to the MCD43-derived BSAs. The ~~MLANN-derived~~ RTM/SciML-derived albedo values represent the average of all available clear-sky pixels observed across four MODIS transits within the day, whereas the MCD43 product is representative of the albedo at local noon (Stroeve et al., 2005). Therefore, values from the MCD43 product are expected to be slightly lower than the ~~MLANN~~ RTM/SciML results due to the relatively lower solar zenith angle ($52 \sim 55^\circ$). We need to highlight that the two comparisons are made at different wavelengths (the NIR/SW's upper bounds
705 for ~~MLANN~~ RTM/SciML- and MCD43-albedo are $2.8 \mu\text{m}$ and $5 \mu\text{m}$, respectively) and with different albedo assumptions (~~BSA and blue-sky and black-sky~~ albedo, for ~~MLANN-albedo~~ RTM/SciML-albedo and MCD43-albedo, respectively). All albedo maps include superimposed SMART albedometer measurements from the ALOUD campaign (Jäkel et al., 2018) as
~~a 'ground truth' reference.~~ reference. Note that the flight segments that overlapped with MCD43D retrievals in Fig. 14 were at an altitude of $h \geq 2500$ m, indicating that the validation data on open water surface have a $33 \sim 150\%$ positive bias relative to the surface albedo values; the biases for bare-ice and snow-covered ice surface is $-10 \sim -7\%$ and $-22 \sim -8\%$, respectively (see flight heights in Fig. 9(e) and the height-induced bias in Fig. 2).

~~In the shallow ocean area, comparisons of MCD43-albedo and MLANN-albedo with measurements showed equally good agreement in the VIS and SW ranges. As described in Section 3, the MLANN-derived NIR albedo on snow and sea ice is about 15% greater than measurements, whereas the MCD43-derived NIR albedo has a better agreement with data in the NIR band.~~

715

Because the BRDF is calculated using observations from a 16-day window, the MCD43 result cannot adequately capture daily albedo variations. One example is its failure to detect the opening of a melt pond north of Svalbard on June 25 and 26, located at 15°E , 80°N . According to the eight RGB MODIS transit images (not shown), the melt pond began to open at 12:45 UTC on June 25, 2017, and by 15:05 UTC on June 26, 2017, the ice underlying the pond had entirely melted, leaving some
720 bare sea ice (as categorized by the MLCM; ~~Chen et al. (2018)~~) surrounding the open water. While MCD43 could not identify this opening, the daily averaged ~~MLANN-albedo~~ RTM/SciML-albedo indicates the snow and ice melting that resulted in the formation of a small open water region.

Another point to emphasize is the lower albedo values obtained by MCD43 on snow-covered ice when compared to the ~~MLANN~~ RTM/SciML results, as demonstrated by the areas north and south of Nordaustlandet (near 22.5°E , 80.5°N and
725 25°E , 78.5°N , respectively). While there are no direct measurements to verify these values, we note that the underestimation of snow-covered area has been mentioned in several previous studies. For example, Stroeve et al. (2005) discovered that the MCD43 retrieval for snow-covered Greenland Icesheet (with an albedo greater than 0.7) has a -0.05 bias when compared to ground-based measurements. Similarly, An et al. (2020) observed underestimation when the albedo is greater than 0.4 for ice

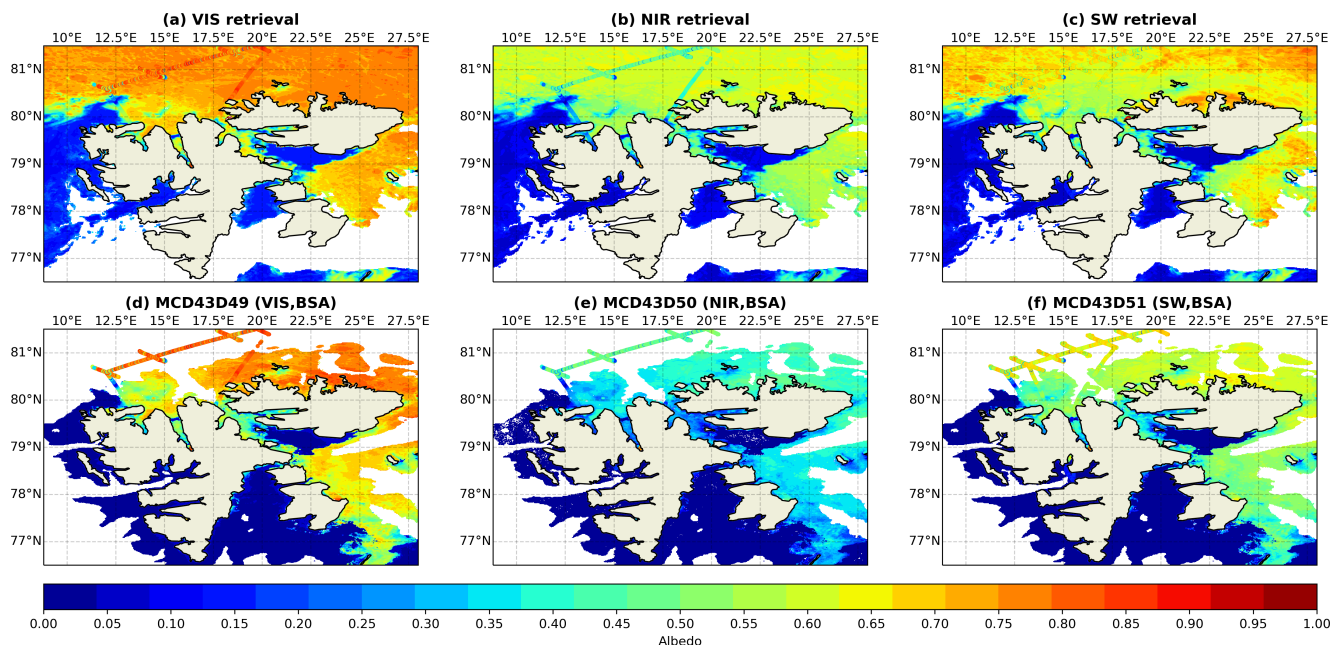


Figure 14. Albedo-retrieval maps on June 25, 2017 in the shallow ocean region near Svalbard. The albedometer measurements from the ACLOUD campaign are superimposed over the retrieval maps in each panel. Note that both low- and high-level flight measurements are included. (a)-(c): the visible, near-infrared, and shortwave (VIS, NIR, SW) albedo values derived using the RTM/SciML-albedo product and MODIS radiance data; (d)-(f) the three broadband black-sky albedo values (BSAs) derived by MCD43D49-51. The empty regions in panels (a) to (c) correspond to cloud coverage throughout the day on June 25, 2017, whereas the empty regions in panels (d) to (f) correspond to ocean areas where MCD43 does not provide retrievals.

caps. For the particular case observed on these two days, the main reason is the extensive melting during the warm period
730 (Knudsen et al., 2018).

Although the MCD43D V6.0 products have been adjusted to better capture shorter-term albedo variations through adjusting the BRDF weighting scheme to emphasize the BRDF of the day of interest inside the 16-day sliding window, by examining the Quality Product (i.e. MCD43A2), we found a much higher ‘BRDF albedo uncertainty’ marked in the melting-snow areas as compared to the surrounding open-water. According to Lucht and Lewis (2000); Wang et al. (2012), the uncertainty can be
735 related to fluctuations in surface properties, atmospheric correction errors, high solar zenith angle ($>65^\circ$), and cloud detection during snow melt, among others. [Figure 16 and Table B3 provide an approximation of the bias imparted by such uncertainty to sea ice albedo: compared to the ‘ground truths’, the MCD43D retrievals on open water and melt-pond are significantly lower, and compared to the RTM/SciML retrievals at the same pixel, the MCD43D snow retrievals are more dispersed.](#)

**Indeed, more in-situ measured validation data are required to say for sure that the MLANN-albedo product may be able to
740 retrieve albedo of sea ice in shallow ocean areas better than the MCD43 product. However, the advantage of our product being**

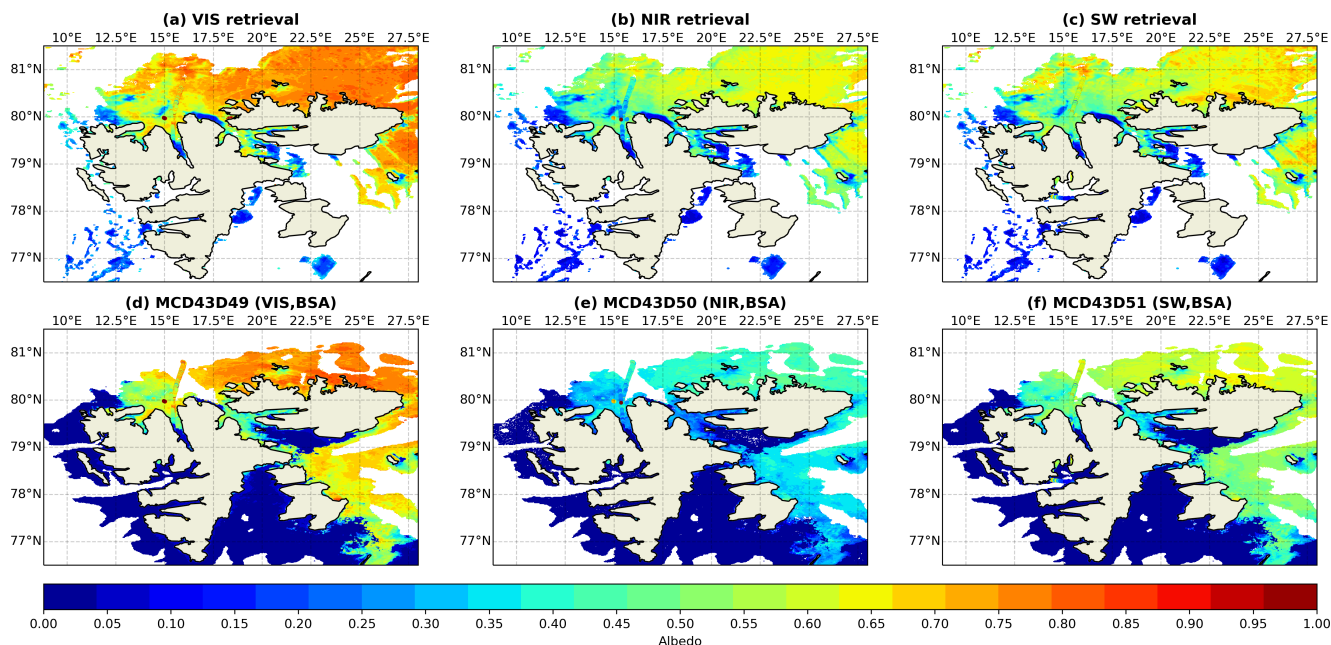


Figure 15. Albedo-retrieval maps, similar to Figure 14 but on June 26, 2017.

~~able to provide retrieval for any clear-sky day should be emphasized, while MCD43A3 needs enough observations during a 16-day window.~~

5.2 Comparison with the MERIS-albedo product

Istomina et al. (2015); Istomina (2020) developed two albedo retrieval products, utilizing MERIS data from Envisat-1 and
 745 OLCI data from Sentinel-3, respectively. The MERIS sensor only operated between 2002 and 2012, and the OLCI product is the successor to the MERIS-albedo product (Istomina et al., 2015); both products are based on the melt-pond detector (MPD) algorithm proposed by Zege et al. (2015).

In Istomina et al. (2015), the MERIS-albedo product was evaluated by comparing the estimated albedo values to aerial
 observations from the MELTEX campaign. The best agreement was found for land-fast ice, with an R-squared value
 750 of 0.84 and an RMSE of 0.068 for 169 matched pixels. Figure 17 compares the retrieval results obtained using the MERIS- and MLANN-albedo RTM/SciML-albedo retrieval algorithms during a 5-day period in 2007 between DOY 166 and 170. Additionally, to the right, the relevant melt pond fractions are given the albedo values from CLARA-SAL product (Karlsson, Karl-Göran et al., 2012) and the melt pond fraction (Istomina et al., 2015) are given as reference.

The challenge of using the MPD algorithm, ~~the~~ to retrieve albedo is that the algorithm relies on certain empirically-derived
 755 criteria (based on ratios of some radiance channels) to determine the exact type and composition of the corresponding pixel in order to assign an appropriate BRDF value for the valid, or filling value for invalid, observations. Since the assigned BRDF

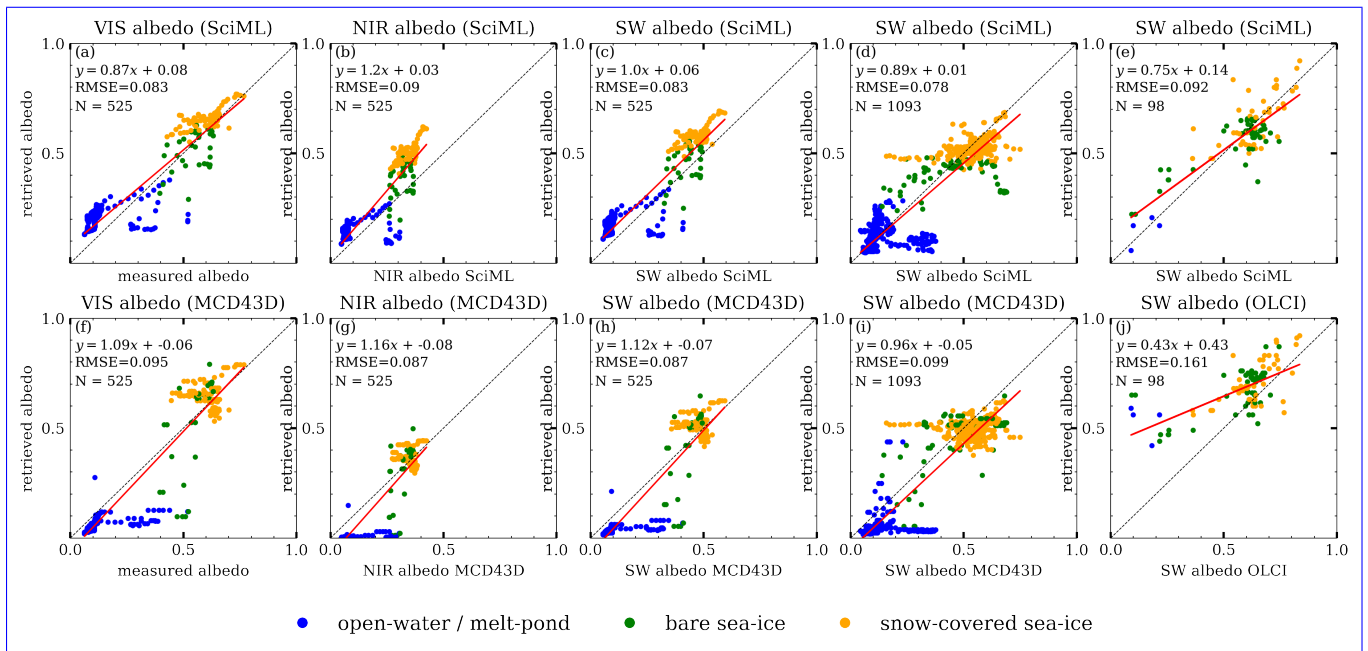


Figure 16. Correlation between satellite retrievals and ACLOUD albedo measurements utilizing three retrieval methods. (f)-(h): MCD43D albedo in the visible, near-infrared, and shortwave broadbands compared to albedometer measurements, (i): MCD43D shortwave albedo compared to pyranometer measurements, and (j): Comparison of the OLCI shortwave albedo derived with the MPD algorithm to all shortwave measurements from the ACLOUD campaign. (a)-(e): RTM/SciML retrievals that are regridded to the MCD43D or OLCI pixels. Surface type is represented by color. The regression relation between retrieval and measurements, RMSE and the number of valid pixels are placed at the top left of each panel. Other statistical metrics (R-squared, bias, $f_{EE \leq 15}$ etc.) can be found in Table B3 in Appendix.

is used to derive albedo, the surface type was explicitly designated prior to albedo estimation. Moreover, the spectral reflection coefficients for the melt-pond and thin ice boundaries, as well as the thick ice and snow-cover boundaries, are manually adjusted based on the surface condition. Therefore, there are greater uncertainties in the retrieval during the transitional seasons of spring-summer and summer-autumn, as well as when the surface is highly heterogeneous (low sea ice concentration, Istomina et al. (2015)). As can be seen discussed in Istomina et al. (2015); misclassification or improper manual assignment would result in a considerable uncertainty in the final albedo estimate.

As shown in Fig. 1718, the two algorithms produce more consistent results for regions with low melt pond fraction, f_{mpf} , i.e. high sea ice concentration areas (panels (a) and (e)), but the f_{sic} : the average albedo values are similar when $f_{mpf} < 30$. However, the MERIS-derived albedos in places with a large MPF (greater than 50) albedo values in regions with large f_{mpf} values ($f_{mpf} > 40\%$) appear to be higher than those produced by the MLANN model (panels (b) and (d)). RTM/SciML model. Grenfell and Maykut (1977) derived a linear relation between f_{mpf} and the surface albedo (α), which is represented by the red lines in Fig. 18. Toyota et al. (1999) found a linear relation between ice concentration and albedo. In the absence of leads, the sea ice concentration and melt pond fraction has a $f_{sic} + f_{mpf} = 1$ relation. The shaded blue

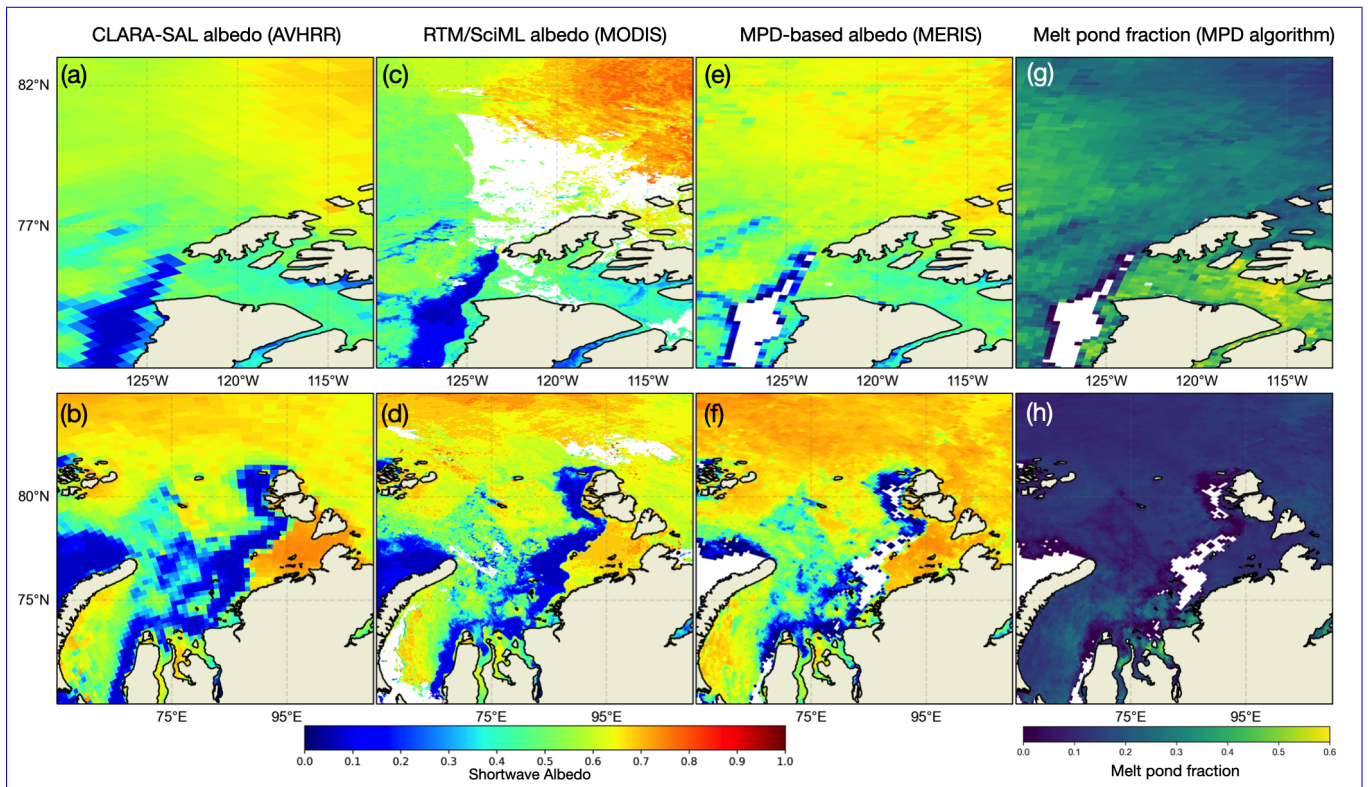


Figure 17. Maps of albedo and melt pond fraction averaged during a 5-day period in 2007 between DOY 166 and 170. From left to right: CLARA-SAL albedo, RTM/SciML-based and MPD-based albedo retrievals, as well as the MPD-derived melt pond fraction, respectively (Karlsson, Karl-Göran et al. (2012) this study, and Istomina et al. (2015)). The upper panels depict the Kara Sea, while the lower panels depict the Banks, Prince Patrick, and Melville Islands. At the bottom, colorbars representing the corresponding values are displayed. In panels (c) and (d), empty regions represent cloud pixels that were detected by the MLCM cloud mask (and hence removed), whereas empty regions in panels (e) through (h) represent either cloud pixels or open-water areas that were not processed by the MPD algorithm.

770 [area and blue lines in Fig. 18 denote the \$f_{mpf} - \alpha\$ relation derived by Toyota et al.. Similarly, Petrich and Eicken \(2009\) reported reference albedo values of \$> 0.6\$ and \$< 0.5\$, respectively, for sea ice with 10% and 50% areal pond coverage. The sea ice albedo values produced by the RTM/SciML model correspond more closely to the reference values obtained by Toyota et al. \(1999\); Grenfell and Maykut \(1977\); Petrich and Eicken \(2009\), whereas the values retrieved by the MPD algorithm are overestimated.](#)

775 Another difference to note is the empty areas in Fig. 17. Chen et al. (2018) and Fan et al. (2021) demonstrated that the MLCM model we used for cloud filtering is more strict than the MODIS cloud filtering algorithm and is capable of identifying very thin cloud (and even fog, see Section 3) on bright surfaces such as snow and ice. The empty areas in (ac) and (bd) are MLCM-identified thin cloud pixels, whereas the empty areas in (ee) through (fh) represent open-water areas that were not processed by the MPD algorithm (Istomina et al., 2015).

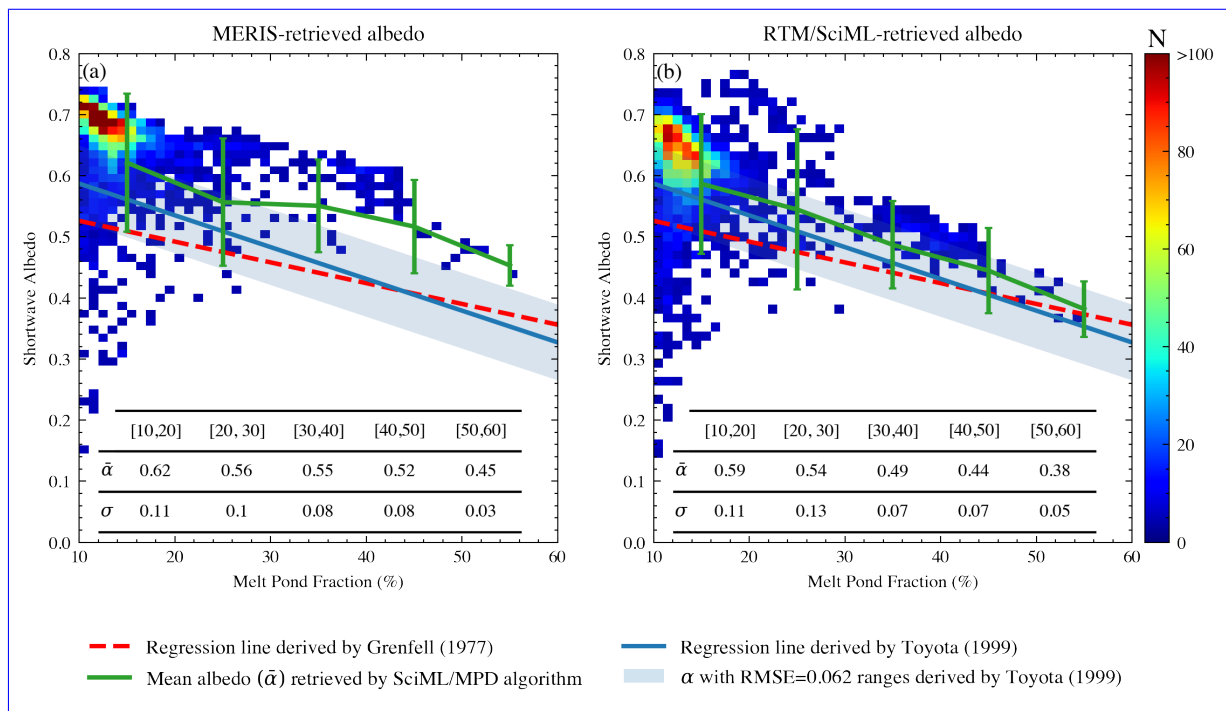


Figure 18. Density plot of the retrieved albedo in proportion to the melt pond fraction (f_{mpf}); values are derived from the regions depicted in Fig. 17. The color scheme represents number density. The inset table includes the mean ($\bar{\alpha}$) and standard deviation (σ) of albedo as retrieved by the SciML/MPD algorithm in different f_{mpf} intervals. The values are also represented by the green line in (a)-(b). The red lines represent the linear relation between f_{mpf} and sea ice albedo derived by Grenfell and Maykut (1977). The blue lines and shadings represent the $f_{\text{mpf}} - \alpha$ relation and the RMSE of 0.062 derived by Toyota et al. (1999).

780 5.3 Comparison with the OLCI-albedo product

Figure 19 depicts OLCI- and ~~MLANN-albedo~~ RTM/SciML-albedo retrievals on June 24, 2017 and June 26, 2017. Additionally, broadband albedo values obtained using pyranometers Stapf et al. (2019) are displayed on top of the RGB images ~~to serve as~~ a ‘ground-truth’ as reference.

In the MPD algorithm, the type of ice used to calculate the ice-BRDF is referred to as ‘white ice’ (Zege et al., 2015), which
 785 forms when melt water drains intermittently from sea ice and has a few centimetres thick white coating that scatters light similarly to a thin snow layer (Grenfell and Warren, 1999; Tschudi et al., 2008).

Due to the logic of the underlying MPD algorithm, the OLCI- and MERIS albedo products place a premium on the melt pond areas in the two polar regions; ~~the MPD method also provides melt pond fractions in addition to surface albedo~~. Because of the algorithm’s emphasis on summer melting ice, it has various limitations, including being only applicable for data gathered
 790 from May to August, having a limited ability to retrieve albedo on snow-covered ice and ice with brine pockets inclusions,

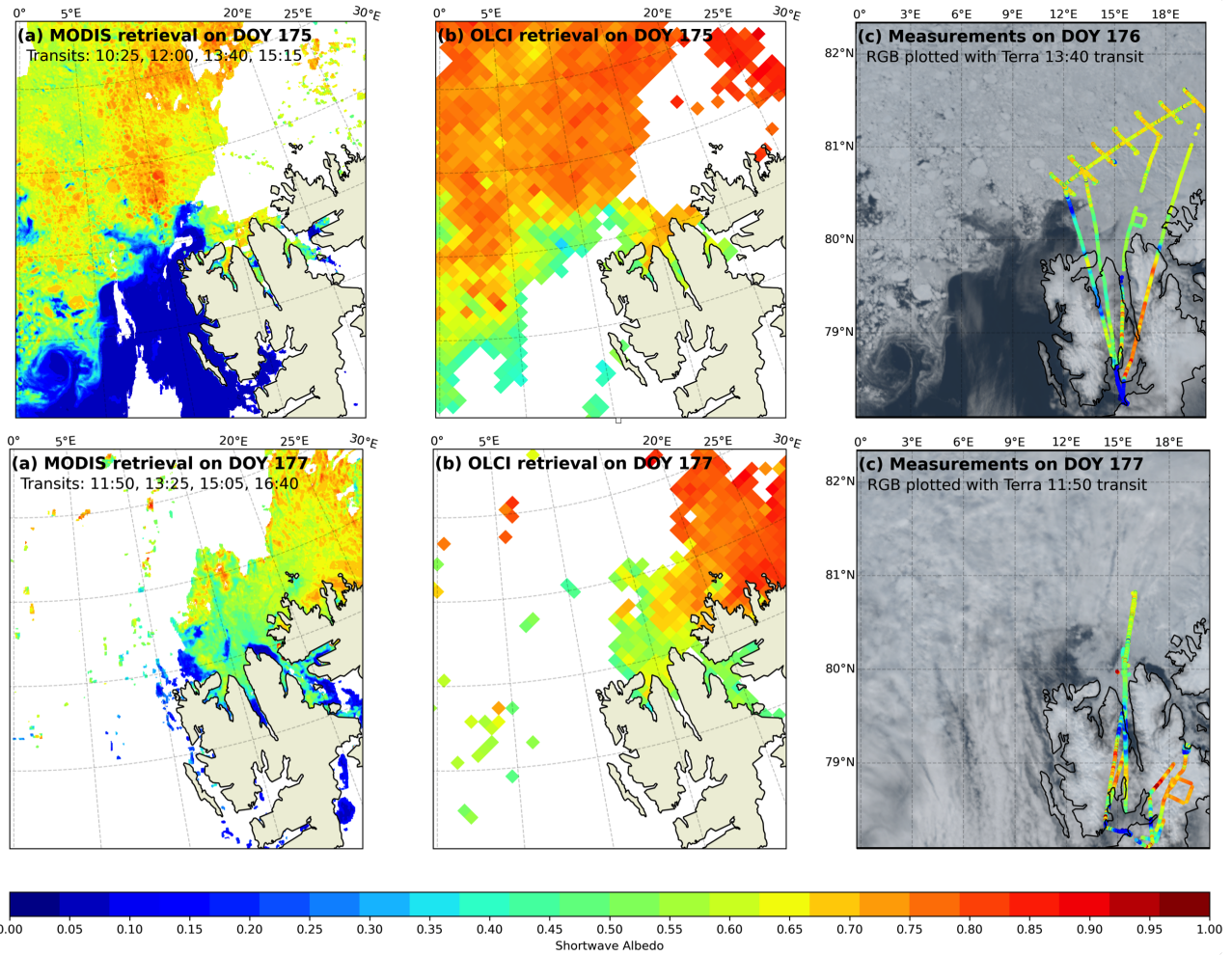


Figure 19. Maps of albedo derived using [MLANN-RTM/SciML](#) (MODIS data) and the MPD algorithm (OLCI data, Istomina (2020)). The top panels depict albedo values on June 24, 2017, while the bottom panels depict values on June 26, 2017. From left to right, panels depict retrievals using [MLANN-RTM/SciML](#), MPD, and pyranometer measurements layered on an RGB image. On the associated images, the MODIS transits used to retrieve albedo and plot the RGB are labeled. Notably, no OLCI retrieval was available on June 25, 2017, and the campaign measurements for reference were taken on June 25 and 26.

omitting retrieval for open-water areas, and having restrictions in areas with low sea ice concentration and very thin ponded ice.

When OLCI albedo maps are compared to *in-situ* data (Fig. 19 (b)-(c)), it is clear that the derived albedo values for snow-covered ice are excessively high (0.75 to 0.82, versus 0.65 to 0.7). On June 26, 2017 (DOY 177), the RGB image shows a few open water spots around the northern coastline that are not captured by OLCI. This failure is partly attributable to the product's spatial resolution; data from its original resolutions (300 m at full resolution and 1.2 km at reduced resolution) were mapped to a 12.5-km NSIDC grid. However, the main reason is that the MPD employs pixels solely from sea ice grid cells, and that open water pixels have been filtered out using a brightness criterion. [The error of OLCI retrieval is quantified by the scatterplots in Fig. 16\(e\)-\(f\) and the statistics \(R-squared, RMSE, bias, etc.\) in Table B3.](#)

By comparison, the ~~MLANN-albedo~~ [RTM/SciML-albedo](#) algorithm is capable of retaining the surface's albedo truthfully regardless of its condition and accurately reflecting the albedo values of these surfaces (i.e. more consistent with the measured albedo values). The current MLCM tool does not discriminate melt ponds from bare ice (~~both are labeled~~, and labels both as 'sea ice'). Because the MPD algorithm employs reflectance values from three visible channels (442 nm, 490 nm, and 510 nm), we may use a similar criterion to derive the melt pond fraction from MODIS or perhaps other sensors as well [in the future](#).

5.4 ~~Discussion~~ [Comparison with the direct-estimation algorithms \(GLASS and VIIRS SURFALB\)](#)

~~Our~~ [At the time this paper was written, the phase-2 GLASS surface albedo product acquired using the MODIS sensor \(Li et al., 2018\) had not yet been released; the V40 GLASS \(MODIS\) product listed on the product page covers just land surface, leaving ocean surface blank. Consequently, the V40 GLASS \(AVHRR\) is compared to RTM/SciML albedo-retrieval tool is not perfect. There are still uncertainties associated with the ice and snow surfaces due to surface roughness and topographic shading, which present a challenge for any satellite remote sensing methods. For simplicity, the snow or ice does not exhibit layered topographic variation in the current training data. Also, the current retrievals in the following section.](#)

[The ALOUD campaign was conducted during the 2017 spring-to-summer transition, which marked the beginning of the melt season, with snow-covered sea ice predominating and a small percentage of melt ponds. Three distinct synoptic weather periods were defined: a Cold Period \(May 23~29, 2017\), a Warm Period \(May 30 to June 12, 2017\), and a Normal Period \(June 13~26, 2017\) \(Wendisch et al., 2019; Knudsen et al., 2018\). Throughout the Cold Period, surface conditions were relatively steady, with albedo values reaching 0.8 on snow-covered ice and approaching 0.6 on bare sea ice. During the Warm Period, the northwesterly wind pushed the Greenland coast ice southward, resulting in the creation of the Northeast Water \(NEW\) Polynya and the opening of the region north of Nordaustlandet \(Wendisch et al., 2019\). It is evident from Fig. 20 that the RTM/SciML albedo-retrieval tool does not account for whitecaps and sun glints on the open ocean surface that would occur at oblique viewing angles. Nevertheless, these constraints can be properly addressed by expanding the SD-based on pertinent RTM-simulations model accurately represents the three synoptic periods, including the emergence of NEW Polynya during the Warm Period and the polynya's closure during the Normal Period. In contrast, GLASS \(AVHRR\) is incapable of detecting these transitions.](#)

825 Additionally, because a flat layer of glacier ice is similar to sea ice without brine pockets and the two have a similar density
 (Warren, 2019), In Fig. 10 of Qu et al. (2016), the CLARA SAL was used as a reference to compare albedo maps acquired
 from GLASS (MODIS) with comparisons performed in the same regions as depicted in Fig. 17 of this work. Comparing the
 two figures demonstrates that the RTM/SciML albedo algorithm presented here may be used to retrieve albedo of relatively
 flat glaciers. To make retrievals agree well with direct-estimation results. Therefore, the limitation of GLASS (AVHRR) could
 be attributable to the restricted number of shortwave channels accessible for the AVHRR sensor (three as opposed to seven for
 830 MODIS).

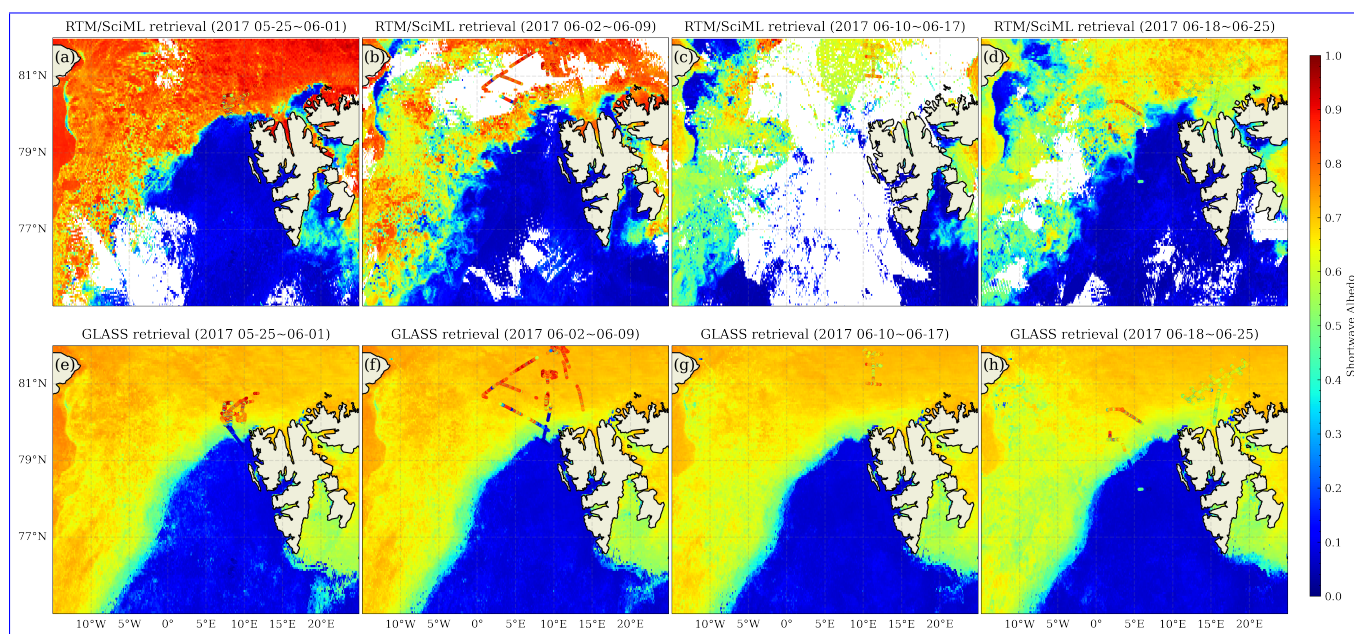


Figure 20. Maps of albedo derived using RTM/SciML (MODIS) and the direct-estimation algorithm (AVHRR data, Liang et al. (2021)) averaged during 8-day periods. In the top row, empty regions represent cloud obscurrence throughout the 8-day periods. The pyranometer measurements from the ACLOUD campaign are superimposed over the retrieval maps; (a)&(e): flight on 2017-05-31, (b)&(f): flights on 2017-06-02, 06-04 and 06-08, (c)&(g): flight on 2017-06-14, and (d)&(h): flights on 2017-6-18, 06-20, 06-25 and 06-26.

835 Figure 21 illustrate pan-Arctic albedo images retrieved using RTM/SciML models more applicable to the glacier surface, the training table for (MODIS and SGLI), the direct-estimation approach (VIIRS), and the MPD method (OLCI) for two representative days with thick ice (partially covered with snow) and melting ice. In order to facilitate analyses, Fig. 22 displays the longitudinally-averaged albedo based on data collected on the same days. Because neither VIIRS nor OLCI provides open-water retrieval and because the cloud-filtering from the four sensors differ, data are collected to calculate average only when all four albedo products (MODIS, SGLI, VIIRS, and OLCI) have values at the same grid cells. Moreover, Fig. B2 illustrates the percentage difference between each retrieval result and the CLARA-SAL product (Karlsson, Karl-Göran et al., 2020). The albedo estimated with MODIS and SGLI sensors using RTM/SciML mod-

els should be updated to incorporate RTM-simulated radiance and albedo for a rough surface. The ‘wind-roughened air-water interface’ can be represented in AccuRT using a one- or two-dimensional Gaussian surface slope distribution (for details see Stamnes et al. (2018)). In comparison to the existing method for retrieving glacier albedo (Ren et al., 2021), which uses the measured BRDF, agrees quite well with the CLARA-SAL values. The VIIRS retrievals in the June-29 image are more comparable to these three, but the July-15 image appears to have lower values.

Due to the use of an uncoupled RTM in the training dataset for the direct-estimation method, the depths of snow, sea ice, and melt ponds were retained as fixed values, hence restricting the algorithm’s retrieval precision for the more variable sea-ice surfaces. The VIIRS SURFALB product relies on linear relations between TOA reflectance and surface albedo at various angular bins stored in a look-up table (LUT). The LUT include over 40,000 combinations of geometry angles. Multiplying the RTM-simulated or measured surface BRDFs (around 120,000) by the possible atmospheric configurations and by the geometry-angle dataset, the resulting LUT is enormously large. Note, however, that only tens of thousands of surface situations were defined by the enormous LUT. Snow in nature possesses complex surface cover (which varies with density, impurity inclusions, thickness, and effective grain size), but the LUT employed in the VIIRS SURFALB product simply featured a snow layer with a fixed depth. The same issue exists in terms of sea ice to approximate glacier-BRDF (Gatebe and King, 2016) and bi-conical band reflectance observed by a space-borne imaging radiometer to approximate the ice albedo in the shortwave-infrared band, the methodology we propose here may be more appropriate for characterizing the anisotropy reflectance of a rough glacier surface conditions. In addition, since a LUT is essentially a linear regression model, the probable correlations between geometry angles and radiance/reflectance values from different channels are not learned in the training (i.e. look up values from the table) process.

In summary, It is difficult to construct a quantitative comparison between the RTM/SciML-albedo and VIIRS SURFALB products due to the lack of validation data that overlaps with the operational time of VIIRS SURFALB. Nonetheless, it is essential to highlight the value of our product’s ability to retrieve albedo from any heterogeneous sea-ice surface, given that the impurities, pond depths, snow cover, and ice layers are all included in the training data for RTM/SciML albedo retrieval tool established in this study is better capable of characterizing the albedo of complex cryosphere surfaces than currently available methods/models.

6 Conclusion and summary

In this paper, we have developed a new-

In this study, we described the development of a novel RTM/SciML sea ice albedo retrieval tool that can be applied to any optical sensor that measures appropriate optical sensors that measure suitable radiance data. Evaluation of retrieved albedo values based on over 2000 data points obtained under cloud-free conditions revealed a small mean absolute error of 0.047, compared to albedo values measured on low-level aircraft flights. Comparisons of the retrieval results from SGLI and MODIS sensors with measurements showed good agreement, indicating the. On a pan-Arctic scale, retrieval results derived from RTM/SciML models are most similar to the CLARA-SAL values, suggesting the reliability of the new RTM/SciML sea ice

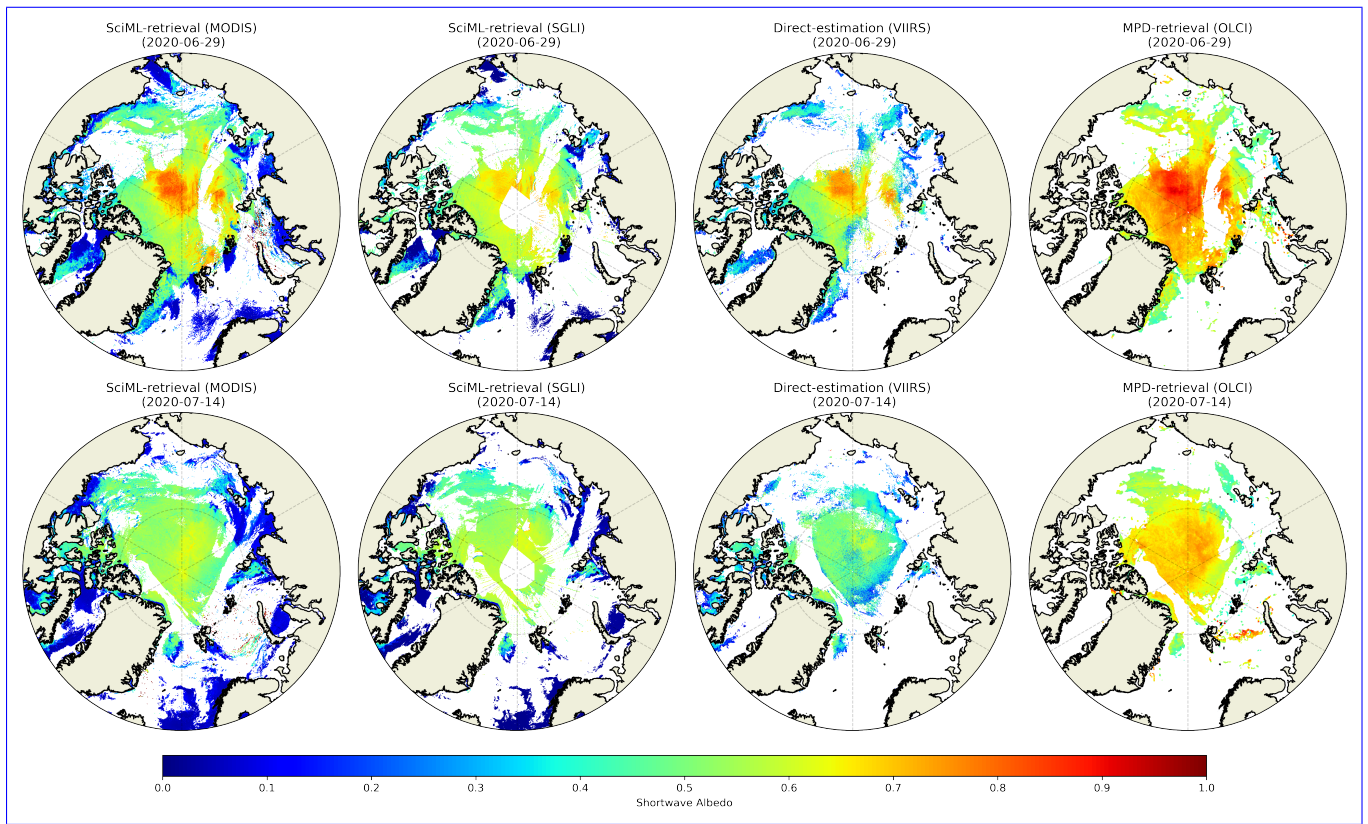


Figure 21. Pan-Arctic maps of albedo; from left to right: RTM/SciML (MODIS), RTM/SciML (SGLI), direct-estimation method (VIIRS), and MPD method (OLCI). The top row represents values for 2020-06-29, while the bottom row represents values for 2020-07-14. Empty regions in SciML images represent cloud pixels that were detected by the MLCM cloud mask, whereas empty regions in VIIRS and OLCI images represent either cloud pixels or open-water areas that were not processed by the algorithms.

albedo retrieval tool framework. For *in situ* validation, comparison with albedo values acquired during low-level aircraft flights, retrieval of albedo values based on more than 2,000 data points during cloudless conditions demonstrated a small RMSE of 0.066.

875 The RTM/SciML-albedo algorithm was trained on a large synthetic dataset generated using a coupled RTM, and represents the optical properties of the cryosphere surface (bare ice, snow-covered ice, water, and melt pond). The combination of these two characteristics enables it to exploit the advantages of both the AccuRT and the RTM/SciML simulation tools:-

- In comparison to the melt pond fraction-based albedo retrieval approach, the RTM/SciML-albedo algorithm has the benefit of being applicable to a wide variety of cryosphere surfaces, both heterogeneous and homogeneous, and of being sensor-agnostic.-

880

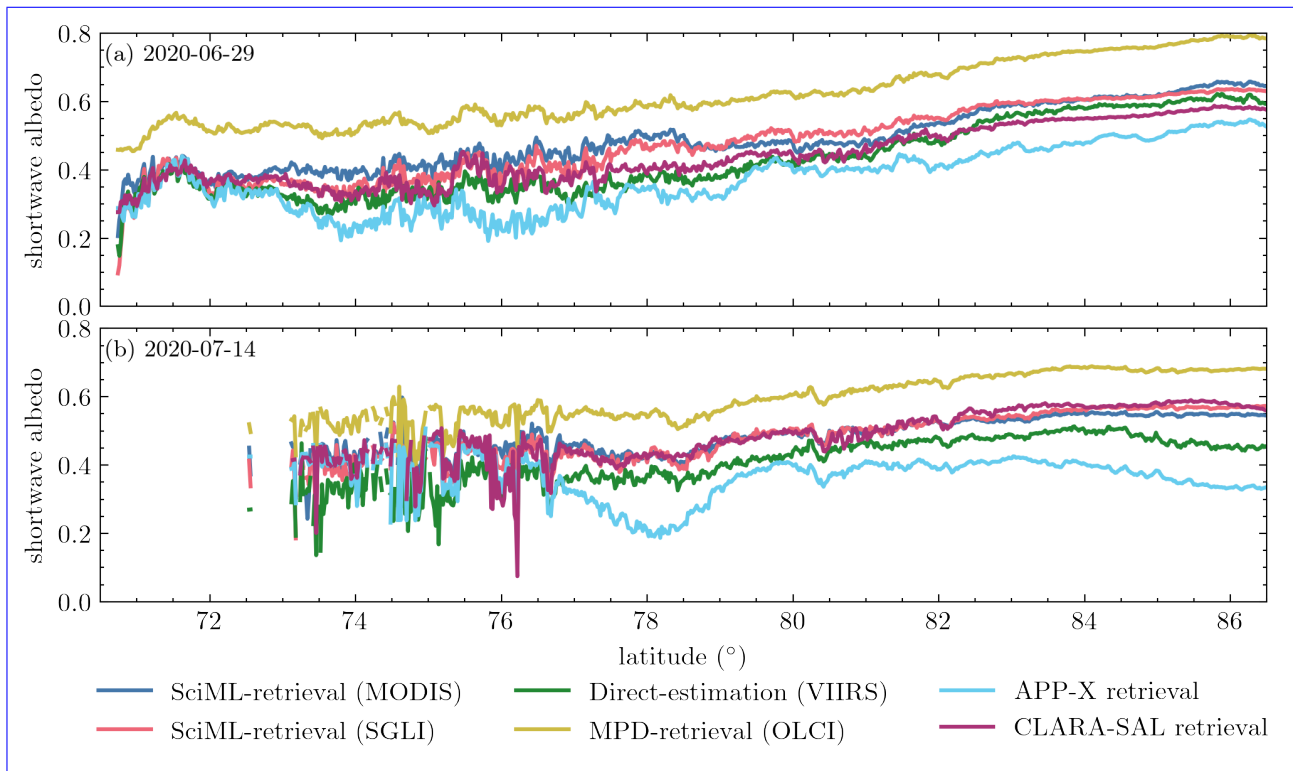


Figure 22. Longitudinally-averaged albedo based on data from Fig. 21. Only when all four albedo products (MODIS, SGLI, VIIRS, and OLCI) have values at the same grid cells are data collected for the calculation of the longitudinal average. In addition, the average albedo of APP-x and CLARA-SAL (5-day temporal resolution, Karlsson, Karl-Göran et al. (2020)) are displayed as points of reference. The temporal coverages of CLARA-SAL are (a): 2020-06-25~2020-06-29 and (b): 2020-07-15~2020-07-19.

- ~~When compared to the LUT-based method for albedo retrieval (e.g. Qu et al. (2016); Peng et al. (2018)), this method is advantageous in terms of obtaining the underlying logic of the training data, availed by the RTM/SciML model.~~

When building the SD, we can reap the benefit of AccuRT being a ~~radiative transfer model~~ RTM for the coupled system that accurately incorporates atmosphere-snow-sea-ice-water interactions to compute TOA radiances and corresponding surface albedo values. Information of both the surface BRDF and the IOPs of the atmosphere ~~have already been~~ is implicitly taken into account. We are thus saved from the procedure to perform atmospheric corrections. ~~In training and interpreting SciML models, we can be confident that the finalized RTM/SciML model could indeed learn the underlying physics (discussed in Zhou et al. (2021 (ready to submit))). Once a RTM/SciML model has been properly trained, it takes only a few seconds to make retrievals over an entire image from a satellite sensor.~~

890 This retrieval procedure does not rely on predefined spectral reflectance threshold values for individual types of surface; the surface classification and albedo retrieval are separate processes, which eliminates errors caused by incorrect surface condition assumptions. ~~Even better, the albedo and reflectance differences between leads, ice floes, and melt ponds imply its potential for~~

~~melt pond and lead identification, as demonstrated by Lee et al. (2016, 2020), who trained a MLANN algorithm for lead and melt pond detection using reflectance data.~~

895 ~~Most importantly~~ There are still various restrictions and potential shortages that will require further improvement. In the current training data, snow or ice does not exhibit layered topographic variation for the sake of simplicity. Additionally, the present RTM/SciML albedo retrieval tool does not account for whitecaps and sun glints on the open ocean surface that would occur at oblique viewing angles. Nevertheless, these limits can be adequately addressed by extending the SD in accordance with pertinent RTM simulations.

900 In summary, the RTM/SciML framework presented and discussed here ~~is~~ has huge potential:

1. It may be used to retrieve albedo of relatively flat glaciers, because a flat layer of glacier ice is similar to sea ice without brine pockets (Warren, 2019). The ‘wind-roughened air-water interface’ can be represented in AccuRT using a one- or two-dimensional Gaussian surface slope distribution (for details see Stamnes et al. (2018)). In comparison to the existing method for retrieving glacier albedo (Ren et al., 2021), which uses the measured BRDF of sea ice to approximate glacier-BRDF (Gatebe and King, 2016) and bi-conical band reflectance observed by a space-borne imaging radiometer to approximate the ice albedo in the shortwave-infrared band, the methodology we propose here may be more appropriate for characterizing the anisotropic reflectance of a rough glacier surface.

2. The framework is generic in nature, allowing for comparisons not only between the MODIS sensors mounted on Terra and Aqua, but also to a large number of existing polar-orbiting sensors and well-planned future sensors, enabling sensor-to-sensor retrieval comparisons. In a recent review, Liang et al. (2019) emphasized the importance of developing retrieval algorithms that are broadly applicable to all satellite sensors: albedo retrievals based on multi-platform satellite sensors can significantly increase the amount of valid and accurate observational data, thereby increasing spatial and temporal coverage regardless of the specific method of retrieval. Meanwhile, developing retrieval algorithms using the same methodology enables a more extensive examination of the uncertainty associated with each sensor (e.g. identifying saturated channels and developing uncertainty assessment methods). The RTM/SciML framework presented in this paper is ideally suited for such a requirement.

List of Acronyms

AANN: auto-associative neural network

ACLOUD: Arctic Cloud Observations Using Airborne

920 Measurements During Polar Day

AFLUX: airborne measurements of radiative and turbulent FLUXes of energy and momentum in the Arctic boundary layer

AVHRR: Advanced Very High Resolution Radiometer

BRDF: bi-directional reflectance distribution function

BSA: Black Sky Albedo

- 925 f_{bc} : black carbon impurity fractions
 f_{cloud} : cloud fraction
 $f_{EE \leq 15}$: percentage of data within 15% expected error
 f_{mpf} : melt pond fraction
 f_{sic} : sea ice concentration
- 930 GLASS: Global Land Surface Satellite
IOPs: inherent optical properties
MAPE: mean absolute percentage error
MERIS: MEdium Resolution Imaging Spectrometer
MISR: Multi-angle Imaging SpectroRadiometer
- 935 MLCM: Machine Learning Classification Mask
MLANN: multi-layer artificial neural network
MODIS: Moderate Resolution Imaging Spectroradiometer
MOSAiC: Multidisciplinary drifting Observatory for the Study of Arctic Climate
MPD: melt pond detection
- 940 NIR: near-infrared
NTBC: narrow-to-broadband conversion
OLCI: Ocean and Land Colour Instrument
PDF: probability density functions
SciML: scientific machine learning
- 945 SD: synthetic dataset
SGLI: Second-generation GLObal Imager
SMART: Spectral Modular Airborne Radiation measurement system
STBC: spectral to broadband conversion
SURFALB: surface albedo (the SURFALB product of VIIRS)
- 950 SW: shortwave
TOA: top of the atmosphere
VIS: visible
VIIRS: Visible Infrared Imaging Radiometer Suite

- 955 *Data availability.* The validation data, H5 files of MODIS retrieval, MODIS albedo retrieval model, and python script to use the retrieval model are intended to be published on PANGAEA.

Author contributions. YZ and WL developed the framework for albedo retrieval; YZ conducted radiative transfer simulations, compiled satellite retrievals and wrote the manuscript; NC developed the surface classification algorithm; and YF, NC, and KS contributed to the discussion of the results. All co-authors assisted with manuscript editing and provided substantial input to the interpretation of the results.

960 *Competing interests.* The authors declare that they have no conflict of interest.

Acknowledgements. We thank Drs. Johannes Stapf and Evelyn Jäkel of Leipzig University for supplying the pyranometer and albedometer observations that are now available on PANGAEA. This work was partially supported by grants from the Japanese Aerospace eXploration Agency (JAXA) and by the United States National Aeronautics and Space Administration (NASA).

Appendix A: Parameterizations in the Synthetic Dataset (SD) for coupled RTM as input

965 A1 Bare sea-ice

The radiative transfer processes in bare sea ice include absorption by pure ice, scattering by air bubbles, as well as scattering and absorption by brine pockets and solid salts (Jin et al., 1994). Unfortunately, direct observational data of air bubble volume fraction and radius (V_{bu} , r_{bu}) in the field is difficult (Petrich and Eicken, 2009). Lindsay (2001) used sea-ice thickness as the main factor to parameterize areal albedo and achieved an uncertainty within 0.05 and 0.10 (even without cloud screening), showing that sea ice thickness is the dominant parameter determining bare sea-ice albedo.

For the parameterization of sea ice in this study, the rest of the sea ice parameters (including brine pocket volume fraction, air bubble volume fraction, air bubble radius) are linearly fitted as a function of sea ice thickness (h) as shown in Table A1. The expectations are that thinner new young ice (NYI) and first year ice (FYI) (≤ 30 cm and ≤ 1 m) would contain less bubbles and would in general be more saline than the thicker, multi-year ice (MYI) counterpart (> 1.5 m). As sea ice deteriorates, brine water is excluded in the desalination process, which results in a smaller brine pocket volume fraction and radius values (V_{br} , r_{br}). Empirical equations were derived with the typical values of bubble and brine parameters for sea ice with increased thickness (adopted from Table 1 in Stamnes et al. (2011)).

It is worth noting that the equation of bulk brine concentration with ice thickness in Toyota et al. (2007) (which is based on *in-situ* measurements of sea ice from the Sea of Okhotsk) and our equation (V_{br} in Table A1) both shows brine concentration approaching $\sim 10\%$ asymptotically as sea ice thickens.

Table A1. Physical parameters of ice. In generating the sea-ice thickness, a truncated-normal distribution with $\mu = 0.03$, $\sigma = 1.5$ was used to ensure an adequate amount of thin ice in the SD. The brine pocket radius conforms to a Tukey-Lambda distribution with $\lambda=0.5$.

Parameter	Sym.	Unit	Value
Sea-ice thickness	h	m	$0 \sim 3$
Brine pocket volume fraction	V_{br}	–	$(-0.067 \cdot \log(h) + 0.1147) \cdot (1 + 0.2 \cdot r_{bu})$
Brine pocket radius	r_{br}	μm	$300 \sim 700$
Air bubble volume fraction	V_{bu}	–	$0.0214 \cdot h + 0.0068$
Air bubble radius	r_{bu}	μm	$-18.3 \cdot h^2 + 222.7 \cdot h + 96.5$

A2 Sea ice covered with melt water

The water depth on thinner ice is in general shallower than on thicker ice. This situation is particularly true for the coastal polynya region, where ice intermittently melts and refreezes from melt water. In addition to temperature, topography of the ice underneath also influences melt water depth. A thinner ice layer is unlikely to evolve into hummocky topography (like MYI ice surfaces) to hold deep melt water (Perovich and Polashenski, 2012).

Generally, melt ponds on sea ice do not exceed 1-meter thickness. From RTM simulations, we found that a pond thickness of 1.5 meter was the critical value that distinguishes the sea ice properties from the overlying melt water, and we therefore use it as the upper limit of melt water thickness (Table A2).

990 In order to increase the variation of the SD, in addition to the melt water in the first ocean layer, we also added variation to the chlorophyll-a (chl-a) concentration as well as Colored dissolved organic matter (CDOM) concentrations in the third ocean layer (second layer is sea ice) in ranges typical for the areas with sea ice cover (König et al., 2019; Mustapha and Saitoh, 2008)

~
Table A2. Physical parameters of melt water on ice and ocean water. Melt water thickness and CDOM values follow randomly-distributed uniform distributions in the specified ranges. For the chl-a concentration, a reciprocal continuous distribution (long tail extending to high values) was used.

Parameter	Units	Value
Melt water thickness	m	0 ~ 1.5
Chlorophyll concentrations	mg/m ³	0.5 ~ 10
CDOM at 443 nm	/m	0.01 ~ 0.1

A3 Sea ice covered with snow

995 The albedo of snow depends on the grain shape and size, solar zenith angle, impurities in the snow, surface roughness, and the thickness of the snow layer (Grenfell et al., 1994) as well as sky condition (clear or cloudy).

1000 The snow cover on all sea ice types can accumulate to optically-thick values (> 10 cm). Nihashi et al. (2009) found that with snow present, a 16 cm snow layer on 80 cm thick first-year ice would have the same insulation effect as a much thicker, 192 cm slab of ice. Similarly, in their simulations, Hamre et al. (2004) found that a 2.5-cm-thick snow cover has about the same transmittance as a 61-cm-thick ice layer. In our simulations, the spectral albedo of both coarse grained (700 μm) and fine grained (100 μm) pure snow (impurity fraction $f_{\text{imp}} = 10^{-8}$) both saturate when the thickness approaches 20 cm; beyond this limit, adding more snow does not further increase the albedo. This value is therefore set as the upper boundary of snow cover depth.

1005 In their snow grain size retrievals, Jäkel et al. (2021a) found an optically equivalent snow grain size (r_e) on glacier and smooth land surfaces centered in the 50 ~ 100 μm range, while the range on smooth sea ice surfaces was 100 ~ 150 μm . A broad range of 50 ~ 150 μm was adopted in our SD simulations (Table A3).

A4 Geometries and atmospheric parameters

The temperature, pressure, and concentrations of the major atmospheric elements were described using the ‘subarctic summer’ atmospheric profile (Anderson et al., 1986). The small amount of aerosols typically found in the sea-ice regions on cloud-free

Table A3. Physical parameters of snow cover. The snow grain size and snow thickness were generated with a randomly uniform distribution in the specified ranges.

Parameter	Symbol	Units	Value
Snow grain size	r_e	μm	50 ~ 150
Snow density	ρ_s	kg/m^3	200
Impurity fractions	f_{imp}	-	$10^{-7} \sim 10^{-6}$
Snow thickness	h_{snow}	m	0.01 ~ 0.2

1010 [days and the relative impact of aerosols on the surface reflectance of such a bright surface indicate that the aerosol optical depth \(AOD\) shown in Table A4 will suffice \(Mehta et al., 2016; Winker et al., 2013\).](#)

Table A4. Geometries and atmospheric parameters. All parameters conform to random-uniform distributions in the specified ranges.

Parameters	Value
Solar zenith angle	20~80 degrees
Sensor angle	0.01~50 degrees
Azimuth angle	0.01~180 degrees
AOD at 500 nm	0.01 ~ 0.3
Relative humidity	0.5
Fine mode fraction	0.9

Appendix B: Appendix Figures and Tables in Discussion

Table B1. Summary of the evaluation results using pyranometer data sampled from Section 2.1.2 (N=4000). The SciML models were classified into seven categories: Linear Regression with polynomial terms, multivariate adaptive regression splines (MARS) with polynomial terms, PCA-processed MARS, Tree models, Voting ensemble, Linear Blending ensemble, and MLANN. Within each category, the models that perform the best are shown in bold. The following metrics are used for evaluation: R2 score, Pearson-r coefficient (r), RMSE, MAE, mean absolute percentage error (MAPE), f_{above} , $f_{EE \leq 15}$, f_{below} and Bias.

Category	Model	R2	r	RMSE	MAE	MAPE (%)	Regression relation	$f_{\text{above}}(\%)$	$f_{\text{below}}(\%)$	$f_{EE \leq 15}(\%)$	Bias
LR	degree1 (P1)	0.85	0.94	0.09	0.07	24.3	$\hat{y} = 0.74y + 0.12$	9.9	4	86	0.01
	degree2 (P2)	0.8	0.93	0.104	0.079	24.4	$\hat{y} = 0.97y - 0.03$	3.3	15	82	-0.013
	degree3 (P3)	0.79	0.92	0.105	0.073	21.1	$\hat{y} = y - 0.03$	4.3	9	87	-0.019
	degree4 (P4)	0.83	0.93	0.096	0.063	16.7	$\hat{y} = y - 0.02$	7.5	4	88	-0.014
	SGD	0.85	0.94	0.09	0.07	24.5	$\hat{y} = 0.74y + 0.12$	10.3	4	86	0.01
MARS	degree1 (P1)	0.66	0.93	0.135	0.111	21.8	$\hat{y} = 0.68y + 0.07$	2.6	24	73	0.025
	degree2 (P2)	0.81	0.93	0.1	0.074	16.9	$\hat{y} = 0.85y + 0.03$	2.7	8	90	-0.004
	degree3 (P3)	0.82	0.93	0.098	0.072	15.7	$\hat{y} = 0.82y + 0.05$	2.7	7	90	0.007
PCA-MARS	degree1 (P1)	0.76	0.89	0.114	0.089	19.2	$\hat{y} = 0.86y + 0.03$	6.3	11	83	-0.005
	degree2 (P2)	0.83	0.93	0.095	0.067	14.9	$\hat{y} = 0.86y + 0.03$	2.9	7	90	-0.001
	degree3 (P3)	0.81	0.93	0.101	0.073	16	$\hat{y} = 0.83y + 0.03$	2.6	9	89	0.003
Tree Models	Decision Tree (DT)	0.57	0.89	0.151	0.114	28.1	$\hat{y} = 1.02y + 0.08$	23.8	4	72	-0.025
	Random Forest (RF)	0.55	0.89	0.155	0.12	34.4	$\hat{y} = 0.96y + 0.13$	29.8	1	69	0.003
	Extra Trees (XT)	0.79	0.92	0.105	0.076	27	$\hat{y} = 0.87y + 0.13$	17	2	81	-0.003
	AdaBoost (AdaB)	0.3	0.81	0.193	0.162	36.2	$\hat{y} = 0.6y + 0.07$	5.2	49	46	0.033
	Grad. Boost. (GB)	0.75	0.92	0.115	0.086	21.9	$\hat{y} = 0.97y + 0.08$	17.2	2	81	-0.011
XGBoost (XGB)	0.65	0.88	0.137	0.103	23.3	$\hat{y} = 0.77y + 0.04$	3.3	22	75	0.01	
Voting	LR(P1, P2, P3, P4)	0.85	0.93	0.09	0.06	16.6	$\hat{y} = 0.95y$	4.1	6	90	-0.012
	MARS(P1, P3, P3)	0.81	0.93	0.101	0.077	18.8	$\hat{y} = 0.87y + 0.01$	2.5	8	90	0.001
	SGD+GB+XGB	0.86	0.94	0.087	0.056	16.4	$\hat{y} = 0.91y + 0.08$	8.6	2	89	-0.006
	LR+MARS+XGB	0.87	0.93	0.084	0.058	15	$\hat{y} = 0.86y + 0.06$	5.1	4	91	-0.004
Linear Blending	LR(P1, P2, P3, P4)	0.82	0.93	0.098	0.066	18.4	$\hat{y} = 0.99y + 0.04$	10	4	86	-0.002
	MARS(P1, P3, P3)	0.83	0.93	0.096	0.066	18.5	$\hat{y} = 0.96y - 0.01$	3.8	7	89	-0.002
	SGD+GB+XGB	0.76	0.93	0.113	0.084	20.1	$\hat{y} = y + 0.06$	15.7	2	82	-0.001
	LR+PCA-MARS+SGD	0.85	0.93	0.091	0.063	16.9	$\hat{y} = 0.92y + 0.01$	3.6	6	91	-0.003
MLANN	(16 x 10 x 8)	0.84	0.92	0.092	0.061	17.8	$\hat{y} = 0.94y + 0.03$	8.4	4	88	-0.013

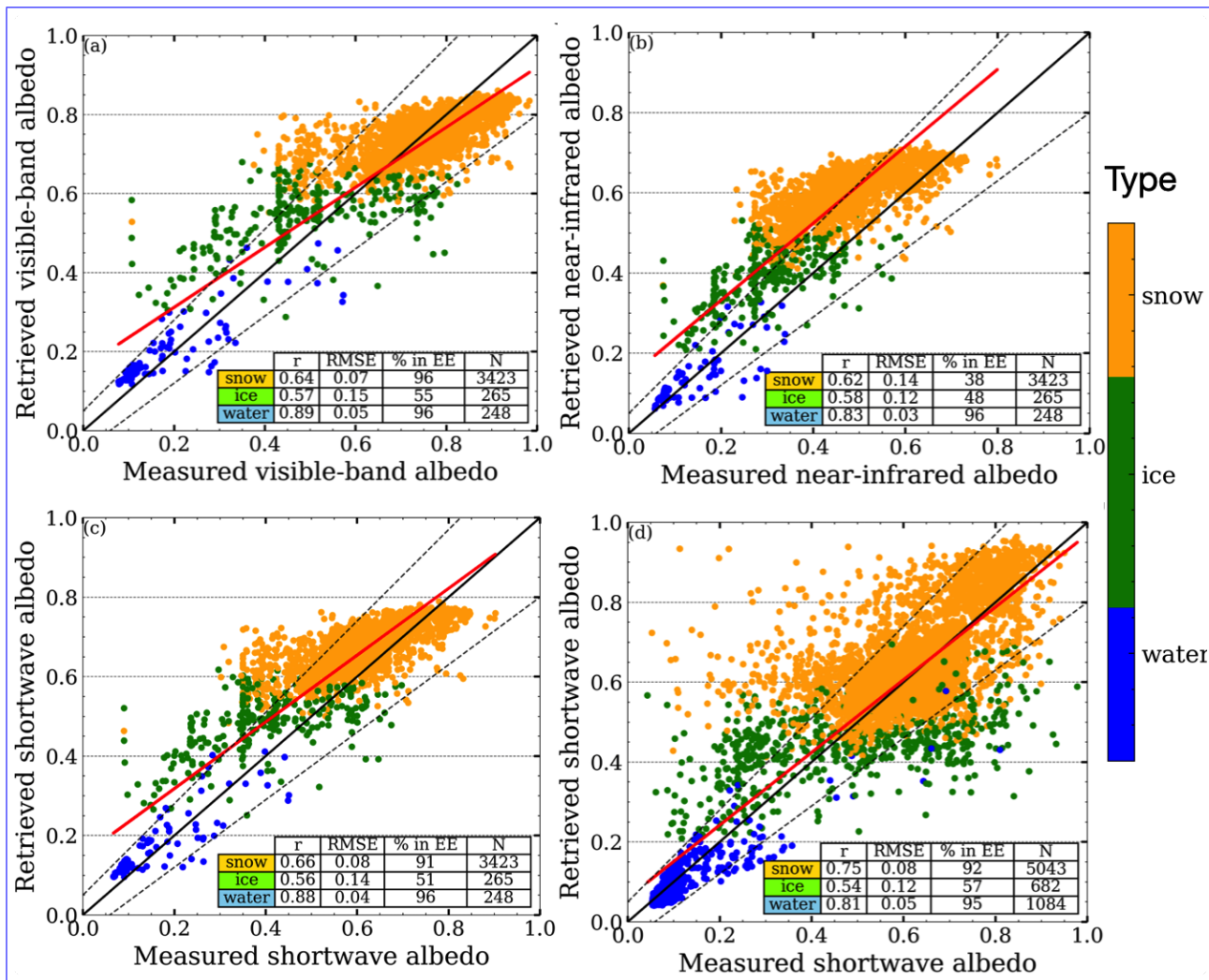


Figure B1. Same as Figure 4, but with the surface type represented by color. In addition, the lower right corner displays data for each surface type (r , RMSE, $f_{EE \leq 15}$, and N).

Table B2. Summary of the evaluation results for a time-constraint with a loose value ($\delta_t \leq 5$ -h). The data were divided into four categories: three broadband albedos determined by the albedometer’s spectral range, and a broadband shortwave albedo determined by the pyranometer’s range. Three subcategories have been identified within each category: snow-covered sea-ice (abbreviated as ‘snow’ in the table), bare sea-ice (‘ice’), and open water (‘water’). Pearson-r coefficient (r), root mean square error (RMSE), mean absolute error (MAE), mean absolute percentage error (MAPE), f_{above} , $f_{EE \leq 15}$, f_{below} , and bias are used to evaluate the retrieval in the subcategories (snow, ice, and water) and the total valid data (‘all’). On the right side of the table, the total number of data in each subgroup is included (N).

equipment (range)	surface	r	RMSE	MAE	MAPE(%)	f_{above}	f_{below}	$f_{EE \leq 15}$	Bias	N
albedometer VIS	water	0.89	0.053	0.046	37	1.2	3	96	-0.005	248
	snow	0.64	0.069	0.051	7.3	3.7	0	96	-0.004	3423
	ice	0.57	0.147	0.125	34.7	37.4	8	55	0.014	265
	all	0.92	0.076	0.056	11	5.8	1	93	0.001	3936
albedometer NIR	water	0.83	0.032	0.021	20.3	1.2	3	96	-0.009	248
	snow	0.62	0.143	0.133	30.2	62.1	0	38	0.011	3423
	ice	0.58	0.122	0.105	45.4	50.2	2	48	0.003	265
	all	0.87	0.137	0.124	30.6	57.5	0	42	0.001	3936
albedometer SW	water	0.88	0.04	0.034	31.1	2	2	96	-0.008	248
	snow	0.66	0.084	0.067	12.1	8.4	0	91	-0.002	3423
	ice	0.56	0.139	0.119	41.4	46	3	51	0.009	265
	all	0.91	0.087	0.068	15.3	10.5	0	89	-0.003	3936
pyranometer	water	0.86	0.036	0.026	24.1	0.2	2	97	-0.008	1113
	snow	0.53	0.096	0.065	12.5	8.4	1	90	-0.009	6257
	ice	0.5	0.182	0.152	41.8	28.3	31	41	0.026	594
	all	0.9	0.099	0.066	16.3	8.7	4	88	-0.011	7964

Table B3. Summary of the evaluation results for MCD43D and OLCI. The data were divided into four categories: three broadband albedos determined by the albedometer’s spectral range, and a broadband shortwave albedo determined by the pyranometer’s range. RTM/SciML retrievals have been regridded to compare the validation errors. R-squared (R2), Pearson-r coefficient (r), root mean square error (RMSE), mean absolute error (MAE), f_{above} , $f_{EE \leq 15}$, f_{below} , and bias are used to evaluate the retrieval in the subcategories (snow, ice, and water) and the total valid data (‘all’). On the left side of the table, the total number of data in each subgroup is included (N).

		R2	r	RMSE	MAE	Regression relations	$f_{above}(\%)$	$f_{below}(\%)$	$f_{within}(\%)$	Bias
SciML-albedomedter (N=525)	VIS	0.86	0.96	0.083	0.073	$\hat{y} = 0.87y + 0.08$	45.3	5	50	0.001
	NIR	0.44	0.92	0.09	0.075	$\hat{y} = 1.2y + 0.03$	37.1	4	59	-0.016
	SW	0.76	0.95	0.083	0.074	$\hat{y} = y + 0.06$	32.6	4	64	-0.01
MCD43-albedomedter (N=525)	VIS	0.81	0.94	0.095	0.069	$\hat{y} = 1.09y - 0.06$	3.6	10	86	-0.024
	NIR	0.48	0.91	0.087	0.072	$\hat{y} = 1.16y - 0.08$	1.7	51	47	-0.016
	SW	0.73	0.93	0.087	0.067	$\hat{y} = 1.12y - 0.07$	3.4	16	81	-0.021
SciML-pyranometer (N=1093)	SW	0.85	0.93	0.078	0.049	$\hat{y} = 0.89y + 0.01$	7.9	7	85	-0.007
MCD43-pyranometer (N=1093)	SW	0.77	0.93	0.099	0.078	$\hat{y} = 0.96y - 0.05$	3.1	30	66	-0.009
SciML-ACLOUD (N=98)	SW	0.69	0.84	0.092	0.071	$\hat{y} = 0.75y + 0.14$	12.2	4	84	-0.005
OLCI-ACLOUD (N=98)	SW	0.06	0.66	0.161	0.122	$\hat{y} = 0.43y + 0.43$	29.6	1	69	0.016

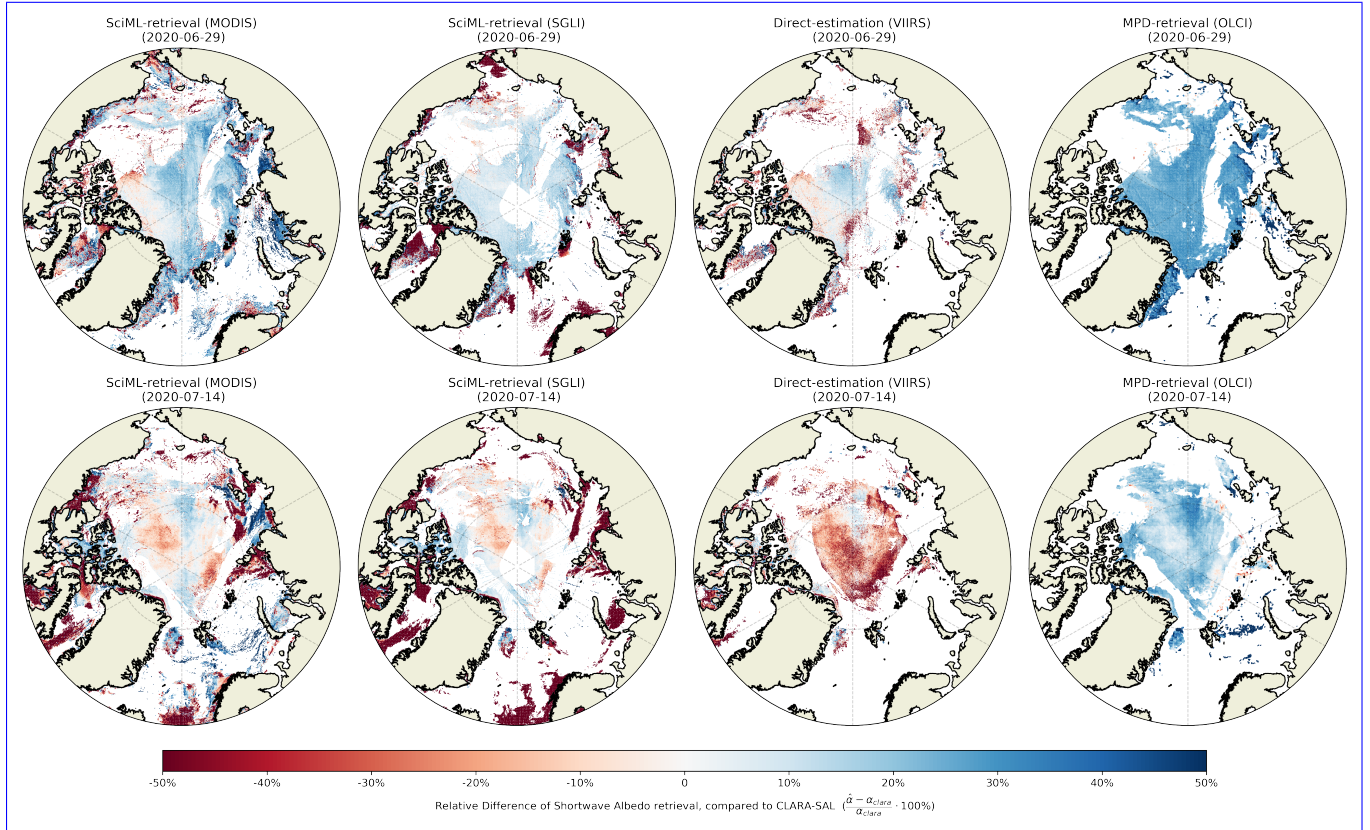


Figure B2. Percentage difference $\left(\frac{\hat{\alpha} - \alpha_{clara}}{\alpha_{clara}} \cdot 100\%\right)$ of albedo maps, as compared to the CLARA-SAL (Karlsson, Karl-Göran et al., 2020) results; from left to right: RTM/SciML (MODIS), RTM/SciML (SGLI), direct-estimation method (VIIRS), and MPD method (OLCI). The top row represents values for 2020-06-29, while the bottom row represents values for 2020-07-14. Empty regions in SciML images represent cloud pixels that were detected by the MLCM cloud mask, whereas empty regions in VIIRS and OLCI images represent either cloud pixels or open-water areas that were not processed by the algorithms.

References

- MOSAIC Science Plan, 2016.
- An, Y., Meng, X., Zhao, L., Li, Z., Wang, S., Shang, L., Chen, H., Lyu, S., Li, G., and Ma, Y.: Performance of GLASS and MODIS Satellite
1015 Albedo Products in Diagnosing Albedo Variations during Different Time Scales and Special Weather Conditions in the Tibetan Plateau, *Remote Sensing*, 12, 2456, <https://doi.org/10.3390/rs12152456>, 2020.
- Anderson, G. P., Clough, S. A., Kneizys, F. X., Chetwynd, J. H., and Shettle, E. P.: AFGL Atmospheric Constituent Profiles (0.120km), 1986.
- Barrientos Velasco, C., Deneke, H., and Macke, A.: Spatial and Temporal Variability of Broadband Solar Irradiance during POLARSTERN
Cruise PS106/1 Ice Floe Camp (June 4th-16th 2017), <https://doi.org/10.1594/PANGAEA.896710>, 2018.
- 1020 Bitz, C. M. and Roe, G. H.: A Mechanism for the High Rate of Sea Ice Thinning in the Arctic Ocean, *Journal of Climate*, 17, 3623–3632, [https://doi.org/10.1175/1520-0442\(2004\)017<3623:AMFTHR>2.0.CO;2](https://doi.org/10.1175/1520-0442(2004)017<3623:AMFTHR>2.0.CO;2), 2004.
- Braakmann-Folgmann, A. and Donlon, C.: Estimating Snow Depth on Arctic Sea Ice Using Satellite Microwave Radiometry and a Neural
Network, *The Cryosphere*, 13, 2421–2438, <https://doi.org/10.5194/tc-13-2421-2019>, 2019.
- Brandt, R. E., Warren, S. G., Worby, A. P., and Grenfell, T. C.: Surface Albedo of the Antarctic Sea Ice Zone, *Journal of Climate*, 18,
1025 3606–3622, <https://doi.org/10.1175/JCLI3489.1>, 2005.
- Brochu, E., Cora, V., and Freitas, N.: A Tutorial on Bayesian Optimization of Expensive Cost Functions, with Application to Active User
Modeling and Hierarchical Reinforcement Learning, CoRR, abs/1012.2599, 2010.
- Cao, Y., Yang, X., and Zhu, X.: Retrieval Snow Depth by Artificial Neural Network Methodology from Integrated AMSR-E and in-Situ
Data—A Case Study in Qinghai-Tibet Plateau, *Chinese Geographical Science*, <https://doi.org/10.1007/s11769-008-0356-2>, 2008.
- 1030 Chen, N., Li, W., Gatebe, C., Tanikawa, T., Hori, M., Shimada, R., Aoki, T., and Stamnes, K.: New Neural Network Cloud Mask Algorithm
Based on Radiative Transfer Simulations, *Remote Sensing of Environment*, 219, 62–71, <https://doi.org/10.1016/j.rse.2018.09.029>, 2018.
- Chi, J., Kim, H.-c., Lee, S., and Crawford, M. M.: Deep Learning Based Retrieval Algorithm for Arctic Sea Ice Concentration from AMSR2
Passive Microwave and MODIS Optical Data, *Remote Sensing of Environment*, 231, 111 204, <https://doi.org/10.1016/j.rse.2019.05.023>,
2019.
- 1035 Comiso, J. C. and Hall, D. K.: Climate Trends in the Arctic as Observed from Space, *WIREs Climate Change*, 5, 389–409,
<https://doi.org/10.1002/wcc.277>, 2014.
- Curry, J. A., Schramm, J. L., and Ebert, E. E.: Sea Ice-Albedo Climate Feedback Mechanism, *Journal of Climate*, 8, 240–247,
[https://doi.org/10.1175/1520-0442\(1995\)008<0240:SIACFM>2.0.CO;2](https://doi.org/10.1175/1520-0442(1995)008<0240:SIACFM>2.0.CO;2), 1995.
- De Keukelaere, L., Sterckx, S., Adriaensen, S., Knaeps, E., Reusen, I., Giardino, C., Bresciani, M., Hunter, P., Neil, C., Van der Zande, D.,
1040 and Vaiciute, D.: Atmospheric Correction of Landsat-8/OLI and Sentinel-2/MSI Data Using iCOR Algorithm: Validation for Coastal and
Inland Waters, *European Journal of Remote Sensing*, 51, 525–542, <https://doi.org/10.1080/22797254.2018.1457937>, 2018.
- Dumont, M., Brissaud, O., Picard, G., Schmitt, B., Gallet, J.-C., and Arnaud, Y.: High-Accuracy Measurements of Snow Bidirectional
Reflectance Distribution Function at Visible and NIR Wavelengths – Comparison with Modelling Results, *Atmospheric Chemistry and
Physics*, 10, 2507–2520, <https://doi.org/10.5194/acp-10-2507-2010>, 2010.
- 1045 Ehrlich, A., Wendisch, M., Lüpkes, C., Buschmann, M., Bozem, H., Chechin, D., Clemen, H.-C., Dupuy, R., Eppers, O., Hartmann, J., et al.:
A Comprehensive in Situ and Remote Sensing Data Set from the Arctic CLOUD Observations Using Airborne Measurements during Polar
Day (ACLOUD) Campaign, *Earth System Science Data*, 11, 1853–1881, <https://doi.org/10.5194/essd-11-1853-2019>, 2019.

- Fan, Y., Li, W., Chen, N., Ahn, J.-H., Park, Y.-J., Kratzer, S., Schroeder, T., Ishizaka, J., Chang, R., and Stamnes, K.: OC-SMART: A Machine Learning Based Data Analysis Platform for Satellite Ocean Color Sensors, *Remote Sensing of Environment*, 253, 112–236, <https://doi.org/10.1016/j.rse.2020.112236>, 2021.
- 1050 Gao, F., Schaaf, C., Jin, Y., Lucht, W., and Strahler, A.: Deriving Albedo from Coupled MERIS and MODIS Surface Products, in: *Proceedings of the MERIS User Workshop*, ESA SP-549, Frascati, Italy, pp. 10–14, 2004.
- Gatebe, C. K. and King, M. D.: Airborne Spectral BRDF of Various Surface Types (Ocean, Vegetation, Snow, Desert, Wetlands, Cloud Decks, Smoke Layers) for Remote Sensing Applications, *Remote Sensing of Environment*, 179, 131–148, <https://doi.org/10.1016/j.rse.2016.03.029>, 2016.
- 1055 Gatebe, C. K., King, M. D., Lyapustin, A. I., Arnold, G. T., and Redemann, J.: Airborne Spectral Measurements of Ocean Directional Reflectance, *Journal of the Atmospheric Sciences*, 62, 1072–1092, <https://doi.org/10.1175/JAS3386.1>, 2005.
- Gildor, H., Tziperman, E., and Toggweiler, J. R.: Sea Ice Switch Mechanism and Glacial-Interglacial CO₂ Variations, *Global Biogeochemical Cycles*, 16, 6–1–6–14, <https://doi.org/10.1029/2001gb001446>, 2002.
- 1060 Grenfell, T. C.: Seasonal and Spatial Evolution of Albedo in a Snow-Ice-Land-Ocean Environment, *Journal of Geophysical Research*, 109, C01 001, <https://doi.org/10.1029/2003JC001866>, 2004.
- Grenfell, T. C. and Maykut, G. A.: The Optical Properties of Ice and Snow in the Arctic Basin, *Journal of Glaciology*, 18, 445–463, 1977.
- Grenfell, T. C. and Perovich, D. K.: Spectral Albedos of Sea Ice and Incident Solar Irradiance in the Southern Beaufort Sea, *Journal of Geophysical Research: Oceans*, 89, 3573–3580, <https://doi.org/10.1029/JC089iC03p03573>, 1984.
- 1065 Grenfell, T. C. and Warren, S. G.: Representation of a Nonspherical Ice Particle by a Collection of Independent Spheres for Scattering and Absorption of Radiation, *Journal of Geophysical Research: Atmospheres*, 104, 31 697–31 709, <https://doi.org/10.1029/1999JD900496>, 1999.
- Grenfell, T. C., Warren, S. G., and Mullen, P. C.: Reflection of Solar Radiation by the Antarctic Snow Surface at Ultraviolet, Visible, and near-Infrared Wavelengths, *Journal of Geophysical Research: Atmospheres*, 99, 18 669–18 684, <https://doi.org/10.1029/94JD01484>, 1994.
- 1070 Gröbner, J., Reda, I., Wacker, S., Nyeki, S., Behrens, K., and Gorman, J.: A New Absolute Reference for Atmospheric Long-wave Irradiance Measurements with Traceability to SI Units, *Journal of Geophysical Research: Atmospheres*, 119, 7083–7090, <https://doi.org/10.1002/2014JD021630>, 2014.
- Hamre, B., Winther, J.-G., Gerland, S., Stamnes, J. J., and Stamnes, K.: Modeled and Measured Optical Transmittance of Snow-Covered First-Year Sea Ice in Kongsfjorden, Svalbard, *Journal of Geophysical Research: Oceans*, 109, 2004.
- 1075 Herbert, C., Munoz-Martin, J. F., Llaveria, D., Pablos, M., and Camps, A.: Sea Ice Thickness Estimation Based on Regression Neural Networks Using L-Band Microwave Radiometry Data from the FSSCat Mission, *Remote Sensing*, 13, 1366, <https://doi.org/10.3390/rs13071366>, 2021.
- Hu, Y., Che, T., Dai, L., and Xiao, L.: Snow Depth Fusion Based on Machine Learning Methods for the Northern Hemisphere, *Remote Sensing*, <https://doi.org/10.3390/rs13071250>, 2021.
- 1080 Ioffe, S. and Szegedy, C.: Batch Normalization: Accelerating Deep Network Training by Reducing Internal Covariate Shift, in: *International Conference on Machine Learning*, pp. 448–456, 2015.
- Istomina, L.: Retrieval of Sea Ice Surface Melt Using OLCI Data Onboard Sentinel-3, American Geophysical Union, Fall Meeting 2020, 2020, C017–07, 2020.

- Istomina, L., Heygster, G., Huntemann, M., Schwarz, P., Birnbaum, G., Scharien, R., Polashenski, C., Perovich, D., Zege, E., Malinka, A.,
1085 Prikhach, A., and Katsev, I.: Melt Pond Fraction and Spectral Sea Ice Albedo Retrieval from MERIS Data – Part 1: Validation against in
Situ, Aerial, and Ship Cruise Data, *The Cryosphere*, 9, 1551–1566, <https://doi.org/10.5194/tc-9-1551-2015>, 2015.
- Jäkel, E., Ehrlich, A., Schäfer, M., and Wendisch, M.: Aircraft Measurements of Up- and Downward Irradiances over Arctic Sea Ice during
the ALOUD Campaign, <https://doi.org/10.1594/PANGAEA.891588>, 2018.
- Jäkel, E., Stapf, J., Wendisch, M., Nicolaus, M., Dorn, W., and Rinke, A.: Validation of the Sea Ice Surface Albedo Scheme of the Re-
1090 gional Climate Model HIRHAM–NAOSIM Using Aircraft Measurements during the ALOUD/PASCAL Campaigns, *The Cryosphere*,
13, 1695–1708, <https://doi.org/10.5194/tc-13-1695-2019>, 2019.
- Jäkel, E., Carlsen, T., Ehrlich, A., Wendisch, M., Schäfer, M., Rosenburg, S., Nakoudi, K., Zanatta, M., Birnbaum, G., Helm, V., et al.: Com-
parison of Optical-Equivalent Snow Grain Size Estimates under Arctic Low Sun Conditions during PAMARCMiP 2018, *The Cryosphere*
Discussions, pp. 1–36, <https://doi.org/10.5194/tc-2021-14>, 2021a.
- 1095 Jäkel, E., Schäfer, M., Ehrlich, A., Becker, S., and Klingebiel, M.: Aircraft Measurements of Spectral Solar Up- and Downward Irradiances
in the Arctic during the MOSAiC-ACA Campaign 2020, <https://doi.org/10.1594/PANGAEA.933850>, 2021b.
- Jin, H., Song, Q., and Hu, X.: Auto-Keras: An Efficient Neural Architecture Search System, arXiv:1806.10282 [cs, stat], 2019.
- Jin, Z., Starnes, K., Weeks, W. F., and Tsay, S.-C.: The Effect of Sea Ice on the Solar Energy Budget in the Atmosphere-Sea Ice-Ocean
System: A Model Study, *Journal of Geophysical Research*, 99, 25 281, <https://doi.org/10.1029/94JC02426>, 1994.
- 1100 Karlsson, K.-G., Anttila, K., Trentmann, J., Stengel, M., Fokke Meirink, J., Devasthale, A., Hanschmann, T., Kothe, S., Jääskeläinen, E.,
Sedlar, J., Benas, N., van Zadelhoff, G.-J., Schlundt, C., Stein, D., Finkensieper, S., Håkansson, N., and Hollmann, R.: CLARA-A2: The
Second Edition of the CM SAF Cloud and Radiation Data Record from 34 Years of Global AVHRR Data, *Atmospheric Chemistry and*
Physics, 17, 5809–5828, <https://doi.org/10.5194/acp-17-5809-2017>, 2017.
- Karlsson, Karl-Göran, Riihelä, A., Müller, R., Meirink, J. F., Sedlar, J., Stengel, M., Lockhoff, M., Trentmann, J., Kaspar, F., Hollmann, R.,
1105 and Wolters, E.: CLARA-A1: CM SAF cLOUDs, Albedo and Radiation Dataset from AVHRR Data - Edition 1: Monthly Means / Daily
Means / Pentad Means / Monthly Histograms, https://doi.org/10.5676/EUM_SAF_CM/CLARA_AVHRR/V001, 2012.
- Karlsson, Karl-Göran, Anttila, K., Trentmann, J., Stengel, M., Solodovnik, I., Meirink, J. F., Devasthale, A., Kothe, S., Jääskeläi-
nen, E., Sedlar, J., Benas, N., van Zadelhoff, Gerd-Jan, Stein, D., Finkensieper, S., Håkansson, N., Hollmann, R., Kaiser, J.,
and Werscheck, M.: CLARA-A2.1: CM SAF cLOUD, Albedo and Surface RADIATION Dataset from AVHRR Data - Edition 2.1,
1110 https://doi.org/10.5676/EUM_SAF_CM/CLARA_AVHRR/V002_01, 2020.
- Karvonen, J.: Baltic Sea Ice Concentration Estimation Using SENTINEL-1 SAR and AMSR2 Microwave Radiometer Data, *IEEE Transac-*
tions on Geoscience and Remote Sensing, 55, 2871–2883, <https://doi.org/10.1109/TGRS.2017.2655567>, 2017.
- Key, J., Wang, X., Liu, Y., Dworak, R., and Letterly, A.: The AVHRR Polar Pathfinder Climate Data Records, *Remote Sensing*, 8, 167,
<https://doi.org/10.3390/rs8030167>, 2016.
- 1115 Kharbouche, S. and Muller, J.-P.: Sea Ice Albedo from MISR and MODIS: Production, Validation, and Trend Analysis, *Remote Sensing*, 11,
9, <https://doi.org/10.3390/rs11010009>, 2018.
- Kingma, D. P. and Ba, J.: Adam: A Method for Stochastic Optimization, arXiv preprint arXiv:1412.6980, 2014.
- Knap, W. H., Reijmer, C. H., and Oerlemans, J.: Narrowband to Broadband Conversion of Landsat TM Glacier Albedos, *International Journal*
of Remote Sensing, 20, 2091–2110, <https://doi.org/10.1080/014311699212362>, 1999.
- 1120 Knudsen, E. M., Heinold, B., Dahlke, S., Bozem, H., Crewell, S., Gorodetskaya, I. V., Heygster, G., Kunkel, D., Maturilli, M., Mech, M.,
Viceto, C., Rinke, A., Schmithüsen, H., Ehrlich, A., Macke, A., Lüpkes, C., and Wendisch, M.: Meteorological Conditions during the

- ACLOUD/PASCAL Field Campaign near Svalbard in Early Summer 2017, *Atmospheric Chemistry and Physics*, 18, 17995–18022, <https://doi.org/10.5194/acp-18-17995-2018>, 2018.
- 1125 Kokhanovsky, A., Box, J. E., Vandecrux, B., Mankoff, K. D., Lamare, M., Smirnov, A., and Kern, M.: The Determination of Snow Albedo from Satellite Measurements Using Fast Atmospheric Correction Technique, *Remote Sensing*, 12, 234, <https://doi.org/10.3390/rs12020234>, 2020.
- König, M., Hieronymi, M., and Oppelt, N.: Application of Sentinel-2 MSI in Arctic Research: Evaluating the Performance of Atmospheric Correction Approaches Over Arctic Sea Ice, *Frontiers in Earth Science*, 7, 22, <https://doi.org/10.3389/feart.2019.00022>, 2019.
- 1130 Kwok, R.: Arctic Sea Ice Thickness, Volume, and Multiyear Ice Coverage: Losses and Coupled Variability (1958–2018), *Environmental Research Letters*, 13, 105005, <https://doi.org/10.1088/1748-9326/aae3ec>, 2018.
- Kwok, R. and Rothrock, D. A.: Decline in Arctic Sea Ice Thickness from Submarine and ICESat Records: 1958–2008: ARCTIC SEA ICE THICKNESS, *Geophysical Research Letters*, 36, n/a–n/a, <https://doi.org/10.1029/2009GL039035>, 2009.
- LeCun, Y., Bengio, Y., and Hinton, G.: Deep Learning, *Nature*, 521, 436–444, <https://doi.org/10.1038/nature14539>, 2015.
- 1135 Lee, G., Kim, D., Kwon, H.-H., and Choi, E.: Estimation of Maximum Daily Fresh Snow Accumulation Using an Artificial Neural Network Model, *Advances in Meteorology*, <https://doi.org/10.1155/2019/2709351>, 2019.
- Lee, S., Im, J., Kim, J., Kim, M., Shin, M., Kim, H.-c., and Quackenbush, L.: Arctic Sea Ice Thickness Estimation from CryoSat-2 Satellite Data Using Machine Learning-Based Lead Detection, *Remote Sensing*, 8, 698, <https://doi.org/10.3390/rs8090698>, 2016.
- Lee, S., Stroeve, J., Tsamados, M., and Khan, A. L.: Machine Learning Approaches to Retrieve Pan-Arctic Melt Ponds from Visible Satellite Imagery, *Remote Sensing of Environment*, 247, 111919, <https://doi.org/10.1016/j.rse.2020.111919>, 2020.
- 1140 Li, W., Stamnes, K., Eide, H., and Spurr, R.: Bidirectional Reflectance Distribution Function of Snow: Corrections for the Lambertian Assumption in Remote Sensing Applications, *Optical Engineering*, 46, 066201, <https://doi.org/10.1117/1.2746334>, 2007.
- Li, X., Fan, X., Yan, H., Li, A., Wang, M., and Qu, Y.: Mapping Global Ocean Surface Albedo from Satellite Observations: Models, Algorithms, and Datasets, *The International Archives of the Photogrammetry, Remote Sensing and Spatial Information Sciences*, XLII-3, 967–970, <https://doi.org/10.5194/isprs-archives-XLII-3-967-2018>, 2018.
- 1145 Liang, S.: Narrowband to Broadband Conversions of Land Surface Albedo I Algorithms, *Remote Sensing of Environment*, p. 26, 2000.
- Liang, S.: Mapping Daily Snow/Ice Shortwave Broadband Albedo from Moderate Resolution Imaging Spectroradiometer (MODIS): The Improved Direct Retrieval Algorithm and Validation with Greenland in Situ Measurement, *Journal of Geophysical Research*, 110, D10109, <https://doi.org/10.1029/2004JD005493>, 2005.
- 1150 Liang, S., Strahler, A. H., and Walthall, C.: Retrieval of Land Surface Albedo from Satellite Observations: A Simulation Study, *JOURNAL OF APPLIED METEOROLOGY*, 38, 14, [https://doi.org/10.1175/1520-0450\(1999\)038<0712:ROLSAF>2.0.CO;2](https://doi.org/10.1175/1520-0450(1999)038<0712:ROLSAF>2.0.CO;2), 1999.
- Liang, S., Wang, D., He, T., and Yu, Y.: Remote Sensing of Earth's Energy Budget: Synthesis and Review, *International Journal of Digital Earth*, 12, 737–780, <https://doi.org/10.1080/17538947.2019.1597189>, 2019.
- 1155 Liang, S., Cheng, J., Jia, K., Jiang, B., Liu, Q., Xiao, Z., Yao, Y., Yuan, W., Zhang, X., Zhao, X., and Zhou, J.: The Global Land Surface Satellite (GLASS) Product Suite, *Bulletin of the American Meteorological Society*, 102, E323–E337, <https://doi.org/10.1175/BAMS-D-18-0341.1>, 2021.
- Libois, Q., Picard, G., France, J. L., Arnaud, L., Dumont, M., Carmagnola, C. M., and King, M. D.: Influence of Grain Shape on Light Penetration in Snow, *The Cryosphere*, 7, 1803–1818, <https://doi.org/10.5194/tc-7-1803-2013>, 2013.
- Lindsay, R.: Arctic Sea-Ice Albedo Derived from RGPS-based Ice-Thickness Estimates, *Annals of Glaciology*, 33, 225–229, <https://doi.org/10.3189/172756401781818103>, 2001.

- 1160 Liu, J., Zhang, Y., Cheng, X., and Hu, Y.: Retrieval of Snow Depth over Arctic Sea Ice Using a Deep Neural Network, *Remote Sensing*, 11, 2864, <https://doi.org/10.3390/rs11232864>, 2019.
- Liu, N. F., Liu, Q., Wang, L. Z., Liang, S. L., Wen, J. G., Qu, Y., and Liu, S. H.: A Statistics-Based Temporal Filter Algorithm to Map Spatiotemporally Continuous Shortwave Albedo from MODIS Data, *Hydrology and Earth System Sciences*, 17, 2121–2129, <https://doi.org/10.5194/hess-17-2121-2013>, 2013.
- 1165 Lucht, W. and Lewis, P.: Theoretical Noise Sensitivity of BRDF and Albedo Retrieval from the EOS-MODIS and MISR Sensors with Respect to Angular Sampling, *International Journal of Remote Sensing*, 21, 81–98, <https://doi.org/10.1080/014311600211000>, 2000.
- Lucht, W., Schaaf, C., and Strahler, A.: An Algorithm for the Retrieval of Albedo from Space Using Semiempirical BRDF Models, *IEEE Transactions on Geoscience and Remote Sensing*, 38, 977–998, <https://doi.org/10.1109/36.841980>, 2000.
- Lüpkes, C.: Aircraft Campaign Arctic Boundary Layer Fluxes (AFLUX) 2019, in: EPIC3Workshop on Airborne Activities in the Arctic: Science and Prospects, Leipzig, 2017-10-05-2017-10-05Leipzig, Leipzig, 2017.
- 1170 Martonchik, J. V., Bruegge, C. J., and Strahler, A. H.: A Review of Reflectance Nomenclature Used in Remote Sensing, *Remote Sensing Reviews*, 19, 9–20, <https://doi.org/10.1080/02757250009532407>, 2000.
- Mehta, M., Singh, R., Singh, A., Singh, N., and Anshumali: Recent Global Aerosol Optical Depth Variations and Trends — A Comparative Study Using MODIS and MISR Level 3 Datasets, *Remote Sensing of Environment*, 181, 137–150, <https://doi.org/10.1016/j.rse.2016.04.004>, 2016.
- 1175 Mustapha, M. A. and Saitoh, S.-I.: Observations of Sea Ice Interannual Variations and Spring Bloom Occurrences at the Japanese Scallop Farming Area in the Okhotsk Sea Using Satellite Imageries, *Estuarine, Coastal and Shelf Science*, 77, 577–588, <https://doi.org/10.1016/j.ecss.2007.10.021>, 2008.
- Nair, V. and Hinton, G. E.: Rectified Linear Units Improve Restricted Boltzmann Machines, in: *Icml*, 2010.
- 1180 Nihashi, S., Ohshima, K. I., Tamura, T., Fukamachi, Y., and Saitoh, S.-I.: Thickness and Production of Sea Ice in the Okhotsk Sea Coastal Polynyas from AMSR-E, *Journal of Geophysical Research*, <https://doi.org/10.1029/2008jc005222>, 2009.
- Peng, J., Yu, Y., Yu, P., and Liang, S.: The VIIRS Sea-Ice Albedo Product Generation and Preliminary Validation, *Remote Sensing*, 10, 1826, <https://doi.org/10.3390/rs10111826>, 2018.
- Perovich, D. K.: Seasonal Evolution of the Albedo of Multiyear Arctic Sea Ice, *Journal of Geophysical Research*, 107, 8044, <https://doi.org/10.1029/2000JC000438>, 2002.
- 1185 Perovich, D. K. and Polashenski, C.: Albedo Evolution of Seasonal Arctic Sea Ice: ALEDO EVOLUTION OF SEASONAL SEA ICE, *Geophysical Research Letters*, 39, n/a–n/a, <https://doi.org/10.1029/2012GL051432>, 2012.
- Petrich, C. and Eicken, H.: Growth, Structure and Properties of Sea Ice, in: *Sea Ice*, edited by Thomas, D. N. and Dieckmann, G. S., pp. 23–77, Wiley-Blackwell, Oxford, UK, <https://doi.org/10.1002/9781444317145.ch2>, 2009.
- 1190 Pithan, F. and Mauritsen, T.: Arctic Amplification Dominated by Temperature Feedbacks in Contemporary Climate Models, *Nature Geoscience*, 7, <https://doi.org/10.1038/NGEO2071>, 2014.
- Pohl, C., Istomina, L., Tietsche, S., Jäkel, E., Stapf, J., Spreen, G., and Heygster, G.: Broadband Albedo of Arctic Sea Ice from MERIS Optical Data, *The Cryosphere*, 14, 165–182, <https://doi.org/10.5194/tc-14-165-2020>, 2020.
- Pope, E. L., Willis, I. C., Pope, A., Miles, E. S., Arnold, N. S., and Rees, W. G.: Contrasting Snow and Ice Albedos Derived from MODIS, Landsat ETM+ and Airborne Data from Langjökull, Iceland, *Remote Sensing of Environment*, 175, 183–195, <https://doi.org/10.1016/j.rse.2015.12.051>, 2016.

- Qu, Y., Liang, S., Liu, Q., He, T., Liu, S., and Li, X.: Mapping Surface Broadband Albedo from Satellite Observations: A Review of Literatures on Algorithms and Products, *Remote Sensing*, 7, 990–1020, <https://doi.org/10.3390/rs70100990>, 2015.
- 1200 Qu, Y., Liang, S., Liu, Q., Li, X., Feng, Y., and Liu, S.: Estimating Arctic Sea-Ice Shortwave Albedo from MODIS Data, *Remote Sensing of Environment*, 186, 32–46, <https://doi.org/10.1016/j.rse.2016.08.015>, 2016.
- Ren, S., Miles, E. S., Jia, L., Menenti, M., Kneib, M., Buri, P., McCarthy, M. J., Shaw, T. E., Yang, W., and Pellicciotti, F.: Anisotropy Parameterization Development and Evaluation for Glacier Surface Albedo Retrieval from Satellite Observations, *Remote Sensing*, 13, 1714, <https://doi.org/10.3390/rs13091714>, 2021.
- 1205 Riihelä, A., Manninen, T., Laine, V., Andersson, K., and Kaspar, F.: CLARA-SAL: A Global 28 Yr Timeseries of Earth’s Black-Sky Surface Albedo, *Atmospheric Chemistry and Physics*, 13, 3743–3762, <https://doi.org/10.5194/acp-13-3743-2013>, 2013.
- Robock, A.: Ice and Snow Feedbacks and the Latitudinal and Seasonal Distribution of Climate Sensitivity, *Journal of the Atmospheric Sciences*, 40, 986–997, [https://doi.org/10.1175/1520-0469\(1983\)040<0986:IASFAT>2.0.CO;2](https://doi.org/10.1175/1520-0469(1983)040<0986:IASFAT>2.0.CO;2), 1983.
- Rösel, A. and Kaleschke, L.: Exceptional Melt Pond Occurrence in the Years 2007 and 2011 on the Arctic Sea Ice Revealed from MODIS Satellite Data: MELT PONDS ON ARCTIC SEA ICE, *Journal of Geophysical Research: Oceans*, 117, n/a–n/a, <https://doi.org/10.1029/2011JC007869>, 2012.
- 1210 Rösel, A., Kaleschke, L., and Birnbaum, G.: Melt Ponds on Arctic Sea Ice Determined from MODIS Satellite Data Using an Artificial Neural Network, *The Cryosphere*, 6, 431–446, <https://doi.org/10.5194/tc-6-431-2012>, 2012.
- Santurkar, S., Tsipras, D., Ilyas, A., and Madry, A.: How Does Batch Normalization Help Optimization?, arXiv:1805.11604 [cs, stat], 2019.
- Schaaf, C. and Wang, Z.: MCD43A2 MODIS/Terra+Aqua BRDF/Albedo Quality Daily L3 Global - 500m V006, 2015a.
- 1215 Schaaf, C. and Wang, Z.: MCD43D59 MODIS/Terra+Aqua BRDF/Albedo White Sky Albedo VIS Band Daily L3 Global 30ArcSec CMG, 2015b.
- Schaaf, C. B., Gao, F., Strahler, A. H., Lucht, W., Li, X., Tsang, T., Strugnell, N. C., Zhang, X., Jin, Y., Muller, J.-P., Lewis, P., Barnsley, M., Hobson, P., Disney, M., Roberts, G., Dunderdale, M., Doll, C., d’Entremont, R. P., Hu, B., Liang, S., Privette, J. L., and Roy, D.: First Operational BRDF, Albedo Nadir Reflectance Products from MODIS, *Remote Sensing of Environment*, 83, 135–148, [https://doi.org/10.1016/S0034-4257\(02\)00091-3](https://doi.org/10.1016/S0034-4257(02)00091-3), 2002.
- 1220 Schaeppman-Strub, G., Schaeppman, M., Painter, T., Dangel, S., and Martonchik, J.: Reflectance Quantities in Optical Remote Sensing—Definitions and Case Studies, *Remote Sensing of Environment*, 103, 27–42, <https://doi.org/10.1016/j.rse.2006.03.002>, 2006.
- Scott, D. W.: *Multivariate Density Estimation: Theory, Practice, and Visualization*, John Wiley & Sons, 2015.
- Serreze, M. C., Holland, M. M., and Stroeve, J.: Perspectives on the Arctic’s Shrinking Sea-Ice Cover, *science*, 315, 1533–1536, <https://doi.org/10.1126/science.1139426>, 2007.
- 1225 Srivastava, N., Hinton, G., Krizhevsky, A., Sutskever, I., Salakhutdinov, R., and Hinton, G.: Dropout: A Simple Way to Prevent Neural Networks from Overfitting, *Journal of Machine Learning Research*, 15, 30, 2014.
- Stamnes, K., Hamre, B., Stamnes, J., Ryzhikov, G., Biryulina, M., Mahoney, R., Hauss, B., and Sei, A.: Modeling of Radiation Transport in Coupled Atmosphere-Snow-Ice-Ocean Systems, *Journal of Quantitative Spectroscopy and Radiative Transfer*, 112, 714–726, <https://doi.org/10.1016/j.jqsrt.2010.06.006>, 2011.
- 1230 Stamnes, K., Hamre, B., Stamnes, S., Chen, N., Fan, Y., Li, W., Lin, Z., and Stamnes, J.: Progress in Forward-Inverse Modeling Based on Radiative Transfer Tools for Coupled Atmosphere-Snow/Ice-Ocean Systems: A Review and Description of the Accurt Model, *Applied Sciences*, 8, 2682, <https://doi.org/10.3390/app8122682>, 2018.

- Stapf, J., Ehrlich, A., Jäkel, E., and Wendisch, M.: Aircraft Measurements of Broadband Irradiance during the ACLOUD Campaign in 2017, *https://doi.org/10.1594/PANGAEA.900442*, 2019.
- 1235 Stapf, J., Ehrlich, A., and Wendisch, M.: Aircraft Measurements of Broadband Irradiance during the AFLUX Campaign in 2019, 2021a.
- Stapf, J., Ehrlich, A., and Wendisch, M.: Influence of Thermodynamic State Changes on Surface Cloud Radiative Forcing in the Arctic: A Comparison of Two Approaches Using Data From AFLUX and SHEBA, *Journal of Geophysical Research: Atmospheres*, 126, <https://doi.org/10.1029/2020JD033589>, 2021b.
- 1240 Stroeve, J., Box, J. E., Gao, F., Liang, S., Nolin, A., and Schaaf, C.: Accuracy Assessment of the MODIS 16-Day Albedo Product for Snow: Comparisons with Greenland in Situ Measurements, *Remote Sensing of Environment*, 94, 46–60, <https://doi.org/10.1016/j.rse.2004.09.001>, 2005.
- Stroeve, J., Holland, M. M., Meier, W., Scambos, T., and Serreze, M.: Arctic Sea Ice Decline: Faster than Forecast, *Geophysical research letters*, 34, <https://doi.org/10.1029/2007GL029703>, 2007.
- 1245 Sturm, M. and Holmgren, J.: An Automatic Snow Depth Probe for Field Validation Campaigns, *Water Resources Research*, 54, 9695–9701, <https://doi.org/10.1029/2018WR023559>, 2018.
- Tedesco, M. and Jeyaratnam, J.: A New Operational Snow Retrieval Algorithm Applied to Historical AMSR-E Brightness Temperatures, *Remote Sensing*, 8, 1037, <https://doi.org/10.3390/rs8121037>, 2016.
- Tedesco, M., Pulliainen, J., Takala, M., Hallikainen, M., and Pampaloni, P.: Artificial Neural Network-Based Techniques for the Retrieval of SWE and Snow Depth from SSM/I Data, *Remote Sensing of Environment*, 90, 76–85, <https://doi.org/10.1016/j.rse.2003.12.002>, 2004.
- 1250 Toyota, T., Ukita, J., Ohshima, K. I., Wakatsuchi, M., and Muramoto, K.: A Measurement of Sea Ice Albedo over the Southwestern Okhotsk Sea, *Journal of the Meteorological Society of Japan. Ser. II*, 77, 117–133, https://doi.org/10.2151/jmsj1965.77.1_117, 1999.
- Toyota, T., Takatsuji, S., Tateyama, K., Naoki, K., and Ohshima, K. I.: Properties of Sea Ice and Overlying Snow in the Southern Sea of Okhotsk, *Journal of Oceanography*, 63, 393–411, <https://doi.org/10.1007/s10872-007-0037-2>, 2007.
- 1255 Tschudi, M., Stroeve, J., and Stewart, J.: Relating the Age of Arctic Sea Ice to Its Thickness, as Measured during NASA’s ICESat and IceBridge Campaigns, *Remote Sensing*, 8, 457, <https://doi.org/10.3390/rs8060457>, 2016.
- Tschudi, M. A., Maslanik, J. A., and Perovich, D. K.: Derivation of Melt Pond Coverage on Arctic Sea Ice Using MODIS Observations, *Remote Sensing of Environment*, 112, 2605–2614, <https://doi.org/10.1016/j.rse.2007.12.009>, 2008.
- Turlach, B. A.: Bandwidth Selection in Kernel Density Estimation: A Review, in: CORE and Institut de Statistique, Citeseer, 1993.
- 1260 Tynes, H. H., Kattawar, G. W., Zege, E. P., Katsev, I. L., Katsev, I. L., Prikhach, A. S., Chaikovskaya, L. I., and Chaikovskaya, L.: Monte Carlo and Multicomponent Approximation Methods for Vector Radiative Transfer by Use of Effective Mueller Matrix Calculations., *Applied Optics*, <https://doi.org/10.1364/ao.40.000400>, 2001.
- Vermote, E., Tanre, D., Deuze, J., Herman, M., and Morcette, J.-J.: Second Simulation of the Satellite Signal in the Solar Spectrum, 6S: An Overview, *IEEE Transactions on Geoscience and Remote Sensing*, 35, 675–686, <https://doi.org/10.1109/36.581987>, 1997.
- 1265 Vihma, T., Pirazzini, R., Fer, I., Renfrew, I. A., Sedlar, J., Tjernström, M., Lüpkes, C., Nygård, T., Notz, D., Weiss, J., Marsan, D., Cheng, B., Birnbaum, G., Gerland, S., Chechin, D., and Gascard, J. C.: Advances in Understanding and Parameterization of Small-Scale Physical Processes in the Marine Arctic Climate System: A Review, *Atmospheric Chemistry and Physics*, 14, 9403–9450, <https://doi.org/10.5194/acp-14-9403-2014>, 2014.
- Wang, D., Liang, S., He, T., and Yu, Y.: Direct Estimation of Land Surface Albedo from VIIRS Data: Algorithm Improvement and Preliminary Validation: ESTIMATE LAND SURFACE ALBEDO FROM VIIRS, *Journal of Geophysical Research: Atmospheres*, 118, 12,577–12,586, <https://doi.org/10.1002/2013JD020417>, 2013.
- 1270

- Wang, J., Yuan, Q., Shen, H., Liu, T., Li, T., Yue, L., Shi, X., and Zhang, L.: Estimating Snow Depth by Combining Satellite Data and Ground-Based Observations over Alaska: A Deep Learning Approach, *Journal of Hydrology*, <https://doi.org/10.1016/j.jhydrol.2020.124828>, 2020.
- 1275 Wang, M. and Overland, J. E.: A Sea Ice Free Summer Arctic within 30 Years: An Update from CMIP5 Models, *Geophysical Research Letters*, 39, <https://doi.org/10.1029/2012GL052868>, 2012.
- Wang, Z., Schaaf, C. B., Chopping, M. J., Strahler, A. H., Wang, J., Román, M. O., Rocha, A. V., Woodcock, C. E., and Shuai, Y.: Evaluation of Moderate-resolution Imaging Spectroradiometer (MODIS) Snow Albedo Product (MCD43A) over Tundra, *Remote Sensing of Environment*, 117, 264–280, <https://doi.org/10.1016/j.rse.2011.10.002>, 2012.
- 1280 Warren, S. G.: Optical Properties of Ice and Snow, *Philosophical Transactions of the Royal Society A: Mathematical, Physical and Engineering Sciences*, 377, 20180 161, <https://doi.org/10.1098/rsta.2018.0161>, 2019.
- Wendisch, M. and Brenguier, J.-L.: *Airborne Measurements for Environmental Research: Methods and Instruments*, John Wiley & Sons, 2013.
- Wendisch, M., Macke, A., Ehrlich, A., Lüpkes, C., Mech, M., Chechin, D., Dethloff, K., Velasco, C. B., Bozem, H., Brückner, M., et al.: The Arctic Cloud Puzzle: Using ACLOUD/PASCAL Multiplatform Observations to Unravel the Role of Clouds and Aerosol Particles in Arctic Amplification, *Bulletin of the American Meteorological Society*, 100, 841–871, <https://doi.org/10.1175/BAMS-D-18-0072.1>, 2019.
- 1285 Winker, D. M., Tackett, J. L., Getzewich, B. J., Liu, Z., Vaughan, M. A., and Rogers, R. R.: The Global 3-D Distribution of Tropospheric Aerosols as Characterized by CALIOP, *Atmospheric Chemistry and Physics*, 13, 3345–3361, <https://doi.org/10.5194/acp-13-3345-2013>, 2013.
- Xiong, X., Stamnes, K., and Lubin, D.: Surface Albedo over the Arctic Ocean Derived from AVHRR and Its Validation with SHEBA Data, *JOURNAL OF APPLIED METEOROLOGY*, 41, 14, [https://doi.org/10.1175/1520-0450\(2002\)041<0413:SAOTAO>2.0.CO;2](https://doi.org/10.1175/1520-0450(2002)041<0413:SAOTAO>2.0.CO;2), 2002.
- 1290 Zege, E., Malinka, A., Katsev, I., Prikhach, A., Heygster, G., Istomina, L., Birnbaum, G., and Schwarz, P.: Algorithm to Retrieve the Melt Pond Fraction and the Spectral Albedo of Arctic Summer Ice from Satellite Optical Data, *Remote Sensing of Environment*, 163, 153–164, <https://doi.org/10.1016/j.rse.2015.03.012>, 2015.
- Zhou, Y., Li, W., Chen, N., Fan, Y., and Stamnes, K.: A Sensor-Agnostic Albedo Retrieval Method for All Sea Ice Surfaces - Model Interpretability and Applications in RCM/GCM as Well as CRF, *The Cryosphere*, 2021 (ready to submit).
- 1295 Zhou, Y., Li, W., Chen, N., Fan, Y., Tomonori, T., Toyota, T., and Stamnes, K.: Spatiotemporal Variations of Sea Ice Albedo and Its Relation with Spring Bloom Occurrences: A Study of the Dynamics of Melt Ponds and Sea Ice Albedo in the Sea of Okhotsk, *Journal of Oceanography*, 2021 (submitted).
- 1300 Zhu, L., Zhang, Y., Wang, J., Tian, W., Liu, Q., Ma, G., Kan, X., and Chu, Y.: Downscaling Snow Depth Mapping by Fusion of Microwave and Optical Remote Sensing Data Based on Deep Learning, *Remote Sensing*, <https://doi.org/10.3390/rs13040584>, 2021.