

Sea-Thickness of multi-year sea ice thickness—on the northern Canadian polar shelf: A second look after 40 years

Humfrey Melling ¹

¹Fisheries and Oceans Canada, Institute of Ocean Sciences, PO Box 6000, Sidney Canada V8L 4B2

5 Correspondence to: Humfrey Melling (Humfrey.Melling@dfo-mpo.gc.ca)

Abstract. This paper presents a systematic record of multi-year sea-ice thickness on the northern Canadian polar shelf, ~~acquired~~measured during the winter of 2009-10. The data were acquired by submerged sonar ~~positioned within~~moored in Penny Strait where they measured floes drifting south from the notional “last ice area”. Ice was moving over the site until 10 December and ~~fast~~static thereafter. Old ice comprised about half of the 1669-km long survey. The average ~~old ice~~ thickness ~~of old ice~~ within 25-km segments of the survey track was 3-4 m; maximum keels were 12-16 m deep. Floes with high average draft were of two types, one with interspersed low draft intervals and one without. The presence or absence of thin patches apparently distinguished ~~aggregate~~large floes ~~comprised~~formed via the aggregation of ~~sub-units~~smaller floes of various ages and deformation states from ~~units~~those of more homogeneous age and deformation state. The former were larger and of somewhat lower mean thickness (1-5 km; 3.5-4.5 m) than the latter (400-600 m; 6.5-14 m). ~~Calculated ice—A calculated~~ accretion of new ice onto the multi-year ~~ice~~floes measured in the autumn of 2009 was used to seasonally adjust the observations to ~~a date in~~thicknesses expected by late winter, when prior data are available. The adjusted mean thickness for all 25-km segments with 4 tenths or more old ice was 3.68 m (sample deviation of 0.45 m), a value indistinguishable within sampling error from values measured in the ~~same~~up-drift area during the 1970s. The recently measured ice-draft distributions were also very similar to those from the 1970s. These results suggest that the dynamical processes that create very thick multi-year ice via ridging close to the study area have been less influenced by climate change than the thermodynamic processes behind the formation and decay of thinner level floes. The hazards posed by such ice therefore persist regionally, although the risk has decreased with the decrease in old ice concentration during recent decades.

10
15
20

Crown copyright

The works published in this journal are distributed under the Creative Commons Attribution 4.0 License. This licence does not affect the Crown copyright work, which is re-usable under the Open Government Licence (OGL). The Creative Commons Attribution 4.0 License and the OGL are interoperable and do not conflict with, reduce or limit each other.

25

© Crown copyright 2021

1 Introduction

30 Bourke and Garrett (1987) prepared the first compilation of sea-ice-draft (viz. thickness) surveys in the Arctic Ocean. Their map showed clearly the progressive increase in the average draft of sea ice from 1-2 m on the Siberian side of the Arctic to more than 6 m at some places near the northern coastlines of Greenland and the Canadian Archipelago. This spatial pattern of ice thickness in the Arctic has been attributed to the combined influences of the long freezing and short thawing seasons at high latitude (Maykut and Untersteiner, 1971) and of pack-ice convergence onto these windward shorelines (Tucker et al., 35 1979); the convergence maintains high ice concentration and enhances the formation of thick ice rubble via material failure under pressure (Kovacs, 1972).

A compact area of multi-year sea ice has persisted on the North American side of the Arctic during the last quarter century while the area covered by multi-year ice in the Arctic Ocean has decreased considerably (e.g. Comiso, 2012; Kwok, 2018); ~~Stroeve and Notz, 2018~~. Moreover the numerical models informing the ~~5th~~6th IPCC Assessment report suggest that the same 40 geographic distribution will continue into the future (~~Collins et al., 2013; Huard, e.g. Ridley and Tremblay, 2013~~Blockley, 2018: Fig. 2). This evidence has fostered the concept of a future remnant “last ice area” within and adjacent to the north Greenland and Canadian polar shelves (Pfirman and Tremblay, 2009; Pfirman et al., 2010; Hamilton et al., 2014); this area is thought to be ecologically important as a future refugium for ice-reliant Arctic wildlife from bacteria to megafauna (<http://www.wwf.ca/conservation/arctic/lia/> [Nov 2021]).

45 Although clearly of concern, the notion of a threatened last area of ice, now rapidly thinning, is based on remarkably few data from that area, past or present (Lyon, 1984; Melling, 2002; Lindsay and Schweiger, 2015). In the compilation by Lindsay and Schweiger (2015) of Arctic ice thickness observations acquired since 1975 there are points since 2003 that lie within the north-west part of the area of most persistent ice, but unfortunately this region lacks comparative data from earlier times. Moreover the recent data from this area are best viewed cautiously because they are measures of ice-plus-snow elevation above an 50 infrequently glimpsed sea level, from an Earth satellite with a relatively large footprint (20-70 m diameter); in situ validation has been minimal (Kwok et al., 2020).

Information on sea ice is also sparse within the adjacent part of the notional last ice area that overlies the Sverdrup Basin – ~~the geological name~~geologist’s shorthand for the northern Canadian polar shelf. The extent of ice here and its composition by ice 55 type have been monitored and charted by the Canadian Ice Service since about 1970, to provide guidance for navigation during August and September. The drift of ice through the area has been determined sporadically by following identifiable floes in satellite images and by satellite-tracking of beacons on floes that fortuitously entered the area. Knowledge of ice thickness is based ~~solely~~almost entirely on bore-hole measurements, weekly single-point values near Canadian weather stations since the 1950s and ~~on survey~~transects of bore-hole measurements acquired during on-ice seismic surveys ~~during~~in the 1970s. ~~There are~~ (Melling, 2002). In addition ~~there have been~~ a handful of few targeted surveys of extreme features. ~~Available data have~~ 60 ~~been reviewed by, documented in~~ Melling (2002).

More recent publications have been focused on ice kinematics and concentration, including fast ice (Galley et al., 2012; Howell and Brady, 2019), systematic estimates of ice inflow from the Arctic Ocean via feature tracking in satellite images (Alt et al 2006; Kwok 2006; Agnew et al., 2008; Wohlleben et al., 2013; Howell and Brady, 2019), decadal fluctuations in multi-year ice concentration (Howell et al., 2008, 2010, 2013, 2015; Tivy et al., 2011) and summertime deterioration of multi-year floes in the area (Dumas et al., 2007; Howell et al., 2009).

Figure 1 depicts the northern part of the Canadian polar shelf, annotated with the names of its larger islands and waterways. The basin is an area of consistently high ice concentration, with old ice comprising 85-90% of the

ice present, except in the area north of Bathurst Island (70%) and in Norwegian Bay (50%) (Melling, 2002). Some of this ice enters from the Arctic Ocean in the north-west during the few months of mobility in late summer and autumn; this ice tends to be highly deformed and extremely thick. A second population develops within the basin from areas of first-year ice that do not melt during the brief summer (Flato and Brown 1996). All ice drifts generally southward to the North West Passage, entering this waterway chiefly via Byam Martin Channel, Penny Strait and Cardigan Strait in the lower right quadrant of the map. These channels draw ice from the Arctic Ocean principally at four entry points, Sverdrup Channel, Peary Channel, Prince Gustaf Adolph Sea and Ballantyne Strait, with a combined width of 314 km. Ice exits channels variously via Hazen, Maclean or Desbarats Straits, or Hassel or Massey Sounds, depending on wind and on ice congestion. Although ice drifts quite slowly along these pathways, it moves faster through the narrower exits to Parry Channel (combined width of 76 km), averaging about 15 km/d within Byam Martin Channel and 25-30 km/d within Penny and Cardigan Straits. Nonetheless, a typical journey across the basin takes 3-5 years because the ice is land-fast between the High Arctic islands for up to ten months per year. The time taken to cross the basin varies with conditions of ice congestion, wind and temperature in summer, and appears to have become decreased during the last 1-2 decades (Howell and Brady, 2019).

The average thickness of sea ice tends to decrease towards the south-east. In the 1970s, survey-line means as high as 5-7 m were measured near the north-western margin of the polar shelf and as high as 3-4 m near the exits to the North West Passage (Fig. 2). Melling (2002) proposed that the cause of this progressive thinning with distance from the outer shelf was a small sustained heat flow to the ice from the ocean; this, a mechanism that has been further documented by Melling et al. (2015).

We do know that there were appreciable reductions in the multi-year ice coverage of the northern polar shelf in 1961, 1970-71, 1979-81, 1983-85, 1997-99, 2005-07, 2011-12, 2014-15 and 2019 (Dumas et al., 2007; Howell et al 2010;

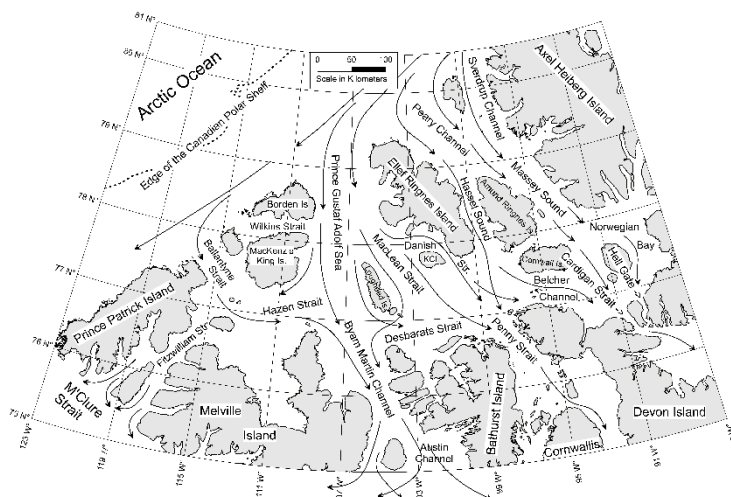
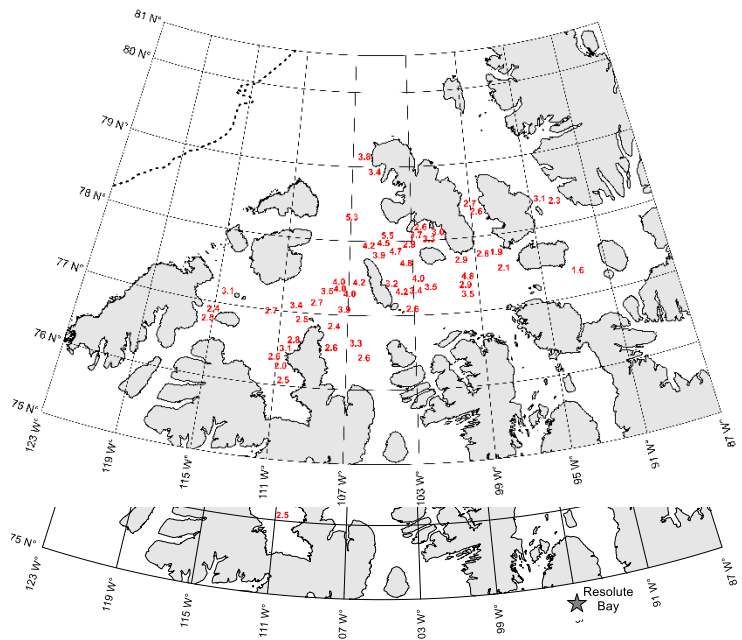


Figure 1. The northern part of the Canadian polar shelf, its principal geographic features and the schematic pattern of sea-ice movement across it.

overly the feature known to geologists as the Sverdrup (sedimentary) Basin.



95 <https://iceweb1.cis.ec.gc.ca/IceGraph/page1.xhtml?lang=en> [Nov 2021]). ~~Within a few years of each occurrence, the coverage~~
 It has ~~returned to been~~ typical ~~for multi-year-ice coverage to return to~~ historical values ~~within a few years of each such event,~~
 via recruitment of second-year ice from remaining first-year ice and via inward drift of old ice from the Arctic Ocean (Howell
 et al. ~~2015~~2015). ~~However a reduced presence of multi-year ice in this area since the early 2000s has been noted by Howell~~
 and Brady (2019).

100 Future severe ice conditions on the Canadian polar shelf are critically dependent on whether all multi-year ice disappears from
 adjacent areas of the Arctic Ocean; ~~cut-off the supply and ice regime of the waters between the Queen Elizabeth Islands~~
~~could~~ Sverdrup Basin would be a very different ~~place if the in-drift of heavy ice from the north-west were to cease.~~ It is useful
 to note that ~~palaeo~~palaeo-climatic indicators reveal that there was heavy ice in this area in summer even during the Holocene
 Warm Period, 5000 years ago (Dyke et al 1996; Dyke and England 2003), when Arctic climate was 2-3°C warmer than that
 105 during the 20th century.

The thickness of multi-year ice presently over the northern polar shelf is not known; there have been no observations since the
 late 1970s. ~~Seeing the declining ice thickness of the central Arctic (Lindsay and Schweiger, 2015) one might anticipate that~~
~~multi-year ice over the northern polar shelf has also thinned dramatically. If so, the feasibility of exploiting the proven natural~~
~~gas reserves of the Sverdrup Basin would be greatly~~
 110 ~~enhanced. Severe ice conditions here in the 1970s were~~
~~critical in limiting expeditious supply of the~~
~~exploration activities, and of great concern in any plan~~
~~to develop the reserves and to ship out produced and~~
~~liquefied natural gas by tanker. However over the~~

Figure 3. Mean thickness of sea ice in late winter, 1971-1980, derived from holes drilled during seismic surveys (Melling 2002). Each value is the average from a median of 1835 boreholes, spaced at least 110 yards apart on a 2D survey grid. Values used in reference to 2009 data are Figure 4. Mean thickness of sea ice in late winter, 1971-1980, derived from holes drilled during seismic surveys (from Melling 2002). Data from a median of 1835 boreholes from a 2D grid of survey lines contribute to each sample. Boreholes were spaced systematically along survey lines, at least 110 yards apart (maximum of 880 yards).

115 southern part of the polar shelf, Haas and Howell (2015) measured multi-year ice in the late winters of 2011 and 2015 using an airborne electromagnetic sensor; they observed expanses of ice averaging 3-4 m over tens of kilometres in Byam Martin Channel, southern Viscount Melville Sound and southern M’Clintock Channel, noting that “features more than 100 m wide and thicker than 4 m occurred frequently”.

120 Acknowledging the much reduced thickness and extent of multi-year ice in the central Arctic (Lindsay and Schweiger, 2015; Stroeve and Notz, 2018), one might anticipate that multi-year ice over the northern polar shelf may also have thinned dramatically. If so, the feasibility of marine transport through the North West Passage and across the Sverdrup Basin and of developing proven local natural gas reserves may have increased. Severe ice conditions here in the 1970s were one of the factors driving the shelving of these gas fields at that time.

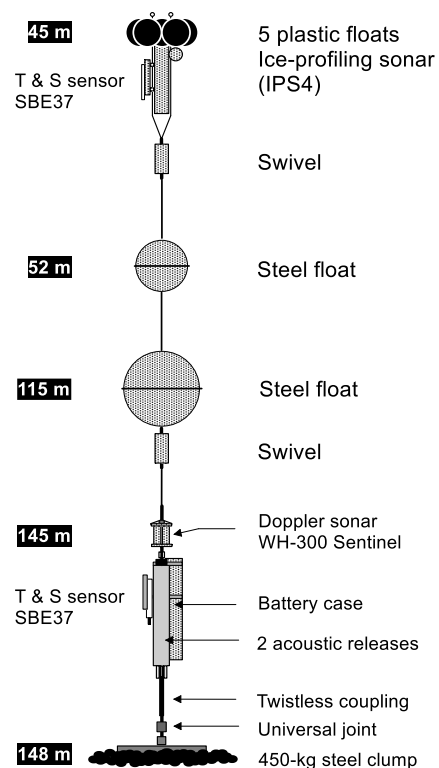
There is also motivation from the perspective of ice dynamics. A range of factors appear influential in the loss of ice from the central Arctic – the pattern of ice circulation, reduced residence time, albedo feed-back, warming ocean, warming atmosphere, poorer recruitment of second-year ice. The seas of the Canadian High Arctic are relatively isolated from the Canada Basin, but they do harbour some of the heaviest multi-year ice in the Arctic. Study of ice here, where gain and loss factors for sea ice may be different, could provide new perspectives on sea ice and climate change.

130 The goal of this study was a timely second assessment of ice within the notional last ice area. Perhaps paradoxically, we chose not to work in the area itself but rather to observe ice as it was leaving via channels along its southern margin. The reason, as common in Arctic field science, was logistical. Access to the interior of the Sverdrup Basin would have been very costly by icebreaker and perhaps not practical even in summer. Use of aircraft in winter would have been cheaper but contingent on the presence of first-year ice suitable for landing ski-planes, which is scarce here. These factors provided a strong motivation for making observations at the most southerly useful locations. We chose Penny Strait for the first year of observation with an eye further west on Byam Martin Channel in future years. Because inter-annual variation was likely to be appreciable, we planned to sustain observations over several years.

140 2 Year-round ice monitoring in Penny Strait, 2009-10

Drilling or electromagnetic induction radar (Haas et al., 2009) can provide ice thickness transects at good (better than (~25 m) spatial resolution but require human presence; these methods are impractical for year-round sea-ice observation at isolated locations. We chose to use used an optimally designed ice-profiling sonar

145 (IPS), a submerged up looking sonar optimally designed) for measuring under-ice topographic profiles. The IPS can operate, capable of operating autonomously for as long as three years (Melling et al., 1995). Moored at a fixed location, it measures the

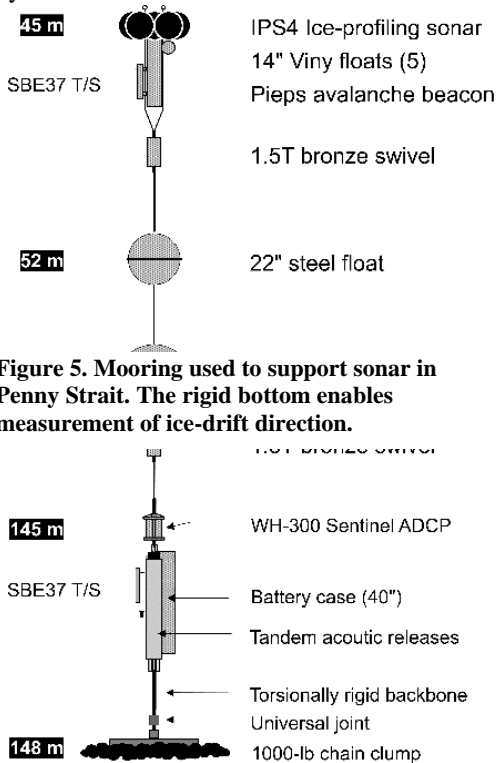


submerged depth of ice (draft) as the difference between the depth of the instrument (from a pressure measurement) and its distance from the ice bottom (from an echo). The IPS is used in combination with Doppler sonar (ADCP) which measures ice-drift velocity; together the instruments provide data from which a detailed topographic transect of multi-year-pack-ice floes, ridge keels and leads can be constructed. The spatial separation of survey points is proportional to ice-drift speed, so that when ice becomes immobile the IPS is limited to measuring the slow local growth and decay of ice stalled above it.

These instruments were placed on a submerged mooring (Fig. 3) with the ADCP near the seabed and the IPS at 45-m depth, where it was safe from moving deep ice keels. Because there was no suitable geomagnetic reference for ice-drift direction at this location – the geomagnetic inclination was 88.3° – the section of the mooring beneath the ADCP was torsionally rigid (i.e. no twisting). All ice-drift measurements by the ADCP were made relative to its fixed, but unknown, heading that was later deduced during the processing of data from the directions of measured tidal currents. This method has been used successfully since 1998 for oceanographic moorings in Cardigan Strait, Hell Gate and Nares Strait (Münchow and Melling, 2008).

The mooring was placed in Penny Strait, on the south-western side that is favoured by Penny Strait in order to measure multi-year-ice leaving the northern polar shelf; the south moving stream. This outflow is manifest as a persistent tongue of 4-9 tenths' pack ice on this side that was our observational target can be seen hugging the south-western shore in the late -summer ice concentration map from the Canadian Ice Service (and autumn (Melling, 2001: Fig. 43).

Ironically these same streams pose challenges for the deployment and recovery of moorings. We were able to deploy our mooring from an icebreaker (CCGS Henry Larsen) within this fast moving heavy ice. However for recovery, the ship needs to reach and hold station at the pre-determined location of the mooring, requirements that would have been difficult under the conditions encountered at deployment. We retrieved the mooring in late May 2010, operating from the surface of fast ice accessed by aircraft. Details of the data collection are summarized in Table 1, Table 2 and Table 3.



3.1 Environmental conditions during the period of observation

Figure 5 Fig. 4 is a radar satellite view of Penny Strait just before the ship’s arrival in 2009; it clearly shows a dense stream of multi-year floes drifting down from the north at this time. When the ship reached the site of the installation, a team from Canada’s National Research Council completed a borehole survey on one of the floes nearby; as reported by Johnston (2019), the minimum bore-hole thickness from 20 drillings of this floe, 1500-m across, was 8.4 m and the median was 16.1m. The ice continued to stream southward for over a month until October 3 when a giant floe (multi-year ice embedded in second-year ice) from Maclean Strait contacted land on both sides of Penny Strait and blocked it. Ice to the north of this floe locked up on October 25. Meanwhile multi-year floes south of the blockage drifted out of Penny

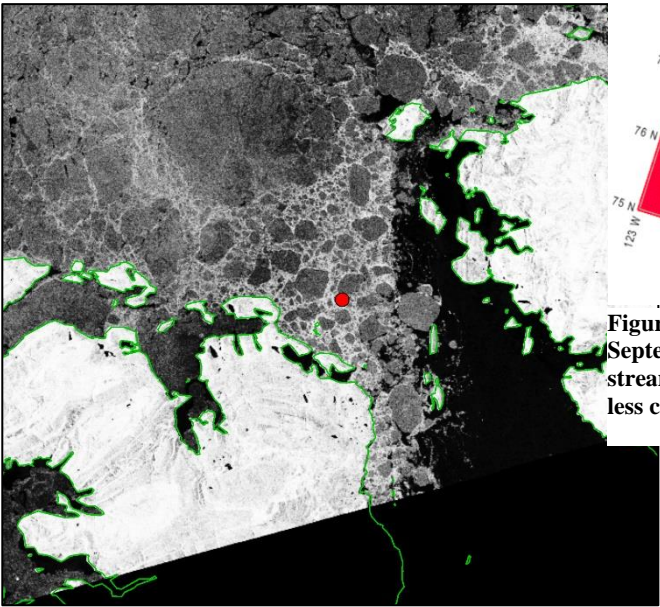


Figure 8. Multi-year pack ice in Penny Strait on 23 August 2009. Ice-free water appears dark. A red dot marks the sonar’s location. (RADARSAT Data and Products © MacDonald, Dettwiler and Associates Ltd. (2010) – All Rights Reserved. RADARSAT is an official mark of the Canadian Space Agency).

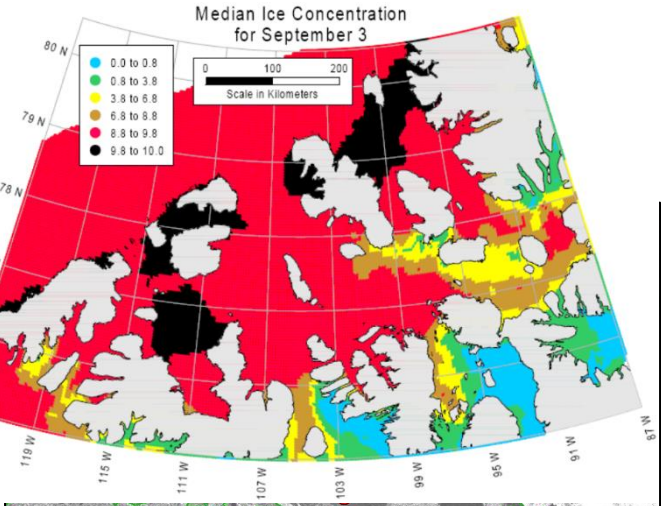


Figure 7. Median sea-ice concentration at minimum extent in early September (data from the Canadian Ice Service). The fast-moving ice streams leaving the high Arctic appear in brown and yellow, denoting less compact ice fields more readily entered by ice-breaking ships.

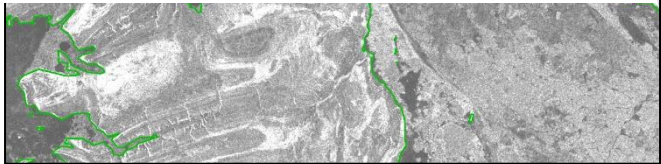
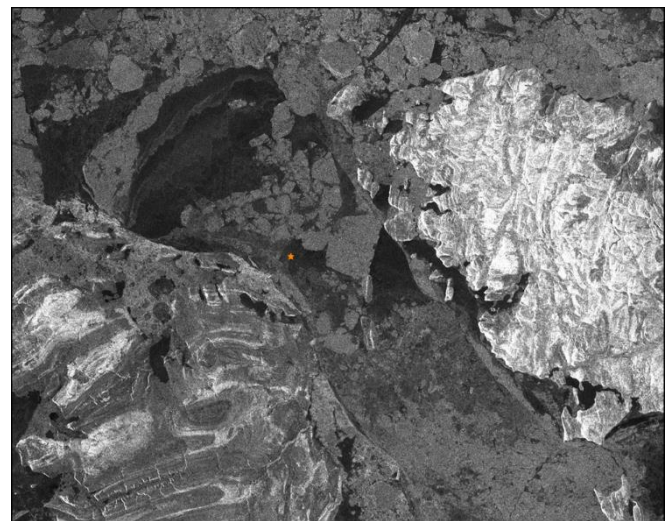
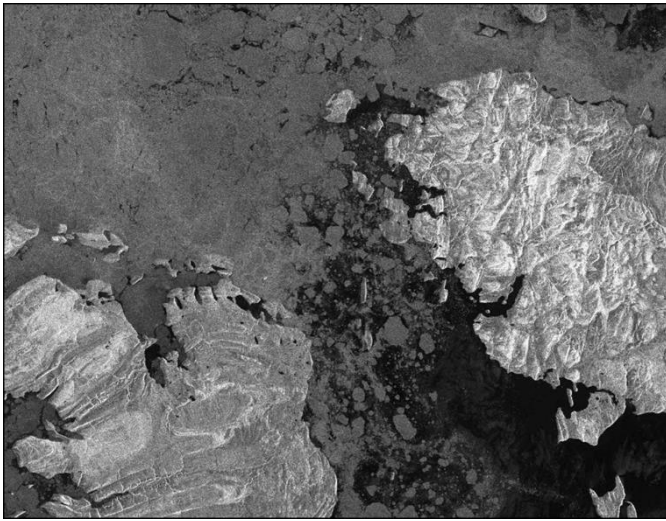


Figure 9. Fast ice in Penny Strait on 15 January 2010. First-year ice appears dark. A red dot marks the sonar’s location. (RADARSAT Data and Products © MacDonald, Dettwiler and Associates Ltd. (2010) – All Rights Reserved. RADARSAT is an official mark of the Canadian Space Agency).

Strait, leaving an area of young sea ice that thickened to thin first-year ice over time. Between November 16 and 23, the blocking floe shattered, allowing large fragments of multi-year ice to drift into the strait. However the ice arch behind the previously land-locked floe held, facilitating a progressive re-establishment of fast ice that had spread over the mooring by December 21 and prevailed there until winter’s end.



185 Ice conditions in Penny Strait early in 2010 are shown in Fig.

6.5. [Ice is no longer moving](#). The ice bridge of early winter is marked by the curved line of transition between a bright area with distinct floes (old ice) and a dark area which is level first-year ice. Old ice in smaller floes is present to the south-east of

190 Penny Strait, but the mooring site itself is [fortuitously](#) beneath an area of level first-year ice. Such ice simplified access to the site by aircraft and access to the mooring submerged beneath it.

Ice and ocean responses to wind in a channel depend upon wind speed and its direction relative to the channel and on the strength of pack ice. Ice strength depends in turn on ice salinity and temperature and on the fractions of open water and thin ice within the pack. The limiting circumstance, which occurs every winter in this area, is 10 tenths ice held immobile by coastal geometry. With fast ice established after mid-December, the wind could move neither ice nor water. In September and again in November, the direction of prevailing wind was north-west, along strait, moderate in speed in September but weak in November. During October and December, wind blew from the north-east, across the strait, moderate in October and strong in December.

200 3.2 Ice drift with wind and current

Sea-ice drift was derived via Doppler analysis of sound scattered by ice back to the ADCP when operating in bottom-tracking mode (Melling et al., 1995). Ice tracking was independent of current measurement by the same instrument, except for the

Figure 10. Multi-year ice streaming through Penny Strait on 27 August 2009 viewed by space-based radar (RADARSAT Data and Products © MacDonald, Dettwiler and Associates Ltd. (2010) – All Rights Reserved. RADARSAT is an official mark of the Canadian Space Agency).

Figure 11. Ice in Penny Strait, winter 2009-10. First-year ice appears dark. The star marks the sonar (RADARSAT Data and Products © MacDonald, Dettwiler and Associates Ltd. (2010) – All Rights Reserved. RADARSAT is an official mark of the Canadian Space Agency).

determination of direction. The fixed heading of the sonar throughout the deployment (ensured by the torsional rigidity of its mooring) was determined by aligning the ebb and flow directions of the measured tidal current with those predicted

by a tidal model

(<https://www.bio.gc.ca/science/research-recherche/ocean/webtide/index-en.php> [Nov

210 2021]). Sampling error, which dominates uncertainty in ice velocity measured by the Doppler method, was better than 0.5 cm s^{-1} for a 15-minute average value with our operating configuration.

215 The progressive vector of ice drift over the mooring, approximating the ice-drift trajectory through the strait, is displayed in Fig. 76. The net displacement over 102.5 days

of movement in 2009 was 529 km towards the south-east, roughly the same distance as that between Penny Strait and the edge of the continental shelf in Prince Gustaf Adolf Sea (450 km). However because the northern entrance to Penny Strait was blocked after December 14, much of the ice subsequently drifting over the mooring was recently formed new and young types. The 1669-km total length of the survey track was appreciably greater than the net displacement because it continues to increase during reversals in direction driven by tide and wind. Sub-tidal events in ice movement were an alternating sequence of excursions to the north-west and south-east. Drift to the north-west was generally brief and correlated with south-east wind (as measured at Resolute Bay): August 30 to September 3; September 13-16; September 30 to October 3; October 6-8. Drift to the south-east occurred during the intervening periods, except that ice was almost motionless during November 5-15. Most of the net south-east displacement occurred with prevailing north-west wind during September 5-28 (251 km) and October 15-27 (374 km).

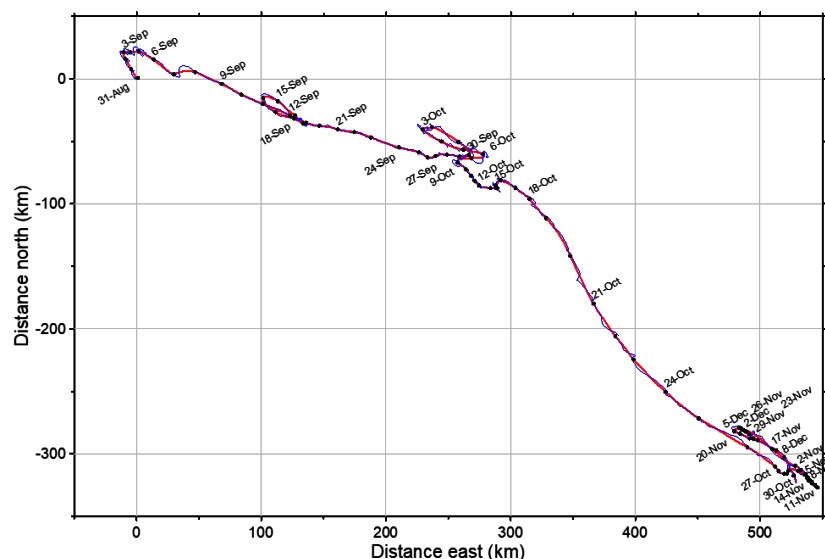


Figure 12. Progressive vector of ice drift in Penny Strait from late August until mid-December 2009. Dots on the de-tided (red) curve are at daily intervals. Ice above the mooring became fast on December 9.

230 3.3 Draft and underside topography of sea ice

The draft of sea ice was derived from IPS' measurements of water pressure and echo time (Melling et al., 1995). Each draft value was assigned a position along the progressive vector of ice displacement calculated by integration of ice velocity. Because the IPS's field of view is about 0.8 m, redundant data were eliminated by re-sampling the ice-draft at 1-m increments along the drift vector. The resulting quasi-spatial transect of under-ice topography, 1.669 million data-points over-the-across 1669 kilometres km of pack ice, is the starting point for scientific interpretation in this study.

235 Fig. 7 shows the contributions to the total volume of the ice (thickness x distance x 1m) made by ice of each draft, in 10-cm increments. The black curve displays the ice-volume distribution for the entire track; there are peaks at drafts of 0.2 m and 2.45 m (old ice), separated by a minimum at 0.75 m. The red and blue curves display data from those 25-km segments with mean draft below 1.5 m and those above 2.5 m, respectively. The former peaks at 0.2 m and reveals virtually no deformed ice;

240 [this is clearly the new-ice mode. The latter peaks at 2.45 m and displays a slow roll-off to drafts characteristic of deformed ice; this is clearly the old-ice mode. The 0.75-m draft at the minimum has therefore](#)
 245 [been chosen to distinguish these two ice types in latter analysis.](#)

Statistics of ice draft for each 25-km segment of the drift path are displayed in Fig. 8. Although sonar measures draft not
 250 thickness, axes showing thickness have been added. A 1.13-ratio of thickness to draft has been used for the minimum and

mean values, based on the reasonable assumption of near-isostatic balance at scales of 100 m and more (Melling et al, 1993).
 This ratio ~~is consistent with~~ [corresponds to](#) densities of 1025 kg m^{-3} for
 255 seawater, 910 kg m^{-3} for submerged ice and 870 kg m^{-3} for sub-aerial ice (Timco and Frederking, 1996).

Because ridges and keels are not locally in isostatic balance, the ratio of
 thickness to draft is variable on small (3-30 m) scales in deformed ice (Hibler 1972; Melling et al., 1993). Nonetheless the
 ratio of maximum draft to maximum height is commonly used as a measure of the thickness of ice ridges, even though the
 260 ridge crest may not exactly coincide with the keel. In first-year ice, the ratio is quite high; Kovacs (1972) and Sisodiya and
 Vaudrey (1981) report 4.5 and 5.5
 respectively. The ratio is lower for multi-year ice where thermal weathering and consequent consolidation affect keel draft
 more than sail height (Amundrud et al 2006). Reported ratios of maximum draft to maximum height for multi-year ice
 265 features are 3.1-3.3 (Cox, 1972; Kovacs et al, 1973; Kovacs et al, 1975), although
 some old ridges have yielded values as large as 5.6 (Dickens and Wetzel, 1981).
 The equivalent ratio of thickness to draft is about 1.3. The 12-16 m maximum drafts

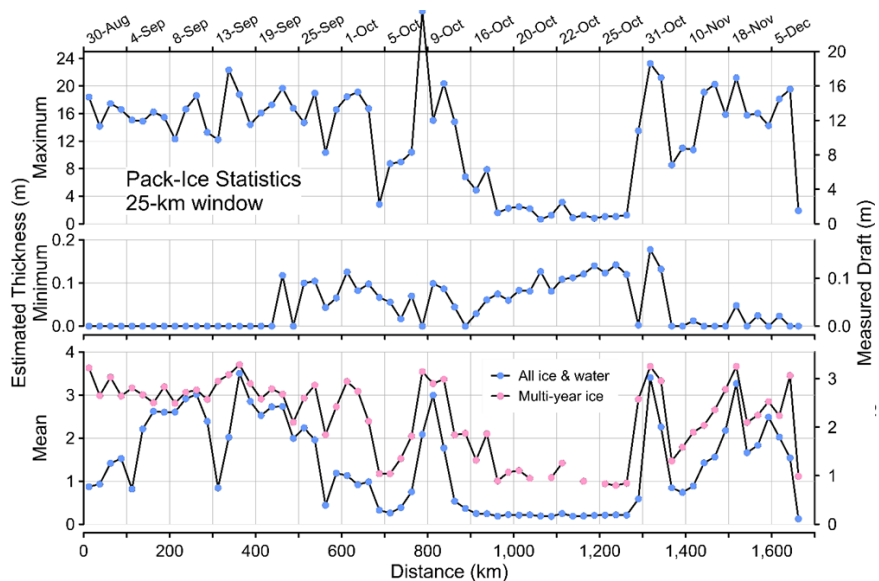


Figure 14. Fraction of ice volume versus draft. The curves represent all data, data from 33 25-km segments with mean draft over 2.5 m and data from 19 with mean draft under 1.5 m. Thickness on the top axis is estimated as 1.13x draft..

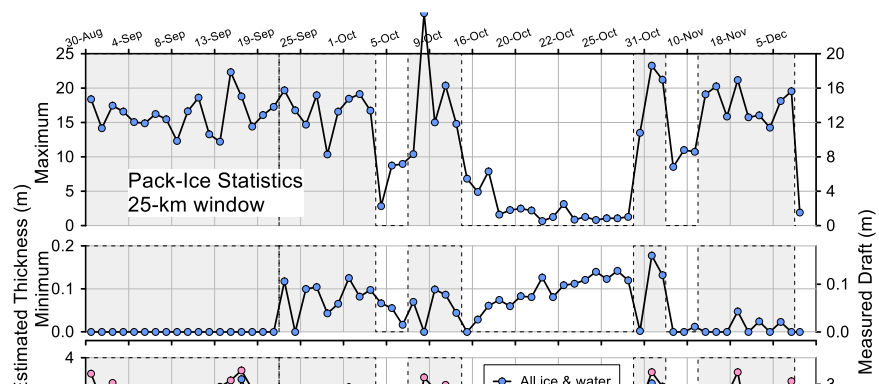


Figure 16. Statistical measures of ice draft for each 25-km segment of the drift path. The curve labelled “multi-year ice” represents the mean for ice with draft over 75 cm. Axes at the right indicate draft and those at the left estimated thickness; conversion factors of 1.13 have been used for the mean and minimum drafts and 1.2 for the maximum, as discussed in the text. Dates of measurement are indicated on the top frame.

typical of multi-year ice features seen in 2009 (Fig. 8) could be indicative of ice as thick as 16-21 m. However, a conservative 1.2-ratio has been used for the left-hand axis on the top frame of that figure. A keel deeper than 25 m was measured on October 8.

The curve labelled “multi-year ice” in the bottom frame represents the displays 25-km mean values for ice with draft exceeding 0.75 m. The overall value mean of this metric these values was 2.66 m (3.0-m thickness). Those 25-km segments for which the overall mean thickness and the thick “multi-year ice thickness” thicknesses are close in value are presumed to, marked by shading in Fig. 8, will have been dominated by multi-year ice. The minimum, mean and maximum values of draft enable a tentative classification of pack ice over the site as follows: Old ice in combination reveal open water at varying concentration between old ice floes until km:450 and in thin ice until km:675; old ice in thin ice again from km:800 to km:875; open water was subsequently replaced by young ice. New ice without old floes was dominant from km:875 to km:1275; old ice in thin ice from km:1275 to km:1350 and again from km:125 to km:1650.

The distinction between the multi year and young ice populations is clear in the distribution of pack ice volume versus draft (Fig. 9). These are shown for the entire survey track and for the 25 km segments with draft greater than 2.5 m and less than 1.5 m. The distribution for all ice has a peak near zero thickness, a peak near 3 m thickness and a long tail to beyond 20 m. The curve for segments with high mean draft shows clearly that the peak at 3 m thickness and the long tail are associated with old ice at this time of year, while the curve for low mean draft is clearly linked to young ice that is only lightly deformed.

Figure 17. Fraction of ice volume versus draft. The curves represent all data, data from 33 25-km segments with mean draft over 2.5 m and data from 19 with mean draft under 1.5 m. Thickness on the top axis is estimated as 1.13x draft..

4 Discussion

4.1 Evidence for change in multi-year ice of the Canadian High Arctic

As mentioned earlier, the only prior data on sea-ice thickness surveys in this area were acquired during on ice conducted in association with seismic surveys during in the 1970s and discussed by (Melling et al., 2002). The surveys were seismic work was conducted in the late winter (mid-March to mid-May) when the ice was thick enough to support the heavy sled trains used to move personnel, accommodations and equipment around this remote area. Whereas there is value in comparing the 1970's data to the present observations. However because the present data were acquired in during autumn and the 1970s data in late winter, a comparison is informative only after adjustments that reflect the seasonal cycle of ice

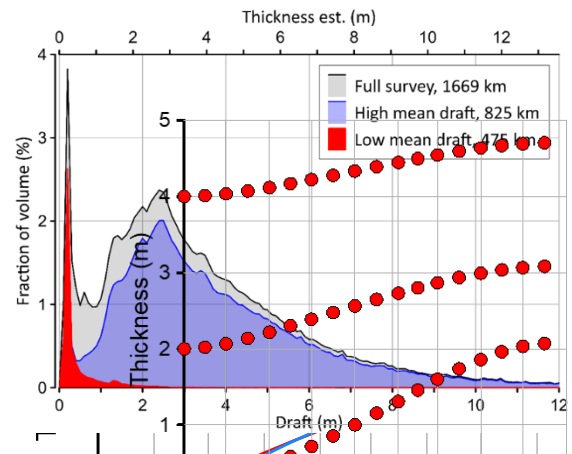


Figure 18. Calculated wintertime growth of three initial thicknesses. The air snow temperature and snow depth that control averages the growth are averages of climatological Resolute conditions at Resolute Bay and Eureka.

305 growth and melt. ~~The~~Such adjustment are obviously problematic in the absence of contemporary on-site data to optimal calculations.

This paper follows the pragmatic lead of Rothrock et al. (1999) in their landmark paper on thinning Arctic pack ice. These authors adjusted ice-thickness observations from late summer both earlier and later dates to mid-September, using values calculated by an ice-thickness model driven by 40 years of wind and temperature (but not snow depth) averaged across the

310 Canada Basin. In our work, only the adjustment for ice thickening from autumn to late winter is was necessary, a prospect more tractable than the converse, because the rate of ice thickening by freezing is better understood than its thinning by melting. Moreover, it is reasonable to assume negligible ice thickening via ridging in the area north of Penny Strait because islands limit constrain the build-up of wind stress on downwind ice and inhibit the ice movement needed to build ridges during most of the winter.

315 Ice growth by freezing is driven by the temperature difference between the snow or ice surface and the ocean and limited by the rate at which heat can be conducted through the ice and snow; ~~the rate of growth slows, slowing~~ as the ice and snow thicken. ~~We have calculated~~ The calculation of the wintertime ice-growth under High Arctic conditions using 15-day averages ~~of growth adjustment for the 2009 data has been based on climatological data values for coastal air temperature (1981-2010 epoch) (Monthly Data Report for 1980 - Climate - Environment and Climate Change Canada (weather.gc.ca) and [2022]) and~~

320 for snow-depth on local sea ice (same epoch: <https://www.canada.ca/en/environment-climate-change/services/ice-forecasts-observations/latest-conditions/archive-overview/thickness-data.html> at [2022]). Data from the two stations with suitable observations that are closest to the 2009 observing site, namely Resolute Bay and Eureka (locations plotted in Fig. 2) were averaged and used to drive a steady state thermodynamic ice-growth model; Assumed values of thermal conductivity were 2.03 W/m/K for sea ice (Trodahl et al., 2001) and 0.31 W/m/K for snow; (Sturm, 2002). Results based on average climatic

325 conditions are shown in Fig. 4 ~~for 9, comparing~~ ice that was 0, 2 and 4 m thick ~~on September at freeze-up dates of October 1- and November 1.~~ First-year ice starting at 0 m ~~has thickened~~ grows to 2.11 m by ~~2.1 m in~~ mid-May, whereas 2-m ice ~~has added adds~~ only 1.10.98 m, and 4-m ice only 0.770 m and 8-m ice only 0.35 m. The effects of a month's delay in freeze-up are a 3.1% increase in thickness for first-year ice and decreases of 2.5% and 1.0% for 2-m and 4-m ice, respectively. The increase for first-year ice reveals that the lost accumulation of snow during October more than compensates for a shorter

330 freezing season. The sonar's first detection of new ice in Penny Strait in late September 2009 makes October 1 the appropriate starting date for calculations.

One-standard-deviation departures from average climatic conditions were calculated from accumulated freezing-degree days and snow depth on 16 May and then apportioned uniformly throughout the period of freezing. Sensitivity of the seasonal adjustment to

these 1- σ anomalies were calculated (Fig. 10). For first year ice, the impact (8.0%) of anomalously thin snow is almost twice that (4.3%) of an anomalously cold winter. For 2-m ice, snow-depth anomalies are only slightly more influential than temperature anomalies (2.2% vs. 2.0%), whereas for 4-m ice temperature anomalies have a slightly greater influence (0.9% vs. 0.7%).

Ice-draft histograms measured in autumn can be adjusted to late winter simply by shifting the bin boundaries to reflect growth by amounts calculated higher values according to the growth model. An estimate adjustments calculated for each thickness. Estimates of the late winter average thickness can for each 25-km segment was then be computed by summing the histogram-weighted contributions from each of the adjusted thickness bins.

Figure 11 shows estimates of the average thickness reached by the ice in each 25-km segment by the end of the 2009-10 winter. Averages are shown for the entire ice field and for those parts of the ice field deemed

to be multi-year ice by virtue of thickness – more than 0.75 m in the autumn and equivalent, after adjustment, to more than 2.3 m in the spring. This figure can be compared with Fig. 8 showing the observations of the ice field in the preceding autumn.

The average thickness that the observed ice field might have attained by the spring of 2010 is 2.8986 m (draft 2.5653 m), with a standard deviation of 0.7 m among 25-km samples of 0.7 m. The thickness of the fraction deemed old ice in the fall (draft more than 0.75 m) could have reached a thickness of 3.8277 m (draft 3.3834 m) by spring.

This number is of limited value for comparison with historical data because the pack ice diverges (Fig. 3) as its drift accelerates towards Penny Strait. This is the reason why the concentration of multi-year ice measured in Penny Strait in 2009 was lower than in the areas to the north west,

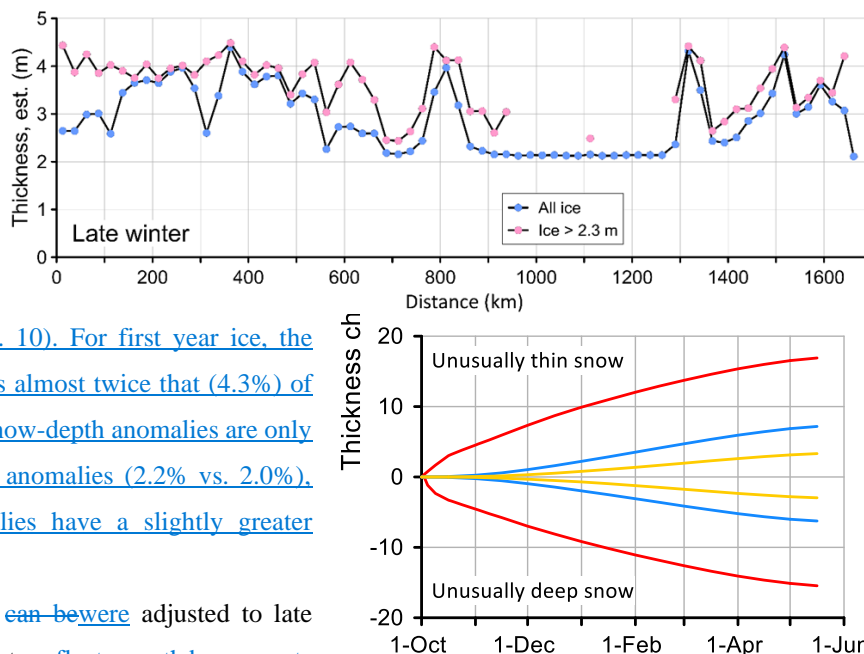
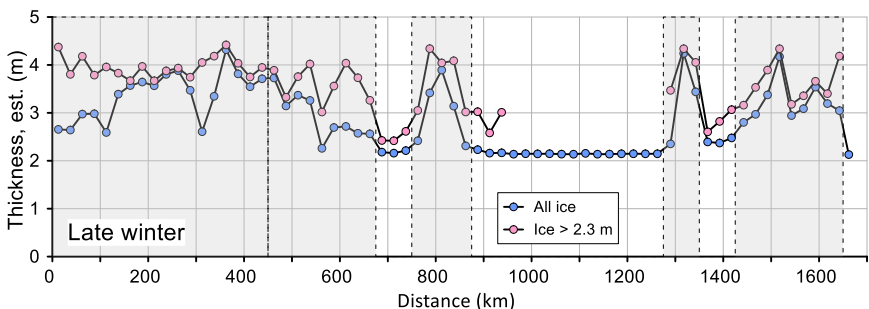


Figure 20. Sensitivity of the calculated ice-growth adjustment to ± 1 standard deviation departure from average climatic conditions for air temperature and snow depth.

Figure 21. Average ice thickness for 25-km segments of the track line at the end of the 2009-10 winter, estimated by forcing ice growth with monthly climatological data for air temperature and snow depth, with the assumption that no new leads or ridges formed during the winter.

which is where the surveys of the 1970s were completed. In 2009, Multi-year ice dominated only 40% of the 25-km segments measured whereas the in Penny Strait in 2009. Even in present times this value, which is a result of faster ice drift through the strait, is only half the median old ice concentration in the areas of comparison was value (70-80% -%) in the area providing comparative ice thickness data from the 1970s. (Canadian 30-year Ice Atlas 1981-2010:



<https://iceweb1.cis.ec.gc.ca/30Atlas/page1.xhtml?grp=Guest&lang=en> [Nov 2021]). A mean thickness based on those Using only the sixteen 25-km segments of the modern data with 80% or more multi-year ice, similar to that were at least half populated by multi year ice is a better metric for comparison. This the 1970s' observations, the mean late-winter-adjusted ice thickness is 3.675 m with a (sample standard deviation of 0.43 m-), very close to the alternate estimate provided above.

FigureFig. 12 compares track-mean values of thickness from systematic drilling in the areaareas "NW" and "WNW" north-west of Penny Strait (Fig. 2) during the 1970s (Melling 2002) withto the range of values estimated for multi-

Figure 22. Average ice thickness for 25-km segments of the track line at the end of the 2009-10 winter, estimated by forcing ice growth with monthly climatological data for air temperature and snow depth, with the assumption that no new leads or ridges formed during the winter. Shading denotes intervals with appreciable multi-year ice.

year ice at the same time of year in 2010, based on the 2009 measurements by sonar. For the modern data, multi-year ice was taken to be that with draft greater than 0.75 m in autumn, increasing to 2.3 m in May. The shaded band (1970s) and error bar (2009) represent sample standard

deviations; the small vertical bar spans the consequence of ± 1 standard deviation in air temperature and snow depth for ice that was 2-m in October; the '+' shows the effect on 2-m ice of a one-month delay in freeze-up. The perhaps surprising result is that the estimated average thickness of multi-year sea ice up-drift of Penny Strait in 2010 was essentially the same as it was four decades earlier in the 1970s.

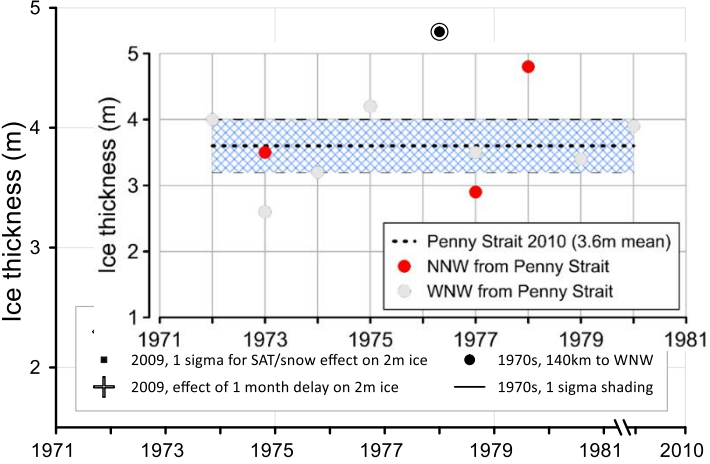


Figure 13 compares the distribution of ice volume with ice thickness from the 1970s' bore-hole data and from the 2009 measurements by sonar, adjusted to late winter values. The distributions derived from bore-hole are 'noisier' than the one derived from sonar because the number of data is so much smaller. Nonetheless it is clear that modal values were near 3-m thickness both in the 1970s and in 2009, and the roll-offs of the distributions with increasing thickness are much the same presently as in the past. Again the evidence suggests minimal change in the multi-year ice population here during the last four decades.

Whereas a 1669-km survey in a single year's data cannot

provide the final word on change in multi-year ice on the Canadian polar shelf, the apparent lack of change in 2009-10 relative to the 1970s is remarkable. During this time the extent of perennial ice over the central Arctic Ocean had decreased by half (Perovich et al. 2014) and the average thickness of the mix of ice types there had decreased by an estimated 1.7 m (Kwok and Untersteiner, 2011).

Discussion of Arctic perennial ice in recent years has been focused more on loss factors (ice export from the Arctic Ocean, duration of

residence there, duration of the thaw season, albedo feedback, cloud effects, etc.) than on formative aspects. Yet the sea ice presence within the Arctic actually represents the difference between competing processes of ice formation and loss. The classic perspective on multi-year ice formation is thermodynamic and traceable to the one dimensional heat-budget model of Maykut and Untersteiner (1971). Using this tool, it can be shown that first-year ice in the colder parts of the marine Arctic can survive its first melt season and gradually evolve into multi-year ice if the cold-season accretion of ice via latent heat loss through the top surface exceeds the warm-season ablation caused by absorption of radiative and oceanic heat. Because the latent heat lost from the top of the ice must diffuse through it from the bottom, its flux is inversely proportional to ice thickness whereas heat gains during the thaw season are proportional to surface area not thickness. As the ice grows thicker, the amount of new-ice accretion during winter decreases; a quasi-equilibrium maximum thickness is reached when winter's gains match summer's losses. This maximum is about 3 m for an average seasonal cycle of climatic forcing in the High Arctic (Maykut and Untersteiner, 1971; Flato and Brown, 1996). Calculations show that increasing the maximum above 3 m by varying climatic forcing within observed limits is difficult, but that increases in snow depth and ocean heat flux can readily decrease it.

Paradoxically a large fraction of the perennial ice mapped for the 1970s by Bourke and Garrett (1987) was appreciably thicker than the 3-m thermodynamic limit. Even then it was obvious that this much thicker ice must have formed by a different process.

Figure 24. 'surveys not compared, autumn of

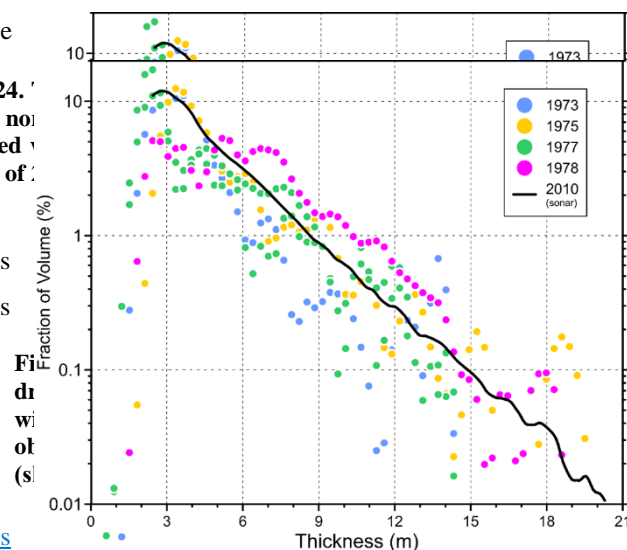


Figure 25. Distribution of pack-ice volume over ice thickness in Penny Strait comparing recent data with surveys during the 1970s. The 2009 data have been adjusted to late winter 2010, as explained in the text.

Figure 26. Distribution of pack-ice volume over ice thickness in Penny Strait comparing recent data with surveys during the 1970s. The 2009 data have been adjusted to late winter 2010, as explained in the text.

420 Narrow zones of much thicker ice (ridges) formed via the piling of ~~fracturing-offracted~~ level ice are ubiquitous in pack ice (Wadhams and Horne, 1980). Indeed ridged ice ten or more times thicker than the fragments that comprise it forms within a few hours during wind storms (Amundrud et al., 2004). Because subsequent thermal deterioration of such thick ice amounts to a few metres per year, remnants of a 30-m ridge may persist for a decade or more (Amundrud et al., 2006). However because ridge remnants are separated and relatively narrow (15-50 m) they cannot form the extensive areas of multi-year ice above 3-m thickness mapped by submarine.

However, the stamukhi zone forming the interface between fast and mobile ice is a plausible source for the large floes of thick multi-year ice, past and present. Here cyclic offshore/onshore and shearing movements of the pack driven by storms facilitate the creation of young ice in flaw leads and its subsequent compression into broad expanses of very thick ice rubble near the grounding line (cf. Kovacs and Mellor, 1974). The patterns of wind and ice circulation generate the highest ice pressure and rubble-forming potential along the North American side of the Arctic margin (Thorndike and Colony, 1982; Colony and Thorndike, 1984), particularly against ~~northern~~ the 2100-km stretch of coastline from north-east Greenland and the western Canadian Arctic Archipelago to the south-west limit of the Queen Elizabeth Islands. This inexorable compression against the coast is evident (Fig. 14) in the

435 drift-pattern of ice revealed by satellite-tracking (IABP, 2020), which displays large along-shore movements in both directions that amount to relatively little net displacement along-shore, interspersed with smaller perpendicular movements that are shoreward on average.

During the 12 to 18-month duration of each track, ice drifted shoreward at about 450 m per day – actual values were, from north-east to south-west, 360, 435 and 555 m per day. Since floes are very closely packed in this area, the shoreward movement is possible only if intervening ice is removed from the sea surface, likely via ridge-building in response to compressive and possibly shearing forces at the fast-ice edge (or coastline). If the “lost” ice were 2 m thick, each day’s movement would be sufficient to build along the coast a ridge of 20-m draft, 30-degree side slope and 25% void fraction. In the course of a year, such “daily” ridges, packed together, would form an along-shore stamukhi zone almost 30 km wide and an average of 11 m in thickness. With time, the cold climate of this region, its highly compacted ice cover and

450 sluggish drift towards milder climes almost guarantee the transformation of broad bands of stamukhi into thick floes of multi-year ice.

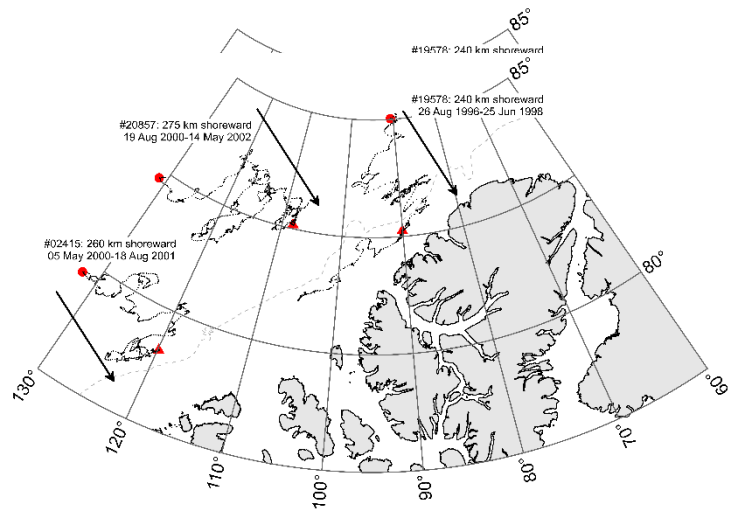


Figure 27. Tracks of 3 beacons on ice north-west of the Canadian Arctic Archipelago, illustrating the combined shearing and compressive deformations that allow the ice slowly to approach the coast. The starting and ending points are marked by red dots and triangles, respectively. Data courtesy of the International Arctic Buoy Program (IABP) <http://iabp.apl.washington.edu/index.html> accessed Nov 2021

The formation and consolidation of stamukhi into broad multi-year hummock fields is storm driven, rapid and insensitive to the direct effects of atmospheric warming. Because the rate of ablation under present conditions is far too slow to eliminate the resulting thick floes in one thaw season, it is plausible that such ice persists in areas close to the formations zones with properties similar to those of past decades. [Subject to uncertainty in our seasonal adjustment of observations and to currently missing knowledge of possible secular change in the mechanics of ridge building \(wind stress, properties of ice and snow\).](#) we suggest that thick-ice genesis as stamukhi explains, despite changing climate, the similarity between our 2009 ice thickness data and those from the 1970s in the Canadian High Arctic.

4.2 Hazardous ice

High average draft (correlated with high thickness and strength), wide extent and the absence of thin (viz. weak) zones are all attributes of interest in the context of ice hazards to navigation. This data set has been ~~analysed~~[analyzed](#) to yield geometric data (draft, extent) on large hazardous features within multi-year ice of the High Arctic ~~in the late 2000s.~~ The focus was on floes wider than 500 m (big, vast and giant in standard nomenclature: CIS, 2005) which might be detectable using the 250-m resolution of the satellite-borne sensors commonly used for ice reconnaissance. These multi-year floes defy simple characterization (e.g. Johnston and Timco, 2008) because they are commonly freeze-bonded conglomerations of smaller floes of varying provenance, age and thickness; moreover, thaw holes produced beneath melt ponds in summer may confound even a reliable identification of floe boundaries in topographic sections. To facilitate both the delineation of floes and comparisons with bore-hole surveys, we have worked with a 250-m running average of the sonar-derived draft profile. [FigureFig.](#) 15 illustrates how averaging alters the probability density of ice draft: the likelihood of both thin and thick ice decreases as the averaging scale increases while the likelihood of near-average ice increases; the multi-year-ice mode becomes more prominent and shifts to higher draft because the ice-draft histogram is positively skewed. These differences are important to bear in mind [also](#) when interpreting data from low resolution sensors carried by aircraft and satellites.

The Rayleigh criterion was applied to this smoothed ice-bottom relief to detect expanses of ice that were unusually thick on a 250-m scale; the reference level for draft, -2 m, enabled identification of the thickest parts of thick floes; peaks in draft were counted as separate features if intervening values dropped towards this reference level by more than half the peak value. This is an unorthodox use of the Rayleigh criterion, otherwise long established as a tool for identifying ridge keels in well resolved

Figure 28. Tracks of 3 beacons on ice north-west of the Canadian Arctic Archipelago, illustrating the combined shearing and compressive deformations that allow the ice slowly to approach the coast. The starting and ending points of the tracks are marked with red dots respectively. Data (IABP) <http://iabp.a>

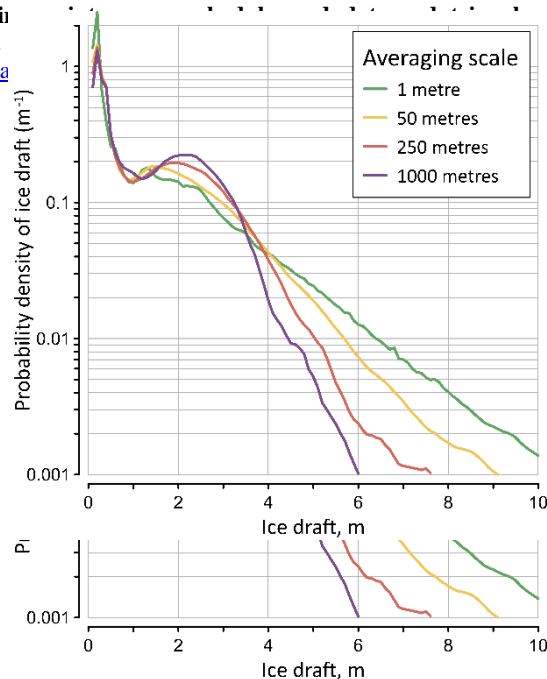
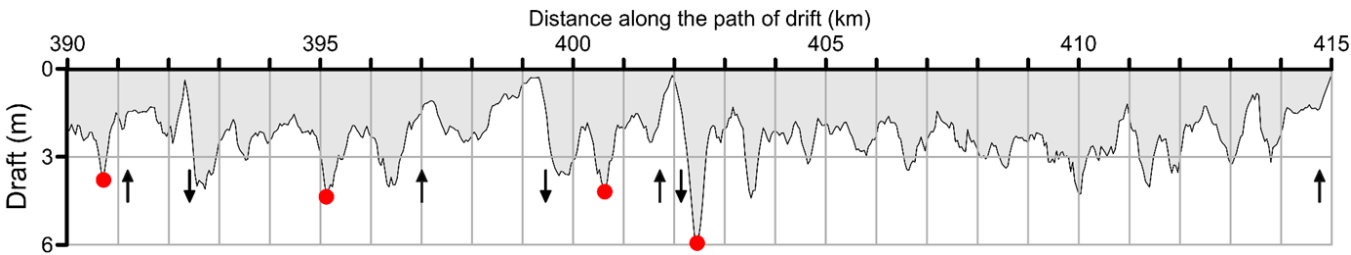


Figure 29. Impact of along-track averaging on the probability density of ice draft.

ice-bottom topography (e.g., Wadhams and Horne, 1980). The boundaries of floes containing these features were taken to be those locations where the 250-m averaged draft crossed 1.5-m depth. The length of the measured chord on each floe was taken to be the length of the survey path between these cross-overs; the mean draft of each floe was the average of all draft values



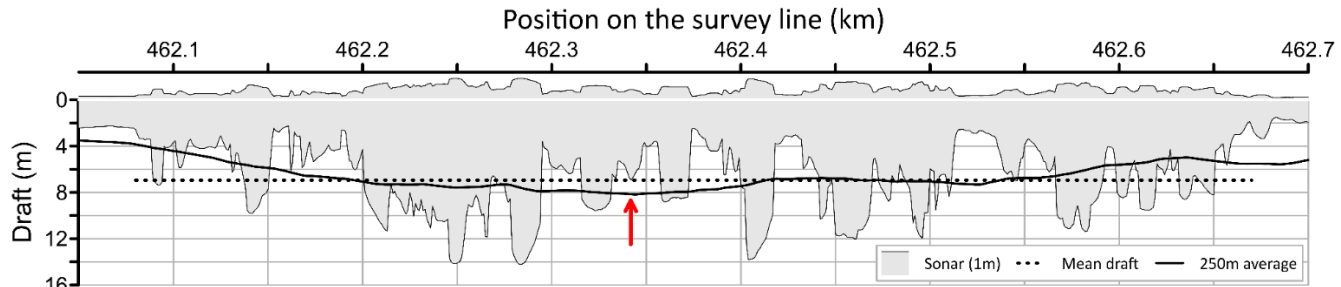
in the measured (not smoothed) data between these points.

Figure 16 displays a segment of the smoothed ice-bottom relief, the “keels” identified within that segment and the edges of the floes in which they were embedded. These so-called “keels” are actually broad expanses of thicker ice, and despite their similarity in a vertically exaggerated view, they are not associated with individual pressure ridges (see Fig. 17).

Figure 18 displays the distribution along the survey path of floes potentially hazardous to navigation. The hazard is represented by an index of severity equal to the area of the floe’s cross-section associated with ice thicker than 4 m total cross-sectional area of ice within the which was thicker than 4 m; the 4-m threshold was chosen arbitrarily to be appreciably higher than the 9-foot-at-3kt (2.75 m) capacity for continuous icebreaking by the most capable ship in service, Russia’s Class-9-rated Artika. Although thick ice and large floes both present hazard, the index does not distinguish between short transects of very thick ice and long transects of thinner ice. Table 43 compares the 10 floes with the highest severity and the 10 thickest floes.

Figure 32. A 25-km segment of the section measured by sonar, The curve displays 250-m averaged values of ice draft. The red dots mark “keels” identified using the Rayleigh criterion. The down and up arrows mark the arriving and departing edges of floes, respectively.

The two groups of floes differ by an order of magnitude in chord length (high index floes being larger) and by 50% in mean thickness (high index floes being thinner), but do not differ significantly in 1-m and 250-m scale maximum thickness. The scatter-plots in Fig. 19 showing all 177 floes suggest that the maximum 250-m averaged thickness of each floe had a weak tendency to increase with the size of the floe and a strong tendency to increase with its mean thickness. Within the full sample



of 177 floes (plot not shown), the mean thickness of floes did not vary systematically with floe size.

505 The data herein provide an opportunity to estimate how frequently floes such as those carefully measured by Johnston (2011, 2019) were likely to be encountered in the Canadian High Arctic in the late 2000s. Autonomous sonar is
510 impartial in measuring all floes that pass overhead, whereas bore-hole surveys are selective. Johnston sought suitable floes

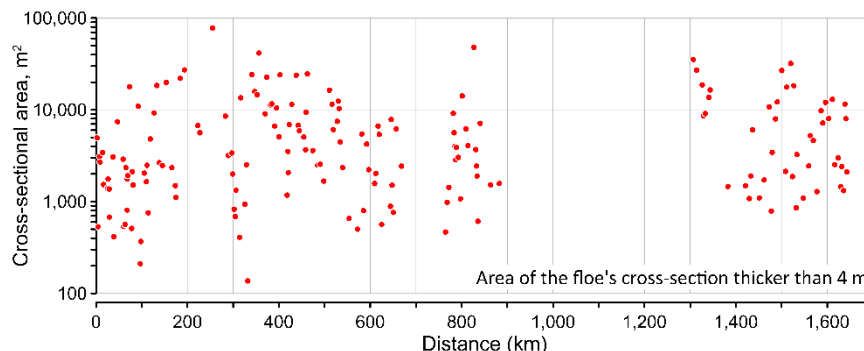


Figure 35. An index of the navigational hazard posed by individual thick floes identified along the survey path. The index in the cross-sectional area of all ice thicker than 4 m in each floe.

Figure 34. A 650-m section of a floe with 6.95m average draft showing the difference between conventional ridge keels of 25-m scale in the original sonar record and the identified "keel" (arrow) in the 250-m averaged draft. Plotted freeboard is simply a notional scaled version of the floe's draft.

Figure 33. A 650-m section of a floe with 6.95m average draft showing the difference between conventional ridge keels of 25-m scale in the original sonar record and the identified "keel" (arrow) in the 250-m averaged draft. Plotted freeboard is simply a notional scaled version of the floe's draft.

during reconnaissance flights by helicopter and selected the most rugged for systematic measurement via drilling. She worked in the same area of the High Arctic during an overlapping period of time (August 2007 to April 2011). The mean of the floe-
515 averaged thicknesses from 22 floes, each typically 20-30 holes at 10-m spacing (a 200-300 m span), was 7.60 m; the quartiles were 4.95, 7.60 and 9.38 m.

The sonar in Penny Strait measured ice draft across 1669.0-km of pack ice, a mix of thick old ice, thin new ice and open water. There were 738.7 km of ice within the section that had draft greater than 0.95 m. Within this thicker component of the pack, a 250-m expanse of ice with draft exceeding 4.35 m was encountered on average every 5.7 km, one exceeding 6.70 m every 42
520 km and one exceeding 8.30 m every 113 km (these thresholds are the drafts equivalent to quartile thicknesses of the bore-hole surveys). As to be expected given the drillers' specific interest in very thick ice, 250-m expanses of ice with draft exceeding 4.35 m were much less common in the sonar record (4.36%) than in the drill-hole surveys (75%), as also those exceeding 8.30 m (0.22%, versus 25%).

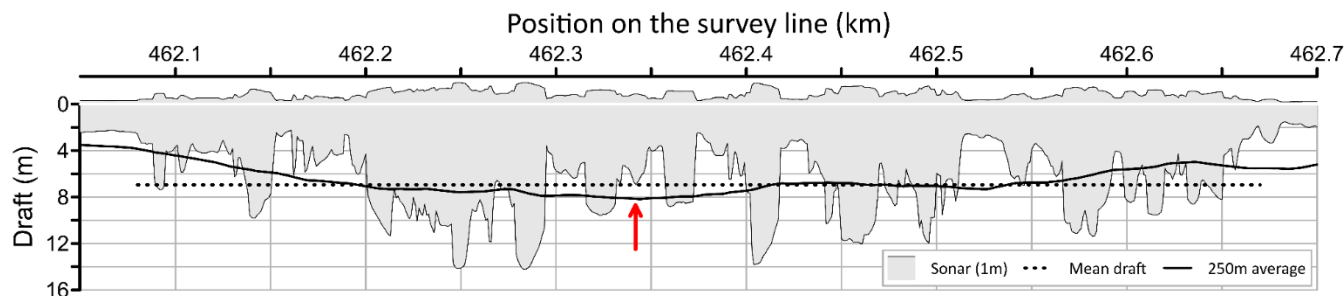


Figure 36. An index of the navigational hazard posed by individual thick floes identified along the survey path. The index in the cross-sectional area of all ice thicker than 4 m in each floe.

However, the recurrence distances for thick ice estimated from the sonar record are not inconsistent with the airborne observer's success in finding such features. An observer flying along the sonar section at 100 knots and looking only down would cross a 250-m expanse of 9.4-m thick ice (8.3 m draft) ~~ice~~ on average every 36 minutes; an observer with visibility a few kilometres to each side of the flight path could find such features in less time. Search times in the range of 15-30 minutes are consistent with the experience of the drill team (M. Johnston, pers. com., 2009).

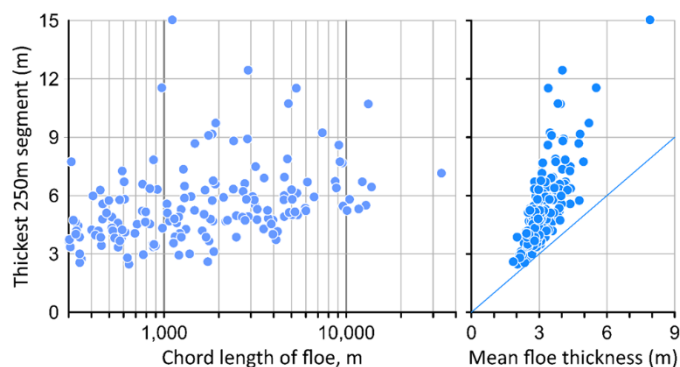


Figure 37. Scatterplot of the maximum 250-m averaged thickness of each floe against the measured chord length of that floe (left), and against the mean thickness of the floe (right).

5 Conclusions

Ice-profiling sonar installed in Penny Strait during the 2009-10 winter have provided modern ice-thickness data from the northern Canadian polar shelf, for comparison with prior bore-hole surveys during the 1970s. The two data sets provide a perspective on change within the notional last ice area of the marine Arctic.

The ice pack in Penny Strait in the autumn of 2009 was a mix of multi-year floes from further north and young ice formed locally. The latter occupied about 60% of the pack ice surveyed because the densely packed south-drifting multi-year floes spread apart as they accelerated into the strait. Old ice ~~could be distinguished from~~ and new ice populations were distinguishable because the two populations formed distinct modes in the histogram of draft. The mean draft of ~~the component~~ those 25-km segments of the pack ~~that was~~ deemed to be contain old ice (draft > 0.75 m) was 2.66 m (thickness 3.00 m).

The observations in 2009 were acquired at the end of the thaw season, whereas comparative data from the 1970s were acquired late in the freezing season. To allow inter-comparison, the modern ice-draft data were converted to thickness and then seasonally adjusted ~~for using modeled estimates of~~ wintertime (October through mid-May) ice accretion. The resulting mean estimated thickness for multi-year ice in May 2010 was 3.677 m (~~σ~~ sample standard deviation of 0.45 m). The average thickness from ten bore-hole lines measured between 1972 and 1980 within ~~40080-140~~ km of Penny Strait, to the northwest ~~of Penny Strait~~, was also 3.67 m (~~σ~~ sample standard deviation of 0.67 m). Moreover, the 1970s and 2010 distributiondistributions of ice volume as function of thickness ~~waswere~~ not obviously different ~~from that in the 1970s in terms of their modes~~ modal values and roll-offs with increasing thickness. Nonetheless, we note the distinction between the absence of dramatic change over time in the thickness of multi-year-ice (this paper) and the obvious reduction in its concentration, documented elsewhere. It is noted also that the present data reveal conditions in only one year, in one 1669-km survey. More prolonged and widespread observations are needed to substantiate these results.

~~The apparent lack of change in thick multi-year ice near Penny Strait after 40 years of Arctic warming suggests examining its genesis not its wastage. We propose that the formation of Arctic multi-year ice floes thicker than about 3 m has been and~~

continues to be driven by pack-ice pressure rather than by surface thermal energy balance. The build-up of pressure sufficient to build large ridges occurs within a few hundred kilometres of coastlines during strong onshore wind storms. The occurrence of such weather is not obviously reduced by rising Arctic air temperature.

Where such winds prevail, specifically off northern Greenland and the Canadian Archipelago, ridges accumulate into wide bands of thick ice rubble – stamukhi zones. Ice rubble piled to a thickness of tens of metres takes many years to deteriorate in the cold High Arctic climate. Meanwhile it evolves into the very thick old ice still found along this coast and for a few hundred kilometres in down-drift directions across the Canadian polar shelf and into the Beaufort and Greenland Seas.

The northern Canadian polar shelf continues to present serious ice hazards to navigation, although navigational risk has decreased with the decline in old ice concentration. 177 floes of interest were identified within the 739 km of ice having draft greater than 0.95 m. Their danger to navigation was assessed using 4 metrics: chord length, maximum 250-m-average thickness, maximum thickness and the cross-sectional area of ice thicker than 4 m. The 20 most dangerous floes fell into two groups based on these metrics, those with the most ice thicker than 4 m and those with the highest mean thickness. The first tended to have modest mean thickness (3.4-m group average) and large chord length (12.5-km group average); the second had much smaller chord length (1.3-km group average) and, obviously, high mean thickness (5.1-m group-average). The groups differed little in the greatest thicknesses on 1-m and 250-m scales. 46Forty-six of the floes ~~hashad~~ at least one 250-m expanse with average thickness over 6 m ~~of floes~~ and 14fourteen had an expanse ~~thicker~~averaging more than 8 m. The thickest 250-m expanses tended to occur within the smaller thicker floes.

The accelerated thermal wastage of thick multi-year ice has dominated scientific attention during recent decades. The surprising lack of change in the thickness of multi-year ice near Penny Strait after 40 years of Arctic warming indicates need for more attention to the processes by which, and the locales where, it is created. We argue that the formation of Arctic multi-year ice floes thicker than about 3 m has been and continues to be driven by pack-ice deformation rather than by surface thermal energy balance. The extreme deformation of pack ice required to build large ridges occurs within a few hundred kilometres of coastlines during strong onshore wind storms. Where such winds prevail, specifically along 2100-km of coastline bordering northern Greenland and the Queen Elizabeth Islands, ridges accumulate into wide shore-parallel bands of thick ice rubble – stamukhi zones. Ice rubble piled to a thickness of tens of metres takes many years to deteriorate in the cold High Arctic climate. Meanwhile it likely evolves into the very thick old ice still found along this coast and for hundreds of kilometres in down-drift directions across the Canadian polar shelf and into the Beaufort and Greenland Seas. Since there is little evidence that high wind-stress events are decreasing in intensity, duration or frequency in response to rising Arctic air temperature, the production of very thick old ice will likely continue. They implications for the future of ice-free summers and safely navigable waters in the Arctic are obvious.

Data availability statement

Information for access of data: <https://www.pac.dfo-mpo.gc.ca/science/oceans/data-donnees/index-eng.html> [Nov 2021].

590 The archive of Fisheries and Oceans Canada is not accessible via the internet. Data used in this study are available on request to the corresponding author. Users may also contact the senior analyst to arrange for access:

DFO.PAC.SCI.IOSData-DonneesISO.SCI.PAC.MPO@dfo-mpo.gc.ca

Author contribution

The manuscript is the work of the sole author.

Competing interests

595 The author declare that he have no conflict of interest..

Acknowledgements

600 This study was funded by the Canadian Program for the International Polar Year, the Canadian Program for Energy Research and Development and the Government of Nunavut. Logistical support was provided by the Polar Continental Shelf Program (PCSP) of Natural Resources Canada and the Canadian Coast Guard. I thank PCSP staff, officers and crew of CCGS *Henry Larsen*, and DFO technical staff (R. Lindsay, J. Poole) for their support in mooring preparation, deployment and recovery. I thank D. Riedel and staff of ASL Environmental Sciences Inc. for diligence in processing sonar data. [Comments by Dr. David Babb and another \(anonymous\) reviewer have been very helpful.](#)

References

- 605 Agnew, T., Lambe, A. and Long, D.: Estimating sea ice area flux across the Canadian Arctic Archipelago using enhanced AMSR-E, *J. Geophys. Res.*, 113, C10011, doi:10.1029/2007JC004582, 2008.
- Alt, B., Wilson, K. and Carrières, T.: A case study of old ice import and export through the Peary and Sverdrup Channels of the Canadian Arctic Archipelago, *Ann. Glaciol.*, 44, 329-338, 2006.
- Amundrud, T. L., Melling, H. and Ingram, R. G.: Geometrical constraints on the evolution of ridged sea ice, *J. Geophys. Res.*, 109, C06005, doi:10.1029/2003JC002251, 2004.
- 610 Amundrud, T. L., Melling, H., Ingram, R. G. and Allen, S. E.: The effect of structural porosity on the melting of ridge keels in pack ice, *J. Geophys. Res.*, 111, C06004, doi:10.1029/2005JC002895, 2006.
- Bourke, R. H. and Garrett, R. P.: Sea ice thickness distribution in the Arctic Ocean, *Cold Reg. Sci. Tech.*, 13, 259-280, 1987.

CIS: MANICE (Manual of Ice), Unpublished document, Canadian Ice Service, 2005.

<https://www.canada.ca/en/environment-climate-change/services/weather-manuals-documentation/manice-manual-of-ice/chapter-3.html#Egg> [2021] last access 1 May 2022

~~Collins, M., Knutti, R., Arblaster, J., Dufresne, J. L., Fiechfet, T., Friedlingstein, P., Gao, X., Gutowski, W. J., Johns, T., Krinner, G., Shongwe, M., Tebaldi, C., Weaver A. J. and Wehner, M.: Long term Climate Change: Projections, Commitments and Irreversibility, In: Climate Change 2013: The Physical Science Basis, Contribution of Working Group I to the Fifth Assessment Report of the Intergovernmental Panel on Climate Change [Stocker, T., F., Qin, D., Plattner, G. K., Tignor, M., Allen, S.K., Boschung, J., Nauels, A., Xia, Y., Bex, V. and Midgley, P., M. (eds.)]. Cambridge University Press, Cambridge UK and New York USA, 2013.~~

Colony, R. and Thorndike, A. S.: An estimate of the mean field of Arctic sea ice motion. J. Geophys. Res., 89, 10623-10629, 1984.

Comiso, J. C.: Large Decadal Decline of the Arctic Multiyear Ice Cover. J. Clim., 25, 1176–1193. doi:10.1175/JCLI-D-11-00113.1, 2012.

Cox, G. F. N.: Variations of salinity in multi-year sea ice at the AIDJEX 1972 camp, M.Sc. thesis, Dartmouth College NH, 972.

Dumas, J. A., Melling, H. and Flato, G. M.: Late-summer pack ice in the Canadian Archipelago: Thickness observations from a ship in transit, Atmos. Oc., 45, 57-70, 2007.

Dickins, D. F. and Wetzel, V. F.: Multi-year pressure ridge study: Queen Elizabeth Islands, In: Proc 6th Int. Conf. Port Ocean Eng. Arctic Cond., POAC'81. Quebec, 765 775. (B. Michel, ed), Université Laval, Quebec, 1981.

Dyke, A. S. and England, J.: Canada's most northerly post-glacial bowhead whales (balaena mysticetus): Holocene sea-ice conditions and polynya development, Arctic, 56, 14-20, 2003.

Dyke, A. S., Hooper, J. and Savelle, J.M.: A history of sea ice in the Canadian Arctic Archipelago based on postglacial remains of bowhead whale (Balaena mysticetus). Arctic 49, 235-255. 1996.

Flato, G.M. and Brown, R. D.: Variability and climate sensitivity of land-fast Arctic sea ice. J. Geophys. Res., 101, 25767-25778, 1996.

Galley, R. J., Else, B. G., Howell, S. E., Lukovich, J. V. and Barber, D. G.: Landfast sea ice conditions in the Canadian Arctic: 1983-2009,. Arctic, 133-144. 2012.

Hamilton, S. G. , Castro de la Guardia, L., Derocher, A. E., Sahanatien, V., Tremblay, B., et al. : Projected polar bear sea ice habitat in the Canadian Arctic Archipelago. PLoS ONE 9, e113746, doi:10.1371/journal.pone.0113746, 2014.

Haas, C., [and Howell, S. E. L.: Ice thickness in the Northwest Passage, Geophys. Res. Lett., 42, doi:10.1002/ 2015GL065704. 2015.](#)

[Haas, C.,](#) Lobach, J., Hendricks, S., Rabenstein, L. and Pfaffling, A.: Helicopter-borne measurements of sea ice thickness, using a small and lightweight, digital EM system. J. Appl. Geophys., 67, 234-241, 2009.

- Howell, S. E. L. and Brady, M.: The dynamic response of sea ice to warming in the Canadian Arctic Archipelago. *Geophys. Res. Lett.*, 46, 13119-13125, 2019.
- Howell, S. E. L., Derksen, C., Pizzolato, L. and Brady, M.: Multiyear ice replenishment in the Canadian Arctic Archipelago: 1997–2013, *J. Geophys. Res.*, 120, 1623-1637, 2015.
- 650 Howell SEL CR Duguay, T Markus. 2009. Sea ice conditions and melt season duration variability within the Canadian Arctic Archipelago: 1979–2008. *Geophys Res Lett* 36, L10502, doi:10.1029/2009GL037681.
- Howell S. E. L., Tivy, A., Yackel, J. J. and McCourt, S.: Multi-year ice conditions in the western CAA region of the NWP: 1968-2006. *Atmos. Oc.* 46, 229-242, 2008
- Howell S. E. L., Tivy, A., Agnew, T., Markus, T. and Derksen, C.: Extreme low sea ice years in the Canadian Arctic
- 655 Archipelago: 1998 versus 2007. *J. Geophys. Res.*, 115, C10053, doi:10.1029/2010JC006155, 2010.
- Howell S. E. L., Wohleben, T., Daboor, M., Derksen, C., Komarov, A. and Pizzolato, L.: Recent changes in the exchange of sea ice between the Arctic Ocean and the Canadian Arctic Archipelago. *J. Geophys. Res.*, 118(7), 3595-3607, 2013.
- ~~Huard, D, Tremblay, B.: Last Ice Area, World Wildlife Fund (unpublished rep.) DHS-WWF 01, . [2021]~~
- IABP: <http://iabp.apl.washington.edu/index.html>, 2013. [2020]
- 660 Johnston, M. E. and Timco, G. W.: Understanding and Identifying Old Ice in Summer. Tech. Rep. CHC-TR-055. Canadian Hydraulics Centre, National Research Council Canada, 1200 Montreal Road, Ottawa K1A 0R6. 236 pp., 2008.
- Johnston, M. E.: Results from Field Programs on Multi-year Ice August 2009 and May 2010. Tech. Rep. CHC-TR-082. Canadian Hydraulics Centre, National Research Council Canada, 1200 Montreal Road, Ottawa K1A 0R6, 2011.
- Johnston, M. E.: Thickness and freeboard statistics of Arctic multi-year ice in late summer: Three recent drilling campaigns,
- 665 *Cold Reg. Sci. Tech.*, 158, 30-51 2019.
- Kovacs, A.: On pressured sea ice. In: *Sea Ice* (T. Karlsson, ed), National Research Council, Iceland, Reykjavik, 276-295, 1972.
- Kovacs, A., Dickens, D. F., and Wright, B. D.: An investigation of multi-year pressure ridges and shore pile ups, APOA Rep. 89-1, Available from Pallister Resources Limited, Calgary AB, 1975.
- Kovacs, A. and Mellor, M.: Sea ice morphology and ice as a geologic agent in the southern Beaufort Sea. In: *The coast and*
- 670 *shelf of the Beaufort Sea*, 1974.,
- Kovacs, A., Weeks, W. F., Ackley, S. and Hibler, W. D. III: Structure of a multi-year pressure ridge *Arctic* 26, 22-31, 1973.
- Kwok, R.: Exchange of sea ice between the Arctic Ocean and the Canadian Arctic Archipelago, *Geophys. Res. Lett.*, 33, L16501, doi:10.1029/2006GL027094, 2006.
- Kwok, R.: Arctic sea ice thickness, volume, and multiyear ice coverage: losses and coupled variability (1958–2018). *Env. Res.*
- 675 *Lett.* 13, 105005, 2018.
- Kwok, R. and Untersteiner, N.: The thinning of Arctic sea ice. *Phys. Today*, 64, 36-41, 2011
- Kwok, R., Kacimi, S., Webster, M. A., Kurtz, N. T. and Petty, A. A.: Arctic snow depth and sea ice thickness from ICESat-2 and CryoSat-2 freeboards: A first examination. *J. Geophys. Res.*, 125, 2019JC016008, 2020.

- Lindsay, R. and Schweiger, A.: Arctic sea ice thickness loss determined using subsurface, aircraft and satellite observations. *Cryosphere*, 9, 269-283. doi:10.5194/tc-9-269-2015, 2015.
- Lyon, W. K.: The navigation of Arctic polar submarines. *J. Navig.*, 37, 155-179, 1984.
- Maykut, G. A. and Untersteiner, N.: Some results from a time-dependent thermodynamic model of sea ice. *J. Geophys. Res.*, 76, 1550-1575, 1971.
- Melling, H.: Sea ice of the northern Canadian Arctic ~~Archipelag~~Archipelago. *J. Geophys. Res.*, 107, 3181, doi:10.1029/2001JC001102, 2002.
- Melling H.: The Thickness of Arctic Pack Ice - Advances and Challenges. Arctic Climate Change - The ACSYS Decade and Beyond. Chapter 3, In Arctic Climate Change - The ACSYS Decade and Beyond. Atmospheric and Oceanographic Sciences Library 43, doi 10.1007/978-94-007-2027-5_3. Springer Science+Business Media B.V. 464 pp., 2009.
- Melling, H, Haas, C., and Brossier, E.: Invisible polynyas: Modulation of fast ice thickness by ocean heat flux on the Canadian polar shelf. *J. Geophys. Res.* 120, 777-795. doi/10.1002/2014JC010404, 2015.
- Melling, H., Johnston, P. H. and Riedel, D. A.: Measurements of the underside topography of sea ice by moored subsea sonar. *J. Atmos. Oc. Tech.*, 12, 589-602, 1995.
- Melling, H., Topham, D. R. and Riedel, D. A.: Topography of the upper and lower surfaces of 10 hectares of deformed sea ice, *Cold Reg. Sci. Tech.*, 21, 349-369, 1993.
- Münchow, A. and Melling, H.: Ocean current observations from Nares Strait to the west of Greenland: Interannual to tidal variability and forcing. *J. Mar. Res.*, 66, 801-833. 2008.
- Perovich, D., Gerland, S., Hendricks, S., Meier, W., Nikolaus, M. and Tschudi, M.: Sea ice. In: Arctic Report Card, <http://www.arctic.noaa.gov/reportcard>, 2014. [2021].
- Pfirman, S. L. and Tremblay, B.: Arctic refuge holds key to future of polar species, *New Scient.* 204, 26–27, 2009.
- Pfirman, S. L, Tremblay, B., Newton, R. and Fowler, C.: The Last Arctic Sea Ice Refuge, AGU Fall Meeting Abstracts, 592. <http://adsabs.harvard.edu/abs/2010AGUFM.C43E0592P> 2010. [~~2021~~ ~~2010~~ ~~[2021]~~]
- Ridley, J. K. and Blockley, E. W.: Brief communication: Solar radiation management not as effective as CO2 mitigation for Arctic sea ice loss in hitting the 1.5 and 2 °C COP climate targets, *The Cryosphere*, 12, 3355–3360, <https://doi.org/10.5194/tc-12-3355-2018>, 2018.
- Rothrock, D. A., Yu, Y. and Maykut, G. A.: Thinning of the Arctic sea-ice cover. *Geophys. Res. Lett.* 26, 3469-3472, 1999.
- Stroeve, J. and Notz, D. *Environ. Res. Lett.* 13, 103001, 2018.
- Sisodiya, R. G. and Vaudrey, K. D.: Beaufort Sea first year ice features survey 1979. In: Proc. 6th Int. Conf. Port Ocean Eng. Arctic Cond, POAC'81. Quebec, 755 764. (B Michel, ed). Université Laval, Quebec, 1981.
- Sturm, M.: Thermal conductivity and heat transfer through the snow on the ice of the Beaufort Sea. *J. Geophys. Res.*, 107, 1-17, doi:10.1029/2000JC000409, 2002.
- Thorndike, A. S. and Colony, R.: Sea ice motion in response to geostrophic winds. *J. Geophys. Res.*, 87, 5845-5852, 1982.
- Timco, G. W. and Frederking, R. M. W.: A review of sea ice density. *Cold Reg. Sci. Tech.* 24, 1-6 1996.

- Tivy, A., Howell, S. E. L., Alt, B., McCourt, S., Chagnon, R., Crocker, G., Carrières, T. and Yackel, J. J.: Trends and variability in summer sea ice cover in the Canadian Arctic based on the Canadian Ice Service Digital Archive, 1960–2008 and 1968–2008. *J. Geophys. Res.*, 116, C03007, doi:10.1029/2009JC005855, 2011.
- 715 [Trodehl, H. J., Wilkinson, S. O. F., McGuinness, M. J. and Haskell T.G.: Thermal conductivity of sea ice; dependence on temperature and depth. *Geophys. Res. Lett.*, 28, doi: 10.1029/2000GL012088, 1270-1282, 2001.](#)
- Tucker, W. B. III, Weeks, W. F. and Frank, M.: Sea ice ridging over the Alaskan continental shelf. *J. Geophys. Res.*, 84, 4885-4897, 1979.
- 720 Wadhams, P. and Horne, R. J.: An analysis of ice profiles obtained by submarine sonar in the Beaufort Sea. *J. Glaciol.*, 25, 401-424, 1980.
- Wohlleben, T., Howell, S. E. L., Agnew, T. and Komarov, A.: Sea-ice motion and flux within the Prince Gustaf Adolf Sea, Queen Elizabeth Islands, Canada during 2010. *Atmos. Oc.*, 41, 1-17. doi:10.1080/07055900.2012.750232, 2013.

Table 1. Oceanographic mooring in Penny Strait

Site name	ACW09-8	
Position (WGS84)	76° 40.5019' N	097° 52.5356' W
Water depth	148 m	
Deployment platform	CCGS Henry Larsen	
Deployment date	30 Aug 2009	
Recovery platform	Sea ice, via aircraft from Resolute Bay	
Release date	18 May 2010	

Table 2. Ice-measuring instruments on the Penny Strait mooring

	Ice Profiling Sonar	Acoustic Doppler Current Profiler
Model	ASL Environmental Sciences Ltd. IPS4	Teledyne RDI Workhorse-300
Measurements	Ice draft from echo range & pressure	Ice drift & current velocity from Doppler
Depth	44 m	145 m
Sampling interval	1, 3, 10 s for Sep-Oct, Nov-Jan, Feb-May	15 minutes
End of in-water record	01:20 utc 18 May 2010	09:45 utc 16 Mar 2010*

730 Table 3. Characteristics of hazardous multi-year ice features.

10 floes with the most ice thicker than 4 m					10 floes with the greatest mean thickness				
Severity index (m ²)	Chord length (m)	Mean thickness (m)	Thickest 250-m (m)	Maximum thickness (m)	Mean thickness (m)	Chord length (m)	Severity index (m ²)	Thickest 250-m (m)	Maximum thickness (m)
78,019	33,756	3.1	7.2	17.9	7.9	1,110	9,156	15.0	29.7
47,879	13,226	3.9	10.7	19.6	5.5	995	5,627	11.5	23.6
41,529	13,893	3.4	6.4	18.0	5.2	1,921	11,548	9.7	17.2
35,390	9,377	3.7	7.7	16.7	5.0	421	2,486	7.7	14.5
31,916	8,828	3.7	6.4	15.1	4.8	1,837	9,395	9.2	18.9
27,218	10,678	3.2	5.8	14.8	4.8	536	3,423	5.8	10.0
26,981	9,109	3.4	8.6	17.2	4.8	1,512	8,011	8.7	18.8
26,761	10,135	3.1	5.2	15.1	4.4	842	4,075	6.4	14.4
24,630	7,463	3.5	9.2	17.1	4.4	3,176	14,633	7.5	15.5
24,159	8,879	3.2	6.7	21.4	4.4	498	2,701	5.6	10.5
36,448	12,534	3.4	7.4	17.3	5.1	1,285	7,105	8.7	17.3
±5,517	±2,573	±0.1	±0.6	±0.7	±0.4	±285	±1,371	±1.0	±2.0

List of Figures

Figure 1. The northern part of the Canadian polar shelf, its principal geographic features and the schematic pattern of sea-ice movement across it. The map encompasses the Queen Elizabeth Islands which overlie the feature known to geologists as the Sverdrup (sedimentary) Basin.

Figure 2. Mean thickness of sea ice in late winter, 1971-1980, derived from holes drilled during seismic surveys (~~from~~ Melling 2002). Data~~Each value is the average~~ from a median of 1835 boreholes ~~from a 2D grid of survey lines contribute to each sample. Boreholes were,~~ spaced ~~systematically along survey lines,~~ at least 110 yards apart ~~(maximum of 880 yards) on a 2D survey grid. Values used in reference to 2009 data are circled. Climate stations and the 2009-10 mooring site are indicated.~~

Figure 3. Mooring used to support sonar in Penny Strait. The ~~rigid bottom~~twistless coupling enables measurement of ice-drift direction.

Figure 4. ~~Median sea ice concentration at minimum extent in early September (data from the Canadian Ice Service). The fast-moving ice streams leaving the high Arctic appear in brown and yellow, denoting less compact ice fields more readily entered by ice-breaking ships.~~

~~Figure 5.~~ Multi-year pack ice streaming through in Penny Strait on ~~27~~23 August 2009 ~~viewed by space-based synthetic aperture radar. Ice-free water appears dark. A red dot marks the sonar's location.~~ (RADARSAT Data and Products © MacDonald, Dettwiler and Associates Ltd. (2010) – All Rights Reserved. RADARSAT is an official mark of the Canadian Space Agency).

Figure ~~6.5.~~ Fast ice in Penny Strait, ~~winter 2009-10. Multi on 15 January 2010. First-year ice is light-toned and first-year ice shows appears~~ dark. ~~The star~~A red dot marks the ~~sonar~~sonar's location. (RADARSAT Data and Products © MacDonald, Dettwiler and Associates Ltd. (2010) – All Rights Reserved. RADARSAT is an official mark of the Canadian Space Agency).

Figure ~~7.6.~~ Progressive vector of ice drift in Penny Strait from late August until mid-December 2009. Dots on the de-tided (red) curve are at daily intervals. Ice above the mooring became fast on December 9.

Figure 7. Fraction of ice volume versus draft. The curves represent all data, data from 33 25-km segments with mean draft over 2.5 m and data from 19 with mean draft under 1.5 m. Thickness on the top axis is estimated as 1.13x draft.

Figure 8. Statistical measures of ice draft for each 25-km segment of the drift path. The curve labelled “multi-year ice” represents the mean for ice with draft over 75 cm. Axes at the right indicate draft and those at the left estimated thickness; conversion factors of 1.13 have been used for the mean and minimum drafts and 1.2 for the maximum, as discussed in the text. Dates of measurement are indicated on the top frame. Shading denotes intervals with appreciable multi-year ice.

Figure 9. Fraction of ice volume versus draft. The curves represent all data, data from 33 25-km segments with mean draft over 2.5 m and data from 19 with mean draft under 1.5 m. Thickness on the top axis is estimated as 1.13x draft.

~~Figure 10.~~ Calculated wintertime growth of sea ice of three initial thicknesses. The air temperature and snow depth on ice that control the growth are averages of 1981-2010 climatological conditions at Resolute Bay and Eureka.

Figure 10. Sensitivity of the calculated ice-growth adjustment to ± 1 standard deviation departure from average climatic conditions for air temperature and snow depth.

Figure 11. Average ice thickness for 25-km segments of the track line at the end of the 2009-10 winter, estimated by forcing ice growth with monthly climatological data for air temperature and snow depth, with the assumption that no new leads or ridges formed during the winter. Shading denotes intervals with appreciable multi-year ice.

Figure 12. Track-mean ice thickness of multi-year ice from drill-hole surveys north-west of Penny Strait during late winter in the 1970s, compared with 2010 winter values derived from observations in the autumn of 2009, as explained in the text. (shaded band is $\pm\sigma$).

Figure 13. Distribution of pack-ice volume over ice thickness in Penny Strait comparing recent data with surveys during the 1970s. The 2009 data have been adjusted to late winter 2010, as explained in the text.

Figure 14. Tracks of 3 beacons on ice north-west of the Canadian Arctic Archipelago, illustrating the combined shearing and compressive deformations that allow the ice slowly to approach the coast. The starting and ending points are marked by red dots and triangles, respectively. Data courtesy of the International Arctic Buoy Program (IABP) {2021}<http://iabp.apl.washington.edu/index.html> accessed Nov 2021

Figure 15. Impact of along-track averaging on the probability density of ice draft.

Figure 16. A 25-km segment of the section measured by sonar, The curve displays 250-m averaged values of ice draft. The red dots mark “keels” identified using the Rayleigh criterion. The down and up arrows mark the arriving and departing edges of floes, respectively.

Figure 17. A 650-m section of a floe with 6.95m average draft showing the difference between conventional ridge keels of 25-m scale in the original sonar record and the identified “keel” (arrow) in the 250-m averaged draft. Plotted freeboard is simply a scaled version of the floe’s draft.

Figure 18. An index of the navigational hazard posed by individual thick floes identified along the survey path. The index is the cross-sectional area of all ice thicker than 4 m in each floe.

Figure 19. Scatterplot of the maximum 250-m averaged thickness of each floe against the measured chord length of that floe (left), and against the mean thickness of the floe (right).