

Fig. S1. Microplastic concentrations identified at each sample site from the Ross Island region of Antarctica

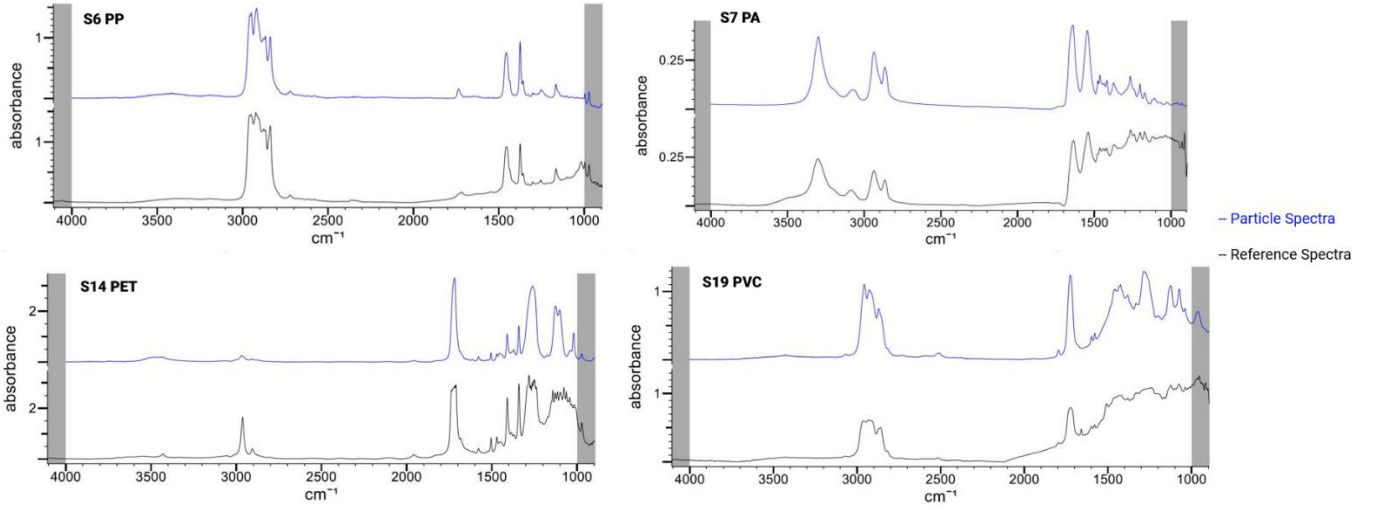


Fig. S2. Examples of identified particle spectra against polymer reference spectra for four identified polymers

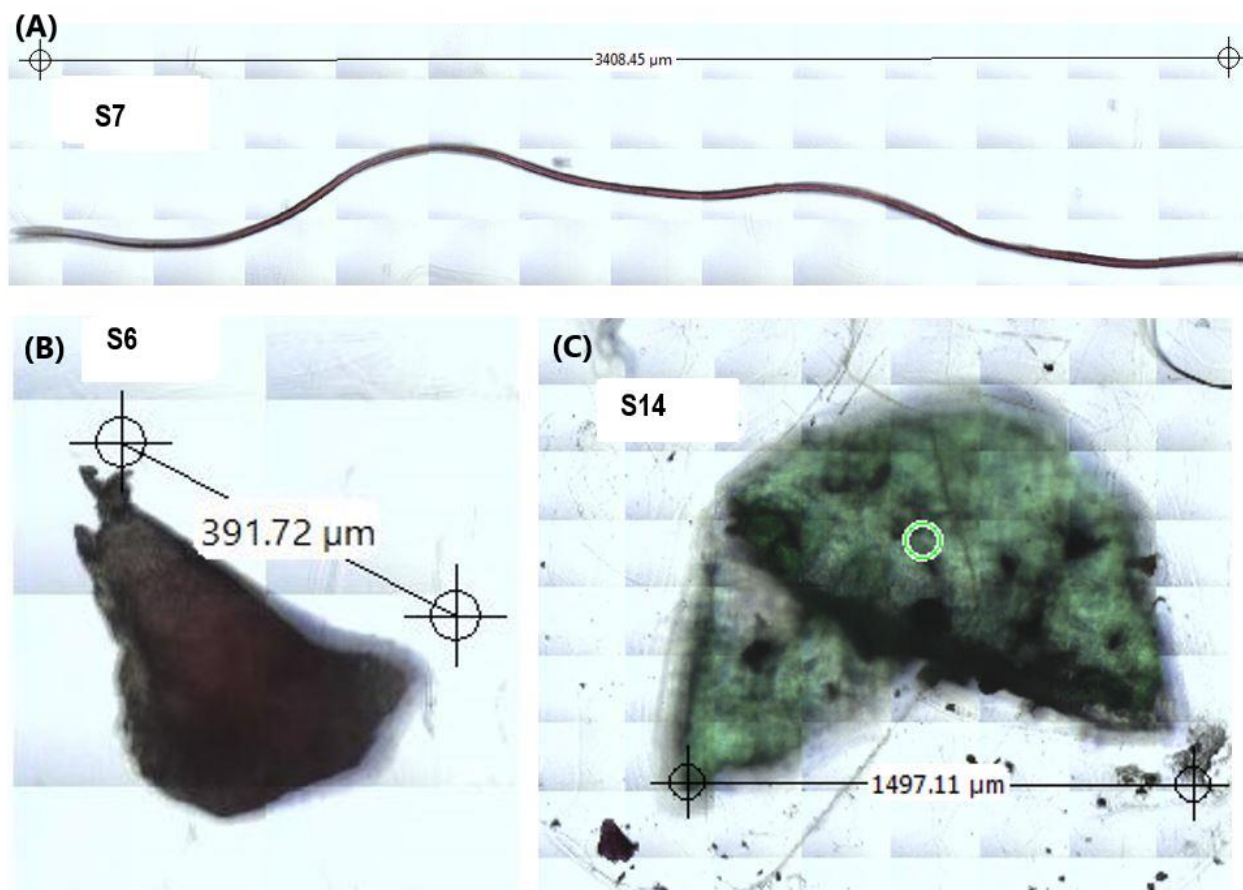


Fig. S3. Example images of identified plastics from three Antarctic samples. (A) Polyamide fibre from S7, (B) Polypropylene fragment from S6, (C) PET film from S14