

Long-term firn and mass balance modelling for Abramov glacier in the data-scarce Pamir Alay

Marlene Kronenberg¹, Ward van Pelt², Horst Machguth¹, Joel Fiddes³, Martin Hoelzle¹, and Felix Pertziger⁴

¹Department of Geosciences, University of Fribourg, Fribourg, Switzerland

²Department of Earth Sciences, Uppsala University, Uppsala, Sweden

³WSL Institute for Snow and Avalanche Research SLF, Davos, Switzerland

⁴GIS consultant, Auckland, New Zealand

Correspondence: Marlene Kronenberg (marlene.kronenberg@unifr.ch)

Abstract. Several studies identified heterogeneous glacier mass changes in western High Mountain Asia over the last decades. Causes for these mass change patterns are still not fully understood. Modelling the physical interactions between glacier surface and atmosphere over several decades can provide insight into relevant processes. Such model applications, however, have data needs which are usually not met in these data scarce regions. Exceptionally detailed glaciological and meteorological data exist for the Abramov glacier in the Pamir Alay range. In this study, we use weather station measurements in combination with downscaled reanalysis data to force a coupled surface energy balance–multilayer subsurface model for Abramov glacier for 52 years. Available *in situ* data are used for model calibration and validation. We find an overall negative mass balance of $-0.27 \text{ m w.e. a}^{-1}$ for 1968/1969–2019/2020 and a loss of firn pore space causing a reduction of internal accumulation. Despite increasing air temperatures, we do not find an acceleration of glacier-wide mass loss over time. Such an acceleration is compensated by increasing precipitation rates ($+0.0022 \text{ m w.e. a}^{-1}$, significant at a 90% confidence level). Our results indicate a significant correlation between annual mass balance and precipitation ($R^2=0.72$).

1 Introduction

Spatially heterogeneous mass changes of glaciers in High Mountain Asia (HMA) during the last decade have been detected by several regional studies (e.g. Kääb et al., 2012; Brun et al., 2017; Shean et al., 2020; Jakob et al., 2021). Topographical effects in combination with precipitation increases are suggested as reasons for balanced or positive mass changes for numerous glaciers in the Karakoram, Kunlun Shan, Pamir, Pamir Alay, and Tibetan Plateau subregions (Miles et al., 2021). Whereas reliable precipitation data from *in situ* measurements are very scarce for the region (Pohl et al., 2015), the analysis of the gridded Global Precipitation Climatology Project over thirty years has indicated a precipitation increase in the Western part of HMA due to large-scale atmospheric circulation patterns (strengthening westerlies) (Yao et al., 2012). Based on regional climate model data, glacier modelling and moisture tracking, De Kok et al. (2020) conclude that changes in irrigation patterns and climate are responsible for the identified mass balance patterns in HMA.

Including *in situ* data and investigating processes at a local scale over several decades can be helpful in better understanding the influence of atmospheric conditions on glacier mass changes (Mölg et al., 2012; Zhu et al., 2020). Mass balance models of varying complexity have been applied to investigate the mass balance response of mountain glaciers to climate (e.g. Klok and Oerlemans, 2002; Pellicciotti et al., 2009; Sicart et al., 2011). Models solving the energy balance at the glacier surface are more physically based and therefore considered more suitable for longer time periods with unknown ~~climates~~ climate than temperature-index parametrisations calibrated for stationery conditions (Hock, 2005). Energy balance models are, however, only applicable if sufficient data are available to generate a complete climate forcing and to calibrate uncertain model parameters. Important processes in the accumulation zone, which reduces mass loss due to refreezing and water storage, are not included into surface energy balance models. Several studies have applied energy balance models coupled to multi-layer snow models to simulate refreezing processes within the snow and firn as well as heat conduction which are relevant for the glacier mass and energy balance (e.g. Reijmer and Hock, 2008; Huintjes et al., 2015b). Simulating the physical connection between the atmosphere and the glacier provides insights into the climatic control of glacier mass gain or loss (Mölg and Hardy, 2004).

A few studies have applied energy balance models for glaciers in HMA: Kayastha et al. (1999) applied a point-scale energy balance model to Glacier AXOIO in the Nepalese Himalaya. Azam et al. (2014) modelled the point energy balance of Chhota Shigri Glacier glacier in the Western Himalaya. Several studies focus on glaciers and ice caps located on the Tibetan Plateau (Mölg et al., 2012; Zhang et al., 2013; Huintjes et al., 2015b, a, 2016). Zhu et al. (2020) applied a surface energy balance model to Muji Glacier, located in the north-eastern Pamir. Except for Huintjes et al. (2016), who used a coupled snowpack and ice surface energy and mass balance model (COSIMA) to reconstruct the climate on the Tibetan Plateau during the little ice age, only relative short periods up to one decade have been investigated. The availability of historical data for the Abramov glacier located in the Pamir Alay provides a unique opportunity for detailed modelling over longer periods than covered by those previous studies.

Abramov glacier is located in the western part of HMA nearby to the data scarce regions for which positive or balanced mass changes have been identified (Fig. 1). Barandun et al. (2015) previously calculated the long term mass balance of Abramov glacier by applying a simplified energy balance model (Oerlemans, 2001) and calibrating it to *in situ* measurements. Denzinger et al. (2021) computed the geodetic mass balance based on aerial imagery from 1975 and satellite stereo pairs from 2015. Both studies found an overall negative mass balance of -0.44 ± 0.10 m w.e. a⁻¹ for 1968-2014 and of -0.38 ± 0.12 m w.e. a⁻¹ for 1975-2015. According to Barandun et al. (2021), Abramov glacier has a similar mass balance to other glaciers in the Pamir Alay. Recent firn investigations at a point site at ~ 4400 m a.s.l. on Abramov glacier (site 2 in Fig. 1b) suggest that the glacier experienced a precipitation increase compared to the 1970s and that firn conditions remained similar since then (Kronenberg et al., 2021a). These field data, however, only provide information about net accumulation rates and furthermore have a limited temporal and spatial resolution. Modelling the continuous firn and mass balance evolution of Abramov glacier with a process-based model will allow to put the observations into context and give insights into underlying processes. Such a model application of for western HMA unprecedented detail is possible thanks to detailed glaciological and meteorological measurements available for the temperate, valley-type Abramov glacier (Kislov, 1982; Pertziger, 1996; Schöne et al., 2013; Hoelzle et al., 2017).

Here, we apply a coupled surface energy balance – multilayer subsurface model (van Pelt et al., 2012, 2019) to simulate the firm and mass balance evolution from 1968 to 2020. Our objective is to better understand the underlying processes of observed mass balances for this glacier in response to climatic conditions which may likely be relevant also for other sites in the region.

60 In our analysis, we put a main focus on the accumulation area aiming on a process-based temporally resolved quantification of accumulation processes within the firm as well as their contribution to the glacier-wide mass balance.

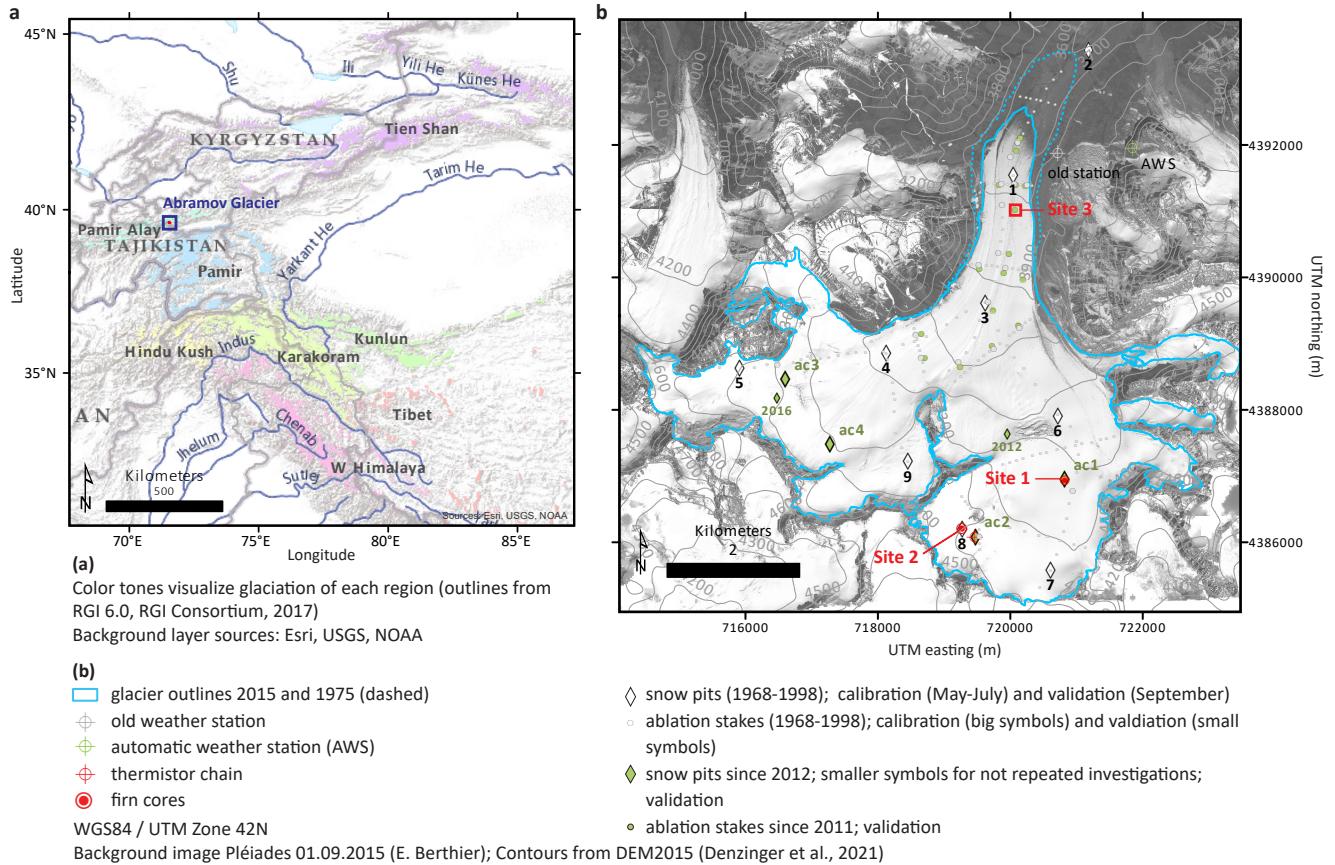


Figure 1. (a) Overview map showing the location of Abramov Glacier in the Pamir Alay (indicated in blue). (b) Map of Abramov Glacier and surroundings showing the location of weather stations and the mass balance observation network. (Own maps; layer sources are indicated in the legend)

2 Methods

2.1 Study site

Abramov glacier (39.50°N, 71.55°E) is located in the Pamir Alay (north-western Pamir) in Kyrgyzstan (Fig. 1). The north facing valley-type glacier spans an elevation range from 3650-5000 m a.s.l. and covers an area of 24 km² (in 2015). In 1972/73 the glacier advanced suddenly (e.g Glazyrin et al., 1993). Since then, the glacier retreated by about 1 km (Barandun et al., 2015). The mean annual air temperature (1968-1998) measured at 3837 m a.s.l. next to the glacier tongue (Fig. 1b, original station) was -4.1°C and annual precipitation sums for the same period are 750 mm a⁻¹. Abramov glacier has temperate firm conditions (Kislov, 1977) and cold subsurface conditions were measured in the ablation area throughout the year (Kislov et al., 1977). Liquid water was observed at depths of about 8.5 to 13 m around 4400 m a.s.l. (Glazyrin et al., 1977; Kislov, 1982). The glacier's detailed and comprehensive mass-balance time series ended abruptly in 1999, but were re-initiated in 2011 and an automatic weather station (AWS) was installed in 2011 (Schöne et al., 2013; Hoelzle et al., 2017; Zech et al., 2021).

2.2 Model description

We simulate the mass balance evolution of Abramov glacier using a coupled surface energy balance–multilayer subsurface model (EBFM) by van Pelt et al. (2012). The surface energy balance model was developed following Klok and Oerlemans (2002) and the subsurface model based on SOMARS by Greuell and Konzelmann (1994). The original model was first employed to simulate the mass balance of Nordenskiöldbreen located on Svalbard. A parameterized water percolation routine was introduced by Marchenko et al. (2017) and the albedo decay scheme was updated based on the work by Bougamont et al. (2005). The model has participated in the firm meltwater Retention Model Intercomparison Project (RetMIP) as "UppsalaU-niDeepPerc" (Vandecrux et al., 2020) and it has been applied to several other glaciers located in the Arctic and the Alps (e.g. van Pelt and Kohler, 2015; van Pelt et al., 2021; Mattea et al., 2021). Here, we use the model version described by van Pelt et al. (2019) and we include an updated parametrisation for seasonal snow densification after van Kampenhout et al. (2017). As the model has been previously described in detail, only a short model overview is given in the following. For full details the reader is referred to van Pelt et al. (2019) and preceding studies.

2.2.1 Surface energy balance model

The surface energy balance model is forced by meteorological input data and calculates the energy fluxes which contribute to the surface energy budget (fluxes towards the surface are defined as positive):

$$Q_{melt} = SW_{net} + LW_{net} + Q_{sens} + Q_{lat} + Q_{sub}, \quad (1)$$

with the total energy available for melting Q_{melt} , the net shortwave radiation SW_{net} , the net longwave radiation LW_{net} , the turbulent sensible and latent heat fluxes Q_{sens} and Q_{lat} and the heat flux into the subsurface Q_{sub} . The model iteratively solves Eq. 1 to find the surface temperature, which is the only unknown and cannot be larger than 0°C.

Surface ablation either occurs in form of melt or as sublimation when the latent heat flux is negative. Surface accumulation occurs either in form of solid precipitation, which is calculated based on air temperature and precipitation forcing using a linear transition from rain to snow around a threshold temperature ($T_{sr} \pm 1$ K), or in form of riming. In case of a snow or firn surface, liquid water originating from surface melt, rain or condensation is added to the subsurface (section 2.2.2) and in case of an ice surface leaves the system as runoff. For the entire modelling period, the incoming shortwave radiation SW_{in} is simulated as described in Klok and Oerlemans (2002) and van Pelt et al. (2012) and accounts for grid aspect and shading by surrounding terrain. The attenuation by clouds (τ_{cl}) is calculated using Eq. 6 with parameters determined for Nordenskiöldbreen, Svalbard, by van Pelt et al. (2012). We also tested the parameter values determined by Greuell et al. (1997) for an Alpine glacier. Using the values determined for Svalbard, however, yielded a better agreement between modelled SW_{in} and AWS measurements. The outgoing shortwave radiation SW_{out} depends on the surface albedo. In case snow is present, the albedo α_{snow} is a function of the snow temperature, wetness and age, as described in van Pelt et al. (2019). In absence of snow the ice albedo α_{ice} applies. The computation of the longwave radiation follows the Stefan-Boltzmann law. The sky emissivity depends on cloud cover, air temperature and humidity following relations in Konzelmann et al. (1994) and Greuell and Konzelmann (1994).

The turbulent sensible and latent heat fluxes Q_{sens} and Q_{lat} are calculated for large-scale atmospheric conditions following Oerlemans and Grisogono (2002). The equations are available in Klok and Oerlemans (2002). The subsurface heat flux Q_{sub} is calculated based on the modelled temperature and conductivity. To obtain Q_{sub} , a linear gradient through the two uppermost layers is applied (section 2.2.2). The heat supplied by liquid precipitation is neglected.

2.2.2 Subsurface model

The subsurface model computes the temporal evolution of subsurface temperature, density and liquid water content for discrete layers. The temperature depends on heat conduction (vertical diffusive heat flux) and refreezing of percolating melt, rain water and condensed moisture (van Pelt et al., 2012). The expressions for heat capacity and effective conductivity are adopted from Sturm et al. (1997) and Yen (1981). Heat (and mass) advection is accounted for by describing vertical layer movement on a Lagrangian grid. The penetration of shortwave radiation into the subsurface and therefore also subsurface melting are neglected. We use an updated subsurface densification routine compared to previous EBFM applications. For layer densities above $\rho_{firn} = 500 \text{ kg m}^{-3}$, the parametrisation described in van Pelt et al. (2012), which is based on the gravitational densification by Arthern et al. (2010) and modified after Ligtenberg et al. (2011), is applied. For layers with a density below $\rho_{firn} = 500 \text{ kg m}^{-3}$ a newly introduced fresh snow densification parametrisation following van Kampenhout et al. (2017) is used. Seasonal snow densifies due to destructive metamorphism and compaction by overburden pressure. Van Kampenhout et al. (2017) furthermore include a snow densification due to drifting snow for densities below 350 kg m^{-3} . Snow drift is not included here, as we are not focusing on dynamics of fresh snow. In order to increase numerical efficiency, the fresh snow ρ_{fresh} density is set to 350 kg m^{-3} . The densification due to destructive snow metamorphism is depth independent but varies according to the layer temperature T :

$$\frac{\partial \rho}{\partial t} = c_{dm3} c_{dm2} c_{dm1} \exp(-c_{dm4}(T_0 - T)), \quad (2)$$

with the constants $c_{dm3} = 2.777 \times 10^{-6} \text{ s}^{-1}$, $c_{dm4} = 0.04 \text{ K}^{-1}$, $c_{dm2} = 1$ ($c_{dm2} = 2$) in case of absence (presence) of liquid water and a tapering constant $c_{dm1} = 1$ in the range of $\rho = \in [0, \rho_{max}]$ and exponentially decreasing above ρ_{max} . The densification due to overburden pressure P (kg m^{-3}) depends on a viscosity coefficient η ($\text{kg s}^{-1} \text{ m}^{-3}$)

$$\frac{\partial \rho}{\partial t} = \frac{P}{\eta}, \quad (3)$$

The viscosity coefficient η is calculated following van Kampenhout et al. (2017) who slightly simplified the expression of Vionnet et al. (2012):

$$\eta = f_1 \times 4 \times \eta_0 \frac{\rho}{c_\eta} \exp(a_\eta(T_0 - T) + b_\eta \rho), \quad (4)$$

with a correction factor accounting for the liquid water content f_1 , $\eta_0 = 7.62237 \times 10^6 \text{ kg s}^{-1} \text{ m}^{-3}$, $a_\eta = 0.1 \text{ K}^{-1}$, $b_\eta = 0.023 \text{ m}^3 \text{ kg}^{-1}$ and $c_\eta = 358 \text{ kg m}^{-3}$.

The subsurface water within the firm column originates from percolating melt water, rain or condensed moisture. Preferential percolation is parametrised as described by Marchenko et al. (2017). Liquid water is instantly distributed along the depth axis following a normal distribution until a maximum depth z_{lim} unless it reaches an impermeable ice layer before. Refreezing of percolating water raises subsurface temperatures and densities until the melting point or the density of ice is reached. A small amount of liquid water is stored as irreducible water held by capillary forces and the remaining water percolates further downwards until an impermeable ice layer is reached where it forms a slush layer. The maximum irreducible water content is calculated from the porosity (ratio between pore space and the total volume of the snow/firm layer) following Schneider and Jansson (2004). Below z_{lim} , percolation occurs non-preferentially following a bucket-scheme. Water moves to the next underlying layer if the refreezing capacity is eliminated (layer density or temperature reach density of ice or melting temperature) and the maximum irreducible water content is reached. Surface runoff happens instantaneously and occurs when bare ice is at the surface.

2.3 Model set up

The surface energy balance and subsurface profiles are updated with a temporal resolution of three hours. We use a grid of 107×107 grid points with a horizontal resolution of 100 m, only 2654 of these grid points are assigned to the glacier using glacier outlines from 1975. We use a digital elevation model from 1968 to define the initial elevation of each grid point and update the elevation for each three-hour time step based on a linearly downscaled annual height change grid. The topographical data was provided by Barandun et al. (2015); Denzinger et al. (2021); Stainbank (2018). Please refer to the supplementary material (section S1.1) for further information on topographical data.

For each three-hour time step, we derive topographical parameters used for the computation of incoming solar radiation as described in van Pelt et al. (2012). While modelling, the glacier surface is assumed to be constant and glacier grid points are classified as glacier throughout the modelling period. Distributed characteristics are thus computed for a fixed reference glacier surface and spatial varying elevation in time. We later account for a reduction of glacier surface when analysing the model output as described in section 2.8.

The subsurface modelling domain consists of 100 vertical layers extending down to a depth of about 35 m below the surface in the accumulation area. The initial layer thickness at the surface is 0.1 m and at layer numbers 15, 25 and 35 (corresponding to initial depths of 1.5, 3.5 and 7.5 m). Layer thickness reduces with time due to gravitational densification of snow and firn. The subsurface layers move along the depth axes to respond to mass gain or loss at the surface. Due to accumulation, the thickness of the uppermost layer can increase until the thickness of 0.1 m is reached, additional accumulation leads to the creation of a new layer and the removal of the lowermost layer of the modelling domain. In the EBFM, horizontal mass and energy fluxes are neglected and mass and energy exchange between grid cells is only possible along the vertical depth axes.

2.4 Model forcing

The EBFM is forced by meteorological data with a three-hourly resolution. The necessary input consists of the following variables: Air temperature, precipitation, air pressure, relative humidity, precipitation, wind speed and cloud cover fraction. Long-term weather station measurements are available for 1968 to 1998 (Fig. 1b, original station), we extend the time-series until 2020 using downscaled ERA5 reanalysis data which is continuously available from 1979 to present (Hersbach et al., 2020).

2.4.1 Original weather station data

The original Abramov glacier weather station was located on a moraine next to the glacier tongue at 3837 m a.s.l. and was operational from October 1967 until summer 1999. The meteorological data are published in Pertziger (1996) who also compiled the data in digital format (daily resolution). Here, we use data from January 1968 until December 1998 for the following parameters: daily average air pressure, wind speed, relative humidity and temperature, as well as daily precipitation sum, daily minimum air temperature and cloud cover and daily maximum temperature and cloud cover. More details about the station data can be found in the supplementary material (Table S1).

Based on these data, we created three-hourly ~~value~~ values for each variable. We use a scaled sine function to calculate three-hourly air temperatures. The scaling factor is determined for each day based on measured minimum and maximum temperatures and daily averages of the three-hourly time series correspond to reported average air temperature measurements. For air pressure and relative humidity the mean value is applied throughout the daily cycle. Daily precipitation sums are divided by eight to obtain three-hourly data. During the melt season, convection is a main driver of cloudiness and cloud formation mainly takes place along the mountain ridges (Suslov and Krenke, 1980). We therefore assume cloud cover to be lower in the morning hours and lower for large areas of lower parts of the glacier than observed averages. Consequently, we assign observed daily minimum cloud cover to the first four timesteps and daily average cloud cover for the rest of the day.

2.4.2 TopoSCALE ERA5 data

Long-term weather station measurements are available for 1968 to 1998 (Fig. 1b, original station), we extend the time-series until 2020 using downscaled ERA5 reanalysis available from ECMWF (Hersbach et al., 2020). We use hourly output from

ERA5 for 1980-2020. Data from the original Abramov weather station as well as data from the AWS are completely independent from the ERA5 data set, as the stations are not used during the assimilation procedure (Personal communication from H. Hersbach, ECMWF 2021). We interpolate ERA5 data from the nine grid points located nearest to Abramov glacier (Fig. S1).
 190 Air temperature, air pressure, relative humidity, precipitation, global and clear sky radiation are downscaled using TopoSCALE (Fiddes and Gruber, 2014) which performs a 3D interpolation of atmospheric fields available on pressure levels (to account for time-varying lapse rates) and a topographic correction of radiative fluxes. The latter includes a cosine correction of incident direct short-wave radiation on a slope, an adjustment of diffuse short-wave and long-wave radiation by the sky view factor, and an elevation correction of both long-wave and direct short-wave radiation. It has been extensively tested in various geographical
 195 regions and applications, e.g. permafrost in the European Alps (Fiddes et al., 2015), permafrost in the North Atlantic region (Westermann et al., 2015), Northern Hemisphere permafrost (Obu et al., 2019), Antarctic permafrost (Obu et al., 2020), Arctic snow cover (Aalstad et al., 2018), Arctic climate change (Schuler and Ims Østby, 2020), and Alpine snow cover (Fiddes et al., 2019). This approach enables us to provide a climate length pseudo-observation time series globally while accounting for the main topographic effects on atmospheric forcing.

200 **2.4.3 Cloud fraction calculated from TopoSCALE ERA5 data**

Cloud cover fraction is not directly available from ERA5 but a required input for the model. We therefore, calculate the TopoSCALE cloud fraction from the TopoSCALE global I and the clear-sky radiation I_{cs} . In a first step, the cloud transmissivity τ_{cl} is calculated following Klok and Oerlemans (2002):

$$\tau_{cl} = I/I_{cs} \quad (5)$$

205 We use the three-hourly average values of I and I_{cs} to calculate τ_{cl} for each time step for which I and I_{cl} are both above 0. We use the the expression by Greuell et al. (1997):

$$\tau_{cl} = 1.00 - c1 \times n - c2 \times n^2 \quad (6)$$

to calculate the cloud cover n from the cloud transmissivity τ_{cl} . The parameters $c1=0.128$ and $c2=0.346$ are adopted from van Pelt et al. (2012). Night time cloud cover n values are linearly interpolated from neighboring, non-missing values.

210 **2.4.4 Bias correction of TopoSCALE ERA5 data and creation of a continuous data set**

ERA5 is a global reanalysis product and its quality is dependent on density of assimilated observations, which varies globally. Central Asia in general and mountainous regions of the Pamir specifically, are data poor and therefore the reanalysis is less well constrained as compared to data rich regions such as Europe, for example. Therefore, even after downscaling (accounting for resolution differences between the model grid and point of interest) we can expect there to be residual biases, which we address
 215 with the following procedure. We aggregate TopoSCALE data to monthly averages to compare them to data from the original

weather station. Biases are calculated for monthly air temperature, pressure and wind speed for the period 1980-1998 and then used to correct TopoSCALE air temperature, pressure and wind speed for 1980-2020. Monthly average ratios between monthly aggregated station measurements and TopoSCALE data are calculated for precipitation (sums) and cloud fraction (averages) and relative humidity (averages) for the period 1980-1998 and used to correct the TopoSCALE time series for 1980-2020. The resulting cloud fraction time series for summer months (July to September) shows a reduced amplitude compared to the station time series for 1968-98. We use the precipitation time series to correct for this by setting the cloud cover to 0 for days without precipitation and to 1 if precipitation is higher than a monthly threshold value (cf. supplement section S1.4). Monthly averages of the final cloud fraction time series correspond to monthly averages prior to this correction. We combine the three-hourly observed data from 1968 to 1998 with the bias corrected TopoSCALE ERA5 data for the years 1999-2020 to obtain a final data set for 1968-2020. An alternative data set is created using historical measurements for the period 1968-1979 and TopoSCALE ERA5 data for the years 1980-2020 (Fig. 2). The both data sets thus differ for the period 1980-1998. The forcing data sets are visualized in Figs. S2 and S3 and the trends of original forcing are given in Table 4.

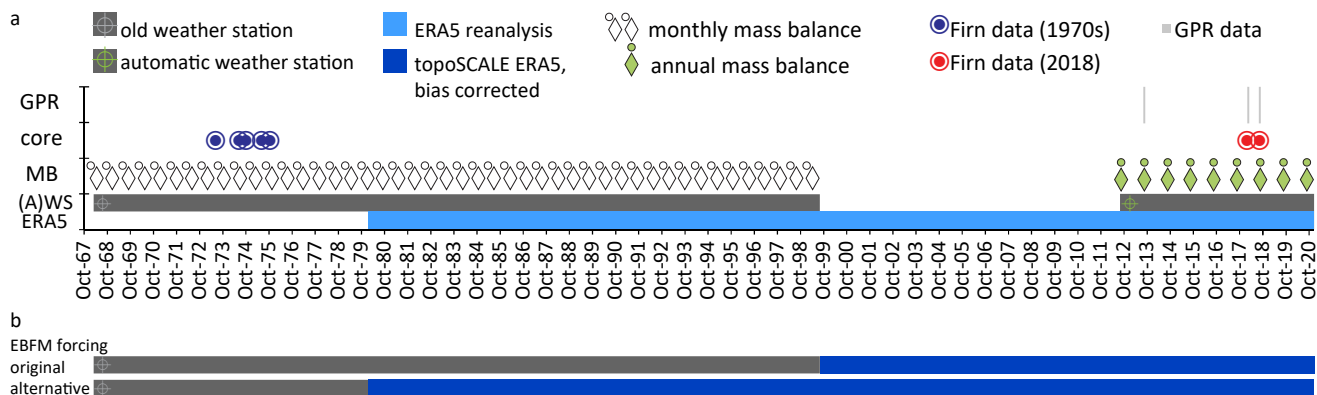


Figure 2. Temporal overview of data available for this study. The availability of different *in situ* and gridded datasets (ERA5 reanalysis) is shown in a. Panel b summarizes which data are used for forcing the model. We mainly show results using the original forcing. A sensitivity model run was performed using the alternative forcing (applying the same parameters as in the original run). Results are shown in the supplementary material

2.5 Calibration and validation data

The EBFM calibration and validation is mainly based on glaciological *in situ* measurements which are available for two periods: Historical data cover three decades at the beginning of the simulation period (1968-1998) and *in situ* are again available for the most recent eight years (2012-2020, (Fig. 2a). We split the historical data into calibration and validation data and use the recent glaciological data for validation only. Additionally, we use data from an AWS installed in 2012 to constrain parameters of the energy balance formulation (see supplementary material section S1.5 for more information).

2.5.1 Monthly point mass balance data 1967-1998

235 For Abramov glacier, very detailed mass balance measurements are available for the period from 1967-1998 (Fig. 2). The data
set consists of mass balance point observations at a monthly resolution performed at eight snow pit and 165 stake locations
totalling in 42961 stake and 2179 snow pit measurements. More details about this exceptional data set are given in the sup-
plementary material (section S1.3). We use a subset of these data to calibrate several parameters of the EBFM as described in
section 2.6. The calibration data set consists of snow pit measurements from March, June and July and September and mea-
240 surements from 19 selected stakes locations performed at the end of the hydrological year in September (annual mass balance
measurements). The stakes were selected to correspond to the location of current mass balance point observations (see section
2.5.2). Up to 146 independent annual stake measurements per mass balance year are used to validate the modelled surface
mass balance for the years 1968/69-1997/1998. The spatial distribution of the calibration and validation data sets are shown in
Fig. 1b.

245 2.5.2 Annual point mass balance data 2011-2020

For recent years, the modelled surface mass balances are validated against annual mass balance measurements which are
available from up to 20 points since 2011/2012 (Barandun et al., 2015; Hoelzle et al., 2017). The new monitoring network
consists of 16 stakes in the ablation area and up to four snow pits in the accumulation area (Fig. 1). Whereas the stake locations
were roughly kept constant over time, the locations of the snow pits varied during the first years. Field visits took place once a
250 year during July/August and exact observation dates are available. Only ablation stake readings from snow free locations are
considered and the density of ice (900 kg m^{-3}) is used to calculate floating-date mass balances between the two observation
dates. Due to the stratigraphic nature of snow pit observations, the beginning of the accumulation season is not known and we
assume the last summer surface to have formed at the beginning of the hydrological year. Point accumulation values are thus
calculated for the period from the 1 October until the observation date using the snow density and depth measurement of each
255 snow pit.

2.5.3 Firn profile data

Density profiles dating back to the 1970s are available from deep firn pits that were located in the eastern branch of the
accumulation area at $\sim 4400 \text{ m a.s.l.}$ and $\sim 4250 \text{ m a.s.l.}$ (Kislov, 1982). In 2018, firn cores were drilled at similar and nearby
locations (Fig. 2a). We refer to Kronenberg et al. (2021a) for a detailed description of legacy and recent firn profiles. In addition
260 to density measurements, continuous subsurface temperature measurements from four thermistors located in a borehole at
 $\sim 4380 \text{ m a.s.l.}$ are available from February 2018 until April 2020. Based on historical firn densities, one subsurface parameter
was optimised (section 2.6). The rest of the subsurface data are used for validation only.

2.6 Parameter selection and calibration

In order to reflect the local conditions of Abramov glacier we adjusted several model parameters based on data available from *in situ* measurements and other studies from HMA. We selected the calibration parameters based on their relevance for our site and the existence of data. The order of calibration is chosen considering the dependence of parameters on calibration of other parameters. First lapse rates to extrapolate the meteorological forcing over the glacier area are determined, then the incoming radiation parameters are estimated (see supplement S1.5 for details). Thereafter, we optimise accumulation parameters and finally parameters affecting summer melt. Model parameters different from values used by van Pelt et al. (2019) are summarized in Table 2, the last column indicates whether a parameter was optimised (y/n).

We use *in situ* mass balance measurements from eight snow pits located on the glacier and data from a selection of 19 ablation stakes for the period 1969-1998 (Table 1) for calibration. With these data we manually optimise a set of accumulation and ablation parameters. Final parameters are determined by minimizing bias between modelled surface mass balances for grid cells corresponding to point locations with *in situ* measurements. We use precipitation correction factors in order to debias the precipitation forcing. The correction mainly compensates for undercatch, but also accounts for all other biases present in the precipitation forcing. We consider March accumulation measurements to be least affected by melt and use them to calibrate the precipitation bias correction factor $Prec_{c-w}$ applied for October-June. During summer months, the precipitation undercatch is assumed to be reduced compared to autumn, winter and spring and we adopt a value of $Prec_{c-s}=1.15$ determined for Alpine locations in Switzerland from Sevruk (1985). The bias between modelled and measured June and July snow pit measurements is reduced by a two-parameter exploration for α_{fresh} and t_{wet}^* . And finally, α_{ice} is optimised using September surface mass balance measurements (snow pits and ablation stakes).

Parameters in the subsurface model are default values except for the critical density of destructive metamorphism ρ_{max} which is optimised to obtain a better fit between modelled and measured subsurface densities at ~ 4410 m a.s.l.

The comparison of optimized model simulations to surface mass balance observations used for model calibration shows a **stronger-higher** Root Mean Square Error (RMSE) for the annual mass balance than for the accumulation in March, and despite some bias in the linear fit, the datasets generally approach the 1:1 linear fit line (Fig. S4).

Table 1. Number of point measurements used for calibration of surface energy balance parameters (cf. Table 2). Accumulation measurements were performed at eight sites on the glacier surface and all available measurements are used for the selected months. We use 19 out of 165 ablation stakes for calibration. Stakes are selected to correspond to current observation sites

type	period	use	number of data points
March snow pit measurements	1969-1998	calibration $Prec_{c-w}$	225
June snow pit measurements	1969-1998	calibration $\alpha_{fresh}, t_{wet}^*$	203
July snow pit measurements	1969-1998	calibration $\alpha_{fresh}, t_{wet}^*$	141
annual mass balance measurements	1969-1998	calibration α_{ice}	532

Table 2. List of EBFM parameter choices with references. For parameters optimised by EBFM simulations for Abramov glacier (opt), the initial value is given in brackets.

	parameter	unit	value (initial)	reference	opt	
	dT/dz	temperature lapse rate	K m^{-1}	-0.005	Kislov (1982)	n
	$dPrec/dz$	precipitation lapse rate (factor)	m^{-1}	0.0013	calculated from in situ data	n
	$dPres$	Pressure decay parameter	-	$-1.45 \cdot 10^{-4}$	calculated from in situ data	n
	dRH/dz	relative humidity gradient	$\% \text{ m}^{-1}$	0.01	Huintjes et al. (2016)	n
	γ	potential temperature lapse rate	K m^{-1}	0.0055	from in situ and pseudostation data	n
	$Prec_{c-w}$	precipitation bias correction winter (factor)	-	1.85 (2)	-	y
	$Prec_{c-s}$	precipitation bias correction summer (factor)	-	1.15	Sevruck (1985)	n
	α_{ice}	ice albedo	-	0.23 (0.3)	Mölg et al. (2012)	y
	α_{fresh}	fresh snow albedo	-	0.81 (0.85)	Mölg et al. (2012)	y
	t_{wet}^*	albedo decay time scale wet snow	days	7 (15)	van Pelt et al. (2019)	y
	P_{th}	snowfall threshold to reset to α_{fresh}	m w.e. s^{-1}	$3.5 \text{d} \cdot 8$	Zhu et al. (2020)	n
	C_b	background turbulent exchange coefficient	-	0.0037	Klok and Oerlemans (2002)	n
	$c1$	cloud transmissivity parameter	-	0.128	van Pelt et al. (2012)	n
	$c2$	cloud transmissivity parameter	-	0.346	van Pelt et al. (2012)	n
	k_{aer}	aerosol transmission constant	-	0.982	Klok and Oerlemans (2002)	n
	b	clear sky emissivity parameter	-	0.433	calculated from in situ data	n
	ϵ_{cl}	overcast emissivity	-	0.960	default value	n
	λ	optical thickness empirical constant	-	3.00	Smith (1966)	n
	z_{lim}	preferential percolation depth	m	6.0	default value	n
	ρ_{max}	critical density destructive metamorphism	kg m^{-3}	300 (200)	-	y
	ρ_{fresh}	fresh snow density	kg m^{-3}	350	Klok and Oerlemans (2002)	n

2.7 Model initialisation, performed simulations and sensitivity experiments

To initialize subsurface conditions the model is run twice over the period 1968-98 using the three-hourly weather station data to force the model. The first iteration is started with identical subsurface conditions throughout the glacier with a vertical grid consisting of temperate ice (273.15 K). The second initialisation run is started from the final stage of a first run.

We perform several model runs for selected grid points corresponding to the locations of selected ablation stakes and snow pits indicated in Fig. 1 to adjust model parameters (section 2.6) using the final combined three-hourly forcing consisting of station (1968-1998) and bias corrected TopoSCALE ERA5 data (1999-2020). Thereafter, we perform a final distributed model run for the period from 1 January 1968 until 31 December 2020 using the same forcing.

295 To assess the model sensitivity towards parameter choices, we performed several model runs for three selected grid points (sites 1, 2 and 3, Fig. 1b) testing single parameter perturbations following Klok and Oerlemans (2002). Additional sensitivity runs are performed using different cloud cover forcings. To assess the overall sensitivity to the model forcing, we carried out an alternative distributed run using the alternative data set with a shorter period of station measurements (1968-1979, Fig. 2). Detailed results of these sensitivity experiments are presented in the supplementary material (Figs. S7-S15).

300 2.8 Analysis of model output and mass balance calculation

We calculate the climatic mass balance as the sum of the surface and the internal mass balance for hydrological years (1 October-30 September) (Cogley et al., 2011). The surface mass balance is the result of accumulation (+) and ablation (-) at the surface including precipitation (+), moisture exchange (+/-), and mass loss through runoff (-). The internal mass balance accounts for re-freezing and storage of liquid water below the previous summer surface.

305 While the model grid elevation is updated for each time step, the modelling extent is kept constant using the glacier mask from 1975 for the entire simulation period. After modelling, the glacier wide mass balance and other results-variables are calculated for decade-wise updated glacier extents. Until the end of the hydrological year 1978, the entire model output is analysed ~~corresponding to the glacier area of 1975.~~ For the next ten hydrological years, a glacier mask corresponding to the glacier area from 1986 is used and output outside this domain is not considered. Masks based on outlines from 1998, 2005 and 310 2015 are used for 1988/1989-1997/1998, 1998/1999-2007/2008 and 2008/2009-2019/2020.

The equilibrium line altitude ELA is calculated as the mean elevation of grid points with a mass balance equal to 0 m w.e. at the end of a the hydrological year. Grid points with a negative mass balance value at the end of the hydrological year are used to calculate ablation gradients, which is the linear relation between elevation and modelled ablation.

For comparison to in situ point measurements, the modelled surface mass balance of the grid point nearest to the stake/snow 315 pit location is used. The daily model output is aggregated at the end of the month of interest with respect to the beginning of the hydrological year (1 October) to compare to accumulation observations. For comparison to ablation observations, data is accumulated until the reported observation date (section 2.5.1). For *in situ* observations since 2011, the stake installation dates are earlier in the melt season and model output is extracted for exact periods between stake installation and stake reading (section 2.5.2).

320 3 Results

3.1 Long term mass balance

The distributed mean annual climatic mass balance for 1968/1969-2019/2020 is shown in Fig. 3. The mass balance of Abramov glacier is predominantly negative for the years from 1968/1969 to 2019/2020, with a mean value of $-0.27 \text{ m w.e. a}^{-1}$, and shows no significant trend in annual mass balances ($+0.0002 \text{ m w.e. a}^{-1}$, $p\text{-value}=0.979$ and Fig. 4c). The most negative modelled 325 mass balances occur at the start of the period, while the two decades between 1978 and 1998 are characterised by an almost

balanced mass budget, thereafter becoming more negative again (Fig. 4a,c and Table 3). The modelled elevation distribution of mass balance shows that accumulation is lowest during the first decade (1968/1969-1977/1978) and highest during the last modelled decade (2008/2009-2017/2018), and ablation is largest during the first decade, followed by the second last decade (1998/1999-2007/2008) (Fig. 5b).

330 The RMSE between simulated surface mass balances and independent point measurements not used for calibration is similar for the recent and historical investigation periods (~ 0.7 m w.e.), whereas the mean bias is lower for the period of historical measurements (+0.05 m w.e.) than for recent years (+0.28 m w.e.) (Fig. 6a and b). Differences in the mean bias are partly related to the spatial distribution of the validation data. As visible from Fig. 6a,b and 4b), both, accumulation and ablation were underestimated whereas more accumulation measurements are available for the historical period (Fig. 1b).

Table 3. Mean glacier-wide climatic mass balance, internal accumulation Equilibrium Line Altitude ELA and ablation gradients for each decade and different periods used for comparison with other studies. The periods are hydrological years (e.g. 1968/1969-1977/1978 refers to 1 October 1968 - 30 September 1978) unless precise dates are specified. The mean glacier surface used for the mass balance calculation is also indicated

period	climatic mass balance m w.e. a ⁻¹	internal accumulation m w.e. a ⁻¹	ELA m a.s.l.	ablation gradient m w.e. m ⁻¹	mean glacier surface km ²
1968/1969-1977/1978	-0.63	0.11	4250	0.0077	26.54
1978/1979-1987/1988	-0.04	0.1	4170	0.0078	25.78
1988/1989-1997/1998	-0.08	0.13	4180	0.0083	25.24
1998/1999-2007/2008	-0.33	0.12	4220	0.0076	25.16
2008/2009-2017/2018	-0.23	0.1	4222	0.0066	25.06
1968/1969-1997/1998	-0.25	0.12	4200	0.008	25.85
1968/1969-2013/2014	-0.26	0.12	4207	0.0077	25.6
1971/1972-1993/1994	-0.26	0.11	4200	0.0079	25.87
1975/1976-2014/2015	-0.26	0.11	4208	0.0076	25.42
15 Jul 1975-1 Sep 2015	-0.30	0.11	4208	0.0076	25.42
1998/1999-2019/2020	-0.31	0.11	4225	0.007	25.11
2011/2012-2019/2020	-0.38	0.08	4248	0.0065	25.06
1968/1969-2019/2020	-0.27	0.11	4211	0.0076	25.54

335 3.2 Internal accumulation

The average glacier-wide modelled internal accumulation is 0.11 m w.e. a⁻¹. Internal accumulation occurs in large parts of the accumulation area and is more pronounced in the orographic right of the accumulation area (Fig. 7) and varies over time. Highest internal accumulation rates are modelled for the years 1968/1969-1977/1978 between 4400 and 4500 m a.s.l (Fig. 5c). The decades 1988/1989-1997/1998 and 1998/1999-2007/2008 are characterised by higher internal accumulation rates at lower

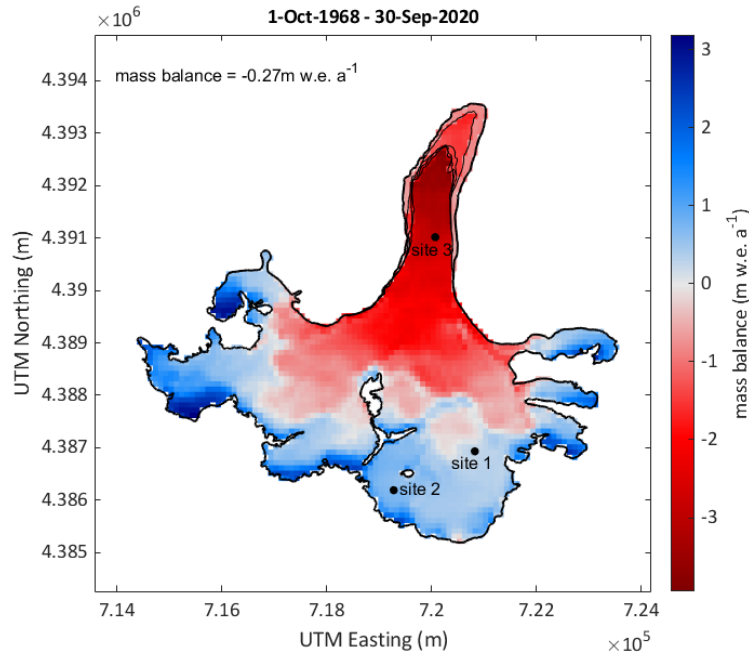


Figure 3. Modelled mean annual distributed mass balance for updated glacier extents for the period from 1 October 1968 to 30 September 2020. Note, that the mean annual mass balance for the entire period and updated glacier surfaces is shown. Values are thus reduced on the glacier tongue, where the glacier area reduced over time. The different glacier outlines are shown with black lines. Furthermore, the location of three selected points is indicated.

340 elevations around 4250 m a.s.l. (Fig. 5b) where the glacier covers large areas (Fig. 5c). Lowest internal accumulation rates are modelled for the second and the last decade (Table 3).

3.3 Firn evolution

Modelled subsurface densities are higher at site 1, ~ 4250 m a.s.l. (Fig. 8a-c) than at site 2, ~ 4400 m a.s.l. (Fig. 9a-c) and increase over time at both sites. At site 1, a significant increasing trend of subsurface densities for the depth range of 0-10 m is
 345 found for 1968/1969-2019/2020 ($+1.14 \text{ kg m}^{-3} \text{ a}^{-1}$, p-value = 0.014), whereas the trend is significant at site 2 when the first two decades are excluded ($+1.53 \text{ kg m}^{-3} \text{ a}^{-1}$, p-value = 0.005 for 1988/1989-2019/2020). At the lower site (~ 4250 m a.s.l., Fig. 8a-c) densities at depth reach the density of ice. Modelled firn densities correspond well with measurements shown for four different dates in Fig. 10. The mean biases between modelled and measured densities for the depth covered by measurements are -18.9 kg m^{-3} for June 1973, $+52.6 \text{ kg m}^{-3}$ for June 1974, $+20.4 \text{ kg m}^{-3}$ for June 1975 and -23.8 kg m^{-3} for August 2018.

350 For early years, the modelled subsurface temperatures indicate temperate firn conditions and propagation of winter cooling down to depths of about 10 m in the accumulation area at site 1 (~ 4250 m a.s.l., Fig. 8d). In later years, the cold content

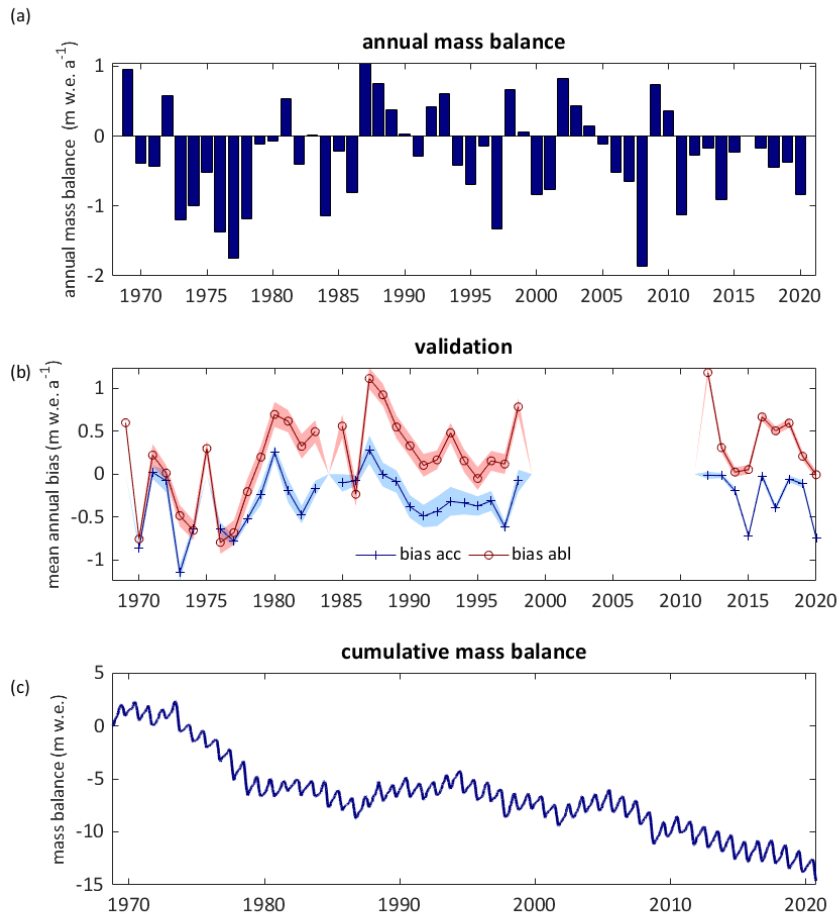


Figure 4. Temporal evolution of modelled climatic mass balance. (a) Modelled mean annual mass balance for updated glacier extents. (b) Mean annual bias-between-measured-and-modelled surface accumulation in-bias (blue) and mean annual surface ablation in-bias (red) between point measurements and model output for corresponding grid points. The shaded area refers to the measurement uncertainty calculated following Thibert et al. (2008). (c) Modelled cumulative mass balance for updated glacier extents.

propagates to greater depths and overall cold subsurface conditions are modelled for most recent years (Fig. 8e-f). For the depth range of 0-10 m, the subsurface cooling trend is -0.036 K a^{-1} (p-value < 0.001 for 1968/1969-2019/2020).

In contrast to the results at site 1, the modelled firn temperatures for site 2 ($\sim 4400 \text{ m a.s.l.}$) indicate continuously temperate
 355 firn conditions and propagation of winter cooling down to depths of about 10 m (Fig. 9d-f). Also here, a slight cooling trend was found (-0.0041 K a^{-1} p-value=0.043 for 1968/1969-2019/2020).

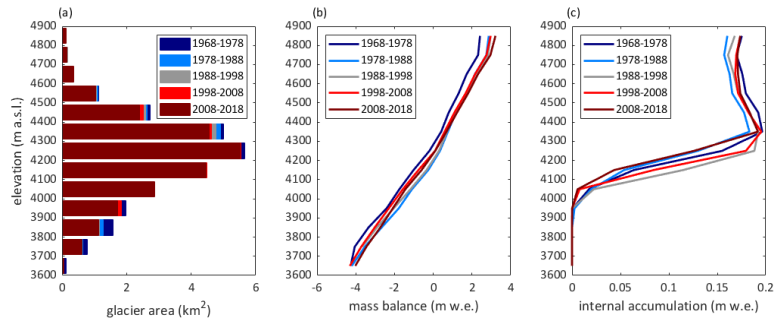


Figure 5. Modelled mass balance and internal accumulation versus elevation. The elevation distribution of the glacier area for different glacier extents are shown in panel panel (a). The largest glacier area was observed for the first decade (shown in dark blue) and reduced over time. In panel (b) the climatic mass balance is plotted versus the elevation for the modelled decades. In panel (c) the internal accumulation is plotted versus elevation. The periods are hydrological years (e.g. 1968-1978 refers to 1 October 1968 - 30 September 1978).

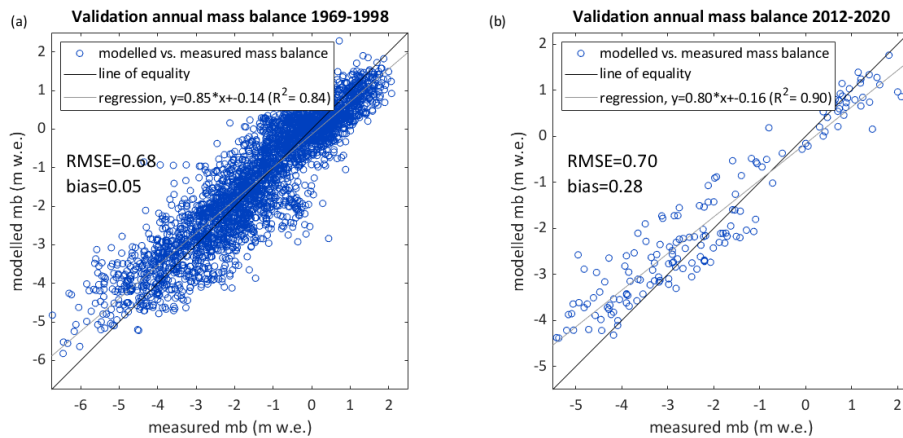


Figure 6. Model validation: Measured versus modelled annual surface mass balance for an independent set of point measurements from 1968/1969-1997/1998 (3292 point measurements) (a) and from 2011/2012-2019/2020 (164 point measurements) (b).

In Fig. 11, modelled firn temperatures at S2 are compared to thermistor measurements from spring 2018. Measured as well as modelled temperatures remain temperate at depths greater than about 10 m. In March (Fig. 11 a,b), modelled temperatures near the surface correspond well with observations. At a depth of about 7 m, the modelled temperatures are a bit higher. In April (shown in Fig. 11c), modelled firn temperatures are warmer than measurements also for the uppermost thermistor location. At a depth of about 7 m minimum subsurface temperatures are recorded for 6 June 2018. On this date, modelled firn temperatures are temperate except for a small zone around 7 m depth (Fig. 11d).

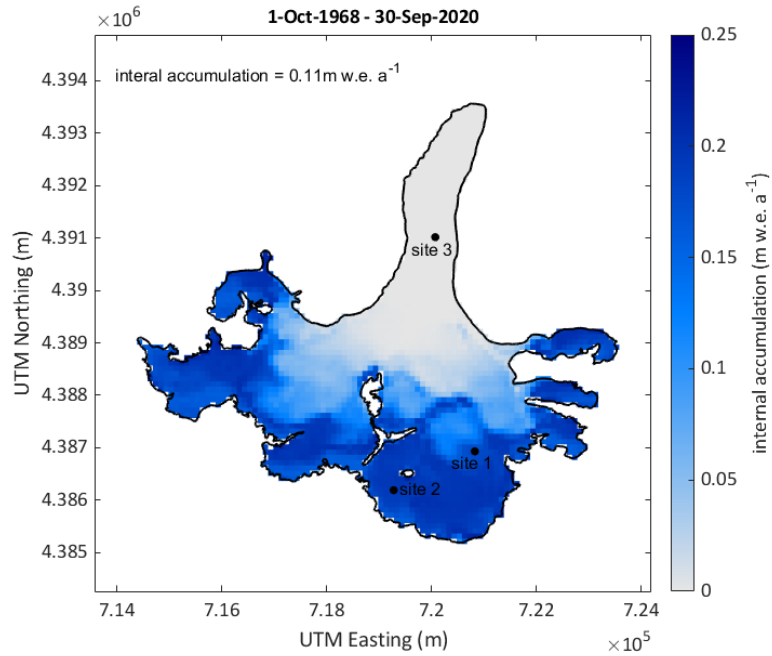


Figure 7. Map of mean annual internal accumulation for the mass balance years 1968/1969-2019/2020. The location of three selected points is indicated.

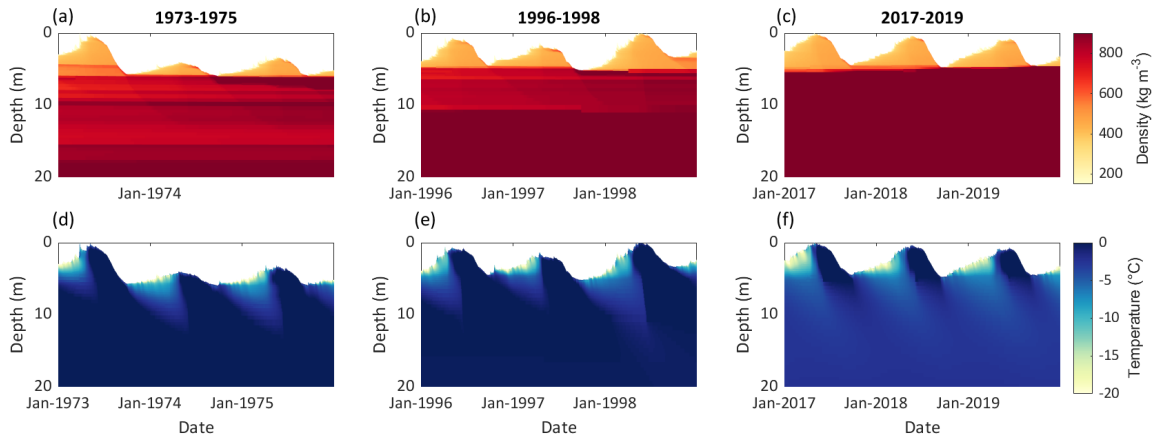


Figure 8. Modelled subsurface conditions at site 1 (~ 4250 m a.s.l.) for three selected periods: 1973-1975 (panels a and d), 1996-1998 (b,e) and 2017-2019 (c,f). Panels a, b and c show the subsurface density and panels e, d and f the subsurface temperature. The location of the site is indicated in Fig.1 b

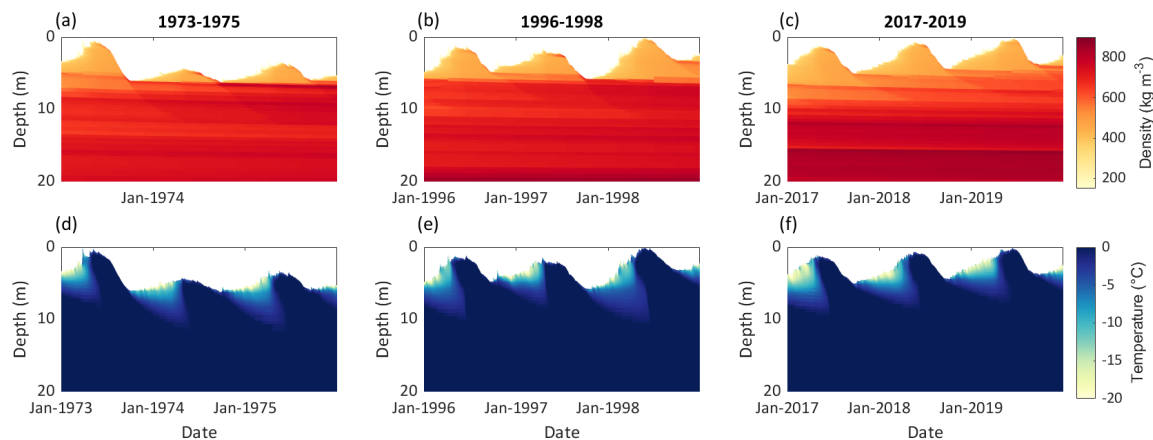


Figure 9. Modelled subsurface conditions at site 2 (~ 4400 m a.s.l.) for three selected periods: 1973-1975 (panels a and d), 1996-1998 (b,e) and 2017-2019 (c,f). Panels a, b and c show the subsurface density and panels e, d and f the subsurface temperature. The location of the site is indicated in Fig.1b

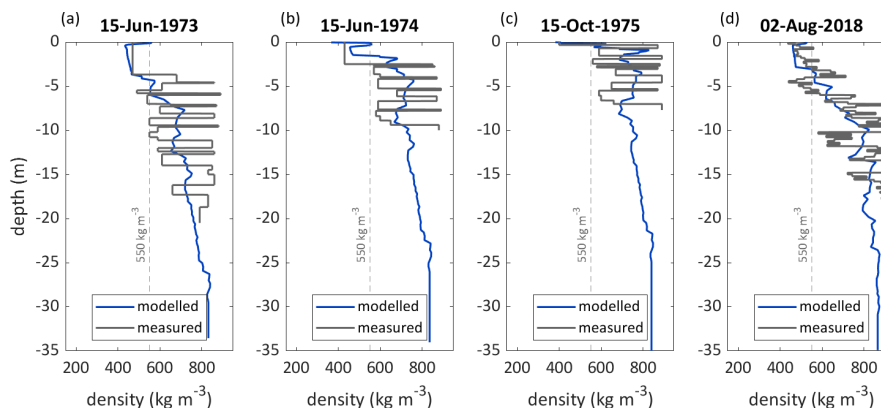


Figure 10. Modelled and measured subsurface densities for site 2 (~ 4400 m a.s.l.). Measured subsurface densities from the 1970s are digitised from figures 2.1 and 2.2 in Kislov (1982) (a-c) and own measurements are shown for 2018 (d). The location of the site is indicated in Fig.1b.

3.4 Temporal variation of climate variables, mass and energy fluxes

Significant increasing trends for model forcing air temperature (mean over hydrological years) and mean summer air temperatures are found for 1968/1969-2019/2020 (Table 4). Trends are also significant for air pressure (increase), relative humidity (decrease), cloud cover fraction (decrease) and precipitation sums (increase) (Table 4). Highest amounts of precipitation were recorded from 1978/1979 to 1997/1998 and from 2008/2009 to 2017/2018 (Table S2). Whereas the earlier two decades are characterised by almost balanced mass changes, more negative values were simulated for the most recent decade, when the internal accumulation was strongly reduced compared to earlier years (Table 3). Low internal accumulation was also simulated

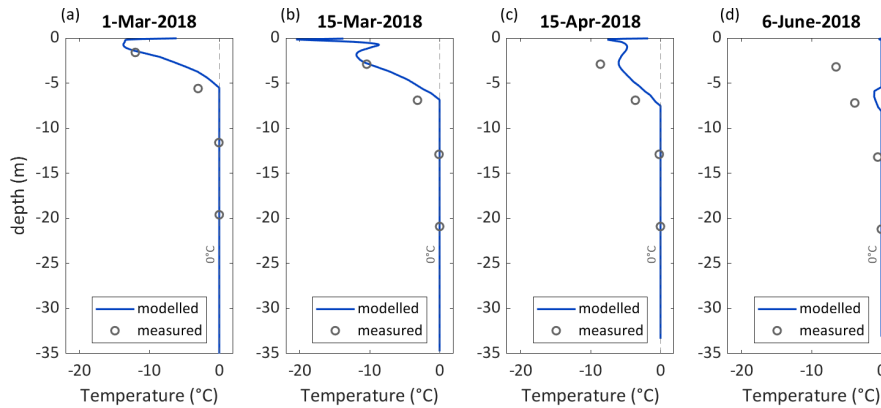


Figure 11. Modelled and measured subsurface temperature for a station located nearby site 2 (~4400 m a.s.l.). The location of the site is indicated in Fig. 1b.

370 for the second and most balanced decade (1978/1979 to 1987/1988) (Table 3). Both decades of low internal accumulation
 follow years with exceptionally high amounts of available melt energy and comparably low precipitation rates (especially from
 (1968/1969 to 1977/1978) (Tables 3, S2; Figs. 12 and S5). Overall, the preceding conditions led to a reduction of the area
 where internal accumulation could take place (only higher elevation bands in Fig. 5c, see also video supplement). Following
 1978/1979-1987/1988, when precipitation was high, the area where internal accumulation takes place in larger areas (Fig. 5c
 375 and video supplement). In most recent years which follow another decade characterised by negative mass balances the area
 and amount of internal accumulation are strongly reduced (Table 3, Fig. 5). In general, the simulated annual mass balances are
 more strongly correlated with annual precipitation ($R^2=0.72$) than to the summer air temperatures ($R^2=0.29$) (Fig. S6).

Examining the modelled energy fluxes for different sampled locations (lower accumulation area site1, accumulation area site
 2 and ablation area site3, Fig. 1b) highlights, that most heat fluxes are characterised by an increasing trend (Table 4), whereas
 380 high incoming shortwave radiation occurred during the first decade characterised by the most pronounced mass loss (Figs. 12
 and S5). In 2008/2009-2017/2018, when melt rates were highest for the points in the accumulation area, sensible heat flux and
 incoming long-wave radiation were high (Figs. 12, S5 and Table S2).

4 Discussion

4.1 Long-term mass balance and firn evolution

385 The modelled long-term mean mass balance for Abramov glacier indicates an overall mass loss of -0.27 m w.e. a $^{-1}$ for
 the period 1968/1969-2019/2020 which is in agreement with the findings of other recent studies. Barandun et al. (2015)
 and Denzinger et al. (2021) found somewhat more negative mass balances. Barandun et al. (2015) estimate the mass bal-
 ance for 1967/1968-2013/2014 as -0.44 ± 0.10 m w.e. a $^{-1}$. Their estimate is based on the application of a calibrated surface
 mass balance model and a simple approximation of internal accumulation as well as basal ablation which together contribute

Table 4. Trends and p-values for climate variables and energy balance components for the period from the 1 October 1968 until the 30 September 2020 (hydrological years) are listed for a grid point in the ablation area at ~ 3850 m a.s.l. Values in brackets refer to site 2 located in the accumulation area at ~ 4400 m a.s.l. y/n stand for significant or not significant at a 90% confidence level. The point location of both grid points are indicated in Fig.1. The trends for glacier-wide mass balance, glacier wide internal accumulation and original climate forcing (for the elevation of the weather station at 3837 m a.s.l.; 1 October 1968 - 30 September 2020) are also given

variable	trend	unit	p-value	significant
mean annual air temperature	+0.0295 (+0.0236)	K a^{-1}	<0.001 (<0.001)	y (y)
mean summer (JJAS) air temperature	+0.0208 (+0.0149)	K a^{-1}	0.003 (0.003)	y (y)
annual precipitation sum	+0.0018 (+0.0068)	m w.e. a^{-1}	0.421 (0.076)	n (y)
mean annual incoming shortwave radiation	-0.4297 (-0.2815)	$\text{W m}^{-2} \text{a}^{-1}$	<0.001 (<0.001)	y (y)
mean annual outgoing shortwave radiation	-0.3989 (-0.2362)	$\text{W m}^{-2} \text{a}^{-1}$	<0.001 (<0.001)	y (y)
mean annual incoming longwave radiation	+0.0702 (+0.0432)	$\text{W m}^{-2} \text{a}^{-1}$	0.074 (0.251)	y (n)
mean annual outgoing longwave radiation	+0.0507 (+0.0388)	$\text{W m}^{-2} \text{a}^{-1}$	0.005 (0.029)	y (y)
mean annual sensible heat flux	+0.0550 (+0.0417)	$\text{W m}^{-2} \text{a}^{-1}$	0.001 (0.003)	y (y)
mean annual latent heat flux	+0.0515 (+0.0473)	$\text{W m}^{-2} \text{a}^{-1}$	<0.001 (<0.001)	y (y)
mean annual heat flux from the subsurface	-0.0202 (-0.0153)	$\text{W m}^{-2} \text{a}^{-1}$	<0.001 (0.001)	y (y)
mean annual glacier wide mass balance	+0.0002	m w.e. a^{-1}	0.979	n
mean annual internal accumulation	-0.0003	m w.e. a^{-1}	0.159	n
mean annual air temperature 3837 m a.s.l.	+0.0222	K a^{-1}	<0.001	y
mean summer (JJAS) air temperature 3837 m a.s.l.	+0.0136	K a^{-1}	0.047	y
annual precipitation sum 3837 m a.s.l.	+0.0022	m w.e. a^{-1}	0.074	y
mean annual cloud cover fraction 3837 m a.s.l.	-0.0012	-	0.002	y
mean annual relative humidity 3837 m a.s.l.	-0.1240	$\% \text{ a}^{-1}$	0.002	y
mean annual air pressure 3837 m a.s.l.	+1.6274	Pa a^{-1}	0.008	y

390 $+0.07 \text{ m w.e. a}^{-1}$. In Fig. 13 annual mass balances of different studies are compared to our results: Previous analysis of annual mass balance data for 1971-1994 provided different estimates, but yielded all more negative mass changes than our study (Barandun et al. (2015): $-0.39 \text{ m w.e. a}^{-1}$, Dyurgerov (2002): $-0.50 \text{ m w.e. a}^{-1}$, and Pertziger (1996): $-0.61 \text{ m w.e. a}^{-1}$) than the EBFM ($-0.26 \text{ m w.e. a}^{-1}$). Denzinger et al. (2021) calculate the geodetic mass balance as $-0.38 \pm 0.12 \text{ m w.e. a}^{-1}$ for 15 July 1975 until 1 September 2015. Our result for the same time period ($-0.30 \text{ m w.e. a}^{-1}$) is within their calculated uncertainties.

395 We do not find a significant trend in the evolution of annual mass balances ($+0.0002 \text{ m w.e. a}^{-1}$, p-value = 0.979), nor in the reduction of mean annual internal accumulation ($-0.0003 \text{ m w.e. a}^{-1}$, p-value = 0.159) for the period 1968/1969-2019/2020 despite significant trends within all variables used as model forcing (Table 4). Comparing annual mass balances with annual precipitation sums and summer air temperatures shows that annual mass balances are more strongly correlated to precipitation

400 sums than to summer air temperatures (Fig. S6). The effect of the substantial warming ($+0.0222 \text{ K a}^{-1}$, p-value < 0.001) thus

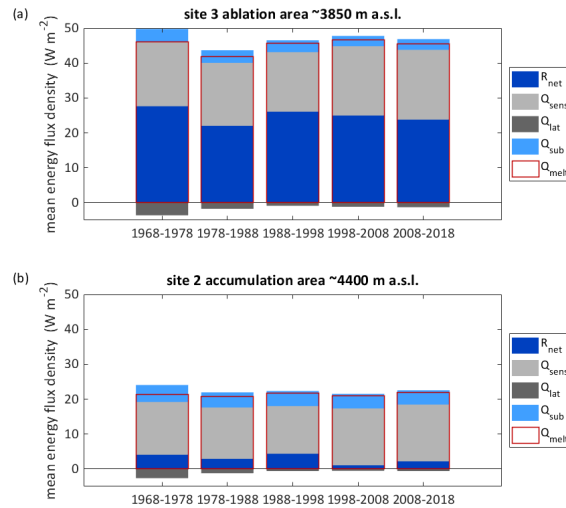


Figure 12. Mean modelled energy fluxes per decade for a grid point located in the ablation area at ~ 3850 m a.s.l. (a) and in the accumulation area at ~ 4400 m a.s.l. (b). The point locations are indicated in Fig.1. R_{net} is the net radiation, Q_{sens} the sensible and Q_{lat} the latent heat flux, Q_{sub} the heat flux from/into the subsurface and Q_{melt} the total energy available for melt. The periods are hydrological years (e.g. 1968-1978 refers to 1 October 1968 - 30 September 1978).

seems to be attenuated by increasing precipitation ($+0.0022$ m w.e. a^{-1} , p-value = 0.074). The increase of net accumulation in the accumulation area (Fig. 5b) may thus be attributed to an increase of solid precipitation (Tables S2 and 4). Barandun et al. (2015) also find an increase of accumulation based on their modelling results as does the field study of Kronenberg et al. (2021a), who identified a net accumulation increase for a point location at ~ 4400 m a.s.l. We can speculate that Abramov
405 glacier might be affected by the same changes in precipitation patterns that could be partly responsible for the mass balance anomaly in western HMA (e.g. Miles et al., 2021). Barandun et al. (2015) furthermore describe a tendency towards more ablation during recent decades. We find high ablation rates for the first decade and for 1998/1999-2007/2008 (Fig. 5b). In contrast to previous studies (e.g. Dyurgerov and Dwyer, 2001), we do not find a steepening of ablation gradients. The ablation gradient is higher for 1968/1969-1997/1998 (0.0080 m w.e. m^{-1}) than for 1998/1999-2019/2020 (0.0070 m w.e. m^{-1}). Miles
410 et al. (2021) calculate an ablation gradient of 0.0084 m w.e. m^{-1} for 2012-2016. Whereas their ablation gradient is higher, their ELA of 4163 m a.s.l. is located lower than the here modelled ELA (Table 3).

We find a relevant contribution of refreezing below the last summer horizon to the overall mass balance, and this contribution evolves over time (Fig. 5c and Table 3). In the lower accumulation area up to ~ 4300 m a.s.l., internal accumulation strongly increases with elevation and lowest values are modelled for the last decade (Fig. 5c). At site 1, within this zone, the subsurface
415 density reaches the density of ice (Fig. 8a-c), which will hinder subsequent internal accumulation. An increase of subsurface densities also occurs higher up in the accumulation zone at site 2 around ~ 4400 m a.s.l. as shown in Fig. 9a-c. The lowest internal accumulation rates are found for the second (1978/1979-1987/1988) and the last (2008/2009-2017/2018) modelled

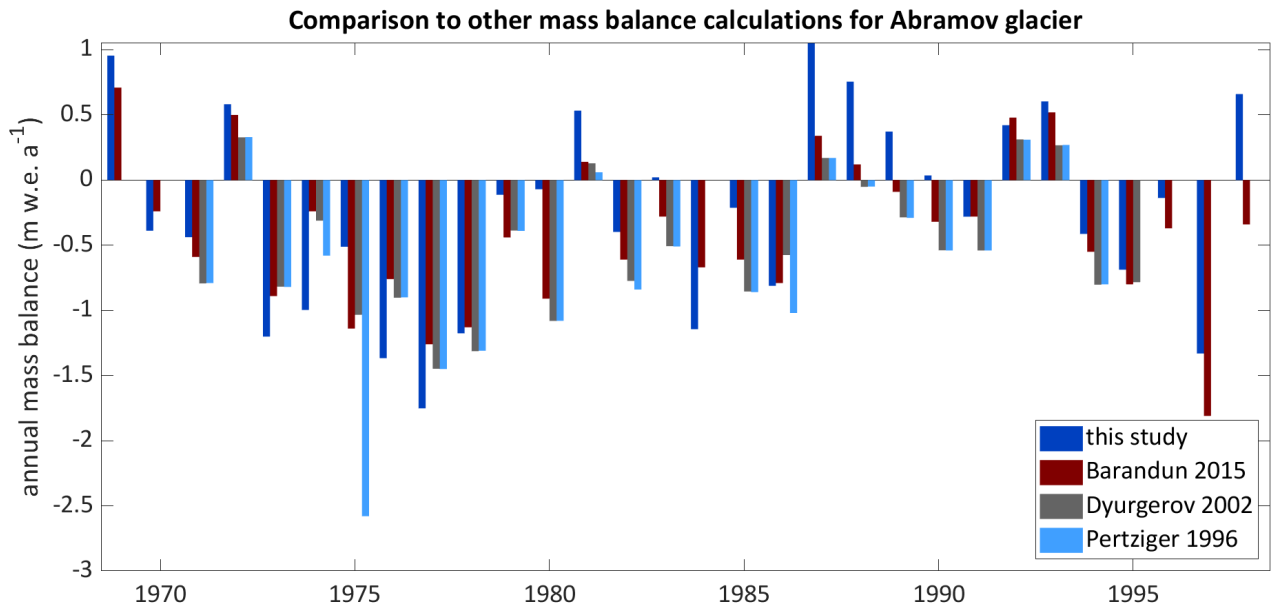


Figure 13. Comparison of annual mass balance results to previously published values for Abramov glacier based on *in situ* data (Pertziger, 1996; Dyurgerov, 2002) and based on modelling assimilating *in situ* data (Barandun et al., 2015)

decade. Both of these periods follow decades with clearly negative mass balances and high refreezing rates (Table 3). This is confirmed by *in situ* measurements from several years during the first decade which indicate negative annual mass balances at several or all point observation sites in the accumulation area (Kislov, 1982; Pertziger, 1996). The model results suggest, that thanks to high accumulation and limited ablation, the firm could recover during the following years allowing for higher internal accumulation rates thereafter. Results from the most recent decade and years, however, indicate that the necessary pore space for refreezing is again reducing. Whereas the subsurface density at ~ 4250 m a.s.l. decreases throughout the modelling period, a significant decrease is found for ~ 4400 m a.s.l. after 1987/1988 only.

Abramov glacier is thus losing its capacity to buffer mass loss through refreezing. The loss of pore space occurs despite high amounts of solid precipitation (Table S2) responsible for the increased accumulation compared to the first decade (Fig. 5b) and affects large areas of the accumulation zone (Fig. 5a). For the upper elevation bands, modelled internal accumulation remains high for recent decades. Based on the observations from the lower firm sites, with further warming, these uppermost zones are, however, expected to also lose pore space. The changes are also reflected in a decrease of subsurface temperatures. The reduction and later absence of latent heat release through refreezing leads to cold firm properties at ~ 4250 m a.s.l. for recent years (Fig. 8d-f). The slight cooling trend for ~ 4400 m a.s.l. (Fig. 9d-f), together with the recent increase of subsurface densities, highlight that firm zone changes start to occur also at higher elevations.

Firn changes and effects on internal accumulation as identified for Abramov glacier likely also occur elsewhere in HMA. The impacts may be delayed for glaciers with higher located elevation areas, where firn conditions may still be cold and refreezing limited. The recent propagation of changes to higher elevation ranges indicates that also higher located glaciers may experience firn regime changes in future ultimately leading to a reduction of their firn area.

Mass balance observations often neglect internal accumulation or account for the process only in a simplified manner. This applies for mass balance calculation based on glaciological data but also for geodetic mass change estimates. The latter usually use constant density conversion factors to convert elevation to mass changes. Our results indicate that internal accumulation can play an important role for glaciers with temperate accumulation areas. Whereas mass change calculations neglecting the internal accumulation may be overestimating the mass loss for periods with available pore space, this error will likely be reduced as glaciers lose pore space.

Evidence from *in situ* measurements of pore space amount and change in glaciers of HMA is very scarce. Lambrecht et al. (2020) expect a strong elevation gradient of melt water refreezing on Fedschenko Glacier, western Pamir. The chemical signature of annual accumulation layers is currently only preserved at elevations above 5200 m a.s.l., but evidence of summer melt was found at elevations of more than 5300 m a.s.l. Based on a sensitivity experiments with a region-wide application of a simple model, Wang et al. (2019) concluded that under warmer conditions, refreezing will increase for continental glaciers and decrease for glaciers located in more humid and warmer environments. In their study, Abramov glacier is located in a region for which they find an increase of refreezing. Our results indicate a decrease of internal accumulation related to the retreat of the firn line. A retreat of the firn line is likely also occurring elsewhere, however, the underlying processes are often not sufficiently included into simple, regional approaches.

4.2 Uncertainties, model sensitivities and validation

EBFM reproduces the observations satisfactorily, as shown by the comparison of modelled and measured surface mass balances (Fig. 6) and the comparison of subsurface properties (Figs. 10, 11). Whereas the overall biases between modelled and measured surface mass balances are low (0.05 m w.e. for historical and 0.28 m w.e. for recent years), relatively large biases exist for single years (Fig. 4b). These comparisons of modelled and measured data provide an overall estimate of the combined modelling and observational uncertainty. The sources of the modelling uncertainty are diverse and sometimes not readily quantifiable, we here discuss the general sources and likely implications based on the performed sensitivity experiments and general considerations, rather than producing a formal uncertainty assessment for the model output.

Several uncertainties are related to the model setup. The spatial vertical and horizontal as well as temporal resolutions are too coarse to resolve all the observed variations and to reproduce all relevant processes. Consequences of the horizontal resolutions are for example that several point observations shown in Figs. S4 and 6 are located within one modelled grid cell. The model is unable to fully reproduce the spatial heterogeneity of *in situ* observations. This also applies for subsurface conditions. On Abramov glacier highly variable firn conditions and accumulation rates are found based on firn cores and ground penetrating radar data (Kronenberg et al., 2021a). This study showed that annual accumulation, measured in firn cores, can vary by a factor of 1.5 over a horizontal distance of 250 m. Thus the EBFM satisfyingly reproduces the bulk densities measured at site

2 (Fig. 10), however the lower measured densities at nearby drill sites (c4381 and c4382 in Kronenberg et al. (2021a)) are not reproduced satisfactorily as the model does not simulate the horizontal small scale variability of accumulation and furthermore does not consider processes such as wind redistribution of snow. The lack of considering those processes also explains the misfit between modelled and measured accumulation as visible from Figs. 6a,b and S4a,b to some extent. Other reasons for the misfit are likely related to the limited spatial representativeness of the rather low number of accumulation observations. Another uncertainty related to the model set up is the use of a linearly updated glacier surface elevations and decade-wise changing glacier outlines. These approximations of topographical changes may be responsible for underestimations (overestimations) of melt rates on the glacier tongue if surface elevations are ~~to high~~ (to too high (too low)). The linearly updated glacier surface might thus be a reason for the underestimation of melt rates on the glacier tongue as visible from Figs. 6a,b and S4b. The initial conditions are a further source of uncertainties. It is very likely that the atmospheric conditions were different from the used data set prior to the modelling period. Nevertheless, modelled subsurface conditions agree well with measurements during early years of the modelling period (Fig. 10a-c).

An important source of uncertainties is related to the model forcing. While station data is available for the first thirty years, data from a gridded climate product (ERA5) has to be used for the remaining modelling period. To homogenize the input, the downscaled ERA5 data is bias corrected to match with monthly averages of observations for the overlapping period. The creation of a cloud cover forcing needed for additional processing steps. The sensitivity of related choices is shown in Figs. S9 and S10. Despite the corrections of the TopoSCALE ERA5 forcing, differences in both data sets affect the model output as evident from the results of the alternative model run which yielded a more negative mass balance for the period for which both data sets are available (alternative forcing: $-0.23 \text{ m.w.e. a}^{-1}$ original forcing $-0.05 \text{ m.w.e. a}^{-1}$, Figures S11-S15). Uncertainties in the model forcing may thus be a further reason for the misfits between measured and modelled surface mass balances and our study demonstrates that results with higher confidence can be produced for the period for which in situ measurements serve as a model forcing. The differences between both distributed runs further highlight the limitations of gridded products and emphasize the importance of *in situ* data.

The parametrisations used in modelling energy balance and subsurface conditions are based on simplifications that cause further uncertainties. The snow albedo parametrisation serves as an example. Snow albedo is re-set to fresh snow albedo after each snowfall event greater than 3 mm.w.e. d^{-1} . Thereby, also the albedo decay scheme starts again with the value for fresh snow. During field visits in summer, we observed the deposition of fresh snow on a longer exposed snow surface with a visibly reduced albedo. The fresh snow then melted away within hours to days again exposing the darker snow. The used parametrisation is not able to reproduce this evolution. This simplification may be compensated by the calibration of $t_{wet}^* = 7$ days, which is more suitable to represent conditions in Central Asia than the higher default value of 15 days used in the Arctic (Bougamont et al., 2005; van Pelt et al., 2019). As previously discussed in van Pelt and Kohler (2015), the model is not able to reproduce the small scale density variability of the subsurface (Fig. 10) as several processes such as wind crust formation, modelling of firn/snow grains or local vertical pooling of melt water on existing high density layers are not included.

Further model uncertainties are related to the choice of parameters. The sensitivity model runs for the modified parameters (Figs. S7 and S8) highlight that parameter perturbations have strong impacts on mass balance and internal accumulation. The

deviations between different model runs is highest for the point location in the lower accumulation area (site 1, cf. Fig. 1b). This underlines the sensitivity and critical role of the firm cover in this elevation zone. Whereas, site 3 remains an ablation site for all parameter scenarios, the most extreme parameter scenarios result in almost balanced mass changes at site 2 (~4400 m a.s.l., Fig. S7a,c). At, site 1 (~4250 m a.s.l) internal accumulation reduces for almost all parameter scenarios (Fig. S8b). The largest impact on mass balance and internal accumulations is caused by the perturbation of the winter precipitation correction factor ($Prec_{c-w}$), and the fresh snow albedo (α_{snow}), which were both constrained by the exceptional *in situ* data available for Abramov glacier.

The calibration data, however, are only available for point locations. We use spatially and temporally constant parameter values for periods with and without *in situ* measurements. This necessary simplification has implications; for example, we use temporally constant albedo parameters, whereas a darkening of the glacier surface is likely (Sarangi et al., 2019). An underestimation of recent ablation rates (Fig. 6b) may be related to albedo decreases (Schmale et al., 2017) which are not considered due to a lack of respective calibration data.

Our study shows, that long-term *in situ* measurements are of great value for simulating the long-term evolution of Abramov glacier with a coupled surface energy balance–multilayer subsurface model. The comprehensive model output complements the exceptional observational data set for this glacier. The combination of both data sets provides an opportunity to discuss processes on a high spatial and temporal resolution for a period of more than five decades which is unprecedented for the data sparse HMA.

5 Conclusions

In this study, we apply a distributed coupled surface energy balance and firm model to simulate 52 years of mass balance and firm evolution of Abramov glacier, Pamir Alay. The model is forced with a combination of weather station and down-scaled reanalysis data. The modelled surface mass balance and subsurface conditions agree well with *in situ* measurements for the beginning of the modelling period and recent years. We find an overall negative mass balance of $-0.27 \text{ m w.e. a}^{-1}$ for 1968/1969-2019/2020, which is somewhat less negative than the mass balance determined by previous studies. The first modelled decade 1968/1969-1977/1978 is characterized by the most negative mass balance and is followed by two decades of almost balanced conditions. More recent years are again characterised by clearly negative conditions. Our results indicate that the firm of Abramov glacier is currently losing pore space and that the loss of pore space is more advanced in the lower accumulation area. The warm and also cold infiltration zones of glaciers located at higher locations may not yet be affected. The correlation of annual mass balance with annual precipitation sums ($R^2=0.72$, p-value < 0.001) is stronger than the correlation with summer air temperature ($R^2=0.29$, p-value < 0.001). Increasing precipitation rates have thus compensated for increasing air temperatures, preventing an acceleration of mass loss for Abramov glacier during the last five decades. To our knowledge, this is the first application of a model of similar complexity for such a long time period for a glacier in HMA and may thus provide valuable insights into processes of within data scarce region.

Code and data availability. The EBFM code, the model forcing and topographical grid used in this study are available at <https://doi.org/10.5281/zenodo.5773796> (Kronenberg et al., 2021b). Due to their large volume, modelled grids are available on request. The majority of in situ mass balance data used for calibration and validation are available from the World Glacier Monitoring Service (doi.org/10.5904/wgms-fog-2021-05) (WGMS, 2021). The Abramov glacier data base containing the original weather station data and monthly mass balance measurements from Abramov glacier for 1968-1998 is available at <https://doi.org/10.5281/zenodo.7110254> (Pertziger and Kronenberg, 2022). Measurements of the automatic weather station can be downloaded from http://178.217.169.232/sdss/index.php?&page=measure_ page (Schöne et al, 2013).

Author contributions. MK performed the analysis and wrote the paper. WvP supplied the EBFM model code and support to use it. MK, HM and MH took place in several field campaigns acquiring *in situ* data. JF applied TopoSCALE to downscale the ERA5 data. FP provided the historical meteorological and mass balance data as well as extensive clarification on the data set. All authors participated in the discussion of the results.

Competing interests. The authors declare that they have no conflict of interest.

Acknowledgements. We acknowledge all the people who have been involved in the collection of field data on Abramov glacier. Especially we would like to thank to Erlan Azsivov, Ruslan Kenzhebaev Bolot Moldobekov and Ryskul Usabaliev from the Central Asian Institute for Applied Geosciences (CAIAG) and Sultanbek Belekov and Iurii Novomlintsev from KyrgyzHydromet for organizing the mass balance measurements on Abramov glacier during the last years and to Martina Barandun and Tomas Saks for their continuous efforts in coordinating the monitoring activities. We greatly acknowledge the help of Stanislav Kutuzov, Ivan Lavrentiev, Alex Merkuskin, Yuri Tarasov, François Valla and Andrey Yakovlev for providing access to literature and data published in Russian and complementary information. We thank Enrico Mattea for the valuable exchange about the model application and also for sharing his code used for modelling experiments. We would like to thank Dr. Lindsey Nicholson, Niklas Richter and Tobias Zolles for their constructive reviews and we sincerely thank the editor Dr. Emily Collier. This study was financed by the Swiss National Science Foundation (SNSF), grant 200021_169453 and the Project CICADA (Cryospheric Climate Services for improved Adaptation, contract no. 81049674 between the Swiss Agency for Development and Cooperation and the University of Fribourg).

References

- Aalstad, K., Westermann, S., Schuler, T. V., Boike, J., and Bertino, L.: Ensemble-based assimilation of fractional snow-covered area satellite retrievals to estimate the snow distribution at Arctic sites, *The Cryosphere*, 12, 247–270, <https://doi.org/10.5194/tc-12-247-2018>, 2018.
- 560 Arthern, R. J., Vaughan, D. G., Rankin, A. M., Mulvaney, R., and Thomas, E. R.: In situ measurements of Antarctic snow compaction compared with predictions of models, *Journal of Geophysical Research*, 115, 1–12, <https://doi.org/10.1029/2009JF001306>, 2010.
- Azam, M. F., Wagnon, P., Vincent, C., Ramanathan, A. L., Favier, V., Mandal, A., and Pottakkal, J. G.: Processes governing the mass balance of Chhota Shigri Glacier (western Himalaya, India) assessed by point-scale surface energy balance measurements, *The Cryosphere*, 8, 2195–2217, <https://doi.org/10.5194/tc-8-2195-2014>, 2014.
- 565 Barandun, M., Huss, M., Sold, L., Farinotti, D., Azisov, E., Salzmann, N., Usubaliev, R., Merkushkin, A., Hoelzle, M., A.Merkushkin, and Hoelzle, M.: Re-analysis of seasonal mass balance at Abramov glacier 1968-2014, *Journal of Glaciology*, 61, 1103–1117, <https://doi.org/10.3189/2015JoG14J239>, 2015.
- Barandun, M., Pohl, E., Naegeli, K., McNabb, R., Huss, M., Berthier, E., Saks, T., and Hoelzle, M.: Hot Spots of Glacier Mass Balance Variability in Central Asia, *Geophysical Research Letters*, 48, 1–14, <https://doi.org/10.1029/2020GL092084>, 2021.
- 570 Bougamont, M., Bamber, J. L., and Greuell, W.: A surface mass balance model for the Greenland Ice Sheet, *Journal of Geophysical Research: Earth Surface*, 110, 1–13, <https://doi.org/10.1029/2005JF000348>, 2005.
- Brun, F., Berthier, E., Wagnon, P., Kääh, A., and Treichler, D.: A spatially resolved estimate of High Mountain Asia glacier mass balances from 2000 to 2016, *Nature Geoscience*, 10, 668–674, <https://doi.org/10.1038/ngeo2999>, 2017.
- Cogley, J. G., Hock, R., Rasmussen, L. A., Arendt, A. A., Bauder, A., Braithwaite, R. J., Jansson, M., Kaser, G., Möller, M., Nicholson, 575 L., and Zemp, M.: Glossary of Glacier Mass Balance, IHP-VII Technical Documents in Hydrology, IACS Contribution No.2, 86, 114, unesdoc.unesco.org/images/0019/001925/192525e.pdf, 2011.
- De Kok, R. J., Kraaijenbrink, P. D., Tuinenburg, O. A., Bonekamp, P. N., and Immerzeel, W. W.: Towards understanding the pattern of glacier mass balances in High Mountain Asia using regional climatic modelling, *Cryosphere*, 14, 3215–3234, <https://doi.org/10.5194/tc-14-3215-2020>, 2020.
- 580 Denzinger, F., Machguth, H., Barandun, M., Berthier, E., Girod, L., Kronenberg, M., Usubaliev, R., and Hoelzle, M.: Geodetic mass balance of Abramov Glacier from 1975 to 2015, *Journal of Glaciology*, 67, 331–342, <https://doi.org/10.1017/jog.2020.108>, 2021.
- Dyrugerov, M.: Glacier Mass Balance and Regime: Data of Measurements and Analysis, INSTAAR Occasional Paper, p. 268, 2002.
- Dyrugerov, M. and Dwyer, J.: The Steepening of Glacier Mass Balance Gradients with Northern Hemisphere Warming, *Zeitschrift für Gletscherkunde und Glazialgeologie*, 36, 107–118, 2001.
- 585 Fiddes, J. and Gruber, S.: TopoSCALE v.1.0: Downscaling gridded climate data in complex terrain, *Geoscientific Model Development*, 7, 387–405, <https://doi.org/10.5194/gmd-7-387-2014>, 2014.
- Fiddes, J., Endrizzi, S., and Gruber, S.: Large-area land surface simulations in heterogeneous terrain driven by global data sets: Application to mountain permafrost, *Cryosphere*, 9, 411–426, <https://doi.org/10.5194/tc-9-411-2015>, 2015.
- Fiddes, J., Aalstad, K., and Westermann, S.: Hyper-resolution ensemble-based snow reanalysis in mountain regions using clustering, *Hydrology and Earth System Sciences*, 23, 4717–4736, <https://doi.org/10.5194/hess-23-4717-2019>, 2019.
- 590 Glazyrin, G. E., Glazyrina, E. L., Kislov, B. V., and Pertziger, F. I.: Water level regime in deep firn pits on Abramov glacier [in Russian], *Trudy SARNIGMI*, 45, 54–61, 1977.

- Glazyrin, G. E., Kamnyansky, G. M., and Pertziger, F. I.: The regime of Abramov glacier [in Russian], *Gidrometeoizdat*, St. Petersburg, 1993.
- 595 Greuell, W. and Konzelmann, T.: Numerical modelling of the energy balance and the englacial temperature of the Greenland ice sheet. Calculations for the ETH-Camp location (West Greenland, 1155 m a.s.l.), *Global and Planetary Change*, 9, 91–114, [https://doi.org/10.1016/0921-8181\(94\)90010-8](https://doi.org/10.1016/0921-8181(94)90010-8), 1994.
- Greuell, W., Knap, W. H., and Smeets, P. C.: Elevational changes in meteorological variables along a mid-latitude glacier during summer, *Journal of Geophysical Research*, 102, 25 941–25 954, <https://doi.org/10.1029/97JD02083>, 1997.
- 600 Hersbach, H., Bell, B., Berrisford, P., Hirahara, S., Horányi, A., Muñoz-Sabater, J., Nicolas, J., Peubey, C., Radu, R., Schepers, D., Simmons, A., Soci, C., Abdalla, S., Abellan, X., Balsamo, G., Bechtold, P., Biavati, G., Bidlot, J., Bonavita, M., De Chiara, G., Dahlgren, P., Dee, D., Diamantakis, M., Dragani, R., Flemming, J., Forbes, R., Fuentes, M., Geer, A., Haimberger, L., Healy, S., Hogan, R. J., Hólm, E., Janisková, M., Keeley, S., Laloyaux, P., Lopez, P., Lupu, C., Radnoti, G., de Rosnay, P., Rozum, I., Vamborg, F., Villaume, S., and Thépaut, J. N.: The ERA5 global reanalysis, *Quarterly Journal of the Royal Meteorological Society*, 146, 1999–2049, <https://doi.org/10.1002/qj.3803>, 2020.
- 605 Hock, R.: Glacier melt: a review of processes and their modelling, *Progress in Physical Geography*, 29, 362–391, <https://doi.org/10.1191/0309133305pp453ra>, 2005.
- Hoelzle, M., Azisov, E., Barandun, M., Huss, M., Farinotti, D., Gafurov, A., Hagg, W., Kenzhebaev, R., Kronenberg, M., Machguth, H., Merkulshkin, A., Moldobekov, B., Petrov, M., Saks, T., Salzmann, N., Schöne, T., Tarasov, Y., Usubaliev, R., Vorogushyn, S., Yakovlev, A., and Zemp, M.: Re-establishing a monitoring programme for glaciers in Kyrgyzstan and Uzbekistan, Central Asia, *Geoscientific Instrumentation, Methods and Data Systems*, 6, 397–418, <https://doi.org/10.5194/gi-6-397-2017>, 2017.
- 610 Huintjes, E., Neckel, N., Hochschild, V., and Schneider, C.: Surface energy and mass balance at Purogangri ice cap, central Tibetan Plateau, 2001-2011, *Journal of Glaciology*, 61, 1048–1060, <https://doi.org/10.3189/2015JoG15J056>, 2015a.
- Huintjes, E., Sauter, T., Schröter, B., Maussion, F., Yang, W., Kropáček, J., Buchroithner, M., Scherer, D., Kang, S., and Schneider, C.: Evaluation of a coupled snow and energy balance model for Zhadang glacier, Tibetan Plateau, using glaciological measurements and time-lapse photography, *Arctic, Antarctic, and Alpine Research*, 47, 573–590, <https://doi.org/10.1657/AAAR0014-073>, 2015b.
- Huintjes, E., Loibl, D., Lehmkuhl, F., and Schneider, C.: A modelling approach to reconstruct Little Ice Age climate from remote-sensing glacier observations in southeastern Tibet, *Annals of Glaciology*, 57, 359–370, <https://doi.org/10.3189/2016AoG71A025>, 2016.
- Jakob, L., Gourmelen, N., Ewart, M., and Plummer, S.: Spatially and temporally resolved ice loss in High Mountain Asia and the Gulf of Alaska observed by CryoSat-2 swath altimetry between 2010 and 2019, *The Cryosphere*, 15, 1845–1862, <https://doi.org/10.5194/tc-2020-176>, 2021.
- 620 Kääb, A., Berthier, E., Nuth, C., Gardelle, J., Arnaud, Y., Kaab, A., Berthier, E., Nuth, C., Gardelle, J., and Arnaud, Y.: Contrasting patterns of early twenty-first-century glacier mass change in the Himalayas, *Nature*, 488, 495–498, <https://doi.org/10.1038/nature11324>, 2012.
- Kayastha, R. B., T. O., and Ageta, Y.: Application of a mass-balance model to a Himalayan glacier, *Journal of Glaciology*, 45, 559–567, <https://doi.org/10.3189/S002214300000143X>, 1999.
- 625 Kislov, B. V.: About the question of determining the internal accumulation of temperate glaciers [in Russian], *Trudy SARNIGMI*, 45, 62–72, 1977.
- Kislov, B. V.: Formation and regime of the firn-ice stratum of a mountain glacier [in Russian], Ph.D. thesis, SARNIGMI Tashkent, 1982.
- Kislov, B. V., Nozdrukhin, V. K., and Pertziger, F. I.: Temperature regime of the active layer of Abramov Glacier [in Russian], *Materialy Glatsiologicheskikh Issledovaniy (Data of glaciological studies)*, 30, 199–204, 1977.
- 630

- Klok, E. J. and Oerlemans, J.: Model study of the spatial distribution of the energy and mass balance of Morteratschgletscher, Switzerland, *Journal of Glaciology*, 48, 505–518, <https://doi.org/10.3189/172756502781831133>, 2002.
- Konzelmann, T., Van de Wal, R., Gruell, W., Binanja, E., Henneken, C., and Abe-Ouchi, A.: Parameterization of global and longwave incoming radiation for the Greenland Ice Sheet, *Global and Planetary Change*, 9, 143–164, [https://doi.org/10.1016/0921-8181\(94\)90013-2](https://doi.org/10.1016/0921-8181(94)90013-2), 1994.
- Kronenberg, M., Machguth, H., Eichler, A., Schwikowski, M., and Hoelzle, M.: Comparison of historical and recent accumulation rates on Abramov Glacier, Pamir Alay, *Journal of Glaciology*, 67, 253–268, <https://doi.org/10.1017/jog.2020.103>, 2021a.
- Kronenberg, M., van Pelt, W., Machguth, H., Hoelzle, M., Fiddes, J., Hoelzle, M., and Pertziger, F.: MarleneKro/ebfm_abramov: version 1.0 [code], <https://doi.org/10.5281/zenodo.5773796>, 2021b.
- 640 Lambrecht, A., Mayer, C., Bohleber, P., and Aizen, V.: High altitude accumulation and preserved climate information in the western Pamir, observations from the Fedchenko Glacier accumulation basin, *Journal of Glaciology*, 66, 219–230, <https://doi.org/10.1017/jog.2019.97>, 2020.
- Ligtenberg, S. R. M., Helsen, M. M., and Van Den Broeke, M. R.: An improved semi-empirical model for the densification of Antarctic firn, *Cryosphere*, 5, 809–819, <https://doi.org/10.5194/tc-5-809-2011>, 2011.
- 645 Marchenko, S., Pelt, W. V., Claremar, B., Pohjola, V., Pettersson, R., Machguth, H., and Reijmer, C.: Parameterizing deep water percolation improves subsurface temperature simulations by a multilayer firn model, *Frontiers in Earth Science*, 5, 1–20, <https://doi.org/10.3389/feart.2017.00016>, 2017.
- Mattea, E., Machguth, H., Kronenberg, M., van Pelt, W., Bassi, M., and Hoelzle, M.: Firn changes at Colle Gnifetti revealed with a high-resolution process-based physical model approach, *The Cryosphere*, 15, 3181–3205, [https://doi.org/https://doi.org/10.5194/tc-15-3181-](https://doi.org/https://doi.org/10.5194/tc-15-3181-2021)
650 2021, 2021.
- Miles, E., McCarthy, M., Dehecq, A., Kneib, M., Fugger, S., and Pellicciotti, F.: Health and sustainability of glaciers in High Mountain Asia, *Nature Communications*, 12, <https://doi.org/10.1038/s41467-021-23073-4>, <http://dx.doi.org/10.1038/s41467-021-23073-4>, 2021.
- Mölg, T. and Hardy, D. R.: Ablation and associated energy balance of a horizontal glacier surface on Kilimanjaro, *Journal of Geophysical Research D: Atmospheres*, 109, 1–13, <https://doi.org/10.1029/2003JD004338>, 2004.
- 655 Mölg, T., Maussion, F., Yang, W., and Scherer, D.: The footprint of Asian monsoon dynamics in the mass and energy balance of a Tibetan glacier, *The Cryosphere*, 6, 1445–1461, <https://doi.org/10.5194/tc-6-1445-2012>, 2012.
- Obu, J., Westermann, S., Bartsch, A., Berdnikov, N., Christiansen, H. H., Dashtseren, A., Delaloye, R., Elberling, B., Etzelmüller, B., Kholodov, A., Khomutov, A., Kääb, A., Leibman, M. O., Lewkowicz, A. G., Panda, S. K., Romanovsky, V., Way, R. G., Westergaard-Nielsen, A., Wu, T., Yamkhin, J., and Zou, D.: Northern Hemisphere permafrost map based on TTOP modelling for 2000–2016 at 1 km²
660 scale, *Earth-Science Reviews*, 193, 299–316, <https://doi.org/10.1016/j.earscirev.2019.04.023>, 2019.
- Obu, J., Westermann, S., Vieira, G., Abramov, A., Balks, M. R., Bartsch, A., Hrbáček, F., Kääb, A., and Ramos, M.: Pan-Antarctic map of near-surface permafrost temperatures at 1 km² scale, *The Cryosphere*, 14, 497–519, <https://doi.org/10.5194/tc-14-497-2020>, <https://tc.copernicus.org/articles/14/497/2020/>, 2020.
- Oerlemans, J.: *Glaciers and climate change*, AA Balkema Publishers, Lisse and Exton (PA), 2001.
- 665 Oerlemans, J. and Grisogono, B.: Glacier winds and parameterisation of the related surface heat fluxes, *Tellus, Series A: Dynamic Meteorology and Oceanography*, 54, 440–452, <https://doi.org/10.1034/j.1600-0870.2002.201398.x>, 2002.
- Pellicciotti, F., Carenzo, M., Helbing, J., Rimkus, S., and Burlando, P.: On the role of subsurface heat conduction in glacier energy-balance modelling, *Annals of Glaciology*, 50, 16–24, <https://doi.org/10.3189/172756409787769555>, 2009.

- Pertziger, F.: Abramov Glacier Data Reference Book: Climate, Runoff, Mass Balance, Central Asian Hydrometeorological Institute, Tashkent, 1996.
- Pertziger, F. and Kronenberg, M.: Abramov glacier data base [data set], <https://doi.org/10.5281/ZENODO.7110254>, 2022.
- Pohl, E., Gloaguen, R., and Seiler, R.: Remote sensing-based assessment of the variability of winter and summer precipitation in the pamirs and their effects on hydrology and hazards using harmonic time series analysis, *Remote Sensing*, 7, 9727–9752, <https://doi.org/10.3390/rs70809727>, 2015.
- 675 Reijmer, C. H. and Hock, R.: Internal accumulation on Storglaciären, Sweden, in a multi-layer snow model coupled to a distributed energy- and mass-balance model, *Journal of Glaciology*, 54, 61–72, <https://doi.org/10.3189/002214308784409161>, 2008.
- RGI Consortium: Randolph Glacier Inventory – A Dataset of Global Glacier Outlines: Version 6.0, Global Land Ice Measurements from Space, Colorado, USA. Digital Media, <https://doi.org/10.7265/N5-RGI-60>, 2017.
- Sarangi, C., Qian, Y., Rittger, K., Bormann, K. J., Liu, Y., Wang, H., Wan, H., Lin, G., and Painter, T. H.: Impact of light-absorbing particles on snow albedo darkening and associated radiative forcing over high-mountain Asia: high-resolution WRF-Chem modeling and new satellite observations, *Atmospheric Chemistry and Physics*, 19, 7105–7128, <https://doi.org/10.5194/acp-19-7105-2019>, 2019.
- 680 Schmale, J., Flanner, M., Kang, S., Sprenger, M., Zhang, Q., Guo, J., Li, Y., Schwikowski, M., and Farinotti, D.: Modulation of snow reflectance and snowmelt from Central Asian glaciers by anthropogenic black carbon, *Scientific Reports*, 7, 1–10, <https://doi.org/10.1038/srep40501>, 2017.
- 685 Schneider, T. and Jansson, P.: Internal accumulation in firn and its significance for the mass balance of Storglaciären, Sweden, *Journal of Glaciology*, 50, 25–34, <https://doi.org/10.3189/172756504781830277>, 2004.
- Schöne, T., Zech, C., Unger-Shayesteh, K., Rudenko, V., Thoss, H., Wetzel, H.-U., Gafurov, A., Illigner, J., and Zubovich, A.: A new permanent multi-parameter monitoring network in Central Asian high mountains - from measurements to data bases, *Geoscientific Instrumentation, Methods and Data Systems*, 2, 97–111, <https://doi.org/10.5194/gi-2-97-2013>, 2013.
- 690 Schuler, T. V. and Ims Østby, T.: Sval-Imp: A gridded forcing dataset for climate change impact research on Svalbard, *Earth System Science Data*, 12, 875–885, <https://doi.org/10.5194/essd-12-875-2020>, 2020.
- Sevruk, B.: Systematischer Niederschlagsmessfehler in der Schweiz, in: *Der Niederschlag in der Schweiz, Beiträge zur Geologie der Schweiz - Hydrologie*, edited by Sevruk, B., vol. 31, pp. 65–75, 1985.
- Shean, D. E., Bhushan, S., Montesano, P., Rounce, D. R., Arendt, A., and Osmanoglu, B.: A Systematic, Regional Assessment of High Mountain Asia Glacier Mass Balance, *Frontiers in Earth Science*, 7, 1–19, <https://doi.org/10.3389/feart.2019.00363>, 2020.
- 695 Sicart, J. E., Hock, R., Ribstein, P., Litt, M., and Ramirez, E.: Analysis of seasonal variations in mass balance and meltwater discharge of the tropical Zongo Glacier by application of a distributed energy balance model, *J. Geophys. Res. Atmos.*, 116, 1–18, <https://doi.org/10.1029/2010JD015105>, 2011.
- Smith, W. L.: Note on the Relationship Between Total Predictable Water and Surface Dew Point, *Journal of Applied Meteorology*, 5, 726–727, [https://doi.org/10.1175/1520-0450\(1966\)005<0726:NOTRBT>2.0.CO;2](https://doi.org/10.1175/1520-0450(1966)005<0726:NOTRBT>2.0.CO;2), 1966.
- 700 Stainbank, W. D.: Simulation of Abramov glacier energy balance and firn properties, Msc thesis, University of Fribourg, 2018.
- Sturm, M., Holmgren, J., König, M., and Morris, K.: The thermal conductivity of seasonal snow, *Journal of Glaciology*, 43, 26–41, <https://doi.org/10.1017/S0022143000002781>, 1997.
- Suslov, V. F. and Krenke, A. N.: *Abaramov Glacier (Alay Range) [in Russian]*, Gidrometeoizdat, St. Petersburg, 1980.
- 705 Thibert, E., Blanc, R., Vincent, C., and Eckert, N.: Glaciological and Volumetric Mass Balance Measurements: Error Analysis over 51 years for the Sarennes glacier, French Alps, *Journal of Glaciology*, 54, 522–532, 2008.

- van Kampenhout, L., Lenaerts, J. T., Lipscomb, W. H., Sacks, W. J., Lawrence, D. M., Slater, A. G., and van den Broeke, M. R.: Improving the Representation of Polar Snow and Firn in the Community Earth System Model, *Journal of Advances in Modeling Earth Systems*, 9, 2583–2600, <https://doi.org/10.1002/2017MS000988>, 2017.
- 710 van Pelt, W. and Kohler, J.: Modelling the long-term mass balance and firn evolution of glaciers around Kongsfjorden, Svalbard, *Journal of Glaciology*, 61, 731–744, <https://doi.org/10.3189/2015JoG14J223>, 2015.
- van Pelt, W., Pohjola, V., Pettersson, R., Marchenko, S., Kohler, J., Luks, B., Hagen, J. O., Schuler, T. V., Dunse, T., Noël, B., and Reijmer, C.: A long-term dataset of climatic mass balance, snow conditions, and runoff in Svalbard (1957 – 2018), *The Cryosphere*, 13, 2259–2280, <https://doi.org/10.5194/tc-13-2259-2019>, 2019.
- 715 van Pelt, W. J., Schuler, T. V., Pohjola, V. A., and Pettersson, R.: Accelerating future mass loss of Svalbard glaciers from a multi-model ensemble, *Journal of Glaciology*, 67, 485–499, <https://doi.org/10.1017/jog.2021.2>, 2021.
- van Pelt, W. J. J., Oerlemans, J., Reijmer, C. H., Pohjola, V. A., Pettersson, R., and Van Angelen, J. H.: Simulating melt, runoff and refreezing on Nordenskiöldbreen, Svalbard, using a coupled snow and energy balance model, *The Cryosphere*, 6, 641–659, <https://doi.org/10.5194/tc-6-641-2012>, 2012.
- 720 Vandecrux, B., Mottram, R., L. Langen, P., S. Fausto, R., Olesen, M., Max Stevens, C., Verjans, V., Leeson, A., Ligtenberg, S., Kuipers Munneke, P., Marchenko, S., van Pelt, W., R. Meyer, C., B. Simonsen, S., Heilig, A., Samimi, S., Marshall, S., MacHuth, H., MacFerrin, M., Niwano, M., Miller, O., I. Voss, C., and E. Box, J.: The firn meltwater Retention Model Intercomparison Project (RetMIP): Evaluation of nine firn models at four weather station sites on the Greenland ice sheet, *Cryosphere*, 14, 3785–3810, <https://doi.org/10.5194/tc-14-3785-2020>, 2020.
- 725 Vionnet, V., Brun, E., Morin, S., Boone, A., Faroux, S., Le Moigne, P., Martin, E., and Willemet, J.-M.: The detailed snowpack scheme Crocus and its implementation in SURFEX v7.2, *Geoscientific Model Development*, 5, 773–791, <https://doi.org/10.5194/gmd-5-773-2012>, 2012.
- Wang, R., Liu, S., Shangguan, D., Radić, V., and Zhang, Y.: Spatial heterogeneity in glacier mass-balance sensitivity across High Mountain Asia, *Water*, 11, 776, <https://doi.org/10.3390/w11040776>, 2019.
- Westermann, S., Ostby, T. I., Gisläs, K., Schuler, T. V., and Etzelmüller, B.: A ground temperature map of the North Atlantic permafrost region based on remote sensing and reanalysis data, *The Cryosphere*, 9, 1303–1319, <https://doi.org/10.5194/tc-9-1303-2015>, 2015.
- 730 WGMS: Fluctuations of Glaciers Database, <https://doi.org/doi.org/10.5904/wgms-fog-2021-05>, 2021.
- Yao, T., Thompson, L., Yang, W., Yu, W., Gao, Y., Guo, X., Yang, X., Duan, K., Zhao, H., Xu, B., Pu, J., Lu, A., Xiang, Y., Kattel, D. B., and Joswiak, D.: Different glacier status with atmospheric circulations in Tibetan Plateau and surroundings, *Nature Climate Change*, 2, 663–667, <https://doi.org/10.1038/nclimate1580>, 2012.
- 735 Yen, Y.-C.: Review of thermal properties of snow, ice and sea ice., Tech. rep., CRREL report 81-10, DTIC, Hanover, New Hampshire, USA, 1981.
- Zech, C., Schöne, T., Illigner, J., Stolarczuk, N., Queißer, T., Köppl, M., Thoss, H., Zubovich, A., Sharshebaev, A., Zakhidov, K., Toshpulatov, K., Tillayev, Y., Olimov, S., Paiman, Z., Unger-Shayesteh, K., Gafurov, A., and Moldobekov, B.: Hydrometeorological data from a Remotely Operated Multi-Parameter Station network in Central Asia, *Earth System Science Data*, 13, 1289–1306, <https://doi.org/10.5194/essd-13-1289-2021>, 2021.
- 740 Zhang, G., Kang, S., Fujita, K., Huintjes, E., Xu, J., Yamazaki, T., Haginoya, S., Wei, Y., Scherer, D., Schneider, C., and Yao, T.: Energy and mass balance of Zhadang glacier surface, central Tibetan Plateau, *Journal of Glaciology*, 59, 137–148, <https://doi.org/10.3189/2013JoG12J152>, 2013.

Zhu, M., Yao, T., Xie, Y., Xu, B., Yang, W., and Yang, S.: Mass balance of Muji Glacier, northeastern Pamir, and its controlling climate factors, *Journal of Hydrology*, 590, 1–17, <https://doi.org/10.1016/j.jhydrol.2020.125447>, 2020.