

Altimetric observation of wave attenuation through the Antarctic marginal ice zone using ICESat-2

Jill Brouwer^{1,2}, Alexander D. Fraser², Damian J. Murphy^{3,2}, Pat Wongpan², Alberto Alberello⁴, Alison Kohout⁵, Chris Horvat⁶, Simon Wotherspoon¹, Robert A. Massom^{3,2,7}, Jessica Cartwright⁸, and Guy D. Williams¹

¹Institute for Marine and Antarctic Studies, University of Tasmania, Hobart, Australia

²Australian Antarctic Program Partnership, Institute for Marine and Antarctic Studies, University of Tasmania, Hobart, Australia

³Australian Antarctic Division, Kingston, Australia

⁴University of East Anglia, Norwich, United Kingdom

⁵National Institute of Water and Atmospheric Research, Christchurch, New Zealand

⁶Brown University, Providence, USA

⁷The Australian Centre for Excellence in Antarctic Science, University of Tasmania, Hobart, Australia

⁸Spire Global, Inc., Glasgow, United Kingdom

Correspondence: Alexander Fraser (Alexander.Fraser@utas.edu.au)

Abstract. The Antarctic marginal ice zone (MIZ) is a highly dynamic region where sea ice interacts with ocean surface waves generated in ice-free areas of the Southern Ocean. Improved large-scale (satellite-based) estimates of MIZ extent and variability are crucial for understanding atmosphere-ice-ocean interactions and biological processes, and detection of change therein. Legacy methods for defining the MIZ are typically based on sea ice concentration thresholds, and do not directly relate to the fundamental physical processes driving MIZ variability. To address this, new techniques have been developed to measure the spatial extent of significant wave height attenuation in sea ice from variations in Ice, Cloud and land Elevation Satellite-2 (ICESat-2) surface heights. The poleward wave penetration limit (boundary) is defined as the location where significant wave height attenuation equals the estimated error in significant wave height. Extensive automated and manual acceptance/rejection criteria are employed to ensure confidence in along-track wave penetration width estimates, due to significant cloud contamination of ICESat-2 data or where wave attenuation is not observed. Analysis of 304 ICESat-2 tracks retrieved from four months of 2019 (February, May, September and December) reveals that sea ice concentration-derived MIZ width estimates are far narrower (by a factor of ~ 7 on average) than those from the new technique presented here. These results suggest that indirect methods of MIZ estimation based on sea ice concentration are insufficient for representing physical processes that define the MIZ. Improved large-scale measurements of wave attenuation in the MIZ will play an important role in increasing our understanding of this complex sea ice zone.

1 Introduction

Understanding the nature and drivers of the Earth's sea ice system (and change and variability therein) is a high priority in climate science (Meredith et al., 2019). Sea ice-related processes play a crucially important role in Earth's climate system by

modifying and modulating interactions of the ocean and atmosphere, and by influencing the oceanic uptake and storage of anthropogenic heat and CO₂ from the atmosphere (e.g., Butterworth and Miller, 2016). Moreover, sea ice forms a key habitat for a diverse range of marine biota, from micro-organisms to whales (Massom and Stammerjohn, 2010).

An important element of this complex air-sea ice-ocean interaction system is the outer part of the sea ice zone, termed the marginal ice zone (MIZ). The MIZ is qualitatively defined as the area where sea ice properties are impacted by open ocean processes, especially ocean surface gravity waves (Wadhams, 1986). Wave-ice interactions are mutual: waves alter sea ice properties through physical and thermodynamic processes, and energy transferred while doing so attenuates wave amplitude by scattering and dissipative processes. Sea ice acts as a low-pass filter, preferentially attenuating higher frequency waves at a rate dependent on the sea ice physical properties (e.g., concentration, thickness, floe size; Squire, 2020; Montiel et al., 2022). In some cases, long-period surface gravity waves have been observed to penetrate hundreds of kilometers into sea ice before their energy is fully attenuated (Liu and Mollo-Christensen, 1988; Asplin et al., 2012; Stopa et al., 2018a). In doing so, they can substantially impact the sea ice cover and the size distribution of ice floes (Kohout et al., 2014). This is especially the case in the circum-Antarctic sea-ice zone, where long period and high amplitude waves from the surrounding high-energy Southern Ocean (Young et al., 2020) penetrate and become progressively attenuated within the MIZ (Weeks, 2010; Horvat et al., 2020; Alberello et al., 2021).

The highly dynamic nature and intense ice-atmosphere-ocean interactions occurring in the MIZ have important effects on sea ice properties and distribution, the structure and properties of the ocean and atmosphere, weather patterns, regional and global climate, and important marine ecosystems (Stammerjohn et al.). Sea ice formation and melt processes within the MIZ are also a major driver of distinct regional patterns observed in Antarctic seasonal sea-ice advance and retreat (Kohout et al., 2014), and observed change and variability therein (Lubin and Massom, 2006). A primary process for wave alteration of sea ice coverage, properties, dynamics and thermodynamics is through wave-induced break-up caused by flexural strain (Wadhams et al., 1986; Dumont et al., 2011; Bennetts et al., 2017; Wadhams et al., 2018). The distance over which wave energy is large enough to break sea ice has been used as a proxy to measure the MIZ by some authors (e.g., Dumont et al., 2011; Williams et al., 2013a, b; Bennetts et al., 2015; Williams et al., 2017), but this approach requires knowledge of sea ice properties. Wave-induced break-up and subsequent wave attenuation result in smaller floes close to the ice edge, due to break-up at the margins by larger amplitude waves, and progressive attenuation of wave energy (and larger floes) deeper into the ice pack (Collins et al., 2015; Fox and Haskell, 2001; Massom et al., 1999; Toyota et al., 2011). Floe size distribution is an important determinant of lateral sea ice melt, as the increased total perimeter of smaller floes enhances melt (Maykut and Perovich, 1987; Steele, 1992) and can energize ocean eddy variability, driving faster sea ice retreat (Horvat et al., 2016). This process makes a major contribution to the rapid annual retreat of Antarctic sea ice each spring-summer. The presence of waves also determines ice type, and can enhance pancake ice-floe growth in autumn-winter, whilst wave over-wash may also enhance melt (Massom et al., 2001). These processes present a positive feedback whereby less extensive sea ice coverage reduces wave attenuation, enhancing floe break-up and melt, thus underscoring their importance (Roach et al., 2018; Alberello et al., 2019).

The MIZ, as viewed from remotely sensed sources, is historically defined using satellite passive microwave sea ice concentration (SIC) data as the area between the ice edge (15% SIC) and close ice as defined by the World Meteorological Or-

ganisation (2014) (80% SIC; Strong, 2012; Strong et al., 2017). This definition allows large-scale delineation of this zone on
55 daily timescales. However, mapping and monitoring the MIZ based on intermediate values of SIC is not physically-based, as
it does not directly represent wave-ice or other coupled interactions. Indeed, SIC is influenced by a wide range of concomitant
processes including winds and ocean currents, air temperature, upper ocean heat storage, turbulent and radiative heat exchange
(Wadhams, 1986) and snow cover (Sturm and Massom, 2017). SIC-based MIZ retrieval is thought to inaccurately represent
MIZ extent, particularly in the Antarctic (Vichi, 2021), as significant wave penetration can occur in areas of 100% ice coverage
60 (Liu and Mollo-Christensen, 1988; Vichi et al., 2019), and, conversely, waves may not be present in all low-concentration sea
ice.

Altimetry holds strong potential to measure wave propagation and attenuation in sea ice (Lubin and Massom, 2006). Attenuation of waves in ice has been measured using satellite radar altimetry as early as the mid-1980s (Rapley, 1984). The ground resolution achievable by present radar altimeter technology is not sufficient to directly resolve wave attenuation through the
65 MIZ. This is expected to be resolved with the proposed Surface Water and Ocean Topography (SWOT) radar interferometry mission (Fu and Ubelmann, 2013) due to be launched in late 2022 (Armitage and Kwok, 2021). Laser altimeters such as the Advanced Topographic Laser Altimeter System (ATLAS) instrument on board ICESat-2 (IS-2 hereafter) can observe at a sufficient spatial resolution to detect wave propagation and attenuation (Horvat et al., 2020), under clear-sky (cloud-free) conditions. With satellite ground speeds in excess of 7 km/s, IS-2 further enables near-instantaneous snapshots of wave attenuation
70 with distance into the sea ice. For example, a 2019 storm in the Barents Sea was observed to generate waves in sea ice with heights above 2 m, which decayed over distances of several hundred kilometers into the sea ice near Svalbard (Horvat et al., 2020). With IS-2 operational since October 2018, and orbiting the Earth 15 times per day, the IS-2 dataset provides global coverage and combined with information about along-track floe sizes, concentrations, and thicknesses can provide unique information about wave attenuation for climate models (Tilling et al., 2018; Horvat et al., 2019; Roach et al., 2019; Horvat and
75 Roach, 2021).

The importance of interactions between ocean surface waves and sea ice provides a strong motivation to observe, understand, simulate and predict current and future MIZ conditions and processes. Southern Ocean wave height is predicted to increase over the coming decades (Dobrynin et al., 2012) as the frequency and intensity of storms increase, which will allow waves to penetrate further into the MIZ (e.g. Squire, 2020), potentially increasing MIZ areal coverage, properties and influence. Being
80 able to understand large-scale MIZ dynamics is an essential step to improving our understanding of the likely response of Antarctic sea ice to climate change, and its wide-ranging impacts.

The purpose of this study is to develop a new method to directly detect the presence of surface gravity waves in Antarctic sea ice using IS-2 surface height data, and to measure the distance over which waves are attenuated. Definitions of MIZ and MIZ extent are qualitative in nature, and may vary depending on the time-scale and application considered. In this paper, “wave
85 penetration width” describes the distance of wave attenuation measured along IS-2 satellite tracks, and this metric is therefore spatially and temporally constrained to these altimetric measurements. Additional factors including sea ice properties are not considered. The inner boundary of wave penetration is defined as the location where significant wave height attenuation equals the estimated error in significant wave height. MIZ width measurement from SIC is used as comparison, hereafter referred

to as “SIC-derived MIZ width”, referring to the distance between the 15 and 80 % SIC thresholds. Large-scale (remotely
90 sensed) measurements of wave attenuation and penetration width are expected to provide improved knowledge of the physical
dynamics occurring within the MIZ, as compared to SIC-derived methods of delineating this zone.

A recent analysis of IS-2 data measured the presence of ocean waves in ice by determining the presence of negative heights
(after a mean sea surface correction was applied; Horvat et al., 2020). The results of this preliminary analysis reported that the
wave-affected MIZ extents were smaller than that defined by SIC. This is contrary to suggestions that SIC may underestimate
95 MIZ extent due to the observed presence of surface gravity waves where SIC is 100% and therefore not classified as MIZ
based on the SIC definition (Vichi et al., 2019). The Horvat et al. (2020) study required wave heights to be large relative to
background sea ice and ocean variability, highlighting the need for spectral analysis of IS-2 heights to facilitate the separation
of wave presence from sea ice variability. To address this limitation, this study aims to:

1. improve estimates of wave presence and attenuation in the Antarctic MIZ using spectral and spatial domain analysis
100 techniques;
2. validate IS-2-derived significant wave height against coincident wave buoy measurements; and
3. calculate wave penetration width along IS-2 tracks, and compare to MIZ width derived from SIC to address the proposed
hypothesis that the SIC-based technique underestimates MIZ width compared to a wave attenuation-based metric.

This introduction is followed by a description of the datasets used. From there, the Methods section details how the IS-2
105 heights are analysed in the spectral and spatial domains, how significant wave height is determined, and how wave penetration
width is estimated from this. The Results section presents two case studies of wave attenuation observations, which are both
expanded upon within separate appendices. Wave penetration from these cases, as well as all cases covered in this study, is
contrasted with MIZ width determined from SIC maps. The results are then discussed in the context of other studies, with
indications for future study directions, in the Discussion section.

110 **2 Datasets**

IS-2 was launched in September 2018 and provides coverage of the Antarctic MIZ (when cloud-free) along predominantly
north/south track lines. IS-2 orbits at an altitude of ~480 km, with 17 m diameter laser footprints spaced ~0.7 m along track,
arranged in a six-beam configuration (Abdalati et al., 2010). The standard deviation in vertical photon height measurements
is of the order of centimeters (Neumann et al., 2019). Higher-order sea ice height products are derived by accumulating 150
115 photon returns into approximately 10-20 m segments, with a reported along-track vertical precision of approximately 2 cm for
Arctic sea ice (Kwok, 2019). Wave presence in the MIZ was determined from the along-track variability (with a wavelength
on the order of several hundred metres) of IS-2 reported surface heights. The IS-2 dataset used here is the Level 3 sea ice
height product (ATL07, version 2), from the National Snow and Ice Data Centre (NSIDC; <https://nsidc.org/data/atl07>). The
ATL07 algorithm corrects surface heights for deviations due to solid Earth tides, solid Earth pole tides, local displacement due
120 to ocean loading, atmospheric delay and mean sea surface (predetermined from IS-2 and Cryosat-2 data), ocean tides, long

period equilibrium tides and geoid undulations (Kwok, 2019). ATL07 surfaces are produced where passive-microwave-derived sea ice concentration is equal to or greater than 15%.

As a proof of concept, we consider here all IS-2 tracks within four study periods of February, May, September and December of 2019. These were chosen to represent times of minimum extent, rapid autumn advance, maximum extent and rapid summer retreat, respectively (Eayrs et al., 2019).

SIC-based estimates of MIZ width were also computed for comparison with along-track spectral information. We use the ARTIST Sea Ice algorithm daily 6.25 km SIC data (Spreen et al., 2008) downloaded from <https://seaice.uni-bremen.de/sea-ice-concentration/amsre-amsr2/>, rather than the NSIDC ice concentration product packaged with IS-2 data, due to its higher resolution facilitating finer-scale consideration of wave attenuation.

To validate IS-2-retrieved wave information, we compare IS-2-derived significant wave height (H_s) estimates to measurements made by five wave-ice interaction buoys. The buoys, which were manufactured by P.A.S. Consultants P/L, use the Sparton AHRS-M1 micro-sized, light weight, low power inertial sensor with a built-in adaptive calibration mode. The buoys were designed for sea ice deployment, and monitor acceleration in all planes. Data bursts (acquisitions at a rate of 64 Hz) were separated by 640 seconds. A low-pass, second-order Butterworth filter was applied with a cut-off at 0.5 Hz, and subsampled to 2 Hz. A high-pass filter was then applied and the acceleration integrated twice to provide the displacement. Calculation of spectral density was performed using Welch's method (Welch, 1967), with a 10% cosine window and de-trending on four segments (each 256 s long) with 50% overlap. Spectral moments were also calculated, and H_s was obtained from the zeroth spectral moment, defining the total variance (or energy) of the wave system within the frequency range detectable by the buoy. Five buoys were deployed on 2019-12-09 and 2019-12-10, from north (64.27° S) to south (64.75° S) along ~120.5° E. Three of these buoys were deployed near the ice edge, one in low sea ice concentration and another in high sea ice concentration. For all deployments, the sea ice primarily consisted of pancakes with gaps generally filled with frazil or brash ice. In total, 4,402 wave records were captured over six months (from 2019-12-10 to 2020-06-12).

3 Methods

For each track, preliminary quality control of the IS-2 heights was first undertaken. Segment heights >100 m were removed, where segment heights refer to the mean heights of returned photon collections measured by IS-2 (see "height_segment_height" variable in the ATL07 Product Data Dictionary, accessible from <https://nsidc.org/sites/nsidc.org/files/technical-references/ATL07-data-dictionary-v001.pdf>). Each track line was split into descending and ascending orbit components, and ascending tracks were reversed so that all analyses were undertaken from north to south. As a consequence, waves generated from the limited fetch within coastal polynyas were ignored here.

Surface height data were interpolated onto a regular 8 m grid format using a cubic spline method in order to provide equally-spaced points for application of amplitude scaling corrections due to cloud-obscured data (detailed in Appendix A). Non-Uniform Fourier Transform (NUFT) techniques including the Lomb-Scargle periodogram, or the method of Greengard and Lee (2004) suggested by Horvat et al. (2020) are not considered here.

Interpolated along-track heights were divided into windows of 6.25 km, to provide a similar resolution to the ASI/ASMR-2
155 SIC product for comparison. Sections were selected for spectral analysis in 6.25 km sliding windows with a 1 km step (a
window overlap was implemented). The maximum allowable amount of missing data (due to cloud contamination) in each
window was set to 50% (Murphy et al., 2007).

SIC-based MIZ width is defined as the distance between the 15% and 80% SIC contours (Strong et al., 2017). Here we
calculate MIZ width from SIC along the IS-2 tracks rather than using, for example, meridional transects (Stroeve et al., 2016)
160 or more sophisticated mathematical techniques (see recommendations in Strong et al., 2017) to facilitate direct comparison
between SIC- and IS-2-derived estimates. Secondary occurrences of lower SIC (<80%) further south than the northernmost
80% boundary were not included in the SIC MIZ width calculations, to remain consistent with the fact that the inner MIZ was
not measured by the wave attenuation methods. The effective wave-in-ice penetration width metric (x_e), representing the total
ice “path” encountered along the satellite track, was calculated by integrating the SIC (P_z) from the ice edge (0) inwards to
165 point x (after Wadhams, 1975), and is referred to henceforth as “corrected distance into the MIZ”:

$$x_e = \int_0^x P_z dz. \quad (1)$$

This metric represents the equivalent distance from the ice edge to distance x if the ice were consolidated to 100% concentra-
tion, and is always shorter than the physical distance from the ice edge to point x .

3.1 Spectral and spatial domain analyses

170 Spectral analysis was completed for each suitable section and along each track. The effect of lost variance due to windowing
and missing data (i.e., cloud cover) was corrected using W_{ss} scaling described in Appendix A. Two windowing functions,
boxcar and Hann (Earle, 1996) were tested to determine the effects of spectral leakage on spectral amplitude estimates. Each
window was combined with the missing data profile for each section and the W_{ss} scaling factor calculated from this combined
window.

175 Sampling effects of non-random data gaps may contribute their own spectral characteristics in addition to those from the
surface height data itself (Murphy et al., 2007). To circumvent this, a Spatial Domain Filtering (SDF) spectral analysis method
using Finite Impulse Response Filters (FIRFs) was also employed, following Murphy et al. (2007). An additional advantage
of applying filtering in the spatial domain is the ease with which filtered data can be inspected. Here the FIRFs are a set of
Gaussian functions (in the spectral domain), with a constant Q factor (Palo et al., 1998) (here Q=2.25, encompassing three
180 complete wave cycles). A bank of 11 filters with center wavelengths ranging from 38 m to 1500 m was originally considered
(i.e. wave periods from 5 to 31 s), in accordance with expected wavelength values of surface gravity waves (Toffoli and Bitner-
Gregersen, 2017). Inter-filter spacing was equivalent to the filter bandwidth. The filtering process involved the convolution of
the height data with the spatial domain filter function generated from the FIRFs.

A subset of four contiguous filters (with peak wavelengths of 165, 239, 345 and 498 m, roughly equivalent to 10, 12, 15 and 18 s periods) was subsequently chosen from this filter bank for final wave penetration width retrieval, based on the results of Stopa et al. (2018b). Filters with center wavelengths shorter than 150 m were not considered representative of wave penetration width due to rapid attenuation of shorter wavelengths. These wavelengths may also be associated with roughness due to ice features, potentially confounding H_s estimates in the inner MIZ. Wavelengths longer than ~ 500 m were not considered for wave penetration width estimation here, as they have a weaker physical effect on sea ice (e.g., a lower modelled break-up stress; Montiel and Squire, 2017).

3.2 Derivation of significant wave height

Significant wave height was used as the primary metric to measure wave attenuation in the MIZ, and is related to wave energy (Kohout et al., 2020). Four different measurements of significant wave height were calculated for each suitable along-track section: 1) Hann- and 2) boxcar-windows moment-based; and standard-deviation based estimates from 3) interpolated and 4) SDF-filtered height series. Hann- and boxcar-windowed power spectra were bandpass-filtered from the Nyquist wavenumber to 1,500 m to remove longer wavelength signals (e.g. tides, geoid variations) that may have remained despite IS-2 corrections (Kwok, 2019). Significant wave height was then calculated from the zeroth moment (m_0) of each power spectrum after bandpass filtering. Significant wave heights calculated in this way were termed (H_{m0}):

$$H_{m0} = 4\sqrt{m_0}. \quad (2)$$

Spatial domain estimates of significant wave height (H_s) were also determined from the standard deviation (std) of the interpolated and SDF-filtered along-track height data (h)

$$H_s = 4 \cdot std(h). \quad (3)$$

Mean significant wave height for each 1 km along-track spacing was calculated by averaging across the three corresponding H_s estimates from each beam. Error in mean significant wave height was calculated by quadrature addition of the standard deviation of the three H_s values, and the mean IS-2 height error within each 6.25 km section.

3.3 Attenuation curve fitting and wave penetration width estimation

The wave penetration width was estimated by fitting segmented linear regressions to H_s and H_{m0} transects with the R package “segmented” (Muggeo, 2003) to automatically divide transects into outer “attenuation-dominated” and inner “ice structure-dominated” regions. To facilitate the automated application of the segmented linear regression model, simplified initial estimates of the change-point between these two sections were first obtained. This was achieved by fitting a Generalised Additive Model (GAM) with a thin-plate regression spline smooth term (Wood, 2003) using the R package “mgcv” (Wood, 2017),

and retrieving the first local minimum of the fitted spline. Subsequent segmented model input specified one change-point initialised at the local minima distance, and used data truncated within two times the distance of this local minimum to ensure representation of both regions.

215 Following automated definition of the change-point, H_{m0} and H_s attenuation (i.e., a decrease in significant wave height with increasing distance from the ice edge) within the outer “attenuation-dominated” region were quantified using the corresponding segmented regression line, in order to determine wave penetration width. Attenuation of significant wave height in sea ice has been reported as exponential as well as linear (Kohout et al., 2014). Here, we used both models for attenuation when fitting the segmented linear regressions (noting that analysis of the falloff coefficient or exponent is outside of the scope of the present work). For the exponential models, y-axes (H_{m0} and H_s estimates from the various techniques) were log-transformed
220 prior to the fit of the segmented linear regression. The inner boundary of the MIZ was defined as the point where the modelled significant wave height intercepted the quadrature-added error of the three H_s estimates (one per strong beam) and the estimated error in segment height. This metric was used for wave penetration width estimates to a) avoid information loss due to GAM smoothing, b) allow attenuation modelling using previously demonstrated linear and exponential relationships, and c) avoid
225 contributions of variable data in the inner (“ice structure-dominated”) region to the final estimate. Concentration-corrected distance from the ice edge was used for wave penetration width determination (and this was later converted back to physical distance for reporting). In these measurements of attenuation, an along-track wave propagation direction and stationarity were assumed. Wave propagation direction assumption caveats are given in the Discussion section.

3.4 Track selection during processing

230 Not all IS-2 tracks were able to be processed in this way. Appropriate track selection criteria consisted of two components: firstly, the (automated) identification of tracks that contained enough cloud-free data to identify the presence or absence of wave attenuation throughout the MIZ (Figure 1a, c and f); and secondly, assessment of whether or not a track contained characteristics required to be identified as MIZ or not (both automated and manual components; Figure 1h and i, respectively). Any thresholds were chosen so as to be conservative (i.e., to ensure confidence in H_s and wave penetration width estimates
235 by discarding tracks without apparent H_s attenuation). These procedures are described in detail below, and caveats associated with manual track selection given in the Discussion section.

Any tracks with excessive cloud coverage were automatically identified and rejected from further processing. In this first step, IS-2 tracks were either accepted or rejected based on the following criterion: tracks with $\geq 50\%$ data present in the central strong beam within either 100 km or 500 km from the ice edge were accepted for further processing (Figure 1a). Tracks failing
240 this criterion were rejected. The 100 km bound was chosen to allow selection of records of the outer MIZ and allow wave penetration estimation at times of reduced sea ice extent (and hence MIZ) around the sea-ice minimum (February-March), while the 500 km bound was chosen so as to not exclude lines where a deeper MIZ may be present.

Further filtering steps in the first stages of processing (Figure 1a-d) were undertaken as follows:

1. Tracks acquired during satellite reorientation were excluded since data quality may be degraded (Figure 1a).

- 245 2. Tracks were excluded if all sections violated the maximum missing data threshold for spectral analysis (Figure 1c).
3. All tracks were excluded in the region from 50 to 61° W – a region of persistent multi-year sea ice near the ice edge to the east of the Antarctic Peninsula (Melsheimer et al., 2022). Considerable roughness of the multi-year sea ice in this area had the potential to confound the automated partitioning between “attenuation-dominated” and “ice structure-dominated” regions outlined above.

250 Accepted tracks were required to contain at least ten valid 6.25 km sections for automated change-point segmentation (Figure 1f). Following this step, any tracks with a positive gradient in the outer “attenuation-dominated” region were discarded. If the estimated wave penetration width was larger than the sea ice zone width (i.e., due to H_s attenuation extrapolation in regions of data gaps) the track was discarded (Figure 1h). As a result, cases of complete MIZ from the ice edge to the continent are likely to be erroneously discarded (a condition likely to occur in the narrow sea ice zone throughout much of East Antarctica or in the Bellingshausen Sea (Massom et al., 2008). Method improvements are required to account for these cases, and will be discussed later.

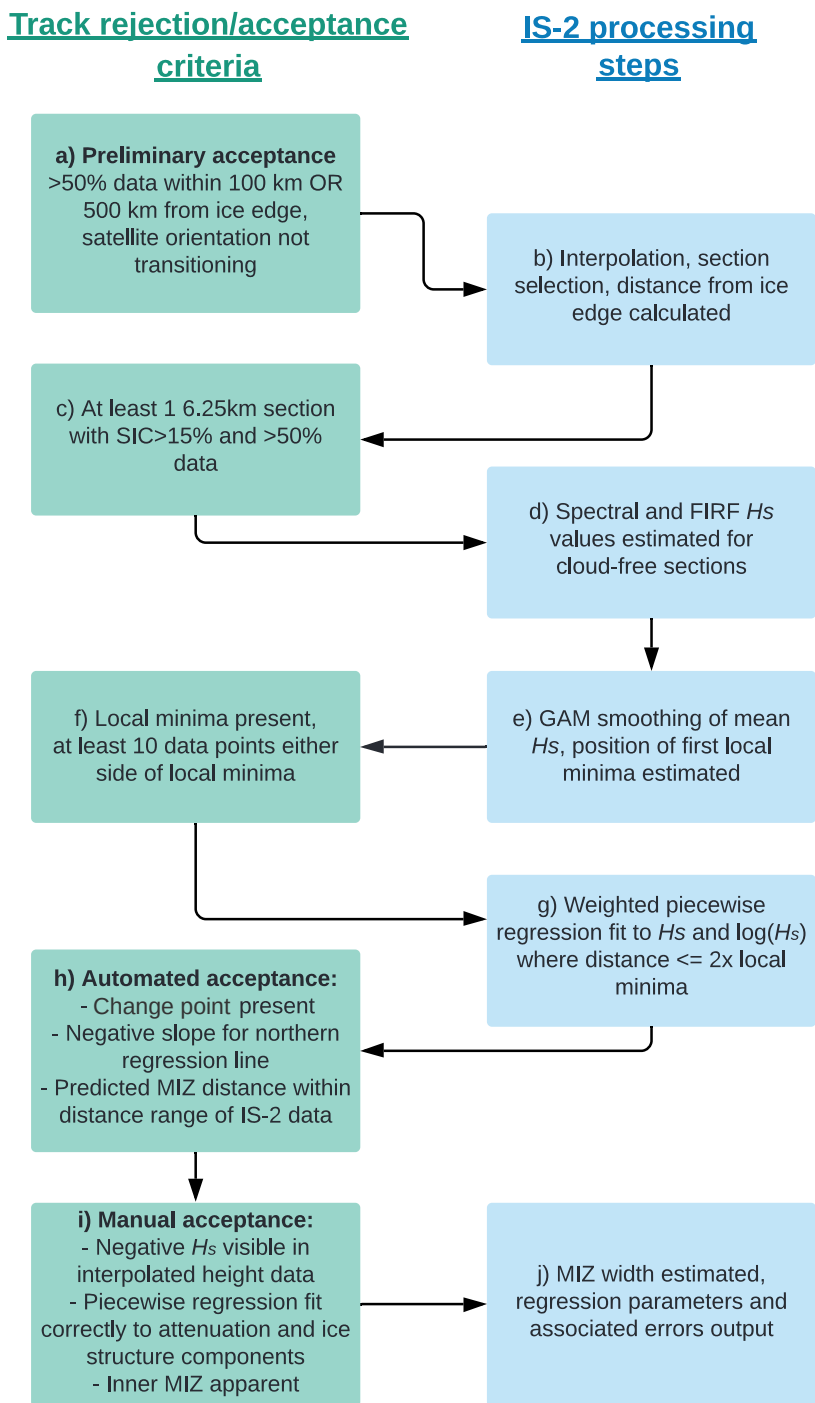
In order to ensure accurate wave penetration width estimation, manual selection was undertaken to remove cases where no wave attenuation was apparent (largely arising due to cloud cover over the region experiencing attenuation) or the attenuation models were clearly incorrectly fit (primarily due to H_s contributions from ice structure in the “attenuation-dominated” region; Figure 1i). Wave attenuation was manually assessed by identifying the presence or absence of a triangular shaped “envelope” of wave decay in the height data, showing as large positive and negative heights at the ice edge which attenuate with increasing distance into the sea ice (Horvat et al., 2020). The next criterion for this manual assessment was that the change-point of the piecewise regression occurred at the transition from “attenuation-dominated” to “ice structure-dominated” regions. To avoid high uncertainty in wave penetration width estimation due to missing (cloud-masked) data, tracks were further excluded if the boundary between the “attenuation-dominated” and “ice structure-dominated” regions was obscured (by cloud). Due to the considerable manual overhead, four months of 2019 were analysed and presented here. Table 1 gives the number of tracks prior to track selection, and after automated/manual selection in each month.

| Selection step | February | May | September | December | Total |
|---------------------|----------|-----|-----------|----------|-------|
| Prior to selection | 784 | 868 | 840 | 868 | 3360 |
| Automated selection | 219 | 408 | 342 | 252 | 1221 |
| Manual selection | 24 | 167 | 101 | 27 | 320 |

Table 1. Number of tracks in each month (of 2019) remaining after automated and manual filtering was applied. Tracks are split into ascending and descending components, i.e., there are two tracks per data file.

For the purposes of validation of IS-2-retrieved attenuation, H_s was directly measured from a deployment of five wave-sensing buoys, and used to validate the H_s estimates derived from IS-2. Co-locations of IS-2 tracks and wave buoys were first identified, prioritising temporal proximity (within 6 hours) over spatial proximity (within 400 km) under the assumption that wave conditions de-correlate quickly with time (a lag of 6 hours reduces the autocorrelation coefficient to between 0.79

Figure 1. Flow chart of track selection criteria and processing steps.



and 0.95 for the five buoys in this buoy deployment). Tracks containing a buoy co-location were then analysed to find the closest (spatial) measurement of H_s for comparison. IS-2-derived H_s measurements at these locations were also compared to a modified version of the Horvat et al. (2020) technique for estimating wave-affected fraction. The modification allows
 275 along-track (rather than gridded, as published) estimates of wave-affected fraction using each IS-2 beam, along a 50 km sliding window.

4 Results

Two case studies (Table 2) are presented to demonstrate the methods involved in directly detecting the presence of waves in the IS-2 height data, and measuring their attenuation to find the inner MIZ boundary. Cases from September and February in
 280 2019 are chosen to illustrate the performance of the wave penetration width estimation under different wave/ice conditions.

| Date | ATL07 track ID | Latitude | Longitude |
|------------|-------------------------|----------|-----------|
| 2019-09-09 | 20190909191519_11260401 | 65.0° S | 132.2° W |
| 2019-02-04 | 20190204191931_05860201 | 68.8° S | 21.1° E |

Table 2. Summary of the two case study tracks. Latitude and Longitude of the along-track ice edge location are provided.

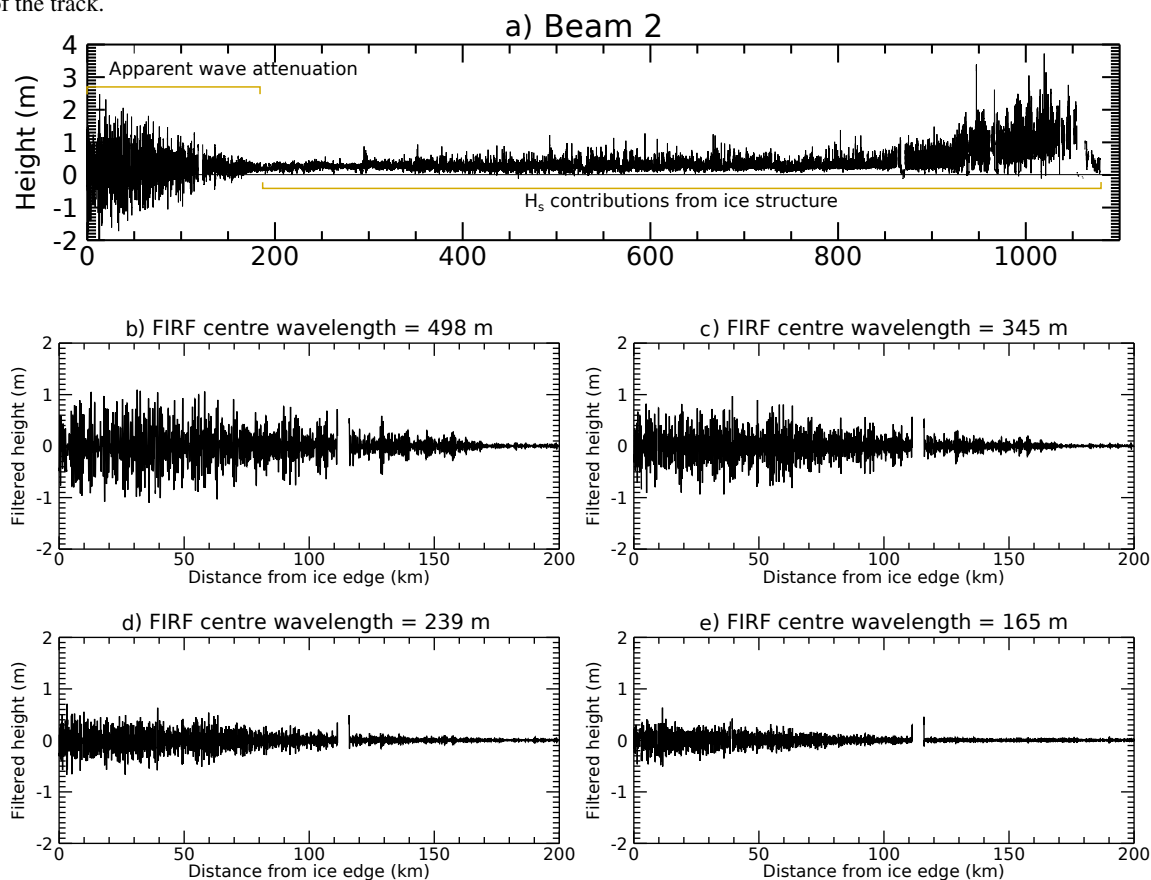
4.1 Case study from 2019-09-09

Figure 2a shows IS-2 heights observed from the ice edge to the continent. Negative heights indicative of wave passage (Horvat et al., 2020) were visible in all three strong beams (only centre beam shown) within ~ 180 km of the ice edge. This region exhibits a distinctive attenuation envelope. Note that most height contributions due to tides, inverse barometer effects, geoid
 285 undulations and mean sea surface have been removed by the ATL07 algorithm (Kwok, 2019). Although some residual remains, these corrections are sufficient for the purposes of visual detection of wave attenuation during the manual filtering in this study. Increasing heights at around >800 km from the ice edge indicates a transition to thicker ice. SDF-filtered altimetric heights displayed varying signal amplitude (outer 200 km shown in Fig. 2b-e). In this case, the largest heights were present in the data filtered with the SDF with a centre wavelength of 498 m. Waves of this wavelength appeared to penetrate up to ~ 170 km from
 290 the ice edge.

Further detailed analysis of the spectral amplitude as a function of distance from the ice edge, as well as GAM-based first local minimum estimation and change-point detection (for roughly delineating the attenuation-dominated boundary), and attenuation curve fitting (for estimating the limit of wave penetration) are presented in Appendix B.

To summarise the results of this case study, the presence of waves was apparent in the negative heights in the spatial data, and their attenuation was shown by the decrease in both positive and negative height values with increasing distances from the
 295 ice edge (the characteristic triangular envelope). This pattern of attenuation was visible until ~ 180 km from the ice edge. Wave attenuation was also evident in the spectral domain, shown by the decreasing amplitude and narrowing of the spectral peak

Figure 2. Panel a: Resampled segment heights from the central strong beam, for case study 1. Data acquisition start time 2019-09-09T19:15:19Z. Panels b-e: SDF-filtered heights for each of the four FIRF filters used in wave penetration width estimation, for the first 200 km of the track.



with increasing distance from the ice edge. SDF-based H_s estimates of wave penetration width ranged from 109 to 184 km (assuming linear attenuation, and depending on the centre wavelength of the spatial domain filter). The three spectral H_s -based estimates were also within this range.

Underestimation of the MIZ width using the SIC-based technique for this case is shown in Figure 3. In this figure H_{m0} attenuation fit to distance from the ice edge (rather than using corrected distance) is given for visual comparison (for reference, the wave penetration width estimated using the corrected distance metric was 177 km). Agreement between the distance over which waves were visible, and the wave penetration width distance derived from wave attenuation (i.e., panels a and c) provide high confidence in the methods of wave penetration width retrieval. A further case study, from 2019-02-04, is presented next, as evidence of this technique working well during the summertime sea ice minimum.

Figure 3. Direct comparison of along-track a) IS-2 beam 2 heights, b) SIC-based MIZ width and c) H_s and the resulting wave penetration width estimated by modelling wave attenuation, for case study 1. Data acquisition start time 2019-09-09T19:15:19Z. The case illustrated here shows wave penetration width estimated using a linear fit to the Hann-windowed H_{m0} values. Here, for comparison purposes, we perform the attenuation analysis (panel c) without consideration of SIC (i.e., on uncorrected distance).

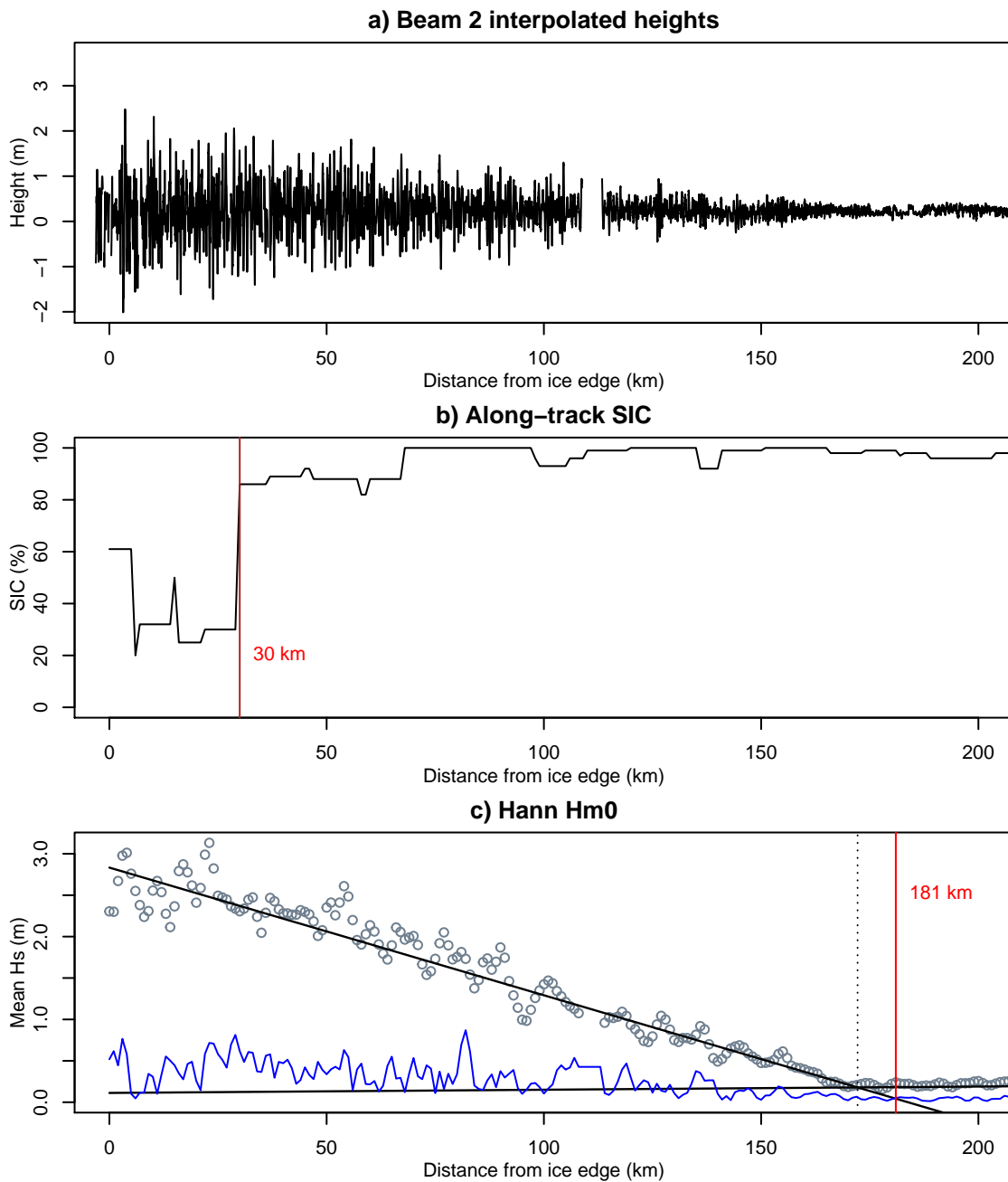
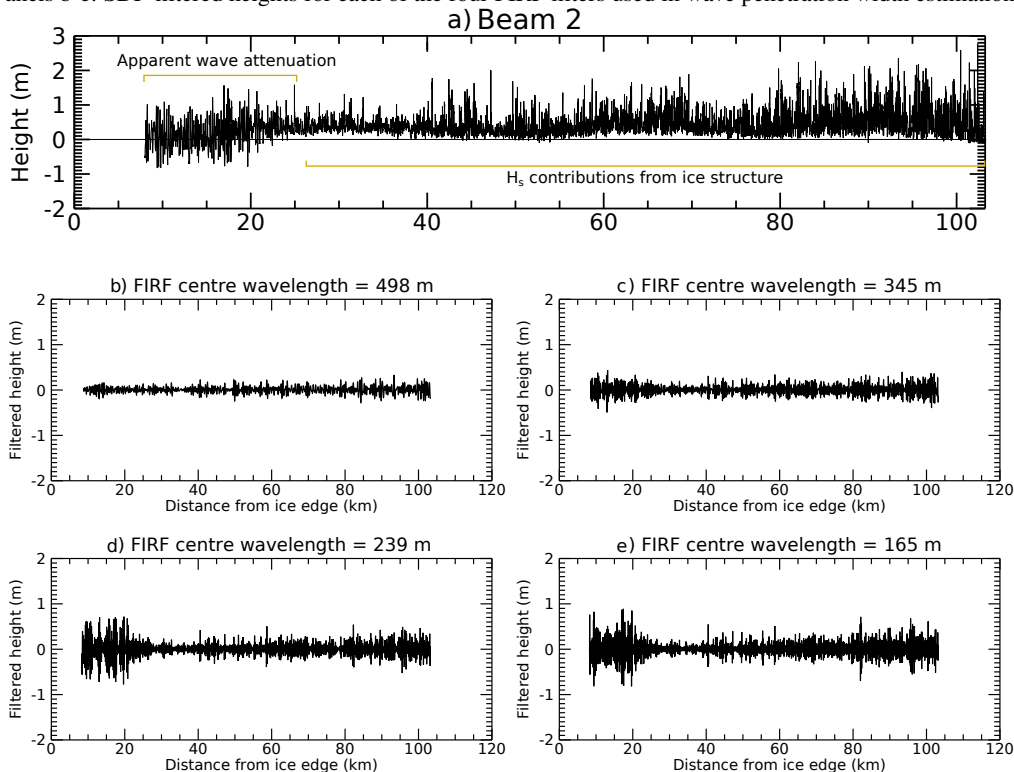


Figure 4. Panel a: Resampled segment heights from the central strong beam, for case study 2. Data acquisition start time 2019-02-04T19:19:31Z. Panels b-e: SDF-filtered heights for each of the four FIRF filters used in wave penetration width estimation.

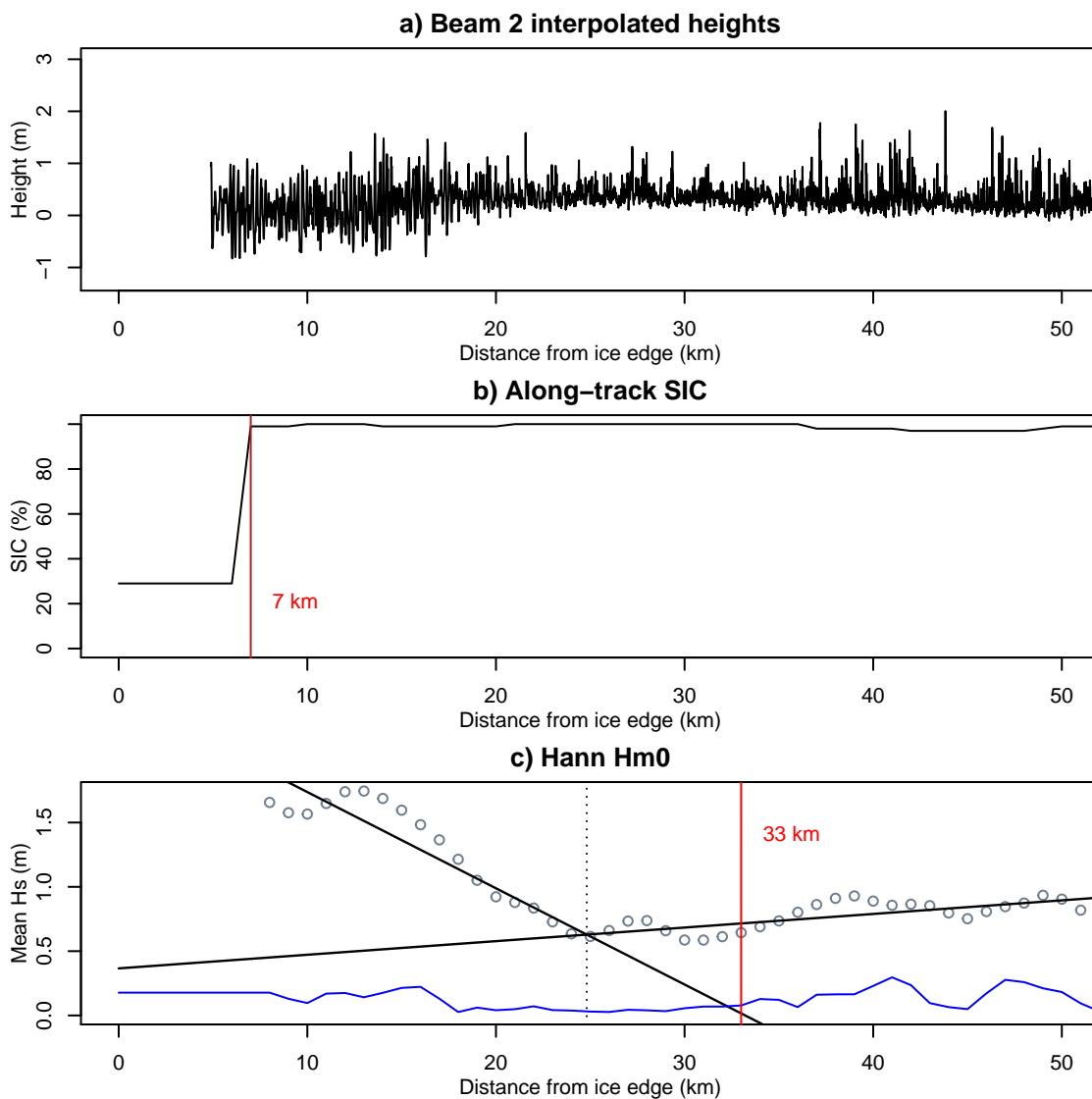


4.2 Case study from 2019-02-04

The summer case study exhibited a narrower MIZ than the September case study presented above, and smaller wave amplitude relative to inner-MIZ and pack ice structure variability (Figure 4).

310 Further detailed analysis of this case study is presented in Appendix C. To summarise this case, negative heights were again observed near the ice edge, although the wave magnitude was lower in this case. Attenuation was visible until around 30 km from the ice edge. Similar patterns of attenuation as those in the first case study were also present here in both spatial and spectral domains, i.e., the presence of negative heights in spatial data and a downshift and narrowing of the spectral peak. Assuming linear attenuation, SDF-based H_s estimates of wave penetration width ranged from 31 to 58 km. The three
 315 spectral H_s -based estimates were also within this range. As with the previous case study, the SIC-based technique considerably underestimates MIZ width (with the 80% SIC contour encountered at a distance of only 7 km from the ice edge, in contrast to the value of 33 km estimated using the Hann H_{m0} technique with linear attenuation; Figure 5).

Figure 5. Direct comparison of a) IS-2 beam 2 heights, b) SIC-based MIZ width and c) wave penetration width, for case study 2. Data acquisition start time 2019-02-04T19:19:31Z. The case illustrated here shows wave penetration width estimated using a linear fit to the Hann-windowed H_{m0} values. Here, for comparison purposes, we perform the attenuation analysis (panel c) without consideration of SIC (i.e., on uncorrected distance).



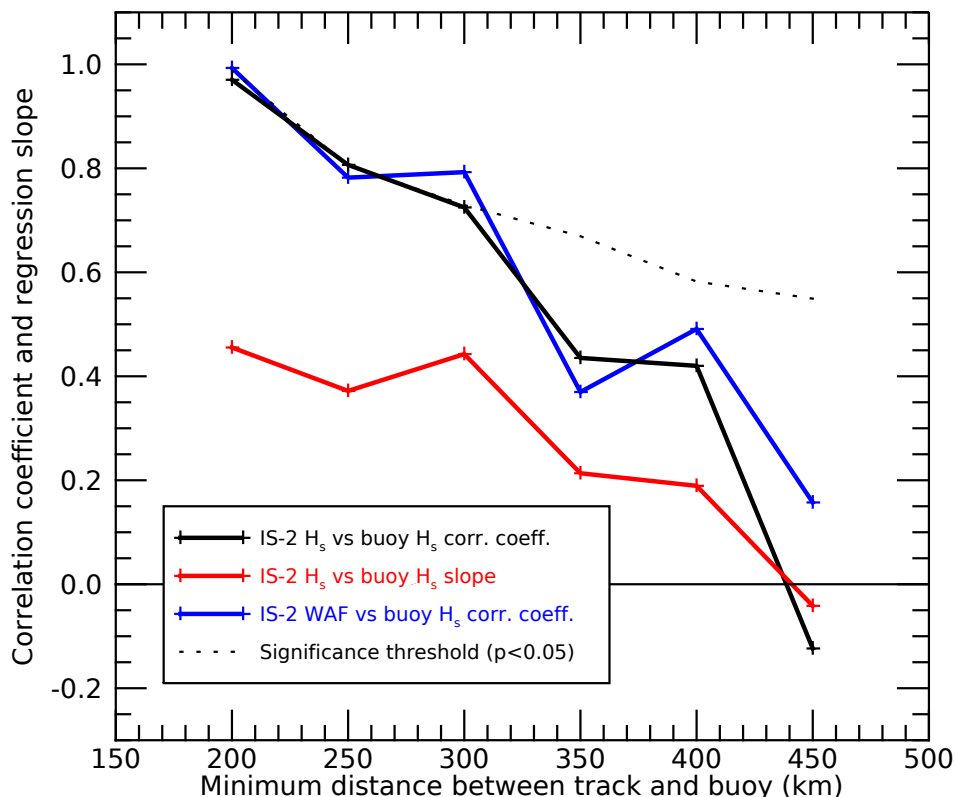
4.3 Validation of IS-2 H_s against wave buoy-derived H_s

From 80 tracks with a spatio-temporal separation (between buoy- and IS-2-measured H_s) of less than 400 km and six hours, ten were selected for comparison, based on the IS-2 track selection criteria presented above, with most rejected due to cloud cover. The mean time separation between buoy data acquisition and the corresponding IS-2 track overpass was 38 minutes. The mean distance from the buoy to the ice edge was 182 km (range: 11 to 371 km). Validation of IS-2-derived H_s (in this case, the Hann-filtered H_{m0} technique was used, but all gave similar results) against buoy measurements is presented in Fig. 6, and was found to be very sensitive to their spatial separation (i.e., waves decorrelated quickly with distance). For tracks within 200 km of the buoy measurement, the Pearson's correlation coefficient was $r=0.94$ (but with only three tracks), however this remained high at $r=0.72$ when buoy-satellite conjunctions within 300 km were considered (six tracks). For these six conjunctions, the mean distance to the ice edge was 122 km, i.e., the buoys are generally closer to the ice edge than the satellites. Given the high orbital inclination of IS-2, with sub-satellite tracks aligned close to north-south at this latitude, this means most of the separation between the nearest pass of the sub-satellite track and the buoy occurs in the east-west direction (cloud coverage notwithstanding). It is assumed that the spatial decorrelation of wave height in sea ice is highly anisotropic (i.e., the wave height field varies quickly from north to south as waves become attenuated in that direction, but slowly from east to west, assuming incident waves from the north and a perpendicular ice edge), however a more in-depth study of the spatio-temporal decorrelation of wave height is required to fully understand how wave buoys can be best used to validate IS-2-derived heights.

The correlation is significant for spatial separation less than 300 km. For conjunctions within 300 km, the H_s regression slope was 0.44, i.e., less than 1.0, indicating that IS-2 underestimates H_s (by a factor of ~ 2.25 in this case). This is not surprising given the fundamental difference in measurement technique, however the high correlation and positive slope, particularly at < 300 km separation, gives confidence in the approaches demonstrated here. For the same ten IS-2 tracks, the correlation between wave-affected fraction (from the along-track-modified Horvat et al. (2020) technique) and IS-2-based H_s retrieved here was $r=0.55$ ($p=0.049$), indicating a significant correlation despite differences in wave estimation technique. More detailed comparison of these two IS-2-based wave estimation techniques is planned for the future.

Based on the case studies presented in 4.1 and 4.2, and other tracks assessed during manual filtering, the SDF technique was chosen to estimate wave penetration width. The median value of the MIZ distance determined in four SDF wavelengths (165, 239, 345 and 498 m) was used as the wave penetration width metric to reduce the reliance on attenuation in one particular wavelength range. The advantages of the SDF technique over the spectral methods were two-fold: Taking the median of wave penetration width estimates from SDFs in the wavelength range of 165 to 500 m enabled increased sensitivity to waves within a wavelength range that was assumed likely to physically impact the ice and prevalent in the Antarctic MIZ (see Figure 2 in Stopa et al., 2018a); and minimised H_s contributions from ice structure. The simplicity of applying SDFs and relevant amplitude correction in addition to the absence of the effect of spectral noise caused by convolution of data gaps were further advantages (Murphy et al., 2007). A comparison between techniques is presented in Appendix D, indicating that all techniques considered here are highly correlated.

Figure 6. Validation of IS-2-derived H_s against wave buoy data, using Pearson’s correlation coefficient (black line) and regression slope (red line), as a function of closest distance between track and buoy. The regression slope of less than unity indicates that IS-2 under-estimates H_s . The blue line indicates the correlation coefficient between the H_s technique presented here and the wave-affected fraction using a modified along-track wave-affected fraction metric (after Horvat et al., 2020). The dashed line indicates the significance threshold for the blue and black lines.



4.4 Attenuation model comparison and wave penetration width uncertainty quantification

RMSE residual between observed H_s and the fit in the attenuation-dominated region was approximately two times smaller for the linear attenuation model than the exponential fits over the four months in the study period (Table 3), indicating that the linear attenuation model provided a better fit for the cases studied here. Wave penetration width uncertainty, calculated from uncertainty in the y-intercept and slope of the fit (see Table 3), was larger for the exponential attenuation model in May and September, and ranged from $\sim 8\%$ (linear; May and September) to $\sim 19\%$ of the overall wave penetration width (linear, February).

| Month (2019) | RMSE (m) | | Wave penetration uncertainty (km, (%)) | |
|-----------------|------------|-----------------|--|-----------------|
| | Linear fit | Exponential fit | Linear fit | Exponential fit |
| February | 0.084 | 0.104 | 8.2 (18.9) | 6.6 (10.8) |
| May | 0.056 | 0.096 | 12.1 (7.9) | 34.7 (17.9) |
| September | 0.079 | 0.204 | 18.4 (8.8) | 32.5 (12.5) |
| December | 0.052 | 0.066 | 23.4 (16.0) | 13.1 (7.5) |
| Mean | 0.065 | 0.129 | 14.7 (9.0) | 29.9 (18.3) |

Table 3. Uncertainty statistics of SDF-median wave penetration width estimates by month. Wave penetration uncertainty is the error in wave penetration width calculated from the slope and intercept uncertainty (which were quadrature-added to the window size, 6.25 km), shown as absolute values (km) and as a percentage of the mean wave penetration width.

4.5 SDF-based wave penetration width estimation compared to the SIC-based MIZ width technique

The traditional SIC-based MIZ width estimation gave lower estimates than those derived from SDF H_s attenuation in all months analysed. A comparison of these techniques is shown in Figure 7 (exponential results have been omitted here due to the larger attenuation model fit residuals and uncertainties described above, but are similar). SIC-derived MIZ width and SDF-derived wave penetration estimates were closest in February where linear SDF-derived estimates were ~ 2.3 times larger than SIC-derived estimates. SDF-derived estimates were ~ 4.6 and 6.7 times wider in May and September, respectively. The largest differences between estimates occurred in December, with a regression slope of 14.9.

4.6 MIZ and wave penetration width seasonality

For the same set of tracks (i.e., those which passed the automated and manual track selection mentioned above), median SIC-derived MIZ width estimates were far narrower than SDF-derived wave penetration widths in all months (Figure 8). SDF-derived wave penetration widths were deepest in September, and narrowest in February. Using the SDF technique, wave penetration widths in excess of 600 km are observed to occur in May, September and December, whereas SIC-based estimates of MIZ width never exceed 200 km. We note that SIC-derived MIZ width is wider in May than September, in contrast to the IS-2-derived result presented here. The Southern Ocean H_s is higher in September than in May (Young et al., 2020), possibly indicating that the IS-2-derived wave penetration presented here is a more realistic representation of the MIZ than the SIC-derived metric, however wave-ice interaction model studies are required to confirm this.

5 Discussion

5.1 Towards improved definition of the MIZ

MIZ width estimates from SIC were far narrower than wave penetration width values from IS-2, and the disparity between SIC and wave presence in sea ice was illustrated in the case studies demonstrated in 4.1 and 4.2. It was then shown that this result

Figure 7. Comparison between SIC-derived MIZ width and SDF- derived wave penetration width estimates for each month. SDF wave penetration width estimates were derived using a linear fit to the attenuation curve of H_s estimates. Slope (m) and number of samples (n) for each month are presented. The solid black line shows linear best fit forced through the origin, and the dashed line represents the 1:1 reference. All panels range from 0 to 400 km except panel a (0 to 120 km)

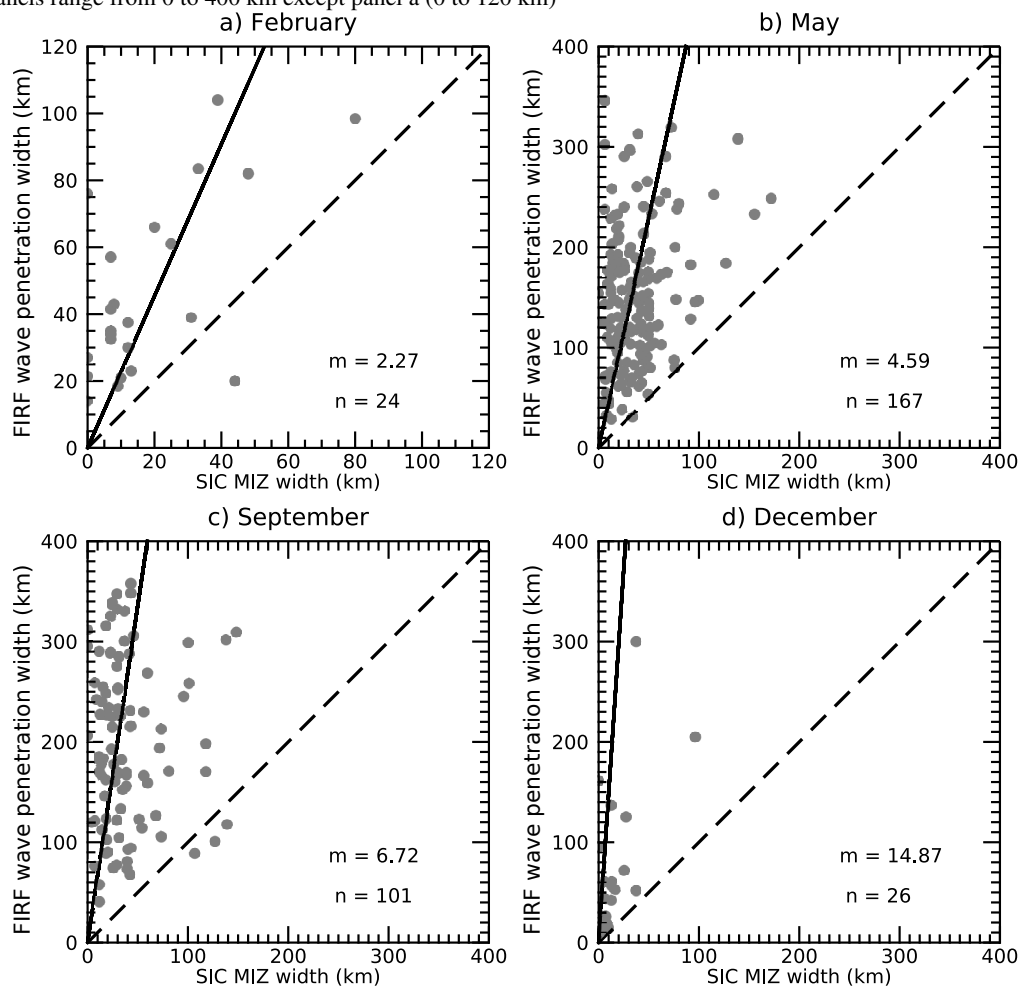
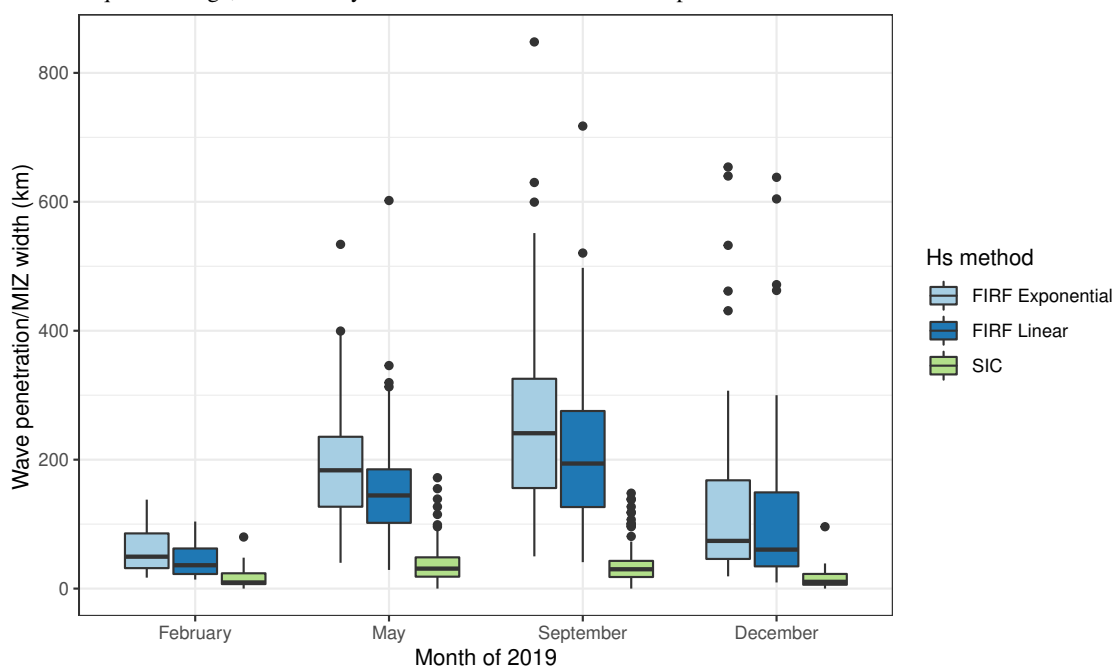


Figure 8. IS-2-derived wave penetration width estimates by month for the the SDF methods (assuming linear and exponential attenuation) compared to the SIC-derived MIZ widths. Median, first and third quartiles are indicated by boxplot centre line and hinges. Whiskers extend to 1.5 times the interquartile range, and data beyond this are shown as individual points.



occurs in all four months studied. This work is further evidence that SIC-based MIZ may not accurately reflect the presence of waves. Both Vichi et al. (2019) and Alberello et al. (2021) detected waves in unconsolidated yet high concentration (100%) sea ice, through which waves could easily propagate. Knowledge of SIC distribution alone (without ice type or thickness information) is inadequate for understanding the evolution of MIZ, especially during an extreme polar cyclone (Vichi et al., 2019) or compaction events (Massom et al., 2008), where the presence of strong on-ice winds may lead to wave penetration within extremely compressed (100%) SIC. This new technique presents a potential alternative to the SIC based definition of MIZ, and may allow the study of MIZ response to extreme wave events in more detail.

In contrast to the findings presented here, Horvat et al. (2020) found IS-2 derived “wave affected ” regions had a smaller spatial extent than SIC MIZ across all seasons and hemispheres. We suggest two potential reasons for this discrepancy. First, the Horvat et al. (2020) method cannot record waves with smaller amplitude than sea ice freeboard variability, and likely underestimates the areas where waves are truly present. Second, Horvat et al. (2020) developed a gridded product from all IS-2 tracks, whereas we focused on a subset of IS-2 tracks in which waves were manually identified. Thus while there is high correlation between both estimates, the inclusion of many tracks without active waves into a gridded product reduces the overall extent of the wave-affected MIZ.

The inner wave penetration boundary was here defined as the point where H_s equalled the estimated error in the surface heights. The estimates of wave penetration width presented here (especially when assuming exponential decay) likely include small amplitude waves in the inner MIZ that may have energies too small to “significantly impact the dynamics of sea ice”, as considered a physical component of MIZ in (Weeks, 2010). It is then necessary to consider what magnitude of wave energy (or H_s) has sufficient impact on sea ice properties, e.g., the threshold when waves are energetic enough to break sea ice (Dumont et al., 2011; Williams et al., 2013a, b; Bennetts et al., 2015; Williams et al., 2017). This is less straightforward as it requires knowledge of the geometric and mechanical properties of the ice cover (including thickness, floe size, elastic modulus) to quantify when stresses in the ice exceed the breakup strength. Sutherland and Dumont (2018) defined the MIZ as the distance from the ice edge over which modelled compressive forcing from wave stress was greater to or equal to that from wind stress. Through the techniques presented here, this “dynamics-impacted” MIZ could be studied using an adjusted (higher) H_s threshold.

5.2 H_s estimation method and caveats associated with this work

The high correlation among IS-2 wave penetration width estimation methods indicated that these results were relatively insensitive to H_s calculation method. The selection of a wavelength subset for the SDF median estimation of H_s did not significantly influence wave penetration width estimates, as similar results were shown for the H_{m0} estimates (i.e., integrated over 16 to 1500 m; wave periods from 3 to 30 s), and the standard deviation-derived H_s (where no bandpass filtering was applied). This indicated suitability for the choice of SDF-based selection, with the potential benefit of increased sensitivity to surface gravity wave wavelengths most commonly present in the Antarctic MIZ and most likely to impact sea ice.

There are a number of caveats associated with the wave penetration width estimation techniques presented here. Although most manual rejection of IS-2 tracks was because of cloud obscuration of the MIZ, there may be other cases excluded because no attenuation visibly occurs, such as due to quiescent wave conditions north of the ice edge. In such cases, SIC-derived MIZ estimates may be wider than those based on attenuation. This selection bias favours obvious attenuation occurring when open ocean H_s is large. In these (unrepresented) low offshore H_s cases, an SIC-based measurement of MIZ width is also inappropriate.

A bias may also be introduced by exclusion of tracks where wave attenuation occurs from the ice edge to the Antarctic continent. Such cases are likely to occur around the time of the sea ice minimum, particularly in East Antarctica and the Bellingshausen Sea, where sea ice extent is lower than in the Weddell or Ross seas. In addition, it is possible that times of northerly winds may bring both high apparent H_s at the ice edge (favouring visible and obvious attenuation) and a compacted ice edge, resulting in a narrower SIC-derived MIZ width estimate. Consideration (and elimination) of such potential biases should form the focus of subsequent work.

5.3 Wave attenuation model

Exponential decay, with decay rate as a function of wave frequency, is widely accepted as an appropriate form for modelling wave attenuation (Meylan et al., 2018), is predicted by linear theory (Squire, 2020), has been demonstrated by observational

425 wave buoy studies (Kohout et al., 2020), and has been implemented in mathematical models (Meylan et al., 2018). However, the
mean RMSE and wave penetration uncertainty statistics presented here were smaller for linear than exponential fit. This may
suggest non-linearity in energy transfer during attenuation, perhaps caused by variation in ice thickness, which has been shown
to strongly affect attenuation rates (De Santi et al., 2018), or energy input from wind to waves in unconsolidated sea ice, which
is not currently accounted for in contemporary wave models (Rogers et al., 2020). The aforementioned potential bias toward
430 times of larger wave heights may also play a role in the apparent better fit of linear attenuation (Kohout et al., 2014; Montiel
et al., 2018), due to the occurrence of nonlinear dissipation mechanisms including wave over-wash of floes and breaking
(of steep waves) close to the ice edge (Squire, 2018). Seasonal effects on attenuation may also be expected due to seasonal
variability in ice cover and type (e.g., Doble et al., 2015). The prevalence of thinner, unconsolidated pancake ice during the
Antarctic growth season may result in lower attenuation rates. Meylan et al. (2014) found no change in H_s within the outer
435 80 km of Antarctic MIZ in September, where there were small floes (10 to 25 m diameter) present and low SIC. Non-linear
viscous dissipation may be a dominant mode of wave attenuation in unconsolidated ice types (Squire, 2020). Correction for
incident wave direction (Kohout et al., 2020), and the consideration of noise effects (especially at lower frequencies; Thomson
et al., 2021) should also be considered in future work to ensure accuracy in attenuation coefficient retrieval.

5.4 MIZ seasonality

440 Wave penetration width seasonality agreed broadly with that expected from seasonal trends in Southern Ocean H_s , with larger
incident waves in winter months able to penetrate further into the MIZ, matching the seasonality of Young et al. (2020). We
draw attention to a large discrepancy between SIC-derived MIZ widths and IS-2-derived wave penetration widths: SIC MIZ
width was 4.6 and 6.7 times lower than linear SDF-derived wave penetration width in May and September, respectively. SIC-
based studies of MIZ seasonality have shown a peak in MIZ area in October/November, after the annual sea ice area maximum
445 (Uotila et al., 2019), whereas the wave-affected fraction metric described by Horvat et al. (2020) was unexpectedly low in
November 2018. Although only four months were assessed in the present study, improved automation of these techniques and
their application over the whole IS-2 data record (September 2018 to present) may improve our understanding of seasonal MIZ
dynamics, and should be prioritised for future work.

Seasonality and sea ice characteristics also play a role in the reliability of wave penetration estimates. Thicker multi-year or
450 first year ice near the ice edge in summer increases the difficulty of differentiation between wave presence from ice structure,
necessitating manual removal of such cases. By way of comparison, March to September is characterised by pancake ice present
at the ice edge, providing a more homogeneous environment in which to observe attenuation. In the period of rapid spring ice
retreat (November to early February), further challenges to accurate wave penetration estimation occur due to the complex
ice edge morphology, and the development of open water regions near the continent. Complexity in the spatial distribution
455 of retreating ice edge can result in the orientation of IS-2 tracks not being orthogonal to the ice edge, and the measurement
of waves along the boundary of sea ice rather than into the pack, giving spurious estimates for attenuation. The variable
distribution of open water at this time may increase the incidence of observing multiple wave directions due to local wave
generation, potentially impacting the reliability of attenuation estimates. The highest disagreement between IS-2 and SIC was

observed in December, and this is likely linked to such complexities during rapid retreat. The lowest disagreement between
460 IS-2 and SIC was observed in February, likely because of the smaller total sea ice extent at this time (Eayrs et al., 2019).

5.5 Further improvements

In addition to those previously suggested, one large improvement to this work would be the consideration of incident wave
direction in spectral estimates. A north-south wave propagation direction has been assumed in most previous studies on wave
attenuation (e.g., Kohout et al., 2014), and was similar to the along-track wave direction assumed here. If the incident wave
465 direction was offset from the IS-2 track, the wavelength would be underestimated by a factor of $\cos(\theta)$ where θ is the angle be-
tween the incident wave direction and the satellite track. This potentially results in invalid assumptions for the SDF wavelength
choice, leading to a misrepresentation of these parameters. Wave direction corrections, for example following the methods in
Kohout et al. (2020), would allow physically-meaningful retrievals of wavenumber and spectral width characteristics. Wave di-
rection will also affect the corrected distance calculation using SIC values retrieved, enabling them to be representative of SIC
470 that waves travelled through. As there remain uncertainties in wave reanalysis products (especially within sea ice), remotely-
sensed wave direction from the forthcoming SWOT satellite radar altimeter (Armitage and Kwok, 2021) may provide improved
wave direction estimates.

In addition to H_s , spectral width may be another important parameter to consider for wave penetration width estimation. Both
case studies presented here exhibit a prominent spectral peak associated with the presence of waves, although the magnitude of
475 the peak wavelength varied due to the characteristics of the incident wave field. In contrast, areas of ice structure displayed a
very different signature of Brownian noise. Difference of spectral shape between these two regimes may be a more robust way
of distinguishing the presence of MIZ (for example from isolated sections), rather than requiring a full track of attenuation. If
this method were applied, an estimate of the Brownian noise threshold associated with ice structure (following the methods
in Thomson et al., 2021) may provide a suitable cutoff for frequencies and power spectral amplitude over which to estimate
480 spectral width. Consideration should also be given to the use of the lower-level ATL03 dataset from IS-2, which reports
individual geo-located photon reflection locations, and other techniques which do not require resampling of along-track data
(e.g., non-uniform Fourier transforms), as these may preserve important spectral information lost in the production of the
ATL07 segments.

6 Conclusions

485 The application of spectral and spatial techniques to ICESat-2 data presented here give an effective means of remotely de-
termining wave attenuation in sea ice. Improved understanding of wave attenuation in ice, facilitated by a larger number of
widely-distributed records of attenuation from IS-2, may be applicable for incorporation into wave and sea ice models. Here,
many tracks were too cloud-affected to give a complete record of wave attenuation. However, this technique may assist in
developing such a record by validating other large-scale MIZ width estimates achieved from microwave-based remote sensing
490 techniques, including scatterometers and the forthcoming generation of synthetic aperture radar altimeters (Lubin and Massom,

2006). This attempt to remotely characterize MIZ wave penetration width is a step toward improving our understanding of the interactions in this zone, with widespread application for studies concerning MIZ ecology and physical processes.

Code and data availability. AMSR2-derived sea-ice concentration data (using the ARTIST Sea Ice algorithm) were obtained from the University of Bremen. ICESat-2 sea ice height data (ATL07 product) were obtained from the National Snow and Ice Data Center (NSIDC). The wave-ice buoy data are available from the NZ Ocean Data Network (doi:10.17632/22hpw2xn3x.1). Processed ICESat-2 data will be made available as an Australian Antarctic Data Centre archive in compliance with FAIR Data Standards upon paper acceptance. Code to reproduce these results will be available and updated on GitHub upon paper acceptance.

Appendix A: Missing data correction in spectral analysis

The spectral analysis of IS-2 data applied here seeks to obtain power spectra whose amplitudes are directly related to those of the underlying waves. This is made difficult by the (sporadic) absence of data due to cloud and the application of windowing functions. Both of these effects lead to a decrease in the sum contributing to the mean-square amplitude of the altimetric height segment. In accordance with Parseval's identity, the average spectral power also decreases according to

$$\frac{1}{N} \sum_{k=0}^{N-1} |c_k|^2 = \sum_{n=0}^{N-1} |C_n|^2, \quad (\text{A1})$$

where c_k are the mean-removed heights (potentially attenuated or set to zero) along a segment of the track containing N points and C_n are the components of its digital Fourier transform (DFT). (Note that the position of the $1/N$ factor depends on the form of the DFT being used.)

Following Press et al. (1992, section 13.4), compensation for the effect of windowing can be achieved by replacing the $1/N^2$ factor used to calculate spectral amplitudes from $|C_n|^2$ with $1/W_{ss}$, where

$$W_{ss} \equiv N \sum_{j=0}^{N-1} w_j^2, \quad (\text{A2})$$

and w_j is the window function weighting applied to each c_k before the application of the DFT.

The usual application of a windowing correction sees window amplitudes w_j summed over all N . In the presence of missing data, the windowing function can be reinterpreted to be the product of the windowing function and a missing data mask, equal to unity only where valid data are present. To adapt the W_{ss} correction, an interpretation where w_j is zero within data gaps is applied, such that

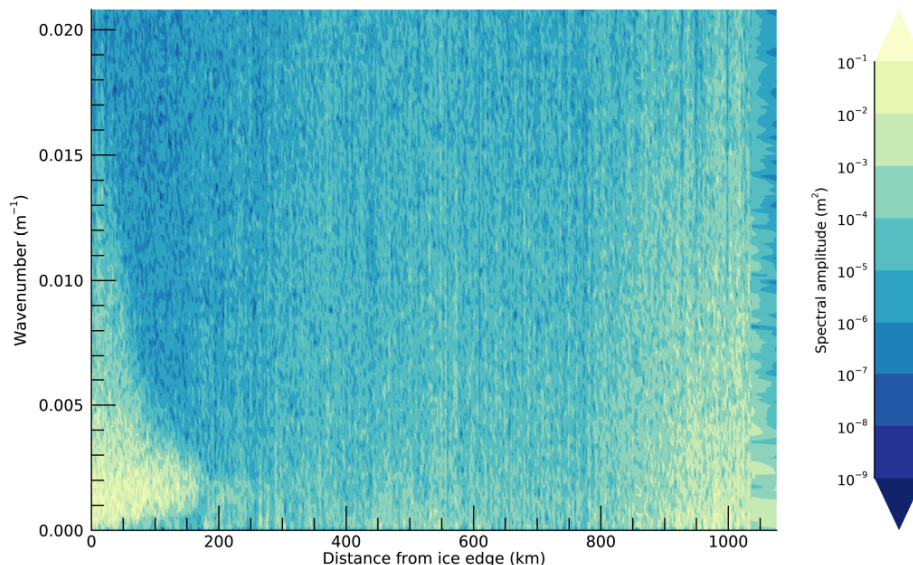
$$W_{ss} \equiv N \sum_{j \in G} w_j^2, \quad (\text{A3})$$

where G is the set of indices of good data. This acts to scale the spectral coefficients back up to the (physical) wave amplitudes, and to do it in a way that includes the impact of the distribution of the missing data on the windowing function.

Appendix B: Supplementary figures for 2019-09-09 case study

Here we present further detailed analysis of the 2019-09-09 case study.

Figure B1. Mean power spectral density as a function of wavenumber and distance from the ice edge, for case study 1. Data acquisition start time 2019-09-09T19:15:19Z.

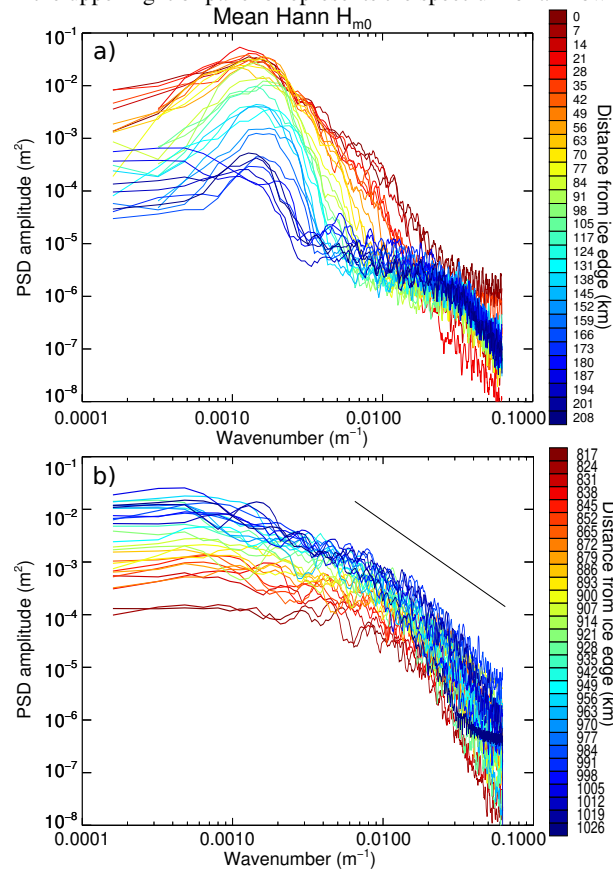


520 Figure B1 presents the power spectrum for the entire track. Narrowing of the spectrum from 0 to 200 km is evident. From
~250 to 800 km there is a region of low spectral amplitude due to low variability in height. After 800 km, high spectral
amplitude is spread across a wider wavenumber ($2\pi/\text{wavelength}$) range. This distribution of spectral amplitude is very different
to that of the first 200 km.

Power spectra of individual 6.25 km sections within 200 km of the ice edge (Fig. B2: Hann-filtered spectra shown only;
525 boxcar-filtered spectra were similar) displayed a prominent peak wavenumber of $\sim 0.0015 \text{ m}^{-1}$, corresponding to a wavelength
of 650 m (wave period of $\sim 20 \text{ s}$). This is similar to the dominant wavelength suggested by the FIRF analysis. Power spectra
of sections close to the Antarctic continent ($>817 \text{ km}$ from the ice edge; given in Fig. B2, panel b) peaked at very short
wavenumbers, corresponding to very long wavelengths. In this region, the spectral shape displayed a near-monotonic decrease
in spectral amplitude, characteristic of Brownian noise (Gilman et al., 1963). For this section of ice $>817 \text{ km}$ from the ice
530 edge, total spectral amplitude increased with increasing distance from the ice edge as the variance in surface height increased.

The steps involved in attenuation model-fitting and wave penetration width estimation are demonstrated in Figs. B3, B4 and
B5 for all methods of wave penetration width estimation presented here. The GAM smoothing technique is able to effectively
estimate the first local minimum (red dashed lines, Figure B3). The subsequent change-point estimation using segmented
linear regression identified the transition from wave attenuation-dominated H_s to ice structure-dominated H_s (dotted black

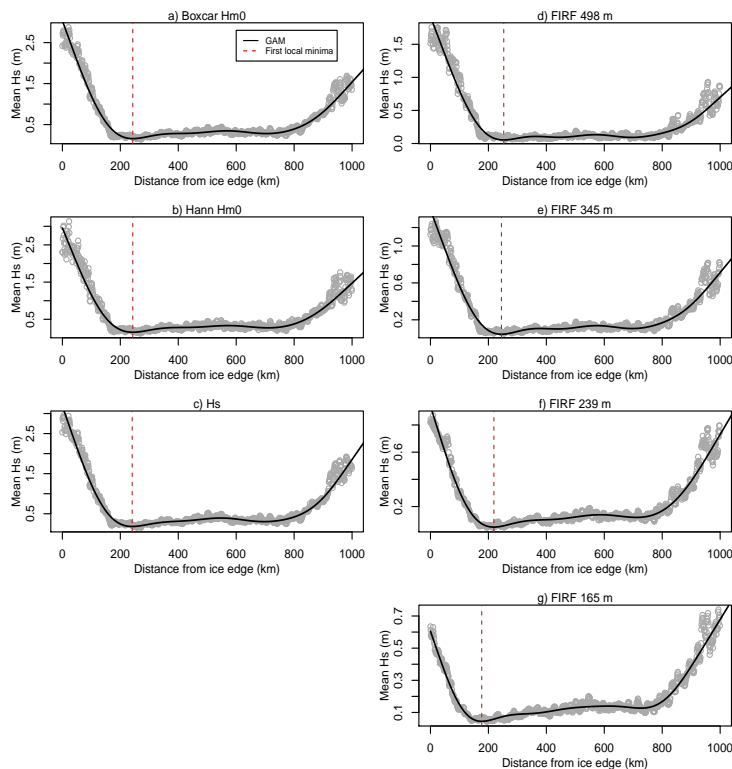
Figure B2. Hann-windowed power spectra of sections close to the ice edge (a) and in the inner pack (b), for case study 1. Data acquisition start time 2019-09-09T19:15:19Z. The colour scale indicates distance from the ice edge. Power spectral estimates were smoothed with a 5 point moving average. The black line in the upper right of panel b represents the spectrum of a Brownian noise signal (-20 dB/decade).



535 lines in Figures B4 and B5). Final wave penetration widths (red lines in Figures B4 and B5) were estimated from the intercept between modelled attenuation (outer section of the segmented linear regression) and the estimated error in H_s estimates. H_s was expected to approach zero when waves were fully attenuated (i.e. no surface variations in the absence of waves). However for all H_s estimation methods there was a positive offset in H_s after the transition to the ice structure-dominated region, likely associated with H_s contributions from variations in ice thickness. This offset was slightly lower for the SDF H_s estimates than

540 the other methods which measured the amplitude of the whole spectrum (Figs. B4 and B5). Model fit to the attenuation appears reasonable (Figures B4 and B5), and the linear attenuation model appears to fit the data better than the exponential model in this case. Assuming linear attenuation, wave penetration width estimates range from 109 to 184 km, as estimated by the 126 m and 498 m SDFs, respectively (with H_s -derived estimates falling within this range). Exponential-modeled wave penetration width estimates range from 179 km to 263 km.

Figure B3. GAM-based local minimum estimation for the spectral (left column) and SDF-derived (right column) estimates of H_s , for case study 1. Data acquisition start time 2019-09-09T19:15:19Z. The section from the ice edge to two times the GAM-based minimum distance is used for change-point estimation.



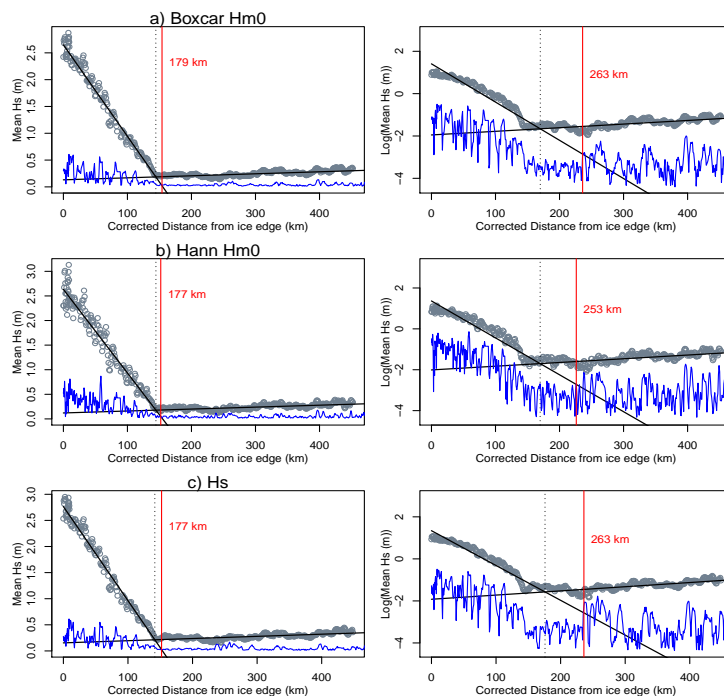
545 Appendix C: Supplementary figures for the 2019-02-04 case study

Here we present further detailed analysis of the 2019-02-04 case study.

The peak wavelength indicated by both the SDFs and Hann power spectra was ~ 250 m (corresponding to a wavenumber of ~ 0.004 and a period of ~ 11 s; Figs. C1 and C2), shorter than that of case study 1 by ~ 400 m.

Change-point estimation also performed well for this case study, despite fewer points being available for fitting compared to
 550 the other case study presented (Figures C3, C4 and C5). Similar to the September case study, H_s values did not reach zero at the end of wave attenuation (indicating ice structure contribution to apparent H_s at the transition point), and the “offset” here was again smaller for the SDF-based techniques (~ 0.2 m for SDF filtering-based H_s , vs ~ 0.6 m for Boxcar H_{m0} , Hann H_{m0} and standard deviation-derived H_s). Most methods resulted in an IS-2-estimated wave penetration width of 30 to 40 km, with the exponential attenuation model resulting in wider estimates.

Figure B4. Wave penetration width estimation for the spectral H_s estimation methods, for case study 1. Data acquisition start time 2019-09-09T19:15:19Z. Linear fit is shown on the left, and exponential (by log-transforming the y-axis) on the right. The grey scatter points show H_s estimates derived from each spectral analysis technique. The dotted black line represents change-point estimation of the piecewise linear regression. The blue line represents the quadrature-added uncertainty in H_s estimates. The estimated wave penetration width is marked by the red vertical line, and labelled in terms of the equivalent uncorrected (actual) wave penetration width.

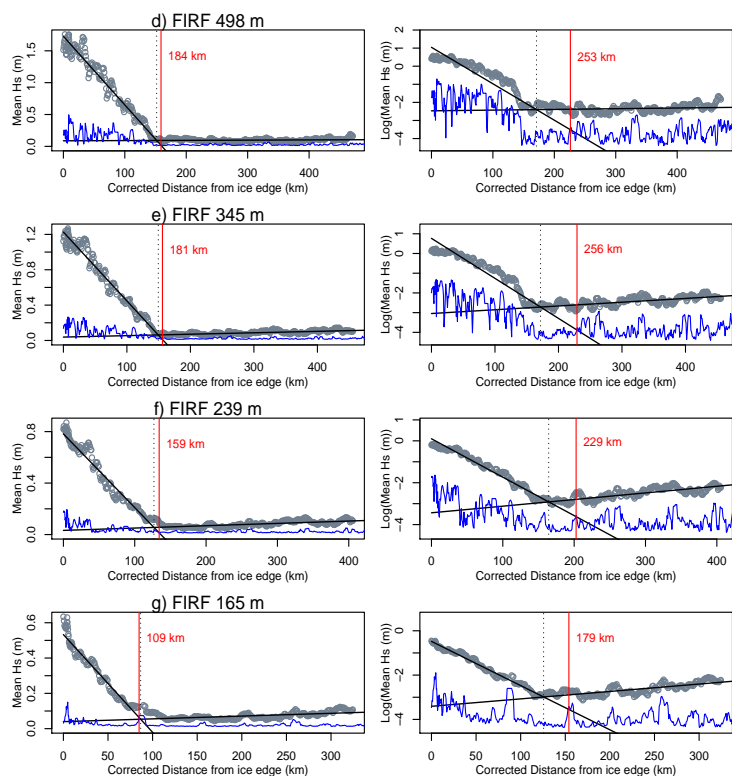


555 Appendix D: Comparison of IS-2 wave penetration width estimation techniques

There was a very high correlation between SDF median-derived wave penetration width estimates and those derived from all other H_s estimation methods (Figure D1). Regression slope across all comparisons was in the range of 0.918 to 1.01, indicating robust agreement between all wave penetration width retrieval techniques. The Pearson's correlation coefficient between SDF-derived and all other techniques was between $r=0.949$ and 0.978 .

560 *Author contributions.* All authors edited the manuscript. JB and ADF led the analysis, produced all figures, drafted the paper and coordinated co-authors. DJM advised on spectral and spatial analyses. PW, GDW and AK deployed the buoys and contributed to the analysis. AA and RAM assisted with wave-ice interaction considerations. CH produced the along-track wave-affected fraction estimates and contributed to the interpretation of results. SW and JC assisted with data preparation.

Figure B5. As for Fig. B4 but for SDF methods.

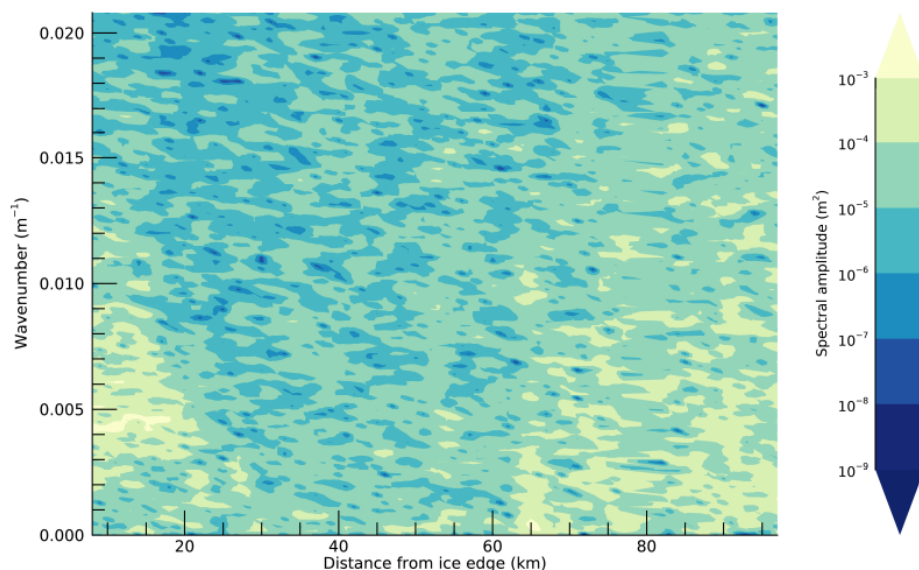


Competing interests. The authors declare no competing interests.

565 *Acknowledgements.* This project received grant funding from the Australian Government as part of the Antarctic Science Collaboration Initiative program, and contributes to Project 6 of the Australian Antarctic Program Partnership (Project ID ASCI000002). This research was supported by use of the Nectar Research Cloud and by the Tasmanian Partnership for Advanced Computing. The Nectar Research Cloud is a collaborative Australian research platform supported by the NCRIS-funded Australian Research Data Commons (ARDC). RM is supported by the Australian Antarctic Division, the Australian Government's Australian Antarctic Partnership Programme and the Australian Research Council Special Research Initiative Australian Centre for Excellence in Antarctic Science (Project Number SR200100008), and this study contributes to AAS Project 4528. We thank the NSIDC and University of Bremen for providing the ICESat-2 and sea ice concentration data, respectively. We are deeply grateful to the captain, officers, crews, and scientists on board icebreaker Shirase for their help with field observations for the 61st Japanese Antarctic Research Expedition (JARE). AA acknowledges support from the Japan Society for the Promotion of Science (PE19055). PW also acknowledges support from the Japan Society for the Promotion of Science (18F18794).

570

Figure C1. Mean power spectral density as a function of wavenumber and distance from the ice edge, for case study 2. Data acquisition start time 2019-02-04T19:19:31Z



575 References

- Abdalati, W., Zwally, H. J., Bindshadler, R., Csatho, B., Farrell, S. L., Fricker, H. A., Harding, D., Kwok, R., Lefsky, M., Markus, T., Marshak, A., Neumann, T., Palm, S., Schutz, B., Smith, B., Spinhirne, J., and Webb, C.: The ICESat-2 Laser Altimetry Mission, Proceedings of the IEEE, 98, 735–751, <https://doi.org/10.1109/JPROC.2009.2034765>, 2010.
- Alberello, A., Onorato, M., Bennetts, L., Vichi, M., Eayrs, C., MacHutchon, K., and Toffoli, A.: Brief Communication: Pancake ice floe size distribution during the winter expansion of the Antarctic marginal ice zone, *The Cryosphere*, 13, 41–48, <https://doi.org/https://doi.org/10.5194/tc-13-41-2019>, 2019.
- Alberello, A., Bennetts, L., Onorato, M., Vichi, M., MacHutchon, K., Eayrs, C., Ntamba, B. N., Benetazzo, A., Bergamasco, F., Nelli, F., Pattani, R., Clarke, H., Tersigni, I., and Toffoli, A.: Three-dimensional imaging of waves and floe sizes in the marginal ice zone during an explosive cyclone, <https://doi.org/10.48550/ARXIV.2103.08864>, 2021.
- 585 Armitage, T. W. K. and Kwok, R.: SWOT and the ice-covered polar oceans: An exploratory analysis, *Advances in Space Research*, 68, 829–842, <https://doi.org/10.1016/j.asr.2019.07.006>, 2021.
- Asplin, M. G., Galley, R., Barber, D. G., and Prinsenber, S.: Fracture of summer perennial sea ice by ocean swell as a result of Arctic storms, *Journal of Geophysical Research: Oceans*, 117, <https://doi.org/10.1029/2011JC007221>, 2012.
- Bennetts, L. G., O’Farrell, S., Uotila, P., and Squire, V. A.: An idealized wave–ice interaction model without subgrid spatial or temporal discretizations, *Annals of Glaciology*, 56, 258–262, <https://doi.org/10.3189/2015AoG69A599>, 2015.
- 590 Bennetts, L. G., O’Farrell, S., and Uotila, P.: Impacts of ocean-wave-induced breakup of Antarctic sea ice via thermodynamics in a stand-alone version of the CICE sea-ice model, *The Cryosphere*, 11, 1035–1040, <https://doi.org/10.5194/tc-11-1035-2017>, 2017.

Figure C2. Hann-windowed power spectra of sections close to the ice edge (a) and in the inner pack (b), for case study 2. Data acquisition start time 2019-02-04T19:19:31Z. The colour scale indicates distance from the ice edge. Power spectral estimates were smoothed with a 5 point moving average.

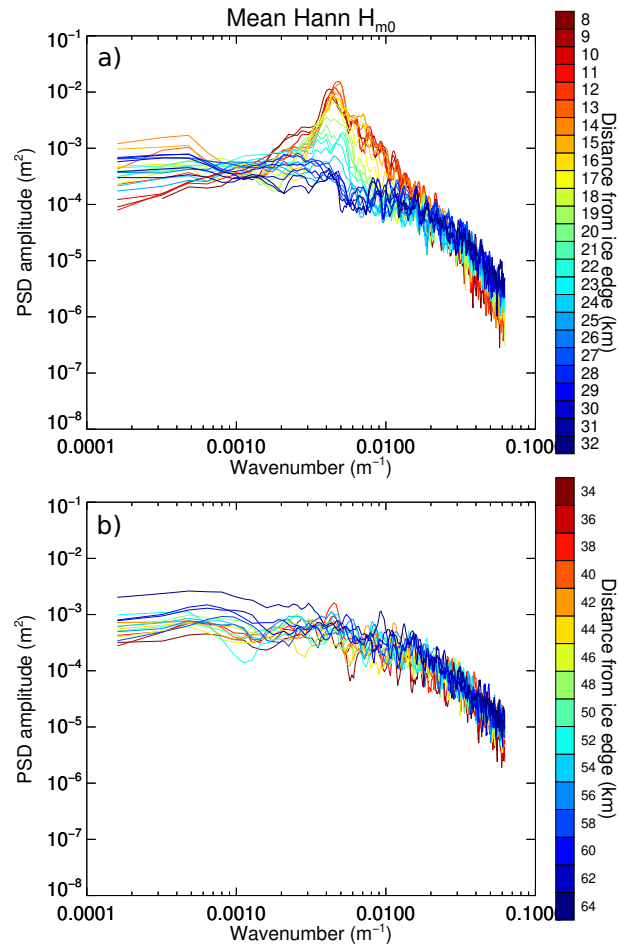
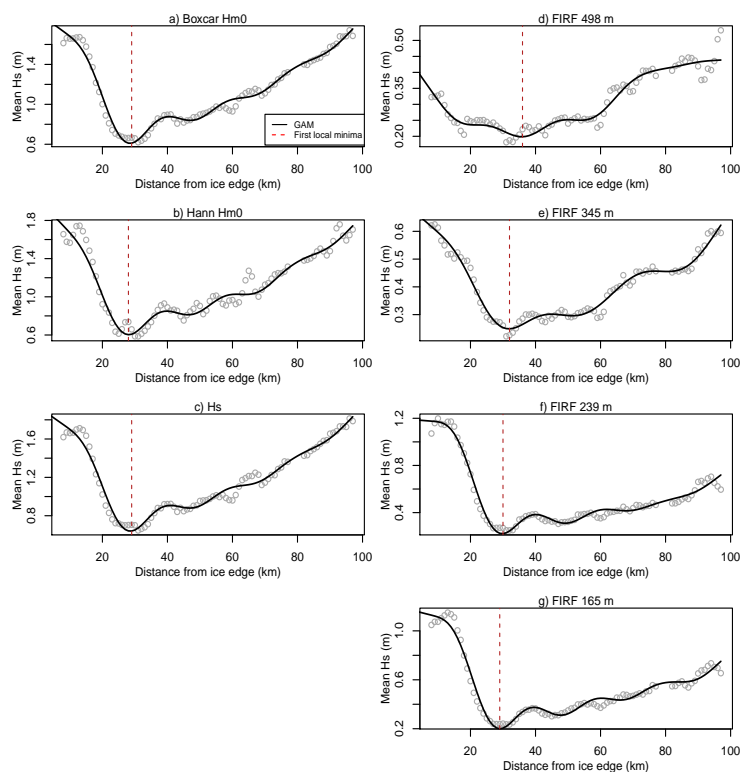


Figure C3. GAM-based local minimum estimation for the spectral (left column) and SDF-derived (right column) estimates of H_s , for case study 2. Data acquisition start time 2019-02-04T19:19:31Z. The section from the ice edge to two times the GAM-based minimum distance is used for change-point estimation.



Butterworth, B. J. and Miller, S. D.: Air-sea exchange of carbon dioxide in the Southern Ocean and Antarctic marginal ice zone, *Geophysical Research Letters*, 43, 7223–7230, <https://doi.org/10.1002/2016GL069581>, 2016.

595 Collins, C. O., Rogers, W. E., Marchenko, A., and Babanin, A. V.: In situ measurements of an energetic wave event in the Arctic marginal ice zone, *Geophysical Research Letters*, 42, 1863–1870, <https://doi.org/10.1002/2015GL063063>, 2015.

De Santi, F., De Carolis, G., Olla, P., Doble, M., Cheng, S., Shen, H. H., Wadhams, P., and Thomson, J.: On the Ocean Wave Attenuation Rate in Grease-Pancake Ice, a Comparison of Viscous Layer Propagation Models With Field Data, *Journal of Geophysical Research: Oceans*, 123, 5933–5948, <https://doi.org/10.1029/2018JC013865>, 2018.

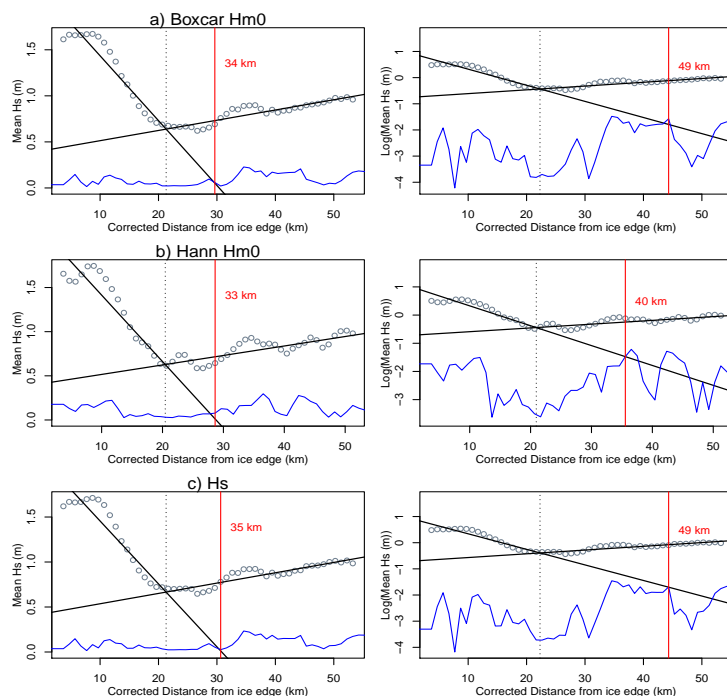
600 Doble, M. J., Carolis, G. D., Meylan, M. H., Bidlot, J.-R., and Wadhams, P.: Relating wave attenuation to pancake ice thickness, using field measurements and model results, *Geophysical Research Letters*, 42, 4473–4481, <https://doi.org/10.1002/2015GL063628>, 2015.

Dobrynin, M., Murawsky, J., and Yang, S.: Evolution of the global wind wave climate in CMIP5 experiments, *Geophysical Research Letters*, 39, <https://doi.org/10.1029/2012GL052843>, 2012.

Dumont, D., Kohout, A. L., and Bertino, L.: A wave-based model for the marginal ice zone including a floe breaking parameterization, *Journal of Geophysical Research: Oceans*, 116, <https://doi.org/10.1029/2010JC006682>, 2011.

605

Figure C4. Wave penetration width estimation for the spectral H_s estimation methods, for case study 2. Data acquisition start time 2019-02-04T19:19:31Z. Linear fit is shown on the left, and exponential (by log-transforming the y-axis) on the right. The dotted black line represents change-point estimation of the piecewise linear regression. The blue line represents the quadrature-added error of H_s estimates. The estimated wave penetration width is marked by the red vertical line, and labelled in terms of the equivalent uncorrected wave penetration distance.



Earle, M.: Nondirectional and directional wave data analysis procedures, Tech. Rep. NDBC Technical Document 96-01, National Oceanic and Atmospheric Administration, 1996.

Eayrs, C., Holland, D., Francis, D., Wagner, T., Kumar, R., and Li, X.: Understanding the Seasonal Cycle of Antarctic Sea Ice Extent in the Context of Longer-Term Variability, *Reviews of Geophysics*, 57, 1037–1064, <https://doi.org/10.1029/2018RG000631>, 2019.

610 Fox, C. and Haskell, T. G.: Ocean wave speed in the Antarctic marginal ice zone, *Annals of Glaciology*, 33, 350–354, <https://doi.org/10.3189/172756401781818941>, 2001.

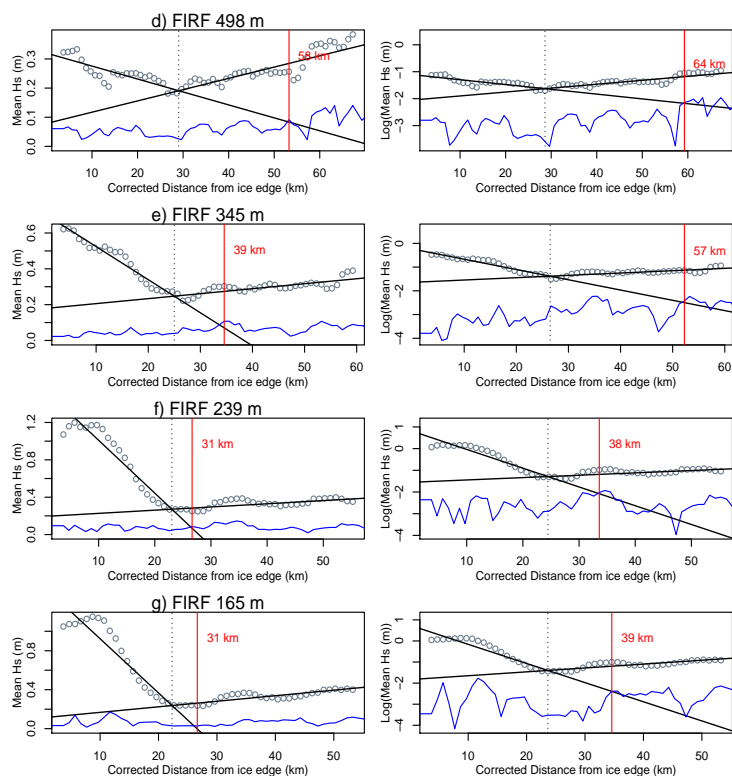
Fu, L.-L. and Ubelmann, C.: On the Transition from Profile Altimeter to Swath Altimeter for Observing Global Ocean Surface Topography, *Journal of Atmospheric and Oceanic Technology*, 31, 560–568, <https://doi.org/10.1175/JTECH-D-13-00109.1>, 2013.

615 Gilman, D. L., Fuglister, F. J., and Mitchell, J. M.: On the Power Spectrum of “Red Noise”, *Journal of the Atmospheric Sciences*, 20, 182–184, [https://doi.org/10.1175/1520-0469\(1963\)020<0182:OTPSON>2.0.CO;2](https://doi.org/10.1175/1520-0469(1963)020<0182:OTPSON>2.0.CO;2), 1963.

Greengard, L. and Lee, J.-Y.: Accelerating the Nonuniform Fast Fourier Transform, *SIAM Review*, 46, 443–454, <https://doi.org/10.1137/S003614450343200X>, 2004.

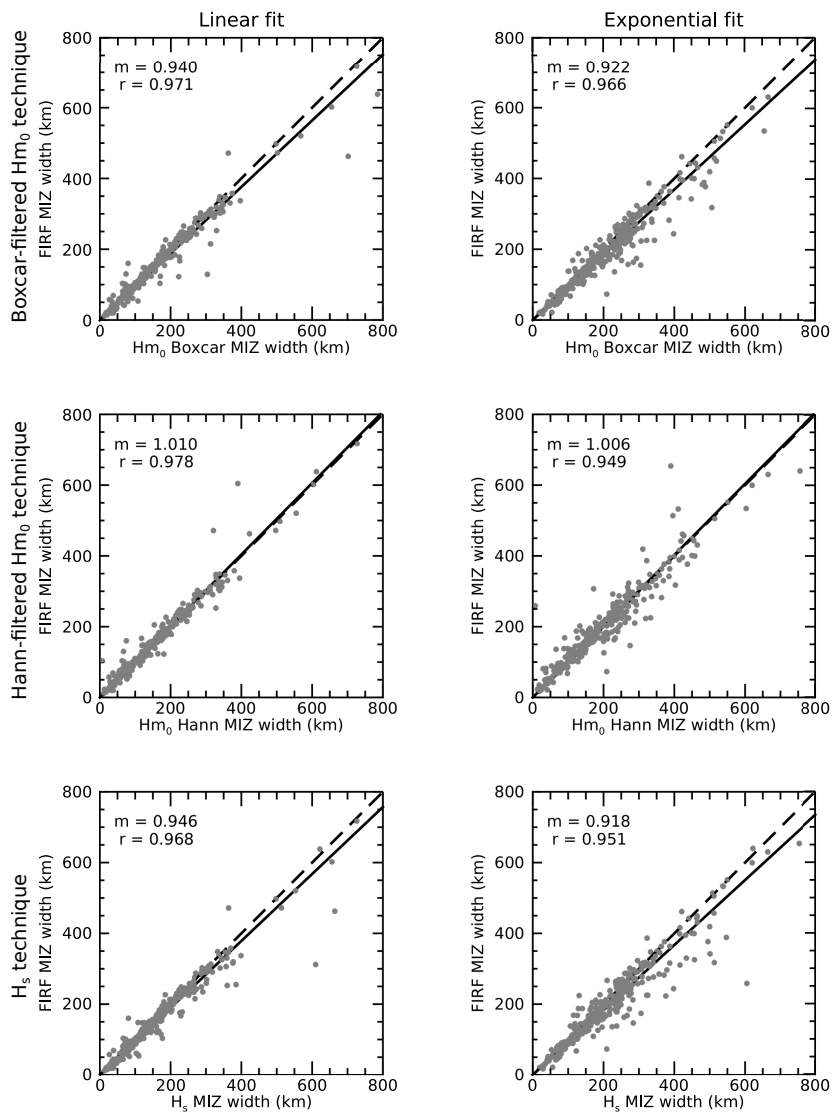
Horvat, C. and Roach, L. A.: WIFF1.0: A hybrid machine-learning-based parameterization of Wave-Induced sea-ice Floe Fracture, *Geoscientific Model Development Discussions*, 2021, 1–17, <https://doi.org/10.5194/gmd-2021-281>, 2021.

Figure C5. As for Fig. C4, but for SDF methods.



- 620 Horvat, C., Tziperman, E., and Campin, J.-M.: Interaction of sea ice floe size, ocean eddies, and sea ice melting, *Geophysical Research Letters*, 43, 8083–8090, <https://doi.org/10.1002/2016GL069742>, 2016.
- Horvat, C., Roach, L. A., Tilling, R., Bitz, C. M., Fox-Kemper, B., Guider, C., Hill, K., Ridout, A., and Shepherd, A.: Estimating the sea ice floe size distribution using satellite altimetry: theory, climatology, and model comparison, *The Cryosphere*, 13, 2869–2885, <https://doi.org/10.5194/tc-13-2869-2019>, 2019.
- 625 Horvat, C., Blanchard-Wrigglesworth, E., and Petty, A.: Observing Waves in Sea Ice With ICESat-2, *Geophysical Research Letters*, 47, e2020GL087629, <https://doi.org/10.1029/2020GL087629>, 2020.
- Kohout, A. L., Williams, M. J. M., Dean, S. M., and Meylan, M. H.: Storm-induced sea-ice breakup and the implications for ice extent, *Nature*, 509, 604–607, <https://doi.org/10.1038/nature13262>, 2014.
- Kohout, A. L., Smith, M., Roach, L. A., Williams, G., Montiel, F., and Williams, M. J. M.: Observations of exponential wave attenuation in
 630 Antarctic sea ice during the PIPERS campaign, *Annals of Glaciology*, pp. 1–14, <https://doi.org/10.1017/aog.2020.36>, 2020.
- Kwok, R.: ATL07/10 notes to users and known issues, Tech. Rep. Release 2, NSIDC, 2019.
- Liu, A. K. and Mollo-Christensen, E.: Wave Propagation in a Solid Ice Pack, *Journal of Physical Oceanography*, 18, 1702–1712, 1988.
- Lubin, D. and Massom, R.: *Polar Remote Sensing Volume 1: Atmosphere and Oceans*, Springer-Verlag and Praxis Publishing, Berlin, Heidelberg, 1st edn., <https://doi.org/10.1007/3-540-30785-0>, 2006.

Figure D1. Linear regression between SDF-based wave penetration width estimates and those based $H_{m,0}$ with boxcar (top row) and Hann (middle row) windowing, and the H_s estimate derived from the standard deviation of heights (bottom row). Spectral analysis methods were compared for both linear (left) exponential (right) attenuation modelling methods. Solid black lines show the linear regression (constrained to pass through the origin), with slope (m) and Pearson's correlation coefficient (r) values indicated in the top left of each plot. Dashed lines represent a slope of unity.



- 635 Massom, R. A. and Stammerjohn, S. E.: Antarctic sea ice change and variability: Physical and ecological implications, *Polar Science*, 4, 149–186, <https://doi.org/10.1016/j.polar.2010.05.001>, 2010.
- Massom, R. A., Comiso, J. C., Worby, A. P., Lytle, V. I., and Stock, L.: Regional Classes of Sea Ice Cover in the East Antarctic Pack Observed from Satellite and In Situ Data during a Winter Time Period, *Remote Sensing of Environment*, 68, 61–76, [https://doi.org/10.1016/S0034-4257\(98\)00100-X](https://doi.org/10.1016/S0034-4257(98)00100-X), 1999.
- 640 Massom, R. A., Eicken, H., Hass, C., Jeffries, M. O., Drinkwater, M. R., Sturm, M., Worby, A. P., Wu, X., Lytle, V. I., Ushio, S., Morris, K., Reid, P. A., Warren, S. G., and Allison, I.: Snow on Antarctic sea ice, *Reviews of Geophysics*, 39, 413–445, <https://doi.org/10.1029/2000RG000085>, 2001.
- Massom, R. A., Stammerjohn, S. E., Lefebvre, W., Harangozo, S. A., Adams, N., Scambos, T. A., Pook, M. J., and Fowler, C.: West Antarctic Peninsula sea ice in 2005: Extreme ice compaction and ice edge retreat due to strong anomaly with respect to climate, *Journal of Geophysical Research: Oceans*, 113, <https://doi.org/10.1029/2007JC004239>, 2008.
- 645 Maykut, G. A. and Perovich, D. K.: The role of shortwave radiation in the summer decay of a sea ice cover, *Journal of Geophysical Research: Oceans*, 92, 7032–7044, <https://doi.org/10.1029/JC092iC07p07032>, 1987.
- Melsheimer, C., Spreen, G., Ye, Y., and Shokr, M.: Antarctic sea ice types from active and passive microwave remote sensing, *The Cryosphere Discussions*, 2022, 1–23, <https://doi.org/10.5194/tc-2021-381>, 2022.
- 650 Meredith, M., Sommerkorn, M., Cassotta, S., Derksen, C., Ekaykin, A., Hollowed, A., Kofinas, G., Mackintosh, A., Melbourne-Thomas, J., Muelbert, M. M. C., Ottersen, G., Pritchard, H., and Schuur, E. A. G.: IPCC Special Report on the Ocean and Cryosphere in a Changing Climate, chap. Polar Regions, p. 215, Cambridge University Press, Cambridge, 2019.
- Meylan, M. H., Bennetts, L. G., and Kohout, A. L.: In situ measurements and analysis of ocean waves in the Antarctic marginal ice zone, *Geophysical Research Letters*, 41, 5046–5051, <https://doi.org/10.1002/2014GL060809>, 2014.
- 655 Meylan, M. H., Bennetts, L. G., Mosig, J. E. M., Rogers, W. E., Doble, M. J., and Peter, M. A.: Dispersion Relations, Power Laws, and Energy Loss for Waves in the Marginal Ice Zone, *Journal of Geophysical Research: Oceans*, 123, 3322–3335, <https://doi.org/10.1002/2018JC013776>, 2018.
- Montiel, F. and Squire, V. A.: Modelling wave-induced sea ice break-up in the marginal ice zone, *Proceedings of the Royal Society A: Mathematical, Physical and Engineering Sciences*, 473, 20170258, <https://doi.org/10.1098/rspa.2017.0258>, publisher: Royal Society, 2017.
- 660 Montiel, F., Squire, V. A., Doble, M., Thomson, J., and Wadhams, P.: Attenuation and Directional Spreading of Ocean Waves During a Storm Event in the Autumn Beaufort Sea Marginal Ice Zone, *Journal of Geophysical Research: Oceans*, 123, 5912–5932, <https://doi.org/10.1029/2018JC013763>, 2018.
- Montiel, F., Kohout, A. L., and Roach, L. A.: Physical drivers of ocean wave attenuation in the marginal ice zone, *Journal of Physical Oceanography*, <https://doi.org/10.1175/JPO-D-21-0240.1>, 2022.
- 665 Muggeo, V. M. R.: Estimating regression models with unknown break-points, *Statistics in Medicine*, 22, 3055–3071, <https://doi.org/10.1002/sim.1545>, 2003.
- Murphy, D., French, W., and Vincent, R.: Long-period planetary waves in the mesosphere and lower thermosphere above Davis, Antarctica, *Journal of Atmospheric and Solar-Terrestrial Physics*, 69, 2118–2138, <https://doi.org/10.1016/j.jastp.2007.06.008>, 2007.
- Neumann, T. A., Martino, A. J., Markus, T., Bae, S., Bock, M. R., Brenner, A. C., Brunt, K. M., Cavanaugh, J., Fernandes, S. T., Hancock, D. W., Harbeck, K., Lee, J., Kurtz, N. T., Luers, P. J., Luthcke, S. B., Magruder, L., Pennington, T. A., Ramos-Izquierdo, L., Rebold, T., Skoog, J., and Thomas, T. C.: The Ice, Cloud, and Land Elevation Satellite – 2 mission: A global geolocated
- 670

- photon product derived from the Advanced Topographic Laser Altimeter System, *Remote Sensing of Environment*, 233, 111 325, <https://doi.org/10.1016/j.rse.2019.111325>, 2019.
- 675 Palo, S. E., Portnyagin, Y. I., Forbes, J. M., Makarov, N. A., and Merzlyakov, E. G.: Transient eastward-propagating long-period waves observed over the South Pole, *Annals Geophysicae*, 16, 1486–1500, 1998.
- Press, W., Teukolsky, S., Vetterling, W., and Flannery, B.: *Numerical recipes in C: the art of scientific computing*, Cambridge University Press, Cambridge, 2nd edn., 1992.
- Rapley, C. G.: First observations of the interaction of ocean swell with sea ice using satellite radar altimeter data, *Nature*, 307, 150–152, 1984.
- 680 Roach, L. A., Horvat, C., Dean, S. M., and Bitz, C. M.: An Emergent Sea Ice Floe Size Distribution in a Global Coupled Ocean-Sea Ice Model, *Journal of Geophysical Research: Oceans*, 123, 4322–4337, <https://doi.org/10.1029/2017JC013692>, 2018.
- Roach, L. A., Bitz, C. M., Horvat, C., and Dean, S. M.: Advances in Modeling Interactions Between Sea Ice and Ocean Surface Waves, *Journal of Advances in Modeling Earth Systems*, 11, 4167–4181, <https://doi.org/https://doi.org/10.1029/2019MS001836>, 2019.
- Rogers, W. E., Meylan, M., and Kohout, A.: Estimates of spectral wave attenuation in Antarctic sea ice, using model/data inversion, 685 <https://doi.org/10.1002/essoar.10503945.1>, 2020.
- Spreen, G., Kaleschke, L., and Heygster, G.: Sea ice remote sensing using AMSR-E 89-GHz channels, *Journal of Geophysical Research: Oceans*, 113, <https://doi.org/10.1029/2005JC003384>, 2008.
- Squire, V. A.: A fresh look at how ocean waves and sea ice interact, *Philosophical Transactions of the Royal Society A: Mathematical, Physical and Engineering Sciences*, 376, 20170 342, <https://doi.org/10.1098/rsta.2017.0342>, 2018.
- 690 Squire, V. A.: Ocean Wave Interactions with Sea Ice: A Reappraisal, *Annual Review of Fluid Mechanics*, 52, 37–60, <https://doi.org/10.1146/annurev-fluid-010719-060301>, 2020.
- Stammerjohn, S., Massom, R., Rind, D., and Martinson, D.: Regions of rapid sea ice change: An inter-hemispheric seasonal comparison.
- Steele, M.: Sea ice melting and floe geometry in a simple ice-ocean model, *Journal of Geophysical Research: Oceans*, 97, 17 729–17 738, <https://doi.org/10.1029/92JC01755>, 1992.
- 695 Stopa, J. E., Arduhin, F., Thomson, J., Smith, M. M., Kohout, A., Doble, M., and Wadhams, P.: Wave Attenuation Through an Arctic Marginal Ice Zone on 12 October 2015: 1. Measurement of Wave Spectra and Ice Features From Sentinel 1A, *Journal of Geophysical Research: Oceans*, 123, 3619–3634, <https://doi.org/10.1029/2018JC013791>, 2018a.
- Stopa, J. E., Sutherland, P., and Arduhin, F.: Strong and highly variable push of ocean waves on Southern Ocean sea ice, *Proceedings of the National Academy of Sciences*, 115, 5861–5865, <https://doi.org/10.1073/pnas.1802011115>, 2018b.
- 700 Stroeve, J. C., Jenouvrier, S., Campbell, G. G., Barbraud, C., and Delord, K.: Mapping and assessing variability in the Antarctic marginal ice zone, pack ice and coastal polynyas in two sea ice algorithms with implications on breeding success of snow petrels, *The Cryosphere*, 10, 1823–1843, <https://doi.org/10.5194/tc-10-1823-2016>, 2016.
- Strong, C.: Atmospheric influence on Arctic marginal ice zone position and width in the Atlantic sector, February–April 1979–2010, *Climate Dynamics*, 39, 3091–3102, <https://doi.org/10.1007/s00382-012-1356-6>, 2012.
- 705 Strong, C., Foster, D., Cherkaev, E., Eisenman, I., and Golden, K. M.: On the Definition of Marginal Ice Zone Width, *Journal of Atmospheric and Oceanic Technology*, 34, 1565–1584, <https://doi.org/10.1175/JTECH-D-16-0171.1>, 2017.
- Sturm, M. and Massom, R. A.: Snow in the sea ice system: friend or foe?, chap. 3, pp. 65–109, John Wiley & Sons, Ltd, <https://doi.org/10.1002/9781118778371.ch3>, 2017.

- Sutherland, P. and Dumont, D.: Marginal Ice Zone Thickness and Extent due to Wave Radiation Stress, *Journal of Physical Oceanography*, 48, 1885–1901, <https://doi.org/10.1175/JPO-D-17-0167.1>, 2018.
- 710 Thomson, J., Hosekova, L., Meylan, M. H., Kohout, A. L., and Kumar, N.: Spurious Rollover of Wave Attenuation Rates in Sea Ice Caused by Noise in Field Measurements, *Journal of Geophysical Research: Oceans*, 126, e2020JC016606, <https://doi.org/10.1029/2020JC016606>, 2021.
- Tilling, R. L., Ridout, A., and Shepherd, A.: Estimating Arctic sea ice thickness and volume using CryoSat-2 radar altimeter data, *Advances in Space Research*, 62, 1203–1225, <https://doi.org/10.1016/j.asr.2017.10.051>, the CryoSat Satellite Altimetry Mission: Eight Years of Scientific Exploitation, 2018.
- 715 Toffoli, A. and Bitner-Gregersen, E. M.: Types of Ocean Surface Waves, Wave Classification, in: *Encyclopedia of Maritime and Offshore Engineering*, pp. 1–8, John Wiley & Sons, Ltd., <https://doi.org/10.1002/9781118476406.emoe077>, 2017.
- Toyota, T., Haas, C., and Tamura, T.: Size distribution and shape properties of relatively small sea-ice floes in the Antarctic marginal ice zone in late winter, *Deep Sea Research Part II: Topical Studies in Oceanography*, 58, 1182–1193, <https://doi.org/10.1016/j.dsr2.2010.10.034>, 2011.
- 720 Uotila, P., Goosse, H., Haines, K., Chevallier, M., Barthélemy, A., Bricaud, C., Carton, J., Fučkar, N., Garric, G., Iovino, D., Kauker, F., Korhonen, M., Lien, V. S., Marnela, M., Massonnet, F., Mignac, D., Peterson, K. A., Sadikni, R., Shi, L., Tietsche, S., Toyoda, T., Xie, J., and Zhang, Z.: An assessment of ten ocean reanalyses in the polar regions, *Climate Dynamics*, 52, 1613–1650, <https://doi.org/10.1007/s00382-018-4242-z>, 2019.
- 725 Vichi, M.: A statistical definition of the Antarctic marginal ice zone, *The Cryosphere Discussions*, 2021, 1–23, <https://doi.org/10.5194/tc-2021-307>, 2021.
- Vichi, M., Eayrs, C., Alberello, A., Bekker, A., Bennetts, L., Holland, D., Jong, E. d., Joubert, W., MacHutchon, K., Messori, G., Mojica, J. F., Onorato, M., Saunders, C., Skatulla, S., and Toffoli, A.: Effects of an Explosive Polar Cyclone Crossing the Antarctic Marginal Ice Zone, *Geophysical Research Letters*, 46, 5948–5958, <https://doi.org/10.1029/2019GL082457>, 2019.
- 730 Wadhams, P.: Airborne laser profiling of swell in an open ice field, *Journal of Geophysical Research (1896-1977)*, 80, 4520–4528, <https://doi.org/10.1029/JC080i033p04520>, 1975.
- Wadhams, P.: The Seasonal Ice Zone, in: *The Geophysics of Sea Ice*, edited by Untersteiner, N., NATO ASI Series, pp. 825–991, Springer US, Boston, MA, https://doi.org/10.1007/978-1-4899-5352-0_15, 1986.
- 735 Wadhams, P., Squire, V. A., Ewing, J. A., and Pascal, R. W.: The Effect of the Marginal Ice Zone on the Directional Wave Spectrum of the Ocean, *Journal of Physical Oceanography*, 16, 358–376, publisher: American Meteorological Society, 1986.
- Wadhams, P., Aulicino, G., Parmiggiani, F., Persson, P. O. G., and Holt, B.: Pancake Ice Thickness Mapping in the Beaufort Sea From Wave Dispersion Observed in SAR Imagery, *Journal of Geophysical Research: Oceans*, 123, 2213–2237, <https://doi.org/10.1002/2017JC013003>, 2018.
- 740 Weeks, W. F.: *On sea ice*, vol. 49, University of Alaska Press, Fairbanks, 1st edn., 2010.
- Welch, P.: The use of fast Fourier transform for the estimation of power spectra: A method based on time averaging over short, modified periodograms, *IEEE Transactions on Audio and Electroacoustics*, 15, 70–73, <https://doi.org/10.1109/TAU.1967.1161901>, 1967.
- Williams, T. D., Bennetts, L. G., Squire, V. A., Dumont, D., and Bertino, L.: Wave–ice interactions in the marginal ice zone. Part 1: Theoretical foundations, *Ocean Modelling*, 71, 81–91, <https://doi.org/10.1016/j.ocemod.2013.05.010>, 2013a.

- 745 Williams, T. D., Bennetts, L. G., Squire, V. A., Dumont, D., and Bertino, L.: Wave–ice interactions in the marginal ice zone. Part 2: Numerical implementation and sensitivity studies along 1D transects of the ocean surface, *Ocean Modelling*, 71, 92–101, <https://doi.org/10.1016/j.ocemod.2013.05.011>, 2013b.
- Williams, T. D., Rampal, P., and Bouillon, S.: Wave–ice interactions in the neXtSIM sea-ice model, *The Cryosphere*, 11, 2117–2135, <https://doi.org/10.5194/tc-11-2117-2017>, 2017.
- 750 Wood, S. N.: Thin plate regression splines, *Journal of the Royal Statistical Society: Series B (Statistical Methodology)*, 65, 95–114, <https://doi.org/10.1111/1467-9868.00374>, 2003.
- Wood, S. N.: *Generalized Additive Models An Introduction with R*, Chapman Hall/CRC, 2nd edn., 2017.
- World Meteorological Organisation: *Sea Ice Nomenclature*, Tech. rep., 2014.
- Young, I. R., Fontaine, E., Liu, Q., and Babanin, A. V.: The Wave Climate of the Southern Ocean, *Journal of Physical Oceanography*, 50, 755 1417–1433, <https://doi.org/10.1175/JPO-D-20-0031.1>, 2020.