

Review article: Existing and potential evidence for Holocene grounding-line retreat and readvance in Antarctica

Joanne S Johnson^{*1}, Ryan A Venturelli², Greg Balco³, Claire S Allen¹, Scott Braddock⁴, Seth Campbell⁴, Brent M Goehring², Brenda L Hall⁴, Peter D Neff⁵, Keir A Nichols⁶, Dylan H Rood⁶, Elizabeth R Thomas¹, John Woodward⁷

¹British Antarctic Survey, High Cross, Madingley Road, Cambridge, CB3 0ET, UK

²Department of Earth & Environmental Sciences, Tulane University, New Orleans, LA 70118, USA

³Berkeley Geochronology Center, 2455 Ridge Road, Berkeley, CA 94709, USA

⁴School of Earth and Climate Sciences and the Climate Change Institute, University of Maine, Orono, ME 04469 USA

⁵Department of Soil, Water, and Climate, University of Minnesota, Saint Paul, MN 55108, USA

⁶Department of Earth Science & Engineering, Imperial College London, London SW7 2AZ, UK

⁷Department of Geography and Environmental Sciences, Northumbria University, Newcastle-upon-Tyne, NE1 8ST, UK.

Correspondence to: Joanne S Johnson (jsj@bas.ac.uk)

Abstract. Widespread existing geological records from above the modern ice-sheet surface and outboard of the current ice margin show that the Antarctic Ice Sheet (AIS) was much more extensive at the Last Glacial Maximum (~20 ka) than at present. However, whether it was ever smaller than present during the last few millennia, and (if so) by how much, is known only for a few locations because direct evidence lies within or beneath the ice sheet, which is challenging to access. Here, we describe how retreat and readvance (henceforth “readvance”) of AIS grounding lines during the Holocene could be detected and quantified using subglacial bedrock, subglacial sediments, marine sediment cores, relative sea-level (RSL) records, geodetic observations, radar data, and ice cores. Of these, only subglacial bedrock and subglacial sediments can provide direct evidence for readvance. Marine archives are of limited utility because readvance commonly covers evidence of earlier retreat. Nevertheless, stratigraphic transitions documenting change in environment may provide support for direct evidence from subglacial records, as can the presence of transgressions in RSL records, and isostatic subsidence. With independent age control, past changes in ice structure and flow patterns revealed by radar can be used to infer past ice volume changes in ice flow and geometry, commensurate with and therefore potential readvance. Since ice cores capture changes in surface mass balance, elevation, and changes in atmospheric and oceanic circulation that are known to drive grounding-line migration, they also have potential for identifying readvance. A multidisciplinary approach is likely to provide the strongest evidence for or against a smaller-than-present AIS in the Holocene.

Short Summary. Recent studies have suggested that some portions of the Antarctic Ice Sheet were less extensive than present in the last few thousand years. We discuss how past ice loss and regrowth during this time would leave its mark on geological and glaciological records and suggest ways in which future studies could detect such changes. Determining timing of ice loss and gain around Antarctica and conditions under which they occurred is critical for preparing for future climate warming-induced changes.

1 Introduction

Improving our understanding of the glacial history of the Antarctic Ice Sheet (AIS) during the Holocene (11.7 ka to present) is essential for determining the likely ice-sheet response to future ocean and atmospheric warming. The Holocene provides a wide range of climatic variations with which to examine interglacial ice-sheet behaviour under conditions similar to, or warmer than, present (Hall, 2009). Holocene retreat and readvance of AIS grounding lines is theoretically predicted by relative sea-level reconstructions and suggested by some geological and glaciological observations. Here we consider how Holocene retreat and readvance could be detected and quantified using observations from geological and glaciological

archives, illustrated in Fig. 1. Deglaciation from a much more extensive Last Glacial Maximum (LGM) ice-sheet configuration is recognised from widespread geological evidence located above the modern ice-sheet surface and outboard of the present ice margin. However, whether or not the AIS grounding line was ever situated inboard of its present position during the Holocene, and (if so) by how much, is known only for a few locations. Evidence for a smaller-than-present ice sheet which then readvanced – a concept which we refer to hereafter as “readvance” – is difficult to find, as it lies underneath or within the relatively inaccessible modern ice sheet. Precise dating of both subglacial and englacial records is also challenging because dateable material is frequently lacking, and geomorphic context is hard to acquire. Although some such evidence has been obtained (e.g., Venturelli et al., 2020), it is extremely limited, and interpretations are sometimes contradictory. For example, there is no agreed-upon explanation for the glaciological processes and environmental forcing leading to readvance (Kingslake et al., 2018; Neuhaus et al., 2021). Furthermore, the maximum extent of Holocene retreat has not yet been determined. In summary, the vastly greater weight of geological data from areas outside the present ice-sheet margin has led to a commonly accepted, but biased, paradigm that the AIS is now the smallest it has been since the LGM.

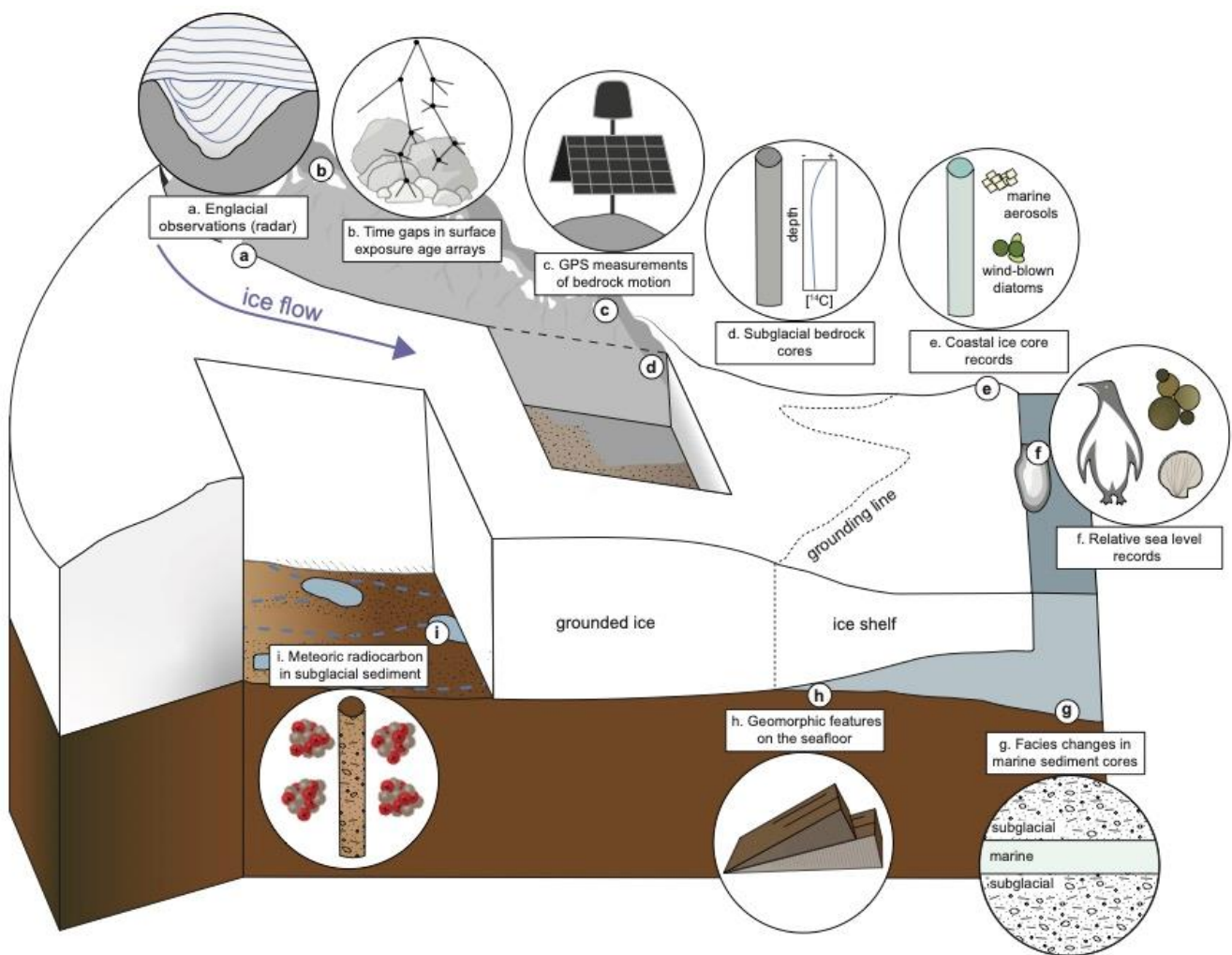


Figure 1: A recipe for reconstructing grounding-line retreat and readvance during the Holocene. This schematic illustrates geological and glaciological archives-records that may be used for palaeoglaciological reconstructions. These are discussed in the paper as follows: (a) englacial observations (Sect. 3.3.1), (b) exposure age arrays (Sect. 3.1.1), (c) geodetic observations (Sect. 3.1.4), (d) subglacial bedrock cores (Sect. 3.2.2), (e) ice cores (Sect. 3.3.2), (f) relative sea-level records (Sect. 3.1.3), (g) marine sediment cores (Sect. 3.1.2), (h) submarine geomorphic features (Sect. 3.1.2), (i) subglacial sediments (Sect. 3.2.1).

Geological observations of readvance help ascertain the boundary conditions that enable expansion from a smaller-than-present configuration and provide data with which ice-sheet models can be validated and thereby improved (e.g., Gollgedge et

al., 2013; Lowry et al., 2019; Albrecht et al., 2020 a,b; Johnson et al., 2021). We outline the current evidence for Holocene readvance of the AIS (including both the East and West AIS, and the Antarctic Peninsula Ice Sheet), describe the types of direct and circumstantial geological evidence that could theoretically be used to reconstruct its timing and magnitude, and suggest some approaches for future investigations. We also discuss the analytical and logistical challenges of obtaining different types of records.

2 The principle of Holocene readvance behaviour

In principle, Holocene readvance is expected to have occurred at least locally in Antarctica because of the interaction between global eustatic sea-level change and glacio-isostatic rebound. More than 100 m of ESL rise between 19–7 ka, resulting from the disappearance-reduction of Northern Hemisphere ice sheets (Lambeck et al., 2014), may have forced Antarctic grounding-line retreat and consequent ice-sheet thinning (e.g., Clark et al., 2002; Gomez et al., 2020). This is recorded by numerous geological data indicating ice margin retreat across the Antarctic continental shelf and thinning at inland sites after 15–12 ka (RAISED consortium, 2014). By 6 ka, Northern Hemisphere ice sheets had fully disappeared, and eustatic sea-level rise was essentially complete (Argus et al., 2014; Peltier et al., 2015). However, geological evidence indicates that post-LGM thinning of the AIS continued until at least this time in many locations, and beyond in some (refer to Fig. 2 and accompanying discussion in Sect. 3.1.1). Because the timescale for viscous relaxation of the lithosphere is on the order of thousands of years, glacio-isostatic uplift of the underlying continent in response to this post-LGM thinning continued well after 6 ka. Thus, most sites in Antarctica transitioned from experiencing relative sea-level (RSL) rise in the early Holocene to RSL fall in the mid Holocene (cf. figure 3, Whitehouse et al., 2012). As sea-level forcing of grounding-line positions is likely an important control on Antarctic ice extent (Gomez et al., 2010), it follows that the ice sheet should have reached its minimum configuration sometime in the mid to late Holocene and subsequently expanded to its current extent. Holocene readvance has been simulated by a few ice-sheet models in response to external forcing during the last glacial cycle (e.g., Kingslake et al., 2018; Pollard and DeConto, 2012), but it is by no means ubiquitous in all models. Furthermore, those models are often poorly constrained by sparse geological observations and data-model mismatches are common (e.g., Johnson et al., 2021; Nichols, 2020; Spector et al., 2019; Jones et al., 2021), which decreases confidence in their ability to reliably simulate past ice-sheet change.

3 Is it possible to detect Holocene retreat and readvance using glacial-geological evidence?

Glacial-geological records of past ice-sheet fluctuations can be categorised as either direct or circumstantial. Direct evidence can provide conclusive proof of a particular configuration or hypothesis. In contrast, whereas circumstantial evidence implies (-or is not inconsistent with), a particular configuration, but is not direct proof of it. Multiple lines of direct and/or circumstantial evidence can strengthen conclusions about the timing and magnitude of ice-sheet retreat.

In the following sections, we describe a range of glacial and geological records that have the potential to provide direct or circumstantial evidence for retreat of the Antarctic grounding line upstream of its present position during the past few millennia. These records are situated either below or within the modern ice sheet, or in currently exposed areas. A variety of approaches can be used to access these records, but there are considerable logistical challenges, as explained below.

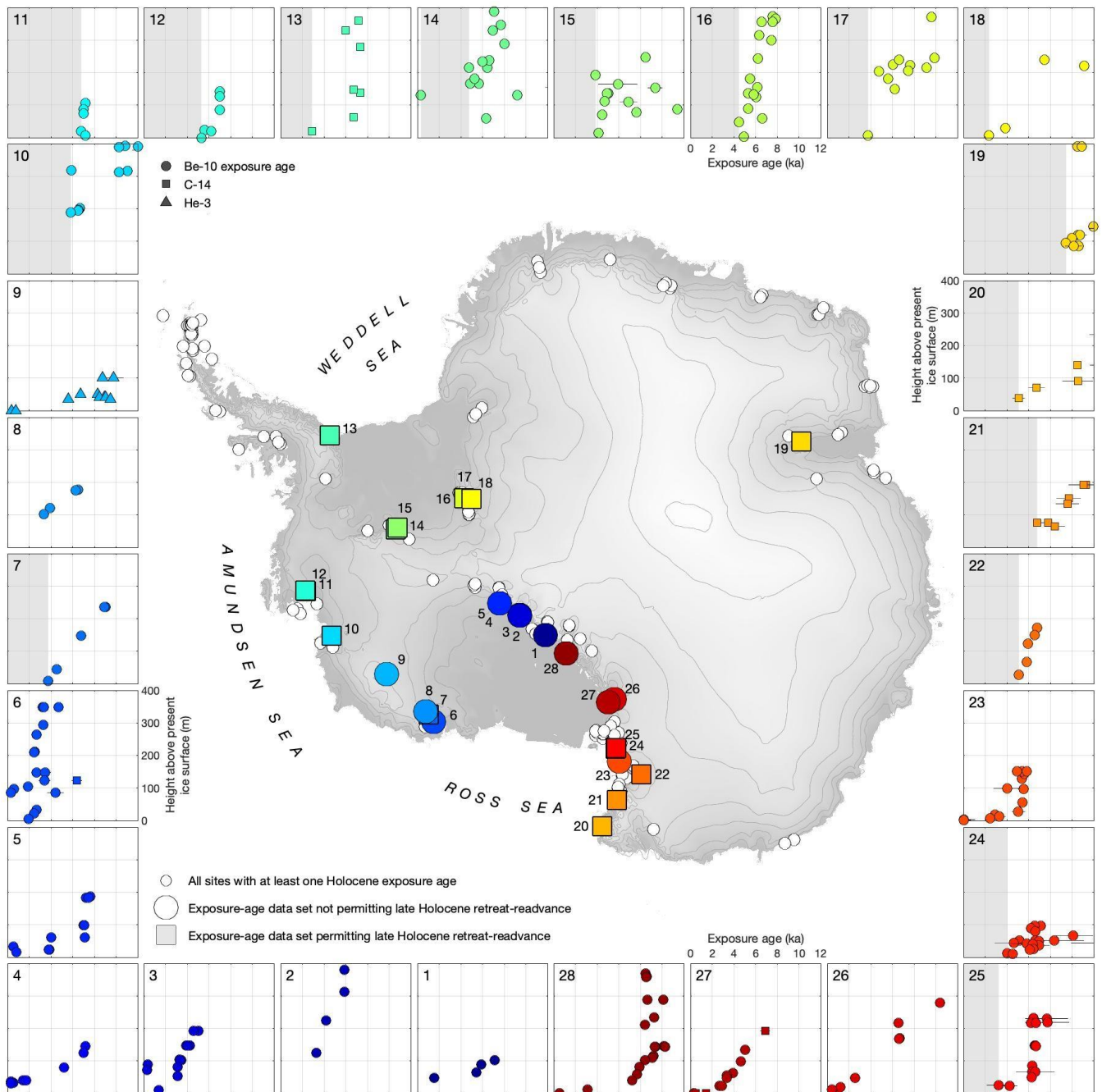
3.1 Evidence currently above or adjacent to ice

3.1.1 Evidence of a time gap in which readvance could have occurred

At numerous locations around Antarctica, cosmic-ray exposure dating of glacially transported erratic cobbles and ice-scoured bedrock surfaces has provided Holocene constraints on the timing of deglaciation. Specifically, exposure age data from currently ice-free areas record past ice thickness changes upstream of the grounding line. Retreat of the grounding line would be accompanied by dynamic thinning upstream, assuming reasonable limits on surface mass balance changes. Therefore, evidence of rapid thinning at sites near and upstream of present grounding lines provides evidence for past grounding-line retreat. The premise of exposure dating is that cosmic-ray interactions with rocks and minerals exposed at Earth's surface induce nuclear reactions that give rise to rare nuclides not produced by other natural processes. However, shielding of the surface by more than approximately 10 m of ice (or an equivalent mass thickness of anything else) stops nearly all of the cosmic-ray flux and prevents nuclide production. Erosion beneath ice sheets commonly generates fresh rock surfaces that have not been exposed to the cosmic-ray flux, so the concentration of cosmic-ray produced nuclides, expressed as an "exposure age," in a rock surface uncovered by retreat records the time when that retreat exposed the surface (Dunai, 2010). Thus, exposure age records of LGM-to-present deglaciation comprise arrays of ages, measured in either bedrock or glacially transported clasts collected at a range of elevations from a single nunatak, in which exposure age systematically increases with elevation (e.g., Stone et al., 2003; Fig. 2). Exposure age data collected from above the modern ice surface cannot provide direct evidence that the ice at that site was ever thinner than present. However, they can prove that the ice was *not* thinner at a particular time: for example, exposure ages of 4 ka above the present ice surface would exclude any scenario that called for thinner-than-present ice at 4 ka.

Many exposure age data sets from Antarctica can thus be used to determine whether or not Holocene readvance *could* have occurred in certain regions. As shown in Fig. 2, some exposure age arrays include multiple late Holocene ages from above the present ice surface, and a thinning history inferred from these arrays intersects the modern ice surface at approximately the present time (see sites 26 and 27 ~~in Fig. 2~~). Late Holocene thinning below present, and subsequent thickening, *could not* have occurred at these sites. On the other hand, many exposure age arrays intersect the present ice surface in the mid Holocene, typically in the range 6–2 ka, and do not include any younger exposure ages. At these sites, late Holocene readvance *could* have occurred. In fact, readvance would appear probable at these sites because the only alternative explanation for these data is zero change in ice thickness during the late Holocene. Whilst possible, zero late Holocene change seems unlikely given that continued dynamic adjustment of ice thickness to RSL change was presumably occurring during this period.

A survey of existing exposure age data from Antarctica shows that occurrences of these two scenarios are not geographically patterned (Fig. 2). Sites where exposure age data permit Holocene readvance are common in the Weddell and Amundsen Sea embayments. In contrast, datasets from the inner Ross Sea embayment uniformly preclude readvance, whilst datasets in the outer Ross Sea coast (northern Victoria Land; sites 20–25 in Fig. 2) permit it. For the East Antarctic coast, there are very few data and only one location (site 19 in Fig. 2, in the Lambert Glacier region) with an extensive enough data set to be unambiguously classified for this purpose. Although there are many sites elsewhere in East Antarctica where Holocene exposure ages have been determined (white circles in Fig. 2), the majority of these sites have only one or two ages, or are located adjacent to sea level where readvance could not be detected. Overall, existing exposure age data are (i) consistent with the hypothesis that late Holocene readvance took place in the Weddell and Amundsen Sea embayments and at outer Ross Sea sites, (ii) not obviously consistent with the hypothesis that readvance took place in the inner Ross Sea, and (iii) provide minimal information for East Antarctica.



145 **Figure 2: Evidence from Holocene exposure age data collected from various locations in Antarctica that do or do not permit ice surface lowering below the present elevation during the late Holocene.** The figure was generated from the ICE-D:ANTARCTICA database (<http://antarctica.ice-d.org>). There are many sites (230) which have at least one Holocene exposure age (small white circles). This figure shows only a subset of those sites or groups of sites that have more than four Holocene data which together display a reasonably coherent thinning history. Sites where the lowest data are at or near sea level are also excluded because thinning below sea level is unfeasible and could not be recorded by exposure age data anyway. The sites are classified by whether they do (squares on map, grey axes shading on axes highlighting age gap) or do not (circles, white axes no shading) have a late Holocene gap where readvance could have occurred. For purposes of this figure, a late Holocene gap is deemed to exist if the age-elevation trend defined by the exposure age data intersects the present ice surface before the present time.

150 **3.1.2 Evidence for past grounding-line position from the marine record**

As an ice sheet advances across the continental shelf, it typically overrides and obliterates geomorphological evidence of prior retreat, such as grounding zone wedges or mega scale glacial lineations (e.g., Greenwood et al., 2021), and leaves depositional evidence of readvance, such as sedimentary transitions (e.g., Smith et al., 2019) and cross-cutting landforms (e.g., Greenwood et al., 2018). In a few locations, palaeo ice stream retreat and readvance did not entirely remove prior

160 grounding zone deposition, but rather built composite grounding zone wedges that represent two separate periods of
deposition [e.g., in the Ross Sea; (Greenwood et al., 2018); Weddell Sea; (Arndt et al., 2017)]. In most situations, however,
geomorphic features alone are insufficient for reconstructing retreat and subsequent readvance. We thus consider a range of
depositional transitions in marine sediment cores that would be consistent with readvance. The clearest evidence would be a
165 transition from a subglacial diamicton facies, overlain by diatom-bearing or diatomaceous mud (indicative of open-marine
sedimentation), back to diamicton (Fig. 3a). At present, there are no published examples of such stratigraphic evidence
indicating that this degree of change occurred during the Holocene. A form of evidence more likely to be found, yet not
necessarily diagnostic, would be a stratigraphic transition from subglacial (diamicton) to ice proximal (stratified diamicton)
or sub-ice-shelf facies (mud) back to subglacial (Fig. 3a). Unequivocal evidence, however, has only come from dating
presently subglacial material (see Sect. 3.2.1), and selected examples from the Antarctic Peninsula (Christ et al., 2015; Simkins et
170 al., 2021). Reconstructions of past ice-shelf collapse [e.g., Ross Ice Shelf (Yokoyama et al., 2016); Prince Gustav Ice Shelf
(Pudsey et al., 2001); George VI Ice Shelf (Bentley et al., 2005; Smith et al., 2007); Larsen C Ice Shelf (Smith et al., 2021)]
may also be useful for inferring changes in grounding-line position inboard of the collapse site. In summary, although these
marine records alone cannot prove that Holocene readvance occurred, they can be used to support direct evidence provided
by terrestrial archives.

175

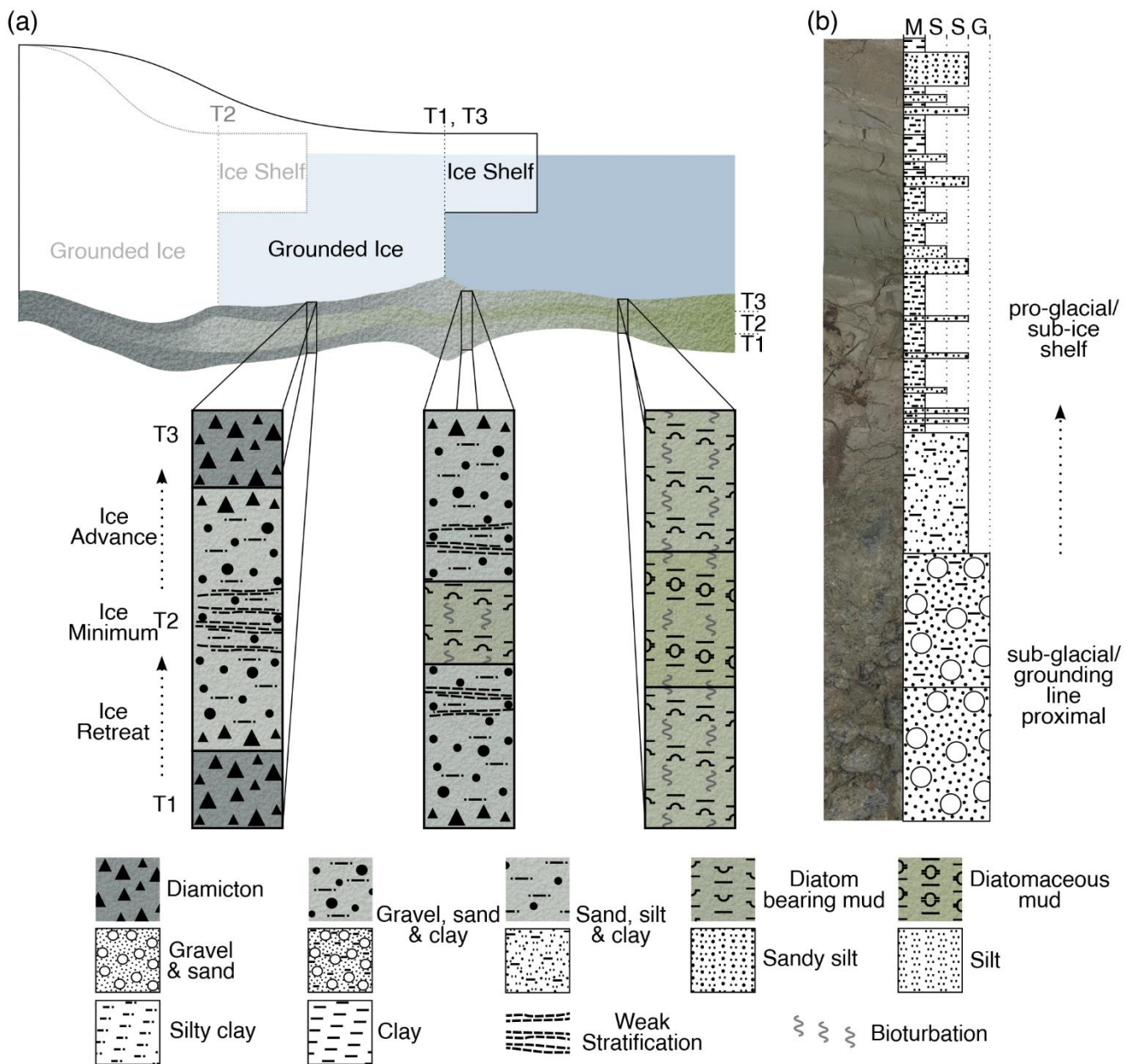


Figure 3: Facies changes in marine sediments that would be consistent with readvance. (a) Illustration of sediment logs recording an interval of reduced glacier extent (T2) between more advanced glacier positions (T1 and T3) for sub-glacial, glacio-proximal and glacio-distal settings; (b) Example of sediment transition from a sub-glacial/grounding-line-proximal to proglacial/sub-ice-shelf setting.

180

3.1.3 Evidence for transgressions in relative sea-level records

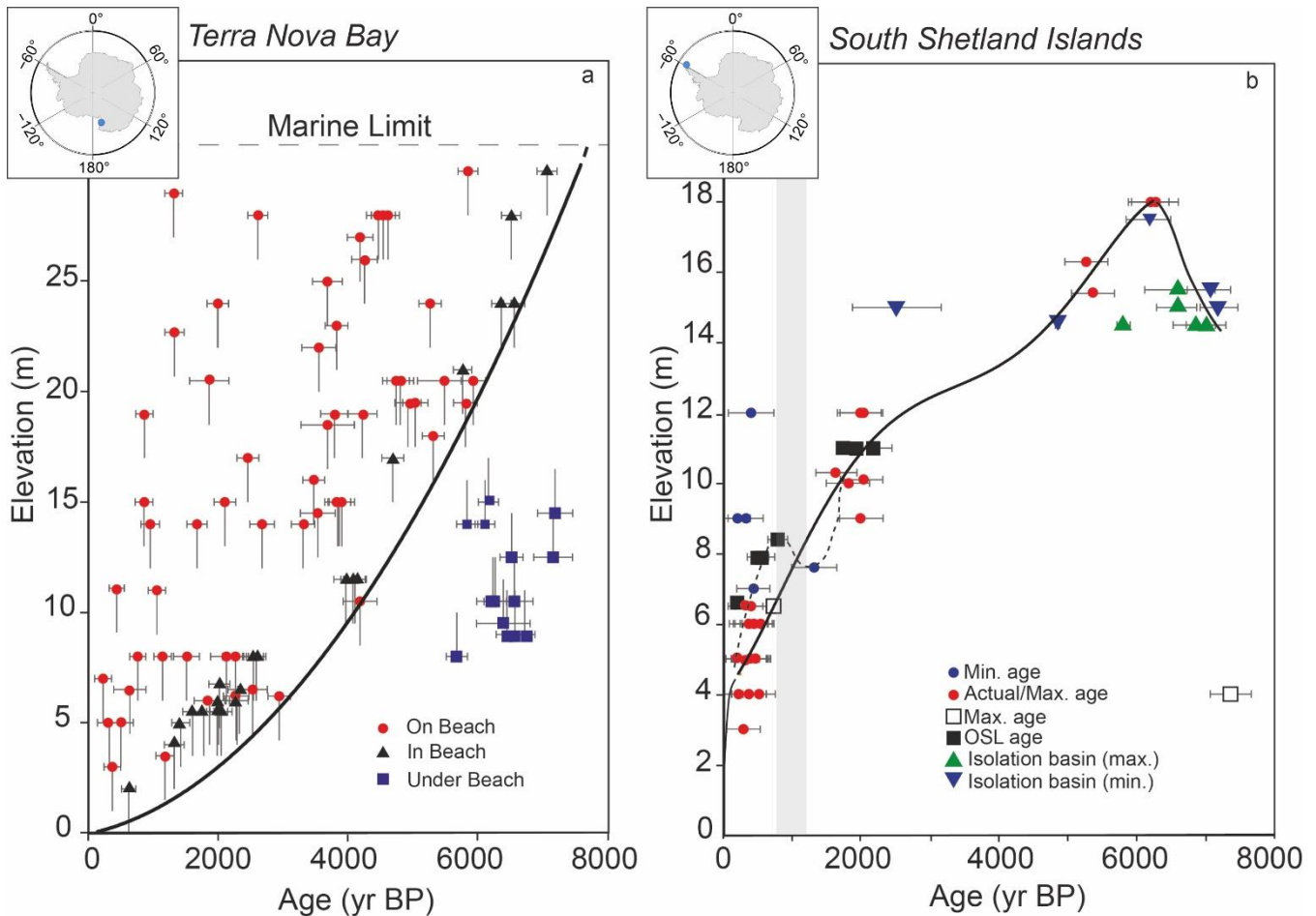
185

Holocene readvance would theoretically result in ice mass changes detectable in sea-level records. Slowing rates of **change fall** or even transgressions in RSL records proximal to glaciated areas are commonly interpreted as ice mass gain where significant eustatic sea-level rise is absent (e.g., Motyka, 2003; Mann and Streveler, 2008; Simms et al., 2012; Farquharson et al., 2018). RSL records from around the AIS could afford evidence of glacial readvance if the expansion were of a magnitude sufficient to cause measurable crustal depression, or at least a noticeable slowing of **isostatic** rebound rates.

190

Antarctic RSL records have been reconstructed by dating beach deposits that were elevated above sea level by rebound using a variety of methods. These include radiocarbon dating of organic material (e.g., shells, bones, seal fur) buried in beach ridges (e.g., Hall and Denton, 1999; Baroni and Hall, 2004), optically stimulated luminescence (OSL) dating of beach

cobbles (e.g., Simms et al., 2012), and radiocarbon dating the marine-lacustrine transitions in isolation basins (e.g., Verleyen et al., 2005; Watcham et al., 2011).



195

Figure 4: Two patterns of RSL change in Antarctica. (a) Many curves show a typical exponential shape, as represented by the curve from Terra Nova Bay, Ross Sea region [Baroni and Hall (2004), recalculated with marine reservoir correction of Hall et al. (2010), updated for Marine20 calibration dataset]. (b) A more complex pattern as represented by the South Shetland Islands. This curve is thought to show evidence of at two possible transgressions least one (~6.5–7 ka and) and possibly two (dashed line) transgressions, linked to glacier advance (e.g., Hall, 2010; Watcham et al., 2011; Simms et al., 2012). Redrawn from curves of Hall (2010), Simms et al. (2011), and Watcham et al. (2011), with ages recalculated with Marine20 and IntCal20. Circles denote radiocarbon samples from raised beaches (Hall, 2010 and references therein), squares are OSL dates of beach cobbles (Simms et al., 2011), and triangles are dates of the marine-freshwater transitions in isolation basins (Mäusbacher et al., 1989; Martinez-Macchiavello et al., 1996; Watcham et al., 2011). Shaded vertical bar indicates possible period of glacier readvance associated with dashed line.

200

205

Concerted effort over the past two decades from several regions of Antarctica (e.g., Baroni and Hall, 2004; Roberts et al., 2011; Simkins et al., 2013; Verleyen et al., 2017) has resulted in a more complete understanding of Holocene Antarctic RSL change. Most existing Antarctic records show simple RSL fall from 8 ka to present (e.g., Zwartz et al., 1998; Baroni and Hall, 2004; Bentley et al., 2005; Braddock et al., in-review/accepted), and thus lack evidence for subsidence related to significant late Holocene ice growth. A notable exception in the South Shetland Islands (Fig. 4) provides evidence of one or more transgressions linked to ice expansions, most recently in the late Holocene around 1 ka (John and Sugden, 1971; Hall, 2010; Watcham et al., 2011; Simms et al., 2012). These transgressions are expressed in the records as changes in rate (and direction) of RSL change.

210

215

The occurrence of raised beaches proximal to extant ice masses can afford further evidence of Holocene readvance. Numerous locations [e.g., Ross Sea (Baroni and Orombelli, 1991; Hall and Denton, 2002; Baroni and Hall, 2004); South Shetland Islands (John and Sugden, 1971; Hall, 2010); Antarctic Peninsula (Simms et al., 2021)] show flights of raised

beaches that extend up to, and presumably beneath, present-day glaciers. These observations imply an extended period of reduced ice extent in the Holocene, permitting beach formation, subsequently followed by a late Holocene readvance.

220 Further exploration and dating of such beach deposits could support the hypothesis of late Holocene readvance. Remaining challenges to the use of RSL data to assess ice behaviour include the relative sparsity of such datasets in many regions of Antarctica, as well as chronological limitations. A broad spatial array of high-resolution RSL curves, particularly in areas close to the glaciers of interest, would increase the usefulness of the data. The ease of obtaining such curves is commonly affected by logistical access, by the existence (or not) of suitable raised beaches and isolation basins, and by the
225 presence/absence of sufficient dateable material.

3.1.4. Evidence for isostatic subsidence from geodetic observations

230 Present-day GPS measurements of vertical bedrock motion, combined with glacio-isostatic modelling, can provide indirect evidence for ice thickness changes in the past few millennia. The basis for this is that ice-sheet thinning and retreat causes local isostatic uplift, whereas isostatic subsidence occurs in response to ice-sheet thickening or grounding-line advance (Whitehouse et al., 2019). The utility of geodetic observations for studies of Holocene readvance was first demonstrated by Bradley et al. (2015). They used glacio-isostatic adjustment modelling and GPS-derived bedrock uplift rates to explore hypotheses for the causes of late Holocene ice flow reorganisation in the Weddell Sea embayment observed in radar data
235 (Siegert et al., 2013). They found that retreat of grounding lines upstream of their present position during the mid Holocene, followed by readvance in the late Holocene, provides a plausible explanation for ongoing bedrock subsidence detected by the bedrock GPS measurements. More recently, King et al. (2022) measured bedrock vertical motion between 2006-2020 in the Totten-Denman Glacier region of East Antarctica. After accounting for displacement caused by surface mass balance loading, they detected widespread isostatic subsidence west of Totten Glacier that is consistent with a late Holocene
240 grounding-line readvance. They were unable to determine the extent of the readvance, but this would theoretically be possible if the underlying mantle viscosity is known (mantle viscosity controls how fast the crust can rebound, so regions with low viscosity rebound faster making them more susceptible to readvance; Barletta et al., 2018). Whilst this interpretation of the GPS data must be verified with glacial-geological sampling, both of these studies demonstrate the potential of geodetic observations to provide indirect evidence for readvance that can be used to support interpretations made
245 using other approaches described here.

Whilst acquiring GPS uplift data does not entail collecting new glacial-geological samples and can be undertaken without needing to penetrate the ice sheet, it is not without challenges. Firstly, contemporary geophysical signals – such as surface mass balance variations, present-day dynamic glacier mass loss, post-seismic deformation and volcanic activity – can swamp
250 the signal of glacio-isostatic adjustment and must therefore be accounted for (Whitehouse et al., 2019). There are also many logistical considerations. For example, the location of GPS measurements depends upon the availability of exposed rocky outcrops, which can be very limited, particularly in inland regions of Antarctica. Remote locations can also be logistically difficult to access; this is particularly critical for GPS installations which need to be serviced at least every two to three years. Continuous long time-series GPS data are more useful (and reliable) than a series of short single-season occupations,
255 especially in regions where upper mantle viscosity is low, such as the Amundsen Sea embayment or northern Antarctic Peninsula (Barletta et al., 2018; Nield et al., 2014). Therefore, installing GPS equipment that will remain in place for several years, or decades, is preferable to repeatedly reinstalling equipment to collect just a few weeks of measurements.

3.2 Evidence currently under ice

260 3.2.1 Subglacial sediments

Where the AIS is grounded below sea level, the grounding line serves not only as the boundary between the ice sheet and ice shelf, but also separates the isolated subglacial environment from the atmospherically connected marine environment.

265 Radiocarbon (^{14}C) ~~is~~ produced in Earth's atmosphere ~~and is~~ oxidised to ^{14}C -bearing carbon dioxide ($^{14}\text{CO}_2$), which can enter the ocean system via photosynthesis (organic pathways) or air-sea exchange (inorganic pathways). In contrast to the surrounding marine environment, ~~The Antarctic subglacial environment,~~ ~~in contrast to the surrounding marine environment,~~ is separated from the atmosphere by hundreds-to-thousands of metres of ice, cutting ~~off~~ its microbial biosphere ~~off~~ from incorporating $^{14}\text{CO}_2$. Grounding-line retreat enables an incursion of ocean waters over subglacial sediments, leaving behind ~~^{14}C -radiocarbon~~ as a marker of the timing and extent of grounding-line retreat. The discovery of ~~^{14}C -radiocarbon~~ in bulk-~~dated~~ acid insoluble organic matter (AIOM) from the subglacial environment paired with an ice-sheet model was used
270 by Kingslake et al. (2018) to imply that grounding-line retreat and readvance occurred in the Ross Sea embayment during the Holocene. ~~However, the presence of~~ ~~However,~~ ~~^{14}C -radiocarbon~~ in bulk ~~organic matter~~ AIOM, which is not diagnostically linked to a single source in the way that a fossil would be, is ~~ambiguous,~~ not sufficient for placing chronological constraints on grounding-line retreat. This is because subglacial sediment contains both ^{14}C -bearing organic carbon and glacially eroded fossil carbon (e.g., Sackett, 1986; Andrews et al., 1999). As such, preparatory techniques capable of separating the small amount of Holocene (^{14}C -bearing) carbon from the remaining fossil (~~$\geq 50,000$ year old~~) carbon ~~(that which is older than the measurement capabilities of radiocarbon)~~ are needed to unambiguously use ^{14}C in sub-ice sediments to provide
275 chronological constraints on Holocene readvance. Venturelli et al. (2020) demonstrated that the Ramped PyrOx/Ramped Pyrolysis Oxidation method (Ramped PyrOx, RPO; Rosenheim et al., 2008) -was sufficient for thermal separation of sub-ice organic matter, enabling the use of ~~^{14}C -radiocarbon~~ to determine ~~the precise timing of the~~ ~~that last marine incursion~~
280 grounding-line retreat and readvance occurred during the mid-Holocene in the southern Ross Sea embayment.

Further work ~~employing RPO radiocarbon dating using on subglacial sediments retrieved from the subglacial environment is thus likely to can~~ will help to provide geological constraints on the timing and magnitude of ~~grounding retreat prior to~~ ~~Holocene readvance~~ Holocene readvance around Antarctica (e.g., Venturelli, 2021). ~~However, a few challenges remain that~~
285 make these records difficult to generate. First, with the identification of an active microbial ecosystem in the subglacial environment, the 2007 National Research Council determined that promoting environmental stewardship of the pristine subglacial environment is required when drilling through ice and into sediment (National Research Council, 2007; Scientific Committee on Antarctic Research, 2011). As a result, recovering water-saturated sediment from beneath grounded ice has since relied on clean-access, hot water drilling in lieu of drilling with other fluids (e.g., hydrocarbons) that would otherwise
290 contaminate subglacial samples (Priscu et al., 2013; Michaud et al., 2020). One challenge associated with hot water drilling is refreezing at the air-water interface that has potential to decrease the diameter of boreholes and impede the deployment of coring devices (Tulaczyk et al., 2014; Talalay et al., 2019). This can, however, be resolved by adding heat to the borehole during operations (Priscu et al., 2021). Size limitations and cleanliness requirements of borehole deployments also limit the tools available for retrieving subglacial sediments (Hodgson et al., 2016 and references therein). Finally, the discovery of a
295 small amount of radiocarbon in subglacial organic matter underscores the importance of avoiding contamination from modern sources (Venturelli et al., 2021).

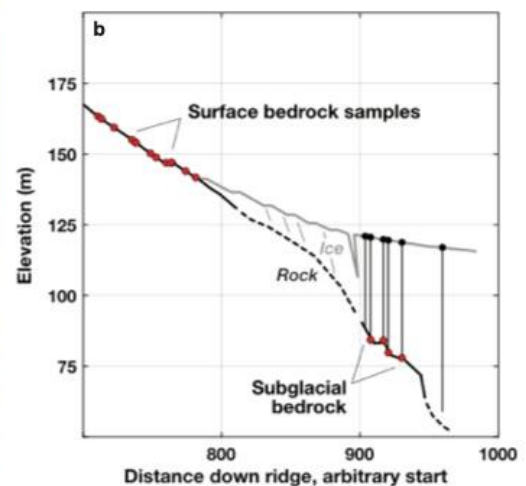
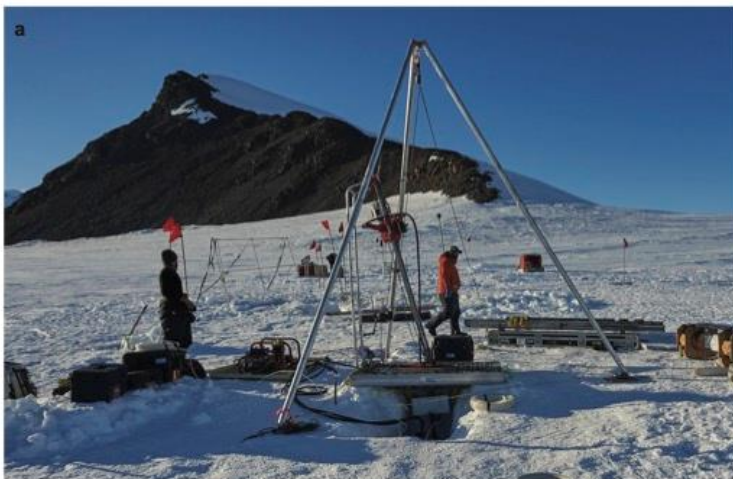
3.2.2 Subglacial bedrock

Exposure age data from below the ice sheet could prove the hypothesis that the AIS was smaller in the Holocene than today: if the ice sheet was thinner in the past, rock surfaces would exist that are now covered by enough ice to completely block the

300 cosmic-ray flux, but were exposed to the cosmic-ray flux when the ice was thinner. A significant concentration of a cosmic-
ray produced nuclide in a rock sample collected from beneath the ice sheet would be direct, unambiguous evidence that the
ice sheet was thinner in the past. It would not strictly require surface exposure of bedrock, because the cosmic-ray flux can
penetrate some thickness of ice, but it would require that the surface be covered by no more than about 10 m of ice or snow
for hundreds to thousands of years. A similar argument applies for luminescence-based tools [e.g., OSL and infrared
305 stimulated luminescence (IRSL)] that involve measuring the amount of trapped charge in minerals accumulated when
exposed to naturally occurring environmental radiation. Exposure to sunlight (“bleaching”) releases trapped charge, and
charge builds up slowly after exposure ends, so the method can detect recent exposure of mineral grains to sunlight (Aitken,
1998). OSL or IRSL evidence of bleaching in subglacial bedrock would require exposure of the rock surface to sunlight
either directly or through a very thin (<1 m) layer of clean ice or snow.

310

Thus, the basic concept of subglacial bedrock exposure dating via either cosmogenic-nuclide or luminescence measurements
is quite simple: cosmogenic-nuclide concentrations above background levels or a bleaching signal in subglacial bedrock
require thinner ice in the past. However, there are several challenges to implementing it. Firstly, accessing the bedrock below
the ice surface requires drilling a hole through the ice and into the underlying bedrock. A few past ice drilling projects
315 recovered subglacial rock or sediment as a byproduct of ice core drilling, for example, at GISP2 in 1992 (Gow and Meese,
1996) and Taylor Dome in 1993 (Steig et al., 2000). In recent years, several drill systems have been developed for the
specific purpose of subglacial bedrock recovery that are lighter, more mobile, and more effective at collecting rock core than
deep ice core drills (Kuhl et al., 2021; Boeckmann et al., 2021; Goodge and Severinghaus, 2016). These drills have now
successfully collected bedrock cores at several locations in Antarctica, including the Ohio Range in the Transantarctic
320 Mountains (Boeckmann et al., 2021), Mt Murphy at the Amundsen Sea coast (Boeckmann et al., 2021; Fig. 5), and the Pirrit
Hills in central West Antarctica (Kuhl et al., 2021). Although the relatively small diameter (typically 2–5 cm) of rock cores
that can be collected by drilling imposes limits on sample size, subglacial bedrock recovery and exposure dating in frozen-
bed conditions characteristic of polar ice sheets is-are now routinely feasible.



325

Figure 5: An example of subglacial bedrock drilling in Antarctica. (a) Photograph showing an attempt to collect subglacial bedrock
samples for OSL and cosmogenic ^{14}C measurements to determine whether a late Holocene thinning-thickening cycle took place at Mt
Murphy, between the Thwaites and Pope Glaciers in West Antarctica. (b) Plot showing profile along the ridge at Mt Murphy. Red circles
denote position of surface and subglacial bedrock samples. The lowermost bedrock samples on the exposed ridge above the present ice
surface have exposure ages of 4 ka (Johnson et al., 2020), leaving a late Holocene time gap during which the ice at this location could have
330 been thinner. Drilling to collect subglacial bedrock samples took place in the 2019-20 Antarctic field season.

335 A second challenge lies in interpreting the cosmogenic-nuclide or luminescence measurements. Although detecting
subglacial exposure would always be unambiguous evidence of thinner ice in the past, the absence of such evidence would
not categorically exclude past thinning. For example, seawater has effectively the same shielding effect as ice, so a low-
elevation coastal site that was below local relative sea level when ice-free would not show cosmogenic-nuclide or OSL
evidence of exposure. More generally at sites where this is not a consideration, not detecting failing to detect -subglacial
340 exposure in a subglacial bedrock sample could mean either that the ice was never thinner, or that the ice was thinner in the
past and the previously exposed surface was subsequently removed by erosion. For OSL and IRSL, regrowth of trapped
charge following burial of a previously bleached surface will gradually remove evidence of surface exposure even without
erosion of the surface, typically on a timescale of hundreds of thousands of years. Radioactive decay would have a similar
effect for relatively short-lived cosmogenic nuclides, but, since other simultaneously produced nuclides are longer-lived or
stable, decay could not remove all evidence of cosmic-ray exposure acquired before the Holocene. Subglacial erosion, on the
345 other hand, could remove both types of evidence, but can often be excluded by glaciological observations and/or modeling
that explore whether or not a site could have hosted ice above the freezing point and be capable of enabling significant
erosion.

Finally, although the presence of bleaching of an OSL signal or significant cosmogenic-nuclide concentrations in subglacial
bedrock are clear evidence that ice was thinner in the past, it is not always possible to determine the timing of that thinning
350 event. For OSL data, bleaching events that are relatively recent compared to the time required for regrowth of trapped charge
can typically be unambiguously dated. For cosmogenic-nuclide data, if independent evidence indicates that the sample
experienced only a single period of exposure and a single period of burial, the durations of both can be uniquely inferred
from measurements of two nuclides with different half-lives (“burial dating”; see Dunai, 2010). On the other hand, in the
general case where (i) neither subaerial nor subglacial erosion was significant, (ii) bedrock surfaces experienced repeated
355 periods of exposure and ice cover during glacial-interglacial cycles, and (iii) independent evidence for the number of
exposure events is lacking, multiple-nuclide data typically limit the range of possible exposure-burial scenarios without
implying a unique solution. In this paper, however, we are focusing on the very specific case of late Holocene thinning and
thickening at sites that are known to have been covered by ice between some time prior to the LGM and the mid to late
Holocene. Identifying late Holocene exposure in this situation is relatively simple with measurements of cosmogenic ^{14}C ,
360 which is produced in quartz by cosmic-ray interactions and has a half-life of 5730 years. Thus, ^{14}C produced in any
hypothetical surface exposure prior to the LGM would now be effectively undetectable due to radioactive decay. Although
longer-lived nuclides (such as ^{10}Be , which has a half-life of 1.39 Myr), detected in subglacial bedrock could have been
produced either in the late Holocene or during many previous Pleistocene interglaciations, ^{14}C could only have been
produced in the late Holocene. Significant ^{14}C concentrations above background would therefore be unambiguous evidence
365 for late Holocene thinning. Thus, strategies for detecting late Holocene retreat and readvance via subglacial bedrock
recovery drilling focus on OSL and cosmogenic ^{14}C measurements.

3.3 Evidence within ice

3.3.1 Radar observations

370 Ground-penetrating radar and radio echo sounding data (collectively referred to as “radar”) provide a vast record of glacier
structure and past ice-sheet change reaching back decades to hundreds of thousands of years (e.g., Ashmore et al., 2020;
Schroeder et al., 2019; Kehrl et al., 2018; Winter et al., 2019; Bradley et al., 2015). These data can reveal evidence of
fluctuations in ice thickness and flow patterns with high spatial resolution (e.g., Campbell et al., 2013; Conway et al., 1999;
Siegert et al., 2013), making radar particularly useful for identifying regions across the AIS that experienced ice volume

375 changes. The technique thus has the potential to provide indirect evidence for Holocene readvance (e.g., Kingslake et al.,
2018). However, the internal structure of any glacier is the cumulative result of accumulation, ice flow, englacial or
boundary condition processes (such as surface or basal melt, and refreezing), and ablation. Therefore, to incorporate radar
observations of englacial structure into models of ice-sheet history, thereby making them useful for studies of readvance,
each of these processes should be accounted for. There are several studies where this has been undertaken. For example,
380 Medley et al. (2014) used airborne radar to make large-scale observations of snow accumulation along the Amundsen Sea
coast and associated the data with mass balance changes. By coupling repeat analog and digital radar data, Schroeder et al.
(2019) showed that the eastern ice shelf of Thwaites Glacier (in the Amundsen Sea embayment) thinned by 10-33% between
1978-2009, with basal melting as the likely primary cause. Arcone et al. (2012) disentangled complex unconformable
stratigraphy across 650 km of East Antarctic megadunes and modelled accumulation processes across these structures to
385 suggest increasing accumulation rates over the past ~1000 years. Widespread observations of ablation attributed to local and
regional scale processes, on both millennial to longer timescales, have also been made using radar data across Antarctica
(e.g., Campbell et al., 2013; Kerhl et al., 2018; Winter et al., 2019). Finally, Campbell et al. (2013) and Bell et al. (2011)
showed that surface and englacial processes, such as melting and refreezing, can alter original englacial stratigraphy and
must therefore be corrected for.

390 The englacial structure of an ice sheet may also be impacted by external drivers caused by changes in the ocean (e.g.,
Holland et al., 2020), atmosphere (e.g., Scambos et al., 2000), and solid earth dynamics (e.g., Larour et al., 2019). This
includes, for example, retreat and subsequent readvance of a grounding line driven by warm ocean water incursion, or spatial
and temporal changes in atmospheric deposition. One line of evidence for readvance that can be revealed by radar surveys
395 relates to observations of englacial stratigraphy. Simple stratigraphy is common in regions with slow-moving ice such as the
center of ice sheets or at ice divides. In contrast, complex englacial stratigraphy can occur in regions of fast flowing ice as a
result of enhanced ice velocity leading to unconformable internal ice stratigraphy, and by processes which result in a change
in ice-sheet volume (e.g., Siegert et al., 2013; Bingham et al., 2015), as would occur during readvance. Surveying the spatial
continuity of englacial unconformities can therefore afford insight into the mechanism(s) driving these past events and reveal
400 whether these observations are a local, or regional, phenomenon. In summary, whilst radar data can provide indirect
evidence for readvance, processes that influence internal glacier structure can create challenges for its interpretation.

405 Radar observations linked to changing ice flow – which are also often associated with changes in accumulation, ablation, or
boundary conditions – are another important potential source of indirect evidence for grounding-line readvance. Significant
thinning, followed by ice thickening associated with readvance, might produce an unconformity visible within radar
stratigraphy (Wearing and Kingslake., 2019; Kingslake et al., 2018). This would be preserved as surface conformable
stratigraphy overlaying buckled or disturbed ice, or it could include older ice that is topographically confined under
readvanced ice (see record “a” in Fig. 1). Several examples of radar evidence compatible with a Holocene readvance exist in
410 the Weddell Sea sector. Kingslake et al. (2018) conducted a radar survey of Henry Ice Rise (see Fig. 7 for location) that
revealed disturbed basal ice crosscut by near-horizontal stratigraphy several hundred meters below the ice surface. Ice
properties at Henry Ice Rise (see Fig. 7 for location) are characterised by cold-based, slow-moving ice (evidenced by relic
crevasses and melt features located well upstream of the modern grounding line), which suggest that disturbed basal ice was
the result of a grounding-line readvance (Wearing and Kingslake, 2019). Similarly, Siegert et al. (2013) used radar to survey
415 the Bungenstock Ice Rise and observed deformed ice near the bed superimposed by undeformed ice. Given the current ice
flow directions and velocities at the ice rise, they interpreted their radar observations as suggesting enhanced flow during the
mid to late Holocene following a readvance. Additional radar observations relating changes in ice flow to readvance events
come from ice divides where asymmetrical Raymond arches may suggest down-glacier dynamical changes; in such cases,

radar stratigraphy can provide direct evidence of Holocene glacier change (e.g., Raymond, 1983; Nereson et al., 2000; Vaughan et al., 1999; Conway et al., 1999; Drews et al., 2015; Kingslake et al., 2016).

Radar can also uncover the timing and spatial extent of ice mass changes by providing a link between independent methods. For example, it has been used to target drilling sites for vertical and horizontal ice cores (e.g., Spaulding et al., 2013; Kehrl et al., 2018), to link surface exposure data to englacial observations (Campbell et al., 2013), and to select subglacial bedrock drill sites in West Antarctica [at Pirrit Hills and Ohio Range (Spector et al., 2018), and Mount Murphy (see Sect. 2.2.2)]. A primary goal of radar surveying at ice core sites has been to acquire evidence of conformable stratigraphy and avoid sites with more complex flow history, such as flow reorientation and unconformities (e.g., Rodriguez-Morales et al., 2020; Mojtabavi et al., 2022). Such radar surveys are often combined with other glaciological inputs to allowing modelling of ice flow across a potential drill site or to search for “oldest ice” locations (e.g., Karlsson et al., 2018; Gerber et al., 2021). Since radar methods are now used to target subglacial bedrock sampling sites, these same techniques can be used concurrently to select ice core drilling locations at points of interest (e.g., previous surface or volcanic ash layers identified in radar profiles) to provide independent ages for these observations.

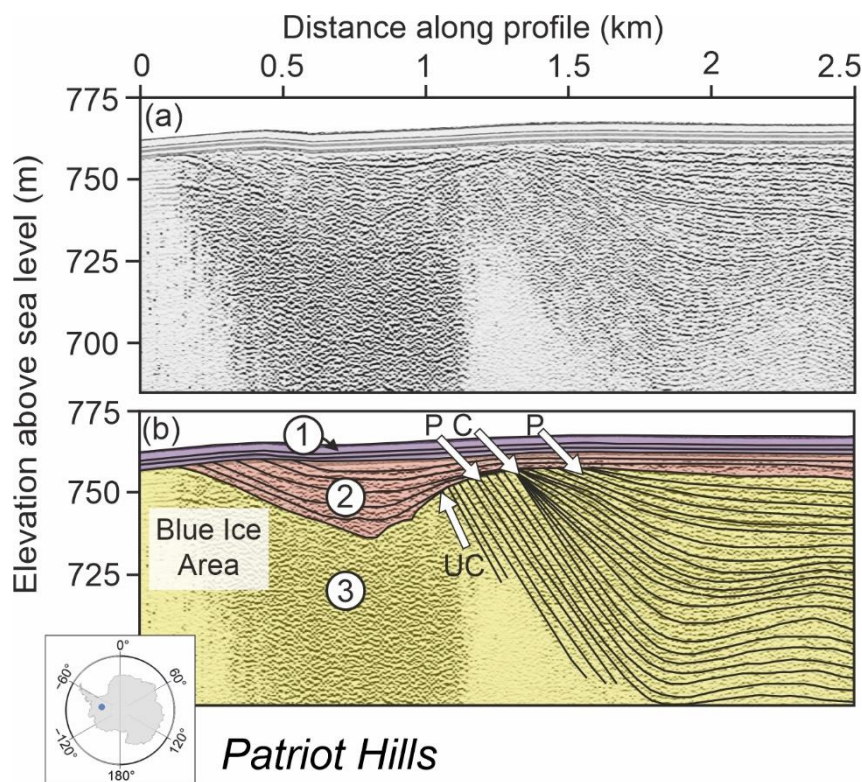


Figure 6: Ground-penetrating radar (GPR) showing an example of changes in internal isochrones within the ice sheet that formed as a result of changes in accumulation, ablation and ice flow around nunataks. (a) An elevation-corrected snowmobile-towed 200 MHz ground-penetrating radar profile from the margins of the blue ice area adjacent to Patriot Hills, Horseshoe Valley, West Antarctica (see map inset for general location; the data are also shown in figure 3 of Winter et al., 2016). (b) The same radar profile with coloured overlays, numbered 1–3, to show (1: purple) no structure is visible since the GPR direct wave hides the top 1 m of isochrones, (2: orange) recent snow accumulation at edge of blue ice area, and (3: yellow) buried blue ice to the left of the image, with accumulation of snow over the blue ice to the right. Black lines highlight prominent internal reflectors within the snow accumulation layers. Prograding (P) and convergent (C) isochrone sequences are indicated with arrows. “UC” indicates a stratigraphic unconformity where shallowly-dipping internal reflectors are overlain by near-horizontal firm; this represents the former blue ice surface, where ablation has removed the glacier ice. Following ablation, snow has been deposited on top of the exposed blue ice area as the ice unit flowed down valley away from the present exposed blue ice ablation area. The image highlights the complexity of interpreting radar data in marginal areas, but also demonstrates that radar can hold a temporal record of changes in ice sheet elevation, flow patterns, accumulation and ablation.

Radar has the potential to provide records of ice volume change over larger spatial extents than other geological or glaciological techniques because it is feasible to collect tens to hundreds of kilometres of data during a single field season.

455 However, a number of considerations are required to optimise its use. Ground or airborne radar methods both have benefits and limitations: ground surveys result in more local coverage at higher spatial resolution whereas airborne surveys have greater spatial coverage and can survey more complex or difficult-to-access terrain, but at lower spatial resolution. Combining the data from both methods provides opportunities to extrapolate local observations into a regional context. Additionally, there are horizontal and vertical resolution and depth-of-penetration tradeoffs to consider when choosing between lower to higher frequency radar systems, ground or airborne survey platforms, and other radar electronics such as power sources and digitizers. However, continuous improvements in technology are closing the gap on such tradeoffs, with some higher frequency and non-traditional systems even reaching sub-centimetre stratigraphic imaging precision at kilometres depth (e.g., Nicholls et al., 2015). In contrast, determining the *timing* of observed events from radar data remains 460 challenging. Relative ages of radar-derived englacial stratigraphic horizons can be inferred, but determining absolute dates for those horizons requires linking them to other observations such as exposure age dating, ice core geochemistry (Winter et al., 2016, 2019; Bodart et al., 2021), and climate or ice-history models. For example, Winter et al. (2019) matched distinct horizons to dated ice cores to place absolute ages on distinct horizons observed in radar profiles and their relationship to observed unconformities in local radar profiles, which may represent readvance events (figure 6, Winter et al., 2016). 465 Without such carefully constructed age constraints, most radar data can be used only qualitatively.

470 In summary, radar has (thus far) been under-utilised for obtaining indirect and quantitative evidence of readvance. It can be used both for detecting ice-sheet changes associated with readvance and, when radar is coupled with methods that provide independent age constraints (such as ice cores and exposure age dating of bedrock), the timing of readvance. The lateral margins of West Antarctica are particularly suitable for radar studies that seek to detect readvance because ice volume changes there are likely to be revealed in radar profiles at sites where temporal constraints from ice core and exposure dating studies can also be obtained.

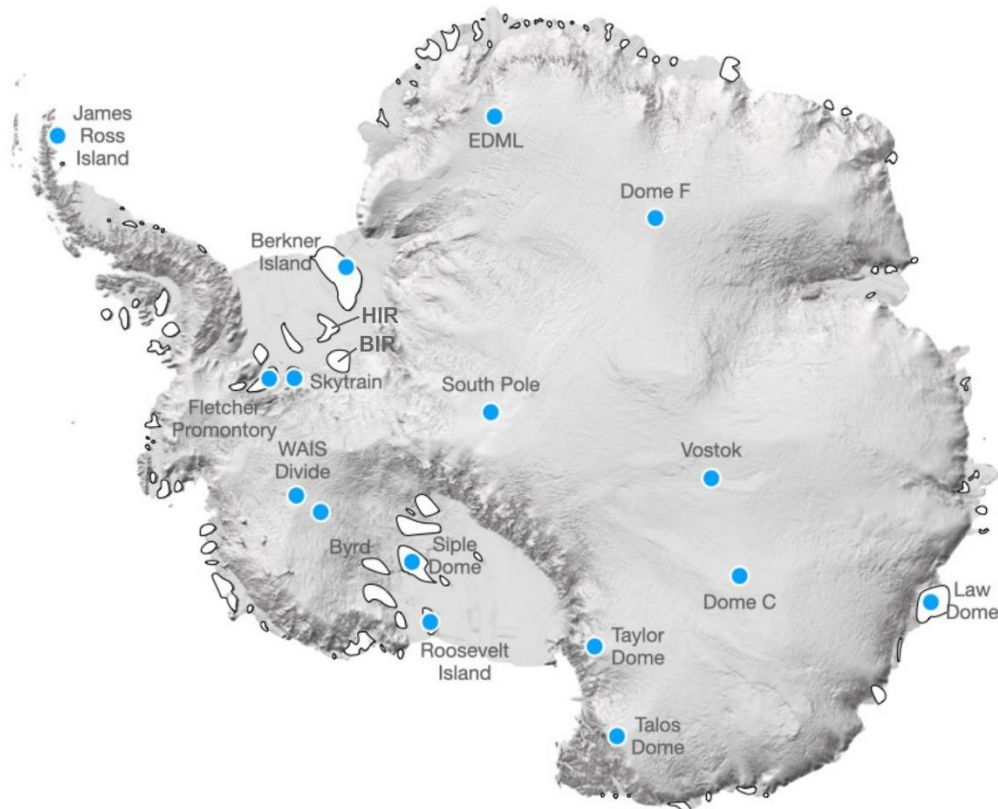
3.3.2 Ice cores

475 The geochemical composition of ice, together with the gas trapped in the bubbles within it, has the potential to capture changes in ice-sheet surface mass balance, elevation, and atmospheric and oceanic circulation (such as wind strength and sea surface temperature) that are known both to drive ice-sheet retreat and readvance, and be influenced by it. Ice cores therefore provide an alternative source of information about grounding-line behaviour, but, as yet, they have not been utilised for studies of Holocene readvance.

480 There are several potential approaches for extracting this information from ice cores. A well-established method for reconstructing past surface temperatures uses the relationship between stable water isotopes and temperature (e.g. Jouzel et al., 1997). A number of mechanisms, including changes in ice-sheet elevation during ice-sheet readvance (or retreat), will alter this isotope-temperature relationship. The offset between ice core-derived temperature changes and estimates from isotope-enabled general circulation models can be largely reconciled when changes in ice-sheet elevation are taken into account (Werner et al., 2018; Buizert et al., 2021). Therefore, it may be possible to detect evidence that would be consistent with Holocene readvance from the isotope-temperature relationship within ice cores. Another promising approach for reconstructing changes in elevation arises from the total air content in ice cores. The volume of air encapsulated in bubbles as they become isolated is dependent on air pressure and temperature when the bubbles are formed (Martinerie et al., 1992). 490 Hence, the total air content extracted from ice cores is sensitive to changes in ice-sheet elevation. Total air content has been used to reconstruct the LGM elevation anomaly relative to the present, indicating a 420 m offset between East and West Antarctica (Buizert et al., 2021). When used in conjunction with stable water isotopes, the derived elevation changes since

the LGM indicate a thickening in West Antarctica (+300 m at WAIS divide; Fig. 7) and thinning in East Antarctica (-120 m at Dome C; Fig. 7). Despite the promise of this approach, resolution and detection may limit its use, with some studies
495 suggesting that elevation changes of less than 150–250 m will be below detection (Martinerie et al., 1992).

Since mass balance of the AIS is dependent on both mass gain (from snow accumulation) and mass loss (melt, sublimation, calving), surface mass balance (SMB) may also reflect changes in ice-sheet volume and elevation changes (Davis et al.,
2005) that would be expected during retreat and readvance. For example, periods of low snow accumulation during the late
500 Holocene have been linked to the Little Ice Age (Bertler et al., 2011; Simms et al., 2021). Currently, only seven ice cores – five from East Antarctica and two from West Antarctica, all from the ice-sheet interior – capture changes in snow accumulation for the full Holocene (Buizert et al., 2021). The large-scale pattern of SMB decline during the late Holocene is observed at all those sites, with the largest decline in West Antarctica starting at 2.5 ka (Fudge et al., 2016).



505 **Figure 7: Map of Antarctica showing location of existing and potential ice core sites from which Holocene ice has been, or could be, obtained.** Deep ice core sites from where Holocene ice has already been collected are represented by blue dots, and suitable locations for future sampling of Holocene ice near grounding zones – ice rises and ridges – are highlighted as white areas (locations from Matsuoka et al., 2015); “HIR” and “BIR” show the location of Henry and Bungenstock Ice Rises, respectively. The Reference Elevation Model of Antarctica hillshade base is from Howat et al. (2019).

510 Topographic changes associated with ice-sheet retreat and readvance alter the atmospheric circulation around, and over, the ice sheet. This can influence the direction or pathways of air masses reaching an ice core site. Changes in atmospheric circulation can be detected in ice core stable water isotope (e.g., Stenni et al., 2017) and snow accumulation records (e.g., Thomas et al., 2015, 2017; Medley and Thomas, 2019). They also impact the deposition in ice of chemical species such as
515 sea salts (e.g., Dixon et al., 2004) and insoluble particulate matter such as dust and diatoms (Koffman et al., 2014; Allen et al., 2020; Tetzner et al., 2021). Identifying the origin(s) of the dust and diatoms can indicate air mass pathways as well as the subaerial/surface conditions at the source. The prevalence of open marine and sea ice diatoms at coastal ice rises (Tetzner et al., 2021) would also vary with ice-sheet configuration (i.e., retreated vs-versus advanced). Evidence of circulation changes derived from these imprints can therefore be used to infer fluctuations in ice-sheet grounding line positions.

Ice core research has so far been largely focused on retrieving records from ice divides in the interior of the ice sheet (Fig. 7) because these sites offer ice-sheet stability (e.g., minimal flow) and low snow accumulation that are suitable for obtaining long climate records. However, lower elevation coastal sites, such as coastal ice rises or sub-Antarctic islands at the edge of the ice sheet (Fig. 7), offer greater sensitivity in capturing Holocene changes in coastal climate and ice-sheet processes (e.g., Thomas et al., 2021); including elevation change and ice-sheet readvance (Matsuoka et al., 2015; Neff, 2020). There are, however, very few published records from low elevation sites, with fewer than 20 Antarctic ice core sites from locations below 1500 m elevation (Thomas et al., 2017; Stenni et al., 2017) and none from regions currently experiencing rapid change, such as the Amundsen Sea coast. One reason is that drilling infrastructure expands significantly when collecting such “intermediate depth” ice cores, due to the need for drilling fluid, larger drill equipment, brittle ice precautions (e.g., Neff, 2014), and peripherals needed to handle ice cores on the surface (e.g., Souney et al., 2021). Recovering a complete Holocene ice core from low elevation coastal sites is therefore logistically expensive.

Despite the promise of low elevation sites and coastal domes for detecting Holocene retreat and readvance, there are limitations: (i) ~~The~~ the high snow accumulation at coastal sites reduces the number of years that the record contains, (ii) the high concentration of marine aerosols can make dating, particularly the use of volcanic tie-points, challenging (e.g., Winstrup et al., 2019; Moser et al., 2021), (iii) low elevation sites can be susceptible to surface melting (Moser et al., 2021; Thomas et al., 2021) which may compromise the preservation of ice core proxies (Moser et al., 2021), and (iv) complex orography at the ice-sheet margin may limit sites to capturing regional, rather than large-scale, changes in ice-sheet dynamics. These challenges could be addressed in future by collecting multiple cores across a region, utilising a suite of ice core proxies, and prioritising insoluble materials that are less susceptible to melt.

4 Summary

There are several complementary approaches that can be used in Antarctica to obtain geological and glaciological records for determining whether, where, and when grounding-line readvance occurred during the Holocene. Of the archives described here, subglacial bedrock and subglacial sediment can provide direct evidence that the AIS was smaller than present during the Holocene, whereas others (marine sediments, radar, records of RSL change, ice cores) have the potential to provide circumstantial evidence consistent with, but not direct proof of, such a hypothesis. The latter situation is notably the case where mechanisms other than retreat and readvance would produce similar features in the records. Such evidence is, nevertheless, useful for corroborating the direct evidence obtained from subglacial sediments and bedrock.

Based on our interpretation of existing datasets, many parts of West Antarctica appear particularly promising for detecting Holocene readvance. The presence of late Holocene gaps in exposure age data arrays in the Weddell Sea and Amundsen Sea embayments, and the outer Ross Sea, point to these as locations where Holocene readvance is likely to have occurred. Recent studies in the Ross Sea embayment have confirmed that Holocene readvance can be detected (Kingslake et al., 2018), and, furthermore, suggest that its timing can be constrained using direct measurements (Venturelli et al., 2020) and models (Neuhaus et al., 2021). In both the Ross Sea and Weddell Sea sectors, geomorphic evidence of compound grounding zone wedges provides supporting marine evidence that readvance occurred in both regions (Greenwood et al., 2018; Arndt et al., 2017). However, there is apparent inconsistency between the observation of radiocarbon in subglacial sediments ~~subglacial ¹⁴C data~~ that provides direct evidence for Holocene grounding line retreat and readvance in the central Ross Sea embayment and exposure age data above the modern ice surface that provide equally direct evidence that Holocene ice sheet thinning and thickening occurred at the embayment margins. Although these lines of evidence could perhaps be reconciled by

processes such as, for example, asynchronous forcing of grounding line position or ice thickness, this requires further investigation. In contrast with the Weddell, Amundsen and Ross Sea embayments, there are currently insufficient existing exposure age data or suitable ice cores from most of the East Antarctic coast with which to determine if readvance occurred there or to identify suitable areas for future investigation. That region is therefore critical for further research if we are to gain a continent-wide picture of late Holocene ice-sheet extent. Finally, low elevation coastal ice rises offer greater sensitivity than interior sites for detecting Holocene grounding-line changes using ice cores, but very few cores from such sites have yet been collected anywhere in Antarctica.

Future research in this area faces considerable challenges, several of which are common to all the approaches discussed here. In particular, the logistical challenges are enormous: access to remote Antarctic locations is difficult and expensive, and often requires collaboration between multiple nations. The availability of suitable sites for collecting archives is limited, and not all are feasible to access. ~~logistical challenges because~~ Critically, much of the potential evidence for Holocene readvance lies within or beneath the AIS, which is ~~hard~~ technically challenging- to access. Nevertheless, significant progress has been made in the past few years, with successful subglacial bedrock and sediment drilling campaigns undertaken in West Antarctica (Kamb, 2001; Tulaczyk et al., 2014; Boeckmann et al., 2021, Priscu et al., 2021). Dating Holocene archives anywhere in Antarctica, particularly those from the past few millennia, is especially difficult due to the low concentrations of accumulated nuclides in bedrock and very small amounts of dateable carbon in subglacial organic material. Furthermore, bringing together glaciological and geological records that have variable resolutions and degrees of uncertainty is not straightforward. Notwithstanding these challenges, determining whether, where, and when the ice sheet grounding line was significantly inboard of its present location during the past few millennia is critical to gaining a mechanistic understanding for readvance behaviour. Obtaining (more) geological records from areas where Holocene deglacial history is currently unknown, or where records are sparse, is essential for this. Further research should focus on improving age constraints and assimilating data from the various direct and indirect archives described here. Research combining multidisciplinary approaches is likely to provide the strongest evidence for or against a smaller-than-present AIS in the Holocene. Only once we understand where, and when, readvance occurred and determine its extent can we really begin to understand the mechanisms that drove it.

Author Contributions

JSJ conceptualised the paper, developed it with RAV and GB, and led the writing process. All authors contributed to writing the manuscript. CSA, GB, BLH, JSJ, PDN, RAV, and JW prepared the figures with input from all co-authors.

590 Competing Interests

The authors declare that they have no conflict of interest.

Data availability

Exposure age data shown in Figure 2 can be downloaded from the ICE-D:ANTARCTICA database at <http://antarctica.ice-d.org>.

595 Acknowledgements

The authors are grateful for many insightful conversations with the following colleagues that helped formulate the ideas presented here: Robert Ackert (Harvard University), Alex Brisbourne, Claus-Dieter Hillenbrand, Kelly Hogan, Rob Larter, and James Smith (British Antarctic Survey), Chloe Gustafson (Scripps Institute of Oceanography), Ruthie Halberstadt (University of Massachusetts Amherst), Matt King (University of Tasmania), Pippa Whitehouse (Durham University), David
600 Pollard (Penn State University), Brad Rosenheim (University of South Florida), Martin Siegert (Imperial College London). Thank you also to Kate Winter (Northumbria University) who helped prepare Fig. 6. This work is from the Geological History Constraints project, a component of the International Thwaites Glacier Collaboration (ITGC). Support from National Science Foundation (NSF: Grant OPP-1738989) and Natural Environment Research Council (NERC: Grants NE/S006710/1, NE/S00663X/1 and NE/S006753/1). SC is also supported by National Science Foundation Antarctic Earth Sciences Grant
605 17449949. ITGC Contribution No. 060.

References

- Aitken, M. J.: Introduction to Optical Dating: The Dating of Quaternary Sediments by the Use of Photon-stimulated Luminescence, Clarendon Press, 282 pp., 1998.
- 610 Albrecht, T., Winkelmann, R., and Levermann, A.: Glacial-cycle simulations of the Antarctic Ice Sheet with the Parallel Ice Sheet Model (PISM) – Part 1: Boundary conditions and climatic forcing, *Cryosphere*, 14, 599–632, <https://doi.org/10.5194/tc-14-599-2020>, 2020a.
- Albrecht, T., Winkelmann, R., and Levermann, A.: Glacial-cycle simulations of the Antarctic Ice Sheet with the Parallel Ice
615 Sheet Model (PISM) – Part 2: Parameter ensemble analysis, *Cryosphere*, 14, 633–656, <https://doi.org/10.5194/tc-14-633-2020>, 2020b.
- Allen, C. S., Thomas, E. R., Blagbrough, H., Tetzner, D. R., Warren, R. A., Ludlow, E. C., and Bracegirdle, T. J.: Preliminary Evidence for the Role Played by South Westerly Wind Strength on the Marine Diatom Content of an Antarctic
620 Peninsula Ice Core, (1980–2010), *Geosciences*, 10, 87, <https://doi.org/10.3390/geosciences10030087>, 2020.
- Andrews, J. T., Domack, E. W., Cunningham, W. L., Leventer, A., Licht, K. J., Jull, A. J. T., DeMaster, D. J., and Jennings, A. E.: Problems and Possible Solutions Concerning Radiocarbon Dating of Surface Marine Sediments, Ross Sea, Antarctica, *Quat. Res.*, 52, 206–216, <https://doi.org/10.1006/qres.1999.2047>, 1999.
- 625 [Arcone, S., Jacobel, R., and Hamilton, G.: Unconformable stratigraphy in East Antarctica: Part I. Large firn cosets, recrystallized growth, and model evidence for intensified accumulation. *J. Glaciol.*, 58\(208\), 240–252. doi:10.3189/2012JoJ11J044, 2012.](#)
- 630 Argus, D. F., Peltier, W. R., Drummond, R., and Moore, A. W.: The Antarctica component of postglacial rebound model ICE-6G_C (VM5a) based on GPS positioning, exposure age dating of ice thicknesses, and relative sea level histories, *Geophys. J. Int.*, 198, 537–563, <https://doi.org/10.1093/gji/ggu140>, 2014.

- 635 Arndt, J. E., Hillenbrand, C.-D., Grobe, H., Kuhn, G., and Wacker, L.: Evidence for a dynamic grounding line in outer Filchner Trough, Antarctica, until the early Holocene, *Geology*, 45, 1035–1038, <https://doi.org/10.1130/G39398.1>, 2017.
- Ashmore, D. W., Bingham, R. G., Ross, N., Siegert, M. J., Jordan, T. A., and Mair, D. W. F.: Englacial Architecture and Age-Depth Constraints Across the West Antarctic Ice Sheet, *Geophys. Res. Lett.*, 47, e2019GL086663, <https://doi.org/10.1029/2019GL086663>, 2020.
- 640 [Barletta V. R., Bevis M., Smith, B. E., Wilson, T., Brown, A., Bordoni, A., Willis, M., Khan, S. A., Rovira-Navarro, M., Dalziel, I., Smalley, R., Kendrick, R., Konfal, S., Caccamise, D. J., Aster, R. C., Nyblade, A., and Wiens, D. A.: Observed rapid bedrock uplift in Amundsen Sea embayment promotes ice-sheet stability, *Science*, 360, 1335–1339, <https://doi.org/10.1126/science.aao1447>, 2018.](#)
- 645 Baroni, C. and Hall, B. L.: A new Holocene relative sea-level curve for Terra Nova Bay, Victoria Land, Antarctica, *J. Quat. Sci.*, 19, 377–396, <https://doi.org/10.1002/jqs.825>, 2004.
- Baroni, C., and Orombelli, G.: Holocene raised beaches at Terra Nova Bay, Victoria Land, Antarctica, *Quaternary Res.* 36, 157–177, [https://doi.org/10.1016/0033-5894\(91\)90023-X](https://doi.org/10.1016/0033-5894(91)90023-X), 1991.
- 650 [Bell, R. E., Creyts, T. T., Braaten, D., Corr, H., Das, I., Damaske, D., Frearson, N., Jordan, T., Rose, K. C., Studinger, M., and Wolovick, M.: Widespread persistent thickening of the East Antarctic Ice Sheet by freezing from the base, *Science*, 331, 1592–5, \[10.1126/science.1200109\]\(https://doi.org/10.1126/science.1200109\), 2012.](#)
- 655 Bentley, M. J., Hodgson, D. A., Sugden, D. E., Roberts, S. J., Smith, J. A., Leng, M. J., and Bryant, C.: Early Holocene retreat of the George VI Ice Shelf, Antarctic Peninsula, *Geology*, 33, 173, <https://doi.org/10.1130/G21203.1>, 2005.
- RAISED consortium, Bentley, M. J., Ó Cofaigh, C., Anderson, J. B., Conway, H., Davies, B., Graham, A. G. C., Hillenbrand, C.-D., Hodgson, D. A., Jamieson, S. S. R., Larter, R. D., Mackintosh, A., Smith, J. A., Verleyen, E., Ackert, R. P., Bart, P. J., Berg, S., Brunstein, D., Canals, M., Colhoun, E. A., Crosta, X., Dickens, W. A., Domack, E., Dowdeswell, J. A., Dunbar, R., Ehrmann, W., Evans, J., Favier, V., Fink, D., Fogwill, C. J., Glasser, N. F., Gohl, K., Golledge, N. R., Goodwin, I., Gore, D. B., Greenwood, S. L., Hall, B. L., Hall, K., Hedding, D. W., Hein, A. S., Hocking, E. P., Jakobsson, M., Johnson, J. S., Jomelli, V., Jones, R. S., Klages, J. P., Kristoffersen, Y., Kuhn, G., Leventer, A., Licht, K., Lilly, K., Lindow, J., Livingstone, S. J., Massé, G., McGlone, M. S., McKay, R. M., Melles, M., Miura, H., Mulvaney, R., Nel, W., Nitsche, F. O., O'Brien, P. E., Post, A. L., Roberts, S. J., Saunders, K. M., Selkirk, P. M., Simms, A. R., Spiegel, C., Stollendorf, T. D., Sugden, D. E., van der Putten, N., van Ommen, T., Verfaillie, D., Vyverman, W., Wagner, B., White, D. A., Witus, A. E., and Zwart, D.: A community-based geological reconstruction of Antarctic Ice Sheet deglaciation since the Last Glacial Maximum, *Quat. Sci. Rev.*, 100, 1–9, <https://doi.org/10.1016/j.quascirev.2014.06.025>, 2014.
- 670 Bertler, N. A. N., Mayewski, P. A., and Carter, L.: Cold conditions in Antarctica during the Little Ice Age — Implications for abrupt climate change mechanisms, *Earth Planet. Sc. Lett.*, 308, 41–51, <https://doi.org/10.1016/j.epsl.2011.05.021>, 2011.
- Bingham, R. G., Rippin, D. M., Karlsson, N. B., Corr, H. F. J., Ferraccioli, F., Jordan, T. A., Le Brocq, A. M., Rose, K. C., Ross, N., and Siegert, M. J.: Ice-flow structure and ice dynamic changes in the Weddell Sea sector of West Antarctica from radar-imaged internal layering, *J. Geophys. Res.*, 120, 655–670, <https://doi.org/10.1002/2014JF003291>, 2015.
- 675

- 680 Bodart, J. A., Bingham, R. G., Ashmore, D. W., Karlsson, N. B., Hein, A. S., and Vaughan, D. G.: Age-Depth Stratigraphy of Pine Island Glacier Inferred From Airborne Radar and Ice-Core Chronology, *J. Geophys. Res.*, 126, e2020JF005927, <https://doi.org/10.1029/2020JF005927>, 2021.
- Boeckmann, G. V., Gibson, C. J., Kuhl, T. W., Moravec, E., Johnson, J. A., Meulemans, Z., and Slawny, K.: Adaptation of the Winkie Drill for subglacial bedrock sampling, *Ann. Glaciol.*, 62, 109–117, <https://doi.org/10.1017/aog.2020.73>, 2021.
- 685 Braddock, S., Hall, B. L., Johnson, J. S., Balco, G., Spoth, M., Whitehouse, P. L., Campbell, S., Goehring, B. M., Rood, D. H., and Woodward, J.: Minimal late Holocene ice-mass change inferred from relative sea-level data, Pine Island Bay, Antarctica, *Nat. Geosci.*, [in-review/accepted](#).
- 690 [Bradley, S. L., Hindmarsh, R. C. A., Whitehouse, P. L., Bentley, M. J., and King, M. A.: Low post-glacial rebound rates in the Weddell Sea due to Late Holocene ice-sheet readvance, *Earth Planet. Sc. Lett.*, 413, 79–89, <https://doi.org/10.1016/j.epsl.2014.12.039>, 2015.](#)
- Buizert, C., Fudge, T. J., Roberts, W. H. G., Steig, E. J., Sherriff-Tadano, S., Ritz, C., Lefebvre, E., Edwards, J., Kawamura, K., Oyabu, I., Motoyama, H., Kahle, E. C., Jones, T. R., Abe-Ouchi, A., Obase, T., Martin, C., Corr, H., Severinghaus, J. P., 695 Beaudette, R., Epifanio, J. A., Brook, E. J., Martin, K., Chappellaz, J., Aoki, S., Nakazawa, T., Sowers, T. A., Alley, R. B., Ahn, J., Sigl, M., Severi, M., Dunbar, N. W., Svensson, A., Fegyveresi, J. M., He, C., Liu, Z., Zhu, J., Otto-Bliesner, B. L., Lipenkov, V. Y., Kageyama, M., and Schwander, J.: Antarctic surface temperature and elevation during the Last Glacial Maximum, *Science*, 372, 1097–1101, <https://doi.org/10.1126/science.abd2897>, 2021.
- 700 Campbell, S., Balco, G., Todd, C., Conway, H., Huybers, K., Simmons, C., and Vermeulen, M.: Radar-detected englacial stratigraphy in the Pensacola Mountains, Antarctica: implications for recent changes in ice flow and accumulation, *Ann. Glaciol.*, 54, 91–100, <https://doi.org/10.3189/2013AoG63A371>, 2013.
- 705 [Christ, A. J., Talaia-Murray, M., Elking, N., Domack, E. W., Leventer, A., Lavoie, C., Brachfeld, S., Yoo, K.-C., Gilbert, R., Jeong, S. M., Petrushak, S., Wellner, J., and the LARISSA Group, Late Holocene glacial advance and ice shelf growth in Barilari Bay, Graham Land, west Antarctic Peninsula, *Geol. Soc., Am. Bull.*, 127 \(1-2\): 297–315, doi: <https://doi.org/10.1130/B31035.1>, 2015.](#)
- 710 [Christner, B. C., Mikucki, J. A., Foreman, C. M., Denson, J., Prisco, J. C.: Glacial ice cores: a model system for developing extraterrestrial decontamination protocols. *Icarus* 174, 572–584, doi: 10.1016/j.icarus.2004.10.027, 2005.](#)
- Clark, P. U., Mitrovica, J. X., Milne, G. A., and Tamisiea, M. E.: Sea-Level Fingerprinting as a Direct Test for the Source of Global Meltwater Pulse IA, *Science*, 295, 2438–2441, <https://doi.org/10.1126/science.1068797>, 2002.
- 715 Conway, H., Hall, B. L., Denton, G. H., Gades, A. M., and Waddington, E. D.: Past and Future Grounding-Line Retreat of the West Antarctic Ice Sheet, *Science*, 286, 280–283, <https://doi.org/10.1126/science.286.5438.280>, 1999.

Davis, C. H., Li, Y., McConnell, J. R., Frey, M. M., and Hanna, E.: Snowfall-Driven Growth in East Antarctic Ice Sheet Mitigates Recent Sea-Level Rise, *Science*, 308, 1898–1901, <https://doi.org/10.1126/science.1110662>, 2005.

720

Dixon, D., Mayewski, P. A., Kaspari, S., Sneed, S., and Handley, M.: A 200 year sub-annual record of sulfate in West Antarctica, from 16 ice cores, *Ann. Glaciol.*, 39, 545–556, <https://doi.org/10.3189/172756404781814113>, 2004.

725

[Drews, R., Matsuoka, K., Martín, C., Callens, D., Bergeot, N., and Pattyn, F.: Evolution of Derwael Ice Rise in Dronning Maud Land, Antarctica, over the last millennia. *J. Geophys. Res.–Earth*, 120\(3\), 564–579, <https://doi.org/10.1002/2014JF003246>, 2015.](https://doi.org/10.1002/2014JF003246)

Dunai, T. J.: *Cosmogenic Nuclides: Principles, Concepts and Applications in the Earth Surface Sciences*, Cambridge University Press, 199 pp., 2010.

730

Farquharson, L., Mann, D., Rittenour, T., Groves, P., Grosse, G., and Jones, B.: Alaskan marine transgressions record out-of-phase Arctic Ocean glaciation during the last interglacial, *Geology*, 46, 783–786, <https://doi.org/10.1130/G40345.1>, 2018.

735

Fudge, T. J., Markle, B. R., Cuffey, K. M., Buizert, C., Taylor, K. C., Steig, E. J., Waddington, E. D., Conway, H., and Koutnik, M.: Variable relationship between accumulation and temperature in West Antarctica for the past 31,000 years, *Geophys. Res. Lett.*, 43, 3795–3803, <https://doi.org/10.1002/2016GL068356>, 2016.

740

[Gerber, T. A., Hvidberg, C. S., Rasmussen, S. O., Franke S., Sinnl, G., Grinsted, A., Jansen, D. and Dahl-Jensen, D.: Upstream flow effects revealed in the EastGRIP ice core using Monte Carlo inversion of a two-dimensional ice-flow model, *The Cryosphere*, 15, 3655–3679, \[10.5194/tc-15-3655-2021\]\(https://doi.org/10.5194/tc-15-3655-2021\), 2021.](https://doi.org/10.5194/tc-15-3655-2021)

Golledge, N. R., Levy, R. H., McKay, R. M., Fogwill, C. J., White, D. A., Graham, A. G. C., Smith, J. A., Hillenbrand, C.-D., Licht, K. J., Denton, G. H., Ackert, R. P., Maas, S. M., and Hall, B. L.: Glaciology and geological signature of the Last Glacial Maximum Antarctic ice sheet, *Quat. Sci. Rev.*, 78, 225–247, <https://doi.org/10.1016/j.quascirev.2013.08.011>, 2013.

745

Gomez, N., Mitrovica, J. X., Tamisiea, M. E., and Clark, P. U.: A new projection of sea level change in response to collapse of marine sectors of the Antarctic Ice Sheet, *Geophys. J. Int.*, 180, 623–634, <https://doi.org/10.1111/j.1365-246X.2009.04419.x>, 2010.

750

Gomez, N., Weber, M. E., Clark, P. U., Mitrovica, J. X., and Han, H. K.: Antarctic ice dynamics amplified by Northern Hemisphere sea-level forcing, *Nature.*, 587, 600–604, <https://doi.org/10.1038/s41586-020-2916-2>, 2020.

Goode, J. W. and Severinghaus, J. P.: Rapid Access Ice Drill: a new tool for exploration of the deep Antarctic ice sheets and subglacial geology, 62, 1049–1064, <https://doi.org/10.1017/jog.2016.97>, 2016.

755

Gow, A. J. and Meese, D. A.: Nature of basal debris in the GISP2 and Byrd ice cores and its relevance to bed processes, *J. Glaciol.*, 22, 134–140, <https://doi.org/10.3189/1996AoG22-1-134-140>, 1996.

- 760 Greenwood, S. L., Simkins, L. M., Halberstadt, A. R. W., Prothro, L. O., and Anderson, J. B.: Holocene reconfiguration and readvance of the East Antarctic Ice Sheet, *Nat. Commun.*, 9, 3176, <https://doi.org/10.1038/s41467-018-05625-3>, 2018.
- Greenwood, S. L., Simkins, L. M., Winsborrow, M. C. M., and Bjarnadottir, L. R.: Exceptions to bed-controlled ice sheet flow and retreat from glaciated continental margins worldwide, *Sci. Adv.*, 13, 7(3), <https://www.science.org/doi/10.1126/sciadv.abb6291>, 2021.
- 765 Hall, B. L.: Holocene glacial history of Antarctica and the sub-Antarctic islands, *Quaternary Sci. Rev.*, 28, 2213–2230, <https://doi.org/10.1016/j.quascirev.2009.06.011>, 2009.
- Hall, B. L.: Holocene relative sea-level changes and ice fluctuations in the South Shetland Islands, *Global Planet. Change*, 74, 15–26, <https://doi.org/10.1016/j.gloplacha.2010.07.007>, 2010.
- 770 Hall, B. L. and Denton, G. H.: New relative sea-level curves for the southern Scott Coast, Antarctica: evidence for Holocene deglaciation of the western Ross Sea, *J. Quat. Sci.*, 14, 641–650, [https://doi.org/10.1002/\(SICI\)1099-1417\(199912\)14:7<641::AID-JQS466>3.0.CO;2-B](https://doi.org/10.1002/(SICI)1099-1417(199912)14:7<641::AID-JQS466>3.0.CO;2-B), 1999.
- 775 Hall, B. L. and Denton, G. H.: Holocene history of the Wilson Piedmont Glacier along the southern Scott Coast, Antarctica, *The Holocene*, 12, 619–627, <https://doi.org/10.1191/0959683602hl572rp>, 2002.
- Hall, B. L., Henderson, G. M., Baroni, C., and Kellogg, T. B.: Constant Holocene Southern-Ocean ¹⁴C reservoir ages and ice-shelf flow rates, *Earth Planet. Sc. Lett.*, 296, 115–123, <https://doi.org/10.1016/j.epsl.2010.04.054>, 2010.
- 780 [Hodgson D. A., Bentley, M. J., Smith, J. A., Klepacki, J., Makinson, K., Smith, A. M., Saw, K., Scherer, R., Powell, R., Tulaczyk, Rose, M., Pearce, D., Mowlem, M., Keen, P., Siegert, M. J.: Technologies for retrieving sediment cores in Antarctic subglacial settings. *Phil. Trans. R. Soc. A*, 374, 20150056, <http://dx.doi.org/10.1098/rsta.2015.0056>, 2016.](https://doi.org/10.1098/rsta.2015.0056)
- 785 Holland, D. M., Nicholls, K. W., and Basinski, A.: The southern ocean and its interaction with the Antarctic ice sheet, *Science*, 367(6484), 1326–1330, <http://doi.org/10.1126/science.aaz5491>, 2020.
- Howat, I. M., Porter, C., Smith, B. E., Noh, M.-J., and Morin, P.: The Reference Elevation Model of Antarctica, *Cryosphere*, 13, 665–674, <https://doi.org/10.5194/tc-13-665-2019>, 2019.
- 790 John, B. S., and Sugden, D. E.: Raised marine features and phases of glaciation in the South Shetland Islands, *British Antarctic Survey Bulletin*, 24, 45–111, <http://nora.nerc.ac.uk/id/eprint/526463>, 1971.
- 795 Johnson, J. S., Roberts, S. J., Rood, D. H., Pollard, D., Schaefer, J. M., Whitehouse, P. L., Ireland, L. C., Lamp, J. L., Goehring, B. M., Rand, C., and Smith, J. A.: Deglaciation of Pope Glacier implies widespread early Holocene ice sheet thinning in the Amundsen Sea sector of Antarctica, *Earth Planet. Sc. Lett.*, 548, 116501, <https://doi.org/10.1016/j.epsl.2020.116501>, 2020.

- 800 Johnson, J. S., Pollard, D., Whitehouse, P. L., Roberts, S. J., Rood, D. H., and Schaefer, J. M.: Comparing Glacial-Geological Evidence and Model Simulations of Ice Sheet Change since the Last Glacial Period in the Amundsen Sea Sector of Antarctica, *J. Geophys. Res.-Earth.*, 126, <https://doi.org/10.1029/2020JF005827>, 2021.
- Jones, R. S., Gudmundsson, G. H., Mackintosh, A. N., McCormack, F. S., and Whitmore, R. J.: Ocean-Driven and
805 Topography-Controlled Nonlinear Glacier Retreat During the Holocene: Southwestern Ross Sea, Antarctica, *Geophys. Res. Lett.*, 48, e2020GL091454, <https://doi.org/10.1029/2020GL091454>, 2021.
- Jouzel, J., Alley, R. B., Cuffey, K. M., Dansgaard, W., Grootes, P., Hoffmann, G., Johnsen, S. J., Koster, R. D., Peel, D., Shuman, C. A., Stievenard, M., Stuiver, M., and White, J.: Validity of the temperature reconstruction from water isotopes in
810 ice cores, *J. Geophys. Res.-Oceans*, 102, 26471–26487, <https://doi.org/10.1029/97JC01283>, 1997.
- Kamb, B.: Basal Zone of the West Antarctic Ice Streams and its Role in Lubrication of Their Rapid Motion, in: *Antarctic Research Series*, edited by: Alley, R. B. and Bindshadler, R. A., American Geophysical Union, Washington, D. C., 157–199, <https://doi.org/10.1029/AR077p0157>, 2001.
- 815 [Karlsson, N. B., Binder, T., Eagles, G., Helm, V., Pattyn, F., Van Liefferinge, B. and Eisen, O.: Glaciological characteristics in the Dome Fuji region and new assessment for “Oldest Ice”. *The Cryosphere*, 12, 2413–2424, <https://doi.org/10.5194/tc-12-2413-2018>, 2018.](#)
- 820 Kehrl, L., Conway, H., Holschuh, N., Campbell, S., Kurbatov, A. V., and Spaulding, N. E.: Evaluating the Duration and Continuity of Potential Climate Records From the Allan Hills Blue Ice Area, East Antarctica, *Geophys. Res. Lett.*, 45(9), 4096–4104, <https://doi.org/10.1029/2018GL077511>, 2018.
- 825 [King, M. A., Watson, C. S., and White, D.: GPS rates of vertical bedrock motion suggest late Holocene ice-sheet readvance in a critical sector of East Antarctica. *Geophys. Res. Lett.*, 49, e2021GL097232, <https://doi.org/10.1029/2021GL097232>, 2022.](#)
- 830 [Kingslake, J., Martin, C., Arthern, R. J., -Corr, H. F. J., and King, E. C.: Ice-flow reorganization in West Antarctica 2.5 kyr ago dated using radar-derived englacial flow velocities, *Geophys. Res. Lett.*, 43, <https://doi.org/10.1002/2016GL070278>, 2016.](#)
- Kingslake, J., Scherer, R. P., Albrecht, T., Coenen, J., Powell, R. D., Reese, R., Stansell, N. D., Tulaczyk, S., Wearing, M. G., and Whitehouse, P. L.: Extensive retreat and re-advance of the West Antarctic Ice Sheet during the Holocene, *Nature*, 558, 430–434, <https://doi.org/10.1038/s41586-018-0208-x>, 2018.
- 835 Koffman, B. G., Kreutz, K. J., Breton, D. J., Kane, E. J., Winski, D. A., Birkel, S. D., Kurbatov, A. V., and Handley, M. J.: Centennial-scale variability of the Southern Hemisphere westerly wind belt in the eastern Pacific over the past two millennia, *Clim. Past*, 10, 1125–1144, <https://doi.org/10.5194/cp-10-1125-2014>, 2014.
- 840 Kuhl, T., Gibson, C., Johnson, J., Boeckmann, G., Moravec, E., and Slawny, K.: Agile Sub-Ice Geological (ASIG) Drill development and Pirrit Hills field project, *Ann. Glaciol.*, 62, 53–66, <https://doi.org/10.1017/aog.2020.59>, 2021.

- 845 Lambeck, K., Rouby, H., Purcell, A., Sun, Y., and Sambridge, M.: Sea level and global ice volumes from the Last Glacial Maximum to the Holocene, *P. Natl. Acad. Sci. USA*, 111, 15296–15303, <https://doi.org/10.1073/pnas.1411762111>, 2014.
- Larour, E., Seroussi, H., Adhikari, S., Ivins, E., Caron, L., Morlighem, M., and Schlegel, N.: Slowdown in Antarctic mass loss from solid Earth and sea-level feedbacks, *Science*, 364, eaav7908, <https://doi.org/10.1126/science.aav7908>, 2019.
- 850 Lowry, D. P., Golleddge, N. R., Bertler, N. A. N., Jones, R. S., and McKay, R.: Deglacial grounding-line retreat in the Ross Embayment, Antarctica, controlled by ocean and atmosphere forcing, *Sci. Adv.*, 5(8), eaav8754, <https://doi.org/10.1126/sciadv.aav8754>, 2019.
- Mann, D. H. and Streveler, G. P.: Post-glacial relative sea level, isostasy, and glacial history in Icy Strait, Southeast Alaska, USA, *Quaternary. Res.*, 69, 201–216, <https://doi.org/10.1016/j.yqres.2007.12.005>, 2008.
- 855 Martinerie, P., Raynaud, D., Etheridge, D. M., Barnola, J.-M., and Mazaudier, D.: Physical and climatic parameters which influence the air content in polar ice, *Earth Planet. Sc. Lett.*, 112, 1–13, [https://doi.org/10.1016/0012-821X\(92\)90002-D](https://doi.org/10.1016/0012-821X(92)90002-D), 1992.
- 860 Martinez-Macchiavello, J. C., Tatur, A., Servant-Vildary, S., and Valle, R. D.: Holocene environmental change in a marine-estuarine-lacustrine sediment sequence, King George Island, South Shetland Islands, *Antarct. Sci.*, 8, 313–322, <https://doi.org/10.1017/S095410209600048X>, 1996.
- 865 Matsuoka, K., Hindmarsh, R. C. A., Moholdt, G., Bentley, M. J., Pritchard, H. D., Brown, J., Conway, H., Drews, R., Durand, G., Goldberg, D., Hattermann, T., Kingslake, J., Lenaerts, J. T. M., Martín, C., Mulvaney, R., Nicholls, K. W., Pattyn, F., Ross, N., Scambos, T., and Whitehouse, P. L.: Antarctic ice rises and rumples: Their properties and significance for ice-sheet dynamics and evolution, *Earth Science Reviews*, 150, 724–745, <https://doi.org/10.1016/j.earscirev.2015.09.004>, 2015.
- 870 Mäusbacher, R., Müller, J., and Schmidt, R.: Evolution of postglacial sedimentation in Antarctic lakes (King George Island), *Z. Geomorphol.*, 219–234, <https://doi.org/10.1127/zfg/33/1989/219>, 1989.
- Medley, B. and Thomas, E. R.: Increased snowfall over the Antarctic Ice Sheet mitigated twentieth-century sea-level rise, *Nat. Clim. Change*, 9, 34–39, <https://doi.org/10.1038/s41558-018-0356-x>, 2019.
- 875 [Medley, B., Joughin, I., Smith, B. E., Das, S. B., Steig, E. J., Conway, H., Gogineni, S., Lewis, C., Criscitiello, A. S., McConnell, J. R., Van den Broeke, M. R., Lenaerts, J. T. M., Bromwich, D. H., Nicolas, J. P., and Leuschen, C.: Constraining the recent mass balance of Pine Island and Thwaites glaciers, West Antarctica with airborne observations of snow accumulation, *The Cryosphere*, 8, 1375–1392, <https://doi.org/10.5194/tc-8-1375-2014>, 2014.](#)
- 880

Michaud, A. B., Vick-Majors, T. J., Achberger, A. M., Skidmore, M. L., Christner, B. C., Tranter, M., Priscu, J. C.: Environmentally clean access to Antarctic subglacial aquatic environments, *Antarct. Sci.* 32(5), 329–340. doi: 10.1017/S0954102020000231, 2020.

885 Mills, S. C., Broeq, A. M. L., Winter, K., Smith, M., Hillier, J., Ardakova, E., Boston, C. M., Sugden, D., and Woodward, J.: Testing and application of a model for snow redistribution (Snow_Blow) in the Ellsworth Mountains, *Antarctica, J. Glaciol.*, 65, 957–970, <https://doi.org/10.1017/jog.2019.70>, 2019.
890 Mojtabavi, S., Eisen, O., Franke, S., Jansen, D., Steinhage, D., Paden, J., Dahl-Jensen, D., Weikusat, I., Eichler, J. and Wilhelms, F.: Origin of englacial stratigraphy at three deep ice core sites of the Greenland Ice Sheet by synthetic radar modelling. *J. Glaciol.*, 1–13, [10.1017/jog.2021.137](https://doi.org/10.1017/jog.2021.137), 2022.

Moser, D. E., Jackson, S., Kjær, H. A., Markle, B., Ngoumtsa, E., Pedro, J. B., Segato, D., Spolaor, A., Tetzner, D., Vallelonga, P., and Thomas, E. R.: An Age Scale for the First Shallow (Sub-)Antarctic Ice Core from Young Island, Northwest Ross Sea, *Geosci.*, 11, 368, <https://doi.org/10.3390/geosciences11090368>, 2021.

895

Motyka, R. J.: Little Ice Age subsidence and post Little Ice Age uplift at Juneau, Alaska, inferred from dendrochronology and geomorphology, *Quaternary Res.*, 59, 300–309, [https://doi.org/10.1016/S0033-5894\(03\)00032-2](https://doi.org/10.1016/S0033-5894(03)00032-2), 2003.

National Research Council: Exploration of Antarctic Subglacial Aquatic Environments: Environmental and Scientific Stewardship, Washington, DC: The National Academies Press, doi: doi.org/10.17226/11886, 162 pp., 2007.

900

Neff, P. D.: A review of the brittle ice zone in polar ice cores. *Ann. Glaciol.*, 55(68), 72–82, <https://doi.org/10.3189/2014AoG68A023>, 2014.

905 Neff, P.: Amundsen Sea Coastal Ice Rises, *Oceanography*, 3(2), 88–89, <https://doi.org/10.5670/oceanog.2020.215>, 2020.

Nereson, N. A., Raymond, C. F., Jacobel, R. W., and Waddington, E. D.: The accumulation pattern across Siple Dome, West Antarctica, inferred from radar-detected internal layers, *J. Glaciol.*, 46, 75–87, <https://doi.org/10.3189/172756500781833449>, 2000.

910

Neuhaus, S. U., Tulaczyk, S. M., Stansell, N. D., Coenen, J. J., Scherer, R. P., Mikucki, J. A., and Powell, R. D.: Did Holocene climate changes drive West Antarctic grounding line retreat and readvance?, *Cryosphere*, 15, 4655–4673, <https://doi.org/10.5194/tc-15-4655-2021>, 2021.

915 Nichols, K. A.: The Glacial History of the Weddell Sea Embayment, Antarctica, Ph.D., Tulane University School of Science and Engineering, United States -- Louisiana, 149 pp., 2020.

Nicholls, K. W., Corr, H. F. J., Stewart, C. L., Lok, L. B. Brennan, P. V. and Vaughan, D. G.: A ground-based radar for measuring vertical strain rates and time-varying basal melt rates in ice sheets and shelves, *J. Glaciol.*, 61(230), 1079–1087, doi:10.3189/2015JoG15J073, 2015.

920

Nield, G. A., Barletta, V. R., Bordoni, A., King, M. A., Whitehouse, P. L., Clarke, P. J., Domack, E., Scambos, T. A., and Berthier, E.: Rapid bedrock uplift in the Antarctic Peninsula explained by viscoelastic response to recent ice unloading, *Earth Planet. Sci. Lett.*, 397, 32–41, 2014.

925

Peltier, W. R., Argus, D. F., and Drummond, R.: Space geodesy constrains ice age terminal deglaciation: The global ICE-6G_C (VM5a) model, *J. Geophys. Res.-Sol. Ea.*, 120, 450–487, <https://doi.org/10.1002/2014JB011176>, 2015.

930

Pollard, D. and DeConto, R. M.: Description of a hybrid ice sheet-shelf model, and application to Antarctica, *Geosci. Model Dev.*, 5, 1273–1295, <https://doi.org/10.5194/gmd-5-1273-2012>, 2012.

935

Priscu, J. C., Achberger, A. M., Cahoon, J. E., Christner, B. C., Edwards, R. L., Jones, W. L., Michaud, A. B., Siegfried, M. L., Skidmore, M. L., Spigel, R. H., Switzer, G. W., Tulaczyk, S., and Vick-Majors, T. J.: A microbiologically clean strategy for access to the Whillans Ice Stream subglacial environment, *Antarct. Sci.*, 25, 637–647, doi: 10.1017/S0954102013000035, 2013.

940

Priscu, J. C., Kalin, J., Winans, J., Campbell, T., Siegfried, M. R., Skidmore, M., Dore, J. E., Leventer, A., Harwood, D. M., Duling, D., Zook, R., Burnett, J., Gibson, D., Krula, E., Mironov, A., McManis, J., Roberts, G., Rosenheim, B. E., Christner, B. C., Kasic, K., Fricker, H. A., Lyons, W. B., Barker, J., Bowling, M., Collins, B., Davis, C., Gagnon, A., Gardner, C., Gustafson, C., Kim, O.-S., Li, W., Michaud, A., Patterson, M. O., Tranter, M., Venturelli, R., Vick-Majors, T., Elsworth, C., and The SALSA Science Team: Scientific access into Mercer Subglacial Lake: scientific objectives, drilling operations and initial observations, *Ann. Glaciol.*, 1–13, <https://doi.org/10.1017/aog.2021.10>, 2021.

945

Pudsey, C. J., Evans, J., Domack, E. W., Morris, P., and Valle, R. A. D.: Bathymetry and acoustic facies beneath the former Larsen-A and Prince Gustav ice shelves, north-west Weddell Sea, *Antarct. Sci.*, 13, 312–322, <https://doi.org/10.1017/S095410200100044X>, 2001.

950

Raymond, C. F.: Deformation in the Vicinity of Ice Divides, *J. Glaciol.*, 29, 357–373, <https://doi.org/10.3189/S0022143000030288>, 1983.

955

Roberts, S. J., Hodgson, D. A., Sterken, M., Whitehouse, P. L., Verleyen, E., Vyverman, W., Sabbe, K., Balbo, A., Bentley, M. J., and Moreton, S. G.: Geological constraints on glacio-isostatic adjustment models of relative sea-level change during deglaciation of Prince Gustav Channel, Antarctic Peninsula, *Quaternary Sci. Rev.*, 30, 3603–3617, <https://doi.org/10.1016/j.quascirev.2011.09.009>, 2011.

960

Rodriguez-Morales, F., Braaten, D., Mai, H.T., Paden, J., Gogineni, P., Yan, J. -B., Abe-Ouchi, A., Fujita, S., Kawamura, K., Tsutaki, S. Y., Van Liefferinge, B., Matsuoka, K. and Steinhage, D.: A Mobile, Multichannel, UWB Radar for Potential Ice Core Drill Site Identification in East Antarctica: Development and First Results. *IEEE J. Sel. Top. Appl.*, 13, 4836–4847, doi:10.1109/JSTARS.2020.3016287, 2020.

Rosenheim, B. E., Day, M. B., Domack, E., Schrum, H., Benthien, A., and Hayes, J. M.: Antarctic sediment chronology by programmed-temperature pyrolysis: Methodology and data treatment, *Geochem. Geophys. Geosyst.*, 9(4), Q04005, <https://doi.org/10.1029/2007GC001816>, 2008.

965

Sackett, W. M.: Organic carbon in sediments underlying the Ross Ice Shelf, *Org. Geochem.*, 9, 135–137, [https://doi.org/10.1016/0146-6380\(86\)90103-8](https://doi.org/10.1016/0146-6380(86)90103-8), 1986.

970

Scambos, T. A., Hulbe, C., Fahnestock, M., and Bohlander, J.: The link between climate warming and break-up of ice shelves in the Antarctic Peninsula, *J. Glaciol.*, 46, 516–530, <https://doi.org/10.3189/172756500781833043>, 2000.

[Scientific Committee on Antarctic Research: IP033: SCAR's Code of Conduct for the Exploration and Research of Subglacial Aquatic Environments, Buenos Aires: SCAR, 5 pp., 2011.](#)

975

Schroeder, D. M., Dowdeswell, J. A., Siegert, M. J., Bingham, R. G., Chu, W., MacKie, E. J., Siegfried, M. R., Vega, K. I., Emmons, J. R., and Winstein, K.: Multidecadal observations of the Antarctic ice sheet from restored analog radar records, *P. Natl. Acad. Sci. USA*, 116, 18867–18873, <https://doi.org/10.1073/pnas.1821646116>, 2019.

980

Siegert, M., Ross, N., Corr, H., Kingslake, J., and Hindmarsh, R.: Late Holocene ice-flow reconfiguration in the Weddell Sea sector of West Antarctica, *Quaternary Sci. Rev.*, 78, 98–107, <https://doi.org/10.1016/j.quascirev.2013.08.003>, 2013.

Simkins, L. M., Simms, A. R., and DeWitt, R.: Relative sea-level history of Marguerite Bay, Antarctic Peninsula derived from optically stimulated luminescence-dated beach cobbles, *Quaternary Sci. Rev.*, 77, 141–155, <https://doi.org/10.1016/j.quascirev.2013.07.027>, 2013.

985

[Simkins, L. M., Greenwood, S. L., Munevar Garcia, S., Eareckson, E. A., Anderson, J. B., Prothro, L. O.: Topographic Controls on Channelized Meltwater in the Subglacial Environment, *Geophys. Res. Lett.*, 48 \(20\), e2021GL094678, <https://doi.org/10.1029/2021GL094678>, 2021.](#)

990

Simms, A. R., DeWitt, R., Kouremenos, P., and Drewry, A. M.: A new approach to reconstructing sea levels in Antarctica using optically stimulated luminescence of cobble surfaces, *Quaternary Geochronol.*, 6, 50–60, <https://doi.org/10.1016/j.quageo.2010.06.004>, 2011.

995

Simms, A. R., Ivins, E. R., DeWitt, R., Kouremenos, P., and Simkins, L. M.: Timing of the most recent Neoglacial advance and retreat in the South Shetland Islands, Antarctic Peninsula: insights from raised beaches and Holocene uplift rates, *Quaternary Sci. Rev.*, 47, 41–55, <https://doi.org/10.1016/j.quascirev.2012.05.013>, 2012.

1000

Simms, A. R., Bentley, M. J., Simkins, L. M., Zurbuchen, J., Reynolds, L. C., DeWitt, R., and Thomas, E. R.: Evidence for a “Little Ice Age” glacial advance within the Antarctic Peninsula – Examples from glacially-overrun raised beaches, *Quaternary Sci. Rev.*, 271, 107195, <https://doi.org/10.1016/j.quascirev.2021.107195>, 2021.

Smith, J. A., Bentley, M. J., Hodgson, D. A., Roberts, S. J., Leng, M. J., Lloyd, J. M., Barrett, M. S., Bryant, C., and Sugden, D. E.: Oceanic and atmospheric forcing of early Holocene ice shelf retreat, George VI Ice Shelf, Antarctica Peninsula, *Quaternary Sci. Rev.*, 26, 500–516, <https://doi.org/10.1016/j.quascirev.2006.05.006>, 2007.

1005

Smith, J. A., Graham, A. G. C., Post, A. L., Hillenbrand, C.-D., Bart, P. J., and Powell, R. D.: The marine geological imprint of Antarctic ice shelves, *Nat. Commun.*, 10, 5635, <https://doi.org/10.1038/s41467-019-13496-5>, 2019.

1010

Smith, J. A., Hillenbrand, C.-D., Subt, C., Rosenheim, B. E., Frederichs, T., Ehrmann, W., Andersen, T. J., Wacker, L., Makinson, K., Anker, P., Venables, E. J., and Nicholls, K. W.: History of the Larsen C Ice Shelf reconstructed from sub-ice shelf and offshore sediments, *Geology*, 49, 978–982, <https://doi.org/10.1130/G48503.1>, 2021.

1015

Souney, J. M., Twickler, M. S., Aydin, M., Steig, E. J., Fudge, T. J., Street, L. V., Nicewonger, M. R., Kahle, E. C., Johnson, J. A., Kuhl, T. W., Casey, K. A., Fegyveresi, J. M., Nunn, R. M., and Hargreaves, G. M.: Core handling, transportation and processing for the South Pole ice core (SPICEcore) project, *Ann. Glaciol.*, 62, 118–130, <https://doi.org/10.1017/aog.2020.80>, 2021.

1020

[Spaulding, N. E., Higgins, J. A., Kurbatov, A. V., Bender, M. L., Arcone, S. A., Campbell, Dunbar, N. W., Chimiak, L. M., Introne, D. S., and Mayewski, P. A.: Climate archives from 90 to 250ka in horizontal and vertical ice cores from the Allan Hills Blue Ice Area, Antarctica, *Quaternary Res.*, 80 \(3\), 562-574, <https://doi.org/10.1016/j.yqres.2013.07.004>, 2013.](https://doi.org/10.1016/j.yqres.2013.07.004)

Spector, P., Stone, J., Pollard, D., Hillebrand, T., Lewis, C., and Gombiner, J.: West Antarctic sites for subglacial drilling to test for past ice-sheet collapse, *Cryosphere*, 12, 2741–2757, <https://doi.org/10.5194/tc-12-2741-2018>, 2018.

1025

Spector, P., Stone, J., and Goehring, B.: Thickness of the divide and flank of the West Antarctic Ice Sheet through the last deglaciation, 13, 3061–3075, *Cryosphere*, <https://doi.org/10.5194/tc-13-3061-2019>, 2019.

1030

Steig, E. J., Morse, D. L., Waddington, E. D., Stuiver, M., Grootes, P. M., Mayewski, P. A., Twickler, M. S., and Whitlow, S. I.: Wisconsinan and holocene climate history from an ice core at Taylor dome, western Ross embayment, Antarctica, *Geogr. Ann. A.*, 82, 213–235, <https://doi.org/10.1111/j.0435-3676.2000.00122.x>, 2000.

1035

Stenni, B., Curran, M. A. J., Abram, N. J., Orsi, A., Goursaud, S., Masson-Delmotte, V., Neukom, R., Goosse, H., Divine, D., van Ommen, T., Steig, E. J., Dixon, D. A., Thomas, E. R., Bertler, N. A. N., Isaksson, E., Ekaykin, A., Werner, M., and Frezzotti, M.: Antarctic climate variability on regional and continental scales over the last 2000 years, *Clim. Past.*, 13, 1609–1634, <https://doi.org/10.5194/cp-13-1609-2017>, 2017.

Stone, J. O., Balco, G. A., Sugden, D. E., Caffee, M. W., Sass, L. C., Cowdery, S. G., and Siddoway, C.: Holocene Deglaciation of Marie Byrd Land, West Antarctica, *Science*, 299, 99–102, <https://doi.org/10.1126/science.1077998>, 2003.

1040

[Talalay, P., Li, X., Fan, X., Yang, Y., Li, Y., Wang, T., Li, X., Liu, A., and Zhao, G.: Experimental investigation of water freezing and estimating refreezing time in ice boreholes, *Cold Reg. Sci. Technol.*, 166, 102822, <https://doi.org/10.1016/j.coldregions.2019.102822>, 2019.](https://doi.org/10.1016/j.coldregions.2019.102822)

- 1045 Tetzner, D. R., Thomas, E. R., and Allen, C. S.: Marine diatoms in ice cores from the Antarctic Peninsula and Ellsworth Land, Antarctica -species diversity and regional variability, *The Cryosphere Discuss.* [preprint], <https://doi.org/10.5194/tc-2021-160>, in review, 2021.
- Thomas, E. R., Hosking, J. S., Tuckwell, R. R., Warren, R. A., and Ludlow, E. C.: Twentieth century increase in snowfall in coastal West Antarctica, *Geophys. Res. Lett.*, 42, 9387–9393, <https://doi.org/10.1002/2015GL065750>, 2015.
- 1050 Thomas, E. R., van Wessem, J. M., Roberts, J., Isaksson, E., Schlosser, E., Fudge, T. J., Vallelonga, P., Medley, B., Lenaerts, J., Bertler, N., van den Broeke, M. R., Dixon, D. A., Frezzotti, M., Stenni, B., Curran, M., and Ekaykin, A. A.: Regional Antarctic snow accumulation over the past 1000 years, *Clim. Past*, 13, 1491–1513, <https://doi.org/10.5194/cp-13-1491-2017>, 2017.
- 1055 Thomas, E. R., Gacitúa, G., Pedro, J. B., Faith King, A. C., Markle, B., Potocki, M., and Moser, D. E.: Physical properties of shallow ice cores from Antarctic and sub-Antarctic islands, *Cryosphere*, 15, 1173–1186, <https://doi.org/10.5194/tc-15-1173-2021>, 2021.
- 1060 Tulaczyk, S., Mikucki, J. A., Siegfried, M. R., Priscu, J. C., Barcheck, C. G., Beem, L. H., Behar, A., Burnett, J., Christner, B. C., Fisher, A. T., Fricker, H. A., Mankoff, K. D., Powell, R. D., Rack, F., Sampson, D., Scherer, R. P., Schwartz, S. Y., and The WISSARD Science Team: WISSARD at Subglacial Lake Whillans, West Antarctica: scientific operations and initial observations, *Ann. Glaciol.*, 55, 51–58, <https://doi.org/10.3189/2014AoG65A009>, 2014.
- 1065 Vaughan, D. G., Corr, H. F. J., Doake, C. S. M., and Waddington, E. D.: Distortion of isochronous layers in ice revealed by ground-penetrating radar, *Nature*, 398, 323–326, <https://doi.org/10.1038/18653>, 1999.
- Venturelli, R. A.: Investigating the Recent History of a Changing Planet with Innovative Isotopic Techniques and New Geologic Archives, University of South Florida, 2021.
- 1070 Venturelli, R. A., Siegfried, M. R., Roush, K. A., Li, W., Burnett, J., Zook, R., Fricker, H. A., Priscu, J. C., Leventer, A., and Rosenheim, B. E.: Mid-Holocene Grounding Line Retreat and Readvance at Whillans Ice Stream, West Antarctica, *Geophys. Res. Lett.*, 47, <https://doi.org/10.1029/2020GL088476>, 2020.
- 1075 [Venturelli, R. A., Vick-Majors, T. J., Collins, B., Gagnon, A., Kasic, K., Kurz, M. D., Li, W., Priscu, J., Roberts, M., Rosenheim, B. E., and SALSA Science Team: A FRAMEWORK FOR TRANSDISCIPLINARY RADIOCARBON RESEARCH: USE OF NATURAL-LEVEL AND ELEVATED-LEVEL ¹⁴C IN ANTARCTIC FIELD RESEARCH, *Radiocarbon* 63, 1555–1568, doi: 10.1017/RDC.2021.55, 2021.](#)
- 1080 Verleyen, E., Hodgson, D. A., Milne, G. A., Sabbe, K., and Vyverman, W.: Relative sea-level history from the Lambert Glacier region, East Antarctica, and its relation to deglaciation and Holocene glacier readvance, *Quaternary Res.*, 63, 45–52, <https://doi.org/10.1016/j.yqres.2004.09.005>, 2005.

- 1085 Verleyen, E., Tavernier, I., Hodgson, D. A., Whitehouse, P. L., Kudoh, S., Imura, S., Heirman, K., Bentley, M. J., Roberts, S. J., De Batist, M., Sabbe, K., and Vyverman, W.: Ice sheet retreat and glacio-isostatic adjustment in Lützow-Holm Bay, East Antarctica, *Quaternary Sci. Rev.*, 169, 85–98, <https://doi.org/10.1016/j.quascirev.2017.06.003>, 2017.
- 1090 Watcham, E. P., Bentley, M. J., Hodgson, D. A., Roberts, S. J., Fretwell, P. T., Lloyd, J. M., Larter, R. D., Whitehouse, P. L., Leng, M. J., Monien, P., and Moreton, S. G.: A new Holocene relative sea level curve for the South Shetland Islands, Antarctica, *Quaternary Sci. Rev.*, 30, 3152–3170, <https://doi.org/10.1016/j.quascirev.2011.07.021>, 2011.
- [Wearing, M. G., and Kingslake, J.: Holocene Formation of Henry Ice Rise, West Antarctica, Inferred From Ice-Penetrating Radar. *J. Geophys. Res.-Earth.*, 124\(8\), 2224–2240, <https://doi.org/10.1029/2018JF004988>, 2019.](https://doi.org/10.1029/2018JF004988)
- 1095 Werner, M., Jouzel, J., Masson-Delmotte, V., and Lohmann, G.: Reconciling glacial Antarctic water stable isotopes with ice sheet topography and the isotopic paleothermometer, *Nat. Commun.*, 9, 3537, <https://doi.org/10.1038/s41467-018-05430-y>, 2018.
- 1100 Whitehouse, P. L., Bentley, M. J., Milne, G. A., King, M. A., and Thomas, I. D.: A new glacial isostatic adjustment model for Antarctica: calibrated and tested using observations of relative sea-level change and present-day uplift rates, *Geophysical J. Int.*, 190, 1464–1482, <https://doi.org/10.1111/j.1365-246X.2012.05557.x>, 2012.
- [Whitehouse, P. L., Gomez, N., King, M. A., Wiens, D. A.: Solid earth change and the evolution of the Antarctic ice sheet, *Nat. Commun.*, 10, 503, <https://doi.org/10.1038/s41467-018-08068-y>, 2019.](https://doi.org/10.1038/s41467-018-08068-y)
- 1105 Winstrup, M., Vallelonga, P., Kjær, H. A., Fudge, T. J., Lee, J. E., Riis, M. H., Edwards, R., Bertler, N. A. N., Blunier, T., Brook, E. J., Buizert, C., Ciobanu, G., Conway, H., Dahl-Jensen, D., Ellis, A., Emanuelsson, B. D., Hindmarsh, R. C. A., Keller, E. D., Kurbatov, A. V., Mayewski, P. A., Neff, P. D., Pyne, R. L., Simonsen, M. F., Svensson, A., Tuohy, A., Waddington, E. D., and Wheatley, S.: A 2700-year annual timescale and accumulation history for an ice core from Roosevelt Island, West Antarctica, *Clim. Past*, 15, 751–779, <https://doi.org/10.5194/cp-15-751-2019>, 2019.
- 1115 Winter, K., Woodward, J., Dunning, S. A., Turney, C. S. M., Fogwill, C. J., Hein, A. S., Golledge, N. R., Bingham, R. G., Marrero, S. M., Sugden, D. E., and Ross, N.: Assessing the continuity of the blue ice climate record at Patriot Hills, Horseshoe Valley, West Antarctica, *Geophys. Res. Lett.*, 43, 2019–2026, <https://doi.org/10.1002/2015GL066476>, 2016.
- Winter, A., Steinhage, D., Creyts, T. T., Kleiner, T., and Eisen, O.: Age stratigraphy in the East Antarctic Ice Sheet inferred from radio-echo sounding horizons, *Earth Syst. Sci. Data*, 11, 1069–1081, <https://doi.org/10.5194/essd-11-1069-2019>, 2019.
- 1120 Yokoyama, Y., Anderson, J. B., Yamane, M., Simkins, L. M., Miyairi, Y., Yamazaki, T., Koizumi, M., Suga, H., Kushara, K., Prothro, L., Hasumi, H., Southon, J. R., and Ohkouchi, N.: Widespread collapse of the Ross Ice Shelf during the late Holocene, *P. Natl. Acad. Sci. USA*, 113, 2354–2359, <https://doi.org/10.1073/pnas.1516908113>, 2016.
- Zwartz, D., Bird, M., Stone, J., and Lambeck, K.: Holocene sea-level change and ice-sheet history in the Vestfold Hills, East Antarctica, *Earth Planet. Sc. Lett.*, 155, 131–145, [https://doi.org/10.1016/S0012-821X\(97\)00204-5](https://doi.org/10.1016/S0012-821X(97)00204-5), 1998.