

# On the evolution of an ice shelf melt channel at the base of Filchner Ice Shelf, from observations and viscoelastic modeling

Angelika Humbert<sup>1,2</sup>, Julia Christmann<sup>1</sup>, Hugh F. J. Corr<sup>3</sup>, Veit Helm<sup>1</sup>, Lea-Sophie Höyns<sup>1,4</sup>, Coen Hofstede<sup>1</sup>, Ralf Müller<sup>5,6</sup>, Niklas Neckel<sup>1</sup>, Keith W. Nicholls<sup>3</sup>, Timm Schultz<sup>5,6</sup>, Daniel Steinhage<sup>1</sup>, Michael Wolovick<sup>1</sup>, and Ole Zeising<sup>1,2</sup>

<sup>1</sup>Alfred-Wegener-Institut Helmholtz-Zentrum für Polar- und Meeresforschung, Bremerhaven, Germany

<sup>2</sup>University of Bremen, Department of Geosciences, Bremen, Germany

<sup>3</sup>British Antarctic Survey, Natural Environment Research Council, Cambridge, UK

<sup>4</sup>University of Bremen, Department of Mathematics and Computer Science, Bremen, Germany

<sup>5</sup>Institute of Applied Mechanics, University of Kaiserslautern, Kaiserslautern, Germany

<sup>6</sup>Division of Continuum Mechanics, Technical University of Darmstadt, Darmstadt, Germany

**Correspondence:** Angelika Humbert (angelika.humbert@awi.de)

**Abstract.** Ice shelves play a key role in the stability of the Antarctic Ice Sheet due to their buttressing effect. A loss of buttressing as a result of increased basal melting or ice shelf disintegration will lead to increased ice discharge. Some ice shelves exhibit channels at the base that are not yet fully understood. In this study, we present in-situ melt rates of a channel which is up to 330m high and located ~~at~~in the southern Filchner Ice Shelf. Maximum observed melt rates are ~~2.3~~ma<sup>-1</sup>~~2~~ma<sup>-1</sup>. Melt rates ~~decline~~inside the channel ~~along~~decrease in the direction of ice flow and turn ~~into freezing~~55 km to freezing ~~55 km~~55 km downstream of the grounding line. While closer to the grounding line melt rates are higher within the channel than outside, this relationship reverses further downstream. Comparing the modeled evolution of this channel under present-day climate conditions over 250 years with its present geometry reveals a mismatch. ~~This mismatch indicates melt rates two times higher were necessary over the past 250 years to form today's channel~~Melt rates twice as large as the present-day values are required to fit the observed geometry. In contrast, forcing the model with present-day melt rates results in a closure of the channel, which contradicts observations. Time series of melt rate measurements show strong tidally-induced variability in vertical strain-rates. We found no evidence of seasonality, but discrete pulses of increased melting occurred throughout the measurement period. The type of melt channel in this study diminishes in height with distance from the grounding line and are hence not a destabilizing factor for ice shelves.

## 15 1 Introduction

Melt channels ~~in~~carved upward into the base of ice shelves have been hypothesized to destabilize ice shelves and ~~were~~are often linked to enhanced basal melt ~~. This triggered a variety of observational studies (Le Brocq et al., 2013; Langley et al., 2014; Drews, 2015; Marsh et al., 2016; Dow et al., 2017; Marshall et al., 2018; Marshall et al., 2019; Marshall et al., 2020; Marshall et al., 2021; Marshall et al., 2022; Marshall et al., 2023; Marshall et al., 2024; Marshall et al., 2025; Marshall et al., 2026; Marshall et al., 2027; Marshall et al., 2028; Marshall et al., 2029; Marshall et al., 2030)~~. However, such channels diminish with increasing (Le Brocq et al., 2013; Langley et al., 2014; Drews, 2015; Marsh et al., 2016; Dow et al., 2017; Marshall et al., 2018; Marshall et al., 2019; Marshall et al., 2020; Marshall et al., 2021; Marshall et al., 2022; Marshall et al., 2023; Marshall et al., 2024; Marshall et al., 2025; Marshall et al., 2026; Marshall et al., 2027; Marshall et al., 2028; Marshall et al., 2029; Marshall et al., 2030). At some locations, these channels increase in height with distance from the grounding line ~~at numerous locations~~. The main ~~questions are thus if such channels are indeed~~, thus reducing the structural strength of the ice shelf, while at other locations

~~they diminish downstream, minimizing their influence on shelf integrity. It remains unknown why some channels diminish downstream and whether channels that diminish downstream are also~~ locations of enhanced basal melt ~~and what causes them to diminish.~~

Channels at the base of ice shelves may ~~either be incised by form where~~ subglacial channels beneath the inland ice ~~transporting grounded ice discharge fresh water~~ into the ocean (Le Brocq et al., 2013), ~~or they may arise~~ arise from topographic features or from shear margins developing surface troughs when adjusting to ~~floatation (Alley et al., 2019).~~ Such ~~features floatation (Alley et al., 2019).~~ Features like bedrock undulations or eskers ~~imprinted into the ice geometry on the inland ice side create a channel-type geometry on the floating part~~ underneath the grounded ice may also leave a channel-like imprint ~~in the geometry of the floating shelf~~ (Drews et al., 2017; Jeofry et al., 2018). In ~~both all~~ cases, the ~~geometry of the~~ channel at the ice base will be altered by two factors: ~~incision due to~~ basal melt arising from oceanic heat and ~~closure due to~~ viscoelastic creep.

Surface troughs on ice shelves ~~, which are detectable by satellites and airborne remote sensing, are linked due to buoyancy equilibrium to are linked to~~ incisions at the ice base, thus either to melt channels (e.g. Le Brocq et al., 2013; Langley et al., 2014) or to basal crevasses (e.g. Humbert et al., 2015). ~~The surface troughs are formed by viscoelastic deformations in the transition to buoyancy and buoyancy equilibrium itself.~~ Channels at the ice base have been surveyed using radio echo sounding (Rignot and Steffen, 2008; Vaughan et al., 2012; Le Brocq et al., 2013; Dutrieux et al., 2014; Langley et al., 2014; Dow et al., 2018). ~~The Their~~ typical dimensions range from 300 – 500m wide and up to 50m high ~~channels~~ (Langley et al., 2014) to 1 – 3km wide and 200 – 400m high ~~ones~~ (Rignot and Steffen, 2008). Channel flanks are not necessarily smooth but may form terrace structures in ~~the~~ lateral (across ice flow) dimension as shown by Dutrieux et al. (2014) for Pine Island Glacier, Antarctica. These terraces are separated by up to 50m high walls with steep slopes between 40° and 60°.

Hofstede et al. (2021a) found a basal channel on Support Force Glacier at the transition to ~~the~~ Filchner Ice Shelf attributed to the outflow of subglacial water. The channel increases in height close to the grounding line and widens ~~afterwards~~ ~~downstream~~. Between 7 and 14km from the grounding line, the flanks of the channel ~~became~~ ~~become~~ steeper and terraces ~~formed~~ ~~form~~ on its sides, which are sustained over 38km from the grounding line, but ~~decline in~~ ~~with decreasing~~ height between 14–38km. Within this distance, the height ~~varied of the channel varies~~ only slightly from 170 to 205m. This particular channel is the focus of this study.

~~In-situ observations of melt rates in such channels are often conducted with a phase sensitive Radio Echo Sounder (pRES), which is described in more detail below.~~ Basal melt rates ~~in a channel at~~ ~~inside a channel underneath~~ Ross Ice Shelf, Antarctica were found by Marsh et al. (2016) to be up to  $22.2 \text{ m a}^{-1}$  near the grounding line and only  $2.5 \text{ m a}^{-1}$  for observations 40km downstream. ~~In the lateral direction,~~ the melt rate is only  $0.82 \text{ m a}^{-1}$  demonstrating enhanced melt inside the channel ~~compared to its surroundings~~. At Pine Island Glacier, Antarctica, Stanton et al. (2013) found basal melt rates of up to  $24 \text{ m a}^{-1}$  and an across-channel variability that they suggested to be related to channelized flow. The ~~decreasing of melt rates inside the channel in the flow direction~~ ~~decrease of channel melt rates with distance downstream~~ is likewise described by Le Brocq et al. (2013). ~~Uprising fresh water~~ ~~Buoyant fresh water initially~~ enhances basal melting inside the channel ~~. At some point, it becomes by~~ ~~increasing the vigor of the turbulent plume at the ice base and entraining more ambient warm water~~ Jenkins and Doake (1991)

60 . However, at some point the rising plume can become super-cooled due to the falling pressure. Thus, the melt rate decreases and could even change to refreezing, which leads to the formation of frazil ice and freeze-on. This is a general feature of the thermohaline circulation underneath ice shelves (e.g. MacAyeal, 1984). Similar to Le Brocq et al. (2013), Marsh et al. (2016) assumed that the channel at Ross Ice Shelf is formed by the outflow of subglacial meltwater. Washam et al. (2019) found high seasonal variability in basal melting within a channel at Petermann Gletscher, Greenland. In summer, melt rates reached a maximum of  $80 \text{ m a}^{-1}$ , whereas in winter, melt rates were below  $5 \text{ m a}^{-1}$ . They suggested that increased subglacial discharge during summer strengthens ocean currents under the ice which drives the high melt rates. Besides seasonal variability, melt rates also change within smaller periods. Vaňková et al. (2020) identified melt rate variations at the semi-diurnal  $M_2$  tidal constituent at six of 17 locations at Filchner-Ronne Ice Shelf, Antarctica.

65 In-situ observations of melt rates in sub-ice shelf channels are often conducted with a phase sensitive Radio Echo Sounder (pRES), which is described in more detail below.

Modeling basal melt rates ~~requires adequately requires fully~~ coupled ice-ocean models, ~~solving the energy jump condition at the transition of ice to the ocean~~ that evaluate the energy balance at the ice-ocean transition to compute basal melt rates. While none of the global circulation models deals with ice shelf cavities, there are some coupled ice-sheet-ocean models 70 simulating large scale basal melt rates (Gwyther et al., 2020; Dinniman et al., 2016; Jourdain et al., 2017; Seroussi et al., 2017; Timmermann and Hellmer, 2013; Galton-Fenzi et al., 2012). However, only a few of them incorporate melt channels as this requires very high horizontal resolution: Gladish et al. (2012) showed that channels confine the warm water and stabilize the ice shelf by preventing melt on broader spatial scales. This conclusion is affirmed by Millgate et al. (2013) who found that an increasing number of melt channels lead to a decreasing overall mean melt rate. Our study will provide an observational 75 dataset of basal melt rates that allows ~~assessing this type of modeling~~ understanding these types of modeling results.

The change in geometry due to mechanical deformation is another important contribution to the evolution of basal channels. The spatial gradients in displacement  $u$  lead to strain  $\epsilon$  that causes a change in ice thickness. This ~~component~~ process is governed by the viscoelastic nature of a Maxwell fluid for ice. While ice is reacting purely ~~viscous~~ viscously on long time scales, its behavior on short time scales is elastic (Reeh et al., 2000; Gudmundsson, 2011; Sergienko, 2013; Humbert et al., 80 2015; Christmann et al., 2016; Schultz, 2017; Christmann et al., 2019). The transition from grounded to floating ice and short term geometry changes due to basal melt or accumulation are examples of ice affected by the elastic response. Over time scales of years, viscous creep becomes more relevant. As a consequence, the geometry of melt channels needs to be modeled using viscoelastic material models ~~, which we will also engage below~~ based on a characteristic Maxwell time of 153d (deduced in the model section) arising from the material parameters used for this study.

85 In this study, we present in-situ melt rates of a large melt channel feature of in the southern Filchner Ice Shelf at the inflow from Support Force Glacier (SFG). Field ~~measurement~~ measurements and satellite-borne data ~~enable us~~ provide constraints to investigate how this feature evolves using numerical modeling. In addition to the spatial distribution of basal melt, we ~~are~~ analyzing analyze the temporal evolution of melt rates. We split this manuscript into two main parts, starting with observations followed by a modeling section. We present the methodology and the results in each part separately. A synthesis ~~is then then~~ 90 follows focusing on the evolution of the melt channel.

## 2 Observations

### 2.1 Data acquisition

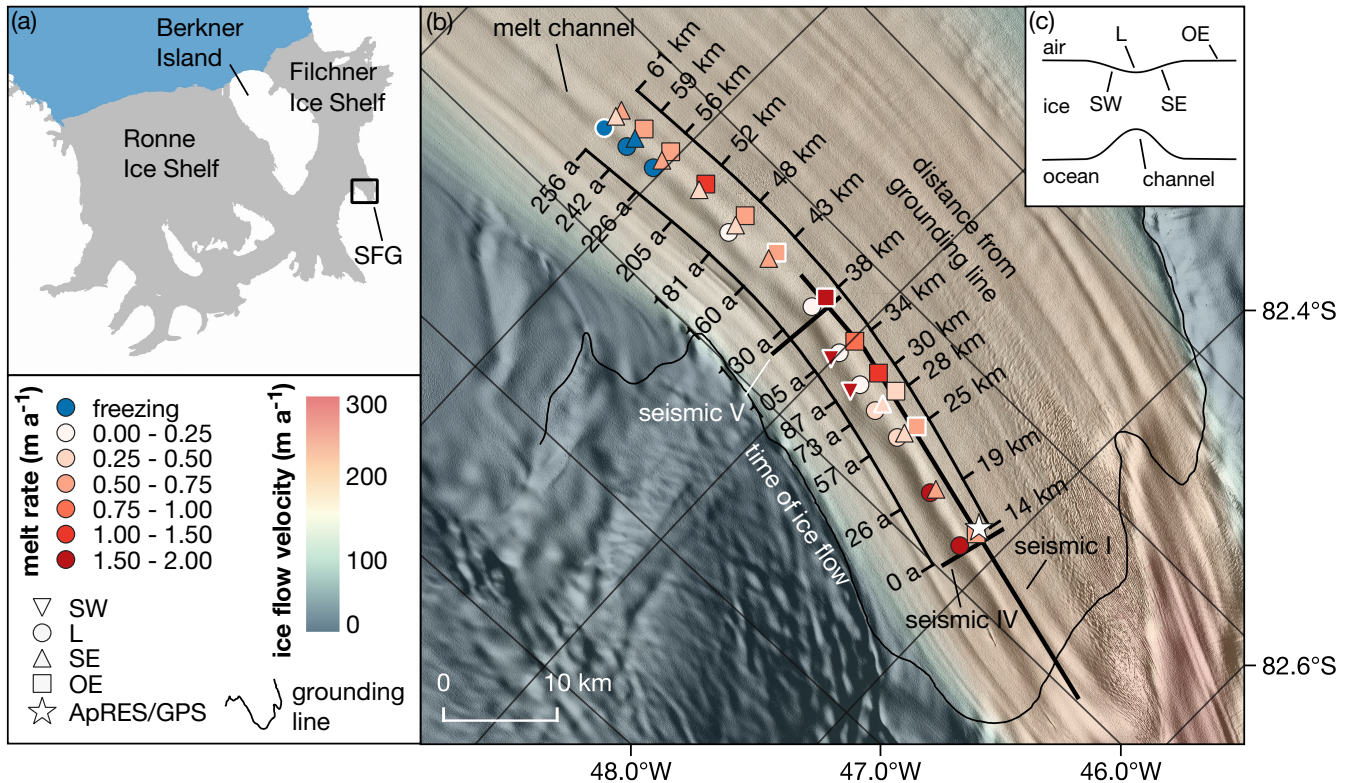
We acquired data at a melt channel on the southern Filchner Ice Shelf under the framework of the Filchner Ice Shelf Project (FISP). We performed 44 phase-sensitive radar (pRES) measurements (locations are shown in Fig. 1) in the season 2015/16, 95 that have been repeated in 2016/17 as Lagrangian-type measurements. These measurements were taken in 13 cross-sections ranging from 14 to 61 km downstream from the grounding line (Fig. 1). This allows us to investigate the spatial variability of basal melt rates. At each cross-section, up to four measurements were performed at different locations: at the steepest western flank (SW), at the lowest surface elevation (L), at the steepest eastern flank (SE) and outside east of the channel (OE; Fig. 1b). In order to achieve an all-year time series, one autonomous pRES (ApRES) station was installed (Fig. 1b). This instrument 100 performed autonomous measurements every two hours resulting in 4342 measurements between 10 January 2017 and 6 January 2018. A One year earlier, a GPS station was also in operation at this point from December 24, 2015 to May 5, 2016-2016, the data of which we use for tidal analysis. To distinguish the single-repeated measurements from the autonomous measurements, we refer to them as *pRES* and *ApRES* measurements, respectively.

### 2.2 Materials and methods

#### 105 2.2.1 pRES device and processing

The pRES device is a low-power, ground-based radar that allows for estimating displacement of layers from repeated measurements with a precision of millimeters (Brennan et al., 2014). This accuracy enables ~~investigating the investigation of~~ even small basal melt rates, taking into account snow accumulation together with firm compaction and strain in ~~vertical direction into account the vertical direction~~ (Corr et al., 2002; Jenkins et al., 2006). The pRES is a frequency modulated continuous wave 110 (FMCW) radar that transmits a sweep, called *chirp*, over a period of one second with a center frequency of 300 MHz and bandwidth of 200 MHz (Nicholls et al., 2015). For a better signal to noise ratio, the single-repeated measurements were performed with 100 chirps per measurement and the measurements of the time series with 20 chirps due to memory and power limitations. After collecting the data, ~~each chirp was correlated anomalous chirps within each burst were removed and the remaining chirps were stacked. Anomalous chirps were identified by correlating each chirp~~ with every other chirp ~~in order to reject those which had of the burst. Those with~~ a low correlation coefficient on average ~~the remaining chirps were stacked were rejected~~.

We followed Brennan et al. (2014) and Stewart et al. (2019) for data processing to get amplitude- and phase-depth profiles. The final profile that contains the amplitude and phase information as a function of two-way travel time was ~~received-obtained~~ from a Fourier transformation. To convert two-way travel time into depth, the propagation velocity of the radar wave is computed following Kovacs et al. (1995). For this the ~~density-vertical ice/firn density profile~~ is required. Here we use a model 120 described by Herron and Langway (1980). As input parameters, accumulation rate and mean annual temperature ~~is are~~ needed, for which we use data from the regional climate model RACMO 2.3/ANT (van Wessem et al., 2014, multi-annual mean 1979



**Figure 1.** (a) Map of the Ronne and Filchner ice shelves (BedMachine Antarctica (Morlighem, 2020; Morlighem et al., 2020)). The study area near the Support Force Glacier (SFG) is marked with a black box. (b) Study area with pRES-derived basal melt rates at 13 cross-sections of the melt channel. The different symbols indicate the position relative to the channel, as shown in (c). Those melt rates derived from a nadir and an off-nadir basal return are marked with a white outline. For each cross-section, the distance from the grounding line and the duration of ice flow from the location furthest upstream are given. The location of an ApRES/GPS station is shown by a star. The seismic I, IV and V lines mark the location of active seismic profiles (Hofstede et al., 2021a, b). The background is a hillshade of the Reference Elevation Model of Antarctica (Howat et al., 2018, 2019) overlaid by the ice flow velocity (Hofstede et al., 2021a). (c) Sketch of a cross-section of the channel with measurement locations on the steepest western surface flank (SW), at the lowest surface elevation (L), on the steepest eastern surface flank (SE) and outside east of the channel (OE).

– 2011). Despite the correction of higher propagation velocities in the firm, the uncertainty of the velocity and thus of the depth is 1% (Fujita et al., 2000).

## 2.2.2 Basal melt rates from repeated pRES measurements

125 The method for determining basal melting rates, previously described by e.g. Nicholls et al. (2015) and Stewart et al. (2019), is based on the ice thickness evolution equation. The change in ice thickness over time  $\partial H/\partial t$  consists of **a-component components** arising from deformation and accumulation/ablation at both interfaces (e.g. Zeising and Humbert, 2021). As our

observations are discrete in time, the change of ice shelf thickness  $\Delta H$  within the time period  $\Delta t$ , that is caused by changes at the surface and in the firn  $\Delta H_s$  (e.g. snow accumulation/ablation and firn compaction), by strain in vertical direction  $\Delta H_\varepsilon$  and by thickness changes due to basal melt  $\Delta H_b$  is considered:

$$\frac{\Delta H}{\Delta t} = \frac{\Delta H_s}{\Delta t} + \frac{\Delta H_\varepsilon}{\Delta t} + \frac{\Delta H_b}{\Delta t} \quad (1)$$

(Vaňková et al., 2020; Zeising and Humbert, 2021). In order to obtain the basal melt rate, the change in ice thickness must be adjusted for the other contributions. Snow accumulation/ablation, firn compaction but also changes in radar hardware ~~(and settings or settings (a different pRES instrument was used for the revisit))~~ can cause ~~an a~~ vertical offset near the surface that cannot be distinguished from one another. Following Jenkins et al. (2006), we aligned both measurements below the firn-ice transition. To this end, we ~~compute~~ computed the depth of pore closure  $h_{pc}$  takes place, i.e. the depth at which a density of  $830 \text{ kg m}^{-3}$  is reached. ~~To this end, we~~ We apply the densification model (Herron and Langway, 1980) and mean annual accumulation rate and temperature from the multi-year mean RACMO2.3 product (van Wessem et al., 2014). In our study area,  $h_{pc}$  varies between 62m and 71m. The actual alignment is based on a correlation of the amplitudes for a window of 6m around  $h_{pc}$ . No reliable alignment could be obtained from the correlation for nine stations ~~, since the correlation values were not unambiguous because the correlations of the surrounding depths resulted in ambiguous alignments.~~ As a consequence, these stations were not considered.

After the alignment, the change in the ice thickness  $H_i$  below the ~~depth of the pore close~~ pore closure depth  $h_{pc}$  is only affected by vertical strain and basal melt. Thus the basal melt rate  $a_b$  (positive for melting, negative for freezing) is

$$a_b = -\frac{\Delta H_b}{\Delta t} = -\left(\frac{\Delta H_i}{\Delta t} - \frac{\Delta H_\varepsilon}{\Delta t}\right) \quad (2)$$

with  $\Delta H_\varepsilon$  being the thickness change due to vertical strain  $\varepsilon_{zz}^{\text{obs}}$ .  $\Delta H_\varepsilon$  is derived from integrating  $\varepsilon_{zz}^{\text{obs}}$  from the aligned reflector at  $h_{pc}$  to the ice base  $h_b$

$$\Delta H_\varepsilon = \int_{\bar{h}_b}^{h_{pc}} \varepsilon_{zz}^{\text{obs}} dz. \quad (3)$$

Here,  $\bar{h}_b$  denotes the ~~averaged~~ average depth of the ice base of the measurements. The vertical strain is defined as

$$\varepsilon_{zz}^{\text{obs}} = \frac{\partial u_z}{\partial z} \quad (4)$$

with the displacement in vertical direction  $u_z$ .

In order to determine  $u_z$ , we followed the method described by Stewart et al. (2019). We divided the first measurement in segments of 6m width with 3m overlap from a depth of 20m below the surface to 20m above the ice base. To determine vertical displacements, we cross-correlated each segment of the first measurement with the repeated measurement. The lag of the largest amplitude correlation coefficient was used to find the correct minimum phase difference, from which we derived

the vertical displacement. Since noise prevents the reliable estimation of the vertical displacement from a certain depth on, we calculated the depth at which the averaged correlation of unstacked chirps undercuts the empirical value of 0.65. We name this the noise-level depth limit  $h_{nl}$ , which is 743m on average in this study area. Only those segments located below  $h_{pc}$  and above  $h_{nl}$  were used to avoid densification processes and noise to influence the strain estimation. A linear regression was calculated from the shifts of the remaining segments, assuming a constant vertical strain distribution over depth as the overall trend. However, at six stations, all in the hinge zone where the ice is ~~bended-bent~~ by tides, we observed a slight deviation from a linear trend at deeper layers (Fig. A1a). A depth-dependent tidal vertical strain caused by tidal bending near the grounding line was also found by e.g. Jenkins et al. (2006) and Vaňková et al. (2020), although the long-term vertical strain was found to be depth independent (Vaňková et al., 2020). The segments that indicate a non-linear distribution are located below  $h_{nl}$  and are hence not taken into account for the regression. Nevertheless, we want to provide a lower limit of  $|\Delta H_\varepsilon|$  considering other forms of strain-depth relations (Jenkins et al., 2006). For this purpose, we use a strain model that is decreasing linearly from half the ice thickness (approximately  $h_{nl}$ ) to the depth of at which  $\varepsilon_{zz} = 0$   ~~$\varepsilon_{zz}^{obs} = 0$~~  (Fig. A1b). This serves as a lower limit of ~~the displacement~~  $|\Delta H_\varepsilon|$ , whereas a linear  ~~$\varepsilon_{zz}(z) = \varepsilon_{zz}^{obs}(z)$~~  gives the upper limit. The average of both gives  $\Delta H_\varepsilon$  and the difference the uncertainty.

In order to derive  $\Delta H_i$ , we used a wider segment of 10m around the basal return, which was identified by a strong increase in amplitude. Its upper limit is located 9m above the basal return, while the lower limit is defined 1m below the basal return. The vertical displacement of the ice base and thus the change in ice thickness was obtained from the cross-correlation of the basal segment. However, more than one strong basal reflection occurred at 7 sites. For these sites, we averaged the melt rates we derived from both basal segments. In Appendix A1 we discuss the identification of the basal reflection and the influence of off-nadir basal returns on the estimation of basal melt rates (Tab. A1, Figs. A2 and A3).

The uncertainty of the melt rate results mainly from the alignment of the repeated measurement and the uncertainty of  $\Delta H_\varepsilon$ . This leads to uncertainties in the melt rate of ~~more than  $0.2 \text{ m a}^{-1}$  up to  $0.26 \text{ m a}^{-1}$~~  for locations in the hinge zone, while at other locations the uncertainty is predominantly in the range of  $< 0.05 \text{ m a}^{-1}$ . At those stations where the melt rate was averaged, the error represents the difference of the two melt rates. Since this difference is up to  $1.34 \text{ m a}^{-1}$ , the error significantly exceeds  $0.26 \text{ m a}^{-1}$  in some cases.

In order to classify how representative the melt rates are for the past, we reconstructed the ice thickness based on the values derived from the pRES measurements. First, we ~~interpolated the linearly interpolated~~  $a_b$ ,  $\Delta H_\varepsilon$  and  $\Delta H_s$  along the distance of the channel to get continuous values between the cross-sections and smoothed the results in order to obtain a trend for each process. We converted the distance ~~downstream of the the upstream-most~~ from the upstream-most cross-section to an age beyond this cross-section by assuming the mean flow velocity is constant in time and space. Next, we treat the change in ice thickness as a transport equation. To this end, we compute the advection of the ice thickness along the flowline under present day climate conditions ( $H_{PDadv}$ ). For this we use interpolated functions of  $a_b(t)$ ,  $\Delta H_\varepsilon(t)$  and  $\Delta H_s(t)$ . The expected

ice thickness at  $H_{\text{PDadv}}$  is then the thickness at  $t_0 = 0$  plus the cumulative change in ice thickness:

$$H_{\text{PDadv}}(t) = H(t_0) + \int_{t_0}^t (\Delta H_s(t') + \Delta H_\varepsilon(t') + a_b(t')) dt'. \quad (5)$$

190 ~~We can turn this around~~ We can invert this and calculate a synthetic melt rate  $a_b^{\text{syn}}(t)$  that reconstructs the observed ice thickness  $H$ :

$$H(t) = H(t_0) + \int_{t_0}^t (\Delta H_s(t') + \Delta H_\varepsilon(t') + a_b^{\text{syn}}(t')) dt'. \quad (6)$$

Descriptions of the symbols are given in Tab. A2.

### 2.2.3 Basal melting from ApRES time series

195 The processing of the autonomous measured time series with a 2-hour measurement interval differs slightly from the single-repeated measurements. For the ApRES time series, the instrument was located below the surface, thus snow accumulation had no influence on the measured ice thickness and an alignment of the measurements is not necessary. This gives the possibility to determine the firm compaction  $\Delta H_f$ . Without the alignment, thickness change due to strain needs to be considered for the whole ice thickness  $H$

$$200 \quad \Delta H_\varepsilon = \int_0^H \varepsilon_{zz}^{\text{obs}} dz. \quad (7)$$

For processing, we followed the method described by Zeising and Humbert (2021), which differs slightly from the processing applied by Vaňková et al. (2020). Similar to processing of the single-repeated measurements, we divided the first measurement into the same segments and calculated the cross-correlation of the first measurement ( $t_1$ ) with each repeated measurement ( $t_i$ ). The displacement was obtained by the lag of the minimum phase difference. To avoid half-wavelength ambiguity due to phase  
205 wrapping, we limited the range of expected lag based on the displacement derived for the period  $t_1 - t_{i-1}$ .

The estimation of the vertical strain for the period  $t_1 - t_i$  is based on a regression analysis of the vertical displacements for chosen segments. Only those segments located below a depth of 70 m and above the noise-level depth limit of  $h \approx 600$  m were used to avoid densification processes and noise ~~to influence~~ influencing the strain estimation. Assuming constant strain over depth ~~(which is a first guess only)~~, the regression analysis gives the vertical strain and the cumulative displacement  $u_z(z)$  is

$$210 \quad u_z(z) = \varepsilon_{zz}^{\text{obs}} z + \Delta H_f \quad (8)$$

where the intercept at the surface is the firm compaction  $\Delta H_f$ . ~~By increasing the time period, the~~ Similar to determination of  $\Delta H_i$  of the single-repeated measurements, we derived the change in ice thickness  $\Delta H$  for a wider segment of 10 m. The cumulative melt of the ApRES time series is derived.



was finally derived by

$$215 \quad \Delta H_b(t) = - \int_{t_1}^t (\Delta H(t') - \Delta H_\varepsilon(t') - \Delta H_f(t')) dt'. \quad (9)$$

In order to investigate if the basal melt is affected by tides, we first de-trended the cumulative melt time series and computed the frequency spectrum afterwards.

Subsequently, we used ~~frequencies up to the solar annual constituent as input for a harmonic fit~~ the time series of  $\Delta H(t)$   
220 ~~–We then to investigate the occurrence of melt events. We~~ de-tided  $\Delta H(t)$  by subtracting ~~the harmonic fit a harmonic fit~~  
based on frequencies up to the solar annual constituent and calculated the thinning rate ~~–Assuming, afterwards. Assuming~~ that  
basal melt causes changes on short time scales of several days, we attribute abrupt increases in the thinning rate to basal melt  
anomalies.

#### 2.2.4 Global Positioning System (GPS) processing

225 The GPS processing is similar to the method used by Christmann et al. (2021). With the Waypoint GravNav 8.8 processing  
software, we applied a kinematic precise point positioning (PPP) processing for the GPS data that were stored in daily files.  
We merged three successive daily solutions to enable full day overlaps avoiding jumps between individual files. Afterwards,  
we combined the files in the middle of each 1-day overlap using relative point to point distances and removed outliers. The  
data has been low-pass filtered for frequencies higher than 1/3600 Hz. For tidal analysis, we calculated the power spectrum of  
230 the vertical displacement.

#### 2.2.5 Digital Elevation Model (DEM)

We use the TanDEM-X PolarDEM 90m Digital Elevation data product provided by the German Aerospace Center (DLR) as  
reference elevation model (DLR, 2020). As the elevation values represent ellipsoidal heights relative to the WGS84 ellipsoid  
we refer the PolarDEM to the EIGEN-6C4 Geoid (Foerste et al., 2014). In the following, we refer the DEM heights above  
235 Geoid as observed surface elevation  $h_{TDX}$ . The absolute vertical height accuracy of the PolarDEM is validated against ICESat  
data and given to be < 10m (Rizzoli et al., 2017). For our region of interest the accuracy is given to be < 5m as shown in  
Fig. 16 of Rizzoli et al. (2017).

### 2.3 Results and discussion of observations

#### 2.3.1 Spatial melt rate distribution around basal channel

240 ~~The estimated~~ We were able to determine basal melt rates ~~derived from at 34 of the 44~~ single-repeated pRES measurements.  
At some of the excluded stations, low correlation values prevented the alignment at the firn-ice transition or the estimation of

the vertical strain. At others, a change in the shape of the first basal return prevented the determination of the change in ice thickness.

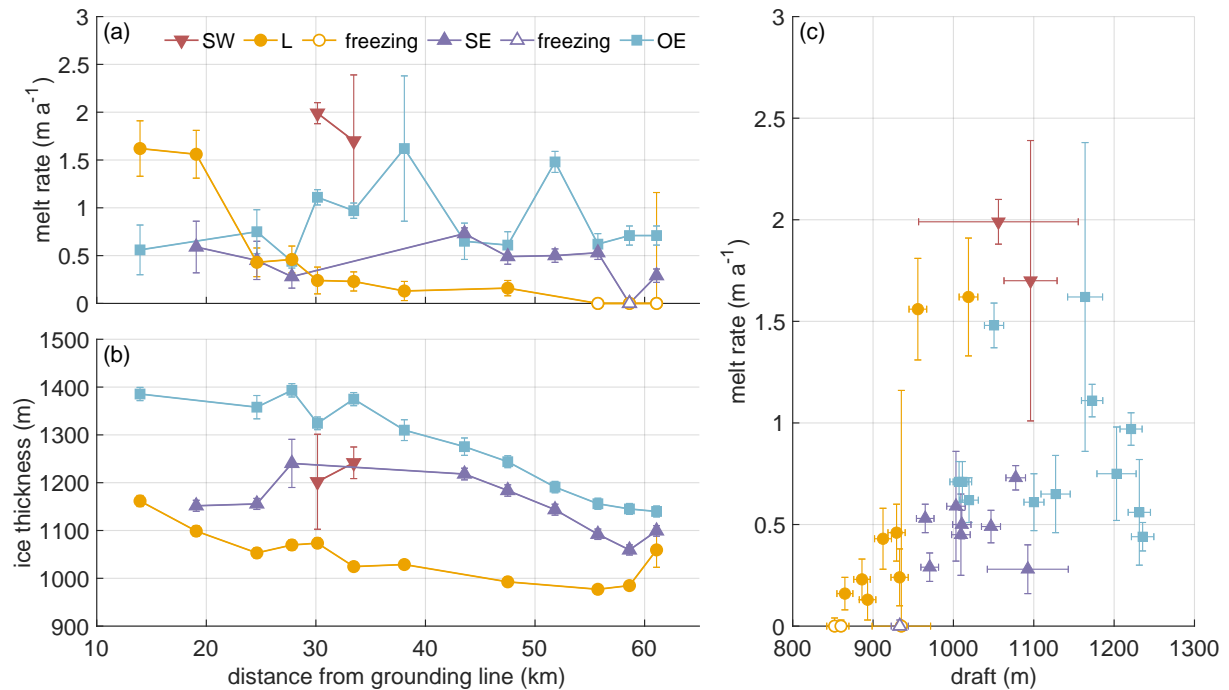
245 The estimated basal melt rates range from 0 to ~~2.3 m a<sup>-1</sup>~~ ( $2 \text{ m a}^{-1}$ , with the largest melt rates on the steepest western flank (SW) of the channel (Fig. 2a). ~~Some stations indicate basal freezing.~~ A trend of decreasing melt rates in the along channel direction was found at the ~~thinnest-highest~~ part (L) of the channel. Here, melt rates decrease from  $1.8 \text{ m a}^{-1}$  to basal freezing, measured at the three most downstream cross-sections. Outside of the channel (OE), basal melt rates are more variable without a trend. Stations at the eastern flank (SE) show a lower range of variability. Here,  $a_b$  varies between basal freezing and  $0.8 \text{ m a}^{-1}$ .

250 The height of the channel (difference in ice thickness between L and OE; Fig. 2b) increases from about 200 m at the southernmost cross-section to a maximum ~~difference~~ of about 330 m over a distance of 20 km in ice flow direction. At this location the melt rates within the channel fall below those outside the channel and the height of the channel decreases, reaching  $\sim 100$  m at the northernmost cross-section.

In Fig. 2c we display the melt rates as a function of ice-shelf draft, derived from the TanDEM-X surface elevation and the pRES ice thickness. The melt rates outside the channel (OE) seem to be independent of the ice-shelf draft, while inside the channel (L) the melt rates decrease with reduced draft. However, melt rates at the largest ~~drift-draft~~ inside the channel are approx. three times larger than those outside the channel or at the steepest eastern flank (SE) at similar draft.

255 The distribution of  $\Delta H_e$  shows a significant thickening of more than  $1 \text{ m a}^{-1}$  at the most upstream cross-section at L and OE (Fig. A4). In the ice flow direction,  $\Delta H_e$  declines, reaching about zero above the channel at the cross-section furthest downstream. In contrast, outside the channel, strain-thinning occurred ~~30 km from from 30 km downstream~~ the grounding line. The change in ice thickness due to firn compaction and accumulation is close to zero in the entire study area (Fig. A4).

260 However, the measurements only show a snapshot, as the variability on longer time scales is unknown. Based on the interpolated melt rates,  $\Delta H_e$  and  $\Delta H_s$  along the channel (solid lines in Fig. 3a and A4), we computed the advected ice thickness under present day climate conditions  $H_{\text{PDadv}}$  (solid lines in Fig. 3b). The comparison of  $H_{\text{PDadv}}$  with the measured ice thickness (dashed lines) shows large differences of up to 185 m above the channel. While the observed ice thickness decreases rapidly above the channel,  $H_{\text{PDadv}}$  remains almost constant. In contrast, no significant differences between the observed ice thickness and  $H_{\text{PDadv}}$  can be identified outside the channel. If the present day melt rates were representative ~~for a longer period of time of the long-term mean~~, the channel would ~~be closed close~~ within 250 years, as the difference in  $H_{\text{PDadv}}$  above and outside the channel reaches zero. However, since the channel still exists beyond the northern end of our study area, it can be concluded  
270 that the melt rates in the channel must have been higher in the past. How large the melt rates must have been on average can be deduced from the reconstruction of the existing ice thickness. The resulting synthetic average melt rate in the channel is about twice as high as the observed ~~ones~~ melt rates, reaching  $3.5 \text{ m a}^{-1}$  in the upstream area (yellow dashed line in Fig. 3a). Assuming a steady state ice thickness upstream of the study area (supported by low elevation change found in (Helm et al., 2014)) and constant vertical strain and accumulation in the past, this indicates that melt rates in the last 250 years have been  
275 significantly higher than observed now.



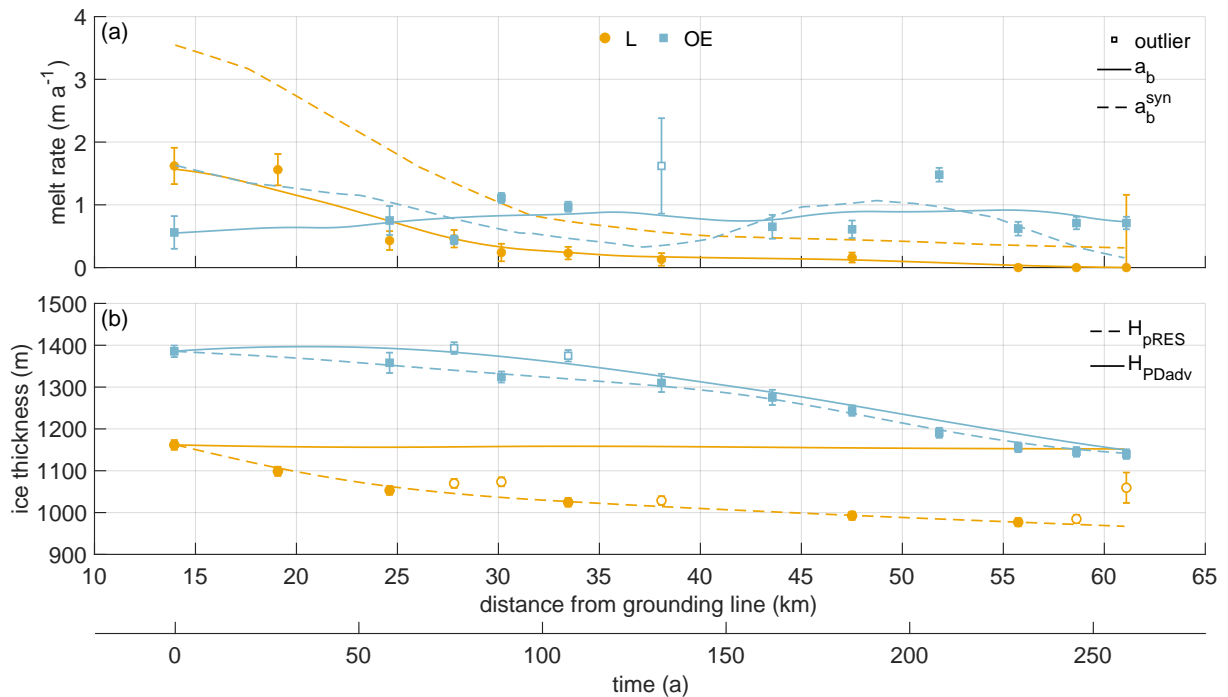
**Figure 2.** Spatial distribution of pRES-derived (a) basal melt rates (positive  $a_b$  represents melting) and (b) ice thickness at the locations SW (red), L (yellow), SE (purple) and OE (blue) around the channel as a function of distance from the grounding line. (c) Melt rate as a function of ice draft obtained from pRES-derived ice thickness and  $h_{TDX}$ . ~~Uncertainties are shown by gray error bars.~~

In addition to the observations we have presented in this section, we ~~also conducted measurements of the vertical profile of the vertical displacement, that we present below~~ show the pRES-derived vertical displacement profiles in section 3.2.2 together with simulations.

### 2.3.2 Time series of basal melting

280 The ApRES time series outside the melt channel reveals an average melt rate of  $0.23 \text{ m a}^{-1}$  (Fig. 4a). A look at the monthly mean melt rates shows increased melt during the summer months (January, February and November, December) in comparison with the winter season. In these months the melt rates show values from more than  $0.3 \text{ m a}^{-1}$  up to  $0.62 \text{ m a}^{-1}$ . ~~The unfiltered time series of the cumulative melt shows a tidal signal with amplitudes of  $\sim 1 \text{ cm}$  within 12 h around the low-pass filtered cumulative melt. The spectral analysis shows~~ spectral analysis of the unfiltered cumulative melt time series shows all main  
 285 diurnal and semi-diurnal constituents, which is in accordance ~~to~~ with the frequencies observed from the GPS station (Fig. A5). ~~The analysis of melt events from the~~

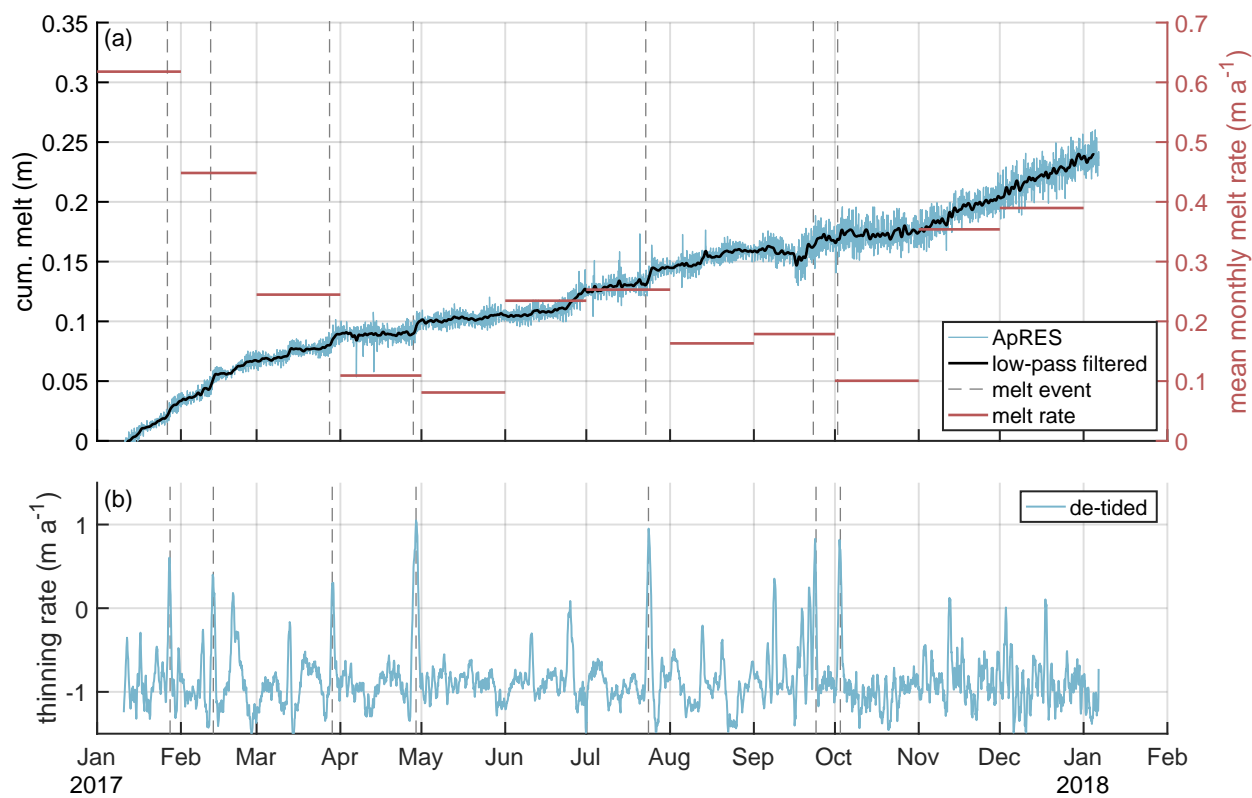
The presence of the tidal induced signal prevents a robust analysis of the basal melt rate as a high resolution time series. Nevertheless, to investigate the occurrence of non-tidal melt anomalies, we analyzed the time series of  $\Delta H(t)$  after it was



**Figure 3.** (a) Melt rates at locations L (yellow) and OE (blue) are shown by dots (L) and squares (OE). The interpolated melt rates ( $a_b$ ) are shown by solid lines and synthetic melt rates ( $a_b^{syn}$ ) that are necessary to reproduce  $H_{pRES}$  at L and OE are shown by dashed lines. (b) Ice thickness at locations L (yellow) and OE (blue) are shown by dots (L) and squares (OE). The interpolated ice thicknesses ( $H_{pRES}$ ) are shown by dashed lines and the advected ice thicknesses under present day climate conditions ( $H_{PDadv}$ ) from the observed melt rates at L and OE are shown by solid lines. The two x-axes show the distance from the grounding line in kilometers and the duration of ice flow in years from the measurement location furthest upstream. Unconsidered observations were marked as outliers. Error bars mark the uncertainties of the pRES-derived values.

de-tided. The resulting de-tided thinning rate shows several melt anomalies distributed over the entire measurement period (Fig. 4ab). These events lasted from a several hours to a few days and melted up to 1.5 cm of ice.

~~We found evidence for a~~ The unfiltered time series of the cumulative melt indicates a tidal signal with amplitudes of  $\sim 1$  cm within 12h around the low-pass filtered cumulative melt. However, we found evidence that this tidal signal is due to the inaccuracy in the determination of the strain and not a true tidal melt amplitude: We found a clear accordance of the strain in the upper ice column with the tidal signal as recorded by GPS measurements. ~~Unfortunately,~~ however, we are lacking tidal vertical strain in the lower column of the ice due to the noise, ~~which permits to extract the temporal variation of basal melt rates on tidal time scales.~~ As the tidal variation of  $\Delta H/\Delta t$  is by far lower than the observed  $\Delta H_e/\Delta t$ , either deformation in the upper and lower parts compensates each other, or basal melt/freeze takes this role. We can exclude freezing, as we do not find jumps in the amplitude of the basal return in the ApRES signal (Vaňková et al., 2021) over tidal time scales. Consequently, we



**Figure 4.** Time series of basal melting at ApRES location outside the channel. (a) Cumulative melt (blue line, left y-axis) over measurement period from 10 January 2017 to 6 January 2018 with low-pass filtered time series (black line). In September 2017, a malfunction of the ApRES caused a change of the attenuation which resulted in a noisier time series. Monthly mean melt rates are shown by red lines on the right y-axis. (b) Thinning rate after subtracting of the tidal signal (blue line). The dashed gray lines in (a) and (b) mark stronger melt events.

infer that strain in the lower part compensates the one half compensates that in the upper part and there is only a small variation of basal melt on tidal time scales.

As our location is close to two hinge zones, upstream and west of the melt channel, only a full three-dimensional model could shade light into shed light on the vertical strain in the lower part of the ice column. This is numerically costly for the required non-linear strain theory and not in reach beyond the scope of the project. With melt channels being located (or initiated) in the hinge zone, any kind of ApRES time series performed at ice columns with a thickness of more than 1000 m is thick ice columns might be affected by the unclear strain-depth profile in the lower part of the ice column. This may be overcome by a radar device with higher transmission power, that allows to detect the the detection of vertical displacement of layers down to the base. The observed tidal dependency of the vertical strain is consistent to with the finding from other ApRES locations at the Filchner-Ronne Ice Shelf by Vaňková et al. (2020). They found the strongest dependency, even of the basal melt rate

at some stations, on the semidiurnal ( $M_2$ ) constituent. ~~Beside~~ Besides depth-independent tidal vertical strain, (Vaňková et al.,  
310 2020) found tidal deformation from elastic bending at ApRES stations located near grounded ice.

For an ice shelf such as the Filchner we expect the principal drivers of basal melting to be the water speed and its temperature above the in situ freezing point (e.g. Holland and Jenkins, 1999). For much of the ice shelf the water speed is dominated by tidal activity (Vaňková et al., 2020), but near the grounding line of SFG we expect the tidal currents to be low, consistent with the evidence from the ApRES thinning rate time series. It is likely that the anomalously high melting events seen in the record  
315 result from the passage of eddies, with their associated water speed and temperature anomalies.

### 3 Viscoelastic modeling

To obtain a more profound understanding of the evolution of the channel, we conduct transient simulations and analyze the change in geometry of ~~a~~ 2D cross-sections ( $x, z$  direction) over time, as well as the simulated strain-field. The simulations are forced with the basal melt rates (both interpolated and synthetic) obtained in this study (Fig. 3). We transform distance  
320 ( $y$ -direction) to time in along flow direction of the ice shelf (Fig. 1) using present day velocities. This enables us to study under which conditions the channel is stable or vanishes.

Ideally, we would have observations of ice geometry and basal melt rates from the ~~transition from inland~~ grounding line onward, but our first cross-section with observations is located 14km downstream of the grounding line (Fig. 1). The initial elastic response of the grounded ice becoming afloat ~~had~~ has faded away. Further elastic contributions to the deformation  
325 ~~originates~~ originate from in-situ melt at the base and accumulation at the surface. To ~~initialize our simulations adequately, we~~ therefore best fit the stress-state at the first cross-section, we conduct a spin-up.

#### 3.1 Model

The model comprises non-linear strain theory ~~accounting for finite deformations~~, as there is no justification to expect a priori the ~~deformation to be small~~ simplified, linearized strain description for simulation times ~~of more longer~~ than 200a (~~e.g. ?~~)  
330 (e.g. Haupt, 2000). We treat the ice as a viscoelastic fluid and solve the system of equations for displacements using the commercial finite element software COMSOL (~~Christmann et al., 2019~~), (Appendix Sec. B1; Fig. B1 Christmann et al., 2019). The constitutive relation corresponds to a Maxwell material with an elastic response on short time scales and viscous response on long time scales. For homogeneous, isotropic ice, two elastic material parameters exist (Young's modulus  $E$  and Poisson's ratio  $\nu$ ). We conduct all viscoelastic simulations with commonly used values for ice ~~for Young's modulus of 1 GPa and Poisson's ratio of 0.325~~ of  $E = 1 \text{ GPa}$  and  $\nu = 0.325$  (Christmann et al., 2019). Another material parameter of the vis-  
335 coelastic Maxwell material is the viscosity. It controls the viscous flow of ice. We use a constant viscosity of  $5 \times 10^{15} \text{ Pa s}$  and discuss the influence of this material parameter later on. This constant viscosity is at the upper limit of the viscosity distribution derived by an inversion ~~of the~~ for the rheological rate factor in the floating part of the Filchner-Ronne Ice Shelf (Appendix Sec. B2 and Fig. B2). This inversion has been conducted using the Ice Sheet and Sea-Level System  
340 Model (ISSM) (Larour et al., 2012) in higher-order Blatter-Pattyn approximation (Blatter, 1995; Pattyn, 2003), ~~BedMachine~~

geometry (Morlighem et al., 2020) and using BedMachine geometry (Morlighem, 2020; Morlighem et al., 2020), the velocity field of (Mouginot et al., 2019b, a). It was further supported by Mouginot et al. (2019b, a), and a temperature field presented in (Eisen et al., 2020) Eisen et al. (2020), based on the geothermal heat flux of (Martos et al., 2017). Martos et al. (2017). For the assumed material parameters, we obtain a characteristic Maxwell time of  $\tau = 153$  d by  $\tau = (2 + 2\nu)\eta/E$  (Haupt, 2000).

345 The model geometry represents a cross-section through the melt channel (Fig. 5) with the  $x$ -direction being across channel and resembling the seismic IV profile (Fig. 1) for  $t = 0$  a. By assuming plane strain, it is virtually infinite in the  $y$ -direction. The shape and the loading do not vary in the along-flow direction (width is sufficiently large). The stress state is independent of the third dimension, the displacement  $u_y$  in flow direction is zero and hence all strain components in the direction of the width vanish

350 
$$\varepsilon_{yy} = \varepsilon_{xy} = \varepsilon_{yz} = 0. \quad (10)$$

The computational domain is discretized by an unstructured mesh using prisms with a triangular basis involving a refined resolution near the channel. We use the direct MUMPS solver and backward differentiation formula with automatic time step control and quadratic Lagrange polynomials as shape functions for the displacements. The viscous strain is an additional internal variable in the Maxwell model and we use shape functions of linear discontinuous Lagrange type to save computational effort Lagrange type. In some cases, the geometry evolution leads to degraded mesh elements, which requires automated remeshing from time to time.

In this study, the ice density is  $910 \text{ kg m}^{-3}$  and the seawater density is  $1028 \text{ kg m}^{-3}$ . At the upper and lower boundaries, we apply stress boundary conditions: for the ice-ocean interface, a traction boundary condition specifies the water pressure by a Robin-type condition. The ice-atmosphere interface is traction-free. Laterally, we apply displacement boundary conditions. 360 As we take a plane strain approach, we can neglect deformation in the downstream-along-flow direction. To obtain reasonable realistic lateral boundary conditions, we transfer-transform observed vertical strain and hence, vertical displacements, at the location OE in horizontal displacements assuming incompressibility. First, we assume incompressibility

$$\varepsilon_{zz}^{\text{obs}} = -(\varepsilon_{xx}^{\text{obs}} + \varepsilon_{yy}^{\text{obs}}); \quad (11)$$

and compute the sum of the horizontal strain. We integrate this strain to get a horizontal displacement. Therefore, we assume 365 a homogeneous material, no additional forces in horizontal direction and a constant ice thickness. The last assumption is not valid inside the channel. However with a channel of 300 m maximum height over 1 km width, the deviation from outside to inside the channel is small for a computational domain of around 10 km width and an ice thickness around 1300 m. With these assumptions we get a constant strain and integrate this strain to get a horizontal displacement. As we additionally assume plane strain, we can only apply this displacement to the lateral boundary in the across-flow direction. To model the compression and 370 extension of the ice flow through the embayment, we apply the horizontal displacement to each lateral side so that  $u_x$  becomes

$$u_x = \frac{(\varepsilon_{xx} + \varepsilon_{yy})W}{2} \cdot \frac{1}{2} \int_0^W (\varepsilon_{xx}^{\text{obs}} + \varepsilon_{yy}^{\text{obs}}) dx = \frac{(\varepsilon_{xx}^{\text{obs}} + \varepsilon_{yy}^{\text{obs}})W}{2}, \quad (12)$$

with  $W$  the width of the simulated cross-section (Fig. 5). We assume that the horizontal displacements are ~~constant in vertical direction~~ depth-independent at lateral boundaries, resulting in a compression or elongation perpendicular to the channel  
375 (Fig. B3a).

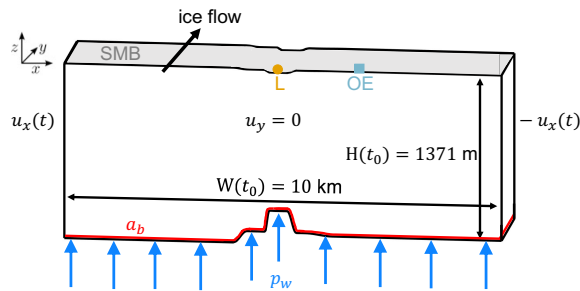
The climate forcing consists of ~~the~~ SMB and basal melt rate. Technically, both are applied by changing the geometry of the reference configuration with the respective cumulative quantities (Fig. B3b,c). For the SMB, we used multi-year mean RACMO2.3 data (van Wessem et al., 2014) ranging from 0.15 to 0.17  $\text{m a}^{-1}$  for a density of  $910 \text{ kg m}^{-3}$ , that we slightly modified to account for the surface depression over the channel: accumulation measurements at the pRES locations indicated  
380 higher accumulation in the channel than outside by a factor of roughly 1.5. Thus, we used 50% higher accumulation rates above the basal channel and a smooth cosine-shaped transition in the  $x$ -direction. A crucial forcing is of course the basal melt rate. Here we conduct individual experiments that are based on our observed melt rates and ~~its~~ their variations. As this data is spatially sparse, we need to interpolate those values in the across-channel ( $x$ ) direction. ~~To this end, we assume~~ We assume a smooth cosine-shaped transition between the observed basal melt rates outside east (OE) and inside the channel (L). For melt  
385 rates outside west, we do not have any observations and assume them to be time-independent. With 10% lower melt rates than for OE during the spin-up and a smooth cosine-shaped transition ~~between outside west and lowest, we get a good agreement of the ice base geometry for outside west with seismic IV and V. For the first 20 a after the spin-up, the melt rate outside east is higher than outside west. While afterwards, the melt rates in the western part are higher than in the eastern part outside the channel.~~

390 As we conduct Lagrangian experiments, ~~distance equals time~~ we computed the time between the observed measurements through their distance divided by flow velocity. We define  $t_0 = 0$  a at the pRES measurements furthest upstream (Fig. 1) that is also the location of the seismic ~~observations~~ observation IV by Hofstede et al. (2021a, b). To evaluate our simulations, we compare the simulated surface topography and ice thickness, as well as  $u_z(z)$  with the observed one for the considered time interval of 250 a.

395 We performed a spin-up to avoid model shocks, introduced by the transient behavior of a Maxwell material, that could be falsely interpreted as the response to geometry changes, for instance, caused by basal melt rates. The main goal ~~is~~ here is to have the geometry after spin-up fit reasonably to the geometry measured at the seismic IV line (see Fig. 1) that we denote as time  $t_0$ . The spin-up covers ~~75 a~~ 75 years, which corresponds to the time from the grounding line to that profile under present day flow speeds. To this end, we take a constant melt rate equal to the melt rate at  $t_0$  and adjust the geometry at the grounding  
400 line to match the geometry at  $t_0$  of the seismic IV profile reasonably well. After the spin-up, the width  $W(t_0)$  of the simulated geometry is 10 km. With this procedure ~~an~~ the initial elastic deformation at the beginning of the transient simulation vanished and the viscoelastic geometry evolution of the melt channel can be evaluated for different melt scenarios and SMB forcings.

Short-term forces like the time-varying climate forcing as well as the lateral extension or compression demand the usage of a viscoelastic instead of a viscous model to simulate the temporal evolution of the basal channel. ~~We shown later on.~~ First,  
405 we conduct a series of simulations with different material parameters and identify the best match of observed and simulated ice thickness above (L) and outside east (OE) of the channel. At these two positions most of the pRES measurements were done and the distribution of the melt rates gives an adequate basis to force the model. Due to the sparsity of observations at the





**Figure 5.** The cross-section of the model geometry at the end of the spin-up ( $t_0$ ) of the first experiment shows its corresponding width and ice thickness outside east. The boundary conditions of the viscoelastic model are the water pressure  $p_w$  acting perpendicular to the ice base, the displacement in the flow direction  $u_y$ , which is zero due to plane strain assumptions, and the time-dependent displacement  $u_x(t)$  acting in the lateral direction derived by pRES observations. The locations of the pRES station at the lowest point (L) of the channel and outside east (OE) are shown at their position on the surface in addition to the SMB (mass increase) and the melt rate  $a_b$  (mass decrease) at the base of the geometry.

western side, we apply a forcing in the model based only on melt rates at L and OE.

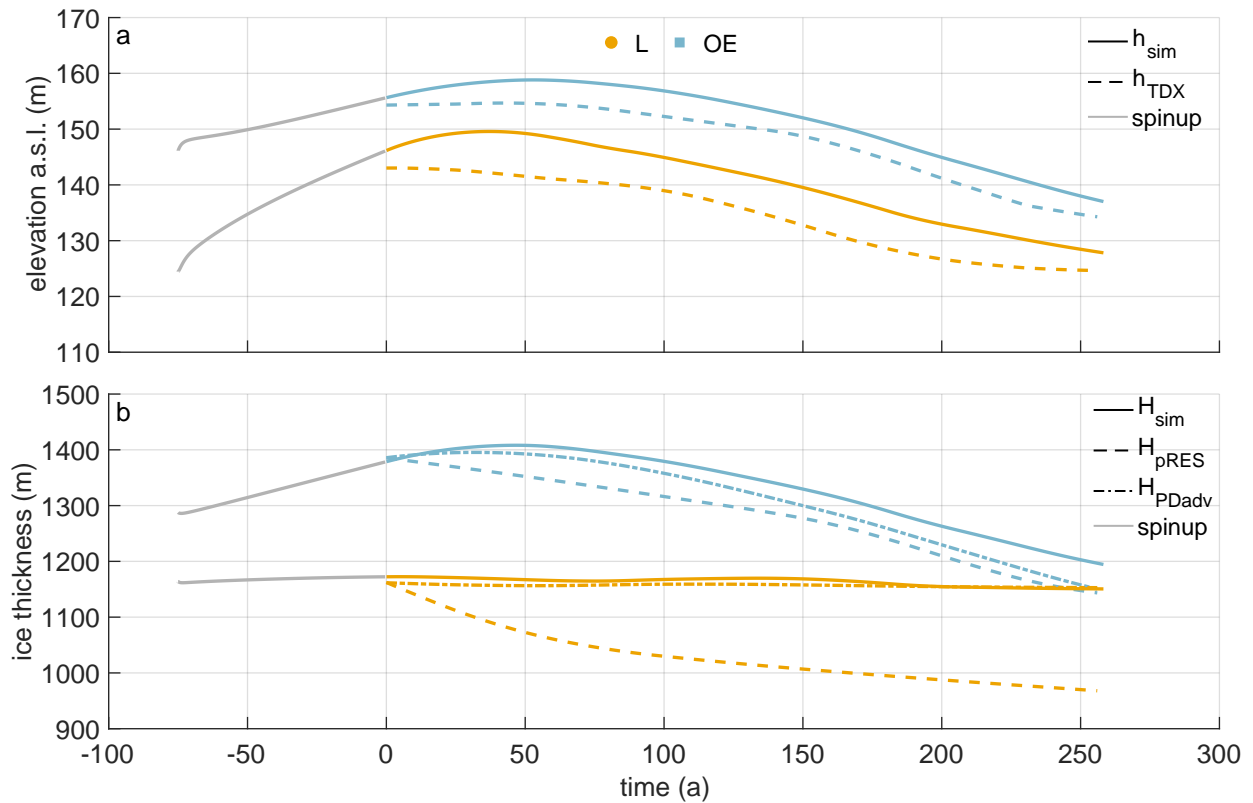
In ~~a~~ the first experiment, we use an interpolation of the observed melt rates as forcing and compare the results with  $H_{PDadv}$  (solid lines in Fig. 3). The second experiment aims to derive the best match between simulated and observed geometry. For this experiment, we use synthetic melt rates (dashed lines in Fig. 3a).

## 3.2 Results and discussion of simulations

### 3.2.1 First experiment: pRES-derived melt rate

The spin-up for this experiment ~~is~~ starts with a manually adjusted geometry (including the channel at the base) ~~for at~~  $t = -75$  a to fit seismic IV profile ~~for  $t_0$  at the base at  $t_0$~~ . We applied a constant melt rate of  $1.5 \text{ m a}^{-1}$  at L and  $0.5 \text{ m a}^{-1}$  at OE. This forcing enlarges the melt channel during the spin-up as the ice thickness OE increases due to the prescribed displacement ~~at~~ representing compression caused by the lateral boundaries moving towards the center of the channel. The general shape of the base matches the seismic profile IV reasonably well (Fig. 1 and Fig. B4). ~~In the experiment~~ After the spin-up, we force the base with  $a_b$  (solid line in Fig. 3a).

The results of this experiment are displayed in Fig. 6. For both locations, L and OE, the simulated and observed geometry differ significantly. ~~While the~~ The simulated ice thickness above the channel ~~only~~ declines by 21 m ~~or 1.7%~~ in 250 a, ~~the observed one is a factor of 9, or while the observed thickness is~~ 191 m thinner ~~. However than the simulated one.~~ Outside the channel, the simulated trend ~~outside the channel~~ shows thinning. This thinning ~~sets in~~ begins after 50 a, whereas we find continuous thinning in the observations. This delayed onset of thinning is also represented in the simulated surface topography. Most ~~notably~~ notable is the match between simulated  $H_{sim}$  and advected  $H_{PDadv}$  ice thickness under present day climate



**Figure 6.** First experiment: Simulated surface elevation (a) and ice thickness (b) using the pRES-derived melt rate. Colors denote quantities above the channel (yellow) and outside the channel (blue). (a) Simulated surface elevation  $h_{\text{sim}}$  (solid lines) and observed  $h_{\text{TDX}}$  (dashed lines). (b) Simulated ice thickness  $H_{\text{sim}}$  (solid lines), under present day climate conditions advected  $H_{\text{PDadv}}$  (dashed-dotted lines) and observed  $H_{\text{pRES}}$  (dashed lines). Gray lines represent the spin-up.

conditions at the center of the channel (L). This match confirms that present day melt rates would not lead to the observed channel evolution over 250 a.

### 3.2.2 Second experiment: Synthetic melt rate

The spin-up for the second experiment also starts with a geometry that has been manually adjusted for at  $t = -75$  a to fit seismic IV profile for  $t_0$  at the base at  $t_0$ . In the second simulation experiment, we force the base with the synthetic melt rate (Fig. 3a) that is inside the channel larger than the observed melt rate. Again, the melt rate has been kept constant over the spin-up with  $a_b^{\text{syn}}(t_0)$ . By disregarding the additional melt of the spin-up, the The synthetic melt rate leads to a cumulative melt after 250 a of 290 m (Fig. B3a). With that with 184 m more ice is melted at L than in the first experiment and hence, the initial geometry has to be different to the first experiment.

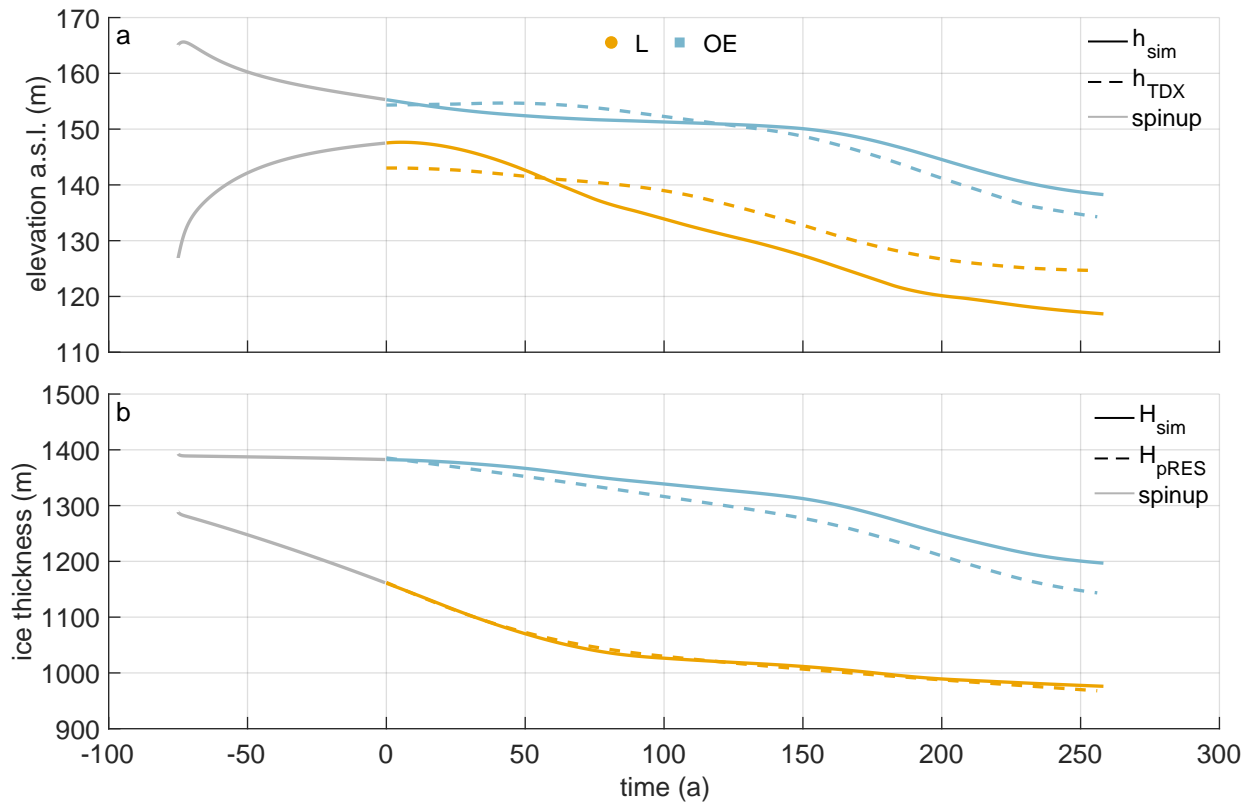
435 The modeled geometry of this experiment is presented in Fig. 7. The simulated ice thickness at L is in very good agreement with  $H_{\text{pRES}}$ . There is some mismatch at OE, but the simulated trend of thinning is synchronous to the ~~observation~~observations. After 250 a the deviation from the observed ice thickness at OE reaches ~~53 m~~+53 m. The simulated ~~evolution of the~~ base for the second experiment shows a persistent basal channel (Fig. B5). The mismatch of the surface elevation at L and OE ~~is reversing~~reverses over time: while the simulated surface topography at OE is first too low, it is too high in the second half  
440 of the transient simulation (Fig. 7). However, the trend of the observed  $h_{\text{TDX}}$  and simulated  $h_{\text{sim}}$  elevation behave similarly. ~~Above the channel, the surface elevation is first~~While ice thickness is in good agreement, surface elevation above the channel is overestimated by 4 m at the end of the spin-up. After 57 a, it turns from an over- to underestimation that results in an 8 m lower  $h_{\text{sim}}$  than the observed  $h_{\text{TDX}}$  after 250 a. To ~~assess~~understand if the ice is in buoyancy-hydrostatic equilibrium, we compute the freeboard at the position L for an ice density of  $910 \text{ kg m}^{-3}$ . The surface elevation is 133 m at  $t_0$  and decreases to  
445 112 m after 250 a. Although  $h_{\text{TDX}}$  is larger than this, the ice is approaching flotation in the downstream direction. One could take another approach and estimate the mean density under the assumption of buoyancy equilibrium: at  $t_0$  this corresponds to  $901 \text{ kg m}^{-3}$  and after 250 a to  $896 \text{ kg m}^{-3}$ . As more ice is melted from below and with higher snow accumulation at L, the density decreases, which is to be expected.

After 250 a, the simulated freeboard at OE is 1 m higher than the surface elevation of 138 m inferred by buoyancy equilibrium  
450 using an ice density of  $910 \text{ kg m}^{-3}$ . ~~Similar considerations regarding OE lead to a~~and at OE the discrepancy is 3 m higher  
 ~~$h_{\text{TDX}}$  than 132 m out of buoyancy equilibrium.~~ Overall, we see convergence to equilibrium state at OE and the simulated surface elevation at L. At the end of the simulation, only  $h_{\text{TDX}}$  above the channel does not reach buoyancy equilibrium, which leads to the justifiable assumption that the mean ice density at L is lower than OE.

At the position of the furthest upstream pRES observations we ~~can see from the seismic IV profile that the influence of the~~  
455 ~~grounding line has not completely vanished~~know from interferometry shown in Hofstede et al. (2021a) that the location is still in the hinge zone. The assumption of buoyant equilibrium is therefore likely to be flawed. At the end of the simulation, the geometry should be close to buoyancy equilibrium despite melting and a 50% higher SMB at L than OE. Hence, simulations carried out using a higher SMB within the channel would result in better agreement with the observed values of  $h_{\text{TDX}}$ .

460 Next, we ~~exploit~~consider the variation of the vertical displacement ~~over~~with depth. The results are presented in Fig. 8. For this purpose, we calculated the cumulative vertical displacement in one year~~over~~depth. For comparability, the vertical displacements due to accumulation and snow compaction were removed from the observed distributions.

Most notably, we move from a vertically extensive regime ~~into a compressive by increasing distance to~~to a compressive regime with increasing distance from the grounding line. Given the complexity of the problem, the simulations show a reasonable agreement with the observations. The best match is reached at OE, which is not that surprising. The generally good agreement of the simulated displacements outside the channel comes from tuning  $u_x$  at the lateral boundary to match  $u_z$  from the pRES measurements at OE. A schematic illustration of first principal strains and their directions shows a closure of the channel for lateral compression and simultaneously a thickening of the ice shelf that is larger inside the channel than outside (Fig. B6). For lateral extension, we conversely get a thinning of the ice shelf that is smaller inside the channel than outside.



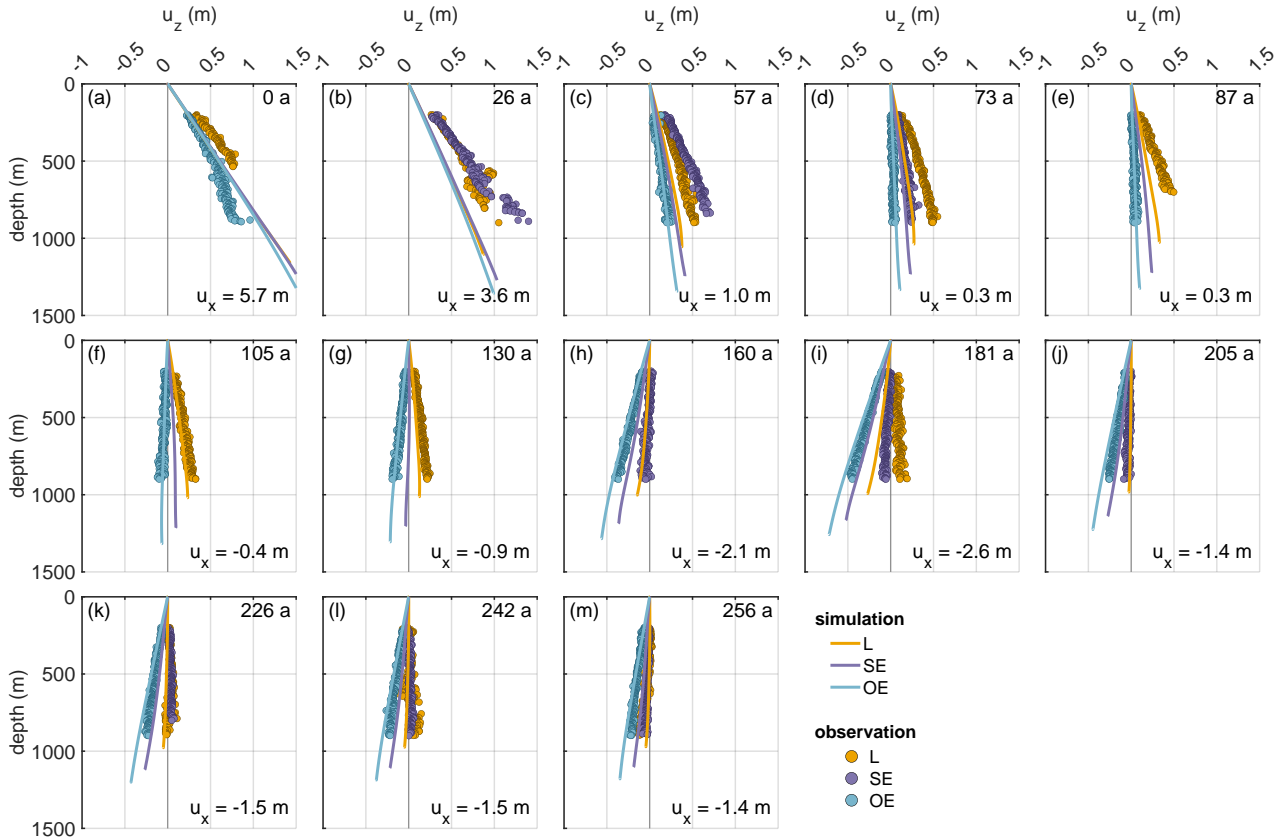
**Figure 7.** Second experiment: simulated surface elevation (a) and ice thickness (b) using the synthetic melt rate. Colors denote quantities above the channel (yellow) and outside the channel (blue). (a) Simulated surface elevation  $h_{sim}$  (solid lines) and observed  $h_{TDX}$  (dashed lines). (b) Simulated ice thickness  $H_{sim}$  (solid lines) and observed  $H_{pRES}$  (dashed lines). Gray lines represent the spin-up.

470 Both simulated and observed vertical displacement distributions show that the strain decreases from L to OE (Fig. 8). The only exception here is  $t = 57$  a, where the vertical strain at SE is larger than the one at L, in the observations. While at 0 a and 26 a the deviation of the simulated displacements between L and OE is small, it increases afterwards. From 105 a, the simulated vertical displacements agree very well with those of the pRES-measurements, where a displacement distribution was derivable at L and OE. The same comparison for the first experiment (Fig. B7) shows similar results, with significantly less pronounced differences between L and OE. Hence, the mismatch to the observed vertical displacements for this experiment using the measured melt rates is higher than for the second experiment with the synthetic melt rates. **The simulated strain evolution of the cross-section confirms that the viscoelastic model needs to account for finite deformation as the strain exceeds 10% (Fig. B12).**

475

As the last point of this second experiment, we consider the influence of the viscosity on the evolution of the melt channel (Fig. B8). To reach the ice thickness of seismic IV, the simulation applying the smallest viscosity needs a higher initial channel

480



**Figure 8.** Second experiment: comparison of displacements ( $u_z$ ) derived from observations (dots) and the simulations (lines). The different panels show the displacement for  $\Delta t = 1$  a allocated to the simulation time (number in the upper right corner). The numbers in the lower right corners give horizontal displacement  $u_x$  derived from  $\varepsilon_{zz}$  of the pRES measurements outside the channel (OE) with positive values representing compression and negative values extension.

and hence, less ice thickness at L at the beginning of the spin-up (Appendix Sec. B3). The channel thickness of the pRES-measurement is modeled best using a viscosity of  $5 \times 10^{15}$  Pa.s. A two times higher viscosity leads to an ice thickness in the channel that is a geometry where the ice is 42 m smaller thinner in the center of the channel after 250 a, while a five times lower viscosity results in 116 m thicker ice above the channel due to more viscous flow into the channel. The simulated ice thickness OE is similar for all three different viscosities. The distributions of vertical displacement with depth illustrate that the difference between L and OE is larger for smaller viscosity values (Fig. B9). Often the viscosity of  $5 \times 10^{15}$  Pa.s fits quite well to obtain the observations by the simulation but for some a slightly (Fig. B9a) or a considerably lower viscosity (Fig. B9c) would be needed.

## 4 Discussion

490 ~~Melt~~ Observed melt rates inside the channel are in general rather ~~moderate~~ modest,  $< 2 \text{ m a}^{-1}$ . For comparison, values retrieved at a channel 1.7 km from the grounding line of the Ross Ice Shelf at ~~Mereer~~ the inflow of the Mercer and Whillans ice streams ~~inflow~~ were  $22.2 \text{ m a}^{-1}$  (Marsh et al., 2016). ~~At the Ross Ice Shelf, the~~ These values dropped to below  $4 \text{ m a}^{-1}$  over a distance of 10 km and reached  $2.5 \text{ m a}^{-1}$  after 40 km. We also find that the melt rates decrease by a factor of five ~~lower values~~ in the center of the channel over a distance of 11 km, however, this takes place between 14 and 25 km downstream the grounding  
495 line. ~~However, at about the same distance, we find a peak in basal melt rate of  $2.3 \text{ m a}^{-1}$  (Figs. 1 and 2) at OE. Interestingly enough, this location corresponds to a steep basal topography in the seismic profiles I and V, indicating that we might have not been entirely outside the channel at this spot, but potentially at a steep flank.~~ At the Ross Ice Shelf, the ratio between the melt rates inside the channel and 1 km outside it is about 27, whereas we find only a factor of 3, with ~~a~~ the distance between L and OE being 1.8 km. ~~?~~

500

Zeising et al. (2022) presented pRES-derived basal melt rates downstream of our study area. Roughly 40 km downstream the northernmost cross-section ( $\sim 200 \text{ a}$  of ice flow), these measurements show that the channel still exists, but with a small height of  $\sim 16 \text{ m}$ . Inside the channel, ~~?~~ Zeising et al. (2022) determined a melt rate ~~of  $0.25 \text{ m a}^{-1}$  and outside  $0.41 \text{ m a}^{-1}$ .~~  $\sim 0.20 \text{ m a}^{-1}$  lower than outside. The larger melt rates outside the channel compared to inside is in agreement with the finding  
505 of our study. In general, the channel height declines, so the channel fades out. The channel diminishes by because melt rates inside the channel ~~falling~~ fall below those outside the channel. The trend in vertical strain has only a minor contribution to this evolution. We thus do not find any evidence that such channels are a cause for instabilities of ice shelves as suggested by Dow et al. (2018).

One of the main findings of our study is that the present geometry can only be formed with considerable higher melt rates in  
510 the past (see Fig. 3). This finding is based on the assumption that the strain-rates were in the past similar to present day and that melt on both flanks of the channel are similar. This is justified, as significant changes in strain would require a change in the system that would cause other characteristics to change, like the main flow direction, for which we do not find any indication. However, in our setting, we are in a compressive regime. A similar assumption may at other locations not be possible.

The pRES melt rate observations covered only one year. As the ocean conditions within the sub-ice shelf cavity are known to  
515 respond to the ocean forcing from the ice front (e.g. Nicholls, 1997), ~~they would expect~~ we would expect them to be subject to significant interannual variability. Underlying any interannual variability, a long-term reduction in basal melt rates would be the expected response to a reduction in production of dense shelf waters north of the ice front, resulting from a reduction in sea ice formation (Nicholls, 1997), resulting in turn from a reduction in the southerly winds that blow freshly produced sea ice to the north.

520 A decrease in northward motion of sea ice has been observed in the satellite record (e.g. Holland and Kwok, 2012), ~~and~~ The modeling experiments by Naughten et al. (2021) ~~find decreasing~~ also find decreasing ice-shelf basal melt rates. This reduction is therefore consistent with higher basal melt rates in the past. However, our model results suggest that the mismatch

between the past melt rates needed to explain the ~~observed~~-channel geometry and ~~those that were observed~~-the present-day  
observed melt rates applies only to the channel, and not to the ambient ice. This could be explained by historically higher  
525 levels of subglacial outflow at the grounding line, or anomalously low levels during the observation period. Subglacial outflow  
contributes to the buoyant flow up the basal slope and therefore the shear-induced turbulence that raises warm water from  
deeper in the water column towards the ice base. Variations in the subglacial outflow could be caused by variations in subglacial  
storage, as Smith et al. (2009) found an active subglacial lake at the transition between Academy Glacier and SFG, and ~~also~~  
~~Humbert et al. (2018) suggest~~ Humbert et al. (2018) also suggest the presence of a subglacial lake in the upstream area of SFG  
530 subglacial lake.

Hofstede et al. (2021a) showed that the subglacial channel appears 7 km upstream of the grounding line increasing its height  
to 280 m at the grounding line. The location of the channel corresponds with increased subglacial flux found by Humbert et al.  
(2018) using a simple routing scheme. ~~The channel formed on the grounded part is most likely the source of a grounding line~~  
~~fan and thus carrying sediments, formed at the seabed under the basal channel~~ Hofstede et al. (2021a). Once this topographic  
535 feature reaches the ocean, it ~~will focus on the relatively buoyant flow~~ serves to focus the buoyant plume and enhance shear-  
driven vertical mixing, bringing heat and salt to the ice base leading to higher basal melt rates.

However, with increasing distance along the channel, the basal gradient, and therefore the speed of the buoyant flow, ~~reduces,~~  
~~as does is~~ reduced, which also reduces the entrainment of warm water from beneath. Coupled with the ~~increasing pressure~~  
~~freezing point at the ice base~~ pressure-induced increase in the freezing point with decreasing depth, this leads to a gradual  
540 reduction of the melt rate in the channel. From Fig. 2a, the melt rate in the channel reduces below that of the ambient ice  
base by about 30 km distance from the grounding line, suggesting that the effect of ~~basal melting~~ focused meltwater outflow  
thereafter is to suppress the channel.

The cause of the strong melt anomalies identified in the ApRES measurements remains unclear as no direct ocean observation  
545 exists near SFG. However, the time scale of the events is consistent with the passage of warm cored eddies. Such features have  
been observed in the ocean cavity beneath the neighboring Ronne Ice Shelf (Nicholls, 2018).

The channel height is found to increase until 30–35 km downstream of the grounding line. Further downstream, the channel  
begins to close. Our modeling results show that less viscous ice ( $1 \times 10^{15}$  Pa.s) would tend to shut the channel faster than the rate  
we observe ~~-(Fig. B8)~~. For the best match between observed and modeled geometry, we need viscosities around  $5 \times 10^{15}$  Pa.s  
550 ~~of stiff ice to prevent the~~ to prevent closure by deformation. ~~This claim is also confirmed by the inversion of the viscosity~~  
~~to model~~ (Fig. 7). This viscosity value is also supported by an inversion of ice rheology to fit observed surface velocities  
in the melt channel region (Appendix Sec. B2). With a viscosity of  $5 \times 10^{15}$  Pa.s, we can ~~simulate with use~~ a viscoelastic  
model to simulate the channel evolution in both experiments ~~matching to match~~ the observations: (i) pRES-derived melt rates  
result in an ice thickness fitting the present day advected ice thickness  $H_{PDadv}$  ~~-(Fig. 6)~~, and (ii) synthetic melt rates lead  
555 to the observed ice thickness  $H_{pRES}$  ~~-(Fig. 7)~~. The channel vanishes for the pRES-derived melt rates as those are unable  
to maintain the channel geometry open against viscoelastic deformation (Fig. B4). Based on the higher synthetic melt rates,  
the simulated basal channel remains open and we get a similar basal appearance to that found by the seismic measurements

(Fig. B5). However, if we would want to match the observed basal geometry at seismic profile V more precisely, we would have to spatially vary the basal melt rate in the across-flow direction, enlarge the transition between L and OE, and thus extend the channel to the eastern side.

To evaluate the importance of using a viscoelastic and not a purely viscous material law, we compute the logarithmic Hencky strain (Appendix Sec. B4). With this strain measure, an additive decomposition of the strain into an elastic and viscous part is possible. After the spin-up, the elastic strain components in the across-flow and thickness direction are in the order of permille and one order of magnitude higher than the shear component (Fig. B10). Christmann et al. (2021) derived similar magnitudes in the viscoelastic simulation of 79° North Glacier considering linearized strains. The magnitude of elastic strain in the across-flow direction is caused by the lateral compression and varies slightly to higher values around the channel due to the dent of the channel. However, the highest elastic strain values are reached outside the channel and decrease with time (Fig. B11). It is likely that the elastic deformation slightly increases especially inside the channel if the lateral compression changes into tension or vice versa. In the thickness direction, the elastic strain is decreasing towards the channel (Fig. B10b). This causes the difference in geometry change, due to different values of the viscosity, manifests stronger to be larger inside the channel than outside. This was to be expected because of the load situation resulting from the prescribed geometry rather than outside (Fig. B8). The simulated geometry change is mainly due to the elastic response to thinning by basal melt and ice accumulation. Any purely viscous simulation would overrate the deformation -in the vertical direction as the elastic strain has the opposite sign as the viscous one (Fig. B12d-f). Higher melt rates were needed to compensate for this. Wearing et al. (2021) presents a full Stokes simulation of a comparable melt channel and indeed needs high-higher melt rates to keep the channel open. The relative amount of elastic strain shows values up to 8% of the total strain for high lateral compression or extension and is hence not negligible (Fig. B10). It is important to keep this result in mind for (future-)future inverse modeling of melt rates in melt channels.

We find a difference (-4m -4m to 8m) between simulated and observed surface elevation at L -(Fig. 7). The elevation difference is most likely caused by the constant density that we used for the simulations, as the ice thickness matches well. For the thinner ice above the channel, this could be achieved by an ice density decreasing from outside to inside and from upstream to downstream in the channel. However, one has to keep in mind -that the accuracy of the surface elevation product is only 5m, so the differences in surface elevation may not be significant.

In general, we benefited highly from having measurements of vertical strain available. This opens new possibilities to identify weaknesses in the modeling and, such as limited knowledge on lateral boundary conditions and rheological parameters, and gave us useful insight into the spatial variation of the vertical strain across such a topographic feature -(Figs. 8 and B7). Although the pRES surveys only about half the ice thickness, the slope of  $u_z(z)$  in the upper half is distinct for the positions L, SE and OE and greatly varies with distance from the grounding line, and is also influenced by the embayment of the ice shelf. Simulated  $u_z$  at L start to match only after about 100 a starts to match well with observations after about 100 a, which could result from the first few cross-sections still being influenced by the hinge zone -(Fig. 8). Tidal bending was not taken into account here, due to the 2D setting. This could in future be investigated, if repeated pRES measurements would be conducted



up to the grounding line covering the entire hinge zone, in which case it would also be extremely advantageous to obtain basal melt rates at tidal time scales.

595 Our study demonstrates that viscoelastic simulations can be a useful but complex tool to analyze melt channel evolution. In an inverse approach, viscoelastic models could also give more insights into basal melt rates of channel systems of ice shelves in general, given that satellite-borne surface elevation is available in high resolution. However, the fact that large deformations require non-linear strain theory will make this a challenging endeavor. As changes in basal melt rates will inevitably lead to surface elevation changes of channel systems, systematic monitoring of the surface topography from space can serve as an early warning system and trigger further in-situ observation similar to this study.

## 600 5 Conclusions

We find basal melt rates in a melt channel and its surroundings on Filchner Ice Shelf to be up to  $2.3\text{ma}^{-1}$   $2\text{ma}^{-1}$ . Basal melt rates inside the channel drop with distance down-flow, even turning into freezing 55 km downstream of the grounding line. Close to the grounding line, melt rates are larger inside the channel than outside, while further downstream this relationship reverses. ~~Over distance along~~ Along flow, the channel ~~dimension~~ height decreases from a maximum ~~height~~ of 330 m to below 605 100 m. The channel diminishes because the reduced melt rate is unable to maintain the channel geometry against viscoelastic deformation. Analysis of the ~~present-day ice thickness advection~~ predicted ice thickness from advection of present-day thickness with present-day melt rates revealed large differences compared to the observed ice thickness above the channel, which indicates that melt rates have been about twice as large in the last 250 a. The viscoelastic simulation confirms this statement and indicates that basal melt channels need high basal melt rates and relatively cold ice to persist. The deformation of 610 the basal melt channel is mainly driven by the elastic response to the basal melt rate. The observed and simulated evolution of this melt channel demonstrates that melt channels of this kind are not a destabilizing element of ice shelves. The ApRES time series showed brief melt anomalies distributed over the entire measurement period and slightly increased melt rates in summer .

*Code availability.* The mph file of the finite element software COMSOL Multiphysics (Version 5.6) of the viscoelastic finite deformation simulation used for this study is available via AWI's gitlab (<https://gitlab.awi.de/jchristm/viscoelastic-finite-defos-meltchannel>).

615 *Data availability.* Raw data and derived products of the single-repeated pRES measurements, raw data of the ApRES time series (<https://doi.pangaea.de/10.1594/PANGAEA.932413>), surface accumulation data at pRES locations, processed GPS measurements (<https://doi.pangaea.de/10.1594/PANGAEA.932441>) are submitted to the World Data Center PANGAEA. The seismic data (<https://doi.org/10.1594/PANGAEA.932278>) are available at the World Data Center PANGAEA (Hofstede et al., 2021b). BedMachine Antarctica product can be accessed at <http://nsidc.org/data/nsidc-0756200> (Morlighem, 2020) (last access: 12 April 2021) MEaSURES velocity product can be accessed at 620 <https://nsidc.org/data/nsidc-0754/versions/1> (Mouginot et al., 2019a) (last access: 13 April 2021).

## Appendix A: Observations

### A1 Basal reflections and the influence of off-nadir returns

The identification of the basal reflections in both measurements, the first and the repeat measurement, is important in order to determine the change in ice thickness and thus the basal melt rate. Due to a high contrast in relative permittivity, the ice—ocean interface is a particularly strong reflector. Accordingly, the reflection at the ice base in the echogram is characterized by a sharp increase in amplitude. After identifying the first basal reflection in both measurements, the vertical displacement can be determined by means of a cross-correlation of the basal segment, provided that the shape of the basal reflector has not changed significantly. However, this was not the case at five of the 44 stations in our study area. At these, the basal return had changed significantly and thus prevented an unequivocally match. We therefore excluded these stations from the melt rate analysis. At all other stations, the reflection had changed only slightly, so that the vertical displacement could be reliably determined. Figure A2 shows three examples (OE, SE and L) from a cross-section 48 km downstream of the grounding line. In all of these measurements, a strong increase in amplitude was found between 992 m (L) and 1244 m (OE), which represents the first onset of the basal reflections. While the shape of the basal return changed only slightly, there was a change in amplitude, which is lower in the repeat measurement, especially in Fig. A2e,f. One potential reason for this was different measurement settings that influenced the amplification of the signal, but imprecise alignment of the transmitting and receiving antennas can also be responsible for this.

However, at 7 of the 44 stations more than one strong and clear defined basal reflection was found, raising the question of which is the nadir and which is the off-nadir reflection. The reason for this is that a steep base, such as on the flanks of the channel, creates strong off-nadir reflections. Depending on the basal gradient, this off-nadir reflection may also arrive before the nadir reflection. As pRES data represent point measurements, they cannot be used to constrain the local shape of the ice base and thus distinguishing nadir from off-nadir returns is difficult. One possible indicator of the nadir reflection can be the reflection amplitude, since the antenna radiates most of its energy in the nadir direction. However, in certain basal geometries off-nadir reflections can still be stronger than the nadir reflection, even accounting for the antenna beam pattern. Figure A3 shows two examples of stations with off-nadir reflections. In the measurements at the pRES029 station (OE; Fig. A3a,b), the basal reflection with the largest amplitude appeared with a range 11 m greater than the first basal reflection. This could be an indication that the first basal reflection is an off-nadir return. The analysis of the vertical displacement of both basal reflections shows a deviation of 0.13 m. The second example from station pRES019 (SW; Fig. A3c-e) shows two basal reflections of approximately equal strength, separated by about 175 m. At this station, the deviation of the vertical displacement of both basal returns was only 0.01 m. Which of these reflections is the nadir and which is the off-nadir reflection cannot be reliably determined from the pRES measurement. Only by analyzing the basal geometry, e.g. by airborne radar or seismic profiles, can the reflection be assigned to its place of origin by determining the basal distances from the measurement location. However, since seismic profiles are only available in the vicinity of two cross-sections, this method cannot be used for all stations. Thus, we calculated the displacement of the second and strongest basal return of those 7 stations where more than one strong basal return occurred. The melt rates derived from the first and the second basal return are shown in Tab. A1. While at 3 sites the

655 difference in melt rate is below  $0.1 \text{ m a}^{-1}$ , at others, the melt rate difference exceeds  $1 \text{ m a}^{-1}$ . Since we cannot distinguish  
between nadir and off-nadir solely from our pRES measurements, we have averaged the two derived melt rates and take into  
account the difference in the error. However, at station pRES042 (L) we found basal freezing by analyzing the first basal  
return but derived a melt rate of  $1.09 \pm 0.07 \text{ m a}^{-1}$  from the second, stronger basal return. We designate this location as a basal  
freezing station and state the range of melt rate as an error.

660 **A2 Additional table**

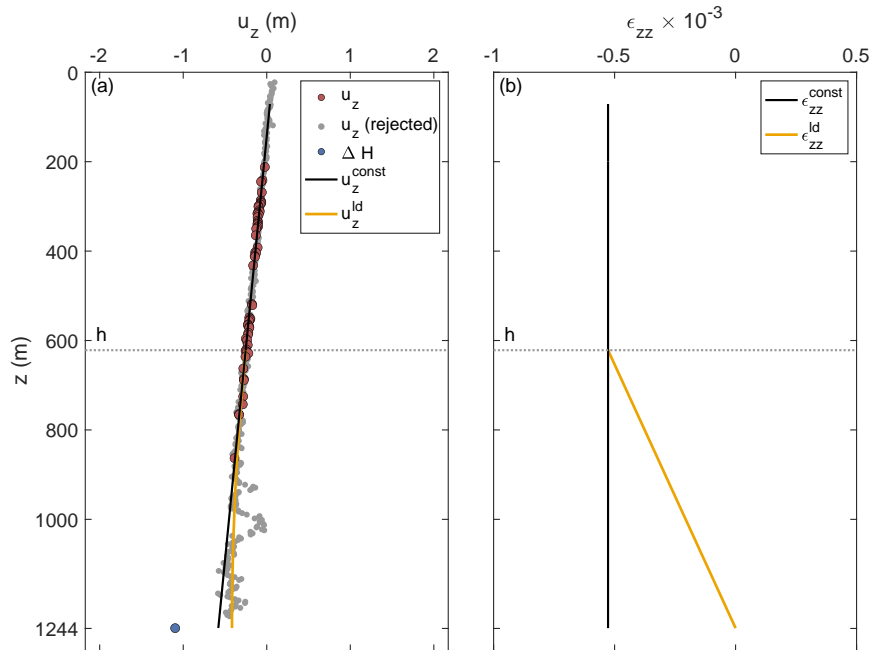
**Table A1.** Melt rates determined from different basal returns.

<u>pRES station</u>	<u>location</u>	<u>basal return #1</u>		<u>basal return #2</u>		<u>Average</u>	
		<u>range (m)</u>	<u><math>a_b \text{ (m a}^{-1}\text{)}</math></u>	<u>range (m)</u>	<u><math>a_b \text{ (m a}^{-1}\text{)}</math></u>	<u>range (m)</u>	<u><math>a_b \text{ (m a}^{-1}\text{)}</math></u>
<u>pRES016</u>	<u>SW</u>	<u><math>1221.0 \pm 12.21</math></u>	<u><math>1.09 \pm 0.08</math></u>	<u><math>1262.3 \pm 12.62</math></u>	<u><math>2.32 \pm 0.07</math></u>	<u><math>1241.7 \pm 33.04</math></u>	<u><math>1.70 \pm 0.69</math></u>
<u>pRES019</u>	<u>SW</u>	<u><math>1114.6 \pm 11.15</math></u>	<u><math>1.97 \pm 0.09</math></u>	<u><math>1289.3 \pm 12.89</math></u>	<u><math>2.02 \pm 0.09</math></u>	<u><math>1202.0 \pm 99.36</math></u>	<u><math>1.99 \pm 0.11</math></u>
<u>pRES020</u>	<u>SE</u>	<u><math>1202.4 \pm 12.02</math></u>	<u><math>0.28 \pm 0.12</math></u>	<u><math>1278.3 \pm 12.78</math></u>	<u><math>0.27 \pm 0.12</math></u>	<u><math>1240.3 \pm 50.37</math></u>	<u><math>0.28 \pm 0.12</math></u>
<u>pRES025</u>	<u>OE</u>	<u><math>1347.2 \pm 13.47</math></u>	<u><math>0.89 \pm 0.10</math></u>	<u><math>1368.8 \pm 13.69</math></u>	<u><math>0.61 \pm 0.09</math></u>	<u><math>1358.0 \pm 24.38</math></u>	<u><math>0.75 \pm 0.23</math></u>
<u>pRES028</u>	<u>OE</u>	<u><math>1301.3 \pm 13.01</math></u>	<u><math>2.29 \pm 0.09</math></u>	<u><math>1318.6 \pm 13.18</math></u>	<u><math>0.95 \pm 0.09</math></u>	<u><math>1310.0 \pm 21.75</math></u>	<u><math>1.62 \pm 0.76</math></u>
<u>pRES029</u>	<u>OE</u>	<u><math>1269.9 \pm 12.70</math></u>	<u><math>0.60 \pm 0.13</math></u>	<u><math>1280.8 \pm 12.80</math></u>	<u><math>0.70 \pm 0.14</math></u>	<u><math>1275.4 \pm 18.18</math></u>	<u><math>0.65 \pm 0.19</math></u>
<u>pRES042</u>	<u>L</u>	<u><math>1033.6 \pm 10.34</math></u>	<u>freezing</u>	<u><math>1085.2 \pm 10.85</math></u>	<u><math>1.09 \pm 0.07</math></u>	<u><math>1059.4 \pm 36.39</math></u>	<u>freezing - <math>1.09 \pm 0.07</math></u>

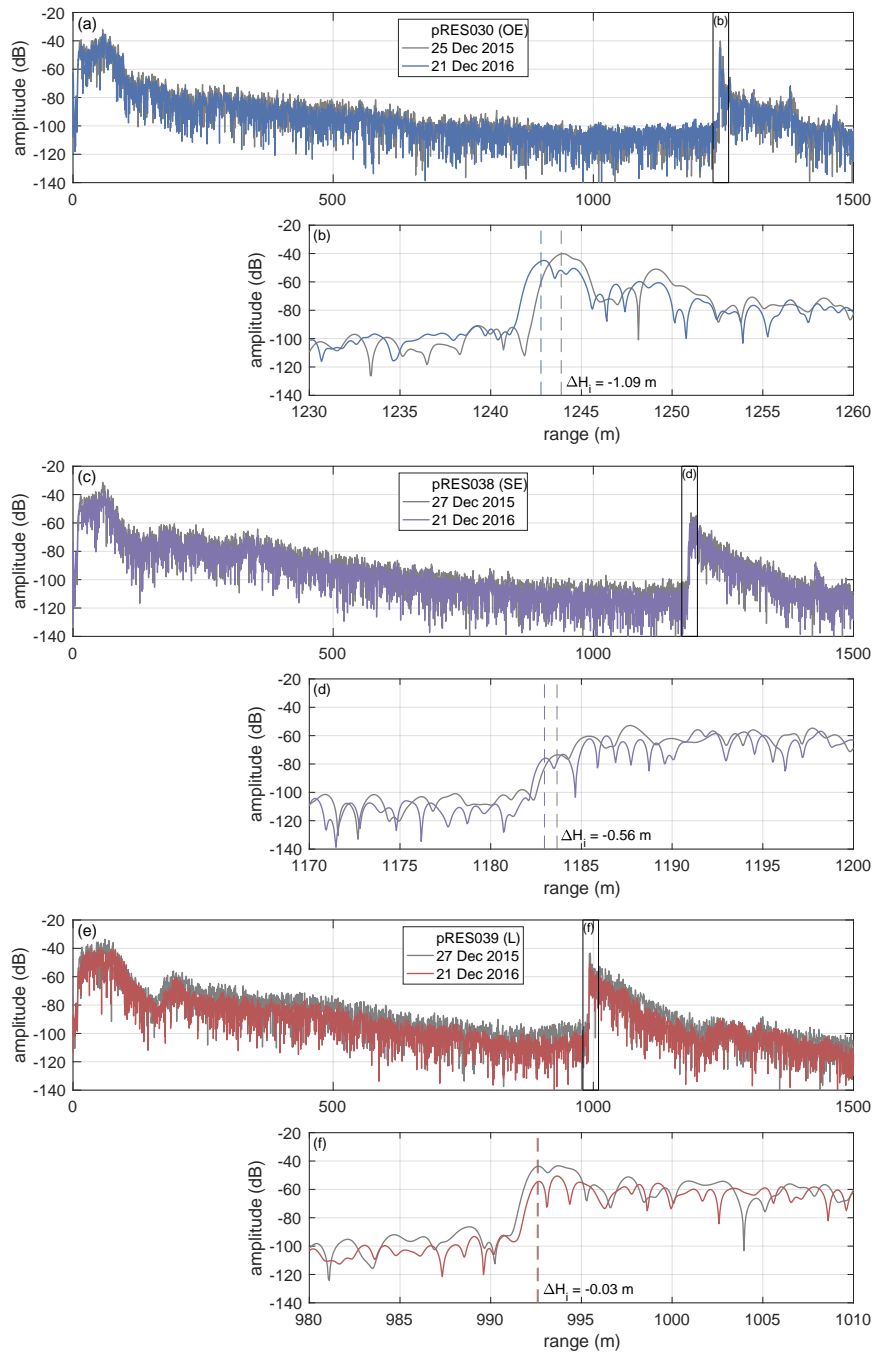
**Table A2.** Description of symbols

Symbol	Description	Unit
$u_x$	horizontal displacement in across flow	<u>m</u>
$u_y$	horizontal displacement in along flow	<u>m</u>
$u_z$	vertical displacement	<u>m</u>
$\overline{\epsilon_{xx}^{obs}}$	horizontal strain in across flow	
$\overline{\epsilon_{yy}^{obs}}$	horizontal strain in along flow	
$\overline{\epsilon_{zz}^{obs}}$	vertical strain	
$\overline{h_b}$	averaged depth of the ice base	<u>m</u>
$h_{pc}$	depth of the pore closure relative to surface	<u>m</u>
$h_{nl}$	noise-level depth limit relative to surface	<u>m</u>
$h_{sim}$	simulated surface elevation	<u>m</u>
$h_{TDX}$	TanDEM-X surface elevation	<u>m</u>
$H$	ice thickness	<u>m</u>
$H_{pRES}$	pRES derived ice thickness	<u>m</u>
$H_{sim}$	simulated ice thickness	<u>m</u>
$H_{PDadv}$	advection of the ice thickness under present day climate conditions	<u>m</u>
$t$	time	<u>a</u>
$t_0$	$t = 0$ a, defined at the most upstream pRES measurement location	<u>a</u>
$t_1$	1st measurement of ApRES time series	
$t_i$	i-th measurement of ApRES time series	
$\Delta t$	time period between repeated measurements	<u>a</u>
$\Delta H$	change in ice thickness	<u>m</u>
$\Delta H_i$	change in ice thickness below the depth of the pore close	<u>m</u>
$\Delta H_s$	change in ice thickness at the surface and in the firn	<u>m</u>
$\Delta H_f$	change in ice thickness due to firn compaction	<u>m</u>
$\Delta H_\epsilon$	change in ice thickness due strain	<u>m</u>
$\Delta H_b$	change in ice thickness due to basal melt	<u>m</u>
$a_b$	basal melt rate	<u>m a<sup>-1</sup></u>
$a_b^{syn}$	synthetic basal melt rate	<u>m a<sup>-1</sup></u>
$W$	width of the cross-section in simulations	<u>m</u>

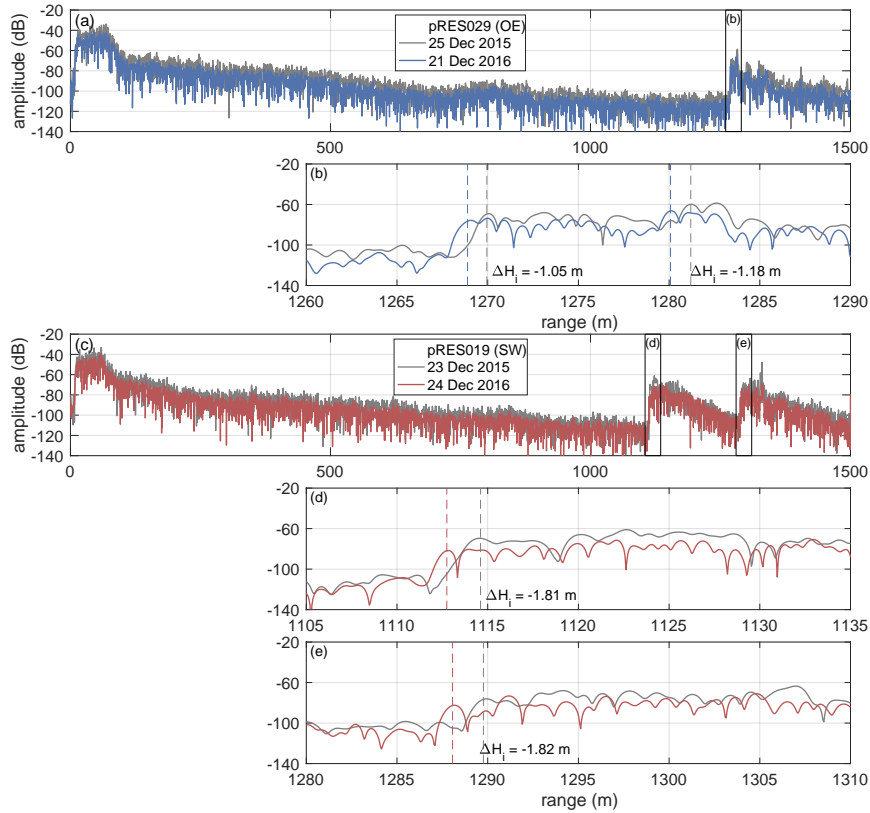
### A3 Additional figures



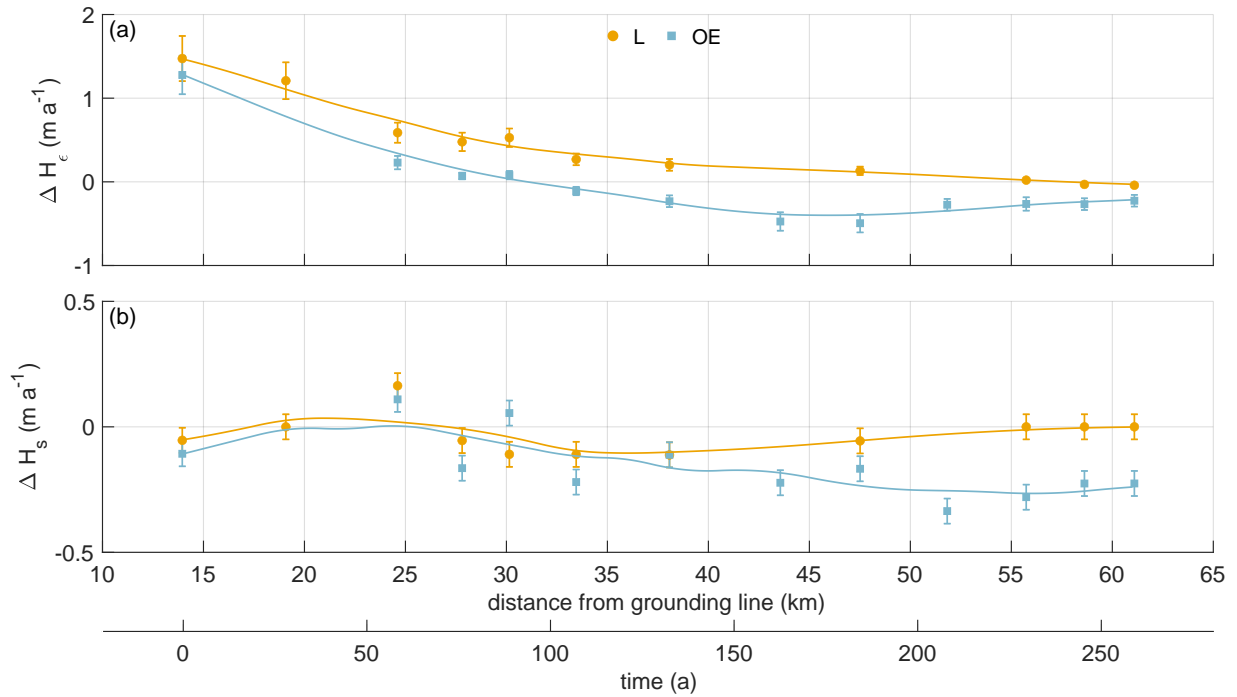
**Figure A1.** Strain analysis of an aPRES measurement at location OE (pRES30; 48 km from grounding line). (a) Derived vertical displacements  $u_z$  for  $\Delta t = 1$  a of the ice base ( $\Delta H$ ; blue dot) and internal layers (red and gray dots). Displacements used for the linear regression  $u_z^{\text{const}}$  (black line) are colored in red and rejected displacements are shown in gray. The second model  $u_z^{\text{ld}}$  with a linear decrease (ld) from depth  $h$  (dotted line) to zero at the ice base is shown in orange. (b) Vertical strain for  $\Delta t = 1$  a of both models whose displacement is shown in (a).



**Figure A2.** Amplitude profiles of first (gray line) and repeated pRES measurements at locations OE (a, b; blue), SE (c, d; purple) and L (e, f; red), all at the cross-section with a distance of 48 km from the grounding line. (b, d, f) Enlarged basal section, visualized by black boxes in (a), (c) and (e). Vertical dashed lines mark the ice thickness and  $\Delta H_i$ , the change in ice thickness between both visits.

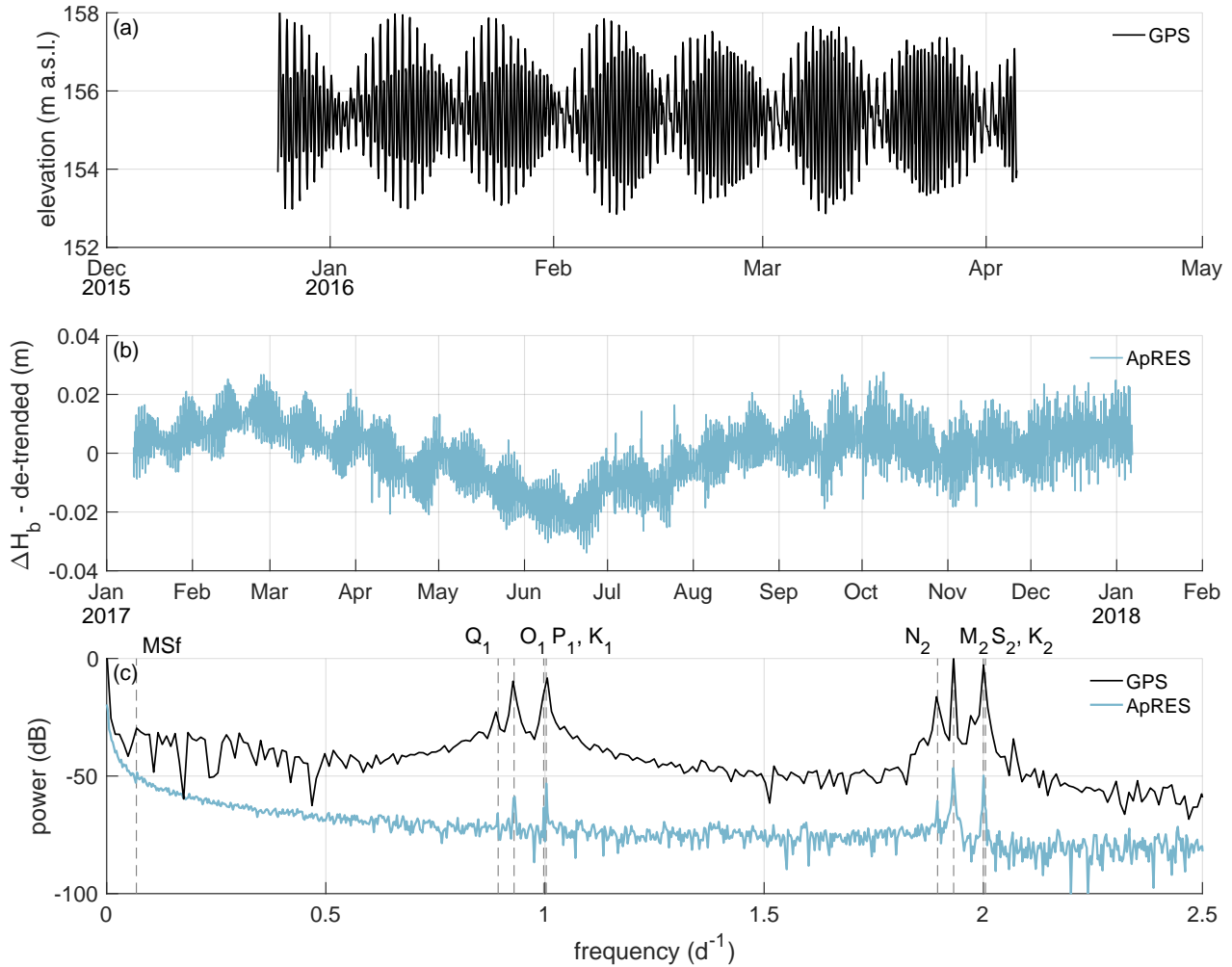


**Figure A3.** Amplitude profiles of two measurements indicating off-nadir basal reflections. (a, b) First (gray line) and repeated pRES measurement (blue) at location OE at the cross-section with a distance of 43 km from the grounding line. (b) Enlarged basal section, visualized by black boxes in (a). Vertical dashed lines mark the ice thickness and  $\Delta H_i$ , the change in ice thickness between both visits for the first and second strong increase in amplitude. (c–e) First (gray line) and repeated pRES measurement (red) at location SW at the cross-section with a distance of 28 km from the grounding line. (d, e) Enlarged basal sections, visualized by black boxes in (c). Vertical dashed lines mark the ice thickness and  $\Delta H_i$ , the change in ice thickness between both visits for the first and second strong increase in amplitude.



**Figure A4.** Distribution of pRES-derived (a) change in ice thickness due to strain and (b) ice thickness change due to surface process (firn compaction and accumulation) above the channel (yellow dots) and outside east of the channel (blue squares). The solid lines represent a smoothed fit. Error bars mark the uncertainties of the pRES-derived values.





**Figure A5.** (a) Surface elevation recorded by the GPS station from end of December 2015 to early April 2016. (b) Linear de-trended basal-cumulative melt rate ( $\alpha_T \Delta H_b$ ) from ApRES observations between January 2017 and January 2018. (c) Frequency spectrum from data shown in (a) and (b). Vertical gray dashed lines mark the constituents with half day periods ( $N_2 = 12.66$  h,  $M_2 = 12.42$  h,  $S_2 = 12.00$  h,  $K_2 = 11.97$  h), daily periods ( $Q_1 = 26.87$  h,  $O_1 = 25.82$  h,  $P_1 = 24.07$  h,  $K_1 = 23.93$  h), and Fortnightly period (MSf = 14.76 d). Notice, due to a shorter measuring period of the GPS, the resolution in frequency space is lower than of the ApRES.

## Appendix B: Modeling

### B1 Viscoelastic model for nonlinear strains

This section presents the basic equations for a viscoelastic Maxwell model applicable for finite strains. To consider finite deformations, we need to distinguish different configurations (Fig. B1). The reference configuration (stresses and strains denoted by the subscript 0) includes all positions  $\mathbf{X}$  of material points in an initially undeformed domain. The displacement vector field  $\mathbf{u} = \mathbf{x} - \mathbf{X}$  relates the particle position vector  $\mathbf{X}$  in the reference configuration to its spatial position  $\mathbf{x}$  in the current configuration depending on the external load and the time passed (Fig. B1). To formulate differential equations for finite viscoelasticity, we focus on the system of equations with respect to the reference configuration, which is frequently applied in solid mechanics Haupt (2000).

In the reference configuration, the quasi-static momentum balance reads

$$\text{Div } \boldsymbol{\sigma}_0 + \mathbf{f}_0 = \mathbf{0} \quad (\text{B1})$$

with  $\text{Div}(\cdot)$  the divergence with respect to the reference configuration. The tensor  $\boldsymbol{\sigma}_0 = J\boldsymbol{\sigma}\mathbf{F}^{-T}$  is the first Piola-Kirchhoff stress containing the Jacobian determinant  $J = \det(\mathbf{F})$ , the Cauchy stress  $\boldsymbol{\sigma}$  of the current configuration and the transposed inverse of the deformation gradient

$$\mathbf{F} = \frac{\partial \mathbf{x}}{\partial \mathbf{X}} = \frac{\partial \mathbf{u}}{\partial \mathbf{X}} + \mathbf{I} \quad (\text{B2})$$

characterizing the material gradient of motion in which  $\mathbf{I}$  is the second order identity tensor. The volume force  $\mathbf{f}_0 = -(J\rho_{\text{ice}}g)\mathbf{e}_z$  accounts for the gravitational force in the thickness direction using the ice density  $\rho_{\text{ice}} = 910 \text{ kg m}^{-3}$ , the acceleration due to gravity  $g$ , and the upward pointing unit vector  $\mathbf{e}_z = (0, 0, 1)^T$ . The formulation for finite viscoelasticity uses the conceptual multiplicative decomposition of the deformation gradient

$$\mathbf{F} = \mathbf{F}_e \mathbf{F}_v \quad (\text{B3})$$

into rate-independent elastic (e) and rate-dependent viscous (v) parts (Lee, 1969). All material equations are formulated in the intermediate configuration (stresses and strains denoted by  $\tilde{\cdot}$ ) as an additive decomposition of the strain (similar to linearized strain; Christmann et al., 2019) is feasible in the intermediate configuration

$$\tilde{\boldsymbol{\epsilon}} = \tilde{\boldsymbol{\epsilon}}_e + \tilde{\boldsymbol{\epsilon}}_v. \quad (\text{B4})$$

The elastic strain is given by  $\tilde{\boldsymbol{\epsilon}}_e = \frac{1}{2}(\mathbf{F}_e^T \mathbf{F}_e - \mathbf{I})$  and the viscous strain by  $\tilde{\boldsymbol{\epsilon}}_v = \frac{1}{2}(\mathbf{I} - \mathbf{F}_v^{-T} \mathbf{F}_v^{-1})$ . For a viscoelastic Maxwell model, the viscous stress is equal to the elastic stress in the intermediate configuration. If we assume a Saint-Venant-Kirchhoff material for the elastic material, we get

$$\tilde{\boldsymbol{\sigma}}^D = 2\mu\tilde{\boldsymbol{\epsilon}}_e^D = 2\eta\dot{\tilde{\boldsymbol{\epsilon}}}_v \quad (\text{B5})$$

690 with the viscosity  $\eta$ , the first Lamé constant  $\mu = E/[2(1+\nu)]$  and the deviatoric part of the elastic strain  $\tilde{\epsilon}_e^D = \tilde{\epsilon}_e - \frac{1}{3}\text{tr}(\tilde{\epsilon}_e)\mathbf{I}$ . The viscous strain rate is defined using the objective lower Oldroyd rate  $\overset{\Delta}{\tilde{\epsilon}}_v = \dot{\tilde{\epsilon}}_v + \mathbf{l}_v^T \tilde{\epsilon}_v + \tilde{\epsilon}_v \mathbf{l}_v$  with the viscous deformation rate  $\mathbf{l}_v = \dot{\mathbf{F}}_v \mathbf{F}_v^{-1}$  and the time derivative  $d(\cdot)/dt$  denoted by the superimposed dot.

For the viscoelastic simulation, we have to formulate all equations and boundary conditions in the same configuration; here, we choose the reference configuration. Beside solving the momentum balance (B1), we solve the material law

$$695 \quad \sigma_0^S = \frac{\lambda + \frac{2}{3}\mu}{2} [\text{tr} \mathbf{C} \mathbf{C}_v^{-1} - 3] \mathbf{C}_v^{-1} + \mu \left[ \mathbf{C}_v^{-1} \mathbf{C} \mathbf{C}_v^{-1} - \frac{1}{3} \text{tr} \left( \mathbf{C} \mathbf{C}_v^{-1} \right) \mathbf{C}_v^{-1} \right] \quad (\text{B6})$$

with the symmetric second Piola-Kirchhoff stress  $\sigma_0^S = \mathbf{F}^{-1} \sigma_0$ , the second Lamé constant  $\lambda = \frac{E\nu}{(1+\nu)(1-2\nu)}$  and the right Cauchy-Green tensor  $\mathbf{C} = \mathbf{F}^T \mathbf{F}$ . For a viscoelastic Maxwell material, we either have to compute elastic or viscous deformations through an internal variable in the reference configuration. The evolution equation for the internal variable  $\mathbf{C}_v = \mathbf{F}_v^T \mathbf{F}_v$  reads

$$700 \quad \eta \dot{\mathbf{C}}_v = \mu \left( \mathbf{C} - \frac{1}{3} \text{tr}(\mathbf{C} \mathbf{C}_v^{-1}) \mathbf{C}_v \right). \quad (\text{B7})$$

At last, we have to define the boundary conditions in the reference configuration. Dirichlet conditions are the same in reference and current configuration, while traction boundary conditions change due to adjusting normal vectors for the different configurations. To model compression and extension, the horizontal displacements acting on the lateral boundaries are computed out of the observed strain at the position OE

$$705 \quad u_{\text{left}} = u_x(t), \quad u_{\text{right}} = -u_x(t) \quad (\text{B8})$$

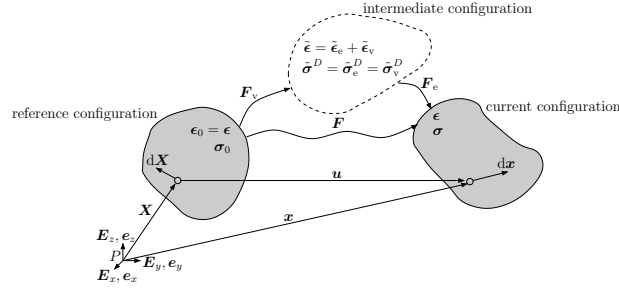
with  $u_x$  the displacement component in across-flow direction (Eq. 12, Fig. 5). The upper surface is traction-free and the base perceive the depth-increasing water pressure of the current configuration

$$p = \begin{cases} \rho_{\text{sw}} g(-z - u_z) & \text{for } z + u_z \leq 0 \\ 0 & \text{else} \end{cases} \quad (\text{B9})$$

710 in normal direction with sea water density  $\rho_{\text{sw}} = 1028 \text{ kg m}^{-3}$  and  $u_z$  the displacement component in the thickness direction. Hence, we have to compute the water pressure in the reference configuration

$$t_0 = P_0 \mathbf{N} = p \mathbf{J} \mathbf{F}^{-T} \mathbf{N} = p \mathbf{n} \quad (\text{B10})$$

with the pressure  $P_0$  and the normal vector  $\mathbf{N}$  in the reference configuration as well as the pressure  $p$  and the normal vector  $\mathbf{n}$  in the current configuration. Additionally, we deform the geometry by temporally and spatially variable fields of basal melt subtracted at the lower boundary and SMB added to the upper boundary.



**Figure B1.** Reference, current and intermediate configurations and their corresponding strain and stress denotation for the finite viscoelastic Maxwell model. In the intermediate configuration (dashed line) the viscoelastic material equations are defined.

## 715 B2 Viscosity from inverse modeling

For estimating the viscosity distribution in the Filchner-Ronne Ice Shelf, we conduct a control-method inversion for the **rheology parameter in the floating part**. We use the Ice Sheet and Sea Level System Model (Larour et al., 2012) applied to the Filchner-Ronne Ice Shelf using the Blatter-Pattyn higher-order approximation (Blatter, 1995; Pattyn, 2003). The calculation is done on an unstructured finite element grid with a refined resolution of 2 km at the grounding line, in the shear margins as well as at other regions of faster ice flow. In the melt channel domain we further refine the resolution of the grid to 0.5 km.

To generate the geometry of the ice shelf the BedMachine Antarctica v2 data set is used (Morlighem et al., 2020; Morlighem, 2020). For the ice rigidity in the grounded region, as well as an initial guess of ice rigidity in the floating shelf, we assume the results of a long-term thermal spin-up also used in Eisen et al. (2020) based on the geothermal flux from Martos et al. (2017). We constrain ice surface velocities to fit the MEASUREs data set (Mouginot et al., 2019b, a).

Our optimization approach **iteratively infers infers iteratively** two parameters – the basal friction parameter in the grounded area and the ice rheology parameter in the floating area. For this purpose two cost functions are built. Each cost function consists of two at the surface  $S$  evaluated data misfits, linear and logarithmic, as well as a Tikhonov regularization term:

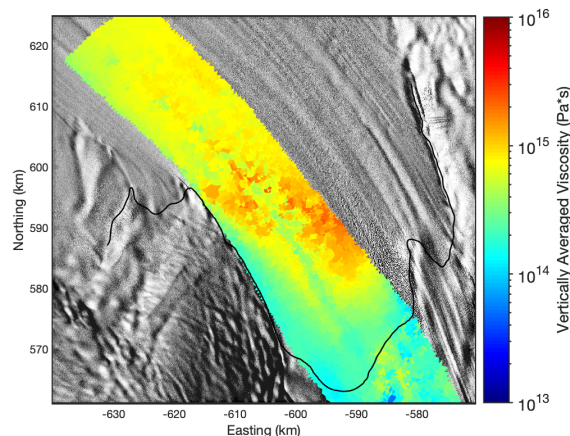
$$J(\mathbf{v}, \underline{kp}) = \gamma_1 \int_S \frac{(v_x - v_x^{\text{obs}})^2 + (v_y - v_y^{\text{obs}})^2}{2} dS + \gamma_2 \int_S \left( \log \left( \frac{\|\mathbf{v}\| + \varepsilon}{\|\mathbf{v}^{\text{obs}}\| + \varepsilon} \frac{\|\mathbf{v}\| + \xi}{\|\mathbf{v}^{\text{obs}}\| + \xi} \right) \right)^2 dS + \gamma_t J_{\text{reg}}(\underline{p}) \quad (\text{B11})$$

with  $v^{\text{obs}}$  the observed surface velocity,  $v$  the modeled velocity,  $p$  the respective control parameter for the inversion and a added minimal velocity  $\xi$  to avoid singularities. The first term will be most sensitive to velocity observations in fast-flowing areas, the second term will be most sensitive to velocity observations in **slow-flowing-slow-floating** areas, while the third term  $J_{\text{reg}}(\underline{p})$  penalizes oscillations in the optimization parameter  $\underline{p}$ . We performed an L-curve analysis to find suitable weights  $\gamma_1, \gamma_2, \gamma_t$  for both cost functions. With this trade-off curve, we can make sure that we find a regularization term that fits the data well without overfitting noise. For the basal friction inversion, we found best weights  $\gamma_1 = 1, \gamma_2 = 5 \times 10^{-6}$  and  $\gamma_t = 1 \times 10^{-8}$ , while for the ice rigidity inversion the optimal weights were  $\gamma_1 = 1, \gamma_2 = 0.8$  and  $\gamma_t = 4 \times 10^{-17}$ .

We linearize and solve the optimization problem using the M1QN3 algorithm with an incomplete adjoint (Larour et al., 2012).

For this inversion setting we apply a gradient relative convergence criterion  $\epsilon_{\text{gtot}} = 10^{-6}$  and two points which are less than  $\text{dxmin} = 10^{-4}$  from each other are considered identical. Besides we used a maximum number of iterations and function evaluations of 1000. We show our best-fit results for ice viscosity in the region around the melt channel in Fig. B2.

740 The range of the viscosity is between  $5.0563 \times 10^{13}$  and  $2.6656 \times 10^{15}$  Pa.s.



**Figure B2.** Ice viscosity in the melt channel area obtained from inverse modeling. The map extent is the same as in Fig. 1. The background image is a hillshade of the Reference Elevation Model of Antarctica (Howat et al., 2018, 2019).

### B3 Sensitivity of experiment 2 on viscosity

To capture the influence of the viscosity, different constant values (one smaller and one higher as in the second experiment) are investigated in a further experiment. The spin-up for each viscosity starts at  $t = -75$  a with an arbitrary basal geometry that should fit seismic IV profile at the end of the spin-up ( $t_0$ ). The melt rate  $a_b^{\text{syn}}(t_0)$  is again assumed to be constant over the spin-up for all different viscosity values. We force the base with the synthetic melt rate (Fig. 3a), the same melt rate we already used in the second experiment. The initial base for the middle and high viscosity is nearly the same as  $5 \times 10^{15}$  Pa.s is for ice a rather high value requiring cold ice (Fig. B8). For the smallest viscosity, a deeper channel at the beginning of the spin-up is needed.

745

### B4 Elastic strain measure

750 For the concept of nonlinear strain, strain measures are defined and valid in particular configurations. However, the commonly used strain measures, like the Green-Lagrange strain in the reference configuration or the Euler-Almansi strain in the actual configuration, always have combined viscoelastic parts that cannot be split into viscous and elastic parts separately due to the multiplicative decomposition of the deformation gradient (Eq. B3). To quantify the elastic contribution of the melt channel evolution, we consider the Hencky strain, often called true strain, a logarithmic strain measure introduced in more detail by

755 (Cuitino and Ortiz, 1992). Xiao (2005) and Neff et al. (2015) showed an extensive overview of the logarithmic strain properties and its applications. The advantage of the Hencky strain is an additive decomposition of the strain into an elastic and viscous part comparable to the procedure assuming a linearized strain for the linear strain theory. Furthermore, the Hencky strain is identical in the reference and current configuration.

The Hencky strain is defined by

$$760 \quad \underline{\underline{\epsilon^H}} = \frac{1}{2} \ln(\underline{\underline{F^T F}}) = \frac{1}{2} \ln(\underline{\underline{C}}). \quad (\text{B12})$$

We can compute the logarithm of the right Cauchy- Green tensor  $C$  by logarithmizing the eigenvalues derived by a spectral decomposition. For rigid body motions when  $C = I$ , the Hencky strain is zero. The eigenvalues of  $F^T F$  for the Lagrangian perspective are the same as the eigenvalues of  $FF^T$  in the Eulerian sense. Hence, the Hencky strain in the reference configuration is the same as in the current configuration and, for simplicity, we call it strain  $\epsilon$  here.

765 In the viscoelastic Maxwell model considering finite strains, we have a multiplicative decomposition of the deformation gradient  $F$  in an elastic and viscous part (Eq. B3) and it holds

$$\underline{\underline{C}} = \underline{\underline{F^T F}} = \underline{\underline{F_v^T F_e^T F_e F_v}} = \underline{\underline{F_v^T C_e F_v}} \quad (\text{B13})$$

with  $C_e = F_e^T F_e$ . Furthermore, we can split the deformation gradient in a rotation  $R$  and a stretching  $U$  ( $F = RU$ ). The rotation has to be orthogonal, hence, we arbitrarily choose the viscous rotation as the identity tensor ( $R_v = I$ ) and get

$$770 \quad \underline{\underline{C}} = \underline{\underline{U_v^T C_e U_v}} \Rightarrow \ln(\underline{\underline{C}}) = \ln(\underline{\underline{U_v^T}}) + \ln(\underline{\underline{C_e}}) + \ln(\underline{\underline{U_v}}). \quad (\text{B14})$$

The stretching is symmetric ( $U_v^T = U_v$ ) and we get  $2\ln(U_v) = \ln(U_v^2) = \ln(C_v)$  based on the relation  $C_v = U_v^2$ . In the end, we can split the strain additive into

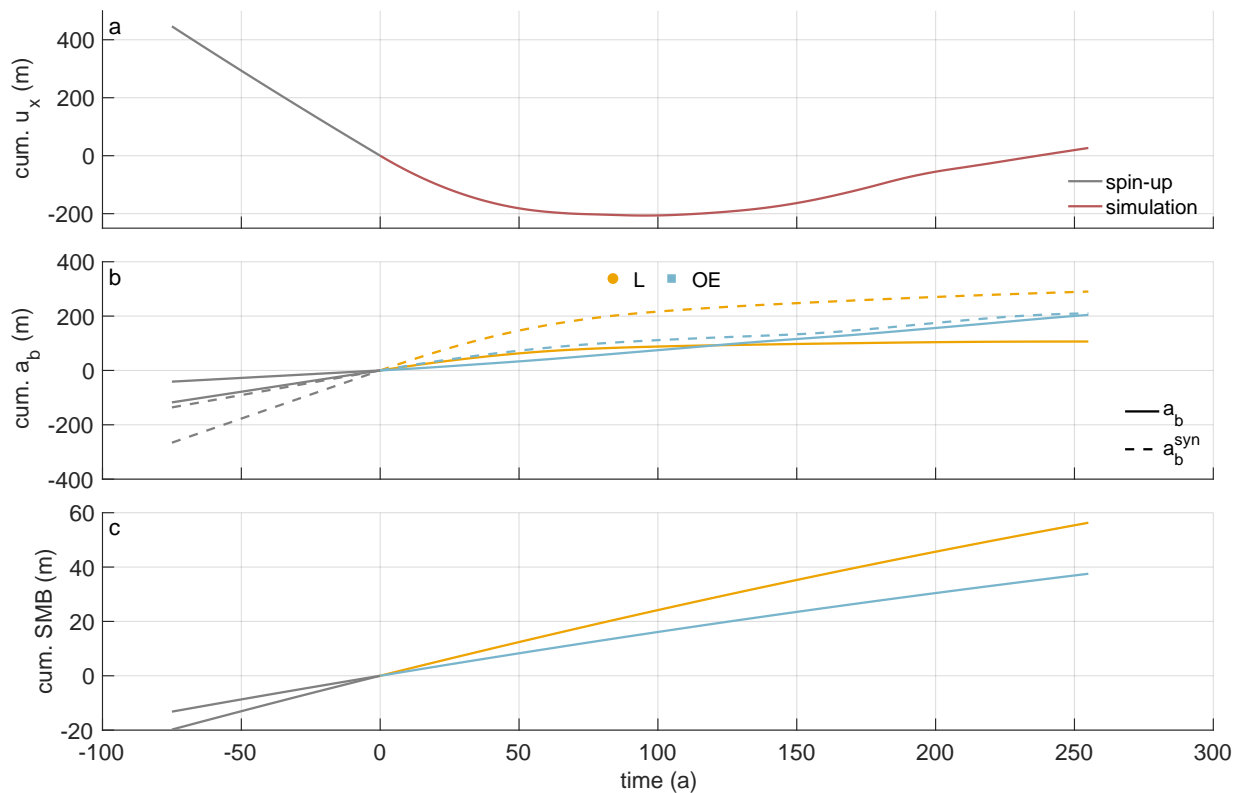
$$\ln(\underline{\underline{C}}) = \underbrace{\ln(\underline{\underline{C_e}})}_{2\epsilon} + \underbrace{\ln(\underline{\underline{C_v}})}_{2\epsilon^e} + \underbrace{\ln(\underline{\underline{C_v}})}_{2\epsilon^v} \quad (\text{B15})$$

and get the elastic strain

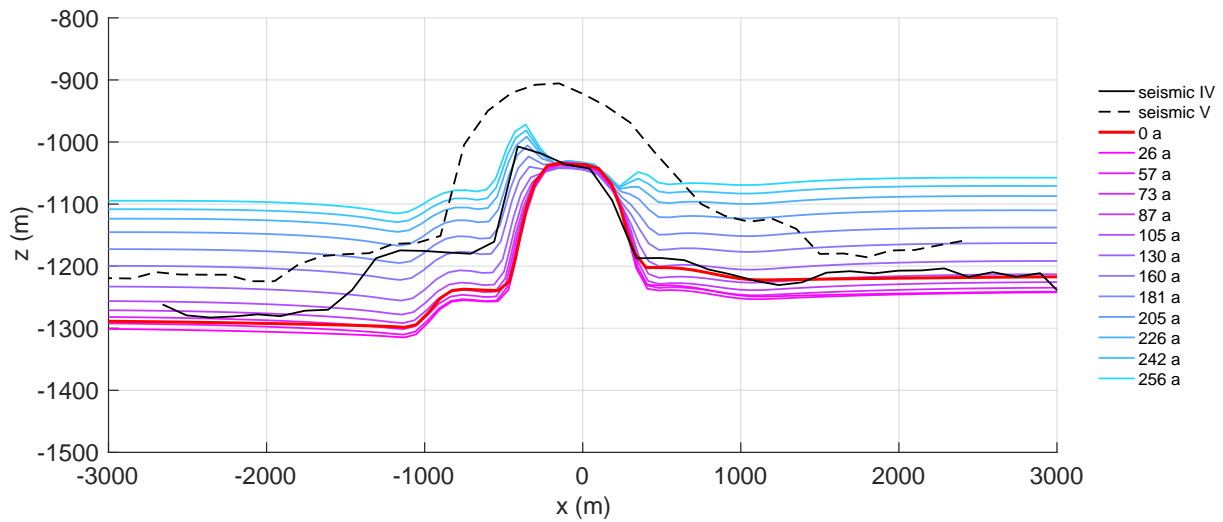
$$775 \quad \underline{\underline{\epsilon^e}} = \underline{\underline{\epsilon}} - \underline{\underline{\epsilon^v}} = \frac{1}{2} \ln(\underline{\underline{C}}) - \frac{1}{2} \ln(\underline{\underline{C_v}}), \quad (\text{B16})$$

where  $C_v$  is the internal variable of the viscoelastic material model.

## B5 Additional figures

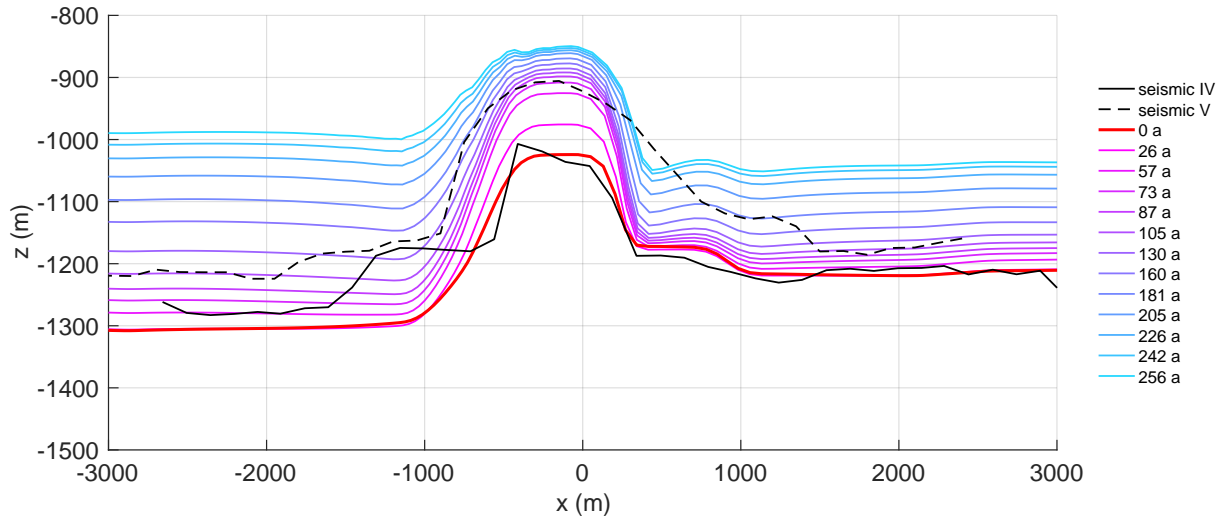


**Figure B3.** Model input derived from pRES measurements and RACMO [van Wessem et al. \(2014\)](#) ([van Wessem et al., 2014](#)). (a) **Cumulative horizontal displacement** calculated from pRES-derived vertical strain rates outside of the channel. (b) Cumulative basal melt rates above (yellow) and outside the channel (blue). Solid lines are derived from the pRES measurements and dashed lines are synthetic melt rates that are necessary to reproduce the measured ice thickness distribution. (c) Cumulative surface mass balance (SMB) derived from multi-year mean RACMO2.3 data [van Wessem et al. \(2014\)](#) ([van Wessem et al., 2014](#)) for a density of  $910 \text{ kg m}^{-3}$  outside the channel (blue) and above the channel (yellow), 50% larger. Gray lines represent values used in the spin-up and colored lines values used in the simulation of the evolution of the channel.

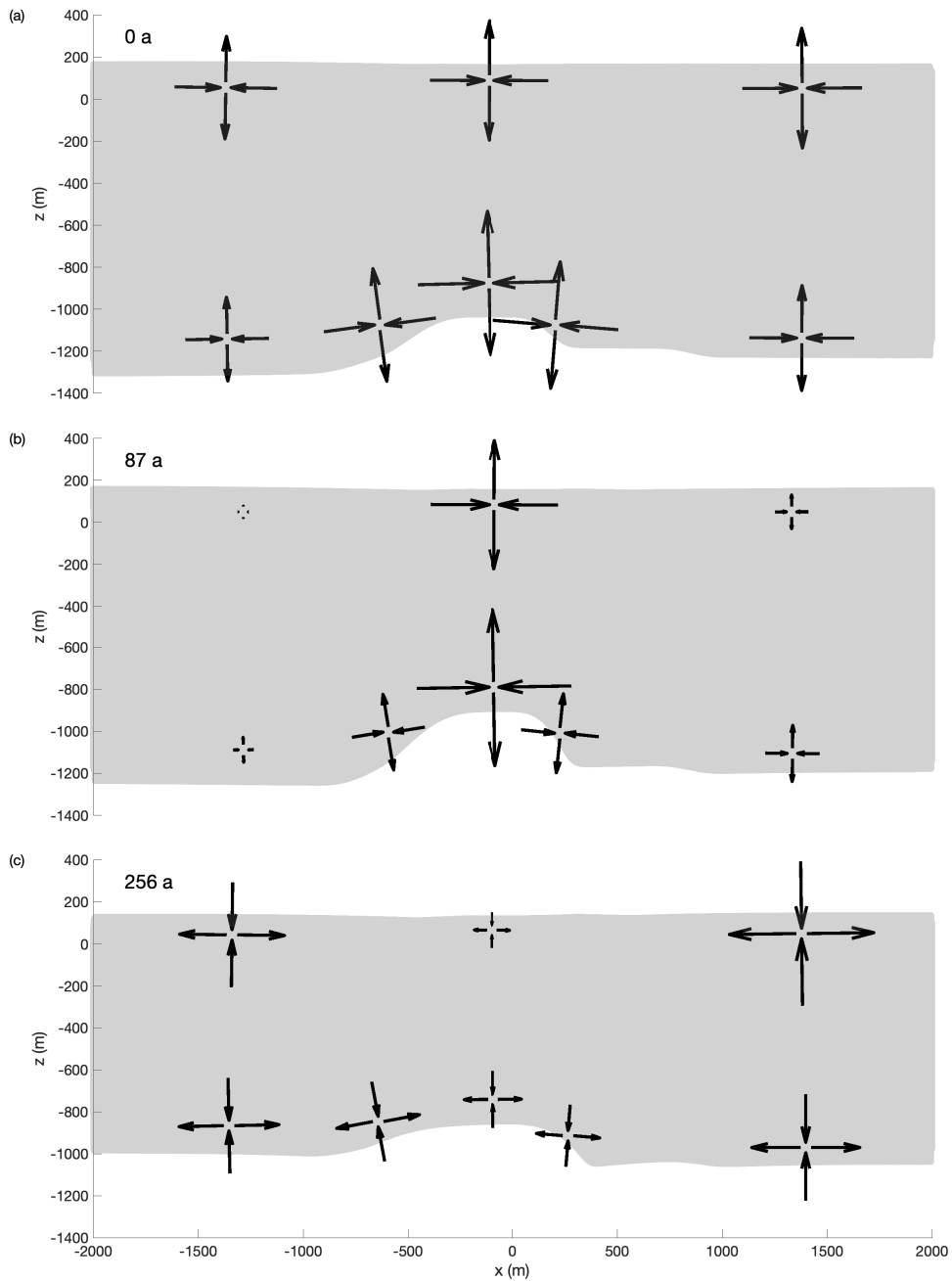


**Figure B4.** Evolution of the base for the first experiment applying pRES-derived melt rates in the viscoelastic simulation. The black curve shows seismic profile IV [Hofstede et al. \(2021b\)](#) ([Hofstede et al., 2021b](#)) and the red line the simulated base after the spin-up. For each position of pRES observations, the simulated base is shown using a color distribution ranging from red (furthest upstream) to blue (furthest downstream). The dashed black line is the base of seismic profile V [Hofstede et al. \(2021b\)](#) ([Hofstede et al., 2021b](#)) near the pRES observation fitting to 130 a

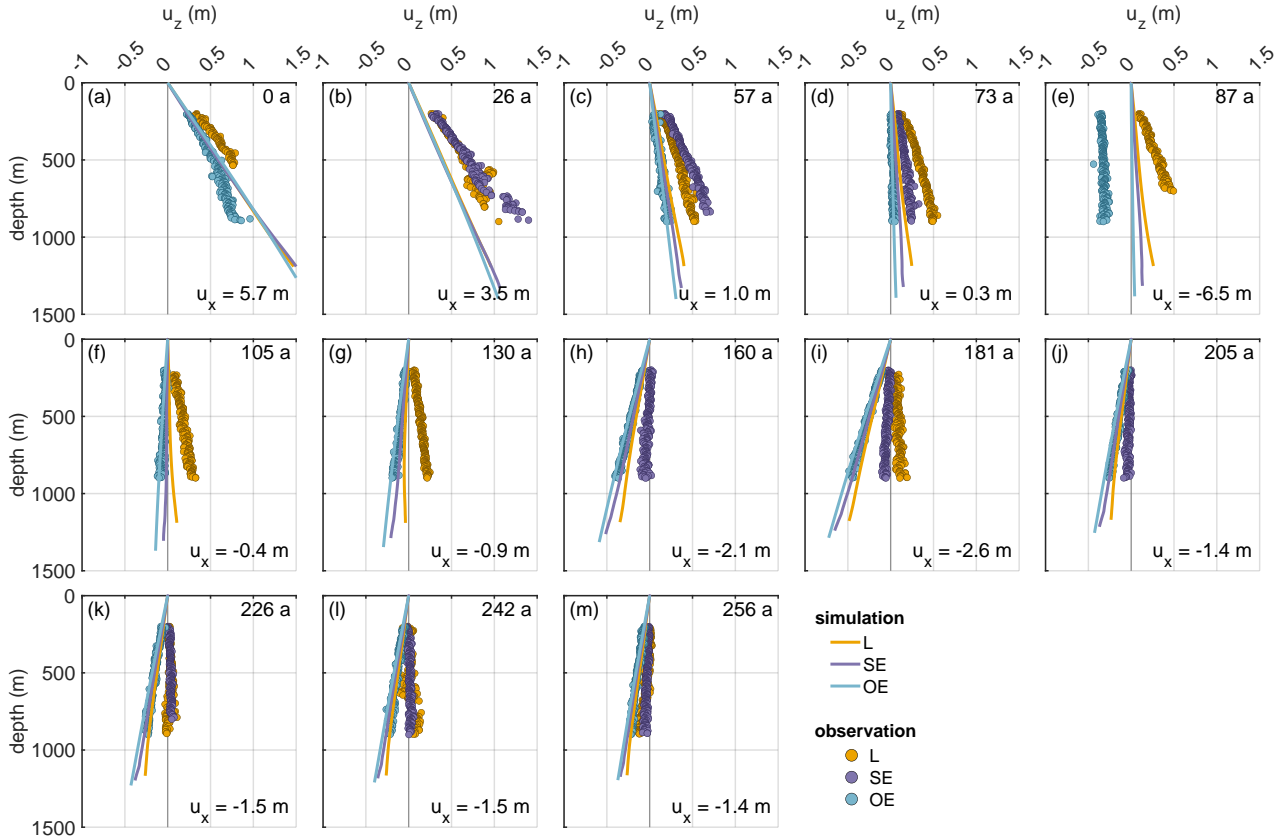




**Figure B5.** Evolution of the base for the second experiment applying synthetic melt rates in the viscoelastic simulation. The black curve shows seismic profile IV [Hofstede et al. \(2021b\)](#) ([Hofstede et al., 2021b](#)) and the red line is the simulated base after the spin-up. For each position of pRES observations, the simulated base is shown using a color distribution ranging from red (furthest upstream) to blue (furthest downstream). The dashed black line is the base of seismic profile V [Hofstede et al. \(2021b\)](#) ([Hofstede et al., 2021b](#)) near the pRES observation fitting to [130 a](#). The opening of the basal channel cannot be rebuilt with the model as the melt rate inside the channel is only applied to constant channel width. The basal channel stays open during the simulation time of 256 a.

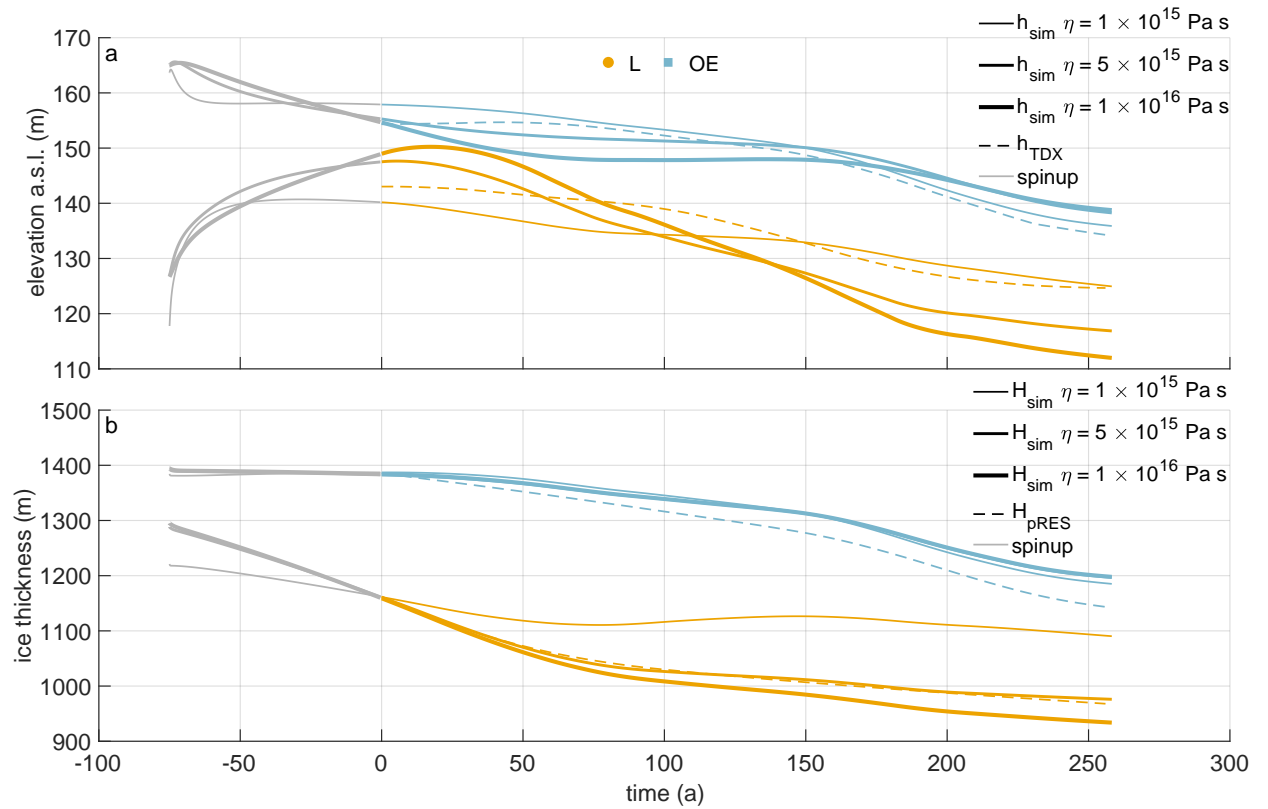


**Figure B6.** Schematic arrows with their length according to the simulated principal strain magnitude and the pointing direction fitting to principal strain directions at special points in the cross section for three different points in time (a) at  $t = 0$  a (after the spinup, maximum lateral compression), (b)  $t = 87$  a (small lateral displacement), (c)  $t = 256$  a (end of the simulation).



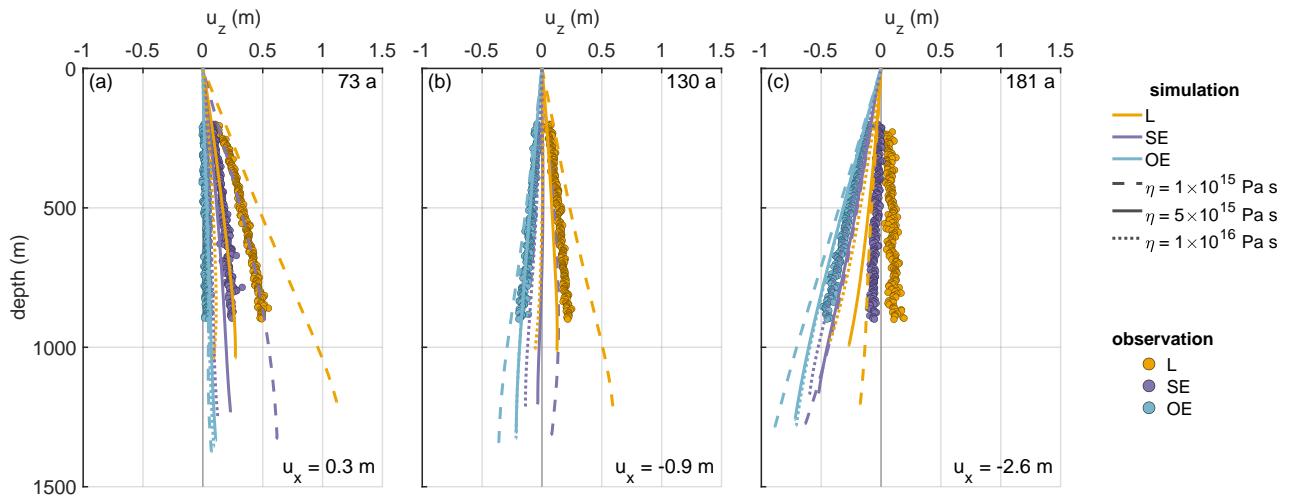
**Figure B7.** First experiment: comparison of displacements ( $u_z$ ) derived from pRES measurements (dots) and from the simulations (lines). The different panels show the displacement for  $\Delta t = 1$  a allocated to the year of the model (number in upper right corner). The numbers in the lower right corners give horizontal displacement  $u_x$  derived from  $\varepsilon_{zz}$  of the pRES measurements outside the channel (OE) with positive values representing compression and negative values extension.

Simulated vertical strain of the current configuration of the second experiment using synthetic melt rates for (a)  $t = 0$  a (after the spin-up, maximum lateral compression), (b)  $t = 87$  a (small lateral displacement), (c)  $t = 181$  a (maximum lateral extension). The white color shows the mean strain at each point in time. Bluish colors denote a strain deviation that is smaller than the mean value, while for the reddish areas the strain is higher. The highest strain occurs inside the channel caused by the viscous flow. The geometry variation caused by the melt rate counteract this ice flow and the basal channel persists. The maximum strain value increases from a to c through an increasing simulation



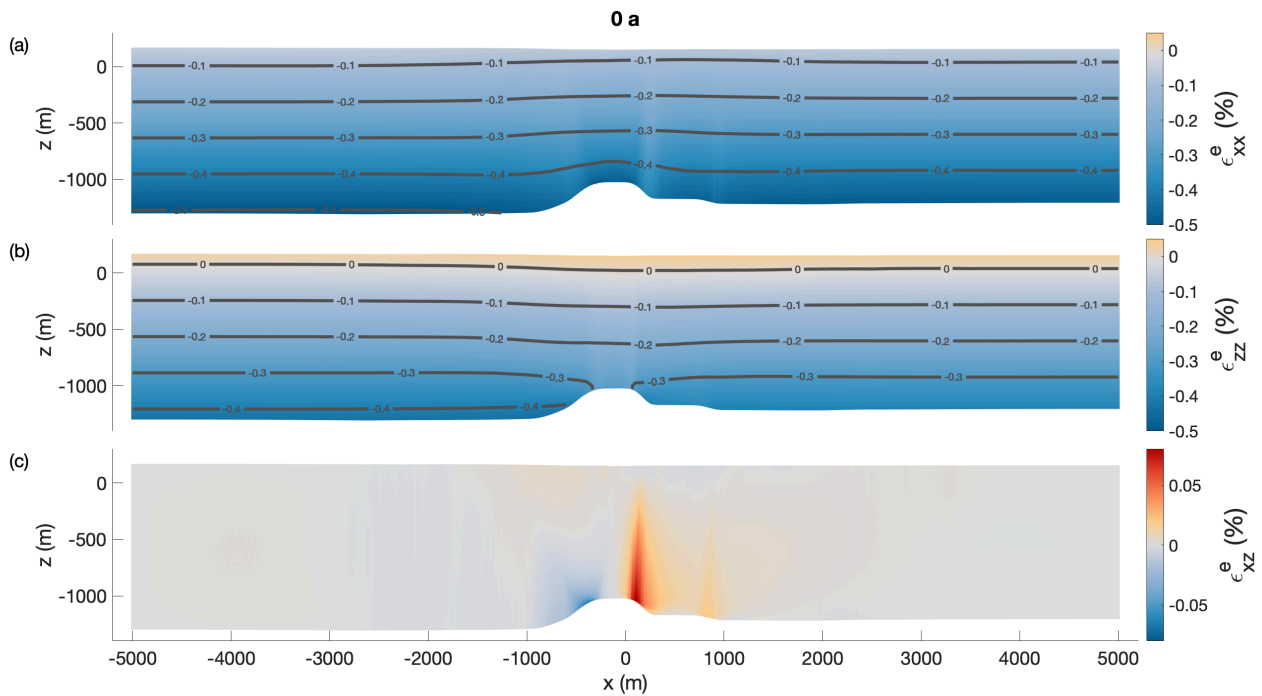
time:

**Figure B8.** (a) Surface elevation above the channel (yellow) and outside the channel (blue) derived from the simulation (solid lines) and from TanDEM-X DLR (2020) (dashed lines). (b) Ice thickness above the channel (yellow) and outside the channel (blue) derived from the simulation (solid lines) and from pRES measurements (dashed lines). The thickness of the solid lines represents the different viscosities:  $1 \times 10^{15}$  Pa s (thin line),  $5 \times 10^{15}$  Pa s (medium line, same value as in the second experiment),  $1 \times 10^{16}$  Pa s (thick line). Gray lines represent values used in the spin-up and colored lines values used in the simulation of the evolution of the channel.

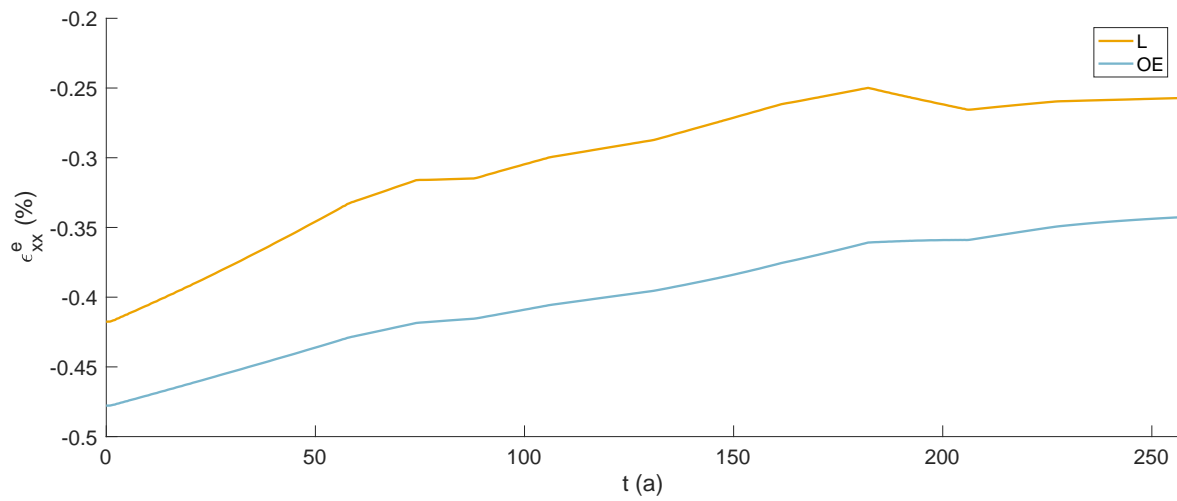


**Figure B9.** Second experiment: comparison of displacements ( $u_z$ ) derived from observations (dots) and the simulations for different viscosities displayed by different line styles (lines). The different panels show the displacement for  $\Delta t = 1$  a allocated to the simulation time (upper right corner). The numbers in the lower right corners give horizontal displacement  $u_x$  derived from  $\varepsilon_{zz}$  of the pRES measurements outside the channel (OE) with positive values representing compression and negative values extension.

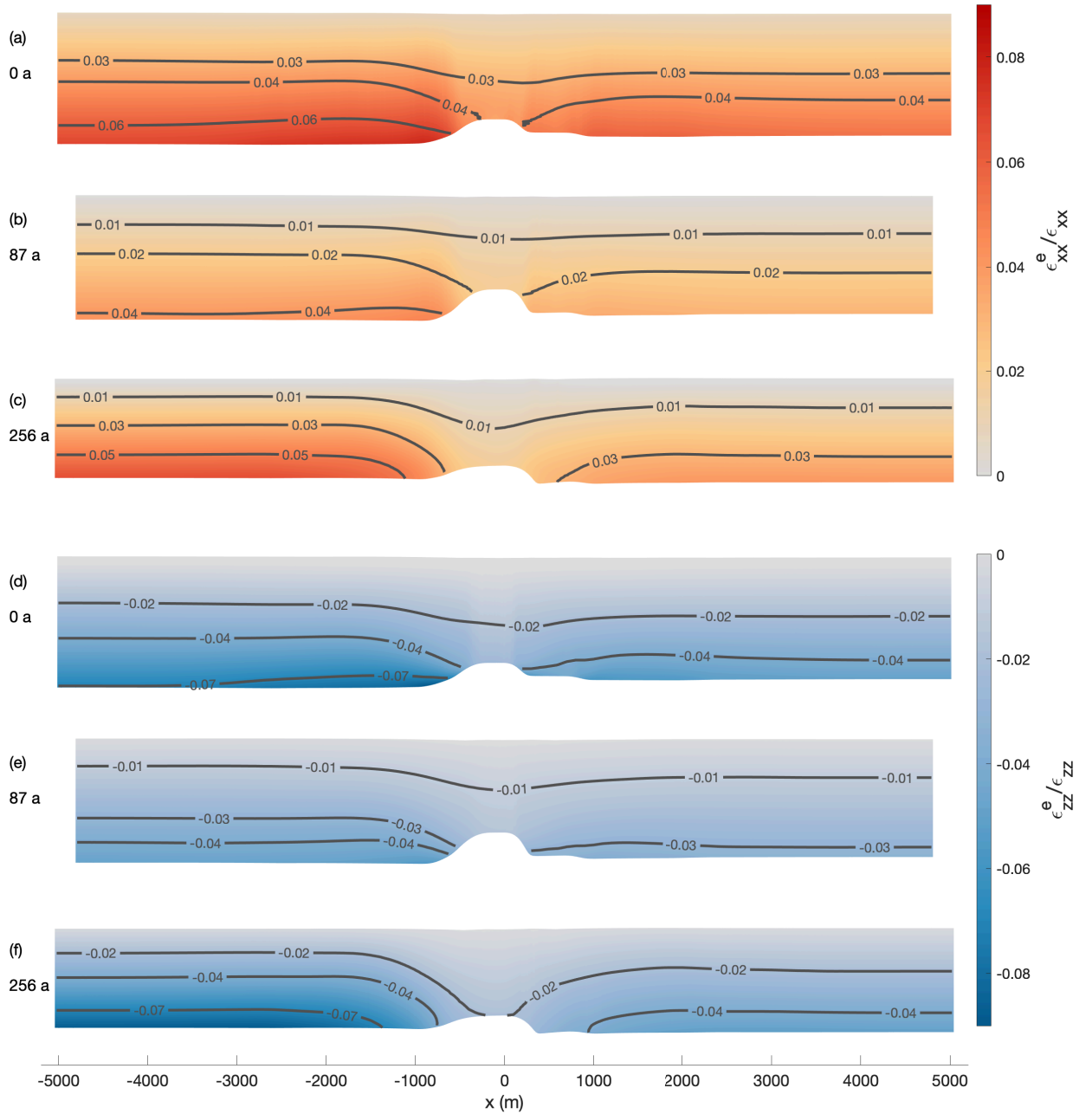
(a) Surface elevation above the channel (yellow) and outside the channel (blue) derived from the simulation (solid lines) and from TanDEM-X DLR (2020) (dashed lines). (b) Ice thickness above the channel (yellow) and outside the channel (blue) derived from the simulation (solid lines) and from pRES measurements (dashed lines). The thickness of the solid lines represents the different viscosities:  $1 \times 10^{15}$  Pas (thin line),  $5 \times 10^{15}$  Pas (medium line, same value as in the second experiment),  $1 \times 10^{16}$  Pas (thick line). Gray lines represent values used in the spin-up and colored lines values used in the simulation of the evolution of the channel.



**Figure B10.** The simulated elastic part of Hencky strain (a) in across-flow direction, (b) in thickness direction and (c) the shear component for the second experiment using synthetic melt rates at  $t = 0$  a (after the spin-up, maximum lateral compression). The gray lines are contour lines of the elastic strain components. The normal components reach permille values (the blueish colors denote compression), while the shear component is one order of magnitude smaller.



**Figure B11.** The evolution of the simulated elastic part of Hencky strain at the ice base inside and outside east the channel in percent over the simulation time of 256 a. The initial elastic response of the grounded ice becoming afloat has vanished as the grounding line to far upstream. The spinup of 75 a leads to a continuous elastic transition at  $t = 0$  a the start of the comparison between simulated results and observations.



**Figure B12.** Relative contribution of elastic to total strain of the second experiment using synthetic melt rates for the simulation. The upper three panels show the relative elastic strain in across-flow direction  $\epsilon_{xx}^e / \epsilon_{xx}$  for (a)  $t = 0$  a (after the spin-up, maximum lateral compression), (b)  $t = 87$  a (small lateral displacement), (c)  $t = 256$  a (end of the simulation). The lower three panels show the relative elastic strain in thickness direction  $\epsilon_{zz}^e / \epsilon_{zz}$  for (d)  $t = 0$  a (after the spin-up, maximum lateral compression), (e)  $t = 87$  a (small lateral displacement), (f)  $t = 256$  a (end of the simulation). The negative values denote that the elastic and viscous strains have different signs. The elastic and viscous Hencky strain sum up to the total strain.



*Author contributions.* AH has designed the study, conducted the field study together with DS and wrote the manuscript together with OZ, JC, KWN, VH and LH. OZ processed the pRES/ApRES data and analyzed the melt rates together with AH. JC performed the viscoelastic simulations together with TS and with contributions from OZ and AH. JC, AH and OZ analyzed the results together with RM. VH and OZ processed the GPS data. LH and MW performed the inverse modeling. CH performed the seismic measurements and supported the discussions. NN calculated the TDX-DEM. KWN supported the field study and contributed to melt rate analysis and its discussion together with HFJC. All authors helped to improve writing.

*Competing interests.* The authors declare that they have no conflict of interest.

785 *Acknowledgements.* This work was funded by the AWI strategy fund project FISP. We acknowledge the support of BAS for the field campaign, in particular the support of the Graham Niven and Bradley Morell, who have been field assistants in the two expeditions. L.H. is funded through the Helmholtz School for Marine Data Science (MarDATA), Grant No. HIDSS-0005. Support for this work came from the UK Natural Environment Research Council large grant “Ice shelves in a warming world: Filchner Ice Shelf System” (NE/L013770/1).

## References

- 790 Alley, K. E., Scambos, T. A., Alley, R. B., and Holschuh, N.: Troughs developed in ice-stream shear margins precondition ice shelves for ocean-driven breakup, *Science Advances*, 5, eaax2215, <https://doi.org/10.1126/sciadv.aax2215>, 2019.
- Blatter, H.: Velocity and stress fields in grounded glaciers: a simple algorithm for including deviatoric stress gradients, *Journal of Glaciology*, 41, 333–344, <https://doi.org/10.3189/S002214300001621X>, 1995.
- Brennan, P. V., Lok, L. B., Nicholls, K., and Corr, H.: Phase-sensitive FMCW radar system for high-precision Antarctic ice shelf profile monitoring, *IET Radar, Sonar & Navigation*, 8, 776–786, <https://doi.org/10.1049/iet-rsn.2013.0053>, 2014.
- 795 Christmann, J., Plate, C., Müller, R., and Humbert, A.: Viscous and viscoelastic stress states at the calving front of Antarctic ice shelves, *Annals of Glaciology*, 57, 10–18, <https://doi.org/10.1017/aog.2016.18>, 2016.
- Christmann, J., Müller, R., and Humbert, A.: On nonlinear strain theory for a viscoelastic material model and its implications for calving of ice shelves, *Journal of Glaciology*, 65, 212–224, <https://doi.org/10.1017/jog.2018.107>, 2019.
- 800 Christmann, J., Helm, V., Khan, S. A., Kleiner, T., Müller, R., Morlighem, M., Neckel, N., Rückamp, M., Steinhage, D., Zeising, O., and Humbert, A.: Elastic deformation plays a non-negligible role in Greenland’s outlet glacier flow, *Communications Earth & Environment*, 2, 232, <https://doi.org/10.1038/s43247-021-00296-3>, 2021.
- Corr, H. F., Jenkins, A., Nicholls, K. W., and Doake, C.: Precise measurement of changes in ice-shelf thickness by phase-sensitive radar to determine basal melt rates, *Geophysical Research Letters*, 29, 73–1 73–4, <https://doi.org/10.1029/2001GL014618>, 2002.
- 805 Cuitino, A. and Ortiz, M.: Computational modelling of single crystals, *Modelling and Simulation in Materials Science and Engineering*, 1, 225–263, <https://doi.org/10.1088/0965-0393/1/3/001>, 1992.
- Dinniman, M. S., Asay-Davis, X. S., Galton-Fenzi, B. K., Holland, P. R., Jenkins, A., and Timmermann, R.: Modeling Ice Shelf/Ocean Interaction in Antarctica: A Review, *Oceanography*, 29, 144–153, <https://doi.org/10.5670/oceanog.2016.106>, 2016.
- DLR: TanDEM-X - PolarDEM - Antarctica, 90m, <https://doi.org/10.15489/9jhr18jepi65>, 2020.
- 810 Dow, C. F., Lee, W. S., Greenbaum, J. S., Greene, C. A., Blankenship, D. D., Poinar, K., Forrest, A. L., Young, D. A., and Zappa, C. J.: Basal channels drive active surface hydrology and transverse ice shelf fracture, *Science Advances*, 4, <https://doi.org/10.1126/sciadv.aao7212>, 2018.
- Drews, R.: Evolution of ice-shelf channels in Antarctic ice shelves, *The Cryosphere*, 9, 1169–1181, <https://doi.org/10.5194/tc-9-1169-2015>, 2015.
- 815 Drews, R., Pattyn, F., Hewitt, I. J., Ng, F. S. L., Berger, S., Matsuoka, K., Helm, V., Bergeot, N., Favier, L., and Neckel, N.: Actively evolving subglacial conduits and eskers initiate ice shelf channels at an Antarctic grounding line, *Nature Communications*, 8, 15 228, <https://doi.org/10.1038/ncomms15228>, 2017.
- Dutrieux, P., Stewart, C., Jenkins, A., Nicholls, K. W., Corr, H. F., Rignot, E., and Steffen, K.: Basal terraces on melting ice shelves, *Geophysical Research Letters*, 41, 5506–5513, <https://doi.org/10.1002/2014GL060618>, 2014.
- 820 Eisen, O., Winter, A., Steinhage, D., Kleiner, T., and Humbert, A.: Basal roughness of the East Antarctic Ice Sheet in relation to flow speed and basal thermal state, *Annals of Glaciology*, 61, 162–175, <https://doi.org/10.1017/aog.2020.47>, 2020.
- Foerste, C., Bruinsma, S., Abrykosov, O., Lemoine, J.-M., Marty, J. C., Flechtner, F., Balmino, G., Barthelmes, F., and Biancale, R.: EIGEN-6C4 The latest combined global gravity field model including GOCE data up to degree and order 2190 of GFZ Potsdam and GRGS Toulouse, <https://doi.org/10.5880/icgem.2015.1>, 2014.

- 825 Fujita, S., Matsuoka, T., Ishida, T., Matsuoka, K., and Mae, S.: A summary of the complex dielectric permittivity of ice in the megahertz range and its applications for radar sounding of polar ice sheets, in: *Physics of ice core records*, pp. 185–212, Hokkaido University Press, 2000.
- Galton-Fenzi, B. K., Hunter, J. R., Coleman, R., Marsland, S. J., and Warner, R. C.: Modeling the basal melting and marine ice accretion of the Amery Ice Shelf, *Journal of Geophysical Research: Oceans*, 117, <https://doi.org/10.1029/2012JC008214>, 2012.
- 830 Gladish, C. V., Holland, D. M., Holland, P. R., and Price, S. F.: Ice-shelf basal channels in a coupled ice/ocean model, *Journal of Glaciology*, 58, 1227–1244, <https://doi.org/10.3189/2012JoG12J003>, 2012.
- Gudmundsson, H.: Ice-stream response to ocean tides and the form of the basal sliding law, *The Cryosphere*, 5 (1), 259–270, <https://doi.org/10.5194/tc-5-259-2011>, 2011.
- Gwyther, D. E., Kusahara, K., Asay-Davis, X. S., Dinniman, M. S., and Galton-Fenzi, B. K.: Vertical processes and resolution impact ice shelf basal melting: A multi-model study, *Ocean Modelling*, 147, 101–156, <https://doi.org/10.1016/j.ocemod.2020.101569>, 2020.
- 835 Haupt, P.: *Continuum Mechanics and Theory of Materials*, Springer, Berlin, <https://doi.org/10.1007/978-3-662-04775-0>, 2000.
- Helm, V., Humbert, A., and Miller, H.: Elevation and elevation change of Greenland and Antarctica derived from CryoSat-2, *The Cryosphere*, 8, 1539–1559, <https://doi.org/10.5194/tc-8-1539-2014>, 2014.
- Herron, M. M. and Langway, C. C.: Firn densification: an empirical model, *Journal of Glaciology*, 25, 373–385, <https://doi.org/10.3189/S0022143000015239>, 1980.
- 840 Hofstede, C., Beyer, S., Corr, H., Eisen, O., Hattermann, T., Helm, V., Neckel, N., Smith, E. C., Steinhage, D., Zeising, O., and Humbert, A.: Evidence for a grounding line fan at the onset of a basal channel under the ice shelf of Support Force Glacier, Antarctica, revealed by reflection seismics, *The Cryosphere*, 15, 1517–1535, <https://doi.org/10.5194/tc-15-1517-2021>, 2021a.
- Hofstede, C., Beyer, S., Corr, H. F. J., Eisen, O., Hattermann, T., Helm, V., Neckel, N., Smith, E. C., Steinhage, D., Zeising, O., and Humbert, A.: Seismic reflection data of a basal channel and ocean cavity at the ice shelf-grounding line area of Support Force Glacier, Filchner Ice Shelf, Antarctica, <https://doi.org/10.1594/PANGAEA.932278>, 2021b.
- 845 Holland, D. M. and Jenkins, A.: Modeling Thermodynamic Ice–Ocean Interactions at the Base of an Ice Shelf, *Journal of Physical Oceanography*, 29, 1787 – 1800, [https://doi.org/10.1175/1520-0485\(1999\)029<1787:MTIOIA>2.0.CO;2](https://doi.org/10.1175/1520-0485(1999)029<1787:MTIOIA>2.0.CO;2), 1999.
- Holland, P. R. and Kwok, R.: Wind-driven trends in Antarctic sea-ice drift, *Nature Geoscience*, 5, 872–875, <https://doi.org/10.1038/ngeo1627>, 2012.
- 850 Howat, I., Morin, P., Porter, C., and Noh, M.-J.: The Reference Elevation Model of Antarctica, <https://doi.org/10.7910/DVN/SAIK8B>, 2018.
- Howat, I., Porter, C., Smith, B. E., Noh, M.-J., and Morin, P.: The Reference Elevation Model of Antarctica, *The Cryosphere*, 13, 665–674, <https://doi.org/10.5194/tc-13-665-2019>, 2019.
- Humbert, A., Steinhage, D., Helm, V., Hoerz, S., Berendt, J., Leipprand, E., Christmann, J., Plate, C., and Müller, R.: On the link between surface and basal structures of the Jelbart Ice Shelf, Antarctica, *Journal of Glaciology*, 61, 975–986, <https://doi.org/10.3189/2015JoG15J023>, 2015.
- 855 Humbert, A., Steinhage, D., Helm, V., Beyer, S., and Kleiner, T.: Missing evidence of widespread subglacial lakes at Recovery Glacier, Antarctica, *Journal of Geophysical Research: Earth Surface*, 123, 2802–2826, <https://doi.org/10.1029/2017JF004591>, 2018.
- Jenkins, A. and Doake, C.: Ice-ocean interaction on Ronne Ice Shelf, Antarctica, *Journal of Geophysical Research: Oceans*, 96, 791–813, <https://doi.org/10.1029/90JC01952>, 1991.
- 860 Jenkins, A., Corr, H. F., Nicholls, K. W., Stewart, C. L., and Doake, C. S.: Interactions between ice and ocean observed with phase-sensitive radar near an Antarctic ice-shelf grounding line, *Journal of Glaciology*, 52, 325–346, <https://doi.org/10.3189/172756506781828502>, 2006.

- 865 Jeofry, H., Ross, N., Le Brocq, A., Graham, A. G. C., Li, J., Gogineni, P., Morlighem, M., Jordan, T., and Siegert, M. J.: Hard rock landforms generate 130 km ice shelf channels through water focusing in basal corrugations, *Nature Communications*, 8, 4576, <https://doi.org/10.1038/s41467-018-06679-z>, 2018.
- Jourdain, N. C., Mathiot, P., Merino, N., Durand, G., Le Sommer, J., Spence, P., Dutrieux, P., and Madec, G.: Ocean circulation and sea-ice thinning induced by melting ice shelves in the Amundsen Sea, *Journal of Geophysical Research: Oceans*, 122, 2550–2573, <https://doi.org/10.1002/2016JC012509>, 2017.
- 870 Kovacs, A., Gow, A. J., and Morey, R. M.: The in-situ dielectric constant of polar firn revisited, *Cold Regions Science and Technology*, 23, 245 – 256, [https://doi.org/10.1016/0165-232X\(94\)00016-Q](https://doi.org/10.1016/0165-232X(94)00016-Q), 1995.
- Langley, K., von Deschanden, A., Kohler, J., Sinisalo, A., Matsuoka, K., Hattermann, T., Humbert, A., Nøst, O., and Isaksson, E.: Complex network of channels beneath an Antarctic ice shelf, *Geophysical Research Letters*, 41, 1209–1215, <https://doi.org/10.1002/2013GL058947>, 2014.
- 875 Larour, E., Seroussi, H., Morlighem, M., and Rignot, E.: Continental scale, high order, high spatial resolution, ice sheet modeling using the Ice Sheet System Model (ISSM), *Journal of Geophysical Research: Earth Surface*, 117, F01 022, <https://doi.org/10.1029/2011JF002140>, 2012.
- Le Brocq, A. M., Ross, N., Griggs, J. A., Bingham, R. G., Corr, H. F., Ferraccioli, F., Jenkins, A., Jordan, T. A., Payne, A. J., Rippin, D. M., et al.: Evidence from ice shelves for channelized meltwater flow beneath the Antarctic Ice Sheet, *Nature Geoscience*, 6, 945, <https://doi.org/10.1038/ngeo1977>, 2013.
- 880 Lee, E. H.: Elastic-plastic deformation at finite strains, *Journal of Applied Mechanics*, 36, 1–6, <https://doi.org/10.1115/1.3564580>, 1969.
- MacAyeal, D. R.: Thermohaline circulation below the Ross Ice Shelf: A consequence of tidally induced vertical mixing and basal melting, *Journal of Geophysical Research: Oceans*, 89, 597–606, <https://doi.org/10.1029/JC089iC01p00597>, 1984.
- 885 Marsh, O. J., Fricker, H. A., Siegfried, M. R., Christianson, K., Nicholls, K. W., Corr, H. F., and Catania, G.: High basal melting forming a channel at the grounding line of Ross Ice Shelf, Antarctica, *Geophysical Research Letters*, 43, 250–255, <https://doi.org/10.1002/2015GL066612>, 2016.
- Martos, Y. M., Catalán, M., Jordan, T. A., Golynsky, A., Golynsky, D., Eagles, G., and Vaughan, D. G.: Heat Flux Distribution of Antarctica Unveiled, *Geophysical Research Letters*, 44, 11,417–11,426, <https://doi.org/10.1002/2017GL075609>, 2017.
- 890 Millgate, T., Holland, P. R., Jenkins, A., and Johnson, H. L.: The effect of basal channels on oceanic ice-shelf melting, *Journal of Geophysical Research: Oceans*, 118, 6951–6964, <https://doi.org/10.1002/2013JC009402>, 2013.
- Morlighem, M.: MEaSURES BedMachine Antarctica, Version 2. Boulder, Colorado USA. NASA National Snow and Ice Data Center Distributed Active Archive Center, Accessed 12 April 2021, <https://doi.org/10.5067/E1QL9HFQ7A8M>, 2020.
- 895 Morlighem, M., Rignot, E., Binder, T., Blankenship, D., Drews, R., Eagles, G., Eisen, O., Ferraccioli, F., Forsberg, R., Fretwell, P., Goel, V., Greenbaum, J. S., Gudmundsson, H., Guo, J., Helm, V., Hofstede, C., Howat, I., Humbert, A., Jokat, W., Karlsson, N. B., Lee, W. S., Matsuoka, K., Millan, R., Mouginit, J., Paden, J., Pattyn, F., Roberts, J., Rosier, S., Ruppel, A., Seroussi, H., Smith, E. C., Steinhage, D., Sun, B., Broeke, M. R. v. d., Ommen, T. D. v., Wessm, M. v., and Young, D. A.: Deep glacial troughs and stabilizing ridges unveiled beneath the margins of the Antarctic ice sheet, *Nature Geoscience*, 13, 132–137, <https://doi.org/10.1038/s41561-019-0510-8>, 2020.
- Mouginit, J., Rignot, E., and Scheuchl, B.: MEaSURES Phase-Based Antarctica Ice Velocity Map, Version 1. Boulder, Colorado USA. NASA National Snow and Ice Data Center Distributed Active Archive Center, Accessed 13 April 2021, <https://doi.org/10.5067/PZ3NJ5RXXH10>, 2019a.

- 900 Mougnot, J., Rignot, E., and Scheuchl, B.: Continent-Wide, Interferometric SAR Phase, Mapping of Antarctic Ice Velocity, *Geophysical Research Letters*, 46, 9710–9718, <https://doi.org/10.1029/2019GL083826>, 2019b.
- Naughten, K. A., De Rydt, J., Rosier, S. H. R., Jenkins, A., Holland, P. R., and Ridley, J. K.: Two-timescale response of a large Antarctic ice shelf to climate change, *Nature Communications*, 12, 1991, <https://doi.org/10.1038/s41467-021-22259-0>, 2021.
- Neff, P., Ghiba, I.-D., and Lankeit, J.: The exponentiated Hencky-logarithmic strain energy. Part I: constitutive issues and rank-one convexity, 905 *Journal of Elasticity*, 121, 143–234, <https://doi.org/10.1007/s10659-015-9524-7>, 2015.
- Nicholls, K. W.: Predicted reduction in basal melt rates of an Antarctic ice shelf in a warmer climate, *Nature*, 388, 460–462, <https://doi.org/10.1038/41302>, 1997.
- Nicholls, K. W.: The study of ice shelf-ocean interaction—techniques and recent results, *Advances in Polar Science*, 3, 222–230, <https://doi.org/10.13679/j.advps.2018.3.00222>, 2018.
- 910 Nicholls, K. W., Corr, H. F., Stewart, C. L., Lok, L. B., Brennan, P. V., and Vaughan, D. G.: A ground-based radar for measuring vertical strain rates and time-varying basal melt rates in ice sheets and shelves, *Journal of Glaciology*, 61, 1079–1087, <https://doi.org/10.3189/2015JoG15J073>, 2015.
- Pattyn, F.: A new three-dimensional higher-order thermomechanical ice sheet model: Basic sensitivity, ice stream development, and ice flow across subglacial lakes, *J. Geophys. Res. Solid Earth*, 108, <https://doi.org/10.1029/2002JB002329>, 2003.
- 915 Reeh, N., Mayer, C., Olesen, O. B., Christensen, E. L., and Thomsen, H. H.: Tidal movement of Nioghalvfjærdsfjorden glacier, northeast Greenland: observations and modelling, *Annals of Glaciology*, 31, 111–117, <https://doi.org/10.3189/172756400781820408>, 2000.
- Rignot, E. and Steffen, K.: Channelized bottom melting and stability of floating ice shelves, *Geophysical Research Letters*, 35, <https://doi.org/10.1029/2007GL031765>, 2008.
- Rizzoli, P., Martone, M., Gonzalez, C., Wecklich, C., Borla Tridon, D., Bräutigam, B., Bachmann, M., Schulze, D., Fritz, T., Huber, M., 920 Wessel, B., Krieger, G., Zink, M., and Moreira, A.: Generation and performance assessment of the global TanDEM-X digital elevation model, *ISPRS Journal of Photogrammetry and Remote Sensing*, 132, 119–139, <https://doi.org/10.1016/j.isprsjprs.2017.08.008>, 2017.
- Schultz, T.: Viskoelastische Modellierung der Dynamik eines Gletschers als Antwort auf basales Schmelzen und die Oberflächenmassenbilanz, Master thesis, 2017.
- Sergienko, O.: Basal channels on ice shelves, *Journal of Geophysical Research: Earth Surface*, 118, 1342–1355, 925 <https://doi.org/10.1002/jgrf.20105>, 2013.
- Seroussi, H., Nakayama, Y., Larour, E., Menemenlis, D., Morlighem, M., Rignot, E., and Khazendar, A.: Continued retreat of Thwaites Glacier, West Antarctica, controlled by bed topography and ocean circulation, *Geophysical Research Letters*, 44, 6191–6199, <https://doi.org/10.1002/2017GL072910>, 2017.
- Smith, B. E., Fricker, H. A., Joughin, I. R., and Tulaczyk, S.: An inventory of active subglacial lakes in Antarctica detected by ICESat 930 (2003–2008), *Journal of Glaciology*, 55, 573–595, <https://doi.org/10.3189/002214309789470879>, 2009.
- Stanton, T., Shaw, W., Truffer, M., Corr, H., Peters, L., Riverman, K., Bindschadler, R., Holland, D., and Anandakrishnan, S.: Channelized ice melting in the ocean boundary layer beneath Pine Island Glacier, Antarctica, *Science*, 341, 1236–1239, <https://doi.org/10.1126/science.1239373>, 2013.
- Stewart, C. L., Christoffersen, P., Nicholls, K. W., Williams, M. J., and Dowdeswell, J. A.: Basal melting of Ross Ice Shelf from solar heat 935 absorption in an ice-front polynya, *Nature Geoscience*, 12, 435, <https://doi.org/10.1038/s41561-019-0356-0>, 2019.
- Timmermann, R. and Hellmer, H.: Southern Ocean warming and increased ice shelf basal melting in the twenty-first and twenty-second centuries based on coupled ice-ocean finite-element modelling, *Ocean Dynamics*, 63, <https://doi.org/10.1007/s10236-013-0642-0>, 2013.

- van Wessem, J., Reijmer, C., Morlighem, M., Mouginot, J., Rignot, E., Medley, B., Joughin, I., Wouters, B., Depoorter, M., Bamber, J., et al.: Improved representation of East Antarctic surface mass balance in a regional atmospheric climate model, *Journal of Glaciology*, 60, 761–770, <https://doi.org/10.3189/2014JoG14J051>, 2014.
- 940 Vaňková, I., Nicholls, K. W., Corr, H. F., Makinson, K., and Brennan, P. V.: Observations of tidal melt and vertical strain at the Filchner-Ronne Ice Shelf, Antarctica, *Journal of Geophysical Research: Earth Surface*, 125, e2019JF005280, <https://doi.org/10.1029/2019JF005280>, 2020.
- Vaňková, I., Nicholls, K. W., and Corr, H. F. J.: The Nature of Ice Intermittently Accreted at the Base of Ronne Ice Shelf, Antarctica, Assessed Using Phase-Sensitive Radar, *Journal of Geophysical Research: Oceans*, 126, e2021JC017290, <https://doi.org/10.1029/2021JC017290>, 2021.
- 945 Vaughan, D. G., Corr, H. F., Bindschadler, R. A., Dutrieux, P., Gudmundsson, G. H., Jenkins, A., Newman, T., Vornberger, P., and Wingham, D. J.: Subglacial melt channels and fracture in the floating part of Pine Island Glacier, Antarctica, *Journal of Geophysical Research: Earth Surface*, 117, <https://doi.org/10.1029/2012JF002360>, 2012.
- 950 Washam, P., Nicholls, K. W., Münchow, A., and Padman, L.: Summer surface melt thins Petermann Gletscher Ice Shelf by enhancing channelized basal melt, *Journal of Glaciology*, 65, 662–674, <https://doi.org/10.1017/jog.2019.43>, 2019.
- Wearing, M. G., Stevens, L. A., Dutrieux, P., and Kingslake, J.: Ice-Shelf Basal Melt Channels Stabilized by Secondary Flow, *Geophysical Research Letters*, 48, e2021GL094872, <https://doi.org/10.1029/2021GL094872>, 2021.
- Xiao, H.: Hencky strain and Hencky model: extending history and ongoing tradition, *Multidiscipline Modeling in Materials and Structures*, 1, 1–52, <https://doi.org/10.1163/1573611054455148>, 2005.
- 955 Zeising, O. and Humbert, A.: Indication of high basal melting at the EastGRIP drill site on the Northeast Greenland Ice Stream, *The Cryosphere*, 15, 3119–3128, <https://doi.org/10.5194/tc-15-3119-2021>, 2021.
- Zeising, O., Steinhage, D., Nicholls, K. W., Corr, H. F. J., Stewart, C. L., and Humbert, A.: Basal melt of the southern Filchner Ice Shelf, Antarctica, *The Cryosphere*, 16, 1469–1482, <https://doi.org/10.5194/tc-16-1469-2022>, 2022.