

Glacier geometry and flow speed determine how Arctic marine-terminating glaciers respond to lubricated beds

Whyjay Zheng^{1, 2}

¹Department of Earth and Atmospheric Sciences, Cornell University, Ithaca, NY, USA

²Department of Statistics, University of California Berkeley, Berkeley, CA, USA

Correspondence: Whyjay Zheng (whyjz@berkeley.edu)

Abstract. Basal conditions directly control the glacier sliding rate and the dynamic discharge of ice-flow. Recent glacier destabilization events indicate that some marine-terminating glaciers quickly respond to lubricated beds with increased flow speed, but the underlying physics, especially how this vulnerability relates to glacier geometry and flow characteristics, remains unclear. This paper presents a 1-D physical framework for glacier dynamic vulnerability assuming sudden basal lubrication as an initial perturbation. In this new model, two quantities determine the scale and the areal extent of the subsequent thinning and acceleration after the bed is lubricated: Péclet number (P_e) and the product of glacier speed and thickness gradient (dubbed J_0 in this study). To validate the model, this paper calculates P_e and J_0 using multi-sourced data from 1996–1998 for outlet glaciers in Greenland and Austfonna Ice Cap, Svalbard, and compares the results with the glacier speed change during 1996/1998–2018. Glaciers with lower P_e and J_0 are more likely to accelerate during this 20-year span than those with higher P_e and J_0 , which matches the model prediction. A combined factor of ice thickness, surface slope, and initial flow speed for ice-flow physically determines how much and how fast glaciers respond to lubricated beds, as forms in terms of speed, elevation, and terminus change.

1 Introduction

Marine-terminating glaciers around the world worldwide have undergone significant acceleration, retreat, and mass loss in past decades (e.g. Vaughan et al., 2013; Cook et al., 2016; Carr et al., 2017; Catania et al., 2020; Williams et al., 2021). At the Greenland Ice Sheet (GrIS) where a good portion of marine-terminating glaciers are studied, the dynamic discharge of marine-terminating glaciers accounts for 66% of the ice loss region’s total mass loss, while surface mass balance (SMB) accounts for the rest of 34% (Mouginot et al., 2019). For the other Arctic regions outside of the Greenland Ice Sheet GrIS, SMB surface mass balance contributes more mass loss than dynamic discharge (Catania et al., 2020), but there also exists several rapid acceleration events that also dominate the local land ice budget (e.g. McMillan et al., 2014; Strozzi et al., 2017a; Willis et al., 2018; Haga et al., 2020).

The acceleration and dynamic thinning of marine-terminating glaciers have been attributed to at least two different sources: basal lubrication driven by surface melt accessing to the bed, and terminus perturbation driven by ice-ocean interactions (Carr et al., 2013). Multiple observations suggest the warming of subsurface ocean waters as the primary and widespread driver across the outlet glaciers in the GrIS (e.g. Nick et al., 2009; Walsh et al., 2012; Tedstone et al., 2013; Catania et al., 2020;

25 Wood et al., 2021; Williams et al., 2021). As a result, modelings of glacier dynamic loss for estimating sea-level rise usually focus on the glacier terminus and overlook the changing basal conditions (e.g. Nick et al., 2013). Outside of the GrIS, the primary drivers of the dynamic ice loss ~~and their relative importance~~ remain largely uncertain (Carr et al., 2017; Strozzi et al., 2017b), although significant melt-induced lubrication and speedup events have been identified ~~Melt-induced speedups are still suggested to be the case for several events~~ around the Arctic, ~~including the GrIS~~ (e.g. Sundal et al., 2011; Dunse et al., 2015; Zheng et al., 2019; Seddik et al., 2019). To date, the response to basal lubrication is mostly studied at a seasonal scale which links to changing subglacial hydrology within a year (e.g. Zwally et al., 2002; Bartholomew et al., 2010; Sundal et al., 2013; Hewitt, 2013; Rathmann et al., 2017; King et al., 2018; Williams et al., 2020). However, there have been concerns and observations that the bed conditions can evolve and affect glacier dynamics over multiple years. For example, the recent extensive formation of supraglacial lakes in the GrIS can open new moulins that last for years and contribute to long-lived speedups (e.g. Hoffman et al., 2018). During 35 several glacier surge events in Svalbard and the Russian Arctic, initial flow speedups have also created highly crevassed glacier surface and led to further speedups by additional meltwater routing (e.g. Dunse et al., 2015; Strozzi et al., 2017a; Zheng et al., 2019; Sánchez-Gómez et al., 2019). ~~Although some speedup events seem to permanently change the basal conditions via creating a highly crevassed glacier surface which makes meltwater reach the bed more easily~~ These events potentially alter the basal conditions by allowing meltwater to reach the bed in all seasons, but their ~~the~~ interannual impact ~~of basal lubrication~~ is still less constrained (Kehrl et al., 2017). In 40 addition, glacier geometry plays a vital role in how a glacier responds to an external perturbation (Carr et al., 2017; Kehrl et al., 2017), but only terminus disruption has been physically well documented and explained (McFadden et al., 2011; Felikson et al., 2017, 2021). Whether some glaciers are more sensitive to basal lubrication than others due to their geometry is not well known.

To better understand how much and how fast a glacier responds to basal lubrication and its relationship to glacier geometry, 45 this paper presents a physical model with a 1-D framework along flowlines formulating the subsequent change (in terms of both glacier speed and surface elevation) after the glacier bed is suddenly lubricated. We use an existing glacier perturbation model (Zheng et al., 2019) and replace the initial thinning condition with a step reduction of basal friction along the glacier channel. We This new model identifies key parameters that dominate elevation change rate and ice flow acceleration ~~in this new model~~. Then, using data from the Greenland Ice Sheet and Austfonna Ice Cap, Svalbard, we derive these parameters for each 50 glacier basin ~~we analyze~~ and compare them with glacier speed change over 20 years. The entire ~~data~~ processing workflows, including data fetching, ~~deriving key parameters~~ all calculations, and figure scripts, ~~for making figures~~ are available on Github (<https://github.com/whyjz/pejzero>, Zenodo DOI: <https://doi.org/10.5281/zenodo.5641953>) and are compiled as a Jupyter Book ready to be cloud executed using the MyBinder service for full reproducibility (Project Jupyter et al., 2018; Executable Books Community, 2020).

55 2 Model development

We build the model on the perturbation theory developed by Nye (1963), Bindshadler (1997), Felikson et al. (2017), and Zheng et al. (2019). Our goal in this section is to formulate the change rate of ice elevation ($\frac{dh}{dt}$, $\frac{dH_1}{dt}$) and ice speed ($\frac{dU}{dt}$, $\frac{dU_1}{dt}$)

Table 1. Variables used in perturbation model defined in this study. In the dimension column, L is length and T is time. The prime notation used in the text denotes the partial derivative of a variable with respect to x ; for example, $H'_1 \equiv \frac{\partial H_1}{\partial x}$.

Variable	Definition	Dimension
x	Distance along a 1-D glacier flowline towards terminus	L
t	Time after perturbation	T
m	Flow law constant	none
$U_0(x)$	Glacier speed before perturbation	LT^{-1}
$U_1(x, t)$	Change of glacier speed after perturbation	LT^{-1}
$K_0(x)$	Basal friction term before perturbation	$L^{m-1}T^{-1}$
$\cancel{K_1(x, t)}\underline{K_1}$	Change of Basal friction after perturbation (<u>assumed constant</u>)	$L^{m-1}T^{-1}$
$H_0(x)$	Glacier thickness before perturbation	L
$H_1(x, t)$	Change of glacier thickness after perturbation	L
$\alpha_0(x)$	Glacier slope before perturbation	none
$\alpha_1(x, t)$	Change of glacier slope after perturbation	none
$q_0(x)$	Flux before perturbation	L^2T^{-1}
$q_1(x, t)$	Change of flux after perturbation	L^2T^{-1}
$C_0(x)$	$\equiv \partial q_0 / \partial H$	LT^{-1}
$D_0(x)$	$\equiv \partial q_0 / \partial \alpha$	L^2T^{-1}
$J_0(x)$	$\equiv C_0 H'_0 + D_0 \alpha'_0$	LT^{-1}
$P_e(x)$	Péclet number, see Eq. 14	none
ℓ	Characteristic length (length of perturbation)	L

after a glacier bed is lubricated permanently. In this new model, basal lubrication is considered as a sudden perturbation without initial elevation change. The variables defined in the model are listed in Table 1.

60 2.1 Perturbation due to a permanent change of basal conditions

We set up a glacier with the following initial values along its 1-D flowline profile: speed (U_0), thickness (H_0), flux (q_0), surface slope (α_0), and bed friction term (K_0). These values vary along ~~with~~ the flowline distance x (positive towards downstream) and do not vary with time (i.e., steady state). We assume that the ice is purely sliding on the bed and does not have any internal deformation, that is,

$$65 \quad q_0 = U_0 H_0. \quad (1)$$

The glacier speed can be further represented using the hard-bed sliding law (Weertman, 1957):

$$U_0 = K_0 H_0^m \alpha_0^m, \quad (2)$$

where m is the flow-law constant and is set to 3 in this study.

At $t = 0$, the bed condition changes and the friction term becomes $K_0 + K_1$. The second term K_1 denotes the amount of change and is positive for a lubrication scenario. There is no initial elevation change associated with this event. We also assume this is a one-time change and is uniform over the glacier, so $K_1(x, t) \underline{K_1}$ is a constant. The subsequent change of speed, elevation, flux, and slope, are represented as U_1 , H_1 , q_1 , and α_1 respectively. Unlike K_1 , these quantities vary along the glacier channel and over time. Assuming zero local surface mass balance and zero local stress imbalance (e.g. Felikson et al., 2017; Zheng et al., 2019), the conservation of mass can be expressed as:

$$\frac{\partial H_1}{\partial t} = -\frac{\partial q_1}{\partial x}. \quad (3)$$

Taking the total derivative of q_1 with respect to t yields

$$q_1 = \frac{\partial q_0}{\partial K} K_1 + \frac{\partial q_0}{\partial H} H_1 + \frac{\partial q_0}{\partial \alpha} \alpha_1. \quad (4)$$

If we assume a much more gentle slope of the bedrock than that of the ice surface (Felikson et al., 2017; Zheng et al., 2019), the surface slope can be also expressed as the first derivative of ice thickness:

$$\alpha_1 = -\frac{\partial H_1}{\partial x} \quad (5)$$

Plugging Eqs. 1, 2, 4, and 5 into Eq. 3 yields

$$\frac{\partial H_1}{\partial t} = -\frac{K_1}{K_0} \left(C_0 \frac{\partial H_0}{\partial x} + D_0 \frac{\partial \alpha_0}{\partial x} \right) - \frac{\partial C_0}{\partial x} H_1 - \left(C_0 - \frac{\partial D_0}{\partial x} \right) \frac{\partial H_1}{\partial x} + D_0 \frac{\partial^2 H_1}{\partial x^2}, \quad (6)$$

where

$$C_0 = \frac{\partial q_0}{\partial H} \quad (7)$$

and

$$D_0 = \frac{\partial q_0}{\partial \alpha}. \quad (8)$$

Since $H_1(t = 0, x) = 0$,

$$\left. \frac{\partial H_1}{\partial t} \right|_{t=0} = -\frac{K_1}{K_0} J_0, \quad (9)$$

where

$$J_0 = C_0 H'_0 + D_0 \alpha'_0 = \frac{\partial q_0}{\partial H} \frac{\partial H_0}{\partial x} + \frac{\partial q_0}{\partial \alpha} \frac{\partial \alpha_0}{\partial x}. \quad (10)$$

2.2 J_0 and Péclet number (P_e)

Equation 9 indicates that the ratio of K_1 to K_0 and the value of J_0 both determine the initial elevation change rate. In a lubricating scenario, both K_1 and K_0 are positive, and the initial response of $\frac{dH_1}{dt}$ $\frac{dh}{dt}$ J_0 is inversely proportional to J_0 .

To relate J_0 to the glacier speed change, we start from the change of flux and assume $U_1 \gg H_1$. This can be justified by many observations of glacier destabilization since the amount of speed change is usually one to two orders of magnitude higher than the amount of elevation change (e.g. McMillan et al., 2014; Willis et al., 2018). Therefore,

$$q_1 = U_1 H_0 + U_0 H_1 \approx U_1 H_0. \quad (11)$$

Since $\frac{\partial K_1}{\partial t} = 0$ K_1 is a constant, we can derive the glacier speed change using Eqs. 4, 5, 7, 8, and 11:

$$\frac{\partial U_1}{\partial t} = \frac{1}{H_0} \frac{\partial q_1}{\partial t} = \frac{1}{H_0} (C_0 \frac{\partial H_1}{\partial t} - D_0 \frac{\partial}{\partial x} \frac{\partial H_1}{\partial t}). \quad (12)$$

At $t = 0$,

$$\left. \frac{\partial U_1}{\partial t} \right|_{t=0} = -J_0 \frac{K_1}{K_0} \frac{C_0}{H_0} \quad (13)$$

Similar to the elevation change, J_0 is inversely proportional to the initial glacier acceleration. If two glacier beds are lubricated with the same amount of K_1/K_0 , the glacier with a higher amount absolute value of J_0 (i.e., $|J_0|$) will be more vulnerable to basal lubrication unstable as the initial speed and elevation change rates are higher.

Also, from Eq. 9 we can predict a subsequent elevation change after $t = 0$. At this point, the last three terms in Eq. 6 begin to take part in the elevation change rate. The second term of Eq. 6 represents an exponential decay of the change rate, and the third and the fourth terms indicate advective and diffusive migration of elevation perturbation, respectively. The coefficients of the latter two terms determine the relative strength between advection and diffusion, with the ratio defined as the Péclet number, P_e :

$$P_e = \frac{C_0 - D'_0}{D_0} \ell, \quad (14)$$

where ℓ is the length of a perturbation. If P_e is much higher than 0, forward advection will dominate, and any perturbation of ice thickness will only propagate downstream. This prohibits destabilization in the upper stream if thinning or glacier retreat initiates near the terminus. On the other hand, if $P_e \sim 0$ or is negative, either diffusion or backward advection takes place, and a thickness perturbation at the terminus can propagate upstream, changing the dynamics of the entire glacier. Hence, we consider
115 a glacier with low P_e more vulnerable than one with high P_e .

Combining Eqs. 1, 2, 7, and 8 with Eq. 14, we can express P_e in terms of ice speed, elevation, and surface slope (see Text S4 of Zheng et al., 2019, Eqs. 11 to 16 for derivation details):

$$P_e = \left[\frac{(m+1)\alpha_0}{mH_0} - \frac{U'_0}{U_0} - \frac{H'_0}{H_0} + \frac{\alpha'_0}{\alpha_0} \right] \ell \quad (15)$$

The final assumption we adopt in the model is $\alpha'_0 = \frac{\partial \alpha_0}{\partial x} \approx 0$ since the estimated value from the data we use in this paper
120 is essentially small. For example, α'_0 of the glacier profile shown in Fig. 3 is only around 10^{-6} – 10^{-7} m^{-1} for the first 100 km, and the last term in Eq. 15 is roughly an order less than the sum of the first three terms. In practice, this assumption might be necessary since the last term in Eq. 15 α'_0 is highly sensitive to local slope change and may not reflect the glacier's overall mechanism a glacier follows to dissipate the perturbation. With this assumption, Eq. 15 can be reduced asto:

$$\frac{P_e}{\ell} \approx \left[\frac{(m+1)\alpha_0}{mH_0} - \frac{U'_0}{U_0} - \frac{H'_0}{H_0} \right]. \quad (16)$$

125 Note we now express Péclet number as the form of $\frac{P_e}{\ell}$ since we do not focus on a particular perturbation length and instead plan to evaluate the general tendency for the ice flow to dissipate any length of perturbations. Compared to the past models, the expression of P_e in this model has an additional term $\frac{U'_0}{U_0}$, implying its relationship to spatially changing basal conditions. This extra dependency on glacier speed also suggests that P_e is a changing variable and needs to be re-calculated if ice flow speeds up or slows down (see Discussion for more details).

130 With the same assumption about α'_0 , the expression of J_0 (Eq. 10) can be also reduced to:

$$J_0 \approx C_0 H'_0 = (m+1)U_0 H'_0, \quad (17)$$

which is proportional to the product of ice speed and the gradient of ice thickness along the flowline. A typical glacier thins toward the terminus, corresponding to a negative H'_0 and J_0 . According to Eq. 13, a negative J_0 suggests that when a lubricating scenario takes place, the glacier will speed up to accommodate the change. From Eq. 9 we can see that the glacier will also get
135 thickened (except at the divide) since thicker ice is sliding and replaces thinner ice downstream.

To summarize, two parameters P_e and J_0 are derived from the 1-D basal lubrication model. J_0 represents the strength of initial response to basal lubrication, and P_e gives insights into the mode of mass transport after elevation change occurs. Glaciers with a high $|J_0|$ and a low P_e (~ 0 or negative) are more vulnerable to basal lubrication since reduced friction can lead to a high initial acceleration and elevation change rate, which will then propagate to the entire glacier via diffusion or negative
140 advection.

3 Data and Methods for Validating the Model

To test if the model is suitable for evaluating marine-terminating glaciers, we derive observed P_e/ℓ and J_0 for outlet glaciers in the GrIS and Austfonna Ice Cap, Svalbard. These two regions are selected primarily because surface elevation, bed elevation, and glacier speed data necessary for our calculation are publicly available. We compare the results with the NASA MEaSUREs ITS_LIVE glacier velocity [records](#) (Gardner et al., 2018, 2019) [and frontal retreat records](#) (Wood et al., 2021) spanning over 20 years and determine if both P_e/ℓ and J_0 are indicative of the vulnerability to basal lubrication.

3.1 Greenland Ice Sheet

We use the data set published with Felikson et al. (2021), which provides well-constrained flowline data for Greenland's 141 marine-terminated glaciers and their branches (187 basins in total, Fig. 1). These glaciers scatter around the ice sheet and provide a diverse sampling over various climate and oceanic factors. The data set contains six primary flowline shapes for each glacier basin, with vertices sampled every 50 m along the flowlines. We use surface elevations at each vertex, sampled from the Greenland Ice Mapping Project (GIMP, Howat et al., 2014). The GIMP surface elevations come from multiple remote sensing sources and are coregistered with elevations acquired by the Ice, Cloud, and land Elevation Satellite (ICESat), thus best representing the ice sheet elevations during 2003–2009. The flowline vertices also contain the glacier bed elevations, sampled from the BedMachine v3 subglacial topography (Morlighem et al., 2017). While BedMachine v3 uses the source data collected from 1993 to 2016, we assume that the bed elevations are stable over time and can represent any year in that period. To acquire U_0 and glacier speed change at each flowline vertex, we manually sample the annually-mosaicked ITS_LIVE glacier speed data from 1998 and 2018, respectively. The ITS_LIVE data are derived from Landsat 4, 5, 7, and 8 images using the autoRIFT feature tracking software (Gardner et al., 2018; Lei et al., 2021). Finally, each vertex of a flowline has the following key parameters: surface elevation, bed elevation, glacier speed in 1998, and speed difference between 1998 and 2018.

We prepare and process the input data for each flowline using the following steps:

1. Since the 1998 speed data do not cover the entire ice sheet, we remove flowlines with only 20 speed readings or less from the input list.
2. Locate vertices with NoData speed values along the flowlines and perform a linear interpolation to fill the missing values. [We do not extrapolate the glacier speed; therefore, the NoData vertices at both ends of the flowline are still preserved after this step.](#)
3. Remove flowlines with only 280 valid vertices or less from the input list. A valid vertex should contain all key parameters and no NoData Values.
4. To avoid the effect of small sloping change, we smooth the surface elevation, bed elevation, glacier speed data, and their derivatives using the Savitzky–Golay filter with a window size of 251 vertices (12.5 km) (Savitzky and Golay, 1964; Felikson et al., 2021). We do not apply the smoothing filter to data 0–3 km from the terminus due to insufficient sampling points within the window size. These unfiltered data will not be used for the next step.

5. Derive P_e/ℓ and J_0 along each flowline using Eqs. 17, 16, and parameters representative of the glacier geometry/speed from 1998. As we empirically derive P_e/ℓ and J_0 for each basin and compare them on the same plot, the results will be insensitive to the selected value of m and the sliding law (Felikson et al., 2021).
6. We also need to include glacier retreat in our analysis to better distinguish the relationship between basal lubrication and speedups. Thus, we use the Greenland Marine-Terminating Glacier Retreat Data (Wood et al., 2021), which contains temporal evolution of terminus positions derived from Landsat 5, 7, and 8 images for 226 glaciers. We use QGIS to manually measure the terminus retreat between 1988 and 2018 for each glacier at its center flowline.
7. Compare ~~the results with~~ P_e/ℓ and J_0 with the frontal retreat and the speed change between 1998 and 2018.

3.2 Austfonna Ice Cap, Svalbard

We perform the same analysis for the marine-terminating glaciers of Austfonna, a polythermal Ice Cap located in NE Svalbard. Austfonna is only about 100 km wide and is considered to have a more uniform climate and oceanic factors than the GrIS, but its marine outlet glaciers have exhibited diverse speed histories in the past 20 years (Fig. 2). For instance, the glacier speed of Basin-3 (Storisstraumen) increased 45-fold during the past two decades, likely triggered by feedback between summer melt, crevasse formation, and basal lubrication (McMillan et al., 2014; Dunse et al., 2015; Gong et al., 2018). The other surge-type glaciers include Basin-1 (Bråsvellbreen) and Basin-17 (Etonbreen), and the last surge periods of both glaciers are around 1938 (Schytt, 1969; Hagen et al., 1993; Dowdeswell et al., 2008). The other glaciers of Austfonna do not have a surge history, but many of them (e.g., Basin-2, -5, -7, and -10) have also significantly increased the flow speed since 1996, as seen from Fig. 2.

To calculate P_e/ℓ and J_0 , we use the Ice Thickness Models Intercomparison eXperiment (ITMIX) data set (Farinotti et al., 2017), hosted by the International Association of Cryospheric Sciences (IACS). We use the Austfonna DEM from 1996 (Möhlhardt and Kääh, 2012), velocity from 1995–1996 (Dowdeswell et al., 2008), and ice thickness from 1996 (Dowdeswell et al., 1986; Farinotti et al., 2017), all included in the ITMIX data set. 8 out of 11 marine-terminated glaciers (Basin-1, -3, -4, -5, -6, -7, -10, and -17; Fig. 2) are selected for the analysis; the exceptions are Basin-2, -8, and -9 due to their small length roughly equal to the smoothing window. We construct six glacier flowlines based on the 2018 glacier velocity from the ITS_LIVE annual velocity mosaics (Fig. 2B) and sample ITMIX glacier elevation, ice thickness, and glacier speed data every 50 m along each flowline. Then we follow the same workflow for the outlet glaciers in GrIS (see the previous section) and finally compare P_e/ℓ & J_0 with the ITS_LIVE 2018 glacier speeds.

4 Results

4.1 Variation within a single basin

Figures 3 and 4 provide example results within a single basin, showing both input data and the values of P_e/ℓ and J_0 along six major flowlines. The average frontal speed at Glacier 0001 (Jakobshavn) Isbræ; 69.18°N, 49.76°W, 0207 (65.17°N, 41.16°W;

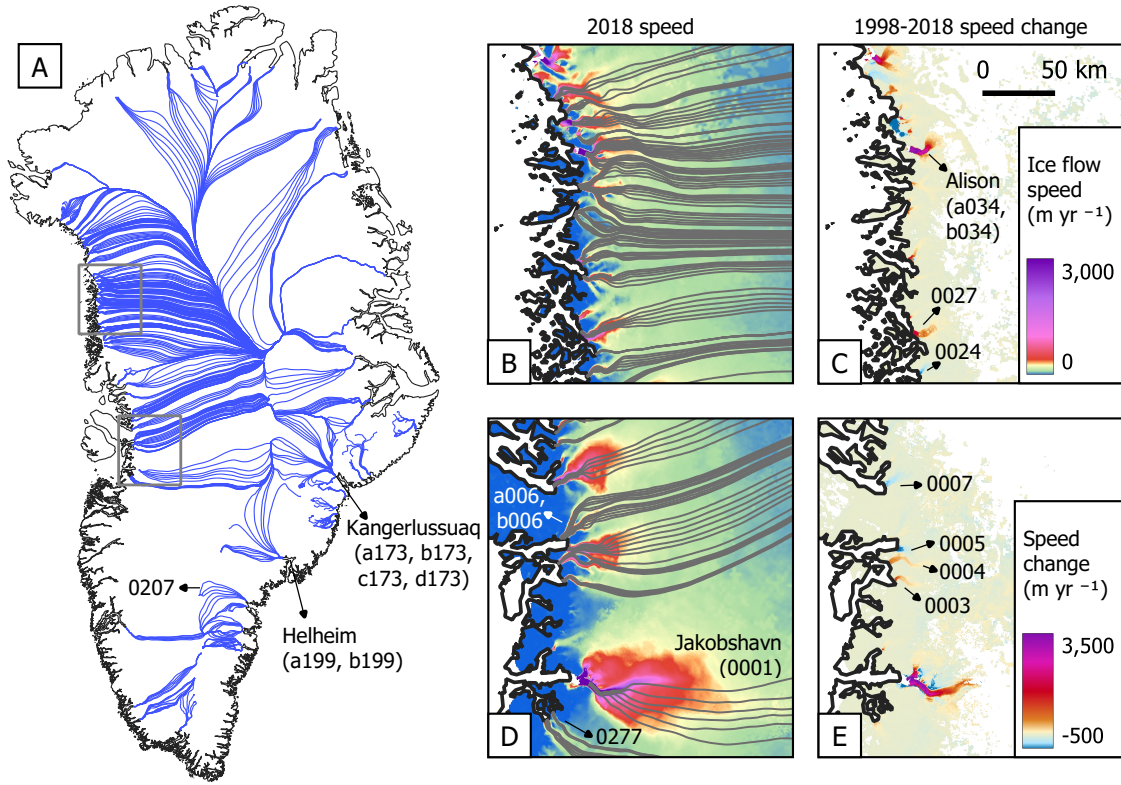


Figure 1. Greenland glacier flowlines used in this study. (A) Location of all selected flowlines from 104 outlet glaciers or glacier branches. Gray boxes indicate map locations for panels on the right. (B–C) The closer view of the flowline distribution, speed from 2018, and speed change during 1998 and 2018 at NW Greenland, a place with the most flowlines across the ice sheet. (D–E) Same panels as B–C but for W Greenland where Jakobshavn Isbræ is located in the bottom. The glacier speeds from 1998 and 2018 are both sampled from the ITS_LIVE data set. Major glaciers and most glaciers in the zoom-in panels are labeled with names and IDs used in the source data set. [Panels B–E share the scale bar illustrated in panel C.](#)

Figs. 1 & 3) has changed from ~ 60004000 m yr⁻¹ to ~ 95007000 m yr⁻¹ during the studied period, suggesting a destabilized status. The value of P_e/ℓ of individual flowlines ranges from 8×10^{-5} to 2×10^{-5} within $\pm 2 \times 10^{-4}$ m⁻¹ for the first 20 km from the terminus, but the average value is more constrained roughly at 4.5×10^{-5} between -5×10^{-5} and 2×10^{-5} m⁻¹ for the first 10 km. Compared to P_e/ℓ , J_0 changes more quickly throughout the first 20 km, from ~ 600 about -1000 m yr⁻¹ to -200170 m yr⁻¹. The pattern of the 1998–2018 speed change resembles that of J_0 calculated using the 1998 data, indicating J_0 as a good predictor of glacier speedup. If we plot J_0 versus P_e/ℓ (Fig. 3F) along the first 10 km from the terminus, the average values will roughly form a line going vertically from lower right to upper left on the plot in the figure.

On the other hand, Glacier 0277 (Alangordliup Sermia, 68.95°N, 50.22°W, ~ 30 km south of Jakobshavn Isbræ; Figs. 1 & 4) is more stable than Glacier 02070001 since the amount of the speed change in the past two decades is only 0–40 m yr⁻¹ and

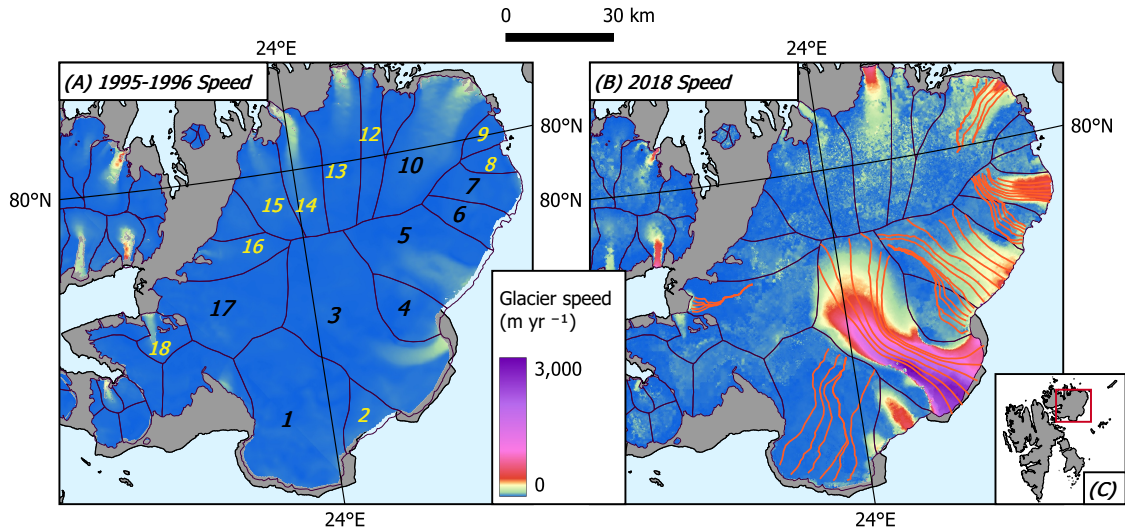


Figure 2. Austfonna Ice Cap, Svalbard, and glacier flowlines. (A) ITMIX glacier speed in 1995–1996. Each glacier basin is labeled with a number as per Dowdeswell et al. (2008), and glaciers with a black numbers are analyzed in this study. (B) ITS_LIVE mosaicked glacier speed in 2018. For each selected basin, we generate six flowlines and plot them on the map as red lines. Glacier outlines are from the Randolph Glacier Inventory (RGI) version 6.0 (RGI Consortium, 2017). (C) Map of Svalbard, Norway; the red box highlights the location of Austfonna Ice Cap. Panels A and B share the scale bar at the figure top.

is constrained at the first 6 km from the terminus. P_e/ℓ ranges from 2×10^{-4} to $6 \times 10^{-4} \text{ m}^{-1}$ within the first 10 km, which is roughly 10 times the values from [Glacier-0207Jakobshavn](#) Isbræ. Also, the slow glacier speed in 1998 directly results in low $|J_0|$ (only $\sim 10 \text{ m yr}^{-1}$) compared to [Glacier-0207Jakobshavn](#) Isbræ. These results are supportive for Glacier 0277 having a stable condition during the study period. Interestingly, the speed change pattern ~~now~~ resembles P_e/ℓ ~~instead of J_0~~ at the first 10 km. The glacier might have dealt with frontal or basal perturbation through advection, as indicated by a large P_e .

The results of the other GrIS and Austfonna glaciers are available in the Github-Zenodo supplemental materials (<https://doi.org/10.5281/zenodo.5641953>).

4.2 P_e & J_0 versus glacier speed change

This study focuses on the parameter variations close to the glacier terminus for two reasons. First, crevasses and moulins are more likely to form at the terminus region via hydrofracture than at higher elevations (Poinar et al., 2015). Therefore, additional meltwater routing can alter the basal conditions over multiple years. In addition, the J_0 tends to be small for the upper regions of all glaciers where the ice flow is slow, making this metric less distinctive from one basin to another. Considering the limit of spatial smoothing in the processing workflow (see Section 3.1, step 4), we select the data at 3 km from the terminus for the

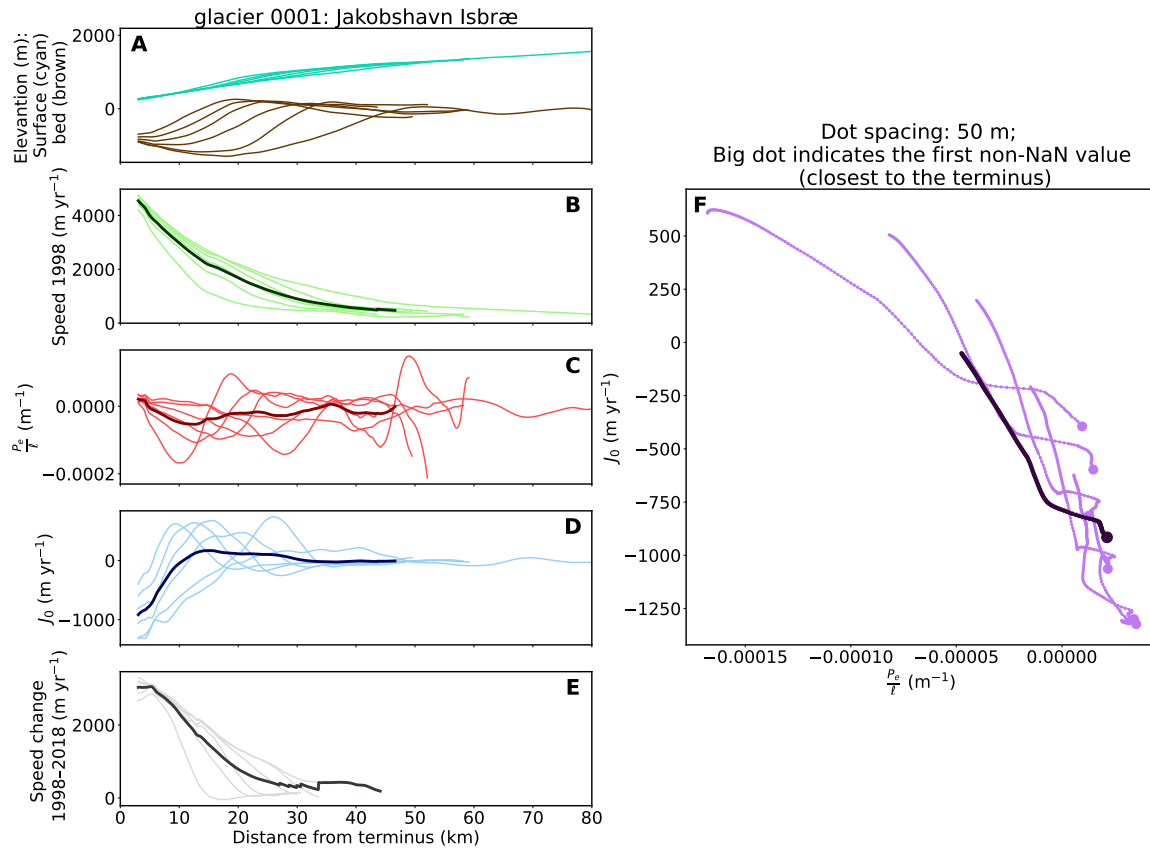


Figure 3. Example results from glacier 0207 (65.17°N, 41.16°W) glacier 0001 (Jakobshavn Isbræ, 69.18°N, 49.76°W). (A) surface elevation (Cyan) and bed elevation (Brown). (B) surface speed in 1998. (C) P_e/ℓ . (D) J_0 . (E) Speed change between 1998 and 2018. These plots show all six flowlines profiles from a single basin in respect to the distance from the glacier terminus. The thick lines represent the average of all six these flowlines. (F) J_0 versus P_e/ℓ along the first 10 km from the terminus. The big dots represent values at 3 km or the valid values closest to the terminus, and the small dots are plotted every 50 m along the flowline.

225 following intercomparison. Due to the incomplete spatial coverage of ITS_LIVE data from 1998, only 104 out of 187 GrIS glacier basins have valid values of P_e/ℓ and J_0 at this terminus distance (Fig. 1).

While most of these glaciers have sped up during the 20 years, 26 glaciers slowed down by up to -522 m yr^{-1} (Fig. 5A). To illustrate P_e/ℓ and J_0 at the glacier front and their varying direction along the flowline, we plot J_0 versus P_e/ℓ plot, each using ball-head-pin-like curves. Each curve represents the average J_0 & P_e/ℓ values of one glacier basin at 3–5 km with the

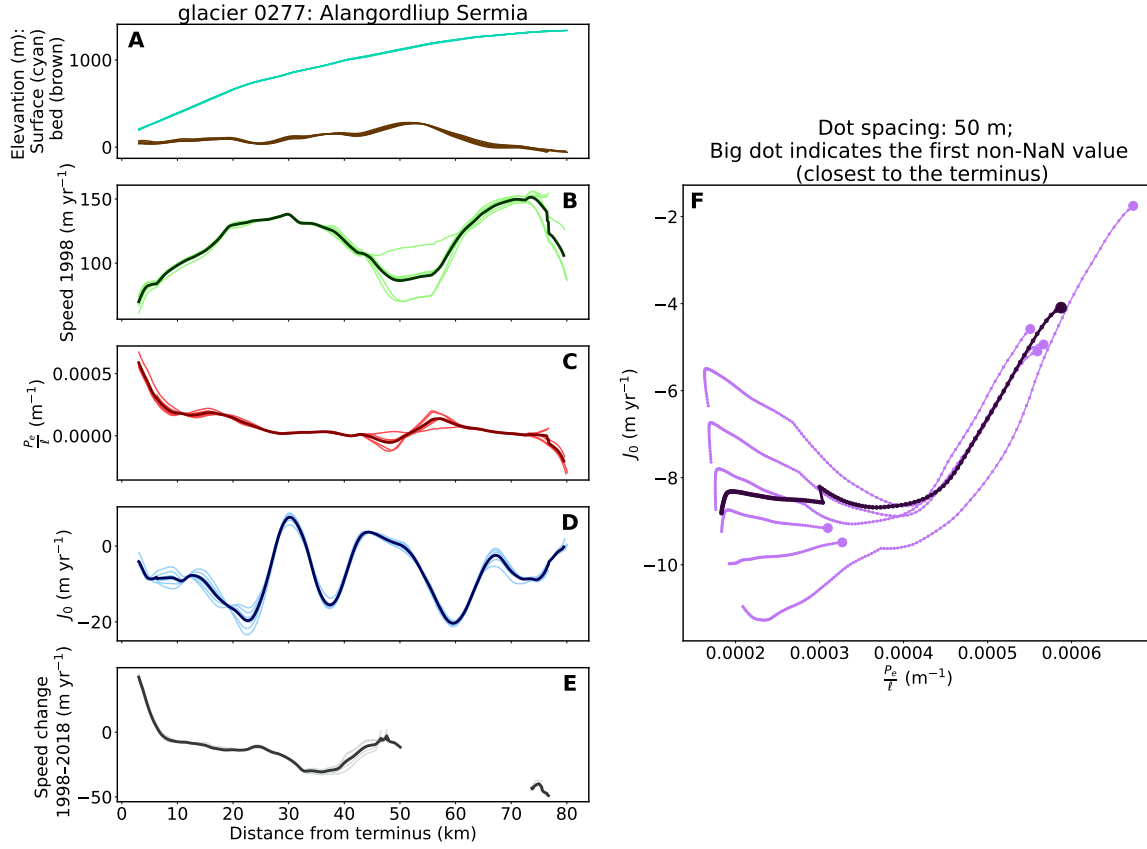


Figure 4. Example results from glacier 0277 (Alangordliup Sermia, 68.95°N, 50.22°W). See Fig. 3 for detailed description about each panel.

230 head mark located at 3 km, color-coded based on their speed change at 3 km, and its head marks the values at 3 km as well (Fig. 5B).
 Glaciers with low speed change (pale color curves) tend to cluster around the area where $J_0 \approx 0 \text{ m yr}^{-1}$ and $P_e/\ell > 0.0001 \text{ m}^{-1}$. Most of these curves are near horizontal on the plot, indicating a small change of J_0 and a large change of P_e/ℓ at the glacier front. Likewise, On the other hand, glaciers with high speed change (warm- or cold-color curves, including accelerated and decelerated glaciers) seem to cluster together in a different area where J_0 is much more negative and $P_e/\ell \approx 0 \text{ m}^{-1}$. These
 235 curves generally show a vertical orientation indicating changing J_0 and constant low P_e/ℓ along the glacier flowline.

To further illustrate the clustering trend, we arbitrarily select a speed change threshold of $\pm 300 \text{ m yr}^{-1}$ and classify the glaciers based on their speed change at 3 km. The threshold value is determined in order to give each classification roughly the same number of samples. Note that glaciers with significant slowdown or speedup are classified into the same group because

a glacier vulnerable to basal lubrication would also be sensitive to recovering basal conditions from a lubrication event. 54
 240 glaciers have an absolute value of speed change $\geq 300 \text{ m yr}^{-1}$, and the other 50 glaciers are considered more stable with an
 absolute value of speed change $< 300 \text{ m yr}^{-1}$. We plot J_0 against P_e/ℓ using the values from 3 km as well as the Gaussian
 kernel density estimates of each classification for both J_0 and P_e/ℓ . The results using all glaciers (Fig. 6A) indicate that two
 classifications have a slightly different distribution for J_0 and P_e/ℓ . The unstable glaciers (red group ~~on Fig. 6~~) have J_0 and P_e/ℓ
 distributions peaked at $\sim -200 \text{ m yr}^{-1}$ and $\sim 0.00003 \text{ m}^{-1}$ respectively, while the peaks of stable glaciers (blue group ~~on~~
 245 ~~Fig. 6~~) shift to higher values to $\sim -50 \text{ m yr}^{-1}$ for J_0 and $\sim 0.00013 \text{ m}^{-1}$ for P_e/ℓ . Despite the peak shift being small compared
to the distributions themselves, the difference is statistically significant found by the Kolmogorov–Smirnov statistic ($p = 0.003$
and 0.006 for J_0 and P_e/ℓ , respectively; see the Fig. 6 Jupyter Book page for details). Since terminus retreat has been attributed
as the major cause of glacier speedups (King et al., 2020), we further group the glaciers by the distance of terminus retreat.
 Fig. 6B plots only the glaciers with a retreat larger than 0.5 km, and the separation between two glacier groups in terms of J_0
 250 and P_e/ℓ becomes much less significant ($p = 0.366$ and 0.050 , respectively). On the other hand, Fig. 6C shows the J_0 and
 P_e/ℓ distributions for glaciers with a retreat $\leq 0.5 \text{ km}$. Only 7 glaciers with little or no retreat have accelerated over 300 m
 yr^{-1} , which might not be enough to determine the significance of separation for P_e/ℓ ($p = 0.255$). However, it is clear to see
two groups divided by the value of J_0 in the plot ($p = 2 \times 10^{-5}$).

Among all the glacier outlets, Glacier 0207 (65.17°N , 41.16°W ; Fig. 1A) seems to be unusual since it is the only one with
 255 J_0 over 100 m yr^{-1} (Fig. 5B). A positive J_0 requires a decreasing ice thickness from terminus to upstream (Eq. 17), which
seems to indicate a steeper bed than the glacier surface. In our analysis, Glacier 0207 is considered an example with large $|J_0|$,
despite having a different sign from the other glaciers. However, additional data from more glaciers would be required to fully
characterize the glaciers with positive J_0 and their sensitivity to basal lubrication.

We adopt the same method from Fig. 5 to plot the results from 8 marine-terminating glaciers in Austfonna (Fig. 7). Since
 260 all glaciers have accelerated at the terminus for the past two decades, we adjust the color code so that blue represents low
 change and other colors represent high change. For Basin-3 and -5, there are no valid measurements at 3 km, and we only mark
 the first valid measurements from 7.3 and 6.7 km, respectively, as single points on the plot. Similar to the GrIS, glaciers with
 higher speed change (Basin-3, -5, -7, and -10) roughly occupy the lower left side of the panel where P_e/ℓ and J_0 are small or
 more negative, and glaciers with lower speed change (Basin-1, -4, -6, and -17) fall on a different corner where P_e/ℓ and J_0
 265 are larger. ~~The only important difference is~~ However, the scale of $|J_0|$ as all 8 glaciers have values between 0 and 10 m yr^{-1} , much
 less than that from the GrIS (cf. Fig. 5, ~~with~~ where $|J_0|$ ranging from 0 to over 1500 m yr^{-1}). This is because all 8 glaciers are
 slowly moving in 1996, resulting in a low $|J_0|$ according to Eq. 17. ~~In addition,~~ It is also interesting that Basin-1 (Bråsvellbreen)
 and Basin-5 have similar J_0 -versus P_e/ℓ , but Basin-5 has a speed change roughly ten times more than Basin-1. Since Basin-1
 has a surge record back in 1936–1938 (Schytt, 1969) and is currently in the quiescent stage, its low J_0 & P_e/ℓ values might
 270 indicate a future instability when a surge is triggered internally or externally.

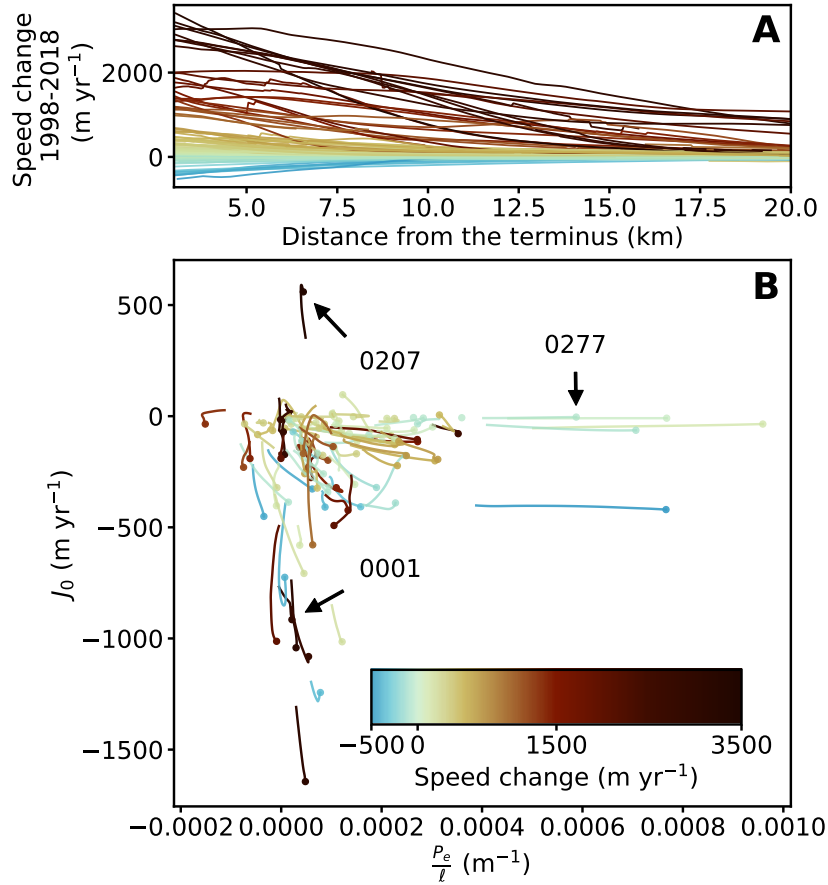


Figure 5. (A) Speed change along Greenland glacier flowlines within the first 20 km from the terminus. Each line represents the average value of a single glacier basin and is color coded based on the speed change value at 3 km (the first valid data point after the Savitzky–Golay filter is applied). (B) The average J_0 versus P_e/ℓ at 3–5 km from the terminus. The value at 3 km is marked with a big dot. Each line uses the same color code from (A). The glacier basins presented in Figs. 3 (0001) & 4 (0277), as well as one extra glacier basin (0207) are annotated.

5 Discussion

5.1 Separation of glacier groups on the J_0 –versus P_e/ℓ plot

For the GrIS, the J_0 –versus P_e/ℓ plots (Figs. 5–6) seem to capture the characteristics of glaciers vulnerable to basal lubrication. GrIS and Austfonna glaciers with more negative J_0 and P_e/ℓ in 1996–1998 are more likely to speed up in the next 20 years. This tendency is not obvious for glaciers with a significant retreat (Fig. 6B), possibly because instead of changing basal conditions, it is the retreat dominating the flow dynamics of these glaciers. Nevertheless, the separation of peaks at different P_e/ℓ values suggests that the diffusive strength of ice flow still plays a major role in the decades-long speed changes. For glaciers with a more stable terminus position, the clear separation of J_0 (Fig. 6C) supports basal lubrication as a primary cause of glacier

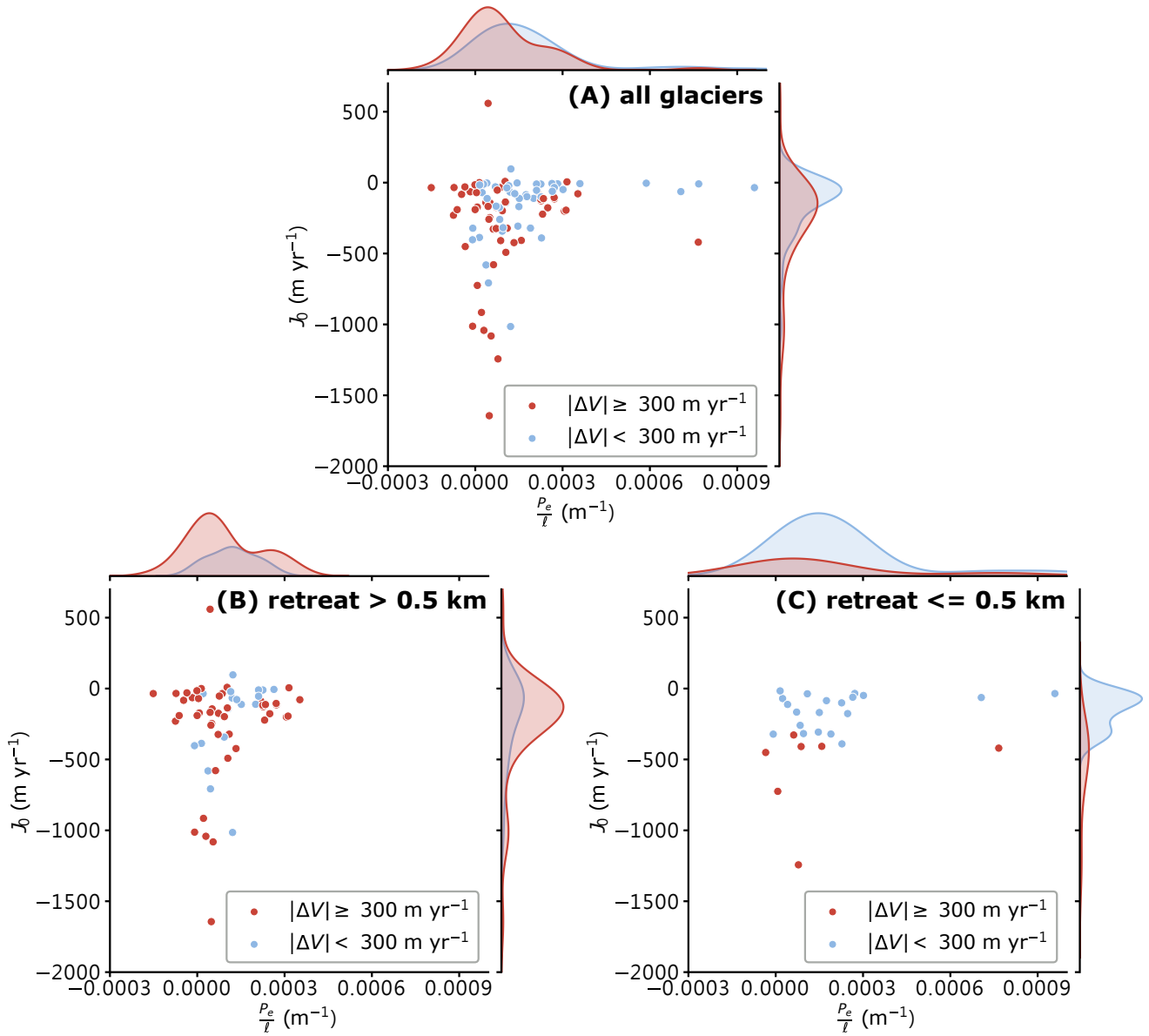


Figure 6. Distribution of J_0 and P_e/l for Greenland's (A) Greenland Ice Sheet's 104 glacier basins analyzed in this study; (B) a subset of panel A including only basins with a frontal retreat > 0.5 km during 1998–2018; (C) a subset of panel A including only basins with a frontal retreat ≤ 0.5 km during 1998–2018. These plots are similar to Fig. 5B but only show the values at 3 km from the terminus. Each mark is classified based on the 300 m/yr threshold of speed change. The joint plots show the Gaussian kernel density estimate along both axes for each class.

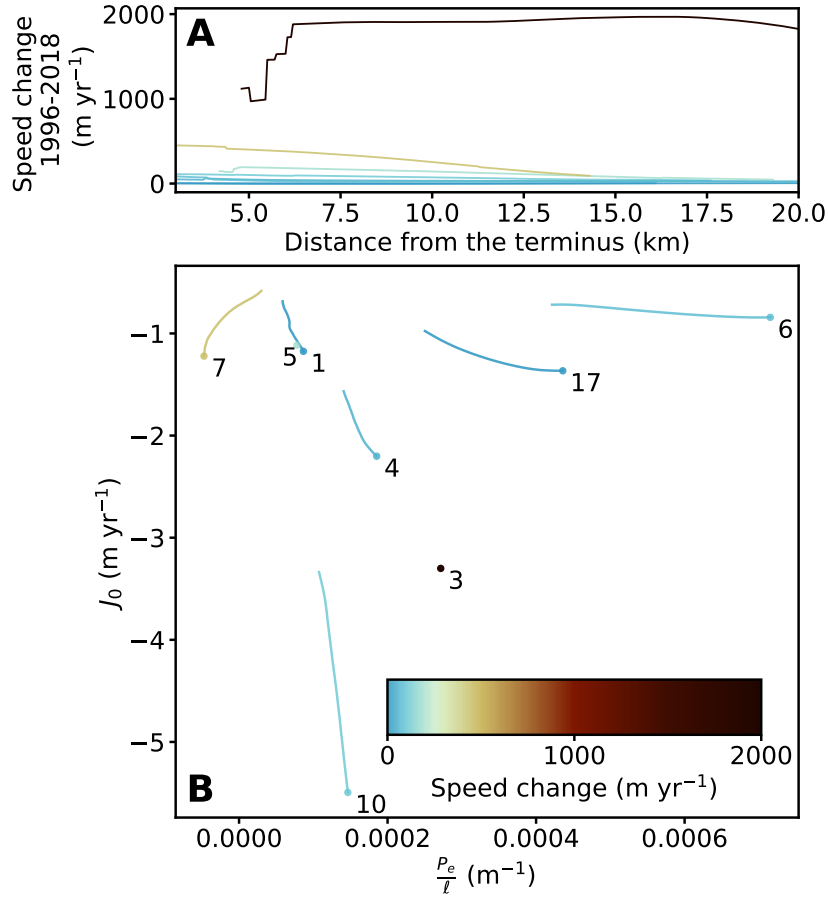


Figure 7. (A) Speed change along Austfonna glacier flowlines within the first 20 km from the terminus. Each line represents the average value of a single glacier basin and is color coded based on the speed change value at 3 km. (B) The average J_0 versus P_e/ℓ at 3–5 km from the terminus. The value at 3 km is marked with a big dot. Each line uses the same color code from (A) and is labeled by the glacier No. (see Fig. 2). ~~Small dots are plotted every 50 m along each flowline.~~ Note that for Basin-3 and -5, there is no valid measurement at 3 km, and only the first valid measurements (at 7.3 and 6.7 km respectively) are plotted.

speedups and likely highlights the importance of the initial response to changing basal conditions. Even if a glacier has a low P_0 and allows diffusion-dominating dynamics, a small $|J_0|$ prohibits much elevation and speed change under a lubrication scenario (Eq. 9).

However, this trend is ambiguous for glaciers with $J_0 = -500 \pm 0 \text{ m yr}^{-1}$ and $P_e/\ell = 0 \pm 0.0001 \text{ m}^{-1}$ as some of them remain stable over 20 years while the others accelerated significantly. This can be possibly attributed to two different reasons. First, a low P_0 indicates a diffusion-dominating dynamics for dissipating elevation change, but a small $|J_0|$ prohibits much elevation change under a lubrication scenario (Eq. 9). As a result, the glacier flow would be insensitive to a lubrication event and accommodate any subsequent perturbations slowly. The second reason The other factor that might affect the tendency of P_e/ℓ and $|J_0|$ we see in Fig. 6 focuses on whether the basal lubrication takes place within the study period. Although melt-

induced speedups are common for GrIS glaciers (e.g. van de Wal et al., 2008; Bartholomew et al., 2010; Kehrl et al., 2017; Rathmann et al., 2017; Seddik et al., 2019), not all 104 glacier basins ~~on Fig. 6~~ analyzed here have been studied well enough to identify when and where glacier responds to changing basal conditions. A glacier with low P_e/ℓ and high $|J_0|$ can remain stable if no basal lubrication has taken place in the past decades, mixing up the distributions in Fig. 6. Also, the P_e/ℓ and $|J_0|$ patterns at the glacier front may not represent the entire glacier length. If moulins can form at a higher elevation than previously thought due to the warming climate and widespread supraglacial lakes (Hoffman et al., 2018), it might be necessary to reassess the P_e/ℓ and $|J_0|$ patterns within a wider range of flowline distance. These two reasons suggest that the glaciers with low $|J_0|$ and P_e/ℓ are still likely susceptible to changing basal conditions but need more time to adjust glacier speed and fully accommodate the lubrication.

The three surge-type glaciers of Austfonna (Basin-1, -3, and -17) do not cluster on Fig. 7. Compared to the other two glaciers, Basin-3 has a higher flow speed in 1995–1996, resulting in a slightly more negative J_0 . It has an unusual long surge evolution over two decades as well: the ice flow speed gradually increased since the mid-1990s (Dowdeswell et al., 2008; McMillan et al., 2014) and reached a peak velocity of $\sim 6500 \text{ m yr}^{-1}$ in 2013 (Dunse et al., 2015). The sustaining high flow speed has been attributed to meltwater routing through crevasses formed during the speedup (Dunse et al., 2015; Gong et al., 2018). Since the additional support of surface melt can alter the behavior of a surge-type glacier by reaching a steady state balancing mass and enthalpy conservation through thinner and faster-moving ice (Benn et al., 2019), Basin-3 may have entered an ice stream-like regime with higher sensitivity to changing basal conditions. This might explain why Basin-3 is away from the other two surge-type but currently quiescent glaciers on Fig. 7. Nevertheless, additional analysis and tests will be required before inferring a general vulnerability for surge-type glaciers to basal lubrication.

5.2 Characteristics of glaciers vulnerable to basal lubrication

Both P_e and J_0 depend on the ice thickness and flow speed (Eqs. 16 & 17), but with a different relationship. Assuming a monotonous decrease of glacier thickness toward the terminus (i.e., no overdeepening area), glaciers with thicker ice and a faster flow yield lower P_e and higher $|J_0|$ and thus are more susceptible to basal lubrication. However, the thickness change along the flowline (H') has a competing contribution to P_e and J_0 : a greater change (i.e. a more negative H') increases both P_e and $|J_0|$. ~~In this paper, all the GrIS and Austfonna glaciers with such a thickness change are slowly moving in 1996 or 1998, still yielding a low $|J_0|$ (Figs. 3 and 5). These~~ Glaciers with a very negative H' may not likely be activated through intense diffusion (which is also suggested true for a terminus perturbation scenario in Felikson et al., 2021), but a collapse-like destabilization is still possible at the terminus or a localized region along the glacier due to its high $|J_0|$. For a glacier with an overdeepening zone, increased ice thickness again lowers P_e and raises $|J_0|$, making the glacier more vulnerable to basal lubrication at the overdeepened area.

Despite having an additional associating factor J_0 in the model, inferences made to the Péclet number in this study is similar to the previous models based on the perturbation theory. A low or negative P_e allows an ocean-induced terminus perturbation to propagate to a certain inland distance where P_e becomes larger (Felikson et al., 2017, 2021). For an outlet glacier in the GrIS, it is probably common to have terminal perturbation and changing basal conditions in effect at the same time (as indicated by Jakobshavn Isbræ for example; Joughin et al., 2008; Khazendar et al., 2019; Riel et al., 2021). In this case, P_e reflects a general vulnerability to elevation perturbations and is indistinguishable from the source forcing. On the other hand, J_0 as a new term

in the lubrication-induced perturbation model seems to be exclusively related to the basal sensitivity as indicated by Fig. 6B–C. Nevertheless, J_0 might still be a key factor for a glacier only subject to the ocean-ice interaction. As warm subsurface water-induced thinning debuttresses the glacier front and increases the longitudinal stretching and glacier speed (Holland et al., 2008), new crevasses can provide additional routes for surface melt accessing to and lubricating the bed (Gagliardini and Werder, 2018; Gong et al., 2018). The investigation for surface strain rates indicates that these new crevasses can propagate to up to 1600 m high, corresponding to ~ 50 km away from the terminus for GrIS outlet glaciers (Poinar et al., 2015). Thus, J_0 can be used to evaluate the latter mechanism’s impact, specifically for subsequent ice flow acceleration or the feedback to additional thinning. This oceanic forcing-induced basal lubrication seems to be important for marine-terminating glaciers to switch to and maintain a fast flow over the years. ~~since land-terminating glaciers in the GrIS are thought to be insensitive to extensive meltwater~~
 330 ~~forcing~~

Our model does not consider the melt production from strain heating or geothermal heating at the bed. If included, induced glacier speedup due to basal lubrication can generate energy to melt basal ice (Strozzi et al., 2017b), further increasing K_1 and leading to a higher glacier speed and thinning rate than what Eqs. 6 and 12 indicate.

5.3 Feedback from basal lubrication

335 One implication from the lubrication-induced perturbation model is that both P_e and J_0 are temporally changing variables. As glacier speed increases due to basal lubrication, P_e will be closer to zero, and $|J_0|$ will become larger, ~~resulting in status~~making
~~the glacier~~ more sensitive to any following change ~~of~~in basal conditions. A potential example to illustrate this feedback is Vavilov Ice Cap, Severnaya Zemlya, Russia. The western marine outlet of this ice cap was moving at less than 1 km yr⁻¹ with no apparent summer speedups just before a surge-like collapse took place (Willis et al., 2018). The collapse initiated when the
 340 terminus advanced into weak marine sediments, bringing the glacier speed to a maximum of ~ 9 km yr⁻¹ in summer 2015, and then the ice flow started to slow down but with a significant seasonal variation (Willis et al., 2018; Zheng et al., 2019). During the collapse, Péclet number at the thinning center reduced by at least 40%, suggesting a shift to ice stream-like dynamic regime more susceptible to basal lubrication (Zheng et al., 2019). However, this transition is not necessarily irreversible since the bed would also be sensitive to a refreezing or efficient draining event, increasing P_e and decreasing $|J_0|$ back to the pre-perturbation
 345 level. Such a cycle is probably happening on a yearly basis as many GrIS glaciers have seasonal speedups closely bonded to summer melt (e.g. Palmer et al., 2011; Sundal et al., 2013; Rathmann et al., 2017). Still, For a multi-year destabilization like Vavilov, it is uncertain whether such a shutdown can completely revert the glacier dynamics since the ice thickness, another critical parameter controlling P_e and J_0 in our model, has changed much during the collapse as well.

As noted in the case of Vavilov, dynamic thinning caused by the lubricated bed can also consequently change the dynamic
 350 regime, and create another feedback loop. Thinning would decrease the ice thickness and increase the surface slope, potentially raising P_e and $|J_0|$. Unlike the acceleration feedback from the previous paragraph, this feedback circle seems to be milder as a glacier would gradually switch to advection and prevent further inland thinning. However, dynamic thinning may also contribute to glacier retreat (Thomas and Bentley, 1978; Wood et al., 2021) and the subsequent debuttressing and speedup events. The net effect for dynamic thinning to glacier vulnerability to basal conditions remains ambiguous based on this view

355 and suggests a future research topic since dynamic discharge in GrIS will likely continue to contribute significant ice loss in the near future (Mouginot et al., 2019; Choi et al., 2021).

6 Conclusions

Based on the new lubrication-induced 1-D perturbation model, we show that a lubricated bed can initiate a thinning perturbation and destabilize the entire glacier if a particular combination of glacier thickness, thickness gradient, and flow speed is met. 360 The model identifies two controlling physical quantities P_e/ℓ (Péclet number divided by the characteristic length) and J_0 (essentially the product of glacier speed and thickness gradient). We use observational data from 1996–1998 and derive these numbers for 104 and 8 marine-terminating glaciers in Greenland Ice Sheet and Austfonna Ice Cap, Svalbard, respectively. The results show that P_e/ℓ and J_0 correlate to the flow speed change during 1996/1998 and 2018, especially for non-surge glaciers and glaciers without significant terminus retreat, matching the model prediction. Glaciers with thick ice and a fast 365 flow result in low P_e and negative J_0 , and reduced basal friction leads to initial speedup and thinning, which can propagate further inland via diffusion. For glaciers in the Greenland Ice Sheet subject to ocean-ice interactions, this new model indicates multiple feedback cycles that make glaciers more sensitive to changing basal conditions. Finally, this study highlights glaciers classified as vulnerable to lubricated beds (low P_e and high $|J_0|$) but with no significant speed change during the past two decades. Frequent monitoring is suggested for these glaciers because they might be more prone to future instabilities and affect 370 the projected sea level rise.

Code and data availability. All the data, workflows, documentation, supplemental figures, plotting scripts, and Python code for this study are available on the Github repository “whyjz/pejzero” (<https://github.com/whyjz/pejzero>). The pejzero release version 0.1 is . Its latest release is archived on Zenodo: <https://doi.org/10.5281/zenodo.5641954> <https://doi.org/10.5281/zenodo.5641953>, where a detailed description about additional assets (large files that Github cannot track) is available. The pejzero repository has been rendered as Jupyter Book pages 375 at <https://whyjz.github.io/pejzero/> and is Binder-ready for full reproducibility. The Greenland glacier flowline data and scripts prepared by Felikson et al. (2021) are available at <https://doi.org/10.5281/zenodo.4284759> and <http://doi.org/10.5281/zenodo.4284715>. The Greenland Marine-Terminating Glacier Retreat Data prepared by Wood et al. (2021) are available at <https://doi.org/10.7280/D1667W>. Specific instructions on data retrieval and ingestion (including the flowline, ITMIX, and ITS_LIVE data) can be found on the `Fig*.ipynb` files in the pejzero repository.

380 *Author contributions.* Whyjay Zheng conceptualizes the study, analyzes the data, and writes the manuscript.

Competing interests. The author declares that they have no conflict of interest.

Acknowledgements. This study is partially supported by the Jupyter meets the Earth (JMTE), an NSF EarthCube funded project (grant No. 1928406 and 1928374). Kudos to the advice from the JMTE team for making the study's scientific workflow as sharable and reproducible as possible. Comments from Dr. Matthew Pritchard, Dr. Michael Willis, and Facundo Sapienza greatly improved the quality of the paper.

385 The author thanks Dr. Denis Felikson for addressing questions about the use of the GrIS flowline data. The author also acknowledges the National Snow and Ice Data Center QGreenland package (Moon et al., 2021) as an extremely convenient tool for inter-comparing the GrIS data sets and preparing maps presented in this paper. The final appreciation goes to two anonymous reviewers and their constructive and insightful suggestions for the entire study.

References

- Bartholomew, I., Nienow, P., Mair, D., Hubbard, A., King, M. A., and Sole, A.: Seasonal evolution of subglacial drainage and acceleration in a Greenland outlet glacier, *Nature Geoscience*, 3, 408–411, <https://doi.org/10.1038/ngeo863>, 2010.
- Benn, D. I., Fowler, A. C., Hewitt, I., and Sevestre, H.: A general theory of glacier surges, *Journal of Glaciology*, 65, 701–716, <https://doi.org/10.1017/jog.2019.62>, 2019.
- Bindschadler, R.: Actively surging West Antarctic ice streams and their response characteristics, *Annals of Glaciology*, 24, 409–414, <https://doi.org/10.3189/S0260305500012520>, 1997.
- Carr, J. R., Stokes, C. R., and Vieli, A.: Recent progress in understanding marine-terminating Arctic outlet glacier response to climatic and oceanic forcing: Twenty years of rapid change, *Progress in Physical Geography*, 37, 436–467, <https://doi.org/10.1177/0309133313483163>, 2013.
- Carr, J. R., Stokes, C. R., and Vieli, A.: Threefold increase in marine-terminating outlet glacier retreat rates across the Atlantic Arctic: 1992–2010, *Annals of Glaciology*, pp. 1–20, <https://doi.org/10.1017/aog.2017.3>, 2017.
- Catania, G. A., Stearns, L. A., Moon, T. A., Enderlin, E. M., and Jackson, R. H.: Future Evolution of Greenland’s Marine-Terminating Outlet Glaciers, *Journal of Geophysical Research: Earth Surface*, 125, 1–28, <https://doi.org/10.1029/2018JF004873>, 2020.
- Choi, Y., Morlighem, M., Rignot, E., and Wood, M.: Ice dynamics will remain a primary driver of Greenland ice sheet mass loss over the next century, *Communications Earth & Environment*, 2, 26, <https://doi.org/10.1038/s43247-021-00092-z>, 2021.
- Cook, A. J., Holland, P. R., Meredith, M. P., Murray, T., Luckman, A., and Vaughan, D. G.: Ocean forcing of glacier retreat in the western Antarctic Peninsula, *Science*, 353, 283–286, <https://doi.org/10.1126/science.aae0017>, 2016.
- Dowdeswell, J., Drewry, D., Cooper, A., Gorman, M., Liestøl, O., and Orheim, O.: Digital Mapping of the Nordaustlandet Ice Caps from Airborne Geophysical Investigations, *Annals of Glaciology*, 8, 51–58, <https://doi.org/10.3189/S0260305500001130>, 1986.
- Dowdeswell, J. A., Benham, T. J., Strozzi, T., and Hagen, J. O.: Iceberg calving flux and mass balance of the Austfonna ice cap on Nordaustlandet, Svalbard, *Journal of Geophysical Research: Earth Surface*, 113, F03 022, <https://doi.org/10.1029/2007JF000905>, 2008.
- Dunse, T., Schellenberger, T., Hagen, J. O., Kääb, A., Schuler, T. V., and Reijmer, C. H.: Glacier-surge mechanisms promoted by a hydro-thermodynamic feedback to summer melt, *Cryosphere*, 9, 197–215, <https://doi.org/10.5194/tc-9-197-2015>, 2015.
- Executable Books Community: Jupyter Book (v0.10), <https://doi.org/10.5281/zenodo.4539666>, 2020.
- Farinotti, D., Brinkerhoff, D. J., Clarke, G. K., Fürst, J. J., Frey, H., Gantayat, P., Gillet-Chaulet, F., Girard, C., Huss, M., Leclercq, P. W., Linsbauer, A., Machguth, H., Martin, C., Maussion, F., Morlighem, M., Mosbeux, C., Pandit, A., Portmann, A., Rabatel, A., Ramsankaran, R., Reerink, T. J., Sanchez, O., Stentoft, P. A., Singh Kumari, S., Van Pelt, W. J., Anderson, B., Benham, T., Binder, D., Dowdeswell, J. A., Fischer, A., Helfricht, K., Kutuzov, S., Lavrentiev, I., McNabb, R., Hilmar Gudmundsson, G., Li, H., and Andreassen, L. M.: How accurate are estimates of glacier ice thickness? Results from ITMIX, the Ice Thickness Models Intercomparison eXperiment, *Cryosphere*, 11, 949–970, <https://doi.org/10.5194/tc-11-949-2017>, 2017.
- Felikson, D., Bartholomäus, T. C., Catania, G. A., Korsgaard, N. J., Kjær, K. H., Morlighem, M., Noël, B., Van Den Broeke, M., Stearns, L. A., Shroyer, E. L., Sutherland, D. A., and Nash, J. D.: Inland thinning on the Greenland ice sheet controlled by outlet glacier geometry, *Nature Geoscience*, 10, 366–369, <https://doi.org/10.1038/ngeo2934>, 2017.
- Felikson, D., A. Catania, G., Bartholomäus, T. C., Morlighem, M., and Noël, B. P.: Steep Glacier Bed Knickpoints Mitigate Inland Thinning in Greenland, *Geophysical Research Letters*, 48, 1–10, <https://doi.org/10.1029/2020GL090112>, 2021.

- 425 Gagliardini, O. and Werder, M. A.: Influence of increasing surface melt over decadal timescales on land-terminating Greenland-type outlet glaciers, *Journal of Glaciology*, 64, 700–710, <https://doi.org/10.1017/jog.2018.59>, 2018.
- Gardner, A. S., Moholdt, G., Scambos, T., Fahnestock, M., Ligtenberg, S., van den Broeke, M., and Nilsson, J.: Increased West Antarctic and unchanged East Antarctic ice discharge over the last 7 years, *The Cryosphere*, 12, 521–547, <https://doi.org/10.5194/tc-12-521-2018>, 2018.
- Gardner, A. S., Fahnestock, M. A., and Scambos, T. A.: ITS_LIVE Regional Glacier and Ice Sheet Surface Velocities, <https://doi.org/10.5067/6II6VW8LLWJ7>, 2019.
- 430 Gong, Y., Zwinger, T., Åström, J., Altena, B., Schellenberger, T., Gladstone, R., and Moore, J. C.: Simulating the roles of crevasse routing of surface water and basal friction on the surge evolution of Basin 3, Austfonna ice cap, *Cryosphere*, 12, 1563–1577, <https://doi.org/10.5194/tc-12-1563-2018>, 2018.
- Haga, O. N., McNabb, R., Nuth, C., Altena, B., Schellenberger, T., and Kääh, A.: From high friction zone to frontal collapse: dynamics of an ongoing tidewater glacier surge, Negribreen, Svalbard, *Journal of Glaciology*, 66, 742–754, <https://doi.org/10.1017/jog.2020.43>, 2020.
- 435 Hagen, J. O., Liestøl, O., Roland, E., and Jørgensen, T.: Glacier atlas of Svalbard and Jan Mayen, in: *Meddelelser* 129, p. 141, Norsk polarinstitutt, 1993.
- Hewitt, I.: Seasonal changes in ice sheet motion due to melt water lubrication, *Earth and Planetary Science Letters*, 371–372, 16–25, <https://doi.org/10.1016/j.epsl.2013.04.022>, 2013.
- 440 Hoffman, M. J., Perego, M., Andrews, L. C., Price, S. F., Neumann, T. A., Johnson, J. V., Catania, G., and Lüthi, M. P.: Widespread Moulin Formation During Supraglacial Lake Drainages in Greenland, *Geophysical Research Letters*, 45, 778–788, <https://doi.org/10.1002/2017GL075659>, 2018.
- Holland, D. M., Thomas, R. H., de Young, B., Ribergaard, M. H., and Lyberth, B.: Acceleration of Jakobshavn Isbræ triggered by warm subsurface ocean waters, *Nature Geoscience*, 1, 659–664, <https://doi.org/10.1038/ngeo316>, 2008.
- 445 Howat, I. M., Negrete, A., and Smith, B. E.: The Greenland Ice Mapping Project (GIMP) land classification and surface elevation data sets, *Cryosphere*, 8, 1509–1518, <https://doi.org/10.5194/tc-8-1509-2014>, 2014.
- Joughin, I., Das, S. B., King, M. A., Smith, B. E., Howat, I. M., and Moon, T.: Seasonal Speedup Along the Western Flank of the Greenland Ice Sheet, *Science*, 320, 781–783, <https://doi.org/10.1126/science.1153288>, 2008.
- Kehrl, L. M., Joughin, I., Shean, D. E., Floricioiu, D., and Krieger, L.: Seasonal and interannual variabilities in terminus position, glacier velocity, and surface elevation at Helheim and Kangerlussuaq Glaciers from 2008 to 2016, *Journal of Geophysical Research: Earth Surface*, 122, 1635–1652, <https://doi.org/10.1002/2016JF004133>, 2017.
- 450 Khazendar, A., Fenty, I. G., Carroll, D., Gardner, A., Lee, C. M., Fukumori, I., Wang, O., Zhang, H., Seroussi, H., Moller, D., Noël, B. P. Y., van den Broeke, M. R., Dinardo, S., and Willis, J.: Interruption of two decades of Jakobshavn Isbrae acceleration and thinning as regional ocean cools, *Nature Geoscience*, 12, 277–283, <https://doi.org/10.1038/s41561-019-0329-3>, 2019.
- 455 King, M. D., Howat, I. M., Jeong, S., Noh, M. J., Wouters, B., Noël, B., and Van Den Broeke, M. R.: Seasonal to decadal variability in ice discharge from the Greenland Ice Sheet, *Cryosphere*, 12, 3813–3825, <https://doi.org/10.5194/tc-12-3813-2018>, 2018.
- King, M. D., Howat, I. M., Candela, S. G., Noh, M. J., Jeong, S., Noël, B. P. Y., van den Broeke, M. R., Wouters, B., and Negrete, A.: Dynamic ice loss from the Greenland Ice Sheet driven by sustained glacier retreat, *Communications Earth & Environment*, 1, 1, <https://doi.org/10.1038/s43247-020-0001-2>, 2020.
- 460 Lei, Y., Gardner, A., and Agram, P.: Autonomous Repeat Image Feature Tracking (autoRIFT) and Its Application for Tracking Ice Displacement, *Remote Sensing*, 13, 749, <https://doi.org/10.3390/rs13040749>, 2021.

- McFadden, E. M., Howat, I. M., Joughin, I., Smith, B. E., and Ahn, Y.: Changes in the dynamics of marine terminating outlet glaciers in west Greenland (2000-2009), *Journal of Geophysical Research: Earth Surface*, 116, 1–16, <https://doi.org/10.1029/2010JF001757>, 2011.
- McMillan, M., Shepherd, A., Gourmelen, N., Dehecq, A., Leeson, A., Ridout, A., Flament, T., Hogg, A., Gilbert, L., Benham, T., Van Den Broeke, M., Dowdeswell, J. a., Fettweis, X., Noël, B., and Strozzi, T.: Rapid dynamic activation of a marine-based Arctic ice cap, *Geophysical Research Letters*, 41, 8902–8909, <https://doi.org/10.1002/2014GL062255>, 2014.
- Moholdt, G. and Kääb, A.: A new DEM of the Austfonna ice cap by combining differential SAR interferometry with ICESat laser altimetry, *Polar Research*, 31, 18 460, <https://doi.org/10.3402/polar.v31i0.18460>, 2012.
- Moon, T., Fisher, M., Harden, L., and Stafford, T.: QGreenland (v1.0.1) [software] Available from <https://qgreenland.org>, <https://doi.org/10.5281/zenodo.4558266>, 2021.
- Morlighem, M., Williams, C. N., Rignot, E., An, L., Arndt, J. E., Bamber, J. L., Catania, G., Chauché, N., Dowdeswell, J. A., Dorschel, B., Fenty, I., Hogan, K., Howat, I., Hubbard, A., Jakobsson, M., Jordan, T. M., Kjeldsen, K. K., Millan, R., Mayer, L., Mouginot, J., Noël, B. P. Y., O’Cofaigh, C., Palmer, S., Rysgaard, S., Seroussi, H., Siegert, M. J., Slabon, P., Straneo, F., van den Broeke, M. R., Weinrebe, W., Wood, M., and Zinglensen, K. B.: BedMachine v3: Complete Bed Topography and Ocean Bathymetry Mapping of Greenland From Multibeam Echo Sounding Combined With Mass Conservation, *Geophysical Research Letters*, 44, 11,051–11,061, <https://doi.org/10.1002/2017GL074954>, 2017.
- Mouginot, J., Rignot, E., Bjørk, A. A., van den Broeke, M., Millan, R., Morlighem, M., Noël, B., Scheuchl, B., and Wood, M.: Forty-six years of Greenland Ice Sheet mass balance from 1972 to 2018, *Proceedings of the National Academy of Sciences*, 116, 9239–9244, <https://doi.org/10.1073/pnas.1904242116>, 2019.
- Nick, F. M., Vieli, A., Howat, I. M., and Joughin, I.: Large-scale changes in Greenland outlet glacier dynamics triggered at the terminus, *Nature Geoscience*, 2, 110–114, <https://doi.org/10.1038/ngeo394>, 2009.
- Nick, F. M., Vieli, A., Andersen, M. L., Joughin, I., Payne, A., Edwards, T. L., Pattyn, F., and van de Wal, R. S. W.: Future sea-level rise from Greenland’s main outlet glaciers in a warming climate, *Nature*, 497, 235–238, <https://doi.org/10.1038/nature12068>, 2013.
- Nye, J. F.: The response of a glacier to changes in the rate of nourishment and wastage, *Proceedings of the Royal Society of London. Series A. Mathematical and Physical Sciences*, 275, 87–112, <https://doi.org/10.1098/rspa.1963.0157>, 1963.
- Palmer, S., Shepherd, A., Nienow, P., and Joughin, I.: Seasonal speedup of the Greenland Ice Sheet linked to routing of surface water, *Earth and Planetary Science Letters*, 302, 423–428, <https://doi.org/10.1016/j.epsl.2010.12.037>, 2011.
- Poinar, K., Joughin, I., Das, S. B., Behn, M. D., Lenaerts, J. T. M., and Broeke, M. R.: Limits to future expansion of surface-melt-enhanced ice flow into the interior of western Greenland, *Geophysical Research Letters*, 42, 1800–1807, <https://doi.org/10.1002/2015GL063192>, 2015.
- Project Jupyter, Bussonnier, M., Forde, J., Freeman, J., Granger, B., Head, T., Holdgraf, C., Kelley, K., Nalvarte, G., Osheroff, A., Pacer, M., Panda, Y., Perez, F., Ragan-Kelley, B., and Willing, C.: Binder 2.0 - Reproducible, Interactive, Sharable Environments for Science at Scale, in: *The 17th Python in Science Conference*, <https://doi.org/10.25080/Majora-4af1f417-011>, 2018.
- Rathmann, N. M., Hvidberg, C. S., Solgaard, A. M., Grinsted, A., Gudmundsson, G. H., Langen, P. L., Nielsen, K. P., and Kusk, A.: Highly temporally resolved response to seasonal surface melt of the Zachariae and 79N outlet glaciers in northeast Greenland, *Geophysical Research Letters*, 44, 9805–9814, <https://doi.org/10.1002/2017GL074368>, 2017.
- RGI Consortium: Randolph Glacier Inventory – A Dataset of Global Glacier Outlines: Version 6.0: Technical Report, Global Land Ice Measurements from Space, <https://doi.org/10.7265/N5-RGI-60>, 2017.

- Riel, B., Minchew, B., and Joughin, I.: Observing traveling waves in glaciers with remote sensing: new flexible time series methods and application to Sermeq Kujalleq (Jakobshavn Isbræ), Greenland, *The Cryosphere*, 15, 407–429, <https://doi.org/10.5194/tc-15-407-2021>, 2021.
- Sánchez-Gómez, P., Navarro, F. J., Benham, T. J., Glazovsky, A. F., Bassford, R. P., and Dowdeswell, J. A.: Intra- and inter-annual variability in dynamic discharge from the Academy of Sciences Ice Cap, Severnaya Zemlya, Russian Arctic, and its role in modulating mass balance, *Journal of Glaciology*, pp. 1–18, <https://doi.org/10.1017/jog.2019.58>, 2019.
- Savitzky, A. and Golay, M. J. E.: Smoothing and Differentiation of Data by Simplified Least Squares Procedures, *Analytical Chemistry*, 36, 1627–1639, <https://doi.org/10.1021/ac60214a047>, 1964.
- Schytt, V.: Some comments on glacier surges in eastern Svalbard, *Canadian Journal of Earth Sciences*, 6, 867–873, <https://doi.org/10.1139/e69-088>, 1969.
- Seddik, H., Greve, R., Sakakibara, D., Tsutaki, S., Minowa, M., and Sugiyama, S.: Response of the flow dynamics of Bowdoin Glacier, northwestern Greenland, to basal lubrication and tidal forcing, *Journal of Glaciology*, 65, 225–238, <https://doi.org/10.1017/jog.2018.106>, 2019.
- Strozzi, T., Kääb, A., and Schellenberger, T.: Frontal destabilization of Stonebreen, Edgeøya, Svalbard, *Cryosphere*, 11, 553–566, <https://doi.org/10.5194/tc-11-553-2017>, 2017a.
- Strozzi, T., Paul, F., Wiesmann, A., Schellenberger, T., and Kääb, A.: Circum-arctic changes in the flow of glaciers and ice caps from satellite SAR data between the 1990s and 2017, *Remote Sensing*, 9, 947, <https://doi.org/10.3390/rs9090947>, 2017b.
- Sundal, A., Shepherd, A., van den Broeke, M., Van Angelen, J., Gourmelen, N., and Park, J.: Controls on short-term variations in Greenland glacier dynamics, *Journal of Glaciology*, 59, 883–892, <https://doi.org/10.3189/2013JoG13J019>, 2013.
- Sundal, A. V., Shepherd, A., Nienow, P., Hanna, E., Palmer, S., and Huybrechts, P.: Melt-induced speed-up of Greenland ice sheet offset by efficient subglacial drainage, *Nature*, 469, 521–524, <https://doi.org/10.1038/nature09740>, 2011.
- Tedstone, A. J., Nienow, P. W., Sole, A. J., Mair, D. W. F., Cowton, T. R., Bartholomew, I. D., and King, M. A.: Greenland ice sheet motion insensitive to exceptional meltwater forcing, *Proceedings of the National Academy of Sciences*, 110, 19719–19724, <https://doi.org/10.1073/pnas.1315843110>, 2013.
- Thomas, R. H. and Bentley, C. R.: A Model for Holocene Retreat of the West Antarctic Ice Sheet, *Quaternary Research*, 10, 150–170, [https://doi.org/10.1016/0033-5894\(78\)90098-4](https://doi.org/10.1016/0033-5894(78)90098-4), 1978.
- van de Wal, R. S. W., Boot, W., van den Broeke, M. R., Smeets, C. J. P. P., Reijmer, C. H., Donker, J. J. A., and Oerlemans, J.: Large and Rapid Melt-Induced Velocity Changes in the Ablation Zone of the Greenland Ice Sheet, *Science*, 321, 111–113, <https://doi.org/10.1126/science.1158540>, 2008.
- Vaughan, D., Comiso, J., Allison, I., Carrasco, J., Kaser, G., Kwok, R., Mote, P., Murray, T., Paul, F., Ren, J., Rignot, E., Solomina, O., Steffen, K., and Zhang, T.: Ch. 4. Observations: Cryosphere, in: *Climate Change 2013: The Physical Science Basis. Contribution of Working Group I to the Fifth Assessment Report of the Intergovernmental Panel on Climate Change*, edited by Stocker, T., Qin, D., Plattner, G.-K., Tignor, M., Allen, S., Boschung, J., Nauels, A., Xia, Y., Bex, V., and Midgley, P., chap. 4, Cambridge University Press, 2013.
- Walsh, K. M., Howat, I. M., Ahn, Y., and Enderlin, E. M.: Changes in the marine-terminating glaciers of central east Greenland, 2000–2010, *The Cryosphere*, 6, 211–220, <https://doi.org/10.5194/tc-6-211-2012>, 2012.
- Weertman, J.: On the Sliding of Glaciers, *Journal of Glaciology*, 3, 33–38, <https://doi.org/10.3189/S0022143000024709>, 1957.

- Williams, J. J., Gourmelen, N., and Nienow, P.: Dynamic response of the Greenland ice sheet to recent cooling, *Scientific Reports*, 10, 1647, <https://doi.org/10.1038/s41598-020-58355-2>, 2020.
- Williams, J. J., Gourmelen, N., and Nienow, P.: Complex multi-decadal ice dynamical change inland of marine-terminating glaciers on the Greenland Ice Sheet, *Journal of Glaciology*, 67, 833–846, <https://doi.org/10.1017/jog.2021.31>, 2021.
- 540 Willis, M. J., Zheng, W., Durkin, W. J., Pritchard, M. E., Ramage, J. M., Dowdeswell, J. A., Benham, T. J., Bassford, R. P., Stearns, L. A., Glazovsky, A. F., Macheret, Y. Y., and Porter, C. C.: Massive destabilization of an Arctic ice cap, *Earth and Planetary Science Letters*, 502, 146 – 155, <https://doi.org/10.1016/j.epsl.2018.08.049>, 2018.
- Wood, M., Rignot, E., Fenty, I., An, L., Bjørk, A., van den Broeke, M., Cai, C., Kane, E., Menemenlis, D., Millan, R., Morlighem, M., Mougnot, J., Noël, B., Scheuchl, B., Velicogna, I., Willis, J. K., and Zhang, H.: Ocean forcing drives glacier retreat in Greenland, *Science*
- 545 *Advances*, 7, 1–11, <https://doi.org/10.1126/sciadv.aba7282>, 2021.
- Zheng, W., Pritchard, M. E., Willis, M. J., and Stearns, L. A.: The possible transition from glacial surge to ice stream on Vavilov Ice Cap, *Geophysical Research Letters*, 46, <https://doi.org/10.1029/2019GL084948>, 2019.
- Zwally, H. J., Abdalati, W., Herring, T., Larson, K., Saba, J., and Steffen, K.: Surface Melt-Induced Acceleration of Greenland Ice-Sheet Flow, *Science*, 297, 218–222, <https://doi.org/10.1126/science.1072708>, 2002.