

Exploring the role of snow metamorphism on the isotopic composition of the surface snow at EastGRIP

Romilly Harris Stuart^{1,4}, Anne-Katrine Faber², Sonja Wahl², Maria Hörhold³, Sepp Kipfstuhl³, Kristian Vasskog⁴, Melanie Behrens³, Alexandra Zuhr^{5,6}, and Hans Christian Steen-Larsen²

¹Laboratoire des Sciences du Climat et de l'Environnement, UMR8212, CNRS – Gif sur Yvette, France

²Geophysical Institute, University of Bergen and Bjerknes Centre for Climate Research, Bergen, Norway

³Alfred-Wegener-Institut Helmholtz-Zentrum für Polar- und Meeresforschung, Bremerhaven, Germany

⁴Department of Geography, University of Bergen, and Bjerknes Centre for Climate Research, Bergen, Norway

⁵Alfred-Wegener-Institut Helmholtz Zentrum für Polar- und Meeresforschung, Research Unit Potsdam, Telegrafenberg A45, 14473 Potsdam, Germany

⁶University of Potsdam, Institute of Geosciences, Karl-Liebknecht-Str. 24-25, 14476 Potsdam-Golm, Germany

Correspondence: Romilly Harris Stuart (romilly.harris-stuart@lscce.ipsl.fr)

Abstract.

Stable water isotopes from polar ice cores are invaluable high-resolution climate proxy records. Recent studies have aimed to improve understanding of how the climate signal is stored in the stable water isotope record by addressing the influence of post-depositional processes on the surface snow isotopic composition. In this study, the relationship between surface snow metamorphism and water isotopes during precipitation-free periods is explored using measurements of snow specific surface area (SSA). Continuous daily SSA measurements from the East Greenland Ice Core Project site (EastGRIP) ~~situated in the accumulation zone of the Greenland Ice Sheet~~ during the summer seasons of 2017, 2018 and 2019, are used to develop an empirical decay model to describe events of rapid decrease in SSA, linked to snow metamorphism. We find that SSA decay during precipitation-free periods at EastGRIP is best described by the exponential equation $SSA(t) = (SSA_0 - 22) \cdot e^{-\alpha t} + 22$, and has a dependency on wind-speed. The relationship between surface snow SSA and snow isotopic composition is primarily explored using Empirical Orthogonal Function analysis. A coherence between SSA and d -excess is apparent during 2017 and 2019, suggesting that processes driving change in SSA also influence snow ~~isotopic composition~~ d -excess. In contrast, 2018 was characterised by a covariance between SSA and $\delta^{18}\text{O}$ highlighting the inter-annual variability in surface regimes. Moreover, we observed changes in isotopic composition consistent with fractionation effects associated with sublimation and vapour diffusion during periods of rapid decrease in SSA. Our findings support recent studies which provide evidence of isotopic fractionation during sublimation, and show that snow d -excess is modified during snow metamorphism.

1 Introduction

The traditional interpretation of stable water isotopes in ice cores is based on the linear relationship between local temperature and first-order parameters $\delta^{18}\text{O}$ and δD of surface snow on ice sheets (Dansgaard, 1964). Accurate reconstruction requires consideration of precipitation intermittency (Casado et al., 2020; Laepple et al., 2018), past variations in ice-sheet elevation

(Vinther et al., 2009), sea ice extent (Faber et al., 2017; Sime et al., 2013), and firn diffusion (Johnsen et al., 2000; Landais et al., 2006; Holme et al., 2018), which influence the water isotopic composition in ice cores. The second-order parameter deuterium excess (d -excess) is defined by the deviation from the near-linear relationship between $\delta^{18}\text{O}$ and δD which is driven by non-equilibrium (kinetic) fractionation ($d\text{-excess} = \delta\text{D} - 8 \cdot \delta^{18}\text{O}$). d -excess in ice cores is understood to reflect moisture source conditions (Dansgaard, 1964; Merlivat and Jouzel, 1979; Johnsen et al., 1989), changes in moisture source region (Masson-Delmotte et al., 2005), and can be modified during snow crystal formation in supersaturated clouds (Ciais and Jouzel, 1994; Sodemann et al., 2008).

Recent studies have documented isotopic composition change in the surface snow during precipitation-free periods (Steen-Larsen et al., 2014; Ritter et al., 2016; Casado et al., 2018; Hughes et al., 2021), linked to synoptic variations in atmospheric water vapour composition and subsequent exchange with the surface snow (Steen-Larsen et al., 2014; Ritter et al., 2016; Madsen et al., 2019; Hughes et al., 2021; Wahl et al., 2021; Casado et al., 2021). Post-depositional processes at the surface involve additional kinetic effects adding complexity to the interpretation of d -excess (Hughes et al., 2021; Casado et al., 2021). Here we focus on processes influencing isotopic composition of the surface snow after deposition while exposed to surface processes, and concentrate on the ~~second-order parameter d -excess~~ second-order parameter d -excess due to its sensitivity to kinetic effects.

After deposition, snow grains undergo structural changes known as snow metamorphism, which is active at the surface and at greater depths, depending on temperature (gradient) conditions (Colbeck, 1983; Pinzer and Schneebeli, 2009). Surface snow metamorphism is initially driven by a reduction in the snow-air interface to reach thermodynamic stability (Colbeck, 1980; Legagneux and Domine, 2005). The snow-air interface can be described by the widely used parameter snow specific surface area (SSA), which is dependent on optical grain radius and density of ice ($SSA = 3/\rho_{ice} \cdot r_{opt}$) (Gallet et al., 2009) and can be used as ~~a measure an indicator~~ for snow metamorphism (Cabanes et al., 2002, 2003; Legagneux et al., 2002). Freshly deposited snow has a high SSA which decreases with time under both isothermal ($<10^\circ\text{C m}^{-1}$) and temperature gradient ($>10^\circ\text{C m}^{-1}$) conditions within the snow (Cabanes et al., 2002; Legagneux et al., 2004; Domine et al., 2007; Genthon et al., 2017). Decrease in SSA in dry snow is predominantly the result of ~~Ostwald-Ripening, where large grains grow at the cost of smaller grains (Lifshitz and Slyozov, 1961; Legagneux et al., 2004), interstitial vapour diffusion (Flin and Brzoska, 2008; Sokratov and Golubev, 2009; Pinzer et al., 2012), and wind effects~~ water vapor transfer among grains, with smaller grains feeding the growth of larger grains (Legagneux et al., 2004; Flin and Brzoska, 2008; Sokratov and Golubev, 2009; Pinzer et al., 2012). Ventilation by wind can accelerate SSA decrease by enhancing water vapor transfer rates (Picard et al., 2019). Under natural conditions, SSA decrease is driven by a combination of these processes depending on surface conditions (Cabanes et al., 2003; Pinzer and Schneebeli, 2009), each potentially modifying the isotopic composition of the snow (Ebner et al., 2017).

Models can provide a quantitative description of SSA decrease after deposition. Previous studies have proposed SSA decay models using a combination of field measurements and controlled laboratory experiments (Cabanes et al., 2002, 2003; Legagneux et al., 2003, 2004; Flanner and Zender, 2006; Taillandier et al., 2007). Exponential models are documented to produce the best fit to in-situ SSA decay data given that they can account for temperature effects under various wind conditions while being simple in their formulation (Cabanes et al., 2003). A subsequent physical-based model was defined by ~~Legagneux et al. (2003)~~

[Legagneux et al. \(2004\)](#) to describe SSA decay based on grain growth theory, which was then further developed by Flanner and Zender (2006), who defined parameters based on surface temperature, temperature gradient and snow density. Existing SSA decay models have rarely been applied to polar ice sheet surface snow (Linow et al., 2012; Carmagnola et al., 2013). Conditions for surface snow on polar ice sheets are not necessarily comparable to other alpine and Arctic regions due to negligible melt and the high-latitude radiation budget. Moreover, while continuous surface SSA measurements exist from Antarctica (Gallet et al., 2011, 2014; Picard et al., 2014), those from Greenland focus on the depth evolution of SSA ([Carmagnola et al., 2013](#); [Linow et al., 2012](#)) ([Linow et al., 2012](#); [Carmagnola et al., 2013](#)). Continuous datasets of daily SSA and corresponding isotopic composition measurements from the accumulation zone of the Greenland Ice Sheet ~~can contribute to understanding the relevance of snow metamorphism for~~ are required for understanding the influence of surface snow metamorphism on surface energy budget ~~and for ice core studies. The latter~~ ([Picard et al., 2012](#)), and for the interpretation of ice core water isotope records ([Casado et al., 2021](#); [Wahl et al., 2022](#)). In this study we focus on the latter, which is of particular ~~interest~~ importance owing to observations of isotopic fractionation during snow metamorphism documented in laboratory studies (Ebner et al., 2017) and field experiments (~~[Hughes et al., 2021](#); [Wahl et al., 2021](#); [Casado et al., 2021](#)~~) ([Casado et al., 2021](#); [Hughes et al., 2021](#)). Nonetheless, few studies have focused on the direct relationship between physical snow properties, such as SSA, and post-depositional changes in isotopic composition.

In this manuscript, the aim is to explore the behaviour of surface snow metamorphism on polar ice sheets using daily SSA measurements from Northeast Greenland during summer, and to compare the change in physical properties to the isotopic composition measurements. The primary focus is to document events where changes in SSA occur rapidly over a number of precipitation-free days, which we use as a proxy for snow metamorphism. Events of rapid SSA decrease (SSA decay events) are used to 1) quantify and model surface snow metamorphism in polar snow and, 2) assess isotopic change during surface snow metamorphism in-situ. The data presented here has great value for our understanding of the influence of post-depositional processes on physical and isotopic changes in the polar ice sheet surface snow. This allows for deeper understanding of snow properties at remote regions of polar ice sheets and contributes to the interpretation of stable water isotopes in polar ice cores.

2 Study site and methods

2.1 EastGRIP site overview and meteorological data

All data used in this paper was collected as part of the Surface Program corresponding to the international deep ice core drilling project at the East Greenland Ice Core Project site (EastGRIP, 75.65°N , 35.99°W ; 2,700 m.a.s.l) during summer field seasons (~~May–August~~ May–August) of 2017, 2018 and 2019. The local accumulation rate is approximately 1412 ± 2 cm water equivalent per year (Schaller et al., 2017).

Meteorological data used for this study are from the Program for Monitoring of the Greenland Ice Sheet (PROMICE) Automatic Weather Station set up by the Geological Survey of Denmark and Greenland (GEUS) at EastGRIP in 2016 (Fausto et al., 2021). The data are 10-minute mean values for a number of variables. In addition to the surface variables, snow temperature was measured using a thermistor string at 0.1 m intervals during 2017 and 2018 but was modified to 1 m intervals in

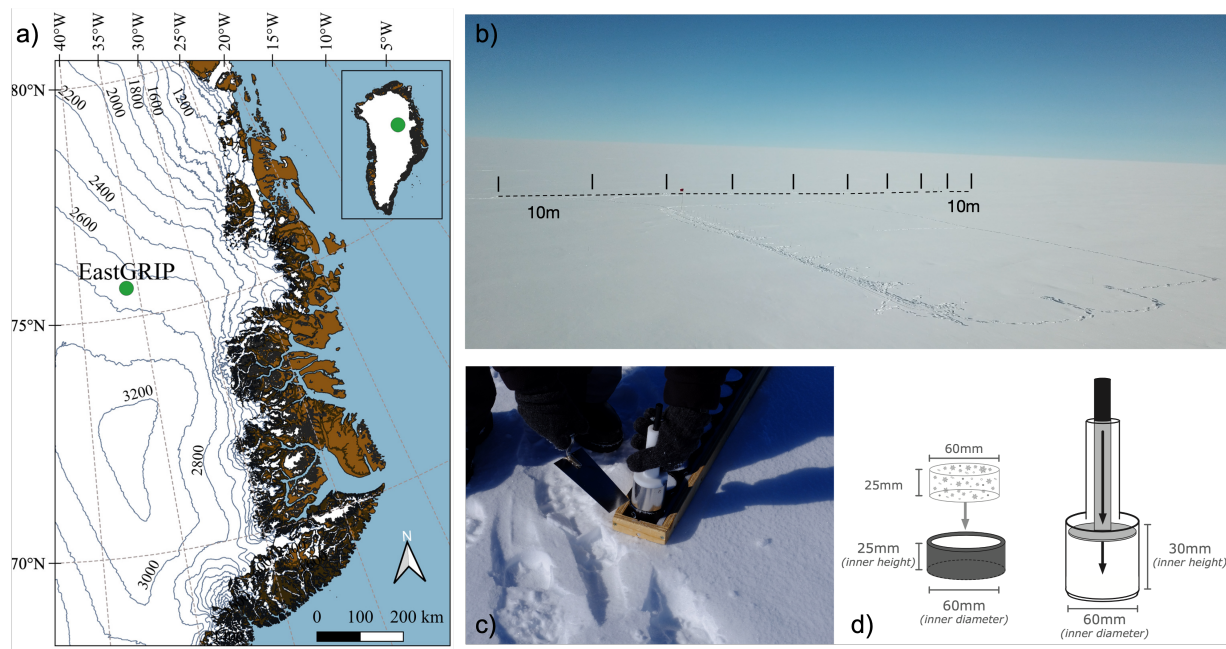


Figure 1. a) A map of Greenland with a [black star-green dot](#) indicating the EastGRIP site ([Source: VisitGreenland](#)) ([Wahl et al., 2021](#)). b) A photograph of the clean snow area at the field site (Credit: Bruce Vaughn), black lines indicate the SSA sampling transect with 10 m spacing shown as dashed lines. c) A photograph of SSA sampling cups (Credit: Sonja Wahl), and d) an illustration of the sampling device from Klein (2014).

2019. An additional thermistor string was thus installed in May of 2019, from which we use the 0.1 m measurements. Relevant weather variables for this study are surface temperature (calculated from longwave radiation down and longwave radiation up with longwave emissivity set at 0.97), air temperature and wind speed (Van As, 2011). Mean weather conditions vary between sampling years, as outlined in Table 1 with prevailing westerly winds throughout the sampling seasons.

An eddy-covariance (EC) measurement tower was set up at EastGRIP for every summer observation period (Madsen et al., 2019; Wahl et al., 2021). Here we use the 30-minute latent heat flux (LE) measurements which are calculated from the measurement of humidity fluxes between the surface and atmosphere. Positive LE indicates upwards energy flux in the form of sublimation in Table 1. [Significant Observations of](#) weather conditions such as ground fog, drifting snow and snowfall, were documented each day in the EastGRIP field diary.

2.2 [Snow Accumulation, snow sampling procedure and snow-accumulations subsequent measurements](#)

Each summer season of 2017, 2018 and 2019 snow samples were taken once a day, primarily in the morning, from May to August at 10 sampling sites. Each site was marked by a stick, along a 90m transect [running perpendicular to the prevailing wind direction \(285° N \(Wahl et al., 2021\)\)](#) with 10m spacing upwind of the EastGRIP camp to ensure clean snow (Fig. 1b).

Table 1. Weather statistics ~~for summer field campaigns during~~ 2017, 2018 and 2019. Mean and standard deviation for weather variables during the three sampling seasons. Surface temperature, relative humidity with reference to ice and wind speed use PROMICE weather station based on 10-minute measurements. Latent heat flux a 30-minute mean upwards flux from the eddy-covariance tower.

		2017	2018	2019
	Instrument	06/05–05/05/08	04/05–07/05–07/08	24/05–01/05–01/08
Surface Temperature (°C)	(Kipp and Zonen CNR1/CNR4 radiometer)	-14.5 ± 6.2	-15.76–15.8 ± 7.6	-10.6 ± 5.4
Relative Humidity (%)	(Calculated) Calculated	95.8 ± 15	95.9 ± 16	93.3 ± 14
Wind Speed (ms ⁻¹)	(R.M. Young 05103-5 ± 0.3 ms⁻¹)	4.9 ± 0.2	4.2 ± 1.9	4.5 ± 1.6
Latent Heat Flux (W m ⁻²)	(IRGASON Campbell Scientific)	1.28 ± 4.2	1.3 ± 4.3	2.6 ± 5.2

The specific dates for each season are given in Table 1. The precise location of each sample was marked by a small stick to ensure the adjacent snow is sampled the next day and to avoid sampling snow from different depths. A 6 cm diameter sampling device (cup) collected the top 2.5 cm of surface snow (Fig. 1c and d). Snow density is determined using the weight of each snow sample with a known volume. Sticks were placed at each sampling site at the start of each season to measure snow height, that is, the distance between the snow surface and top of the stick with a ruler with an uncertainty margin of ± 0.5 cm. Accumulation, used here to describe the change in snow height (cm), was calculated using the cumulative sum of the daily difference between measurements of snow height from each site. The resultant datasets consist of 10 daily measurements of ~~three-four~~ parameters, SSA, density ~~and snow accumulation~~, snow accumulation and stable water isotopes. The field season for 2018 started on the 5th of May, ~~9-days-9 days~~ earlier than 2017 (14th May), and 22 days earlier than 2019 (27th May). The meteorological data is re-sampled to the SSA sampling time-periods ~~to ensure consistent comparison~~.

2.3 SSA measurements

Each snow sample is placed into the Ice Cube sampling container below an Infra-Red (IR) laser diode (wavelength of 1310 nm), where the SSA is calculated based on IR hemispherical reflectance, as explained in Gallet et al. (2009). More information on the Ice Cube device can be found in Zuanon (2013). ~~The e-folding depth of 1310 nm radiation in snow~~ Gallet et al. (2009) show that SSA measurements for snow with density of 200 kg m⁻³ is approximately and SSA of 35 m² kg⁻¹ mostly reflect the top 1 cm (Gallet et al., 2009). Thus, as of a 2.5 cm snow sample when using 1310 nm radiation, due to the e-folding depth. The properties of each 2.5 cm snow sample will determine the e-folding depth (i.e. the depth to which the light irradiances within the snowpack is reduced to 1/e (approximately 37%) of its initial value), with higher SSA and density causing a decreased e-folding depth. Given that the mean snow density from all field seasons is 293 kg m⁻³ (307 ± 40 kg m⁻³, 278 ± 47 kg m⁻³, 294 ± 50 kg m⁻³ for 2017, 2018 and 2019) ~~, each and the mean SSA is 37.5 m² kg⁻¹, the SSA values~~ measurement will be ~~heavily~~ weighted towards the top <1 cm of the 2.5 cm sample. However, recent studies have shown that the SSA values obtained from the instrument used here (Ice Cube) agree well with measurements from computed microtomography on the same samples (Martin and Schneebeli, 2022). Further our data fairly agreed in comparison to remote sensing products

125 (Kokhanovsky et al., 2019; Vandecrux et al., 2022). Thus we consider our SSA values as representative for the upper 2.5 cm surface snow.

The light reflected from the snow samples is converted into inter-hemispheric IR reflectance using a calibration curve based on methane absorption methods (Gallet et al., 2009). A radiative-transfer model is used to retrieve SSA from inter-hemispherical IR reflectance. To avoid influence from solar radiation, SSA was measured inside a white tent or in a snow
130 cave kept at temperatures between -5°C and -20°C. We assume an uncertainty of 10% for SSA measurements between ~~55–130~~ 130 m² kg⁻¹ (Gallet et al., 2009).

2.4 Surface snow isotopes

Individual SSA samples were put in separate bags and subsequently measured for water isotopic composition. Thus, every day the 10 SSA samples have a corresponding isotopic composition. The resultant isotope value is the average composition over
135 the top 2.5 cm of snow. Each sample was kept frozen during transportation and storage. The samples were then analysed at Alfred Wegener Institute in Bremerhaven using a cavity ring-down spectroscopy ~~instrument~~ instruments (Picarro L-2120-i and L-2140-i) following the protocol of Van Geldern and Barth (2012). This technique produces $\delta^{18}\text{O}$ and δD measurements with an estimated uncertainty of 0.15‰ and 0.8‰ respectively. The calculated values for *d*-excess have an estimated uncertainty of 1‰.

140 2.5 Data analysis

2.5.1 Defining SSA decay events

Freshly deposited snow has a high SSA that slowly decreases through time due to snow metamorphism. Based on this understanding, two terms are defined: ~~1) SSA increase indicating~~

1. SSA increase: Increases in SSA indicate deposition events in the form of precipitation ~~, drifted snow or surface hoar formation, and 2) SSA decay or deposited snowdrift.~~
2. SSA decrease: Decreases in SSA are due to snow metamorphism and other post-depositional processes such as ~~wind erosion, wind scouring and, in some few cases, surface hoar formation.~~ Identification of such SSA decays

SSA decays are primarily identified in the time-series ~~are required~~ to quantify snow metamorphism and corresponding
150 isotopic change during precipitation-free periods. Surface conditions are ~~subsequently assessed~~ considered to remove events ~~where the with~~ surface snow layer ~~is likely to have experienced perturbation~~ perturbations via deposition or erosion by the wind.

A threshold is derived to systematically identify periods of rapid SSA decay ~~—~~ hereafter referred to as SSA decay events ~~over a two-day period which was found to be the most representative time step to capture SSA decay events for all sampling~~

155 ~~years~~. SSA decay events captured by this threshold are defined by the peak SSA value (~~day-0~~Day-0), through to the next increase in SSA (~~rather than decrease~~).

~~A set of criteria are required to reduce the potential of analysing applied to the~~ SSA decay events ~~to avoid events~~ with wind-perturbed surfaces. ~~In Antarctica, unconsolidated surface~~ While in Antarctica, drifting of unconsolidated snow has been observed ~~to drift at wind speeds at mean hourly wind speeds~~ as low as 54.5 m s^{-1} ~~measured at 2 m height (Birnbaum et al., 2010).~~
160 ~~However~~ (Birnbaum et al., 2010), a study from ~~north-east Greenland~~ Northeast Greenland, with similar conditions to EastGRIP, documented snowdrift starting at 6 m s^{-1} (Christiansen, 2001), due to warmer temperatures facilitating bonding of the surface snow (Li and Pomeroy, 1997). ~~Field diary~~ Additional field diary observations from EastGRIP document significant snowdrift when wind speeds ~~exceeded~~ exceed 7 m s^{-1} .

~~Based on this assessment, we define two wind-speed categories for comparison of the effects of wind-speed on SSA decay.~~
165 Based on these observations, two wind speed categories are defined.

1. Low-wind events: The first includes events with daily maximum wind-speed (computed from 10-minute averaged wind-speed) consistently below 6 m s^{-1} , hereafter referred to as low-wind events, ~~with where~~ negligible surface perturbation. ~~Secondly, we consider events where the is ensured.~~
2. Moderate-wind events: A second category considers events with daily maximum wind-speed ~~is between 6~~ between ~~6-7~~ 7 m s^{-1} , hereafter ~~referred to as the~~ moderate-wind events. The inclusion of ~~moderate-wind these~~ events facilitates an assessment of the influence of wind-speed on SSA decay, ~~while the threshold.~~

Subsequent isotopic analysis is first broadly applied to both low- and moderate-wind events over 1- and 2-day periods, followed by a focused assessment of isotopic change and corresponding temperature fluxes is applied to low-wind events alone given the assurance of unperturbed snow. All events with wind-speed for snowdrift based on temperature conditions from
175 ~~Li and Pomeroy (1997) is used to ensure minimal chance of drift. above 7 m s⁻¹ are excluded from analysis.~~

2.5.2 Modelling surface snow metamorphism

The first empirical SSA decay model, Eq.(1), was proposed by Cabanes et al. (2003) who described a temperature-dependent exponential decay based on snow samples collected from the Alps (~~Cabanes et al., 2002~~) and ~~Aretic Canada (Cabanes et al., 2003)~~ (Cabanes et al., 2003) and the Canadian Arctic (Cabanes et al., 2002). Legagneux et al. (2003) found Eq.(2) to best describe
180 experimental SSA decay under controlled laboratory conditions.

$$SSA(t) = SSA_0 \cdot e^{-\alpha t} \quad (1)$$

$$SSA(t) = B - A \cdot \ln(t + \Delta t) \quad (2)$$

In both Eq.(1) and (2), SSA(t) is the SSA value at a time, t, in days since the initial SSA value, SSA₀, and α is the decay rate.
185 Parameters A and B in Eq.(2) were found to be arbitrarily related to the decay rate and initial SSA of each sample. To improve

the physical basis of the model, the theory of Ostwald ~~Ripening~~ripening, describing grain growth driven by thermodynamic instability, was implemented into the model (Legagneux et al., 2004). Eq. (3) has two parameters τ and n ; τ is the decay rate and n relates to theoretical grain growth. The physical model was further developed by Flanner and Zender (2006) to incorporate a physical quantification of the parameters including information about temperature, temperature gradient, and density. Based
 190 on these three conditions, they created a look-up table for τ and n .

$$SSA(t) = SSA_0 \cdot \left(\frac{\tau}{t + \tau} \right)^{1/n} \quad (3)$$

Taillandier et al. (2007) proposed two equations based on Eq. (2) to define the decay rate under isothermal and temperature gradient conditions where they were able to directly incorporate a surface temperature parameter (T_m). Here we use the model for temperature gradient conditions (Eq. 9 in Taillandier et al. (2007)).

$$SSA(t) = [0.659 \cdot SSA_0 - 27.2 \cdot (T_m - 2.03)] - [0.0961 \cdot SSA_0 - 3.44 \cdot (T_m + 1.90)] \cdot \ln \left\{ t + e^{\left(\frac{-0.341 \cdot SSA_0 - 27.2 \cdot (T_m - 2.03)}{0.0961 \cdot SSA_0 - 3.44 \cdot (T_m + 1.90)} \right)} \right\} \quad (4)$$

~~Building upon~~

Building upon these previous studies, we define an empirical SSA decay model using continuous daily SSA measurements from EastGRIP to describe the behaviour of surface snow SSA in polar summer conditions (Cabanes et al., 2002, 2003; Flanner and Zender, 2006; Legagneux et al., 2002, 2003; Taillandier et al., 2007). A recent study at EastGRIP has shown the significant
 200 heterogeneity in surface snow due to post-depositional reworking from the wind (Zuhr et al., 2021), and therefore each sample location is treated individually to avoid ~~signal attenuation~~the smoothing out of localised signals when averaging.

3 Results

3.1 EastGRIP meteorological conditions

Meteorological variables over the three sampling seasons vary substantially as shown in Fig. 2. Air temperatures were below
 205 -30°C between May 5th and May 8th in 2018. Such low temperatures were not recorded for 2017 and 2019. Moreover, when comparing the period from May 27th to August 5th of each year (duration of 2019 season), 2018 air temperatures (-13.3°C) were still 0.5°C lower than 2017 and 3.2°C lower than ~~2019~~2019 (Table 1).

The 2017 season was characterised by high wind intrusions of $>13\text{ m s}^{-1}$ at approximately 20-day intervals. Considering all three sampling years, the average daily maximum wind speed is 7 m s^{-1} , with 209 out of the total 237 sampling days having
 210 maximum wind speed above 5 m s^{-1} . The distributions of daily maximum wind-speed compared to 10-minute mean values are found in the Supplemental Fig. A1. ~~Between the start and end of the 2017 field season, we observed net accumulation of 4.81~~Net-accumulation was observed during all seasons, with 4.8 ~~cm of snow over the 89, 9.3~~cm of snow over the 89, 9.3 ~~-day season, compared to 9.30~~-day season, compared to 9.30 cm

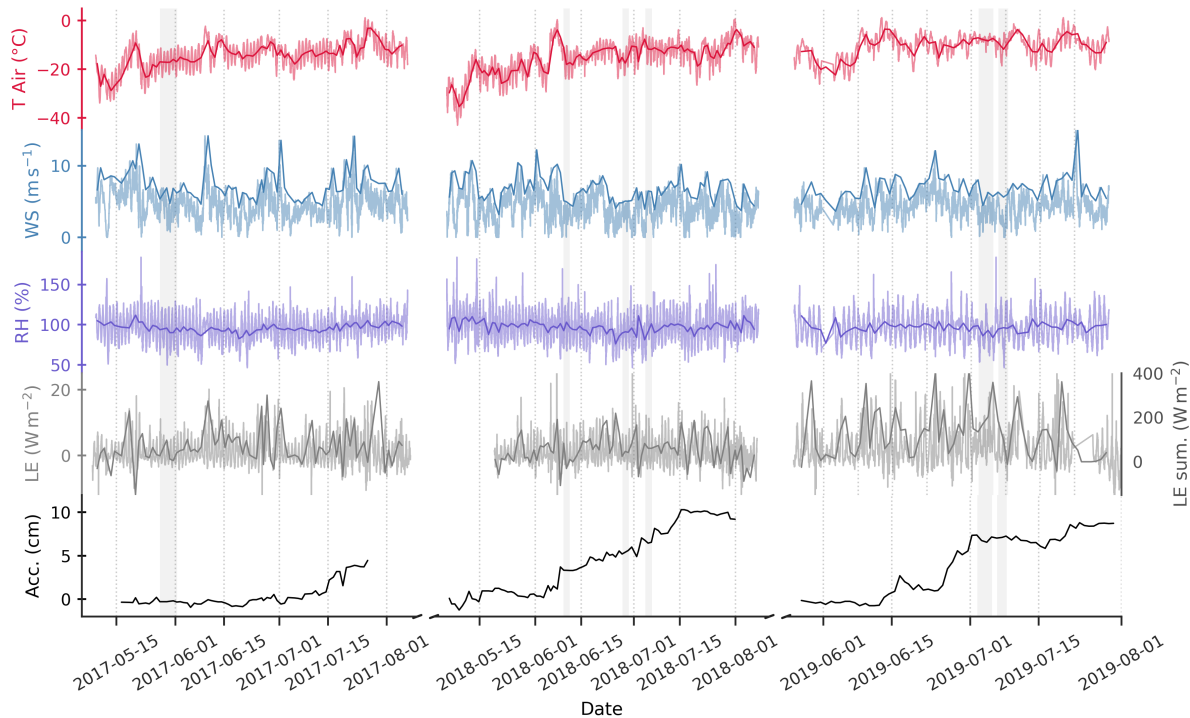


Figure 2. Time series of the ambient conditions during the sampling periods. Data covers the specific sampling periods each year. 10-minute mean data from the AWS is presented for air temperature, wind-speed and relative humidity. Mean values (bold lines) are shown for air temperature and relative humidity, while daily maximum is shown for wind-speed. Latent heat flux data are 30-minute averages from the eddy-covariance tower, with the daily sum shown in bold. Snow accumulation is presented in the lower panel as the daily mean over the 10 sampling sites (see Section 2.2). Grey bars indicate the derived SSA decay events.

in 2018 and 8.58 and 8.6 cm in 2019. accumulated for the 2017 (), 2018 () and 2019 () field seasons respectively. In addition, the total sum of LE during 2019 was 30% greater than in 2018 indicating strong sublimation. Eddy-covariance LE measurements are supported by LE from AWS observations which indicate the same magnitude of difference between the years.

3.1.1 Spatial and temporal snow surface variability

~~Seasonal variability~~ Spatial and temporal variability – defined as the daily standard deviation over transect and the standard deviation of the daily mean values over the season respectively – is observed in SSA, $\delta^{18}\text{O}$ and d -excess throughout the field seasons of 2017, 2018 and 2019 (Fig.3), with ~~highest daily highs~~ spatial variability in isotopic composition. SSA is characterised by peaks, often corresponding to high spatial variability, followed by gradual decreases over a number of days, the SSA decay feature which is most prominent during 2017 and corresponds to negligible or decreasing accumulation. High SSA values at the start of the 2018 season (daily mean $88\text{ m}^2\text{ kg}^{-1}$) correspond to low and spatially homogeneous $\delta^{18}\text{O}$.

Inter-annual difference is observed in $\delta^{18}\text{O}$, with seasonal mean values of $-31.6 \pm 2.1\text{‰}$, $-32.7 \pm 1.3\text{‰}$ and $-27.3 \pm 2.1\text{‰}$ for 2017, 2018 and 2019 respectively (Fig. 3). Throughout the season $\delta^{18}\text{O}$ follows a gradual increasing trend from May to August following concurrent with increasing temperatures. Note that the 2019 field season started approximately 15 days later than 2017 and 2018, resulting in a bias towards mid-summer conditions. Cases of abrupt decreases (-10‰) are observed in the late summer, for example, on July 12th in 2018 and July 25th in 2019, which correspond to originating from late-summer snowfall events. Note that the 2019 field season started approximately 15 days later than 2017 and 2018, resulting in a bias towards mid-summer conditions. No clear seasonal trend is observed in d -excess, but rather there are periods of gradual decrease in d -excess during periods with no accumulation in all years. The most apparent is from May 15th to June 14th in 2017 corresponding to 0cm net-accumulation (Fig. 3). The maximum daily spread in $\delta^{18}\text{O}$ and d -excess is approximately 15‰, indicating strong surface heterogeneity.

Empirical Orthogonal Function (EOF) analysis is applied to the data to identify the dominant modes of variance in both the temporal and spatial dimensions for each parameter — SSA, $\delta^{18}\text{O}$ and d -excess. Using a confidence interval of 95% ($p < 0.05$), the relationship between SSA and isotopic composition is tested for all 10 identical samples, covering the entire measurement period. The spatial and temporal principal components returned for each variable by the EOF are presented in Fig. 3. During

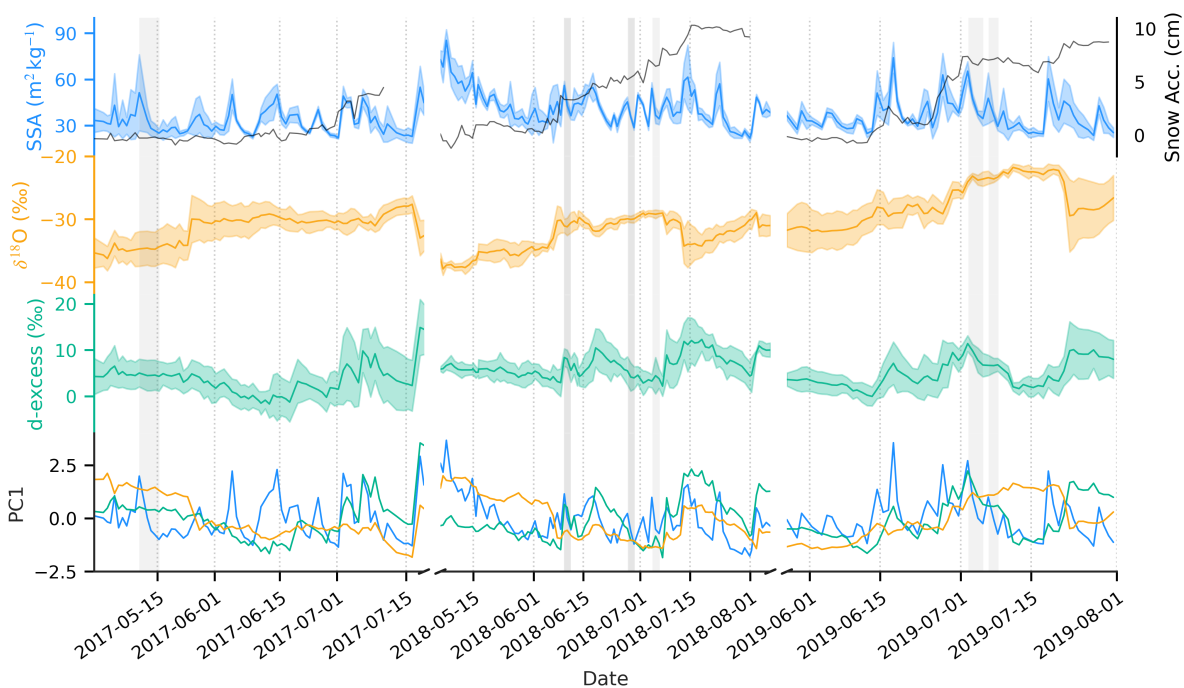


Figure 3. Time-series of SSA (blue), $\delta^{18}\text{O}$ (orange), d -excess (green) and the first principal components (PC1) of each variable in the lower panel. Bands in the upper three panels show spatial standard deviation between the 10 sampling sites. The secondary y-axis in the top panel shows the average snow accumulation. The grey bars indicate the SSA decay events.

2017, 2018 and 2019 all variables have one dominant mode of variance, or principal component (PC1). PC1 of SSA ($PC1_{SSA}$) explains 61 %, 77 % and 72 % of variance for the respective years, PC1 of $\delta^{18}O$ ($PC1_{\delta^{18}O}$) explains 69 %, 83 % and 75 % of the total variance respectively, while PC1 of d -excess ($PC1_{d_{xs}}$) explains 47 %, 51 % and 60 %.

240 Results from the EOF analysis ~~reveals~~ reveal distinct differences between the sampling years, most prevalent is the opposing regime from 2018 to 2019. During 2018, $PC1_{\delta^{18}O}$ and $PC1_{d_{xs}}$ have an inverse correlation in the spatial dimension ($r=-0.6$), and a significant positive correlation between $PC1_{\delta^{18}O}$ and $PC1_{d_{ssa}}$ in the temporal dimension ($p<0.05$, $r=0.5$) (Fig. A2 and Fig. A3). In contrast, data from 2019 are characterised by significant positive correlations between $PC1_{SSA}$ and ~~of~~ $PC1_{d_{xs}}$ in both the spatial ($p<0.05$, $r=0.75$) and temporal dimensions ($r=0.3$, $p>0.05$), while no relationship is observed between $PC1_{\delta^{18}O}$ and
245 $PC1_{d_{xs}}$. During 2017, there is a weak positive correlation for the temporal component of $PC1_{SSA}$ and $PC1_{d_{xs}}$ ($p<0.05$, $r=0.3$), and the temporal $PC1_{\delta^{18}O}$ and $PC1_{d_{xs}}$ ($p<0.05$, $r=0.4$). There is an apparent shift after July 15th where $PC1_{d_{xs}}$ transitions from co-varying with $PC1_{\delta^{18}O}$ to co-varying with $PC1_{SSA}$. Figure A2 and Fig. A3 in the supplement illustrate the spatial and temporal components of the EOF results.

3.2 SSA decay events

250 3.2.1 Observations

In agreement with Eq. (1), we observe a relationship between initial SSA and subsequent magnitude of decrease when evaluating the SSA decay events (Fig 3). From the years 2017, 2018 and 2019 a total of 21 events are identified that fulfill the SSA decay criteria (as defined in Section 2.5.1). These events are named E1, E2 etc (Table A).

~~Prior to analysis, we assess the meteorological conditions and field observations to remove SSA decay events with potentially~~
255 ~~perturbed surface snow. This includes all events coinciding with observations of ground fog, snowdrift, and snowfall, and events where the wind speed exceeds the~~ Using the thresholds defined in Section 2.5.1. ~~Out of, 15 out of the~~ 21 events ~~captured by the SSA decay event threshold, 15 are influenced by either snowdrift, snowfall, or ground fog according to field diary observations, or high wind speeds (maximum wind speed $>7\text{ m s}^{-1}$) are excluded from the analysis due to risk of surface perturbations.~~ Of the ~~remaining~~ 6 events, two are in the low-wind category (E10 and E11 = 5.1 m s^{-1}), and 4 in the moderate-wind category (E1, E13, E18 and E19). Both E10 and E11 had consistent clear sky conditions. Note that E11 was preceded by ~~significant~~ ground fog, ~~not snowfall, indicating that the peak value of $46\text{ m}^2\text{ kg}^{-1}$ was likely the result of surface hoar, and thus, rapid SSA decay follows an SSA peak not caused by precipitation and not snowfall~~ (Table A).

The rate of SSA decay is strongly influenced by the initial SSA during the decay period (Fig. 4), showing that the rate of change is proportional to the absolute value, as described by an exponential decay law ($r=-0.71$ and $r=-0.91$ for low- and
265 moderate-wind events respectively). The mean air temperature for all SSA decay events was between -17.3°C and -7°C . The first day of each event is characterised by the largest change in SSA, followed by a decrease in magnitude over the subsequent days, with negligible change in SSA below $22\text{ m}^2\text{ kg}^{-1}$.

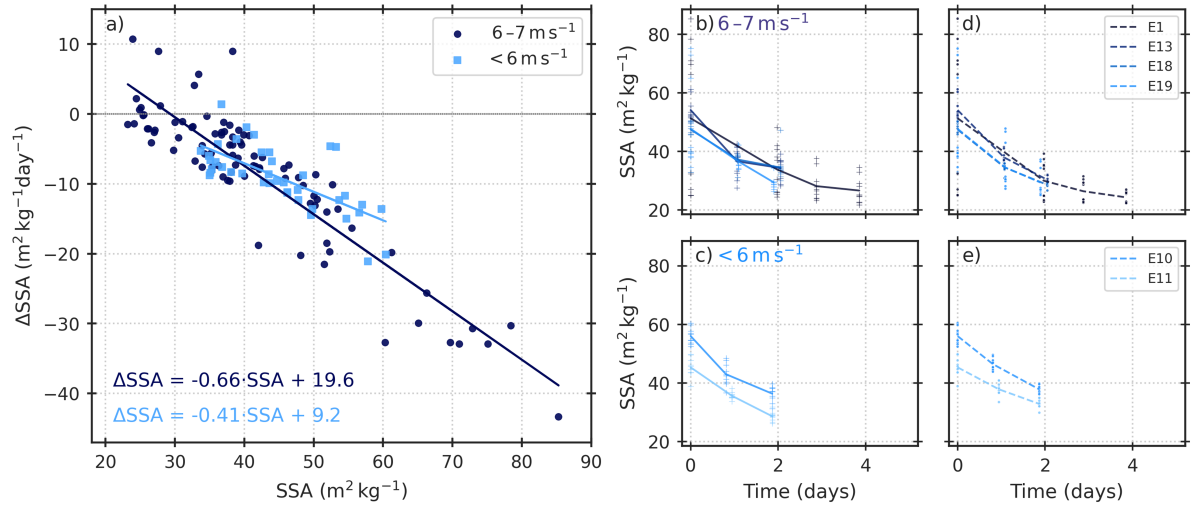


Figure 4. Linear regressions for change in SSA against the SSA for the low-wind (light-blue) and moderate-wind (dark-blue) SSA decay events (a) considering all individual samples. The observed SSA decays are shown for the moderate-wind events (b), and the low wind events (c), followed by the modelled SSA decays for the respective events in d) and e). The legend in d) and e) corresponds to SSA decay event number in Table A.

3.2.2 Model

SSA decay rate is quantified by plotting the rate of change in SSA per day against the absolute SSA value for all 10 sampling sites for low- and moderate-wind events (Fig. 4a). We observe a linear relationship between the change in SSA from one day to the next (ΔSSA) and SSA.

The SSA decay model for EastGRIP is constructed using the differential equation for the linear relationship between ΔSSA and absolute SSA. Solving the differential equation with respect to time (t), produces the SSA decay model defined as Eq. (5), which follows the equation structure of Eq. (1).

$$SSA(t) = (SSA_0 - 22) \cdot e^{-\alpha \cdot t} + 22 \quad (5)$$

Where $SSA(t)$ is the SSA measurement at a given time in days since the first measurement (initial SSA), SSA_0 is the initial SSA value, α is the decay rate, and a decay constant. An offset of $22 \text{ m}^2 \text{ kg}^{-1}$ is defined for both equations by the minimum required to account for the non-zero asymptote, and is defined as the SSA value where the derivative of SSA is equal to $0 \text{ m}^2 \text{ kg}^{-1}$. The decay rate, determined by the slope of the linear regressions in Fig. 4, is higher for moderate-wind SSA decay events ($-0.66 \text{ m}^2 \text{ kg}^{-1} \text{ day}^{-1}$) than for low-wind SSA decay events ($-0.41 \text{ m}^2 \text{ kg}^{-1} \text{ day}^{-1}$). Within the temperature range of low- and moderate-wind SSA decay events from this study, there is no observable temperature dependence of the SSA decay rate. However, such a temperature dependence is clear in events which were excluded due to potential surface perturbations,

where there is a decrease in decay rate and increase in the background SSA value with low temperatures (Fig. A4). Our results indicate a slower rate of decay under decreased wind-speed conditions.

285 3.2.3 Model performance comparison

Table 2. RMSE values for model evaluation. ~~This Study uses the respective α~~ Model predictions are compared to observations for both the low- and moderate-wind events for daily (mean SSA values (Mean) and the 10 individual ~~samples~~ SSA measurements (Individual)). For the low-wind events, α in Eq. (5) is $-0.41 \text{ m}^2 \text{ kg}^{-1} \text{ day}^{-1}$. For moderate-wind events α in Eq. (5) is $-0.66 \text{ m}^2 \text{ kg}^{-1} \text{ day}^{-1}$. FZ06 parameters τ and n are defined from the look-up table in Flanner and Zender (2006). T07 uses the mean surface temperature for each event as an input parameter.

	Low-wind		Moderate-wind	
	Mean $\text{m}^2 \text{ kg}^{-1}$	Individual $\text{m}^2 \text{ kg}^{-1}$	Mean $\text{m}^2 \text{ kg}^{-1}$	Individual $\text{m}^2 \text{ kg}^{-1}$
This Study <u>study</u>	2.48	3.50	2.60	4.28
FZ06	6.46	6.90	7.90	9.52
T07	5.63	6.10	5.27	6.49

Model performance is tested by comparing daily predicted decrease to the 10 daily observations, and by comparing model predictions from this study to those from Flanner and Zender (2006) hereafter referred to as FZ06, and the model defined by Taillandier et al. (2007), hereafter T07, as defined in Section 2.5.2. Residuals between our model and the observations are normally distributed, suggesting no systematic errors in model predictions. The root mean squared error (RMSE) between our model predictions and observed ~~mean~~ SSA is $2.48 \text{ m}^2 \text{ kg}^{-1}$ and $2.60 \text{ m}^2 \text{ kg}^{-1}$ for the low-wind and moderate-wind SSA decay events respectively.

Parameter values for τ and n in FZ06 are defined for each event based on mean density, surface temperature and temperature gradient using the extensive look-up table referenced in Flanner and Zender (2006). FZ06 consistently overestimates the SSA decay rate, with residuals increasing throughout the events (~~See~~ Fig. A5). ~~T07 is able to accurately predict the~~ generally underestimates the SSA decay rate of low- and moderate-wind events, with largest errors associated with E1, the event featuring the lowest temperatures and highest wind-speeds. which has relatively lowest temperatures and highest wind-speeds. However, for low-wind events T07 consistently underestimates the SSA decay rate. wind speeds. RMSE values presented in Table 2 ~~indicate show~~ that the model from this study predicts the observed SSA decay with the least error, ~~for both wind-speed categories.~~

3.3.1 Low- and moderate-wind event analysis

Isotopic changes during all the analysed events are shown, with each point indicating a specific sampling site. The daily change in d -excess (d_{xs}) and SSA is presented in a), change in d -excess and SSA over the first 2-days of each event is shown in b), and the respective changes in d -excess are plotted against the absolute d -excess values in c). Linear regressions are included for daily change (orange) and 2-day change (grey):

EOF-analysis in Section 3.1.1 indicates a relationship between SSA and isotopic composition, most pronounced in 2019. With the understanding that decreasing SSA for The following sections assess the snow isotopic change during the low- and moderate-wind events is the result of snow metamorphism of an unperturbed snow surface, we can now document concurrent isotopic changes in the snow. For both low- and moderate-wind events, rate-of-the change in d -excess is plotted against the rate-of change in SSA (Fig. 5), after the first and second day of each event. We here include analysis of the change in d -excess after the second day (referred to as a 2-day change), presented in Table 3 for each low- and moderate-wind events.

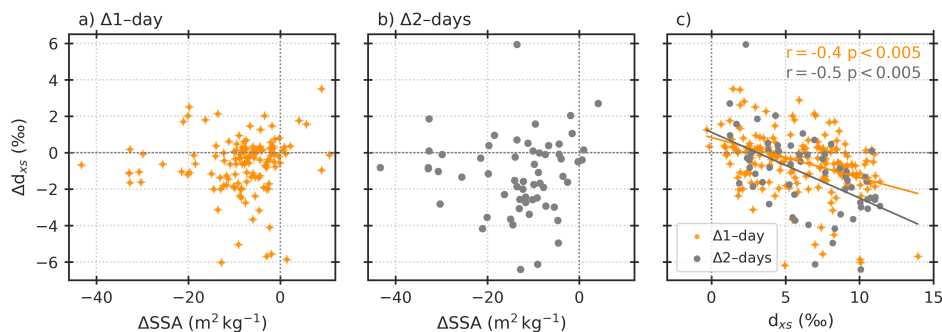


Figure 5. Isotopic changes during all the analysed events are shown, with each point indicating a specific sampling site. The daily change in d -excess (d_{xs}) and SSA is presented in a), change in d -excess and SSA over the first 2-days of each event is shown in b), and the respective changes in d -excess are plotted against the absolute d -excess values in c). Linear regressions are included for daily change (orange) and 2-day change (grey).

Both $\delta^{18}\text{O}$ and d -excess change from the initial value (day-0Day-0) in all events, with the percentage change in d -excess being the same order of magnitude as for SSA, and an order of magnitude higher than that of $\delta^{18}\text{O}$. Three out of six events are characterised by increasing $\delta^{18}\text{O}$ and decreasing d -excess after 2-days. E1, E13 and E19 deviate from this pattern. E13 and E19 both correspond to total increase in $\delta^{18}\text{O}$ and d -excess, whereas E11 is characterised by a slight decrease in $\delta^{18}\text{O}$ and decrease in d -excess (Table 3). The Δd -excess over a 1-day period indicates a slight negative skew around a mean of -0.3% . 4 of 6 events (61% of all sample sites) experience a decrease in d -excess by day-2Day-2. The mean is shifted to -1.2% over a 2-day period with decreases in d -excess documented in 45 out of the 60 samples (75%) during precipitation-free periods with minimal surface perturbation. Initial d -excess is observed to have a significant influence on the magnitude of d -excess decrease over the defined period (Fig. 5c), with high initial d -excess corresponding to the largest decreases in d -excess.

Table 3. Table of isotopic change for decay events. Mean values on day-0 and day-2 of each event, and percentage change over this 2-day period are presented for $\delta^{18}\text{O}$, d -excess and SSA. Low-wind events (bold text) and moderate-wind events are presented.

	$\delta^{18}\text{O}$			d -excess			SSA		
	(‰)			(‰)			($\text{m}^2 \text{kg}^{-1}$)		
	<u>Initial</u> <u>Day-0</u>	Day-2	2-Day % Δ	<u>Initial</u> <u>Day-0</u>	Day-2	2-Day % Δ	<u>Initial</u> <u>Day-0</u>	Day-2	2-Day % Δ
E1	-34.72	-34.60	0.4%	5.0	4.5	-10.0%	51.3	33.9	-34.0%
E10	-31.08	-30.56	1.7%	8.4	5.6	-33.3%	56.0	36.3	-35.1%
E11	-29.93	-29.95	-0.1%	5.5	4.0	-27.3%	45.3	28.6	-36.9%
E13	-29.13	-29.10	0.1%	3.3	3.8	15.2%	54.1	36.6	-32.3%
E18	-24.08	-23.80	1.2%	11.4	7.8	-31.6%	65.3	37.2	-43.0%
E19	-23.40	-23.31	0.4%	6.7	6.8	1.5%	47.7	29.4	-38.2%

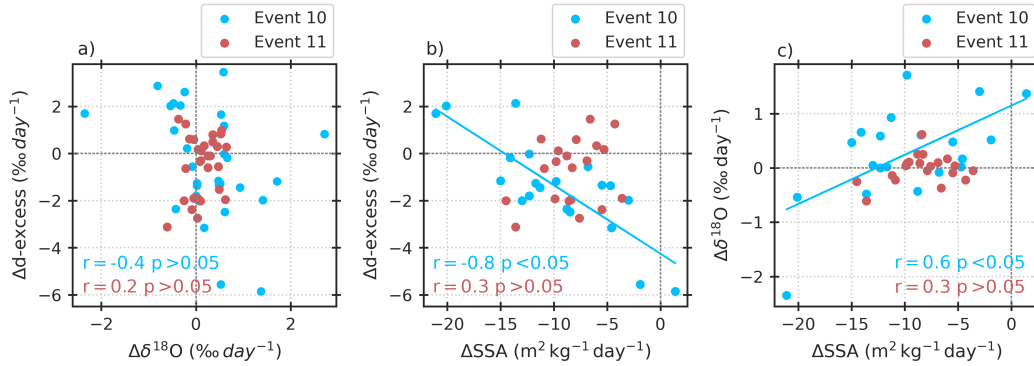


Figure 6. Isotopic change analysis for low-wind events, E10 and E11. Panel a) shows daily change in d -excess against change in $\delta^{18}\text{O}$ for E10 and E11, b) shows change in d -excess against change in SSA, and c) shows change in $\delta^{18}\text{O}$ and change in SSA. The r - and p -value for each regression are indicating in the corresponding colours. Only significant linear regressions are indicated with a line.

3.3.2 Low-wind event analysis

The following section focuses on latent heat fluxes flux (LE) and near-surface temperature gradients (TG) corresponding to isotopic change during low-wind events only. This is to ensure that the surface layer we are analysing is constant throughout the event to avoid inaccurate interpretation of isotopic change. As mentioned in Section 3.2, ground fog preceded the SSA peak in E11, concurrent with negligible accumulation recorded. In contrast, almost 1 cm of snow was accumulated during the day prior to E10, corresponding corresponds to observation of snowfall -

LE and temperature gradients for low-wind events. Latent heat flux (LE) (grey), air-surface temperature gradient (TG) (red) and surface-10cm subsurface TG (red) during June 2018. E10 (blue) and E11 (red) are highlighted. Dark grey shading in LE indicates sublimation and light grey shows deposition.

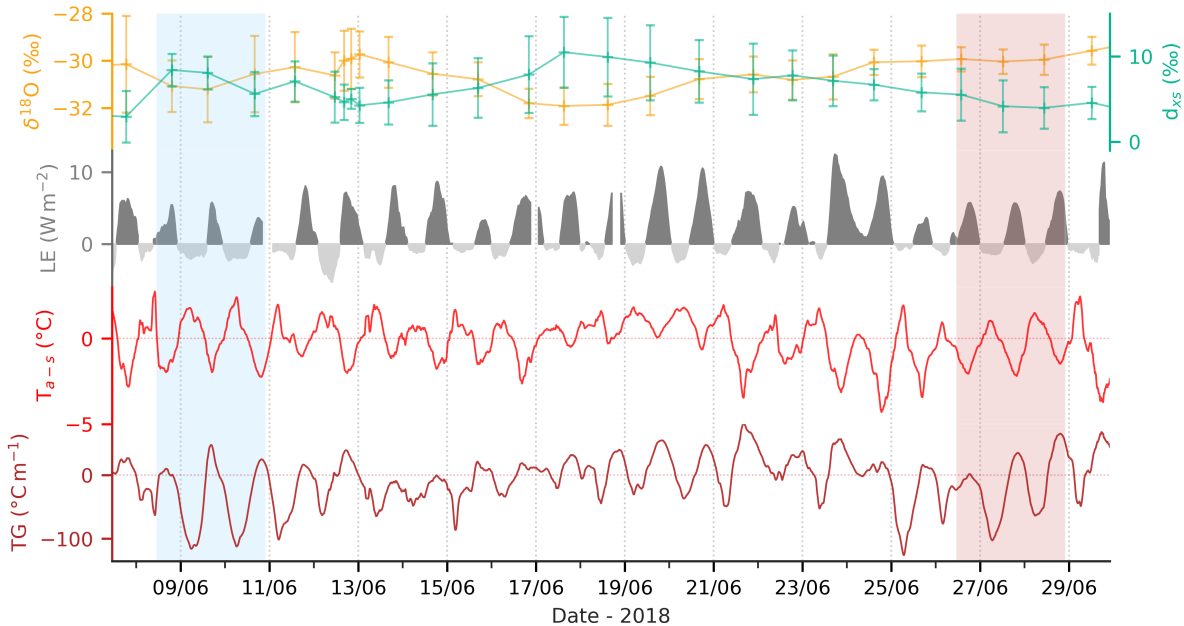


Figure 7. LE and temperature gradients for low-wind events. Latent heat flux (LE) (grey), air-surface temperature gradient (TG) (bright red) and surface-10cm subsurface TG (dark red) during June 2018. E10 (blue) and E11 (red) are highlighted. Dark grey shading in LE indicates sublimation and light grey shows deposition.

330 (Table A). Figure 6 shows the relationship between the daily change in isotopic composition for E10 and E11 (Δd -excess and $\Delta\delta^{18}\text{O}$) and SSA (ΔSSA). During E10, significant inverse correlations are observed between $\Delta\delta^{18}\text{O}$ and Δd -excess, and between ΔSSA and Δd -excess ($r=-0.5$, $r=-0.8$), while $\Delta\delta^{18}\text{O}$ and ΔSSA are positively correlated ($r=0.6$). In contrast, no significant relationship is observed between the Δ -parameters during E11, where there is negligible change in surface snow $\delta^{18}\text{O}$ ($<0.7\text{‰}$).

335 The direction of vapour fluxes are inferred using temperature gradients determined from air, surface and subsurface (10cm depth) temperature data, and LE, measured as an upwards flux. ~~Net-sublimation~~ Net sublimation is observed during both E10 and E11, with a total sum of 33.9 W m^{-2} and 55.8 W m^{-2} for the respective events. LE is inversely related to the ~~temperature gradient (TG)~~ TG between the air and the surface, with strong sublimation ($>10\text{ W m}^{-2}$), corresponding to a negative TG of 2.5°C between the air and surface on June 10th 2018 (E10). A concurrent upwards vapour flux is observed between the

340 subsurface and surface, most apparent on June 11th 2018 (Day-2 of E10).

Negative LE up to -4 W m^{-1} are documented each night corresponding to the transition from a negative to positive TG between the air and surface. Net-deposition was recorded between sampling on 9th June at 15:18-30 UTC and 10th June 10:40 ~~UTC-30 UTC 2018~~ UTC-30 UTC 2018 (first day of E10) corresponding to a decrease in $\delta^{18}\text{O}$ and d -excess. The subsequent day, characterised by net sublimation, had a large increase in $\delta^{18}\text{O}$ and a larger decrease in d -excess. Contrary to E10, E11 is characterised by a large

345 decrease in d -excess and a small decrease in $\delta^{18}\text{O}$, both concurrent with net-sublimation and strong negative surface-subsurface TG. The air-surface TG during E11 has a lower mean and reduced diurnal amplitude than E10 facilitating sublimation for a longer period.

4 Discussion

350 ~~Continuous daily SSA measurements at EastGRIP during the summer season of 2017, 2018 and 2019 have allowed for quantification of variations in snow physical properties due to deposition and snow metamorphism. Understanding the relationship between rapid decreases in SSA and corresponding change in isotopic composition require clearly defined events and environmental context. Using a set of criteria, six SSA decay events during precipitation-free periods are defined and used to construct an empirical decay model with the decay rate tuned for low and moderate wind speeds. We firstly discuss the behaviour of SSA decay at EastGRIP and compare to existing models. The isotopic change associated with low-wind SSA decay events is then considered, in the context of sublimation, interstitial diffusion and wind effects (Ebner et al., 2017; Hughes et al., 2021). Results from EOF analysis are used in combination with the isotopic change during SSA decay.~~
The new SSA and snow isotopic composition datasets presented in this study have revealed concurrent decreases in d -excess (and $\delta^{18}\text{O}$ to a lesser degree) and SSA during precipitation free periods with minimal snow drift. A simple empirical model describing the SSA decay rate under different wind regimes reveals more rapid SSA decay when wind speeds are higher. The following sections look firstly at why existing models tend to be inaccurate when predicting in-situ SSA decay at the surface, followed by a second section discussing the possible mechanisms driving the relationship between SSA and d -excess during precipitation-free periods.

4.1 SSA decay at EastGRIP

Events of rapid SSA decay at EastGRIP are best described by an exponential decay function, in agreement with observations from Cabanes et al. (2003). No cold events ($< -20^\circ\text{C}$) are captured within the event criteria, potentially indicating ~~1) a need for warmer temperatures that warmer temperatures are needed~~
365 to induce such change in SSA over the time-period, or 2) that the local synopticity favours precipitation (bringing snow with high SSA) coincident with low temperature and high winds during the summer. Within this framework, the events Events captured by the threshold with mean temperatures below -20°C are likely capturing wind-erosion, exposing that exposes sub-surface snow with lower SSA.

low SSA. The narrow temperature range of SSA decay events does not facilitate a conclusive definition of a temperature-dependent decay rate (Cabanes et al., 2003; Legagneux et al., 2003; Flanner and Zender, 2006; Taillandier et al., 2007). We instead assess the influence of ~~wind-speed~~ wind speed on the SSA decay rate and observe a more rapid SSA decay with increased ~~wind-speed~~ wind speed, which can be explained by increased ventilation of saturated pore air acting as a catalyst for snow metamorphism (Cabanes et al., 2003; Flanner and Zender, 2006; Neumann and Waddington, 2004). While wind erosion cannot be definitively ruled out even after applying the criteria described in Sec 2.5.1, high wind-speeds are documented to increase SSA via the re-deposition of fragmentation and sublimated snow crystals after suspension (Domine et al., 2009), meaning that SSA changes of this nature would not be captured in our analysis.

375

Unsurprisingly, given the parameters are fit to the data, the model defined in the study predicts observed SSA decay for the low- and moderate-wind events with the lowest RMSE. ~~The decay model from Taillandier et al. (2007) (T07) performed well for the moderate-wind events, but underestimated the rate of decay for the low-wind events. T07 was defined based on the SSA decay of fresh snow with densities below 180 kg m^{-3} (Taillandier et al., 2007), compared to a mean density of 266 kg m^{-3} for~~ all (Eq. (4)) underestimated the observed SSA decay rate in all the low- and moderate-wind events ~~in this study, except for E18. The largest error is associated with E1, which also had the highest mean wind-speed (6.9 m s^{-1}) of all analysed events.~~ The tendency for T07 to underestimate the ~~SSA decay seems counter-intuitive given the possibility of aged snow in our study, which would plausibly be expected to experience SSA decay at a slower rate than fresh snow (Domine et al., 2007)~~ observed SSA decay can be explained by the additional influence of wind speed which accelerates SSA decay (Cabanes et al., 2002) but is not considered in either T07 or FZ06. In contrast, ~~the model from Flanner and Zender (2006) (FZ06)~~ consistently overestimates the observed SSA decay rate, most pronounced in E10 and E18. The original parameter values ~~τ and n~~ of FZ06 were tuned to data from alpine regions, potentially explaining the poor fit.

The simple empirical model presented here is limited to conditions at EastGRIP within a narrow temperature range ~~and therefore is likely to~~ (-18°C to -7°C) and therefore might be unsuitable for sites with different conditions. However, large errors when using the models from the literature indicate that the low-latitude tuning ~~is and exclusion of wind effects are~~ not optimal for predicting surface snow SSA decay at EastGRIP. Our study is limited by a relatively small number of unperturbed SSA decay events, hampering statistical evaluation over longer timescales.

4.2 Isotopic change during SSA decay events

4.2.1 Low-wind events

~~Three key mechanisms are expected to drive the rapid SSA decays, 1) large grains growing at the expense of small grains (Legagneux et al., 2004; Flanner and Zender, 2006), 2) diffusion of interstitial water vapour (Colbeck, 1983; Ebner et al., 2017; Touzeau et al., 2017), 3) sublimation reducing the dendricity of snow grains which is intensified by wind ventilating the saturated pore air, known as 'wind-pumping' (Neumann and Waddington, 2004). The dominant mechanisms can theoretically be identified by a combination of the change in isotopic composition – indicating the fractionation effect – and the LE and temperature gradient data to determine the direction of flux.~~

~~In theory, mechanism 1) causes minimal change in the bulk isotopic composition of a snow layer under isothermal conditions (Ebner et al., 2017). During no~~ In the absence of snowfall or other surface perturbations, multi-day periods of snow metamorphism correspond to change in snow isotopic composition. We observe decreasing d -excess with SSA through time suggesting that the mechanisms driving snow metamorphism also influence the isotopic composition. However, the mechanisms linking these changes are unclear and are not always consistent in space and time. The following section explores the possible mechanisms driving isotopic change during SSA decay events ~~did the~~ , by assessing the LE and TG conditions during events with minimal surface perturbations.

Two key mechanisms are expected to drive the rapid SSA decay and concurrent change in snow isotopic composition remain consistent. In the case of 2), interstitial diffusion, light isotopes are preferentially diffused, while the heavy isotopes will be preferentially deposited onto the cold snow grains (Colbeck, 1983; Ebner et al., 2017; Touzeau et al., 2016). Thus, diffusion of water vapour in the pore space causes: 1) snow grain growth via diffusion of interstitial water vapour due to near-surface temperature gradients (Colbeck, 1983; Ebner et al., 2017; Touzeau et al., 2018), observed to cause a decrease in d -excess and slight increases in $\delta^{18}\text{O}$ due to kinetic fractionation (Flanner and Zender, 2006). Similarly, mechanism 3), sublimation is widely documented to cause in the defined snow layer (Colbeck, 1983; Ebner et al., 2017; Touzeau et al., 2016); 2) grain rounding via sublimation from convex regions of snow grains (Neumann and Waddington, 2004), causing an increase in $\delta^{18}\text{O}$ of the remaining snow mass due to isotopic fractionation, and a significant decrease in d -excess expected to be due to kinetic fractionation (Ritter et al., 2016; Madsen et al., 2019; Hughes et al., 2021; Wahl et al., 2021; Casado et al., 2021). Conclusively identifying these mechanisms requires water vapour isotopes to model the fractionation effects. In the absence of this data, we infer potential explanations for isotopic change during the low-wind events of the remaining snow (Ritter et al., 2016; Madsen et al., 2019). Sublimation is enhanced by ventilation of the saturated pore air, known as 'wind-pumping' (Neumann and Waddington, 2004). We note that isothermal metamorphism driven by Ostwald ripening also causes a decrease in SSA (Ebner et al., 2015), but is associated with minimal change in bulk isotopic composition which was not observed in our analysis. However, conditions that favour Ostwald ripening were not observed in our analysis.

An overall increase in $\delta^{18}\text{O}$ and decrease in d -excess during E10 is likely can be attributed to a combination of 2) and 3) and 2) based on observation of net-sublimation and high amplitude diurnal temperature gradient variability, indicating vapour transport within the pore space. The TG variability over the course of the event. Net-deposition was measured during the period between 9th June at 15:18-30 UTC and 10th June 10:40 UTC had net deposition 30 UTC 2018, corresponding to an overall decrease in $\delta^{18}\text{O}$ during the first day, agreeing with previous studies (Stenni et al., 2016; Casado et al., 2021; Feher et al., 2021) and minimal decrease in d -excess. An increase in snow $\delta^{18}\text{O}$ would be, which is not necessarily expected during deposition (Stenni et al., 2016; Feher et al., 2021; Casado et al., 2021), however, However, disequilibrium between water vapour isotopic composition and snow isotopic composition may explain the decrease in deviation from expectation (Wahl et al., 2022). Although ground fog was documented on the day preceding E11, no significant deposition is observed in the LE data in the day preceding E11, indicating the absence of lasting surface hoar formation. The 30% decrease in d -excess concurrent with change in $\delta^{18}\text{O}$ (Wahl et al., 2021).

Both suggests strong kinetic fractionation during E11. Continuous variations in $\delta^{18}\text{O}$ and d -excess vary continuously throughout June 2018 (Fig. 7), with show no clear relationship to total LE or temperature gradients. Strong diurnal surface and subsurface temperature gradients. Field experiments looking at sub-diurnal variability show a stronger dependence of snow isotopic composition on LE (Hughes et al., 2021), potentially explaining the lack of a strong diurnal relationship.

Conclusively identifying these mechanisms requires water vapour isotopes to model the fractionation effects. In the absence of this data, we infer potential explanations for isotopic change during the low-wind events can explain rapid SSA decay (Pinzer et al., 2012). We conclude. Our analysis suggests that SSA of the surface snow is strongly influenced by surface-subsurface TG and wind speed, while the changes in isotopic composition are likely to be influenced by other factors, such as

the magnitude of vapour-snow isotopic disequilibrium during sublimation (Steen-Larsen et al., 2014; Hughes et al., 2021; Wahl et al., 2021) (Wahl et al., 2022). Decoupling the influence of sublimation and interstitial diffusion within the snow requires additional measurements of isotopic composition of atmospheric water vapour to model associated fractionation effects (Wahl et al., 2021) (Wahl et al., 2022). Our results ~~suggest that while processes driving SSA decay (snow metamorphism) do modify the isotopic composition of the surface snow, interstitial diffusion has a disproportionate effect on SSA decay. show that while snow isotopic composition does indeed change during SSA decay events, predicting the magnitude, and even the sign, of the isotopic change associated with snow metamorphism is not possible when information about the interstitial vapour isotopic composition is missing.~~

4.2.2 Inter-annual variability

The recurring difference in snow characteristics and temperature conditions during 2019 compared to 2017 and 2018 could be explained by the shifting phase of the North Atlantic Oscillation (NAO) which is in positive phase during ~~2018 and~~ 2017 ~~and 2018~~ (below-average temperatures), and negative phase during 2019. A similar pattern is observed in the snow isotopes when considering the period between 27th May to 1st August where the mean $\delta^{18}\text{O}$ values during 2019 was -27.3‰, which is 4.3‰ higher than 2018 (-31.6‰) and 3.6‰ higher than 2017 (-30.9‰). While the difference in mean $\delta^{18}\text{O}$ can plausibly be explained by a 3.2°C mean air temperature difference, the isotope-SSA covariance is not so straightforward.

The positive mode of PC1_{SSA} (Fig. 3) can be interpreted as increases in SSA from depositional events, such as precipitation, ~~surface hoar formation,~~ and wind-fragmented snowdrift (Domine et al., 2009), while the negative mode is associated with snow metamorphism or wind-erosion (Cabanes et al., 2002, 2003; Legagneux et al., 2003, 2004; Taillandier et al., 2007; Flanner and Zender, 2006). Based on this interpretation, a covariance between PC1_{SSA} and $\text{PC1}_{d_{\text{xs}}}$ or $\text{PC1}_{\delta^{18}\text{O}}$ indicates that the mechanisms controlling SSA variability also influence the isotopic composition.

We observe a decoupling of the temporal variance in d -excess from that of $\delta^{18}\text{O}$ (Fig. 3) in ~~2019 which is can be attributed to the d -excess signal being more sensitive to kinetic effects during sublimation and grain growth between pore air water vapour and the snow grains (Ebner et al., 2017; Casado et al., 2021).~~ ~~2019. This difference may be related to the recorded transition from winter to summer in 2017 and 2018, but not in 2019.~~

Ongoing work to ~~decouple~~ ~~disentangle~~ the processes driving change in isotopic composition ~~—~~ sublimation from surface or interstitial vapour diffusion between layers in the pore space ~~—~~ is vital for precise climate reconstruction in ice cores ~~(Touzeau et al., 2018; Hughes et al., 2021; Wahl et al., 2021; Casado et al., 2021)~~ ~~(Touzeau et al., 2018; Casado et al., 2021; Hughes et al., 2021)~~. Future studies would benefit from obtaining direct measurements of the isotopic composition of precipitation and surface hoar, to determine the fraction of such deposits in the SSA samples. Furthermore, a quantitative representation of vapour fluxes in the surface snow rather than the temperature-gradient based approximation used in this study would provide a basis from which to quantify the relative influence of fractionation during sublimation and interstitial diffusion.

475 4.3 Implications and perspectives

Documented changes in snow isotopic composition during surface snow metamorphism have potential implications for interpretation of stable water isotope records from ice cores, given that the current interpretation assumes the precipitation signal is preserved (Dansgaard, 1964). Variations of d -excess in ice core records are attributed to changes in source region, source region conditions and kinetic fractionation occurring during snow crystal formation in supersaturated clouds (Stenni et al., 2010; Jouzel and Merlivat, 1984). However, we show that there are substantial changes in d -excess during precipitation-free periods supporting recent work showing that post-depositional factors add complexity to the traditional interpretation of ice core water isotope records. Greenland ice core ~~d -excess~~ records show abrupt decreases in d -excess corresponding to warming transitions, which is attributed to change in moisture source regions (Steffensen et al., 2008). Results presented in our study document decreases in snow d -excess during surface snow metamorphism associated with temperature gradients and sublimation, potentially contributing to the ~~total decrease observed in the low~~ d -excess ~~records~~ values during warm periods.

The findings of this exploratory study reiterate the importance of quantifying the isotopic fractionation effects associated with processes driving snow metamorphism during precipitation-free periods. Moreover, the inter-annual variability observed at EastGRIP between 2018 and 2019 suggests that precipitation intermittency ~~and~~ temperature (gradients) and wind regimes play a role in isotopic change, which is not readily identified in the surface snow SSA data.

490 5 Conclusions

This study addresses the rapid SSA decay driven by surface snow metamorphism. In particular, the study aims to explore how rapid SSA decay relates to changes in isotopic composition of the surface snow in the dry accumulation zone of the Greenland Ice Sheet. Ten individual snow samples were collected daily over a 90m transect at EastGRIP in the period between May and August of 2017, 2018 and 2019. SSA and isotopic composition were measured for each sample. Periods of snow metamorphism after deposition events were defined using SSA measurements to extract periods of rapid decreases in SSA.

An exponential SSA decay model ($SSA(t) = (SSA_0 - 22) \cdot e^{-\alpha \cdot t} + 22$) was constructed to empirically describe surface snow metamorphism in summer conditions for polar snow, with surface temperatures above -20°C and with minimal surface perturbation. Two event categories were defined based on wind speed, with an upper threshold of 7 m s^{-1} to minimise chance of snowdrift. ~~Wind speed is observed to increase surface~~ Higher wind speeds increase the SSA decay rate ~~showing that snow metamorphism is enhanced~~ due to enhanced snow metamorphism with increased ventilation of the pore space.

Changes in isotopic composition corresponding to post-depositional processes driving SSA decay are observed in all low- and moderate-wind events. A decrease in d -excess from ~~day-0 to day-2~~ Day-0 to Day-2 is observed in 4 out of the 6 events with no precipitation. Further analysis of low-wind SSA decay events indicates that the combined effects of vapour diffusion and diurnal LE variability causes isotopic fractionation of the surface snow in the absence of precipitation. The differing fractionation effects are expected to be the result of vapour-snow isotopic disequilibrium. A strong correlation observed between SSA and d -excess found in 2019 was not present for 2018. We suggest that this is due to strong sublimation corresponding to high temperatures during 2019.

In summary, our results support documentation of fractionation during sublimation and deposition between the snow surface and atmosphere, indicating that the precipitation isotopic composition signal is not always preserved during the processes driving surface snow metamorphism. Observations of post-depositional decrease in d -excess during rapid SSA decay hints to local processes influencing the d -excess signal and therefore an interpretation as source region signal alone is insufficient.

Data availability. The SSA, density and accumulation data for all sampling years is available on the PANGAEA database with the DOI: <https://doi.org/10.1594/PANGAEA.946763>. Snow isotope data is available at DOI: <https://doi.pangaea.de/10.1594/PANGAEA.946729>. Data from the Programme for Monitoring of the Greenland Ice Sheet (PROMICE) 400 were provided by the Geological Survey of Denmark and Greenland (GEUS) at <http://www.promice.dk>. Eddy Covariance Tower measurement are available on the PANGAEA database with the DOI: <https://doi.org/10.1594/PANGAEA.928827>.

Author contributions. HCSL, AKF and RHS designed the study together. AKF, SW, MH, MB, AZ, SK and HCSL carried out the data collection and measurements. RHS, AKF and HCSL worked directly with the data. RHS, AKF and HCSL prepared the manuscript with contributions from all co-authors. AKF contributed largely to the manuscript text and structure. HCSL designed and administrated the SNOWISO project.

Competing interests. The authors declare that they have no conflict of interest.

Acknowledgements. [This project has received funding from the European Research Council \(ERC\) under the European Union's Horizon 2020 research and innovation program: Starting Grant-SNOWISO \(grant agreement 759526\). EastGRIP is directed and organized by the Centre for Ice and Climate at the Niels Bohr Institute, University of Copenhagen. It is supported by funding agencies and institutions in Denmark \(A. P. Møller Foundation, University of Copenhagen\), USA \(US National Science Foundation, Office of Polar Programs\), Germany \(Alfred Wegener Institute, Helmholtz Centre for Polar and Marine Research\), Japan \(National Institute of Polar Research and Arctic Challenge for Sustainability\), Norway \(University of Bergen and Bergen Research Foundation\), Switzerland \(Swiss National Science Foundation\), France \(French Polar Institute Paul-Emile Victor, Institute for Geosciences and Environmental research\), and China \(Chinese Academy of Sciences and Beijing Normal University\).](#)

Table A1. Description of conditions for SSA decays captured by decrease threshold. Duration and conditions for all 21 events defined by the threshold. Observations were made of snowfall, snowdrift and ground fog. Presented here are the dates, event number, mean surface temperature (ST), maximum wind-speed (WS), accumulation (A), surface conditions including: those recorded during the day (24h) preceding each event (Initial conditions Day -1), the dominant conditions throughout the event (Sky conditions) and cloud cover, observations of surface perturbations (Comments)-during the events based on field observations (Day 0–n), and finally the wind speed category for SSA decay event analysis (Event category). In the "Surface conditions" columns, S, SD and F stand for snowfall, snowdrift and ground fog respectively. C in "Cloud cover" indicates clear-sky and O indicates overcast.

	<u>Date</u>	<u>Event No.</u>	<u>Surface temp. (ST)</u> °C	<u>WS</u> Initial conditions ms^{-1}	<u>A</u> Sky conditions cm	<u>Comments</u>	<u>Day</u>
<u>2017-height 2017</u>	27/05 - 31/05	E1	-17.3	No clear driver 6.9	Clear-sky -0.5	NA	
	19/06 - 24/06-04	E2	-13.6	Snowfall 2.3	Clear-sky -0.1	Fog S	
	30/06 - 02/07	E3	-14.0	Snowfall 13.6	Overcast -0.7	Snowdrift S	
	10/07 - 15/07	E4	-13.2	Snowfall 6.9	Clear-sky -0.3	Fog and snowfall	
	18/07 - 19/07	E5	-11.7	Snowfall 6.4	Overcast 0.0	Snowdrift S	
	21/07 - 23/07	E6	-11.2	Snowfall 14.1	Overcast 0.1	Snowdrift S	
<u>2018-height 2018</u>	07/05 - 10/05	E7	-33.7	Drift and fog 9.3	Clear/ice-fog 0.0	Fog SD, F	
	14/05 - 15/05	E8	-19.8	Snowfall 5.4	Clear-sky -0.3	Fog and snowfall	
	16/05 - 18/05	E9	-21.5	Snowfall and fog 6.0	Overcast 0.0	Fog and snowfall	
	09/06 - 11/06	E10	-14.9	Snowfall 5.1	Overcast -0.4	S	
	27/06 - 29/06	E11	-15.3	Ground fog 5.1	Clear-sky -0.3	F	
	30/06 - 03/07	E12	-11.2	Wind drifted snow 6.9	Clear-sky -0.4	Snowfall SD	
	04/07 - 06/07	E13	-10.2	Snowfall 6.5	Clear-sky -0.3	S	
	16/07 - 21/07	E14	-14.3	No clear driver 6.9	Clear-sky 0.0	Fog and snowfall	
	23/07 - 27/07	E15	-14.1	Ground fog 9.2	Clear-sky -0.1	F	
<u>2019-height 2019</u>	17/06 - 20/06	E16	-11.4	Snowfall 6.8	Clear-sky -0.7	Snowfall S	
	27/06 - 30/06	E17	-9.5	No clear driver 5.6	Overcast 0.8	Fog and snowfall	
	02/07 - 05/07	E18	-7.0	Snowfall 6.3	Overcast -0.6	S	
	06/07 - 08/07	E19	-10.0	No clear driver 6.3	Clear-sky -0.1	NA	
	18/07 - 20/07	E20	-7.6	Ground fog 8.2	Overcast 0.0	F	
	28/07 - 31/07	E21	-6.5	No clear driver 5.4	Clear-sky 0.0	NA	

This project has received funding from the European Research Council (ERC) under the European Union's Horizon 2020 research and innovation program: Starting Grant-SNOWISO (grant agreement 759526). EastGRIP is directed and organized by the Centre for Ice and Climate at the Niels Bohr Institute, University of Copenhagen. It is supported by funding agencies and institutions in Denmark (A. P. Møller Foundation, University of Copenhagen), USA (US National Science Foundation, Office

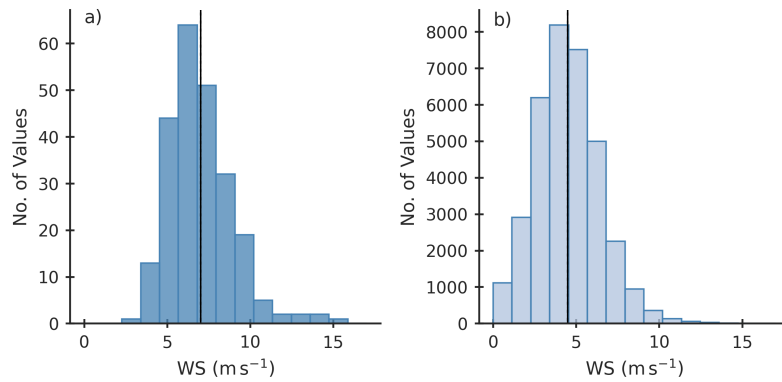


Figure A1. *Wind-speed Distribution*

Histograms showing a) the daily maximum values and b) the 10-minute mean values for all sampling days of 2017, 2018 and 2019. The black line indicates the mean.

535 of Polar Programs), Germany (Alfred Wegener Institute, Helmholtz Centre for Polar and Marine Research), Japan (National Institute of Polar Research and Arctic Challenge for Sustainability), Norway (University of Bergen and Bergen Research Foundation), Switzerland (Swiss National Science Foundation), France (French Polar Institute Paul-Emile Victor, Institute for Geosciences and Environmental research), and China (Chinese Academy of Sciences and Beijing Normal University).-

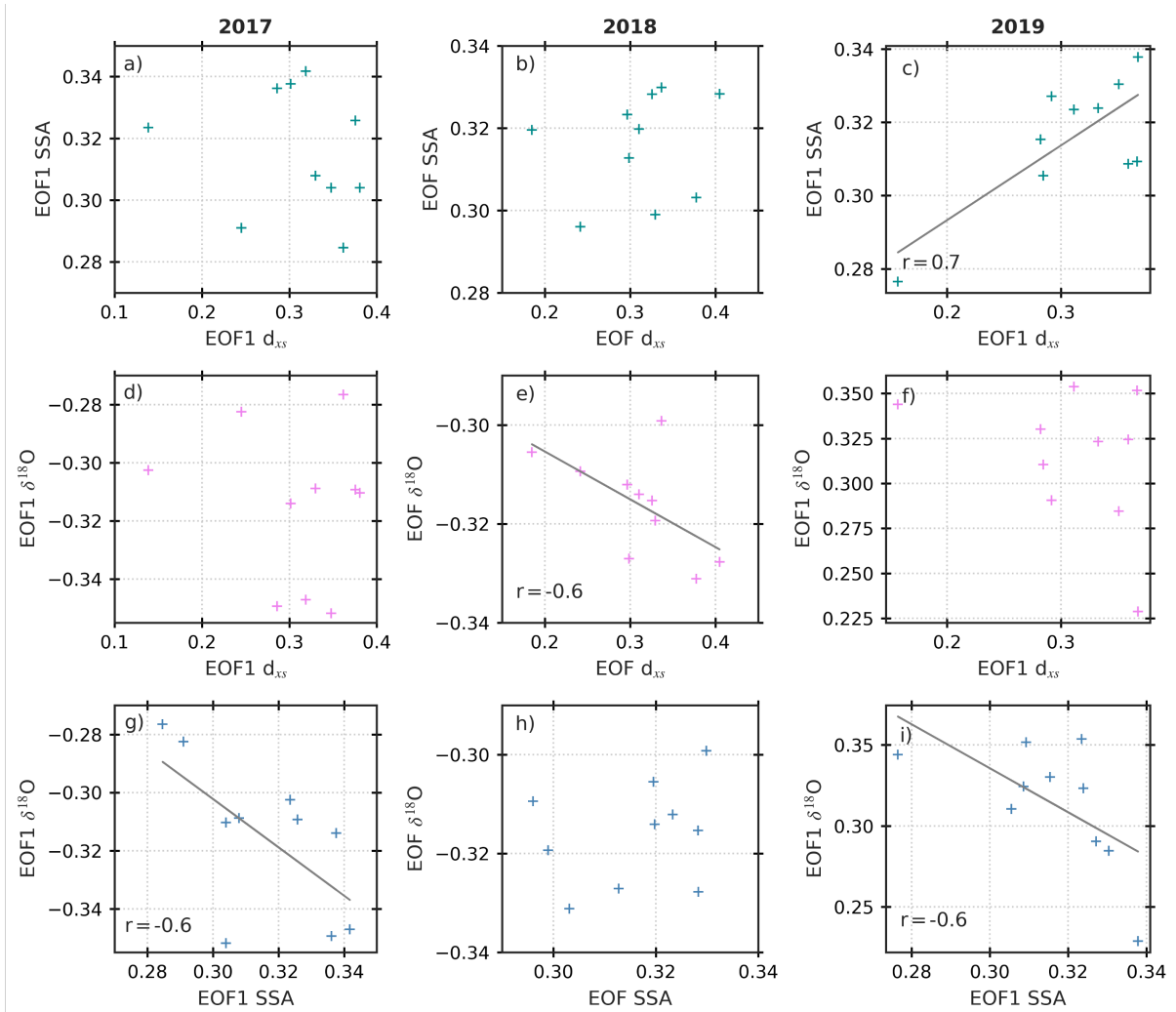


Figure A2. Results from the EOF analysis showing the relationship between SSA, d -excess and $\delta^{18}\text{O}$ in the spatial dimension. Linear regressions are included in plots with significant correlations ($p < 0.05$) between variables.

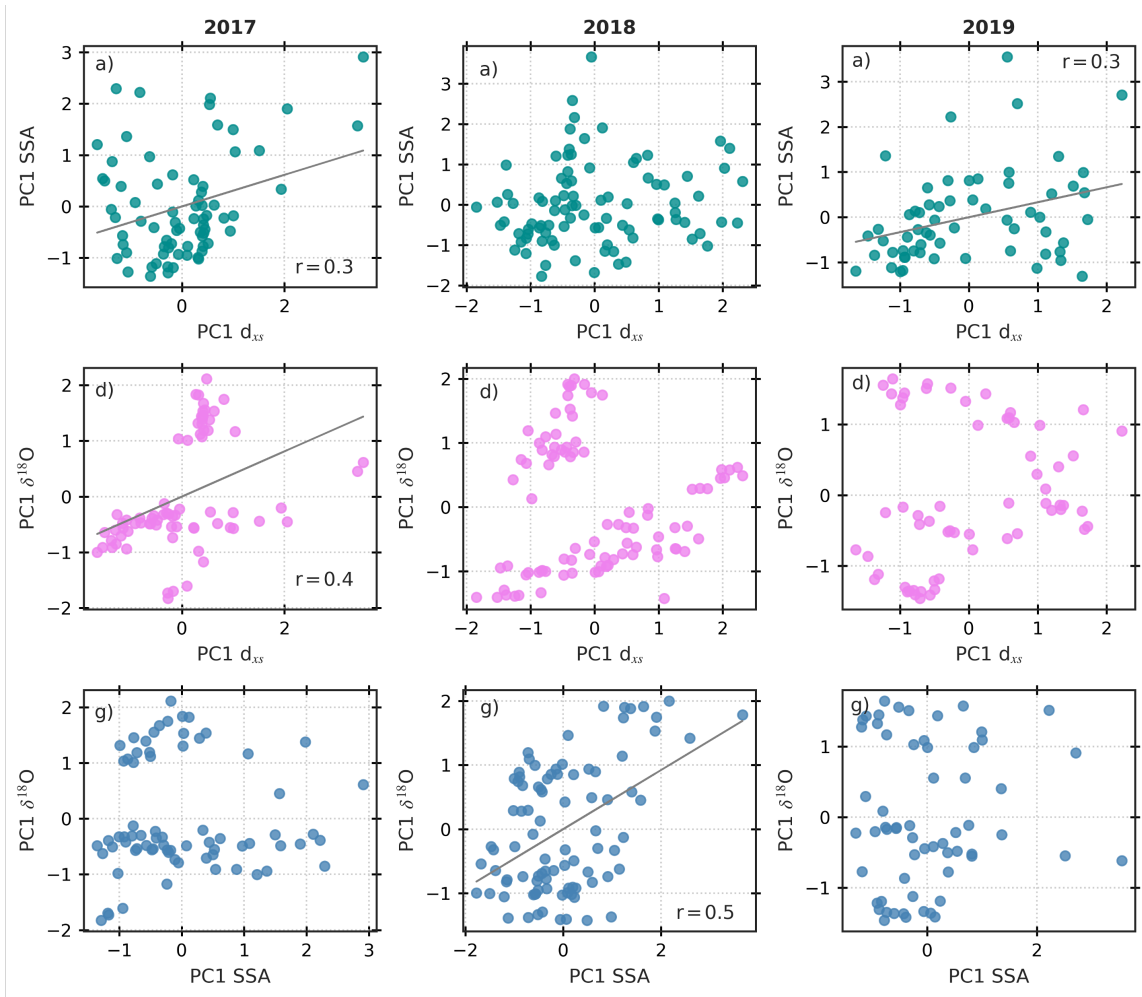


Figure A3. Results from the EOF analysis showing the relationship between SSA, d -excess and $\delta^{18}\text{O}$ in the temporal dimension. Linear regressions are included in plots with significant correlations ($p < 0.05$) between variables.

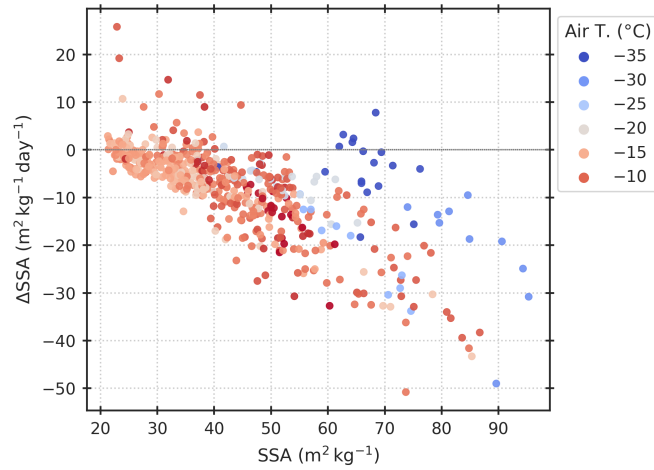


Figure A4. The derivative of change in SSA is shown as after a function of day (Day-1 to Day-0) plotted against the absolute value from Day-0 for all 21 SSA ~~fall~~ decay events (E1 - E21 in Table A) captured by the decrease threshold ~~are included here~~ described in Section 2.5.1. The markers are coloured by mean air temperature between samplings (i.e. the mean air temperature from the time between sampling on Day-0 and Day-1).

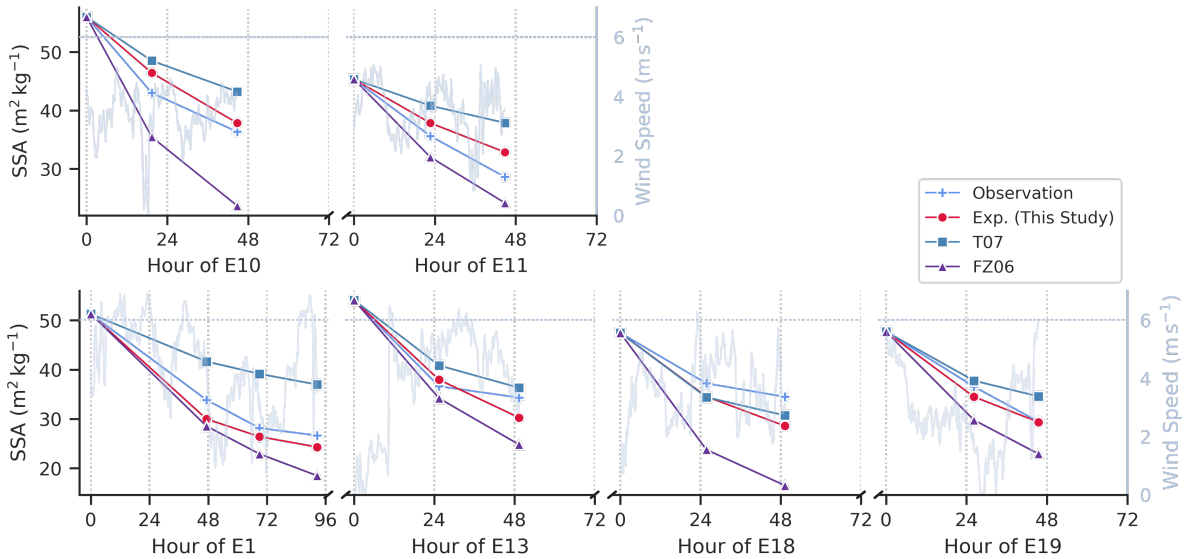


Figure A5. SSA decay model evaluation and a comparison to observations. Included models are the decay model from this study and the existing decay models from Flanner and Zender (2006), FZ06, and Taillandier et al. (2007), T07. The 10-minute averaged wind-speed is shown on the secondary y-axis, with the $6 m^2 kg^{-1}$ thresholds indicated. Low-wind events E10 and E11 are shown in the upper panel, and moderate-wind events are shown in the lower panel (E1, E13, E18 and E19).

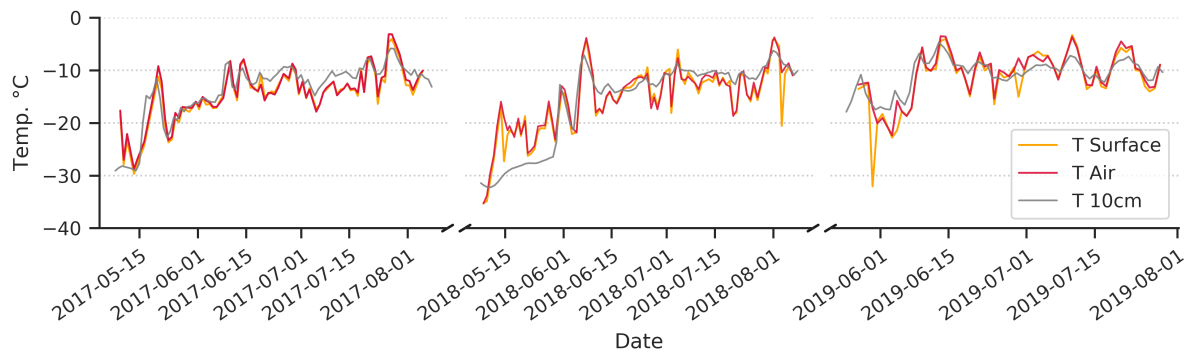


Figure A6. Daily mean 2m air temperature (red), surface temperature (yellow) and 10cm subsurface temperature time-series (grey). The data are presented for the 2017, 2018 and 2019.2019 measurement campaigns.

References

- 540 Birnbaum, G., Freitag, J., Brauner, R., Koñig, G., Koñig-Langlo, K., Schulz, E., Kipfstuhl, S., Oerter, H., Reijmer, C. H., Schlosser, E., Faria, S. H., Ries, H., Loose, B., Herber, A., Duda, M. G., Powers, J. G., Manning, K. W., and Van Den Broeke, M. R.: Strong-wind events and their influence on the formation of snow dunes: observations from Kohnen station, Dronning Maud Land, Antarctica, *Journal of Glaciology*, 56, 891–902, <https://www.cambridge.org/core>, 2010.
- Cabanes, A., Legagneux, L., and Dominé, F.: Evolution of the specific surface area and of crystal morphology of Arctic fresh snow during the ALERT 2000 campaign, *Atmospheric Environment*, 36, 2767–2777, [https://doi.org/10.1016/S1352-2310\(02\)00111-5](https://doi.org/10.1016/S1352-2310(02)00111-5), 2002.
- 545 Cabanes, A., Legagneux, L., and Dominé, F.: Rate of evolution of the specific surface area of surface snow layers, *Environmental Science and Technology*, 37, 661–666, <https://doi.org/10.1021/es025880r>, 2003.
- Carmagnola, C. M., Domine, F., Dumont, M., Wright, P., Strellis, B., Bergin, M., Dibb, J., Picard, G., Libois, Q., Arnaud, L., and Morin, S.: Snow spectral albedo at Summit, Greenland: Measurements and numerical simulations based on physical and chemical properties of the snowpack, *Cryosphere*, 7, 1139–1160, <https://doi.org/10.5194/tc-7-1139-2013>, 2013.
- 550 Casado, M., Landais, A., Picard, G., Münch, T., Laepple, T., Stenni, B., Dreossi, G., Ekaykin, A., Arnaud, L., Genthon, C., Touzeau, A., Masson-Delmotte, V., and Jouzel, J.: Archival processes of the water stable isotope signal in East Antarctic ice cores, *Cryosphere*, 12, 1745–1766, <https://doi.org/10.5194/tc-12-1745-2018>, 2018.
- Casado, M., Münch, T., and Laepple, T.: Climatic information archived in ice cores: Impact of intermittency and diffusion on the recorded isotopic signal in Antarctica, *Climate of the Past*, 16, 1581–1598, <https://doi.org/10.5194/cp-16-1581-2020>, 2020.
- 555 Casado, M., Landais, A., Picard, G., Arnaud, L., Dreossi, G., Stenni, B., and Prié, F.: Water Isotopic Signature of Surface Snow Metamorphism in Antarctica, *Geophysical Research Letters*, 48, <https://doi.org/10.1029/2021GL093382>, 2021.
- Christiansen, H. H.: Snow-cover depth, distribution and duration data from northeast Greenland obtained by continuous automatic digital photography, *Annals of Glaciology*, 32, 102–108, <https://www.cambridge.org/core>, 2001.
- 560 Ciais, P. and Jouzel, J.: Deuterium and oxygen 18 in precipitation: Isotopic model, including mixed cloud processes, Tech. Rep. D8, 1994.
- Colbeck, S. C.: Thermodynamics of snow metamorphism due to variations in curvature, *Journal of Glaciology*, 26, 291–301, <https://www.cambridge.org/core>, 1980.
- Colbeck, S. C.: Theory of metamorphism of dry snow., *Journal of Geophysical Research*, 88, 5475–5482, <https://doi.org/10.1029/JC088iC09p05475>, 1983.
- 565 Dansgaard, W.: Stable isotopes in precipitation, *Tellus*, 16, 436–468, <https://doi.org/10.3402/tellusa.v16i4.8993>, 1964.
- Domine, F., Taillandier, A. S., and Simpson, W. R.: A parameterization of the specific surface area of seasonal snow for field use and for models of snowpack evolution, *Journal of Geophysical Research: Earth Surface*, 112, 1–13, <https://doi.org/10.1029/2006JF000512>, 2007.
- Domine, F., Taillandier, A. S., Cabanes, A., Douglas, T. A., and Sturm, M.: Three examples where the specific surface area of snow increased over time, *Cryosphere*, 3, 31–39, <https://doi.org/10.5194/tc-3-31-2009>, 2009.
- 570 Ebner, P. P., Schneebeli, M., and Steinfeld, A.: Tomography-based monitoring of isothermal snow metamorphism under advective conditions, *Cryosphere*, 9, 1363–1371, <https://doi.org/10.5194/tc-9-1363-2015>, 2015.
- Ebner, P. P., Steen-Larsen, H. C., Stenni, B., Schneebeli, M., and Steinfeld, A.: Experimental observation of transient $\delta^{18}\text{O}$ interaction between snow and advective airflow under various temperature gradient conditions, *The Cryosphere Discussions*, pp. 1–36, <https://doi.org/10.5194/tc-2017-16>, 2017.

- 575 Faber, A. K., Vinther, B. M., Sjolte, J., and Pedersen, R. A.: How does sea ice influence $\delta^{18}\text{O}$ of Arctic precipitation?, *Atmospheric Chemistry and Physics*, 17, 5865–5876, <https://doi.org/10.5194/acp-17-5865-2017>, 2017.
- Fausto, R. S., Van As, D., Mankoff, K. D., Vandecrux, B., Citterio, M., Ahlstrøm, A. P., Andersen, S. B., Colgan, W., Karlsson, N. B., Kjeldsen, K. K., Korsgaard, N. J., Larsen, S. H., Nielsen, S., Pedersen, A., Shields, C. L., Solgaard, A. M., and Box, J. E.: PROMICE automatic weather station data, *Earth System Science Data*, 80, 1–41, <https://doi.org/10.22008/promice/data/aws>, 2021.
- 580 Feher, R., Voiculescu, M., Chiroiu, P., and Perşoiu, A.: The stable isotope composition of hoarfrost, <https://doi.org/10.1080/10256016.2021.1917567>, 2021.
- Flanner, M. G. and Zender, C. S.: Linking snowpack microphysics and albedo evolution, *Journal of Geophysical Research Atmospheres*, 111, 1–12, <https://doi.org/10.1029/2005JD006834>, 2006.
- Flin, F. and Brzoska, J. B.: The temperature-gradient metamorphism of snow: Vapour diffusion model and application to tomographic images, *Annals of Glaciology*, 49, 17–21, <https://doi.org/10.3189/172756408787814834>, 2008.
- 585 Gallet, J. C., Domine, F., Zender, C. S., and Picard, G.: Measurement of the specific surface area of snow using infrared reflectance in an integrating sphere at 1310 and 1550 nm, *Cryosphere*, 3, 167–182, <https://doi.org/10.5194/tc-3-167-2009>, 2009.
- Gallet, J. C., Domine, F., Arnaud, L., Picard, G., and Savarino, J.: Vertical profile of the specific surface area and density of the snow at Dome C and on a transect to Dumont D’Urville, Antarctica - Albedo calculations and comparison to remote sensing products, *Cryosphere*, 5, 631–649, <https://doi.org/10.5194/tc-5-631-2011>, 2011.
- 590 Gallet, J. C., Domine, F., Savarino, J., Dumont, M., and Brun, E.: The growth of sublimation crystals and surface hoar on the Antarctic plateau, *Cryosphere*, 8, 1205–1215, <https://doi.org/10.5194/tc-8-1205-2014>, 2014.
- Genthon, C., Piard, L., Vignon, E., Madeleine, J. B., Casado, M., and Gallée, H.: Atmospheric moisture supersaturation in the near-surface atmosphere at Dome C, Antarctic Plateau, *Atmospheric Chemistry and Physics*, 17, 691–704, <https://doi.org/10.5194/acp-17-691-2017>, 2017.
- 595 Holme, C., Gkinis, V., and Vinther, B. M.: Molecular diffusion of stable water isotopes in polar firn as a proxy for past temperatures, *Geochimica et Cosmochimica Acta*, 225, 128–145, <https://doi.org/10.1016/j.gca.2018.01.015>, 2018.
- Hughes, A. G., Wahl, S., Jones, T. R., Zuhr, A., Hörhold, M., White, J. W. C., and Steen-Larsen, H. C.: The role of sublimation as a driver of climate signals in the water isotope content of surface snow: Laboratory and field experimental results, *The Cryosphere*, <https://doi.org/10.5194/tc-2021-87>, 2021.
- 600 Johnsen, S., Clausen, H. B., Cuffey, K. M., Hoffmann, G., Schwander, J., and Creyts, T.: Diffusion of stable isotopes in polar firn and ice: the isotope effect in firn diffusion, *Physics of Ice Core Records*, pp. 121–142, 2000.
- Johnsen, S. J., Dansgaard, W., and White, J. W.: The origin of Arctic precipitation under present and glacial conditions, *Tellus, Series B*, 41 B, 452–468, <https://doi.org/10.3402/tellusb.v41i4.15100>, 1989.
- 605 Jouzel, J. and Merlivat, L.: Deuterium and oxygen 18 in precipitation: modeling of the isotopic effects during snow formation., *Journal of Geophysical Research*, 89, 749–757, <https://doi.org/10.1029/jd089id07p11749>, 1984.
- Klein, K.: Variability in dry Antarctic firn - Investigations on spatially distributed snow and firn samples from Dronning Maud Land, Antarctica, PhD Thesis, University of Bremen, 3, 1–15, <https://doi.org/10.1016/j.cell.2009.01.043>, 2014.
- Kokhanovsky, A., Lamare, M., Danne, O., Brockmann, C., Dumont, M., Picard, G., Arnaud, L., Favier, V., Jourdain, B., Meur, E. L., Di Mauro, B., Aoki, T., Niwano, M., Rozanov, V., Korkin, S., Kipfstuhl, S., Freitag, J., Hoerhold, M., Zuhr, A., Vladimirova, D., Faber, A. K., Steen-Larsen, H. C., Wahl, S., Andersen, J. K., Vandecrux, B., van As, D., Mankoff, K. D., Kern, M., Zege,

- E., and Box, J. E.: Retrieval of snow properties from the Sentinel-3 Ocean and Land Colour Instrument, *Remote Sensing*, 11, <https://doi.org/10.3390/rs11192280>, 2019.
- Laepple, T., Münch, T., Casado, M., Hoerhold, M., Landais, A., and Kipfstuhl, S.: On the similarity and apparent cycles of isotopic variations in East Antarctic snow pits, *Cryosphere*, 12, 169–187, <https://doi.org/10.5194/tc-12-169-2018>, 2018.
- Landais, A., Barnola, J. M., Kawamura, K., Caillon, N., Delmotte, M., Van Ommen, T., Dreyfus, G., Jouzel, J., Masson-Delmotte, V., Minster, B., Freitag, J., Leuenberger, M., Schwander, J., Huber, C., Etheridge, D., and Morgan, V.: Firn-air $\delta^{15}\text{N}$ in modern polar sites and glacial-interglacial ice: A model-data mismatch during glacial periods in Antarctica?, *Quaternary Science Reviews*, 25, 49–62, <https://doi.org/10.1016/j.quascirev.2005.06.007>, 2006.
- Legagneux, L. and Domine, F.: A mean field model of the decrease of the specific surface area of dry snow during isothermal metamorphism, *Journal of Geophysical Research: Earth Surface*, 110, <https://doi.org/10.1029/2004JF000181>, 2005.
- Legagneux, L., Cabanes, A., and Dominé, F.: Measurement of the specific surface area of 176 snow samples using methane adsorption at 77 K, *Journal of Geophysical Research Atmospheres*, 107, 5–1, <https://doi.org/10.1029/2001JD001016>, 2002.
- Legagneux, L., Lauzier, T., Dominé, F., Kuhs, W. F., Heinrichs, T., and Techmer, K.: Rate of decay of specific surface area of snow during isothermal experiments and morphological changes studied by scanning electron microscopy, *Canadian Journal of Physics*, 81, 459–468, <https://doi.org/10.1139/p03-025>, 2003.
- Legagneux, L., Taillandier, A. S., and Domine, F.: Grain growth theories and the isothermal evolution of the specific surface area of snow, *Journal of Applied Physics*, 95, 6175–6184, <https://doi.org/10.1063/1.1710718>, 2004.
- Li, L. and Pomeroy, J. W.: Estimates of threshold wind speeds for snow transport using meteorological data, *Journal of Applied Meteorology*, 36, 205–213, [https://doi.org/10.1175/1520-0450\(1997\)036<0205:EOTWSF>2.0.CO;2](https://doi.org/10.1175/1520-0450(1997)036<0205:EOTWSF>2.0.CO;2), 1997.
- Linow, S., Hörhold, M. W., and Freitag, J.: Grain-size evolution of polar firn: A new empirical grain growth parameterization based on X-ray microcomputer tomography measurements, *Journal of Glaciology*, 58, 1245–1252, <https://doi.org/10.3189/2012JoG11J256>, 2012.
- Madsen, M. V., Steen-Larsen, H. C., Hörhold, M., Box, J., Berben, S. M., Capron, E., Faber, A. K., Hubbard, A., Jensen, M. F., Jones, T. R., Kipfstuhl, S., Koldtoft, I., Pillar, H. R., Vaughn, B. H., Vladimirova, D., and Dahl-Jensen, D.: Evidence of Isotopic Fractionation During Vapor Exchange Between the Atmosphere and the Snow Surface in Greenland, *Journal of Geophysical Research: Atmospheres*, 124, 2932–2945, <https://doi.org/10.1029/2018JD029619>, 2019.
- Martin, J. and Schneebeli, M.: Impact of the sampling procedure on the specific surface area of snow measurements with the IceCube, *EGUosphere*, 501, 1–12, <https://doi.org/10.5194/egusphere-2022-501>, 2022.
- Masson-Delmotte, V., Landais, A., Stievenard, M., Cattani, O., Falourd, S., Jouzel, J., Johnsen, S. J., Dahl-Jensen, D., Sveinbjornsdottir, A., White, J. W., Popp, T., and Fischer, H.: Holocene climatic changes in Greenland: Different deuterium excess signals at Greenland Ice Core Project (GRIP) and NorthGRIP, *Journal of Geophysical Research D: Atmospheres*, 110, 1–13, <https://doi.org/10.1029/2004JD005575>, 2005.
- Merlivat, L. and Jouzel, J.: Global climatic interpretation of the deuterium-oxygen 16 relationship for precipitation., *Journal of Geophysical Research*, 84, 5029–5033, <https://doi.org/10.1029/JC084iC08p05029>, 1979.
- Neumann, T. A. and Waddington, E. D.: Effects of firn ventilation on isotopic exchange, *Journal of Glaciology*, 50, 183–194, <https://www.cambridge.org/core>, 2004.
- Picard, G., Domine, F., Krinner, G., Arnaud, L., and Lefebvre, E.: Inhibition of the positive snow-albedo feedback by precipitation in interior Antarctica, *Nature Climate Change*, 2, 795–798, <https://doi.org/10.1038/nclimate1590>, 2012.

- Picard, G., Royer, A., Arnaud, L., and Fily, M.: Influence of meter-scale wind-formed features on the variability of the microwave brightness temperature around Dome C in Antarctica, *Cryosphere*, 8, 1105–1119, <https://doi.org/10.5194/tc-8-1105-2014>, 2014.
- 650 Picard, G., Arnaud, L., Caneill, R., Lefebvre, E., and Lamare, M.: Observation of the process of snow accumulation on the Antarctic Plateau by time lapse laser scanning, *Cryosphere*, 13, 1983–1999, <https://doi.org/10.5194/tc-13-1983-2019>, 2019.
- Pinzer, B. and Schneebeli, M.: Temperature gradient metamorphism is not a classical coarsening process, *ISSW 09 - International Snow Science Workshop, Proceedings*, pp. 58–61, 2009.
- 655 Pinzer, B. R., Schneebeli, M., and Kaempfer, T. U.: Vapor flux and recrystallization during dry snow metamorphism under a steady temperature gradient as observed by time-lapse micro-tomography, *Cryosphere*, 6, 1141–1155, <https://doi.org/10.5194/tc-6-1141-2012>, 2012.
- Ritter, F., Christian Steen-Larsen, H., Werner, M., Masson-Delmotte, V., Orsi, A., Behrens, M., Birnbaum, G., Freitag, J., Risi, C., and Kipfstuhl, S.: Isotopic exchange on the diurnal scale between near-surface snow and lower atmospheric water vapor at Kohnen station, East Antarctica, *Cryosphere*, 10, 1647–1663, <https://doi.org/10.5194/tc-10-1647-2016>, 2016.
- 660 Schaller, C. F., Freitag, J., and Eisen, O.: Critical porosity of gas enclosure in polar firn independent of climate, *Climate of the Past*, 13, 1685–1693, <https://doi.org/10.5194/cp-13-1685-2017>, 2017.
- Sime, L. C., Risi, C., Tindall, J. C., Sjolte, J., Wolff, E. W., Masson-delmotte, V., and Capron, E.: Warm climate isotopic simulations : what do we learn about interglacial signals in Greenland ice cores ?, *Quaternary Science Reviews*, 67, 59–80, <https://doi.org/10.1016/j.quascirev.2013.01.009>, 2013.
- 665 Sodemann, H., Masson-Delmotte, V., Schwierz, C., Vinther, B. M., and Wernli, H.: Interannual variability of Greenland winter precipitation sources: 2. Effects of North Atlantic Oscillation variability on stable isotopes in precipitation, *Journal of Geophysical Research Atmospheres*, 113, 1–21, <https://doi.org/10.1029/2007JD009416>, 2008.
- Sokratov, S. A. and Golubev, V. N.: Snow isotopic content change by sublimation, *Journal of Glaciology*, 55, 823–828, <https://doi.org/10.3189/002214309790152456>, 2009.
- 670 Steen-Larsen, H. C., Sveinbjörnsdóttir, A. E., Peters, A. J., Masson-Delmotte, V., Guishard, M. P., Hsiao, G., Jouzel, J., Noone, D., Warren, J. K., and White, J. W.: Climatic controls on water vapor deuterium excess in the marine boundary layer of the North Atlantic based on 500 days of in situ, continuous measurements, *Atmospheric Chemistry and Physics*, 14, 7741–7756, <https://doi.org/10.5194/acp-14-7741-2014>, 2014.
- Steffensen, J. P., Andersen, K. K., Bigler, M., Clausen, H. B., Dahl-Jensen, D., Fischer, H., Goto-Azuma, K., Hansson, M., Johnsen, S. J., 675 Jouzel, J., Masson-Delmotte, V., Popp, T., Rasmussen, S. O., Röthlisberger, R., Ruth, U., Stauffer, B., Siggaard-Andersen, M. L., Sveinbjörnsdóttir, E., Svensson, A., and White, J. W.: High-resolution greenland ice core data show abrupt climate change happens in few years, *Science*, 321, 680–684, <https://doi.org/10.1126/science.1157707>, 2008.
- Stenni, B., Masson-Delmotte, V., Selmo, E., Oerter, H., Meyer, H., Röthlisberger, R., Jouzel, J., Cattani, O., Falourd, S., Fischer, H., Hoffmann, G., Iacumin, P., Johnsen, S. J., Minster, B., and Udisti, R.: The deuterium excess records of EPICA Dome C and Dronning Maud 680 Land ice cores (East Antarctica), *Quaternary Science Reviews*, 29, 146–159, <https://doi.org/10.1016/j.quascirev.2009.10.009>, 2010.
- Stenni, B., Scarchilli, C., Masson-Delmotte, V., Schlosser, E., Ciardini, V., Dreossi, G., Grigioni, P., Bonazza, M., Cagnati, A., Karlicek, D., Risi, C., Udisti, R., and Valt, M.: Three-year monitoring of stable isotopes of precipitation at Concordia Station, East Antarctica, *Cryosphere*, 10, 2415–2428, <https://doi.org/10.5194/tc-10-2415-2016>, 2016.
- Taillandier, A. S., Domine, F., Simpson, W. R., Sturm, M., and Douglas, T. A.: Rate of decrease of the specific surface area 685 of dry snow: Isothermal and temperature gradient conditions, *Journal of Geophysical Research: Earth Surface*, 112, 1–13, <https://doi.org/10.1029/2006JF000514>, 2007.

- Touzeau, A., Landais, A., Stenni, B., Uemura, R., Fukui, K., Fujita, S., Guilbaud, S., Ekaykin, A., Casado, M., Barkan, E., Luz, B., Magand, O., Teste, G., Le Meur, E., Baroni, M., Savarino, J., Bourgeois, I., and Risi, C.: Acquisition of isotopic composition for surface snow in East Antarctica and the links to climatic parameters, *Cryosphere*, 10, 837–852, <https://doi.org/10.5194/tc-10-837-2016>, 2016.
- 690 Touzeau, A., Landais, A., Morin, S., Arnaud, L., and Picard, G.: Numerical experiments on vapor diffusion in polar snow and firn and its impact on isotopes using the multi-layer energy balance model Crocus in SURFEX v8.0, *Geoscientific Model Development*, 11, 2393–2418, <https://doi.org/10.5194/gmd-11-2393-2018>, 2018.
- Van As, D.: Warming, glacier melt and surface energy budget from weather station observations in the Melville Bay region of northwest Greenland, *Journal of Glaciology*, 47, <https://www.cambridge.org/core>, 2011.
- 695 Van Geldern, R. and Barth, J. A.: Optimization of instrument setup and post-run corrections for oxygen and hydrogen stable isotope measurements of water by isotope ratio infrared spectroscopy (IRIS), *Limnology and Oceanography: Methods*, 10, 1024–1036, <https://doi.org/10.4319/lom.2012.10.1024>, 2012.
- Vandercrux, B., Box, J. E., Wehrle, A., Kokhanovsky, A. A., Picard, G., Niwano, M., Hörhold, M., Faber, A. K., and Steen-Larsen, H. C.: The Determination of the Snow Optical Grain Diameter and Snowmelt Area on the Greenland Ice Sheet Using Spaceborne Optical
700 Observations, *Remote Sensing*, 14, <https://doi.org/10.3390/rs14040932>, 2022.
- Vinther, B. M., Buchardt, S., Clausen, H., Dahl-Jensen, D., Johnsen, S., Fisher, D., Koerner, R., Raynaud, D., Lipenkov, V., Andersen, K., Blunier, T., Rasmussen, S., Steffensen, J., and Svensson, A.: Holocene thinning of the Greenland ice sheet, *Nature*, 461, 385–388, 2009.
- Wahl, S., Steen-Larsen, H. C., and Reuder, J.: Quantifying the Stable Water Isotopologue Exchange between Snow Surface and Lower Atmosphere by Direct Flux Measurements, *Journal of Geophysical Research: Atmospheres*, <https://doi.org/10.1029/2020jd034400>, 2021.
- 705 Wahl, S., Steen-Larsen, H. C., Hughes, A. G., Dietrich, L. J., Zuhr, A., Behrens, M., Faber, A., and Hörhold, M.: Atmosphere-Snow Exchange Explains Surface Snow Isotope Variability, *Geophysical Research Letters*, 49, <https://doi.org/10.1029/2022GL099529>, 2022.
- Zuanon, N.: IceCube, a portable and reliable instrument for snow specific surface area measurement in the field, *International Snow Science Workshop*, pp. 1020–1023, www.A2PhotonicSensors.com, 2013.
- Zuhr, A. M., Münch, T., Steen-Larsen, H. C., Hörhold, M., and Laepple, T.: Local-scale deposition of surface snow on the Greenland ice
710 sheet, *The Cryosphere*, 15, 4873–4900, <https://doi.org/10.5194/tc-15-4873-2021>, 2021.