

Figure S1. Brightness temperatures on June 1, 2003 using (a) DMSP (b) AMSR (c) CEM2 JRA-55 and (d) CEM2 JRA-55 with 0.968 correction as in Burgard et al. (2020a, b) and (e) CEM2 JRA-55 with 0.92 correction applied only to areas of multi-year ice.

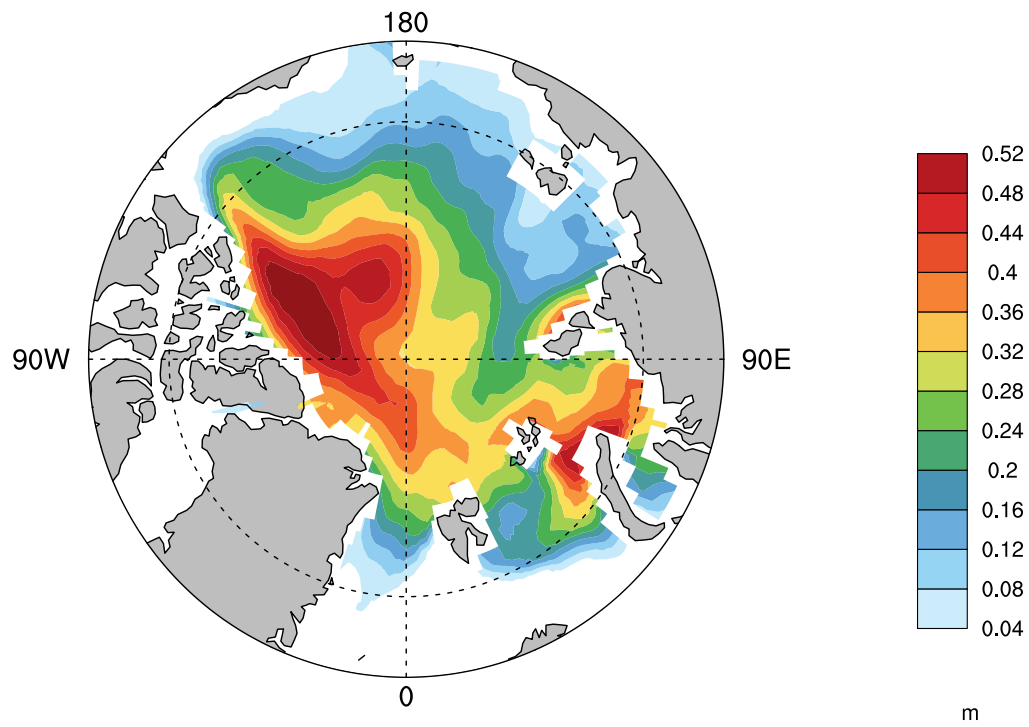


Figure S2. CESM JRA-55 snow on sea ice depth on June 1, 2003 (m).