

# Potential of X-band polarimetric SAR co-polar phase difference for Arctic snow depth estimation

Joëlle Voglimacci-Stephanopoli<sup>1,2</sup>, Anna Wendleder<sup>3</sup>, Hugues Lantuit<sup>4,5</sup>, Alexandre Langlois<sup>1,2</sup>, Samuel Stettner<sup>3,6</sup>, [Andreas Schmitt<sup>7</sup>](#), Jean-Pierre ~~Dedieu<sup>7</sup>~~[Dedieu<sup>8,2</sup>](#), Achim Roth<sup>3</sup> and Alain Royer<sup>1,2</sup>

<sup>1</sup> Centre d'Applications et de Recherches en Télédétection, Université de Sherbrooke, Sherbrooke, J1K 2R1, Canada

<sup>7</sup> Centre d'Études Nordiques, Université Laval, Québec, Québec, G1V 0A6, Canada

<sup>8</sup> German Remote Sensing Data Center, German Aerospace Center, Oberpfaffenhofen, Germany

<sup>9</sup> Institute of Geosciences, University of Potsdam, Potsdam, Germany

<sup>10</sup> Alfred Wegener Institute Helmholtz Centre for Polar and Marine Research, 14473 Potsdam, Germany

<sup>6</sup> German Space Agency, German Aerospace Center, Bonn, Germany

<sup>11</sup> ~~7~~ [Institute for Applications of Machine Learning and Intelligent Systems, Munich University of Applied Sciences, Munich, Germany](#)

Institute of Environmental Geosciences, Université Grenoble-Alpes/CNRS/IRD, 38058 Grenoble, France

*Corresponding author:* Joëlle Voglimacci-Stephanopoli ([joelle.voglimacci-stephanopoli@usherbrooke.ca](mailto:joelle.voglimacci-stephanopoli@usherbrooke.ca))

**Abstract.** Changes in snowpack associated with climatic warming has drastic impacts on surface energy balance in the cryosphere. Yet, traditional monitoring techniques, such as punctual measurements in the field, do not cover the full snowpack spatial and temporal variability, which hampers efforts to upscale measurements to the global scale. This variability is one of the primary constraints in model development. In terms of spatial resolution, active microwaves (synthetic aperture radar—SAR) can address the issue and outperform methods based on passive microwaves. Thus, high spatial resolution monitoring of snow depth (SD) would allow for better parameterization of local processes that drive the spatial variability of snow. The overall objective of this study is to evaluate the potential of the TerraSAR-X (TSX) SAR sensor and the wave co-polar phase difference (CPD) method for characterizing snow cover at high spatial resolution. Consequently, we first (1) ~~quantified the spatio-temporal~~ [investigate SD and DHF variability of the geophysical properties of the snowpack between different vegetation classes in an Arctic the Ice Creek catchment, we then \(Okiqtaruk-Herschel Island, Yukon, Canada\) using in situ measurement collected over the course of a field campaign in 2019;](#) (2) ~~studied the link~~ [evaluate linkages](#) between snow [properties characteristics](#) and CPD, [distribution over 2019 dataset and \(3\) Determine CPD seasonality](#) considering ~~ground-vegetation~~ [meteorological data over 2015-2019 period. n.](#) Snow depth (SD) could be extracted using the CPD when certain conditions are met. A high incidence angle (> 30 °) with a high Topographic Wetness Index (TWI) (> 7.0) showed correlation between SD and CPD (~~R-squared~~ [Rsquared](#) up to 0.72). Further, future work should address a threshold of sensitivity to TWI and incidence angle to map snow depth in such environments and assess the potential of using interpolation tools to fill in gaps in SD information on drier vegetation types.

## 1. Introduction

35 Snow cover is a key component of the cryosphere which plays an essential role for ecological processes and hydrological dynamics. In arctic ecosystems, those processes include species survival (Dolant et al., 2018; Poirier et al., 2019), thermal ground regime (Goodrich, 1982; Gouttevin et al., 2012; Stieglitz et al., 2003) or vegetation colonization and growth (Berteaux et al., 2017; Kankaanpää et al., 2018; Myers-Smith et al., 2011a). In the past 40 years, we observed a pan-Arctic reduction in the snow cover duration of 2–4 days per decade (AMAP, 2017) and maximum Arctic snow depth ~~trend~~trends show a consistent  
40 decrease since 1980 (AMAP, 2017; IPCC, 2019). These trends will undeniably change the arctic landscape. For instance, duration of snow patches impacts vegetation phenology (Kankaanpää et al., 2018) and controls shrubs' growth (Myers-Smith et al., 2011b; Pomeroy et al., 2006). Hence, patterns of vegetation densification (also called greening) arise, and dense vegetation such as shrubs impact the snowpack physical properties. Twigs induce a decrease in snow density and an increase of depth hoar formation (Domine et al., 2016; Gouttevin et al., 2018; Sturm et al., 2001). By protruding above the snowpack  
45 surface, shrubs reduce surface albedo and advance the snow melt timing (Sturm et al., 2001). Coupled to a decreasing trend on maximum snow depth and snow cover duration observed (AMAP, 2017; IPCC, 2019), the greening of the Arctic is likely to lead to drastic modification of the snowpack. A recent update on the classification of Sturm et al. (1995) suggested by Royer et al. (2021) demonstrates a positive feedback on climate warming owed to snow-vegetation interaction. High resolution land cover classification is therefore needed to address changes in the snowpack in a warming climate.

50 Current snow modules used in Earth System Models are based on coarse spatial resolution of tens of kilometres (Bokhorst et al., 2016). Coarse ~~spatial~~spatial resolution hampers our efforts to understand the dynamics driving snowpacks at the landscape scale. Indeed, snow is characterized by a high spatial and temporal heterogeneity (*e.g.*: Rutter et al., 2014; Thompson et al., 2016; Wilcox et al., 2019). Traditional approaches using *in situ* measurement can provide very detailed spatial information on snow properties, but cannot be deployed over large areas. There is therefore a strong need to bridge these two scales and  
55 provide means to monitor the temporal and spatial variability of the snowpack over larger areas.

Earth observation satellites can provide frequent measurements over larger areas. ~~Space-borne~~Spaceborne platforms are widely used to monitor snow on local, regional, and global scales. Yet, they also suffer from strong limitations. Optical sensors allow measurements on surface characteristics of snow, but do not provide direct measurements of the properties of the snowpack and are often limited by cloud cover. Passive microwave monitoring methods are operational and provide continuous data, but  
60 suffer from the coarse spatial resolution of satellite observations (*e.g.*: Frei et al., 2012)). Active microwave observations with synthetic aperture radar (SAR) can overcome these issues in providing high resolution frequent snow measurements over large areas.

SAR can “see” through clouds while being independent from solar illumination. SAR sensors are interesting to collect data from the snowpack because they can, on the one hand, transmit and receive microwaves in horizontal (H) and vertical (V)  
65 polarization, and on the other hand, their microwaves can interact with and penetrate into the observed material. ~~The main~~

~~challenge related to the use of SAR is the lack of a reliable method to relate satellite data to physical measurements in snow impacted environments.~~

The objective of this paper is therefore to evaluate the potential of polarimetric method co-polar phase difference (CPD) produced with the X-band satellite TerraSAR-X to retrieve SD from an arctic snowpack where vegetation is highly variable.

70 This general objective requires a complete characterization of the snowpack from field data to fully understand the sensitivity of CPD to various snow characteristics. This requirement motivates the following two specific objectives: (1) investigate SD variability between different vegetation classes in the Ice Creek catchment (Qikiqtaruk-Herschel Island, Yukon, Canada) using *in situ* measurements collected over the course of a field campaign in 2019 and (2) evaluate linkages between SD snow characteristics and CPD ~~distributions~~distribution over 2019 dataset and (3) Determine CPD seasonality considering meteorological data over ~~the 2015–2019~~ period.

## 2. Background: Co-polar phase difference—snow structure

### 2.1. Arctic snow properties

Snow cover in the Arctic is mostly characterized by two main layers (Domine et al., 2016; Royer et al., 2021; Sturm et al., 2008). The upper layer, the wind slab, is very compact as it is subject to sustained winds and cold temperatures that promote cohesion of snow grains (Domine et al., 2018b; Sturm et al., 2008). The basal layer generally consists of depth hoar (DH) grains that develop under a kinetic metamorphic regime in dry snow conditions with a sustained strong temperature gradient (Domine et al., 2016). Kinetic growth refers to formation of depth hoar crystals within the snowpack induced by a strong thermal gradient.

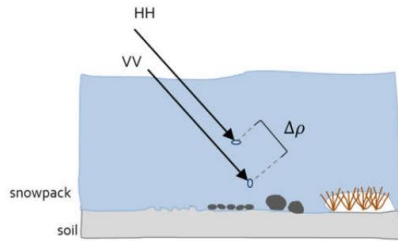
The snowpack is driven by two types of metamorphic regimes, namely wet and dry snow metamorphism (Bernier et al., 2016). 85 These regimes develop according to the temperature gradient in the snowpack and to its liquid water content (Colbeck, 1973). Wet snow metamorphism, with liquid water available in the snowpack, will lead to different metamorphic processes for saturated and unsaturated conditions (Colbeck, 1982). As a result, there will be a major impact on microwave radiative transfer given that wet snow acts as a blackbody in such frequencies (*e.g.* Rott and Matzler, 1987). In the case of an arctic snowpack, a regime of dry snow metamorphism is generally found when sustained cold temperatures last during most of the winter 90 (Domine et al., 2018a). Schneebeli et Sokratov (2004) found that snow crystals are highly anisotropic (dependency to a direction of an object), which is correlated with snow metamorphism (Calonne and al., 2014; Gouttevin and al., 2018). As such, over the time, snow crystals become elongated to a vertical direction after their setting up and during the constructive snow metamorphosis in the snowpack.

The geometrical structure of the snow will characterize the electromagnetic wave propagation through the snowpack by scattering and absorption processes within each layer (Mätzler, 1987). Given the dry nature of the arctic snowpack, the main source of backscattering should occur at the snow-ground interface for frequencies in X-band ( $\lambda = 3.1 \text{ cm}$ ), such as used in this study, or below as dry snow can be considered as a homogeneous, “non-scattering” and non-absorbing volume (Leinss et

al., 2014). This said, inhomogeneous layers such as ice layers, melt/freeze crust and any strong vertical change in dielectric properties (*i.e.* density, wetness) can also affect the signal.

### 2.3. Co-polar coherence

The co-polar coherence (CCOH) indicates the correlation coefficient of HH and VV phase centers. The magnitude of the CCOH ranges between 0 and 1 where a weak correlation ( $< 0.5$  as defined by Leinss et al. [2014]) indicates a low scattering with a more chaotic and randomly random phase shifts between HH and VV waves and are hence omitted. Such weak correlations will occur when HH and VV waves have different phase centers and different scattering targets- (see Fig. 1 with the phase shift  $\Delta\rho$ ). A decrease in correlation can also be induced by a strong surface scattering caused by rough or wet surfaces, volume scattering during winter or during snow-free conditions where vegetation is exposed (Fig.1). The equation of CPD is only valid where no volume scattering occurs (Leinss et al., 2014) since an increase in volume scattering will lead to a decrease of the CCOH.



**Figure 1.** Phase shift ( $\Delta\rho$ ) can also be caused by scattering effects within the snowpack or by surface roughness (including vegetation) (Credit: A.Wendleder).

### 2.4. Co-polar phase difference

CPD is a polarimetric method using the difference in the phase between HH and VV polarization channels. The phase difference refers to the difference in the propagation speed of a wavelength in a material as a function of polarization, which then causes a phase difference in the electromagnetic wave between polarizations. The phase of a single polarization is assumed to have a uniform distribution over  $[-\pi, \pi]$  (Leinss et al., 2014; Patil et al., 2020).

A relationship was found between CPD and snowfall by Chang et al. (1996) and Leinss et al. (2014) which induces a propagation delay among horizontal and vertical phases due to horizontal alignments of fresh snow crystals. Recent studies focused on the boreal region (Leinss et al., 2014, 2016) or were applied in arctic region with no or sparse vegetation (Dedieu et al., 2018) so the application of the CPD method in the Arctic remains poorly documented. It could be hypothesized that the CPD can describe the entire snowpack in such cold and dry environments. Strong vertical changes in density and grain size could also lead to a decrease in coherence so that the use of CPD information might not be suitable (*i.e.* when CCOH  $< 0.5$ , see Fig. 1).

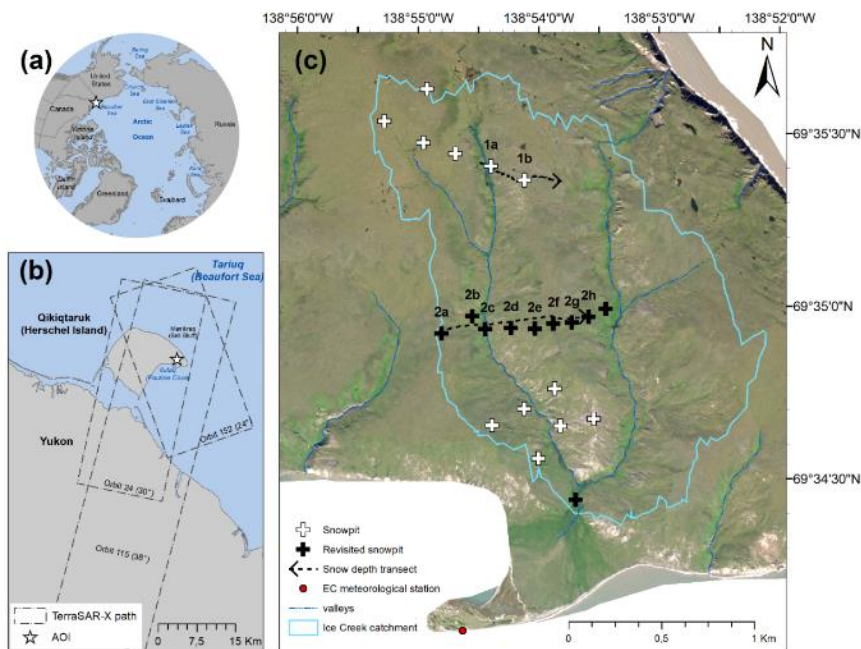
### 3. Data and Methods

#### 3.1. Study site

Qikiqtaruk-Herschel Island (69° 35' N, 139° 06' W) is located about 2 km off the Yukon Coast in the northwestern Canadian Arctic (Fig. 2). With an approximate area of 108 km<sup>2</sup>, this island has a rolling topography (max. altitude: 183 m a.s.l.), dissected by numerous geomorphological forms such as gullies, valleys and polygonal soils (Short et al., 2011; Stettner et al., 2018). The permafrost on Qikiqtaruk-Herschel Island is continuous with a high ice content. Ground ice can be observed on the island in the form of ice wedges, ice lenses, or buried snowbanks, as observed by Pollard (1990). Results from Wolter et al. (2016) suggested that geomorphological processes, such as permafrost degradation, are strongly related to vegetation composition on Qikiqtaruk-Herschel. The active layer thickness varies from 45 cm to 90 cm in marine deposits (silty diamicton) and can reach over 110 cm in porous deposits (Lantuit and Pollard, 2008; Smith et al., 1989). A thickening of the active layer by 15 cm to 25 cm was documented on the island during the period from 1985 to 2005, as well as an increase in the mean annual air temperature by 2.7 °C between 1970 and 2005 (Burn and Zhang, 2009).

Spatial distribution of snow on the island is primarily based on topography, due to the low tundra-type vegetation (Burn and Zhang, 2009). The snow is blown away from the uplands and accumulates in topographic depressions such as valleys and hummocky terrain (Burn and Zhang, 2009). The dominant wind direction is northwest with frequent storms in late August and September (Solomon, 2005). A study by Myers-Smith et al. (2011) indicates an increase in the canopy and vegetation height over the last century that can be expected to have an impact on the snow cover structure.

In this paper, we performed our measurements in the Ice Creek catchment (area of 1.54 km<sup>2</sup>) located at the eastern end of the island (Fig. 2). The digital elevation models from ArcticDEM (2 m res.) indicates average slopes of 2.9° with maximums of 13.2° at altitudes ranging from 5 m to 94 m (Porter et al., 2018).



145 **Figure 2.** (a) Location of the study site in the Arctic (b) Visual extent of TerraSAR-X passages on Qikiqtaruk Herschel Island (c) Ice Creek study site including the location of measurements. The black crosses were revisited during each TerraSAR-X acquisitions (Imagery provided by Workview 01.01.1001, True Color). The meteorological station belongs to Environment and Climate Change Canada (ECCC).

## 3.2. Snow distribution over Ice creek

### 3.2.1. Snow measurements

150 Two sampling strategies were used for the snowpit characterization (Table 1). First, detailed snowpit measurements were conducted along predefined locations at an average distance of 200 m between each site (Fig. 2c). The snowpit locations in the centre of the Ice Creek catchment as well as location at the outlet of the catchment were revisited during each TerraSAR-X (TSX, see 3.3.) acquisition so that soil characteristics remain unchanged between snow sampling and satellite measurements. Snow depths were measured using a GPS snow depth probe around the snowpits, ensuring the representativeness of the snowpit location. This was conducted by measuring depths in a growing circle moving away from the snowpit location until an approximate diameter of 30 m was reached, which is typically the area required to ensure representativeness in tundra environments (Clark et al., 2011). Snowpits and SD measurements were then distributed spatially elsewhere in the catchment to refine the characterization of snow within the catchment. Additionally, two SD transects were conducted across the

155

160 catchment to analyze the SD distribution in the study site. Both transects were established from the [west side to the east side](#)  
~~to the west side~~ of the Ice Creek catchment. [These transect were acquired on May 1st 2019 \(Transect #2\) and May 4th 2019](#)  
[\(Transect #1\).](#)

165 Detailed snow profiles were acquired in spring 2019 (mid-April to early May). In each site, we dug snowpits in a way to avoid  
direct solar illumination of the snow wall. High resolution vertical profiles of density, temperature, grain size and type were  
conducted according to Fierz et al. (2009, see Table 1). Specifically, layered density profiles were obtained by extracting snow  
170 samples from each identified layer using a 100 cm<sup>3</sup> density cutter and weighed using a Pesola light series scale. Temperature  
profiles were measured at 3 cm intervals using a Cooper digital thermometer, and profile measurements included shadowed  
surface temperature as well as soil-snow interface.

From the above observations, each layer was classified according to their density and snow grain type across 5 classes  
following Fierz et al. (2009): 1) Depth Hoar, 2) windslab, 3) surface hoar, 4) fresh snow, 5) melt-freeze crust and ice layer.  
170 The snow depth and mean density of each layer classified, was compiled for later linear regression analysis with TSX data  
[from the same period. Regression analysis will be used to reach objective \(2\) of this paper.](#)

**Table 1: *In situ* measurements during the 2019 field campaign**

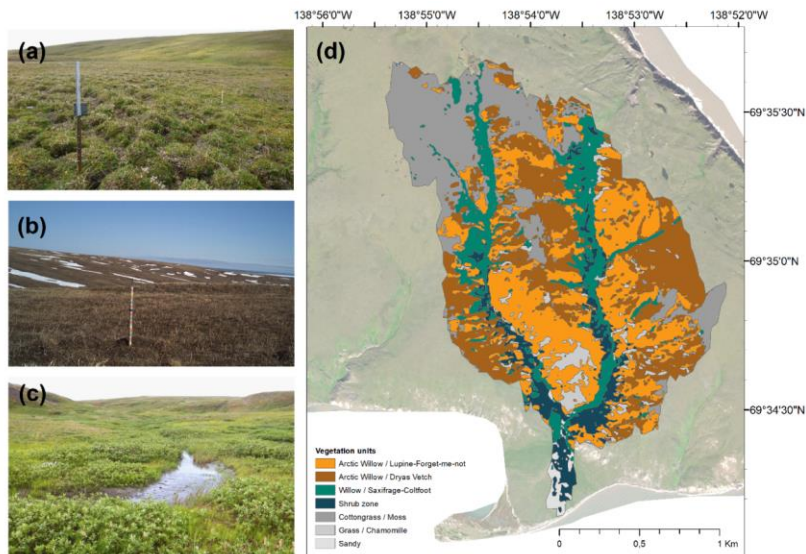
<b>Snowpits</b>	See Fig 2c
	Snow height
	Size and grain type (visual estimation)
Stratigraphy	Temperature profile (measurement at 3 cm, $\pm 0.1$ °C)
	Snow density by layers (measurements at 5 cm when possible, $\pm 0.5$ kg m <sup>-3</sup> )
<b>Environment and Climate Canada (ECCC) meteorological station</b>	69.5682° N, 138.9134° W
	Precipitation gauge for total precipitation (mm) and rate (mm h <sup>-1</sup> ), Temperature (°C)

### 3.2.2. Vegetation units

175 The classification of the different vegetation units was obtained from Eischeid (2015) following the initial definition developed  
by Smith et. al. (1989). The classification was determined by the soil type, vegetation observed and geomorphological features.  
The dataset used in this study was derived from 2015 GeoEye satellite data (res.: 1.65 m) (Eischeid, 2015). For the specific  
needs of this paper, we focused on the following specific classes: *Arctic Willow and Dryas Vetch* (hereinafter referred as  
*Dryas*), *Arctic Willow and Lupine (Lupine)*, *Shrub Zone (Shrub)* and *Willow Saxifrage Coltsfoot (Coltsfoot)*. These classes

were selected given that they are physically and spatially different (see Fig. 3d), which is of primary importance from a snow microstructure and radar backscattering perspective.

The *Lupine* class is associated with an irregular and hummocky terrain (Eischeid, 2015, see Fig. 3d). High variability in microtopography results in equally heterogeneous SD at a similar scale (Sturm and Holmgren, 1994). Erosion rates and moisture content will vary greatly following terrain instability (Eischeid, 2015). The *Coltsfoot* class is common in wetlands, where the ground is generally saturated and composed of shrubs (Eischeid, 2015). This vegetation class is located at the bottom of valleys, which is suitable for snow accumulation (Burn and Zhang, 2009). The *Shrub* class was added by Eischeid (2015) to the original classification by Smith et al. (1989) to reflect the growing importance of shrubs on the island. It is characterized by non-hydrophilic vegetation with lower soil moisture. Finally, the *Dryas* class is common on the gently undulating upland slopes (Smith et al., 1989). The associated soil type is a moderately well-drained Turbic Cryosol, which shows evidence of cryoturbation, as well as bare soil. Each snowpit characteristics and SD measurement were grouped by vegetation units to extract means and standard deviation by vegetation classes. The snowpits made along the two transects were grouped when they were at a distance less than 30 m and statistics of distribution (average and standard deviation) were extracted to complete the data analysis.



**Figure 3.** Vegetation classes occurring in the Ice Creek catchment: (a) irregular and hummocky terrain observed in *Lupine* class (Credit: M. Fritz) (b) Low vegetation on well drained area (such as *Dryas*) (Photo by the author) and (c) *Shrub* and wetland (such as *Coltsfoot* class) (Credit: M. Fritz). (d) Vegetations unit's distribution in the study area (from Obu et al. (2017) as defined initially by Smith et al. (1989). The classes in grey are not include in the analysis.



### 3.3. Snow - SAR correlation-relationship

#### 3.3.1. SAR acquisition and preprocessing

A total of five TSX acquisitions in HH and VV polarizations over three different orbits were obtained during spring 2019, encompassing areas where snow measurements and vegetation information was available (Table 2). Snowpits and SD measurements taken before and after ( $\pm 2$  days) each TSX acquisition were included in the analysis as no precipitation occurred and air temperature was stable during the field campaign. Additionally, a time series of TSX acquisitions for the ~~2014~~2015–2019 period (orbit 24,  $\theta = 31^\circ$ ) was analyzed to evaluate the inter-annual variability of snow conditions on the island. The full TSX dataset was first processed at the DLR (German Aerospace Center). The preprocessing is described in Schmitt et al. (2015), and includes the determination of the Kennaugh elements, their radiometric calibration and orthorectification. The images were georeferenced in UTM with a ground sampling distance of 5 m. To reduce speckle noise, we used the multi-scale multi-looking algorithm developed by Schmitt (2016; Schmitt et al., 2015). CPD and CCOH can directly be derived from the radiometric and geometrically calibrated Kennaugh elements. The Kennaugh matrix describes the polarimetric information and allows to differentiate the physical scattering mechanisms (*e.g.* double bounce, volume and surface scattering) affecting the signal, which in turn can be linked to snow characteristics. The following Kennaugh elements were used in the CPD equation:

$$\phi_{HH} - \phi_{VV} = \angle \frac{K_7}{-K_3} \quad (1)$$

where  $K_7$  is the phase shift between HH, and VV phase centre described as

$$K_7 = \{S_{HH}S_{VV}^*\} \quad (2)$$

and where  $K_3$  is the scattering difference between surface to double bounce:

$$K_3 = -\{S_{HH}S_{VV}^*\} \quad (3)$$

To reduce the loss of coherence, a threshold was applied to CPD pixels where CCOH was less than 0.5, following Leinss et al. (2014). Again, the Kennaugh elements were used in the CCOH equation:

$$\gamma_{VV,HH} \cdot e^{i\phi_{CPD}} = \frac{\langle S_{HH} \cdot S_{VV}^* \rangle}{\sqrt{\langle |S_{HH}|^2 \rangle \langle |S_{VV}|^2 \rangle}} \approx 2 \sqrt{\frac{K_3^2 + K_7^2}{K_0^2 - K_4^2}} \cdot e^{i \angle \frac{K_7}{K_3}} \quad (4)$$

Note that the notation of the Kennaugh matrix is labeled according to Schmitt et al. (2015). A total of 32 pixels had a CCOH less than 0.5, hence showing a random phase shift between waves which is not optimal for CPD applications. These pixels were therefore removed from the analysis. To discard the potential effect of slope on crystal grains orientation, 5 pixels with a slope greater than  $10^\circ$  were subsequently extracted (3 in the *Dryas* class, 2 in the *Lupine*). To assess the temporal variability of CPD signal, pixels were divided by vegetation class for the period 2015–2019.

230 **Table 2: TSX acquisition on Qikiqtaruk-Herschel Island. All orbits were used for linear regression with *in situ* snow measurements. Orbit 24 has a sufficient time series and was used to extract temporal evolution of CPD.**

Relative orbit	Flight direction	Polarization mode	Incidence angle	Observation period (yyyy-mm-dd) (Acquisition date used for linear regression)	Number of scenes	<i>In situ</i> data
				2014.12.26—2018.03.06		
24	Descending	HH, VV	31°	2019.04.17—2019.05.20 (2019.04.17, 2019.04.28)	104	2019.04.17, 18 2019.04.28
152	Ascending	HH, VV	24°	2019.04.15—2019.05.18 (2019.04.26)	241	2019.04.26
115	Descending	HH, VV	38°	2019.04.23—2019.05.15 (2019.04.23, 2019.05.04)	243	2019.04.23, 22 2019.05.03 2019.05.04

### 3.3.2. Linking snow depth to CPD

#### *Implication of Snow Geometry*

235 We focused on the SD variability between vegetation classes. We also evaluated depth hoar fraction (DHF) given that King et al. (2018) found that X-band backscattering is highly sensitive to depth hoar grains. This allowed us to assess if any discrepancies in SD retrieval can be linked to large grain size. In addition, horizontal structures such as ice layers and melt/freeze crusts were identified for the same purpose of testing the SD retrieval capabilities in different stratigraphic contexts. Dedieu et al. (2018) showed that the attenuation of the SAR signal was caused by ice layers of 3 to 5 cm thick, but lingering uncertainties remain with regards to the contribution of thinner ice lenses such as the ones found on Qikiqtaruk-Herschel Island.

240

#### *Topographic Wetness Index as a proxy*

SD retrieval is challenging because it is impacted by snow surface properties. SD retrieval with CPD may be impacted by the dielectric properties of the snow surface, since the main backscatter signal is expected at the snow ground interface. High moisture content at the soil surface would potentially improve the performance of SD retrieval, because given that the presence penetration of ice leads to better reflection conditions for the microwaves signal into the soil would be limited by the high dielectric constant of the soil. The Topographic Wetness Index (TWI) was chosen as a proxy to analyze the variance between vegetation groups. Given the high sensitivity of microwaves to wetness, the high variability of TWI between each vegetation class will lead to different responses in backscattering through changes in the dielectric constant of the soil. The TWI was first developed by Beven and Kirkby (1979) within the runoff model TOPMODEL using the following equation:

245

250 
$$TWI = \ln\left(\frac{a}{\tan\beta}\right) \quad (5)$$

where  $\tan\beta$  is the local slope and  $a$  is the upslope area per unit which is obtained with the upslope area (the cells contributing to the runoff to the cells of interest,  $A$ ) and the contour length ( $L$ ) following  $a=A/L$ . The upslope area calculated is based on D8 flow direction algorithm (O'Callaghan and Mark, 1984) and the TWI values were computed based on the ArtidEM constructed from the DigitalGlobe Constellation (Porter et al., 2018, res: 2 m). Each TWI values derived from the catchment was combined to vegetation classes and CPD cells as described above.

#### Analysis

260 The Shapiro-Wilk test was used to test the normality of distributions for SD and TWI. Since TWI and SD distributions did not respect a normal distribution, the variance in TWI and SD between each group was tested with the non-parametric test Welch ANOVA in conjunction with a post-hoc Games-Howell test. ANOVA in conjunction with a post-hoc Games-Howell test. Welch's ANOVA allows testing at first if the differences between the groups is statistically significant, while the post-hoc Games-Howell test highlights the differences between specific groups. It may be possible that some groups show no statistically significant difference of the means. For instance, we could expect no difference of the means on the SD and TWI between the group Coltsfoot and Shrubs as both vegetation units are located in areas well suited for snow and water accumulation. We use the Games-Howell test as it does not assume equal variances and sample sizes (Games and Howell, 1976).

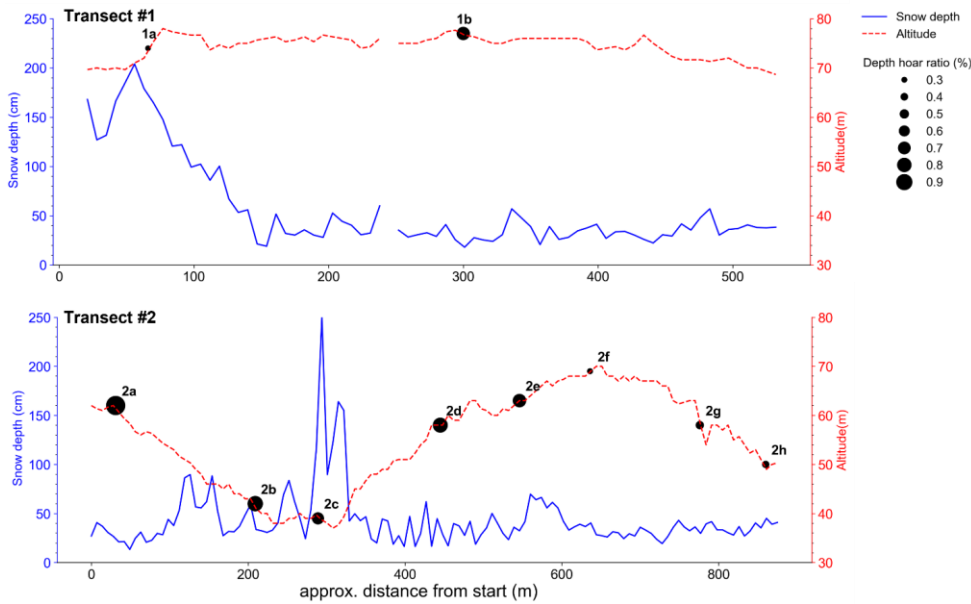
265 We evaluated the correlation between snow characteristics and CPD using a linear regression analysis. The median value was extracted when more than one snow measurement was found in the same TSX pixel (5 m). Thus, a total of 371 pixels was used in the analysis (average number of snow measurements per pixel: 1.7). The median SD by pixels were grouped by vegetation classes and orbit. Durbin-Watson's test and Breusch-Pagan's were used to assess autocorrelations and homoscedasticity of distribution data. Significance for all tests were calculated with  $\alpha = 0.05$ .

## 4. Results

### 4.1. Snow distribution

#### 4.1.1. Snow depth and depth hoar fraction along transects

275 Measurements of SD from transect #1 (Fig. 4) varied between 20 and 250 cm where the peak was measured at the valley bottom. Further west, SD values decreased significantly substantially on the slope with values between 20 and 50 cm. Highest DHF along the transect were found on the west side of the transect and on the slopes with an average of 0.76 while an average of 0.39 was observed on the east side of the catchment. Along transect #2 (Fig. 5) and snow cover was also deeper at the bottom of the valley (from 120 cm up to 200 cm) and decreased significantly on slopes and higher elevation areas (30 cm to 50 cm).



**Figure 4.** Snow depth (SD) transects surveyed in the Ice Creek catchment. Transect #1 and transect #2 shows snow depth (solid line) and altitude (m.a.s.l., dashed line) along transect. Mean  $\frac{\text{Depth}}{\text{depth hoar}} \text{ ratio fraction (DHF)}$  are indicated along transects by proportional size. 1a, 1b and 2c contain one observation. See Fig. 2c for their location in the catchment.

#### 4.1.2. Snow characteristics by vegetation classes

##### *Snow Depth*

The average SD within Ice Creek catchment was  $47.4 \text{ cm} \pm 39.6 \text{ cm}$ . The range of variability was substantial, with minimum value at 8.0 cm and a maximum at 212.0 cm. The standard deviation of the snow depth was variable yet strong among all classes (Table 3). The largest standard deviation measured was over *Lupine* (22.3 cm or 57 % of the mean SD) followed by *Coltsfoot* (67.6 cm or 54 % of the mean SD). *Coltsfoot* was by far characterized a greater SD than any other class.

Despite the great deviation around the mean for each class, the Welch ANOVA (Table 4) shows that SD is significantly different between all vegetation groups ( $p\text{-value} = 5^{-13}$ ). Games-Howell post-hoc revealed that *Coltsfoot* SD measurement is significantly different from the other classes as well as *Dryas*. The difference between *Lupine* and *Shrub* is not significant.

##### *Topographic Wetness Index*

The average TWI was  $6.1 \pm 1.6$ . The minimum and the maximum ranged between 2.5 and 14.7 while the average by vegetation classes range between 7.4 and 5.5 with a weak deviation around the means (Table 3). *Coltsfoot* showed the highest TWI which

is consistent with its location in the valley (Fig. 3) and its vegetation group type, characterized by hydrophilic vegetation. The Welch ANOVA shows that wetness index extracted with TWI is significantly different between all vegetation groups with a p-value <0.001 (p-value =  $6^{-14}$ ), which again is expected to lead to different responses from TSX. The Games-Howell post-hoc test revealed that difference in TWI is not significant between *Coltsfoot* and *Shrub* units and between *Dryas* and *Lupine* (Table 5).

#### Depth Hoar Fraction

The DHF of the snowpack was larger than 0.5 for all vegetation classes. However, standard deviations of classes with shallow snow such as *Lupine* and *Dryas* were greater whereas the standard deviation was lower than 0.1 for *Coltsfoot* where the SD is the highest. At least one horizontal structure (ice layer or melt-freeze crust layer) was found in each snowpit. The average thickness of each ice or melt-freeze crust layer was  $1.6 \text{ cm} \pm 0.7 \text{ cm}$  and the cumulative thickness average by snowpit was  $4.5 \text{ cm} \pm 2.8 \text{ cm}$ . The maximum ice thickness (4 cm) was found at the station downstream, which would suggest that the sensitivity of the CPD to ice layers should be generally lower than what was found by Dedieu et al. (2018). The high stratification otherwise may attenuate the signal.

**Table 3: Averaged SD and DHF for each of the vegetation class**

Vegetation class	SD and TWI nb of samples	Averaged SD $\pm \sigma$ (cm)	Averaged TWI $\pm \sigma$	DHF nb of samples	Averaged DHF $\pm \sigma$ (%)
<i>Coltsfoot</i>	29	$126.0 \pm 67.6$	$7.4 \pm 0.9$	8	$0.55 \pm 0.06$
<i>Dryas</i>	146	$31.8 \pm 14.1$	$5.9 \pm 1.2$	16	$0.62 \pm 0.31$
<i>Lupine</i>	118	$38.9 \pm 22.3$	$5.5 \pm 1.5$	21	$0.60 \pm 0.21$
<i>Shrub</i>	28	$44.1 \pm 20.6$	$6.8 \pm 1.3$	6	$0.51 \pm 0.18$
Other units	50	$69.3 \pm 47.2$	$6.8 \pm 2.4$	7	$0.58 \pm 0.20$
<b>Average in catchment</b>	<b>371</b>	<b><math>47.4 \pm 39.6</math></b>	<b><math>6.1 \pm 1.6</math></b>	<b>58</b>	<b><math>0.59 \pm 0.22</math></b>

**Table 4: Post-hoc analysis with Games-Howell for snow depth in vegetation classes (non-parametric test). Each row present variance between snow depth means from two different groups. All vegetation groups were tested on each other.**

Snow depth				
Class 1	Class 2	Mean Difference (cm)	Standard error (cm)	p-value
<i>Coltsfoot</i>	<i>Dryas</i>	+94.2	12.60	0.001
<i>Coltsfoot</i>	<i>Lupine</i>	+87.1	12.71	0.001
<i>Coltsfoot</i>	<i>Shrub</i>	+81.9	13.14	0.001
<i>Dryas</i>	<i>Lupine</i>	-7.14	2.36	0.014
<i>Dryas</i>	<i>Shrub</i>	-12.34	4.07	0.015
<i>Lupine</i>	<i>Shrub</i>	-5.2	4.41	0.622

**Table 5: Post-hoc analysis with Games-Howell for the TWI (non-parametric test). Each row present variance between TWI means from two different groups. All vegetation groups were tested on each other.**

TWI				
Group 1	Group 2	Mean Difference (Wetness index)	Standard error (cm)	p-value
<i>Coltsfoot</i>	<i>Dryas</i>	+1.56	0.20	0.001
<i>Coltsfoot</i>	<i>Lupine</i>	+1.97	0.22	0.001
<i>Coltsfoot</i>	<i>Shrub</i>	+0.63	0.30	0.147
<i>Dryas</i>	<i>Lupine</i>	+0.41	0.17	0.076
<i>Dryas</i>	<i>Shrub</i>	-0.93	0.26	0.003
<i>Lupine</i>	<i>Shrub</i>	-1.34	0.28	0.001

## 4.2. TerraSAR-X results

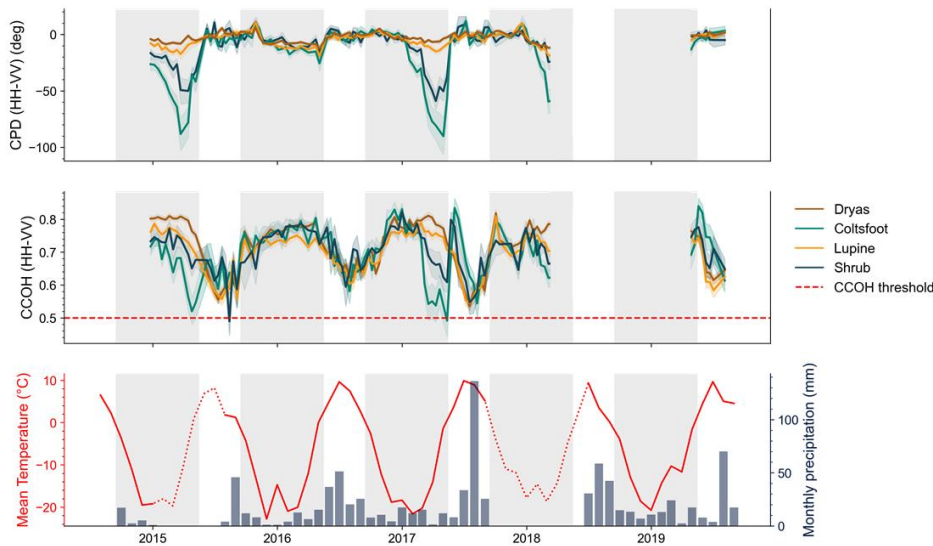
### 4.2.1. Spatial and temporal evolution of CPD

Figures 5a and 5b show the averaged temporal evolution of CPD and CCOH with descending orbit 24 (incidence angle = 31°) for each vegetation class as well as the confidence interval (95%). The period with presence of snow was set between mid-September and mid-May based on prior observations (Burn and Zhang, 2009; Stettner et al., 2018). Figure 5c shows the monthly average temperature and cumulative monthly precipitation on Qikiqtaruk-Herschel Island.

A periodicity was observed with the CPD signal, with on one side, the period of snow-free condition where the signal oscillates around zero, and on the other side, the period with snow where the signal decreased over the season suggesting an influence from the snowpack. For the 2014–2019 period, the mean CPD value during the snow was  $-8.59^\circ$  with annual mean°. The means of each winter are ranging between  $13.41^\circ$  (2014–2015) and  $-6.42^\circ$  (2017–2018). During the snow-free condition, the

average CPD over the same period increased to  $-0.87^{\circ}$  (2014-2019). Maximum and minimum values during snow-free conditions ranged between  $-0.44^{\circ}$  (2014-2015) and  $-1.32^{\circ}$  (2015-2016). The decrease generally started in January, when the average air temperature is at its coldest ( $-20^{\circ}\text{C}$ ) except in during the snow season of 2016-2017, where a warming occurred, increasing the average temperature of  $5^{\circ}\text{C}$  for that year. The two classes with taller vegetation type (*Coltsfoot* and *Shrub*) stood out during the winters 2014-2015 and 2016-2017. There the CPD decreased to  $-60^{\circ}$  towards the end of the winter. The decrease in the CPD was therefore similar between the vegetation classes and is about  $-15^{\circ}$ .

Overall, the coherence stayed greater than the 0.5 threshold over 2014-2019 period with an average of  $0.71 \pm 0.11$ . The signal was lower during snow-free period where the average is  $0.63 \pm 0.11$ . The coherence then increased around  $0.76 \pm 0.08$  during the winter. *Coltsfoot* and *Shrub* classes showed greater variation on the coherence over the seasons and the years compared to *Lupine* and *Dryas* classes. The average CCOH by vegetation classes ranged between  $0.69 \pm 0.07$  (for *Coltsfoot*) and  $0.72 \pm 0.07$  (for *Dryas*).



**Figure 5.** (a) Average CPD and (b) Average CCOH by vegetation class with interval of confidence (95%) for orbit 24 ( $31^{\circ}$ , descending). values were extracted from GPS dataset (see Fig. 2c), where  $N_{Coltsfoot} = 33$ ,  $N_{Dryas} = 140$ ,  $N_{Lupine} = 118$ ,  $N_{Shrub} = 29$ . Winter period (mid-September to mid-May) is shown in shaded area. Windows pixels size is 1x1 pixel (5x5m). (c) Meteorological data from Qikiqtaruk Herschel Island station (dataset from Environment Canada (2021)). The meteorological station is not equipped with a telemetry system and since the island is inaccessible during the winter, the lack of data during the winters 2014-2015 and 2017-2018 was caused by a malfunction

of the station. Air temperature during these periods were gap filled using Komakuk Beach meteorological station and shown by the red dotted line. Please refer to appendix A for further details on the method.

#### 4.2.2. Retrieving SD per vegetation class using CPD

The dataset from 2019 was used to perform a simple linear regression analysis allowing to assess whether there is a statistically significant relationship between snow measurements (layer depth of the depth hoar, wind slab, melt-freeze crust and ice layers and mean density of each layer) and CPD. No significant correlation was found other than SD or the samples contained fewer than 10 observations which bring elusive correlation (see Appendix A for more details). The best correlations between SD and CPD were found with *Lupine* (orbit 24, desc., incidence angle 31°) and *Coltsfoot* (orbit 115, desc., incidence angle 38°) (Table 6).

The *Coltsfoot* and *Shrub* classes were characterized by similar TWI mean values as well as low TWI variance. These two classes were combined to be compared with other classes (named *Coltsfoot+Shrub* in Table 6). This grouping led to an improvement in the coefficient of determination of 0.044 as well as a decrease in p-value and standard deviation. Samples with a coefficient of determination greater than 0.50 met the assumptions of homoscedasticity as well as the absence of autocorrelation, except for the sample located in *Coltsfoot+Shrub* in the 115 orbit, and samples located in *Coltsfoot* in the 152 asc. orbit (See Table B1 for further details). These results show clearly that CPD can be used to retrieve SD, albeit not in all vegetation classes.

**Table 6:** R-squared, p-value and standard deviation ( $R^2 \pm \text{std}$  [ $p\text{value} \pm \text{std}$ ]) results from linear regression analysis between SD and CPD obtained by vegetation classes and by orbits. The confidence interval was measured using the “Bootstrap with replacement” resampling technique ( $N_{\text{bootstrap}} = 1000$ ). The standard deviation of r-squared and the p-value obtained by the technique are indicated in the results whose variance is explained to more than 50%

	<i>Lupine</i>	<i>Dryas</i>	<i>Coltsfoot</i>	<i>Coltsfoot+Shrub</i>
<b>Orbit 24 (31°)</b>	<b>0.55 ± 0.11</b> <b>(0.001 ± 0.004)</b>	0.01 (0.59)	0.10 (0.55) **	0.07 (0.47)
<b>Orbit 115 (38°)</b>	0.01 (0.51)	0.004 (0.64)	<b>0.72 ± 0.16</b> <b>(0.00 ± 0.01)</b>	<b>0.74 ± 0.09</b> <b>(0.00 ± 0.00)</b>
<b>Orbit 152 (24°)</b>	0.02 (0.44)	0.0 (0.82)	<b>0.68 ± 0.18 **</b> <b>(0.08 ± 0.08)</b>	0.001 (0.91)

\*\* Fewer than 10 observations

## 5. Discussion

### 5.1. Snow distribution on Qikiqtaruk-Herschel Island

#### *Snow Depth*



On the study site, snow gets quickly redistributed across the landscape by winds. Burn and Zhang (2009) showed that SD distribution patterns were primarily driven by topography in close vicinity to the Ice Creeks. Our observations (Fig. 4) concur and expand on those from Burn and Zhang (2009) by highlighting the effect of microtopography and of vegetation in controlling SD. The SD was greater (> 100 cm) in areas characterized by shrubs and wetlands (*Coltsfoot*), which are mainly associated with valley bottom locations. There is a significant difference in SD between *Coltsfoot* and any other class, which shows that snow gets blown away on high points and slopes and accumulated in spatially constrained areas at the valley bottom (Fig. 3d and 3c). By contrast, grass-type or shallow vegetation, such as *Dryas* and *Lupine*, is found in wind-exposed areas. Deeper snow was found over *Lupine* compared to *Dryas*. The microtopography may play a role in this difference, as the standard deviation of SD is greater in the *Lupine*. There is greater variability in SD between the troughs and the top of hummocks, as documented by Wilcox et al. (2019). Thus, we can relate to this study as the distribution of snow in the Ice Creek catchment is driven primarily by vegetation and topography.

#### *Depth Hoar Fraction*

We suggest that the DHF is strongly driven by microtopography. During winter 2019, the DHF amounted to an average of 59% of the snowpack (n = 58). There is a greater standard deviation of these measurements in vegetation classes where the average SD is lower (less than 40 cm average depth) such as *Lupine* and *Dryas*. The effect of microtopography allows snow capture in hummock hollows early in the season and the thermal gradient from the ground to the surface varies accordingly (King et al., 2018; Wilcox et al., 2019). Depth hoar develops when a strong thermal gradient occurs between the ground and the snow surface. There are two situations where a strong gradient occurs: 1) when the SD is low and 2) when the soil is warm and the snow surface is cold. Sturm and Holmgren (1994) have shown that the depressions in tussocks or hummock are warmer than the top. The thermal gradient found in this type of vegetation class may therefore explain the large standard deviation of DHF found in *Lupine* class. Thus, the soil wetness should be higher in the hollows, but that effect might not be captured by the TWI used in this paper as its spatial resolution relies on a 2 m resolution DEM.

#### *Comparison over Snow Classification*

~~The snow characteristics observed over the Ice Creek catchment are consistent with the literature. We compared our statistics to the classification proposed by Royer et al. (2021) and observed a good fit with the Herbaceous and low shrub tundra snow class (Table 7). The standard deviation of the mean snow depth from our study site and from Royer et al. (2021) classification are both greater than 80%. The local topography inherited from the last glaciation (Late Wisconsin) is specific to Qikiqtaruk-Herschel Island and could explain higher snow depth, and therefore higher SWE and density. The maritime effect observed on Qikiqtaruk (Cray and Pollard, 2015) could also explain the warmer mean temperature during winter. All study sites used in Royer et al. (2021) classification are in the East of Canada. Further studies and datasets from the western part of Canada would greatly improve the snow classification.~~

Mis en forme : Retrait : Gauche : 0 cm, Première ligne : 0 cm, Espace Après : 3,9 pt, Interligne : Multiple 1,08 li

**Table 7.** Comparison of snow characteristics with Royer et al. (2021) classification. Mean temperature was extracted from 1974-2019 375 meteorological station from Qikiqtaruk Herschel Island and for the winter season (December to March as define by Royer et al. (2021)).

	Latitude range (°N)	Mean Temperature (°C)	SWE ± Std (mm)	SD ± Std (cm)	Density ± Std (kg m <sup>-3</sup> )
<del>Qikiqtaruk Herschel Island</del>	<del>68-69</del>	<del>-22.1</del>	<del>142.6 ± 90.1</del>	<del>47.4 ± 39.6</del>	<del>343.8 ± 73.7</del>
Herbaceous and low shrub tundra snow (from Royer et al. (2021))	58-74	-23.6	132.9 ± 57.6	43.1 ± 35.2	315.3 ± 49.1

Mis en forme : Espace Après : 0 pt, Taquets de tabulation 3,17 cm, Centré + Pas à 3,92 cm

Mis en forme : Retrait : Gauche : 0 cm

Mis en forme : Retrait : Gauche : 0 cm

## 5.2. CPD Spatio-temporal evolution and SD correlation

The high-resolution vegetation classification used in this paper allowed us to show that CPD varies greatly according to seasons and vegetation class (Fig. 5). Overall, the CPD signal decreased during winter and increased rapidly during melt. This concurs with observations from Leinss et al. (2014, 2016) made in Sodankylä. According to the model developed by Leinss (2014, 2016), the strong CPD decrease observed in 2015 and 2017 winters over shrubs areas could be explained by fresh snow accumulation or dominance in horizontal structures. However, the snow distribution analysis showed that the *Shrub* class has shallow snow, making it, SD-wise, significantly different from the *Coltsfoot* class, meaning the result doesn't show that the measured CPD signal is entirely governed by the snowpack. The CPD evolution over different vegetation classes is significantly different between two distinct groups: tall vegetation zones (*Coltsfoot* and *Shrubs*) and low vegetation zones (*Lupine* and *Dryas*). The small decrease observed at *Lupine* and *Dryas* classes during the snow season (Fig. 5) could indicate an influence from the ground, as the snow depth measured is less than 30 cm and highly stratified. TheHowever, the effect from inhomogeneities within the snowpack does not support this case, as the CCOH is greater of 0.5 for each pixel. *Dryas* is characterized by the lowest TWI, which could lead to less backscattering at the snow-ground interface hence decrease the change in the snow season. High DHF in *Lupine* vegetation class indicate a potential of higher TWI in the tussock's hollow, which might not be captured by the TWI. Hence, the TWI variability within a TSX pixel at this vegetation class area could also explain the low decrease of CPD observed in Fig. 5.

Although the snowpack was highly stratified, each ice layers or melt-freeze crust was in average less than 2 cm thick, which is thinner than the ice layers in the snowpacks studied by Dedieu et al. (2018). It may explain why the linear regression analysis of CPD shows the best results with the total SD (*i.e.* less sensitive to small crusts), which has never been observed before.

A high level of moisture in the ground will lead to major dielectric contrast at the snow-soil interface, hence limiting the penetration depth of the radar signal (Duguay et al., 2015). Thus, the sensitivity of the signal to ground conditions decreases. Duguay et al. (2015) also showed a strong saturation of TSX signal in the areas with shrubs greater than 50 cm. ~~The shrubs may explain the best correlation~~ Warmer ground temperature were previously observed in Table 6 as permafrost are (e.g. Myers-Smith and Hik (2013), Domine et al. (2016). which could delay the freezing process and enhance the contrast at the snow/ground interface. In the case of the study area, Myers-Smith et al. (2019) report an increase of the canopy where the measured shrubs at the bottom of the valley were more than a meter.

The TWI variance analysis shows that there is no significant variance between *Coltsfoot—Shrub* classes and between *Lupine—Dryas* classes, which could explain the strong decrease of the signal observed in mid-winter (Fig. 5). A high TWI indicates a high-water accumulation potential, hence a higher saturation of the soil. In the microwave range, soil saturation increases the dielectric properties of the soil. The sensitivity of the X-band radar signal is then higher, which allows the interface between the snowpack and the ground to be well discriminated. Thus, CPD captures snow accumulation well across winter in areas of higher potential of soil moisture, while soils with lower potential moisture are likely to contribute to the CPD signal and thus reduce the correlation between snow depth and CPD signal.

We suggest the increase in the r-squared depends on the soil moisture because there is less contribution from the ground on the backscatter signal. A higher incidence angle ( $> 30^\circ$ ) improve the results, agreeing with Leinss et al. (2014). The use of the TWI is promising for the snow-SAR dynamics as it is easy to compute and relies on topographic datasets that are now widely available for the entire Arctic. Furthermore, no correlation was found between retrieval performance of SD and DHF, suggesting that the poor performance over *Dryas* class is explained by soil contributions. The relatively conclusive results for the *Lupine* class at orbit 24 show an inverse correlation (Fig. 6) which contradicts with Leinss et al. (2014). We hypothesize that the tussock depressions are preferential areas for the formation of depth hoar, caused by the effect of microtopography. Thus, vertical structures are dominant in the snowpack, which could explain an increase of vertical structure where the snowpack is deeper at this vegetation class. Further analysis should be done on the soil moisture and on the effect of the depth hoar distribution to better capture the wetness of hummocky ~~area~~ areas and how it can improve retrievals of SD.

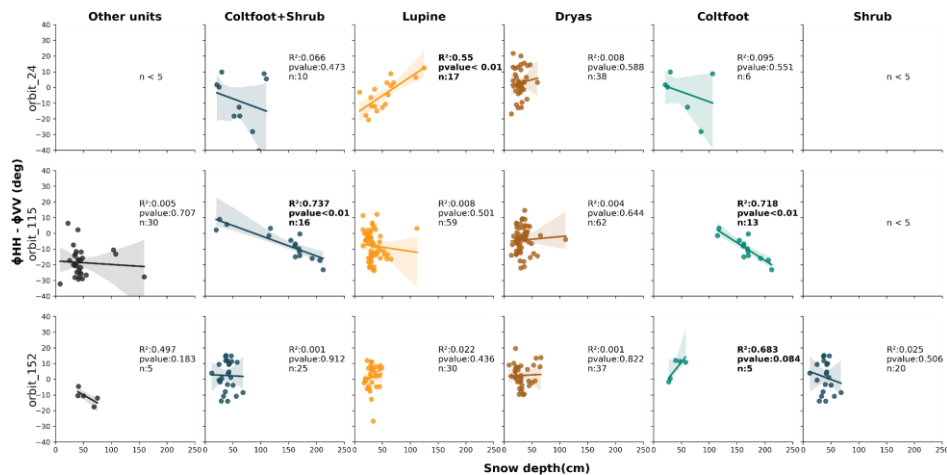


Figure 6. Correlation analysis between CPD and snow depth.

## 6. Conclusion

This study was the first to investigate the potential of co-polar phase difference (CPD) derived from TerraSAR-X data in combination with snowpit characterization over Qikiqtaruk-Herschel Island. We were able to find a variability in SD and TWI depending on vegetation classes extracted from a high-resolution map of vegetation cover. Classifying snowpits by vegetation classes on Qikiqtaruk-Herschel Island shows respectable results, helping to demonstrate the effect of topography and hence the moisture rate of the ground on CPD signal. The 2019 dataset shows a high heterogeneous snowpack with different ice layers and with a DHF representing in average more than half of the snowpack.

Despite this complex snowpack, we demonstrate a correlation between the CPD and the SD when certain conditions are met. A high incidence angle ( $> 30^\circ$ ) with a high TWI ( $> 7.0$ ) allows to show a correlation between SD and CPD with R-squared up to 0.72. CPD cannot be used to extract the fresh snow in an arctic context, as the penetration of the electromagnetic wave tend to go through the entire snowpack.

The *in-situ* data used for the present study do not cover the entire winter on Qikiqtaruk-Herschel Island, which brings uncertainties on snow depth characterization with CPD. ~~The maritime climate of Qikiqtaruk-Herschel Island may advance the snow melt period and provoke a shift to a wet metamorphism regime of the snowpack.~~ The lack of consistent stratigraphy measurement over the winter is still a major limit in snow studies. Consistent stratigraphy measurement over the winter would improve the understanding of the snowpack metamorphism regime.

470 The maritime climate of Qikiqtaruk-Herschel Island may advance the snow melt period and provoke a shift to a wet metamorphism regime of the snowpack. To address the remaining question about the specific climate of the study site, we compared our statistics to the classification proposed by Royer et al. (2021) and observed a good fit with the Herbaceous and low shrub tundra snow class (Table 7). The snow characteristics observed over the Ice Creek catchment are consistent with the literature.

475 The standard deviation of the mean snow depth from our study site and from Royer et al. (2021) classification are both greater than 80%. The local topography inherited from the last glaciation (Late Wisconsin) is specific to Qikiqtaruk-Herschel Island and could explain higher snow depth, and therefore higher SWE and density. The maritime effect observed on Qikiqtaruk (Cray and Pollard, 2015) could also explain the warmer mean temperature during winter. All study sites used in Royer et al. (2021) classification are in the East of Canada. Further studies and datasets from the western part of Canada would greatly improve the snow classification.

480 Focus of future studies could be the threshold sensitivity to TWI and the incidence angle of snow depth retrievals to map snow depth in such environments and to evaluate the potential of using interpolation tools to cover the gaps in SD information over ~~dryer vegetation types.~~ vegetation types. SD variability within a TSX pixel should be studied further, especially in hummocky areas where the highest variability was found, which could suggest a variability in the TWI as well. Statistical approaches, using the coefficient of variation of snow depths (CVsd), as suggested by Winstral and Marks (2014) and Liston (2002) could be an interesting avenue in the development of a representative mapping of the terrain. Meloche et al. (2022) demonstrated recently the effectiveness of the coefficient of variability of snow depth (CVsd) to improve passive microwave SWE retrievals in similar environment found on Herschel island (i.e., arctic snowpack with tundra vegetation type).

*Code and data availability.* Data and code are made available upon request from the corresponding author.

490 *Author contributions.* JVS performed this study as part of her Master thesis project, co-supervised by AL and HL. JVS, SS, AL, and AW designed the methodology. JVS wrote the code, performed the field measurements and the analysis. The original idea and method were developed by JVS, AL and HL. AW and AS performed the SAR preprocessing, AR, AW, AL and JPD support in the ~~440~~-SAR analysis. The manuscript was written by JVS and edited by all the co-authors.

495 *Competing interests.* The authors declare they have no conflict of interest.

*Acknowledgment.* This work was funded by Mitacs-Globalink, the EU Horizon 2020 program (Nunataryuk, grant no<sup>o</sup>773421 and Polar Knowledge Canada. The authors acknowledge the use of the ArcticDEM (© 2019 Polar Geospatial Center) and the TerraSAR-X imagery was provided by the German Aerospace Centre data (© DLR 2019). We would like to thank the Aurora Research Institute, the Yukon Territorial Government and Yukon Parks (Herschel Island Qikiqtaruk Territorial Park) for

administrational and logistical support, and the Inuvialuit people for the opportunity to conduct research on their traditional lands. JVS would like to thank Vincent Sasseville for the fieldwork support and Silvan Leinss for the several exchanges and discussion on CPD method. [The authors would like to thank Georg Fisher, the reviewers and the editor, Carrie Vuyovich, for their help in improving this paper.](#)

## 505 **References**

- AMAP: Snow, Water, Ice and Permafrost in the Arctic (SWIPA) 2017. [online] Available from: <https://www.amap.no/documents/doc/snow-water-ice-and-permafrost-in-the-arctic-swipa-2017/1610>, 2017.
- Bernier, M., Dedieu, J. P. and Duguay, Y.: Snow characterization using radar imaging, in *Land Surface Remote Sensing in Continental Hydrology*, pp. 139–182., 2016.
- 510 Berteaux, D., Gauthier, G., Domine, F., Ims, R. A., Lamoureux, S. F., Lévesque, E. and Yoccoz, N.: Effects of changing permafrost and snow conditions on tundra wildlife: critical places and times, *Arct. Sci.*, 3(2), 65–90, doi:10.1139/as-2016-0023, 2017.
- Beven, K. J. and Kirkby, M. J.: A physically based, variable contributing area model of basin hydrology, *Hydrol. Sci. Bull.*, 24(1), 43–69, doi:10.1080/02626667909491834, 1979.
- 515 Bokhorst, S., Pedersen, S. H., Brucker, L., Anisimov, O., Bjerke, J. W., Brown, R. D., Ehrich, D., Essery, R. L. H., Heilig, A., Ingvander, S., Johansson, C., Johansson, M., Jónsdóttir, I. S., Inga, N., Luoju, K., Macelloni, G., Mariash, H., McLennan, D., Rosqvist, G. N., Sato, A., Savelle, H., Schneebeli, M., Sokolov, A., Sokratov, S. A., Terzago, S., Vikhamar-Schuler, D., Williamson, S., Qiu, Y. and Callaghan, T. V: Changing Arctic snow cover: A review of recent developments and assessment of future needs for observations, modelling, and impacts, *Ambio*, 45(5), 516–537, doi:10.1007/s13280-016-0770-0, 2016.
- Burn, C. R. and Zhang, Y.: Permafrost and climate change at Herschel Island (Qikiqtaruk), Yukon Territory, Canada, *J. Geophys. Res. Earth Surf.*, 114(2), 1–16, doi:10.1029/2008JF001087, 2009.
- Calonne, N., Flin, F., Geindreau, C., Lesaffre, B. and Rolland Du Roscoat, S.: Study of a temperature gradient metamorphism of snow from 3-D images: Time evolution of microstructures, physical properties and their associated anisotropy, *Cryosphere*, 8(6), 2255–2274, doi:10.5194/tc-8-2255-2014, 2014.
- 525 Chang, P. S., Mead, J. B., Knapp, E. J., Sadowy, G. A., Davis, R. E. and McIntosh, R. E.: Polarimetric Backscatter from fresh and metamorphic snowcover at millimeter wavelengths, *IEEE Trans. Antennas Propag.*, 44(1), 58–73, doi:10.1109/8.477529, 1996.
- Clark, M. P., Hendrikx, J., Slater, A. G., Kavetski, D., Anderson, B., Cullen, N. J., Kerr, T., Örn Hreinsson, E. and Woods, R. A.: Representing spatial variability of snow water equivalent in hydrologic and land-surface models: A review, *Water Resour. Res.*, 47(7), doi:10.1029/2011WR010745, 2011.
- Colbeck, S. C.: Theory of Metamorphism of Wet Snow., US Army Corps Eng Cold Reg Res Eng Lab Res Rep, 88(313), 5475–5482, 1973.
- 530 Colbeck, S. C.: An overview of seasonal snow metamorphism, *Rev. Geophys.*, 20(1), 45–61, doi:10.1029/RG020i001p00045, 1982.
- Cray, H. A. and Pollard, W. H.: Vegetation recovery patterns following permafrost disturbance in a Low Arctic setting: Case study of Herschel Island, Yukon, Canada, *Arctic, Antarct. Alp. Res.*, 47(1), 99–113, doi:10.1657/AAAR0013-076, 2015.
- 535 Dedieu, J., Negrello, C., Jacobi, H., Duguay, Y., Boike, J., Bernard, E., Westermann, S., Gallet, J. and Wendleder, A.: Improvement of snow physical parameters retrieval using SAR data in the Arctic ( Svalbard ), in *International Snow Science Workshop*, pp. 303–307, Innsbruck, Austria. [online] Available from: <https://www.issw2018.com/en/>, 2018.
- Dolant, C., Montpetit, B., Langlois, A., Brucker, L., Zolina, O., Johnson, C. A., Royer, A. and Smith, P.: Assessment of the Barren Ground Caribou Die-off During Winter 2015–2016 Using Passive Microwave Observations, *Geophys. Res. Lett.*, 45(10), 4908–4916,

doi:10.1029/2017GL076752, 2018.

- 540 Domine, F., Barrere, M. and Morin, S.: The growth of shrubs on high Arctic tundra at Bylot Island: Impact on snow physical properties and permafrost thermal regime, *Biogeosciences*, 13(23), 6471–6486, doi:10.5194/bg-13-6471-2016, 2016.
- Domine, F., Picard, G., Morin, S. and Barrere, M.: Major Issues in Simulating some Arctic Snowpack Properties Using Current Detailed Snow Physics Models . Consequences for the Thermal Regime and Water Budget of Permafrost , doi:10.1029/2018MS001445, 2018a.
- Domine, F., Belke-Brea, M., Sarrazin, D., Arnaud, L., Barrere, M. and Poirier, M.: Soil moisture, wind speed and depth hoar formation in the Arctic snowpack, *J. Glaciol.*, 64(248), 990–1002, doi:10.1017/jog.2018.89, 2018b.
- 545 Duguay, Y., Bernier, M., Lévesque, E. and Tremblay, B.: Potential of C and X band SAR for shrub growth monitoring in sub-arctic environments, *Remote Sens.*, 7(7), 9410–9430, doi:10.3390/rs70709410, 2015.
- Eisched, I.: Mapping of soil organic carbon and nitrogen in two small adjacent Arctic watersheds on Herschel Island, Yukon Territory, University of Hohenheim. [online] Available from: 10013/epic.47347.d001, 2015.
- 550 Fierz, C., Armstrong, R. L., Durand, Y., Etchevers, P., Greene, E., McClung, D. M., Nishimura, K., Satyawali, P. K. and Sokratov, S. A.: The International Classification for Seasonal Snow on the Ground, UNESCO/IHP., 2009.
- Frei, A., Tedesco, M., Lee, S., Foster, J., Hall, D. K., Kelly, R. and Robinson, D. A.: A review of global satellite-derived snow products, *Adv. Sp. Res.*, 50(8), 1007–1029, doi:10.1016/j.asr.2011.12.021, 2012.
- Games, P. a and Howell, J. F.: Statistics Key words : Multiple Comparisons ; iances ; Unequal Sample Sizes Means ; Heterogeneous Games and Howell, J. Educ. Stat., 1(2), 113–125, 1976.
- 555 Goodrich, L. E.: The influence of snow cover on the ground thermal regime, *Can. Geotech. J.*, 19(4), 421–432, doi:10.1139/t82-047, 1982.
- Gouttevin, I., Menegoz, M., Dominé, F., Krinner, G., Koven, C., Ciais, P., Tarnocai, C. and Boike, J.: How the insulating properties of snow affect soil carbon distribution in the continental pan-Arctic area, *J. Geophys. Res. Biogeosciences*, 117(2), 1–11, doi:10.1029/2011JG001916, 2012.
- 560 Gouttevin, I., Langer, M., Löwe, H., Boike, J., Proksch, M. and Schneebeli, M.: Observation and modelling of snow at a polygonal tundra permafrost site: spatial variability and thermal implications, *Cryosph. Discuss.*, (January), 1–43, doi:10.5194/tc-2017-280, 2018.
- IPCC: The Ocean and Cryosphere in a Changing Climate. A Special Report of the Intergovernmental Panel on Climate Change, Intergov. Panel Clim. Chang., undefined [online] Available from: <https://www.ipcc.ch/srocc/chapter/summary-for-policymakers/>, 2019.
- Kankaanpää, T., Skov, K., Abrego, N., Lund, M., Schmidt, N. M. and Roslin, T.: Spatiotemporal snowmelt patterns within a high Arctic landscape, with implications for flora and fauna, *Arctic, Antarct. Alp. Res.*, 50(1), 1–17, doi:10.1080/15230430.2017.1415624, 2018.
- 565 King, J., Derksen, C., Toose, P., Langlois, A., Larsen, C., Lemmetyinen, J., Marsh, P., Montpetit, B., Roy, A., Rutter, N. and Sturm, M.: The influence of snow microstructure on dual-frequency radar measurements in a tundra environment, *Remote Sens. Environ.*, 215(December 2017), 242–254, doi:10.1016/j.rse.2018.05.028, 2018.
- Lantuit, H. and Pollard, W. H.: Fifty years of coastal erosion and retrogressive thaw slump activity on Herschel Island, southern Beaufort Sea, Yukon Territory, Canada, *Geomorphology*, 95(1–2), 84–102, doi:10.1016/j.geomorph.2006.07.040, 2008.
- 570 Leinss, S., Parrella, G. and Hajnsek, I.: Snow height determination by polarimetric phase differences in X-band SAR data, *IEEE J. Sel. Top. Appl. Earth Obs. Remote Sens.*, 7(9), 3794–3810, 2014.
- Leinss, S., Löwe, H., Proksch, M., Lemmetyinen, J., Wiesmann, A. and Hajnsek, I.: Anisotropy of seasonal snow measured by polarimetric phase differences in radar time series, *Cryosph.*, 10(4), 1771–1797, 2016.

575 [Liston, G. E.: Representing Subgrid Snow Cover Heterogeneities in Regional and Global Models, \*Journal of Climate\*, 17, 1381-1397, 550 10.1175/1520-8. 2014. 0442\(2004\)017<1381:RSSCHI>2.0.CO;2, 2004.](#)

Mätzler, C.: Applications of the interaction of microwaves with the natural snow cover, *Remote Sens. Rev.*, 2(2), 259–387, doi:10.1080/02757258709532086, 1987.

Meloche, J., Langlois, A., Rutter, N., Royer, A., King, J., Walker, B., Marsh, P., and Wilcox, E. J.: [Characterizing tundra snow sub-pixel variability to improve brightness temperature estimation in satellite SWE retrievals](https://doi.org/10.5194/tc55516-87-2022), *The Cryosphere*, 16, 87–101, <https://doi.org/10.5194/tc55516-87-2022>, 2022.

Myers-Smith, I., Grabowski, M. M., Thomas, H. J. D., Björkman, A. D., Cunliffe, A. M., Assmann, J. J., Boyle, J., Mcleod, E., Mcleod, S., Joe, R., Lennie, P., Arey, D. and Gordon, R.: Eighteen years of ecological monitoring reveals multiple lines of evidence for tundra vegetation change, *Ecol. Monogr.*, 89(2), doi:10.1002/ecm.1351, 2019.

Myers-Smith, I. H., & Hik, D. S. [Shrub canopies influence soil temperatures but not nutrient dynamics: An experimental test of tundra snow-shrub interactions](https://doi.org/10.1002/ece3.710), *Ecology and Evolution*, 3(11), 3683–3700. <https://doi.org/10.1002/ece3.710>, 2013.

Myers-Smith, I. H., Hik, D. S., Kennedy, C., Cooley, D., Johnstone, J. F., Kenney, A. J. and Krebs, C. J.: Expansion of canopy-forming willows over the twentieth century on Herschel Island, Yukon Territory, Canada, *Ambio*, 40(6), 610–623, doi:10.1007/s13280-011-0168-y, 2011a.

Myers-Smith, I. H., Forbes, B. C., Wilmking, M., Hallinger, M., Lantz, T., Blok, D., Tape, K. D., MacIsaac-Fauria, M., Sass-Klaassen, U., Lévesque, E., Boudreau, S., Ropars, P., Hermanutz, L., Trant, A., Collier, L. S., Weijers, S., Rozema, J., Rayback, S. A., Schmidt, N. M., Schaeppman-Strub, G., Wipf, S., Rixen, C., Ménard, C. B., Venn, S., Goetz, S., Andreu-Hayles, L., Elmendorf, S., Ravolainen, V., Welker, J., Grogan, P., Epstein, H. E. and Hik, D. S.: Shrub expansion in tundra ecosystems: Dynamics, impacts and research priorities, *Environ. Res. Lett.*, 6(4), doi:10.1088/1748-9326/6/4/045509, 2011b.

O’Callaghan, J. F. and Mark, D. M.: The extraction of drainage networks from digital elevation data, *Comput. Vision, Graph. Image Process.*, 28(3), 323–344, doi:10.1016/0734-189X(89)90053-4, 1984.

Patil, A., Singh, G. and Rüdiger, C.: Retrieval of snow depth and snow water equivalent using dual polarization SAR data, *Remote Sens.*, 12(7), 1–11, doi:10.3390/rs12071183, 2020.

Poirier, M., Gauthier, G. and Domine, F.: What guides lemmings movements through the snowpack?, *J. Mammal.*, 100(5), 1416–1426, doi:10.1093/jmammal/gyz129, 2019.

Pollard, W.: The nature and origin of ground ice in the herschel island area, Yukon Territory, *Nordicana*, (54), 23–30, 1990.

Pomeroy, J. W., Bewley, D. S., Essery, R. L. H., Hedstrom, N. R., Link, T., Granger, R. J., Sicart, J. E., Ellis, C. R. and Janowicz, J. R.: Shrub tundra snowmelt, *Hydrol. Process.*, 20(4), 923–941, doi:10.1002/hyp.6124, 2006.

Porter, C., Morin, P., Howat, I., Noh, M.-J., Bates, B., Peterman, K., Keeseey, S., Schlenk, M., Gardiner, J., Tomko, K., Willis, M., Kelleher, C., Cloutier, M., Husby, E., Foga, S., Nakamura, H., Platson, M., Wethington Michael, J., Williamson, C., Bauer, G., Enos, J., Arnold, G., Kramer, W., Becker, P., Doshi, A., D’Souza, C., Cummings, P., Laurier, F. and Bojesen, M.: ArcticDEM [dataset] , doi:10.7910/DVN/OHHUKH, 2018.

Rott, H. and Mätzler, C.: Possibilities and limits of synthetic aperture radar for snow and glacier surveying, *Ann. Glaciol.*, 9, 195–199, doi:10.1071/SRB04Abs021, 1987.

Royer, A., Domine, F., Roy, A., Langlois, A., Davesne, G., Royer, A., Domine, F., Roy, A. and Langlois, A.: New northern snowpack classification linked to vegetation cover on a latitudinal mega-transect across northeastern Canada, *Écoscience*, 00(00), 1–18, doi:10.1080/11956860.2021.1898775, 2021.

Rutter, N., Sandells, M., Derksen, C., Toose, P., Royer, A., Montpetit, B., Langlois, A., Lemmetyinen, J. and Pulliainen, J.: Snow stratigraphic heterogeneity within ground-based passive microwave radiometer footprints: Implications for emission modeling, *J. Geophys. Res. Earth Surf.*, 119(3), 550–565, doi:10.1002/2013JF003017, 2014.

Schmitt, A.: Multiscale and Multidirectional Multilooking for SAR Image Enhancement, *IEEE Trans. Geosci. Remote Sens.*, 54(9), 5117–5134, doi:10.1109/TGRS.2016.2555624, 2016.



- Schmitt, A., Wendleder, A. and Hinz, S.: The Kennaugh element framework for multi-scale, multi-polarized, multi-temporal and multi-frequency SAR image preparation, *ISPRS J. Photogramm. Remote Sens.*, 102, 122–139, doi:10.1016/j.isprsjprs.2015.01.007, 2015.
- 620 Schneebeli, M. and Sokratov, S. A.: Tomography of temperature gradient metamorphism of snow and associated changes in heat conductivity, *Hydrol. Process.*, 18, 3655–3665, doi:10.1002/hyp.5800, 2004.
- Short, N., Brisco, B., Couture, N., Pollard, W., Murnaghan, K. and Budkewitsch, P.: A comparison of TerraSAR-X, RADARSAT-2 and ALOS-PALSAR interferometry for monitoring permafrost environments, case study from Herschel Island, Canada, *Remote Sens. Environ.*, 115(12), 3491–3506, doi:10.1016/j.rse.2011.08.012, 2011.
- 625 Smith, C. A. S., Kennedy, C. E., Hargrave, A. E. and McKenna, K. M.: Soil and vegetation of Herschel Island, Yukon territory, *Yukon Soil Surv. Rep.*, 1, 1989.
- Solomon, S. M.: Spatial and temporal variability of shoreline change in the Beaufort-Mackenzie region, northwest territories, Canada, *Geo-Marine Lett.*, 25(2–3), 127–137, doi:10.1007/s00367-004-0194-x, 2005.
- Stettner, S., Lantuit, H., Heim, B., Eppler, J., Roth, A., Bartsch, A. and Rabus, B.: TerraSAR-X time series fill a gap in spaceborne Snowmelt Monitoring of small Arctic Catchments-A case study on Qikiqtaruk (Herschel Island), Canada, *Remote Sens.*, 10(7), 1155, doi:10.3390/rs10071155, 2018.
- 630 Stieglitz, M., Déry, S. J., Romanovsky, V. E. and Osterkamp, T. E.: The role of snow cover in the warming of arctic permafrost, *Geophys. Res. Lett.*, 30(13), 2003.
- Sturm, M. and Holmgren, J.: Effects of microtopography on texture, temperature and heat flow in Arctic and sub-Arctic snow, *Ann. Glaciol.*, 19, 63–68, doi:10.1017/s0260305500010995, 1994.
- 635 Sturm, M., Holmgren, J. and Liston, G. E.: A seasonal snow cover classification system for local to global applications, *J. Clim.*, 8(5), 1261–1283, doi:10.1175/1520-0442(1995)008<1261:ASSCCS>2.0.CO;2, 1995.
- Sturm, M., McFadden, J. P., Liston, G. E., Stuart Chapin, F., Racine, C. H. and Holmgren, J.: Snow-shrub interactions in Arctic Tundra: A hypothesis with climatic implications, *J. Clim.*, 14(3), 336–344, doi:10.1175/1520-0442(2001)014<0336:SSIIAT>2.0.CO;2, 2001.
- 640 Sturm, M., Derksen, C., Liston, G., Silis, A., Solie, D., Holmgren, J., Huntington, H. and Liston, G.: A Reconnaissance Snow Survey across Northwest Territories and Nunavut, Canada, April 2007, *Erdc/Crrel*, (April 2007), 2008.
- Thompson, A., Kelly, R. and Marsh, P.: Spatial variability of snow at Trail Valley Creek, NWT, in 73rd Eastern Snow Conference, pp. 101–108, Columbus, Ohio, USA., 2016.
- Wilcox, E. J., Keim, D., de Jong, T., Walker, B., Sonnentag, O., Sniderhan, A. E., Mann, P. and Marsh, P.: Tundra shrub expansion may amplify permafrost thaw by advancing snowmelt timing, *Arct. Sci.*, 5(4), 202–217, doi:10.1139/as-2018-0028, 2019.
- 645 [Winstral, A., and Marks, D.: Long-term snow distribution observations in a mountain catchment: Assessing variability, time stability, and the representativeness of an index site, \*Water Resources Research\*, 50, 293-305, 10.1002/2012WR013038, 2014.](#)
- Wolter, J., Lantuit, H., Fritz, M., Macias-Fauria, M., Myers-Smith, I. and Herzschuh, U.: Vegetation composition and shrub extent on the Yukon coast, Canada, are strongly linked to ice-wedge polygon degradation, *Polar Res.*, 35(2016), doi:10.3402/polar.v35.27489, 2016.

650

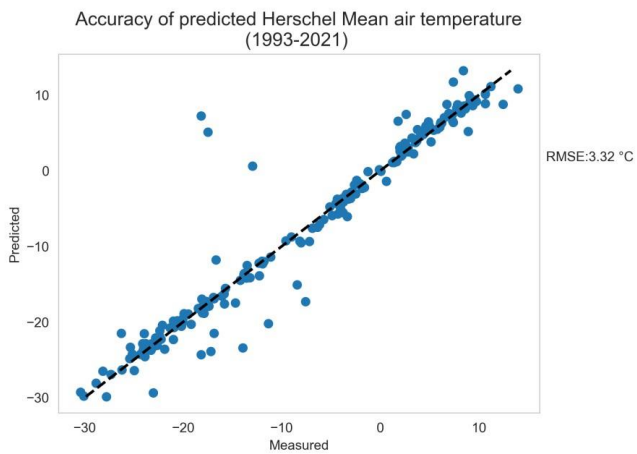
**Appendix A: Meteorological data gap-filling**

The meteorological station is not equipped with a telemetry system and since the island is inaccessible during the winter, the lack of data during the winters 2014-2015 and 2017-2018 was caused by a malfunction of the station. Air temperature during these periods were gap filled using Komakuk beach meteorological station as performed by Burn and Zhang (2009). The following equation was used to apply on Komakuk beach dataset:

$$T_h = 0.97T_k + 0.75$$

Where  $T_h$  are the monthly mean air temperature at Herschel island and  $T_k$  at Komakuk beach. Predicted values showed good correlation ( $R^2:0.93$ ,  $pvalue = < 0.001$ ) with RMSE of 3.32 --C (Fig.A1).

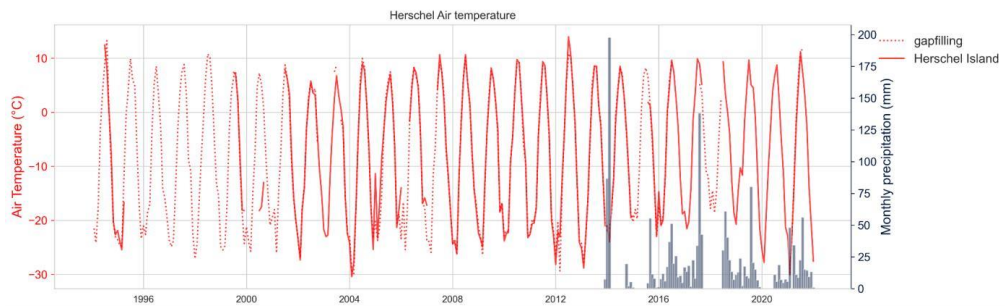
655



660

**635 Figure A1:** result from linear regression between air temperature measured on Herschel Island and predicted value using Burn and Zhang 2009 equation.

Figure A2 show a visual comparison between the air temperature predicted and measured along the timeserie. Unfortunately, no precipitation dataset were available at Komakuk beach station.

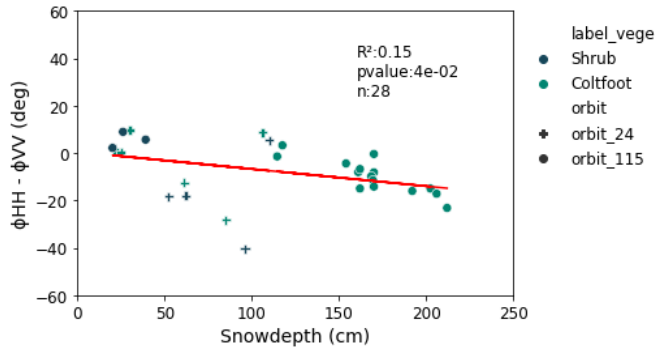


565

**Figure A2:** Comparison during 1994-2022 air temperature measured on Herschel Island and predicted value using Burn and Zhang 2009 equation.

## Appendix B: Complementary results

670



**Figure 1A1:** Linear regression between CPD and snowdepth on descending orbit (orbits 24 and 115) without TWI threshold.

Table A1B1 show the complementary results retrieved during the linear regression analysis, between CPD and every snow variable measured on the field. Results with  $R^2$  greater or equal to 0.5 are shown in bold character. The samples may vary when a measurement was not possible during the field campaign.

675

Each variables describe a characteristic sampled in the snowpit:

H\_tot : Snow depth (cm).

H\_ws : Wind slab height (cm).

H\_dh : Depth hoar height (cm).

680

H\_tot\_ice : Snow height to the first ice layer observed in the snowpit (cm). The ice layer thickness must be greater than 2 cm.

H\_tot\_mf : Snow height to the first meltfreeze crust (cm).

Density\_moy : Average snow density ( $\text{kg m}^{-3}$ )

Density\_dh : Average density for the depth hoar layer ( $\text{kg m}^{-3}$ ).

Ssa\_ws : Average *snow surface area* measured in the wind slab layer.

685

Ratio\_df : Depth hoar fraction in the snowpit (%)

Cumul\_tot : Cumulative thickness of horizontal layers (meltfreeze crust, ice lens, in cm).

Ice\_cumul : Cumulative thickness of ice lens (cm). cumulée de couche de glace

Cumul\_crust : Cumulative thickness of meltfreeze crust (cm).

Ratio\_ws : Windslab ratio in the snowpit (%)

**Table A3B1.** Complementary results retrieved during the linear regression analysis. The standard deviation with bootstrap is not show as the results with R<sup>2</sup> greater than 0.5 have samples with less than 8 observations.

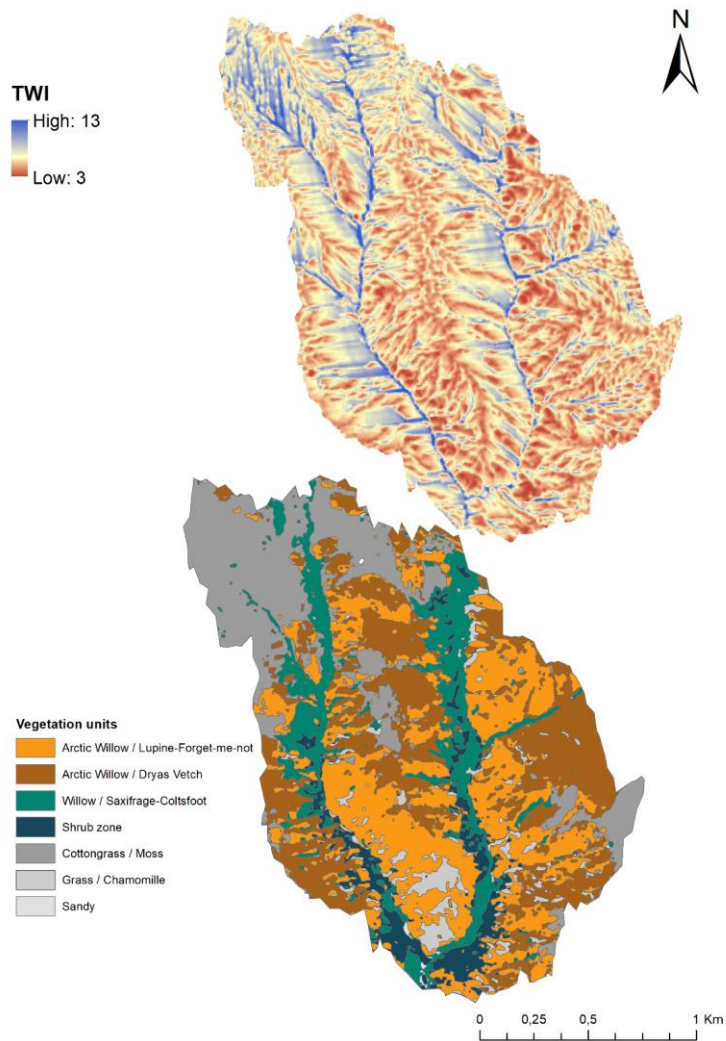
Orbit 115												
	ratio_	ice	cumul	densit	densit	ratio_	h_tot_	h_tot_	h_dh	h_ws	h_tot	ssa_ws
	dh	cumul	crust	y	y	ws	mf	ice				
				moy	dh							
<b>R<sup>2</sup> (p)</b>	0.0 (0.86)	0.16 (0.15)	0.17 (0.13)	0.06 (0.42)	0.03 (0.60)	0.00 (0.92)	0.00 (0.93)	0.07 (0.36)	0.22 (0.08)	0.09 (0.28)	0.31 (0.03)	0.05 (0.46)
<b>sample</b>	15	15	15	14	13	15	15	15	15	15	15	13

Orbit 152													
	ssa_	ice_	cumu	h_	h_ws	h_dh	h_tot	h_tot	ratio_	densit	densi	cumu	ratio
	ws	cumu	l	tot			mf	ice	ws	y	ty	l	dh
		l	tot	tot						dh	moy	crust	
<b>R<sup>2</sup> (p)</b>	0.04 (0.7)	0.46 (0.06)	<b>0.64</b> <b>(0.02)</b>	0.45 (0.07)	0.48 (0.06)	0.02 (0.72)	0.38 (0.19)	0.19 (0.28)	0.09 (0.56)	0.0 (0.98)	<b>0.51</b> <b>(0.05)</b>	0.34 (0.17)	0.27 (0.19)
<b>sample</b>	6	8	8	8	8	8	6	8	6	8	8	7	8

Orbit 24													
	cumu	ratio	densit	densit	ratio	ssa	h_tot	h_dh	h_ws	h_tot	ice_	h_tot	cumu
	l	ws	y	y	dh	ws	_ice				cumu	_mf	l
	crust		moy	dh							l		tot
<b>R<sup>2</sup> (p)</b>	0.02 (0.64)	0.02 (0.6)	0.01 (0.7)	0.09 (0.33)	0.0 (0.83)	0.01 (0.76)	0.03 (0.59)	0.04 (0.49)	0.03 (0.59)	0.0 (0.87)	0.2 (0.14)	0.03 (0.55)	0.08 (0.33)
<b>sample</b>	13	14	14	13	14	12	12	14	14	14	12	13	14

**Table B2.** Comparison of snow characteristics with Royer et al. (2021) classification. Mean temperature was extracted from 1974-2019 meteorological station from Qikiqtaruk Herschel Island and for the winter season (December to March as define by Royer et al (2021)). Latitude

	range (°N)	Mean Temperature (°C)	SWE ± Std (mm)	SD ± Std (cm)	Density ± Std (kg m <sup>-3</sup> )
<u>Qikiqtaruk Herschel Island</u>	<u>68-69</u>	<u>-22.1</u>	<u>142.6 ± 99.1</u>	<u>47.4 ± 39.6</u>	<u>343.8 ± 73.7</u>
<u>Herbaceous and low shrub tundra snow (from Royer et al. (2021))</u>	<u>58-74</u>	<u>-23.6</u>	<u>132.9 ± 57.6</u>	<u>43.1 ± 35.2</u>	<u>315.3 ± 49.1</u>



**Figure B2:** Topographic wetness index (TWI) map compared to vegetation units located on Okiqtaruk-Herschel is land.

## Appendix BC: Statistical analysis assumptions and results

### Homoscedasticity

Linear least squares regression assumes that the residuals come from a population where the variance is constant. When heteroscedasticity is present, the result is therefore unreliable. The Breusch-Pagan statistical test evaluates the assumption of homoscedasticity, *i.e.* the consistency of the error variance in a linear regression model.

The assumptions are:

*null hypothesis (H0):* Homoscedasticity is present

*alternative hypothesis (Ha):* Homoscedasticity is not present (heteroscedasticity is present)

If the p-value of the Lagrange multiplier statistic (LMS) is greater than 0.05, the probability of homoscedasticity is greater than 5%. The null hypothesis is therefore retained. In the opposite case (p-value < 0.05), the probability of homoscedasticity is less than 5%. The alternative hypothesis is then adopted.

### Autocorrelation

The Durbin-Watson test (DW) is used to test the autocorrelation of residuals in linear regression models. It assesses whether the residuals are independent.

The assumptions are:

*H0:* There is no correlation between the residuals

*Ha:* The residuals are autocorrelated.

The results are expected between 0 and 4. Values between 1.5 and 2.5 indicates no autocorrelation. Results near 0 show positive autocorrelation, while results near 4 show negative autocorrelation.

**Table B1C1.** statistical test results for CPD and snow depth correlation analysis. Each model represents a divided sample in function of vegetation class and TSX orbit. Results with an R<sup>2</sup> greater than 0.5 is shown. Durbin-Watson test (DW) and the Breusch-Pagan test (LMS) were selected to assess the autocorrelation for the first and the homoscedasticity for the latter. LMS stand for Lagrange multiplier statistic

Vegetation class	orbit	sample	R <sup>2</sup>	Adjusted R <sup>2</sup>	DW	LMS	LMS p-value
<i>Lupine</i>	24	17	0.55	0.52	1.80	2.51	0.11
<i>Coltsfoot</i>	115	16	0.70	0.68	2.01	1.65	0.19
<i>Coltsfoot+Shrub</i>	115	19	0.75	0.73	0.81	3.48	0.06
<i>Coltsfoot</i>	152	5	0.68	0.58	1.37	2.03	0.15