

A regionally resolved inventory of High Mountain Asia surge-type glaciers, derived from a multi-factor remote sensing approach

Gregoire Guillet¹, Owen King¹, Mingyang Lv², Sajid Ghuffar¹, Douglas Benn¹, Duncan Quincey³, and Tobias Bolch¹

¹School of Geography and Sustainable Development, University of St Andrews, United Kingdom of Great Britain and Northern Ireland

²Aerospace Information Research Institute, Chinese Academy of Sciences, Beijing, 100094, China

³School of Geography, University of Leeds, United Kingdom of Great Britain and Northern Ireland

Correspondence: Gregoire Guillet (gg70@st-andrews.ac.uk)

Abstract. Knowledge about the occurrence and characteristics of surge-type glaciers is crucial due to the impact of surging on glacier melt and glacier related hazards. One of the "super-clusters" of surge-type glaciers is the mountains of Asia. However, no consistent region-wide inventory of surge-type glaciers in High Mountain Asia exists. We present a regionally resolved inventory of surge-type glaciers based on their behaviour across High Mountain Asia between 2000 and 2018. We identify 5 surge-type behaviour from surface velocity, elevation and feature change patterns using a multi-factor remote sensing approach that combines yearly ITS_LIVE velocity data, DEM differences and very-high resolution imagery (Bing Maps, Google Earth). Out of the ≈ 95000 glaciers in HMA, we identified 666 that show diagnostic surge-type glacier behaviour between 2000 and 2018, which are mainly found in the Karakoram (223) and the Pamir regions (223). The total area covered by the 666 surge-type glaciers represents 19.5% of the glacierized area in Randolph Glacier Inventory (RGI) V6.0 polygons in HMA. [68](#) 10 [glaciers were already identified as surge-type](#). We validate 107 previously identified glaciers as surge-type and newly identify 491 glaciers. We finally discuss the possibility of self-organized criticality in glacier surges. Across all regions of HMA, the surge-affected area within glacier complexes displays a significant power law dependency with glacier length.

1 Introduction

Glacier surges are internally triggered, quasi-periodic oscillations of a glacier's dynamical behaviour, alternating between slow 15 and fast flow (Meier and Post, 1969; Raymond, 1987; Sharp, 1988; Truffer et al., 2021). While periods of slow flow (or quiescence) usually last for tens to hundreds of years, periods of fast flow (surge) are shorter (months to 15 years), with flow velocity reaching up to 10-1000 times its standard order of magnitude (Meier and Post, 1969; Murray et al., 2003; Pritchard et al., 2005; Mansell et al., 2012). During surges, a substantial volume of ice is transferred from a reservoir zone down-glacier to a receiving zone. This mass transfer typically leads to drastic thinning in the upper reaches of the glacier and thickening at 20 lower elevations, often causing a substantial advance of the glacier terminus (see Sund et al. (2009) for example).

Glacier surges can occur on both polythermal and temperate glaciers. In the former case, the bed can oscillate between cold and warm states over the course of a surge cycle, whereas in the latter the bed remains warm throughout. These two cases have

been used as the basis for a two-fold classification of surge-type glaciers ("Svalbard-type" vs. "Alaskan-type") with distinct instability mechanisms ("thermal switch" and "hydrological switch", respectively) (Murray et al., 2003; Jiskoot et al., 2001).
25 This binary view, however, reflects neither the wide diversity of surging behaviour (see Quincey et al. (2015) for example) nor the consistent associations between surging and climate, glacier geometry, and substrate characteristics. Benn et al. (2019) have argued that the full spectrum of glacier dynamic behaviour can be understood in terms of basal enthalpy balance. That is, stable steady states (non-surging behaviour) are only possible if enthalpy (thermal energy and water) generated at glacier beds from geothermal heat, friction and other sources can be evacuated from the system at the same rate. Imbalances between
30 enthalpy inputs and outputs result in dynamic instabilities, including surges. Some combinations of regional (climatic) and local (topographic, geologic) factors encourage instability, consistent with observations (Sevestre and Benn, 2015). Many aspects of enthalpy balance theory need to be worked out in detail (e.g. interactions between ice motion, friction and basal drainage), and predictions of the theory need to be tested against local and regional datasets.

Surge-type behaviour has been documented for around 1% of glaciers worldwide (Jiskoot et al., 2000; Sevestre and Benn, 2015), with two main "super-clusters" : High Mountain Asia (HMA) and the so called "Arctic Ring" (Alaska, Arctic Canada, Svalbard, and Russian High Arctic) (Sevestre and Benn, 2015). Surge-type glaciers throughout HMA have received significant attention in the past decades, with many regional inventories being generated, especially in the Karakoram (Hewitt, 1969; Kotlyakov et al., 1997; Barrand and Murray, 2006; Quincey et al., 2011; Copland et al., 2011; Bolch et al., 2017), Pamirs (Osipova et al., 1998; Kotlyakov et al., 2008; Shangguan et al., 2016; Lv et al., 2019; Goerlich et al., 2020) and Tien Shan
40 (Osmonov et al., 2013; Häusler et al., 2016; Mukherjee et al., 2017; Zhou et al., 2021). More recently, glacier surges have been documented in understudied regions of HMA such as the Tibetan Plateau (King et al., 2021; Xu et al., 2021; Zhu et al., 2021) and Western Kunlun Shan (Yasuda and Furuya, 2013, 2015; Chudley and Willis, 2019; Muhammad and Tian, 2020). Many of these studies have focused on the modern satellite era and highlighted the non-uniform distribution of surge-type glaciers in HMA, giving a more accurate representation of the prevalence of surge-type glaciers compared to ground based
45 efforts (Kotlyakov et al., 2008; Imran and Ahmad, 2021). The only existing inventory of surge-type glaciers in HMA originates from the study of Sevestre and Benn (2015). Their inventory however relies on a compilation of scientific literature, albeit considering inconsistent diagnostic criteria, identification methods and study periods (1861-2013).

The cyclical advance of surge-type glaciers can result in repeated and widespread glacier hazard (i.e. outburst of glacier-dammed lakes, gravitational instabilities etc.) formation (Gardner and Hewitt, 1990; Ding et al., 2018; Bhambri et al., 2019; Truffer et al., 2021). Hazards associated with surge-type glaciers impact both the local environment in the path of the advancing glacier terminus (Shangguan et al., 2016) and communities further downstream, in the path of meltwater produced by glaciers at the head of mountain catchments. The source of many large Glacial Lake Outburst Floods (GLOFs) in the Karakoram can be traced back to lakes which have formed behind the advancing terminus of a surge-type glacier (Hewitt and Liu, 2010; Bhambri et al., 2019). The timing and magnitude of the drainage of such lakes is difficult to predict because of the active nature of
55 the lake's ice dam, but several GLOFs may occur from the same lake during the active phase of the damming glacier (Round et al., 2017; Gao et al., 2021; Bazai et al., 2021). The recent surge and associated glacial lake formation alongside Shishpare Glacier (Bhambri et al., 2020; Muhammad et al., 2021) is just one example of the threat posed by surge-related hazards to

high mountain infrastructure such as the International Karakoram Highway – a route which provides a vital link to mountain communities in southwest China/Tibet and Pakistan (Ding et al., 2018).

60 The impact of ice redistribution through a glacier surge's cycle on its overall rate of mass loss or gain (mass balance) over multi-decadal timescales is still disputed. The flux of ice from a surge-type glacier's reservoir zone to its receiving zone results in the redistribution of a large ice volume to lower altitude, where it is more prone to ablation (Sund et al., 2009; King et al., 2021). Studies have documented increased melt rate in the expanded ablation zone, outpacing the rate of quiescent phase ice build-up in the years following surge cessation, and leading to markedly more negative mass balance (Aðalgeirsdóttir et al., 2005; Kochtitzky et al., 2019; King et al., 2021). Similarly, synchronous surging by a number of glaciers in the Ak-Shirak region of the Northern Tien Shan resulted in enhanced ice loss in the 1980s and 1990s when no significant change in temperature or precipitation otherwise occurred to drive enhanced ablation (Bhattacharya et al., 2021). The surge-related fluctuation of individual glacier mass balance does not appear pronounced enough to influence regional ice loss rates over shorter time scales amongst the larger surge-type glacier clusters, such as the Karakoram (Gardelle et al., 2013; Berthier and Brun, 2019). A detailed inventory of surge-type glaciers is clearly important for a region such as HMA, where glacier hazard mitigation and glacier meltwater yield will be a high priority as the temperatures of the region are projected to further rise in coming decades (Kraaijenbrink et al., 2017; Bolch et al., 2019; Lalande et al., 2021).

The objectives of this paper are twofold. First, we aim to assess the occurrence of surge-type glaciers across HMA using remotely sensed data spanning the period 2000-2018. Then, we aim to clarify what are the main geometric characteristics and controls for surging in HMA, as well as providing a clearer image of the spectrum of possible surge behavior, in light of the enthalpy balance theory (Benn et al., 2019).

2 Data and methods for surge-type glacier identification

We propose to identify surge-type glaciers from distinct widely used criteria (Dowdeswell and Williams, 1997; Copland et al., 2003; Grant et al., 2009), directly contrasting with regional trends of glacier mass loss (Brun et al., 2017; Shean et al., 2020; Bhattacharya et al., 2021), slow down (Dehecq et al., 2019) and retreat (Li et al., 2019). First, substantial and spatially concentrated surface elevation changes (over 1-10 years), either in the reservoir zone or at lower elevations (near the glacier terminus), are assumed to be typical of surge-type glacier ice mass redistribution. Then, substantial variations in a glacier's velocity field over a similar time period is taken as indicative of surging. Finally, we consider chaotic glacier-wide crevasse patterns mixing longitudinal and transverse crevasses at low altitudes (typically close to the front) as diagnostic of active glacier surges. While terminus advance is often a consequence of glacier surges, not all surge-type glaciers display terminal advance during the active phase and it is therefore not considered as a discriminating criterion for surge identification (Paul et al., 2017; Steiner et al., 2018).

2.1 Glacier surface elevation changes

We considered two contrasting patterns of glacier surface elevation change to be diagnostic of surge-type glaciers. We aimed to identify glaciers which exhibited substantial and widespread surface elevation gain (thickening) over their receiving zone, which is also commonly accompanied by surface elevation decrease (thinning) over a glacier's reservoir zone due to the flux of ice between the two areas (Figure 1 (A)). We consider this pattern of elevation change to be diagnostic of the active phase of a glacier's surge cycle. We also aimed to identify glaciers which exhibited substantial and widespread reservoir zone thickening and concomitant terminal thinning, which we attribute to quiescent phase ice build-up occurring alongside post-surge phase ice loss at lower elevations (Figure 1 (B)). To identify the mass displacement associated with the active phase of a glacier's surge cycle, or substantial ice mass build up associated with the quiescent phase of the surge cycle, we examined multi-temporal datasets of surface elevation change (dH) over HMA glaciers. We primarily used the dH data generated by Shean et al. (2020), which covers the period 2000-2018, to identify the elevation change patterns described above. To aid the identification of surge-like behaviour which may have occurred at the beginning of the period covered by Shean et al. (2020), the signal of which may have been obscured by subsequent long-term thinning, we also examined dH data generated by Hugonnet et al. (2021) over the periods 2000-2004 and 2005-2009, and by Brun et al. (2017) over the period 2000-2016. Distinctive surface elevation patterns were identified manually and corroborated by multiple users.

2.2 Glacier surface velocity

The NASA MeaSURES ITS_LIVE project (Gardner et al., 2019) provides measurements of glacier surface velocity at monthly to yearly temporal resolution over all major land ice regions, with a resolution of 240m 240 m. Glacier surface velocities are were estimated over the 1985-2018 period from Landsat 4,5,7 and 8 images using the auto-RIFT feature tracking algorithm (Gardner et al., 2018). As a consequence of unequal data quality and scarcity in the years covered by the earlier Landsat data archives, we only considered yearly glacier surface velocity derived from Landsat 7 and 8 imagery, between 2000 and 2018, which also matches the period covered by surface elevation change datasets.

The ITS_LIVE yearly glacier surface velocity data are provided with an associated error map. From the collection of yearly glacier surface velocity and their respective error maps, we then form V_0 , the error-weighted mean velocity map for the study period, as follows:

$$V_0 = \frac{\sum_{i=1}^n w_i V_i}{\sum_{i=1}^n w_i} \quad (1)$$

where V_i is the glacier surface velocity dataset for year i and the weights w_i are defined as:

$$w_i = \frac{1}{\epsilon_i^2} \quad (2)$$

with ϵ_i being the error map for year i .

The yearly map of velocity change (dV) is computed as the difference between V_0 and V_i for each year i . We then follow the method from Mouginot and Rignot (2015) and eliminate potential outliers using a 3x3 median filter.

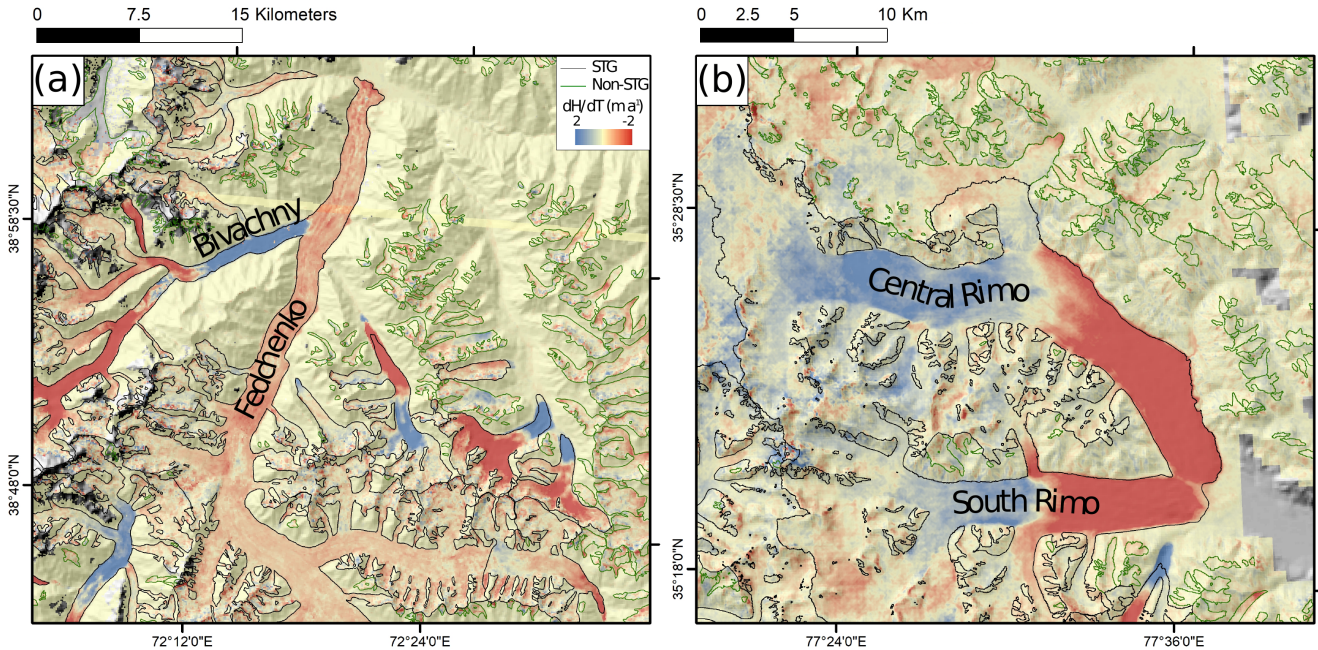


Figure 1. Examples of surface elevation change data used to identify surge-type glaciers. A) Ice mass transfer associated with the surges of Bivachny Glacier, and other local glaciers, over the period 2010-2029 (data from Hugonnet et al., 2021). B) Ice mass build-up in the reservoir zones of Central and South Rimo Glaciers over the period 2000-2018 (data from Shean et al. (2020)). Glacier outlines are from the Randolph Glacier Inventory V6.0 (RGI V6.0) (RGI Consortium, 2017)

120 From these data, we aim to identify positive velocity anomaly with a magnitude commensurate to that of a glacier surge. We thus assume the distribution of dV to be a 0-mean Gaussian distribution for glaciers with stable flow over the studied period (Figure 2 (a)). Surging behaviour typically displays more complex patterns and one can expect the distribution of surface velocity variations to be either positively (during the active phase) or negatively (quiescent phase) heavy-tailed (Figure 2 (b)). In the present work, we aim to identify glaciers displaying strong positive heavy-tails resulting from active surges on particular

125 years. We thus compute the range between the median (P_{50}) and the percentile 95 (P_{95}) for each glacier and year :

$$\text{IPR}_i = |P_{95i} - P_{50i}| \quad (3)$$

where IPR_i is the inter-percentile range for year i . From Equation 3, we propose to quantify surge magnitude as a surge index, defined as follows:

$$s_i = \frac{\text{IPR}_i}{k * V_0} \quad (4)$$

130 where s_i is the surge index for year i . k corresponds to a threshold for surge identification. Surge velocities are usually described as 10 to 1000 times greater than "standard" glacier velocity (Cuffey and Paterson, 2010; Jiskoot, 2011). However, surges in

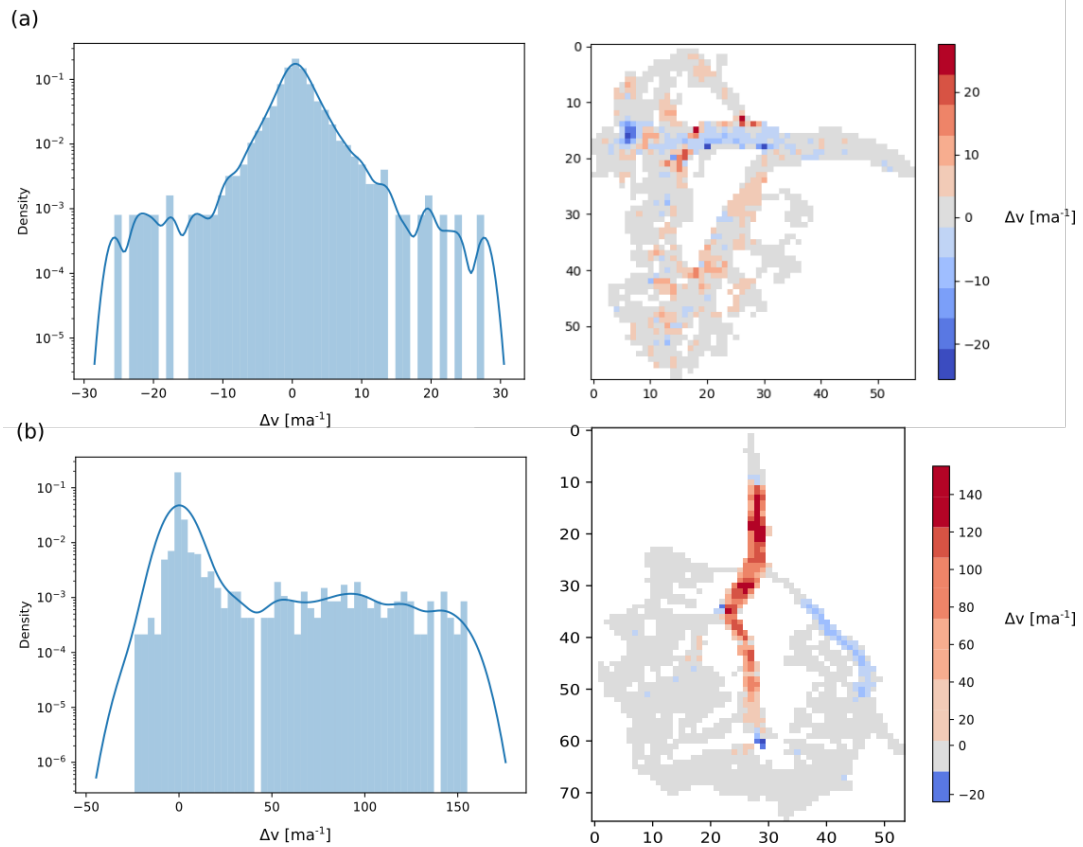


Figure 2. Distribution and map of dV for two glaciers. (a) Non-surge-type glacier : Samudra Tapu Glacier [in 2013](#), Chandra River Basin, Western Himalaya. Note the symmetrical dV distribution. (b) Surge-type glacier : K2 North Glacier complex [in 2015](#), Karakoram. Note the positive heavy tail on dV as a consequence of surging behaviour.

HMA have been documented with surface velocities close to 4 times the standard velocity (Quincey et al., 2011, 2015; Bhambri et al., 2017; King et al., 2021). Thus, we here work with $k = 4$.

In practice, a glacier is defined as surge-type when it presents at least one occurrence of $s_i \geq 1$ within the whole study period. Equation 4 allows to quantify the relationship between the observed velocity anomaly for each specific year, and V_0 . We thus highlight variations in the magnitude of the active phase of surge events from one year to another.

2.3 Glacier surface features

Substantial changes occur in the stress and strain regime at the surface of a surge-type glacier during its active phase which result in the widespread modification of surface structures such as crevasse patterns (Jennings and Hambrey, 2021). Such changes in structural glaciology have previously been used to identify glacier surging (See Grant et al. (2009); Lovell et al. (2018) for example).

We performed systematic visual checks for the presence and temporal variation of diagnostic crevasse patterns on Very High Resolution (VHR, spatial resolution finer than 5m) optical imagery. We used multi-temporal, VHR imagery in Google Earth (GE) and additional images in Bing Maps to confirm or rebut the identification of surge-type glaciers, alongside glacier surface elevation and velocity changes. We aimed to identify crevasse patterns indicative of longitudinal extension or lateral shear margins, which are indicative of ice flow increases and ice mass redistribution in the down-glacier direction (Figure 3), as well as potholes on the surface of the glacier which suggest ice flow stagnation. The availability of VHR optical imagery allowed for the examination of structures in glacier reservoir and receiving zones, whereas moderate resolution optical imagery (Landsat, for example) typically only allows for the identification of larger glacier features such as looped moraines, which might not be prevalent on all surge-type glaciers

2.4 Glacier outlines and tributary glacier surges

In this study, we used the Randolph Glacier Inventory (RGI) V6.0 glacier outlines (Pfeffer et al., 2014; RGI Consortium, 2017). The RGI provides a snapshot of glacier extent near the beginning of the 21st century and so current glacier extent, particularly of glaciers which have since surged, may differ somewhat from the area estimates associated with the RGI. However, such differences are unlikely to cause erroneous comparisons at a regional level and we have not further modified RGI glacier extents in order to compare the attributes of surge-type glacier clusters in different parts of HMA.

Similarly, the RGI does not propose individualized polygons for tributary glaciers within larger glacier complexes. Any statistical analysis specifically studying spatial quantities of individual glaciers (surface area for example) from an RGI-based surge-type glacier inventory can therefore be biased by the presence of tributary glacier surges in wider, non-surge-type glacier complexes. Prominent examples of this phenomenon are Bivachny glacier (Fedchenko Glacier complex, Pamir, Tajikistan), Maedan Glacier (Panmah Glacier, Karakoram, Pakistan) and Liligo Glacier (Baltoro Glacier, Karakoram Pakistan) (Wendt et al., 2017; Goerlich et al., 2020; Hewitt, 2007; Belo et al., 2008).

In the present study, we manually digitized the maximal surface area impacted by a given surge within glacier complexes observed between 2000 and 2018. Surge-affected areas are delineated from the extent of substantial glacier surface elevation change caused by ice mass transfer during the active phase of a surge, using very-high resolution optical imagery from Google Earth and Bing Maps to corroborate each delineation. We therefore provide an estimate of the maximum surface area affected by surges [in glacier complexes](#) ($n = 300/666$), in addition to the positively-biased surface area of surge-type RGI polygons. Due to the relatively low resolution (size of one pixel on the ground) of the velocity data used in this study (240m, see Section 2.2), we follow the method proposed by Dehecq et al. (2019) and only consider RGI polygons with an area greater than 5 km² for velocity-based analyses.

2.5 Identification of surge-type glaciers

We carried out a preliminary manual search of surface elevation change datasets to highlight possible surge-type glaciers by identifying typical surge-induced surface elevation change patterns (see Section 2.1) which contrasted directly with local

175 thinning patterns evident on non-surge-type glaciers. In parallel, automatic surge detection was carried out from the ITS_LIVE
datasets on RGI polygons with an area greater than 5 km². Two sub-inventories were thus created before being merged together.
Each glacier was then individually inspected for the presence of surface features typical of active surging (see Section 2.3).
To be qualified as surging, individual glaciers must display at least 2 of the 3 proposed identification criteria of rapid changes
180 in surface elevation, surface velocity, surface crevassing and potholes. [Geomorphological evidence of surging such as looped
moraines, push moraines or ice strandlines are not considered as identification criteria](#). By combining different criteria, we
typically mitigate false identification of phenomena other than surges which may cause a similar signal in, for example, surface
velocity data such as lake-terminating glacier frontal speed-up. The multi-factor approach also mitigates problems such as
remnant noise in the surface elevation and velocity datasets among others.

3 Results

185 Out of the ≈ 95000 glaciers in HMA, 666 have displayed surge-type behavior between 2000 and 2018 (Figure 4). Traditional
surge-type glacier clusters are clearly defined, as approximately two thirds of the identified surge-type glaciers are located in
the Karakoram (223) or in the Pamirs (223) (Table 1). Smaller clusters are located in the Tien Shan and the Kunlun Shan,
whilst isolated and less numerous examples are found across the Tibetan plateau and its peripheral mountain ranges (Table 1).

190 [Our inventory is based on the fusion of two sub-inventories computed from the study of glacier surface elevation change
\(see Section 2.1\) and surface velocity \(see Section 2.2\) datasets. Analysis of glacier surface elevation changes revealed 607
surge-like signal for 607 glaciers, while the sub-inventory automatically generated from ITS_LIVE was composed of 860
glaciers. Around 300 glacier were common to both inventories. The substantial difference in number of glaciers identified in
the two sub-inventories can be explained by two main causes. First, the overall uncertainty and data voids in the ITS_LIVE
195 datasets will lead to artificial velocity anomalies from one year to another. Second, in line with the results of Pronk et al. \(2021\)
, we have noted the presence of a large \(at least 70, exact number not known\) of lake terminating glaciers displaying contrasted
surface velocity signals](#)

From the 666 identified glaciers, 68 had been previously identified as "Observed Surging" in the RGI V6.0. We further
confirm 107 glaciers, previously identified as "Probable" or "Possible" surge-type glaciers. Finally, we newly identify 491
200 glaciers, previously categorized as "No Evidence" and "Not Assigned". Compared to the Sevestre and Benn (2015) inventory,
we newly identified 482 surging glaciers: 140 in the Pamirs (see Section 4.2 for more), 150 in the Karakoram, 63 in the Tien
Shan. Sevestre and Benn (2015) did not identify surges in the Kunlun Shan, Himalayas, Tibetan Mountains or Qilian Shan.

RGI polygons of surge-type glaciers cover a total surface area of 19044 km², which corresponds to $\approx 19.5\%$ of the glacier-
ized area in HMA. Unsurprisingly, surge-type glaciers account for the greatest portion of RGI glacier area in the Karakoram
205 (45.3%), followed by the Eastern (33.9%) and Western Pamir (35.6%) (Figure 4 and Table 1). Surge-type glaciers account for
less than 1% of glacier area in 9 of the 22 HIMAP (Bolch et al., 2019) regions. We find no evidence of glacier surging in the
Hengduan Shan or Dzhungarsky Alatau.

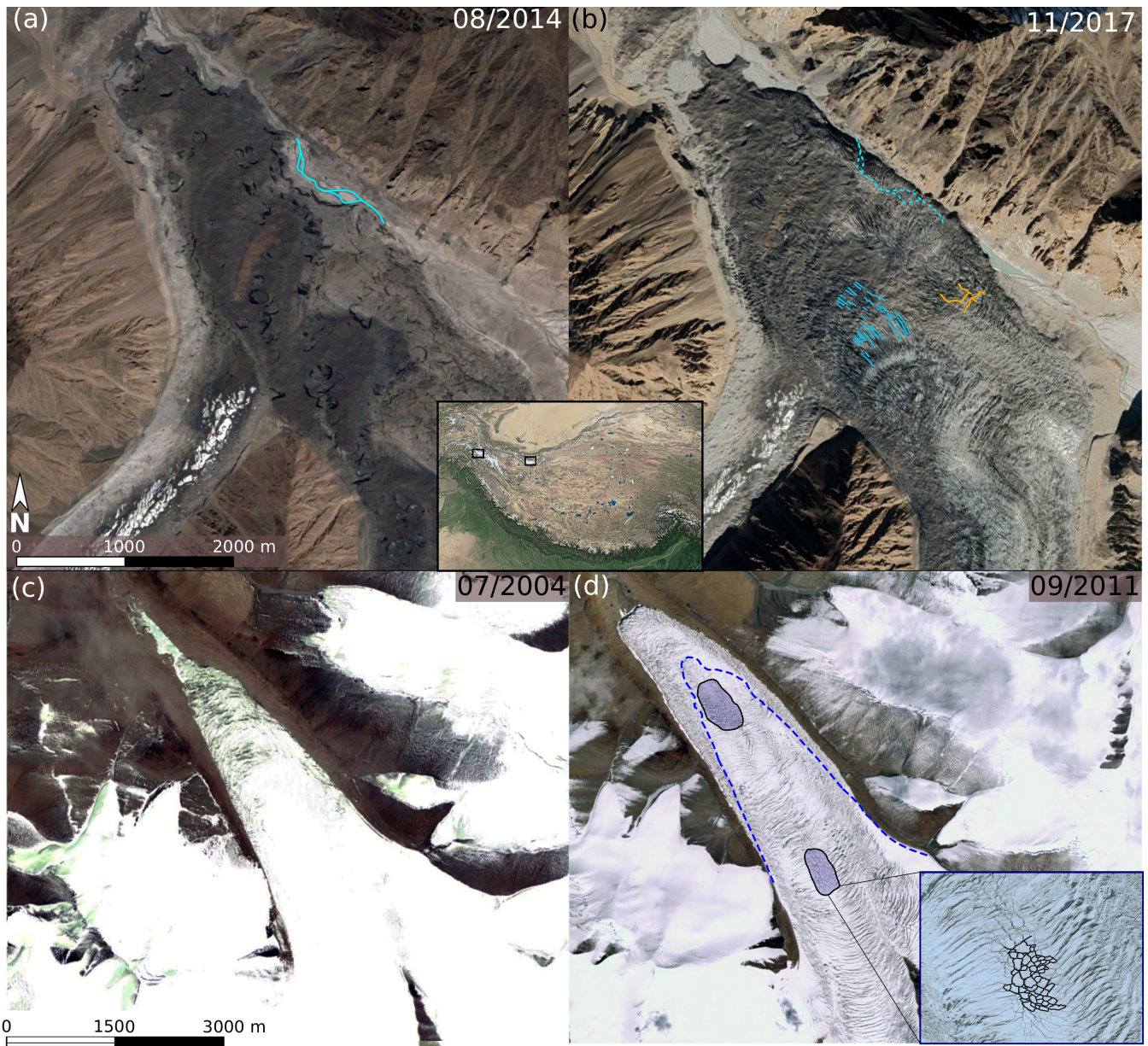


Figure 3. Google Earth imagery close ups of surface features indicative of surges on debris-covered (Top row: 2017 surge of Khurdopin glacier, Hunza Basin, Karakoram) and clean ice glaciers (Bottom row: 2008-14 surge of N2 Glacier, West Kunlun Tibet). (a) Khurdopin Glacier in August 2014 during the quiescent phase. Note the abundance of supraglacial ponds on the stagnant ice. Blue line : river bed. (b) Khurdopin Glacier in November 2017 during the active phase (peaking in May 2017). (Steiner et al., 2018). The surface is heavily crevassed with longitudinal (blue lines) and intersecting crevasses (yellow). The blue dashed line represents the location of the river bed in panel (a). (c) N2 glacier in a quiescent phase in 2004. (d) N2 Glacier in 2011 after active phase peak (August 2009–November 2010) (Yasuda and Furuya, 2015). The blue dashed line represents the position of glacier terminus in 2004. Note the substantial terminus advance and the two zones (blue polygons) of rhombic crevasse patterns, indicative of surge-type behaviour (Christina Herzfeld and Zahner, 2001; Herzfeld et al., 2004). © Google Earth 2021 and © Microsoft.

HIMAP region	Greater HIMAP region	N STGs	N Glaciers	Area of STGs (km ²)	Area of all glaciers (km ²)	STG area (%)
Karakoram	Karakoram	223	11586	9736	21475	45.3
Western Pamir	Pamirs	173	9118	2883	8480	33.9
Eastern Pamir	Pamirs	47	1609	784	2200	35.6
Pamir Alay	Pamirs	2	3151	26	1846	1.4
Central Tien Shan	Tien Shan	54	5836	1629	7270	22.4
Northern/Western Tien Shan	Tien Shan	19	3903	173	2261	7.7
Eastern Tien Shan	Tien Shan	1	4259	3	2333	0.1
Western Kunlun Shan	Kunlun Shan	60	5674	2096	8456	24.8
Eastern Kunlun Shan	Kunlun Shan	13	3092	485	2994	16.2
Tibetan Interior Mountains	Tibetan Mountains	19	3493	372	3815	9.8
Tanggula Shan	Tibetan Mountains	14	1584	318	1840	17.3
Eastern Hindu Kush	Eastern Hindu Kush	9	4375	193	3051	6.3
Qilian Shan	Qilian Shan	9	2684	68	1597	4.3
Central Himalaya	Himalayas	7	7374	55	8986	0.6
Western Himalaya	Himalayas	6	9951	136	8117	1.7
Eastern Himalaya	Himalayas	1	2963	9	2983	0.30
Altun Shan	Kunlun Shan	3	467	16	295	5.4
Eastern Tibetan Mountains	Tibetan Mountains	3	522	35	312	11.2
Nyainqentanglha	Tibetan Mountains	2	7417	16	7046	0.2
Gangdise Mountains	Tibetan Mountains	1	3851	11	1270	0.9
Hengduan Shan	Hengduan Shan	0	2056	0	1281	0
Dzhungarsky Alatau	Dzhungarsky Alatau	0	968	0	520	0
Total/Mean*		666	95536	19044	97605	19.5*

Table 1. Table of number and proportion of area covered by RGI polygons of surge-type glaciers for each HIMAP region (Bolch et al., 2019). STG: surge-type glacier

3.1 Distribution and geometry of surge and non surge-type glaciers

Previous studies have demonstrated significant differences in glacier geometry (e.g. length, slope) between surge-type and non surge-type glaciers (see Sevestre and Benn (2015) among others, for example). We here further document the impact of geometry on surge behaviour by studying glacier elevation range, slope, length area and aspect, using attributes derived from the RGI V6.0. Note that, due to the wide ranges covered by each attribute, we compare common logarithm values.

Throughout HMA, surge-type glaciers systematically present greater elevation range and area (Figure 5). As glacier length, slope and elevation range are strongly correlated attributes, such a pattern is unsurprising. We further observe generally lower slopes for surge-type glaciers than non-surge-type glaciers. The difference is not as clear cut as for the other parameters; the median surge-type glacier slope indeed lies within one standard deviation of the median for non-surge-type glaciers. Slope alone is thus not a sufficient predictor for surge-type behavior in HMA. We however observe that the frequency of surge-type

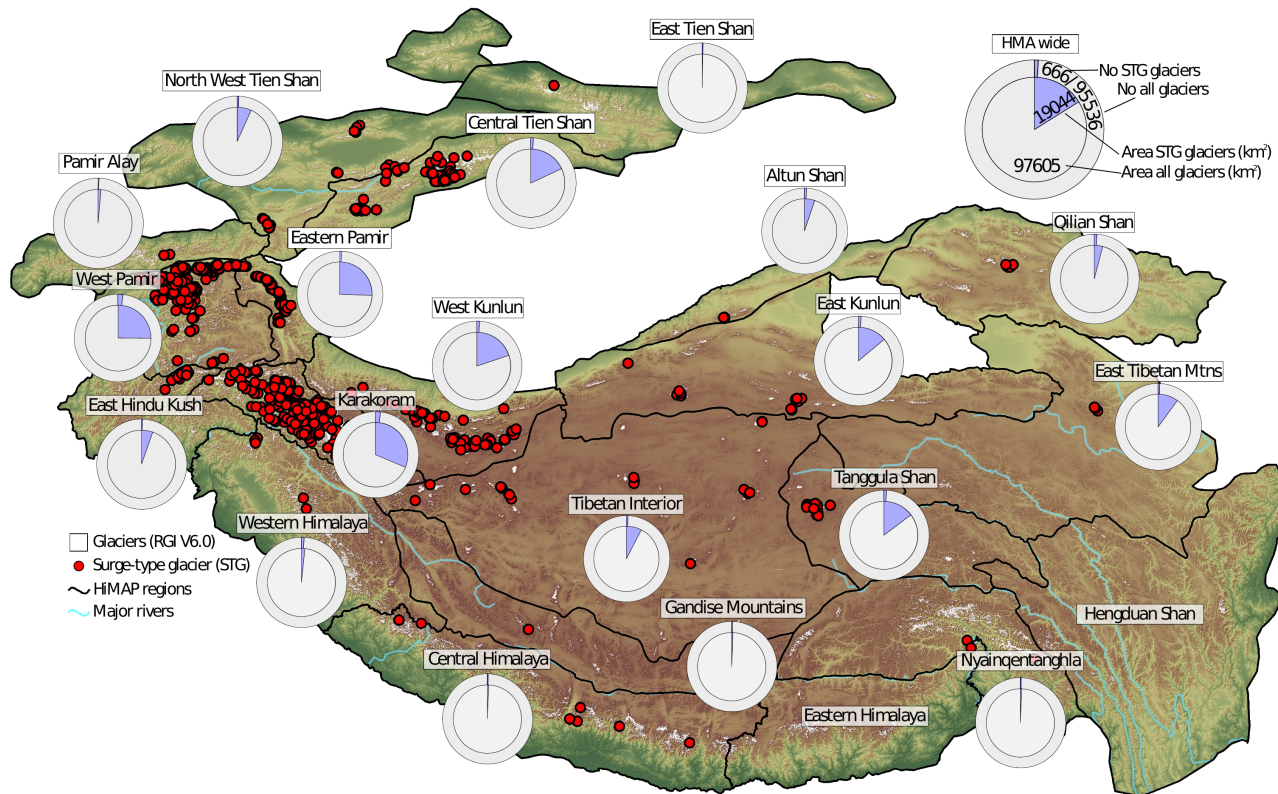


Figure 4. The distribution of surge-type glaciers (red dots) across HMA, identified by our multi-factor remote sensing approach. The number and area of surge-type glaciers within each HMAP region (Bolch et al., 2019), compared to the total glacier population, are also shown. Prominent but well known clusters of surge-type glaciers are evident in the Pamirs and Karakoram, but our analyses has also detected smaller clusters of surge-type glaciers across the Tibetan Plateau and Tien Shan.

glaciers drastically increases with greater lengths and shallower slopes (Figure 6), as predicted by the enthalpy balance theory (Benn et al., 2019).

220 While in the Tien Shan, Pamirs and Kunlun Shan, aspect distributions do not significantly differ, we nonetheless note narrower distributions and increased number in south quadrants for surge-type glaciers, with $\approx 8\%$ of glaciers flowing S in the Tien Shan, $\approx 7\%$ flowing SW and S in the Pamirs and $\approx 9\%$ flowing SE in the Kunlun Shan ($\approx 2\%$ for non-surge-type glaciers in all three regions) (Figure 7). We note distinct variability in the aspect distribution of surge-type glaciers in the Tibetan Mountains (Figure 7), which show no dominant orientation. Inter-regional differences in glacier type (defined in the

225 RGI V6.0) reflect and possibly explain the aforementioned variability in glacier aspect. Topographically confined mountain glaciers are most common in regions with coherent surge-type glacier aspect (Figure 8), whereas regions with larger numbers of ice cap outlet glaciers show more variability in surge-type glacier aspect (Figure 7). Indeed, the number of outlet surge-

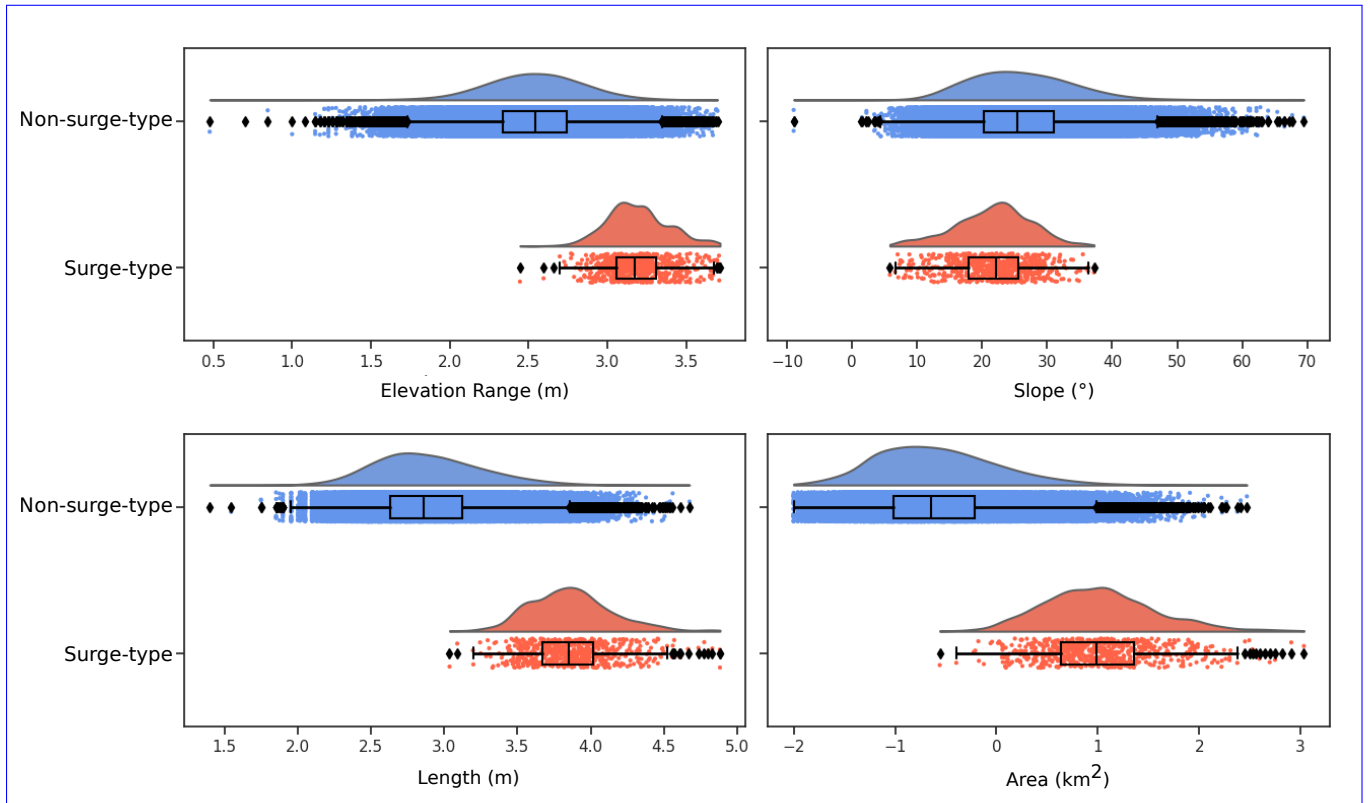


Figure 5. Distributions of geometrical attributes between non-surging and surge-type glaciers: (a) Elevation range, (b) Slope, (d) Length, (d) Area. Surge-type glaciers are represented in orange, non surge-type glaciers in blue. L_{max} is the length of the centerline of the longest glacier trunk of each RGI polygon. Area, length and altitude range are represented using common logarithms. Whiskers represent the 95th percentile of each distribution while limits of the box represent 1 standard deviation.

type glaciers outweighs the number of surge-type mountain glaciers in the Tibetan Mountains, where there is no clear aspect preference of surge-type glaciers.

230 3.2 Analysis of glacier geometry and its impact on surge-type behaviour

We here further document the potential impacts of geometry on surging behaviour, both at HMA and regional scales. More specifically, we study the relationships between surge-affected area in glacier complexes and median surge indices with glacier median elevation, elevation range, slope and length. We observe no particular relationship between the area affected by surge in glacier complexes and the median elevation or the slope (Figure 9). Similarly no evident correlation can be described between the median surge index and the same geometric attributes. The common logarithm of the surge-affected area in glaciers complex is however strongly linearly correlated (Pearson's $R = 0.81$, p -value < 0.001 , zero-mean residuals) to that of maximum glacier complex length. This linear correlation of the common logarithm of two variables yields a power law relationship between

235

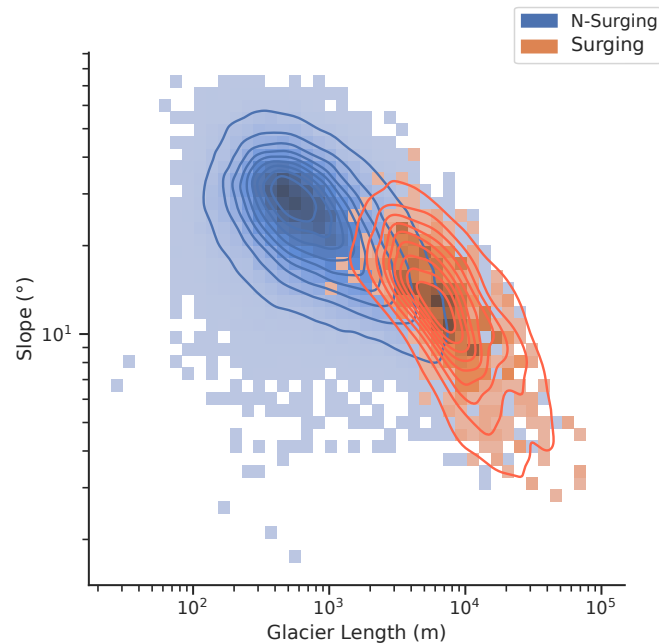


Figure 6. Length and mean slope for surging and non-surge-type glaciers in HMA. Due to the disparity in sample sizes between surge-type (666) and non surge-type glaciers (more than 90000), the length/mean slope relationship is represented using a bi-variate histogram. Contour lines represent an estimate of the probability density, approximated using kernel density estimation.

the surge-affected area and the maximum length of glacier complexes, with a power law exponent of 1.3. We further identify similar linear relationships between the common logarithms of the median surge index and the elevation range (Figure 9) 240 (Pearson's $R = 0.59$, p -value < 0.001 , zero-mean residuals), with a power law exponent close to 0.84.

On a regional scale, the Tien Shan, Pamirs and the Karakoram all show relatively high correlation between range and median surge index with statistically significant p -values. We note an important anti-correlation between slope and surge area in the Kunlun which is a consequence of contrasting glacier geometries in the Kunluns. While the distribution of glacier slopes in the Karakoram and the Pamirs (for example) present a uni-modal distribution with respective means close to 25 and 22 degrees, 245 slope distribution in the Kunlun is uniform with no clearly identifiable mode. All identified correlations display a heavy scatter and more data is needed to consolidate these relationships.

3.3 The impact of surge-type behaviour on glacier mass balance

The [glacier-wide](#) mass balance measurements presented here originate from the studies of Shean et al. (2020) and Hugonnet et al. (2021), covering the periods 2000-2018 and 2000-2020, respectively.

250 We observe no major difference between the medians of the different distributions in the Karakoram, Pamirs, Kunlun Shan, Tien Shan and Tibetan Mountains (Figure 10). Median mass budget for surge-type glaciers are close to $-0.2 \text{ m.w.e a}^{-1}$ in the

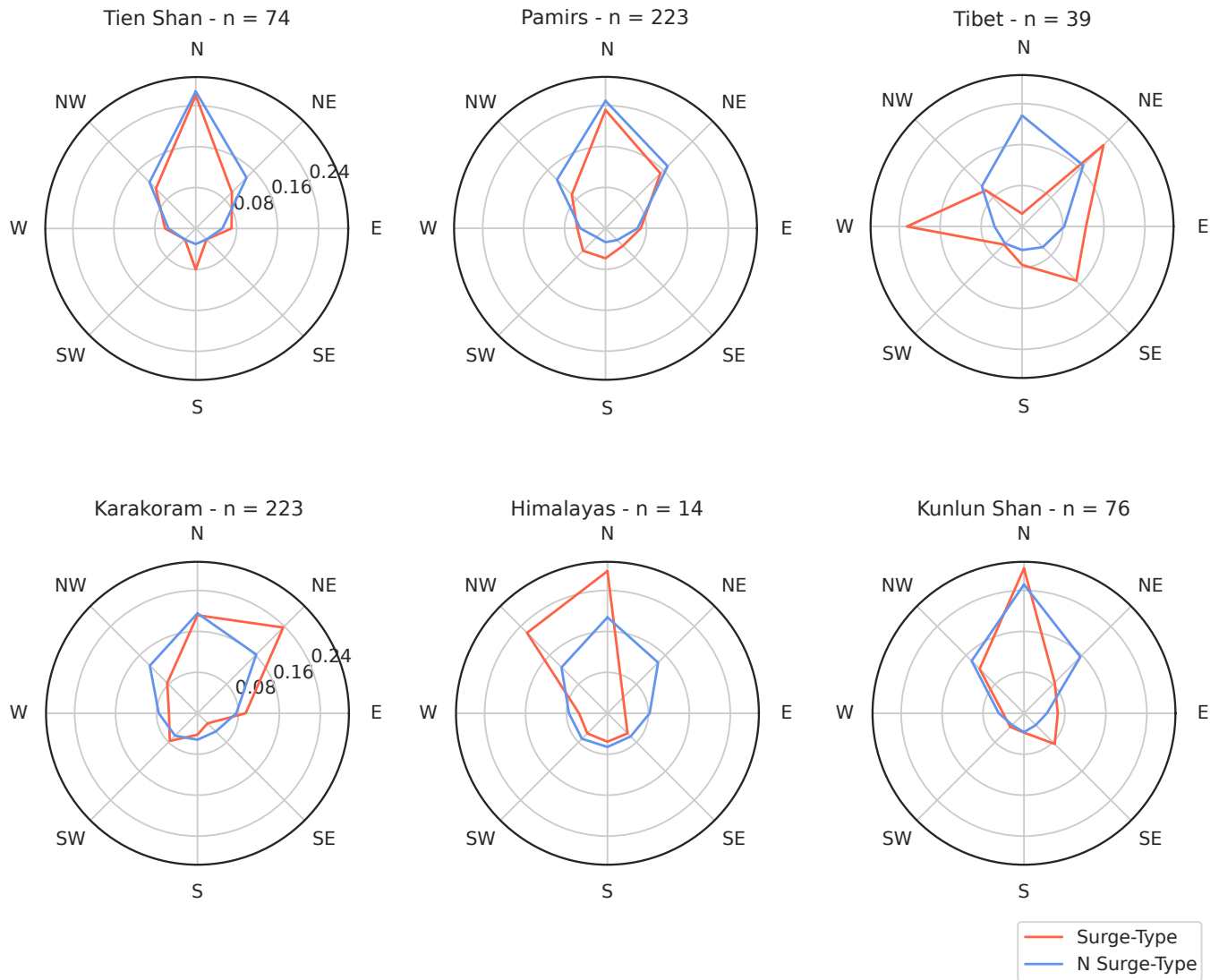


Figure 7. Aspect sector distribution for surging and non surge-type glaciers for each greater study regions per count. n refers to the number of surge-type glaciers per greater HIMAP region.

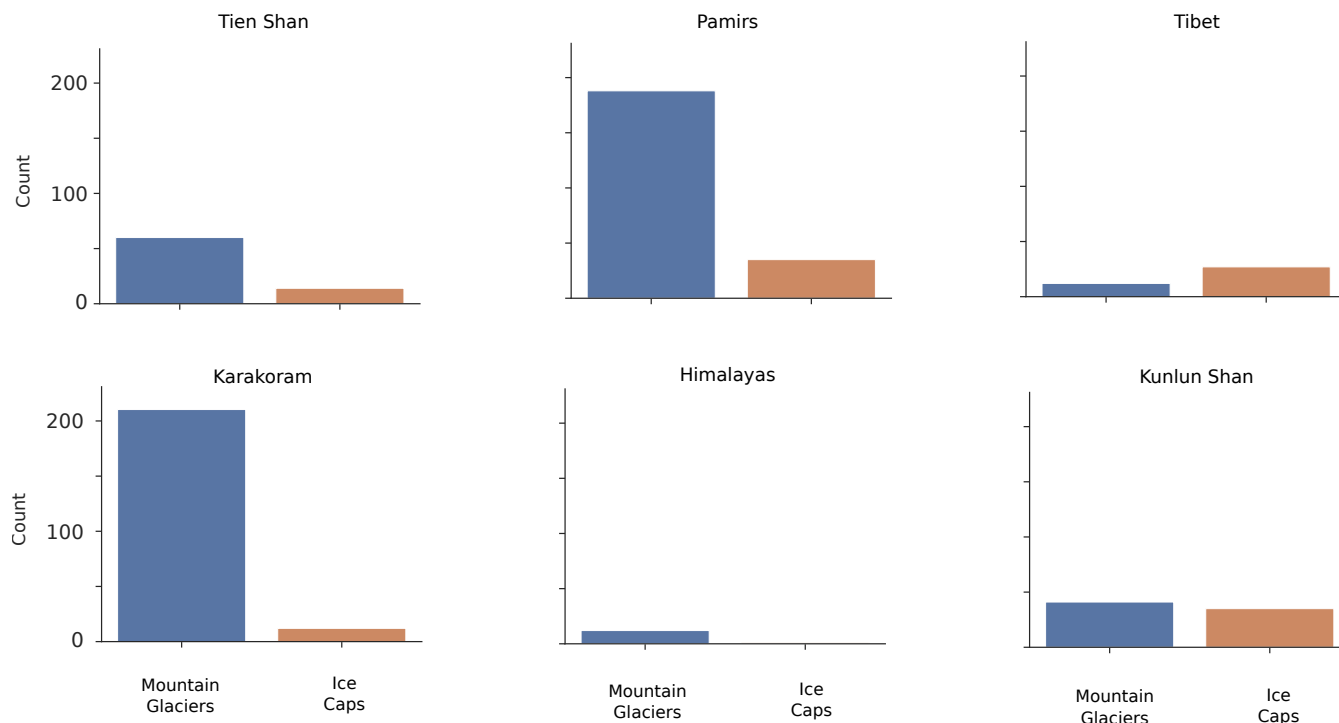


Figure 8. Distributions of surge-type glacier types for each of the greater HIMAP regions. Note that the Tibetan Mountains is the only region where ice cap outlet glacier are more represented than mountain glaciers, with a ratio of 2.7.

Karakoram, $-0.1 \text{ m.w.e a}^{-1}$ in the Pamirs and $-0.09 \text{ m.w.e a}^{-1}$ in the Kunlun Shan. Non-surging-glaciers in the same regions display median mass losses close to -0.09 , -0.05 , and $-0.05 \text{ m.w.e a}^{-1}$ respectively. We however note that the mass balance distribution for surge-type glaciers in the Karakoram is positively skewed with $g = 1.1$, and negatively skewed with $g = -1.4$ for non surge-type glaciers. The mass density of the distribution for surge-type glaciers in the Karakoram is thus concentrated towards more negative mass balance. Due to the relatively low number of surge-type glaciers reported in Qilian Shan, Eastern Hindu Kush, Himalayas, we do not consider results for these regions as representative.

Inspection of the temporally resolved mass balance estimates of Hugonnet et al. (2021) suggests marked changes of glacier mass budgets during their transition from late quiescence to their active surge phase, and then immediately following their latest surge (Table 2). More specifically, Khurdopin Glacier displayed balanced and even positive mass balance prior to (2010-2015) and during the early stages (2015-2016) of its most recent surge. Khurdopin Glacier then experienced substantial ice mass loss (-0.22 - $-0.3 \text{ m w.e.a}^{-1}$) during the later stages of its latest surge and immediately following surge cessation. Similarly, Hispar Glacier (not including the Konyang tributary, which surged itself around 2007) experienced a slight decrease in mass loss between the later stages of quiescence (2010-2012) and the start of its surge phase (2012-2014–Table 2) and then a significant increase in its rate of ice loss once the active phase of the surge had ended. The rate of ice mass loss doubled from Hispar Glacier immediately following the end of its 2014-2016 surge.

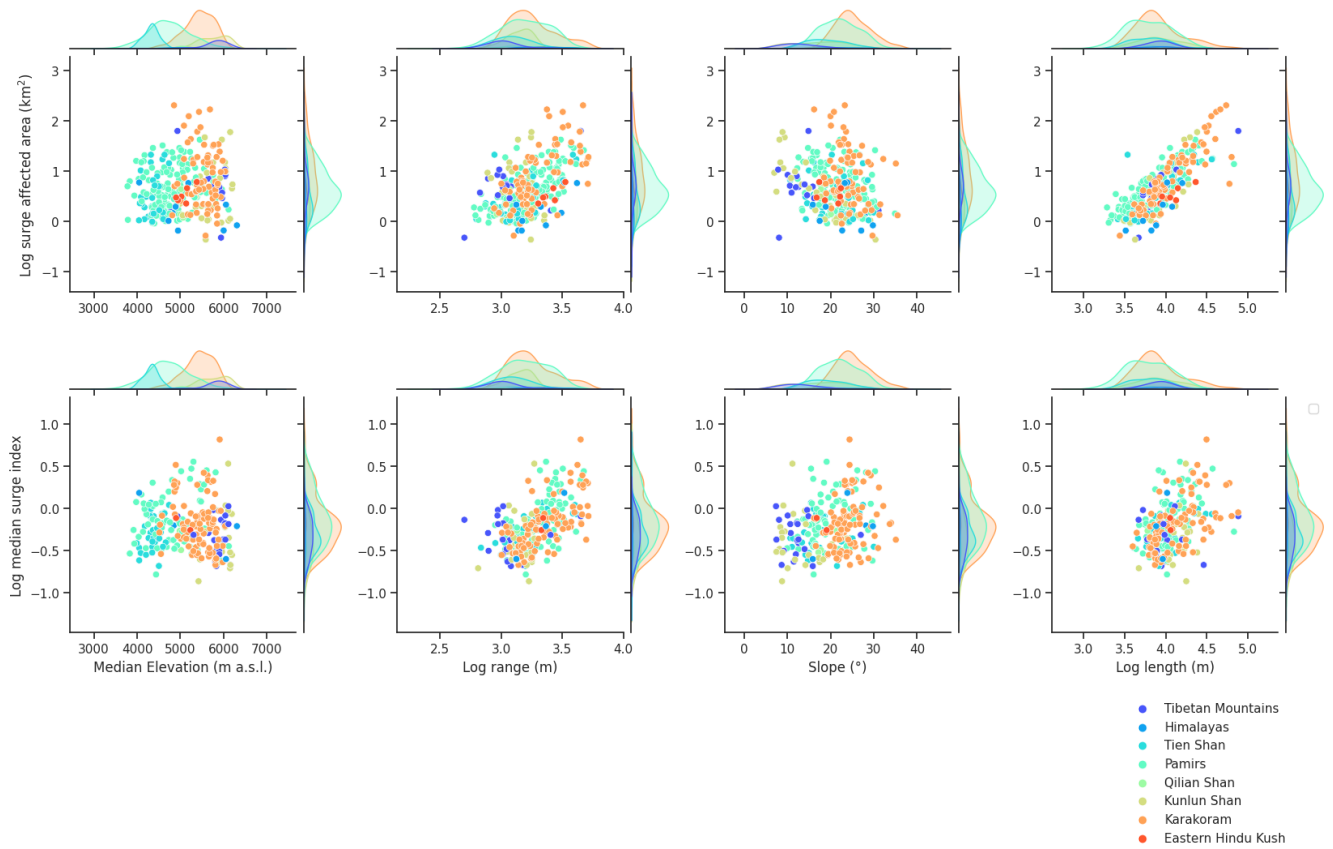


Figure 9. Correlation between the different geometric parameters of surge type glaciers

Glacier	Quiescence	Build-up	Active phase	Post-surge
Khurdopin	-0.04 ± 0.3 (2010-2015)	0.17 ± 1.4 (2015-2016)	-0.22 ± 1.4 (2016-2017)	-0.3 ± 1.6 (2017-2018)
Hispar (main trunk)	-0.38 ± 0.6 (2010-2012)	-0.24 ± 0.6 (2012-2014)	-0.4 ± 0.6 (2014-2016)	-0.8 ± 0.6 (2016-2018)

Table 2. Example of mass balance (m.w.e a^{-1}) over specified period and phases in the surge cycles of Khurdopin and Hispar glaciers' last documented surges. [Data from Hugonnet et al. \(2021\)](#). Note the substantial uncertainties associated to each elevation change estimate. For more on the specific surges of each glacier, we refer the reader to Paul et al. (2017); Bhambri et al. (2020); Steiner et al. (2018)

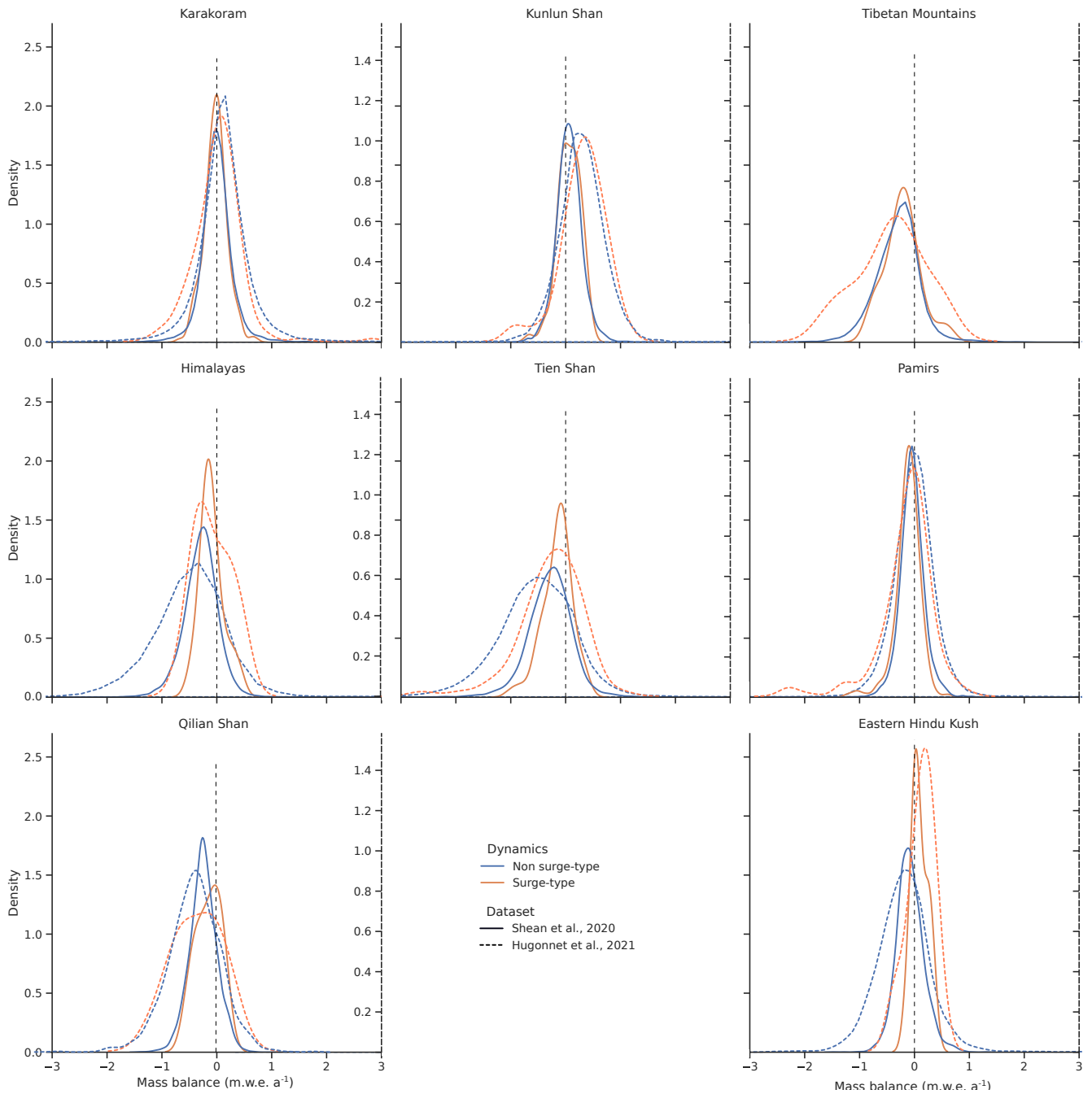


Figure 10. Distributions of mass balance for surge-type and non surge-type glaciers for the greater HIMAP regions derived from the results of Shean et al. (2020) and Hugonnet et al. (2021). Strong differences are noticeable in regions where sample sizes are low (Himalayas, Qilian Shan, Hindu Kush etc.). Comparisons between mass balance patterns of surge-type and non-surge-type glaciers are however difficult given the overall uncertainty associated to surface elevation change datasets.

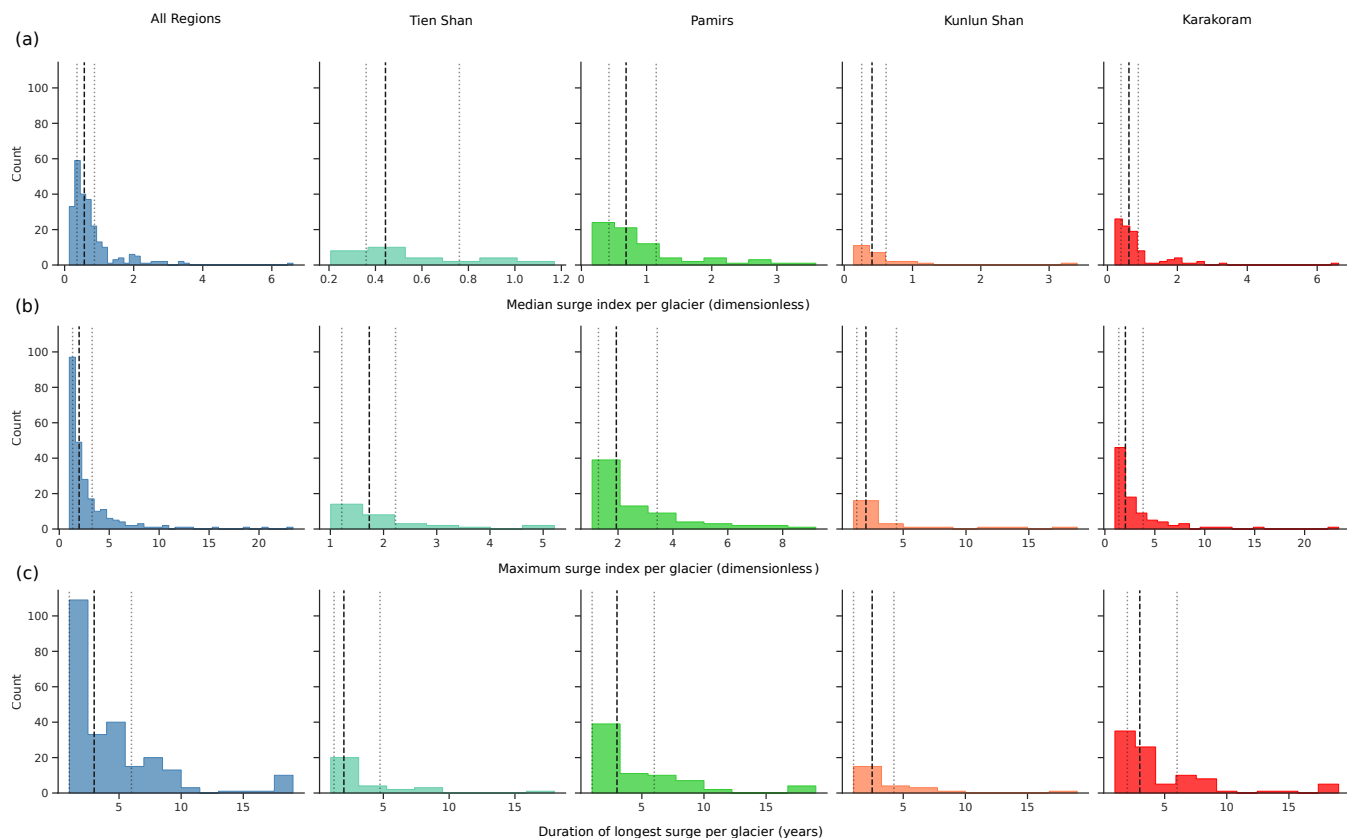


Figure 11. Distribution of (a) Median surge index per glacier, (b) Maximum surge index per glacier and (c) Duration of the longest active phase per glacier for the whole HMA and 4 of the larger HIMAP regions. Dashed line represent median of each distribution, dotted lines are 25th and 75th percentiles.

3.4 Temporal variability and maximum velocities in surge active phase

We observe no major differences in the length of the active phase of surges captured by the velocity data in different regions across HMA, the distributions of which are presented in Figure 11 (a) and (b) respectively. While the distributions present similar medians (2, 2, 2.3 and 2.3 [years](#) for the Tien Shan, Pamirs, Kunlun Shan and Karakoram respectively) and 25th percentile (1.2, 1.3, 1.3 and 1.4 [years](#)), we note a disparity in 75th percentile (2.2, 3.4, 4.4, and 4 [years](#)). For the Pamirs, Kunlun and Karakoram, the inter-quartile range exceeds the median maximum surge index by a factor 1.1-1.3, highlighting the irregularity of surge velocities. Both regions notably display surges indices greater than 10, with maxima up to 18 in the Kunlun Shan and 223 in the Karakoram. Velocity data for Qilian Shan, Eastern Hindu Kush, Himalayas and Tibetan mountains were too sparse to be considered representative (< 10 samples in each case).

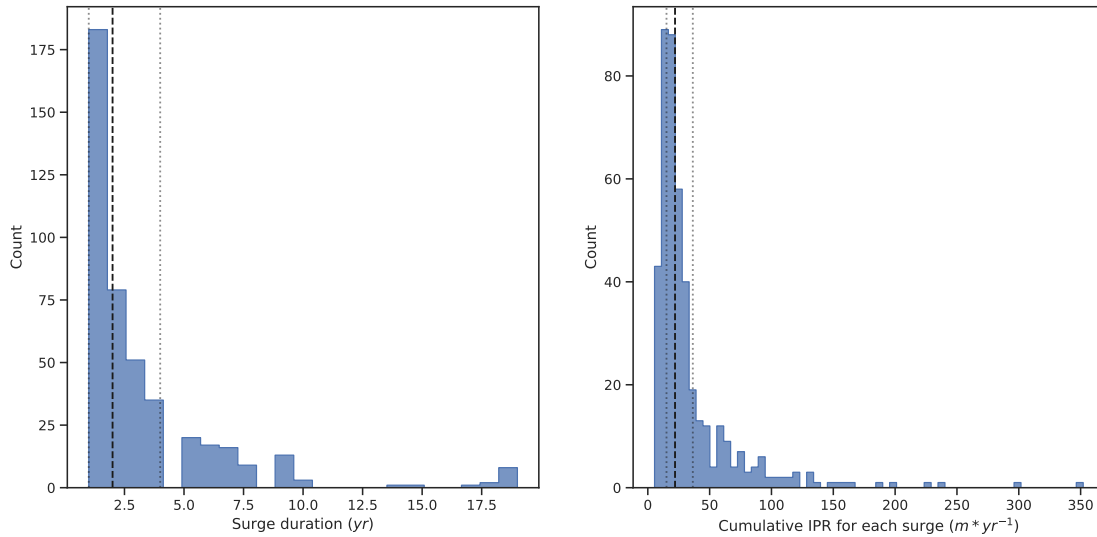


Figure 12. Distributions of surge duration and cumulative sum of IPR for the 439 surges recorded over the 245 glaciers presenting velocity data

We note no clear difference in surge active phase duration between regions (Figure 11, c). The majority of surges typically last less than 3 years, with a median duration of 2.6 ± 0.1 years. However, the distributions are systematically heavy-tailed, with all regions displaying active phases lasting 18 years.

We finally study the distributions of duration and cumulative sum of *IPR* (see Equation 3) for each surge over HMA. We
 280 use the latter as a crude proxy of the total energy dissipated during a given surge.

Both distributions are presented in Figure 12 and display the characteristic shape of power law (or Pareto)-like distributions. Power laws are common in geophysical systems where energy accumulated over a significant period is released rapidly (also known as avalanching systems), and arise from a wide variety of physical phenomena (criticality and self organized criticality (SOC), among others. See e.g. Turcotte (1989), Sachs et al. (2012), Åström et al. (2014), and Corral and González (2019) for
 285 more). To further study the hypothesis that the velocity anomaly during active phases and the duration of surges follow power law distributions, we use the widespread method of Clauset et al. (2009), relying on maximum likelihood estimation of power law distribution parameters (Pawitan, 2001; Bauke, 2007) and Kolmogorov-Smirnov distance minimization or log-likelihood ratio goodness-of-fit tests (See Park and Kim (1992); Press et al. (2007) for example). The proposed power law model fits the velocity anomaly during active phases better than exponential models, with log-likelihood ratio (*R*) significantly greater than
 290 zero (see Table 3). On the other hand, the exponential model fits the duration of active phases of surges better than the best-fit power law model, with a log-likelihood ratio of -6.

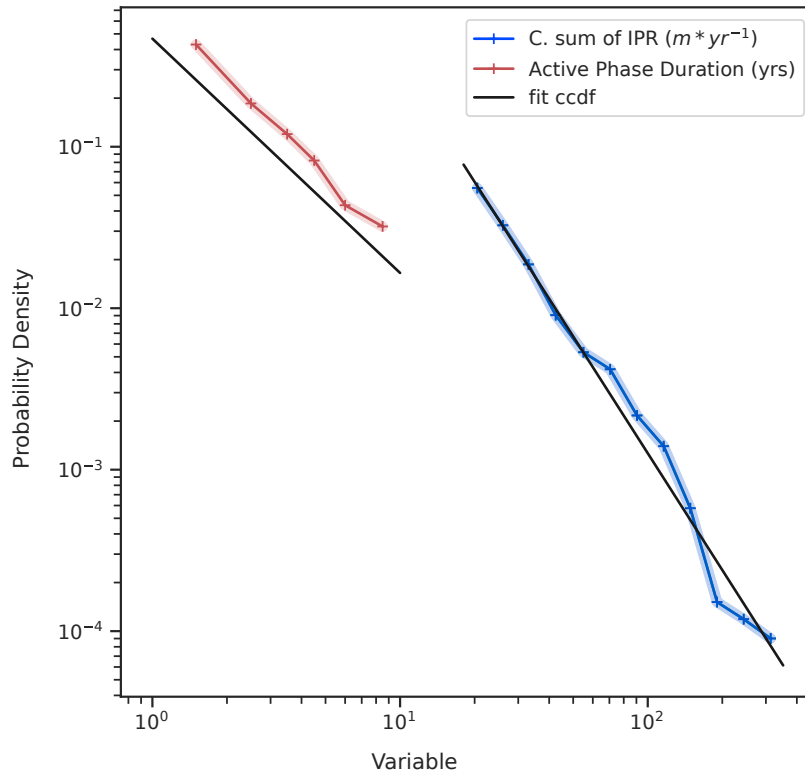


Figure 13. Estimation of empirical probability densities for the cumulative sum of IPR (blue) and surge active phase duration (red). Solid black lines indicate power law fits.

Variable	α	σ	R
Cumulative sum of IPR ($m * yr^{-1}$)	2.4	0.04	24
Duration of surge active phase ($yr s$)	1.45	0.03	-6

Table 3. Table of power law parameters: α represents the power law exponent. σ is the standard deviation associated to α . R represents the log-likelihood ratio between power law and exponential distributions.

The fits between the estimated probability densities and the data are further presented in Figure 13. We find that the theoretical cumulative distribution function (CCDF) is in good agreement with the cumulative sum of IPR data. As mentioned above, the fitted distribution does not replicate active phase duration distribution as well. This is likely to be a consequence of our heavily truncated observation period: we do not highlight surges with an active phase greater than 18 years and thus truncate the power law's heavy tail. Similarly the yearly sample rate of the ITS_LIVE data used prevents identification of active phase lasting less than a year, further truncating the potential power law.

4 Discussion

4.1 Uncertainties

The surge-type glacier identification criteria which we have followed are built on a number of different publicly available datasets generated in previous studies. Each of these datasets are imperfect representation of real geophysical signals and attributes and present a level of uncertainty. The error associated with the elevation change datasets of Hugonnet et al. (2021) varies somewhat between different time periods. Between 2000-2004 and 2005-2009 the mean error over glacier surfaces in our inventory is 1.04 m a^{-1} and 0.97 m a^{-1} , respectively. The mean error over glacier surfaces in our inventory using data from Brun et al. (2017) is 0.43 m a^{-1} , although we note lower coverage of this elevation change dataset over higher reaches of glaciers, where associated error would also be higher. Error estimates associated with the elevation change dataset of Shean et al. (2020) are not freely available, but we would expect similar levels of error to be associated with these data to those of Hugonnet et al. (2021). Hugonnet et al. (2021) and Shean et al. (2020) estimate similar levels of uncertainty alongside their geodetic glacier mass balance estimates, and as surface elevation change error tends to dominate the geodetic mass balance budget, the error associated with the underlying elevation change data should therefore be similar. Importantly, the error associated with elevation change datasets over glacier tongues is predominantly well below the magnitude of the changes associated with surge behaviour (up to 10 m a^{-1}).

The error associated with the surface velocity data similarly varies between different periods, due to the switch from Landsat7 to Landsat 8 imagery. Between 2000-2013 and 2013-2018 the median error in glacier surface velocity in the inventory is around 1.35 m a^{-1} and 0.37 m a^{-1} respectively. The maximum error is significantly larger for 2000-2013 than 2013-2018, with 63 m a^{-1} and 11.3 m a^{-1} . Errors in the ITS_LIVE surface velocity dataset typically cluster in the accumulation area of glaciers, where trackable features are less abundant. The use of error-weighted surface velocity fields (Section 2.2) ensures a greater penalization of aberrant surface velocity pixels in the accumulation area. In the ablation area and over glacier tongues, errors on surface velocity lie well below the magnitude of changes in velocity resulting from a surge (up to 150 m a^{-1}).

4.1.1 Identification of surge-type glaciers

Our study combines different, individual criteria used in previous studies to identify glacier surging, each of which may be more or less reliable in the detection of glacier surging in different scenarios. For example, the identification of glacier surging

through the monitoring of glacier terminus positions is effective when glacier terminus advance is anomalous in comparison to the local pattern of glacier retreat in response to climate conditions, or where glaciers are devoid of stagnant, debris-covered
325 tongues which may inhibit surge propagation towards glacier termini (Quincey et al., 2015). Glacier surging and mass gain
related terminus advance may be confused in some scenarios (Lv et al., 2020) and additional observations are required to more
accurately interpret glacier behaviour. In this study we qualify a glacier as surging if, and only if, it presented at least two of
the three discriminatory criteria outlined in sections 2.1 to 2.3 (rapid surface elevation and/or velocity variations and/or intense
surface crevassing and/or potholes) . We are therefore confident that our interpretations are robust and that the prevalence of
330 surging we document is an improvement on approaches using fewer surging criteria.

4.1.2 Identification of individual surges, temporal variability and IPR

In Section 3.4, we derived distributions of surge duration and intensity for every surge of each of the 245 glaciers with velocity
data. While all glaciers identified have been systematically verified to be surging, individual surges of the same glacier are
only derived from the velocity data. The determination of individual surges onset and termination year therefore only relies
335 on the velocity dataset; the duration of surges is thus known up to a certain level of certainty, depending on our threshold
for identification (k in Equation 4). We tested the implications of different values of k over the statistical attributes of the
distributions of surge duration and cumulative sum of IPR and found that increasing k naturally reduces the number of detected
surges (Data not shown). However, the distribution of surge durations does not differ substantially for different values of k .
On the other hand, the distribution of cumulative sum of IPR is positively biased, as a result of the truncation of lower values.
340 Increasing the detection threshold does not affect the shape of the distributions.

4.2 Comparison with other inventories

Inventories of surge-type glaciers have been assembled for many sub-regions of HMA and particularly detailed studies have
been carried out where hazards associated with surging have been widespread and recurring, such as the Karakoram and the
Pamirs. A careful comparison of the similarities and differences between our inventory and those of previous studies is difficult
345 because of the contrast in the methods used to identify glacier surging, the criteria used to define glacier surging and because
the periods examined to identify glacier surging vary substantially between studies.

Sevestre and Benn (2015) proposed the only existing regional inventory of surge-type glaciers in HMA. The number of surge-
type glaciers documented in our inventory significantly differs from that of Sevestre and Benn (2015), especially in the Pamirs.
A further examination of the Sevestre and Benn (2015) inventory reveals that, out of the 827 surge-type glaciers documented,
350 284 correspond to individual tributaries within glacier complexes which are not individualized in the present study. From the
remaining 543 glaciers, 35 documented in the RGI V5.0 (on which Sevestre and Benn (2015) is based) do not exist in the RGI
V6.0. Furthermore, we found that the proposed inventory and the one from Sevestre and Benn (2015) only share 83 identified
surge-type glaciers in the Pamirs. This yields a difference of 390 surge-type glaciers between the two inventories. Upon further
examination of the remaining glacier population [from Sevestre and Benn \(2015\)](#) we note a median glacier area of 1.6km^2 , a
355 sixth of the median area of the surge-type glacier population described in the present inventory (9.6km^2). Of those 390 in

the Sevestre and Benn (2015) inventory, 30% present an area small than 1.0km^2 . Close examination of these glaciers (Ujsu Glacier and the glaciers in its direct vicinity such as Aldzhaylau and Rakzou glaciers) using the surface elevation and surface velocity change data over the period 2000-2018 did not yield any evidence of surge-type behavior. We rather observed constant glacier mass loss and recession, with no clear signal of instability-related velocity anomalies. Furthermore, no mention of such a high number of surge-type glaciers in the Pamirs can be found in the literature used by Sevestre and Benn (2015). Kotlyakov et al. (2008) indeed refer to Osipova et al. (1998), mentioning "630 glaciers with indications of dynamic instability, 51 of them identified as surging", they later state that 55 surge-type glaciers had been documented up to 2006 in the Pamirs. Given these unclear, conflicting and interpretive records of unstable glacier dynamics, the small sizes of glaciers in that population compared to other surge-type glaciers in the present and other studies (see next section), the lack of evidence for unstable behavior over the 2000-2018 period, as well as the new considerations laid by the enthalpy balance theory (Benn et al., 2019), we here question the surge-type behavior of this subset of 390 glaciers in the Pamirs. Assuming we were to consider that population of glaciers as indeed surge-type, the estimated glacierized area covered by surge-type RGI polygons in HMA would become 20.6%.

Further general comparisons can be drawn between inventories based on remotely sensed imagery to establish the success of the methods used however (Table 4). The inventory of Goerlich et al. (2020) is based on observations of surface elevation change and glacier terminus advance in the Pamirs over the period 1968-2018 which allowed for the identification of 206 surge-type glaciers. Our observations of elevation change, surface velocity change and structural glaciology between 2000-2018 suggest 223 surge-type glaciers in the same region. The limited difference between these results may suggest that few surges in the Pamirs exhibit low magnitude elevation changes (e.g. Figure 1) and require additional observations (surface velocity) to aid surge-type glacier identification. The low rate of thinning and ice mass loss in the Pamirs (see Shean et al. (2020) for example) has also likely preserved the strong signal of elevation change associated with surging in multi-decadal geodetic studies.

In contrast, Rankl et al. (2014) identified 101 surge-type glaciers in the Karakoram from glacier surface velocity and glacier terminus observations over the period 1972-2012, which is substantially less than the 223 identified in this study using data covering the period 2000-2018. The main methodological difference between our study and Rankl et al. (2014) is our additional use of surface elevation change data and the annual resolution of the ITS_LIVE glacier surface velocity fields, which were intermittent (1992, 1993, 2003 and 2006-2013) in the study of Rankl et al. (2014). Many short duration (median 2.3 years) Karakoram glacier surges (Figure 12) may have occurred between the dates of velocity fields presented by Rankl et al. (2014) and the longer lasting mass transfer signal of the same surges has only been picked up by our subsequent analyses of glacier surface elevation change. Also focusing on the Karakoram, Bhambri et al. (2017) compiled a list of 221 surge-type glaciers, 2 fewer than our estimate, but using a wide variety of observations spanning the period 1840-2015. As a broad portion of the study period of Bhambri et al. (2017) covers the pre-satellite era, during which many short-duration or low magnitude surges could have occurred undocumented, we would suggest that our inventory of surge-type glaciers provides a higher time-resolved estimate of the contemporary prevalence of surge-type glaciers in the Karakoram. Mukherjee et al. (2017) supplemented an inventory based on previously published results with surface elevation change datasets over the period 1964-2014 to identify

Study	Region	Period	Number of surge-type glaciers	This study	Data sources	Evidence
Bhambri et al. (2017)	Karakoram	1840s-2017	221	223	Landsat, ASTER, Ground Observations	dT, dV, SF
Copland et al. (2011)	–	1960-2011	221	223	Landsat, ASTER, Earth Resources Sat-1	SF
Rankl et al. (2014)	–	1976-2012	101	–	Landsat, various Synthetic Aperture Radar (SAR) images	dT, dV
Sevestre and Benn (2015)	–	1861-2013	106	–	Literature	Various
Sevestre and Benn (2015)	Pamir	–	820	223	–	Various
Goerlich et al. (2020)	–	1960s-2018	206	–	Landsat, Corona KH-4, Hexagon KH-9, SRTM, AW3D30	dT, dH
Osipova et al. (1998); Kotlyakov et al. (2008)	–	1973-2006	55	–	Historical data, Resurs-F, ASTER	Various
Yasuda and Furuya (2015)	Western Kunlun	1972-1992	9	60	Landsat, various Synthetic Aperture Radar (SAR) images	dT, dV
Mukherjee et al. (2017)	Tien Shan	1964-2014	39	74	Landsat, Corona KH-4, Hexagon KH-9, Cartosat, SPOT	dT, dH
Sevestre and Benn (2015)	–	1861-2013	11	–	Literature	Various

Table 4. Comparison of the number of surge-type glaciers identified by other inventory studies in sub-regions of HMA with our results. dT = change in terminus position, dV = changes in glacier surface velocity, SF = surface features, dH = changes in glacier surface elevation

39 surge-type glaciers in the Tien Shan. Our results suggest there are 74 surge-type glaciers in the same study area. Again, the main methodological difference between our study and that of Mukherjee et al. (2017) is our use of the ITS_LIVE velocity time series, which enabled the identification of 35 additional surge-type glaciers. In contrast to the Pamirs, the substantial, long-term thinning experienced by glaciers in the Tien Shan (Bhattacharya et al., 2021) has likely dampened the signal of thickening caused by glacier surging in multi-decadal geodetic studies, thus our additional examination of surface velocity anomalies has resulted in a more complete picture of the prevalence of surge-type glaciers here. The comparisons above emphasise the benefits of a multi-factor approach to identify surge-type glaciers, particularly in regions where glacier recession and mass loss rates are high. The availability of multi-temporal, globally resolved remotely sensed datasets should facilitate the assembly of extensive, accurate surge-type glaciers inventories in the future.

400

4.3 Distribution and geometry of surge and non surge-type glaciers

We have studied the relationships between glacier geometry and surging behaviour. Our results are consistent with previous knowledge that surging glaciers systematically present greater areas, length and elevation range than non-surge-type glaciers (Clarke et al., 1986; Hamilton and Dowdeswell, 1996; Jiskoot et al., 1998, 2000, 2003; Barrand and Murray, 2006; Grant et al., 2009; Sevestre and Benn, 2015).

Greater lengths are correlated with increased surge-affected area in glacier complexes, with up to 45% of total glacier area impacted in the Karakoram (Hispar Glacier). With surge-type glaciers being consistently in the higher-end of the glacier area spectrum, such considerations need to be further studied as they are likely to have a significant impact on glacier mass balance (King et al., 2021) and glacier-related hazards (Kääb et al. (2021) for example) at glacier scale.

410 While we observe lower median surface slope for surge-type glaciers, the results are not as clear-cut as for other studies such as Sevestre and Benn (2015) for example. The slight, non-statistically significant correlation between slope and surging described in our study is consistent with previous results in Yukon Territory (Clarke, 1991), Spitsbergen (Hamilton, 1992;

Hamilton and Dowdeswell, 1996) and Karakoram (Bhambri et al., 2017). We however demonstrated that, in HMA, longer glaciers with gentler surface slopes are more likely to be surge-type than short steep glaciers. Length and slope thus act as independent controls on surging behaviour, a result that was first predicted in the enthalpy balance theory proposed by Benn et al. (2019).

We have shown that the aspect distributions for surge-type glaciers and non-surge-type glaciers do not substantially differ, which is consistent with previous knowledge on the studied regions (Bhambri et al., 2017; Mukherjee et al., 2017; Goerlich et al., 2020). Aspect distributions however differ in the Tibetan Mountains. We interpreted this result as the consequence of ice cap outlets outnumbering valley/mountain glaciers in this area, with the aspect of the latter being controlled by topography and geology, while the former present less topographically constrained flow. From this, we argue that, in the Tibetan Mountains, aspect has no control over surging behaviour.

4.3.1 Impact of surges on mass balance

In Section 3.3, we presented glacier mass changes computed by the studies of Shean et al. (2020) and Hugonnet et al. (2021) with an emphasis on the potential differences in mass balance between surge-type and non-surge-type glaciers. In line with the results of Gardelle et al. (2013); Berthier and Brun (2019), we do not report any significant difference in mass budget between surge-type and non surge-type glaciers over multi-decadal timescales, for all the greater HMAP regions. We however described a marked increase in mass loss following surge cessation for two glaciers in the Karakoram. These results are consistent with the findings of Kochtitzky et al. (2019); King et al. (2021) and Bhattacharya et al. (2021). While such a mass loss is clearly identifiable in a minimal time frame after surge termination, it is likely averaged out over multi-decadal timescales. The regional distribution of mass changes over multi-decadal time scales is thus unlikely to be altered by surge-type behavior, unless a significant number of glaciers surge repeatedly during the studied period (see Bhattacharya et al. (2021) for more) or in case of extreme events. Surges will however locally lead to increased variability in a glacier's meltwater runoff and hamper the water resource availability, potentially jeopardizing human livelihoods in the glacier's vicinity. The impact of surging over more localized scales thus need to be further quantified, through the thorough study of a greater number of mass balance measurements, covering the entire surge cycle of a significant glacier sample.

4.3.2 Temporal variability and velocities in surge active phase

In this study, we present distributions of surge active phase duration derived from yearly ITS_LIVE velocity data. The moments of the presented distributions (here the percentiles) are in line with previous studies focusing on each individual region (Quincey et al., 2011; Yasuda and Furuya, 2015; Quincey et al., 2015; Bhambri et al., 2017; Lv et al., 2019; Goerlich et al., 2020; Paul, 2020; Zhu et al., 2021). We nonetheless demonstrated that the differences between distinct HMA regions lie in the number of surges rather than that the duration of individual surges. This result contrasts with the findings of Dowdeswell et al. (1991) stating that active phases in the Pamirs typically last for 1 to 2 years, and disputes the claims of Zhu et al. (2021) than Tien Shan covers a greater range of active phase duration than other regions in HMA.

445 We here further dispute the claim of Goerlich et al. (2020) that active phase duration in the Pamirs is "random". The presented results indeed demonstrate that the distribution of surge active phase duration (both for HMA and the Pamirs) is more likely to be heavy-tailed or power law-like.

4.4 On the physics of glacier surges

Our results suggest potential power law-like and heavy-tailed distributions for a variety of surge-type glacier parameters. Using standard methods for power law validation, we most notably highlighted that the cumulative sum of IPR over the entire duration of surge active phases (as a crude proxy of energy dissipated during the active phase) potentially follows a power law distribution. The emergence of power-law distributed quantities in avalanching geophysical systems (systems that suddenly release energy slowly accumulated over a period) arises from a wide variety of physical reasons (see Corral and González (2019) for example), with the potential role of Self-Organized Criticality (Bak, 2013) in glacier surges being first discussed by Kavanaugh (2009). Given the importance of power law-generating physical phenomena in understanding geophysical dynamical systems, we emphasize the need to validate the potential power-laws described in this study with 1) complementary data (Sentinel 1 velocity data for example) providing velocity and surge active phase duration estimates over a wider range of order of magnitudes and 2) adapting the existing glacier surge models proposed by Benn et al. (2019) or Thøgersen et al. (2019) to estimate the energy dissipated during the active phase of a surge.

460 5 Conclusions

In this paper, we presented a new inventory of surge-type glaciers for High Mountain Asia. This inventory is based on a multi-factor remote sensing approach, combining yearly velocity fields (ITS_LIVE), surface elevation change datasets published in prior studies and very high-resolution satellite imagery (Bing Maps and Google Earth) to identify surge-type glaciers between 2000 and 2018. Overall, we identified 666 surge-type glaciers across HMA over the studied period, confirming 107 for which surging behaviour was believed "Probable" or "Possible", and newly identifying 491. We further studied the geometry of surge-type glaciers compared to non-surge-type glaciers and found relationships coherent with previous studies which have focused on smaller sub-samples of surge-type glaciers. We established a relationship between surging behaviour and glacier size, the most important being that for glacier complexes, the area affected by surging is dependent on overall complex length following a power law relationship. The duration of the active phase of surge-type glaciers across HMA shows little variation in between greater HIMAP regions. Finally we defined the sum of velocity anomalies during a surge as a crude proxy for energy dissipated over the duration of the active phase and studied its distribution. We showed that this distribution is heavy tailed and, using standard methods for power law validation, discussed that the sum of velocity anomalies and surge duration are potentially power law distributed. We would recommend that our inventory serves as a baseline dataset in the further study of surge-type glacier characteristics.

475 *Author contributions.* GG, OK, and TB conceived the study. GG, OK and ML generated the inventory, with support from SG. The code was developed by GG (velocity workflow and data analysis). GG and OK analyzed the results with support from ML and DB. GG and OK wrote the paper and produced the figures, with contributions from all other co-authors.

Competing interests. Some authors are members of the editorial board of The Cryosphere. The peer-review process was guided by an independent editor, and the authors have also no other competing interests to declare.

480 *Data availability.* The inventory is available at <https://zenodo.org/record/5524861>.

Acknowledgements. This study was supported by the Strategic Priority Research Programs of Chinese Academy of Sciences (*XDA20100300*, *XDA19070202*, and *XDA20100300*) and the Swiss National Science Foundation (200021E_177652/1).

References

- Aðalgeirsdóttir, G., Björnsson, H., Pálsson, F., and Magnússon, E.: Analyses of a Surging Outlet Glacier of Vatnajökull Ice Cap, Iceland, *Annals of Glaciology*, 42, 23–28, <https://doi.org/10.3189/172756405781812934>, 2005.
- 485 Åström, J. A., Vallot, D., Schäfer, M., Welty, E. Z., O’Neel, S., Bartholomäus, T. C., Liu, Y., Riikilä, T. I., Zwinger, T., Timonen, J., and Moore, J. C.: Termini of Calving Glaciers as Self-Organized Critical Systems, *Nature Geoscience*, 7, 874–878, <https://doi.org/10.1038/ngeo2290>, 2014.
- Bak, P.: *How Nature Works: The Science of Self-Organized Criticality*, Springer Science & Business Media, 2013.
- 490 Barrand, N. E. and Murray, T.: Multivariate Controls on the Incidence of Glacier Surging in the Karakoram Himalaya, Arctic, Antarctic, and Alpine Research, 38, 489–498, [https://doi.org/10.1657/1523-0430\(2006\)38\[489:MCOTIO\]2.0.CO;2](https://doi.org/10.1657/1523-0430(2006)38[489:MCOTIO]2.0.CO;2), 2006.
- Bauke, H.: Parameter Estimation for Power-Law Distributions by Maximum Likelihood Methods, *The European Physical Journal B*, 58, 167–173, <https://doi.org/10.1140/epjb/e2007-00219-y>, 2007.
- Bazai, N. A., Cui, P., Carling, P. A., Wang, H., Hassan, J., Liu, D., Zhang, G., and Jin, W.: Increasing Glacial Lake Outburst Flood Hazard 495 in Response to Surge Glaciers in the Karakoram, *Earth-Science Reviews*, 212, 103 432, <https://doi.org/10.1016/j.earscirev.2020.103432>, 2021.
- Belo, M., Mayer, C., Smiraglia, C., and Tamburini, A.: The Recent Evolution of Liligo Glacier, Karakoram, Pakistan, and Its Present Quiescent Phase, *Annals of Glaciology*, 48, 171–176, <https://doi.org/10.3189/172756408784700662>, 2008.
- Benn, D. I., Fowler, A. C., Hewitt, I., and Sevestre, H.: A General Theory of Glacier Surges, *Journal of Glaciology*, 65, 701–716, 500 <https://doi.org/10.1017/jog.2019.62>, 2019.
- Berthier, E. and Brun, F.: Karakoram Geodetic Glacier Mass Balances between 2008 and 2016: Persistence of the Anomaly and Influence of a Large Rock Avalanche on Siachen Glacier, *Journal of Glaciology*, 65, 494–507, <https://doi.org/10.1017/jog.2019.32>, 2019.
- Bhambri, R., Hewitt, K., Kawishwar, P., and Pratap, B.: Surge-Type and Surge-Modified Glaciers in the Karakoram, *Scientific Reports*, 7, 15 391, <https://doi.org/10.1038/s41598-017-15473-8>, 2017.
- 505 Bhambri, R., Hewitt, K., Kawishwar, P., Kumar, A., Verma, A., Snehmani, Tiwari, S., and Misra, A.: Ice-Dams, Outburst Floods, and Movement Heterogeneity of Glaciers, Karakoram, *Global and Planetary Change*, 180, 100–116, <https://doi.org/10.1016/j.gloplacha.2019.05.004>, 2019.
- Bhambri, R., Watson, C. S., Hewitt, K., Haritashya, U. K., Kargel, J. S., Pratap Shahi, A., Chand, P., Kumar, A., Verma, A., and Govil, H.: The Hazardous 2017–2019 Surge and River Damming by Shispare Glacier, Karakoram, *Scientific Reports*, 10, 4685, 510 <https://doi.org/10.1038/s41598-020-61277-8>, 2020.
- Bhattacharya, A., Bolch, T., Mukherjee, K., King, O., Menounos, B., Kapitsa, V., Neckel, N., Yang, W., and Yao, T.: High Mountain Asian Glacier Response to Climate Revealed by Multi-Temporal Satellite Observations since the 1960s, *Nature Communications*, 12, 4133, <https://doi.org/10.1038/s41467-021-24180-y>, 2021.
- Bolch, T., Pieczonka, T., Mukherjee, K., and Shea, J.: Brief Communication: Glaciers in the Hunza Catchment (Karakoram) Have Been 515 Nearly in Balance since the 1970s, *The Cryosphere*, 11, 531–539, <https://doi.org/10.5194/tc-11-531-2017>, 2017.
- Bolch, T., Shea, J. M., Liu, S., Azam, F. M., Gao, Y., Gruber, S., Immerzeel, W. W., Kulkarni, A., Li, H., Tahir, A. A., Zhang, G., and Zhang, Y.: Status and Change of the Cryosphere in the Extended Hindu Kush Himalaya Region, in: *The Hindu Kush Himalaya Assessment: Mountains, Climate Change, Sustainability and People*, edited by Wester, P., Mishra, A., Mukherji, A., and Shrestha, A. B., pp. 209–255, Springer International Publishing, Cham, https://doi.org/10.1007/978-3-319-92288-1_7, 2019.

- 520 Brun, F., Berthier, E., Wagnon, P., Kääb, A., and Treichler, D.: A Spatially Resolved Estimate of High Mountain Asia Glacier Mass Balances from 2000 to 2016, *Nature Geoscience*, 10, 668–673, <https://doi.org/10.1038/ngeo2999>, 2017.
- Christina Herzfeld, U. and Zahner, O.: A Connectionist-Geostatistical Approach to Automated Image Classification, Applied to the Analysis of Crevasse Patterns in Surging Ice, *Computers & Geosciences*, 27, 499–512, [https://doi.org/10.1016/S0098-3004\(00\)00089-3](https://doi.org/10.1016/S0098-3004(00)00089-3), 2001.
- Chudley, T. R. and Willis, I. C.: Glacier Surges in the North-West West Kunlun Shan Inferred from 1972 to 2017 Landsat Imagery, *Journal of Glaciology*, 65, 1–12, <https://doi.org/10.1017/jog.2018.94>, 2019.
- 525 Clarke, G. K. C.: Length, Width and Slope Influences on Glacier Surging, *Journal of Glaciology*, 37, 236–246, <https://doi.org/10.3189/S0022143000007255>, 1991.
- Clarke, G. K. C., Schmok, J. P., Ommanney, C. S. L., and Collins, S. G.: Characteristics of Surge-Type Glaciers, *Journal of Geophysical Research: Solid Earth*, 91, 7165–7180, <https://doi.org/10.1029/JB091iB07p07165>, 1986.
- 530 Clauset, A., Shalizi, C. R., and Newman, M. E. J.: Power-Law Distributions in Empirical Data, *SIAM Review*, 51, 661–703, <https://doi.org/10.1137/070710111>, 2009.
- Copland, L., Sharp, M. J., and Dowdeswell, J. A.: The Distribution and Flow Characteristics of Surge-Type Glaciers in the Canadian High Arctic, *Annals of Glaciology*, 36, 73–81, <https://doi.org/10.3189/172756403781816301>, 2003.
- Copland, L., Sylvestre, T., Bishop, M. P., Shroder, J. F., Seong, Y. B., Owen, L. A., Bush, A., and Kamp, U.: Expanded and Recently
535 Increased Glacier Surging in the Karakoram, Arctic, Antarctic, and Alpine Research, 43, 503–516, <https://doi.org/10.1657/1938-4246-43.4.503>, 2011.
- Corral, Á. and González, Á.: Power Law Size Distributions in Geoscience Revisited, *Earth and Space Science*, 6, 673–697, <https://doi.org/10.1029/2018EA000479>, 2019.
- Cuffey, K. M. and Paterson, W. S. B.: *The Physics of Glaciers*, Academic Press, 2010.
- 540 Dehecq, A., Gourmelen, N., Gardner, A. S., Brun, F., Goldberg, D., Nienow, P. W., Berthier, E., Vincent, C., Wagnon, P., and Trouvé, E.: Twenty-First Century Glacier Slowdown Driven by Mass Loss in High Mountain Asia, *Nature Geoscience*, 12, 22–27, <https://doi.org/10.1038/s41561-018-0271-9>, 2019.
- Ding, M., Huai, B., Sun, W., Wang, Y., Zhang, D., Guo, X., and Zhang, T.: Surge-Type Glaciers in Karakoram Mountain and Possible
545 Catastrophes alongside a Portion of the Karakoram Highway, *Natural Hazards*, 90, 1017–1020, <https://doi.org/10.1007/s11069-017-3063-4>, 2018.
- Dowdeswell, J. A. and Williams, M.: Surge-Type Glaciers in the Russian High Arctic Identified from Digital Satellite Imagery, *Journal of Glaciology*, 43, 489–494, <https://doi.org/10.3189/S0022143000035097>, 1997.
- Dowdeswell, J. A., Hamilton, G. S., and Hagen, J. O.: The Duration of the Active Phase on Surge-Type Glaciers: Contrasts between Svalbard and Other Regions, *Journal of Glaciology*, 37, 388–400, <https://doi.org/10.3189/S0022143000005827>, 1991.
- 550 Gao, Y., Liu, S., Qi, M., Xie, F., Wu, K., and Zhu, Y.: Glacier-Related Hazards Along the International Karakoram Highway: Status and Future Perspectives, *Frontiers in Earth Science*, 0, <https://doi.org/10.3389/feart.2021.611501>, 2021.
- Gardelle, J., Berthier, E., Arnaud, Y., and Kääb, A.: Region-Wide Glacier Mass Balances over the Pamir-Karakoram-Himalaya during 1999–2011, *The Cryosphere*, 7, 1263–1286, <https://doi.org/10.5194/tc-7-1263-2013>, 2013.
- Gardner, A. S., Moholdt, G., Scambos, T., Fahnestock, M., Ligtenberg, S., van den Broeke, M., and Nilsson, J.: Increased West Antarctic and
555 Unchanged East Antarctic Ice Discharge over the Last 7 Years, *The Cryosphere*, 12, 521–547, <https://doi.org/10.5194/tc-12-521-2018>, 2018.

- Gardner, A. S., Fahnestock, M., and Scambos, T. A.: ITS_LIVE Regional Glacier and Ice Sheet Surface Velocities, Data archived at National Snow and Ice Data Center, 2019.
- Gardner, J. S. and Hewitt, K.: A Surge of Bualtar Glacier, Karakoram Range, Pakistan: A Possible Landslide Trigger, *Journal of Glaciology*, 36, 159–162, <https://doi.org/10.3189/S0022143000009394>, 1990.
- 560
- Goerlich, F., Bolch, T., and Paul, F.: More Dynamic than Expected: An Updated Survey of Surging Glaciers in the Pamir, *Earth System Science Data*, 12, 3161–3176, <https://doi.org/10.5194/essd-12-3161-2020>, 2020.
- Grant, K. L., Stokes, C. R., and Evans, I. S.: Identification and Characteristics of Surge-Type Glaciers on Novaya Zemlya, Russian Arctic, *Journal of Glaciology*, 55, 960–972, <https://doi.org/10.3189/002214309790794940>, 2009.
- 565
- Hamilton, G. S.: Investigation of Surge-Type Glaciers in Svalbard, Thesis, University of Cambridge, <https://doi.org/10.17863/CAM.27506>, 1992.
- Hamilton, G. S. and Dowdeswell, J. A.: Controls on Glacier Surging in Svalbard, *Journal of Glaciology*, 42, 157–168, <https://doi.org/10.3189/S0022143000030616>, 1996.
- Häusler, H., Ng, F., Kopecny, A., and Leber, D.: Remote-Sensing-Based Analysis of the 1996 Surge of Northern Inylchek Glacier, Central Tien Shan, Kyrgyzstan, *Geomorphology*, 273, 292–307, <https://doi.org/10.1016/j.geomorph.2016.08.021>, 2016.
- 570
- Herzfeld, U. C., Clarke, G. K. C., Mayer, H., and Greve, R.: Derivation of Deformation Characteristics in Fast-Moving Glaciers, *Computers & Geosciences*, 30, 291–302, <https://doi.org/10.1016/j.cageo.2003.10.012>, 2004.
- Hewitt, K.: Glacier Surges in the Karakoram Himalaya (Central Asia), *Canadian Journal of Earth Sciences*, 6, 1009–1018, <https://doi.org/10.1139/e69-106>, 1969.
- 575
- Hewitt, K.: Tributary Glacier Surges: An Exceptional Concentration at Panmah Glacier, Karakoram Himalaya, *Journal of Glaciology*, 53, 181–188, <https://doi.org/10.3189/172756507782202829>, 2007.
- Hewitt, K. and Liu, J.: Ice-Dammed Lakes and Outburst Floods, Karakoram Himalaya: Historical Perspectives on Emerging Threats, *Physical Geography*, 31, 528–551, <https://doi.org/10.2747/0272-3646.31.6.528>, 2010.
- Hugonnet, R., McNabb, R., Berthier, E., Menounos, B., Nuth, C., Girod, L., Farinotti, D., Huss, M., Dussailant, I., Brun, F., and Kääh, A.: Accelerated Global Glacier Mass Loss in the Early Twenty-First Century, *Nature*, 592, 726–731, <https://doi.org/10.1038/s41586-021-03436-z>, 2021.
- 580
- Imran, M. and Ahmad, U.: Geospatially Analysing the Dynamics of the Khurdopin Glacier Surge Using Multispectral and Temporal Remote Sensing and Ground Observations, *Natural Hazards*, 108, 847–866, <https://doi.org/10.1007/s11069-021-04708-7>, 2021.
- Jennings, S. J. A. and Hambrey, M. J.: Structures and Deformation in Glaciers and Ice Sheets, *Reviews of Geophysics*, 59, e2021RG000 743, <https://doi.org/10.1029/2021RG000743>, 2021.
- 585
- Jiskoot, H.: Glacier Surging, in: *Encyclopedia of Snow, Ice and Glaciers*, pp. 415–428, Springer Dordrecht, 2011.
- Jiskoot, H., Boyle, P., and Murray, T.: The Incidence of Glacier Surging in Svalbard: Evidence from Multivariate Statistics, *Computers & Geosciences*, 24, 387–399, [https://doi.org/10.1016/S0098-3004\(98\)00033-8](https://doi.org/10.1016/S0098-3004(98)00033-8), 1998.
- Jiskoot, H., Murray, T., and Boyle, P.: Controls on the Distribution of Surge-Type Glaciers in Svalbard, *Journal of Glaciology*, 46, 412–422, <https://doi.org/10.3189/172756500781833115>, 2000.
- 590
- Jiskoot, H., Pedersen, A. K., and Murray, T.: Multi-Model Photogrammetric Analysis of the 1990s Surge of Sortebrae, East Greenland, *Journal of Glaciology*, 47, 677–687, <https://doi.org/10.3189/172756501781831846>, 2001.
- Jiskoot, H., Murray, T., and Luckman, A.: Surge Potential and Drainage-Basin Characteristics in East Greenland, *Annals of Glaciology*, 36, 142–148, <https://doi.org/10.3189/172756403781816220>, 2003.

- 595 Kääb, A., Jacquemart, M., Gilbert, A., Leinss, S., Girod, L., Huggel, C., Falaschi, D., Ugalde, F., Petrakov, D., Chernomorets, S., Dokukin, M., Paul, F., Gascoïn, S., Berthier, E., and Kargel, J. S.: Sudden Large-Volume Detachments of Low-Angle Mountain Glaciers – More Frequent than Thought?, *The Cryosphere*, 15, 1751–1785, <https://doi.org/10.5194/tc-15-1751-2021>, 2021.
- Kavanaugh, J. L.: Exploring Glacier Dynamics with Subglacial Water Pressure Pulses: Evidence for Self-Organized Criticality?, *Journal of Geophysical Research: Earth Surface*, 114, <https://doi.org/10.1029/2008JF001036>, 2009.
- 600 King, O., Bhattacharya, A., and Bolch, T.: The Presence and Influence of Glacier Surging around the Geladandong Ice Caps, North East Tibetan Plateau, *Advances in Climate Change Research*, 12, 299–312, <https://doi.org/10.1016/j.accre.2021.05.001>, 2021.
- Kochtitzky, W., Jiskoot, H., Copland, L., Enderlin, E., McNabb, R., Kreutz, K., and Main, B.: Terminus Advance, Kinematics and Mass Redistribution during Eight Surges of Donjek Glacier, St. Elias Range, Canada, 1935 to 2016, *Journal of Glaciology*, 65, 565–579, <https://doi.org/10.1017/jog.2019.34>, 2019.
- 605 Kotlyakov, V. M., Osipova, G. B., and Tsvetkov, D. G.: Fluctuations of Unstable Mountain Glaciers: Scale and Character, *Annals of Glaciology*, 24, 338–343, <https://doi.org/10.3189/S0260305500012416>, 1997.
- Kotlyakov, V. M., Osipova, G. B., and Tsvetkov, D. G.: Monitoring Surging Glaciers of the Pamirs, Central Asia, from Space, *Annals of Glaciology*, 48, 125–134, <https://doi.org/10.3189/172756408784700608>, 2008.
- Kraaijenbrink, P. D. A., Bierkens, M. F. P., Lutz, A. F., and Immerzeel, W. W.: Impact of a Global Temperature Rise of 1.5 Degrees Celsius on Asia’s Glaciers, *Nature*, 549, 257–260, <https://doi.org/10.1038/nature23878>, 2017.
- 610 Lalande, M., Ménégoz, M., Krinner, G., Naegeli, K., and Wunderle, S.: Climate Change in the High Mountain Asia in CMIP6, *Earth System Dynamics Discussions*, pp. 1–56, <https://doi.org/10.5194/esd-2021-43>, 2021.
- Li, Y.-J., Ding, Y.-J., Shangguan, D.-H., and Wang, R.-J.: Regional Differences in Global Glacier Retreat from 1980 to 2015, *Advances in Climate Change Research*, 10, 203–213, <https://doi.org/10.1016/j.accre.2020.03.003>, 2019.
- 615 Lovell, A. M., Carr, J. R., and Stokes, C. R.: Topographic Controls on the Surging Behaviour of Sabche Glacier, Nepal (1967 to 2017), *Remote Sensing of Environment*, 210, 434–443, <https://doi.org/10.1016/j.rse.2018.03.036>, 2018.
- Lv, M., Guo, H., Lu, X., Liu, G., Yan, S., Ruan, Z., Ding, Y., and Quincey, D. J.: Characterizing the Behaviour of Surge- and Non-Surge-Type Glaciers in the Kingata Mountains, Eastern Pamir, from 1999 to 2016, *The Cryosphere*, 13, 219–236, <https://doi.org/10.5194/tc-13-219-2019>, 2019.
- 620 Lv, M., Guo, H., Yan, J., Wu, K., Liu, G., Lu, X., Ruan, Z., and Yan, S.: Distinguishing Glaciers between Surging and Advancing by Remote Sensing: A Case Study in the Eastern Karakoram, *Remote Sensing*, 12, 2297, <https://doi.org/10.3390/rs12142297>, 2020.
- Mansell, D., Luckman, A., and Murray, T.: Dynamics of Tidewater Surge-Type Glaciers in Northwest Svalbard, *Journal of Glaciology*, 58, 110–118, <https://doi.org/10.3189/2012JoG11J058>, 2012.
- Meier, M. F. and Post, A.: What Are Glacier Surges?, *Canadian Journal of Earth Sciences*, 6, 807–817, <https://doi.org/10.1139/e69-081>,
625 1969.
- Mouginot, J. and Rignot, E.: Ice Motion of the Patagonian Icefields of South America: 1984–2014, *Geophysical Research Letters*, 42, 1441–1449, <https://doi.org/10.1002/2014GL062661>, 2015.
- Muhammad, S. and Tian, L.: Mass Balance and a Glacier Surge of Guliya Ice Cap in the Western Kunlun Shan between 2005 and 2015, *Remote Sensing of Environment*, 244, 111 832, <https://doi.org/10.1016/j.rse.2020.111832>, 2020.
- 630 Muhammad, S., Li, J., Steiner, J. F., Shrestha, F., Shah, G. M., Berthier, E., Guo, L., Wu, L.-x., and Tian, L.: A Holistic View of Shisper Glacier Surge and Outburst Floods: From Physical Processes to Downstream Impacts, *Geomatics, Natural Hazards and Risk*, 12, 2755–2775, <https://doi.org/10.1080/19475705.2021.1975833>, 2021.

- Mukherjee, K., Bolch, T., Goerlich, F., Kutuzov, S., Osmonov, A., Pieczonka, T., and Shesterova, I.: Surge-Type Glaciers in the Tien Shan (Central Asia), *Arctic, Antarctic, and Alpine Research*, 49, 147–171, <https://doi.org/10.1657/AAAR0016-021>, 2017.
- 635 Murray, T., Strozzi, T., Luckman, A., Jiskoot, H., and Christakos, P.: Is There a Single Surge Mechanism? Contrasts in Dynamics between Glacier Surges in Svalbard and Other Regions, *Journal of Geophysical Research: Solid Earth*, 108, <https://doi.org/10.1029/2002JB001906>, 2003.
- Osipova, G., Tchetinnikov, A., and Rudak, M.: Catalogue of Surging Glaciers of Pamir, *Mater. Glyatsiol. Issled.*, 85, 3–136, 1998.
- Osmonov, A., Bolch, T., Xi, C., Kurban, A., and Guo, W.: Glacier Characteristics and Changes in the Sary-Jaz River Basin (Central Tien
640 Shan, Kyrgyzstan) – 1990–2010, *Remote Sensing Letters*, 4, 725–734, <https://doi.org/10.1080/2150704X.2013.789146>, 2013.
- Park, W. and Kim, Y.: Goodness-of-Fit Tests for the Power-Law Process, *IEEE Transactions on Reliability*, 41, 107–111, <https://doi.org/10.1109/24.126680>, 1992.
- Paul, F.: A 60-Year Chronology of Glacier Surges in the Central Karakoram from the Analysis of Satellite Image Time-Series, *Geomorphology*, 352, 106993, <https://doi.org/10.1016/j.geomorph.2019.106993>, 2020.
- 645 Paul, F., Strozzi, T., Schellenberger, T., and Kääh, A.: The 2015 Surge of Hispar Glacier in the Karakoram, *Remote Sensing*, 9, 888, <https://doi.org/10.3390/rs9090888>, 2017.
- Pawitan, Y.: In All Likelihood: Statistical Modelling and Inference Using Likelihood, OUP Oxford, 2001.
- Pfeffer, W. T., Arendt, A. A., Bliss, A., Bolch, T., Cogley, J. G., Gardner, A. S., Hagen, J.-O., Hock, R., Kaser, G., Kienholz, C., Miles, E. S., Moholdt, G., Mölg, N., Paul, F., Radić, V., Rastner, P., Raup, B. H., Rich, J., Sharp, M. J., and Consortium, T. R.: The Randolph Glacier
650 Inventory: A Globally Complete Inventory of Glaciers, *Journal of Glaciology*, 60, 537–552, <https://doi.org/10.3189/2014JoG13J176>, 2014.
- Press, W. H., Teukolsky, S. A., Vetterling, W. T., and Flannery, B. P.: Numerical Recipes 3rd Edition: The Art of Scientific Computing, Cambridge University Press, 2007.
- Pritchard, H., Murray, T., Luckman, A., Strozzi, T., and Barr, S.: Glacier Surge Dynamics of Sortebrae, East Greenland, from Synthetic Aperture Radar Feature Tracking, *Journal of Geophysical Research: Earth Surface*, 110, <https://doi.org/10.1029/2004JF000233>, 2005.
- 655 Pronk, J. B., Bolch, T., King, O., Wouters, B., and Benn, D. I.: Contrasting Surface Velocities between Lake- and Land-Terminating Glaciers in the Himalayan Region, *The Cryosphere*, 15, 5577–5599, <https://doi.org/10.5194/tc-15-5577-2021>, 2021.
- Quincey, D. J., Braun, M., Glasser, N. F., Bishop, M. P., Hewitt, K., and Luckman, A.: Karakoram Glacier Surge Dynamics, *Geophysical Research Letters*, 38, <https://doi.org/10.1029/2011GL049004>, 2011.
- Quincey, D. J., Glasser, N. F., Cook, S. J., and Luckman, A.: Heterogeneity in Karakoram Glacier Surges, *Journal of Geophysical Research: Earth Surface*, 120, 1288–1300, <https://doi.org/10.1002/2015JF003515>, 2015.
- 660 Rankl, M., Kienholz, C., and Braun, M.: Glacier Changes in the Karakoram Region Mapped by Multiresolution Satellite Imagery, *The Cryosphere*, 8, 977–989, <https://doi.org/10.5194/tc-8-977-2014>, 2014.
- Raymond, C. F.: How Do Glaciers Surge? A Review, *Journal of Geophysical Research: Solid Earth*, 92, 9121–9134, <https://doi.org/10.1029/JB092iB09p09121>, 1987.
- 665 RGI Consortium: Randolph Glacier Inventory—a Dataset of Global Glacier Outlines: Version 6.0, Global Land Ice Measurements from Space, Colorado, USA, Tech. Rep, 2017.
- Round, V., Leinss, S., Huss, M., Haemmig, C., and Hajnsek, I.: Surge Dynamics and Lake Outbursts of Kyagar Glacier, Karakoram, *The Cryosphere*, 11, 723–739, <https://doi.org/10.5194/tc-11-723-2017>, 2017.

- Sachs, M. K., Yoder, M. R., Turcotte, D. L., Rundle, J. B., and Malamud, B. D.: Black Swans, Power Laws, and Dragon-Kings: Earth-
670 quakes, Volcanic Eruptions, Landslides, Wildfires, Floods, and SOC Models, *The European Physical Journal Special Topics*, 205, 167–
182, <https://doi.org/10.1140/epjst/e2012-01569-3>, 2012.
- Sevestre, H. and Benn, D. I.: Climatic and Geometric Controls on the Global Distribution of Surge-Type Glaciers: Implications for a Unifying
Model of Surging, *Journal of Glaciology*, 61, 646–662, <https://doi.org/10.3189/2015JoG14J136>, 2015.
- Shangguan, D., Liu, S., Ding, Y., Guo, W., Xu, B., Xu, J., and Jiang, Z.: Characterizing the May 2015 Karayaylak Glacier Surge in the
675 Eastern Pamir Plateau Using Remote Sensing, *Journal of Glaciology*, 62, 944–953, <https://doi.org/10.1017/jog.2016.81>, 2016.
- Sharp, M.: Surging Glaciers: Behaviour and Mechanisms, *Progress in Physical Geography: Earth and Environment*, 12, 349–370,
<https://doi.org/10.1177/030913338801200302>, 1988.
- Shean, D. E., Bhushan, S., Montesano, P., Rounce, D. R., Arendt, A., and Osmanoglu, B.: A Systematic, Regional Assessment of High
Mountain Asia Glacier Mass Balance, *Frontiers in Earth Science*, 0, <https://doi.org/10.3389/feart.2019.00363>, 2020.
- 680 Steiner, J. F., Kraaijenbrink, P. D. A., Jiduc, S. G., and Immerzeel, W. W.: Brief Communication: The Khurdopin Glacier Surge Revisited –
Extreme Flow Velocities and Formation of a Dammed Lake in 2017, *The Cryosphere*, 12, 95–101, <https://doi.org/10.5194/tc-12-95-2018>,
2018.
- Sund, M., Eiken, T., Hagen, J. O., and Kääh, A.: Svalbard Surge Dynamics Derived from Geometric Changes, *Annals of Glaciology*, 50,
50–60, <https://doi.org/10.3189/172756409789624265>, 2009.
- 685 Thøgersen, K., Gilbert, A., Schuler, T. V., and Malthe-Sørenssen, A.: Rate-and-State Friction Explains Glacier Surge Propagation, *Nature
Communications*, 10, 2823, <https://doi.org/10.1038/s41467-019-10506-4>, 2019.
- Truffer, M., Kääh, A., Harrison, W. D., Osipova, G. B., Nosenko, G. A., Espizua, L., Gilbert, A., Fischer, L., Huggel, C., Craw Burns, P. A.,
and Lai, A. W.: Chapter 13 - Glacier Surges, in: *Snow and Ice-Related Hazards, Risks, and Disasters (Second Edition)*, edited by Haeberli,
W. and Whiteman, C., pp. 417–466, Elsevier, <https://doi.org/10.1016/B978-0-12-817129-5.00003-2>, 2021.
- 690 Turcotte, D. L.: Fractals in Geology and Geophysics, in: *Fractals in Geophysics*, edited by Scholz, C. H. and Mandelbrot, B. B., *Pure and
Applied Geophysics*, pp. 171–196, Birkhäuser, Basel, https://doi.org/10.1007/978-3-0348-6389-6_10, 1989.
- Wendt, A., Mayer, C., Lambrecht, A., and Floricioiu, D.: A Glacier Surge of Bivachny Glacier, Pamir Mountains, Observed by a Time Series
of High-Resolution Digital Elevation Models and Glacier Velocities, *Remote Sensing*, 9, 388, <https://doi.org/10.3390/rs9040388>, 2017.
- Xu, J., Shangguan, D., and Wang, J.: Recent Surging Event of a Glacier on Geladandong Peak on the Central Tibetan Plateau, *Journal of
695 Glaciology*, pp. 1–7, <https://doi.org/10.1017/jog.2021.86>, 2021.
- Yasuda, T. and Furuya, M.: Glacier Surge in West Kunlun Shan, NW Tibet Detected by Synthetic Aperture Radar, in: *Conference Proceedings
of 2013 Asia-Pacific Conference on Synthetic Aperture Radar (APSAR)*, pp. 61–62, 2013.
- Yasuda, T. and Furuya, M.: Dynamics of Surge-Type Glaciers in West Kunlun Shan, Northwestern Tibet, *Journal of Geophysical Research:
Earth Surface*, 120, 2393–2405, <https://doi.org/10.1002/2015JF003511>, 2015.
- 700 Zhou, S., Yao, X., Zhang, D., Zhang, Y., Liu, S., and Min, Y.: Remote Sensing Monitoring of Advancing and Surging Glaciers in the Tien
Shan, 1990–2019, *Remote Sensing*, 13, 1973, <https://doi.org/10.3390/rs13101973>, 2021.
- Zhu, Q., Ke, C.-Q., and Li, H.: Monitoring Glacier Surges in the Kongur Tagh Area of the Tibetan Plateau Using Sentinel-1 SAR Data,
Geomorphology, 390, 107 869, <https://doi.org/10.1016/j.geomorph.2021.107869>, 2021.