

Chronostratigraphy of Larsen blue ice area in Northern Victoria Land, East Antarctica, and its implications for paleoclimate

Giyoon Lee¹, Jinho Ahn¹, Hyeontae Ju², Florian Ritterbusch³, Ikumi Oyabu⁴, Christo Buizert⁵, Songyi Kim², Jangil Moon², Sambit Ghosh¹, Kenji Kawamura^{4,6,7}, Zheng-Tian Lu³, Sangbum Hong², Chang Hee Han², Soon Do Hur², Wei Jiang³, and Guo-Min Yang³

¹School of Earth and Environmental Sciences, Seoul National University, Seoul, South Korea

²Korea Polar Research Institute, Incheon, South Korea

³School of Physical Sciences, University of Science and Technology of China, Hefei, China.

⁴National Institute of Polar Research, Tachikawa, Japan

⁵College of Earth, Ocean and Atmospheric Sciences, Oregon State University (OSU), Corvallis, OR, USA

⁶Department of Polar Science, School of Multidisciplinary Sciences, The Graduate University for Advanced Studies, SOKENDAI, Tachikawa, Japan

⁷Japan Agency for Marine-Earth Science and Technology (JAMSTEC), Yokosuka, Japan

Correspondence to: Jinho Ahn (jinhoahn@gmail.com)

15 **Abstract.** In blue ice areas (BIAs), deep ice ~~is directly exposed at the surface~~^{outerops}, allowing cost-effective collection of large-sized old ice samples ~~at the surface~~. However, chronostratigraphic studies on blue ice areas are challenging owing to fold and fault structures. Here, we report ~~on a~~ surface transect of ice with an undisturbed horizontal stratigraphy from the Larsen BIA, ~~Northern Victoria Land, East Antarctica, making the area valuable for paleoclimate studies~~. Ice layers defined by dust bands and ground penetration radar (GPR) surveys indicate a monotonic increase in age along the ice flow direction on the downstream side, while the upstream ice exhibits a potential repetition of ages on scales of tens of meters, ~~as shown in which result from a~~ complicated fold structure. Stable water isotopes ($\delta^{18}\text{O}_{\text{ice}}$ and $\delta^2\text{H}_{\text{ice}}$) and components of the occluded air (i.e., CO_2 , N_2O , CH_4 , $\delta^{15}\text{N}\text{-N}_2$, $\delta^{18}\text{O}_{\text{atm}}$ ($= \delta^{18}\text{O}\text{-O}_2$), $\delta\text{O}_2/\text{N}_2$, $\delta\text{Ar}/\text{N}_2$, ^{81}Kr and ^{85}Kr) ~~were~~^{are} analyzed for surface ice and shallow ice core samples. Correlating $\delta^{18}\text{O}_{\text{ice}}$, $\delta^{18}\text{O}_{\text{atm}}$, and CH_4 records ~~off from the~~ Larsen BIA ~~ice~~ with ~~existing ice core records~~^{ice from previously drilled ice cores} indicate ~~s~~ that the gas age at ~~the various~~ shallow ~~vertical~~ coring sites ranges between 9.2–23.4 ka BP, while the ice age ~~for the entire surface sampling sites between~~ ~~sampled from the surface ranges from~~ 5.6–to 24.7 ka BP. Absolute radiometric ^{81}Kr dating for the two ~~vertical~~ cores confirms ages within acceptable levels of analytical uncertainty. A tentative climate reconstruction suggests a large deglacial warming of $15 \pm 5^\circ\text{C}$ (1σ), and an increase in snow accumulation by a factor of 1.7–4.6 ~~(from 24.3 ka BP to 10.6 ka BP)~~. ~~Climatic interpretation is complicated by the need for upstream flow corrections, evidence for strong surface sublimation during the last ice age, and potential errors in the estimated gas age-ice age difference.~~ Our study demonstrates that BIAs in Northern Victoria Land may help to obtain high-quality records for paleoclimate and atmospheric greenhouse gas compositions through the last deglaciation, ~~although in general climatic interpretation is complicated by the need for upstream flow corrections, evidence for strong surface sublimation during the last ice age~~^{glacial period, and potential errors in the estimated gas age-ice age difference}.

Commented [C1]: To editor

➤ Line 25: Discrete ice samples were collected. Not a horizontal ice core.

Commented [C2]: To editor

➤ Line 28: This sentence is moved to "Line 31".

1 Introduction

35 Ice cores serve as very useful archives for paleoclimate, ~~and can provide information on, for instance, such as ancient atmospheric greenhouse gas composition, surface temperature, and aerosols. For instance, ice core records reveal the~~ relationship between greenhouse gas concentration and Earth's climate (Petit et al., 1999; EPICA Community Members, 2004; Siegenthaler et al., 2005; Lüthi et al., 2008; Bereiter et al., 2015), abrupt climate changes during the last glacial period (Dansgaard et al., 1989; Steffensen et al., 2008), and bipolar seesaw climate links on millennium timescales (Blunier and
40 Brook, 2001; Landais et al., 2015). ~~To date~~ Thus far, continuous climate records from ice cores cover the last 800 ka, ~~while new deep drilling projects in the Antarctica now aim at recovering ice that is and may reach~~ more than 1 Ma ~~old in the near future by new deep drilling projects in the Antarctica~~ (Fischer et al., 2013). However, the use of ice cores obtained from conventional deep ice core drilling projects ~~has some limitations~~ remains limited as many analyses require large amounts of ice, such as trace element isotope and trace gas analyses. In addition, deep drilling projects incur high economic and labour
45 costs. In contrast, coring in blue ice areas (BIAs) has emerged as an alternative to obtain large ice samples in a cost-effective manner (Folco et al., 2006; Petrenko et al., 2006; Schaefer et al., 2006; Sinisalo et al., 2007; Korotkikh et al., 2011; Turney et al., 2013; Bauska et al., 2016; Aarons et al., 2017; Baggenstos et al., 2017; Zekollari et al., 2019; Yan et al., 2019; Fogwill et al., 2020).

~~Over the vast majority of the Antarctic ice sheet surface~~ Once snow is deposited on the surface, ice is formed through the compaction of snow. ~~This ice then deforms and, through gravity, flows and flows directly~~ towards the margin of the ice sheet (Gardner et al., 2018). However, (basal) topographic obstacles ~~in some cases~~ redirect the ice-flow towards the surface in some ~~areas, resulting in~~ so-called blue ice areas. In these BIAs, ~~annually more~~ surface snow is ablated ~~than accumulated~~ by katabatic winds and/or sublimation (Bintanja, 1999; Sinisalo and Moore, 2010). Because ice layers of the same age (isochrones) are extended on the surface, ~~we can obtain~~ large amounts of old ice ~~for~~ of a specific age ~~can be obtained~~ at the surface and/or
55 relatively shallow depths, allowing ~~researchers~~ to study ~~the~~ paleoclimate ~~which is typically prohibited by~~ without constraints ~~related to~~ limited sample sizes (Schaefer et al., 2006; Bauska et al., 2016; Fogwill et al., 2020).

In ~~some~~ the early stages of BIA research, ~~meteorites were the focus of investigation because~~ when ice flow and ~~surface conditions combine favorably, ablation causes~~ large concentrations of meteorites ~~to~~ can accumulate on the surface of the BIAs (Whillans and Cassidy, 1983; Cassidy et al., 1992; Harvey, 2003; Tollenaar et al., 2022). Recently, studies on BIAs have drawn
60 ~~particular~~ attention to the possibility of identifying ice older than 800 ka BP (to date, the longest continuous ice core record covers the last 800 ka BP), ~~which is of particular interest~~ because glacial–interglacial cycles changed from 40 to 100 kyr ~~around this time~~ during the 0.8–1.0 Ma period, which is ~~called~~ referred to as the mid-Pleistocene Transition (MPT). It has been reported that ice at Allan Hills BIA has ages of 90–250 ka BP on the surface (Spaulding et al., 2013), reaching ~2.7 Ma BP near the bedrock at depths of about 150–200 m (Yan et al., 2019). However, the use of ice samples taken from BIAs (hereafter referred
65 to as blue ice) has several drawbacks. In most cases, the stratigraphy of the BIAs is complicated, as shown by the fold and fault structures on the surface (Folco et al., 2006; Petrenko et al., 2006; Curzio et al., 2008; Schaefer et al., 2009; Baggenstos

et al., 2017) and [the](#) stratigraphy is discontinuous at deep depths near the bedrock where ice ages are similar to or older than the MPT (Higgins et al., 2015; Yan et al., 2019).

BIAs cover [about 1.67 %](#) of the Antarctic continent, [of which a large fraction is ~~and are~~](#) concentrated in Victoria Land, the Transantarctic Mountains, Dronning Maud Land and the Lambert Glacier basin (Hui et al., 2014) (Fig. 1). Several chronological studies of BIAs have been conducted in Southern Victoria Land: [on](#) Taylor Glacier (Aciego et al., 2007; Buizert et al., 2014; Baggenstos et al., 2017; Baggenstos et al., 2018; Menking et al., 2019), [in the](#) Allan Hills (Spaulding et al., 2013; Higgins et al., 2015; Yan et al., 2019; Yan et al., 2021), [and on](#) Mullins Glacier (Yau et al., 2015); [and in](#) Northern Victoria Land: [on](#) Frontier Glacier (Folco et al., 2006; Curzio et al., 2008; Welten et al., 2008). Studies on ~~the~~ Taylor Glacier and Allan Hills ~~BIA~~ have constrained age along several transects and cores. However, chronologies of the other BIAs in Victoria Land remain [largely unknown, prohibiting insufficient for](#) high-resolution paleoclimate studies. In addition, important paleoclimate proxies such as stable water isotopes, greenhouse gases, and isotopic ratios [of the oxygen gas have, to date,](#) not been [previously addressed/analyzed](#) for the BIAs in Northern Victoria Land.

Generally, because of the complicated stratigraphy, blue ice samples are dated [using by combining](#) multiple methods (Sinisalo and Moore, 2010). In previous studies, ice flow modelling, correlation analysis with stable isotopes of ice, and radiometric analysis of meteorites and tephra in ice have been used, but [in most cases](#) the age constraints have not been sufficiently precise to study [the](#) paleoclimate (Azuma et al., 1985; Nakawo et al., 1988; Reeh et al., 2002; Folco et al., 2006; Aciego et al., 2007; Curzio et al., 2008; Dunbar et al., 2008). One effective method for dating the gas age is to correlate globally well-mixed atmospheric gas records (e.g., CH₄, CO₂, δ¹⁸O_{atm}) with existing well-dated ice core records (Spaulding et al., 2013; Baggenstos et al., 2017; Menking et al., 2019; Yan et al., 2021). Other methods include the use of stable Ar isotopes (Higgins et al., 2015; Yau et al., 2015; Yan et al., 2019) or radioactive ⁸¹Kr (Loosli&Oeschger 1969; Buizert et al., 2014; Tian et al., 2019; Crotti et al., 2021), both of which provide independent and absolute age constraints. However, the use of Ar and Kr isotopes [has](#) ~~ve~~ certain limitation ~~for to allow for an~~ accurate age constraint. [The age uncertainty of Ar dating is ±180 ka or 11 % of the age; the uncertainty is originated from the according to a regression line used by Bender et al. \(2008\) used.](#) In addition, the ages can be corrupted by the injection of radiogenic ⁴⁰Ar from the continental crust (Bender et al., 2010). ⁸¹Kr is a cosmogenically-produced radioactive isotope with a half-life of 229 ± 11 ka, decaying to ⁸¹Br via electron capture. It is mixed in the atmosphere within 1–2 years and has no other significant sources or sinks, making ⁸¹Kr an ideal tracer (Oeschger, 1987; Zappala et al., 2020). Oeschger (1987) suggested the potential of ⁸¹Kr for radiometric ice core dating. However, at that time, 10⁵–10⁶ kg of ice was required. Owing to the development of Atom Trace Trap Analysis (ATTA), the required ice has continued to decrease (Lu et al., 2014; Tian et al., 2019; Jiang et al., 2020; Crotti et al., 2021). Buizert et al. (2014), for the first time, showed that ⁸¹Kr age dating is feasible for blue ice in Taylor Glacier, Antarctica. However, the age uncertainty of ⁸¹Kr dating ranges between 5–20 % of the age depending on the sample age and sample size (Jiang et al., 2020). It also has a systematic age uncertainty of ~5 % due to the uncertainty in the ⁸¹Kr half-life. Given these uncertainties [in using Ar and Kr isotopes for direct dating](#), here we opt to use correlation of atmospheric gas records with existing well-dated ice core records as the primary dating tool. [For dating ice ages, glaciochemical records \(e.g., nss-Ca²⁺, δ¹⁸O_{ice}, δ²H_{ice}\) can be used for correlation](#)

Commented [C3]: To editor

➤ Line 88: According to Bender et al. (2008), the age uncertainty would be ±180 ka or 11% of the age, whichever is greater. So we think it is necessary to include this in the text.

with existing well dated ice core records (Baggenstos et al., 2018; Menking et al., 2019). Notably, the ice is older than the gas at the corresponding depth because the gas is isolated and stops mixing with the atmospheric air when the firm completely transforms into ice (Schwander and Stauffer, 1984).

105 CH₄ and O₂ are well mixed in the atmosphere (Blunier et al., 2007), and conducting correlations of both CH₄ concentration and δ¹⁸O of O₂ (δ¹⁸O_{atm}) is a well-known strategy for establishing chronologies of blue ice, ~~which have been used even before the advent of absolute dating method~~ (Petrenko et al., 2006; Baggenstos et al., 2017; Yan et al., 2021). Variations in continental ice mass ~~are~~ known to be the main factor that controls δ¹⁸O_{atm} during glacial–interglacial cycles (Bender et al., 1985; Sowers et al., 1993). In addition, variations in the Inter Tropical Convergence Zone (ITCZ) ~~are also known~~ ~~were also considered to influence~~ δ¹⁸O_{atm} on millennial and orbital timescales (Severinghaus et al., 2009; Landais et al., 2010; Seltzer et al., 110 2017; Extier et al., 2018b). Because of the long lifetime of oxygen gas in the atmosphere (~1 ka), δ¹⁸O_{atm} varies more gradually ~~compared to CH₄~~, limiting synchronization to millennial timescales. In contrast, atmospheric CH₄ concentration changes rapidly because of the short lifetime of ~12 years, allowing precise dating via stratigraphic matching.

115 For dating ice ages, glaciochemical records (e.g., nss-Ca²⁺, δ¹⁸O_{ice}, δ²H_{ice}) can be used for correlation with existing well-dated ice core records (Baggenstos et al., 2018; Menking et al., 2019). Notably, at a given depth, the ice is older than the gas because the gas is only isolated and stops mixing with the atmospheric air when the firm completely transforms into ice (Schwander and Stauffer, 1984).

Commented [C4]: To editor

➤ Line 100: The sentence is moved to “Line 113”.

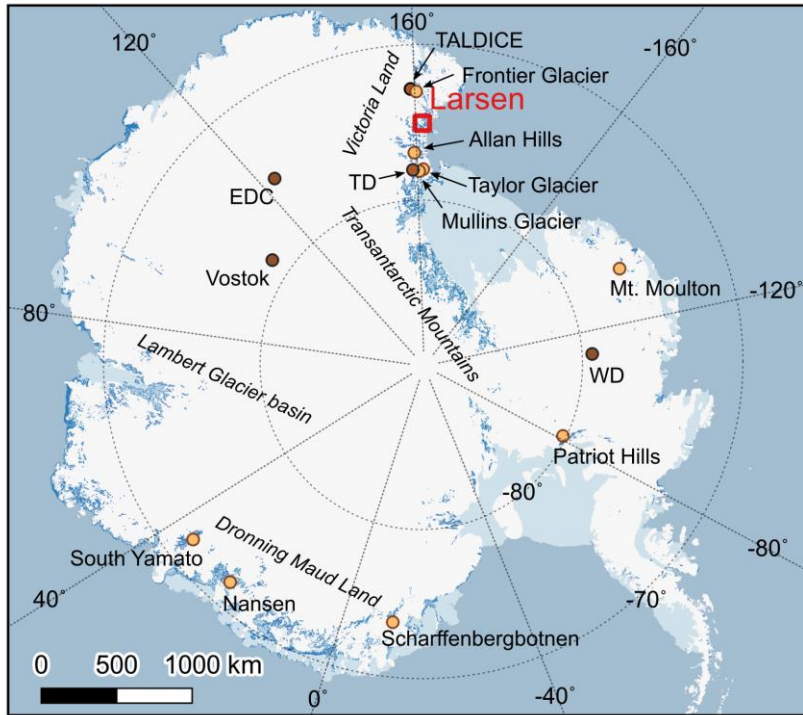


Figure 1. Distribution map of BIAs in Antarctica. BIAs are noted in dark blue (Hui et al., 2014). Orange dots represent the BIAs where the chronology has been studied. Deep ice core locations with brown dots are labeled as follows: Talos Dome ice core (TALDICE), Taylor Dome (TD), EPICA Dome C (EDC), WAIS Divide (WD) and Vostok. To keep a consistent orientation with the GPR profile in Fig. 3, we flipped the classical map of Antarctica (East Antarctica to the left-hand side). The Antarctic map was obtained from the QGIS Quantarctica package.

Our study focuses on the chronostratigraphy of ice in the Larsen BIA, Antarctica, which may with the goal to facilitate future research in this region. We describe the local ice flow and structure of the ice layers using dust bands and ground penetration radar (GPR) surveys, and then assessed the alterations of the measured stable water isotopes, greenhouse gases (CH_4 , CO_2), and gas isotopes ($\delta^{15}\text{N-N}_2$, $\delta^{18}\text{O}_{\text{atm}}$). To constrain the unknown gas and ice ages, $\delta^{18}\text{O}_{\text{atm}}$, CH_4 , and $\delta^{18}\text{O}_{\text{ice}}$ were correlated with existing ice core records. We also independently confirmed the ages using the radiometric ^{81}Kr dating method. Finally, using the $\delta^{15}\text{N-N}_2$, and the Δage (ice age and gas age difference) results, we present the record of surface temperature and accumulation rate. For this, in contrast to the previous studies, which used the Herron-Longway model (Herron and Langway, 1980; Baggenstos et al., 2018; Menking et al., 2019; Yan et al., 2021), we applied a recently developed analytical

framework, which does not require stable water isotope values to estimate past surface temperatures and accumulation rates (Buizert, 2021); ~~stable water isotope values from Larsen BIA seems altered by fractionation during sublimation of ice (see Sect. 3.2).~~

2 Study area and methods

135 2.1 Larsen blue ice area (BIA)

We sampled ice from Larsen BIA, an outlet glacier in the Northern Victoria Land, East Antarctica, during the austral summer of 2018/2019. The Larsen BIA is located approximately 85 km southwest of the Korean Jang Bo Go station (Fig. 2a). The mean annual temperature is -24.4 ± 11.7 °C (1 σ) (in year 2016; data and information were obtained from the Meteorological Observatory at MZS and Victoria Land of PNRA-www.climantartide.it), cold enough to prevent ice melting in the summer. [Consequently, the ablation of ice at the surface occurs through sublimation.](#) There were ~20 cm wide dust bands with gentle folding structures in the mid- to downstream part, while we observed severely folded dust bands (e.g. S- and Z-folds) in the upstream part (Fig. 2b). Dust bands are frequently observed in BIAs in Victoria Land and can be used as isochrons (Sinisalo and Moore, 2010). To obtain ice samples with a simple stratigraphy, we avoided ice coring in areas with complex fold structures and sampled ice in the direction of ice flow identified by the Antarctic ice velocity map in the QGIS Quantarctica package (Rignot et al., 2011; Mougnot et al., 2012; Matsuoka et al., 2018; Matsuoka et al., 2021). [In contrast](#) ~~However,~~ the stratigraphy of the upstream ice, where we collected surface ice, may be inverted and repeated on a scale of tens of meters. Shallow ice cores were drilled along a 1-km long transect at intervals of 20–30 m (Fig. 2b). Most ice cores had lengths of approximately 2 m, but ice core #23 (74.9319° S, 161.6018° E) was ~10.4 m (Fig. 2c). We also collected near-surface ice samples (~500 g) along a 1.3 km transect at 20 m intervals to measure stable water isotopes of the ice ($\delta^{18}\text{O}_{\text{ice}}$, $\delta^2\text{H}_{\text{ice}}$) at depths of ~5–10 cm (hereafter referred to as the surface ice sample). [The average horizontal spacing of the surface ice samples and ice cores was approximately 10.3 m.](#) The ice core TF (74.93042° S, 161.56975° E) with a length of ~12 m on the upstream side was sampled in 2016 for a preliminary study, as described by Jang et al. (2017). An imaginary line parallel to the ice flow direction was used to define the horizontal distance, while a perpendicular line from each sampling location to the line parallel to the ice flow direction was projected to identify the intersection point. Each intersection point was then used to measure the horizontal distance from the most upstream sampling site (Fig. S1).

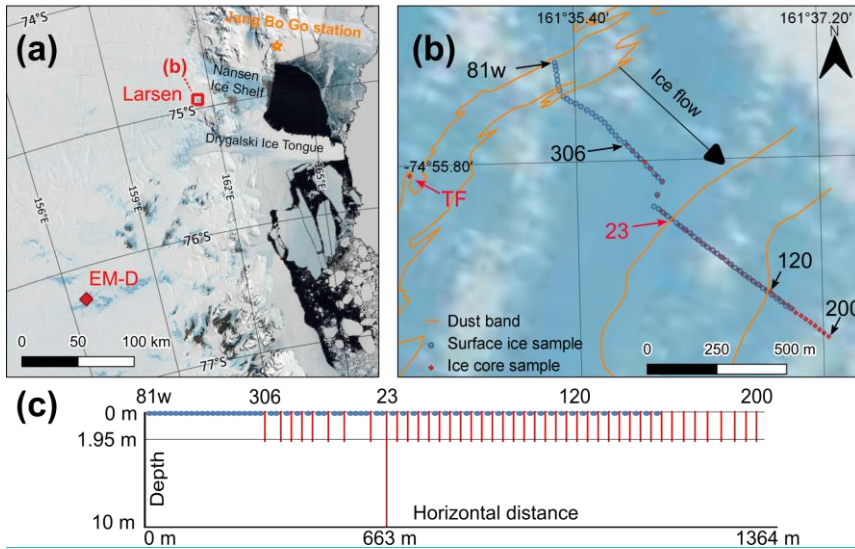


Figure 2. Location of the Larsen BIA and sample collection. (a) Location of Larsen BIA, EM-D core, and Jang Bo Go station. (b) Magnified map of Larsen BIA, including sample locations. Orange lines represent dust bands observed in the blue ice field. The line marks are derived from [what appeared on Google Earth imagery \(https://earth.google.com/web/@-74.93,161.58,1080.8673325a,2487.72294087d,49.37163057v,347.89929343h,0t,0r\)](https://earth.google.com/web/@-74.93,161.58,1080.8673325a,2487.72294087d,49.37163057v,347.89929343h,0t,0r). Blue dots represent locations of surface ice samples. Red diamonds are locations of shallow ice cores. Six representative names are shown: red letters for ~10 m long cores (TF and #23), black letters for 2 m long cores (#306, #120, and #200) and surface ice (81w). Z- and S-folds are ~~recognized~~ identified by the dust bands at upstream ~~icesites~~ sites. The total ~~transectlength~~ transect length of the ice sample transect is approximately 1.4 km. (c) Schematized cross-section of the transect. Satellite photo of Antarctica is from the QGIS Quantarctica package (Bindschadler et al., 2008).

165 2.2 Ground penetrating radar (GPR) survey

170 Approximately 17 km of GPR data ~~waswere~~ were collected ~~forduring~~ during two days in January 2019 (Fig. S1). A MALÅ ProEx impulse radar system with a 50 MHz unshielded antenna for a larger penetration depth was used for data acquisition. Records were obtained at a sampling frequency of 559.5 MHz, time interval 0.1 s and stacked 4 times. The survey was conducted at a speed of 2.5–3 km h⁻¹ to minimize noise caused by frictional vibrations between the antenna and the surface of the glacier. The position of traces was recorded using a single-frequency code-phase GPS with an accuracy of < 3 m. Data processing was performed in ReflexW v.9.5 in the ~~following~~ following order: ~~of~~ dewow, DC filter, band-pass filter, time-zero drift, energy decay correction, background removal, static correction, migration, and stack. As the constant radar signal velocity “v” in the glacier was 0.17 m ns⁻¹ (Borgorodsky, 1985; Reynolds, 1985), and the frequency “f” of the radar system was 50 MHz, the GPR wavelength “λ” was about 3.4 m ($\lambda = v f^{-1}$).

175 2.3 Stable water isotope measurement

Stable water isotopes ($\delta^{18}\text{O}_{\text{ice}}$, $\delta^2\text{H}_{\text{ice}}$) were measured simultaneously at the Korea Polar Research Institute (KOPRI) using the Cavity Ring-Down Spectroscopy (CRDS) method using a Picarro L2130-i with a vaporizer (A0211). Surface ice samples (~5–10 cm depth) and ice core samples (10–30 cm and 190–200 cm depths of ice cores) were used for the analyses. ~~The average horizontal spacing of the surface ice samples and ice cores was approximately 10.3 m.~~ Ice from the ~10 m long core #23 was ~~used for measurements~~ at 20 cm vertical intervals. Ice samples were kept in Whirl-Pak and melted at room temperature. The melted sample was then injected into a 2 ml vial via a disposable syringe with a 0.45 μm filter. One batch of measurements consisted of five duplicate samples (10 samples in total) and a working standard. The first and second aliquots of the sample were measured 12 times each, while the working standard was measured 20 times. The last six measurements were used to remove memory effects from the previous samples. The precision was evaluated by measuring the working standard repeatedly ($n = 67$); 1 sigma (standard deviation) was 0.07 ‰ for $\delta^{18}\text{O}_{\text{ice}}$ and 0.90 ‰ for $\delta^2\text{H}_{\text{ice}}$. The working standards and samples were calibrated against the international standards for water isotopes, VSMOW2 (Vienna Standard Mean Ocean Water 2), SLAP2 (Standard Light Antarctic Precipitation 2) and GISP (Greenland Ice Sheet Precipitation).

180 2.4 Greenhouse gas (GHG) measurement

The CH_4 concentrations in ice cores (#306, #23, #120, and #201) were analyzed at Seoul National University (SNU) using a melt-refreeze technique with a flame ionization detector gas chromatograph (FID-GC) at 10 cm vertical intervals. The CH_4 measurement process is described in detail by Yang (2019). Briefly, we trimmed the outermost side and the cracks of the ice samples by approximately 2 mm with a clean band saw to eliminate contamination by ambient air. The mass of the ice used for measurement was about 35–55 g. Then, we placed the ice inside a custom-made flask and evacuated the flask. We used a 740.6 ppb standard air sample from the National Oceanic and Atmospheric Administration (NOAA) Global Monitoring Division (GMD) on the WMO X2004A scale to establish a daily calibration line (Dlugokencky et al., 2005). The NOAA standard air was injected into four flasks containing bubble-free ice samples, which served as the control group. The CH_4 mixing ratio of the control group was measured, and the daily average offset to the standard value of 740.6 ppb was considered as a systematic error; thus, the daily average offset (average of the daily average offsets: 11.4 ± 3.2 ppb (1σ); average of the intra-day standard deviations of the control group: 3.7 ± 1.2 ppb (1σ)) was subtracted from each measurement result. The trapped gas in the ice was liberated by immersing the flask in a hot water and then refreezing the melt water. In addition, as CH_4 is more soluble than the major air components (N_2 , O_2 , and Ar), the CH_4 concentration of the 1st extracted air is lower than the original value. Therefore, 2nd gas extraction was conducted (refrozen meltwater was melted and refrozen once again) to correct the solubility effect.

The same ice cores (#306, #23, #120, and #201) were used for CO_2 measurements. Generally, CO_2 should be measured using a dry extraction system rather than wet extraction because of its high solubility in water and the possibility of CO_2 production by carbonate–acid reactions in ice melt (Delmas et al., 1980). Therefore, for our measurement, air was collected

Commented [GL5]: To editor
➤ Line 178: The sentence is moved to "Line 150".

using a needle-crusher dry extraction instrument and detected by FID-GC at SNU. The ice was pre-treated in the same manner as that for CH₄, as described above, while the required amount of ice was 15–20 g. We placed the ice in the needle crush chamber, which was cooled to –35 °C during ice preparation. The CO₂ results could be affected by adsorption and desorption by the instrument and the sample tube (Ahn et al., 2009). Therefore, before crushing the ice, NOAA standard air was released through the chamber and collected into the sample tube. The CO₂ mixing ratio was measured, and the average offset with respect to NOAA standard air (systematic error) was ~~used to subtracted from each measurement results, the value of the CO₂ result from each ice sample measurement.~~ The CO₂ mixing ratio of the standard air we used for making a daily calibration line was 285.66 ppm or 293.32 ppm (because gas in the tank had been exhausted), which is from NOAA GMD in the WMO X2019 calibration scale (Hall et al., 2021). Trapped air in the ice was collected in a sample tube cooled by a helium closed cycle refrigerator (He-CCR) (–12 K) after crossing the water trap (approximately –80 °C). The entire process is described in detail by Shin (2014).

We also used ice samples from 35 cores at depths of 190–200 cm (hereafter referred to as horizontal measurement) and ice core #23 to measure CH₄, CO₂, and N₂O concentrations, along with other gas isotopes (see below), by a wet extraction method at the National Institute of Polar Research (NIPR) in Japan. For CO₂ and CH₄, FID-GC was used, and for N₂O, an electron capture detector (ECD) GC was used. To determine the concentrations of CH₄ and CO₂, a calibration line was established using TU-2008 (Tohoku University) scale standard air; for N₂O, the TU-2006 scale standard air was used. Details on the standard air used in this study (named STD 1, 3, 5) are described by Oyabu et al. (2020). Three standard air and a quadratic calibration line were used to determine the GHG concentration at the NIPR, while single standard air and a linear calibration line were used to determine the GHG concentration at SNU. Different calibration scales of standard air (TU and NOAA/WMO) and different calibration methods may contribute to making an inter-laboratory offset of GHG concentrations. CO₂ was measured again at SNU using the dry extraction method at 190–195 cm depth for the horizontal measurement (Table S7). The ice preparation process is briefly explained in Sect. 2.5.

Here, we also report CH₄ and CO₂ measurement results of the EM-D core for comparison (76.253° S, 156.562° E) (Fig. 2), which was sampled on 13 December, 2016 at Elephant Moraine Texas Bowl for preliminary study (Jang et al., 2017).

2.5 Analyses of $\delta^{15}\text{N-N}_2$, $\delta^{18}\text{O}_{\text{atm}}$, $\delta\text{O}_2/\text{N}_2$, and $\delta\text{Ar}/\text{N}_2$

O₂, N₂, and Ar isotopes were measured at the NIPR using a dual-inlet mass spectrometer (Thermo Fisher Scientific Delta V). The isotope results were evaluated with respect to the modern atmosphere. As mentioned previously, we measured 35 ice cores at depths of 190–200 cm to evaluate how ancient air compositions change horizontally and also measured gas isotopes using ice core #23 at several depths with a range of 0–10 m to compare with the results from the neighbouring cores at depths of 190–200 cm. Because gas loss fractionation by molecular diffusion during storage could have affected the isotope results (Ikeda-Fukazawa et al., 2005; Oyabu et al., 2021), we trimmed the surface and the cracks of the ice approximately 3–5 mm and then shaved away some blurry ice surface using a ceramic knife. The weight of the ice obtained was 55–80 g after trimming the surfaces. The ice inside the vessel was evacuated for ~120 min. To extract the gas, each vessel was gradually immersed in

Commented [GL6]: To editor
➤ Line 216: We added “(–12 K)”.

240 a hot water container. Simultaneously, the released air was collected into a sample tube, which was cooled by a He-CCR. After homogenizing the sample tube overnight, the gas was split into two aliquots, one for isotope analysis (1.5 ml) and the other for greenhouse gas measurement (5 ml). The measurement process is described in more detail by Oyabu et al. (2020).

Obtaining a true $\delta^{18}\text{O}$ value in the past atmosphere from ice cores requires gravitational, thermal, and gas loss fractionation corrections. The gravitational factor is proportional to the difference in the mass number between isotopes (Craig et al., 1988; Severinghaus et al., 1998). Therefore, $\delta^{18}\text{O}$ ($^{18}\text{O}/^{16}\text{O}$) was affected twice as much as that of $\delta^{15}\text{N}$ ($^{15}\text{N}/^{14}\text{N}$) by gravity. Hence, each gas isotope was gravity-corrected using Eq. (1):

$$\delta^{18}\text{O}_{\text{atm}} = \delta^{18}\text{O} - 2 \times \delta^{15}\text{N} \quad (1)$$

Following the same principle, $\delta\text{O}_2/\text{N}_2$ is more affected than $\delta^{15}\text{N}$ by a factor of 4 than $\delta^{15}\text{N}$; thus it was corrected using Eq. (2), and used to assess the gas loss fractionation:

$$\delta\text{O}_2/\text{N}_2_{\text{gravcorr}} = \delta\text{O}_2/\text{N}_2 - 4 \times \delta^{15}\text{N} \quad (2)$$

Along with gravitational correction, thermal fractionation should also be considered because temperature gradients in the firn column affect the distribution of the isotopes (Severinghaus et al., 1998; Goujon et al., 2003). However, thermal fractionation is typically small in Antarctic ice cores due to the relatively gradual nature of surface climate change (Goujon et al., 2003). Comparing $\delta^{40}\text{Ar}/4$ ($^{40}\text{Ar}/^{36}\text{Ar}$) and $\delta^{15}\text{N}$ together, allow discrimination of the contribution of thermal and gravity fractionation (Severinghaus et al., 1998). However, for our samples, thermal fractionation could not be considered because ^{36}Ar interfered with $^{36}\text{O}_2$.

Following Capron et al. (2010), we did not correct for gas loss fractionation in our samples because the $\delta\text{O}_2/\text{N}_2_{\text{gravcorr}}$ values were significantly greater than -30% , except for one measurement for sample #301 (Table S4, S5). $\delta\text{O}_2/\text{N}_2_{\text{gravcorr}}$ of around -30% indicates that the ice is poorly preserved, and has experienced considerable gas loss either during drilling or storage (Landais et al., 2003). We did not use the results of #301 when constraining the gas age using $\delta^{18}\text{O}_{\text{atm}}$. Gravity-corrected $\delta\text{Ar}/\text{N}_2_{\text{gravcorr}}$ ($\delta\text{Ar}/\text{N}_2_{\text{gravcorr}} = \delta\text{Ar}/\text{N}_2 - 12 \times \delta^{15}\text{N}$) is listed in Table S4 and Table S5 but was not used in this study.

2.6 ^{81}Kr dating

For the ^{81}Kr measurement of ice core #23 and TF, 5.3 kg (depth: 711–1040 cm) and 5.4 kg (depth: 798–1192.5 cm) of ice were used, respectively. Air for the ^{81}Kr measurement was extracted at SNU using the instrument provided by the University of Science and Technology of China (USTC). The ice was kept in a tank with an O-ring lid and evacuated using a dry scroll pump with a water trap, then melted by immersing the tank in hot water. The released gas was collected in containers and shipped to the USTC for Kr purification and ^{81}Kr analysis using Atom Trap Trace Analysis (ATTA). The extraction procedure was described in detail by Tian et al. (2019), and the principle of ATTA is described by Jiang et al. (2012).

The anthropogenic ^{85}Kr was measured simultaneously with ^{81}Kr to quantify any contamination with modern air. For both samples, the measured ^{85}Kr activity was below the detection limit, hence no correction for contamination with modern air was necessary. For the calculation of the ^{81}Kr -ages, the changes in the past atmospheric ^{81}Kr abundance due to variations in the

cosmic ray flux on Earth (Zappala et al., 2020) were considered. The age uncertainty calculation was based on the statistical error of atom counting.

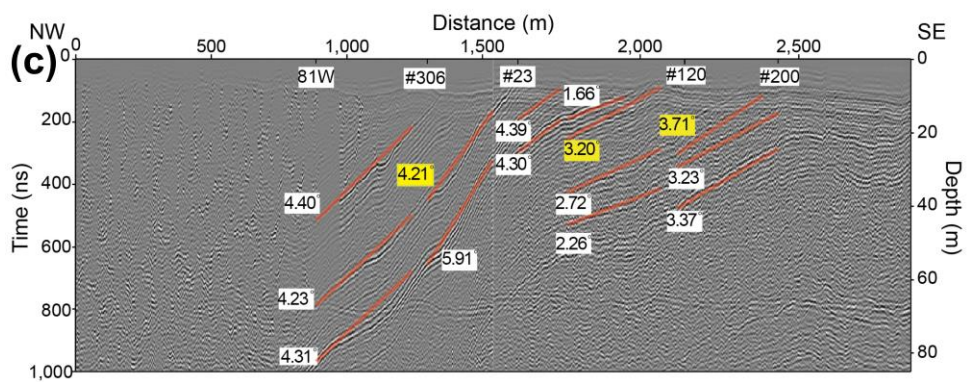
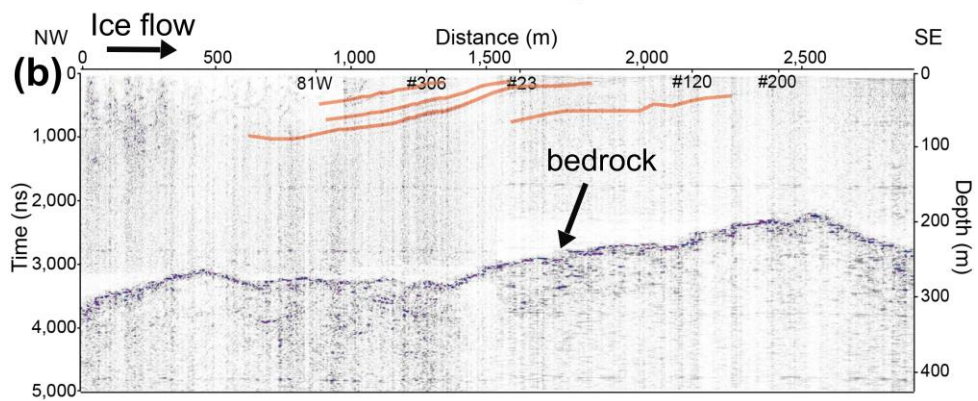
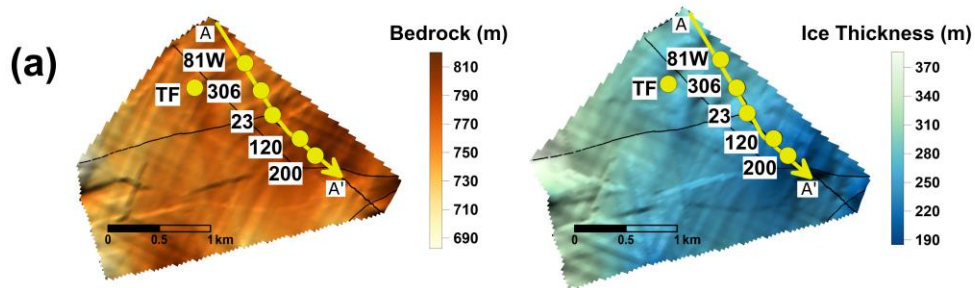
2.7 Development of WD2014 timescale for TALDICE

275 When constraining the ice age of Larsen ice, the TALDICE record was selected to synchronize Larsen $\delta^{18}\text{O}_{\text{ice}}$ because of its
proximity to the ~~upstream direction of the~~ Larsen BIA. For the TALDICE ice core, we used a timescale that was synchronized
to the WAIS Divide (WD) WD2014 chronology (Buizert et al., 2015; Sigl et al., 2016) in the following way: The ice age scales
were synchronized using volcanic deposits identified in sulfur/sulfate data from the WD and TALDICE cores (Severi et al.,
2012; Buizert et al., 2018). Next, the TALDICE gas-age ice-age difference (Δage) was established empirically by matching
280 abrupt changes in atmospheric CH_4 to the WD core; at each match point, this provided one discrete Δage constraint. A
dynamical firn densification model based on Herron-Langway firn physics (Herron & Langway, 1980) was then used to
interpolate between these empirical Δage constraints in order to obtain a TALDICE gas age scale for all depths (Buizert et al.,
2021).

3 Results

285 3.1 Ground penetrating radar (GPR) survey

In the GPR survey, we identified ice layers (or isochrones) in the transect parallel to the ice flow direction (Fig. 3). The dips
of the ice layers range from 1° to 6° with a decreasing trend from the upstream to the downstream direction. The ice layers of
the radargram were not clearly visible at a depth of < 10 m because of the direct wave signal. We did not observe any
stratigraphic folding structure in the ice layers (~~that made and associated~~ age inversion) along the ice flow direction in the mid-
290 to downstream areas (from ice cores #23 to #200). Therefore, we expect monotonic and continuous age changes along the ice-
flow direction. However, as shown in the dust bands with S- and Z-folds in the upstream area (Fig. 2b), the upstream
stratigraphy might be repeated on a scale of tens of meters (from 81w to ice core #23). In addition, the subsurface ice layer in
the upstream area (0–800 m from the most upstream side) was not well recognized from the GPR profile (Fig. 3c). It is possible
that the noise caused by (subsurface) crevasses, cavities, or cracks ~~could~~ obscured the signals. In addition, accurate data
295 acquisition might have been hindered by antenna tremors or low battery power at severely cold temperatures. The basal
topography is well defined from the GPR data; we observed an ice thickness variation of 200–380 m (Fig. 3a, b). The results
of the bedrock elevation and ice thickness (Fig. 3a) were obtained using a kriging method. The ice thickness decreases as ice
flows with increasing bedrock elevation, which is a favourable condition for ~~old~~ ice to be ~~exposed at the surface~~ outcropped.



300 **Figure 3. Ground penetrating radar (GPR) survey overview profile.** (a) Bedrock elevation and ice thickness of Larsen BIA. (b) GPR profile of the transect (AA' in (a)) through the blue ice field. Identifiable ice layers are indicated in orange lines. Ice layers are not well identified at a distance of < 800 m. (c) Enlarged upper 80 m of the GPR profile. ~~Ice layers at a distance of > 2,500 m have a relatively flat dip.~~ Vertical axis is exaggerated and the dip of the ice ranges ~~between 1 –and 6°~~. The average dips used for estimating the ice ages at 1.95 m depth are indicated by yellow boxes.

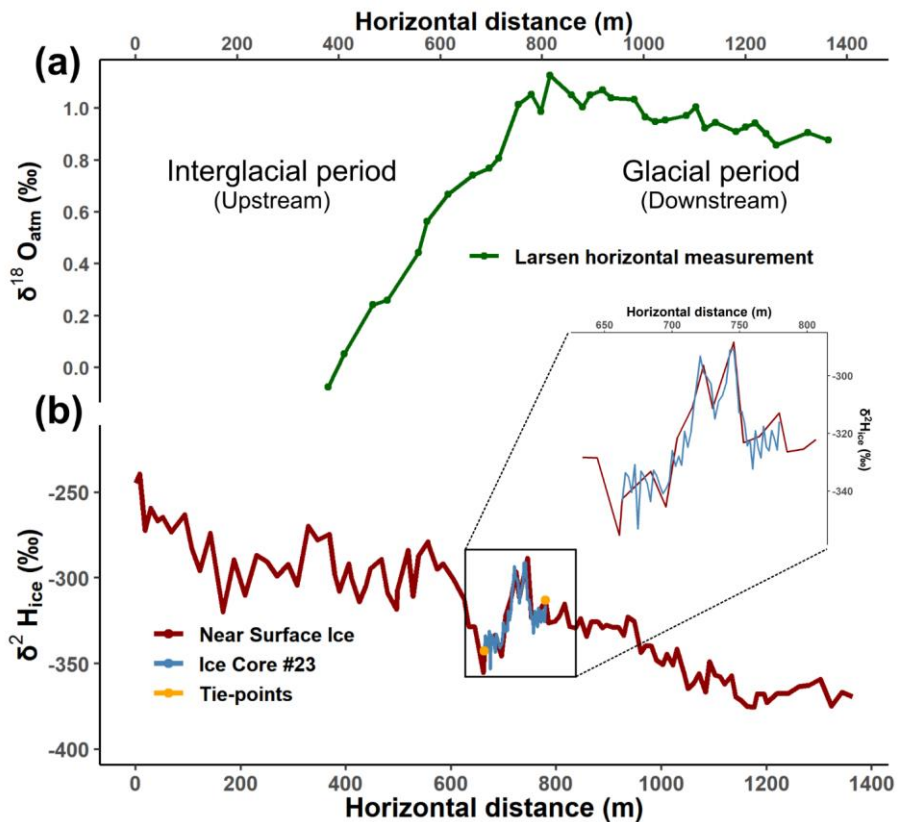
Commented [C7]: To editor

➤ Line 302: Ice layers at a distance of > 2200 m are identified at Fig. 3c.

305 3.2 Stable water isotopes

Stable water isotopes in ice record surface temperatures in the past at snow deposition sites (Jouzel et al., 1997). The $\delta^{18}\text{O}_{\text{ice}}$ and $\delta^2\text{H}_{\text{ice}}$ records of Larsen BIA are presented in Table S8, S9, and S10. The horizontal $\delta^2\text{H}_{\text{ice}}$ ~~result~~ has a distinct local minimum around a horizontal distance of 600–800 m, indicating a transient cold event (Fig. 4b). The $\delta^2\text{H}_{\text{ice}}$ of the transient cold event plunges by approximately 70 ‰, heading to the upstream ice. The most downstream sample, ice core #200, ~~has~~ a $\delta^2\text{H}_{\text{ice}}$ of -369 ‰. Conversely, the most upstream sample, surface ice 81w, ~~has~~ a $\delta^2\text{H}_{\text{ice}}$ of -245 ‰. Ice core #23, ~~was~~ located in the middle of the transect, and the vertical $\delta^2\text{H}_{\text{ice}}$ profile ~~showed a range between~~ of -353 ‰ ~~and~~ -291 ‰. ~~It appears that the~~The water isotope values from the Larsen BIA are ~~more~~ scattered over a wider range than ~~most~~ other published ice core records (Petit et al., 1999; EPICA Community Members, 2004; Stenni et al., 2011). A highly variable $\delta^{18}\text{O}_{\text{ice}}$ has also been reported in the Taylor Glacier (Baggenstos et al., 2018; Menking et al., 2019). Severe scattering might indicate that the accumulation zone (original source of ice) of Larsen BIA might have experienced more variability in temperature and/or the vapour source (variability of atmospheric conditions) than other sites. The wider range of water isotope value during the deglaciation as compared to other published ice core records might be due to a higher increase in temperature and/or because of the spatial difference between the original deposition site of upstream and downstream ices. Deuterium-excess ($d = \delta^2\text{H}_{\text{ice}} - 8 \times \delta^{18}\text{O}_{\text{ice}}$) shows a wide range (8.44 to -8.69 ‰, Table S8) from the entire near-surface ice samples. The negative d-excess likely indicates that isotopic fractionation is attributed to the sublimation of ice in the accumulation zone (Hu et al., 2021). Negative d-excess values were also observed in the Allan Hills BIA (Hu et al., 2021). Meanwhile, sublimation can deplete ^{16}O and ^1H in ice, ~~thereby enriching and make the~~ isotopic ratios ($\delta^{18}\text{O}_{\text{ice}}$ and $\delta^2\text{H}_{\text{ice}}$) ~~enriched~~. Thus, negative value of d-excess results indicate that stable water isotopes are not proper proxies for the changes in temperature and vapour sources.

To match the two $\delta^2\text{H}_{\text{ice}}$ profiles (measurement of ice core #23 and horizontal measurement of near-surface ice), the depth of ice core #23 was converted to the horizontal distances by pinpointing the deepest result of #23 to the result of ice core #104. The horizontal distances for the rest of ~~the depth of~~ core #23 were assigned ~~throughby conducting~~ linear interpolation. The two $\delta^2\text{H}_{\text{ice}}$ profiles ~~match well, as indicated by~~ had an r^2 value of 0.86 ($p < 0.001$) (Fig. 4b). The similarity of $\delta^2\text{H}_{\text{ice}}$ between the vertical and horizontal measurements demonstrates that the ice stratigraphy was not disturbed. The average difference of the values of $\delta^2\text{H}_{\text{ice}}$ between vertical ice core #23 and the horizontal record is 9.8 ‰ and 0.6 ‰ for $\delta^{18}\text{O}_{\text{ice}}$. We assume that the average difference is the uncertainty (1σ) of stable water isotope values of the Larsen ice. ~~As~~The ~10 m long #23 core covers ages that correspond to a surface distance of ~117 m, ~~from which we calculated~~ ~~the an~~ average dip of the ice layer of 4.96°, which is comparable with the average dip derived from the GPR profile (Fig. 3c). This depth/distance relationship is also supported by the comparison of gas isotope values ($\delta^{18}\text{O}_{\text{atm}}$ and $\delta^{15}\text{N-N}_2$) from ice core #23 to the records from the horizontal measurement at a depth of 1.95 m (Fig. A2).



335 **Figure 4.** $\delta^{18}\text{O}_{\text{atm}}$ and $\delta^2\text{H}_{\text{ice}}$ records from Larsen BIA. (a) $\delta^{18}\text{O}_{\text{atm}}$ from each ice core at a 1.95 m depth (horizontal measurement). The $\delta^{18}\text{O}_{\text{atm}}$ of the horizontal measurement was gravity-corrected using Eq. (1). (b) $\delta^2\text{H}_{\text{ice}}$ from near-surface ice (~5–10 cm depth surface ice samples and 10–30 cm depth ice core samples) and ice core #23. The surface ice record was matched with core #23 using two tie-points (orange dots) with a corresponding and show a r^2 value of 0.86 ($p < 0.001$).

340 3.3 Analysis of gas entrapped in the ice

3.3.1 CH₄ and CO₂ mixing ratios

The measurement results of the CH₄ and CO₂ concentrations for the vertical cores are presented in Fig. A1. In the shallow ice cores (#306, #120, #201) show that greenhouse gases are significantly altered for the top 2 m, showing out-of-range values of the range of natural greenhouse gas concentrations during the last 800 ka BP: 340–800 ppb for CH₄ and 180–300 ppm for

CO₂. The CH₄ records of #23 also fluctuate significantly at 0–4.6 m depth, which is reduced but settle down at > 4.6 m. CO₂ records of #23, in contrast, gradually decrease and become steady at a depth of > 4.6 m. A comparison of the results from NIPR and SNU for ice core #23 shows that the difference in the concentration decreases significantly at depths of > 4 m; large differences (30–140 ppb) of CH₄ at 0–4 m depths, but decreased considerably (5–10 ppb) at a depth of > 4 m; the CO₂ difference was 10–20 ppm at < 4 m, but decreased to 2–10 ppm at a depth of > 4 m (Table S5 and S6). The CO₂ mixing ratio of the TF core, reported by Jang et al. (2017), showed that CO₂ was scattered even in the deeper part (> 4 m) of the ice core. We speculate that this scattering is due to complicated ice stratigraphy since we observed several folding structures identified by dust bands near the TF core site (Fig. 2b). Altered CH₄ in near-surface samples have also been identified at shown in Pakitsoq (Greenland), Taylor Glacier, and Elephant Moraine (Petrenko et al., 2006; Baggenstos et al., 2017). By combining our new measurements with those from the literature, we find the the depth at which greenhouse gas concentrations stabilized appears to be inversely proportional to mean annual temperature (Table 1).

Table 1. Depth of unaltered greenhouse gas compositions and mean annual temperature of BIAs.

Site	Depth of unaltered greenhouse gas composition (m)	Mean annual temperature (°C)	Reference for depth of unaltered air	Reference for mean annual temperature
Elephant Moraine	> 10 [*]	-30.3	This study (Fig. A1)	KOPRI AWS (76.27° S, 156.71° E)
Texas Bowl	> 10 [*]	-30.3	This study (Fig. A1)	KOPRI AWS (76.27° S, 156.71° E)
Allan Hills	> 7–10 [§]	-31 [†]	Spaulding et al. (2013)	Delisle and Sievers (1991)
Larsen BIA	> 4.6	-24.4	This study (Fig. A1)	Antarctic Meteo-Climatological Observatory
Taylor Glacier	> 4	-18 [‡]	Baggenstos et al. (2017)	United States Antarctic Program
Pakitsoq (Greenland)	> 0.3	-5.4 [¶]	Petrenko et al. (2006)	Climate-data.org

^{*}Depth of unaltered greenhouse gas compositions from Elephant Moraine Texas Bowl remains uncertain due to the lack of data at depth of > 10 m. Mean annual temperature of Elephant Moraine: provided by KOPRI's automatic weather station (AWS) record of year 2020 and 2021. [†]Allan Hills: not provided by an AWS but by stable water isotopes; [§]deduced by vertical profile of δ¹⁵N-N₂ and δ¹⁸O_{atm} values in Allan Hills. [‡]Taylor Glacier: assumed to be comparable with the mean annual temperature of nearby McMurdo station (~100 km away). [¶]Pakitsoq (Greenland): assumed to be comparable with the mean annual temperature of the nearby town of Ilulissat (~40 km away).

3.3.2 δ¹⁵N-N₂ and δ¹⁸O_{atm}

As δ¹⁵N-N₂ and δ¹⁸O_{atm} were measured at very shallow depths (~1.95 m), we compared the horizontal results with the vertical distribution of ice core #23. The depths of ice core #23 were converted to horizontal distances at a depth of 1.95 m (Fig. A2) using Eq. (3):

$$\text{Horizontal distance in meter (at 1.95 m depth)} \text{HD}_{1.95\text{m}} = [(\text{depth of ice core \#23 } D_{\#23}) - 1.95] / \tan(4.96^\circ) + 663 \quad (3)$$

HD_{1.95m} represents the horizontal distance in meter (at 1.95 m depth), and D_{#23} represents the depth of ice core #23. The We added 663 m reflect the distance between because ice core #23 and was located 663 m from the most upstream sampling site.

The average dip of the ice layer (4.96°) was calculated by matching the δ²H_{ice} of ice core #23 with the horizontal records from

the neighbouring cores (Fig. 4b). The $\delta^{15}\text{N-N}_2$ and $\delta^{18}\text{O}_{\text{atm}}$ values obtained from the horizontal record at 1.95 m are comparable to those from ice core #23, except those from the very shallow depths of < 0.5 m (Fig. A2), confirming that the gas isotope ratios are generally reliable at a depth of 1.95 m. We estimated the uncertainty of $\delta^{15}\text{N-N}_2$ and $\delta^{18}\text{O}_{\text{atm}}$ values as $\pm 0.05\%$ (1σ) because the differences between #23 and the horizontal record were approximately 0.05%. Petrenko et al. (2006) also reported for a site in Western Greenland that as long as the ice is not affected by surface ice melting, nitrogen and oxygen gas isotopes are not altered even at a depth of 0.3 to 0.4 m at the western Greenland ice. In contrast, $\delta^{15}\text{N-N}_2$ and $\delta^{18}\text{O}_{\text{atm}}$ values in the Allan Hills are relatively stable/stabilized below 7–10 m (Spaulding et al., 2013). No significant gaps, discontinuities, or anomalies were found within the results from horizontal measurements of $\delta^{18}\text{O}_{\text{atm}}$, which indicate a relatively undisturbed and significant stratigraphic disturbance (Fig. 4a).

380 4 Discussion

4.1 Glacial termination identification in Larsen ice

The increase in $\delta^2\text{H}_{\text{ice}}$ and decrease in $\delta^{18}\text{O}_{\text{atm}}$ from downstream (older ice) to upstream ice (younger ice) shows that the reflects warming atmospheric conditions over time changed to a warmer climate (Fig. 4). More specifically in particular, the $\delta^{18}\text{O}_{\text{atm}}$ values of the Larsen ice (1.126‰ to -0.075‰) are reveal a typical for a glacial termination period. Based on satellite image of the studied area, Larsen BIA might have been located directly downstream of an accumulation zone and the ice might have been originated solely from an accumulation zone because no other BIAs are identified upstream (refer to Fig. 1 in Zekollari et al., 2019). This expectation is supported by the GPR survey profile (Fig. 3b, c) and the $\delta^{18}\text{O}_{\text{atm}}$ (Fig. 4a), which indicates no complex ice stratigraphy and no discontinuities in the downstream area of Larsen BIA, respectively. In terms of this ice flow condition, we expect the age of Larsen BIA corresponds to relatively young one among the latest glacial terminations.

The maximum $\delta^{18}\text{O}_{\text{atm}}$ value of > 1‰ implies that the ice is younger than 800 ka BP because the glacial climate conditions became more extreme following MPT (Lisiecki and Raymo, 2005; Elderfield et al., 2012; Chalk et al., 2017); values from the literature suggest it is likely that the maximum $\delta^{18}\text{O}_{\text{atm}}$ values were < 1.0‰ during the pre-MPT glacial periods (Yan et al., 2019). The EPICA Dome C (EDC) record shows that Termination I, II, IV, V and VII are the only terminations that have both negative $\delta^{18}\text{O}_{\text{atm}}$ values of negative and values > 1.0‰ over during the last 800 ka BP (Landais et al., 2013; Extier et al., 2018a) (Fig. 5). Hence, we exclude Termination III and VI for the Larsen BIA ages. Among the candidates, Termination V should also be excluded because the maximum $\delta^{18}\text{O}_{\text{atm}}$ value in the EDC record is ~1.4‰, which is significantly higher than that of the Larsen ice. The $\delta^2\text{H}_{\text{ice}}$ decrease in the middle of the glacial termination in the Larsen BIA (Fig. 4b) is similar to that during the Antarctic Cold Reversal (ACR, 12.7–14.6 ka BP), which is a distinct feature only during Termination I among the candidate terminations (i.e., Termination I, II, IV and VII) as observed in the EDC $\delta^2\text{H}_{\text{ice}}$ record (Fig. A46). To confirm the age of the Larsen ice, we compared the $\delta^{18}\text{O}_{\text{atm}}-\text{CH}_4$ relationship with the ice from core #23 at depths of 4.6–10 m with the EDC and WAIS Divide (Fig. 67), and found that the Larsen $\delta^{18}\text{O}_{\text{atm}}-\text{CH}_4$ distribution was well matched only at Termination I. The

Commented [C8]: To editor

> Line 384: We included an explanation that we expect relatively young ices from Larsen BIA.

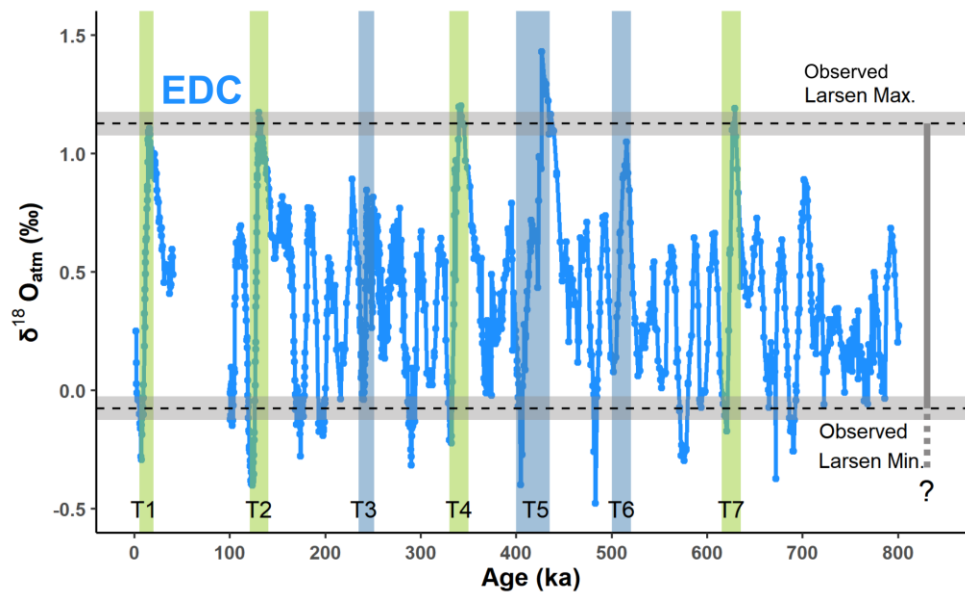
$\delta^{18}\text{O}_{\text{atm}}$ of Larsen has a 0.05 ‰ offset with that of the WAIS Divide, which is within the same order of magnitude on the differences observed between core #23 and horizontal measurements at a depth of > 1.95 m (Fig. A2). Due to the lack of a corresponding $\delta^{18}\text{O}_{\text{atm}}$ record for the CH_4 of core #23, the difference may also come from the $\delta^{18}\text{O}_{\text{atm}}$ records that were estimated by linear interpolation. The $\delta^{18}\text{O}_{\text{atm}}-\text{CO}_2$ and CO_2-CH_4 relationships do not clearly match with those of Termination I in the EDC and WAIS Divide records. The Larsen ice showed a higher CO_2 concentration of the Larsen ice are typically about 10–20 ppm higher compared to EDC and WAIS Divide (Fig. A3). CO_2 concentration warranting further investigations. Finally, we confirmed the ages of the Larsen ice with ^{81}Kr dating, indicating 9–41 and 14–43 ka for ice from the TF and #23 cores, respectively (Table 2), and concluded that Larsen ice covers the Last Glacial Termination (LGT, T1). The ice sample details and krypton dating results are presented in Table 2.

Table 2. Results of ^{81}Kr and ^{85}Kr analysis. Errors in the 5th to 7th column are in $\pm 1\sigma$ confidence level, whereas upper limits in the 4th column have a 90% confidence level. The ^{81}Kr age in the 6th column is given with the statistic error due to atom counting. The systematic error of the ^{81}Kr age in the 7th column is due to the uncertainty in the half-life of ^{81}Kr (229 ± 11 ka). pMKr = percent modern krypton; dpm cc^{-1} = decay per minute / cubic centimeter STP of Kr. As ^{85}Kr in modern air in Antarctica is around 65 dpm cc^{-1} , the ^{85}Kr of samples indicates that alteration by modern air is negligible.

Sample	Mass (kg)	Depth (cm)	^{85}Kr (dpm cc^{-1})	^{81}Kr (pMKr)	^{81}Kr age (ka)	Systematic error (ka)
TF	5.4	798–1192.5	< 1.2	93.5 ± 4.7	26^{+15}_{-17}	± 1
#23	5.3	711–1040	< 0.7	92.4 ± 4.1	29^{+14}_{-15}	± 1

Commented [C9]: To editor

➤ Line 412: We added which column we were referring to.



420 **Figure 5. Comparison of Larsen $\delta^{18}\text{O}_{\text{atm}}$ with EDC record.** $\delta^{18}\text{O}_{\text{atm}}$ records are from Landais et al. (2013) for 0–40 ka and Extier et al. (2018a) for 100–800 ka, respectively. Green vertical bars represent the candidate age intervals for Larsen blue ice; T, Termination. The range of Observed-Larsen $\delta^{18}\text{O}_{\text{atm}}$ values is shown as a vertical grey bar. Horizontal grey bars with dashed lines represent the uncertainty of the measured $\delta^{18}\text{O}_{\text{atm}}$ from Larsen BIA (Fig. A2).

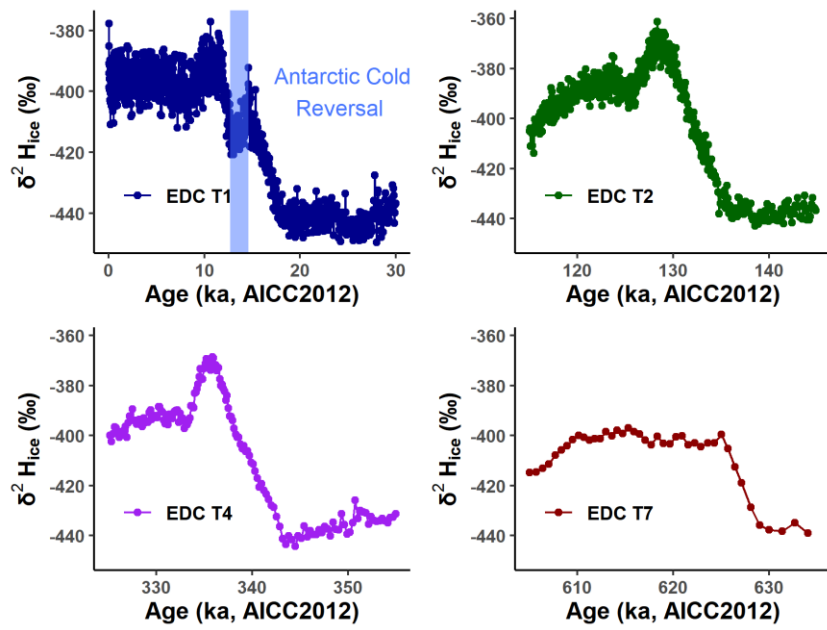


Figure 6. $\delta^2 H_{ice}$ records from EDC. $\delta^2 H_{ice}$ records for T1, T2, T4, and T7 on AICC2012 scale are from Bazin et al. (2013b). The blue vertical bar represents the time interval of the ACR (12.7–14.6 ka BP).

425

Commented [C10]: To editor
 ➤ Line 423: We moved the figure to "Appendix C".

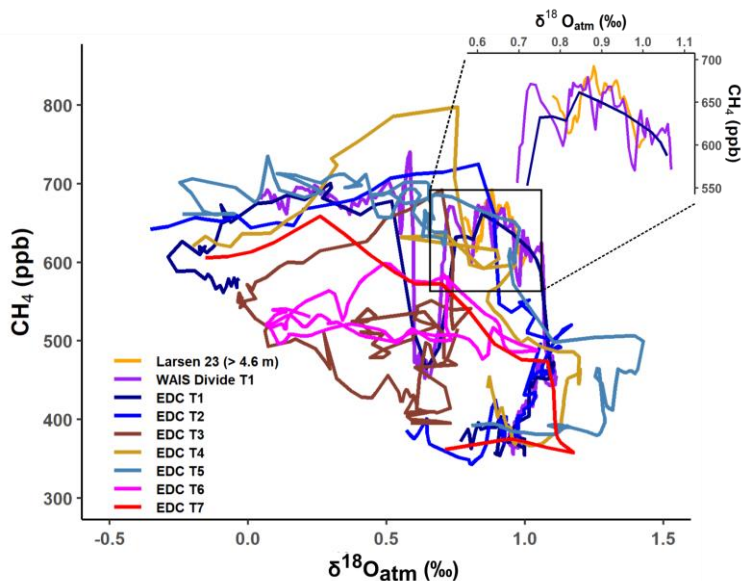


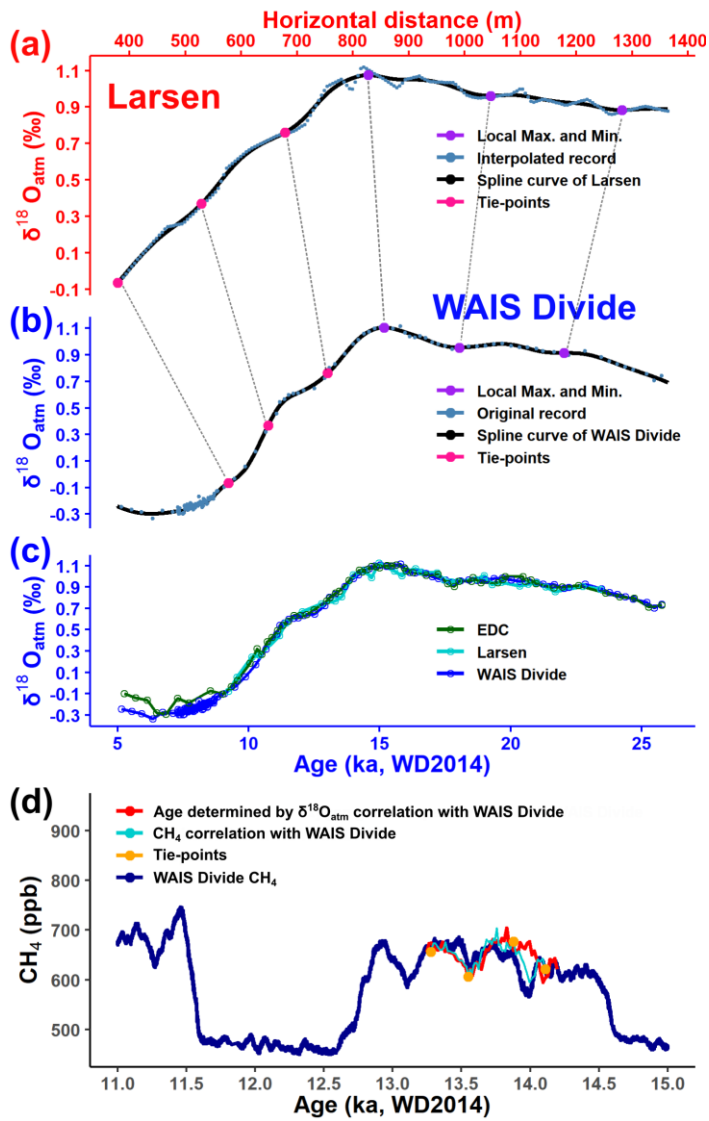
Figure 67. Comparison of $\delta^{18}\text{O}_{\text{atm}}\text{-CH}_4$ relationship in the Larsen ice core #23 with existing records during glacial terminations. $\delta^{18}\text{O}_{\text{atm}}$ and CH_4 data of WAIS Divide are from Severinghaus (2015) and Rhodes et al. (2017), respectively. $\delta^{18}\text{O}_{\text{atm}}$ of EDC is from Landais et al. (2013) and Extier et al. (2018a). The CH_4 record of EDC is from Bazin et al. (2013d). The area within the black box is magnified to compare the Larsen #23 record with those from WAIS Divide T1 and EDC T1.

4.2 Gas ages of Larsen ice

The CH_4 was severely altered at a depth of 1.95 m and the only available CH_4 record was only from ice core #23 (below a depth of 4.6 m). Therefore, we developed the tentative gas age by correlating the horizontal $\delta^{18}\text{O}_{\text{atm}}$ values to those from the WAIS Divide record on the WD2014 timescale. Then, fine correlation was conducted with CH_4 record from the core #23, which corresponds to 13.3–14.1 ka BP at depths of 4.6–10.4 m (Fig. 87d). We used the high-resolution records of CH_4 from both Larsen core #23 and WAIS Divide ice, which greatly improves the precision of age construction compared to the age construction only based on $\delta^{18}\text{O}_{\text{atm}}$. The following paragraph describes this process in detail.

Spline curves were created for both WAIS Divide and Larsen $\delta^{18}\text{O}_{\text{atm}}$ records to reduce artefacts from insufficient sampling resolution and/or ice quality at a 1.95 m depth of the Larsen ice (Fig. 87). The spline curve was drawn after interpolating the original records at 5 m horizontal distance intervals. Three points were selected, which divide the upstream part of the Larsen ice into three equal parts to tie with those in the WAIS Divide record (pink dots in Fig. 78a and 78b). For the downstream side of the Larsen ice, we selected a local maximum and a minimum as the tie points (purple dots in Fig. 78a and 78b) because the

slope of the $\delta^{18}\text{O}_{\text{atm}}$ spline curve is small. When the horizontal distance was $> 1,280$ m, the age was constrained by extrapolation using the age/distance relationship at 18–22 ka. Based on the tentative horizontal gas ages and the depth/distance relationship of core #23 (obtained from Fig. 4b), we determined the gas age of core #23 (~10 m vertical ice core). A small temporal difference (53.6 ± 38.5 yr) existed between the CH_4 record of core #23 (> 4.6 m) and the WAIS Divide record (difference between the red and dark blue lines in Fig. 78d). To eliminate this gap, four tie-points (orange dots) were chosen and interpolated (light blue line). The gas age, corresponding to 13.3–14.1 ka BP was obtained more accurately via CH_4 correlation. As a result, the gas age for the Larsen ice at 1.95 m depth was estimated to be 9.2–23.4 ka BP on WAIS Divide chronology in 2014 (WD2014). The ages on AICC2012 scale were estimated to be 9.4–23.4 ka BP using the depth and the WD2014 age of EDC (Bazin et al., 2013a, Buizert et al., 2021). The age/distance relationship was reasonable (Fig. A65), showing no abrupt change, as supported by the gradual change in the ice layer dip (Fig. 3c). Refer to Text S1 in the supplement for gas age uncertainty.



455 **Figure 78. Correlation of Larsen $\delta^{18}\text{O}_{\text{atm}}$ and CH_4 records with WAIS Divide.** (a) 5 m interpolated $\delta^{18}\text{O}_{\text{atm}}$ value from Larsen BIA with
a spline curve. (b) $\delta^{18}\text{O}_{\text{atm}}$ record from WAIS Divide with a spline curve (Severinghaus et al., 2015). Six tie-points were used to correlate
each other. (c) Comparison of synchronized Larsen $\delta^{18}\text{O}_{\text{atm}}$ with EDC (Landais et al., 2013) and WAIS Divide records. (d) Comparison of
460 CH_4 record from Larsen #23 (> 4.6 m depth) with WAIS Divide (Rhodes et al., 2017). Tentative gas age determined by $\delta^{18}\text{O}_{\text{atm}}$ correlation
with WAIS Divide is tuned by correlating CH_4 record using four tie-points. WD2014 timescale for WAIS Divide and EDC is from Sigl et
al. (2016) and Buizert et al. (2021), respectively.

4.3 Ice ages of Larsen ice

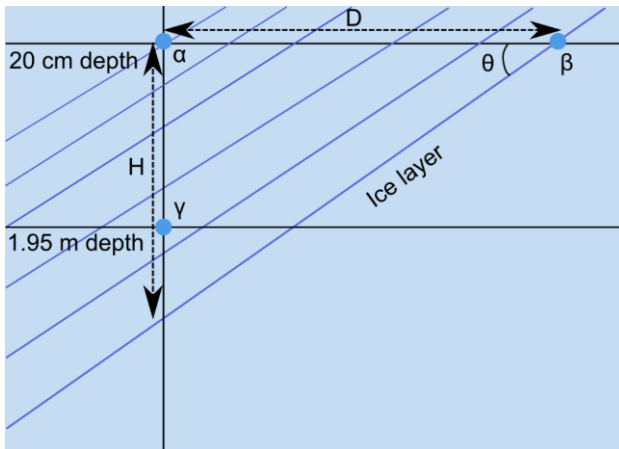
The ice ages of the Larsen ice were determined based on the $\delta^{18}\text{O}_{\text{ice}}$ correlation with the TALDICE record (Fig. 949).
TALDICE was selected since the coring site is close to the Larsen BIA (~240 km apart) and the direction of the TALDICE
465 site from the Larsen BIA is similar to the ice flow direction of the Larsen ice (Rignot et al., 2011; Mouginitot et al., 2012). It is
likely that the trend of surface temperature changes in the snow accumulation zone of the Larsen BIA is comparable to that of
the TALDICE site. Spline curves were constructed for the horizontal measurement of the surface ice. As described above, the
horizontal resolution has been increased by interpolating the original $\delta^{18}\text{O}_{\text{ice}}$ records at 5 m intervals. The correlation was
established by visually selecting a similar inflection point. Then, to validate the ice age, we estimated the ice age at a 1.95 m
470 depth (see below) and calculated the Δage ; Δage for Larsen ice is defined as (ice age) – (gas age) at a depth of 1.95 m.

To estimate the ice age at a depth of 1.95 m, the age/depth relationship of each ice core sample must be determined. The
475 relationship was deduced by a simple calculation using Eq. (4) and (5); α , β , γ : ice age at each location; D: horizontal distance
between two surface ice samples (at a depth of 20 cm); θ is the average dip of the ice layer; $H + 0.2$ m: depth where the age is
the same as β (Fig. 89). The average dip was estimated from the GPR profile (yellow box in Fig. 3c). The average dip of the
ice layer located near core #23 was 4.96° , as inferred from Fig. 4b. Then, the ice age at a depth of 1.95 m was calculated using
Eq. (6). Refer to Fig. 89 to understand the following equations:

$$H = D \times \tan\theta \quad (4)$$

$$\text{Age/depth relation} = (\beta - \alpha)/H \quad (5)$$

$$\gamma = \{(\beta - \alpha)/H\} \times (1.95 - 0.2) + \alpha \quad (6)$$

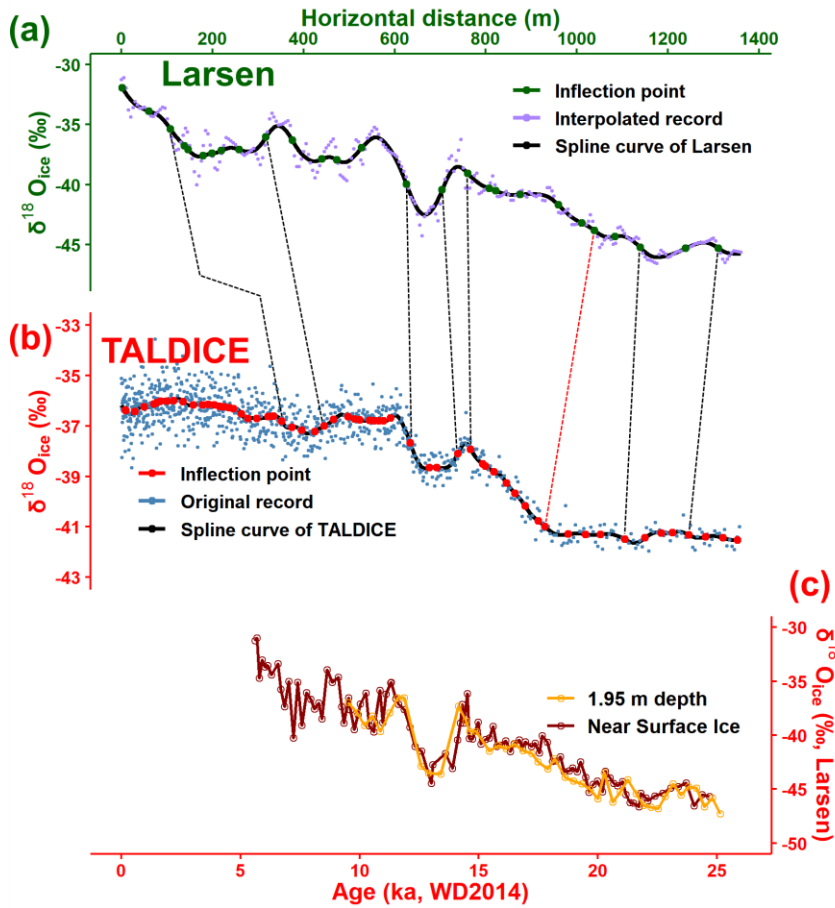


480 **Figure 89.** Schematic illustration for mathematical relation between ice ages.

First, eight tie-points were selected and linearly interpolated. In this case, Δage showed a minimum value at around 17.5 ka (Fig. A54), which is close to the period of the Last Glacial Maximum (LGM). Since Δage increases when the climate is colder (Schwander et al., 1997), we assumed that either the ice age is undervalued or the gas age is overvalued. Because the $\delta^{18}\text{O}_{\text{atm}}$ value of the Larsen ice is comparable with the EDC and WAIS Divide records, the gas age seems to be reasonable and not likely to be overvalued (Fig. 78). Hence, we concluded that the ice age should be revised. In addition, the age/distance relationship of ice shows a rapid age increase near ~1,000 m (Fig. A65), which is not supported by the average dip of the ice layer deduced from the GPR profile (Fig. 3). As the dip decreases to the downstream ice, no abrupt increase in the slope of the age/distance relationship is expected. However, this is the case only when we assume no abrupt change in the snow accumulation rate.

490 After excluding one tie-point (indicated by the red dotted line in Fig. 94a), the Δage of Larsen ice shows a maximum value at approximately 17.5 ka BP, which appears more appropriate (Fig. A54). For records with horizontal distances less than 107 m and greater than 1,310 m, extrapolation was conducted to estimate the ice age using the age/distance relationship at 7–11 ka BP and 18–23.8 ka BP, respectively. In conclusion, the ice age was estimated to be 5.6–24.7 ka BP (WD2014) for the surface ice. However, as noted above, local age inversion may have occurred in the upstream ice areas. Hence, the age constraint for
 495 upstream ice should be considered cautiously. The ice age calculated for a 1.95 m depth also seems reliable because the water isotope record is comparable with the surface ice result when plotted with the ice age (Fig. 94c). Note that ice age synchronization via water isotopes is challenging in climatically stable periods such as the LGM; measurements of dust and ice chemistry could be applied in the future to refine the ice chronology presented here. Refer to Text S1 in the supplement for ice age uncertainty and Δage uncertainty.

500 The established horizontal ice chronology shows that temporal resolutions of 10 yr m^{-1} and 17 yr m^{-1} are available for the
Holocene (5.6–12 ka BP) and for the last deglaciation (12–24.6 ka BP), respectively, at the surface ice from Larsen BIA. These
505 estimated resolutions are higher than those of the deep ice core TALDICE covering this time interval ($\sim 18 \text{ yr m}^{-1}$) (Masson-
Delmotte et al., 2011). In addition, Larsen BIA, allows for collecting large quantities of ice from the surface. Assuming that
the average age/depth relationship of ice core #23 ($\sim 189 \text{ yr m}^{-1}$) is maintained throughout the ice, the ice age may then reach
 $\sim 60 \text{ ka}$ near the bedrock ($\sim 240 \text{ m}$ of ice), and thus, ice may be obtained at least $\sim 60 \text{ ka}$ via shallow coring at the Larsen BIA.



510 **Figure 210. Correlation of Larsen $\delta^{18}\text{O}_{\text{ice}}$ with TALDICE record.** (a) 5 m interpolated $\delta^{18}\text{O}_{\text{ice}}$ value from Larsen BIA with a spline curve. (b) $\delta^{18}\text{O}_{\text{ice}}$ record from TALDICE with a spline curve (Stenni et al., 2011, Bazin et al., 2013c). The ice age of the surface ice from Larsen was estimated by correlating 7 inflection points of the spline curve (indicated by black dotted lines) with TALDICE. (c) Comparison of near-surface $\delta^{18}\text{O}_{\text{ice}}$ with those in 1.95 m depth at Larsen BIA.

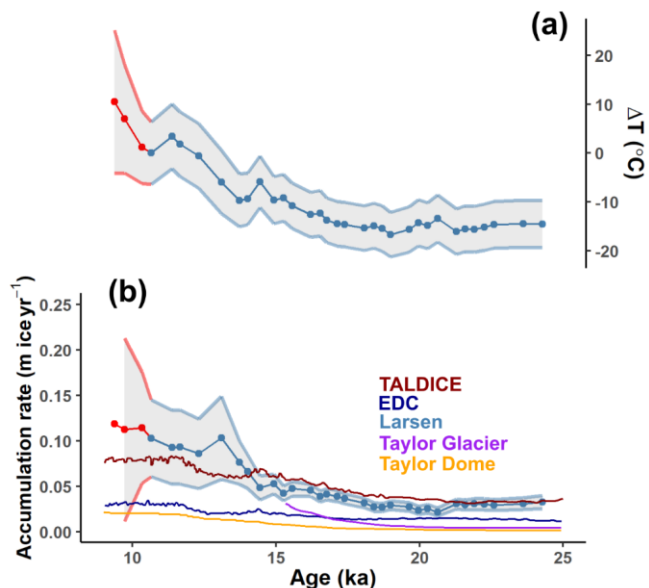
4.45 Estimation of past surface temperature and accumulation rate

As discussed in Sect. 3.2, $\delta^{18}\text{O}_{\text{ice}}$ and $\delta^2\text{H}_{\text{ice}}$ might have been enriched during the sublimation of ice. Therefore, it is inadequate to use stable water isotopes to estimate past surface temperatures. Instead, the analytical framework developed by Buizert (2021) allows us to estimate the past surface temperature using the $\delta^{15}\text{N}\text{-N}_2$ and Δage . The methods for estimating the surface temperature and accumulation rate are described in detail in the Appendix (Appendix D). The results are presented in Table S11 and Fig. 104. The accumulation rates in TALDICE, EDC, Taylor Dome, and Taylor Glacier are also shown for comparison (Veres et al., 2013; Baggenstos et al., 2018). The youngest three reconstructed values of Larsen BIA were rejected (red line in Fig. 104) due to the large relative uncertainty in Δage (including the possibility of negative Δage), and the implied 10.5 °C increase in just ~1,200 years. This might be due to a low bias in the reconstructed ice age, which leads to a lower Δage . Hence, the ice age in this part should be more strongly constrained by using dust concentrations in a future study.

During the last deglaciation, the surface temperature increased by approximately 15 ± 5 °C (1σ) (from 24.3 ka BP to 10.6 ka BP), which is greater than those for any other ice core sites including nearby ~~Talos-Taylor~~ Dome where a recent reconstruction suggests 7.1 ± 2 °C of deglacial warming (Buizert et al., 2021). However, ~~a cautious interpretation is recommended~~the interpretation should be cautious because of the large uncertainty. The large magnitude of the reconstructed temperature change is a consequence of Δage , which is around 300 % larger during the Last Glacial Maximum (LGM) than during the Holocene in our reconstruction. By comparison, most Antarctic sites show only a 60 % to 120 % Δage increase (Buizert et al., 2021). While the Larsen BIA is currently close to the open ocean, during the LGM, the Antarctic ice sheet reached the continental shelf break covering the entire Ross Sea Embayment (Conway et al., 1999). Climate models identified strong cooling over the Ross sea sector, reflecting the increased elevation and ~~increased~~ albedo of the extended ice sheet (Buizert et al., 2021). We suggest that this enhanced cooling may have affected the original deposition site (upstream accumulation area) of Larsen BIA. We note that the past ice sheet thickness at Larsen and the upstream distance travelled since deposition are poorly constrained; both of these ~~should~~ impact the magnitude of the reconstructed temperature change. The temporal isotope slope ($\alpha_T = 0.58$ ‰ K^{-1}) is lower than that for any other ice core site (Buizert et al., 2021) and smaller than the spatial regression slope of around 0.8 ‰ K^{-1} (Masson-Delmotte 2008). However, the temporal isotope slope we reconstructed is likely to be a lower bound because the sublimation might have enriched the $\delta^{18}\text{O}_{\text{ice}}$ of the glacial (downstream) part of Larsen BIA. The reconstructed surface temperature change of 15 ± 5 °C assumes that the selected tie points are correct. However, if the $\delta^{18}\text{O}_{\text{ice}}$ features used for the matching are not climatic in origin but rather reflect local effects (such as sublimation intensity, and accumulation controls by surface slope), then our tie points would be incorrect. Future measurements of ice chemistry and dust loading may improve our Δage estimates, which will allow a refined estimate of past glacial cooling.

Commented [C11]: To editor
➤ Line 522: We changed "Taylor" to "Talos". Typo.

540 From 24.3 ka BP to 10.6 ka BP, the accumulation rate increased by a factor of 1.7–4.6 (from 0.033 ± 0.007 to 0.103 ± 0.042 m ice yr⁻¹). During the same time period, the accumulation rates at Taylor Dome and TALDICE site increased by a factor of ~15.4 and ~2.4, respectively (Veres et al., 2013; Baggenstos et al., 2018). Based on the three records (TALDICE, Larsen blue ice, Taylor Dome), accumulation rate increased more at the Southern Victoria Land than the Northern Victoria Land. The accumulation rate at TALDICE and EDC began to decrease transiently around 14.5 ka BP following the Antarctic Cold Reversal (ACR), while the reconstructed accumulation rates at the deposition site of Larsen BIA and Taylor Dome keep increasing across the ACR. We acknowledge that the accumulation rate of the deposition site of Larsen ice younger than 14 ka BP remains poorly constrained because of the large uncertainty, but is well constrained for the older part (> 14 ka BP). The accumulation rate at the deposition site of Larsen ice is lower than that of TALDICE during 14–21 ka BP and exceeds the accumulation rate of TALDICE after 14 ka BP. The Ross Ice Shelf (RIS) retreated during the last deglaciation (Ship et al., 1999; Yokoyama et al., 2016), and as the RIS retreats, the storm track migrates to the Southern Victoria Land from the northern part and increases precipitation ~~on the Southern Victoria Land to the site~~ (Morse et al., 1998; Aarons et al., 2016; Yan et al., 2021). Therefore, we speculate that the storm track affects the original deposition site of the Larsen BIA more than the Talos Dome after 14 ka BP. The accumulation rate at Taylor Dome (TD) during 14–21 ka BP shows lower value than that from TALDICE and Larsen ice (Fig. 104). However, the accumulation rate increased by a factor of ~5.2 at Taylor Dome, while those at the Larsen and TALDICE increased by a factor of ~2.1, and ~1.8, respectively. Overall, it appears that as RIS retreats, the accumulation rate at the Southern Victoria Land increases more than the Northern Victoria Land. This interpretation is in line with the previous studies (Morse et al., 1998; Aarons et al., 2016; Yan et al., 2021) and may help studies for reconstructing past atmospheric circulation associated with the retreat of RIS. Likewise, a strong accumulation increase across the last deglaciation was seen at the coastal Law Dome site in the Indian Ocean sector (Van Ommen et al., 2004), also attributed to increases in storm-derived precipitation. However, a spatial difference of the original deposition site of the upstream and downstream Larsen ice is not constrained; this must be known to allow for a better interpretation of the accumulation rate.



565 **Figure 10.1. Reconstructed surface temperature and accumulation rate over the last glacial termination (Termination I).** Accumulation rates of TALDICE, and EDC are from Veres et al. (2013). Accumulation rates of Taylor Dome, and Taylor Glacier are from Baggenstos et al. (2018). The three youngest values of Larsen blue ice are rejected (red line) due to the large uncertainty in the $\Delta\delta$ that translates into the possibility of negative accumulation rates and an unexpected 10.5 °C increase in ~1200 years. The ΔT is a relative value to 10.6 ka BP; 10.6 ka BP is the youngest time period available. The uncertainty for the ΔT and accumulation rate (1σ) was estimated through the error propagation formula.

5 Conclusions

570 Based on the shapes of dust bands, GPR profiles, and analytical data ($\delta^{18}\text{O}_{\text{atm}}$, $\delta^2\text{H}_{\text{ice}}$, and CH_4) we conclude that a large ice section the ages of the ice at the the downstream ice (from ice cores #23 to #200) in Larsen BIA (the downstream ice, from ice cores #23 to #200) monotonically increase along the ice flow direction. The vertical profile of $\delta^2\text{H}_{\text{ice}}$ in a core #23 correlated well with the record from the horizontal surface ice samples, showing that the stratigraphy of ice is not significantly disturbed and does not cause an age inversion at the site. The negative d-excess values indicate sublimation of the ice and the possibility of enrichment in the $\delta^2\text{H}_{\text{ice}}$ and $\delta^{18}\text{O}_{\text{ice}}$ values during sublimation. CH_4 is well-preserved at depth in ice cores (> 4.6 m for ice core #23) in ice core #23 at a depth of > 4.6 m, and gas isotopes ($\delta^{18}\text{O}_{\text{atm}}$, $\delta^{15}\text{N-N}_2$) are well-preserved at 1.95 m depth.

575 Horizontal $\delta^{18}\text{O}_{\text{atm}}$ values at a depth of 1.95 m in the Larsen BIA reveal a typical glacial termination (the Larsen $\delta^{18}\text{O}_{\text{atm}}$ shows both negative and > 1.0 value). Along with glaciological ice flow principles, the stable water isotopes, correlation of

CH₄ concentration; and δ¹⁸O_{atm} with existing ice core records, [we suggest that](#) the gas ages of the studied Larsen ice cover 9.2–23.4 ka BP and ice ages cover 5.6–24.7 ka BP. ~~In addition, the~~[This is additionally supported by](#) ⁸¹Kr ages from [local ice#23 and TF cores \(#23 and TF\)also support the ages](#). We provide high-precision ages for ice and fossil air trapped in blue ice at the Larsen BIA. Because well-constrained ages and high quality of proxies are essential for paleoclimate studies, our work may help future studies on BIAs across the Antarctic continent. For example, using the ice samples from Larsen BIA, we suggest a tentative climate reconstruction of surface temperature (15 ± 5 °C increase) and accumulation rate (increased by a factor of 1.7–4.6) at the deposition site of Larsen ice during the last deglaciation.

[Using the](#)[Combining information derived from](#) ice samples from Taylor Glacier, Allan Hills, and Larsen BIA ~~together~~ may also provide [information insights](#) regarding the growth and/or retreat of Ross Ice Shelf. In addition, various sites may be beneficial [for studying the paleoclimate](#) since the ice quality for paleoclimate studies depends on [local](#) glaciological conditions. In particular, since a large amount of ice with the same age is exposed at the surface in the BIA, this study may facilitate further research on paleoclimate [for which large quantities of ice are required \(such as isotope analysis of trace gases or elements in the ice\)](#)~~that was difficult because of the limited amount of ice samples~~.

Appendix A: CH₄, CO₂, δ¹⁸O_{atm}, and δ¹⁵N-N₂ measurements of the Larsen [Glacier ice samples](#)

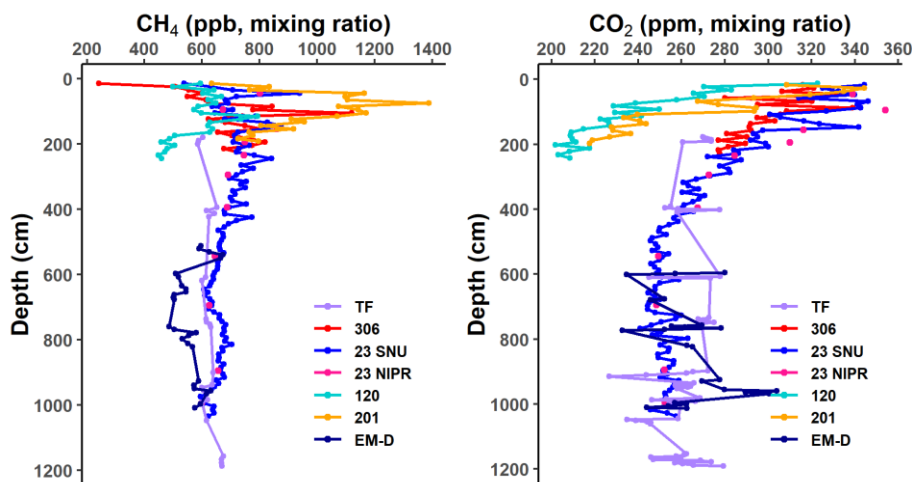


Figure A1. Vertical profiles of greenhouse gas concentrations at Larsen BIA ice cores. (a) CH₄ records. (b) CO₂ records. CH₄ was measured using wet extraction, while CO₂ [was measured](#) via both dry and wet extraction methods at SNU and NIPR, respectively. Results of TF core are from Jang et al. (2017).

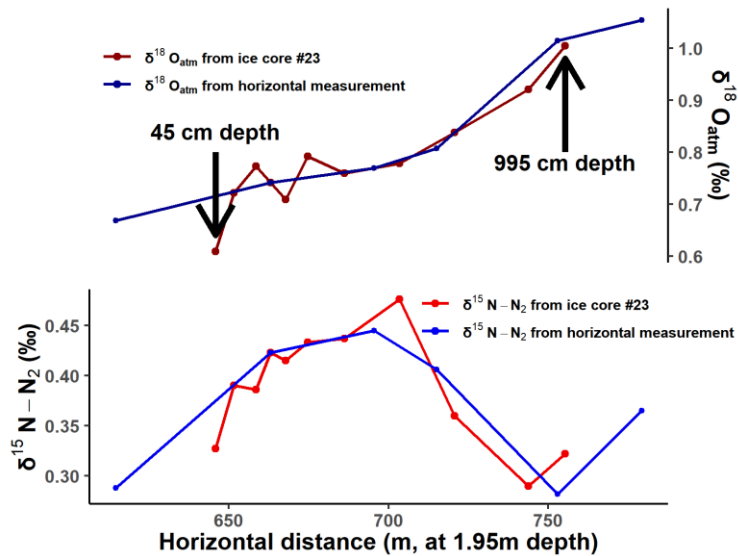


Figure A2. Nitrogen and oxygen gas isotope record of ice core #23 and horizontal measurement. Horizontal measurement is conducted using ice cores at 1.95 m depth. Depth of ice core #23 was converted to horizontal distance at 1.95 m depth by using Eq. (3). The uncertainty of measured $\delta^{18}\text{O}_{\text{atm}}$ at a depth of 1.95 m is assumed to be ± 0.05 ‰ (see Sect. 3.3.2).

600

Appendix B: Gas age estimation for the Larsen Glacier BIA

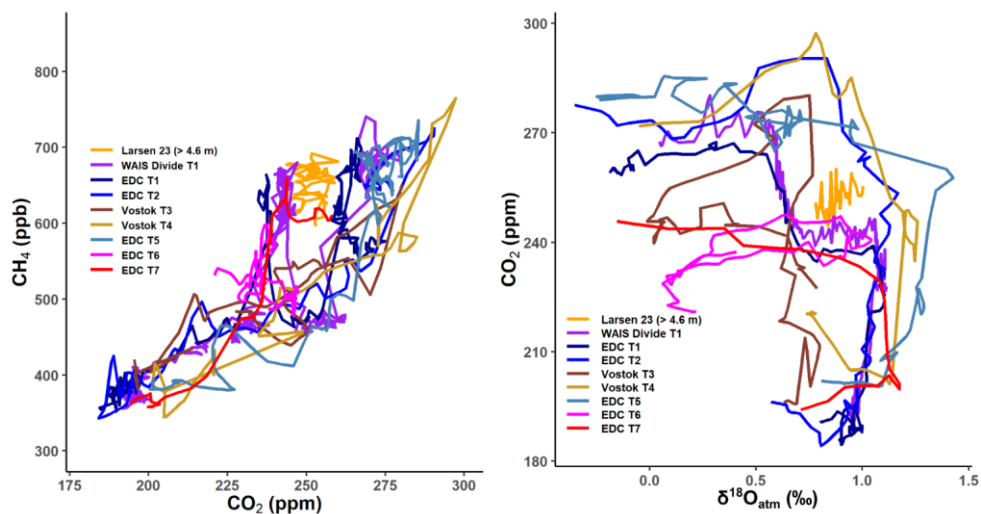


Figure A3. Comparison of CO_2 - CH_4 and $\delta^{18}\text{O}_{\text{atm}}$ - CO_2 relationship in the Larsen ice core #23 with existing records during glacial Terminations. WAIS Divide: Marcott et al. (2014); Severinghaus et al. (2015); Rhodes et al. (2017); EDC: Bazin et al. (2013d); Monnin et al. (2001); Monnin et al. (2004); Siegenthaler et al. (2005); Laurantou et al. (2010); Schmitt et al. (2012); Landais et al. (2013); Bereiter et al. (2015); Extier et al. (2018a); Vostok: Petit et al. (1999); Bender (2002).

605

Appendix C: Ice age estimation for the Larsen GlacierBIA

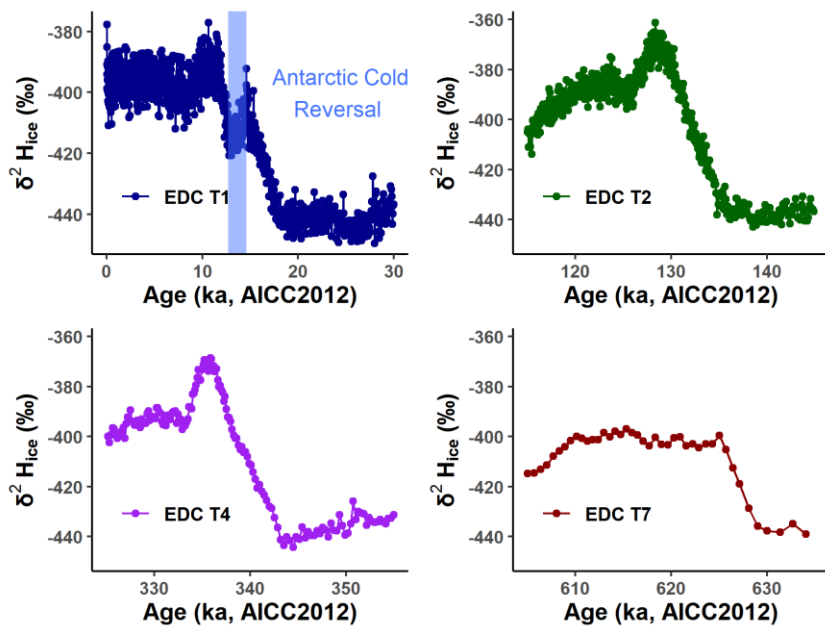


Figure 6A4. $\delta^2 H_{ice}$ records from EDC. $\delta^2 H_{ice}$ records for T1, T2, T4, and T7 on AICC2012 scale are from Bazin et al. (2013b). The blue vertical bar represents the time interval of the ACR (12.7–14.6 ka BP).

610

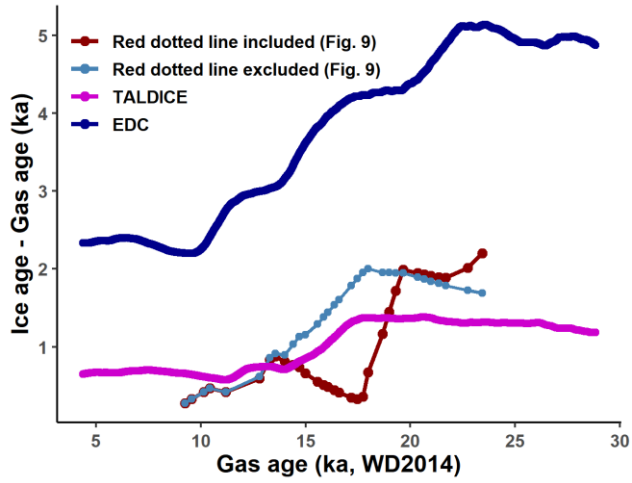
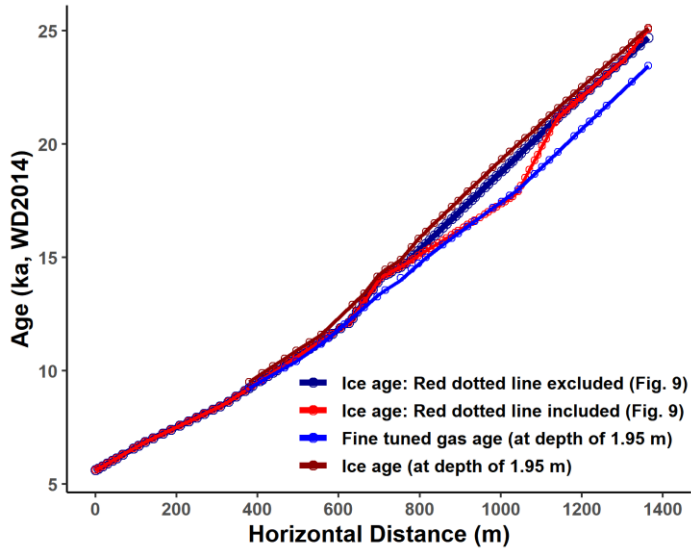


Figure A54. EDC, TALDICE and Larsen BIA Δ age. Δ age for Larsen BIA is defined as (ice age) - (gas age) at 1.95 m depth. EDC WD2014 chronology is from Buizert et al. (2021).



615 **Figure A65. Relation between horizontal distance and age.**

Appendix D: Surface temperature and accumulation rate estimation

The surface temperature change can be estimated using the following equation (Buizert, 2021), where $\bar{T}^2 = T_1 T_2$, R is the ideal gas constant ($8.314 \text{ J mol}^{-1} \text{ K}^{-1}$), L is the lock-in depth, $\gamma = 1$, and $E_T = 23.5 \text{ kJ mol}^{-1}$.

$$T_2 - T_1 = \frac{R\bar{T}^2}{(1+\gamma)E_T} \ln \left[\frac{\Delta \text{age}_1}{\Delta \text{age}_2} \cdot \left(\frac{L_1}{L_2} \right)^\gamma \right] \quad (\text{A1})$$

625 To find the lock-in depth L , we first estimated the diffusive column height via the barometric equation (Eq. A2) (Sowers et al., 1989), then added the convective zone of the firn column; we assume the length of the convective zone to be 4 m. In Eq. A2, Δm is the difference of the molecular weight between $^{28}\text{N}_2$ and $^{29}\text{N}_2$ ($0.001 \text{ kg mol}^{-1}$), g is the gravitational acceleration constant (9.82 m s^{-2}), H_{diff} is the diffusive column height, R is the ideal gas constant ($8.314 \text{ J mol}^{-1} \text{ K}^{-1}$), and T is the temperature (K).

$$625 \delta^{15}\text{N} = \left(e^{\frac{\Delta m \times g \times H_{\text{diff}}}{R \times T}} - 1 \right) \times 1000 \quad (\text{A2})$$

We first applied the modern mean annual temperature of Larsen BIA ($-24.4 \text{ }^\circ\text{C}$) to calculate the lock-in depth at all times. Then we applied Eq. (A1) to calculate T_2 and then applied Eq. (A2) again to find the correct lock-in depth. Finally, we applied Eq. (A1) once again to estimate the correct surface temperature.

630 The ice-equivalent accumulation rate (A) can be estimated by using the following relationship between Δage and ice-equivalent lock-in depth (L_{IE}) (Buizert, 2021). The ratio of L_{IE}/L is known to be ~ 0.70 (Parrenin et al., 2012), and was used to find L_{IE} .

$$\Delta \text{age} = \frac{L_{IE}}{A} \quad (\text{A3})$$

All of the uncertainties in the input parameters were assumed to be independent. Then, final uncertainty for the surface temperature and accumulation rate was estimated through [the standard error propagation formula](#).

635 **Data availability**

All data presented in this study are provided in supplement tables and will be available at the PANGAEA cryosphere database [upon publication in the near future](#).

Author contributions

640 GL and JA conceived the idea of this study, performed experiments, interpreted the data, and wrote the manuscript with contributions from all co-authors. HJ performed ground penetrating radar surveys and data processing. FR, Z.-TL, WJ, and GY carried out ^{81}Kr age dating of the Larsen Glacier. IO, SG, and KK assisted [with](#) gas measurements at the NIPR and

interpreted the results. SK and JM measured stable water isotopes of the ice. CB established the WD2014 timescale of TALDICE and helped with climate reconstructions and interpretation. SH, CHH, and SDH helped collecting ice samples and organize the early plans of this study. All authors have discussed and interpreted the results and contributed to the manuscript.

645 **Competing interests**

The authors declare that they have no conflict of interest.

Acknowledgements

We thank Sang-Young Han, Yoojung Yang, Youngjoon Jang, and Yeongcheol Han for their assistance in collecting ice and organizing data in the early stages of the study. We sincerely thank Gwangjin Lim, Junghwa Hwang, and Jaeyoung Park for their laboratory assistance and technical support. We thank Joohan Lee for providing GPR survey equipment. We also thank the Norwegian Polar Institute for sharing the QGIS Quantarctica package. We also appreciate the Meteo-Climatological Observatory at MZS and Victoria Land of PNRA for annual surface temperature data at the Larsen Glacier. [We also thank two anonymous reviewers and the editor \(Harry Zekollari\) for their constructive comments.](#)

Financial support

655 This study has been supported by the Korea Polar Research Institute (grant no. PE21100) and National Research Foundation of Korea (NRF-2018R1A2B3003256). This work has also received financial support from the National Key Research and Development Program of China (2016YFA0302200), National Natural Science Foundation of China (41727901), the Japan Society for the Promotion of Science (JSPS) and the Ministry of Education, Culture, Sports, Science and Technology of Japan (MEXT) KAKENHI grant numbers 17K12816 to IO; 17H06320 and 15KK0027 to KK, NIPR International Internship Program
660 for Polar Science to GL, and the U.S. National Science Foundation (ANT-1643394) to CB.

References

- Aarons, S. M., Aciego, S. M., Gabrielli, P., Delmonte, B., Koornneef, J. M., Wegner, A., and Blakowski, M. A.: The impact of glacier retreat from the Ross Sea on local climate: Characterization of mineral dust in the Taylor Dome ice core, East Antarctica, *Earth Planet. Sc. Lett.*, 444, 34–44, <https://doi.org/10.1016/j.epsl.2016.03.035>, 2016.
- 665 Aarons, S. M., Aciego, S. M., Arendt, C. A., Blakowski, M. A., Steigmeyer, A., Gabrielli, P., Sierra-Hernández, M. R., Beaudon, E., Delmonte, B., Baccolo, G., May, N. W., and Pratt, K. A.: Dust composition changes from Taylor Glacier (East Antarctica) during the last glacial-interglacial transition: A multi-proxy approach, *Quaternary Sci. Rev.*, 162, 60–71, <https://doi.org/10.1016/j.quascirev.2017.03.011>, 2017.

- Aciego, S. M., Cuffey, K. M., Kavanaugh, J. L., Morse, D. L., and Severinghaus, J. P.: Pleistocene ice and paleo-strain rates at Taylor Glacier, Antarctica, *Quaternary Res.*, 68, 303–313, <https://doi.org/10.1016/j.yqres.2007.07.013>, 2007.
- Ahn, J., Brook, E. J., and Howell, K.: A high-precision method for measurement of paleoatmospheric CO₂ in small polar ice samples, *J. Glaciol.*, 55, 499–506, <https://doi.org/10.3189/002214309788816731>, 2009.
- Azuma, N., Nakawo, A., Higashi, A., and Nishio, F.: Flow pattern near Massif A in the Yamato bare ice field estimated from the structures and the mechanical properties of a shallow ice core, *Memoirs of National Institute of Polar Research. Special issue*, 39, 173–183, 1985.
- 675
- Baggenstos, D., Bauska, T. K., Severinghaus, J. P., Lee, J. E., Schaefer, H., Buizert, C., Brook, E. J., Shackleton, S., and Petrenko, V. V.: Atmospheric gas records from Taylor Glacier, Antarctica, reveal ancient ice with ages spanning the entire last glacial cycle, *Clim. Past*, 13, 943–958, <https://doi.org/10.5194/cp-13-943-2017>, 2017.
- Baggenstos, D., Severinghaus, J. P., Mulvaney, R., McConnell, J. R., Sigl, M., Maselli, O., Petit, J.R., Grente, B., and Steig, E. J.: A horizontal ice core from Taylor Glacier, its implication for Antarctic climate history, and an improved Taylor Dome ice core time scale, *Paleoceanography and Paleoclimatology*, 33, 778–794, <https://doi.org/10.1029/2017PA003297>, 2018.
- 680
- Bauska, T., Baggenstos, D., Brook, E. J., Mix, A. C., Marcott, S. A., Petrenko, V. V., Schaefer, H., Severinghaus, J. P., and Lee, J. E.: Carbon isotopes characterize rapid changes in atmospheric carbon dioxide during the last deglaciation, *P. Natl. Acad. Sci. USA*, 113, 3465–3470, <https://doi.org/10.1073/pnas.1513868113>, 2016.
- 685
- Bazin, L., Landais, A., Lemieux-Dudon, B., Toyé Mahamadou Kele, H., Veres, D., Parrenin, F., Martinerie, P., Ritz, C., Capron, E., Lipenkov, V. Y., Loutre, M.-F., Raynaud, D., Vinther, B. M., Svensson, A. M., Rasmussen, S. O., Severi, M., Blunier, T., Leuenberger, M. C., Fischer, H., Masson-Delmotte, V., Chappellaz, J. A., and Wolff, E. W.: AICC2012 chronology for ice core EDC, PANGAEA, <https://doi.org/10.1594/PANGAEA.824865>, 2013a.
- Bazin, L., Landais, A., Lemieux-Dudon, B., Toyé Mahamadou Kele, H., Veres, D., Parrenin, F., Martinerie, P., Ritz, C., Capron, E., Lipenkov, V. Y., Loutre, M.-F., Raynaud, D., Vinther, B. M., Svensson, A. M., Rasmussen, S. O., Severi, M., Blunier, T., Leuenberger, M. C., Fischer, H., Masson-Delmotte, V., Chappellaz, J. A., and Wolff, E. W.: delta Deuterium measured on ice core EDC on AICC2012 chronology, PANGAEA, <https://doi.org/10.1594/PANGAEA.824891>, 2013b.
- 690
- Bazin, L., Landais, A., Lemieux-Dudon, B., Toyé Mahamadou Kele, H., Veres, D., Parrenin, F., Martinerie, P., Ritz, C., Capron, E., Lipenkov, V. Y., Loutre, M.-F., Raynaud, D., Vinther, B. M., Svensson, A. M., Rasmussen, S. O., Severi, M., Blunier, T., Leuenberger, M. C., Fischer, H., Masson-Delmotte, V., Chappellaz, J. A., and Wolff, E. W.: delta ¹⁸O measured on ice core TALDICE on AICC2012 chronology, PANGAEA, <https://doi.org/10.1594/PANGAEA.824890>, 2013c.
- 695
- Bazin, L., Landais, A., Lemieux-Dudon, B., Toyé Mahamadou Kele, H., Veres, D., Parrenin, F., Martinerie, P., Ritz, C., Capron, E., Lipenkov, V. Y., Loutre, M.-F., Raynaud, D., Vinther, B. M., Svensson, A. M., Rasmussen, S. O., Severi, M., Blunier, T., Leuenberger, M. C., Fischer, H., Masson-Delmotte, V., Chappellaz, J. A., and Wolff, E. W.: Methane measured on ice core EDC on AICC2012 chronology, PANGAEA, <https://doi.org/10.1594/PANGAEA.824883>, 2013d.
- 700
- Bender, M., Labeyrie, L. D., Raynaud, D., and Lorius, C.: Isotopic composition of atmospheric O₂ in ice linked with deglaciation and global primary productivity, *Nature*, 318, 349–352, <https://doi.org/10.1038/318349a0>, 1985.

- Bender, M.: Concentration and Isotopic Composition of O₂ and N₂ in Trapped Gases of the Vostok Ice Core, U.S. Antarctic Program (USAP) Data Center, <https://doi.org/10.7265/N5862DCW>, 2002.
- 705 Bender, M. L., Barnett, B., Dreyfus, G., Jouzel, J., and Porcelli, D.: The contemporary degassing rate of ⁴⁰Ar from the solid Earth, *P. Natl. Acad. Sci. USA.*, 105, 8232–8237, <https://doi.org/10.1073/pnas.0711679105>, 2008.
- Bender, M. L., Burgess, E., Alley, R. B., Barnett, B., and Clow, G. D.: On the nature of the dirty ice at the bottom of the GISP2 ice core, *Earth. Planet. Sc. Lett.*, 299, 466–473, <https://doi.org/10.1016/j.epsl.2010.09.033>, 2010.
- Bereiter, B., Eggleston, S., Schmitt, J., Nehrbass-Ahles, C., Stocker, T. F., Fischer, H., Kipfstuhl, S., and Chappellaz, J.:
715 Revision of the EPICA Dome C CO₂ record from 800 to 600 kyr before present, *Geophys. Res. Lett.*, 42, 542–549, doi:10.1002/2014GL061957, 2015.
- Bindschadler, R., Vornberger, P., Fleming, A., Fox, A., Mullins, J., Binnie, D., Paulsen, S. J., Granneman, B., and Gorodetzky, D.: The Landsat image mosaic of Antarctica, *Remote Sens. Environ.*, 112, 4214–4226, <https://doi.org/10.1016/j.rse.2008.07.006>, 2008.
- 715 Bintanja, R.: On the glaciological, meteorological, and climatological significance of Antarctic blue ice areas, *Rev. Geophys.*, 37, 337–359, <https://doi.org/10.1029/1999RG900007>, 1999.
- Blunier, T. and Brook, E. J.: Timing of millennial-scale climate change in Antarctica and Greenland during the last glacial period, *Science*, 291, 109–112, <https://doi.org/10.1126/science.291.5501.109>, 2001.
- Blunier, T., Spahni, R., Barnola, J.-M., Chappellaz, J., Loulergue, L., and Schwander, J.: Synchronization of ice core records
720 via atmospheric gases, *Clim. Past*, 3, 325–330, <https://doi.org/10.5194/cp-3-325-2007>, 2007.
- Borgerodsky, V. V., Bentley, C. R., Gudmandsen, P. E.: *Radioglaciology*, 1, Glaciology and Quaternary Geology, Springer Netherlands, doi: 10.1007/978-94-009-5275-1, 1985.
- Buizert, C., Baggenstos, D., Jiang, W., Purtschert, R., Petrenko, V. V., Lu, Z.-T., Müller, P., Kuhl, T., Lee, J., Severinghaus, J. P., and Brook, E. J.: Radiometric ⁸¹Kr dating identifies 120,000-year-old ice at Taylor Glacier, Antarctica, *P. Natl. Acad. Sci. USA.*, 111, 6876–6881, <https://doi.org/10.1073/pnas.1320329111>, 2014.
- 725 Buizert, C., Cuffey, K. M., Severinghaus, J. P., Baggenstos, D., Fudge, T. J., Steig, E. J., Markle, B. R., Winstrup, M., Rhodes, R. H., Brook, E. J., Sowers, T. A., Clow, G. D., Cheng, H., Edwards, R. L., Sigl, M., McConnell, J. R., and Taylor, K. C.: The WAIS Divide deep ice core WD2014 chronology – Part 1: Methane synchronization (68–31 ka BP) and the gas age–ice age difference, *Clim. Past*, 11, 153–173, <https://doi.org/10.5194/cp-11-153-2015>, 2015.
- 730 Buizert, C., Sigl, M., Severi, M., Markle, B. R., Wettstein, J. J., McConnell, J. R., Pedro, J. B., Sodemann, H., Goto-Azuma, K., Kawamura, K., Fuita, S., Motoyama, H., Hirabayashi, M., Uemura, R., Stenni, B., Parrenin, F., He, F., Fudge, T. J., and Steig, E. J.: Abrupt ice-age shifts in southern westerly winds and Antarctic climate forced from the north, *Nature*, 563, 681–685, <https://doi.org/10.1038/s41586-018-0727-5>, 2018.
- Buizert, C.: The ice core gas age-ice age difference as a proxy for surface temperature, *Geophys. Res. Lett.*, 48, e2021GL094241. <https://doi.org/10.1029/2021GL094241>, 2021.
- 735

- Buizert, C., Fudge, T. J., Roberts, W. H. G., Steig, E. J., Sherriff-Tadano, S., Ritz, C., Lefebvre, E., Edwards, J., Kawamura, K., Oyabu, I., Motoyama, H., Kahle, E. C., Jones, T. R., Abe-Ouchi, A., Obase, T., Martin, C., Corr, H., Severinghaus, J. P., Beaudette, R., Epifanio, J. A., Brook, E. J., Martin, K., Chappellaz, J., Aoki, S., Nakazawa, T., Sower, T. A., Alley, R. B., Ahn, J., Sigl, M., Severi, M., Dunbar, N. W., Svensson, A., Fegyveresi, J. M., He, C., Liu, Z., Zhu, J., Otto-Bliesner, B. L., Lipenkov, V. Y., Kageyama, M., and Schwander, J.: Antarctic surface temperature and elevation during the Last Glacial Maximum, *Science*, 372, 1097–1101, DOI: 10.1126/science.abd2897, 2021.
- 740 Capron, E., Landais, A., Leieux-Dudon, B., Schilt, A., Masson-Delmotte, V., Buiron, D., Chappellaz, J., Dahl-Jensen, D., Johnsen, S., Leuenberger, M., Loulergue, L., and Oerter, H.: Synchronising EDML and NorthGRIP ice cores using $\delta^{18}\text{O}$ of atmospheric oxygen ($\delta^{18}\text{O}_{\text{atm}}$) and CH_4 measurements over MIS5 (80–123 kyr), *Quaternary Sci. Rev.*, 29, 222–234, <https://doi.org/10.1016/j.quascirev.2009.07.014>, 2010.
- 745 Cassidy, W., Harvey, R., Schutt, J., Delisle, G., and Yanai, K.: The meteorite collection sites of Antarctica, *Meteoritics*, 27, 490–525, <https://doi.org/10.1111/j.1945-5100.1992.tb01073.x>, 1992.
- Chalk, T. B., Hain, M. P., Foster, G. L., Rohling, E. J., Sexton, P. F., Badger, M. P. S., Cherry, S. G., Hasenfratz, A. P., Haug, G. H., Jaccard, S. L., Martínez-García, A., Pälike, H., Pancost, R. D., and Wilson, P. A.: Causes of ice age intensification across the Mid-Pleistocene Transition, *P. Natl. Acad. Sci. USA.*, 114, 13114–13119, <https://doi.org/10.1073/pnas.1702143114>, 2017.
- 750 Conway, H., Hall, B. L., Denton, G. H., Gades, A. M., and Waddington, E. D.: Past and future grounding-line retreat of the west Antarctic ice sheet, *Science*, 286, 280–283, DOI: 10.1126/science.286.5438.280, 1999.
- Craig, H., Horibe, Y., and Sowers, T.: Gravitational Separation of Gases and Isotopes in Polar Ice Caps, *Science*, 242, 1675–1678, doi: 10.1126/science.242.4886.1675, 1988.
- 755 Crotti, I., Landais, A., Stenni, B., Bazin, L., Parrenin, F., Frezzotti, M., Ritterbusch, F., Lu, Z.-T., Jiang, W., Yang, G.-M., Fourré, E., Orsi, A., Jacob, R., Minster, B., Prié, F., Dreossi, G., and Barbante, C.: An extension of the TALDICE ice core age scale reaching back to MIS 10.1, *Quaternary Sci. Rev.*, 266, 107078, <https://doi.org/10.1016/j.quascirev.2021.107078>, 2021.
- 760 Curzio, P., Folco, L., Laurenzi, M. A., Mellini, M., and Zeoli, A.: A tephra chronostratigraphic framework for the Frontier Mountain blue-ice field (northern Victoria Land, Antarctica), *Quaternary Sci. Rev.*, 27, 602–620, <https://doi.org/10.1016/j.quascirev.2007.11.017>, 2008.
- Dansgaard, W., White, J., and Johnsen, S.: The abrupt termination of the Younger Dryas climate event, *Nature*, 339, 532–534, <https://doi.org/10.1038/339532a0>, 1989.
- 765 Delisle, G., and Sievers, J.: Sub-ice topography and meteorite finds near the Allan Hills and the Near Western ice field, Victoria Land, Antarctica, *J. Geophys. Res.-Planet.*, 96, 15577–15587, <https://doi.org/10.1029/91JE01117>, 1991.
- Delmas, R. J., Ascencio, J.-M., and Legrand, M.: Polar ice evidence that atmospheric CO_2 20,000yr BP was 50% of present, *Nature*, 284, 155–157, <https://doi.org/10.1038/284155a0>, 1980.

- Dlugokencky, E. J., Myers, R. C., Lang, P. M., Masarie, K. A., Crotwell, A. M., Thoning, K. W., Hall, B. D., Elkins, J. W.,
770 and Steele, L. P.: Conversion of NOAA atmospheric dry air CH₄ mole fractions to a gravimetrically prepared standard
scale, *J. Geophys. Res.*, 110, D18306, <https://doi.org/10.1029/2005JD006035>, 2005.
- Dunbar, N. W., McIntosh, W. C., and Esser, R. P.: Physical setting and tephrochronology of the summit caldera ice record at
Mount Moulton, West Antarctica, *Geol. Soc. Am. Bull.*, 120, 796–812, <https://doi.org/10.1130/B26140.1>, 2008.
- Elderfield, H., Ferretti, P., Greaves, M., Crowhurst, S., McCave, I. N., Hodell, D., and Piotrowski, A. M.: Evolution of Ocean
775 Temperature and Ice Volume Through the Mid-Pleistocene Climate Transition, *Science*, 337, 704–709, doi:
10.1126/science.1221294, 2012.
- EPICA Community Members (2004): Eight glacial cycles from an Antarctic ice core, *Nature*, 429, 623–628,
<https://doi.org/10.1038/nature02599>, 2004.
- Extier, T., Landais, A., Bréant, C., Prié, F., Bazin, L., Dreyfus, G., Roche, D. M., and Leuenberger, M.: $\delta^{18}\text{O}_{\text{atm}}$ records between
780 100–800 ka from EPICA Dome C ice core, PANGAEA, <https://doi.org/10.1594/PANGAEA.887323>, 2018a.
- Extier, T., Landais, A., Bréant, C., Prié, F., Bazin, L., Dreyfus, G., Roche, D. M., and Leuenberger, M.: On the use of $\delta^{18}\text{O}_{\text{atm}}$
for ice core dating, *Quaternary Sci. Rev.*, 185, 244–257, <https://doi.org/10.1016/j.quascirev.2018.02.008>, 2018b.
- Fischer, H., Severinghaus, J., Brook, E., Wolff, E., Albert, M., Alemany, O., Arthern, R., Bentley, C., Blankenship, D.,
Chappellaz, J., Creyts, T., Dahl-Jensen, D., Dinn, M., Frezzotti, M., Fujita, S., Gallee, H., Hindmarsh, R., Hudspeth, D.,
785 Jugie, G., Kawamura, K., Lipenkov, V., Miller, H., Mulvaney, R., Parrenin, F., Pattyn, F., Ritz, C., Schwander, J., Steinhage,
D., van Ommen, T., and Wilhelms, F.: Where to find 1.5 million yr old ice for the IPICS “Oldest-Ice” ice core, *Clim. Past*,
9, 2489–2505, <https://doi.org/10.5194/cp-9-2489-2013>, 2013.
- Fogwill, C. J., Turney, C. S. M., Menviel, L., Baker, A., Weber, M. E., Ellis, B., Thomas, Z. A., Golledge, N. R., Etheridge,
D., Rubino, M., Thornton, D. P., Van Ommen, T. D., Moy, A. D., Curran, M. A. J., Davies, S., Bird, M. I., Munksgaard,
790 N. C., Rootes, C. M., Millman, H., Vohra, J., Rivera, A., Mackintosh, A., Pike, J., Hall, I. R., Bagshaw, E. A., Rainsley,
E., Bronk-Ramsey, C., Montenari, M., Cage, A. G., Harris, M. R. P., Jones, R., Power, A., Love, J., Young, J., Weyrich,
L. S., and Cooper, A.: Southern Ocean carbon sink enhanced by sea-ice feedbacks at the Antarctic Cold Reversal, *Nat.*
Geosci., 13, 489–497, <https://doi.org/10.1038/s41561-020-0587-0>, 2020.
- Folco, L., Welten, K. C., Jull, A. J. T., Nishiizumi, K., and Zeoli, A.: Meteorites constrain the age of Antarctic ice at the
795 Frontier Mountain blue ice field (northern Victoria Land), *Earth Planet Sc. Lett.*, 248, 209–216,
<https://doi.org/10.1016/j.epsl.2006.05.022>, 2006.
- [Gardner, A. S., Moholdt, G., Scambos, T., Fahnestock, M., Ligtenberg, S., van den Broeke, M., and Nilsson, J.: Increased West
Antarctic and unchanged East Antarctic ice discharge over the last 7 years, *The Cryosphere*, 12, 521–547,
<https://doi.org/10.5194/tc-12-521-2018>, 2018.](https://doi.org/10.5194/tc-12-521-2018)

- 800 Goujon, C., Barnola, J.-M., and Ritz, C.: Modeling the densification of polar firm including heat diffusion: Application to close-off characteristics and gas isotopic fractionation for Antarctica and Greenland sites, *J. Geophys. Res.*, 108, 4792, <https://doi.org/10.1029/2002JD003319>, 2003.
- Hall, B. D., Crotwell, A. M., Kitzis, D. R., Mefford, T., Miller, B. R., Schibig, M. F., and Tans, P. P.: Revision of the World Meteorological Organization Global Atmosphere Watch (WMO/GAW) CO₂ calibration scale, *Atmos. Meas. Tech.*, 14, 3015–3032, <https://doi.org/10.5194/amt-14-3015-2021>, 2021.
- 805 Harvey, R.: The Origin and Significance of Antarctic Meteorites, *Geochemistry*, 63, 93–147, <https://doi.org/10.1078/0009-2819-00031>, 2003.
- Herron, M. M., and Langway, C. C.: Firm densification: An empirical model, *J. Glaciol.*, 25, 373–385, doi:10.3189/S0022143000015239, 1980.
- 810 Higgins, J. A., Kurbatov, A. V., Spaulding, N. E., Brook, E., Introne, D. S., Chimiak, L. M., Yan, Y., Mayewski, P. A., and Bender, M. L.: Atmospheric composition 1 million years ago from blue ice in the Allan Hills, Antarctica, *P. Natl. Acad. Sci. USA.*, 112, 6887–6891, <https://doi.org/10.1073/pnas.1420232112>, 2015.
- Hu, J., Yan, Y., Yeung, L. Y., and Dee, S. G.: Sublimation origin of negative deuterium excess observed in snow and ice samples from McMurdo Dry Valleys and Allan Hills Blue Ice Areas, East Antarctica, *Journal of Geophysical Research: Atmospheres* [preprint], <https://doi.org/10.1002/essoar.10508105.1>, 4 October 2021.
- 815 Hui, F., Ci, T., Cheng, X., Scambo, T. A., Liu, Y., Zhang, Y., Chi, Z., Huang H., Wang, X., Wang, F., Zhao, C., Jin, Z., and Wang, K.: Mapping blue-ice areas in Antarctica using ETM+ and MODIS data, *Ann. Glaciol.*, 55, 129–137, doi:10.3189/2014AoG66A069, 2014.
- Ikeda-Fukazawa, T., Fukumizu, K., Kawamura, K., Aoki, S., Nakazawa, T., and Hondoh, T.: Effects of molecular diffusion on trapped gas composition in polar ice cores, *Earth Planet. Sc. Lett.*, 299, 183–192, <https://doi.org/10.1016/j.epsl.2004.11.011>, 2005.
- 820 Jang, Y., Han, Y., Ryu, Y., Moon, J., Ju, H.-T., Yang, J.-W., Lee, H.-G., Jun, S. J., Lee, J., Hur, S. D., Lee, J. I., and Ahn, J.: A preliminary study for blue ice in Victoria Land, East Antarctica, *Journal of the Geological Society of Korea*, 53, 567–580, <http://dx.doi.org/10.14770/jgsk.2017.53.4.567>, 2017.
- 825 Jiang, W., Bailey, K., Lu, Z.-T., Mueller, P., O’Connor, T. P., Cheng, C.-F., Hu, S.-M., Purtschert, R., Sturchio, N. C., Sun, Y. R., Williams, W. D., and Yang, G.-M.: An atom counter for measuring ⁸¹Kr and ⁸⁵Kr in environmental samples, *Geochim. Cosmochim. Ac.*, 91, 1–6, <https://doi.org/10.1016/j.gca.2012.05.019>, 2012.
- Jiang, W., Hu, S.-M., Lu, Z.-T., Ritterbusch, F., Yang, G.: Latest development of radiokrypton dating – A tool to find and study paleogroundwater, *Quatern. Int.*, 547, 166–171, <https://doi.org/10.1016/j.quaint.2019.04.025>, 2020.
- 830 Jouzel, J., Alley, R. B., Cuffey, K. M., Dansgaard, W., Grootes, P., Hoffmann, G., Johnsen, S. J., Koster, R. D., Peel, D., Shuman, C. A., Stievenard, M., Stuiver, M., and White, J.: Validity of the temperature reconstruction from water isotopes in ice cores, *J. Geophys. Res.*, 102, 26471–26487, <https://doi.org/10.1029/97JC01283>, 1997.

- Korotkikh, E. V., Mayewski, P. A., Handley, M. J., Sneed, S. B., Introne, D. S., Kurbatov, A. V., Dunbar, N. W., and McIntosh, W. C.: The last interglacial as represented in the glaciochemical record from Mount Moulton Blue Ice Area, West Antarctica, *Quaternary Sci. Rev.*, 30, 1940–1947, <https://doi.org/10.1016/j.quascirev.2011.04.020>, 2011.
- Landais, A., Caillon, N., Severinghaus, J., Jouzel, J., and Masson-Delmotte, V.: Analyses isotopiques à haute précision de l'air piégé dans les glaces polaires pour la quantification des variations rapides de température: méthodes et limites, *Notes des activités instrumentales de l'IPSL*, 39, 2003.
- Landais, A., Dreyfus, G., Capron, E., Masson-Delmotte, V., Sanchez-Goñi, M. F., Desprat, S., Hoffmann, G., Jouzel, J., Leuenberger, M., and Johnsen, S.: What drives the millennial and orbital variations of $\delta^{18}\text{O}_{\text{atm}}$?, *Quaternary Sci. Rev.*, 29, 235–246, doi:10.1016/j.quascirev.2009.07.005, 2010.
- Landais, A., Dreyfus, G. B., Capron, E., Jouzel, J., Masson-Delmotte, V., Roche, D. M., Prié, F., Caillon, N., Chappellaz, J., Leuenberger, M., Laurantou, A., Parrenin, F., Raynaud, D., and Teste, G.: EPICA Dome C Ice Core Terminations I and II Air Isotopes and CO_2 Data, NOAA/WDS for Paleoclimatology, https://www.ncei.noaa.gov/pub/data/paleo/icecore/antarctica/epica_domec/edc2013d18oatm.txt, 2013.
- Landais, A., Masson-Delmotte, V., Stenni, B., Selmo, E., Roche, D.M., Jouzel, J., Lambert, F., Guillevic, M., Bazin, L., Arzel, O., Vinther, B., Gkinis, V., and Popp, T.: A review of the bipolar see–saw from synchronized and high resolution ice core water stable isotope records from Greenland and East Antarctica, *Quaternary Sci. Rev.*, 114, 18–32, <https://doi.org/10.1016/j.quascirev.2015.01.031>, 2015.
- Lisiecki, L. E. and Raymo, M. E.: A Pliocene-Pleistocene stack of 57 globally distributed benthic $\delta^{18}\text{O}$ records, *Paleoceanography*, 20, PA1003, <https://doi.org/10.1029/2004pa001071>, 2005.
- Loosli, H. H., and Oeschger, H.: ^{37}Ar and ^{81}Kr in the atmosphere, *Earth Planet Sc. Lett.*, 7, 67–71, [https://doi.org/10.1016/0012-821X\(69\)90014-4](https://doi.org/10.1016/0012-821X(69)90014-4), 1969.
- Laurantou, A., Chappellaz, J., Barnola J.-M., Masson-Delmotte, V., and Raynaud, D.: Changes in atmospheric CO_2 and its carbon isotopic ratio during the penultimate deglaciation, *Quaternary Sci. Rev.*, 29, 1983–1992, <https://doi.org/10.1016/j.quascirev.2010.05.002>, 2010.
- Lu, Z.-T., Schlosser, P., Smethie Jr., W. M., Sturchio, N. C., Fischer, T. P., Kennedy, B. M., Purtschert, R., Severinghaus, J. P., Solomon, D. K., Tanhua, T., and Yokochi, R.: Tracer applications of noble gas radionuclides in the geosciences, *Earth-Sci. Rev.*, 138, 196–214, <https://doi.org/10.1016/j.earscirev.2013.09.002>, 2014.
- Marcott, S. A., Bauska, T. K., Buizert, C., Steig, E. J., Rosen, J. L., Cuffey, K. M., Fudge, T. J., Severinghaus, J. P., Ahn, J., Kalk, M. L., McConnell, J. R., Sowers, T., Taylor K. C., White, J. W. C., and Brook, E. J.: Centennial-scale changes in the global carbon cycle during the last deglaciation, *Nature*, 514, 616–619, <https://doi.org/10.1038/nature13799>, 2014.
- Masson-Delmotte, V., Hou, S., Ekaykin, A., Jouzel, J., Aristarain, A., Bernardo, R. T., Bromwich, D., Cattani, O., Delmotte, M., Falourd, S., Frezzotti, M., Gallée, H., Genoni, L., Isaksson, E., Landais, A., Helsen, M. M., Hoffmann, G., Lopez, J., Morgan, V., Motoyama, H., Noone, D., Oerter, H., Petit, J. R., Royer, A., Uemura, R., Schmidt, G. A., Schlosser, E., Simões, J. C., Steig, E. J., Stenni, B., Stievenard, M., Van Den Broeke, M. R., Van De Wal, R. S. W., Van De Berg, W. J.,

- Vimeux, F., White, J. W. C.: A review of Antarctic surface snow isotopic composition: Observations, atmospheric circulation, and isotopic modeling, *J. Climate*, 21, 3359–3387, <https://doi.org/10.1175/2007JCLI2139.1>, 2008.
- 870 Masson-Delmotte, V., Buiron, D., Ekaykin, A., Frezzotti, M., Gallée, H., Jouzel, J., Krinner, G., Landais, A., Motoyama, H., Oerter, H., Pol, K., Pollard, D., Ritz, C., Schlosser, E., Sime, L. C., Sodemann, H., Stenni, B., Uemura, R., and Vimeux, F.: A comparison of the present and last interglacial periods in six Antarctic ice cores, *Clim. Past*, 7, 397–423, <https://doi.org/10.5194/cp-7-397-2011>, 2011.
- Matsuoka, K., Skoglund, A., and Roth, G.: Quanaertica [Data set], Norwegian Polar Institute, <https://doi.org/10.21334/npolar.2018.8516e961>, 2018.
- 875 Matsuoka, K., Skoglund, A., Roth, G., de Pomereu, J., Griffiths, H., Headland, R., Herried, B., Katsumata, K., Le Brocq, A., Licht, K., Morgan, F., Neff, P. D., Ritz, C., Scheinert, M., Tamura, T., Van de Putte, A., van den Broeke, M., von Deschwandern, A., Deschamps-Berger, C., Van Liefferinge, B., Tronstad, S., and Melvær, Y.: Quantarctica, an integrated mapping environment for Antarctica, the Southern Ocean, and sub-Antarctic islands, *Environ. Model. Softw.*, 140, 105015, <https://doi.org/10.1016/j.envsoft.2021.105015>, 2021.
- 880 Menking, J. A., Brook, E. J., Shackleton, S. A., Severinghaus, J. P., Dyonisius, M. N., Petrenko, V., McConnell, J. R., Rhodes, R. H., Bauska, T. K., Baggenstos, D., Marcott, S., and Barker, S.: Spatial pattern of accumulation at Taylor Dome during Marine Isotope Stage 4: stratigraphic constrains from Taylor Glacier, *Clim. Past*, 15, 1537–1556, <https://doi.org/10.5194/cp-15-1537-2019>, 2019.
- 885 Monnin, E., Indermühle, A., Dällenbach, A., Flückiger, J., Stauffer, B., Stocker, T. F., Raynaud, D., and Barnola, J.-M.: Atmospheric CO₂ concentrations over the last glacial termination, *Science*, 291, 112–114, DOI: 10.1126/science.291.5501.112, 2001.
- Monnin, E., Steig, E. J., Siegenthaler, U., Kawamura, K., Schwander, J., Stauffer, B., Stocker, T. F., Morse, D. L., Barnola, J.-M., Bellier, B., Raynaud, D., Fischer, H.: Evidence for substantial accumulation rate variability in Antarctica during the Holocene, through synchronization of CO₂ in the Taylor Dome, Dome C and DML ice cores, *Earth Planet Sc. Lett.*, 224, 890 45–54, <https://doi.org/10.1016/j.epsl.2004.05.007>, 2004.
- Morse, D. L., Waddington, E. D., and Steig, E. J.: Ice age storm trajectories inferred from radar stratigraphy at Taylor Dome, Antarctica, *Geophys. Res. Lett.*, 25, 3383–3386, <https://doi.org/10.1029/98GL52486>, 1998.
- Mouginot, J., Scheuchl, B., and Rignot, E.: Mapping of Ice Motion in Antarctica Using Synthetic-Aperture Radar Data, *Remote Sensing*, 4, 2753–2767, doi:10.3390/rs4092753, 2012.
- 895 Nakawo, M., Nagoshi, M., and Mae S.: Stratigraphic record of an ice core from the Yamato meteorite ice field, Antarctica, *Ann. Glaciol.*, 10, 126–129, <https://doi.org/10.3189/S0260305500004298>, 1988.
- Oeschger, H.: Accelerator mass spectrometry and ice core research, *Nucl. Instrum. Meth. B.*, 29, 196–202, [https://doi.org/10.1016/0168-583X\(87\)90235-7](https://doi.org/10.1016/0168-583X(87)90235-7), 1987.
- Oyabu, I., Kawamura, K., Kitamura, K., Dallmayr, R., Kitamura, A., Sawada, C., Severinghaus, J. P., Beaudette, R., Orsi, A., 900 Sugawara, S., Ishidoya, S., Dahl-Jensen, D., Goto-Azuma, K., Aoki, S., and Nakazawa, T.: New technique for high-

- precision, simultaneous measurements of CH₄, N₂O and CO₂ concentrations; isotopic and elemental ratios of N₂, O₂ and Ar; and total air content in ice cores by wet extraction, *Atmos. Meas. Tech.*, 13, 6703–6731, <https://doi.org/10.5194/amt-13-6703-2020>, 2020.
- 905 Oyabu, I., Kawamura, K., Uchida, T., Fujita, S., Kitamura, K., Hirabayashi, M., Aoki, S., Morimoto, S., Nakazawa, T., Severinghaus, J. P., and Morgan, J. D.: Fractionation of O₂N₂ and ArN₂ in the Antarctic ice sheet during bubble formation and bubble–clathrate hydrate transition from precise gas measurements of the Dome Fuji ice core, *The Cryosphere*, 15, 5529–5555, <https://doi.org/10.5194/tc-15-5529-2021>, 2021.
- Petit, J.R., Jouzel, J., Raynaud, D., Barkov, N. I., Barnola, J.-M., Basile, I., Bender, M., Chappellaz, J., Davis, M., Delaygue, G. Delmotte, M., Kotlyakov, V. M., Legrand, M., Lipenkov, V. Y., Lorius, C., PÉpin, L., Ritz, C., Saltzman, E., and 910 Stievenard, M.: Climate and atmospheric history of the past 420,000 years from the Vostok ice core, Antarctica, *Nature*, 399, 429–436, <https://doi.org/10.1038/20859>, 1999.
- Petrenko, V. V., Severinghaus, J. P., Brook, E. J., Reeh, N., and Schaefer, H.: Gas records from the West Greenland ice margin covering the Last Glacial Termination: a horizontal ice core, *Quaternary Sci. Rev.*, 25, 865–875, <https://doi.org/10.1016/j.quascirev.2005.09.005>, 2006.
- 915 Reeh, N., Oerter, H., Letréguilly, A., Miller, H., and Hubberten, H.-W.: A new, detailed ice-age oxygen-18 record from the ice-sheet margin in central West Greenland, *Global. Planet. Change*, 4, 373–383, [https://doi.org/10.1016/0921-8181\(91\)90003-F](https://doi.org/10.1016/0921-8181(91)90003-F), 1991.
- Reeh, N., Oerter, H., and Thomsen, H. H.: Comparison between Greenland ice-margin and ice-core oxygen-18 records, *Ann. Glaciol.*, 35, 136–144, <https://doi.org/10.3189/172756402781817365>, 2002.
- 920 Reynolds, J. M.: Dielectric Behaviour of Firn and Ice from the Antarctic Peninsula, Antarctica, *J. Glaciol.*, 31, 253–262, doi:10.3189/S002214300006584, 1985.
- Rhodes, R. H., Brook, E. J., Blunier, T., McConnell, J. R., and Romanini, D.: Experiment-time-integrated CH₄ data from all 3 instruments, calibrated and corrected for solubility and gravitational effects of the WAIS-Divide ice core, Antarctica, PANGAEA, <https://doi.org/10.1594/PANGAEA.875980>, 2017.
- 925 Rignot, E., Mouginot, J., and Scheuchl, B.: Ice Flow of the Antarctic Ice Sheet, *Science*, 333, 1427–1430, DOI: 10.1126/science.1208336, 2011.
- Schaefer, H., Whiticar, M. J., Brook, E. J., Petrenko, V. V., Ferretti, D. F., and Severinghaus J. P.: Ice record of δ¹³C for atmospheric CH₄ across the Younger Dryas-Preboreal transition, *Science*, 313, 1109–1112, DOI: 10.1126/science.1126562, 2006.
- 930 Schaefer, H., Petrenko, V. V., Brook, E. J., Severinghaus, J. P., Reeh, N., Melton, J. R., and Mitchell, L.: Ice stratigraphy at the Pâkitsoq ice margin, West Greenland, derived from gas records, *J. Glaciol.*, 55, 411–421, doi:10.3189/002214309788816704, 2009.

- Schmitt, J., Schneider, R., Elsig, J., Leuenberger, D., Lourantou, A., Chappellaz, J., Köhler, P., Joos, F., Stocker, T. F.,
935 Leuenberger, M., and Fischer, H.: Carbon isotope constraints on the deglacial CO₂ rise from ice cores, *Science*, 336, 711–
714, DOI: 10.1126/science.1217161, 2012.
- Schwander, J., and Stauffer, B.: Age difference between polar ice and the air trapped in its bubbles, *Nature*, 311, 45–47,
<https://doi.org/10.1038/311045a0>, 1984.
- Schwander, J., Sowers, T., Barnola, J.-M., Blunier, T., Fuchs, A., and Malaizé B.: Age scale of the air in the summit ice:
Implication for glacial-interglacial temperature change, *J. Geophys. Res.*, 102, 19483–19493,
940 <https://doi.org/10.1029/97JD01309>, 1997.
- Seltzer, A. M., Buizert, C., Baggenstos, D., Brook, E. J., Ahn, J., Yang, J.-W., and Severinghaus, J. P.: Does δ¹⁸O of O₂ record
meridional shifts in tropical rainfall?, *Clim. Past*, 13, 1323–1338, <https://doi.org/10.5194/cp-13-1323-2017>, 2017.
- Severi, M., Udisti, R., Becagli, S., Stenni, B., and Traversi, R.: Volcanic synchronisation of the EPICA-DC and TALDICE ice
cores for the last 42 kyr BP, *Clim. Past*, 8, 509–517, <https://doi.org/10.5194/cp-8-509-2012>, 2012.
- 945 Severinghaus, J. P., Sowers, T., Brook, E. J., Alley, R. B., and Bender, M. L.: Timing of abrupt climate change at the end of
the Younger Dryas interval from thermally fractionated gases in polar ice, *Nature*, 391, 141–146,
<https://doi.org/10.1038/34346>, 1998.
- Severinghaus, J. P., Beaudette, R., Headly, M. A., Taylor, K., and Brook, E. J.: Oxygen-18 of O₂ Records the Impact of Abrupt
Climate Change on the Terrestrial Biosphere, *Science*, 324, 1431–1434, DOI: 10.1126/science.1169473, 2009.
- 950 Severinghaus, J. P.: Low-res d15N and d18O of O₂ in the WAIS Divide 06A Deep Core, U.S. Antarctic Program (USAP)
Data Center, doi: <https://doi.org/10.7265/N5S46PWD>, 2015.
- Shin, J.: Atmospheric CO₂ variations on millennial time scales during the early Holocene, M.S. thesis, School of Earth and
Environmental Sciences, Seoul National University, South Korea, 2014.
- Ship, S., Anderson, J., and Domack, E.: Late Pleistocene–Holocene retreat of the West Antarctic Ice-Sheet system in the Ross
955 Sea: part 1 – Geophysical results, *Geol. Soc. Am. Bull.*, 111, 1486–1516, [https://doi.org/10.1130/0016-7606\(1999\)111%3C1486:LPHROT%3E2.3.CO;2](https://doi.org/10.1130/0016-7606(1999)111%3C1486:LPHROT%3E2.3.CO;2), 1999.
- Siegenthaler, U., Stocker, T. F., Monnin, E., Lüthi, D., Schwander, J., Staffer, B., Raynaud, D., Barnola, J.-M., Fischer, H.,
Masson-Delmotte, V., and Jouzel, J.: Stable carbon cycle–climate relationship during the late Pleistocene, *Science*, 310,
1313–1317, DOI: 10.1126/science.1120130, 2005.
- 960 Sigl, M., Fudge, T. J., Winstrop, M., Cole-Dai, J., Ferris, D., McConnell, J. R., Taylor, K. C., Welten, K. C., Woodruff, T. E.,
Adolphi, F., Bisiaux, M., Brook, E. J., Buizert, C., Caffee, M. W., Dunbar, N. W., Edwards, R., Geng, L., Iverson, N.,
Koffman, B., Layman, L., Maselli, O. J., McGwire, K., Muscheler, R., Nishiizumi, K., Pasteris, D. R., Rhodes, R. H., and
Sowers, T. A.: The WAIS Divide deep ice core WD2014 chronology – Part 2: Annual-layer counting (0–31 ka BP), *Clim.
Past*, 12, 769–786, <https://doi.org/10.5194/cp-12-769-2016>, 2016.

- 965 Sinisalo, A., Grinsted, A., Moore, J., Meijer, H., Martma, T., and Van De Wal, R. S. W.: Inferences from stable water isotopes on the Holocene evolution of Scharffenbergbotnen blue-ice area, East Antarctica, *J. Glaciol.*, 53, 427–434, <https://doi.org/10.3189/002214307783258495>, 2007.
- Sinisalo, A. and Moore, J. C.: Antarctic blue ice area – towards extracting palaeoclimate information, *Antarct. Sci.*, 22, 99–115, <https://doi.org/10.1017/S095410200990691>, 2010.
- 970 Sowers, T., Bender, M., Labeyrie, L., Martinson, D., Jouzel, J., Raynaud, D., Pichon, J. J., and Korotkevich, Y. S.: A 135,000-year Vostok-Sepcmap Common temporal framework, *Paleoceanography*, 8, 737–766, <https://doi.org/10.1029/93PA02328>, 1993.
- Spaulding, N. E., Higgins, J. A., Kurbatov, A. V., Bender, M. L., Arcone, S. A., Campbell, S., Dunbar, N. W., Chimiak, L. M., Introne, D. S., and Mayewski, P. A.: Climate archives from 90 to 250 ka in horizontal and vertical ice cores from the Allan Hills Blue Ice Area, Antarctica, *Quaternary Res.*, 80, 562–574, <https://doi.org/10.1016/j.yqres.2013.07.004>, 2013.
- 975 Steffensen, J. P., Andersen, K. K., Bigler, M., Clausen, H. B., Dahl-Jensen, D., Fischer, H., Goto-Azuma, K., Hansson, M., Johnsen, S. J., Jouzel, J., Masson-Delmotte, V., Popp, T., Rasmussen, S. O., Röthlisberger, R., Ruth, U., Stauffer, B., Siggaard-Andersen, M.-L., Sveinbjörnsdóttir, Á. E., Svensson, A., and White, J. W. C.: High-resolution Greenland ice core data show abrupt climate change happens in few years, *Science*, 321, 680–684, DOI: 10.1126/science.1157707, 2008.
- 980 Stenni, B., Buiron, D., Frezzotti, M., Albani, S., Barbante, C., Bard, E., Barnola, J. M., Baroni, M., Baumgartner, M., Bonazza, M., Capron, E., Castellano, E., Chappellaz, J., Delmonte, B., Falourd, S., Genoni, L., Iacumin, P., Jouzel, J., Kipfstuhl, S., Landais, A., Lemieux-Dudon, B., Maggi, V., Masson-Delmotte, V., Mazzola, C., Minster, B., Montagnat, M., Mulvaney, R., Narcisi, B., Oerter, H., Parrenin, F., Petit, J. R., Ritz, C., Scarchilli, C., Schilt, A., Schüpbach, S., Schwander, J., Selmo, E., Severi, M., Stocker, T. F., and Udisti, R.: Expression of the bipolar see-saw in Antarctic climate records during the last deglaciation, *Nat. Geosci.*, 4, 46–49, <https://doi.org/10.1038/ngeo1026>, 2011.
- 985 Tian, L., Ritterbusch, F., Gu J.-Q., Hu, S.-M., Jiang, W., Lu, Z.-T., Wang, D., and Yang, G.-M.: ^{81}Kr Dating at the Guliya Ice Cap, Tibetan Plateau, *Geophys. Res. Lett.*, 46, 6636–6643, <https://doi.org/10.1029/2019GL082464>, 2019.
- [Tollenaar, V., Zekollari, H., Lhermitte, S., Tax, D. M. J., Debaille, V., Goderis, S., Claeys, P., and Pattyn, F.: Unexplored Antarctic meteorite collection sites revealed through machine learning, *Science Advances*, 8, DOI: 10.1126/sciadv.abj8138, 2022.](#)
- 990 Turney, C., Fogwill, C., Van Ommen, T. D., Moy, A. D., Etheridge, D., Rubino, M., Curran, M. A. J., and Rivera, A.: Late Pleistocene and early Holocene change in the Weddell Sea: a new climate record from the Patriot Hills, Ellsworth Mountains, West Antarctica, *J. Quaternary Sci.*, 28, 697–704, <https://doi.org/10.1002/jqs.2668>, 2013.
- Van Ommen, T., Morgan, V., and Curran, M.: Deglacial and Holocene changes in accumulation at Law Dome, East Antarctica, *Ann. Glaciol.*, 39, 359–365, doi:10.3189/172756404781814221, 2004.
- Veres, D., Bazin, L., Landais, A., Toyé Mahamadou Kele, H., Lemieux-Dudon, B., Parrenin, F., Martinerie, P., Blayo, E., Blunier, T., Capron, E., Chappellaz, J., Rasmussen, S. O., Severi, M., Svensson, A., Vinther, B., and Wolff, E. W.: The

- Antarctic ice core chronology (AICC2012): an optimized multi-parameter and multi-site dating approach for the last 120 thousand years, *Clim. Past*, 9, 1733–1748, <https://doi.org/10.5194/cp-9-1733-2013>, 2013.
- 1000 Welten, K. C., Folco, L., Nishiizumi, K., Caffee, M. W., Grimberg, A., Meier, M. M. M., and Kober, F.: Meteoritic and bedrock constraints on the glacial history of Frontier Mountain in northern Victoria Land, Antarctica, *Earth Planet. Sc. Lett.*, 270, 308–315, <https://doi.org/10.1016/j.epsl.2008.03.052>, 2008.
- Whillans, I. M. and Cassidy, W. A.: Catch a falling star: Meteorites and old ice, *Science*, 222, 55–57, DOI: 10.1126/science.222.4619.55, 1983.
- 1005 Yan, Y., Bender, M. L., Brook, E. J., Clifford, H. M., Kemeny, P. C., Kurbatov, A. V., Mackay, S., Mayewski, P. A., Ng, J., Severinghaus J. P., and Higgins, J. A.: Two-million-year-old snapshots of atmospheric gases from Antarctic ice, *Nature*, 574, 663–666, <https://doi.org/10.1038/s41586-019-1692-3>, 2019.
- Yan, Y., Spaulding, N. E., Bender, M. L., Brook, E. J., Higgins, J. A., Kurbatov, A. V., and Mayewski, P. A.: Enhanced moisture delivery into Victoria Land, East Antarctica, during the early Last Interglacial: implications for West Antarctic
1010 Ice Sheet stability, *Clim. Past*, 17, 1841–1855, <https://doi.org/10.5194/cp-17-1841-2021>, 2021.
- Yang, J.-W.: Paleoclimate reconstruction from greenhouse gas and borehole temperature of polar ice cores, and study on the origin of greenhouse gas in permafrost ice wedges, Ph.D. thesis, School of Earth and Environmental Sciences, Seoul National University, South Korea, 2019.
- Yau A. M., Bender, M. L., Marchant, D. R., and Mackay, S. L.: Geochemical analyses of air from an ancient debris-covered
1015 glacier, Antarctica, *Quat. Geochronol.*, 28, 29–39, <https://doi.org/10.1016/j.quageo.2015.03.008>, 2015.
- Yokoyama, Y., Anderson, J. B., Yamane, M., Simkins, L. M., Miyairi, Y., Yamazaki, T., Koizumi, M., Suga, H., Kusahara, K., Prothro, L., and Hasumi, H.: Widespread collapse of the Ross Ice Shelf during the late Holocene, *P. Natl. Acad. Sci. USA*, 113, 2354–2359, <https://doi.org/10.1073/pnas.1516908113>, 2016.
- Zappala, J. C., Baggenstos, D., Gerber, C., Jiang, W., Kennedy, B. M., Lu, Z.-T., Masarik, J., Mueller, P., Purtschert, R., and
1020 Visser, A.: Atmospheric ⁸¹Kr as an Integrator of Cosmic-Ray Flux on the Hundred-Thousand-Year Time Scale, *Geophys. Res. Lett.*, 47, <https://doi.org/10.1029/2019GL086381>, 2020.
- Zekollari, H., Goderis, S., Debaille, V., van Ginneken, M., Gattacceca, J., Team, A., Jull, A. J. T., Lenaerts, J. T. M., Yamaguchi, A., Huybrechts, P., Claeys, P.: Unravelling the high-altitude Nansen blue ice field meteorite trap (East Antarctica) and implications for regional paleo-conditions, *Geochim. Cosmochim. Ac.*, 248, 289–310, <https://doi.org/10.1016/j.gca.2018.12.035>, 2019.
- 1025