

Land-atmosphere interactions in sub-polar and alpine climates in the CORDEX FPS LUCAS models: II. The role of changing vegetation

Priscilla A. Mooney¹, Diana Rechid², Edouard L. Davin³, Eleni Katragkou⁴, Natalie de Noblet-Ducoudré⁵, Marcus Breil⁶, Rita M. Cardoso⁷, Anne Sophie Daloz⁸, Peter Hoffmann², Daniela C.A. Lima⁷, Ronny Meier³, Pedro M.M. Soares⁷, Giannis Sofiadis⁴, Susanna Strada⁹, Gustav Strandberg¹⁰, Merja H. Toelle¹¹ and Marianne T. Lund⁸.

¹NORCE Norwegian Research Centre, Bjerknnes Centre for Climate Research, Bergen, Norway

²Climate Service Center Germany (GERICS), Helmholtz-Zentrum Hereon, Hamburg, Germany

³Wyss Academy for Nature, Climate and Environmental Physics, Oeschger Centre for Climate Change Research, University of Bern, Bern, Switzerland

⁴Department of Meteorology and Climatology, School of Geology, Aristotle University of Thessaloniki, Thessaloniki, Greece

⁵Laboratoire des Sciences du Climat et de l'environnement, Paris, France

⁶Institute for Meteorology and Climate Research, Karlsruhe Institute of Technology, Karlsruhe, Germany

⁷Instituto Dom Luiz, Faculdade de Ciências da Universidade de Lisboa, 1749-016 Lisboa, Portugal

⁸CICERO Center for International Climate Research, Oslo, Norway

⁹International Center for Theoretical Physics, Trieste, Italy

¹⁰Swedish Meteorological and Hydrological Institute, Norrköping, Sweden

¹¹Center for Environmental Systems Research, University of Kassel, Germany

Correspondence to: P.A. Mooney (prmo@norceresearch.no)

Abstract. Land cover in sub-polar and alpine regions of northern and eastern Europe have already begun changing due to natural and anthropogenic changes such as afforestation. This will impact the regional climate and hydrology upon which societies in these regions are highly reliant. This study aims to identify the impacts of afforestation/reforestation (hereafter afforestation) on snow and the snow-albedo effect, and highlight potential improvements for future model development. The study uses an ensemble of nine regional climate models for two different idealised experiments covering a 30-year period; one experiment replaces most land cover in Europe with forest while the other experiment replaces all forested areas with grass. The ensemble consists of nine regional climate models composed of different combinations of five regional atmospheric models and six land surface models. Results show that afforestation reduces the snow-albedo sensitivity index and enhances snow melt. While the direction of change is robustly modelled, there is still uncertainty in the magnitude of change. Greatest differences between models emerge in the snowmelt season. One regional climate model uses different land surface models which shows consistent changes between the three simulations during the accumulation period but differs in the snowmelt season. Together these results point to the need for further model development in representing both grass-snow and forest-snow interactions during the snowmelt season. Pathways to accomplishing this include 1) a more sophisticated representation of forest structure, 2) kilometer scale simulations, and 3) more observational studies on vegetation-snow interactions in Northern Europe.

1 Introduction

Interactions between the land surface and the atmosphere in sub-polar and alpine climates occur largely through the snow albedo effect in winter and spring. These interactions strongly influence the regional climate and any change to either land cover or snow cover in these regions will alter the regional climate (IPCC, 2019; Cherubini et al., 2018; Bender et al., 2020).

40 Importantly, changes to the land surface, such as afforestation, also alter the snow cover (Mooney et al., 2021).

Land cover is undergoing rapid change in many parts of the world, including in the sub-polar and alpine regions. Some of this change is a natural response to climate change, e.g., forest fires (Wang et al., 2020) and “greening of the Arctic” (Myers-Smith et al., 2020). Other changes to the land surface are a more direct human influence such as afforestation (Mooney et al., 2021). The impact of these perturbations to the land surface on the regional climate and hydrology can have considerable
45 consequences for society. In these regions, many communities rely on snow for water resources, tourism, energy, and recreation (Framstad et al. 2009; Duncker et al., 2012). They are also vulnerable to snow-related hazards such as flooding and avalanches (Abermann et al., 2019).

Many observation-based studies have assessed the impact of forests on snow accumulation and loss compared to open sites such as grasslands (e.g., Golding and Swanson, 1978; Essery et al., 2003; Varhola et al., 2010; Lundquist et al., 2013). These
50 studies and references therein have shown that the impacts of forests on snow accumulation and ablation are dependent on vegetation structure, local climate, topography, and aspect. Forests can reduce snowpack compared to grasslands through canopy interception and emitting longwave radiation. Conversely, forests can enhance snowpack by shading it from solar radiation, and sheltering it from strong winds (Varhola et al., 2010).

One factor that influences the magnitude of snowpack reduction through canopy interception is forest density. For dense
55 forests, canopy interception can lead to losses in snowpack that exceed 60% of the total annual snowpack (Hedstrom and Pomeroy, 1998). This loss in snowpack during the accumulation period can be offset by the canopy’s shading of the snowpack from solar radiation and strong winds in the snowmelt season, if this is the dominant mechanism for snow loss (Lundquist et al., 2013). However, the loss of snowpack during the snowmelt season could be dominated by increased longwave radiation instead if winter temperatures (DJF) exceed -1°C (Lundquist et al., 2013).

60 Representing these highly complex interactions between forests and snow cover poses a challenge for both global and regional climate modelling (Mudryk et al., 2020). In regional climate models, key processes for vegetation-snow interactions are simulated by both the atmospheric model and the land surface model. During the accumulation phase, atmospheric processes most strongly influence snowpack characteristics, but during the snowmelt season, land surface processes are most influential. Various studies (e.g., Essery et al., 2003; Mudryk et al., 2020; Mooney et al., 2020) have demonstrated that while
65 climate models have become more sophisticated in their representation of vegetation-snow interactions and have improved in their ability to simulate snow cover, there are still deficiencies in the simulation of snow amount.

In Daloz et al., (in review; hereafter Part I), we have shown that deficiencies in the simulation of the snow-albedo climate forcing, a key land-atmosphere interaction in sub-polar and alpine climates, are greatest during the snowmelt period for

different regional climate models participating in the World Climate Research Programme's (WCRP) Coordinated Regional
70 Climate Downscaling Experiment (CORDEX) endorsed Flagship Pilot Study (FPS) Land Use and Climate Across Scales
(LUCAS; Rechid *et al.*, 2017), hereafter called CORDEX FPS LUCAS.

These model deficiencies combined with limited observations means much remains unknown about the impact of
afforestation on the regional climate system and snowpack characteristics in sub-polar and alpine climates of northern and
eastern Europe. This study will address this issue and further focus future model development for vegetation-snow
75 interactions using an ensemble of nine CORDEX FPS LUCAS simulations for two different and extreme land cover
changes. While Part I used simulations with a realistic land cover map, this study (Part II) uses simulations with idealised
land cover maps that cover most of Europe with forest in one experiment and grass in the other.

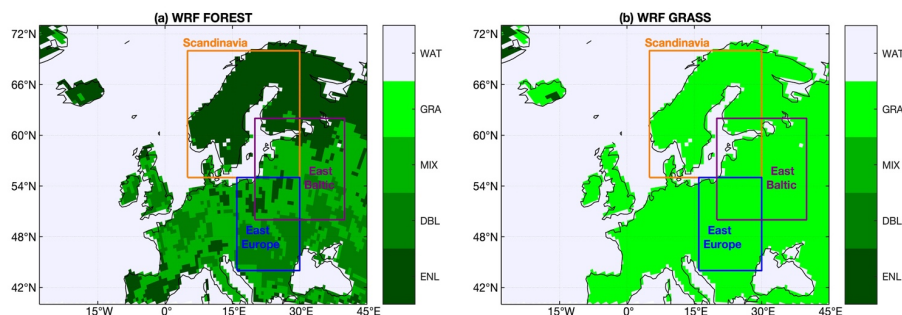
The aims of this study are (1) to identify robust impacts of afforestation on the snow-albedo effect, snow variables, and a
selection of societally relevant metrics, and (2) highlight required improvements for model development in these regions.
80 This study is the first to investigate land atmosphere interactions with a focus on snow variables in high latitude regions by
using an ensemble of regional climate models with idealised land cover scenarios specifically designed to assess the impact
of afforestation in Europe. In doing so, this study will provide one of the most robust assessments of the impact of
afforestation on snowpack in northern and eastern Europe to date. A description of the methodology can be found in the next
section, and the results are presented in section 3. These results are further discussed in section 4 and the conclusions are
85 presented in section 5.

2 Methodology

2.1 CORDEX FPS LUCAS Experiments

Simulations in the CORDEX FPS LUCAS were performed for three different types of experiments: EVAL, FOREST, and
GRASS. All simulations use a grid spacing of 0.44°, cover the period 1986-2015, and use the standard EURO-CORDEX
90 domain (Jacob *et al.*, 2014). Boundary and initial conditions for all simulations were derived from the European Centre for
Medium range Weather Forecasting's Interim reanalysis (ERA-Interim; Dee *et al.*, 2011). The difference between the EVAL,
FOREST, and GRASS experiments lies in the land cover maps. Simulations for the EVAL experiment use the present-day
land cover map specific to each regional climate model (RCM). The EVAL simulations are the control simulations and have
been used to evaluate the performance of the different RCMs in Part I (Daloz *et al.* (in review)) and by Davin *et al.*, (2020)
95 and Sofiadis *et al.* (2021). The FOREST and GRASS experiments, which are the focus of this paper, use idealised land cover
maps (see Figure 1 for an example) that are designed to represent the theoretical maximum of forest and grass coverage.
These idealised land cover maps are derived from a MODIS-based present-day land cover map. From this map, the fractional
coverage of forest is expanded until it covers 100% of non-bare soil ground. The FOREST map conserves the ratio of tree
types (i.e., broadleaf vs needle leaf and deciduous vs evergreen) found in the MODIS-based land cover map. The GRASS

100 land cover map was developed in the same way as the FOREST land cover map. A more comprehensive description of the
land cover maps and conversion rules can be found in (Davin et al., 2020).



105 **Figure 1:** The three regions considered in the analysis: Scandinavia, East Baltic, East Europe. Also shown are the land cover maps for the
FOREST and GRASS experiments. The colour bars indicate land cover type where WAT means water, GRA means grass, MIX means
mixed forests, DBL means deciduous broadleaf, and ENL means evergreen Needleleaf.

2.2 CORDEX FPS LUCAS models

110 This study uses nine RCMs composed of different combinations of five regional atmospheric models and six LSMs. The
combinations are shown in Table 1 which also specifies the model versions, key references for each model and their
representation of snow-vegetation interactions. The ensemble consists of two regional models (WRF and CCLM) that use
multiple LSMs allowing the analysis to isolate the impact of the LSMs on the results. Uniquely, the ensemble consists of two
WRF-NoahMP simulations that differ only by their representation of convection and planetary boundary layer processes.
115 Hereafter, each of these combinations will be considered as different RCMs as they differ in the way they represent different
atmospheric and land surface processes.

Data for all snow variables was available for WRFc-NoahMP, CCLM-CLM5.0, WRFa-NoahMP, RCA, WRFb-CLM4.0.
However, REMO-iMOVE, RegCMA-CLM4.5, and CCLM-TERRA did not have data for snow depth while CCLM-VEG3D
could only provide a binary number of 0 and 1 for snow cover fraction. Snow depth for REMO-iMOVE, RegCMA-CLM4.5,
120 and CCLM-TERRA was calculated from snow water equivalent using a constant value of 312 kg/m^3 [for the bulk density as
described in Sturm et al. \(2010\)](#).

2.2.1 Snow Vegetation Interactions

Below we provide a short description of the snow-vegetation interactions in the different land surface models. A more comprehensive description for each model can be found in the references listed in Table 1.1 for each model.

125 Canopy interception: All models except RCA account for canopy interception of precipitaton. WRFa-NoahMP, WRFc-
NoahMP, CCLM-CLM5.0, CCLM-Veg3D, and REMO-iMOVE use a separate layer for the vegetation canopy which allows
for both liquid water and ice to be intercepted by the vegetation canopy. CCLM-TERRA also accounts for interception of
rain and snow using separate reservoirs for each. While WRFb-CLM4.0 and RegCM-CLM4.5 also use a separate layer for
the canopy canopy, the interception of precipitation does not distinguish between rain and snow.

130 Turbulent transfer under canopy: In WRFa-NoahMP, WRFc-NoahMP, CCLM-Veg3D, CCLM-TERRA, and REMO-
iMOVE, turbulent fluxes between snow, vegetation, and air use Monin-Obukhov Similarity Theory (MOST) stability
functions to calculate aerodynamic resistance with respect to the displacement and roughness lengths of the canopy. In
RCA4, turbulent transfer within the canopy layer is parameterized following Choudhury and Monteith (1988). The canopy
air state is connected to the canopy itself and to the surface beneath the canopy with separate aerodynamic resistances,
135 respectively. In WRFb-CCLM4.0, CCLM-CLM5.0 and RegCMA-CLM4.5, aerodynamic resistances to heat/moisture transfer
between the ground and the canopy air account for the turbulent transfer via a coefficient that results from interpolation
between values for dense canopy and bare soil (Zeng et al. 2005). The dense canopy turbulent transfer coefficient in Zeng et
al. (2005) is modified from its original value of 0.004 to account for stability.

140 Radiative Transfer: WRFa-NoahMP, WRFc-NoahMP, WRFb-CLM4.0, CCLM-CLM5.0 and RegCMA-CLM4.5 use the two-
stream approximation of Dickinson (1983) and Sellers (1985) for radiative transfer within vegetation canopies. CCLM-
Veg3D also uses a two stream approach but the radiative transfer is calculated after the approach of Ritter & Geleyn (1992).
In RCA, the net radiation components are separated between the forest canopy and the forest floor. In this separation a sky
view factor is applied which accounts for the degree of canopy closure (Verseghy et al., 1993) which is a function of LAI
only for long-wave and diffuse short-wave radiation. In CCLM-TERRA, the radiative transfer equations are calculated in
145 terms of upward and downward fluxes based on the two-stream methods. Surface radiation fluxes depend on surface albedo
and temperature. In REMO-iMOVE, there is no direct canopy radiative transfer, land surface influence is calculated for
visible and near-infrared through albedo changes.

150 Snow Albedo: The surface albedo in WRFa-NoahMP, WRFc-NoahMP, and WRFb-CLM4.0 is a diagnostic produced from
the ratio of total reflected shortwave radiation to total downward shortwave radiation. In RCA4, snow albedo for open-land
snow is a prognostic variable and the albedo for snow in the forest is set constant to 0.5. In CCLM-Veg3D, snow albedo is a
prognostic quantity depending on the age of the snow. CCLM-TERRA has a time-dependent snow albedo introduced by an
ageing-function with pre-given maximum and minimum snow albedo values which accounts for partial coverage of the soil
surface by vegetation and snow for albedo. In REMO-iMOVE, the snow albedo is calculated as a function of snow surface
temperature and forest cover. The snow covered land surface albedo is a function of the snow albedo, the background

155 albedo, and the actual snow depth. In both CCLM-CLM5.0 and RegCMa-CLM4.5, snow albedo within each snow layer is simulated with the Snow, Ice, and Aerosol Radiative Model (SNICAR), which incorporates a two-stream radiative transfer solution from Toon et al. (1989) and considers snow age,

Formatted: Font: Italic

Model Name	Institute ID	RCM	LSM	Snow - vegetation interaction
WRFa-NoahMP	IDL	WRF v3.8.1D (Powers et al., 2017)	NoahMP (Niu et al., 2011)	(Deardorff, 1978; Niu and Yang, 2007)
WRFc-NoahMP	BCCR	WRF v3.8.1 (Powers et al., 2017)	NoahMP (Niu et al., 2011)	(Deardorff, 1978; Niu and Yang, 2007)
WRFb-CLM4.0	AUTH	WRF v3.8.1 (Powers et al., 2017)	CLM4.0 (Oleson et al., 2010)	(Wang and Zeng, 2009)
CCLM-CLM5.0	ETH	Cosmo_5.0_clm9 (Sorland et al., 2021)	CLM5.0 (Lawrence et al., 2019)	(Wang and Zeng, 2009; Lawrence et al., 2019; van Kammenhout et al., 2017)
CCLM-VEG3D	KIT	Cosmo_5.0_clm9 (Sorland et al., 2021)	VEG3D (Braun and Schädler, 2005)	(Grabe 2002)
CCLM-TERRA	JLU	Cosmo_5.0_clm9 (Sorland et al., 2021)	TERRA-ML (Schrodin and Heise, 2002)	(Doms et al. 2013)
RegCMa-CLM4.5	ICTP	RegCM v4.6 (Giorgi et al., 2012)	CLM4.5 (Oleson et al., 2013)	(Wang and Zeng, 2009)
REMO-iMOVE	GERICS	REMO2009 (Jacob et al., 2012)	iMOVE (Wilhelm et al., 2014)	(Roeckner et al., 1996; Kotlarski, 2007)
RCA4	SMHI	RCA4 (Strandberg et al. 2015)	Internal (Samuelsson et al., 2006)	(Samuelsson et al. 2015)

Formatted Table

160 **Table 1.1** A list of the RCMS, LSMs, and the model names used in this study. Also listed are the key references describing the models, and the institutions that performed the simulations. Institution and model abbreviations are shown in Appendix A.

2.3 Snow Albedo Sensitivity Index (SASI)

Deleted: ¶

The key interaction between the land and the atmosphere in sub-polar and alpine climates is through changes in surface albedo during winter and spring. This study uses the SASI index (Xu and Dirmeyer, 2013) which is a measure of the climate forcing from the snow-albedo effect. SASI has units of W/m² and is defined mathematically as:

165

$$SASI = SW\sigma(f_{sno})\Delta\alpha$$

170 where SW is the incoming shortwave radiation, $\sigma(f_{sno})$ is the standard deviation of snow cover fraction over time, and $\Delta\alpha$ is
the difference in surface albedo between the snow-covered surface and non-snow covered surface. In this study, $\Delta\alpha$ has a
constant value of 0.5 for grass and 0.2 for forests as the values for this could not be obtained from the models. The albedo
values used for snow covered grass and forest were 0.70 and 0.35 based on (Barlage *et al.*, 2005), while albedo values used
for non-snow covered grass and forest were 0.2 and 0.15 based on (Myhre and Myhre, 2003). Although there are differences
175 in the snow-covered values for different types of forests, i.e., deciduous vs evergreen, these differences were very small
(0.35 vs 0.34). Previous studies on the impacts of afforestation in sub-polar climates, such as Mooney et al. (2021), have
shown that such small changes in albedo have a negligible impact on the outcome. Based on this, the same value was used
for all forests regardless of forest type. High SASI values of 10 W/m² or more indicate a strong radiative forcing from the
snow-albedo effect.

180 **2.4 Start date of snowmelt season**

This study follows the definition of Xu and Dirmeyer (2011) to identify the start date for the snowmelt season. The start date
for the snowmelt season is determined when the 5-day running mean of snow water equivalent falls to 80% of its peak value.

3 Results

3.1 SASI

185 Figure 2 shows the temporal evolution of SASI for the FOREST and GRASS simulations in Scandinavia, East Baltic, and
East Europe for January to June. Values for July to December are excluded due to the lack of snow cover and/or low levels
of incoming solar radiation. SASI is typically low in January since incoming solar radiation is low. As the season progresses,
SASI values increase with increasing solar radiation until the snow starts melting. As the snow cover decreases, SASI values
decrease and reach zero in most places by June. Consequently, the timing of snowmelt differs in the different regions due to
190 latitudinal differences leading to different times for peak values of SASI.

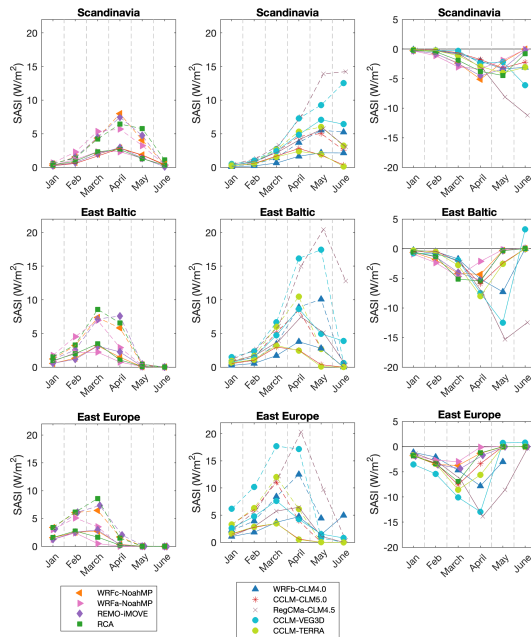


Figure 2: The first and second columns show the SASI values for GRASS (dashed lines) and FOREST (solid lines) experiments averaged over the three different regions shown in Figure 1. The nine simulations are divided into two different columns based on their values (high Vs low); the purpose of this separation is to ease interpretation of the results. The third column shows the impact of afforestation on SASI (FOREST – GRASS).

Figure 2 shows that GRASS simulations have higher SASI values than FOREST simulations meaning afforestation reduces the climate forcing from the snow-albedo effect. This is consistent with the findings of Davin et al. (2020) which also used the CORDEX FPS LUCAS models and showed that afforestation increased surface temperatures in all of these CORDEX FPS LUCAS models. Davin et al. (2020) also showed that afforestation increased net shortwave radiation and sensible heat considerably in these same models. This points to the decreased albedo from afforestation enhancing net shortwave radiation and leading to a positive response in surface air temperature to afforestation. In light of this, the lower SASI values for the FOREST simulations compared to the GRASS values can be primarily attributed to the difference in $\Delta\alpha$ which is 0.5 for GRASS and 0.2 for FOREST. Generally, afforestation does not impact the timing of the maximum value in SASI.

205 Four RCMs (WRFa-NoahMP, WRFc-NoahMP, REMO-iMOVE, and RCA) produce similar SASI values to each other for
the GRASS experiment, and also for the FOREST experiment. The other RCMs simulate considerably different values for
SASI in the GRASS experiment, with the largest differences appearing in the snowmelt season (April-June) when the SASI
for some simulations can be 2-3 times larger than SASI values for other simulations. This is also evident in the FOREST
experiment. It is important to note here that results for CCLM-VEG3D may arise from the use of a binary number (0 or 1)
for snow cover fraction. The next subsection presents the impact of afforestation on snow water equivalent and snow cover
210 which are key variables for SASI.

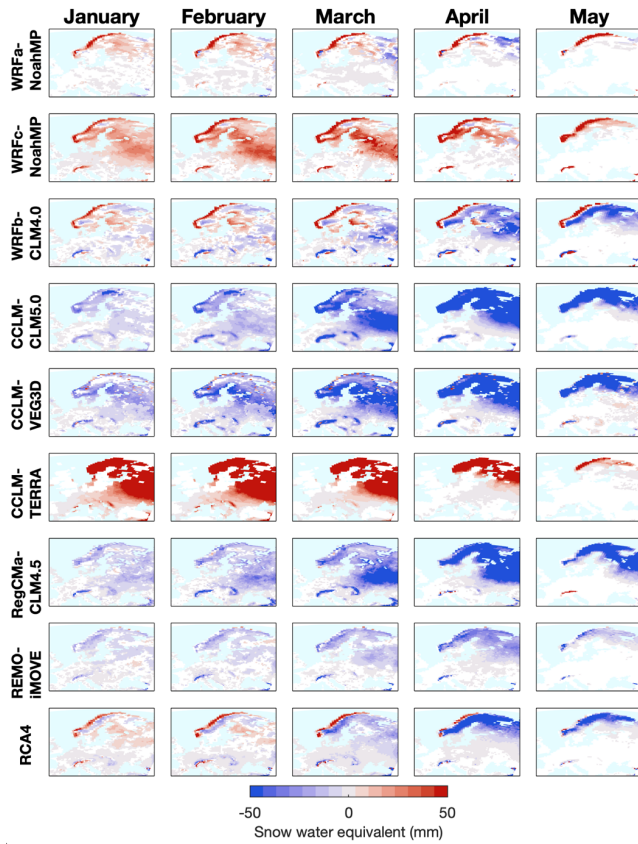
3.2 Snow water equivalent and snow depth

Snow water equivalent and snow depth are considered together as there is a relationship between these quantities and three
of the models provide only snow water equivalent from which snow depth is derived by using a constant density value of
312 kg m^{-3} .

215 Figure 3 shows the difference between the FOREST and GRASS experiments for snow water equivalent for the nine
different models. Only differences that are statistically significant at the 95% confidence level using the student t-test are
shown. Four of the models show that afforestation reduces snow water equivalent in all months and one model shows that
afforestation increases snow water equivalent in all months. The remaining four models show more spatial variability in both
magnitude and sign of change.

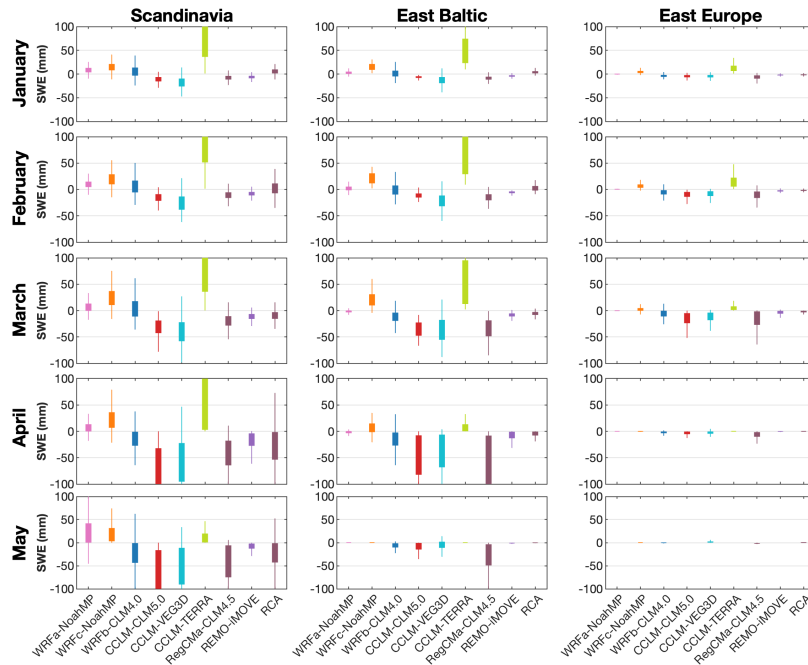
220 A summary of Figure 3 is presented in Figure 4 which shows the spatial variability and mean in the difference between
FOREST and GRASS experiments. In Scandinavia, most RCMs show that afforestation reduces snow water equivalent with
modest decreases and little spatial variability during the accumulation phase, but large decreases and large spatial variability
during the snowmelt season. Four RCMs (WRFa-NoahMP, WRFb-CLM, WRFc-NoahMP, and CCLM-TERRA) show that
afforestation increases snow water equivalent during the accumulation period. Three of these RCMs show that afforestation
225 also leads to higher values of snow water equivalent during the snowmelt season; WRFb-CLM shows that afforestation
decreases the snow water equivalent during the melt season. The results for East Baltic are similar to Scandinavia despite the
difference in forest type; Scandinavia has predominantly evergreen needleleaf forests, while East Baltic is dominated by
mixed forest with considerable areas of deciduous broadleaf and evergreen needleleaf forests. In both Scandinavia and East
Baltic, models display a greater spatial variability during the snowmelt season than during the accumulation period. Only
230 small differences for a few models are shown in East Europe. However, values for snow water equivalent are smaller in this
region compared to the others. The results for snow depth are not shown here as they are very similar to the results for snow
water equivalent.

Deleted: m



235

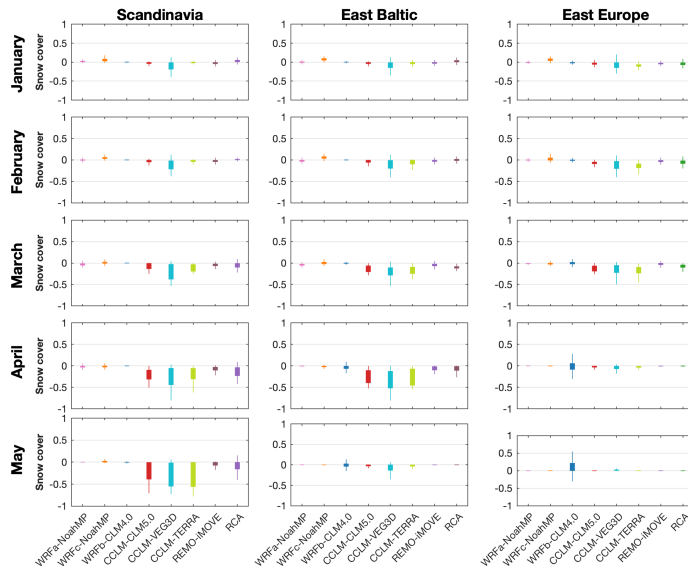
Figure 3: Impact of afforestation (FOREST-GRASS) on snow water equivalent (SWE) simulated by the CORDEX FPS LUCAS models. White spaces show grid boxes that are not statistically significant at the 95% confidence level.



240 **Figure 4:** Impact of afforestation (FOREST-GRASS) on snow water equivalent (SWE) simulated by the LUCAS models. The box plots indicate the spatial variability in the difference between the FOREST and GRASS experiments for each month from January to May (see y-axis). Only differences that are statistically significant at the 95% confidence level are considered. Statistical significance was determined using the student t-test.

3.3 Snow Cover

245 Figure 5 shows the spatial variability in the difference of snow cover fraction between the FOREST and GRASS experiments. As in Figures 3 and 4, only differences that are statistically significant at the 95% confidence level are considered. Most notable in these results is the strong effect of afforestation and large spatial variability demonstrated by the three CCLM models during the snowmelt season. All results show a reduction in snow cover due to afforestation in the snowmelt season with little impact evident during the accumulation period. All three regions show some impact of
 250 afforestation on snow cover.



255 **Figure 5:** Impact of afforestation (FOREST-GRASS) on snow cover fraction simulated by the CORDEX FPS LUCAS models. The box plots indicate the spatial variability in the difference between the FOREST and GRASS experiments. Only differences that are statistically significant at the 95% confidence level are considered. Statistical significance was determined using the student t-test.

3.4 Snow Days

260 Figure 6 shows the impact of afforestation on the number of snow days. Snow days are defined as days when snow depth exceeds 0.1 m and the number of snow days is indicative of the length of the snow season. Four RCMs show that afforestation increases the number of snow days while five RCMs show that afforestation decreases the number of snow days. Three of the four RCMs showing an increase are from the WRF modelling system; three of the five RCMs showing a decrease are from the CCLM model. Both the WRF and CCLM ensembles consist of different LSMs. This suggests that differences in the representation of atmospheric processes are largely responsible for this conflicting result. Nonetheless, 265 there are differences in the magnitude of the response to afforestation within the WRF and CCLM ensembles, suggesting that land surface processes are also important.

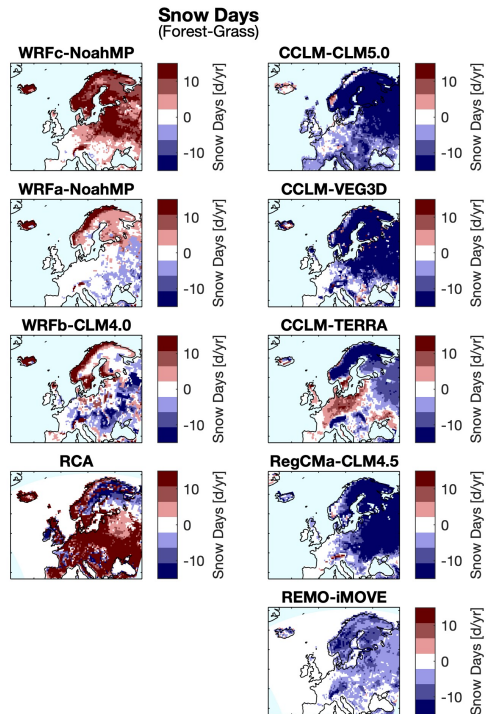


Figure 6: Impact of afforestation (FOREST-GRASS) on the number of snow days in the season, an indicator for the length of the snow season.

270 3.5 Snowmelt

Figure 7 shows the impact of afforestation on the start of the snowmelt season. The start of the snowmelt season is determined when the 5-day moving mean of snow water equivalent reaches 80% of the season maximum in the 5-day moving mean of snow water equivalent. In general, the results of Figure 7 show that afforestation tends to delay the onset of snowmelt. This is most evident in Scandinavia and the East Baltic regions. In the East Europe region, the mean value for most RCMs also shows a delay in the start of the snowmelt season. However, there is large spatial variability and two RCMs (REMO-iMOVE and WRFa-NoahMP) have a mean value greater than zero suggesting an earlier start of the snowmelt season.

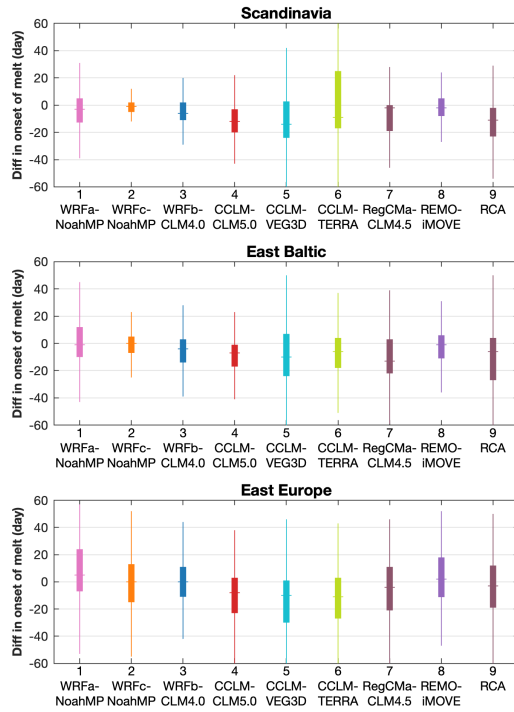


Figure 7: Impact of afforestation (FOREST - GRASS) on the start of the snowmelt season in the three different regions shown in Figure 1. The snowmelt season starts when the 5-day moving mean of snow water equivalent reaches 80% of the maximum value of the 5-day moving mean in the season.

280

4 Discussion

As highlighted in the companion paper (Daloz *et al.*, in review) and other studies (e.g. Matiu *et al.*, 2020), regional climate models have substantial difficulties in simulating snow related processes and variables. This study highlights the need for further model development in the representation of vegetation-snow interactions during the snowmelt season. This is evident from disagreements between models on the magnitude and sign of change arising from afforestation for some of the analyses. It is further evident in the disagreement between model results and observations shown in the companion paper of Daloz *et al.* (in review), especially during the snowmelt season. Model improvements in the representation of vegetation-

285

290 snow interactions can substantially reduce known biases in regional climate simulations for other climate variables in northern and eastern Europe (Mooney et al., 2013; Katragkou et al., 2015). Such improvements would increase confidence in climate change projections for these regions.

Observational studies using paired-site experiments of forests and open spaces, such as grass, have shown that afforestation generally decreases snow accumulation and lowers melt rates (Varhola et al., 2010, and references therein). However, the processes behind these results are very complex and highly variable depending on multiple factors that have led to conflicting results (Lundquist et al., 2013). While all models struggle to reproduce these complexities there are some robust findings here. Models show that afforestation has the greatest impact during the snowmelt season and there is good agreement between the models in simulating the impacts on snow cover. This is consistent with other international studies assessing the ability of climate and land surface models to simulate snow cover (Essery et al., 2009; Mudryk et al., 2020; Krinner et al., 2018). However, there is less agreement in the magnitude of changes during the snowmelt season when afforestation impacts are greatest. Simulating snow-vegetation interactions during snowmelt is a known challenge for models (Krinner et al., 2018). The models also showed good agreement in simulating the impact of afforestation on the onset of the snowmelt season although there was disagreement on the magnitude of change. Disagreement was also found on the impact of afforestation on snow water equivalent. This may be related to the known deficiencies in climate models to simulate snow mass variables, such as snow water equivalent, highlighted in previous studies (Thackeray et al., 2019; Mudryk et al., 2020).

305 Societies in many sub-polar and mountainous regions of the world depend on snow accumulation and snowmelt for a myriad of social and economic activities e.g., water resources and winter tourism. Indeed, these regions are also vulnerable to flooding and avalanches. Regardless of the sign of change, if the impact of afforestation or deforestation on snow accumulation and/or melt is sufficiently large, communities in these regions will be impacted by afforestation. Certain ecological species are also highly dependent on snow, and if afforestation mitigates some of the snow melt expected in a warmer world, then afforestation could help conservation efforts by offering potential sites for “climate change refugia” in a warmer world. Together these points, highlight the societal and ecological need for better information on the impact of afforestation in sub-polar and alpine regions, some of which are already undergoing afforestation.

Deleted: This

Deleted: s

5 Conclusions

315 In this study, we used an ensemble of RCMs to investigate the impact of afforestation during January-June on the climate forcing due to the snow-albedo effect, which is a key land-atmosphere interaction in sub-polar and alpine climates. The study showed that afforestation decreases the snow-albedo climate forcing. This is largely due to changes in surface albedo. While models agreed on the sign of change, there was disagreement in the magnitude of the impact of afforestation on SASI. Results also showed that there was no impact on the timing of the peak value of SASI which generally occurs in March or April depending on the region. Our study also showed that there was a large spread in the values for both the FOREST and 320 GRASS simulations, suggesting that model improvements are required for both grass-snow and forest-snow interactions.

The study also examined the impact of afforestation on snow water equivalent, snow depth, and snow cover fraction. Most models show that afforestation has a smaller impact in January and February when snow is generally accumulating than in March, April and May when snow is melting. Most models showed that afforestation reduced snow water equivalent, snow depth and snow cover fraction in March, April and May when snow is typically melting. However, the models do disagree on the magnitude of the change. This indicates that afforestation enhances snowmelt with little to no impact on snow accumulation. Afforestation was also shown to generally delay the start of the snowmelt season. Analysis of the impact of afforestation on the number of snow days was inconclusive with four models showing increases and five models showing clear decreases.

The main limitations of this study are 1) coarse model resolution, 2) inadequate model representation of complex forest-snow interactions, and 3) lack of forest-snow observations. The coarse spatial resolution in this study limits the ability of all models to adequately represent essential atmospheric processes such as precipitation and key land surface processes and characteristics, e.g., elevation and canopy-snow interactions. Another limitation is the simplistic representation of forest-snow interactions even in the most sophisticated models. For example, most models do not consider the role of forest density in forest-snow interactions, even though observation-based studies have shown the importance of this forest characteristic, and there are well known differences in forest density between managed and natural forests. Another well known deficiency in regional models is their inability to represent windblown snowdrift, which is an important factor for quantifying the snow-albedo effects of afforestation. Finally, the study's ability to determine which model or models correctly represent vegetation-snow processes is severely hampered by the lack of high-quality observations of surface energy and moisture fluxes in forests and grasslands in these regions, particularly in Scandinavia.

These limitations highlight the need for future developments in land surface models to focus on a more sophisticated representation of forest-snow interactions such as the impact of forest type, density, and atmospheric temperatures on both snowmelt and snow accumulation. Indeed, such development would also enhance the performance of regional climate models in these regions.

Future studies should consider using kilometer-scale resolutions as computational resources are becoming more affordable. This would better represent important atmospheric processes and aspects of the land surface such as precipitation processes, and mountainous terrain. This is particularly important in Scandinavia where models in this study show large differences in snow water equivalent. Convection permitting models would not only improve the amounts of precipitation but also its classification into rain and snow would be based on microphysical processes instead of the threshold-based approaches used in coarser models. The next two phases of CORDEX FPS LUCAS will be implemented at higher resolutions with the third phase applying kilometre-scale resolutions. This will provide additional knowledge and insights on this important topic.

Future studies could also consider the impact of dynamic vegetation modelling on the snow-albedo feedback. Previous studies such as Cook et al. (2008) have shown that dynamic vegetation in climate models can be an important amplifier of the snow-albedo feedback. Such analysis was not possible in this study as most models did not have this capability. Future studies should examine this when more land surface models have developed this capacity.

There is also a need for more observational work on vegetation-snow interactions, particularly in northern Europe. A number of observational studies have been conducted in Canada, Russia and the United States of America but only a few have been carried out in Northern Europe. Existing observational studies show that snow-vegetation interactions depend on numerous factors, including elevation and climate. This implies that the results from studies in other regions may not necessarily apply to Northern Europe. Such observations would advance our understanding of vegetation-snow interactions, support model evaluation, improve model development, and reduce uncertainty in future climate projections.

360

365

Appendix A – Abbreviations

Institution	
<i>AUTH</i>	Aristotle University of Thessaloniki
<i>BCCR</i>	Bjerknes Centre for Climate Research
<i>BTU</i>	Brandenburgische Technische Universität
<i>ETH</i>	Eidgenössische Technische Hochschule Zürich
<i>GERICS</i>	Climate Service Center Germany
<i>ICTP</i>	International Centre for Theoretical Physics
<i>IDL</i>	Instituto Amaro Da Costa
<i>JLU</i>	Justus-Liebig-Universität Gießen
<i>KIT</i>	Karlsruhe Institute of Technology
<i>SMHI</i>	Swedish Meteorological and Hydrological Institute
Regional Climate Models	
<i>CCLM</i>	Cosmo-CLM
<i>RCA</i>	Rosby Centre regional Atmospheric climate model
<i>RegCM</i>	Regional Climate Model
<i>WRF</i>	Weather Research and Forecasting model
Land Surface Models	
<i>CLM</i>	Community Land Surface Model
<i>iMOVE</i>	Interactive MOsaic-based VEgetation model
<i>NoahMP</i>	Noah Multi-Parameter model

Data availability

The data and scripts used are available upon request from the corresponding author.

Competing Interests

370 The authors declare that they have no conflict of interest.

Author Contributions

PAM, DR, ELD, EK, MB, RMC, PH, DCAL, RM, PMMS, GS, SS, GS, MHT performed the RCM simulations, using vegetation maps produced by ELD. PAM designed the research, analysed the data, and wrote the paper. All authors contributed to interpreting the results and revising the text.

375 Acknowledgements

CICERO researchers acknowledge funding from the Research Council of Norway (grant 254966). In Norway, the simulations were stored on the server NIRD with resources provided by UNINETT Sigma2 - the National Infrastructure for High Performance Computing and Data Storage in Norway. WRFc-NoahMP simulations were performed and stored on resources provided by UNINETT Sigma2 - the National Infrastructure for High Performance Computing and Data Storage in
380 Norway (NN9280K, NS9001K, NS9599K). WRFb-CLM4.0 simulations were supported by computational time granted from the National Infrastructures for Research and Technology S.A. (GRNET S.A.) in the National HPC facility - ARIS - under project ID pr005025 and pr007033_thin. Edouard L. Davin and Ronny Meier acknowledge financial support from the Swiss National Science Foundation (SNSF) through the CLIMPULSE project and thank the Swiss National Supercomputing Centre (CSCS) for providing computing resources. P. Hoffmann is funded by the Climate Service Center Germany
385 (GERICS) of the Helmholtz-Zentrum Hereon in the framework of the Helmholtz-Institut Climate Service Science (HICSS) project LANDMATE. The authors gratefully acknowledge the WCRP CORDEX Flagship Pilot Study LUCAS "Land use and Climate Across Scales" and the research data exchange infrastructure and services provided by the Jülich Supercomputing Centre, Germany, as part of the Helmholtz Data Federation initiative. R. M. Cardoso, D. C. A. Lima P. M. M. Soares were supported by national funds through FCT (Fundação para a Ciência e a Tecnologia, Portugal) under project
390 LEADING (PTDC/CTA-MET/28914/2017), and project UIDB/50019/2020. The research work from G. Sofiadis was supported by the Hellenic Foundation for Research and Innovation (HFRI) under the HFRI PhD Fellowship grant (Fellowship Number: 1359).

References

Abermann, J., Eckerstorfer, M., Malnes, E., and Hansen, B. U.: A large wet snow avalanche cycle in West Greenland
395 quantified using remote sensing and in situ observations, *Nat. Hazards*, 97, 517–534, <https://doi.org/10.1007/s11069-019-03655-8>, 2019.

- Barlage, M., Zeng, X., Wei, H., and Mitchell, K. E.: A global 0.05° maximum albedo dataset of snow-covered land based on MODIS observations, *Geophys. Res. Lett.*, 32, <https://doi.org/10.1029/2005GL022881>, 2005.
- 400 Bender, E., Lehning, M., and Fiddes, J.: Changes in Climatology, Snow Cover, and Ground Temperatures at High Alpine Locations, *Front. Earth Sci.* 8:100. <https://doi.org/10.3389/feart.2020.00100>, 2020.
- Braun, F. J. and Schädler, G.: Comparison of Soil Hydraulic Parameterizations for Mesoscale Meteorological Models, *J. Appl. Meteorol.*, 44, 1116–1132, <https://doi.org/10.1175/JAM2259.1>, 2005.
- [Choudhury, B. J., Monteith, J. L.: A four-layer model for the heat budget of homogeneous land surfaces. Q. J. R. Meteorol. Soc. 114, 373–398, 1988.](#)
- 405 Cherubini, F., Huang, B., Hu, X., Tölle, M.H., and Strömman, A.H.: Quantifying the climate response to extreme land cover changes in Europe with a regional model, *Environ. Res. Lett.*, 13, <https://doi.org/10.1088/1748-9326/aac794>, 2018.
- Cook, B.I., Bonan, G.B., Levis, S. and Epstein, H.E.: Rapid vegetation responses and feedbacks amplify climate model response to snow cover changes. *Clim Dyn* 30, 391–406, <https://doi.org/10.1007/s00382-007-0296-z>, 2008.
- 410 Daloz, A.S., Schwingshack, C., Mooney, P.A., Strada, S., Rechid, D., Davin, E. L., Katragkou, E., de Noblet-Ducoudré, N., Belda, M., Halenka, T., Breil, M., Cardoso, R.M., Hoffmann, P., Lima, D.C.A., Meier, R., Soares, P.M.M., Sofiadis, G., Strandberg, G., Toelle, M.H., and Lund, M. T.: Land-atmosphere interactions in sub-polar and alpine climates in the CORDEX FPS LUCAS models: I. Evaluation of the snow-albedo effect, *Cryosphere*, (in review).
- 415 Davin, E. L., Rechid, D., Breil, M., Cardoso, R. M., Coppola, E., Hoffmann, P., Jach, L. L., Katragkou, E., de Noblet-Ducoudré, N., Radtke, K., Raffa, M., Soares, P. M. M., Sofiadis, G., Strada, S., Strandberg, G., Tölle, M. H., Warrach-Sagi, K., and Wulfmeyer, V.: Biogeophysical impacts of forestation in Europe: first results from the LUCAS (Land Use and Climate Across Scales) regional climate model intercomparison, *Earth Syst. Dyn.*, 11, 183–200, <https://doi.org/10.5194/esd-11-183-2020>, 2020.
- Deardorff, J. W.: Efficient prediction of ground surface temperature and moisture, with inclusion of a layer of vegetation, *J. Geophys. Res. Oceans*, 83, 1889–1903, <https://doi.org/10.1029/JC083iC04p01889>, 1978.
- 420 Dee, D. P., Uppala, S. M., Simmons, A. J., Berrisford, P., Poli, P., Kobayashi, S., Andrae, U., Balmaseda, M. A., Balsamo, G., Bauer, P., Bechtold, P., Beljaars, A. C. M., van de Berg, L., Bidlot, J., Bormann, N., Delsol, C., Dragani, R., Fuentes, M., Geer, A. J., Haimberger, L., Healy, S. B., Hersbach, H., Hólm, E. V., Isaksen, L., Kållberg, P., Köhler, M., Matricardi, M., McNally, A. P., Monge-Sanz, B. M., Morcrette, J.-J., Park, B.-K., Peubey, C., de Rosnay, P., Tavolato, C., Thépaut, J.-N., and Vitart, F.: The ERA-Interim reanalysis: configuration and performance of the data assimilation system, *Q. J. R. Meteorol. Soc.*, 137, 553–597, <https://doi.org/10.1002/qj.828>, 2011.
- [Dickinson, R.E. 1983. Land surface processes and climate-surface albedos and energy balance. Adv. Geophys. 25:305-353.](#)
- 430 Doms, G., Förstner, J., Heise, E., Herzog, H.-J., Mironov, D., Raschendorfer, M., Reinhardt, T., Ritter, Schrodin, B.R., Schulz, J.-P., Vogel G.: A Description of the Nonhydrostatic Regional Model LM, Part II: Physical Parameterization. DWD, 2013.

- Duncker, P.S., K. Raulund-Rasmussen, P. Gundersen, K. Katzensteiner, J. De Jong, H.P. Ravn, M. Smith, O. Eckmüller, et al.: How forest management affects ecosystem services, including timber production and economic return synergies and trade-offs. *Ecology and Society*, 17, 1-17, 2012.
- Essery, R., Pomeroy, J., Parviainen, J., and Storck, P.: Sublimation of Snow from Coniferous Forests in a Climate Model, 435 *J. Clim.*, 16, 1855–1864, [https://doi.org/10.1175/1520-0442\(2003\)016<1855:SOSFCF>2.0.CO;2](https://doi.org/10.1175/1520-0442(2003)016<1855:SOSFCF>2.0.CO;2), 2003.
- Essery, R., Rutter, N., Pomeroy, J., Baxter, R., Stähli, M., Gustafsson, D., Barr, A., Bartlett, P., and Elder, K.: SNOWMIP2: An Evaluation of Forest Snow Process Simulations, *Bull. Am. Meteorol. Soc.*, 90, 1120–1136, <https://doi.org/10.1175/2009BAMS2629.1>, 2009.
- Framstad, E., H. Berglund, V. Gundersen, R. Heikkilä, N. Lankinen, T. Peltola, O. Risbøl, and Weih, M.: Increased 440 biomass harvesting for bioenergy: Effects on biodiversity, landscape amenities and cultural heritage values. *TemaNord*. Nordic Council of Ministers. 2009: 591, 2009.
- Giorgi F, Coppola E, Solmon F, Mariotti L, Sylla MB, Bi X, Elguindi N, Diro GT, Nair V, Giuliani G, Turuncoglu UU, Cozzini S, Güttler I, O'Brien TA, Tawfik AB, Shalaby A, Zakey AS, Steiner AL, Stordal F, Sloan LC, and Brankovic C: RegCM4: model description and preliminary tests over multiple CORDEX domains, *Clim. Res.*, 52, 7–29, 2012.
- 445 Golding, D. L. and Swanson, R. H.: Snow accumulation and melt in small forest openings in Alberta, *Can. J. For. Res.*, 8, 380–388, <https://doi.org/10.1139/x78-057>, 1978.
- Grabe, F.: Simulation der Wechselwirkung zwischen Atmosphäre, Vegetation und Erdoberfläche bei Verwendung unterschiedlicher Parametrisierungsansätze. PhD Thesis. Inst. for Meteorology and Climate Research, Karlsruhe Institute of Technology, Karlsruhe, Germany, 2002.
- 450 Hedstrom, N. R. and Pomeroy, J. W.: Measurements and modelling of snow interception in the boreal forest, *Hydrol. Process.*, 12, 1611–1625, [https://doi.org/10.1002/\(SICI\)1099-1085\(199808/09\)12:10<1611::AID-HYP684>3.0.CO;2-4](https://doi.org/10.1002/(SICI)1099-1085(199808/09)12:10<1611::AID-HYP684>3.0.CO;2-4), 1998.
- IPCC, 2019: Summary for Policymakers. In: *Climate Change and Land: an IPCC special report on climate change, desertification, land degradation, sustainable land management, food security, and greenhouse gas fluxes in terrestrial 455 ecosystems* [P.R. Shukla, J. Skea, E. Calvo Buendia, V. Masson-Delmotte, H.-O. Pörtner, D. C. Roberts, P. Zhai, R. Slade, S. Connors, R. van Diemen, M. Ferrat, E. Haughey, S. Luz, S. Neogi, M. Pathak, J. Petzold, J. Portugal Pereira, P. Vyas, E. Huntley, K. Kissick, M. Belkacemi, J. Malley, (eds.)]. In press.
- Jacob, D., Elizalde, A., Haensler, A., Hagemann, S., Kumar, P., Podzun, R., Rechid, D., Remedio, A. R., Saeed, F., Sieck, K., Teichmann, C., and Wilhelm, C.: Assessing the Transferability of the Regional Climate Model REMO to 460 Different COordinated Regional Climate Downscaling EXperiment (CORDEX) Regions, *Atmosphere*, 3, <https://doi.org/10.3390/atmos3010181>, 2012.
- Jacob, D., Petersen, J., Eggert, B., Alias, A., Christensen, O. B., Bouwer, L. M., Braun, A., Colette, A., Déqué, M., Georgievski, G., Georgopoulou, E., Gobiet, A., Menut, L., Nikulin, G., Haensler, A., Hempelmann, N., Jones, C., Keuler, K., Kovats, S., Kröner, N., Kotlarski, S., Kriegsmann, A., Martin, E., van Meijgaard, E., Moseley, C., Pfeifer, S., Preuschmann,

- 465 S., Radermacher, C., Radtke, K., Rechid, D., Rounsevell, M., Samuelsson, P., Somot, S., Soussana, J.-F., Teichmann, C.,
Valentini, R., Vautard, R., Weber, B., and Yiou, P.: EURO-CORDEX: new high-resolution climate change projections for
European impact research, *Reg. Environ. Change*, 14, 563–578, <https://doi.org/10.1007/s10113-013-0499-2>, 2014.
- van Kampenhout, L., Lenaerts, J. T. M., Lipscomb, W. H., Sacks, W. J., Lawrence, D. M., Slater, A. G., and van den
Broeke, M. R.: Improving the Representation of Polar Snow and Firn in the Community Earth System Model, *J. Adv.*
470 *Model. Earth Syst.*, 9, 2583–2600, <https://doi.org/10.1002/2017MS000988>, 2017.
- Katragkou, E., García-Díez, M., Vautard, R., Sobolowski, S., Zanis, P., Alexandri, G., Cardoso, R. M., Colette, A.,
Fernandez, J., Gobiet, A., Goergen, K., Karacostas, T., Knist, S., Mayer, S., Soares, P. M. M., Pytharoulis, I., Tegoulis, I.,
Tsikerdekis, A., and Jacob, D.: Regional climate hindcast simulations within EURO-CORDEX: evaluation of a WRF multi-
physics ensemble, *Geosci Model Dev*, 8, 603–618, <https://doi.org/10.5194/gmd-8-603-2015>, 2015.
- 475 Krinner, G., Derksen, C., Essery, R., Flanner, M., Hagemann, S., Clark, M., Hall, A., Rott, H., Brutel-Vuilmet, C., Kim,
H., Ménard, C. B., Mudryk, L., Thackeray, C., Wang, L., Arduini, G., Balsamo, G., Bartlett, P., Boike, J., Boone, A.,
Chéry, F., Colin, J., Cuntz, M., Dai, Y., Decharme, B., Derry, J., Ducharne, A., Dutra, E., Fang, X., Fierz, C., Ghattas, J.,
Gusev, Y., Haverd, V., Kontu, A., Lafaysse, M., Law, R., Lawrence, D., Li, W., Marke, T., Marks, D., Ménégoz, M.,
Nasonova, O., Nitta, T., Niwano, M., Pomeroy, J., Raleigh, M. S., Schaedler, G., Semenov, V., Smirnova, T. G., Stacke, T.,
480 Strasser, U., Svenson, S., Turkov, D., Wang, T., Wever, N., Yuan, H., Zhou, W., and Zhu, D.: ESM-SnowMIP: assessing
snow models and quantifying snow-related climate feedbacks, *Geosci. Model Dev.*, 11, 5027–5049,
<https://doi.org/10.5194/gmd-11-5027-2018>, 2018.
- Kotlarski, S.: A Subgrid Glacier Parameterisation for Use in Regional Climate Modelling, PhD thesis, Reports on Earth
System Science No. 42, Max Planck Institute for Meteorology, Hamburg, 2007.
- 485 Lawrence, D. M., Fisher, R. A., Koven, C. D., Oleson, K. W., Swenson, S. C., Bonan, G., Collier, N., Ghimire, B., van
Kampenhout, L., Kennedy, D., Kluzek, E., Lawrence, P. J., Li, F., Li, H., Lombardozzi, D., Riley, W. J., Sacks, W. J., Shi,
M., Vertenstein, M., Wieder, W. R., Xu, C., Ali, A. A., Badger, A. M., Bisht, G., van den Broeke, M., Brunke, M. A., Burns,
S. P., Buzan, J., Clark, M., Craig, A., Dahlin, K., Drewniak, B., Fisher, J. B., Flanner, M., Fox, A. M., Gentine, P., Hoffman,
F., Keppel-Aleks, G., Knox, R., Kumar, S., Lenaerts, J., Leung, L. R., Lipscomb, W. H., Lu, Y., Pandey, A., Pelletier, J. D.,
490 Perket, J., Randerson, J. T., Ricciuto, D. M., Sanderson, B. M., Slater, A., Subin, Z. M., Tang, J., Thomas, R. Q., Val Martin,
M., and Zeng, X.: The Community Land Model Version 5: Description of New Features, Benchmarking, and Impact of
Forcing Uncertainty, *J. Adv. Model. Earth Syst.*, 11, 4245–4287, <https://doi.org/10.1029/2018MS001583>, 2019.
- Lundquist, J. D., Dickerson-Lange, S. E., Lutz, J. A., and Cristea, N. C.: Lower forest density enhances snow retention in
regions with warmer winters: A global framework developed from plot-scale observations and modeling, *Water Resour.*
495 *Res.*, 49, 6356–6370, <https://doi.org/10.1002/wrcr.20504>, 2013.
- Matiu, M., Pettitta, M., Notarnicola, C., and Zebisch, M.: Evaluating Snow in EURO-CORDEX Regional Climate Models
with Observations for the European Alps: Biases and Their Relationship to Orography, Temperature, and Precipitation
Mismatches, *Atmosphere*, 11, <https://doi.org/10.3390/atmos11010046>, 2020.

- Mooney, P. A., Mulligan, F. J., and Fealy, R.: Evaluation of the Sensitivity of the Weather Research and Forecasting Model to Parameterization Schemes for Regional Climates of Europe over the Period 1990–95, *J. Clim.*, 26, 1002–1017, <https://doi.org/10.1175/JCLI-D-11-00676.1>, 2013.
- Mooney, P. A., Sobolowski, S., and Lee, H.: Designing and evaluating regional climate simulations for high latitude land use land cover change studies, *Tellus Dyn. Meteorol. Oceanogr.*, 72, 1–17, <https://doi.org/10.1080/16000870.2020.1853437>, 2020.
- Mooney, P. A., Lee, H., and Sobolowski, S.: Impact of Quasi-Idealized Future Land Cover Scenarios at High Latitudes in Complex Terrain, *Earths Future*, 9, e2020EF001838, <https://doi.org/10.1029/2020EF001838>, 2021.
- Mudryk, L., Santolaria-Otín, M., Krinner, G., Ménégos, M., Derksen, C., Brutel-Vuilmet, C., Brady, M., and Essery, R.: Historical Northern Hemisphere snow cover trends and projected changes in the CMIP6 multi-model ensemble, *The Cryosphere*, 14, 2495–2514, <https://doi.org/10.5194/tc-14-2495-2020>, 2020.
- Myers-Smith, I. H., Kerby, J. T., Phoenix, G. K., Bjerke, J. W., Epstein, H. E., Assmann, J. J., John, C., Andreu-Hayles, L., Angers-Blondin, S., Beck, P. S. A., Berner, L. T., Bhatt, U. S., Bjorkman, A. D., Blok, D., Bryn, A., Christiansen, C. T., Cornelissen, J. H. C., Cunliffe, A. M., Elmendorf, S. C., Forbes, B. C., Goetz, S. J., Hollister, R. D., de Jong, R., Loranty, M. M., Macias-Fauria, M., Maseyk, K., Normand, S., Olofsson, J., Parker, T. C., Parmentier, F.-J. W., Post, E., Schaeppman-Strub, G., Stordal, F., Sullivan, P. F., Thomas, H. J. D., Tømmervik, H., Treharne, R., Tweedie, C. E., Walker, D. A., Wilming, M., and Wipf, S.: Complexity revealed in the greening of the Arctic, *Nat. Clim. Change*, 10, 106–117, <https://doi.org/10.1038/s41558-019-0688-1>, 2020.
- Myhre, G. and Myhre, A.: Uncertainties in Radiative Forcing due to Surface Albedo Changes Caused by Land-Use Changes, *J. Clim.*, 16, 1511–1524, [https://doi.org/10.1175/1520-0442\(2003\)016<1511:UIRFDT>2.0.CO;2](https://doi.org/10.1175/1520-0442(2003)016<1511:UIRFDT>2.0.CO;2), 2003.
- Niu, G.-Y. and Yang, Z.-L.: An observation-based formulation of snow cover fraction and its evaluation over large North American river basins, *J. Geophys. Res. Atmospheres*, 112, <https://doi.org/10.1029/2007JD008674>, 2007.
- Niu, G.-Y., Yang, Z.-L., Mitchell, K. E., Chen, F., Ek, M. B., Barlage, M., Kumar, A., Manning, K., Niyogi, D., Rosero, E., Tewari, M., and Xia, Y.: The community Noah land surface model with multiparameterization options (Noah-MP): 1. Model description and evaluation with local-scale measurements, *J. Geophys. Res. Atmospheres*, 116, <https://doi.org/10.1029/2010JD015139>, 2011.
- Oleson, K. W., Lawrence, D. M., Bonan, G. B., Flanner, M. G., Kluzek, E., Lawrence, P. J., ... Zeng, X.: Technical Description of version 4.0 of the Community Land Model (CLM) (No. NCAR/TN-478+STR). University Corporation for Atmospheric Research. doi:10.5065/D6FB50WZ, 2010.
- Oleson K. W. & Coauthors: Technical description of version 4.5 of the Community Land Model (CLM). Boulder, CO, 420 pp, 2013.
- Powers, J. G., Klemp, J. B., Skamarock, W. C., Davis, C. A., Dudhia, J., Gill, D. O., Coen, J. L., Gochis, D. J., Ahmadov, R., Peckham, S. E., Grell, G. A., Michalakes, J., Trahan, S., Benjamin, S. G., Alexander, C. R., Dimego, G. J., Wang, W., Schwartz, C. S., Romine, G. S., Liu, Z., Snyder, C., Chen, F., Barlage, M. J., Yu, W., and Duda, M. G.: The Weather

- Research and Forecasting Model: Overview, System Efforts, and Future Directions, *Bull. Am. Meteorol. Soc.*, 98, 1717–1737, <https://doi.org/10.1175/BAMS-D-15-00308.1>, 2017.
- 535 Rechid, D., Davin, E., de Noblet-Ducoudré, N., and Katragkou, E.: CORDEX Flagship Pilot Study LUCAS – Land Use & Climate Across Scales – a new initiative on coordinated regional land use change and climate experiments for Europe, in 19th EGU General Assembly, EGU2017, proceedings from the conference held 23–28 April, 2017 in Vienna, Austria, 19, p. 13172, 2017.
- 540 [Ritter, B., Geleyn, J.-F.: A Comprehensive Radiation Scheme for Numerical Weather Prediction Models with Potential Applications in Climate Simulations. *Monthly Weather Review*, 120, 303-325. \[https://doi.org/10.1175/1520-0493\\(1992\\)120<0303:ACRSFN>2.0.CO;2\]\(https://doi.org/10.1175/1520-0493\(1992\)120<0303:ACRSFN>2.0.CO;2\), 1992.](#)
- Roeckner E., Arpe K., Bentsson L., Christoph M., Claussen M., Dümenil L., Esch M., Giorgetta M., Schlese U. & Schulzweida U.: The atmospheric general circulation model ECHAM-4: Model description and simulation of present day climate. Max-Planck Institut für Meteorologie Report No. 218, 90 pp. , 1996.
- 545 Samuelsson, P., Gollvik S., Jansson, C., Kupiainen, M., Kourzeneva, E., & Jan van de Berg, W.: The surface processes of the Rossby Centre regional atmospheric climate model (RCA4). Reports METEOROLOGY, 157, SMHI, Norrköping, Sweden, 2015.
- Samuelsson, P., Gollvik, S., & Ullerstig, A.: The land-surface scheme of the Rossby Centre regional atmospheric model (RCA3). Reports Meteorology, 122, SMHI, SE-60176 Norrköping, Sweden, 2006.
- 550 Schrodin, E., and Heise, E.: A new multi-layer soil model. COSMO Newsletter No. 2:149-151, 2002.
- Sofiadis, G., Katragkou, E., Davin, E. L., Rechid, D., de Noblet-Ducoudre, N., Breil, M., Cardoso, R. M., Hoffmann, P., Jach, L., Meier, R., Mooney, P., Soares, P. M. M., Strada, S., Tolle, M. H., and Warrach Sagi, K.: Afforestation impact on soil temperature in regional climate model simulations over Europe, *Geosci. Model Dev. Discuss.*, 2021, 1–35, <https://doi.org/10.5194/gmd-2021-69>, 2021.
- 555 [Sellers, P.J.: Canopy reflectance, photosynthesis and transpiration. *Int. J. Remote Sens.* 6:1335-1372, 1985.](#)
- Sorland, S. L., Brogli, R., Pothapakula, P. K., Russo, E., Van de Walle, J., Ahrens, B., Anders, I., Bucchignani, E., Davin, E. L., Demory, M.-E., Dosio, A., Feldmann, H., Früh, B., Geyer, B., Keuler, K., Lee, D., Li, D., van Lipzig, N. P. M., Min, S.-K., Paniz, H.-J., Rockel, B., Schär, C., Steger, C., and Thiery, W.: COSMO-CLM Regional Climate Simulations in the CORDEX framework: a review, *Geosci. Model Dev. Discuss.*, 2021, 1–44, <https://doi.org/10.5194/gmd-2020-443>, 2021.
- 560 Strandberg, G., Bärning L., Hansson U., Jansson C., Jones C., Kjellström E., Kolax M., Kupiainen M., Nikulin G., Samuelsson P., Ullerstig A. & Wang S.: CORDEX scenarios for Europe from the Rossby Centre regional climate model RCA4. SMHI Meteorology and Climatology Rep. 116, 84 pp., https://www.smhi.se/polopoly_fs/1.90275!/Menu/general/extGroup/attachmentColHold/mainColl/file/RMK_116.pdf, 2015.

565 [Sturm, M., Taras, B., Liston, G. E., Derksen, C., Jonas, T., & Lea, J.: Estimating Snow Water Equivalent Using Snow Depth Data and Climate Classes, *Journal of Hydrometeorology*, 11\(6\), 1380-1394, <https://doi.org/10.1175/2010JHM1202.1>, 2010.](#)

Thackeray, C. W., Fletcher, C. G., and Derksen, C.: Diagnosing the Impacts of Northern Hemisphere Surface Albedo Biases on Simulated Climate, *J. Clim.*, 32, 1777–1795, <https://doi.org/10.1175/JCLI-D-18-0083.1>, 2019.

570 [Toon, O.B., McKay, C.P., Ackerman, T.P., and Santhanam, K.: Rapid calculation of radiative heating rates and photodissociation rates in inhomogeneous multiple scattering atmospheres. *J. Geophys. Res.* 94\(D13\):16, 287-16, 301, 1989.](#)

Varhola, A., Coops, N. C., Weiler, M., and Moore, R. D.: Forest canopy effects on snow accumulation and ablation: An integrative review of empirical results, *J. Hydrol.*, 392, 219–233, <https://doi.org/10.1016/j.jhydrol.2010.08.009>, 2010.

575 [Verseghy, D. L., McFarlane, N. A., Lazare, M.: CLASS – A Canadian land surface scheme for GCMs, II. Vegetation model and coupled runs. *Int. J. Climatol.* 13, 347–370, 1993.](#)

Wang, A. and Zeng, X.: Improving the treatment of the vertical snow burial fraction over short vegetation in the NCAR CLM3, *Adv. Atmospheric Sci.*, 26, 877–886, <https://doi.org/10.1007/s00376-009-8098-3>, 2009.

Wang, J. A., Sulla-Menashe, D., Woodcock, C. E., Sonnentag, O., Keeling, R. F., and Friedl, M. A.: Extensive land cover change across Arctic–Boreal Northwestern North America from disturbance and climate forcing, *Glob. Change Biol.*, 580 26, 807–822, <https://doi.org/10.1111/gcb.14804>, 2020.

Wilhelm, C., Rechid, D., and Jacob, D.: Interactive coupling of regional atmosphere with biosphere in the new generation regional climate system model REMO-iMOVE, *Geosci. Model Dev.*, 7, 1093–1114, <https://doi.org/10.5194/gmd-7-1093-2014>, 2014.

Xu, L., and Dirmeyer, P.: Snow-atmosphere coupling strength in a global atmospheric model, *Geophys. Res. Lett.*, 38, 585 L13401, doi:10.1029/2011GL048049, 2011.

Xu, L. and Dirmeyer, P.: Snow-Atmosphere Coupling Strength. Part II: Albedo Effect Versus Hydrological Effect, *J. Hydrometeorol.*, 14, 404–418, <https://doi.org/10.1175/JHM-D-11-0103.1>, 2013.

[Zeng, X., Dickinson, R.E., Barlage, M., Dai, Y., Wang, G., and Oleson, K.: Treatment of under-canopy turbulence in land models. *J. Climate*, 18, 5086-5094, 2005.](#)

590