

Author's response

Response to referee #1

We thank the referee for the comments on our manuscript. We answer all comments in blue font.

General comments:

The article provides a very good understanding of the topic that gives the reader an overview of glacier retreat and subsequent proglacial lake formation across the Himalayas region. The research was well conducted, and information was presented accordingly.

Thank you for your comments.

The research observed the dynamic changes in two glaciers in the Bhutanese Himalaya, which should reflect on the article's title.

Thank you for your useful suggestion. However, the main aim of this study is to trace the fluctuations of the Thorthormi glacier (land- to lake-terminating transition). Luge Glacier was shown as a "reference glacier" to contrast Thorthormi Glacier. Therefore, we would like to keep this title.

The methodology and data analysis has been well explained in each section, but the overall methodology of how different sets of data (with different source and resolution) are compared and analyzed would help readers to get a better understanding.

We received similar comments from referee #2 (regarding dh/dt), so we will change Fig.3, which shows elevation changes based on resampled DEMs (all 30 m resolutions).

In terms of surface flow velocities, we also used different resolutions datasets. We had described the effect of different resolutions in the result section (lines 243-245) as "The ITS_LIVE velocity profile possesses $<5 \text{ m a}^{-1}$ flow velocities for the entire glacier, which is probably due to the coarser resolution (240 m) of the velocity field compared with that in this study (10 m) and Tsutaki et al. (2019; 15 m)."

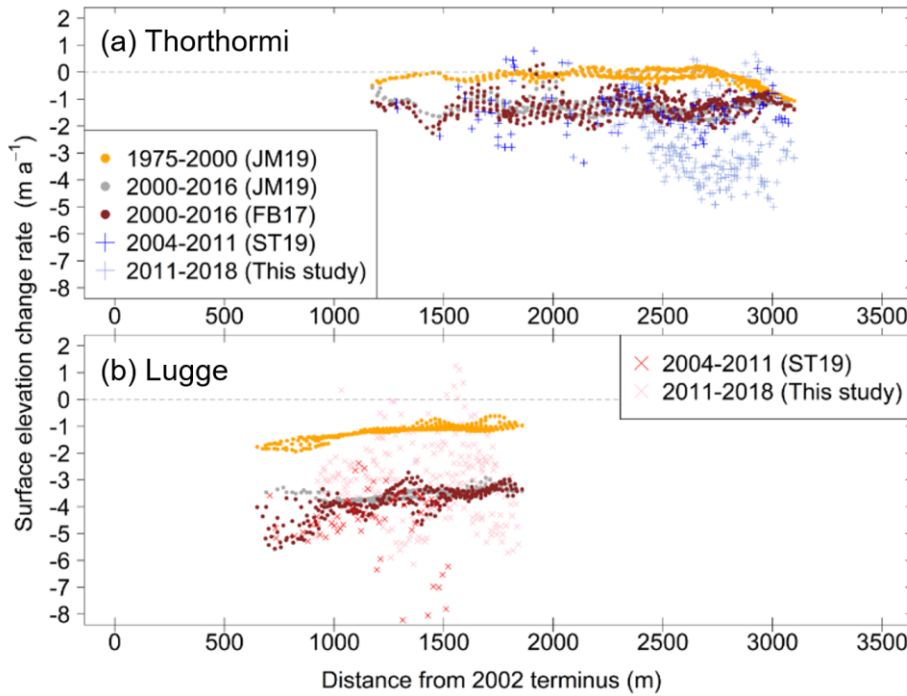


Figure 3 revised.

Technical corrections:

"ITS_LIVE" has not been explained through the article.

We will add an explanation about "ITS_LIVE" in lines 138-141 of the revised manuscript "We extracted the surface velocity from the regional velocity product derived from the ITS_LIVE (Inter-Mission Time Series of Land Ice Velocity and Elevation) project (Gardner et al., 2019), which covered the entire HMA region. The ITS_LIVE velocity product is generated from the Landsat series with the auto-RIFT feature tracking processing chain yielding a 240-m spatial resolution (Gardner et al., 2018).".

We will add reference "Gardner, A. S., Moholdt, G., Scambos, T., Fahnestock, M., Ligtenberg, S., van den Broeke, M., and Nilsson, J.: Increased West Antarctic and unchanged East Antarctic ice discharge over the last 7 years, *cryosphere*, 12, 521–547, <https://doi.org/10.5194/tc-12-521-2018>, 2018."

"GAMDAM" has not been explained through the article.

We will add an explanation of the GAMDAM glacier inventory and change lines 64-65 in the revised manuscript as "Thorthormi Glacier covers 11.6 km² based on the GAMDAM (Glacier Area Mapping for Discharge from the Asian Mountains) glacier inventory (Nuimura et al., 2015; Sakai, 2019) and the 2017 terminus position."

Response to referee #2

We thank the referee for the comments on our manuscript. We answer all comments in blue font.

General comments:

Sato and colleagues present a short study on the effects of a Himalayan glacier retreat with a transition of termini type from a land-terminating to lake-terminating. They argue that the recently observed significant acceleration of ice flow velocities of Thorthormi glacier can be explained by a switch from a compressional to an extensional flow regime in the ablation area caused by a detachment from the terminal moraine. These findings are supported by analysis of ice flow velocity and ice elevation change and are built upon the results of a previously published study by Tsutaki et al. (2019).

Thank you for your comments.

Unfortunately, at the moment the novelty of this submission is fairly limited as the major points have already been addressed by Tsutaki et al. (2019) and by the recent regional study of Pronk et al. (2021). As far as I'm concerned, the purpose of the paper is to show the observational data that confirm the Tsutaki et al. (2019) hypothesis of a plausible ice flow acceleration of Thorthormi glacier following a detachment from the terminal moraine. As the authors have noticed, similar acceleration has already been observed in other regions and, according to current understanding, is something likely to happen.

We first emphasize that this comment doesn't evaluate our study appropriately. This study aims NOT to compare land- and lake-terminating glaciers BUT to trace the fluctuation of a single glacier associated with its land- to lake-terminating transition. Therefore, the novelty of this study would not be discredited by Pronk et al. (2021) and related previous studies, which compared different terminus types. Although a few previous studies traced such the glacier fluctuations associated with proglacial lake formation and terminus detachment in Alaska and Europe Alps (Boyce et al., 2007; Tsutaki et al. 2011), the number of cases and the time periods are very limited compared with those of regional studies dealing with the different terminus types. Furthermore, this is surely the first study that witnessed the terminus transition and associated changes in glacier behavior in the Himalayan region. We had mentioned this in lines 304-306 as "The dynamic thinning of lake-terminating glaciers has been discussed in other HMA regions (e.g., Nuimura et al., 2012; King et al., 2018; Liu et al., 2020). However, our study is the first reported observation of the dynamic changes during the transition from land- to lake-terminating conditions, which have led to the enhanced thinning of a Himalayan glacier."

Unfortunately, the authors did not make a sufficient effort to show the new data convincingly. Figures with maps of ice elevation change and ice velocity field or a profile of the emergence velocity would have been useful and could give a quantitative grasp on what is happening during the retreat. Secondly, the observations of the glacier speed up are limited to only one season (2016/2017 - five years ago), it would have been much more interesting to see a time series of the annual velocities covering the full period from 2011 to the present.

Moreover, the calculation of the emergence velocities is flawed as the authors incorrectly assume a constant no-slip condition (mean vertical velocity equal to 80% of the surface velocity) along the entire ablation area of the glacier.

To reply to these comments, we will add the following analyses and discussion.

● Annual surface velocity changes

The limited flow velocity is due to the satellite we used (Sentinel-2 available since 2016). To trace the temporal change in flow velocity, we adopted the ITS_LIVE annual velocity data (2010–2018). We extracted velocity data every 250 m along the glacier center flowlines. ITS_LIVE velocities do not seem to represent the flow velocity of Luge Glacier (revised Fig. 4b), while those of Thorthormi Glacier seem well represent the annual change (revised Fig. 4a).

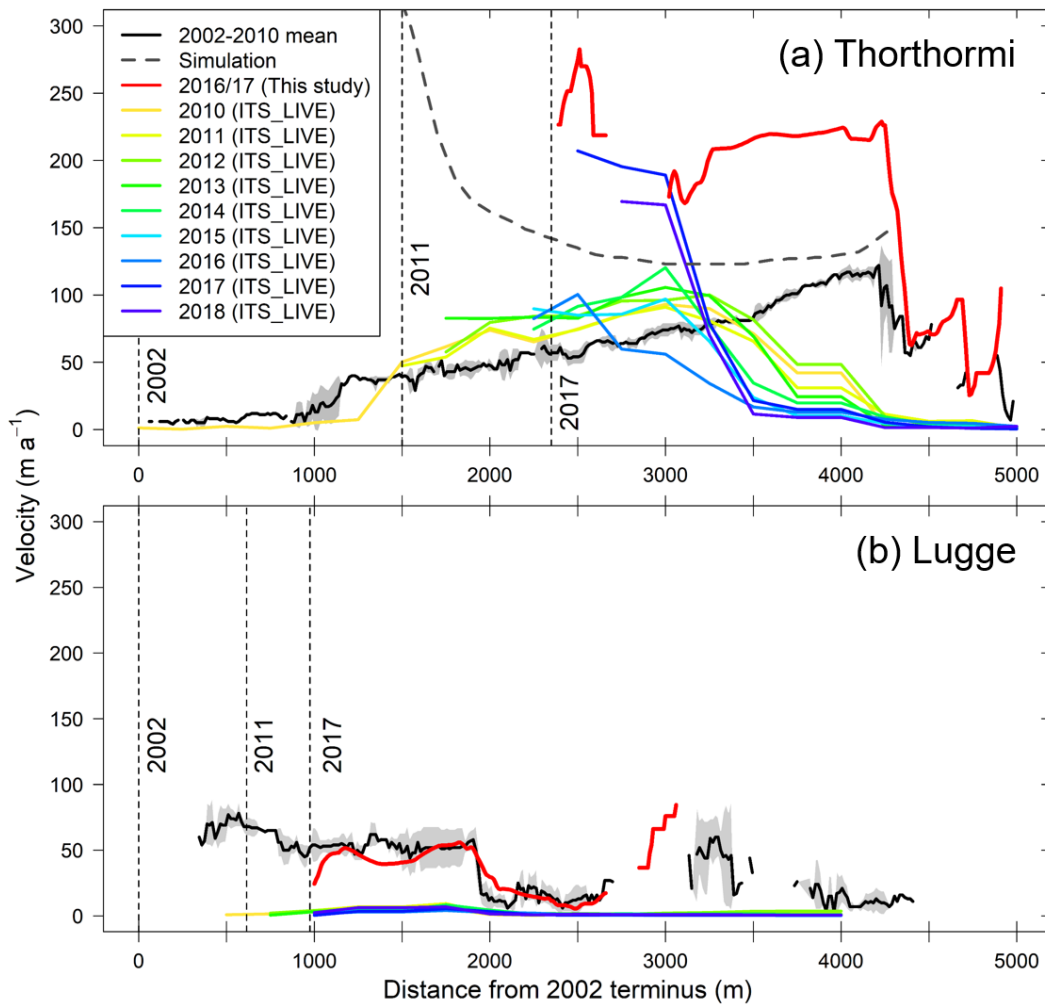


Figure 4 revised.

Acknowledging this comment, we realized some important points that were not in the original manuscript. We thought that the Thorthormi terminus detached in 2011, and velocity soon increased after that. However, the ITS_LIVE velocities

increased drastically after 2017 while those before 2017 show a similar profile to those estimated by ASTER data (Tsutaki et al., 2019). This suggests that the Thorthormi terminus might have been land-terminating condition underwater though the proglacial lake had formed since 2011. We therefore consider that the subaqueous terminus detached from the terminal moraine/ice during 2016–2017, and then the drastic speed-up of velocities occurred. We sincerely thank reviewer #2 for this valuable comment indeed despite the overall negative evaluation. From this finding, we re-evaluated changes in emergence velocity and its impact on the surface lowering of Thorthormi Glacier as follows.

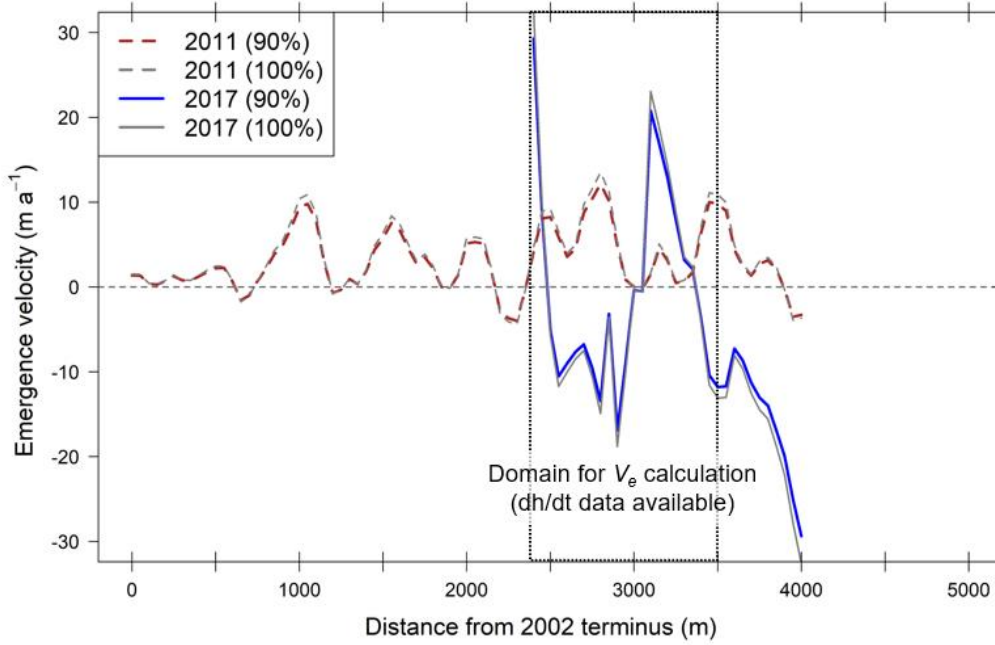
● Emergence velocity calculation

We agree with the comment that our assumption was not suitable for estimating the emergence velocity. Because Tsutaki et al. (2019) simulated that the basal velocity reaches 90% of the surface velocity of Thorthormi, we re-calculated emergence velocity with the two assumptions that the vertical mean velocity equals to 90% (assumption by Tsutaki et al., 2019) and 100% (assumption of a floating condition after terminus detachment) of the surface velocity. We mentioned it in lines 178-281 in the revised manuscript as "Tsutaki et al. (2019) simulated that the basal velocity reaches 90% of the surface velocity of Thorthormi Glacier. We therefore calculated the emergence velocity using two assumptions regarding the surface velocity: the depth-averaged velocity is 90% of the surface velocity based on Tsutaki et al. (2019), and 100% assumed for a floating condition after terminus detachment."

Although the longitudinal profiles of emergence velocity are largely variable probably due to uncertain ice thickness and other simplified assumptions (below Supplementary Figure for emergence velocity), the mean values for the target domain are obviously contrasted from positive to slightly negative (Table 2). We will add a figure of the emergence velocity profile and the mean emergence velocities. In the following reply, we further quantified the impact of drastic change in the emergence velocity on the surface lowering.

Table 2. Comparison of the emergence velocity of Thorthormi Glacier in 2011 and 2017. The mean values are calculated for the 2400–3500 m section from the 2002 terminus (Fig. S4). Two basal sliding conditions are assumed, whereby depth-averaged velocity equals either 90% or 100% of the surface velocity.

| | 2011 | | 2017 | |
|--|-----------------|-----------------|-------------------|-------------------|
| Depth averaged-velocity | 90% | 100% | 90% | 100% |
| Emergence velocity (m a^{-1}) | 5.20 ± 3.78 | 5.78 ± 4.20 | -0.69 ± 11.65 | -0.77 ± 12.94 |



Supplementary Figure. Emergence velocities along the center flowline of Thorthormi Glacier. The mean emergence velocity (V_e) is calculated for the 2400–3500 m section where the dh/dt data is available (Table 2).

● **Additional discussion in emergence velocity**

In Thorthormi Glacier, the emergence velocity decreased by more than 4 m a^{-1} from the 2011 land-terminating condition to the 2018 lake-terminating condition. It seems too large to account for the increased thinning rates (1.38 m a^{-1}) from 2004–2011 (-1.40 m a^{-1}) to 2011–2018 (-2.78 m a^{-1}) (Table 1). We quantified the change in emergence velocity by hypothesizing that it occurred in the last two years (2017 & 2018) during which the surface velocity accelerated. Based on this hypothesis, we calculated the weighted average of the emergence velocity for the period 2011–2018 ($V_{e,2011-2018}$, m a^{-1}) as:

$$V_{e,2011-2018} = \frac{\Delta t_{\text{land}} V_{e,\text{land}} + \Delta t_{\text{lake}} V_{e,\text{lake}}}{\Delta t_{\text{land}} + \Delta t_{\text{lake}}}$$

Here, under the assumption that depth-averaged ice velocity is equal to 90% of surface velocity (Table 2), V_e and Δt are the emergence velocity and years of the land- and lake-terminating conditions, respectively. With the emergence velocities ($V_{e,\text{land}} = 5.20 \text{ m a}^{-1}$ and $V_{e,\text{lake}} = -0.69 \text{ m a}^{-1}$), and periods ($\Delta t_{\text{land}} = 5$ and $\Delta t_{\text{lake}} = 2$), we then obtained the time-weighted mean emergence velocity for the period 2011–2018 as 3.52 m a^{-1} . It means that the emergence velocity reduced by -1.68 m a^{-1} before and after 2011, and it is well consistent with the change in dh/dt from 2004–2011 to 2011–2018 (-1.38 m a^{-1}). Largely variable profiles of the emergence velocity suggest that the estimates are highly uncertain. However, our first order evaluation can explain the cause of the drastic change in the thinning rate of Thorthormi Glacier. We add the evaluation above mentioned to lines 309–321 of the revised manuscript.

We thank referee#2 again for the valuable comments, by which we came up with this idea.

● **Figures of elevation change and surface velocity**

We add the surface elevation change rate in Figure 1b.

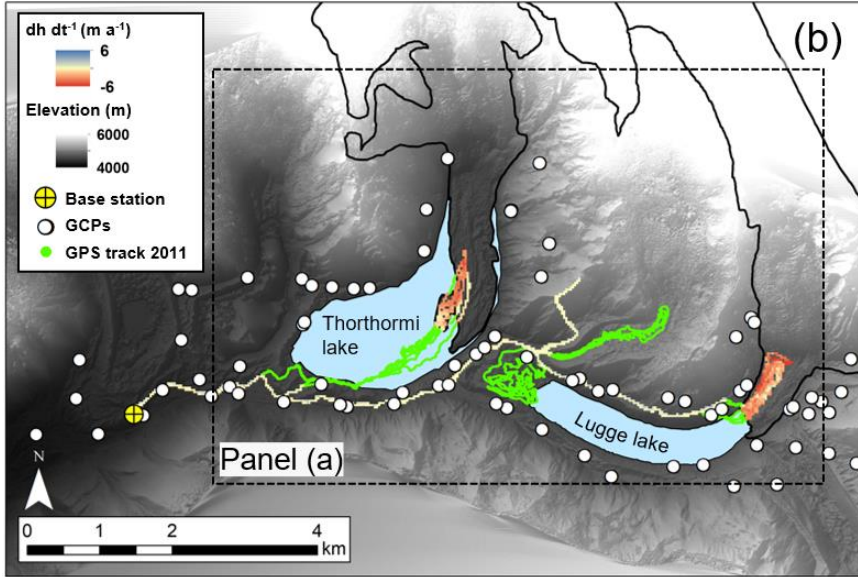
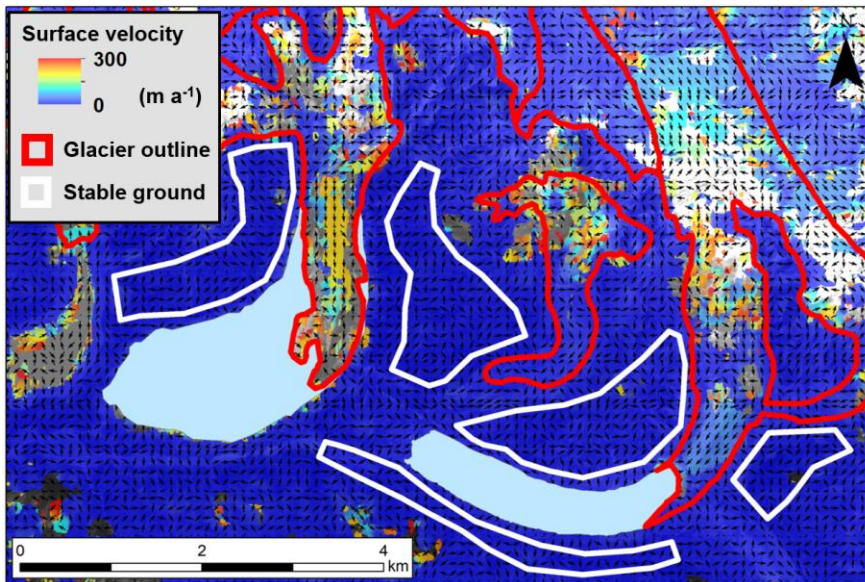


Figure 1b revised.

We also show the surface velocity field. Although the surface velocity along the glacier center flowline is well calculated, many errors are shown on both sides of the Thorthormi Glacier due to the calving of icebergs. Therefore, we add this figure (velocity map) to the supplementary material as it doesn't help readers understand well.



Supplementary Figure. Surface flow velocity field between 16 November 2016 and 11 November 2017. The areas enclosed by the white polygons are stable-ground used to evaluate the error in surface flow velocity.

Lastly, the authors disregard frontal ablation flux in their analysis whereas Pronk et al. (2021) have shown that frontal ablation is controlling the strain rate and whether the terminus is in compressional or an extensional regime. In my opinion, at this stage, the manuscript lacks sufficient quality and novelty that would ensure publication in The Cryosphere and needs a very substantial revision to be accepted.

Thank you for your useful comments. The numerical experiment on the relationship between terminus situation and ice velocity in Pronk et al. (2021) is interesting and informative. However, the effect simulated by Pronk et al. (2021) was not validated by any observational data, and they set a hypothetical terminus (calving front). Although Minowa et al. (2021) quantified such contributions of frontal ablation and subaqueous melting based on their intensive observations in Patagonia, it is not possible to do so with the data available for the glaciers discussed in this study. Whatever frontal ablation or subaqueous melting, the accelerated velocity and estimated emergence velocity suggest that the dynamic thinning should surely account for the accelerated thinning rate of Thorthormi Glacier.

We mentioned the importance of terminus condition with refereeing Pronk et al. (2021) in discussion (Sect. 5) below (lines 335-339 in the revised manuscript).

"This study employed modelled ice thickness (lake depth) that was tuned using point measurement data (Tsutaki et al., 2019) to estimate the dynamics of Thorthormi Glacier. Previous studies have suggested that the surface flow velocity of lake-terminating glaciers is sensitive to the terminus ice thickness and lake water depth (Benn et al., 2007; Pronk et al., 2021). Therefore, constraints on the lake bathymetry may allow us to better understand past and current terminus conditions and quantify the dynamic thinning process. "

We also add Pronk et al. (2021) in the introduction (Sect. 1) as a previous study focusing on a regional scale analysis. We will mention it in line 40 (after the introduction for King et al., 2019) as " Pronk et al. (2021) analysed the surface flow velocities of more than 300 glaciers in the Himalayan region, and determined that the flow velocities of lake-terminating glaciers were twice as high as those of land-terminating glaciers on average."

Specific comments:

L41-42: This is true not only for land- vs. lake-terminating glaciers, it is not uncommon to see a different response to climate forcing even when the glaciers share the same terminus type.

We agree with your comment. We changed it as "The existence of a proglacial lake might be a factor enhancing the glacier flow velocity, retreat and thinning of HMA glaciers. The response of lake- and land-terminating glaciers can fluctuate with different patterns, even if they are located near each other and/or exist under similar climatic conditions (Liu et al., 2020)."

L62: "with the 2017 terminus position and its elevation range spanning 4,400–6,900 m above sea level (a.s.l.)" please re-write

We will change lines 64–66 of the revised manuscript as "Thorthormi Glacier covers 11.6 km² based on the GAMDAM (Glacier Area Mapping for Discharge from the Asian Mountains) glacier inventory (Nuimura et al., 2015; Sakai, 2019) and the 2017 terminus position. Its elevation range spans 4,400–6,900 m above sea level (a.s.l.)." to avoid confusion.

L65: Which year does this area refer to?

The 2017 terminus position was referred. We will change line 65 on the manuscript as "Lugge Glacier is located to the east of Thorthormi Glacier, and covers an area of 10.0 km² based on its 2017 terminus position, with its elevation range spanning 4,500–6,900 m a.s.l. ".

L66: Please be consistent with lake names and introduce them on the Study Area map: here you refer to Lugge Glacial Lake whereas before, (L65) you introduced Lugge Tscho

We fixed the proglacial lake names as "Lugge Glacier lake/Thorthormi Glacier lake". We will change line 67 as "Lugge glacier lake has expanded since the 1960s (Komori, 2008),..." And we will add proglacial lake names in Figure 1b. Please see the revised Figure 1b in reply to the general comment.

L116: If the dh/dt values are at the same positions, how do you explain such a large variance in your dataset compared to previous estimates (Fig. 3)? Did you aggregate your DEMs to 30m resolution as well? Otherwise, both datasets cannot be directly compared.

The high-resolution HP-DEM processed in this study can estimate precise elevation changes compared to the previous works (Brun et al., 2017; Maurer et al., 2019; 30 m-resolution). Therefore, we calculated and plotted surface elevation change without resampling GPS-DEM and HP-DEM. We will change Figure 3 to show elevation changes based on resampled DEMs.

The 2011–2018 elevation changes include positive values. Tsutaki et al. (2019) reported that Lugge Glacier terminus has a heterogeneous surface, which we can confirm from photogrammetry data (Fig. 1c). Therefore, we consider that a displacement of such topography caused positive elevation changes.

We had already mentioned it in lines 224–228 as "The results of this study reveal a large spatial variability compared with the RS-based dh/dt distributions of previous studies (Brun et al., 2017; Maurer et al., 2019), which is likely due to the differences in the spatial resolution of the data. Tsutaki et al. (2019) reported that Lugge Glacier has a heavily crevassed, bumpy surface. We consider that the high resolution (0.5 m) of the dh/dt profiles identified the displacements due to these steep surface features."

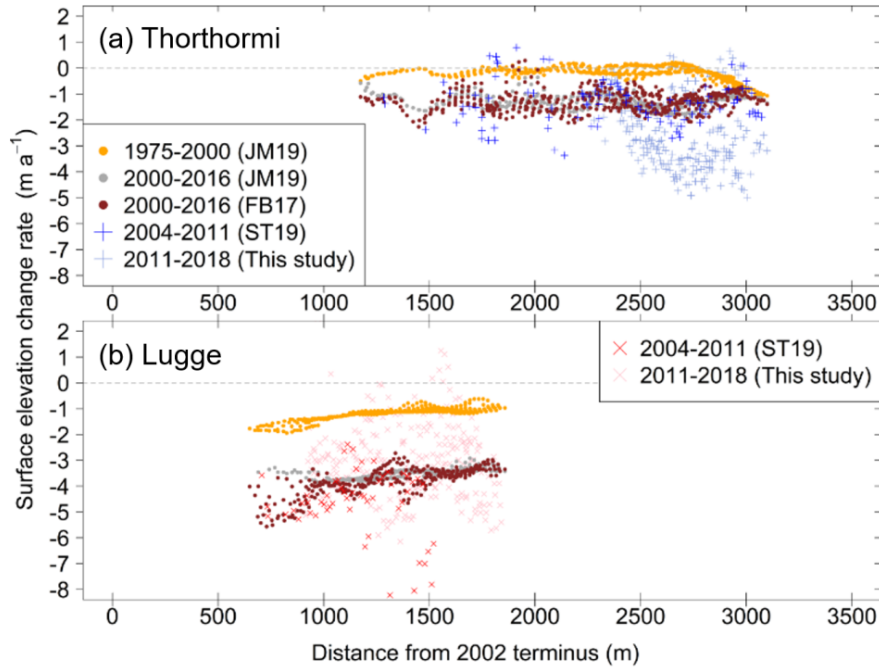


Figure 2 revised.

Additionally, the Leibnitz notation (dh/dt) is normally used for instantaneous values (differential) implying that both dh and dt are infinitesimals.

Thank you for your comment. This style (dh/dt) is commonly used in other publications in glacier study (e.g., Brun et al., 2017; Nature Geoscience, King et al., 2017; The Cryosphere). Hence we will use this style.

L118-122: Please provide more details on data processing (template size, templatematch algorithm)

We chose 20 pixels (200 m) as a template size and used the standard normalized cross-correlation (NCC) algorithm (Heid and Kääb, 2012). We will explain in the method section (Sect. 3.3).

Lines 120-122 in the revised manuscript;

"The normalized cross-correlation algorithm (NCC; Heid and Kääb, 2012) in the feature tracking toolbox (Templatematch) identifies the displacement patterns of the glacier surface features and computes their magnitude from a pair of images."

Lines 123-125 in the revised manuscript;

" After visual trial and error, we chose a 20×20 template size (200×200 m) and 75×75 search window size (750×750 m) to compute the surface feature displacements and calculate the annual flow velocity."

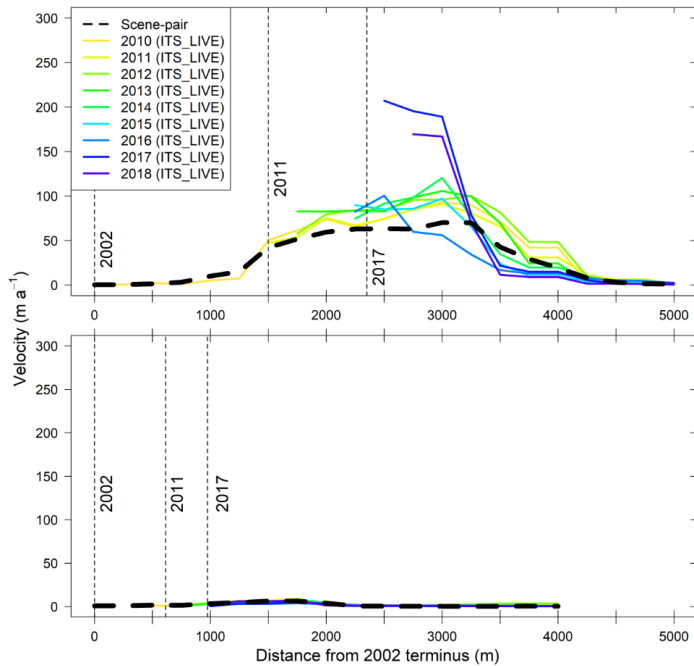
We will also add Heid and Kääb, (2012) to the reference list.

"Heid, T. and Kääb, A.: Evaluation of existing image matching methods for deriving glacier surface displacements globally from optical satellite imagery, Remote Sens. Environ., 118, 339–355,

<https://doi.org/10.1016/j.rse.2011.11.024>, 2012."

L135-136: Did you look on ITS_LIVE scene-pair velocities as well?

We had checked scene-pair velocities (120 m resolution). It appears like this figure if we plot scene-paire velocity (hashed black lines) with other annual ITS_LIVE data. The scene-pair velocity profile seems to be similar to other years.



L149:flotation

We will change all "floatation" to "flotation" and fix it. Thank you.

L155: Why is this Eq. 2a and not 2?

Eq.2a and Eq.2b originate from the same equation so that we denoted as such. We will change (2a) to (2) and (2b) to (4) to avoid confusion.

L169-170: How reliable is the assumption of a fixed glacier width and thickness? Please remember that the glacier bed geometry is inferred from inverse modeling (Farinotti et al., 2009; Tsutaki et al., 2019) and has not been measured.

We have set this assumption for two reasons. (1) One of our aims is to compare with the results of Tsutaki et al. (2019). They used the same assumption (2-dimensional model) and calculated emergence velocity on center flow lines. Therefore, changing the assumptions does not make an accurate comparison with previous work. (2) Thorthormi Glacier has proglacial lakes and calvings on both glacier sides. In this situation, it is not easy to define the glacier width (fluxgate width) and the bedrock topography (ice thickness). We considered that it would be rather less robust of ice emergence to estimate glacier width from only remote-sensing data. Therefore, we used the assumption of a fixed glacier width and thickness.

We also understand the uncertainty of modeled ice thickness. However, other studies also use glacier ice thickness /bed geometry estimated from the inverse modeling dataset as "consensus ice thickness" (e.g., Watson et al., 2020; Wei et al., 2021) without modification. In this study, we used ice thickness estimated in Tsutaki et al. (2019), and they validated and tuned the model (Farinotti et al., 2009) with observed surface velocity and measured ice thickness (terminus lake depth). Therefore, the ice thickness we used is not "actual ice thickness" but is considered to be better constructed than consensus ice thickness.

L170: You are using velocities along the centreline yet Eq. 2b works for depth- and width- averaged velocities. There may be an important change in lateral drag due to the presence of lakes on the sides of the Thorthormi glacier, thus the cross-sectional distribution of the ice flow is not constant along the flowline.

We thank you for your useful comment. Regarding the simplified assumption (calculating on center flowline), please see the reply to lines 169-170. We understand that the traverse velocity is not constant; however, the active icebergs separation at both sides of the glacier makes it substantially difficult to calculate the surface velocity (please see the map of the velocity field in general comment). For these reasons, we did not use the transverse velocity.

The presence of outer ice flux on both sides does not significantly affect the discussion because it is a factor that reduces ice emergence (compression). We had mentioned it in lines 295-298 as "We simply assumed a constant glacier width to calculate V_e along the central flowline. However, this glacier terrain tends to widen in the downglacier direction, yielding an extensional velocity regime. The lateral proglacial lakes on both sides of the terminus before it transitioned to a lake-terminating condition may have further contributed to a more negative V_e than that estimated along the central flowline."

L172: Farinotti, not Farinottie

We will correct it. Thank you.

L174: Here you are assuming no basal motion whereas one can expect an increasing sliding towards the glacier terminus in case of a lake-terminating glacier (Tsutaki, 2019). You are incorrectly referring to Sakai et al. (2006) and Berthier and Vincent (2012), here are quotes from those articles:

Sakai et al. 2006:

"The ice velocity averaged over the depth (h) is taken to be 80% of the surface velocity (u_s) by assuming that the ice flow is laminar, that there is no basal motion (consistent with the glacier being of the polar type) and that the empirical constant (n) in Glen's law is 3 (Paterson, 1994)."

Berthier and Vincent, 2012:

"The next step is the conversion from mean surface to depth-averaged velocity. Without basal sliding, theoretical calculations suggest that the depth-averaged velocity is 80% of the surface velocity (for $n = 3$ in Glen's law; Cuffey and Paterson, 2010, p. 310). With basal sliding, this percentage increases, and for example in the case of Athabasca Glacier, Canada, the mean cross-sectional velocity equals the mean surface velocity (Raymond, 1971). Here we used an intermediate value assuming that the depth-averaged velocity is 90% of the surface velocity."

We agree with your comments. Please see the reply to the general comment.

L230: Why did you calculate the velocity field only for 2016/2017 season? I would recommend showing a map of the velocity field.

Thank you for the suggestion. Please see the reply to the general comment.

L249-257 A plot of the emergence velocity is strongly recommended.

We will add a plot of the emergence velocity. Please see the general comment.

L250: The \pm sign is not needed as σ is always positive. What is the reason for such a high standard deviation?

We will correct it. Thorthormi Glacier has a large variation in surface flow velocity. Therefore, the standard deviation in emergence velocity is also large. Please see the figure of emergence velocity in the general comment.

L277: What is the frontal ablation flux of both glaciers? I think it is important to include it in your analysis as this is the term that closes the mass budget, otherwise, how would you explain the increased thinning and acceleration of ice flow during land-terminating to lake-terminating transition? Please refer to the relevant discussion made by Pronk et al. (2021). There is an abundance of icebergs in the Thorthormi lake as shown in Fig. 1, suggesting a significant frontal ablation flux.

We thank you for your useful comments. Please see the reply to the general comment.

References: There are many errors, missing pagination or volume numbers. Please update references that changed from early access to the final publication stage.

We will check all references carefully again and correct errors. Thank you for mentioning it.

Figure 1: Please add a description of the black bounding box in panel (b). As far as I'm concerned, the panel labels should be in brackets: (a), not a)

We will add a description that indicates "Panel (a)" for the black bounding box in panel (b). We had already mentioned it in Figure 1 caption as "The dashed box in (b) shows the domain of (a)". We will also change all panel labels to like "(a)" from "a)". Please see revised Figure 1b on the reply to the general comment.

Figure 2: This Figure is very similar to Fig. 4 in Tsutaki et al (2019), I guess the reason is to make them easy to compare, please add a reference.

We will add a reference in Figure 2 caption as " The 2000–2012 lake outlines are from Tsutaki et al. (2019)."

The glacier area change increases already 3-4 years before the detachment from the moraine (panel c), this is probably due to the development of lateral lakes - please clarify this in the text

We agree with this comment. We will change line 277 to explain it as " Lateral lakes had formed on both sides of the Thorthormi Glacier terminus several years before 2011 (Fig 2a and 2c)."

Figure 3: There is a large scatter in 2011-2018 data, the points diverge into two populations - a positive and a negative one, why?

Please see the reply to line 116 comment. We will add dh/dt plot that is calculated from resampled DEMs.

Figure 4: Please add the uncertainties of 2016/17 and 2017 (ITS_LIVE) data series.

We added more ITS_LIVE data to Figure 4; therefore, drawing error bars with all lines would complicate the figure. Hence we will mention ITS_LIVE uncertainty in the method section (Sect.3.3) as " We extracted the annual velocity data along the central glacier flowlines from the ITS_LIVE product (2010–2018) to trace the temporal changes in flow velocity; the ITS_LIVE velocities possess mean uncertainties of 1.0 m a^{-1} (maximum of 3.1 m a^{-1}) and 0.6 m a^{-1} (maximum of 6.0 m a^{-1}) along Thorthormi and Luge glaciers, respectively.". We had mentioned the uncertainty of 2016/17 in the same section.

Additional references:

Pronk JB, Bolch T, King O, Wouters B & Benn DI (2021) Contrasting surface velocities between lake- and land-terminating glaciers in the Himalayan region, The Cryosphere, 15(12), 5577-5599 . <https://doi.org/10.5194/tc-15-5577-2021>.

We will add Pronk et al. (2021) to the reference list.

Land- to lake-terminating transition triggers dynamic thinning of a Bhutanese glacier

Yota Sato¹, Koji Fujita¹, Hiroshi Inoue², Akiko Sakai¹ and Karma³

¹ Graduate School of Environmental Studies, Nagoya University, Nagoya, Japan

5 ² National Research Institute for Earth Science and Disaster Resilience (NIED), Tsukuba, Japan

³ National Centre for Hydrology and Meteorology (NCHM), Thimphu, Bhutan

Correspondence to: Yota Sato (yota.sato@nagoya-u.jp)

Abstract. There have been rapid increases in both the number and expansion of the proglacial lakes across High Mountain Asia. However, the relationship between proglacial lakes and glacier dynamics remains unclear in the Himalayan region. Here
10 we present the surface elevation, flow velocity changes, and proglacial lake expansion of Thorthormi and Lugge glaciers in the Lunana region, Bhutanese Himalaya, during the 2000–2018 period using photogrammetry and GPS survey data. The lake expansion and surface lowering rates, and flow velocity field of Lugge Glacier, a lake-terminating glacier, have remained approximately constant since 2000. Conversely, there has been accelerated proglacial lake expansion and a two-fold increase in the thinning rate of Thorthormi Glacier since 2011, as well as a considerable speed-up in the flow velocity field ($>150 \text{ m a}^{-1}$). We reveal that the lake formation and transition of Thorthormi Glacier from a land- to lake-terminating glacier have
15 triggered glacier speed-up and rapid thinning via a positive (compressive) to negative (extensional) change in the emergence velocities. This study provides the first evidence of dynamic glacier changes that are associated with proglacial lake formation across the Himalayan region.

1 Introduction

20 A recent deglacial trend has been reported for numerous glaciers across High Mountain Asia (HMA; e.g., Brun et al., 2019; Maurer et al., 2019; Shean et al., 2020), with these glaciers exhibiting spatially heterogeneous thinning patterns (Bolch et al., 2012; Kääb et al., 2012; Brun et al., 2017). There has been a rapid increase in both the number and expansion of the proglacial lakes across HMA owing to this deglacial trend (Zhang et al., 2015; Nie et al., 2017; Shugar et al., 2020), which has been particularly pronounced across the eastern Himalayas (e.g., Gardelle et al., 2011; Chen et al., 2021). Proglacial lakes form via
25 the coalescence of supraglacial lakes near the glacier terminus (Quincey et al., 2007); their formation suggests the final phase of retreat for these contracting glaciers (Sakai and Fujita, 2010; Benn et al., 2012). The increasing number and evolution of proglacial lakes have led to a rise in the hazardous potential of glacial lake outburst floods (GLOFs). GLOF hazards can be triggered by either unstable terminal moraines or snow/rock avalanches (e.g., Fujita et al., 2008; Westoby et al., 2014), and can cause significant damage to hydropower stations, bridges and buildings that exist downstream of proglacial lakes
30 (Richardson and Reynolds, 2000).

Proglacial lake formation accelerates glacier mass loss via thermal undercutting and calving at the glacier terminus (e.g., Benn et al., 2007; Sakai et al., 2009). Previous studies have analysed the interaction between proglacial lakes and glacier dynamics using in-situ measurements and remote-sensing methods across HMA (e.g., King et al., 2018; Haritashya et al., 2018; Wei et al., 2021). Recent high-resolution satellite and aerial photogrammetry techniques have led to improved glacier and proglacial lake studies. For example, Watson et al. (2020) acquired in situ measurements and unmanned aerial vehicle (UAV) photogrammetry across Tsulagi Glacier in the Nepal Himalaya, and estimated the calving volume at the terminus based on iceberg size. Furthermore, previous studies have also reported the retreat and thinning of lake-terminating glaciers in their catchments to a broad regional scale (e.g., Song et al., 2017; Zhang et al., 2019; Maurer et al., 2019). King et al. (2019) reported that the mass loss of lake-terminating glaciers was greater than that of land-terminating glaciers across broad Himalayan regions, with an observed increase in mass loss after 2000. Pronk et al. (2021) analysed the surface flow velocities of more than 300 glaciers in the Himalayan region, and determined that the flow velocities of lake-terminating glaciers were twice as high as those of land-terminating glaciers on average. The existence of a proglacial lakes can might be a factor enhancing the glacier flow velocity, retreat and thinning of HMA glaciers. The response of lake- and land-terminating glaciers can fluctuate with different patterns~~also exhibit different fluctuation patterns~~, even if they are located near each other and/or exist under similar climatic conditions (Liu et al., 2020). Therefore, advancing our understanding of lake-terminating glacier fluctuations is essential for making robust future predictions of the HMA glacier response.

Numerous proglacial lakes have an exceptionally high-risk potential for GLOFs throughout the Bhutan Himalaya (e.g., Fujita et al., 2013; Zheng et al., 2021), and lake expansion appears to continue unabated (Ageta et al., 2000; Komori, 2008). Previous lake-terminating glacier studies have been conducted across the Bhutan Himalaya using either in situ measurements or satellite remote-sensing methods to assess their dynamics and evolutions (e.g., Suzuki et al., 2007; Fujita et al., 2008). Tsutaki et al. (2019) revealed contrasting fluctuations between two neighbouring glaciers in the Lunana region using in situ GPS measurements, satellite remote-sensing data and numerical modelling. They reported a greater thinning rate along lake-terminating Lugge Glacier than along land-terminating Thorthormi Glacier during the 2004–2011 period, which was attributed to their contrasting terminus conditions. They also projected that the thinning rate and flow speed of Thorthormi Glacier could be accelerated if the current land terminus changed to a lake terminus. The terminus of Thorthormi Glacier is now detached from the terminal moraine and has evolved into a lake-terminating glacier. The associated changes in glacier dynamics due to proglacial lake formation have been studied worldwide (e.g., Boyce et al., 2007; Tsutaki et al., 2013); however, no such study has been undertaken in the Himalayan region to date. Therefore, this study aims to (1) update the fluctuations of two glaciers that have been affected by proglacial lakes in the Bhutan Himalaya, and (2) evaluate the changes in glacier dynamics associated with the transition from land- to lake-terminating conditions. We analysed past in situ measurements and satellite/airborne remote-sensing datasets to achieve this goal.

2 Study Site

Our target glaciers, Thorthormi and Lugge, are located in the Lunana region of northern Bhutan (Fig. 1; 28.06° N, 90.18° E). Thorthormi Glacier covers 11.6 km² based on the GAMDAM (Glacier Area Mapping for Discharge from the Asian
65 glacierMountains) glacier inventory (Nuimura et al., 2015; Sakai, 2019); and the 2017 terminus position. Its elevation range
spans 4,400–6,900 m above sea level (a.s.l.). with the 2017 terminus position and its elevation range spanning 4,400–6,900 m
above sea level (a.s.l.). Thorthormi Glacier had been in contacted with the terminal moraine before 2011, and later then detached
from the terminal moraine and transitioned into a lake-terminating glacier (Tsutaki et al., 2019). Lugge Glacier is located to
the east of Thorthormi Glacier, and covers an area of 10.0 km² based on its 2017 terminus position, with its elevation range
70 spanning 4,500–6,900 m a.s.l. and covers an area of 10.0 km², with its elevation range spanning 4,500–6,900 m a.s.l. Its
proglacial lake (Lugge Tsho) Lugge Glacier Lake has expanded since the 1960s (Komori, 2008), with a maximum lake depth
of 126 m reported in 2002 (Yamada et al., 2004). Lugge Glacial Lake This lake caused an outburst flood in October 1994, and
damaged the downstream areas (Fujita et al., 2008; Maurer et al., 2020). Both glaciers are debris-covered, and have been
reported to be experiencing long-term mass-loss and thinning trends (Bajracharya et al., 2014; Maurer et al., 2016).

3 Observations and analysis methods

3.1 DGPS and aerial photogrammetry survey

We used the global positioning system (GPS) dataset of Tsutaki et al. (2019), who conducted a kinematic survey with a
differential GPS (DGPS; GEM-1, GNSS Technologies) across the on- and off-glacier terrains during the 19–22 September
2011 field campaign. The base station for this survey was installed to the west of Thorthormi Glacial Lake (Fig. 1a). These
80 GPS data points were used to validate the satellite/photogrammetry digital elevation models (DEMs) and compute the surface
elevation changes (Sects. 3.2 and 3.3).

We conducted a helicopter photogrammetry survey on 24 March 2018. Four action cameras (GoPro HERO5 Black) were
attached to the skids of a helicopter, and acquired 4000 × 3000 pixel images in 1-s shooting mode. The shutter speed, focal
length and ISO were fixed at 1/1250 s, 28.3 mm and 100, respectively. We obtained ~7500 photos in total and cropped each
85 photograph by preserving the central 2500 × 2500 pixel area to eliminate the "fisheye effect" of the GoPro camera lens (Girod
et al., 2017). We finally employed 3560 images based on the image quality and glacier coverage. These images were processed
in Agisoft Metashape Professional Edition 1.7.1 (Agisoft LLC), and the sky view was masked for the terrain data processing.

3.2 Terrain data processing

We extracted ground control points (GCPs) from a Pléiades panchromatic orthoimage (0.5-m resolution), which was acquired
90 on 7 November 2017 (Berthier et al., 2014), and its DEM (2.0-m resolution) for the photogrammetry terrain data processing.
We first generated a GPS-derived-DEM (GPS-DEM) to assess the vertical accuracy of the Pléiades-derived-DEM (PL-DEM).

The 2011 GPS data points (UTM Zone 46N, WGS84) were interpolated using the inverse distance weighted method, and then exported to the same grid size as the PL-DEM in ArcGIS (Tspering and Fujita, 2016; Sato et al., 2021). We employed the standard deviation (SD; σ) of the elevation difference between the PL- and GPS-DEMs on the off-glacier stable terrain as the vertical accuracy of the PL-DEM. We did not use the grid cells with steep slopes ($>30^\circ$; Fujita et al., 2008; Nuimura et al., 2012). We then eliminated the validation points that were greater than $\pm 3\sigma$ from the mean elevation difference as extreme outliers (Mertes et al., 2017). Berthier et al. (2014) reported that the vertical accuracy of the PL-DEM was improved by shifting the DEM horizontally. We therefore shifted the PL-DEM by ± 2 pixels (± 4 m) in the northing and easting directions, computed the elevation difference against the GPS-DEM and confirmed that there was no improvement in the vertical accuracy. Finally, the PL-DEM vertical bias (mean elevation difference: MED) was assessed for 12,009 grid cells, yielding a mean value of 0.26 ± 3.86 m (MED \pm SD). We extracted the GCP coordinates from the orthoimage and bias-corrected PL-DEM. Specific topographic features (e.g., boulders, river bending points and dense vegetation spots) on the stable ground were used as GCPs for the photogrammetry terrain data processing.

We used the Structure from Motion (SfM) software in Agisoft Metashape to generate orthoimages and a DEM from the helicopter photogrammetry data (hereafter HP-ortho and HP-DEM, respectively). We overlaid the 77 GCPs that were extracted from the Pléiades products onto the helicopter photogrammetry images (Fig. 1b), and generated both the HP-ortho and HP-DEM at a 0.5-m resolution (Fig. 1a and b). We employed the same approach used in the PL-DEM evaluation to evaluate the vertical bias and accuracy of the HP-DEM by re-generating a 0.5-m resolution GPS-DEM. The vertical accuracy of the HP-DEM was 0.25 ± 3.70 m ($N = 25,474$ GPS-DEM grid cells; Fig. S1a); we also applied an elevation change correction (Sect. 3.3) to correct for the vertical bias of the HP-DEM.

3.3 Changes in the glaciers and glacial lakes

We calculated the surface elevation change rates (dh/dt) by comparing the 2011 GPS-DEM and 2018 HP-DEM (both at 0.5-m resolution). We used 9,491 and 15,604 grid cells to calculate dh/dt for Thorthormi and Lugge glaciers, respectively (red tracks in Fig. 1b). We then compared our results with previous elevation change studies. Tsutaki et al. (2019) calculated dh/dt from the overlapping 2004 and 2011 DGPS data; they also computed the spatial distribution of dh/dt for the same period using ASTER-derived DEMs. We also employed the long-term dh/dt data from Brun et al. (2017) and Maurer et al. (2019) to assess the thinning trends of these two glaciers. Brun et al. (2017) computed dh/dt for the 2000–2016 period over the Hindu-Kush-Himalaya region using ASTER-based DEMs, and Maurer et al. (2019) calculated dh/dt for the 1975–2000 and 2000–2015 periods using satellite-based DEMs. These datasets (hereafter RS-based dh/dt) are provided as 30-m resolution raster data. We extracted the dh/dt data from our DEMs at the same positions for a comparative analysis.

We computed the surface velocity field using the ImGRAFT (Image GeoRectification and Feature Tracking) open-source feature tracking toolbox in MATLAB (Messerli and Grinsted, 2015). The normalized cross-correlation algorithm (NCC; Heid and Käab, 2012) in the feature tracking toolbox (Templatematch) identifies the displacement patterns of the glacier surface features and computes their magnitude from a pair of images. ~~The feature tracking algorithm in the toolbox (Templatematch)~~

125 ~~identifies the displacement patterns of the glacier surface features and computes their magnitude from a pair of images.~~ We
 selected a Sentinel-2 image pair that was acquired on 16 November 2016 and 11 November 2017 (post-monsoon seasons).
~~After visual trial and error, we chose a 20×20 template size (200×200 m) and 75×75 search window size (750×750 m) to~~
~~compute the surface feature displacements and calculate the annual flow velocity.~~ ~~We chose a 75×75 search window size (750~~
 ~~$\times 750$ m) after visual trial and error to compute the surface feature displacements and calculate the annual flow velocity.~~ We
 130 set the correlation value for image matching ($r > 0.6$) and signal to noise ratio ($\text{SNR} > 0.7$) and eliminated the low-quality
 pixels, all of which served as a confidence level threshold for successful image matching. We then estimated the uncertainty
 of the glacier surface velocity and corrected systematic error by checking the stable-ground (off-glacier) displacement (e.g.,
 Liu et al., 2020). We calculated the stable-ground surface displacement (slopes $< 20^\circ$; Quincey et al., 2009), and set the
 corrected median values of V_x (east/west component) and V_y (north/south component) to zero. The flow speed V (m a^{-1}) is
 135 calculated as:

$$V = \sqrt{V_x^2 + V_y^2}. \quad (1)$$

The mean and median stable-ground V values were 2.2 and 1.6 m a^{-1} , respectively, after the displacement correction. The
 140 velocity profiles were extracted along the glacier central flowlines every 10 m , and the pixel values where the flow directions
 differed by $>90^\circ$ from the flowlines were eliminated. We also eliminated the velocity data along the upper section of Lugge
 Glacier ($>5100 \text{ m}$ elevation) because of its heavy snow cover, which can cause incorrect image matching via feature tracking
 (e.g., Nuimura et al., 2017). ~~We extracted the surface velocity from the regional velocity product derived from the ITS LIVE~~
~~(Inter-Mission Time Series of Land Ice Velocity and Elevation) project (Gardner et al., 2019), which covered the entire HMA~~
~~region. The ITS LIVE velocity product is generated from the Landsat series with the auto-RIFT feature tracking processing~~
 145 ~~chain yielding a 240-m spatial resolution (Gardner et al., 2018). We extracted the annual velocity data along the central glacier~~
~~flowlines from the ITS LIVE product (2010–2018) to trace the temporal changes in flow velocity; the ITS LIVE velocities~~
~~possess mean uncertainties of 1.0 m a^{-1} (maximum of 3.1 m a^{-1}) and 0.6 m a^{-1} (maximum of 6.0 m a^{-1}) along Thorthormi and~~
~~Lugge glaciers, respectively.~~ ~~We extracted the surface velocity from the 2017 ITS LIVE velocity product, which covered the~~
 150 ~~entire HMA region and possessed a 240-m spatial resolution (Gardner et al., 2019).~~ We also employed the velocity data
 produced by Tsutaki et al. (2019), which were calculated annually from the ASTER-derived optical satellite images at 15-m
 resolution during the 2002–2011 period.

We delineated the glacial lake area from Landsat 7 and 8 (ETM+/OLI) images with false-colour image composites that were
 acquired between November 2012 and November 2018 (30-m resolution). We then combined the proglacial lake polygons
 155 before 2012 (Tsutaki et al., 2019), and traced the annual lake area changes for the entire 18-year study period. The total lake
 area uncertainties were estimated to be ± 0.14 and $\pm 0.08 \text{ km}^2$ for Thorthormi and Lugge glaciers, respectively, depending on
 the user-induced error and satellite image resolution (Paul et al., 2013). We removed the DEM and velocity data where the

glacier surface turned into the lake surface in successive images. We compared the recent lake expansion rates with a glacial lake inventory (High Mountain Asia Glacier-lake inventory: Hi-MAG; Chen et al., 2021), which was generated for the entire Himalayan region using data from the 2008–2017 period. We finally chose the 2011 and 2017 proglacial-type lakes ($n = 832$) and calculated the expansion rates between 2011 and 2017 in the eastern Himalaya region (including the Lunana region).

3.4 Emergence velocity and ice floatation of Thorthormi Glacier

We calculated the emergence velocities along Thorthormi Glacier to evaluate the change in glacier dynamics since its detachment from the terminal moraine. We estimated the emergence velocity of a given section (V_e , m a^{-1}) from the ice fluxes along the upper and lower boundaries of the section as (e.g., Nuimura et al., 2011; Vincent et al., 2016; Brun et al., 2018):

$$V_e = \frac{(q_{in} - q_{out})}{\bar{W} \cdot dx}, \quad (2a)$$

where q_{in} and q_{out} are the ice fluxes ($\text{m}^3 \text{a}^{-1}$) along the upper and lower boundaries, respectively, and \bar{W} and dx are an averaged glacier width (m) and length (200 m in this study) for analysed V_e section, respectively. The ice flux q (q_{in} or q_{out} , $\text{m}^3 \text{a}^{-1}$) is calculated as:

$$q = W \cdot h \cdot V_c, \quad (3)$$

where W , h and V_c are the glacier width (m), ice thickness (m) and depth-averaged ice velocity (m a^{-1}), respectively. We then applied a simplified assumption that the glacier width is constant, such that Eq. (2a) can be rewritten as:

$$V_e = \frac{h_{up} \cdot V_{c,up} - h_{low} \cdot V_{c,low}}{dx}, \quad (4b)$$

where $h_{up/low}$ are the ice thicknesses (m) and $V_{c,up/low}$ are the depth-averaged ice velocities (m a^{-1}) along the upper/lower boundaries. We assumed that both the glacier thickness and width were constant in the transverse and longitudinal directions, respectively, to calculate the emergence velocities along the central flowline. The ice thickness h along the central flowline was calculated from the HP-DEM-derived glacier surface elevation and estimated bedrock elevation in Tsutaki et al. (2019). Tsutaki et al. (2019) estimated the glacier-bed topography using the Farinotti et al. (2009) ice thickness model and tuning a model parameter based on the observed lake depth (ice thickness). Tsutaki et al. (2019) simulated that the basal velocity reaches 90% of the surface velocity of Thorthormi Glacier. We therefore calculated the emergence velocity using two assumptions regarding the surface velocity: the depth-averaged velocity is 90% of the surface velocity based on Tsutaki et al. (2019), and 100% assumed for a floating condition after terminus detachment. We then used the surface velocity component of the same vector in the central flowline direction. We defined the depth-averaged flow velocity (V_e) as 80% of the surface velocity (e.g.,

Sakai et al., 2006; Berthier and Vincent, 2012), and then used the surface velocity component of the same vector in the central flowline direction. The sections without flow velocities (2520–3020 m from the 2002 terminus) were linearly interpolated using the surface velocities of the surrounding upglacier and downglacier sections. We calculated the emergence velocity for a 200-m section by shifting the section in 50-m increments, and obtained a mean emergence velocity around the current terminus (2400–3500 m from the 2002 terminus). We also calculated V_e in 2011, when Thorthormi Glacier was still a land-terminating glacier, to compare the land- and lake-terminating conditions. We estimated the ice thickness from the glacier surface elevation of the ASTER-derived DEM acquired on 6 April 2011 and the glacier-bed elevation along the central flowline. The depth-averaged ice velocities were calculated from the surface velocities in Tsutaki et al. (2019) (Sect 3.3).

We evaluated the ice flotation potential of the Thorthormi Glacier terminus based on the ice flotation thickness (h_f , m), which was calculated as (Boyce et al., 2007; Watson et al., 2020):

$$h_f = \frac{\rho_w}{\rho_i} d, \quad (54)$$

where ρ_w is the density of water (1000 kg m³), ρ_i is the density of ice (917 kg m³) (e.g., Boyce et al., 2007; Carrivick et al., 2017) and d is lake depth (m). We then defined an index of potential ice flotation as:

$$P_f = \frac{h_f}{h} \times 100, \quad (55)$$

where P_f is the potential ice flotation (%). The glacier can attain flotation when the glacier ice thickness reaches h_f , such that $P_f \geq 100\%$. We extracted the lake surface elevation (4415 m a.s.l.) from the HP-DEM-derived lake perimeter and estimated the lake depth from the glacier-bed elevation (Tsutaki et al., 2019). We then calculated P_f in 100-m intervals in 2011 and 2018 along the glacier central flowline in the terminus region (up to 3500 m from the 2002 terminus).

4 Results

4.1 Lake expansion

We traced the lake expansion for the 2000–2018 period (Figs. 2a and 2b). The proglacial lake areas at the termini of Thorthormi and Lugge glaciers were 3.05 and 1.58 km² in 2018, an increase of 2.01 (193%) and 0.48 km² (44%) from the 2000 lake areas, respectively (Fig. 2c). Both lakes have expanded throughout the study period, and the lake expansion rates (dA/dt) were calculated via a linear regression of the cumulative areas during the 2000–2011 and 2011–2018 periods (Fig. 2c). Lugge Glacial Lake steadily expanding during the 2000–2018 period, with 0.03 and 0.02 km² a^{−1} observed before and after 2011, respectively. However, there has been accelerated expansion of Thorthormi Glacial Lake since 2011, with 0.07 km² a^{−1} observed before 2011 and 0.13 km² a^{−1} observed after 2011. A comparison of these observations with the Hi-MAG data (Chen

et al., 2021) indicates that the expansion rates are in the upper 2.5% (Thorthormi) and 10% (Lugge) of the observed proglacial lakes across the eastern Himalayas.

4.2 Thinning rates

The dh/dt values of both glaciers were calculated from the 2011 GPS-DEM and 2018 HP-DEM, with the 2002 terminus position used as the base position for the comparison. We also extracted the calculated dh/dt values from previous studies that had focused on different time periods (Fig. 3 and Table 1). The thinning rate of Lugge Glacier was more than three times greater than that of Thorthormi Glacier for the 2004–2011 period, when Thorthormi Glacier was a land-terminating glacier, and was then comparable (-2.78 m a^{-1}) to that of Lugge Glacier (-2.87 m a^{-1}) for the recent 2011–2018 period, when Thorthormi Glacier had evolved into a lake-terminating glacier (Fig. S1). There was a two-fold increase and 0.61-fold decrease in the thinning rates of Thorthormi and Lugge glaciers between the 2004–2011 analysis by Tsutaki et al. (2019) and our presented 2011–2018 analysis. The RS-based dh/dt values for the 2000–2016 period (-3.81 to -3.50 m a^{-1} , Brun et al., 2017; Maurer et al., 2019) are similar to the Tsutaki et al. (2019) values (Table 1). The RS-based dh/dt values of Thorthormi and Lugge glaciers are -0.16 and -1.20 m a^{-1} for the 1975–2000 period, respectively, which suggests that the lower section of Thorthormi Glacier experiences minimal thinning before 2000 (Maurer et al., 2019). The spatial distribution of dh/dt along Thorthormi Glacier exhibited a decreasing trend in the upglacier direction during the 2011–2018 period, whereas the dh/dt values during the 2004–2011 period were almost constant across the same region. The thinning rate was $>4 \text{ m a}^{-1}$ (dh/dt of less than -4 m a^{-1}) in the upglacier area ($>2500 \text{ m}$ from the 2002 terminus) during this later period. The dh/dt profiles obtained in previous studies do not reveal such a remarkable trend; however, similar dh/dt plots are independent of the distance from the terminus (Fig. 3a). The results of this study reveal a large spatial variability compared with the RS-based dh/dt distributions of previous studies (Brun et al., 2017; Maurer et al., 2019), which is likely due to the differences in the spatial resolution of the data. Tsutaki et al. (2019) reported that Lugge Glacier has a heavily crevassed, bumpy surface. We consider ~~that~~ the high-resolution photogrammetry data (0.5 m) identified the displacements due to these steep surface features.

4.3 Flow velocity

We calculated the surface velocity field between November 2016 and November 2017, and extracted the velocities along the central flowline (Fig. 4 and S2). We also plotted the ITS_LIVE product (2010–2018) and Tsutaki et al. (2019) velocity profiles. We found fast flow velocities ($>200 \text{ m a}^{-1}$) from the 2017 terminus to the middle part ($\sim 4200 \text{ m}$ from 2002 terminus) of Thorthormi Glacier. The ITS_LIVE velocity also exhibited a similar flow-velocity magnitude near the 2017 terminus; however, the ITS_LIVE velocities decreased more rapidly in the upglacier direction than our calculated results. We are able to confirm the large displacement of a surface feature ($\sim 200 \text{ m a}^{-1}$) from the Sentinel-2 satellite images at ~ 3500 – 4000 m from the 2002 terminus (Fig. S32), which suggests that the flow-velocity profile for Thorthormi Glacier that is calculated in this study should be more reliable than the automatically derived ITS_LIVE flow-velocity profile. A comparison of our velocity profile (2016–2017) with the 2002–2010 velocity profile (Tsutaki et al., 2019) reveals a substantial 2–4-fold increase at ~ 2400 – 4000 m from

the 2002 terminus. The ITS LIVE flow velocity profiles indicate that the Thorthormi Glacier shows similar flow velocity profiles until 2016 to the 2002–2010 average, and remarkable increases are observed in 2017 and 2018 (Fig. 4a). Tsutaki et al. (2019) projected the flow velocities of Thorthormi Glacier under the assumption of a "lake-terminating condition" (dashed line in Fig. 4a). Although the magnitude is $\sim 100 \text{ m a}^{-1}$ less than that in this study, the increasing flow velocities toward the calving front are similar to the trend in the recent velocity profile.

Conversely, the calculated surface velocities of Luge Glacier are $\sim 50 \text{ m a}^{-1}$ up to $\sim 2000 \text{ m}$ from the 2002 terminus in this study (2016–2017). There also appears to be a gradual decrease up to $\sim 2700 \text{ m}$ from the 2002 terminus and it possesses similar velocity magnitude/trend to the 2002–2010 mean velocity calculated by Tsutaki et al. (2019; Fig. 4b). The ITS_LIVE velocity profiles (2010–2018) possesses show flow velocities of $< 5 \text{ m a}^{-1}$ ~~flow velocities~~ for the entire glacier, which is probably due to the coarser resolution (240 m) of the velocity field compared with that in this study (10 m) and Tsutaki et al. (2019; 15 m). Although the terminus position of Luge Glacier has retreated almost 1 km since 2002, the mean velocity profile appears to have remained persistent between the 2000–2010 (Tsutaki et al., 2019) and 2016–2017 observation periods.

4.4 Ice emergence velocity and floatation potential of Thorthormi Glacier

We calculated the emergence velocity of the Thorthormi Glacier terminus under the assumption that the depth-averaged velocity equals either 90% or 100% of the surface velocity. ~~as~~ The resultant V_e values are $-0.69 \pm 11.65 \text{ m a}^{-1}$ and $-0.77 \pm 12.94 \text{ m a}^{-1}$, respectively (2400–3500 m from the 2002 terminus; Fig. S4 and Table 2), although there are large variations depending on the computational area (Fig. S4) ~~($\sigma = \pm 10.6 \text{ m a}^{-1}$).~~ The land-terminating condition yielded V_e values of was 4.6 ± 3.45 , $5.20 \pm 3.78 \text{ m a}^{-1}$ and $5.78 \pm 4.20 \text{ m a}^{-1}$, respectively, for the above-mentioned depth-averaged velocity assumption (Table 2). ~~for the land-terminating condition, which~~ These results suggest that the mean V_e has decreased and become negative after transitioning to a lake-terminating glacier. Tsutaki et al. (2019) also estimated V_e via numerical modelling of the lake- and land-terminating conditions, yielding 2.2 ± 1.9 and $6.3 \pm 2.2 \text{ m a}^{-1}$, respectively.

We also estimated the potential ice-floatation index in the terminus area of Thorthormi Glacier (up to 3500 m from the 2002 terminus). The mean P_f values for 2011 (land-terminating) and 2018 (lake-terminating) are 86% and 97%, respectively, with this increase attributed to the surface lowering of the terminus area during the 2011–2018 period. As a result of surface lowering, some parts of the ice in the terminus area reached ice-floatation thickness ($P_f > 100\%$) by 2018.

5 Discussion

5.1 Contrasting temporal changes in the glacier regimes

Thorthormi and Luge glaciers possess contrasting dh/dt trends and flow velocities, even though they are adjacent to each other. The dh/dt trend, and flow velocity magnitude and spatial distribution of Luge Glacier are approximately constant between the 2004–2011 and 2011–2018, and 2002–2010 and 2016–2017 periods, respectively (Figs. 3b and 4b). Conversely, remarkable increases in the thinning rate and flow velocity are observed across Thorthormi Glacier over the same study periods

(Figs. 3a, ~~and 4a and 5~~). Such a drastic velocity increase within a decade has not been reported in the Himalayas, although the multi-decadal acceleration of glacier thinning and deceleration of glacier flow have been reported (Dehecq et al., 2019; Maurer et al., 2019).

Tsutaki et al. (2019) performed finite-element simulations of present (land-terminating) and future (lake-terminating) Thorthormi Glacier dynamics. Their simulations reproduced the flow velocities for the land-terminating condition with a small root-mean-square error ($<10 \text{ m a}^{-1}$) using satellite-based flow velocities. Their future prediction for a lake-terminating condition, which suggested an increase in flow velocity, is inconsistent with our 2017 velocity analysis (Fig. 4a). However, Tsutaki et al. (2019) highlighted that changes to the sliding coefficient and ice thickness parameters could alter the flow velocity significantly, as their sensitivity tests demonstrated that the simulated flow velocity increased (decreased) by 33% (51%) if the sliding coefficient and ice thickness changed by +30% (−30%) for the land-terminating condition of Thorthormi Glacier. Therefore, the difference between the observed and simulated velocities is likely due to the uncertainties in the sliding coefficient, ice thickness and state of the terminus position. Despite this underestimation, Tsutaki et al. (2019) have reasonably demonstrated the change in sliding conditions associated with the transition from land- to lake-terminating conditions.

5.2 Dynamic thinning triggered by terminus detachment

~~Proglacial lakes had formed on both sides of the Thorthormi Glacier terminus before 2011.~~ Lateral lakes had formed on both sides of the Thorthormi Glacier terminus several years before 2011 (Figs 2a and 2c). The ice thickness was near flotation ($P_f > 85\%$), such that the flow velocities could accelerate near the terminus. However, the flow velocities decreased toward the terminus, producing a longitudinal compression field and subsequent surface lowering that might have been less than that of lake-terminating Luge Glacier (Tsutaki et al., 2019). The longitudinal stress field regime changed from compressional to extensional after the terminus detached from the terminal moraine and transitioned to a lake-terminating condition ~~in 2011~~, and its flow increased owing to efficient basal sliding. Although the satellite imagery shows that the glacier terminus detached from the terminal moraine in 2011 (Fig. 2a), the rapid increase in flow velocity since 2017 suggests that the glacier terminus was in contact with the terminal moraine underwater until 2016 and detached between 2016 and 2017 (Fig. 4a). Furthermore, the lakes that formed on both sides of the glacier terminus may also have reduced the lateral resistive stresses that prevented glacier flow (e.g., Adhikari et al., 2012). These factors might have led to the observed dramatic increase in flow velocities (Fig. 4a). Such an increase in flow velocities due to proglacial lake formation has been observed in other regions (e.g., Boyce et al., 2007; Tsutaki et al., 2011; Sakakibara and Sugiyama, 2014); however, this is the first observation of such a phenomenon in the Himalayan region.

The rapid increase in flow velocities may have enhanced the ice flux towards the glacier terminus due to the longitudinal strain. Positive emergence velocities are distributed up to 2400–3500 m from the 2002 terminus for the 2011 land-terminating condition (Sect 4.4). However, V_e decreased in 2017 and became negative due to the increase in flow velocities toward the terminus. The unchanged thinning rate and velocity regime of Luge Glacier (Figs 2b and 3b, and Table 1) suggest that any recent climatic changes in the Lunana region could not have yielded a significant increase in surface ablation. Therefore, the

increased thinning rate of Thorthormi Glacier can be largely attributed to the decrease in V_e . However, the decrease in V_e (approximately -6.5 m a^{-1} ; Table 2) seems to be too large to account for the increased thinning rate from 2004–2011 to 2011–2018 (-1.38 m a^{-1} ; Table 1). ~~This decrease may be due to the uncertainty in the estimated ice thickness; regardless, this decreasing V_e trend can be clearly confirmed.~~ We quantified the change in emergence velocity by hypothesising that this change occurred in the last two years (2017 and 2018), during which time the surface velocity accelerated (Fig. 4a). The weighted average of the emergence velocity for the 2011–2018 period ($V_{e,2011-2018}$, m a^{-1}) is described as:

$$V_{e,2011-2018} = \frac{\Delta t_{\text{land}} V_{e,\text{land}} + \Delta t_{\text{lake}} V_{e,\text{lake}}}{\Delta t_{\text{land}} + \Delta t_{\text{lake}}} \quad (7)$$

where V_e and Δt are the emergence velocity and duration of the land- or lake-terminating conditions, respectively. We obtained a time-weighted mean emergence velocity of 3.52 m a^{-1} for the 2011–2018 period based on emergence velocities of $V_{e,\text{land}} = 5.20 \text{ m a}^{-1}$ and $V_{e,\text{lake}} = -0.69 \text{ m a}^{-1}$ (assuming a depth-averaged velocity that is 90% of the surface velocity; Table 2) and periods of $\Delta t_{\text{land}} = 5$ and $\Delta t_{\text{lake}} = 2$. This means that V_e decreased by -1.68 m a^{-1} around 2011, which is consistent with the 2004–2011 to 2011–2018 change in dh/dt of -1.38 m a^{-1} . The highly variable V_e profiles suggest that there are large uncertainties in the estimates (Fig. S4 and Table 2); however, our first-order evaluation can explain the cause of the drastic change in the thinning rate of Thorthormi Glacier.

We simply assumed a constant glacier width to calculate V_e along the central flowline. However, this glacier terrain tends to widen in the downglacier direction, yielding an extensional velocity regime. The lateral proglacial lakes on both sides of the terminus before it transitioned to a lake-terminating condition may have further contributed to a more negative V_e than that estimated along the central flowline. Despite these favourable conditions to enhance dynamic thinning, the surface lowering of Thorthormi Glacier has likely been suppressed by the compressive flow regime of the land-terminating condition. The transition to a lake-terminating condition should have caused a two-fold increase in the thinning rate during such a short period (Fig. 2a and Table 1).

These above-mentioned mechanisms might cause a positive feedback between glacier thinning and the increase in flow velocity by enhancing each other. Therefore, increased glacier thinning and surface velocity speed-up will continue along Thorthormi Glacier in the future. The dynamic thinning of lake-terminating glaciers has been discussed in other HMA regions (e.g., Nuimura et al., 2012; King et al., 2018; Liu et al., 2020). However, our study is the first reported observation of the dynamic changes during the transition from land- to lake-terminating conditions, which have led to the enhanced thinning of a Himalayan glacier.

This study employed a modelled ice thickness (lake depth) that was tuned using point measurement data (Tsutaki et al., 2019) to estimate the dynamics of Thorthormi Glacier. Previous studies have suggested that the surface flow velocity of lake-terminating glaciers is sensitive to the terminus ice thickness and lake water depth (Benn et al., 2007; Pronk et al., 2021).

Therefore, constraints on the lake bathymetry may allow us to better understand past and current terminus conditions and quantify the dynamic thinning process.

6 Conclusion

We presented the surface elevation and velocity changes, and proglacial lake expansion of lake-terminating Thorthormi and Lugge glaciers in the Lunana region, Bhutanese Himalaya. We analysed satellite/photogrammetry data and compared our results with those in previous studies to reveal the recent glacier and proglacial lake changes of Thorthormi Glacier, which are associated with the transition from land- to lake-terminating conditions. Whilst the lake expansion and surface lowering rates of Luge Glacier have been approximately constant since 2000, those of Thorthormi Glacier have exhibited a continue increase after the terminus reached flotation and detached from the terminal moraine. There has been a two-fold increase in the thinning rate of Thorthormi Glacier since this transition to lake-terminating conditions in 2011. The flow-velocity field of Thorthormi Glacier has also sped up considerably ($>150 \text{ m a}^{-1}$), whereas that of Lugge Glacier has remained unchanged. We estimate that the rapid thinning and increased flow-velocity field of Thorthormi Glacier were due to this transition to lake-terminating conditions. This study provides the first evidence of the dynamic glacier changes associated with proglacial lake formation in the Himalayan region, and will contribute to advancing our understanding of the dynamics of lake-terminating glaciers, as well as their potential evolution in the future.

Data availability. The Landsat 7 ETM+, Landsat 8 OLI, and Sentinel-2 satellite data are distributed by the United States Geological Survey (<https://earthexplorer.usgs.gov/>, last accessed: 19 October 2021). The ASTER-DEM data are distributed by the National Institute of Advanced Industrial Science and Technology (<https://gbank.gsj.jp/madas/map/index.html>, last accessed: 19 October 2021).

Competing interests. The authors declare that they have no conflict of interest.

Author contributions. KF designed the study. HI and K conducted the photogrammetry survey, with the help of KK. YS processed the photogrammetry data and analysed the satellite data. YS, KF and AS wrote the manuscript. All of the authors contributed to the discussion.

Acknowledgments. We thank J. Chopel and S. Ohmi for supporting the aerial photogrammetry survey. We are indebted to S. Tsutaki and T. Nuimura for providing their data and supporting our data analysis. We thank E. Berthier for providing the Pléiades satellite data.

References

- 380 Adhikari, S. and Marshall, S. J.: Parameterization of lateral drag in flowline models of glacier dynamics, *J. Glaciol.*, 58, 1119–1132, <https://doi.org/10.3189/2012JoG12J018>, 2012.
- Ageta, Y., Iwata, S., Yabuki, H., Naito, N., Sakai, A., Narama, C., and Karma: Expansion of glacier lakes in recent decades in the Bhutan Himalayas, *IAHS Publ.*, 264, 165–175, 2000.
- Bajracharya, S. R., Maharjan, S. B., and Shrestha, F.: The status and decadal change of glaciers in Bhutan from the 1980s to
385 2010 based on satellite data, *Ann. Glaciol.*, 55, 159–166, <https://doi.org/10.3189/2014AoG66A125>, 2014.
- Benn, D. I., Warren, C. R., and Mottram, R. H.: Calving processes and the dynamics of calving glaciers, *Earth-Sci. Rev.*, 82, 143–179, <https://doi.org/10.1016/j.earscirev.2007.02.002>, 2007.
- Benn, D. I., Bolch, T., Hands, K., Gulley, J., Luckman, A., Nicholson, L. I., Quincey, D., Thompson, S., Toumi, R., and Wiseman, S.: Response of debris-covered glaciers in the Mount Everest region to recent warming, and implications for
390 outburst flood hazards, *Earth-Sci. Rev.*, 114, 156–174, <https://doi.org/10.1016/j.earscirev.2012.03.008>, 2012.
- ~~Berthier, E. and Vincent, C.: Relative contribution of surface mass balance and ice flux changes to the accelerated thinning of Mer de Glace, French Alps, over 1979–2008, *J. Glaciol.*, 58, 501–512, <https://doi.org/10.3189/2012JoG11J083>, 2012.~~
- Berthier, E., Vincent, C., Magnússon, E., Gunnlaugsson, Á. Þ., Pitte, P., Le Meur, E., Masiokas, M., Ruiz, L., Pálsson, F., Belart, J. M. C., and Wagnon, P.: Glacier topography and elevation changes derived from Pléiades sub-meter stereo
395 images, *The Cryosphere*, 8, 2275–2291, <https://doi.org/10.5194/tc-8-2275-2014>, 2014.
- Bolch, T., Kulkarni, A., Kääb, A., Huggel, C., Paul, F., Cogley, J. G., Frey, H., Kargel, J. S., Fujita, K., Scheel, M., Bajracharya, S., and Stoffel, M.: The state and fate of Himalayan glaciers, *Science*, 336, 310–314, <https://doi.org/10.1126/science.1215828>, 2012.
- Boyce, E. S., Motyka, R. J., and Truffer, M.: Flotation and retreat of a lake-calving terminus, Mendenhall Glacier, southeast
400 Alaska, USA, *J. Glaciol.*, 53, 211–224, <https://doi.org/10.3189/172756507782202928>, 2007.
- Brun, F., Berthier, E., Wagnon, P., Kääb, A., and Treichler, D.: A spatially resolved estimate of High Mountain Asia glacier mass balances, 2000–2016, *Nat. Geosci.*, 10, 668–673, <https://doi.org/10.1038/NGEO2999>, 2017.
- Brun, F., Wagnon, P., Berthier, E., Shea, J. M., Immerzeel, W. W., Kraaijenbrink, P. D. A., Vincent, C., Reverchon, C., Shrestha, D., and Arnaud, Y.: Ice cliff contribution to the tongue-wide ablation of Changri Nup Glacier, Nepal, central
405 Himalaya, *The Cryosphere*, 12, 3439–3457, <https://doi.org/10.5194/tc-12-3439-2018>, 2018.
- Brun, F., Wagnon, P., Berthier, E., Jomelli, V., Maharjan, S. B., Shrestha, F., and Kraaijenbrink, P. D. A.: Heterogeneous Influence of Glacier Morphology on the Mass Balance Variability in High Mountain Asia, *J. Geophys. Res. Earth Surf.*, 124, 1331–1345, <https://doi.org/10.1029/2018JF004838>, 2019.
- Carrivick, J. L., Tweed, F. S., Ng, F., Quincey, D. J., Mallalieu, J., Ingeman-Nielsen, T., Mikkelsen, A. B., Palmer, S. J., Yde, J. C., Homer, R., Russell, A. J., and Hubbard, A.: Ice-Dammed Lake Drainage Evolution at Russell Glacier, West
410 Greenland, *Front. Earth Sci.* ~~China~~, 5, 100, <https://doi.org/10.3389/feart.2017.00100>, 2017.

- Chen, F., Zhang, M., Guo, H., Allen, S., Kargel, J. S., Haritashya, U. K., and Watson, C. S.: Annual 30 m dataset for glacial lakes in High Mountain Asia from 2008 to 2017, *Earth Syst. Sci. Data*, 13, 741–766, <https://doi.org/10.5194/essd-13-741-2021>, 2021.
- 415 Dehecq, A., Gourmelen, N., Gardner, A. S., Brun, F., Goldberg, D., Nienow, P. W., Berthier, E., Vincent, C., Wagnon, P., and Trouvé, E.: Twenty-first century glacier slowdown driven by mass loss in High Mountain Asia, *Nat. Geosci.*, 12, 22–27, <https://doi.org/10.1038/s41561-018-0271-9>, 2019.
- Farinotti, D., Huss, M., Bauder, A., Funk, M., and Truffer, M.: A method to estimate the ice volume and ice-thickness distribution of alpine glaciers, *J. Glaciol.*, 55, 422–430, <https://doi.org/10.3189/002214309788816759>, 2009.
- 420 Fujita, K., Suzuki, R., Nuimura, T., and Sakai, A.: Performance of ASTER and SRTM DEMs, and their potential for assessing glacial lakes in the Lunana region, Bhutan Himalaya, *J. Glaciol.*, 54, 220–228, <https://doi.org/10.3189/002214308784886162>, 2008.
- Fujita, K., Sakai, A., Takenaka, S., Nuimura, T., Surazakov, A. B., Sawagaki, T., and Yamanokuchi, T.: Potential flood volume of Himalayan glacial lakes, *Nat. Hazards Earth Syst. Sci.*, 13, 1827–1839, <https://doi.org/10.5194/nhess-13-1827-2013>,
425 2013.
- Gardelle, J., Arnaud, Y., and Berthier, E.: Contrasted evolution of glacial lakes along the Hindu Kush Himalaya mountain range between 1990 and 2009, *Global Planet. Change*, 75, 47–55, <https://doi.org/10.1016/j.gloplacha.2010.10.003>, 2011.
- 430 Gardner, A. S., Moholdt, G., Scambos, T., Fahnestock, M., Ligtenberg, S., van den Broeke, M., and Nilsson, J.: Increased West Antarctic and unchanged East Antarctic ice discharge over the last 7 years, *The Cryosphere*, 12, 521–547, <https://doi.org/10.5194/tc-12-521-2018>, 2018.
- Gardner, A. S., M. A. Fahnestock, and T. A. Scambos, [Accessed May 1, 2021]. ITS_LIVE Regional Glacier and Ice Sheet Surface Velocities. Data archived at National Snow and Ice Data Center; doi:10.5067/6II6VW8LLWJ7, 2019.
- Girod, L., Nuth, C., Kääb, A., Etzelmueller, B., and Kohler, J.: Terrain changes from images acquired on opportunistic flights
435 by SfM photogrammetry, *The Cryosphere*, 11, 827–840, <https://doi.org/10.5194/tc-11-827-2017>, 2017.
- Haritashya, U. K., Kargel, J. S., Shugar, D. H., Leonard, G. J., Strattman, K., Watson, C. S., Shean, D., Harrison, S., Mandli, K. T., and Regmi, D.: Evolution and Controls of Large Glacial Lakes in the Nepal Himalaya, *Remote Sensing*, 10, 798, <https://doi.org/10.3390/rs10050798>, 2018.
- 440 Heid, T. and Kääb, A.: Evaluation of existing image matching methods for deriving glacier surface displacements globally from optical satellite imagery, *Remote Sens. Environ.*, 118, 339–355, <https://doi.org/10.1016/j.rse.2011.11.024>, 2012.
- Kääb, A., Berthier, E., Nuth, C., Gardelle, J., and Arnaud, Y.: Contrasting patterns of early twenty-first-century glacier mass change in the Himalayas, *Nature*, 488, 495–498, <https://doi.org/10.1038/nature11324>, 2012.
- King, O., Dehecq, A., Quincey, D., and Carrivick, J.: Contrasting geometric and dynamic evolution of lake and land-terminating glaciers in the central Himalaya, *Global Planet. Change*, 167, 46–60,
445 <https://doi.org/10.1016/j.gloplacha.2018.05.006>, 2018.

- King, O., Bhattacharya, A., Bhambri, R., and Bolch, T.: Glacial lakes exacerbate Himalayan glacier mass loss, *Sci. Rep.*, 9, 18145, <https://doi.org/10.1038/s41598-019-53733-x>, 2019.
- Komori, J.: Recent expansions of glacial lakes in the Bhutan Himalayas, *Quat. Int.*, 184, 177–186, <https://doi.org/10.1016/j.quaint.2007.09.012>, 2008.
- 450 Liu, Q., Mayer, C., Wang, X., Nie, Y., Wu, K., Wei, J., and Liu, S.: Interannual flow dynamics driven by frontal retreat of a lake-terminating glacier in the Chinese Central Himalaya, *Earth Planet. Sci. Lett.*, 546, 116450, <https://doi.org/10.1016/j.epsl.2020.116450>, 2020.
- Maurer, J. M., Rupper, S. B., and Schaefer, J. M.: Quantifying ice loss in the eastern Himalayas since 1974 using declassified spy satellite imagery, *The Cryosphere*, 10, 2203–2215, <https://doi.org/10.5194/tc-10-2203-2016>, 2016.
- 455 Maurer, J. M., Schaefer, J. M., Rupper, S., and Corley, A.: Acceleration of ice loss across the Himalayas over the past 40 years, *Sci. Adv.*, 5, eaav7266, <https://doi.org/10.1126/sciadv.aav7266>, 2019.
- Maurer, J. M., Schaefer, J. M., Russell, J. B., Rupper, S., Wangdi, N., Putnam, A. E., and Young, N.: Seismic observations, numerical modeling, and geomorphic analysis of a glacier lake outburst flood in the Himalayas, *Sci. Adv.*, 6, <https://doi.org/10.1126/sciadv.aba3645>, 2020.
- 460 Messerli, A. and Grinsted, A.: Image georectification and feature tracking toolbox: ImGRAFT, *Geosci. Instrum. Methods Data Syst.*, 4, 23–34, <https://doi.org/10.5194/gi-4-23-2015>, 2015.
- Mertes, J. R., Gulley, J. D., Benn, D. I., Thompson, S. S., and Nicholson, L. I.: Using structure-from-motion to create glacier DEMs and orthoimagery from historical terrestrial and oblique aerial imagery: SfM on Differing Historical Glacier Imagery Sets, *Earth Surf. Proc. Land., Processes Landforms*, 42, 2350–2364, <https://doi.org/10.1002/esp.4188>, 2017.
- 465 Nie, Y., Sheng, Y., Liu, Q., Liu, L., Liu, S., Zhang, Y., and Song, C.: A regional-scale assessment of Himalayan glacial lake changes using satellite observations from 1990 to 2015, *Remote Sens. Environ.*, 189, 1–13, <https://doi.org/10.1016/j.rse.2016.11.008>, 2017.
- Nuimura, T., Fujita, K., Fukui, K., Asahi, K., Aryal, R., and Ageta, Y.: Temporal Changes in Elevation of the Debris-Covered Ablation Area of Khumbu Glacier in the Nepal Himalaya since 1978, *Arct. Antarct. Alp. Res.*, 43, 246–255, <https://doi.org/10.1657/1938-4246-43.2.246>, 2011.
- 470 Nuimura, T., Fujita, K., Yamaguchi, S., and Sharma, R. R.: Elevation changes of glaciers revealed by multitemporal digital elevation models calibrated by GPS survey in the Khumbu region, Nepal Himalaya, 1992–2008, *J. Glaciol.*, 58, 648–656, <https://doi.org/10.3189/2012JoG11J061>, 2012.
- Nuimura, T., Sakai, A., Taniguchi, K., Nagai, H., Lamsal, D., Tsutaki, S., Kozawa, A., Hoshina, Y., Takenaka, S., Omiya, S., Tsunematsu, K., Tshering, P., and Fujita, K.: The GAMDAM glacier inventory: a quality-controlled inventory of Asian glaciers, *The Cryosphere*, 9, 849–864, <https://doi.org/10.5194/tc-9-849-2015>, 2015.
- 475 Nuimura, T., Fujita, K., and Sakai, A.: Downwasting of the debris-covered area of Lirung Glacier in Langtang Valley, Nepal Himalaya, from 1974 to 2010, *Quat. Int.*, 455, 93–101, <https://doi.org/10.1016/j.quaint.2017.06.066>, 2017.

- Paul, F., Barrand, N. E., Baumann, S., Berthier, E., Bolch, T., Casey, K., Frey, H., Joshi, S. P., Konovalov, V., Le Bris, R., Mölg, N., Nosenko, G., Nuth, C., Pope, A., Racoviteanu, A., Rastner, P., Raup, B., Scharrer, K., Steffen, S., and Winsvold, S.: On the accuracy of glacier outlines derived from remote-sensing data, *Ann. Glaciol.*, 54, 171–182, <https://doi.org/10.3189/2013AoG63A296>, 2013.
- Pronk, J. B., Bolch, T., King, O., Wouters, B., and Benn, D. I.: Contrasting surface velocities between lake- and land-terminating glaciers in the Himalayan region. *The Cryosphere*, 15, 5577–5599, <https://doi.org/10.5194/tc-15-5577-2021>, 2021.
- Quincey, D. J., Richardson, S. D., Luckman, A., Lucas, R. M., Reynolds, J. M., Hambrey, M. J., and Glasser, N. F.: Early recognition of glacial lake hazards in the Himalaya using remote sensing datasets, *Glob. Planet. Change*, 56, 137–152, <https://doi.org/10.1016/j.gloplacha.2006.07.013>, 2007.
- Quincey, D. J., Luckman, A., and Benn, D.: Quantification of Everest region glacier velocities between 1992 and 2002, using satellite radar interferometry and feature tracking, <https://doi.org/10.3189/002214309789470987>, 2009.
- Richardson, S. D. and Reynolds, J. M.: An overview of glacial hazards in the Himalayas, *Quat. Int.*, 65–66, 31–47, [https://doi.org/10.1016/S1040-6182\(99\)00035-X](https://doi.org/10.1016/S1040-6182(99)00035-X), 2000.
- Sakai, A. and Fujita, K.: Formation conditions of supraglacial lakes on debris-covered glaciers in the Himalaya, *J. Glaciol.*, 56, 177–181, <https://doi.org/10.3189/002214310791190785>, 2010.
- ~~Sakai, A., Fujita, K., Duan, K., Pu, J., Nakawo, M., and Yao, T.: Five decades of shrinkage of July 1st glacier, Qilian Shan, China, *J. Glaciol.*, 52, 11–16, <https://doi.org/10.3189/172756506781828836>, 2006.~~
- Sakai, A., Nishimura, K., Kadota, T., and Takeuchi, N.: Onset of calving at supraglacial lakes on debris-covered glaciers of the Nepal Himalaya, *J. Glaciol.*, 55, 909–917, <https://doi.org/10.3189/002214309790152555>, 2009.
- Sakai, A.: Brief communication: Updated GAMDAM glacier inventory over high-mountain Asia, *The Cryosphere*, 13, 2043–2049, <https://doi.org/10.5194/tc-13-2043-2019>, 2019.
- Sakakibara, D. and Sugiyama, S.: Ice-front variations and speed changes of calving glaciers in the Southern Patagonia Icefield from 1984 to 2011: calving glaciers in southern Patagonia, *J. Geophys. Res. Earth Surf.*, 119, 2541–2554, <https://doi.org/10.1002/2014JF003148>, 2014.
- Sato, Y., Fujita, K., Inoue, H., Sunako, S., Sakai, A., Tsushima, A., Podolskiy, E., Kayastha, R., and Kayastha, R.: Ice cliff dynamics of debris-covered Trakarding Glacier in the Rolwaling region, Nepal Himalaya, *Front. Earth Sci.-China*, 9, 398, <https://doi.org/10.3389/feart.2021.623623>, 2021.
- Shean, D. E., Bhushan, S., Montesano, P., Rounce, D. R., Arendt, A., and Osmanoglu, B.: A Systematic, Regional Assessment of High Mountain Asia Glacier Mass Balance, *Front. Earth Sci.-China*, 7, 363, <https://doi.org/10.3389/feart.2019.00363>, 2020.
- Shugar, D. H., Burr, A., Haritashya, U. K., Kargel, J. S., Watson, C. S., Kennedy, M. C., Bevington, A. R., Betts, R. A., Harrison, S., and Strattman, K.: Rapid worldwide growth of glacial lakes since 1990, *Nat. Clim. Change*, 939–945, <https://doi.org/10.1038/s41558-020-0855-4>, 2020.

- Song, C., Sheng, Y., Wang, J., Ke, L., Madson, A., and Nie, Y.: Heterogeneous glacial lake changes and links of lake expansions to the rapid thinning of adjacent glacier termini in the Himalayas, *Geomorphology*, 280, 30–38, <https://doi.org/10.1016/j.geomorph.2016.12.002>, 2017.
- Suzuki, R., Fujita, K., and Ageta, Y.: Spatial distribution of thermal properties on debris-covered glaciers in the Himalayas derived from ASTER data, *Bull. Glaciol. Res.*, 24, ~~13–22~~^{C21A–1133}, 2007.
- Tshering, P. and Fujita, K.: First in situ record of decadal glacier mass balance (2003–2014) from the Bhutan Himalaya, *Ann. Glaciol.*, 57, 289–294, <https://doi.org/10.3189/2016AoG71A036>, 2016.
- Tsutaki, S., Nishimura, D., Yoshizawa, T., and Sugiyama, S.: Changes in glacier dynamics under the influence of proglacial lake formation in Rhonegletscher, Switzerland, *Ann. Glaciol.*, 52, 31–36, <https://doi.org/10.3189/172756411797252194>, 2011.
- Tsutaki, S., Sugiyama, S., Nishimura, D., and Funk, M.: Acceleration and flotation of a glacier terminus during formation of a proglacial lake in Rhonegletscher, Switzerland, *J. Glaciol.*, 59, 559–570, <https://doi.org/10.3189/2013JoG12J107>, 2013.
- Tsutaki, S., Fujita, K., Nuimura, T., Sakai, A., Sugiyama, S., Komori, J., and Tshering, P.: Contrasting thinning patterns between lake- and land-terminating glaciers in the Bhutanese Himalaya, *The Cryosphere*, 13, 2733–2750, <https://doi.org/10.5194/tc-13-2733-2019>, 2019.
- Vincent, C., Wagnon, P., Shea, J. M., Immerzeel, W. W., Kraaijenbrink, P., Shrestha, D., Soruco, A., Arnaud, Y., Brun, F., Berthier, E., and Sherpa, S. F.: Reduced melt on debris-covered glaciers: investigations from Changri Nup Glacier, Nepal, *The Cryosphere*, 10, 1845–1858, <https://doi.org/10.5194/tc-10-1845-2016>, 2016.
- Watson, C. S., Kargel, J. S., Shugar, D. H., Haritashya, U. K., Schiassi, E., and Furfaro, R.: Mass Loss From Calving in Himalayan Proglacial Lakes, *Front. Earth Sci. China*, 7, 342, <https://doi.org/10.3389/feart.2019.00342>, 2020.
- Wei, J., Liu, S., Wang, X., Zhang, Y., Jiang, Z., Wu, K., Zhang, Z., and Zhang, T.: Longbasaba Glacier recession and contribution to its proglacial lake volume between 1988 and 2018, *J. Glaciol.*, 1–12, doi:10.1017/jog.2020.119, 2021.
- Westoby, M. J., Glasser, N. F., Brasington, J., Hambrey, M. J., Quincey, D. J., and Reynolds, J. M.: Modelling outburst floods from moraine-dammed glacial lakes, *Earth-Sci. Rev.*, 134, 137–159, <https://doi.org/10.1016/j.earscirev.2014.03.009>, 2014.
- Yamada, T., Naito, N., Kohshima, S., Fushimi, H., Nakazawa, F., Segawa, T., Uetake, J., Suzuki, R., Sato, N., Karma, Chhetri, I. K., Gyenden, L., Yabuki, H., and Chikita, K.: Outline of 2002 – research activities on glaciers and glacier lakes in Lunana region, Bhutan Himalaya, *Bull. Glaciol. Res.*, 21, 79–90, 2004.
- Zhang, G., Yao, T., Xie, H., Wang, W., and Yang, W.: An inventory of glacial lakes in the Third Pole region and their changes in response to global warming, *Global Planet. Change*, 131, 148–157, <https://doi.org/10.1016/j.gloplacha.2015.05.013>, 2015.

- 545 Zhang, G., Bolch, T., Allen, S., Linsbauer, A., Chen, W., and Wang, W.: Glacial lake evolution and glacier–lake interactions
in the Poiqu River basin, central Himalaya, 1964–2017, *J. Glaciol.*, 65, 347–365, <https://doi.org/10.1017/jog.2019.13>,
2019.
- Zheng, G., Allen, S. K., Bao, A., Ballesteros-Cánovas, J. A., Huss, M., Zhang, G., Li, J., Yuan, Y., Jiang, L., Yu, T., Chen,
W., and Stoffel, M.: Increasing risk of glacial lake outburst floods from future Third Pole deglaciation, *Nat. Clim.*
550 *Change*, 11, 411–417, <https://doi.org/10.1038/s41558-021-01028-3>, 2021.

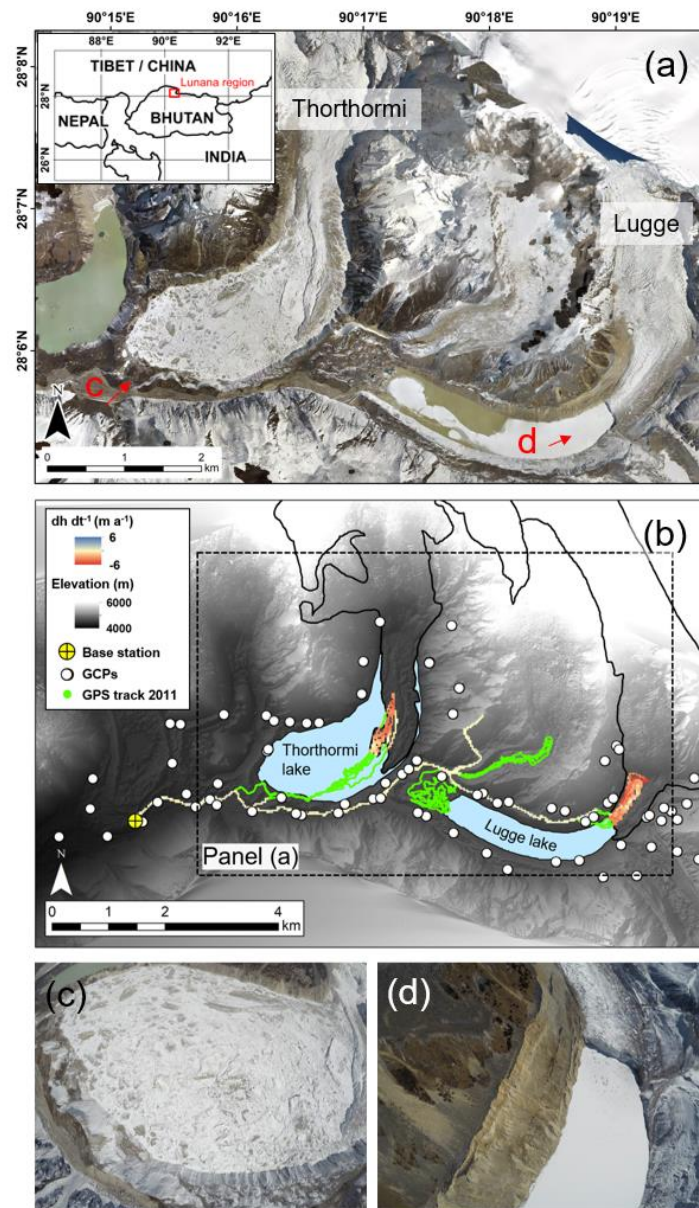
Table 1. Comparison of the measured surface elevation change rates of Thorthormi and Lugge glaciers from various studies.

| Rate of surface elevation change (m a ⁻¹) | | | |
|---|--------------------|---------------|-----------------------|
| Period | Thorthormi Glacier | Lugge Glacier | Reference |
| 1975–2000 | −0.16 | −1.20 | Maurer et al. (2019) |
| 2000–2016 | −1.30 | −3.50 | Maurer et al. (2019) |
| 2000–2016 | −1.29 | −3.81 | Brun et al. (2017) |
| 2004–2011 (DGPS) | −1.40 ± 0.27 | −4.67 ± 0.27 | Tsutaki et al. (2019) |
| 2004–2011 (ASTER) | −1.61 ± 2.75 | −2.24 ± 2.75 | Tsutaki et al. (2019) |
| 2011–2018 | −2.78 ± 0.62 | −2.87 ± 0.62 | This study |

560

Table 2. Comparison of the emergence velocity of Thorthormi Glacier in 2011 and 2017. The mean values are calculated for the 2400–3500 m section from the 2002 terminus (Fig. S4). Two basal sliding conditions are assumed, whereby depth-averaged velocity equals either 90% or 100% of the surface velocity.

| | <u>2011</u> | | <u>2017</u> | |
|--|--------------------|--------------------|----------------------|----------------------|
| <u>Depth-averaged velocity</u> | <u>90%</u> | <u>100%</u> | <u>90%</u> | <u>100%</u> |
| <u>Emergence velocity (m a⁻¹)</u> | <u>5.20 ± 3.78</u> | <u>5.78 ± 4.20</u> | <u>-0.69 ± 11.65</u> | <u>-0.77 ± 12.94</u> |



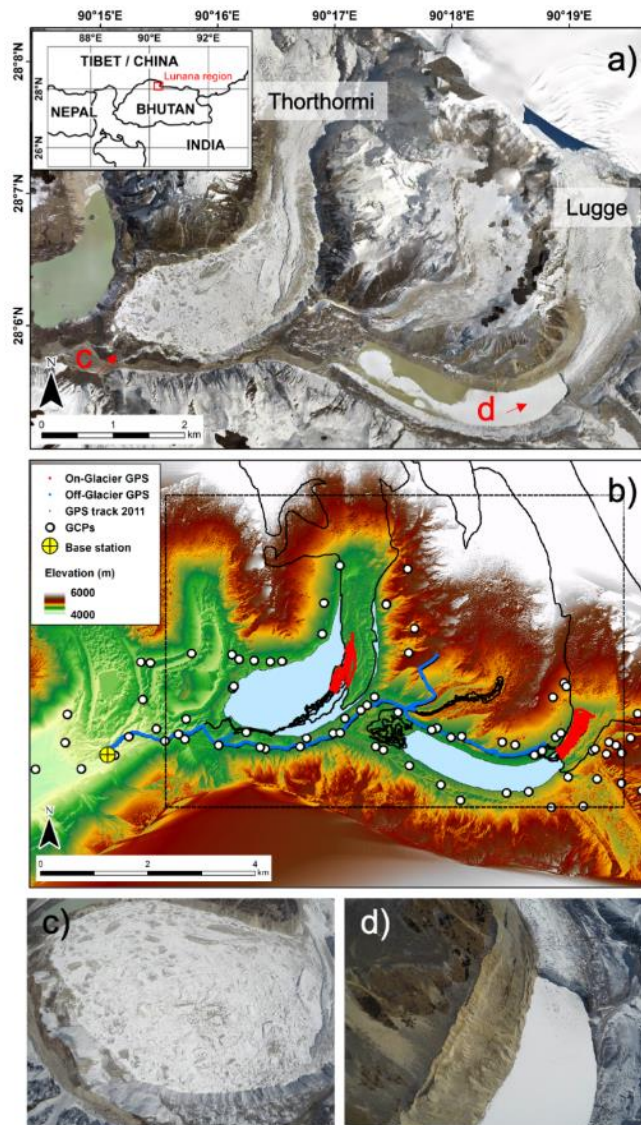
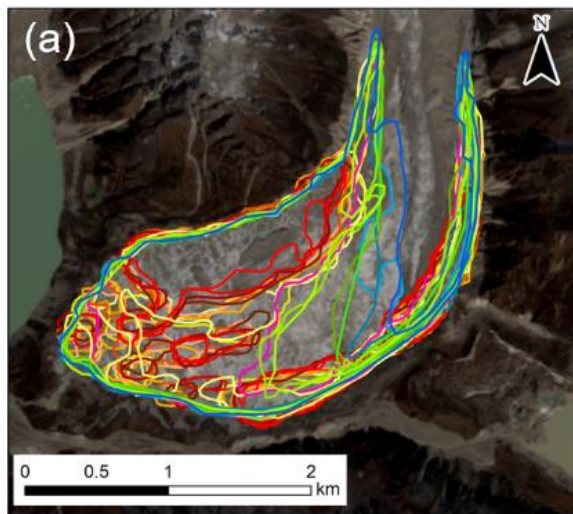
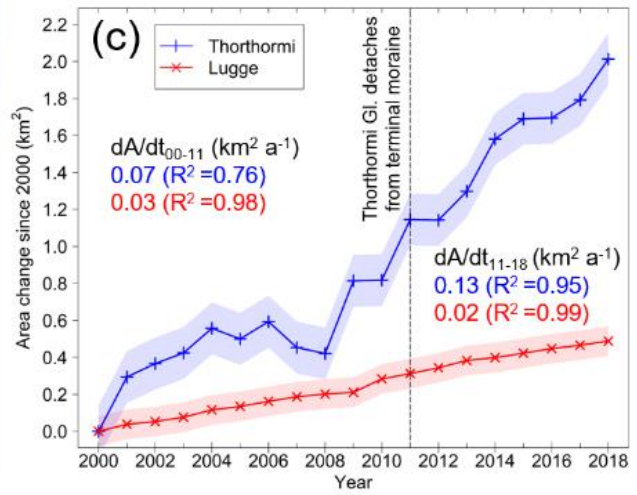
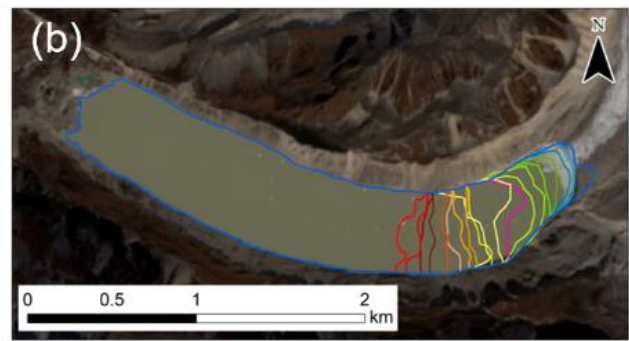


Figure 1. Details of the study site. (a) Location of the Lunana region (inset) and helicopter photogrammetry (HP) orthoimage of Thorthormi and Lugge glaciers (acquired on March 24, 2018). (b) Surface elevation map generated from the HP-DEM using ground control points (GCPs) for terrain data processing (open circles) and 2011 GPS tracks (dots). (c) and (d) Aerial photographs of Thorthormi and Lugge glaciers. Red arrows in panel (a) indicate the directions from which the aerial photographs were taken. The dashed box in (b) shows the domain of (a). Red and blue GPS tracks in (b) are used for the elevation change analysis and DEM accuracy assessment (Sect. 3.2), respectively; the green GPS tracks in (b) were not used for the DEM accuracy check or elevation change analysis.



| | | |
|------------|------------|------------|
| 17/11/2000 | 18/11/2006 | 18/11/2012 |
| 04/11/2001 | 21/11/2007 | 29/11/2013 |
| 07/11/2002 | 23/11/2008 | 18/12/2014 |
| 26/11/2003 | 26/11/2009 | 19/11/2015 |
| 28/11/2004 | 29/11/2010 | 05/11/2016 |
| 15/11/2005 | 02/12/2011 | 08/11/2017 |
| | | 27/11/2018 |



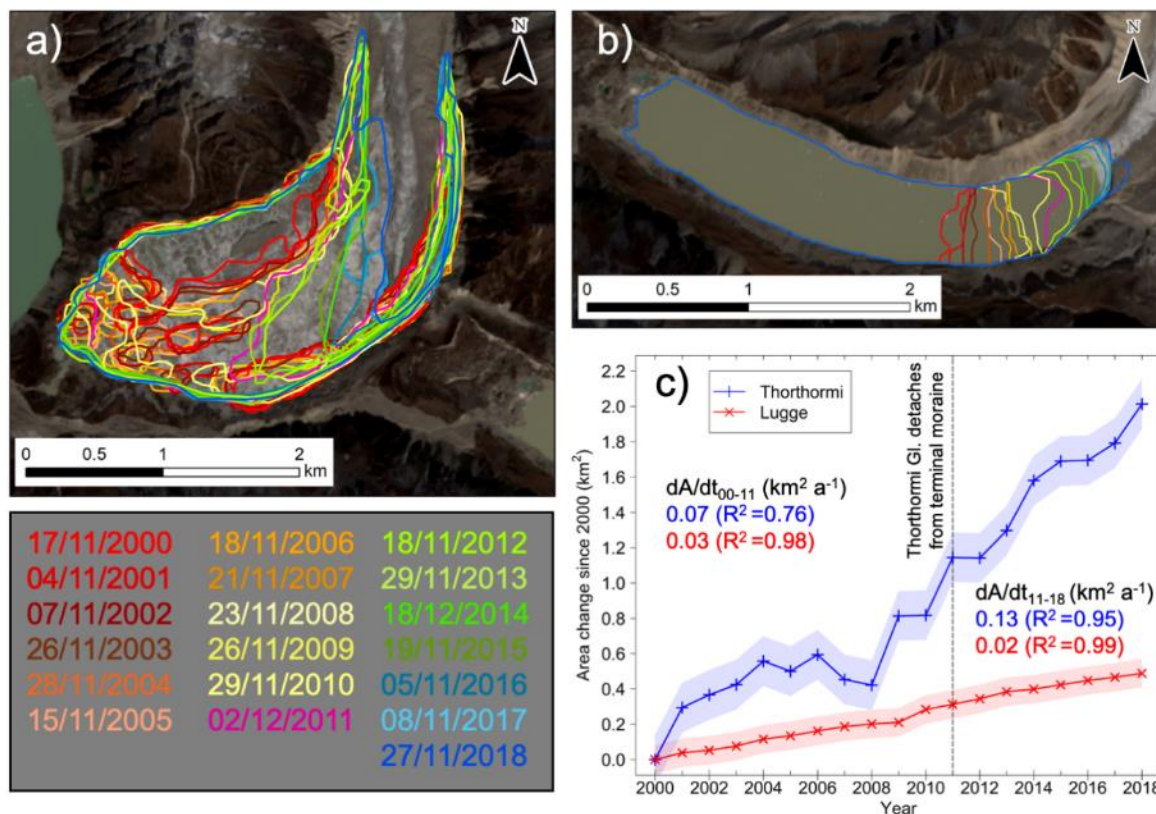


Figure 2. Temporal variations in the spatial extents of (a) Thorthormi and (b) Lugge proglacial lakes. (c) Cumulative changes in lake area for Thorthormi and Lugge glaciers relative to 2000. The background images in (a) and (b) are Sentinel-2 satellite images that were acquired on 11 November 2017. The 2000–2011 lake outlines are from Tsutaki et al. (2019). The dA/dt values in (c) are the 2000–2011 (upper left) and 2011–2018 (lower right) lake expansion rates.

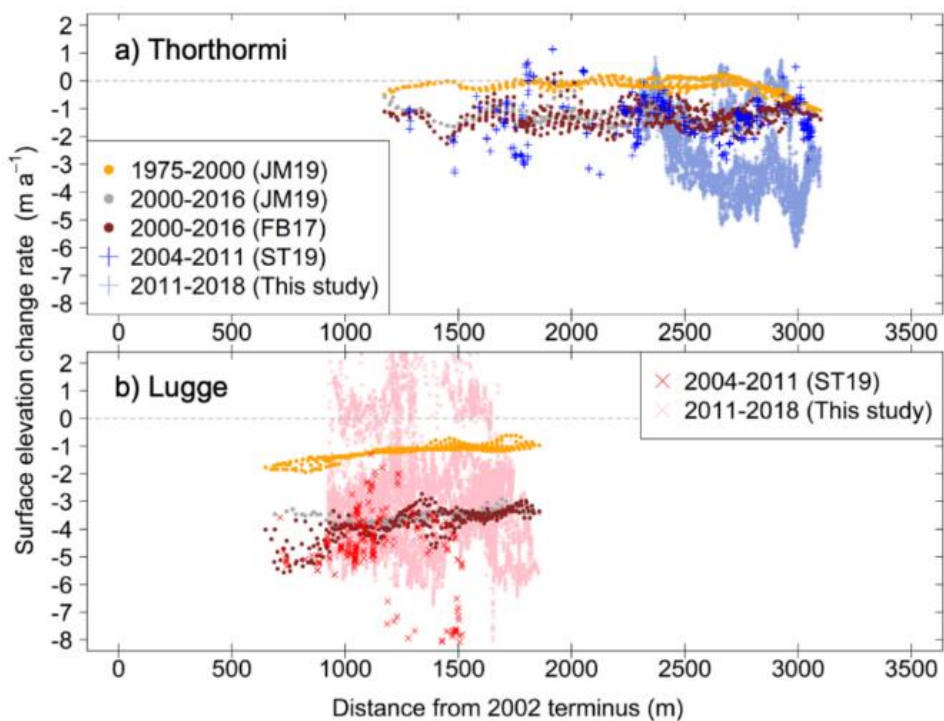
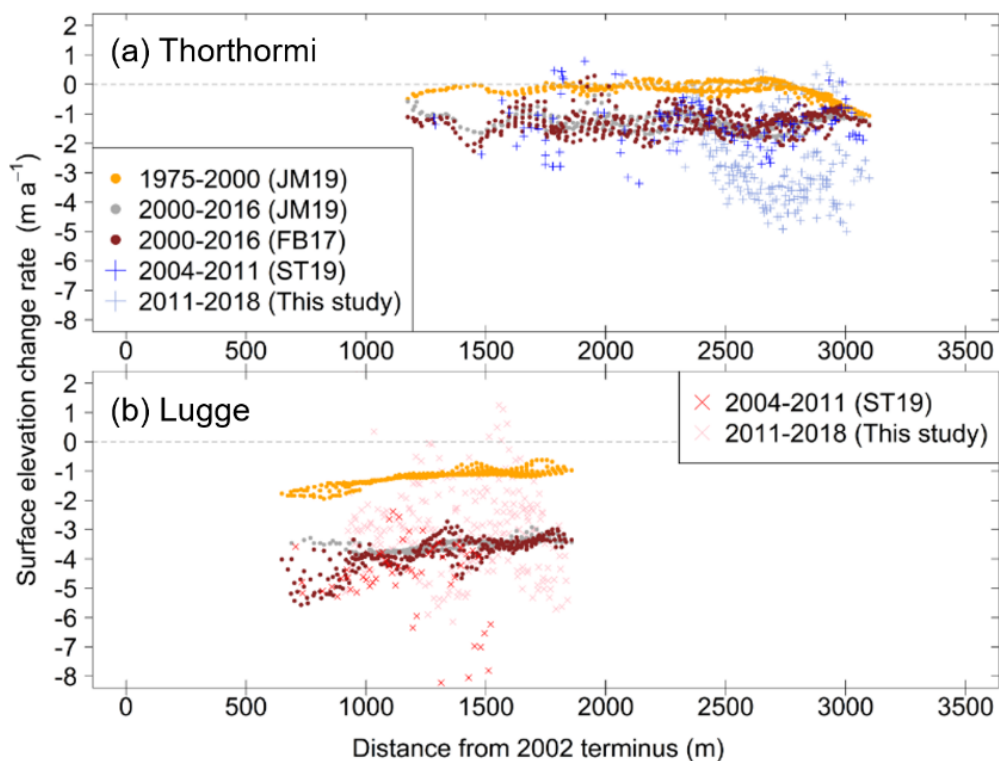
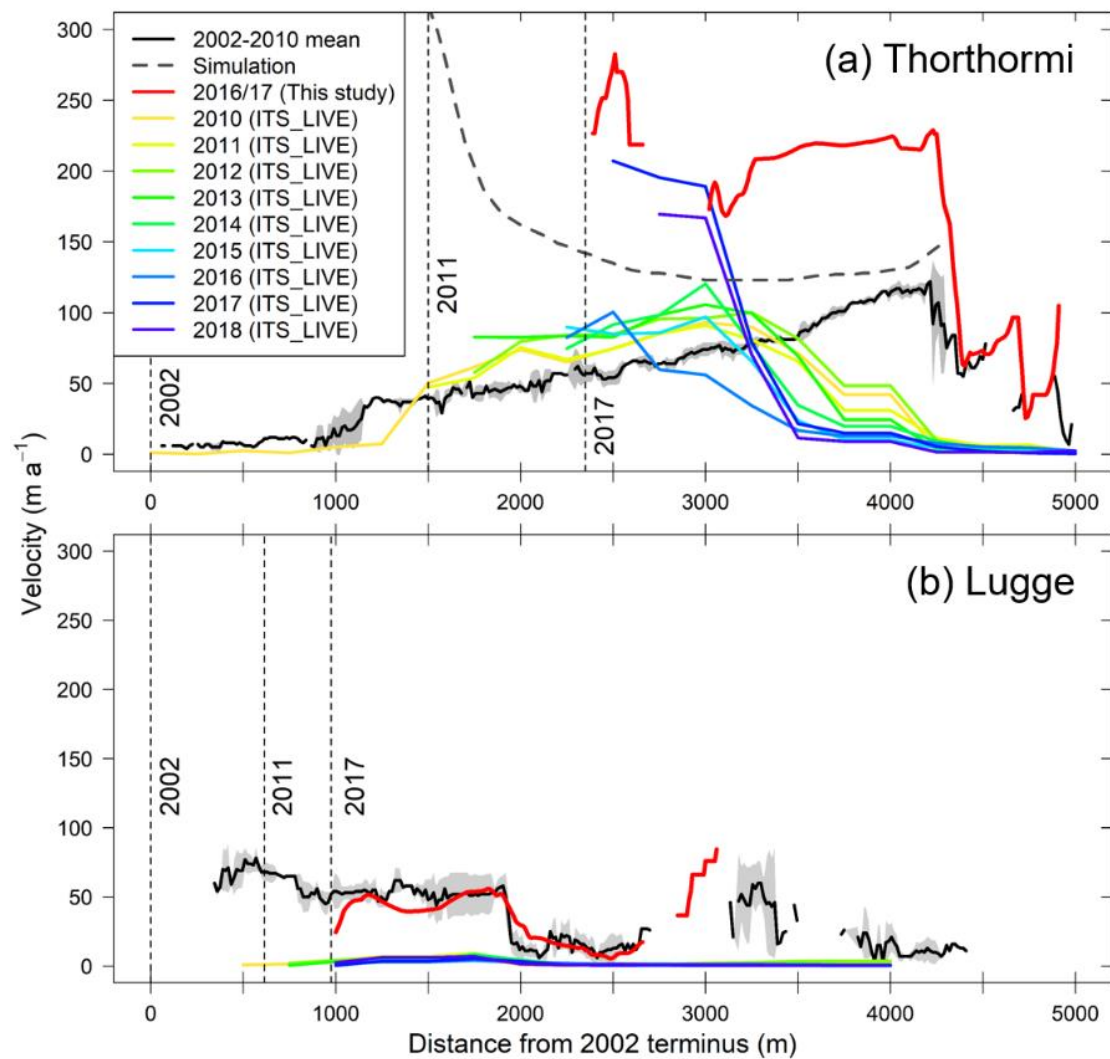


Figure 3. Surface elevation change rates (dh/dt) along (a) Thorthormi and (b) Lügge glaciers (based on the distance from the 2002 glacier terminus). Each panel shows the elevation change rates for 1975–2000 and 2000–2016 (Maurer et al., 2019; JM19), 2000–2016 (Brun et al., 2017; FB17), 2004–2011 (Tsutaki et al., 2019; ST19) and 2011–2018 (this study). HP-DEM and GPS-DEM are resampled to a 30-m resolution for comparison with the dh/dt datasets from previous studies.

590



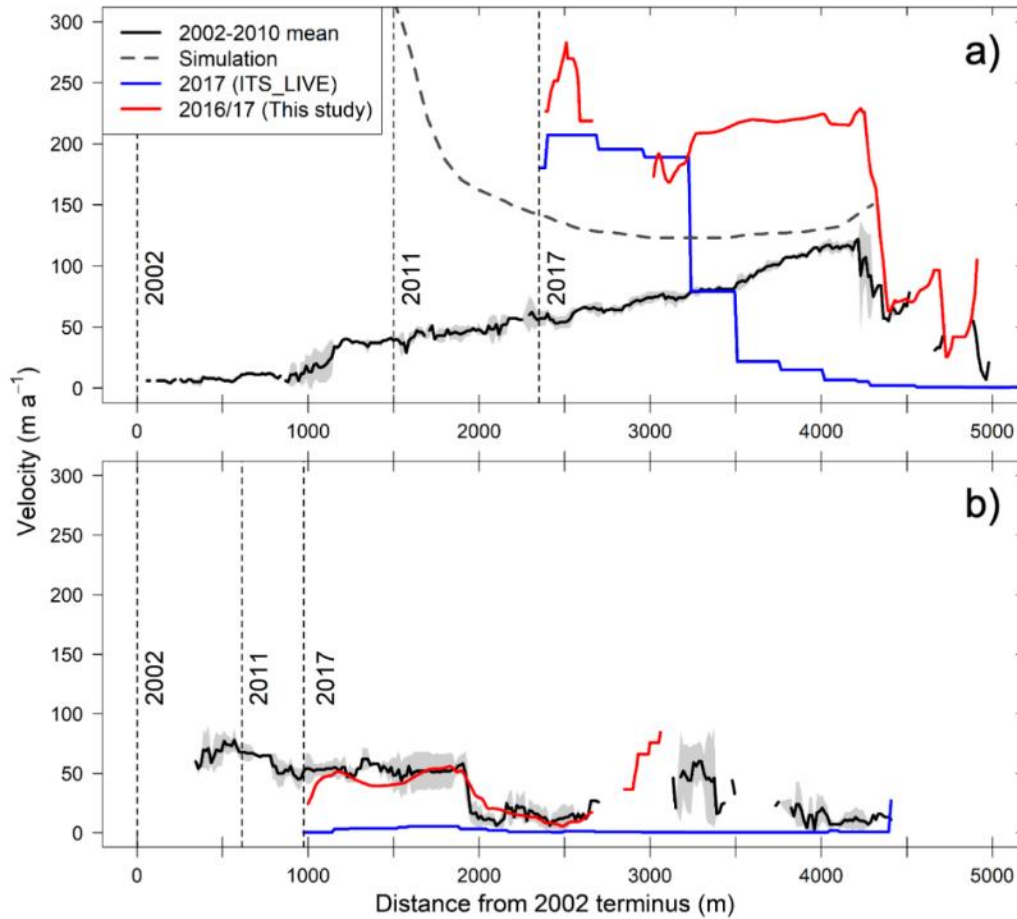


Figure 4. Central flowline velocities of (a) Thorthormi and (b) Lugge glaciers. Dashed vertical lines indicate the glacier terminus positions in 2002, 2011 and 2017. The red lines represent the flow velocity that was calculated in this study (2016–2017). Interannual velocities (2010–2018) are extracted from the ITS_LIVE velocity product. Blue and red lines represent the flow velocities from the ITS_LIVE surface velocity field and this study, respectively. BThe black lines and grey shaded regions represent the mean and standard deviation of the flow velocities for the 2002–2010 period, respectively (Tsutaki et al., 2019). The thick dashed line in (a) denotes the simulated surface velocities with a lake-terminating assumption (Tsutaki et al., 2019).