

# Physical and mechanical properties of winter first-year ice in the Antarctic marginal ice zone along the Good Hope Line

Sebastian Skatulla<sup>1</sup>, Riesna R. Audh<sup>2,4</sup>, Andrea Cook<sup>1</sup>, Ehlke Hepworth<sup>2,4</sup>, Siobhan Johnson<sup>3,4</sup>, Doru C. Lupascu<sup>5</sup>, Keith MacHutchon<sup>1</sup>, Rutger Marquart<sup>1,4</sup>, Tommy Mielke<sup>5</sup>, Emmanuel Omatuku<sup>1,4</sup>, Felix Paul<sup>5</sup>, Tokoloho Rampai<sup>3,4</sup>, Jörg Schröder<sup>6</sup>, Carina Schwarz<sup>6</sup>, and Marcello Vichi<sup>2,4</sup>

<sup>1</sup>Department of Civil Engineering, University of Cape Town, Rondebosch, South Africa

<sup>2</sup>Department of Oceanography, University of Cape Town, Rondebosch, South Africa

<sup>3</sup>Department of Chemical Engineering, University of Cape Town, Rondebosch, South Africa

<sup>4</sup>Marine and Antarctic Research Centre for Innovation and Sustainability (MARIS), University of Cape Town, Rondebosch, South Africa

<sup>5</sup>University of Duisburg-Essen, Institute for Materials Science and Center for Nanointegration Duisburg-Essen (CENIDE), Duisburg-Essen, Germany

<sup>6</sup>University of Duisburg-Essen, Institute of Mechanics, Duisburg-Essen, Germany

**Correspondence:** Sebastian Skatulla (sebastian.skatulla@uct.ac.za)

**Abstract.** As part of the 2019 Southern Ocean seasonal Experiment (SCALE) Winter Cruise of the South African icebreaker SA Agulhas II first-year ice was sampled at the advancing outer edge of the Antarctic marginal ice zone along a 150 km-Good Hope Line transect. Ice cores were extracted from four solitary pancake ice floes of 1.83 – 2.95 m diameter and 0.37 – 0.45 m thickness as well as a 12 × 4 m<sup>2</sup> pancake ice floe of 0.31 – 0.76 m thickness part of a larger consolidated pack ice domain. The ice cores were subsequently analysed for temperature, salinity, texture, anisotropic elastic properties and compressive strength. All ice cores from both, solitary pancake ice floes and consolidated pack ice, exhibited predominantly granular textures. The vertical distributions of salinity, brine volume and mechanical properties were significantly different for the two ice types. High salinity values of  $12.6 \pm 4.9$  PSU were found at the topmost layer of the solitary pancake ice floes but not for the consolidated pack ice. The uniaxial compressive strength for pancake ice and consolidated pack ice were determined as  $2.3 \pm 0.5$  MPa and  $4.1 \pm 0.9$  MPa, respectively. The Young's and shear moduli in longitudinal core direction of solitary pancake ice were obtained as  $3.7 \pm 2.0$  GPa and  $1.3 \pm 0.7$  GPa, and for consolidated pack ice as  $6.4 \pm 1.6$  GPa and  $2.3 \pm 0.6$  GPa, respectively. Comparing Young's and shear moduli measured in longitudinal and transverse core directions, a clear directional dependency was found, in particular for the consolidated pack ice.

## 1 Introduction

The seasonal sea ice advance and retreat in the Antarctic Marginal Ice Zone (MIZ) of the Southern Ocean (SO) is heavily influenced by harsh atmospheric and oceanic conditions. Accordingly, the sea ice dynamics in this region is characterised by high temporal and spatial fluctuations and still elude reliable prediction by current climate models (Hobbs et al., 2016). Due to the limited in situ data from the Antarctic region throughout the year, well established sea ice rheology models such

as Hibler III (1979); Wang and Shen (2010) are phenomenological approaches considering effective properties of spatially  
20 variable ice concentration and empirically-derived thickness and mechanical properties. In particular in the Antarctic MIZ,  
however, the actual sea ice properties and the scale dependency of sea ice deformation are linked to the specific ice types (e.g.  
consolidated pack ice, solitary pancake ice floes and fluid-like grease ice), varying ice concentration, leads with open water etc.  
Dansereau et al. (2016); Rampal et al. (2008); Weiss and Dansereau (2017). Moreover, the heterogeneous and highly dynamic  
25 sea ice composition is affected by a range of mechanical phenomena in combination such as floe collision dynamics, form  
drag of interstitial grease ice on pancake ice floes and skin drag which can only be accurately resolved by small-scale models  
Alberello et al. (2019); Herman et al. (2019); Kohout et al. (2011); Marquart et al. (2021); Rogers et al. (2016). In this sense,  
large-scale models are not directly informed by the underlying mechanisms and phenomena defining sea ice behaviour, and  
the model parameters have little physical meaning. Therefore, a generalization of these models to sea ice conditions other than  
those for which they were fitted to is problematic Squire (2018).

30 Clearly, more investigation of early-stage ice formation in the Antarctic MIZ is necessary to elucidate the seasonal evolution  
of the ice morphology and to link the physical and mechanical properties from the sub-millimeter to kilometer-scale, as this  
stage defines the ice properties also later at the consolidated and melting stages. In order to acquire an in-depth understanding of  
sea ice characteristics and improve forecasting of sea ice trends, short term and long term, remote observational sea ice data and  
their reanalysis products need to be cross-referenced with in situ observations comprising the actual degree of ice consolidation,  
35 thickness, floe size, material composition and texture. In particular, the mechanics of sea ice in terms of deformation, fracture  
and faulting is linked to a range of spatial and temporal scales Weiss and Dansereau (2017).

On a smaller scale less than 10 km, ice strength is distinctly heterogeneous and anisotropic due to the occurrence of leads  
Hutchings and Hibler III (2008). Also, the distribution of floe characteristics such as size, shape, thickness and concentration  
becomes significant, in particular in the marginal ice zone Hutchings et al. (2012); Bennetts et al. (2017); Roach et al. (2018);  
40 Marquart et al. (2021). Owing to the rough sea states in the winter SO delaying sea ice consolidation and rafting effects, sea  
ice composition is vertically changing in terms of grain size, crystallographic texture and fabrics as well as porosity Timco  
and Weeks (2010); Dempsey and Langhorne (2012). On the meter-scale and smaller, the mechanical behaviour of sea ice  
comprises elastic, inelastic, brittle and viscous material characteristics which are directly related to its grain and pore structure,  
brine inclusions as well as the generally temperature and strain rate-dependent material response Mellor (1986); Schulson et al.  
45 (2006). Short-term and seasonal atmospheric temperature fluctuations, precipitation and associated brine drainage processes  
are continuously altering sea ice composition and properties Wells et al. (2011); Galley et al. (2015); Thomas et al. (2020).  
Accordingly, the mechanical ice properties need to be put into context with ice salinity, temperature, density, porosity, type  
as well as crystal size and orientation Nakawo and Sinha (1981); Kovacs (1996); Timco and Weeks (2010). As previously  
mentioned, in situ data of Antarctic sea ice properties are generally scarce, especially during the winter season due to the chal-  
50 lenging access to this region. With regards to physical properties of Antarctic winter sea ice, its salinity Doble et al. (2003);  
Eicken (1992); Tison et al. (2020), density Urabe and Inoue (1988b) and texture Jeffries et al. (1997, 2001); Lange and Eicken  
(1991); Tison et al. (2017, 2020) have been studied. However, with regards to its mechanical properties including elasticity  
and strength as well as their directional dependency a complete lack of data is found, except for uniaxial compression strength

of Antarctic land-fast ice Urabe and Inoue (1988b). Accurate knowledge of mechanical ice properties is important to parameterize realistic small-scale sea ice dynamics models with respect to aspects concerning e.g. the influence of pancake ice floe deformation on the inelastic collision restitution Herman et al. (2019), ridging Yiew et al. (2017) and fracture Weiss (2013) as well as the wave-induced flexural break-up of consolidated pack ice Passerotti et al. (2022). These mechanical phenomena are strongly linked to sea ice formation and retreat, sea ice drift and wave attenuation in the Antarctic MIZ Alberello et al. (2020); Eayrs et al. (2019); Kohout et al. (2014); Rogers et al. (2016); Smith and Thomson (2019).

This paper will report on the sampling and testing of winter first-year ice at the edge of the Antarctic marginal ice zone along the Good Hope Line during the 2019 SCALE<sup>1</sup> Winter Cruise. It is the first winter expedition dedicated to MIZ measurements in the eastern Weddell Sea region after the earlier observations in the late 1980s, early 1990s and 2013 (e.g. LANGE ET AL. Lange et al. (1989), EICKEN ET AL. Eicken et al. (1994), KIVIMAA ET AL. Kivimaa and Kosloff (1994b), HAAS ET AL. Haas et al. (1992), DOBLE ET AL. Doble et al. (2001) and TISON ET AL. 2017 Tison et al. (2017)). The focus is on the physical and mechanical properties of sea ice in the MIZ from the edge into more consolidated pack ice conditions. The properties determined include sea ice texture, temperature, bulk salinity, bulk density, elastic properties, uniaxial compressive strength as well as snow thickness and salinity.

The plan of this paper is as follows: Sec. 2 elaborates on sampling and testing methods, Sec. 3 describes and discusses physical and mechanical data obtained, and a summary of the findings is provided in Sec. 4.

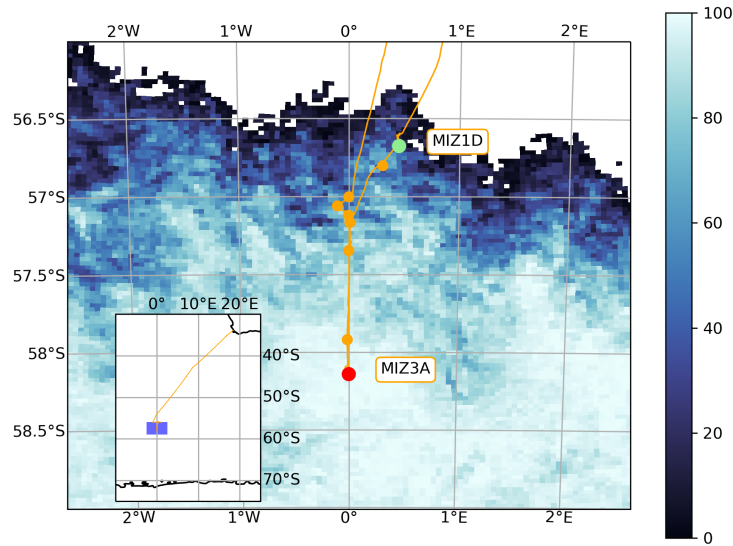
## 2 Materials and Methods

### 2.1 Sample collection

The 2019 Winter SCALE cruise started with the SA Agulhas II departing from Cape Town on the July 18, 2019 sailing directly south to the Antarctic MIZ. The ship entered the ice on the July 26, 2019 at 1pm and exited on the July 28, 2019 at 8:30pm. An overview of the MIZ stations is shown in Fig. 1 with the naming convention and corresponding coordinates listed in Tab. 1. The station plan was designed to resolve the evolution of sea ice features from the open ocean into more consolidated sea ice conditions. Due to contingency and time optimization, the sequence of stations did not follow the original design. The naming convention was extended to preserve the original geographic distribution of MIZ1X being at the edge with the open ocean and MIZ3X in consolidated pack ice. Stations were therefore turned into clusters, where overboard ice coring, pancake ice collection, grease ice sampling, buoy deployment, environmental measurements and ocean sampling took place. Additional biogeochemical sampling was performed at MIZ2X which is, however, not part of this work.

A complete set of sea ice observations was done every hour from the bridge commencing on July 26, 2019 at 1pm and ended on July 28, 2019 at 8:30pm when entering and exiting the ice, respectively. Observations were collected according to the Antarctic Sea Ice Processes and Climate (ASPeCt) protocol estimating ice concentration, ice type, floe size and thickness, cloud

<sup>1</sup> Southern Ocean Seasonal Experiment <http://scale.org.za/>



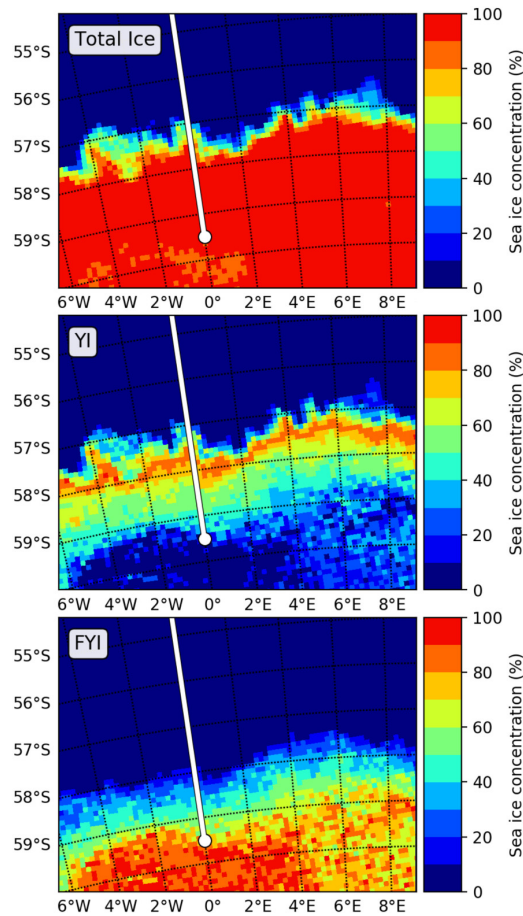
**Figure 1.** Map with the two ice stations MIZ1D and MIZ3A indicated by green and red-coloured circles, respectively. The ship entered the MIZ from the westernmost course and exited from the easternmost course. The sea ice concentration chart was obtained from the University of Hamburg ASI-AMSR2 processing for the July 26, 2019, concentration values in [%]. The small map inlet shows the route from Cape Town to the study area highlighted in blue color.

**Table 1.** List of ice sampling stations.

| Station | Start Date & Time           | Latitude   | Longitude |
|---------|-----------------------------|------------|-----------|
| MIZ3A   | July 27, 2019 10:38am (UTC) | S 58.13783 | W 0.00442 |
| MIZ1D   | July 28, 2019 9:15am (UTC)  | S 56.80178 | E 0.30262 |

cover, visibility, weather, and air and sea surface temperature. The initially higher frequency observations were eventually  
85 combined into the hourly frequency required by ASPeCt Hepworth et al. (2020).

The first ice floes were observed in the early afternoon of the July 26, 2019. Sea ice features were rapidly varying and large  
expanses of consolidated pack ice were found at the latitude of MIZ3. Ice navigation and planning was assisted by i) ice edge  
charting based on satellite data and reanalysis products by the South African Weather Service (SAWS) de Vos et al. (2021),  
and ii) a prototype remote sensing product describing multi-year ice concentration and other sea ice types developed by the  
90 University of Bremen Melsheimer and Spreen (2021). The latter distinguishes the different ice types (young ice, first-year ice  
and multi-year ice) based on the combination of passive microwave and scatterometer data using an algorithm developed by

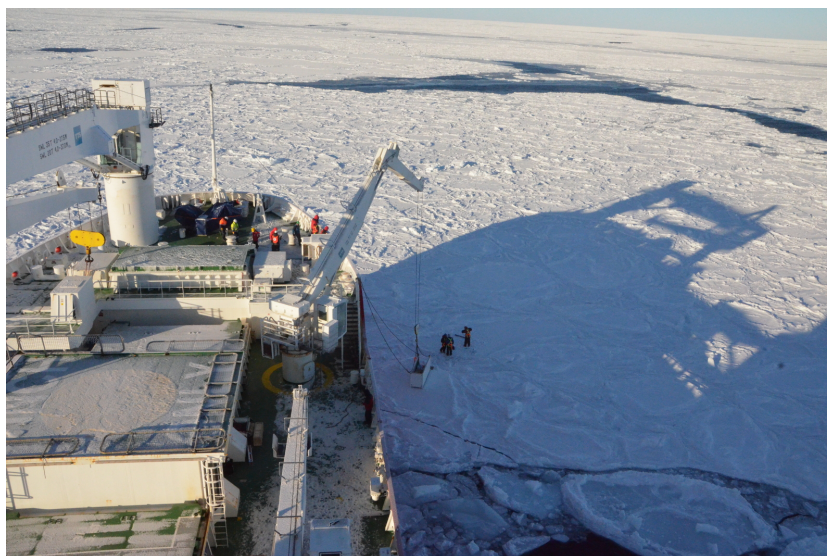


**Figure 2.** Sea ice type concentration data provided by the University of Bremen. Daily concentration of total ice, young ice (YI) and first-year ice (FYI) on the July 24, 2019 prior to the ship entering the MIZ. The cruise plan and the southernmost station (MIZ3A) are also shown. Data are available at <https://seaice.uni-bremen.de/data/MultiYearIce>

Environment Canada’s Ice Concentration Extractor (ECICE) Shokr and Agnew (2013) and corrections by YE ET AL. Ye et al. (2015). Fig. 2 shows that the southernmost ice station was expected to be predominantly in first-year ice (FYI) conditions, which was confirmed on site. The MIZ with unconsolidated ice conditions, composed of pancake ice floes of about 1 to 5 m-  
 95 diameter, likely extended for about 200 km southward as indicated by the young ice (YI) map features in Fig. 2. **With reference to WMO (code 3739), ice age ID 5 applied for the southernmost ice station and ice age ID 3 for the most northerly station.**

Fieldwork operations involving ice core sampling took place on the southward-bound leg at the most southerly station, MIZ3A, as shown in Fig. 1 on July 27, 2019 between 10am-4pm (UTC). Operations took place at daylight in harsh conditions. The air temperature was  $-17^{\circ}\text{C}$  and the wind speed  $20\text{ ms}^{-1}$ , according to the on-board equipment of the South African  
 100 Weather Services. Large first-year floes, ranging between 500-2000 m in diameter, completely covered the ocean, each one

composed of cemented pancake ice floes of smaller sizes. The coring and temperature measurement of cores were done on a single pancake ice floe, about  $12\text{ m} \times 4\text{ m}$  in dimensions, part of a larger consolidated pack ice domain located off the starboard bow as shown in Fig. 3. All cores were extracted in vertical direction, perpendicular to the ice floe surface. A total of 26 cores



**Figure 3.** Coring field at MIZ3A showing the cemented pancakes with sizes varying between 3 and 15 m.

were collected using a 1 m-long 9 cm-diameter Kovacs Mark II barrel operated with an electric drill. Each core was dedicated  
105 for a specific type of testing, with the core IDs and corresponding names found in App. A1 in Tab. A1. The length of the  
cores is representative of the pack ice thickness. Three of them were immediately processed after coring to determine the  
vertical temperature distribution. For this purpose, the cores were placed on a plastic rail with markings for drill points 5 cm  
apart from each other. The temperature probe was put into pre-drilled holes using a cordless drill and the temperature readings  
were recorded. For temperature measurements, the Testo GMH 3750-GE logger ( $\pm 0.03^\circ$  system accuracy) with high precision  
110 Pt100 penetration probes GTF 401 1/10 DIN ( $\pm 0.03^\circ$  accuracy) were utilized (Testo, Titisee-Neustadt, Germany). All readings  
were completed within 4 minutes of coring. After sea ice core collection, a 3D printed Niskin bottle was deployed through two  
core cavities to retrieve samples of the water at the ice-ocean interface. The Niskin 3D deployment yielded two water samples  
of approximately 700 ml each from which the boundary layer salinity of the ocean was determined by a 8410A Portasal sali-  
nometer ( $\pm 0.003\text{ PSU}$  system accuracy) at room temperature. All 26 cores were put in plastic sleeves, sealed and horizontally  
115 stored in crates with a 5 cm-styrofoam insulation for up to 2 hours at environmental temperatures until being taken aboard for  
further processing in the glaciological Cold Laboratory or stored in the ship's freezer. The temperature in the laboratory was  
kept at  $-10^\circ\text{C}$  and the ship's freezer was maintained at  $-25^\circ\text{C}$ , respectively. The cores were continuously kept in a horizontal  
position during transport and storage to minimize further brine drainage. Keeping the lab temperature on the ship at  $-10^\circ\text{C}$   
has been considered a good compromise by the authors so that the large amount of ice samples could be processed as quickly  
120 as possible. During processing of ice specimens in the Cold Laboratory, no noticeable brine loss has occurred.

The collection of solitary pancake ice floes took place on the northward-bound leg at the second most northerly station, MIZ1D, on July 28, 2019 between 10:45am-4pm (UTC). Station MIZ1D was characterized by 80% of the ocean surface covered by pancake ice floes of about 1-3 m diameter as shown in Fig. 4. The relatively warmer air temperature and lower wind speed were recorded at  $-8^{\circ}\text{C}$  and  $12\text{ m s}^{-1}$ , respectively, and a dampened swell was observed. The calm ocean and wind conditions allowed for the quick selection and isolation of pancake ice floes. The pancakes were collected from the ocean using the helideck crane and a custom-made  $5 \times 5\text{ m}^2$  heavy-duty net held by a spreader beam construction designed for a maximum payload of 3.5 t.



**Figure 4.** Sampling of solitary pancake ice floes with diameters of about 2.5 m using the ship's crane.

Four pancake ice floes, labelled A to D, were collected and placed onto individual wooden grids as depicted in Fig. 5 to ease coring and prevent the contamination by the ship deck. Details on the different pancake dimensions are given in Tab. 2.



**Figure 5.** Pancake ice floes placed on wooden grids on the ship's helideck: Pancake A (top left), Pancake B (top right), Pancake C (bottom left) and Pancake D (bottom right) shattered into six large pieces during removal from the net.

**Table 2.** Overview of pancake ice floe dimensions.

| Pancake ice floe | A      | B    | C    | D    |      |
|------------------|--------|------|------|------|------|
| Dimensions [m]   | Height | 0.40 | 0.37 | 0.45 | 0.37 |
|                  | Length | 2.42 | 2.49 | 2.40 | 2.95 |
|                  | Width  | 1.83 | 2.33 | 2.33 | 2.51 |

130 All four pancakes had rafted edges, were snow-covered and did not have a visibly discoloured biologically active layer. The depth and temperature of the snow-layer was taken before each pancake was manoeuvred out of the net which is found in Tab. 2. During the pancake ice floe lifting, the 3D printed Niskin bottle was again deployed from the helideck to retrieve water samples from which the ice-ocean boundary layer salinity was determined. In addition, interstitial frazil ice was collected and its viscosity was measured, further details are found in Paul et al. (2021).

135 Subsequently, between 17 and 23 cores were obtained from each pancake ice floe. The corresponding coring layout with core IDs and corresponding names can be found in App. A2 in Fig. A1 and Tab. A2-A5, respectively. As for the pack ice, all cores were extracted in vertical direction, perpendicular to the ice floe surface. As such, the length of the cores is representative of the pancake ice floe thickness (depth). For each floe, three cores were tested to determine the vertical temperature profile immediately after the floe had been off-loaded. All cores were subsequently transferred to either the Cold Laboratory for further  
 140 processing and testing, or to the ship's freezer.



## 2.2 Testing of physical and mechanical properties

The ice cores used to profile the vertical temperature distribution in consolidated pack ice and pancake ice were subsequently cut with a stainless steel band saw into segments close to 10 cm-length and allowed to melt in ziploc bags in a refrigerator at 5 °C. Once melted, the volume of the samples was measured using a graduated beaker and the bulk salinity was obtained by means of a 8410A Portasal salinometer at room temperature. On deck sampled pancake ice was processed within 30 min and overboard sampled consolidated pack ice within 2.5 h after core extraction.

As the working conditions in the Cold Laboratory aboard the ship were challenging due to the significant swell at edge of the Antarctic MIZ, it was decided to compute the brine volume distributions in pancake ice and consolidated pack ice only based on the obtained temperature and salinity data via the empirical relations by FRANKENSTEIN AND GARNER Frankenstein and Garner (1967)

$$V_b = S_i \left( \frac{49.185}{T} + 0.532 \right) \quad (1)$$

where  $V_b$  denotes brine volume [%],  $S_{si}$  [PSU] the bulk salinity and  $T$  [°C] the absolute value of the temperature. The more accurate relation by Cox and Weeks (1983) additionally requires accurate enough ice density measurements which were difficult to obtain aboard the ship.

The sampled pancake and consolidated pack ice was studied with respect to crystal structure, stratigraphy and texture. For this purpose, one ice core at consolidated conditions and further four pancake ice cores were investigated. The ice cores were visually inspected already during extraction to record obvious physical features such as thickness of snow topping, layering in the texture of the ice, and the presence of possible defects such as cracks. The cores were then taken directly to the ship's storage facility and analysed back at the University of Cape Town, approximately 6 months after collection being stored at -20 °C. The cores were first cut into 10 cm-segments and longitudinal sections with thicknesses in the order of 8 mm were then cut from the centre of these segments with a stainless steel band saw at -10 °C laboratory temperature. These 8 mm-thick sections were further cut using a thermal macrotome to create thin sections of 1 mm thickness and subsequently viewed through cross-polarised sheets and photographed. The used thermal macrotome was constructed by the authors to produce thin sections for cross-polarisation viewing. This device uses the concept of heat being passed through a nickel-chrome wire that slices a section of sea ice. This device is able to cut ice core sections to a thickness of 1 mm or less. The cross-polarised photographs were subsequently analysed for their respective ice textures and crystal sizes. From these images, stratigraphy diagrams were composed for easy visual comparison between cores and the average crystal sizes measured using the scale on the photographs. An average of 20 random crystals per texture layer were selected for measurement in a photograph and the average size and standard deviation was calculated. Furthermore, a 95-percentile confidence interval test was performed over the data collected for each texture for statistical comparison.

The testing of anisotropic elastic material properties of sea ice was conducted in the ship's Cold Laboratory at -10 °C within a few hours after collection. Since the mechanical behaviour of sea ice is rate-dependent, the dynamic Young's modulus is typically determined measuring the speed of ultrasonic waves, a pressure and shear wave, travelling through the ice to exclude viscous strain in the deformation response Timco and Weeks (2010). The P- and S-wave signals are initiated by a pair

175 of transducers put on opposite surfaces of a specimen. The Young's and shear moduli can then be calculated on the basis of its length (the distance between the transducers), its bulk density as well as the speed of transmission of the P- and S-waves in accordance with the following formulae Snyder et al. (2015):

$$E_i = \rho c_s^2 \frac{3c_p^2 - 4c_s^2}{c_p^2 - c_s^2}, \quad (2)$$

$$G_i = \rho c_s^2, \quad (3)$$

180 where  $E_i$  and  $G_i$  denote the dynamic Young's and shear moduli, respectively, associated with the material direction  $x_i$ ,  $\rho$  the bulk density of ice,  $c_p$  the transmission speed of the P-wave and  $c_s$  the transmission speed of the S-wave, both measured along direction  $x_i$ .

The 9 cm-diameter cores ranging between 30-45 cm in length were first visually inspected in the laboratory to identify any internal cracking or other defects that could affect the ultrasound testing results. Subsequently, it was planned how to segment  
185 the cores into specimen lengths as close to 10 cm as possible for testing, see Fig. B1 in App. B. At this stage, consideration was given to already existing segmentation due to fracturing occurred at time of core extraction. The cores were then cut into the planned segments along the entire length using a stainless steel bandsaw providing clean parallel surfaces at the end faces on either side for the subsequent ultrasound measurements in the longitudinal ice core direction. For measurements in the transverse core direction, each segment was again cut in longitudinal direction at two parallel opposite sides providing  
190 the required flat surfaces to apply the transducers. These two surfaces were  $7.2 \text{ cm} \pm 0.8 \text{ cm}$  and  $7.1 \text{ cm} \pm 1.3 \text{ cm}$  apart from each other for pancake and consolidated pack ice specimens, respectively. In order to determine the bulk density of the 43 specimens, their dimensions and weight were first measured in the Cold Laboratory at  $-10^\circ \text{C}$ , the latter using a hand-held scale. The ultrasound testing was carried out less than two hours after core extraction using a PROCEQ Pundit PL-200 testing kit (Screening Eagle Technologies, Schwerzenbach, Switzerland with 250 kHz P- and S-wave transducers assuming that the  
195 mechanical properties of the ice cores had not significantly changed by that time Pustogvar and Kulyakhtin (2016). A low-temperature silicon grease applied to the transducer faces ensured the best possible contact with the ice specimens for the transfer of P- and S-waves across the interface. Three separate tests were carried out for each specimen and direction.

The compressive strengths of the ice samples were determined using the GCTS PLT-2W wireless unconfined compression testing device (GCTS Testing Systems, Tempe, USA). It has a virtually infinite stiffness by automatically correcting for the  
200 frame deformation based on the location of the top cross-head and as a function of the axial load. Samples with a height up to 13.5 cm can be accommodated. There are no constraints induced by the platens to avoid a triaxial state of stress. The cores were cut via a stainless steel bandsaw into multiple 13.5 cm-long segments and immediately tested. In the interest of time to minimize brine drainage and alterations to ice composition, it was deliberately decided not to reduce the sample's diameter required for the optimal diameter/length-ratio of 1:2.5 Schulson and Duval (2009). In total, 27 compression testing  
205 specimens were obtained from twelve pancake ice and three pack ice cores. Specimen dimensions and names are displayed in App. B in Fig. B2. The specimen naming convention is derived from the core names with an additional numbered postfix (S1-S6) indicating the consecutive specimen segmentation sequence starting from the top of the core. The compression testing

commenced less than two hours after core extraction. The uniaxial compression load was manually applied to the sample by a hand pump with an approximate strain rate of  $2 \times 10^{-4} \text{ s}^{-1}$  to  $6 \times 10^{-4} \text{ s}^{-1}$ .

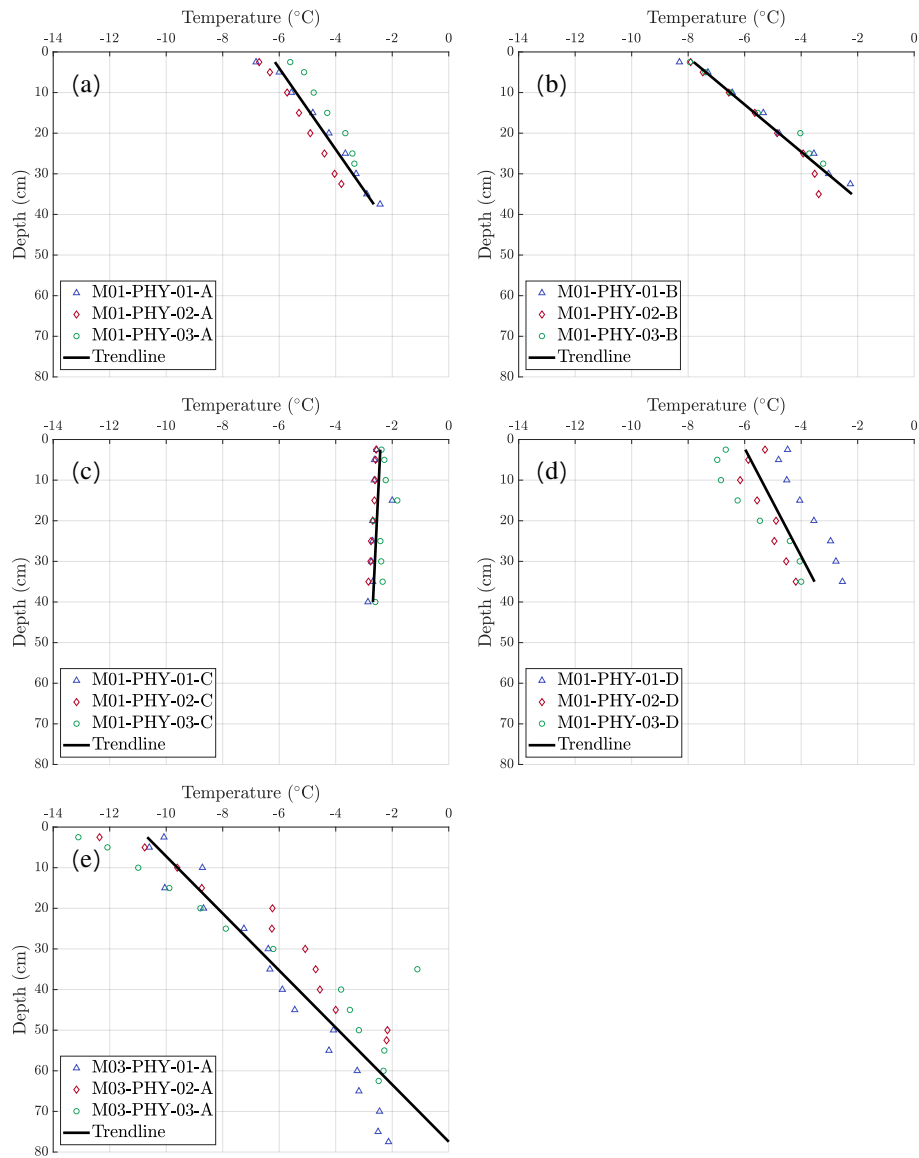
210 An estimate of error in the measurement and registration of temperature, salinity, density, elastic properties and compression strength is less than 9%, which is each significantly less than errors introduced by the variation of the ice structure and properties.

### 3 Results and discussion

#### 3.1 Temperature, salinity, porosity and density

215 The vertical temperature profiles for consolidated pack ice and pancake ice floes A, B and D illustrated in Fig. 6 exhibit the typical linear distribution with depth Nakawo and Sinha (1981); Petrich and Eicken (2017). The temperature gradient of the former is considerably larger due to the lower atmospheric temperature on the day of sampling and testing. However, for pancake ice floes C, the temperature distribution is nearly constant and rather high temperature values were recorded, in particular toward the top core sections. Accordingly, its consistency was reported to be rather soft and poorly consolidated  
220 except for the very top. A significant influence of the snow cover on this disparity can be ruled out, as only minor snow cover was found as listed in Tab. 3 and shows only small variations between all four pancakes. The substantially increased temperatures and porous texture of pancake ice floe C are exhibited in particular in top and middle core sections, a potential explanation could therefore be overwashing occurred during collection and subsequent vertical drainage. This is also further substantiated by the temperature measurements of the thin snow layers covering the four pancake ice floes performed on deck  
225 providing  $-2.8 \pm 0.1 \text{ }^\circ\text{C}$  which indicates overwashing as it should be closer to the measured atmospheric temperature of  $-8 \text{ }^\circ\text{C}$ . Furthermore, the snow temperatures do not link to their respective pancake ice floe temperature profiles, except of pancake ice floe C. It has been reported from ice floe-mounted SIMBA measurements of storm-caused ice floe flooding events that subsequent significant heat propagation occurred increasing ice temperature from initially  $-8.5 \text{ }^\circ\text{C}$  at the top surface by about  $3 \text{ }^\circ\text{C}$  down to 70 cm depth Provost et al. (2017).

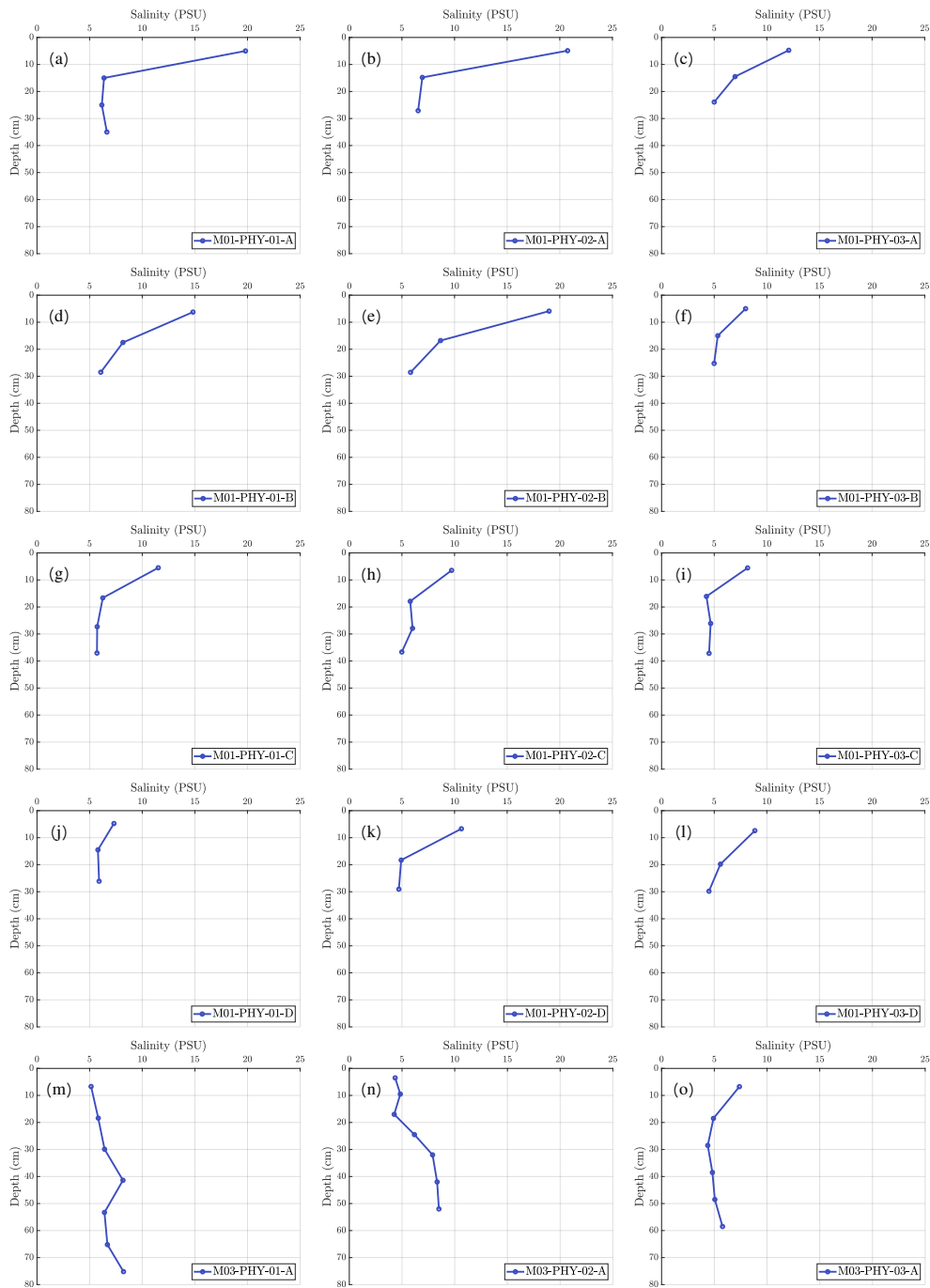
230 The boundary layer salinity of the ocean was determined as 33.29 and 34.11 PSU at MIZ3A and MIZ1D, respectively. The vertical salinity profile for the pancake ice floes depicted in Fig. 7 exhibits at the top of pancake ice floes with  $12.6 \pm 4.9 \text{ PSU}$  significantly higher values than below with  $5.8 \pm 1.1 \text{ PSU}$ . Comparable characteristics in terms of depth evolution and magnitude of salinity have been reported in the Weddell Sea by Eicken (1992), Doble et al. (2003) and Tison et al. (2017). The high salinity of the topmost core section is generally attributed to the high initial growth rate and lower permeability of fine-grained granular ice Nakawo and Sinha (1981). This can be confirmed by the stratigraphy of the cores of pancake ice floes A, B and C which are entirely composed of granular ice as shown in Fig. 10. The obtained values compare to in situ data of congealed grease ice in an artificial lead by SMEDRUD AND SKOGSETH Smedsrud and Skogseth (2006). On the other hand, in situ experiments in the Arctic by NOTZ AND WORSTER Notz and Worster (2008) demonstrated that initially high salinity values at the topmost parts giving the characteristic C-shape vanish due to gravity drainage within 48 hrs, if the frazil ice layer  
240 is thin. This would explain the generally low salinity values at the top of the sampled consolidated pack ice of 4.4-7.4 PSU



**Figure 6.** Plots of temperature over sea ice depth for the four pancake ice floes (cores M01-PHY-01-A/B/C/D, M01-PHY-02-A/B/C/D, M01-PHY-03-A/B/C/D) and for the consolidated pack ice (cores M03-PHY-01-A, M03-PHY-02-A and M03-PHY-03-A), respectively.

where the topmost granular layer is only about 5 cm-thick as shown in Fig. 10 and is immediately followed by a columnar layer.

The snow depth and salinity measurements of the pancake ice floes is listed in Tab. 3. The snow salinity is noticeably higher than the salinity found at the topmost core sections of pancake ice floe A, B and D pointing at surface flooding which was also  
 245 found for East-Antarctic sea ice Massom et al. (1998). For floe C the salinity measurements in snow and underlying ice are of

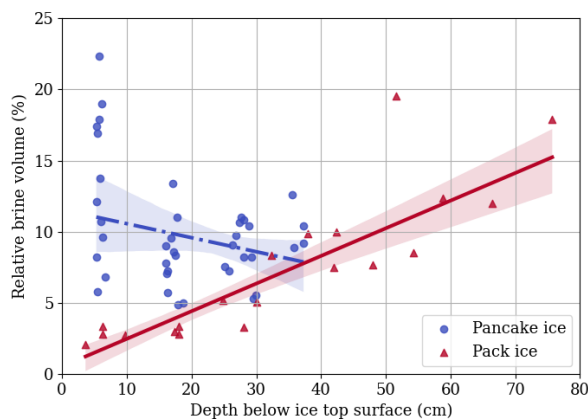


**Figure 7.** Plots of salinity over sea ice depth for the four pancake ice floes (cores M01-PHY-01-A/B/C/D, M01-PHY-02-A/B/C/D, M01-PHY-03-A/B/C/D) and for the consolidated pack ice (cores M03-PHY-01-A, M03-PHY-02-A and M03-PHY-03-A), respectively.

**Table 3.** Overview of pancake ice floe snow depth and salinity.

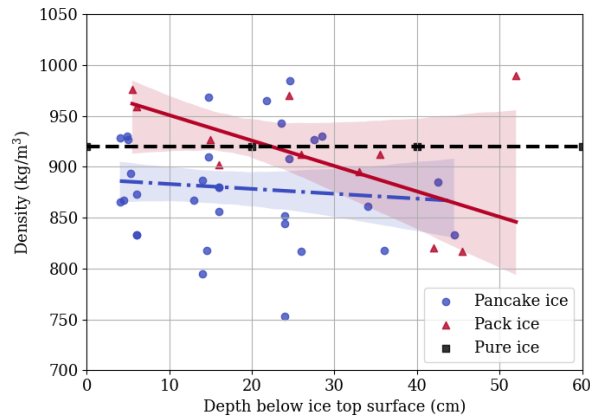
| Pancake ice floe    | A     | B     | C    | D     |
|---------------------|-------|-------|------|-------|
| Snow depth [cm]     | 2.5   | 3.5   | 3.6  | 3.5   |
| Snow salinity [PSU] | 24.74 | 18.43 | 9.68 | 14.26 |

a similar magnitude. The latter might be connected to significant overwashing and drainage occurred during floe collection as mentioned before.



**Figure 8.** Brine volume as a percentage of the total volume as a function of depth for pancake ice floes and consolidated pack ice at stations, MIZ1D and MIZ3A, respectively. The shading indicates the 90-percentile confidence intervals.

Due to brine drainage, the computed brine volume in consolidated pack ice is generally lower than in pancake ice Notz and Worster (2008) which is confirmed by the computed brine volume data illustrated in Fig. 8. The pancake ice brine volumes obtained are above the permeability threshold of 5% which also has been found by Tison et al. (2017) in the MIZ of the Weddell Sea. As the measured salinity in consolidated pack ice is fairly constant with  $6.0 \pm 1.5$  PSU, the brine volume increases with temperature and depth ( $r = 0.866$ ,  $n = 20$ ,  $p < 0.001$ ). The opposite is found for pancake ice where the brine volume clearly decreases with depth ( $r = -0.379$ ,  $n = 40$ ,  $p = 0.016$ ), as the salinity values at the topmost sections are significantly higher compared to the lower sections. However, it should be noted that significant brine loss has been observed during sampling, in particular, when the pancake ice floes were lifted out of the ocean and placed on deck of the ship. As such the actual salinity and relative brine volume of the sampled pancake ice would be higher and the actual bulk density lower than reported in Figs. 7, 8 and 9, respectively, in particular for the bottom of the ice. This aspect has also been observed by Eicken (1992). Using the empirical relation by Frankenstein and Garner (1967) (Eq. (1)), only the uncertainty of salinity measurements negatively impact on the accuracy of the relative brine volume computation, as the temperature measurements reflect in situ conditions.



**Figure 9.** Bulk density as a function of depth for pancake ice floes and consolidated pack ice at stations, MIZ1D (cores M01-US-01A/B/C/D, M01-US-02A/B/C/D) and MIZ3A (cores M03-US-01-A and M03-US-02-A), respectively. The shading indicates the 90-percentile confidence intervals.

260 **Determining sea ice density in the field aboard a ship is generally less accurate than under controlled laboratory conditions on land due to a higher degree of measuring errors with regards to specimen dimensions and weight.** Considering that the density values for pancake ice illustrated in Fig. 9 are with  $879 \pm 53.5 \text{ kg m}^{-3}$  noticeably lower than that of pure ice, a significant air volume fraction is indicated **which can be partly attributed to prior brine loss occurred during ice sampling as previously mentioned.** For the consolidated pack ice, measurement errors and small sample size in combination yield a bulk  
 265 **density trend-line which is not plausible for the top parts, as it would correspond to very high salinity values which have not been observed.** There is no significant correlation between density and depth for pancake ice ( $r = -0.103$ ,  $n = 32$ ,  $p = 0.576$ ) and pack ice ( $r = -0.426$ ,  $n = 11$ ,  $p = 0.192$ ).

### 3.2 **Texture and fabrics**

Three different ice textures can be identified in the cores, namely granular, transitional and columnar. Granular textures, associated with the initially formed frazil ice and also meteoric ice Massom et al. (1998), have the smallest crystal grain sizes  
 270 Eicken (1998). **Granular ice of meteoric origin is due to snow deposited on pancake ice floes mixing with ocean water through percolation for sufficiently heavy snow loading or overwashing, the latter is a common phenomenon in the Ross, Amundsen, Bellingshausen and Weddell Seas** Eicken et al. (1995); Jeffries et al. (1994); Sturm et al. (1998). The proportion of snow ice is significant in particular in Antarctic sea ice due to abundance of precipitation and severe sea states Bromwich et al. (2004);  
 275 Jeffries et al. (2001); Lange et al. (1990); Worby et al. (1998). Columnar ice textures display large, elongated crystals while transitional textures display a mixture of granular and columnar textures, thus its defining features are small crystals that are beginning to elongate and lengthen into the distinctly columnar ice.

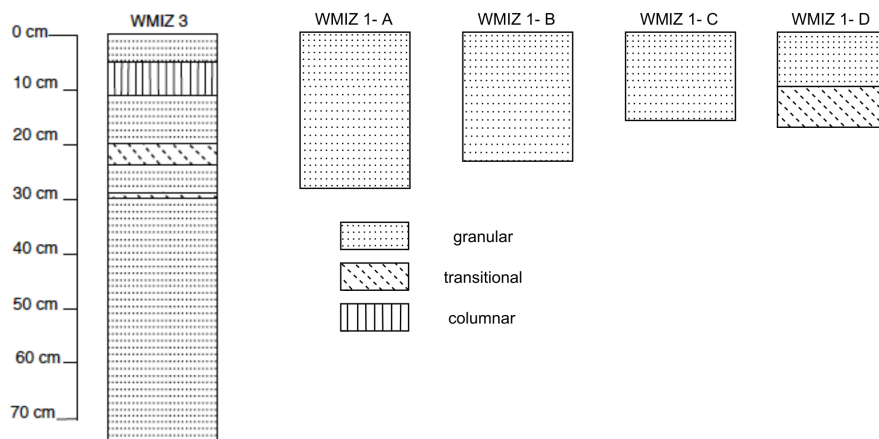
A summary of the fraction of ice textures found to be present in each core along with their respective crystal sizes is found in Tab. 4, while the stratigraphy diagrams are illustrated in Fig. 10. The stratigraphy diagrams are a summary showing the vertical layering of the ice textures within the sampled sea ice. The pancake ice floes A, B and C are completely comprised

**Table 4.** Summary of the sea ice core textures.  $\mu$  specifies the 95-percentile confidence intervals.

| Station-Floe | Granular            |                   | Transitional        |                   | Columnar |                   |
|--------------|---------------------|-------------------|---------------------|-------------------|----------|-------------------|
|              | Fraction            | Crystal Size [mm] | Fraction            | Crystal Size [mm] | Fraction | Crystal Size [mm] |
| MIZ1D-A      | 1                   | 2.06              | -                   | -                 | -        | -                 |
| MIZ1D-B      | 1                   | 2.31              | -                   | -                 | -        | -                 |
| MIZ1D-C      | 1                   | 1.77              | -                   | -                 | -        | -                 |
| MIZ1D-D      | 0.5                 | 1.38              | 0.5                 | 4.34              | -        | -                 |
| MIZ3A        | 0.84                | 2.58              | 0.067               | 7.55              | 0.093    | 15.6              |
|              | $1.87 < \mu < 2.17$ |                   | $4.77 < \mu < 6.23$ |                   | -        |                   |

280

of granular ice as shown in Fig. 10 which is expected of young pancake ice found at the edge of the Antarctic marginal ice zone where frazil ice generation is prevalent due to the harsh sea states in winter Lange and Eicken (1991). It is known from in situ observations in the Arctic that the grease ice layer thickness can reach more than 40 cm before congealing under turbulent and dynamic conditions characterized by convective overturning and wind-driven frazil accumulation Smedsrud and Skogseth (2006). Pancake ice floe D also displays transitional ice textures indicating the beginning of downward freezing due to calmer



**Figure 10.** Stratigraphy diagrams for consolidated pack ice core M03-CP-01-A (WMIZ 3) and pancake ice cores M01-CP-01-A (WMIZ 1-A), M01-CP-01-B (WMIZ 1-B), M01-CP-01-C (WMIZ 1-C) and M01-CP-01-D (WMIZ 1-D), respectively.

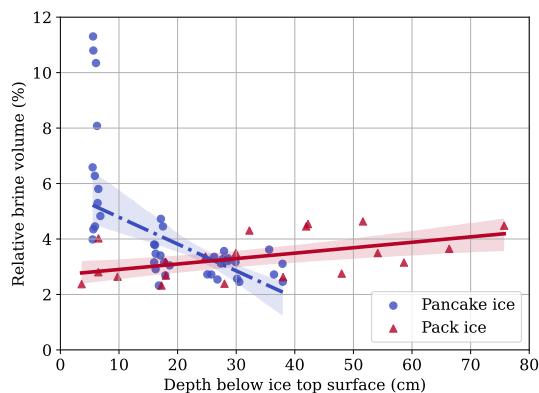
285



sea state and wind conditions Weeks and Ackley (1982). The variability in the pancake ice floes is hard to quantify with regards to their **internal composition** due to their young age. The size range of the granular crystals varies, with pancake ice floe A and C being statistically dissimilar.

The consolidated pack ice core clearly indicates the presence of different layers and is found to be made up of 84 % granular crystals. **Predominantly granular sea ice textures are characteristic for the Weddell Sea region as reported in literature (see e.g. Lange and Eicken (1991); Tison et al. (2017)).** As previously mentioned, this is generally indicative of fairly turbulent ice growth conditions leading to significant frazil ice generation. Small bands of columnar and transitional ice textures were found sandwiched between granular ice which is typical of young ice grown in a highly dynamic ocean environment where regularly occurring atmospheric storms can interrupt steady growth of the ice, causing ice crystals and grain structures to vary in type, size and orientation during the growth period of the ice Lange and Eicken (1991); Carnat et al. (2013); Shokr and Sinha (2015).

### 3.3 Elastic properties

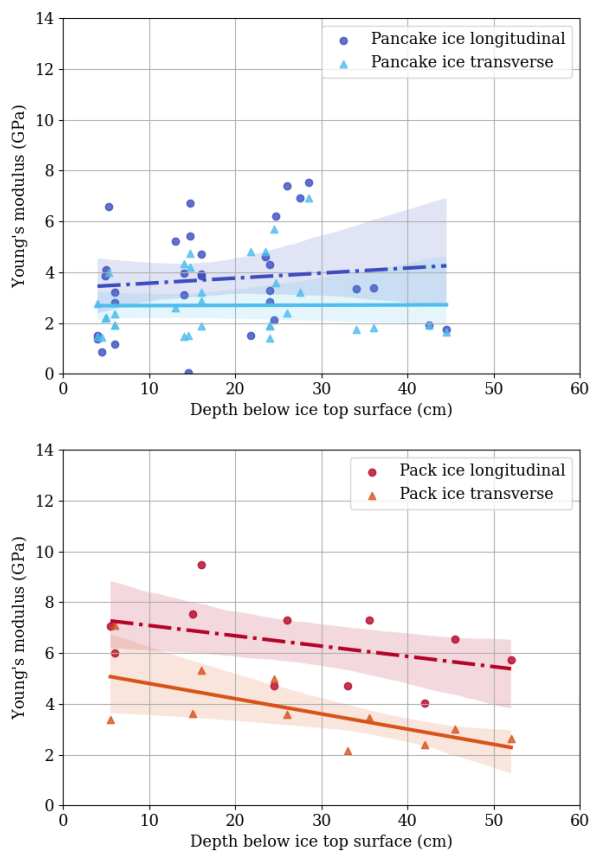


**Figure 11.** Brine volume for uniform ice temperature of  $-10^{\circ}\text{C}$  as a percentage of the total volume as a function of depth for pancake ice floes ( $r = -0.658$ ,  $n = 40$ ,  $p < 0.001$ ) and consolidated pack ice ( $r = 0.508$ ,  $n = 20$ ,  $p = 0.022$ ) at stations, MIZ1D and MIZ3A, respectively. The shading indicates the 90-percentile confidence intervals.

**In order to allow for the direct comparison of ice stiffness and strength with relative brine volume, the latter is recomputed via Eq. (1) using the actual ice temperature of constant  $-10^{\circ}\text{C}$  when being processed in the Cold Laboratory instead of the in situ-measured temperature distribution. The resulting relative brine distribution with depth is depicted in Fig. 11. The uniform temperature distribution over depth does not affect the general trend of porosity over depth when compared with Fig. 8. However, it yields noticeably lower porosity values for pancake ice at the top and for consolidated pack ice at the bottom.**

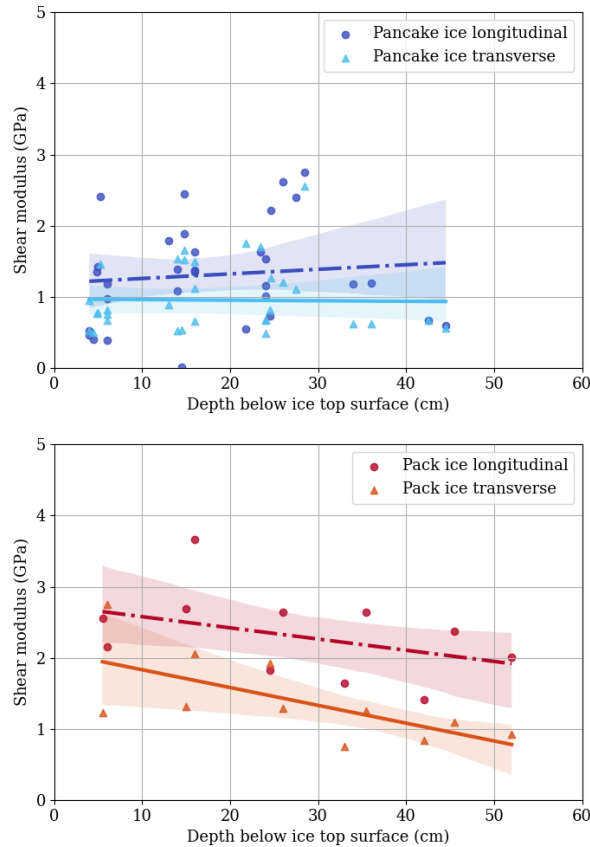
The vertical distributions of dynamic Young's and shear moduli measurements over depth for consolidated pack ice and pancake ice are shown in Figs. 12 and 13, respectively. For the pancake ice, there is no significant correlation between Young's modulus and depth in longitudinal direction ( $r = 0.120$ ,  $n = 32$ ,  $p = 0.513$ ) and in transverse direction ( $r = 0.078$ ,  $n = 32$ ,

305  $p = 0.673$ ). Equally, there is also no significant positive correlation between shear modulus and depth in longitudinal direction  
 $r = 0.115$ ,  $n = 32$ ,  $p = 0.531$ ) and in transverse direction ( $r = 0.045$ ,  $n = 32$ ,  $p = 0.809$ ). For consolidated pack ice, there  
 is no significant negative correlation between Young's modulus and depth in longitudinal direction ( $r = -0.413$ ,  $n = 11$ ,  
 $p = 0.207$ ), however, there is a significant correlation in transverse direction ( $r = -0.672$ ,  $n = 11$ ,  $p = 0.024$ ). Similarly, there  
 is no significant correlation between shear modulus and depth in longitudinal direction ( $r = -0.425$ ,  $n = 11$ ,  $p = 0.192$ ), but  
 310 there is a significant correlation in transverse direction ( $r = -0.665$ ,  $n = 11$ ,  $p = 0.026$ ). As the brine volume is increasing  
 with depth for consolidated pack ice as shown in Fig. 11, this correlation is in-line what has been reported in literature, see e.g.  
 Langleben and Pounder (1963); Mellor (1986); Moslet (2007).



**Figure 12.** Longitudinal and transverse Young's modulus for pancake ice cores M01-US-01-A/B/C/D and M01-US-02-A/B/C/D as well as consolidated pack ice cores M03-US-01-A and M03-US-02-A as a function of depth from the top of the ice. The shading indicates the 90-percentile confidence intervals.

With substantially lower brine values as shown in Fig. 11, the elastic properties found for consolidated pack ice exhibit higher values than for pancake ice, in particular for the upper core sections, with values in longitudinal direction of  
 315  $6.4 \pm 1.6$  GPa and  $2.3 \pm 0.6$  GPa for the Young's and the shear modulus, respectively, as opposed to  $3.7 \pm 2.0$  GPa and

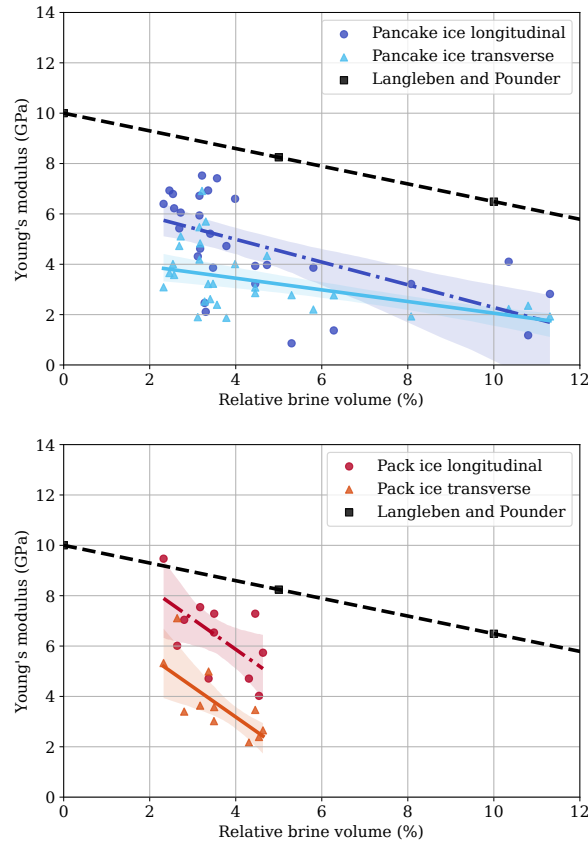


**Figure 13.** Longitudinal and transverse shear modulus for pancake ice cores M01-US-01-A/B/C/D and M01-US-02-A/B/C/D as well as consolidated pack ice cores M03-US-01-A and M03-US-02-A as a function of depth from the top of the ice. The shading indicates the 90-percentile confidence intervals.

1.3 ± 0.7 GPa, respectively. Also, the textural differences between both ice types can be expected to contribute to this discrepancy. The stratigraphical data found for consolidated pack ice (Fig. 10) indicates granular layers intermixed with transitional and columnar layers located in the upper half of the core whereas pancake ice is almost exclusively granular. The dynamic Young's and shear moduli for both ice types are generally lower than reported in literature for columnar first-year ice at low  
 320 brine volumes given as 9.0-9.5 GPa Mellor (1986) and 3.0-3.5 GPa Snyder et al. (2015), respectively. For the consolidated pack ice, this is most likely due to the high granular ice content as temperature and salinity values are comparable.

In the sea ice studies by SINHA Sinha (1984) and NANTHIKESAN AND SUNDER Nanthikesan and Sunder (1994) based on the experiments by DANTL Dantl (1969) as well as GAMMON ET AL. Gammon et al. (1983), polycrystalline sea ice is found to exhibit only a very slight directional dependency in terms of elastic material properties. In contrast, the results shown in Figs. 12  
 325 and 13 indicate a significant difference of elastic moduli measured in longitudinal and transverse core directions, respectively, in particular for the consolidated pack ice where the latter was determined as  $3.8 \pm 1.5$  GPa and  $1.4 \pm 0.6$  GPa for the Young's

and the shear modulus, respectively. Based on the previous studies mentioned before, the finding of directional dependence of elastic properties in this magnitude is unprecedented, in particular considering the predominantly granular ice composition. The pore and channel structure might be of influence which, for consolidated pack ice, can be expected to increase with depth leading to the formation of predominantly vertically aligned brine channels which potentially alter the directional dependency of elastic ice properties with depth.



**Figure 14.** Longitudinal and transverse Young's modulus for pancake ice cores M01-US-01-A/B/C/D and M01-US-02-A/B/C/D as well as consolidated pack ice cores M03-US-01-A and M03-US-02-A as a function of percentage porosity of total volume. The shading indicates the 90-percentile confidence intervals.

Combining brine volume and Young's modulus datasets presented in Figs. 11 12 and 13, respectively, the dependency of the Young's modulus on the relative brine volume is obtained as shown in Fig. 14. **There is a significant correlation between Young's modulus and brine volume for pancake ice in longitudinal direction ( $r = -0.579$ ,  $n = 29$ ,  $p = 0.001$ ) and in transverse direction ( $r = -0.493$ ,  $n = 29$ ,  $p = 0.007$ ).** For consolidated pack ice, there is also a significant correlation between Young's modulus and brine volume in longitudinal direction ( $r = -0.597$ ,  $n = 11$ ,  $p = 0.053$ ) and in transverse direction ( $r = -0.741$ ,  $n = 11$ ,  $p = 0.009$ ). A remarkable aspect of the obtained data is the noticeable directional dependency of the stiffness-porosity

relation, as the Young's modulus, in particular in transverse direction, follows distinctly lower trend-lines in terms of magnitude than predicted by the relation found by LANGLEBEN AND POUNDER Langleben and Pounder (1963) for Arctic ice indicated  
340 by the dashed black line in Fig. 14 which is expressed as

$$E(\text{GPa}) = 10.0 - 35.1 V_b$$

where  $V_b$  [%] denotes the brine volume. A closer match with the curve by Langleben and Pounder could be expected for the stiffness-porosity data in longitudinal direction, if no brine loss had occurred during sampling.

### 3.4 Compressive strength

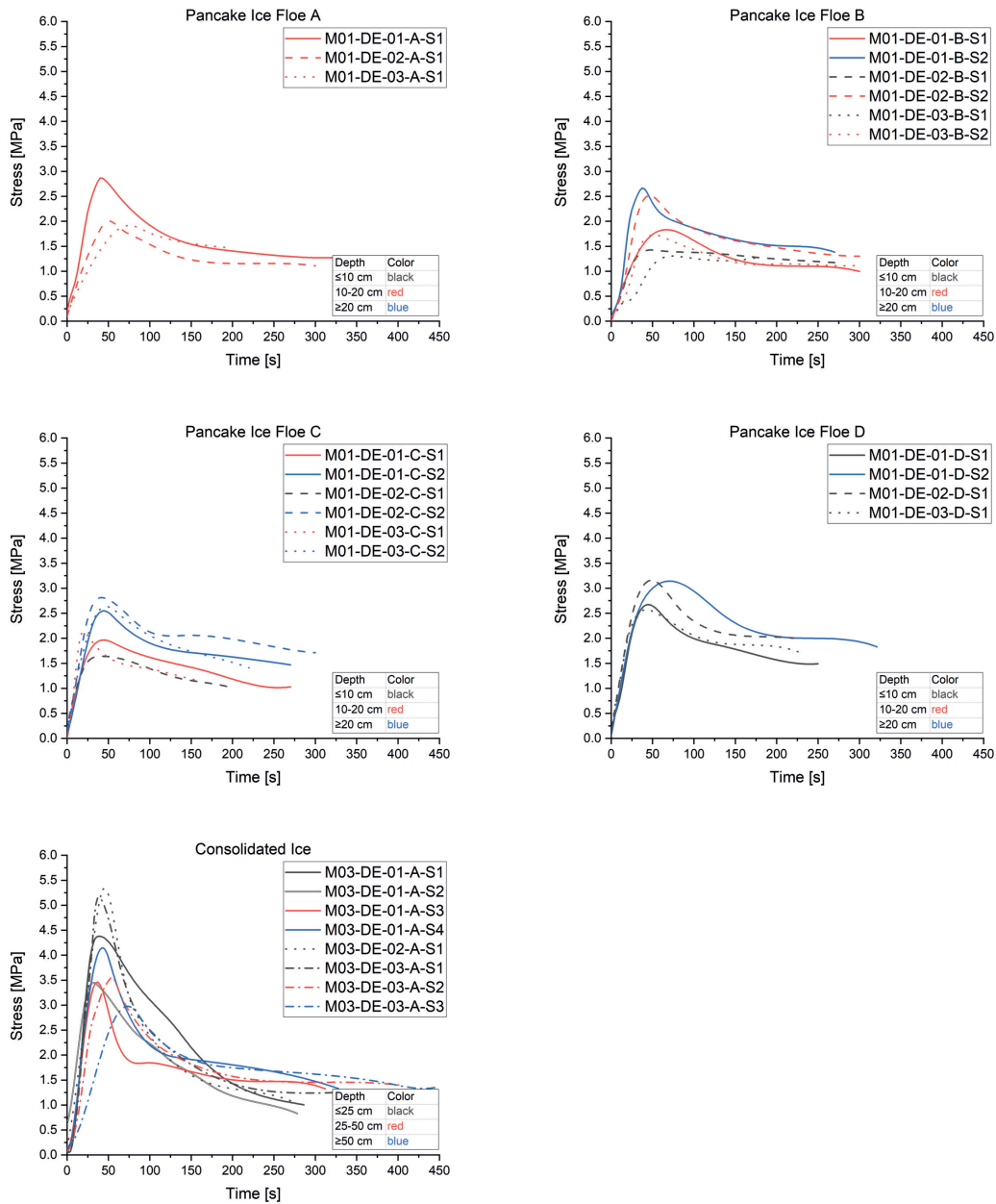
345 Compressive strength of Antarctic sea ice, specifically in winter, has only been studied by URABE AND INOUE Urabe and Inoue (1988a), but the testing was done after long storage-time at  $-20^\circ\text{C}$ . In contrast, the compressive stress-time plots for the fifteen cores displayed in Fig. 15 have been obtained in situ within two hours of collection. The uniaxial compressive strength for pancake ice and consolidated pack ice were determined as  $2.3 \pm 0.5$  MPa and  $4.1 \pm 0.9$  MPa, respectively. All tests shown in Fig. 15 are characterized by ductile failure behaviour with initial strain hardening and significant strain softening after the  
350 peak stress has been reached. For columnar ice, KUEHN AND SCHULSON Kuehn and Schulson (1994) found the ductile-brittle failure transition at a strain rate of  $2 \times 10^{-4} \text{s}^{-1}$ . However, it was stated to be one order of magnitude higher for granular ice which can be confirmed by our results obtained for a strain rate of  $5 \times 10^{-4} \text{s}^{-1}$ .

The Antarctic sea ice compressive strength results by URABE AND INOUE Urabe and Inoue (1988a) of about 8.5 MPa for vertical tested samples at a strain rate of around  $1 \times 10^{-4} \text{s}^{-1}$  are higher than our strength measurements for consolidated pack  
355 ice. However, they tested land-fast sea ice. The compression strength data by KIVIMAA AND KOSLOFF Kivimaa and Kosloff (1994a) obtained in the Weddell Sea in situ in spring are in the range from 1.2 MPa to 4.5 MPa at a strain rate of  $1 \times 10^{-3} \text{s}^{-1}$ , which, despite the brittle failure regime, is lower than the consolidated pack ice data obtained in this study.

It is known from literature, that an increase in ice temperature results in a lower compressive strength due to increasing porosity Han et al. (2015); Kermani et al. (2007); Moslet (2007). This linkage can be confirmed for the tested consolidated  
360 pack ice considering the depth-evolution of both, the increasing relative brine volume illustrated in Fig. 11 and the decreasing maximum stress ( $r = -0.632$ ,  $n = 8$ ,  $p = 0.093$ ) depicted in Fig. 16. Similarly, for the tested pancake ice, the relative brine volume decreases with depth whereas the maximum uniaxial compressive stress increases ( $r = -0.452$ ,  $n = 19$ ,  $p = 0.052$ ). The increase of pancake ice compressive strength over depth can be fitted by the following linear trend-line

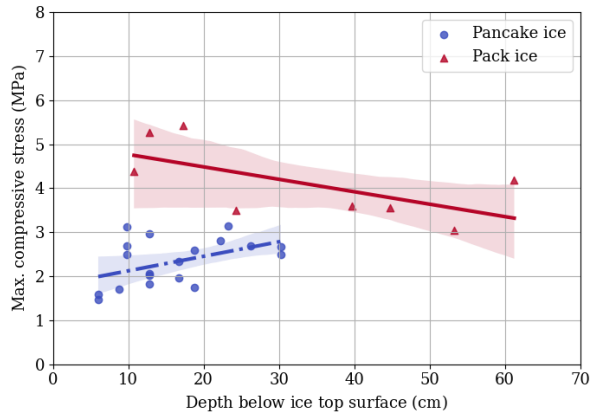
$$\sigma_{\text{compression}} = (4.4 \cdot d + 1.6) \text{ MPa} \quad (4)$$

365 where  $d$  denotes the depth in meter. This discrepancy between the tested consolidated pack and pancake ice can be explained by the high salinity values and brine volumes at the top of the pancake ice floes which show the opposite trend compared with the consolidated pack ice as illustrated in Fig. 11. KOVACS Kovacs (1997) proposed a relation based on total porosity and strain rate to estimate the compressive strength of Arctic first-year sea ice. Fig. 17 compares this relation with the measured compressive strength of pancake ice and consolidated pack ice making use of the porosity data given in Fig. 11. The compressive  
370 strength clearly shows lower magnitudes than expected by the relation derived by KOVACS, in particular for the pancake



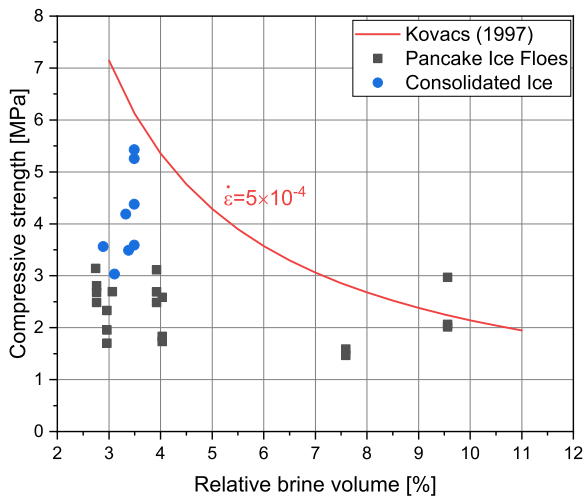
**Figure 15.** Stress-time plots of uniaxial compression test results for all specimens, respective pancake ice floes and consolidated pack ice. The color-coding refers to the sample depth in cm along the core length measured at the sample center and the line style to the specific core.

ice samples. This can be partly contributed to the previously mentioned brine loss at sampling which has been more significant



**Figure 16.** Maximum uniaxial compressive stress for pancake and pack ice over depth with the 90-percentile confidence intervals indicated.

for the pancake ice floes than for consolidated pack ice. However, differences between Arctic and Antarctic ice compositions in terms of texture and fabrics might also play a role warranting further studies in this regard.



**Figure 17.** Uniaxial compressive strength for pancake ice and consolidated ice against brine volume as compared to the relation found by KOVACS Kovacs (1997) using the strain rate of  $5 \times 10^{-4} \text{ s}^{-1}$  applied to obtain the here reported data.

SINHA Sinha (1984) reported an increasing ice strength with depth in horizontally tested hummock ice of an old floe. 375 KIVIMAA ET AL. Kivimaa and Kosloff (1994b) as well as URABE AND INOUE Urabe and Inoue (1988a) found that the maximum compressive strength was reached in a middle layer of the ice sheet. In the study by FREDERKING AND TIMCO

Frederking and Timco (1983), a difference was also observed between top and bottom layers where the latter exhibits a larger strength magnitude. This is in contrast to our findings regarding consolidated pack ice which is strongest at the top and exhibits decreasing strength towards the middle layer due to the increasing brine volume with depth.

380 Both, consolidated pack and pancake ice investigated in this study, are relatively young first-year ice which has been collected in the Antarctic MIZ during the winter season when sea ice was advancing and was exposed to high temperature gradients. In this sense, its measured strength properties are therefore not directly comparable to those mentioned before.

#### 4 Conclusions

The collected data sets of young first-year ice combined physical, textural and mechanical in situ test results of solitary pancake ice floes and consolidated pack ice representing a vertical 150 km-transect into the advancing Antarctic marginal ice zone along the Good Hope Line. Of particular interest was to elucidate the transition between both ice types within the MIZ in terms of their differences in mechanical stiffness and strength properties as linked to physical and textural characteristics at early-stage ice formation.

390 Both ice types exhibited a characteristic linear temperature profile with depth and had predominantly granular textures, for pancake ice almost exclusively, due to the highly dynamic ocean environment. Pancake ice floe C, however, had an almost constant and fairly high temperature distribution which was attributed to overwashing during collection and subsequent vertical drainage. The pancake ice salinity profile exhibited very high magnitudes at the topmost sections and in the snow cover. Accordingly, overwashing and flooding events are a reasonable explanation for the generally high pancake ice salinity at the topmost sections, in particular, as the consolidated pack ice had a very low salinity value at the top, slightly increasing toward the bottom, where recent flooding events can be excluded.

The dynamic Young's and shear moduli measured for consolidated pack ice were substantially lower than reported in literature for first-year ice. The elastic properties of pancake ice were even lower in magnitude due to the high brine volume content and higher temperatures. A similar trend could be observed for the uniaxial compression strength which was found to be lower than reported by the only available source in literature for winter Antarctic sea ice, albeit land-fast Urabe and Inoue (1988a). For pancake ice, the uniaxial compression strength linearly increased with depth as opposed to the consolidated pack ice which decreased with depth as typically reported in literature Han et al. (2015); Kermani et al. (2007). A distinct directional dependency of the elastic moduli in vertical and horizontal directions, respectively, has been found, in particular for consolidated pack ice. Interestingly, the elastic anisotropy of sea ice has not found much attention in literature and has been considered of minor significance. Clearly, besides temperature, internal ice composition and age have an at least equal influence on sea ice stiffness and strength. In particular, the remarkable vertical strength and stiffness profiles of pancake ice floes cannot be exclusively explained by temperature data but need to include salinity, brine volume and textural information as well.

In summary, there is a complete lack of data concerning the mechanical behaviour of winter young and first-year sea ice in the Antarctic. The physical and mechanical sea ice properties obtained for young mostly granular Antarctic first-year ice exhibited distinct differences to measurements done on Arctic predominantly columnar sea ice in terms of compression strength, stiffness



410 and directional dependency of elastic moduli warranting further studies to elucidate the influence of environmental conditions characteristic for the Antarctic marginal ice zone on the interrelation of textural and physical with the mechanical sea ice properties. Small-scale sea ice dynamics models can further help to advance understanding of the seasonal cycle of sea ice growth and retreat as linked mechanical phenomena such as inelastic collision and fracture of ice floes but rely on the accurate parameterisation of the mechanical sea ice parameters in particular.

415 *Data availability.* All experimental data part of this manuscript have been made available via a publically accessible data repository <https://doi.org/10.25375/uct.14900361>.

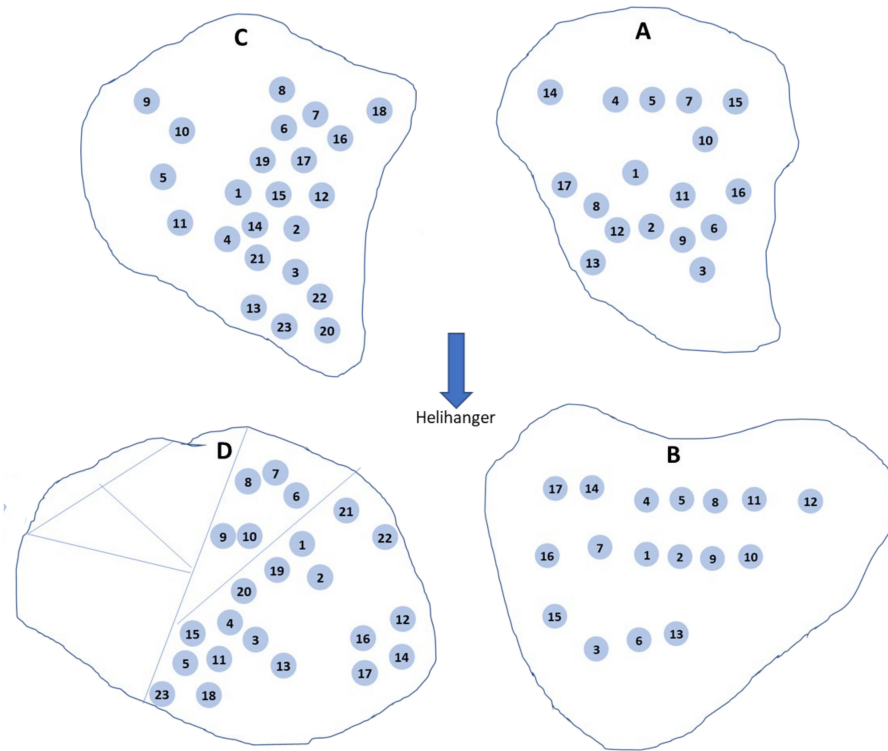
## Appendix A: Pancake and consolidated pack ice core lists

### A1 Consolidated pack ice data

**Table A1.** Overview of pack ice core IDs, corresponding core names, testing designation, and date and time when cored.

| Core ID | Core Name     | Test Designation     | Date Cored    | Time Cored     |
|---------|---------------|----------------------|---------------|----------------|
| 1       | M03-TM-01-A   | Trace metal          | July 27, 2019 | 10am-4pm (UTC) |
| 2       | M03-TM-02-A   | Trace metal          | July 27, 2019 | 10am-4pm (UTC) |
| 3       | M03-TM-03-A   | Trace metal          | July 27, 2019 | 10am-4pm (UTC) |
| 4       | M03-TM-04-A   | Trace metal          | July 27, 2019 | 10am-4pm (UTC) |
| 5       | M03-TM-05-A   | Trace metal          | July 27, 2019 | 10am-4pm (UTC) |
| 6       | M03-BGC-01-A  | Isotope              | July 27, 2019 | 10am-4pm (UTC) |
| 7       | M03-BGC-02-A  | Isotope              | July 27, 2019 | 10am-4pm (UTC) |
| 8       | M03-PHY-01-A  | Temperature          | July 27, 2019 | 10am-4pm (UTC) |
| 9       | M03-PHY-02-A  | Temperature          | July 27, 2019 | 10am-4pm (UTC) |
| 10      | M03-PHY-03-A  | Temperature          | July 27, 2019 | 10am-4pm (UTC) |
| 11      | M03-CPUT-01-A | Biology              | July 27, 2019 | 10am-4pm (UTC) |
| 12      | M03-CPUT-02-A | Biology              | July 27, 2019 | 10am-4pm (UTC) |
| 13      | M03-BIO-01-A  | Bio-cultivation      | July 27, 2019 | 10am-4pm (UTC) |
| 14      | M03-CT-01-A   | MicroCT              | July 27, 2019 | 10am-4pm (UTC) |
| 15      | M03-CT-02-A   | MicroCT              | July 27, 2019 | 10am-4pm (UTC) |
| 16      | M03-CP-01-A   | Texture & fabrics    | July 27, 2019 | 10am-4pm (UTC) |
| 17      | M03-CP-02-A   | Texture & fabrics    | July 27, 2019 | 10am-4pm (UTC) |
| 18      | M03-US-01-A   | Elasticity           | July 27, 2019 | 10am-4pm (UTC) |
| 19      | M03-US-02-A   | Elasticity           | July 27, 2019 | 10am-4pm (UTC) |
| 20      | M03-US-03-A   | Elasticity           | July 27, 2019 | 10am-4pm (UTC) |
| 21      | M03-DE-01-A   | Compression strength | July 27, 2019 | 10am-4pm (UTC) |
| 22      | M03-DE-02-A   | Compression strength | July 27, 2019 | 10am-4pm (UTC) |
| 23      | M03-DE-03-A   | Compression strength | July 27, 2019 | 10am-4pm (UTC) |

## A2 Pancake ice cores



**Figure A1.** Coring layout for pancake ice floes A, B, C and D, respectively.

**Table A2.** Overview of core IDs of pancake A, corresponding core names, testing designation, and date and time when cored.

| Core ID | Core Name     | Test Designation     | Date Cored    | Time Cored    |
|---------|---------------|----------------------|---------------|---------------|
| 1       | M01-PHY-01-A  | Temperature          | July 28, 2019 | 10:50am (UTC) |
| 2       | M01-BGC-01-A  | Isotope              | July 28, 2019 | 11:05am (UTC) |
| 3       | M01-PHY-02-A  | Temperature          | July 28, 2019 | 11:10am (UTC) |
| 4       | M01-BGC-02-A  | Isotope              | July 28, 2019 | 11:12am (UTC) |
| 5       | M01-PHY-03-A  | Temperature          | July 28, 2019 | 11:15am (UTC) |
| 6       | M01-CPUT-01-A | Biology              | July 28, 2019 | 11:30am (UTC) |
| 7       | M01-CPUT-02-A | Biology              | July 28, 2019 | 11:32am (UTC) |
| 8       | M01-CT-01-A   | MicroCT              | July 28, 2019 | 11:50am (UTC) |
| 9       | M01-CT-02-A   | MicroCT              | July 28, 2019 | 11:52am (UTC) |
| 10      | M01-CP-01-A   | Texture & fabrics    | July 28, 2019 | 12:01pm (UTC) |
| 11      | M01-CP-02-A   | Texture & fabrics    | July 28, 2019 | 12:05pm (UTC) |
| 12      | M01-US-01-A   | Elasticity           | July 28, 2019 | 12:06pm (UTC) |
| 13      | M01-US-02-A   | Elasticity           | July 28, 2019 | 12:11pm (UTC) |
| 14      | M01-US-03-A   | Elasticity           | July 28, 2019 | 12:13pm (UTC) |
| 15      | M01-DE-01-A   | Compression strength | July 28, 2019 | 12:18pm (UTC) |
| 16      | M01-DE-02-A   | Compression strength | July 28, 2019 | 12:19pm (UTC) |
| 17      | M01-DE-03-A   | Compression strength | July 28, 2019 | 12:22pm (UTC) |

**Table A3.** Overview of core IDs of pancake B, corresponding core names, testing designation, and date and time when cored.

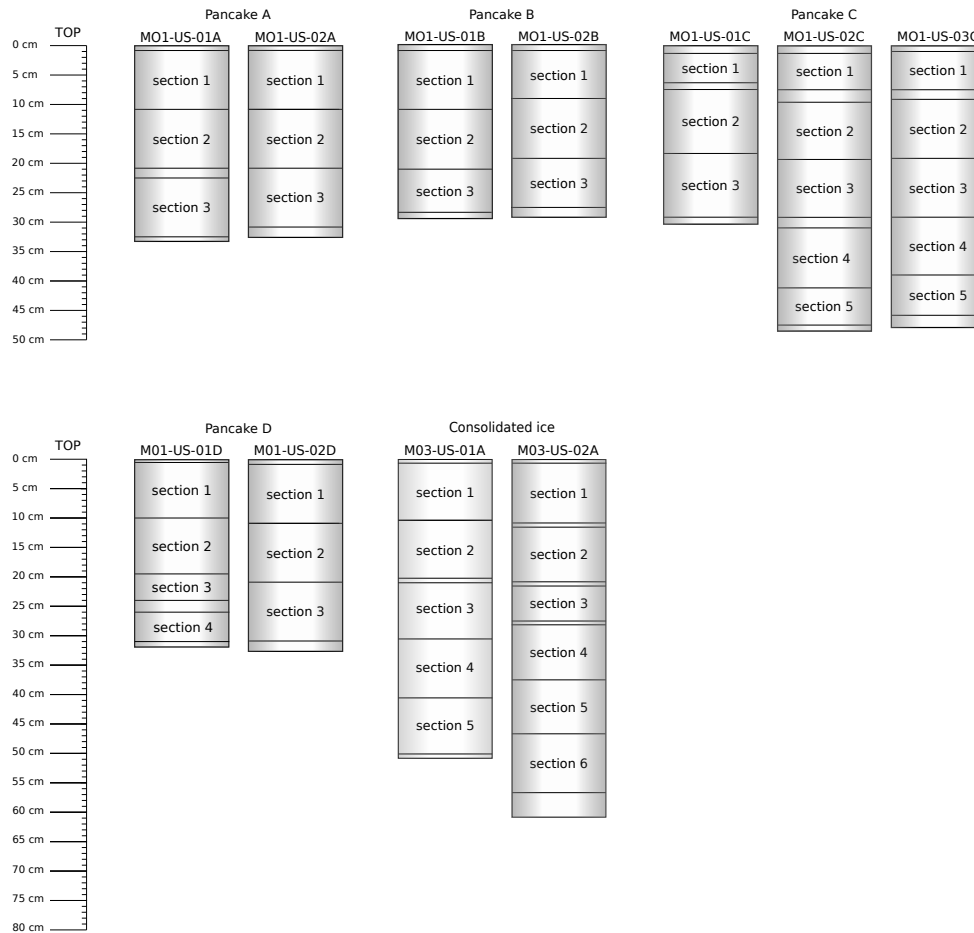
| Core ID | Core Name     | Core Type            | Date Cored    | Time Cored    |
|---------|---------------|----------------------|---------------|---------------|
| 1       | M01-PHY-01-B  | Temperature          | July 28, 2019 | 11:05am (UTC) |
| 2       | M01-BGC-01-A  | Isotope              | July 28, 2019 | 11:18am (UTC) |
| 3       | M01-PHY-02-B  | Temperature          | July 28, 2019 | 11:20am (UTC) |
| 4       | M01-BGC-02-B  | Isotope              | July 28, 2019 | 11:24am (UTC) |
| 5       | M01-PHY-03-B  | Temperature          | July 28, 2019 | 11:26am (UTC) |
| 6       | M01-CPUT-01-B | Biology              | July 28, 2019 | 11:35am (UTC) |
| 7       | M01-CPUT-02-B | Biology              | July 28, 2019 | 11:40am (UTC) |
| 8       | M01-CT-01-B   | MicroCT              | July 28, 2019 | 11:57am (UTC) |
| 9       | M01-CT-02-B   | MicroCT              | July 28, 2019 | 11:59am (UTC) |
| 10      | M01-CP-01-B   | Texture & fabrics    | July 28, 2019 | 12:35pm (UTC) |
| 11      | M01-CP-02-B   | Texture & fabrics    | July 28, 2019 | 12:47pm (UTC) |
| 12      | M01-US-01-B   | Elasticity           | July 28, 2019 | 12:50pm (UTC) |
| 13      | M01-US-02-B   | Elasticity           | July 28, 2019 | 12:52pm (UTC) |
| 14      | M01-US-03-B   | Elasticity           | July 28, 2019 | 1:38pm (UTC)  |
| 15      | M01-DE-01-B   | Compression strength | July 28, 2019 | 2:06pm (UTC)  |
| 16      | M01-DE-02-B   | Compression strength | July 28, 2019 | 2:09pm (UTC)  |
| 17      | M01-DE-03-B   | Compression strength | July 28, 2019 | 2:11pm (UTC)  |

**Table A4.** Overview of core IDs of pancake C, corresponding core names, testing designation, and date and time when cored.

| Core ID | Core Name     | Core Type            | Date Cored    | Time Cored   |
|---------|---------------|----------------------|---------------|--------------|
| 1       | M01-PHY-01-C  | Temperature          | July 28, 2019 | 1:05pm (UTC) |
| 2       | M01-BGC-01-C  | Isotope              | July 28, 2019 | 1:06pm (UTC) |
| 3       | M01-PHY-02-C  | Temperature          | July 28, 2019 | 1:18pm (UTC) |
| 4       | M01-BGC-02-C  | Isotope              | July 28, 2019 | 1:22pm (UTC) |
| 5       | M01-PHY-03-C  | Temperature          | July 28, 2019 | 1:26pm (UTC) |
| 6       | M01-TM-01-C   | Trace metal          | July 28, 2019 | 1:47pm (UTC) |
| 7       | M01-TM-02-C   | Trace metal          | July 28, 2019 | 1:53pm (UTC) |
| 8       | M01-TM-03-C   | Trace metal          | July 28, 2019 | 1:56pm (UTC) |
| 9       | M01-TM-04-C   | Trace metal          | July 28, 2019 | 2:14pm (UTC) |
| 10      | M01-TM-05-C   | Trace metal          | July 28, 2019 | 2:18pm (UTC) |
| 11      | M01-CP-01-C   | Trace metal          | July 28, 2019 | 2:23pm (UTC) |
| 12      | M01-CPUT-01-C | Biology              | July 28, 2019 | 3:40pm (UTC) |
| 13      | M01-CPUT-02-C | Biology              | July 28, 2019 | 3:42pm (UTC) |
| 14      | M01-CT-01-C   | MicroCT              | July 28, 2019 | 3:44pm (UTC) |
| 15      | M01-CT-02-C   | MicroCT              | July 28, 2019 | 3:45pm (UTC) |
| 16      | M01-CP-02-C   | Texture & fabrics    | July 28, 2019 | 3:47pm (UTC) |
| 17      | M01-US-01-C   | Elasticity           | July 28, 2019 | 3:50pm (UTC) |
| 18      | M01-US-02-C   | Elasticity           | July 28, 2019 | 3:51pm (UTC) |
| 19      | M01-US-03-C   | Elasticity           | July 28, 2019 | 3:53pm (UTC) |
| 20      | M01-DE-01-C   | Compression strength | July 28, 2019 | 3:57pm (UTC) |
| 21      | M01-DE-02-C   | Compression strength | July 28, 2019 | 3:58pm (UTC) |
| 22      | M01-DE-03-C   | Compression strength | July 28, 2019 | 4pm (UTC)    |

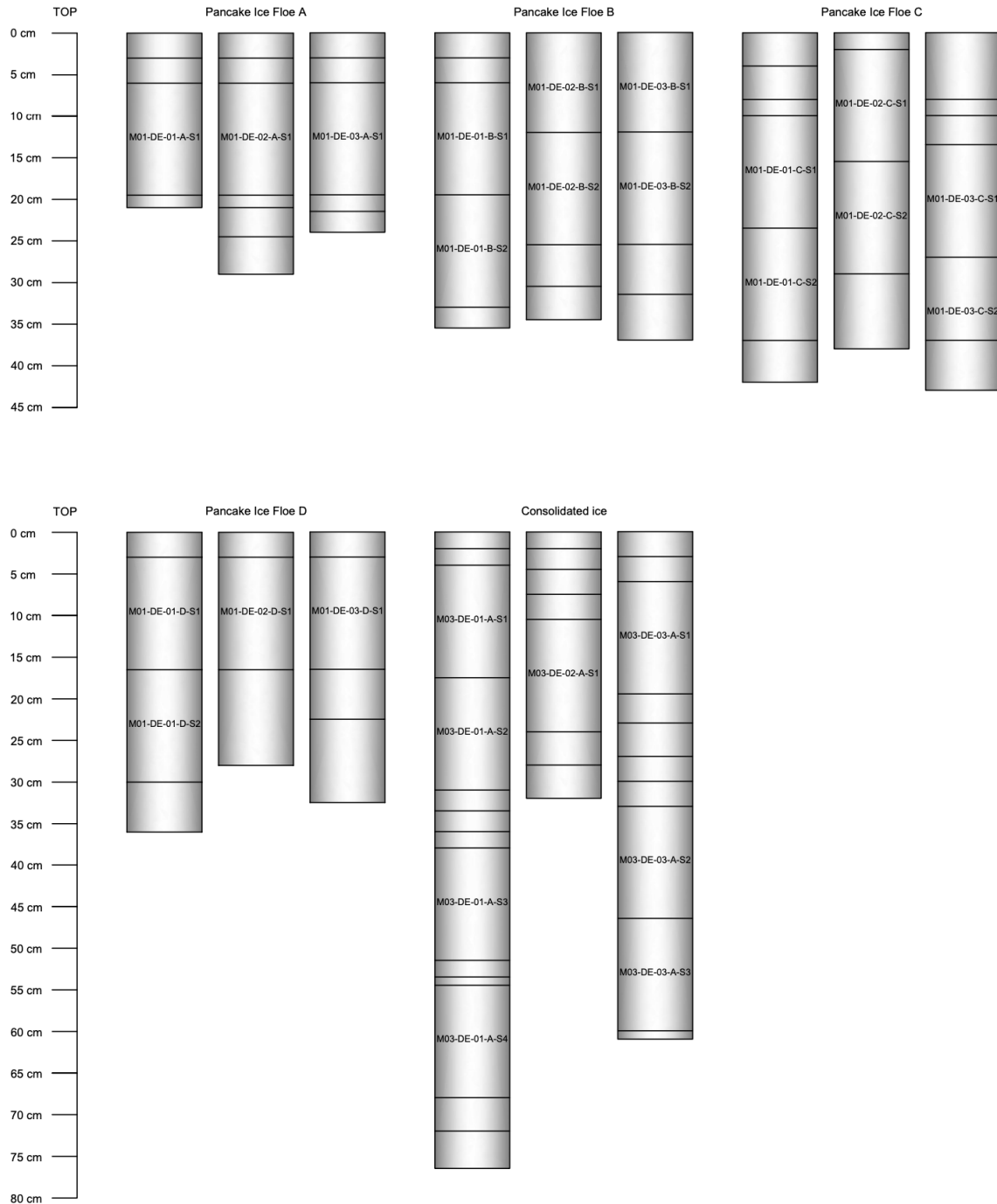
**Table A5.** Overview of core IDs of pancake D, corresponding core names, testing designation, and date and time when cored.

| Core ID | Core Name     | Core Type            | Date Cored    | Time Cored   |
|---------|---------------|----------------------|---------------|--------------|
| 1       | M01-PHY-01-D  | Temperature          | July 28, 2019 | 1:13pm (UTC) |
| 2       | M01-BGC-01-D  | Isotope              | July 28, 2019 | 1:16pm (UTC) |
| 3       | M02-BGC-01-D  | Isotope              | July 28, 2019 | 1:30pm (UTC) |
| 4       | M01-PHY-02-D  | Temperature          | July 28, 2019 | 1:35pm (UTC) |
| 5       | M01-PHY-03-D  | Temperature          | July 28, 2019 | 1:40pm (UTC) |
| 6       | M01-TM-01-D   | Trace metal          | July 28, 2019 | 2:34pm (UTC) |
| 7       | M01-TM-02-D   | Trace metal          | July 28, 2019 | 2:36pm (UTC) |
| 8       | M01-TM-03-D   | Trace metal          | July 28, 2019 | 2:39pm (UTC) |
| 9       | M01-TM-04-D   | Trace metal          | July 28, 2019 | 2:42pm (UTC) |
| 10      | M01-TM-05-D   | Trace metal          | July 28, 2019 | 2:44pm (UTC) |
| 11      | M01-CPUT-01-D | Biology              | July 28, 2019 | 2:52pm (UTC) |
| 12      | M01-CPUT-02-D | Biology              | July 28, 2019 | 2:55pm (UTC) |
| 13      | M01-CT-01-D   | MicroCT              | July 28, 2019 | 2:59pm (UTC) |
| 14      | M01-CT-02-D   | MicroCT              | July 28, 2019 | 3:02pm (UTC) |
| 15      | M01-US-01-D   | Elasticity           | July 28, 2019 | 3:07pm (UTC) |
| 16      | M01-US-02-D   | Elasticity           | July 28, 2019 | 3:11pm (UTC) |
| 17      | M01-US-03-D   | Elasticity           | July 28, 2019 | 3:14pm (UTC) |
| 18      | M01-CP-01-D   | Texture & fabrics    | July 28, 2019 | 3:19pm (UTC) |
| 19      | M01-CP-02-D   | Texture & fabrics    | July 28, 2019 | 3:20pm (UTC) |
| 20      | M01-DE-01-D   | Compression strength | July 28, 2019 | 3:22pm (UTC) |
| 21      | M01-DE-02-D   | Compression strength | July 28, 2019 | 3:26pm (UTC) |
| 22      | M01-DE-03-D   | Compression strength | July 28, 2019 | 3:30pm (UTC) |
| 23      | M01-CPUT-03-D | Biology              | July 28, 2019 | 3:35pm (UTC) |



**Figure B1.** Schematic of the segmentation of seven pancake ice and two pack ice cores subjected to ultrasound testing with section dimensions and corresponding section numbering.





**Figure B2.** Schematic of the segmentation of twelve pancake ice and three pack ice cores subjected to compression testing with sample dimensions and corresponding core names.

*Author contributions.* Conceptualization by SS, DL, KM, TM, and MV. Morphological analysis methodology developed by SJ and TR, ultrasound testing methodology developed by SS, KM and RM, uniaxial compression testing methodology developed by DL, TM and FP. Investigation and data curation by SS, RA, AC, EH, SJ, KM RM, TM, EM, FP, TR and CS. Formal analysis by SS, RA, AC, SJ, DL, KM, RM, TM and FP. Funding acquisition by SS, DL, JS and MV. The original draft was written by SS with assistance from all co-authors.

425 *Competing interests.* The authors declare that the research was conducted in the absence of any commercial or financial relationships that could be construed as a potential conflict of interest.

*Acknowledgements.* This research has been funded by the National Research Foundation of South Africa (NRF) (Grant Nos. 104839, 105858 and 118745). Opinions expressed and conclusions arrived at are those of the author and are not necessarily to be attributed to the NRF. SS, RA, AC, EH, RM, EM, TR and MV acknowledge support from the South African National Antarctic Programme (SANAP).

## 430 References

- Alberello, A., Onorato, M., Bennetts, L., Vichi, M., Eayrs, C., MacHutchon, K., and Toffoli, A.: Brief communication: Pancake ice floe size distribution during the winter expansion of the Antarctic marginal ice zone., *Cryosphere*, 13, 2019.
- Alberello, A., Bennetts, L., Heil, P., Eayrs, C., Vichi, M., MacHutchon, K., Onorato, M., and Toffoli, A.: Drift of pancake ice floes in the winter Antarctic marginal ice zone during polar cyclones, *Journal of Geophysical Research: Oceans*, 125, e2019JC015418, 2020.
- 435 Bennetts, L., O'Farrell, S., and Uotila, P.: Brief communication: Impacts of ocean-wave-induced breakup of Antarctic sea ice via thermodynamics in a stand-alone version of the CICE sea-ice model, *The Cryosphere*, 2017.
- Bromwich, D. H., Guo, Z., Bai, L., and Chen, Q.-s.: Modeled Antarctic precipitation. Part I: Spatial and temporal variability, *Journal of Climate*, 17, 427–447, 2004.
- Carnat, G., Papakyriakou, T., Geilfus, N.-X., Brabant, F., Delille, B., Vancoppenolle, M., Gilson, G., Zhou, J., and Tison, J.-L.: Investigations  
440 on physical and textural properties of Arctic first-year sea ice in the Amundsen Gulf, Canada, November 2007–June 2008 (IPY-CFL system study), *Journal of Glaciology*, 59, 819–837, 2013.
- Cox, G. F. and Weeks, W. F.: Equations for determining the gas and brine volumes in sea-ice samples, *Journal of Glaciology*, 29, 306–316, 1983.
- Dansereau, V., Weiss, J., Saramito, P., and Lattes, P.: A Maxwell-Elasto-Brittle rheology for sea ice modelling, 2016.
- 445 Dantl, G.: Elastic moduli of ice, in: *Physics of ice: proceedings of the International Symposium on Physics of Ice, Munich, Germany, September 9–14, 1968*, edited by Camp, P., Kiszewick, W., Arnold, D., Riehl, N., Bullemer, B., Engelhardt, H., et al., pp. 223–230, 1969.
- de Vos, M., Barnes, M., Biddle, L. C., Swart, S., Ramjukadh, C.-L., and Vichi, M.: Evaluating numerical and free-drift forecasts of sea ice drift during a Southern Ocean research expedition: An operational perspective, *Journal of Operational Oceanography*, pp. 1–17, 2021.
- Dempsey, D. and Langhorne, P.: Geometric properties of platelet ice crystals, *Cold regions science and technology*, 78, 1–13, 2012.
- 450 Doble, M., Coon, M., and Peppe, O.: Study of the winter Antarctic marginal ice zone, *Ber. Polar Meeresforschung*, 402, 158–161, 2001.
- Doble, M. J., Coon, M. D., and Wadhams, P.: Pancake ice formation in the Weddell Sea, *Journal of Geophysical Research: Oceans*, 108, 2003.
- Eayrs, C., Holland, D., Francis, D., Wagner, T., Kumar, R., and Li, X.: Understanding the Seasonal Cycle of Antarctic Sea Ice Extent in the Context of Longer-Term Variability, *Reviews of Geophysics*, 57, 1037–1064, 2019.
- 455 Eicken, H.: Salinity profiles of Antarctic sea ice: Field data and model results, *Journal of Geophysical Research: Oceans*, 97, 15545–15557, 1992.
- Eicken, H.: Deriving modes and rates of ice growth in the Weddell Sea from microstructural, salinity and stable-isotope data, *Antarctic Sea Ice: Physical Processes, Interactions and Variability*, *Antarct. Res. Ser.*, 74, 89–122, 1998.
- Eicken, H., Lange, M. A., and Wadhams, P.: Characteristics and distribution patterns of snow and meteoric ice in the Weddell Sea and their  
460 contribution to the mass balance of sea ice, in: *Annales Geophysicae*, vol. 12, pp. 80–93, Springer, 1994.
- Eicken, H., Fischer, H., and Lemke, P.: Effects of the snow cover on Antarctic sea ice and potential modulation of its response to climate change, *Annals of Glaciology*, 21, 369–376, 1995.
- Frankenstein, G. and Garner, R.: Equations for determining the brine volume of sea ice from  $-0.5^{\circ}$  to  $-22.9^{\circ}$  C, *Journal of Glaciology*, 6, 943–944, 1967.
- 465 Frederking, R. and Timco, G.: Uniaxial compressive strength and deformation of Beaufort sea ice, in: *The Seventh International Conference on Port and Ocean Engineering under Arctic Conditions*, pp. 89–98, 1983.

- Galley, R., Else, B., Geilfus, N.-X., Hare, A., Isleifson, D., Barber, D., and Rysgaard, S.: Imaged brine inclusions in young sea ice—Shape, distribution and formation timing, *Cold Regions Science and Technology*, 111, 39–48, 2015.
- 470 Gammon, P., Kieft, H., Clouter, M., and Denner, W.: Elastic constants of artificial and natural ice samples by Brillouin spectroscopy, *Journal of glaciology*, 29, 433–460, 1983.
- Haas, C., Vieho, T., and Eicken, H.: Sea-ice conditions during the Winter Weddell Gyre Study 1992, ANT X/4, with RV "Polarstern": Ship observations and AVHRR satellite imagery, *Berichte aus dem Fachbereich Physik*, 34, 1992.
- Han, H., Li, Z., Huang, W., Lu, P., and Lei, R.: The uniaxial compressive strength of the Arctic summer sea ice, *Acta Oceanologica Sinica*, 34, 129–136, <https://doi.org/10.1007/s13131-015-0598-7>, 2015.
- 475 Hepworth, E., Vichi, M., van Zuydam, A., Taylor, N. C., Bossau, J., Engelbrecht, M., and Aarskog, T.: Sea Ice Observations in the Antarctic Marginal Ice Zone during Winter 2019, <https://doi.org/10.1594/PANGAEA.921759>, 2020.
- Herman, A., Cheng, S., and Shen, H. H.: Wave energy attenuation in fields of colliding ice floes—Part 1: Discrete-element modelling of dissipation due to ice–water drag, *Cryosphere*, 13, 2019.
- Hibler III, W.: A dynamic thermodynamic sea ice model, *Journal of physical oceanography*, 9, 815–846, 1979.
- 480 Hobbs, W. R., Massom, R., Stammerjohn, S., Reid, P., Williams, G., and Meier, W.: A review of recent changes in Southern Ocean sea ice, their drivers and forcings, *Global and Planetary Change*, 143, 228–250, 2016.
- Hutchings, J. and Hibler III, W.: Small-scale sea ice deformation in the Beaufort Sea seasonal ice zone, *Journal of Geophysical Research: Oceans*, 113, 2008.
- Hutchings, J., Heil, P., Steer, A., and Hibler III, W.: Subsynoptic scale spatial variability of sea ice deformation in the western Weddell Sea during early summer, *Journal of Geophysical Research: Oceans*, 117, 2012.
- 485 Jeffries, M., Morris, K., Weeks, W., and Worby, A.: Seasonal variations in the properties and structural composition of sea ice and snow cover in the Bellingshausen and Amundsen Seas, Antarctica, *Journal of Glaciology*, 43, 138–151, 1997.
- Jeffries, M. O., Shaw, R. A., Morris, K., Veazey, A. L., and Krouse, H. R.: Crystal structure, stable isotopes ( $\delta^{18}\text{O}$ ), and development of sea ice in the Ross, Amundsen, and Bellingshausen seas, Antarctica, *Journal of Geophysical Research: Oceans*, 99, 985–995, 1994.
- 490 Jeffries, M. O., Krouse, H. R., Hurst-Cushing, B., and Maksym, T.: Snow-ice accretion and snow-cover depletion on Antarctic first-year sea-ice floes, *Annals of Glaciology*, 33, 51–60, 2001.
- Kermani, M., Farzaneh, M., and Gagnon, R.: Compressive strength of atmospheric ice, *Cold Regions Science and Technology*, 49, 195–205, <https://doi.org/10.1016/j.coldregions.2007.05.003>, 2007.
- Kivimaa, S. and Kosloff, P.: Compressive Strength And Structure Of Sea Ice In The Weddell Sea, Antarctica, *The Built Environment*, 5, 12, 495 1994a.
- Kivimaa, S. and Kosloff, P.: Compressive strength and structure of sea ice in the Weddell Sea, Antarctica, *WIT Transactions on The Built Environment*, 5, 1994b.
- Kohout, A., Williams, M., Dean, S., and Meylan, M.: Storm-induced sea-ice breakup and the implications for ice extent, *Nature*, 509, 604–607, 2014.
- 500 Kohout, A. L., Meylan, M. H., and Plew, D. R.: Wave attenuation in a marginal ice zone due to the bottom roughness of ice floes, *Annals of Glaciology*, 52, 118–122, 2011.
- Kovacs, A.: Sea ice. Part II, Estimating the full-scale tensile, flexural and compressive strength of first-year ice, 1996.
- Kovacs, A.: Estimating the full-scale flexural and compressive strength of first-year sea ice, *Journal of Geophysical Research: Oceans*, 102, 8681–8689, <https://doi.org/10.1029/96JC02738>, 1997.

- 505 Kuehn, G. A. and Schulson, E. M.: The mechanical properties of saline ice under uniaxial compression, *Annals of Glaciology*, 19, 39–48, 1994.
- Lange, M. and Eicken, H.: Textural characteristics of sea ice and the major mechanisms of ice growth in the Weddell Sea, *Annals of Glaciology*, 15, 210–215, 1991.
- Lange, M., Schlosser, P., Ackley, S., Wadhams, P., and Dieckmann, G.: 18 O concentrations in sea ice of the Weddell Sea, Antarctica, *Journal of Glaciology*, 36, 315–323, 1990.
- 510 of Glaciology, 36, 315–323, 1990.
- Lange, M. A., Ackley, S. F., Wadhams, P., Dieckmann, G., and Eicken, H.: Development of sea ice in the Weddell Sea, *Annals of Glaciology*, 12, 92–96, 1989.
- Langleben, M. and Pounder, E.: *Arctic Sea Ice of Various Ages*, 1963.
- Marquart, R., Bogaers, A., Skatulla, S., Alberello, A., Toffoli, A., Schwarz, C., and Vichi, M.: A computational fluid dynamics model for the small-scale dynamics of wave, ice floe and interstitial grease ice interaction, *Fluids*, 6, 176, 2021.
- 515 small-scale dynamics of wave, ice floe and interstitial grease ice interaction, *Fluids*, 6, 176, 2021.
- Massom, R., Lytle, V., Worby, A., and Allison, I.: Winter snow cover variability on East Antarctic sea ice, *Journal of Geophysical Research: Oceans*, 103, 24 837–24 855, 1998.
- Mellor, M.: Mechanical behavior of sea ice, in: *The geophysics of sea ice*, pp. 165–281, Springer, 1986.
- Melsheimer, C. and Spreen, G.: IUP Multiyear Ice Concentration and Other Sea Ice Types, Tech. Rep. Version 1.1 (Arctic)/Version AQ2 (Antarctic), Institute of Environmental Physics, University of Bremen, Bremen, 2021.
- 520 (Antarctic), Institute of Environmental Physics, University of Bremen, Bremen, 2021.
- Moslet, P.: Field testing of uniaxial compression strength of columnar sea ice, *Cold Regions Science and Technology*, 48, 1–14, 2007.
- Nakawo, M. and Sinha, N. K.: Growth rate and salinity profile of first-year sea ice in the high Arctic, *Journal of Glaciology*, 27, 315–330, 1981.
- Nanthikesan, S. and Sunder, S. S.: Anisotropic elasticity of polycrystalline ice Ih, *Cold regions science and technology*, 22, 149–169, 1994.
- 525 Notz, D. and Worster, M. G.: In situ measurements of the evolution of young sea ice, *Journal of Geophysical Research: Oceans*, 113, 2008.
- Passerotti, G., Bennetts, L. G., von Bock und Polach, F., Alberello, A., Puolakka, O., Dolatshah, A., Monbaliu, J., and Toffoli, A.: Interactions between irregular wave fields and sea ice: A physical model for wave attenuation and ice breakup in an ice tank, *Journal of Physical Oceanography*, 2022.
- Paul, F., Mielke, T., Nisters, C., Schröder, J., Rampai, T., Skatulla, S., Audh, R., Hepworth, E., Vichi, M., and Lupascu, D. C.: Brief communication: Grease Ice in the Antarctic Marginal Ice Zone, *Journal of Marine Science and Engineering*, 2021.
- 530 nification: Grease Ice in the Antarctic Marginal Ice Zone, *Journal of Marine Science and Engineering*, 2021.
- Petrich, C. and Eicken, H.: Overview of sea ice growth and properties, in: *Sea ice*, edited by Thomas, D. N., pp. 1–41, John Wiley & Sons, Ltd Chichester, UK, 2017.
- Provost, C., Sennéchaël, N., Miguet, J., Itkin, P., Rösel, A., Koenig, Z., Villaceros-Robineau, N., and Granskog, M. A.: Observations of flooding and snow-ice formation in a thinner Arctic sea-ice regime during the N-ICE2015 campaign: Influence of basal ice melt and storms, *Journal of Geophysical Research: Oceans*, 122, 7115–7134, 2017.
- 535 flooding and snow-ice formation in a thinner Arctic sea-ice regime during the N-ICE2015 campaign: Influence of basal ice melt and storms, *Journal of Geophysical Research: Oceans*, 122, 7115–7134, 2017.
- Pustogvar, A. and Kulyakhtin, A.: Sea ice density measurements. Methods and uncertainties, *Cold Regions Science and Technology*, 131, 46–52, <https://doi.org/10.1016/j.coldregions.2016.09.001>, 2016.
- Rampal, P., Weiss, J., Marsan, D., Lindsay, R., and Stern, H.: Scaling properties of sea ice deformation from buoy dispersion analysis, *Journal of Geophysical Research: Oceans*, 113, 2008.
- 540 Roach, L. A., Horvat, C., Dean, S. M., and Bitz, C. M.: An emergent sea ice floe size distribution in a global coupled ocean-sea ice model, *Journal of Geophysical Research: Oceans*, 123, 4322–4337, 2018.

- Rogers, W. E., Thomson, J., Shen, H. H., Doble, M. J., Wadhams, P., and Cheng, S.: Dissipation of wind waves by pancake and frazil ice in the autumn Beaufort Sea, *Journal of Geophysical Research: Oceans*, 121, 7991–8007, 2016.
- Schulson, E., Fortt, A., Iliescu, D., and Renshaw, C.: Failure envelope of first-year Arctic sea ice: The role of friction in compressive fracture, *Journal of Geophysical Research: Oceans*, 111, 2006.
- Schulson, E. M. and Duval, P.: *Creep and Fracture of Ice*, Cambridge University Press, Cambridge, <https://doi.org/10.1017/CBO9780511581397>, 2009.
- Shokr, M. and Agnew, T. A.: Validation and potential applications of Environment Canada Ice Concentration Extractor (ECICE) algorithm to Arctic ice by combining AMSR-E and QuikSCAT observations, *Remote sensing of environment*, 128, 315–332, 2013.
- Shokr, M. and Sinha, N.: *Sea ice: physics and remote sensing*, John Wiley & Sons, 2015.
- Sinha, N. K.: Uniaxial compressive strength of first-year and multi-year sea ice, *Canadian Journal of Civil Engineering*, 11, 82–91, <https://doi.org/10.1139/l84-010>, 1984.
- Smedsrud, L. H. and Skogseth, R.: Field measurements of Arctic grease ice properties and processes, *Cold regions science and technology*, 44, 171–183, 2006.
- Smith, M. and Thomson, J.: Pancake sea ice kinematics and dynamics using shipboard stereo video, *Annals of Glaciology*, pp. 1–11, 2019.
- Snyder, S. A., Schulson, E. M., and Renshaw, C. E.: The role of damage and recrystallization in the elastic properties of columnar ice, *Journal of Glaciology*, 61, 461–480, <https://doi.org/10.3189/2015JoG14J225>, 2015.
- Squire, V. A.: A fresh look at how ocean waves and sea ice interact, *Philosophical Transactions of the Royal Society A: Mathematical, Physical and Engineering Sciences*, 376, 20170342, 2018.
- Sturm, M., Morris, K., and Massom, R.: The winter snow cover of the West Antarctic pack ice: its spatial and temporal variability, *Antarctic sea ice: physical processes, interactions and variability*, 74, 1–18, 1998.
- Thomas, M., Vancoppenolle, M., France, J., Sturges, W., Bakker, D. C., Kaiser, J., and von Glasow, R.: Tracer measurements in growing sea ice support convective gravity drainage parameterizations, *Journal of Geophysical Research: Oceans*, 125, e2019JC015791, 2020.
- Timco, G. and Weeks, W.: A review of the engineering properties of sea ice, *Cold regions science and technology*, 60, 107–129, 2010.
- Tison, J.-L., Schwegmann, S., Dieckmann, G., Rintala, J.-M., Meyer, H., Moreau, S., Vancoppenolle, M., Nomura, D., Engberg, S., Blomster, L., et al.: Biogeochemical impact of snow cover and cyclonic intrusions on the winter Weddell Sea ice pack, *Journal of Geophysical Research: Oceans*, 122, 9548–9571, 2017.
- Tison, J.-L., Maksym, T., Fraser, A. D., Corkill, M., Kimura, N., Nosaka, Y., Nomura, D., Vancoppenolle, M., Ackley, S., Stammerjohn, S., et al.: Physical and biological properties of early winter Antarctic sea ice in the Ross Sea, *Annals of Glaciology*, 61, 241–259, 2020.
- Urabe, N. and Inoue, M.: Mechanical Properties of Antarctic Sea Ice, *Journal of Offshore Mechanics and Arctic Engineering*, 110, 403–408, <https://doi.org/10.1115/1.3257079>, 1988a.
- Urabe, N. and Inoue, M.: Mechanical properties of Antarctic sea ice, *Journal of Offshore Mechanics and Arctic Engineering*, 110, 403–408, 1988b.
- Wang, R. and Shen, H. H.: Gravity waves propagating into an ice-covered ocean: A viscoelastic model, *Journal of Geophysical Research: Oceans*, 115, 2010.
- Weeks, W. F. and Ackley, S. F.: The growth, structure, and properties of sea ice, in: *CRREL Monograph 82-1*, pp. 1–130, CRREL, 1982.
- Weiss, J.: *Drift, deformation, and fracture of sea ice: a perspective across scales*, vol. 83, Springer, 2013.
- Weiss, J. and Dansereau, V.: Linking scales in sea ice mechanics, *Philosophical Transactions of the Royal Society A: Mathematical, Physical and Engineering Sciences*, 375, 20150352, 2017.

- 580 Wells, A., Wettlaufer, J., and Orszag, S.: Brine fluxes from growing sea ice, *Geophysical Research Letters*, 38, 2011.
- Worby, A., Massom, R., Allison, I., Lytle, V., and Heil, P.: East Antarctic sea ice: A review of its structure, properties and drift, *Antarctic sea ice: physical processes, interactions and variability*, 74, 41–67, 1998.
- Ye, Y., Heygster, G., and Shokr, M.: Improving multiyear ice concentration estimates with reanalysis air temperatures, *IEEE Transactions on Geoscience and Remote Sensing*, 54, 2602–2614, 2015.
- 585 Yiew, L. J., Bennetts, L., Meylan, M., Thomas, G., and French, B.: Wave-induced collisions of thin floating disks, *Physics of Fluids*, 29, 127 102, 2017.