

Comparison of ice dynamics using full-Stokes and Blatter-Pattyn approximation: application to the ~~central North East~~ Northeast Greenland Ice Stream

Martin Rückamp^{1,*}, Thomas Kleiner¹, and Angelika Humbert^{1,2}

¹Alfred-Wegener-Institut Helmholtz-Zentrum für Polar- und Meeresforschung, Bremerhaven, Germany

²Faculty of Geoscience, University of Bremen, Bremen, Germany

* now at Bavarian Academy of Sciences and Humanities, Munich, Germany

Correspondence: Martin Rückamp (martin.rueckamp@badw.de), Angelika Humbert (angelika.humbert@awi.de)

Abstract. Full-Stokes (FS) ice sheet models provide the most sophisticated formulation of ice sheet flow. However, their applicability is often limited due to ~~its~~ the high computational demand and ~~its~~ owing numerical challenges. To balance computational demand and accuracy, the so-called Blatter-Pattyn (BP) stress regime is frequently used. Here, we explore the dynamic consequences ~~caused~~ by solving FS and the BP stress regime applied to the ~~central part of the North East~~ Northeast Greenland Ice Stream (~~NEGIS~~). To ensure a consistent comparison, we use one single ice sheet model to run the simulations under identical numerical conditions. A sensitivity study to ~~grid resolution~~ the horizontal grid resolution (from 12.8 down to 0.1 km) reveals that velocity differences between the FS and BP solution emerge below ~ 1 km horizontal resolution and continuously ~~increases~~ increase with resolution. ~~Generally, BP produces higher surface velocities than FS, at a resolution of 0.1 km up to 5.8% on average. In an extreme case, estimated ice discharge rates are up to 8% overestimated by BP; in a rather classical case, BP reveals up to 3% more ice discharge. Based on these minor model disagreements and given other large uncertainties in ice sheet projections, we conclude that the use of FS seems not an urgent issue and takes a secondary role in narrowing uncertainties of current sea-level projections. However, the englacial advection schemes from both stress regimes indicate severe impacts on internal layers of ice sheets~~ Over the majority of the modelling domain both models reveal similar surface velocity patterns. At the grounding line of 79° North Glacier the simulations unveil considerable differences whereby BP overestimates ice discharge of up to 50% compared to FS. A sensitivity study to the friction type reveals that differences are stronger for a power-law friction than a linear friction law. Model differences are attributed to topographic variability and the basal drag since neglected stress terms in BP become important.

Copyright statement.

1 Introduction

20 The most comprehensive description of ice sheet flow is ~~by using given by~~ the full-Stokes (FS) equations. ~~As no simplification to the equation system is made, such~~ Such a model is considered the most accurate available, capable of describing highly dynamic ice sheets, including ice streams, ice shelves, and grounding line migration. But this formulation is also the most computationally intensive, both from the numerical perspective and because FS effects can only occur at higher resolutions compared to simpler models.

25 Due to increasing computer power, the emergence of new generation ice sheet models (ISMs) in the last decades allowed ice flow models with varying degrees of approximations to the Stokes equations or even with no approximation. Although ice dynamical processes require a most accurate representation of the stresses, e.g. in regions of high variability in basal topography and/or basal slipperiness (Gudmundsson, 2003; Hindmarsh, 2004), simplifications to FS are still necessary for e.g. long time integrations or for large ensemble modelling to keep the computing time affordable. For this reason, ice flow
30 modelling has frequently relied on simplified mathematical models to balance computational costs and accuracy, such as the three-dimensional and ~~computational~~ computationally efficient Blatter-Pattyn (BP) formulation (Blatter, 1995; Pattyn, 2003). Although BP neglects ~~severe~~ several components of the full system, it is considered valid in the majority of an ice sheet.

~~Under these conditions, current~~ Current ice sheet projections within the ISMIP6 effort (Ice Sheet Model Intercomparison Project for CMIP6 (ISMIP6), Nowicki et al., 2016) cover a large diversity in model approaches and approximations to the
35 Stokes flow (Goelzer et al., 2018; Seroussi et al., 2019; Goelzer et al., 2020; Seroussi et al., 2020), but only one contribution solved the FS problem (~~Seroussi et al., 2020~~) (Seroussi et al., 2020, model UTAS_ElmerIce with a variable resolution between 4 and 40 km). Up to now, there is no clear understanding of whether FS simulations have the potential in narrowing uncertainties in current sea-level predictions from the Greenland and Antarctic ice sheets. However, the fidelity ability to accurately simulate the behaviour of outlet glaciers has been cited in the reports of the Intergovernmental Panel on Climate Change as a prerequisite for
40 reliable ice sheet projections (IPCC, 2013; Oppenheimer et al., 2019).

In earlier ISMIPs the performance in simulating idealized ice stream and marine ice sheet dynamics by ISMs was explored (ISMIP-HOM (Ice Sheet Model Intercomparison Project for Higher-Order Models, Pattyn et al., 2008), MISMIP2d (Marine Ice Sheet Model Intercomparison Project, Pattyn et al., 2012), MISMIP3d (Pattyn et al., 2013), MISMIP+ (Cornford et al., 2020)). The ISMIP-HOM exercise focuses on so-called higher-order (HO) as well as FS model and in particularly reveals
45 that the FS models show a much smaller spread, hence are in better agreement with one another and with ~~the one available~~ analytical solution. In the earlier MISMIP experiments, any systematic study of differences in solutions from Stokes models is ~~prohibited~~ not possible due to the limited number of FS models¹. The recent MISMIP+ effort reflects that the choice of the friction law plays a larger role compared to, e.g. ice flow approximations (two FS models contribute to this exercise). From these synthetic scenarios, it yet needs to be assessed if discrepancies between FS and simpler models are minor compared to
50 other uncertainties in ice sheet modelling given the huge additional computational ~~amount consumed~~ cost by FS models (about 10 times slower than BP (Larour et al., 2012, Table 3 therein)).

¹Compared to the ISMIP-HOM experiments, the MISMIP experiments require a long transient integration, which is costly to perform for an FS model.

In contrast to the idealized ISMIP experiments, the influence of FS on ice dynamical behaviour compared to simpler models were tested on realistic problems (e.g. Leysinger Vieli and Gudmundsson, 2004; Le Meur et al., 2004; Morlighem et al., 2010; Seddik et al., 2012; Favier et al., 2014; Seddik et al., 2017). These exercises provide important insights into the transient response and indicate that FS produces different results ~~as compared to~~ simpler models. For example, in most of the conducted projection experiments, FS tends to contribute less to sea-level rise than simpler models under identical projection scenarios (Seddik et al., 2012; Favier et al., 2014; Seddik et al., 2017). Morlighem et al. (2010) concluded that treating ice flow of the fast-flowing Pine Island Glacier (PIG, Antarctica) with a steeply rising bed near the grounding line with FS is essential. However, assessing whether FS is urgently needed compared to simpler models is complicated because of many interacting processes: (i) comparability is often limited by the use of different ISMs as it is not entirely clear how much of the differences is due to numerical treatments as, e.g. different ~~grids, which resolves, e.g. horizontal grids resolve the~~ bed differently, or discretization schemes. (ii) Differences are also subject to e.g. assumptions in basal flow conditions or the initialization approach. (iii) Moreover, when transient simulations are forced with climate scenarios, the response involves numerous processes and interactions that ~~makes make~~ it difficult to separate causes.

~~Beside the relevance of utilizing FS or simpler models for future projections of ice sheets, the different ice dynamics may have a severe impact on the internal ice flow. The internal ice flow computed by ISMs are used to estimate the englacial layering (e.g., Born, 2017) which can further serve as tuning targets for paleoclimatic simulations (e.g., Sutter et al., 2020). The effect on how different flow approximations affect the internal architecture of ice sheets have received so far no attention to our knowledge; certainly because FS and higher-order models are too expensive for these long-time integrations.~~

Here, we intend to overcome model-intercomparison shortcomings by performing ~~a consistent analysis of differences in stress and velocity fields~~ consistent numerical experiments by solving the FS system or using the ~~Blatter-Pattyn (BP) approximation (Blatter, 1995; Pattyn, 2003)~~ BP approximation. Our comparison focuses on FS to BP, as the latter is more frequently used as a compromise between computational costs and accuracy. The employed ISM ~~, namely COMice (Wilkens et al., 2015)~~ , includes the option to run the FS model or to activate the BP mode allowing us to compare the results consistently as they are computed under the same numerical conditions. Here, we strive to fill the gap of FS and BP intercomparisons in synthetic scenarios towards a high-resolution real system application. ~~Therefore, we select a subset of the North East~~ We select two subsets of the Northeast Greenland Ice Stream (NEGIS) as an investigation area. ~~The subset covers~~ Both subsets cover slow and fast flowing ice as well as ~~a smooth and higher smooth and highly~~ smooth and highly variable bed topography. The first domain focuses on the ice stream while the second domain covers the NEGIS outlets 79° N Glacier (79NG) and Zacharias Isbræ (ZI). Our study is not based on the transient behaviour, we rather aim to address ice dynamical differences between the stress regimes. ~~However, from the simulated 3D ice flow we discuss potential consequences for capturing englacial layers utilizing different flow approximations.~~ As differences between FS and BP are expected to emerge in regions with steep bed gradients or high aspect ratios (height/length ratio ϵ), we step-wise increase spatial resolution from 12.8 km down to a resolution of 0.1 km. ~~In order to investigate whether differences are controlled by the slip ratio (ratio between basal sliding and gravitational driven flow) the ice stiffness is weighted by the enhancement factor.~~

2 Theoretical background

2.1 ~~Field~~The full-Stokes equations

The core of the FS equation system builds the ~~momentum-mass balance~~ (neglecting acceleration) and ~~mass balance-momentum~~ equation for incompressible ice and is written as

$$90 \quad \text{div } \mathbf{v} = 0, \quad (1)$$

$$\text{div } \mathbf{t} = \rho_i \mathbf{g}, \quad \text{div } = 0, \quad (2)$$

with the density of ice ~~$\rho_i = 917 \text{ kg m}^{-3}$~~ , the three dimensional velocity field $\mathbf{v} = (v_x, v_y, v_z)$ in Cartesian coordinates, the gravitational acceleration vector pointing downward $\mathbf{g} = -g\mathbf{e}_z$ ($g = 9.81 \text{ m s}^{-2}$), and the Cauchy stress tensor \mathbf{t} . We split the Cauchy stress into a deviatoric part \mathbf{t}^D and an ~~isometric-isotropic~~ pressure p

$$95 \quad \mathbf{t} = \mathbf{t}^D + p\mathbf{I}, \quad (3)$$

with $p = -\frac{1}{3}\text{tr}(\mathbf{t})$ and \mathbf{I} the identity tensor. The constitutive equation for the non-Newtonian fluid ~~is given by the Glen-Steinemanns flow law (Glen, 1955; Steinemann, 1954)~~ links strain rates to velocity gradients

$$\mathbf{t}^D = 2\eta\mathbf{D}, \quad (4)$$

where \mathbf{D} is the strain rate tensor ~~and links strain rates to the symmetric part of the velocity gradients~~ ($\mathbf{D} = \frac{1}{2}(\text{grad } \mathbf{v} +$
100 $(\text{grad } \mathbf{v})^T)$). The viscosity is defined ~~as is given by the Glen-Steinemanns flow law (Glen, 1955; Steinemann, 1954)~~

$$\eta = \frac{1}{2}EA(T, W)^{-1/n}\dot{\epsilon}_e^{(1-n)/n}, \quad (5)$$

with the flow law exponent ~~$n = 3$~~ , the enhancement factor E , the rate factor A depending on temperature T and microscopic water content W , and the effective strain rate $\dot{\epsilon}_e$ being the second invariant of the strain-rate tensor. To the latter, a small value of $\dot{\epsilon}_0 = 10^{-30} \text{ s}^{-1}$ is added to keep the term non-zero.

105 2.2 Boundary conditions

~~Boundary condition at the~~The upper surface is ~~traction-free~~assumed to be traction free. The ice sheet base is subject to basal sliding according to a friction law for the basal shear stress \mathbf{t}_b^D in the tangential plane

$$\mathbf{t}_b^D = \tau_b \mathbf{e}_b = [(\mathbf{I} - \mathbf{n}\mathbf{n}^T)\mathbf{t}^D] \cdot \mathbf{n} = -\beta^2(\mathbf{I} - \mathbf{n}\mathbf{n}^T) \cdot \mathbf{v} = -\beta^2\mathbf{v}_b, \quad (6)$$

$$\mathbf{v} \cdot \mathbf{n} = 0, \quad (7)$$

110 with the unit normal vector \mathbf{n} pointing ~~outwards~~out of the ice, and \mathbf{v}_b is the velocity in the tangential plane at the base. Basal refreezing or melting is neglected. The basal drag parameter β^2 usually often includes the effective pressure to account for the presence of water lubricating the ice-bed interface, as well as bed properties such as roughness. For floating we use the same boundary condition but prescribe free slip ($\beta^2 = 0$). The parameterization for β^2 used and the remaining lateral boundary condition are given below for each experiment setup.

The [mass and](#) momentum balance (Eq. [1 and 2](#)) can be written in terms of velocity components and pressure p

$$\begin{aligned} \frac{\partial v_x}{\partial x} + \frac{\partial v_y}{\partial y} + \frac{\partial v_z}{\partial z} &= 0, \\ \frac{\partial}{\partial x} \left(2\eta \frac{\partial v_x}{\partial x} \right) + \frac{\partial}{\partial y} \left(\eta \frac{\partial v_x}{\partial y} + \eta \frac{\partial v_y}{\partial x} \right) + \frac{\partial}{\partial z} \left(\eta \frac{\partial v_x}{\partial z} + \eta \frac{\partial v_z}{\partial x} \right) - \frac{\partial p}{\partial x} &= 0, \\ \frac{\partial}{\partial x} \left(\eta \frac{\partial v_x}{\partial y} + \eta \frac{\partial v_y}{\partial x} \right) + \frac{\partial}{\partial y} \left(2\eta \frac{\partial v_y}{\partial y} \right) + \frac{\partial}{\partial z} \left(\eta \frac{\partial v_y}{\partial z} + \eta \frac{\partial v_z}{\partial y} \right) - \frac{\partial p}{\partial y} &= 0, \\ \frac{\partial}{\partial x} \left(\eta \frac{\partial v_x}{\partial z} + \eta \frac{\partial v_z}{\partial x} \right) + \frac{\partial}{\partial y} \left(\eta \frac{\partial v_y}{\partial z} + \eta \frac{\partial v_z}{\partial y} \right) + \frac{\partial}{\partial z} \left(2\eta \frac{\partial v_z}{\partial z} \right) - \frac{\partial p}{\partial z} &= -\rho_i g, \end{aligned} \quad (8)$$

as well as the effective strain rate occurring in Eq. 5

$$120 \quad \dot{\epsilon}_e = \left(\frac{1}{2} \left(\frac{\partial v_x}{\partial x} \right)^2 + \frac{1}{2} \left(\frac{\partial v_y}{\partial y} \right)^2 + \frac{1}{2} \left(\frac{\partial v_z}{\partial z} \right)^2 + \frac{1}{4} \left(\frac{\partial v_x}{\partial y} + \frac{\partial v_y}{\partial x} \right)^2 + \frac{1}{4} \left(\frac{\partial v_x}{\partial z} + \frac{\partial v_z}{\partial x} \right)^2 + \frac{1}{4} \left(\frac{\partial v_y}{\partial z} + \frac{\partial v_z}{\partial y} \right)^2 \right)^{1/2}. \quad (9)$$

The red terms are omitted in the BP approximation [as](#) explained below. The four equations (Eqs. 1 and 8) with the four unknowns v_x , v_y , v_z and p [are forming form](#) the FS equation system. Various approximations to this set of equation exist ranging from shallow ice [approximation \(SIA\)](#) to different types of one layer and multilayer approximations for non-horizontal shear components of the stress tensor (Hutter, 1983; Hindmarsh, 2004; Bueler and Brown, 2009; Ahlkrona et al., 2013). The FS
125 problem has saddle point character which is difficult to solve ([Benzi et al., 2005](#)). In order to reduce the computational demand and derive a better posed problem, Blatter (1995) and Pattyn (2003) developed the so-called BP approximation scheme which is valid for most of the ice sheet domain and up-to-date widely used in ice flow models. The main assumption of their model is that the vertical component of the momentum balance is approximated as hydrostatic (i.e. $\partial t_{zz}/\partial z = \rho_i g$). This [assumption](#)
is used to eliminate the pressure variable p from the FS equation system and reduces the FS problem with the two horizontal
130 velocity components as unknown field variables. The further assumption that horizontal gradients of the vertical velocity are small compared to the vertical gradient of the horizontal velocity (i.e. $\partial v_z/\partial x \ll \partial v_x/\partial z$ and $\partial v_z/\partial y \ll \partial v_y/\partial z$) leads to a closed problem for the two horizontal velocity components. This approximation is equivalent to dropping the red coloured terms in Eq. 8 and 9; it is termed LMLa in Hindmarsh (2004).

The [assumptions to the BP scheme imply that the so-called bridging stresses \(also known as vertical resistive stress Van Der Veen and W
135 , i.e. the resistance to varying stress gradients in direction of the ice flow, is neglected. Bridging effects are generally small and occur near the ice divide and at the grounding line \(Pattyn, 2000\). Since the BP schemes retain stresses of the order \$\mathcal{O}\(1\)\$ and \$\mathcal{O}\(\epsilon\)\$ but delete stress terms of \$\mathcal{O}\(\epsilon^2\)\$ \(Blatter, 1995\) it is only valid to a certain aspect ratio and topographic variability. Once high velocity gradients develop over short distances BP may not provide an accurate solution.](#)

The [simplifications made by BP on the FS system reduces-reduce](#) the computational demand by deriving a better posed
140 problem. By re-arranging the BP equations this system leads to a closed problem for the two horizontal velocity components v_x and v_y . In doing so, the BP approximations decouple the vertical velocity v_z and the pressure p from the full system. Both unknowns are recovered diagnostically by integrating the incompressibility equation (Eq. 1) and the vertical component of the

momentum balance equation (Eq. 8), respectively. However, in our approach we ~~are following~~ follow an alternative way to realize the BP stress regime (see Sect. 3.1 and 3.2).

145 3 Model description and verification

3.1 Ice flow model

To solve the set of equations presented above (Eq. ~~2, 1 and 1 and 2~~ and boundary conditions), we use the COMmercial finite element SOLver (COMSOL) Multiphysics[®] (version 5.5, www.comsol.com, last access May 2021). COMSOL provides a FS interface which is additionally manipulated in order to realise the BP stress regime. This is accomplished by discarding the
150 corresponding terms (red terms in Eqs. 8 and 9) in the weak formulation but maintaining identical FS numerical details. That means that the BP stress regime does not further modify the default FS module, i.e the BP version implemented in this study is not forming a multilayer model with the two horizontal velocity components as field variables. Therefore, our implemented BP approximation is hereafter termed BP-like. In doing so, both flow modes (FS and BP-like) are running through the same (FS) solving algorithm. Hereby we ensure that differences in the computed results due to numerical issues are largely eliminated.
155 However, the disadvantage is that we do not benefit by the reduced complexity of the BP approximation. As a consequence of the avoided decoupling $\tau \partial v_z / \partial z$ in Eq. 9 is not replaced by $-(\partial v_x / \partial x + \partial v_y / \partial y)$ as commonly done in HO approximations ~~(e.g. Pattyn, 2003)~~ (e.g., Pattyn, 2003).

3.2 Numerics

The mass balance and momentum equations constitute a nonlinear equation system. Independent of the employed flow regime,
160 a damped Newton method (which is COMSOL's default solver) is applied in a fully coupled manner to solve for the velocity vector v and the pressure p . The unstabilized Stokes equation (Eq. 8) is subject to the Babuska-Brezzi condition, which states that the basis functions for p have to be of lower order than for v . ~~As we stabilize the FS equation with streamline diffusion (Galerkin least-squares (GLS), Hauke and Hughes, 1994) it is possible to use equal-order interpolation to keep the computational amount limited; i. e. This issue could be circumvent with suitable stabilization techniques. Here, we test the~~
165 numerical robustness of our results by employing two different discretization schemes: (1) We use P2+P1 Lagrange elements which consists of quadratic basis functions for the velocity and linear for the pressure. (2) The second scheme uses linear elements for both the velocity components and the pressure field (P1+P1 Lagrange elements) and numerical stabilization is achieved with streamline diffusion (Galerkin least-squares (GLS), Hauke and Hughes, 1994). Due to the equal-order interpolation, the latter is computationally more efficient but less accurate and sensitive to the GLS stabilization parameters (Helanow and Ahlkrone, 2018
170 . In the following, the schemes will be referred as P2P1 and P1P1GLS, respectively.

To further test the numerical robustness we compare two different implementations (called 'strong' and 'weak') for the Dirichlet condition (Eq. 7) at the ice base. The strong imposition applies the constraints pointwise at each node and, therefore, modifies the underlying variational formulation. The weak method is rather a component of the variational formulation by

adding exterior facet integrals. For the latter, we use the so-called Lagrange multiplier method (Babuska, 1973; Verfürth, 1986; Urquiza et al., 2015) where the Dirichlet condition is multiplied with the Lagrange multiplier λ .

All the flow regime equations are forming a saddle point problem, for which either a direct solver or special preconditioning is needed. The verification tests ISMIP-HOM (see Sect. 3.3) are solved with the direct solver MUMPS (<https://graal.ens-lyon.fr/MUMPS/>; last access August 2020). For the NEGIS subset [experiment experiments](#) (Sect. 4), the degrees of freedom (DOF) increases rapidly with increasing spatial resolution, and a direct solver would be uncommon for such large numbers of DOFs. However, the smaller problems are solved with the direct solver MUMPS, while for the higher resolutions we For the larger problems we rely on the iterative GMRES solver (Saad, 2003) which is accelerated with appropriate preconditioners. Simulations that make use of the strong imposition rely on a Domain Decomposition solver with an overlapping additive Schwarz method (ASM, Widlund and Toselli, 2005) which is much superior in terms of the required computation time and working memory. ASM is a memory-efficient and scalable iterative algorithm for large problems, to accelerate the iterative GMRES solver (Saad, 2003). Very briefly, the solution is found by iteratively solving each subdomain problem with all other domains fixed until convergence is achieved. In each subdomain, the boundary condition is taken from neighbouring subdomains. The employed overlapping method is a multiplicative Schwarz method. The multiplicative method solves each subdomain problem in sequence and might be not suitable for running in parallel. But it reveals much faster convergence and lower memory consumption than other overlapping methods available in COMSOL (symmetric, additive and hybrid compared to MUMPS. Unfortunately, the ASM preconditioner shows a very high computational demand for simulations that employ the weak imposition. Since the involved Lagrange multiplier induces a zero on the diagonal of the system matrix several common preconditioners are not applicable. Therefore, we employ the Vanka algorithm (Vanka, 1986; John and Matthies, 2001) which is specifically designed for large indefinite problems with saddle point character. Based on our simulations, we found Vanka to be very memory efficient and computationally fast for large problems although it requires more Newton and GMRES iterations compared to ASM (see Sect. 4 and Tab. 1 and 2).

In terms of the stressed Regarding the desired consistency between the [simulations simulation](#) results, we must clarify the different usage of the linear solvers: the coarser models show a poor performance with the ASM solver and Vanka preconditioner. At the same time, the higher resolutions run out of memory with the MUMPS solver. But the limiting case with a horizontal grid resolution of $l=0.4$ km reveals differences between [Dependent on modelling domain and employed discretization MUMPS run out of memory around 5 million DOF's. The limiting case MUMPS and ASM results well below \$10^{-7} \text{ m a}^{-1}\$ reveals differences well below \$10^{-7} \text{ m a}^{-1}\$ in the surface velocity, \$v_s = |v|_s\$; differences between MUMPS and Vanka below \$10^{-3} \text{ m a}^{-1}\$](#) . Consequently, we assume that both applied all applied linear solvers provide comparable results.

3.3 Verification by benchmarks

The ISMIP-HOM benchmark targets comparison for three dimensional ice flow models arising from basal topography undulations, from basal sliding and by changing the length scale. From the ISMIP-HOM setup (Pattyn et al., 2008) we select the 3D and non-transient experiments Exp. A (Ice flow over a bumpy bed) and Exp. C ('Ice stream flow I'). We rely on this setup to verify our flow implementations, in particular the BP-like implementation. Please note that the FS implementation is basically

~~verified by the 'mmr' contribution to Pattyn et al. (2008) but is based on COMSOL version 3.5.~~ Exp. A is a parallel-sided slab with a series of sinusoidal oscillations in the basal topography with a frequency of $\omega = 2\pi/L$, with L being the domain length.

210 ~~In this setup no basal sliding is prescribed (i.e. $v|_b = 0$).~~ Exp. C is parallel-sided slab with a series of sinusoidal oscillations on the basal drag parameter β^2 (Eq. 6) with the frequency ω . At the lateral margins periodic boundary conditions are applied. The length scale is subsequently reduced as $L = 160, 80, 40, 20, 10$ and 5 km so that full-Stokes effects can develop due to the higher aspect ratio H/L , with H being the mean ice thickness. The domain is discretized with $n_x = n_y = L/41$ grid points in the horizontal plane. In the vertical direction 15 layers refined to the base are chosen. ~~The parameters and constants used~~

215 ~~in this setup are listed in Tab. ??.~~ We run the benchmarks with a length scale of 5 km with the linear (P1P1GLS) and second order (P2P1) element functions. Additionally, Exp. C is run with the strong and weak imposition of the basal friction law. All other length scales are run with P1P1GLS and for Exp. C with the strong imposition of the friction law. The ISMIP-HOM experiments using an ice density of $\rho_i = 910 \text{ kg m}^{-3}$. For a detailed description of the experimental setup, please refer to Pattyn et al. (2008).

220 Our results for FS and BP-like show good agreements with the corresponding models for FS and non FS (nFS; nFS includes BP) for the conducted A and C test cases (see Appendix Figs. ~~?? and ??~~ S2 and S3). However, the original exercise reveals distinct differences between FS and lower order approximations on short length scales. On those, different characteristics between FS and HO emerge (Fig. 1). In particular, for Exp. C the 'double-peak' in the surface velocity is present in the FS solution but absent in the ~~BP-BP-like~~ regime, which is consistent with the original ISMIP-HOM results. Independent of the

225 used element functions and friction law imposition, we found a good agreement to the original ISMIP-HOM contributions and between our own model versions. Generally, the P2P1 model reveals slightly higher surface velocities than P1P1GLS. The different friction law implementations show very minor differences. From the resulting behavior, the implementations of the FS and BP-like stress regimes are verified.

4 Description of NEGIS subset ~~experiment~~ experiments

230 We select ~~a subset~~ two different subsets of the NEGIS (Fig. 2) to investigate the effect of FS and BP on its ice dynamics. ~~This region comprises~~ The first region focus on an ice-stream like flow regime with abrupt changes in slow and fast flow ~~suitable to conduct such an analysis. On purpose,~~ of the southern branch (SB) of NEGIS (it is termed 'ice-stream', see red line in Fig. 2). The second region comprises also the western branch (WB) of NEGIS and the outlet regions of 79NG and ZI (it is termed 'outlet', see cyan line in Fig. 2). For the ice-stream experiment a region far upstream the grounding

235 line and far downstream the ice divide is selected to avoid grounding line treatment and to focus on an ice-stream like flow regime. The outlet region captures the hinge-zone of 79NG and the marine terminus of ZI. As we rely on the BedMachine v3 data-set (BM, Morlighem et al., 2017), a small area at 79NG becomes afloat. In both setups, the geometry of the NEGIS ~~subset~~ subsets is laterally defined along flow lines that were deduced from the MEaSURES surface velocity data-set (Joughin et al., 2016, 2018).

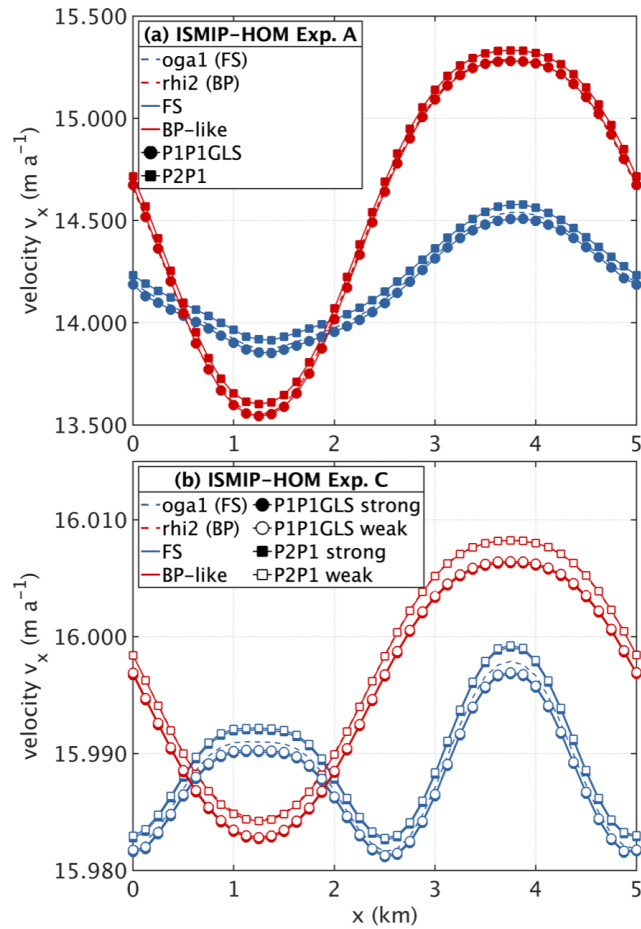


Figure 1. Results of the ISMIP-HOM experiments A (a) and C (b) for the length scale $L = 5$ km. Surface velocity component v_x (m a^{-1}) at $y = L/4$. Values computed in this study for FS and BP-like are compared to the BP model 'rhi2' and the FS model 'oga1' from the original ISMIP-HOM benchmark (Pattyn et al., 2008). Please note that the BP-like P1P1GLS and 'rhi2' BP solutions in Exp. A overlay on each other; in Exp. C the 'rhi2' BP solution is overlaid by BP-like P2P1 strong and and BP-like P2P1 weak.

240 Bed and surface topography are taken from BedMachine v3 (BM, Morlighem et al., 2017). BM. As consistency is the
 primary target of the model set-up to study the response of both stress regimes to different initial and boundary conditions,
 we do not perform an initial relaxation of the free surfaces. A relaxation run based on e.g., the BP-like scheme and successive
 simulation runs with BP-like and FS would likely experience a 'shock' for the FS model because the geometry is consistent to
 the BP-like physics (and in the same way also for a FS relaxation run). Performing relaxation simulations for BP-like and FS
 245 individually would result in different initial geometries and also different initial conditions (e.g., velocity). This would be an
 undesired effect for our consistency approach which would make a clear comparison difficult. Here, we followed the strategy
 to have physical parameters and the geometry input equal in the FS and BP-like to allow a better comparison.

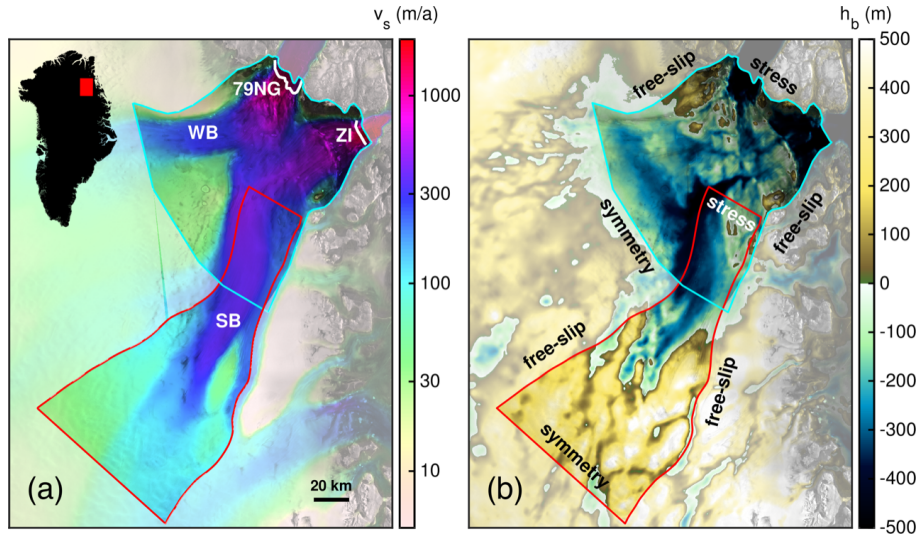


Figure 2. Overview of the NEGIS region and modelling domain. (a) Observed surface velocities (Joughin et al., 2016, 2018). (b) Bed topography (Morlighem et al., 2017). The red and cyan line in (a) and (b) delineates the ice-stream and outlet modelling domain, respectively. In White lines in (a), the black lines (dotted, dashed, straight) indicate flux gate locations at 79NG and ZI (see Fig. ??-9 and related text below). WB and SB indicate the grey line the pathway western and southern branch of seeded particles (see Fig. ??-10). Symmetry, free-slip, and related text below stress in (b) indicate the boundary condition types used at lateral margins. Background image is a RADARSAT Mosaic (Joughin, 2015; Joughin et al., 2016)

In the NEGIS experiment experiments we consider a Budd-like friction type-law (Budd et al., 1979) with a linear relationship on the effective pressure, N ($m = 1$) and non-linear relationship ($m = 3$). The basal drag parameter β^2 in the basal boundary condition (Eq. 6) is assumed as

$$\beta^2 = k^2 N^{1/m} v_b^{1/m-1}, \quad (10)$$

where k is the basal friction coefficient found by an inversion technique (see below and Appendix A). The effective normal pressure is the difference between the local normal stress on the bed boundary ice pressure P_i and the basal water pressure P_w

$$N = P_i - P_w. \quad (11)$$

The basal water pressure is computed in marine parts, i.e. where the ice base is below the sea-level ($h_b < z_{sl}$), according to Huybrechts (1992)

$$P_i = -(\mathbf{t} \cdot \mathbf{n}) \cdot \mathbf{n}, \quad (12)$$

$$P_w = -\min(\rho_w g h_b, 0), \quad (13)$$

where $\rho_w = 1023 \text{ kg m}^{-3}$ is the density of the ocean and h_b water and h_b the bed elevation. Independent of the employed stress regimes the ice pressure Here, P_i is the normal stress instead of the approximated ice overburden pressure. The assumption

tions made about the water pressure imply that the base is perfectly connected to the ocean at any location in the domain that is below sea-level. Overall, this might be incorrect but it forms an appropriate assumption in the absence of an additional hydrological model.

265 Solving a subset of an ice stream poses unknown boundary conditions in the interior of the ice sheet. A ~~very~~ simple approach would be prescribing the measured surface velocities as a depth-averaged velocity profile. However, we choose boundary conditions that are free to adjust during the solution process. ~~Laterally boundary conditions~~ (Fig. 2b). ~~Inflow boundaries~~ are chosen to have a symmetry boundary condition ~~at the inflow boundary, free slip~~, which implies $\mathbf{v} \cdot \mathbf{n} = 0$ and vanishing shear stresses. ~~A free slip condition is chosen~~ at lateral along-flow boundaries and a normal stress condition at the outflow ~~boundary with $\mathbf{t} \cdot \mathbf{n} = \rho_i g(z_s - z)$~~ , boundaries. ~~Dependent on the setup, the outflow boundaries are land- or marine terminating fronts of the glacier or located within the ice. For those we chose stress boundary condition $\mathbf{t} \cdot \mathbf{n} = -F_0 \mathbf{n}$. For outflow boundaries located within the ice (e.g., at 79NG) we choose $F_0 = \rho_i g(z_s - z) + \delta$; for land- or marine terminating fronts (e.g., ZI) we set $F_0 = \min(\rho_i g(z_s - z), 0) + \delta$, where z_s is the surface elevation and z the vertical coordinate. Here, δ is an additional stress that is tuned to match the observed velocities at those boundaries. The additional stress is set to zero except at 79NG and ZI; δ is 0.5 MPa and 0.3 MPa at 79NG and ZI, respectively.~~

275 ~~We conduct experiments with different~~ ~~Dependent on the setup, we conduct experiments ranging from~~ a horizontal mesh resolutions of $l = 12.8, 6.4, 3.2, 1.6, 0.8, 0.4, 0.2, 0.15$ and to 0.1 km. Please note, that $l = 0.15$ km is the nominal resolution of the BM data-set. The horizontal grid sizes ~~comprise used contain~~ resolutions currently used in ice sheet projections (e.g. Aschwanden et al., 2019; Goelzer et al., 2020; Seroussi et al., 2020) (e.g., Aschwanden et al., 2019; Goelzer et al., 2020; Seroussi et al., 2020) and beyond. ~~In the vertical direction 11 layers (refined to the base) are employed which is sufficient compared to higher resolutions (Fig. ??).~~ The 3D meshes comprise between 1960 and 32 864 970 prism elements, respectively, resulting in 5280 to 72 416 740 DOF for the mesh cases (Tab. ??). ~~In addition, For a number of simulations,~~ the enhancement factor in Eq. 5 is varied ~~by as~~ $E = 0.1, 1, 3,$ and 6 . ~~This weighting is used 6~~ to investigate whether simulation differences stem from basal sliding (small E) or internal velocity (large E) ~~and serve mainly as an intercomparison study for both model versions~~. In the following $E = 1$ will be referred as the 'classical case'. The upper and lower values of E are very extreme ~~and likely do not reflect a realistic situation, but not too far away from currently used values~~ (Ma et al., 2010; de Boer et al., 2015). ~~To test the sensitivity on the assumed friction law we run simulations with $m = 1$ and $m = 3$ (Eq. 10). The numerical robustness is tested by the aforementioned numerical discretization schemes and the implementations of the basal boundary condition. We do not run all possible combination in all setups as it is computationally to expensive. Overall, computational times varied between a few seconds and several hours. A broad overview of computational costs is given in Tab. 1 and 2. If not mentioned otherwise~~ ~~all setups employ 11 vertical layers (refined to the base) which is sufficient compared to higher resolutions (Fig. S1).~~

290 For the parameters $A(T, W)$ (Eq. 5) and k^2 (Eq. 10) we utilize external products and capacities:

1. To rely on a realistic thermal state but avoiding an intensive thermal spin-up ~~run~~, we make use of an enthalpy field from a paleo-climatic spin-up ~~with simulated by~~ the ice sheet model SICOPOLIS (Rückamp et al., 2019) ~~which with SIA~~ (Rückamp et al., 2019). ~~The field~~ is bilinearly interpolated to the COMSOL meshes. The temperature-dependent part of

Table 1. ~~Constants~~ Overview of mesh characteristics and ~~model parameters used~~ consumed computational resources of the ice-stream region. Number of non-linear iterations (damped Newton’s method), computational time, and physical RAM usage are listed for $E = 0.1$, $m = 1$, FS and PIPIGLS strong; values do not vary much among other E and stress regimes settings. Solver and cluster settings (OpenMP (OMP) shared-memory threads and distributed-memory tasks (MPI)) are maintained identical between each resolution and stress regime. Computational time includes the solver procedure (e.g. assembling the stiffness matrix, load vector) and outside routines (e.g. construction of mesh, saving results). Generally, COMSOL is run in hybrid mode, that means the process is distributed to a user-defined number of OMP threads and MPI tasks. Without testing the performance thoroughly we achieve a good performance by OMP parallelism per physical node and MPI communication between physical nodes (the code is simply run in OMP mode if MPI is equal to one). The listed RAM usage refers to one MPI task. Please note, that the cluster settings (MPI and OMP) have been chosen in a way that the job returns a solution within the ~~NEGIS-subset experiment~~ cluster ‘wall-time’ but do not indicate any performance scaling.

~~Quantity~~ resolution

~~Ocean water density, $\rho_w = 1023 \text{ kg m}^{-3}$ flow law exponent, $n = 3$~~ Overview of mesh characteristics and consumed computational resources. Number for r

12.8[†]
6.4[†]
3.2[†]
1.6[†]
0.8[†]
0.4[†]
0.2[†]
0.15[†]
0.1[‡]

[†] Simulations are run on the AWI cluster Cray CS 400. Each production node is equipped with 64 GB RAM and 2x18-Core CPUs (Intel Xeon Broadwell CPU E5-2697).

[‡] Simulations are run at the North-German Supercomputing Alliance (HLRN) cluster Lise. Each production node is armed with 362 GB and 2x48-Core CPUs (Intel Cascade Lake Platinum 9242 (C

* Domain Decomposition solver with an overlapping multiplicative Schwarz method. Number of sub-domains are set equally to the number of MPI tasks.

295 the rate factor in Eq. 5 for cold ice is computed by Cuffey and Paterson (2010), and the water-content-dependent part for temperate ice is by Lliboutry and Duval (1985).

2. We make use of the inversion capability in the Ice-sheet and Sea-level System Model (ISSM, Larour et al., 2012) to obtain a spatially varying basal friction coefficient k^2 (Fig. A1 and A2, see Appendix A). The ISSM inversion is performed with ~~$l = 1$~~ $l = 0.8$ km, with BP and for the individual E values. Similarly, the SICOPOLIS temperature field is interpolated
300 to the 3D ISSM mesh. Subsequently, the inferred fields for k^2 are bi-linear interpolated to the COMSOL meshes.

~~It is worth to mention that the computational work by the BP-like model is not reduced compared to FS in our approach, whereas other ice sheet codes benefit highly from reduced cost for BP implementations. Overall, computational times varied between a few seconds towards several hours. A broad overview of consumed computational resources is given in Tab. ???. Further parameters and constants used in this setup are listed in Tab. ???.~~

Table 2. Overview of mesh characteristics and consumed computational resources of the outlet region similar as in Tab. 1. Number of non-linear iterations (damped Newton’s method), computational time, and physical RAM usage are listed for $E = 1$, $m = 3$, FS and PIPIGLS weak.

resolution (km)	#elements	#DOF	lin-Solver	#nlin lin	wall-time (min)	RAM (GB)	MPI OMP
12.8	2620	6820	MUMPS	15 -	0.1	2.19	1 36
6.4	8440	20284	MUMPS	14 -	0.3	2.86	1 36
3.2	33870	77792	MUMPS	14 -	0.75	4.78	1 36
1.6	133380	299860	MUMPS	12 -	1.86	5.27	4 36
0.8	536220	1192400	MUMPS	12 -	6.93	12.58	4 36
0.4	2125600	4701708	Vanka	12 842	21.75	13.98	8 36
0.2	8494560	18738676	Vanka	13 2854	88.48	33.24	16 36
0.15	15024320	33121000	Vanka	13 2461	102.03	47.37	32 18

All simulations are run on the AWI cluster Cray CS 400. Each production node is equipped with 64 GB RAM and 2x18-Core CPUs (Intel Xeon Broadwell CPU E5-2697).

305 5 Results of the NEGIS subset ~~experiment~~ experiments

5.1 Overview of simulations results ~~Ice-stream~~ Ice-stream region

An overview of input parameters and FS simulation results of the NEGIS subset are compared exemplary for $l = 6400$ m and 100 m in Fig. ???. The slope of the bed ~~and surface~~-topography (Fig. ??a-f3a, d) and the friction coefficient (Fig. ??e, g3b, e) of the finer resolution reveals more small scale features and stronger amplitudes; particularly a rapidly varying bed ~~and surface~~ slope in the finer resolution. Despite both compared resolutions relying on the same inferred basal friction coefficient and input geometry, the interpolation to the computational grids produces striking differences. As a consequence the simulated surface velocity fields differ quantitatively (Fig. ??d, h3c, f). Both resolutions reproduce the NEGIS ~~ice-stream~~ to some degree but the finer resolution features an extended fast flow region ($\gtrsim 350 \text{ m a}^{-1}$) and more pronounced shear margins (i.e., sharper velocity gradients). As the ISSM simulations inferring the friction coefficient are conducted with a ~~10.8~~ km horizontal grid resolution and with the BP ice flow approximation, the COMSOL results among all applied resolutions and flow regimes are not ~~excepted to perfectly expected to~~ match the observed velocity field. The purpose of the transferred friction coefficient from the ISSM inversion to COMSOL is to roughly reproduce the observed NEGIS flow pattern. A better fit to observations could be certainly achieved by performing the inversion for each setting separately; however, our experiments are designed to focus on stress regime inter-comparisons and not on an assessment to observations.

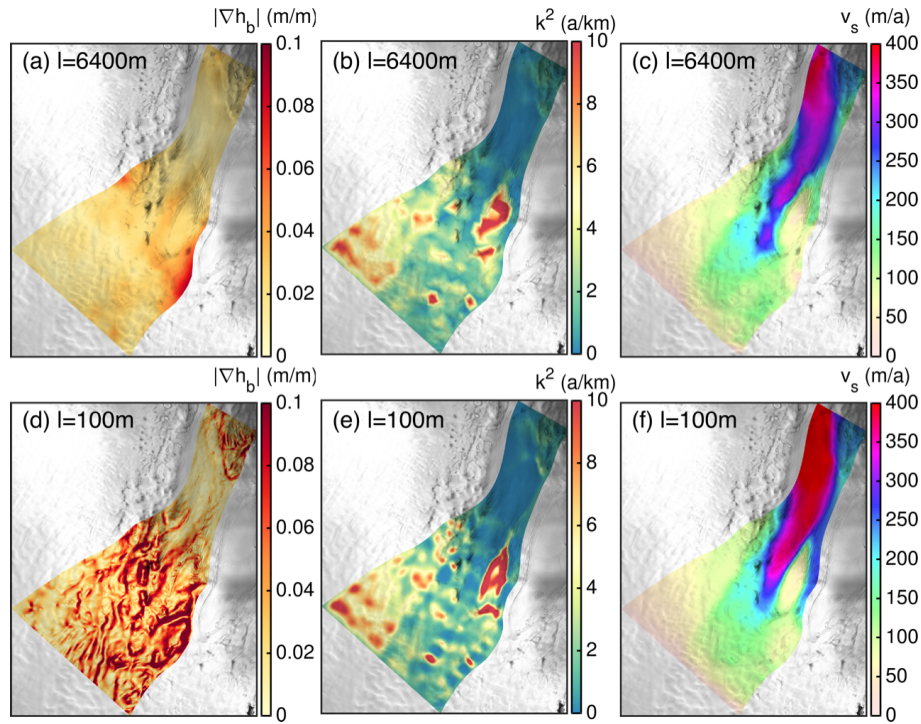


Figure 3. Overview of input parameters and exemplary simulation results of the ice-stream NEGIS subset. Upper row shows slope of ice surface (a), slope of bed topography (b), basal friction coefficient for $E = 1$ inferred with ISSM (e), and simulated surface velocity with FS and $E = 1, m = 1$ and with FS PIPIGLS-strong (d) for 6400 m horizontal resolution. Lower rows shows the same fields but for 100 m horizontal resolution. Background image is a RADARSAT Mosaic (Joughin, 2015; Joughin et al., 2016).

320 5.2 Spatial differences between FS and BP-like

In the following, the FS solution is considered as the exact solution. Therefore, our analysis builds on presenting differences of the BP-like solution to FS. The differences of surface velocities, $v_s = |v| \Delta v_s^{\text{FS-BP-like}} = v_s^{\text{FS}} - v_s^{\text{BP-like}}$, between FS and BP-like are displayed for the 100 m grid resolution in Fig. 4 (differences for a resolution of 800 m and 6400 m are shown in Fig. ??). Spatial differences reveal a different patterns-pattern among the E values. For stiffer ice ($E = 0.1$) the BP-like solutions
 325 exhibits-exhibit higher flow speeds which is almost confined to the fast flow region (Fig. 4a); this area partly coincides with a smooth bed and surface topography (see Fig. ??). Overall, discrepancies between FS and BP-like increase with higher velocities (scatter plot in Fig. 4a). The largest impact of BP-like on the solution is by enhancing the surface flow velocities up to 43 m a^{-1} (relative difference is about 19%) compared to FS. For the 'classical case' ($E = 1$) the pattern is similar but with reduced magnitudes. In this setup, the BP-like velocities are up to 19 m a^{-1} higher (relative difference is about 6%). With
 330 softer ice ($E > 1$), the pattern in surface velocity differences changes and, eventually, for very soft ice ($E = 6$) differences are more pronounced in regions with higher topographic variability (compare Fig. ??) and exhibits-3) and exhibit a rippled pattern.

Velocity differences are scattered around the FS solution by $\pm 80 \text{ m a}^{-1}$; the spread in differences is much stronger for softer ice (see scatter plots in Fig. 4).

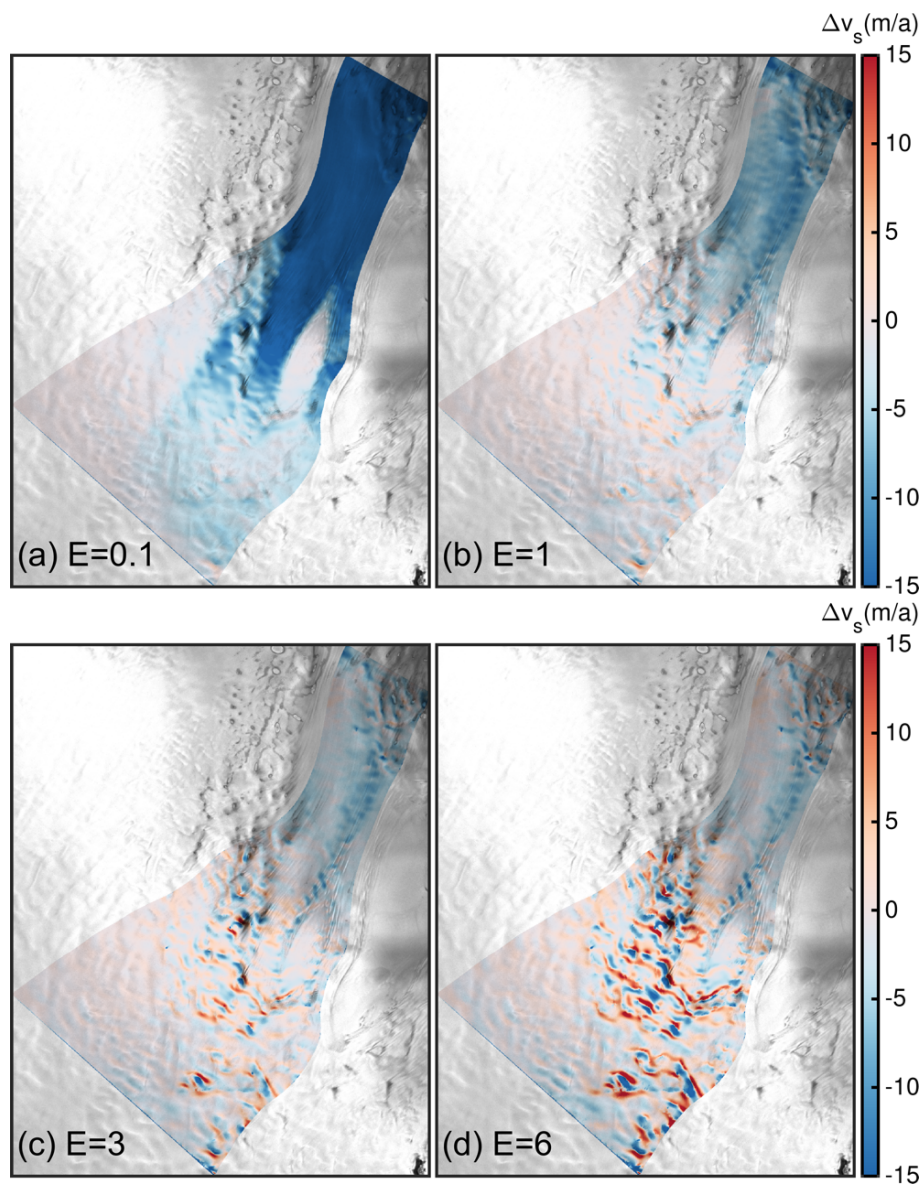


Figure 4. Difference of surface velocity $\Delta v_s^{\text{FS-BP-like}} = v_s^{\text{FS}} - v_s^{\text{BP-like}}$ for a resolution of 100 m. (a, b, c, d) shows differences Differences for $E = 0.1, 1, 3$ and 6 , respectively. Background image is a RADARSAT Mosaic (Joughin, 2015; Joughin et al., 2016).

5.2 Integrative differences between FS and BP-like

335 Based on the spatial differences, we compute a spatially-averaged surface velocity $\bar{v}_s = |\bar{v}|$, for all parameter settings to obtain
 an integrative overview (Fig. 5). The analysis generally unveils-reveals that both the absolute spatially-averaged surface velocity
 (Fig. 5a–d) and relative spatially-averaged surface velocity differences (Fig. 5e–h) start to diverge somewhere below 1.6 and
 0.8 km horizontal grid resolution (which is in the range of the mean ice thickness of 1330 m). Away from this threshold towards
 finer resolutions, solution differences show-increasing-trends-increase between the stress regimes. For the finer resolutions BP-
 340 like produces higher mean surface velocities compared to FS. At the finest resolution (below the nominal resolution of the
 BM data-set), the mean velocity seem to reach a converged state for the BP-like stress regime (less pronounced for $E = 0.1$),
 but FS reveals a small dip towards lower velocities. The tendency of the diverging relative differences at the finest resolution
 is therefore likely a result from the still changing FS solution under grid refinements. The obtained tendency below 150 m is
 intriguing as the differences solely arise from grid-refinements and not due to the input geometry.

345 Maximum-Relative maximum differences between FS and BP-like are obtained for the stiff-ice case ($E = 0.1$). A discussion
on why stiff ice is more sensitive will come in section 5.5. The spatially-averaged ice flow velocity difference is up to 7 m a^{-1}
 for $E = 0.1$; the relative error between FS and BP-like is up to $\sim 5.8\%$. The resulting difference for $E = 1$ shows the same
 trend but is of lower magnitude (up to $\sim 1.5\%$). With softer ice ($E > 1$) the differences decrease. Interestingly, both stress
 regimes reveal an intermediate peak in mean surface velocity at $l = 1600 \text{ m}$ over all E values.

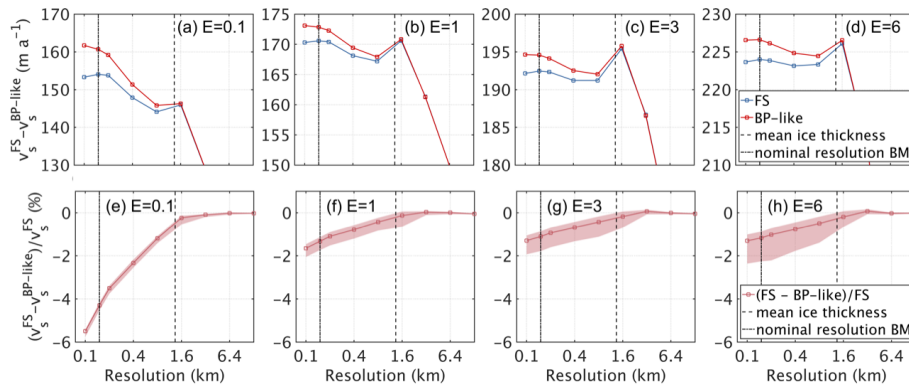


Figure 5. Integrative overview of spatially averaged surface velocities from FS and BP-like stress regimes. Upper row (a, b, c, d) shows surface velocity mean for $E = 0.1, 1, 3,$ and 6 , respectively. Lower row (e, f, g, h) shows the relative difference of BP-like to FS for or $E = 0.1, 1, 3,$ and 6 , respectively. The lighter background indicates the local maximum and minimum relative difference. Please note the logarithmic scale of the x-axis and the different scale of the y-axis in the upper row.

350 5.2 Outlet region

Equivalent as for the ice stream region, an overview of input parameters and FS simulation results of the outlet NEGIS subset
are compared exemplary for $l = 6400 \text{ m}$ and 150 m with PIPIGLS-weak and $m = 3$ (Fig. 6). Similarly, the slope of the

355 bed topography (Fig. 6a, d) and the friction coefficient (Fig. 6b, e) of the finer resolution reveals more small scale features and stronger amplitudes. In both resolutions, the simulated surface velocity fields agree fairly well and reproduce the NEGIS (Fig. 6c, f), however in shear margins and gradients in along flow direction are more expressed in higher resolution.

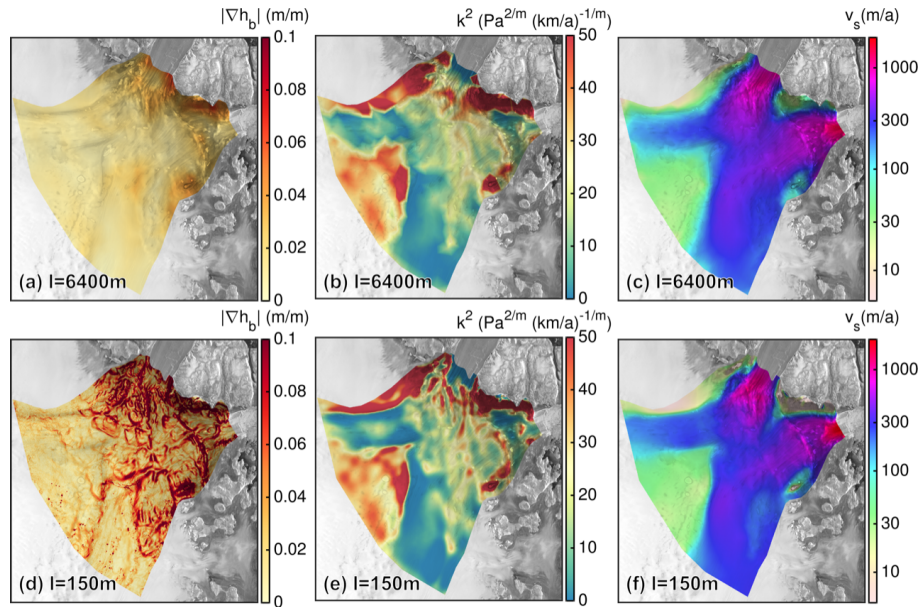


Figure 6. Overview of input parameters and exemplary simulation results of the outlet NEGIS subset. Upper row shows slope of bed topography (a), basal friction coefficient for $E = 1$ (b), and simulated surface velocity with FS PIPIGLS-weak and $m = 3$, and (c) for 6400 m horizontal resolution. Lower rows shows the same fields but for 150 m horizontal resolution. Background image is a RADARSAT Mosaic (Joughin, 2015; Joughin et al., 2016).

360 Differences of surface velocities between FS and BP-like are displayed for the 150 m grid resolution, $E = 1$ and PIPIGLS in Fig. 7. Overall, spatial differences reveal a similar pattern among the employed friction exponents and friction implementations. Largest differences occur in the vicinity of the 79NG grounding line (up to -570 m a^{-1} , see Tab. 3). For a power friction law ($m = 3$) the difference are stronger compared to the linear friction law ($m = 1$). The PIPIGLS-weak setup produces slightly larger differences than PIP1-strong.

365 We compute relative spatially-averaged surface velocity differences for all parameter settings to obtain an integrative overview (Fig. 8). The analysis discloses the clear trend that BP-like simulations lead to higher velocities than FS on average. Overall, the differences increase with higher resolution independent of the employed numerical characteristics. Interestingly, differences between FS and BP-like are more pronounced when using a power friction law compared to a linear friction law (up to 17% compared to 8%, respectively). Furthermore, the weak implementation produces larger differences compared to the strong scheme. The P2P1 discretization reveals differences that are in between PIPIGLS-strong and PIPIGLS-weak results. Differences still tend to increase further below the highest employed resolution. Most remarkably, the area-averaged differences are higher in the outlet region than in the ice stream region (see Fig. 5f).

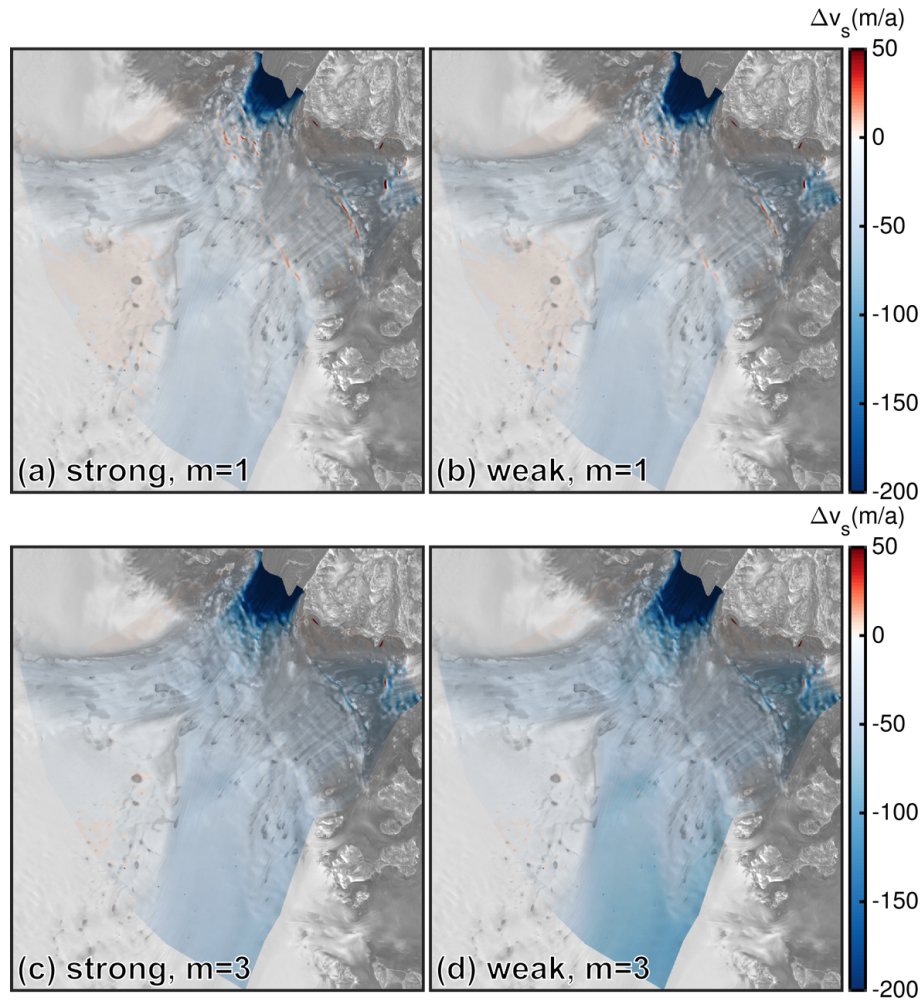


Figure 7. Difference of surface velocity $\Delta v_s^{\text{FS-BP-like}} = v_s^{\text{FS}} - v_s^{\text{BP-like}}$ in the outlet domain for a resolution of 150 m and the PIPIGLS discretization. (a, b) Differences for $m = 1$ and the strong and weak friction implementation, respectively. (c, d) Differences for $m = 3$ and the strong and weak friction implementation, respectively. Please note the different color bar compared to Fig. 4. Background image is a RADARSAT Mosaic (Joughin, 2015; Joughin et al., 2016).

5.3 Impact on ice discharge

370 To estimate the impact on ice discharge, we calculated the ice mass flux along two flux gates of 79NG and ZI (see white lines in Fig. 2a). The flux gate of 79NG corresponds to the grounding line of the BM data set while the flux gate of ZI was shifted approx. 3 km upstream from the calving front. The ice mass flux is calculated as $Q = \int_{\Gamma} \bar{v} H \rho_i ds$, where \bar{v} indicates the depth-averaged ice velocity and the usage of the upper case Q indicates integration over the flux gate area Γ with the line segments ds . On average the total simulated flux across 79NGs grounding line is 14.7 Gt a^{-1} and 14.2 Gt a^{-1} at the flux gate

Table 3. Maximum absolute velocity difference ($\max(|\Delta v_s^{\text{FS-BP-like}}|)$, unit is m a^{-1}) and their corresponding relative velocity difference ($\max(|\Delta v_s^{\text{FS-BP-like}}|)/v_s^{\text{FS}}$, in brackets, unit is %) for different areas in the outlet domain. Results are listed for $l = 150$ m, P1P1GLS and different setups for the basal boundary condition.

setup	79NG	ZI	SB	WB
strong, $m = 1$	353.8 (36.1)	133.9 (10.8)	42.7 (14.2)	27.0 (10.0)
strong, $m = 3$	435.9 (47.4)	154.6 (12.4)	70.1 (24.6)	45.5 (15.6)
weak, $m = 1$	491.3 (53.7)	161.7 (13.3)	48.8 (16.6)	39.0 (13.7)
weak, $m = 3$	570.1 (67.0)	167.0 (13.5)	100.0 (37.5)	59.3 (23.4)

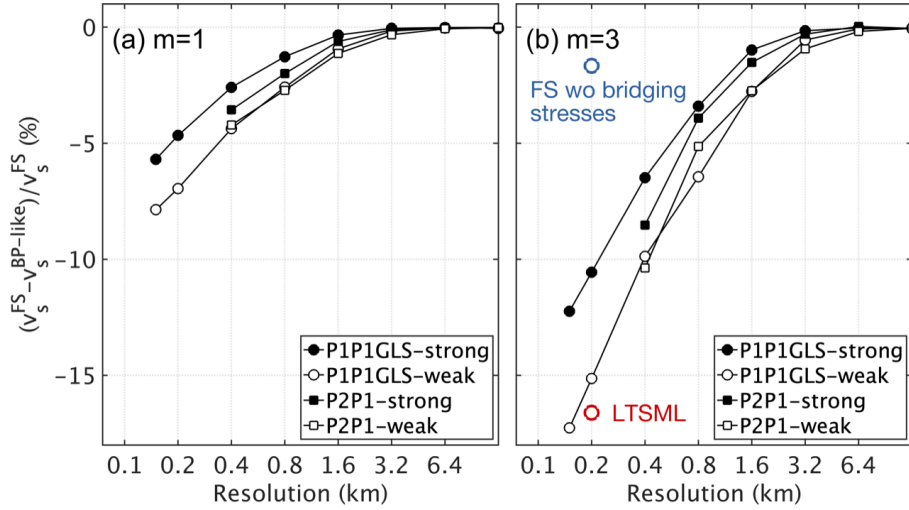


Figure 8. Relative surface velocity differences of area-averaged surface velocities between the FS and BP-like stress regimes in the outlet domain. (a) Linear friction law ($m = 1$). (b) Non linear friction law ($m = 3$). The blue and red circle show two simulations from a ‘FS without (wo) bridging stresses’ and LTSML-like regimes simulated with P1P1GLS-weak (see Discussion). For those, relative differences are calculated between FS and LTSML-like or FS wo bridging stresses.

375 at ZIs terminus. Figure 9 displays relative ice mass flux differences between FS and BP-like. Overall, BP-like shows higher discharge than FS but the responses at 79NG and ZI shows a different order. At 79NG, BP-like ice discharge is up to 40% ($m = 1$) and 50% ($m = 3$) higher than FS. In contrast, a moderate difference of about 5% in both friction laws is found for ZI.

5.4 Free surface evolution

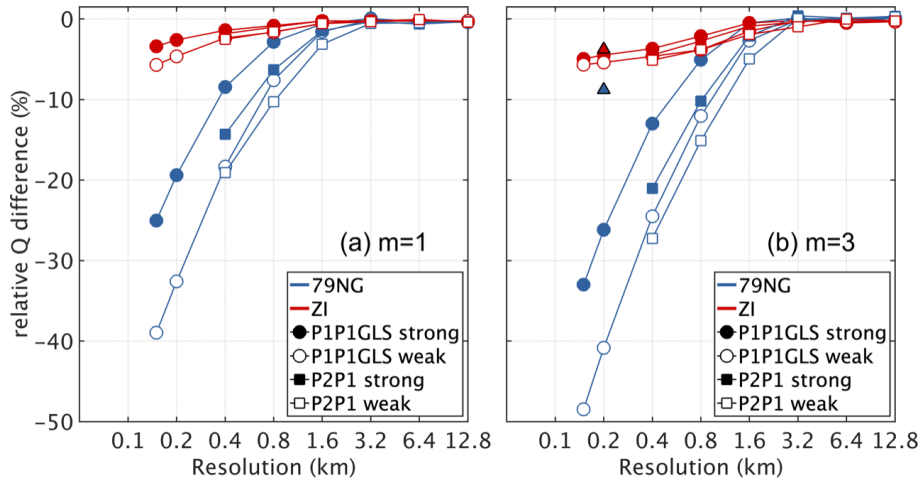


Figure 9. Relative ice mass flux differences between FS and the BP-like stress regimes ($\Delta Q^{\text{FS-BP-like}} = (Q^{\text{FS}} - Q^{\text{BP-like}})/Q^{\text{FS}}$). The location of the flux gates at 79NG and ZI is indicated in Fig. 2. On average the total simulated flux at 79NG is 14.7 Gt a^{-1} and 14.2 Gt a^{-1} at ZI. The triangles in (b) indicate simulation using P1P1GLS-weak with a resolution of $l = 200 \text{ m}$ but a re-gridded geometry from a simulation with $l = 1600 \text{ m}$ (see Sect. 6).

380 In this section, we investigate how the velocity differences are represented in the solution of the ice surface position. The evolution of the free surfaces is given by the kinematic boundary condition

$$\frac{\partial z_s}{\partial t} = v_x n_x + v_y n_y + v_z n_z + \dot{a}_s, \quad (14)$$

where $\dot{a}_s(x, y)$ is the accumulation-ablation function at the surface. Here, we assume no melting or accumulation, i.e. $\dot{a}_s(x, y) = 0$, and the so-called emergence velocity ($v \cdot n$) determines the surface elevation change, $\partial z_s / \partial t$. Since we do not run a forward model the computed free surface evolution is representative for the first time step.

Figure 10 shows the emergence velocity for FS and the difference between FS and BP-like. The FS emergence velocity reveals a somewhat noisy pattern. Due to hyperbolic nature of Eq. 14 numerical stabilization is necessary (Donea and Huerta, 2003; Riviere, for solving the free surface equation which certainly will smooth out sharp gradients and oscillations. However, the FS emergence velocity shows values in the range of $\pm 50 \text{ m a}^{-1}$ (higher at some isolated grid nodes), which is high but not very extreme. Recalling values for surface slopes and velocities of the observational data sets (BM and MEASURE) of up to 0.1 and 1000 m a^{-1} , respectively, lead to values of about 100 m a^{-1} for the horizontal part of the emergence velocity (i.e. $v_x n_x + v_y n_y$). Assuming an initial time step of 0.05 years the estimated maximum height change corresponds roughly to $\pm 2.5 \text{ m}$. Assuming ongoing elevation changes $\partial z_s / \partial t$ in that area of about 1 to 2 m a^{-1} (derived from laser altimetry, pers. comm. Veit Helm, AWI, and older data published in Helm et al. (2014)) the estimated maximum ratio between emergence velocity and height changes ($v \cdot n / (\partial z_s / \partial t)$) is about 25.

The emergence velocity differences between FS and BP-like reveals a picture that BP-like would compute a surface elevation that is lower than the FS surface, particularly at the grounding line at 79NG. Although we are not running a time dependent simulation and, therefore, not capturing grounding line migration we evaluate the buoyancy balance from the stationary setup. The contact condition, i.e. $P_i > P_w$, at the ice base (e.g. Durand et al., 2009). BP-like reveals a grounding line that lies further upstream (≈ 0.5 km) than the one calculated from FS. However both are still located within the hinge zone of 79NG.

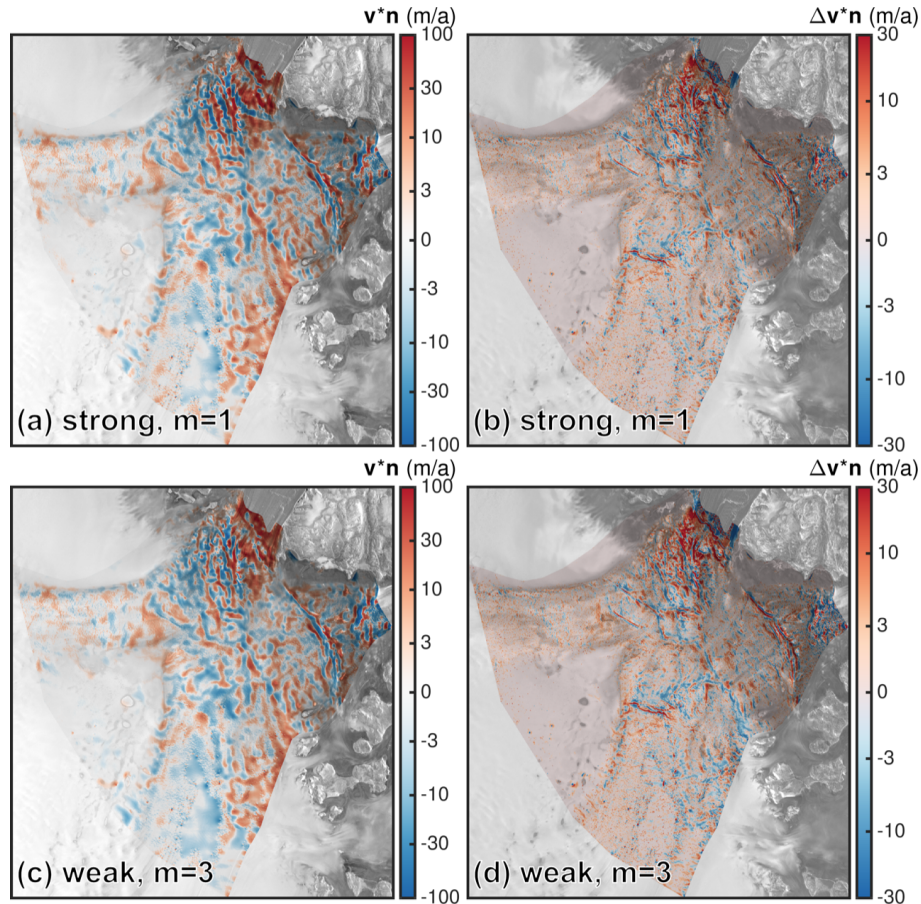


Figure 10. Evaluation of the kinematic boundary condition (emergence velocity $v \cdot n$) at the surface for $l = 150$ m. Surface mass balance is assumed to be zero. Upper row shows (a) FS emergence velocity and (b) emergence velocity differences between FS and BP-like ($v \cdot n|_{FS} - v \cdot n|_{BP-like}$) for $m = 1$ and PIPIGLS-strong. Lower show the equivalent fields for $m = 3$ and PIPIGLS-weak. Background image is a RADARSAT Mosaic (Joughin, 2015; Joughin et al., 2016).

5.5 Relevant physical processes

~~The reasons for the disagreement in stress regime solutions are~~ The reason for the difference in the simulated stress regime is a complex composition of how ice dynamic processes are resolved and how they are resolved in the ice flow model, such as

the basal boundary condition and the internal deformation. In addition, basal drag is coupled to internal deformation via the effective viscosity, making it difficult to separate the two entangled processes. Nevertheless, we strive to give a flavour of the origins by analyzing key processes of ice dynamics [below](#).

Figure 11 [a-d](#) and 12 shows the difference of ~~the basal velocity. Compared to the surface velocity differences, the softer ice shows a rather similar pattern. With softer ice, the accordance of the surface velocity difference pattern to the basal velocity difference pattern reduces. Most striking, the spread in velocity differences obtained at the ice surface for $E=6$ is not evident at the ice base (compare scatter plots in Fig. 4d and 11d).~~

[characteristic quantities between FS and BP-like for the ice-stream and outlet domain, respectively](#). First of all we would expect, that FS would lead to larger ice velocities than BP due to the effective deformation rate (Eq. 9). FS captures the entire stress tensor, which is equivalent to making ice softer on average for the same flow parameters (assuming that strain-rate components shared by FS and BP-like have the same magnitude). Indeed, the depth-averaged viscosity, $\bar{\eta}$, is basically lower for FS compared to BP-like (Fig. 11 [i-l](#) and 12 [c,f](#)). For $E = 0.1$ the depth-averaged viscosity is lower at some larger areas, while for $E = 6$ the pattern changes towards several smaller patches; the magnitude of $\bar{\eta}$ among the E values changes by one order.

However, since FS generally reveals lower velocities than BP-like, the softer ice in FS appears to be ~~levelled-out-compensated~~ by another process. A fundamental control on ice flow is the basal drag indicating the glacier's behaviour for fast flow. The spatial differences of basal drag inferred from the two models reveal ~~that the basal drag it is~~ in the majority larger for FS compared to BP ~~. This spatial pattern generally coincides with the obtained (Fig. 11d-f and 12b, e). The spatial patterns generally coincide with the~~ differences in surface velocity (Fig. 4a ~~).~~ For $E = 0.1$ ~~the and 7). In the ice stream region, the~~ difference is largest for $E = 0.1$ (up to 140 kPa between FS and BP-like). In this setup, it seems that the basal drag is an essential control of the ice flow. With softer ice, the difference in the basal drag decreases. ~~In the outlet domain, the basal drag difference is stronger pronounced for the weak setup with $m = 3$ compared to the strong setup with $m = 1$. At the 79NG area, the maximum difference in basal drag is 316 kPa (99%) and 121 kPa (73%) for weak setup with $m = 3$; for the strong setup with $m = 1$ it is 227 kPa (72%) and 96 kPa (55%), respectively.~~

Inspired by the findings of Gudmundsson (2003) and Hindmarsh (2004) ~~deduced in~~, [deduced from](#) idealized setups, we explore whether ~~their derived criteria for an invalid BP solutions~~ [the criteria when a BP solution is invalid](#) (BP invalid in regions of high slip ratio, high aspect ratio and high topographic variations) hold in our realistic setup. In Fig. 13 [and 14](#) we present two-dimensional histograms of the relative velocity difference between FS and BP-like ~~to the bed slope, $|\nabla h_b|$, to for discrete bins of FS slip ratio v_b/v_s , the local aspect ratio, H/l and to the FS slip ratio v_b/v_s ($\epsilon = H/l$, and the bed slope, $|\nabla h_b|$) (see detailed line plots are in the Appendix-Figs. ??, ??, ??, ??). Model S4-S7)). Simulated differences emerge with increasing aspect ratio ~~ϵ . With increasing aspect ratio neglecting terms of $\mathcal{O}(\epsilon^2)$, i.e. $\partial v_z/\partial x$ and $\partial v_z/\partial y$, in the BP-like (and also BP) model becomes problematic and the solution inaccurate~~. Similarly, the error between FS and BP occurs in regions with high slip ratio (i.e., near-plug-flow conditions prevail) and with higher resolution a larger number of grid ~~points~~ [nodes](#) are involved in producing this error. At a first glance, the distribution of the relative error with respect to the bed slope unveils larger errors at smaller slopes. However, the distribution is certainly biased by large errors occurring in the fast flowing and~~

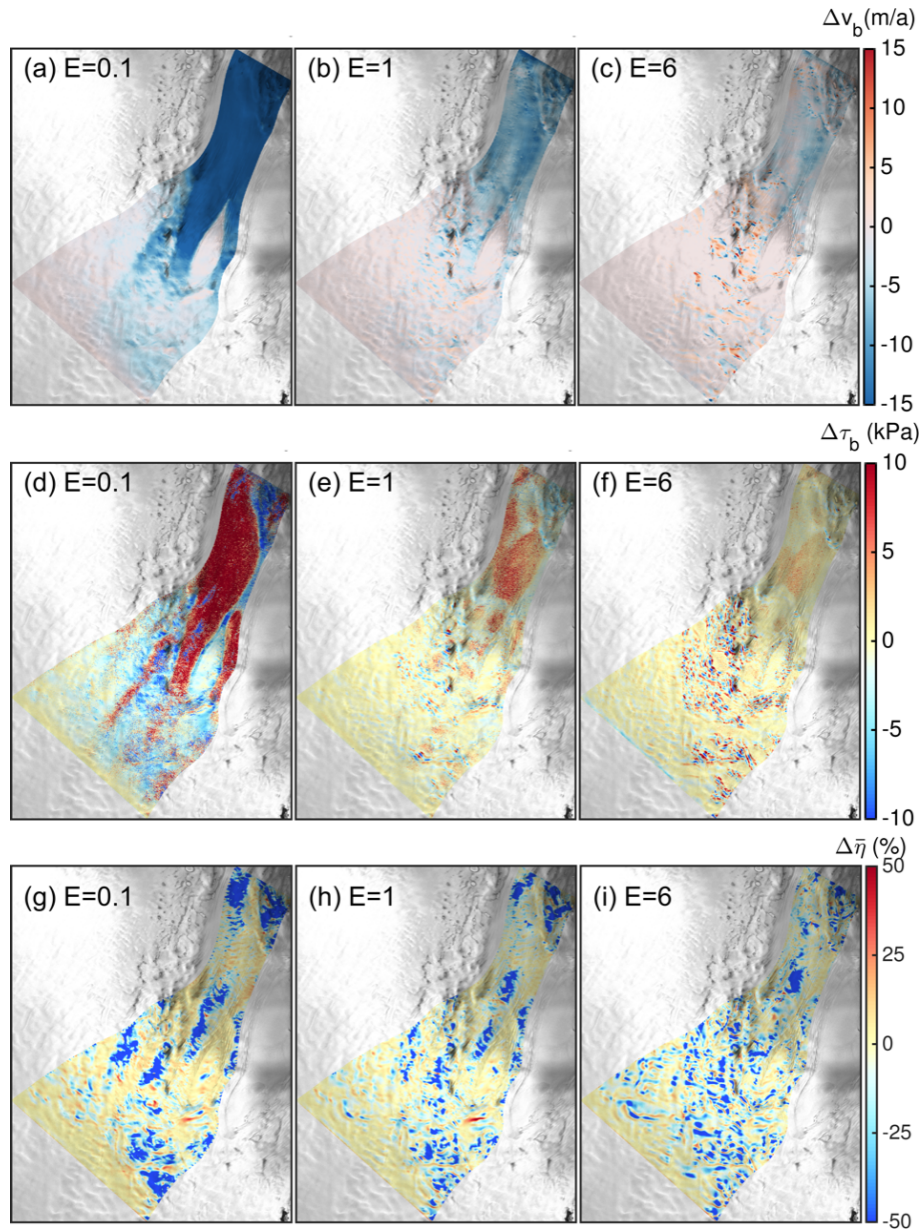


Figure 11. Comparison of characteristic quantities for a resolution of $l = 100$ m, $m = 1$ and PIPIGLS-strong at the ice-stream domain. Difference (FS minus BP-like solution) of basal velocities, v_b (a, b, c, d) and basal drag τ_b (d, e, f, g, h). Relative difference of depth-averaged viscosity $\bar{\eta}$ (g, h, i, j, k, l). Differences are shown for a resolution of 100 m. The domain averaged mean viscosities-viscosity for FS and $E = 0.1, 1, 3$ and 6 are $10.8, 3.6, 1.8,$ and 1.1×10^{14} Pa.s, respectively; for BP-like they are $12.6, 4.1, 2.1,$ and 1.3×10^{14} Pa.s, respectively. The equivalent fields for $E = 3$ reveal patterns and magnitudes that are in between $E = 1$ and $E = 6$. Background image is a RADARSAT Mosaic (Joughin, 2015; Joughin et al., 2016).

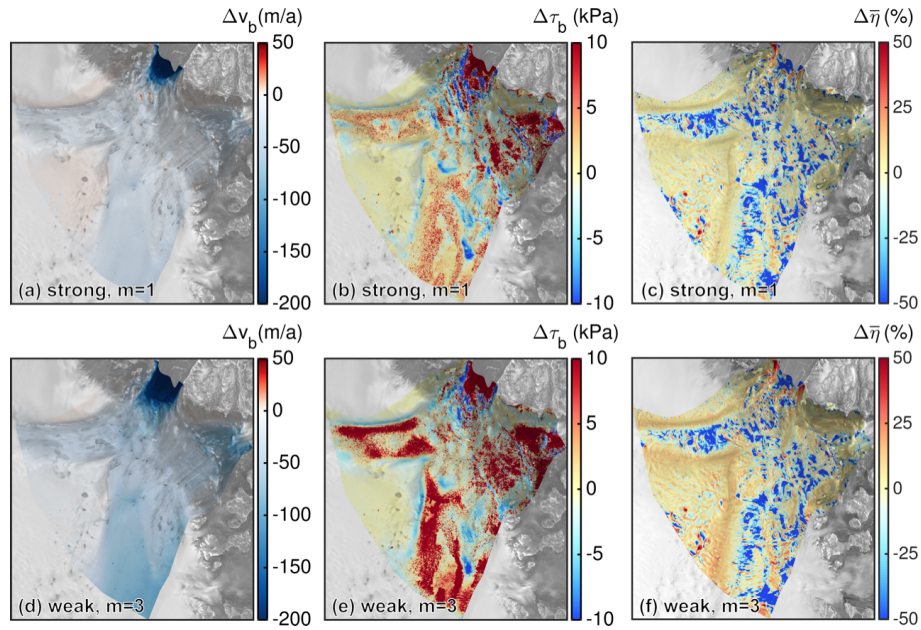


Figure 12. Comparison of characteristic quantities for a resolution of $l = 150$ m and $E = 1$ at the outlet domain. Upper row (a, b, c) shows absolute difference of basal velocities, v_b (a), basal drag τ_b (b), and relative difference of depth-averaged viscosity $\bar{\eta}$ (c) for $m = 1$ and PIPIGLS-strong. The domain averaged mean viscosities for FS are 3.00×10^{14} Pas and 3.40×10^{14} Pas for BP-like. Lower row (d, e, f) shows the equivalent fields but for $m = 3$ and PIPIGLS-weak. The domain averaged mean viscosity for FS is 3.11×10^{14} Pas and 3.39×10^{14} Pas for BP-like. Background image is a RADARSAT Mosaic (Joughin, 2015; Joughin et al., 2016).

smooth trunk of the NEGIS subset (see Fig. ??). By ignoring-neglecting the bed slope bin from 0 to 0.05 it turns out that
 440 higher bed undulations lead to larger errors in the finer resolutions; however, it seems to play a secondary role, compared to
 e.g. the slip ratio, as less-fewer grid nodes are involved. The analysis underlines that the source of stress regime deviations
 occurs in regions of high slip ratio, high aspect ratio and high topographic variability.

To investigate the effect of FS and BP-like on the overall ice dynamics, the simulated vertical velocities, v_z , influence the
 internal advection. Figure ?? demonstrates, that differences in the vertical velocity at the surface are apparent (differences for a
 445 resolution of 800 m and 6400 m are shown in Fig. ??). For softer ice, the difference is more pronounced and generally located
 in areas of topographic variability.

5.6 Evaluating the englacial advection

To evaluate the internal ice flow, we compute pathways of particles from the 3D stationary velocity field. Due to the stationary
 velocity field and the non-evolving geometry, the pathways should not be expected to be realistic or even compared to e.g. layers
 450 obtained from radio echo sounding; the approach here is just for demonstrating the differences in internal ice flow. However, we
 seed particles in arbitrary depths at $(x, y) = (350 \text{ km}, -1280 \text{ km})$ and advect them within 3D velocity field through the main

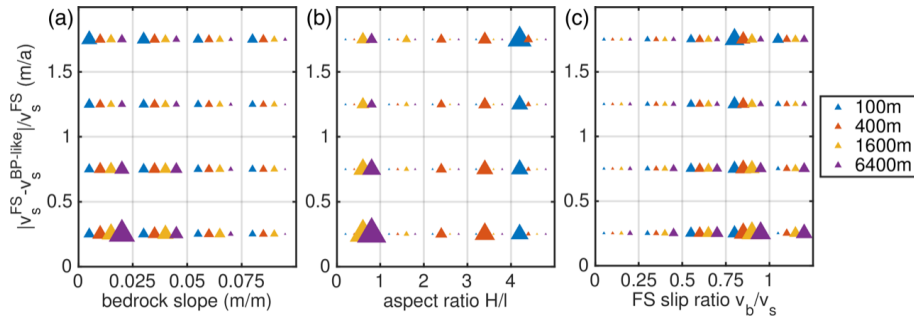


Figure 13. 2D dimensional histograms for $E = 1$, $m = 1$, PIPIGLS-strong and four different grid resolutions for the ice-stream region. Counts of grid nodes per relative velocity error bin and per (a) bed slope bin, (b) local aspect ratio bin, and (c) FS slip ratio bin. The sizes of the triangles are normalized by the total number of horizontal grid nodes of each mesh.

Difference of vertical velocity at the surface $\Delta v_{z,s}^{\text{FS-BP-like}} = v_{z,s}^{\text{FS}} - v_{z,s}^{\text{BP-like}}$ for a resolution of 100 m. (a, b, c, d) shows differences for $E = 0.1, 1, 3$ and 6, respectively. Background image is a RADARSAT Mosaic (Joughin, 2015; Joughin et al., 2016)

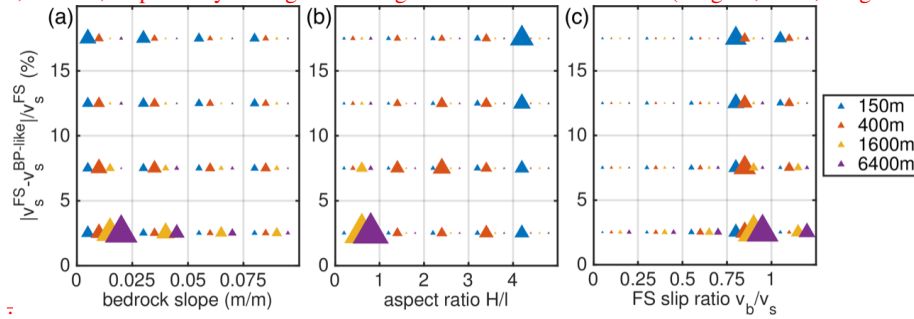


Figure 14. 2D dimensional histograms for $E = 1$, $m = 3$, PIPIGLS-weak and four different grid resolutions for the outlet region. Counts of grid nodes per relative velocity error bin and per (a) bed slope bin, (b) local aspect ratio bin, and (c) FS slip ratio bin. The sizes of the triangles are normalized by the total number of horizontal grid nodes of each mesh.

ice stream. The pathways taken by the particles are indicated in Fig. 2a. Those pathways are mapped onto the same vertical cross section of the glacier. The individual elevations are not straightforward to compare with each other in this cross-sectional view as particles could use slightly different paths in the horizontal plane (map-plane). However, the paths only differ up to 700 m horizontally.

455

For the 100 m resolution and the four rheologies,

6 Discussion

At the ice stream region, the quantitative comparison of both stress regimes with each other reveals that, particularly in extremes cases ($E = 0.1$ and $E = 6$), the pathways are displayed in Fig. ???. The particle pathways for BP-like solution produces higher surface velocities than FS ($E = 0.1$ generally follow the bed topography, but the FS and) and a large spread around

460

the FS solution ($E = 6$). However, these extreme cases at such a high resolution are rarely used in the community. For the $E = 1$ ('classical case') and $E = 3$, we found distinct differences, but those are very low (about 1.5% in spatially averaged surface velocities). Although these differences are small, they tend to increase further at the highest grid resolution used. We cannot rule out the possibility that a much higher resolution would produce much more substantial disagreements, but a bedrock topography database to investigate this is not available to date. However, since FS is computationally very intensive, it is satisfying to note that the differences between the approximated model and the exact solution are small in resolutions that are currently feasible. Therefore, it might be favourable to use a BP stress regime instead of FS for most ice stream modelling studies.

However, once the outlet regions of NEGIS are included (i.e., 79NG and ZI), ice flow treatment with FS is essential. This finding is consistent with the work by Morlighem et al. (2010) at PIG. The overestimation of BP-like pathway tend to diverge. Pathways with the same seeding location reveal differences in the vertical elevations surface velocities to FS in our study agrees with their necessity of a lower inferred basal drag for FS to reproduce observed velocities compared to BP. They attribute this behavior to the developing bridging stresses in FS (t_{zz} about 2% larger in FS compared to BP) due to the rising bed towards the grounding line, which in turn causes the reduction in basal drag. However, in our simulations a clear connection to bridging stresses could not be identified. Figure 15a and c shows the relative differences of t_{zz} between FS and BP-like up to 62 m. For $E = 1$, the pattern looks rather similar, but differences of up to 51 m occur mainly around the peak in the bed (distance = 60 km) or at pathways closer to the bed. For $E = 3$ Although the differences are in a similar range ($\pm 2\%$) as in Morlighem et al. (2010) there is no clear trend that could explain the lower velocities in FS. However, at PIG the bed rises towards the grounding line, while at 79NG the bed mainly slopes down towards the grounding line. This geometric setting might control how the stresses develop. In our case, the differences mainly stem from the basal drag (Fig. 11d-f and 12b, e) that is in the majority higher in FS compared to BP-like. The regions where BP-like simulates a lower basal drag than FS overlap with regions where the assumption that horizontal gradients of the vertical velocity are small compared to the vertical gradient of the horizontal velocity made to BP is invalid (Fig. 15b, d). These terms are of similar order and therefore, dropping stress terms of $\mathcal{O}(\epsilon^2)$, i.e. $\partial v_z / \partial x$ and $\partial v_z / \partial y$, lead to a lower basal drag in the BP-like case. Consequently, we assume that basal sliding is overestimated in BP-like simulations.

Overall, there is no general trend detectable whether FS or

In order to highlight that bridging stresses play a minor role in our setup, we have run two other stress regime versions (executed with P1PIGLS-weak and up to resolution of $l = 400$ m). The first version keeps the bridging stresses in the third equation of the momentum balance (Eq. 8; this is similar to LTSML (Van Der Veen and Whillans, 1989; Kleiner and Humbert, 2014) according to Hindmarsh (2004)); the second version is a FS model without ('wo') bridging stresses. The area-averaged results reveal that LTSML-like is close to BP-like is located below or above each other. Generally, stiffer ice leads to pathways that are located deeper in the ice. This obviously reflects the effect of the differences in vertical velocity discussed above. From these results, a logical consequence would be to let the geometry evolve in order to prove whether the differences are influenced by

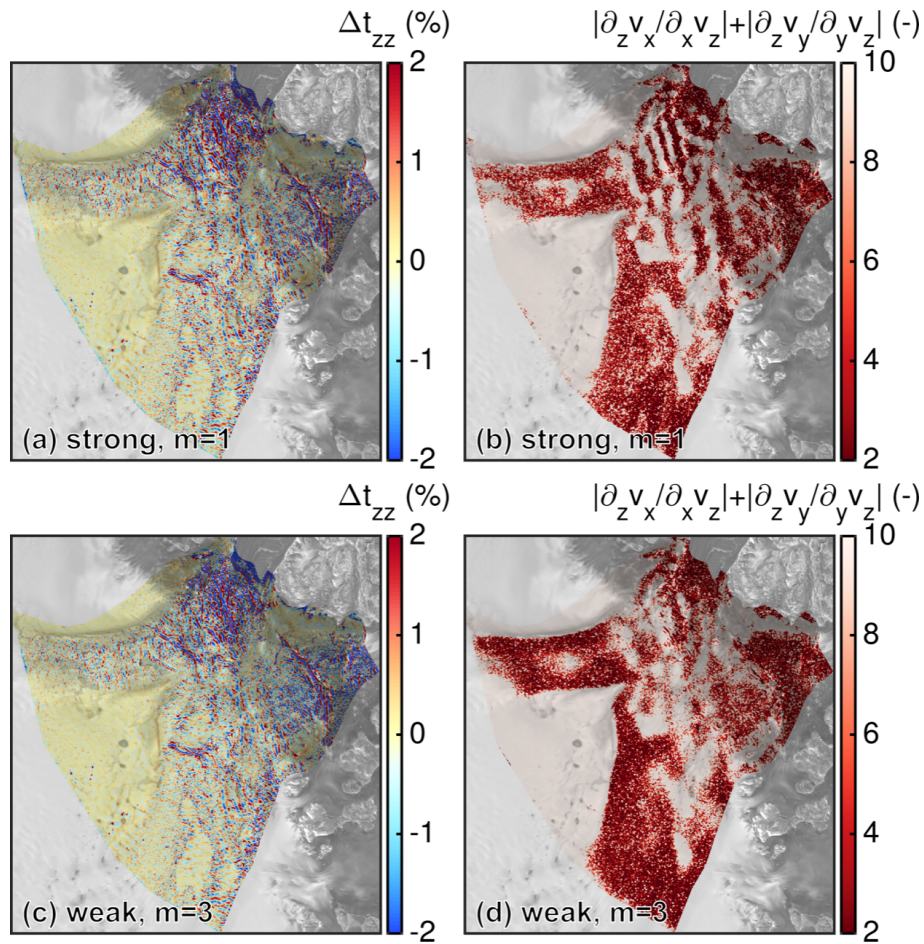


Figure 15. Comparison of (a, c) Relative difference of l_{zz} at the ice base between FS and BP-like and (b, d) ratio of vertical gradient of the horizontal velocity to horizontal gradients of the vertical velocity ($|(\partial v_x / \partial z) / (\partial v_z / \partial x)| + |(\partial v_y / \partial z) / (\partial v_z / \partial y)|$) in absolute terms from the FS solution. Upper row (a, b) shows results for $l = 150$ m, $E = 1$, $m = 1$ and PIPIGLS-strong. Lower row (c, d) shows results for $l = 150$ m, $E = 1$, $m = 3$ and PIPIGLS-weak. Background image is a RADARSAT Mosaic (Joughin, 2015; Joughin et al., 2016).

495 the fixed topography. However, this is beyond the focus of this study, while 'FS w/o bridging stresses' is rather similar to FS (Fig 8b).

A desirable approach would be to compute englacial (age) layers by seeding particles at the surface and track their integration time. However, from the particle pathways, it is obvious that we would not obtain a sufficient depth distribution since surface particles reach a limited depth. Therefore, the retrieved particle pathways merely demonstrate that both flow regimes simulate a different englacial vertical advection scheme in our study. Though not explicitly shown here, it is obvious that these differences would influence the age-depth distribution obtained from. In our diagnostic simulations, we compute lower ice mass fluxes with FS compared to BP-like. This supports the tendency that the sea level rise estimate of FS models is lower than the one of simpler

500

models. (Seddik et al., 2012; Favier et al., 2014; Seddik et al., 2017). However, we observe a different response at 79NG and ZI. At 79NG, ice discharge differences are up to 50%, while at ZI, ice discharge differences are about 5%. Also, at 79NG, differences seem to increase below the highest resolution employed here, while at ZI, the anticipated discharge difference increase appears to be moderate. A thorough analysis of why these two regions behave differently unveiled no significant differences between ice dynamic processes (e.g. Lagrangian-tracer methods (Sutter et al., 2020)). Whether the interpretation for isochrone elevations will fundamentally change by the choice of the stress regimes must be examined further. However, the expanded view from integrative or, basal drag shows a similar decrease). However, a potential source might be the geometric setting, e.g. surface quantities to the englacial 3D flow reveals valuable insights on ice dynamics.

Layering of particle pathways for FS and BP-like along a central flowline for (a) $E = 0.1$, (b) $E = 1$, (c) $E = 3$, and (e) $E = 6$. The coloured symbols indicate the start and end of each pathway. Please note, that some particles are lost as they leave the domain at the surface. The horizontal pathway of the particles is indicated in Fig. ??.

6.1 Impact on ice discharge

To estimate the impact on ice discharge, we calculated the ice mass flux along three flux-gates (the data coverage of available in-situ retrieved data leads to different topographic variability in both regions. To test whether the response behaviour is an effect of topographic variability, we re-run a simulation with P1P1GLS-weak, $m = 3$ and $l = 200$ m but using geometry from a re-gridded $l = 1600$ m simulation. Re-gridding from a coarser geometry acts as smoothing and leads to a less variable geometry. The simulated discharge reveals that 79NG and ZI respond somewhat similar (see triangles in Fig. 2a). The ice mass flux is calculated as $Q = \int_{\Gamma} \bar{v} H \rho_i ds$, where \bar{v} indicates the depth-averaged ice velocity and ρ_i (9b). However, whether the different response at 79NG and ZI with the high-resolution bedrock stems from in-situ data coverage or ZI has generally a smoother geometry than 79NG must be examined in further studies.

We tested the numerical robustness of the underlying finite element method by employing different discretization schemes and how the non-penetration condition at the ice base is enforced. In general, the different schemes show a similar velocity difference pattern between FS and BP-like. For $m = 1$ and $m = 3$ the area averaged velocity differences for $l = 150$ m are within -6.1% to -7.6% and -13.1% to -16.2% , respectively. Therefore, the choice of the usage of the upper case Q indicates integration over the flux-gate area Γ with the line segments ds . The location of the three flux-gates are (1) in the upper and slow-flowing part, (2) the narrow and fast-flowing part, (employed friction law plays a larger role than the choice of numerical characteristics tested in this study).

However, some tests regarding the numerical robustness are missing. Because we keep the number of layers constant over the entire modelling domains, large variations in the aspect ratio occur when refining the mesh. The element aspect ratio is critical for the numerical error and the classical BP system would suffer less under bad element aspect ratios (Larour et al., 2012, Sect 5.1.3 therein). In order to assess the impact of element aspect ratios, we carried out a study where we varied the number of vertical layers from 3) and at the outflow of our domain. Fig. ?? shows the calculated ice mass fluxes with the four different E values. Generally we observe a progression of differences from the interior towards the outflow of the domain. Largest differences occur for the stiffer ice with up to 8% more ice discharge in the to 11. For this test we re-run the simulations up to a resolution of $l = 400$ m

with the P1P1GLS-strong discretization scheme and $m = 3$ applied to the outlet domain. The area-averaged surface velocities difference between FS and BP-like stress regime; for the classical case up to 3%. With softer ice the differences decrease and fall below $\pm 1\%$ for $E = 6$. are very small (Fig. S8). This demonstrates that the comparison is not suffering under bad element aspect ratios and the numerical error behave similar in FS and BP-like.

Integrative overview of relative ice mass flux changes between FS and the BP-like stress regimes $((Q^{\text{FS}} - Q^{\text{BP-like}})/Q^{\text{FS}})$. The location of the three flux gates is indicated in Fig. ???. On average the total flux at the outflow (straight line) is 15 Gt a^{-1} , at the 'bottleneck' (dashed line) it is 22 Gt a^{-1} , and at the onset area (dotted lines) it is 21 Gt a^{-1} .

7 Discussion

The quantitative comparison of both stress regimes with each other reveals that, particularly in extremes cases ($E = 0.1$ and $E = 6$), the The basal boundary conditions are retrieved by inverting for the basal friction coefficient with BP employing a resolution of $l = 800 \text{ m}$. That means, that the boundary conditions are not consistent with FS or with other resolutions. In order to study whether this inconsistency influences the results, we repeat a set of experiments with two different fields for the friction coefficient. To this end, we run two ISSM friction inversions with (1) $E = 1$, $l = 200 \text{ m}$, $m = 3$ and BP and (2) $E = 1$, $l = 800 \text{ m}$, $m = 3$ and FS and feed the inferred friction fields to COMSOL. The area-averaged differences between FS and BP-like solution produces higher surface velocities than FS ($E = 0.1$) and a large spread around the FS solution ($E = 6$) of the three setups show very minor differences (Fig. S9). However, these extreme cases at such a high resolution are rarely used in the community and can be considered as unrealistic. For the $E = 1$ ('classical case') and $E = 3$, we found distinct differences, but those are very low (about 1.5% in spatially averaged surface velocities). Although these differences are small, they tend to increase further at the highest grid resolution used. We cannot rule out the possibility that a much higher resolution would produce much more substantial disagreements, but a bedrock topography database to investigate this is not available to date. However, since FS is computationally very intensive, it is satisfying to note that the differences between the approximated model and the exact solution are small in resolutions that are currently feasible. Therefore, it might be favourable to use a BP stress regime instead of FS for most glacier modelling studies

By implementing FS and BP-like solvers using the COMSOL finite element package, we have developed a useful tool for exploring differences between FS and BP-like, without complications due to differing numerics. The developed model is also very flexible in order to test various ice flow components (e.g., by simply including bridging stresses to convert the BP-like model to LTSML-like). In our model setup, we solve for the same physical problem as in the 'classical' BP scheme but without taking advantage of the reduced number of equations to be solved. Regarding the model physics, our results compare well with other BP implementations, but our BP-like model is less performant. Therefore, the developed BP-like model is not intended for long time integrations or large ensembles.

One limitation of our study is that our the simulations are not prognostic, i.e. we have not investigated how the solution differences propagate to or interact with other components of an ice sheet model, e.g. by coupling to the ice thickness evolution. The calculation of ice discharge and the emergence velocity demonstrates that the stress regimes show distinct discrepancies

570 in a key process, but whether these differences are accumulated in the glaciers mass balance over transient runs, eventually leading to substantially different estimates of ice mass changes, or fading out must be postponed to future studies.

~~Our numerical experiments are consistent with earlier work. The overestimation of BP-like surface velocities to FS in our study is in agreement with Morlighem et al. (2010). They showed the necessity of a lower basal drag for FS to reproduce observed velocities compared to BP. Similarly, the lower FS ice mass fluxes compared to BP-like supports the tendency that FS contribute less to sea level rise than simpler models (Seddik et al., 2012; Favier et al., 2014; Seddik et al., 2017).~~

575 A process not considered here is the thermo-mechanical coupling. For instance, within a thermo-mechanical coupling, the feedback of temperature on the ice viscosity, in turn, changes the ice flow. However, there are several feasible processes how the stress regime differences can modify the thermal regime: (1) the different representation of the basal drag presumably generates a different amount of frictional heating, (2) the different vertical deformation produces a different internal heat source rate, and
580 (3) the internal advection scheme leads to different heat transport. Though the role of these feedbacks is not explored here, there are indications that small initial differences become much larger over long time integrations (Zhang et al., 2015).

7 Conclusions

We compared two approaches to represent ice flow dynamics, namely the FS and the BP-like formulation, for ~~a subset~~ two different subsets of the NEGIS ~~ice stream~~. Both stress regimes are implemented within the same dynamic ice flow model to
585 ~~alleviate~~ enable a consistent comparison where numerical ~~issues~~ differences are largely eliminated. Our ~~performed~~ comparison experiments between FS and BP-like stress regimes unveil that BP-like tends to overestimate surface velocities and the resulting ice discharge. ~~This behaviour emerges~~ The models disagreements start at a horizontal resolution ~~below the mean ice thickness~~ (\ll of around 1000 m) and continuously increases and continuously increase with finer horizontal resolution (down to 100 m). ~~The model disagreements still tend to diverge below the highest employed horizontal resolution of 100 m.~~

590 An intriguing effect was identified as in the ice stream region as a rheology with much softer ice ~~than currently ($E = 6$) than~~ often considered leading to an enhanced spread in surface velocity differences between FS and BP-like. In contrast, ten times stiffer ($E = 0.1$) ice leads to an offset in velocities between FS and BP-like with increasing difference towards larger ice flow. ~~Depending on the stiffness of the ice, we identified the basal drag (stiffer ice)~~ The classical rheology case ($E = 1$) reveals very moderate differences between FS and BP-like. However, once the outlet regions of NEGIS are included, i.e. 79NG and ZI,
595 ice flow treatment with FS is essential as surface velocity differences of up to 570 m a^{-1} at the grounding line of 79NG occur. Numerical characteristics play a minor role compared to the choice of the friction type, i.e. linear versus power-law friction; model differences are greater when a power-law friction is applied. The basal drag and topographic undulations (softer ice) are identified as the general causes for the model disagreements.

600 ~~Even though differences in the velocity fields are overall minor, a view on particle pathways calculated from both model solutions reveals substantial differences that may influence englacial layering interpretation. It should be proven in further studies whether these discrepancies are relevant over long time integrations as the simplistic estimation performed here is based on a stationary approach.~~

From the perspective of large-scale (centennial) ice sheet projections, FS will start to matter (differences in velocities and ice discharge $\gtrsim 3\%$) once one can afford resolutions considerably lower than the local ice thickness in faster moving and undulated areas. However, given the huge additional computational amount consumed by FS models and other large uncertainties ice sheet projections (e. g. surface mass balance forcing and other boundary conditions that have a larger impact on ice sheet evolution), the use of FS seems not an urgent issue. Whether FS will reduce uncertainties of future sea-level projections must be examined further in subsequent transient studies. Although computer power is increasing, transient simulations in FS with a horizontal resolution of about 100 m in dynamic, relevant regions are still challenging. Our diagnostic simulations and previous studies indicate that a correct representation of the ice dynamics in critical areas is required.

Code and data availability. COMSOL Multiphysics© is a commercial software and not freely available. The models used here are accessible for COMSOL users upon request to the authors. The ice flow model ISSM is open source and freely available at <https://issm.jpl.nasa.gov/> (last access: November 30, 2021; (Larour et al., 2012). Simulation results will be made accessible through the World Data Center PANGAEA (<https://doi.pangaea.de/XXX>).

Appendix A: Inversion with ISSM

The simulations presented make use of a basal friction coefficient, k^2 , that is inferred by an inversion method. For the inversion of the basal friction coefficient, we operate the Ice-Sheet and Sea-level System Model (ISSM, Morlighem et al., 2010; Larour et al., 2012), an open source finite element flow model appropriate for continental-scale and outlet glacier applications. The setup is as described above, i.e. (1) domain outline and geometry data set is similar as in the COMSOL simulations (see Fig. 2), (2) ice rheology is taken from SICOPOLIS spinup (Rückamp et al., 2019) and interpolated onto the computational mesh and (3) the friction law follows the form in Eq. 6. But for the ease of computational time model calculations are performed on a structured finite element grid with a horizontal resolution of 1 km and the BP-stress regime. The inversion is conducted separately for each enhancement factor $E = 0.1, 1, 3$ and 6 and the sliding exponents $m = 1$ and $m = 3$.

Within the inverse problem a cost function (J), that measures the misfit between observed, $\mathbf{v}^{\text{obs}} = (v_x^{\text{obs}}, v_y^{\text{obs}})$, and simulated velocities, $\mathbf{v} = (v_x, v_y)$, is minimized. We use the observed velocities from the MEaSURES project (Joughin et al., 2016, 2018) as target within the inversion. The cost function is composed of two terms which fit the velocities in fast- and slow-moving areas. A third term is a Tikhonov regularization to avoid oscillations due to over fitting. The cost function is defined as follows:

$$J(\mathbf{v}, k) = \gamma_1 \frac{1}{2} \int_{\Gamma_s} (v_x - v_x^{\text{obs}})^2 + v_y - v_y^{\text{obs}})^2 d\Gamma_s + \gamma_2 \frac{1}{2} \int_{\Gamma_s} \ln \left(\frac{\sqrt{v_x^2 + v_y^2} + \varepsilon}{\sqrt{v_x^{\text{obs}2} + v_y^{\text{obs}2} + \varepsilon}} \right)^2 d\Gamma_s + \gamma_t \frac{1}{2} \int_{\Gamma_b} \nabla k \cdot \nabla k d\Gamma_b, \quad (\text{A1})$$

where ε is a minimum velocity used to avoid singularities and Γ_s and Γ_b are the ice surface and ice base, respectively. An L-curve analysis was performed to pick the Tikhonov parameter γ_t (not shown). We obtained a good agreement to the observed velocities by choosing with $\gamma_1 = 1 \times 10^3$, $\gamma_2 = 1 \times 10^4$ and $\gamma_t = 1 \times 10^{-4}$ (see Fig. A1 and A2).

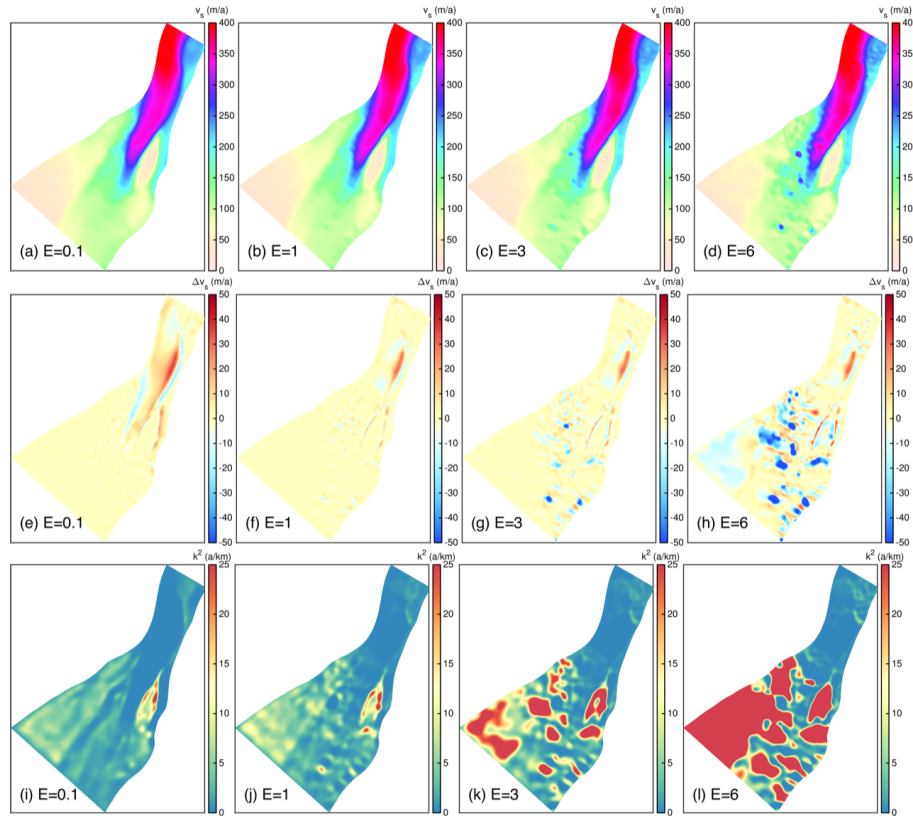


Figure A1. Overview of the ISSM inversion performed with the different values for $E = 0.1, 1, 3$ and 6 [at the ice stream region](#). (a, b, c, d) Simulated surface velocities. (e, f, g, h). Velocity difference between observed and simulated velocities. (i, j, k, l) Inferred basal friction coefficient k^2 .

635 *Author contributions.* MR setup the COMSOL FS and BP model and the ISSM model, conducted the simulation and wrote large parts of the manuscript. AH designed the study. MR, TK and AH analyzed the results. All author contributed in writing the manuscript.

Competing interests. The authors declare that they have no conflict of interest.

Acknowledgements. The simulations were performed at AWI's cluster Cray-CS400 and at the North-German Supercomputing Alliance (HLRN). We would like to thank Natalja Rakowsky (AWI) for providing excellent support for COMSOL at computing facilities at AWI and HLRN. Ralf Greve (ILTS) kindly provided results from spin-up simulations with SICOPOLIS. We thank Eberhard Bänsch and Luca Wester
640 for discussions on Stokes simulations (both Friedrich-Alexander-University of Erlangen).

References

- Ahlkrona, J., Kirchner, N., and Lötstedt, P.: Accuracy of the zeroth- and second-order shallow-ice approximation – numerical and theoretical results, *Geoscientific Model Development*, 6, 2135–2152, <https://doi.org/10.5194/gmd-6-2135-2013>, 2013.
- Aschwanden, A., Fahnestock, M. A., Truffer, M., Brinkerhoff, D. J., Hock, R., Khroulev, C., Mottram, R., and Khan, S. A.: Contribution of
645 the Greenland Ice Sheet to sea level over the next millennium, *Science Advances*, 5, <https://doi.org/10.1126/sciadv.aav9396>, 2019.
- Babuska, I.: The finite element method with Lagrangian multipliers, *Numerische Mathematik*, 20, 179–192, <https://doi.org/10.1007/BF01436561>, 1973.
- Benzi, M., Golub, G. H., and Liesen, J.: Numerical solution of saddle point problems, *Acta Numerica*, 14, 1–137, <https://doi.org/10.1017/S0962492904000212>, 2005.
- 650 Blatter, H.: Velocity and stress fields in grounded glaciers: a simple algorithm for including deviatoric stress gradients, *Journal of Glaciology*, 41, 333–344, <https://doi.org/10.3189/S002214300001621X>, 1995.
- Born, A.: Tracer transport in an isochronal ice-sheet model, *Journal of Glaciology*, 63, 22–38, <https://doi.org/10.1017/jog.2016.111>, 2017.
- Budd, W. F., Keage, P. L., and Blundy, N. A.: Empirical Studies of Ice Sliding, *Journal of Glaciology*, 23, 157–170, <https://doi.org/10.3189/S0022143000029804>, 1979.
- 655 Bueler, E. and Brown, J.: Shallow shelf approximation as a "sliding law" in a thermodynamically coupled ice sheet model, *J. Geophys. Res.*, 114, <https://doi.org/10.1029/2008JF001179>, 2009.
- Cornford, S. L., Seroussi, H., Asay-Davis, X. S., Gudmundsson, G. H., Arthern, R., Borstad, C., Christmann, J., Dias dos Santos, T., Feldmann, J., Goldberg, D., Hoffman, M. J., Humbert, A., Kleiner, T., Leguy, G., Lipscomb, W. H., Merino, N., Durand, G., Morlighem, M., Pollard, D., Rückamp, M., Williams, C. R., and Yu, H.: Results of the third Marine Ice Sheet Model Intercomparison Project (MISMIP+),
660 *The Cryosphere*, 14, 2283–2301, <https://doi.org/10.5194/tc-14-2283-2020>, 2020.
- Cuffey, K. M. and Paterson, W. S. B.: *The Physics of Glaciers*, Elsevier, Amsterdam, The Netherlands etc., 4th edn., 2010.
- de Boer, B., Dolan, A. M., Bernales, J., Gasson, E., Goelzer, H., Gолledge, N. R., Sutter, J., Huybrechts, P., Lohmann, G., Rogozhina, I., Abe-Ouchi, A., Saito, F., and van de Wal, R. S. W.: Simulating the Antarctic ice sheet in the late-Pliocene warm period: PLISMIP-ANT, an ice-sheet model intercomparison project, *The Cryosphere*, 9, 881–903, <https://doi.org/10.5194/tc-9-881-2015>, 2015.
- 665 Donea, J. and Huerta, A.: *Finite element methods for flow problems.*, Finite element methods for flow problems., 2003.
- Durand, G., Gagliardini, O., de Fleurian, B., Zwinger, T., and Le Meur, E.: Marine ice sheet dynamics: Hysteresis and neutral equilibrium, *J. Geophys. Res.*, 114, F03 009–, <https://doi.org/10.1029/2008JF001170>, 2009.
- Favier, L., Durand, G., Cornford, S. L., Gudmundsson, G. H., Gagliardini, O., Gillet-Chaulet, F., Zwinger, T., Payne, A., and Le Brocq, A. M.: Retreat of Pine Island Glacier controlled by marine ice-sheet instability, *Nature Climate Change*, 4, 117–121, <https://doi.org/10.1038/NCLIMATE2094>, 2014.
- 670 Glen, J. W.: The Creep of Polycrystalline Ice, *Proceedings of the Royal Society of London. Series A, Mathematical and Physical Sciences*, 228, 519–538, <https://doi.org/10.1098/rspa.1955.0066>, 1955.
- Goelzer, H., Nowicki, S., Edwards, T., Beckley, M., Abe-Ouchi, A., Aschwanden, A., Calov, R., Gagliardini, O., Gillet-Chaulet, F., Gолledge, N. R., Gregory, J., Greve, R., Humbert, A., Huybrechts, P., Kennedy, J. H., Larour, E., Lipscomb, W. H., Le clec'h, S., Lee, V., Morlighem, M., Pattyn, F., Payne, A. J., Rodehacke, C., Rückamp, M., Saito, F., Schlegel, N., Seroussi, H., Shepherd, A., Sun, S., van de Wal, R., and Zieme, F. A.: Design and results of the ice sheet model initialisation experiments initMIP-Greenland: an ISMIP6 intercomparison, *The Cryosphere*, 12, 1433–1460, <https://doi.org/10.5194/tc-12-1433-2018>, 2018.

- Goelzer, H., Nowicki, S., Payne, A., Larour, E., Seroussi, H., Lipscomb, W. H., Gregory, J., Abe-Ouchi, A., Shepherd, A., Simon, E., Agosta, C., Alexander, P., Aschwanden, A., Barthel, A., Calov, R., Chambers, C., Choi, Y., Cuzzone, J., Dumas, C., Edwards, T., Felikson, D., Fettweis, X., Golleger, N. R., Greve, R., Humbert, A., Huybrechts, P., Le clec'h, S., Lee, V., Leguy, G., Little, C., Lowry, D. P., Morlighem, M., Nias, I., Quiquet, A., Rückamp, M., Schlegel, N.-J., Slater, D. A., Smith, R. S., Straneo, F., Tarasov, L., van de Wal, R., and van den Broeke, M.: The future sea-level contribution of the Greenland ice sheet: a multi-model ensemble study of ISMIP6, *The Cryosphere*, 14, 3071–3096, <https://doi.org/10.5194/tc-14-3071-2020>, 2020.
- Gudmundsson, G. H.: Transmission of basal variability to a glacier surface, *Journal of Geophysical Research: Solid Earth*, 108, 2253, <https://doi.org/10.1029/2002JB002107>, 2003.
- Hauke, G. and Hughes, T.: A unified approach to compressible and incompressible flows, *Computer Methods in Applied Mechanics and Engineering*, 113, 389–395, [https://doi.org/10.1016/0045-7825\(94\)90055-8](https://doi.org/10.1016/0045-7825(94)90055-8), 1994.
- Helanow, C. and Ahlkrone, J.: Stabilized equal low-order finite elements in ice sheet modeling – accuracy and robustness, *Computational Geosciences*, 22, 951–974, <https://doi.org/10.1007/s10596-017-9713-5>, 2018.
- Helm, V., Humbert, A., and Miller, H.: Elevation and elevation change of Greenland and Antarctica derived from CryoSat-2, *The Cryosphere*, 8, 1539–1559, <https://doi.org/10.5194/tc-8-1539-2014>, 2014.
- Hindmarsh, R. C. A.: A numerical comparison of approximations to the Stokes equations used in ice sheet and glacier modeling, *Journal of Geophysical Research: Earth Surface*, 109, <https://doi.org/10.1029/2003JF000065>, 2004.
- Hutter, K.: *Theoretical glaciology : material science of ice and the mechanics of glaciers and ice sheets*, Reidel/Terra Pub. Co., Dordrecht, 1983.
- Huybrechts, P.: The Antarctic ice sheet and environmental change: a three-dimensional modelling study = Der antarktische Eisschild und globale Umweltveränderungen : eine dreidimensionale Modellstudie, https://doi.org/10.2312/BzP_0099_1992, 1992.
- IPCC: *Climate Change 2013: The Physical Science Basis. Contribution of Working Group I to the Fifth Assessment Report of the Intergovernmental Panel on Climate Change*, Cambridge University Press, Cambridge, United Kingdom and New York, NY, USA, <https://doi.org/10.1017/CBO9781107415324>, 2013.
- John, V. and Matthies, G.: Higher-order finite element discretizations in a benchmark problem for incompressible flows, *International Journal for Numerical Methods in Fluids*, 37, 885–903, <https://doi.org/https://doi.org/10.1002/flid.195>, 2001.
- Joughin, I.: MEaSUREs Greenland Ice Sheet Mosaics from SAR Data, Version 1. Boulder, Colorado USA. NASA National Snow and Ice Data Center Distributed Active Archive Center, <https://doi.org/10.5067/6187DQUL3FR5>, 2015.
- Joughin, I., Smith, B. E., Howat, I. M., Moon, T., and Scambos, T. A.: A SAR record of early 21st century change in Greenland, *Journal of Glaciology*, 62, 62–71, <https://doi.org/10.1017/jog.2016.10>, 2016.
- Joughin, I., Smith, B. E., and Howat, I. M.: A complete map of Greenland ice velocity derived from satellite data collected over 20 years, *Journal of Glaciology*, 64, 1–11, <https://doi.org/10.1017/jog.2017.73>, 2018.
- Kleiner, T. and Humbert, A.: Numerical simulations of major ice streams in western Dronning Maud Land, Antarctica, under wet and dry basal conditions, *Journal of Glaciology*, 60, 215–232, <https://doi.org/doi:10.3189/2014JoG13J006>, 2014.
- Larour, E., Seroussi, H., Morlighem, M., and Rignot, E.: Continental scale, high order, high spatial resolution, ice sheet modeling using the Ice Sheet System Model (ISSM), *Journal of Geophysical Research*, 117, F01 022, <https://doi.org/10.1029/2011JF002140>, 2012.
- Le Meur, E., Gagliardini, O., Zwinger, T., and Ruokolainen, J.: Glacier flow modelling: a comparison of the Shallow Ice Approximation and the full-Stokes solution, *Comptes Rendus Physique*, 5, 709–722, <https://doi.org/https://doi.org/10.1016/j.crhy.2004.10.001>, ice: from dislocations to icy satellites, 2004.

- Leysinger Vieli, G. J.-M. C. and Gudmundsson, G. H.: On estimating length fluctuations of glaciers caused by changes in climatic forcing, *Journal of Geophysical Research: Earth Surface*, 109, <https://doi.org/10.1029/2003JF000027>, 2004.
- Lliboutry, L. and Duval, P.: Various isotropic and anisotropic ices found in glaciers and polar ice caps and their corresponding rheologies, *Annales Geophysicae*, 3, 207–224, 1985.
- 720 Ma, Y., Gagliardini, O., Ritz, C., Gillet-Chaulet, F., Durand, G., and Montagnat, M.: Enhancement factors for grounded ice and ice shelves inferred from an anisotropic ice-flow model, *Journal of Glaciology*, 56, 805–812, <https://doi.org/10.3189/002214310794457209>, 2010.
- Morlighem, M., Rignot, E., Seroussi, H., Larour, E., Dhia, H., and Aubry, D.: Spatial patterns of basal drag inferred using control methods from a full-Stokes and simpler models for Pine Island Glacier, West Antarctica, *Geophysical Research Letters*, 37, L14 502, 2010.
- Morlighem, M., Williams, C. N., Rignot, E., An, L., Arndt, J. E., Bamber, J. L., Catania, G., Chauché, N., Dowdeswell, J. A., Dorschel, 725 B., Fenty, I., Hogan, K., Howat, I., Hubbard, A., Jakobsson, M., Jordan, T. M., Kjeldsen, K. K., Millan, R., Mayer, L., Mouginot, J., Noël, B. P. Y., O’Cofaigh, C., Palmer, S., Rysgaard, S., Seroussi, H., Siegert, M. J., Slabon, P., Straneo, F., van den Broeke, M. R., Weinrebe, W., Wood, M., and Zinglensen, K. B.: BedMachine v3: Complete bed topography and ocean bathymetry mapping of Greenland from multibeam echo sounding combined with mass conservation, *Geophysical Research Letters*, 44, 11 051–11 061, <https://doi.org/10.1002/2017GL074954>, 2017.
- 730 Nowicki, S. M. J., Payne, A., Larour, E., Seroussi, H., Goelzer, H., Lipscomb, W., Gregory, J., Abe-Ouchi, A., and Shepherd, A.: Ice Sheet Model Intercomparison Project (ISMIP6) contribution to CMIP6, *Geoscientific Model Development*, 9, 4521–4545, <https://doi.org/10.5194/gmd-9-4521-2016>, 2016.
- Oppenheimer, M., Glavovic, B., Hinkel, J., van de Wal, R., Magnan, A., Abd-Elgawad, A., Cai, R., Cifuentes-Jara, M., Deconto, R., Ghosh, T., et al.: Sea level rise and implications for low-lying islands, coasts and communities IPCC Special Report on the Ocean and Cryosphere 735 in a Changing Climate ed HO Pörtner et al, 2019.
- Pattyn, F.: Ice-sheet modelling at different spatial resolutions: focus on the grounding zone, *Annals of Glaciology*, 31, 211–216, <https://doi.org/10.3189/172756400781820435>, 2000.
- Pattyn, F.: A new three-dimensional higher-order thermomechanical ice-sheet model: basic sensitivity, ice-stream development and ice flow across subglacial lakes, *Journal of Geophysical Research*, 108, 2382, <https://doi.org/10.1029/2002JB002329>, 2003.
- 740 Pattyn, F., Perichon, L., Aschwanden, A., Breuer, B., de Smedt, B., Gagliardini, O., Gudmundsson, G. H., Hindmarsh, R. C. A., Hubbard, A., Johnson, J. V., Kleiner, T., Konovalov, Y., Martin, C., Payne, A. J., Pollard, D., Price, S., Rückamp, M., Saito, F., Souček, O., Sugiyama, S., and Zwinger, T.: Benchmark experiments for higher-order and full-Stokes ice sheet models (ISMIP-HOM), *The Cryosphere*, 2, 95–108, <https://doi.org/10.5194/tc-2-95-2008>, 2008.
- Pattyn, F., Schoof, C., Perichon, L., Hindmarsh, R. C. A., Bueler, E., de Fleurian, B., Durand, G., Gagliardini, O., Gladstone, R., Goldberg, 745 D., Gudmundsson, G. H., Huybrechts, P., Lee, V., Nick, F. M., Payne, A. J., Pollard, D., Rybak, O., Saito, F., and Vieli, A.: Results of the Marine Ice Sheet Model Intercomparison Project, MISIP, *The Cryosphere*, 6, 573–588, <https://doi.org/10.5194/tc-6-573-2012>, 2012.
- Pattyn, F., Perichon, L., Durand, G., Favier, L., Gagliardini, O., Hindmarsh, R., Zwinger, T., Albrecht, T., Cornford, S., Docquier, D., Fürst, J. J., Goldberg, D., Gudmundsson, G. H., Humbert, A., Hütten, M., Huybrechts, P., Jouvét, G., Kleiner, T., Larour, E., Martin, D., Morlighem, M., Payne, A. J., Pollard, D., Rückamp, M., Rybak, O., Seroussi, H., Thoma, M., and Wilkens, N.: Grounding-line 750 migration in plan-view marine ice-sheet models: results of the ice2sea MISIP3d intercomparison, *Journal of Glaciology*, 59, 410–422, <https://doi.org/doi:10.3189/2013JoG12J129>, 2013.
- Riviere, B.: Discontinuous Galerkin methods for solving elliptic and parabolic equations, *Society for Industrial and Applied Mathematics*, <https://doi.org/10.1137/1.9780898717440>, 2008.

- Rückamp, M., Greve, R., and Humbert, A.: Comparative simulations of the evolution of the Greenland ice sheet under simplified Paris Agreement scenarios with the models SICOPOLIS and ISSM, *Polar Science*, 21, 14–25, <https://doi.org/10.1016/j.polar.2018.12.003>, 2019.
- Saad, Y.: *Iterative Methods for Sparse Linear System*, Philadelphia, PA, USA: Society for Industrial and Applied Mathematics, 2003.
- Seddik, H., Greve, R., Zwinger, T., Gillet-Chaulet, F., and Gagliardini, O.: Simulations of the Greenland ice sheet 100 years into the future with the full Stokes model Elmer/Ice, *Journal of Glaciology*, 58, 427–440, <https://doi.org/10.3189/2012JoG11J177>, 2012.
- 760 Seddik, H., Greve, R., Zwinger, T., and Sugiyama, S.: Regional modeling of the Shirase drainage basin, East Antarctica: full Stokes vs. shallow ice dynamics, *The Cryosphere*, 11, 2213–2229, <https://doi.org/10.5194/tc-11-2213-2017>, 2017.
- Seroussi, H., Nowicki, S., Simon, E., Abe-Ouchi, A., Albrecht, T., Brondex, J., Cornford, S., Dumas, C., Gillet-Chaulet, F., Goelzer, H., Gollledge, N. R., Gregory, J. M., Greve, R., Hoffman, M. J., Humbert, A., Huybrechts, P., Kleiner, T., Larour, E., Leguy, G., Lipscomb, W. H., Lowry, D., Mengel, M., Morlighem, M., Pattyn, F., Payne, A. J., Pollard, D., Price, S. F., Quiquet, A., Reerink, T. J., Reese, R., Rodehacke, C. B., Schlegel, N.-J., Shepherd, A., Sun, S., Sutter, J., Van Breedam, J., van de Wal, R. S. W., Winkelmann, R., and Zhang, T.: 765 initMIP-Antarctica: an ice sheet model initialization experiment of ISMIP6, *The Cryosphere*, 13, 1441–1471, <https://doi.org/10.5194/tc-13-1441-2019>, 2019.
- Seroussi, H., Nowicki, S., Payne, A. J., Goelzer, H., Lipscomb, W. H., Abe-Ouchi, A., Agosta, C., Albrecht, T., Asay-Davis, X., Barthel, A., Calov, R., Cullather, R., Dumas, C., Galton-Fenzi, B. K., Gladstone, R., Gollledge, N. R., Gregory, J. M., Greve, R., Hattermann, T., Hoffman, M. J., Humbert, A., Huybrechts, P., Jourdain, N. C., Kleiner, T., Larour, E., Leguy, G. R., Lowry, D. P., Little, C. M., Morlighem, M., Pattyn, F., Pelle, T., Price, S. F., Quiquet, A., Reese, R., Schlegel, N.-J., Shepherd, A., Simon, E., Smith, R. S., Straneo, F., Sun, S., Trusel, L. D., Van Breedam, J., van de Wal, R. S. W., Winkelmann, R., Zhao, C., Zhang, T., and Zwinger, T.: ISMIP6 Antarctica: a multi- 770 model ensemble of the Antarctic ice sheet evolution over the 21st century, *The Cryosphere*, 14, 3033–3070, <https://doi.org/10.5194/tc-14-3033-2020>, 2020.
- 775 Steinemann, S.: Results of Preliminary Experiments on the Plasticity of Ice Crystals, *Journal of Glaciology*, 2, 404–416, <https://doi.org/10.3189/002214354793702533>, 1954.
- Sutter, J., Fischer, H., and Eisen, O.: Simulating the internal structure of the Antarctic Ice Sheet – towards a spatio-temporal calibration for ice-sheet modelling, *The Cryosphere Discussions*, 2020, 1–25, <https://doi.org/10.5194/tc-2020-349>, 2020.
- Urquiza, J. M., Garon, A., and Farinas, M.-I.: Weak imposition of the slip boundary condition on curved boundaries for Stokes flow, *Journal of Computational Physics*, 256, 748–767, <https://doi.org/https://doi.org/10.1016/j.jcp.2013.08.045>, 2014.
- 780 Van Der Veen, C. and Whillans, I.: Force Budget: I. Theory and Numerical Methods, *Journal of Glaciology*, 35, 53–60, <https://doi.org/10.3189/002214389793701581>, 1989.
- Vanka, S.: Block-implicit multigrid calculation of two-dimensional recirculating flows, *Computer Methods in Applied Mechanics and Engineering*, 59, 29–48, [https://doi.org/https://doi.org/10.1016/0045-7825\(86\)90022-8](https://doi.org/https://doi.org/10.1016/0045-7825(86)90022-8), 1986.
- 785 Verfürth, R.: Finite element approximation on incompressible Navier-Stokes equations with slip boundary condition, *Numerische Mathematik*, 50, 997–721, <https://doi.org/10.1007/BF01398380>, 1986.
- Widlund, O. and Toselli, A.: Domain decomposition methods - algorithms and theory, vol. 34 of *Springer Series in Computational Mathematics*, Springer, 2005.
- Wilkens, N., Behrens, J., Kleiner, T., Rippin, D., Rückamp, M., and Humbert, A.: Thermal structure and basal sliding parametrisation at Pine 790 Island Glacier - a 3-D full-Stokes model study, *The Cryosphere*, 9, 675–690, <https://doi.org/10.5194/tc-9-675-2015>, 2015.

Zhang, T., Ju, L., Leng, W., Price, S., and Gunzburger, M.: Thermomechanically coupled modelling for land-terminating glaciers: a comparison of two-dimensional, first-order and three-dimensional, full-Stokes approaches, *Journal of Glaciology*, 61, 702–712, <https://doi.org/10.3189/2015JoG14J220>, 2015.

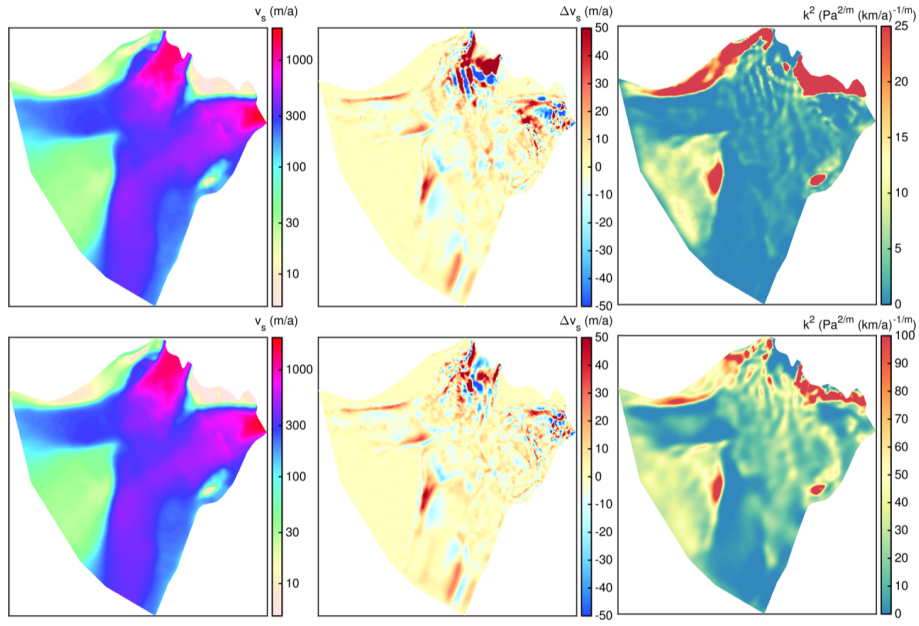


Figure A2. Surface and basal area-averaged velocity for different numbers Overview of vertical layers. Velocity is presented relative to simulation results obtained the ISSM inversion performed with 15 vertical layers. Results are shown the different values for $E=1$, employed FS regime $m=1$ and $m=3$ at the outlet region. Upper row shows simulated surface velocities (a horizontal resolution of $l=400\text{ m}$), velocity difference between observed and simulated velocities (b), and the inferred basal friction coefficient k^2 (c) for $m=1$. Lower row shows the equivalent fields for $m=3$.

Results of ISMIP-HOM benchmark Exp. A. Surface velocity component v_x (m a^{-1}) across the bump at $y=L/4$ for different length scales, with L ranging from 160 to 5 km. Values computed in the study for FS and BP-like are compared to results by simpler models (nFS) and FS from the ISMIP-HOM benchmark (Pattyn et al., 2008).

Results of ISMIP-HOM benchmark Exp. C. Surface velocity component v_x (m a^{-1}) across the bump at $y=L/4$ for different length scales, with L ranging from 160 to 5 km. Values computed in the study for FS and BP-like are compared to results by simpler models (nFS) and FS from the ISMIP-HOM benchmark (Pattyn et al., 2008).

Difference of surface velocity $\Delta v_s^{\text{FS-BP-like}} = v_s^{\text{FS}} - v_s^{\text{BP-like}}$ for a resolution of 100 m (a-d), 800 m (e-h), and 6400 m (i-l). Each column shows differences for $E=0.1, 1, 3$ and 6, respectively. Background image is a RADARSAT Mosaic (Joughin, 2015; Joughin et al., 2016).

Line plots of the absolute surface velocity difference between FS and BP-like ($|\Delta v_s^{\text{FS-BP-like}}|$) versus the surface slope for a resolution of $l=6400\text{ m}$ (a), a resolution of $l=1600\text{ m}$ (b), a resolution of $l=400\text{ m}$ (c), and a resolution of $l=100\text{ m}$ (d). A moving mean with a window of 2500 data points is applied.

Line plots of the absolute surface velocity difference between FS and BP-like ($|\Delta v_s^{\text{FS-BP-like}}|$) versus the bed slope for a resolution of $l=6400\text{ m}$ (a), a resolution of $l=1600\text{ m}$ (b), a resolution of $l=400\text{ m}$ (c), and a resolution of $l=100\text{ m}$ (d). A moving mean with a window of 2500 data points is applied.

Line plots of the absolute surface velocity difference between FS and BP-like ($|\Delta v_s^{\text{FS-BP-like}}|$) versus the local aspect ratio for a resolution of $l=6400\text{ m}$ (a), a resolution of $l=1600\text{ m}$ (b), a resolution of $l=400\text{ m}$ (c), and a resolution of $l=100\text{ m}$ (d). A moving mean with a window of 2500 data points is applied.

Line plots of the absolute surface velocity difference between FS and BP-like ($|\Delta v_s^{\text{FS-BP-like}}|$) versus the FS slip ratio (v_b/v_s) for a resolution of $l=6400\text{ m}$ (a), a resolution of $l=1600\text{ m}$ (b), a resolution of $l=400\text{ m}$ (c), and a resolution of $l=100\text{ m}$ (d). A moving mean with a window of 2500 data points is applied.

Difference of vertical velocity at the surface $\Delta v_{z,s}^{\text{FS-BP-like}} = v_{z,s}^{\text{FS}} - v_{z,s}^{\text{BP-like}}$ for a resolution of 100 m (a-d), 800 m (e-h), and 6400 m (i-l).