

Supplementary Info

Text S1 - Datasets used in comparison plots

Climate Model Comparison

We use outputs from three regional climate models for comparison purposes with the SMB BHM posterior, RACMO2.3p2 (~5.5 km and ~27 km resolution) (Melchior Van Wessem et al., 2018; van Wessem et al., 2016) and MARv3.6.4 (35 km resolution) (Agosta et al., 2019). As the observations used in the BHM represent deviations in ice sheet height or mass from a balance state, we calculate annual anomalies at the ice sheet basin and sector scale with reference to a 1979-2002 baseline mean for each model. For comparison of elevation changes between the RACMO ~5.5km model and the BHM output, the modelled SMB mass change was converted to elevation change using the surface density field of the model output.

Ice Discharge Comparison

For comparison of ice discharge estimates from the mass budget approach with the ice dynamics posterior in our study, we use the latest 40-year time series of annual Antarctic ice discharge (Rignot et al., 2019 - Supplementary Dataset 1). To enable comparison with the anomaly discharges presented in our study we calculate the ice discharge anomalies for 2003 – 2017 period w.r.t the mean annual discharge over the 1979 – 2002 period. The 1σ uncertainties on the discharge are given as the standard deviation of the reference ice discharge as calculated from the reference velocity map used in the study.

Ice Sheet Mass Balance Exercise (IMBIE) Comparison

IMBIE annual mass trends (Shepherd et al., 2018) for the Antarctic Peninsula are determined through calculation of the difference in cumulative mass at the calendar year end (Jan 1st) with that of the previous year. The cumulative time series can be found in the supplementary material of (Shepherd et al., 2018).

Text S2 – West Palmer Land Δ velocity methodology

In order to estimate changes in ice sheet velocity for the West Palmer Land region (basin Hp-I) over the 2003-2019 period of this study, we utilise annual observations of ice sheet velocity from the MEaSUREs program (Mouginot et al., 2017a, 2017b). The dataset consists of annual ice sheet velocity mosaics, with each year consisting of data between July 1st of one year to June 30th the following year. The data is posted at 1 km spatial resolution (EPSG:3031). The observations are derived primarily from speckle tracking of Synthetic Aperture Radar (SAR) image acquisitions, with the inclusion of Landsat-8 optical image tracking after 2013.

Spatial coverage over the Hp-I basin is somewhat limited prior to 2013, due to SAR scene availability and the ability to coherently track speckle patterns in regions where there are large variations in snowfall accumulation (e.g. Western side of the Antarctic Peninsula). Therefore, to maximise spatial coverage, we merge the annual velocity products by taking the mean x and y velocity components for acquisitions over two time periods, 2005-2011 and 2011-2017. The subsequent velocity magnitudes from these two time periods are then differenced (Fig S1b) in order to estimate changes in ice surface velocity between the two epochs.

Table S2 – Comparison Studies Used in Antarctic Peninsula Mass Balance Comparison

Study	Observation Approach	Drainage Basin	Time period	Mass Trend $\pm 1\sigma$ Gt yr⁻¹
McMillan <i>et al</i> (2014)	Altimetry/SEC	Zwally <i>et al</i> (2012)	2010 – 2013	-23 \pm 18
Rignot <i>et al</i> (2019)	IOM	Rignot <i>et al</i> (2013)	1999 - 2009	-29.1 \pm 3
Rignot <i>et al</i> (2019)	IOM	Rignot <i>et al</i> (2013)	2009 - 2019	-45.1 \pm 3
Rignot <i>et al</i> (2008)	IOM	Rignot <i>et al</i> (2013)	2006 - 2007	-60 \pm 46
Zwally <i>et al</i> (2015)	Altimetry/SEC	Zwally <i>et al</i> (2012)	2003- 2008	-29 \pm 2
Luthcke <i>et al</i> (2013)	Gravimetry	Luthcke <i>et al</i> (2013)	2003 - 2010	-37.7 \pm 14
Schröder <i>et al</i> (2018)	Altimetry/SEC	Rignot <i>et al</i> (2013)	1992 - 2010	2.8 \pm 12.3
Schröder <i>et al</i> (2018)	Altimetry/SEC	Rignot <i>et al</i> (2013)	2010 - 2017	-4.5 \pm 8.7
Velicogna <i>et al</i> (2014)	Gravimetry	Velicogna <i>et al</i> (2014)	2003 - 2013	-31 \pm 4
Smith <i>et al</i> (2020)	Altimetry/SEC	Zwally <i>et al</i> (2012)	2003 - 2019	-39 \pm 5
Martin-Espanol <i>et al</i> (2016)	Combination	Sasgen <i>et al</i> (2013)	2003 - 2006	8.3 \pm 7.7
Martin-Espanol <i>et al</i> (2016)	Combination	Sasgen <i>et al</i> (2013)	2007 - 2009	-30.7 \pm 6.8
Martin-Espanol <i>et al</i> (2016)	Combination	Sasgen <i>et al</i> (2013)	2010 – 2013	-62.2 \pm 7.4
Martin-Espanol <i>et al</i> (2016)	Combination	Sasgen <i>et al</i> (2013)	2003 - 2013	-28 \pm 7.2
Shepherd <i>et al</i> (2018)	Altimetry/SEC	Rignot <i>et al</i> (2013)	2003 - 2010	-10 \pm 9
Shepherd <i>et al</i> (2018)	Gravimetry	Rignot <i>et al</i> (2013)	2003 -2010	-23 \pm 5
Shepherd <i>et al</i> (2018)	IOM	Rignot <i>et al</i> (2013)	2003 - 2010	-51 \pm 24

Table S3 – Comparison Studies Used in West Palmer Land (IMBIE Basin Hp-I)

Study	Observation Approach	Drainage Basin	Time Period	Mass Trend $\pm 1\sigma$ Gt yr⁻¹
Wouters <i>et al</i> 2015	Gravimetry	Zwally <i>et al</i> (2012)	2003 -2005	3 \pm 20
Wouters <i>et al</i> 2015	Gravimetry	Zwally <i>et al</i> (2012)	2007 - 2009	-11 \pm 13
Wouters <i>et al</i> 2015	Gravimetry	Zwally <i>et al</i> (2012)	2003 - 2009	-5 \pm 7
Wouters <i>et al</i> 2015	Gravimetry	Zwally <i>et al</i> (2012)	2010 - 2014	-34 \pm 12
Wouters <i>et al</i> 2015	Altimetry/SEC	Zwally <i>et al</i> (2012)	2003 - 2005	12 \pm 18
Wouters <i>et al</i> 2015	Altimetry/SEC	Zwally <i>et al</i> (2012)	2007 - 2009	-6 \pm 13
Wouters <i>et al</i> 2015	Altimetry/SEC	Zwally <i>et al</i> (2012)	2003 - 2009	2 \pm 19
Wouters <i>et al</i> 2015	Altimetry/SEC	Zwally <i>et al</i> (2012)	2010 - 2014	-35 \pm 7
Sasgen <i>et al</i> 2019	Combination	Sasgen <i>et al</i> (2013)	2011 - 2017	-1.3 \pm 24
Sasgen <i>et al</i> 2019	Altimetry/SEC	Sasgen <i>et al</i> (2013)	2011 - 2017	10.5 \pm 3.2
Sasgen <i>et al</i> 2019	Gravimetry	Sasgen <i>et al</i> (2013)	2011 - 2017	-1.2 \pm 2.9
Sasgen <i>et al</i> 2019	Gravimetry	Sasgen <i>et al</i> (2013)	2011 - 2017	-4 \pm 0
Sasgen <i>et al</i> 2019	Gravimetry	Sasgen <i>et al</i> (2013)	2011 - 2016	-13.6 \pm 0
Smith <i>et al</i> 2020	Altimetry/SEC	Zwally <i>et al</i> (2012)	2003 - 2019	-14 \pm 3
Mcmillan <i>et al</i> 2014	Altimetry/SEC	Zwally <i>et al</i> (2012)	2010 - 2013	-11 \pm 11

Figure S1 – Ice Shelf Basal Melting and grounded ice velocity differences for the George VI ice shelf

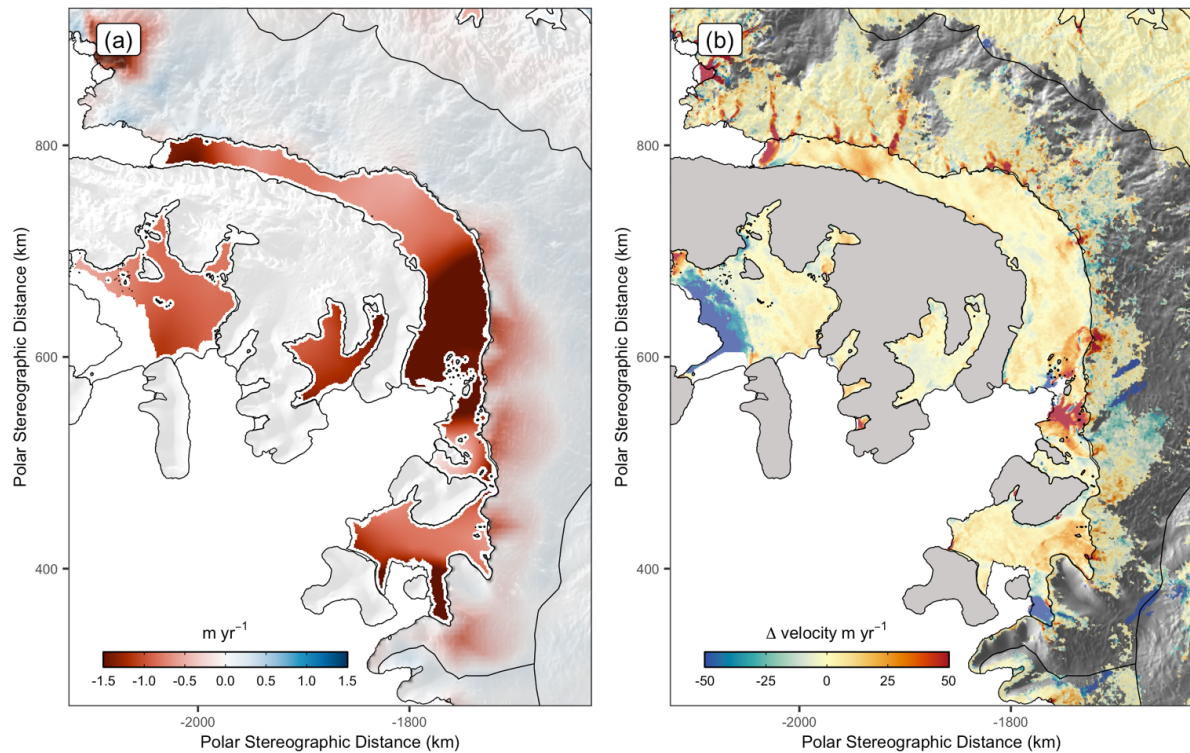


Figure S1 – a) Grounded ice sheet elevation trends due to ice dynamics over West Palmer Land (see Fig. 1 for location) for the year 2016 from the BHM solution plotted with the trend in net ice shelf mass balance for the period 1994–2016 derived from satellite altimetry (Adusumilli et al., 2018). **b)** Difference in velocity magnitude between the merged 2005 – 2011 and 2011–2017 merged velocity product (See text S2 for methodology). All data overlay over the REMA DEM hill shade (Howat et al., 2019)

Supplementary References

- Adusumilli, S., Fricker, H. A., Siegfried, M. R., Padman, L., Paolo, F. S. and Ligtenberg, S. R. M.: Variable Basal Melt Rates of Antarctic Peninsula Ice Shelves, 1994–2016, *Geophys. Res. Lett.*, 45(9), 4086–4095, doi:10.1002/2017GL076652, 2018.
- Agosta, C., Amory, C., Kittel, C., Orsi, A., Favier, V., Gallée, H., Van Den Broeke, M. R., Lenaerts, J. T. M., Van Wessem, J. M., Van De Berg, W. J. and Fettweis, X.: Estimation of the Antarctic surface mass balance using the regional climate model MAR (1979–2015) and identification of dominant processes, *Cryosphere*, 13(1), 281–296, doi:10.5194/tc-13-281-2019, 2019.
- Howat, I. M., Porter, C., Smith, B. E., Noh, M.-J. and Morin, P.: The Reference Elevation Model of Antarctica, *Cryosph.*, 13(2), 665–674, doi:10.5194/tc-13-665-2019, 2019.
- Luthcke, S. B., Sabaka, T. J., Loomis, B. D., Arendt, A. A., McCarthy, J. J. and Camp, J.: Antarctica, Greenland and Gulf of Alaska land-ice evolution from an iterated GRACE global mascon solution, *J. Glaciol.*, 59(216), 613–631, doi:10.3189/2013JoG12J147, 2013.
- Martín-Español, A., Zammit-Mangion, A., Clarke, P. J., Flament, T., Helm, V., King, M. a, Luthcke, S. B., Petrie, E., Rémy, F., Schön, N., Wouters, B. and Bamber, J. L.: Spatial and temporal Antarctic Ice Sheet mass trends, glacio-isostatic adjustment, and surface processes from a joint inversion of satellite altimeter, gravity, and GPS data, *J. Geophys. Res. Earth Surf.*, 121(2), 182–200, doi:10.1002/2015JF003550, 2016.
- McMillan, M., Shepherd, A., Sundal, A., Briggs, K., Muir, A., Ridout, A., Hogg, A. and Wingham, D.: Increased ice losses from Antarctica detected by CryoSat-2, *Geophys. Res. Lett.*, 41(11), 3899–3905, doi:10.1002/2014GL060111, 2014.
- Melchior Van Wessem, J., Jan Van De Berg, W., Noël, B. P. Y., Van Meijgaard, E., Amory, C., Birnbaum, G., Jakobs, C. L., Krüger, K., Lenaerts, J. T. M., Lhermitte, S., Ligtenberg, S. R. M., Medley, B., Reijmer, C. H., Van Tricht, K., Trusel, L. D., Van Ulf, L. H., Wouters, B., Wuite, J. and Van Den Broeke, M. R.: Modelling the climate and surface mass balance of polar ice sheets using RACMO2 - Part 2: Antarctica (1979–2016), *Cryosphere*, 12(4), 1479–1498, doi:10.5194/tc-12-1479-2018, 2018.
- Mouginot, J., Rignot, E., Scheuchl, B. and Millan, R.: Comprehensive Annual Ice Sheet Velocity Mapping Using Landsat-8, Sentinel-1, and RADARSAT-2 Data, *Remote Sens.*, 9(4), 364, doi:10.3390/rs9040364, 2017a.
- Mouginot, J., Scheuchl, B. and Rignot, E. J.: MEaSUREs Annual Antarctic Ice Velocity Maps 2005–2016, Version 1, , doi:http://dx.doi.org/10.5067/9T4EPQXTJYW9, 2017b.
- Rignot, E., Bamber, J. L., Van Den Broeke, M. R., Davis, C., Li, Y. H., Van De Berg, W. J. and Van Meijgaard, E.: Recent Antarctic ice mass loss from radar interferometry and regional climate modelling, *Nat. Geosci.*, 1(2), 106–110, doi:Doi 10.1038/Ngeo102, 2008.
- Rignot, E., Jacobs, S., Mouginot, J. and Scheuchl, B.: Ice-Shelf Melting Around Antarctica, *Science* (80-.), 341(6143), 266–270, doi:Doi 10.1126/Science.1235798, 2013.
- Rignot, E., Mouginot, J., Scheuchl, B., van den Broeke, M., van Wessem, M. J. and Morlighem, M.: Four decades of Antarctic Ice Sheet mass balance from 1979–2017, *Proc. Natl. Acad. Sci.*, 201812883, doi:10.1073/pnas.1812883116, 2019.
- Sasgen, I., Konrad, H., Ivins, E. R., Van Den Broeke, M. R., Bamber, J. L., Martinec, Z. and Klemann, V.: Antarctic ice-mass balance 2003 to 2012: Regional reanalysis of GRACE satellite gravimetry measurements with improved estimate of glacial-isostatic adjustment based on GPS uplift rates, *Cryosphere*, 7(5), 1499–1512, doi:10.5194/tc-7-1499-2013, 2013.
- Schröder, L., Horwath, M., Dietrich, R. and Helm, V.: Four decades of surface elevation

change of the Antarctic Ice Sheet from multi-mission satellite altimetry, *Cryosph. Discuss.*, 1–25, doi:10.5194/tc-2018-49, 2018.

Shepherd, A., Ivins, E., Rignot, E., Smith, B., van den Broeke, M., Velicogna, I., Whitehouse, P., Briggs, K., Joughin, I., Krinner, G., Nowicki, S., Payne, T., Scambos, T., Schlegel, N., Geruo, A., Agosta, C., Ahlstrøm, A., Babonis, G., Barletta, V., Blazquez, A., Bonin, J., Csatho, B., Cullather, R., Felikson, D., Fettweis, X., Forsberg, R., Gallee, H., Gardner, A., Gilbert, L., Groh, A., Gunter, B., Hanna, E., Harig, C., Helm, V., Horvath, A., Horwath, M., Khan, S., Kjeldsen, K. K., Konrad, H., Langen, P., Lecavalier, B., Loomis, B., Luthcke, S., McMillan, M., Melini, D., Mernild, S., Mohajerani, Y., Moore, P., Mouginot, J., Moyano, G., Muir, A., Nagler, T., Nield, G., Nilsson, J., Noel, B., Ootaka, I., Pattie, M. E., Peltier, W. R., Pie, N., Rietbroek, R., Rott, H., Sandberg-Sørensen, L., Sasgen, I., Save, H., Scheuchl, B., Schrama, E., Schröder, L., Seo, K.-W., Simonsen, S., Slater, T., Spada, G., Sutterley, T., Talpe, M., Tarasov, L., van de Berg, W. J., van der Wal, W., van Wessem, M., Dutt Vishwakarma, B., Wiese, D. and Wouters, B.: Mass balance of the Antarctic Ice Sheet from 1992 to 2017, *Nature*, 558(7709), 219–222, doi:10.1038/s41586-018-0179-y, 2018.

Smith, B., Fricker, H. A., Gardner, A. S., Medley, B., Nilsson, J., Paolo Nicholas Holschuh, F. S., Adusumilli, S., Brunt, K., Csatho, B., Harbeck, K., Markus, T., Neumann, T., Siegfried, M. R. and Jay Zwally, H.: Pervasive ice sheet mass loss reflects competing ocean and atmosphere processes, *Science* (80-.), 368(6496), 1239–1242, doi:10.1126/science.aaz5845, 2020.

Velicogna, I., Sutterley, T. C. and van den Broeke, M. R.: Regional acceleration in ice mass loss from Greenland and Antarctica using GRACE time-variable gravity data, *Geophys. Res. Lett.*, 41(22), 8130–8137, doi:10.1002/2014GL061052, 2014.

van Wessem, J. M., Ligtenberg, S. R. M., Reijmer, C. H., van de Berg, W. J., van den Broeke, M. R., Barrand, N. E., Thomas, E. R., Turner, J., Wuite, J., Scambos, T. A. and van Meijgaard, E.: The modelled surface mass balance of the Antarctic Peninsula at 5.5 km horizontal resolution, *Cryosph.*, 10(1), 271–285, doi:10.5194/tc-10-271-2016, 2016.

Zwally, H. J., Giovinetto, M. B., Beckley, M. A. and Saba, J. L.: Antarctic and Greenland Drainage Systems, GSFC Cryospheric Sciences Laboratory, [online] Available from: http://icesat4.gsfc.nasa.gov/cryo_data/ant_grn_drainage_systems.php, 2012.

Zwally, H. J., Li, J., Robbins, J. W., Saba, J. L., Yi, D. and Brenner, A. C.: Mass gains of the Antarctic ice sheet exceed losses, *J. Glaciol.*, 61(230), 1019–1036, doi:10.3189/2015JoG15J071, 2015.