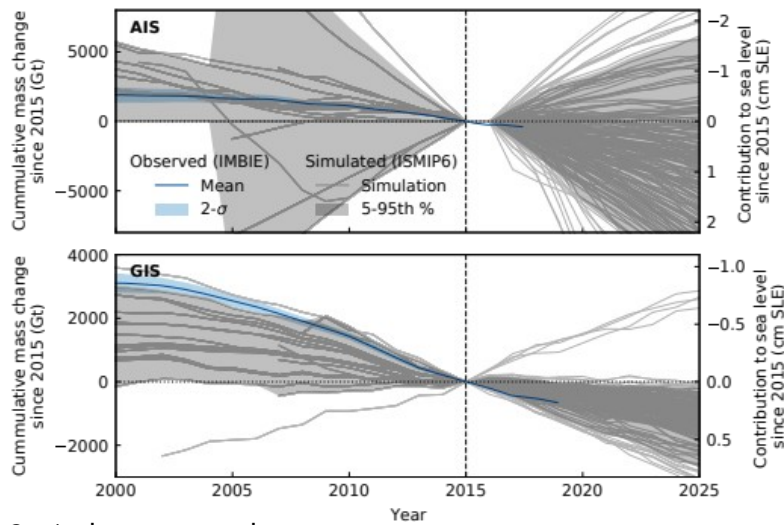


The proof-reading figures contain a flaw: for AIS, the projections were normalized with respect to year 2016 instead of 2015. This is easily visible in the figure “Control run NOT removed” but it does not appear when the control run is removed “Control run removed”.

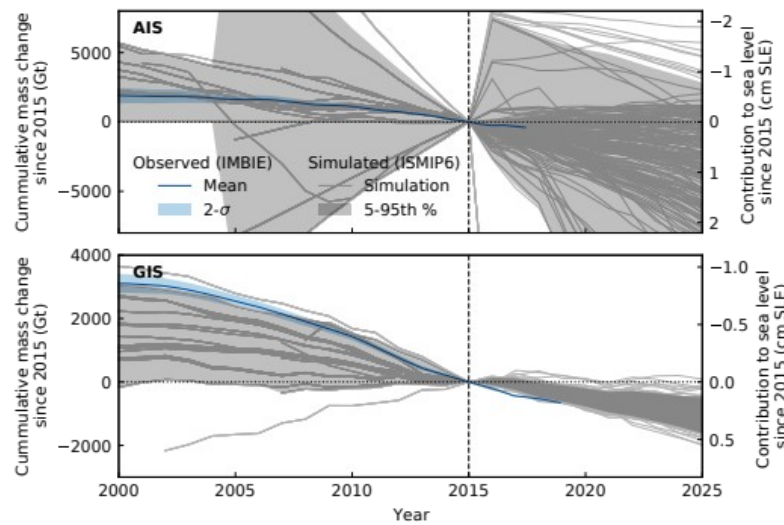
We fixed the script producing the figures, and the correct figures are shown below the flawed ones.

### Figures with wrong AIS projection normalization

#### Control run NOT removed

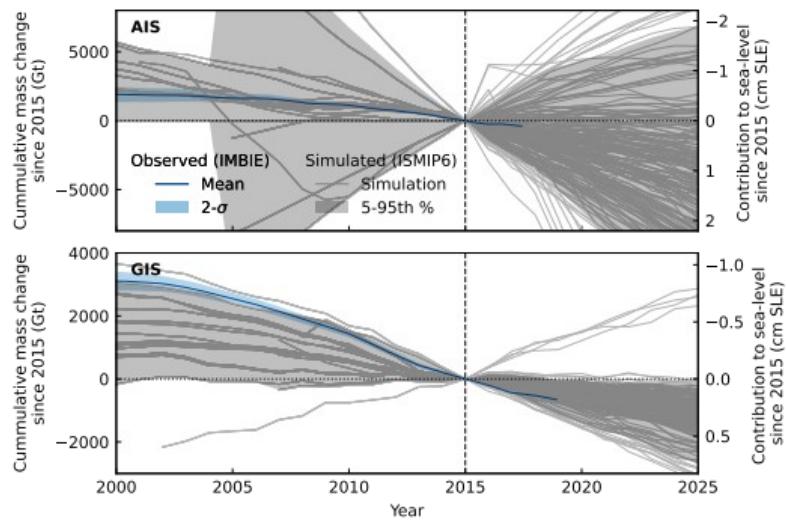


#### Control run removed



## Figures with correct AIS projection normalization

Control run NOT removed



Control run removed

