

Warm and moist atmospheric flow caused a record minimum July sea ice extent of the Arctic in 2020

Yu Liang^{1,2,3,4}, Haibo Bi^{1,2,3}, Haijun Huang^{1,4}, Ruibo Lei⁵, Xi Liang⁶, Bin Cheng⁷, Yunhe Wang^{1,2,3}

¹ Key Laboratory of Marine Geology and Environment, Institute of Oceanology, Chinese Academy of Sciences, Qingdao, 266071, China

² Laboratory for Marine Geology, Qingdao National Laboratory for Marine Science and Technology, Qingdao, 266061, China

³ Center for Ocean Mega-Science, Chinese Academy of Sciences, Qingdao, 266071, China

⁴ University of Chinese Academy of Sciences, Yuquan Road 19, Beijing 100049, China

⁵ Key Laboratory for Polar Science of the State Oceanic Administration, Polar Research Institute of China, Shanghai 200136, China

⁶ Key Laboratory of Research on Marine Hazard Forecasting Center, National Marine Environmental Forecasting Center, Beijing, 100081, China

⁷ Polar Meteorology and Climatology, Finnish Meteorological Institute, Helsinki, PO Box 33 FIN-00931, Finland

Correspondence to: Haijun Huang (hjhuang@qdio.ac.cn); Haibo Bi (bhb@qdio.ac.cn)

Abstract. The satellite observations unveiled that the July sea ice extent of the Arctic shrank to the lowest value in 2020 since 1979, with a major ice retreat in the Eurasian shelf seas including Kara, Laptev, and East Siberian Seas. Based on the ERA-5 reanalysis products, we explored the impacts of warm and moist air-mass transport on this extreme event. The results reveal that anomalously high energy and moisture converged into these regions in the spring months (April to June) of 2020, leading to a burst of high moisture content and warming within the atmospheric column. The convergence is accompanied by local enhanced downward longwave radiation and turbulent fluxes, which is favorable for initiating an early melt onset in the areas with severe ice loss. Once the melt begins, solar radiation played a decisive role in leading to further sea ice depletion due to ice-albedo positive feedback. The typical trajectories of the synoptic cyclones that occurred on the Eurasian side in spring 2020 agree well with the path of atmospheric flow. Assessments suggest that variations in characteristics of the spring cyclones are conducive to the severe melt of sea ice. We argue that large-scale atmospheric circulation and synoptic cyclones act in concert to trigger the exceptional poleward transport of total energy and moisture from April to June to cause this new record minimum of sea ice extent in the following July.

1 Introduction

Arctic sea ice is declining dramatically (Wang et al., 2019) under the background of global warming (Hinzman et al., 2005; Comiso and Hall, 2014; Johannessen et al., 2016) and Arctic Amplification (Screen and Simmonds, 2010; Serreze and Barry, 2011; Kim et al., 2016). Besides, the environment of the Arctic has transformed to a new state with younger (Rigor and

Wallace, 2004; Tschudi et al., 2016) and thinner (Kwok and Rothrock, 2009; Johnson et al., 2012; Bi et al., 2018) ice floes. The severe retreat of Arctic sea ice provides vital implications of environmental change, and it could have a diverse impact on regional and even global climate (Overland et al., 2015; Gu et al., 2018; Previdi et al., 2020), marine ecology (Post et al., 2013), economic activities (Crépin et al., 2017). Likewise, the scientific studies about the causes of Arctic sea ice shrinkage encompass various disciplines, including atmospheric (Deser et al., 2000; Wu et al., 2006; Wang et al., 2009; Ogi et al., 2016) and oceanic (Årthun et al., 2012; Miles et al., 2014; Zhang, 2015; Årthun and Eldevik, 2016) sciences.

Regarding the sea ice-atmosphere interactions, previous studies provided a consensus that changes in both local large-scale atmospheric circulation (Wu et al., 2006; Deser and Teng, 2008; Ding et al., 2017; Hegyi and Taylor, 2018; Lei et al., 2019; Bi et al., 2021) and synoptic activities (e.g., cyclones) (Zhang et al., 2013a; Olason and Notz, 2015; Lei et al., 2016; Wernli and Papritz, 2018; Lei et al., 2020) could significantly impact sea ice variation in the Arctic. Some studies also linked the sea ice loss to large-scale circulation changes and forcing from the tropics through teleconnections (Baxter et al., 2019; Screen and Deser, 2019; Warner et al., 2020). Changes in the atmospheric pattern play an important role in regulating the sea ice variations and trends through different mechanisms. With respect to the thermodynamics, the heat and moisture advection from mid-latitudes increase the air temperature, humidity, and cloudiness, thereby altering the surface radiation and energy budget in the Arctic (Doyle et al., 2011; Graverson et al., 2011; Zhang et al., 2013a; Boisvert et al., 2016; Dufour et al., 2016; Vázquez et al., 2017). The enhanced downward surface longwave radiation associated with heat and moisture transport favors an earlier melt onset, which regulates the surface energy uptake throughout the melt season (Mortin et al., 2016; Kapsch et al., 2019; Horvath et al., 2021). Dynamically, wind anomalies associated with atmospheric conditions can induce sea ice motion and redistribution (Brümmer et al., 2001; Olason and Notz, 2015; Lei et al., 2020; Liang et al., 2021), which can affect the sea ice transport through Fram Strait, the Baffin Bay and channels near Canadian Arctic Archipelago (Kwok, 2006, 2007; Krumpen et al., 2016; Smedsrud et al., 2017; Bi et al., 2019). Besides, inhomogeneous wind anomalies can deform the sea ice cover and cause cracks, leads, and polynyas (Lei et al., 2020).

Sea ice extent (SIE) minima of the Arctic reached its record low in September 2012 ~~ever~~ among all the satellite observations during the period 1979-2020, stood at 3.4039×10^6 km². After that, 2020 witnessed the second-lowest September SIE in the Arctic, which ended up only 3.7482×10^6 km². During the seasonal cycle of the sea ice cover in 2020, SIE grew to its maximum on March 5, then decreased persistently in the following warm months. Roughly speaking, Arctic sea ice cover turned to be smaller in extent during spring and early summer than that of 2012. Consequently, in 2020, Arctic sea ice experienced the lowest July extent recorded since 1979. As estimated, the July SIE of 2020 shrunk to 7.01×10^6 km², which is ~8% (or ~21%) lower than that of 2012 (or the average July SIE over the period 2000-2020). Figure 1 demonstrates the spatial pattern of sea ice concentration (SIC) anomalies and the corresponding SIE in July 2020. During the early summer of 2020, a prominent SIC reduction occurred in the Eurasian shelf seas, including Kara, Laptev, and East Siberian Seas (60°E-165°E and 70°N-82°N, as represented by ~~greenpink~~ polygon in Fig. 3e and d1, hereafter the study area). The

65 averaged SIC anomaly in these areas of 2020 (-25.96%) exceeds corresponding anomalies from all other years during the period 1979-2020. Therefore, the sea ice retreat in these regions contributed remarkably to the distinguished shrinkage of SIE in the Arctic Ocean in July 2020.

At present, the ~~new~~ record low Arctic sea ice extent (SIE) in July 2020, especially in the study area, has not garnered much attention. The underlying mechanisms contributing to this extreme event remain unclear. Inspired by the previous works, ~~we hypothesize that this extreme event is closely related to the atmospheric forcing.~~ We conduct an assessment for 70 the preconditions in meteorological fields during the spring months just prior to the record minimum SIE in July 2020. Specifically, we examine the magnitude and variations of the atmospheric transport of total energy and moisture as well as their convergence over the Arctic in spring (April-June) 2020. The changes in terms of the temperature and specific humidity fields over the vast area with significant sea ice retreat due to the convergence of the energy and water vapor are explored. To quantify the sea ice melt due to changes in the surface energy balance, the energy flux components including downward 75 longwave radiation, solar radiation, and turbulent fluxes are analyzed. Moreover, we investigate the distinct role of the synoptic activities, which contributes to the ~~significant remarkable~~ anomalies of the moisture and energy fluxes into the area of substantial ice loss.

~~The severe retreat of Arctic sea ice provides vital implications of environmental change, and it could have a diverse impact on regional and even global climate (Overland et al., 2015; Gu et al., 2018; Previdi et al., 2020), marine ecology (Post et al., 2013), economic activities (Crépin et al., 2017). Likewise, the scientific studies about the causes of Arctic sea ice shrinkage encompass various disciplines (Deser et al., 2000; Wu et al., 2006; Wang et al., 2009; Ogi et al., 2016). Regarding the sea ice-atmosphere interactions, previous studies provided a consensus that changes in both large-scale atmospheric circulation (Wu et al., 2006; Deser and Teng, 2008; Hegyi and Taylor, 2018; Lei et al., 2019) and synoptic activities (e.g., cyclones) (Zhang et al., 2013a; Olason and Notz, 2015; Lei et al., 2016; Wernli and Papritz, 2018; Lei et al., 85 2020) could significantly impact sea ice variation. Atmospheric forcing plays an important role in regulating the sea ice variations and trends through both thermodynamic and dynamic processes. With respect to the thermodynamics, the heat and moisture advection from mid-latitudes increase the air temperature, humidity, and cloudiness, thereby altering the surface radiation and energy budget in the Arctic (Doyle et al., 2011; Graverson et al., 2011; Zhang et al., 2013a; Boisvert et al., 2016; Dufour et al., 2016; Vázquez et al., 2017). Dynamically, wind anomalies can induce sea ice motion and deformation, 90 leading to sea ice redistribution and the occurrence of cracks, leads, and polynyas (Brümmer et al., 2001; Vihma et al., 2012; Olason and Notz, 2015; Lei et al., 2020; Liang et al., 2021).~~

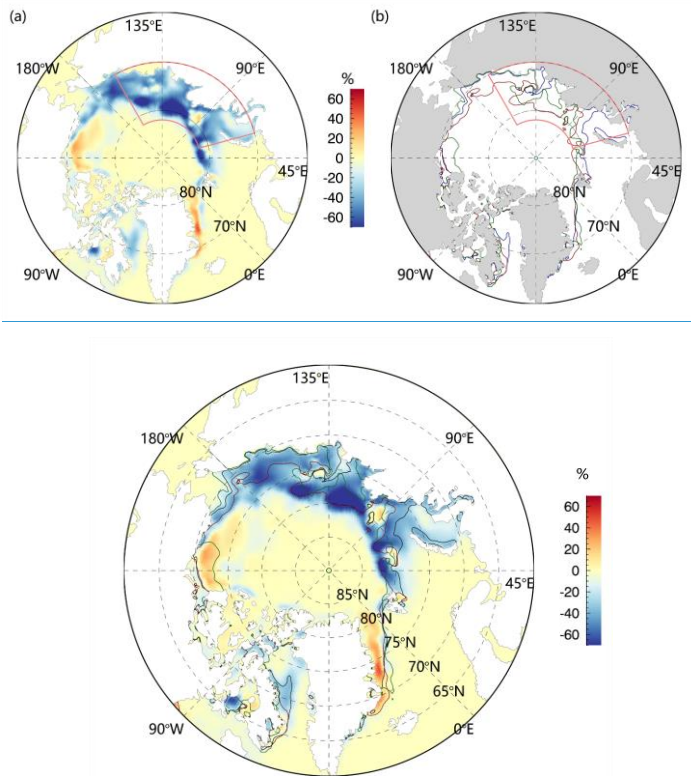


Figure 1. Spatial patterns of SIC anomalies (shading), and the SIEs in typical years (bold lines). The red line represents the SIE in July 2020. Green and grey ~~curves within lines~~ denote the SIE in July 2012 and the 20-yr average of the recent period 2001-2020, respectively. The anomalies are computed as the difference between the fields in July and the corresponding climatology over the past four decades (1979-2020). ~~Pink polygons encapsulate areas where substantial sea ice cover loss (60°E-165°E, 70°N-82°N) occurred in July 2020, which represents the study area of this paper.~~

2 Data and methods

2.1 Data

We use the Polar Pathfinder Daily sea ice motion (SIM) vectors product and satellite-derived daily sea ice concentration (SIC) provided by the National Snow and Ice Data Center (NSIDC) to investigate the SIE variations over the ice-retreated area. The SIM product is derived from a variety of sensors on satellite platforms, merged with buoy observations as well as reanalyzed wind data. The motion data is georeferenced to the Equal-Area Scalable Earth (EASE) Grids. The upgrade of the most recent SIM (Version 4.0) addresses artifacts resulting from interpolation (Tschudi et al., 2019). Tschudi et al. (2019) ~~elucidated show~~ that the NSIDC SIM product is one of the most comprehensive sea ice motion datasets. SIC fields are available on a polar stereographic projection and are derived from the SMMR, the SSM/I, and the SSMIS by applying the

bootstrap algorithm (Comiso, 2017). The latest version (Version 3.1) of the dataset provides improved consistency between sensors through the use of a suite of daily varying tie points generated from the AMSR-E observations. Both datasets have a spatial resolution of 25 km and a temporal resolution of 1-day.

We use daily sea ice thickness (SIT) from the Pan-Arctic Ice Ocean Modeling and Assimilation System (PIOMAS) (Zhang and Rothrock, 2003). PIOMAS is a coupled sea-ice/ocean model which is forced by atmospheric fields and sea surface temperatures from the National Centers for Environmental Prediction/National Center for Atmospheric Research (NCEP/NCAR) reanalysis. Multiple studies have compared PIOMAS SIT fields with satellite, submarine, airborne, and in situ observations, whose results revealed that PIOMAS is highly consistent with these observations (Zhang and Rothrock, 2003; Schweiger et al., 2011; Stroeve et al., 2014; Wang et al., 2016). In particular, Schweiger et al. (2011) outlined a less than 0.1-m mean difference and a high pattern correlation ($r = +0.8$) between the PIOMAS and the ICESat-derived SIT fields. [As for the study area \(the Laptev and East Siberian Seas\), ICESat and PIOMAS ice thickness fields show a close agreement with the spatial pattern of ice thickness. The PIOMAS thickness fields are about 0.2-0.7 m small than that of ICESat for February–March \(Schweiger et al., 2011\).](#) The PIOMAS SIT dataset is available on a generalized orthogonal curvilinear coordinate system with a mean resolution of 22 km.

Cryosphere Science Research Portal (CSRP) of [the](#) National Aeronautics and Space Administration (NASA) provides the record of sea ice surface melt dates in the Arctic, wherein the knowledge concerning the onset of the melt season is obtained. The fields are derived from SSM/I data following Markus et al. (2009) and available on the data grid in line with the SIC fields provided by NSIDC.

ERA5 reanalysis datasets including sea level pressure (SLP), temperature, specific humidity, surface evaporation, wind speed, the vertical integral of northward/eastward water vapor flux, the vertical integral of northward/eastward total energy flux and their convergence, as well as the radiation parameters (surface net/downward longwave radiation, surface net/downward shortwave radiation, surface latent heat flux and surface sensible heat flux) are obtained from the European Centre for Medium-Range Weather Forecasts (ECMWF). These meteorological variables are used to identify cyclones and extract the associated characteristic variables (track, intensity, center, et al.), and to quantify the atmospheric energy and moisture transport. Previously, Kapsch et al. (2013) found ERA-Interim to be the most credible reanalysis for the Arctic climate. [ERA5 is represents a new reanalysis product which that improves on its predecessor \(ERA-Interim\). ERA5It benefits from a decade of developments in model physics, core dynamics, and data assimilation. ERA5 is a new reanalysis product that benefits from a decade of developments in model physics, core dynamics, and data assimilation, replacing the ERA-Interim.](#) Compared with ERA-Interim, the major strength of ERA5 is the much higher temporal and spatial resolutions than those of previous global reanalyses and better performance in the troposphere (Hersbach et al., 2020). The adopted ERA5 datasets are characterized by a spatial resolution of $1.0^{\circ} \times 1.0^{\circ}$ in longitude and latitude. Note that most of the ERA5

带格式的: 字体: 10 磅, 字体颜色: 文字 1

带格式的: 字体: 10 磅, 字体颜色: 文字 1

带格式的: 字体: 10 磅, 字体颜色: 文字 1

variables we utilized are recorded every six hours except for parameters that accumulated over a particular time period (evaporation and surface radiation fluxes) and the convergence of the energy and moisture transport.

2.2 Methods

2.2.1 The atmospheric transport of total energy and moisture

The net atmospheric moisture transport for the Arctic represents regionally integrated precipitation minus evapotranspiration and the precipitable water tendency. However, large errors and sparse uncertainties exist in precipitation and evapotranspiration measurements (Zhang et al., 2013b). To this end, we utilize wind and specific humidity fields from reanalysis, which are of great fidelity, to compute moisture transport. The vertical integral of northward moisture flux can be approximated following the trapezoidal rule (Dufour et al., 2016):

$$\int_0^{p_s} f(p) dp \approx \sum_{n=n_0}^{N-1} \frac{1}{2} [f(p_{n+1}) + f(p_n)] (p_n - p_{n+1}) + f(p_{n_0}) (p_s - p_{n_0}) \quad (1)$$

$$f(p_n) = v_n q_n \quad (2)$$

where n is the number of pressure levels, n_0 is the lowest pressure level, p_s denotes the surface pressure, p_n corresponds to pressure at the n th pressure level, v_n and q_n represents the northward component of the wind speed and specific humidity at the n th pressure level, respectively. We compared our estimated results of the vertical integrated northward water vapor flux against the existing dataset archived in ERA5. The results (not shown) show that the estimated results are highly consistent with the corresponding ERA5 filed both in the magnitude and change of all months across various latitudes (e.g., 70 °N) during the period 1979 to 2020, which lends credence to the direct use of the water vapor flux field obtained from ERA5. By the same token, we take advantage of the vertical integral of total energy from ERA5. The vertically integrated, atmospheric, northward energy transport consists of internal, potential, kinetic and latent energy.

2.2.2 Changes in sea ice thickness due to melt

Changes in surface energy budget related to energy and water vapor convergence could affect sea-ice melting. The thickness of melt caused by alteration of surface energy budget can be calculated via the sea-ice growth model (Maykut et al., 1992; Eisenman et al., 2007). Neglecting some smaller radiative fluxes, the changes in sea ice thickness can be written as a simplified function of the surface radiation and turbulent flux:

$$-\Delta h = \frac{\Delta t}{\rho L} [FL_{w\downarrow} + FS_{w\downarrow} + H_1 + LE_1] \quad (3)$$

where Δh represents sea-ice change, Δt is the time step, ρ represents the density of sea ice (917 kg/m³), L is the latent heat of fusion for sea ice (333.4 kJ/kg), $FL_{w\downarrow}$ and $FS_{w\downarrow}$ represent the surface net fluxes of longwave and shortwave radiation, respectively. H_1 corresponds to the sensible heat, and LE_1 denotes the latent heat.

2.2.3 Cyclone identification and tracking

To examine the effects of cyclone activities on the anomalous energy and moisture transport in spring 2020, we use a revised automatic cyclone identification and tracking algorithm developed originally by Serreze et al. (1993) to diagnose the center positions and trajectories of the cyclones from the 6-hourly SLP data (Serreze et al., 1993; Serreze, 1995; Serreze et al., 1997; Wang et al., 2006; Wang et al., 2013). The cyclone detection and tracking algorithm consists of two steps: (1) Inspecting [each candidate center with a minimum pressure value over the surrounding 7×7 array of grid points. The pressure gradient between the central grid and the surrounding grids should be higher than the detection threshold \(0.1 hPa\)](#) (Wang et al., 2013). ~~the candidate center where the pressure is lower by 0.1 hPa than the surrounding grid points (Wang et al., 2013).~~ ~~If multiple cyclone center candidates are found within a radius of 1200 km, the one with the largest local Laplacian of SLP is determined as the exact cyclone center.~~ (2) Tracking the centers between two consecutive time steps based on the “nearest neighbor” rule to form trajectories, with further checks including the distance moved in specific directions and pressure tendency. Therefore, a cyclone track consists of a series of cyclone centers identified in sequential time steps at adjacent locations. In this study, thresholds related to multiple parameters, including the maximum travel distance (800 km), maximum north-, south- and west-ward migration (600 km), and maximum pressure tendency (20 hPa) (Serreze, 1995; Wang et al., 2006), are adopted. Note that regions with surface elevations higher than 1000 m are excluded since the algorithm tends to detect spurious systems due to larger uncertainty in the SLP over mountainous terrain.

Moreover, the corresponding features for each cyclone, including the duration, intensity, and radius, were also retrieved. By definition, the intensity is referred to as the difference between the SLP of the cyclone center and the climatological monthly mean SLP at corresponding grid points. The density of tracks denotes the number of distinct cyclones occurring in a particular region during spring. We use an integrative parameter, [the Cyclone Activity Index \(CAI\)](#), to measure the intensity, number, and duration of a cyclone. ~~The Cyclone Activity Index (CAI)~~ [CAI](#) is defined as the sum of the intensity over all cyclone centers in a particular region during the spring months (Zhang et al., 2004). A more detailed description of the automated cyclone detection and tracking scheme can be found in Liang et al. (2021).

3 Atmospheric energy and moisture transport

The transport of total energy and moisture toward the Arctic system is controlled by changes in large-scale atmospheric circulation and patterns of climatic variability (Graversen et al., 2011; Vihma et al., 2016; Ding et al., 2017). As depicted in Fig. 2, the average Arctic atmospheric condition from April to June 2020 was dominated by a persistent low-pressure anomaly centered over the north pole and extended southwards from the Barents-Kara Seas to the middle part of northern Eurasia. Two high-pressure anomaly centers were located in Eastern Siberia and around the Norwegian Sea, respectively. [All these centers have relatively great intensity, with surface pressure values being 1.5 standard deviations below \(above\) the](#)

average value over the past four decades. These SLP modes favor anomalous southerly winds, which transport moist and warm air mass from Eurasia into the Arctic through the entry in the Kara Sea. After entering the Arctic Ocean, the air mass was deflected to move along the coast of Eurasia and influenced the shelf seas. The low-pressure anomaly of the atmospheric pattern in spring 2020 is similar to those identified in Kapsch et al. (2019) and Horvath et al. (2021). Both studies pointed out that this kind of atmospheric condition could effectively promote heat and moisture transport into the Arctic. The melt of sea ice is related to the emergence of these patterns as well as the persistence and intensity of associating processes.

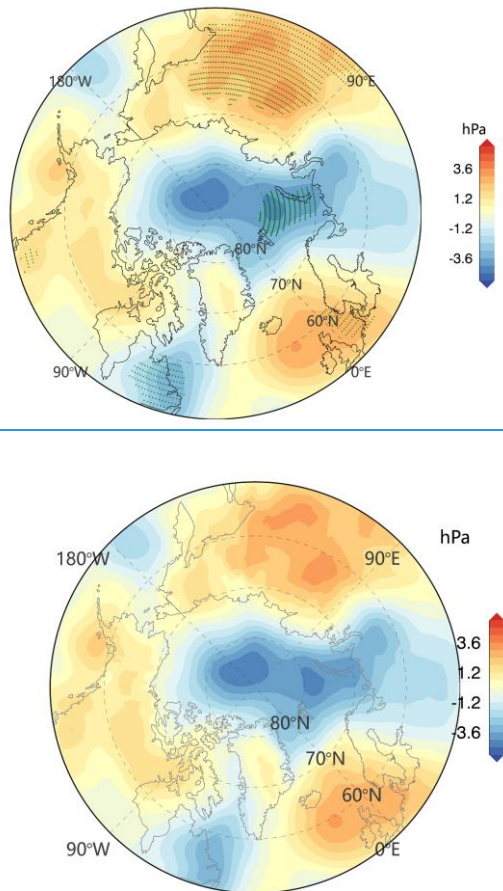
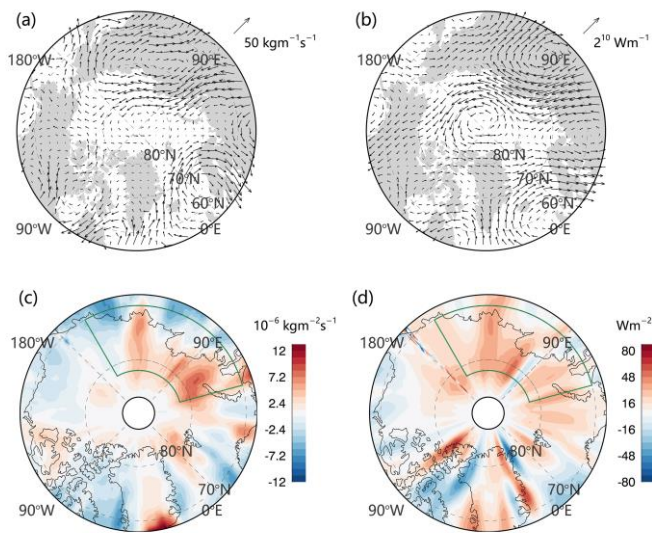


Figure 2. Spatial patterns of SLP anomalies (shading) during April to June 2020. The anomalies are computed as the difference between the averaged fields of the three months (April-June) and the corresponding climatology over the past four decades (1979-2020). Stipplings represent the values where the anomaly exceeds 1.5 standard deviations.

Using ERA5 reanalysis, we quantify the anomalies of the vertical integral of meridional total energy and water vapor flux. As shown in Fig. 3, an anomalously large advection of energy and water vapor from lower latitudes, which is diverted

210 by wind variations, prevailed in the region with conspicuous sea ice retreat (Fig. 1) in spring 2020. Regions around the Laptev and Kara sea (45 °E-120 °E, 70 °N) are the main entry channels for warm air-mass input from lower latitudes. It is estimated that the zonal mean of the meridional total energy flux (water vapor flux) through these main entry channels over the entire spring in 2020 reached up to $1.74 \times 10^{11} \text{ Wm}^{-1}$ ($1.51 \times 10^3 \text{ kg m}^{-1}\text{s}^{-1}$), producing a transport that was 2 (3) standard deviations larger than the 1979-2020 climatology. The pronounced poleward energy and moisture through the entry then

215 converged into the Arctic. As depicted in Fig. 3c and d, the major parts of the ice-retreated shelf seas in spring 2020 are characterized by positive convergence anomalies of the atmospheric moisture and energy transport. Particularly, the magnitude of the total energy and moisture flux convergence anomaly even exceeds 50 Wm^{-2} and $9 \times 10^{-6} \text{ kg m}^{-1}\text{s}^{-2}$, respectively, in the Kara Sea).

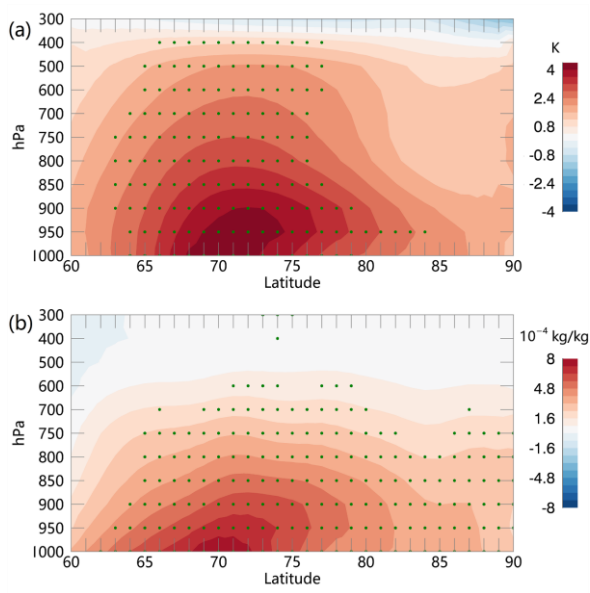


220 **Figure 3.** Anomalies of the vertically integrated northward (a) moisture flux and (b) total energy transport and the corresponding convergence (c-d) averaged over the spring months (April-June) of 2020. Anomalies are relative to the climatology of April-June from the years 1979-2020. Green polygons encapsulate areas where substantial sea ice cover loss (60 °E-165 °E, 70 °N-82 °N) occurred in July 2020, which represents the study area of this paper.

Figure 4 illustrates the meridional cross-sections of temperature and specific humidity anomalies spanning the regions with maximum convergence of the atmospheric fluxes (60 °E-165 °E, 60 °N -90 °N). Horizontally, elevated temperature and higher moisture content distributed widely from 60 °N to 85 °N near the surface. Vertically, the positive temperature and moisture anomalies extend conspicuously into the mid-troposphere (~750 hPa). The intrusion of moisture and energy leads to surface warming (damping) of up to 3-4 K ($6-8 \times 10^{-4} \text{ kg kg}^{-1}$) in the spring months. The vertical patterns of the anomalies indicate that the great convergence (Fig. 3c and d) of energy and moisture could contribute to the local increases in the

230 atmospheric temperature and humidity, both at the surface and in the troposphere above the boundary layer, which is in

agreement with the finding of Graverson et al. (2008). Noticeably, unusual conditions ~~that~~ with higher moisture content and warming within the Arctic atmospheric column prevailed over the ice cover loss region. We also examine the role of local evaporation in the regional increase of moisture under a warmer Arctic climate. According to the ERA5 reanalysis, the spring evaporation over the Arctic Basin exhibits a decreasing trend over the past four decades, except for the Barents and Norwegian Seas. In April-June 2020, below-normal evaporation dominated the Arctic with an averaged negative value of -1.5×10^{-4} m in the regions with notable ice-retreat (not shown). The decline in evaporation indicates that the enhanced moisture contributing to the moister atmosphere over these regions is primarily provided by atmospheric transport from remote areas rather than by local sources as the moisture fluxes from the sea surface are negligible. This finding further affirms the arguments of Vázquez et al. (2016) and Singh et al. (2017), which highlighted the importance of remote sources of water vapor.



带格式的: 居中, 缩进: 首行缩进: 0 厘米

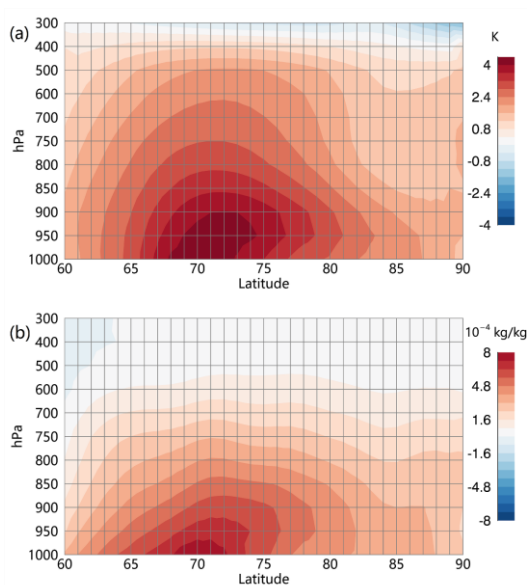


Figure 4. Vertical cross-sections of zonal averaged (a) air temperature and (b) specific humidity anomalies, as a function of latitude and pressure level, during the spring months (April–June) of 2020 spanning the regions with significant energy and moisture convergence (60° E–165° E, 60° N–90° N). The anomalies are calculated as the difference between the averaged fields of the three months (April–June) and the corresponding climatology over the past four decades (1979–2020). Stipplings represent the values where the anomaly exceeds 2 standard deviations.

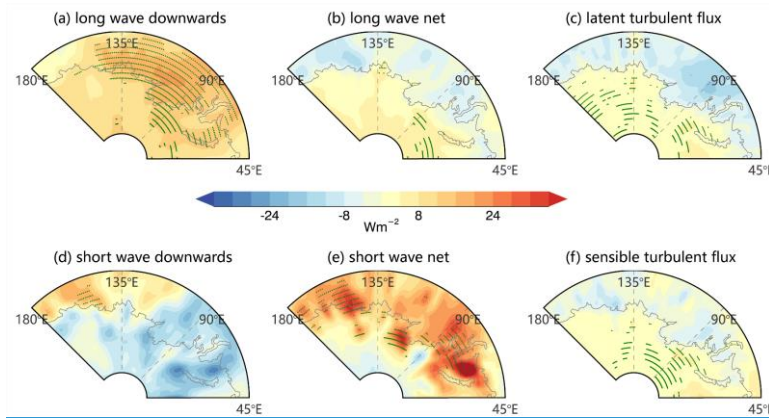
4 Surface energy Budget

The surface energy budget that consists of thermal radiation, solar radiation, and turbulent fluxes is vital for sea ice melt and growth. An increase of humidity associated with the convergence of moisture flux may strengthen cloud formation (Johansson et al., 2017), of which both contribute to the enhanced local greenhouse effect. In addition, the energy convergence in the atmosphere may partly be radiated directly to space in the form of longwave radiation, and partly radiated to the sea surface and turbulently mixed, contributing to the sea ice melt. Having shown the anomalously large convergence of water vapor and total energy transport in April–June 2020, in the following we will present the variations of different surface energy flux components in the following. Note that the ECMWF convention for vertical fluxes is positive downwards.

In the Eurasian shelf seas with remarkable sea ice shrinkage, the surface gained more energy owing to both shortwave and longwave radiation, as well as turbulent fluxes, as the enhanced surface fluxes predominantly appeared in these regions (Fig. 5). The spatial pattern of anomalies in surface thermal radiation downwards is characterized by positive values throughout the convergence zones, with the largest amplitudes in the Kara Sea ($\sim 32 \text{ Wm}^{-2}$, Fig. 5a). The anomalies of the net longwave radiation (Fig. 5b) are roughly similar in spatial distribution to that of the downward component over the Arctic

marginal seas on the Eurasian side. The difference between Fig. 5a and b indicates that part of thermal radiation was radiated upwards to increase the surface air temperature before the melt commenced. Downward and net shortwave radiation anomalies are portrayed in Fig. 5d and e. The downward component of the solar radiation was below-normal in most parts of the ice-retreated area (Fig. 5d), which is presumably attributed to increased cloudiness associated with the convergence of moisture. In contrast, remarkably positive anomalies of the net solar radiation were found in the Eurasian shelf seas where the extensive loss of sea ice is observed. This is a result of the substantial formation of open water due to sea ice loss which reduces the albedo and thereby enables the upper ocean to absorb more heat (i.e., the ice-albedo feedback).

Additionally, sensible and latent turbulent surface flux anomalies both make a contribution to the energy surplus at the surface in the spring months of 2020 (Fig. 5c and f). The positive (downward) anomalies of turbulent surface fluxes were detected in the regions which coincide well with the seas with contracted ice cover (Fig. 5c and f). Intuitively, more turbulent fluxes would be released to the atmosphere as more open water prevailed. That is, a negative (upward) value over the Arctic shelf seas is expected. However, reduced upward, or even downward, sensible and latent heat fluxes are detected in the study region during April-June in 2020. This can be attributed to the anomalously high moisture advection and convergence which as a result could reduce the gradient of the water vapor pressure at the surface. As implied in Fig. 4, positive temperature and humidity anomalies extend from surface even to mid-troposphere, **peaks-peaking** at around 925 hPa. These changes would result in a decreased vertical gradient in air temperature and humidity in the lower atmosphere, reducing the hypothesized upward turbulent fluxes from the ocean surface to the overlying atmosphere.



带格式的: 居中, 缩进: 首行缩进: 0 厘米

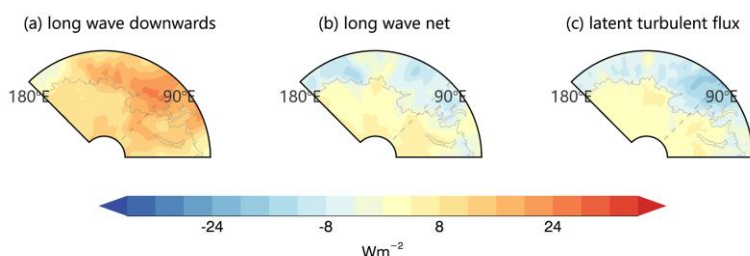


Figure 5. Anomalies of surface (a) downwelling and (b) net longwave radiation, (d) downwelling and (e) net shortwave radiation, as well as sensible (c) and latent (f) heat fluxes. The anomalies are relative to the climatology with monthly resolution from the years 1979-2020 and averaged over the spring months (April–June) of 2020. The stippled grids denote those with values where the anomaly exceeds 2 standard deviations. Note that the plotted view of Fig.5 is slightly larger than the study area for better illustration.

Figure 6a presents the time series of SIE, the anomalies of atmospheric energy transport convergence and the surface fluxes averaged over the study area (enclosed by the green polygon in Fig. 3c and d) during 2020. Indeed, the an energy convergence event started at the end of March and lasted for three months, peaked in early June (Fig. 6a, grey line). The convergence event is intense with values 2 standard deviations higher than the climatology in April and May. This is followed by an augment in the downward thermal radiation plus turbulent fluxes (smaller) by $\sim 30\text{-}40 \text{ Wm}^{-2}$ (Fig. 6a, green line). According to the statistics, 51% of the days in spring 2020 had unusually positive downward thermal radiation plus turbulent fluxes (one standard deviation above its 1979-2020 mean) in the study area. The almost simultaneous response of downward thermal radiation highlights that the convergence of the total energy and moisture flux has a significant imprint on the increased surface energy fluxes. With the enhanced downward infrared radiation, sea ice cover began to decrease gradually (Fig. 6a, grey-blue line). The temporal development in Figure 6 ~~time development~~ underlines that the positive anomalies of longwave radiation plus turbulent fluxes played a significant role in initiating an early than usual melt in 2020. As estimated from fields of melt dates archived in NASA, persistent melt conditions in the study area were observed in May 2020 (Fig. 6a, red vertical line), which occurred about 15 days earlier than the average value of the period 1979-2020 (Fig. 6b). As the melt commenced, the formation of open water decreased the surface albedo, which in turn acted to increase the absorption of solar radiation (Fig. 6a, red line). That is, the earlier melt onset could foster stronger ice-albedo feedback (Hall, 2004), leading to an accelerated decline in SIE in June-July when the anomaly of net solar radiation reached its maximum. Likewise, Horvath et al. (2021) indicate that increased downwelling longwave radiation associated with higher moisture inflow leads to an earlier melt onset. Mortin et al. (2016) show that melt onset over Arctic sea ice is initiated by positive

带格式的：两端对齐

带格式的：字体颜色：文字 1，英语(英国)

带格式的：字体：10 磅，非加粗

带格式的：字体：10 磅，非加粗

带格式的：上标

anomalies of water vapor, clouds, and air temperatures that increase the downwelling longwave radiation to the surface. Our results augment evidence for the existing knowledge of driving mechanisms of early melt onset.

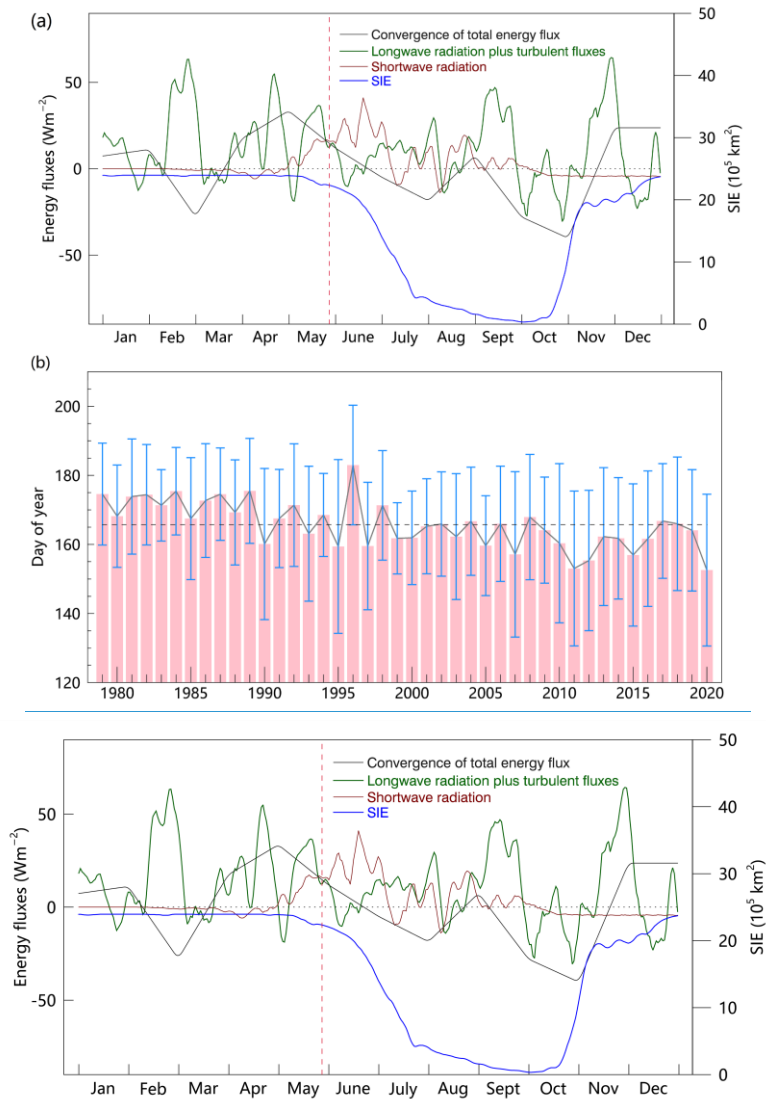


Figure 6. (a) Time series of SIE, the anomalies of atmospheric energy transport convergence and surface energy fluxes over the study area (indicated by the green-pink polygon in Fig. 3e-1 and d) during 2020. The blue curve represents the SIE. The red line denotes the anomalies of net solar radiation. The green line corresponds to the anomalies of the sum of the downwelling thermal radiation and the turbulent (latent plus sensible) flux. The vertical pink line denotes the average melt day (May 28) in 2020, provided by NASA. The retrieved values are averaged over the oceanic grids by applying a land mask. The anomalies are relative to the climatology of the years 1979-2020. (b) The averaged melt date of the study area during the period 1979-2020. The grey dashed line represents the mean melt date of these four decades. Error bars denote one standard deviation.

带格式的: 字体: 非加粗

~~we~~We calculate the changes in sea-ice thickness due to the variations of surface energy fluxes via the sea-ice growth model (Maykut et al., 1992; Eisenman et al., 2007). ~~To~~ so that we can quantify the thermodynamic impact of atmospheric energy of spring 2020 on the sea ice melt, ~~we calculate the changes in sea-ice thickness due to the variations of surface energy fluxes via the sea-ice growth model (Maykut et al., 1992; Eisenman et al., 2007).~~ According to equation (3), a 1 W/m^2 increase in surface energy budget during three spring months (April to June) would melt approximately 2.60 cm of sea ice. The spatial pattern of sea ice thickness change due to surface energy fluxes variations, calculated by equation (4), is portrayed in Fig. 7a.

SIT anomalies due to radiative forcing are mostly negative (i.e., melting) in the Kara, Laptev, and East Siberian Seas during the three spring months of 2020, with a particularly large value (-1.2m) in the Kara sea (Fig.7a). The region with significant SIT reduction (wherein sea ice ~~that was totally melted~~) agrees well with that with distinct SIC anomalies. Moreover, ~~to~~ to reiterate the long-term changes, we examine the trend of SIT over the past four decades in the study area. As estimated from the thickness data provided by PIOMAS, the average thickness of spring (April-June) sea ice in the study area has a remarkable decreasing trend of -0.27 m per decade (significant at the 99% confidence level, Student's t-test) in the past four decades (Fig. 7b). SIT was persistently lower than 2.50 m since 2000 and dropped sharply to only 1.20 m in the spring of 2020. Thinner ice is more susceptible to changes thermodynamically forcing, thus prone to melt earlier, which in turn could foster a stronger summer ice-albedo feedback through the formation of open water areas. In other words, without the extensive coverage of thin, first-year ice in spring 2020 in the study area (Fig. 7b), the unusual atmospheric energy and moisture transport would not have been nearly as effective in reducing ice extent as was observed (Fig. 1).

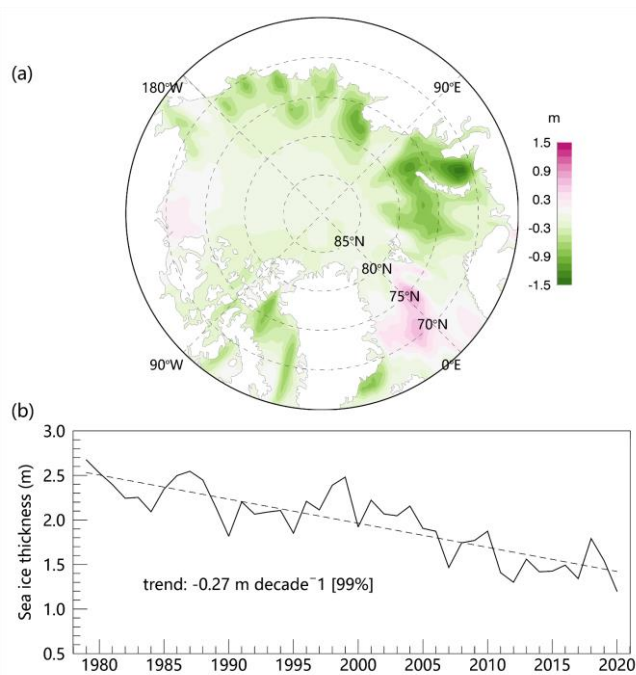


Figure 7. (a) Changes of SIT caused by anomalies of surface radiative fluxes during spring (April-June) 2020 which is estimated by a sea-ice growth model. (b) Time series of SIT (provided by PIOMAS) and the corresponding trend (dashed line) averaged over the study area (60 °E-165 °E and 70 °N-82 °N) in spring during the period 1979-2020.

335 **5 Cyclones activities in Spring 2020**

Synoptic cyclones are a central component maintaining the global atmospheric energy, moist, and momentum budgets (Jakobson and Vihma, 2010; Dufour et al., 2016; Villamil-Otero et al., 2018). A wide variety of studies reveal a poleward shift in tracks and significant changes in the frequency and intensity of extratropical cyclones (Yin, 2005; Sepp and Jaagus, 2011; Zhang et al., 2013a; Day et al., 2018). Considering the notable variations in cyclone activities and the strong sea ice decline experienced in the study area over recent decades, understanding the underlying effects of the cyclones on the poleward transport of energy/moisture is especially crucial. We identify and ~~tracking-track~~ cyclone systems that occurred in the spring months (April - June) during the period 1979-2020 using the automated algorithm (Serreze et al., 1993; Serreze, 1995; Serreze et al., 1997; Wang et al., 2006; Wang et al., 2013). ~~To cross-check the cyclone systems diagnosed from the ERA5 SLP, we also analyzed data from ERA interim. Despite some differences in certain regions, a high agreement exists in terms of interannual variability and climatological geographical distribution of cyclone characteristics (not shown). To some extent, this consistency gives credence to the method and datasets utilized.~~ Neu et al. (2013) conducted an intercomparison experiment involving 15 commonly used detection and tracking algorithms for extratropical cyclones, in which they found that cyclone

带格式的: 正文, 段落间距段后: 0.5 行

characteristics are robust between different schemes. Besides, their results revealed that the algorithm used in this study agrees well with the others in terms of spatial distribution, interannual variability, and geographical linear patterns of the cyclones. To some extent, these facts give credence to the method utilized in this study.

Longitudinal distributions of the climatological vertically integrated northward total energy and moisture flux across 60° N, as well as CAI of cyclones entering the Arctic at the 60°N averaged over the spring months (April–June) during 1979–2020, are illustrated in Fig. 8. Note that cyclones entering the Arctic are defined as cyclone trajectories having their cyclolysis south of 60°N and traveling poleward through 60°N. The spatial distribution of CAI is in good agreement with the vertically integrated meridional total energy and moisture flux. The main entry channels of the energy and moisture including the North Atlantic, North Pacific, and the Labrador Seas witness more cyclones with greater intensity that propagated toward the Arctic region. A strong correlation exists between the averaged CAI and the vertically integrated northward total energy flux (moisture flux) at 60°N with $R=+0.69$ ($+0.68$) (361 grids, significant at the 99% confidence level), suggesting the significant role of cyclone activity in contributing to the poleward advection of energy and moisture. Note that Greenland is masked when tracking cyclones to avoid problems caused by SLP extrapolation, hence we use the latitude 60°N other than 70°N to display the relationship between cyclone activities and the meridional fluxes. Other studies also corroborated the fact that synoptic cyclones play a crucial role in regulating the poleward fluxes considering the fundamental nature of cyclones in holding and transporting moisture and energy. For instance, Dufour et al. (2016) concluded that poleward advection of moisture is dominated by transient eddies (e.g., cyclones) owing to its almost exclusively meridional direction of the flux. It was estimated that the cyclones could explain 80–90% of the total northward transport at latitudes of 70°N (Jakobson and Vihma, 2010; Dufour et al., 2016). In addition, Villamil-Otero et al. (2018) found that stronger cyclone activity across 60°N measured by the CAI generally co-occurs with enhanced poleward monthly atmospheric moisture transport in each representative seasonal month. Our results augment evidence for the view that the intrusion of moisture and energy associated with cyclones into the Arctic is linked with the abrupt changes in the Arctic climate system.

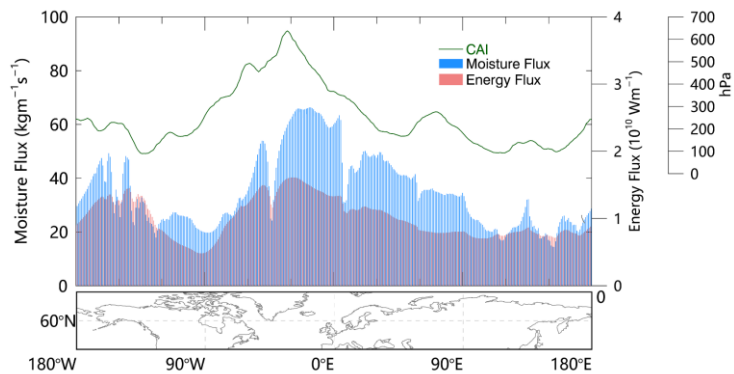


Figure 8. Longitudinal distributions of the climatological vertically integrated meridional total energy and moisture flux across 60°N, as well as CAI of cyclones entering the Arctic at the 60°N averaged over the spring months (April–June) during 1979–2020.

It is noteworthy that, in this study, we use a range of latitudes (50°N–70°N, with a step length of 1°), other than a single one, to define the poleward cyclones. For instance, poleward cyclones are defined as those that are generated south of a certain latitude within the range (50°N–70°N) and traveling northward through it. All of these cyclones may play a non-negligible role in carrying energy and water vapor to the Arctic in the form of a relay. As shown in Fig. 9, spring 2020 saw many low-pressure systems moving poleward from Eurasia and some of them entered the study area through the main entry channels in the Kara sea-Sea (Fig. 9, green thin lines). Besides, in the Eurasian shelf seas with great convergence of the total energy and water vapor transport (Fig. 3c and d), the majority of the cyclones are featured with trajectories in a zonal direction (Fig. 9, blue thin lines). Furthermore, we retrieve the typical trajectory paths of these cyclones following Gaffney (2004). The trajectory clustering was done using a polynomial regression mixture model where each cyclone trajectory is approximated as a second-order polynomial. The detected cyclones during the spring months (April–June) of 2020 are clustered in two categories, which are schematically explained in Fig. 9 with thick polylines. One track represents the cyclones that are generated in the lower latitude of Eurasia with a poleward moving tendency, while the other denotes cyclones in the marginal seas that are characterized by an eastward movement toward or through the Kara, Laptev, and East Siberian Seas (Fig. 9). In general, the trajectories of these cyclones as observed during the spring months (April–June) of 2020 coincide well with the path of total energy and water vapor transport (Fig. 3a and b). The good agreement implies that these extratropical cyclones in spring, as shown in Fig. 9, served as a vital carrier of the anomalously large amount of energy and moisture into the study area. To sum up, the synoptic cyclones act in concert with the large-scale atmospheric circulation to cause anomalous energy and moisture fluxes into the study area and to change the characteristics of the Arctic climate system in 2020.

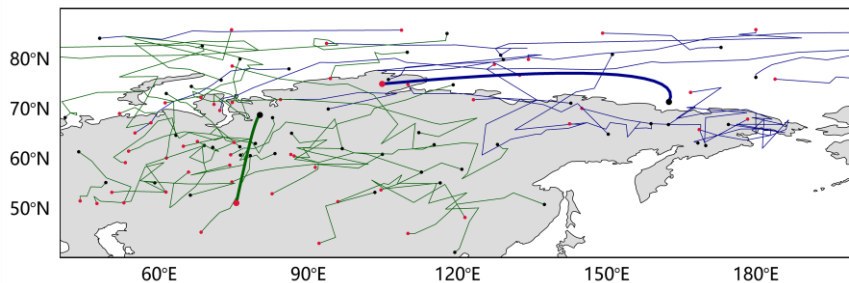


Figure 9. Poleward cyclones detected in the main entry channels (green thin line, 45°E-120°E and 40°N-90°N) and all cyclones occurred in the regions intersected with the route after the fluxes entering Arctic (blue thin line, 45°E-15°W and 65°N-90°N) during the spring months (April-June) in 2020 and their typical trajectories (thick lines). Red (black) dots represent the position of the genesis (lysis) of cyclones.

We further investigate the connection between the long-term changes in poleward cyclones and meridional transport of [total energy and moisture](#). Figures 10a illustrates the decadal relationship between the 10-year running trends that have been observed in the meridional total energy/moisture transport and the poleward cyclone activities in spring (April-June) during the period 1979-2020. Note that the northward transport is the average value of all the corresponding fluxes across 50°N-70°N, which is consistent with the definition of poleward cyclones. Indeed, a robust correlation exists between the trends of the average intensity of poleward cyclones and the vertical integral of northward energy (moisture) transport during spring with a strong correlation coefficient of +0.62 (+0.59), suggesting poleward cyclone activities play an important role in regulating the variations of the decadal trends in meridional transport of energy and moisture. Particularly, in the recent decade (2010-2020), significant upward trends are observed in the northward transport of total energy and moisture together with more intense poleward cyclones (Fig. 10a). ~~As for the spring months of 2020, stronger and more frequent cyclones are detected in the Arctic (Fig. 10b and c). The density of cyclone tracks is higher than normal in many parts of marginal seas and the central Arctic Ocean, with the largest positive values centered over the Taymir Peninsula. Most cyclones throughout the Arctic Basin have unusually high intensity than the climatology of the years 1979-2020, especially in the Barents, Kara, Laptev, and Beaufort Seas, indicating lower than normal SLP in these regions (Fig. 10c). The spatial pattern of CAI anomalies is roughly in line with those of track density and intensity (Fig. 10d). It is noteworthy that the 10-yr trends of these three parameters in spring exhibit remarkable low-frequency variation, which is presumably controlled by the large-scale circulation trends. The low-frequency oscillation of moisture transport trends is primarily linked to the trends in the northward component of surface wind as wind and water vapor gradient determined the flux. We found that when poleward cyclone intensity and meridional total energy/moisture transport exhibit decreasing trends, the large-scale atmospheric circulation shows a tendency towards a stronger anticyclonic circulation over Greenland and Eastern Siberia with a barotropic structure in the troposphere (not shown), similar with the pattern found in (Ding et al., 2017). When the~~

带格式的: 段落间距段前: 6 磅

带格式的: 字体: (默认) Times New Roman, (中文) Times New Roman

带格式的: 字体: (默认) Times New Roman, (中文) Times New Roman

带格式的: 字体: (默认) Times New Roman, (中文) Times New Roman

opposite holds, greater geopotential height extending from surface to upper-level tends to emerge in the Norwegian Sea and

Chukchi Sea (figures omitted).

带格式的: 字体: (中文) Times New Roman

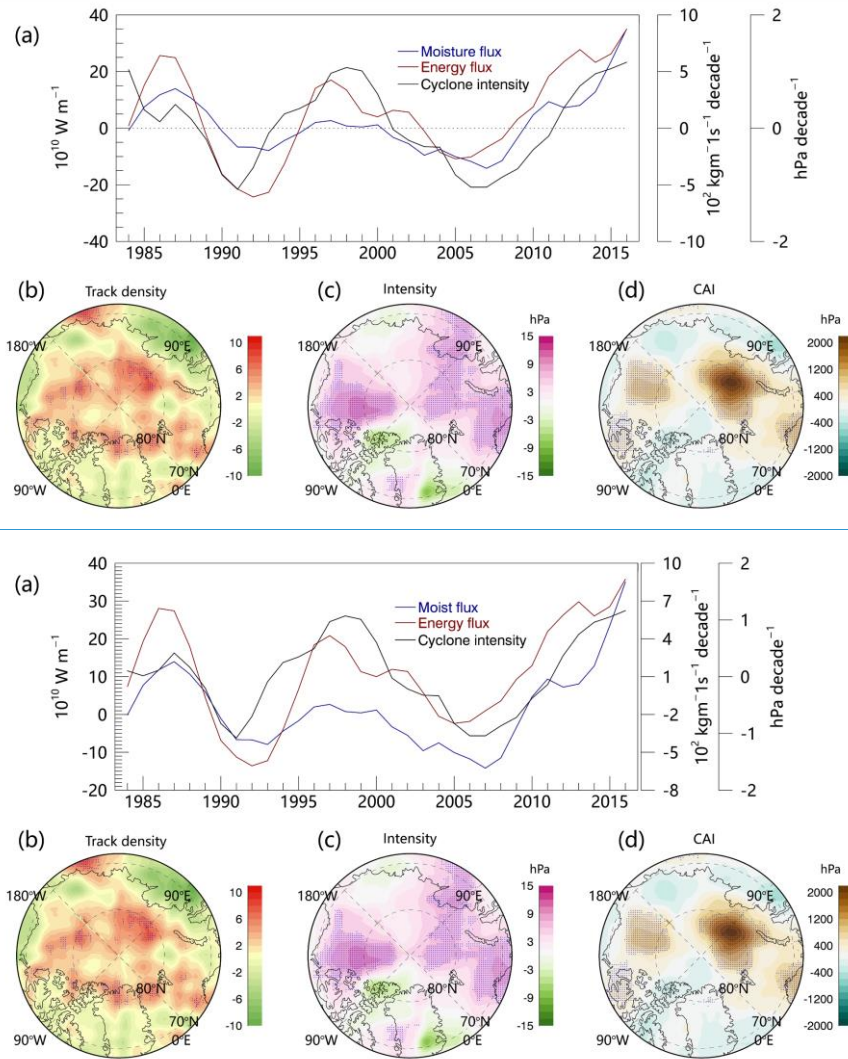


Figure 10. (a) The time series for the trends of the meridional total energy (moisture) transport and average intensity of poleward cyclone during spring months (April to June) from 1979 to 2020. The trends are calculated using a 10-year running window. Note that the northward transport is the average value of all the corresponding fluxes across 50°N - 70°N , which is consistent with the definition of poleward cyclones. Anomalies of the cyclone features in spring 2020 relative to the climatology of the years 1979-2020, including the (b) density of tracks, (c) intensity, and (d) CAI. Panels (ab) have units of counts per 10^6 km^2 while (bc) and (ed) have units of hPa per 10^6 km^2 . Blue dots represent the regions with values above the mean plus 1.5 above standard deviation.

430 As for the spring months of 2020, stronger and more frequent cyclones are detected in the Arctic (Fig. 10b and c). The
density of cyclone tracks is higher than normal in many parts of marginal seas and the central Arctic Ocean, with the largest
positive values centered over the Taymir Peninsula (Fig. 10b). Most cyclones throughout the Arctic Basin have unusually
high intensity than the climatology of the years 1979–2020, especially in the Barents, Kara, Laptev, and Beaufort Seas,
indicating lower-than-normal SLP in these regions (Fig. 10c). The spatial pattern of CAI anomalies is roughly in line with
those of track density and intensity (Fig. 10d). In general, the Eurasian shelf seas had more frequent and stronger cyclones in
435 the spring, especially in the Kara and Laptev seas (Fig. 10). The cyclone variations could alter the spatiotemporal
characteristics of the critical near-surface atmospheric parameters (wind stress, temperature, and humidity). As a result, the
atmospheric ~~conditions-anomalies~~ could ~~have-exert~~ a significant impact on sea ice in the study area through ~~the control-~~
~~regulation~~ on ice motion, deformation, and melt associated with both dynamic and thermodynamic processes of a cyclone.

From the thermodynamical view, the enhancement of the total energy and water vapor transport in the Eurasia side (Fig.
440 3a and b) is associated with the regional increases both in the number (Fig. 10b) and intensity (Fig. 10c) of synoptic cyclones
that occurred in the main entry channels and some part of the study area. ~~As analyzed above, The-the~~ warm and moist air
mass carried by cyclones in spring (Fig. 9) could alter the surface energy balance, thus initiating the earlier melt onset of sea
ice as observed in the study area. For instance, Persson (2012) found that the synoptic-scale weather systems that augmented
the atmospheric energy fluxes to the surface can trigger the melt onset at a specific site and a certain year. The cyclones and
445 the associated frontal systems can also affect the formation of low-level and midlevel clouds over the Arctic Ocean (Curry et
al., 1996), which can alter the surface radiation and energy budgets. Moreover, the cyclones traversing the Arctic can trigger
a spatially extensive sea ice melting with their associated frontal systems (Stramler et al., 2011). ~~The cyclones and the-~~
~~associated frontal systems can also affect the formation of low-level and midlevel clouds over the Arctic Ocean (Curry et al.,~~
~~1996).~~ Zhang et al. (2013a) found that an intense cyclone in August 2012 led to an accelerated ice volume decrease, owing
450 largely to a quadrupling in bottom melt caused by increased upward ocean heat transport. All these thermodynamic factors
may contribute to the significant SIT decline of spring 2020 in Eurasia shelf seas as shown in Fig. 7.

~~-Dynamically,~~ Thorndike and Colony (1982) revealed that the main driver of sea ice motion is the surface wind, which
can explain more than 70% of the variance of the ice velocity in the central Arctic Ocean (Thorndike and Colony, 1982).
~~the-~~ The extreme loss of SIE in July 2020 was accompanied by a strong pattern of anomalous cyclonic SIM in the previous
455 spring (Fig.11), with Ekman drifting out of the central Arctic toward the marginal seas and sea ice outflow through the Fram
Strait. A positive trend of $+3.70 \times 10^4 \text{ km}^2/\text{decade}$ (significant at the 99% confidence level, Student's t-test) is observed in the
spring sea ice area flux through the Fram Strait during the periods 1979–2020. In spring 2020, the sea ice areal flux is
 $2.75 \times 10^5 \text{ km}^2$ as estimated following Kwok (2007), which barely depart from the linear trend. The unexceptional ice outflow
460 through Fram Strait during spring 2020 excludes dynamical transport of sea ice to be the primary contributor to the
occurrence of July minimum SIE. On one hand, the cyclonic SIM anomaly in cold seasons serves to enhance the production

带格式的: 字体: (中文) Times New Roman

带格式的: 字体颜色: 文字 1

带格式的: 上标

带格式的: 上标

带格式的: 字体: 10 磅

of new ice within leads because of the increase in sea ice divergence. On the other hand, as the melt season commences, while ice divergence increases extent, it can also accelerate melt by exposing more dark open water areas in the cracks, leads, and polynyas. [Due to the dynamics of cyclones, strong and inhomogeneous storm-induced wind anomalies can change the sea ice drift pattern and deform the ice cover.](#) More frequent and intense cyclones in the Arctic during spring 2020 (Fig. 10) may provide additional cyclonic wind anomalies which are superimposed on that of the large-scale atmospheric circulation as depicted in Fig. 2, promoting the above processes. Based on our results, the thermodynamical other than dynamical effects of cyclones seem to play a dominant role in regulating the [SIE](#) changes in [the study area](#) [SIE](#) during spring 2020, as the expansion of sea ice cover due to divergence was offset by the significant shrinkage due to melt.

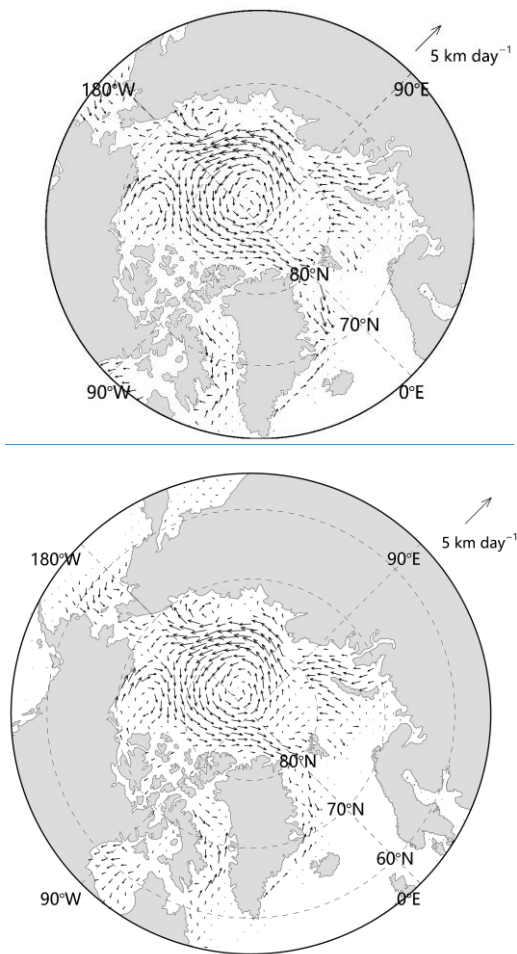


Figure 11. Anomalies of the spring (April to June) SIM [in 2020](#) relative to the climatology of the years 1979-2020.

6 Discussion and Conclusions

An unprecedented reduction in SIE was observed in July 2020 since the satellite era (1979-2020), especially in the Eurasia shelf seas covering the Kara, Laptev, and East Siberian Seas (60 °E-165 °E, 70 °N-82 °N). By utilizing global reanalysis datasets and satellite observations, we address the [underlying](#) mechanisms of the extreme event. The variations of the total energy and moisture transport toward the study area are obtained and analyzed. We investigate the associated surface energy budget during spring (April to June) of 2020 to disentangle the driving effects of different energy components on sea ice in July. Moreover, the influences of large-scale atmospheric circulation and synoptic cyclones on the poleward energy and moisture transport are outlined.

Our results reveal that anomalously high advection of energy and water vapor prevailed during spring (April-June) in 2020 over the regions where conspicuous sea ice retreat occurred in the following July. The enhanced energy and [moisture transport flux](#) converged into the study area through the main entry channels in the Laptev and Kara Seas from lower latitudes, which reached up to $1.74 \times 10^{11} \text{ Wm}^{-1}$ and $1.51 \times 10^3 \text{ kg m}^{-1}\text{s}^{-1}$, respectively, over the entire spring. As a consequence, the convergence of the transport increased the temperature and specific humidity of the local atmosphere from the surface to the middle-troposphere. This is accompanied by a strengthened downward longwave radiation plus turbulent fluxes at the surface, which initiated the earlier melt onset of sea ice in the study area (15 days in advance). After the melt commenced, the enhanced net solar radiation absorbed by dark water due to ice-albedo feedback produced an accelerated decline in SIE. Quantitative analysis shows that the amount of surface radiative fluxes surplus ($\sim 40 \text{ Wm}^{-2}$) during April-June 2020 in the ice-retreat domain can potentially melt around 1 meter of ice in addition to the climatological melt. Besides, having experienced a large reduction in thickness during recent decades ($-0.27 \text{ m per decade}$), the majority of the present sea ice in the study area is composed of thinner seasonal ice (Kwok, 2018). We conclude that the fact of younger and thinner sea ice, together with enhanced total energy and moisture transport which affect the surface radiative forcing, [having-has](#) repercussions for the occurrence of the record low [July-SIE](#) in [July](#) 2020.

A key driver of the anomalous high transport of the total energy and moisture during spring 2020 was a persistent atmospheric pattern, featuring unusually low SLP over the north pole which extended through the Barents-Kara Sea to Eurasia and unusually high-pressure centers over the Eastern Siberia and the Norwegian Sea. The SLP pattern led to southerly winds and favored the enhanced transport of warm and moist air mass from Eurasia to the adjacent Arctic shelf seas where substantial sea ice retreat was observed in July 2020. Besides, the typical trajectories of the synoptic cyclones that occurred on the Eurasian side in the spring months of 2020 agree well with the path of the intensive total energy and water vapor transport. The agreement implies that cyclones served as another important carrier of the large energy and moist fluxes into the study area since the storm is capable of holding [considerable](#) moisture and energy. Further analysis reveals that the enhanced atmospheric fluxes in spring may be partly attributed to the stronger and more frequent cyclone activities

505 near the region with severe loss of SIE. Moreover, anomalously frequent and intense cyclones in the Arctic during spring 2020 coupled with large-scale atmospheric circulation, further strengthened the cyclonic wind and ice motion. The cyclonic ice drift could lead to extensive sea ice melt [in the study area](#) as presented in July 2020 through the large formation of the cracks and leads among sea ice floes. [Here we argue that the unusual atmospheric energy and moisture transport favored by large-scale circulation coupled with cyclones in Spring 2020 effectively reduced ice extent under the circumstance of more thin ice in the study area.](#) In the present study, we explored the influence of cyclones qualitatively because of the strong coupling between the large-scale atmospheric circulation and synoptic activities (Cohen et al., 2017; Kovama et al., 2017). Besides, ~~the coupled interaction between sea ice and atmosphere involves myriad physical processes which may lead to diverse and nonlinear effects on the Arctic ice, as well as triggering multiple feedback mechanisms. Disentangling their effects thereby is challenging which requires using more sophisticated statistical techniques, combined with climate models of higher fidelity. The environment of the Arctic has transformed to a new state with younger (Rigor and Wallace, 2004; Tschudi et al., 2016) and thinner (Kwok and Rothrock, 2009; Johnson et al., 2012; Bi et al., 2018) ice floes. Under the circumstance of thinner and younger sea ice in the Arctic~~ Under such a circumstance, a comprehensive and quantitative analysis of different mechanisms associated with cyclone activity would be an appropriate avenue for follow-up research.

510 ~~Likewise, previous studies have investigated the relationship between synoptic activities and sea ice variability. For instance, Persson (2012) found that the synoptic-scale weather systems that augmented the atmospheric energy fluxes to the surface can trigger the melt onset at a specific site and a certain year. Moisture transport associated with the synoptic activity may explain part of regional differences in sea ice extent and concentration variations, such as in the Barents and Kara Seas (Kapsch et al., 2014; Woods and Caballero, 2016). Nevertheless, the impacts of cyclones on sea ice depend on the location of the cyclone tracks as the movement of cyclones determine the transport of heat and moisture as well as the direction of sea ice drift ice (Thorndike and Colony, 1982; Brümmer et al., 2001; Liang et al., 2021). In the present study, we explored the influence of cyclones qualitatively because of the strong coupling between the large-scale atmospheric circulation and synoptic activities (Cohen et al., 2017; Kovama et al., 2017). Besides, the coupled interaction between sea ice and atmosphere involves myriad physical processes which may lead to diverse and nonlinear effects on the Arctic ice, as well as triggering multiple feedback mechanisms. Disentangling their effects is challenging which requires using more sophisticated statistical techniques, combined with climate models of higher fidelity. The environment of the Arctic has transformed to a new state with younger (Rigor and Wallace, 2004; Tschudi et al., 2016) and thinner (Kwok and Rothrock, 2009; Johnson et al., 2012; Bi et al., 2018) ice floes. Under such a circumstance, a comprehensive and quantitative analysis of different mechanisms associated with cyclone activity would be an appropriate avenue for follow-up research.~~

525 It is also noteworthy that [2020 had the second-lowest September SIE since the satellite era, which is merely 12% higher than that of 2012. A prominent high-pressure anomaly dominated the Arctic in July-September 2020 \(especially in July-August, the figure omitted\), with a high-pressure center slightly shifted to the Pacific sector of the Arctic. Previous studies](#)

域代码已更改

带格式的: 缩进: 首行缩进: 0.5 厘米

域代码已更改

535 [have elaborated that the recent summertime sea ice depletion is broadly associated with the anticyclonic atmospheric](#)
[circulation pattern which can increase the downwelling longwave radiation above the ice by warming and moistening the](#)
[lower troposphere \(Ogi and Wallace, 2012; Ding et al., 2017\). Common to existing literature, the temperature and specific](#)
[humidity of the region under the control of the high-pressure system in July-September 2020 were notably great than the](#)
[corresponding climatology. That is to say, the combination of low-pressure anomaly persistent in April-June \(favoring](#)
540 [moisture and energy inflow\) and anticyclonic atmospheric circulation pattern \(leading to adiabatic warming\) might](#)
[contribute to the particularly low SIE of September 2020. Besides, positive SIC anomalies were detected in the eastern](#)
[Beaufort Sea in summer 2020. The increasing SIC herein can be attributed to the anticyclonic winds, since it could drive](#)
[older sea ice, which has more opportunity to survive through the summer melt, from the central Arctic Ocean and the](#)
[Canadian Arctic Archipelago into the Beaufort Sea. The multiyear ice transport might partially retard the rapid melt of the](#)
545 [overall sea ice in the Arctic after late July and hindered 2020 from being a new record. ~~despite the exceptionally low sea ice~~](#)
[extent in July 2020, which is the focus of the present study, the September SIE minima did not exceed that of 2012, as the](#)
[sea ice decline slowed down after late July. The mechanisms that retard the rapid sea ice melt remain unclear, other possible](#)
[processes like sea ice export variability, and multi-year ice cover should be explored in greater detail in future studies.](#)

Data availability

550 NSIDC sea ice motion is available at <https://nsidc.org/data/NSIDC-0116/versions/4>. NSIDC sea ice concentration data is
obtained from <https://nsidc.org/data/NSIDC-0079/versions/3>. Sea ice thickness from PIOMAS is downloaded from
http://psc.apl.uw.edu/research/projects/arctic-sea-ice-volume-anomaly/data/model_grid. Sea ice melt dates are available at
<https://earth.gsfc.nasa.gov/index.php/cryo/data/arctic-sea-ice-melt>. The ERA5 reanalysis datasets were obtained from the
website <https://cds.climate.copernicus.eu/cdsapp#!/search?type=dataset>.

Author contribution

555 YL carried out the analysis, processed the data, and wrote the manuscript. HB designed the method to calculate the moisture
flux and performed experiments. YW processed the sea ice datasets. HH contributed to the ERA5 data collection. All authors
contributed to the discussion and provided ideas during the concept phase and the writing process.

Competing interests

560 The authors declare that they have no conflict of interest.

Acknowledgments

This work was supported by the General Project of Natural Science Foundation of Shandong Province (ZR2020MD100), National Natural Science Foundation of China under Grant (41406215 and 42076185), Key Deployment Project of Centre for Ocean Mega-Research of Science, Chinese Academy of Sciences (COMS2020Q12), the Open Funds for the Key Laboratory of Marine Geology and Environment, Institute of Oceanology, Chinese Academy of Sciences (MGE2020KG04)

References

- Årthun, M., Eldevik, T., Smedsrud, L., Skagseth, Ø., and Ingvaldsen, R.: Quantifying the influence of Atlantic heat on Barents Sea ice variability and retreat, *Journal of Climate*, 25, 4736-4743, 2012.
- Årthun, M., and Eldevik, T.: On anomalous ocean heat transport toward the Arctic and associated climate predictability, *Journal of Climate*, 29, 689-704, 2016.
- Baxter, I., Ding, Q., Schweiger, A., L'Heureux, M., Baxter, S., Wang, T., Zhang, Q., Harnos, K., Markle, B., and Topal, D.: How tropical Pacific surface cooling contributed to accelerated sea ice melt from 2007 to 2012 as ice is thinned by anthropogenic forcing, *Journal of Climate*, 32, 8583-8602, 2019.
- Bi, H., Zhang, J., Wang, Y., Zhang, Z., Zhang, Y., Fu, M., Huang, H., and Xu, X.: Arctic Sea Ice Volume Changes in Terms of Age as Revealed From Satellite Observations, *IEEE Journal of Selected Topics in Applied Earth Observations and Remote Sensing*, 11, 2223-2237, 2018.
- Bi, H., Zhang, Z., Wang, Y., Xu, X., Liang, Y., Huang, J., Liu, Y., and Fu, M.: Baffin Bay sea ice inflow and outflow: 1978–1979 to 2016–2017, *The Cryosphere*, 13, 1025-1042, 2019.
- Bi, H., Wang, Y., Liang, Y., Sun, W., Liang, X., Yu, Q., Zhang, Z., and Xu, X.: Influences of Summertime Arctic Dipole Atmospheric Circulation on Sea Ice Concentration Variations in the Pacific Sector of the Arctic during Different Pacific Decadal Oscillation Phases *Journal of Climate*, 34, 3003-3019, 10.1175/jcli-d-19-0843.1, 2021.
- Boisvert, L. N., Petty, A. A., and Stroeve, J. C.: The Impact of the Extreme Winter 2015/16 Arctic Cyclone on the Barents–Kara Seas, *Monthly Weather Review*, 144, 4279-4287, 10.1175/mwr-d-16-0234.1, 2016.
- Brümmer, B., Müller, G., Affeld, B., Gerdes, R., Karcher, M., and Kauker, F.: Cyclones over Fram Strait: impact on sea ice and variability, *Polar Research*, 20, 147-152, 10.3402/polar.v20i2.6511, 2001.
- Cohen, L., Hudson, S. R., Walden, V. P., Graham, R. M., and Granskog, M. A.: Meteorological conditions in a thinner Arctic sea ice regime from winter through summer during the Norwegian Young Sea Ice expedition (N-ICE2015), *Journal of Geophysical Research Atmospheres*, 2017.
- Comiso, J. C., and Hall, D. K.: Climate trends in the Arctic as observed from space, *Wiley Interdiscip Rev Clim Change*, 5, 389-409, 10.1002/wcc.277, 2014.
- Comiso, J. C.: Bootstrap Sea Ice Concentrations from Nimbus-7 SMMR and DMSP SSM/I-SSMIS, Version 3, <https://doi.org/10.5067/7Q8HCCWS4I0R>, 2017.
- Crépin, A.-S., Karcher, M., and Gascard, J.-C.: Arctic climate change, economy and society (ACCESS): Integrated perspectives, *Ambio*, 46, 341-354, 2017.
- Curry, J. A., Schramm, J. L., Rossow, W. B., and Randall, D.: Overview of Arctic Cloud and Radiation Characteristics, *Journal of Climate*, 9, 1731-1764, 1996.
- Day, J. J., Holland, M. M., and Hodges, K. I.: Correction to: Seasonal differences in the response of Arctic cyclones to climate change in CESM1, *Climate Dynamics*, 50, 3905-3907, 2018.
- Deser, C., Walsh, J. E., and Timlin, M. S.: Arctic sea ice variability in the context of recent atmospheric circulation trends, *Journal of Climate*, 13, 617-633, Doi 10.1175/1520-0442(2000)013<0617:Asivit>2.0.Co;2, 2000.
- Deser, C., and Teng, H.: Evolution of Arctic sea ice concentration trends and the role of atmospheric circulation forcing, 1979-2007, *Geophysical Research Letters*, 35, Artn L02504

域代码已更改

10.1029/2007gl032023, 2008.

605 Ding, Q., Schweiger, A., L'Heureux, M., Battisti, David S., Po-Chedley, S., Johnson, Nathaniel C., Blanchard-Wrigglesworth, E., Harnos, K., Zhang, Q., Eastman, R., and Steig, Eric J.: Influence of high-latitude atmospheric circulation changes on summertime Arctic sea ice, *Nature Climate Change*, 7, 289-295, 10.1038/nclimate3241, 2017.

Doyle, J., Lesins, G., Thackray, C., Perro, C., Nott, G., Duck, T., Damoah, R., and Drummond, J.: Water vapor intrusions into the High Arctic during winter, *Geophysical research letters*, 38, 2011.

610 Dufour, A., Zolina, O., and Gulev, S. K.: Atmospheric moisture transport to the Arctic: Assessment of reanalyses and analysis of transport components, *Journal of Climate*, 29, 5061-5081, 2016.

Eisenman, I., Untersteiner, N., and Wettlaufer, J. S.: On the reliability of simulated Arctic sea ice in global climate models, *Geophysical Research Letters*, 34, 265-278, 2007.

Gaffney, S.: Probabilistic curve-aligned clustering and prediction with regression mixture models, University of California, Irvine, 2004.

615 Graversen, R. G., Mauritsen, T., Tjernström, M., K äll ä n, E., and Svensson, G.: Vertical structure of recent Arctic warming, *Nature*, 451, 53-56, 2008.

Graversen, R. G., Mauritsen, T., Drijfhout, S., Tjernström, M., and M ärtensson, S.: Warm winds from the Pacific caused extensive Arctic sea-ice melt in summer 2007, *Climate dynamics*, 36, 2103-2112, 2011.

620 Gu, S., Zhang, Y., Wu, Q., and Yang, X. Q.: The linkage between Arctic sea ice and midlatitude weather: In the perspective of energy, *Journal of Geophysical Research: Atmospheres*, 123, 11,536-511,550, 2018.

Hall, A.: The role of surface albedo feedback in climate, *Journal of Climate*, 17, 1550-1568, 2004.

Hegyi, B. M., and Taylor, P. C.: The unprecedented 2016–2017 Arctic sea ice growth season: the crucial role of atmospheric rivers and longwave fluxes, *Geophysical Research Letters*, 45, 5204-5212, 2018.

625 Hersbach, H., Bell, B., Berrisford, P., Hirahara, S., Hor017 Arctic sea ice growth season: the crucial role of atmospheric rivers and longwave fluxes, *Geophysical Research Letters*, 45, 5204-5212, 2018.

Hersbach, H., Bell, B., Berrisford, P., Hirahara, S., Hor017 Arctic sea ice growth season: the crucial role of atmospheric rivers and longwave fluxes, *Geophysical Research Letters*, 45, 5204-5212, 2018.

630 Hinzman, L. D., Bettez, N. D., Bolton, W. R., Chapin, F. S., Dyrugerov, M. B., Fastie, C. L., Griffith, B., Hollister, R. D., Hope, A., Huntington, H. P., Jensen, A. M., Jia, G. J., Jorgenson, T., Kane, D. L., Klein, D. R., Kofinas, G., Lynch, A. H., Lloyd, A. H., McGuire, A. D., Nelson, F. E., Oechel, W. C., Osterkamp, T. E., Racine, C. H., Romanovsky, V. E., Stone, R. S., Stow, D. A., Sturm, M., Tweedie, C. E., Vourlitis, G. L., Walker, M. D., Walker, D. A., Webber, P. J., Welker, J. M., Winker, K. S., and Yoshikawa, K.: Evidence and Implications of Recent Climate Change in Northern Alaska and Other Arctic Regions, *Climatic Change*, 72, 251-298, 10.1007/s10584-005-5352-2, 2005.

Horvath, S., Stroeve, J., Rajagopalan, B., and Jahn, A.: Arctic sea ice melt onset favored by an atmospheric pressure pattern reminiscent of the North American-Eurasian Arctic pattern, *Climate Dynamics*, 57, 1771-1787, 10.1007/s00382-021-05776-y, 2021.

635 Jakobson, E., and Vihma, T.: Atmospheric moisture budget in the Arctic based on the ERA-40 reanalysis, *International Journal of Climatology*, 30, 2175-2194, 2010.

Johannessen, O. M., Bengtsson, L., Miles, M. W., Kuzmina, S. I., Semenov, V. A., Alekseev, G. V., Nagurnyi, A. P., Zakharov, V. F., Bobylev, L. P., Pettersson, L. H., Hasselmann, K., and Cattle, H. P.: Arctic climate change: observed and modelled temperature and sea-ice variability, *Tellus A: Dynamic Meteorology and Oceanography*, 56, 328-341, 10.3402/tellusa.v56i4.14418, 2016.

640 Johansson, E., Devasthale, A., Tjernström, M., Ekman, A. M., and L'Ecuyer, T.: Response of the lower troposphere to moisture intrusions into the Arctic, *Geophysical Research Letters*, 44, 2527-2536, 2017.

Johnson, M., Proshutinsky, A., Aksenov, Y., Nguyen, A. T., Lindsay, R., Haas, C., Zhang, J., Diansky, N., Kwok, R., and Maslowski, W.: Evaluation of Arctic sea ice thickness simulated by Arctic Ocean Model Intercomparison Project models, *Journal of Geophysical Research Oceans*, 117, doi:10.1029/2011JC007257, 2012.

645 Kapsch, M.-L., Graversen, R. G., and Tjernström, M.: Springtime atmospheric energy transport and the control of Arctic summer sea-ice extent, *Nature Climate Change*, 3, 744-748, 2013.

Kapsch, M.-L., Skific, N., Graversen, R. G., Tjernström, M., and Francis, J. A.: Summers with low Arctic sea ice linked to

- 650 persistence of spring atmospheric circulation patterns, *Climate Dynamics*, 52, 2497-2512, 10.1007/s00382-018-4279-z, 2019.
- Kim, K.-Y., Hamlington, B. D., Na, H., and Kim, J.: Mechanism of seasonal Arctic sea ice evolution and Arctic amplification, *The Cryosphere*, 10, 2191-2202, 2016.
- Koyama, T., Stroeve, J., Cassano, J., and Crawford, A.: Sea Ice Loss and Arctic Cyclone Activity from 1979 to 2014, *Journal of Climate*, 30, 4735-4754, 10.1175/jcli-d-16-0542.1, 2017.
- 655 Krumpfen, T., Gerdes, R., Haas, C., Hendricks, S., Herber, A., Selyuzhenok, L., Smedsrud, L., and Spreen, G.: Recent summer sea ice thickness surveys in Fram Strait and associated ice volume fluxes, *The Cryosphere*, 10, 523-534, 2016.
- Kwok, R.: Exchange of sea ice between the Arctic Ocean and the Canadian Arctic Archipelago, *Geophysical Research Letters*, 33, 627-642, 2006.
- 660 Kwok, R.: Baffin Bay ice drift and export: 2002–2007, *Geophysical Research Letters*, 34, 2007.
- Kwok, R., and Rothrock, D. A.: Decline in Arctic sea ice thickness from submarine and ICESat records: 1958–2008, *Geophysical Research Letters*, 36, 2009.
- Kwok, R.: Arctic sea ice thickness, volume, and multiyear ice coverage: losses and coupled variability (1958–2018), *Environ Res Lett*, 13, 105005, 2018.
- 665 Lei, R., Heil, P., Wang, J., Zhang, Z., Li, Q., and Li, N.: Characterization of sea-ice kinematic in the Arctic outflow region using buoy data, *Polar Research*, 35, doi: 10.3402/polar.v35.22658, 2016.
- Lei, R., Gui, D., Hutchings, J. K., Wang, J., and Pang, X.: Backward and forward drift trajectories of sea ice in the northwestern Arctic Ocean in response to changing atmospheric circulation, *International Journal of Climatology*, 2019.
- Lei, R., Gui, D., Heil, P., Hutchings, J. K., and Ding, M.: Comparisons of sea ice motion and deformation, and their responses to ice conditions and cyclonic activity in the western Arctic Ocean between two summers, *Cold Regions Science and Technology*, 170, 102925, 2020.
- 670 Liang, Y., Bi, H., Wang, Y., Huang, H., Zhang, Z., Huang, J., and Liu, Y.: Role of Extratropical Wintertime Cyclones in Regulating the Variations of Baffin Bay Sea Ice Export, *Journal of Geophysical Research: Atmospheres*, 126, e2020JD033616, 2021.
- 675 Markus, T., Stroeve, J. C., and Miller, J.: Recent changes in Arctic sea ice melt onset, freezeup, and melt season length, *Journal of Geophysical Research: Oceans*, 114, 2009.
- Maykut, G. A., Grenfell, T. C., and Weeks, W. F.: On estimating spatial and temporal variations in the properties of ice in the polar oceans, *Journal of Marine Systems*, 3, 41-72, 1992.
- Miles, M. W., Divine, D. V., Furevik, T., Jansen, E., Moros, M., and Ogilvie, A. E.: A signal of persistent Atlantic multidecadal variability in Arctic sea ice, *Geophysical Research Letters*, 41, 463-469, 2014.
- 680 Mortin, J., Svensson, G., Graverson, R. G., Kapsch, M. L., Stroeve, J. C., and Boisvert, L. N.: Melt onset over Arctic sea ice controlled by atmospheric moisture transport, *Geophysical Research Letters*, 43, 2016.
- Neu, U., Akperov, M. G., Bellenbaum, N., Benestad, R., Blender, R., Caballero, R., Coccozza, A., Dacre, H. F., Feng, Y., and Fraedrich, K.: IMILAST: A community effort to intercompare extratropical cyclone detection and tracking algorithms, *Bulletin of the American Meteorological Society*, 94, 529-547, 2013.
- 685 Ogi, M., Rysgaard, S., and Barber, D. G.: Importance of combined winter and summer Arctic Oscillation (AO) on September sea ice extent, *Environ Res Lett*, 11, Artn 034019 10.1088/1748-9326/11/3/034019, 2016.
- Olason, E., and Notz, D.: Drivers of variability in Arctic sea-ice drift speed, *Journal of Geophysical Research Oceans*, 119, 5755-5775, 2015.
- 690 Overland, J., Francis, J. A., Hall, R., Hanna, E., Kim, S.-J., and Vihma, T.: The melting Arctic and midlatitude weather patterns: Are they connected?, *Journal of Climate*, 28, 7917-7932, 2015.
- Persson, P. O. G.: Onset and end of the summer melt season over sea ice: Thermal structure and surface energy perspective from SHEBA, *Climate dynamics*, 39, 1349-1371, 2012.
- 695 Post, E., Bhatt, U. S., Bitz, C. M., Brodie, J. F., Fulton, T. L., Hebblewhite, M., Kerby, J., Kutz, S. J., Stirling, I., and Walker, D. A.: Ecological consequences of sea-ice decline, *Science*, 341, 519-524, 2013.

- Previdi, M., Janoski, T. P., Chiodo, G., Smith, K. L., and Polvani, L. M.: Arctic amplification: A rapid response to radiative forcing, *Geophysical Research Letters*, 47, e2020GL089933, 2020.
- 700 Rigor, I. G., and Wallace, J. M.: Variations in the age of Arctic sea ice, *Journal of Geophysical Research*, 109, C07002, 2004.
- Schweiger, A., Lindsay, R., Zhang, J., Steele, M., Stern, H., and Kwok, R.: Uncertainty in modeled Arctic sea ice volume, *Journal of Geophysical Research*, 116, <https://doi.org/10.1029/2011JC007084>, 2011.
- Screen, J. A., and Simmonds, I.: The central role of diminishing sea ice in recent Arctic temperature amplification, *Nature*, 464, 1334-1337, 2010.
- 705 Screen, J. A., and Deser, C.: Pacific Ocean Variability Influences the Time of Emergence of a Seasonally Ice-Free Arctic Ocean, *Geophysical Research Letters*, 46, 2222-2231, <https://doi.org/10.1029/2018GL081393>, 2019.
- Sepp, M., and Jaagus, J.: Changes in the activity and tracks of Arctic cyclones, *Climatic Change*, 105, 577-595, [10.1007/s10584-010-9893-7](https://doi.org/10.1007/s10584-010-9893-7), 2011.
- Serreze, M. C., Box, J. E., Barry, R. G., and Walsh, J. E.: Characteristics of Arctic synoptic activity, 1952-1989, *Meteorology and Atmospheric Physics*, 51, 147-164, 1993.
- 710 Serreze, M. C.: Climatological aspects of cyclone development and decay in the Arctic, *Journal of Atmosphere*, 33, 1-23, 1995.
- Serreze, M. C., Carse, F., Barry, R. G., and Rogers, J. C.: Icelandic low cyclone activity: Climatological features, linkages with the NAG, and relationships with recent changes in the Northern Hemisphere circulation, *Journal of Climate*, 10, 453-464, [Doi 10.1175/1520-0442\(1997\)010<0453:Ilcacf>2.0.Co;2](https://doi.org/10.1175/1520-0442(1997)010<0453:Ilcacf>2.0.Co;2), 1997.
- 715 Serreze, M. C., and Barry, R. G.: Processes and impacts of Arctic amplification: A research synthesis, *Global planetary change*, 77, 85-96, 2011.
- Singh, H. K., Bitz, C. M., Donohoe, A., and Rasch, P.: A source-receptor perspective on the polar hydrologic cycle: Sources, seasonality, and Arctic-Antarctic parity in the hydrologic cycle response to CO₂ doubling, *Journal of Climate*, 30, 9999-10017, 2017.
- 720 Smedsrud, L. H., Halvorsen, M. H., Stroeve, J. C., Zhang, R., and Kloster, K.: Fram Strait sea ice export variability and September Arctic sea ice extent over the last 80 years, *The Cryosphere*, 11, 65-79, 2017.
- Stramler, K., Genio, A., and Rossow, W. B.: Synoptically Driven Arctic Winter States, *Journal of Climate*, 24, 1747-1762, 2011.
- Stroeve, J., Barrett, A., Serreze, M., and Schweiger, A.: Using records from submarine, aircraft and satellites to evaluate climate model simulations of Arctic sea ice thickness, *The Cryosphere*, 8, 1839-1854, 2014.
- 725 Thorndike, A., and Colony, R.: Sea ice motion in response to geostrophic winds, *Journal of Geophysical Research: Oceans*, 87, 5845-5852, 1982.
- Tschudi, M., Stroeve, J., and Stewart, J.: Relating the age of Arctic sea ice to its thickness, as measured during NASA's ICESat and IceBridge campaigns, *Remote Sensing*, 8, 457, 2016.
- 730 Tschudi, M., Meier, W. N., Stewart, J. S., Fowler, C., and Maslanik, J.: Polar Pathfinder Daily 25 km EASE-Grid Sea Ice Motion Vectors, Version 4. Boulder, Colorado USA. NASA National Snow and Ice Data Center Distributed Active Archive Center. doi: <https://doi.org/10.5067/INAWUWO7QH7B>, 2019.
- Vázquez, M., Nieto, R., Drumond, A., and Gimeno, L.: Moisture transport into the Arctic: Source to, R., Drumond, A., and Gimeno, L.: Moisture transport into the Pathfinder Daily 25 km EASE-Grid Sea Ice Motion Vectors, Version 4. Boulder, Colorado USA
- 735 Vázquez, M., Nieto, R., Drumond, A., and Gimeno, L.: Extreme Sea Ice Loss over the Arctic: An Analysis Based on Anomalous Moisture Transport, *Atmosphere*, 8, 10.3390/atmos8020032, 2017.
- Vihma, T., Screen, J., Tjernström, M., Newton, B., Zhang, X., Popova, V., Deser, C., Holland, M., and Prowse, T.: The atmospheric role in the Arctic water cycle: A review on processes, past and future changes, and their impacts, *Journal of Geophysical Research: Biogeosciences*
- 740 121, 586-620, 2016.
- Villamil-Otero, G. A., Zhang, J., He, J., and Zhang, X.: Role of extratropical cyclones in the recently observed increase in poleward moisture transport into the Arctic Ocean, *Advances in Atmospheric Sciences*, 35, 85-94, 2018.

带格式的: 字体: Times New Roman

域代码已更改

带格式的: 字体: Times New Roman

- 745 Wang, J., Zhang, J., Watanabe, E., Ikeda, M., Mizobata, K., Walsh, J. E., Bai, X., and Wu, B.: Is the Dipole Anomaly a major driver to record lows in Arctic summer sea ice extent?, *Geophysical Research Letters*, 36, 10.1029/2008gl036706, 2009.
- Wang, X., Key, J., Kwok, R., and Zhang, J.: Comparison of Arctic sea ice thickness from satellites, aircraft, and PIOMAS data, *Remote Sensing*, 8, 713, 2016.
- 750 Wang, X. L., Swail, V. R., and Zwiers, F. W.: Climatology and changes of extratropical cyclone activity: Comparison of ERA-40 with NCEP–NCAR reanalysis for 1958–2001, *Journal of Climate*, 19, 3145-3166, 2006.
- Wang, X. L., Feng, Y., Compo, G., Swail, V., Zwiers, F., Allan, R., and Sardeshmukh, P.: Trends and low frequency variability of extra-tropical cyclone activity in the ensemble of twentieth century reanalysis, *Climate Dynamics*, 40, 2775-2800, 2013.
- 755 Wang, Y., Bi, H., Huang, H., Liu, Y., Liu, Y., Liang, X., Fu, M., and Zhang, Z.: Satellite-observed trends in the Arctic sea ice concentration for the period 1979–2016, *Journal of Oceanology & Limnology*, 037, P.18-37, 2019.
- Warner, J., Screen, J., and Scaife, A.: Links between Barents-Kara sea ice and the extratropical atmospheric circulation explained by internal variability and tropical forcing, *Geophysical Research Letters*, 47, e2019GL085679, 2020.
- Wernli, H., and Papritz, L.: Role of polar anticyclones and mid-latitude cyclones for Arctic summertime sea-ice melting, *Nature Geoscience*, 11, 108-113, 2018.
- 760 Wu, B. Y., Wang, J., and Walsh, J. E.: Dipole anomaly in the winter Arctic atmosphere and its association with sea ice motion, *Journal of Climate*, 19, 210-225, Doi 10.1175/Jcli3619.1, 2006.
- Yin, J. H.: A consistent poleward shift of the storm tracks in simulations of 21st century climate, *Geophysical Research Letters*, 32, n/a-n/a, Artn L18701 10.1029/2005gl023684, 2005.
- 765 Zhang, J., and Rothrock, D.: Modeling global sea ice with a thickness and enthalpy distribution model in generalized curvilinear coordinates, *Monthly Weather Review*, 131, 845-861, 2003.
- Zhang, J., Lindsay, R., Schweiger, A., and Steele, M.: The impact of an intense summer cyclone on 2012 Arctic sea ice retreat, *Geophysical Research Letters*, 40, 720-726, 10.1002/grl.50190, 2013a.
- 770 Zhang, R.: Mechanisms for low-frequency variability of summer Arctic sea ice extent, *Proceedings of the National Academy of Sciences*, 112, 4570-4575, 2015.
- Zhang, X., Walsh, J. E., Zhang, J., Bhatt, U. S., and Ikeda, M.: Climatology and interannual variability of arctic cyclone activity: 1948-2002, *Journal of Climate*, 17, 2300-2317, Doi 10.1175/1520-0442(2004)017<2300:Caivoa>2.0.Co;2, 2004.
- Zhang, X., He, J., Zhang, J., Polyakov, I., Gerdes, R., Inoue, J., and Wu, P.: Enhanced poleward moisture transport and amplified northern high-latitude wetting trend, *Nature Climate Change*, 3, 47-51, 2013b.

775