

Snowfall and snow accumulation ~~processes~~ during the MOSAiC winter and spring season

David N. Wagner^{1,2}, Matthew D. Shupe^{3,4}, Christopher Cox^{3,4}, Ola G. Persson^{3,4}, Taneil Uttal³, Markus M. Frey⁵, Amélie Kirchgaessner⁵, Martin Schneebeli¹, Matthias Jaggi¹, Amy R. Macfarlane¹, Polona Itkin^{6,7}, Stefanie Arndt⁸, Stefan Hendricks⁸, Daniela Krampe⁸, Marcel Nicolaus⁸, Robert Ricker⁸, Julia Regnery⁸, Nikolai Kolabutin⁹, Egor Shimanshuk⁹, Marc Oggier¹⁰, Ian Raphael¹¹, Julianne Stroeve^{12,13,14}, and Michael Lehning^{1,2}

¹WSL Institute for Snow and Avalanche Research SLF, Davos, Switzerland

²CRYOS, School of Architecture, Civil and Environmental Engineering, EPFL, Lausanne, Switzerland

³NOAA Physical Science Laboratory, Boulder, CO, USA

⁴Cooperative Institute for the Research in Environmental Sciences, University of Colorado Boulder, Boulder, CO, USA

⁵British Antarctic Survey - Natural Environment Research Council, Cambridge, UK

⁶UiT - The Arctic University of Norway, Tromsø, Norway

⁷Cooperative Institute for Research in the Atmosphere, Colorado State University, Fort Collins, CO, USA

⁸Alfred-Wegener-Institut, Helmholtz-Zentrum für Polar- und Meeresforschung, Bremerhaven, Germany

⁹Arctic and Antarctic Research Institute, St. Petersburg, Russia

¹⁰University of Alaska Fairbanks, Fairbanks, AK, USA

¹¹Thayer School of Engineering, Dartmouth College, Hanover, NH, USA

¹²Centre for Earth Observation Science, University of Manitoba, Winnipeg, Canada

¹³Earth Sciences Department, University College London, London, UK

¹⁴National Snow and Ice Data Center, University of Colorado, Boulder, CO, USA

Correspondence: David N. Wagner (david.wagner@slf.ch)

Abstract. Data from the Multidisciplinary drifting Observatory for the Study of Arctic Climate (MOSAiC) expedition allowed us to investigate the temporal dynamics of snowfall, snow accumulation and erosion in great detail for almost the whole accumulation season (November 2019 to May 2020). We computed cumulative snow water equivalent (SWE) over the sea ice based on snow depth (~~HS~~) and density retrievals from a SnowMicroPen (~~SMP~~) and approximately weekly-measured snow depths along fixed transect paths. ~~Hence, the computed SWE considers surface heterogeneities over an average path length of 1469 m.~~ We used the derived SWE from the snow cover to compare with precipitation sensors installed during MOSAiC. The data was also compared with ERA5 reanalysis snowfall rates for the drift track. ~~Our study shows that the simple fitted HS-SWE function can well be used to compute SWE along a transect path based on SMP SWE retrievals and snow depth measurements.~~ We found an accumulated snow mass of 3438 mm SWE until 26 between end of October 2019 and end of April 2020. The initial SWE over first-year ice relative to second-year ice increased from 50 % to 90 % by end of the investigation period. Further, we found that the Vaisala Present Weather Detector 22(~~PWD22~~), an optical precipitation sensor, and installed on a railing on the top deck of research vessel Polarstern, was least affected by blowing snow and showed good agreements with SWE retrievals along the transect, ~~however it also systematically underestimated snowfall. The.~~ On the contrary, the OTT Pluvio² pluviometer and the OTT Parsivel² laser disdrometer were largely affected by wind and blowing snow, leading to

15 ~~higher~~ too high measured precipitation rates, ~~but~~. These are largely reduced when eliminating drifting snow periods, ~~especially~~
~~the OTT Pluvio² shows good agreements with ground measurements. A comparison with~~ in the comparison. ERA5 snowfall
~~data reveals a good timing of the snowfall events and good agreement with ground measurements but also a tendency towards~~
~~overestimation with an overestimation tendency~~. Retrieved snowfall from the ship-based K_a-band ARM Zenith Radar (~~KAZR~~)
shows good agreements with SWE of the snow cover and comparable differences as ERA5. ~~Assuming the KAZR-derived~~
20 Based on the results, we suggest the K_a-band radar-derived snowfall as an upper limit and ~~PWD22 as a the Present Weather~~
Detector on RV Polarstern as lower limit of a cumulative snowfall range, ~~we estimate~~. Based on these findings, we suggest
a cumulative snowfall of 72 to 107 mm ~~measured between 31 October 2019 and 26 April 2020. For the same period, we~~
~~estimate the~~, and a precipitation mass loss along the transect of the snow cover due to erosion and sublimation as between ~~53~~
~~47~~ and 68 %. ~~Until 7 May 2020, for the time period between 31 October 2019 and 26 April 2020. Extending this period beyond~~
25 available snow cover measurements, we suggest a cumulative snowfall of 98 - 114 mm.

1 Introduction

Snow cover on sea ice has many significant effects on the ice mass balance and general heat exchange processes between
the ocean and the atmosphere (Wever et al., 2020). As snow will cover almost all Arctic sea ice by the beginning of the melt
season and with albedo values close to 0.9, a large amount of the incoming solar radiation is reflected rather than absorbed
30 into the ~~snow pack~~ snowpack. Due to its potentially very high insulating capacity, snow acts as an inhibitor for heat transfer
between ocean, sea ice, and atmosphere (Holtmark, 1955; Maykut and Untersteiner, 1971; Sturm et al., 2002b). Depending
on the season, accumulation, density, and thermal conductivity of the snow, the sea ice growth and melt varies temporally
and spatially. For instance, the underlying sea ice might undergo faster (slower) growth in autumn when the snow on top
is relatively thin (relatively thick). On the other hand, a thicker (thinner) snow cover might lead to delayed (earlier) sea-ice
35 melt in the melt season. Consequently, the small-scale snow distribution ~~might have a large effect on~~ which we define in
the following as decimeter to hectometer-scale snow cover area - affects the ice mass balance on the same scales, as large
amounts of snow are accumulated along ridges or dunes, while large areas of level ice experience little snow accumulation
(Lange and Eicken, 1991; Sturm et al., 1998b; Iacozza and Barber, 1999; Leonard and Maksym, 2011; Trujillo et al., 2016).
The snow that has fallen to the ground as fresh precipitation often gets re-distributed as blowing or drifting snow due to
40 the relatively high average horizontal wind velocities during the Arctic winter. The high snow transport rates are also a re-
sult of the relatively low aerodynamic roughness length of sea ice, where z_0 is typically lower for first-year ice (FYI) than
for second- or multi-year ice (SYI/MYI) (Weiss et al., 2011). In addition, large parts of the snow mass can be expected to
get blown into leads ~~and undergo sublimation (Déry and Yau, 2002; Déry and Tremblay, 2004; Leonard and Maksym, 2011)~~ or
undergo sublimation (Déry and Yau, 2002; Déry and Tremblay, 2004; Leonard and Maksym, 2011; Liston et al., 2020), which
45 has recently been shown to be underestimated by current models (Sigmund et al., 2022). Besides thermodynamic ice growth
at its bottom, snow can directly contribute to ice formation on top of the sea ice as snow-ice. Snow-ice formation occurs when
snow first transforms into slush due to surface flooding of saltwater or direct brine expulsion through thin ice followed by sub-

sequent refreezing (Ackley et al., 1990; Sturm et al., 1998a; Toyota et al., 2011; Jutras et al., 2016; Sturm and Massom, 2016). The relative mass contribution of snow-ice towards sea ice by the end of the accumulation season depends strongly on location, with an approximated average of 6 - 10 % for Arctic sea ice, and with estimated local peaks of up to 80 % (Merkouriadi et al., 2020). As a further term in the snow mass balance, Webster et al. (2021) mentions sea ice dynamics. However, we can only imagine that the dynamics, such as ridge formation, can lead to a snow mass decrease when the snow is pushed below the ice or into the water.

Considering all effects as snow mass source and mass sink, we can write the mass balance equation of snow over sea ice, modified from the general mass balance description of snow (e.g. King et al. (2008)) as

$$\frac{dM}{dt} = P \pm E_s \pm E_e - E_D - R + B - I - \nabla \cdot D - L - S, \quad (1)$$

where $\frac{dM}{dt}$ is the rate of change of the mass of the snow cover over the sea ice at one point in kg m^{-2} , which is equivalent to SWE-per-time Snow Water Equivalent (SWE) per time unit, P is the snowfall rate, E_s is the sublimation rate and E_e is the evaporation rate of the snow cover, E_D is the drifting and blowing snow particle sublimation rate, R is runoff, B is brine mass infiltration rate into the snow cover from below, I is the snow-ice formation rate, D is the horizontal snow transport rate of blowing and drifting snow, L is the rate of the snow mass blown into leads and S is the mass of snow pushed or dug under the ice due to sea ice dynamics. Considering a larger area (i.e. above hectometer scale up to a scale of the whole Arctic ice pack), all terms must be considered, while some terms may become zero when considering the equation at one point, e.g. where no open lead is existent at a point, L becomes zero.

65

The first and largest source term in Eq. 1 is, depending on the considered area, P . ~~Quantitative comparisons between datasets are only possible for same compared point locations or same areas and therefore literature values are often not comparable. However, the~~ The Central Arctic has a dry climate and depending on location, a yearly average snowfall of approximately 100 to 350 mm can be expected in this area (Serreze and Hurst, 2000; Chung et al., 2011; McIlhattan et al., 2020; Webster et al., 2021). During polar night ~~and its adjacent cold months~~, the mass decrease of the snow cover by sublimation (E_s) and evaporation (E_e) can probably be assumed as negligible as well as the mass increase due to deposition (re-sublimation) and condensation (~~Webster et al., 2021~~) (Liston et al., 2020; Webster et al., 2021). However, sublimation and evaporation terms become larger by beginning of summer in May and stay relatively large until September. Reliable values from literature are hard to determine, but the snow cover decrease as combination of E_s and D (as snow particles that get lifted into suspension) may be up to 50 % (Essery et al., 1999). To estimate the blowing snow sublimation E_D , Chung et al. (2011) applied the often and in various forms used sophisticated PIEKTUK blowing snow model (e.g. Déry et al. (1998); Déry and Yau (1999, 2002); Déry and Tremblay (2004); Leonard et al. (2008); Leonard and Maksym (2011)) for a SHEBA (Surface Heat Budget of the Arctic Ocean) field experiment (Uttal et al., 2002) site, drifting between 74° and 81° N. They computed 12 mm of SWE blowing snow sublimation over a time period of 324 days between November 1997 to September 1998. As 179 mm of precipitation was found for the same time period, the blowing snow sublimation mass sink was 6 % of the total cumulative snowfall. During the Canadian Arctic Shelf Exchange Study (CASES) overwintering campaign, Savelyev et al. (2006) found most of the time

80

a relative humidity of over 95 % and concluded on very low blowing snow sublimation rates. Liston et al. (2020) however, suggested based on modelling results a significant mass reduction of the snow cover by 20 % due to blowing snow sublimation. Within the melt season in summer, R can be expected to be the largest mass sink (Webster et al., 2021). Considering brine infiltration, B , which is often accompanied by the expression of frost flowers, Nghiem et al. (1997) found in indoor experiments a 4 mm slush layer forming beneath frost flowers. However, when snow falls onto frost flowers or a layer of brine, it gets soaked by brine, transformed into slush and, when cold enough, it is often transformed quickly into snow-ice. Hence, we assume that brine only can be a positive mass term as long as a certain ambient temperature is not undercut, where the snow begins to transform into snow-ice. Regarding mass decrease due to snow-ice formation I , Merkouriadi et al. (2020) gives an average value of less than 0.05 m snow-ice thickness for the Central Arctic. It is hard to estimate from the 0.05 m a precipitated amount of SWE from recalculation, as the process of snow-ice formation is complex (Jutras et al., 2016). However, when we assume 0.05 m as snow height with an average fresh snow density of 100 kg m^{-3} , we expect around 5 mm of SWE decrease, which would mean only about 3 %, relative to the measured 179 mm during SHEBA. The snow-ice formation rate is expected to be highest in the months of September, October and November (Webster et al., 2021). On one hand, the largest sink term in Eq.1 is the erosion outside the melting season, represented as D in the mass balance equation, which may make up to 50 % SWE decrease over sea ice of the total precipitated snow mass (Leonard and Maksym, 2011). On the other hand, locally, the eroded mass may deposit at the windward and leeward side of ridges, on level areas as dunes and fills frozen leads ~~which can locally exceed~~ hence locally very often exceeds the precipitated mass. The amount of drifting and blowing snow that is lost and gets melted in open leads L varies strongly depending on location, considered area, ice dynamics and lead properties such as width and orientation relative to the wind. However, the total vanished mass flux from the column of blowing and drifting snow can make locally up to 100 % (Déry and Tremblay, 2004; Leonard and Maksym, 2011). Déry and Tremblay (2004) computed for a 10 km fetch, using the blowing snow model PIEKTUK with a mean lead width of 100 m, an open water fraction of 1 % and a typical lead trap efficiency of 80 %, an annual blowing snow loss of 20 mm SWE. However, in this model setup, saltation mass flux is not considered. Leonard et al. (2008); Leonard and Maksym (2011) were doing computations with the same model-base for Antarctic sea ice, but considering saltation mass flux in addition. They emphasize the relative importance of saltation mass flux in the computation, as they find that all saltated mass flux blown towards an open lead vanishes there, and that although the mass flux within the saltation layer in their model is lower than in the blowing snow column above, the higher frequency of saltation (about 50 % on 23 days in October 2007) compared against blowing snow frequency makes the mass loss due to saltation an important term. However, only a very limited number of studies was carried out that investigate this specific problem and the saltation layer with relative large snow mass flux was not considered in great detail so far. Hence, the existing estimates go along with large uncertainties.

As we will only consider the accumulation time period, we can omit runoff R from Eq.1. Further, snow cover evaporation and sublimation terms are negligible during this time, hence we can neglect the terms E_s and E_e . Then we write the simplified

115 mass balance equation for winter and early spring as:

$$\frac{dM}{dt} = P \pm D - L - E_D - I - S. \quad (2)$$

To investigate all effects of the snow cover over the ice - the insulating effect, the sea ice mass-contribution effect, and the albedo effect - light must be shed into the snow processes that are represented and detailed knowledge of the evolution of total snow mass $\frac{dM}{dt}$, or SWE over time on top of the ice, is required. However, due to logistical challenges, especially for the
120 winter and spring months, snowfall rate and snow accumulation estimates could only be roughly approximated so far. The past estimates mostly made use of rare point measurements, or rather old time series (Petty et al., 2018) and satellite remote sensing (Petty et al., 2018; Cabaj et al., 2020), leading to high uncertainties in weather-, climate and snow cover models as well as in reanalyses. Batrak and Müller (2019), for instance, could show that a 5 to 10 °C warm bias of the sea ice surface temperature in weather forecasts and reanalyses is due to a missing snow layer modeled on top of the sea ice. For snowfall rates and mass
125 balance estimations, some general problems occur: Limited data about snowfall rates from precipitation gauges currently exist for this region. ~~Snow-buoys~~ Buoys that measure snow height with acoustic sensors which record long continuous time series along its drift tracks throughout the Central Arctic do exist (Nicolaus et al., 2021). However, uncertainties with point snow measurements arise in those windy regions due to the snow transport processes described above. If using precipitation sensors, the high average horizontal wind velocities make snowfall rate estimates difficult for both weighing gauges (Goodison et al.,
130 1998) and optical sensors (Wong, 2012a). The wind itself may lead to an undercatch for weighing bucket gauges (Goodison et al., 1998), while blowing snow may lead to overestimation for both, weighing principle-gauges and optical sensors (Sugiura et al., 2003). Blowing snow typically occurs at heights up to ten meters, while it ~~even-can-can even~~ reach several hundreds of meters in altitude (Budd et al., 1966; Scarchilli et al., 2009). Hence, we expect that blowing snow can often falsely be detected as precipitation by snowfall sensors (Sugiura et al., 2003). Some issues caused by the wind can be corrected with scaling factors
135 or transfer functions, but these need to be identified for these specific conditions (Goodison et al., 1998). Another approach is to measure the snow water equivalent (SWE) of the snow cover. From this, one can derive snowfall rates. However, especially during the polar night, the precipitated snow is dry, and as already indicated above ~~is-~~, the wind speed is often sufficiently high to drift the freshly fallen snow particles away immediately. Hence, single point measurements are not appropriate to estimate snowfall and horizontal sampling ~~intervals~~ distance and temporal distance between sampling days should be kept as short as
140 possible (~~Trujillo and Lehning, 2015~~). This becomes more crucial the more windy the location is.

During the year-long Multidisciplinary drifting Observatory for the Study of Arctic Climate (MOSAiC) expedition, during which the research vessel (RV) Polarstern (Alfred-Wegener-Institut Helmholtz-Zentrum für Polar- und Meeresforschung, 2017) served as a base moored on two different ice floes, data of snow on the ice as well as of in-situ snowfall was collected
145 in great detail for almost the whole MOSAiC period (October 2019 - October 2020) (??). The dataset includes measurements of the penetration force into the snowpack with a SnowMicroPen (SMP) (Schneebeli and Johnson, 1998; Schneebeli et al., 1999) from which snowpack densities can be estimated (Proksch et al., 2015), bulk SWE measurements, weekly repeated transects of snow depth measurements, and a set of precipitation sensors installed on the ice (Vaisala Present Weather Detector

22 (PWD22) (Vaisala, 2004; Kyrouac and Holdridge, 2019), OTT Pluvio² pluviometer (Bartholomew, 2020a; Wang et al.,
150 2019b), OTT Parsivel² (Bartholomew, 2020b; Shi, 2019), and on board RV Polarstern (Vaisala PWD22, OTT Parsivel²).

This paper investigates the snow accumulation period from October 2019 to May 2020, where precipitation is solid, and no significant snowmelt was observed. For this period, the intentions in this paper are as follows:

- Compute reliable values for SWE evolution along the fixed transect paths that include surface heterogeneities
- 155 – Use the computed SWE for periods where no drifting snow occurred to compare with snowfall rates from precipitation gauges installed during the MOSAiC expedition [and make a best-estimate of total precipitation during the investigation period](#)
- Evaluate an existing radar reflectivity - snowfall (Z_e -S) relationship (Matrosov, 2007; Matrosov et al., 2008) for the ship-based K_a -Band ARM Zenith Radar (KAZR)
- 160 – Evaluate the ERA5 (Hersbach et al., 2020) mean snowfall rates for the MOSAiC drift track
- Investigate ~~processes that lead to~~ [average snow mass balance and](#) discrepancies of computed snowfall rates and SWE on the sea ice and shed light into the processes described in Eq.2, such as total eroded mass

Section 2 introduces our methods, followed by section 3, where we show the results. In section 4 we discuss our results, and in section 5 we draw conclusions about our findings and give an outlook about potential future work.

165 2 Data and methodology

All data used for evaluations in the following was collected during the MOSAiC campaign (~~Krumpen et al., 2020~~) ([Krumpen et al., 2020; ?](#); from the beginning of ~~leg-Leg~~ 1 (24 October 2019) until the end of ~~leg-Leg~~ 3 (7 May 2020) (Fig. 1). On 4 October 2019, RV Polarstern moored along an ice floe that originated in the Siberian shelf (Krumpen et al., 2020).

2.1 Ice conditions and Central Observatory

- 170 According to Krumpen et al. (2020), the floe where RV Polarstern moored on had a size of approximately 2.8 km x 3.8 km and was a loose assembly of pack ice, little less than a year old that had survived the 2019 summer melt. Fig. 2 shows a map of the ice- and snow surface structures and installations by 5 March 2020 of the MOSAiC Central Observatory(~~CO~~). Note that the shown elevation range is only approximate as problems occurred with the inertial navigation system of the laser scanner. This lead to tilts and the single swaths within the map have staggered heights. To this date, these uncertainties could not be corrected.
- 175 However, very bright areas indicate ridges of around 2 m height, with locally 3 m height and more. The ~~CO~~ [Central Observatory](#) (all installations in the close vicinity of Polarstern) was distinguished from the Distributed Network, which consisted of remote autonomous stations at least a few kilometers away from the CO. The [detailed concept about the Central Observatory and](#)

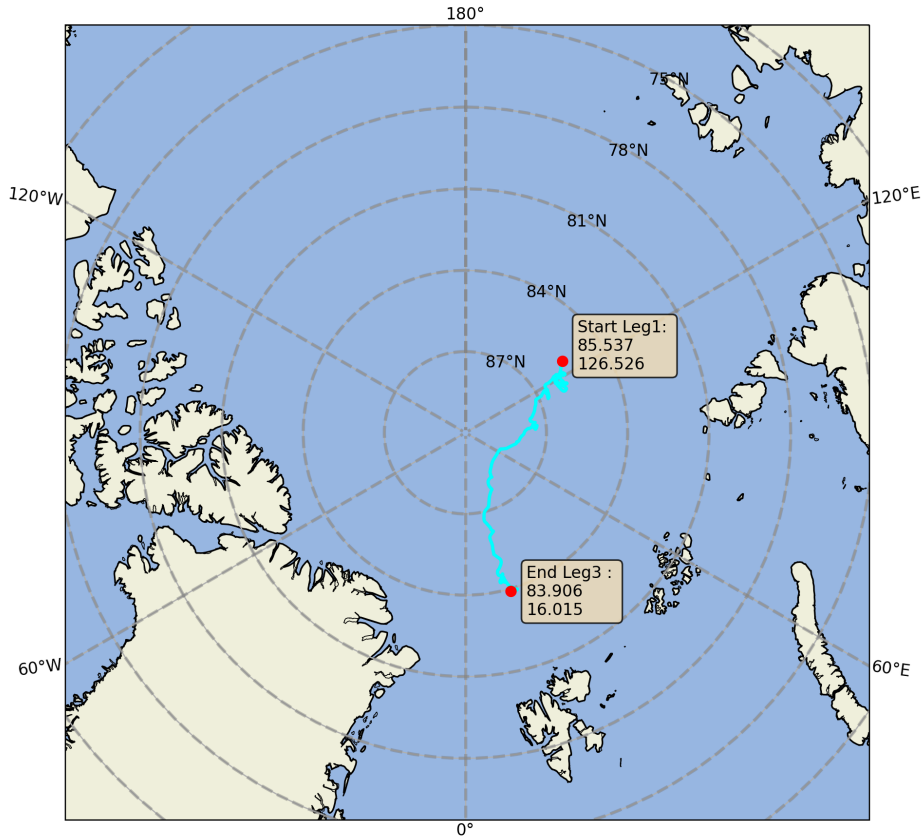


Figure 1. The drift trajectory of RV Polarstern between ~~start of leg 1 (24 October 2019)~~ and ~~end of leg 3 (7 May 2020)~~, 2020.

Distributed Network are explained in ?. The core of the floe consisted mostly of deformed second-year ice (SYI), and the ice surrounding this core mainly consisted of frozen melt ponds (remnant SYI) and partially first-year ice (FYI). When the ship moored, the heading of RV Polarstern was about 220° in October 2019. Significant changes in ice conditions occurred the first time around 16 November 2019, when a storm led to strong ice deformations in and around the CO. Another significant ice deformation event occurred around 11/12 March 2020 and ~~the days thereafter~~, other periodically until 7 May 2020. Over time, the floe rotated counter-clockwise and reached a minimum heading of 75° on 21 March 2020.

We describe the measuring setup and the post-processing for all used data streams in the following.

185 2.2 Snow cover measurements

2.2.1 SMP force and SWE measurements

We measured snow-water equivalent (SWE) with an ETH tube (~~Haberkorn, 2019~~), a SWE sampler that is commonly used in Switzerland (Haberkorn, 2019; López-Moreno et al., 2020), as well as resistance force with the SnowMicroPen (SMP)

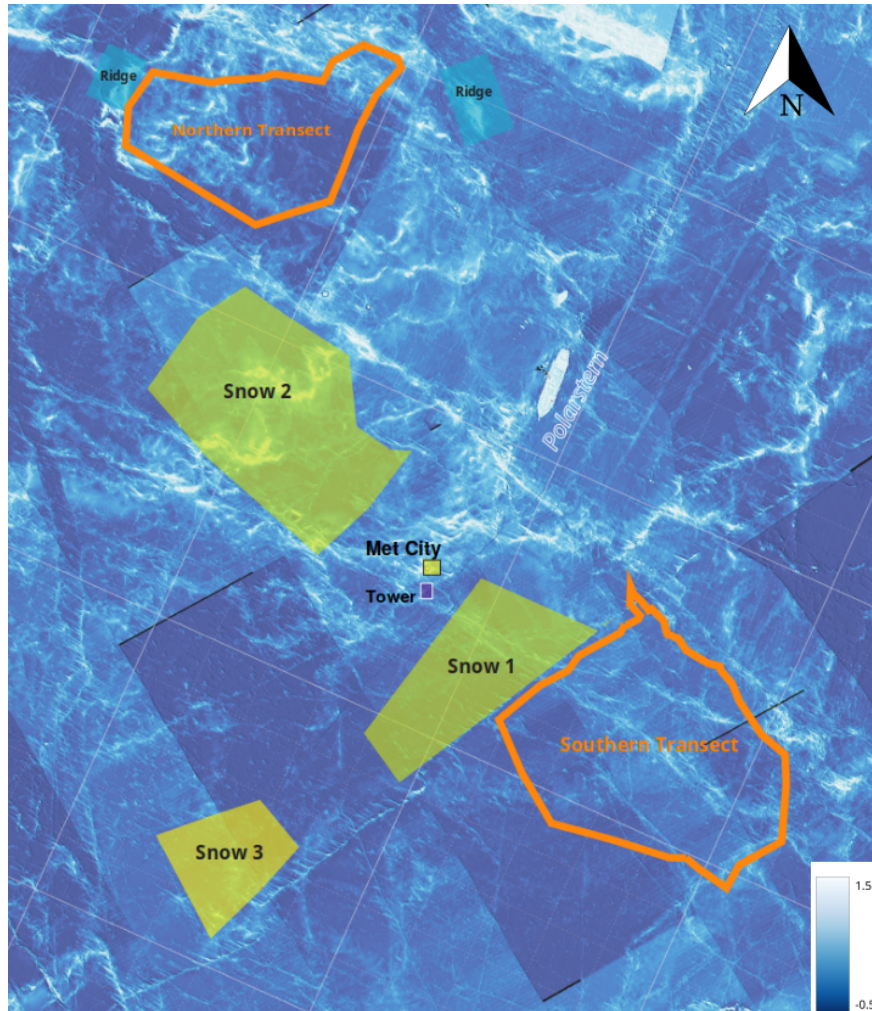


Figure 2. Main snow measuring areas on the MOSAiC floe by 5 March 2020. The bottom layer is a digital elevation map (DEM) from airborne laser scanning (ALS) with the helicopter. The square side length of the underlay grid is 500 m. The transect paths and margins of the shaded measuring areas are based on GPS measurements. The legend for elevation is shown in meters. However, the elevation range is only approximate due to issues with the inertial navigation system which could not be corrected so far.

(Schneebeli and Johnson, 1998; Schneebeli et al., 1999) and snow height at different sites (areas shaded in yellow in Fig. 2).

190 The ~~direct-SWE measurements~~ bulk SWE measurements with the ETH cylinder follow the simple principle where the mass of the snow fitting in a tube with a known cross-sectional area is weighed on a spring scale, which yields the SWE in mm, or kg m^{-2} . The device is calibrated for low temperatures, which is most important for the steel spring of the scale. López-Moreno et al. (2020) made an intercomparison of various bulk density and SWE samples including the ETH tube and tested for instrumental bias and variability. It can be concluded that from a single ETH tube measurement, we might expect

195 a maximum error of 10 %. This value appears high, but given the fact that the average Arctic sea ice snow cover is thin, the absolute error will be low. Given a 20 cm snow depth, the maximum expected error would only be 2 cm. López-Moreno et al. (2020) also argue, that particularly light samples may lead to an additional 10 % of error with respect to the weighing process with the spring scale itself. Nonetheless, a currently non-quantified error is that during a bulk SWE measurement a sharp transition between snow cover and sea ice often cannot be determined, which is especially valid for an underlying surface scattering layer

200 (SSL) on SYI. However, we use a relatively big sample size of $n = 195$ bulk SWE measurements, and with increasing sample size, uncertainties are expected to be increasingly leveled out. To avoid wind influence on the measurements, the weighing was each conducted in the wind shadow of surrounding objects, persons or the person measuring itself.

The SMP is a device which measures the penetration resistance force (N) by means of a rod with a conic tip that is slowly

205 ~~driving-driven~~ vertically into the snowpack. A force sensor is connected to the tip which detects the force that is needed to drive into the snowpack with μm resolution. The output is given as a force-snow depth signal. These penetration resistance force signals can be used to estimate snowpack density and detect the layers in the snowpack (Proksch et al., 2015; King et al., 2020). We used three different sensors, but all SMP version 4, during MOSAiC. Processing of density from SMP force signals is discussed in the next chapter.

210

The map in Fig. 2 shows the floe state on 5 March 2020, which changed significantly due to ice dynamics that started on 11 March 2020. Snow was measured at the different sites as well as along both transect loops. The measurements cover a large area of the floe, including level, remnant SYI, FYI, and deformed SYI. Details about the sampling procedure will follow below. Snow 1 was characterized mainly by a mixture of remnant SYI and deformed SYI. In the beginning, Snow 1 was mostly

215 flat, but the surface became rougher over the time of the expedition. At Snow 1 we deployed three snow pit sites, which were maintained until the end of leg 3. The Snow 2 plot was characterized as an open level field, mostly on remnant and deformed SYI with a distinct, high, and long pressure ridge in the center of the plot. On Snow 2, we maintained two snowpit locations until the end of leg 3. Both sites had very similar underlying ice conditions. Snow 3 was created at a later point, furthest away from the vessel. In the beginning, it was a very flat area with underlying FYI and was maintained during leg 3 but needed to

220 be abandoned due to ice dynamics in mid-March. Further, weekly snow pit measurements were conducted along the south-westerly section of the northern transect loop. Also, transects were conducted infrequently over ridges, and measurements were conducted weekly at the ice coring sites during ~~leg-Leg~~ 1 (beyond the map boundaries in Fig. 2, but located north-west of the ship), among other measuring locations. The large variety of locations, their underlying ice types, and snow depths allow us to

take the spatial heterogeneities of the snow cover into account. However, since we use a bulk approach with the collected SMP
225 and direct SWE data, detailed information on each measuring site is not needed and will not be provided here.

At the measuring locations, SWE, snow height, and penetration resistance force measurements with the SMP were done. The SMP measurements at the recurring snowpit locations were conducted as follows: Five SMP measurements were performed at a distance of about 20 cm along a line parallel to the old snowpit wall to account for the spatial heterogeneity of the snowpack.
230 On the ridge sites, for instance, SMP measurements were conducted infrequently as ~~transect~~ transects over ridges. We used these measurements to estimate SWE along the northern and southern transect loops, which will be explained below. For more details about the SMP and SWE collection, we refer to Macfarlane et al. (2022a, b); Wagner et al. (2021) (data publicly accessible after end of the MOSAiC moratorium in January 2023) and soon to be published data and method papers by MOSAiC participants that describe the MOSAiC snow measurement setup in detail.

235 2.2.2 Transects

Snow depth transects were conducted weekly with a Magnaprobe (~~Sturm and Holmgren, 2018~~) (Sturm and Holmgren, 2018; Itkin et al., 2020), if the atmospheric, ice, or overall safety conditions did not prevent it. The transect path was distributed into two loops (Fig. 2): A northern loop, mostly situated on deformed SYI, and a southern loop, which was mainly situated on FYI and remnant SYI with underlying frozen melt ponds. A transition zone distinguished these two loops, mostly consisting of frozen melt ponds
240 with a very flat surface without significant heterogeneities. The approximate ice conditions and the transect loop locations can be seen in orange on the MOSAiC floe map from 5 March 2020 (Fig. 2). The elevations on the southern transect are mostly below around 1 m height. The elevations are generally higher on the northern transect, although it does not cover ridges of up to 3 m height or more as they have been observed on the Snow 2 plot. One important aspect to note is that surrounding elevations of the ice (i.e. ridges) often exceed the height of the transect areas, for instance in the north and the south of the northern transect,
245 or in the north and the east of the southern transect. The expected result from this surrounding sea ice characteristic is that during drifting snow events, snow might get caught upwind of the transect areas, while wind speeds may decrease, potentially leading to flow separation and a bias in the total snow accumulation. We consider this as a non-quantifiable uncertainty at this point of research. The only way to overcome this problem in the future is to cover larger sampling areas and increase the number of these. To find an optimum between technical effort and reliable result, one could decrease these areas until average
250 values are not changing any more significantly.

The GPS coordinates of the Magnaprobe were transformed into coordinates of a local metric coordinate system, called "FloeNavi" (Fig. 3). Furthermore, the transects were partially corrected for shifts within the ice, which was especially the case for an event with strong ice dynamics on 16 November 2019. Thus, the southern loop transects until (including) 14 November
255 2019 are marked as a yellow rectangle in Fig. 3. Note that a part of the northern transect was off the regular transect track on 31 October 2019, which leads to ~~little~~ some uncertainties in evaluations. However, we tested how it affected the average when only the off track was cut off versus the whole northern transect. We found an increase of only 0.8 mm when the whole track

was considered. Hence, though this leads to ~~little~~ some uncertainties, we included the 31 October 2019 transect for further evaluations. For all other days of sampling, though the transects may deviate from one another within the FloeNavi coordinate system, the actual transect path was the same. After the coordinate transformation and horizontal correction, for good spatial and temporal comparability, clear margins as shown in the rectangles in Fig. 3 were defined for the "southern" and "northern" transect loop. By the overlays, one can recognize that the transect loops were not significantly impacted by internal differential ice movements.

Ice dynamics affected the transects especially from 11/12 March 2020 on, where leads and cracks opened throughout the paths. Overall, we tried to minimize the influence of these ice deformation events on the transect measurements. However, an impact on the time series cannot be excluded. On the transects, snow height measurements were sampled with the Magnaprobe with an average distance between measuring points of ~~1.21~~ 1.1 m ~~for the northern loop and 1.03 m for the southern loop~~. Note that this value is simply an average that contains the uncertainty of GPS localization, coordinate transformation, and the step length of the user, while the users varied mainly between each leg of MOSAiC. The average distance between measurements was computed after applying the FloeNavi coordinate transformation. Values $z < 0.00\text{ m}$ as well as $z > 1.40\text{ m}$ (the technically constrained measurable length) were discarded as incorrect data. ~~From the measured Magnaprobe snow heights, 0.01 m was subtracted from each measurement to correct for the tip that typically sinks into the ice to this amount. Outliers were detected with a z score, and all outliers with a z score above 3 were discarded. In this study, we did not account for further corrections that may come along with a tip sinking into material below the snow cover, for instance the surface scattering layer on SYI. Sturm and Holmgren (2018) showed that this error is hard to quantify, as it depends strongly on the ground material and of course the applied force as well - an issue which also occurs for crusts within the snow cover. Similar issues occur for other snow measurements, such as ETH tube and SMP, as well, which will be mentioned later in the text again.~~

The northern loop was sampled from 24 October 2019 to 7 May 2020 on 24 days with an average path length of 954 m. The southern loop was sampled from 31 October 2019 to 26 April 2020 14 times with an average transect path length of 974 m. More in-detail data and instrument description is found in Itkin et al. (2021).

To take surface roughness (i.e. variability of snow surface height) and potential snow accumulation at surface irregularities better into account, we looked at the weekly snow height differences of the transects. With the given average horizontal sampling distance (1.03 - 1.21 m), no small-scale patterns are considered (sastrugi, for instance) for evaluation. However, since the extent of ridges and most types of dunes are in all horizontal directions larger than 1.2 m (Filhol and Sturm, 2015), we expect our typical horizontal sampling scale to accurately characterize the spatial distribution of accumulation, which we demonstrate in Sec. 2.3.1.

2.3 SMP density retrievals and SWE from transect snow depths

~~Not many direct SWE measurements or SMP force measurements are available along the transect path. We use the direct SWE measurements for validation but apply a statistical SWE – snow depth (HS) relationship to estimate SWE along the full~~

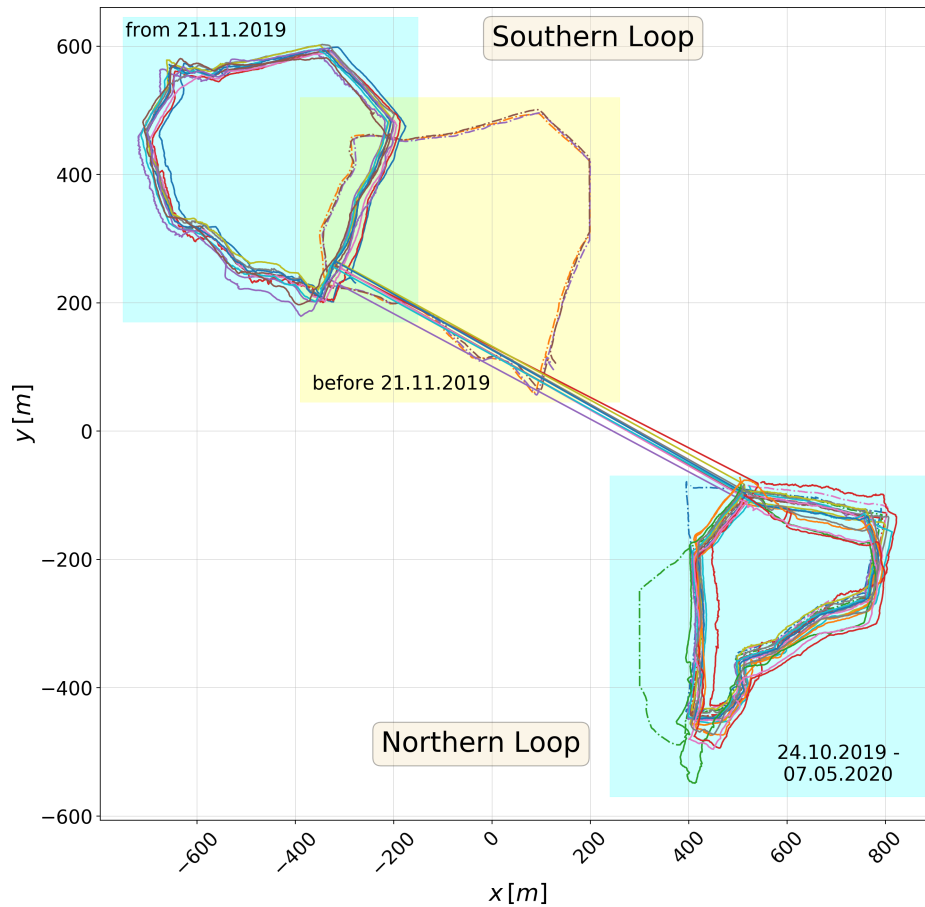


Figure 3. ~~All used~~ Magnaprobe transect paths (~~leg 1 – leg 3~~) with coordinates transformed to the FloeNavi grid corrected for ice drift. The rectangles represent the margins that were used as a definition for "Northern transect loop" (upper left) and "Southern transect loop" (bottom right) for good comparability. The shifts between transect paths within a rectangle ~~origin~~ originate from corrections and coordinate transformation, though the actual transect paths were the same.

~~path (Jonas et al., 2009). Due to its fast and simple usage even during harsh conditions in the polar night~~ Based on how the campaign was planned, we have considerably more SMP force measurements available ($N = 3007$) than ~~direct SWE bulk bulk~~ SWE weighing measurements ($N = 195$). Furthermore, ~~as we made~~ for each snowpit we made at least $n = 5$ SMP measurements and the SMP was often used even for ridge transects, these measurements best characterize the spatial heterogeneity in the snow depth across the sea ice. Not many direct SWE measurements or SMP force measurements are available along the transect path. Hence, we use the direct SWE measurements for validation but apply a statistical SWE - snow depth (HS) relationship to estimate SWE along the full path (Sturm et al., 2002a; Jonas et al., 2009).

300 Snowpack density can be ~~retrieved~~estimated with a statistical model from SMP snow depth-force signal profiles (Proksch et al., 2015):

$$\rho = a + b \ln \left(\frac{F}{\tilde{F}} \right) + c \ln \left(\frac{F}{\tilde{F}} \right) L + dL \quad (3)$$

where a ($kg\,m^{-3}$), b (N^{-1}), c ($N^{-1}\,mm^{-1}$), d (mm^{-1}) are empirical regression coefficients, ~~F is the~~ \tilde{F} is the median penetration force of the SMP (N) for a specified sliding window and L is the microstructural length scale (Löwe and Her-
 305 wijnen, 2012) for the same window. Both \tilde{F} and L are computed for the window size of 2.5 mm with a 50 % overlap, which is the same as used in Proksch et al. (2015), but contrary to Calonne et al. (2020) (1 mm) and King et al. (2020) (5 mm). King et al. (2020) calibrated the corresponding coefficients to snow on Arctic sea ice and found $a = 315.61\,kg\,m^{-3}$, $b = 46.94\,N^{-1}$, ~~$c = 43.94\,N^{-1}\,mm^{-1}$, $d = 88.15\,mm^{-1}$~~ $c = -43.94\,N^{-1}\,mm^{-1}$, $d = -88.15\,mm^{-1}$. The coefficients show a significant improvement in density derivation for snow on sea ice, which is reflected by the decrease in the root-mean-square error (RMSE)
 310 (Proksch et al. (2015): $RMSE = 130\,kg\,m^{-3}$, King et al. (2020): $RMSE = 41\,kg\,m^{-3}$) without removing outliers, compared against density cutter measurements. Consequently, we used the coefficients from King et al. (2020) for the following SWE computations. From the SMP density estimates we can compute

$$SWE = HS \cdot \bar{\rho} \quad (4)$$

where HS (m) is the height of snow over the ice or snow depth, and $\bar{\rho}$ ($kg\,m^{-3}$) is the vertically averaged density of the
 315 snowpack. The computed SWE dataset is documented in detail by Wagner et al. (2021). Similar to Jonas et al. (2009), but applying the function directly to SWE, we fitted the following function to the available bulk SWE measurements as well as SWE retrievals from the SMP:

$$SWE = m \cdot HS^a + \underline{b} \quad (5)$$

where m is the fitted slope, b is the fitted y-intercept, and a is a fitting coefficient. For the bulk SWE measurements, we
 320 found ~~$m = 333.82$, $a = 1.12$ and $b = +0.92$~~ $m = 334.61$ and $a = 1.14$ (Fig. 4). For the SMP retrievals we found ~~$m = 323.91$, $a = 1.1$ and $b = 2.31$~~ $m = 323.97$ and $a = 1.07$. The functions do not deviate heavily from another, but the y-intercept is obviously shifted downwards in the bulk SWE measurements. ~~Thus, as As~~ we have more ~~measurements available~~ SMP
measurements available in total, and especially for deep snow depths ~~with the SMP but believe that the y-intercept for the~~
~~SWE bulk measurements is more reliable, we combined the functions and computed SWE as:~~ compared with ETH tube, we
 325 computed SWE based on fitted SMP density - SWE parameters as:

$$SWE = \underline{323.91} \underline{323.97} \cdot HS^{\underline{1.1}} + 0.92^{\underline{1.07}}. \quad (6)$$

From Fig. 4 one can clearly see that the improvement for snow on sea ice of the coefficients found by King et al. (2020) is valid for MOSAiC leg 1-3 SMP data, too (Fig. 4c) and that the coefficients determined by Proksch et al. (2015) and Calonne et al. (2020) ~~are~~ appear not appropriate to estimate SWE of snow during MOSAiC ~~leg~~ Leg 1 - 3. Furthermore, the lowest RMSE
 330 (expressed here as average error of individually computed SWE relative to the regression line for an individual parameter setup)

was found for the fitted model with the coefficients from King et al. (2020) (7.2 mm SWE) compared against 15.4 mm (Proksch et al., 2015) and 9.4 mm (Calonne et al., 2020).

335 However, one should note the following limitations in this comparison: First, we used for all computations a sliding window size of 2.5 mm, which is the same as in Proksch et al. (2015), while Calonne et al. (2020) used 1 mm and King et al. (2020) a 5 mm window. However, the strength of the influence can at least partially be invalidated by the fact that Calonne et al. (2020) state that they tested for sensitivity of three different window sizes of 1, 2.5 and 5 mm and could not find a significant influence on the result - which is not quantified in the publication. At least choosing a fixed window for each parameterization - as we did with the 2.5 mm window - increases the comparability. Another limitation might be that the Proksch et al. (2015) calibration was made with a SMP version 2, while Calonne et al. (2020), King et al. (2020) and we use the newest SMP version 4.

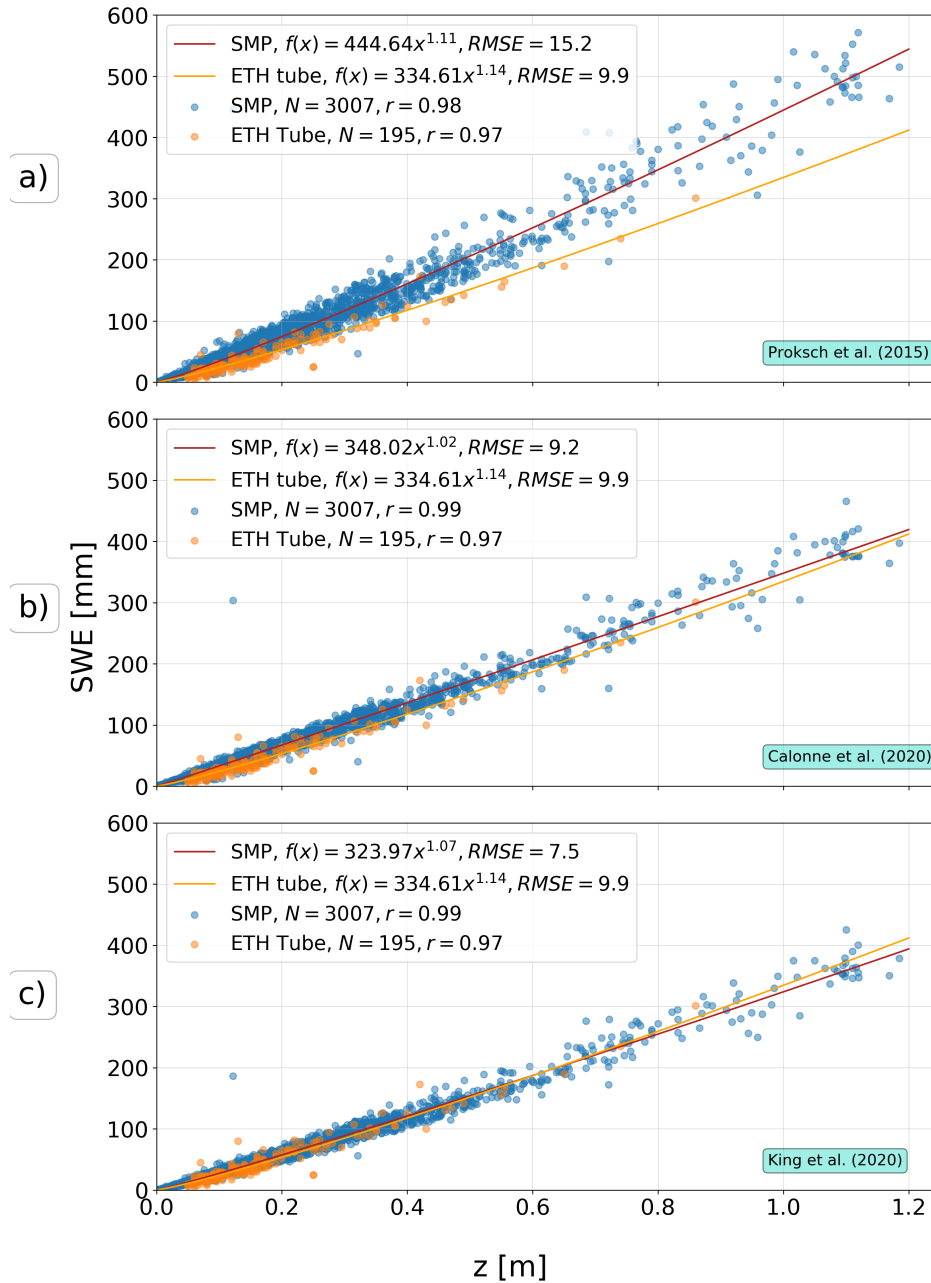


Figure 4. Scatter plots and fitted HS-SWE function of SMP derived SWE and measured SWE with ETH tube for a) The density computation coefficients from Proksch et al. (2015), b) Calonne et al. (2020) and c) King et al. (2020).

340 ~~We applied this~~ We applied our fitted formula to each snow depth measurement with the Magnaprobe along the transect path to obtain the SWE estimates. The SWE was rounded to integers for the following description in the text, except when two

values that are compared are very similar. No rounding was conducted before any computations. The average computed SWE will also serve as reference comparison with snowfall sensors and ERA5 as described in section 2.8.

A limitation with this approach is that different snow layers are not distinguished by density, even though a wind-packed layer has a higher density than a depth hoar layer. Hence, when high winds lead to drifting snow deposition that is detected by a snow height increase with the Magnaprobe, the SWE increase is likely to be underestimated, as would be the eroded mass of a drifting snow layer. It is beyond the scope of this study ~~-, and indeed beyond the measurements themselves,~~ to attempt an approach that distinguishes different snow layers. Instead, for validation, we compared SMP and ETH tube measurements with transect-computed SWE along a section of the northern transect loop for 14, 21, and 28 November 2019 (Fig. 5). The validation measurements were conducted at different positions at each day of measurements and contain drift locations and level ice areas. Note that ~~a clear quantitative comparison is difficult, this quantitative comparison of bulk SWE/SMP SWE versus transect contains uncertainties~~ as the accuracy of GPS measurements (2 m) and the following coordinate transformation of the Magnaprobe as well as the SMP coordinates do not allow for cm-scale precision. ~~Thus, for~~ Further, the pits were dug up to a vertical distance of 1 m from the transect path, in order to sample fresh snow that is not disturbed by repeated transects. For quantitative comparison, SWE computations from direct bulk SWE and SMP measurements along the transects were plotted over SWE model retrievals. Fig. 5a shows the measuring locations for each SMP measurement along the northern transect loop (5 measurements at each snowpit location) and Fig. 5b, Fig. 5c and Fig. 5d show the corresponding SWE plotted over the x-axis of the FloeNavi for different days of measurements.

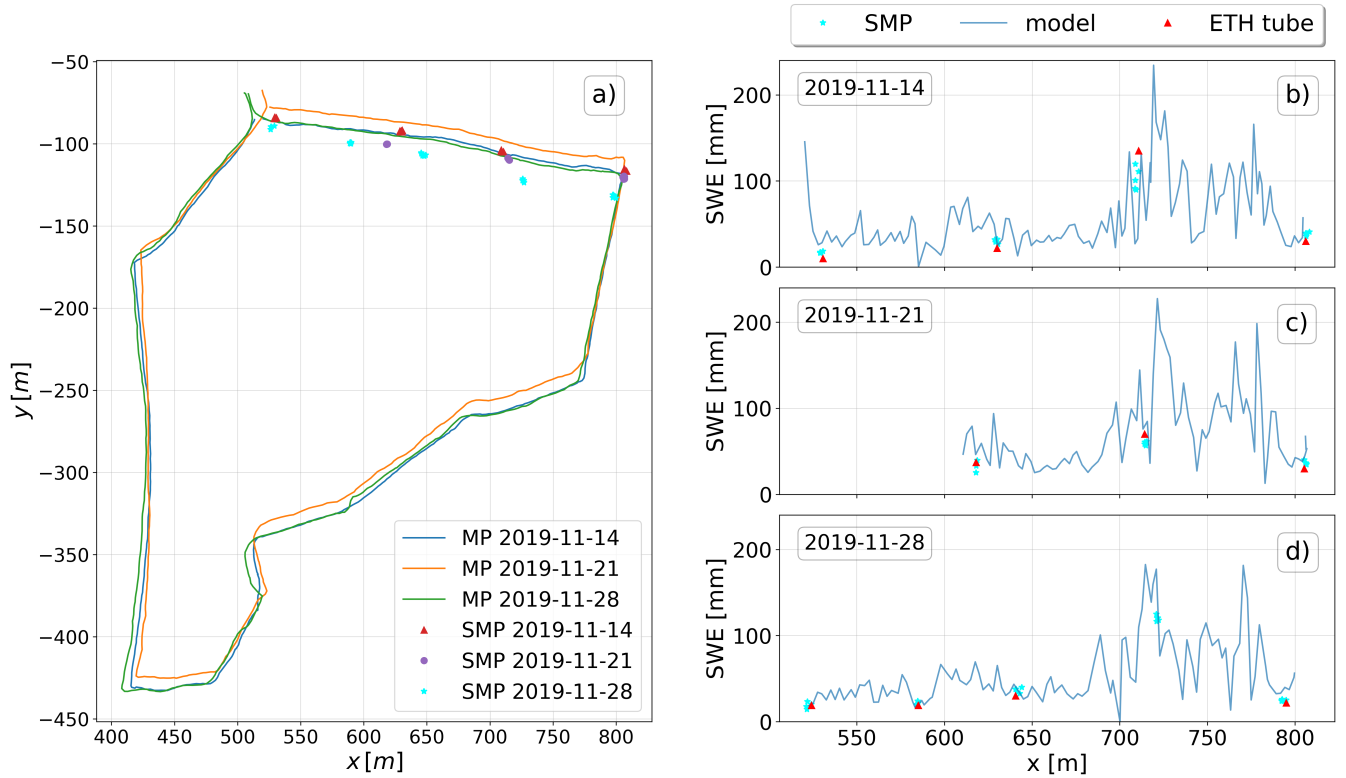


Figure 5. a) SMP measurement locations along the Magnaprobe (MP) transect path on 14 (2019-11-14), 21 (2019-11-21), and 28 November 2019. The GPS coordinates were transformed into local FloeNavi grid coordinates. b), c), and d) show the comparison of SWE estimates from direct SMP measurements, direct bulk SWE measurements, and SWE derived with the HS-SWE model from the Magnaprobe snow depth measurements along the northern transect as x-axis location on the FloeNavi grid, for 14 , 21 and 28 November 2019.

This comparison shows that the modeled SWE matches the derived SWE from SMP retrievals and bulk SWE measurements quite well during the three chosen time periods, even for higher SWE estimates, where a higher scatter is expected (Fig. 4). ~~The direct SWE measurement with the ETH tube shows a tendency towards lower SWE values~~ Note that although the time distance between the three days of measurements is relatively short, we found from and including 14 November until and including 21 November 2019 on 42 % of the time drifting snow conditions, where the threshold friction velocity for snow transport was exceeded (the lower SPC was not installed yet at this time). From and including 21 November until and including 28 November 2019 the threshold was exceeded on 57 % of the time. This means we can expect re-distributed snow for the two following days after 14 November. Inter-compared SMP-SWE versus ETH-SWE, we find a RMSE of 16.3 mm for 14 November, 8.1 mm for 21 November and 3.5 mm for 28 November. However, we must note that the depth of SWE measurements from ETH tube and SMP have some individual but differing restrictions: Firstly, as the SMP cut-off force signal was set to 40 - 41 N (depending on the device), the snow depth was determined whenever one of those values was reached, which is not necessarily

370 the snow - ice interface. Secondly, during the sampling period, there was no method ~~evolved~~established to distinguish between surface scattering layer (SSL) and snow. Hence, its vertical position was determined visually, which was not always clear. Therefore, a measurement with the ETH tube might or might not include the surface scattering layer which formed during the melt season of 2019. If the SMP was able to penetrate the SSL only partially while it was not measured with the ETH tube, then SWE is overestimated from the SMP measurements. Otherwise, if the SMP could not penetrate the SSL while it
375 was partially measured with the ETH tube, the SMP-based SWE computation overestimates actual SWE. However, as the SMP-SWE retrievals are often close to the direct SWE measurements, one can assume on the whole reliable values. Research to determine exact boundaries between snow and sea ice is ongoing. Furthermore, since the number of measurement points along a transect is large and we do not expect systematic biases, we believe that fluctuations caused by these various sources of uncertainty will largely average out, such that the results from the applied SWE model yield a reasonable estimate along the
380 transect.

Under section A we make a comparison with derived SWE over Arctic sea ice during the SHEBA campaign conducted by Sturm et al. (2002a) in a similar manner. The comparison shows the difference of their and our results and underlines the importance of using our approach for MOSAiC snow cover data.

2.3.1 Evaluating the sensitivity of the arithmetic mean with respect to horizontal sampling distance

385 As shown by Trujillo and Lehning (2015), a sufficiently small sampling interval of point measurements is crucial for estimating representative values of spatially averaged snow depths. We studied the sensitivity of the horizontal sampling interval for average mass estimates by reducing the sample numbers from using all samples (Magnaprobe average sampling distance of 1.1 m) down to considering every 10th sample (about 11 m sample distance) for the average. The process was conducted for each day of sampling and the averages were normalized against the original sampling frequency (Fig. 6).

390 The results show that for sampling frequencies down to 1/3 of the original frequency (sampling distances ranging from 1.1 to 3.4 m), the average mass estimates vary by less than $\pm 1\%$. This indicates that a sampling distance up to 3.4 m is mostly robust and that no significant undersampling occurred. This also shows that the impact of variations in sampling interval distance that inevitably occurs with different operators of the Magnaprobe is probably negligible. The larger fluctuations in computed average mass for longer sample interval distances suggests undersampling at those scales and less reliable averages. However,
395 a validation of uncertainties that could accompany varying vertical penetration force leading to different measured snow height, e.g. when a crust within the snow is penetrated or not due to varying operators, is not conducted here. The operators were aware of this issue and tried to apply a similar power for the Magnaprobe sampling.

2.4 Snowfall rates

2.4.1 Precipitation gauges

400 Snowfall rates were estimated using standard internal processing software from five distinct precipitation gauges operated by the US Department of Energy Atmospheric Radiation Measurement (ARM) Program. Two sensors investigated here were

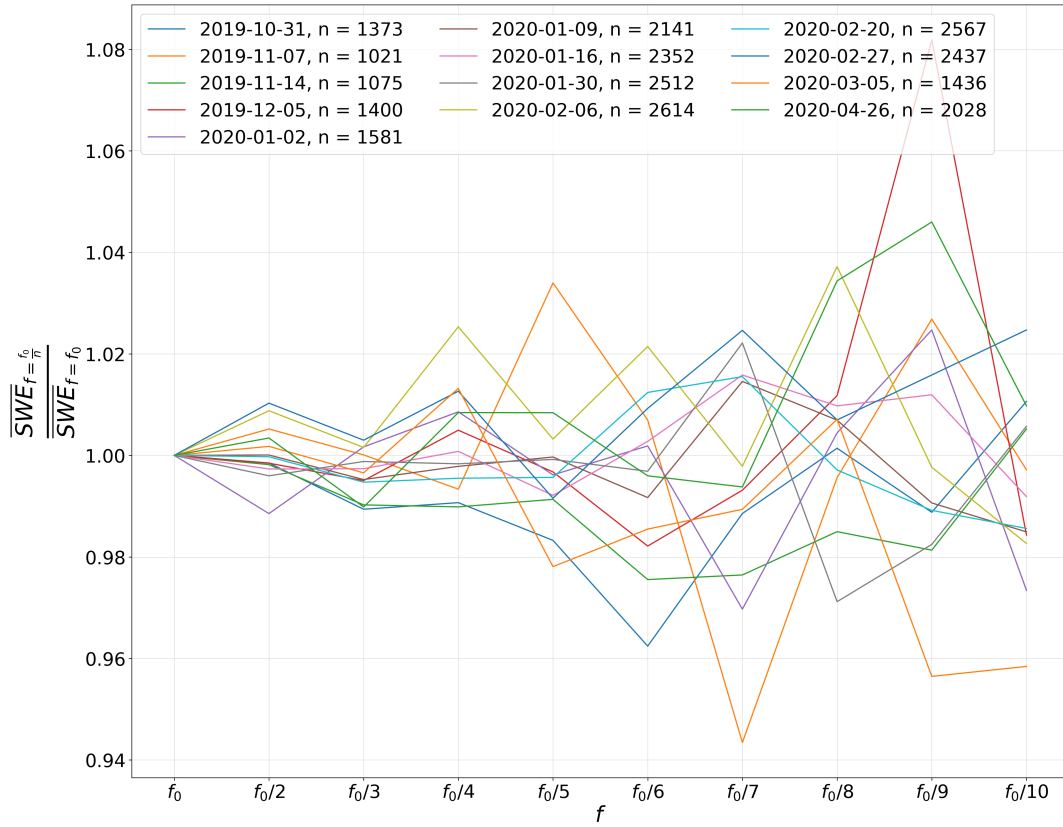


Figure 6. Sensitivity of the transect average in dependence of the Magnaprobe horizontal sampling interval. The x-axis shows the horizontal transect sampling frequency in relation to the original sampling frequency f_0 , the y-axis shows the ratio of the average SWE of all tested frequencies to the average SWE of the original sampling frequency for each day of sampling (2019-10-31 to 2020-04-26).

installed on the railing on the top deck of Polarstern - a Vaisala Present Weather Detector 22 (Vaisala, 2004; Kyrrouac and Holdridge, 2019) (in the following referred to as PWD22PS) and an OTT Parsivel² laser disdrometer (Shi, 2019; Bartholomew, 2020b) (in the following referred to as P2PS) (Tab. 1). The PWD22PS was installed at 22 m and the P2PS at 24 m above the water line. On the ice, in "Met City" (Fig. 2, in the following, referred to as MC), three precipitation sensors were installed: 1) an OTT Parsivel² (P2MC), installed at 1.5 m nominal height above the snow surface, surrounded by a double-alter shield, 2) a PWD22 (PWD22MC), installed at 2 m nominal height, unshielded and 3) an OTT Pluvio² L (Wang et al., 2019b; Bartholomew, 2020b), shielded by a double-alter shield and installed at 1 m above the snow (in the following referred to as Pluvio2). Different ARM data levels of the devices are given, where a1 means "calibration factors applied and converted to geophysical units" and b1: "QC checks applied to measurements".

Optical devices evaluated here are the Vaisala PWD22 and the OTT Parsivel². However, the measurement technique and the process of estimating snowfall rates are different. The Parsivel² is a laser-disdrometer that processes the voltage signal changes due to light extinction when a hydrometeor falls through the laser-beam. It has an effective measuring area of 54 cm² to estimate hydrometeor size and velocity (Löffler-Mang and Joss, 2000). The hydrometeors are classified into size classes which can be used to investigate the particle size distribution. The precipitation type is determined by device-internal spectral signature comparison, where the spectra are determined empirically. Based on particle size, velocity, and estimated precipitation type, device-internal software computes a snowfall estimate. No details are known about the exact formula used by the manufacturer for the snowfall estimate. Its accuracy is given by the manufacturer as $\pm 20\%$ with an intensity range of 0.001 to 1200 mm h⁻¹ (Tab. 1). The calibration was conducted in the manufacturer's laboratory and therefore no calibration was needed in the field.

The PWD22 consists of several sensors that are used to compute the snowfall rate: The two core sensors are a transmitter-receiver combination, where the transmitter emits pulses of near-infrared (NIR) light. The receiver on the other side measures the scattered part at 45° of the light beam from the emitted signal (sampling volume 100 cm³). Rapid changes in the scatter signal between transmitter and receiver are used to compute precipitation intensity. The sampling volume allows for the detection of single crystals and aggregates of snow crystals (snowflakes). Furthermore, the PWD22 is equipped with a heated RAINCAP rain sensor, which produces a signal proportional to the amount of water on the sensing element. By means of the ratio from sample volume and water content determined with the RAINCAP sensor, precipitation types are distinguished. In the tube between the transmitter and receiver, another temperature sensor (thermistor) is installed. The detected temperature is used to select the default precipitation type. When frozen precipitation is detected, the PWD22 software multiplies optical intensity with a scaling factor, determined from RAINCAP and optical intensities from the receiver to estimate snowfall intensity as SWE per time unit (Vaisala, 2004). The manufacturer does not provide a value for accuracy, however the intensity measuring range is given as 0.00 to 999 mm h⁻¹. There is no calibration principle known for the field but the manufacturer mentions comparisons with closeby reference gauges as calibration method.

The only device that we compare here that uses a weighing principle is the OTT Pluvio². The instrument's core is a sealed load cell that continuously measures the weight of the precipitation falling into the entry of the bucket. The installed variant was an OTT Pluvio² L Version 400, with a collecting area of 400 cm² and a recording capacity of 750 mm of precipitation. Its accuracy is given by the manufacturer as ± 0.1 mm min⁻¹ or ± 6 mm h⁻¹, or $\pm 1\%$ and its intensity range as ± 6 mm h⁻¹ or 0.1 to 30 mm h⁻¹. No calibration for the OTT Pluvio² is needed in the field as it was delivered calibrated by the manufacturer. However, calibration weights were used to test for accuracy.

The data streams were downloaded from the ARM data archive (<https://adc.arm.gov/>) and scanned for quality control flags. Values with timestamps that correspond to flags indicating maintenance time, suspicious or incorrect values were discarded.

Table 1. Summary of validated installed precipitation sensors and radar during MOSAiC as well details about the ERA5 reanalysis (PS: RV Polarstern, MC: Met City, DA: double alter shield, WL: Water line, DFIR: Double Fence Intercomparison Reference).

Device/Reanalysis	Loc	Abbreviation	Nominal height Snow/WL (m)	Shield	Data reference	ARM data level	Accuracy	Intensity range	Selected existing snowfall validations / Reference setup	Calibration
Vaisala PWD22	PS	PWD22PS	22 (WL)	-	Kyrouac and Holdridge (2019)	b1	-	0.00 - 999 mm/h	-32 % from median / DFIR (Wong, 2012a) +33 % from median / manual (Boudala et al., 2016)	Reference comparison
OTT Parsivel ²	PS	P2PS	24 (WL)	-	Shi (2019)	b1	± 20 %	0.001 - 1200 mm/h	+46 / +54 % from median / DFIR (Wong, 2012a) +24 / +29 % from median / DFIR (Wong et al., 2012b)	manufacturer
KAZR	PS	KAZR	14 (WL)	-	Lindenmaier et al. (2019)	a1	-	-	23 % relative bias / shielded Nipher gauge (Matrosov et al., 2008)	-
Vaisala PWD22	MC	PWD22MC	2 (Snow)	-	Kyrouac and Holdridge (2019)	b1	-	0.00 - 999 mm/h	see above	Reference comparison
OTT Parsivel ²	MC	P2MC	1.5 (Snow)	DA	Shi (2019)	b1	± 20 %	0.001 - 1200 mm/h	see above	manufacturer
OTT Pluvio ²	MC	Pluvio2	1 (Snow)	DA	Wang et al. (2019b)	a1	± 6 mm/h ± 0.1 mm/min ± 1 %	6 - 1800 mm/h	-63 % from median (max) / DFIR -14 % from median (min) / DFIR (Wong, 2012a)	manufacturer / calib. weights
ERA5	-	-	-	-	Hersbach et al. (2020)	-	-	-	+ 62.8 mm cum. SWE / snow buoys (Wang et al., 2019a) slight underestimate in summer / CloudSat (Cabaj et al., 2020) overestimate in other months	-

2.4.2 Snowfall retrievals from the Ka-band ARM Zenith Radar.

445 Snowfall was retrieved from the K_a-Band ARM Zenith Radar (KAZR) (Widener et al., 2012; Lindenmaier et al., 2019) that was installed on a container at the bow of RV Polarstern. Using a radar snowfall retrieval allows investigating snowfall continuously, and eliminates impacts on gauges such as acceleration effects of wind that result in undercatch or overestimation due to blowing snow particles. The KAZR operated at approximately 35 GHz. We computed the snowfall rate S [$mm\,h^{-1}$] according to the power law

450
$$Z_e = a S^b \tag{7}$$

where Z_e [$mm^6\,m^{-3}$] is the radar equivalent reflectivity factor and a and b are empirical coefficients. We chose $a = 56$ and $b = 1.2$ as these were found to be good average values for dry snowfall at this radar frequency, and no significant riming was observed (Matrosov, 2007; Matrosov et al., 2008).

Near-field radar measurements can suffer from a variety of issues, such that snowfall retrievals typically must be applied to radar signals that are elevated above the surface. To find an appropriate KAZR range gate to extract snowfall rates, we plotted the cumulative sums of SWE based on KAZR-derived snowfall from reflectivity measurements at different range gates (Fig. 7). The first range gate of 100 m did not yield any measurements, while at 130 m reflectivities were too low. From Fig. 7 we see that the differences in the cumulative snowfall from range gates between 220 m, and 280 m are the least. The decrease of computed snowfall with height beyond 280 m is probably due to very low cloud heights in winter (Jun et al., 2016), such that snowfall would get underestimated as these range gates are often at higher elevations within the clouds or even beyond the cloud top. ~~As we found for~~ We found largest snowfall rates for the 280 m the highest snowfall rates, range gate, thus we chose it as range gate from which we extracted the snowfall retrievals. However, based on this simple analysis, the potential differences in snowfall based on this choice of range gate are on the order of about 10 %. With an instrument elevation of 14 m asl, the elevation of the extracted snowfall rates is 294 m asl.

460

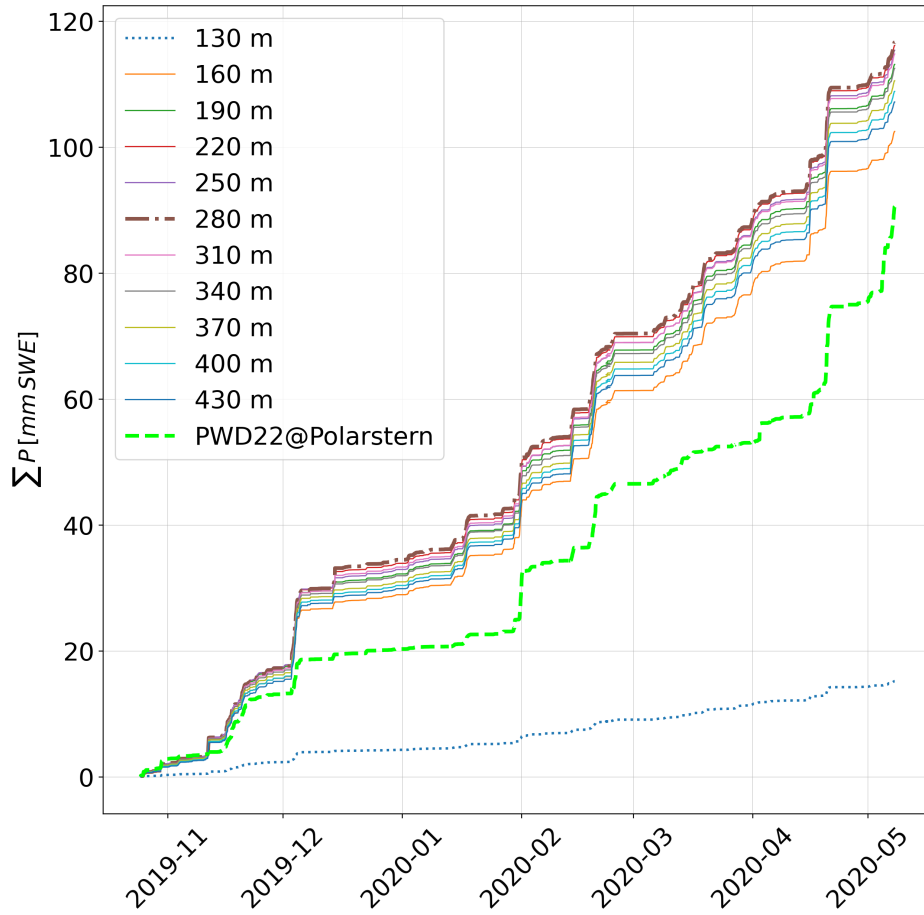


Figure 7. Computed cumulative snowfall for different KAZR range gates and PWD22PS.

465 2.5 Atmospheric flux station data

A meteorological tower of 10 m height was installed on the ice 558 m away from RV Polarstern at about 60° off the bow of the vessel in the middle of October 2019. However, due to ice dynamics, by the end of leg 3 (beginning of May 2020), the distance was only about 334 m while the direction from the ship stayed approximately the same (Fig. 2). At nominal levels $z = 2$ m, 6 m and 10 m above the snow, three-dimensional wind (u, v, w) and temperature were measured at high frequency with METEK uSonic-3 Cage MP anemometers (METEK, 2019), while on the same elevation levels, relative humidity and temperature were measured with Vaisala HUMICAP Humidity and Temperature HMT330 sensors (Vaisala, 2009). The University of Colorado / NOAA surface flux team carried out the post-processing and computed turbulent fluxes, such as momentum flux and turbulent heat fluxes, mixing ratio, or friction velocity. Wind vectors were corrected, i.e., processed wind directions are according to geographic true north. We used wind velocity, wind direction, computed latent heat flux, friction velocity, relative humidity, the temperature at 2 m, and temperature of the snow surface from the described dataset (Cox et al., 2021).

2.6 Drifting and blowing snow mass flux

On the meteorological tower described under Sec. 2.5, two snow particle counters (SPCs) (Sato et al., 1993) were installed. The devices continuously detect number and sizes of snow particles which are transported through a laser beam. The devices rotate with very low friction on a vertical axis and mounted wind vanes at the back of the sensor keep the laser beam 90° towards the wind. One SPC was installed at 0.5 m (SPC1106) and one at 10 m (SPC1206) above the snow. The lower SPC1106 ran with only a few interruptions from 2 December 2019 until 7 May 2020 (data availability for this period 96.6 %). The upper SPC1206 ran with only a few interruptions from 14 October 2019 until 7 May 2020 (data availability for this period 94.9 %). One bigger data gap for the SPC1206 was between 17 November 2019 03:05:00 UTC and 18 November 11:15:00 UTC because there was a power interruption due to sea ice dynamics resulting in broken power lines.

485

To determine periods, where snow transport and erosion has occurred, horizontal mass flux ($kg\,m^{-2}\,s^{-1}$) for both SPCs were computed as (Sugiura et al., 2009):

$$Q_{SPC} = \frac{\pi \rho_p}{6} \sum_{n=1}^{64} S_n N_n D_n^3 \quad (8)$$

where ρ_p is the density of a drifting snow particle, which we assumed here as the density of ice $\rho_p = 917\,kg\,m^{-3}$, S_n is the shape factor of snow particles of the n -th class, which we assumed as 1 here, N_n is the particle flux of the n -th class ($m^{-2}\,s^{-1}$), which is the number of particles per class passing the SPC sensor area A_s in a second, and D_n is the diameter of a drifting snow particle of the n -th class (m). ~~We consider the density assumption for the lower SPC at 0.5~~

~~Note that the snow saltation layer height is typically only up to 0.2 m above the snow as appropriate, as the fragmentation of snow crystals due to saltation leads to spherical particles (Comola et al., 2017). However, for the SPC 10m, (Clifton et al., 2006; Nishimura, while the SPC was installed initially at 0.5 m above the snow we expect a mixture of dendritic precipitation particles and spherical blowing snow particles that were lifted from the ground and passed into suspension. Hence, for the upper SPC, an overestimation of the mass flux is expected. We are mostly interested in the timing of drifting and blowing snow events, an distinguishing between dendritic and spheric particles is not possible with the available setup, hence, the distinction is not made here.~~

~~To compare,~~ which means that we might not detect some drifting snow events. It is likely that the distance between sensor and snow cover shrank over time since installation on 2 December 2019 due to deposition of new snow. In any case, given these uncertainties, to determine potential drifting snow periods ~~with periods determined from measured mass flux from the SPCs~~ for periods where the SPC might fail, the critical friction velocity for snow particles was calculated as (Bagnold, 1941):

$$u_{*t} = A \cdot \sqrt{\frac{\rho_{ice} - \rho_{air}}{\rho_{air}} g \bar{d}} \quad (9)$$

where A is a threshold parameter and is here assumed as 0.18 as found by Clifton et al. (2006) for drifting snow initiation, $\rho_{ice} = 917\,kg\,m^{-3}$ is the density of ice, ρ_{air} is the density of air, $g = 9.81\,m\,s^{-1}$ is gravity acceleration on earth and \bar{d} is an average particle diameter, which we assumed as $260\,\mu m$ which was found as lowest particle diameter on the surface where

505

snow transport was observed by Clifton et al. (2006). ρ_{air} could be retrieved from the meteorological tower data. The computed thresholds were applied to computed u_* from the tower. If $u_* > u_{*t}$, particles begin to get lifted from the ground and drifting snow flux is initiated.

510 ~~Although the formula of Bagnold (1941) considers cohesion of the particles with the constant threshold parameter A , it is independent of temperature in the formula. In the 15 experiments Clifton et al. (2006) made, the temperature span was -16 to 0 .~~ The mass decrease computed with the HS-SWE function from the transect is temporally compared against computed cumulative snow mass flux from the snow particle counters. Note that the cumulative horizontal mass flux is only an indicator for the strength of the erosion, but cannot be translated into actual eroded mass. To distinguish in the text between computed
515 SWE decrease of the snow cover and cumulative mass flux and to avoid confusion, we keep the designation SWE for the snow cover but use $\text{kg } ^\circ\text{C}$. ~~Li and Pomeroy (1997) included, besides wind speed, air temperature in the parameterization of their formula for wind transport threshold to take account for the inhibiting effect on snow transport from sintering. The measurements from the dataset that were used to fit the equation were entirely collected over the main land of Canada. Clifton et al. (2006) compared snow transport threshold formulas from Bagnold (1941), Li and Pomeroy (1997) (but tested~~
520 ~~without varying ambient temperature) and Lehning et al. (2000), which is reformulated after Schmidt (1980), with experiment results from a wind tunnel. They found good agreements for the Bagnold (1941) formula with $A = 0.18$. Clifton et al. (2006) found better agreements with experimental results for Bagnold (1941) over Li and Pomeroy (1997) and they state that the predictive power of a statistical analysis is limited compared against the approaches from Bagnold (1941) and Schmidt (1980).~~ The formula by Lehning et al. (2000) would require detailed snowpack properties which is not feasible at this point. Hence,
525 ~~we decided to compute u_{*t} after Bagnold (1941) here~~ m^{-2} for cumulative mass flux in the following, although SWE has the same units.

2.7 ERA5 mean snowfall rates

For the drift track coordinates of RV Polarstern, shown in Fig. 1, we extracted ERA5 (Hersbach et al., 2020) mean snowfall rates, which is the sum of the convective and large-scale snowfall in ERA5. While the large-scale snowfall is generated from
530 the cloud scheme in the ECMWF Integrated Forecasting System (IFS) (ifs, 2020), the convective snowfall is generated from the IFS convection scheme. The resolution for ERA5 over the sea is $0.28125^\circ \times 0.28125^\circ$, which is about 31×31 km. Hence, the extracted snowfall rate from ERA5 for the drift track does not refer to points but represents an averaged value over these grid cells closest to the drift track coordinates. The purpose here is to compare the ERA5 mean snowfall against snow cover SWE and sensors in this study.

535 2.8 Sensor and reanalysis comparison method

We computed the average SWE for the northern- and southern loop (Tab. 2) as we expect this combination of deformed SYI, remnant SYI, and FYI is more representative for an overall snow accumulation estimate ~~than choosing a snow deposition for one of these ice types. Additionally, in section 3 and Fig. 9 we will show, that change of average SWE along a several hundreds~~

of meters long section of the whole transect is over 200% from the average SWE along the whole northern transect, compared before and after a drifting snow event. This confirms the need for as long transect sections as possible to find an average snow mass value for an area that can be representative for the MOSAiC ice floe. Indeed it is impossible to determine at this point with this data set we made use of whether only the SWE derived from the northern- or southern- or the average of loops, is the best choice to evaluate snowfall. A snow height difference dataset based on laser scanners of an area that includes both, northern- and southern transects and an area beyond that, could be used to validate transect snow depth. However, we do not make use of such a dataset here. We will demonstrate in the coming sections that initial average SWE on the northern loop is about twice the value of the average SWE on the southern loop.

The SWE increase until January 2020 is much faster on the southern loop, hence, we see a different accumulation rate depending on whether we measure snow depth on SYI (northern loop) or FYI (southern loop). Indeed, what “most representative” means, also strongly depends on the horizontal extent of snowfall and wind patterns, i.e. the total accumulated snow mass that has fallen over a certain area but is re-deposited due to wind. This is a problem we are not able to consider in this study but can potentially be solved by computing snow mass based on the difference of airborne- or terrestrial laser scan derived heights. The reason why we decided to use an SWE average of Northern and Southern loop as reference, is that the MOSAiC ice floe consisted to large parts of these two ice types.

This average computed snow cover SWE serves then as our reference for the precipitation sensors and ERA5 snowfall. Note that for the averaging process, data were discarded when only the northern- or southern transect loop was measured on one day, except when the temporal distance between the measurement of northern and southern loop was short and there was no snowfall in between. This is only the case for 24 (northern) and 26 (southern) April. Hence, the transect averaged SWE starts on 31 October 2019 and ends on 24/26 April 2020, with a significant reduction of days of sampling, compared to the loop-differentiated time series that start on 24 October 2019 and end on 5 May 2020, all days of transect sampling available (Tab. 2). RMSE between snow cover SWE and sensor- and reanalysis estimated SWE was computed for the time period where no SWE decrease in between the days of the transect sampling has been detected by means of the computed snow cover SWE, which is all days before and including 20 February 2020. Here we used $n = 10$ days for subtracting SWE, which results in $n = 9$ days for error comparison. The RMSE is computed as mm and always refers to the precipitation sum between days of transect sampling. To discuss in more detail

To discuss the erosion influence on potential discrepancies of snow cover SWE and sensor estimated snowfall in more detail, in addition, RMSE was also computed for days after time periods where no significant amounts of horizontal mass flux were detected with the SPCs, i.e. where no erosion between two days of transect sampling was expected. The detailed comparison follows in the results section. These detected drifting snow periods until 20 February were 3 - 5 December, 19 December 2019, 30 Jan - 2 February and 18-20 February 2020. Hence, in this case, 5 December 2019, 6 February and 20 February 2020 were discarded from transect SWE time series for evaluation, hence $n = 6$ days, which are the days before and after the drifting snow events, were left over for comparison with sensors and ERA5. This results in $n = 5$ pairs for error calculation. The drifting snow free periods are marked as yellow areas in the graph of Fig. 11f. Note that due to the strong cumulative aspect (i.e. we compare snowfall that is accumulated always between the days of transect measurements), the difference is naturally reduced

Table 2. Used transect days of sampling, and specifications: Transect N/S refers to Northern/Southern Transect, averaged for validation refers to the days where the transect SWE was averaged as shown in Fig. 8, RMSE with drifting snow describes all days where SWE was subtract from the from the respective day before, while all days where subtracted in a row, RMSE without drifting snow / pair refers to the days used for validation where no or low drifting snow mass flux was detected in between while the respective days after which subtraction was performed consecutively are listed as well. The corresponding RMSE values including regression lines are shown in Fig. 12. The comparison with bulk SWE and SMP refers to the dates where direct comparisons are made with HS-SWE function derived SWE along the transect (Fig. 5.

Date	Transect N / S	Averaged for validation	RMSE with drifting snow	RMSE without drifting snow / pair	Comparison with bulk SWE and SMP
2019-10-24	N	-	-	-	-
2019-10-31	N / S	yes	yes (start)	-	-
2019-11-07	N / S	yes	yes	yes (start) / 2019-11-14	-
2019-11-14	N / S	yes	yes	yes / 2019-11-07	yes
2019-11-21	N	-	-	-	yes
2019-11-28	N	-	-	-	yes
2019-12-05	N / S	yes	yes	-	-
2019-12-19	N	-	-		-
2020-01-02	N / S	yes	yes	yes / 2019-12-05 / 2020-01-09	-
2020-01-09	N / S	yes	yes	yes / 2020-01-02 / 2020-01-16	-
2020-01-16	N / S	yes	yes	yes / 2020-01-09 / 2020-01-30	-
2020-01-30	N / S	yes	yes	yes (end) / 2020-01-16	-
2020-02-06	N / S	yes	yes	-	-
2020-02-20	N / S	yes	yes (end)	-	-
2020-02-27	N / S	yes	-	-	-
2020-03-05	N / S	yes	-	-	-
2020-03-20	N	-	-	-	-
2020-03-26	N	-	-	-	-
2020-03-30	S	-	-	-	-
2020-04-06	N	-	-	-	-
2020-04-16	N	-	-	-	-
2020-04-24	N	yes (avg with 2020-04-26)	-	-	-
2020-04-26	S	yes (avg with 2020-04-24)	-	-	-
2020-04-30	N	-	-	-	-
2020-05-07	N	-	-	-	-

when reducing the sample number. The reduction of validation pairs reduce the significance of the comparison, however, we additionally inter-compare the error change of the sensors/ERA5 which may strengthen the significance considering the role of wind.

575

3 Results

3.1 Snow mass accumulation and decrease

To estimate average accumulated snow mass along the transects, the SWE was computed for both transect loops over time as described in section 2.3. The SWE was rounded to integers for the following description in the text, except when two values that are compared are very similar. No rounding was conducted before any computations. The average computed SWE will also serve as reference comparison with snowfall sensors and ERA5 as described in section 2.8. Fig. 8a shows the derived SWE evolution as box- and whisker plots for the northern and the southern transect. The initial average SWE values for the northern loop (6466 mm on 31 October) are naturally higher than for the southern loop (2832 mm on 31 October), as the northern transect was situated mostly on deformed SYI. After 31 October 2019, the The value for the northern loop decreased step by step to around 54 to 65 mm until 5 December, while average SWE for the southern loop increased, especially between 14 November to 5 December by 24 by 29 mm to a very similar value of 5666 mm. From between 14 November and 5 December 2019 on, 2019. The SWE on both transect loops increased until to 92 mm on the northern loop and 80 mm on the southern loop, between 5 December 2019 and 20 February 2020. From then on, there was first a slight decrease and then a slight increase observed for both loops. It is noteworthy that even though the initial SWE over the remnant SYI and FYI (southern loop) was approximately only half of the value on the northern loop, it reached 89 a decrease observed in both loops, with a minimum of 79 % of the snow mass of mm on the northern loop by the end of the accumulation period (northern: 81 on the 6 April 2020 and a minimum of 73 mm on 24 April, southern : 72 mm on 26 April). This indicates a "saturation" snow accumulation, which we will discuss later. It can also be observed that the standard deviation increased for both loops over time (Fig. ??), though it was initially higher for the rougher deformed ice (35 mm on 31 October 2019) than for remnant, or FYI (13 the southern loop on 5 March 2020. On both transects, SWE increased afterward, to 90 mm on 31 October 2019). Most notable, standard deviations for both loops converged almost completely, where we find 46.8 mm for the northern loop on by 24 April 2020 and 46.281 mm for on the southern loop on by 26 April 2020. For both loops, the standard deviation did not increase considerably after 20 February, where 43.8 mm was reached on the southern loop and 43.1 mm was reached. Hence, even though the initial SWE over the remnant SYI and FYI (southern loop) was approximately only half of the value on the northern loop. This was coincident with the average SWE values that did not increase considerably from 20 February until, it reached 90 % of the snow mass of the northern loop by the end of the accumulation season. period.

We present results about snow mass decrease in the following. The mass decrease computed with the HS-SWE function from the transect is temporally compared against computed cumulative snow mass flux from the snow particle counters. Note that the cumulative horizontal mass flux is only an indicator for the strength of the erosion, but cannot be translated into actual eroded mass. To distinguish easier in the text between computed SWE decrease of the snow cover and cumulative mass flux and to avoid confusions, we keep the designation SWE for the snow cover but use kg m^{-2} for cumulative mass flux in the following, although SWE has the same units as kg m^{-2} . In the following, we present detailed results about snow mass decrease. Notably, we find a net mass decrease, computed with the HS-SWE function, of 99.5 mm for the northern transect loop between 27 February and 20 March for the northern loop. From The mass increased again to 90 mm between 20 March on, the mass

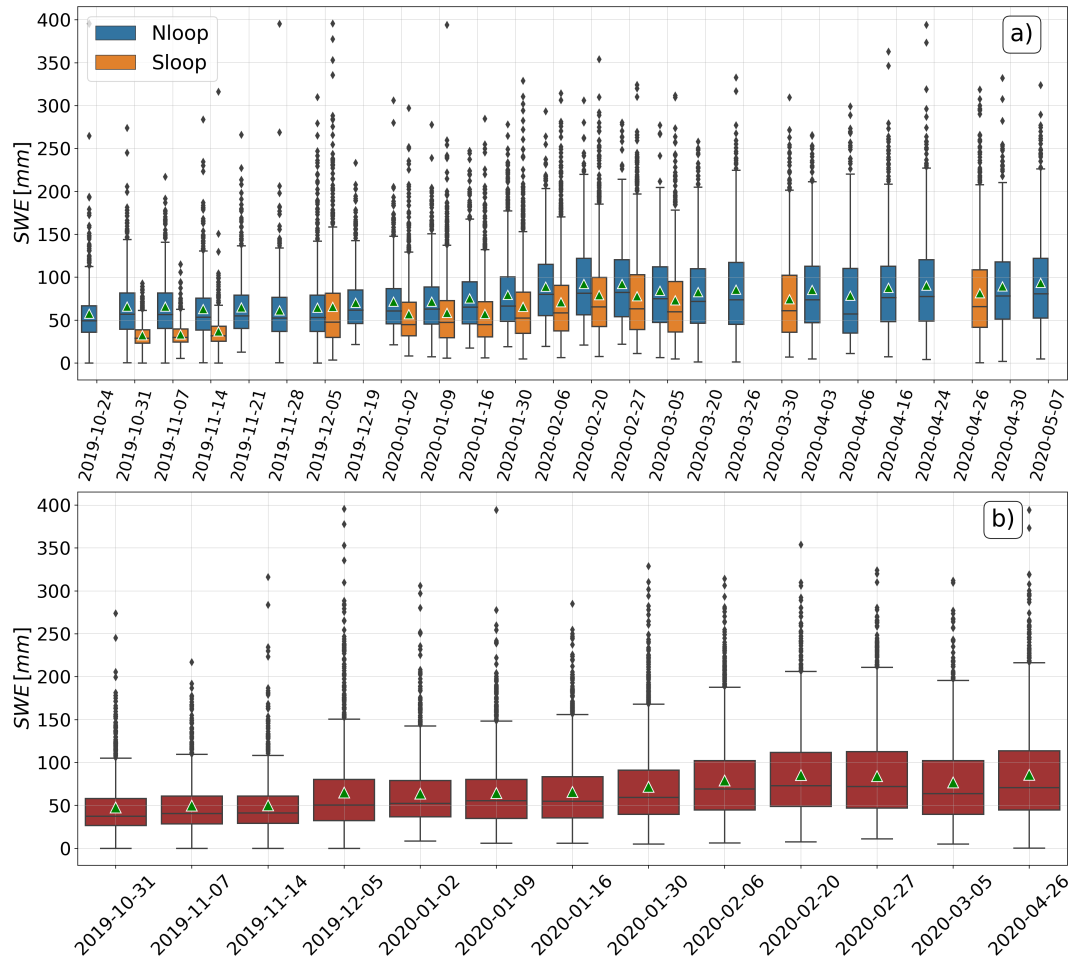


Figure 8. a) Box- and whisker plots for SWE estimates along the northern ("Nloop") and southern ("Sloop") transect, respectively. b) Shows box- and whisker plots for averages of northern- and southern transect loop. Horizontal lines show the median, green triangles the average, the boxes show the interquartile ranges (IQR) (25 - 75 %), the whiskers represent 1.5 times the upper- and lower values of the IQR. The dots represent outliers that are beyond 1.5 times the IQR. Note the different dates between a) and b) as data where only data for one loop was available was discarded for computation of b). The exception is the 24, and 26 April 2020 as the temporal distance was so close that these were averaged, too.

increased again. For and 24 April 2020. The maximum on the northern loop is reached with 94 mm on 7 May 2020. This however, is not comparable with the southern loop ,we find a mass decrease from 20 February on , from 71 mm down to 66 as the southern transect time series only last until end of April 2020. The SWE maximum on the southern loop is found as 81 mm on 5 March. After 5 March, the mass increased again. 26 April 2020.

615 into the period, where 1) the discrepancy between cumulative SWE from the precipitation sensors and SWE from the transect becomes large (Fig. 10b, Fig. 11a) and 2) where about 45 % (640 kg m^{-2}) of the total cumulative horizontal snow mass flux at

0.5 m above the surface over the whole measuring period of the SPC1104 has occurred (Fig. 11f). That means, over 45 % of drifted snow-mass appeared on only 19 % (30/158) of the days from the whole measuring time of the lower SPC. The period is marked as green shaded areas in Fig. 11. Most distinct in this period was the event on 24 - 25 February (marked as red shaded areas in Fig. 11), ~~in~~ during which 323 kg m^{-2} of cumulative mass flux was detected with the lower SPC - which is 23 % of the total detected cumulative mass flux on 1.3 % of the days the device was running. During this storm, a maximum peak of around 11 m s^{-1} was detected in the 1-h averaged wind speed data at 2 m above the ice, which means that the measured peak at shorter time intervals ~~was probably higher.~~

~~Average cumulative SWE of the snowpack (solid lines) and standard deviation (shaded areas) from this average for the Northern and Southern transect loop.~~

must have been higher. We computed the sum of the detected mass decrease that occurred between days of sampling and that is driven by erosion (but does not reflect the total eroded mass), for the northern loop as $\Delta \text{SWE} = -27$ $\Delta \text{SWE} = -24$ mm (between 31 October 2019 - 7 May 26 April 2020) and for the southern loop as $\Delta \text{SWE} = -11$ $\Delta \text{SWE} = -16$ mm (between 31 October 2019 - 24 April 2020). ~~However, as erosion occurred on different days for each loop, we find a much lower average of both transects as $\Delta \text{SWE} = -17$ mm, between 31 October 2019 and 26 April 2020.~~

Fig. 9 shows the SWE for the same section of the northern loop transect as in Fig. 5 (268 m length), for 20 February and 5 March 2020, which are before and after a drifting snow event. As the section on 5 March had twice the average horizontal Magnaprobe sampling distance compared to 20 February, and for better illustration, a simple moving average with a window of $n = 4$ was applied to the section on 20 February while a moving average with a window $n = 2$ was applied to the data from 5 March. A significant re-distribution due to wind is recognizable. ~~The~~ During the same period, the average decrease for this section was 12 mm SWE (from 82.6 mm to 70.1 mm - a relative value of 15 %), while for the whole northern loop the average decrease was 8 mm ~~during the same period.~~ (from 87.3 mm to 79.5 mm - a relative value of 9 %).

Finally, we present results of the average SWE of the northern- and southern loop (Fig. 8b). The average initial SWE value on 31 October 2019 was 4248 mm and increased to 7686 mm on 24/26 April 2020. Hence, we estimate the total mass increase over time as about 3438 mm. Over the transect average, the SWE decrease during the snow transport event was 5.5 mm on 24 - 25 February ~~2020 was 5.5 mm.~~ 2020.

3.2 Precipitation sensor and radar snowfall retrieval comparisons

To compare with the different estimates of snowfall, the cumulative SWE values were examined for each approach. The plot of cumulative snowfall between 31 October 2019 and 7 May 2020 without any corrections applied can be seen in Fig. 10a. The snowfall rates deviate heavily from ~~another between sensors~~ one another between precipitation data source and locations. The P2PS shows the highest cumulative snowfall, while the P2MC shows the lowest, although with limited data availability (Bartholomew, 2020b). As a result of the limited availability and wide spread between these two identical systems operated at different locations, we no longer consider ~~these instruments~~ the P2MC. The PWD22PS shows the lowest cumulative snowfall, with 97.6 mm while the highest is estimated by the P2PS (290.3 mm). It also stands out that the cumulative sum of ERA5

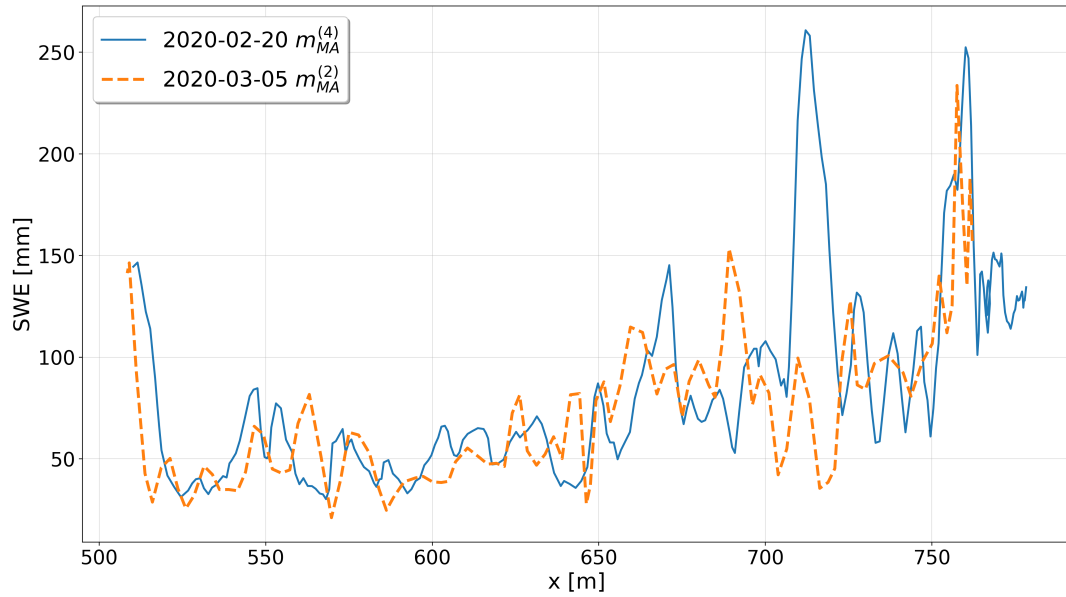


Figure 9. Retrieved SWE from same Magnaprobe section as shown in Fig. 5 on 20 February before a strong drifting snow event that occurred on 24 - 25 February and mass distribution on 5 March 2020 after the drifting snow event. The superscript numbers in brackets in the legend correspond to the count of numbers of the moving median window used for plotting.

650 (110 mm) by 7 May 2020 is very similar to that of the snowfall ~~retrieved~~estimated from the KAZR (114 mm).

Fig. 10b compares the northern, southern, and average transect loop SWE values with the uncorrected cumulative snowfall from a subset of the sensors and the ERA5 mean snowfall. ~~Especially the~~The PWD22PS is well in line with SWE from the snow cover until mid-end of February 2020. Afterwards, more snow over the ice was eroded, which is indicated by high
655 horizontal drifting and blowing snow mass flux measured with both SPCs (Fig. 11f). After mid-February, the snow cover SWE did not increase significantly and instead stagnates, while the sensors indicate periodic snowfall. Thus, the discrepancy between sensor snowfall rates and snowpack SWE became larger.

~~We computed the RMSE for the~~RMSE with respect to SWE difference is shown for snowfall sensors, KAZR ~~retrieved snowfall~~ and ERA5~~relative to the SWE of the snow cover for the time period 31 October 2019–20 February 2020, before the~~
660 ~~first decrease of the SWE from the transect average was observed~~, (Fig. 12, Tab. ??). In this time). We consider the case first where snowdrift time periods are included in the evaluation (i.e. all days of sampling until and including 20 February 2020). For this period, a SWE increase of the snow cover of about 3637 mm was detected. ~~In addition to the whole time period~~(Fig. 12a, cumulated within the intervals in between n = 9 days). ~~RMSE was~~Fig. 12b, in contrast, shows RMSE computed only for days when no drifting or low drifting snow occurred (detected with the SPCs) in between the last and the current day of sampling
665 ~~(Fig. 12b, n = 6 days). The detected drifting snow periods until 20 February were 3–5 December, 19 December 2019, 30 Jan–2 February and 18–20 February 2020 (Fig. 11f). Hence, we discarded 5 December 2019, 6 February and 20 February 2020 of~~

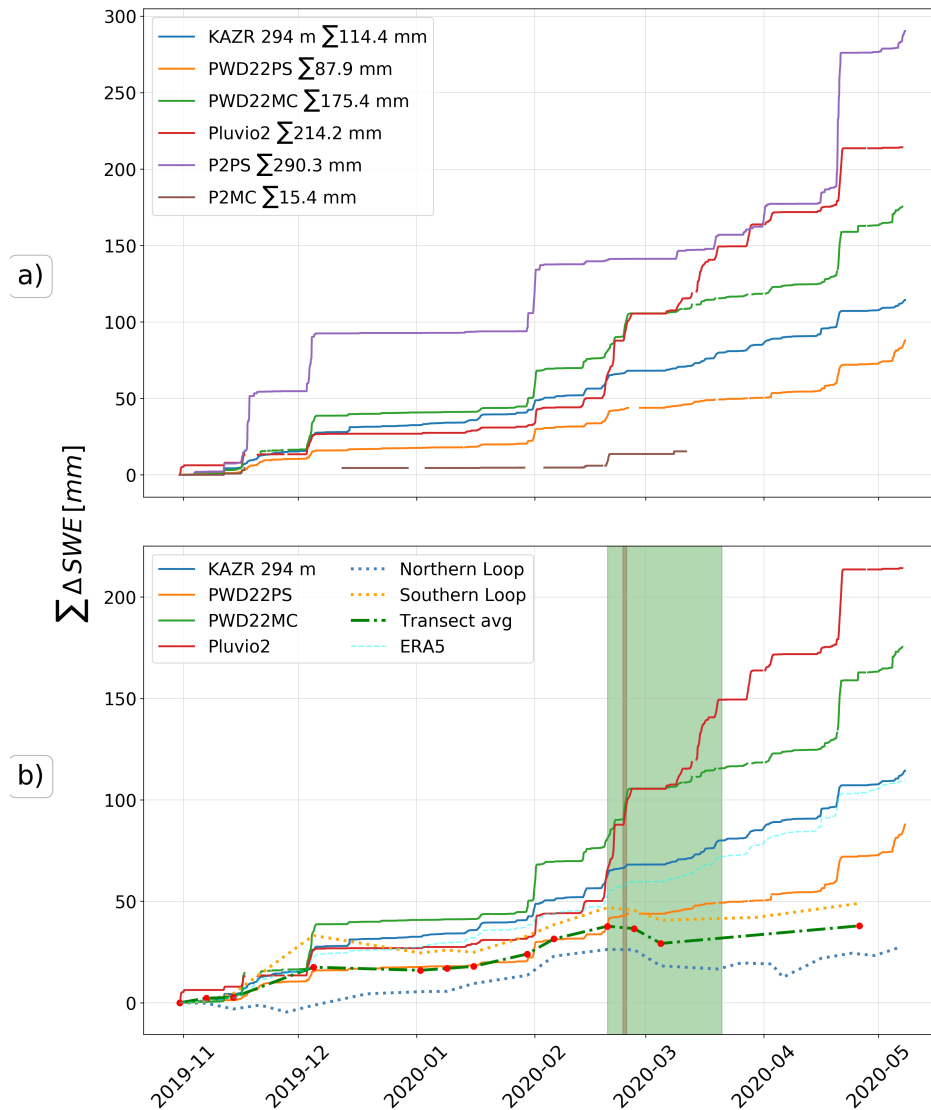


Figure 10. a) Cumulative snowfall for different installed precipitation sensors during MOSAiC from 31 October 2019 to 7 May 2020. b) Sensors, ERA5 estimates and SWE of the snow cover. The red dots show the days on which both transect loops were sampled. The red shading shows the time period of the strong drifting snow event on 24 - 25 February 2020. The green shaded areas mark the strong drifting snow period where 45 % of all cumulative horizontal mass flux was detected (Fig. 11).

the transect SWE time-series. For this time period, an increase of 13.7 mm SWE was detected for the transect. For the whole evaluated time period Considering the first case ($n = 9$ days), all sensors appear to overestimate. However, as expected, this indicates, that erosion occurred in the time periods between the days the transects were sampled, which leads to a systematic positive bias of the sensors. For this period—assuming that no erosion occurred—case the PWD22PS is most similar to the

670

SWE (RMSE = 2.52.06 mm), followed by ERA5 (4.33.37 mm), the KAZR (5.54.7 mm), Pluvio2 (7.26.78 mm), PWD22MC (9.88.74 mm) and P2PS (26.726.39 mm).~~However, when eliminating the days before which drifting snow has been detected with the SPCs~~

~~However, in the second case (n = 6 days),~~ the differences are reduced significantly for all devices and ERA5, too. In this case, PWD22PS still Pluvio2 shows the closest comparison to the SWE (RMSE = 1.1.72 mm)~~but with a systematic average bias of -1.1. PWD22PS shows good agreement (RMSE = 1.96 mm) with a tendency towards underestimation.~~ It reveals that also ERA5 performs well (RMSE = 1.22.88 mm), but with an overestimation tendency, ~~with only one negative biased value found on 7 November of -1.3 mm, while all other values as all validation pairs~~ were positively biased with an average of 1.12.0 mm. The KAZR performs similarly, with a bias of -1.2 mm on 7 November while all other values were positively biased with an average of 1.4 mm. The Pluvio2 performs well without wind influence. Besides ERA5, the KAZR (RMSE = 1.43.55 mm), systematically positively biased with 4 negatively biased values (-1.52.4 mm avg) and 2 positively biased values (0.5 mm), show least RMSE decrease comparing to the case using n = 9 days, which is very likely the result of the fact that both ERA5 and KAZR are not wind-vulnerable in contrast to the other sensors. The largest difference of the sensors relative to the SWE snow cover is found for P2PS (RMSE = 2.93.2 mm). ~~However, it must be noted that all sensors except of the P2PS underestimate the snowfall by 7 November 2019, hence we can question the validity of the comparison for this day. In this case, we can speak of an unconditional overestimation of ERA5 and the KAZR.~~

Note that due to the strong cumulative aspect (i.e. we compare snowfall that is accumulated always between the days of transect measurements), the difference is naturally reduced when reducing the sample number. Nonetheless, the fact that there is an overall tendency towards a decrease in the apparent overestimation of the sensors relative to the SWE, indicates that erosion likely did occur before the days eliminated in Fig. 12b. For the PWD22PS, the ~~difference compared to SWE RMSE~~ is only reduced by about 502.5 %, ~~while for the for ERA5 by 13 % and the KAZR by 23.7 % while for P2PS the RMSE was reduced by 88 % and for PWD22MC ,for instance, the difference was reduced to about 30~~ reduced by 69 % of its original value. For the Pluvio2, the difference was reduced to 26 % of its initial value. While the apparent overestimation of the sensors in Fig. 12a is likely due to erosion (and hence strongly biased), ~~the these~~ different magnitudes of RMSE reduction (Fig. 12b, ~~Tab. ??~~) suggest that PWD22PS is less affected by overestimation due to high wind speeds that accompany blowing snow, compared to PWD22MC or Pluvio2, both of which were installed near the surface. ~~This is mainly due to a a much lower bias for PWD22PS on 5 December 2019 and 6 February 2020, before eliminating drifting snow periods, compared with Pluvio2 and PWD22MC, but also compared against P2PS, which is a device known for wind vulnerability towards overestimation of snowfall.~~

In summary, if we only consider time periods without drifting snow, ~~PWD22PS and ERA5 Pluvio2 and PWD22PS~~ compare most favorably with SWE, ~~however~~ with reasonable results for ~~Pluvio2, KAZR and ERA5, KAZR, PWD22MC and P2PS,~~ as well. ~~The P2PS shows the largest differences.~~ When also considering high wind speeds and blowing snow, the PWD22PS still appears to compare most favorably with SWE, while especially P2PS, PWD22MC and Pluvio2 appear to be most negatively affected by high wind speeds.

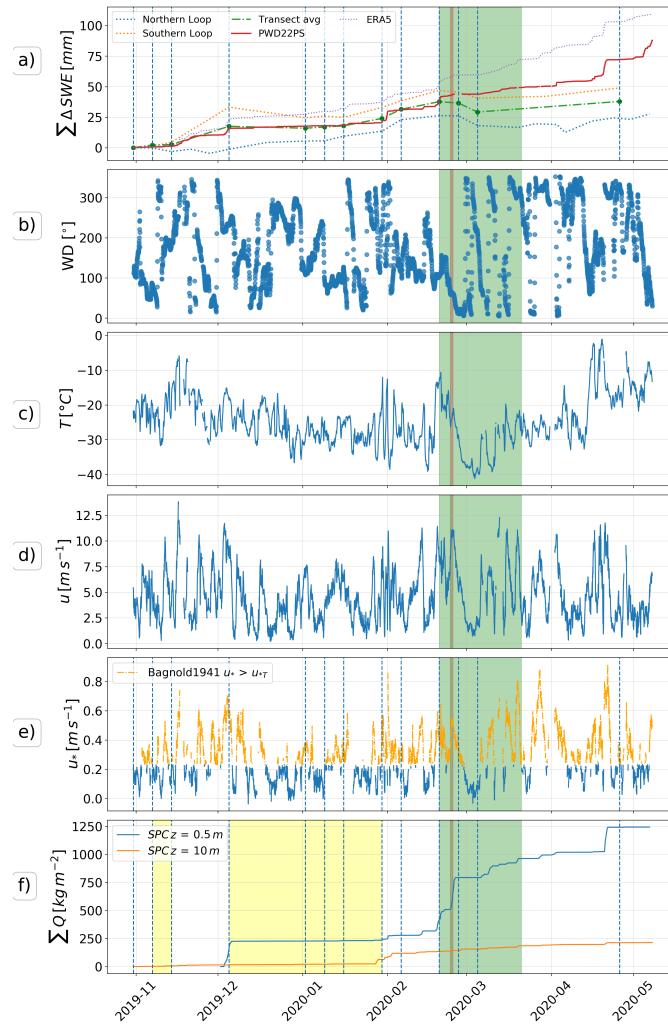


Figure 11. Time series from 31 October 2019 to 7 May 2020 for a) estimated SWE from the transect and HS-SWE model as well as cumulative snowfall from ERA5, cumulative snowfall from PWD22 on Polarstern ~~and~~ KAZR derived snowfall rates. b) wind direction at 2 m, c) air temperature at 2 m above the snow d) wind speed at 2 m height, e) computed friction velocity threshold for snow transport after (Bagnold, 1941), f) cumulative horizontal mass flux with the snow particle counter at 0.5 m above the snow and at 10 m height, respectively. The green shaded areas mark the strong drifting snow period where 45 % of all cumulative horizontal mass flux was detected. The vertical blue dashed lines mark the days where both transect loops were sampled. The yellow shaded areas mark the time periods no to very low mass was detected by means of the snow particle counters.

705

~~RMSE of different devices and ERA5 relative to the computed SWE from the snow cover. The second column shows RMSE before and including 20 February 2020, excluding time periods where drifting snow was detected with the SPCs ($\Sigma_{transect} = 13.7 \text{ mm}$). The third column shows RMSE that does not neglect drifting snow days but for the same time span~~

($\sum_{\text{transect}} = 35.6 \text{ mm}$): Device/Reanalysis RMSE-mm excluding detected snowdrift RMSE-mm including detected snowdrift PWD22PS
1.1 2.5 ERA5 1.2 4.3 Pluvio2 1.4 7.2 KAZR 294 m (Matrosov, 2007) 1.6 5.5 PWD22MC 1.7 9.8 P2PS 2.9 26.7

710 ~~We find in total of~~ Taken together, we detected five significant snowfall events. If we use ~~PWD22MC~~ PWD22PS as reference, we find for 3 - 5 December 2019: $\approx 5.5 \text{ mm}$, 30 January - 3 February 2020: $\approx 10 \text{ mm}$, 18 - 21 February 2020: $\approx 8.5 \text{ mm}$, 16 - 21 April 2020: $\approx 16.5 \text{ mm}$, 4 - 7 May 2020: $\approx 14 \text{ mm}$. Hence, about 54 mm of snow fell during events, while the other 33 mm fell in between, e.g. as trace precipitation or diamond dust.

715 To better illustrate the blowing snow influence on sensors that is already suggested by Fig. 12, we made scatter plots of snowfall rates from different sensors with respect to the PWD22PS. Fig. 13 shows a scatter plot for the short time of two days between 24 and 25 February, where high drifting snow mass fluxes were detected. We can clearly see that the Pluvio2 (Fig. 13b) and the PWD22MC (Fig. 13d) strongly overestimate snowfall relative to PWD22PS, while P2PS (Fig. 13a) and KAZR (Fig. 13d) stay largely unaffected and only measure trace precipitation of 0.1 to 0.2 mm h^{-1} . This becomes even clearer
720 when we look at snowfall rates of Pluvio2 (Fig. 14a) and PWD22MC (Fig. 14b) versus the horizontal mass flux detected by the SPCs.

Scatter plots for the whole period (31 October 2019 - 7 May 2020) for different sensors versus horizontal mass flux ~~show~~ reveal the influence of drifting and blowing snow, too (Fig. 15). Pearson correlation coefficients show medium positive correlations for mass flux and snowfall from Pluvio2 at SPC height at 0.5 m (Fig. 15b, $r = 0.55 - 0.58$) and PWD22MC (Fig. 15d, $r = 0.54 - 0.55$) while a weak negative correlation is observed for P2PS (Fig. 15a, $r = -0.19$) and for PWD22PS (Fig. 15c, $r = 0.26$). These results indicate that instruments collocated on the ice at about 1 - 1.5 m height are much more affected by drifting and blowing snow than instruments installed on Polarstern at 22 m height.

730 3.3 ERA5

~~We compared~~ We compare ERA5 mean snowfall rates against the snow cover SWE and against PWD22PS. As described above, when we consider the comparisons illustrated in Fig. 12 ~~and Tab. ??~~, ERA5 shows reasonable results with a relatively low RMSE of ~~1.22.8 mm~~ 1.22.8 mm, ~~an overestimation tendency and even an unconditional overestimation when neglecting 7 November 2019 as evaluation value~~ and an overestimation tendency. Assuming PWD22PS as reference, ERA5 shows an overall good
735 timing of the snowfall events (Fig. 10b, Fig. 11a). As for the transect SWE validation, it overestimates snowfall relative to PWD22PS, too, in this case systematically and with an acceleration of the positive bias from the end of February on. This leads to an overestimation (relative to PWD22PS) of the total accumulation of almost 22 mm (+25 %) by the end of the investigation period. We computed the RMSE for the snowfall rate relative to PWD22PS as 0.06 mm h^{-1} for the whole time period from 31 October to 7 May 2020.

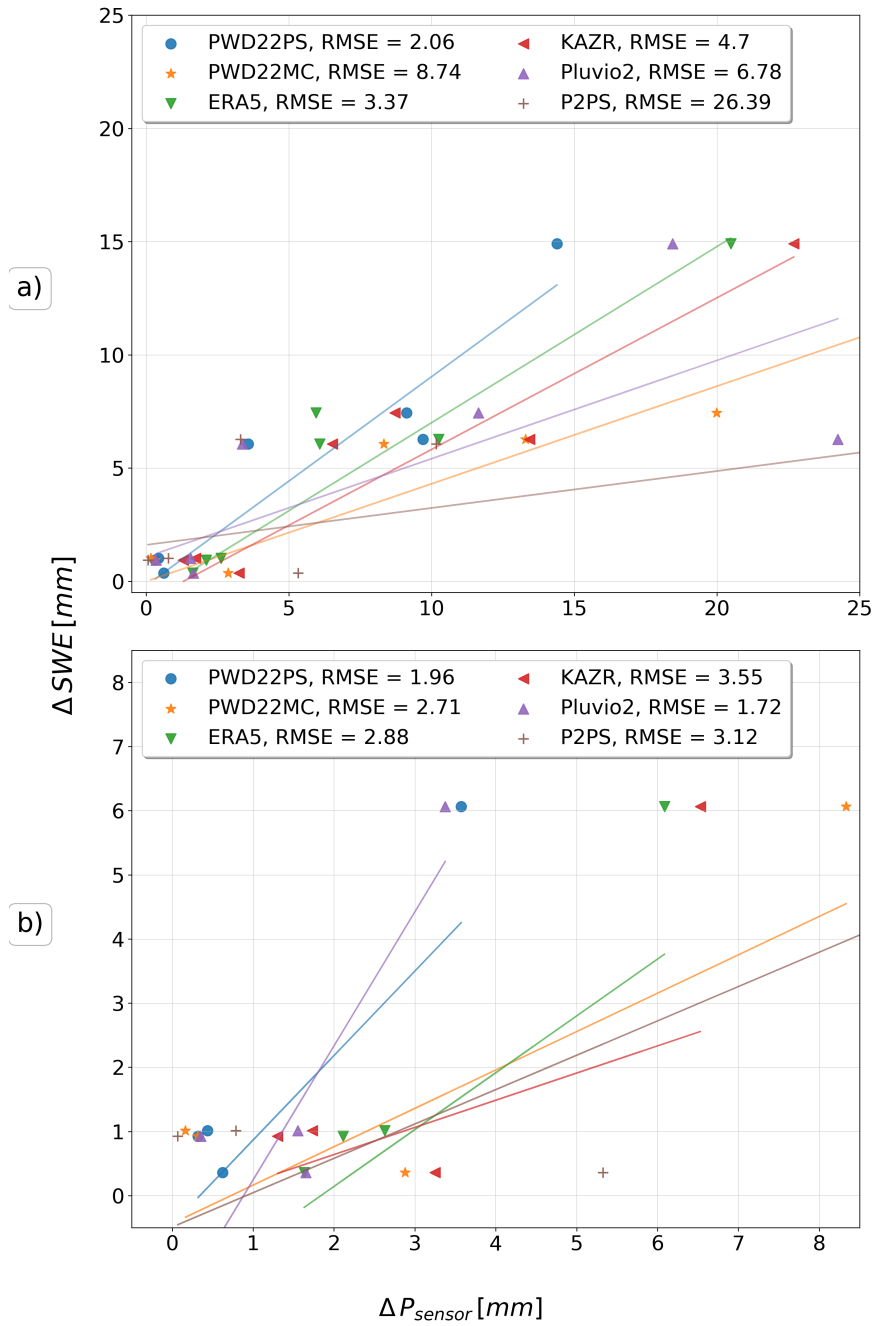


Figure 12. a) RMSE [mm] of the sensors and ERA5 with respect to snow cover SWE, for the time period before 20 February 2020 with $n = 9$ days of sampling, including days when drifting snow was detected. b) as a) but without days when drifting snow was detected before ($n = 6$ days). The lines show the linear regression for each sensor.

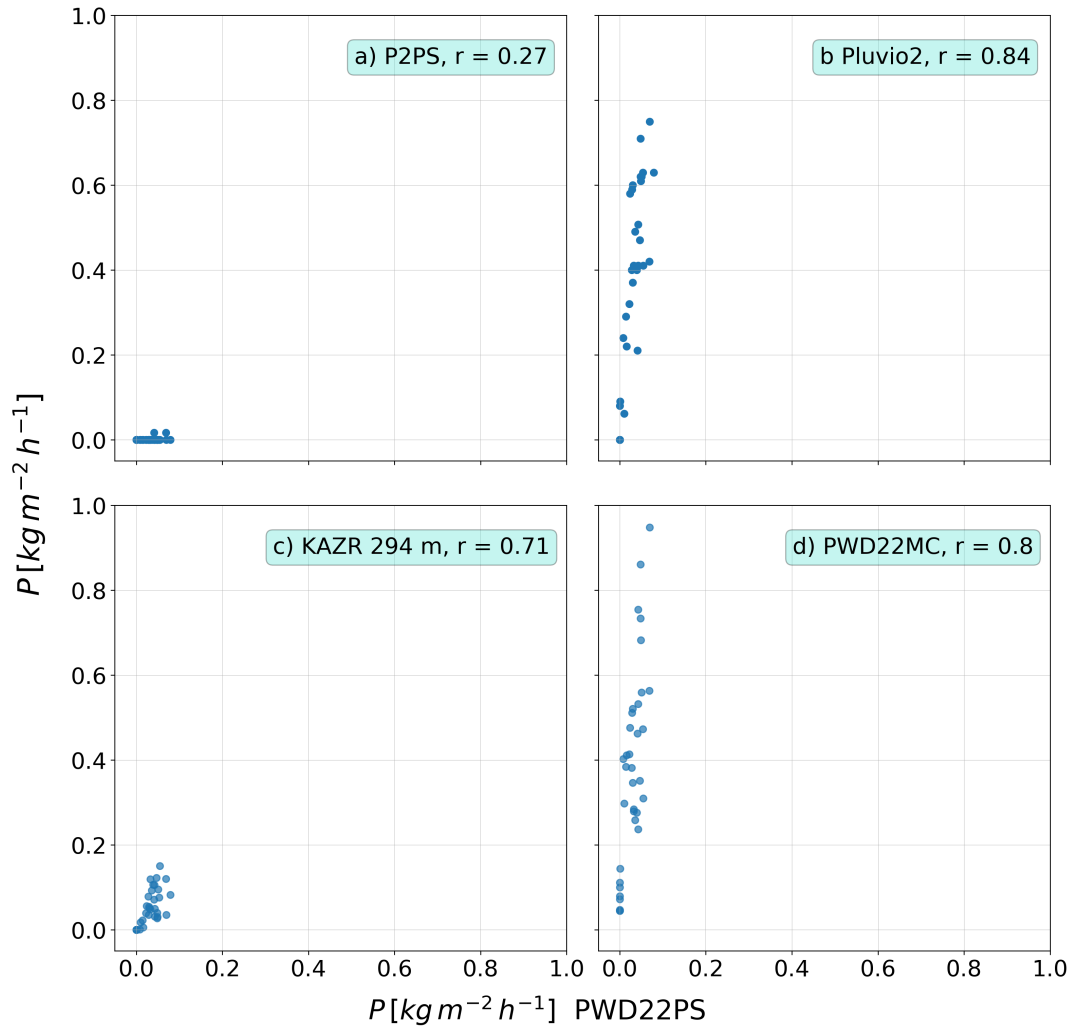


Figure 13. Scatter plots of PWD22PS snowfall rates vs. different sensor snowfall rates for the drifting snow event on 24 - 25 February 2020 for a) P2PS, b) Pluvio2, c) KAZR and d) PWD22MC.

740 4 Discussion

4.1 Snow mass balance

With the fitted HS - SWE function, we were able to retrieve the SWE of snow cover over the ice for the transect loops. We found a SWE increase from the beginning of the measurements until around 20 February 2020, while from then on, could show that comparing the average SWE of a northern loop section with 268 m length (Fig. 9) with the average SWE did not increase anymore, although snowfall was occurring. Following three significant snowfall events (3–5 December 2019: ≈ 5.4 mm, 30 January–3 February 2020: ≈ 10 mm for the whole northern loop, the SWE change due to a drifting snow event was different by

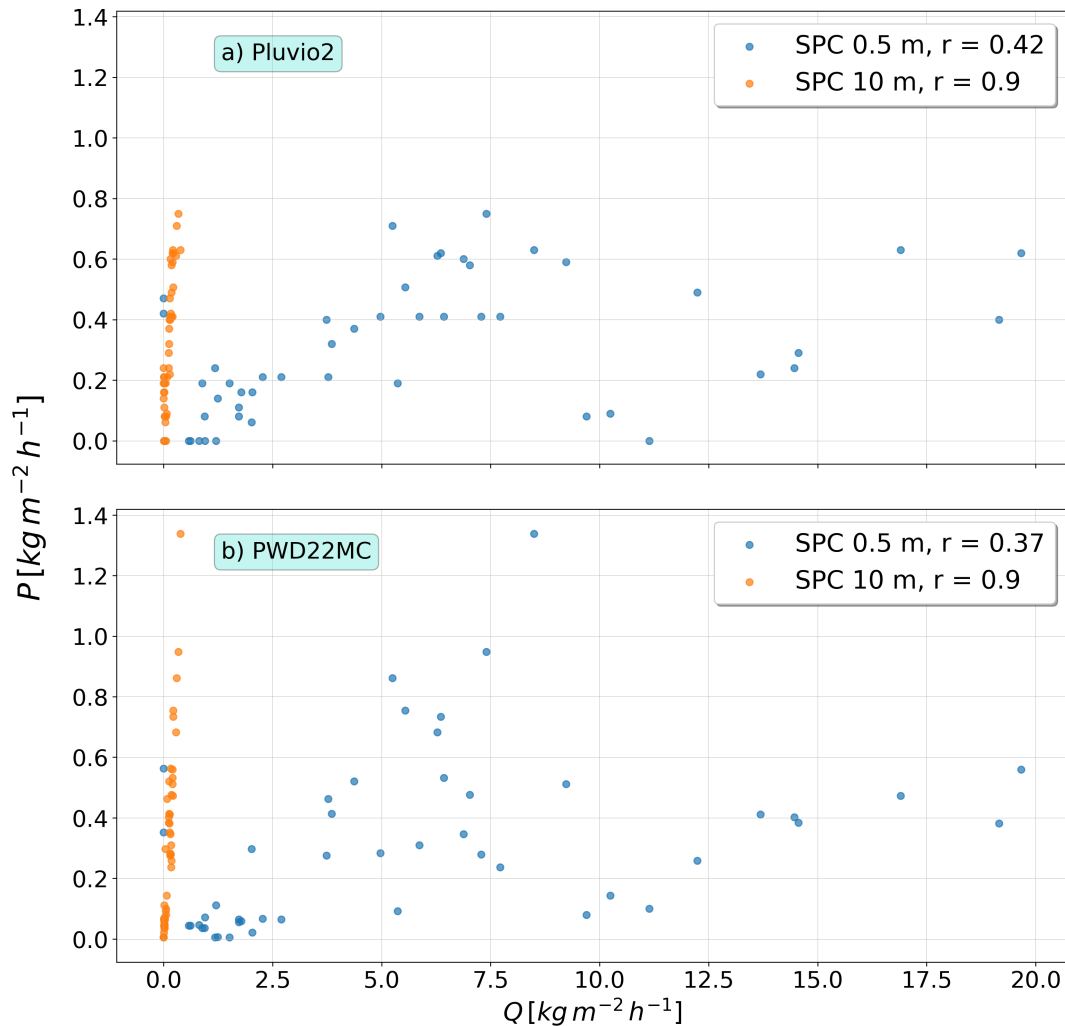


Figure 14. Scatter plots of sensor snowfall rates vs. SPC mass flux for the drifting snow event on 24 - 25 February 2020 for a) Pluvio2 and b) ~~PWD22S3~~PWD22MC.

more than 100 mm, 18%. This shows the need for sampling with large spatial extents which was one reason - 21 February 2020: ≈ 8.5 mm), a strong drifting and blowing snow event occurred on 24 besides including both characteristic ice types for the ice floe during MOSAIC, SYI and FYI - 25 February. Consequently, the total SWE decrease on the southern transect loop was about 5 mm until 5 March 2020, while the decrease was almost 9 mm on the northern transect loop. The why we decided to use the SWE average of both, northern- and southern loop as a reference for snowfall sensor and reanalysis comparison. Nonetheless, a snow height difference comparison of terrestrial laser scanning (TLS) or airborne laser scanning (ALS) based digital elevation models and transect snow depth would be desirable.

For the evaluation of the SWE in- and decrease, note that the net decrease generally includes eroded mass in addition to incom-

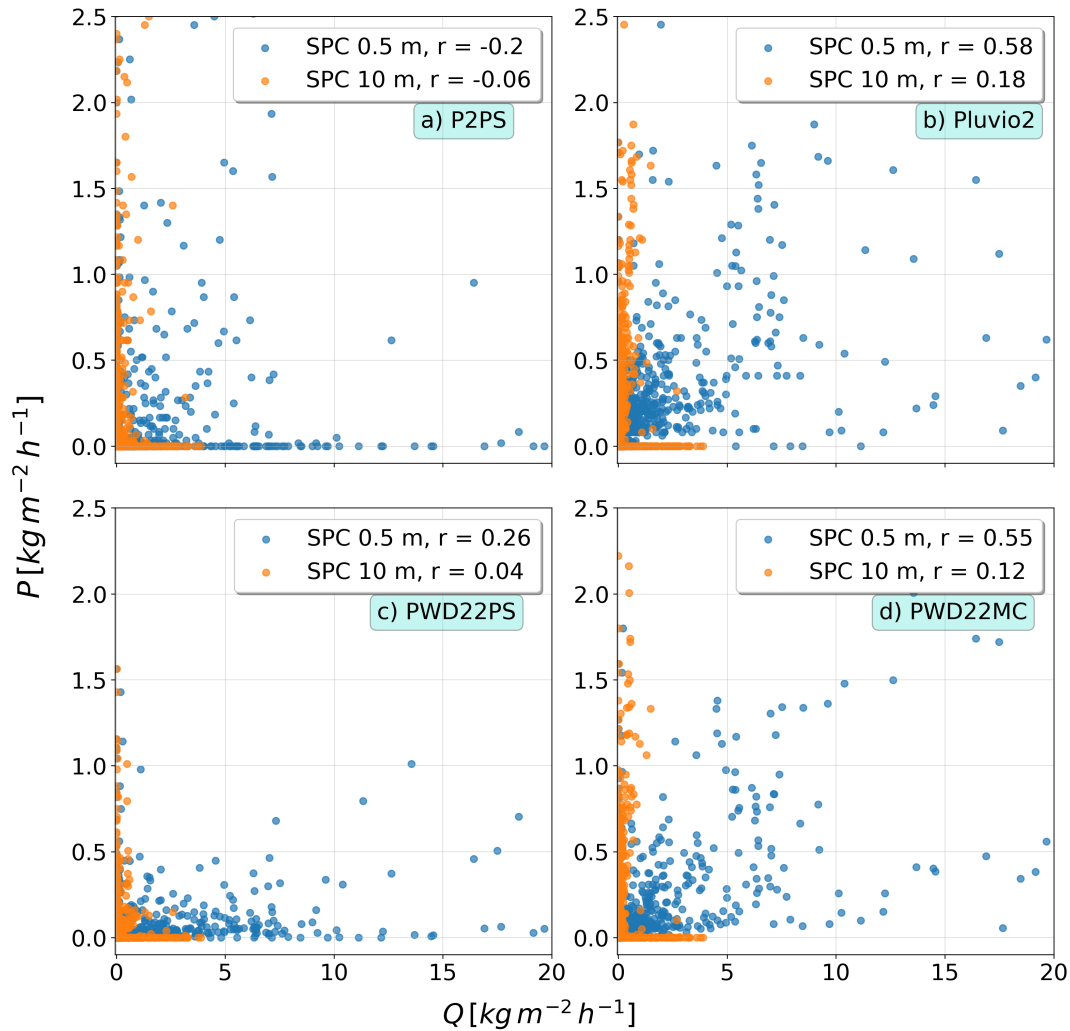


Figure 15. Scatter plots of sensor computed snowfall rates vs. SPC mass flux for the whole time period for a) P2PS, b) Pluvio2, c) PWD22PS and d) PWD22MC.

755 ing precipitated mass, hence the eroded mass was often larger than the precipitated mass. Followed by the drifting snow event on 24–25 February, we find two significant snowfall events. When considering PWD22PS as reference, the snowfall sums for these events were: 16–21 April 2020: ≈ 16.5 mm, 4–7 May 2020: ≈ 14 mm. Hence, about 54 mm of snow fell during five events in total, while the other 33 mm fell in between, e.g., as trace precipitation or diamond dust. These two quantities can only be determined separately when considering snowfall events and no drifting snow events at the same time in between days of sampling.

760

We observed an average snow mass increase of 36 mm until 20 February 2020, and from then on a slight decrease was observed to 34 mm until end of leg 3. Within this time period, the decrease was strongest between 20 February 2020 and 5 March 2020, with almost 7 mm down to 28 mm. From The constant value of SWE from 20 February 2020, also the standard deviation stabilized for both transect loops, on deformed SYI and remnant SYI/FYI at around 44 to 45 mm (Fig. ??). This on, raises the question of a saturation mass of snow that can accumulate in this windy environment. ~~As the time of the maximum mass goes along with the stabilized standard deviation,~~ where the roughness of the surface might be a limiting factor. ~~It~~ Possibly, this is due to smoothening of the initially rough sea ice surface due to deposited drifting snow. The less rough the surface, the less snow can accumulate. This may be also related to the faster increase of SWE on FYI compared to SYI, and the fact that the initial 50 % of SWE over FYI reached 90 % of the SWE over SYI by end of the investigation period. One hypothesis might be, that over SYI, the snow mass is rather saturated, as the snow had time to smooth the ridges already over one season before, while FYI might be more rough as long as fresh ridges are existent. Weiss et al. (2011) found in general higher aerodynamic roughness lengths for SYI. With higher roughness length we expect more flow separation and more accumulation. However, the study is more than 10 years old and given the fact that average ice thickness is thinning in the context of global warming, we might see less stable FYI by the year 2019/2020, resulting in more ice motion and ridge formation - and leading to larger aerodynamic roughness lengths.

It also remains to be investigated why most drifting snow and erosion occurred from 20 February 2020 on, as indicated by transect SWE decrease and horizontal mass flux. Indeed, snow mass flux rates are high until 27 February, but on the sampling day itself, the wind speed dropped as well as the mass flux rate (Fig. 11). Between 27 February and 5 March, the probability for snow transport was very low, indicated by both, SPC mass flux and computed threshold friction velocity. One might consider that lower horizontal sampling distance ($\bar{D}_{5Mar} = 1.6$ m) could have led to an underestimation of the accumulated snow. However, from Fig. 6 one can see that reducing the sampling frequency by half has no significant effect on the average. One can only see a significant fluctuation from reducing the frequency to 1/3 and below. Hence, a reduced sampling frequency does not explain the mass decrease. Ice dynamics that affected the transect occurred from 11/12 March 2020 and thereafter. Hence, no ice dynamics influenced the sampling on 5 March 2020. Nevertheless, an impact on the time series cannot be excluded from 12 March 2020 on. Looking at horizontal mass flux and decreased computed snow mass together, we ~~suggest cannot say for sure~~ that erosion was largely responsible for the mass decrease . Other than observed, the critical between 27 February and 5 March. The threshold friction velocity was still exceeded on the 27 February, indicating snow transport, while low recorded mass flux indicates low transport. The computed threshold friction velocity after Bagnold (1941) (Fig. 11e) does not indicate ~~more-much more or less~~ drifting snow compared to other time periods. However, the formula after Bagnold (1941) is rather simple and neglects varying temperatures and therefore varying bond ~~strengths-strengths~~ of snow particles at the top of the snowpack. The bond strength depends strongly on weather history. The preceding long period of air and snow surface temperatures often below -30 °C (Fig. 11c) could have inhibited sintering, which is strongly temperature-dependent and develops more slowly at lower snow temperatures (Colbeck et al., 1997; Colbeck, 1998; Blackford, 2007). The Bagnold formula does not consider splash entrainment (Comola et al., 2017; Comola and Lehning, 2017) or surface roughness and atmospheric stability, which

largely affects the near-surface wind field. Furthermore, the used bond strength parameter of $A = 0.18$ ~~that we used in the~~
~~computation Eq. 2.6,~~ was found by ~~(Clifton et al., 2006)~~ Clifton et al. (2006) in a wind tunnel, with ~~a~~ an ambient temperature
range of -16 to 0°C ~~which.~~ However, this temperature range was undershot most of the time during our investigation period of
800 MOSAiC (Fig. 11c).

In any case, we expect the transect time series until and including 5 March 2020 to be mostly valid. However, the usage of the
transect SWE for sensor- and reanalysis comparisons is limited, as erosion has very likely occurred over some periods between
the transect sampling days. Hence, the amount of erosion is not quantifiable based on the available transect data. Nonetheless,
805 days where it is likely that no erosion occurred since the previous transect sampling prior to 20 February 2020 could be detected
by means of snow particle counters. The cumulative transect SWE of these time periods was then compared against cumulative
SWE from the sensors and ERA5 for the same time periods, which will be discussed in the next section. The validity of the
SWE time series decreased with increasing ice dynamics from 11/12 March 2020 on and with decreasing temporal sampling
frequency on both northern and southern transect loop. ~~The largest gap in sampling occurred between 26 March and 24/26 April.~~
810

If we assume, based on the findings, that PWD22PS is least affected by blowing snow, and provides a reasonable estimate
of snowfall, then the snowfall between 31 October 2019 and 26 April 2020 was about 72 mm. We know that the PWD22PS
showed the lowest cumulative snowfall and a systematic negative bias compared against ground truth (Fig. 12). Further, it
has been suggested that PWD22PS tends to underestimate snowfall, ~~where values found of~~ with values of down to 30 % less
815 compared to a Geonor gauge ~~in~~ within a DFIR (Wong (2012a), Tab. 1). Until 7 May 2020 as end of MOSAiC leg 3, the total
snowfall would then be at least about 98 mm in 189 days. If we assume the ~~retrieved~~ estimated snowfall from the KAZR as
upper limit for cumulative snowfall (as it was demonstrated that Pluvio2 and PWD22MC were affected by wind and blowing
snow towards overestimation), we find about 114 mm. This value is comparable with the cumulative snowfall from ERA5
(110 mm). Hence, during 189 days, was ~~assume we have as the best estimate~~ that the total snowfall was between 98 and
820 114 mm. With the total mass increase of ~~34~~ 38 mm for the transect SWE during the full observation time, we can approximately
compute the minimum total eroded mass as ~~38~~ 34 mm until 26 April ~~2020, which is more than the value of the mass that has~~
~~accumulated along the transect during the same period. With more than 2020.~~ With almost 50 % of eroded snow mass, we find
comparable magnitudes as Leonard and Maksym (2011), although they investigated snow over Antarctic sea ice and their time
period for investigation was only about 1 month. However, our findings also compare well to results from Essery et al. (1999).
825 Further sensor assessments discussions are made in the next section.

Sublimation of snow crystals during trace precipitation or diamond dust could have led to snowfall detection in the optical
sensors but no SWE increase of the snow cover. However, the study design does currently not allow to investigate that but it is
recommendable to be investigated in detail. Earlier studies suggest that blowing snow sublimation may be responsible for about
830 6 % for the mass sink (Chung et al., 2011). The relatively low sublimation rates also arise from the high relative humidities
found over sea ice, inhibiting further sublimation due to a quick saturation of the air. Snow cover sublimation can generally be

expected to be negligible during polar night (Webster et al., 2021).

Studies of Déry and Tremblay (2004), Leonard et al. (2008) and Leonard and Maksym (2011) indicate that, besides sublimation, large parts of drifting and blowing snow will drift into the open water of leads. However, for the drifting snow event on 24 - 25 February, there was ~~not no~~ significant open water area in the vicinity. Thus, without such a local sink, we would expect that even though snow was eroded, more snow-mass would be delivered from the upwind side at approximately the same amount. However, the given mass of drifting snow from the upwind side depends on the low-pressure system's extent and trajectory associated with the high wind speeds. In Fig. 11 we see that after the event, some atmospheric parameters have changed significantly and rapidly (a temperature drop, a decrease in wind speed). The rapid change of atmospheric conditions could explain why no "new" snow has been transported from the windward side. Another important factor could be, that the area that the transect covers, has a relatively low surface roughness, with ridges that were generally shorter than in the surrounding region. Erosion might be large over these relatively smooth areas that the transect covers, and the delivered drifting snow from the upwind side could have been deposited at higher ridges upwind. But even a just frozen lead will be filled by drifting snow after a while, that would lead to a mass sink on the upwind side, inhibiting further snow transport downwind. Considering the ALS-based digital elevation map of the floe (Fig. 2) and the wind direction around 24 - 25 February (between North and North-East) (Fig. 11b), it is evident that the northern transect was likely to be partially wind-shadowed by higher surface structures on the upwind-side. This wind-shadowing can lead to less wind transport downwind but maybe also to less erosion due to lower surface friction. This is suggested by our findings, too, as we found more substantial erosion over the northern transect loop. During the drifting snow event, the southern transect was often in the wind-shadow of the vessel and other installations (Fig. 2), leading to ~~decelerations~~ deceleration and less surface friction that could have led to snow transport or erosion. In the case of more deposition upwind, the mass over the sampled area would decrease even if the friction velocity behind the obstacles is decreased, which leads to less erosion. The computed SWE would not be representative for the whole floe in this case. While potentially interesting, the method used in our study does not allow to investigate these balances. Another reason for a computed SWE decrease during the later part of the observations might be wind-induced compaction of the upper snowpack. With our approach, we assume almost a linear relationship between snow depth and SWE. However, snowdrifts consist of dense packed, rounded grains (Fierz et al., 2008). Hence, in this case, we probably under-estimate the increase (decrease) of the SWE in case of drifting snow deposition (erosion). A thorough investigation is recommended, but beyond the scope of this study. Further studies based on SMP measurements are planned. Another reason for underestimating snow depth with spatio-temporal sampling approaches might be that parts of the snow are caught in the porous parts of ridges, depending on wind direction and on the age of the ridges. This is something that is not covered by this study. Furthermore, for the erosion, the upper snowpack's microstructural composition plays a role, especially the strength of the bonds associated with sintering and temperature.

Snowfall rates from precipitation gauges show large differences among each other. Battaglia et al. (2010) already showed that OTT Parsivel instruments overestimate the number of large particles. Further, the uncertainty they found regarding fall velocity was high. Wong (2012a) also found a large overestimation of snowfall for the OTT Parsivel of about 50% (Tab. 1), while the overestimation became larger during high wind speeds. The relatively low accuracy of $\pm 20\%$ for snowfall as given by the manufacturer compared to other instruments does make strong overestimations not surprising. Observations examined here appear to confirm this overestimation. Although the installation on the top deck of RV Polarstern at 24 m height appears to be well protected against blowing snow (Fig. 15a) the overestimation of P2PS rather appears to be due to wind itself as also found in earlier studies.

Regarding Vaisala PWD22 and snowfall, Boudala et al. (2016) found that in comparison with manual measurements, it overestimated snowfall by about 33 % due to detected snow crystals not observed by the human observer. Wong et al. (2012b) instead, found good agreements with two Vaisala VRG 101 (double Alter shielded) and two OTT Pluvio (Tretyakov shielded) gauges. Compared to a Geonor gauge in a Double Fence Intercomparison Reference (DFIR), Wong (2012a) found for the PWD22 an underestimation for solid precipitation of 32 %. Hence, we expect and also can confirm an underestimation of snowfall during MOSAiC. However, the RMSE was with 1.1 mm the lowest compared against all other validated sensors. Wong (2012a) found little wind influence on the PWD22 measurements, which we can confirm, as the RMSE relative to SWE estimates was reduced least (as relative value) compared against all other sensors after drifting snow periods were eliminated from the comparison. Compared against SPC mass flux, we demonstrated that the installation on the railing on the top deck of RV Polarstern has protected the sensor from blowing snow. On the contrary, the same device installed in Met City on the ice showed a relative overestimate, suggesting an influence from blowing snow. Comparisons with the KAZR-derived snowfall, which is also unaffected by blowing snow, further support the notion that the PWD22PS was not significantly impacted by blowing snow.

The undercatch of snowfall due to the wind for weighing bucket gauges is well known (Goodison et al., 1998; Boudala et al., 2016; Kochendorfer et al., 2017). However, we observed a strong positive bias in the cumulative snow mass for the Pluvio2 gauge when comparing with PWD22PS. This bias was largely due to a strong drifting snow event at the end of February, probably leading to blowing snow being lifted from the ground and landing in the bucket (Fig. 14,15). Available transfer functions (e.g., Goodison et al. (1998); Boudala et al. (2016); Kochendorfer et al. (2017, 2018)) cannot correct for this type of blowing snow event, as they correct the underestimation with increasing wind speed. However, we suggest that these events can be detected using snow particle counters and removed before applying other corrections.

The snowfall retrieval from the KAZR using a Z_e -S relationship with coefficients determined by Matrosov (2007) shows a slight ~~an~~ overestimation relative to the snow cover SWE but performs comparably well as ERA5. The difference to ERA5

in cumulative snowfall was only about 5 mm by end of the investigation period. Considering the known low bias in PWD22
900 measurements, and the fact that the radar snowfall retrievals are not affected by wind or blowing snow, it is likely that this radar-
based estimate provides reasonable results. However, such radar-based retrievals are dependent on the inherent properties of
the snowfall observed in the datasets from which they are derived. ~~If the snowfall observed at MOSAiC had distinct properties,
such as aspect ratio distributions or mass-size relations, then the relationship used here might have an increased uncertainty.
More effort could also be taken to find the best range gate for the retrievals.~~

905 4.3 ERA5 performance

ERA5 performed reasonably well, with a ~~slight~~weak overestimation when compared with snow cover SWE. Overall, the
timing of the snowfall events is represented well by ERA5. Relative to PWD22PS, the cumulative ERA5 snowfall would have
been overestimated by about 25 % by 7 May 2020. However, as already discussed, due to the light underestimation of the
PWD22PS, the true snowfall lies probably between PWD22PS and ERA5 or the KAZR. Relative to PWD22PS, ERA5 appears
910 to perform better before about March 2020, although the available data does not allow to prove that it generally performs
worse before. As the ERA5 performance depends on input of measurements and numerical weather data, we can at least point
out that there was a substantial decrease of the air- (minus 50 - 75 % between March and May 2020), Chen (2020)) and ship
based observations which may lead to a worsening of the performance. Chen (2020) found globally a worsening of temperature
forecasts of up to 2 °C in the time period March - May 2020, compared against February 2020. Nonetheless, a comparison with
915 the cumulative sum of the KAZR (Fig. 10b) rather speaks against this theory as the ERA5 cumulative snowfall is always below
the KAZR snowfall. Exact reasons with respect to ERA5 should be thoroughly investigated. Cabaj et al. (2020) also found
a general positive bias (in daily snowfall rates) comparing ERA5 with CloudSat data. However, CloudSat is only available
up to 82 °N, while MOSAiC ~~leg 1-3~~ was most of the time north of 84 °N and for large parts even above 87 °N (Fig. 1) ~~:-~~
between October 2019 and May 2020. Further, in Cabaj et al. (2020), they found a decrease in the positive bias towards the
920 spring months compared with the winter months of December, January, and February while we find an increased apparent
bias during this time when comparing with PWD22PS. Wang et al. (2019a) compared ERA5 snowfall with data from several
snow buoys for a comparable drift track in the Arctic ocean to MOSAiC and a comparable time spans as our validation, from
autumn to spring in the following year. Although they do not give details about the method, they mention a positive bias of
ERA5 cumulative snowfall of about 63 mm compared with snow ~~buoys~~buoys by end of the investigation period. They found
925 partially a negative bias and very varying results but on average a positive bias. However, as already pointed out, it cannot be
concluded from a few point measurements on the overall accumulated snow on a larger area. Further, from our study we see
that we cannot conclude from the computed SWE of the snow cover alone on the precipitated sum as the erosion appears to
be large, even when measured over larger areas. Nonetheless, the results from Wang et al. (2019a) also indicate that a lot snow
mass gets eroded over time, which is even more evident as we as well as Cabaj et al. (2020) find an overestimation tendency
930 for ERA5 snowfall. We must further notice that ERA5 does not consider blowing snow sublimation in their computations.
Although Orsolini et al. (2019) do not find a mass effect of including blowing snow sublimation in ERA5, Chung et al. (2011)
for instance, computed a larger effect of blowing snow sublimation of 12 mm y⁻¹ over sea ice over 324 days. The non-existent

blowing snow particle sublimation may be a ~~reson~~reason for the overestimation tendency found in our study. Recent results with a new model of drifting snow sublimation (CRYOWRF- (Sharma et al., 2021)), indicate that it may be more important than previously estimated. We plan to address this particular problem in our future work.

5 Conclusions

We fitted a ~~HS-SWE~~snow depth-SWE function to computed SWE values from ~~SMP~~SnowMicroPen force signals and applied the model to snow depths from Magnaprobe for the northern- and southern transect loops of MOSAiC, ~~leg 1 to leg 3. We could~~for the winter and spring time period between October 2019 and May 2020. We show that the SWE reconstructions compared well against direct SWE measurements. Besides transect paths, other snow depth sources, such as snow height differences from terrestrial laser scans, could be used with this function to compute SWE.~~A validation of the horizontal sampling frequency of the Magnaprobe along the transect path shows that the transect averages for all days of sampling are mostly robust against sampling frequency changes down to about about 3.4 m. Although we cannot account for uncertainties due to sampling differences by different operators regarding the applied force, our validation indicates that no significant under-sampling occurred and the observed average is likely a good estimate of the actual SWE.~~

~~We could show~~One particular finding of our work is that SWE differences between snow on deformed SYI and snow on remnant SYI and FYI decrease until the end of the snow accumulation season at the beginning of May. The SWE on remnant SYI and FYI, while starting out at only about 50 % in late October 2019, reached almost 90 % of the value for snow on deformed SYI by ~~early May. As the SWE differences decreased and the total SWE increased, the standard deviation for both loops equalized at around 44 to 45 mm from 20 February 2020 on, suggesting that the snow surface roughness becomes larger over time until 20 February but stagnates from then on. Although erosion and deposition occurred at different times for both underlying ice types before 20 February 2020, it is noteworthy that the first decrease of the average SWE occurred at the same time as the average maximum standard deviation on both loops~~end of April. Since SWE also did not increase much after ~~this time, these~~20 February, the observations raise the question as to whether there is a saturation point for snow mass accumulation~~and snow surface roughness over sea ice~~. We suggest a range of ~~38~~34 mm (~~53~~47 %) to 69 mm (68 %) of precipitation that has been eroded over time, with the PWD22PS lower and the KAZR as upper limit of cumulative snowfall. There was a remarkable snow erosion event between 24 to 25 February 2020, which we decided to have a closer look onto as snow cover SWE decreased during this time. The fate of the eroded snow is unclear, but it is likely that a significant amount was deposited around higher ridges or filled in the gaps of frozen leads, limiting its transport to the areas covered by the transects.

~~We detected a remarkable snow erosion event between 24 to 25 February 2020.~~ However, as transects were conducted approximately weekly, processes in the snow that have occurred in the meantime are not detected. More snow erosion accompanies the temporal adjustment of the surface roughness between remnant SYI and deformed SYI. Besides temporal sampling frequency of the transect, another limitation of the study is that layering of the snowpack was not considered for estimating deposited and eroded snow mass. However, validation measurements at different points in time suggest that the impact

of this effect might be small. A thorough investigation of layer density is recommended. Further research, connecting snow microstructure with snow transport rates, for instance, investigating sintering and bond strengths of snow grains that depend on temperature, could help to elucidate high Arctic snow processes. This is also important as the eroded snow has influenced several sensors' measurements.

970

Although the unquantified eroded snow mass limits the potential for ~~intercomparisons~~inter-comparisons, we found that the ~~PWD22PS~~Present Weather Detector 22 optical precipitation sensor installed on Polarstern showed the smallest differences with the estimated SWE during periods without indication of drifting snow. We demonstrated that ~~the this~~ PWD22 ~~on RV~~ ~~Polarstern~~ was mostly protected from blowing snow influences while this blowing snow led to high correlations between horizontal mass flux and precipitation rates of ~~Pluvio2 and PWD22~~the pluviometer and the Present Weather Detector at Met City. ~~Similar to PWD22PS~~We assume that the high snowfall rates detected with the ice-based pluviometer originates to significant parts from blowing snow that was blown into the gauge opening. Similar to PWD22 on Polarstern, the KAZR snowfall retrievals are likely not affected by wind or blowing snow. ~~It shows a low~~The snowfall retrieved with this Ka-band radar shows a relatively high bias relative to ~~the~~ snow cover SWE~~although, and~~ it appears to overestimate snowfall. This overestimation however can be reduced when doing more research on selecting range gates and fitting of the coefficients. The OTT Parsivel² ~~laser~~disdrometer showed a strong tendency towards overestimation. ~~We assume that the OTT Pluvio² originates to significant parts from blowing snow that was blown into the sensor opening.~~ For PWD22PS, over 189 days~~For the Present Weather Detector 22, installed on Polarstern,~~ we find a total cumulative snowfall of 98 mm over 189 days. We suggest the KAZR snowfall as possible upper cumulative limit with 114 mm. Snowfall rates from the ERA5 reanalysis showed a reasonable performance, with a good timing of snowfall events but a relatively safe tendency towards overestimation. ~~They slight~~This light overestimation may arise from non-existing blowing snow sublimation. However, ~~we made to our knowledge, we present~~ the first validation of ERA5 snowfall for the high Arctic~~based on relatively reliable measurement data to our knowledge, based on a combination of repeating snow depth transect and a set of in-situ precipitation sensor data.~~

980

985

990

This study sets the base for future snow mass balance research for MOSAiC and further general snow research for Arctic sea ice. We are better aware of snow mass quantities that accumulate and erode over the central Arctic sea ice surface for almost the whole accumulation season, including the polar night. The data can be used to improve numerical snow cover-, sea-ice, weather- and climate models and for more detailed process understanding research across disciplines. Initial sensor validations were conducted, which allow for more specified, more thorough research.

995

Data availability. KAZR- (Lindenmaier et al., 2019), PWD22- (Kyröac and Holdridge, 2019), Parsivel²- (Shi, 2019) and Pluvio² data (Wang et al., 2019b) are publicly available in the ARM data archive. Derived SWE from the SnowMicroPen is available on PANGAEA (Wagner et al., 2021). Raw SMP data is available on PANGAEA (Macfarlane et al., 2022a). Bulk SWE measurements are available on PANGAEA (Macfarlane et al., 2022b). Magnaprobe snow depths are available on PANGAEA (Itkin et al., 2021). Raw met tower data is available

on the Arctic Data Center (Cox et al., 2021). SPC data will soon be available on the UK Polar data centre (<https://www.bas.ac.uk/data/uk-pdc/>).
1000

Appendix A: ~~Central Observatory map by 30 March 2020~~SWE comparison with Sturm et al. (2002a)

~~The map shows the Central Observatory (CO) on 30 March 2020 at a different condition compared to the map of 5 March 2020.~~

We can compare the HS-SWE function ($SWE = 323.97 \cdot HS^{1.07}$, with HS in meter) with the fitted function from Sturm et al. (2002a) ($SWE = 0.348 \cdot HS$, with HS in centimeter), derived for sea ice snow cover during the SHEBA campaign (Perovich et al., 1999; Uttal et al., 1999). It is shown that the fit in this paper (hereby called "W2021") generally delivers lower SWE values for the same snow height compared against Sturm et al. (2002a) (hereby called "S2002"). The difference becomes larger the higher the snow depth is, which is partially a result of the different gradient (323.97 vs. 348). However, there is also a faster change between 0 and 200 mm, which is a result of the slight non-linearity of the W2021 function. The overall difference is significant, as the deviation of the overall average from S2002 (86.5 mm) to W2021 (74 mm) is +17 %, while the RMSE is 13 mm. This deviation is relevant, especially when comparing ground truth with snowfall sensors in such a dry environment as the Arctic, where snowfall rates are typically very small. These points justify the application of a specific fit for the winter and early spring during MOSAiC, instead of using values from literature. Differences in comparison with Sturm et al. (2002a) stand out very quickly: They found an average snow depth of 0.337 m and an average density of 340 kg m^{-2} resulting in 166 mm SWE. We found an average snow depth of 0.249 m and an average density of 286.5 kg m^{-2} . Hence, both values are lower in our study resulting in an average SWE of 71.2 mm. This is indeed less than the half found by Sturm et al. (2002a). Note that the timing and setup of the snow measurements of Sturm et al. (2002a) are indeed comparable to ours, as they conducted snow transect measurements along transects for the accumulation period October to May, as well. However, they used different instrumentation and also sampled over different horizontal extents. As discussed above, the average SWE change due to a snow transport event can be very different when we compare one transect section SWE against the whole transect SWE. Hence, comparability is always subject to great uncertainties. Also note, that Sturm et al. (2002a) found a 25 % higher value of snow cover SWE, compared against snowfall measurements with a Nipher shielded gauge, even after applying a 2.5 factor as precipitation correction against undercatch. The lower SWE on the snow cover is in any case very contrary to our results, as we estimate at least 56 % less snow mass on the ice compared against measured snowfall. A larger impact on the results could be due to the fact, that the measuring during our investigation period did mostly occur between the 85th and 83th latitude, while during SHEBA, the camp started at around 75°N , 142°W and drifted up to 75°N , 162°W . We can speculate that a less dry climate further away from the pole led to more snowfall, or that certain weather patterns led to notable differences over longer time spans in snowfall, wind conditions, or temperature, which we cannot determine at this point. Given that fitting the HS-SWE function is highly specific for given snow conditions and considering the substantial different average snow depth and snow density, we conclude that these are the main reasons for different fitting parameters that are found for our
1025
1030

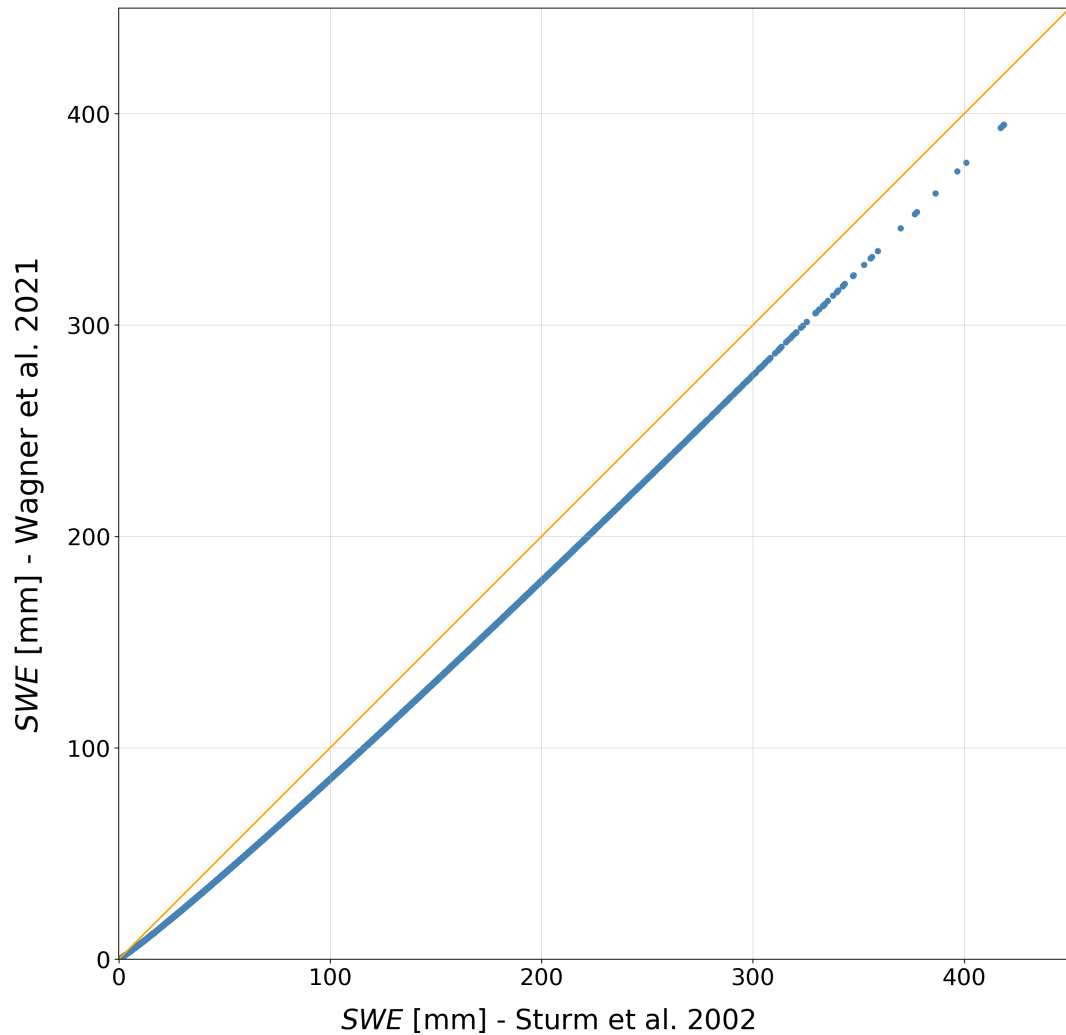


Figure A1. CO map by 30 March 2020. The map shows the Central Observatory (CO) at a different condition and with all installations on the floe compared to the map [Scatter plot](#) of 5 March 2020. Snowpit locations are marked here by black stars [derived SWE after fitted function in this paper](#) and the floe is rotated counter-clockwise compared against the map of 5 March, with a ship's heading of about 90° [function by Sturm et al. \(2002a\)](#). The orange line marks where $r = 1.0$.

[study. Nonetheless, the measuring setup and instrumentation itself might lead to differences, and cannot easily quantitatively compared.](#)

Scatter-plots of PWD22PS snowfall rates vs. different sensor snowfall rates for the whole time period for a) P2PS, b) Pluvio2, c) KAZR and d) PWD22MC.

1035 *Author contributions.* DNW took the lead in writing the manuscript and implemented comments, improvements and findings from discussions with co-authors. DNW, JR, NK, ES, MO, IR, MS, MJ, DK, ARM, and SA conducted the snowpit measurements. DNW and ARM processed the snowpit data. The principal investigator for snow pits is MS. SH, MO, PI, MJ, SA, JS and RR conducted transect measurements. The principal investigator for the transect is PI. Transect data was post-processed by DNW. MDS, OGP, TU, MMF, AK and CC were responsible for the met tower measurements, including SPC. The principal investigator for the tower is MDS. The University of Colorado /
1040 NOAA flux team processed the met tower data. The principal investigator for the SPC is MMF. DNW post-processed the SPC data. Team ICE created floe maps during the cruise. SH provided the code to correct the coordinate transformation from global to FloeNavi coordinates. The KAZR and all precipitation sensors were set up, maintained, and processed by the ARM team, and MDS was the principal investigator for the ARM involvement in MOSAiC. DNW conducted further KAZR and gauges processing. MN was leading the ice team during MOSAiC and was coordinating the work of the different sub-groups within the ice team. ML was involved in MOSAiC planning and supervised the
1045 work during the manuscript.

Competing interests. The authors declare that they have no conflict of interest.

Acknowledgements. Data used in this manuscript was produced as part of the international Multidisciplinary drifting Observatory for the Study of the Arctic Climate (MOSAiC) with the tag MOSAIC20192020 and the project ID: AWI_PS122_00. [DNW and ML were supported by the Swiss National Science Foundation \(SNSF-200020_179130\)](#). KAZR reflectivities and precipitation data were obtained
1050 from the Atmospheric Radiation Measurement (ARM) user facility, a U.S. Department of Energy (DOE) Office of Science user facility managed by the Biological and Environmental Research Program. ["Met tower data was supported by the National Science Foundation OPP-1724551 and by NOAA's Physical Sciences Laboratory \(PSL\) and Global Ocean Monitoring and Observing Program \(GOMO\)". MDS was supported by the DOE Atmospheric System Research Program \(DE-SC0019251, DE-SC0021341\). PI was supported by the National Science Foundation NSF-1820927 and by the Research Council of Norway RCN-287871. SA, SH, DK, MN, RR, JR were supported through the Alfred-Wegener-Institute's funds AWI_SNOW, AWI_ICE and AWI_ROV. SA and MN were supported through the German Research Foundation \(DFG\) projects SnowCast \(AR1236/1\) and SCASI \(NI1095/5\)](#). We thank Sergey Matrosov for valuable discussions about snow-fall and for helping with his radar expertise. The authors thank all MOSAiC participants for contributing to the paper in one way or another: the MOSAiC logistics team, the ship's personnel, all the different team members (ICE, ATMOS, BGC, ECO, OCEAN), the ARM crew, the project coordination, and the MOSAiC project board. ~~Met-tower-data-was-supported-by-the-National-Science-Foundation-OPP-1724551.~~
1055 ~~MDS-was-supported-by-the-DOE-Atmospheric-System-Research-Program-(DE-SC0019251, DE-SC0021341).~~
1060

References

- IFS Documentation CY47R1 - Part IV: Physical Processes, no. 4 in IFS Documentation, ECMWF, <https://doi.org/10.21957/cpmkqvija>, 2020.
- Ackley, S., Lange, M., and Wadhams, P.: Snow cover effects on Antarctic sea ice thickness., 1990.
- 1065 Alfred-Wegener-Institut Helmholtz-Zentrum für Polar- und Meeresforschung: Polar Research and Supply Vessel POLARSTERN Operated by the Alfred-Wegener-Institute, Journal of large-scale research facilities, 2, <https://doi.org/10.17815/jlsrf-3-163>, 2017.
- Bagnold, R. A.: The physics of blown sand and desert dunes / by R.A. Bagnold, William Morrow New York, 1941.
- Bartholomew, M.: Weighing Bucket Rain Gauge Instrument Handbook., Tech. rep., ed. by Robert Stafford, ARM user facility. DOE/SC-ARM-TR-232., 2020a.
- 1070 Bartholomew, M.: Laser Disdrometer Instrument Handbook., Tech. rep., ed. by Robert Stafford, ARM user facility. DOE/SC-ARM-TR-137., 2020b.
- Batrak, Y. and Müller, M.: On the warm bias in atmospheric reanalyses induced by the missing snow over Arctic sea-ice, Nature Communications, 10, 1–8, <https://doi.org/10.1038/s41467-019-11975-3>, 2019.
- Battaglia, A., Rustemeier, E., Tokay, A., Blahak, U., and Simmer, C.: PARSIVEL Snow Observations: A Critical Assessment, Journal of
1075 Atmospheric and Oceanic Technology, 27, 333–344, <https://doi.org/10.1175/2009JTECHA1332.1>, 2010.
- Blackford, J. R.: Sintering and microstructure of ice: a review, Journal of Physics D: Applied Physics, 40, R355–R385, <https://doi.org/10.1088/0022-3727/40/21/r02>, 2007.
- Boudala, F. S., Isaac, G. A., Filman, P., Crawford, R., Hudak, D., and Anderson, M.: Performance of emerging technologies for Measuring Solid and Liquid Precipitation in Cold Climate as compared to the Traditional Manual Gauges, Journal of Atmospheric and Oceanic
1080 Technology, 34, 167–185, <https://doi.org/10.1175/jtech-d-16-0088.1>, 2016.
- Budd, W. F., Dingle, W. R. J., and Radok, U.: The Byrd Snow Drift Project: Outline and Basic Results, pp. 71–134, American Geophysical Union (AGU), <https://doi.org/https://doi.org/10.1029/AR009p0071>, 1966.
- Cabaj, A., Kushner, P. J., Fletcher, C. G., Howell, S., and Petty, A. A.: Constraining Reanalysis Snowfall Over the Arctic Ocean Using CloudSat Observations, Geophysical Research Letters, 47, <https://doi.org/10.1029/2019gl086426>, 2020.
- 1085 Calonne, N., Richter, B., Löwe, H., Cetti, C., Schure, J. t., Herwijnen, A. V., Fierz, C., Jaggi, M., and Schneebeli, M.: The RHOSSA campaign: multi-resolution monitoring of the seasonal evolution of the structure and mechanical stability of an alpine snowpack, The Cryosphere, 14, 1829–1848, <https://doi.org/10.5194/tc-14-1829-2020>, 2020.
- Chen, Y.: COVID-19 Pandemic Imperils Weather Forecast, Geophysical Research Letters, 47, e2020GL088613, <https://doi.org/10.1029/2020gl088613>, 2020.
- 1090 Chung, Y.-C., Bélair, S., and Mailhot, J.: Blowing Snow on Arctic Sea Ice: Results from an Improved Sea Ice–Snow–Blowing Snow Coupled System, Journal of Hydrometeorology, 12, 678–689, <https://doi.org/10.1175/2011JHM1293.1>, 2011.
- Clifton, A., Rüedi, J.-D., and Lehning, M.: Snow saltation threshold measurements in a drifting-snow wind tunnel, Journal of Glaciology, 52, 585–596, <https://doi.org/10.3189/172756506781828430>, 2006.
- Colbeck, S.: Sintering in a dry snow cover, Journal of Applied Physics, 84, 4585–4589, <https://doi.org/10.1063/1.368684>, 1998.
- 1095 Colbeck, S., of Engineers, U. S. A. C., Research, C. R., and (U.S.), E. L.: A Review of Sintering in Seasonal Snow, AD-a335 556, U.S. Army Cold Regions Research and Engineering Laboratory, https://books.google.ch/books?id=D_CHKAAACAAJ, 1997.

- Comola, F. and Lehning, M.: Energy- and momentum-conserving model of splash entrainment in sand and snow saltation, *Geophysical Research Letters*, 44, 1601–1609, <https://doi.org/10.1002/2016GL071822>, 2017.
- Comola, F., Kok, J. F., Gaume, J., Paterna, E., and Lehning, M.: Fragmentation of wind-blown snow crystals, *Geophysical Research Letters*, 44, 4195–4203, <https://doi.org/10.1002/2017GL073039>, 2017.
- Cox, C., Gallagher, M., Shupe, M., Persson, O., Solomon, A., Blomquist, B., Brooks, I., Costa, D., Gottas, D., Hutchings, J., Osborn, J., Morris, S., Preusser, A., and Uttal, T.: 10-meter (m) meteorological flux tower measurements (Level 1 Raw), <https://doi.org/doi:10.18739/A2VM42Z5F>, multidisciplinary Drifting Observatory for the Study of Arctic Climate (MOSAiC), central Arctic, October 2019 - September 2020. urn:nod:ARCTIC., 2021.
- Déry, S. J. and Tremblay, L.-B.: Modeling the Effects of Wind Redistribution on the Snow Mass Budget of Polar Sea Ice, *Journal of Physical Oceanography*, 34, 258–271, [https://doi.org/10.1175/1520-0485\(2004\)034<0258:MTEOWR>2.0.CO;2](https://doi.org/10.1175/1520-0485(2004)034<0258:MTEOWR>2.0.CO;2), 2004.
- Déry, S. J. and Yau, M. K.: A climatology of adverse winter-type weather events, *Journal of Geophysical Research: Atmospheres*, 104, 16 657–16 672, <https://doi.org/10.1029/1999jd900158>, 1999.
- Déry, S. J. and Yau, M. K.: Large-scale mass balance effects of blowing snow and surface sublimation, *Journal of Geophysical Research: Atmospheres* (1984–2012), 107, ACL 8–1–ACL 8–17, <https://doi.org/10.1029/2001jd001251>, 2002.
- Déry, S. J., Taylor, P. A., and Xiao, J.: The Thermodynamic Effects of Sublimating, Blowing Snow in the Atmospheric Boundary Layer, *Boundary-Layer Meteorology*, 89, 251–283, <https://doi.org/10.1023/a:1001712111718>, 1998.
- Essery, R., Li, L., and Pomeroy, J.: A distributed model of blowing snow over complex terrain, *Hydrological Processes*, 13, 2423–2438, [https://doi.org/10.1002/\(sici\)1099-1085\(199910\)13:14/15<2423::aid-hyp853>3.0.co;2-u](https://doi.org/10.1002/(sici)1099-1085(199910)13:14/15<2423::aid-hyp853>3.0.co;2-u), 1999.
- Fierz, C., Armstrong, R., Durand, Y., Etchevers, P., Greene, E., Mcclung, D., Nishimura, K., Satyawali, P., and Sokratov, S.: The 2008 International Classification of Seasonal Snow on the Ground, p. 579–580, 2008.
- Filhol, S. and Sturm, M.: Snow bedforms: A review, new data, and a formation model, *Journal of Geophysical Research: Earth Surface*, 120, 1645–1669, <https://doi.org/https://doi.org/10.1002/2015JF003529>, 2015.
- Goodison, B., Louie, P., and Yang, D.: WMO Solid Precipitation Measurement Intercomparison, World Meteorological Organization-Publications-WMO TD, 67, 1998.
- Haberkorn, A.: European Snow Booklet – an Inventory of Snow Measurements in Europe, <https://doi.org/http://dx.doi.org/10.16904/envdat.59>, 2019.
- Hersbach, H., Bell, B., Berrisford, P., Hirahara, S., Horányi, A., Muñoz-Sabater, J., Nicolas, J., Peubey, C., Radu, R., Schepers, D., Simmons, A., Soci, C., Abdalla, S., Abellan, X., Balsamo, G., Bechtold, P., Biavati, G., Bidlot, J., Bonavita, M., De Chiara, G., Dahlgren, P., Dee, D., Diamantakis, M., Dragani, R., Flemming, J., Forbes, R., Fuentes, M., Geer, A., Haimberger, L., Healy, S., Hogan, R. J., Hólm, E., Janisková, M., Keeley, S., Laloyaux, P., Lopez, P., Lupu, C., Radnoti, G., de Rosnay, P., Rozum, I., Vamborg, F., Villaume, S., and Thépaut, J.-N.: The ERA5 global reanalysis, *Quarterly Journal of the Royal Meteorological Society*, 146, 1999–2049, <https://doi.org/https://doi.org/10.1002/qj.3803>, 2020.
- Holtmark, B. E.: Insulating Effect of a Snow Cover on the Growth of Young Sea Ice, *Arctic*, 8, 60–65, <http://www.jstor.org/stable/40506652>, 1955.
- Iacozza, J. and Barber, D. G.: An examination of the distribution of snow on sea-ice, *Atmosphere-Ocean*, 37, 21–51, <https://doi.org/10.1080/07055900.1999.9649620>, 1999.

- Itkin, P., Webster, M., Hendricks, S., Oggier, M., Jaggi, M., Ricker, R., Arndt, S., Divine, D. V., von Albedyll, L., Raphael, I., Rohde, J., and Liston, G. E.: Magnaprobe snow and melt pond depth measurements from the 2019-2020 MOSAiC expedition., <https://doi.org/10.1594/PANGAEA.937781>, pANGAEA, 2021.
- Jonas, T., Marty, C., and Magnusson, J.: Estimating the snow water equivalent from snow depth measurements in the Swiss Alps, *Journal of Hydrology*, 378, 161–167, <https://doi.org/10.1016/j.jhydrol.2009.09.021>, 2009.
- Jun, S.-Y., Ho, C.-H., Jeong, J.-H., Choi, Y.-S., and Kim, B.-M.: Recent changes in winter Arctic clouds and their relationships with sea ice and atmospheric conditions, *Tellus A*, 68, 29 130, <https://doi.org/10.3402/tellusa.v68.29130>, 2016.
- Jutras, M., Vancoppenolle, M., Lourenço, A., Vivier, F., Carnat, G., Madec, G., Rousset, C., and Tison, J.-L.: Thermodynamics of slush and snow–ice formation in the Antarctic sea-ice zone, *Deep Sea Research Part II: Topical Studies in Oceanography*, 131, 75–83, <https://doi.org/10.1016/j.dsr2.2016.03.008>, 2016.
- King, J., Howell, S., Brady, M., Toose, P., Derksen, C., Haas, C., and Beckers, J.: Local-scale variability of snow density on Arctic sea ice, *The Cryosphere*, 14, 4323–4339, <https://doi.org/10.5194/tc-14-4323-2020>, 2020.
- King, J. C., Pomeroy, J. W., Gray, D. M., and Fierz, C.: Snow accumulation, in: *Snow and Climate*, edited by Armstrong, R. L. and Brun, E., chap. 3.4, pp. 83–92, Cambridge University Press, 2008.
- Kochendorfer, J., Rasmussen, R., Wolff, M., Baker, B., Hall, M. E., Meyers, T., Landolt, S., Jachcik, A., Isaksen, K., Brækkan, R., and Leeper, R.: The quantification and correction of wind-induced precipitation measurement errors, *Hydrology and Earth System Sciences*, 21, 1973–1989, <https://doi.org/10.5194/hess-21-1973-2017>, 2017.
- Kochendorfer, J., Nitu, R., Wolff, M., Mekis, E., Rasmussen, R., Baker, B., Earle, M. E., Reverdin, A., Wong, K., Smith, C. D., Yang, D., Roulet, Y.-A., Meyers, T., Buisan, S., Isaksen, K., Brækkan, R., Landolt, S., and Jachcik, A.: Testing and development of transfer functions for weighing precipitation gauges in WMO-SPICE, *Hydrology and Earth System Sciences*, 22, 1437–1452, <https://doi.org/10.5194/hess-22-1437-2018>, 2018.
- Kruppen, T., Birrien, F., Kauker, F., Rackow, T., Albedyll, L. v., Angelopoulos, M., Belter, H. J., Bessonov, V., Damm, E., Dethloff, K., Haapala, J., Haas, C., Harris, C., Hendricks, S., Hoelemann, J., Hoppmann, M., Kaleschke, L., Karcher, M., Kolabutin, N., Lei, R., Lenz, J., Morgenstern, A., Nicolaus, M., Nixdorf, U., Petrovsky, T., Rabe, B., Rabenstein, L., Rex, M., Ricker, R., Rohde, J., Shimanchuk, E., Singha, S., Smolyanitsky, V., Sokolov, V., Stanton, T., Timofeeva, A., Tsamados, M., and Watkins, D.: The MOSAiC ice floe: sediment-laden survivor from the Siberian shelf, *The Cryosphere*, 14, 2173–2187, <https://doi.org/10.5194/tc-14-2173-2020>, 2020.
- Kyröuac, J. and Holdridge, D.: Surface Meteorological Instrumentation (PWD)., atmospheric Radiation Measurement (ARM) user facility., 2019.
- Lange, M. A. and Eicken, H.: The sea ice thickness distribution in the northwestern Weddell Sea, *Journal of Geophysical Research: Oceans*, 96, 4821–4837, <https://doi.org/10.1029/90JC02441>, 1991.
- Lehning, M., Doorschot, J., and Bartelt, P.: A snowdrift index based on SNOWPACK model calculations, *Annals of Glaciology*, 31, 382–386, <https://doi.org/10.3189/172756400781819770>, 2000.
- Leonard, K. C. and Maksym, T.: The importance of wind-blown snow redistribution to snow accumulation on Bellingshausen Sea ice, *Annals of Glaciology*, 52, 271–278, <https://doi.org/10.3189/172756411795931651>, 2011.
- Leonard, K. C., Tremblay, L., MacAyeal, D. R., and Jacobs, S. S.: Interactions of wind-transported snow with a rift in the Ross Ice Shelf, Antarctica, *Geophysical Research Letters*, 35, <https://doi.org/10.1029/2007gl033005>, 2008.
- Li, L. and Pomeroy, J. W.: Estimates of Threshold Wind Speeds for Snow Transport Using Meteorological Data, *Journal of Applied Meteorology*, 36, 205–213, [https://doi.org/10.1175/1520-0450\(1997\)036<0205:eotwsf>2.0.co;2](https://doi.org/10.1175/1520-0450(1997)036<0205:eotwsf>2.0.co;2), 1997.

- Lindenmaier, I., Nelson, D., Isom, B., Hardin, J., Matthews, A., Wendler, T., and Castro, V.: Ka ARM Zenith Radar (KAZRCFRGE), <https://doi.org/10.5439/1498936>, atmospheric Radiation Measurement (ARM) user facility., 2019.
- Liston, G. E., Itkin, P., Stroeve, J., Tschudi, M., Stewart, J. S., Pedersen, S. H., Reinking, A. K., and Elder, K.: A Lagrangian Snow-Evolution System for Sea-Ice Applications (SnowModel-LG): Part I—Model Description, *Journal of Geophysical Research: Oceans*, 125, e2019JC015913, <https://doi.org/https://doi.org/10.1029/2019JC015913>, e2019JC015913 2019JC015913, 2020.
- 1175 Löffler-Mang, M. and Joss, J.: An Optical Disdrometer for Measuring Size and Velocity of Hydrometeors, *Journal of Atmospheric and Oceanic Technology*, 17, 130 – 139, [https://doi.org/10.1175/1520-0426\(2000\)017<0130:AODFMS>2.0.CO;2](https://doi.org/10.1175/1520-0426(2000)017<0130:AODFMS>2.0.CO;2), 2000.
- López-Moreno, J. I., Leppänen, L., Luks, B., Holko, L., Picard, G., Sanmiguel-Valladolid, A., Alonso-González, E., Finger, D. C., Arslan, A. N., Gillemot, K., Sensoy, A., Sorman, A., Ertas, M. C., Fassnacht, S. R., Fierz, C., and Marty, C.: Intercomparison of measurements of bulk snow density and water equivalent of snow cover with snow core samplers: Instrumental bias and variability induced by observers, *Hydrological Processes*, 34, 3120–3133, <https://doi.org/https://doi.org/10.1002/hyp.13785>, 2020.
- 1180 Löwe, H. and Herwijnen, A. v.: A Poisson shot noise model for micro-penetration of snow, *Cold Regions Science and Technology*, 70, 62–70, <https://doi.org/10.1016/j.coldregions.2011.09.001>, 2012.
- Macfarlane, A. R., Arndt, S., Dadic, R., Hannula, H.-R., Jaggi, M., Kolabutin, N., Krampe, D., Oggier, M., Pirazzini, R., Raphael, I., Regnery, J., Shimanshuck, E., Wagner, D. N., and Schneebeli, M.: Snow water equivalent retrievals from SnowMicroPen data from MOSAiC Leg 1 - Leg 3, <https://doi.org/10.1594/PANGAEA.935554>, pANGAEA, 2022a.
- 1185 Macfarlane, A. R., Tavri, A., Polashenski, C., Krampe, D., Clemens-Sewall, D., Wagner, D. N., Shimanchuck, E., Hannula, H.-R., Raphael, I., Mateo, I., Regnery, J., Smith, M., Oggier, M., Nicolaus, M., Jaggi, M., Lehning, M., Kolabutin, N., Pirazzini, R., Dadic, R., Hammerle, S., Arndt, S., and Schneebeli, M.: Snowpit metadata during the MOSAiC expedition: SWE., <https://doi.org/10.1594/PANGAEA.940199>, pANGAEA, 2022b.
- 1190 Matrosov, S. Y.: Modeling Backscatter Properties of Snowfall at Millimeter Wavelengths, *Journal of the Atmospheric Sciences*, 64, 1727–1736, <https://doi.org/10.1175/jas3904.1>, 2007.
- Matrosov, S. Y., Shupe, M. D., and Djalalova, I. V.: Snowfall Retrievals Using Millimeter-Wavelength Cloud Radars, *Journal of Applied Meteorology and Climatology*, 47, 769–777, <https://doi.org/10.1175/2007jamc1768.1>, 2008.
- 1195 Maykut, G. A. and Untersteiner, N.: Some results from a time-dependent thermodynamic model of sea ice, *Journal of Geophysical Research* (1896-1977), 76, 1550–1575, <https://doi.org/10.1029/JC076i006p01550>, 1971.
- McIlhatten, E. A., Kay, J. E., and L'Ecuyer, T. S.: Arctic Clouds and Precipitation in the Community Earth System Model Version 2, *Journal of Geophysical Research: Atmospheres*, 125, e2020JD032521, <https://doi.org/10.1029/2020jd032521>, 2020.
- Melo, D. B., Sharma, V., Comola, F., Sigmund, A., and Lehning, M.: Modeling snow saltation: the effect of grain size and interparticle cohesion, *Earth and Space Science Open Archive*, p. 29, <https://doi.org/10.1002/essoar.10507087.1>, 2021.
- 1200 Merkouriadi, I., Liston, G. E., Graham, R. M., and Granskog, M. A.: Quantifying the Potential for Snow-Ice Formation in the Arctic Ocean, *Geophysical Research Letters*, 47, e2019GL085020, <https://doi.org/https://doi.org/10.1029/2019GL085020>, e2019GL085020 2019GL085020, 2020.
- METEK: 3D Ultrasonic Anemometer uSonic-3 Cage MP Manual, Tech. rep., 2019.
- 1205 Nghiem, S. V., Martin, S., Perovich, D. K., Kwok, R., Drucker, R., and Gow, A. J.: A laboratory study of the effect of frost flowers on C band radar backscatter from sea ice, *Journal of Geophysical Research: Oceans*, 102, 3357–3370, <https://doi.org/https://doi.org/10.1029/96JC03208>, 1997.

- Nicolaus, M., Hoppmann, M., Arndt, S., Hendricks, S., Katlein, C., Nicolaus, A., Rossmann, L., Schiller, M., and Schwegmann, S.: Snow Depth and Air Temperature Seasonality on Sea Ice Derived From Snow Buoy Measurements, *Frontiers in Marine Science*, 8, 377, <https://doi.org/10.3389/fmars.2021.655446>, 2021.
- Nishimura, K., Yokoyama, C., Ito, Y., Nemoto, M., Naaïm-Bouvet, F., Bellot, H., and Fujita, K.: Snow particle speeds in drifting snow, *Journal of Geophysical Research: Atmospheres*, 119, 9901–9913, <https://doi.org/10.1002/2014JD021686>.
- Orsolini, Y., Wegmann, M., Dutra, E., Liu, B., Balsamo, G., Yang, K., de Rosnay, P., Zhu, C., Wang, W., Senan, R., and Arduini, G.: Evaluation of snow depth and snow cover over the Tibetan Plateau in global reanalyses using in situ and satellite remote sensing observations, *The Cryosphere*, 13, 2221–2239, <https://doi.org/10.5194/tc-13-2221-2019>, 2019.
- Perovich, D. K., Andreas, E. L., Curry, J. A., Eiken, H., Fairall, C. W., Grenfell, T. C., Guest, P., Intrieri, J., Kadko, D., Lindsay, R. W., McPhee, M. G., Morison, J., Moritz, R. E., Paulson, C. A., Pegau, W. S., Persson, P., Pinkel, R., Richter-Menge, J. A., Stanton, T., Stern, H., Sturm, M., Tucker III, W., and Uttal, T.: Year on ice gives climate insights, *Eos, Transactions American Geophysical Union*, 80, 481–486, <https://doi.org/10.1029/EO080i041p00481-01>, 1999.
- Petty, A. A., Webster, M., Boisvert, L., and Markus, T.: The NASA Eulerian Snow on Sea Ice Model (NESOSIM) v1.0: initial model development and analysis, *Geoscientific Model Development*, 11, 4577–4602, <https://doi.org/10.5194/gmd-11-4577-2018>, 2018.
- Proksch, M., Löwe, H., and Schneebeli, M.: Density, specific surface area, and correlation length of snow measured by high-resolution penetrometry, *Journal of Geophysical Research: Earth Surface*, 120, 346–362, <https://doi.org/10.1002/2014JF003266>, 2015.
- Sato, T., Kimura, T., Ishimaru, T., and Maruyama, T.: Field test of a new snow-particle counter (SPC) system, *Annals of Glaciology*, 18, 149–154, <https://doi.org/10.3189/S0260305500011411>, 1993.
- Savelyev, S. A., Gordon, M., Hanesiak, J., Papakyriakou, T., and Taylor, P. A.: Blowing snow studies in the Canadian Arctic Shelf Exchange Study, 2003–04, *Hydrological Processes*, 20, 817–827, <https://doi.org/10.1002/hyp.6118>, 2006.
- Scarchilli, C., Frezzotti, M., Grigioni, P., Silvestri, L. D., Agnoletto, L., and Dolci, S.: Extraordinary blowing snow transport events in East Antarctica, *Climate Dynamics*, 34, 1195–1206, <https://doi.org/10.1007/s00382-009-0601-0>, 2009.
- Schmidt, R. A.: Threshold Wind-Speeds and Elastic Impact in Snow Transport, *Journal of Glaciology*, 26, 453–467, <https://doi.org/10.3189/S0022143000010972>, 1980.
- Schneebeli, M. and Johnson, J. B.: A constant-speed penetrometer for high-resolution snow stratigraphy, *Annals of Glaciology*, 26, 107–111, <https://doi.org/10.3189/1998AoG26-1-107-111>, 1998.
- Schneebeli, M., Pielmeier, C., and Johnson, J. B.: Measuring snow microstructure and hardness using a high resolution penetrometer, *Cold Regions Science and Technology*, 30, 101 – 114, [https://doi.org/10.1016/S0165-232X\(99\)00030-0](https://doi.org/10.1016/S0165-232X(99)00030-0), 1999.
- Serreze, M. C. and Hurst, C. M.: Representation of Mean Arctic Precipitation from NCEP–NCAR and ERA Reanalyses, *Journal of Climate*, 13, 182–201, [https://doi.org/10.1175/1520-0442\(2000\)013<0182:romapf>2.0.co;2](https://doi.org/10.1175/1520-0442(2000)013<0182:romapf>2.0.co;2), 2000.
- Sharma, V., Gerber, F., and Lehning, M.: Introducing CRYOWRF v1.0: Multiscale atmospheric flow simulations with advanced snow cover modelling, *Geoscientific Model Development Discussions*, 2021, 1–46, <https://doi.org/10.5194/gmd-2021-231>, 2021.
- Shi, Y.: Laser Disdrometer (LD).), <https://doi.org/10.5439/1498731>, atmospheric Radiation Measurement (ARM) user facility., 2019.
- Sigmund, A., Dujarding, J., Comola, F., Sharma, V., Huwald, H., Brito Melo, D., Hirasawa, N., Nishimura, K., and Lehning, M.: Evidence of Strong Flux Underestimation by Bulk Parametrizations During Drifting and Blowing Snow, *Boundary-Layer Meteorology*, 182, 119–146, <https://doi.org/10.1007/s10546-021-00653-x>, 2022.
- Sturm, M. and Holmgren, J.: An Automatic Snow Depth Probe for Field Validation Campaigns, *Water Resources Research*, 54, 9695–9701, <https://doi.org/10.1029/2018wr023559>, 2018.

- Sturm, M. and Massom, R. A.: Snow in the sea ice system: friend or foe?, chap. 3, pp. 65–109, John Wiley and Sons, Ltd, <https://doi.org/10.1002/9781118778371.ch3>, 2016.
- Sturm, M., Morris, K., and Massom, R.: Antarctic Sea Ice: Physical Processes, Interactions and Variability, pp. 1–18, <https://doi.org/10.1029/ar074p0001>, 1998a.
- 1250 Sturm, M., Morris, K., and Massom, R.: The Winter Snow Cover of the West Antarctic Pack Ice: Its Spatial and Temporal Variability, pp. 1–18, American Geophysical Union (AGU), <https://doi.org/10.1029/AR074p0001>, 1998b.
- Sturm, M., Holmgren, J., and Perovich, D. K.: Winter snow cover on the sea ice of the Arctic Ocean at the Surface Heat Budget of the Arctic Ocean (SHEBA): Temporal evolution and spatial variability, *Journal of Geophysical Research: Oceans*, 107, SHE 23–1–SHE 23–17, <https://doi.org/10.1029/2000JC000400>, 2002a.
- 1255 Sturm, M., Perovich, D. K., and Holmgren, J.: Thermal conductivity and heat transfer through the snow on the ice of the Beaufort Sea, *Journal of Geophysical Research: Oceans*, 107, SHE 19–1–SHE 19–17, <https://doi.org/10.1029/2000JC000409>, 2002b.
- Sugiura, K., Yang, D., and Ohata, T.: Systematic error aspects of gauge-measured solid precipitation in the Arctic, Barrow, Alaska, *Geophysical Research Letters*, 30, <https://doi.org/10.1029/2002gl015547>, 2003.
- Sugiura, K., Ohata, T., Yang, D., Sato, T., and Sato, A.: Application of a snow particle counter to solid precipitation measurements under
1260 Arctic conditions, *Cold Regions Science and Technology*, 58, 77–83, <https://doi.org/10.1016/j.coldregions.2009.03.010>, 2009.
- Toyota, T., Massom, R., Tateyama, K., Tamura, T., and Fraser, A.: Properties of snow overlying the sea ice off East Antarctica in late winter, 2007, *Deep Sea Research Part II: Topical Studies in Oceanography*, 58, 1137 – 1148, <https://doi.org/10.1016/j.dsr2.2010.12.002>, antarctic Sea Ice Research during the International Polar Year 2007-2009, 2011.
- Trujillo, E. and Lehning, M.: Theoretical analysis of errors when estimating snow distribution through point measurements, *The Cryosphere*,
1265 9, 1249–1264, <https://doi.org/10.5194/tc-9-1249-2015>, 2015.
- Trujillo, E., Leonard, K., Maksym, T., and Lehning, M.: Changes in snow distribution and surface topography following a snowstorm on Antarctic sea ice, *Journal of Geophysical Research: Earth Surface*, 121, 2172–2191, <https://doi.org/10.1002/2016JF003893>, 2016.
- Uttal, T., Curry, J. A., McPhee, M. G., Perovich, D. K., Moritz, R. E., Maslanik, J. A., Guest, P. S., Stern, H. L., Moore, J. A., Turenne, R., Heiberg, A., Serreze, M. C., Wylie, D. P., Persson, O. G., Paulson, C. A., Halle, C., Morison, J. H., Wheeler, P. A., Makshtas, A.,
1270 Welch, H., Shupe, M. D., Intrieri, J. M., Stamnes, K., Lindsey, R. W., Pinkel, R., Pegau, W. S., Stanton, T. P., and Grenfeld, T. C.: Surface Heat Budget of the Arctic Ocean, *Bulletin of the American Meteorological Society*, 83, 255–276, [https://doi.org/10.1175/1520-0477\(2002\)083<0255:SHBOTA>2.3.CO;2](https://doi.org/10.1175/1520-0477(2002)083<0255:SHBOTA>2.3.CO;2), 2002.
- Vaisala: Present Weather Detector PWD22 User’s Guide, Tech. rep., 2004.
- Vaisala: HUMICAP®Humidity and Temperature Transmitter Series HMT330, Tech. rep., 2009.
- 1275 Wagner, D. N., Jaggi, M., Macfarlane, A. R., Arndt, S., Krampe, D., Regnery, J., Oggier, M., Kolabutin, N., Raphael, I., Shimanouchuk, E., and Schneebeli, M.: Snow water equivalent retrievals from SnowMicroPen data from MOSAiC Leg 1 - Leg 3, <https://doi.org/10.1594/PANGAEA.927460>, pANGAEA, 2021.
- Wang, C., Graham, R. M., Wang, K., Gerland, S., and Granskog, M. A.: Comparison of ERA5 and ERA-Interim near-surface air temperature, snowfall and precipitation over Arctic sea ice: effects on sea ice thermodynamics and evolution, *The Cryosphere*, 13, 1661–1679,
1280 <https://doi.org/10.5194/tc-13-1661-2019>, 2019a.
- Wang, D., Bartholomew, M., and Cromwell, E.: Weighing Bucket Precipitation Gauge (WBPLUVIO2)., atmospheric Radiation Measurement (ARM) user facility., 2019b.

- Webster, M. A., DuVivier, A. K., Holland, M. M., and Bailey, D. A.: Snow on Arctic Sea Ice in a Warming Climate as Simulated in CESM, *Journal of Geophysical Research: Oceans*, 126, e2020JC016308, <https://doi.org/10.1029/2020jc016308>, 2021.
- 1285 Weiss, A. I., King, J., Lachlan-Cope, T., and Ladkin, R.: On the effective aerodynamic and scalar roughness length of Weddell Sea ice, *Journal of Geophysical Research: Atmospheres*, 116, <https://doi.org/10.1029/2011JD015949>, 2011.
- Wever, N., Rossmann, L., Maaß, N., Leonard, K. C., Kaleschke, L., Nicolaus, M., and Lehning, M.: Version 1 of a sea ice module for the physics-based, detailed, multi-layer SNOWPACK model, *Geoscientific Model Development*, 13, 99–119, <https://doi.org/10.5194/gmd-13-99-2020>, 2020.
- 1290 Widener, K., Bharadwaj, N., and Johnson, K.: Ka-Band ARM Zenith Radar (KAZR) Handbook., Tech. rep., aRM user facility. DOE/SC-ARM/TR-106., 2012.
- Wong, K., Fischer, A., and Nitu, R.: Measurement of Precipitation at AWS in Canada: Configuration, Challenges and Alternative Approaches, 2012b.
- Wong, K. C.: Performance of Several Present Weather Sensors as Precipitation Gauges, in: WMO Technical Conference on Meteorological
1295 and Environmental Instruments and Methods of Observation (Teco 2012), 2012a.