

Ice fabrics in two-dimensional flows: beyond pure and simple shear

Daniel H. Richards¹, Samuel S. Pegler¹, and Sandra Piazzolo²

¹School of Mathematics, University of Leeds, United Kingdom

²School of Earth and Environment, University of Leeds, United Kingdom

Correspondence: Daniel H. Richards (d.h.richards@leeds.ac.uk)

Abstract. Ice fabrics - the distribution of crystal orientations in a polycrystal - are key for understanding and predicting ice flow dynamics. Despite its their importance, the characteristics and evolution of ice fabrics beyond fabrics produced outside of the deformation regimes of pure and simple shear flow has largely been neglected. Within an ice sheet, a significant part of the deformation can be outside the regimes of pure and simple shear. We , yet they are a common occurrence within ice sheets. Here, we use a recently developed numerical model (SpecCAF) , which has been shown to accurately reproduce experimentally observed fabrics in both compression and simple shear, to classify the fabrics produced under general two-dimensional deformation regimes. Our analysis develops the first predictions for fabric patterns arising to classify all fabrics produced over a continuous spectrum of incompressible two-dimensional deformation regimes and temperatures, encompassing those . The model has been shown to accurately predict ice fabrics produced in experiments, where the ice has been deformed in either uniaxial compression or simple shear. Here we use the model to reveal fabrics produced in regimes intermediate to pure and simple shear, as well as those that are more rotational than simple shear. We find that intermediate deformation regimes between pure and simple shear result in a smooth transition between a fabric characterised by a cone-shape girdle and a secondary cluster pattern. Highly-rotational Highly rotational deformation regimes are revealed to produce a weak girdle fabric. In addition, we Furthermore, we provide regime diagrams to help constrain deformation conditions of measured ice fabrics. We also obtain predictions for the strain-scales strain scales over which fabric evolution takes place at any given temperature. The use of our model in large-scale ice flow models as well as and for interpreting fabrics observed in ice cores and seismic anisotropy , will provide provides new tools supporting the community in predicting and interpreting ice flow in a changing climate.

1 Introduction

Mass loss from ice sheets is set to be the main contributor to sea-level rise this century (e.g. Shepherd et al., 2018). Reliably predicting sea-level rise depends on accurately modelling ice flow. One of the most important controls on ice flow ice-flow dynamics is the ice fabric, i.e. the arrangement of ice grains in terms of their crystallographic axes collective distribution of crystal orientations within a given polycrystal. Strong alignment of the crystal lattices orientations may cause the strain-rate response to an applied stress to vary by a factor of 9 in different directions (e.g. Pimienta and Duval, 1987). Hence, understanding the fabrics present in any flowing ice sheet, i.e. Antarctica or Greenland, is important for predicting ice-sheet flow and, in turn, the loss of ice over time.

To date, the analysis and discussion of ice fabrics has focused primarily on those formed under the specific deformation regimes of pure and simple shear. The primary motivation uniaxial compression and pure shear (both irrotational deformations), as well

as simple shear. However, these regimes represent isolated points in a parameter space of deformation regimes that occur in nature. Kamb (1972) conducted experiments to produce fabrics at for intermediate deformations between uniaxial compression and pure or simple shear and produced illustrative pole figures across this space. He found that for these intermediate deformations, the fabric pattern produced exhibits a continuous transition between what is seen for the known end points. This transition is measured using the *stress character*, the ratio of maximum and minimum in stress difference between principal axes. Kamb (1972) also examines the steady state characteristics of the fabric, finding it is primarily dependent on total strain and weakly dependent on stress. However the experiments are limited to strains of around 0.5 and high temperatures (-5 to 0° C) which limits the application of this work to conditions seen in ice sheets.

The objective of the present paper is to use the validated fabric evolution model SpecCAF (Richards et al., 2021) to take a step away from the isolated conditions of pure irrotational deformation and simple shear where the model has been validated, and explore the continuous space of deformation regimes lying intermediate to these endmember between these cases, and also those that are extrapolate beyond to deformation regimes more rotational than simple shear, across a unified spectrum. Ice flow is commonly modelled in . One way to model ice flow is to simplify it to the two-dimensional x - z plane (e.g Martín et al., 2009), and analysis (along the flow direction and the vertical, e.g Martín et al., 2009). This is done in order to understand vertical variation of the ice flow and compare to ice core profiles. Analysis of this flow shows that it commonly resides outside the endmember regimes of pure and simple shear (we illustrate this below will illustrate this further in section 2.2.1 below). Therefore, an exploration of the fabric patterns fabrics arising in this generalised situation is necessary as a a necessary step towards improving our ability to interpret fabrics derived understanding of ice fabrics: both to aid the interpretation of fabrics measured from ice cores and to predict future ice flow taking ice fabric effects into account. As a first step towards this, we seek here

To summarise, in this paper we seek to address a number of open questions. First, what fabrics are produced under any given (incompressible) two-dimensional deformation regime? Second, how do fabrics evolve at the these fabrics change over the space of increasing vorticity and temperature, and can we use this information to aid in interpreting ice cores? Third, how do fabrics evolve at very high strains which have remained inaccessible to laboratory experiments? Third, what strains are necessary to reach steady state in the different deformation regimes? Finally, at these high strains, how are the final steady states dependent on parameters such as temperature and type of deformation regime? , and at what strain does the fabric reach a steady state?

We address these questions by making use of a new continuum model SpecCAF (Richards et al., 2021), which is the first fabric evolution model to accurately predict ice fabrics produced in laboratory experiments, and is computationally efficient enough to be incorporated into large-scale ice-sheet models.

55 2 Background

2.1 Fabric Development

2.1.1 Processes governing fabric development

The distribution of crystallographic orientations within a polycrystal is called the fabric or crystallographic preferred orientation (CPO). Basal-slip is generally dominant in ice (Duval et al., 1983), although non-basal slip systems are active, especially at high temperatures (Chauve et al., 2017). To leading order the The distribution of the c -axes is the key control for dominant control on the mechanical properties (e.g. such as viscous anisotropy) of ice (Duval, 1981). As ice flows, under deformation by crystal plasticity, the distribution of Ice deforms and flows primarily through dislocation glide, which occurs almost exclusively along the basal-plane. The orientation of the basal-plane can be described by its normal vector, the c -axes evolves to produce a fabric. The intensity -axis. Both the intensity and pattern of the fabric, and the pattern seen, produced is dependent on the conditions of deformation, which will influence the relative activity of different deformation mechanisms. During crystal plasticity several deformation mechanisms may be active. These include crystal slip, grain boundary migration (also termed migration recrystallization), rotational recrystallization and rigid-body rotation. Crystal slip occurs predominantly by slip mechanisms. As ice deforms, the fabric evolves through dislocation glide along the basal plane, which results in a systematic change in orientation of the Causes c -axis (Steinemann, 1958; ?), even though other slip systems are activated to a minor degree if deformed at high temperatures (Chauve et al., 2017) and in areas of local stress heterogeneities (Piazolo et al., 2015)-axes to rotate (Steinemann, 1958; Hondoh, 2000), rigid-body rotation, which simply rotates grains around the rotation axis, and recrystallization processes, which rearrange the grain boundary network.

Migration recrystallization There are two main recrystallization processes that affect the ice fabric. The first is *migration recrystallization*, which can include a combination of strain-induced grain boundary migration and nucleation (Doherty et al., 1997). Grain-boundary migration in a deforming crystalline material that deforms by crystal plasticity is mainly driven by difference in differences in stored strain energy i.e. energy related to unbound dislocation density either side of a grain boundary (e.g. Humphreys and Hatherly, 2004)(e.g. Gottstein and Shvindlerman, 1999; Humphreys and Hatherly, 2004). Hence, in the case of such strain induced migration recrystallization(Drury et al., 1985; Drury and Urai, 1990) strain-induced migration recrystallization, the less strained grain grows at the expense of the more strained grain resulting in an overall decrease in the strain energy of the system. As the strain energy stored in a grain (i.e. dislocation density) is directly related to the imposed stress (Gottstein and Shvindlerman, 1999) migration recrystallization is inherently related to stress as well. (Drury et al., 1985; Drury and Urai, 1990). The dislocation density accumulated within a certain grain is primarily a response to its orientation relative to the main deviatoric stress axes. For example, a grain favourably oriented for basal slip will accumulate less fewer dislocations than a grain that is oriented unfavourably. Consequently, depending on the deformation regime, grains of certain orientation will grow at the expense of grains of another unfavourable orientation. less favourable orientations. Grains may also nucleate spontaneously in areas of high dislocation density and then grow if they are favourably orientated (Doherty et al., 1997). As a result, the effect of migration recrystallization is to produce c -axes c -axes clustered towards certain orientations in a polycrystal. Even though some studies suggest that fabric is stress-dependent (Harte et al., 2020; Hudleston, 2015), the effect of migration recrystallization will be the same on the resulting fabric. It should be noted that, while the local stress axes are influenced by the environment around the respective

grain (e.g. Grennerat et al., 2012; Piazzolo et al., 2015), grains with *c*-axis oriented less favourably for slip relative to the far field stress axes will statistically have higher stored strain energy.

90 **Rotational recrystallization** The second recrystallization process is *rotational recrystallization*. This occurs when dislocations recover into subgrain boundaries which, with increasing strain, will develop into grains (Drury et al., 1985). As dislocations are concentrated close to grain boundaries due to stress heterogeneities (Piazzolo et al., 2015), subgrains, and therefore heterogeneity, as observed in shallow and deep polar ice (Kipfstuhl et al., 2006, 2009), and which can be thought of as an ice grain having a stressed outer 'mantle' and a less stressed inner 'core' (Faria et al., 2009). Therefore, new grains developing from subgrains, dominantly will tend to occur near grain boundaries. The orientation of these
95 new grains is random to leading order. This acts to diffuse the *c*-axes of the original grain (Gödert, 2003). Rigid-body rotation acts to rotate any grain and therefore its *c*-axis in accordance with the rotational characteristics of the deformation regime that the ice grains are subjected to similar to, but slightly different to, the parent grain. With increasing strain, the difference in orientation tends to increase (Halfpenny et al., 2006). This randomisation of orientations acts to diffuse concentrations in the fabric (Alley, 1992).

2.1.2 Observed fabrics

100 Ice fabrics can be observed through laboratory experiments, through ice cores from real-world locations, and, more recently, inferred through radar and seismic measurements.

In the laboratory, the majority of experiments are performed in compression, either in pure shear (2D) or unconfined (uniaxial) compression (3D), without any rotational component by compressing a block of ice, resulting in an irrotational deformation: either pure shear if the block is confined in one direction or uniaxial compression otherwise (e.g. Jacka and Maccagnan, 1984; Jacka and Li,
105 2000; Craw et al., 2018; Fan et al., 2020; Piazzolo et al., 2013). The other endmember considered is simple-shear off-studied case is simple shear (Journaux et al., 2019; Qi et al., 2019). Laboratory experiments provide detailed fabric measurements in known conditions. However, experiments are mostly limited to endmember single deformation regimes, as well as to strains of around 0.4 for uniaxial compression (Fan et al., 2020) and 2 for direct simple shear (Qi et al., 2019).

Experiments have been performed using combined compression and for deformations intermediate to pure and simple shear, at
110 temperatures close to the melting point of ice (Duval, 1981; ?; Budd et al., 2013) (Duval, 1981; Li et al., 1996; Budd et al., 2013). Fabrics from Duval (1981) combining unconfined uniaxial compression and simple shear show a broad cluster with 3 or 4 maxima inside it. Budd et al. (2013) shows, for an experiment with mostly simple shear combined with some confined compression pure shear and at an equivalent strain to that used later in this paper of 0.75, a fabric which shows the merging of a double cluster (from pure shear) and a single-maxima single-maximum (from simple shear). Experiments have also been performed with layered samples of ice (Wilson, 2000;
115 Wilson and Peternell, 2012). In addition to the relatively few experiments that have been conducted under a combination of simple and pure shear, no analysis has been conducted of situations where fabrics are produced in There are no experiments exploring deformation regimes more rotational than simple shear. We show As a preliminary motivation in section 2.2.2, we will show that deformation regimes inbetween that lie in between pure and simple shear, and those as well as those that are more rotational than simple shear, occur widely in natural ice-sheet flows along both horizontal and vertical cross-sections.

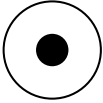



Fabric name	(a) Single-maximum	(b) Cone-shape	(c) Double-maximum	(d) Secondary cluster
Pole figure				
Deformation	Compression, Simple shear	Unconfined compression	Confined compression	Simple shear
Temperature	Low (~ -30°C)	High (~ -10°C)	High (~ -10°C)	High (~ -10°C)

Figure 1. Illustration showing common fabrics or CPOs fabrics which develop in ice, illustrated by their pole figures, as well as the deformation regime and temperature they typically occur at. The pole figures show the distribution of c -axis orientations, with the compression axis at the centre. (a) shows a single-maximum fabric, produced in unconfined uniaxial compression or simple shear at low temperatures (Qi et al., 2019). (b) shows a cone-shape girdle fabric, produced in unconfined uniaxial compression at higher temperatures, when grain-boundary migration is active (Paterson, 1999). This can also be considered a girdle fabric when the cone-angle approaches 90° . (c) shows a double-maxima fabric produced in confined compression (pure shear) (Budd et al., 2013). (d) shows a single-maximum with a secondary cluster, produced in simple shear at higher temperatures. (Kamb, 1972; Qi et al., 2019). Note: this simple shear deformation is rotated 45° to keep the principal deformation axes constant relative to the other figures.

120 Fabrics can also be analysed by taking ice cores in ice sheets. An A detailed understanding of the fabrics produced over possible deformations and temperatures enables us to interpret the deformation regime and temperature history of ice cores. Initial studies of ice cores have concentrated on ice domes or divides (Gow, 1961; Holtzscheler et al., 1954; Johnsen et al., 1995). These locations are deliberately chosen because they have minimal deformation, to and thus act as a good proxy for past climate data. At domes the centre of a dome, the ice will be deformed vertically in unconfined deform vertically in uniaxial compression, producing either a single-maximum or a girdle shape fabric (Fig. ??1). Recently, ice cores have become available in locations with more complex deformation regime histories (Stoll et al., 2018; Treverrow et al., 2010). Stoll et al. (2018) show examples of a variety of fabric shapes such as girdles and single-maximum fabrics orientated in different directions as well as relatively faster fabric development with depth compared to ice cores at domes. Fabrics can also be measured from boreholes using sonic and optical techniques (Gusmeroli et al., 2012; Kluskiewicz et al., 2017).

130 Recently, data from radar and seismics has also been used to infer fabric properties (Matsuoka et al., 2003; Fujita et al., 2006; Booth et al., 2020). These methods can capture natural ice fabrics without expensive drilling, allowing data to be collected at more active locations such as ice streams (Jordan et al., 2020).

2.1.3 Fabric development

135 Figure ?? illustrates schematically some commonly observed CPO patterns seen in laboratory experiments and from ice cores. These are illustrated In experiments and observations, a number of common fabric patterns occur (Figure 1). Fabrics are commonly visualised by pole figures which show half of the of c -axis orientations (which cover the space of a unit sphere) projected onto a plane (since , showing a hemisphere where each point represents a possible orientation. As the c -axes are antipodally symmetric, this a hemisphere is sufficient to show all the information). Labora-

140 tory experiments studying CPO evolution have been performed mostly in uniaxial compression and this produces either a single maximum possible orientations. The colour then indicates concentrations of orientation at the direction. The mechanisms of basal-slip deformation, rigid-body rotation, migration and rotational recrystallization act in different ways and with different magnitudes depending on the deformation regime and temperature. For uniaxial compression, at low temperatures (Fig. ??a) or a cone-shape fabric at high temperatures (Fig. ??b). At low temperatures ($T \approx -30^\circ \text{C}$) basal-slip deformation regime dominates and this causes c -axes to rotate towards the axis of compression, producing the single-maximum shown in Fig. ??a. The cone-shape fabric shown in Fig. ??b, seen in experiments such as Kamb (1972), is produced by the balance of basal-slip deformation regime and migration recrystallization. The process of migration recrystallization pattern (Fig. 1a). At high temperatures, migration recrystallization is also active. This process acts to consume grains orientated towards the compression axis, and grow and, on its own, grows grains orientated in a ring 45° away from the compression axis (the orientation easiest for basal slip and hence likely to be with the least dislocations). Therefore, the balance of basal-slip deformation regime and migration recrystallization produces a ring or cone-shape pattern in the pole figure: girdle pattern, with an angle always $< 45^\circ$ due to the interaction between the two processes (Fig. 1b). In pure shear, which is a 2D compression, the grains produced by migration recrystallization instead form two clusters at 45° , as shown in Fig. ??c is produced rather than a cone-shape fabric. This has been seen in experiments such as Budd et al. (2013) and hence a double-maximum fabric is produced (1c), as observed in experiments (Budd et al., 2013).

Recent simple shear experiments produce experiments in simple shear produced either a single-maximum at low temperatures, or a single-maximum with an offset secondary cluster (Fig. ??1d) at intermediate strains and high temperatures (Qi et al., 2019; Journaux et al., 2019). This pattern is similar to a double-maxima double-maximum but the presence of vorticity in simple shear causes an imbalance in cluster strengths. For the stronger, primary cluster the cluster that is not aligned with the shear plane normal to be advected towards the primary cluster. As the secondary cluster's orientation changes, grains of that orientation accumulate more dislocations so start to be consumed by migration recrystallization vorticity acts to move c -axes in the opposite direction to the basal-slip deformation, resulting in a stable position. For the weaker, secondary cluster the vorticity and basal-slip deformation both rotate c -axes away, towards the compression axis. This results in the imbalance in cluster strengths seen illustrated in Fig. ??1d.

160 2.2 Classifying flow regimes

2.2.1 General deformation regimes

There exists a significant variety of deformation regimes in the natural world. One way to classify a deformation regime is by the vorticity number (Passchier, 1991), which measures the ratio of vorticity magnitude to strain-rate magnitude:

$$\mathcal{W} = \sqrt{\frac{W_{ij}W_{ij}}{D_{ij}D_{ij}}}, \quad (1)$$

165 where $\mathbf{W} = \frac{1}{2}(\nabla\mathbf{u} - \nabla\mathbf{u}^T)$ is the anti-symmetric part of the velocity gradient (the spin-rate tensor) and $\mathbf{D} = \frac{1}{2}(\nabla\mathbf{u} + \nabla\mathbf{u}^T)$ is the symmetric part of the velocity gradient (the strain-rate tensor).

As a note for people unfamiliar, in Eq. (1) we have used both summation notation W_{ij} and vector notation \mathbf{W} . W_{ij} is a 2nd-rank tensor (shown by the number of indices) and the operation $W_{ij}W_{ij}$, indicating summation over the repeated indices, is the tensor inner product $\mathbf{W} : \mathbf{W}$.

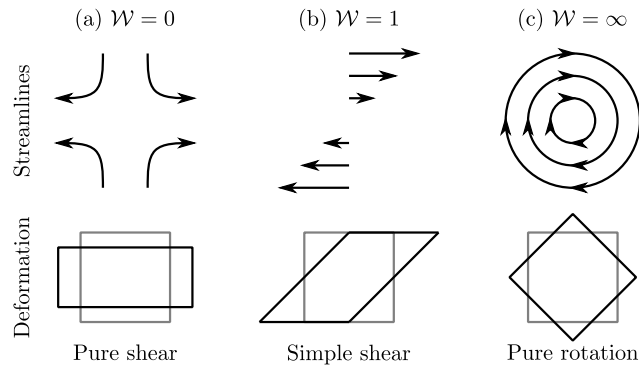


Figure 2. Schematics illustrating two-dimensional flow regimes at different vorticity numbers \mathcal{W} (Eq. (1)): (a) Pure shear ($\mathcal{W} = 0$), (b) Simple shear ($\mathcal{W} = 1$), (c) Pure rotation A purely rotational deformation ($\mathcal{W} = \infty$). For each flow the streamlines and deformation regime produced are shown.

170 Figure 2 illustrates different flow regimes and the corresponding vorticity number the flow regimes associated with different vorticity numbers \mathcal{W} for each. The vorticity number is 0 for pure shear or uniaxial compression, 1 for simple shear and ∞ for rigid-body rotation. Ice in the natural world will experience deformation regimes with vorticity numbers from 0 to ∞ , however to date fabrics produced for . However, the most extensive analysis to date has focused on the specific cases of $\mathcal{W} = 0$ and $\mathcal{W} = 1$ are the only areas which have been extensively explored due to the limitations of possible difficulty of producing other deformation regimes in experiments.

175 Pure shear and simple shear also tend to dominate discussions regarding the interpretation of fabrics in ice-sheet flow. In the late 1990s and early 2000s it was recognised in the geological community that flow in rocks cannot be approximated by endmember plane strain flow models the isolated conditions of $\mathcal{W} = 0$ and $\mathcal{W} = 1$ alone (Jiang, 1994; Bailey and Eyster, 2003). There is now an extensive literature Since then, many papers within structural geology which have developed conceptual models and analytical techniques to predict and recognise natural geological flows with vorticity numbers between 0 and 1 (Fossen and
180 Tikoff, 1993; Tikoff and Fossen, 1995; Piazzolo et al., 2002, 2004; ten Grotenhuis et al., 2002). In contrast, such analysis is less common in discussions surrounding ice core interpretation; pure shear and simple shear tend to dominate discussions regarding both the interpretation of ice-sheet flow and experimental analysis ice-core interpretation. This may be mainly due to the fact that such endmember because such scenarios are a) experimentally straightforward to achieve, b) the two endmembers and b) these cases can – as a first approximation - be associated with different ice flow scenarios of an ice divide and the shallow ice approximation (although it should be noted, as we
185 discuss below, that the shallow ice approximation is only in simple shear towards near the base).

2.2.2 Two-dimensional deformation regimes in natural ice flow

As a first step towards exploring the fabrics produced by all possible deformation regimes, we will focus here on general incompressible two-dimensional deformations. Although deformation regimes in the natural world will be three-dimensional, exploring fabrics produced by two-dimensional deformation regimes is a natural first step away from the canonical regimes
190 of pure and simple shear. It is also common to limit the modelling of ice-sheet ice sheets to two dimensions, ; either in the

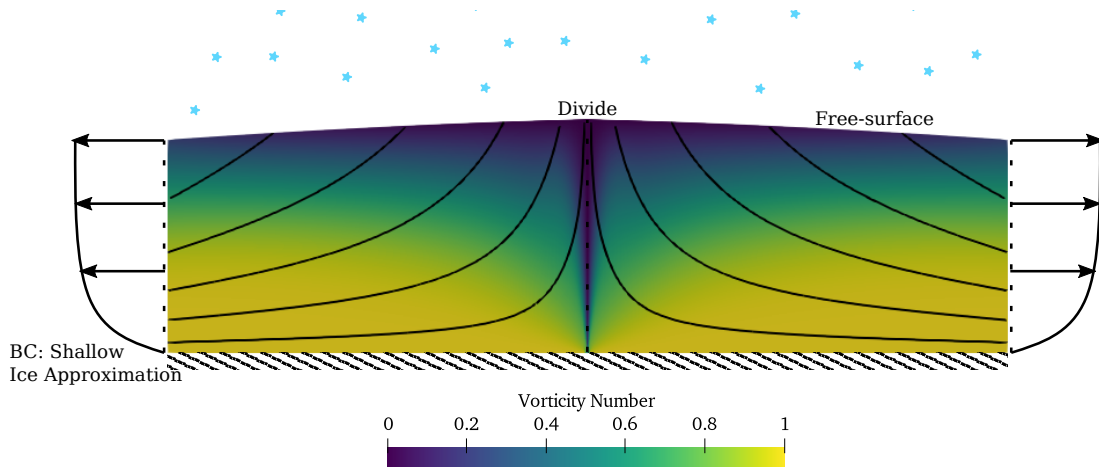


Figure 3. Illustrative figure showing the vorticity number for ice flowing at a divide, showing a range from 0 to 1. The problem setup is from Martín et al. (2009) with isotropic ice. The simulation has an aspect ratio of 20, but only the region from $x = 0$ to $x = 10H$, where H is the height of model domain, is shown. The domain has the velocity from the shallow-ice approximation imposed at the left and right boundaries, and the surface accumulation is set to match the outflow, corresponding to a steady state. No-slip is imposed at the base and a free surface is assumed at the top. The vorticity number is shown, alongside streamlines. This flow was computed using a full-Stokes solver written in FEniCS (Martin Alnæs et al., 2015) with $n = 3$ and solved using Taylor-Hood elements.

vertical cross-section (Pattyn et al., 2008; Martín et al., 2009). In Fig. 3, we show the vorticity number from a 2D simulation of flow at or through depth-integrated approaches (e.g Pegler, 2016; Joughin et al., 2021).

In order to illustrate the range of vorticity numbers which are expected to occur in natural flows, we explore here a number of scenarios. For an ice divide and its horizontal transition towards a flow dominated by vertical shear stresses (the shallow ice approximation, the simulation shows that the vorticity number varies smoothly between 0 and 1 (Fig. 3). Due to the vanishing of horizontal velocity at the divide central divide itself, the vorticity number is 0 there, corresponding to the regime of pure shear along $x = 0$. Away from the divide, the flow is dominated by a balance between gravity and the divergence of vertical shear stresses exhibits a transition in the vorticity number (the shallow ice approximation). The vorticity number transitions continuously from 1 at the base, corresponding to simple shear, towards close to 0 at the surface, corresponding to pure shear. In summary, the figure shows vorticity numbers between 0 and 1 are the norm.

It is not only vorticity numbers. If we consider a 2D flow of ice over a Gaussian bump (Fig. 4), flowing from left to right down a hill of angle 3.0° , we find that vorticity numbers both between 0 and 1 which can occur. Vorticity numbers and greater than 1, corresponding to deformation regimes more rotational than simple shear, are predicted to occur in ice sheets. As an example consider the flow of ice over a Gaussian bump at the base shown in Fig. 4. This is modification of the ISMIP-HOM experiment F benchmark (Pattyn et al., 2008), representing ice flowing downhill over a Gaussian bump. Compared to Pattyn et al. (2008), the bump is 4 times higher and 31.6 times sharper. This shows even in a simple configuration can occur. This indicates that, even in relatively simple configurations, vorticity numbers greater than 1 (in this case reaching 1.6) can potentially occur in

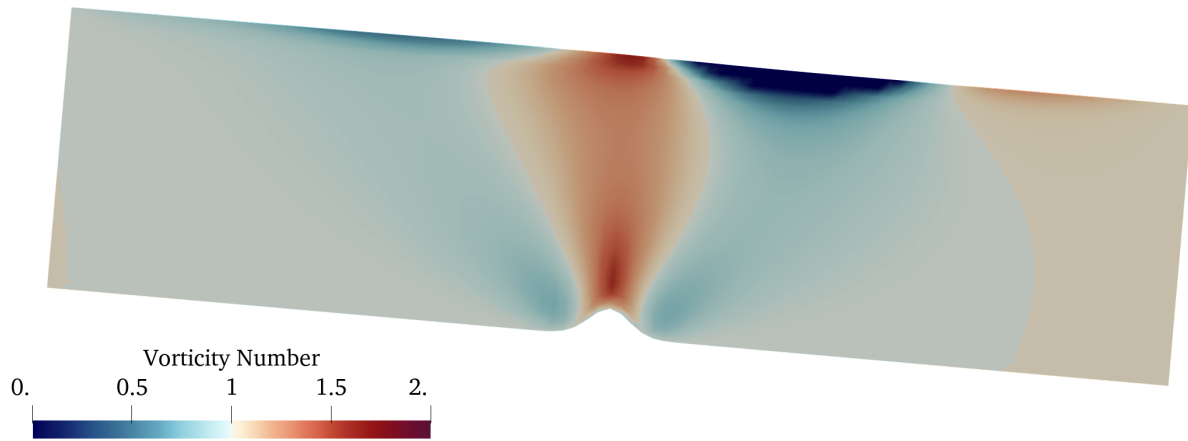


Figure 4. The vorticity number for ice flowing over a 2D slice from a modified version of the ISMIP-HOM Experiment F benchmark (Pattyn et al., 2008) gaussian bump, performed in Elmer/ICE (Gagliardini et al., 2013) with $n = 3$. The ice is flowing from left to right, down a hill with angle 3.0° . There is no slip at the base and encounters a Gaussian bump free surface at the base top. Compared to Pattyn et al. (2008), the Gaussian bump height $h = H/10$, where H is 4 times higher and 31.6 times sharper the domain height. Over the bump the flow accelerates leading to vorticity numbers greater than 1. This simulation was performed using Elmer/ICE (Gagliardini et al., 2013) with $n = 1$.

the vertical velocity profile. Fig. 4 shows vorticity numbers up to 2. To-date, cross-section. However, to-date, the fabrics produced for vorticity numbers above 1 have not been analysed.

Further, we have calculated The above examples focused on the two-dimensional flow in vertical cross-sections of ice-sheet simulations. To further explore the occurrence of vorticity numbers away from 0 or 1 in natural flows, we calculate an estimate of the vorticity number in the horizontal flow near the surface of Antarctica, in order to illustrate the natural deviation from endmember regimes the Antarctic Ice Sheet. To do this we have used, we use surface velocity data from Antarctica (Mouginot et al., 2019) to calculate the vorticity number, shown in Fig. 5. We have calculated the The vorticity number is calculated by combining surface velocity gradients $\partial u/\partial x, \partial u/\partial y, \partial v/\partial x, \partial v/\partial y$ using central differencing. To evaluate the vorticity number, we use these estimates of horizontal velocity gradients combined with an estimate of the maximum vertical shear vertical shear rate $(\partial u/\partial z, \partial v/\partial z)$ in the top 25% of the depth of the ice-sheet determined. In order to estimate the lower-bound of the vorticity number near the surface, we estimate the upper bound on the vertical shear by using the shallow-ice approximation assuming no basal-slip. to assume no sliding at the base of the ice sheet. This is likely to be a conservative estimate of vorticity number in areas where it is known there is significant sliding at the base of the ice stream. We estimate the vertical shear for no basal slip, at a depth of 25% into the ice-sheet, such that these vorticity numbers are at least valid to this depth: in regions with more slip at the base of the ice sheet, the vertical shear rate will be reduced and this estimate remains valid to a greater depth. The derivative $\partial w/\partial z$ is calculated using mass continuity and we have neglected the higher order contributions $\partial w/\partial x$ and $\partial w/\partial y$.

To reduce the errors in the data for Fig. 5 we have taken the mean value from a 10×10 block (covering a 4.5 km square). We have defined the standard deviation of any variables, such as velocity components, as the variance from the mean of the 100 samples in each 10×10 block. The relative standard deviation controls the transparency: if this is $> 100\%$ this location is plotted as white, and a relative standard deviation of 0% is plotted as the full colour. From this figure we can see

The resulting prediction for the vorticity number shown in the map of Fig. 5 indicates that there are many widespread regions of Antarctica where the surface vorticity number near the surface is both at intermediate values between 0 and 1, and or at values greater than 1. The regions characterised by high vorticity numbers ($W > 1$) occur typically typically occur in highly dynamic regions such as ice streams. Closer to the base of an ice-sheetIn the majority of the ice sheet, the vorticity number tends will tend to 1 as the vertical gradients dominate. In regions with no basal slip, these vorticity numbers are potentially valid to approximately 25% into the ice-sheet. In regions with basal slipdepth increases due to the large vertical shear at the base. For ice streams and shelves, the vorticity number will be valid deeper into the ice-sheetpredicted here may also apply closer to the base.

2.3 Hierarchy of ice modelling spanning the microscale to the macroscale

The effects of deformation on the dynamics of ice covers a vast range of scales from the order of microns for studying grain-grain interactions, to continental scales of 1000s of kilometres when studying ice-sheetsice sheets. Consequently, different approaches must be used depending on the scale one seeks to work on, with microscale micro-scale models serving to provide parametrisations of small-scale processes for use in larger scale models. At the scale of micrometres microns and millimetres, there exist several approaches for modelling the microstructure directly (e.g. Llorens et al., 2016; Kennedy and Pettit, 2015). This involves simulating grain-grain grain-to-grain interactions with deformation regimes imposed via stress or velocity boundary conditions at the edges of the numerical domain. This is useful for improving our understanding of ice microstructure and fabric evolution. However, it cannot be scaled-up to be incorporated into ice-sheet model models due to the numerical cost. At the largest scale, ice-sheet models typically neglect the effect of fabric entirely. The state-of-the-art for incorporating fabric evolution into large-scale models is to track the evolution of a 2nd-rank tensor representing the second moment of the orientation density function (to be defined below in Eq. (2)). A key omission in utilising As taking the second moment alone is that it cannot incorporate the important process of migration recrystallization (Gillet-Chaulet et al., 2006; Gagliardini et al., 2013), which is key in terms of producing the details of differing fabric patterns only retains information from terms up to order two in a spherical harmonic expansion (Montgomery-Smith et al., 2010), it is impossible with this approach to reproduce observed fabric patterns like a secondary cluster.

In this paperContribution, we use the SpecCAF model from Richards et al. (2021), which forms a continuum model of the full orientation density function with parameterisations of the underlying processes calibrated using laboratory experiments. In the hierarchy of ice modelling, SpecCAF seeks to model ice fabrics at a larger scale than models by Llorens et al. (2017)for example such as Llorens et al. (2017). SpecCAF acts as a continuum model for fabric evolution which, through use of a spectral methodthe use of spherical harmonic expansion, is sufficiently efficient computationally that it can be incorporated into ice-sheet models, while retaining all key processes. In this continuum approach, grain-to-grain interactions are incorporated statistically through parameterisations of an orientation density function representing a distribution function of c -axes averaged over a polycrystal. The model thereby describes the evolution of the orientation density by considering ice as a continuum mixture of orientations (Faria, 2006). Parameterisations then describe the effect of different microstructural processes on the orientation distribution function. Since it incorporates parameterisations of the

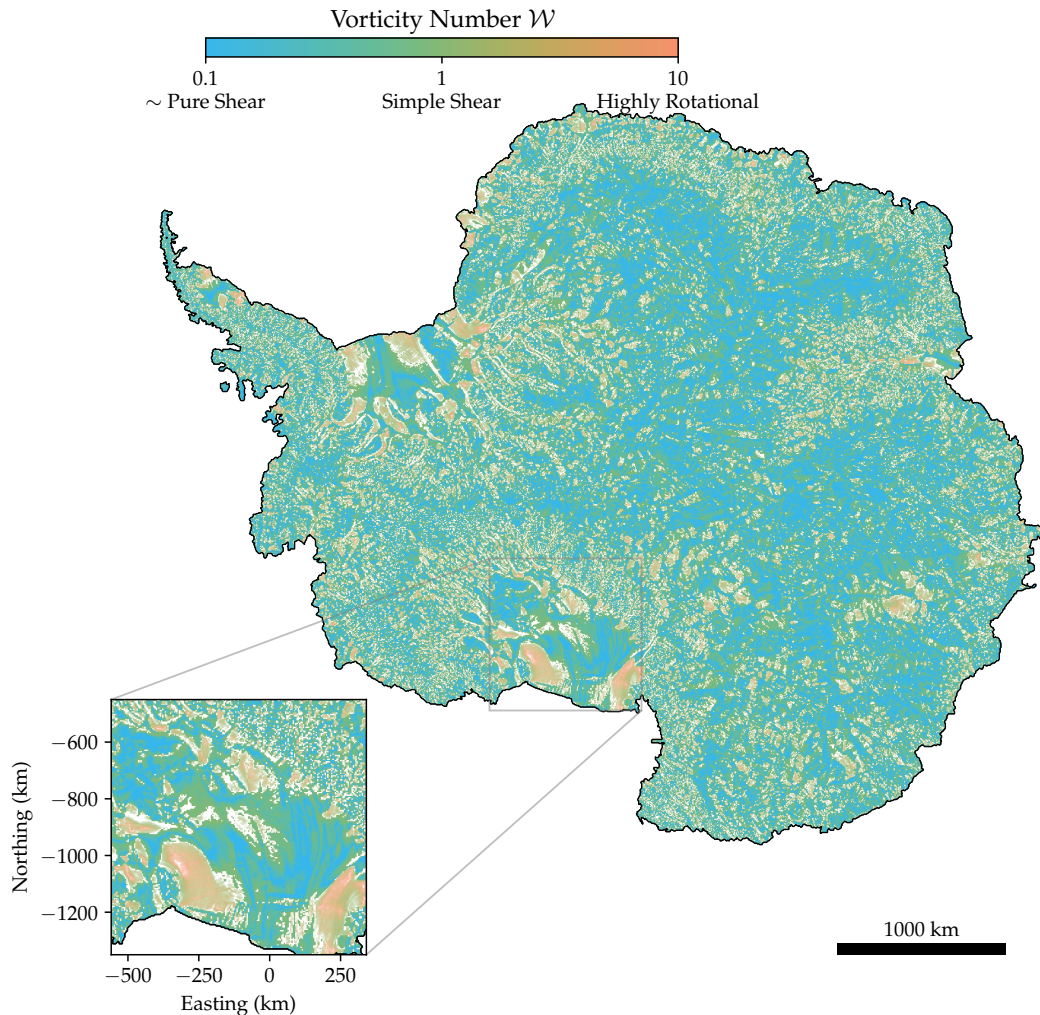


Figure 5. Vorticity number (defined Figure to illustrate the range of vorticity numbers near the surface in EqAntarctica.) This is calculated from the surface velocity data of Antarctica (Mouginot et al., 2019) after averaging over a 10×10 block and taking the mean value within each block. The calculation uses the horizontal velocity fields from the observed surface velocity combined with an estimate of the average vertical shear predicted to occur in the top 25% of the ice sheet using the shallow-ice-approximation. The colour shows the vorticity number on a log scale. The transparency shows the relative error: an error in \mathcal{W} of 100% or greater is plotted as white and an error of 0% is plotted as used to hide areas with large uncertainty in the full colour vorticity number. The inset shows the Ross Ice Shelf, with the easting and northing in Antarctic polar stereographic coordinates. This shows considerable variation across the continent, including deformation regimes not accessible in the laboratory.

mean effect of grain-grain interactions, there is no need to represent the strain and stress fields explicitly within the microstructure. However, these interactions are incorporated statistically within the model by parameterisations of the net effect of these interactions , and

calibrated using laboratory experiments for which parameters such as strain, deformation rate and temperature are known.

260 This model (SpecCAF) has been shown to predict fabrics accurately in both the endmember limits of uniaxial compression and simple shear. The model can predict, and can make predictions of fabric evolution with only the velocity gradient and temperature as inputs.

We note that, by itself, SpecCAF models fabric evolution only, it for given applied deformation. It does not include a viscosity formulation like the CAFFE model of Placidi et al. (2010). Thus, we take the velocity gradient as being prescribed, and consider the evolution of fabrics that occur as a result. In principle, the model could be coupled to a any flow law (viscosity

265 formulation) describing the effect of the fabric on the anisotropy. This could be considered in future.

2.4 Open questions addressed here Outline of paper

In this paper we use the SpecCAF model to address the open questions highlighted in the introduction: what fabrics are produced under any given (incompressible) two-dimensional deformation regime, how do fabrics evolve at the very high strains, what strains are necessary to reach steady state, and how are these final steady states dependent on the parameters?

270 In section 3 we review the SpecCAF model and clarify its underlying modelling assumptions and comparison with other modelling approaches. In section 4.1 we determine for the first time the evolution of fabrics in general 2D deformation regimes, for the first time bridging the complete spectrum from pure shear to rigid-body rotation, across the range of temperatures seen in ice sheets. In section 4.2 we construct a complete regime diagram for two-dimensional deformation regimes documenting fabrics that arise over the space of temperature, deformation regime, and strain, and explain the physical balances leading to

275 these fabrics. Finally, in section 4.3 we investigate the time or strain scales over which ice fabric evolution takes place, as well as investigating the steady-state strength of ice fabrics, across the space of deformation regime and temperature. We then discuss the implication of these results for the interpretation of ice cores (section 5.3) and ice flow (sec 5.4).

3 Methods

3.1 The continuum approach

280 The model described in this section is based on Placidi et al. (2010) has already been described in Richards et al. (2021). For the sake of clarity we include an explanation here as well. We begin by reviewing the SpecCAF model, which is developed, experimentally calibrated, tested and solved in Richards et al. (2021) and based on a mathematical continuum approach of Faria (2001, 2006) and Placidi et al. (2010). The SpecCAF model uses a continuum approach to represent the mass distribution of c -axes within a polycrystal $\rho^*(\mathbf{x}, t, \mathbf{n})$, termed the *orientation mass density*, defined according to

$$285 \quad \rho(\mathbf{x}, t) = \int_{S^2} \rho^*(\mathbf{x}, t, \mathbf{n}) d\mathbf{n}, \quad (2)$$

where $\rho(\mathbf{x}, t)$ is the mass density of ice, and \mathbf{n} is a unit vector representing the direction of a c -axis. Here, $\rho^*(\mathbf{x}, t, \mathbf{n}) d\mathbf{n}$ is the mass fraction of grains with orientations directed towards \mathbf{n} within the solid angle $d\mathbf{n}$. In accordance with the equation above, integrating ρ^* over the space of possible orientations (the surface of a unit sphere S^2) gives the mass density of ice at that

Symbol	Name	Unit	Defined in
$\nabla \mathbf{u}$	Velocity gradient	s^{-1}	
\mathbf{D}	Strain-rate tensor	s^{-1}	
\mathbf{W}	Spin-rate tensor	s^{-1}	
\mathcal{W}	Vorticity number	-	Eq. (1)
ρ	Density	kgm^{-3}	
ρ^*	Orientation mass density	kgm^{-3}	Eq. (2)
f^*	Orientation distribution function	-	Eq. (3)
$(\cdot)^*$	Quantity defined over orientation space		
\mathbf{n}	Unit orientation vector	-	
∇^*	Gradient over orientation space	-	Eq. (5)
\mathbf{v}^*	Orientation transition rate	s^{-1}	Eq. (6)
\mathcal{D}^*	Deformability	-	Eq. (7)
$\langle (\cdot)^* \rangle$	Average over orientation space		
λ	Rotation recrystallization rate	s^{-1}	
β	Migration recrystallization rate	s^{-1}	
ι	Ratio between basal-slip deformation and rigid-body rotation	-	
$\dot{\gamma}$	Strain rate	s^{-1}	Eq. (9)
$(\tilde{\cdot})$	Non-dimensionalised quantity	-	
γ	Strain	-	Eq. (13)
T	Temperature	$^{\circ}C$	
J	J index	-	Eq. (14)

Table 1. List of mathematical symbols used in this paper, including units and the equation if they are explicitly defined

particular point in physical space, $\rho(\mathbf{x}, t)$. The non-dimensional equivalent of this is the *orientation distribution function*:

$$290 \quad f^* = \rho^* / \rho \quad (3)$$

SpecCAF incorporates the effect of basal-slip deformation, migration recrystallization and rotation recrystallization (all as functions of temperature), as well as rigid-body rotation, to develop an evolution equation for the orientation mass density ρ^* . As discussed above, the model evolves ρ^* as the dependent variable, with the net effects of grain-to-grain interactions incorporated through ~~parametrisations~~parameterisations. This is similar to other continuum approaches, for example how explicit
295 descriptions of particle interactions are not included in the Stokes equations, yet are satisfactorily modelled statistically through parameterisation in the form of a constitutive relation. In the present case, rotation recrystallization is modelled as a diffusion of concentrations of ρ^* , originally the idea of Gödert (2003). Migration The effect of migration recrystallization is modelled through an orientation dependent source-term orientation-dependent source term producing ρ^* preferentially at orientations where grains would be likely to have a large basal shear-stress shear stress, and vice-versa. Basal-slip deformation is incorporated in accordance with

300 the ‘deck-of-cards’ analogy, and assuming linear dependence on the strain-rate tensor (Placidi et al., 2010). The resulting continuum model has been shown to reproduce all detailed features of the **orientation** distribution functions calculated from experimental samples (Richards et al., 2021).

The essential continuum approach was proposed previously by Faria (2001, 2006). Grains with the same orientations are called a *species*. There has been discussion in the literature (Gagliardini, 2008; Faria et al., 2008) on whether this theory
 305 implicitly includes a *Taylor assumption*, namely, that all ice grains forming the polycrystal experience the same strain-rate. The Taylor assumption has been shown not to be valid for ice (Castelnau et al., 1998). To summarise this debate, Gagliardini (2008) suggests that the assumption in Faria (2006) that the strain-rate of a species is independent of orientation is equivalent to every grain undergoing the same deformation (a Taylor assumption). However, Faria et al. (2008) rejected this assertion and replied that this assumption only requires that grains move with the surrounding material, with no direct constraint on
 310 the individual deformation of grains. In accordance with the continuum approach, the net effect of deformations on individual grains, which can vary from grain to grain, is incorporated via parametrisations of the overall net effect of these interactions. Since these parametrisations are calibrated using **fully resolved laboratory** experiments (Richards et al., 2021), they represent net effects relevant to real samples in which grains do not all experience the same strain. Therefore, the continuum model does not impose a Taylor assumption on the grain deformation. Furthermore, care should be taken **in attributing to attribute** our calibrated
 315 parameters as applying specifically to **grain-grain interactions rather than** the bulk interactions representing their net statistical effects in the model, **as opposed to grain-grain interactions**.

Despite the model not including the Taylor hypothesis, the term for basal-slip deformation in the equation below is similar to that which would be derived from a Taylor homogenisation of ice under a simple basal-slip only model (Gagliardini et al., 2009). The only exception is that the rate of **viscoplastic visco-plastic** deformation can vary relative to rigid-body rotation.

320 3.2 Model specification

The evolution equation for ρ^* under the framework described above was first defined in Placidi et al. (2010):

$$\frac{\partial \rho^*}{\partial t} = -\nabla^* \cdot (\rho^* \mathbf{v}^*) + \lambda \nabla^{*2}(\rho^*) + \beta (\mathcal{D}^* - \langle \mathcal{D}^* \rangle) \rho^*, \quad (4)$$

where λ and β are parameters, to be defined below. Here, ∇^* is the gradient operator in orientation space **defined by**:

$$\nabla^* \mathbf{v}^* = \frac{\partial \mathbf{v}^*}{\partial \mathbf{n}} - \left(\frac{\partial \mathbf{v}^*}{\partial \mathbf{n}} \cdot \mathbf{n} \right) \mathbf{n} = \frac{\partial v_i^*}{\partial n_j} - \frac{\partial v_i^*}{\partial n_l} n_l n_j,$$

325 **which is the gradient operator**, restricted to the surface of a sphere **(i.e. the space of possible orientations) defined by**:

$$\nabla^* \mathbf{v}^* = \frac{\partial \mathbf{v}^*}{\partial \mathbf{n}} - \left(\frac{\partial \mathbf{v}^*}{\partial \mathbf{n}} \cdot \mathbf{n} \right) \mathbf{n} = \frac{\partial v_i^*}{\partial n_j} - \frac{\partial v_i^*}{\partial n_l} n_l n_j. \quad (5)$$

The parameters λ and β represent the rates of rotational **recrystallization and grain-boundary migration** and **migration recrystallization**, respectively. The orientationally dependent term \mathcal{D}^* will be defined below in Eq. (7). The term \mathbf{v}^* defines the orientation transition rate, defined by Placidi et al. (2010) as:

330
$$v_i^* = W_{ij} n_j - \iota (D_{ij} n_j - n_i n_j n_k D_{jk}). \quad (6)$$

This equation is broadly similar to the rotation of an individual c -axis in a discrete model. The term $W_{ij}n_j$ in Eq. (6) represents the effect of vorticity on the CPO. The rigid-body on the fabric, and the second term models basal-slip deformation. The non-dimensional parameter ι represents the ratio of basal-slip deformation to rigid-body rotation.

The parameter λ (s^{-1}) represents the rate of rotational recrystallization, which can be modelled by a diffusion in orientation space (Gödert, 2003) modelled as a diffusional term. Migration recrystallization is modelled by an orientation-dependent source term, with the rate controlled by β (s^{-1}). The orientation dependence is governed by the deformability, defined by:

$$\mathcal{D}^* = 5 \frac{(D_{ij}n_j)(D_{ik}n_k) - (D_{ij}n_jn_i)^2}{D_{mn}D_{nm}}. \quad (7)$$

Placidi et al. (2010) give the physical interpretation of For a given stretching tensor \mathbf{D} , and for a basal plane with normal \mathbf{n} this function represents the normalised strain-rate (or stretching) acting on the basal plane. Therefore, \mathcal{D}^* as the (normalised) square of the shear strain rate resolved onto will be greater at orientations where it is easier to slip along the basal plane. Because ice deforms primarily by basal slip, the resolved shear rate on the basal plane also drives slip along the basal plane, this is a good approximation for the accumulation of deformation energy in the a physical grain, which drives migration recrystallization. The average of \mathcal{D}^* is defined as:

$$\langle \mathcal{D}^* \rangle = \int_{S^2} \frac{\rho^*}{\rho} \mathcal{D}^* d\mathbf{n} \quad (8)$$

If \mathcal{D}^* is greater than the average value $\langle \mathcal{D}^* \rangle$ then \mathcal{D}^* at that orientation will increase, as implied by the final term on the right hand side of Eq. . This corresponds to this term acts as a source term for ρ^* at this orientation. This parameterises grains growing or nucleating with at this orientation. Note that the total production and consumption of \mathcal{D}^* always balance. The factor of 5 in Eq. (7) is a convention.

3.3 Non-dimensionalisation

To apply Eq. (4) to spatially homogeneous fabrics and to compare to fabrics deformed in the laboratory we perform a non-dimensionalisation, where we non-dimensionalise by a characteristic density ρ_0 and strain-rate, which we define as:

$$\dot{\gamma} = \sqrt{\frac{1}{2} D_{ij} D_{ji}}. \quad (9)$$

This is the effective strain-rate strain rate, corresponding to the second-invariant second invariant of the strain-rate tensor \mathbf{D} . The strain-rate we non-dimensional variables are represented with tildes and are defined as:

$$f^* = \frac{\rho^*}{\rho_0}, \quad \tilde{\mathbf{D}} = \frac{\mathbf{D}}{\dot{\gamma}}, \quad \tilde{\mathbf{W}} = \frac{\mathbf{W}}{\dot{\gamma}}, \quad \tilde{\lambda}(T, \dot{\gamma}) = \frac{\lambda(T, \dot{\gamma})}{\dot{\gamma}}, \quad \tilde{\beta}(T, \dot{\gamma}) = \frac{\beta(T, \dot{\gamma})}{\dot{\gamma}}, \quad (10)$$

where for clarity we use f^* to refer to the non-dimensional orientation distribution function (note that the strain rate we non-dimensionalise with in this paper is half the strain-rate we used in Richards et al. (2021), which was based on the experimental strain-rate. The non-dimensional variables are represented with tildes and are defined as:

$$\tilde{\rho}^* = \frac{\rho^*}{\rho_0}, \quad \tilde{\mathbf{D}} = \frac{\mathbf{D}}{\dot{\gamma}}, \quad \tilde{\mathbf{W}} = \frac{\mathbf{W}}{\dot{\gamma}}$$

$$\tilde{\lambda}(T, \dot{\gamma}) = \frac{\lambda(T, \dot{\gamma})}{\dot{\gamma}}, \quad \tilde{\beta}(T, \dot{\gamma}) = \frac{\beta(T, \dot{\gamma})}{\dot{\gamma}}$$

strain rate). Recasting Eq. (4) in terms of the non-dimensional variables above, we obtain:

$$360 \quad \frac{\partial \tilde{\rho}^*}{\partial \tilde{t}} \frac{\partial \mathbf{f}^*}{\partial \tilde{\mathbf{t}}} = -\nabla^* \cdot [\mathbf{f}^* \tilde{\mathbf{v}}^*] + \tilde{\lambda} \nabla^{*2}(\mathbf{f}^*) + \mathbf{f}^* \tilde{\beta} (\mathcal{D}^* - \langle \mathcal{D}^* \rangle), \quad (11)$$

where

$$\tilde{v}_i^* = \tilde{W}_{ij} n_j - \iota (\tilde{D}_{ij} n_j - n_i n_j n_k \tilde{D}_{jk}).$$

is the non-dimensional form of the orientation transition rate (Eq. (6)). Richards et al. (2021) constrained the non-dimensional parameters $\tilde{\lambda}, \iota, \tilde{\beta}$ as functions of temperature. This was done by finding the parameters which gave a best fit to experimental results in simple shear. These parameters were then found to predict well fabric produced in the other endmember deformation regime of (unconfined) fabrics produced in uniaxial compression. In this paper, we use a best fit from the entire inversion performed in Richards et al. (2021), rather than just from the inversion performed in simple shear. Furthermore, as the strain-rate we use to non-dimensionalise is half that used in Richards et al. (2021), the non-dimensional recrystallization parameters ($\tilde{\lambda}, \tilde{\beta}$) used in this paper are double those used in Richards et al. (2021). The true parameters (λ, β) are unchanged. The non-dimensional parameters as functions of temperature are shown in Fig. 6, along with the data points used in the inversion from Richards et al. (2021) and 80% and 95% confidence intervals. In the accompanying supplement to this article a parameter sensitivity study can be found, reproducing the figures below with (a) $\iota_{\max}, \tilde{\beta}_{\max}, \tilde{\lambda}_{\min}$ and (b) $\iota_{\min}, \tilde{\beta}_{\min}, \tilde{\lambda}_{\max}$, with the max and min values taken from the 80% confidence interval in Fig. 6. (a) and (b) are chosen to give the strongest and weakest fabric, respectively.

Equation (11) and the parameters defined by the best fit lines in Fig. 6 combined, when solved with the spectral method defined in Richards et al. (2021), represent the SpecCAF model.

3.4 Pole figure and cross section representation

As a preliminary illustration of the model output and its representation, we show in Fig. 7 an example of model output obtained by solving the model at $T = -5^\circ \text{C}$, in simple shear ($\mathcal{W} = 1$). The principal axes are orientated at $\theta = \pm 45^\circ$ directions of the pole figure. To visualise how the fabric changes with increasing strain, we plot slices of the pole figure at $y = 0$. The example pole figure in (a) is plotted at a strain of $\gamma = 0.345$. The value of ρ^* at $y = 0$ is plotted in (c) for each strain. This shows how the cpo fabric develops from an isotropic fabric. A secondary cluster can clearly be seen as a transient feature which has mostly disappeared by $\gamma = 0.8$.

As an example comparison of the model prediction and experimental observations, we have included a pole figure from laboratory experiments (Qi et al., 2019) in Fig. 87b. This is at the same temperature and strain as the model output in (a). There is very good agreement between the model and experiments. More experimental comparisons are detailed in Richards et al. (2021), showing that the model is able to generally capture both qualitative and quantitative features of fabrics observed in existing experiments.

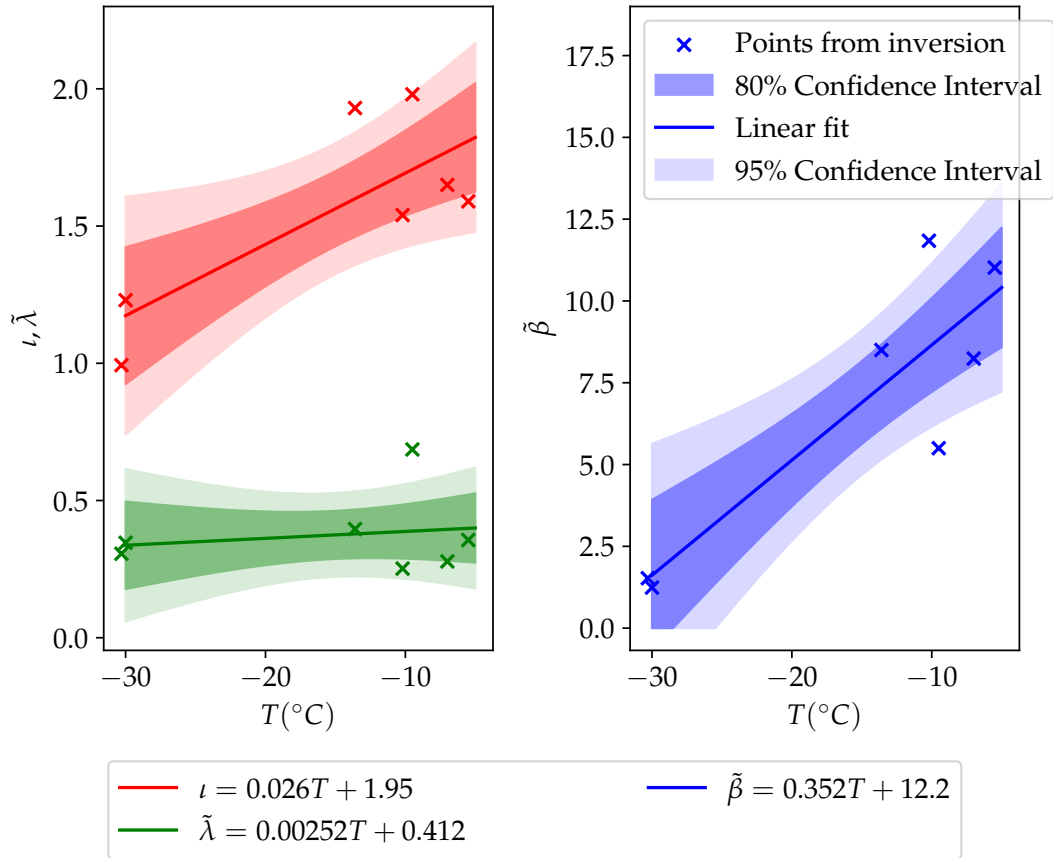


Figure 6. The model parameters $\iota, \tilde{\lambda}, \tilde{\beta}$ as functions of temperature, determined by linear regression to experimental data in both compression and simple shear, as conducted in Richards et al. (2021). The 95% and 80% confidence intervals are shown.

4 Results

4.1 General fabric evolution: dependence on temperature and vorticity number

390 We explore fabric evolution across a complete, continuous range of vorticity numbers \mathcal{W} for two-dimensional deformation regimes (spanning $\mathcal{W} = 0$ to ∞), and a continuous range of temperatures T relevant to ice-sheet flow ($T = -30$ to -5°C). For all cases, we assume an initially isotropic fabric. To make comparisons, we will limit our analysis to fabrics undergoing a constant two-dimensional deformation and at a constant temperature. We apply a velocity gradient which varies with vorticity number. This is chosen to be:

$$395 \quad \nabla \mathbf{u} = \begin{bmatrix} 1 & 0 & k \\ 0 & 0 & 0 \\ -k & 0 & -1 \end{bmatrix} \quad \text{such that} \quad \mathbf{D} = \begin{bmatrix} 1 & 0 & 0 \\ 0 & 0 & 0 \\ 0 & 0 & -1 \end{bmatrix} \quad \text{and} \quad \mathbf{W} = \begin{bmatrix} 0 & 0 & k \\ 0 & 0 & 0 \\ -k & 0 & 0 \end{bmatrix} \quad (12)$$

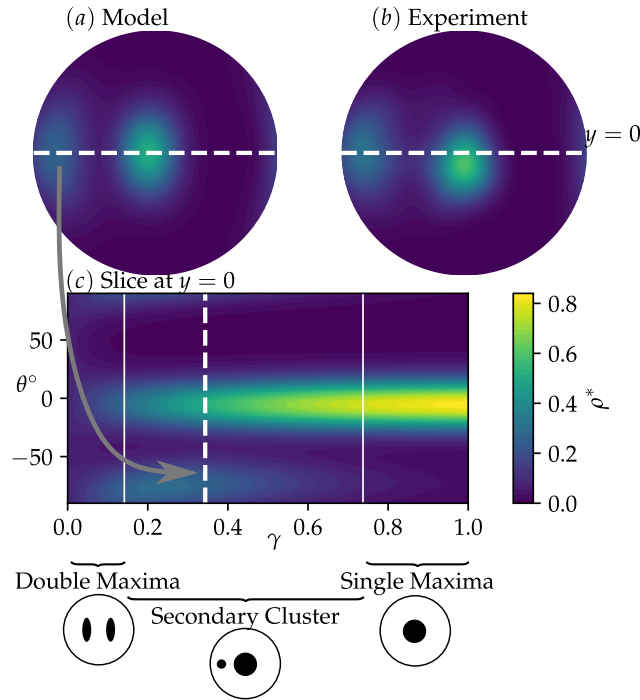


Figure 7. To illustrate the fabric we show a simulation in simple shear at $T = -5^\circ \text{C}$. (a) shows a pole figure from the model at an effective strain of $\gamma = 0.345$ (where the strain-rate is defined as in Eq. (9)). (b) shows a pole figure from laboratory experiments (Qi et al., 2019) at the same temperature and strain, showing good agreement. More comparisons like this can be found in Richards et al. (2021). The white dotted line in (a) and (b) shows $y = 0$. (c) shows $\bar{p}^* f^*$ at $y = 0$ against strain. Here the white dotted line highlights the strain at which the pole figure is plotted. θ is the polar angle. The grey arrow shows the secondary cluster transposed from the pole figure to the $\gamma - \theta$ diagram. Also highlighted is the classification of the different fabric types at different strains; from double-maxima double-maximum to secondary cluster to the steady state single maxima single-maximum. For this figure only the principal strain axes of deformation are oriented at $\theta = \pm 45^\circ$.

This gives $\dot{\gamma} = 1$, and the vorticity number $\mathcal{W} = k$. The vorticity number, defined in Eq. (1), gives the ratio of vorticity to strain-rate magnitude. However, it does not fully constrain the velocity gradient. To do so, we define the non-dimensional velocity gradient as:

$$\nabla \hat{\mathbf{u}} = \begin{bmatrix} 1 & \mathcal{W} \\ -\mathcal{W} & -1 \end{bmatrix}$$

This gives pure shear for $\mathcal{W} = 0$, simple shear for $\mathcal{W} = 1$ and rigid-body rotation as $\mathcal{W} \rightarrow \infty$. The principal-axes of deformation are aligned with the coordinate axes and are unchanged. This velocity gradient is chosen such that the principal strain axes are unchanging as \mathcal{W} varies. Because of this, the simple shear ($\mathcal{W} = 1$) condition is rotated 45° from the usual definition of $\partial u / \partial z = 1$, 0 otherwise, and this is seen in the pole figures.

We define the strain as:

$$\gamma = \int \dot{\gamma} dt = \int \sqrt{\frac{1}{2} D_{ij} D_{ji}} dt, \quad (13)$$

405 i.e. based on the effective strain rate defined in Eq. 9. Different measurements (e.g. an axial strain) are sometimes used in experiments but these can be converted to the effective strain by normalising by the effective strain-rate of the deformation. With the velocity gradient fully defined, we explore the fabric dynamics produced across T - \mathcal{W} space in Fig. 8. For each square we show the slice through the pole figure at $y = 0$ (explained in Fig. 7) up to a finite strain of $\gamma = 1$. The temperature range is from -30°C to -10°C – 5°C , temperatures typical in ice sheets (Duval et al., 2010). The vorticity number ranges from $\mathcal{W} = 0.1$, very close to pure shear, and $\mathcal{W} = 10$ representing highly vortical flow with curved streamlines. This provides a detailed picture of how the fabric evolves with increasing strain, providing insights into deformation regimes between compression pure and simple shear as well analysis of fabrics produced by deformation regimes more rotational than simple shear. For low vorticity numbers, a single maximum single-maximum can be seen at low temperatures which develops into double-maxima double-maximum as strain increases. As At high temperatures with a double-maximum, as \mathcal{W} increases the clusters are moved by the rotational component of the deformation, resulting in a primary and secondary cluster. The weaker, secondary cluster is gradually. In combination with basal-slip deformation, this results in one stable and one unstable cluster (see section 2.1.3). The c -axes of the unstable cluster rotate under basal-slip deformation and vorticity such that they are at an orientation where they are consumed by migration recrystallization as strain increases, leading to a single maximum single-maximum at high strains, for $\mathcal{W} \sim O(1)$.

420 Figs. S1 and S2 in the supplement show that variations in the parameters from Fig. 6 affect the strength of the primary cluster primarily, but do not affect the variation with vorticity number or the transition from one fabric type to another.

We also show in Fig. 8 analysis of fabrics produced in highly rotational ($\mathcal{W} > 1$) deformation regimes, which as we have shown are prevalent in real-world conditions to occur (Figs. 4,5). Figure 8 shows that the fabric is strongest for $\mathcal{W} = 1$, and weakens as vorticity increases past this. For example, for $\mathcal{W} = 10$ there is only a very weak cpo fabric produced. Furthermore, at large vorticity numbers oscillation can be seen in the fabric pattern. Figs. S1 and S2 in the supplement show that variations in the parameters from Fig. 6 affect the strength of the primary cluster primarily, but do not affect the variation with vorticity number or the transition from one fabric type to another.

To further analyse the limit of very large vorticity numbers we show the fabric produced as $\mathcal{W} \rightarrow \infty$ in Fig. 9. This fabric is seen for any vorticity number above $\mathcal{W} \approx 50$. To measure fabric concentration the J index is often used (Bunge, 1982), defined as: by

$$430 \quad J = \int S^2 \rho^{*2} S_2^2 f^{*2} \, d\mathbf{n}. \quad (14)$$

Although the M -index can also be used to measure fabric strength and may be more reliable (Skemer et al., 2005), the J -index can be calculated very efficiently, enabling exploration of the parameter space used in this paper. The J index of this fabric is 1.16, very close to completely isotropic ($J = 1$). It is unlikely this weak girdle fabric would be distinguishable from an isotropic fabric in a physical sample, where the cpo fabric is determined by sampling a limited number of grain orientations. Sensitivity analysis in the supplement reveals no change in the fabric pattern and only a small change in fabric strength, ranging between 1.11–1.23 for the min and max parameters.

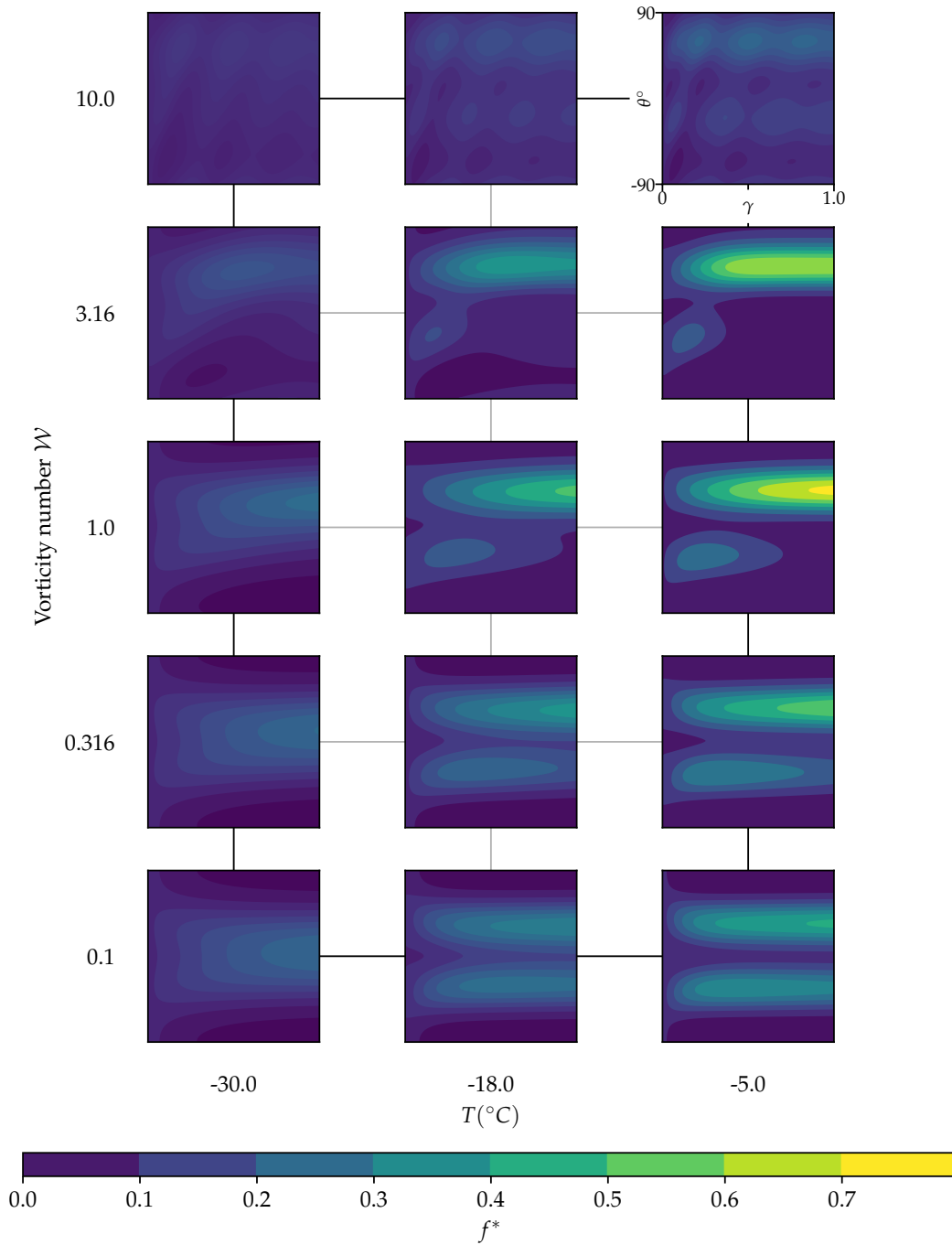


Figure 8. Slices of the pole figure showing the value of ρ^* the orientation distribution function f^* at $y = 0$ for an array of temperatures and vorticity numbers. All $y = 0$ plots go to a strain of $\gamma = 1$. The colour limits are the same for all plots.

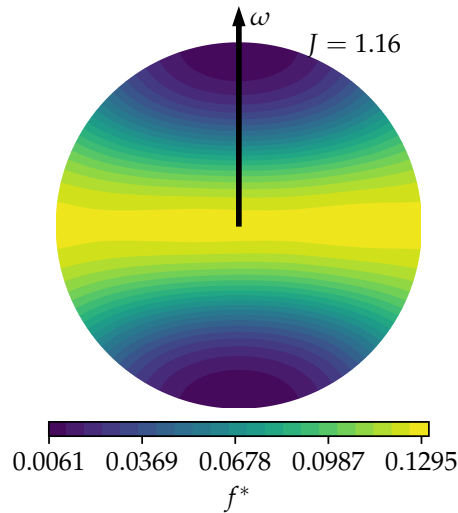


Figure 9. Pole figure for $\mathcal{W} \rightarrow \infty$ and $T = -5^\circ \text{C}$ at steady-state. A very weak girdle fabric is produced, with the girdle coincident with the axis of vorticity, shown by an arrow. This CPO fabric has a J index of 1.16, where $J = 1$ is an isotropic fabric.

4.2 Fabric regime diagrams for cluster angle and fabric type

To distil all the complex information shown in Fig. 8 and make this information more easily accessible, we presents results showing the variation of the angle of the primary cluster and the regimes of different fabric patterns across the $\mathcal{W} - T$ space. The present results showing a regime diagram of fabric patterns (Fig. 10) as well as the the angle between the primary cluster and the closest principal axis of deformation strain axes (i.e. the axis of compression) is shown in Fig. 11 at six separate finite strain values, across $\mathcal{W} - T$ space. Even at a low finite strain of $\gamma = 0.3$ there is already an established difference in angle across the parameter space (, Fig. 11a). Low temperatures and low vorticity numbers have the primary cluster most closely aligned with the compression axis. The angle then increases as both temperature and especially vorticity number increase. As strain increases the variation in angle increases. However, for a finite strain greater than 0.5 the angle is mostly invariant with strain. Across the strain and temperature range, an angle of around 40° implies simple shear ($\mathcal{W} \approx 1$), whereas if the primary cluster and compression axis are coincident, this suggests pure shear at $T \approx -30^\circ \text{C}$).

Figures S3 and S4 in the supplement show Fig. 11 with the strongest and weakest possible fabric based on the 80% confidence intervals in Fig. 6. At low vorticity numbers and temperatures, the angle between the primary cluster and compression axis is slightly sensitive to variations in parameters, but outside of this space the angle is roughly unchanged.

As a means to visualise the variety of fabrics in terms of both the parameter space and across possible finite strains we show a regime diagram for fabric patterns in Fig. 10. To define whether a fabric is a double-maxima double-maximum, secondary cluster or single-maxima single-maximum we take the ratio of the two largest peaks in the fabric. If the 2nd largest peak is less than 10% the strength of the largest peak, it defines as a single-maxima single-maximum. If the strength of the 2nd largest peak is between 10% and 90% of the largest peak, it is defined as a secondary cluster. If it is $> 90\%$ it is defined as a double-maxima double-maximum. Contour lines of primary cluster angle at 20° and 50° are also shown. This shows the different fabric types (Fig. ??1) across the space of temperature, vorticity number and finite strain. The figure is in the same format as 11.

455 Figure 10a shows the initial fabric after a finite strain of only $\gamma = 0.3$. There are three regimes at this finite strain. For approx-
 imately $\mathcal{W} < 0.7$ a **double-maxima double-maximum** is produced. There is a small region, at high vorticity numbers and primarily
 at low temperatures but extending into high temperatures, at which a **single-maxima single-maximum** is produced. Otherwise a
 secondary cluster is produced, this occurs for relatively high vorticity numbers and is more dominant at higher temperatures, as
 expected. At higher finite strain the **double-maxima double-maximum** pattern becomes less prevalent, only occurring at lower vor-
 460 ticity numbers or not at all. This highlights the transient nature of this pattern. As a reminder, the **double-maxima double-maximum**
 is the 2D equivalent of a **cone-shape girdle** fabric (Fig. ??1). The **double-maxima double-maximum** fabric is only present up to a finite
 strain of about $\gamma = 0.5$. In Fig. 10c, at $\gamma = 1.0$ the parameters space is dominated by **single-maxima single-maximum** and secondary
 cluster patterns. Ice fabrics which develop at higher temperatures $T > -20^\circ\text{C}$ are dominated by secondary cluster patterns,
 with the exception of around $\mathcal{W} \approx 3$, where a **single-maxima single-maximum** occurs because the secondary cluster is too weak.
 465 At lower temperatures $T < -25^\circ\text{C}$ a **single-maxima single-maximum** is produced because migration recrystallization is not active
 enough for multiple clusters to be produced. This balance between a single-maximum fabric and a secondary cluster fabric
 continues as the finite strain increases, with a **single-maxima single-maximum** also becoming more prevalent at high temperatures
 for vorticity numbers around 1 (Fig. 10e and f).

Figures S5 and S6 in the supplement show Fig. 10 with the strongest and weakest possible fabric based on the 80% confi-
 470 dence intervals in Fig. 6. The overall picture is similar. The variation with vorticity number is approximately unchanged and
 boundaries between the regimes shift by roughly $\pm 7^\circ\text{C}$.

The angle between the primary cluster and the closest principal axis of deformation (i.e. the axis of compression) is
 shown in Fig. 11 at six separate finite strain values, across \mathcal{W} - T space. Even at a low finite strain of $\gamma = 0.3$ there is
 already an established difference in angle across the parameter space (Fig. 11a). Low temperatures and low vorticity
 475 numbers have the primary cluster most closely aligned with the compression axis. The angle then increases as both
 temperature and especially vorticity number increase. As strain increases the variation in angle increases. However, for
 a finite strain greater than 0.5 the angle is mostly invariant with strain. Across the strain and temperature range, an angle
 of around 40° implies simple shear ($\mathcal{W} \approx 1$), whereas if the primary cluster and compression axis are coincident, this
 suggests pure shear at $T \approx -30^\circ\text{C}$.

480 Figures S7 and S8 in the supplement show Fig. 11 with the strongest and weakest possible fabric based on the
 80% confidence intervals in Fig. 6. At low vorticity numbers and temperatures, the angle between the primary cluster and
 compression axis is slightly sensitive to variations in parameters, but outside of this space the angle is roughly unchanged.

To illustrate the difference in pole figure patterns at the same finite strain but different temperatures and deformation regimes
 485 we plot pole figures at a finite strain of $\gamma = 2$ (Fig. 12) overlaid onto a regime diagram of fabric patterns. The pole figures
 are centred at the vorticity number and temperature they are simulated at. Figure 12 highlights fabrics are still variable despite
 being in the same regime. The fabric at $\mathcal{W} = 1, T = -5^\circ\text{C}$ is much stronger than the fabric at $\mathcal{W} = 10, T = -30^\circ\text{C}$ or $\mathcal{W} =$
 $0.1, T = -30^\circ\text{C}$, however they are all **single-maxima single-maximum**. We also note the difference in angle of the primary cluster

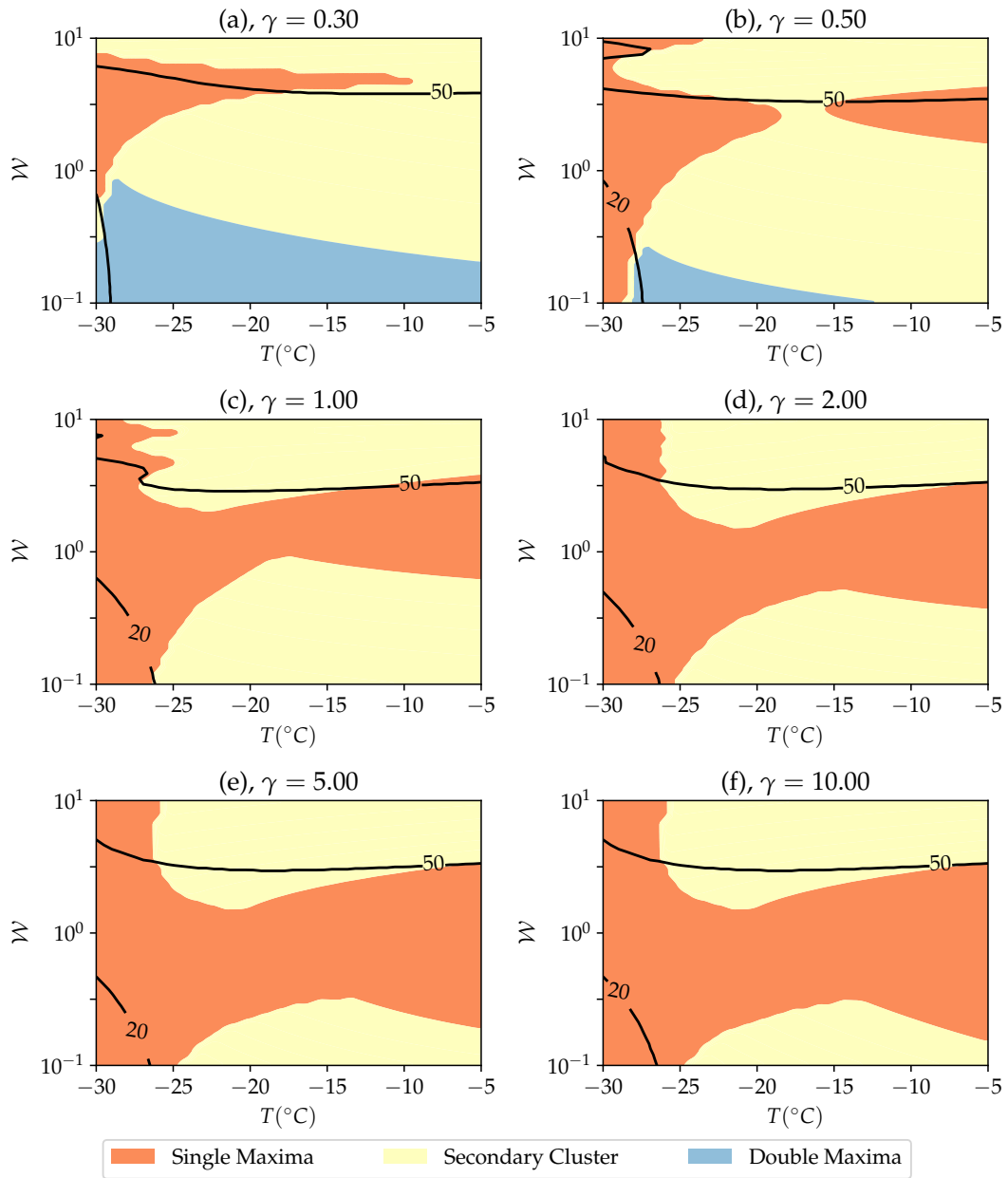


Figure 10. Contour plots showing Regime diagram of the angle different fabric patterns which occur (defined in degrees Fig. 1). The angle of the largest primary cluster from the compression axis in Fig. 11 at 20° and 50° is also overlaid. The diagrams are shown for progressively increasing finite discrete strain values. This angle is fairly invariant with finite strain. The resolution of this figure is 50×50 across the parameter space.

across the parameter space: approximately 0° for $\mathcal{W} = 0.1, T = -30^\circ \text{C}$ but increasing as \mathcal{W} and T increase, as shown in Fig.

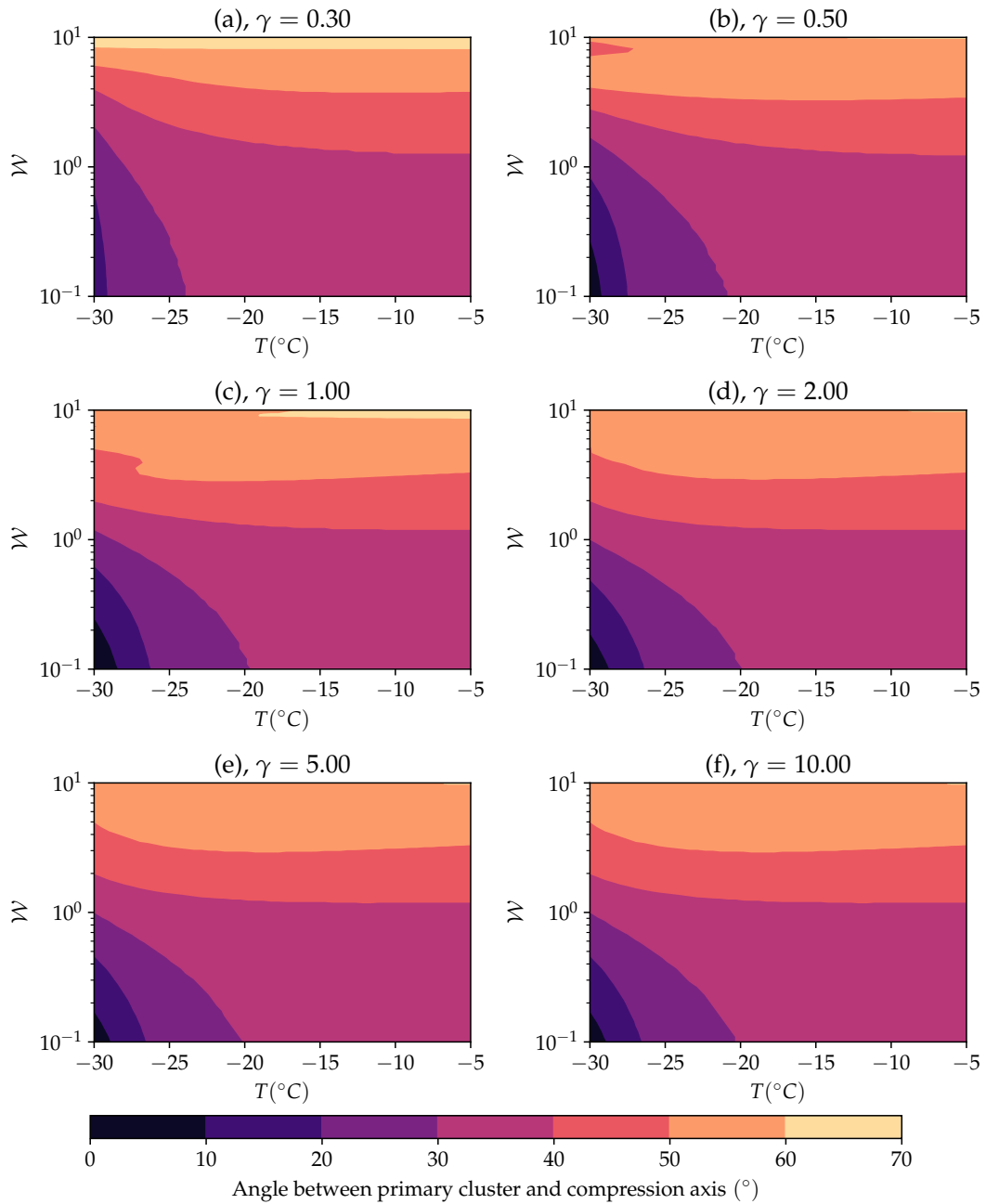


Figure 11. Regime diagram of Contour plots showing the different fabric patterns which occur angle (defined in Fig. ??degrees) . The angle of the primary largest cluster in Fig from the compression axis. 11 at 20° and 50° is also overlaid. As in Fig. 11 diagrams Panels are shown for discrete progressively increasing finite strain values. The resolution of this figure is 50×50 across the parameter space.

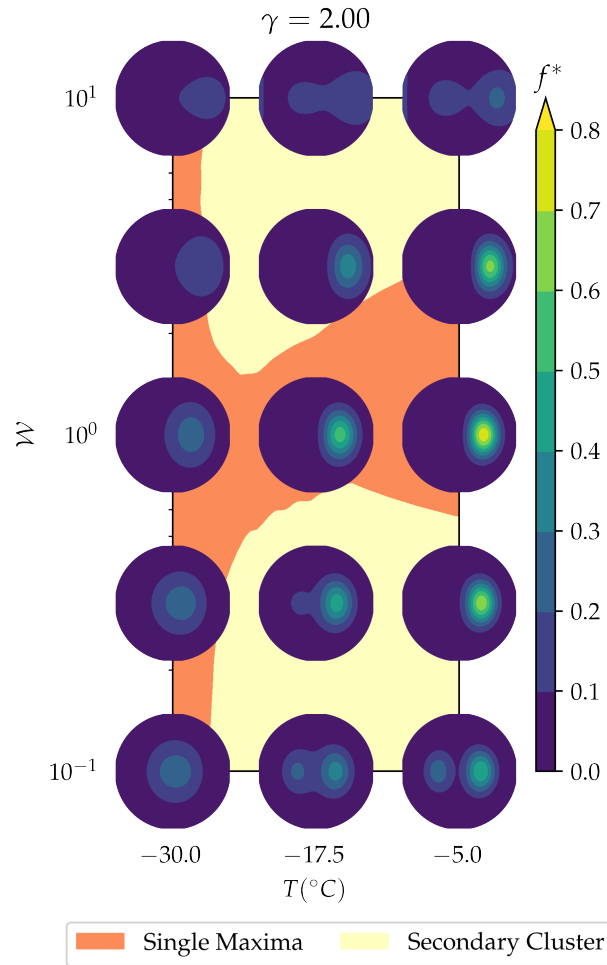


Figure 12. Pole figures overlaid onto the regimes at $\gamma = 2$. The pole figures are centred at the vorticity number and temperature they occur.

4.3 Analysis of fabric evolution timescales

A variable that is central to the interpretation of ice core fabrics is the timescale or, equivalently in the non-dimensional problem, the finite strain over which fabric evolution occurs. In Fig. 13 we explore fabric evolution timescales. Fig. 13a shows the finite strain required to reach halfway to J -index, representing fabric strength, at steady-state in (a). We also show the strain at halfway to steady state (Fig. 13b) and the J -index when the fabric reaches steady state in (b). Both are shown across the space of \mathcal{W} - T . -index at a finite strain of 0.5 (Fig. 13c). An example showing the evolution of the J index and the finite strain at which it reaches steady state is illustrated in with strain at a single temperature and vorticity number is shown in in Fig. 13.d.

Fig. 13a shows that as the steady-state fabric always increases in strength. Furthermore, the steady-state fabrics are strongest at a vorticity number of around 0.7 across almost the whole temperature space. Comparing to the fabric strength

500 at $\gamma = 0.5$ (Fig. 13c) highlights how far fabrics are from reaching steady state at this strain, the fabric is approximately $\frac{2}{3}$ rds of the steady-state value at $\gamma = 0.5$. This also shows that at this strain, the strongest fabrics occur not for vorticity numbers around 1, but for higher vorticity numbers of ~ 3 .

Figure 13a b shows the finite strain at which the J -index is halfway to its steady-state value. This can be considered the half-life over which fabric evolution occurs. Measuring the strain at halfway to steady-state gives insight into the timescale
505 over which fabric development occurs and is more robust measure than estimating the strain at steady-state steady state, which we found was sensitive to parameter variations such as those shown in the supplement. Vorticity numbers closest to 0 and the coldest temperatures have the highest halfway strain. Under these conditions, neither rigid-body rotation nor migration recrystallization are are activated active to a significant degree: the fabric evolution is dominated by by basal-slip deformation. Fabrics also take longer to develop closer to a vorticity number of 0.7, due to the fact that this vorticity number has the
510 strongest fabrics generally. For $\mathcal{W} > 1$ the strain to reach half strength decreases, as the fabrics are shown to be generally weaker as vorticity number increases. This is clearly seen in Fig. 13b (showing the J -index a steady-state). Generally, as temperature increases the steady-state fabric always increases in strength. Fabrics are strongest at a vorticity number of around 0.7 across almost the whole temperature space.

Figures S9 and S10 S11 and S12 in the supplement show Fig. 13 with the strongest and weakest possible fabric based on the 80% confidence intervals in Fig. 6. These figures show that the halfway strain is fairly insensitive to changes in the parameters,
515 with the maximum varying by around $\pm 20\%$. The maximum halfway strain remains at $\mathcal{W} = 0.1, T = -30^\circ \text{C}$ for both Fig. S9 and S10 S11 and S12. The J index at steady-state steady state is more sensitive to changes in parameters but the general picture of how this variable changes across the T - \mathcal{W} space is similar, with the upper bound showing generally less variation across the parameter space.

5 Discussion

520 The analysis presented here gives predictions for the fabric patterns produced over the whole range of vorticity numbers and temperatures arising for incompressible two-dimensional deformation regimes, a first for fabric modelling. We have limited the analysis here to fabrics produced under a constant deformation regime and temperature. Although ice in the natural world will undergo changing deformation regimes, our analysis is a first step to provide insights into fabrics produced for deformation regimes away from pure and simple shear. Furthermore, the fabrics analysed here are highly relevant for ice deformed in the
525 laboratory, which is in most cases deformed at constant temperature and vorticity number.

Ice in the real-world will undergo three-dimensional deformations yet it is common to model ice-sheets in two-dimensions ice sheets
in two dimensions; either along the vertical cross-section, such as in Fig 3 . This has been shown to be valid around divides such as in Martín et al. (2009) or Martín et al. (2009), or through depth-integrated approaches (e.g Joughin et al., 2021). However, caution must be used when applying the conclusions of this paper to areas with highly three-dimensional deformations, such as curved
530 ice streams or other areas where there is both vertical and horizontal deformation. In some regions, such as ice streams and regions where the ice is floating, the deformation will be more two-dimensional. Nevertheless, exploring general two-dimensional deformations is a good first step away from the isolated, two-dimensional conditions of pure and simple shear alone.

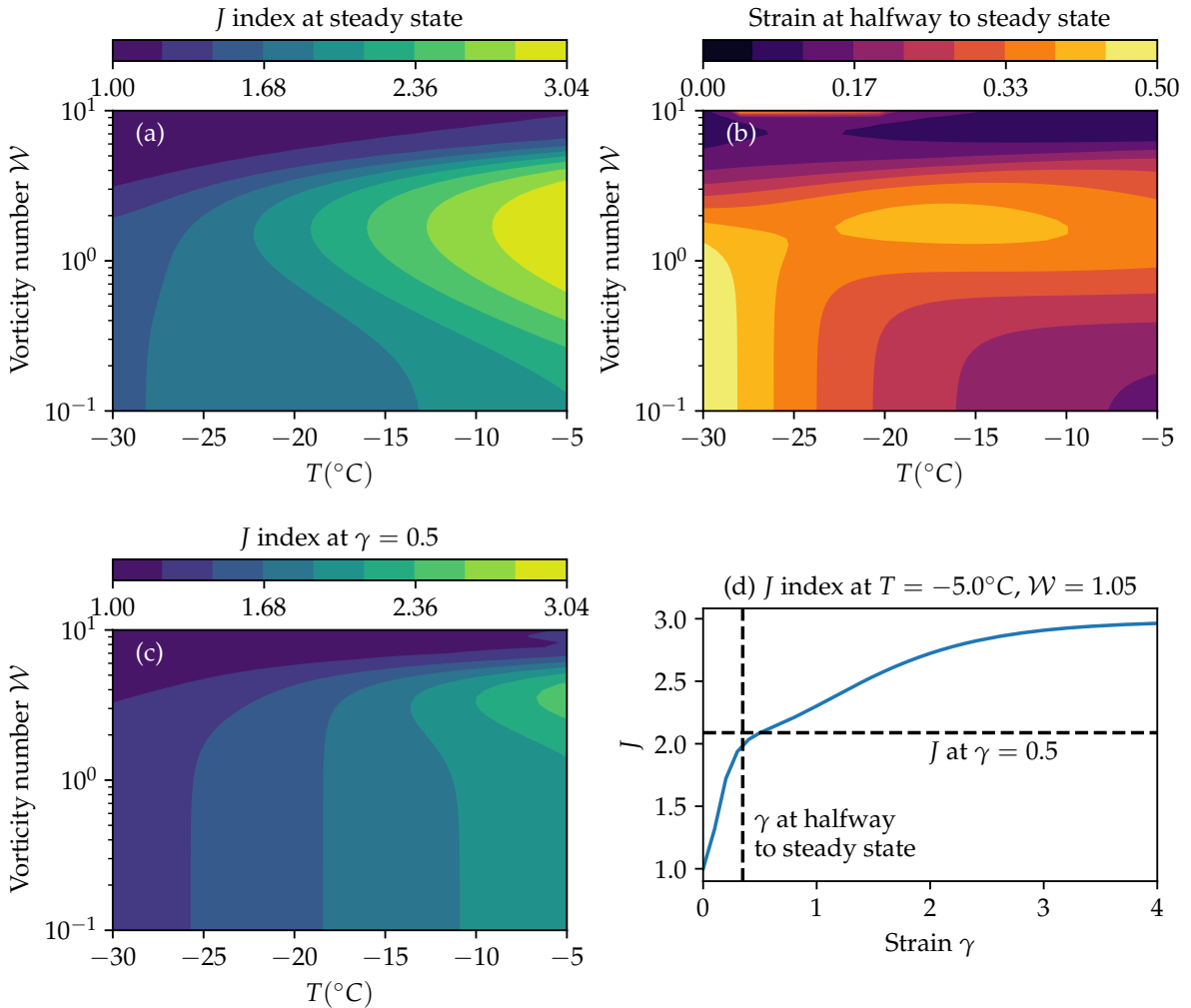


Figure 13. Properties of steady-state fabrics across the $\mathcal{W}-T$ parameter space. (a) shows the strain J index at which the fabric, at constant T and \mathcal{W} , reaches steady-state (defined as a rolling average of (b) shows the J index over a finite strain window of 2 gets within 5% of required to reach halfway to the steady-state value of J). (b) shows the J index at a steady-state strain of $\gamma = 0.5$. (c) shows the plot of J against strain γ at $T = -30^\circ\text{C}$, $\mathcal{W} = 0.01$, with illustrating the calculated steady-state strain at halfway to steady state and J -index at $\gamma = 0.5$.

5.1 Fabric patterns across deformation regime and temperature space

Previous work has focused on modelling fabrics produced at fixed single deformation regimes (Llorens et al., 2016), or modelling the deformation experienced by ice at a divide (Bargmann et al., 2012). Due to the computational efficiency of our model, we have been able to perform thousands of simulations across the parameter space of temperature and vorticity number to show how fabrics vary.

Our work generally shows a smooth transition between the two deformation regimes of pure and simple shear, as can be seen in Fig. 8 and agreeing with the high temperature experiments of Kamb (1972). Such intermediate deformation regimes are important in the real-world (Figs. 3,4,5) and must be taken into account when considering ice fabrics, rather than focusing on the isolated cases of pure and simple shear.

The weak fabric seen for highly rotational flows has not had not previously been studied at all so far to date. This result is interesting as it shows for the reveals for the the first time the fabric produced by highly rotational deformation regimes: a weak girdle fabric. Throughout these deformation regimes we have kept the magnitude of \mathbf{D} , the strain-rate tensor, constant. Therefore, at high vorticity numbers the weak fabric seen in Figs. 8 and 9 is not caused by a lack of deformation. Instead it is due to the rotational component acting to quickly smear any cluster produced by basal-slip deformation or migration recrystallization to orientations where the cluster is consumed by migration recrystallization. The end result as $\mathcal{W} \rightarrow \infty$ is a very weak girdle fabric with the girdle aligned to the axis of vorticity.

The regime diagram in Fig. 10 shows the fabric patterns produced across the space of vorticity number, temperature and strain. From experimentally deformed ice, the vast majority of fabrics produced are cone-shape girdle fabrics (Fan et al., 2020). However, ice deformed in the laboratory in compression can only reach strains of up to $\gamma = 0.5$ and Fig. 10 highlights how double-maxima fabrics double-maximum fabrics - the two-dimensional equivalent of a girdle - are only present up to these strains. Above $\gamma = 0.5$, secondary cluster and single-maxima secondary-cluster and single-maximum patterns are more prevalent. Importantly, as suggested by Kamb (1972), secondary cluster fabrics, which have been to-date only seen are commonly only considered in simple shear ($\mathcal{W} = 1$), can occur at very low vorticity numbers (Fig. 10c,d).

Results Experimental results from Budd et al. (2013) show a secondary cluster secondary-cluster fabric for $W = 0.85, \gamma = 0.34$ and $T = -2^\circ \text{C}$. Extrapolating Fig. 10a would suggest this agrees with our model. Budd et al. (2013) also have another laboratory data point at $\mathcal{W} = 0.52, \gamma = 0.72$ and $T = -2^\circ \text{C}$ which shows a single-maxima pattern. Extrapolating single-maximum pattern. Visual extrapolation of the regimes in Fig. 10 would predict a secondary-cluster fabric, however close to . However, it is close to the parametric boundary where the fabric becomes a single-maxima. Furthermore switches to becoming a single-maximum fabric. It should also be noted SpecCAF has only been constrained up to $T = -5^\circ \text{C}$, and, as ice approaches the melting point, the parameters are likely to behave depend non-linearly on temperature, so a simple extrapolation cannot be relied upon.

5.2 Finite strains required for fabric evolution

For the interpretation of ice fabrics, it is essential that we know the timescale (or in the non-dimensional case here, total finite strain) over which fabrics evolve to steady state. In this paper we have presented the first assessment of fabric timescales (Fig.13).e. strains), by examining the ‘half-life’ for fabrics to reach steady-state. steady state (Fig. 13). In compression, experiments can only reach a maximum effective strain of $\gamma \approx 0.5$. It is often assumed that a strain of around $\gamma = 0.2$ represents a steady state in the mechanical properties , and consequently in fabric (Jacka and Li, 2000)(e.g. Fan et al., 2020). However, recent experiments show that the fabric continues to evolve past this (Piazolo et al., 2013; Qi et al., 2017). It is also known that fabrics require higher finite strain to reach steady-state steady state in simple shear (Journaux et al., 2019). Qi et al. (2017) note that fabric data is required at higher strains than has been achieved to date by compression experiments to link to high-strain natural environments. The

results in our paper fill this missing gap. The analysis of fabric regimes extends to very high strains of $\gamma = 10$. For low \mathcal{W} , in experiments and in Fig. 8, a **cpo fabric** quickly develops at very low strain $\gamma \approx 0.2$, (also seen in Craw et al., 2018). Although the fabric pattern does not change as strain increases, it cannot be said to be in **steady-state steady state** because the concentration of orientation at the clusters continues to increase. It should be noted that any change in fabric intensity will directly affect the mechanical properties such as the degree of viscous and seismic anisotropy (Duval et al., 1983; Matsuoka et al., 2003).

Figure 13a shows that, for very low temperatures ($T \approx -30^\circ \text{C}$) the strain to reach halfway to steady state is the highest, around $\gamma = 0.5$. **as As** can be seen in Fig. 13c the true steady-state can not be reached to much later as the J index approaches the steady-state value slowly. From this we can remark that reaching true steady states at these temperatures in laboratory experiments will be impossible for deformations close to pure shear. Although Fig. 13a shows that, above very low temperatures ($T > -24^\circ \text{C}$), deformation regimes closer to simple shear take longer to reach **steady-state steady state**. However these strains are more achievable in the laboratory as fabrics can be deformed in torsion, allowing very high strains such as $\gamma > 1.5$ to be reached (Journaux et al., 2019). Furthermore, the strain to reach halfway to steady state is primarily dependent on vorticity number \mathcal{W} , rather than temperature.

585 5.3 Consequences for ice core interpretation

Analysis and interpretation of ice cores remain key for understanding the processes occurring in the natural world, for both understanding the past climate history (Dansgaard et al., 1969) as well as understanding ice sheet dynamics (Schytt, 1958). The regime diagrams we have constructed (Figs. 11,10,10,11) can be used as a toolkit to interpret ice cores. For example a **single maxima single-maximum** fabric with an angle less than 20° between the compression axis and primary cluster centre implies the core has undergone mostly compression at low temperature. If other constraints such as knowledge the deformation regime history or temperature has been constant to good approximation, the dominant deformation regime and temperature can be further constrained. As our work here is for constant temperature and vorticity number, any ice core fabric interpretation will inherently assume that an ice core that has been deformed primarily at a dominant temperature and deformation regime over its recent history. Since temperature varies with depth in an ice sheet (Paterson, 1999), this method is likely to be most reliable for ice cores where the ice is primarily moving horizontally i.e. far from ice divides. We **also assume an initial random have also assumed an initially uniformly distributed** orientation for the fabric (**corresponding to initially randomly distributed orientations**). Although deformation regime history in the natural world is likely to be complex, this is a reasonable assumption because ice formed from surface accumulation will initially have a random distribution of orientations (Montagnat et al., 2020).

The fabric pattern is a robust way to interpret ice cores, as it requires no **assumptions assumption** about the deformation regime direction. The regime diagram in Fig. 10, which is based on the fabric pattern only, is complex but **insights can be drawnnonethelessallows insights to be drawn**. For example, the presence of **double-maxima double-maximum** fabrics (two equal strength clusters) implies that the fabric has undergone a relatively low strain. A secondary cluster fabric implies that the fabric is likely to be at intermediate strains, and at temperatures $T > -20^\circ \text{C}$. A very weak secondary cluster fabric implies a **highly** rotational deformation regime $W > 3$. Furthermore, we have shown that the presence of a fabric **which that** appears to be isotropic could be indicative not only of no deformation, but also of a highly rotational deformation **regimesregime**.

If other information about the fabric history is known, Figs. 11 and 10 and 11 can be used in combination to extend this knowledge. For example, if there are independent constraints on the orientation of the deformation regime axis, then the angle of the primary cluster can be used to interpret ice cores as well. As can be seen in Fig. 11 the angle between the primary cluster and the compression axis is relatively invariant with strain. Knowing this angle can therefore give a good estimate of the vorticity number and temperature. for deformation regimes which are primarily 2D.

5.4 Implications for ice flow properties and modelling

Viscous anisotropy of ice is controlled by the fabric and is a key control of the flow field (e.g. Alley, 1988). This anisotropy is dependent on the pattern, direction and strength of the fabric. The current approach common in ice-sheet models is to represent anisotropy with an enhancement factor which that scales the viscosity, either globally (Graham et al., 2018) or locally (Placidi et al., 2010). The model SpecCAF used in our paper can, in principle, be coupled with any anisotropic viscosity formulation to include directional variation in viscosity. Martín et al. (2009) has coupled a fabric model to an anisotropic viscosity, but the fabric evolution model used did not include recrystallization, which are dominant is key processes in controlling fabric evolutions and their evolution and its approach to final steady states, as well as state. Their model also neglects the considerable effect of temperature dependence. The high sensitivity of fabric strength and patterns to temperature shown in our paper and in experimental work (Qi et al., 2019), in agreement with experiments (Qi et al., 2019), may lead to further interesting flow features on top of those caused by anisotropy alone. This can only be captured with a coupled fabric model including a temperature dependent fabric. Temperature can also affect the flow through viscous heating (e.g Hindmarsh, 2004) and a temperature dependent fabric model coupled to anisotropic viscosity such as Gillet-Chaulet et al. (2005) would allow us to understand what proportion of the effects of temperature are a consequence of viscous heating and what proportion arise through temperature induced changes to the fabric.

The fabrics we have shown here Our analysis of fabrics here can also give insight into where anisotropy may be most important in an ice sheet. Areas with strong fabrics will be highly anisotropic, with the viscosity varying in different directions. Anisotropic flow is not well studied but initial simulations with coupled anisotropic flow show that it can explain hitherto unexplained observations such as syncline patterns observed under ice divides (Martín et al., 2009). Our analysis of fabrics produced in highly rotational deformation regimes showing an almost isotropic fabric (as seen in Figs. 8 and 13b) implies that in the regions of Antarctica where the flow is highly rotational, which as we can see (i.e. those highlighted in Fig. 5 does occur), the fabric will evolve towards a state with limited anisotropy (directional variation in viscosity). However areas of approximately simple shear ($\mathcal{W} = 1$) show the strongest fabrics and hence the strongest effect of anisotropy. This means viscous anisotropic effects are expected to be widespread, further motivating the need to fully represent them in models. In future work it would be possible to explore how seismic wave velocities vary with the different fabrics modelled in this paper, again comparing to real world observations (e.g. Smith et al., 2017).

6 Conclusions

Prediction of **Accurately predicting ice** fabric evolution is pivotal for the correct interpretation of ice core fabrics **and reliably predicting as well as the reliable prediction of** ice losses in a changing climate **using ice sheet modelling**. Our work extends the ability to predict fabric evolution from the **endmember** deformation regimes of pure and simple shear to general two-dimensional deformation regimes. **As such the presented study This** represents a step towards understanding fabrics in fully general conditions **which is** : key for understanding viscous anisotropy and, in turn, large-scale ice-sheet flow modelling. We have shown that deformation regimes outside of pure and simple shear are important in common flow scenarios seen in **ice-sheets**. **There is the potential for future work to extend the modelled fabrics to calculate to seismic anisotropic properties, enabling us to further improve our understanding of ice in natural flows ice sheets. Future work could**

640 fabric evolution from the **endmember** deformation regimes of pure and simple shear to general two-dimensional deformation regimes. **As such the presented study This** represents a step towards understanding fabrics in fully general conditions **which is** : key for understanding viscous anisotropy and, in turn, large-scale ice-sheet flow modelling. We have shown that deformation regimes outside of pure and simple shear are important in common flow scenarios seen in **ice-sheets**. **There is the potential for future work to extend the modelled fabrics to calculate to seismic anisotropic properties, enabling us to further improve our understanding of ice in natural flows ice sheets. Future work could**

645 **use the modelled fabric to predict seismic properties, to compare to real world observations.**

The regime diagrams presented are a useful tool to help with the interpretation of ice core data. In combination with other information, such as the plane of deformation regime or an estimate of the temperature at which a core was deformed, these regime diagrams can be used to determine the primary deformation regime and temperature undergone by an ice core. We show that for two-dimensional deformations, the **double-maxima double-maximum** fabric is not present at high strains when only a small amount of vorticity is present in the deformation regime $\mathcal{W} > 0.1$. This is important as many laboratory experiments are performed for $\mathcal{W} = 0$. Future work could investigate whether this conclusion extends to three-dimensional **cone-shape girdle** fabrics.

650 a small amount of vorticity is present in the deformation regime $\mathcal{W} > 0.1$. This is important as many laboratory experiments are performed for $\mathcal{W} = 0$. Future work could investigate whether this conclusion extends to three-dimensional **cone-shape girdle** fabrics.

Highly rotational deformation regimes were investigated for the first time and showed a weak girdle fabric aligned to the axis of vorticity. We have also shown how the timescale for fabric evolution, shown by the halfway strain to reach **steady-state steady state**, changes over the parameter space. Laboratory experiments around simple shear may be able to reach the strains required to get close to **steady-state steady state**, however compression experiments, especially at low temperatures, cannot achieve the required strains for **steady-state steady state**.

655 **state**, changes over the parameter space. Laboratory experiments around simple shear may be able to reach the strains required to get close to **steady-state steady state**, however compression experiments, especially at low temperatures, cannot achieve the required strains for **steady-state steady state**.

Our predictions of ice fabric evolution over a wide range of deformation regimes provide insights into how and where viscous anisotropy will be important for **ice flow ice-flow** dynamics. Intermediate deformation regimes between pure and simple shear produce the strongest **CPOs fabrics**, suggesting anisotropy will be most important in these regions. Similarly, as highly rotational deformation regimes produce a weak fabric, there is likely to be a less dominant affect of anisotropy in such regions. Our understanding of these issues could be further improved by combining our model with an anisotropic viscosity formulation to model the coupled fully anisotropic flow of ice **necessary to predict ice flow in a changing climate. is an important future step for accurately predicting ice flow.**

660 produce the strongest **CPOs fabrics**, suggesting anisotropy will be most important in these regions. Similarly, as highly rotational deformation regimes produce a weak fabric, there is likely to be a less dominant affect of anisotropy in such regions. Our understanding of these issues could be further improved by combining our model with an anisotropic viscosity formulation to model the coupled fully anisotropic flow of ice **necessary to predict ice flow in a changing climate. is an important future step for accurately predicting ice flow.**

Code availability. A python implementation of SpecCAF, alongside code to reproduce the figures in the Results section, is available at <http://doi.org/10.5281/zenodo.7086132>

665 *Code availability.* A python implementation of SpecCAF, alongside code to reproduce the figures in the Results section, is available at <http://doi.org/10.5281/zenodo.7086132>

Author contributions. All authors designed the research and edited the manuscript. DR developed the model code, performed the analysis and visualization and wrote the draft.

Competing interests. The authors declare that they have no conflict of interest.

670 *Acknowledgements.* We thank Sergio Faria for his email correspondence and review which helped to improve this manuscript. We also thank Ed Waddington, Maurine Montagnat, Fabien Gillet-Chaulet, and one anonymous reviewers for their helpful and insightful reviews which also improved the manuscript. Finally we thank Kaitlin Keegan for her editorial handling. This worked was funded by the UK Engineering and Physical Sciences Research Council (EPSRC) grant EP/L01615X/1 for the University of Leeds [centre for doctoral training in fluid dynamics](#) [Centre for Doctoral Training in Fluid Dynamics](#).

675 References

- Alley, R. B.: Fabrics in Polar Ice Sheets: Development and Prediction, *Science*, 240, 493, <https://doi.org/10.1126/science.240.4851.493>, <http://science.sciencemag.org/content/240/4851/493.abstract>, 1988.
- Alley, R. B.: Flow-law hypotheses for ice-sheet modeling, *Journal of Glaciology*, 38, 245–256, <https://doi.org/10.3189/S0022143000003658>, <https://www.cambridge.org/core/article/flowlaw-hypotheses-for-icesheet-modeling/4ED80EA46F4363E13BEFAA6804D1D9AE>, 1992.
- 680 Bailey, C. M. and Eyster, E. L.: General shear deformation in the Pinaleño Mountains metamorphic core complex, Arizona, *Journal of Structural Geology*, 25, 1883–1892, [https://doi.org/10.1016/S0191-8141\(03\)00044-0](https://doi.org/10.1016/S0191-8141(03)00044-0), <https://www.sciencedirect.com/science/article/pii/S0191814103000440>, 2003.
- Bargmann, S., Seddik, H., and Greve, R.: Computational modeling of flow-induced anisotropy of polar ice for the EDML deep drilling site, Antarctica: The effect of rotation recrystallization and grain boundary migration, *International Journal for Numerical and Analytical*
- 685 *Methods in Geomechanics*, 36, 892–917, <https://doi.org/10.1002/nag.1034>, <https://doi.org/10.1002/nag.1034>, 2012.
- Booth, A. D., Christoffersen, P., Schoonman, C., Clarke, A., Hubbard, B., Law, R., Doyle, S. H., Chudley, T. R., and Chalari, A.: Distributed Acoustic Sensing of Seismic Properties in a Borehole Drilled on a Fast-Flowing Greenlandic Outlet Glacier, *Geophysical Research Letters*, 47, e2020GL088148, <https://doi.org/10.1029/2020GL088148>, <https://doi.org/10.1029/2020GL088148>, publisher: John Wiley & Sons, Ltd, 2020.
- 690 Budd, W. F., Warner, R. C., Jacka, T., Li, J., and Treverrow, A.: Ice flow relations for stress and strain-rate components from combined shear and compression laboratory experiments, *Journal of Glaciology*, 59, 374–392, <https://doi.org/10.3189/2013JoG12J106>, edition: 2017/07/10 Publisher: Cambridge University Press, 2013.
- Bunge, H.: *Texture Analysis in Materials Science: Mathematical Models*, Butterworths, London, 1982.
- Castelnau, O., Shoji, H., Mangeney, A., Milsch, H., Duval, P., Miyamoto, A., Kawada, K., and Watanabe, O.: Anisotropic behavior of GRIP
- 695 ices and flow in Central Greenland, *Earth and Planetary Science Letters*, 154, 307–322, [https://doi.org/10.1016/S0012-821X\(97\)00193-3](https://doi.org/10.1016/S0012-821X(97)00193-3), <http://www.sciencedirect.com/science/article/pii/S0012821X97001933>, 1998.
- Chauve, T., Montagnat, M., Piazzolo, S., Journaux, B., Wheeler, J., Barou, F., Mainprice, D., and Tommasi, A.: Non-basal dislocations should be accounted for in simulating ice mass flow, *Earth and Planetary Science Letters*, 473, 247–255, <https://doi.org/10.1016/j.epsl.2017.06.020>, <http://www.sciencedirect.com/science/article/pii/S0012821X17303308>, 2017.
- 700 Craw, L., Qi, C., Prior, D. J., Goldsby, D. L., and Kim, D.: Mechanics and microstructure of deformed natural anisotropic ice, *Journal of Structural Geology*, 115, 152–166, <https://doi.org/10.1016/j.jsg.2018.07.014>, <http://www.sciencedirect.com/science/article/pii/S0191814118300646>, 2018.
- Dansgaard, W., Johnsen, S., Møller, J., and Langway Jr., C.: One thousand centuries of climatic record from Camp Century on the Greenland ice sheet, *Science*, 166, 377–381, <https://doi.org/10.1126/science.166.3903.377>, 1969.
- 705 Doherty, R., Hughes, D., Humphreys, F., Jonas, J., Jensen, D., Kassner, M., King, W., McNelley, T., McQueen, H., and Rollett, A.: Current issues in recrystallization: a review, *Materials Science and Engineering: A*, 238, 219–274, [https://doi.org/10.1016/S0921-5093\(97\)00424-3](https://doi.org/10.1016/S0921-5093(97)00424-3), <https://www.sciencedirect.com/science/article/pii/S0921509397004243>, 1997.
- Drury, M. and Urai, J.: Deformation-related recrystallization process, *Tectonophysics*, 172, 235–253, [https://doi.org/10.1016/0040-1951\(90\)90033-5](https://doi.org/10.1016/0040-1951(90)90033-5), 1990.
- 710 Drury, M., Humphreys, F., and White, S.: Large strain deformation studies using polycrystalline magnesium as a rock analogue. Part II: dynamic recrystallisation mechanisms at high temperatures, *Special Issue Experiments in Solid State Physics Relevant to*

- Lithospheric Dynamics, 40, 208–222, [https://doi.org/10.1016/0031-9201\(85\)90131-1](https://doi.org/10.1016/0031-9201(85)90131-1), <https://www.sciencedirect.com/science/article/pii/0031920185901311>, 1985.
- 715 Duval, P.: Creep and Fabrics of Polycrystalline Ice Under Shear and Compression, *Journal of Glaciology*, 27, 129–140, <https://doi.org/10.3189/S002214300001128X>, edition: 2017/01/20 Publisher: Cambridge University Press, 1981.
- Duval, P., Ashby, M. F., and Anderman, I.: Rate-controlling processes in the creep of polycrystalline ice, *The Journal of Physical Chemistry*, 87, 4066–4074, <https://doi.org/10.1021/j100244a014>, <https://doi.org/10.1021/j100244a014>, 1983.
- 720 Duval, P., Montagnat, M., Grennerat, F., Weiss, J., Meyssonier, J., and Philip, A.: Creep and plasticity of glacier ice: a material science perspective, *Journal of Glaciology*, 56, 1059–1068, <https://doi.org/10.3189/002214311796406185>, <https://www.cambridge.org/core/article/creep-and-plasticity-of-glacier-ice-a-material-science-perspective/34BA86B28CE3026D0AE8FBF63BFFB54C>, 2010.
- Fan, S., Hager, T. F., Prior, D. J., Cross, A. J., Goldsby, D. L., Qi, C., Negrini, M., and Wheeler, J.: Temperature and strain controls on ice deformation mechanisms: insights from the microstructures of samples deformed to progressively higher strains at -10, -20 and -30°C, *The Cryosphere*, 14, 3875–3905, <https://doi.org/10.5194/tc-14-3875-2020>, <https://tc.copernicus.org/articles/14/3875/2020/>, publisher: Copernicus Publications, 2020.
- 725 Faria, S.: Mixtures with continuous diversity: general theory and application to polymer solutions, *Continuum Mechanics and Thermodynamics*, 13, 91–120, <https://doi.org/10.1007/s001610100043>, <https://doi.org/10.1007/s001610100043>, 2001.
- Faria, S., Kipfstuhl, S., Azuma, N., Freitag, J., Weikusat, I., Murshed, M., and Kuhs, W.: The Multiscale Structure of Antarctica Part I : Inland Ice, 68, 2009.
- 730 Faria, S. H.: Creep and recrystallization of large polycrystalline masses. I. General continuum theory, *Proceedings of the Royal Society A: Mathematical, Physical and Engineering Science*, 462, 1493, <https://doi.org/10.1098/rspa.2005.1610>, <http://rspa.royalsocietypublishing.org/content/462/2069/1493.abstract>, 2006.
- Faria, S. H., Kremer, G. M., and Hutter, K.: Reply to Gagliardini’s comment on ‘Creep and recrystallization of large polycrystalline masses’ by Faria and co-authors, *Proceedings of the Royal Society A: Mathematical, Physical and Engineering Science*, 464, <https://doi.org/10.1098/rspa.2008.0181>, <https://royalsocietypublishing.org/doi/10.1098/rspa.2008.0181>, 2008.
- 735 Fossen, H. and Tikoff, B.: The deformation matrix for simultaneous simple shearing, pure shearing and volume change, and its application to transpression-transension tectonics, *The Geometry of Naturally Deformed Rocks*, 15, 413–422, [https://doi.org/10.1016/0191-8141\(93\)90137-Y](https://doi.org/10.1016/0191-8141(93)90137-Y), <http://www.sciencedirect.com/science/article/pii/019181419390137Y>, 1993.
- Fujita, S., Maeno, H., and Matsuoka, K.: Radio-wave depolarization and scattering within ice sheets: a matrix-based model to link radar and ice-core measurements and its application, *Journal of Glaciology*, 52, 407–424, <https://doi.org/10.3189/172756506781828548>, edition: 740 2017/09/08 Publisher: Cambridge University Press, 2006.
- Gagliardini, O.: Comment on the papers ‘Creep and recrystallization of large polycrystalline masses’ by Faria and co-authors, *Proceedings of the Royal Society A: Mathematical, Physical and Engineering Sciences*, 464, 289–291, <https://doi.org/10.1098/rspa.2007.0187>, <https://doi.org/10.1098/rspa.2007.0187>, 2008.
- 745 Gagliardini, O., Gillet-Chaulet, F., and Montagnat, M.: A Review of Anisotropic Polar Ice Models: from Crystal to Ice-Sheet Flow Models, *Physics of Ice Core Records II*, 68, <http://citeseerx.ist.psu.edu/viewdoc/download?doi=10.1.1.496.2886&rep=rep1&type=pdf>, 2009.
- Gagliardini, O., Zwinger, T., Gillet-Chaulet, F., Durand, G., Favier, L., de Fleurian, B., Greve, R., Malinen, M., Martín, C., R’vå aback, P., Ruokolainen, J., Sacchetti, M., Schäfer, M., Seddik, H., and Thies, J.: Capabilities and performance of Elmer/Ice, a new-generation ice sheet model, *Geoscientific Model Development*, 6, 1299–1318, <https://doi.org/10.5194/gmd-6-1299-2013>, 2013.

- Gillet-Chaulet, F., Gagliardini, O., Meyssonier, J., Montagnat, M., and Castelnau, O.: A user-friendly anisotropic flow law for ice-sheet modeling, *Journal of Glaciology*, 51, 3–14, <https://doi.org/10.3189/172756505781829584>, <https://www.cambridge.org/core/journals/journal-of-glaciology/article/userfriendly-anisotropic-flow-law-for-icesheet-modeling/09883516ED5805B13E3D2446B3EC0911>, 2005.
- Gillet-Chaulet, F., Gagliardini, O., Meyssonier, J., Zwinger, T., and Ruokolainen, J.: Flow-induced anisotropy in polar ice and related ice-sheet flow modelling, 2nd Annual European Rheology Conference, 134, 33–43, <https://doi.org/10.1016/j.jnnfm.2005.11.005>, <http://www.sciencedirect.com/science/article/pii/S0377025705002648>, 2006.
- Gottstein, G. and Shvindlerman, L. S.: *Grain Boundary Migration in Metals: Thermodynamics, Kinetics and Applications*, CRC Press, 1999.
- Gow, A. J.: Deep core studies of the accumulation and densification of snow at Byrd Station and Little America V, Antarctica, CRREL Research Report, <https://hdl.handle.net/11681/5803>, 1961.
- Graham, F. S., Morlighem, M., Warner, R. C., and Treverrow, A.: Implementing an empirical scalar constitutive relation for ice with flow-induced polycrystalline anisotropy in large-scale ice sheet models, *The Cryosphere*, 12, 1047–1067, <https://doi.org/10.5194/tc-12-1047-2018>, <https://www.the-cryosphere.net/12/1047/2018/>, 2018.
- Grennerat, F., Montagnat, M., Castelnau, O., Vacher, P., Moulinec, H., Suquet, P., and Duval, P.: Experimental characterization of the intragranular strain field in columnar ice during transient creep, *Acta Materialia*, 60, 3655–3666, <https://doi.org/10.1016/j.actamat.2012.03.025>, 2012.
- Gusmeroli, A., Pettit, E. C., Kennedy, J. H., and Ritz, C.: The crystal fabric of ice from full-waveform borehole sonic logging, *Journal of Geophysical Research: Earth Surface*, 117, <https://doi.org/10.1029/2012JF002343>, <https://doi.org/10.1029/2012JF002343>, publisher: John Wiley & Sons, Ltd, 2012.
- Gödert, G.: A mesoscopic approach for modelling texture evolution of polar ice including recrystallization phenomena, *Annals of Glaciology*, 37, 23–28, <https://doi.org/10.3189/172756403781815375>, 2003.
- Halfpenny, A., Prior, D. J., and Wheeler, J.: Analysis of dynamic recrystallization and nucleation in a quartzite mylonite, *Tectonophysics*, 427, 3–14, 2006.
- Harte, A., Atkinson, M., Preuss, M., and Fonseca, J.: A statistical study of the relationship between plastic strain and lattice misorientation on the surface of a deformed Ni-based superalloy, *Acta Materialia*, 195, <https://doi.org/10.1016/j.actamat.2020.05.029>, 2020.
- Hindmarsh, R. C. A.: Thermoviscous stability of ice-sheet flows, *Journal of Fluid Mechanics*, 502, 17–40, <https://doi.org/10.1017/S0022112003007390>, <https://www.cambridge.org/core/article/thermoviscous-stability-of-icesheet-flows/13E3DB8CEFF97DB4A911E9F174B8E994>, 2004.
- Holtzschcherer, J. J., G. de Q. Robin, and Glen, J. W.: Depth of Polar Ice Caps, *The Geographical Journal*, 120, 193–202, <https://doi.org/10.2307/1791535>, <http://www.jstor.org/stable/1791535>, publisher: [Wiley, Royal Geographical Society (with the Institute of British Geographers)], 1954.
- Hondoh, T.: Nature and behavior of dislocations in ice, *Physics of Ice Core Records*, <http://hdl.handle.net/2115/32459>, 2000.
- Hudleston, P. J.: Structures and fabrics in glacial ice: A review, *Journal of Structural Geology*, 81, 1–27, <https://doi.org/10.1016/j.jsg.2015.09.003>, <http://www.sciencedirect.com/science/article/pii/S0191814115300365>, 2015.
- Humphreys, F. and Hatherly, M.: *Recrystallization and Related Annealing Phenomena*, Pergamon, Oxford, 2004.
- Jacka, T. and Li, J.: Flow rates and crystal orientation fabrics in compression of polycrystalline ice at low temperatures and stresses, 2000.

- 785 Jacka, T. and Maccagnan, M.: Ice crystallographic and strain rate changes with strain in compression and extension, *Cold Regions Science and Technology*, 8, 269–286, [https://doi.org/10.1016/0165-232X\(84\)90058-2](https://doi.org/10.1016/0165-232X(84)90058-2), <http://www.sciencedirect.com/science/article/pii/0165232X84900582>, 1984.
- Jiang, D.: Vorticity determination, distribution, partitioning and the heterogeneity and non-steadiness of natural deformations, *Journal of Structural Geology*, 16, 121–130, [https://doi.org/10.1016/0191-8141\(94\)90023-X](https://doi.org/10.1016/0191-8141(94)90023-X), <https://www.sciencedirect.com/science/article/pii/019181419490023X>, 1994.
- 790 Johnsen, S. J., Dahl-Jensen, D., Dansgaard, W., and Gundestrup, N.: Greenland palaeotemperatures derived from GRIP bore hole temperature and ice core isotope profiles, *Tellus B: Chemical and Physical Meteorology*, 47, 624–629, <https://doi.org/10.3402/tellusb.v47i5.16077>, <https://doi.org/10.3402/tellusb.v47i5.16077>, publisher: Taylor & Francis, 1995.
- Jordan, T. M., Schroeder, D. M., Elsworth, C. W., and Siegfried, M. R.: Estimation of ice fabric within Whillans Ice Stream using polarimetric phase-sensitive radar sounding, *Annals of Glaciology*, 61, 74–83, <https://doi.org/10.1017/aog.2020.6>, <https://www.cambridge.org/core/journals/annals-of-glaciology/article/estimation-of-ice-fabric-within-whillans-ice-stream-using-polarimetric-phasesensitive-radar-sounding/F334B5CE907DBED94E7614EFB32E1DAF>, edition: 2020/02/03 Publisher: Cambridge University Press, 2020.
- 795 Joughin, I., Shapero, D., Smith, B., Dutrieux, P., and Barham, M.: Ice-shelf retreat drives recent Pine Island Glacier speedup, *Science Advances*, 7, eabg3080, <https://doi.org/10.1126/sciadv.abg3080>, <https://doi.org/10.1126/sciadv.abg3080>, publisher: American Association for the Advancement of Science, 2021.
- 800 Journaux, B., Chauve, T., Montagnat, M., Tommasi, A., Barou, F., Mainprice, D., and Gest, L.: Recrystallization processes, microstructure and crystallographic preferred orientation evolution in polycrystalline ice during high-temperature simple shear, *The Cryosphere*, 13, 1495–1511, <https://doi.org/10.5194/tc-13-1495-2019>, <https://www.the-cryosphere.net/13/1495/2019/>, 2019.
- 805 Kamb, B.: Experimental Recrystallization of Ice Under Stress, in: *Flow and Fracture of Rocks*, pp. 211–241, American Geophysical Union (AGU), <https://doi.org/10.1029/GM016p0211>, <https://agupubs.onlinelibrary.wiley.com/doi/abs/10.1029/GM016p0211>, 1972.
- Kennedy, J. H. and Pettit, E. C.: The response of fabric variations to simple shear and migration recrystallization, *Journal of Glaciology*, 61, 537–550, <https://doi.org/10.3189/2015JoG14J156>, <https://www.cambridge.org/core/journals/journal-of-glaciology/article/response-of-fabric-variations-to-simple-shear-and-migration-recrystallization/CFE83A878F70F5F8E7135C28A77FF9C0>, 2015.
- 810 Kipfstuhl, S., Hamann, I., Lambrecht, A., Freitag, J., Faria, S. H., Grigoriev, D., and Azuma, N.: Microstructure mapping: a new method for imaging deformation-induced microstructural features of ice on the grain scale, *Journal of Glaciology*, 52, 398–406, <https://doi.org/10.3189/172756506781828647>, <https://www.cambridge.org/core/article/microstructure-mapping-a-new-method-for-imaging-deformationinduced-microstructural-features-of-ice-on-the-grain-scale/5B7CD1BA70B176C4565CD998C9F6B656>, edition: 2017/09/08 Publisher: Cambridge University Press, 2006.
- 815 Kipfstuhl, S., Faria, S. H., Azuma, N., Freitag, J., Hamann, I., Kaufmann, P., Miller, H., Weiler, K., and Wilhelms, F.: Evidence of dynamic recrystallization in polar firn, *Journal of Geophysical Research: Solid Earth*, 114, <https://doi.org/10.1029/2008JB005583>, <https://doi.org/10.1029/2008JB005583>, publisher: John Wiley & Sons, Ltd, 2009.
- 820 Kluskiewicz, D., WADDINGTON, E., Anandkrishnan, S., Voigt, D., Matsuoka, K., and McCARTHY, M.: Sonic methods for measuring crystal orientation fabric in ice, and results from the West Antarctic ice sheet (WAIS) Divide, *Journal of Glaciology*, 63, 1–15, <https://doi.org/10.1017/jog.2017.20>, 2017.
- Li, J., Jacka, T., and Budd, W.: Deformation rates in combined compression and shear for ice which is initially isotropic and after the development of strong anisotropy, *Annals of Glaciol-*

- ogy, 23, 247–252, <https://doi.org/10.3189/S0260305500013501>, <https://www.cambridge.org/core/article/deformation-rates-in-combined-compression-and-shear-for-ice-which-is-initially-isotropic-and-after-the-development-of-strong-anisotropy/87ABC4DFAFFA123128C6CA2E883CAE6E>, edition: 2017/01/20 Publisher: Cambridge University Press, 1996.
- 825 Llorens, M.-G., Grier, A., Bons, P. D., Lebensohn, R. A., Evans, L. A., Jansen, D., and Weikusat, I.: Full-field predictions of ice dynamic recrystallisation under simple shear conditions, *Earth and Planetary Science Letters*, 450, 233–242, <https://doi.org/10.1016/j.epsl.2016.06.045>, <http://www.sciencedirect.com/science/article/pii/S0012821X16303326>, 2016.
- Llorens, M.-G., Grier, A., Steinbach, F., Bons, P. D., Gomez-Rivas, E., Jansen, D., Roessiger, J., Lebensohn, R. A., and Weikusat, I.:
830 Dynamic recrystallization during deformation of polycrystalline ice: insights from numerical simulations, *Philosophical Transactions of the Royal Society A: Mathematical, Physical and Engineering Sciences*, 375, 20150346, <https://doi.org/10.1098/rsta.2015.0346>, <https://royalsocietypublishing.org/doi/abs/10.1098/rsta.2015.0346>, 2017.
- Martin Alnæs, Jan Blechta, Johan Hake, August Johansson, Benjamin Kehlet, Anders Logg, Chris Richardson, Johannes Ring, Marie E Rognes, and Garth N Wells: The FEniCS Project Version 1.5, *Archive of Numerical Software*, 3, 9–23,
835 <https://doi.org/10.11588/ans.2015.100.20553>, 2015.
- Martín, C., Gudmundsson, G. H., Pritchard, H. D., and Gagliardini, O.: On the effects of anisotropic rheology on ice flow, internal structure, and the age-depth relationship at ice divides, *Journal of Geophysical Research: Earth Surface*, 114, <https://doi.org/10.1029/2008JF001204>, <https://doi.org/10.1029/2008JF001204>, publisher: John Wiley & Sons, Ltd, 2009.
- Matsuoka, K., Furukawa, T., Fujita, S., Maeno, H., Uratsuka, S., Naruse, R., and Watanabe, O.: Crystal orientation fabrics within the Antarctic
840 ice sheet revealed by a multipolarization plane and dual-frequency radar survey, *Journal of Geophysical Research: Solid Earth*, 108, <https://doi.org/10.1029/2003JB002425>, <https://doi.org/10.1029/2003JB002425>, publisher: John Wiley & Sons, Ltd, 2003.
- Montagnat, M., Löwe, H., Calonne, N., Schneebeli, M., Matzl, M., and Jaggi, M.: On the Birth of Structural and Crystallographic Fabric Signals in Polar Snow: A Case Study From the EastGRIP Snowpack, *Frontiers in Earth Science*, 8, <https://www.frontiersin.org/article/10.3389/feart.2020.00365>, 2020.
- 845 Montgomery-Smith, S., Jack, D. A., and Smith, D. E.: A systematic approach to obtaining numerical solutions of Jeffery’s type equations using Spherical Harmonics, *Composites Part A: Applied Science and Manufacturing*, 41, 827–835, <https://doi.org/10.1016/j.compositesa.2010.02.010>, <http://www.sciencedirect.com/science/article/pii/S1359835X10000679>, 2010.
- Mouginot, J., Rignot, E., and Scheuchl, B.: Continent-Wide, Interferometric SAR Phase, Mapping of Antarctic Ice Velocity, *Geophysical Research Letters*, 46, 9710–9718, <https://doi.org/10.1029/2019GL083826>, <https://doi.org/10.1029/2019GL083826>, publisher: John Wiley & Sons, Ltd, 2019.
- 850 Passchier, C.: The classification of dilatant flow types, *Journal of Structural Geology*, 13, 101–104, [https://doi.org/10.1016/0191-8141\(91\)90105-R](https://doi.org/10.1016/0191-8141(91)90105-R), <http://www.sciencedirect.com/science/article/pii/019181419190105R>, 1991.
- Paterson, W. S. B.: *The Physics of Glaciers*, Pergamon, Oxford, 3rd edn., 1999.
- Pattyn, F., Perichon, L., Aschwanden, A., Breuer, B., de Smedt, B., Gagliardini, O., Gudmundsson, G. H., Hindmarsh, R. C. A., Hubbard, A.,
855 Johnson, J. V., Kleiner, T., Kononov, Y., Martin, C., Payne, A. J., Pollard, D., Price, S., Rückamp, M., Saito, F., Souček, O., Sugiyama, S., and Zwinger, T.: Benchmark experiments for higher-order and full-Stokes ice sheet models (ISMIP–HOM), *The Cryosphere*, 2, 95–108, <https://doi.org/10.5194/tc-2-95-2008>, <https://www.the-cryosphere.net/2/95/2008/>, publisher: Copernicus Publications, 2008.
- Pegler, S. S.: The dynamics of confined extensional flows, *Journal of Fluid Mechanics*, 804, 24–57, <https://doi.org/10.1017/jfm.2016.516>, <https://www.cambridge.org/core/article/dynamics-of-confined-extensional-flows/EEFC70C2DA769ACA57E2D1A6109B331D>, edition:
860 2016/08/31 Publisher: Cambridge University Press, 2016.

- Piazolo, S., Bons, P., and Passchier, C.: The influence of matrix rheology and vorticity on fabric development of populations of rigid objects during plane strain deformation, *Tectonophysics*, 351, 315–329, [https://doi.org/10.1016/S0040-1951\(02\)00220-2](https://doi.org/10.1016/S0040-1951(02)00220-2), <https://www.sciencedirect.com/science/article/pii/S0040195102002202>, 2002.
- 865 Piazolo, S., Jessell, M. W., Prior, D. J., and Bons, P. D.: The integration of experimental in-situ EBSD observations and numerical simulations: a novel technique of microstructural process analysis, *Journal of Microscopy*, 213, 273–284, <https://doi.org/10.1111/j.0022-2720.2004.01304.x>, <https://doi.org/10.1111/j.0022-2720.2004.01304.x>, publisher: John Wiley & Sons, Ltd, 2004.
- Piazolo, S., Wilson, C. J. L., Luzin, V., Brouzet, C., and Peternell, M.: Dynamics of ice mass deformation: Linking processes to rheology, texture, and microstructure, *Geochemistry, Geophysics, Geosystems*, 14, 4185–4194, <https://doi.org/10.1002/ggge.20246>, <https://doi.org/10.1002/ggge.20246>, 2013.
- 870 Piazolo, S., Montagnat, M., Grennerat, F., Moulinec, H., and Wheeler, J.: Effect of local stress heterogeneities on dislocation fields, examples from transient creep in polycrystalline ice, 90, 303–309, <https://doi.org/10.1016/j.actamat.2015.02.046>, <http://www.scopus.com/inward/record.url?scp=84925256590&partnerID=8YFLogxK>, 2015.
- Pimienta, P. and Duval, P.: Mechanical behavior of anisotropic polar ice, *The Physical Basis of Ice Sheet Modelling*, 170, 1987.
- 875 Placidi, L., Greve, R., Seddik, H., and Faria, S. H.: Continuum-mechanical, Anisotropic Flow model for polar ice masses, based on an anisotropic Flow Enhancement factor, *Continuum Mechanics and Thermodynamics*, 22, 221–237, <https://doi.org/10.1007/s00161-009-0126-0>, <https://doi.org/10.1007/s00161-009-0126-0>, 2010.
- Qi, C., Goldsby, D. L., and Prior, D. J.: The down-stress transition from cluster to cone fabrics in experimentally deformed ice, *Earth and Planetary Science Letters*, 471, 136–147, <https://doi.org/10.1016/j.epsl.2017.05.008>, <http://www.sciencedirect.com/science/article/pii/S0012821X17302625>, 2017.
- 880 Qi, C., Prior, D. J., Craw, L., Fan, S., Llorens, M.-G., Griera, A., Negrini, M., Bons, P. D., and Goldsby, D. L.: Crystallographic preferred orientations of ice deformed in direct-shear experiments at low temperatures, *The Cryosphere*, 13, 351–371, <https://doi.org/10.5194/tc-13-351-2019>, <https://www.the-cryosphere.net/13/351/2019/>, 2019.
- Richards, D. H. M., Pegler, S. S., Piazolo, S., and Harlen, O. G.: The evolution of ice fabrics: A continuum modelling approach validated against laboratory experiments, *Earth and Planetary Science Letters*, 556, 116–118, <https://doi.org/10.1016/j.epsl.2020.116718>, <http://www.sciencedirect.com/science/article/pii/S0012821X20306622>, 2021.
- 885 Schytt, V.: Snow and ice studies in Antarctica, Norwegian-British-Swedish antarctic expedition, 1949-52. Scientific results, 4, S. 9–148, 3 pl.–bl., 6, 8 pl.–s., 1 diagr.–bl., <http://urn.kb.se/resolve?urn=urn:nbn:se:su:diva-75505>, number Of Volumes: Vol. 4. A-C Place: Oslo Publisher: Norsk Polarsinstitut, 1958.
- 890 Shepherd, A., Ivins, E., Rignot, E., Smith, B., van den Broeke, M., Velicogna, I., Whitehouse, P., Briggs, K., Joughin, I., Krinner, G., Nowicki, S., Payne, T., Scambos, T., Schlegel, N., A. G., Agosta, C., Ahlstrøm, A., Babonis, G., Barletta, V., Blazquez, A., Bonin, J., Csatho, B., Cullather, R., Felikson, D., Fettweis, X., Forsberg, R., Gallee, H., Gardner, A., Gilbert, L., Groh, A., Gunter, B., Hanna, E., Harig, C., Helm, V., Horvath, A., Horwath, M., Khan, S., Kjeldsen, K. K., Konrad, H., Langen, P., Lecavalier, B., Loomis, B., Luthcke, S., McMillan, M., Melini, D., Mernild, S., Mohajerani, Y., Moore, P., Mouginit, J., Moyano, G., Muir, A., Nagler, T., Nield, G., Nilsson, J., Noel, B., Ootaka, I., Pattle, M. E., Peltier, W. R., Pie, N., Rietbroek, R., Rott, H., Sandberg-Sørensen, L., Sasgen, I., Save, H., Scheuchl, B., Schrama, E., Schröder, L., Seo, K.-W., Simonsen, S., Slater, T., Spada, G., Sutterley, T., Talpe, M., Tarasov, L., van de Berg, W. J., van der Wal, W., van Wessem, M., Vishwakarma, B. D., Wiese, D., Wouters, B., and The IMBIE team: Mass balance of the Antarctic Ice Sheet from 1992 to 2017, *Nature*, 558, 219–222, <https://doi.org/10.1038/s41586-018-0179-y>, <https://doi.org/10.1038/s41586-018-0179-y>, 2018.

- Skemer, P., Katayama, I., Jiang, Z., and Karato, S.-i.: The misorientation index: Development of a new method for calculating the strength of
900 lattice-preferred orientation, *Tectonophysics*, 411, 157–167, <https://doi.org/10.1016/j.tecto.2005.08.023>, <https://www.sciencedirect.com/science/article/pii/S0040195105004439>, 2005.
- Smith, B. E., Gourmelen, N., Huth, A., and Joughin, I.: Connected subglacial lake drainage beneath Thwaites Glacier, West Antarctica, *The Cryosphere*, 11, 451–467, <https://doi.org/10.5194/tc-11-451-2017>, <https://tc.copernicus.org/articles/11/451/2017/>, publisher: Copernicus Publications, 2017.
- 905 Steinemann, S.: Experimentelle Untersuchungen zur Plastizität von Eis, Ph.D. thesis, ETH Zurich, <https://doi.org/10.3929/ethz-a-000096707>, 1958.
- Stoll, N., Weikusat, I., Kerch, J., Kleitz, I., Eichler, J., Shigeyama, W., Homma, T., Jansen, D., Bayer-Giraldi, M., Kuiper, E.-J., Westhoff, J., Saruya, T., Faria, S. H., Kipfstuhl, S., and Dahl-Jensen, D.: Physical properties of the NEGIS ice core - The upper 1700m in EGRIP, in: *The Ninth Symposium on Polar Science*, National Institute of Polar Research (NIPR), Tokyo, Japan, <https://epic.awi.de/id/eprint/48741/>,
910 2018.
- ten Grotenhuis, S. M., Piazzolo, S., Pakula, T., Passchier, C. W., and Bons, P. D.: Are polymers suitable rock analogs?, *Tectonophysics*, 350, 35–47, [https://doi.org/10.1016/S0040-1951\(02\)00080-X](https://doi.org/10.1016/S0040-1951(02)00080-X), <https://www.sciencedirect.com/science/article/pii/S004019510200080X>, 2002.
- Tikoff, B. and Fossen, H.: The limitations of three-dimensional kinematic vorticity analysis, *Journal of Structural Geology*, 17, 1771–1784, [https://doi.org/10.1016/0191-8141\(95\)00069-P](https://doi.org/10.1016/0191-8141(95)00069-P), <http://www.sciencedirect.com/science/article/pii/019181419500069P>, 1995.
- 915 Treverrow, A., Warner, R. C., Budd, W. F., and Craven, M.: Meteoric and marine ice crystal orientation fabrics from the Amery Ice Shelf, East Antarctica, *Journal of Glaciology*, 56, 877–890, <https://doi.org/10.3189/002214310794457353>, 2010.
- Wilson, C. J. and Peternell, M.: Ice deformed in compression and simple shear: control of temperature and initial fabric, *Journal of Glaciology*, 58, 11–22, <https://doi.org/10.3189/2012JoG11J065>, 2012.
- Wilson, C. J. L.: Experimental work on the effect of pre-existing anisotropy on fabric development in glaciers, *Geological Society, London, Special Publications*, 176, 97, <https://doi.org/10.1144/GSL.SP.2000.176.01.08>, <http://sp.lyellcollection.org/content/176/1/97.abstract>,
920 2000.