

Dear Editor,

We thank you and three reviewers very much for the comments and suggestions for the paper ‘Evaluation of Sea-Ice Thickness from four reanalyses in the Antarctic Weddell Sea’ submitted to *The Cryosphere*. They were valuable and very helpful for revising and improving our manuscript. We have made a substantial revision according to the reviewers’ comments and suggestions, and reply to them one by one below.

Qinghua Yang

On behalf of all the authors

## Responses to referee #1

Dear Dr. Keguang Wang:

Thanks for your helpful comments to improve this manuscript.

Below, we repeat each comment and insert our replies in the text. All responses are in blue font for clarity of reading. In addition, we add more introduction on reanalyses sea ice thickness and rephrase the fifth paragraph in section 1 (from Line 74).

Qinghua Yang

On behalf of all the authors

### ***Main Comments:***

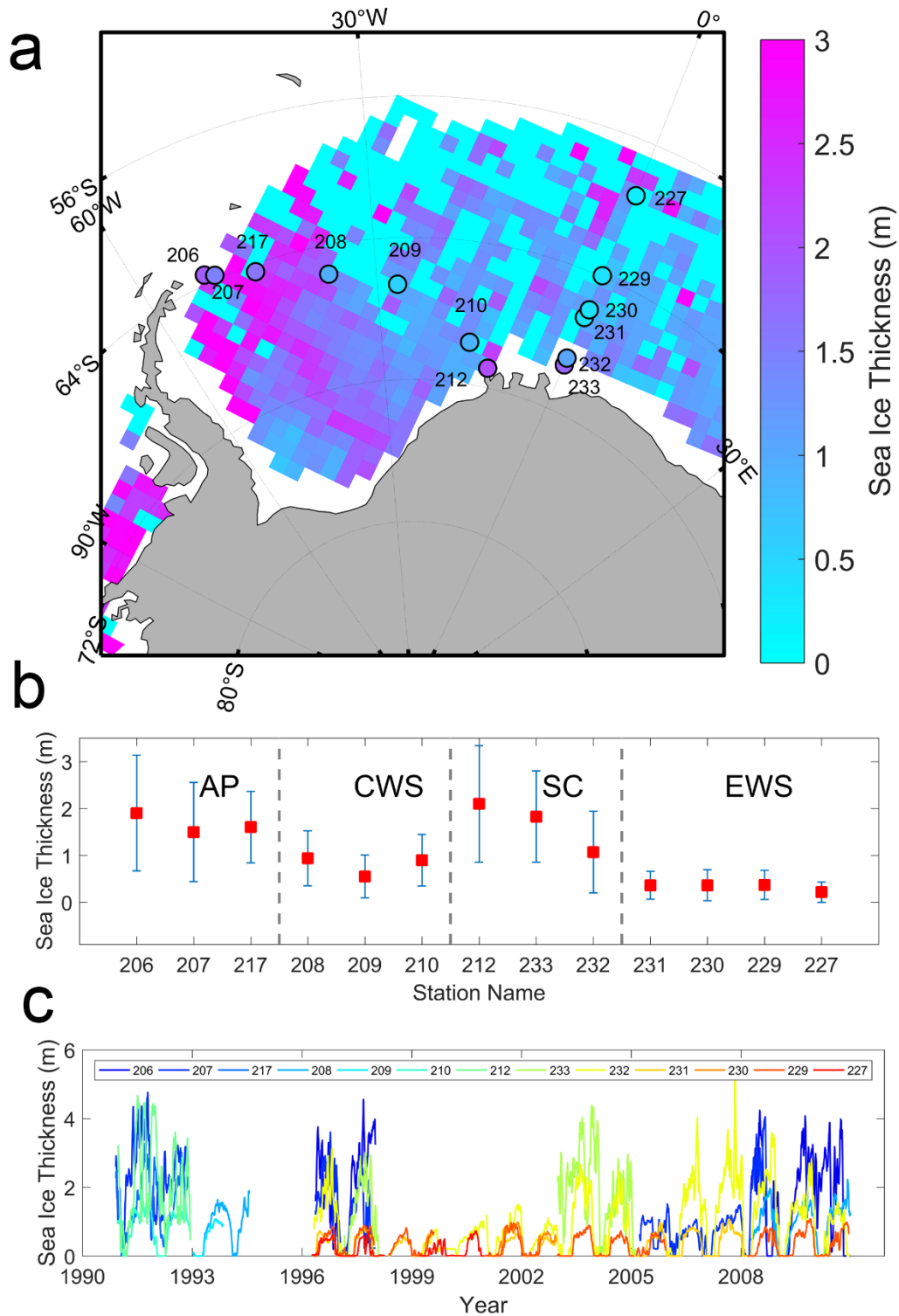
**Point 1:** There is inconsistency during the comparison in terms of the data. In the “Data and methods” part, the authors state “Comparison are made using monthly means”, however, when in 3.3 Comparison with sea-ice thickness from ICESat-1, they are using seasonal mean. This inconsistency must be fixed. It will be much better that the authors describe how they make the comparison in the exact sections.

**Response:** In the old version, we compared four reanalyzed SIT products with ULS, ASPeCt by monthly mean, but with seasonal mean for products from Envisat and ICESat-1. Now, we deleted “Comparisons are made using monthly means” in the “Data and methods” part, then described the related information in individual sections instead. For example, we added “All ULS recorded once a second are averaged into monthly ice draft” in Line 194 in section 3.1 before “Because thick...”

**Point 2:** Section 3.1. It remains unclear what kind of mooring data are using here. According to the statement “The aggregate temporal span of ULS observations in AP, CWS, SC and EWS is 148, 79, 185 and 272 months”, and consider the numbers of the mooring in these regions, there should be large difference in the mooring data regarding the time duration. I suggest the authors add a plot in their Figure 1 showing the temporal evolution of the mooring observed SIT that are actually used in their comparisons.

**Response:** The previous description indeed could make the reader confused about the ULS data used in this section. Actually, we collected all daily ULS records of 13 stations in the Weddell Sea from 1990 to 2008. Due to the different ice conditions during this period, the duration of records in the four different sectors (AP, CWS, SC and EWS) are quite different. The aggregate time span is  $40(206) + 84(207) + 24(217) = 148$  months in AP,  $40(208) + 10(209) + 23(210) = 73$  months in CWS,  $23(212) + 37(233) + 125(232) = 185$  months in SC, and  $91(231) + 28(230) + 108(229) + 45(227) = 272$  months in EWS. That is to say, the correct aggregate time span of ULS observations in AP, CWS, SC and EWS is 148, 73, 185 and 272 months, respectively. CWS has the fewest observations because it is far away from the coast and has a relatively long ice-covered time. Though CWS has fewer observations than AP and SC, its standard deviation (SD) is lower than AP and SC (new Figure 1b). Considering average of sea ice thickness as well as their SDs, we think current division is reasonable.

According to your suggestion, we added the time series of 15-day moving average sea ice thickness based on daily records of all 13 stations. Besides, we added the standard deviations of daily sea ice thickness as error bars in all mean ice thickness (new Figure 1b) to represent the variations of all stations.



**New Figure 1:** a) The ICESat-1 sea-ice thickness in autumn of 2005 in the Weddell Sea and the locations of the moored upward looking sonars with their mean thicknesses shaded. b) The mean ULS sea-ice thickness from west to the east in the Weddell Sea. The error bars represent the standard deviation of daily ice thickness for individual stations. Grey dotted lines divide the 13 stations into four parts: the Antarctic Peninsula (AP), the central Weddell Sea (CWS), the southern coast (SC), and the eastern Weddell Sea (EWS). c) The time series of daily sea ice thickness of all 13 stations after a 15-day moving average.

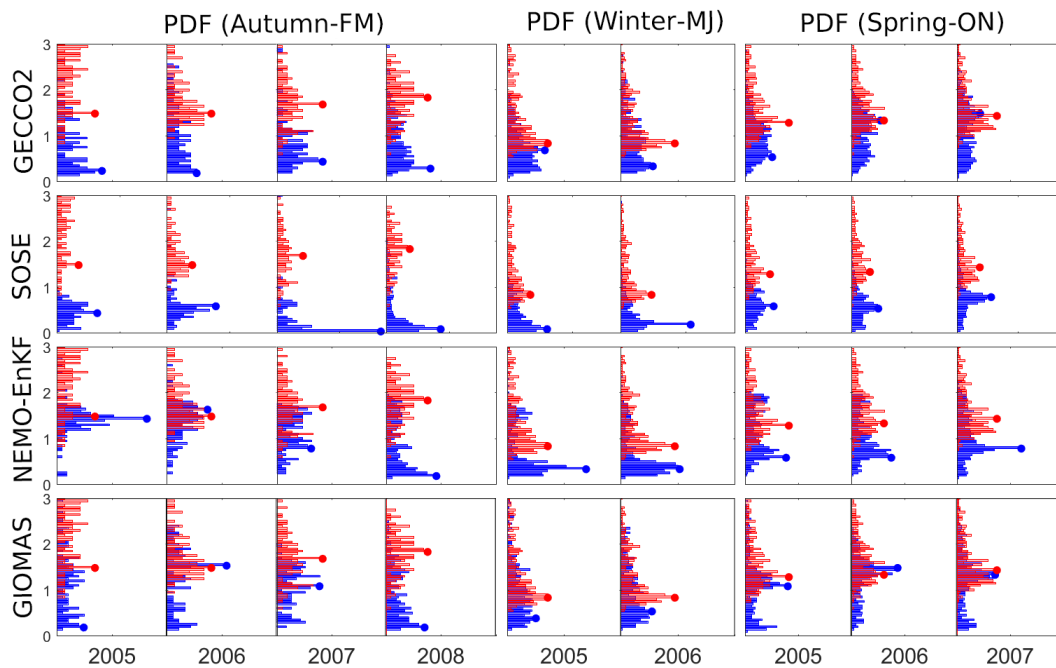
**Point 3:** Figure 4. Not sure why the authors use SITs from different locations in the three reanalyses

(Figs. 4b-d). This means they also use different ASPeCT SIT when comparing with the different reanalyses. What can we infer from such different comparisons? I suggest the authors use a consistent comparison: Use the same ASPeCT SIT, with reanalysis SITs interpolated to the same time and same location.

**Response:** We are sorry because the old caption for Figure 4 was wrong and this caused the misleading. It is not “Locations of model sea-ice thickness are shown in b ...”, but should be “Locations of modal sea-ice thickness are shown in b ...”. We have corrected this.

**Point 4:** Section 3.3. It is not clear what kind of manipulations here for the reanalysis SIT. The authors state “we use October and November to represent spring : : :”. However, according to Table 2, the ICESat-1 measurement is irregular, and no full month measurements. Do the authors use the same dates as the observations, or just simply use the full two-month reanalysis data? As the authors here try to compare the mean, it is very important to compare the exact corresponding data in terms of time and locations. Also the authors need give a test with confidence level for the comparison.

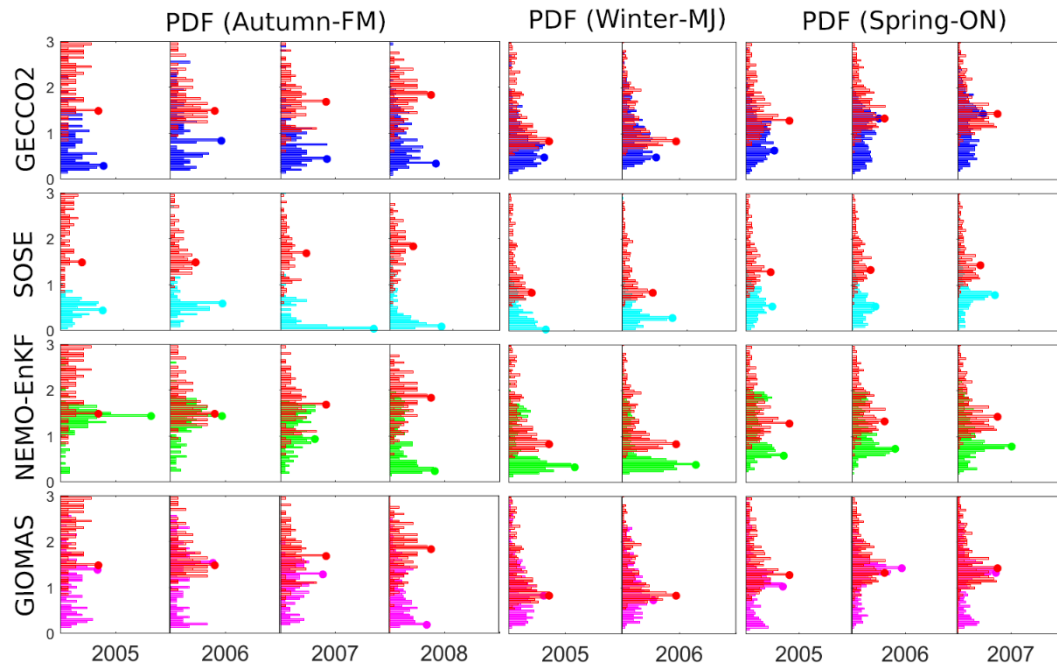
**Response:** We used a two-month mean SIT for reanalyses in Section 3.3 when comparing with ICESat-1. Considering the irregular months of ICESat-1, we performed a time-weighted calculation for all four reanalyses in the new comparison. For example, if the temporal span of FM04 is from 17 January to 21 March, which includes 13 days in February and 21 days in March, then all SIT reanalyses will be averaged by  $(13/34)*SIT_{Feb} + (21/34)*SIT_{Mar}$ . That is what we plotted for the new Figures 5 & 6. The main change in Figure 5 is for GIOMAS reanalysis. The difference between GIOMAS modal SIT and ICESat-1 modal SIT decreased in FM05, FM07, MJ05 and MJ06 after using the new monthly averaged SIT. The spatial pattern of monthly SIT in the new Figure 6 is generally consistent with that in the old Figure 6. The main difference occurs in the GIOMAS winter, where the new figure 6 has less area with differences around -0.5 m over the central Weddell Sea. Besides, all reanalyses SIT are biased to ICESat-1 SIT with a t-test.



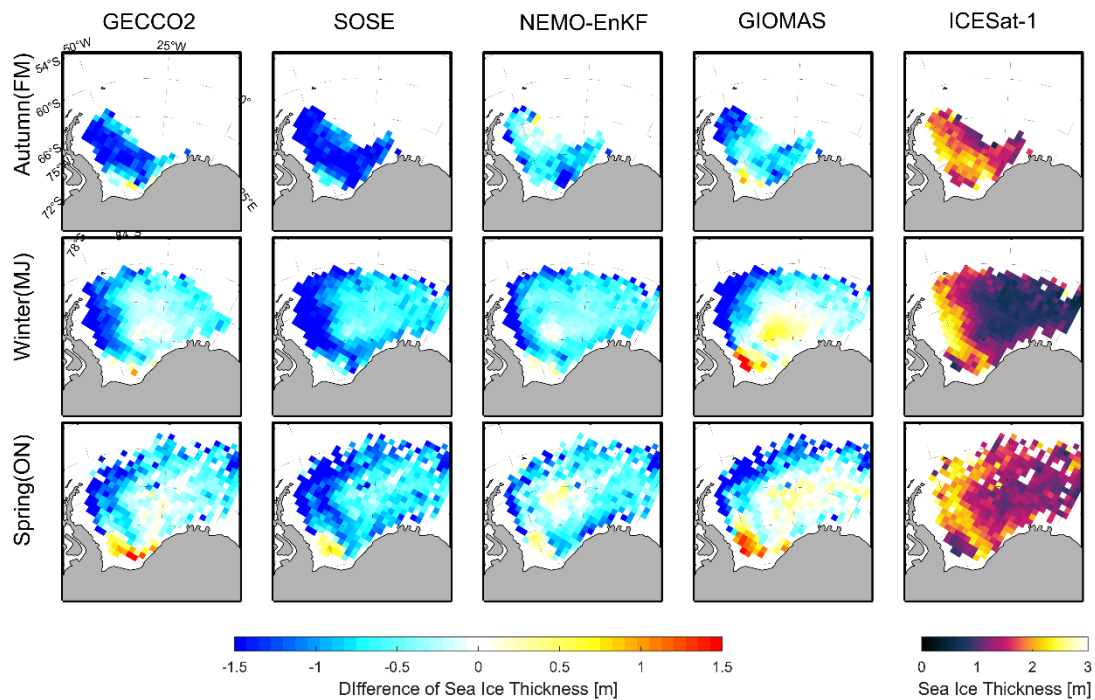
**Old Figure 5:** The variation of monthly ice thickness distribution from reanalyses (blue) and ICESat-1 (red) in Autumn-FM (left), Winter-MJ (middle) and Spring-ON (right).



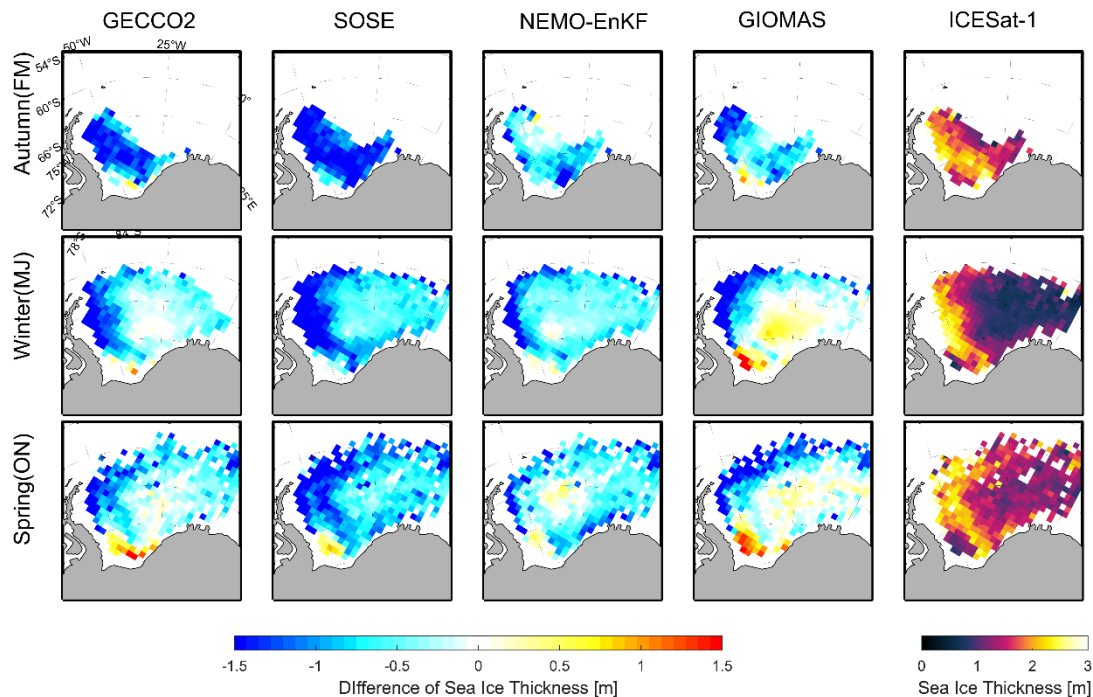
The blue and red dots represent the modal ice thickness of reanalyses (blue) and ICESat-1, respectively.



**New Figure 5:** The variation of monthly ice thickness distribution from GECCO2 (blue), SOSE (cyan), NEMO-EnKF (green), GIOMAS (pink) and ICESat-1 (red) in Autumn-FM (left), Winter-MJ (middle) and Spring-ON (right). The colored dots represent the modal ice thickness. In order to make the histogram plots readable, different reanalyses has different x range.



**Old Figure 6: The Differences of sea ice thickness between GECCO2 (first column), SOSE (second column), NEMO-EnKF (third column), and GIOMAS (fourth column) and ICESat-1 in Autumn-FM (first row), Winter-MJ (second row) and Spring-ON (third row). The contours in last column represent the autumn sea-ice thickness of ICESat-1.**



**New Figure 6: The Differences of sea ice thickness between GECCO2 (first column), SOSE (second column), NEMO-EnKF (third column), and GIOMAS (fourth column) and ICESat-1 in Autumn-FM (first row), Winter-MJ (second row) and Spring-ON (third row). The contours in last column represent the autumn sea-ice thickness of ICESat-1.**

**Point 5:** Line 280-281. “Compared with ICESat-1, only NEMO-EnKF has a similar variation of modal ice thickness from Autumn-FM to Spring-ON, while GECCO2, SOSE and GIOMAS have monotonically increasing model ice thickness”. It seems to me 2005 & 2006 for SOSE, and 2006 for GIOMAS have similar seasonal variations in Figure 5. Table 4 looks somewhat misleading as its modal SITs not necessary in the same year.

**Response:** In the new version, the sentences starting from Line 279, “and the variability of mean ice thickness is less than that of modal ice thickness (Table 4)...” were deleted. Following your suggestion, we added “In most cases, modal ice thickness of reanalyses are lower than that of ICESat-1. For example, in 2008 Autumn-FM, four reanalyses have modal ice thickness lower than 0.3 m, indicating the newly formed sea ice. However, ICESat-1’s modal ice thickness is around 1.5 m. SOSE and NEMO-EnKF have a similar variation of modal ice thickness from Autumn-FM to Spring-ON as ICESat-1 in 2005 and 2006. GIOMAS has a similar seasonal variation in 2005. GECCO2 fails to reproduce the decrease of modal ice thickness from Autumn-FM to Winter-MJ. This is because GECCO2 loses most thick ice in summer and thus has lower modal ice thickness than the other data sets.” In addition, we deleted Table 4 in the new version to avoid misleading.

## Responses to referee #2

Dear Dr. Céline Heuzé:

Thanks for your helpful comments to improve this manuscript.

Below, we repeat each comment and insert our replies in the text. All responses are in blue font for clarity of reading.

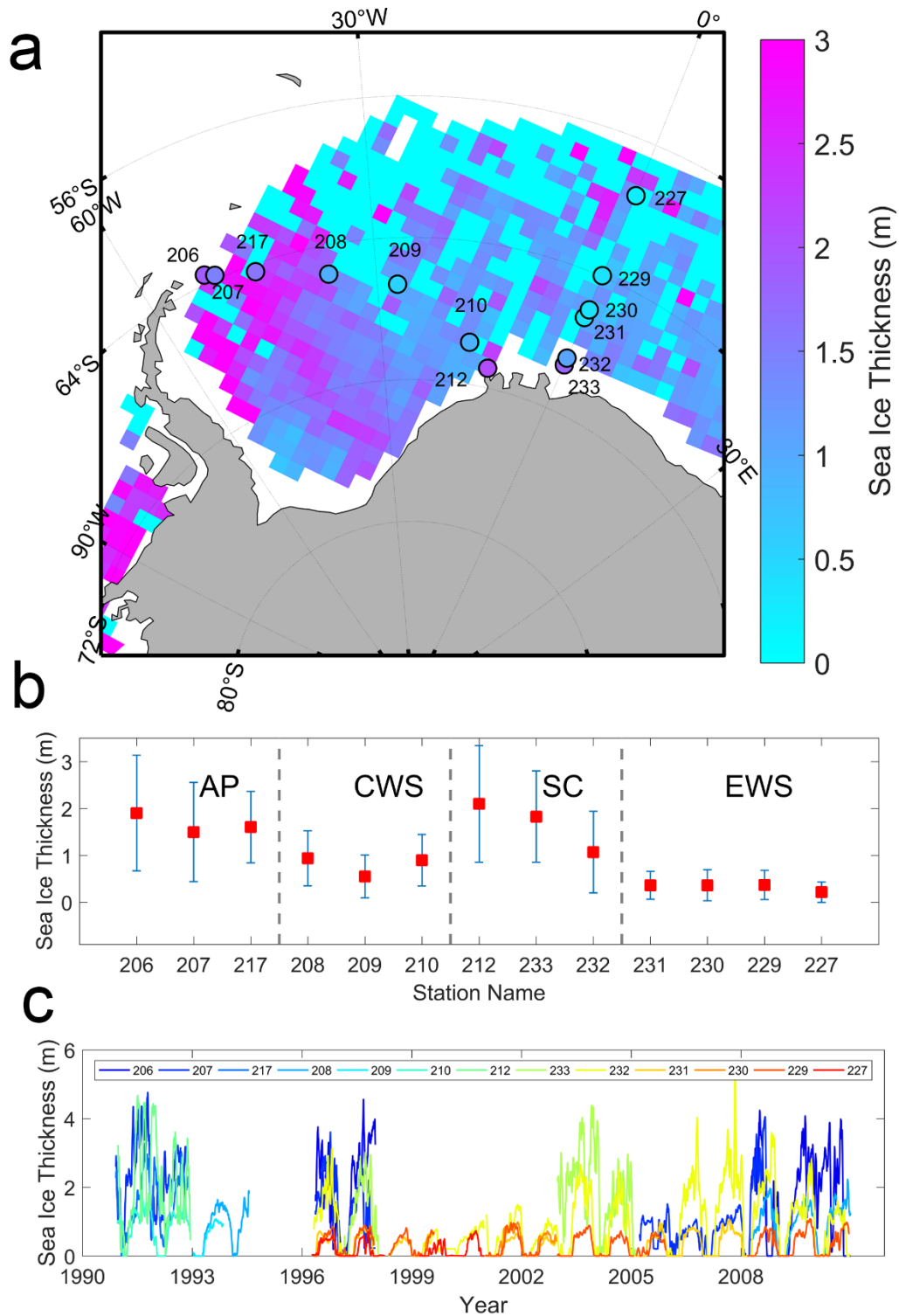
Qinghua Yang

On behalf of all the authors

### ***Main Comments:***

**Point 1:** The regions On Fig 1, you present the four regions into which you split the Weddell Sea, and that you analyse in Fig 3. You base that split on data from ULS, but you present only their mean, not the uncertainty attached to it. I am particularly surprised that 210 and 212 would be in different regions. So at least on Fig 1b, add the errors bars. Then modify the region split if needed.

**Response:** We divided 13 ULS stations according to their ice conditions. Following your suggestion, we added the uncertainty of daily SIT records (here we use the standard deviation representing the uncertainty) in the new figure 1b. The mean SIT of station 210 is similar to other stations of the CWS group, lower than that of the SC group. In addition, the uncertainties of station 208, 209 and 210 are all around 0.5 m, while the uncertainties of stations of SC group are all higher than 0.85 m. Therefore, we think our division criterion is reasonable. In order to provide more information on ULS records following another reviewer, we added the time series of daily SIT of all 13 stations after a 15-day moving average in the new Figure 1c.



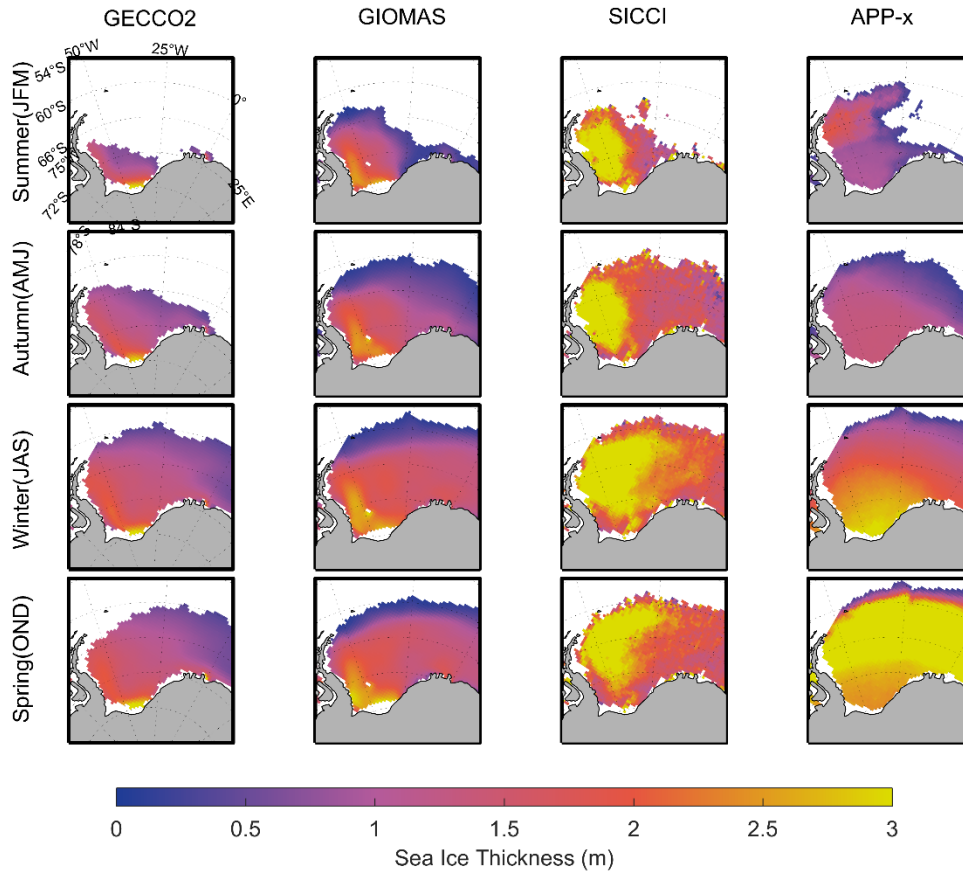
**New Figure 1:** a) The ICESat-1 sea-ice thickness in autumn of 2005 in the Weddell Sea and the locations of the moored upward looking sonars with their mean thicknesses shaded. b) The mean ULS sea-ice thickness from west to the east in the Weddell Sea. The error bars represent the standard deviation of daily ice thickness for individual stations. Grey dotted lines divide the 13 stations into four parts: the Antarctic Peninsula (AP), the central Weddell Sea (CWS), the southern coast (SC), and the eastern Weddell Sea (EWS). c) The time series of daily sea ice thickness of all 13 stations after a 15-day moving average.

**Point 2:** The more recent time period and long term perspective most of the analysis is performed on the time period common to all four reanalyses (late 2000s), which I understand. Unfortunately, it is a bit old and short. Southern Ocean sea ice has behaved very differently since. So please, include a short extra subsection dedicated to comparing GIOMAS and GECCO to SICCI (CryoSat2 at least) and APP. Ideally, also add something about trends in these reanalyses

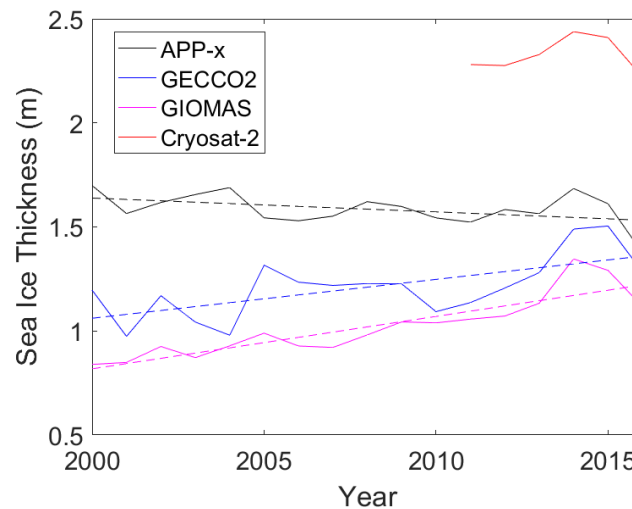
**Response:** Thanks for the suggestion. We added the comparison of GECCO2, GIOMAS, Cryosat-2 and APP-x from 2011 to 2016 in the Figure suppl. The SIT of GECCO2 and GIOMAS have an obvious lower SIT than SICCI (Cryosat-2), but their spatial pattern are similar to SICCI (Cryosat-2) in the period from 2005 to 2008. The thickest ice of GECCO2 and GIOMAS concentrate on the southwestern Weddell Sea in all seasons, without spatial shift as Cryosat-2 or Envisat shows. APP-x has lower SIT than Cryosat-2 in summer and autumn. Then, its SIT increases rapidly in winter and spring and has the thickest mean ice thickness in the spring of all four data sets. Its abnormal thick ice ( $> 3$  m) in the central and eastern Weddell is contrary to the ULS observations in the literature. Besides, the spatial pattern of APP-x SIT presents obvious zonal symmetry. That is to say, the evolution of APP-x SIT is mainly controlled by thermodynamic processes and cannot well reflect the dynamic processes.

Though, we showed the yearly-mean sea ice thickness in the Weddell Sea of GECCO2, GIOMAS and APP-x from 2000 to 2019 (Figure suppl2). The Cryosat-2 sea ice thickness has also been added to this plot. Even though the magnitudes of SIT are quite different among the four data sets, all of them show relatively high mean SIT in 2014. GECCO2 and GIOMAS present an upward trend from 2000 to 2019 (exceed 95% significance level), while APP-x presents a downward trend at the same time but cannot pass significance text. Currently, we still cannot conclude whether the upward signal of GECCO2 and GIOMAS SIT is realistic. Further, more reliable and longer data sets are needed to investigate the trend of Antarctic SIT is necessary.

We have not put this part in the main document, since both the CryoSat-2 and the APP-x ice thickness are with large uncertainties. In particular, the uncertainties of the radar altimeter can result from the inaccuracy snow-ice interface and snow-ice formation (Willatt et al., 2010), and also the surface type mixing and surface roughness (Schwegmann et al., 2016; Paul et al., 2018; Tilling et al., 2019).”. APP-x almost cannot grasp the dynamical thickening of sea ice, that is to say, it cannot keep the memory of sea ice cover in the Weddell Sea, which exist abundant multi-year ice.



**Figure sup1: Seasonal mean sea-ice thickness (summer to spring) from GECCO2, GIOMAS, SICCI and APP-x for the 6-yr period 2011-2016**



**Figure sup2: Trends of yearly-mean sea ice thickness from 2000 to 2016. The dotted lines represent the linear regression fittings.**

### ***Minor Comments:***

**1 Line 109:** say that all the information to come is summarised in Table 1. Try to write this entire section in a more structured manner, giving the same information about all four products (at least

time period and resolution).

**Response:** We added the following sentences at the end of Line 111 “Its horizontal spatial resolution is  $1^\circ \times 1/6^\circ$ .”. At the end of Line 134, we added “The horizontal spatial resolution of GIOMAS is  $4/5^\circ \times 4/5^\circ$ .”.

**2 Line 140:** you mention ASPeCT now, but only introduce the product line 170

**Response:** We changed the “ASPeCt” here as “ship-based observations”.

**3 Fig 1a:** add the lines separating the four regions plotted there too Fig 1b: see comment above, add the error bars, and potentially modify your region division accordingly

**Response:** We added error bar in the new Figure 1b and explained the reason for using such division criterion in the response of Point 1.

**4 Fig 4b-d:** why are you showing different thickness bands for different products? They are not even the thicknesses you comment on in the text. Please show only one range, so that the reader can compare the reanalyses.

**Response:** First, we are sorry because the old caption for Figure 4 was wrong and this caused the misleading. It is not “Locations of model sea-ice thickness are shown in b ...”, but should be “Locations of modal sea-ice thickness are shown in b ...”. We have corrected this. Second, the different modal ice thickness corresponds to the leading ice types of different reanalyses. Their similar spatial locations mean the modal ice thickness is a representative parameter in comparison with ASPeCt SIT.

**5 Table 3:** have you checked whether the reanalyses are correlated with each other? It is suspicious that they all seem to have similar biases when compared against ICESat-1.

**Response:** We are very sorry as there is indeed something wrong with the old Table 3, please see the following new Table 3 (the old values are in parentheses). Based on the new results, NEMO-EnKF has obvious higher CC than the other three reanalyses and the CC of GIOMAS close to 0.

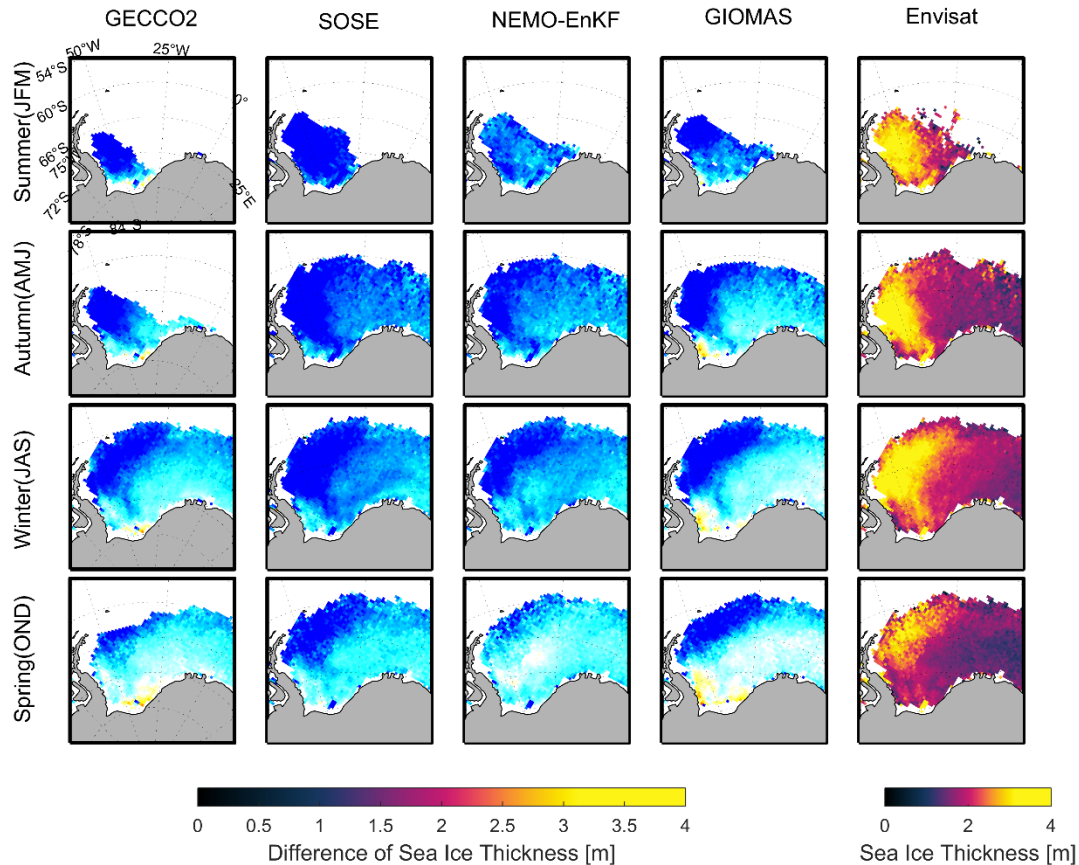
New Table 3: The mean ice thickness bias, root-mean-square error estimate and correlation between ICESat-1 and four sea-ice thickness reanalyses.

Reanalysis	Mean error (m)	RMSE (m)	Correlation
GECCO2	-0.67(-1.02)	0.55(0.71)	0.19(0.18)
SOSE	-0.99(-1.20)	0.51(0.63)	0.26(0.20)
NEMO-EnKF	-0.63(-0.99)	0.44(0.68)	0.54(0.31)
GIOMAS	-0.52(-0.90)	0.68(0.79)	0.03(0.17)

**6 Fig 7:** present it like Fig 6, as difference against reference rather than actual values. This way, we can compare with Fig 6 (alternatively, present Fig 6 like Fig 7).

**Response:** Corrected. Please see the new Figure 7.





**Figure 7:** Same as Figure 6 but with respect to Envisat (last column) for the 4-yr period 2005-2008.

**7 Fig 8** (and text corresponding): since the sea ice concentration is about right, and that all reanalyses present similar biases in thickness when compared to satellite retrievals, can it be that the thickness retrievals are the ones that are not perfect yet? Sea ice concentration retrieval is after all more mature.

**Response:** Yes, the performance of sea ice concentration is better than the sea ice thickness, both for remote sensing retrieval and numerical modeling. Comparing with the sea ice concentration, both the satellite and the model ice thickness estimates have large errors, because the modeled ice concentration can be constrained by the satellite observations, but this is not the case for the modeled ice thickness.

**8 Line 331:** you meant to refer to Fig 8 here.

**Response:** Yes. We corrected this.

**9 Line 345/Fig 9:** I know you write that you will not investigate the reasons for biases in the reanalyses, but I find the north sea ice of GIOMAS in winter/spring surprising. Is the reanalysis known for having too fast an Antarctic Circumpolar Current? Or is the ice too thin/mobile?

**Response:** Good suggestion. On the one hand, the relative low ice concentration in the marginal ice zone and high ice motion speed of GIOMAS (Figure 8) than the other four data sets can accelerate the sea ice loss (local melting or northward advection). On the other hand, the thin ice thickness will make ice more mobile driven by the same wind speed. Currently, we still cannot give the explicit casualty between thin ice and fast ice motion of GIOMAS.



**10 Line 342-346:** you forgot to refer to Fig 9 here. The caption of Fig 9 refers to itself instead of Fig 8 by the way

***Response:*** Corrected.

**11 Table 5:** the units need to be fixed. Indicate the net flux in the reference product as well (at least in the caption).

***Response:*** Corrected.

**12 Line 373:** not "sea ice ocean models", reanalyses. Sea ice ocean models have their own series of problems, but that's beyond the scope of this review.

***Response:*** This sentence will be replaced by “We conclude that sea ice thickness reanalyses in the Weddell Sea have a varying degree of realism.”

## Responses to referee #3

Dear Dr. Daniel Price:

Thanks for your helpful comments to improve this manuscript.

Below, we repeat each comment and insert our replies in the text. All responses are in blue font for clarity of reading.

Qinghua Yang

On behalf of all the authors

### ***Main Comments:***

**Point 1:** Readers may benefit from a concise explanation of the general principles of sea ice thickness estimates from reanalysis products. It will be difficult for non-experts in this specific field to grasp the processes considered and limitations during the construction of a sea ice thickness reanalysis product. I appreciate this is the point of the references but it is often helpful to provide an insight as part of the text to assist the reader (supported by references)

**Response:** Good suggestion. We added some description:

Sea ice thickness is a prognostic variable in all ocean—sea ice models used to generate the reanalyses considered in this study. The use of a data assimilation scheme offers the possibility to provide revised estimates of sea ice thickness, by constraining the simulated model output with observations (ocean or sea ice, e.g., Sakov et al., 2012; Köhl, 2015; Mu et al., 2018).

Added reference:

Köhl, A., 2015: Evaluation of the GECCO2 ocean synthesis: transports of volume, heat and freshwater in the Atlantic. Q. J. Roy. Meteor. Soc., 141, 166-181.

Mu, L., M. Losch, Q. Yang, R. Ricker, S. N. Losa, and L. Nerger, 2018: Arctic-wide sea ice thickness estimates from combining satellite remote sensing data and a dynamic ice-ocean model with data assimilation during the CryoSat-2 period. J. Geophys. Res.-Oceans, 123, 7763-7780.

Sakov, P., F. Counillon, L. Bertino, K. A. Lisaeter, P. R. Oke, and A. Korablev, 2012: TOPAZ4: An ocean-sea ice data assimilation system for the North Atlantic and Arctic. Ocean Sci., 8, 633-656.

**Point 2:** I appreciate it is sometimes difficult to fit all the relevant information into the limited word count of an abstract, but I think the reader (and work) would benefit from some sort of quantified reporting in the abstract. Terms like ‘well reproduce’ are somewhat subjective, is there a way to effectively provide a quantitative measure in the abstract of how well these reanalysis perform compared to one another and the observations? i.e. report the key results in a quantitative manner. This could in some way be related to a ‘score’ suggested in point 5 below

**Response:** Good suggestion. A quantitatively description of the comparison results are necessary to know the performance of all four reanalyses. After a serious thinking, we tend to present values of root-mean-square error (RMSE) and correlation coefficient (CC), which are

more objective instead of “score” ranking. It is noted that the CC with ULS means the temporal correlation between four reanalyses and ULS, while the CC with ICESat-1 means the spatial correlation because they are calculated by yearly mean SIT fields. Our results (Table 5) show that the SOSE has the highest CC of 0.77 and lowest RMSE of 0.72 m, when compared with ULS ice thickness. All RMSEs are less than 0.9 m and all CCs are more than 0.4. Compared with ICESat-1, NEMO-EnKF has the highest CC of 0.54 and lowest RMSE of 0.44 m. CCs of the other three reanalyses are less than 0.3 and GIOMAS almost no spatial relation with ICESat-1.

By the way, we will add the RMSE and CC results in the new abstract. But we cannot conclude the performance of reanalyses only by their RMSEs or CCs. First, the time coverage of ICESat-1 is quite limited. Second, the spatial representation of ULS data sets is very sparse.

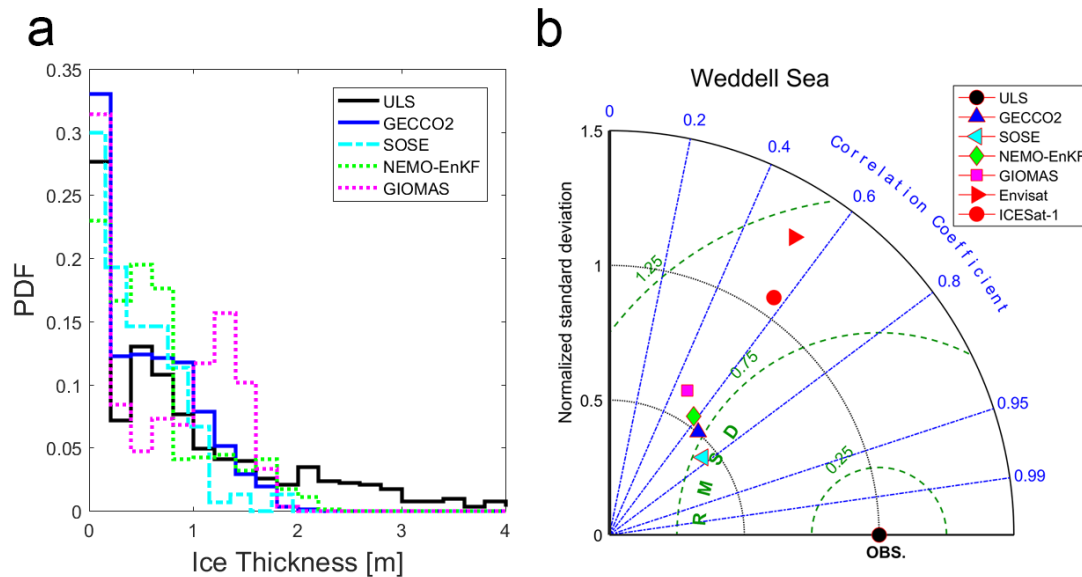
Table 5. Statistics of four reanalyses with respect to ULS and ICESat-1.

	GECCO2	SOSE	NEMO-EnKF	GIOMAS
ULS(RMSE)	0.77	0.72	0.82	0.89
ULS(CC)	0.65	0.77	0.58	0.47
ICESat-1(RMSE)	0.55	0.51	0.44	0.47
ICESat-1(CC)	0.19	0.26	0.54	0.03

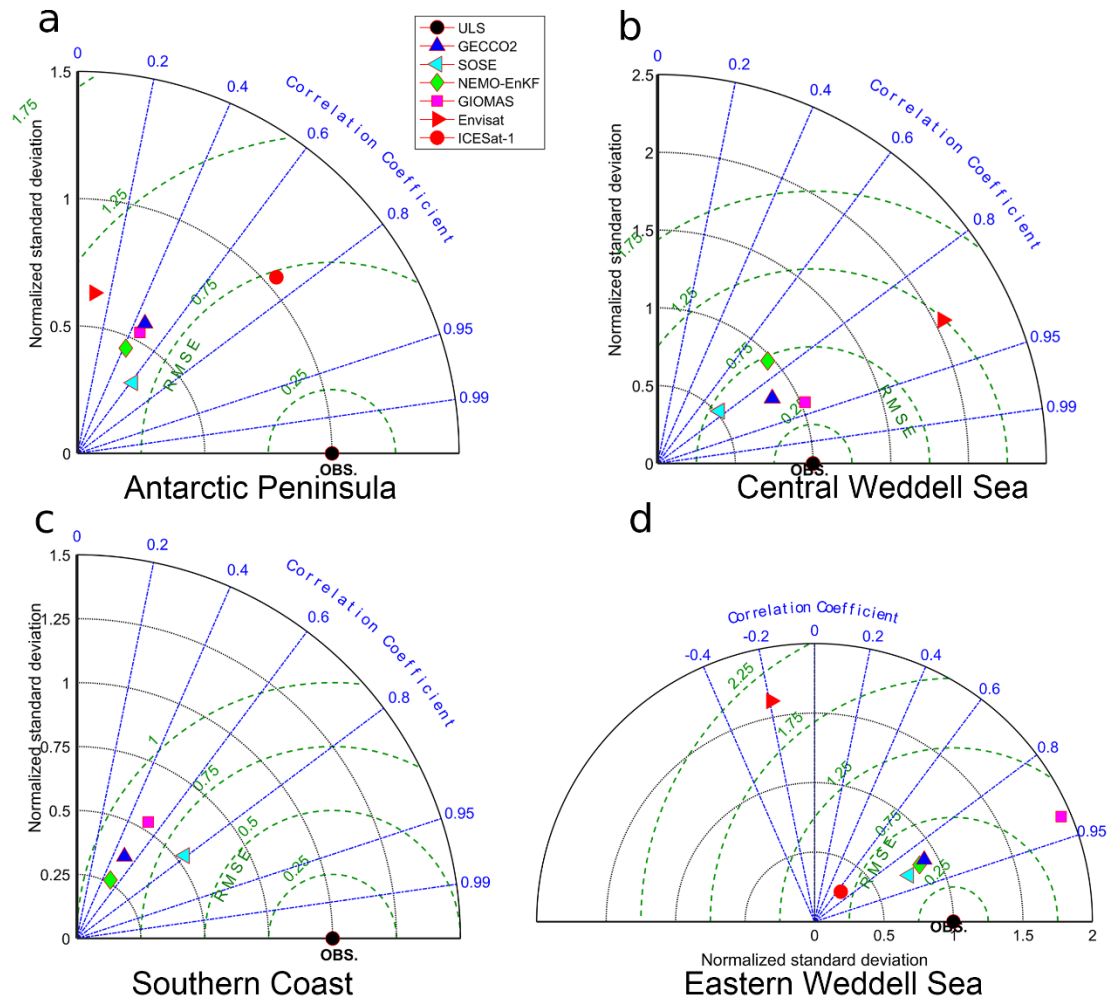
**Point 3:** Although the manuscript is written well and results are well displayed, it would be useful to maintain the colour coding of each reanalysis/observational datasets throughout the figures to avoid confusion

*Response:*

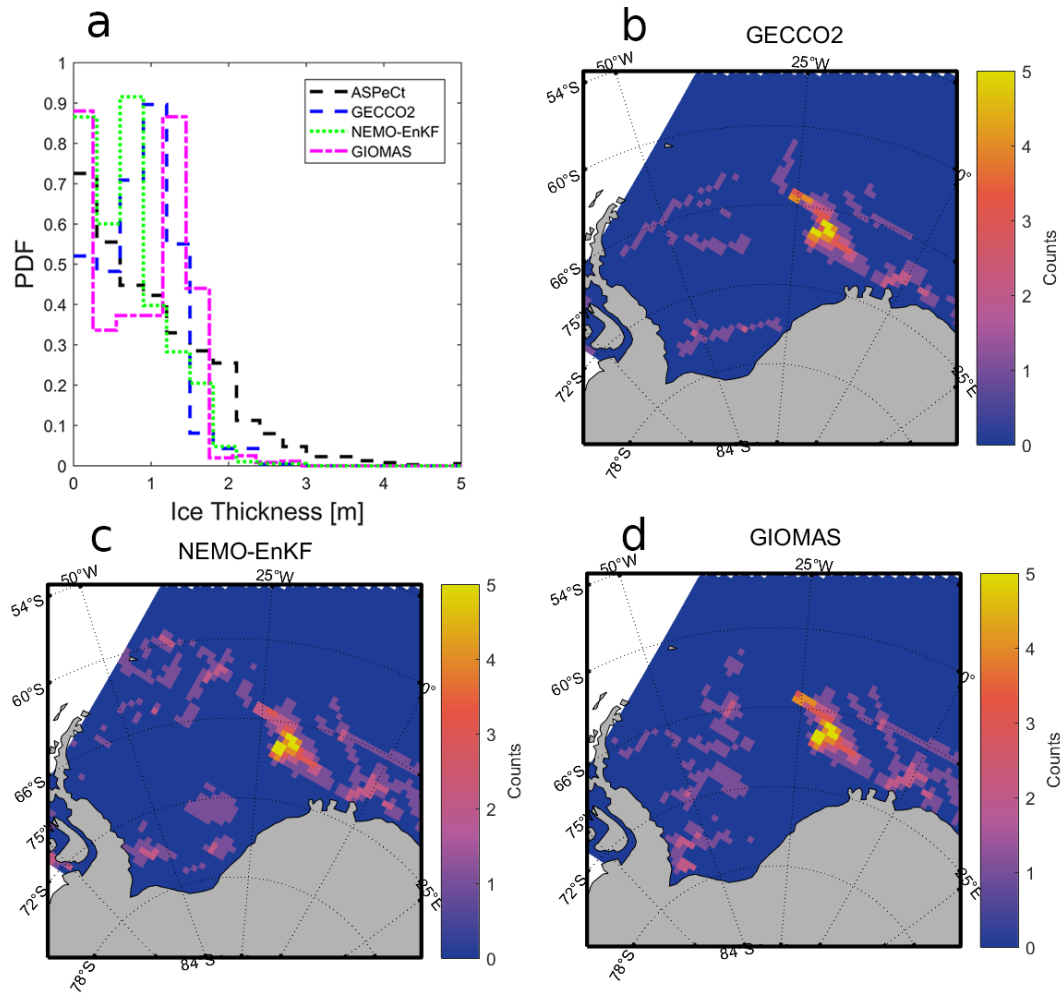
Corrected. In the new version, the ULS/ASPeCt data is colored in black and ICESat-1/Envisat is colored in red. Please see the new Figure 2 and 3. Besides, these color codes are applied to ITDs in the new Figure 4 and Figure 5.



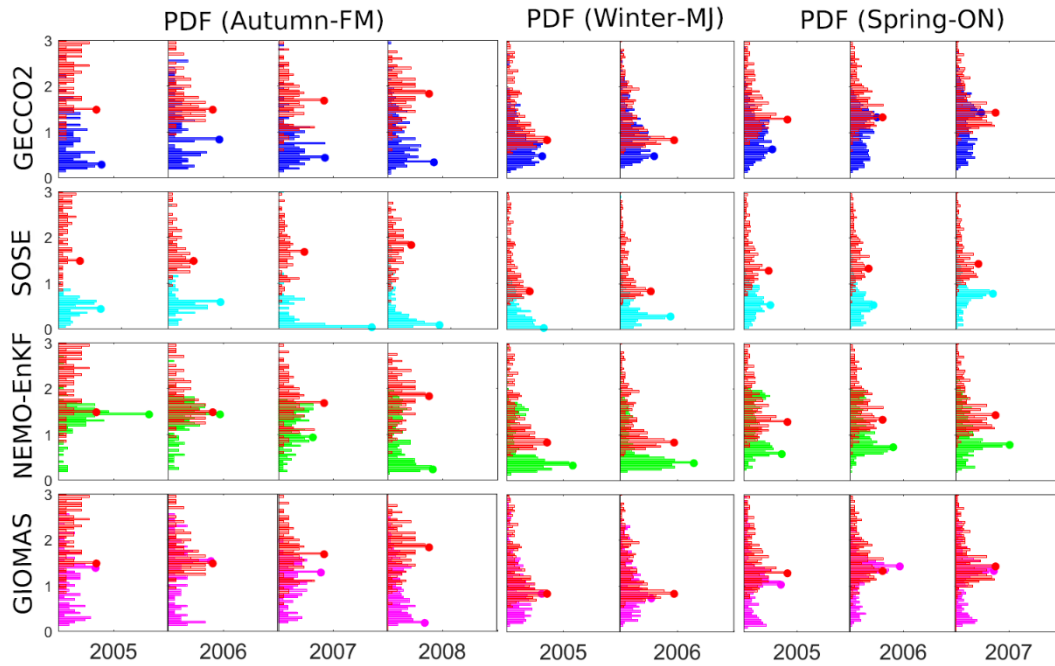
**New Figure 2:** a) Probability density distributions (PDF) of monthly sea-ice thickness from ULS and four reanalyses at the 13 ULS locations of the Weddell Sea. b) Normalized Taylor diagram for monthly sea ice thickness of four reanalyses as well as Envisat and ICESat-1 with respect to the sea-ice thickness from upward-looking sonar from 1990 to 2008 in the Weddell Sea. The green dashed lines indicate the normalized root-mean-square error (RMSE).



**New Figure 3:** Same as Figure 1b, but for the four sub-regions: a) Antarctic Peninsula, b) central Weddell Sea, c) Southern Coast, and d) eastern Weddell Sea.



**New Figure 4:** a) Histograms of sea-ice thickness from ASPeCt and three reanalyses. Locations of model sea-ice thickness are shown in b) GECCO2 for a range of 0.8 to 1.4 m, c) NEMO-EnKF for a range of 1.1 to 1.7 m, d) and GIOMAS for a range of 1.1 to 1.7 m.



**New Figure 5: The variation of monthly ice thickness distribution from GECCO2 (blue), SOSE (cyan), NEMO-EnKF (green), GIOMAS (pink) and ICESat-1 (red) in Autumn-FM (left), Winter-MJ (middle) and Spring-ON (right). The colored dots represent the modal ice thickness. In order to make the histogram plots readable, different reanalyses has different x range.**

**Point 4:** It is clear that the reanalyses underestimate the sea ice thickness distribution when compared to ICESat-1 but maybe some attention should be given to the description of this comparison in the results. “ICESat-1 thickness is much thicker than that of the reanalyses except GIOMAS in Spring-ON” – is this entirely accurate? GECCO2 also has two instances where the modes are similar when compared to ICESat-1, in Spring-ON (2007) the mode is higher in GECCO2, Spring-ON (2006) it appears to be the same. NEMO-EnKF also has two examples in Autumn-FM where the modes are higher (2006) and similar (2005). Is GIOMAS in Spring-ON really that notable? I am a little confused by the plots in Figure 5 from visual inspection - why does the ICESat-1 thickness distribution change in the same season and year for the SOSE comparison? i.e. the ICESat-1 distributions seem to stay the same in the PDFs in the same year/season for the other plots but the distribution is shifted in the SOSE plots. Is this to do with some different sampling from different geographical coverage of the reanalyses? In addition, why is 2007/2008 omitted for Winter-MJ and 2008 for SpringON? Was this decision driven by a lack of ICESat-1 data for comparison? It is stated in the text (L264) that the ‘we compare sea-ice thickness from four reanalyses: : :with that from ICESat-1 for the period from 2005 to 2008’ but this does not appear to be the case in the corresponding figure. In Table 2 the ICESat-1 measurement periods are described and 2007 (Winter-MJ) does not have a ‘-’ indicating the data is absent but instead ‘Winter-MJ’ is written. Also 2004 is shown but does not appear to be part of the described analysis, is there a reason for this? My main point related to this section of the study is that there seem to be some discrepancies in how the data is described and how it is presented in figures. This needs to be looked at and all data and descriptions must be consistent

**Response:** We are very sorry as we made a mistake in the old Table 2. In fact, there are no ICESat-1 measurements in the 2007 winter-MJ. We only compare four reanalyses with ICESat-1 from 2005 to 2008 to fit for SOSE time coverage as well as to be comparable with Figure 6. In order to make the histogram plots in Figure 5 more readable, we use a different x range for

histogram plots of different reanalyses. The key point of Figure 5 is the location of modal ice thickness, which is the positions of colored circle dots. In addition, the descriptions of the differences between reanalyses and ICESat-1 were improved in the new version based on the new ranking results and the new monthly averaged approach.

**Point 5:** I would expect that the community would look to evaluations like this to understand what reanalyses could be useful for supporting their own work. As the manuscript currently reads, it is difficult to digest and really understand the limitations of each of the reanalyses. It may provide some clarity and assist the readers understanding of the results to have a table with the key parameters the authors are trying to evaluate (including but not limited to thickness, relationship between mean/mode, min/max thickness accuracy, spatial accuracy, sea ice growth/seasonal evolution of thickness, open ocean vs. coastal regimes, ice motion –divergence/convergence) and a score evaluating how well they have performed. This is not an explicit request, but just a suggestion for the authors to consider in order to improve the communication of important information from this work.

*Response:* Thanks and please see the response in Point 2.

### ***Minor Comments:***

**1 L28:** ‘crucial component of the Earth system’, understand what authors mean but perhaps more specific ‘climate system’ for example.

*Response:* Corrected.

**2 L89:** add ‘a’ between ‘introduce’ and ‘sea-ice’.

*Response:* Corrected.

**3 Section 2.1 ~ L110 and L130:** should a spatial resolution be reported for GECCO2/GIOMAS as is given for the other reanalyses? I see they are in Table 1 but why report some resolutions in the text and not others?

*Response:* We added some description on the resolution of GECCO2 and GIOMAS in the new version.

**4 L118 and L124:** ‘â„A~ r’ used in one instance and ‘degrees’ in another, perhaps adopt one standard

*Response:* we now use “°” in Line 124.

**5 L136:** to be absolutely accurate perhaps reword ‘(the part above the sea level)’ to ‘(combined ice and snow height above local sea level)’.

*Response:* Corrected.

**6 L140:** ‘suggested by Worby’? Is a complete reference available?

*Response:* Corrected. The complete reference is Kern et al. (2016) in Line 141. In the new version, we deleted “suggested by Worby” in Line 140.

**7 L149:** I understand that the limitations of radar altimeters are not the focus of this study but the complexity of the technique/its limitations in the Antarctic are understated by these few sentences. Perhaps include reference to other studies highlighting this to provide the reader with some context if they require it. This takes me to another point, it doesn’t appear CS-2 is used in the analysis, why is it described in the data section?

**Response:** Corrected. On the one hand, we added “the uncertainties of the radar altimeter can result from the inaccuracy snow-ice interface and snow-ice formation (Willatt et al., 2010), and also the surface type mixing and surface roughness (Schwegmann et al., 2016; Paul et al., 2018; Tilling et al., 2019).” On the other hand, we will delete the description about CS2 in the Antarctic since we have not used them.

Ref:

1. Willatt, R. C., Giles, K. A., Laxon, S. W., Stone-Drake, L., and Worby, A. P.: Field Investigations of Ku-Band Radar Penetration into Snow Cover on Antarctic Sea Ice, *IEEE Trans. Geosci. Remote Sens.*, 48, 365–372, <https://doi.org/10.1109/TGRS.2009.2028237>, 2010.

2. Schwegmann, S., Rinne, E., Ricker, R., Hendricks, S., and Helm, V.: About the consistency between Envisat and CryoSat-2 radar freeboard retrieval over Antarctic sea ice, *The Cryosphere*, 10, 1415–1425, <https://doi.org/10.5194/tc-10-1415-2016>, 2016.

3. Paul, S., Hendricks, S., Ricker, R., Kern, S., and Rinne, E.: Empirical parametrization of Envisat freeboard retrieval of Arctic and Antarctic sea ice based on CryoSat-2: progress in the ESA Climate Change Initiative, *The Cryosphere*, 12, 2437–2460, <https://doi.org/10.5194/tc-12-2437-2018>, 2018.

4. Tilling, R., Ridout, A., and Shepherd, A.: Assessing the Impact of Lead and Floe Sampling on Arctic Sea Ice Thickness Estimates from Envisat and CryoSat-2, *J. Geophys. Res.*, 124, 7473–7485,

**8 L149:** More accurate to say ‘the radar altimeter is expected to’ (and then provide relevant references) as opposed to ‘the radar altimeter can measure’

**Response:** Corrected.

**9 L159:** Use acronym ‘ULS’ once it is provided and throughout manuscript use acronyms/abbreviations once they are supplied e.g. L199 ‘Antarctic Peninsula’ to ‘AP’ as it is shortened on L195

**Response:** Corrected. In the new version, we use “ULS” instead of “upward looking sonar” in Line 82, 97, 158, 159, 192 and 193. We use “AP” instead of “Antarctic Peninsula” in Line 195, 199, 220, 236, 292, 338 and 384. We use “CWS” instead of “central Weddell Sea” in Line 200, 222, 239, 242, 292 and 381. We use “EWS” instead of “eastern Weddell Sea” in Line 199, 239, 241, 243, 258, 296, 317, 340, 345 and 379. We use “SC” instead of “southern coast” in Line 200 and 226.

**10 L164:** I don’t think ‘skilful’ is appropriate here, perhaps ‘accurate’ or ‘approximates thickness well’ or something similar

**Response:** Corrected.

**11 L167:** What are these uncertainties? 5 cm/8cm/18 cm etc? Are they a spread around the mean +/- 5 cm or direct positive deviations from other reference measurements? If so are there references for these expected accuracies?

**Response:** Following Behrendt et al. (2013), the accuracy of the ice draft is  $\pm 5$  cm in the freezing/melting seasons and  $\pm 12$  cm in winter. Then, based on the linear regression function (Eq. 1 in Line 162) between ice draft and ice thickness, the accuracy of ULS ice thickness is  $\pm 8$  cm in the freezing/melting seasons and  $\pm 18$  cm in winter.

**12 Figure 1:** Standard deviation is abbreviated to SD in the figure but to STD in the text, these should be consistent



**Response:** Corrected.

**13 Figure 3:** caption – Capitalise ‘southern coast’.

**Response:** Corrected and the new caption will be change to: “Figure 3: Same as Figure 1b, but for the four sub-regions: a) Antarctic Peninsula, b) central Weddell Sea, c) Southern Coast, and d) eastern Weddell Sea.”

**14 Figure 5:** Thickness (m) is not actually labelled on the y-axis. Insert ‘(red)’ after second mention of ICESat-1 in the caption.

**Response:** Corrected.

**15 L290:** ‘this means that the reanalyses may not well represent coastal processes’ – what do the authors specifically mean here in reference to sea ice? Dynamics and convergence against the coast? Interaction with the coastline? Inaccurate bathymetry or coastal currents? Some of the concluding statements are a little vague. I think the study would benefit from being more specific and shed light on the limitations that need to be addressed.

**Response:** Exactly as what the reviewer pointed, these processes could all contribute to the underestimation, however, it is rather difficult to distinguish. For example, we do not know whether each model smooths the bathymetry, and actually how they manipulate the bathymetry can dramatically change the coastal current and sea ice. The only thing clear now is that it should be lack of accurate sea ice dynamics rather than thermodynamics. We now refined the sentence to be: “ this means that the reanalyses may not well represent the coastal sea ice dynamical processes.”.

**16 L290:** Why is SOSE not included in the spatially averaged differences here?

**Response:** Sorry, we forgot to list the bias of SOSE. The new description should be “The spatial averaged differences between models and ICESat-1 are -1.30 m (GECCO2), 1.42 m (SOSE), -0.63 m (NEMO-EnKF) and -0.75 m (GIOMAS), respectively”.

**17 L325:** ‘primary’ to ‘prime’.

**Response:** Corrected.

**18 L362:** insert ‘satellite’ before ‘altimeters’

**Response:** Corrected.

**19 L369:** ‘still’ before ‘been’.

**Response:** Corrected.

**20 L388:** ‘improve’ to ‘improving’

**Response:** Corrected.

**21 L388:** ‘assimilate’ to ‘assimilating’.

**Response:** Corrected.

**22 Figure 6:** What time period is this data comparison for? Are they seasonal averages for all years?

**Response:** The time period is from 2005 to 2008. They cover the irregular months listed in Table 2.

**23 In acknowledgements:** ICESat-1 data is provided by NASA and NSIDC not ESA.

## REFERENCED EXISTING REANALYSES

*Response:* Corrected.

# Evaluation of Sea-Ice Thickness from four reanalyses in the Antarctic Weddell Sea

Qian Shi<sup>1</sup>, Qinghua Yang<sup>1</sup>, Longjiang Mu<sup>2</sup>, Jinfei Wang<sup>1</sup>, François Massonnet<sup>3</sup>, Matthew R. Mazloff<sup>4</sup>

<sup>1</sup>School of Atmospheric Sciences, Sun Yat-sen University, and Southern Marine Science and Engineering Guangdong Laboratory (Zhuhai), Zhuhai, 519082, China

<sup>2</sup>Alfred Wegener Institute Helmholtz Centre for Polar and Marine Research, Bremerhaven 27570, Germany

<sup>3</sup>Georges Lemaître Centre for Earth and Climate Research, Earth and Life Institute, Université catholique de Louvain, Louvain-la-Neuve, Belgium

<sup>4</sup>Scripps Institution of Oceanography, University of California, San Diego, CA, USA

Correspondence to: [Yangqh25@mail.sysu.edu.cn](mailto:Yangqh25@mail.sysu.edu.cn) and [Longjiang.mu@awi.de](mailto:Longjiang.mu@awi.de)

**Abstract.** Ocean-sea ice coupled models constrained by ~~various~~ observations provide different ice thickness estimates in the Antarctic. We evaluate contemporary monthly ice thickness from four reanalyses in the Weddell Sea, the German contribution of the Estimating the Circulation and Climate of the Ocean project, Version 2 (GECCO2), the Southern Ocean State Estimate (SOSE), the Nucleus for European Modelling of the Ocean (NEMO) based ocean-ice model (called NEMO-EnKF), and the Global Ice-Ocean Modeling and Assimilation System (GIOMAS). The evaluation is performed against reference satellite and in situ observations from ICESat-1, Envisat, upward looking sonars and visual ship-based sea-ice observations. Compared with ICESat-1, NEMO-EnKF has the highest correlation coefficient (CC) of 0.54 and lowest root-mean-square error (RMSE) of 0.44 m. Compared with in situ observation, SOSE has the highest CC of 0.77 and lowest RMSE of 0.72 m. All reanalyses underestimate ice thickness near the coast of the western Weddell Sea with respect to ICESat-1 and in situ observations, even though these observational estimates may be biased low. GECCO2 and NEMO-EnKF reproduce the seasonal variation of first-year ice thickness reasonably in the eastern Weddell Sea. In contrast, GIOMAS ice thickness performs best in the central Weddell Sea, while SOSE ice thickness agrees most with the observations in the southern coast of the Weddell Sea. In addition, only NEMO-EnKF can reproduce the seasonal evolution of the large-scale spatial distribution of ice thickness, characterized by the thick ice shifting from the southwestern and western Weddell Sea in summer to the western and northwestern Weddell Sea in spring. We infer that the thick ice distribution is correlated with its better simulation of northward ice motion in the western Weddell Sea. These results demonstrate the possibilities and limitations of using current sea-ice reanalysis for understanding the recent variability of sea-ice volume in the Antarctic.

## 1 Introduction

Antarctic sea ice is a crucial component of the climate system. In contrast to the rapid sea ice decline in the Arctic, the sea-ice extent of the Antarctic exhibited an overall positive trend during the past four decades (Simmonds, 2015; Comiso et al., 2017), even when taking into consideration the relatively fast decrease observed from 2014 to 2017 (Turner and Comiso, 2017;

删除了: varied

删除了: ,

删除了: ,

删除了: , and with

删除了: Compared with ICESat-1 altimetry and in situ observations,

删除了: a

删除了: they

删除了: ICESat-1 and visual observations

删除了: can well

删除了: well

删除了: spatial

删除了:

删除了: distribution

删除了: well

删除了: Earth

Parkinson, 2019). Potential causes such as the ozone hole (Thompson, 2002; Turner et al., 2009), the interactions of the atmosphere and ocean (Stammerjohn et al., 2008; Meehl et al., 2016), and the basal melting from ice shelves (Bintanja et al., 2013) have been proposed to explain this phenomenon, but a consensus has not been reached yet (Bitz and Polvani, 2012; Sigmond and Fyfe, 2014; Swart and Fyfe, 2013; Holland and Kwok, 2012). Due to limited ice thickness measurements, previous investigations primarily focused on the change of sea-ice extent or area rather than sea-ice volume. However, sea-ice thickness, which determines the sea ice storage of heat and freshwater, is a significant parameter meriting further investigation. Understanding the causes of changing sea-ice thickness is vital for both understanding the sea-ice mass change over the past decades and predicting the sea ice change in the Antarctic (Jung et al., 2016).

The significant role of the Weddell Sea in sea ice formation (accounting for 5~10% of annual ice production around the Antarctica, see Tamura et al., 2008) makes the region a significant source of Antarctic Bottom Water (AABW) (Gill, 1973). Decreasing sea ice production in the Weddell Sea will therefore further freshen AABW (Jullion et al., 2013). Apart from the seasonal sea ice, the Weddell Sea also has perennial sea ice (about  $1 \times 10^6$  km<sup>2</sup>, accounting for 40% of the total summer sea-ice area in the Antarctic). This perennial sea ice is found in the northwestern Weddell Sea along the Antarctic Peninsula (AP), due to the semi-enclosed basin shape and the related clockwise gyre circulation (Zwally et al., 1983). The extent of the perennial sea ice influences radiation and momentum budgets of the upper ocean in the summertime. Moreover, the Weddell Sea is found to be the main contributor to the positive Antarctic sea ice volume trend in different models (Holland et al., 2014; Zhang, 2014).

Unlike in the Arctic, sea-ice thickness observations, such as those from submarines or airborne surveys (Kwok and Rothrock, 2009; Haas et al., 2010) are rather sparse and rare in the Antarctic. Drillings offer ice thickness information on level or undeformed ice but are not representative of the large-scale sea ice thickness distribution. Before 2002, large-scale Antarctic sea-ice thickness observations mainly came from visual measurements on ships, such as those provided by the Antarctic Sea Ice Processes & Climate program (ASPeCt) (Worby et al., 2008). The ASPeCt data are valuable for undeformed ice and thin ice, but have obvious negative biases and do not inform the ice thickness during wintertime (Timmermann, 2004). Ice draft from upward looking sonars (ULS) can be used to investigate ice thickness evolution, but their deployments are mostly in the Weddell Sea. Recently, autonomous underwater vehicles (AUV) carrying ULS devices has become a novel method to collect contemporary wide sea-ice draft maps. Williams et al. (2015) indicated that the Antarctic inner ice is likely more deformed than previously thought based on ULS observations aboard AUV. However, the application of AUV ULS is still limited to regional observational efforts. Since the launch of a laser altimeter aboard ICESat-1 and radar altimeters aboard Envisat and CryoSat-2, basin-wide sea-ice thickness can be estimated (Zwally et al., 2008; Kurtz and Markus, 2012; Yi et al., 2011; Hendricks et al., 2018). The Antarctic sea-ice thickness from ICESat-1 has already been widely used in the Antarctic sea ice research but it is also reported to have uncertainties due to the poor knowledge of the snow cover (Kurtz and Markus, 2012; Yi et al., 2011). Moreover, the relatively short temporal coverage of ICESat-1 (13 months in total, restricted from spring to

删除了: yet

删除了: sea-ice volume

删除了: formation

删除了: increasing

删除了: results from

删除了:

删除了:

删除了: s

删除了: s

删除了: the

删除了:

删除了: totally

autumn) impedes its application for climate studies. Envisat (from 2002 to 2012) and CryoSat-2 (from 2010 to present) cover longer periods, but they tend to overestimate Antarctic thickness due to an uncertain representation of snow depth (Willatt et al., 2010; Wang et al., 2020). In addition, current altimeters only provide sea-ice thickness maps over the whole Arctic or Antarctic once a month due to their relatively narrow footprints. It is worth noting that Antarctic IceBridge data can provide ice thickness during summertime based on aerial remote sensing since 2009 (Kwok and Kacimi, 2019).

删除了: time  
删除了: (from 2002 to present),  
删除了: resulting from  
删除了: the

Compared with sea-ice thickness from in situ or remote sensing observations, thickness estimates from reanalysis systems have the advantage to provide a homogenous sampling in space and time. Reanalysis systems are based on ocean-sea ice systems, which when embedded in fully coupled climate models display large systematic biases (e.g., Zunz et al., 2013), suggestive of shortcomings in the atmosphere and/or ocean-sea ice models. In view of these biases, the use of sea ice-ocean models forced by atmospheric reanalysis is a general approach to better constrain sea-ice thickness changes. Sea-ice thickness is a prognostic variable in all ocean-sea ice models. The use of a data assimilation scheme offers the possibility to provide revised estimates of sea-ice thickness, by constraining the simulated model output with observations (ocean or sea ice, e.g., Sakov et al., 2012; Köhl, 2015; Mu et al., 2018). Data assimilation is an effective approach to reduce the gap between model simulations and observations. Several investigations have been made to estimate long-term Antarctic sea-ice thickness changes using ice-ocean coupled models with data assimilation (e.g., Zhang and Rothrock, 2003; Massonnet et al., 2013; Köhl, 2015; Mazloff et al., 2010), resulting in openly available sea-ice thickness products. These sea-ice thickness products have been used for various studies. However, to our knowledge, there have been no comprehensive inter-comparisons conducted on these data sets, particularly in the Weddell Sea.

删除了: s  
删除了: with regards to the temporal duration and spatial coverage  
删除了: However, fully coupled  
删除了: because of the complex atmosphere-sea ice-ocean feedbacks

删除了: reanalyses

删除了: In addition,  
删除了: Tthe  
删除了: d  
删除了: further narrow the

Different from the other Antarctic marginal seas, the Weddell Sea fortunately has more in situ sea-ice thickness measurements, including moored ULS and drillings (Lange and Eicken, 1991; Harms et al., 2001; Behrendt et al., 2013). In this paper, we evaluate four widely used Antarctic sea-ice thickness reanalysis products in the Weddell Sea against most of the available ice thickness observations in the sector. We focus on the inter-comparison of the sea-ice thickness performance and do not attempt to find the causal mechanisms for the spread in the data sets. Indeed, multiple factors control sea-ice thickness (the forcing, the resolution, the physics, the assimilation technique, the data used for assimilation), and it is beyond the scope of this study to determine which factors dominate. In section 2, we introduce four sea-ice thickness data sets from different reanalyses as well as the respective data processing systems. We also introduce four kinds of reference data: two from satellite altimeters and two from in situ observations. In addition, we introduce a sea-ice motion data set derived from satellites to help investigate the seasonal variation and spatial distribution of sea-ice thickness. In section 3, we first compare all four reanalyses with ULS and ASPeCt records, and then we evaluate the spatial uncertainty of reanalysis sea-ice thickness using ICESat-1 and Envisat observations. The seasonal variation and spatial distribution of sea-ice thickness differences between reanalyses and observations are also discussed. In section 4, we discuss the uncertainties and limitations of all reference data sets and summarize the conclusions.

删除了: upward looking sonar

删除了: reanalyzed

## 2 Data and methods

Sea-ice thickness in the Weddell Sea from four reanalyses are evaluated against observations from satellite altimeters, moored ULS and ship observations. For comparison with Envisat, the modeled ice thickness data are gridded onto the Envisat product 50-km polar stereographic grid using linear interpolation. To enable comparison with ICESat-1 sea-ice thickness estimates the reanalyses are gridded onto a 100 km Equal-Area Scalable Earth (EASE) grid (Brodzik et al., 2012), also using linear interpolation. Before comparing with in situ observations, such as ULS and ASPeCt, all reanalyses and altimeter sea-ice thickness data are linearly interpolated to the locations of in situ observations. In order to mitigate temporal gaps between the observations and reanalyses, the instantaneous ULS sea-ice thickness data are monthly averaged before comparison. When comparisons are made against monthly ASPeCt sea-ice thickness, all available daily records around specified model grids are averaged monthly. However, the small temporal coverage of ASPeCt impedes its representativeness, and the uncertainty of ASPeCt should be taken into consideration in the evaluation. Besides, we exclude the IceBridge sea-ice thickness in our evaluation because the period of coincidence between IceBridge and NEMO-EnKF and ULS observations is less than one year and three years, respectively.

### 2.1 Sea-ice thickness from four reanalyses

The German contribution of the Estimating the Circulation and Climate of the Ocean project Version 2 (GECCO2) is an ocean synthesis based on MITgcm. GECCO2 assimilates abundant hydrographic observations by the adjoint 4-D Var method starting from 1948 (Köhl, 2015). This synthesis is only constrained by ocean measurements without any sea ice data assimilation. Its horizontal spatial resolution is  $1^\circ \times 1^\circ$ .

Similar to GECCO2, the Southern Ocean State Estimate (SOSE) is also an ocean and sea ice estimate based on MITgcm model using the 4-D Var method (Mazloff et al., 2010). SOSE has been constrained by various kinds of observations, such as Argo and CTD profiles, sea surface temperature and height from satellite observations, as well as mooring data. Also, SOSE assimilates the satellite sea-ice concentration data from the National Snow and Ice Data Center (NSIDC). SOSE has been widely used in various studies (e.g., Abernathey et al., 2016; Cerovečki et al., 2019). In this paper, we evaluate the SOSE sea-ice thickness provided from 2005 to 2010 at a resolution of  $1/6^\circ$  (Mazloff et al., 2010).

Massonnet et al. (2013) produced an Antarctic ice thickness reanalysis based on the Nucleus for European Modelling of the Ocean (NEMO) ocean model coupled with the Louvain-la-Neuve sea Ice Model Version2 (LIM2) ice model, using the ensemble Kalman Filter (EnKF), which is referred to NEMO-EnKF in the following text. Satellite sea-ice concentration is assimilated in this model by which the sea-ice thickness is improved, exploiting the covariances between sea-ice concentration and sea-ice thickness. The ice thickness in this data set has a spatial resolution of  $2^\circ$ , and has been used to investigate the variability of salinity in the Southern Ocean (Haumann et al., 2016).

删除了: upward looking sonars

删除了: Comparisons are made using monthly means.

删除了: bin

删除了: this data set

删除了: and SOSE/NEMO-EnKF is very short.

删除了:

删除了:

删除了:

删除了:

删除了:

删除了: degrees

185

The Global Ice-Ocean Modeling and Assimilation System (GIOMAS) is based on the Parallel Ocean Model (POM) coupling with a 12-category thickness and enthalpy distribution (TED) ice model (Zhang and Rothrock, 2003). The TED model simulates sea ice ridging processes explicitly following Thorndike et al. (1975) and Hibler (1980). This data set includes monthly ice thickness, concentration, growth/melt rate as well as ocean heat flux from 1970 to present. GIOMAS assimilates sea-ice concentration as described in Lindsay and Zhang (2006), and its ice thickness is evaluated to have good agreement with satellite observations in the Arctic. The horizontal spatial resolution of GIOMAS is  $0.8^{\circ} \times 0.8^{\circ}$ .

删除了:

### 2.2 Sea-ice thickness from altimeters

Currently, large-scale Antarctic ice thickness observations mainly come from laser and radar altimeters, among which the laser altimetry data of Antarctic sea-ice thickness obtained from ICESat-1 are widely used due to its mature retrieval algorithm (Kurtz and Markus, 2012; Kern et al., 2016). Laser altimeters sense the total freeboard (combined ice and snow height above local sea level), and sea-ice thickness can be inferred from freeboard with different algorithms (Kurtz and Markus, 2012; Markus et al., 2011). Above algorithms adopt different treatments for retrieving snow depth, but the large discrepancies are still found among these products (Kern et al., 2016). Though, the spatial distribution from different sea-ice thickness generally shows similarities. We use a new ICESat-1 sea-ice thickness product retrieved from a modified ice density approximation, because this data was reported to have low biases relative to ship-based observations, and may accurately reproduce seasonal thickness variations (Kern et al., 2016). Due to the extensive spatial coverage and relatively high accuracy of ICESat-1, we use this monthly mean sea-ice thickness product as a reference to evaluate the sea-ice thickness of the four reanalyses. Periods of availability of this product are given in Table 2. Though used as a reference, note that ICESat-1 and ship-based data are biased low when compared to the ULS and Envisat data (Figure 3b).

删除了: observe

删除了: the part

删除了: the

删除了: Even though differences

删除了: ,

删除了: of

删除了:

删除了: suggested by Worby

删除了: ASPeCt

删除了: ASPeCt

205 {NOTE:0150}

Another large-scale sea-ice thickness data set used here are from the Sea Ice Climate Change Initiative (SICCI) project. SICCI includes Envisat and CryoSat-2 sea-ice thickness with spatial resolution of 50 km in the Antarctic (Hendricks et al., 2018). This new Antarctic sea-ice thickness dataset was published in August of 2018. Both Envisat and Cryosat-2 carry a radar altimeter, which is expected to measure the ice freeboard (total freeboard minus snow depth) instead of only total freeboard as measured by ICESat-1, but with less accuracy. The uncertainties of the radar altimeter estimate result from inaccuracy determining the snow-ice interface (Willatt et al., 2010), and also from biases due to surface type mixing and surface roughness (Schwegmann et al., 2016; Paul et al., 2018; Tilling et al., 2019). Previous studies indicated that Envisat overestimates the ice thickness because the radar signal can reflect inside the snow layer or even at the snow surface rather than reflect at the ice-snow interface (Willatt et al., 2010; Wang et al., 2020). The mean and modal sea-ice thickness from Envisat is in good agreement during the sea-ice growth season, however, Envisat overestimates thin sea ice in the polynyas near the coasts and underestimates deformed thick ice in the multi-year sea ice region (Schwegmann et al., 2016). Due to the large biases of

删除了: (2002-2012)

删除了: (2010-2017)

删除了: carry

删除了: . The radar altimeter can

删除了: and Cryosat-2 are

Envisat sea-ice thickness, we only use these Envisat sea-ice thickness estimates as a supplement to ICESat-1 when investigating the evolution of sea-ice thickness spatial distribution.

### 235 2.3 Sea-ice thickness from in situ measurements

The ULS measures the draft (the underwater part of sea ice) continuously at a fixed location. In this paper, we use the sea-ice thickness from the ULS deployed in the Weddell Sea from 2002 to 2012. Ice draft is converted into total ice thickness using the empirical relationship proposed by Harms et al. (2001), which is based on sea ice drilling measurements in the Weddell Sea, following Eq. (1):

$$240 \quad D = 0.028 + 1.012d, \quad (1)$$

where  $D$  represents total sea-ice thickness and  $d$  represents the ice draft. The detailed processes of the sea-ice draft are described by Behrendt et al. (2013). This equation approximates thicknesses between 0.4 and 2.7 m well, with a coefficient of determination ( $r^2$ ) of 0.99, but overestimates thin ice with thicknesses less than 0.4 m (Behrendt et al., 2015). Even though the drilling cases included the snow layers, the empirical equation ignores the variations of snow depth. Owing largely to the sea-ice draft accuracy of 5 cm in the freezing/melting seasons and 12 cm in winter, the accuracy of the ULS sea-ice thickness is estimated to be 8 cm in freezing/melting seasons and 18 cm in winter.

Ship-based sea-ice thickness measurements following the Antarctic Sea Ice Processes & Climate (ASPeCt) protocol are also used to evaluate the sea-ice thickness. The ASPeCt includes visual sea-ice thickness observations within 6 nautical miles of ship tracks with the period from 1981 to 2005. Errors in ice thickness are estimated to be  $\pm 20\%$  of total thickness for level ice and  $\pm 30\%$  for deformed ice thicker than 0.3 m. A simple function of undeformed sea-ice thickness, average sail height, and the fractional ridged area is used to compute the mean sea-ice thickness (Worby et al., 2008). It is noted that the ASPeCt data tends to underestimate mean sea-ice thickness because ships usually avoid thick sea ice.

### 2.4 Sea-ice motion from satellite

255 In order to attribute possible reasons for biases in sea-ice thickness, the sea-ice motion data set known as Polar Pathfinder Daily Sea Ice Motion Vector, version 4 from NSIDC is employed as a reference data (Tschudi et al., 2019). The daily sea-ice motion vectors are retrieved based on a block tracking method from sequential imagery using multiple sensors, including the Scanning Multichannel Microwave Radiometer (SMMR), Special Sensor Microwave/Imager (SSM/I), Special Sensor Microwave Imager and Sounder (SSMIS), Advanced Microwave Scanning Radiometer-Earth Observing System (AMSR-E) and Advanced Very-High-Resolution Radiometer (AVHRR). In summer, when most sensors failed to retrieve ice motion, the ice motion vectors in the Antarctic are mainly derived from wind speed estimates. The ice motion derived from multi-sources were merged using optimal interpolation (Isaaks and Srivastava, 1989). In this paper, the monthly sea-ice motion vectors were acquired from the daily ice motion vectors.

删除了: upward looking sonar (

删除了: )

删除了: upward looking sonar

删除了: is skilful for

删除了: S

删除了: based on

删除了: and buoy observations

删除了: T



Based on the comparison with independent buoy observations in the Weddell Sea, Schwegmann et al. (2011) indicated that NSIDC sea-ice motion vectors underestimate the meridional and zonal sea-ice velocity by 26.3% and 100%, respectively. Following Haumann et al. (2016), we use a simple correction for the NSIDC sea-ice motion vectors by multiplying the meridional speed by 1.357 and the zonal speed by 2.000.

### 3 Results

#### 3.1 Comparison with sea-ice thickness from upward looking sonars

In this section, we use sea-ice thickness derived from ULS to evaluate the abovementioned four reanalyses as well as other reference observations. All ULS data are recorded once a second, and are averaged into a monthly ice draft estimate. Because thick deformed sea ice is found in the southern and western Weddell Sea (Behrendt et al., 2013; Kurtz et al., 2012), the 13 ULS stations are divided into four sub-regions (Figure 1b): the Antarctic Peninsula (AP, including Stations 206, 207 and 217), the central Weddell Sea (CWS, including Stations 208, 209 and 210), the southern coast (SC, including Stations 212, 232 and 233), and the eastern Weddell Sea (EWS, including Stations 227, 229, 230 and 231). The classification criterion is based on the locations of ULS stations (Figure 1a) and long-term averaged ULS sea-ice thickness as well as their standard deviation (Figure 1b). Under this classification, the AP is dominated by deformed thick sea ice, and the EWS by newly formed ice. The CWS has both first-year ice and deformed sea ice, and the southern coast has both first-year ice and land-fast sea ice (Harms et al., 2001; Behrendt et al., 2013). The aggregate temporal span of ULS observations in AP, CWS, SC and EWS is 148, 73, 185 and 272 months, respectively.

Then we compare the ice thickness distribution from the reanalyses with ULS observations in 13 positions in the Weddell Sea (Figure 2a). As presented in Table 1, SOSE has shorter period than the other three reanalyses. To include the most available data records in the inter-comparison, the periods of GECCO2, NEMO-EnKF and GIOMAS are from 1990 to 2008, while the period of SOSE is from 2005 to 2008. The results indicate that for each data set, the most probable sea-ice thickness is less than 0.2 m. The NEMO-EnKF and ULS have local maxima in the distribution of 0.4-0.6 m. GIOMAS has local maxima at 1.2-1.4 m. Meanwhile, the probability density function (PDF) of GECCO2 and SOSE decreases with increasing sea-ice thickness. None of the reanalyses have sea ice thicker than 2.2 m, though thicknesses of this magnitude are observed by ULS (Figure 2a).

The Taylor diagram (Figure 2b) indicates that the correlation coefficients (CCs) of all six data sets are larger than 0.4, and SOSE has the highest CC of 0.77. The maximum and minimum of root-mean-square error (RMSE) is 1.15 m of Envisat and 0.71 m for SOSE. The normalized standard deviations (NSD) of sea-ice thickness from four reanalyses data sets, dividing with the standard deviation of the references, are lower than 0.62, while the NSD of Envisat and ICESat-1 are larger than 1.0.

删除了: upward looking sonars

删除了: Antarctic Peninsula

删除了: eastern Weddell Sea

删除了: central Weddell Sea

删除了: 79

删除了: i

删除了: normalized standard deviations

删除了: (STD) of sea-ice thickness from four reanalyses data sets

删除了: STD

315 Compared with four reanalyses, ICESat-1 has higher STD that is close to 1.0, which means ICESat-1 could reproduce the variation of sea-ice better than four reanalyses. It is noted that the relatively short ICESat-1 record (13 months) limits the reliability of this assessment.

320 In the AP (Figure 3a), GECCO2, NEMO-EnKF and GIOMAS have CCs around 0.4, and SOSE has the highest CC of 0.62. All RMSEs for the four reanalyses are larger than 0.7 m. The NSDs of the four reanalyses and Envisat are lower than the ULS. ICESat-1 has the largest CC of 0.74 and a NSD of nearly 1.0. In the CWS (Figure 3b), the CCs of the six data sets are all higher than 0.7. The NSD of GECCO2, SOSE, NEMO-EnKF and GIOMAS is 0.85, 0.52, 0.97 and 1.03, respectively. That means that GECCO2, NEMO-EnKF and GIOMAS could well reproduce the variation of the sea-ice thickness in the CWS. In addition, Envisat overestimates the interannual variability of sea-ice thickness significantly in this region as its NSD is larger than 2.0. In the southern coast (Figure 3c), the CC of GECCO2, SOSE, NEMO-EnKF and GIOMAS is 0.50, 0.79, 0.50 and 0.52, respectively. The normalized NSD of GECCO2, SOSE, NEMO-EnKF and GIOMAS is 0.37, 0.53, 0.26 and 0.54, respectively, indicating that all reanalyses underestimate the sea-ice thickness variability, especially for the NEMO-EnKF. SOSE performs best among four reanalyses, with a high CC of 0.79 and a low RMSE of 0.66 m. In the EWS (Figure 3d), the CC of GECCO2, SOSE, NEMO-EnKF and GIOMAS is 0.87, 0.90, 0.88 and 0.92, respectively. Their normalized NSD is 0.91, 0.76, 0.86 and 1.93, implying GECCO2, SOSE and NEMO-EnKF well reproduce the seasonal thickness variation of first-year ice. ICESat-1 has a lower CC of 0.66, and NSD of 0.29, partly resulting from the large uncertainty of ICESat-1 ice thickness measuring the first-year ice thickness in this region, particularly in the summertime. Envisat has the lowest CC (-0.19) and highest RMSE (2.06 m) among all data sets, and its NSD is comparable with GIOMAS.

335 SOSE has larger CCs than the other three reanalyses in the regions close to the coast (AP and SC). Even though SOSE uses the same MITgcm ice-ocean model as GECCO2, its higher spatial resolution of 1/6° resolves more small-scale dynamical processes in these regions. But in the regions with large amounts of newly formed ice (the CWS and the EWS), SOSE tends to underestimate sea-ice thickness with lower NSDs than the other reanalyses. GECCO2 and NEMO-EnKF have similar statistics in the four sub-regions. They perform best in the regions dominated by newly-formed ice (SC), GIOMAS has moderate performance in the regions close to the coast and performs best in the CWS, with the highest CC of 0.92 and lowest RMSE of 0.40 m. GIOMAS shows excessive variability in the CWS, with a NSD of 1.93.

340 **3.2 Comparisons with ice thickness from the ASPeCt**

The monthly sea-ice thickness distribution histograms (Figure 4a) show that the three reanalyses (GECCO2, NEMO-EnKF, GIOMAS) have distributions suggesting an overestimation of the abundance of thin ice and underestimation of the abundance of thick ice, with respect to ASPeCt. We exclude SOSE in evaluation due to its relatively short period, because the ASPeCt observations used here are from 1981 to 2005, though there are extensive ASPeCt observations from 2005 to 2012,

删除了: accuracy

删除了: Antarctic Peninsula

删除了: STDs

删除了: STD

删除了: central Weddell Sea

删除了: STD

删除了: STD

删除了: STD

删除了: STD

删除了: eastern Weddell Sea

删除了: s

删除了: are

删除了: STD

删除了: (

删除了: )

删除了: T

删除了: (

删除了: )

删除了: STD

删除了: Antarctic Peninsula

删除了: Southern Coast

删除了: central Weddell Sea

删除了: eastern Weddell Sea

删除了: T

删除了: eastern Weddell Sea).

删除了: central Weddell Sea

删除了: eastern Weddell Sea

删除了: STD

删除了: weighted more towards sea-ice thicknesses less than 1.8 m than...

删除了: does

but the sample records are very limited in the Weddell Sea. While there are a few instances of sea-ice thicknesses greater than 1.8 m in GECCO2, NEMO-EnKF and GIOMAS, ASPeCt has recorded ice thicker than 3.0 m. Given that the ASPeCt observations from an area with a 6 nautical mile radius (~11.1 km) are compared with models with ~ 60 km spatial resolution, this is unsurprising. The ship observations show the pack ice to be a highly varied and complicated mixture of different ice types. The concentration, thickness, and topography may vary significantly over a short spatial distance. Compared with ASPeCt, GECCO2 has more sea ice with thickness ranging from 0.5 m to 1.25 m, and GIOMAS has more sea ice with thickness ranging from 1.3 m to 1.8 m. NEMO-EnKF mainly overestimates sea-ice thickness within the bins from 0 to 1.0 m. In addition, the sea-ice thickness of GECCO2, NEMO-EnKF and GIOMAS seem to concentrate within the range of 0.8 to 1.4 m, 0.5 to 0.8 m, and 1.1 to 1.7 m, respectively (Figure 4a). These thicknesses are mainly found over the first-year sea-ice area of the eastern Weddell Sea and ice edge (Figure 4b-d). In these regions, reanalyses tend to overestimate sea-ice thickness with respect to ASPeCt, which is consistent with the results reported in Timmermann et al. (2004). The small-scale spatial and temporal variation of ice thickness, which is represented in the ASPeCt observations, is not captured by the reanalyses.

### 3.3 Comparison with sea-ice thickness from ICESat-1

In this section, we compare sea-ice thickness from four reanalyses (GECCO2, SOSE, NEMO-EnKF and GIOMAS) with that from ICESat-1 for the period from 2005 to 2008. Considering the fact that ICESat-1 does not always provide data for full months, we performed a time-weighted calculation for all four reanalyses in the comparison. For example, the temporal span of February to March 2004 (FM04) is from 17 January to 21 March, which includes 13 days in February and 21 days in March; therefore all SIT reanalyses are averaged by  $(13/34)*SIT_{Feb} + (21/34)*SIT_{Mar}$ . Based on the statistics of aggregate sea-ice thickness, all four reanalyses underestimate ice thickness close to 1 m (Table 3). The root-mean-square error (RMSE) of the four reanalyses exceed 0.6 m, and the maximum and minimum is 0.8 m (GIOMAS) and 0.6 m (SOSE), respectively. The correlations between the four reanalyses and ICESat-1 are low, and the maximum correlation coefficient is only 0.31 (NEMO-EnKF). It should be noted that the ICESat-1 records are very limited, only in October, November, February, March, May and June (see Table 2 for more information). Following Kern and Spreen (2015) and Kern et al. (2016), when comparing with ICESat-1, we use October and November to represent spring (hereafter Spring-ON) February and March to represent autumn (hereafter Autumn-FM), May and June to represent winter (hereafter Winter-MJ), respectively. Based on the interannual variation of ice thickness distribution (ITD) from Autumn-FM to Spring-ON (Figure 5), we find that ICESat-1 thickness is much thicker than that of the reanalyses except GIOMAS in Spring-ON. The ITD of ICESat-1 shows peaks mainly around 1.2 m (ice thickness < 0.5 m are truncated) while the four reanalyses have peaks in the low sea-ice thickness bins (<1.0 m) and very little ice thicker than 2.0 m. The modal sea-ice thickness of ICESat-1 has weak interannual variation in different seasons (red dots in Figure 5), but the modal sea-ice thickness of NEMO-EnKF and GIOMAS have significant interannual variation in Autumn-FM. In addition, the modal and mean ice thickness of ICESat-1 have significant seasonal variation (e.g., modal thickness decreases from 1.7 m to 0.9 m from austral Autumn-FM to Winter-MJ due to the new ice formation, and increases to 1.3 m from Winter-MJ to Spring-ON due to the thermodynamic and dynamic processes). In most cases, modal ice thickness,

删除了: little

删除了: 1.1

删除了: 1.7

删除了: Figure not shown)

删除了:

删除了: ) and the variability

of reanalyses are lower than that of ICESat-1. For example, in 2008 Autumn-FM, four reanalyses have modal ice thickness lower than 0.3 m, indicating the newly formed sea ice. However, ICESat-1's modal ice thickness is around 1.5 m. SOSE and NEMO-EnKF have a similar variation of modal ice thickness from Autumn-FM to Spring-ON as ICESat-1 in 2005 and 2006. GIOMAS has a similar seasonal variation in 2005. GECCO2 fails to reproduce the decrease of modal ice thickness from Autumn-FM to Winter-MJ. This is because GECCO2 loses most thick ice in summer and thus has lower modal ice thickness than the other data sets.

In addition to the aggregate sea-ice thickness statistics, the spatial difference of thickness between four analyses and ICESat-1 is also investigated. The ICESat-1 data show that ice thicker than 2.5 m, mainly located in the western Weddell sea and with a location shifting from the southwestern Weddell Sea in Autumn-FM to the northwestern Weddell Sea in Spring-ON (Figure 6). In Autumn-FM, all reanalyses underestimate ice thickness. For GECCO2 and SOSE, negative biases up to 1.5 m almost cover the entire Weddell Sea and the negative biases of NEMO-EnKF and GIOMAS mainly occur in the area near the coast. Considering the ICESat-1 thickness may be biased low (Kern et al., 2016), this suggests that these reanalyses may not well represent coastal processes. The spatial averaged differences between models and ICESat-1 are -1.30 m (GECCO2), -0.63 m (NEMO-EnKF) and -0.75 m (GIOMAS), respectively. In Winter-MJ, all reanalyses still underestimate sea-ice thickness along the Antarctic Peninsula (AP) and in the western Weddell Sea, and GIOMAS overestimates thickness in the CWS and near the Ronne Ice Shelf of the southern Weddell Sea, where new sea ice is found. All four reanalyses underestimate sea-ice thickness by up to 1.5 m in the north edge of sea-ice cover. In Spring-ON, the area of thickness underestimation of all four analyses shrinks to the western Weddell Sea along the AP and the northern edge of ice cover, while a slight overestimation is also found in the central and eastern Weddell Sea. In addition, GIOMAS overestimates ice thickness near the Ronne Ice Shelf in the southern Weddell Sea, which is thought to be an important source of new sea ice (Drucker et al., 2011). The overestimation is likely due partially to GIOMAS's explicit simulation of sea ice ridging processes, which tends to create thick ridges. It may also be due to the generally low ICESat-1 thickness values when compared to ULS and Envisat data (see Figure 3d above).

### 3.4 Comparison with seasonal evolution of sea-ice thickness from Envisat

The comparison with ICESat-1 thickness in section 3.3 is limited by the temporal coverage of ICESat-1, in particular, the seasonal evolution cannot be fully quantified. Although the Envisat sea-ice thickness has larger biases than ICESat-1 thickness (Schwegmann et al., 2016; Wang et al., 2020), it is still useful in assessing the seasonal evolution of the sea-ice thickness, due to it covering all seasons. Furthermore, its spatial distribution has a good spatial correlation with the ICESat-1 (figure not shown here).

In this section, based on the Envisat sea-ice thickness data, we focus on the comparison of seasonal variation of the spatial distribution of sea-ice thickness averaged from 2005 to 2008. Following with the seasonal classification in Holland and Kwok (2012), the summer, autumn, winter and spring hereinafter refer to January to March, April to June, July to September and

删除了: mean ice thickness is less

删除了: (Table 4). Compared with ICESat-1, only

删除了: has

删除了: , while GECCO2, SOSE

删除了: have monotonically increasing modal ice thickness. For mean sea-...

删除了: , all four reanalyses have similar variability

删除了: the GIOMAS

删除了: smallest variation

删除了: aggerate

删除了: central Weddell Sea

删除了: is with

删除了: can be applied

删除了: comparing

删除了:

删除了: because the Envisat ice thickness covers

删除了: the

删除了: , and

删除了:

October to December, respectively. The spatial distribution of sea-ice thickness of NEMO-EnKF shows the most similarity  
470 with Envisat over the year (Figure 7). GECCO2 and SOSE have similar sea-ice thickness distributions all year round, while  
GECCO2 is much thicker. The thickest ice of GECCO2 and SOSE is mainly located in the southern Weddell Sea and  
southwestern Weddell Sea, respectively. NEMO-EnKF reproduces the thick sea ice (>1.5m) over the region in the  
northwestern Weddell Sea from winter to spring. Compared with other models, GIOMAS has the largest amount of thick ice  
(>2.0 m), and it is mostly located in the western and southern Weddell Sea and occurs in all seasons. In addition, different  
475 from other data sets, GIOMAS has a large area of sea ice thicker than 1.5 m between -25°W and 0°E over the eastern Weddell  
Sea from autumn to spring.

The sea-ice concentration is also analyzed, as it is closely tied to sea-ice thickness via dynamics and thermodynamics.  
Benefiting from data assimilation approaches, all models have a similar spatial distribution of sea-ice concentration with  
480 respect to satellite observations (Figure 8). GECCO2, which has not assimilated sea-ice concentration, has a high concentration  
in the southern Weddell Sea, while the other three models have the high concentrations found mostly in the southwestern  
Weddell Sea. It is worth noting that the SOSE sea-ice concentration shows a “river” pattern with relatively low sea-ice  
concentration around the prime meridian in autumn and winter. This phenomenon can be attributed to the open-ocean polynya  
in 2005 and has also been reported by Abernathey et al. (2016).

485 **Driven by wind and underlying ocean currents, sea ice motion shape the dynamic thickening of sea ice.** We investigate the sea  
ice motion effects on the spatial distribution of sea-ice thickness. Because Envisat does not measure ice motion, the satellite  
ice motion data **product** from the National Snow and Ice Data Center are used instead (Tschudi et al., 2019). In addition, we  
also calculate the divergence of ice motion to investigate the influence of ice motion on the variation of sea-ice thickness. As  
490 shown in Figure 8, a clockwise ice motion is the leading pattern in the Weddell Sea, known as Weddell Gyre, especially in  
wintertime. GECCO2 has weak ice motion and weak convergence in the southern Weddell Sea (the cyan rectangle in Figure  
9), while the other three reanalyses show apparent westward ice motion. That gives rise to less ice accumulation along the AP  
in GECCO2. In addition, the westward movement of the SOSE, NEMO-EnKF and NSIDC ice velocity fields with ice  
convergence in the southwestern Weddell Sea are in favour of the dynamic thickening. Compared to NEMO-EnKF and  
495 GIOMAS in summer through autumn, SOSE has a stronger sea ice circulation advecting more ice toward the north-western  
Weddell Sea and the coast of the AP. SOSE has rapid ice motion for all seasons, especially near the Antarctic Peninsula in the  
western Weddell Sea and the coast near Queen Maud Land (QMD) in the southern Weddell Sea. The high ice speed of SOSE  
in this region may result from its relatively thin sea ice. Based on the satellite data, the convergence is mainly in the middle  
and eastern Weddell Sea. The divergence is mainly in the southern and western Weddell Sea, which are regions of new sea-  
500 ice formation and sea-ice deformation, respectively (Figure 8). GECCO2 mainly has convergence in all seasons. The strong  
divergence and convergence of SOSE alternatively **occurs** in the south-eastern Weddell Sea and the northern edge of the sea-  
ice cover. The sea ice motion convergence of NEMO-EnKF is relatively weak, but widespread, and is generally consistent

删除了:

删除了:

删除了:

删除了: primary

删除了: Since sea-ice thickness distributions are associated with ice

advection,

删除了: w

删除了:

删除了: therefore,

删除了: 7

删除了: 8

删除了: occur

515 with satellite inferences. GIOMAS shows an abnormal divergence in the eastern Weddell Sea in autumn, which may result from its thick ice in this region diagnosed in section 3.3.

In order to quantitatively estimate the influence of sea ice advection on thickness in the southwestern Weddell Sea, we calculate sea ice flux across two sections. The zonal section (from 70°W to 25°W, 65°S) captures outflow from the western Weddell  
520 Sea (Harms et al., 2001). Flux across the meridional section (65°S to 72°S, 25°W) is also diagnosed to form a closure (Figure 8, blue and red line). Here, we use sea-ice area flux instead of the volume flux to exclude the thickness influence. All models underestimate the sea-ice area flux across 25°W, especially for GECCO2 and GIOMAS (Figure 10a). The ice area flux in GIOMAS is approximately half of that in the NSIDC product (Table 4). In the 65°S section, GIOMAS has smaller northward ice area flux, which favours thick ice staying in the southwestern Weddell Sea. With respect to the NSIDC product, GECCO2  
525 and SOSE have relatively small ice inflow in the 25°W section ( $0.95 \times 10^3 \text{ km}^2/\text{mon}$  and  $0.30 \times 10^3 \text{ km}^2/\text{mon}$ ) and relatively high outflow in the 65°S section ( $3.06 \times 10^3 \text{ km}^2/\text{mon}$  and  $3.13 \times 10^3 \text{ km}^2/\text{mon}$ ), which favours thin ice in the southwestern Weddell Sea. SOSE and NEMO-EnKF have similar ice flux in the 25°W section, but NEMO-EnKF has better ice thickness distribution than SOSE according to Figure 7. NEMO-EnKF has smaller ice flux in the 65°S section and a better correlation with NSIDC. We find that accurate northward ice motion in the western Weddell Sea is related to thick ice accumulation in the southwestern  
530 Weddell Sea and sea-ice thickness distribution consistent with observations.

删除了: 5

删除了: favours

删除了: favours

删除了: actual

删除了: in the Weddell Sea

删除了: Antarctic

删除了: some

删除了: , in

删除了: been

删除了: could

删除了: To further a quantitatively measure the performance of all four, we use root-mean-square error (RMSE) and correlation coefficient (CC) with respect to ULS and altimeter measurements as criteria. It is noted that the CC with ULS means the temporal correlation between four reanalyses and ULS, while the CC with ICESat-1 means the spatial correlation because they are calculated by yearly mean SIT fields. Our results (Table 5) show that the SOSE has the highest CC of 0.77 and lowest RMSE of 0.72 m, when compared with ULS ice thickness. All RMSEs are less than 0.9 m and all CCs are more than 0.4.

#### 4 Discussion and summary

In this paper, we evaluate sea-ice thickness in the Weddell Sea from four reanalyses against observations from satellite altimeters, mooring and visual observations. It should be noted that although this evaluation is based on most of the available observations in the Weddell Sea, there are still uncertainties and limitations in this evaluation. For example, due to the temporal  
535 coverage of the reanalyses and reference data, the large-scale evaluation against ICESat-1 and Envisat are limited to 2005 to 2008, and mainly focuses on the seasonal evolution and spatial distribution of ice thickness. The evaluation against ASPeCt is from 1981 to 2005. Furthermore, Schwegmann et al. (2016) already showed that Envisat sea-ice thickness underestimates thick ice and overestimates thin ice compared to CryoSat-2. In addition, the Envisat sea-ice thickness has different interannual variability compared with the in situ ULS observations. Nevertheless, the Envisat thickness has still been used to investigate  
540 the seasonal evolution of sea ice in this study. These limitations should be further addressed when more ice thickness observations are available in the future.

To further a quantitatively measure the performance of all four, we use root-mean-square error (RMSE) and correlation coefficient (CC) with respect to ULS and altimeter measurements as criteria. It is noted that the CC with ULS means the temporal correlation between four reanalyses and ULS, while the CC with ICESat-1 means the spatial correlation because they are calculated by yearly mean SIT fields. Our results (Table 5) show that the SOSE has the highest CC of 0.77 and lowest  
545 RMSE of 0.72 m, when compared with ULS ice thickness. All RMSEs are less than 0.9 m and all CCs are more than 0.4.

Compared with ICESat-1, NEMO-EnKF has the highest CC of 0.54 and lowest RMSE of 0.44 m. CCs of the other three reanalyses are less than 0.3 and GIOMAS almost no spatial relation with ICESat-1.

560 We conclude that current sea-ice thickness reanalyses in the Weddell Sea have a varying degree of realism. Compared with ASPeCt, GECCO2, NEMO-EnKF and GIOMAS have deficiencies reproducing the small spatio-temporal variation of thickness in regions dominated by first-year ice. Compared with ICESat-1 and ULS sea-ice thickness, all four reanalyses underestimate ice thickness in the western and north-western Weddell Sea with highly deformed sea ice (mean ice thickness > 1.5 m) from Autumn-FM to Spring-ON. To be particular, GIOMAS and SOSE ice thickness performs best in the Central and 565 the South Coast of the Weddell Sea, respectively, while GECCO2 and NEMO-EnKF could reproduce new ice evolution in the eastern Weddell Sea. GIOMAS tends to overestimate first-year ice thickness in the eastern Weddell Sea, especially in spring. Besides the explicit simulation of ice ridging, the convergence of GIOMAS sea ice in the CWS may be an important cause of the positive bias in sea-ice for this reanalysis. Compared with Envisat, only NEMO-EnKF did well reproducing the clock-wise shift of thick ice from the western Weddell Sea in winter to the north-western Weddell Sea in spring. Our study also indicates 570 the northward ice motion in the western Weddell Sea along the Antarctic Peninsula has an important influence on ice thickness distribution in the Weddell Sea.

This study shows that to accurately infer the variability of the Antarctic sea-ice volume (not only the Weddell Sea) in the context of global climate change, there is still room to further improve the Antarctic sea-ice reanalyses, and possible ways include improving the ice-ocean model physics via optimizing model parameters (e.g., Sumata et al., 2019), and assimilating 575 ice-ocean observations (in particular the satellite derived sea-ice thickness) with a sea ice-ocean multi-variate data assimilation approach (e.g., Mu et al., 2020).

Data availability. The GECCO2 sea-ice thickness are available at <https://icdc.cen.uni-hamburg.de/1/daten/reanalysis-ocean/gecco2.html> (Köhl, 2015). The SOSE sea-ice thickness are available at [http://sose.ucsd.edu/sose\\_stateestimation\\_data\\_05to10.html](http://sose.ucsd.edu/sose_stateestimation_data_05to10.html) (Mazloff et al., 2010). The NEMO-EnKF sea-ice thickness are available at <http://www.climate.be/seaice-reanalysis> (Massonnet et al., 2013). The GIOMAS sea-ice thickness are available at [http://psc.apl.washington.edu/zhang/Global\\_seaice/data.html](http://psc.apl.washington.edu/zhang/Global_seaice/data.html) (Zhang and Rothrick, 2003). The Antarctic sea-ice thickness of 580 ICESat-1 are processed by Kern et al. (2016) and distributed by ESA CCI project, at <http://icdc.cen.uni-hamburg.de/1/projekte/esa-cci-sea-ice-ecv0/esa-cci-data-access-form-antarctic-sea-ice-thickness.html>. The CryoSat-2 and 585 Envisat sea-ice thickness are available at <https://dx.doi.org/10.5285/b1f1ac03077b4aa784c5a413a2210bf5> (Hendricks et al., 2018). The ASPeCt sea-ice thickness are available at <http://aspect.antartica.gov.au/data> (Worby et al., 2008). Sea ice velocity are available at <https://nsidc.org/data/NSIDC-0116/versions/4> (Tschudi et al., 2019). The Weddell Sea upward looking sonar ice draft are available at <https://doi.pangaea.de/10.1594/PANGAEA.785565> (Behrendt et al., 2013).

删除了: It comes to a conclusion  
删除了: ice-ocean models reproduce sea  
删除了: with

删除了: central Weddell Sea  
删除了: data

删除了:   
删除了: ,  
删除了: prediction, and the  
删除了: improve  
删除了: assimilate the observed  
删除了:  
删除了: an ensemble based

删除了: ICESat-1  
删除了:  
删除了: available  
删除了: (Kern et al., 2016).  
删除了:  
删除了:

*Author contributions.* QY and LM developed the concept of the paper. QS analyzed all the data and wrote the manuscript. All authors assisted during the writing process and critically discussed the contents.

*Competing interests.* The authors declare that they have no conflict of interest.

*Acknowledgments.* The authors would like to thank Jinlun Zhang from University of Washington for his invaluable advice in improving the manuscript. This is a contribution to the Year of Polar Prediction (YOPP), a flagship activity of the Polar Prediction Project (PPP), initiated by the World Weather Research Programme (WWRP) of the World Meteorological Organisation (WMO). We acknowledge the WMO WWRP for its role in coordinating this international research activity. This study is supported by the National Natural Science Foundation of China (No. 41941009, 41922044), the Guangdong Basic and Applied Basic Research Foundation (No. 2020B1515020025), and the Fundamental Research Funds for the Central Universities (No. 19lgzd07). François Massonnet is a F.R.S.-FNRS Research Fellow. MRM is supported by NSF Awards OCE-1924388, PLR-1425989, OPP-1936222 and NASA award 80NSSC20K1076. The authors would like to thank European Space Agency (ESA) for providing the Envisat and ICESat-1 data, and Alfred Wegener Institute, Helmholtz Centre for Polar and Marine Research (AWI) for providing Weddell Sea ULS data.

## References

- Abernathey, R. P., Cerovecki, I., Holland, P. R., Newsom, E., Mazloff, M., and Talley, L. D.: Water-mass transformation by sea ice in the upper branch of the Southern Ocean overturning, *Nature Geoscience*, 9, 596-601, 10.1038/ngeo2749, 2016.
- Behrendt, A., Dierking, W., Fahrbach, E., and Witte, H.: Sea ice draft in the Weddell Sea, measured by upward looking sonars, *Earth System Science Data*, 5, 209-226, 10.5194/essd-5-209-2013, 2013.
- [Behrendt, A., Dierking, W., and Witte, H.: Thermodynamic sea ice growth in the central Weddell Sea, observed in upward-looking sonar data, \*Journal of Geophysical Research: Oceans\*, 120\(3\): 2270-2286, 10.1002/2014JC010408, 2015.](#)
- Bintanja, R., van Oldenborgh, G. J., Drijfhout, S. S., Wouters, B., and Katsman, C. A.: Important role for ocean warming and increased ice-shelf melt in Antarctic sea-ice expansion, *Nature Geoscience*, 6, 376-379, 10.1038/ngeo1767, 2013.
- Bitz, C. M., and Polvani, L. M.: Antarctic climate response to stratospheric ozone depletion in a fine resolution ocean climate model, *Geophysical Research Letters*, 39, 10.1029/2012gl053393, 2012.



640 Brodzik, M. J., Billingsley, B., Haran, T., Raup, B., and Savoie, M. H.: EASE-Grid 2.0: Incremental but Significant  
Improvements for Earth-Gridded Data Sets, *ISPRS International Journal of Geo-Information*, 1, 32-45,  
10.3390/ijgi1010032, 2012.

Cerovečki, I., A.J. Meijers, M.R. Mazloff, S.T. Gille, V.M. Tamsitt, and P.R. Holland, 2019: The Effects of Enhanced Sea Ice  
Export from the Ross Sea on Recent Cooling and Freshening of the Southeast Pacific. *J. Climate*, 32, 2013–2035,  
<https://doi.org/10.1175/JCLI-D-18-0205.1>

645 Comiso, J. C., Gersten, R. A., Stock, L. V., Turner, J., Perez, G. J., and Cho, K.: Positive Trend in the Antarctic Sea Ice Cover  
and Associated Changes in Surface Temperature, *Journal of Climate*, 30, 2251-2267, 10.1175/jcli-d-16-0408.1, 2017.

Drucker, R., Martin, S., and Kwok, R.: Sea ice production and export from coastal polynyas in the Weddell and Ross Seas.  
*Geophysical Research Letters*, 38(17), 10.1029/2011GL048668, 2011.

Fichefet, T., and Maqueda, M. M.: Sensitivity of a global sea ice model to the treatment of ice thermodynamics and dynamics.  
650 *Journal of Geophysical Research: Oceans*, 102(C6), 12609-12646, 1997.

Gill, A. E.: Circulation and bottom water production in the Weddell Sea, *Deep Sea Research and Oceanographic Abstracts*,  
20(2), 111-140., 1973.

Haas, C., Hendricks, S., Eicken, H., and Herber, A.: Synoptic airborne thickness surveys reveal state of Arctic sea ice cover,  
*Geophysical Research Letters*, 37, n/a-n/a, 10.1029/2010gl042652, 2010.

655 Harms, S., Fahrbach, E., and Strass, V. H.: Sea ice transports in the Weddell Sea, *Journal of Geophysical Research: Oceans*,  
106, 9057-9073, 10.1029/1999jc000027, 2001.

Haumann, F. A., Gruber, N., Munnich, M., Frenger, I., and Kern, S.: Sea-ice transport driving Southern Ocean salinity and its  
recent trends, *Nature*, 537, 89-92, 10.1038/nature19101, 2016.

Hendricks, S., Paul, S., and Rinne, E.: ESA Sea Ice Climate Change Initiative (Sea\_Ice\_cci): Southern hemisphere thickness  
660 from the Envisat satellite on a monthly grid (L3C), v2.0, Centre for Environmental Data Analysis,  
10.5285/b1f1ac03077b4aa784c5a413a2210bf5, 2018.

Hibler III, W.: Modeling a variable thickness sea ice cover, *Monthly weather review*, 108, 1943-1973, 10.1175/1520-  
0493(1980)108<1943:MAVTSI>2.0.CO;2, 1980.

Holland, P. R., and Kwok, R.: Wind-driven trends in Antarctic sea-ice drift, *Nature Geoscience*, 5, 872-875, 10.1038/ngeo1627,  
665 2012.

Holland, P. R., Bruneau, N., Enright, C., Losch, M., Kurtz, N. T., and Kwok, R.: Modeled Trends in Antarctic Sea Ice  
Thickness, *Journal of Climate*, 27, 3784-3801, 10.1175/jcli-d-13-00301.1, 2014.

Isaaks, E. H., and Srivastava, M. R.: *Applied geostatistics*, 551.72 ISA, 1989.

Jullion, L., Naveira Garabato, A. C., Meredith, M. P., Holland, P. R., Courtois, P., and King, B. A.: Decadal Freshening of the  
670 Antarctic Bottom Water Exported from the Weddell Sea, *Journal of Climate*, 26, 8111-8125, 10.1175/jcli-d-12-  
00765.1, 2013.

删除了: sea ice

- Jung, T., Gordon, D.N., Bauer, P., Bromwich, D.H., Chevallier, M., Day, J.J., Dawson, J., Doblas-Reyes, F., Fairall, C., Goessling, H.F., Holland, M., Inoue, J., Iversen, T., Klebe, S., Lemke, P., Losch, M., Makshtas, A., Mills, B., Nurmi, P., Perovich, D., Reid, P., Renfrew, I.A., Smith, G., Svensson, G., Tolstykh, M., Yang, Q.: Advancing polar prediction capabilities on daily to seasonal time scales. *Bulletin of the American Meteorological Society*, 10.1175/BAMS-D-14-00246.1.
- Kalnay, E., Kanamitsu, M., Kistler, R., et al.: The NCEP/NCAR 40-year reanalysis project. *Bulletin of the American meteorological Society*, 77(3): 437-472, 1996.
- Kern, S., and Spreen, G.: Uncertainties in Antarctic sea-ice thickness retrieval from ICESat, *Annals of Glaciology*, 56(69), 107-119, 10.3189/2015AoG69A736, 2015.
- Kern, S., Ozsoy-Çiçek, B., and Worby, A.: Antarctic Sea-Ice Thickness Retrieval from ICESat: Inter-Comparison of Different Approaches, *Remote Sensing*, 8, 10.3390/rs8070538, 2016.
- Köhl, A.: Evaluation of the GECCO2 ocean synthesis: transports of volume, heat and freshwater in the Atlantic, *Quarterly Journal of the Royal Meteorological Society*, 141, 166-181, 10.1002/qj.2347, 2015.
- Kurtz, N. T., and Markus, T.: Satellite observations of Antarctic sea ice thickness and volume, *Journal of Geophysical Research: Oceans*, 117, n/a-n/a, 10.1029/2012jc008141, 2012.
- Kwok, R., and Rothrock, D. A.: Decline in Arctic sea ice thickness from submarine and ICESat records: 1958-2008, *Geophysical Research Letters*, 36, n/a-n/a, 10.1029/2009gl039035, 2009.
- Kwok, R., and Kacimi, S.: Three years of sea ice freeboard, snow depth, and ice thickness of the Weddell Sea from Operation IceBridge and CryoSat-2, *The Cryosphere*, 12(8), 2789-2801, 10.5194/tc-12-2789-2018, 2018.
- Lange, M. A., and Eicken, H.: The sea ice thickness distribution in the northwestern Weddell Sea, *Journal of Geophysical Research*, 96, 10.1029/90jc02441, 1991.
- Lindsay, R., and Zhang, J.: Assimilation of ice concentration in an ice-ocean model, *Journal of Atmospheric and Oceanic Technology*, 2006.
- Madec, Gervan.: The Nemo team, NEMO ocean engine. Note du Pôle de modélisation, Institut Pierre-Simon Laplace (IPSL), France 27, 2008.
- Markus, T., Massom, R., Worby, A. P., Lytle, V., Kurtz, N. T., and Maksym, T.: Freeboard, snow depth and sea-ice roughness in East Antarctica from in situ and multiple satellite data, *Annals of Glaciology*, 52(57), 2011.
- Massonnet, F., Mathiot, P., Fichet, T., Goose, H., König Beatty, C., Vancoppenolle, M., and Laverne, T.: A model reconstruction of the Antarctic sea ice thickness and volume changes over 1980–2008 using data assimilation, *Ocean Modelling*, 64, 67-75, 10.1016/j.ocemod.2013.01.003, 2013.
- Mazloff, M. R., Heimbach, P., and Wunsch, C.: An Eddy-Permitting Southern Ocean State Estimate, *Journal of Physical Oceanography*, 40, 880-899, 10.1175/2009jpo4236.1, 2010.
- Meehl, G. A., Arblaster, J. M., Bitz, C. M., Chung, C. T. Y., and Teng, H.: Antarctic sea-ice expansion between 2000 and 2014 driven by tropical Pacific decadal climate variability, *Nature Geoscience*, 9, 590-595, 10.1038/ngeo2751, 2016.

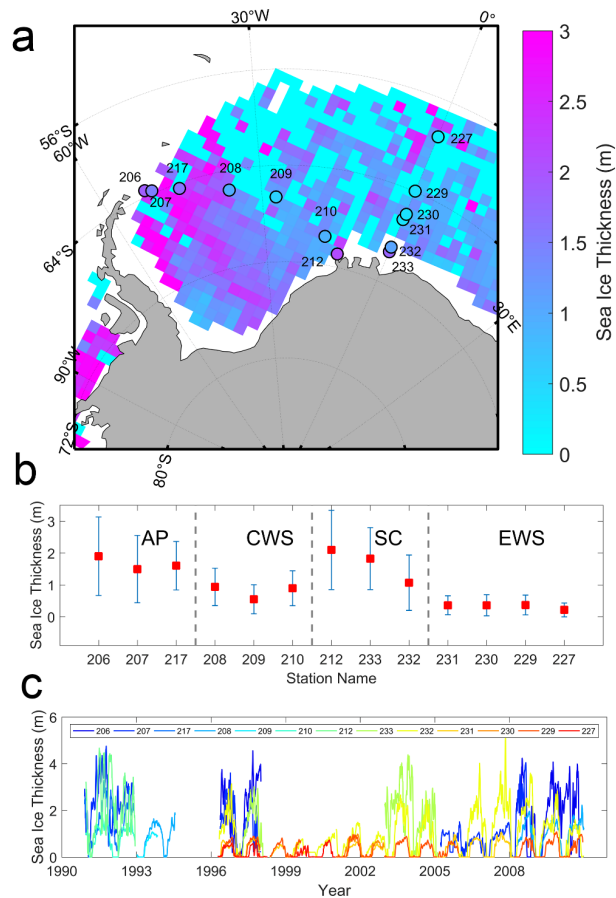
- Mu, L., Losch M., Yang, Q., Ricker, R., Losa, S. N., and Nerger, L.: Arctic-wide sea ice thickness estimates from combining satellite remote sensing data and a dynamic ice-ocean model with data assimilation during the CryoSat-2 period, *Journal of Geophysical Research-Oceans*, 123, 7763-7780, 2018.
- 710 Mu, L., Nerger, L., Tang, Q., Losa, S., Sidorenko, D., Wang, Q., Semmler, T., Zampieri, L., Losch, M., Goessling, H.: Towards a data assimilation system for seamless sea ice prediction based on the AWI Climate Model, *Journal of Advances in Modelling Earth Systems*, 10.1029/2019MS001937, 2020.
- Parkinson, C. L.: A 40-y record reveals gradual Antarctic sea ice increases followed by decreases at rates far exceeding the rates seen in the Arctic, *Proc Natl Acad Sci U S A*, 116, 14414-14423, 10.1073/pnas.1906556116, 2019.
- 715 Paul, S., Hendricks, S., Ricker, R., Kern, S., and Rinne, E.: Empirical parametrization of Envisat freeboard retrieval of Arctic and Antarctic sea ice based on CryoSat-2: progress in the ESA Climate Change Initiative, *The Cryosphere*, 12, 2437-2460, <https://doi.org/10.5194/tc-12-2437-2018>, 2018.
- Sakov, P., Counillon, F., Bertino, L., Lisaeter, K. A., Oke, P. R., and Korablev, A.: TOPAZ4: An ocean-sea ice data assimilation system for the North Atlantic and Arctic, *Ocean Science*, 8, 633-656, 2012.
- 720 Schwegmann, S., Rinne, E., Ricker, R., Hendricks, S., and Helm, V.: About the consistency between Envisat and CryoSat-2 radar freeboard retrieval over Antarctic sea ice, *The Cryosphere*, 10, 1415-1425, 10.5194/tc-10-1415-2016, 2016.
- Schwegmann, S., Haas, C., Fowler, C., and Gerdes, R.: A comparison of satellite-derived sea-ice motion with drifting-buoy data in the Weddell Sea, Antarctica, *Annals of Glaciology*, 52(57), 103-110, 10.3189/172756411795931813, 2011.
- Sigmond, M., and Fyfe, J. C.: The Antarctic Sea Ice Response to the Ozone Hole in Climate Models, *Journal of Climate*, 27, 1336-1342, 10.1175/jcli-d-13-00590.1, 2014.
- 725 Simmonds, I.: Comparing and contrasting the behaviour of Arctic and Antarctic sea ice over the 35 year period 1979-2013, *Annals of Glaciology*, 56, 18-28, 10.3189/2015AoG69A909, 2015.
- Stammerjohn, S. E., Martinson, D. G., Smith, R. C., and Iannuzzi, R. A.: Sea ice in the western Antarctic Peninsula region: Spatio-temporal variability from ecological and climate change perspectives, *Deep Sea Research Part II: Topical Studies in Oceanography*, 55, 2041-2058, 10.1016/j.jdsr.2.2008.04.026, 2008.
- 730 Sumata, H., Kauker, F., Karcher, M. and Gerdes, R.: Simultaneous Parameter Optimization of an Arctic Sea Ice–Ocean Model by a Genetic Algorithm, *Monthly Weather Review*, doi: 10.1175/MWR-D-18-0360., 2019.
- Swart, N. C., and Fyfe, J. C.: The influence of recent Antarctic ice sheet retreat on simulated sea ice area trends, *Geophysical Research Letters*, 40, 4328-4332, 10.1002/grl.50820, 2013.
- 735 Tamura, T., Ohshima, K. I., and Nihashi, S.: Mapping of sea ice production for Antarctic coastal polynyas, *Geophysical Research Letters*, 35, n/a-n/a, 10.1029/2007gl032903, 2008.
- Thompson, D. W. J.: Interpretation of Recent Southern Hemisphere Climate Change, *Science*, 296, 895-899, 10.1126/science.1069270, 2002.
- 740 Thorndike, A. S., Rothrock, D., Maykut, G., and Colony, R.: The thickness distribution of sea ice, *Journal of Geophysical Research*, 80, 4501-4513, 1975.

删除了: Mu,

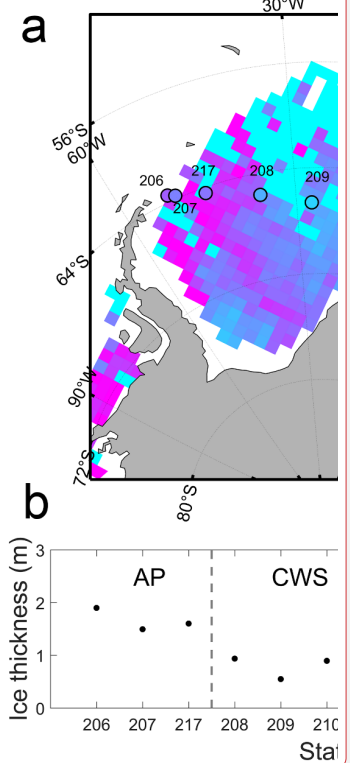
- [Tilling, R., Ridout, A., and Shepherd, A.: Assessing the Impact of Lead and Floe Sampling on Arctic Sea Ice Thickness Estimates from Envisat and CryoSat-2, \*Journal of Geophysical Research\*, 124, 7473–7485, 2019.](#)
- Timmermann, R.: Utilizing the ASPeCt sea ice thickness data set to evaluate a global coupled sea ice–ocean model, *Journal of Geophysical Research*, 109, 10.1029/2003jc002242, 2004.
- 745 Tschudi, M., Meier, W., Stewart, J., Fowler, C., and Maslanik, J.: Polar Pathfinder daily 25 km EASE-Grid sea ice motion vectors, version 4 dataset 0116, NASA National Snow and Ice Data Center Distributed Active Archive Center, Boulder, CO USA, doi, 10, 2019.
- Turner, J., Comiso, J. C., Marshall, G. J., Lachlan-Cope, T. A., Bracegirdle, T., Maksym, T., Meredith, M. P., Wang, Z., and Orr, A.: Non-annular atmospheric circulation change induced by stratospheric ozone depletion and its role in the recent increase of Antarctic sea ice extent, *Geophysical Research Letters*, 36, 10.1029/2009gl037524, 2009.
- 750 Turner, J., and Comiso, J.: Solve Antarctica’s sea-ice puzzle, *Nature*, 547, 275–277, <https://doi.org/10.1038/547275a>, 2017.
- Wang, J., Min, C., Ricker, R., Yang, Q., Shi, Q., Han, B., and Hendricks, S.: A comparison between Envisat and ICESat sea ice thickness in the Antarctic, *The Cryosphere Discuss.*, <https://doi.org/10.5194/tc-2020-48>, in review, 2020.
- 755 Willatt, R. C., Giles, K. A., Laxon, S. W., Stone-Drake, L., and Worby, A. P.: Field Investigations of Ku-Band Radar Penetration into Snow Cover on Antarctic Sea Ice, *IEEE Transactions on Geoscience and Remote Sensing*, 48, 365-372, 10.1109/tgrs.2009.2028237, 2010.
- Williams, G., Maksym, T., Wilkinson, J., Kunz, C., Murphy, C., Kimball, P., and Singh, H.: Thick and deformed Antarctic sea ice mapped with autonomous underwater vehicles, *Nature Geoscience*, 8, 61-67, 10.1038/ngeo2299, 2015.
- 760 Worby, A. P., Geiger, C. A., Paget, M. J., Van Woert, M. L., Ackley, S. F., and DeLiberty, T. L.: Thickness distribution of Antarctic sea ice, *Journal of Geophysical Research*, 113, 10.1029/2007jc004254, 2008.
- Yi, D., Zwally, H. J., and Robbins, J. W.: ICESat observations of seasonal and interannual variations of sea-ice freeboard and estimated thickness in the Weddell Sea, Antarctica (2003–2009), *Annals of Glaciology*, 52(57), 2011.
- Zhang, J., Hibler III W. D.: On an efficient numerical method for modeling sea ice dynamics. *Journal of Geophysical Research: Oceans*, 102(C4), 8691-8702, 10.1029/96JC03744, 1997.
- 765 Zhang, J., and Rothrock, D. A.: Modeling Global Sea Ice with a Thickness and Enthalpy Distribution Model in Generalized Curvilinear Coordinates, *Monthly Weather Review*, 2003.
- Zhang, J.: Modeling the Impact of Wind Intensification on Antarctic Sea Ice Volume, *Journal of Climate*, 27, 202-214, 10.1175/jcli-d-12-00139.1, 2014.
- 770 Zunz, V., Goosse, H., and Dubinkina, S.: Decadal predictions of Southern Ocean sea ice: testing different initialization methods with an Earth-system Model of Intermediate Complexity, *EGU General Assembly Conference Abstracts*, 2013,
- Zwally, H. J., Comiso, J. C., Parkinson, C. L., Campbell, W. J., Carsey, F. D., and Gloersen, P.: Antarctic sea ice, 1973-1976: satellite passive-microwave observations, No. NASA-SP-459. National Aeronautics and Space Administration Washington DC, 1983.

775 Zwally, H. J., Yi, D., Kwok, R., and Zhao, Y.: ICESat measurements of sea ice freeboard and estimates of sea ice thickness in  
the Weddell Sea, *Journal of Geophysical Research*, 113, 10.1029/2007jc004284, 2008.

780



**Figure 1:** a) The ICESat-1 sea-ice thickness in autumn of 2005 in the Weddell Sea and the locations of the moored upward looking sonars with their mean thicknesses shaded. b) The mean ULS sea-ice thickness from west to the east in the Weddell Sea. The error bars represent the standard deviation of daily ice thickness for individual stations. Grey dotted lines divide the 13 stations into four parts: the Antarctic Peninsula (AP), the central Weddell Sea (CWS), the southern coast (SC), and the eastern Weddell Sea (EWS). c) The time series of daily sea-ice thickness of all 13 stations after a 15-day moving average.



删除了:

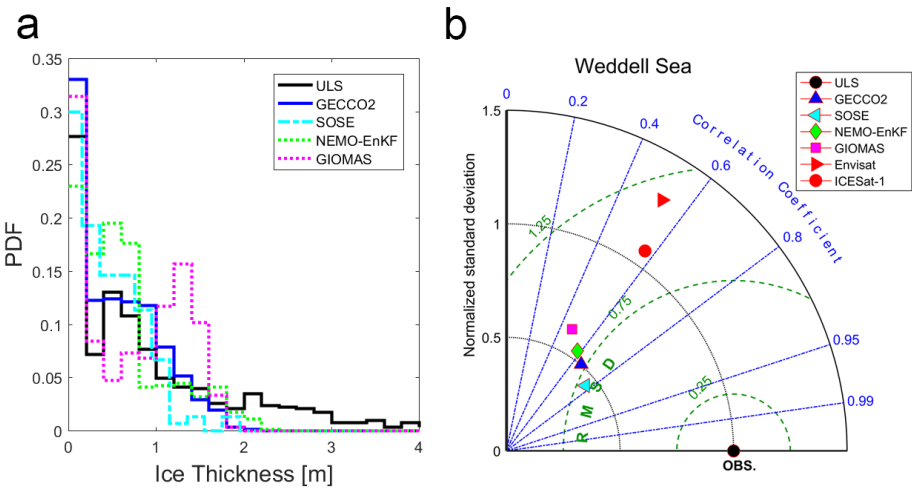
删除了: Weddell Sea

删除了: sonar stations,

删除了: long term

删除了: coloured. The ICESat-1 sea-ice thickness in autumn of 2005 is coloured in the background.

795

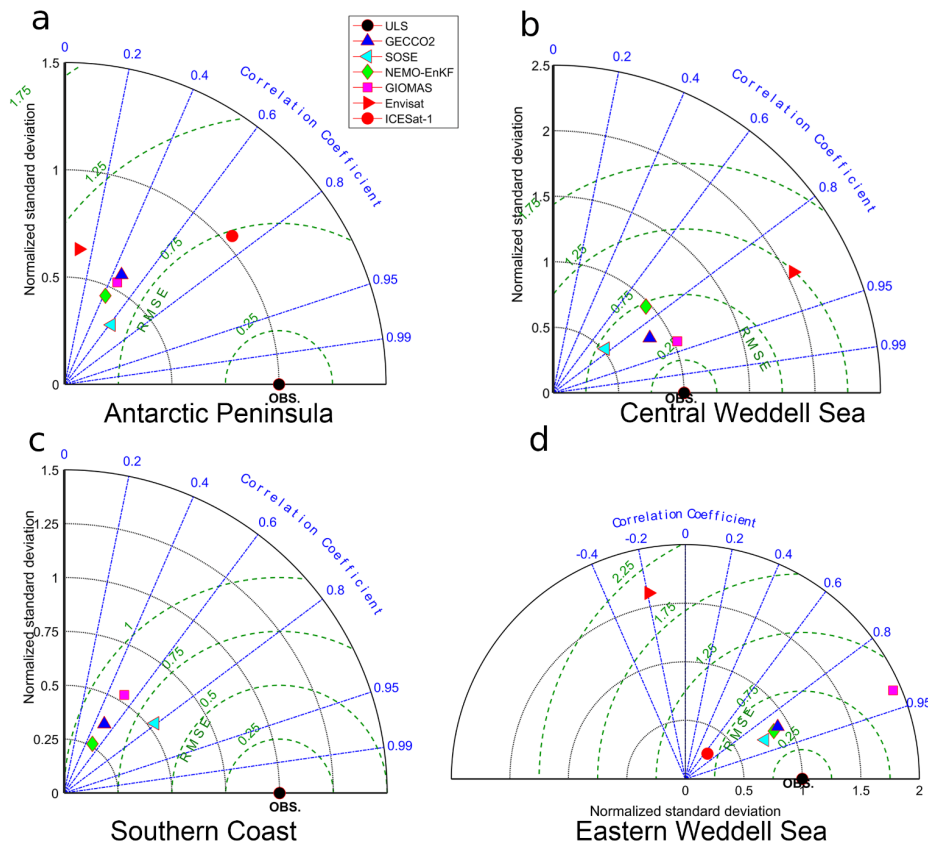


800

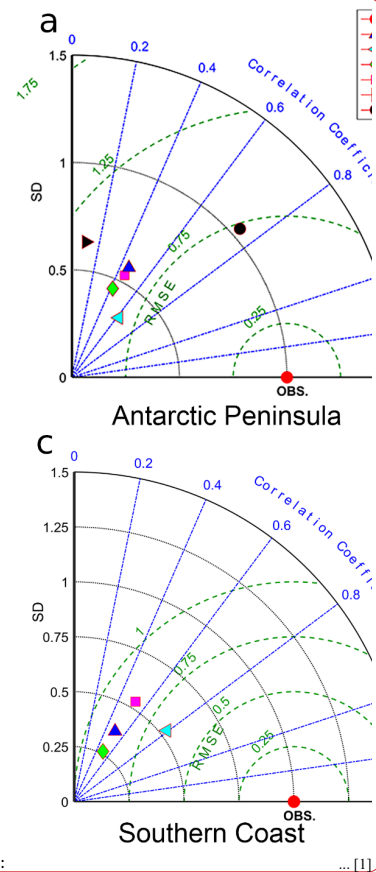
Figure 2: a) Probability density distributions (PDF) of monthly sea-ice thickness from ULS and four reanalyses at the 13 ULS locations of the Weddell Sea. b) Normalized Taylor diagram for monthly sea-ice thickness of four reanalyses as well as Envisat and ICESat-1 with respect to the sea-ice thickness from upward-looking sonar from 1990 to 2008 in the Weddell Sea. The green dashed lines indicate the normalized root-mean-square error (RMSE).

805

810

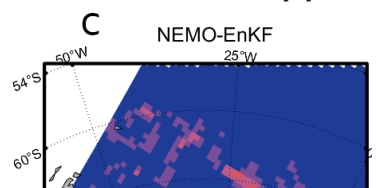
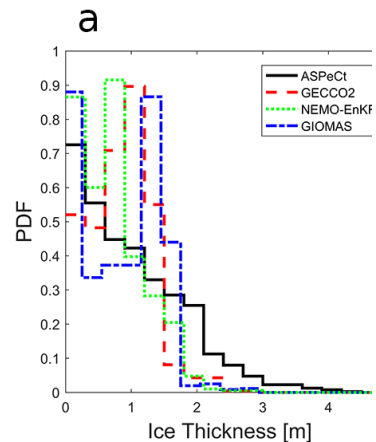


815 Figure 3: Same as Figure 1b, but for the four sub-regions: a) Antarctic Peninsula, b) central Weddell Sea, c) Southern Coast, and d) eastern Weddell Sea.



删除了:

... [1]





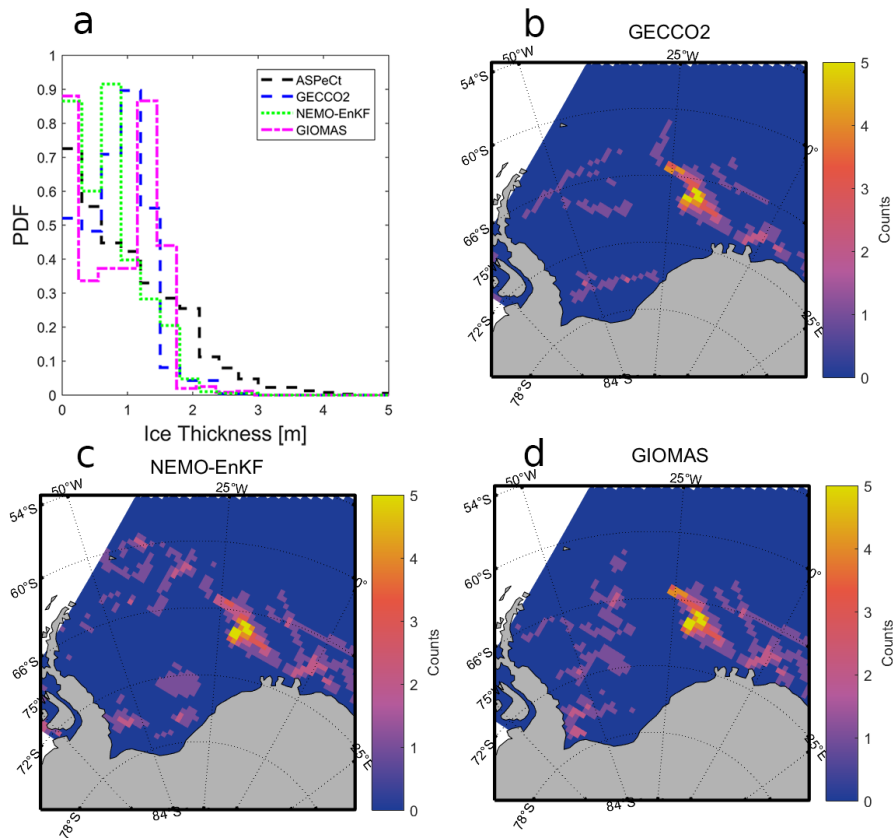


Figure 4: a) Histograms of sea-ice thickness from ASPeCt and three reanalyses. Locations of model sea-ice thickness are shown in b) GECCO2 for a range of 0.8 to 1.4 m, c) NEMO-EnKF for a range of 1.1 to 1.7 m, d) and GIOMAS for a range of 1.1 to 1.7 m.

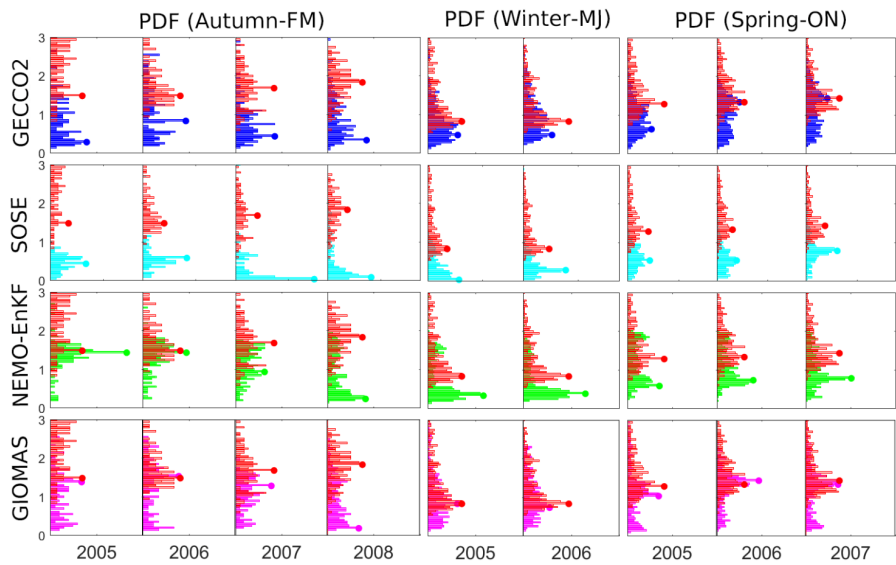
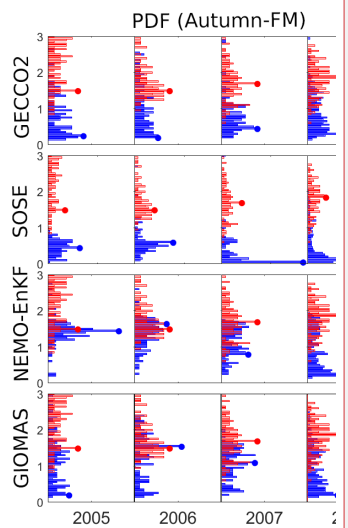


Figure 5: The variation of monthly ice thickness distribution from GECCO2 (blue), SOSE (cyan), NEMO-EnKF (green), GIOMAS (pink) and ICESat-1 (red) in Autumn-FM (left), Winter-MJ (middle) and Spring-ON (right). The colored dots represent the modal ice thickness.

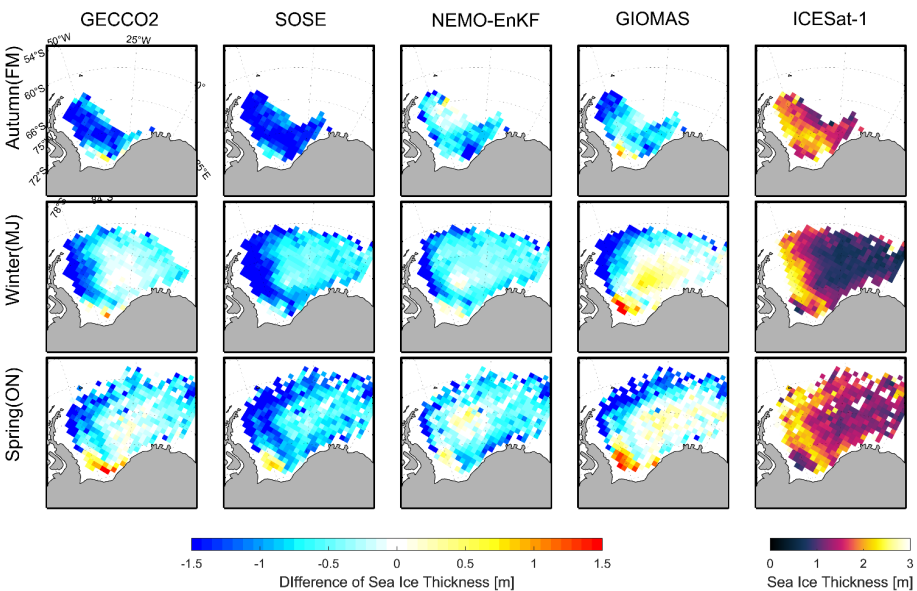


删除了:

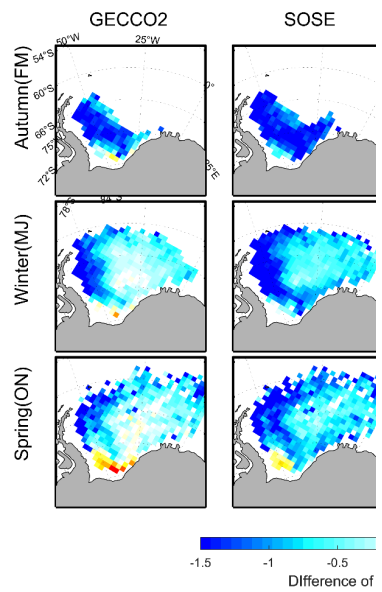
删除了: reanalyses

删除了: blue and red

删除了: of reanalyses (blue) and ICESat-1, respectively



840 **Figure 6: The Differences of sea ice thickness between GECCO2 (first column), SOSE (second column), NEMO-EnKF (third column), and GIOMAS (fourth column) and ICESat-1 in Autumn-FM (first row), Winter-MJ (second row) and Spring-ON (third row). The contours in last column represent the autumn sea-ice thickness of ICESat-1.**



删除了:

删除了:

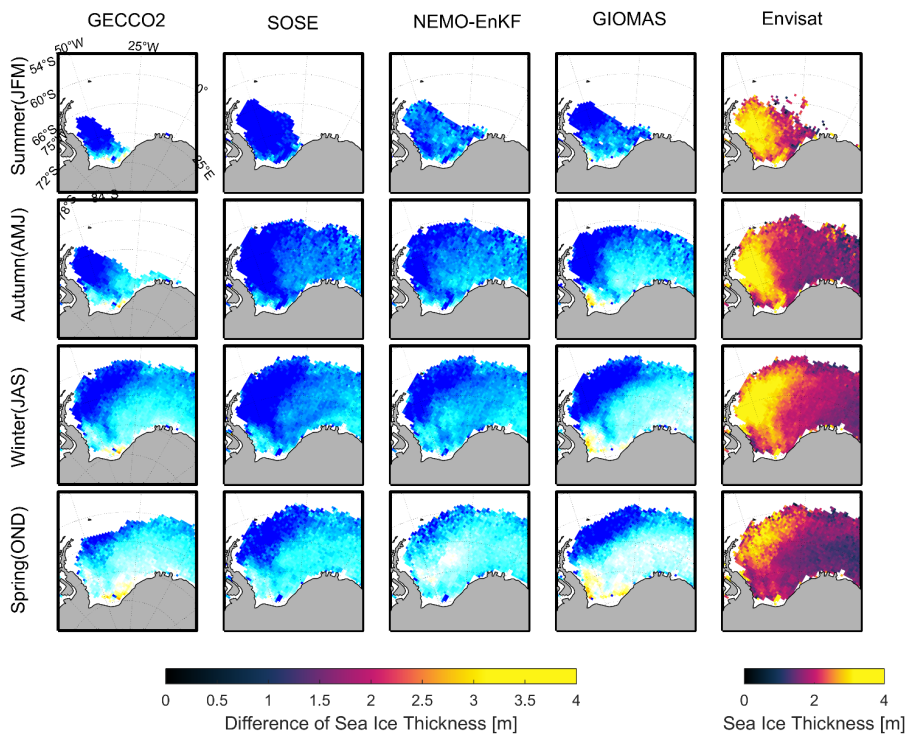
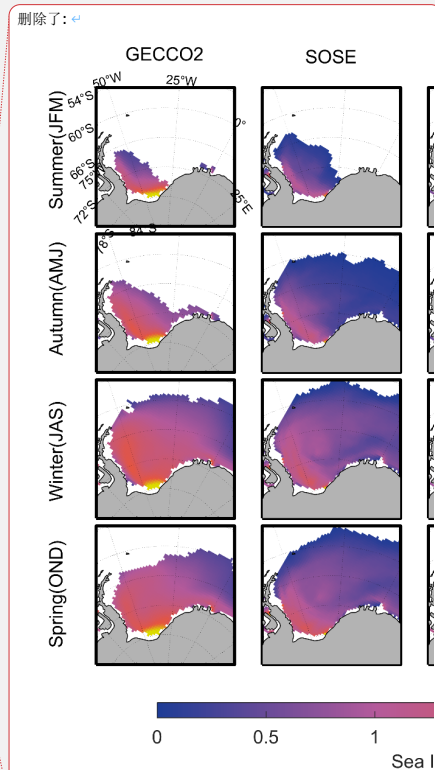


Figure 7: Same as Figure 6 but with respect to Envisat (last column) for the 4-yr period 2005-2008.



删除了: Seasonal mean sea-ice thickness (summer

删除了: spring) from four reanalyses and

删除了:

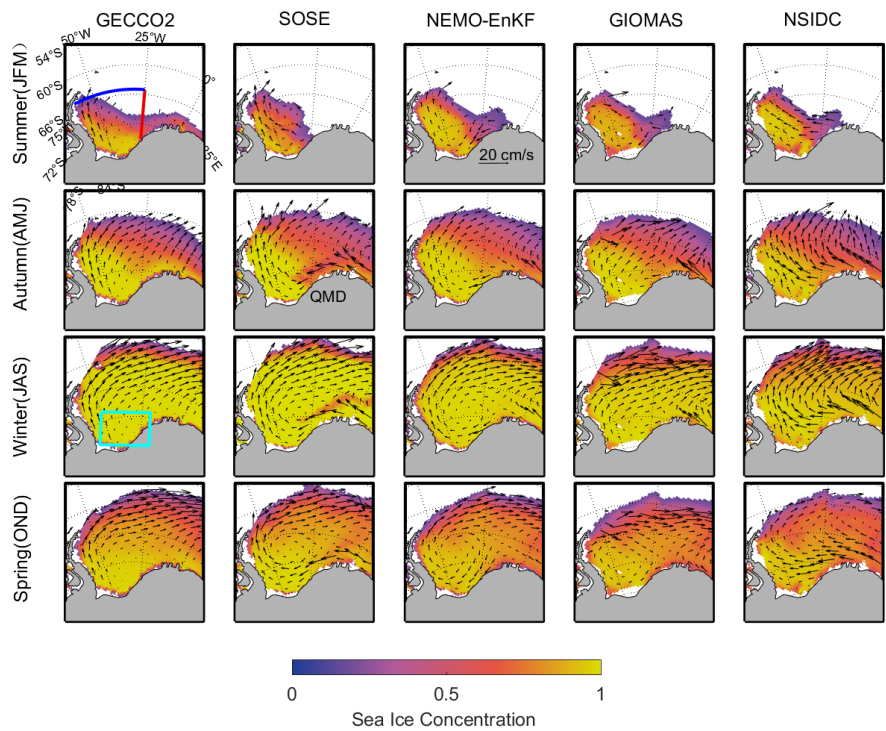


Figure 8: Seasonal mean sea ice concentration (summer to spring) for the 4-yr period 2005-2008. The overlapped vectors represent sea ice velocity from respective data sets.

删除了:

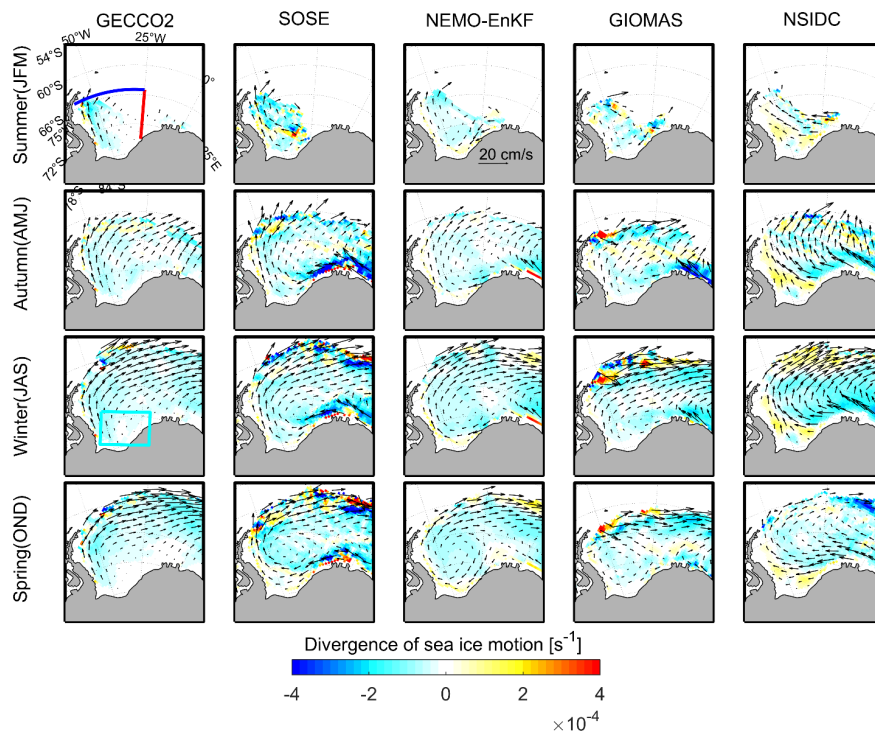


Figure 9: Same as Figure 9 but for divergence of sea ice motion.



Figure 10: a) Monthly sea-ice area flux westward into the southwestern Weddell Sea across the 25°W section and b) area flux northward out of the southwestern Weddell Sea across the 65°S section from 2005-2008.

删除了: fluxed

删除了: fluxed

Table 1: Introduction of the four reanalyses data systems used in this study.

	GECCO2	SOSE	NEMO-EnKF	GIOMAS
period	1948.01-2016.12	2005.01-2010.12	1979.01-2009.11	1979.01-present
domain	Global	South Hemisphere	Global	Global
Spatial resolution	1°×1/3°	1/6°×1/6°	2°×2°	0.8°×0.8°
Vertical levels	50 z-levels	42/52 z-levels	31 z-levels	25 z-levels
Ocean model	MITgcm	MITgcm	NEMO (Madec, 2008)	POP
Ice model	MITgcm embedded sea-ice model (Zhang and Hibler, 1997; Hibler, 1980)	Same as GECCO2	LIM2 (Fichefet and Maqueda, 1997; Timmerman et al., 2005)	TED (Zhang and Rothrock, 2003)
Assimilation method for ocean	4-D Var (adjoint) method	4-D Var (adjoint) method	/	/
Assimilation method for sea-ice concentration	/	4-D Var (adjoint) method	Ensemble Kalman filter (Mathiot et al., 2012)	Nudging (Lindsay and Zhang, 2006)
Sea-ice concentration used for assimilation	/	NSIDC (25 km×25 km)	EUMETSAT-OSISAF (12.5 km×12.5 km)	HadISST (1°×1°)
Atmospheric forcing	NCEP-NCAR daily reanalysis (Kalnay et al., 1996)	adjusted NCEP/adjusted ERA-interim	NCEP-NCAR daily reanalysis (Kalnay et al., 1996)	NCEP-NCAR daily reanalysis (Kalnay et al., 1996)

删除了: 4/5

删除了: 4/5

删除了:

删除了:



Table 2: ICESat-1 measurement periods in this study. Abbreviations given in parentheses in each cell are used throughout the paper to denote the respective period. Spring-ON refers October and November, Autumn-FM refers February and March, Winter-MJ refers May and June, respectively.

Year	Winter-MJ	Autumn-FM	Spring-ON
2004	18 May-21 June (MJ04)	17 February-21 March (FM04)	3 October-8 November (ON04)
2005	20 May-23 June (MJ05)	17 February-24 March (FM05)	21 October-24 November (ON05)
2006	24 May-26 June (MJ06)	22 February-27 March (FM06)	25 October-27 November (ON06)
2007	12 March-14 April (MA07)		2 October-5 November (ON07)
2008	-	17 February-21 March (FM08)	-

Table 3: The mean ice thickness bias, root-mean-square error estimate and correlation between ICESat-1 and four sea-ice thickness reanalyses.

Reanalysis	Mean error (m)	RMSE (m)	Correlation
GECCO2	-0.67	0.55	0.19
SOSE	-0.99	0.51	0.26
NEMO-EnKF	-0.63	0.44	0.54
GIOMAS	-0.52	0.68	0.03

Table 4: Mean sea-ice volume flux biases, root-mean-square error and correlation through the 25°W and 65°S sections between four reanalyses and satellite observations. (Unit: 10<sup>3</sup>km<sup>2</sup>/mon, positive/ negative sign means the outflow and inflow into region outlined by red and blue lines in Figure 10)

	Section 25°W				Section 65°S			
	Net flux	Bias	RMSE	Correlation	Net flux	Bias	RMSE	Correlation
GECCO2	0.95	1.57	1.46	0.67	-3.06	-0.22	1.41	0.86
SOSE	0.30	0.92	1.04	0.85	-3.13	-0.29	2.04	0.68
NEMO- EnKF	0.49	1.12	1.07	0.84	-2.53	0.49	1.62	0.84
GIOMAS	1.28	1.91	1.40	0.75	-0.50	2.34	1.64	0.81

Table 5. Statistics of four reanalyses with respect to ULS and ICESat-1.

	<u>GECCO2</u>	<u>SOSE</u>	<u>NEMO-EnKF</u>	<u>GIOMAS</u>
<u>ULS(RMSE)</u>				
<u>unit: m</u>	<u>0.77</u>	<u>0.72</u>	<u>0.82</u>	<u>0.89</u>
<u>ULS(CC)</u>	<u>0.65</u>	<u>0.77</u>	<u>0.58</u>	<u>0.47</u>
<u>ICESat-1(RMSE)</u>				
<u>unit: m</u>	<u>0.55</u>	<u>0.51</u>	<u>0.44</u>	<u>0.47</u>
<u>ICESat-1(CC)</u>	<u>0.19</u>	<u>0.26</u>	<u>0.54</u>	<u>0.03</u>

第 22 页: [1] 删除了

shiqianouc@outlook.com

2020/9/25 PM1:50:00

✖

第 22 页: [1] 删除了

shiqianouc@outlook.com

2020/9/25 PM1:50:00

✖

第 22 页: [1] 删除了

shiqianouc@outlook.com

2020/9/25 PM1:50:00

✖

第 31 页: [2] 删除了

shiqianouc@outlook.com

2020/9/25 PM1:50:00

▼

▲

第 31 页: [3] 删除了

shiqianouc@outlook.com

2020/9/25 PM1:50:00

✖

第 31 页: [3] 删除了

shiqianouc@outlook.com

2020/9/25 PM1:50:00

✖