

---

**This content about the authors’ response to ‘Inter-comparison of snow depth over Arctic sea ice from reanalysis reconstructions and satellite retrieval’ includes:**

- (1) Reply to referee 1.....2
- (2) Reply to referee 2.....5
- (3) Marked-up manuscript version

The authors would like to thank the referee for the comments and suggestions to our manuscript, especially those involving quantitative results and analyses. We have revised the manuscript to the figures/histogram more clearly. Accordingly, we have made the following replies and the accompanying revisions.

**The referee's comments 1:**

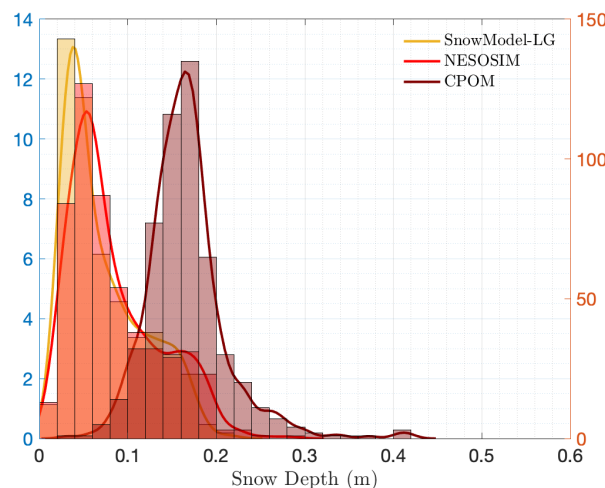
*This is a second round review of the manuscript "Inter-comparison of snow depth over sea ice from multiple methods" submitted by Lu Zhou et al. The topic fits well to The Cryosphere and is of great and timely relevance. The authors have addressed most comments raised by the previous reviewers. I have some more specific and general suggestions.*

*The representation of the results is not always reproducible and accurate. In particular I am not satisfied with the graphical representation of the distributions. The underlying data are obscured by using kernel density smoothing for the histograms. It would be better to also show the underlying histograms. It is unclear how the averaging process of the gridding smears the distributions.*

*The graphical representation of scatter plots (Fig 10 and 13) is not very nice. The frequency of points is not visible. Better show density scatter plots like in <https://doi.org/10.1029/2020GL088970>*

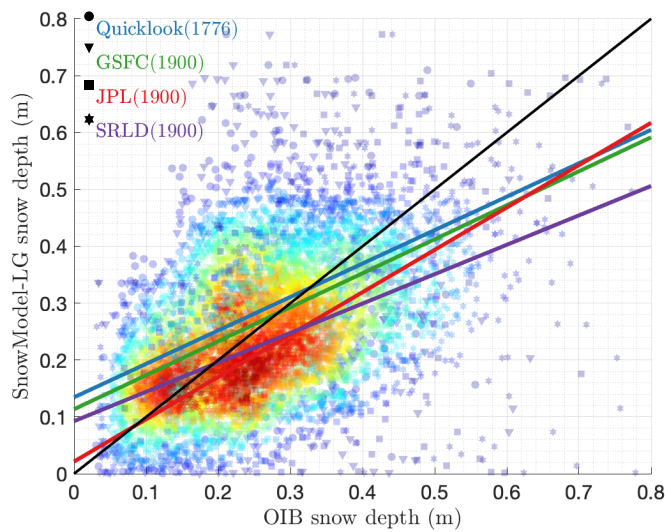
**Reply:**

The authors acknowledge that the histogram could be obscured in the form of kernel density, however, we would like to argue that, by using kernel density function lines we do clearly and precisely show the differences of modes and variabilities among eight products (Figure 2). The following graph contains some products kernel density lines and histogram comparisons as in Figure 2.a. It is clear that the kernel density smooth lines convey the similar knowledge of the original histogram. Therefore, the authors choose kernel density smooth lines to better highlight the differences among the products (instead of raw histograms).



For the scatter plots in Figure 10, thank you for the suggestion. However, it is quite difficult to clearly differentiate the four pairs of comparison in one plot with the scatter density. The following figure is one example of comparing SnowModel-LG and OIB using the scatter densities, with different symbols representing different OIB products. It is quite hard to tell the differences among the four OIB product from the picture, although the linear fittings show remarkably different slopes. For Figure 13.b,

the authors have adopted scatter density to show the frequency of values.



**The referee's comments 2:**

*Numbers are reported not only with the significant digits which pretends too high accuracy, e.g. two modes of 18.0 cm and 32.0 cm. How can the mode be derived with subcentimeter accuracy? Units should not be set in italics.*

**Reply:**

The authors have changed the value in the accuracy of subcentimeter and changed the units in non-italics.,

**The referee's comments 3:**

*The data availability (upon request from the authors) is against the FAIR principle which is adopted by the journal.*

**Reply:**

Thank you for pointing out this. Actually, in this intercomparison work we don't produce any new datasets. Meanwhile, all the public snow products, OIB and buoy data are explicitly covered in the data availability.

**The referee's comments 4:**

*The title is very general. It should include more details about the region (Arctic) and the methods.*

**Reply:**

The authors have changed the title into "Inter-comparison of snow depth over Arctic sea ice from reanalysis reconstructions and satellite retrieval".

**The referee's comments 5:**

*The abstract lacks details about the results. For example, I think the finding that the PMW Bremen and PMW DMI products show essentially no variability/spread compared to the buoy data is important to mention. I can not see the consistency in general structure among different snow depth data sets. Better remove this half-sentence from the abstract.*

**Reply:**

The abstract has been rewritten in the revision paper as following: ‘In this study, we compare eight recently developed snow depth products over Arctic sea ice, which use satellite observations, modeling or a combination of satellite and modeling approaches. These products are further compared against various ground-truth observations, including those from ice mass balance observations and airborne measurements. Large mean snow depth discrepancies are observed over the Atlantic and Canadian Arctic sectors. There is no significant trend in the mean snow depth among all snow products since the 2000s, despite overall shallower snow packs in recent years compared to snow depth climatologies. The delaying in Arctic freeze-up could bring about the differences in early snow accumulation from products against the climatology. Among the products evaluated, the University of Washington (UW) snow depth product produces the deepest spring (March-April) snow packs, while the snow product from the Danish Meteorological Institute (DMI) provides the shallowest spring snow depths. SnowModel-LG and NESOSIM, also provide estimates of snow density and these two show no significant Arctic-wide trend during the 2000s.

Most snow products manifest the significant correlation with Operational IceBridge (OIB) while the correlations are quite low against buoy measurements, with no correlation and very low variability from University of Bremen and DMI products. Inconsistencies in reconstructed snow parameters among the products, as well as differences between in-situ and airborne observations can be partially attributed to differences in effective footprint and spatial/temporal coverage, as well as insufficient observations for validation/bias adjustments. Our results highlight the need for more targeted Arctic surveys over different spatial and temporal scales to allow for a more systematic comparison and fusion of airborne, in-situ and remote sensing observations.'

***The referee's comments 6:***

*Move supplementary plots into the main part if necessary for the understanding.*

**Reply:**

We've moved the original Figure 12 into Supplementary and exchanged the Figure S1, S2 and S3 into the manuscript.



The authors would like to thank the comments on specific term and suggestions on spatial aliasing to our revision. We have updated some figures in the main paper and the supplementary. As follows, we have made replies and the accompanying revisions.

**The referee's comments 1:**

*Review of Zhou, L., Stroeve, J., Xu, S., Petty, A., Tilling, R., Winstrup, M., Rostosky, P., Lawrence, I. R., Liston, G. E., Ridout, A., Tsamados, M., and Nandan, V.: Inter-comparison of snow depth over sea ice from multiple methods, The Cryosphere Discuss., <https://doi.org/10.5194/tc-2020-65>, in review, 2020.*

*This is a very timely paper on inter-comparison of snow-depth products derived using a variety of methods. Snow depth on sea ice is a hot research topic and this paper for the first time pulls together and inter-compares many different methods. The paper is very thorough in its comparisons and certainly deserves to be published asap. The paper has been reviewed already and I am only seeing this 2nd version, so I have only a few comments:*

*Section 2 and specifically 2.3.2: The term resolution is not used properly. On numerous occasions in the text, grid spacing is mis-interpreted as resolution. Please fix. Especially L250 and L266 but also L233-234. In products where low frequency PMR data are used, the spatial resolution is typically 30-50+ kilometers. Grid spacing can be much finer, but that does not mean resolution.*

**Reply:**

The authors thank reviewer for pointing out the difference between ‘grid spacing’ and ‘resolution’. In Section 2, the products are described in different grids but not the resolution, especially for satellite-based products. The authors have revised the term “resolution” and “grid spacing” fits their situation and all revisions are marked out in **red**.

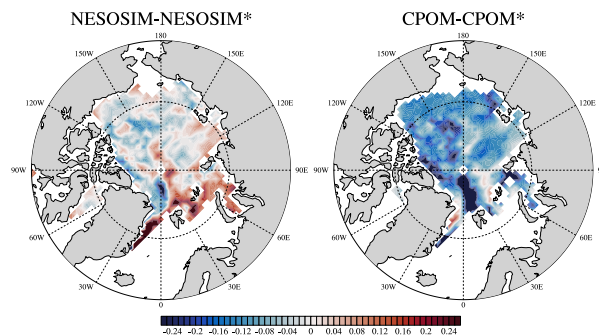
**The referee's comments 2:**

*L310-315: Discuss if the difference observed between reanalysis-based products over MY-ice can be explained by their different snow depth initialization procedures.*

**Reply:**

The differences among the reanalysis-based products especially over MYI are affected by many factors not only initial snow conditions, but also reanalysis datasets used, as well as the sea ice tracking algorithm they adopted. For SnowModel-LG, snowfall is from MERRA2, while NESOSIM uses the median value from MERRA, ERA-I, JRA55 and ASR reanalyses, and CPOM and UW both use ERA-I snowfall. The differences contributed from snow accumulation can be easily qualitative detected from the Eulerian perspective. The followed figure shows the differences between NESOSIM/CPOM products and NESOSIM/CPOM initial snow condition + SnowModel-LG accumulation (denoted as NESOSIM\*/CPOM\*) in March-April in 2015. Based on the same initial condition for NESOSIM and CPOM, this differences directly manifest the large discrepancies in snow accumulation among SnowModel-LG, NESOSIM and CPOM, especially near the north of Greenland and the North Atlantic sector. Being consistent with Figure 7, CPOM shows overall less snow accumulation

than in SnowModel-LG. For revision, the authors would emphasize that the discrepancies among reanalysis-based products are the combined effect of several factors, on Line 295-300 of the manuscript and marked in red.



**The referee's comments 3:**

L416: Note that SnowModel-LG has denser AND thinner snow than e.g. NESOSIM. This may correspond to very similar SWE. This observation could be included in this section.

**Reply:**

The manuscripts mentioned the broadly equivalent SWE between SnowModel-LG and NESOSIM in Line 406, thank you for pointing out this.

**The referee's comments 4:**

Section 4.3 You should also discuss and relate/refer to: Geiger, C., Müller, H., Samluk, J., Bernstein, E., & Richter-Menge, J. (2015). Impact of spatial aliasing on sea-ice thickness measurements. *Annals of Glaciology*, 56(69), 353-362. doi:10.3189/2015AoG69A644

**Reply:**

The authors sincerely thank referee's suggestion and have added this discussion in Section 4.3, marked out in red.

**The referee's comments 5:**

Just a suggestion: I would consider leaving out the comparison with buoy data since it does not bring any further insight. Alternatively move it to supplementary material and consider including some of the Suppl. Material in the main paper instead. Especially figures S1, S2 and S3 I believe should be in the main paper.

**Reply:**

The authors would like to emphasize that, the comparison with buoy data highlights the importance of spatial representation problem, despite that the accumulation comparison brings about very limited information. Therefore, the snow accumulation comparison between buoy and the products (Figure 12) are moved into the Supplementary and accordingly, original figure S1, S2 and S3 are moved into the main manuscript.

**The referee's specific comments:**

L20: observations. -> observations including the development of new products.

----Corrected

L39: lln -> ln

----Corrected

L118: *within Arctic basin -> within the Arctic basin*

----Corrected

L173: *consistence -> consistent*

----Corrected

L325: *snowpack is still significant -> the snowpack is still significantly*

----Corrected

L343: *discrepancies -> differences*

----Corrected

L362-63: *W99 snow accumulates -> W99 accumulates*

----Corrected

L376: *2.0 cm to 3.0 cm -> 2.0 to 3.0 cm*

----Corrected

L406: *in 8 -> in Figure 8*

----Corrected

L423: *larger spatial scales -> coarser spatial scales*

----Corrected

L442: *"best against ( $R^{*2}$ ", some text seems to be missing here*

----Corrected

L498: *n -> ln*

----Corrected

L539: *percipitation -> precipitation*

----Corrected

# Inter-comparison of snow depth over Arctic sea ice from reanalysis reconstructions and satellite retrieval

Lu Zhou<sup>1</sup>, Julianne Stroeve<sup>2,3,4</sup>, Shiming Xu<sup>1,5</sup>, Alek Petty<sup>6,7</sup>, Rachel Tilling<sup>6,7</sup>, Mai Winstrup<sup>8,9</sup>, Philip Rostosky<sup>10</sup>, Isobel R. Lawrence<sup>11</sup>, Glen E. Liston<sup>12</sup>, Andy Ridout<sup>2</sup>, Michel Tsamados<sup>2</sup>, and Vishnu Nandan<sup>3</sup>

<sup>1</sup>Ministry of Education Key Laboratory for Earth System Modeling, Department of Earth System Science, Tsinghua University, Beijing, China

<sup>2</sup>Centre for Polar Observation and Modelling, Earth Sciences, University College London, London, UK

<sup>3</sup>Centre for Earth Observation Science, University of Manitoba, Winnipeg, Canada

<sup>4</sup>National Snow and Ice Data Center, University of Colorado, Boulder, CO, USA

<sup>5</sup>University Corporation for Polar Research, Beijing, China

<sup>6</sup>NASA Goddard Space Flight Center, Greenbelt, MD, USA

<sup>7</sup>Earth System Science Interdisciplinary Center, University of Maryland, College Park, MD, USA

<sup>8</sup>DTU Space, Technical University of Denmark, Lyngby, Denmark

<sup>9</sup>Danish Meteorological Institute (DMI), Copenhagen, Denmark

<sup>10</sup>University of Bremen, Institute of Environmental Physics, Bremen, Germany

<sup>11</sup>Centre for Polar Observation and Modelling, University of Leeds, UK

<sup>12</sup>Colorado State University, Cooperative Institute for Research in the Atmosphere (CIRA), Fort Collins, CO, USA

**Correspondence:** Julianne Stroeve (stroeve@nsidc.org)

## Abstract.

In this study, we compare eight recently developed snow depth products over Arctic sea ice, which use satellite observations, modeling or a combination of satellite and modeling approaches. These products are further compared against various ground-truth observations, including those from ice mass balance observations and airborne measurements. Large mean snow depth discrepancies are observed over the Atlantic and Canadian Arctic sectors. The differences between climatology and the snow products early in winter could be in part a result of the delaying in Arctic ice formation that reduces early snow accumulation. Besides, late winter snow accumulation rate is quite slower in the climatology than in the newly products in spite of the overall shallower spring snow among all products. Among the products evaluated, the University of Washington (UW) snow depth product produces the deepest spring (March-April) snow packs, while the snow product from the Danish Meteorological Institute (DMI) provides the shallowest spring snow depths. Most snow products show significant correlation with snow depths retrieved from Operational IceBridge (OIB) while correlations are quite low against buoy measurements, with no correlation and very low variability from University of Bremen and DMI products. Inconsistencies in reconstructed snow depth among the products, as well as differences between these products and in-situ and airborne observations can be partially attributed to differences in effective footprint and spatial/temporal coverage, as well as insufficient observations for validation/bias adjustments. Our results highlight the need for more targeted Arctic surveys over different spatial and temporal scales to allow for a more systematic comparison and fusion of airborne, in-situ and remote sensing observations.

# 1 Introduction

Snow on sea ice plays an important role in the Arctic climate system. Snow provides freshwater for melt pond development and when the melt ponds drain, freshwater to the upper ocean (Eicken et al., 2004). In winter, snow insulates the underlying sea ice cover, reducing heat flux from the ice-ocean interface to the atmosphere and slowing winter sea ice growth (Sturm and Massom, 2017). Snow also strongly reflects incoming solar radiation, impacting the surface energy balance and under-ice algae and phytoplankton growth (Mundy et al., 2009). Furthermore, sea ice thickness cannot be retrieved from either laser or radar satellite altimetry without good knowledge of both the snow depth and snow density (Giles et al., 2008; Kwok, 2010; Zygmuntowska et al., 2014).

Despite its recognized importance, snow depth and density over the Arctic Ocean remain poorly known. Most of our understanding comes from measurements collected from Soviet North Pole drifting stations and limited field campaigns. The Warren et al. (1999) climatology and the recently updated Shalina and Sandven (2018) climatology, hereafter *W99* and *SS18*, respectively, have provided a basic understanding of the seasonally- and spatially-varying snow depth distribution over Arctic sea ice. However, these data were collected from stations between 1950 and 1991 and were largely confined to multi-year ice (MYI) in the central Arctic. Hence, they are not representative of the Arctic-wide snow cover characteristics of recent years (Webster et al., 2014). Today, the Arctic Ocean has transitioned from a regime dominated by thicker, older MYI to one dominated by thinner and younger first-year ice (FYI) (Maslanik et al., 2007, 2011). In addition, the length of the ice-free season has increased (delayed freeze-up and early melt-onset/break up), reducing the amount of time over which snow can accumulate on the sea ice (Stroeve and Notz, 2018). In response to this data gap, several groups are working to produce updated assessments of snow on sea ice using a variety of techniques.

From satellites, several studies have used passive microwave brightness temperatures to retrieve snow depth, on FYI (Markus et al., 2011) and MYI (Rostosky et al., 2018; Kilic et al., 2019; Braakmann-Folgmann and Donlon, 2019; Winstrup et al., 2019). Other studies have modelled snow accumulation over sea ice using various atmospheric reanalysis products as input (Blanchard-Wrigglesworth et al., 2018; Petty et al., 2018; Liston et al., 2020; Tilling et al., In preparation). Some promise has also been shown in mapping snow depth by combining satellite-derived radar freeboards from two different radar altimeters (Lawrence et al., 2018; Guerreiro et al., 2016) and from active - passive microwave satellite synergies (Xu et al., In preparation). With the launch of ICESat-2, additional possibilities exist to combine radar and lidar altimeters to directly retrieve snow depth (Kwok and Markus, 2018). Such approaches are paving the way for proposed future satellite missions (i.e., ESA's CRISTAL (Kern et al., 2019)).

In recognition of the numerous new snow data products available, it is timely to provide an inter-comparison of these products so that recommendations can be made to the science community as to which data product best suits their needs. Towards this end, we provide a comprehensive intercomparison between eight new snow depth products and evaluate them against various in situ observations and different NASA's Operation IceBridge (OIB) snow depth products. Since these datasets do not have

50 common spatio-temporal resolutions, we limit our comparisons to monthly averages between October-November (from now referred to as the autumn period) and March-April (spring period) from 2000 to 2018 and also limit our region to the Arctic basin (i.e., we exclude regions such as the Sea of Okhotsk, Bering Sea, Baffin Bay/Davis Strait, and the East Greenland Sea).

The paper is organized as follows. The next section describes the details of each snow product, snow depth observations and climatology data used for comparison. Comparisons among snow products and between climatologies are shown in Section 3. Section 4 discusses validation against OIB/buoy measurements and representation issues. The conclusion and further implications for snow are found in Section 5.

## 2 Data and methods

In this section, we introduce: (1) observational datasets of snow depth used for validation/comparison, (2) climatological snow depth products, (3) passive and active microwave snow depth products and (4) reconstructed snow depth estimates from models. The inter-comparison among all snow products and comparison between these products and measurements are based on their native spatial and temporal resolution. However, the spatial and temporal resolution varies considerably between products. Details on resolution and grids are provided in Table 1.

An additional comparison was made between OIB and the different snow depth products at the coarsest spatial ( $100 \times 100$  km) grid and temporal (monthly) resolution. Below we briefly describe each data set. We refer the reader to the references for each data product for more detailed information on the individual algorithms.

### 2.1 Measurements used for comparison

#### 2.1.1 In situ Observations

Ice Mass Balance Buoys (IMBs) are designed to provide snow depth and ice thickness information, and have generally been deployed within undeformed MYI (Richter-Menge et al., 2006). In this study, we use snow depth measurements from IMBs deployed by US Army Cold Regions Research and Engineering Laboratory (CRREL). Each buoy is equipped with acoustic sounders above and below the ice with an accuracy 5 mm for depth measurements (Richter-Menge et al., 2006). Following Perovich et al. (2009), snow depth measurements greater than 2 m or less than 0 m are removed. In total, 58 CRREL buoy tracks are used between 2010 and 2015 (available at: <http://imb-crrel-dartmouth.org>). To align the IMB data with the daily and monthly snow depth products, as well eliminate effects from missing measurements, we average the IMB data into monthly averages after first creating daily averages from the four-hourly observations. See, Table S1 for a listing of buoys used, along with their dates/time periods of operation.

Snow buoys have been deployed by the Alfred Wegener Institute (AWI) since 2010 (Nicolaus et al., 2017), and provide snow depth estimates from 4 separate snow depth pingers. These are averaged together to provide one snow depth value at each buoy location. Here, we use snow depths from 28 AWI snow buoys between 2013-2017 (accessible at: <http://data.meereisportal.de>),

80 which are also listed in Table S1. Similar to the CREEL buoys, the snow depths are first averaged into daily averages before monthly averages are derived.

### 2.1.2 OIB Airborne observations

Since 2009, NASA Operation IceBridge (OIB) has conducted airborne profiling of Arctic sea ice every spring, generally across the western Arctic. Snow depth observations are derived with an ultra-wideband quicklook snow radar (Paden et al., 2014),  
85 capable of retrieving snow depth from the radar echoes from both air-snow and snow-ice interfaces (Kurtz and Farrell, 2011). Snow depth can then be retrieved through retracking and compensation from the radar echogram. The OIB campaigns provide unique large-scale and high spatial resolution observations, however the swath is limited due to the airborne nature of the measurements. Furthermore, most flight tracks cover a limited area from the north of Greenland towards Alaska, and data covers only a limited time period, namely March and April.

90 Several algorithms have been developed to derive snow depth from this radar system (Kwok et al., 2017). While different algorithms show general agreement in regional snow depth distributions, larger interannual variability is observed among these algorithms than found in *W99* and mean snow depth differences result from different ways of detecting the snow-air and snow-ice interfaces from the radar returns (Kwok et al., 2017). Taking these differences into consideration, we use four OIB snow depth products from: (1) Sea Ice Freeboard, Snow Depth, and Thickness data Quicklook product (quicklook) available from  
95 NSIDC website and examined in King et al. (2015) and Kwok et al. (2017); (2) NASA Goddard Space Flight Center (GSFC) (Kurtz et al., 2013, 2015); (3) Jet Propulsion Laboratory (JPL) (Kwok and Maksym, 2014) and; (4) snow radar layer detection (SRLD) (Koenig et al., 2016). These four OIB products overlap only in 2014 and 2015, and thus we limit our comparisons with OIB-derived snow depths to those two years. Each OIB product is first regridded to the  $100 \times 100$  km polar stereographic projection, and then all daily flight tracks are averaged together to produce monthly mean OIB snow depths (March or April)  
100 for each year. We also compare snow reconstructions on their native spatio-temporal resolution with OIB measurements in the Supplementary Material.

## 2.2 Snow depth climatologies

In addition to the airborne and in-situ snow measurements, we use two types of conventional large-scale snow products that are often used in the derivation of sea ice thickness from radar or laser altimetry (Ricker et al., 2014; Kwok and Cunningham,  
105 2008), the Warren et al. (1999) (*W99*) and the Shalina and Sandven (2018) (*SS18*) climatologies. *W99* provides distributions of snow depth and density for each calendar month by assembling “North Pole” (NP) drifting station observations from the 1950s to 1990s. A two-dimensional quadratic function is adopted to fit the measurements to the Arctic basin. *W99* also provides a climatology of snow water equivalent (SWE) from January to December. This is derived using snow depths and densities measured along snow lines, and if unavailable, Arctic-mean density for that month is used. Like snow depth, a two-dimensional  
110 quadratic fit was applied to the SWE data.

*SS18* further combines NP data (as in *W99*) with additional snow data from the Soviet airborne expeditions (Sever) obtained primarily during the 1960s to 1980s to produce spring (March-April-May) snow depth fields. Since the aircraft would land on level FYI, *SS18* is not limited to MYI in the central Arctic (as *W99*), but includes FYI in the Eurasian seas as well (Shalina and Sandven, 2018). The spatial **grid spacing** of the *SS18* climatology is  $100 \times 100$  km within the Arctic basin.

## 115 **2.3 Satellite- and model-based snow depth products**

Eight snow depth data sets are included in this inter-comparison study (Table 1). They mainly fall into 2 categories: (1) snow reconstruction using atmospheric reanalysis data as input to a snow accumulation model together with snow redistribution by sea ice drift; (2) snow depth retrieved from satellite data, including passive microwave-based snow retrieval, blended satellite-derived radar sea ice freeboards at two different frequencies, and active-passive satellite (combining CryoSat-2 and SMOS) data synergy. Here, snow depth is defined as the average thickness of snow over the entire grid-cell area for eight products, not just over the sea ice-covered fraction.

The first category includes four different new products: the distributed snow evolution model (SnowModel-LG) (Liston et al., 2020; Stroeve et al., 2020); NASA Eulerian Snow on Sea Ice Model (NESOSIM) (Petty et al., 2018); the Centre for Polar Observation and Modelling (CPOM) model (Tilling et al., In preparation); and the Lagrangian Ice Tracking System for snowfall over sea ice from University of Washington (UW) (Blanchard-Wrigglesworth et al., 2018). The second category includes the following snow depth products: the products from the University of Bremen (PMW Bremen) (Rostosky et al., 2018) and the Danish Meteorological Institute (PMW DMI) (Winstrup et al., 2019) rely on satellite passive microwaves at multiple frequencies/polarizations for their snow depth retrieval algorithms. The dual-altimeter snow thickness (DuST) product (Lawrence et al., 2018) is derived from combining data from CryoSat-2 (Ku-band) and AltiKa (Ka-band) satellite radar altimeters. The DuST product also combines Envisat (radar altimeter: Ku-band) and ICESat (laser altimeter) data during their period of overlap. Finally, Department of Earth System Science, Tsinghua University (DESS) combines Ku-band altimeter (CryoSat-2) and L-band passive microwave radiometer (SMOS) to retrieve snow depth and sea ice thickness based on two physical models (Xu et al., In preparation). Each approach uses vastly different methodologies and provide snow information at different spatial and temporal resolutions.

### 135 **2.3.1 Reanalysis-based snow depth reconstruction**

#### **SnowModel-LG**

SnowModel-LG is a prognostic snow model originally developed for terrestrial snow applications, now adapted for snow depth reconstruction over sea ice using Lagrangian ice parcel tracking (Liston et al., 2020). Physical snow processes are included such as blowing snow redistribution and sublimation, density evolution and snow pack metamorphosis. SnowModel-LG is used in a Lagrangian framework to redistribute snow around the Arctic basin as the sea ice moves. Tracking begins on August 1st 1980 assuming snow-free initial conditions, and accumulates snow until July 31st of the next year. On July 31st, any remaining snow that is isothermal and saturated with meltwater becomes superimposed ice and is no longer identified as ‘snow’. SnowModel-



LG is the only data product that includes snow depth during the melt season. The essential inputs to this data product are atmospheric reanalysis estimates of precipitation, 2m air temperature, wind speed and direction, and weekly ice motion vectors from NISDC (Stroeve et al., 2020). Weekly ice motion vectors are linearly interpolated to daily resolution. Output relevant to this study are the snow depth and bulk snow density (Liston et al., 2020), and are provided on a  $25 \times 25$  km EASE grid. A recent study (Stroeve et al., 2020) evaluated SnowModel-LG using NASA MERRA2 (Gelaro et al., 2017) and ERA5 atmospheric reanalysis fields (Hersbach and Dee, 2016) against several data sets including OIB, IMBs, MagnaProbe and passive microwave estimates. They found that the model captured observed spatial and seasonal variability in snow depth accumulation, while also showing statistically significant declines in snow depth since 1980 during the cold season. The temporal resolution of SnowModel-LG is daily between 1st August 1980 and 31st July 2018.

## NESOSIM

The NASA Eulerian Snow On Sea Ice Model (NESOSIM) is a three-dimensional, two-layer (vertical), Eulerian snow budget model (Petty et al., 2018). NESOSIM includes two snow layers: old compacted snow and new fresh snow. Wind-packing and snow loss to the leads are included, and were used to calibrate NESOSIM with historical snow depth and density observations from the NP drifting station data. NESOSIM was run using several atmospheric reanalyses, including ERA-I (Dee et al., 2011), JRA55 (Ebata et al., 2011) and MERRA (Rienecker et al., 2011) and a median of these daily reanalysis snowfall estimates is used in this study. The model is also forced with near-surface wind fields from ERA-I, NSIDC Polar Pathfinder sea ice drift vectors (Tschudi et al., 2019) and Bootstrap passive microwave ice concentrations (Comiso, 2017). Snow accumulation is initialized at the end of summer (default of August 15th) and run until the following spring (May 1st). To initialize snow depth in mid-August, NESOSIM linearly scales the August snow depth in the W99 climatology based on the ratio between duration of the summer melt season and the climatological summer duration. The duration of the summer melt season is defined based on ERA-I air temperatures, and climatological summer melt duration is from Radionov et al. (1997). Snow depth is further equally divided into the ‘old’ and ‘new’ snow layers, with snow transferred from the ‘new’ to the ‘old’ snow layer based on the wind conditions. Snow is then accumulated and evolves dynamically with sea ice motion through a divergence-convergence and an advection term. Daily snow depth (mean depth over the sea ice fraction) and snow density and snow volume (per unit grid-cell) are available from August 15th to April 30th for each year, at a spatial **grid spacing** of  $100 \times 100$  km in a polar stereographic projection. NESOSIM provides the effective snow depth of the ice covered fraction, and the mean grid-cell snow depth. In order to be consistent with snow depth estimates from the other methods, we will use the latter in this study.

## CPOM

The CPOM snow depth product (Tilling et al., In preparation) is initialized on a Lagrangian grid with a spacing of 10 km running from 40°N to the pole. Snow accumulation begins on 15th August each year using the W99 August snow depth and a fixed density of  $350 \text{ kg/m}^3$  on all ice covered (sea ice concentration > 15%) grid points. This initial snow layer is kept separated from any accumulated snow after the model has started running. The model then steps daily through the winter,

175 accumulating snow in SWE. Snow parcels are moved using NSIDC Polar Pathfinder ice motion data, and any parcels moving outside the ice-covered region are removed. New parcels covered by expansion of the ice-covered region become active with no initial snow. Where the 2 m ERA-I air temperature is above freezing point, the daily ERA-I SWE of snowfall is added to the already accumulated column. A fraction of the accumulated snow is removed when the wind speed exceeds  $5\text{ m s}^{-1}$  using a function proportional to wind speed and lead fraction (see (Schröder et al., 2019), table 1). Finally, the total column  
 180 of accumulated SWE at each Lagrangian point is converted to snow depth using a daily snow density function constructed in a similar way to Kwok and Cunningham (2008), which is added to the initial snow layer (if present). The irregularly spaced snow data from the Lagrangian grid are re-gridded onto a regular  $10\text{ km}^2$  polar stereographic projection using an averaging radius of  $50\text{ km}$  to give a snow depth map for each day of winter.

## UW

185 The last reanalysis-based snow reconstruction is from University of Washington (UW). The algorithm accumulates cold-season snowfall along sea-ice drift trajectories using 12-hourly snowfall from ERA-I, weekly NSIDC sea ice vectors and weekly-averaged NOAA-NSIDC sea ice concentration (Meier et al., 2013). A Lagrangian Ice Tracking System (LITS) (DeRepentigny et al., 2016) is used to backward track each grid point from the first week of April to the last week of the previous August (Blanchard-Wrigglesworth et al., 2018). This tracking system has a claimed accuracy of  $50\text{ km}$  after 6 months of tracking  
 190 (DeRepentigny et al., 2016). Once the 6-month trajectories are established for each ice parcel, the algorithm accumulates weekly averaged snowfall along each parcel trajectory. A sea ice concentration correction is further imposed every week (one time-step). Specifically, if the ice concentration drops below 15%, the accumulation stops and the trajectory is ended at the previous time-step. Only monthly snow depths in April are available for the period from 1980 to 2015. Spatial **grid spacing** of the data set is  $75 \times 75\text{ km}$  on a polar stereographic projection.

## 195 2.3.2 Satellite-based snow depth retrieval

### DuST

Lawrence et al. (2018) derives snow depth by utilizing the difference in freeboards retrieved from radar altimeter satellites operating at different frequencies. Specifically, satellite data from ESA's CryoSat-2 (CS-2, Ku-band radar satellite altimeter operational since 2010) and CNES/ISRO's AltiKa (Ka-band radar satellite altimeter, 2013-present) are used. The deviation of  
 200 each satellite's return from its "expected" dominant scattering horizon (the snow surface for Ka-band and the ice/snow interface for Ku-band) is quantified using independent snow and ice freeboards from OIB. Using a spatially variable correction function, AltiKa and CS-2 freeboards are calibrated to the snow surface and snow/ice interfaces respectively, allowing snow depth to be estimated as the difference between the two. A caveat to the approach is that since OIB data are only available during March/April and cover limited regions of the Arctic, the calibration of the CS-2 and AltiKa freeboards with OIB may not be  
 205 valid during other months and/or regions. The same methodology has also been applied to ICESat and Envisat satellites, whose active periods overlap between 2003 and 2009, and these data are used to extend the snow depth product further back in time.

This Dual-altimeter Snow Thickness (DuST) product produces: (1) monthly snow depth maps from October to April during CS-2/Altika period (2013-present), and (2) bi-monthly annual snow depth maps (March-April or October-November) during the ICESat-Envisat period (2003-2008). For both time-periods, the snow depth is gridded on a  $1.5^\circ$  longitude  $\times$   $0.5^\circ$  latitude grid. The data is limited to below  $81.5^\circ\text{N}$  due to the upper latitude of AltiKa/Envisat.

### PMW Bremen

The University of Bremen's PMW snow depth product described in Rostosky et al. (2018) on FYI is available during the AMSR-E/2 period. The algorithm is adapted from Markus and Cavalieri (1998), which was derived from a series of passive microwave sensors, such as the Scanning Multichannel Microwave Radiometer (SMMR) (from 1979), and continuing on through the Special Sensor Microwave Imager (SSM/I) and SSM/I Sounders (SSMIS). The latter algorithm computes the spectral gradient ratio between 18.7 and 37 GHz vertical polarization brightness temperatures (Tbs) to generate 5-day averaged snow depth estimations over FYI (Markus et al., 2011). This algorithm has limitations for wet snow spring and multiyear ice (Comiso et al., 2003) and large sensitivity to surface roughness (Stroeve et al., 2006). Snow depths over smooth FYI were found to be accurate in comparisons with OIB during 2009 and 2011 ( $RMSE < 0.06\text{ m}$  over a shallow snow cover), while significant biases were found over rougher FYI or MYI (Brucker and Markus, 2013).

Rostosky et al. (2018) further extends the approach of Markus and Cavalieri (1998) to also include snow depth over MYI using the lower frequencies of  $6.9\text{ GHz}$  from the NASA Advanced Microwave Scanning Radiometer AMSR-E and the JAXA Global Change Observation Mission-Water (GCOM-W) AMSR2 instrument. We refer to the resulting product as the PMW Bremen snow depth product. The gradient ratio between vertical polarized brightness temperatures (Tbs) at  $18.7\text{ GHz}$  and  $6.9\text{ GHz}$  helps to mitigate the retrieval sensitivity problems over MYI during March and April. Specifically, robust linear regressions were derived based on fitting 5 years' (2009, 2010, 2011, 2014, and 2015) NOAA Wavelet ("WAV") Airborne Snow Radar-Snow Depth on Arctic Sea Ice Data Set (Newman et al., 2014) and the polarized Tb gradient ratio. Snow depths over different ice types were fitted separately, using OSI-SAF sea ice type map to distinguish between FYI and MYI. No evaluation/validation were performed in regions outside of OIB measurements. The spatial grid spacing is similar to typical passive microwave measurements, at  $25 \times 25\text{ km}$  in the polar stereographic projection. Daily snow depth maps for winter months from November to April since 2002 are available. It should be noted that snow depth over MYI is only available during March and April when the OIB data were available to constrain the model. Snow depth uncertainty is estimated to be between 0.1 and 6.0 cm over FYI and between 3.4 and 9.4 cm over MYI.

### PMW DMI

In Winstrup et al. (2019), snow depth is derived by a random forest regression model based on passive microwave Tbs from AMSR-E and AMSR2. The model was trained using a Round Robin Data Package (Pedersen et al., 2018), with OIB campaigns snow thicknesses provided by NSIDC including IDCSI4 and quicklook products and collocated brightness temperatures. Training was performed on 2/3 of the data set, using OIB data from the period April 2009-March 2014, leaving the remaining OIB

data (period: March 2014-April 2015) for validation purposes. Specifically, multi-channel Tbs ranging from C-band ( $6.9\text{ GHz}$ ) to  $89\text{ GHz}$  are included as predictors, at both vertical and horizontal polarization. The random forest consists of 500 regression trees, each derived from bootstrapping the input data, and using a maximum limit of five predictors for each leaf in the regression trees. The most important predictors, as found by the algorithm, were the following channels:  $18.7\text{ GHz}$  (27%),  $23.8\text{ GHz}$  (17%) and  $10.7\text{ GHz}$  (11%), all vertical polarizations. Derived snow depths were found to be in good agreement with the OIB data retained for validation, with an average error of  $0.05\text{ m}$ , and an accuracy of 78.7%. The passive microwave snow depth product from the Danish Meteorological Institute (PMW DMI) constructs spring-time (March and April) daily snow depth between 2013 and 2018 at  $25\times 25\text{ km}$  spatial **grid spacing** on the EASE-Grid 2.0 (Brodzik et al., 2012).

## DESS

The Department of Earth System Science in Tsinghua University (DESS) algorithm retrieves both sea ice thickness and snow depth simultaneously by using sea ice freeboard from CS2 and L-band ( $1.4\text{ GHz}$ ) Tbs from the Soil Moisture and Ocean Salinity (SMOS) satellite (Xu et al., In preparation). The active period of these two satellites are both from 2010 to present. Specifically, this algorithm combines a hydrostatic equilibrium model and improved L-band radiation model (Xu et al., 2017). Sea ice freeboard is converted to sea ice thickness based on hydrostatic equilibrium (Laxon et al., 2003), using assumptions on snow, ice and water densities. Tbs from SMOS can be used to retrieve thin sea ice thickness (Kaleschke et al., 2012) and snow depth over thick ice (Maaß et al., 2013). The L-band radiation model is further improved by adding vertical structure of temperature and salinity in sea ice and snow (Zhou et al., 2017). In order to obtain the missing measurements resulting from limited upper latitude in the SMOS satellite, L-band Tbs spanning inclination angles from  $0^\circ$  to  $40^\circ$  and from  $85^\circ\text{N}$  to  $87.5^\circ\text{N}$  is approximated using Tbs of all frequencies in AMSR-E and AMSR2 through a back-propagation machine learning process. By combining the two observational datasets, the uncertainties in both sea ice thickness and snow depth are largely reduced. Unlike optimal interpolation-based sea ice thickness synergy, as applied in Ricker et al. (2017), the uncertainty in ice thickness is reduced through an explicitly retrieved snow depth.

Both sea ice thickness and snow depth are available in the DESS product. Here we use the monthly snow depth maps available for March of each year since 2011, which are provided at a spatial **grid spacing** of  $12.5\times 12.5\text{ km}$  on a polar stereographic pojection.

## 3 Snow products inter-comparison

In this section, we carry out a systematic comparison of the eight snow products, using the two climatological snow datasets ( $W99$  and  $SS18$ ) as a reference for all comparisons and analyses. Section 3.1 presents the results for mean snow depth and its spatial distribution, Section 3.2 introduces the seasonal cycle, whereas the long-term trend and inter-annual variability is presented in Section 3.3. For the two products that model an evolving snow density, we also intercompare these against climatology (Section 3.4). While we focus on basin-wide estimates for the whole Arctic, we also explore consistency and mean state of all products over three sub-regions: the Canadian Arctic sector (CA) including Canadian Archipelago, the Atlantic (At-

lantic) and the Pacific & Central Arctic (Pacific) sectors (regions outlined in Figure S1). Over these regions, sea ice conditions vary considerably, with mostly thick MYI within the CA, and thinner FYI elsewhere. The North Atlantic has generally more precipitation as a result of proximity to the North Atlantic storm tracks.

Given the relatively long time period and basin-scale coverage provided by SnowModel-LG, this snow depth product is used as the reference product when carrying out the regional consistency checks. To align the temporal and spatial resolution between all snow products, comparisons are mainly carried out after year 2000 and focused on the early and late winter months of October/November and March/April. The products containing data for longer time periods are further explored against climatologies and their long-term trends are assessed.

### 3.1 Mean state and distribution of snow depth

Mean snow depth, which is a direct indicator of total snow volume over sea ice, is of fundamental importance for the characterization of the Arctic hydrological cycle. Spatial maps of monthly mean snow depth across all data products, as well as the *W99* and *SS18* climatologies, are shown in Figure 2 and 3 in spring (autumn) months for the season of 2014-2015. Products are shown with their native resolution and grids. The spatial patterns in all products are in broad agreement that thicker snow occurs north of Greenland and the CA sector and thinner snow in the seasonal ice zones (i.e., Baffin Bay and marginal seas of the Eurasia continent). Some products also show thicker snow in the East Greenland Sea (NESOSIM in particular) and the Atlantic sector of the Arctic. Despite some general agreements, mean spring snow pack and regional discrepancies are evident in Figure 2. In particular, the thickest snow in late winter/early spring for NESOSIM occurs in the East Greenland Sea, while in DESS, the deepest snow is concentrated in the Canadian Arctic.

During autumn, for the region north of Greenland and Svalbard, SnowModel-LG runs forced with MERRA-2 show a similar spatial pattern as other reanalysis-based modeling systems (i.e. NESOSIM and CPOM), but shallower snow than NESOSIM (Figure 3). DuST also shows deep snow packs in this region (16.6 cm mean snow depth), though the spatial coverage is more limited. Spring snow depth, ranging from 15.2 cm to 25.3 cm in the Arctic domain (Figure 1), exhibits large spatial variability among all products. Further, relatively thick snow packs in the North Atlantic sector are evident in all reanalysis-based products except for CPOM. Deeper snow packs are expected in this region as it receives winter precipitation from the North Atlantic storm tracks. The discrepancies in spring among the reanalysis-based is the results of several aspects including initial snow assumption, tracking numerical algorithm and reanalysis adoption. For comparison, snow is also the deepest (over 35 cm) to the north of Svalbard in both the *W99* and *SS18* climatologies. NESOSIM further suggests thick snow over Davis Strait, with spring averaged snow depths greater than 25 cm. This is in stark contrast to the other data sets over the FYI in that region, and is likely unrealistic given this is a region of first-year ice that does not usually freeze until December/January (e.g. Stroeve et al. (2014)), limiting the time over which snow can accumulate on the ice.

The histogram of time-averaged snow depth in the different products is shown in Figure 4 for the period 2000 to 2018 during the spring and autumn periods, respectively. Out of all the reanalysis-based data products, snow depth distributions in NESOSIM are shifted towards slightly deeper snow packs (8.4 cm) than those from SnowModel-LG (7.2 cm) and CPOM (6.0

cm) during autumn, although the shapes of the distributions are similar. The deepest snow packs during October/November are found in DuST, with a mode of the distribution at about 16.6 cm. This is much larger than other products and seems unlikely to be realistic early in the snow accumulation season. During spring (Figure 4.b), PMW DMI exhibits the overall smallest snow depth in late winter (14.5cm), while UW shows the largest snow depth (25.2 cm) in the common region of the snow products. Conclusions are similar if we omit DuST, and extend the analysis up to 87.5°N. Doing so, but the bimodal snow depth distribution in autumn is more evident, suggesting the separation of snow cover over old and newly formed sea ice. As expected, snow depths shift to overall deeper snow packs in spring, especially when including the higher latitudes (Figure 4.c and Figure 4.d). The shallowest spring snow in PMW DMI, with a mean snow depth < 15 cm, and the thickest autumn snow in DuST, are the two extremes among current snow products.

Additionally, we examine snow depth over the three different sectors in spring 2015 (Figure S1). Deepest snow packs from reanalysis-based snow products mainly occur over the North Atlantic, while satellite-based products indicate more snow accumulating over the CA. Although this is only one year of comparison, it shows that regional differences in snow accumulation can be quite pronounced depending on data set used.

Discrepancies between snow products and the climatologies both in spring (Figure 5) and in autumn (Figure S2) are evident. In autumn (Figure S2), bimodal snow distributions are noticeable both in SnowModel-LG and NESOSIM using the data past 2000, with a large proportion of thin snow not seen in the *W99* climatology. By the end of winter, the differences between all products and *W99* are larger (Figure 5) than in autumn, with the minimum decreasing is 10 cm for UW and the maximum is over 15 cm for PMW DMI in spring. SnowModel-LG, DuST and DESS all have snow depths below 10 cm in March/April. For reanalysis-based products, the snowpack is still significant shallower against climatologies in the 1980s (1990s in the case of CPOM) when *W99* is partly collected. In addition to mean snow depth, the skewness of the snow distribution, especially in spring, among all products are mainly positive as a result of the larger presence of thin snow cover over FYI dominated in the current era, while that of *W99* is in the opposite.

Apart from *W99*, the Shalina and Sandven (2018) climatology provides additional snow depth information in the marginal seas, especially over the Eurasian seas. Overall *SS18* has lower snow depths in the central Arctic compared with *W99*. Figure 6 reveals that snow distribution in *SS18* includes two modes: 18.1 cm and 32.2 cm, which correspond to snow over FYI and MYI respectively. Generally, differences between the *SS18* climatology and the various snow products are similar to the comparison results with *W99*, but *SS18* tends to exhibit similar bimodal distribution as seen in some of the snow products.

To summarize, there is general agreement among the products (except for UW) that there is a distinct difference in snow depth on perennial and seasonal ice. It is worth noting that this agreement is across the two distinctive methods for snow depth reconstruction, i.e., the reanalysis based numerical integration, and satellite based retrievals. This is also reflected in both the basin-scale snow depth averages and the spatial patterns. However, the areas of where the thickest/thinnest snow depths are found tend to differ between the two types of methods. The heavy snow in reanalysis-based products falls primarily over the East Greenland Sea and Atlantic sector as a result of frequent storm tracks over this area, whereas from active or passive microwave satellite data the thickest snow is detected over the Canadian Arctic sector due to the different features of old vs. newly formed ice. Finally, the intercomparison of the different snow products, and further against two climatological data sets,

reach similar conclusions: (1) all snow products have similar structure such that snow over perennial ice is thicker, but quite  
340 large regional differences in mean value, (2) snow depths in the products evaluated show less snow in recent years relative to  
the climatologies.

### 3.2 Seasonal cycle of snow depth

Time-series (2000-2018) of monthly mean snow depths during winter (September to April) averaged over regions up to  $81.5^{\circ}\text{N}$   
are displayed in Figure 7, whereas Figure 8 shows the seasonal mean and spread. The *W99* is included as reference (see Figure  
345 *S3* for the results when the region is extended up to  $87.5^{\circ}\text{N}$ ).

In NESOSIM, April snow depths are higher than in SnowModel-LG (Figure 7), especially after 2012. We further see from  
Figure 8 that the initial snow depth before autumn is thinner in SnowModel-LG, but there is more wintertime snow accu-  
mulation in SnowModel-LG than in NESOSIM. Thicker autumn snow in NESOSIM is a result of using *W99* for the initial  
conditions, while SnowModel-LG tracks the snow through the summer melt season, removing any remaining snow at the end  
350 of summer when the snow pack is saturated and isothermal (this then becomes decomposed ice). The end result is that by  
the end of winter, overall differences between the two products are less pronounced despite large differences in total snow  
accumulated over winter.

Seasonal snow accumulation is also larger in SnowModel-LG compared with CPOM. In contrast, the seasonal accumulation  
in DuST and snow changes from March to April in PMW Bremen are unexpectedly small, even negative, while the PMW DMI  
355 shows similar seasonal changes as the reanalysis-based products. Overall, the largest seasonal snow accumulation occurs in  
*W99* and the deepest snowpacks are observed in March, the month when snow reaches its maximum depth, whereas many of  
the other products reach their maximum snow depths in April. However, based on Section 3.1, compared with *W99*, all snow  
cover products in early winter have thinner snow packs than at the end of the winter, which implies either that the intensity of  
snow accumulation is weakening or that the snow accumulation period has shortened. We further note that *W99* accumulates  
360 more snow during the early part of winter and thus the seasonal curves are flattened near spring. SnowModel-LG, NESOSIM  
and CPOM on the other hand share similar seasonal accumulation curves, with accumulation continuing to increase through  
winter. This seasonal pattern of winter snow accumulation finds support in a recent study by Kwok et al. (2020) that found  
accumulation later in winter in 2018-2019. This implies that there may be limited efficacy of the climatological seasonal pattern  
of snow accumulation in the current Arctic climate. As sea ice freeze-up continues to delay further over the last 40 years, it is  
365 expected that the early snow accumulation will continue to differ from that reflected in *W99*.

### 3.3 Trend and inter-annual variability of snow depth

All reanalysis-based snow reconstructions, namely SnowModel-LG, CPOM, NESOSIM and UW have consistent inter-annual  
variability in spring snow volume from 2000 to present (see details in Table S2), with statistically significant (confidence level  
99%) correlations of the interannual snow depth/volume between the data sets. DESS also exhibits generally similar inter-

370 annual variability as the reanalysis-based products ( $R^2=$  0.42 to SnowModel-LG; 0.68 to NESOSIM and; 0.32 to CPOM),  
whereas PMW Bremen and DuST do not.

While there is interannual variability in snow accumulation, the variability is overall quite small, ranging from 2 cm in  
November to about 2 to 3 cm in April. This also holds for results as averaged up to 87.5°N (Figure S3). The interannual vari-  
ability seen in the data products is about half of that previously reported in *W99*, where interannual variability was estimated  
375 to be about 4.3 cm in November and 6.1 cm in April. It is important to note, however, the climatological estimation of inter-  
annual variability in *W99* includes snow depth uncertainties, and should be treated as an upper bound for the inherent physical  
interannual variability. It should be also noticed that DuST shows a significant positive snow depth bias from the Envisat period  
to the CryoSat-2 period, likely a result of using OIB to calibrate the snow depth estimates. This positive snow bias is missing  
in the passive-microwave based snow products (e.g., PMW Bremen), and is not observed in DESS (time-series in PMW DMI  
380 is too short to be assessed).

As averaged over the common regions of all data sets, no significant trend is observed in most snow products except DuST  
since 2000. However, regionally the reanalysis-based snow products exhibit regions of statistically significant positive and  
negative snow depth trends over a longer time-period. For example, positive snow depth trends are found north of Greenland  
and the Canadian Archipelago from 1991 to 2015 (common period) (Figure 9). These positive trends may be a result of more  
385 autumn precipitation (Serreze et al., 2012) or changes in the proportion of MYI vs. FYI in the region. On the other hand, snow  
depth trends in spring are mostly negative within the rest of the Arctic basin, statistically significant for SnowModel-LG in  
FYI regions, and for CPOM in Barents Sea. In autumn, the regions with statistically significant negative snow depth trends  
in SnowModel-LG are larger, which is likely a result of delays in freeze-up (Markus et al., 2009; Stroeve and Notz, 2018).  
CPOM also shows negative trends in these regions, but not as large as those from SnowModel-LG. April and November mean  
390 snow depth trends from SnowModel-LG as computed over the entire Arctic basin are  $-0.5\text{ cm/decade}$  and  $-0.9\text{ cm/decade}$ ,  
respectively, although some regions show larger trends. In CPOM, basin-mean significantly negative trend ( $-0.47\text{ cm/decade}$ )  
is only found in November.

Finally, we synthesize long-term changes in snow depth in relationship to the climatology products. As mentioned in Section  
3.1, the minimum and maximum differences of mean snow depth in March/April between products in the current years and  
395 climatology are 10 cm and 15 cm respectively over the last 40 years, thus the inter-decadal snow depth changes would be in  
the range of  $-0.25\text{ cm/year}$  and  $-0.375\text{ cm/year}$ . These estimates span the value of  $-0.29\text{ cm/year}$  in Webster et al. (2014).  
However, one should keep in mind that there are large uncertainties in the snow climatology data sets and the interannual  
variability is larger than in the snow products.

### 3.4 Snow density comparison

400 Apart from snow depth, we further investigate snow density in the two products that provide snow density estimates: SnowModel-  
LG and NESOSIM. Since the *W99* climatology contains both snow depth and SWE, we can compare against the *W99* snow  
densities. Snow density in *W99* is limited to the Arctic basin. SnowModel-LG suggests that snow is denser than in NESOSIM



in both November and April, as shown in Figure 10. Considering that the snow depth in SnowModel-LG is thinner than NESOSIM, we find that the two models provide a broadly equivalent SWE (not shown). Snow over the Atlantic sector, especially within the East Greenland Sea, is the densest in SnowModel-LG, with mean density values above  $370 \text{ kg/m}^3$  in November and April. In contrast, NESOSIM has mostly smaller snow densities and considerably less spatial variability. For W99, the snow is denser over the Atlantic sector in November, while in April, the denser snow is over the Pacific sector.

Time-series of wintertime mean snow density within the Arctic basin in SnowModel-LG, NESOSIM and W99 are summarized in Figure 11. Both SnowModel-LG and NESOSIM show an increase in snow density into the winter, which is consistent with W99. However, snow density in SnowModel-LG is consistently higher than that of NESOSIM, with more pronounced differences at the end of winter; W99 falls between the two estimates at  $320 \text{ kg/m}^3$ . Seasonally, SnowModel-LG densities increase more from October to April than in NESOSIM and W99. Neither the NESOSIM nor SnowModel-LG densities suggest any long-term changes in snow density, yet SnowModel-LG shows considerable interannual variability of spring and winter snow density, which is not present in NESOSIM or W99.

## 4 Comparison of snow depth products against observations

In this section, we compare the snow depth products against the observational datasets. Since snow depth data from OIB play an important role in the development of some of the snow products, the comparison and validation potentially suffer from the problem of data dependency. This applies to both reanalysis based snow reconstructions and the satellite-retrieved snow depth fields. Buoy-based comparisons are free from the data dependency problem, yet the limited local spatial coverage of buoys hinders direct comparisons with the products in study, which are all on much coarser spatial scales ( $>10 \text{ km}$ ). Therefore, after the intercomparisons we discuss the complexities in validating different snow products and observations with in-situ and airborne measurements in Section 4.3.

### 4.1 Comparison against OIB

We assess the snow products against four different OIB snow depth products. We first compare OIB and snow products after gridding both to a common  $100 \times 100 \text{ km}$  grid and by evaluating the monthly averages in 2014 and 2015. Results are shown in Figure 12 and Table 2. Taking the quicklook product as an example, there are on average 1,300 OIB 40 m mean measurement samples per grid cell. It should be noted that snow depths from DuST, PMW Bremen and DMI are directly fitted against OIB snow depths, and as a result, these data show significantly correlations (over 0.36 for PMW DMI) with OIB as shown in Table 2. Therefore, we do not consider this a suitable validation (or comparison) for these products. For the PMW DMI product, however, OIB data from the period from March 2014-2015 was not used during model development, and hence we have more confidence in the high correlation observed. Except for NESOSIM and UW, the other reanalysis-based products are also to some extent indirectly tuned by OIB snow depths in some years. Overall, all products show reasonably high correlations with the different OIB snow estimates except for UW, which only shows a slight correlation with some versions of the OIB data.

It should be noted that OIB snow depth is itself a derived product, and thus caution is warranted when interpreting the results of the comparison with snow products. In fact, a strong dependence of our validation results to the specific OIB data product is evident by the different linear fitting slopes shown in Figure 12, as well as the  $R^2$  values,  $RMSE$  and normalised  $RMSE$  ( $NRMSE: RMSE/(max - min)$ ) in Table 2. The fit is best for the PMW Bremen and PMW DMI data, followed by the CPOM and DESS products, though this depends on the choice of OIB data set used for evaluation. For example, CPOM performs best against SRLD ( $R^2=0.61$ ) and worst against GSFC ( $R^2=0.43$ ); DESS also performs best against SRLD ( $R^2=0.59$ ) but worst against quicklook ( $R^2=0.26$ ). SnowModel-LG and NESOSIM have similar  $R^2$  ranging from a low  $R^2$  of 0.27 and 0.29, respectively against the quicklook product to a high of 0.47 (SnowModel-LG vs. SRLD) and 0.39 (NESOSIM vs. GSFC). The UW snow product, on the other hand, performs poorly against all OIB snow depth estimates (maximum  $R^2$  of 0.31 with SRLD). Among all non-directly OIB-fitted snow products (SnowModel-LG, CPOM, DESS, UW and NESOSIM), RMSE in CPOM is the lowest, while in DESS the RMSE is over 10 cm. The distribution/variability in UW is narrow compared with other products related to the lack of spatial variability of snow depth across the basin.

In order to avoid biases introduced by temporal and spatial averaging and interpolation during the validation, we also carry out the comparison for each of the data products on their native grids and native temporal resolution (Figure S4). In contrast to the coarser resolution comparisons shown in Figure 12 and Table 2, more outliers, lower  $R^2$  values and larger  $RMSE$ s are evident in these native spatial-temporal resolution comparisons. The comparison results still depend on the choice of OIB data product, and in some instances the statistical correlation improves. There is still no significant correlation between UW snow depths and those from OIB, but the overall  $RMSE$  is the lowest recorded at less than 4.0cm. PMW DMI has the lowest  $NRMSE$ , followed closely by all other snow products, with the largest  $NRMSE$  in DESS. All snow products except NESOSIM and UW show higher  $R^2$  under spatial coarser resolution compared to Figure 12, Figure S4 and Table S3. The comparisons between monthly and daily scale estimates suggests that temporal resolution has little influence on OIB comparisons, since there are only small changes in  $R^2$  and  $RMSE$ , without significant differences. However, spatial resolution does impact the statistical fits, which is related to the lack of representation between OIB and these products at the coarse scale of 100 km (discussed further in section 4.3).

Given the potential data dependency problem and the sensitivity to the specific OIB data set, it is not possible to conclude which snow product performs best. Snow products that have been produced through tuning with OIB data show higher  $R^2$  and smaller  $RMSE$ s. The PMW DMI product performs best, despite not being tuned with OIB data for the time period to which it is compared. The outlier is the UW product. In summary, there is a need for a consensus as to which OIB data products are the most accurate, and also for further independent observations to compare against the various pan-Arctic snow products currently available to the science community.

## 4.2 Comparison with buoy data

We further explore how well the snow products represent the mean state of small scale snow depth on Arctic sea ice by comparing against CRREL IMBs and AWI snow buoys. As discussed in Section 2.1.1, 86 buoy tracks (58 tracks are from

CRREL and 28 tracks are from AWI) were processed from 2000 to 2017 (Table S1). Scatterplots in Figure 13 between monthly mean (March and April) buoy snow depths and those from the various products are based on their native spatial resolution. DuST is excluded due to lack of buoy samples in its more limited spatial coverage. Despite some statistically significant correlations, the correlations are all very low, with slopes close to 0. The highest correlation among the products is 0.16 for DESS. The PMW Bremen and PMW DMI products show essentially no variability/spread compared to the buoy data.

Next, we focus on temporal evolution as we do not expect the local-scale point measurements of the IMBs/snow buoys to match with the coarse spatial scale of the data products. We compare snow depth differences in the products along the buoys' drifting tracks against the accompanied snow accumulation measured by buoys during winter (Figure S5). Specifically, the three daily-resolution products (SnowModel-LG, NESOSIM and CPOM) are interpolated onto daily geolocations of the buoys. Only buoys with valid measurements from October until the following February are considered. Snow accumulation is then calculated by subtracting the mean snow depth within the first seven days and that in the last seven days. None of these products show significant correlation with buoy accumulation because several outliers weaken the overall correlation. Based on Stroeve et al. (2020), good correlations are witnessed between SnowModel-LG and buoy data using the buoy location in each integration step. Therefore, the lack of correlation we observe may be due to large discrepancies in trajectories determined from the ice drift products and from buoys, especially after a long-term integration.

In general, the comparison with snow depth measurements from buoys highlight two important limitations of these sorts of comparisons. First, pronounced representation issues are present when comparing point measurements to coarse-resolution products despite buoys being intentionally deployed to represent the adjacent areas, and despite the fact that they potentially traverse large geospatial ranges. Second, sea ice drift is a major factor in determining the uncertainty of snow depth estimations during the numerical integration of reanalysis-based approaches.

### 4.3 Study of representation issues

Comparison and validation of snow depth products with observations of vastly different spatial resolutions and coverage is complex. For OIB, although the ground tracks cover large regions, the aggregate footprint size is small. For example, an average of 1300 OIB samples are used to compute the  $100 \times 100 \text{ km}$  cell-mean snow depth and the aggregate area is about  $0.6 \text{ km}^2$ , which is 0.006% of the  $100 \text{ km}$  cell. The same spatial aliasing situation has long existed in sea ice thickness (Geiger et al., 2015), where the different instrument footprint sizes bring about artificial modes in thickness distribution. However, here, the spatial coverage of OIB mitigates this problem, by introducing large-scale variability in computing the cell-mean values of snow depth. For comparison, buoy measurements are the extreme case of limited representation for products with coarse resolution. Although the absolute error for each buoy measurement is low, the practice of using it for validation purposes should be scrutinized.

In order to study the effect of limited spatial coverage on validation, we utilized an OIB dataset to simulate various spatial grid spacings of products that can be used for snow depth validation, including the extreme case of point measurements (e.g. buoys). Specifically, we divide OIB scans into segments of about  $37.5 \text{ km}$ , which is the typical resolution of the snow

500 products evaluated in the study. The mean snow depths from all OIB measurements within each segment are computed and treated as the “true” snow depth (hereinafter referred to as Hs), which is then used as the snow depth measurement to be validated. Re-sampling, that is multiple selections from samples, of the OIB measurement in each segment is carried out, in order to simulate the various observations with limited coverage. By studying the behaviors of fitting snow depth (Hs) values to samples, we observe the change in the slopes and qualities of the statistical fits. Three sampling strategies are designed: (I) 505 random re-sampling, for which 40 OIB samples are randomly chosen within the segment region and used to compute the mean Hs; (II) segment-based re-sampling, for which a local OIB segment track with 40 consecutive samples is chosen and used to compute mean Hs; and (III) single sample, for which a single OIB Hs measurement is chosen to represent the locally-measured snow depth. Strategy III essentially mimics a buoy observation in one day within typical passive microwave satellite spatial resolution (i.e., limited spatial coverage). Specifically, in order to further increase the validity of Strategy III for mimicking 510 buoy measurements, we make sure that the thickness of the random single sample in Strategy III is within 1 standard deviation of the mode of the OIB ice thickness distribution.

Figure 14.a shows the snow depth distribution from strategy I (red lines) and strategy II (blue lines) for an example segment, in order to demonstrate the simulation strategies. A typical case of the fitting in strategy III is shown in Figure 14.b, with each dot representing a local region of 37.5 km. After extracting and averaging the sample in different strategies, snow distribution 515 is much narrower in strategy I and II than in the original measurements, especially in random re-sampling. Using Monte-Carlo simulations with re-sampling, we compute the distribution of fitting slopes for the three strategies, shown in Figure 14.c. In strategy I (random re-sampling), due to the small number of OIB samples chosen (40 samples), the slopes of the linear fitting lines are lower than 1 (around 0.91). This indicates that even if there is overall good coverage of the measurements, the limited footprint still causes the fitting lines to flatten. If we limit the measurement of Hs to a local segment (40 consecutive samples: 520 strategy II), the slopes drop to about 0.73, which indicates that the limited representation of the local segment to regional variations further affects the validations. This is also in direct contrast with strategy I. When we further limit the comparison to a single OIB sample (strategy III), the slopes further decrease to around 0.24. It is important to note that, although the fitted lines are very flat (an example in Figure 14.b), the fittings are all statistically significant.

This result agrees with the buoy validation results in Section 4.2, where the fitted slope between snow products and buoy 525 data (Figure 13) is considerably flatter when compared with the results involving OIB observations, as a result of both large aggregate footprint and wider spatial coverage of OIB. Yet, the study with OIB data suggests that the product validation with buoy data should yield statistically significant correlations. This result also indicates that when tuning the prognostic/statistical models against airborne or in-situ measurements for reconstructing snow, the uncertainty concerning limited representation should be addressed in order to avoid over-fitting. The systematic study of uncertainty quantification for limited representation 530 is beyond the scope of this paper, and planned as future work.

## 5 Summary and outlook

This paper offers a detailed assessment of current snow products over sea ice. Although general consistency in snow structure is witnessed among the products in terms of deeper snow over perennial ice, regionally large spatial and temporal discrepancies do occur. Further, the magnitude of seasonal snow accumulation differs, as do long-term trends. Among the products evaluated, UW and PMW DMI provide the upper and lower extremes of snow volume/depth at the end of the freezing season. Wintertime snow accumulation is overall less than than in the *W99* climatology, and is postponed towards springtime in the reanalysis-based products. On the other hand, the satellite-derived DuST product does not exhibit a distinct wintertime snow accumulation. Inter annual variability of precipitation in the majority of reanalysis-based products were found to be consistent (Barrett et al., 2020) and thus we may have expected the reanalysis-based snow depth to share similar inter-annual variability in snow depth. However, different methods for accumulating the precipitation in the reanalysis, as well as how that precipitation is redistributed within the Arctic basin under ice motion leads to pronounced differences among the reanalysis-based products. The March/April interannual variability for all snow products was about half that previously estimated by *W99* (3.0 cm vs. 6.1 cm). Furthermore, none of the current snow products display a trend in overall snow depth since 2000, although they all suggest significantly thinner snow in spring than found in the climatologies. Over a longer time-period however, several of the reanalysis-based snow products do show statistically significant trends towards thinner snow.

We further compared each product against OIB and buoy observations. All snow reconstructions demonstrate significant correlation with OIB observations, except for UW, which only shows a slight correlation with some versions of the OIB data. Correlations are lower when compared against buoy measurements (no significant correlation in PMW Bremen and PMW DMI), with the highest correlation of 0.4 in DESS. We suggest that poor correlations are at least in part caused by representation issues when trying to validate coarse observations against finer resolution measurements. More effort is required to simulate how snow accumulates locally since currently no product has the ability to model snow depth at local spatial scales, as captured by observational platforms such as buoys. For the reanalysis-based products, improvement in the ice drifting algorithm and snow redistribution parameterisation may result in more accurate representation of snow distribution. Based on the results, we pick SnowModel-LG, NESOSIM, CPOM and DESS as the products with the highest consistency. While we cannot reach conclusive results on which snow product best represents the “true” snow depth, we emphasize the importance of further coordinated intercomparisons, and call for community effort to collect more independent observations for snow over sea ice.

Despite its importance for polar climate studies and sea ice altimetry, the snow cover on sea ice remains a scarcely observed parameter. Airborne surveys such as OIB provide a good trade-off between spatial resolution and coverage, yielding one of the richest snow depth observations for the polar regions. Although it is a derived product, OIB snow depth has become a major reference for model tuning, as well as the benchmark for many snow depth reconstruction products. Therefore, although the comparisons with OIB snow depth differs among the products (Section 4.1), there remain inherent limitations regarding data dependency. Given the status quo of limited snow depth products as reference data sets, more independent observations are required. The problems associated with validation and data dependency would be avoided by using separate training and testing datasets (such as subsets of OIB snow depth data) for the model tuning of snow reconstructions.

565 Due to the resolution differences of the various snow depth products, spatial and temporal representation issues need to be explored further to facilitate detailed comparison and validation. This is especially true when validating coarse spatial resolution data with local snow depth measurements such as buoy or a single OIB sample (Section 4). In order to address these issues, the multi-scale characteristics of the snow should be studied in a systematic manner, including: (1) its distribution and interaction with sea ice (Xu et al., 2020), and (2) the scaling properties for a wide range of measurement footprints, including  
570 in-situ measurements with snow probes and snow stakes (footprint  $< 0.1 \text{ m}^2$ ), airborne measurements ( $100 \text{ m}^2$ ), and typical satellite passive microwave imagers ( $100\text{-}1000 \text{ km}^2$ ). Uncertainty quantification can then be carried out and incorporated in the development of new snow remote sensing techniques, as well as product intercomparison and validations.

With climate change and Arctic warming, the snow cover on sea ice has undergone drastic changes. A longer melting season, later freeze-up and shrinking of the perennial sea ice cover have resulted in an overall thinning of the snow cover (Section 3.1).  
575 However, the polar hydrological processes have become more pronounced with warming, with stronger and more frequent polar storms inducing more snowfall (Webster et al., 2019). In addition to these competing factors influencing the total amount of snow on Arctic sea ice, the snow stratigraphy and potential changes are a challenge for both remote sensing and modeling of the snow cover. With the combined factors of more snowfall and thinner sea ice, the resulting snow-ice formation causes changes in the thermodynamic and radiometric properties of the snow cover, as witnessed in N-ICE2015 (Gallet et al., 2017;  
580 Merkouriadi et al., 2017). In addition, the repeated intrusions of warm air causes snow stratigraphy changes and even thawing-refreezing cycles, bringing challenges to both airborne and satellite remote sensing of the sea ice and snow cover. Furthermore, the long-term increase of Arctic precipitation is projected to continue in the future decades, with potential transition in the phase of precipitation (Bintanja and Selten, 2014). The complex processes involving snow stratigraphy pose further challenges for the modeling of active/passive radiometry of snow and sea ice, as well as that of prognostic modeling of snow over sea ice.

585 Current and future in-situ and satellite campaigns contribute to an ever-growing and enriching catalogue for snow and sea ice observations. In-situ campaigns, such as MOSAiC, provide annual, process level studies of the atmosphere-ice-ocean coupled system for the Arctic. Novel satellite campaigns such as the multi-frequency radar altimeter CRISTAL (Kern et al., 2020) will provide unique capabilities for snow depth measurement and sea ice altimetry. The abundance of the methodologies and techniques that are investigated in this study show that there is general consistency among the products derived by both  
590 numerical and satellite-based approaches, and snow on Arctic sea ice is significantly thinner against observations from the last century. However, some spatial/temporal differences among these products calls for more attention for more independent snow observations as well as modeling improvements.

*Data availability.* CRREL and AWI buoy data are downloaded from the website (<http://www.imb-crrel-dartmouth.org/imb.crrel>) and (<http://data.meereis.org/>). IceBridge data were provided by A. Petty. NESOSIM data are available from <https://neptune.gsfc.nasa.gov/csb/index.php?section=516>, UW  
595 data are from <http://www.atmos.washington.edu/ed/data/snow>, DuST data are available from <http://www.cpom.ucl.ac.uk/DuST>.

*Author contributions.* LZ and SMX contributed the DESS data. JS and GEL contributed the SnowModel-LG data. AP contributed the NESOSIM and three different OIB data (JPL, GSFC and SRLD). RT and AR contributed the CPOM data. MW contributed the PMW DMI data. PR contributed the PMW Bremen data. IRL and MT contributed the DuST data. LZ and JS wrote the paper with inputs from co-authors, and all authors contributed to editing of the manuscript.

600 *Competing interests.* The authors declare that they have no conflict of interest

*Acknowledgements.* This work is partially supported by the National Key R & D Program of China under the grant number 2017YFA0603902 and the National Science Foundation of China under the grant number 42030602. This work is also partially supported by Center for High-Performance Computing and System Simulation, Pilot National Laboratory for Marine Science and Technology (Qingdao). The work of P. Rostosky was funded by the Deutsche Forschungsgemeinschaft (DFG, German Research Foundation) Project Number 268020496 TRR 605 172, within the Transregional Collaborative Research Center ArctiC Amplification: Climate Relevant Atmospheric and SurfaCe Processes, and Feedback Mechanisms ( $AC$ )<sup>3</sup>. MT acknowledges support from the European Space Agency Project in part by project “Polarice” under Grant ESA/AO/1-9132/17/NL/MP and in part by the project “CryoSat+ Antarctica” under Grant ESA ESA AO/1-9156/17/I-BG.

## References

- Barrett, A. P., Stroeve, J., and Serreze, M. C.: Arctic Ocean Precipitation from Atmospheric Reanalyses and Comparisons with North Pole  
610 Drifting Station Records, *Journal of Geophysical Research: Oceans*, 2020.
- Bintanja, R. and Selten, F.: Future increases in Arctic precipitation linked to local evaporation and sea-ice retreat, *Nature*, 509, 479–482,  
2014.
- Blanchard-Wigglesworth, E., Webster, M., Farrell, S. L., and Bitz, C. M.: Reconstruction of snow on Arctic sea ice, *Journal of Geophysical  
Research: Oceans*, 123, 3588–3602, 2018.
- 615 Braakmann-Folgmann, A. and Donlon, C.: Estimating snow depth on Arctic sea ice using satellite microwave radiometry and a neural  
network, *The Cryosphere*, 13, 2421–2438, 2019.
- Brodzik, M. J., Billingsley, B., Haran, T., Raup, B., and Savoie, M. H.: EASE-Grid 2.0: Incremental but significant improvements for Earth-  
gridded data sets, *ISPRS International Journal of Geo-Information*, 1, 32–45, 2012.
- Brucker, L. and Markus, T.: Arctic-scale assessment of satellite passive microwave-derived snow depth on sea ice using Operation IceBridge  
620 airborne data, *Journal of Geophysical Research: Oceans*, 118, 2892–2905, 2013.
- Comiso, J. C.: Bootstrap Sea Ice Concentrations from Nimbus-7 SMMR and DMSP SSM/I-SSMIS, Version 3, boulder, Colorado USA.  
NASA National Snow and Ice Data Center Distributed Active Archive Center. doi: <https://doi.org/10.5067/7Q8HCCWS4I0R>. [Date Ac-  
cessed: 2020-10-19], 2017.
- Comiso, J. C., Cavalieri, D. J., and Markus, T.: Sea ice concentration, ice temperature, and snow depth using AMSR-E data, *IEEE Transac-  
625 tions on Geoscience and Remote Sensing*, 41, 243–252, 2003.
- Dee, D. P., Uppala, S. M., Simmons, A., Berrisford, P., Poli, P., Kobayashi, S., Andrae, U., Balmaseda, M., Balsamo, G., Bauer, d. P., et al.:  
The ERA-Interim reanalysis: Configuration and performance of the data assimilation system, *Quarterly Journal of the royal meteorological  
society*, 137, 553–597, 2011.
- DeRepentigny, P., Tremblay, L. B., Newton, R., and Pfirman, S.: Patterns of sea ice retreat in the transition to a seasonally ice-free Arctic,  
630 *Journal of Climate*, 29, 6993–7008, 2016.
- Ebita, A., Kobayashi, S., Ota, Y., Moriya, M., Kumabe, R., Onogi, K., Harada, Y., Yasui, S., Miyaoka, K., Takahashi, K., et al.: The Japanese  
55-year reanalysis“JRA-55”: an interim report, *Sola*, 7, 149–152, 2011.
- Eicken, H., Grenfell, T., Perovich, D., Richter-Menge, J., and Frey, K.: Hydraulic controls of summer Arctic pack ice albedo, *Journal of  
Geophysical Research: Oceans*, 109, 2004.
- 635 Gallet, J.-C., Merkouriadi, I., Liston, G. E., Polashenski, C., Hudson, S., Rösel, A., and Gerland, S.: Spring snow conditions on Arctic sea ice  
north of Svalbard, during the Norwegian Young Sea ICE (N-ICE2015) expedition, *Journal of Geophysical Research: Atmospheres*, 122,  
10–820, 2017.
- Geiger, C., Müller, H.-R., Samluk, J. P., Bernstein, E. R., and Richter-Menge, J.: Impact of spatial aliasing on sea-ice thickness measurements,  
*Annals of Glaciology*, 56, 353–362, 2015.
- 640 Gelaro, R., McCarty, W., Suárez, M. J., Todling, R., Molod, A., Takacs, L., Randles, C. A., Darmenov, A., Bosilovich, M. G., Reichle, R.,  
et al.: The modern-era retrospective analysis for research and applications, version 2 (MERRA-2), *Journal of Climate*, 30, 5419–5454,  
2017.
- Giles, K. A., Laxon, S. W., and Ridout, A. L.: Circumpolar thinning of Arctic sea ice following the 2007 record ice extent minimum,  
*Geophysical Research Letters*, 35, 2008.



- 645 Guerreiro, K., Fleury, S., Zakharova, E., Rémy, F., and Kouraev, A.: Potential for estimation of snow depth on Arctic sea ice from CryoSat-2 and SARAL/AltiKa missions, *Remote Sensing of Environment*, 186, 339–349, 2016.
- Hersbach, H. and Dee, D.: ERA5 reanalysis is in production, *ECMWF newsletter*, 147, 5–6, 2016.
- Kaleschke, L., Tian-Kunze, X., Maaß, N., Mäkynen, M., and Drusch, M.: Sea ice thickness retrieval from SMOS brightness temperatures during the Arctic freeze-up period, *Geophysical Research Letters*, 39, 2012.
- 650 Kern, M., Ressler, G., Cullen, R., Parrinello, T., Casal, T., and Bouffard, J.: Copernicus polaR Ice and Snow Topography Altimeter (CRISTAL) Mission Requirements Document, version 2, available from the European Space Agency, ESTEC, Noordwijk, The Netherlands, 72 pp., 2019.
- Kern, M., Cullen, R., Berruti, B., Bouffard, J., Casal, T., Drinkwater, M. R., Gabriele, A., Lecuyot, A., Ludwig, M., Midthassel, R., et al.: The Copernicus Polar Ice and Snow Topography Altimeter (CRISTAL) high-priority candidate mission, *The Cryosphere*, 14, 2235–2251, 655 2020.
- Kilic, L., Tonboe, R. T., Prigent, C., and Heygster, G.: Estimating the snow depth, the snow-ice interface temperature, and the effective temperature of Arctic sea ice using Advanced Microwave Scanning Radiometer 2 and ice mass balance buoy data, *The Cryosphere*, 13, 1283–1296, 2019.
- King, J., Howell, S., Derksen, C., Rutter, N., Toose, P., Beckers, J. F., Haas, C., Kurtz, N., and Richter-Menge, J.: Evaluation of Operation 660 IceBridge quick-look snow depth estimates on sea ice, *Geophysical Research Letters*, 42, 9302–9310, 2015.
- Koenig, L. S., Ivanoff, A., Alexander, P. M., MacGregor, J. A., Fettweis, X., Panzer, B., Forster, R. R., Das, I., McConnell, J. R., Tedesco, M., et al.: Annual Greenland accumulation rates (2009-2012) from airborne snow radar, *The Cryosphere*, 10, 2016.
- Kurtz, N., Farrell, S., Studinger, M., Galin, N., Harbeck, J., Lindsay, R., Onana, V., Panzer, B., and Sonntag, J.: Sea ice thickness, freeboard, and snow depth products from Operation IceBridge airborne data, *The Cryosphere*, 7, 1035–1056, 2013.
- 665 Kurtz, N., Studinger, M., Harbeck, J., Onana, V., and Yi, D.: IceBridge L4 Sea Ice Freeboard, Snow Depth, and Thickness, Version 1, boulder, Colorado USA, NASA National Snow and Ice Data Center Distributed Active Archive Center, <https://doi.org/10.5067/G519SHCKWQV6>, 2015.
- Kurtz, N. T. and Farrell, S. L.: Large-scale surveys of snow depth on Arctic sea ice from Operation IceBridge, *Geophysical Research Letters*, 38, 2011.
- 670 Kwok, R.: Satellite remote sensing of sea-ice thickness and kinematics: a review, *Journal of Glaciology*, 56, 1129–1140, 2010.
- Kwok, R. and Cunningham, G.: ICESat over Arctic sea ice: Estimation of snow depth and ice thickness., *Journal of Geophysical Research: Oceans*, 113, 2008.
- Kwok, R. and Maksym, T.: Snow depth of the Weddell and Bellingshausen sea ice covers from IceBridge surveys in 2010 and 2011: An examination, *Journal of Geophysical Research: Oceans*, 119, 4141–4167, 2014.
- 675 Kwok, R. and Markus, T.: Potential basin-scale estimates of Arctic snow depth with sea ice freeboards from CryoSat-2 and ICESat-2: An exploratory analysis, *Advances in Space Research*, 62, 1243–1250, 2018.
- Kwok, R., Kurtz, N. T., Brucker, L., Ivanoff, A., Newman, T., Farrell, S. L., King, J., Howell, S., Webster, M. A., Paden, J., et al.: Intercomparison of snow depth retrievals over Arctic sea ice from radar data acquired by Operation IceBridge, *The Cryosphere*, 11, 2571–2593, 2017.
- 680 Kwok, R., Kacimi, S., Webster, M., Kurtz, N., and Petty, A.: Arctic Snow Depth and Sea Ice Thickness From ICESat-2 and CryoSat-2 Freeboards: A First Examination, *Journal of Geophysical Research: Oceans*, 125, e2019JC016 008, 2020.

- Lawrence, I. R., Tsamados, M. C., Stroeve, J. C., Armitage, T. W., and Ridout, A. L.: Estimating snow depth over Arctic sea ice from calibrated dual-frequency radar freeboards, *The Cryosphere*, 12, 3551–3564, 2018.
- Laxon, S., Peacock, N., and Smith, D.: High interannual variability of sea ice thickness in the Arctic region, *Nature*, 425, 947–950, 2003.
- 685 Liston, G. E., Itkin, P., Stroeve, J., Tschudi, M., Stewart, J. S., Pedersen, S. H., Reinking, A. K., and Elder, K.: A Lagrangian Snow-Evolution System for Sea-Ice Applications (SnowModel-LG): Part I–Model Description, *Journal of Geophysical Research: Oceans*, p. e2019JC015913, 2020.
- Maaß, N., Kaleschke, L., Tian-Kunze, X., and Drusch, M.: Snow thickness retrieval over thick Arctic sea ice using SMOS satellite data, *The Cryosphere*, 7, 1971–1989, 2013.
- 690 Markus, T. and Cavalieri, D. J.: Snow depth distribution over sea ice in the Southern Ocean from satellite passive microwave data, *Antarctic sea ice: physical processes, interactions and variability*, 74, 19–39, 1998.
- Markus, T., Stroeve, J. C., and Miller, J.: Recent changes in Arctic sea ice melt onset, freezeup, and melt season length, *Journal of Geophysical Research: Oceans*, 114, 2009.
- Markus, T., Cavalieri, D. J., and Ivanoff, A.: Algorithm theoretical basis document: Sea ice products: Updated December 2011, cryospheric Sciences Laboratory, NASA Goddard Space Flight Center. Retrieved from: [https://nsidc.org/sites/nsidc.org/files/files/amsr\\_atbd\\_seaice\\_dec2011.pdf](https://nsidc.org/sites/nsidc.org/files/files/amsr_atbd_seaice_dec2011.pdf), 2011.
- 695 Maslanik, J., Fowler, C., Stroeve, J., Drobot, S., Zwally, J., Yi, D., and Emery, W.: A younger, thinner Arctic ice cover: Increased potential for rapid, extensive sea-ice loss, *Geophysical Research Letters*, 34, 2007.
- Maslanik, J., Stroeve, J., Fowler, C., and Emery, W.: Distribution and trends in Arctic sea ice age through spring 2011, *Geophysical Research Letters*, 38, 2011.
- 700 Meier, W., Fetterer, F., Savoie, M., Mallory, S., Duerr, R., and Stroeve, J.: NOAA/NSIDC climate data record of passive microwave sea ice concentration, version 2, National Snow and Ice Data Center, 10, N55M63M1, 2013.
- Merkouriadi, I., Cheng, B., Graham, R. M., Rösel, A., and Granskog, M. A.: Critical role of snow on sea ice growth in the Atlantic sector of the Arctic Ocean, *Geophysical Research Letters*, 44, 10–479, 2017.
- 705 Mundy, C., Gosselin, M., Ehn, J., Gratton, Y., Rossnagel, A., Barber, D. G., Martin, J., Tremblay, J.-É., Palmer, M., Arrigo, K. R., et al.: Contribution of under-ice primary production to an ice-edge upwelling phytoplankton bloom in the Canadian Beaufort Sea, *Geophysical Research Letters*, 36, 2009.
- Newman, T., Farrell, S. L., Richter-Menge, J., Connor, L. N., Kurtz, N. T., Elder, B. C., and McAdoo, D.: Assessment of radar-derived snow depth over Arctic sea ice, *Journal of Geophysical Research: Oceans*, 119, 8578–8602, 2014.
- 710 Nicolaus, M., Hoppmann, M., Arndt, S., Hendricks, S., Kaltefleiter, C., König-Langlo, G., Nicolaus, A., Rossmann, L., Schiller, M., Schwegmann, S., et al.: Snow height and air temperature on sea ice from snow buoy measurements, Alfred Wegener Institute, Helmholtz Center for Polar and Marine Research, Bremerhaven, PANGAEA, <https://doi.org/10.1594/PANGAEA.875638>, 2017.
- Paden, J., Li, J., Leuschen, C., Rodriguez-Morales, F., and Hale, R.: IceBridge Snow Radar L1B Geolocated Radar Echo Strength Profiles, Version 2, boulder, Colorado USA. NASA National Snow and Ice Data Center Distributed Active Archive Center. doi: <https://doi.org/10.5067/FAZTWP500V70>. [Date Accessed: 2020-02-07], updated 2019, 2014.
- 715 Pedersen, L., Saldo, R., Ivanova, N., Kern, S., Heygster, G., Tonboe, R., Huntemann, M., Ozsoy, B., Ardhuin, F., and Kaleschke, L.: Rasmus Reference dataset for sea ice concentration, Fileset, figshare, <https://doi.org/10.6084/m9.figshare.6626549.v6>, 2018.

- Perovich, D., Richter-Menge, J., Elder, B., Arbetter, T., Claffey, K., and Polashenski, C.: Observing and understanding climate change: Monitoring the mass balance, motion, and thickness of Arctic sea ice, URL <http://imb.crrel.usace.army.mil>, URL <http://imb.crrel.usace.army.mil>, 2009.
- Petty, A. A., Webster, M., Boisvert, L., and Markus, T.: The NASA Eulerian Snow on Sea Ice Model (NESOSIM) v1.0: initial model development and analysis., *Geoscientific Model Development*, 11, 2018.
- Radionov, V. F., Bryazgin, N. N., and Alexandrov, E. I.: The Snow Cover of the Arctic Basin., Tech. rep., WASHINGTON UNIV SEATTLE APPLIED PHYSICS LAB, 1997.
- Richter-Menge, J. A., Perovich, D. K., Elder, B. C., Claffey, K., Rigor, I., and Ortmeier, M.: Ice mass-balance buoys: a tool for measuring and attributing changes in the thickness of the Arctic sea-ice cover, *Annals of Glaciology*, 44, 205–210, 2006.
- Ricker, R., Hendricks, S., Helm, V., Skourup, H., and Davidson, M.: Sensitivity of CryoSat-2 Arctic sea-ice freeboard and thickness on radar-waveform interpretation, *The Cryosphere*, 8, 1607–1622, 2014.
- Ricker, R., Hendricks, S., Kaleschke, L., Tian-Kunze, X., King, J., and Haas, C.: A weekly Arctic sea-ice thickness data record from merged CryoSat-2 and SMOS satellite data, *Cryosphere*, 11, 1607–1623, 2017.
- Rienecker, M. M., Suarez, M. J., Gelaro, R., Todling, R., Bacmeister, J., Liu, E., Bosilovich, M. G., Schubert, S. D., Takacs, L., Kim, G.-K., et al.: MERRA: NASA’s modern-era retrospective analysis for research and applications, *Journal of climate*, 24, 3624–3648, 2011.
- Rostosky, P., Spreen, G., Farrell, S. L., Frost, T., Heygster, G., and Melsheimer, C.: Snow depth retrieval on Arctic sea ice from passive microwave radiometers-Improvements and extensions to multiyear ice using lower frequencies, *Journal of Geophysical Research: Oceans*, 123, 7120–7138, 2018.
- Schröder, D., Feltham, D. L., Tsamados, M., Ridout, A., and Tilling, R.: New insight from CryoSat-2 sea ice thickness for sea ice modelling, *The Cryosphere*, 13, 125–139, 2019.
- Serreze, M. C., Barrett, A. P., and Stroeve, J.: Recent changes in tropospheric water vapor over the Arctic as assessed from radiosondes and atmospheric reanalyses, *Journal of Geophysical Research: Atmospheres*, 117, 2012.
- Shalina, E. V. and Sandven, S.: Snow depth on Arctic sea ice from historical in situ data, *The Cryosphere*, 12, 1867–1886, 2018.
- Stroeve, J. and Notz, D.: Changing state of Arctic sea ice across all seasons, *Environmental Research Letters*, 13, 103 001, 2018.
- Stroeve, J., Markus, T., Boisvert, L., Miller, J., and Barrett, A.: Changes in Arctic melt season and implications for sea ice loss, *Geophysical Research Letters*, 41, 1216–1225, 2014.
- Stroeve, J., Liston, G. E., Buzzard, S., Zhou, L., Mallett, R., Barrett, A., Tschudi, M., Tsamados, M., Itkin, P., and Stewart, J.: A Lagrangian Snow-Evolution System for Sea Ice Applications (SnowModel-LG): Part II-Analyses, *Journal of Geophysical Research: Oceans*, p. e2019JC015900, 2020.
- Stroeve, J. C., Markus, T., Maslanik, J. A., Cavalieri, D. J., Gasiewski, A. J., Heinrichs, J. F., Holmgren, J., Perovich, D. K., and Sturm, M.: Impact of surface roughness on AMSR-E sea ice products, *IEEE Transactions on Geoscience and Remote Sensing*, 44, 3103–3117, 2006.
- Sturm, M. and Massom, R. A.: *Snow in the sea ice system: Friend or foe*, Wiley-Blackwell New York, NY, 2017.
- Tilling, R., Ridout, A., Shepherd, A., Tsamados, M., and Buzzard, S.: A model of snow depth an Arctic winter sea ice., In preparation.
- Tschudi, M., Meier, W. N., Stewart, J. S., Fowler, C., and Maslanik, J.: Polar Pathfinder Daily 25 km EASE-Grid Sea Ice Motion Vectors, Version 4, boulder, Colorado USA. NASA National Snow and Ice Data Center Distributed Active Archive Center. doi: <https://doi.org/10.5067/INAWUWO7QH7B>. [Date Accessed: 2020-10-19], 2019.
- Warren, S. G., Rigor, I. G., Untersteiner, N., Radionov, V. F., Bryazgin, N. N., Aleksandrov, Y. I., and Colony, R.: Snow depth on Arctic sea ice, *Journal of Climate*, 12, 1814–1829, 1999.

**Table 1.** Summary of investigated snow reconstruction products.

Product	Time span	Temporal resolution	Spatial <b>grid</b>	Projection type	Method type	Reference
SnowModel-LG	1980-2018	All year (daily)	$25 \times 25km$	EASE grid	Reanalysis-based	Liston et al. (2020) Stroeve et al. (2020)
NESOSIM	2000-2017	Aug to Apr (daily)	$100 \times 100km$	Polar stereographic grid	Reanalysis-based	Petty et al. (2018)
CPOM	1991-2017	All year (daily)	$10 \times 10km$	Polar stereographic grid	Reanalysis-based	Tilling et al. (In preparation)
UW	1980-2015	Apr (monthly)	$75 \times 75km$	Polar stereographic grid	Reanalysis-based	Blanchard-Wrigglesworth et al. (2018)
DuST	2003-2008, 2013-2018	Bi-monthly (2013-2018) & monthly (2003-2008)	$1.5^\circ$ longitude $\times 0.5^\circ$ latitude	Up to $81.5^\circ$ N	Active satellite-based	Lawrence et al. (2018)
DESS	2011-2019	Mar (monthly)	$12.5 \times 12.5km$	Polar stereographic grid (up to $87.5^\circ$ N)	Active & passive satellite-based	Xu et al. (In preparation)
PMW Bremen	2003-2018	Mar & Apr (Daily)	$25 \times 25km$	Polar stereographic grid	Passive satellite-based	Rostosky et al. (2018)
PMW DMI	2013-2018	Jan to Apr (Daily)	$25 \times 25km$	EASE grid 2.0	Passive satellite-based	Winstrup et al. (2019)

Webster, M. A., Rigor, I. G., Nghiem, S. V., Kurtz, N. T., Farrell, S. L., Perovich, D. K., and Sturm, M.: Interdecadal changes in snow depth on Arctic sea ice, *Journal of Geophysical Research: Oceans*, 119, 5395–5406, 2014.

Webster, M. A., Parker, C., Boisvert, L., and Kwok, R.: The role of cyclone activity in snow accumulation on Arctic sea ice, *Nature communications*, 10, 1–12, 2019.

760 Winstrup, M., Tonboe, R., Lavergne, T., Rasmussen, T., Saldo, R., Tietsche, S., and Pedersen, L. T.: Retrieval of spring-time snow thicknesses on Arctic sea ice from AMSR-2 microwave radiometer data., *eSA Living Planet Symposium 2019*, May 13-17, Milan, 2019.

Xu, S., Zhou, L., Liu, J., Lu, H., and Wang, B.: Data Synergy between Altimetry and L-Band Passive Microwave Remote Sensing for the Retrieval of Sea Ice Parameters?A Theoretical Study of Methodology, *Remote Sensing*, 9, 1079, 2017.

Xu, S., Zhou, L., and Wang, B.: Variability scaling and consistency in airborne and satellite altimetry measurements of Arctic sea ice., *Cryosphere*, 14, 2020.

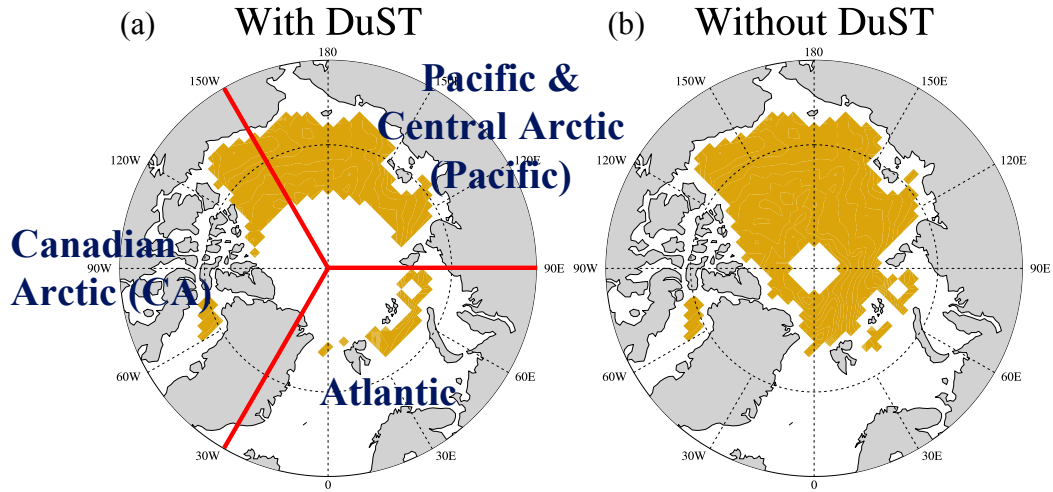
765 Xu, S., Zhou, L., Zhu, W., Wang, B., and Liu, J.: Arctic Wintertime Sea Ice Thickness and Snow Depth with physical synergy of CryoSat-2 and SMOS., In preparation.

Zhou, L., Xu, S., Liu, J., Lu, H., and Wang, B.: Improving L-band radiation model and representation of small-scale variability to simulate brightness temperature of sea ice, *International Journal of Remote Sensing*, 38, 7070–7084, 2017.

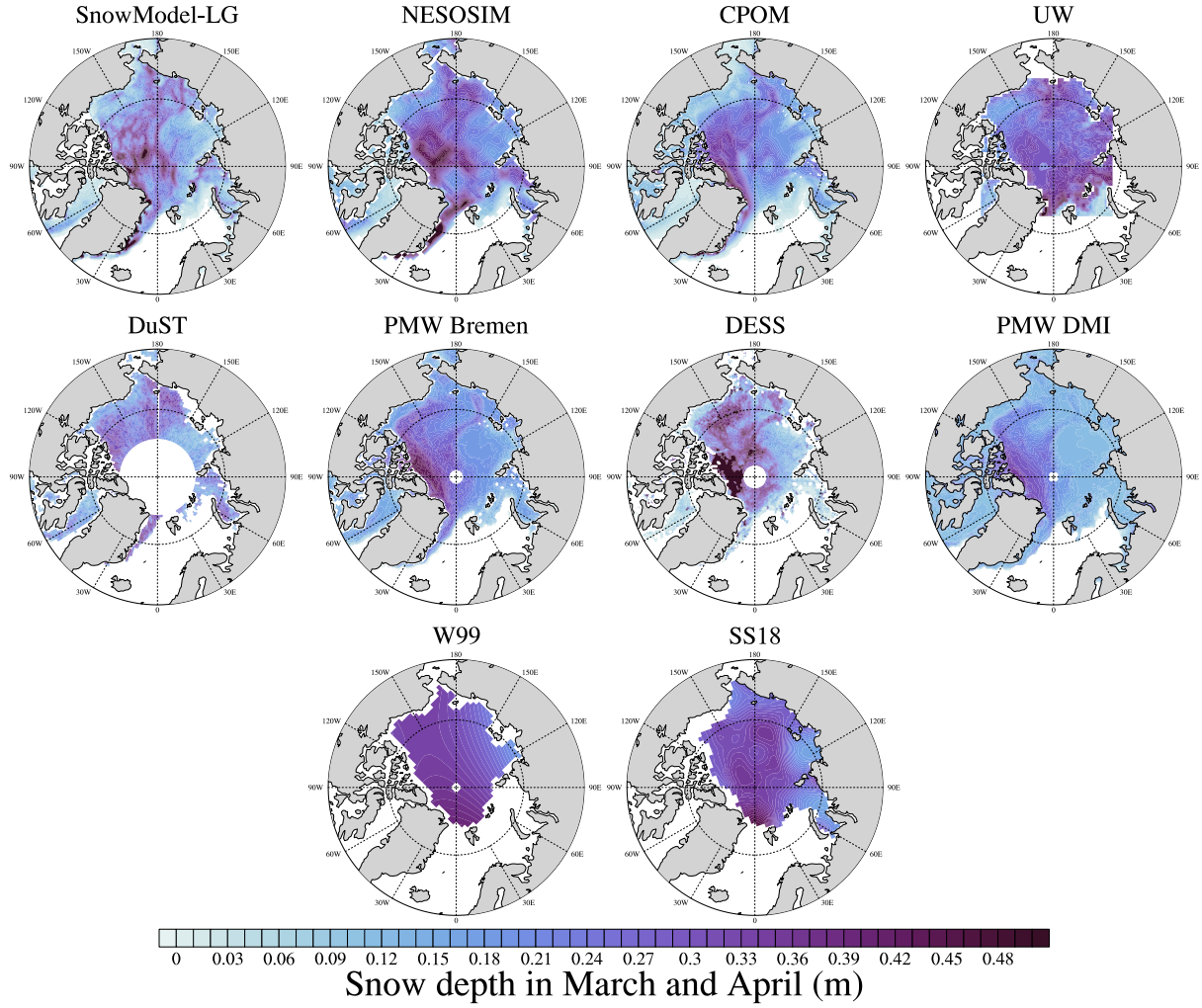
770 Zygmuntowska, M., Rampal, P., Ivanova, N., and Smedsrud, L. H.: Uncertainties in Arctic sea ice thickness and volume: new estimates and implications for trends, *The Cryosphere*, 8, 705–720, 2014.

**Table 2.**  $R^2$  (in bold),  $RMSE$  (left in bracket, units: cm) and  $NRMSE$  (right in bracket) of various average monthly snow depth products in comparison with four OIB snow depth products, using  $100 \times 100 km$  monthly comparison.

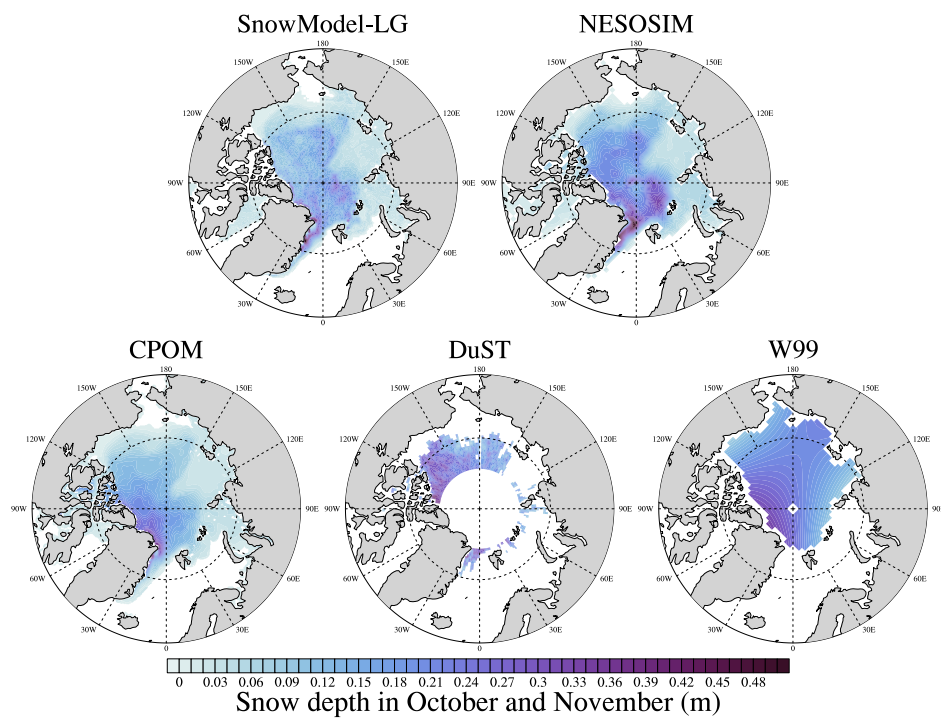
OIB Product	SnowModel-LG	NESOSIM	CPOM	UW	DuST	DESS	PMW Bremen	PMW DMI
quicklook	<b>0.27</b>	<b>0.29</b>	<b>0.54</b>	<b>0.00</b>	<b>0.36</b>	<b>0.26</b>	<b>0.59</b>	<b>0.54</b>
	(9.5,0.23)	(10.0,0.22)	(6.2,0.15)	(3.1,0.15)	(4.6,0.14)	(14.0,0.41)	(4.4,0.11)	(4.4,0.10)
GSFC	<b>0.30</b>	<b>0.39</b>	<b>0.43</b>	<b>0.10</b>	<b>0.30</b>	<b>0.48</b>	<b>0.56</b>	<b>0.37</b>
	(9.5,0.23)	(9.0,0.21)	(7.4,0.19)	(3.6,0.13)	(5.2,0.14)	(12.4,0.34)	(4.8,0.11)	(5.4,0.13)
JPL	<b>0.41</b>	<b>0.38</b>	<b>0.59</b>	<b>0.17</b>	<b>0.35</b>	<b>0.51</b>	<b>0.70</b>	<b>0.52</b>
	(8.7,0.15)	(9.0,0.15)	(6.2,0.13)	(3.5,0.10)	(5.0,0.13)	(12.2,0.35)	(4.0,0.09)	(4.8,0.08)
SRLD	<b>0.47</b>	<b>0.38</b>	<b>0.61</b>	<b>0.31</b>	<b>0.21</b>	<b>0.59</b>	<b>0.63</b>	<b>0.43</b>
	(8.4,0.10)	(9.1,0.10)	(6.1,0.10)	(3.2,0.06)	(5.6,0.11)	(11.1,0.23)	(4.4,0.08)	(5.2,0.06)



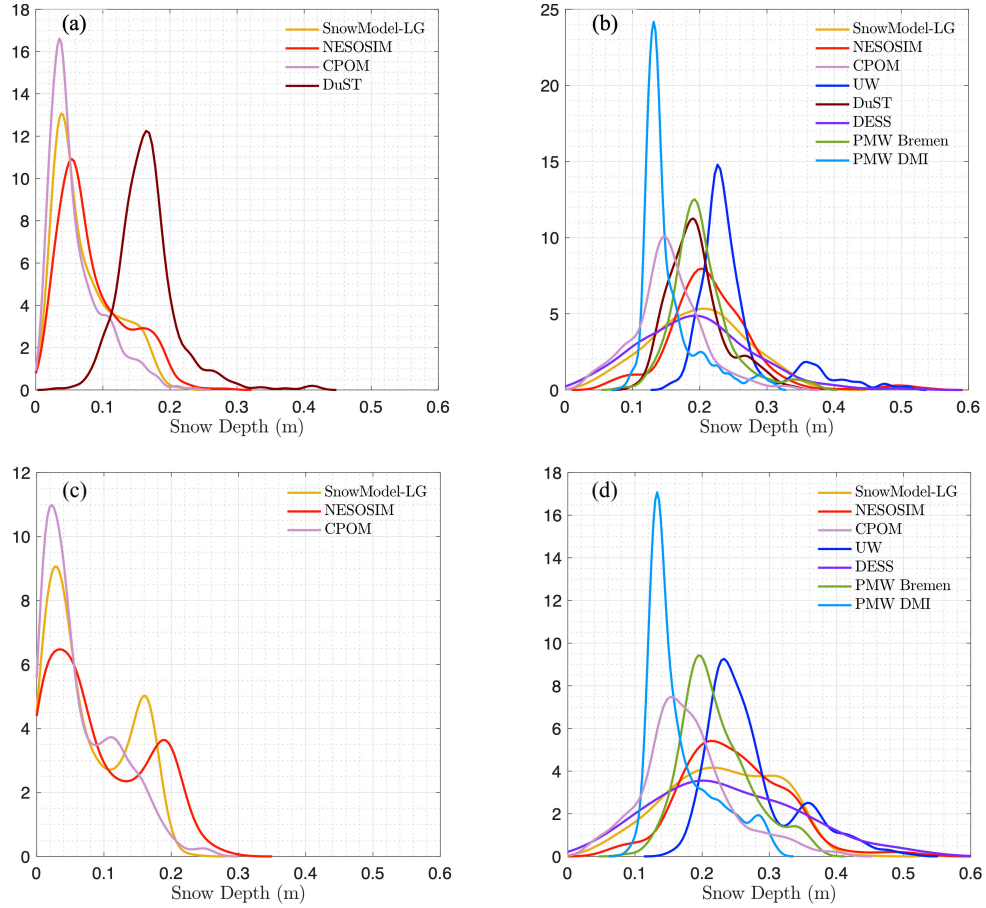
**Figure 1.** The common regions (yellow) of snow product inter-comparison with (a) and without (b) DuST. Also shown the regions of interest in this study: Canadian Arctic (CA), North Atlantic Sector (Atlantic) and Pacific & Central Arctic (Pacific) .



**Figure 2.** Mean snow depth (units: *m*) depth in spring (March-April) 2014 for eight snow products, W99 and SS18.

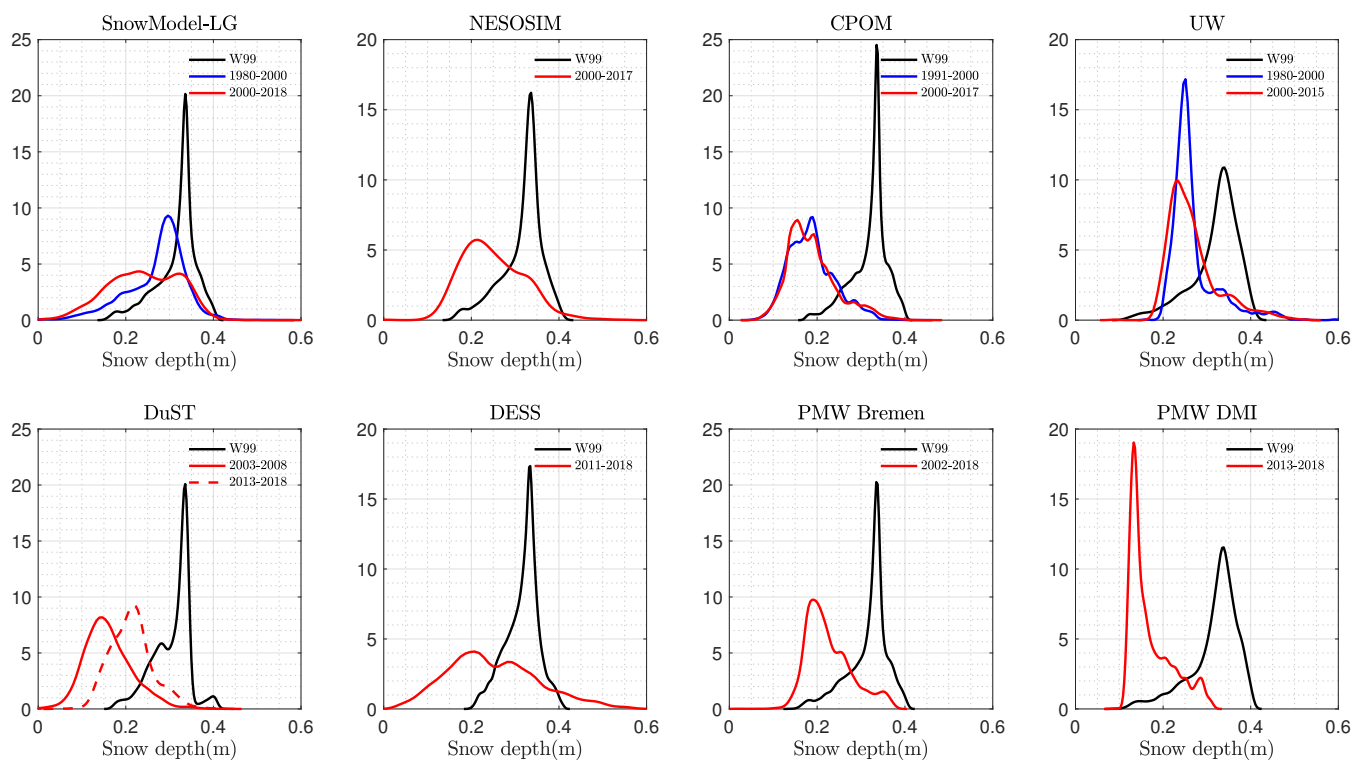


**Figure 3.** Mean snow depth (units: *m*) depth in autumn (October-November) 2014 for four snow products and *W99*.

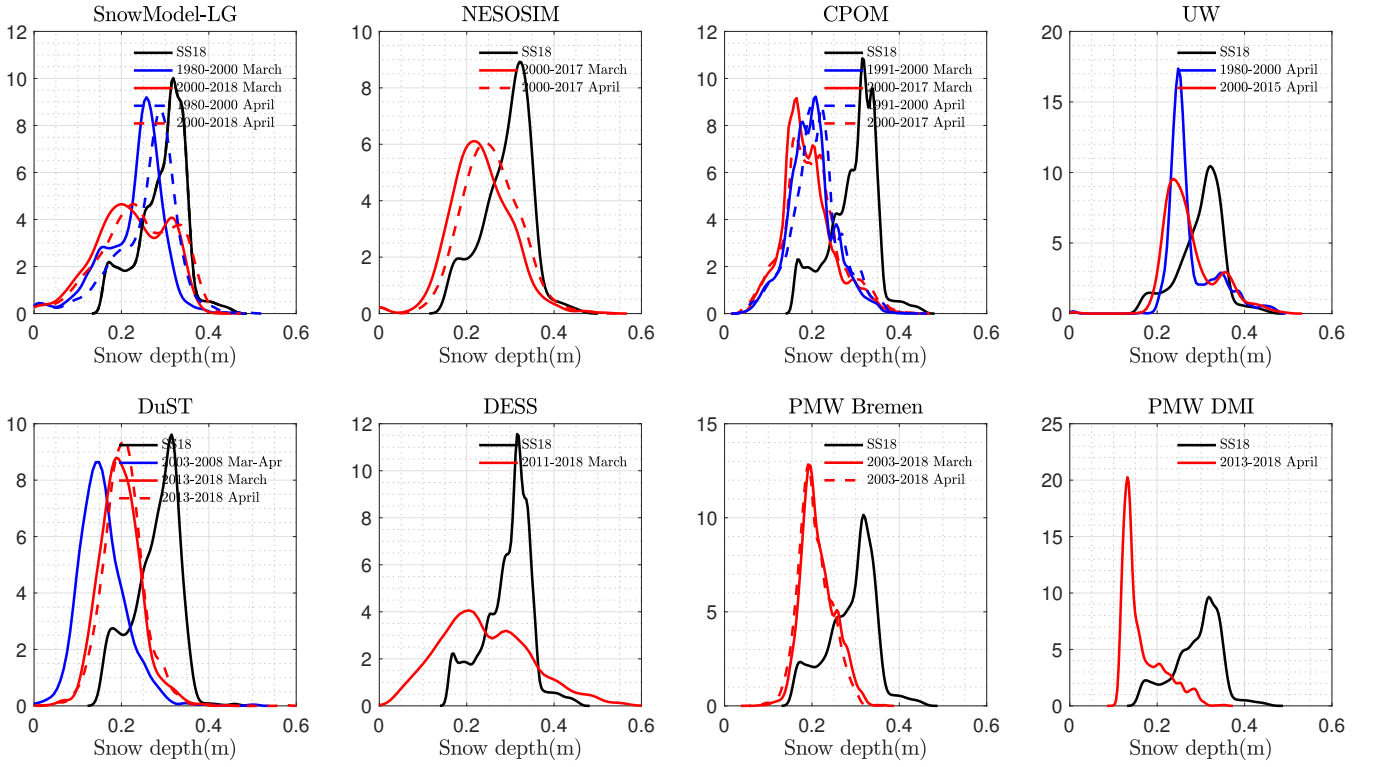


**Figure 4.** Snow distribution comparison within the common regions (in Figure 1(a)) in all snow products during the period 2000-2018 (different products cover different periods) with/without DuST included in October-November (a)/(c) and March-April (b)/(d).

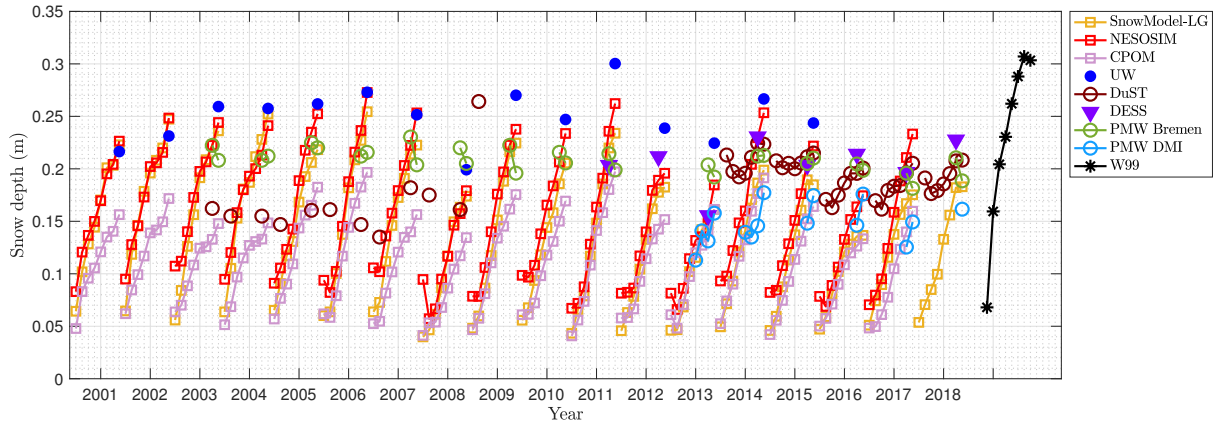




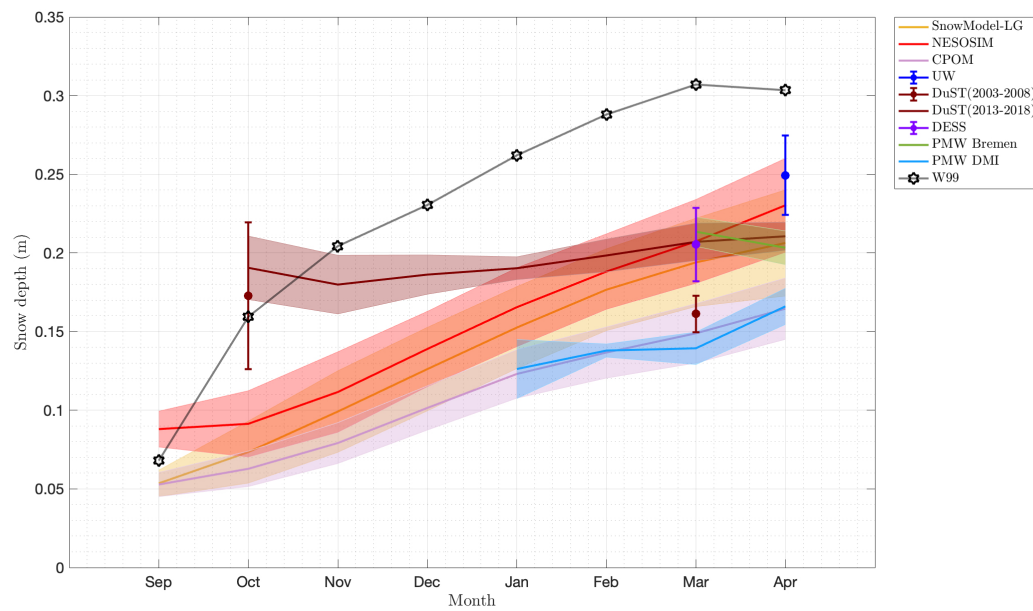
**Figure 5.** Snow distribution comparison between *W99* and snow products in spring (March/April).



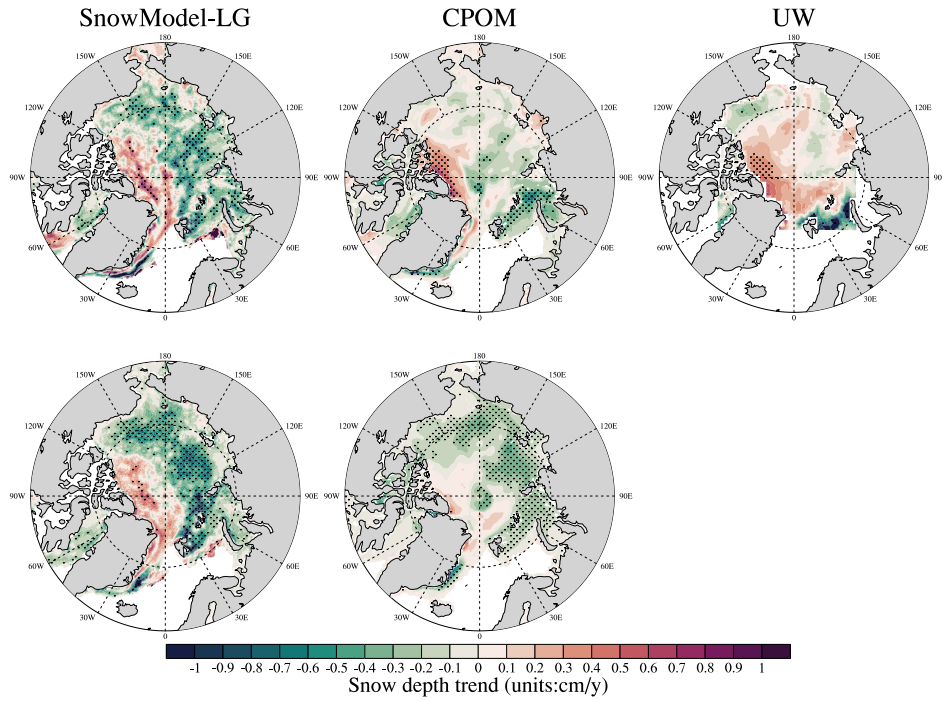
**Figure 6.** Snow distribution comparison between *SS18* climatology and snow products.



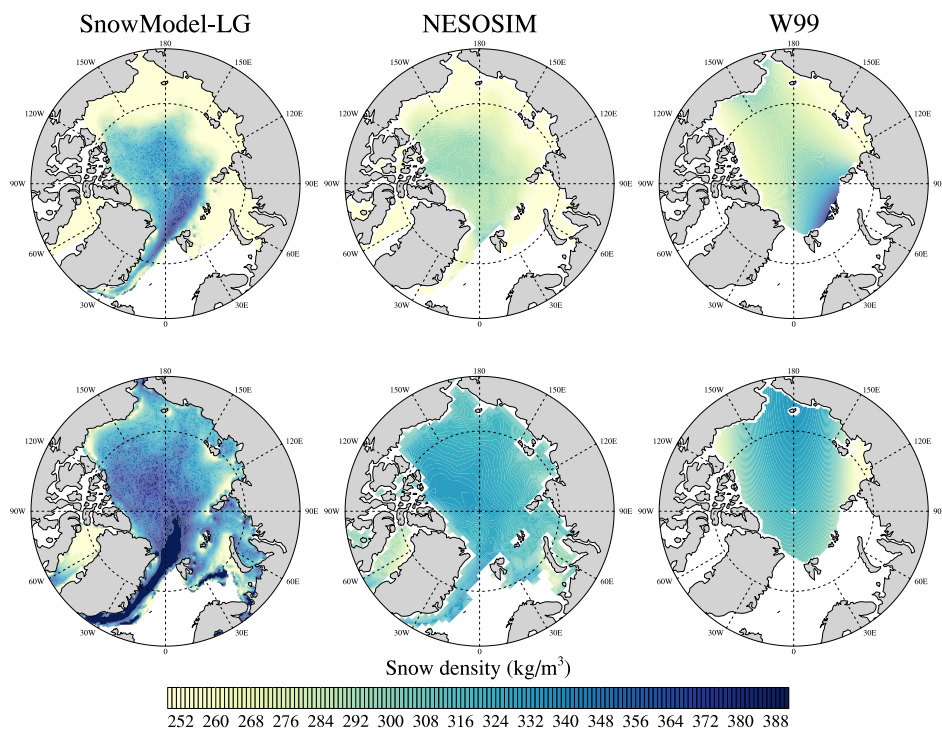
**Figure 7.** Time series of average monthly snow depth in each snow product within the common regions since 2000. Only winter time (September to next April) is shown.



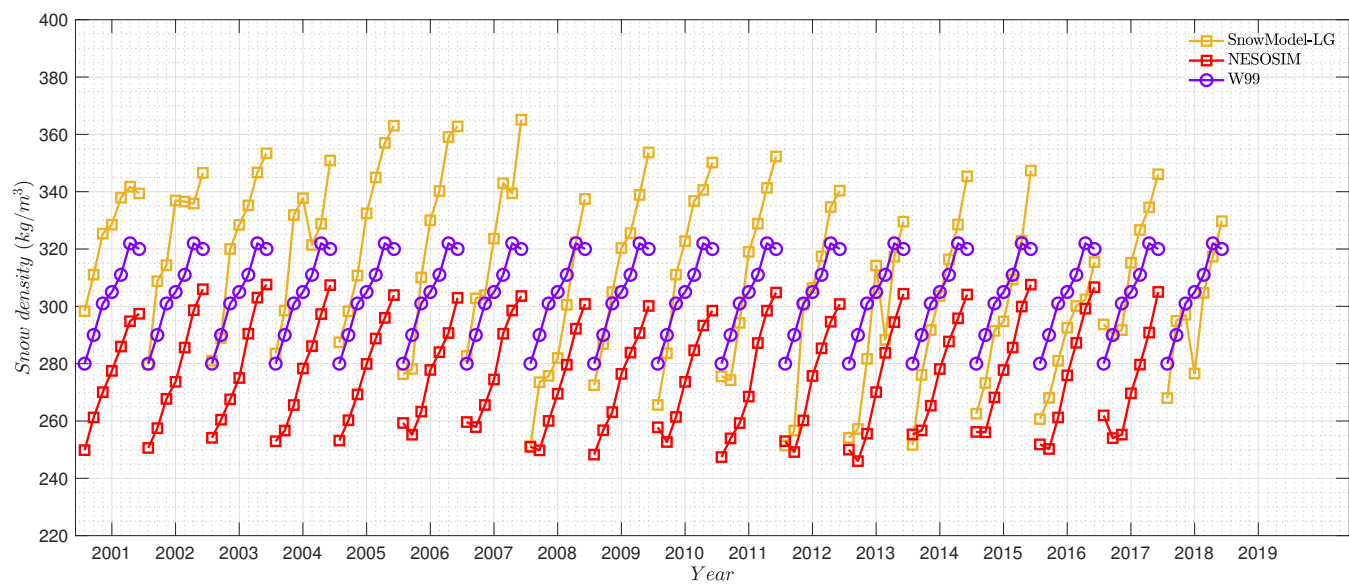
**Figure 8.** Wintertime snow accumulation among eight products and *W99* since 2000.



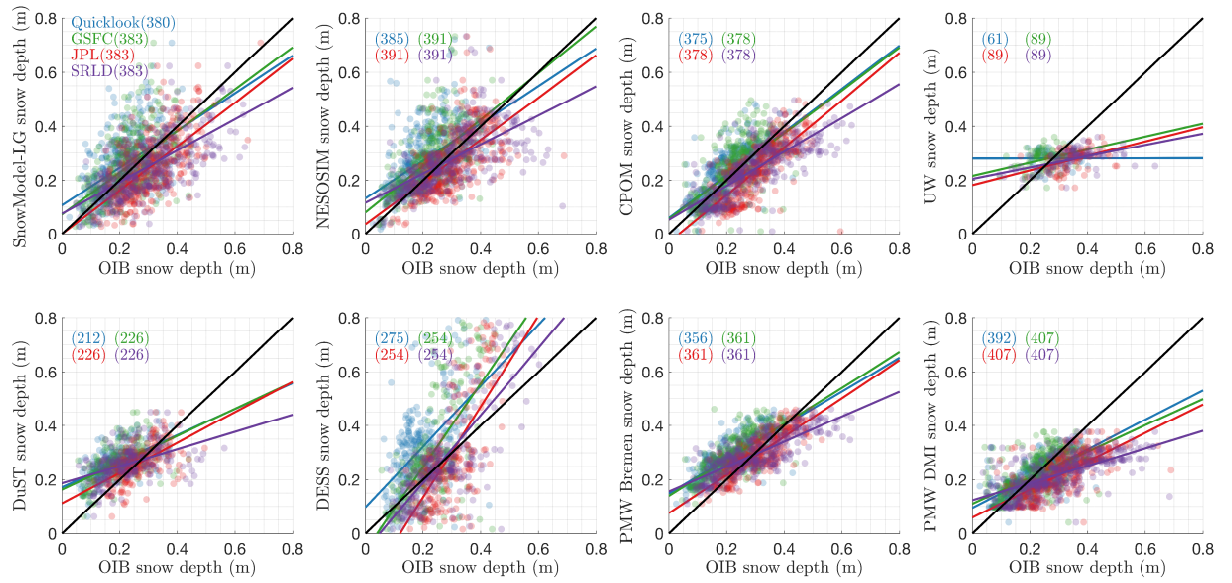
**Figure 9.** Trend of snow depth (Units:  $cm/year$ ) for SnowModel-LG, CPOM and UW in spring (April) (first row) and autumn (November) (second row) during the period from 1991 to 2015. Areas with significant trends are shown as dotted areas (confidence level 95%).



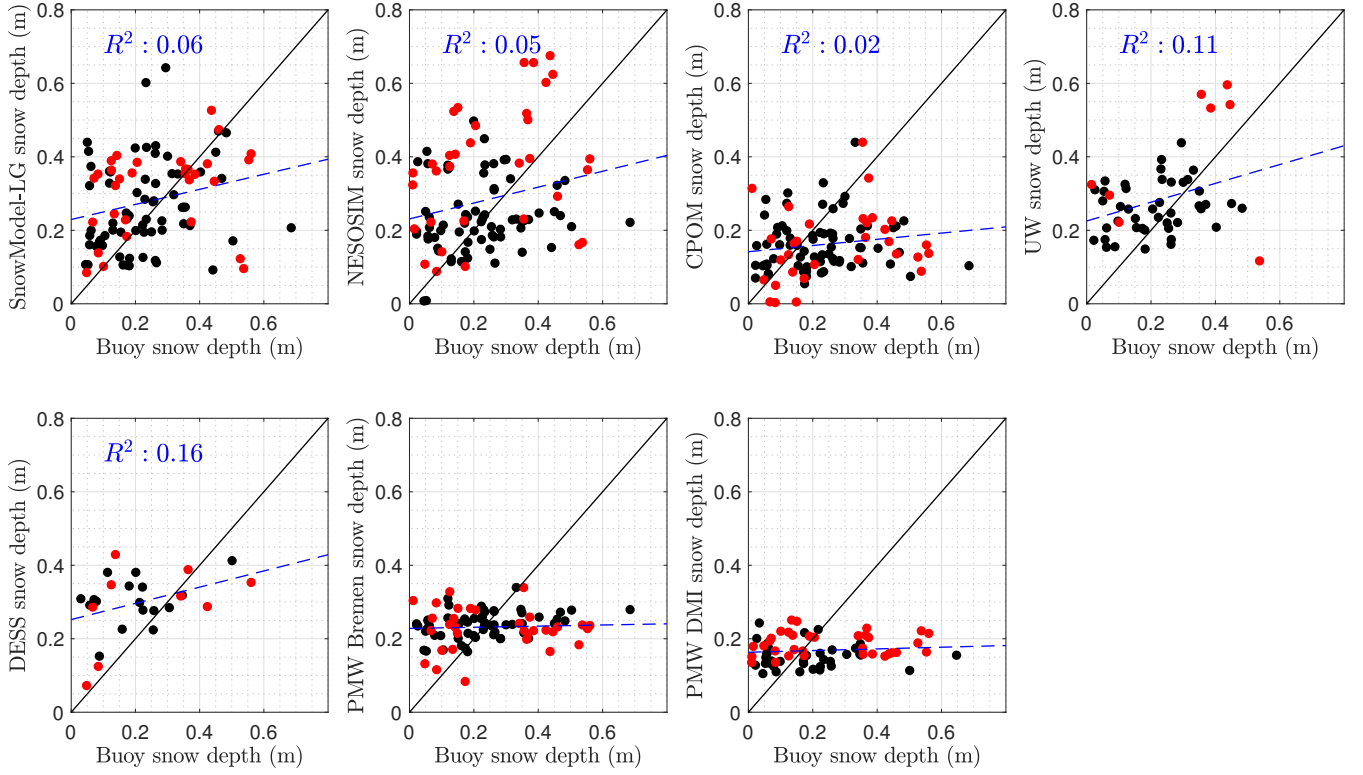
**Figure 10.** Mean snow density (Units:  $\text{kg/m}^3$ ) according to SnowModel-LG, NESOSIM and W99 in November (first row) and the next April (second row) since 2000.



**Figure 11.** Time series of mean snow density (Units:  $kg/m^3$ ) within Arctic basin (common region in Figure 1) comparison in SnowModel-LG, NESOSIM and W99 since 2000.

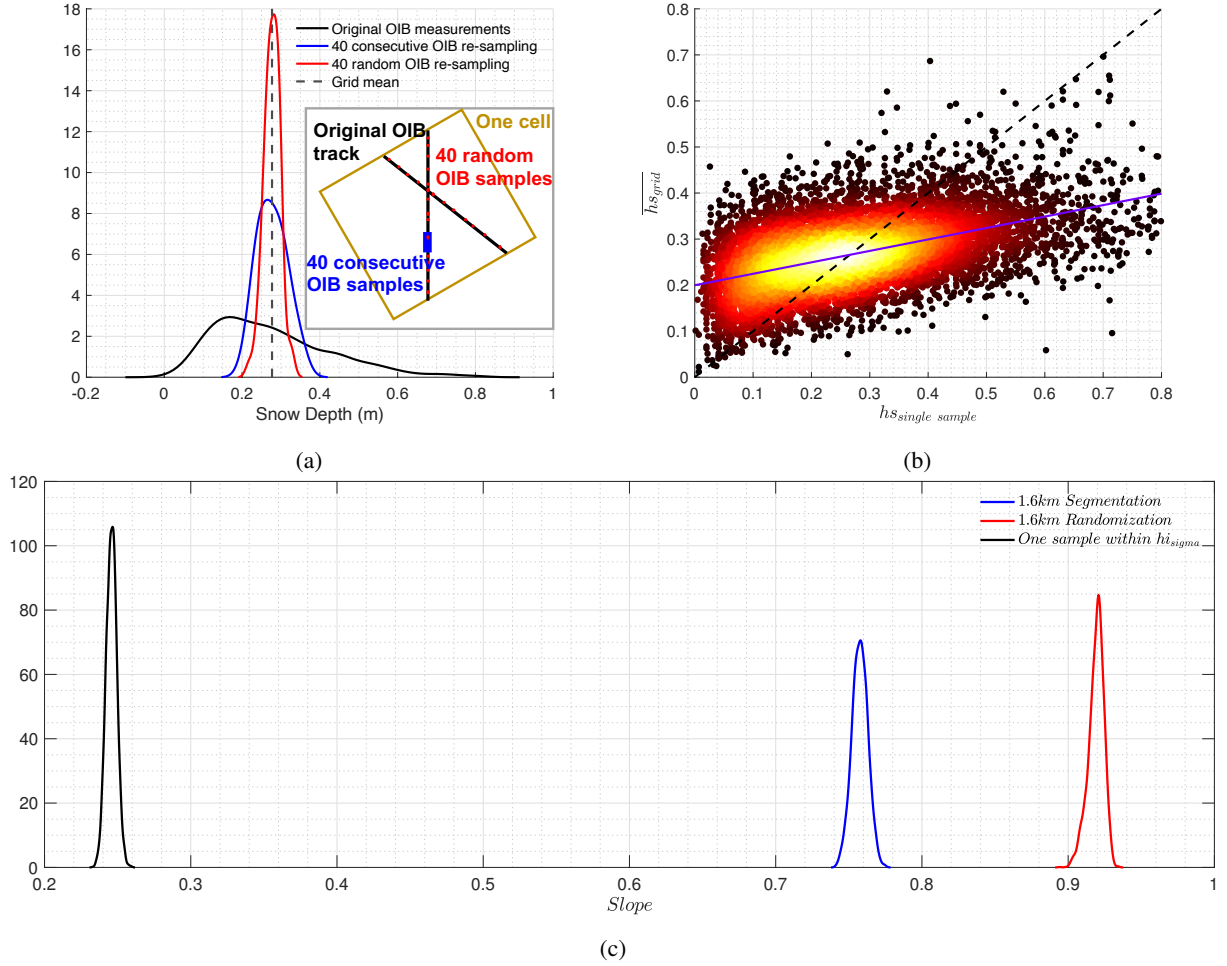


**Figure 12.** March and April comparison (only April in UW and March in DESS) between four monthly OIB products (quicklook in blue, GSFC in green, JPL in red and SRLD in purple) and all snow products in monthly onto 100km grid in the period of 2014 and 2015. Lines are best linear fits. Numbers in left corners indicate the valid count in the linear fitting.



**Figure 13.** Comparison of average March/April snow depth in snow products in native spatial resolution versus the AWI (red dots)/IMBs (black dots) buoys. All significant correlation ( $R^2$ ) are given in blue.





**Figure 14.** The study with OIB on the effects of sampling strategy for observations. Snow distribution within typical region (a) under different sampling method embedded with schematic on different strategies deployment: original OIB measurements (black), 40 consecutive OIB re-sampling (strategy II: blue) and 40 random OIB re-sampling (strategy I: red). Mean snow depth are in dashed lines. Typical fitting (b) between cell mean and a single sample snow depth for all regions, with fitting line in purple. Overall distribution of slopes (c) in three re-sampling strategies, fitting between OIB cell mean and 40 random OIB samples (strategy I), between OIB cell mean and 40 consecutive samples (strategy II) and between OIB cell mean and single sample within 1 sigma of the mode of the ice thickness (strategy III: black).