

Supplements for manuscript:

The MOSAiC ice floe: sediment-laden survivor from the Siberian shelf

5 Thomas Krumpfen¹, Florent Birrien¹, Frank Kauker¹, Thomas Rackow¹, Luisa von Albedyll¹, Michael Angelopoulos¹, H. Jakob Belter¹, Vladimir Bessonov², Ellen Damm¹, Klaus Dethloff¹, Jari Haapala³, Christian Haas¹, Stefan Hendricks¹, Jens Hoemann¹, Mario Hoppmann¹, Lars Kaleschke¹, Michael Karcher¹, Nikolai Kolabutin², Josefine Lenz^{1,4}, Anne Morgenstern¹, Marcel Nicolaus¹, Uwe Nixdorf¹, Tomash Petrovsky², Benjamin Rabe¹, Lasse Rabenstein⁵, Markus Rex¹, Robert Ricker¹, Jan Rohde¹, Egor Shimanchuk², Suman Singha⁶, Vasily Smolyanitsky², Vladimir Sokolov², Tim Stanton⁷, Anna Timofeeva², Michel Tsamados⁸

15 ¹Alfred Wegener Institute, Helmholtz Centre for Polar and Marine Research, Am Handelshafen 12, 27570 Bremerhaven, Germany

²Arctic and Antarctic Research Institute, Ulitsa Beringa, 38, Saint Petersburg, 199397, Russia

³Finnish Meteorological Institute, Marine Research, P.O.Box 503, FI-00101 Helsinki, Finland

20 ⁴Association of Polar Early Career Scientists, Alfred Wegener Institute for Polar and Marine Research, Telegrafenberg A45, 14473 Potsdam, Germany

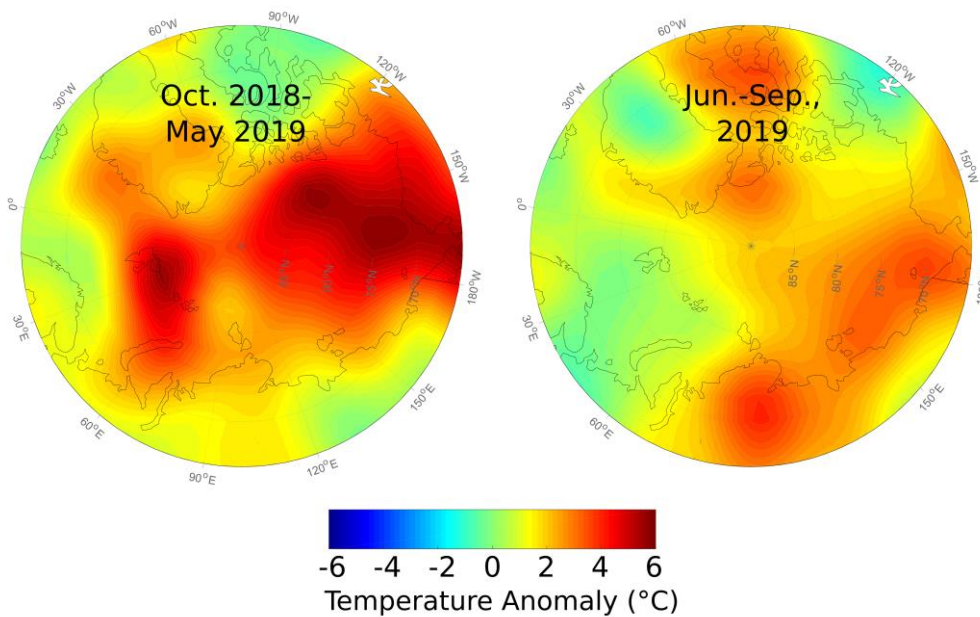
⁵Drift & Noise Polar Services, Stavendam 17, 28195 Bremen, Germany

⁶German Aerospace Center, Remote Sensing Technology Institute, SAR Signal Processing, Am Fallturm 9, 28359 Bremen, Germany

⁷Naval Postgraduate School, Oceanography Department, 833 Dyer Road, Building 232, Monterey, CA 93943, US

25 ⁸University College London, Dept. of Earth Science, 5 Gower Place, London WC1E 6BS, UK

Correspondence to: Thomas Krumpfen (tkrumpfen@awi.de)



30

Figure A, Supplement: left) October 2018 – May 2019 and right) June – September 2019 1000 hPa air temperature anomalies in °C in comparison to the 1981 - 2010 climatology (data source: www.esrl.noaa.gov/psd/products).

35

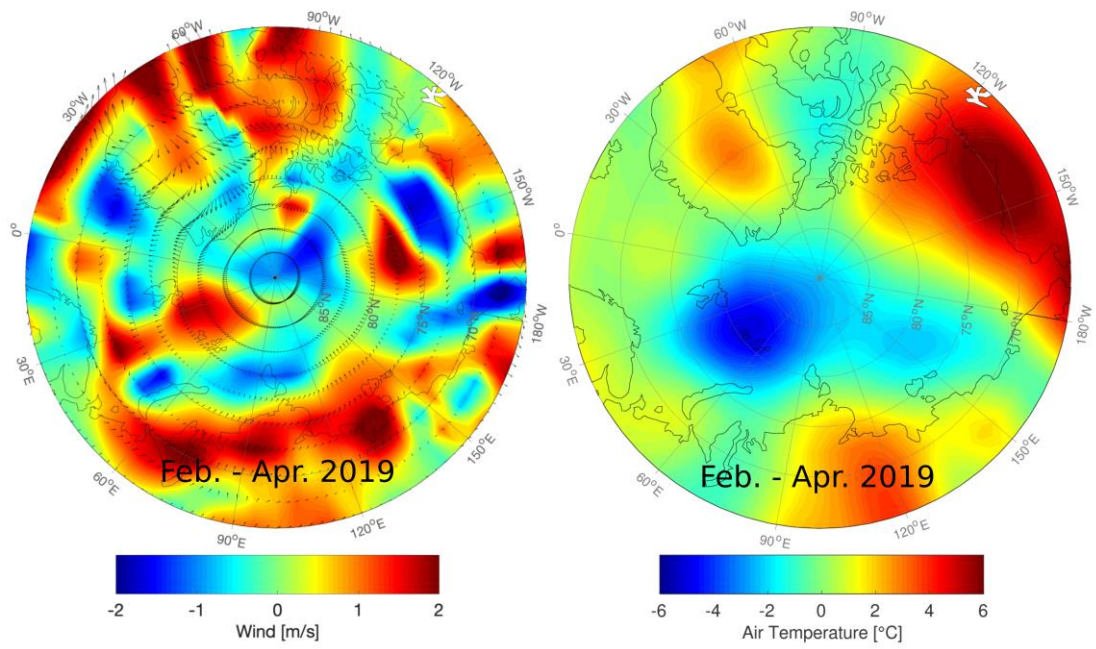


Figure B, Supplement: left) February – April 2019 wind velocity anomalies at 10 m height and right) February - April 2019 1000 hPa air temperature anomalies in comparison to the 2011 - 2018 (CryoSat-2 period) climatology (data source: www.esrl.noaa.gov/psd/products).