

Response to the Editor's decision (Nanna Bjørnholt Karlsson) on manuscript TC-2020-51: Temporal and spatial variability in surface roughness and accumulation rate around 88° S from repeat airborne geophysical surveys

We use the following color and font coding scheme in our response:

Editors's comments

Response: authors' response to comments.

Dear Dr. Karlsson,

We would like to thank you for your very thorough and thoughtful review of our manuscript and your decision to accept it for publication pending corrections. We have corrected both issues according to your suggestions. Our detailed explanation is below. We have also corrected two minor typos in the manuscript related to references that previously went unnoticed.

Best regards,

Michael Studinger

Detailed explanation of corrections:

Line 36: Is there a word missing? "The southern convergence of all Ice, Cloud, and land Elevation Satellite-2 (ICESat-2, (Markus et al., 2017)) and CryoSat-2 (Wingham et al., 2006) ground reference tracks at 88°S (McConnell et al., 1997; Mosley-Thompson et al., 1999; Winski et al., 2019, Helm et al., 2014)."

Response: We have added the missing word: "The southern convergence of all Ice, Cloud, and land Elevation Satellite-2 (ICESat-2, (Markus et al., 2017)) and CryoSat-2 (Wingham et al., 2006) ground reference tracks **is** at 88°S(~~McConnell et al., 1997; Mosley-Thompson et al., 1999; Winski et al., 2019, Helm et al., 2014).~~" This sentence was heavily changed in the previous revisions and the references related to accumulation rate and slope are not needed. The accumulation rate and slope statements were moved to lines 72-74 in the previous revisions together with the references.

From previous editor report: "Fig. 3/line 239: add an arrow to Fig. 3". This is a suggestion to add an arrow indicating where the smooth area located between 175° W and 60° E can be seen on Figure 3. The comment relates back to the difficulty in coupling the information shown in Fig. 3 with Fig. 4. You have already discussed this in your reply to reviewer 1, and I agree with you that regardless of

coordinate system it will always be challenging when features cross the 180W/180E line. If you prefer to not annotate your figures further perhaps you can specify somewhere (either in the text or in the figure caption) that Fig. 4 starts at Titan Dome and moves clockwise along 88°S.

Response: We have marked the smooth segment between 175° W and 60° E with a solid green line in Fig. 3 and have also added a label referring to Fig. 4. We have expanded the figure caption accordingly. We have also indicated the smooth segment with a green line in Fig. 4d, added a label and refer the reader to Fig. 3. We have updated the figure caption accordingly. We have also included your suggestion of pointing out the clockwise orientation in the caption of Fig. 4.

We hope these two additions will make it easier for the reader to locate the smooth segment in Figs. 3 and 4.

Temporal and spatial variability in surface roughness and accumulation rate around 88° S from repeat airborne geophysical surveys

Michael Studinger¹, Brooke C. Medley¹, Kelly M. Brunt^{2,1}, Kimberly A. Casey^{3,1}, Nathan T. Kurtz¹, Serdar S. Manizade^{4,5}, Thomas A. Neumann¹, and Thomas B. Overly^{2,1}

5 ¹NASA Goddard Space Flight Center, Greenbelt, MD, USA

²Earth System Science Interdisciplinary Center (ESSIC), University of Maryland, College Park, MD, USA

³U.S. Geological Survey, Reston, VA, US

⁴Amentum Services Inc., Wallops Island, VA, USA

⁵NASA Wallops Flight Facility, Wallops Island, VA, USA

10

Correspondence to: Michael Studinger (michael.studinger@nasa.gov)

Abstract. We use repeat high-resolution airborne geophysical data consisting of laser altimetry, snow and Ku-band radar and optical imagery acquired in 2014, 2016 and 2017 to analyze the spatial and temporal variability in surface roughness, slope, wind deposition, and snow accumulation at 88° S, an elevation bias validation site for ICESat-2 and potential validation site for CryoSat-2. We find significant small-scale variability (< 10 km) in snow accumulation based on the snow radar subsurface stratigraphy, indicating areas of strong wind redistribution are prevalent at 88° S. In general, highs in snow accumulation rate correspond with topographic lows resulting in a negative correlation coefficient of $r^2 = -0.32$ between accumulation rate and MSWD (Mean Slope in the mean Wind Direction). This relationship is strongest in areas where the dominant wind direction is parallel to the survey profile, which is expected as the geophysical surveys only capture a two-dimensional cross section of snow redistribution. Variability in snow accumulation appears to correlate with variability in MSWD. The correlation coefficient between the standard deviations of accumulation rate and MSWD is $r^2 = 0.48$ indicating a stronger link between the standard deviations than the actual parameters. Our analysis shows that there is no simple relationship between surface slope, wind direction and snow accumulation rates for the overall survey area. We find high variability in surface roughness derived from laser altimetry measurements on length-scales smaller than 10 km, sometimes with very distinct and sharp transitions. Some areas also show significant temporal variability over the course of the 3 survey years. Ultimately, there is no statistically significant slope-independent relationship between surface roughness and accumulation rates within our survey area. The observed correspondence between the small-scale temporal and spatial variability in surface roughness and backscatter, as evidenced by Ku-band radar signal strength retrievals, will make it difficult to develop elevation bias corrections for radar altimeter retrieval algorithms.

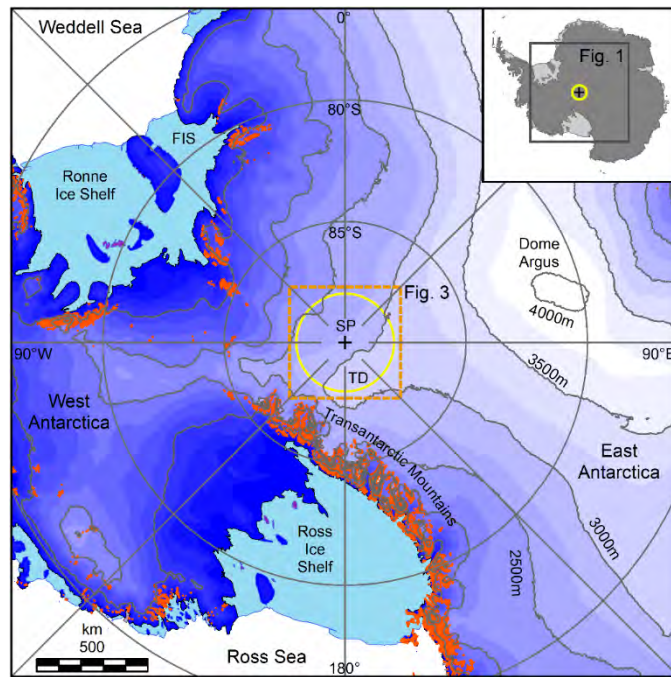
1 Introduction

30 Polar ice sheets play a critical role in Earth's climate system. Measurements from satellites and aircraft reveal that the ice sheets of Greenland and Antarctica are changing at an accelerating rate suggesting increasing rates of global sea-level rise as the ice sheets melt (e.g., Vaughan et al., 2013). To project future rates of sea-level rise, numerical models of an ice sheet's response to climate forcing require input data of the surface mass balance and its spatial and temporal variability. Observing changes in ice-surface elevation from satellite and airborne platforms has long been recognized as a powerful tool for assessing and quantifying ice sheet mass balance (e.g., Abdalati et al., 2010; Krabill et al., 2000; Thomas and Investigators, 2001; Zwally et al., 2002).

The southern convergence of all Ice, Cloud, and land Elevation Satellite-2 (ICESat-2, (Markus et al., 2017)) and CryoSat-2 (Wingham et al., 2006) ground reference tracks [is](#) at 88° S (~~McConnell et al., 1997; Mosley-Thompson et al., 1999; Winski et al.,~~

~~2019, Helm et al., 2014~~). Because of the density of tracks, the small impact of surface processes, and the region's relative quiescence, 88° S is the primary ICESat-2 land-ice validation site in the southern hemisphere (Brunt et al., 2019a; Brunt et al., 2019b). Both radar and laser altimeters are potentially prone to elevation biases related to surface roughness and slope. For laser altimeters such as ICESat-2, increased surface roughness causes broadening of the return signal, which can cause elevation biases up to 0.2 m (Smith et al., 2019). When surface roughness changes seasonally the elevation biases will also change with time (Smith et al., 2019). For radar altimeters such as CryoSat-2, smoother surfaces will have larger return signal strength compared to rougher surfaces which also changes the shape of the return waveform potentially causing elevation biases (Kurtz et al., 2014). Since radar altimeters penetrate below the ice surface, volume backscatter from subsurface firn will also impact the return signal waveform (e.g., Nilsson et al., 2016). Radar extinction with depth depends on the dielectric permittivity of firn, which is primarily a function of firn density (Kovacs et al., 1995). Changes in firn density are often related to changes in snow accumulation rates (e.g., Grima et al., 2014) making radar elevation biases potentially a function of spatial changes in accumulation rates. Furthermore, wind-induced anisotropic features of firn can introduce azimuth dependent elevation biases (Armitage et al., 2014).

Previous Antarctic studies have reported relationships between surface slope, roughness and snow accumulation rates (e.g., Arcone et al., 2012; Dattler et al., 2019; Fahnestock et al., 2000; Grima et al., 2014; Hamilton, 2004; King et al., 2004). To better understand potential correlations between altimetry elevation biases and geophysical parameters of the ice surface, we are specifically studying the spatial and temporal variability of surface roughness and accumulation rate over the ICESat-2 validation site at 88° S. We use repeat high-resolution airborne data consisting of laser altimetry, snow and Ku-band radar and natural color imagery acquired as part of the National Aeronautics and Space Administration's (NASA) Operation IceBridge (OIB) mission to analyze spatial and temporal variability in surface roughness, slope, accumulation rate, and Ku-band radar backscatter along a 1400 km circle around 88° S (Fig. 1). We start with a description of the survey area and the data sets we use (Section 2). We then focus on surface roughness in Section 3, first describing its relevance to cryospheric research, the methods we use to estimate surface roughness, followed by a description of temporal and spatial variations in surface roughness that we observe in our data. We then describe in Section 4 how we estimate snow accumulation rates, followed by a description of the spatial variability we observe in snow accumulation rates in our survey area in Section 5. Section 6 explores the relationship between surface, slope and wind direction. The impact of surface roughness on radar backscatter and therefore elevation bias in radar altimeter measurements is discussed in Section 7. Section 8 concludes the paper.



65 **Figure 1: Location map with survey area around 88° S (yellow line). Surface elevation is from Helm et al., (2014). Rock outcrops from the Antarctic Digital Database are marked in red. SP marks the geographic South Pole, TD is Titan Dome and FIS is Filchner Ice Shelf.**

2 Data sets and survey area

Our survey area is situated on the East Antarctic plateau in the hinterland of the Transantarctic Mountains (Fig. 1). The ice surface elevation along the 1400 km long survey line around 88° S varies between 2450 and 3100 m, with bedrock elevations ranging from
 70 -1450 to 1785 m (Morlighem et al., 2020) and Fig. 4. The thinnest ice along 88° S is 1190 m thick and the thickest ice reaches 4100 m (Fig. 4). Ice surface velocities in our survey area are generally below 10 m yr⁻¹ (Mouginot et al., 2019). Accumulation measurements from snow pits and shallow firn cores are sparse (Favier et al., 2013; Picciotto et al., 1971). The survey area is in a region of low snow accumulation (7–10 cm annual water equivalent) (Arthern et al., 2006; McConnell et al., 1997; Mosley-Thompson et al., 1999; Winski et al., 2019) and low surface slope ($0.11^\circ \pm 0.10^\circ$, Fig. A1a) (Helm et al., 2014). Together with the
 75 low snow accumulation rate and low ice surface velocities this makes it an ideal area for calibration and validation of spaceborne altimeters (Brunt et al., 2019a; Brunt et al., 2019b).

Accumulation of snow on the Antarctic ice sheet is primarily the result of precipitation of snow. The precipitated distribution of accumulated snow is subsequently modified spatially by wind-driven erosion and deposition. Sublimation of accumulated snow, both, in the form of wind-driven sublimation of airborne snow particles and surface sublimation removes accumulated snow and
 80 therefore mass from the surface and further modifies the initial deposition pattern resulting from precipitation (e.g., Frezzotti et al., 2007, and references therein). For slopes ≥ 0.002 Das et al. (2013) found wind-scoured areas in East Antarctica with negative surface mass balance similar to the wind-glaze area described by Scambos et al. (2012). Using European Centre for Medium-Range Weather Forecasts (ECMWF) reanalysis data, Casey et al. (2014) estimate that around half of the snow accumulation at the South Pole comes from periodic moisture-bearing storms traversing the Filchner–Ronne and Ross Ice Shelves towards the pole
 85 from West Antarctica. It is likely that the percentage of snow accumulation from such cyclonic events is even higher at 88° S near the Transantarctic Mountains compared to the South Pole since the area is closer to the source of moisture, complicating the relationship between surface slope, wind direction and snow accumulation. Therefore, there is no simple relationship between surface slope, wind direction and snow accumulation rates.

We use airborne geophysical data collected during 6 NASA OIB survey flights in 2014, 2016 and 2017. The data consists of high-
90 resolution laser altimetry, natural color imagery and snow and Ku-band radar data and is available from the National Snow and Ice
Data Center (NSIDC).

2.1 Laser altimeters

2.1.1 Airborne Topographic Mapper (ATM)

The ATM is a conically-scanning laser altimeter that measures the surface topography of a swath beneath the aircraft at a 15° off-
95 nadir angle (Krabill et al., 2002). The range from the laser altimeter to the surface is converted to geographic position by integration
with platform Global Positioning System (GPS) and attitude/Inertial Measurement Unit (IMU) measurement subsystems. The
conical scan geometry results in a near-constant angle of incidence and intersecting laser footprints allow for pointing biases to be
determined over any type of surface (Harpold et al., 2016; Martin et al., 2012). The two generations of instruments used in this
study, T4 and T6 have a pulse repetition frequency of 3,000 Hz, a wavelength of 532 nm, and a pulse width of 6 ns full width at
100 half maximum (FWHM). The ATM scanner has a swath width of 240 m at a nominal flight elevation of 460 m above ground level
(AGL) and a footprint diameter of ~0.8 m. As a result of the conical scan pattern, the density of spot elevation measurements varies
across the swath from 0.03 footprints m⁻² at the center to 0.37 footprints m⁻² at the edge. At a nominal aircraft speed of 130 m s⁻¹
the average spacing between point elevation measurements is ~5 m in the center of the scan and <1 m near the edge. The vertical
accuracy of an individual laser spot measurement is estimated to be 7 cm with a vertical shot-to-shot precision of 3 cm (Martin et
105 al., 2012). We use both the L1B and L2 (ICESN) data products (Studinger, 2013, updated 2018, 2014, updated 2018).

2.1.2 Riegl LMS-Q240i laser altimeter

The University of Alaska, Fairbanks (UAF) operates a commercially available Riegl LMS-Q240i airborne laser scanner together
with IMU and dual-frequency GPS subsystems for attitude and precise position. The system is a near-infrared linear, unidirectional
scanner that scans the surface in parallel lines. The system acquires measurements at 10,000 Hz with a footprint size of 1.0 m at
110 460 m AGL and at a ±30° off-nadir scan angle. The average spacing of laser footprints both along track and across is ~1 m at 460
m AGL and a ground speed of 85 m/s (Johnson et al., 2013; Larsen, 2010, updated 2018). Results over 20% of our study area at
88° S show that 2 flights from a 2017 UAF laser altimetry survey had a <10 cm bias and a surface measurement precision of <10
cm (Brunt et al., 2019a).

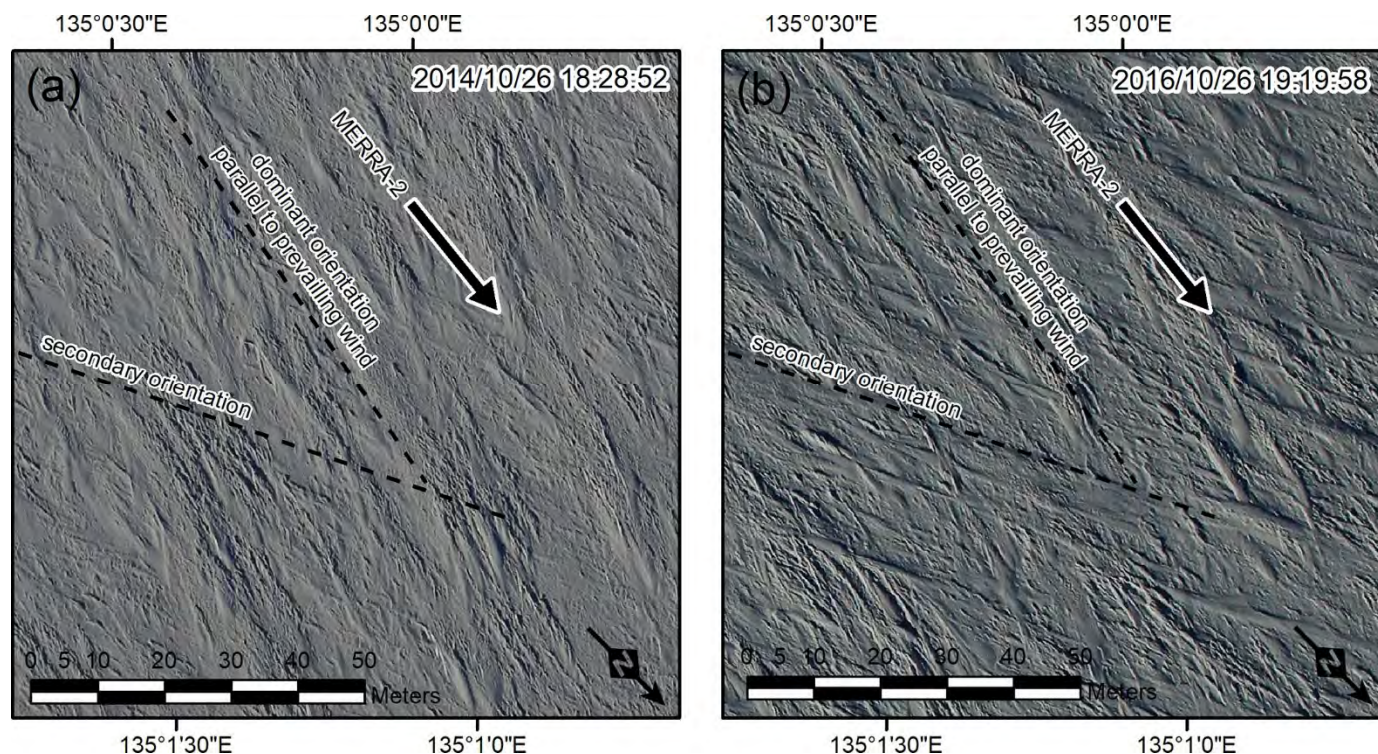
2.2 Snow and Ku-band radar

115 The snow radar is an ultra-wideband microwave radar that operates over the 2–8 GHz frequency range and is developed and
operated by the Center for Remote Sensing of Ice Sheets (CReSIS) at the University of Kansas (KU). The system is a frequency-
modulated continuous-wave (FMCW) radar that images the stratigraphy in the upper ~40 m of the ice sheet with a bandwidth-
limited range resolution of 2.6 cm in firn with a density of 550 kg/m³ and 3.8 cm in air (Leuschen, 2014, updated 2018; Panzer et
al., 2013; Rodriguez-Morales et al., 2014). At these low accumulation sites, preservation of reflection horizons is greatly reduced
120 due to a slow rate of burial. Also, the ambient conditions required to generate seasonal reflections might not always be present
(such as depth hoar). At the nominal flight elevation of 460 m AGL the snow radar has a footprint size of approximately 10 m
across track and 14.5 m along track (Panzer et al., 2013). A 9-by-4 (range bin-by-trace) median filter is applied to the data to
minimize noise. The Ku-band radar altimeter is identical in design but operates over the frequency range of 12–18 GHz for mapping
subsurface stratigraphy in the upper 10 m of polar firn (Gomez-Garcia et al., 2012; Paden et al., 2014, updated 2018; Rodriguez-

125 Morales et al., 2014). Since both radars have the same bandwidth (6 GHz) the bandwidth-limited range resolution of the Ku-band radar is the same as the snow radar.

2.3 Digital Mapping System natural color imagery

The Digital Mapping System (DMS) is a digital camera that acquires natural color, high-resolution images at 10 cm pixel size at the nominal flight elevation of 460 m AGL (Dominguez, 2010, updated 2018) (Fig. 2). The camera is operated by NASA's Airborne Sensor Facility located at the Ames Research Center. Images are approximately 380 m across swath and 570 m along swath and cover the entire ATM swath width. A combined IMU and GPS system for precise position and attitude information is part of the instrument package. DMS images are acquired with overlap between consecutive images to ensure data continuity. The difference in geolocation between distinct elongated snow surface features (sastrugi) between overlapping, orthorectified images is on the order of several meters. The DMS images are referenced to the RADARSAT 200 m Digital Elevation Model (DEM) (Liu et al., 2015).



140 Figure 2: DMS natural color images of the same area at 88° S and 135° E. The location is indicated in Fig. 3b. The two aerial images are nadir-looking, geolocated and orthorectified, color photographs of a sun illuminated snow surface taken from 460 m AGL. The two photographs were taken on the same day of year two years apart. The low-angle sun illuminates the elongated, elevated surface features (sastrugi) facing the sun and creates dark shadows in the opposite direction behind the elevated features. For the 2014 image the sun is 11.5° above the horizon (accounting for refraction through the atmosphere) and for the 2016 image it is 12.1°. The orientations of sastrugi, indicated by dashed lines, is determined by visually following transitions of elongated bright, sun-illuminated features and corresponding shadows. Both images show a dominant sastrugi orientation parallel to the 26 year averaged 10 m wind field from MERRA-2 (e.g., Gelaro et al., 2017) and a secondary orientation that appears to be less pronounced in 2014 compared to 2016.

145 2.4 Survey flights

Between 2014 and 2017 six NASA OIB airborne geophysical survey flights were completed to acquire data around 88° S (Table 1). Two flights are necessary to complete the entire small circle around 88° S with the platforms and bases of operations used. Snow and Ku-band radar data and DMS images are only available for 2014 and 2016 years. The combination of simultaneous laser altimetry, snow radar stratigraphy and natural color imagery on a regional scale provides a unique data set to study small scale deposition and erosional processes and their temporal and spatial variability.

Date	Longitude Segment	Aircraft	Laser	Snow & Ku-band Radars	Camera	Flight Elevation
2014/10/23	110° E to 70° W	DC-8	ATM-T4	KU CReSIS	DMS	460 m AGL
2014/10/26	70° W to 110° E	DC-8	ATM-T4	KU CReSIS	DMS	460 m AGL
2016/10/26	70° W to 110° E	DC-8	ATM-T6	KU CReSIS	DMS	460 m AGL
2016/11/15	110° E to 70° W	DC-8	ATM-T6	KU CReSIS	DMS	460 m AGL
2017/11/30	100° E to 10° W	DC-3	UAF Riegl	n/a	n/a	460 m AGL
2017/12/03	30° W to 150° W	DC-3	UAF Riegl	n/a	n/a	460 m AGL

Table 1: Science instruments and airborne platforms of 6 NASA OIB aerogeophysical survey flights at 88° S.

3 Ice surface roughness

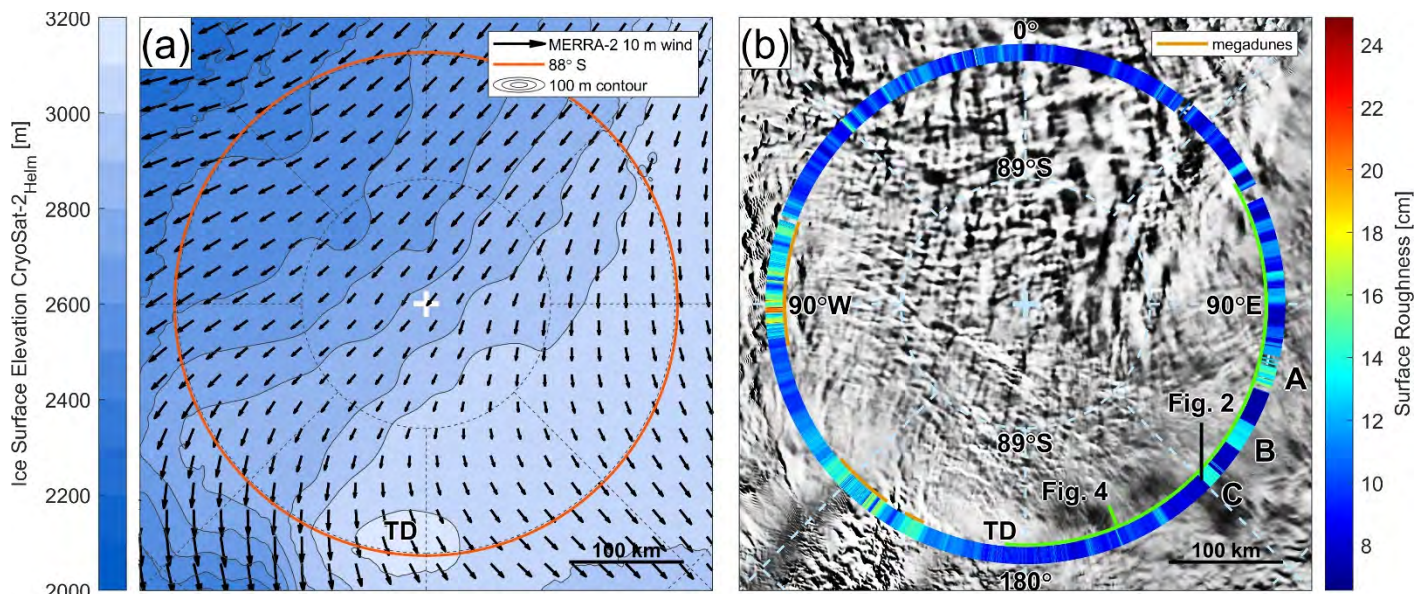
3.1 Background

155 The surface roughness of polar ice sheets is primarily a result of ice dynamics and surface-atmosphere interactions on varying temporal and spatial scales. In general, ice flow over rugged bedrock topography causes roughness features that can extend from several hundreds of kilometers to a few kilometers depending on ice thickness, flow speed and basal conditions (e.g., Smith et al., 2006, and references therein). These large-scale variations in ice surface topography caused by ice dynamics are not the topic of this analysis. Here, we focus on small-scale surface roughness or surface texture that spans from several meters to hundreds of

160 meters and is primarily the result of ice-atmosphere interactions, such as wind deposition and wind-induced ablation or erosion, the predominant types of surface-atmosphere interactions in the area of 88° S. Sastrugi are the dominant form of small-scale surface roughness in the interior of polar ice sheets and are known to form parallel to the prevailing wind direction. Their orientation can therefore be used to infer time-averaged prevailing wind directions (e.g., Bromwich et al., 1990; Gow, 1965). Lister and Pratt (1959) describe sastrugi on the order of 20-30 meters along the route of the Commonwealth Trans-Antarctic Expedition that also

165 crossed 88° S. Figure 2 shows natural color DMS images of the same area at 88° S and 135° E taken two years apart. The dominant sastrugi orientation matches the 26 year average (1980 – 2016) of the 10 m wind direction from MERRA-2 (Modern-Era Retrospective Analysis for Research and Applications, (e.g., Gelaro et al., 2017)) (Fig. 3a). The ice surface on the East Antarctic plateau often has a dominant sastrugi orientation with sometimes two or three populations of sastrugi forming a crossing network of ridges that reflects seasonal changes in wind orientation (e.g., Warren et al., 1998) (Fig. 2). These seasonal changes are not

170 captured in our averaged MERRA-2 wind direction. The good agreement between the dominant sastrugi orientation and the MERRA-2 long-term average, however, suggests that a single dominant wind direction is a good representation of the conditions in the survey area (Fig. 2).



175 Figure 3: a) Ice surface elevation from CryoSat-2 (Helm et al., 2014) and 26 year 10 m average wind speed from MERRA-2 (e.g., Gelaro et al., 2017). Red line marks location of 88S° S airborne geophysical data collection. TD is Titan Dome. b) Ice surface roughness from 2014 ATM data (Studinger, 2014, updated 2018). Background image is MODIS Mosaic of Antarctica 2013 – 2014 (Haran et al., 2014) using MODIS data between 11/2013 and 03/2014. Locations of megadune fields are marked in orange and roughness features A, B, and C refer to Fig. 4b. **The location of the segment with smooth surface in 2016 and 2017 between 175° W and 60°E that is discussed in Section 3.4 and shown in Fig. 4 is marked by a green line.**

180 In recent decades, especially in the rapidly warming West Antarctic region, synoptic heat- and moisture-bearing storms have reached the South Pole area (e.g., Harris, 1992; Nicolas and Bromwich, 2011). Such storms and cyclonic events have been less common, though still occur in the interior of East Antarctica (e.g., Gorodetskaya et al., 2014; Hirasawa et al., 2000). Individual sastrugi can be eroded and reform during a single storm (Warren et al., 1998). Most changes, however, occur as a result of seasonal changes between summer and winter months (e.g., Gow, 1965). Gow (1965) shows that sastrugi form during winter months
 185 resulting in a rough surface, and subsequently get eroded during the summer by sublimation and deflation at South Pole. This effect mostly results in a flattening of the subsurface layer stratigraphy and therefore does not affect our surface roughness results.

3.2 Relevance of surface roughness and slope for altimetry and surface mass balance

The surface roughness and slope of ice sheets affect several processes that are relevant for ice sheet mass balance (e.g., Gow, 1965, and references therein; van der Veen et al., 2009). King et al. (2004) describe small scale variations in accumulation rate on the
 190 order of 1 km that appear to be associated with wind-borne redistribution as a function of slope. Hamilton (2004) found significant variability in snow accumulation rates due to the interaction of prevailing winds with meter-scale surface topography; where, for example, a concave depression can receive up to 18% more accumulation than adjacent steeper snow surface topography. Similarly, Arcone et al. (2012) mapped accumulation patterns in East Antarctica that are created by wind-blown deposition on windward and leeward slopes. Slope-dependent accumulation is also related to spatial variations in firn density (Grima et al., 2014) which impacts
 195 mass balance estimates from altimetry data. Small-scale roughness contributes to noise in firn core records and therefore accumulation rate estimates (van der Veen et al., 1998; van der Veen et al., 2009). Studies by van der Veen et al. (1998; 2009) used ATM roughness estimates over Greenland to determine the uncertainty in water equivalent (w.e.q.) accumulation estimates from shallow firn cores.

Surface roughness also affects the albedo and bidirectional reflectance distribution function of ice sheets (Leroux and Fily, 1998;
 200 Warren et al., 1998). Nolin et al. (2002) used ATM roughness estimates to calibrate Multi-angle Imaging SpectroRadiometer (MISR) roughness estimates, and Nolin and Payne (2007) derived then relationships between ice surface roughness and near-

infrared albedo using ATM and MISR data. Ongoing satellite and modelling investigations on radiative impacts of surface roughness and sastrugi continue to illuminate angular relationships and parameterizations that can be key to quantifying bidirectional reflectance distribution function and albedo sensitivities in ice surface studies (e.g., Corbett and Su, 2015; Kokhanovsky and Zege, 2004; Larue et al., 2019). As ice sheet surface roughness mapping and modeling capabilities improve, it will be possible to more accurately include the radiative effects of surface roughness. Surface roughness furthermore affects thermodynamic fluxes because it affects boundary layer processes through the aerodynamic roughness and therefore the surface energy balance (Boisvert et al., 2017; Chambers et al., 2019; Nolin and Mar, 2018; Palm et al., 2017).

3.3 Surface roughness estimates - methods

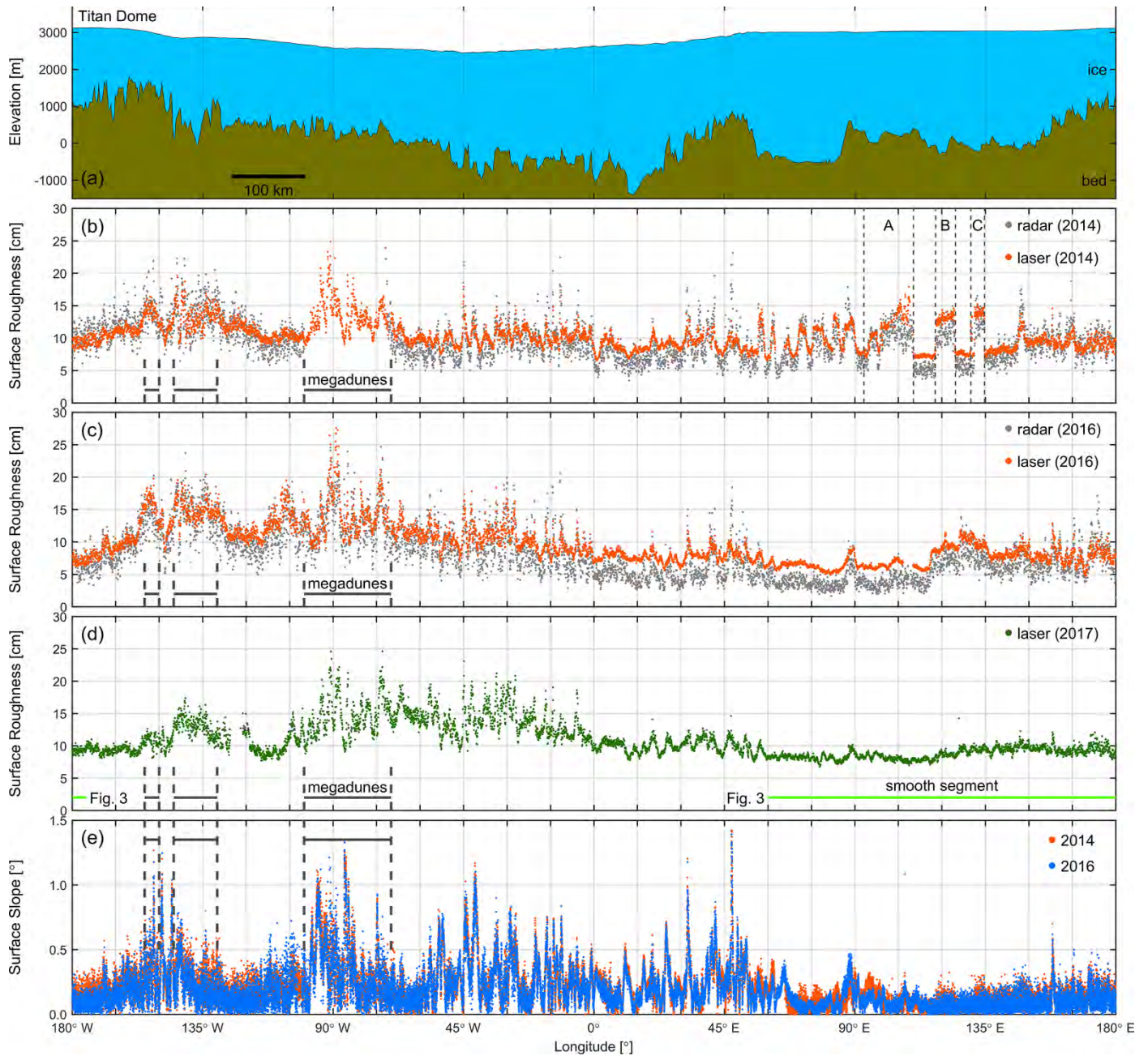
There are several diverse approaches to quantifying topographic irregularity or surface roughness (e.g., Smith, 2014, and references therein). In general, roughness metrics are not only scale and orientation-dependent, but also impacted by the spatial resolution, footprint size and sample spacing of the input data. One commonly used metric for surface roughness is the standard deviation σ of small-scale elevation fluctuations from a mean or de-trended surface in a given area or over a given length (e.g., Das et al., 2013; Smith, 2014, and references therein). In order to minimize potential effects from anisotropy in surface roughness over different length scales and orientations we have calculated surface roughness over an area roughly square in size common to both laser altimeters. Individual spot elevation measurements are binned into 0.06° longitude segments (240 m in length at 88°S). We then fit a 3rd order polynomial regression model through all spot elevation measurements within a longitude segment. We define the standard deviation σ of the residuals as a metric for surface roughness.

For estimation of surface roughness from snow radar data, we pick an initial surface for each radar trace record (every ~ 5 meters along track) by finding the maximum slope in the radar return power across 9 discrete time intervals called range bins. The size of a range bin in firn with a density of 550 kg/m^3 is 1.8 cm. Starting at the initial surface pick, we keep sliding the surface pick one range bin deeper (or later in time) while the slope for the range bin remains above 3 standard deviations of the mean, which provides our final surface. Next, surface picks that lie outside of a 15-range bin window from a smoothed surface are discarded and set to the smoothed surface, however, very few data points are discarded (1.8%). Surface roughness is estimated from residuals to the smoothed surface fit. Specifically, surface roughness for a given location is calculated as the standard deviation in surface range-bin residuals for locations within a 250-meter radius. This radius was selected to ensure consistency with laser-altimeter-derived roughness values. Finally, the range-bin roughness is converted to heights by using the radar wave velocity in air ($2.998\text{E}^8 \text{ m/s}$). For a closer look at very fine-scale spatial and temporal changes in surface roughness around 88°S we use roughness estimates contained in the ATM Level 2 smoothed ice surface data product, known as ICESSEN s. The ICESSEN data product includes slope and roughness estimates in overlapping $80 \text{ m} \times 80 \text{ m}$ platelets across the swath (Studinger, 2014, updated 2018). The root mean square of the residuals of a plane fit through the platelets is an estimate of the surface roughness. Removing the mean results in the root mean square being equivalent to the standard deviation σ .

Figure 4 shows the surface roughness estimates around 88°S latitude from three different instruments and over the course of 3 different years. In general, there is good agreement between the roughness estimated using the ATM laser altimeter and the synchronous roughness estimates from the snow radar (Fig. 4 b, c). Because of the smaller footprint size and higher sampling density the ATM laser-derived roughness estimates are slightly larger than the radar estimates, with few exceptions. The radar estimates also reveal more scatter, probably caused by the much lower range resolution of the radar compared to the ATM laser altimeter. The mean difference between the laser minus snow radar roughness estimates is $0.6 \pm 1.9 \text{ cm}$ for 2014 and $1.6 \pm 2.1 \text{ cm}$ for 2016; however, the spatial patterns, which are of main interest for this study, are nearly indistinguishable. There are no obvious spatial patterns in the roughness difference between laser and radar that would reflect a geophysical signal. Because of the higher

point density, roughness derived from the UAF Riegl system is larger than the ATM roughness estimates. The mean difference between the 2017 UAF minus 2016 ATM laser estimates is 1.2 ± 2.4 cm.

A 370 km long segment between 150°W and 100°E was repeated in 2017 within 3 days with the same instrument. It is unlikely that the surface was significantly altered within 3 days and therefore the difference between the two estimates can be used as an approximate estimate of the instrument-specific accuracy and precision of the laser-derived roughness estimates. The mean surface roughness for the first east-bound flight is 9.5 ± 1.5 cm and 10.1 ± 2.0 cm for the later west-bound flight. The mean μ of the difference in surface roughness between the two 2017 flights is 0.02 cm with a σ of 0.7 cm. For comparison, a separate study by Das and others (2013) over Dome Argus with a Riegl LMS-Q240i scanner show a similar range of roughness as our measurements around 88°S .



250

Figure 4: a) Ice surface elevation from 2014 ATM data (Studinger, 2014, updated 2018) and bedrock topography from 2014 CReSIS Multichannel Coherent Radar Depth Sounder (MCoRDS) data (Leuschen et al., 2010, updated 2018). The profile starts at Titan Dome (TD) and moves clockwise around 88°S . b) Surface roughness from 2014 ATM laser and snow radar data. A 14 minute disk failure of the snow radar in 2014 resulted in a data gap over the megadunes. c) Same for 2016. d) Surface roughness from 2017 UAF laser data.

255 The location of the smooth segment between 175° W and 60° E that is discussed in Section 3.4 and also shown in Fig. 3b is indicated by a green line. e) Surface slope from 2014 and 2016 ATM ICESSE data using only the nadir platelet (Studinger, 2014, updated 2018). Heavy dashed lines in b) – e) mark megadune areas and thin dashed lines in b) indicate distinct abrupt changes in surface roughness in 2014.

3.4 Surface roughness, slope and elevation around 88° S - results

260 In order to distinguish ice surface roughness features caused by ice dynamics from roughness features that are a result of ice–
atmosphere interactions, the proximity of the ice surface to bedrock topography and bedrock roughness must be understood (Fig.
4 a). The large ice thickness (Fig. 4) and slow ice flow velocities ($< 10 \text{ m yr}^{-1}$ (Mouginot et al., 2019)) in the survey area, combined
with the small window size we use to calculate the roughness make it unlikely that any of the roughness features we observe are
ice dynamic related. Thus, we interpret the roughness characteristics shown in Figs. 3 and 4 as caused by ice–atmosphere
265 interactions.

Figure 3b and 4 show several spatially coherent segments with distinct roughness characteristics around 88° S that appear not to
be related to ice dynamics. In general, the surface roughness estimated from snow radar and laser altimetry data varies between 2
and 25 cm. The smoothest surface in 2016 and 2017 is between 175° W and 60° E and includes Titan Dome. The location of this
segment is indicated by green lines in Figs. 3b and 4d. The smooth segment also coincides with the highest ice surface elevations
270 and shallowest surface slopes around 88° S (Fig. 4).

The segment between 70° W and 100° W shows a pronounced increase in roughness in 2014 (Fig. 4b). The MODIS Mosaic of
Antarctica (MOA, (Haran et al., 2014)) shows that this segment is near the edge of a megadune field that is mostly north of 88° S
(Fig. 3b). Megadunes are long–wavelength surface ripples (Fahnestock et al., 2000) with amplitudes on the order of a few meters
(peak to trough) and wavelengths of several kilometers (Fahnestock et al., 2000; Scambos and Fahnestock, 1998). The typical
275 elevation pattern of megadunes is not visible in the 88° S laser altimetry data. The likely reasons for this are that the airborne
geophysical data was collected at the edge of the dune field and the orientation of the dune crests is subparallel to the airborne
geophysical data. The orientation of dune crests between 70° W and 100° W is approximately perpendicular to the prevailing
surface wind direction from MERRA-2 (Fig. 3a) consistent with findings from Fahnestock et al. (2000).

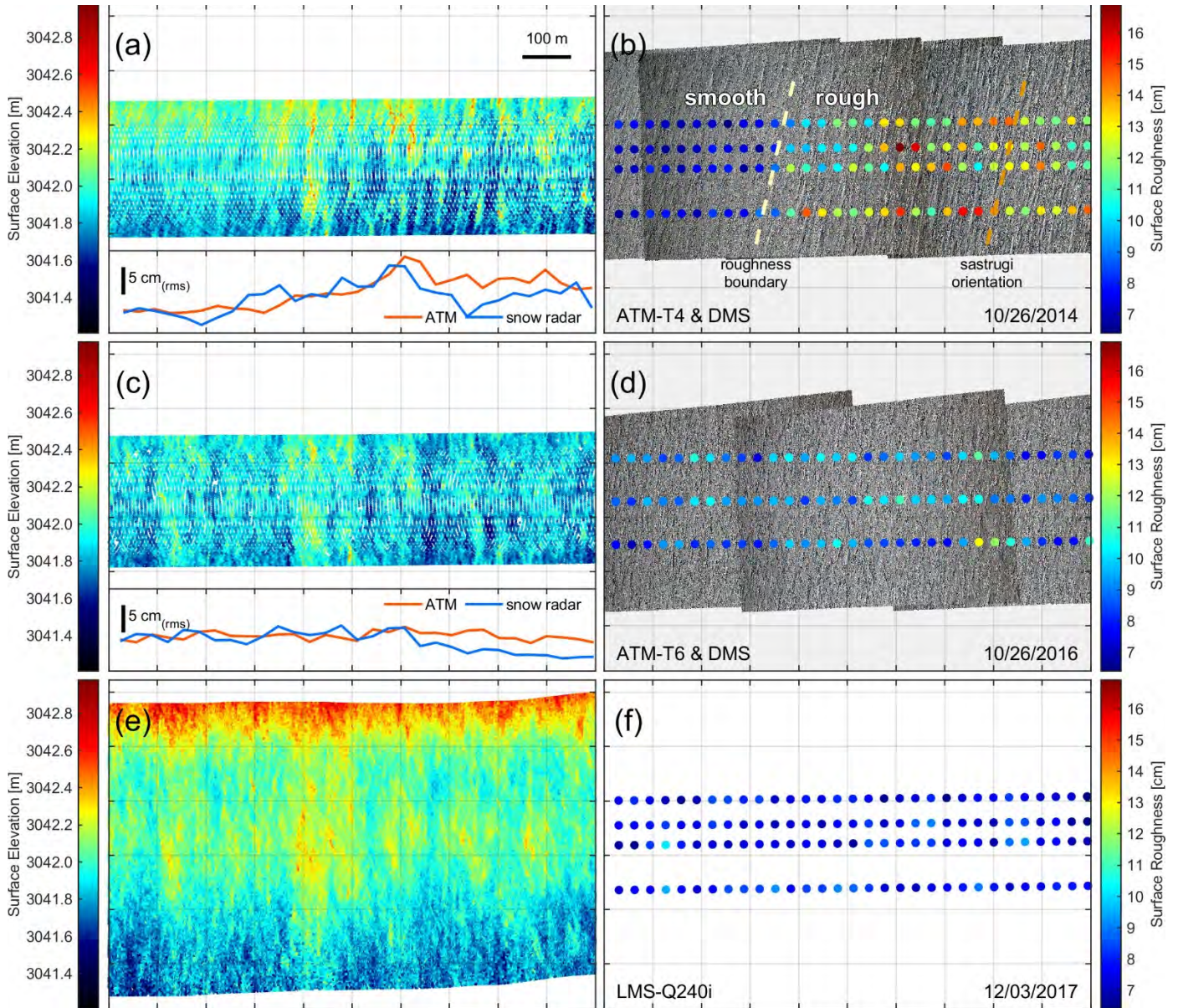
A second megadune field can be seen between 130° W – 145° W and 150° W – 155° W (Fig. 3 and Fig. 4). The surface of this
280 dunefield is less rough in 2017 compared to 2014 and 2016. . Data for MOA was collected between 11/2013 and 03/2014. The
temporal stability of megadune fields remains poorly understood. Fahnestock et al. (2000) found 60 m of dune migration over a
34 year period for a megadune field in the vicinity of Vostok Station, approximately 1100km from the dune field discussed here.
Therefore dune migration rates could vary significantly between the two sites. Since our survey area is near the edge of the dune
field we cannot rule out that over the course of 4 years the edge of the dune field has migrated out of the coverage of the airborne
285 geophysical data.

The slope of the ATM ICESSE nadir platelets shows many distinct peaks that are aligned very well between the 2014 and 2016
data, indicating that these features are stable in location (Fig. 4e). The mean μ and standard deviation σ of the surface slope around
88° S is $0.20^\circ \pm 0.16^\circ$ and never exceeds 1.5° .

3.5 Temporal changes in surface roughness - results

290 We use ATM Level 2 ICESSE roughness estimates for a closer look at multiyear temporal changes in surface roughness around
88° S (Fig. 5) because they are calculated over $80 \text{ m} \times 80 \text{ m}$ platelets. The 2014 data reveals several areas where surface roughness
doubles over very short spatial scales of only a few hundred meters (Fig. 4a). These features, labelled A, B and C in Fig. 4b, are
several tens of kilometers wide and appear to be oriented parallel to the main sastrugi direction visible in simultaneously collected

ATM spot elevation data and Digital Mapping System (DMS) imagery. Fig. 5 shows a close-up of one of the features (C). The rougher surface features are also present in the simultaneously collected CRE SIS snow radar data (Fig. 5 a, c). These areas of increased surface roughness disappear in 2016 or seem to be significantly reduced in amplitude with the sharpness of the edges significantly blurred. Both the laser derived surface roughness and the roughness estimated from snow radar data seems to be slightly lower than the smooth area. In 2017, the segments labelled A, B and C appear to have no distinct roughness anomaly (Fig. 4d) compared to the surrounding areas.



300

305

310

Figure 5: Laser spot elevation measurements and DMS imagery over roughness feature "C" (Fig. 4b). The center of all map panels is at 88.97° S/135° E. All panels cover the exact same area on the ground and are shown in a local coordinate system parallel to the aircraft trajectory. Panels a), c) and e) show laser spot elevation measurements in 2014, 2016 and 2017. Inset plots in a) and c) show surface roughness from ATM and snow radar at the center of the scan/nadir position. Panels a) and c) show small (cm level) semi-circular elevation biases that are a result of occasional variations in scan azimuth speed (Yi et al., 2015). The peak-to-peak amplitude of these biases is an order of magnitude smaller than the ice surface topography. Panels b), d) and f) show corresponding DMS imagery (b) and d) only) and surface roughness from laser altimetry in 2014, 2016, and 2016. The darkening towards the edge of the DMS frames in b) and d) is caused by vignetting from the lens and not related to geophysical changes. ATM roughness is from ICESSE data and the UAF Rieggl data from 2017 has been calculated in the same way as ATM ICESSE data to make them compatible. A distinct change in roughness can be seen in 2014 that is visible in both, the laser derived surface roughness, and the length of the shadows in DMS imagery (b). The roughness doubles over a distance of ~200 m (a). The orientation of the boundary is parallel to the dominant sastrugi orientation (b). In 2016 and 2017 the distinct change in roughness seems to have been smoothed out.

4 Snow accumulation rates derived from snow radar data and MERRA-2 - methods

For snow-radar derived accumulation calculations, we first stack traces to an approximate along-track separation of 100 meters (~
315 18 traces), which largely reduces noise in the return power especially at depth. These stacked echograms are then combined into
segments of ~100 km. A single radar reflection horizon, assumed isochronous, is tracked through the 100-km segment. The actual
horizon picked will likely vary from segment to segment because we chose to map the strongest and most continuous reflection
within that segment. The horizon is picked semi-automatically. First, the user visually selects the horizon of interest. The range
bin with the strongest return power within a 15 bin window is then selected as the horizon "pick" for that trace. That pick is
320 extended laterally across all traces by finding the strongest return power in adjacent traces within the 15 bin window. The user can
then modify the picks if they deviate from their visual interpretation. The user can also eliminate portions of a given horizon if
visual inspection deems horizon differentiation impossible. The spatial variability in accumulation rates and the varying strength
of signal return prevent the calculation of temporally consistent accumulation rate from a single continuous horizon around the
entirety of 88°S. Thus, the accumulation rates estimated for each 100-km segment will span differing time intervals; however,
325 because of the relatively low accumulation rates, the majority span several decades minimizing the impact of interannual
variability.

For each 100-km segment, we estimate the spatial variability in snow accumulation using the aforementioned horizon picks.
Typically, radar derived accumulation rates rely on knowledge of the horizon age as well (e.g., Medley et al., 2013; 2014), but a
lack of nearby dated ice-core stratigraphy or clearly defined annual horizons restricts our ability to assign an age to our horizon
330 picks. Because our work is focused on evaluating the spatial variability in snow accumulation, we develop a method that
approximates the age of a given horizon through combination of horizon depths and MERRA-2 mean annual precipitation-minus-
evaporation ($P-E$). In such a manner, our large-scale mean accumulation rates are forced to large-scale MERRA-2 $P-E$, however,
rates are allowed to vary on < 1 km length-scales from our radar horizon picks. We detail the methodology below.

Assuming each horizon pick within a given segment is isochronous, we need to determine a way to approximate the age of that
335 horizon. To do so, we begin by determining the mean accumulation rate and 2-meter air temperature from MERRA-2 over the
entire segment, and use those variables to model steady-state firn density and age profiles using Herron & Langway (1980). The
two-way travel time (τ) between the surface and the horizon pick is converted into depth (d) assuming

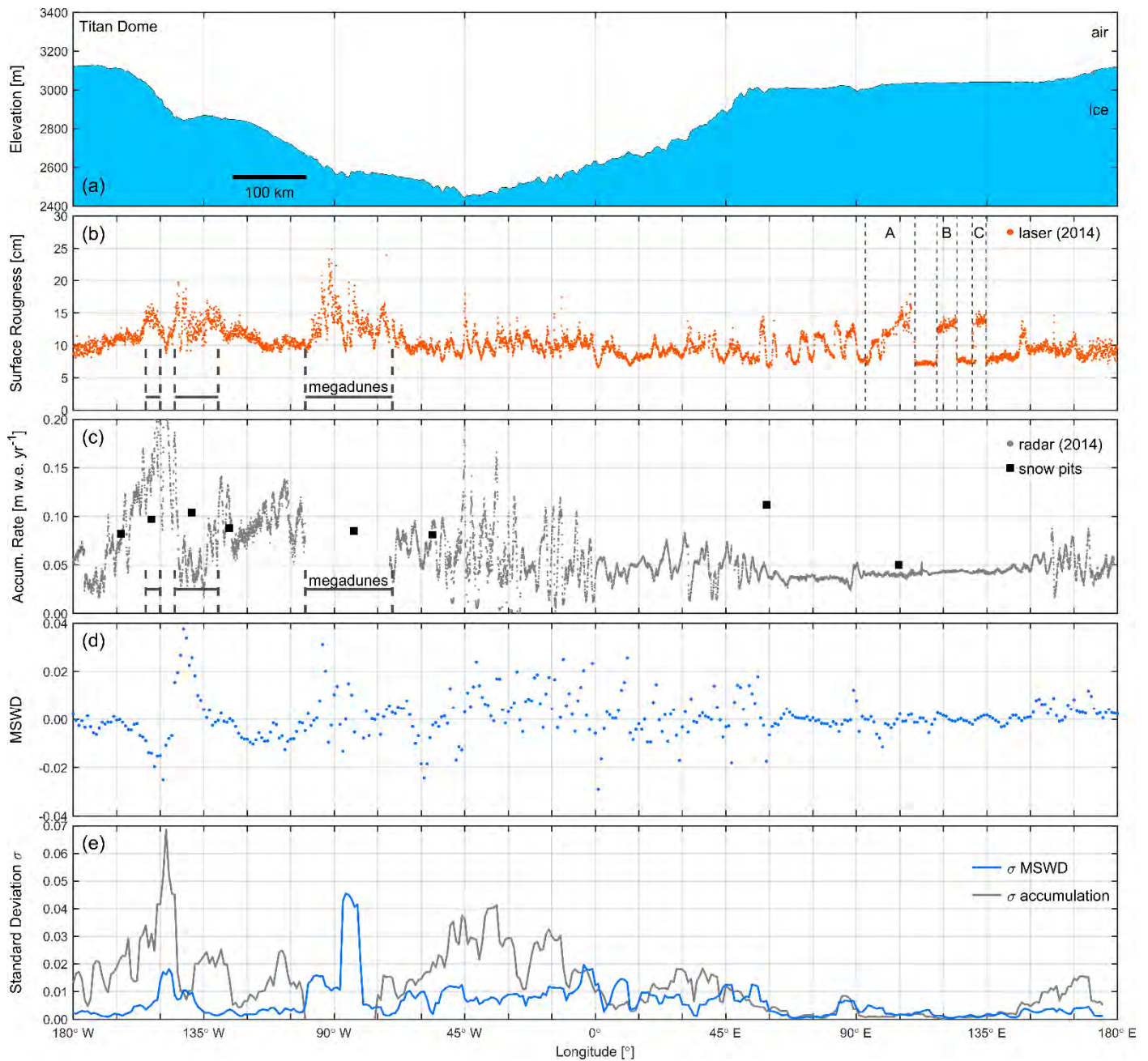
$$d(x) = \frac{c\tau(x)}{2\sqrt{\epsilon}}, \quad (1)$$

where c is the speed of light and ϵ is the integrated dielectric permittivity of the material above the horizon and x is the distance
340 along flight line. Specifically, we use the modelled depth-density profile to generate depth-dielectric permittivity based on Kovacs
et al. (1995), which is then used to relate depth and two-way travel time with a depth-varying radar-wave velocity. Using this
model, we interpolate horizon two-way travel time to depth. Depths vary along-track (as our layer pick varies), but our large-
scale depth-age model from Herron & Langway (1980) does not; thus, we will estimate a variable along-track age of the radar
horizon. The use of a single firn density model for the entire 88° S circle is justified because the difference between the minimum
345 and maximum accumulation rates is relatively small. The along-track variability is counter to our initial assumption that the radar
horizons are isochronous; however, when we take the average age along-track, we effectively force the overall mean accumulation
rate for the segment to the large-scale MERRA-2 mean. We then use this age to calculate spatially varying accumulation rates
along the entire segment as outlined by Medley et al. (2015). In such a manner, we force the large-scale mean accumulation rates
to those prescribed by MERRA-2 but allow for small-scale variability derived from the snow radar horizon picks in the absence
350 of independent estimates of firn depth-age profiles (Dattler et al., 2019). For comparison we have plotted all existing accumulation
measurements of Favier et al. (2013) in Fig. 6c over our MERRA-2 and radar-derived accumulation rates. These snow pit

measurements include data from the 1962-1963 South Pole Traverse (Taylor, 1971). While there is general agreement it should be pointed out that Favier et al. ~~(2013)~~ (2013) applied the quality rating of Magand et al. (2007), which identifies all snow pit data points shown in Fig. 6c as low quality and subsequently excludes these data points from the quality controlled version presented in Favier et al. (2013). Further limitations of the comparison are the long time between the snow pit measurements and airborne data and the large variability in snow accumulation rates on length scales of 10 km that can be seen in the radar-derived snow accumulation rates.

5 Spatial variability in snow accumulation rates - results

Previous work used the Mean Slope in the mean Wind Direction (MSWD) for studying relationships between surface slope and spatial variability in snow accumulation rates (e.g., Das et al., 2013; Dattler et al., 2019; Scambos et al., 2012). MSWD is defined as the scalar dot product between the surface slope with the mean wind direction (Scambos et al., 2012). Here, we use the time-averaged zonal and meridional wind components u and v from MERRA-2, transformed in to a Cartesian polar-stereographic projection, to calculate the mean wind direction. Analyzing relationships between surface slope, accumulation rates, and mean wind direction at 88° S is limited by the latitudinal resolution of the MERRA-2 reanalysis model, which is 0.5° or 55 km, as well as the cross-sectional nature of the geophysical surveys (i.e., the data represent a 2-dimensional cross section). Given the narrow swath width of the ATM laser data (240 m) we use the ice surface slope derived from the CryoSat-2 DEM (Helm et al., 2014) at 1 km resolution to calculate the MSWD. The slope south of 88° S is only weakly constrained due to the absence of elevation data imposing further limitations on the analysis. The MERRA-2 26 year 10 m wind field is interpolated to the CryoSat-2 DEM grid cell locations. The difference in spatial resolution between the surface DEM and MERRA-2 will result in MSWD uncertainty from oversampling the wind field. Because of the small slopes in the study area, however, we don't anticipate complex wind fields where actual wind orientation would significantly deviate from the MERRA-2 reanalysis model. Small topographic features, however, are not represented by the 10 m surface wind field as will be discussed later.



375 **Figure 6:** a) Ice surface elevation around 88° S from ATM laser altimetry. b) Surface roughness from ATM laser altimetry. c) Snow accumulation rate derived from 2014 snow radar data and tied to MERRA-2. A 14 minute disk failure of the snow and Ku-band radars in 2014 resulted in a data gap over the megadunes and therefore the accumulation rate. Squares indicate accumulation measurements from snow pit data within 10 km of 88° S (Favier et al., 2013; Taylor, 1971). d) Mean Slope in the mean Wind Direction (MSWD) in one degree longitude bins (4 km). e) Standard deviation σ of the MSWD and snow accumulation rate estimated over 20 km long segments.

380 In general, annual snow accumulation is around 5 cm w.e. yr⁻¹ and is highest near the backside of the Transantarctic Mountains near 150° W, a region that is influenced by precipitation from cyclonic events penetrating the area from the Bellingshausen and Ross Sea sectors (Casey et al., 2014; Nicolas and Bromwich, 2011) (Fig. 6). The highest accumulation rates (up to 20 cm w.e. yr⁻¹) near 150° W coincide with a megadune field (Fig. 3b) and appear to be in a local topographic low at the flank of Titan Dome that trends perpendicular to the aerogeophysical survey profile around 88° S (Fig. 6A and Fig. A1a). The surface depression coincides with a 1000 m deep and 25 km wide bedrock low perpendicular to the profile ((Studinger et al., 2006), and Fig. 3a). The dominant wind direction is near perpendicular to the survey profile and follows the trend of the ice surface low (Fig. 3a). The high accumulation area also shows high surface roughness combined with steep slopes (Fig. 4 and Fig. A1). (2014)Another area with

relatively high snow accumulation rates is located between 45° W and 0° longitude and is also exposed to precipitation from the Weddell Sea sector (e.g., Casey et al., 2014).

The snow accumulation rate at 88° S is spatially highly variable over very short length scales of several kilometers (Fig. 6c). Based on visual inspection small-scale variability in snow accumulation rate correlates with small-scale variability in ice surface elevation (Fig. 6a), suggesting that wind-driven erosion and deposition is a primary process of snow accumulation. The relatively constant surface elevation between 60° E and 150° E shows very little variation in snow accumulation. In contrast, the short scale (< 10 km) undulations in ice surface elevation between 75° W and 45° E correspond to a highly variable (0 – 20 cm w.e. yr⁻¹) snow accumulation pattern with similar length scale (Fig. 6 a, c and Fig. A2). The dominant wind direction in the western segment is subparallel to the profile (Fig. A2). Here, several pronounced peaks in snow accumulation rate correspond to topographic depressions in ice surface elevation (grey dashed lines in Fig. A2) indicating windblown deposition of snow. The eastern part of the profile has wind direction oblique or perpendicular to the profile. However, several peaks in snow accumulation rate still correlate with topographic depressions. Near 90° E the wind direction is parallel to the profile (Fig. 3). A pronounced peak in snow accumulation rate at 90° E correlates with 20 m deep depression in surface topography that is several kilometers wide (Fig. A3). Accumulation decreases on the lee side of the topographic high at the western shoulder of the depression and increases towards the lowest part of the depression where it reaches its highest point (Fig. A3). The general correlation of highs in accumulation rate with lows in topography results in an overall negative correlation coefficient of $r^2 = -0.33$ between accumulation rate and MSWD (Fig. 7a). DMS natural color imagery and laser altimetry data shows typically two dominant wind directions (Fig. 2). Our MERRA-2 wind direction is an average over seasonal variations in wind speed and likely reflects a wind direction somewhere between the two dominant orientations of sastrugi. Since we have no knowledge of when a particular layer of snow has been deposited during a year it is not possible to do a more detailed analysis.

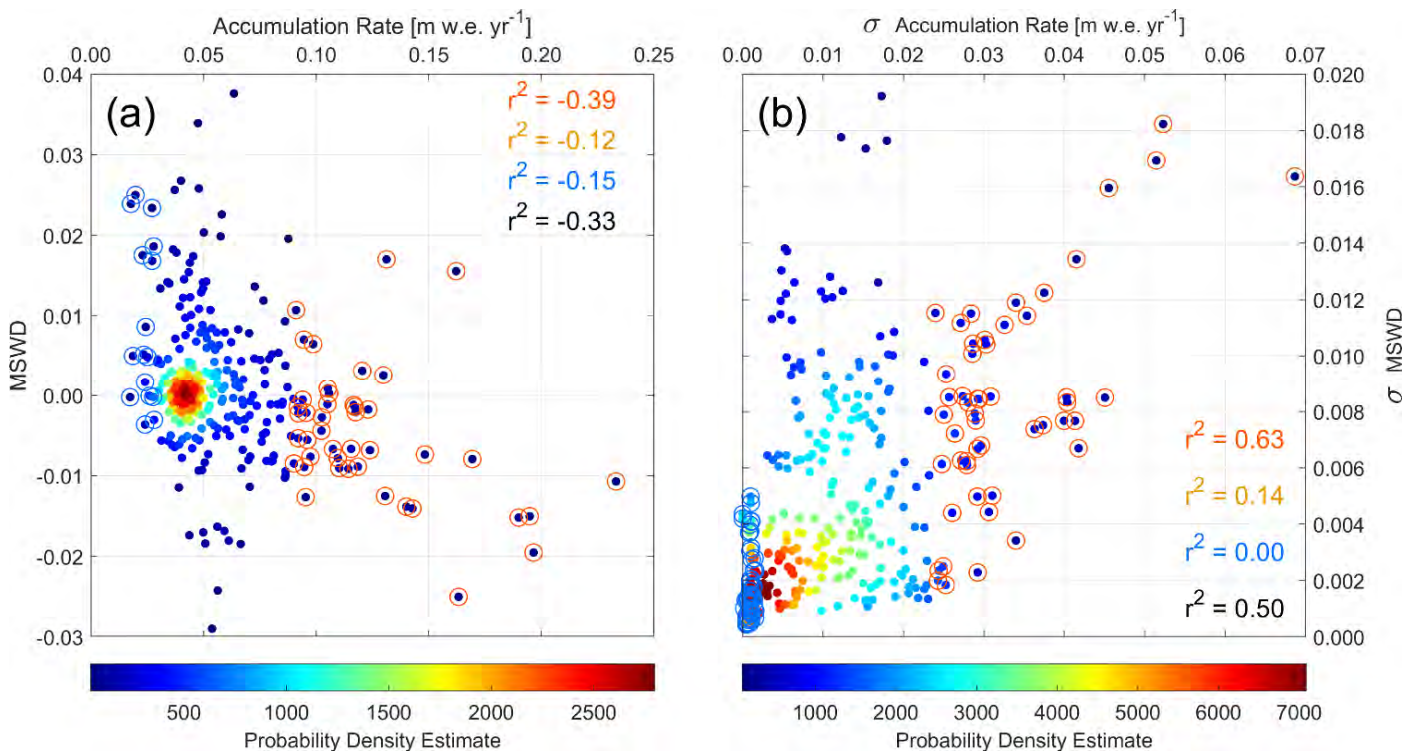


Figure 7: a) Mean Slope in the mean Wind Direction (MSWD) versus snow accumulation rate around 88° S in one degree longitude bins (4 km). Since monochrome scatter plots can be misleading we have used color coding to indicate regions with higher point density. Higher probability density estimates, calculated using a kernel estimate, are shown in warmer colors and indicate regions with higher point density. The probability density estimate is for visual clarity only and is not used for analysis or interpretation. Pearson's correlation coefficient $r^2 = -0.33$ for the entire data set. b) Same for the standard deviation σ of the MSWD and snow accumulation rate with $r^2 = 0.50$. σ is estimated over 20-km-long moving windows. Data points below $\mu - \sigma$ are indicated with blue circles and r^2 s are listed in blue.

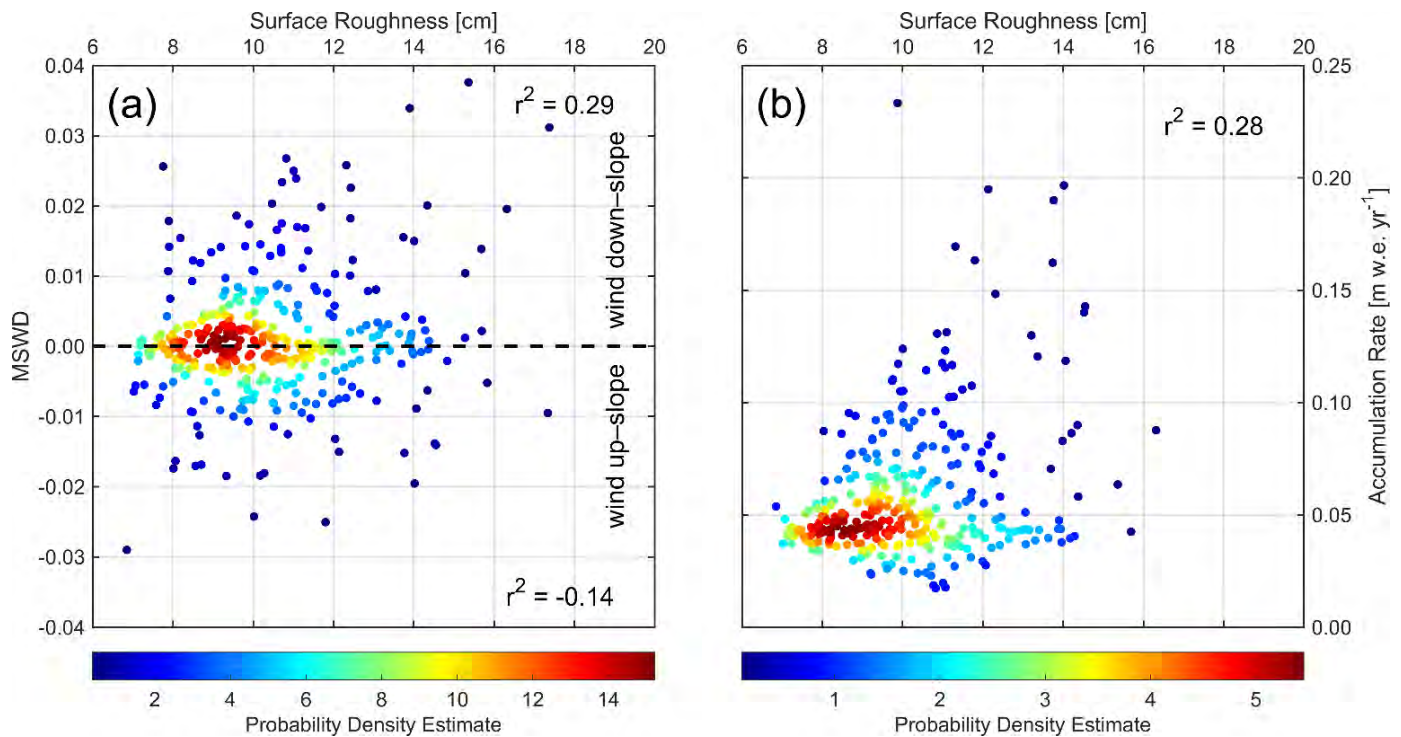
415 The upper subset consists of data points above $\mu + \sigma$ and is marked by red circles and red r^2 values. The remaining data points fall within $\pm\sigma$ from μ with r^2 shown in orange (data points are not marked for clarity).

The surface roughness derived from ATM laser altimetry reflects roughness on a scale of <250 m and does not reflect ice surface slope changes on length scales of several km. However, the MSWD (Fig. 6d) shows the same pattern of high variability between 75° W and 45° E and fairly constant values between 60° E and 150° E. To quantify the relationship between variability in surface slope, wind direction and accumulation rates we use the standard deviation σ of the MSWD and snow accumulation rate calculated over a 20 km long moving window (Fig. 6e). Figure 6e shows the standard deviation of the MSWD and accumulation rate. In general, higher σ in accumulation rate generally occurs in areas with higher σ in MSWD. The match is strongest near 90° E where wind orientation is parallel to the profile.

The correlation coefficient between the standard deviations of the accumulation rate and the MSWD is $r^2 = 0.50$ indicating a stronger link between these variables than the actual parameters (Fig 7b). The magnitude of the correlation coefficient, however, is dependent on the length scale used to calculate the standard deviation. Dattler et al. (2019) find a similar behavior between σ accumulation rate and σ MSWD. Visual inspection of Fig. 7 suggests that the relationship between accumulation rate and MSWD and the σ of accumulation rate and σ of MSWD is more pronounced for larger magnitudes of the variables. A kernel density estimate quantifies the probability density estimate of nearby points and allows visualization of the point density using a color scale for the data points (Fig. 7). We divide the data set into 3 subsets using the mean μ and σ : the lower end is defined by values below $\mu - \sigma$, while the upper end are values above $\mu + \sigma$. The remaining points that are within $\pm\sigma$ from μ form the center subset. We have calculated correlation coefficients r^2 for all subsets. In general, the correlation is strongest for the upper subsets, while the lower subsets show weak correlation. This is different from Dattler's et al. results (2019) who finds that the lower end also shows strong correlation. The upper tenth percentile of our data has an r^2 of 0.85 similar to Dattler's et al. results (2019). Most of Dattler's et al. data (2019) is located over high accumulation areas in West Antarctica. A possible explanation for the weak correlation could be the very low accumulation rates in our area, combined with very small slopes and low wind speed. Noise in the elevation data will have a stronger impact on MSWD calculation and similarly, subtle changes in surface slope are likely below the resolution of MERRA-2, therefore resulting in a noisier and thus uncorrelated lower subset.

6 Relationship between surface roughness, slope and wind direction – results

Wind-related deposition and ablation processes could cause spatial roughness variations depending on surface slope and wind direction. For example, windblown deposition of snow into concave surface depressions and ablation on up-slope areas could create spatial surface roughness patterns that correlate with slope and wind direction. We use the MSWD to determine if slopes that are exposed to uphill winds have different surface roughness than slopes experiencing primarily downhill winds (Fig. 8a). We calculate r^2 for up-slope winds (MSWD < 0) and down-slope winds (MSWD > 0). Neither the up-slope winds ($r^2 = -0.14$) nor down-slope winds ($r^2 = 0.29$) show any statistically significant correlation between surface roughness and slope as can be seen in the scatter plot (Fig. 8a). Similarly, the surface roughness does not seem to be correlated with snow accumulation rates ($r^2 = 0.28$) indicating that there is also no statistically significant slope-independent relationship between surface roughness and accumulation rates within our survey area (Fig. 8b). Correlations may exist in smaller local areas, but our data shows that there is no consistent relationship between surface roughness, slope and wind direction on a regional scale within our survey area. However, our analysis is constrained by using 2-dimensional high-resolution roughness estimates and correlating it with 3-dimensional wind fields and surface slope with much lower spatial resolution.



455 **Figure 8:** a) ATM derived surface roughness versus Mean Slope in the mean Wind Direction (MSWD) around 88° S in one degree longitude bins (4 km). Color indicates the probability density estimate of nearby points using a kernel density estimate. Pearson's correlation coefficients r^2 are calculated for up-slope winds (MSWD < 0) and down-slope winds (MSWD > 0). b) Same for surface roughness versus accumulation rate.

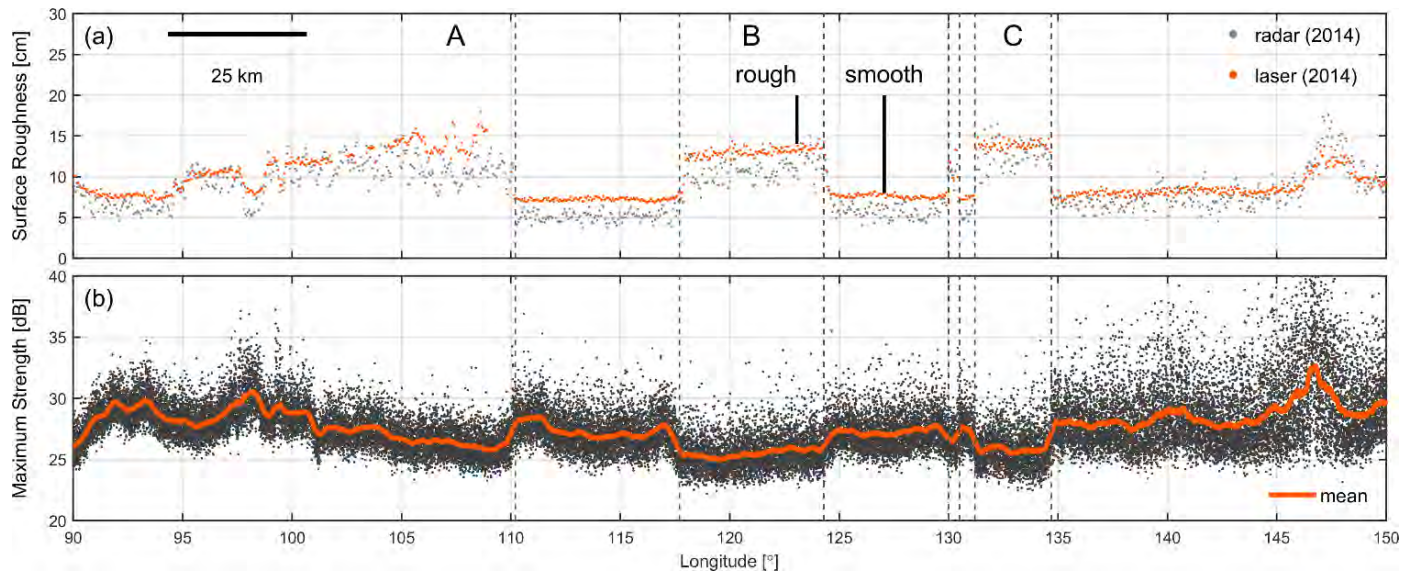
7 Radar backscatter and surface roughness

Surface roughness impacts the return signal of radar altimeters and can therefore cause elevation biases (e.g., van der Veen et al., 2009, and references herein) similar to slope-dependent errors in altimetry data (Helm et al., 2014; Slater et al., 2018). Radar backscatter in radar altimeters such as CryoSat-2 is a function of surface roughness. Surface roughness at the length-scales of the radar wavelength (2.2 cm) predominantly contributes to radar backscatter which cannot be resolved by our laser data. Changes in surface roughness cause changes in radar backscatter through changes of the echo waveform which can introduce range biases in the retrieval of surface elevation (Arthern et al., 2001; Kurtz et al., 2014). Figure 9 shows the maximum of the Ku-band radar return signal strength over the distinct roughness features identified from laser altimetry data (see Section 3.5). The maximum return energy over rougher surface areas is about 3 dB lower than over the smooth areas in between. The difference in return signal strength is even more pronounced for the snow radar (4 dB, not shown). Stacked Ku-band waveforms shown in Fig. A4 show 3 dB higher surface return power at 3.053 μ s over a smooth surface compared to the rough surface. The amplitude of the subsurface backscatter below 3.06 μ s, however, is similar in strength over smooth and rough areas (Fig. A4). This observation is consistent with Gow's (1965) finding that heat from radiation causes crystal growth on the flanks of sastrugi, resulting in loosely bonded crystals that are prone to erosion by moderate winds (Gow, 1965). This differential sublimation-deflation driven redistribution of snow which flattens the surface topography at the end of the summer resulting in relatively flat subsurface stratigraphy compared to the surface topography. The difference in waveform shapes between smooth and rough surfaces suggests that radar altimeters are potentially prone to elevation errors when threshold or leading edge trackers are being used for range retrieval. The Ku-band radar's relatively wide bandwidth and small footprint size allows resolution of the surface and sub-surface layers and thus accurate tracking of the surface elevation. However, the reduced bandwidth and significantly larger footprint size of CryoSat-2 LRM returns

460
465
470
475

does not allow for the resolution of individual layers, but instead leads to a pronounced broadening of the return waveform when the total cumulative backscatter of the sub-surface layers is close to, or exceeds, the backscatter from the surface layer.

The relatively small-scale nature and temporal variability of these features would require the use of more sophisticated retrieval techniques to better account for differences caused by the lower relative surface backscatter of rough areas. The elevation biases
480 caused by temporal and spatial variability in surface roughness are in addition to elevation biases caused by wind-induced anisotropy in the firm that have been identified from cross-over analysis (Armitage et al., 2014).



485 **Figure 9: a) Surface roughness from 2014 ATM laser and CReSIS Ku-band radar data over roughness features “A”, “B”, and “C” (Fig. 4b). Vertical black lines mark the locations of radar waveforms over smooth and rough surfaces shown in Fig. A4. b) Maximum of relative return signal strength from 2014 snow radar data. Red line is a running mean calculated over 350 radar traces (~2 km), which is similar in size to the 1.65 km CryoSat-2 footprint in low resolution mode (LRM) over smooth surfaces (Scagliola, 2013). The strength of the surface return is around 3 dB weaker over rough areas compared to smooth areas.**

8 Conclusions

490 We have mapped the spatial and temporal variability in surface roughness and snow accumulation rate on a regional scale along a 1400 km circle around 88° S. We find significant small-scale variability (< 10 km) in snow accumulation based on snow radar subsurface stratigraphy, indicating areas of strong wind redistribution are prevalent at 88° S. The observed small-scale variability in snow accumulation rates is not captured by existing reanalysis models such as MERRA-2, which have low spatial resolution. Our analysis shows that there is no simple relationship between surface slope, wind direction and snow accumulation rates for the
495 entire survey area. Previous studies have primarily focused on smaller regions often showing good correlation between surface slope and accumulation rates and are often used to falsely extrapolate parameters and relationships to larger regions beyond the study area. While we also observe these local correlations between surface slope, wind direction and accumulation rates, our results show that even for a homogenous area like the East Antarctic plateau near the South Pole such simple relationships don't exist on a regional scale. At the same time, we note that our accumulation rate measurements are a simple 2-dimensional view; until we
500 have 3-dimensional mapping of accumulation rates, these relationships might remain elusive. Our results underline the importance of regional-scale studies to derive accurate regional-scale parameterizations and relationships in light of expanding data sets, advances in high-performance computing and sophistication in model development. Similarly, we find high variability in surface roughness derived from laser altimetry measurements on length-scales smaller than 10 km, sometimes with very distinct and sharp transitions. These areas also show significant temporal variability over the course of the 3 survey years. We also find that surface

505 roughness does not seem to be correlated with snow accumulation rates. There seems to be no statistically significant slope-independent relationship between surface roughness and accumulation rates within our survey area. The observed small-scale temporal and spatial variability in surface roughness will make it difficult to develop elevation bias corrections for radar altimeter retrieval algorithms.

510 **Data availability.** All NASA Operation IceBridge data used in this study are freely available at the National Snow and Ice Data Center (NSIDC) at <https://nsidc.org/icebridge/portal> (accessed 2019). The CryoSat-2 DEM from Helm et al. (2014) is available at <https://doi.pangaea.de/10.1594/PANGAEA.831392> (accessed 2019). The MODIS Mosaic of Antarctica (MOA, (Haran et al., 2014)) is available from NSIDC at <https://nsidc.org/data/nsidc-0730> (accessed 2019). MERRA-2 data is available at https://gmao.gsfc.nasa.gov/reanalysis/MERRA-2/data_access/ (accessed 2018). The Antarctic Digital Database is available at
515 <https://www.add.scar.org/> (accessed 2020).

Author contributions. MS led the analysis of the laser altimetry, optical imagery, integration of results and prepared the manuscript with contributions from all co-authors. BM derived surface roughness and accumulation rates from snow radar data and MERRA-2 and wrote the corresponding manuscript sections. KB, KC, and TN contributed to the analysis and interpretation of surface
520 roughness and accumulation rates. NK and TO contributed to the interpretation of radar backscatter and surface roughness. SM contributed to the analysis and interpretation of the ATM laser altimetry data. All authors helped write the paper.

Competing interests. The authors declare that they have no conflict of interests.

525 **Acknowledgements.** We thank the Operation IceBridge instrument teams and flight crews for 11 years of data collection that made this study possible. Richard Cullather is thanked for discussions about MERRA-2. Mark Fahnestock is thanked for discussions about surface roughness, slope and accumulation rates. We thank reviewers Neil Ross and Joshua Chambers and the editor Nanna Bjørnholt Karlsson for constructive reviews that helped improve the manuscript.

530 **Financial support.** Funding for this work comes from NASA's Cryospheric Sciences Program.

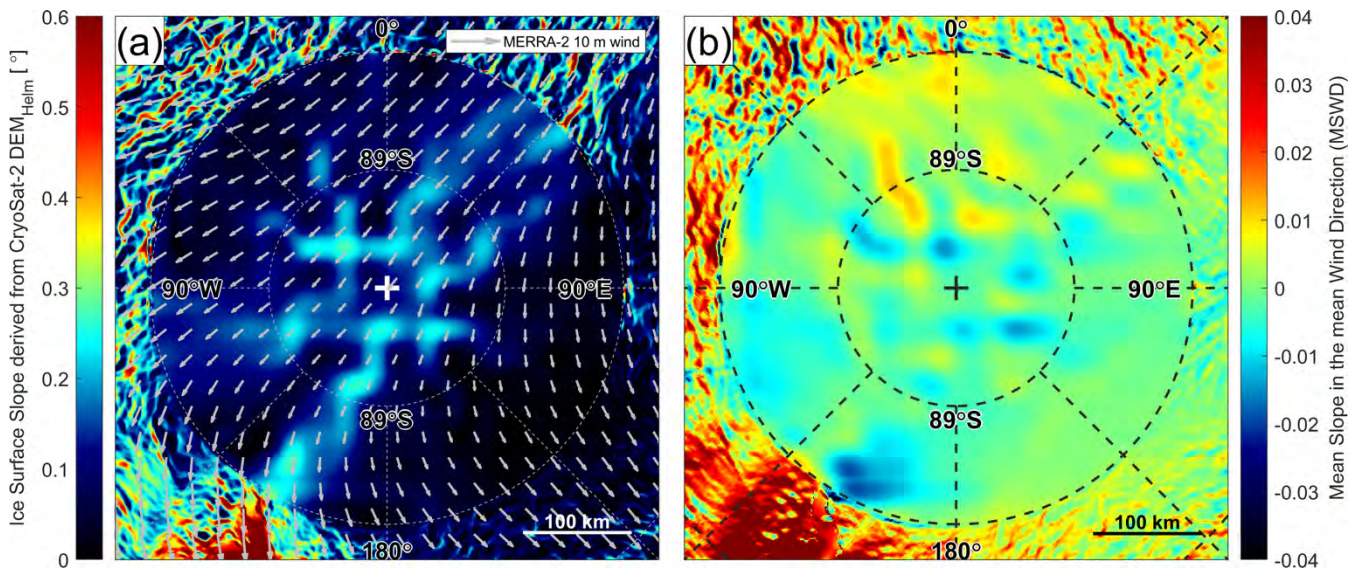
References

- Abdalati, W., Zwally, H. J., Bindshadler, R., Csatho, B., Farrell, S. L., Fricker, H. A., Harding, D., Kwok, R., Lefsky, M., Markus, T., Marshak, A., Neumann, T., Palm, S., Schutz, B., Smith, B., Spinirne, J., and Webb, C.: The ICESat-2 Laser Altimetry Mission, Proceedings of the IEEE, 98, 735-751, 10.1109/jproc.2009.2034765, 2010.
- 535 Arcone, S. A., Jacobel, R., and Hamilton, G.: Unconformable stratigraphy in East Antarctica: Part I. Large firn cosets, recrystallized growth, and model evidence for intensified accumulation, Journal of Glaciology, 58, 240-252, 10.3189/2012JoJ11J044, 2012.
- Armitage, T. W. K., Wingham, D. J., and Ridout, A. L.: Meteorological Origin of the Static Crossover Pattern Present in Low-Resolution-Mode CryoSat-2 Data Over Central Antarctica, Geoscience and Remote Sensing Letters, IEEE, 11, 1295-1299, 10.1109/LGRS.2013.2292821, 2014.
- 540 Arthern, R. J., Wingham, D. J., and Ridout, A. L.: Controls on ERS altimeter measurements over ice sheets: Footprint-scale topography, backscatter fluctuations, and the dependence of microwave penetration depth on satellite orientation, Journal of Geophysical Research: Atmospheres, 106, 33471-33484, 10.1029/2001jd000498, 2001.
- Arthern, R. J., Winebrenner, D. P., and Vaughan, D. G.: Antarctic snow accumulation mapped using polarization of 4.3-cm wavelength microwave emission, Journal of Geophysical Research: Atmospheres, 111, 10.1029/2004jd005667, 2006.
- 545 Boisvert, L. N., Lee, J. N., Lenaerts, J. T. M., Noël, B., Broeke, M. R., and Nolin, A. W.: Using remotely sensed data from AIRS to estimate the vapor flux on the Greenland ice sheet: Comparisons with observations and a regional climate model, Journal of Geophysical Research: Atmospheres, 122, 202-229, doi:10.1002/2016JD025674, 2017.
- Bromwich, D. H., Parish, T. R., and Zorman, C. A.: The confluence zone of the intense katabatic winds at Terra Nova Bay, Antarctica, as derived from airborne sastrugi surveys and mesoscale numerical modeling, Journal of Geophysical Research: Atmospheres, 95, 5495-5509,
550 doi:10.1029/JD095iD05p05495, 1990.

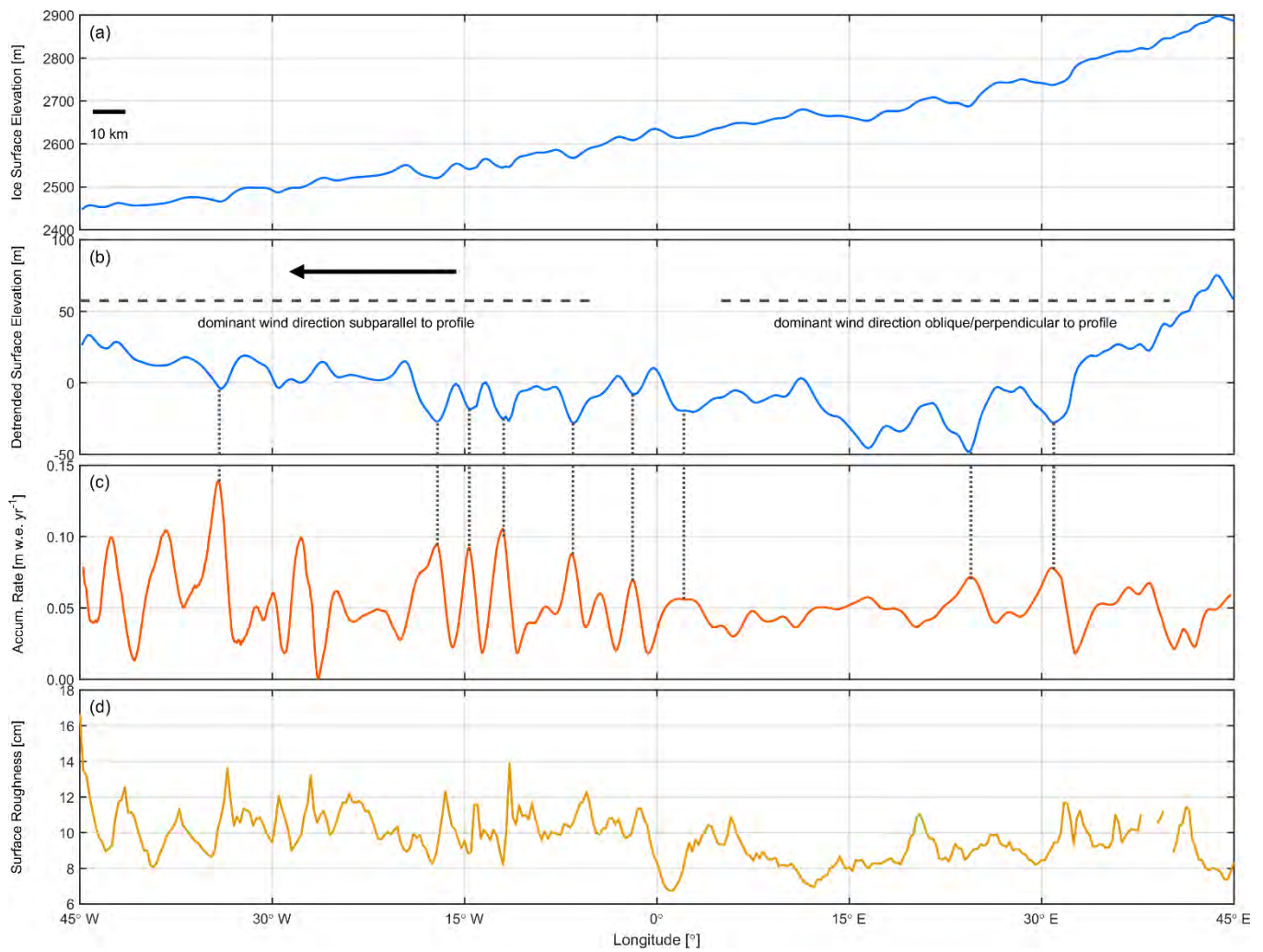
- Brunt, K. M., Neumann, T. A., and Larsen, C. F.: Assessment of altimetry using ground-based GPS data from the 88S Traverse, Antarctica, in support of ICESat-2, *The Cryosphere*, 13, 579-590, 10.5194/tc-13-579-2019, 2019a.
- Brunt, K. M., Neumann, T. A., and Smith, B. E.: Assessment of ICESat-2 Ice Sheet Surface Heights, Based on Comparisons Over the Interior of the Antarctic Ice Sheet, *Geophysical Research Letters*, 46, 13072-13078, 10.1029/2019gl084886, 2019b.
- 555 Casey, K. A., Fudge, T. J., Neumann, T. A., Steig, E. J., Cavitte, M. G. P., and Blankenship, D. D.: The 1500 m South Pole ice core: recovering a 40 ka environmental record, *Annals of Glaciology*, 55, 137-146, 10.3189/2014AoG68A016, 2014.
- Chambers, J. R., Smith, M. W., Quincey, D. J., Carrivick, J. L., Ross, A. N., and James, M. R.: Glacial aerodynamic roughness estimates: uncertainty, sensitivity and precision in field measurements, *Journal of Geophysical Research: Earth Surface*, n/a, 10.1029/2019JF005167, 2019.
- 560 Corbett, J., and Su, W.: Accounting for the effects of sastrugi in the CERES clear-sky Antarctic shortwave angular distribution models, *Atmos. Meas. Tech.*, 8, 3163-3175, 10.5194/amt-8-3163-2015, 2015.
- Das, I., Bell, R. E., Scambos, T. A., Wolovick, M., Creyts, T. T., Studinger, M., Frearson, N., Nicolas, J. P., Lenaerts, J. T. M., and van den Broeke, M. R.: Influence of persistent wind scour on the surface mass balance of Antarctica, *Nature Geoscience*, 6, 367, 10.1038/ngeo1766, 2013.
- 565 Dattler, M. E., Lenaerts, J. T. M., and Medley, B.: Significant Spatial Variability in Radar-Derived West Antarctic Accumulation Linked to Surface Winds and Topography, *Geophysical Research Letters*, 46, 13126-13134, 10.1029/2019gl085363, 2019.
- Dominguez, R. T.: IceBridge DMS L1B Geolocated and Orthorectified Images, Version 1. [2014, 2016]: NASA National Snow and Ice Data Center Distributed Active Archive Center: <https://doi.org/10.5067/OZ6VNOPMPRJ0>: 2010, updated 2018
- Fahnestock, M. A., Scambos, T. A., Shuman, C. A., Athern, R. J., Winebrenner, D. P., and Kwok, R.: Snow megadune fields on the East Antarctic Plateau: extreme atmosphere-ice interaction, *Geophysical Research Letters*, 27, 3719-3722, 2000.
- 570 Favier, V., Agosta, C., Parouty, S., Durand, G., Delaygue, G., Gallee, H., Drouet, A. S., Trouvilliez, A., and Krinner, G.: An updated and quality controlled surface mass balance dataset for Antarctica, *Cryosphere*, 7, 583-597, 10.5194/tc-7-583-2013, 2013.
- Frezzotti, M., Urbini, S., Proposito, M., Sarchilli, C., and Gandolfi, S.: Spatial and temporal variability of surface mass balance near Talos Dome, East Antarctica, *Journal of Geophysical Research-Earth Surface*, 112, 10.1029/2006jf000638, 2007.
- 575 Gelaro, R., McCarty, W., Suárez, M. J., Todling, R., Molod, A., Takacs, L., Randles, C. A., Darmenov, A., Bosilovich, M. G., Reichle, R., Wargan, K., Coy, L., Cullather, R., Draper, C., Akella, S., Buchard, V., Conaty, A., Silva, A. M. d., Gu, W., Kim, G.-K., Koster, R., Lucchesi, R., Merkova, D., Nielsen, J. E., Partyka, G., Pawson, S., Putman, W., Rienecker, M., Schubert, S. D., Sienkiewicz, M., and Zhao, B.: The Modern-Era Retrospective Analysis for Research and Applications, Version 2 (MERRA-2), *Journal of Climate*, 30, 5419-5454, 10.1175/jcli-d-16-0758.1, 2017.
- 580 Gomez-Garcia, D., Rodriguez-Morales, F., Leuschen, C., and Gogineni, S.: KU-Band radar altimeter for surface elevation measurements in polar regions using a wideband chirp generator with improved linearity, 2012 IEEE International Geoscience and Remote Sensing Symposium, 2012, 4617-4620,
- Gorodetskaya, I. V., Tsukernik, M., Claes, K., Ralph, M. F., Neff, W. D., and Van Lipzig, N. P. M.: The role of atmospheric rivers in anomalous snow accumulation in East Antarctica, *Geophysical Research Letters*, 41, 6199-6206, 10.1002/2014gl060881, 2014.
- 585 Gow, A. J.: On the Accumulation and Seasonal Stratification Of Snow at the South Pole, *Journal of Glaciology*, 5, 467-477, 10.3189/S002214300001844X, 1965.
- Grima, C., Blankenship, D. D., Young, D. A., and Schroeder, D. M.: Surface slope control on firn density at Thwaites Glacier, West Antarctica: Results from airborne radar sounding, *Geophysical Research Letters*, 41, 6787-6794, doi:10.1002/2014GL061635, 2014.
- Hamilton, G. S.: Topographic control of regional accumulation rate variability at South Pole and implications for ice-core interpretation, *Annals of Glaciology*, 39, 214-218, 10.3189/172756404781814050, 2004.
- 590 Haran, T., Bohlander, J., Scambos, T. A., Painter, T. H., and Fahnestock, M. A.: MODIS Mosaic of Antarctica 2008-2009 (MOA2009) Image Map 2009: NASA National Snow and Ice Data Center Distributed Active Archive Center: 10.7265/N5KP8037: 2014
- Harpold, R., Yungel, J., Linkswiler, M., and Studinger, M.: Intra-scan intersection method for the determination of pointing biases of an airborne altimeter, *International Journal of Remote Sensing*, 37, 648-668, 10.1080/01431161.2015.1137989, 2016.
- 595 Harris, J. M.: An analysis of 5-day midtropospheric flow patterns for the South Pole: 1985-1989, *Tellus B*, 44, 409-421, 10.1034/j.1600-0889.1992.00016.x, 1992.
- Helm, V., Humbert, A., and Miller, H.: Elevation and elevation change of Greenland and Antarctica derived from CryoSat-2, *The Cryosphere*, 8, 1539-1559, 10.5194/tc-8-1539-2014, 2014.
- Herron, M. M., and Langway, C. C.: Firn Densification: An Empirical Model, *Journal of Glaciology*, 25, 373-385, 10.3189/S0022143000015239, 600 1980.
- Hirasawa, N., Nakamura, H., and Yamanouchi, T.: Abrupt changes in meteorological conditions observed at an inland Antarctic Station in association with wintertime blocking, *Geophysical Research Letters*, 27, 1911-1914, 10.1029/1999gl011039, 2000.
- Johnson, A. J., Larsen, C. F., Murphy, N., Arendt, A. A., and Zirnheld, S. L.: Mass balance in the Glacier Bay area of Alaska, USA, and British Columbia, Canada, 1995-2011, using airborne laser altimetry, *Journal of Glaciology*, 59, 632-648, 10.3189/2013JoG12J101, 2013.
- 605 King, J. C., Anderson, P. S., Vaughan, D. G., Mann, G. W., Mobbs, S. D., and Vosper, S. B.: Wind-borne redistribution of snow across an Antarctic ice rise, *Journal of Geophysical Research: Atmospheres*, 109, 10.1029/2003JD004361, 2004.
- Kokhanovsky, A. A., and Zege, E. P.: Scattering optics of snow, *Applied Optics*, 43, 1589-1602, 10.1364/AO.43.001589, 2004.
- Kovacs, A., Gow, A. J., and Morey, R. M.: The in-situ dielectric constant of polar firn revisited, *Cold Regions Science and Technology*, 23, 245-256, [https://doi.org/10.1016/0165-232X\(94\)00016-Q](https://doi.org/10.1016/0165-232X(94)00016-Q), 1995.
- 610 Krabill, W., Abdalati, W., Frederick, E., Manizade, S., Martin, C., Sonntag, J., Swift, R., Thomas, R., Wright, W., and Yungel, J.: Greenland ice sheet: High-elevation balance and peripheral thinning, *Science*, 289, 428-430, 10.1126/science.289.5478.428, 2000.
- Krabill, W. B., Abdalati, W., Frederick, E. B., Manizade, S. S., Martin, C. F., Sonntag, J. G., Swift, R. N., Thomas, R. H., and Yungel, J. G.: Aircraft laser altimetry measurement of elevation changes of the greenland ice sheet: technique and accuracy assessment, *Journal of Geodynamics*, 34, 357-376, 10.1016/s0264-3707(02)00040-6, 2002.
- 615 Kurtz, N. T., Galin, N., and Studinger, M.: An improved CryoSat-2 sea ice freeboard retrieval algorithm through the use of waveform fitting, *The Cryosphere*, 8, 1217-1237, 10.5194/tc-8-1217-2014, 2014.

- Larsen, C. F.: IceBridge UAF Lidar Scanner L1B Geolocated Surface Elevation Triplets, Version 1. [2017]: NASA National Snow and Ice Data Center Distributed Active Archive Center: <https://doi.org/10.5067/AATE4JJ91EHC>: 2010, updated 2018
- 620 Larue, F., Picard, G., Arnaud, L., Ollivier, I., Delcourt, C., Lamare, M., Tuzet, F., Revuelto, J., and Dumont, M.: Snow albedo sensitivity to macroscopic surface roughness using a new ray tracing model, *The Cryosphere Discuss.*, 2019, 1-26, 10.5194/tc-2019-179, 2019.
- Leroux, C., and Fily, M.: Modeling the effect of sastrugi on snow reflectance, *Journal of Geophysical Research: Planets*, 103, 25779-25788, 10.1029/98JE00558, 1998.
- Leuschen, C., Gogineni, P., Rodriguez-Morales, F., Paden, J., and Allen, C.: IceBridge MCoRDS L2 Ice Thickness, Version 1: NASA National Snow and Ice Data Center Distributed Active Archive Center: <https://doi.org/10.5067/GDQ0CUCVTE2Q>: 2010, updated 2018
- 625 Leuschen, C.: IceBridge Snow Radar L1B Geolocated Radar Echo Strength Profiles, Version 2. [2014, 2016]: NASA National Snow and Ice Data Center Distributed Active Archive Center: <https://doi.org/10.5067/FAZTWP500V70>: 2014, updated 2018
- Lister, H., and Pratt, G.: Geophysical Investigations of the Commonwealth Trans-Antarctic Expedition, *The Geographical Journal published by The Royal Geographical Society (with the Institute of British Geographers)*, 125, 343-354, 1959.
- Liu, H., Jezek, K., Li, B., and Zhao, Z.: Radarsat Antarctic Mapping Project Digital Elevation Model, Version 2: NASA National Snow and Ice Data Center Distributed Active Archive Center: <https://doi.org/10.5067/8JKNEW6BFRVD>: 2015
- 630 Magand, O., Genthon, C., Fily, M., Krinner, G., Picard, G., Frezzotti, M., and Ekaykin, A. A.: An up-to-date quality-controlled surface mass balance data set for the 90°–180°E Antarctica sector and 1950–2005 period, *Journal of Geophysical Research: Atmospheres*, 112, 10.1029/2006jd007691, 2007.
- Markus, T., Neumann, T., Martino, A., Abdalati, W., Brunt, K., Csatho, B., Farrell, S., Fricker, H., Gardner, A., Harding, D., Jasinski, M., Kwok, R., Magruder, L., Lubin, D., Luthcke, S., Morison, J., Nelson, R., Neuenschwander, A., Palm, S., Popescu, S., Shum, C. K., Schutz, B. E., Smith, B., Yang, Y., and Zwally, J.: The Ice, Cloud, and land Elevation Satellite-2 (ICESat-2): Science requirements, concept, and implementation, *Remote Sensing of Environment*, 190, 260-273, <https://doi.org/10.1016/j.rse.2016.12.029>, 2017.
- 635 Martin, C. F., Krabill, W. B., Manizade, S. S., Russell, R. L., Sonntag, J. G., Swift, R. N., and Yungel, J. K.: Airborne Topographic Mapper Calibration Procedures and Accuracy Assessment 2012.
- 640 McConnell, J. R., Bales, R. C., and Davis, D. R.: Recent intra-annual snow accumulation at South Pole: Implications for ice core interpretation, *Journal of Geophysical Research: Atmospheres*, 102, 21947-21954, 10.1029/97jd00848, 1997.
- Medley, B., Joughin, I., Das, S. B., Steig, E. J., Conway, H., Gogineni, S., Criscitiello, A. S., McConnell, J. R., Smith, B. E., van den Broeke, M. R., Lenaerts, J. T. M., Bromwich, D. H., and Nicolas, J. P.: Airborne-radar and ice-core observations of annual snow accumulation over Thwaites Glacier, West Antarctica confirm the spatiotemporal variability of global and regional atmospheric models, *Geophysical Research Letters*, 40, 3649-3654, 10.1002/grl.50706, 2013.
- 645 Medley, B., Joughin, I., Smith, B. E., Das, S. B., Steig, E. J., Conway, H., Gogineni, S., Lewis, C., Criscitiello, A. S., McConnell, J. R., van den Broeke, M. R., Lenaerts, J. T. M., Bromwich, D. H., Nicolas, J. P., and Leuschen, C.: Constraining the recent mass balance of Pine Island and Thwaites glaciers, West Antarctica, with airborne observations of snow accumulation, *The Cryosphere*, 8, 1375-1392, 10.5194/tc-8-1375-2014, 2014.
- 650 Medley, B., Ligtenberg, S. R. M., Joughin, I., Van den Broeke, M. R., Gogineni, S., and Nowicki, S.: Antarctic firn compaction rates from repeat-track airborne radar data: I. Methods, *Annals of Glaciology*, 56, 155-166, 10.3189/2015AoG70A203, 2015.
- Morlighem, M., Rignot, E., Binder, T., Blankenship, D., Drews, R., Eagles, G., Eisen, O., Ferraccioli, F., Forsberg, R., Fretwell, P., Goel, V., Greenbaum, J. S., Gudmundsson, H., Guo, J., Helm, V., Hofstede, C., Howat, I., Humbert, A., Jokat, W., Karlsson, N. B., Lee, W. S., Matsuoka, K., Millan, R., Mouginot, J., Paden, J., Pattyn, F., Roberts, J., Rosier, S., Ruppel, A., Seroussi, H., Smith, E. C., Steinhage, D., Sun, B., Broeke, M. R. v. d., Ommen, T. D. v., Wesse, M. v., and Young, D. A.: Deep glacial troughs and stabilizing ridges unveiled beneath the margins of the Antarctic ice sheet, *Nature Geoscience*, 13, 132-137, 10.1038/s41561-019-0510-8, 2020.
- 655 Mosley-Thompson, E., Paskievitch, J. F., Gow, A. J., and Thompson, L. G.: Late 20th Century increase in South Pole snow accumulation, *Journal of Geophysical Research: Atmospheres*, 104, 3877-3886, 10.1029/1998jd200092, 1999.
- Mouginot, J., Rignot, E., and Scheuchl, B.: Continent-Wide, Interferometric SAR Phase, Mapping of Antarctic Ice Velocity, *Geophysical Research Letters*, 46, 9710-9718, 10.1029/2019gl083826, 2019.
- 660 Nicolas, J. P., and Bromwich, D. H.: Climate of West Antarctica and Influence of Marine Air Intrusions, *Journal of Climate*, 24, 49-67, 10.1175/2010jcli3522.1, 2011.
- Nilsson, J., Gardner, A., Sandberg Sørensen, L., and Forsberg, R.: Improved retrieval of land ice topography from CryoSat-2 data and its impact for volume change estimation of the Greenland Ice Sheet, *The Cryosphere Discuss.*, 2016, 1-47, 10.5194/tc-2016-109, 2016.
- 665 Nolin, A. W., Fetterer, F. M., and Scambos, T. A.: Surface roughness characterizations of sea ice and ice sheets: case studies with MISR data, *IEEE Transactions on Geoscience and Remote Sensing*, 40, 1605-1615, 10.1109/TGRS.2002.801581, 2002.
- Nolin, A. W., and Payne, M. C.: Classification of glacier zones in western Greenland using albedo and surface roughness from the Multi-angle Imaging SpectroRadiometer (MISR), *Remote Sensing of Environment*, 107, 264-275, <https://doi.org/10.1016/j.rse.2006.11.004>, 2007.
- 670 Nolin, A. W., and Mar, E.: Arctic Sea Ice Surface Roughness Estimated from Multi-Angular Reflectance Satellite Imagery, *Remote Sensing*, 11, 50, 2018.
- Paden, J., Li, J., Leuschen, C., Rodriguez-Morales, F., and Hale, R.: IceBridge Ku-Band Radar L1B Geolocated Radar Echo Strength Profiles, Version 2.: NASA National Snow and Ice Data Center Distributed Active Archive Center: <https://doi.org/10.5067/D7DX7J7J5JN9>: 2014, updated 2018
- 675 Palm, S. P., Kayetha, V., Yang, Y., and Pauly, R.: Blowing snow sublimation and transport over Antarctica from 11 years of CALIPSO observations, *The Cryosphere*, 11, 2555-2569, 10.5194/tc-11-2555-2017, 2017.
- Panzer, B., Gomez-Garcia, D., Leuschen, C., Paden, J., Rodriguez-Morales, F., Patel, A., Markus, T., Holt, B., and Gogineni, P.: An ultra-wideband, microwave radar for measuring snow thickness on sea ice and mapping near-surface internal layers in polar firn, *Journal of Glaciology*, 59, 244-254, 10.3189/2013JoG12J128, 2013.
- 680 Picciotto, E., Crozaz, G., and De Breuck, W.: Accumulation on the South Pole - Queen Maud Land Traverse, 1964 - 1968, in: *Antarctic Snow and Ice Studies II*, edited by: Crary, A. P., Antarctic Research Series, 16, American Geophysical Union, Washington, DC, 257 - 315, 1971.
- Rodriguez-Morales, F., Gogineni, S., Leuschen, C. J., Paden, J. D., Jilu, L., Lewis, C. C., Panzer, B., Gomez-Garcia Alvestegui, D., Patel, A., Byers, K., Crowe, R., Player, K., Hale, R. D., Arnold, E. J., Smith, L., Gifford, C. M., Braaten, D., and Panton, C.: Advanced Multifrequency

- Radar Instrumentation for Polar Research, Geoscience and Remote Sensing, IEEE Transactions on, 52, 2824-2842, 10.1109/TGRS.2013.2266415, 2014.
- 685 Scagliola, M.: CryoSat footprints. Technical Note. ESA Document XCRY-GSEG-EOPG-TN-13-0013., 2013.
- Scambos, T. A., and Fahnestock, M. A.: Improving digital elevation models over ice sheets using AVHRR-based photogrammetry, *Journal of Glaciology*, 44, 97-103, 10.3189/S002214300002392, 1998.
- Scambos, T. A., Frezzotti, M., Haran, T., Bohlander, J., Lenaerts, J. T. M., Van Den Broeke, M. R., Jezek, K., Long, D., Urbini, S., Farness, K., Neumann, T., Albert, M., and Winther, J. G.: Extent of low-accumulation 'wind glaze' areas on the East Antarctic plateau: implications for continental ice mass balance, *Journal of Glaciology*, 58, 633-647, 10.3189/2012JoG11J232, 2012.
- 690 Slater, T., Shepherd, A., McMillan, M., Muir, A., Gilbert, L., Hogg, A. E., Konrad, H., and Parrinello, T.: A new digital elevation model of Antarctica derived from CryoSat-2 altimetry, *The Cryosphere*, 12, 1551-1562, 10.5194/tc-12-1551-2018, 2018.
- Smith, B., Fricker, H. A., Holschuh, N., Gardner, A. S., Adusumilli, S., Brunt, K. M., Csatho, B., Harbeck, K., Huth, A., Neumann, T., Nilsson, J., and Siegfried, M. R.: Land ice height-retrieval algorithm for NASA's ICESat-2 photon-counting laser altimeter, *Remote Sensing of Environment*, 233, 111352, <https://doi.org/10.1016/j.rse.2019.111352>, 2019.
- 695 Smith, B. E., Raymond, C. F., and Scambos, T.: Anisotropic texture of ice sheet surfaces, *Journal of Geophysical Research: Earth Surface*, 111, doi:10.1029/2005JF000393, 2006.
- Smith, M. W.: Roughness in the Earth Sciences, *Earth-Science Reviews*, 136, 202-225, 10.1016/j.earscirev.2014.05.016, 2014.
- Studiver, M., Bell, R. E., Fitzgerald, P. G., and Buck, W. R.: Crustal architecture of the Transantarctic Mountains between the Scott and Reedy Glacier region and South Pole from aerogeophysical data, *Earth and Planetary Science Letters*, 250, 182-199, <https://doi.org/10.1016/j.epsl.2006.07.035>, 2006.
- 700 Studiver, M.: IceBridge ATM L1B Elevation and Return Strength, Version 2. [2014, 2016]: NASA National Snow and Ice Data Center Distributed Active Archive Center: <https://doi.org/10.5067/19SIM5TXKPGT>: 2013, updated 2018
- Studiver, M.: IceBridge ATM L2 ICESat Elevation, Slope, and Roughness, Version 2. [2014, 2016]: NASA National Snow and Ice Data Center Distributed Active Archive Center: 10.5067/CPRXXK3F39RV: 2014, updated 2018
- 705 Taylor, L. D.: Glaciological studies on the South Pole Traverse 1962-1963, in: *Antarctic Snow and Ice Studies II*, edited by: Crary, A. P., Antarctic Research Series, 16, American Geophysical Union, Washington, DC, 209-224, 1971.
- Thomas, R. H., and Investigators, P.: Program for arctic regional climate assessment (PARCA): Goals, key findings, and future directions, *Journal of Geophysical Research-Atmospheres*, 106, 33691-33705, 10.1029/2001jd900042, 2001.
- 710 van der Veen, C. J., Krabill, W. B., Csatho, B. M., and Bolzan, J. F.: Surface roughness on the Greenland ice sheet from airborne laser altimetry, *Geophysical Research Letters*, 25, 3887-3890, 10.1029/1998gl900041, 1998.
- van der Veen, C. J., Ahn, Y., Csatho, B. M., Mosley-Thompson, E., and Krabill, W. B.: Surface roughness over the northern half of the Greenland Ice Sheet from airborne laser altimetry, *Journal of Geophysical Research-Earth Surface*, 114, 10.1029/2008jf001067, 2009.
- Vaughan, D. G., Comiso, J. C., Allison, I., Carrasco, J., Kaser, G., Kwok, R., Mote, P., Murray, T., Paul, F., Ren, J., Rignot, E., Solomina, O., Steffen, K., and Zhang, T.: Observations: Cryosphere, in: *Climate Change 2013: The Physical Science Basis. Contribution of Working Group I to the Fifth Assessment Report of the Intergovernmental Panel on Climate Change*, edited by: Stocker, T. F., Qin, D., Plattner, G.-K., Tignor, M., Allen, S. K., Boschung, J., Nauels, A., Xia, Y., Bex, V., and Midgley, P. M., Cambridge University Press, Cambridge, United Kingdom and New York, NY, USA 2013.
- 715 Warren, S. G., Brandt, R. E., and O'Rawe Hinton, P.: Effect of surface roughness on bidirectional reflectance of Antarctic snow, *Journal of Geophysical Research: Planets*, 103, 25789-25807, doi:10.1029/98JE01898, 1998.
- 720 Wingham, D. J., Francis, C. R., Baker, S., Bouzinac, C., Brockley, D., Cullen, R., de Chateau-Thierry, P., Laxon, S. W., Mallow, U., Mavrocordatos, C., Phalippou, L., Ratier, G., Rey, L., Rostan, F., Viau, P., and Wallis, D. W.: CryoSat: A mission to determine the fluctuations in Earth's land and marine ice fields, in: *Natural Hazards and Oceanographic Processes from Satellite Data*, edited by: Singh, R. P., and Shea, M. A., *Advances in Space Research-Series*, 4, 841-871, 2006.
- 725 Winski, D. A., Fudge, T. J., Ferris, D. G., Osterberg, E. C., Fegyveresi, J. M., Cole-Dai, J., Thundercloud, Z., Cox, T. S., Kreutz, K. J., Ortman, N., Buizert, C., Epifanio, J., Brook, E. J., Beaudette, R., Severinghaus, J., Sowers, T., Steig, E. J., Kahle, E. C., Jones, T. R., Morris, V., Aydin, M., Nicewonger, M. R., Casey, K. A., Alley, R. B., Waddington, E. D., Iverson, N. A., Bay, R. C., and Souney, J. M.: The SP19 Chronology for the South Pole Ice Core – Part 1: Volcanic matching and annual-layer counting, *Clim. Past Discuss.*, 2019, 1-29, 10.5194/cp-2019-61, 2019.
- 730 Yi, D., Harbeck, J. P., Manizade, S. S., Kurtz, N. T., Studiver, M., and Hofton, M.: Arctic Sea Ice Freeboard Retrieval With Waveform Characteristics for NASA's Airborne Topographic Mapper (ATM) and Land, Vegetation, and Ice Sensor (LVIS), *Ieee Transactions on Geoscience and Remote Sensing*, 53, 1403-1410, 10.1109/tgrs.2014.2339737, 2015.
- Zwally, H. J., Schutz, B., Abdalati, W., Abshire, J., Bentley, C., Brenner, A., Bufton, J., Dezio, J., Hancock, D., Harding, D., Herring, T., Minster, B., Quinn, K., Palm, S., Spinhirne, J., and Thomas, R.: ICESat's laser measurements of polar ice, atmosphere, ocean, and land, *Journal of Geodynamics*, 34, 405-445, 10.1016/s0264-3707(02)00042-x, 2002.
- 735



745 **Figure A1:** a) Ice surface slope in degrees derived from CryoSat-2 (Helm et al., 2014) and 26 year 10 m wind average from MERRA-2 (e.g., Gelaro et al., 2017). b) Mean Slope in the mean Wind Direction (MSWD).



750 **Figure A2:** a) Ice surface elevation at 88° S between 45° W and 45° E from ATM laser altimetry. b) Ice surface elevation with linear trend removed. c) Snow accumulation rate. Several prominent peaks that spatially correlate with topographic depressions are marked by grey dashed lines. d) ATM derived ice surface roughness.

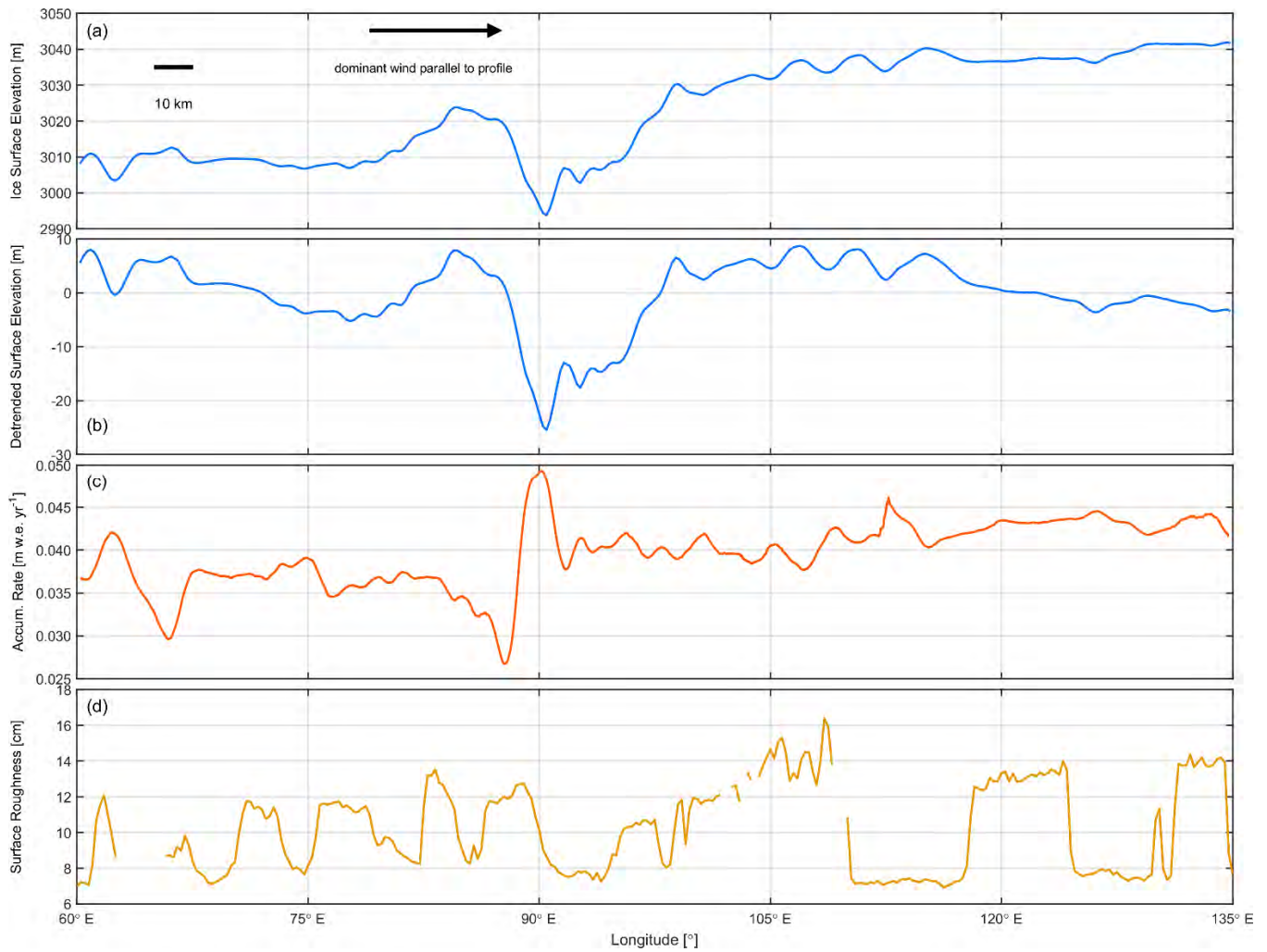


Figure A3: a) Ice surface elevation between 60° E and 135°E from ATM laser altimetry. The dominant wind direction from MERRA-2 is parallel to the profile segment. b) Ice surface elevation with linear trend removed. c) Snow accumulation rate were the pronounced peak at 90° E corresponds to the topographic depression in the ice surface. d) ATM derived ice surface roughness.

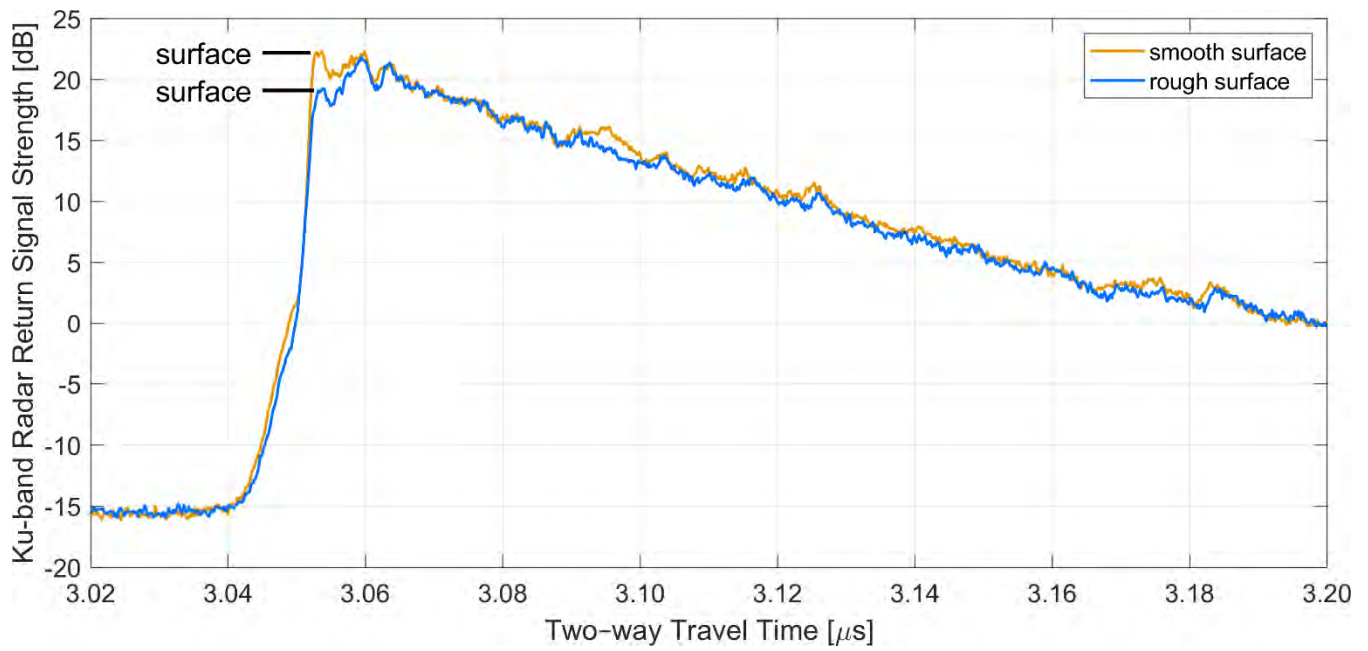


Figure A4: Relative Ku-band radar return signal strength over smooth and rough surfaces. 100 traces were stacked for the averaged waveforms. For location see Fig. 9. The difference between the radar waveforms indicates that radar altimeters are potentially prone to elevation errors when threshold or leading edge trackers are being used for range retrieval.

765