

# Surface composition of debris-covered glaciers across the Himalaya using linear spectral unmixing of Landsat 8 OLI imagery

Deleted: and

Adina E. Racoviteanu<sup>1</sup>, Lindsey Nicholson<sup>2</sup> and Neil F. Glasser<sup>1</sup>

<sup>1</sup> Department of Geography and Earth Sciences, Aberystwyth University, UK

<sup>2</sup> Department of Atmospheric and Cryospheric Sciences, University of Innsbruck, Austria

Correspondence to: [adr18@aber.ac.uk](mailto:adr18@aber.ac.uk); [racovite@gmail.com](mailto:racovite@gmail.com)

## Abstract

The Himalaya mountain range is characterized by highly glacierized, complex, dynamic topography. The ablation area of glaciers often features a highly heterogeneous debris mantle comprising ponds, steep and shallow slopes of various aspects, variable debris thickness and exposed ice cliffs, associated with differing ice ablation rates. Understanding the composition of the glacier surface is essential for a proper understanding of glacier hydrology and glacier-related hazards. Until recently, efforts to map debris-covered glaciers from remote sensing focused primarily on glacier extent rather than surface characteristics, and relied on traditional “whole pixel” image classification techniques. Spectral unmixing routines, rarely used for debris-covered glaciers, allow decomposition of a pixel into constituting materials, providing a more realistic representation of glacier surfaces. Here we use linear spectral unmixing of Landsat 8 OLI images (30 m) to obtain fractional abundance maps of the various supraglacial surfaces (debris material, clean ice, supraglacial ponds, vegetation) across the Himalaya around the year 2015. We focus on the debris-covered glacier extents as defined in the supraglacial debris cover database. The spectrally unmixed surfaces are subsequently classified to obtain maps of composition of debris-covered glaciers across sample regions.

We test the unmixing approach in the Khumbu region of the central Himalaya, and we evaluate its performance for supraglacial pond by comparison with independently mapped ponds from high-resolution Pléiades (2 m) and PlanetScope imagery (3 m) for sample glaciers in two other regions with differing topo-climatic conditions. Spectral unmixing applied over the entire Himalaya mountain range (a supraglacial debris cover area of 2,254 km<sup>2</sup>) indicates that at the end of the ablation season, debris-covered glacier zones comprised 60.9 % light debris, 23.8 % dark debris, 5.6 % clean ice, 4.5 % supraglacial vegetation, 2.1 % supraglacial ponds, small amounts of cloud cover (2 %) and unclassified areas (1.2 %). Supraglacial ponds were more prevalent in the monsoon-influenced central-eastern Himalaya (up to 4 % of the debris-covered area) compared to the monsoon-dry transition zone (only 0.3 %) and in regions with lower glacier elevations. Climatic controls (higher average temperatures and more abundant precipitation), coupled with higher glacier thinning rates and lower average glacier velocities, further favour pond incidence and the development of supraglacial vegetation. The spectral unmixing performed satisfactorily

Deleted: eastern

Deleted: glacierized

Deleted: 12

for the supraglacial pond and vegetation classes (an Fscore of ~0.9 for both classes), and reasonably for the debris classes (Fscore of 0.7). With continued advances in satellite data and further method refinements, the approach presented here provides avenues towards achieving large-scale, repeated mapping of supraglacial features.

**Keywords:** Himalaya, debris-covered glaciers, remote sensing, spectral unmixing, supraglacial ponds

## 1 Introduction

High relief orogenic belts such as the Himalaya are characterized by glacierized, complex, dynamic topography and the presence of a continuous cover of rock debris across the lowest part of the ablation zone of glaciers (Kirkbride, 2011). Globally, supraglacial debris cover accounts for ~7 % of the total glacierized area (Scherler et al., 2018; Herreid and Pellicciotti, 2020).

In high mountain environments, high denudation rates and mass-wasting processes such as rock falls and rockslides from the steep valley sides supply abundant rock debris to the glacier surface (Kirkbride, 2011; Shroder et al., 2000; Evatt et al., 2015). This results in highly heterogeneous surfaces, consisting of debris material of various lithologies and grain sizes (sand and silt to boulders), forming debris cones on variable but mostly shallow slopes. Some of the most notable features of such surfaces are the supraglacial ponds and exposed ice cliffs, which have gained interest in recent years for several reasons. First, they influence the surface energy receipts of the supraglacial debris surface and the efficiency with which atmospheric energy can be transferred to the underlying ice and cause glacier ice ablation. While ice ablation beneath debris cover of more than a few centimetres thick is strongly reduced (Østrem, 1959; Nicholson and Benn, 2006; Reid and Brock, 2010), ice cliffs and supraglacial ponds are local ‘hot spots’ for glacier downwasting due to enhanced energy absorption at the surface of these features (Ragetti et al., 2016; Miles et al., 2016; Sakai et al., 2002; Buri et al., 2016; Steiner et al., 2015). Understanding their spatial distribution is essential for a proper assessment of glacier hydrology, notably to simulate glacier-wide ablation rates and meltwater production. Second, the current distribution and fluctuation of proglacial lakes and supraglacial pond extents is of interest for assessing glacier-related hazards. Recent studies have reported an increase in pro- and supraglacial lake area and number in the Himalaya and worldwide as a response to climatic changes (Shugar et al., 2020; Nie et al., 2017; Shukla et al., 2018). Some of the supraglacial ponds coalesce and form larger supraglacial lakes, which may evolve into fully-formed proglacial ice or moraine-dammed lakes (Benn et al., 2012; Thompson et al., 2012), with enhanced potential for producing hazards such as glacier lake outburst floods (Benn et al., 2012; Komori, 2008; Richardson and Reynolds, 2000; Reynolds, 2014; GAPHAZ, 2017). Increasing trends of pond development of 17 to 52 % per year were reported in the Khumbu region (2000 to 2015) (Watson et al., 2016), with a three-fold increase in pond area over three decades (1989 to 2018) (Chand and Watanabe, 2019). Quantifying the number/area of supraglacial ponds and their evolution (Miles et al., 2017; Liu et al., 2015; Watson et al., 2016) is important for assessing which ones might represent conditioning factors for hazards (Sakai and Fujita, 2010; Reynolds, 2000). Third, understanding the fluctuations of these surface characteristics, in particular supraglacial vegetation, is important since vegetation expansion on debris-covered surfaces may indicate the transition from a debris-

covered glacier to a rock glacier in a context of climate change (Shroder et al., 2000; Jones et al., 2019; Knight et al., 2019; Monnier and Kinnard, 2017; Kirkbride, 1989).

70 Our understanding of the regional variability in glacier mass balance of both clean and debris-covered glaciers in the Himalaya has improved over the last years (Dehecq et al., 2019; Brun et al., 2017; Shean et al., 2020), and the role of glacier morphology in controlling glacier behaviour and changes has also been demonstrated in recent studies (Salerno et al., 2017; Brun et al., 2019). However, a comprehensive assessment of the surface geomorphology, supraglacial pond coverage, moraine characteristics and supraglacial vegetation at various temporal scales is still needed over the entire Himalaya. Until recently, 75 efforts to map debris-covered glaciers focused primarily on their extent rather than the surface characteristics. This was achieved at regional scales using a combination of digital elevation models (DEMs), various spectral band ratios and terrain curvature (Shukla et al., 2010; Bolch et al., 2007; Kamp et al., 2011; Bishop et al., 2001; Paul et al., 2004). Attempts to improve the accuracy of debris-covered glacier mapping included the use of thermal data. i.e., temperature differences between debris 80 underlined by glacier ice and the surrounding non-ice moraines (Taschner and Ranzi, 2002; Bhambri et al., 2011a; Racoviteanu and Williams, 2012; Alifu et al., 2016) or the use of glacier velocity (Smith et al., 2015). Considerable improvements in monitoring capacity due to recent satellite developments and cloud-computing platforms such as Google Earth Engine allowed exploitation of large amounts of Landsat and Sentinel-2 data. This has resulted in two recent global datasets of supraglacial debris (Scherler et al., 2018; Herreid and Pellicciotti, 2020). While these global datasets represent an important development in advancing the understanding of the distribution of debris-covered glaciers at a large scale, they can suffer from the use of 85 inconsistent methods and different temporal coverage between and/or within regions. Supraglacial debris in these databases was mapped within the bounds of the Randolph Glacier Inventory (RGI) (Pfeffer et al., 2014), which has varying analysis dates and accuracy. While these issues were partially mitigated in a revised dataset based on semi-automated assessments of Landsat imagery (Herreid and Pellicciotti, 2020), improvements were limited to glaciers larger than 1 km<sup>2</sup> and were not applied repeatedly at the global scale.

90 Supraglacial ponds and ice cliffs are currently not represented in either existing supraglacial debris cover datasets or in the updated, publicly available regional glacier lake inventories (Wang et al., 2020; Shugar et al., 2020; Chen et al., 2020). The latter tend to focus primarily on the representation of proglacial lakes and their decadal changes. A database of supraglacial ponds at several time periods is desirable in order to complement the existing supraglacial debris and lake databases, as the distribution of these surface features on debris-covered glacier tongues remains limited to a handful of glaciers in the Himalaya 95 (Watson et al., 2016, 2017a; Watson et al., 2018; Steiner et al., 2019). For example, regional studies on seasonal dynamics and evolution of supraglacial ponds and ice cliffs tend to be biased towards the well-studied Khumbu and Langtang areas of Nepal Himalaya (Watson et al., 2016, 2017a; Miles et al., 2017; Steiner et al., 2019). More studies are needed in other regions in order to assess the spatial differences in their occurrence as well as to infer the long-term changes of these features.

The increased availability of high-resolution (0.5 to 5 m) remotely sensed data from Pléiades, SPOT and Quickbird satellites 100 etc., complemented by RapidEye, PlanetScope and SkySat images from Planet, has offered new opportunities for

Deleted: been

Deleted: freely available

characterizing the surface of debris-covered glaciers in more detail. Supraglacial ponds and ice cliffs have been mapped using a combination of manual digitization on high-resolution multi-spectral imagery (1-3 m) or directly on Google Earth (Brun et al., 2018; Watson et al., 2018; Watson et al., 2017a, 2016; Steiner et al., 2019). Semi-automated mapping methods include adaptive binary thresholding (Anderson et al., 2021), band ratios and/or morphological operators (Miles et al., 2017; Liu et al., 2015), the normalized difference water index (NDWI) (Watson et al., 2018; Gardelle et al., 2011; Miles et al., 2017; Kneib et al., 2020; Liu et al., 2015; Wessels et al., 2002; Narama et al., 2017), feature extraction via decision-trees and/or Object-Based Image Analysis (OBIA) (Liu et al., 2015; Kraaijenbrink et al., 2016; Panday et al., 2011) or thermal imagery (Suzuki et al., 2007; Foster et al., 2012). Other methods include the use of very high-resolution topographic models generated using terrestrial structure-from-motion techniques (Westoby et al., 2014; Rounce et al., 2015; Herreid and Pellicciotti, 2018; Westoby et al., 2020) or the use of Unmanned Aerial Vehicles (UAV) data (Kraaijenbrink et al., 2016). Synthetic Aperture Radar overcomes the limitations of optical remote sensing in areas with frequent cloud cover (i.e., the eastern Himalaya), and has been used to map supraglacial ponds and track their dynamics (e.g. Strozzì et al., 2012; Wangchuk and Bolch, 2020; Zhang et al., 2021). Despite methodological developments, a robust and transferable method for mapping ice cliffs and ponds in a systematic manner using these high-resolution datasets does not yet exist and current methods remain computationally-intensive. Understanding how the surface composition of the debris-covered tongues upscales in coarser resolution imagery such as Landsat is still needed at regional scales. For example, large differences were shown between UAV-derived ponds and RapidEye-derived ponds in other studies (cf. Kraaijenbrink et al., 2016).

Even with the increased availability of high-resolution imagery, medium resolution data from archive Landsat series (30 m spatial resolution) remain a valuable data source for various regional-scale mapping applications due to their large swath width (185 km), free accessibility and acquisition time spanning four decades. One of the limitations in using these medium resolution data is that most studies rely on traditional “whole pixel” image classification techniques. While these classification techniques are advantageous for some applications, they do not reveal the constituent surfaces of image pixels on the ground nor their proportions (Keshava and Mustard, 2002). Spectral unmixing routines, initially described by Atkinson (1997; 2004) and Foody (2004), allow decomposition of a given pixel into constituting materials, providing their fractional abundance and thus generating a more realistic representation of complex surfaces (Keshava and Mustard, 2002). These have been used in glaciology to retrieve snow grain size and derive fractional snow covered areas from MODIS or Landsat (Painter, 2003; Painter et al., 2009; Sirguey et al., 2009; Veganzones et al., 2014; Rosenthal and Dozier, 1996), to map clean glacier areas or snow (Painter et al., 2012; Cortés et al., 2014), lakes (Zhang et al., 2004) and vegetation (Ettritch et al., 2018; Song, 2005; Xie et al., 2008). A small number of studies used spectral unmixing to characterize the mineral composition of debris-covered glaciers (Casey and Kääb, 2012; Casey et al., 2011), to characterize lake colour, turbidity and suspended sediments (Matta et al., 2017; Giardino et al., 2010) and more recently to map ice cliffs (Kneib et al., 2020), but the potential of sub-pixel mapping for debris-covered glaciers has not been fully exploited.

**Deleted:** More recent

**Deleted:** combined with machine learning and/or OBIA was shown to ...

In this study, we use spectral unmixing of Landsat 8 OLI imagery to detect the surface characteristics of supraglacial debris cover across the Himalaya, with a particular emphasis on quantifying the supraglacial pond coverage and vegetation. We first apply and validate the spectral unmixing in the well-studied Khumbu region of the central Himalaya. Using the spectra and spectral unmixing parameters that were derived from the Khumbu, we infer the composition of supraglacial debris cover for the entire Himalaya spatial domain. We validate the pond results by comparing the supraglacial pond areas derived from spectral unmixing with those obtained using OBIA on high-resolution imagery for selected glaciers at three different sites. We use the results to assess the composition of the debris-covered glacier tongues in regions with differing topo-climatic conditions, to evaluate the distribution of supraglacial ponds and vegetation [across](#) the mountain range in relation to geographic location, climate, topographic characteristics, glacier mass balance and surface velocity and we discuss the potential relationship between these features and the temporal evolution of these glaciers.

## 2 Data sources and methods

### 2.1 Study area

Our study area comprises various spatial domains (Fig. 1). The larger Himalaya domain is defined here as the region spanning ~ 1,500 km (~76 to 92° longitude and ~26 to 34° latitude), covering areas from Himachal/Jammu and Kashmir border in the west to Bhutan Himalaya in the east (Fig. 1). Glaciers in this area have been in a state of negative mass balance in the last decades, with accelerating trends in the 2000 to 2010 decade (Bolch et al., 2019; Brun et al., 2017; Kääb et al., 2012; Maurer et al., 2019). We developed our method in the glacierized Khumbu region of Nepal, which we refer to hereafter as the “Khumbu domain”, although it also includes glaciers north of the divide (Fig. 2). Glaciers in the Khumbu have been well studied in terms of glacier mass balance using the traditional glaciologic method (Wagnon et al., 2013), the geodetic method (Bolch et al., 2008; Nuimura et al., 2012; Brun et al., 2017; Bolch et al., 2011; Rieg et al., 2018), energy balance models (Rounce and McKinney, 2014; Rounce et al., 2015; Kayastha et al., 2000), debris cover characteristics (Iwata et al., 1980; Watanabe et al., 1986; Nakawo et al., 1999; Iwata et al., 2000; Casey et al., 2011; Yukari et al., 2000) and surface velocity (Quincey et al., 2009). Rates of change of the debris-covered glacier areas in the Khumbu vary from  $-0.12 \pm 0.05 \text{ \% a}^{-1}$  from 1962 to 2005 (Bolch et al., 2008) to  $-0.27 \pm 0.06 \text{ \% a}^{-1}$  from 1962 to 2011 (Thakuri et al., 2014). Supraglacial ponds cover ~ 0.3 to 7 % of the glacierized area in the Khumbu based on high-resolution Pléiades data (Watson et al., 2017a; Kneib et al., 2020; Salerno et al., 2012); ice cliffs cover between 1 and 9.2 % of the glacier areas (Brun et al., 2018; Watson et al., 2017a; Kneib et al., 2020).

Fig. 1 and Fig. 2 here

To examine and highlight regional differences in the composition of the debris-covered surfaces, we use four sub-regions selected across monsoonal gradients as defined in the literature, corresponding to the Landsat scenes (~32,919 km<sup>2</sup>) shown on

Figure 1 (Bookhagen and Burbank, 2010; Thayyen and Gergan, 2010; Barros and Lang, 2003). The Lahaul Spiti region in western Himalaya is in the “monsoon-arid” transition zone, characterized by monsoon precipitation during the summer and precipitation from the Westerlies in the winter (Thayyen and Gergan, 2010). The Manaslu and Khumbu regions in the central Himalaya, and the Bhutan region in the eastern Himalaya, are all under the influence of the Indian Summer Monsoon, which brings large amounts of precipitation during the summer months (June to September) (Barros and Lang, 2003; Bookhagen and Burbank, 2006) (Fig. 1).

To validate the performance of the spectral unmixing as a basis for estimating pond coverage, we used debris-covered glacier zones at three validation sites (700 - 1,150 km<sup>2</sup>), selected across the wider Himalaya domain from the Khumbu, Langtang and Lahaul Spiti regions (Fig. 1). Supraglacial ponds on these glaciers were mapped using OBIA methods on high-resolution imagery (section 2.6).

2.2 Remote sensing data

The satellite data used for spectral unmixing comprises of 13 Landsat 8 OLI images covering the Himalaya domain (Fig. 1). Characteristics of these images are given in Table 1. These were top of atmosphere registered, radiometrically calibrated and orthorectified imagery (level L1TP -T1), available at 30 m spatial resolution in the visible to short-wave infrared since 2013 (Wulder et al., 2019; USGS, 2015). We selected scenes from the post-monsoon period only (September to November) in order to minimize cloud and snow cover occurrence (Bookhagen and Burbank, 2006). In addition, Landsat scenes across the domain were selected around the same date as much as possible to minimize seasonal differences in surface conditions, notably seasonal changes in pond occurrence (Miles et al., 2017). All chosen images were acquired around the same time of the day (05 UTC time), with similar solar azimuth (~143 degrees) and zenith angle (~30 degrees). This is important to ensure that differences in surface conditions were minimal. Where the 2015 images had too much cloud or snow, we selected images for the same season in 2014 and 2016 (Table 1). We acknowledge that this choice may introduce some uncertainties due to the temporal difference, which we discuss later (section 4.6). The Landsat 8 OLI scene from Khumbu (September 30, 2015) was chosen as reference for method development and testing. We also performed a second spectral unmixing on an additional 2016 Landsat 8 OLI scene for Lahaul Spiti in the western Himalaya (Table 1) in order to have an analysis that was coincident with the high-resolution data used to validate the supraglacial pond mapping within this region.

Table 1 here

For calibration and validation of the spectral unmixing products at specific locations, we used a combination of high-resolution optical imagery from Pléiades and Planet (Table 1). The Pléiades 1A satellite sensor acquires tri-stereo high-resolution data (0.5 m spatial resolution in the panchromatic band and 2 m in the multispectral bands, blue to near-infrared), with 20 km image swath at nadir (Table 1). Three Pléiades scenes from 2015 (Oct 7, 19 and 20) covered the north, northeast and southeast parts of Khumbu (Rieg et al., 2018) and offered the closest match to the date of the reference Landsat image

Deleted: selected

Formatted: Font: 10 pt

Deleted: Table 1

(Sept 30, 2015) (Fig. 1); these Pléiades scenes were cloud-free and snow-free over the debris-covered part of the glaciers. The scenes were provided as three sets of triplets of primary data (1A), and were orthorectified in the Leica Photogrammetry Suite in ERDAS Imagine 2013 (ERDAS, 2010) using the Pléiades Rational Polynomial Coefficient model and the Pléiades DEM (1 m) previously generated using semi-global matching (Rieg et al., 2018). The individual image scenes were mosaicked to a single image using nearest neighbour at 2 m spatial resolution. In addition, a RapidEye level 3A analytic ortho tile from Oct 9, 2015 from Planet (Planet\_Team, 2017) was used in addition to Pléiades in the Khumbu in order to cover a wider region to better overlap the Landsat scene. This [RapidEye scene](#) consists of orthorectified, surface reflectance data at 5 m spatial resolution and five multispectral bands, projected to UTM coordinates. A PlanetScope ortho-tile from Oct 19, 2016 (3 m spatial resolution, 4 multi-spectral bands) was used in Lahaul Spiti area to validate the ponds resulting from unmixing the 2016 Landsat 8 scene for this region (Table 1). Both RapidEye and PlanetScope tiles obtained from Planet were mosaicked to single scenes using nearest neighbour. These have a stated positional accuracy of < 10 m, [reported as root mean square error, RMSE](#) (Planet\_Labs, 2021).

We co-registered all high-resolution images and the corresponding Landsat 8 OLI images using the Co-registration of Optically Sensed Images and Correlation (COSI-Corr) routine (Leprince et al., 2007) implemented in ENVI 5.5 Classic (L3Harris Geospatial, Boulder CO). For the Pléiades image, after co-registration with 20 tie points and a second-order polynomial transformation (RMSE = 1.3 m), image displacements were -0.16 m in the E/W direction and 0.12 m in the N/S direction. The Planet RapidEye and PlanetScope scenes were co-registered on the Landsat 8 OLI with 15 and 10 tie points (RMSE = 5 m and 1.6 m, respectively), yielding offsets of ~1.1 to 1.7 m in the E/W direction and 0.09 to 0.5 m in the N/S direction after co-registration. These offsets were below the spatial resolution of all scenes (2 - 5 m).

### 2.3 Atmospheric and topographic corrections

All Landsat 8 OLI scenes were corrected to minimize atmospheric effects due to scattering or absorption from atmospheric gases, aerosols and clouds. We used the open-source Atmospheric and Radiometric Correction of Satellite Imagery (ARCSI v 3.1.6) routine based on the 6S algorithm (Vermote et al., 1997). We applied the STDSREF option in ARCSI with the shadow option, which provided standardized surface reflectance products for all the scenes where deep shadows were masked out as NoData. ARCSI allows for global and local viewing and solar geometries using physically-based illumination and reflectance corrections based on topographic data (Shepherd and Dymond, 2003), a specified atmospheric profile, an Aerosol Optical Thickness (AOT) value and sensor geometry. These settings are important for minimizing differences in surface conditions among the various scenes. The AOT value was automatically derived in ARCSI by a numerical inversion of the surface reflectance on an image-basis using the simple dark object subtraction technique (DOS) from the blue band, yielding an AOT of 0.05 for the Sept 30, 2015 Khumbu scene. To validate the performance of the DOS technique for the atmospheric profile representation in our study area for this date, we validated the estimated AOT against level 1.5 data at reference wavelength of  $\lambda = 500$  nm aerosol size from AERONET (<https://aeronet.gsfc.nasa.gov/>) (Giles et al., 2019) and

Deleted:

235 against daily forecast global reanalysis of total optical depth at multiple wavelengths from the Copernicus Atmospheric  
Monitoring Service (CAMS) (<https://atmosphere.copernicus.eu/catalogue#/>). The AOT values obtained using the DOS  
method (0.05) were consistent with the ones calculated from AERONET and CAMS (0.07 and 0.05, respectively). In the  
Himalaya, we can generally assume relatively clean atmospheres and thus consider that low AOT values are reasonable (P.  
Bunting, Aberystwyth Univ., personal communication, Feb. 2021). Our choice of a constant AOT value in high  
240 environments is in line with findings from other studies (Gillingham et al., 2013; Matta et al., 2017). Surface topography  
used for the atmospheric and topographic corrections was based on the ALOS Global Digital Surface Model (AW3D30  
version 2.2, at 30 m) (JAXA, 2019), constructed from data acquired from 2006 to 2011. The vertical accuracy of ~10 m in  
eastern Nepal (Tadono et al., 2014) is superior to that of Shuttle Radar Topography Mission (SRTM) DEM (23.5 m, reported  
by Mukul et al. (2017)), because it contains fewer data voids and provided better shadow rendering in our area.

245 **2.4 Supraglacial debris cover data**

In this study, we constrained our analysis over supraglacial debris surfaces, extracted from the database of global distribution  
of supraglacial debris cover (Scherler et al., 2018), and referred hereinafter as the “SDC”. Debris-covered glacier outlines in  
this dataset were derived from Landsat 8 OLI and Sentinel-2 data using automated approaches on Google Earth Engine by  
excluding clean ice and snow from glacier areas within the limits of the Randolph Glacier Inventory (RGI v.6)  
250 (RGI Consortium, 2017). Outlines span the period 1998 to 2001 for the central and eastern Himalaya, the year 2002 for the  
western (monsoon-dry transition zone) and mostly the year 2010 for glaciers in China. In this study, the outlines obtained from  
the SDC dataset required pre-processing because supraglacial ponds along with other surfaces such as nunataks were  
represented as “holes” in this dataset. This caused “NULL geometry” errors due to unclosed polygons, duplicated vertices etc.  
We fixed these errors in the SDC polygons using the Repair Geometry command in ArcGIS v10.8., in order to “fill” the holes  
255 so that these were included in the SDC polygons. For the test Khumbu area, we removed supraglacial debris polygons with an  
area less than 0.01 km<sup>2</sup>, which proved to be erroneous areas upon visual examination, i.e., sliver polygons or isolated bare land  
pixels. Such unwanted small polygons typically result from polygon overlays and do not represent a physical entity on the  
ground (Delafontaine et al., 2009).

**2.5 Spectral unmixing background and set-up**

260 In remote sensing, the reflectance spectrum of any image pixel represents an average of the materials on the ground, present  
in various proportions within that pixel (Keshava and Mustard, 2002). These “mixed pixels” are a common occurrence and are  
especially a concern in low to medium resolution imagery including Landsat. In the case of debris-covered glacier tongues,  
constituent materials include various types of rock debris and/or ice cliffs, supraglacial ponds and vegetation in various  
proportions (Rounce et al., 2018). Spectral unmixing techniques serve to quantify mixed spectra and to decompose each pixel  
265 into its constituent materials based on their characteristic, distinct spectral signatures. These materials are referred to as “pure”  
endmembers (Painter et al., 2009; Keshava and Mustard, 2002) and are either extracted from the image itself before unmixing

Deleted: T

Deleted: in



270 using unsupervised techniques, or supplied by the user using *a priori* knowledge (Painter et al., 2009; Keshava and Mustard, 2002; Dixit and Agarwal, 2021). The relationship between the fractional abundance of each material and its spectra is most often defined as a linear combination of the spectral reflectance of the distinct constituent materials. This is implemented as linear mixing models (LMMs), used for example to distinguish among vegetation, rock, or different snow grain sizes (Painter et al., 2009). LMMs are easy to implement and are therefore widely used (Dixit and Agarwal, 2021; Keshava and Mustard, 2002). In contrast, nonlinear mixing models take into account multiple scattering between surfaces and are used in forested areas where canopy height, or particulate mineral mixtures are in close association (Roberts et al., 1993). They are more realistic but are also more difficult to implement (Dixit and Agarwal, 2021).

To yield physically meaningful results, fractions obtained from spectral unmixing should ideally comply with two major constraints: (a) the non-negativity (or positivity) constraint (i.e. fractions should not be negative) and (b) the sum-to-unity (i.e. for each pixel, fractions should add up to 1) (Keshava and Mustard, 2002). The non-negativity condition is recommended because negative reflectance values have no physical meaning, and the sum-to-unity constraint is recommended when very dark endmembers such as shadows are targeted or for unmixing radiance or thermal infrared emissivity. Models that comply with both conditions (called “fully-constrained models”) are difficult to achieve because they require perfect knowledge of the system, which is rarely feasible. Furthermore, fully-constrained models have been shown to produce unrealistic fractions in poorly defined areas or areas of low illumination (Cortés et al., 2014). In this study, we applied a LMM with endmembers extracted from the Landsat 8 OLI image itself, and we constrained our analysis over the supraglacial debris cover only to reduce model complexity. We used the LMM implementation in the ENVI 5.5 software (L3Harris Geospatial, Boulder CO).

### 2.5.1 Endmember selection and spectral signatures

The selection of endmembers is crucial in determining the accuracy and reliability of the spectral unmixing (Song, 2005; Dixit and Agarwal, 2021), and it requires some trial and error as well as *a priori* knowledge. We selected the endmembers within the debris-covered areas in the Khumbu domain, based on the reference Landsat 8 OLI scene (Sept 30, 2015). Prior to this, we performed a forward Minimum Noise Fraction Transform on the Landsat scene (Green et al., 1988), which consists of a linear transformation of the data based on principal component analysis, and allows to estimate noise in the bands. All bands had eigenvalues > 1, so we determined the dimensionality of the Landsat data as  $n = 7$ . We used the unsupervised pixel purity index routine in ENVI to find “pure” pixels in an automated manner. This routine outputs a data cloud where the value of each point indicates the number of times each pixel was marked as extreme, thus representing pixels with the highest occurrence in the image. We optimized the pure pixel extraction using various numbers of iterations (20,000 to 50,000) with thresholds ranging from 2 to 3 (i.e., two to three times the noise level in the data) until all “pure pixels” were detected. Larger thresholds identify more extreme pixels, but they are less likely to be “pure” endmembers. “Pure” pixels were identified on the Landsat 8 OLI scene as corresponding to six endmembers: clean ice, dry vegetation, clouds, light

Deleted: therefore

Deleted: in

debris, dark debris and turbid water (Fig. 3). These were checked against co-registered Pléiades and RapidEye false colour composites in the Khumbu in order to minimize any occurrence of “mixed pixels”.

Fig. 3 here

The spectra of the six endmembers (Fig. 4a) were statistically separable based on the Jeffries-Matusita and Transformed Divergence separability measures (Richards, 2013) (values > 1.9–2.0). We defined both light and dark debris endmembers on the basis of their spectral differences (Fig. 4a), also noted in other studies (Casey et al., 2011; Kneib et al., 2020). We visually compared these spectral signatures with those we acquired previously in the field on Mer de Glace (French Alps) using an SVC HR-1024 spectrometer (350 nm to 2500 nm) (Racoviteanu and Arnaud, 2013) (Fig. 4b), as well as with supraglacial debris spectra from other papers (Naegeli et al., 2015; Naegeli et al., 2017; Casey and Kääb, 2012). To minimize the number of endmembers, we made several choices: (a) we did not consider any snow; (b) we assumed the supraglacial ponds to be mostly of turbid type, i.e., those containing larger quantities of suspended sediments. We based this choice on results from Matta et al., (2017), who reported 52 % of ponds in the Himalaya to have grey waters and 24 % blueish waters; the water spectra in Fig. 4a corresponds well with field-based spectra for other turbid lakes in the Khumbu, such as Chola Lake, reported their study; (c) based on our field observations of high-altitude vegetation in the Khumbu (Fig. 3d), we defined the vegetation endmember as “dry vegetation”, whose spectral signature (a) corresponds roughly to the graminoid shrubs or overgrown vegetation with a grass-like appearance typically found at high altitudes (Wehn et al., 2014); (d) deep shadows were previously removed during the topographic corrections with ARCSI and assigned “NoData” so they were not considered as an endmember. We ran the LMM for various combinations and numbers of endmembers (3 to 6 endmembers) and recorded the model RMSE for each combination. We examined the residuals (RMSE band) provided from the unmixing to determine areas of missing or incorrect endmembers; when this contained distinct features, it indicated poorly defined endmembers. We excluded the endmembers one by one and ran the LMM until we obtained a “salt and pepper” with no distinct features, indicating that no endmembers were missing or misidentified.

Fig. 4 here

## 2.5.2 Surface classification from fractional maps

LMM routines result in a multi-band raster containing pixel-by-pixel fractional cover values for each class, which ideally range from 0 to 1. When we obtained negative values for a class, we assumed that the material was missing and forced these values to zero. Positive values were normalized by dividing each endmember fraction by the sum of the endmembers, so that the sum of the fractions of the various materials in each pixel added up to 1. This is a common procedure suggested by previous studies (Rosenthal and Dozier, 1996; Quintano et al., 2012; Cortés et al., 2014) when the sum-to-one condition is not satisfied.

For further analysis, we require maps of the surfaces rather than just a numerical value of area, so we classified the 30 m fractional maps by applying a threshold  $\alpha$  to produce binary maps for each class. Previous studies used a minimum threshold of  $\alpha = 0.4$  or  $0.5$ , i.e. a pixel was assigned to a class if it contained a fraction of 40 – 50 % to 100 % of that constituent material (Hall, 2002). The thresholds varied by class, because any pixel contains a mixture of materials in various proportions (section 3.1). Pixels which satisfy 2 different thresholds are categorized as ‘unclassified’. For the supraglacial ponds in the Khumbu, we defined the water threshold quantitatively based on comparison of the LMM-derived pond areas against those derived from Pléiades for seven glaciers (section 2.6), and we evaluated the sensitivity of the chosen water threshold. For the other classes, the thresholds were adjusted carefully based on visual interpretation against the Pléiades and RapidEye images in the Khumbu. The thresholds established for the Khumbu were applied over the entire Himalaya domain.

### 2.5.3 Accuracy assessment

The performance of the LMM was assessed both qualitatively (on the basis of visual interpretation and comparison with surfaces visible on the high-resolution Pléiades and RapidEye), and quantitatively (using established measures, i.e., RMSE, fraction value abnormalities and the residual band output in the LMM) (Gillespie et al., 1990). To quantitatively assess the ground accuracy of the LMM, we manually digitized 151 test pixels covering all six classes (10 – 38 pixels per class) on false colour composites of the Pléiades and RapidEye images in the Khumbu using a simple random sampling strategy. The reference points were chosen so that they were well distributed across the Khumbu (Fig. 2), and were taken to represent “ground truth”. The predicted class was compared to the ground truth at each pixel to generate a confusion matrix and to compute the overall accuracy of the model (percent pixels classified correctly). We also report class-specific metrics as true positives (number of pixels correctly classified and are found in a class, TP), true negatives (number of correctly classified pixels, that do not belong to a class, TN), false positives (number of pixels that were incorrectly assigned to a class, FP) and false negatives (number of pixels that were omitted from a class, FN) (Table 2). We calculated three metrics which are suitable for multi-class classification routines (Sokolova and Lapalme, 2009) as follows (Eq. 1-3):

$$Precision = \frac{TP}{TP + FP} \quad (1)$$

$$Recall = \frac{TP}{TP + FN} \quad (2)$$

$$Fscore = \frac{2TP}{2TP + FP + FN} \quad (3)$$

Precision measures the agreement between ground data and classified data, i.e., the probability that a pixel classified as water, is indeed water on the ground. Recall measures the effectiveness of the classifier to identify a pixel in the class of interest, i.e. the percentage of results correctly classified by the algorithm. Fscore balances precision and recall as the harmonic means of

Deleted: root mean square error –

Deleted: TP

Deleted: for example

the two, and measures the relation between the pixels on the ground and those classified, i.e., the model accuracy for each class. For all metrics, a poor score is 0.0 and a perfect score is 1.0.

## 365 2.6 Validation of supraglacial ponds with high-resolution data

We validated the performance of the spectral unmixing for supraglacial pond areas on the basis of high-resolution imagery for 6 to 7 debris-covered glacier extents at each of the three sites shown in Figure 1. For the Khumbu and Lahaul Spiti glaciers, supraglacial pond areas were mapped from Pléiades and PlanetScope imagery, respectively (Table 1) using OBIA techniques (Blaschke et al., 2014) implemented in the ENVI Feature Extraction Module (HarrisGeospatial, 2017). In the  
370 Khumbu, the Pléiades images were acquired several weeks apart from the date of the Landsat scene in some parts of the region (see Table 1), but we assume minimal lateral expansion between the two dates, as discussed by Watson et al. (2018).  
For the Langtang region, we validated our LMM-derived pond areas with those reported for seven glaciers based on SPOT7 satellite imagery in Steiner et al., (2019). The OBIA method used for Khumbu and Lahaul Spiti consisted in a ‘segmentation only’ extraction workflow on the visible bands of Pléiades and/or PlanetScope, with an edge algorithm (to delineate the pond  
375 segments), a fast lambda setting (to merge adjacent segments with similar colours and borders) and a texture kernel size of 3 pixels (suitable for segmenting small areas). The scale and merge levels were adjusted against colour composites to prevent over-segmenting and to combine different segments into one pond. The resulting polygons were further manually corrected (split, merged or digitized) for any missing and/or shaded areas beneath ice cliffs as described in Watson et al. (2017a). Our aim was not to construct a sophisticated OBIA classification scheme but rather to use the feature extraction module as time-  
380 saving strategy and to add objectivity to the manual digitization.

## 2.7 Auxiliary region-wide datasets

We explored the dependency of the resulting supraglacial pond cover incidence on topographic variables: elevation bands above the termini, slope and aspect of the debris cover areas. These were calculated over the debris-covered parts of the glaciers on the basis of the AW3D30 DEM (30 m). Only glacier polygons with area larger than 1 km<sup>2</sup>, resulting in a subset of 408  
385 glaciers were selected from the SDC database over the Himalaya domain for an in-depth glacier-by-glacier analysis. The area threshold was applied in order to remove spurious small bare land patches or isolated debris pixels present in the SDC database.  
While the vast majority of glaciers in the Himalaya are smaller than 1 km<sup>2</sup>, these are mostly clean glaciers (Racoviteanu et al.,  
2015). In addition to the glacier-by-glacier basis analysis, we also binned the topographic variables, i.e., 100-m elevation, 2-degree slope and 45-degree aspect, and summarized the pond incidence in each bin.  
390 We explored spatial patterns in the pond incidence and supraglacial vegetation with respect to regional climate gradients, average glacier mass balance and average surface velocity. Climate data (total precipitation and average temperature) were obtained from ERA5-Land, which provides gridded monthly average means at 0.1° x 0.1° of land surface properties (Copernicus Climate Change Service, 2019) (Muñoz-Sabater, 2019). Gridded glacier thickness change at 30 m resolution for the period 2000 – 2019 were obtained from Shean et al., (2020). Glacier surface velocities for the period 2013 – 2015 based

Deleted: selected from

Deleted: gradient

Deleted: numerous

on Landsat data were obtained from Dehecq et al., (2015). All topo-climatic variables were binned and averaged over a 1° x 1° grid to explore the topo-climatic controls on spatial trends in pond and vegetation incidence and to allow comparison with other studies (e.g. Brun et al., 2017; Dehecq et al., 2019).

Deleted: a

3 Results

3.1 Fractional maps

Here we present results of the unconstrained LMM, because this had a lower RMSE (0.6 %) compared to the partially constrained model run (RMSE of 1.5 %). The normalized fractional maps of the six surface types are presented in Fig. 5; fractional values ranged from 0.004 to 1. Fractional water values greater than 0.5 correspond to supraglacial ponds, visible for example at the termini of Ngozumpa and Khumbu Glaciers (Fig. 6a,b). Light and dark debris was identified with a threshold of 0.25 and 0.40 respectively, defined visually on the basis of the Pléiades image. Dry vegetation patches generally exhibited pixel fractions greater than 0.65. Pixels with abnormally high positive fractional vegetation values were found in areas of healthy green vegetation and/or bare terrain, which should not be part of the debris-covered tongues, as will be discussed later (section 4.5). Cloud pixels display fractional values greater than 0.45, although some pixels were mixed with debris, particularly at cloud shadow areas. For clean ice, fractional values were rather low (0.20) and ranged from 0 (areas which might have some degree of dirty, dark ice with a lower albedo) to 1 (small number of clean ice pixels found in the upper areas of supraglacial debris).

Fig. 5 and Fig. 6 here

3.2 Accuracy of the LMM-based classification for the Khumbu

Accuracy measures presented in Table 2 for the Khumbu domain show that errors were not evenly distributed among classes. For the water and vegetation classes, recall score was 0.83 to 0.84 respectively, with a precision of 0.94 and 0.93 respectively Table 2. For these classes, the LMM achieved a balance of precision and recall metrics, with a high Fscore of ~ 0.9 indicating an accurate model. For the debris classes, the model was reasonable but not outstanding, with an Fscore of ~ 0.7 and lower precision score for dark debris (0.56) compared to light debris (0.72) (Table 2). This suggests that in the case of dark debris, the LMM model was less accurate than light debris, because pixels from other classes (clean ice, water and light debris) got mistakenly assigned to this class. Clouds were classified with low precision and low recall scores (Fscore of ~ 0.5), which means that the LMM performed relatively poorly for this class and it also missed 50% of the cloud pixels. There was confusion between clean ice and cloud pixels, i.e., clean ice pixels were mistakenly included in the cloud class. Clean ice was the most poorly classified, with a recall score close to 0 and Fscore of 0.13; one ice pixel was correctly identified, but other surfaces were confounded with ice. We attribute this to the poorly defined ice class in the model data (i.e., limited number of “pure” ice pixels used to extract the spectral signature). Based on these measures, we note that overall, the LMM most accurately

classified the water and vegetation classes, with reasonable performance for the light debris class but poor performance for clean ice and clouds. The overall accuracy of the LMM-based classification of the six surfaces was 75 %; however, this is a rather coarse metric and it does not indicate the specific performance of the model for each class so we do not use this here as evaluation of the accuracy.

Table 2 here

3.3 Supraglacial pond thresholds and validation

The sensitivity analysis of the pond areas obtained from LMM fractional maps with various thresholds (Table 3) indicates that there was up to 40 % variability in total pond area when compared to Pléiades-based ponds, depending on the glacier. A threshold of 0.5 applied to the water class (fractional water > 0.5 = supraglacial ponds) yielded the best agreement with the total pond areas for the seven glaciers, obtained from OBIA mapping on the Pléiades image (1.0 km² compared to 1.1 km² for the total coverage, respectively, or a 9 % difference) (Table 4). For the Khumbu Glacier, LMM with a threshold of 0.5 yielded a pond area of 0.20 km² versus 0.23 km² from Pléiades (Table 4), which is in agreement with the area reported by Watson et al. (2017b)(0.24 km²) using the same Pléiades image (Oct 7, 2015).

Table 3 and Table 4 here

In the Lahaul Spiti region, for the seven glaciers we investigated, LMM yielded a total pond area of 0.14 km² (0.31 % of the total debris-covered area of the glaciers). The area mapped from PlanetScope image from the same date (Oct 19, 2016) using OBIA yielded 0.10 km² (0.22 % of the debris-covered area) (Table 4).

In the Langtang region, for the six glaciers investigated in Steiner et al., (2019), our LMM-derived pond areas yielded a total of 0.17 km² pond area (0.64% of the debris-covered area). Steiner et al., (2019) obtained a total pond area of 0.21 km² (0.86 % of the debris-covered area) for the same glaciers based on manual digitization by multiple analysts from SPOT7 data for the same date as the Landsat. LMM under-estimated the pond area by 0.05 km² (19 %), which is within the uncertainty range (21 %) reported for the ponds in the Langtang area by Steiner et al., (2019).

Visually, the spectrally unmixed pond pixels correspond well with the validation dataset, although there is a difference in the representation of the pond surfaces due to the spatial resolution (30 m Landsat vs. 2 m Pléiades) (Fig. 6). For Lhotse Glacier, the supraglacial pond area was slightly under-estimated compared to Pléiades (Table 5) as can be seen on Figure 6. This is perhaps due to the predominance of darker debris type on this glacier, some of which was confused with water, as shown by the accuracy metrics (Table 2). Similarly, in the Lahaul Spiti region, locations of the supraglacial ponds correspond well

Deleted: Table 3

Deleted: Table 3

Deleted: Table 4

between LMM and PlanetScope on Bara Shigri Glacier (Fig. 6c), but the small ponds are not identified using the water threshold of 0.5, which assumes that more than 50% of the pixel area is covered by water.

### 3.4 Application to regional non-glacier lake databases

While supraglacial ponds are the focus of this study, we mention that LMMs can also be parameterized to map other lakes, by masking the debris-covered glacier areas and replacing the turbid water endmember with the clear water endmember, which has a lower spectral signature (Fig. 4a). This is beyond the purpose of this study, but we provide an illustration of such an output for the terminus of Ngozumpa Glacier (Fig. 7). We present the ponds and lakes on the debris cover and outside it for comparison with two existing glacial lakes databases constructed from the same year (2015 Landsat): the HMA v.1 lake dataset, derived using a normalized difference water index (Shugar et al., 2020) and HI-MAG constructed using a modified NDWI and manual corrections (Chen et al., 2020). A comparison with other global databases such as the Global Surface Water dataset (Pekel et al., 2016) was not undertaken here, as this has already been shown to underestimate the water occurrence over most of the Himalaya by Chen et al. (2020). With regards to HMA v.1 and HI-MAG datasets, Figure 7 shows that the lake outlines obtained from spectral unmixing for the supra-glacier ponds at the terminus of Ngozumpa Glacier as well as the Gokyo Lakes outside the glaciers are outperforming both of the existing databases in this area. Our lake extents are consistent with the HMA v.1 lakes extents outside debris cover (Fig. 7), and the surface area estimates agree quite well, for example we calculated a difference of 5 % in the summed pond area over the three Gokyo Lakes (1.15 km<sup>2</sup> in our estimates vs. 1.09 km<sup>2</sup> in HMA v.1). The slight under-estimate in the latter is due to simplification of the raster edges in the vector conversion process, visible in the lake extents. With regards to supraglacial ponds, for example Spillway Lake at the terminus of Ngozumpa Glacier, our spectral unmixing technique maps most of these lakes, while both HMA v.1 and the HI-MAG datasets fail to detect all the supraglacial ponds. The HI-MAG detects more of the surface of Spillway Lake compared to HMA v.1, but the outlines are simplified and lack precision with respect to Landsat pixels (Fig. 7). We did not simplify the lake and pond polygons, as this can introduce significant area errors.

Fig. 7 here

### 3.5 Composition of the debris-cover glacier tongues: glacier to regional scale

#### 3.5.1 Khumbu domain

For the seven debris-covered glacier tongues in the Khumbu (Fig. 8), the most prevalent materials detected using the LMM were dark and light debris, with an average of 53.7 % and 43.6 % of the supraglacial debris area, respectively (Table 5). The dark and light debris areas exhibit variable distribution patterns by glacier. For example, the debris-covered tongue of Nuptse Glacier in Khumbu is mostly covered by light debris (> 95 % of its area), while the opposite is true for Lhotse Glacier, which

Deleted: nd

is mostly composed of dark debris (> 91 %) (Table 5). Other glaciers in the eastern part of Khumbu, i.e., Kangshung Glacier  
490 exhibit alternating bands of light and dark debris, where darker bands represent medial moraines (Fig. 8).

Table 5 and Fig. 8 here

Exposed ice was detected in small quantities in the Khumbu, ranging from 0.2 % (Lhotse) to a 1.4 % (Changri Nup) with an  
average of 0.6 % of the debris-covered areas (Table 5 and Fig. 9). Patches of supraglacial vegetation ranged from ~ 0 %  
(Lhotse Nup Glacier) to 1.6 % (Gaunara Glacier), with an average of 0.5 % over the seven tongues (Table 5). Vegetation  
495 patches were found for several pixels corresponding to the lateral moraine of Ngozumpa Glacier, or larger patches at the  
terminus of Labeilong and Kazhenpu Glaciers in China (Fig. 8. and Fig. 10). The supraglacial pond area in the Khumbu in  
2015 ranged from 0.9 % (Lhotse and Nuptse Glaciers) to ~ 3 % of the debris-covered area (Ngozumpa and Khumbu  
Glaciers), with an average of 1.6 % over the seven debris-covered glacier tongues and glacier-by-glacier variability (Table  
5). The larger water coverage for Ngozumpa and Khumbu Glaciers is consistent with the presence of large supraglacial  
500 ponds at the terminus of these two glaciers shown on Figure 6.

Fig. 9 and Fig. 10 here

### 3.5.2 Himalaya domain

Here we consider patterns across the whole analysed mountain range and also compare and contrast conditions in the four  
regions highlighted in Figure 1. Light debris is prevalent over the entire Himalayan domain, comprising almost three times  
505 the extent of dark debris (60.9 % vs. 23.8 %, respectively). There is a slight regional variability in the occurrence of light  
debris, but all regions exhibit similar patterns in terms of the proportion of light and dark debris (Table 6). Glaciers in the  
western part of the Himalaya are mostly composed of supraglacial light debris, which presumably reflects the nature of the  
underlying bedrock geology here (Searle et al., 1987).

We detected a higher percent coverage of clean ice/snow within the debris-covered area for the entire range (5.6 % of the  
510 debris) with respect to the reference Khumbu domain (0.6 % on average) (Table 6). At the date of the analysis (September to  
October 2015), some of the debris-covered glaciers in the eastern part (Bhutan) exhibited snow on the upper parts of the  
supraglacial debris, ~~perhaps due to early snowfalls common in this area at this time of the year.~~

~~Table 6~~ here

Cloud coverage amounted to 45 km<sup>2</sup> (2.0 % of the debris-covered area) over the entire range, with less coverage in Lahaul  
515 Spiti and Khumbu (1.6 % and 0.6 % respectively) compared to the Bhutan domain (6 %).

Supraglacial vegetation covered a total of 4.5 % of the debris-covered parts of glaciers over the Himalaya domain, with less  
coverage in the western part (Lahaul Spiti, 1.6 % of the debris cover) than in the central and eastern Himalaya regions (Khumbu

**Deleted:** because the end of the ablation season occurs later in this area

**Deleted:** .

**Deleted:** Table 6

**Moved down [1]:** While these patterns correspond to local meteorology, which will be discussed later (section 4.1), i.e. more frequent cloud cover in the eastern Himalaya until later fall months compared to the western part (Thayyen and Gergan, 2010), we are less confident in the actual estimations of the cloud cover areas so we do not wish to over-interpret these.



and Bhutan domains, at ~ 3 %). We show examples of the vegetation maps obtained from the LMM on Kazhenpu Glacier in China in Figure 10a. On other glaciers, such as Labeilong Glacier (Fig. 10b), these values might be slightly over-estimated because the SDC dataset included patches of healthy vegetation as part of the debris cover.

The supraglacial pond dataset over the Himalaya domain consists of a total of 18325 ponds ranging in area from 0.0009 km<sup>2</sup> to 0.002 km<sup>2</sup>. Ponds accounted for an area of 47 km<sup>2</sup> (2.1 % of the total supraglacial debris cover), with marked regional variability among western Himalaya (Lahaul Spiti: 0.3 % of the supraglacial debris), central Himalaya (Khumbu: 1.6 % and Manaslu: 2.6 %) and eastern Himalaya (Bhutan: 4.9 %) (Table 6).

### 3.6 Glacier-by-glacier pond and vegetation coverage

The 408 debris-covered glacier tongues selected from the SDC dataset for the in-depth analysis (cf. section 2.7) ranged in area from 1 km<sup>2</sup> to 37 km<sup>2</sup>, with an average area of 3.9 km<sup>2</sup> and a mean slope of 12.7°. The supraglacial pond and vegetation coverage of these glaciers shows heterogeneous patterns (Fig. 11a,b). Both supraglacial ponds and vegetation cover a relatively small percent of the debris-covered glacier areas in the western Himalaya (0 to 2.5 %) compared to the central and eastern parts. We note some clusters of higher percentage occurrence of both ponds and vegetation in these two regions (7.5 – 10% for ponds and 20 – 40 % for vegetation, respectively) (Fig. 11a,b). The glacier-by-glacier analysis of pond coverage with respect to minimum debris-covered glacier elevation did not yield a clear trend, suggesting that ponds do not occur necessarily on glaciers situated at lower altitudes. Similarly, supraglacial vegetation coverage did not display significant dependencies on either average slope or minimum elevation of the debris-covered tongues.

Fig. 11 here

Analysis of pond coverage per 100-m elevation bands over the entire range however shows clearer patterns than glacier-by-glacier results: 77 % of the pond area coverage occurs within 10 % elevation from the glacier termini and decreases exponentially towards the upper part of the debris-covered tongues (0.1% of pond coverage at 75% up the debris area) (Fig. 12a). We note from Figure 12a that the largest concentration of ponds does not occur directly at the glacier termini, but within 2 % of the elevation from the terminus (i.e., within 100 m above the minimum elevation). The exponential fit shown in (a) and (b) could have useful predictive power, but misses the peak lake coverage that is typically found near the terminus and on low angle slopes. The high pond coverage near the terminus coincides with the areas of pond coalescence into large terminal lakes, which implies that an exponential fit is useful for capturing the percent cover of 'perched ponds' but likely not the base level lakes (cf. Benn et al., 2012). The analysis of pond incidence over 2° slope bands (Fig. 12b) shows that 38 % of the total pond area occurs within 0 to 10° slope bins, with the maximum pond area coverage found at slope bins averaging 4 to 6° (9 % of the pond area) (Fig. 12b). The analysis of pond incidence over 2° slope bands (Fig. 12b) shows that 38 % of the total pond area occurs within 0 to 10° slope gradient, with the maximum pond occurrence found at slope bins averaging 4 to 8° (9 % of the pond area) (Fig. 12b). The pond incidence increases initially, then drops on slopes > 8°, which is to be

**Deleted:** We attribute the high percentage of supraglacial vegetation in some of the eastern parts to errors in the input supraglacial dataset, and we are hesitant to over-interpret the vegetation analysis. However, we note the potential of the fractional vegetation maps for identifying mapping errors in SDC dataset.

**Deleted:** gradient

**Moved down [2]:** While we could hypothesize that both ponds and vegetation tend to develop on stagnant, low angle debris-covered tongues at lower elevations, which would favour increased temperature and therefore increase surface melt, trends were not statistically significant on a glacier-by-glacier basis, and are therefore not thoroughly discussed here.

**Moved down [3]:** Supraglacial ponds have been shown to form on stagnating areas on the ablation areas of glaciers with negative mass balance and surface angles lower than 2° (Sakai and Fujita, 2010; Reynolds, 2000; Quincey et al., 2007).

**Deleted:** gradient

**Moved (insertion) [4]**

**Deleted:** the maximum pond coverage

**Deleted:** 38 % of the total pond area

**Deleted:** The maximum

**Deleted:** occurs

**Deleted:** between 2

**Deleted:** and

**Deleted:** 8 to

**Deleted:** For

**Deleted:** 10

**Deleted:** the pond incidence drops exponentially,

590 expected because at steeper slopes, meltwater can drain away (Reynolds, 2000). This is consistent with findings from a  
previous study (Scherler et al., 2011), which found that slope areas with gradients less than 8° were associated with stagnant  
ice at the terminus regions of debris-covered glaciers over the Himalaya. With respect to glacier aspect, we found that the  
maximum pond coverage occurs on slopes with an eastern orientation (22.5 to 67.5°, 15.6 % of the pond area) and  
southeastern orientation (67.5 – 112.5, 14.2 % of the pond area), with less pond incidence (~ 9 %) on northern facing slopes  
595 (Fig. 12c). Although the differences in pond incidence in the different aspect bands are only within 4 %, this seems to  
support the fact that southern and eastern facing slopes receive more insolation, thus favouring ice melt and formation of  
ponds.

Fig. 12 here

### 3.7 Supraglacial pond and vegetation distribution over the large domain

600 Here we present the large-scale patterns of pond and vegetation occurrence on debris-covered glacier tongues over the  
Himalaya domain with respect to topo-climatic variables averaged and binned at 1x1 degrees (~111 km)(Fig. 13).

Fig. 13 here

605 Binned supraglacial ponds and vegetation over the Himalaya domain exhibit clear spatial patterns (Fig. 13a,b). With regards  
to geographical location, the pond coverage in the western Himalaya is rather homogenous (ranging from 0.1 to 1.5% of the  
debris-covered areas) and is the more pronounced and more heterogenous in the eastern Himalaya (2.4 to 4.3 % of the  
debris-covered area) (Fig.13a). Pond incidence is positively correlated with longitude (Pearson's  $r = 0.82$ ) and negatively  
correlated with latitude (Pearson's  $r = -0.72$ ), with both correlations significant at 95 % confidence interval (Table 7).  
Similarly, supraglacial vegetation is positively correlated with longitude (Pearson's  $r = 0.40$ ) and negatively correlated with  
latitude (Pearson's  $r = -0.28$ ) (Fig.13b) and exhibits less pronounced occurrence in the north-western part of the domain. The  
610 correlations are significant at 90 % confidence interval (p-value < 0.1) but are weaker than those for the pond incidence. The  
surface trend analysis of pond incidence and supraglacial vegetation shows that these both increase in the east-west direction  
at the rate of +0.23 % and +0.72 % per degree longitude, respectively.

Pond occurrence is positively correlated with average temperature (Pearson's  $r = 0.40$ ) and with precipitation (Pearson's  $r =$   
0.53), with correlations significant at 90 % ( $p < 0.1$ ) and 95% ( $p < 0.05$ ) confidence intervals, respectively. Furthermore,  
615 pond occurrence is negatively correlated with glacier thickness change (Pearson's  $r = -0.71$ ,  $p < 0.1$ ) (Table 7). We did not  
find significant correlations of pond and supraglacial vegetation occurrence with percentage of debris cover on the glacier  
area, termini elevation or average glacier velocity (Table 7). Supraglacial vegetation had a weak positive correlation with  
precipitation, but it was not significant.

Moved up [4]: The maximum pond occurrence occurs at slope bins between 2 and 8° (8 to 9 % of the pond area) (Fig. 12b)

Deleted: ¶

Deleted: slope

Deleted: Fig. 13

Deleted: Fig. 13

Formatted: Font: 10 pt

Formatted: Font: 10 pt

Formatted: Font: 10 pt

Formatted: Font: 10 pt

[Table 7 here](#)

## 4 Discussion

### 4.1 Controls on mountain-range scale supraglacial pond and vegetation distribution

The topo-climatic conditions for the occurrence of supraglacial ponds on the surface of debris-covered glaciers have been addressed in a small number of studies (e.g. Sakai, 2012; Sakai and Fujita, 2010). While we could hypothesize that both ponds and vegetation tend to develop on stagnant, low angle ( $< 2^\circ$ ) areas of the debris-covered tongues (Sakai and Fujita, 2010; Reynolds, 2000; Quincey et al., 2007) and at lower elevations, which would favour increased temperature and therefore increase surface melt, ~~that trends were not statistically significant when considered on a glacier-by-glacier basis.~~

This implies that at the mountain range scale, the distribution of supraglacial features may be governed by more complex factors which include geomorphologic, glaciologic and climatic patterns. Understanding these spatial trends in pond and vegetation requires first a consideration of the topographic conditions, i.e., regional differences in the occurrence of supraglacial debris and the elevations at which debris-covered glaciers are found and glacier regimes. Here we discuss the occurrence of supraglacial ponds and vegetation in light of regional topo-climatic conditions.

A first observation is that supraglacial debris covers a larger part of the glacierized areas in the central and eastern Himalaya compared to the western extremities, decreasing linearly from the southwest to northeast, with more pronounced trends eastwards ( $-2.7\%$  per degree longitude) than northwards ( $-0.6\%$  per degree latitude) (Fig. 13c). At the same time, the elevation of the debris-covered glacier termini increases strongly northwards towards the Tibetan plateau ( $+354\text{ m}$  per degree latitude) and from west to east ( $+114\text{ m}$  per degree longitude) (Fig. 13d). The increasing trends in both pond and vegetation coverage towards the eastern Himalaya noted earlier are consistent with the presence of lower glacier termini and higher rates of debris in the eastern part compared to the western part noted in this study. Overall, debris-covered glacier tongues descend to lower elevations in the central-eastern Himalaya region ( $\sim 3,700\text{ m}$  to  $4,400\text{ m}$ ) compared to the western part ( $\sim 4,700$  to  $4,900\text{ m}$ ). While our results show that the control of glacier termini elevation on pond occurrence is very weak and not significant, vegetation occurrence is moderately correlated with termini elevation and precipitation. While their control on vegetation is not statistically significant, it appears that the lower elevations at which supraglacial debris is found might favour vegetation growth on these tongues, as noted on Figures 13b and 13d.

Development of supraglacial vegetation (mostly shrubs) has been noted on stagnant, thick debris-covered tongues in other areas of the world (Xie et al., 2020; Tampucci et al., 2016). Increasing trends in other glacierized areas such as the Alps are a consequence of climatic change and declining glaciation (Vezoula et al., 2016). As supraglacial vegetation typically only develops on stagnant surfaces that are no longer undergoing substantial gravitational reworking, its presence may also constitute an indication of glacier inactivity and later stages of decay. We observe increased vegetation occurrence towards the eastern Himalaya in 2015 (Fig. 13b) where more negative surface elevation changes are also observed (Fig. 13e). Gridded

Formatted: Font: 10 pt

Deleted: our results show

Deleted: A

Deleted: The topo-climatic conditions for the occurrence of supraglacial ponds on the surface of debris-covered glaciers have been addressed in a small number of studies (e.g. Sakai, 2012; Sakai and Fujita, 2010). Supraglacial ponds have been shown to form on stagnating areas on the ablation areas of glaciers with negative mass balance and surface angles lower than  $2^\circ$  (Sakai and Fujita, 2010; Reynolds, 2000; Quincey et al., 2007). While we could hypothesize that both ponds and vegetation tend to develop on stagnant, low angle debris-covered tongues at lower elevations, which would favour increased temperature and therefore increase surface melt, trends were not statistically significant on a glacier-by-glacier basis, and are therefore not thoroughly discussed here. Here we discuss the large-scale patterns of pond and vegetation occurrence on debris-covered glacier tongues over the Himalaya domain and their glacio-climatic controls using the auxiliary data over the glacierized areas averaged and binned at  $1 \times 1$  degrees ( $\sim 111\text{ km}$ ). In Figure 13 we present trends in each of these controls to quantify spatial patterns in their occurrence over the entire domain. Fig. 13 here

Moved (insertion) [3]

Moved (insertion) [2]

Deleted: Fig. 13 here

Deleted: S

Deleted: ,

Deleted: and has been found to be increasing

Deleted: as

Deleted: to

Deleted: is

average glacier thickness changes over the 2000 – 2018 period based on Shean et al. (2020) dataset show a clear west to east linear pattern in the thinning rates, with thinning rates becoming increasingly more negative towards the east, at the rate of 0.02 m per degree longitude (Fig.13e). This is consistent with the slightly negative glacier mass balance reported in this area in other regional studies (Berthier and Brun, 2019; Brun et al., 2017). This surface thinning is consistent with the eastward increase in both pond and vegetation incidence noted earlier, i.e., the eastern areas are associated with increased glacier thinning rates which result in more negative glacier mass balance. In addition, trend analysis of the average gridded glacier velocities (2013 – 2015) from Dehecq et al. (2015) (Fig. 13f) show that glacier velocities decrease at the rate of -0.2 m a<sup>-1</sup> per degree longitude and -0.1 m a<sup>-1</sup> per degree latitude, indicating a tendency for more stagnating debris-covered glacier tongues towards the north and east. Stagnant glaciers were reported for the northern parts of the central Himalaya (Scherler et al., 2011) and were attributed to topographic differences, i.e., low slope angles on the northern slopes of the range promoting development of stagnant ice, in contrast with more rugged, steeper terrain of the southern slopes which favours more dynamic glacier environments (Scherler et al., 2011). This correlates with the higher incidence of vegetation in these areas (Fig.13b), supporting the idea that stagnating glaciers display higher vegetation growth and point to a potential transition of debris-covered glaciers in certain areas towards vegetated glaciers as noted in other studies (Fickert et al., 2007). At the same time, higher thinning trends are consistent with higher supraglacial pond coverage, since ponds can enhance local ablation rates by up to three times (Brun et al., 2016; Miles et al., 2018; Irvine-Fynn et al., 2017). While we only note a weak direct dependence of glacier thinning on supraglacial vegetation (Table 7), the slightly more negative mass balances and lower surface velocities towards the east may indicate the transition of debris-covered glaciers to inactive debris-covered glacier tongue or a rock glacier in this part of the Himalaya (Jones et al., 2019; Monnier and Kinnard, 2017). However, we note that the control of glacier velocities on ponds and vegetation noted here are not statistically significant and may not be conclusive.

Climate factors (temperature and precipitation) may also favour pond incidence over some parts of the domain, i.e., higher temperatures and therefore more dynamic environments could favour increased surface melt and pond formation (Herreid and Pellicciotti, 2020). In the case of the Himalaya, gridded average temperatures for the month of Oct. 2015 exhibit a southwest to northeast decreasing trend, with a stronger decrease in the south to north direction (-2.3 °C per degree latitude) (Fig.13g). Total gridded precipitation for the same month increases in the eastern direction at the rate of -0.06 mm per degree latitude and decreases towards the drier, colder regions of Tibetan plateau with a stronger gradient northward (-0.23 mm per degree latitude) (Fig. 13h). On the contrary, the warmer and wetter areas of the eastern Himalaya seem to favour higher pond coverage, as also suggested in other studies (Herreid and Pellicciotti, 2020). At larger scales, it has been shown that certain conditions related to topography and lithology could offset this dependency, but at the range of the Himalaya, this climatic dependency holds. Climatic conditions and glacier characteristics in the western Himalaya are more similar to those in the Karakoram where glaciers have undergone less shrinkage (Brun et al., 2017; Käab et al., 2012; Gardelle et al., 2013), than those in the central and eastern, monsoon-influenced Himalaya, which exhibit higher temperatures and larger precipitation amounts, and where debris-covered glacier termini are found at lower elevations.

Deleted: (2020)

Deleted: Supraglacial vegetation growth in eastern Himalaya

Formatted: Font: 10 pt

Deleted: a

Deleted: an

Deleted: l3e

Deleted: f

Deleted: Previous studies have reported the highest negative mass balance rates in the period 2000 to 2010 / 2015 for the western part of the Himalaya (Lahaul Spiti) (Brun et al., 2017; Käab et al., 2012; Gardelle et al., 2013). Gridded average glacier thickness changes over the 2000 – 2018 period based on Shean et al. (2020) dataset show a clear west to east linear pattern in the thinning rates, with an increase at the rate of 0.02 m per degree longitude towards the east (Fig.13g). This surface thinning is consistent with the eastward increase in pond and vegetation incidence noted earlier, i.e., the eastern areas are associated with increased glacier thinning rates and result in more negative mass balance. This can favour higher supraglacial pond coverage as well as perhaps a transition of debris-covered glaciers towards vegetated glaciers as noted in other studies (Fickert et al., 2007).

740 The controls on debris-covered glacier surface evolution are a complex combination of cumulative debris-supply, mass-  
balance condition, debris cover expansion, stagnation and total lowering. Further analysis is needed to capture the complex  
combination of topographic and climatic factors that contribute to the development of ponds and vegetation on debris cover.  
Studies have noted that surface types are related to the evolutionary stage of a debris-covered glacier (cf. Thompson et al.,  
2016), in that debris thickness variability, local topography, degree of downwasting, and glacier tongue gradient are all  
potentially at least partially related to the time-lapsed since debris cover formation (Sakai and Fujita, 2010; Nicholson et al.,  
745 2018). Relatedly, Herreid and Pellicciotti (2020) introduce the term of debris-covered glacier 'stage' ranging from 0 to 1 as a  
percentage of the full, 2D 'debris-cover carrying capacity' of a glacier, such that if 100% of the ablation zone is debris-covered,  
then the debris-covered area cannot expand further without up-glacier migration of the equilibrium line. Robustly analysing  
controls and drivers of debris covered glacier surface proportions would require controlling for these time-dependent aspects,  
which is beyond the scope of this contribution, in which we aim to showcase the potential of the method in mapping surface  
750 types. Such an analysis of the controls and drivers is worthy of a stand-alone publication, using the most recent publicly  
available and corrected datasets (Herreid and Pellicciotti, 2020) and a carefully quality-controlled output of the method  
proposed here. A complete understanding of the occurrence of surface features may also require a treatment of transient glacier  
supraglacial debris cover co-evolution in order to quantify the time-dependent controls on pond formation and vegetation  
growth as the debris cover and glacier geometry in specific catchments develop over time.

## 755 4.2 Spatial and spectral limitations of the Landsat data

Our analysis of surface composition of the debris-covered glacier tongues is subject to several limitations related to the spectral  
and spatial resolution of the input Landsat data. While linear spectral unmixing is a relatively straightforward routine to  
implement once the endmembers and their spectra are selected, using Landsat data at 30 m spatial resolution and spectral  
dimensionality for spectral unmixing has its limitations. While Landsat 8 is superior to the previous Landsat missions in terms  
760 of its calibration, geometry and radiometric resolution (Irons et al., 2012), its spectral dimensionality remains an issue,  
particularly with respect to mapping of the various types of debris material and/or supraglacial ponds with various degrees of  
turbidity. Previous studies in the Himalaya (Casey and Kääb, 2012; Casey et al., 2011; Matta et al., 2017) suggest that the  
spectral dimensionality of these two surfaces is greater than the dimensionality of the Landsat 8 OLI bands available for  
unmixing. Landsat has limited spectral resolution data (7 bands available for unmixing) compared to hyperspectral data (for  
765 example AVIRIS, 224 bands). Both the partially constrained and the unconstrained LMMs yielded negative abundances in our  
study, with larger positive values ( $> 3$ ) especially for the vegetation class. Since our fractions did not satisfy the sum-to-unity  
condition, normalization of the classes was necessary, which may have introduced further uncertainty in our results because  
some classes had higher positive values than others. However, previous studies showed that these negative values do not  
necessarily affect the ability to discriminate between surfaces (Klein and Isacks, 1999).

**Deleted:** Average gridded glacier velocities (2013 – 2015) from Dehecq et al. (2015) decrease from the southwest to the northeast direction, with more pronounced gradients in the north direction ( $-0.1 \text{ m a}^{-1}$  per degree latitude) compared to the east ( $-0.2 \text{ m a}^{-1}$  per degree longitude) (Fig. 13h). The lower glacier velocities towards the north indicate a tendency for stagnating debris-covered glacier tongues and correlates with the smaller incidence of ponds in these areas (Fig. 13a). In these areas, supraglacial vegetation shows a higher incidence (Fig. 13b), supporting the idea that stagnating glaciers also display higher vegetation growth. Stagnant glaciers were reported for the southern and northern parts of the central Himalaya (Scherler et al., 2011) and were linked to topographic differences, i.e., low slope gradients on the northern slopes of the range promoting development of stagnant ice, in contrast with more rugged, steeper terrain of the southern slopes which favours more dynamic glacier environments (Scherler et al., 2011).

**Deleted:** As such, an analysis to do justice to all these factors and their co-relations is sufficient to warrant a separate analysis and publication. In terms of debris-cover characteristics, we found that glacierized areas more heavily covered with supraglacial debris and situated at lower elevations tend to exhibit more supraglacial pond coverage. Higher average temperatures and more abundant precipitation also seem to favour pond occurrence. In terms of glacier regimes, we found higher thinning rates coupled with lower average glacier velocities to favour both pond incidence and the development of supraglacial vegetation.

**Deleted:** However,

**Deleted:** f

**Formatted:** Font colour: Black

**Deleted:** of Landsat

**Deleted:** LMM

800 Limitations posed by the spatial resolution of Landsat data (30 m) affected the accuracy of the selected endmembers. While we used the pixel purity index to automate the selection of endmembers, we acknowledge that some mixture may still occur at 30 m spatial resolution. Furthermore, the 30-m spatial resolution does not allow us to detect supraglacial features such as ice cliffs or small ponds which can span only a few square meters. Improvements envisioned here include applying the spectral unmixing Sentinel-2 imagery, which has a better spectral, spatial and temporal resolution (13 bands in the visible to shortwave infrared, 10 – 20 m, 5-day revisit time) compared to Landsat (7 bands in the visible to shortwave, 30 m, 16-day revisit time). 805 This would allow for better definition of endmembers, facilitating more accurate and repeated mapping in the future.

Furthermore, the 30 m spatial resolution of the DEM does not allow us to infer the precise control of topographic factors such as slope and aspect on pond formation or a full quantification of the small-scale controls of pond incidence, but only provides a mountain-range scale of the pond distribution.

810 4.3 Limitations in the endmember definition

In this study, we utilized the maximum numbers of endmembers (n = 6) allowed by the spectral resolution of the Landsat 8 OLI data (7 bands), in an attempt to capture the variability of the system and to avoid high RMSE of the model which may occur due to missing classes. The main difficulty here consisted in capturing the wide variability of the materials present across the mountain range, for example different lithologies, while ensuring a “valid” LMM. This is defined as one where fractional values do not exceed 1.01 (under strict constraint rules) or 2.01 (under looser rules) and where RMSE is less than 2.5% (Painter et al., 2009). Our choice of debris endmembers was limited to “light” and “dark” debris, and these may not cover the wide spectrum of lithology present across the Himalaya. With regards to the on-the ground spectral characteristics of the debris material in the Khumbu region, Casey et al. (2011) showed that these vary due to the presence of various of minerals, notably distinct granitic (lighter) vs. schistic (darker) debris types with different compositions. However, spectral differences in these two classes can also be related to debris water content especially on very thin debris (as for thinly debris-covered ice cliffs) and is associated with grain size, i.e., fine-grained sediments have a greater capacity for water retention (Juen et al., 2013; Collier et al., 2014). We also noted such differences in the spectra for wet fine debris and dry coarse debris with large grain sizes on Mer de Glace (Fig. 4b); however, the limited Landsat spectral resolution implies that we could not define separate endmembers for each. Using only two endmembers for debris cannot capture the various types of debris with different mineral and geochemical composition, nor distinguish between debris with various degrees of water content, which has a different spectral signature compared to dry debris (Fig. 4b). Furthermore, we could not take into consideration bare illuminated non-glacierized surfaces including nunataks which were occasionally mistakenly included within the polygons in the SDC dataset. As a result, these areas were also associated with some high positive fractional values, which might have affected the overall RMSE of our model, and particularly the sum-to-unity condition.

830 Although we defined the water endmember on the basis of turbid water (greyish-blue ponds), supraglacial ponds of various turbidity levels are present across the mountain range, due to various degrees of suspended sediments. The color of these

Deleted: However, as with the slope analysis, the  
Formatted: Caption,Caption +10pt bold, Left, Line spacing: single  
Deleted: ¶

Deleted: t  
Deleted: we are aware that  
Deleted: most likely do

Deleted: we are aware that

ponds can range from grey to turquoise and reddish shades in various proportions (Matta et al., 2017) to small clear water  
supraglacial ponds (Takeuchi et al., 2012; Giardino et al., 2010), as observed in the field (Fig. 3e). Each type of pond has  
different spectral signatures, but the limited spectral resolution of Landsat does not allow to use concomitantly both a clear  
and a variable turbid water endmember in the spectral unmixing. Nevertheless, as shown in Figure 7, the majority of the  
turbid supraglacial ponds are connected to the exposed ice and glacier drainage network (hence larger suspended sediment),  
and are expected to be most relevant to glacier evolution and may be of concern for outburst flood potential. Our clear water  
algorithm nicely picks out the small number of isolated non-turbid ponds at the terminus of the Ngozumpa Glacier (Fig. 7),  
highlighting the success of different end-member selection for addressing other scientific questions. With further testing,  
fractional water maps obtained from spectral unmixing techniques can be used to characterize the state of lakes and ponds in  
terms of their turbidity (Matta et al., 2017; Giardino et al., 2010) i.e., by quantifying the fraction of a pixel covered by water,  
light and/or dark debris. In this regard, repeated monitoring of pond turbidity using these combined tools allows changes in  
suspended sediment load to be tracked over time, which are considered direct indicators of glacier wasting processes and  
glacier–lake interaction (Giardino et al., 2010). This aspect is not fully explored in this study, but can be further investigated  
by combining LMMs with field spectra of ponds and lakes to characterize the various degrees of turbidity across the  
mountain range. Since lake turbidity is temporally highly variable and since our current dataset is a snapshot of pond density,  
it cannot be used to infer any variability in sediment concentration, but it provided the basis for tracking changes in glacier  
area, which has important applications.

Similarly, we could not define a healthy vegetation endmember whose spectral signature (not shown here) differs from that of  
the “dry vegetation” endmember we selected. However, small amounts of healthy vegetation do occur on debris-covered  
glaciers in the eastern part of the Khumbu domain, and these were indeed detected by the LMM (Fig. 10).

The cloud and clean ice detection based on LMM were not accurate in this particular configuration. While some isolated pixels  
were classified as clouds, others pixels were confounded with other types of surfaces, notably debris (Table 2). While the cloud  
distribution noted in this study correspond to local meteorology, i.e. more frequent cloud cover in the eastern Himalaya until  
later fall months compared to the western part (Thayven and Gergan, 2010), we are less confident in the actual estimations of  
the cloud cover areas so we do not wish to over-interpret these. Applying algorithms such as Fmask (Zhu et al., 2015) to mask  
the clouds resulted in misclassification of the entire glacierized surface as cloud, which is a well-documented issue (Stillinger  
et al., 2019), so we could not mask the clouds prior to the spectral unmixing.

Likewise, clean ice was poorly classified, mostly likely due to its poor representation in the dataset (i.e., limited number of  
clean ice “pure” pixels). While our results hint at the presence of ice to some extent, we are not confident about these results.  
Some pixels correspond indeed to location of ice cliffs which were perhaps exposed at the end of the ablation season (cf. Fig.  
9); others correspond mostly to clean ice patches at the upper limit of supraglacial debris which were included in the input  
data, which dated from previous years, or seasonal snow. While we chose our images at the end of the ablation season, post-

**Deleted:** s

**Deleted:** Furthermore, lake turbidity is temporally highly variable and since our dataset is a snapshot of pond density, it cannot be used to infer any variability in sediment concentration.

**Moved (insertion) [1]**

**Deleted:** these

**Deleted:** patterns

**Deleted:** which will be discussed later (section 4.1),

monsoon the snow cover is usually minimal, but early snowfalls can occur. Other features such as the ice “sails” (Evatt et al., 2017) **may** not be extracted at the resolution of spatial resolution of the Landsat imagery, since these features **often** span only several **square** meters. At the same time, the LMM algorithm in its current parameterization cannot detect ice cliffs dusted with fine debris, which have a lower albedo than clean ice (Naegeli et al., 2015). Targeting exposed but dusted ice features within the debris cover in addition to clean ice would need some refinement of the algorithm using Sentinel -2 imagery with better spectral resolution and better parameterization (Kneib et al., 2020), optical thresholding of band ratios using high-resolution imagery (Anderson et al., 2021) and/or feature detection based on OBIA (Kraaijenbrink et al., 2016; Watson et al., 2017a; Mölg et al., 2019).

**Deleted:** could

#### 4.4 Uncertainty due to the thresholds applied to fractional maps

Selection of the thresholds used to classify the fractional maps to obtain the final maps of each surface is another source of uncertainty in our method. Previous spectral unmixing studies (Hall, 2002; Rittger et al., 2013), justified using a threshold of 0.5 for the classifying fractional maps for various types of surfaces, while they also tested thresholds as low as 0.15 (Rittger et al., 2013). While we applied a threshold of 0.5 and 0.65 to our water and vegetation classes, respectively, for the other classes the fractional thresholds were ultimately determined using visual inspection, which introduced a certain degree of subjectivity into our study.

#### 4.5 Quality of input SDC dataset

Due to the spectral limitations of Landsat, in this study we applied the unmixing only to the debris-covered areas of glaciers to reduce model complexity. Therefore, model performance is to some extent subject to the quality of the input dataset. At the onset of our study, the only global database of supraglacial debris was the SDC dataset (Scherler et al., 2018), and although Herreid and Pellicciotti (2020) provide updated supraglacial debris outlines, these were not available at the onset of our study and are not currently incorporated in the standardized RGI dataset. Debris outlines in the SDC dataset constitute a multi-time stamp dataset, based on data spanning 1998 to 2015, while our Landsat data was based primarily on 2015. This may introduce uncertainties in the calculation of pond coverage. For example, we assumed that any changes at the termini of the debris-covered areas would have occurred within these older outlines, since surge-type glaciers, and hence apparent glacier “advance” are rare or non-existent in the Himalaya region, contrary to the Karakoram (Sevestre and Benn, 2015). However, recent studies have reported an upward expansion of the debris cover in the Himalaya (Xie et al., 2020; Thakuri et al., 2014; Bhambri et al., 2011b; Kamp et al., 2011), which we do not account for here. As such, in these areas, our pond density may be underestimated, and this would need a more in-depth analysis and the availability of multi-temporal supraglacial debris datasets. Furthermore, our study revealed some important issues with the input SDC dataset used to constrain the spectral unmixing, particularly the inclusion of patches of healthy vegetation and bare bright steep terrain. The spurious vegetated areas present within the debris cover outlines (Fig. 10b) may have affected to some extent the quality of the spectral unmixing, i.e., the non-negativity and the sum-to-unity conditions, because it produced large negative and



910 positive fractional vegetation values. We were able to identify these as being healthy vegetation on non-glacierized terrain. On the other hand, some of the [high percentage of supraglacial vegetation in some of the eastern parts](#) is attributed [to errors in the input supraglacial dataset, and we are hesitant to over-interpret the vegetation analysis. However, we note the potential of the fractional vegetation maps for identifying mapping errors in SDC dataset.](#) Because these “abnormal values” served to identify errors in the existing SDC dataset, they constitute a valuable tool to correct and refine these global databases.

915 **4.6 ~~W~~ider applicability of the method**

In this study we demonstrated the transferability of a method developed on a single region for the year 2015 (Khumbu) by applying it to a Landsat 8 OLI scene from a different area (Lahaul Spiti) for the same season (post-monsoonal) but a different year (2016), and validating the ponds with PlanetScope data. In the light of the spatial and spectral limitations of Landsat data discussed above, the applicability of our approach for multitemporal analyses requires careful considerations. When 920 transferring methods from one scene to others, illumination differences and shadow effects across the scenes need to be resolved, particularly if the scenes are not acquired on the same date. In this study, we attempted to minimize these effects by applying atmospheric and topographic corrections and implicitly assumed that the set of endmembers defined for the Khumbu ~~could~~ be applied to the entire Himalaya. However, in some areas, some spectral differences may remain, leading to confusion between the water / light debris / ice classes and hence some over-estimation of the pond coverage, particularly in some areas 925 of the western Himalaya. While these pond areas require further quality control prior to their inclusion in regional datasets, they are within the uncertainties reported at other sites, for example Langtang (Steiner et al., 2019). Furthermore, if the approach is used over the same area for multi-temporal pond or vegetation analysis, the geolocation accuracy of the Landsat can be a concern, because the pixels can be slightly misaligned from acquisition to acquisition, resulting in potentially very different compositions and unmixing results. This needs to be mitigated by co-registration of the scenes prior to unmixing and 930 performing the change analysis. Further uncertainty is introduced in our study by the fact that for certain areas of the Himalaya, Landsat cloud-free and snow-free scenes were not available for the year 2015, and we used scenes from 2014 and 2016 (cf. Table 1). We assumed that surface conditions were similar, but acknowledge that pond areas are dynamic and can change from year to year. Furthermore, this study does not account for the seasonality of supraglacial ponds, but provides a methodological basis for their identification.

935 **5 Summary and further work**

In this study, we estimated the spatial distribution of surface characteristics on debris-covered glaciers (various types of debris, clean ice, supraglacial ponds and vegetation) at subpixel scale using 30 m fractional maps obtained from a spectral linear mixing model. We tested the approach in the Khumbu region comprising eastern Nepal and parts of China using Landsat 8 OLI imagery, and then applied it over the entire Himalaya to evaluate its performance over a larger domain. Pléiades and 940 Planet high-resolution imagery were used to assess the endmember selection and to validate the mapped supraglacial pond areas using OBIA techniques. Our key findings can be summarised as follows:

Deleted: Considerations regarding the

Deleted: w

Deleted: an

Deleted: we acknowledge that

• We demonstrate the use of Landsat spectral unmixing in determining the surface properties of debris-covered glaciers, which holds great potential for mapping the dynamic changes in surface conditions at a regional scale. While we present a method that holds promise for effectively partitioning the surface properties of debris covered glaciers, we recommend that future analysis of the potential drivers and controls on the observed surface types and their regional variation revealed by this method be carried out on a further quality-controlled data set, to avoid over-interpretation of any errors within the datasets used;

• We show that spectral signatures derived from the Landsat 8 OLI imagery and cross-checked using high-resolution Pléiades can be applied at the mountain range scale provided that all images are atmospherically and topographically corrected to reduce differences in illumination patterns, and that images are acquired around the same date. While the limited Landsat spectral resolution did not allow for a very fine definition of the wide spectrum of all the different debris lithologies and ice types present on debris-covered tongues across the study area, LMM successfully distinguished among broad categories, and convincingly reproduced independently mapped supraglacial pond areas. Overall, we consider the spectral unmixing method presented here a promising approach to add to the suite of tools that are valuable in analyzing the dynamic surfaces of debris-covered glaciers;

• One of the major contributions of the current study is that we produced a supraglacial pond inventory for the entire Himalaya for the year 2015, based on spectral unmixing of coarse resolution and freely available Landsat 8 OLI satellite imagery. We consider that this approach can provide more detail, and thus outperform other analyses of supraglacial pond identification and classification performed on similar Landsat data for the same period but based on normalized difference water indices (Shugar et al., 2020) or manual delineation (Chen et al., 2020). The method and results are comparable to mapping quality from higher resolution, allowing improved analysis of multitemporal change in pond incidence and size in a future study. The dataset of supraglacial ponds is available in public domain via Zenodo data repository (DOI:10.5281/zenodo.4421857);

• Regional trend analysis on gridded data indicates that higher average temperatures and more abundant precipitation strongly favour pond occurrence but did not have a significant control on supraglacial vegetation. The extent of the supraglacial debris and the elevation of the Himalaya did exhibit a weak control on supraglacial pond coverage, and a moderate control on supraglacial vegetation. In terms of glacier regimes, we found that higher thinning rates coupled with lower average glacier velocities are consistent with pond incidence and seem to favour the development of supraglacial vegetation. Climatic controls (higher average temperatures and more abundant precipitation) also favour pond occurrence.

Future developments to overcome the current limitations of this study include the use of more sophisticated non-linear mixing models, which would allow to discriminate materials of interest in more detail. Work is ongoing to make the unmixing step approach fully automated by integrating it within scripting routines (e.g. Bunting et al., 2014), so that it can be applied in the future to derive supraglacial pond outlines at multi-temporal scales and monitor pond development over time. Given that these

Deleted: with LMM

Deleted: that debris-covered tongues situated at lower glacier elevations tend to exhibit more supraglacial pond coverage.

Deleted: Higher glacier thinning rates, coupled with lower average glacier velocities, further favour pond incidence and the development of supraglacial vegetation

Deleted: Python-based

surface ponds are ephemeral and change rapidly, automated multi-temporal scale mapping is highly desirable to track their evolution over time in various regions. The analysis presented here complements and expands the existing proglacial lake databases for the year 2015 by providing supraglacial pond extents. With continued advances in satellite data in the near future, the methodology developed here provides avenues towards achieving large-scale, repeated mapping of supraglacial features.


## 990 6 Author contributions

AR conceiving the idea, designed the spectral unmixing experiments, led this work, obtained and processed the Landsat and the high-resolution images and wrote the paper with input from co-authors. LN provided Pléiades imagery, discussed the research strategy and helped select endmembers based on field expertise. NG supervised the study and provided geomorphology expertise. All authors contributed to writing the paper.

## 995 7 Code availability

Atmospheric and topographic corrections have been performed using the ARCSI routine, which is embedded in the freely available, python-based RSGISLIB software available freely (Bunting et al., 2014). The code for batch processing of the Landsat 8 OLI images for the entire Himalaya can be provided upon request. Post-processing of the spectrally unmixed Landsat 8 OLI maps was done using the Python module ArcPy from ESRI ArcGIS. The steps for loop processing (normalizing the fractional raster files, classifying the surfaces, and extracting the composition of the debris-covered glaciers from the fractional maps) can be provided upon request.

## 8 Data availability

Landsat 8 OLI data used in this study can be obtained at no cost from the USGS Earth Explorer (<https://earthexplorer.usgs.gov/>). All versions of the NASA SRTM Global 1-arc second DEMs are available from the EarthData platform (<https://earthdata.nasa.gov/>). All versions of the ALOS Global Digital Surface Model, including the one used in this paper, are available from <https://www.eorc.jaxa.jp/ALOS/en/aw3d30/index.htm>. Preliminary datasets of supraglacial ponds and vegetation, along with the fractional maps are available via  data repository (DOI:10.5281/zenodo.4421857).

## 9 Competing interests

1010 The authors declare that they have no conflict of interest.

## 10 Acknowledgements

This research received funding from the European Union's Horizon 2020 research and innovation programme under the Marie Skłodowska-Curie grant agreement No 663830. LN was supported by the Austrian Science Fund (FWF) Grant P28521. Access

1015 to Pléiades imagery was provided through the Österreichische Forschungsförderungsgesellschaft (FFG) project “High-  
 resolution spaceborne studies of mass balance processes on glaciers of the Khumbu Himal, Nepal” (GiHima-Sat). We  
 acknowledge the BritInn Fellowship programme which funded AR’s work visit to Univ. of Innsbruck to develop this research  
 with LN in 2018. We are grateful to United States Geological Survey and to Planet API program for providing free access to  
 Landsat and RapidEye imagery. Thanks for Lorenzo Rieg and Christoph Klug of the University of Innsbruck for processing  
 1020 of the Pléiades DEMs.

### List of References

- Alifu, H., Johnson, B., and Tateishi, R.: Delineation of Debris-Covered Glaciers Based on a Combination of  
 Geomorphometric Parameters and a TIR/NIR/SWIR Band Ratio, *IEEE Journal of Selected Topics in Applied Earth  
 Observations and Remote Sensing*, 9, 781-792, 10.1109/JSTARS.2015.2500906, 2016.
- 1025 Anderson, L. S., Armstrong, W. H., Anderson, R. S., and Buri, P.: Debris cover and the thinning of Kennicott Glacier,  
 Alaska: in situ measurements, automated ice cliff delineation and distributed melt estimates, *The Cryosphere*, 15, 265-282,  
 10.5194/tc-15-265-2021, 2021.
- Barros, A. P., and Lang, T. J.: Monitoring the Monsoon in the Himalayas: Observations in Central Nepal, June 2001,  
*Monthly Weather Review*, 1408-1427, 2003.
- 1030 Benn, D. I., Bolch, T., Hands, K., Gulley, J., Luckman, A., Nicholson, L. I., Quincey, D., Thompson, S., Toumi, R., and  
 Wiseman, S.: Response of debris-covered glaciers in the Mount Everest region to recent warming, and implications for  
 outburst flood hazards, *Earth-Science Reviews*, 114, 156-174, <https://doi.org/10.1016/j.earscirev.2012.03.008>, 2012.
- Berthier, E., and Brun, F.: Karakoram geodetic glacier mass balances between 2008 and 2016: persistence of the anomaly  
 and influence of a large rock avalanche on Siachen Glacier, *J. Glaciol.*, 65, 494-507, 10.1017/jog.2019.32, 2019.
- 1035 Bhambri, R., Bolch, T., and Chaujar, R. K.: Mapping of Debris-covered Glaciers in the Garhwal Himalayas using ASTER  
 DEMs and Thermal Data, *Int J Rem Sens*, 32, 8095–8119, 10.1080/01431161.2010.532821, 2011a.
- Bhambri, R., Bolch, T., Chaujar, R. K., and Kulshreshtha, S. C.: Glacier changes in the Garhwal Himalaya, India, from 1968  
 to 2006 based on remote sensing, *J. Glaciol.*, 57, 543 - 556, 2011b.
- Bishop, M. P., Bonk, R., Kamp, U., and J.F. Shroder, J.: Terrain analysis and data modeling for alpine glacier mapping,  
 1040 *Polar Geogr.*, 25, 182 - 201, 2001.
- Blaschke, T., Hay, G. J., Kelly, M., Lang, S., Hofmann, P., Addink, E., Queiroz Feitosa, R., van der Meer, F., van der Werff,  
 H., van Coillie, F., and Tiede, D.: Geographic Object-Based Image Analysis – Towards a new paradigm, *ISPRS Journal of  
 Photogrammetry and Remote Sensing*, 87, 180-191, <https://doi.org/10.1016/j.isprsjprs.2013.09.014>, 2014.
- Bolch, T., Buchroithner, M. F., Kunert, A., and Kamp, U.: Automated delineation of debris-covered glaciers based on  
 1045 ASTER data, *Geoinformation in Europe (Proc. of 27th EARSeL Symposium, 04 -07 June 2007)*, Bozen, Italy, 403 - 410,  
 2007.
- Bolch, T., Buchroithner, M. F., Pieczonka, T., and Kunert, A.: Planimetric and Volumetric Glacier Changes in the Khumbu  
 Himalaya since 1962 Using Corona, Landsat TM and ASTER Data., *J Glaciol*, 54, 592 - 600, 2008.
- Bolch, T., Pieczonka, T., and Benn, D. I.: Multi-decadal mass loss of glaciers in the Everest area (Nepal Himalaya) derived  
 1050 from stereo imagery, *The Cryosphere*, 5, 349-358, 10.5194/tc-5-349-2011, 2011.
- Bolch, T., Shea, J. M., Liu, S., Azam, F. M., Gao, Y., Gruber, S., Immerzeel, W. W., Kulkarni, A., Li, H., Tahir, A. A.,  
 Zhang, G., and Zhang, Y.: Status and Change of the Cryosphere in the Extended Hindu Kush Himalaya Region, in: *The*

- Hindu Kush Himalaya Assessment: Mountains, Climate Change, Sustainability and People, edited by: Wester, P., Mishra, A., Mukherji, A., and Shrestha, A. B., Springer International Publishing, Cham, 209-255, 2019.
- 1055 Bookhagen, B., and Burbank, D. W.: Topography, relief and TRMM-derived rainfall variations along the Himalaya, *Geoph Res Lett*, 33, doi:10.1029/2006gl026037, 2006.
- Bookhagen, B., and Burbank, D. W.: Toward a complete Himalyan hydrological budget: spatiotemporal distribution of snowmelt and rainfall and their impact on river discharge, *J. Geoph Res*, 115, doi:10.1029/2009JF001426, 2010.
- 1060 Brun, F., Buri, P., Miles, E. S., Wagnon, P., Steiner, J., Berthier, E., Ragettli, S., Kraaijenbrink, P., Immerzeel, W. W., and Pellicciotti, F.: Quantifying volume loss from ice cliffs on debris-covered glaciers using high-resolution terrestrial and aerial photogrammetry, *J. Glaciol.*, 62, 684-695, 10.1017/jog.2016.54, 2016.
- Brun, F., Berthier, E., Wagnon, P., Kääb, A., and Treichler, D.: A spatially resolved estimate of High Mountain Asia glacier mass balances from 2000 to 2016, *Nature Geosci*, 10, 668-673, 10.1038/ngeo2999, 2017.
- 1065 Brun, F., Wagnon, P., Berthier, E., Shea, J. M., Immerzeel, W. W., Kraaijenbrink, P. D. A., Vincent, C., Reverchon, C., Shrestha, D., and Arnaud, Y.: Ice cliff contribution to the tongue-wide ablation of Changri Nup Glacier, Nepal, central Himalaya, *The Cryosphere*, 12, 3439-3457, 10.5194/tc-12-3439-2018, 2018.
- Brun, F., Wagnon, P., Berthier, E., Jomelli, V., Maharjan, S. B., Shrestha, F., and Kraaijenbrink, P. D. A.: Heterogeneous Influence of Glacier Morphology on the Mass Balance Variability in High Mountain Asia, *J Geoph Res : Earth Surf*, 124, 1331-1345, <https://doi.org/10.1029/2018JF004838>, 2019.
- 1070 Bunting, P., Clewley, D., Lucas, R. M., and Gillingham, S.: RSGISLib software, C, Pergamon Press, Inc., 216–226 pp., 2014.
- Buri, P., Miles, E. S., Steiner, J. F., Immerzeel, W. W., Wagnon, P., and Pellicciotti, F.: A physically based 3-D model of ice cliff evolution over debris-covered glaciers, *J Geoph Res : Earth Surf*, 121, 2471-2493, 10.1002/2016JF004039, 2016.
- 1075 Casey, K., and Kääb, A.: Estimation of Supraglacial Dust and Debris Geochemical Composition via Satellite Reflectance and Emissivity, *Remote Sensing*, vol. 4, issue 9, pp. 2554-2575, 4, 2554-2575, 10.3390/rs4092554, 2012.
- Casey, K. A., Kaab, A., and Benn, D. I.: Characterization of glacier debris cover via in situ and optical remote sensing methods: a case study in the Khumbu Himalaya, Nepal, *The Cryosphere*, 5, 2011.
- Chand, B. M., and Watanabe, T.: Development of Supraglacial Ponds in the Everest Region, Nepal, between 1989 and 2018, *Rem Sens*, 11, 10.3390/rs11091058, 2019.
- 1080 Chen, F., Zhang, M., Guo, H., Allen, S., Kargel, J. S., Haritashya, U. K., and Watson, C. S.: Annual 30-meter Dataset for Glacial Lakes in High Mountain Asia from 2008 to 2017, *Earth Syst. Sci. Data Discuss.*, 2020, 1-29, 10.5194/essd-2020-57, 2020.
- 1085 Collier, E., Nicholson, L. I., Brock, B. W., Maussion, F., Essery, R., and Bush, A. B. G.: Representing moisture fluxes and phase changes in glacier debris cover using a reservoir approach, *The Cryosphere*, 8, 1429-1444, 10.5194/tc-8-1429-2014, 2014.
- Cortés, G., Giroto, M., and Margulis, S. A.: Analysis of sub-pixel snow and ice extent over the extratropical Andes using spectral unmixing of historical Landsat imagery, *Rem Sens Environ*, 141, 64-78, <https://doi.org/10.1016/j.rse.2013.10.023>, 2014.
- 1090 Dehecq, A., Gourmelen, N., and Trouve, E.: Deriving large-scale glacier velocities from a complete satellite archive : Application to the Pamir-Karakoram-Himalaya, *Rem Sens Environ*, 162, 55-66, 10.1016/j.rse.2015.01.031, 2015.
- Dehecq, A., Gourmelen, N., Gardner, A. S., Brun, F., Goldberg, D., Nienow, P. W., Berthier, E., Vincent, C., Wagnon, P., and Trouvé, E.: Twenty-first century glacier slowdown driven by mass loss in High Mountain Asia, *Nature Geosci*, 12, 22-27, 10.1038/s41561-018-0271-9, 2019.

- Delafontaine, M., Nolf, G., van de Weghe, N., Antrop, M., and de Maeyer, P.: Assessment of sliver polygons in geographical vector data, *International Journal of Geographical Information Science*, 23, 719-735, 10.1080/13658810701694838, 2009.
- Dixit, A., and Agarwal, S.: Non-linear spectral unmixing of hyperspectral data using Modified PPNMM, *Applied Computing and Geosciences*, 9, 100053, <https://doi.org/10.1016/j.acags.2021.100053>, 2021.
- Ettritch, G., Bunting, P., Jones, G., and Hardy, A.: Monitoring the coastal zone using earth observation: application of linear spectral unmixing to coastal dune systems in Wales, *Remote Sensing in Ecology and Conservation*, 4, 303-319, 10.1002/rse2.79, 2018.
- Evatt, G. W., Abrahams, D., Heil, M., Mayer, C., Kingslake, J., Mitchell, S. L., Fowler, A. C., and Clark, C. D.: Glacial melt under a porous debris layer, *J. Glaciol.*, 61, doi: 10.3189/2015JoG14J235, 2015.
- Evatt, G. W., Mayer, C., Mallinson, A. M. Y., Abrahams, I. D., Heil, M., and Nicholson, L.: The secret life of ice sails, *J. Glaciol.*, 63, 1049-1062, 10.1017/jog.2017.72, 2017.
- Fickert, T., Friend, D., Grüninger, F., Molnia, B., and Richter, M.: Did Debris-Covered Glaciers Serve as Pleistocene Refugia for Plants? A New Hypothesis Derived from Observations of Recent Plant Growth on Glacier Surfaces, *AAAR*, 39, 245-257, 10.1657/1523-0430(2007)39[245:DDGSAP]2.0.CO;2, 2007.
- Foster, L. A., Brock, B. W., Cutler, M. E. J., and Diotri, F.: A physically based method for estimating supraglacial debris thickness from thermal band remote-sensing data, *Journal of Glaciology*, 58, 677-691, 10.3189/2012JoG11J194, 2012.
- GAPHAZ: Assessment of Glacier and Permafrost Hazards in Mountain Regions – Technical Guidance Document, Zurich, Switzerland / Lima, Peru, 72, 2017.
- Gardelle, J., Arnaud, Y., and Berthier, E.: Contrasted evolution of glacial lakes along the Hindu Kush Himalaya mountain range between 1990 and 2009, *Glob Planet Ch*, 75, doi:10.1016/j.gloplacha.2010.1010.1003, 2011.
- Gardelle, J., Berthier, E., Arnaud, Y., and Kääb, A.: Region-wide glacier mass balances over the Pamir-Karakoram-Himalaya during 1999-2011, *The Cryosphere*, 7, 1263-1286, 10.5194/tc-7-1263-2013, 2013.
- Giardino, C., Oggioni, A., Bresciani, M., and Yan, H.: Remote Sensing of Suspended Particulate Matter in Himalayan Lakes, *Mountain Research and Development*, 30, 157-168, 10.1659/MRD-JOURNAL-D-09-00042.1, 2010.
- Giles, D. M., Sinyuk, A., Sorokin, M. G., Schafer, J. S., Smirnov, A., Slutsker, I., Eck, T. F., Holben, B. N., Lewis, J. R., Campbell, J. R., Welton, E. J., Korkin, S. V., and Lyapustin, A. I.: Advancements in the Aerosol Robotic Network (AERONET) Version 3 database – automated near-real-time quality control algorithm with improved cloud screening for Sun photometer aerosol optical depth (AOD) measurements, *Atmos. Meas. Tech.*, 12, 169-209, 10.5194/amt-12-169-2019, 2019.
- Gillespie, A. R., Smith, M. O., Adams, J. B., Willis, S. C., Fischer, A. F., III., and Sabol, D. E.: Interpretation of residual images: spectral mixture analysis of AVIRIS images, Owens Valley, California, *Proceedings of the Second Air-borne Visible/Infrared Imaging Spectrometer (AVIRIS) Workshop*, 1990, 243–270.
- Gillingham, S. S., Flood, N., and Gill, T. K.: On determining appropriate aerosol optical depth values for atmospheric correction of satellite imagery for biophysical parameter retrieval: requirements and limitations under Australian conditions, *Int J Rem Sens*, 34, 2089-2100, 10.1080/01431161.2012.738945, 2013.
- Green, A. A., Berman, M., Switzer, P., and Craig, M. D.: A transformation for ordering multispectral data in terms of image quality with implications for noise removal, *IEEE Transactions on Geoscience and Remote Sensing*, 26, 65-74, 10.1109/36.3001, 1988.
- Hall, D. K. R., George A., Salomonson, Vincent V.; DiGirolamo, Nicolo E.; and Bayr, Klaus J.: MODIS Snow-Cover Products, *Remote Sensing of the Environment*, 83, 88 - 89, 2002.

- 1135 ENVI Feature Extraction module: [https://www.l3harrisgeospatial.com/Portals/0/pdfs/HG\\_ENVI\\_FX\\_module\\_data-sheet\\_WEB.pdf](https://www.l3harrisgeospatial.com/Portals/0/pdfs/HG_ENVI_FX_module_data-sheet_WEB.pdf), access: 25-04, 2017.
- Herreid, S., and Pellicciotti, F.: Automated detection of ice cliffs within supraglacial debris cover, *The Cryosphere*, 12, 1811-1829, 10.5194/tc-12-1811-2018, 2018.
- Herreid, S., and Pellicciotti, F.: The state of rock debris covering Earth's glaciers, *Nature Geosci*, 13, 621-627, 10.1038/s41561-020-0615-0, 2020.
- 1140 Irons, J. R., Dwyer, J. L., and Barsi, J. A.: The next Landsat satellite: The Landsat Data Continuity Mission, *Rem Sens Environ*, 122, 11-21, <https://doi.org/10.1016/j.rse.2011.08.026>, 2012.
- Irvine-Fynn, T. D. L., Porter, P. R., Rowan, A. V., Quincey, D. J., Gibson, M. J., Bridge, J. W., Watson, C. S., Hubbard, A., and Glasser, N. F.: Supraglacial ponds regulate runoff from Himalayan debris-covered glaciers, *Geoph Res Lett*, 44, 11,894-811,904, <https://doi.org/10.1002/2017GL075398>, 2017.
- 1145 Iwata, S., Watanabe, O., and Fushimi, H.: Surface morphology in the ablation area of the Khumbu glacier, *J. Japan Soc. Snow Ice (Seppyo)*, 41, 9 -17, 1980.
- Iwata, S., Aoki, T., Kadota, T., Seko, K., and Yamaguchi, S.: Morphological evolution of the debris cover on Khumbu Glacier, Nepal, between 1978 and 1995, in: *Debris-covered glaciers*, edited by: Nakawo, M., Raymond, C. F., and Fountain, A., IAHS, 2000.
- 1150 Jones, D. B., Harrison, S., and Anderson, K.: Mountain glacier-to-rock glacier transition, *Global and Planetary Change*, 181, 102999, <https://doi.org/10.1016/j.gloplacha.2019.102999>, 2019.
- Juen, M., Mayer, C., Lambrecht, A., Wirbel, A., and Kueppers, U.: Thermal properties of a supraglacial debris layer with respect to lithology and grain size, *Geografiska Annaler: Series A, Physical Geography*, 95, 197-209, 10.1111/geoa.12011, 2013.
- 1155 Kääb, A., Berthier, E., Nuth, C., Gardelle, J., and Arnaud, Y.: Contrasting patterns of early twenty-first-century glacier mass change in the Himalayas, *Nature*, 488, 495-498, 10.1038/nature11324, 2012.
- Kamp, U., Byrne, M., and Bolch, T.: Glacier fluctuations between 1975 and 2008 in the Greater Himalaya Range of Zaskar, southern Ladakh, *Journal of Mountain Sciences*, 8, 374 - 389, 2011.
- 1160 Kayastha, R. B., Takeuchi, Y., Nakawo, M., and Ageta, Y.: Practical prediction of ice melting beneath various thickness of debris cover on Khumbu Glacier, Nepal, using a positive degree-day factor, in: *Debris-Covered Glaciers*, edited by: Raymond, C. F., Nakawo, M., Fountain, A., IAHS, Wallingford, UK, 71 - 81, 2000.
- Keshava, N., and Mustard, J. F.: Spectral unmixing, *IEEE Signal Processing Magazine*, 19, 44-57, 10.1109/79.974727, 2002.
- Kirkbride, M.: About the concepts of continuum and age, *Boreas*, 18, 87-88, <https://doi.org/10.1111/j.1502-3885.1989.tb00376.x>, 1989.
- 1165 Kirkbride, M. P.: Debris-Covered Glaciers, in: *Encyclopedia of Snow, Ice and Glaciers*, edited by: Singh, V. P., Singh, P., and Haritashya, U. K., Springer Netherlands, Dordrecht, 180-182, 2011.
- Klein, A. G., and Isacks, B. L.: Spectral mixture analysis of Landsat thematic mapper images applied to the detection of the transient snowline on tropical Andean glaciers, *Glob Planet Ch*, 22, 139-154, [https://doi.org/10.1016/S0921-8181\(99\)00032-](https://doi.org/10.1016/S0921-8181(99)00032-6)
- 1170 [6](https://doi.org/10.1016/S0921-8181(99)00032-6), 1999.
- Kneib, M., Miles, E. S., Jola, S., Buri, P., Herreid, S., Bhattacharya, A., Watson, C. S., Bolch, T., Quincey, D., and Pellicciotti, F.: Mapping ice cliffs on debris-covered glaciers using multispectral satellite images, *Rem Sens Environ*, 112201, <https://doi.org/10.1016/j.rse.2020.112201>, 2020.
- Knight, J., Harrison, S., and Jones, D. B.: Rock glaciers and the geomorphological evolution of deglaciating mountains, *Geomorphology*, 324, 14-24, 2019.
- 1175

- Komori, J.: Recent expansions of glacial lakes in the Bhutan Himalayas, *Quaternary International*, 184, 177-186, <https://doi.org/10.1016/j.quaint.2007.09.012>, 2008.
- Kraaijenbrink, P. D. A., Shea, J. M., Pellicciotti, F., Jong, S. M. d., and Immerzeel, W. W.: Object-based analysis of unmanned aerial vehicle imagery to map and characterise surface features on a debris-covered glacier, *Rem Sens Environ*, 186, 581-595, <https://doi.org/10.1016/j.rse.2016.09.013>, 2016.
- Leprince, S., Ayoub, F., Klinger, Y., and Avouac, J.: Co-Registration of Optically Sensed Images and Correlation (COSI-Corr): an operational methodology for ground deformation measurements, 2007 IEEE International Geoscience and Remote Sensing Symposium, 2007, 1943-1946,
- Liu, Q., Mayer, C., and Liu, S.: Distribution and interannual variability of supraglacial lakes on debris-covered glaciers in the Khan Tengri-Tumor Mountains, Central Asia, *Environmental Research Letters*, 10, 014014: 014011-014010, 10.1088/1748-9326/10/1/014014, 2015.
- Matta, E., Giardino, C., Boggero, A., and Bresciani, M.: Use of Satellite and In Situ Reflectance Data for Lake Water Color Characterization in the Everest Himalayan Region, *Mountain Research and Development*, 37, 16-23, 10.1659/MRD-JOURNAL-D-15-00052.1, 2017.
- Maurer, J. M., Schaefer, J. M., Rupper, S., and Corley, A.: Acceleration of ice loss across the Himalayas over the past 40 years, *Science Advances*, 5, eaav7266, 10.1126/sciadv.aav7266, 2019.
- Miles, E. S., Pellicciotti, F., Willis, I. C., Steiner, J. F., Buri, P., and Arnold, N. S.: Refined energy-balance modelling of a supraglacial pond, Langtang Khola, Nepal, *Ann Glaciol*, 57, 29-40, 10.3189/2016AoG71A421, 2016.
- Miles, E. S., Ian C. Willis, Neil S. Arnold, Steiner, J., and Pellicciotti, F.: Spatial, seasonal and interannual variability of supraglacial ponds in the Langtang Valley of Nepal, 1999–2013, *J. Glaciol.*, 63, 88–105, 2017.
- Miles, E. S., Willis, I., Buri, P., Steiner, J. F., Arnold, N. S., and Pellicciotti, F.: Surface Pond Energy Absorption Across Four Himalayan Glaciers Accounts for 1/8 of Total Catchment Ice Loss, *Geoph Res Lett*, 45, 10,464–410,473, 10.1029/2018GL079678, 2018.
- Mölg, N., Bolch, T., Walter, A., and Vieli, A.: Unravelling the evolution of Zmuttgletscher and its debris cover since the end of the Little Ice Age, *The Cryosphere*, 13, 1889-1909, 10.5194/tc-13-1889-2019, 2019.
- Monnier, S., and Kinnard, C.: Pluri-decadal (1955–2014) evolution of glacier–rock glacier transitional landforms in the central Andes of Chile (30–33 ° S), *Earth Surf. Dynam.*, 5, 493-509, 10.5194/esurf-5-493-2017, 2017.
- Mukul, M., Srivastava, V., Jade, S., and Mukul, M.: Uncertainties in the Shuttle Radar Topography Mission (SRTM) Heights: Insights from the Indian Himalaya and Peninsula, *Scientific Reports*, 7, 41672, 10.1038/srep41672, 2017.
- Naegeli, K., Damm, A., Huss, M., Schaepman, M., and Hoelzle, M.: Imaging spectroscopy to assess the composition of ice surface materials and their impact on glacier mass balance, *Rem Sens Environ*, 168, 388-402, <https://doi.org/10.1016/j.rse.2015.07.006>, 2015.
- Naegeli, K., Damm, A., Huss, M., Wulf, H., Schaepman, M., and Hoelzle, M.: Cross-Comparison of Albedo Products for Glacier Surfaces Derived from Airborne and Satellite (Sentinel-2 and Landsat 8) Optical Data, *Rem Sens*, 9, 10.3390/rs9020110, 2017.
- Nakawo, M., Yabuki, H., and Sakai, A.: Characteristics of Khumbu Glacier, Nepal Himalaya: recent change in the debris-covered area, in: *Ann Glaciol, Annals of Glaciology*, 118-122, 1999.
- Narama, C., Daiyrov, M., Tadono, T., Yamamoto, M., Kääb, A., Morita, R., and Ukita, J.: Seasonal drainage of supraglacial lakes on debris-covered glaciers in the Tien Shan Mountains, Central Asia, *Geomorphology*, 286, 133-142, <https://doi.org/10.1016/j.geomorph.2017.03.002>, 2017.
- Nicholson, L., and Benn, D. I.: Calculating ice melt beneath a debris layer using meteorological data, *J. Glaciol.*, 52, 463-470, 10.3189/172756506781828584, 2006.



- Nicholson, L. I., McCarthy, M., Pritchard, H. D., and Willis, I.: Supraglacial debris thickness variability: impact on ablation and relation to terrain properties, *The Cryosphere*, 12, 3719-3734, 10.5194/tc-12-3719-2018, 2018.
- 1220 Nie, Y., Sheng, Y., Liu, Q., Liu, L., Liu, S., Zhang, Y., and Song, C.: A regional-scale assessment of Himalayan glacial lake changes using satellite observations from 1990 to 2015, *Rem Sens Environ*, 189, 1-13, <https://doi.org/10.1016/j.rse.2016.11.008>, 2017.
- Nuimura, T., Fujita, K., Yamaguchi, S., and Sharma, R. R.: Elevation changes of glaciers revealed by multitemporal digital elevation models calibrated by GPS survey in the Khumbu region, Nepal Himalaya, 1992-2008, *J. Glaciol.*, 58, 648-656, 1225 2012.
- Østrem, G.: Ice Melting under a Thin Layer of Moraine, and the Existence of Ice Cores in Moraine Ridges, *Geografiska Annaler*, 41, 228-230, 1959.
- Painter, T. H., Rittger, K., McKenzie, C., Slaughter, P., Davis, R. E., and Dozier, J.: Retrieval of subpixel snow covered area, grain size, and albedo from MODIS, *Rem Sens Environ*, 113, 868-879, <http://dx.doi.org/10.1016/j.rse.2009.01.001>, 1230 2009.
- Painter, T. H., Brodzik, M. J., Racoviteanu, A., and Armstrong, R.: Automated mapping of Earth's annual minimum exposed snow and ice with MODIS, *Geoph Res Lett*, 39, n/a-n/a, 10.1029/2012GL053340, 2012.
- Painter, T. H., Jeff Dozier, Dar A. Roberts, Robert E. Davis, Robert O. Green: Retrieval of subpixel snow-covered area and grain size from imaging spectrometer data, *Rem Sens Environ*, 85, 64 - 77, 2003.
- 1235 Panday, P., Bulley, H., Haritashya, U., and Ghimire, B.: Supraglacial Lake Classification in the Everest Region of Nepal Himalaya, in: *Geospatial Techniques for Managing Environmental Resources*, edited by: J.K. Thakur et al. (eds.), Capital Publishing Company, 2011.
- Paul, F., Huggel, C., and Kääb, A.: Combining satellite multispectral image data and a digital elevation model for mapping debris-covered glaciers, *Rem Sens Environ*, 89, 510-518, 2004.
- 1240 Pekel, J.-F., Cottam, A., Gorelick, N., and Belward, A. S.: High-resolution mapping of global surface water and its long-term changes, *Nature*, 540, 418-422, 10.1038/nature20584, 2016.
- Pfeffer, W. T., Arendt, A. A., Bliss, A., Bolch, T., Cogley, J. G., Gardner, A. S., Hagen, J. O., Hock, R., Kaser, G., Kienholz, C., Miles, E. S., Moholdt, G., Mölg, N., Paul, F., Radić, V., Rastner, P., Raup, B. H., Rich, J., Sharp, M. J., and Randolph Consortium: The Randolph Glacier Inventory: a globally complete inventory of glaciers, *J. Glaciol.*, 60, doi: 10.3189/2014JoG13J176, 2014. 1245
- Quincey, D. J., Richardson, S. D., Luckman, A., Lucas, R. M., Reynolds, J. M., Hambrey, M. J., and Glasser, N. F.: Early recognition of glacial lake hazards in the Himalaya using remote sensing datasets, *Glob Planet Ch*, 56, 137 - 152, 2007.
- Quincey, D. J., Luckman, A., and Benn, D.: Quantification of Everest region glacier velocities between 1992 and 2002, using satellite radar interferometry and feature tracking, *J. Glaciol.*, 55, 596-606, 2009.
- 1250 Quintano, C., Fernández-Manso, A., Shimabukuro, Y. E., and Pereira, G.: Spectral unmixing, *International Journal of Remote Sensing* 33, 5307-5340, 10.1080/01431161.2012.661095, 2012.
- Racoviteanu, A. E., and Williams, M. W.: Decision tree and texture analysis for mapping debris-covered glaciers: a case study from Kangchenjunga, eastern Himalaya, *Rem Sens Special Issue*, 4, 3078-3109, doi:3010.3390/rs4103078, 2012.
- Racoviteanu, A. E., Arnaud, Y., Williams, M. W., and Manley, W. F.: Spatial patterns in glacier characteristics and area changes from 1962 to 2006 in the Kanchenjunga, Sikkim area, eastern Himalaya, *The Cryosphere*, 9, 505-523, 10.5194/tc-9-505-2015, 2015. 1255
- Ragetti, S., Bolch, T., and Pellicciotti, F.: Heterogeneous glacier thinning patterns over the last 40 years in Langtang Himal., *The Cryosphere*, 10, 2075 - 2097, doi: 10.5194/tc-2016-25), 2016.

- Reid, T. D., and Brock, B. W.: An energy-balance model for debris-covered glaciers including heat conduction through the debris layer, *J. Glaciol.*, 56, 903-916, 10.3189/002214310794457218, 2010.
- Reynolds, J.: On the formation of supraglacial lakes on debris-covered glaciers, in: *Debris-covered glaciers*, edited by: M. Nakawo, C. F. R., and A. Fountain, IAHS, Wallingsford, 153 - 161, 2000.
- Reynolds, J. M.: Assessing glacial hazards for hydropower development in the Himalayas, Hindu Kush and Karakoram, *Int J. Hydropower & Dams*, 21, 60-65, 2014.
- Richards, J.: *Remote Sensing Digital Image Analysis*, Springer-Verlag,, Berlin,, 2013.
- Richardson, S. D., and Reynolds, J. M.: An overview of glacial hazards in the Himalayas, *Quaternary International*, 65-6, 31-47, 2000.
- Rieg, L., Klug, C., Nicholson, L., and Sailer, R.: Pléiades Tri-Stereo Data for Glacier Investigations—Examples from the European Alps and the Khumbu Himal, *Rem Sens*, 10, 10.3390/rs10101563, 2018.
- Rittger, K., Painter, T. H., and Dozier, J.: Assessment of methods for mapping snow cover from MODIS, *Advances in Water Resources*, 51, 367-380, <https://doi.org/10.1016/j.advwatres.2012.03.002>, 2013.
- Roberts, D. A., Smith, M. O., and Adams, J. B.: Green vegetation, nonphotosynthetic vegetation, and soils in AVIRIS data, *Rem Sens Environ*, 44, 255-269, [https://doi.org/10.1016/0034-4257\(93\)90020-X](https://doi.org/10.1016/0034-4257(93)90020-X), 1993.
- Rosenthal, W., and Dozier, J.: Automated Mapping of Montane Snow Cover at Subpixel Resolution From the Landsat Thematic Mapper, *Water Res Res*, 32, 115-130, 10.1029/95WR02718, 1996.
- Rounce, D. R., and McKinney, D. C.: Debris thickness of glaciers in the Everest area (Nepal Himalaya) derived from satellite imagery using a nonlinear energy balance model, *The Cryosphere*, 8, 1317-1329, 10.5194/tc-8-1317-2014, 2014.
- Rounce, D. R., Quincey, D. J., and McKinney, D. C.: Debris-covered glacier energy balance model for Imja-Lhotse Shar Glacier in the Everest region of Nepal, *The Cryosphere*, 9, 2295-2310, 10.5194/tc-9-2295-2015, 2015.
- Rounce, D. R., King, O., McCarthy, M., Shean, D. E., and Salerno, F.: Quantifying Debris Thickness of Debris-Covered Glaciers in the Everest Region of Nepal Through Inversion of a Subdebris Melt Model, *J Geoph Res : Earth Surf*, 123, 1094-1115, 10.1029/2017JF004395, 2018.
- Sakai, A., Nakawo, M., and Fujita, K.: Distribution Characteristics and Energy Balance of Ice Cliffs on Debris-Covered Glaciers, Nepal Himalaya, Arctic Antarctic and Alpine Research, 34, 12 - 19, 2002.
- Sakai, A., and Fujita, K.: Correspondence: Formation conditions of supraglacial lakes on debris covered glaciers in the Himalaya, *J. Glaciol.*, 56, 177 - 181, 2010.
- Sakai, A.: Glacial lakes in the Himalayas: a review on formation and expansion processes, *Global Environmental Research*, 23 - 30, 2012.
- Salerno, F., Thakuri, S., D'Agata, C., Smiraglia, C., Manfredi, E. C., Viviano, G., and Tartari, G.: Glacial lake distribution in the Mount Everest region: Uncertainty of measurement and conditions of formation, *Glob Planet Ch*, 92-93, 30-39, <https://doi.org/10.1016/j.gloplacha.2012.04.001>, 2012.
- Salerno, F., Thakuri, S., Tartari, G., Nuimura, T., Sunako, S., Sakai, A., and Fujita, K.: Debris-covered glacier anomaly? Morphological factors controlling changes in the mass balance, surface area, terminus position, and snow line altitude of Himalayan glaciers, *Earth Planet Sci Lett*, 471, 19-31, <https://doi.org/10.1016/j.epsl.2017.04.039>, 2017.
- Scherler, D., Bookhagen, B., and Strecker, M. R.: Spatially variable response of Himalayan glaciers to climate change affected by debris cover, *Nature Geosci*, 4, 156, 10.1038/ngeo1068, 2011.
- Scherler, D., Wulf, H., and Gorelick, N.: Global Assessment of Supraglacial Debris-Cover Extents, *Geoph Res Lett*, 45, 11,798-711,805, 10.1029/2018GL080158, 2018.

- Searle, M. P., Windley, B. F., Coward, M. P., Cooper, D. J. W., Rex, A. J., Rex, D., Tingdong, L. I., Xuchang, X., Jan, M. Q., Thakur, V. C., and Kumar, S.: The closing of Tethys and the tectonics of the Himalaya, *GSA Bulletin*, 98, 678-701, 10.1130/0016-7606(1987)98<678:TCOTAT>2.0.CO;2, 1987.
- Sevestre, H., and Benn, D.: Climatic and geometric controls on the global distribution of surge-type glaciers: Implications for a unifying model of surging, *J. Glaciol.*, 61, 646-662, 10.3189/2015JoG14J136, 2015.
- Shean, D. E., Bhushan, S., Montesano, P., Rounce, D. R., Arendt, A., and Osmanoglu, B.: A Systematic, Regional Assessment of High Mountain Asia Glacier Mass Balance, *Front. Earth Sci.*, 7, 363, 2020.
- Shepherd, J. D., and Dymond, J. R.: Correcting satellite imagery for the variance of reflectance and illumination with topography, *Int. J. Rem Sens*, 24, 3503-3514, 10.1080/01431160210154029, 2003.
- Shroder, J. F., Bishop, M. P., Copland, L., and Sloan, V. F.: Debris-covered Glaciers and Rock Glaciers in the Nanga Parbat Himalaya, Pakistan, *Geografiska Annaler: Series A, Physical Geography*, 82, 17-31, <https://doi.org/10.1111/j.0435-3676.2000.00108.x>, 2000.
- Shugar, D. H., Burr, A., Haritashya, U. K., Kargel, J. S., Watson, C. S., Kennedy, M. C., Bevington, A. R., Betts, R. A., Harrison, S., and Stratman, K.: Rapid worldwide growth of glacial lakes since 1990, *Nat Clim Change*, 10, 939-945, 10.1038/s41558-020-0855-4, 2020.
- Shukla, A., Arora, M. K., and Gupta, R. P.: Synergistic approach for mapping debris-covered glaciers using optical-thermal remote sensing data with inputs from geomorphometric parameters, *Rem Sens Environ*, 114, 1378-1387, 2010.
- Shukla, A., Garg, P. K., and Srivastava, S.: Evolution of Glacial and High-Altitude Lakes in the Sikkim, Eastern Himalaya Over the Past Four Decades (1975–2017), *Front. Env. Science*, 6, 81, 2018.
- Sirguey, P., Mathieu, R., and Arnaud, Y.: Subpixel monitoring of the seasonal snow cover with MODIS at 250-m spatial resolution in the Southern Alps of New Zealand: Methodology and accuracy assessment, *Rem Sens Environ*, 113, 160-181, <http://dx.doi.org/10.1016/j.rse.2008.09.008>, 2009.
- Sokolova, M., and Lapalme, G.: A systematic analysis of performance measures for classification tasks, *Information Processing & Management*, 45, 427-437, <https://doi.org/10.1016/j.ipm.2009.03.002>, 2009.
- Song, C.: Spectral mixture analysis for subpixel vegetation fractions in the urban environment: How to incorporate endmember variability?, *Rem Sens Environ*, 95, 248-263, <https://doi.org/10.1016/j.rse.2005.01.002>, 2005.
- Steiner, J., Pellicciotti, F., Buri, P., Miles, E., Immerzeel, W. W., and Reid, T.: Modelling ice-cliff backwasting on a debris-covered glacier in the Nepalese Himalaya, *J. Glaciol.*, 61, 889-907, 10.3189/2015JoG14J194, 2015.
- Steiner, J. F., Buri, P., Miles, E. S., Ragetti, S., and Pellicciotti, F.: Supraglacial ice cliffs and ponds on debris-covered glaciers: spatio-temporal distribution and characteristics, *J. Glaciol.*, 65, 617-632, 10.1017/jog.2019.40, 2019.
- Stillinger, T., Roberts, D. A., Collar, N. M., and Dozier, J.: Cloud Masking for Landsat 8 and MODIS Terra Over Snow-Covered Terrain: Error Analysis and Spectral Similarity Between Snow and Cloud, *Water Res Res*, 55, 6169-6184, <https://doi.org/10.1029/2019WR024932>, 2019.
- Strozzi, T., Wiesmann, A., Kääb, A., Joshi, S., and Mool, P.: Glacial lake mapping with very high resolution satellite SAR data, *Nat Haz Earth Sys Sci*, 12, 2487-2498, 10.5194/nhess-12-2487-2012, 2012.
- Suzuki, R., Fujita, K., and Ageta, Y.: Spatial distribution of thermal properties on debris-covered glaciers in the Himalayas derived from ASTER data, *Bull Glacier Res*, 24, 13 - 22, 2007.
- Tadono, T., Ishida, H., Oda, F., Naito, S., Minakawa, K., and Iwamoto, H.: Precise global DEM generation by ALOS PRISM, *ISPRS Annals of Photogrammetry, Remote Sensing and Spatial Information Sciences*, II-4, 10.5194/isprsannals-II-4-71-2014, 2014.

- Takeuchi, N., Kohshima, S., Fujita, K., and Nakawo, M.: Variation in suspended sediment concentration of supraglacial lakes on debris-covered area of Lirung Glacier in Nepali Himalayas, *Global Environmental Research*, 16, 95-104, 2012.
- Tampucci, D., Citterio, C., Gobbi, M., and Caccianiga, M.: Vegetation outlines of a debris-covered glacier descending below the treeline, *Plant Sociology*, 53, 43-52, 10.7338/pls2016531/03, 2016.
- Taschner, S., and Ranzi, R.: Landsat-TM and ASTER data for monitoring a debris covered glacier in the Italian Alps within the GLIMS project, *Proceedings IGARSS 2002*, 4, 1044–1046, 2002.
- Thakuri, S., Salerno, F., Smiraglia, C., Bolch, T., D'Agata, C., Viviano, G., and Tartari, G.: Tracing glacier changes since the 1960s on the south slope of Mt. Everest (central Southern Himalaya) using optical satellite imagery, *The Cryosphere* 8, 1297 - 1315, doi:10.5194/tc-8-1297-2014, 2014.
- Thayyen, R. J., and Gergan, J. T.: Role of glaciers in watershed hydrology: a preliminary study of a "Himalayan catchment", *The Cryosphere*, 4, 115-128, 10.5194/tc-4-115-2010, 2010.
- Thompson, S., Benn, D., Mertes, J., and Luckman, A.: Stagnation and mass loss on a Himalayan debris-covered glacier: Processes, patterns and rates, *J. Glaciol.*, -1, 1-19, 10.1017/jog.2016.37, 2016.
- Thompson, S. S., Benn, D. I., Dennis, K., and Luckman, A.: A rapidly growing moraine-dammed glacial lake on Ngozumpa Glacier, Nepal, *Geomorphology*, 145, 1-11, 2012.
- Landsat processing details: <https://landsat.usgs.gov/Landsat-Processing-Details>, access: 2019-28-03, 2015.
- Veganzones, M., Dalla Mura, M., Dumont, M., Zin, I., and Chanussot, J.: Improved subpixel monitoring of seasonal snow cover: A case study in the Alps, *International Geoscience and Remote Sensing Symposium (IGARSS)*, 10.1109/IGARSS.2014.6947356, 2014.
- Vermote, E. F., Tanre, D., Deuze, J. L., Herman, M., and Morcette, J.: Second Simulation of the Satellite Signal in the Solar Spectrum, 6S: an overview, *IEEE Transactions on Geoscience and Remote Sensing*, 35, 675-686, 10.1109/36.581987, 1997.
- Vezzola, L. C., Diolaiuti, G. A., D'Agata, C., Smiraglia, C., and Pelfini, M.: Assessing glacier features supporting supraglacial trees: A case study of the Miage debris-covered Glacier (Italian Alps), *The Holocene*, 26, 1138-1148, 10.1177/0959683616632883, 2016.
- Wagnon, P., Vincent, C., Arnaud, Y., Berthier, E., Vuillermoz, E., Gruber, S., Menegoz, M., Gilbert, A., Dumont, M., Shea, J. M., Stumm, D., and Pokhrel, B. K.: Seasonal and annual mass balances of Mera and Pokalde glaciers (Nepal Himalaya) since 2007, *Cryosphere*, 7, 1769-1786, 10.5194/tc-7-1769-2013, 2013.
- Wang, X., Guo, X., Yang, C., Liu, Q., Wei, J., Zhang, Y., Liu, S., Zhang, Y., Jiang, Z., and Tang, Z.: Glacial lake inventory of high-mountain Asia in 1990 and 2018 derived from Landsat images, *Earth Syst. Sci. Data*, 12, 2169-2182, 10.5194/essd-12-2169-2020, 2020.
- Wangchuk, S., and Bolch, T.: Mapping of glacial lakes using Sentinel-1 and Sentinel-2 data and a random forest classifier: Strengths and challenges, *Science of Remote Sensing*, 2, 100008, <https://doi.org/10.1016/j.srs.2020.100008>, 2020.
- Watanabe, O., Iwata, S., and Fushimi, H.: Topographic characteristics in the ablation area of the Khumbu glacier, Nepal Himalaya, *Ann Glaciol*, 8, 177 - 180, 1986.
- Watson, C. S., Quincey, D. J., Carrivick, J. L., and Smith, M. W.: The dynamics of supraglacial ponds in the Everest region, central Himalaya, *Glob Planet Ch*, 142, 14-27, <https://doi.org/10.1016/j.gloplacha.2016.04.008>, 2016.
- Watson, C. S., Quincey, D. J., Carrivick, J. L., and Smith, M. W.: Ice cliff dynamics in the Everest region of the Central Himalaya, *Geomorph.*, 278, 238-251, <https://doi.org/10.1016/j.geomorph.2016.11.017>, 2017a.
- Watson, C. S., Quincey, D. J., Smith, M. W., Carrivick, J. L., Rowan, A. V., and James, M. R.: Quantifying ice cliff evolution with multi-temporal point clouds on the debris-covered Khumbu Glacier, Nepal, *J. Glaciol.*, 63, 823-837, 10.1017/jog.2017.47, 2017b.

- 1380 Watson, C. S., King, O., Miles, E. S., and Quincey, D. J.: Optimising NDWI supraglacial pond classification on Himalayan debris-covered glaciers, *Rem Sens Environ*, 217, 414-425, <https://doi.org/10.1016/j.rse.2018.08.020>, 2018.
- Wehn, S., Lundemo, S., and Holten, J. I.: Alpine vegetation along multiple environmental gradients and possible consequences of climate change, *Alpine Botany*, 124, 155-164, 10.1007/s00035-014-0136-9, 2014.
- 1385 Wessels, R. L., Kargel, J. S., and Kieffer, H. H.: ASTER measurement of supraglacial lakes in the Mount Everest region of the Himalaya, in: *Annals of Glaciology*, Vol 34, 2002, *Annals of Glaciology*, 399-408, 2002.
- Westoby, M. J., Glasser, N. F., Hambrey, M. J., Brasington, J., Reynolds, J. M., and Hassan, M. A.: Reconstructing historic Glacial Lake Outburst Floods through numerical modelling and geomorphological assessment: Extreme events in the Himalaya, *Earth Surface Processes and Landforms*, 39, 1675-1692, 2014.
- 1390 Westoby, M. J., Rounce, D. R., Shaw, T. E., Fyffe, C. L., Moore, P. L., Stewart, R. L., and Brock, B. W.: Geomorphological evolution of a debris-covered glacier surface, *Earth Surface Processes and Landforms*, 45, 3431-3448, <https://doi.org/10.1002/esp.4973>, 2020.
- 1395 Wulder, M. A., Loveland, T. R., Roy, D. P., Crawford, C. J., Masek, J. G., Woodcock, C. E., Allen, R. G., Anderson, M. C., Belward, A. S., Cohen, W. B., Dwyer, J., Erb, A., Gao, F., Griffiths, P., Helder, D., Hermosilla, T., Hipple, J. D., Hostert, P., Hughes, M. J., Huntington, J., Johnson, D. M., Kennedy, R., Kilic, A., Li, Z., Lymburner, L., McCorkel, J., Pahlevan, N., Scambos, T. A., Schaaf, C., Schott, J. R., Sheng, Y., Storey, J., Vermote, E., Vogelmann, J., White, J. C., Wynne, R. H., and Zhu, Z.: Current status of Landsat program, science, and applications, *Rem Sens Environ*, 225, 127-147, <https://doi.org/10.1016/j.rse.2019.02.015>, 2019.
- 1400 Xie, F., Liu, S., Wu, K., Zhu, Y., Gao, Y., Qi, M., Duan, S., Saifullah, M., and Tahir, A. A.: Upward Expansion of Supra-Glacial Debris Cover in the Hunza Valley, Karakoram, During 1990 ~ 2019, *Front. Earth Sci.*, 8, 10.3389/feart.2020.00308, 2020.
- Xie, Y., Sha, Z., and Yu, M.: Remote sensing imagery in vegetation mapping: a review, *Journal of Plant Ecology*, 1, 9-23, 10.1093/jpe/rtn005, 2008.
- 1405 Yukari, T., Kayastha, R. B., and M, N.: Characteristics of ablation and heat balance in debris-free and debris-covered areas on Khumbu Glacier, Nepal Himalayas, in the pre-monsoon season, in: *Debris-covered glacier*, edited by: Nakawo, M., Raymond, C. F., and Fountain, A. G., 2000.
- Zhang, B., Liu, G., Zhang, R., Fu, Y., Liu, Q., Cai, J., Wang, X., and Li, Z.: Monitoring Dynamic Evolution of the Glacial Lakes by Using Time Series of Sentinel-1A SAR Images, *Rem Sens*, 13, 10.3390/rs13071313, 2021.
- Zhang, H., Suhong, L., Qizhong, L., and Jiacheng, S.: Sub-pixel lake mapping in Tibetan Plateau, *IEEE Trans Geosci Rem Sens*, 0-7803-8742-2/04, 3073 - 3076, 2004.
- 1410 Zhu, Z., Wang, S., and Woodcock, C. E.: Improvement and expansion of the Fmask algorithm: cloud, cloud shadow, and snow detection for Landsats 4-7, 8, and Sentinel 2 images, *Rem Sens Environ*, 159, 269-277, <https://doi.org/10.1016/j.rse.2014.12.014>, 2015.

List of tables

Table 1 Satellite imagery used in this study.

Sensor	Path/ Row	Product	Date	Bands	Cell size (m)	Swath width (km)	Usage
Landsat 8 OLI	137/41	L1TPT1	2014-11-25	Band 1 Visible 0.43 - 0.45 μm	30	185	Spectral unmixing
	138/41		2015-11-19				
	139/41		2015-10-09	Band 2 Visible 0.450 - 0.51 μm			
	140/41		2015-09-30				
	141/40		2015-10-07	Band 3 Visible 0.53 - 0.59 μm			
	142/40		2016-11-01				
	143/40		2015-10-05	Band 4 Red 0.64 - 0.67 μm			
	144/39		2015-09-10				
	145/39		2015-10-03	Band 5 Near-IR 0.85 - 0.88 μm			
	146/38		2015-09-08				
	147/37		2015-09-15	Band 6 SWIR 1 1.57 - 1.65 μm			
	147/38		2015-09-15				
	147/38		2016-10-19	Band 7 SWIR 2 2.11 - 2.29 μm)			
Pléiades	-	Level 1A	2015-10-07 2015-10-19 2015-10-20	Blue 430-550 nm Green 490-610 nm Red 600-720 nm Near IR 750-950 nm	2	20	Visual checking of Landsat endmembers; Pond validation (Khumbu area)
Rapid-Eye		Level 3A	2015-10-09	Green 520-590 nm Red 630-685 nm Red edge 690-730nm Near-IR 760-850 nm	5	77	Visual checking of Landsat endmembers (Khumbu area)
Planet-Scope		Level 3A	2016-10-19 2016-10-20	Blue 455 – 515 nm Green 500 – 590 nm Red 590 – 670 nm Near IR 780 – 860 nm	3	24.6 x 16.4	Additional pond validation (Lahaul Spiti area)

l420 Table 2 Summary of accuracy metrics per class for the Khumbu area, calculated based on the confusion matrix, including true positives (TP), false positives (FP), false negatives (FN) and true negatives (TN).

Class	TP	FP	FN	TN	Recall	Precision	F-score
clean ice	1	0	13	112	0.07	1.00	0.13
water (turbid)	32	2	6	81	0.84	0.94	0.89
debris (dark)	29	23	0	84	1.00	0.56	0.72
debris (ight)	21	8	9	62	0.70	0.72	0.71
clouds	5	3	5	92	0.50	0.63	0.56
vegetation (dry)	25	2	5	88	0.83	0.93	0.88

Table 3 Sensitivity analysis of the supraglacial pond area for the seven reference glaciers in the Khumbu domain, obtained using various thresholds applied to the fractional water maps.

Glacier	Surface area (km <sup>2</sup> )		
	Fractional water > 0.4	Fractional water > 0.45	Fractional water > 0.5
Khumbu	0.45	0.32	0.20
Lhotse	0.07	0.06	0.05
Lhotse Nup	0.03	0.03	0.02
Ngozumpa	0.79	0.66	0.50
Nuptse	0.09	0.05	0.03
Changri Nup	0.25	0.19	0.09
Gaunara	0.16	0.12	0.07
Total pond coverage	1.8	1.4	1.0

1435



Table 4 Validation of the Landsat spectral unmixing for supraglacial pond coverage at selected glaciers at three sites across the Himalaya domain, shown in Figure 1.

Khumbu		Landsat 8 spectral unmixing			Pléiades OBIA		
Glacier	Debris area (km <sup>2</sup> )	Pond area (km <sup>2</sup> )	% coverage	Date	Pond area (km <sup>2</sup> )	% coverage	Date
Khumbu	7.50	0.20	2.80	30 Sept 2015	0.21	2.70	7 Oct 2015
Lhotse	5.20	0.05	0.90		0.08	1.70	
Lhotse Nup	1.50	0.02	1.00		0.02	1.60	
Ngozumpa	19.40	0.50	2.70		0.59	3.00	
Nuptse	2.90	0.03	0.90		0.03	1.00	
Changri Nup & Shar	7.30	0.09	1.30		0.11	1.50	
Gaunara	5.20	0.07	1.40		0.09	1.70	
Total	49.00	1.00	2.04		1.10	2.24	
Langtang		Landsat 8 spectral unmixing			SPOT 7 manual digitization (from Steiner et al., 2019)		
Lirung	1.44	0.00	0.00	7 Oct 2015	0.00	2.70	6 Oct 2015
Ghanna	0.69	0.00	0.00		0.00	1.70	
Langshisha	4.46	0.01	0.20		0.01	1.60	
Langtang	16.17	0.15	0.92		0.18	3.00	
Sabalchum	3.44	0.01	0.33		0.02	1.00	
Lirung	1.44	0.00	0.00		0.00	1.50	
Total	26.20	0.17	0.64		0.21	0.86	
Lahaul Spiti		Landsat 8 spectral unmixing			PlanetScope OBIA		
Yichu	5.7	0.002	0.000	19 Oct 2016	0.001	0.000	19 Oct 2016
Dibi Ka	5.6	0.004	0.000		0.009	0.000	
Bara Shigri	21.3	0.126	0.027		0.076	0.016	
Sara Umga	7.8	0.007	0.001		0.012	0.001	
G077666E32079N	0.7	0.000	0.000		0.000	0.000	
G077559E32106N	3.2	0.000	0.000		0.000	0.000	
G077698E32078N	1.2	0.001	0.000		0.000	0.000	
Total	45.5	0.14	0.31		0.10	0.22	

Table 5 Composition of the seven debris-covered tongues in Khumbu, expressed as percent coverage of each material with respect to the debris-covered zones of each glacier.

Glacier	Clean ice (%)	Water turbid (%)	Debris dark (%)	Debris light (%)	Cloud (%)	Vegetation dry (%)
Khumbu	0.4	2.8	17.2	79.3	0.0	0.3
Lhotse	0.2	0.9	91.1	7.5	0.0	0.4
Lhotse Nup	0.7	1.0	69.1	29.2	0.0	0.0
Ngozumpa	0.4	2.7	54.2	42.2	0.1	0.5
Nuptse	0.3	0.9	2.7	95.8	0.0	0.3
Changri Nup	1.4	1.3	76.0	20.9	0.0	0.5
Gaunara	0.9	1.4	65.6	30.5	0.0	1.6
Average	0.6	1.6	53.7	43.6	0.0	0.5

1445

Table 6 Composition of the debris-covered glaciers over the entire Himalaya domain and four selected sub-domains along the monsoonal gradient and for the entire domain, listed from west to east. Debris-covered glacier areas are based on the SDC dataset (Scherler et al., 2018).

	Lahaul Spiti		Manaslu		Khumbu		Bhutan		Entire domain	
	Area (km <sup>2</sup> )	%	Area (km <sup>2</sup> )	%	Area (km <sup>2</sup> )	%	Area (km <sup>2</sup> )	%	Area (km <sup>2</sup> )	%
Clean ice	10.2	5.0	7.1	6.9	2.7	0.9	10.1	7.8	126.5	5.6
Clouds	3.3	1.6	2.9	2.8	0.6	0.2	7.8	6.0	45.0	2.0
Debris (dark)	26.6	13.1	14.9	14.6	148.1	48.9	19.5	15.0	535.4	23.8
Debris (light)	151.4	74.4	70.1	68.6	130.2	43.0	83.1	64.1	1371.0	60.9
Turbid water	0.6	0.3	2.7	2.6	4.9	1.6	5.2	4.0	47.0	2.1
Vegetation (dry)	3.3	1.6	4.5	4.4	9.6	3.2	4.1	3.1	101.7	4.5
Unclassified	8	4	16	16	6.9	6	0.0	0.0	26.0	1.2
Total debris cover	204	100	118	100	303	100	130	100	2253	100

1450

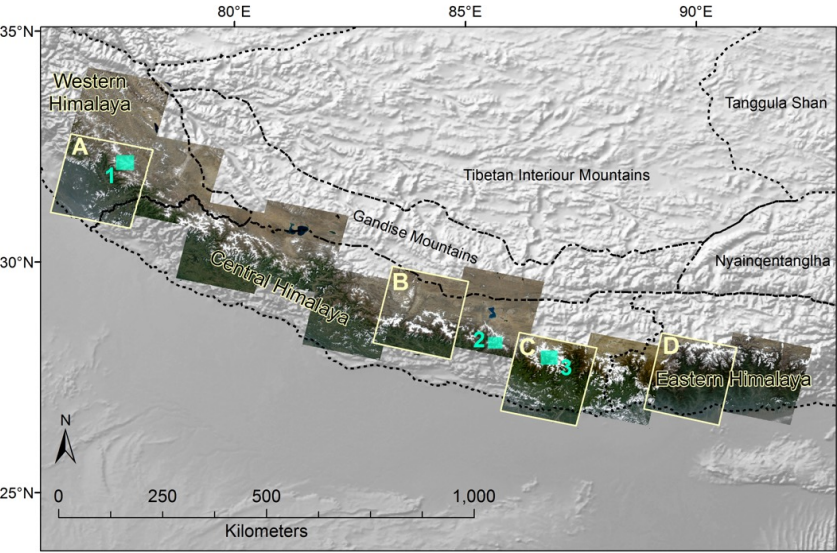
Table 7 Correlation matrix for topo-climatic and geographic controls on pond and vegetation coverage based on Pearson's *r*. \*\* denotes correlations significant at 95% confidence interval (*p*-value < 0.05); \* denotes correlations significant at 90 % confidence interval (*p*-value < 0.01)

Formatted: Caption,Caption +10pt bold

	Ponds	Vegeta- tion	Debris cover %	Termini elevation	Tempe- rature	Precipi- tation	Thickness change	Velocity	Longitude	Latitude
Ponds	1.00									
Vegetation	0.21	1.00								
Debris cover	0.05	-0.25	1.00							
Termini elevation	-0.03	0.24	-0.51**	1.00						
Temperature	0.40*	0.12	0.39	-0.29	1.00					
Precipitation	0.53**	0.29	0.32	-0.53**	0.51**	1.00				
Thickness change	-0.37*	-0.01	-0.30	-0.18	-0.04	-0.12	1.00			
Velocity	0.18	-0.18	0.30	-0.76**	0.21	0.54**	0.11	1.00		
Longitude	0.82**	0.40*	0.27	-0.07	0.42**	0.74**	-0.42**	0.24	1.00	
Latitude	-0.72**	-0.28*	-0.47**	0.32	-0.73**	-0.78**	0.25	-0.37*	-0.88	1.00

List of figures

Fig. 1 Himalaya study domain showing the large climatic regions from Bolch et al. (2019) as dotted black lines and the studied regions (western, central and eastern). The figure also shows the selected domains across the monsoonal gradient discussed in the text, shown as light-yellow outlines and labeled as: A → Lahaul Spiti in the “monsoon-arid” transition zone of the western Himalaya; B → Manaslu; C → Khumbu and parts of eastern Tibet in the central Himalaya, and D → Bhutan in the eastern Himalaya. Turquoise boxes represent the pond validation sites: 1 – Lahaul



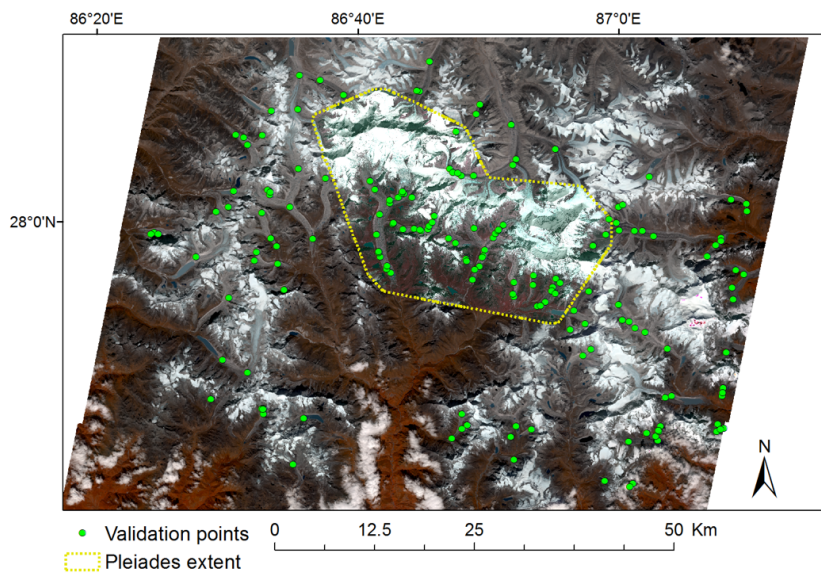
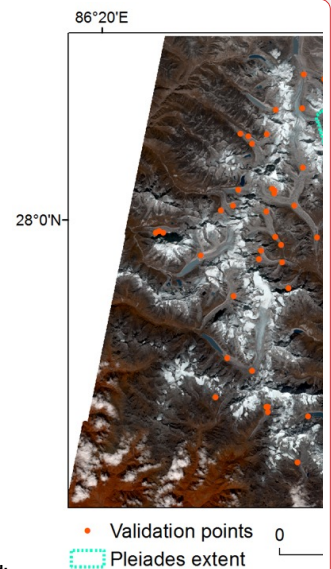


Fig. 2 The Khumbu test region in Nepal showing the RapidEye image of Oct 9, 2015 (bands 5, 4 and 3) and the Pléiades image of Oct 7, 19 and 20, 2015 (bands 4, 3 and 2) (yellow dotted outline). Vegetation appears in dark red; ponds display various shades of turquoise. Green dots represent the ground truth points digitized on the high-resolution images and used for the accuracy assessment of the linear spectral unmixing.



Deleted:

Deleted: turquoise

Deleted: Red

Deleted: for

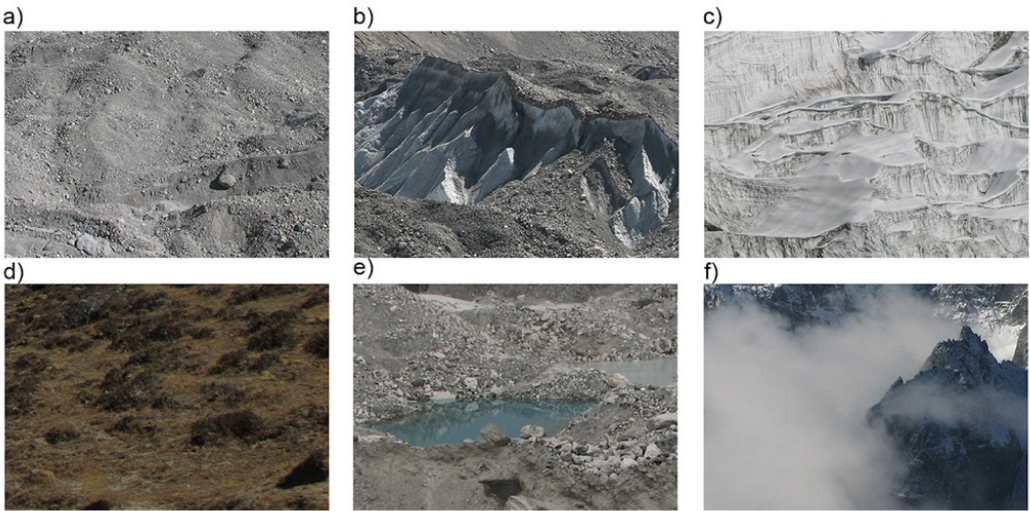


Fig. 3 Types of surfaces present in the study area: a) light debris cover (quartz, feldspar); b) darker schistic debris with ice cliff; c) clean ice with crevasses in the glacier ablation area; d) graminoid shrub type vegetation (dry); e) supraglacial lakes with different turbidity levels; f) valley clouds. All photos were taken in the Khumbu region. Photo credit: A. Racoviteanu

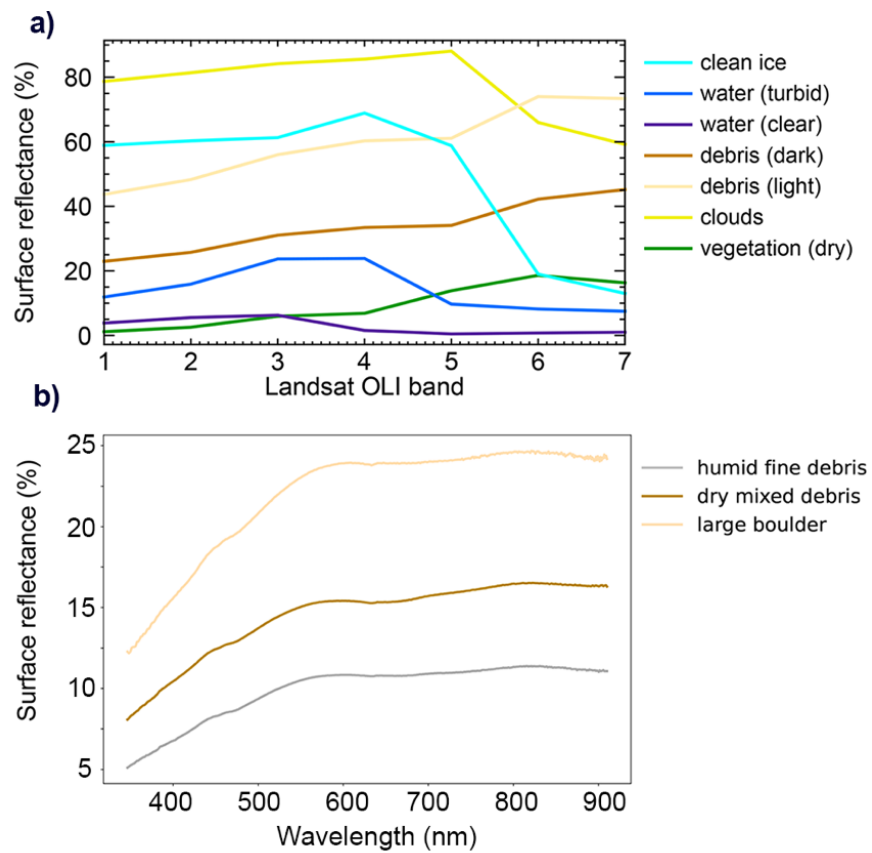
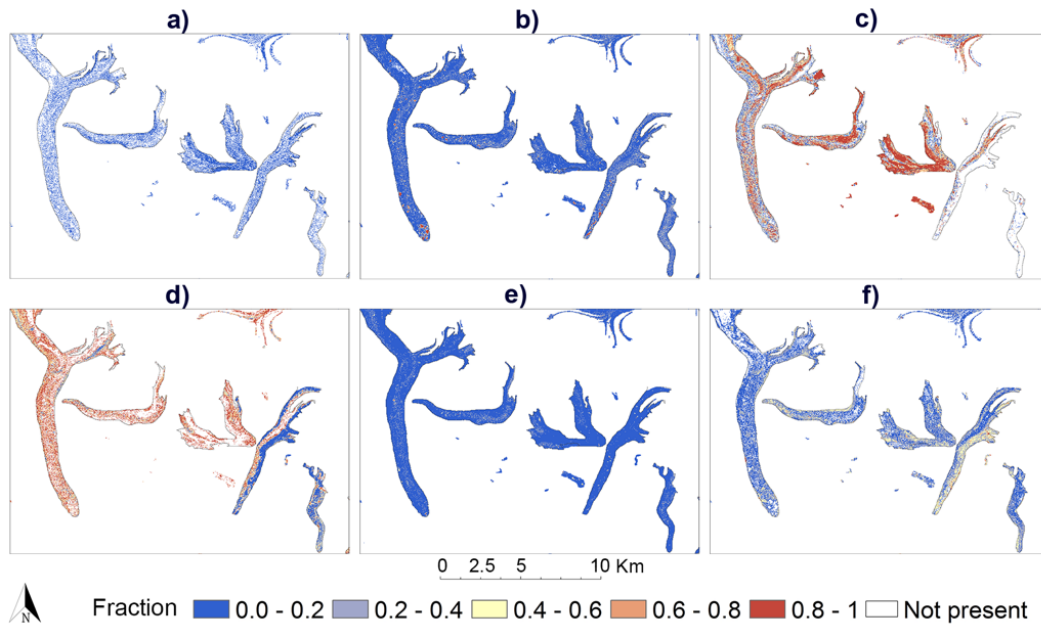


Fig. 4 a) Spectral signatures of endmembers extracted from Landsat 8 OLI bands 1 to 7 (Sept 30, 2015 Khumbu image) after the atmospheric and topographic corrections; b) field spectra from the debris-cover part of Mer de Glace Glacier

1515 (France) shown for comparison purposes only.



1520 Fig. 5 Fractional maps obtained from the LMM routine for a subset of the Khumbu area. Colour bars show the percentage  
 1525 covered by each type of material on a pixel-by pixel basis: a) clean ice; b) turbid water; c) dark debris; d) light debris; e)  
 1530 clouds; f) dry vegetation.



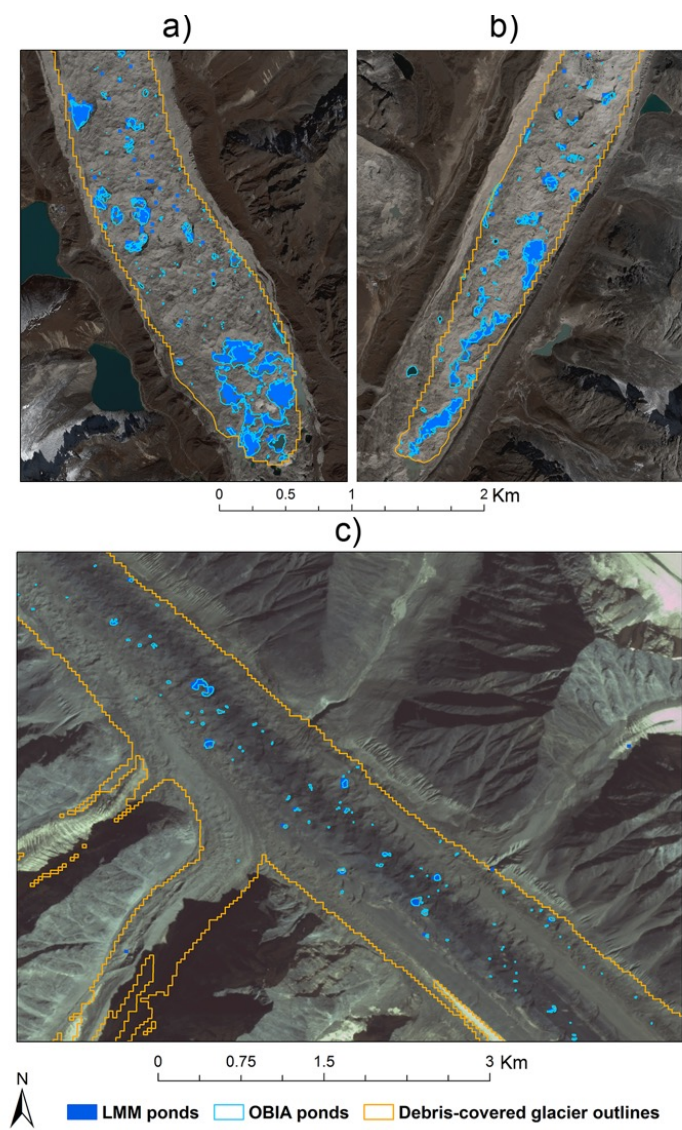


Fig. 6 Comparison of the Landsat sub-pixel classified fractional ponds (dark blue) with OBIA pond outlines (light blue) based on high-resolution data for the termini of three glaciers: a) Ngozumpa Glacier ; b) Khumbu Glacier and c) Bara Shigri Glacier. The background images are colour composites (bands 1,2,3) of Pleiades imagery (a-b) and PlanetScope imagery (c). Glacier outlines are from the SDC dataset (Scherler et al., 2018).

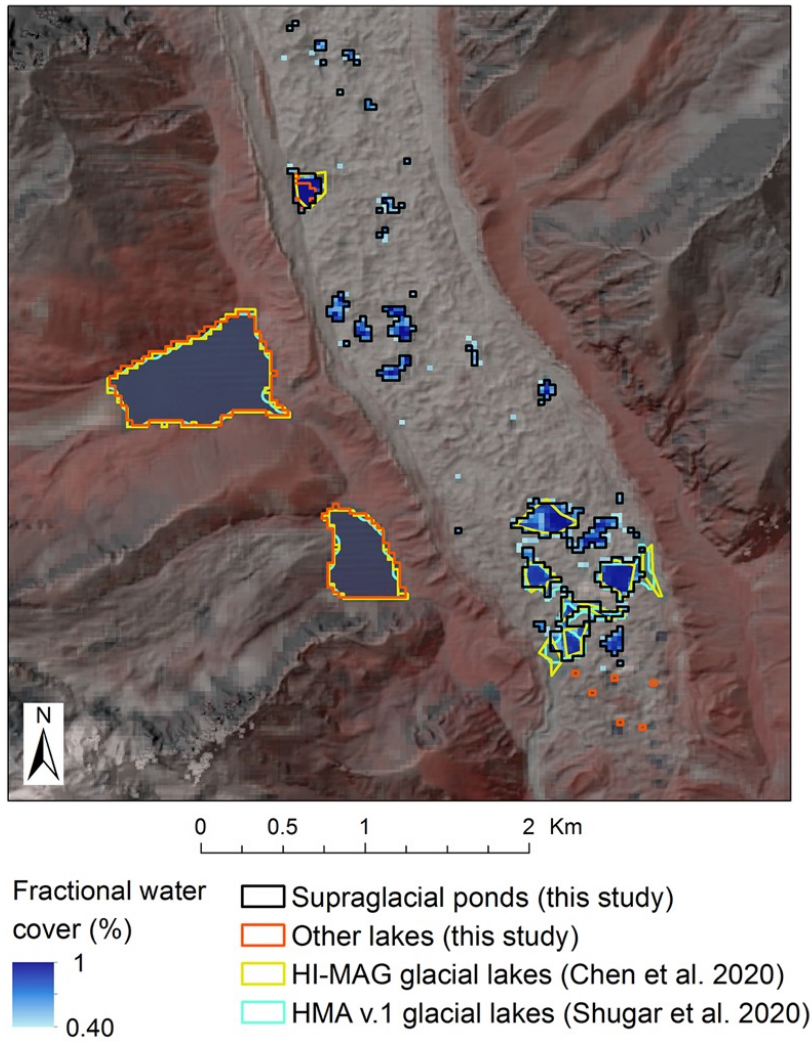


Fig. 7 Comparison of the fractional ponds from this study with two recent lake datasets based on 2015 Landsat imagery (same as our study) for the terminus of Ngozumpa Glacier and the Gokyo Lakes in Khumbu, with the Landsat colour composite of bands 5, 4 and 3 overlaid on shaded relief.

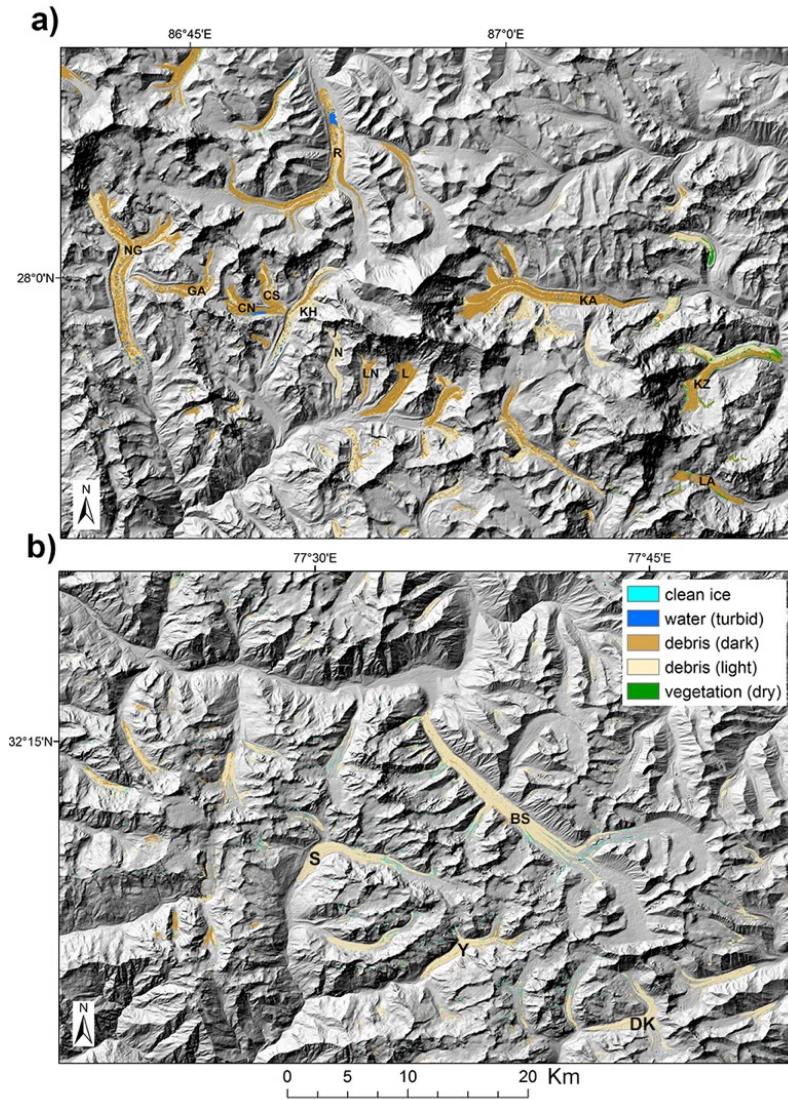
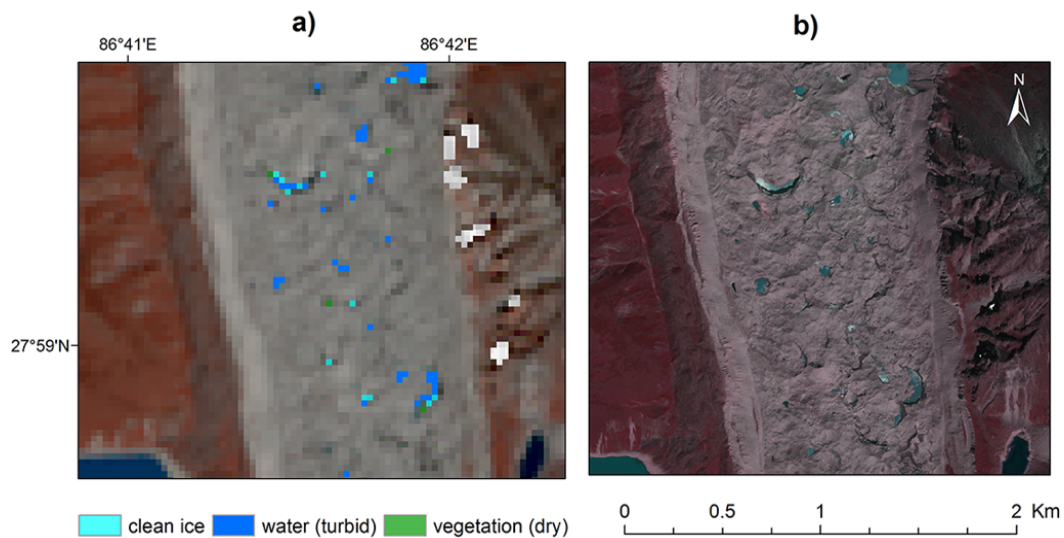


Fig. 8 Composition of debris-covered glacier tongues shown two of the domains showing glaciers discussed in the text: a) subset of the Khumbu domain (NG – Ngozumpa Glacier, GA – Gaunara Glacier; CN – Changri Nup Glacier; CS – Changri Shar Glacier, KH – Khumbu Glacier, N – Nuptse Glacier; LN – Lhotse Nup Glacier; L – Lhotse Glacier, KA – Kangshung Glacier; KZ – Kazhenpu Glacier; LA – Labeilong Glacier and b) subset of the Lahaul Spiti area (BS – Bara Shigri Glacier, S – Sara Umga Glacier, Y – Yichu Glacier and DK – Dibi Ka Glacier). Surfaces are shown on shaded relief from the AW3D30 DEM, with debris-cover glaciers from the SDC dataset (Scherler et al. 2018). Note that the extent of Changri Nup incorrectly includes the inactive part of the glacier in this global dataset.

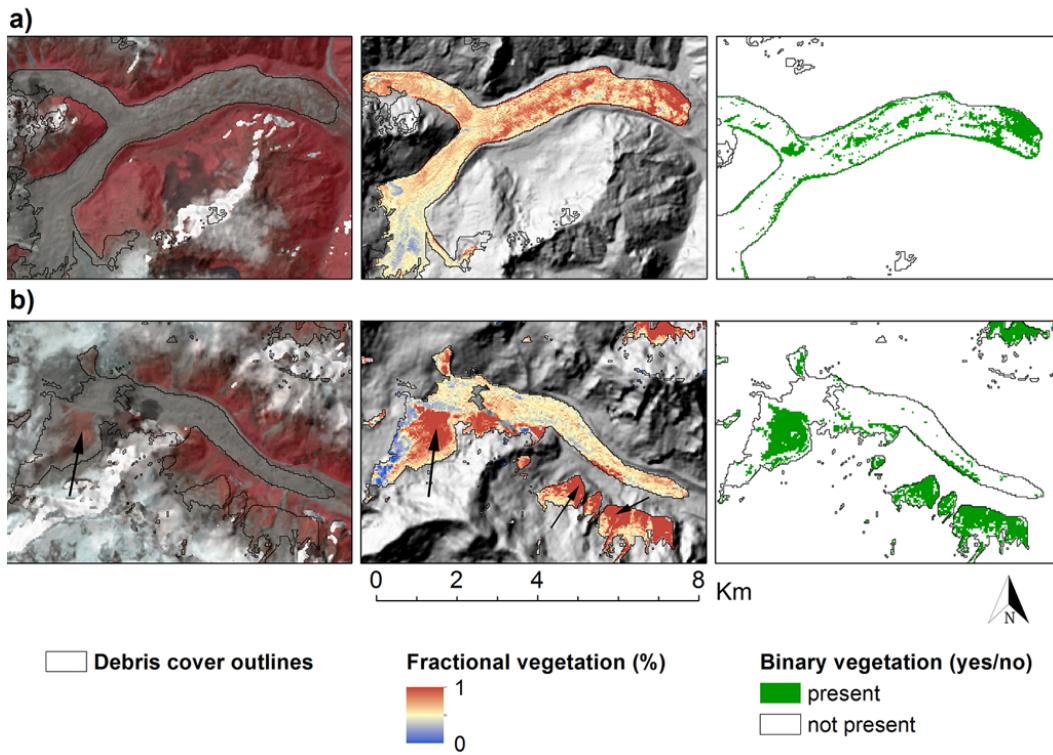




1585

Fig. 9 Ice pixels detected by the LMM at the surface of Ngozumpa Glacier in the Khumbu region. a) Landsat 8 OLI false colour composite bands 5,4,3 and unmixing results for ice, water and vegetation classes only; b) Pléiades colour composite (bands 4,3,2) shown for comparison, with vegetation shown as red shades. Ice cliffs display the typical crescent moon shape. White pixels in (a) correspond to NoData in areas of topographic shadows, resulting from the topographic correction routine.

1590



1595 Fig. 10 Examples of the supraglacial vegetation maps for two glaciers in eastern Himalaya: a) Kazhenpu Glacier; b) Labeilong Glacier. Left panels show the Landsat 8 OLI colour composite (bands 5,4,3) draped onto a shaded relief map from the ALOS DEM. Middle panels show fractional vegetation and black arrows point to identified errors (bare land and/or healthy vegetation) in the SDC dataset. Right panels show the pixels containing more than 65 % fractional vegetation.

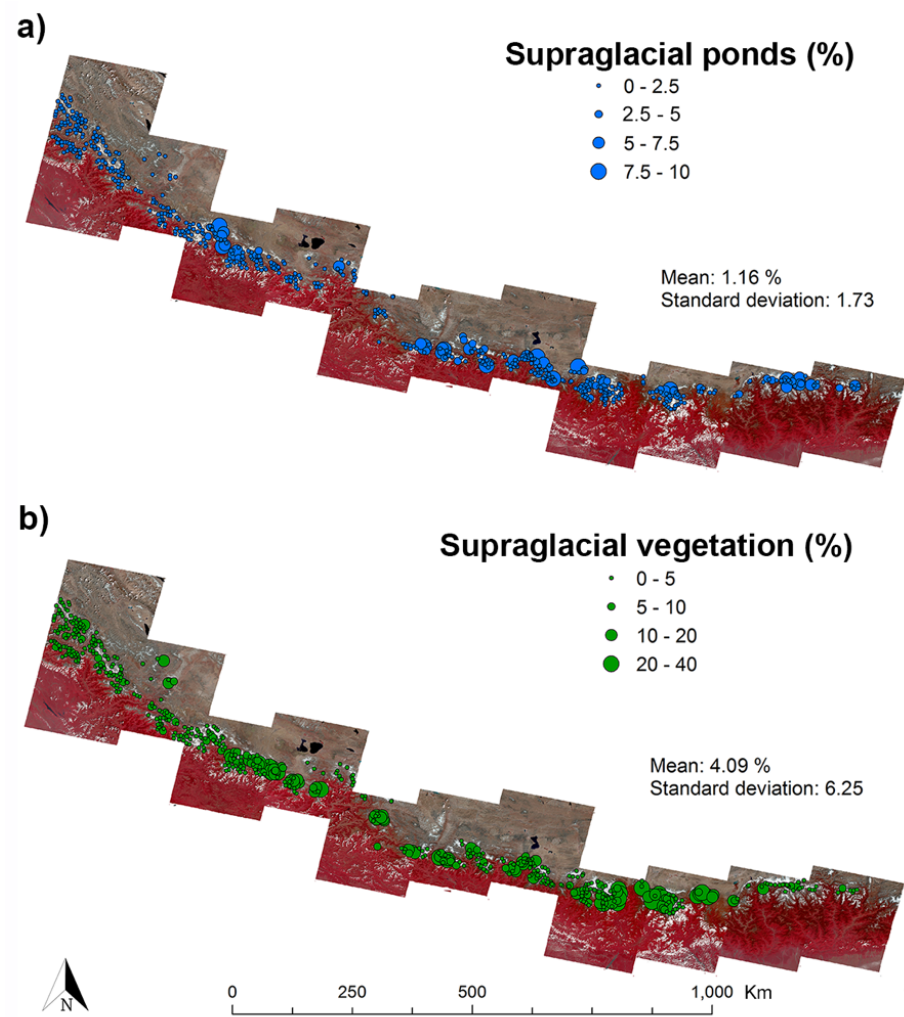


Fig. 11 Distribution of (a) supraglacial pond coverage and (b) supraglacial vegetation, expressed as percent of each debris-covered area on a glacier-by-glacier basis for the 408 sampled glaciers.

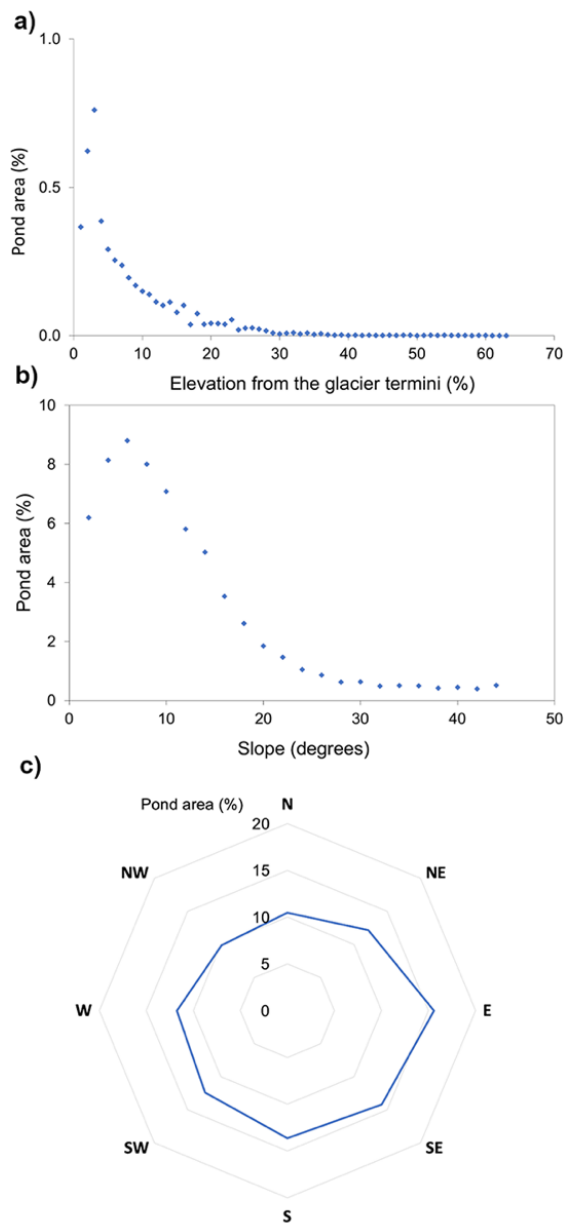


Fig. 12 Plots of supraglacial pond coverage summarized over (a) elevation bands expressed as % above terminus, (b) slope expressed as 2-degree bins and (c) glacier aspect expressed as 45-degree bins.

**Deleted:** gradient

**Deleted:** over the glaciers

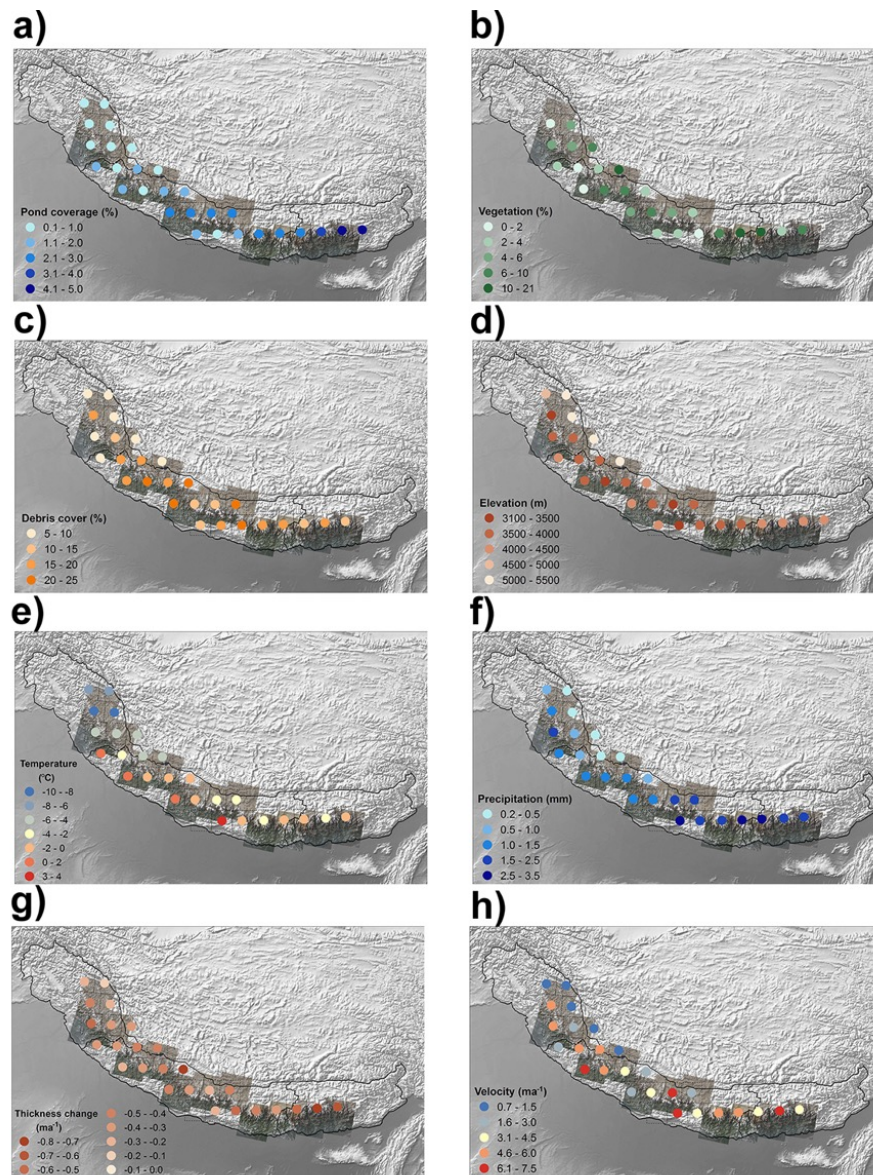


Fig. 13 Plots of :  
 (a) LMM-derived ponds; (b) LMM-derived vegetation; (c) debris cover expressed as % of the glacierized area; (d) minimum elevation of debris cover; (e) ~~Deleted~~ Thickness change trends 2000 – 2018 from Shean et al. (2020) and (f) average velocity trends 2013 – 2015 from Dehecq et al. (2015). g) average temperature from ERA5-Land (Oct 2015); h) total precipitation from ERA5-Land (Oct. 2015); All

**Deleted:** e) average temperature from ERA5-Land (Oct 2015); f) total precipitation from ERA5-Land (Oct. 2015); g

variables were averaged over the glacierized areas and gridded over 1x1 degree grid cells.