

We thank the reviewer for the very positive, detailed and constructive assessment of our manuscript. In the following we provide a point-by-point response (reviewer comments in black, replies in blue, changes to the text in non-serif). At the end of the document you find the track-changes manuscript (new text in blue, modified text in red).

Main Comments:

1. The title

The title should be tightened to be more specific. E.g. “Simulating the internal structure” could be qualified, especially given that the isochrones were derived from simulated velocity and geometry fields, rather than calculated online in the ice sheet model. Suggest something like: “Investigating the internal structure of the Antarctic Ice Sheet: the utility of isochrones for spatio-temporal ice sheet model calibration” OR “On the use of isochrones as a novel diagnostic for ice sheet model performance”

We thank the reviewer for the nice suggestions and agree that the title should be more specific. We adopted suggestion number 1 and the title now reads:

“Investigating the internal structure of the Antarctic Ice Sheet: the utility of isochrones for spatio-temporal ice sheet model calibration”

2. Structure and readability of sections 3-5:

I found the structure and flow of sections 3-5 difficult to follow, and because of this the findings of the study – particularly with respect to clearly identifying the sources of mismatches between observed and simulated isochrone depths – and their significance were weakened. For example, L195-206 introduces the main goal and three main potential sources of model-obs mismatches. While the sections that follow contain discussion of each of these sources, it is not always clear which source is being considered (e.g. with subsection headers), and there is some repetition (particularly sections 3.2 and 4). It’d be good to see a restructuring through sections 3 and 4, with distinct subsections to systematically address each source of mismatch, first with respect to Dome C (section 3), then with respect to the broader EAIS (section 4).

In each section, the aim should be named early in the paragraph so that it’s clear why certain experiments are being assessed, and the significance of the results. E.g. for L253-276, evaluating the model parameterisation, the aim of that paragraph is stated on L262-263, but should be moved to the start. This would help in interpreting the results.

In section 4 on P16 L341-376, the presentation of the results/physical conditions is mixed up with the discussion of the processes that could contribute to obsmodel mismatches and how they contrast regionally. It’d be good to first clearly discuss the Dome C and Dome Fuji results. E.g. “for DML-VIII23, the bedrock elevation is above sea level and relatively flat. For this transect, the obs-model mismatch...” Then in a new paragraph, contrast the obs-model mismatch between each of the transects (DML-VIII23, CEA-10, DML-IV24) to highlight the sources/processes that could contribute to the mismatch. It’ll then be easier to come away with a clear picture of what is causing what on the larger scale.

It’d be helpful for readability of the conclusions section to restructure into 4 paragraphs:

- Summarise how well the paleo model outputs match the main observed features of the internal ice sheet structure and capture broad-scale SMB

patterns.

- Summarise how the method helps to understand the processes underlying/ sources of mismatches between observed and simulated isochrone depths, with specific reference to the four areas identified in comment 1. above: (a) boundary conditions; (b) forcing time series; (c) initial conditions/ parameters; and (d) simulation time.
- Summarise where more efforts are needed: (a) constraints on the spatial variability in paleo accumulation rates; (b) constraints on basal drag in marine sectors.
- Discuss the model intercomparison

We agree with the reviewer that sections 3-5 were difficult to follow and did a complete overhaul. Section 3 is now divided into four subsections titled:

3.1 Dome C - evaluating the paleoclimate forcing (i)

3.2 Dome C - impact of paleo spin-up and model parameterisation on simulated isochrone elevation (ii)

3.3 Dome C - Impact of lower boundary conditions on isochrone simulated isochrone elevation (iii)

3.4 Caveats to modelling isochrones with large scale ice-sheet models

The figures in section 3 were modified according to both reviewers' suggestions and Figure 6 (now Figure 7) complemented with the results of a present-day parameter study illustrating the effect of different parameterizations affecting sliding on isochrone elevation. The present-day ensemble is described in section 2 of the ms.

Figure 8 (still Figure 8) was modified and now consists of a panel illustrating the effect of different geothermal heat flux choices on the simulated isochrone elevation as well as a panel showing the along-transect geothermal heat flux and computed basal melt.

Section 4 is now divided into two parts

4.1 Simulated isochrone elevation along the Talos Dome - Lake Vostok - transect.

4.2 Simulated isochrone elevation along the Dome Fuji - Dronning Maud Land - transect.

We added an additional Figure showing the simulated isochrone elevations for a present-day parameter study akin to Figure 7 in section 3 but for transect CEA-10 (90 ka isochrone)

Conclusions

We followed the reviewer's suggestion to compartmentalize the discussions which is now arranged into four parts covering the different impacts on the simulated isochrone elevations:

-climate forcing

-ice sheet model parameterization

-effect of paleo-spin up

-geothermal heat flux and bedrock elevation

The fifth item shortly introduces the planned model intercomparison.

3. Reporting of basal drag and methodology

One of the main findings is that the basal drag can play a large role in the mismatch between observed and simulated isochrones. I.e., the large mismatch in some regions is due to an overestimation of vertical velocities where there is low basal friction. However, the actual basal drag is not reported in this paper for the simulations. This makes it very difficult to ascertain whether the aims of the study that relate to basal drag have been adequately addressed, and the degree to which the discussion around the accuracy and constraints on the basal drag applies. The basal drag coefficient should be reported for each of the simulations as a separate figure in the main body of the manuscript. It'd also be good to see the drag coefficient as a separate panel on figure 9. I recommend adding supplementary material that describes how the basal drag was calculated for each of the simulations.

It'd also be worth reiterating some of the salient features of the model setup/methodology, particularly those aspects that are relied upon for interpretation of the results. For example, how was the model tuned at Dome C? This is key in understanding point (i): the impact of the paleoclimate climate forcing on the model-obs mismatch (see specific point below).

We agree with the reviewer, that a more detailed description of the model features and settings is necessary. We therefore expanded section 2.2 considerably and hope this will provide the reader with a better perspective on how the model estimates sliding. We decided not to include figures of the spatial distribution of the yield stress in the paper because we do not know the yield stress in reality. Thus, a direct comparison between model and observations is not possible. Moreover, it is not the yield stress at present day which is relevant for the elevation of the observed isochrones but its integrated effect throughout the time since deposition of the isochrone. This means that a present-day comparison does not capture this.

4. Generalisation of results to the large-scale

I'm slightly concerned that the abstract (and then the conclusions) oversells the results by use of some general terms e.g. "Antarctic Ice Sheet", "the interior", and "subglacial basins". The results for the isochrones that are analysed certainly support the interpretations; however, in reality, these isochrones only cover very small parts of the East Antarctic Ice Sheet. How representative are the results for these particular observational isochrones for the large-scale ice sheet?

The reviewer brings up an important aspect of using englacial layers to benchmark paleo-ice-sheet-models: the availability and spatial extent of dated isochrones. In contrast to Greenland, dated isochrones in Antarctica are sparsely distributed and predominantly cover regions around deep ice cores, ice divides and domes. While this is certainly a good start, at the current stage it is not possible to carry out a model-based pan-Antarctic isochrone study as there are not enough picked and dated radar transects available. While we analysed one radar product for West Antarctica (provided by Ashmore et al.) we did not include the results in this paper, as the data is limited to the Holocene and our paleo-ice-sheet model simulations do not resolve the 0-10 ka BP grounding line position in this

sector of the ice sheet sufficiently well to carry out a meaningful comparison between observations and model results. We also looked at a recently published set of dated isochrones from Titan Dome (Beem et al. 2020 TC). For this particular geographic setting, the bedrock topography of the Bedmap2 data at 16 km which we use as an input data set for the ice sheet model is drastically different from the more recent radar observations at high resolutions (see Figures below in an example for the 16.8 ka isochrone and another transect for the 59.4 ka isochrone). We would prefer to keep the WAIS radar transects and the Titan Dome case out of the manuscript as it is very lengthy already. The Titan Dome example is interesting but does not necessarily add new insights as the impact of bedrock uncertainties is already discussed for Dome C. We hope to include the data from Ashmore and Beem in the intended model intercomparison.

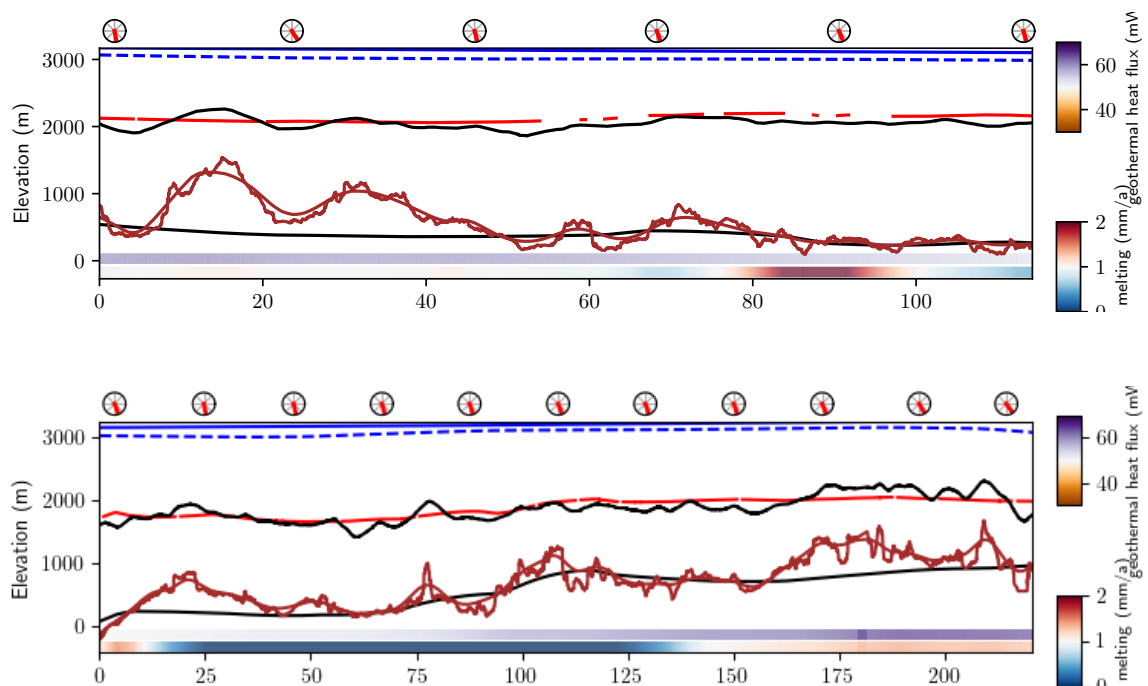


Figure 1: Observed and modelled isochrone along a transect at Titan Dome (observed isochrone and high-res bedrock topography from Beem et al. 2020). The simulated isochrone is depicted in red, the observed isochrone in black.

We changed the wording in the abstract from:

“We show, that paleoclimate forcing schemes commonly used to drive ice-sheet models work well in the interior of the Antarctic Ice Sheet and especially along ice divides, but fail towards the ice-sheet margin.”

To

“We show, that paleoclimate forcing schemes **derived from ice core records and climate models** commonly used to drive ice-sheet models work well in the interior of the **East** Antarctic Ice Sheet and especially along ice divides, but fail towards the ice-sheet margin in the studied cases”

these isochrones only cover very small parts of the East Antarctic Ice Sheet.

We would like to note that the isochrones analysed in this manuscript span a good portion of the East Antarctic Ice Sheet and make use of the available pool of dated isochrones. The region we cover extends from Dronning-Maud-Land to Dome Fuji, from Lake Vostok over Dome C towards Talos Dome. We simulate the isochronal planes for all regions of the Antarctic Ice Sheet with an ice thickness above 2200 m and a velocity smaller than 7 m/a (see Figure 2 and 4). We could have plotted some “artificial transects” along these planes to expand the coverage discussed in the paper, but there are unfortunately no observations to compare these simulations to. We do hope that efforts such as AntArchitecture and our paper will motivate future radar missions into hitherto unexplored regions of Antarctica. We added a sentence in chapter 3, pointing out that:

“We would like to note, that while we simulate isochronal layers throughout East and West Antarctica our model-observation-intercomparison is mostly limited to ice domes and along ice divides in East Antarctica as only these regions are covered by dated radar-based isochrone observations. Future radar explorations in Antarctica will hopefully complement the available data by observations away from ice divides and along drainage sectors as these are the regions which would point to critical misrepresentations in ice sheet model simulations.”

5. Grammar and spelling:

I have noted some grammatical and spelling points below, but not all of them – others should be able to be corrected fairly easily with a standard LaTeX spelling checker or online e.g. grammarly.com. Some of the sentences are also long and a little bit wordy – it would be worth shortening the longer sentences for improved readability.

We are sorry for grammatical and spelling issues and thank the reviewer for pointing them out. We hope we caught all mistakes.

Specific Comments

P1 L6. "We simulate observed isochrone elevations within the AIS via passive Lagrangian tracers" >> "We calculate isochrone elevations from simulated AIS geometries and velocities via passive Lagrangian tracers".

Done.

P2 L31. Check citation style. Also on P6 L152-153, P12 L283, P18 L367.

Done.

P2 L45. What does "in scope of" mean here? "Relevant to"?

Yes, edited accordingly.

Table 1. I couldn't see the analysis of a number of these isochrones (e.g. CEA-7,8,12,13). Were these reported within the figures and text?

Thanks for pointing this out, the caption of the table now reads:

Overview of analysed isochrones. Transects presented in this work are DC - X45a, X57a, Y77a, Y90a, CEA-10, DML VIII-23/IV-24

P6 L134. Sentences starting from “We use” to a new paragraph.

Done

P6 L136-139. The sentence starting with “Based on the analysis” was a bit confusing. I took it to mean the following: (a) that the observed isochrone data used in this study (derived from Winter et al. 2017) are assumed to have a maximum age uncertainty of 1 ka; (b) that the observed isochrone data are all above or at 2000 m depth; (c) that the age uncertainty nonlinearly increases with depth; (d) that the age uncertainty of the observed isochrone data is always lower than the uncertainty in the simulated data. Is this what is meant? This sentence could be reworded for improved clarity.

“We use various internal layers in this study. Details on the radar resolution, dating methods and resulting uncertainty can be found in the respective original publications (Cavitte et al., 2016; Winter et al., 2019; Leysinger Vieli et al., 2011). Based on the analysis performed on five different radar systems by Winter et al. (2017) near EDC, we consider a maximum age uncertainty of around 1 ka for each isochrone above 2000 m depth. (roughly 2/3 of the ice thickness) (Winter et al., 2019). This range covers most of the horizons considered in this study, so we can transfer the uncertainty of 1 ka. Below a depth of 2000 m, the age uncertainty increases non-linearly with depth towards the bed (Winer et al., 2019). At places where the deepest ice is younger than the ice around Dome C, the age gradient with depth will then be less steep towards the bed than the one determined at Dome C. Thus, the age uncertainties of the horizons below 2000 m depth will be lower than at Dome C. We consider this uncertainty always to be smaller than the proposed age derived from the ISM data.”

P6 L138. “2/3 or” >> “2/3 of”

Done

P6 L154. “relatively coarse resolution” >> “relatively coarse resolution model grid”? Does the mesh size evolve over time with grounding line migration or is it static? Some more details on the model experiments would be helpful here.

Yes, we refer to the model grid here. We edited the text and clarify that we use a static model grid:

“We employ a combination of the shallow ice (SIA) and shallow shelf (SSA) approximation (SSA+SIA Hybrid Winkelmann et al., 2011a) with a sub-grid grounding line parameterisation (Gladstone et al., 2010; Feldmann et al., 2014) to allow for reversible grounding line migration despite using a relatively coarse resolution **static model grid of 16 km** (Feldmann et al., 2014)”

P8 L175. How is “accurate enough” determined? How do we know that the misfits between the radar isochrones and the simulated isochrones using this method and the ISM are not sensitive to the temporal and spatial resolution of the ISM output and the Lagrangian particle tracking algorithm? It would be good to see a sensitivity analysis or uncertainty quantification here.

We thank the reviewer for this suggestion. The manuscript now contains a figure showing the effect of different temporal resolutions of the ISM output and different total tracer numbers on the isochrone elevation (new figure 3 on page 10 and corresponding text on page 9).

“Velocity snapshots between 1 ka and 10 ka largely produce the same isochrone elevation (see Figure 3).”

“Figure 3 illustrates the changes in the computed isochrone elevation due to different numbers of tracers. In regions where homogenous flow dominates, the number of tracers does not affect the simulated isochrone elevation much. However, if spatial gradients in ice-flow and topography increase, simulated isochrone elevations diverge with low tracer densities.”

As we do not have paleo simulations on other resolutions than 16 km, we could not test the impact of the ISM output resolution which can be significant in faster flowing regions due to the overall dependency of ice sheet model simulations on resolution. However, this effect is probably relatively small in regions such as Dome C.

P8 L184 “We also tested other seeding strategies...” What was the outcome of these tests (i.e. was there any sensitivity to seeding mask)? A section quantifying the uncertainty in the tracer method would be appropriate in a supplementary material document

We would like to forego an additional supplementary material covering tracer seeding considerations as this would be rather technical and does not add any insights with regard to the main findings of the manuscript. We added a paragraph shortly motivating our choice of seeding mask.

“The choice of seeding mask is solely motivated by the tracer coverage. As long as the transects of interest are covered by the seeding mask, the latter only affects the density of tracers (a larger seeding masks leads to sparser tracer coverage if the number of tracers is not adjusted accordingly). We found that a seeding mask defined by the ice thickness and surface flow considerations mentioned above provides the best coverage given the radar transects discussed in this study.”

P8 L201. “the model ensemble was tuned”. What does this mean? Please provide specific details of what fields were tuned and to what data.

The methods section was expanded by a more detailed description of the model setup (including a discussion of the relevant tuning parameters) also including a sentence regarding the considerations behind the model tuning (see also response to comment on P9L214):

“[...] Both the paleo simulations and the present day equilibrium simulations were tuned to match the observed present day surface elevation (with a focus on the deep ice core sites), ice volume and grounding line position.”

[...] “Here, we will primarily focus on Dome C as ice sheet model parameters relevant for ice flow and basal friction were tuned to match the regional ice-sheet configuration.”

„Table 2 provides an overview of the friction and sliding parameters chosen for the 2 Ma, 220 ka and present-day model ensemble. In PISM the till friction angle ϕ controls the yield stress at the ice-bedrock interface which can be set to be a function of the bedrock elevation (increasing with elevation). The yield stress is determined by

(see ms for correctly set eqn.)

where ϕ is the bedrock elevation dependent till friction angle and N_{till} the effective pressure. As in Sutter et al. (2019) we choose a pseudo-plastic power law with the parameter q controlling the amount of sliding via the relationship

(see ms for correctly set eqn.)

where τ_b is the shear stress, u ice velocity and $u_{\text{threshold}}$ the threshold velocity at which τ_b has the exact magnitude as τ_c (condition for sliding). The so called SIA enhancement factor in the 220 ka and present-day ensemble is 1.0 as in Sutter et al. (2019)."

"For further details regarding the ISM setup see section 2.1 in Sutter et al. (2019). Geothermal heat flux is taken from Shapiro and Ritzwoller (2004) as well as from Purucker (2013); An et al. (2015) and Martos et al. (2017). Topography data are from Bedmap2 (Fretwell et al., 2013) except in the present-day simulation where we use the new BedMachine Antarctica dataset from Morlighem et al. (2020). We model isochrone elevations (see 2.3) on the basis of full paleo-ice-sheet model runs (pal, model integration from 2 Ma (Sutter et al., 2019) and 220 ka BP in this study), the present-day snapshot of the latter (pd-pal) and a present-day equilibrium ensemble (pd, with an integration time of 2000 years following a thermal spinup in a fixed ice sheet geometry for 200 ka). The 2 Ma simulations in (Sutter et al., 2019) are initialised at 2 Ma BP from a present-day ice sheet geometry. The 220 ka simulations where initialised from the 220 ka BP output of the 2 Ma simulation with isochrones evolving until present day according to the computed transient ice flow starting at their respective age (see Table 1) in the past. In the present-day snapshot (pd-pal) and present-day equilibrium ensemble (pd) isochrones evolve on the basis of the simulated present-day flow."

P8 L201-202. "To assess the impact of model" >> "To assess the impact of (ii) model"

Done.

Figure 3. For this figure and for figures 4, 6, 8, and 9, please make the figure bigger (e.g. textwidth) and increase the font size. The blue lines in panel C are difficult to see - perhaps use black instead - and it'd be great to label the transects in panels B and C (see also comment on figure 4).

The colouring of the lines in C correspond to the observed normalised elevation above bedrock along the transect. We modified the figure caption to make this clearer. There are no transects in panel B as there is no 38 ka isochrone for this region. Transects in C are now labelled.

In the caption, I wasn't sure what this sentence meant: "Due to the small mismatch... are discernible." Does this mean that the background colour is relatively uniform? Consider modifying the colour bar to zoom to the relevant colour range represented in the figure. Also, "strong" >> "large" in the second last sentence of the caption.

We agree that this description is vague. We reformulate this part of the caption which now reads:

“The mismatch between the simulated isochronal layer and the observed isochrone elevation along the transects is generally small in the Dome C region with the exception of the upper right section in panel C) where the simulated isochrone is off by up to 40% of the local ice thickness.”

P9 L214. "To evaluate the validity of the forcing approach in Sutter et al. (2019).".
Earlier, it is mentioned that the model ensemble is tuned to match the regional configuration near Dome C. For what paleoclimate forcing was this tuning carried out? Please comment on whether/how this tuning might impact the capacity to assess the validity of the forcing approach.

For the 220k runs, the same paleo-forcing as in Sutter et al. (2019) was used but with different precipitation-temperature scaling. We modified the text accordingly:

“It is important to note, that the model parameters chosen in Sutter et al. (2019) where tuned using a climate forcing with a temperature-precipitation relationship of 3%. The paleo-simulations created for this paper employ identical model parameters and the same forcing but with temperature-precipitation relationships of 5, 6 and 8 %K⁻¹), see section 2.2.”

Figure 4. The transect lines and labels are difficult to see on panel A - please make the lines thicker and more contrasting with the background. It's difficult to determine which line is which on panel B (the brown/purple/red colours are similar - perhaps choose more contrasting colours for the bed elevation). Please also make the lines thicker and include a legend on panel B?

Done.

P10 L219. "DC-57a" is not marked in bold in figure 4A (that's DC-X45a). Which transect is referred to here? Suggest labelling all transects more clearly on the figures.

Corrected.

P10 L221. Why use 3, 5, 6, and 8

This is motivated by estimates of the Dome C paleo temperature-precipitation relationship (Frieler et al. 2015) as mentioned in the text. The sentence now reads:

“Isochrones are computed from the output of experiment B1- P1 in Sutter et al. (2019) using a scaling constant between temperature and accumulation anomalies (i.e. percent change of accumulation for every degree of surface air temperature change) of %3K⁻¹, as well as new simulations with scaling constants of 5, 6 and 8 %K⁻¹, inspired by the approximate range indicated by paleo proxies of 5.9±2.2%K⁻¹ (Frieler et al., 2015).”

P10 L225. "completely reproduces". What does this mean? The red line in panel B is sometimes outside of the 5-6

We agree that this is misleading. We reworded the sentence to:

“According to our simulations a precipitation scaling between 5 and 6 %K⁻¹ reproduces the 96 ka isochrone best, **which is in accordance with an ice core based relationship of 5.9±2.2%K⁻¹** for EDC (Frieler et al., 2015). “

P10 L227. "at least for the interior of the East Antarctic Ice Sheet". The results show that is valid for Dome C (and given that the model is tuned for this region). It's not clear that this conclusion can be extended to the interior of the EAIS in general. Surely this depends on the degree to which the climate forcing is appropriate in other regions? (which is indeed addressed in section 4).

We agree! This conclusion cannot be simply extrapolated to the whole interior EAIS. We moderated the sentence accordingly:

“This gives us confidence that the paleo mass balance forcing approach in Sutter et al. (2019) is valid at least for the **region around Dome C and likely for the larger parts of the interior East Antarctic Ice Sheet (see section 4)** “

P10 L230-231. This result might be related to the fact that the method employed in Martos et al. (2017) is not physically realistic. For a description and an updated GHF product for all of Antarctica, see: Stål, T, et al. "Antarctic geothermal heat flow model: Aq1." Geochemistry, Geophysics, Geosystems: e2020GC009428, <https://doi.org/10.1029/2020GC009428>.

Thanks for pointing us to this study. We would have loved to compare the four geothermal heat flux compilations used in our simulations with the one from Stål, however the Pangaea link they provide in their paper is dead (DOI not found) and after a manual search in Pangaea for the data it turned out that the data is not yet available (dataset in review, accessed 09.03.2021 <https://doi.pangaea.de/10.1594/PANGAEA.924857>). We will use this new data set in future studies.

P11 L242-252. I found this paragraph difficult to follow. First, the discussion of the 0.5 cm/a difference between observations (Stenni et al., 2016) and the models simulations + RACMO could be clearer. Is there a reason the simulations match RACMO but not obs? Second, for clarity please reference panel B in the text (e.g. "When we compare (figure 5B) our simplified: : :)") and describe the bias correction that is used. Consider restructuring the paragraph for clarity, and add labels for the different curves in figure 5A.

We agree that this paragraph is not very clear. We hope the revised paragraph is easier to follow. The climate forcing used in the simulations is created from climate time slice anomalies from the Last Interglacial, Last Glacial Maximum and Pre-Industrial. In between the time slices, we interpolated the climate linearly based on the variations in the Dome C deuterium record. The resulting transient anomalies were added to RACMO which is used as the present-day reference forcing. This is the reason why the simulations match RACMO but not obs. For present day.

P11 L251. "along ice divides" >> "along the ice divide near EPICA Dome C"

Done.

Figure 5. What are the semi transparent solid lines in panel A? Bias corrected values

from the simulation? Please describe, along with the dashed lines, in the figure 5 caption.

Correct, these are the bias corrected values from the simulations. We decided to remove them as they distract from the actual forcing used in the simulations.

P12 L253. "where" » "were"

Thanks, done throughout the ms.

P12 L256. Here 5

P12 L262-276. Should "pal", "pd-pal", and "pd-pd" be in italics here and through this paragraph?

We changed the font from italics to regular throughout the paragraph.

P12 L267-276. This is a really neat and interesting result. It's also interesting because presumably unknown parameters (e.g. the basal friction coefficient) are also somewhat uncertain in the initialisation of

We are happy, that the reviewer likes the result.

P12 L278-279. "are small" >> "are generally small". E.g. the difference between obs and sim isochrones for 38 ka along DC-Y77 between _15-25 km is much larger than for any other isochrone in this portion of the transect.

Done

P12 L286. "antarctic" >> "Antarctic". Here and elsewhere.

Done

P13 L293. "60 and 90 ka" >> "90 and 60 ka". How much uncertainty does the shorter spin-up time for 90 and 60 ka introduce?

This is a very good question and I'm afraid we cannot say for sure. In fact, we think the impact might be small as the 220 ka simulations were initialised from the 2Ma simulations in Sutter et al. 2019, the only difference being the temperature-precip scaling. To address this, we would have to rerun the experiments for the 130 ka isochrone with an experiment initialised 30 ka earlier. Due to time restrictions and limited computational resources, we would rather not do this at this stage. But it is certainly something to keep in mind for future experiments. We decided to remove the sentence:

"Finally, the simulations analysed in the previous sections were initialised at 220 ka BP. Therefore the model spinup for the calculations of the 130 and 160 ka isochrone elevations was only 60 and 90 ka, respectively. This could be another aspect influencing the particularly poor match between modelled and observed isochrone elevations for these ages."

As the word "spinup" might be misleading here and we cannot quantify the uncertainty introduced.

P13 L297-298. A bit of a jumbled sentence. Suggest: "Areas with sparse radar observations may have bed elevation estimates that differ from high-res radar data by several hundred metres."

Thanks, and Done.

Figure 7. Final line: "The coloured bars on the bottom of" >> "The coloured bars at the bottom"

Done.

P14 L310. "focus of an upcoming paleo-ice-sheet model intercomparison". Great idea.

Thanks ☺

Figure 8. In the second last line of the caption, "normalised with" >> "normalised by"

Done.

P15 L322. "The northern half of the transect bottom part in Figure 9". It's not hugely clear which segment of the transect this refers to - perhaps add demarcation on panels A and B of figure 9.

We agree, done and rephrased.

"The northern half of the transect close to Talos Dome (bottom left in Figure 10) is dominated by the imprint of the Wilkes Subglacial Basin with a large misfit between the modelled and observed isochrone ($\approx 26\%$ RMSE along km 0-500 in Figure 10, compared to $\approx 8.3\%$ and $\approx 4.8\%$ along km 500-1000 and 1000-15000, respectively)."

P16 L334. "The basal friction in the model is a function of bedrock elevation". Please provide the equation and description of the basal friction calculation, perhaps in supplementary material.

We now provide the formulation of the yield stress and its relation to the relevant parameters for sliding in section 2.2

P16 L347. "isorchrone" >> "isochrone"

Thanks for spotting this, corrected.

P16 L349. "We limit ourselves to..." New paragraph.

Done.

P16 L356-358. Move "which encompasses...Wilkes Subglacial Basin" to earlier where CEA-10 results are first introduced. Reword remaining part of sentence: "The comparison between DML-VIII23 and CEA-10 potentially highlights a methodological deficiency (leading to unrealistic internal flow and basal sliding) as the isochrone mismatch in CEA-10 cannot be remedied by a surface mass balance correction."

Done.

P16 L365. "Dome C". Should this be Dome F or Dome C here and also on page 18?
I'm not sure I understand this argument if it's Dome C.

We agree that the reference to Dome C is confusing here. What we meant to say, is that the temperature-precipitation relationship at EDML might strongly differ from the continental mean (ca. 5%/K). We rephrased both sentences:

“One potential reason could be a relationship between temperature and precipitation anomalies in the EDML region which strongly differs from the continental scale temperature precipitation scaling of $ca. 5 \pm 1\% K^{-1}$. This would affect the surface mass balance forcing and therefore the elevation of the isochrone. However, the proxy-based paleo-precipitation-temperature relationship at EDML is very similar to the continental mean albeit with considerable uncertainties of $\pm 2.8\%$ for EDML (Frieler et al., 2015).“

Figure 9. Consider a vertical line on panel B indicating the Dome C location so that we can compare GHF here to the northern portion of the transect. Consider also demarcating (e.g. with a coloured vertical line) the "northern portion/bottom half" of transect in panel B, and perhaps with two "x" the same region on panel A. For panel C, here and in figure 8, I suggest using a different colour map for the basal melt rate - the blue-white-red transition is usually used for differences (where white is 0). In the second line of the caption: "beige" looks more like dark red to me.

Done.

P18 L379-380. It would be better to reword as follows: "We are able to reconstruct most large-scale englacial layer features of the observed isochrones..."

Done.

P18 L394. "A model intercomparison". New paragraph

Done.

Figure 10. Should "DMLVIII 22" on panel A be "DMLVIII 23"? It's hard to see the dashed lines on panel B – please make the lines thicker.

There's transect DMLVIII-22 and DMLVIII-23, both are marked correctly. We made the Bedmachine lines in panel B thicker.

P20 L405. "This would facilitate" >> "This would facilitate the evaluation of"

Done.

Investigating the internal structure of the Antarctic Ice Sheet: the utility of isochrones for spatio-temporal ice sheet model calibration

Johannes Sutter¹, Hubertus Fischer¹, and Olaf Eisen^{2,3}

¹Climate and Environmental Physics, Physics Institute, and Oeschger Centre for Climate Change Research, University of Bern, Bern, Switzerland

²Alfred Wegener Institute Helmholtz-Centre for Polar and Marine Research, Bremerhaven, Germany

³Department of Geosciences, University of Bremen, Bremen, Germany.

Correspondence: Johannes Sutter (johannes.sutter@climate.unibe.ch)

Abstract. Ice Sheet models are a powerful tool to project the evolution of the Greenland and Antarctic Ice Sheets, and thus their future contribution to global sea-level changes. Testing the fitnessability of ice-sheet models to reproduce ongoing and past changes of the present-day ice cover in Greenland and Antarctic ice-cover is a fundamental part of every modelling effort. However, benchmarking ice-sheet model dataresults against real-world observations is a non-trivial process, as observational data comes with spatio-temporal gaps in coverage. Here, we present a new approach to assess the abilityaccuracy of ice-sheet models which makes use of the internal layering of the Antarctic Ice Sheet. We simulate observed isochrone elevations within the Antarctic Ice Sheet via passive Lagrangian tracers. We calculate isochrone elevations from simulated AIS geometries and velocities via passive Lagrangian tracers, highlighting that a good fit of the model to two dimensional datasets such as surface velocity, ice-sheet thickness and extent, does not guarantee a good match against the three dimensional architecture of the ice sheet and thus correct evolution over time. We show, that paleoclimate forcing schemes derived from ice core records and climate models commonly used to drive ice-sheet models work well to constrain the 3D structure of ice flow and age in the interior of the East Antarctic Ice Sheet and especially along ice divides, but fail towards the ice-sheet margin. The comparison to isochronal horizons attempted here reveals that simple heuristics of basal drag can lead to an overestimation of the vertical interior ice-sheet flow especially over subglacial basins. Our model-observation intercomparison approach opens a new avenue for the improvement and tuning of current ice-sheet models via a more rigid constraint on model parameterisations and climate forcing which will benefit model-based estimates of future and past ice-sheet changes.

1 Introduction

A core motivation of the ice-sheet modelling community is to provide meaningful projections of future sea-level rise. Towards this goal, great strides have been made in improving ice-sheet models (ISMs) to capture current and past modes of ice-sheet dynamics (Pattyn, 2018). However, at this point projections of the future behaviour of the Greenland and Antarctic Ice Sheet under global warming are divergent depending on model physics, initialisation and the choice of climate forcing (Seroussi et al., 2019, 2020; Goelzer et al., 2020). This has important ramifications for model-based estimates of future sea-level change especially in the case of the Antarctic Ice Sheet due to its potentially highly nonlinear response to climate warming (Garbe

et al., 2020). Despite major improvements, ISM simulations today are constrained by incomplete boundary conditions such as
25 uncertainties in the bedrock relief and geothermal heat flux, fragmental information on past and present climate conditions (es-
pecially with regard to ocean circulation underneath ice shelves) and model heuristics such as parameterisations of grounding
line dynamics, ice flow and ice-shelf calving processes. To overcome these limitations, ISMs are usually tuned to observations
of the past and present state of an ice sheet. Well established two dimensional data benchmarks used in ice-sheet modelling
are e.g. the BEDMAP2 (Fretwell et al., 2013), BedMachine (Morlighem et al., 2017, 2020) and MEaSUREs (Joughin et al.,
30 2015, updated 2018; Mouginot et al., 2017, updated 2017) data sets for Antarctica and Greenland, which provide a continental
coverage of **bed topography, present-day** ice-sheet geometry and surface flow. Such benchmarks are necessary to ~~not only get~~
~~the~~**accurately reproduce the** currently observed geometry and velocity ~~right~~. ~~but~~ Ideally, ISMs are not only tuned to the present
state of an ice sheet but also to paleo-horizons to ensure their capability to capture an ice-sheet's evolution under climate con-
ditions differing from the Common Era (e.g. DeConto and Pollard, 2016; Sutter et al., 2019; Seroussi et al., 2019; Edwards
35 et al., 2019). Typical target climate epochs are the Last Glacial Maximum (LGM) with relatively well constrained grounding
line margins in Antarctica (Bentley et al., 2014) and paleo ice sheet elevation proxies which can be utilised as a tuning target
(e.g. Albrecht et al., 2020). Furthermore, sea-level reconstructions from the Last Interglacial (LIG) can give an indication of
ice loss in Antarctica and Greenland (Dutton et al., 2015). **However, lack of spatial data sets for past climate states as well**
as~~and~~ **uncertainties and sparse coverage of paleo-proxy based ice-sheet and sea-level reconstructions complicate the validation**
40 **of paleo ice sheet simulations.**

Using the above-mentioned tuning targets allowsto for simulation of ~~simulate~~ an ice sheet in line with the present-day
observed surface properties and proxy data from the past millennia. However, the notion that a good fit to spatial datasets of
the Common Era and proxy targets in the past guarantees the model's ability to respond accurately to future climate changes
is debatable. Due to the complexity of ice-sheet-climate interactions it is still challenging to create a proper initial ice-sheet
45 configuration from which its future evolution can be adequately simulated (Seroussi et al., 2019, 2020). For example, tuning
the ice sheet to the observed present state (e.g. via inversion for basal drag) by matching the current ice-sheet topography and
surface flow does not guarantee the accurate reproduction of e.g. internal flow, ice temperature distribution and basal friction.
It also could lead to overfitting of parameters relevant to ice flow **within the** scope of uncertain boundary conditions such as
geothermal heat flux, sub-shelf ocean temperatures, and surface mass balance. Without inversion the modelled present-day
50 topography can differ from the observed state by several hundred meters of ice thickness on which basis it is difficult to
interpret model-based sea-level projections. Fundamentally, every ISM application is an ill-posed problem with non-unique
solutions. Therefore, overfitting to a set of observables could lead to an initial ice-sheet configuration dominating the projected
response to the applied climate forcing (Seroussi et al., 2019), especially over decadal to centennial timescales. Discrepancies
in the initial state with respect to the actual real world ice sheet can propagate and multiply during the model simulation due
55 to the intrinsic nonlinearities of the system. Even a near-perfect match to present-day 2D or 1D observable state variables can
conceal overfitting of the model due to weakly constrained boundary conditions, e.g. uncertainties in the climate forcing or
geothermal heat flux (Burton-Johnson et al., 2020; Talalay et al., 2020). **To counter the effects of overfitting, promising attempts**
to improve the initialisation of ice sheet models have been made which involve transient inversions of multiple surface elevation

observations over time (Goldberg et al., 2015) albeit only on the regional scale and limited to the extent of the satellite record.

60 To reduce the effect of these limitations, we propose an additional data benchmark for ISMs which provides spatio-temporal constraints incorporating the paleo-evolution of an ice sheet and complements the hitherto used 2D and 1D tuning targets.

Paleo-surfaces within ice sheets are created by simultaneous deposition of impurities at the ice-sheet's surface. These are widely observable by radio-echo sounding. The internal horizons (isochrones) of ice sheets provide a spatio-temporal calibration target for ISMs, as they are formed by the three dimensional ice flow patterns affected by [bedrock undulations](#), [geothermal](#)
65 [heat flux and the paleo-climate](#) and therefore integrate all aspects of an ice-sheet's evolution in one observable. Isochrones are mapped by radar observations as individual radar reflections within the ice and are subsequently dated for example by using tie points to ice core chronologies (crossover points) or distinct reflectors such as dated volcanic eruptions. An ice-sheet wide coverage of such traced and dated englacial layers, as envisioned by the SCAR action group AntArchitecture (Bingham, 2020) would be an invaluable tuning benchmark, which both constrains the climate forcing as well as the simulated ice flow more
70 tightly than ~~the usually hitherto~~ employed 2D or 1D data targets. So far, isochrones have been used in or with ice-flow models (1D, 2D or 3D) to reconstruct paleo accumulation patterns and their changes, e.g. in Waddington et al. (2007); Leysinger Vieli et al. (2011); Cavitte et al. (2018), or to constrain high resolution alpine glacier models (Konrad et al., 2013; Jouvet et al., 2020). Specialised models have been developed to compute isochrone geometry (Hindmarsh et al., 2009) or tailor-made to accurately simulate the internal layering of ice sheets (Born, 2017). Lagrangian and semi-lagrangian tracer advection has been employed
75 to shed light on the isotopic composition and stratigraphies of the Greenland and Antarctic Ice Sheets (Clarke et al., 2003, 2005; Lhomme et al., 2005a, b; Huybrechts et al., 2007; Goelles et al., 2014; Born, 2017), to identify potential locations of old ice in Antarctica (Passalacqua et al., 2018) and recently to assess past ice sheet instabilities (Sutter et al., 2020). Despite these achievements, englacial isochrones have not been getting the required attention in the context of tuning targets for continental ISMs (Born, 2017).

80 In this work, we discuss the ability and limitations of a 3D continental ISM to capture englacial layers and therefore to exploit existing isochrone elevation datasets to constrain ISM results. We compare model results to dated isochrones spanning a large part of the East Antarctic Ice Sheet and discuss how such a comparison can be utilised to improve ISM simulations. Thus, this work does not aim at reconstructing the internal architecture of the Antarctic Ice Sheet as detailed as possible (as e.g. done in Parrenin et al., 2017), but rather to exploit isochrones as a constraint on model behaviour to improve the modelling
85 of paleo-ice-sheet evolution. In section 2 we [introduce the post-processing routine \(Lagrangian tracer advection\) and the input data, and give an overview of the observed traced and dated internal layers from East Antarctic radar transects discussed in this study and shortly summarise the ice sheet model setting](#). In section 3 we focus on the ice-core deep drilling site Dome C and provide a detailed analysis of the simulated internal layering in comparison to a set of observed layers from four individual radar transects, discussing paleo-accumulation patterns the impact of ice dynamics [as well as of uncertainties in bedrock elevation](#)
90 [and geothermal heat flux](#). Finally, we expand this view to the whole East Antarctic Ice Sheet in section 4 , [where we highlight regions, where model-isochrone comparison shows systematic deficits in the modelled ice flow and suggest processes and parameterisations in the model that may be responsible for these deficits](#).

2 Approach to modelling Antarctic isochrones

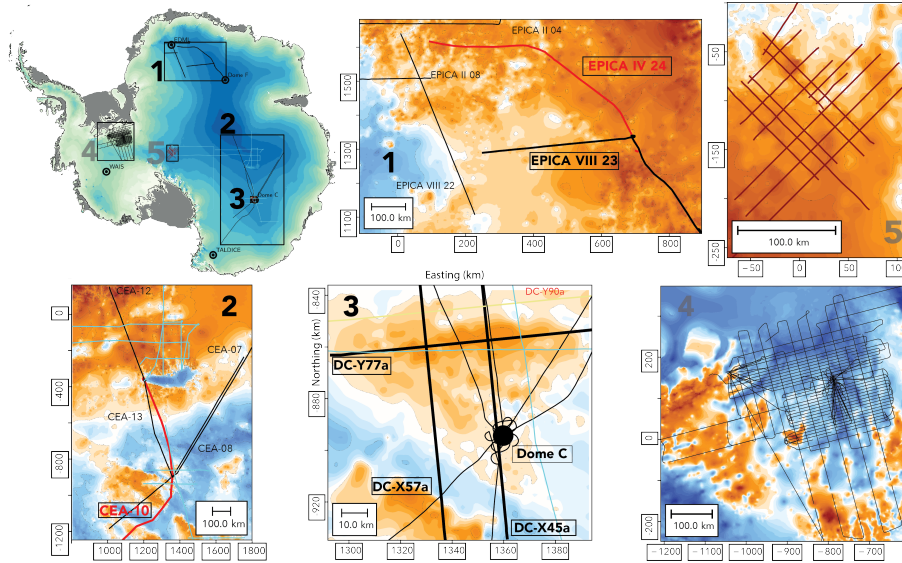


Figure 1. Antarctic topography from BedMachine Antarctica (Morlighem et al., 2020) overlain by radar transects with individual dated isochrones analysed in this study. The enlarged sections highlight regional clusters and their respective topographic settings. Clusters 1-3 are discussed in this study. The isochrone data are from: cluster 1) Winter et al. (2019), cluster 2) and 3) Leysinger Vieli et al. (2011); Cavitte et al. (2016, 2020); Winter et al. (2019), cluster 4) Beem et al. (2020), cluster 5) Ashmore et al. (2020).

We use ice-sheet model results from Sutter et al. (2019) as well as a new set of paleo-simulations and a present-day equilibrium ensemble obtained from simulations with the ISM PISM (the PISM authors, 2015; Bueler and Brown, 2009; Winkelmann et al., 2011b) to compute Antarctic isochrone elevations., where We tune the ice-sheet model to match against observational data from present day (PD), the Last Glacial Maximum (LGM) and the Last Interglacial (LIG). Tuning targets include the surface elevation at East Antarctic ice core locales as well as the grounding line extent at the LGM (Bentley et al., 2014), LIG sea-level reconstructions (Dutton et al., 2015) and PD sea-level equivalent ice volume and grounding line position (Fretwell et al., 2013). We choose selections of traced and dated englacial layers which have crossovers with the EPICA Dome C (EDC), EPICA Dronning Maud Land (EDML), Dome Fuji and Vostok ice-cores. Unfortunately, the number of published and available traced and dated Antarctic isochrones is limited at the current stage, a situation which initiatives like AntArchitecture aspire to improve in the coming years. For this intercomparison we make use of three compilations of dated isochrones (Leysinger Vieli et al., 2011; Cavitte et al., 2016, 2020; Winter et al., 2019) which provide about 10,000 km of analysed radar transects with dated isochrones covering the past 38 ka to 170 ka BP (see Table 1). We focus on this time period as dated isochrones from this range are available for all regions considered here. Both younger and older dated isochrones are available for example for Dome C, Titan Dome (Beem et al., 2020) and for West Antarctica (Ashmore et al., 2020) (see Table 1). With this wealth of information we are able to not only analyse the performance of our model simulations close to ice core locations but also along

Table 1. Overview of analysed isochrones. Transects presented in this work are DC - X45a, X57a, Y77a, Y90a, CEA-10, DML VIII-23/IV-24.

Name	Region	Line length (km)	Age (ka)
^C DC - X45a,X57a,Y77a,Y90a	Dome C	100	38,48,73,96,130,160
^W CEA-7,8,10,12,13	Wilkes Basin - Dome C - Vostok - Dome A	400 - 1800	38,90,161
^W DML- II-04,II-08,IV-24,VIII-22,VIII-23	Dome Fuji - EDML	200 - 800	38,74
^{LV} DC - 1,2,3	Dome C	50 - 600	36.5,73,130,170
^{LV} V - 1,2,2W,3	Vostok - Dome A - South Pole	50 - 2000	36.5,73,130,170
^B	Titan Dome	≈ 100 km	4.7, 10.7,16.8,29,37.6,51.4,72.5
^A	Weddell Sea sector West Antarctica	≈ 100 – 600 km	3.1,5,6,6.4

Isochrones are from Cavitte et al. (2016, 2020) (^CDC-X45a,X57a,Y77a,Y90a), Winter et al. (2019) (^WCEA-7,8,10,12,13,DML- II-04,II-08,IV-24,VIII-22,VIII-23), Leysinger Vieli et al. (2011) (^{LV}DC - 1,2,3, ^{LV}V - 1,2,2W,3), Beem et al. (2020) and Ashmore et al. (2020). The superscripts (^{C,W,LV,B,A}) denote the respective publication. The line lengths (x-y) specified in the table vary depending on the transect except for the data from Cavitte et al. (2016, 2020) where all transects are 100 km in length. The specified ages are those used in this manuscript but do not represent the complete set of internal layers available in the respective references. The transects shown in the lower half of the table are not discussed in this work.

and across ice divides spanning the whole distance from Dronning Maud Land to the George V Coast (see Figure 1). The area
connected by the radar transects covers a wide range in the spectrum of bedrock relief, geothermal heat flux as well as climate
regimes and ice-sheet elevations. This allows us to analyse the impact of uncertainties in the paleo mass balance, basal melt, ice
dynamics and bedrock on modelled isochrone elevations. Table 1 gives an overview of the radar transects used analysed in this
work. The Dome C region is included in Leysinger Vieli et al. (2011); Winter et al. (2019); Cavitte et al. (2020) and provides
an excellent region to test the validity of the climate forcing scheme employed by Sutter et al. (2019). The EDC ice core itself
provides tight constraints on the age of the isochrones via the AICC2012 chronology (Veres et al., 2013; Bazin et al., 2013) as
well as the accumulation history during the last glacial-interglacial cycle (Cavitte et al., 2018). It is important to note that, as the
ISM’s climate forcing was modulated via the EDC deuterium record, we expect the best fit of our computed isochrones to be
in the region encompassing this ice core. The areas around EDC, Dome Fuji and EDML are all well sampled by reliable radar
observations, therefore providing very accurate estimates of bedrock elevation (Karlsson et al., 2018). This makes it possible to
investigate the impact of bedrock uncertainties on the mismatch between observed and computed isochrone elevations. Finally,
the transects in the vicinity to faster flowing marine drainage regions (e.g. Wilkes Subglacial Basin) allow for an assessment of
model parameterisations of ice flow on the computed isochrone elevation.

2.1 Observation of isochrones

Radar surveys of ice sheets observe numerous internal layers, i.e., changes in the dielectric properties of the ice, which lead to
a partial reflection of the downward propagating radar wave back to the surface. Most of these layers are caused by changes in
the conductivity content of the ice by deposition of acids from volcanic eruptions at the surface of the ice sheet. After volcanic
eruptions these depositions usually occur over a few years and are rather homogeneous over spatial scales of 10s to 100s of
km. The absence of melting on the Antarctic plateau leads to continuous burial and, thus, submergence of these conductivity

layers, which are typically spread over less than one meter (Eisen et al., 2006). Lateral variations in accumulation rates cause differences in submergence velocities and, thus, to deformation of these initially surface-parallel layers. With increasing depth, the influence of ice dynamics on the (vertical) submergence velocity increases and deforms the layers further.

Radar systems used to map internal layers and the thickness of ice sheets operate in the range of 10s to 100s of MHz, corresponding to a wavelengths on the order of meters. The width of the observed reflections, caused by the interaction of the electromagnetic radar waves with the conductivity peaks, is determined by the bandwidth or pulse length of the radar systems. They are typically in the range of 0.5 to several tens of meters (Winter et al., 2017).

Occurrences of basal melt, e.g. due to high local geothermal heat flux, can cause deformation of the internal layers closer to the bed. With increasing depth the internal layers often follow the bed topography in an often smoothed fashion. Thus, the lateral variation of the depth of these internal reflection horizons is usually sufficiently small to be continuously detected with the spatial sampling distance of airborne radar systems. They operate with a horizontal sampling distance in the range of meters to tens of meters (Winter et al., 2017) and can be traced over hundreds to thousands of kilometres. As each of these layers originates from the same physical change in conductivity, which the ice inherited during deposition as snow at the surface, they are considered isochrones and have the same age along the reflection horizon.

Dating can most reliably be achieved by tying internal layers to ice core sites, where age–depth estimates are available from ice-core proxy analysis. For the comparison of observed and modelled isochrone elevations, the uncertainty of the observed isochrones is an important parameter. Apart from the radar-inherent uncertainties coming along with identifying and continuously tracing the same radar signal for an horizon and the conversion of two-way travel time to depth, the uncertainty in the ice-core ages and the actual matching procedure between horizons and ice core are the largest sources of error.

We use various internal layers in this study. Details on the radar resolution, dating methods and resulting uncertainty can be found in the respective original publications (Cavitte et al., 2016; Winter et al., 2019; Cavitte et al., 2020; Leysinger Vieli et al., 2011). Based on the analysis performed on five different radar systems by Winter et al. (2017) near EDC, we consider an age uncertainty of around 1 ka. We consider a maximum age uncertainty of around 1 ka for each isochrone above 2000 m depth (roughly 2/3 of the ice thickness) (Winter et al., 2019). Below a depth of around 2000 m (roughly 2/3 of the ice thickness) This range covers most of the horizons considered in this study. Below a depth of 2000 m, the age uncertainty increases non-linearly with depth towards the bed (Winter et al., 2019). At places where the deepest ice is younger than the ice around Dome C, the age gradient with depth will then be less steep towards the bed than the one determined at Dome C. Thus, the age uncertainties of the horizons below 2000 m depth will be lower than at Dome C. We consider this uncertainty always to be smaller than the proposed age derived from the ISM data.

2.2 Large-scale ice-sheet modelling

In order to compute Antarctic isochrones, time resolved 3D velocity data as well as the transient ice-sheet geometry (ice thickness and bedrock topography) are necessary. We therefore ran a paleoclimate model ensemble covering the last 220 ka, and make use of previously published model ensemble results covering the last 2 Ma (Sutter et al., 2019). The 220 ka simulations were initialised from the 220 ka output from (Sutter et al., 2019). In addition to the 220 ka paleo-ensemble we

also carried out a present-day equilibrium ensemble to assess the impact of the missing paleo-spinup as well as different model parameterisations on the computed isochrone elevations. The climate forcing for the present-day ensemble was derived from the regional climate model RACMO (van Wessem et al., 2014) and the World Ocean Atlas 2018 (Locarnini et al., 2019). The parameter range chosen for the PD ensemble is associated with an equilibrium sea-level equivalent ice volume within $\pm 2\text{m}$ of present-day observations (Fretwell et al., 2013). Both the paleo simulations and the present-day equilibrium simulations were tuned to match the observed present-day surface elevation (with a focus on the deep ice core sites), ice volume and grounding line position. An overview over the experimental setup is provided in Figure 2. The model forcing used in the paleo-simulations is described in detail in Sutter et al. (2019) and provides spatio-temporal information on ocean temperatures, surface temperature and precipitation derived from climate snapshots during the LIG (Pfeiffer and Lohmann, 2016) and the LGM as anomaly forcing with respect to the modelled pre-industrial climate state. In between the climate snapshots, surface temperature and ocean temperatures are interpolated on the basis of the EDC deuterium data (Jouzel et al., 2007) using a temperature-precipitation relationship of 3 \%K^{-1} (see section 2.3 and Figure 2 in Sutter et al., 2019) and 5, 6 and 8 \%K^{-1} for the 220 ka simulations. The ISM is run on a 16 km grid with 81 vertical levels except for a present-day run which is carried out on an 8 km grid with 101 vertical levels. **Bedrock elevation changes due to transient load changes are computed via the Lingle-Clark model based on** Lingle and Clark (1985); Bueler et al. (2007). We employ a combination of the shallow ice (SIA) and shallow shelf (SSA) approximation (SSA+SIA Hybrid Winkelmann et al., 2011a) with a sub-grid grounding line parameterisation (Gladstone et al., 2010; Feldmann et al., 2014) to allow for reversible grounding line migration despite using a relatively coarse resolution **static model grid of 16 km** (Feldmann et al., 2014). **Table 2 provides an overview of the friction and sliding parameters chosen for the 2 Ma, 220 ka and present-day model ensemble.** In PISM the till friction angle ϕ controls the yield stress at the ice-bedrock interface which can be set to be a function of the bedrock elevation (increasing with elevation). The yield stress is determined by

$$\tau_c = \tan \phi N_{till} \quad (1)$$

where ϕ is the bedrock elevation dependent till friction angle and N_{till} the effective pressure. As in Sutter et al. (2019) we choose a pseudo-plastic power law with the parameter q controlling the amount of sliding via the relationship

$$\tau_b = -\tau_c \frac{\mathbf{u}}{u_{threshold}^q |\mathbf{u}|^{1-q}} \quad (2)$$

where τ_b is the shear stress, \mathbf{u} ice velocity and $u_{threshold}$ the threshold velocity at which τ_b has the exact magnitude as τ_c (condition for sliding). The so called SIA enhancement factor in the 220ka and present-day ensemble is 1.0 as in Sutter et al. (2019).

For further details regarding the ISM setup see section 2.1 in Sutter et al. (2019). Geothermal heat flux is taken from Shapiro and Ritzwoller (2004) or alternatively from Purucker (2013); An et al. (2015); Martos et al. (2017). Topography data are from Bedmap2 (Fretwell et al., 2013) except in the present-day simulation where we use the new BedMachine-Antarctica dataset

Table 2. Overview of parameters relevant for sliding in Sutter et al. (2019) (2Ma), for the 220ka ensemble (220k) and for the present-day ensemble (PD). ϕ_1 is the minimum (for depths below -700 m) and ϕ_2 the maximum (for depths above 0 m) till friction angle.

Parameter	ϕ_1	ϕ_2	q	sia_e
2Ma	5	30	0.6	1.0
220k	5	30	0.6	1.0
PD	2, 3, 4, 5	30	0.6, 0.75	1.0

from Morlighem et al. (2020). We model isochrone elevations (see 2.3) on the basis of full paleo-ice-sheet model runs (pal, 195 model integration from 2 Ma (Sutter et al., 2019) and 220 ka BP in this study), the present-day snapshot of the latter (pd-pal) and a present-day equilibrium ensemble (pd, with an integration time of 2000 years following a thermal spinup using a fixed ice sheet geometry for 200 ka). The 2 Ma simulations in (Sutter et al., 2019) are initialised at 2 Ma BP from a present-day ice sheet geometry. The 220 ka simulations were initialised from the 220 ka BP output of the 2 Ma simulation with isochrones evolving until present day according to the computed transient ice flow. Isochrone evolution starts at their respective age (see 200 Table 1) in the past. In the present-day snapshot (pd-pal) and present-day equilibrium ensemble (pd) isochrones evolve on the basis of the simulated present-day flow (constant velocity field).

2.3 Lagrangian tracer advection

We use the open source python software OceanParcels v0.9 (Lange and van Sebille, 2017) which was originally designed to analyse ocean data but can be easily adopted for transient or steady state ISM data. At its core, OceanParcels provides a 205 Lagrangian particle tracking scheme which is computationally efficient and adaptable to a variety of input grids (Delandmeter and van Sebille, 2019). Individual particles tracks are computed following the advection equation (equation 1 in Lange and van Sebille, 2017):

$$\mathbf{X}(t + \Delta t) = \mathbf{X}(t) + \int_t^{t+\Delta t} \mathbf{v}(\mathbf{x}, \tau) d\tau + \Delta \mathbf{X}_b(t) \quad (3)$$

where \mathbf{X} is position of the particle in space, \mathbf{v} the three-dimensional velocity at the particles' position and $\Delta \mathbf{X}_b(\tau)$ is the 210 change in position due to "behaviour", which does not play a role in our application as we assume that every ice parcel is passively advected with the velocity field without any additional advection terms. For further details regarding OceanParcels please refer to Lange and van Sebille (2017). For OceanParcels to work we need to provide three dimensional velocity data covering the time frame we are interested in (i.e., the last 160 ka as this is the age of the oldest isochrone we take into account) as well as the ice-sheet's geometry (thickness and bedrock elevation) at sufficiently high temporal resolution. Naturally, the 215 finer the temporal resolution of the ice-sheet time slice data, the more accurate the particle tracks will be. However, to prevent input data for OceanParcels from getting too large for standard python libraries (numpy, scipy, netCDF4) and memory we opted

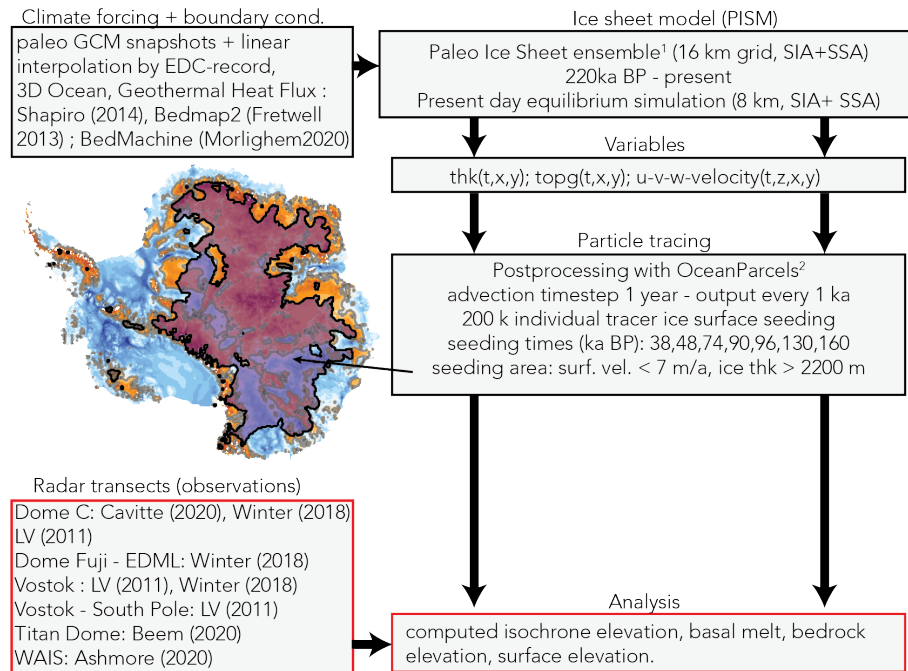


Figure 2. Experimental setup. The left column depicts the input data to the ice-sheet model (climate forcing, geothermal heat flux and initial geometry) and to the data intercomparison (observed radar transects). The contour plot illustrates the area where tracers are seeded (see supplementary video). The right column contains the ice-sheet model specifications, required variables (thickness, bedrock topography and 3D velocity field) for the tracing scheme and the settings used in OceanParcels (Lange and van Sebille, 2017).

for a temporal resolution of 1 ka and 10 ka which proved to be accurate enough for the (for the most part) relatively slow ice flow in East Antarctica. **Velocity snapshots between 1 ka and 10 ka largely produce the same isochrone elevation (see Figure 3).** We set the advection time step (Δt) to one year and for each experiment we deploy 200,000 individual tracers which we seed at the ice surface at the time of the age of the isochrone we want to compute (e.g. at 38 ka BP for the 38 ka isochrone). Misfits of the ice-sheet model state in terms of elevation and velocity field relative to the true (unknown) ice sheet state at that point in time in the past **and throughout the paleo simulation** will lead to deviations of the modelled isochrone as observed in the ice sheet today. This information can then be used to identify such misfits and improve the model representation of the ice sheet. We find that for less than 10^5 tracers, gaps in coverage due to the dispersive nature of ice flow are too large to resolve the internal layers away from ice divides. **Figure 3 illustrates the changes in the computed isochrone elevation due to different numbers of deployed tracers. In regions where homogenous flow dominates, the number of tracers does not affect the simulated isochrone elevation much. However, if spatial gradients in ice-flow and topography increase, simulated isochrone elevations diverge with low tracer densities.**

The seeding mask (i.e., the region where tracers are initiated) consists of the area with an ice thickness of more than 2200 m and surface flow slower than 7 m/a (see Figure 2 and the supplementary video). The seeding mask covers an area which

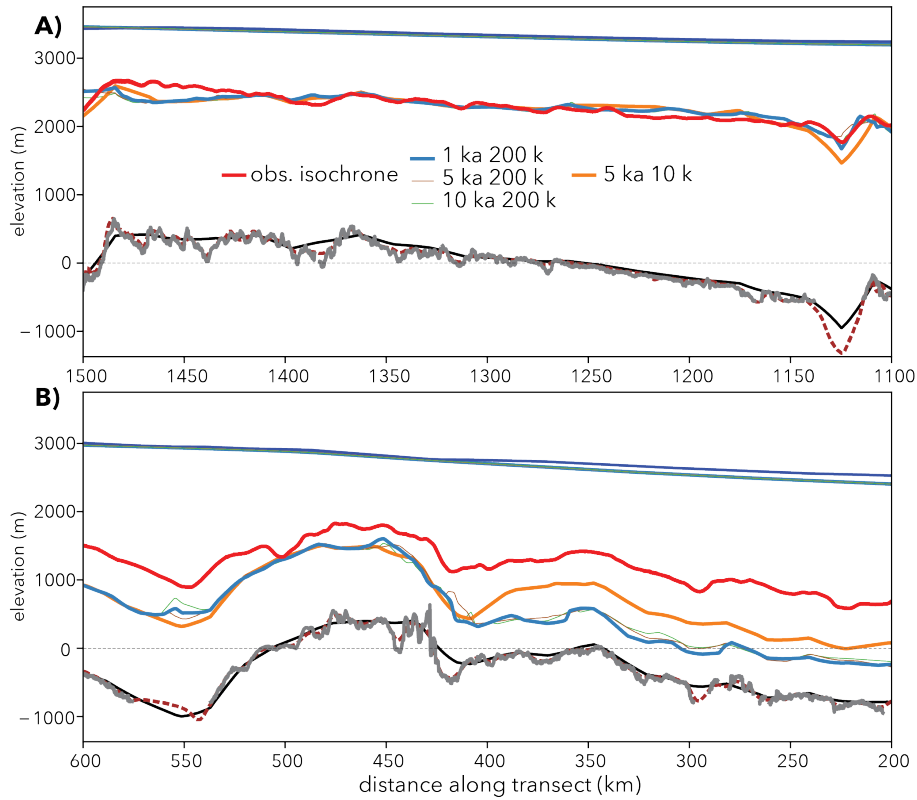


Figure 3. Observed and simulated isochrones along transect CEA-10 (see Figure 1, 10 and 11). Observed isochrone is shown in red, simulated isochrones are computed based on snapshot velocity fields every 1, 5 and 10 ka. Tracer seeding was carried out with 200.000 and 5.000 tracers. Bedrock topography used in the model runs is plotted in black and bedrock elevation derived from the radar transect in grey. The gridded 1km BedMachine bedrock elevation (Morlighem et al., 2020) is plotted for comparison as well (smooth dashed brown line).

entailsencloses every individual radar transect analysed here. We also tested other seeding strategies employing the IMBIE drainage basins (Zwally et al., 2012), ice divides or around ice core locations. The choice of seeding mask is solely motivated by the tracer coverage. As long as the transects of interest are covered by the seeding mask, the latter only affects the density of tracers (a larger seeding masks leads to sparser tracer coverage if the number of tracers is not adjusted accordingly). We found that a seeding mask defined by the ice thickness and surface flow considerations mentioned above provides the best coverage given the radar transects discussed in this study. The tracer experiments were all carried out on a laptop computer (Powerbook (2015), 2.7 GHz, 8 GB memory, OS-X: 10.13.6), with computation times between a few hours (38 ka isochrone) and 10-15 hours (160 ka isochrone), i.e., $\approx 1\text{h}/10\text{ka}$ elapsed model time.

OceanParcels provides netCDF-files consisting of the individual tracer positions in space and time. Accordingly, to extract isochrones we selected the last tracer positions and gridded them to a regular 1 km x 1 km grid (bi-linear interpolation). This provided an elevation map of the respective tracer swarm for all regions covered by the seeding mask (see Figure 4 A and

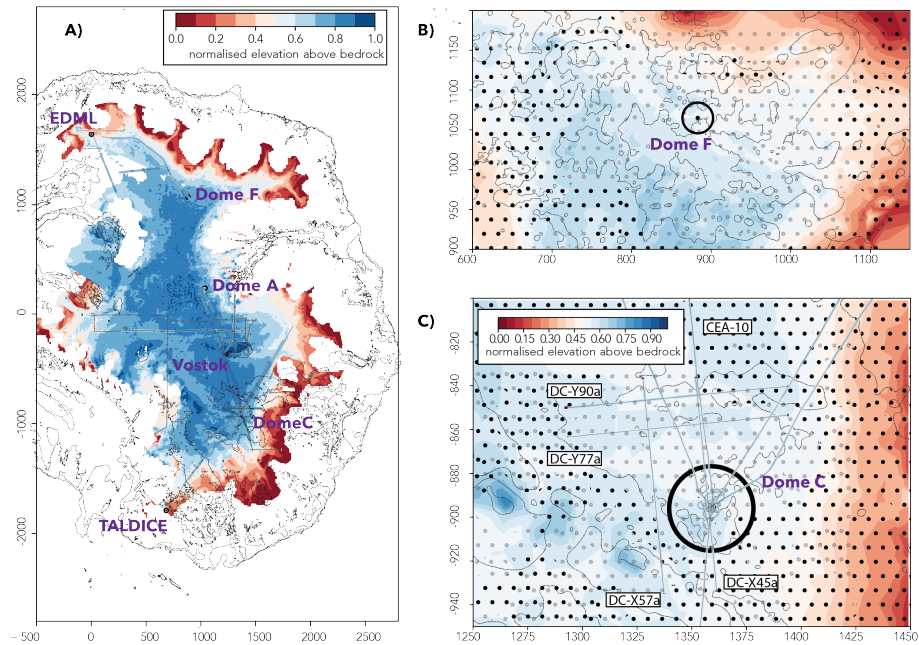


Figure 4. Computed isochrone elevation in East Antarctica. Panel A) illustrates the elevation above bedrock of the 38 ka isochrone normalised by the local ice thickness. The filled isochrone contours are overlain by the normalised elevation of the observed isochrones (thin coloured lines). Black shapes in A depict the zero meter sea-level bedrock contour. Panel B) shows a blow up of the region around Dome Fuji with dotted areas where basal melt is simulated. Semi-transparent dots show results with geothermal heat flux forcing from Martos et al. (2017) and opaque dots from Shapiro and Ritzwoller (2004), respectively. Panel C) shows the area around Dome C overlain by the normalised elevation of the observed isochrones (thin coloured lines). The mismatch between the simulated isochronal layer and the observed isochrone elevation along the transects is generally small in the Dome C region with the exception of the upper right section in panel C) where the simulated isochrone is off by up to 40% of the local ice thickness.

supplementary video). From this elevation map we then extracted the computed tracer-elevation. From the ice sheet model output we retrieved the bedrock- and surface-elevation, as well as the melting at the base of the ice and the corresponding geothermal heat flux (which was the latter being derived from the input data) along the individual radar transects. Our main goal is the identification of systematic mismatches between predicted and observed isochrone geometry. As a metric for the difference between observed and modelled isochrones we use their respective elevations in the ice sheet above the ice-bed interface, normalised by the local ice thickness. This yields the root-mean square difference (RMSD) in %.

3 Modelled Antarctic isochrone elevations

Our main goal is the identification of systematic mismatches between predicted and observed isochrone geometry. To achieve this, we focus on three major sources of model-observation mismatches: (i) climate forcing, (ii) model parameterisation, (iii)

bedrock and geothermal heat flux. As computed isochrone elevations will be affected by a superposition of uncertainties from all three sources we separate our analysis into regions where we expect only one factor to dominate. To isolate the effect of (i) climate forcing we turn to areas characterised by limited ice flow (e.g. ice domes or close to ice divides) and by a good representation of the bedrock elevation in the model (difference between input data set and local high resolution radar data). We will primarily focus on Dome C as ~~the model ensemble was~~ ice sheet model parameters relevant for ice flow and basal friction were tuned to match the regional ice-sheet configuration. To assess the impact of ~~model performance and ice flow parameterisation~~ (ii) we ~~discuss the model fitness~~ assess the fit of modelled isochrones computed to compute isochrones in regions of elevated surface velocities and in subglacial basins (bedrock below sea level) as well as the effect of different parameter choices (see Table 2) under the same boundary conditions (climate, geothermal heat flux, bedrock topography). To test (iii) we analyse the impact on bedrock elevation uncertainty around Dome C and use different geothermal heat flux fields to investigate their influence on the modelled internal layer architecture. We would like to note, that while we simulate isochronal layers throughout East and West Antarctica our model-observation-intercomparison is mostly limited to ice domes and along ice divides in East Antarctica, as these regions are covered by dated radar-based isochrone observations. Future radar explorations in Antarctica will hopefully complement the available data by observations away from ice divides and along drainage sectors as these are the regions which point to critical misrepresentations in ice sheet model simulations.

3.1 Dome C - evaluating the paleoclimate forcing (i)

We now turn to the first (i) of the aforementioned three main factors determining simulated isochrone elevations, the climate forcing. Due to the near cessation of surface flow at ice domes the local internal stratigraphy is by and large dominated by the regional surface mass balance history and potentially affected by basal melting due to a large ice thickness, low surface accumulation and/or elevated geothermal heat flux. Consequently, in the particular geographical setting of an ice divide, we do not expect that parameterisations of ice dynamics will have a large effect on the internal layer architecture. Therefore, we assume that model-mismatches with respect to observed isochrones are mostly due to the applied surface mass balance forcing and geothermal heat flux. To evaluate the validity of the forcing approach in Sutter et al. (2019) and in this work we turn to several radar transects in the vicinity of the EDC ice core (75°1' S, 123°4' E, see Figure 5) which satisfy the condition of low ice surface velocities. It is important to note, that the model parameters chosen in Sutter et al. (2019) were tuned using a climate forcing with a temperature-precipitation relationship of 3%. The paleo-simulations created for this paper employ identical model parameters and the same forcing (see section 2.2) but with alternative temperature-precipitation relationships of 5, 6 and 8 %K⁻¹. The radar transects are discussed in Cavitte et al. (2016, 2020) and cut across an area loosely bound by the Concordia Trench and Little Dome C (LDC).

In a first step we investigate which surface mass balance history during the last glacial-interglacial cycle matches best with the 96 ka isochrone along transect ~~DC-57a~~ DC-X45a, which spans from the northern end of the Concordia Subglacial Trench southward via EDC to LDC (thick black line in Figure 5 A). Isochrones are computed from the output of experiment B1-P1 in Sutter et al. (2019) using a scaling constant between temperature and accumulation anomalies (i.e. the percent change of accumulation for every degree of surface air temperature change) of %3K⁻¹, as well as new simulations with scaling constants

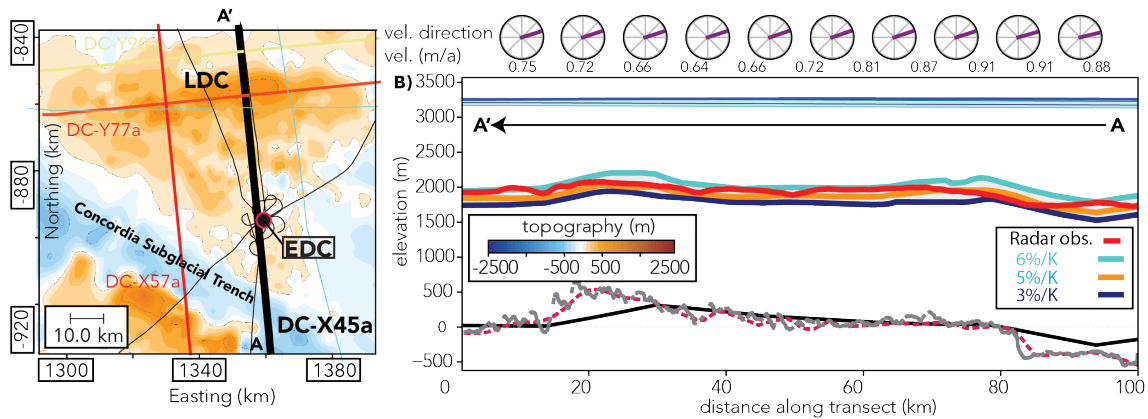


Figure 5. Transect DC-X45a with the 96 ka isochrone. Panel A) illustrates the bedrock elevation and radar transects analysed in this study crossing Dome C. In B) the computed isochrone elevations for simulations with 3%, 5% and 6% precipitation change per Kelvin surface temperature change are plotted against the observed isochrone (red dashed line). Bedrock topography used in the model runs is plotted in black and bedrock elevation derived from the radar transect in grey. The gridded 1km BedMachine bedrock elevation (Morlighem et al., 2020) is plotted for comparison as well (smooth dashed purple line). The circles on the top of B) denote the relative flow direction and speed with respect to the radar transect.

of 5, 6 and 8 $\%K^{-1}$, inspired by the approximate range indicated by paleo proxies of $5.9 \pm 2.2\%K^{-1}$ (Frieler et al., 2015). Figure 5 B depicts the observed 96 ka isochrone in comparison to the simulated isochrones. The latter fit the observations reasonably well to within $\approx 2 - 5\%$ of the local ice thickness RMSD. According to our simulations a precipitation scaling between 5 and 6 $\%K^{-1}$ (RMSD of $\approx 3.8\%$ and $\approx 3.3\%$ for precipitation scaling of 5 and 6 $\%K^{-1}$, respectively) reproduces the 96 ka isochrone best, which is in accordance with an ice core based relationship of $5.9 \pm 2.2\%K^{-1}$ for EDC (Frieler et al., 2015). This gives us confidence that the paleo mass balance forcing approach in Sutter et al. (2019) is valid at least for the region around Dome C and likely for the larger parts of the interior East Antarctic Ice Sheet (see section 4). It is important to note, that the simulations are tuned to the geothermal heat flux data from Shapiro and Ritzwoller (2004). We discuss the impact of the choice of the geothermal heat flux forcing in subsection 3.3.

Above, we identified which paleo temperature-precipitation scaling leads to the best fit of modelled and observed isochrone elevations. Making use of this paleo-accumulation estimate we can plot the transient accumulation history at EDC during the last glacial interglacial cycle (Figure 6 A) and compare the regional temporal mean precipitation forcing during 0-9 ka BP and 9-39 ka BP with reconstructed paleo-accumulation patterns at Dome C by Cavitte et al. (2018) (Figure 6 B). Figure 6 A) depicts the EDC accumulation history depending on the temperature-precipitation scaling-factor. The Holocene surface mass balance fluctuates close to the present-day reference forcing derived from the model estimate from the regional climate model RACMO van Wessem et al. (2014) which is used here as the present-day reference climate state (ca. 3 cm/a ice equivalent in the Dome C region) and drops to ca. 1.7 cm/a during the LGM. The observed modern surface mass balance at EDC is ≈ 2.5 cm/a (Stenni et al., 2016), i.e., our present-day surface mass balance forcing is ca. 20% too high in this region. When we compare

our simplified forcing with reconstructed paleo-accumulation patterns at Dome C by Cavitte et al. (2018) our estimates of paleo-accumulation differs by about 10 to 30%. This is mostly due to the aforementioned overestimation in the 1979-2011 present-day reference surface mass balance at EDC. It is important to note, that our approach does not strive to achieve a detailed reconstruction of paleo-accumulation as done in Cavitte et al. (2018). They are fitting englacial layer horizons via a 1-D pseudo-steady ice flow model (Parrenin et al., 2017) leading to more accurate estimates of the local surface mass balance ~~the ice divide~~ **along the ice divide near EPICA Dome C**, while we are merely trying to establish the validity of our large scale paleoclimate forcing approach. Nevertheless, Figure 6 B) illustrates that our paleo-accumulation forcing provides a surface mass balance pattern along ice divides which matches more detailed reconstructions as carried out by Cavitte et al. (2018) reasonably well.

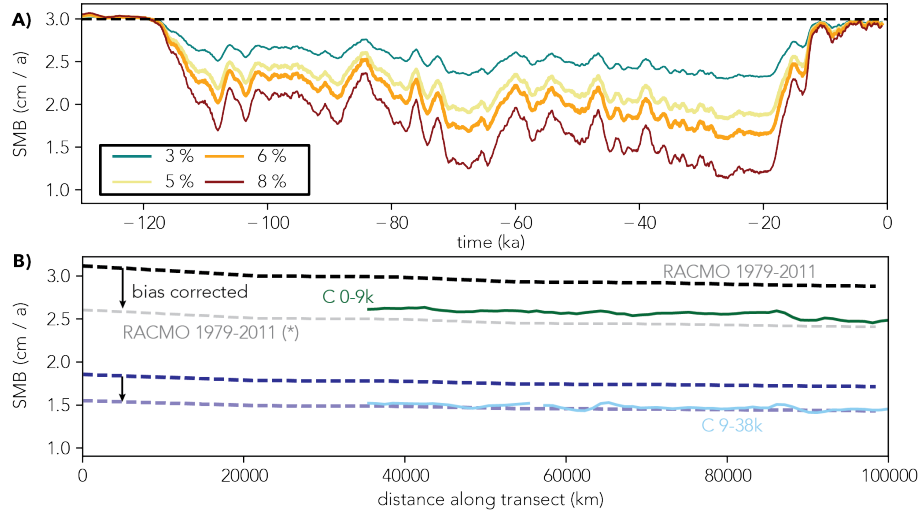


Figure 6. A) Prescribed precipitation (cm/a) over time at the EPICA Dome C ice core drill site for different temperature-precipitation scaling ($3, 5, 6, 8\%K^{-1}$). **The temperature-precipitation scaling which produces the most realistic isochrone elevations along the transects analysed in this work are highlighted by thick lines ($5, 6\%K^{-1}$)** B) Green and light blue lines depict the mean 0-9 ka and 9-38 ka accumulation along transect X45a from Cavitte et al. (2018) compared to the simulated accumulation **for the same time** with a precipitation forcing ~~for a~~ **with $7\%K^{-1}$ temperature-precipitation scaling respectively**. The semi-transparent dashed lines depict the precipitation after **accounting for the difference bias-correction between** the present-day reference data from van Wessem et al. (2014) **and the observed modern surface mass balance estimate at EDC, which is ≈ 2.5 cm/a** (Stenni et al., 2016).

3.2 Dome C - impact of paleo spin-up and model parameterisation on simulated isochrone elevation (ii)

The modelled isochrone elevations discussed above were computed on the basis of transient snapshots of local velocity and topography fields and show a good match to observed isochrone elevations. In the following we analyse the modelled 96 ka isochrone-elevation along transect DC-X57a for three different tracer experiments in which the velocity and ice geometry is taken from: 1. the full transient ISM-data from the 220 ka paleo-simulation with temperature-precipitation scaling of $5\%K^{-1}$

(case pal), 2. only the present-day output of the latter (case pd-pal) and 3. the velocity and topography data from an ensemble of present-day climate equilibrium simulations (case pd) where the ice sheet is forced only by present-day surface climate and ocean temperatures. The comparison between pal and pd-pal allows us to assess the influence of the transient past surface mass balance forcing and paleo-ice-flow reorganisation in pal while the comparison between pd-pal and ~~pd-pd~~pd mainly illuminates the effect of the parameterisation of ice flow (ii) and the missing imprint of the paleo-spinup. In pal tracers are advected based on the respective temporally evolving ice sheet configuration; in pd-pal advection is based on the last time slice output (present-day) of pal (using constant velocity and topography); in ~~pd-pd~~pd tracers are advected via the present-day equilibrium velocity resulting from present-day climate forcing.

This will therefore elucidate the impact of the paleo-spinup and of the model parameterisation (ii) on computed isochrone elevations (Figure 7). Figure 7 shows, that the difference in isochronal elevation between pal and pd-pal is already substantial. However, it is relatively small in comparison to the difference between pal and ~~pd-pd~~pd despite the fact that surface elevations for pd-pal and ~~pd-pd~~pd are very similar. All isochrone elevations simulated in the pd case are unrealistic but also show a substantial spread for the parameter range tested here (see Section 2.2). Increasing either the basal friction (via the till friction angle) or the parameter controlling the sliding (via q) shifts the isochrone elevation by almost a third of the local ice thickness. However, even for parameter sets which lead to a growing ice sheet under present-day climate conditions (corresponding with an ice sheet model parameterisation which leads to high basal drag and slower vertical and horizontal ice advection) the simulated elevation of the 96 ka isochrone is well below the observed one. This shows, that it is only possible to simulate realistic isochrone elevations, while achieving an overall ice sheet shape in agreement with present-day observations, if one takes into account the paleo-evolution of the ice sheet.

This illustrates that tuning an ISM to present-day observations and mass balance trends (~~pd-pd~~pd) might yield a suitable fit to ice-sheet surface observations but fails to capture the integrated internal layering which is a product of the paleo surface-mass-balance as well as of paleo ice-dynamics. This might have important repercussions for paleo ice-sheet studies as well as for projections of the future sea-level contribution of the Antarctic Ice Sheet, as the ice-sheet's initial state can affect its future behaviour over centennial or even decadal time scales (Seroussi et al., 2019) due to misrepresentations for example in the parameterisation of basal friction, the internal flow fields (and thus mass transport) and the thermal state as a consequence of overfitting. Ideally, to assess the impact of isochrone elevation calibration on ice sheet model projections, one would compare three cases where the model parameters are tuned a) via thickness/surface velocity inversion, b) against present-day surface observables and paleo-proxies (ideally including a paleo spinup) and c) isochrone elevation calibration combined with b). However, this is work in progress and beyond the scope of this manuscript.

3.3 Impact of lower boundary conditions on simulated isochrone elevation (iii)

Next to the uncertainties associated with paleoclimate forcing fields and ice-sheet model parameterisations the uncertainties in the basal boundary conditions (iii) applied in a large-scale paleo-ice-sheet model further complicate the computation of isochrone elevations. Areas with sparse radar observations may have bed elevation estimates that differ from high-resolution

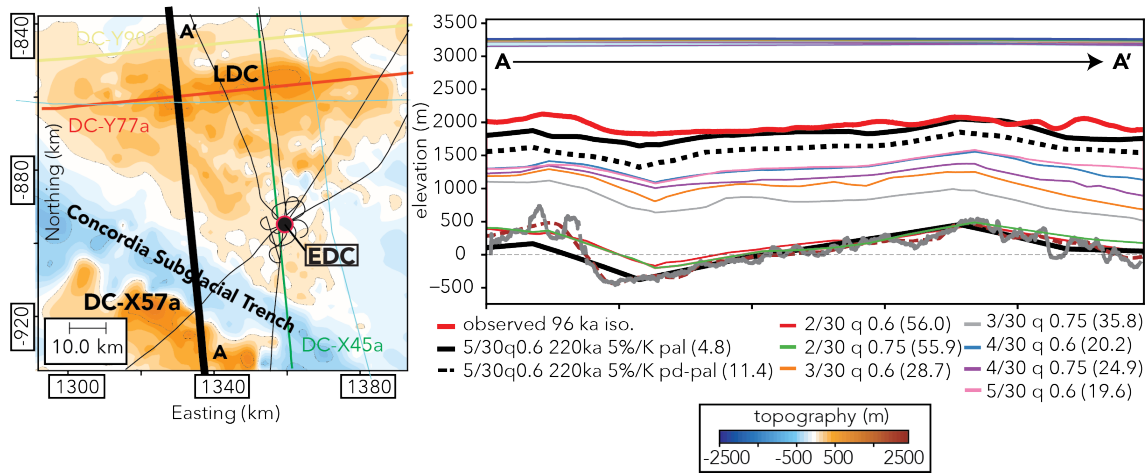


Figure 7. Comparison of the observed and modelled 96 ka isochrone along radar profile X57a (red line in right panel) in the Dome C region with the model simulation: A) depicts the study area and the location of the radar transect corresponding to the simulated and observed transect isochrone. B) 96 ka observed isochrone elevation in red, paleoclimate simulation with 5‰K^{-1} precipitation scaling (black line), present-day output of the paleoclimate simulation (black dashed line) and present-day equilibrium simulations (colored lines). Root mean square error between observed and modelled isochrone elevation is given by the numbers in the legend of B). The coloured bars at the bottom of B) depict the geothermal heat flux and the computed basal melt rate along the transect.

radar data by several hundred metres (Karlsson et al., 2018; Morlighem et al., 2020). Uncertainties in the bedrock elevation in areas with only sparse radar observations can feature differences of several hundred meters if compared to newly acquired high-resolution radar data. This can affect the basal flow regime and corresponding thermal state of the local ice column significantly. We would expect that line transects characterised by a bedrock profile in relatively good agreement with reality should yield a good agreement between modelled and observed isochrones as well. While this is true e.g. for some parts of transect DC-X57 in the Dome C region (see Figure 9), the assumption cannot be generalised to all East Antarctic transects discussed in this work as uncertainties in the parameterisations of ice flow (see Figure 7), paleoclimate forcing (Figure 5) and geothermal heat flux (Figure 8) can have a dominating or confounding effect over differences in the observed and modelled bedrock relief. Additionally, the impact of bedrock undulations on isochrone elevation will be stronger close to bedrock and might not be observable in relatively young shallow isochrones where the surface mass balance is the dominating factor.

A further challenge complicating the comparison between simulated and observed isochrone elevations is the largely unknown distribution of geothermal heat at the base of the ice which is only inferred indirectly and exhibits large differences in between data-sets from Shapiro and Ritzwoller (2004); Purucker (2013); An et al. (2015); Martos et al. (2017). Comparison to simulations employing other data sets shows that the modelled isochrones fit well for GHF from Purucker (2013); An et al. (2015) but fail to reproduce the approximate isotope elevation for the high GHF from Martos et al. (2017) which produces widespread basal melting beyond (1 mm/a) in the region (see Figures 8 and 4 C). Geothermal heat flux is uncertain for most parts of the Antarctic Ice Sheet and regional differences between published datasets (Figure 8) can be substantial

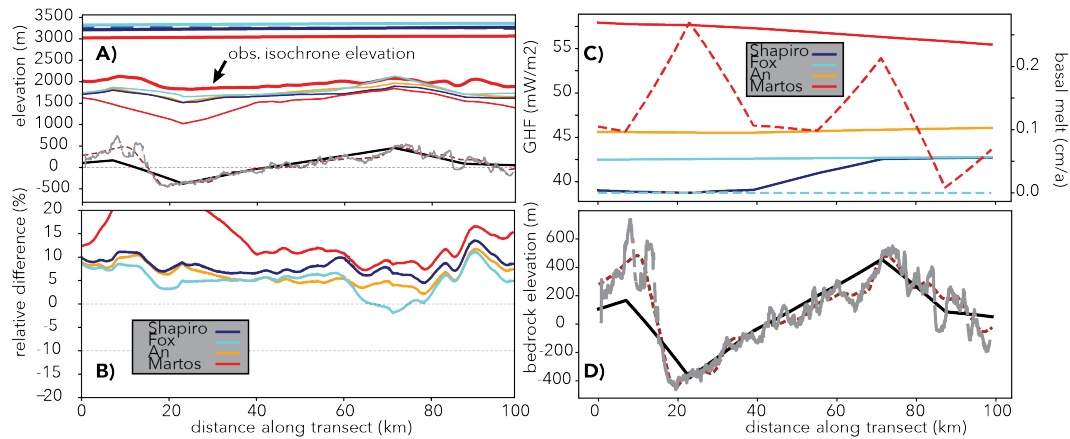


Figure 8. Illustration of model data along DC-X57 transect with a temperature precipitation scaling of $3\%K^{-1}$. Panel A) shows the modelled surface and isochrone elevation under geothermal heat flux boundary conditions from Shapiro and Ritzwoller (2004); Purucker (2013); An et al. (2015); Martos et al. (2017). Panel B) depicts the isochrone mismatch (normalised by local ice thickness) between modelled and observed isochrone elevations. The thin dashed lines show the mismatch after subtracting the difference between the high-resolution BEDMACHINE and low resolution Bedmap2 data. Panel C) shows the geothermal heat flux along the transect and the associated modelled basal melt (dashed lines). Panel D) highlights the bedrock elevation from the model simulation based on the Bedmap2 (Fretwell et al., 2013) at 16 km resolution (black line), bedrock radar reflection (Cavitte et al., 2016) (red line) and Bedmachine Antarctica (Morlighem et al., 2020) data at 1 km resolution (grey line)

(Burton-Johnson et al., 2020; Talalay et al., 2020). Local basal melting occurs under forcing with the Shapiro and Ritzwoller (2004) data set as well, but is largely limited to (0-1 mm/a) and lies between 0.25-0.5 mm/a around EDC. The computed basal melt rates with GHF from Shapiro and Ritzwoller (2004) and a temperature precipitation scaling of $6\%K^{-1}$ are similar to the ones in Passalacqua et al. (2017) which are empirically determined to fit the EPICA Dome C ice core age scale. A more complete assessment of the relative influence of basal and surface boundary conditions as well as model parameterisations on East Antarctic isochrone elevations across the whole ice column is beyond the scope of this study but could be the focus of an upcoming paleo-ice-sheet model intercomparison.

3.4 Caveats to modelling isochrones with large scale ice-sheet models

Differences between modelled isochrones (based on paleo-velocity fields) and their observed elevation above bedrock are generally small for all isochrones sampled in this study which are younger than the LIG (< 120 ka, root mean square error of $RMSD < 5\%$). It is striking, however, that for isochrones older than 120 ka the gap between model results and observation widens (see Figure 9). Due to the lack of climate model data for glacials and interglacials preceding the LIG, we estimated the climate forcing before 130 ka BP to be a linear combination between the climate state of the LGM and the LIG using the EPICA Dome C deuterium record as an index to interpolate between the two climate states (see section 2.1 in Sutter et al.,

2019). Naturally, this approach is just an approximation of the actual transient climate conditions and therefore will necessarily lead to discrepancies in the surface mass balance as well as the ocean forcing. Another potential cause of the relatively poor representation of isochrones before 130 ka BP is the high circum-antarctic subsurface ocean temperature peak assumed for the LIG (ca. 2°C). Due to coastal thinning and potentially grounding line retreat caused by aforementioned elevated ocean temperatures, this might lead to an exaggerated ice flow in the major drainage basins such as the Wilkes Basin (see Fig 10) or the Aurora Basin, in turn potentially affecting even remote regions such as Dome C. In fact, the model-data-observations mismatch is especially poor for the sections of the Dome C transects close to the Aurora Subglacial Basin (see Figure 9 B) which could also point to an issue with the parameterisation of basal drag in subglacial basins (see section 4). Finally, the simulations analysed in the previous sections were initialised at 220 ka BP. Therefore the model spinup for the calculations of the 130 and 160 ka isochrone elevations was only 90 and 60 ka, respectively. This could be another aspect influencing the particularly poor match between modelled and observed isochrone elevations for these ages.

4 Large scale modelling of the internal architecture of the East Antarctic Ice Sheet

In the following, we expand our view to the whole of the East Antarctic Ice Sheet, assessing how valid the choices of model parameters and the paleo-accumulation forcing derived from Dome C really are when it comes to simulating the evolution of the whole ice sheet. The focus on the EDC ice core region in the previous section allowed us to appreciate the impact of uncertain forcing fields and bedrock elevation on a relatively small length scale (100 km). We now turn to larger distances, where the Dome C-derived transient paleoclimate forcing and model optimisation might lead to more pronounced diversions between the modelled isochrone elevations and the radar data. We first assess the 90 ka isochrone along transect CEA-10 (see Figure 10). It starts close to Talos Dome crossing the upper reaches of the Wilkes Subglacial Basin after which it traverses the Concordia Subglacial Trench, passing EDC and LDC and finally arching upwards to end at Lake Vostok (total distance ca. 1500 km). In the second part of this section we discuss the isochrone geometry between Dome Fuji and the EPICA Dronning Maud Land ice core (EDML).

4.1 Simulated isochrone elevation along the Talos Dome - Lake Vostok - transect.

Figure 10 illustrates nicely that there are two main regimes covered by profile CEA-10. The northern half of the transect bottom part close to Talos Dome (bottom left in Figure 10) is dominated by the imprint of the Wilkes Subglacial Basin with a large misfit between the modelled and observed isochrone ($\approx 26\%$ RMSD along km 0-500 in Figure 10, compared to $\approx 8.3\%$ and $\approx 4.8\%$ along km 500-1000 and 1000-15000, respectively). The striking excursions of the modelled isochrone elevation in Figure 10 point towards an too-fast internal vertical ice motion that is too fast. This could possibly be due to the heuristics involved in determining the yield stress in subglacial basins. Furthermore, past elevated ice flow episodes of the marine Wilkes Basin Ice Sheet caused by thinning of the coastal ice cover for example during interglacials (Sutter et al., 2020) could have mediated drawdown of isochrone elevation. While a spatially varying temperature-precipitation relationship could also affect the isochrone elevation in this region, this seems not to be the case here. We show this by computing the 90-ka isochrone

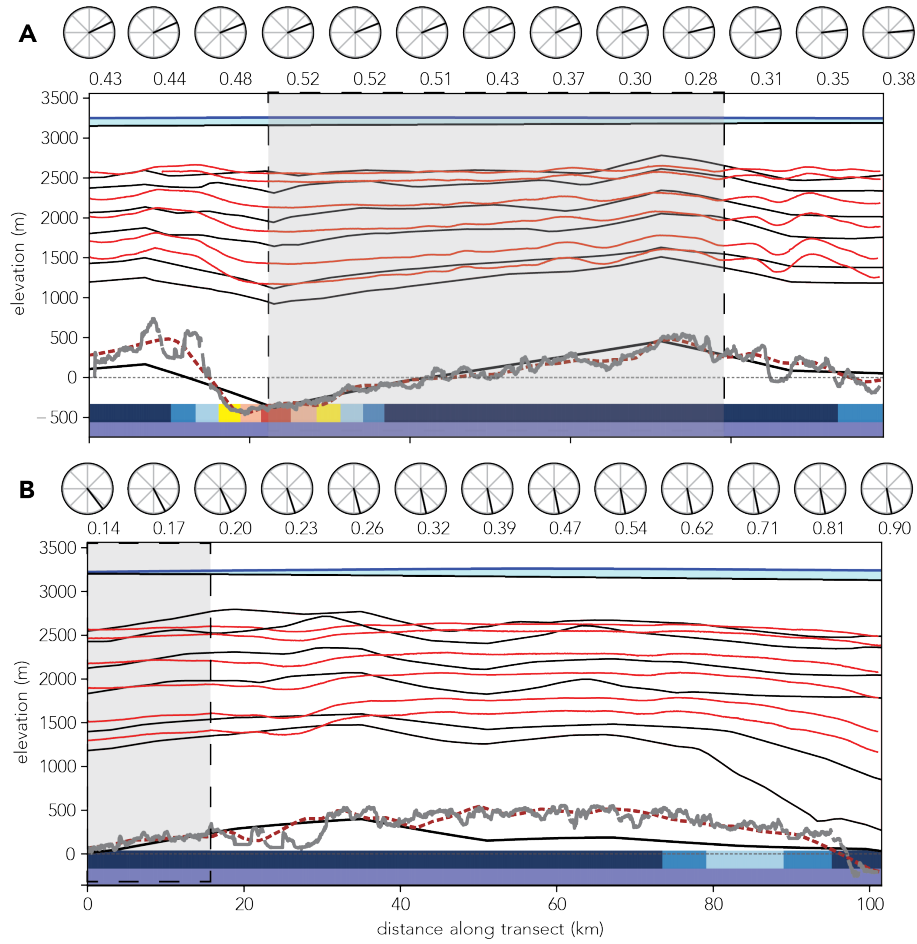


Figure 9. Modelled (black lines) and observed isochrones (red lines 38, 48, 74, 96, 130, 160 ka from top to bottom) for transect DC-X57 (A) and DC-Y77 (B). The grey vertical bars highlight areas with low elevation differences in the low resolution model bedrock input (black line) compared to the high resolution radar observations (grey line) which generally correspond to a good match of modelled and observed isochrones. The 1 km BedMachine data (Morlighem et al., 2020) is depicted by the (red dashed line). The labeled circles denote the surface flow and magnitude in m/a relative to the direction of the transect. The coloured bars on the bottom depict the geothermal heat flux (Shapiro and Ritzwoller, 2004) and the computed basal melt rate along the transect as in Figure 7.

415 elevation in a paleo-simulation with a temperature-precipitation relationship of $8\%K^{-1}$ which cannot mitigate the drop in
elevation in the first 300 km of the transect and exacerbates the deviation between simulated and observed isochrone elevation
along km 500-1500 ($\approx 16.7\%$ RMSD along km 0-500 in Figure 10, compared to $\approx 8.7\%$ and $\approx 7.8\%$ along km 500-1000
and 1000-15000, respectively). We did not test temperature precipitation relationships higher than $8\%K^{-1}$, as they would be
beyond what is reconstructed from East Antarctic ice cores. Geothermal heat flux can also be ruled out from being the culprit,
420 as for the most part the thermal regime in the data set from Shapiro and Ritzwoller (2004) at Dome C is similar or even lower.

On the basis of the boundary conditions used here, we suggest that the main reason for the isochrone mismatch lies in the parameterisation of basal drag and ice flow. The basal friction in the model is a function of bedrock elevation (see section 2.2) and decreases with depth, therefore it is lower in bedrock depressions especially below sea level where sliding is thus higher. Also, the relatively coarse resolution (16 km) used here leads to a "smoothed-out" bedrock profile (see Figure 8) potentially favouring faster basal ice flow. A "rougher" bedrock profile might impede sliding in drainage regions. Another aspect could be the choice of the so called "enhancement factor" in the shallow ice approximation SIA_e which is a crude tuning parameter to accommodate for anisotropic ice. Here, $SIA_e = 1.0$ which is low compared to values used in other studies (generally, a lower value of SIA_e leads to slower ice flow) so we do not expect that the enhancement factor plays a dominant role. Modelled isochrone elevations in the present day equilibrium ensemble (case pd) are far off the observed target elevation throughout the CEA-10 transect (see Figure 11). This underlines the results from the Dome C region pd-case (section 3.2).

4.2 Simulated isochrone elevation along the Dome Fuji - Dronning Maud Land - transect.

We now focus on the 74 ka isochrone connecting Dome Fuji ($77^{\circ}32'S$, $38^{\circ}70'E$) and the EDML ice core ($75^{\circ}0'S$, $0^{\circ}068'E$). Figure 12 illustrates the topographic characteristics of the area enclosing Dome Fuji and EDML. In contrast to Dome C which is surrounded by bedrock below sea level in the outskirts of the Aurora Subglacial Basin, the ice bed at and around Dome Fuji is elevated above sea level for several hundreds of kilometres in every direction. This means that the yield stress computed by the ISM will be very high in a large area, making the impact of sliding on internal ice velocities negligible. Both transects DML-VIII23 and DML-IV24 are characterised by mountainous subglacial terrain above sea level (see Figure 12 A). Any mismatches between the observed and modelled isochrone elevations is most probably due to uncertainties in the climate forcing or computed basal melt patterns. Basal melting at the bed of the ice along the radar tracks is largely unfortunately unknown, as is the temporal paleo-accumulation pattern. A direct comparison to proxy or observational data is therefore not feasible. In the future observation-based estimates of the presence or absence of basal melt (e.g. Fujita et al., 2012; Passalacqua et al., 2017; Karlsson et al., 2018) could be utilised to locally attribute mismatches between modelled and observed isochrone elevations to inconsistencies in basal melting between model and observations.

We limit ourselves to a qualitative discussion of the model-data mismatch trying to identify persistent patterns. Looking at DML-VIII23, the modelled isochrone elevation fits well with the observed radar data ($RMSD < 5\%$ for the whole transect) and is of similar accuracy as for the 100 km Dome C data for the same transect age ($RMSD 3.5 - 5.0\%$). In contrast to the lower half of CEA-10 (previous section), which is situated above a deep bedrock depression associated with low basal friction in the model, the whole transect DML-VIII23 is characterised by relatively flat bedrock above sea level. Furthermore, past elevated ice flow episodes of the marine Wilkes Basin Ice Sheet caused by thinning of the coastal ice cover e.g. during interglacials could have mediated drawdown of isochrone elevation. The comparison between DML-VIII23 and CEA-10 potentially highlights a methodological deficiency (leading to unrealistic internal flow and basal sliding) as the isochrone mismatch in CEA-10 cannot be remedied by a surface mass balance correction.

The comparison between DML-VIII23 and transect CEA-10 which encompasses the outskirts of the Wilkes Subglacial Basin therefore highlights a potentially methodological deficiency in the simulated internal flow and bedrock sliding as the isochrone

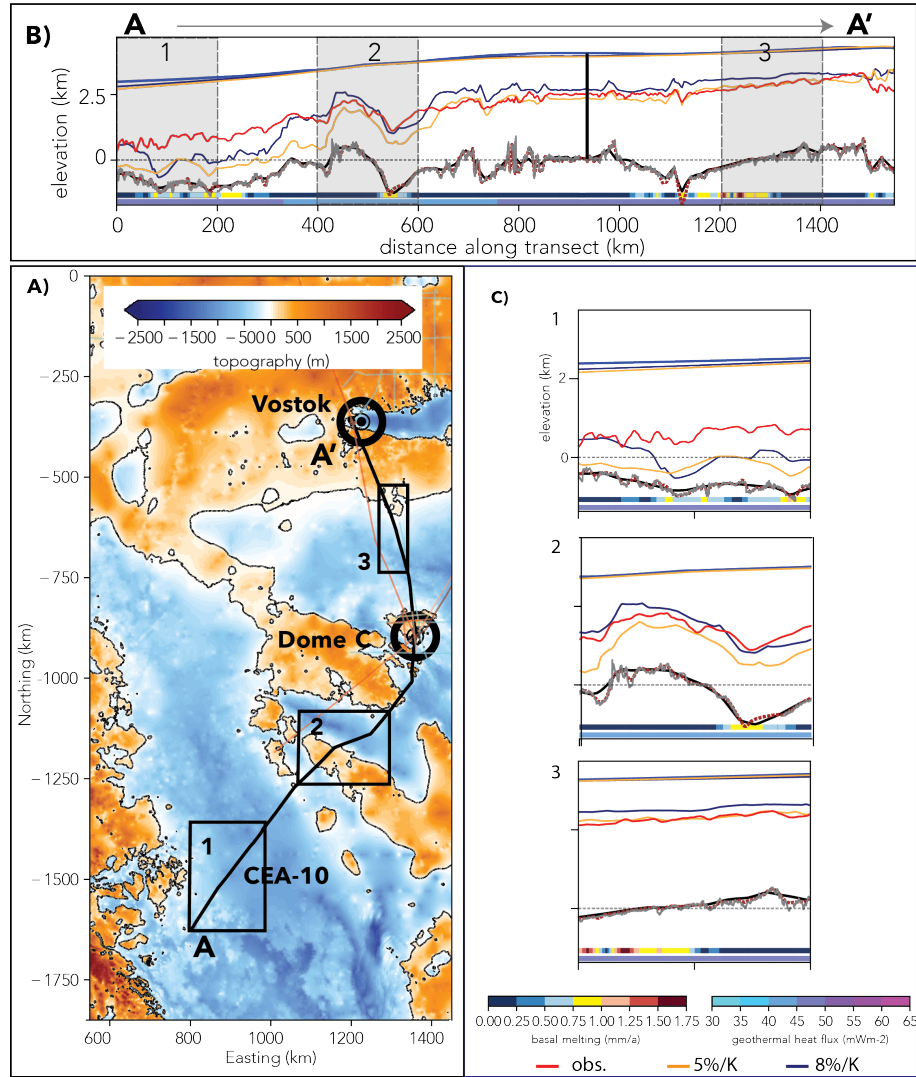


Figure 10. Overview of transect CEA-10. Panel A) shows the bedrock elevation from Morlighem et al. (2020) at 1 km resolution overlain by the CEA-10 transect in black and other radar transects analysed in this study (thin coloured lines). Panels B) and C) illustrate the ice surface, bedrock and isochrone elevation of the 90 ka radar reflector (modelled - blue $8\%K^{-1}$, yellow $5\%K^{-1}$, observed - red) along transect CEA-10 (The position of the EDC ice core is illustrated by the vertical black line in panel B). The model bedrock elevation is depicted in black, the original radar data in grey and the BedMachine Antarctica 1 km-grid in brown. Shaded areas in B are shown additionally in a detailed view (C). Sea level (0-elevation) is depicted by the black dotted line. The coloured bars on the bottom of B) and C) depict the geothermal heat flux and the computed basal melt rate along the transect.

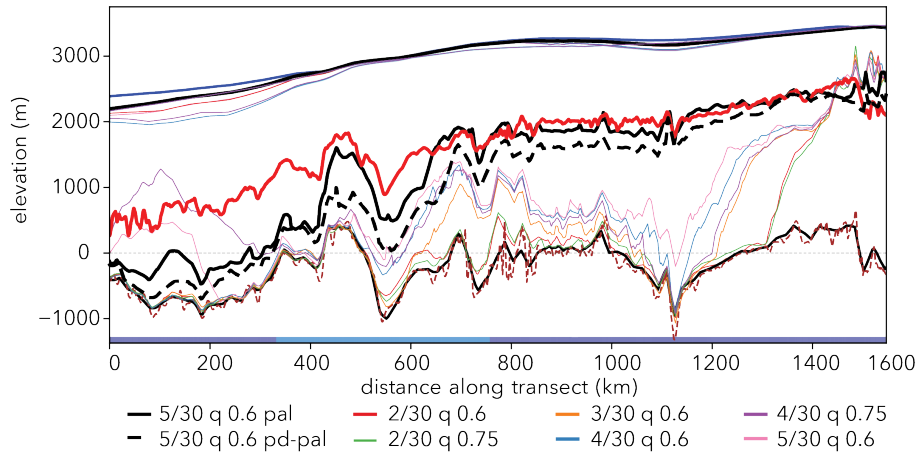


Figure 11. Simulated and observed isochrone elevations along transect CEA-10. The thick red line depicts the observed 90 ka radar reflector, the black line the 220 ka paleo-simulation with a paleo-precipitation-temperature relationship of $5\%K^{-1}$. The dashed black line shows the isochrone elevation computed with the respective present-day time slice (case pd) of the paleo simulation (pal). The thin colored lines represent the simulated isochrone and surface elevation from the present-day equilibrium ensemble.

455 mismatch in transect CEA-10 cannot be remedied via a surface mass balance correction. Modelled isochrone elevations based on simulations employing inversion techniques to determine basal friction and/or a paleo-ensemble covering a larger parameter spread would be necessary to assess whether this mismatch can be further reduced using the state of the art today.

In case of DML-IV24 a slightly different picture emerges. For the first half of the transect, the modelled isochrone is in very good agreement to the observed elevation data (except in areas with strong deviations between the 16 km BedMap topography and the high resolution radar observation), but the second half of the transect shows large deviations in the isochrone elevation leading to an overall RMSD of ca. 10% for the whole transect. In this case, it is not straightforward to identify the causes for the mismatch as the bedrock is above sea level along the whole transect and there is no clear correlation between elevated basal melt rates and dips in modelled isochrone elevation. One potential reason could be a relationship between temperature and precipitation anomalies in the EDML region which is fundamentally different strongly differs from Dome C the continental scale temperature precipitation scaling of ca. $5 \pm 1\%K^{-1}$. This would affect the surface mass balance forcing and therefore the elevation of the isochrone. However, the proxy-based paleo-precipitation-temperature relationship at EDML and Dome C is very similar to the continental mean albeit with considerable uncertainties of $\pm 2.8\%$ for Dome C and EDML (Frieler et al., 2015). In fact, using the ISM results of a simulation with a precipitation-temperature relationship of $8\%K^{-1}$ which is at the upper end of reconstructions for EDML, the match of the computed isochrone elevation close to EDML is improved considerably (see Figure 12). Thus, the assumption of a simple and spatially uniform accumulation/temperature scaling may be valid on the high plateau of the East Antarctic Sheet but not necessarily hold for areas closer to the coast, where synoptic activity can dominate the spatial and temporal variability in precipitation (Welker et al., 2014). This could only be remedied in coupled atmosphere/ice sheet model runs that are able to resolve such synoptic activity. For computational reasons, however,

460

465

470

this is currently not possible for such long-term runs as performed in this study. One potential solution would be to use a
 475 spatially heterogenous accumulation/temperature scaling informed by both coastal and interior ice core reconstructions.

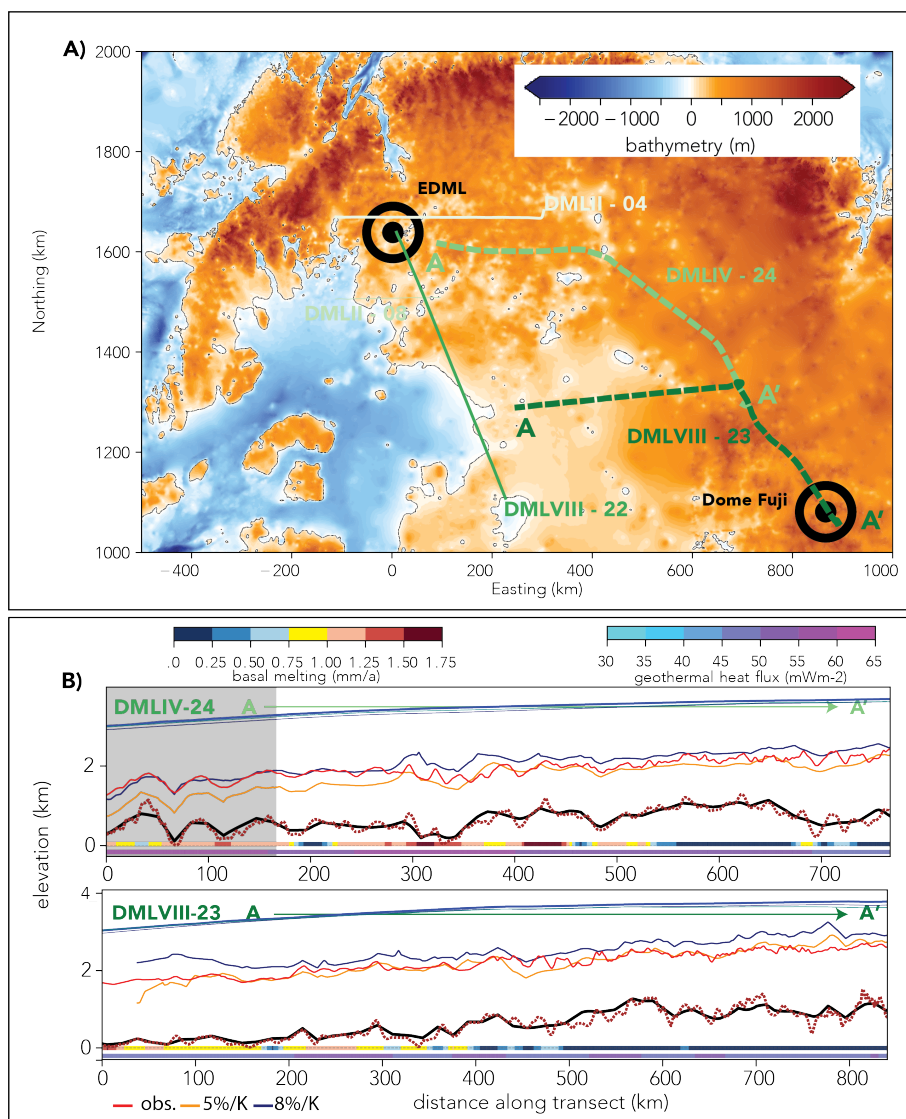


Figure 12. Overview of transect DML VIII-23 and IV-24. Panel A) shows the bedrock elevation from Morlighem et al. (2020) at 1 km resolution overlain by the DML transects in green and other radar transects analysed in this study (thin coloured lines). Panel B) illustrates the ice surface, bedrock and isochrone elevation of the 74 ka radar reflector (modelled - blue $8\%K^{-1}$, yellow $5\%K^{-1}$, observed - red). The model bedrock elevation is depicted in black while the original radar data and the BedMachine Antarctica 1 km-grid is plotted in brown. The coloured bars on the bottom of B) depict the geothermal heat flux and the computed basal melt rate along the transect.

5 Conclusions

We present the first attempt to constrain Antarctic paleoclimate forcing and parameterisations of ice flow in a continental scale ice sheet model by comparison of simulated englacial layers against a pool of observed Antarctic isochrones.

- We are able to reconstruct most large-scale englacial layer features of the observed isochrones and show that it is possible to simulate the observed internal structure of the Antarctic Ice Sheet even at coarse resolution. ~~identify past accumulation patterns by direct comparison of the~~ We identify mismatches between modelled and observed isochrone elevations, which can be traced back to the transient paleoclimate forcing employed in our model runs which makes use of a linear paleo-temperature-precipitation relationship. The forcing is constructed by ice core reconstructions in combination with paleoclimate model data. This does not take into account the spatial heterogeneity of paleo temperature-precipitation relationships and effects of synoptic precipitation variability. Our isochrone modelling efforts therefore motivate the use of a regionally refined temperature-precipitation scaling to improve paleo ice-sheet simulations and consequently the paleo spinup for model based future projections.
- We further show, that our ~~paleo ice-sheet simulations suggest~~ **computed** isochrone elevations are in very good agreement (**within $\pm 5\%$ RMSD of the local ice thickness**) with observations in slow flowing regions such as at or near ice divides especially at locations where the ice-core based proxy reconstruction of the temperature-precipitation scaling matches the one used in the forcing. However, we find key isochrone elevation mismatches in the proximity or above marine glaciated areas of the Antarctic Ice Sheet which points towards a poorly constrained parameterisation of basal drag. ~~However,~~ There seems to be a systematic overestimation of vertical advection over subglacial basins and in drainage sectors. This is most probably a commonality of all ice-sheet model setups using similar heuristics for basal friction as we use here, i.e., the majority of ice-sheet models used for paleo-studies. ~~This raises~~raising the question whether paleo-simulations and projections of ice dynamics in subglacial basins might be subject to a systematic bias. **We show,** that using englacial layers as a tuning target in ice sheet modelling is ideally suited to identify such biases, as surface observables such as ice sheet elevation do not necessarily reveal inconsistencies in the subsurface flow field. Expanding the existing radar observations into regions of dynamic ice flow away from ice divides and over subglacial basins would provide invaluable constraints for paleo-ice-sheet model simulations.
- The reproducibility of isochrones dramatically increases if the ice sheet has been simulated transiently over the last several glacial-interglacial cycles. **In contrast, flow fields computed in equilibrium simulations under constant present-day forcing produce isochrone elevation mismatches of up to two-thirds of the local ice thickness.** This points towards critical misrepresentations of the ice sheet's internal flow for model setups where only present-day climate forcing is taken into account and the model is solely tuned against present-day 2D and 1D observables. **Varying the parameters relevant for basal sliding cannot remedy this mismatch.** This is despite the fact that isochrone elevations can vary several hundred meters for a set of parameters which produce an equilibrium sea-level equivalent ice volume of the Antarctic Ice Sheet within ± 2 m of present-day observations.

– When using isochrones as a tuning target for paleo-ice-sheet models, two key uncertainties prove difficult to account for: 1) geothermal heat flux fields remain poorly constrained and can have a strong influence on isochrone elevations. Therefore, both climate forcing and ice sheet model parameterisation should be constrained by isochrone elevations in concert with the present-day surface observables, (sea-level equivalent) ice volume and paleo tuning targets such as local ice sheet elevations or post-LGM grounding line positions as well. Uncertain bedrock elevation is the second complicating factor. However it is easier to identify by comparison between the usually coarse resolution model bedrock elevation and the available high resolution radar products.

– A model intercomparison investigating isochrone elevations based on a variety of model physics and forcings could shed light on systematic misrepresentations of ice flow and, thus, internal stratigraphy in current generation ice-sheet models. Our post-processing approach would allow for such an intercomparison as it forgoes the need to implement a Lagrangian tracer module into the respective ice-sheet model. We make the case that the internal stratigraphy of the Antarctic Ice Sheet can serve as a valuable data benchmark for continental ice-sheet modelling as it provides a three dimensional tuning target which is imprinted with the complete climate and flow history of the ice sheet. ~~Therefore, matching the internal structure of the ice sheet is a powerful tool.~~

We conclude that this approach should be used alongside traditionally employed tuning targets such as ice volume, surface velocity or grounding line positions. While analysing the match of an ISM simulation with the internal stratigraphy is not as straight forward as using surface observables, it could improve both paleo ice-sheet reconstructions as well as sea-level projections due to more realistic initial ice-sheet configurations. Efforts such as AntArchitecture’s to provide a compilation of all observed englacial layers will provide an invaluable data benchmark for future ice-sheet modelling efforts. Looking ahead, it would be desirable to develop a standard protocol to tune ISMs against the internal stratigraphy of the Antarctic Ice Sheet. This would facilitate the evaluation of a new generation of model simulations which are constrained by the climate and ice dynamic memory encapsulated within the ice.

Code and data availability. Both PISM and OceanParcels are open source and available via <https://pism-docs.org/wiki/doku.php> and <http://oceanparcels.org/index.html>, respectively. The isochrones from Winter et al. (2019) are available via Pangaea <https://doi.pangaea.de/10.1594/PANGAEA.895528>, all model data is available upon request.

Video supplement. Tracer migration from 90-0 ka BP. Tracers are seeded at the surface at 90 ka BP and transported with the ice flow over time. Colouring illustrates absolute tracer elevation. Available at <https://doi.org/10.5446/50125>

Author contributions. JS devised the experiments and ran the simulations. JS, HF and OE carried out the analysis. JS wrote the manuscript with contributions from HF and OE.

Competing interests. OE is CEIC of The Cryosphere

540 *Acknowledgements.* We would like to thank Marie Cavitte, Gwendolyn Leysinger Vieli, Anna Winter, Lucas Beem and David Ashmore for providing the isochrone data and helpful discussions as well as Philippe Delandmeter and Victor Onink for their support with setting up OceanParcels for the use with PISM-data. JS is grateful for funding from the Deutsche Forschungsgemeinschaft under personal grant SU 1166/1-1 (Project WANT-Ice). Hubertus Fischer gratefully acknowledges the long-term support by the Swiss National Science Foundation (SNSF). Development of PISM is supported by NSF grants PLR-1603799 and PLR-1644277 and NASA grant NNX17AG65G.

References

- 545 Albrecht, T., Winkelmann, R., and Levermann, A.: Glacial-cycle simulations of the Antarctic Ice Sheet with the Parallel Ice Sheet Model (PISM) - Part 2: Parameter ensemble analysis, *Cryosphere*, 14, 633–656, <https://doi.org/10.5194/tc-14-633-2020>, 2020.
- An, M. J., Wiens, D. A., Zhao, Y., Feng, M., Nyblade, A., Kanao, M., Li, Y. S., Maggi, A., and Leveque, J. J.: Temperature, lithosphere-aesthenosphere boundary, and heat flux beneath the Antarctic Plate inferred from seismic velocities, *Journal of Geophysical Research-Solid Earth*, 120, 8720–8742, <https://doi.org/10.1002/2015jb011917>, 2015.
- 550 Ashmore, D. W., Bingham, R. G., Ross, N., Siegert, M., Jordan, T. A., and Mair, D. W. F.: Englacial Architecture and Age-Depth Constraints Across the West Antarctic Ice Sheet, *Geophysical Research Letters*, 47, <https://doi.org/10.1029/2019GL086663>, 2020.
- Bazin, L., Landais, A., Lemieux-Dudon, B., Toyé Mahamadou Kele, H., Veres, D., Parrenin, F., Martinerie, P., Ritz, C., Capron, E., Lipenkov, V., Loutre, M.-F., Raynaud, D., Vinther, B., Svensson, A., Rasmussen, S. O., Severi, M., Blunier, T., Leuenberger, M., Fischer, H., Masson-Delmotte, V., Chappellaz, J., and Wolff, E.: An optimized multi-proxy, multi-site Antarctic ice and gas orbital chronology (AICC2012): 120-800 ka, *Climate of the Past*, 9, 1715–1731, <https://doi.org/10.5194/cp-9-1715-2013>, 2013.
- 555 Beem, L. H., Young, D. A., Greenbaum, J. S., Blankenship, D. D., Guo, J., and Bo, S.: Characterization of Titan Dome, East Antarctica, and potential as an ice core target, *The Cryosphere Discussions*, 2020, 1–19, <https://doi.org/10.5194/tc-2020-210>, 2020.
- Bentley, M. J., Cofaigh, C. O., Anderson, J. B., Conway, H., Davies, B., Graham, A. G. C., Hillenbrand, C. D., Hodgson, D. A., Jamieson, S. S. R., Larter, R. D., Mackintosh, A., Smith, J. A., Verleyen, E., Ackert, R. P., Bart, P. J., Berg, S., Brunstein, D., Canals, M., Colhoun, E. A., Crosta, X., Dickens, W. A., Domack, E., Dowdeswell, J. A., Dunbar, R., Ehrmann, W., Evans, J., Favier, V., Fink, D., Fogwill, C. J., Glasser, N. F., Gohl, K., Gollledge, N. R., Goodwin, I., Gore, D. B., Greenwood, S. L., Hall, B. L., Hall, K., Hedding, D. W., Hein, A. S., Hocking, E. P., Jakobsson, M., Johnson, J. S., Jomelli, V., Jones, R. S., Klages, J. P., Kristoffersen, Y., Kuhn, G., Leventer, A., Licht, K., Lilly, K., Lindow, J., Livingstone, S. J., Masse, G., McGlone, M. S., McKay, R. M., Melles, M., Miura, H., Mulvaney, R., Nel, W., Nitsche, F. O., O'Brien, P. E., Post, A. L., Roberts, S. J., Saunders, K. M., Selkirk, P. M., Simms, A. R., Spiegel, C., Stollendorf, T. D., Sugden, D. E., 560 van der Putten, N., van Ommen, T., Verfaillie, D., Vyverman, W., Wagner, B., White, D. A., Witus, A. E., Zwart, D., and Consortium, R.: A community-based geological reconstruction of Antarctic Ice Sheet deglaciation since the Last Glacial Maximum, *Quaternary Science Reviews*, 100, 1–9, <https://doi.org/10.1016/j.quascirev.2014.06.025>, 2014.
- Bingham, R., e. a.: Report of AntArchitecture Workshop, July 2017, <https://www.scar.org/library/science-4/geosciences/antarchitecture/5240-antarchitecture-workshop-2017/>, 2020.
- 570 Born, A.: Tracer transport in an isochronal ice-sheet model, *Journal of Glaciology*, 63, 22–38, <https://doi.org/10.1017/jog.2016.111>, 2017.
- Bueler, E. and Brown, J.: Shallow shelf approximation as a "sliding law" in a thermodynamically coupled ice sheet model, *J. Geophys. Res.*, 114, <https://doi.org/10.1029/2008JF001179>, 2009.
- Bueler, E., Lingle, C. S., and Brown, J.: Fast computation of a viscoelastic deformable Earth model for ice-sheet simulations, *Annals of Glaciology*, Vol 46, 2007, 46, 97–+, <https://doi.org/Doi 10.3189/172756407782871567>, 2007.
- 575 Burton-Johnson, A., Dziadek, R., and Martin, C.: Review article: Geothermal heat flow in Antarctica: current and future directions, *The Cryosphere*, 14, 3843–3873, <https://doi.org/10.5194/tc-14-3843-2020>, 2020.
- Cavitt, M. G. P., Blankenship, D. D., Young, D. A., Schroeder, D. M., Parrenin, F., Lemeur, E., Macgregor, J. A., and Siegert, M. J.: Deep radiostratigraphy of the East Antarctic plateau: connecting the Dome C and Vostok ice core sites, *Journal of Glaciology*, 62, 323–334, <https://doi.org/10.1017/jog.2016.11>, 2016.

- 580 Cavitte, M. G. P., Parrenin, F., Ritz, C., Young, D. A., Van Liefferinge, B., Blankenship, D. D., Frezzotti, M., and Roberts, J. L.: Accumulation patterns around Dome C, East Antarctica, in the last 73 kyr, *Cryosphere*, 12, 1401–1414, <https://doi.org/10.5194/tc-12-1401-2018>, 2018.
- Cavitte, M. G. P., Young, D. A., Mulvaney, R., Ritz, C., Greenbaum, J. S., Ng, G., Kempf, S. D., Quartini, E., Muldoon, G. R., Paden, J., Frezzotti, M., Roberts, J. L., Tozer, C. R., Schroeder, D. M., and Blankenship, D. D.: A detailed radiostratigraphic data set for the central East Antarctic Plateau spanning the last half million years, *Earth System Science Data Discussions*, 2020, 1–27, [https://doi.org/10.5194/essd-](https://doi.org/10.5194/essd-2020-393)
- 585 2020-393, 2020.
- Clarke, G. K. C., Marshall, S. J., Rybak, O., and Huybrechts, P.: A comparison of Eulerian and Lagrangian methods for dating in numerical ice-sheet models, *Annals of Glaciology*, Vol 37, 37, 150–158, *ann Glaciol*, 2003.
- Clarke, G. K. C., Lhomme, N., and Marshall, S. J.: Tracer transport in the Greenland ice sheet: three-dimensional isotopic stratigraphy, *Quaternary Science Reviews*, 24, 155–171, <https://doi.org/10.1016/J.Quascirev.2004.08.021>, *quaternary Sci Rev*, 2005.
- 590 DeConto, R. M. and Pollard, D.: Contribution of Antarctica to past and future sea-level rise, *Nature*, 531, 591–597, <https://doi.org/10.1038/nature17145>, 2016.
- Delandmeter, P. and van Sebillé, E.: The Parcels v2.0 Lagrangian framework: new field interpolation schemes, *Geoscientific Model Development*, 12, 3571–3584, <https://doi.org/10.5194/gmd-12-3571-2019>, 2019.
- Dutton, A., Carlson, A. E., Long, A. J., Milne, G. A., Clark, P. U., DeConto, R., Horton, B. P., Rahmstorf, S., and Raymo, M. E.: Sea-level
- 595 rise due to polar ice-sheet mass loss during past warm periods, *Science*, 349, <https://doi.org/10.1126/science.aaa4019>, 2015.
- Edwards, T. L., Brandon, M. A., Durand, G., Edwards, N. R., Golledge, N. R., Holden, P. B., Nias, I. J., Payne, A. J., Ritz, C., and Wernecke, A.: Revisiting Antarctic ice loss due to marine ice-cliff instability, *Nature*, 566, 58–+, <https://doi.org/10.1038/s41586-019-0901-4>, 2019.
- Eisen, O., Wilhelms, F., Steinhage, D., and Schwander, J.: Improved method to determine RES-reflector depths from ice-core profiles of permittivity and conductivity, *Journal of Glaciology*, 52, 299–310, <https://doi.org/10.3189/172756506781828674>, 2006.
- 600 Feldmann, J., Albrecht, T., Khroulev, C., Pattyn, F., and Levermann, A.: Resolution-dependent performance of grounding line motion in a shallow model compared with a full-Stokes model according to the MISIMP3d intercomparison, *Journal of Glaciology*, 60, 353–360, <https://doi.org/10.3189/2014JoG13J093>, 2014.
- Fretwell, P., Pritchard, H. D., Vaughan, D. G., Bamber, J. L., Barrand, N. E., Bell, R., Bianchi, C., Bingham, R. G., Blankenship, D. D., Casassa, G., Catania, G., Callens, D., Conway, H., Cook, A. J., Corr, H. F. J., Damaske, D., Damm, V., Ferraccioli, F., Forsberg, R., Fujita, S., Gim, Y., Gogineni, P., Griggs, J. A., Hindmarsh, R. C. A., Holmlund, P., Holt, J. W., Jacobel, R. W., Jenkins, A., Jokat, W., Jordan, T., King, E. C., Kohler, J., Krabill, W., Riger-Kusk, M., Langley, K. A., Leitchenkov, G., Leuschen, C., Luyendyk, B. P., Matsuoka, K., Mouginot, J., Nitsche, F. O., Nogi, Y., Nost, O. A., Popov, S. V., Rignot, E., Rippin, D. M., Rivera, A., Roberts, J., Ross, N., Siegert, M. J., Smith, A. M., Steinhage, D., Studinger, M., Sun, B., Tinto, B. K., Welch, B. C., Wilson, D., Young, D. A., Xiangbin, C., and Zirizzotti, A.: Bedmap2: improved ice bed, surface and thickness datasets for Antarctica, *Cryosphere*, 7, 375–393, [https://doi.org/10.5194/Tc-7-375-](https://doi.org/10.5194/Tc-7-375-2013)
- 610 2013, 2013.
- Frieler, K., Clark, P. U., He, F., Buizert, C., Reese, R., Ligtenberg, S. R. M., van den Broeke, M. R., Winkelmann, R., and Levermann, A.: Consistent evidence of increasing Antarctic accumulation with warming, *Nature Climate Change*, 5, 348–352, 2015.
- Fujita, S., Holmlund, P., Matsuoka, K., Enomoto, H., Fukui, K., Nakazawa, F., Sugiyama, S., and Surdyk, S.: Radar diagnosis of the subglacial conditions in Dronning Maud Land, East Antarctica, *The Cryosphere*, 6, 1203–1219, <https://doi.org/10.5194/tc-6-1203-2012>, <https://tc.copernicus.org/articles/6/1203/2012/>, 2012.
- 615 Garbe, J., Albrecht, T., Levermann, A., Donges, J. F., and Winkelmann, R.: The hysteresis of the Antarctic Ice Sheet, *Nature*, 585, 538–544, <https://doi.org/10.1038/s41586-020-2727-5>, 2020.

- Gladstone, R. M., Payne, A. J., and Cornford, S. L.: Parameterising the grounding line in flow-line ice sheet models, *Cryosphere*, 4, 605–619, <https://doi.org/10.5194/Tc-4-605-2010>, 2010.
- 620 Goelles, T., Grosfeld, K., and Lohmann, G.: Semi-Lagrangian transport of oxygen isotopes in polythermal ice sheets: implementation and first results, *Geoscientific Model Development*, 7, 1395–1408, <https://doi.org/10.5194/gmd-7-1395-2014>, geosci Model Dev, 2014.
- Goelzer, H., Nowicki, S., Payne, A., Larour, E., Seroussi, H., Lipscomb, W. H., Gregory, J., Abe-Ouchi, A., Shepherd, A., Simon, E., Agosta, C., Alexander, P., Aschwanden, A., Barthel, A., Calov, R., Chambers, C., Choi, Y., Cuzzone, J., Dumas, C., Edwards, T., Felikson, D., Fettweis, X., Golledge, N. R., Greve, R., Humbert, A., Huybrechts, P., Le clec'h, S., Lee, V., Leguy, G., Little, C., Lowry, D. P., Morlighem, M., Nias, I., Quiquet, A., Rückamp, M., Schlegel, N.-J., Slater, D., Smith, R., Straneo, F., Tarasov, L., van de Wal, R., and van den Broeke, M.: The future sea-level contribution of the Greenland ice sheet: a multi-model ensemble study of ISMIP6, *The Cryosphere Discussions*, 2020, 1–43, <https://doi.org/10.5194/tc-2019-319>, 2020.
- 625 Goldberg, D. N., Heimbach, P., Joughin, I., and Smith, B.: Committed retreat of Smith, Pope, and Kohler Glaciers over the next 30 years inferred by transient model calibration, *The Cryosphere*, 9, 2429–2446, <https://doi.org/10.5194/tc-9-2429-2015>, 2015.
- 630 Hindmarsh, R. C. A., Vieli, G. J. M. C. L., and Parrenin, F.: A large-scale numerical model for computing isochrone geometry, *Annals of Glaciology*, 50, 130–140, <https://doi.org/10.3189/172756409789097450>, 2009.
- Huybrechts, P., Rybak, O., Pattyn, F., Ruth, U., and Steinhage, D.: Ice thinning, upstream advection, and non-climatic biases for the upper 89% of the EDML ice core from a nested model of the Antarctic ice sheet, *Climate of the Past*, 3, 577–589, <https://doi.org/10.5194/cp-3-577-2007>, *clim Past*, 2007.
- 635 Joughin, I., Smith, B., Howat, I., and Scambos, T.: MEaSUREs Greenland Ice Sheet Velocity Map from InSAR Data, Version 2., Boulder, Colorado USA. NASA National Snow and Ice Data Center Distributed Active Archive Center, <https://doi.org/10.5067/OC7B04ZM9G6Q>, 2015, updated 2018.
- Jouvet, G., Rölli, S., Sahli, H., Corcho, J., Gnägi, L., Compagno, L., Sidler, D., Schwikowski, M., Bauder, A., and Funk, M.: Dating the ice of Gauligletscher, Switzerland, based on surface radionuclide contamination and ice flow modeling, *The Cryosphere Discussions*, 2020, 1–28, <https://doi.org/10.5194/tc-2020-142>, 2020.
- 640 Jouzel, J., Masson-Delmotte, V., Cattani, O., Dreyfus, G., Falourd, S., Hoffmann, G., Minster, B., Nouet, J., Barnola, J. M., Chappellaz, J., Fischer, H., Gallet, J. C., Johnsen, S., Leuenberger, M., Loulergue, L., Luethi, D., Oerter, H., Parrenin, F., Raisbeck, G., Raynaud, D., Schilt, A., Schwander, J., Selmo, E., Souchez, R., Spahni, R., Stauffer, B., Steffensen, J. P., Stenni, B., Stocker, T. F., Tison, J. L., Werner, M., and Wolff, E. W.: Orbital and millennial Antarctic climate variability over the past 800,000 years, *Science*, 317, 793–796, <https://doi.org/10.1126/Science.1141038>, 2007.
- 645 Karlsson, N. B., Binder, T., Eagles, G., Helm, V., Pattyn, F., Van Liefferinge, B., and Eisen, O.: Glaciological characteristics in the Dome Fuji region and new assessment for "Oldest Ice", *Cryosphere*, 12, 2413–2424, <https://doi.org/10.5194/tc-12-2413-2018>, 2018.
- Konrad, H., Bohleber, P., Wagenbach, D., Vincent, C., and Eisen, O.: Determining the age distribution of Colle Gnifetti, Monte Rosa, Swiss Alps, by combining ice cores, ground-penetrating radar and a simple flow model, *Journal of Glaciology*, 59, 179–189, <https://doi.org/10.3189/2013JoG12J072>, 2013.
- 650 Lange, M. and van Sebille, E.: Parcels v0.9: prototyping a Lagrangian ocean analysis framework for the petascale age, *Geoscientific Model Development*, 10, 4175–4186, <https://doi.org/10.5194/gmd-10-4175-2017>, 2017.
- Leysinger Vieli, G. J.-M. C., Hindmarsh, R. C. A., Siegert, M. J., and Bo, S.: Time-dependence of the spatial pattern of accumulation rate in East Antarctica deduced from isochronic radar layers using a 3-D numerical ice flow model, *Journal of Geophysical Research-Earth Surface*, 116, <https://doi.org/10.1029/2010jf001785>, 2011.

- Lhomme, N., Clarke, G. K. C., and Marshall, S. J.: Tracer transport in the Greenland Ice Sheet: constraints on ice cores and glacial history, *Quaternary Science Reviews*, 24, 173–194, <https://doi.org/10.1016/J.Quascirev.2004.08.020>, *quaternary Sci Rev*, 2005a.
- Lhomme, N., Clarke, G. K. C., and Ritz, C.: Global budget of water isotopes inferred from polar ice sheets, *Geophysical Research Letters*, 32, <https://doi.org/10.1029/2005gl023774>, 2005b.
- 660 Lingle, C. S. and Clark, J. A.: A Numerical-Model of Interactions between a Marine Ice-Sheet and the Solid Earth - Application to a West Antarctic Ice Stream, *Journal of Geophysical Research-Oceans*, 90, 1100–1114, <https://doi.org/DOI.10.1029/JC090iC01p01100>, 1985.
- Locarnini, R. A., Mishonov, A. V., Baranova, O. K., Boyer, T. P., Zweng, M., Garcia, H. E., Reagan, J., Seidov, D., Weathers, K., Paver, C., and Smolyar, I.: *World Ocean Atlas 2018, Volume 1: Temperature.*, NOAA Atlas NESDIS 81, 2019.
- Martos, Y. M., Catalan, M., Jordan, T. A., Golynsky, A., Golynsky, D., Eagles, G., and Vaughan, D. G.: Heat Flux Distribution of Antarctica Unveiled, *Geophysical Research Letters*, 44, 11 417–11 426, <https://doi.org/10.1002/2017gl075609>, 2017.
- 665 Morlighem, M., Williams, C. N., Rignot, E., An, L., Arndt, J. E., Bamber, J. L., Catania, G., Chauche, N., Dowdeswell, J. A., Dorschel, B., Fenty, I., Hogan, K., Howat, I., Hubbard, A., Jakobsson, M., Jordan, T. M., Kjeldsen, K. K., Millan, R., Mayer, L., Mouginot, J., Noel, B. P. Y., O’Cofaigh, C., Palmer, S., Rysgaard, S., Seroussi, H., Siegert, M. J., Slabon, P., Straneo, F., van den Broeke, M. R., Weinrebe, W., Wood, M., and Zinglensen, K. B.: BedMachine v3: Complete Bed Topography and Ocean Bathymetry Mapping of
- 670 Greenland From Multibeam Echo Sounding Combined With Mass Conservation, *Geophysical Research Letters*, 44, 11 051–11 061, <https://doi.org/10.1002/2017gl074954>, 2017.
- Morlighem, M., Rignot, E., Binder, T., Blankenship, D., Drews, R., Eagles, G., Eisen, O., Ferraccioli, F., Forsberg, R., Fretwell, P., Goel, V., Greenbaum, J. S., Gudmundsson, H., Guo, J. X., Helm, V., Hofstede, C., Howat, I., Humbert, A., Jokat, W., Karlsson, N. B., Lee, W. S., Matsuoka, K., Millan, R., Mouginot, J., Paden, J., Pattyn, F., Roberts, J., Rosier, S., Ruppel, A., Seroussi, H., Smith, E. C., Steinhage,
- 675 D., Sun, B., van den Broeke, M. R., van Ommen, T. D., van Wessem, M., and Young, D. A.: Deep glacial troughs and stabilizing ridges unveiled beneath the margins of the Antarctic ice sheet, *Nature Geoscience*, 13, 132–+, <https://doi.org/10.1038/s41561-019-0510-8>, 2020.
- Mouginot, J., Scheuchl, B., and Rignot, E.: MEaSURES Annual Antarctic Ice Velocity Maps 2005-2017, Version 1., Boulder, Colorado USA. NASA National Snow and Ice Data Center Distributed Active Archive Center, <https://doi.org/0.5067/9T4EPQXTJYW9>, 2017, updated 2017.
- 680 Parrenin, F., Cavitte, M. G. P., Blankenship, D. D., Chappellaz, J., Fischer, H., Gagliardini, O., Masson-Delmotte, V., Passalacqua, O., Ritz, C., Roberts, J., Siegert, M. J., and Young, D. A.: Is there 1.5-million-year-old ice near Dome C, Antarctica?, *Cryosphere*, 11, 2427–2437, <https://doi.org/10.5194/tc-11-2427-2017>, 2017.
- Passalacqua, O., Ritz, C., Parrenin, F., Urbini, S., and Frezzotti, M.: Geothermal flux and basal melt rate in the Dome C region inferred from radar reflectivity and heat modelling, *Cryosphere*, 11, 2231–2246, <https://doi.org/10.5194/tc-11-2231-2017>, 2017.
- 685 Passalacqua, O., Cavitte, M., Gagliardini, O., Gillet-Chaulet, F., Parrenin, F., Ritz, C., and Young, D.: Brief communication: Candidate sites of 1.5 Myr old ice 37 km southwest of the Dome C summit, East Antarctica, *The Cryosphere*, 12, 2167–2174, <https://doi.org/10.5194/tc-12-2167-2018>, 2018.
- Pattyn, F.: The paradigm shift in Antarctic ice sheet modelling, *Nature Communications*, 9, <https://doi.org/10.1038/s41467-018-05003-z>, 2018.
- 690 Pfeiffer, M. and Lohmann, G.: Greenland Ice Sheet influence on Last Interglacial climate: global sensitivity studies performed with an atmosphere-ocean general circulation model, *Climate of the Past*, 12, 1313–1338, <https://doi.org/10.5194/cp-12-1313-2016>, 2016.

- Purucker, M. E.: Geothermal heat flux data set based on low resolution observations collected by the CHAMP satellite between 2000 and 2010, and produced from the MF-6 model following the technique described in Fox Maule et al. (2005), retrieved from: https://core2.gsfc.nasa.gov/research/purucker/heatflux_updates.html, 2013.
- 695 Seroussi, H., Nowicki, S., Simon, E., Abe-Ouchi, A., Albrecht, T., Brondex, J., Cornford, S., Dumas, C., Gillet-Chaulet, F., Goelzer, H., Golledge, N. R., Gregory, J. M., Greve, R., Hoffman, M. J., Humbert, A., Huybrechts, P., Kleiner, T., Larour, E., Leguy, G., Lipscomb, W. H., Lowry, D., Mengel, M., Morlighem, M., Pattyn, F., Payne, A. J., Pollard, D., Price, S. F., Quiquet, A., Reerink, T. J., Reese, R., Rodehacke, C. B., Schlegel, N. J., Shepherd, A., Sun, S. N., Sutter, J., Van Breedam, J., van de Wal, R. S. W., Winkelmann, R., and Zhang, T.: initMIP-Antarctica: an ice sheet model initialization experiment of ISMIP6, *Cryosphere*, 13, 1441–1471, [https://doi.org/10.5194/tc-](https://doi.org/10.5194/tc-13-1441-2019)
- 700 13-1441-2019, 2019.
- Seroussi, H., Nowicki, S., Payne, A. J., Goelzer, H., Lipscomb, W. H., Abe Ouchi, A., Agosta, C., Albrecht, T., Asay-Davis, X., Barthel, A., Calov, R., Cullather, R., Dumas, C., Gladstone, R., Golledge, N., Gregory, J. M., Greve, R., Hatterman, T., Hoffman, M. J., Humbert, A., Huybrechts, P., Jourdain, N. C., Kleiner, T., Larour, E., Leguy, G. R., Lowry, D. P., Little, C. M., Morlighem, M., Pattyn, F., Pelle, T., Price, S. F., Quiquet, A., Reese, R., Schlegel, N.-J., Shepherd, A., Simon, E., Smith, R. S., Straneo, F., Sun, S., Trusel, L. D., Van Breedam, J.,
- 705 van de Wal, R. S. W., Winkelmann, R., Zhao, C., Zhang, T., and Zwinger, T.: ISMIP6 Antarctica: a multi-model ensemble of the Antarctic ice sheet evolution over the 21st century, *The Cryosphere Discussions*, 2020, 1–54, <https://doi.org/10.5194/tc-2019-324>, 2020.
- Shapiro, N. M. and Ritzwoller, M. H.: Inferring surface heat flux distributions guided by a global seismic model: particular application to Antarctica, *Earth and Planetary Science Letters*, 223, 213–224, <https://doi.org/10.1016/J.Epsl.2004.04.011>, 2004.
- Stenni, B., Scarchilli, C., Masson-Delmotte, V., Schlosser, E., Ciardini, V., Dreossi, G., Grigioni, P., Bonazza, M., Cagnati, A., Karlicek, D., Risi, C., Udisti, R., and Valt, M.: Three-year monitoring of stable isotopes of precipitation at Concordia Station, East Antarctica, *Cryosphere*, 10, 2415–2428, <https://doi.org/10.5194/tc-10-2415-2016>, 2016.
- 710 Sutter, J., Fischer, H., Grosfeld, K., Karlsson, N. B., Kleiner, T., Van Liefferinge, B., and Eisen, O.: Modelling the Antarctic Ice Sheet across the mid-Pleistocene transition - implications for Oldest Ice, *Cryosphere*, 13, 2023–2041, <https://doi.org/10.5194/tc-13-2023-2019>, 2019.
- Sutter, J., Eisen, O., Werner, M., Grosfeld, K., Kleiner, T., and Fischer, H.: Limited Retreat of the Wilkes Basin Ice Sheet During the Last Interglacial, *Geophysical Research Letters*, 47, <https://doi.org/10.1029/2020GL088131>, 2020.
- 715 Talalay, P., Li, Y., Augustin, L., Clow, G. D., Hong, J., Lefebvre, E., Markov, A., Motoyama, H., and Ritz, C.: Geothermal heat flux from measured temperature profiles in deep ice boreholes in Antarctica, *The Cryosphere*, 14, 4021–4037, [https://doi.org/10.5194/tc-14-4021-](https://doi.org/10.5194/tc-14-4021-2020) 2020, 2020.
- the PISM authors: PISM, a Parallel Ice Sheet Model, <http://www.pism-docs.org>, 2015.
- 720 van Wessem, J. M., Reijmer, C. H., Morlighem, M., Mougnot, J., Rignot, E., Medley, B., Joughin, I., Wouters, B., Depoorter, M. A., Bamber, J. L., Lenaerts, J. T. M., van de Berg, W. J., van den Broeke, M. R., and van Meijgaard, E.: Improved representation of East Antarctic surface mass balance in a regional atmospheric climate model, *Journal of Glaciology*, 60, 761–770, <https://doi.org/10.3189/2014JoG14J051>, 2014.
- Veres, D., Bazin, L., Landais, A., Kele, H. T. M., Lemieux-Dudon, B., Parrenin, F., Martinerie, P., Blayo, E., Blunier, T., Capron, E., Chappellaz, J., Rasmussen, S. O., Severi, M., Svensson, A., Vinther, B., and Wolff, E. W.: The Antarctic ice core chronology (AICC2012): an optimized multi-parameter and multi-site dating approach for the last 120 thousand years, *Climate of the Past*, 9, 1733–1748, <https://doi.org/10.5194/cp-9-1733-2013>, 2013.
- 725 Waddington, E. D., Neumann, T. A., Koutnik, M. R., Marshall, H. P., and Morse, D. L.: Inference of accumulation-rate patterns from deep layers in glaciers and ice sheets, *Journal of Glaciology*, 53, 694–712, <https://doi.org/10.3189/002214307784409351>, 2007.

- 730 Welker, C., Martius, O., Froidevaux, P., Reijmer, C. H., and Fischer, H.: A climatological analysis of high-precipitation events in Dronning Maud Land, Antarctica, and associated large-scale atmospheric conditions, *Journal of Geophysical Research: Atmospheres*, 119, 11,932–11,954, <https://doi.org/10.1002/2014JD022259>, 2014.
- Winkelmann, R., Martin, M. A., Haseloff, M., Albrecht, T., Bueller, E., Khroulev, C., and Levermann, A.: The Potsdam Parallel Ice Sheet Model (PISM-PIK) - Part 1: Model description, *Cryosphere*, 5, 715–726, <https://doi.org/10.5194/Tc-5-715-2011>, 2011a.
- 735 Winkelmann, R., Martin, M. A., Haseloff, M., Albrecht, T., Bueller, E., Khroulev, C., and Levermann, A.: The Potsdam Parallel Ice Sheet Model (PISM-PIK) Part 1: Model description, *The Cryosphere*, 5, 715–726, 2011b.
- Winter, A., Steinhage, D., Arnold, E. J., Blankenship, D. D., Cavitte, M. G. P., Corr, H. F. J., Paden, J. D., Urbini, S., Young, D. A., and Eisen, O.: Comparison of measurements from different radio-echo sounding systems and synchronization with the ice core at Dome C, Antarctica, *The Cryosphere*, 11, 653–668, <https://doi.org/10.5194/tc-11-653-2017>, 2017.
- 740 Winter, A., Steinhage, D., Creyts, T. T., Kleiner, T., and Eisen, O.: Age stratigraphy in the East Antarctic Ice Sheet inferred from radio-echo sounding horizons, *Earth System Science Data*, 11, 1069–1081, <https://doi.org/10.5194/essd-11-1069-2019>, 2019.
- Zwally, H. J., Giovinetto, M. B., Beckley, M. A., and Saba, J. L.: Antarctic and Greenland Drainage Systems, GSFC Cryospheric Sciences Laboratory, 2012.