

Dear Olaf Eisen,

below please find a list of changes, the author responses to the reviewers as well as a marked-up manuscript showing the differences to the previous version.

Best regards

Summer Blot, Ryan Bay and Martin Rongen

List of changes:

- The explanantion on the birefringence mechanism has been expanded.
- The term "anti-freeze" has been changed to "non-freezing drilling fluid, Estisol-140".
- The term "craigite" has been changed to "clathrate hydrate".
- The reference to "Voigt (2017)" has been corrected.
- It has been clarified that only the deepest ice is believed to originate from Titan Dome.
- The statement in the abstract on being able to measure fabric properties has been softened.
- Following an investigation triggered by the review from Jan Eichler (see the authors response), we had to conclude that there is no sensitivity to measure the anisotropy direction at depth of less then 1100 m. The section and Figure 7b have been changed accordingly
- Minor changes in wording and corrections to typos.

Interactive comment on “Observation of an optical anisotropy in the deep glacial ice at the geographic South Pole using a laser dust logger” by Martin Rongen et al.

Martin Rongen et al.

rongen@physik.rwth-aachen.de

Received and published: 15 May 2020

Dear Referee,

Thank you for your timely review. Please find the responses to the issues raised in-line with your review comments below:

General:

C1

The authors present observation on anisotropic light scattering in the ice sheet near South Pole. The results are derived from measurements with an optical dust logger deployed in a 1750-m borehole. The authors attribute the anisotropy to a preferential light diffusion by the birefringent property of ice, which could be the basis for a new technique for in situ logging of ice fabric properties. The paper is a clear description and analysis of the novel observations.

Specific comments:

p. 2, l. 16: "For crystal realizations where the deflection outweighs the additional diffusion, the photon flux along the flow axis will continuously increase with distance". I suggest expanding the introduction here: What is additional diffusion? What means photon flux increases with distance? Probably it (finally) decreases by absorption and scattering.

True. The absolute photon flux does decrease with distance. But it increases with respect to the intensity on the orthogonal axis.
The additional diffusion was also meant with this comparison in mind, comparing the larger diffusion along the flow axis with the smaller diffusion along the orthogonal axis.

The paragraph has been expanded to read as follows:
The deflection per distance increases for stronger girdle fabrics, a larger average crystal elongation or a smaller average crystal size. For crystal realizations where the deflection outweighs the additional diffusion along the flow axis compared to the diffusion along the orthogonal direction, the photon flux along the flow axis

C2

will increase with distance compared to the photon flux along the orthogonal axis.

p. 4, l. 7: "anti-freeze": general definition of an anti-freeze is an additive that lowers the freezing point of a water-based liquid. Here, Estisol-140 is a non-freezing drilling fluid.

Thank you for the clarification. This has been adopted.

p. 4, l. 9+13: Voigt (2017) is not in references.

That reference had an error and was cited by the first name, not the family name. This has been corrected.

p. 4, l. 11: The accumulation site varies with the depth below the surface. Titan Dome is the accumulation site only for the deepest ice.

That's a good point. The sentence has been changed to:
The associated accumulation site for the deepest ice is believed by ? to be Titan Dome, meaning that the ice has been transported as far as 200 km.

p. 6, l. 10: "craigite" was suggested as mineral name in the 1980's but to my

C3

knowledge never approved. Use clathrate hydrate.

Done.

p. 6, l. 15 "global offsets". As the logs are from the same hole, the "global" offsets do not have an external origin. They are rather caused by the logging instrument(?) If so, the term "global" seems inadequate to me.

We have expanded on the explanation. The sentence now reads as:
These systematic offsets, caused for example by the changing clarity of the drilling fluid or grime accumulation on the logger, are corrected using a second-degree polynomial fitted to the ratio.

Interactive comment on The Cryosphere Discuss., <https://doi.org/10.5194/tc-2020-34>, 2020.

Interactive comment on “Observation of an optical anisotropy in the deep glacial ice at the geographic South Pole using a laser dust logger” by Martin Rongen et al.

Martin Rongen et al.

rongen@physik.rwth-aachen.de

Received and published: 15 May 2020

Dear Jan Eichler,

Thank you for your timely review. Please find the responses to the issues raised in-line with your review comments below:

General comments:

The manuscript describes observations of direction-dependent intensities of backscat-

C1

tered light in ice. The scattering anisotropy was measured using a laser dust logger deployed in the SPICEcore borehole. The study follows previous observations of anisotropic light propagation in ice at the IceCube observatory. The measurements support results obtained from simulations of light diffusion by Chirkin and Rongen (2019). The authors conclude that scattering due to reflection and refraction on grain boundaries in a birefringent polycrystal play a major role for the anisotropic modulation of light in ice.

The study is carefully carried out and well presented. It shows novel in-situ measurements of optical properties of ice. I believe it is a relevant contribution to our understanding of light propagation and scattering in ice. It may find application in current ice-core-analytical methods as well as in future developments.

I have some concerns about the general suitability of the method for obtaining a continuous fabric record. The intensity ratios can serve to determine the strength of anisotropy within a horizontal plane, so it works well for a girdle-type fabric. However, other types of arrangements of the c-axes can hardly be distinguished or even detected using the current design of the dust logger (e. g. a vertical single maximum, or other more complex distributions).

Specific comments:

p.1 l.7-8: See the last paragraph in general comments. I think the statement is too brave. Maybe it is just the term “fabric” which, in my understanding, includes a number of characteristics, which I am not convinced they are accessible for the dust logger.

We agree with the assessment, that the current data will most likely

C2

not be able to unambiguously constrain the many fabric properties. The requirements to study this possibility (photon propagation simulation of the experimental setup), as well as potential improvements to the experimental data (to include the measurement of propagation delays), are detailed in the last paragraph of section 6.

The sentence in the abstract has been changed to:
In the future, the measurement principle, when combined with a full-chain simulation, may have the potential to provide a continuous record of fabric properties along the entire depth of a drill hole.

p.2 l.16-17: What crystal realization would strengthen the deflection effect?

A stronger deflection effect would result from a stronger girdle, a larger mean crystal elongation as well as a smaller overall crystal size.

The paragraph has been expanded to read as follows (also taking into account comments from the other reviewer):
The deflection per distance increases for stronger girdle fabrics, a larger average crystal elongation or a smaller average crystal size. For crystal realizations where the deflection outweighs the additional diffusion along the flow axis compared to the diffusion along the orthogonal direction, the photon flux along the flow axis will increase with distance compared to the photon flux along the orthogonal axis.

C3

p.4 l.11-12: The corresponding accumulation site varies with depth, so the Titan Dome must refer to a particular depth in the ice core.

That's a good point (as also raised by the other reviewer). The sentence has been changed to:
The associated accumulation site for the deepest ice is believed by ? to be Titan Dome, meaning that the ice has been transported as far as 200 km.

p.6 l.10 and p.10 l.8: "craigite": The common terms are clathrate hydrates or air hydrates.

The term has been changed to "clathrate hydrate".

p.9 Fig.7: If there is no anisotropy signature above 1100 m, how can you determine the anisotropy axis being 120 degrees above this depth?

Thank you very much for raising this issue! We had originally assumed that the correctly fitted axis might be an indication for a small residual anisotropy signature. This is not the case. We have instead traced the problem to a minimizer artifact. The seed value for the angle was originally chosen to be 120°. In the absence of a significant signal, the fit values seem to be pulled towards the seed value instead of scattering randomly. Re-seeding the minimizer with different anisotropy axis directions did not significantly change the measured anisotropy strength or axis below 1100 m (within the uncertainty).

C4

The original paragraph read as:

Individual ratios are seen to yield consistent anisotropy axes in the deep ice. In the shallow ice above ~1100m, where the mean strength of the observed anisotropy signal vanishes, the phase angle is badly constrained and varies widely between individual ratios. The per-depth average axes are compatible with the global average of 126 ± 1 (stat) °.

This will be changed to:

Individual ratios are seen to yield consistent anisotropy axes in the deep ice. In the shallow ice above ~1100m, where the mean strength of the observed anisotropy signal vanishes, the phase angle is unconstrained. The average axis in the deep ice is 126 ± 1 (stat) °.

Attached please find a figure showing the impact of the seed value as well as the plot to be used in the updated version of the manuscript.

p.10 l.10-16: I also wonder what would be the effect of the grain shape and its preferred orientation. Also the scattering on grain boundary intersections (triple junctions) may add some contribution - possibly even an anisotropic one.

Grain shape after averaging over many thousand encountered crystals is by us assumed to be an ellipsoid with the mayor axis being closely aligned with the flow direction. It is the second major contribution (besides the c-axis distribution) to the effect, as it

C5

changes the grain boundary orientation distribution. As shape and fabric are strongly linked (in a girdle fabric the average crystal shape has to be elongated) we did not explicitly elaborate on this. We hope this is now covered, by the extended description of the general birefringence effect on page 2.

Triple junctions have so far not been considered. But as their fractional contribution to the surface area of a grain is rather small, their effect should be negligible.

Interactive comment on The Cryosphere Discuss., <https://doi.org/10.5194/tc-2020-34>, 2020.

C6

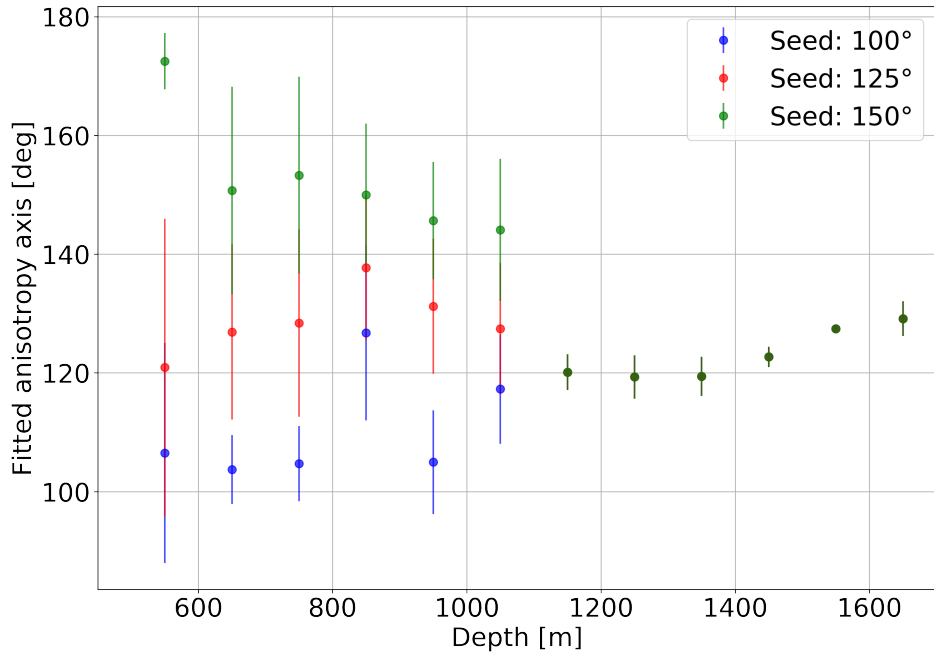


Fig. 1. Impact of the minimizer seed on the axis fit.

C7

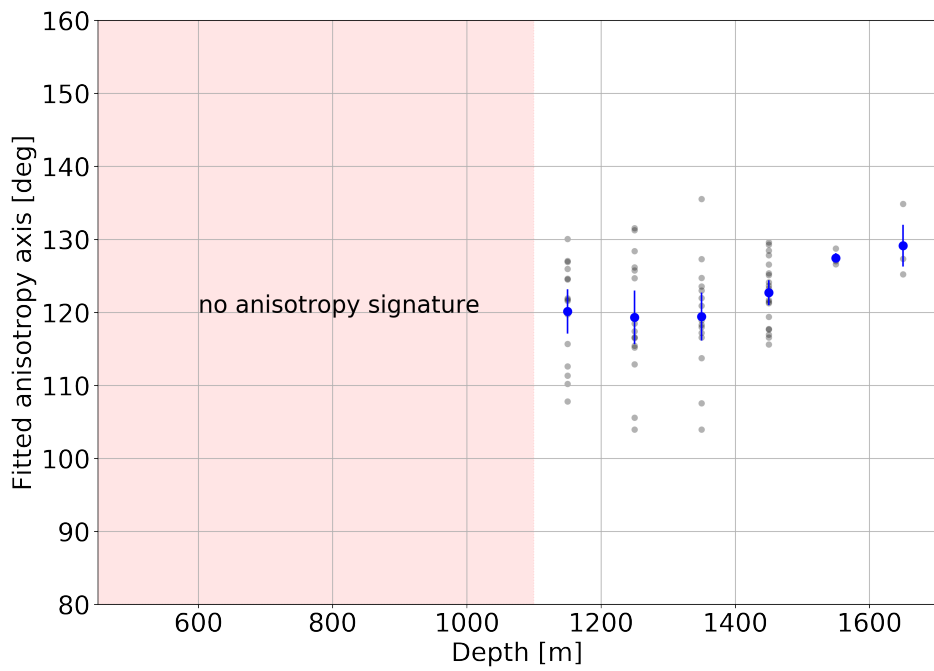


Fig. 2. New figure for the depth dependent anisotropy axis.

C8

Observation of an optical anisotropy in the deep glacial ice at the geographic South Pole using a laser dust logger

Martin Rongen¹, Ryan Carlton Bay², and Summer Blot³

¹RWTH Aachen University, Institute for Particle Physics III B, 52074 Aachen, Germany

²Department of Physics, University of California, Berkeley, CA, USA

³DESY, D-15738 Zeuthen, Germany

Correspondence: Martin Rongen (rongen@physik.rwth-aachen.de)

Abstract. We report on a depth-dependent observation of a directional anisotropy in the recorded intensity of back-scattered light as measured by an oriented laser dust logger. The measurement was performed in a drill hole at the geographic South Pole, about a kilometer away from the IceCube Neutrino Observatory. The drill hole remains open for access, after the SPICEcore collaboration had retrieved a 1751 m ice core. We find the measured anisotropy axis of $126 \pm 3^\circ$ to be compatible with the local flow direction. The observation is discussed in comparison to a similar anisotropy observed in data from the IceCube Neutrino Observatory and ~~is able to dismiss Mie scattering based explanations in favor of favours~~ a birefringence based scenario ~~over previously suggested Mie scattering based explanations~~. In the future, the measurement principle, when combined with a full-chain simulation, may ~~be used~~ have the ~~potential~~ to provide a continuous record of fabric properties along the entire depth of a drill hole.

1 Introduction

The viscosity of an individual ice crystal strongly depends on the direction of the applied strain. As a hexagonal crystal, ice will most readily deform as shear is applied orthogonal to the c-axis, which leads to slip of the basal planes (Petrenko and Whitworth (2002)). Thus, individual grains elongate, with the major axis being aligned perpendicular to the c-axis.

In large-scale systems, such as glaciers or ice sheets, ice is compressed under its own weight and as a result flows away from the accumulation region. This leads to preferential c-axis orientations (see Alley, 1988), most commonly

girdle fabrics, where c-axis are predominantly found on a plane, with the plane's normal vector being aligned with the flow direction. Ice fabric can not only be observed through macroscopic imaging of ice cores (Weikusat et al., 2016), but also leads to a directionality in the propagation of mechanical and electromagnetic radiation, in principle allowing for remote-sensing of the ice fabric.

The mechanical anisotropy of ice means that the speed of sound depends on the fabric realization. This has for example been derived and measured by Kluskiewicz et al. (2017). Ice crystals are also a birefringent material, with any incoming electromagnetic radiation being separated into an ordinary and extra-ordinary ray of ~~opposite-perpendicular~~ polarization with respect to the c-axis, and which propagate with different refractive indices. This is classically observed as a direction-dependent delay in the propagation of radio waves, as for example described by Fujita et al. (2006).

Recently, as part of ice calibration measurements for the IceCube Neutrino Observatory (Aartsen et al., 2017), Chirkin (2013) described the observation of an optical anisotropy, where about twice as much light is observed along the glacial flow axis versus orthogonal to the flow axis, at a receiver 125 m away from an isotropic emitter. The effect was originally modelled as a direction dependent modification to Mie scattering quantities, either through a modification of the scattering function as proposed by Chirkin (2013) or through the introduction of a direction dependent absorption as introduced by Rongen (2019). As also shown by Rongen (2019), both parameterizations lack a thorough theoretical justification and resulted in an

incomplete description of the IceCube data.

As the wavelength of ~ 400 nm employed in the IceCube studies is significantly smaller than the average grain size, the effect is challenging to derive from first principles. First attempts have been made by Chirkin and Rongen (2019) by attributing the effect to the cumulative diffusion that a light beam experiences as it is refracted or reflected on many grain boundary crossings in a birefringent polycrystal with a preferential c-axis distribution.

In this scenario the diffusion is found to be strongest when photons initially propagate along the flow and smallest when initially propagating orthogonal to the flow. In addition photons are, on average, deflected towards the flow axis.

The deflection per unit distance increases for stronger girdle fabrics, a larger average crystal elongation or a smaller average crystal size. For crystal realizations where the deflection outweighs the additional diffusion along the flow axis compared to the diffusion along the orthogonal direction, the photon flux along the flow axis will continuously increase with distance compared to the photon flux along the orthogonal axis.

We add to the body of anisotropy observations by providing the first direction-dependent measurement of the intensity of back-scattered, optical light returning to the oriented dust logger deployed down a glacial bore hole. If the anisotropy is caused by Mie scattering a reduced return signal is expected when the light source points along the flow, while more light is expected to return in case of the birefringence and absorption explanations.

2 The oriented dust logger

The dust logger, as sketched in Figure 1 and introduced by Bramall et al. (2005), consists of a 404 nm laser line source, emitting a 2 mm thin, horizontal fan of light about 60° across. A small fraction (10^{-10} to 10^{-6}) of all emitted photons is back-scattered or reflected and returns to the bottom section of the dust logger where a 1" Hamamatsu photon-counter module is located. Scattering and absorption on air bubbles, soot and other impurities as described by Mie scattering theory is traditionally thought to be the dominant contribution to the return signal. However, taking into consideration the findings of Chirkin and Rongen (2019), diffusion on grain boundaries may also contribute non-negligibly to the signal.

The intensity of the light source can be adjusted throughout the logging process. To avoid stray light contamination from reflections on the hole-ice interface, multiple sets of black nylon baffles are attached to the side of the pressure

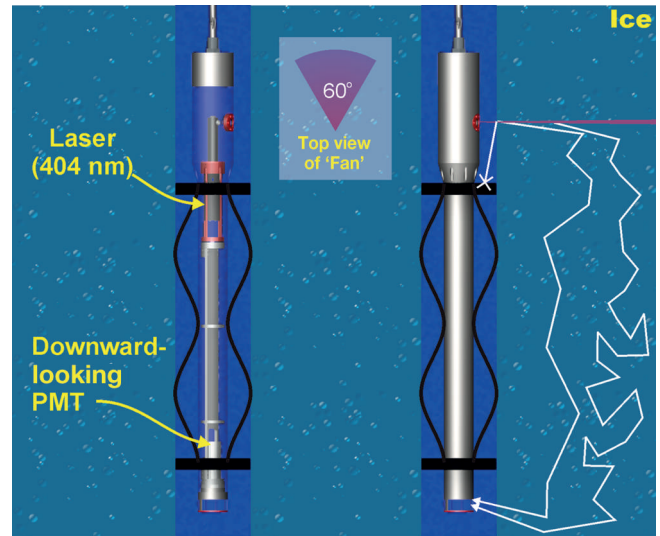


Figure 1. Sketch of the laser dust logger. Light emitted by a 404 nm diode laser in a 60° horizontal fan can only reach the photon counter below through scattering on nearby impurities.

housing. These also sweep ice crystals and debris out of the source beam. Spring-loaded calipers keep the logger centered in the hole.

The depth of the logger is monitored through the cable payout and on-board pressure sensors. During offline analysis multiple logs from the same site are further aligned to achieve centimeter depth precision, using characteristic features such as volcanic lines, as described by Aartsen et al. (2013).

This device has previously been deployed in West Antarctica, East Antarctica and Greenland. Due to excellent imaging properties, deployments down the water-filled drill holes of the IceCube Neutrino Observatory resulted in one of the highest resolution particulate stratigraphies of any glacier available to-date, as described by Aartsen et al. (2013).

To measure a potential directionality of the return signal relative to the direction of the emitted light fan, an optional extension consisting of an Applied Physics Systems Model 547 Directional Sensor¹ has been fitted to the top of the logger. By measuring the local magnetic field it deduces the absolute orientation with an azimuthal accuracy of $\pm 1.2^\circ$ for latitudes $< \pm 40^\circ$. For our application at the geographic South Pole we estimate the azimuthal accuracy to be $\pm 3^\circ$.

¹https://www.appliedphysics.com/_main_site/wp-content/uploads/model-547-micro-orientation-sensor.pdf

3 SPICEcore deployments

The South Pole Ice Core, SPC14 (see Casey et al., 2014), was drilled by the SPICEcore project in 2014–2016 at a location 2.7 km from the Amundsen–Scott station, using the Intermediate Depth Drill designed and deployed by the U.S. Ice Drilling Program (IDP) (Johnson et al., 2014). It reached a final depth of 1751 m (Winski et al., 2019), surpassing the original 1500 m goal.

The core has been retrieved in 2 m segments with a diameter of 98 mm. The resulting 126 mm diameter drill hole was filled with the non-freezing drilling fluid Estisol-140 anti-freeze liquid and has been preserved for future logging access.

15

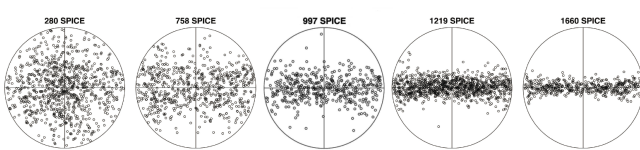


Figure 2. Depth development of c-axis distributions (Lambert azimuthal equal-area projections) measured in SPICEcore. Depths (in meters) are indicated atop each diagram. They show a clean girdle fabric below ~1000 m. Adapted from: Voigt (2017)

Unlike most ice coring sites, the Geographic South Pole is not near an ice divide, but rather on a flank site with a local flow velocity of 10 m per year. The associated accumulation site for the deepest ice is believed by Lilien et al. (2018) to be Titan Dome, meaning that the ice has been transported over roughly as far as 200 km. The experienced strain below ~800 m has resulted in a very prominent and continuously strengthening girdle fabric as measured by Voigt (2017). Figure 2 shows example c-axis distributions from the SPC14 ice core at various depths.

The oriented dust logger has been deployed down the SPICEcore hole twice during the 16/17 season, both times using the Intermediate Depth Logging Winch provided by the IDP. Due to a limited available cable length, it was only able to reach a depth of 1577 m of the 1751 m cored. During the first log the laser intensity was not yet optimized, leading to saturated and thus unusable data above 1000 m.

Two further deployments down to ~1700 m were performed during the 18/19 season. Due to mechanical problems with the winch cable payout, depth readings from the winch itself are inaccurate. Only one deployment could be depth aligned to the required precision using characteristic features as previously discussed. This deployment includes an additional round-trip between 1354-1703 m. Table 1 summarizes the properties of the logs used for the

Log	Depth [m]	Note
Down1	130 - 1577	Saturated above 1000 m
Up1	1577 - 130	Saturated above 1000 m
Down2	130 - 1580	-
Up2	1580 - 130	-
Down3-Leg1	130 - 1703	-
Up3-Leg1	1703 - 1354	-
Down3-Leg2	1354 - 1704	Near identical orientations to Down3-Leg1
Up3-Leg2	1704 - 130	-

Table 1. Summary of usable logs obtained within the 16/17 and 18/19 logging seasons.

measurements presented here.

As shown in Fig.3, the logger rotates as it descends and ascends the hole, mainly due to the residual twist in the logging cable. On ascent, as the cable is pulling the tool up, it undergoes a smooth rotation of slightly varying angular velocity. On descent the logger sinks under its own weight and the rotation is not continuous. The most likely explanation is that the logger is repeatedly stuck on the wall before slipping.

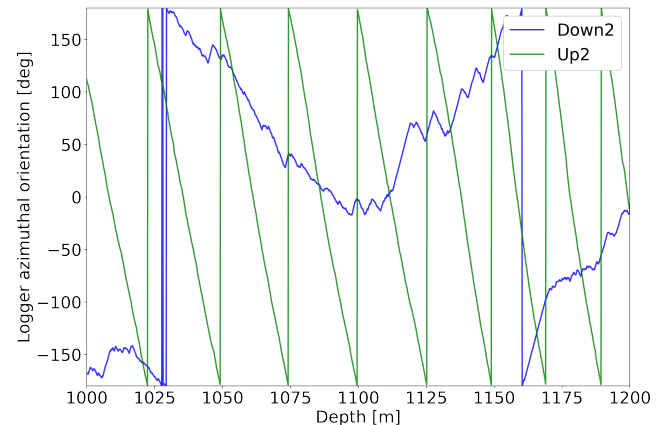


Figure 3. Rotation of the tool descending and ascending the bore hole. A smooth and continuous rotation of slightly varying angular velocity is observed when ascending. During descent the rotational movement is erratic.

4 Anisotropy signature

The data obtained from the oriented dust logger consists of orientation, depth and optical return signal measurements at 10 ms intervals. At the usual deployment speed this is equivalent to a sampling distance of ~2.5 mm.

45

50

55

While the photomultiplier is located ~ 850 mm below the laser light source, the depth resolution, as measured by Bramall et al. (2005) as the smearing of an ash layer, is dominated by the vertical extent of the laser beam and is ~~no~~ worse than a few mm. This allows for a continuous record of optical properties down the entire depth of a drill hole at the vertical resolution of less than a year of deposition, assuming an annual layer thickness of 1-2 cm in the deep ice as reported by Aartsen et al. (2013).

Above the transition region of air bubbles to ~~eragite~~ clathrate hydrate (Miller, 1969) at 700-1300 m the return signal is dominated by scattering on air bubbles. Below, the return signal is primarily proportional to the concentration of impurities contributing to scattering. The resulting high resolution stratigraphy is exemplified in Fig. 4.

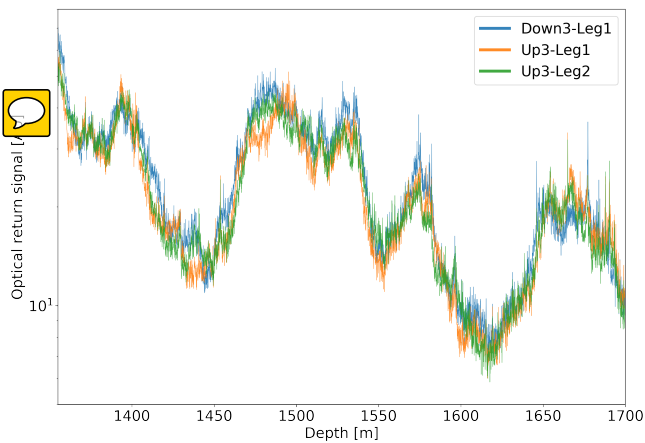


Figure 4. Example detail of optical stratigraphies obtained by logging the same depth range three times.

This figure also shows that the optical return signals at the same depths are not consistent between logs. Instead the signal depends on the absolute orientation of the logger. We extract this anisotropy signature by taking the ratio of two logs. Usually, the ratios of raw data are on average non-unity and show slow, continuous variations. These ~~global offsets~~ systematic offsets, caused for example by the changing clarity of the drilling fluid or grime accumulation on the logger, are corrected using a second-degree polynomial fitted to the ratio.

Example ratios for ~ 100 m depth slices and after fitting and correcting the offset for each depth slice are given in Fig. 5. When the device's orientation between logs is out of phase, pointing in different directions at the same depth, the ratio in these examples becomes as large as 1.5. When the logs are in phase, the observed intensities are equal and thus the ratio is unity.

Analysis of the 18/19 logging season reveals that two logs, *Down3-Leg1* and *Down3-Leg2*, exhibit strongly correlated orientations. As exemplified in Fig. 6, the orientations of the two descending segments in the depth range between 1354 m and 1703 m show near identical orientations, suggesting that the rotation of the tool may have been governed by the hole geometry itself. As a result, the ratio of the two logs is consistent with unity where the logs align and the spread of 2% standard deviation indicates the typical short term intensity fluctuations seen in the measurement.

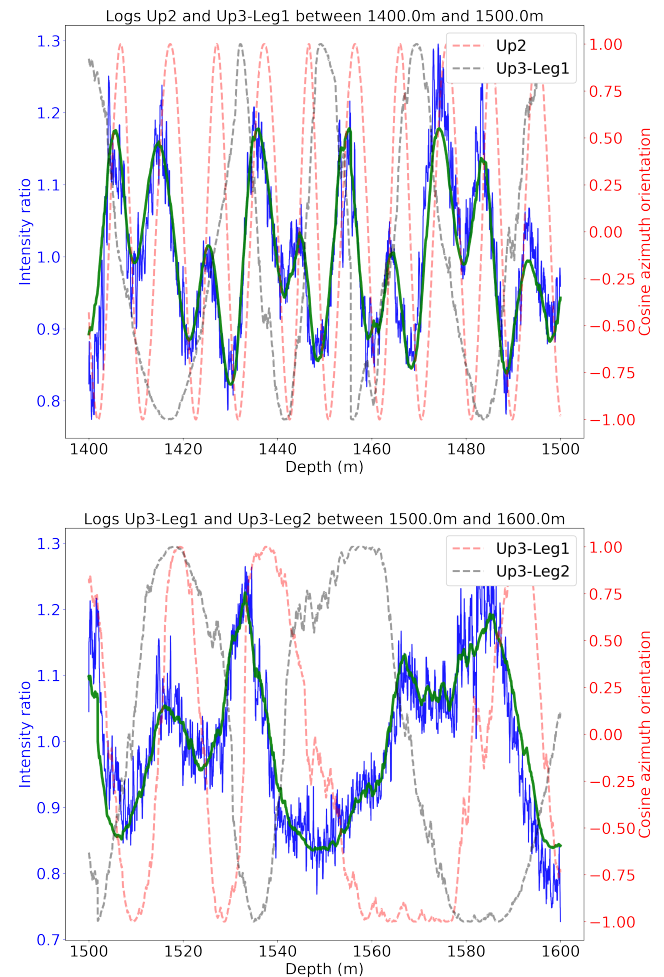


Figure 5. Example intensity ratio fits in ~ 100 m depth slices. The red and black dotted lines denote the orientations of the two used logs. (The orientation is defined as the cosine of the azimuth angle.) Blue is the intensity ratio. Green is the fitted intensity ratio using eq. 1.

In the following analysis, log *Down3-Leg2* is excluded from the analysis as it is fully correlated with *Down3-Leg1*. The number of remaining usable ratios at each depth range available from N logs is given by the binomial coefficient

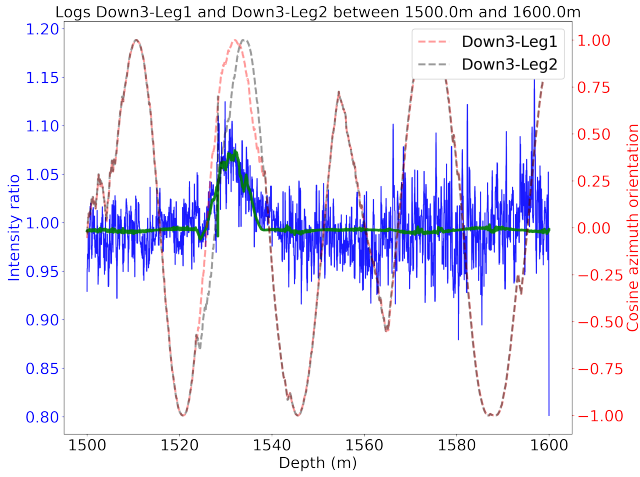


Figure 6. The intensity ratio of two log segments with identical orientations is unity and shows the typical spread of the data.

$\binom{N}{2}$ and varies between 3 and 21.

Lacking a mature first-principle explanation and simulation of the anisotropy effect and experimental setup, the ratios have instead been found to be well-described by the following empirical relationship:

$$\text{intensity ratio} = \frac{1 + a \cdot \cos(2 \cdot (\alpha_1 - \phi))}{1 + a \cdot \cos(2 \cdot (\alpha_2 - \phi))}. \quad (1)$$

Here α_1 and α_2 denote the azimuthal orientations of the logger during the two logs. ϕ denotes the azimuthal phase angle of the anisotropy effect, also called anisotropy axis and is limited to $0^\circ - 180^\circ$. a is a measure of the strength of the observed effect.


The orientations and the intensity ratio are given by the dust logger data. The free parameters a and ϕ can be determined by fitting eq. 1 to the data from a given depth range.

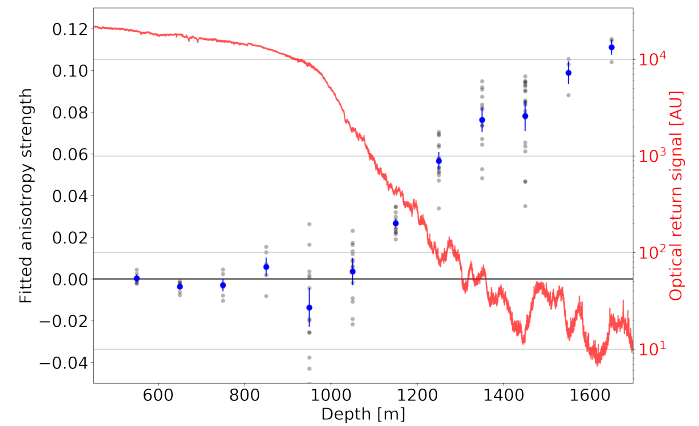
Note that the chosen relationship, while being very robust and easy to extract, implicitly assumes that the anisotropy causes a relative modulation to the total signal. In case the signal is additive on top of a contribution caused by Mie scattering on impurities, as would be expected from a fabric driven birefringence scenario, the derived strength parameter a can not directly be interpreted as the strength of the underlying effect. For example, assuming an overall constant return signal from the anisotropy, the strength parameter a would be seen to increase as the overall return signal decreases as a function of depth.

5 Depth evolution

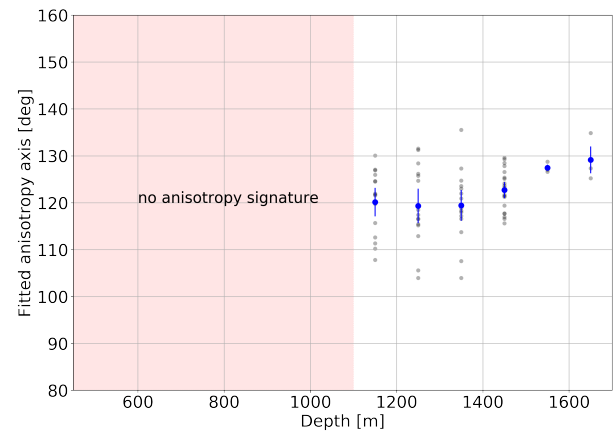
To study the depth evolution of the anisotropy signature the data is binned into 100 m slices. While this only allows

for a rather coarse depth resolution, it ensures that at least a few rotations are seen in each ratio. Otherwise the correction polynomial could bias the signal introduced by the anisotropy and the fit would not be able to reliably determine the phase and amplitude of each log. The systematic shift introduced by the correction polynomial was further accessed by varying its degree between 1 and 3 and was found to be below the error on the mean, which is introduced below, for all depth-slices.

In the future, a finer depth resolution may experimentally be achieved by not relying on the natural rotation of the logger as  deployed but by artificially inducing a fast rotation.



(a) Anisotropy strength. An example log is superimposed as reference.



(b) Anisotropy axis.

Figure 7. Depth-dependence of fitted quantities. Gray dots denote values obtained from individual ratios. The blue markers indicate the average at each depth.

The depth evolution of the fitted anisotropy axis ϕ and strength a as a function of depth are seen in Fig. 7. The spread of these fitted quantities between different ratios far outweighs the statistical error of the fit of each ratio.

The errors on the means of each depth bin are thus constructed from the standard deviation of all ratios. While $\binom{N}{2}$ ratios can be constructed, only $N - 1$ are statistically independent. The error on each mean is thus given as $\sigma_{\text{mean}} = \sigma / \sqrt{N - 1}$.

Individual ratios are seen to yield consistent anisotropy axes in the deep ice. In the shallow ice above ~ 1100 m, where the mean strength of the observed anisotropy signal vanishes, the phase angle is ~~badly constrained and varies widely between individual ratios. The per-depth average axes are compatible with the global average of unconstrained. The average axis in the deep ice is~~ 126 ± 1 (stat) $^\circ$. Considering the 3° systematic uncertainty of the orientation sensor, this direction is in good agreement with the local ice flow direction as measured by Lilien et al. (2018) as well as the optical axis of 126° or 130° as fitted by Chirkin (2013) and Rongen (2019) respectively, both using IceCube data.

No anisotropy signatures are seen above 1100 m, with the observed strength parameter continuously increasing in the deeper ice. It is currently unclear which fraction of the increase in observed anisotropy strength versus depth is caused by the continuously stronger girdle fabric or by the decrease in overall scattering. However, no anisotropy signal is observed at 1000 m where the girdle fabric is already clearly developed (see Fig. 2) but bubbles still dominate the scattering at this depth. Therefore, we suspect that the anisotropy signature is smeared out to some extent due strong local diffusion.

6 Conclusions

We have presented the first direction-dependent measurement of the intensity of back-scattered, optical light in deep glacial ice. The measurement has been performed using an oriented dust logger deployed down the SPICEcore drill hole.

Below ~ 1100 m a consistent increase in received intensity is observed when the laser is aligned with the local flow axis. This is consistent with the birefringence explanation offered by Chirkin and Rongen (2019) where more diffusion is observed along the flow, thus leading to a higher return intensity and inconsistent with the previous explanation given by Chirkin (2013) where the effect was attributed to reduced Mie scattering along this flow. The observed sign is qualitatively also consistent with an ~~absorption-based~~ anisotropy.

The amplitude of the intensity modulation increases with depth. This is in part likely caused by the strengthening of the girdle fabric as well as the strong reduction in overall scattering, as bubbles are transformed to ~~eraigite~~ clathrate

hydrate,

~~To be able to disentangle these two effects, and to potentially transition from the presented experimental ratios to a quantitative measurement of fabric properties, will require~~ a full photon propagation simulation incorporating both Mie scattering on impurities as well as the diffusion introduced through the polycrystalline, birefringent fabric. While the basics for such a simulation have been outlined by Chirkin and Rongen (2019), more work will be required for the simulation to be efficient enough to be used in this application. It is currently also unclear if the intensity ratio alone, will be sufficient to constrain the different fabric properties, namely the Woodcock parameters and the average grain size and shape, or if more information such as timing may be required.

Competing interests. The authors declare that they have no competing interests (both financial or non-financial).



Author contributions. RB designed the dust logger. The logging was carried out by RB and SB. MR and RB developed the data processing and analysis. The manuscript was prepared by MR with contributions from all co-authors.

Acknowledgements. The authors would like to thank the SPICEcore collaboration for providing the borehole, the U.S. Ice Drilling Program, the Antarctic Support Contractor and the NSF National Science Foundation for providing the equipment to perform the described measurement and for their support at South Pole. This work has been achieved under the NSF grant #1443566 and was in part supported by BMBF, Verbundforschung. We would also like to thank the IceCube collaboration for supporting the 18/19 logging activities.

References

- Aartsen, M., Abbasi, R., et al.: South Pole glacial climate reconstruction from multi-borehole laser particulate stratigraphy, *Journal of Glaciology*, 59, 1117–1128, 2013.
- Aartsen, M., Ackermann, M., Adams, J., et al.: The IceCube Neutrino Observatory: instrumentation and online systems, *Journal of Instrumentation*, 12, P03 012, <http://stacks.iop.org/1748-0221/12/i=03/a=P03012>, 2017.
- Alley, R. B.: *Fabrics in Polar Ice Sheets: Development and Prediction*, Science, 240, 493–495, <https://doi.org/10.1126/science.240.4851.493>, <https://science.sciencemag.org/content/240/4851/493>, 1988.
- Bramall, N. E. et al.: A deep high-resolution optical log of dust, ash, and stratigraphy in South Pole glacial ice, *Geophys. Res. Lett.*, 32, <https://doi.org/10.1029/2005GL024236>, 2005.
- Casey, K., Fudge, T., Neumann, T., Steig, E., Cavitte, M., and Blankenship, D.: The 1500 m South Pole ice core: recovering a 40 ka environmental record, *Annals of Glaciology*, 55, 137–146, <https://doi.org/10.3189/2014aog68a016>, 2014.

- Chirkin, D.: Evidence of optical anisotropy of the South Pole ice, in: Proceedings, 33rd International Cosmic Ray Conference (ICRC2013): Rio de Janeiro, Brazil, July 2-9, 2013, p. 0580, <http://inspirehep.net/record/1412998/files/icrc2013-0580.pdf>, 2013.
- 5 Chirkin, D. and Rongen, M.: Light diffusion in birefringent polycrystals and the IceCube ice anisotropy, in: 36th International Cosmic Ray Conference (ICRC 2019) Madison, Wisconsin, USA, July 24-August 1, 2019, 2019.
- Fujita, S., Maeno, H., and Matsuoka, K.: Radio-wave depolarization and scattering within ice sheets: a matrix-based model to link radar and ice-core measurements and its application, *Journal of Glaciology*, 52, 407–424, <https://doi.org/10.3189/172756506781828548>, 2006.
- 10 Johnson, J. A., Shturmakov, A. J., Kuhl, T. W., Mortensen, N. B., and Gibson, C. J.: Next generation of an intermediate depth drill, *Annals of Glaciology*, 55, 27–33, <https://doi.org/10.3189/2014aog68a011>, 2014.
- Kluskiwicz, D., Waddington, E. D., et al.: Sonic methods for measuring crystal orientation fabric in ice, and results from the West Antarctic ice sheet (WAIS) Divide, *Journal of Glaciology*, 63, 603–617, <https://doi.org/10.1017/jog.2017.20>, 2017.
- 20 Lilien, D. A., Fudge, T. J., Koutnik, M. R., et al.: Holocene Ice-Flow Speedup in the Vicinity of the South Pole, *Geophysical Research Letters*, 45, 6557–6565, <https://doi.org/10.1029/2018gl078253>, <https://doi.org/10.1029/2018gl078253>, 2018.
- 25 Miller, S. L.: Clathrate Hydrates of Air in Antarctic Ice, *Science*, 165, 489–490, <https://doi.org/10.1126/science.165.3892.489>, 1969.
- Petrenko, V. F. and Whitworth, R. W.: *Physics of Ice*, Oxford University Press, <https://doi.org/10.1093/acprof:oso/9780198518945.001.0001>, 2002.
- 30 Rongen, M.: Calibration of the IceCube Neutrino Observatory, Ph.D. thesis, RWTH Aachen University, <https://doi.org/10.18154/RWTH-2019-09941>, 2019.
- Voigt, D. E.: c-Axis Fabric of the South Pole Ice Core, SPC14, <https://doi.org/10.15784/601057>, <http://www.usap-dc.org/view/dataset/601057>, 2017.
- 40 Weikusat, I., Jansen, D., et al.: Physical analysis of an Antarctic ice core—towards an integration of micro- and macrodynamics of polar ice, *Philosophical Transactions of the Royal Society A: Mathematical, Physical and Engineering Sciences*, 375, 20150347, <https://doi.org/10.1098/rsta.2015.0347>, 2016.
- 45 Winski, D. A., Fudge, T. J., Ferris, D. G., et al.: The SP19 chronology for the South Pole Ice Core – Part 1: volcanic matching and annual layer counting, *Climate of the Past*, 15, 1793–1808, <https://doi.org/10.5194/cp-15-1793-2019>, 2019.