

Supplementary material for “Recent North Greenland temperature warming and accumulation”

Helle Astrid Kjær¹, Patrick Zens¹, Ross Edwards³, Martin Olesen⁴, Ruth Mottram⁴, Gabriel Lewis⁵, Christian Terkelsen Holme¹, Samuel Black^{1,2}, Kasper Holst Lund¹, Mikkel Schmidt¹, Dorthe Dahl-Jensen^{1,9}, Bo Vinther¹, Anders Svensson¹, Nanna Karlsson⁷, Jason E. Box⁷, Sepp Kipfstuhl⁶, and Paul Vallelonga^{1,8}

1Physics for Ice, Climate and Earth Sciences (PICE), Niels Bohr Institute, University of Copenhagen, Copenhagen 2100, Denmark

2 NatureScot, Inverness, IV3 8NW, United Kingdom

3Physics and Astronomy, Curtin University, Perth, Western Australia, Australia

4Danish Meteorological Institute, Copenhagen 2100, Denmark

5Department of Earth Sciences, Dartmouth College, Hanover, NH, USA

6Alfred-Wegener-Institut Helmholtz-Zentrum für Polar- und Meeresforschung, Bremerhaven, Germany

7Geologic Survey of Denmark and Greenland (GEUS), Copenhagen 1350, Denmark

8UWA Oceans Institute, University of Western Australia, Crawley, WA, Australia

9University of Manitoba, Winnipeg, MB R3T 2N2, Canada

Correspondence to: Helle Astrid Kjær (hellek@fys.ku.dk)

This supplementary material contains 4 figures.

Figure S1 presents the density and temperature profiles for the 6 shallow cores retrieved during the NEEM to EastGRIP traverse in 2015. Figure S2 is the HIRHAM5 model topography of the Greenland ice sheet. Figure S3 is water isotopes analysed in the traverse cores T2015-A1 (NEEM site) and T2015-A5 (EastGRIP site). S4 represents the accumulation (precipitation minus evaporation) against temperature as found in the HIRHAM5 model.

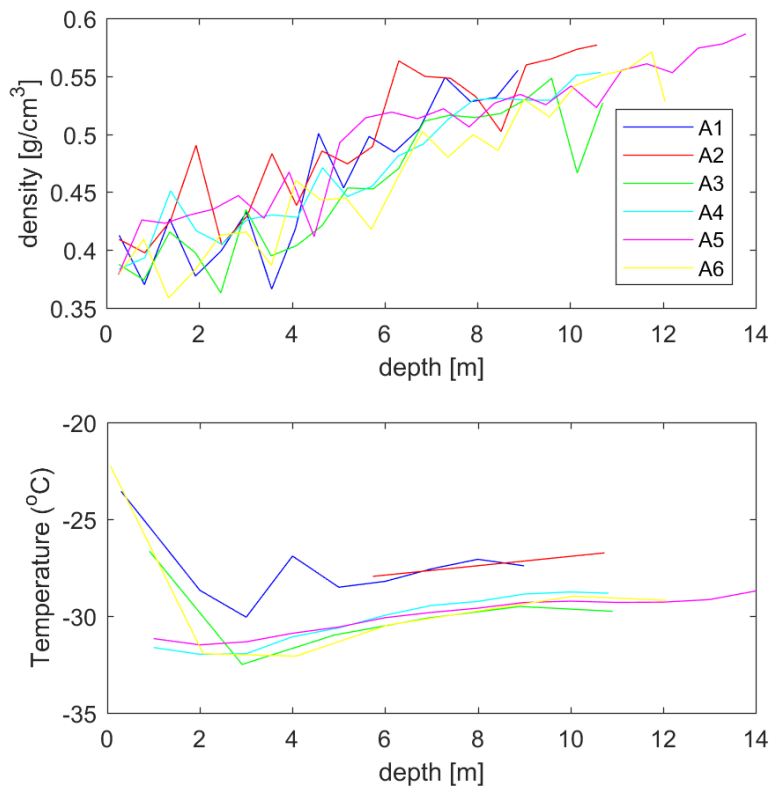


Figure S1: Top densities as a function of depth for each of the six shallow cores. Bottom Temperature as a function of depth for each of the 6 cores.

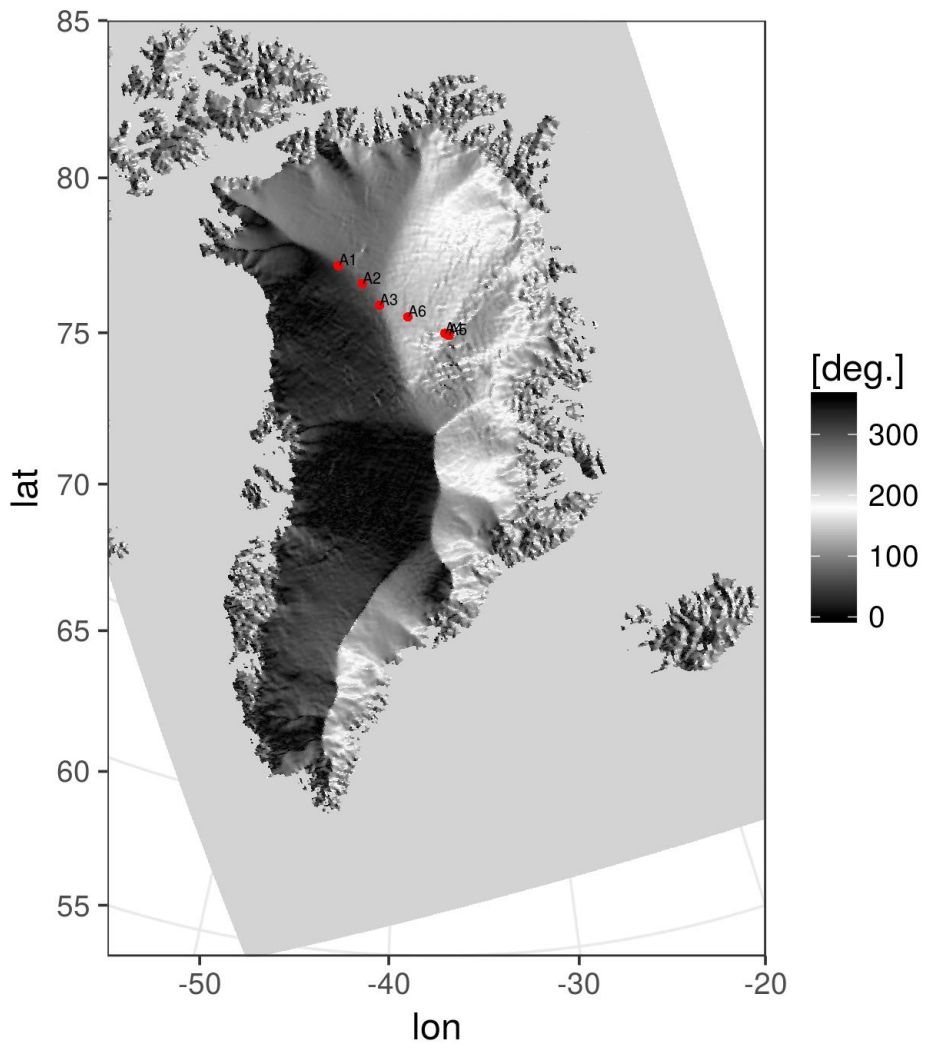


Figure S2: HIRHAM5 topography illustrated by slope degree for each model point. Note how A3 is positioned between where the central ice divide split into a north-eastern and north-western divide.

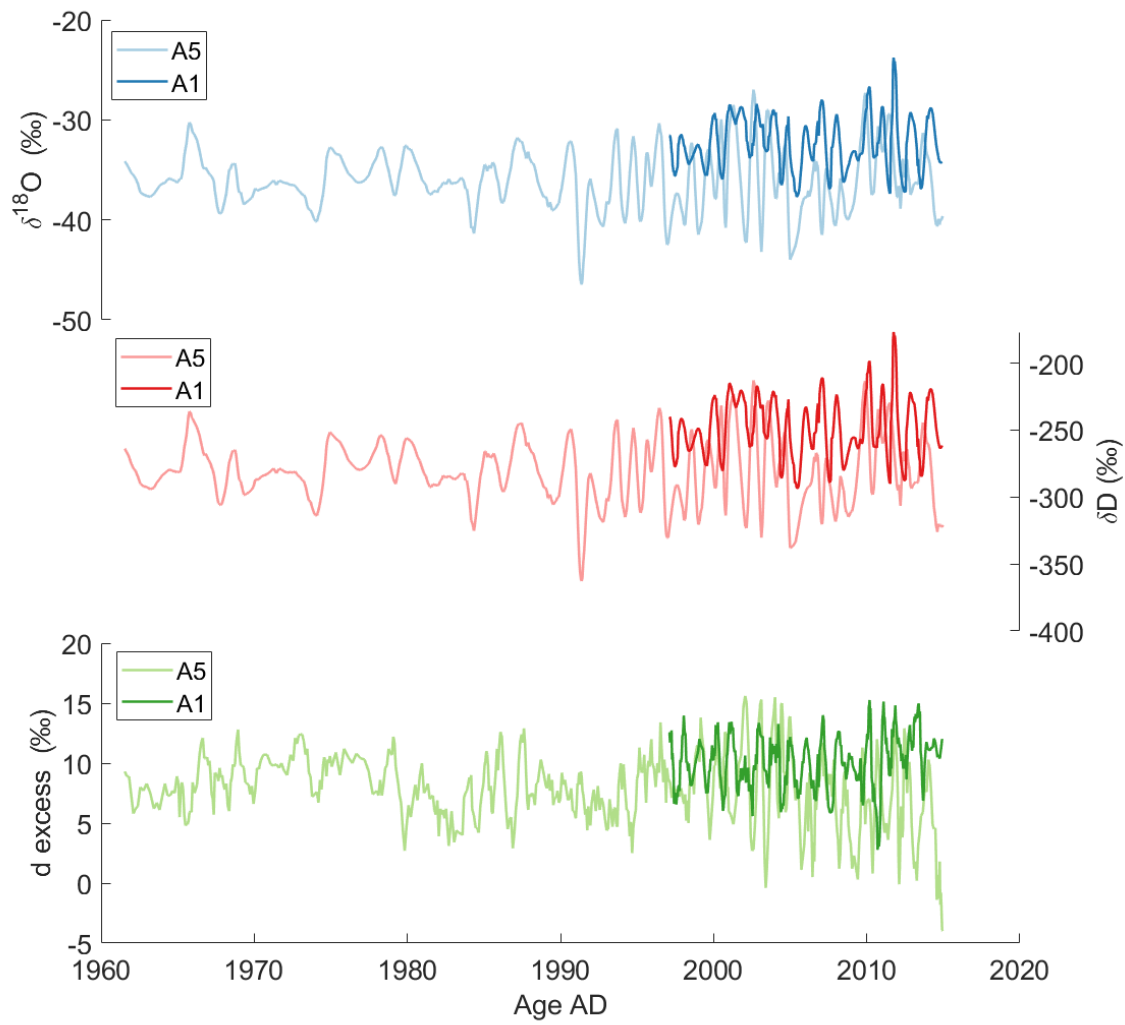


Figure S3 Water isotopes as determined in the firm core A1(NEEM ice core site) and A5 (NEGIS site).

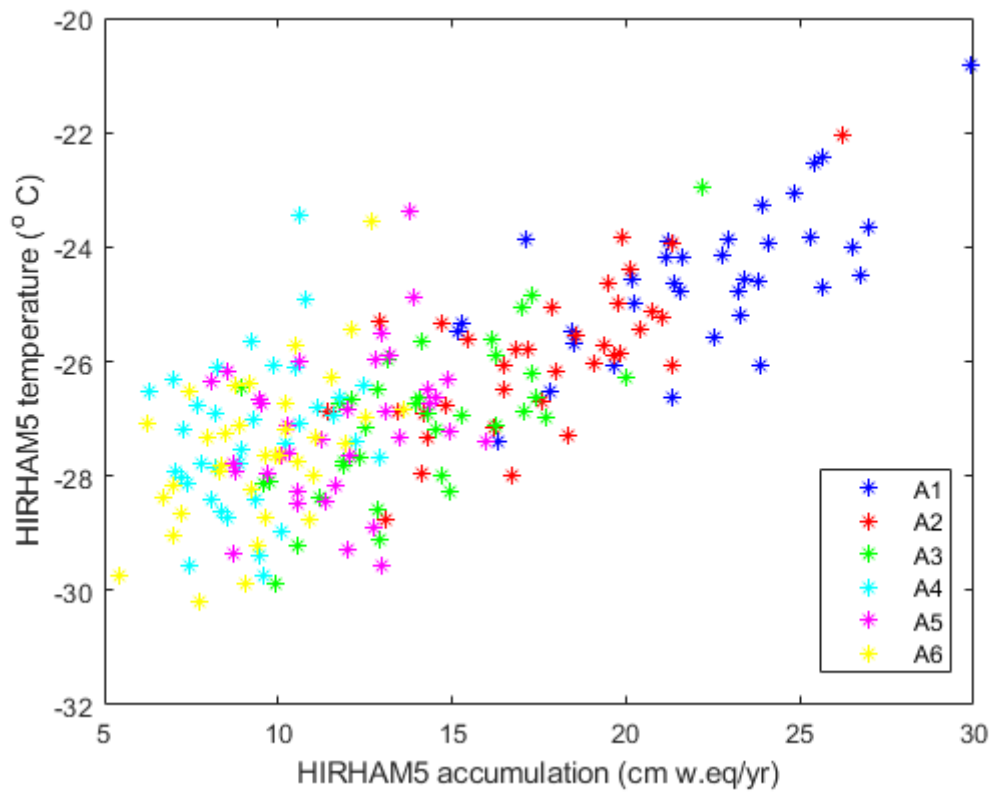


Figure S4 Annual mean temperature and accumulation from the HIRHAM5 model.