

River ice phenology and thickness from satellite altimetry: Potential for ice bridge road operation and climate studies

Elena Zakharova^{1,2}, Svetlana Agafonova³, Claude Duguay^{4,5}, Natalia Frolova³, Alexei Kouraev⁶

1. *Institute of Water Problems of Russian Academy of Science, Moscow, Russia*

5 2. *EOLA, Toulouse, France*

3. *Moscow State University, Moscow, Russia*

4. *University of Waterloo, Waterloo, Canada*

5. *H2O Geomatics, Waterloo, Canada*

6. *LEGOS, Université de Toulouse, CNES, CNRS, IRD, UPS Toulouse, France*

10

Abstract

River ice is a key component of the cryosphere. Satellite monitoring of river ice is a rapidly developing area of scientific enquiry, which has wide-ranging implications for climate, environmental, and socio-economic applications. Spaceborne radar altimetry is widely used for monitoring river water regimes; however, its potential ~~has not been demonstrated yet~~ for the observation of river ice processes and properties has not been demonstrated yet. Using Ku-band backscatter measurements from the Jason-2 and Jason-3 satellite missions (2008 - 2019), we demonstrate ~~for the first time~~ the potential of radar altimetry for the retrieval of river ice phenology dates and ice thickness for the first time. The ~~A~~ altimetric measurements ~~are shown~~ were determined to be sensitive enough to detect the first appearance of ice and the beginning of thermal breakup on the Lower Ob River (Western Siberia).

15

20

The uncertainties in the retrieval of ice event timing ~~are~~ were within the 10-day repeat cycle of Jason-2/3 ~~for in~~ 88–90% of the cases analysed. The uncertainties in the river ice thickness retrievals ~~from backscatter measurements made~~ via empirical relations between the satellite backscatter measurements with and in situ observations, ~~are~~ within expressed as root mean square errors (RMSE), ~~were~~ of 0.07-0.18 m. ~~One of the~~ novel application of radar altimetry is ~~in~~ the prediction of ice bridge road operations, which is demonstrated herein. We ~~show~~ established that the dates of ferry closing and ice road opening and closing ~~ice road opening~~ in Salekhard City can be predicted with an accuracy (expressed as RMSE) of ~~four~~ 3–5 days. ~~Uncertainties in the prediction of dates of ice road closure are three days, with the lead time varying from four days (for late breakup start) to 22 days (for early breakup start).~~

25

1 Introduction

River ice is a major component of the cryosphere. It affects an extensive portion of the hydrologic system in the Northern Hemisphere, where seasonal ice impacts 58% of the total river length (Prowse et al., 2007). Hence, monitoring the interannual variability and ~~trends~~ changes of in the river regime in response to climate change is critical for many environmental and societal applications. River ice plays a key role in the functioning of aquatic and riparian ecosystems (Prowse, 2001) and contributes to the erosion of channels and banks (Ettema, 2002) as well as the transport of sediments (Beltaos et al., 2018). River ice affects streamflow via the withdrawal (immobilisation) of part of the water during freeze-up and the consequent release during breakup. In addition, ice jams on rivers can cause catastrophic flooding (Beltaos et al., 2013). From socio-economic and cultural perspectives, river ice affects the operation of hydropower stations as well as construction and navigation activities. In arctic regions, frozen rivers

30

35

provide a unique transportation infrastructure for the movement of goods and people via winter ice roads and provide local populations with access to fishing and hunting/trapping grounds and; in some cases (e.g. Central Yakutia, Russia); to freshwater. However, the operational monitoring of ice cover on northern rivers is difficult due to site accessibility. Moreover, ice conditions can be unsafe for people who perform in situ measurements, especially at the beginning or end of the ice season. Therefore, satellite remote sensing has been proposed as an alternate tool; or as complement; to ground-based measurements, allowing for the characterisation of river ice properties and processes at spatial and temporal resolutions suitable for addressing various scientific and operational requirements (Duguay et al., 2015).

Indeed, satellite-borne instruments provide observational capabilities that can be used to map and monitor many river ice parameters. For example, optical sensors, such as the Moderate Resolution Imaging Spectroradiometer (MODIS) and the Advanced Very High-Resolution Radiometer (AVHRR), have been used to map the river ice extent and phenology, including freeze-up and breakup dates (Pavelsky and Smith, 2004; Chaouch et al., 2014; Chu and Lindenschmidt, 2016; Muhammad et al., 2016; Cooley and Pavelsky, 2016; Beaton et al., 2019). However, the presence of extensive cloud cover for many months of the year and low solar illumination conditions, particularly during the freeze-up period, are limiting factors for monitoring river ice at high latitudes using optical sensors. Active sensors operating in the microwave region of the electromagnetic spectrum are weather independent and provide a spatial resolution higher than that provided by the MODIS and AVHRR instruments. Synthetic aperture radar (SAR) imaging systems, in particular, have been used to monitor river ice phenology (e.g. Unterschultz et al., 2009; Mermoz et al., 2009; Sobiech et al., 2013; Sun and Trevor, 2018), deformation (Unterschultz et al., 2009), and classification of ice types (e.g. Chu and Lindenschmidt, 2016). Comprehensive reviews on remote sensing of lake and river ice can be found in Jeffries et al. (2005) and Duguay et al. (2015).

Ice thickness (Hice) is another parameter, which is of particular interest for operational purposes, such as public safety, ice road service, ice jam forecasts, and mitigation. Passive microwave and thermal satellite instruments have shown-exhibited potential for the retrieval of ice thickness for large lakes (Kang et al., 2014; Duguay et al., 2002, 2015; Gunn et al., 2015; Kheyrollah Pour et al., 2017). However, the spatial dimension of rivers, notably the width of the channels, limits the application of these instruments as they only provide coarse spatial resolution (km to tens of km spatial-resolutions). A few studies have used SAR images with high, 10–25 m, spatial resolutions to estimate river ice thickness (Unterschultz et al., 2009; Mermoz et al., 2014, Zhang et al., 2019), mainly through the establishment of the statistical relations between backscatter and in situ ice thickness measurements. However, these SAR-based methods have been limited to the estimation of ice thickness for short time periods (one or a few ice seasons) and small sections of rivers, primarily due to limited access to SAR imagery in years prior to the launch of the Sentinel-1A/B missions (2014) of the European Space Agency (ESA). Altimetric radars represent an excellent alternative or complement to SAR satellites. Satellite altimeters also provide relatively high spatial resolution (200–400 m) and are as-well weather-independent instruments with a long history of observations starting in the mid-1980s. Radar altimeters have largely been used for monitoring water levels of inland water bodies and water courses starting-at-over 100-m in width (Michailovsky et al., 2012). Radar altimeter data products are freely accessible via portals, such as the ones operated by the French space agency (CNES: Centre national d'études spatiales) and ESA; data can be routinely and quickly processed over large areas for relatively long time periods.

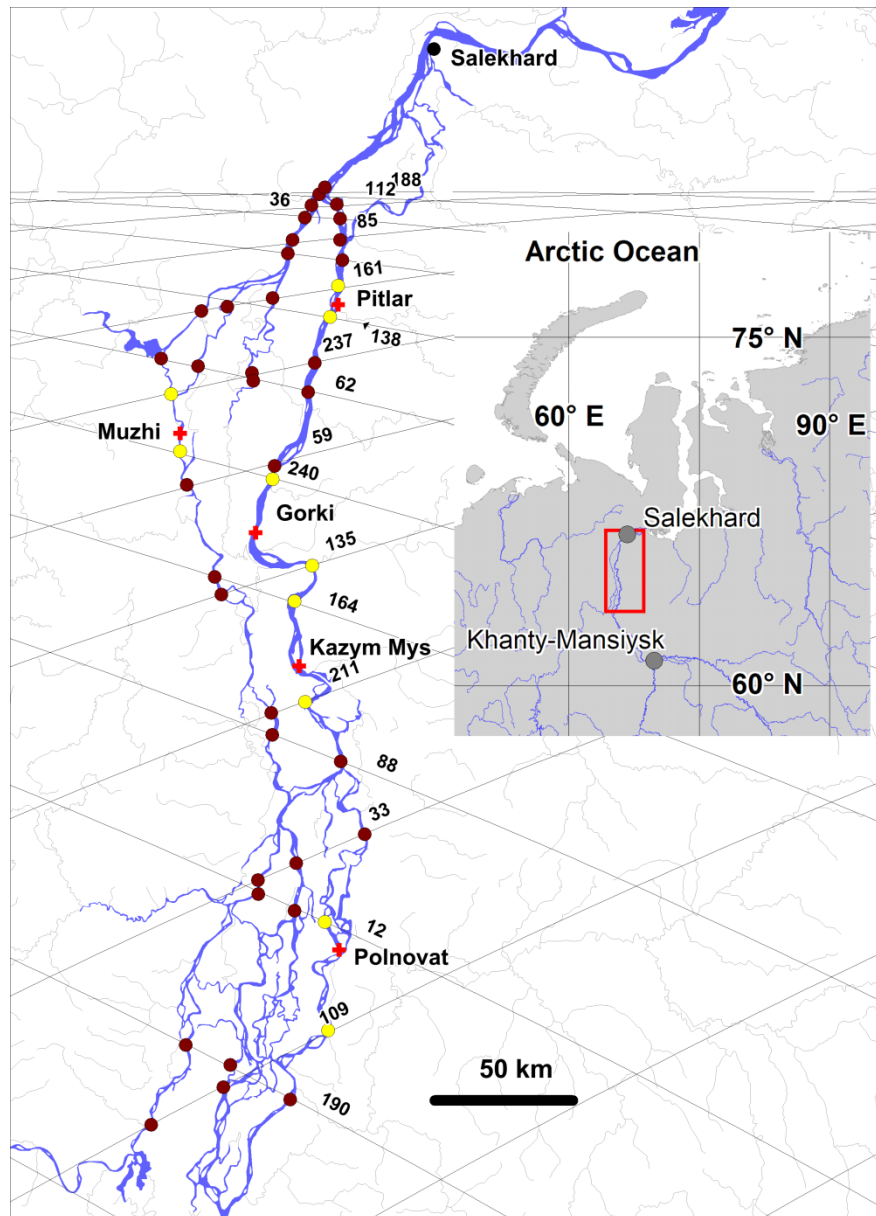
Radar signals incident upon the Earth's surface are modified according to the physical properties of the reflecting surface materials. Similar to SAR imaging SAR-systems, the signal recorded by radar altimeters can be interpreted as a function of the changes in surface properties, and the backscatter coefficient (ratio between the power of the emitted and received signals) can be used to characterize the surface state within a radar footprint.

Radar backscatter from freshwater ice depends on the radar configuration (radar type, operating frequency, viewing geometry, polarisation) and on the material properties, such as ice thickness, layering, air bubble inclusions, liquid water content, surface roughness, and snow on ice (Ulaby et al., 1986; Duguay et al., 2002; Leconte et al., 2009; Atwood et al., 2015; Gunn et al., 2015; Antonova et al., 2016; Gunn et al., 2018). The potential of altimetric radars has already been demonstrated for the monitoring ice phenology dates of large Eurasian lakes (Kouraev et al., 2007, 2015) and for the estimation of ice thickness on large northern lakes in Canada (Beckers et al., 2017; Duguay et al., 2018). However, radar altimeters have not been used ~~to date~~ for monitoring the ice regime of rivers. Therefore, for the first time, we demonstrate the application of radar altimetry for monitoring the interannual variability of river ice phenology and ice thickness along a 400 km stretch of the Ob River (Siberia, Russia).

This paper describes the development and validation of the algorithms for the retrieval of river ice phenology dates and ice thickness and the use of these products for the prediction of ice bridge road operations at Salekhard City on the Ob River. For this purpose, data from two altimetric satellite missions, Jason-2 and Jason-3, were selected for two reasons: 1) they provide the best temporal resolution (10 days) amongst the altimetric missions; and 2) the lifetime of this series of satellites provides observations on the same orbit, starting in 1992 with the TOPEX/Poseidon and continues with the Sentinel-6 mission (launched in November 2020), which is offering an interesting perspective for a follow-up investigation on the response of river ice on the Ob to a changing Arctic climate.

2 Study Region

The study was conducted over an area that encompasses the lower reaches of the Ob River (Siberia, Russia). The Ob River drains the Western Siberian Plain and is the third largest river in the Arctic Ocean watershed, with a mean annual flow of 406 km³ (Zakharova et al., 2020). The lower reaches of the Ob River extend ~~for~~ approximately 800 km and begin at the confluence of the Ob and ~~the~~ Irtysh Rivers at 61.08°N (Figure 1). The reaches are characterised by a particularly wide floodplain (up to 50 km) and ~~the presence of~~ numerous branches. The easternmost channel is the ~~main primary and~~ largest branch, called the Big Ob. The second largest branch delineates the flood plain from the west. The Ob River watershed is one of the largest peat bog systems in the world (Zakharova et al., 2014), and many settlements, which are located on the high terraces of the two main branches, have limited interconnection and access to supplies. The main branches of the river are navigable; however, they are covered by ice for seven months of the year. In winter, when the bogs are frozen, local communities intensify their socio-economic activities by constructing winter roads and ice bridges over the river crossings. River ice observations on the Ob are sparse and taken only at a few gauging stations dedicated to water level monitoring. In this study, we selected a section of the lower reaches of the Ob River located between two large administrative centres (Salekhard and Khanty-Mansyisk).



115

Figure 1. The lower reaches of the Ob River and location of the virtual (circles) and gauging (red crosses) stations. Stations from the training set are shown as yellow circles. Jason-2 and Jason-3 satellite tracks numbers are also provided at the river crossings. The main map ~~is~~was produced using the public World Bank data (<https://datacatalog.worldbank.org/dataset/major-rivers-world>).

120

3 Data

3.1 In situ data and ice regime at studied river reaches

125

The Russian Hydrometeorological Service monitors ice at all gauging stations that measure the water level. There are five water-level gauging stations in the studied Ob River reach (Figure 1; Table 1). Four stations (Polnovat, Gorki, Kazym-Mys, and Pitlar) are located on the main branch of the Ob River, and one station (Muzhi) provides observations on the secondary channel called the Small Ob River.

130

Table 1. Gauging stations in the lower reaches of the Ob River, including information on distance from the river mouth, beginning of observation periods, and periods with data gaps in observation records at stations.

River- station	Distance from mouth (km)	Beginning of observation period	Data gap in observation record
Ob – Polnovat	702	1970	
Ob – Gorki	487	1935	
Small Ob – Muzhi	463	1933	
Ob – Kazym Mys	551	1979	1988 –2003
Ob – Pitlar	386	1979	1990 – 2005

135

The standard protocol of river ice monitoring at the gauging stations involves: 1) daily visual observations of ice presence/absence and ice type/events; and 2) ~~three to four times per month~~ measurements of ice thickness and on-ice snow depth three to four times per month. Ice thickness is measured by drilling a single hole using an ice auger. ~~Snow depth corresponds to an average value calculated from of~~ The snow depth records are represented as the average values to an average value calculated from of three snow-depth measurements located around the hole.

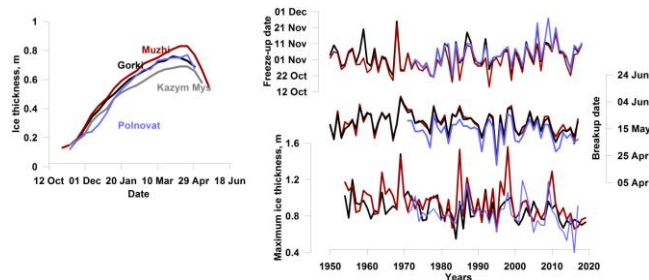
140

According to the in situ observations at the gauging stations, ice formation begins on average between 23 and 27 October. In the last 20 years, the earliest and latest records are 1 October and 18 November, respectively. At-In the studied river reaches, ice cover forms quickly, typically within just 2-3 days from the first appearance of first ice. However, according to the records provided by gauging stations, in 15% of the cases, full freeze-up (from ice onset to complete freeze-over) takes up to 10 days. Ice grows rapidly during the first month of the ice season. By the end of November, the river ice reaches a thickness of 0.23-0.30 m ~~already by the end of November~~. Towards the end of the ice growth period (March-April), the average thickness of the ice cover is 0.80-1.0 m ~~on average~~ (maximum of 1.50 m). Snow depth on the ice surface varies from 0.09-0.13 m in November to 0.30-0.50 m in April. The temporal dynamics of ice growth on the large linear channel sections of the Ob River is similar throughout the studied reaches (Fig. 2a). However, in the southern part of the region, the ice thickness is 0.07 to 0.20 m less than that in the north. Climate change has affected river ice in the Canadian Arctic (Prowse et al., 2011b) and the European part of Russia (Agafonova and Vasilenko, 2020), ~~but has not yet resulted in a significant change in the ice regime of the entire lower Ob River.~~

150

Mann-Kendall tests performed on the ice time series with complete records (Polnovat, Gorki and Muzhi; see Table 1) have revealed that ice onset ~~dates are occurring had occurred~~ significantly later (0.05 level) only at the Polnovat station. ~~while m~~ Maximum ice thicknesses have become significantly thinner (0.05 level) only at both the Gorki and Muzhi stations (Figure 2b). The observed trends are of order of 3 days/10 years and 3 cm/10 years for the ice onset and maximum ice thickness, respectively.

155



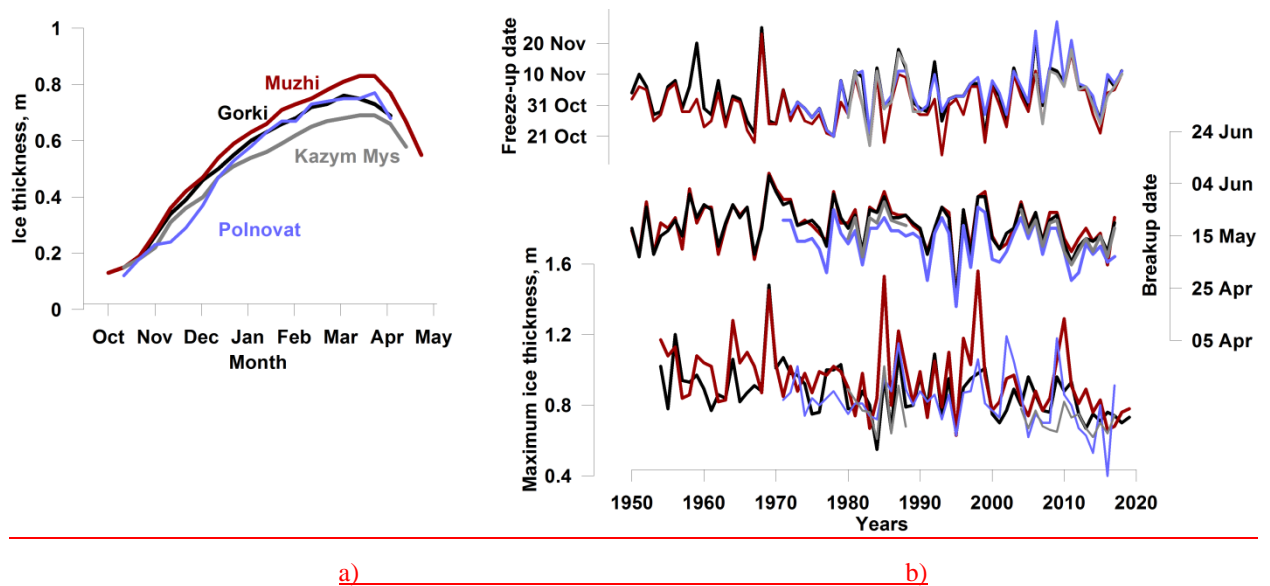


Figure 2. Examples of a) seasonal evolution of ice thickness (1980-2017 mean) and b) interannual variability of ice freeze-up and end of breakup dates, and maximum ice thickness at four stations (Gorki, Muzhi, Polnovat, and Kazym Mys). ~~at Gorki, Muzhi and Polnovat stations.~~

3.2 Altimetry and radiometry data

Data from the Jason-2 and Jason-3 satellite missions covering the period from July 2008 to August 2019 were used in this study. The Jason-2 satellite is the third altimetric satellite of the TOPEX/Poseidon-Jason series. The satellite operated between 2008 and 2016 and acquired data in-on a 10-day repeat orbit with an inclination of 66.08°. One satellite cycle consisted of 127 revolutions and 254 tracks (odd numbers for ascending and even numbers for descending orbits). In 2016, Jason-3 was sent into space with the same orbit and instruments as Jason-2. For 20 cycles, the two missions flew in a tandem mission with an 80-second time lag, ensuring continuity of measurements. The altimetric radar onboard Jason-2 and Jason-3 provided along-track measurements at the Ku (13.6 GHz) and C (5.3 GHz) bands with a sampling frequency of 20 Hz, allowing for a 375-m distance between adjacent radar measurements. The ground track repeatability of the mission was maintained within a ± 1 -km cross-track at the equator. At the latitudes of our study area (63-66°N), the cross-track oscillation band was approximately 400 m wide. ~~Because the radar ground footprint at Ku band is smaller than that at C band, In this study,~~ only measurements obtained in Ku-band were ~~considered used~~. The theoretical footprint of the radar at the Ku-band is 10-12 km in diameter over a rough ocean surface (Fu and Cazenave, 1991). However, this diameter decreases over smooth inland water and ice surfaces such that the main returned signal can come from footprints of just a few kilometres in diameter (Legrésy and Rémy, 1997).

The satellite payload of Jason-2 also included a nadir-looking Advanced Microwave Radiometer (AMR), which provided measurements of brightness temperature at 18.7, 23.8, and 34.0 GHz frequencies with a sampling frequency of 1 Hz. Brightness temperature measurements acquired by other passive microwave radiometers, such as SSM/I and AMSR-E, have demonstrated good performance for the retrieval of dates associated with ice phenology (Kouraev et al., 2007; Kang et al., 2012; Du et al., 2017) as well as for the retrieval of the ice thickness (Kang et al., 2014) on large lakes in Russia and Canada. ~~Since~~ ~~Because the~~ Jason AMR footprints are large in diameter (42 km at 18.7 GHz, 35 km at 23.8 GHz, and 22 km at 34.0 GHz) (Kouraev et al., 2007), the brightness temperature measurements over rivers are dominated by signals emitted predominantly from land surfaces surrounding the river

channels. Hence, we used Jason-2/3 AMR measurements only as a source of auxiliary information to develop additional criteria for the adjustment of the radar freeze-up/breakup date retrieval algorithm. During the commissioning-tandem mission period, the differences in the Ku-band backscatter measurements (Sig0) between Jason-2 and Jason-3 were within 1 dB. The difference in the brightness temperature measurements was within 3 K.

190 In this study, the backscatter and brightness temperature measurements were extracted from a geophysical research data records product (GDR) distributed on the AVISO+ data portal (ftp-access.aviso.altimetry.fr, last accessed 30/06/2021). The GDR product contains various parameters estimated from the radar return echo, which is represented as a waveform. ~~We used the 20 Hz backscatter coefficient retrieved from the ICE1 algorithm (Bamber, 1994).~~ An altimeter waveform represents a histogram of energy backscattered by the ground surface to the satellite with respect to time. The waveform ground processing (retracking) is aimed at obtaining a better estimates of range (distance from satellite to the Earth surface) than those obtained with on-board algorithms. ~~We used the 20 Hz backscatter coefficient retrieved from the ICE1 algorithm (Bamber, 1994).~~ The ICE1 retracking algorithm calculates the centre of gravity, amplitude, and width of a rectangular box using the maximum power of the waveform samples. The backscatter is estimated using an instrument link budget and the waveform amplitude (ESA, 2020).
195
200 The AMR measurements of brightness temperature have a 1 Hz temporal frequency. Here, they were linearly interpolated to the coordinates of the 20 Hz radar measurements.

Landsat 8 images at a 30-m spatial resolution (<https://earthexplorer.usgs.gov/>) were used for the geographical selection of altimetric radar and radiometer measurements over the river channels using our own Python code, allowing us to overlap the along-track Jason-2/3 measurements on the Landsat images. The cross-section of an altimetric track with a river channel is called a virtual station (VS; see Figure 1 for locations). Each VS was given a name containing the track number. To distinguish the VSs located on secondary branches from those located on the main Ob River channel, the names of the stations located on the secondary branch (i.e. Small Ob River) were provided with the index "S_Ob".
205

210 **4 Temporal variability of radar altimetry signal over frozen rivers**

~~Since-Because~~ there is an absence of work on the use of radar altimetry for river ice studies, we provide some elements of interpretation on the evolution of backscatter with freshwater ice properties. The effect of ~~varied-varying~~ ice properties on the radar return from nadir-looking altimeter instruments has been reported in several investigations of the Antarctic and Greenland ice sheets (e.g. Rémy et al., 2012; Nilsson, 2015; Larue et al., 2021) as well as for sea ice (e.g. Kurtz et al., 2014; Guerreiro et al., 2016). However, freshwater ice differs from other types of ice ~~either-byin~~ its textural/structural (e.g. crystal structure, density, layering, air bubble content) or chemical properties (e.g. salt content). The impact of freshwater ice properties on satellite measurements in the microwave region has been studied extensively in context of the interpretation of measurements from side-looking imaging SAR sensors (e.g. Duguay et al., 2002; Jeffries et al., 2005; Unterschultz et al., 2009; Atwood et al., 2015, van der Sanden et al., 2021). To date, no research has provided ~~some~~ explanations on the temporal variability of radar altimetry measurements over frozen rivers. Below, we provide a summary of the variability of altimetric radar signals over river ice during the freeze-up (ice formation), ice growth, and breakup (ice decay) periods. based on our own interpretation of the altimetric data from this study.
215
220

Previous studies (e.g. Kouraev et al., 2005; Duguay et al., 2018; Zakharova et al., 2019, 2020) have show demonstrated that over Arctic rivers and lakes, the backscatter from radar altimeters varies seasonally. This behaviour is strongly related to hydrological phases, especially to the presence of ice (Figure 3a). We analysed the
225

seasonal behaviour of backscatter from the Ob River with respect to geophysical parameters that can potentially affect the scattering properties of the surface at microwave frequencies. The radar return of nadir-looking altimeters significantly differs from ~~the return that~~ obtained with side-looking imaging SAR instruments (ca. 20-45° off nadir).
230 At nadir, a smooth surface produces a higher return echo than a rough surface (Ulaby et al., 1986). The altimetric return signal is represented as a waveform (Figure 3b). The shape of the waveform varies for different types of surfaces and can provide a variety of information that is useful for the interpretation of geophysical processes (Berry et al., 2005). For instance, Beckers et al. (2017) found the presence of an intermediate peak on the leading edge of waveforms that they attributed to the reflection of the radar signal ~~at from~~ the ice surface (i.e. snow-ice interface).
235 The main waveform peak was considered to originate from the ice bottom (i.e. ice-water interface). The difference in the ice surface - ice bottom altimetric heights estimated from these two peaks was found to be related to the ice thickness and therefore was used for its retrieval. ~~In many of the radar waveforms extracted over river ice, we can also detect~~ This intermediate peak can also be detected on the ~~waveform~~-leading edge of many waveforms extracted over river ice (Figure 3b). However, considering that the radar echoes over rivers come from ~~very-substantially~~ heterogeneous surfaces, we ~~avoided~~ to referring this peak to a definitive reflecting boundary and suggest another approach for ice thickness retrievals. Figure 3b demonstrates that during ice growth, the ~~main-primary~~ waveform evolution is related to a decrease in power of the ~~waveform~~-main peak. This can be explained by the volumetric scattering/absorption of the radar signal with ice growth. We ~~noted~~ d that this decrease is proportional to the value of backscatter, which can be seen as the integral under the waveform. Based on this observation, we suggest that the
240 retrieval of ice thickness is possible through the establishment of a simple statistical relation between the radar backscatter and ~~in-~~situ river ice thickness measurements. This simple approach has exhibited some potential for the retrieval of river ice thickness from imaging SAR instruments (Unterschultz et al., 2009; Mermoz et al., 2014). However, in contrast to nadir-looking radar altimeters, it has recently been suggested that backscatter from off-nadir looking imaging SAR during the ice growth season may be more related to ~~increased~~ d roughness at the ice-water
245 interface than ice thickness alone (Murfit and Duguay, 2021).

High backscatter values of nadir-looking altimeters are observed when the instrument footprint contains a large fraction of open calm water with low roughness (Fu and Cazenave, 1991). ~~In general, the surface roughness of inland water objects of small and medium size is low, and backscatter values are high, as when compared with ocean conditions (Zakharova et al., 2014, 2018). However, on~~ rivers, over large, flooded areas, the water surface can
255 exhibit substantial roughness owing to turbulent flow ~~and-or~~ the impact of wind, thus resulting in lower backscatter values ~~compared than those obtained over~~ calm water. On lakes, during freeze-up, the presence of floating ice (floes or slush) prevents the development of wind-induced waves and, therefore, increases the specular reflection off the water (Kouraev et al., 2007, 2021). Freeze-up on rivers starts with the formation of a fine skim ice layer along the banks (i.e. border ice). This ice can detach and drift (Hicks, 2009). The skim ice is characterised by a smooth
260 surface and bottom. We suggest that the peak on the backscatter time series, ~~at representing~~ the time of the first appearance of the ~~first~~-skim or drifting ice in late autumn can indicate the start of freezing (Figure 3c).

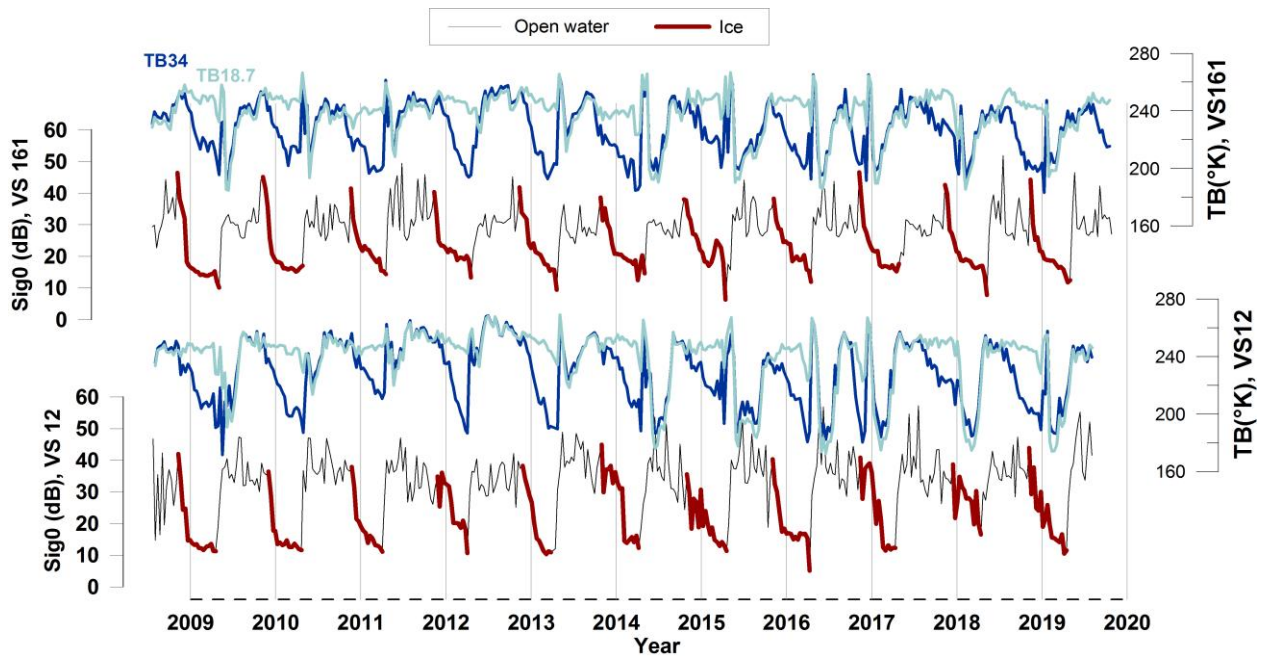
The scattering and absorption of radar echoes within ice depends on the penetration depth of the incident radar signal and internal ice properties (Rémy et al., 2012, Jeffries et al., 2012). At the Ku-band, the penetration depth into dry freshwater ice is in the order of 5-12 m and depends on the temperature and properties of the ice (Legrésy and
265 Rémy, 1997). Therefore, in the case of thin lake or river ice, the penetration depth for waves emitted at altimetric radar frequencies (C and Ku-band) allows for the estimation of ice thickness. River ice ~~mainly~~-grows as water at the bottom of the ice cover freezes (Duguay et al., 2015). As ice grows, the volume scattering of the radar altimeter signal within the ice increases, resulting in a decrease in backscatter (Brown 1977; Rémy et al., 2012). On the Ob

270 ~~River backscatter time series, a~~ distinct recession limb can be clearly observed on the Ob River backscatter time series in winter (see the red lines in Figure 3a). The Ob River ice gains approximately 30% of its total thickness during the first month of ice growth (Figure 2a). The highest temporal decrease in backscatter ($Sig0$), expressed as $\Delta Sig0/\Delta t$ (where Δt is the period between two consecutive observations), are observed ~~exactly~~ during that period. During winter, small peaks can appear in the backscatter time series (see VS12 in Figure 3a). The peaks can be explained ~~by as the~~ temporary changes ~~of in the~~ ice surface characteristics, such as the formation of polynya (open water areas), redistribution of snow on the ice surface by winds, snow wetting during mechanical ice cracking (i.e. slushing), and occasional snow melt during warm sunny days (and refreezing at night) in early spring. All these processes either change the roughness of the reflecting surface (polynya and snow crust) or decrease the radar penetration depth and, consequently, reduce the signal energy loss within the ice.

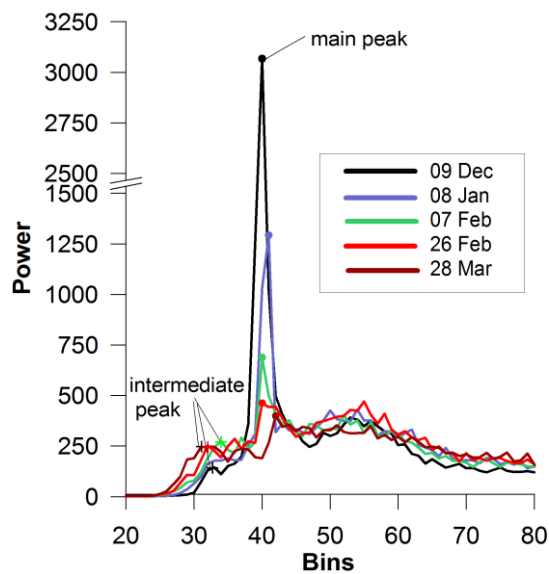
280 River ice breakup is influenced by both thermodynamic and hydrodynamic processes, known as thermal and mechanical breakup, respectively (Ginzburg, 1977). ~~Our previous s~~Studies using SARAL/AltiKa (Kouraev et al., 2015) and Jason-3 (Kouraev et al., 2021) altimeter data have demonstrated that in early spring, when air temperatures are still mostly negative, lake ice undergoes metamorphism under the influence of solar radiation. At that time, a drop in backscatter of approximately in the order of 5-10 dB can be observed. A similar process can occur on the Ob River ice during the pre-melt period (~~see, for example, years 2012-2016 in~~ Figure 3ac). When air temperatures become positive, snow on the ice surface melts, increasing the surface backscattering of the radar signal. Melt progressively affects the ice and melt ponds with a smooth water surface can appear on the ice surface. The presence of water on the ice surface and wet snow/ice prevents the penetration of radar signals (Ulaby et al., 1986). During melt, surface scattering becomes dominant in the altimetric return signals. This leads to an increase ~~of~~ in the radar altimetry backscatter as because the roughness of the surface of the melting snow/ice and melt ponds is
285 low.

290 Mechanical breakup begins when the water level rises. At this time, water can flood the ice surface due to the earlier breakup in the river headwaters or its tributaries, or ~~due~~ to water infiltration through cracks in the weakened/fractured ice (Ginzburg, 1977; Hicks, 2009). A high backscatter peak occurs at the beginning of flooding. ~~The value of the peak varies over a large range, in the order of which can vary significantly from 25- to 50 dB.~~ Such events preclude the development of a threshold-based algorithm for the retrieval of breakup dates. As the river becomes ice-free, the backscatter decreases owing to the increased surface roughness induced by wind and turbulence.

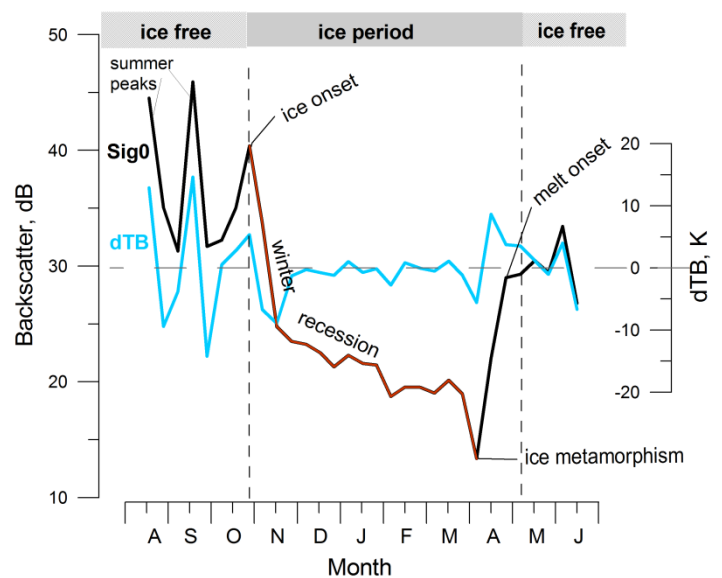
300 During the open water season, several backscatter peaks are frequently observed. Summer variability in backscatter depends on many factors, including wind induced roughness, VS location (banks, presence of islands, floodplain characteristics), and the proportion of water within the footprint (intermittent summer inundation due to rain events), among others.



a)



b)



c)

305 **Figure 3.** Variability of Jason-2/3 measurements over sections of the Ob River. a) Interannual variability of
 backscatter and brightness temperature to the north (VS 161) and south (VS 12) of the study area (dark red lines
 correspond to the ice cover period retrieved from altimetric measurements using manual routine). b) Winter
 evolution of typical waveforms for track 88 over a river channel (the coloured lines correspond to different dates
 during winter 2013-2014). c) Typical seasonal variability of backscatter on the Ob River and related ice regime
 310 phases.

5 Methods

5.1 Ice onset and breakup algorithm

315 Considering the behaviour of radar backscatter over frozen rivers described in Section 4 and presented on Figure 3c,
 we developed a dynamic algorithm for retrieving ice phenology dates based on the analysis of the Sig0 time series
 specific to each VS. We suggest that the last annual-peak of each year in the backscatter time series corresponds to

the beginning of river ice formation (ice onset). In the case of a multi-peaky recession limb, see for example VS12 in 2013 (Figure 3a), we selected the autumnal peak whose height is of the order of spring-summer peak heights typical for this VS. This helps to distinguish the peaks related to the first appearance of ice (higher peak) from the subsequent peaks related to the appearances of water on the ice (smaller peaks). If the peak selection of the peak is not straightforward (for example, two high peaks within one month or the prominence of the peak is low), an additional criterion based on the brightness temperature difference ~~between-of~~ the 34.0 and 18.7 GHz frequency channels (ΔTB) is introduced (Kouraev et al., 2005, 2007). Because the ΔTB values vary around zero and do not exceed 2 K (Figure 3c), in such case, we selected the backscatter peak at time t , if in a time frame of $(t-1, t+2)$ of satellite cycles at least three of the four ΔTB values ~~are-were~~ $< 2^\circ \text{K}$ during the satellite cycle time frame of $(t-1, t+2)$.

Brightness temperature measurements integrate emissions from larger surrounding areas than the altimetric radar backscatter measurements. ~~Freezing-of-s~~ Small oxbow lakes on the floodplain as well as soils and bogs on banks usually ~~occurs-freeze~~ earlier than ~~in~~ the big channels of the Ob River. By applying the $(t-1, t+2)$ window, we ensured that the progression of freezing in the area of the VS ~~is-was~~ captured and that the backscatter peak ~~is-was~~ not caused by a synoptic-scale cooling episode or by calm weather conditions.

The beginning of the ice cover decay (beginning of thermal ice melt-start) leads to an increase in spring backscatter. The melt-detection algorithm searches for the spring peak in the backscatter time series. For multi-peak winters, the algorithm also uses the ΔTB condition. During the melt, the ΔTB is usually higher than 2 K (Figure 3c). The algorithm searches for the peak, which is accompanied by a simultaneous increase in ΔTB in the same order of magnitude as the mean summer ΔTB value for a given VS. Among the spring peaks, the peak satisfying the condition $\min[\Delta TB_t - \text{mean}(\Delta TB_{\text{Jul-Aug}})]$ (where $\text{mean}(\Delta TB_{\text{Jul-Aug}})$ is the mean summer brightness temperature difference), was selected. In a few instances, the spring peak ~~is-found-to-be~~ absent or ~~can~~ could not be automatically detected because of a low prominence. In these cases, we used the date of the maximum increase in backscatter between two satellite cycles ($\Delta \text{Sig}0/\Delta t$) for the period from January to mid-June.

A variety of combinations of different geomorphological (riverbanks, floodplain, river width, and islands), meteorological (synoptic cooling/warming episodes), and ice cover/open water (polynya, and ridging) conditions can occur. Their complex impact on the variability in backscatter during freeze-up and breakup makes it difficult to address all the variations automatically. ~~Because-of-this~~ Therefore, we retrieved the ice phenology dates manually through a visual inspection of the backscatter (and ΔTB if necessary) time series for each VS ~~as~~ to compare the performance of the automated and manual freeze/melt detection routines. Both the manual and automated routines use the same criteria. A summary of the processing scheme is illustrated in Figure 4.

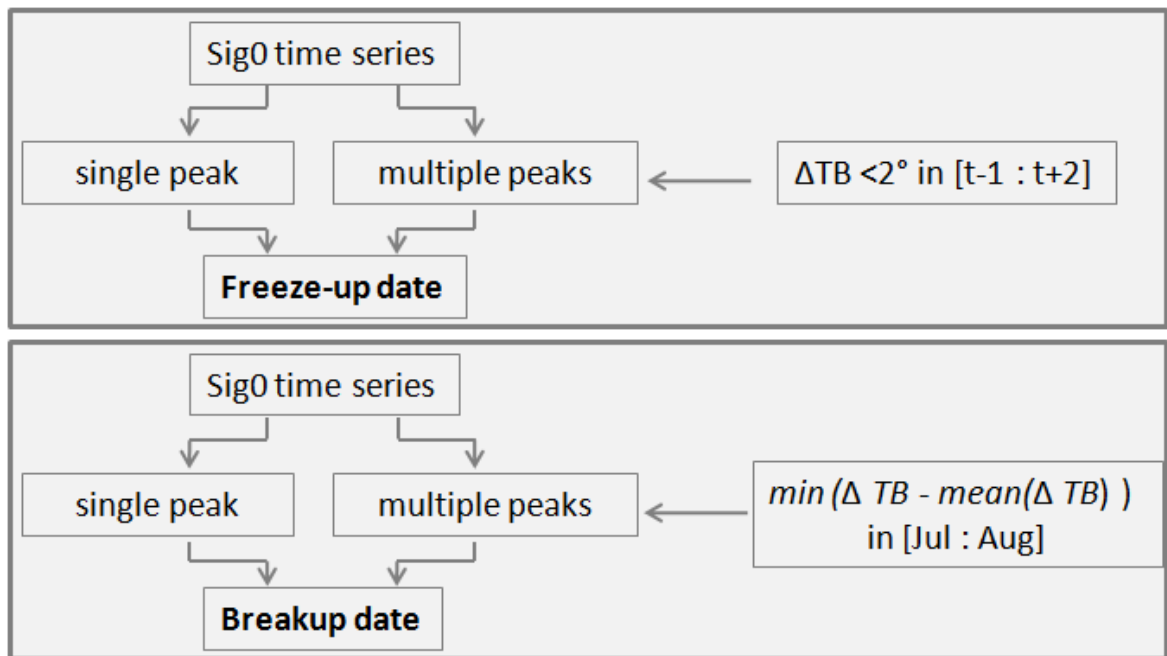


Figure 4. Processing scheme of retrieving ice phenology dates ~~retrieving~~ from altimetric measurements.

350

5.2 Ice thickness algorithm

~~Year-to-year~~ Interannual variations in the backscatter values at the beginning of the freeze-up period (see Figure 3a) may be caused by different land/water/ice proportions within the radar altimeter footprint, wind conditions, floating ice concentration, ~~eteor~~ other factors. Assuming that the decrease in backscatter between two consecutive observations ($\Delta Sig0/\Delta t$) is proportional to a gain in ice thickness (see Section 4), we used a relative backscatter decrease rather than the absolute backscatter values for the estimation of ice thickness. This ~~allows~~ allowed us to minimise the effect of the initial freezing conditions on the accuracy of ice thickness retrievals. For each years Sstarting from the first date of freezing (i.e. ice onset determined manually), we estimated the backscatter cumulative difference $\Sigma(\Delta Sig0/\Delta t)$ and constructed the relationship between this parameter and in-situ ice thickness (H_{ice}) measured at the nearest gauging station (Figure 5). The application of a locally Estimated Scatterplot Ssmoothing filter (LOESS) on the $\Sigma(\Delta Sig0/\Delta t)$ parameter makes it possible to minimise the effect of secondary peaks on the winter backscatter curve.

355

360

Along the 400 km long Low Ob River reaches covered by the 20 northernmost Jason satellite tracks, 48 VSs were defined using the Jason-2 and Jason-3 tracks overlaid on Landsat 8 images. Ten VSs nearest to the five gauging stations were chosen as a training set for calibrating the ice thickness retrieval algorithms and for estimating the uncertainties in the ice phenology dates and ice thickness retrievals. The Results of ~~the retrievals of~~ ice onset and ice melt start dates s retrievals by both the automated and manual routines were compared ~~to-with~~ the ground station records of ice types or water/ice cover state (ridging, polynya, water-on-ice and ice drift among others). As Because the dates of the in-situ measurements ~~did~~ not coincide exactly with the Jason overpass dates, the ice thickness values were linearly interpolated between the two adjacent dates of in-situ observations for the dates of the satellite overpasses. The other 38 VSs (main set) were used to characterise the ice conditions within all the studied river reaches.

365

370

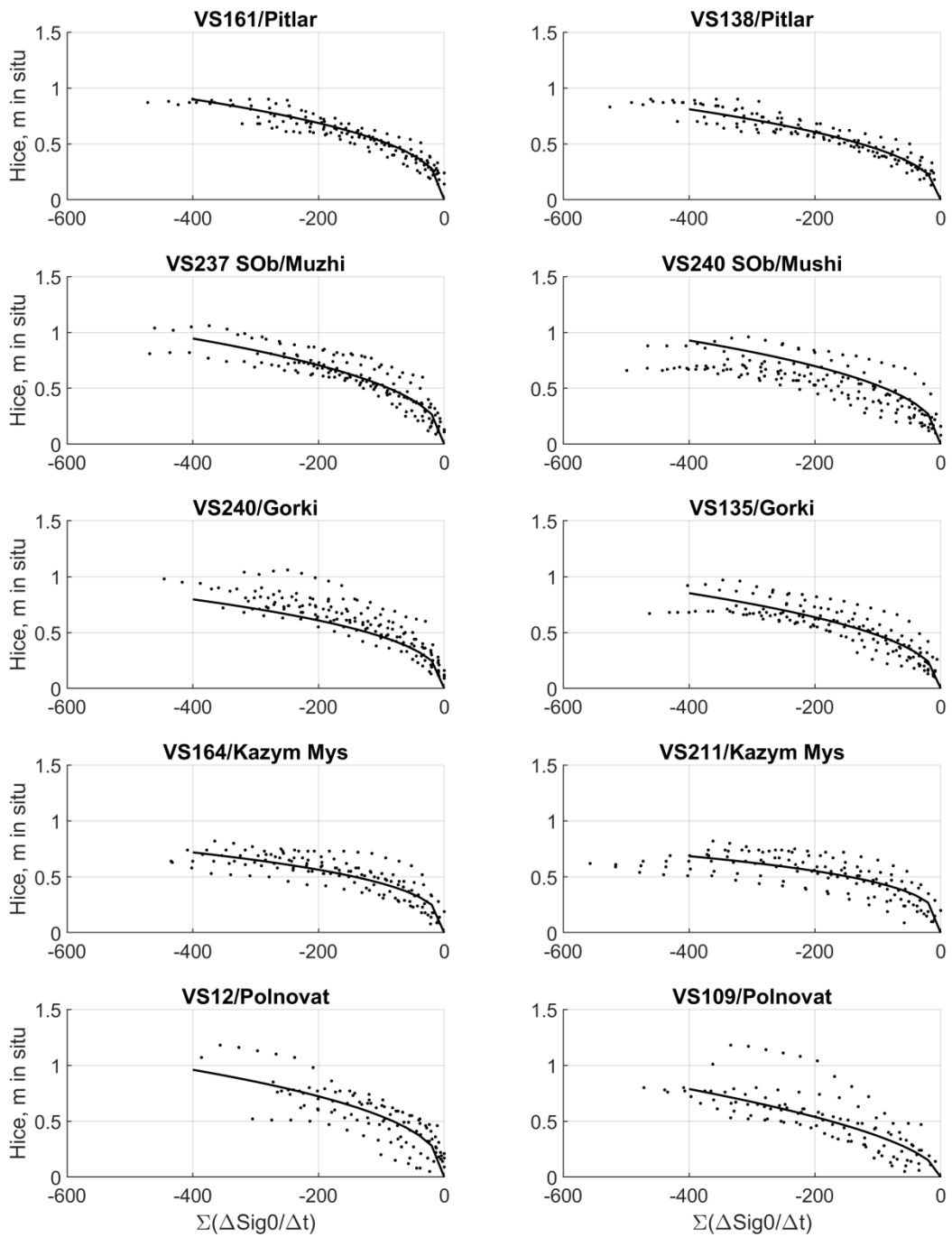


Figure 5. Relationship between $\Sigma(\Delta Sig0/\Delta t)$ and in-situ ice thickness at ten virtual stations.

375

Amongst the tested fitting functions (linear, polynomial, and power), the power equation (31) produced the best fit between the cumulative backscatter difference and in-situ ice thickness measurements. The selection of the fitting function was based on maximisation of the correlation between $\Sigma(\Delta Sig0/\Delta t)$ and in-situ *Hice* and the minimisation of root mean square error (RMSE) calculated between the *Hice* retrieved from Equation 31 and the observed *Hice* values.

380

$$H_{ice} = a \times abs(\Sigma(\Delta Sig0/\Delta t))^b \quad (1)$$

~~Coefficients a and b of the equation were estimated for each pair of gauging VSs from the training set. Using the leave-one-year-out method (Picard and Cook, 1984) for each gauging station -VS pair in the training set, we obtained a set of a and b coefficients and estimated their mean values. These mean values were then used for ice thickness estimation on the corresponding training VS.~~

~~The algorithm was validated for the ten virtual stations from the training set. For the ice phenology algorithm, the accuracy was evaluated by evaluation of using the percentage of good retrievals. Because the Jason satellite has a 10-day repeating orbit, a retrieval was considered good if the difference between it and the in situ observation was ≤10 days. The accuracy of the ice thickness retrievals was evaluated for the same ten virtual stations using the correlation coefficient and RMSE calculated between the retrieved and observed ice thickness for the 2008-2018 period. A schematic representation of the processing steps is presented in Figure 6.~~

~~Using coefficients a and b from Equation (13) derived for the VSs from the training set, we estimated the ice thicknesses for the locations of the other 38 VSs. The following strategy was adopted. Firstly, for each VS, using the correlation matrix, we searched for the best correlation between its backscatter and the backscatter for one of the training VSs. Then, the coefficients a and b of VS_i with the highest correlation coefficient were applied to the VS considered.~~

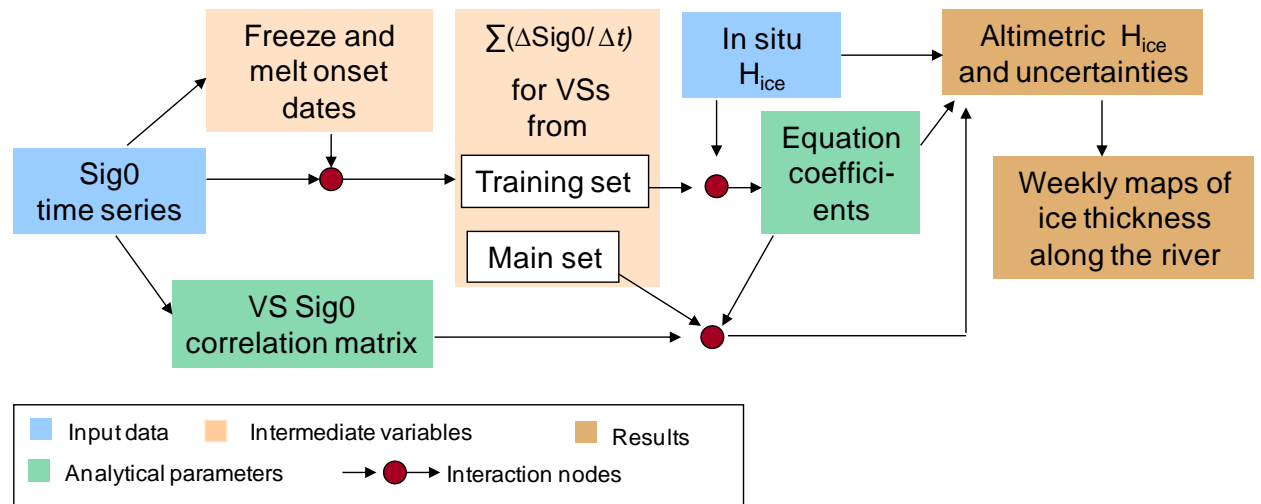


Figure 6. Processing scheme of ice thickness retrieval from altimetric measurements.

5.3 Generation of 2D spatiotemporal ice thickness product

~~Using coefficients a and b from equation (3) derived for the VSs from the training set, we estimated the ice thickness at locations of the other 38 VSs. The following strategy was adopted: firstly, for each VS, using the correlation matrix, we searched for the best correlation between its backscatter and the backscatter at one of the training VSs. Then, the coefficients a and b of VS_i showing the highest correlation coefficient were applied to the VS considered.~~

~~The H_{ice} ice thickness retrieved at all 48 VSs were used for the creation of weekly maps, which were generalised into a 2D spatio-temporal ice thickness product. For this, the altimeter-derived ice thicknesses were interpolated and smoothed in 2D spatio-temporal coordinates using a moving average filter. The size of the smoothing window must:~~
a) preserve ~~as much as possible~~ the *H_{ice}* magnitudes and the spatial heterogeneity of ice thickness in the spatial

domain ~~as much as possible~~; and b) reduce the residual noise in the temporal domain remaining after ~~smoothing of~~ the backscatter time series ~~was smoothed~~ with the LOESS filter. The selection of the smoothing window was determined based on the correlation coefficient and RMSE estimated between ~~the~~ *Hice* time series retrieved at virtual stations and ~~the~~ *Hice* time series extracted from the smoothed product for the same VS locations. The effect of interpolation and smoothing on seasonal *Hice* magnitude was evaluated ~~via-by estimating~~ the differences between ~~the~~ maximum yearly values of *Hice*.

~~It should be noted that an important~~Notably, a critical effect of the interpolation/smoothing procedure on *Hice* (i.e. rapid degradation of the correlation coefficient and RMSE statistics) occurred in ~~a-the~~ 15-40 km spatial window range. In windows beyond 40-45 km, the procedure resulted in ~~little-few~~ subsequent changes in the smoothed product. In the temporal domain, the application of windows below 15 days (for 0 km spatial window) and 40 days (for 60 km spatial window) also had a minor effect (the correlation coefficient was above 0.98, RMSE and difference in maximum *Hice* ($Hice_{max}$) were below 0.03 m). The selected window of 40 km/30 days allowed ~~to~~ keeping the average $Hice_{max}$ difference and RMSE below 0.04 and 0.03 m, respectively. The correlation between ~~the~~ *Hice* time series extracted from the smoothed product and those retrieved at 20 VSs located on the main branch of the Ob River was 0.99.

6 Results

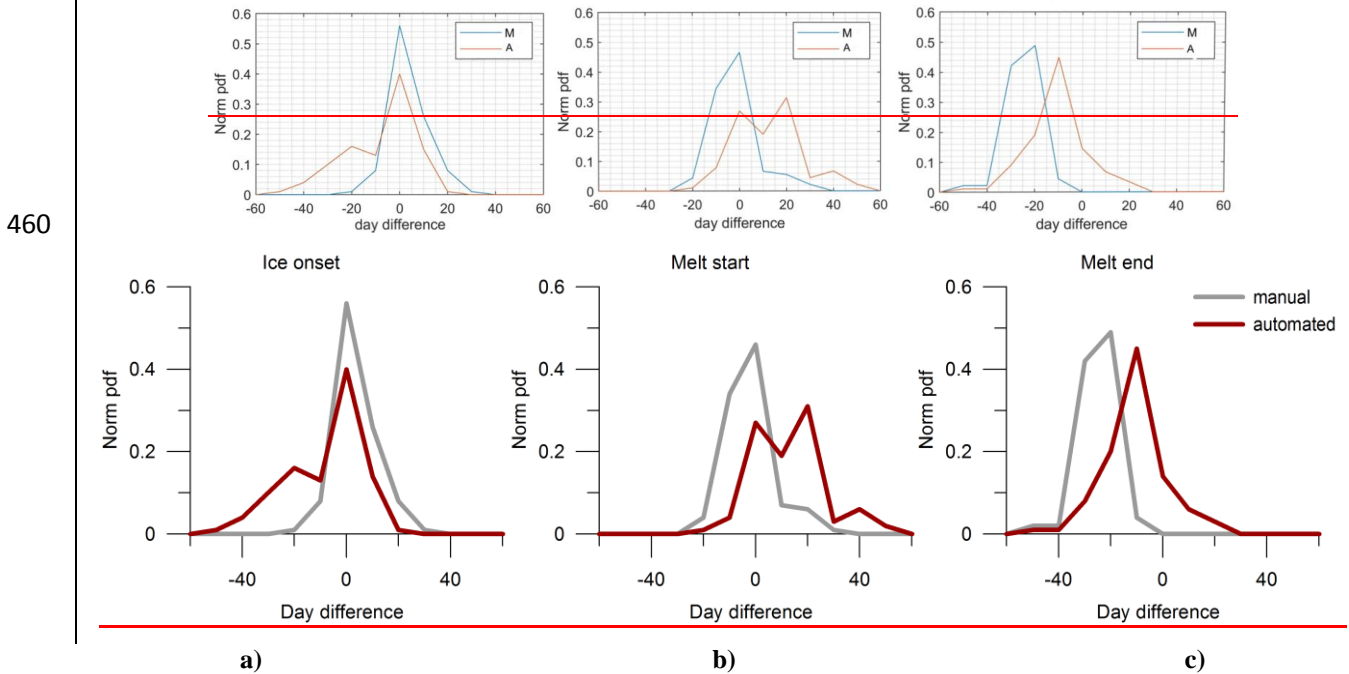
5.46.1 Validation of Ice phenology retrievals algorithm

Considering the 10-day repeat overpass of the Jason-2/3 satellites and the distance between the gauging stations and VSs, we considered a 10-day time-step difference (i.e. ± 10 days) as an acceptable accuracy for ~~the~~ altimetry-derived ice phenology dates. For 90% of the manual routine retrievals, the difference ~~in-between~~ the first ice events (ice onset) ~~with-and in-~~situ observations ~~is-was~~ less than 10 days (Figure 7a). In 56% of the cases, there ~~is-was~~ no difference in the number of days. ~~As the radar footprint over rivers is heterogeneous and is affected by signals from the frozen/unfrozen state of land/river/floodplain lakes, there are numerous variations in the behaviour of backscatter at the beginning of the freeze up period. In such case, the~~The automated routine ~~misses-missed~~ certain ~~temporal Sig0~~ behaviour types, and detection ~~is-was~~ less accurate for ice onset than in ~~the case of~~ the manual routine. Only 70% of the altimetric ice onset dates ~~fall-were~~ within 10 days of the in-situ observations at ~~the~~ gauges, and only 40% ~~fall-were~~ on the same day.

Breakup is a more complex process consisting of the thermal degradation of ice cover (melt start) and its mechanical disintegration and downstream movement (melt end). Comparing the dates of ~~the~~ altimetry-derived melt onset (start) with ~~those of~~ the ice state flags provided by gauging stations, we could conclude that the manual routine of our algorithm accurately detected the start of ice thermal degradation. In 88% of the cases, the difference between the manually retrieved melt dates and in-situ observations of the first water appearance ~~is-was~~ less than ± 10 days (Figure 7b). The automatically derived melt date estimations ~~are-were~~ less accurate for the detection of ~~the~~ melt starts ~~than compared to~~ the manually derived estimations. However, the automated routine ~~is-was better more~~ adapted for the detection of the melt end than for ~~the~~ detection of melt start; an accuracy of less than ± 10 days ~~is-was~~ achieved for 67% of cases (Figure 7 b, c).

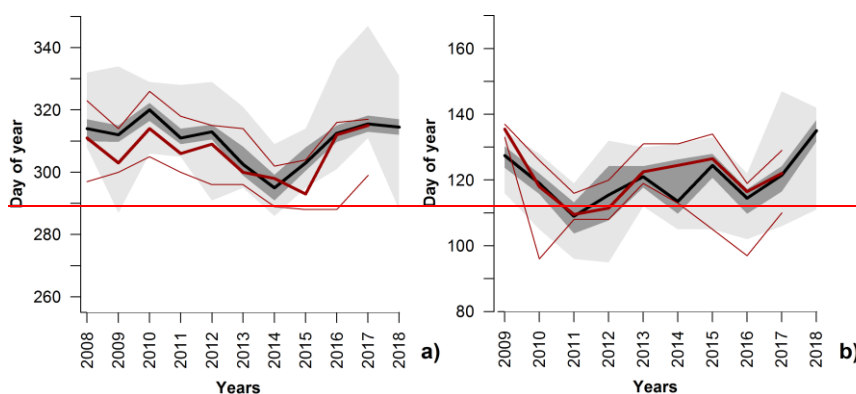
The melt algorithm was designed for ~~the~~ detection of the ice melt start; (i.e. the wet ice, water-on-ice or open water events). ~~The M~~manual retrieval of breakup dates allow~~sed~~ for better control over the complex variability ~~of-in~~ ~~the~~ backscatter in spring than ~~does~~ the automated routine. It is likely that in the complex cases the automated routine

455 detects the melt end or even provides unrealistic early/late estimates of melt dates. For example, ~~for the whole set of 48 VSs, over the full 10 winter periods of study,~~ the automated ~~detection routine fails, that is detects~~ detected unrealistic melting dates before 10 April and after 10 June, in 10% of the total cases ~~for the entire set of 48 VSs over the 10 winter periods of study.~~ ~~As~~ ~~Because~~ the manual routine demonstrates better accuracy than the automated routine, it was therefore selected for further analysis of the results and for use with the ice thickness retrieval algorithm.



465 **Figure 7.** Normalised distribution of difference in number of days between altimetric and in-situ observed dates of a) ice onset, b) melt start, and c) melt end over the 2008-2019 period retrieved for 10 virtual stations from training set of VSs using manual and automated routines.

470 A comparison of the interannual variability of median dates estimated for VSs located on the main river branch (20 VSs in total) with the corresponding parameter estimated from the observations at four gauging stations (also located on the main river branch) demonstrated a good agreement between the satellite retrievals and in-situ observations (Figure 8). A significant difference between the gauging gauges and VSs (in the order of approximately 20 days) ~~is~~ ~~was~~ observed only for the melt start dates in 2014. This good agreement suggests that our algorithm approach is suitable for monitoring the interannual variability of ice events.



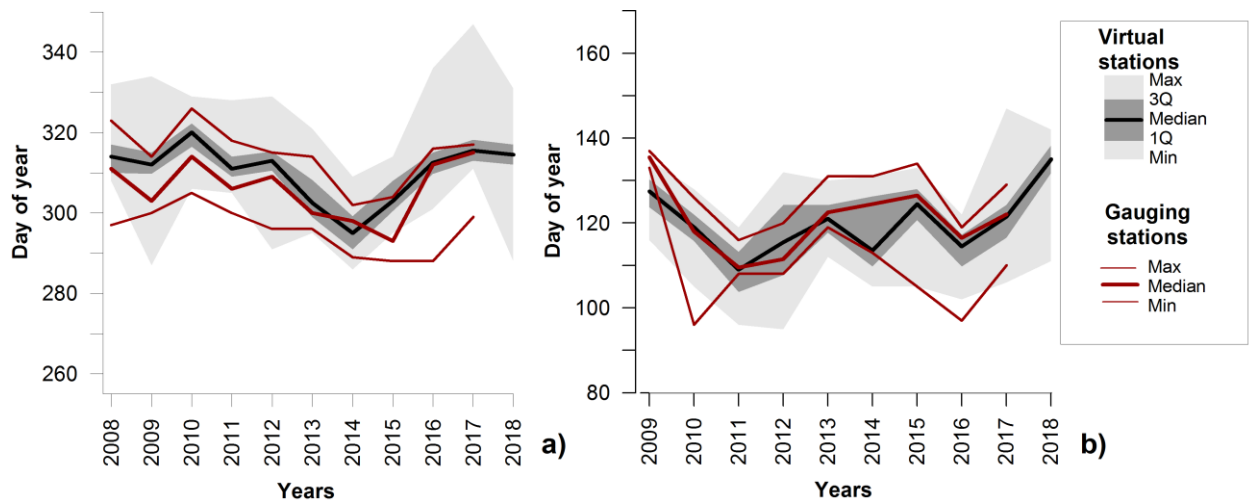


Figure 8. Interannual variability of dates of a) ice onset and b) melt start for the main Ob River channel retrieved using the manual routine. ~~Red thick lines are the median and red thin lines are the min-max values observed. The statistics are estimated using at- data from~~ four gauging stations ~~and 20 virtual stations located~~ along the main Ob River channel. ~~Black thick lines correspond to the median value of dates observed at 20 virtual stations within the same river reaches. The dark grey zone is the spread between the 3rd and 1st quartiles, and light grey zone is the spread between minimum and maximum values.~~

5.56.2 Validation of Ice thickness retrievals algorithm

The accuracy of ~~the~~ ice thickness retrievals from altimetric measurements was assessed for the ten VSs from the training set located ~~around-near~~ the gauging stations (Figure 9). At the northern VSs (VSs 161, 138, 237S_Ob, and 2490S_Ob), the correlation between ~~the~~ retrieved and observed ice thickness ~~is-was~~ stronger than at other locations, and the RMSE in ~~the~~ estimates of the altimeter-retrieved ice thickness ~~are-was~~ less than 0.12 m (Table 2). For the southernmost VSs (VS 12 and 109), the RMSE increased ~~up~~ to 0.14-0.18 m. The relative uncertainty in ~~the~~ ice thickness estimates ~~is-was~~ found to be higher at the beginning (low *Hice*) of the ice period, ~~than~~ in the middle or ~~at~~ ~~the~~ end of winter. Except for VS109, the variability in the values of coefficients *a* and *b* in Equation (1) ~~is-was~~ low (Table 2), which indicates good stability in the established relationships and their potential validity for other VSs located far from the gauged reaches. One way to evaluate the sensitivity of the satellite *Hice* retrievals to ~~the~~ fitting parameters consists ~~of-in~~ running a cross-validation experiment, ~~(i.e. retrieving the Hice using the coefficients obtained for an adjacent VS).~~ Similar scores between retrieved and in-~~situ~~ ice thickness obtained in ~~the~~ validation (Table 2) and ~~in~~ cross-validation (Table 3) experiments demonstrated ~~d~~ the robustness of ~~Equation 13~~, resulting in low errors in ~~the~~ satellite *Hice* estimates for the northern VSs (161, 138, 237S_Ob, and 2490S_Ob). Uncertainties ~~of-in~~ ~~the~~ *Hice* retrievals for the southernmost VSs ~~are-were~~ higher than for the northern VSs. However, the retrievals ~~at~~ ~~for~~ the southern VSs in the cross-validation experiment can be improved by selecting the equation parameters (*a* and *b*) not from the adjacent VS, but from the training VSs, which provide the best *Sig0* correlation, ~~with-the-Sig0-of VSs-considered.~~ For example, when applying the coefficient derived for ~~the~~ VS135 - Gorki gauging station pair to VS109 and VS12 (backscatter of VS135 demonstrated the highest correlation with the backscatter of VS109 and VS12), the RMSE of ~~the~~ retrieved *Hice* for these VSs ~~decreased~~ from 0.23 m to 0.18-0.19 m (see scores in the denominator of corresponding lines in Table 3).

505 | **Table 2.** Coefficients *a* and *b* for the built relations, correlation coefficient (*R*), and RMSE between the retrieved and in-situ ice thickness for virtual stations from the training set. S_Ob refers to virtual stations located on the secondary (western) river branch of the Ob (see Figure 1).

Virtual stations	Corresponding gauging station	Distance to gauging station, km	Coefficients of Equation (13)		Validation scores	
			a	b	R	RMSE, (m)
161	Pitlar	5.6	8.69	0.39	0.94	0.07
138	Pitlar	5.1	6.54	0.42	0.94	0.07
237 S_Ob	Muzhi	15.9	7.64	0.42	0.90	0.10
240 S_Ob	Muzhi	7.7	7.96	0.41	0.90	0.10
240	Gorki	19.4	7.70	0.39	0.81	0.12
135	Gorki	28	6.88	0.42	0.87	0.11
164	Kazym Mys	22.4	8.83	0.35	0.84	0.10
211	Kazym Mys	20.1	10.7	0.31	0.76	0.12
12	Polnovat	10.9	8.23	0.41	0.77	0.18
109	Polnovat	33.4	2.92	0.55	0.84	0.14

510 | **Table 3.** Correlation coefficient (*R*) and RMSE between the retrieved and in-situ ice thickness in the cross-validation experiment.

Virtual stations	Corresponding gauging station	VS whose coefficients a and b are used for cross-validation	R	RMSE (m)
161	Pitlar	138	0.94	0.09
138	Pitlar	161	0.94	0.09
237 S_Ob	Muzhi	240 S_Ob	0.90	0.10
240 S_Ob	Muzhi	237 S_Ob	0.89	0.11
240	Gorki	135	0.81	0.13
135	Gorki	240	0.87	0.11
164	Kazym Mys	211	0.84	0.10
211	Kazym Mys	164	0.76	0.13
12	Polnovat	109/135*	0.76/0.76*	0.23/0.18*
109	Polnovat	12/135*	0.76/0.76*	0.23/0.19*

* Two different pairs of a and b coefficients were used for cross-validation.

515

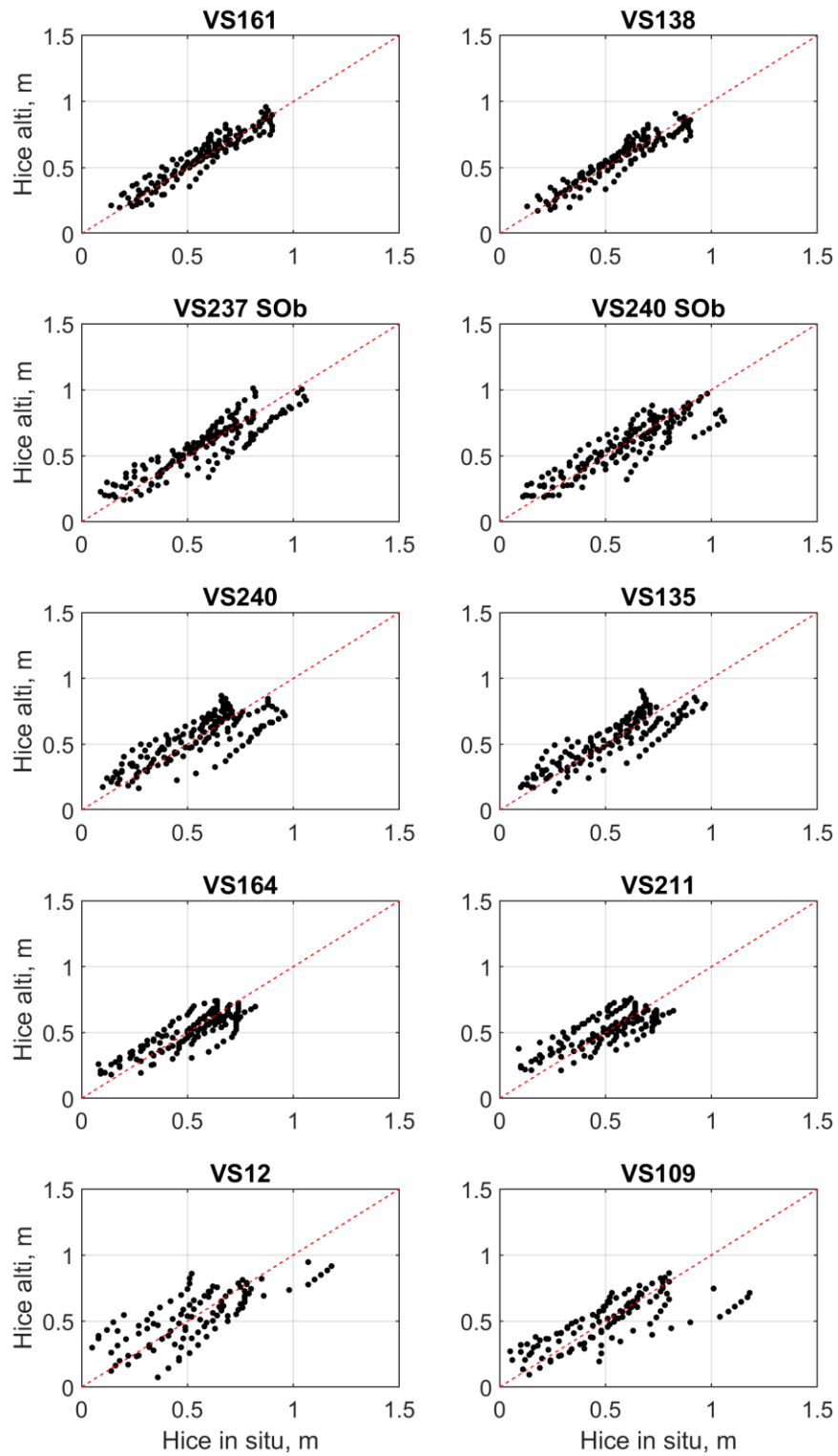


Figure 9. Ice thickness measured at gauging stations (x axis) and retrieved from the altimetric measurements (y axis) for the training VSs. The red dash line corresponds to the 1:1 relation line.

6-Results

520 6.1.3 Ice thickness estimation for the entire studied river reaches

Using the a and b coefficients of Equation (31) developed for the VSs from the training set, we estimated the ice thickness at locations of the other 38 VSs and produced weekly maps, which were generalised into a 2D spatio-temporal ice thickness product (Figure 10). The elaborated maps can be used for evaluating the ice thickness and ice phenology dates in the areas between the virtual stations. For instance, two useful parameters can be extracted from the 2D product: the maximum ice thickness and the ice thickness observed on 1 December.

525 ~~From a practical standpoint~~ Generally, knowledge of the maximum ice thickness is relevant for hydro-climate change monitoring (Vuglinsky and Valatin, 2018); ~~while~~ the ice thickness determined on 1 December is crucial for the local and regional socioeconomic stakeholders ~~as because~~ this is the average date ~~that for the opening of~~ the ice bridge road to the north of the study area at Salekhard opens. To assess the quality of the 2D product for operational use, we compared the interannual dynamics of the mentioned parameters derived from this product ~~and with those~~ observed at the gauging stations.

530 For approximately 90% of the area of the studied river reaches, the interannual variability in the maximum ice thickness retrieved from altimetric measurements indicated ~~s~~ a clear decrease from 2008 to 2012 (Figure 10). This tendency corresponds well to those observed at all the gauging stations (Figure 11a). Since 2013, the maximum ice thickness has increased slowly. However, both altimetric and in-situ observations after 2013 ~~both~~ exhibited spatio-temporal variability that ~~is was~~ not always in agreement. This disagreement may be related to environmental factors affecting ice growth, such as snow amount, autumn ice drift and accumulation, ridging/hummocking, and ice flooding (water-on-ice). For example, according to the station records, ridging events appear more frequently after 2012 at ~~the a~~ northernmost gauging station, Pitlar, than at the other gauging stations. We ~~could~~ not fully exclude the effect of the simplicity of the retrieval algorithm, based on the empirical approach, as well as the effect of the spatio-temporal smoothing of the altimetric retrievals used in the map production.

540 Differences between altimetric and in-situ ice thicknesses on 1 December lie within the algorithm uncertainties of 0.07-0.18 m (Figure 11b). In addition to the geophysical reasons and simplicity of the algorithm noted above, the observed difference can be related to degradation in the quality of the in-situ time series (gaps, unrealistic values) and the low representativeness of the one-hole sampling protocol for in-situ ice thickness measurements.

545

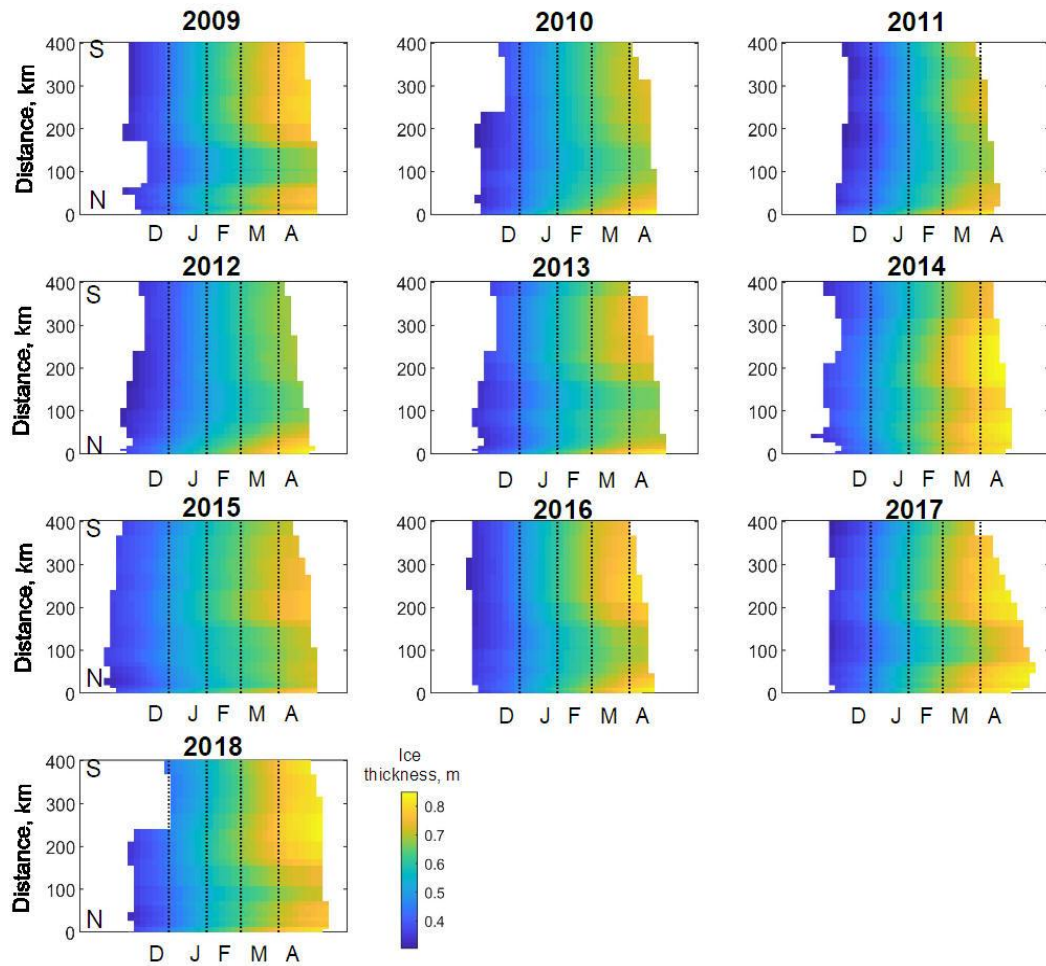


Figure 10. Spatio-temporal ice thickness variability (m) for the main branch of all the Lower Ob River reaches for the 2008-2018 period from the generalized weekly altimetric product. Distance in km is indicated from the northernmost virtual station 187 in the upstream direction (south). Letters on the x axis correspond to the first letter of the month (December-April).

550

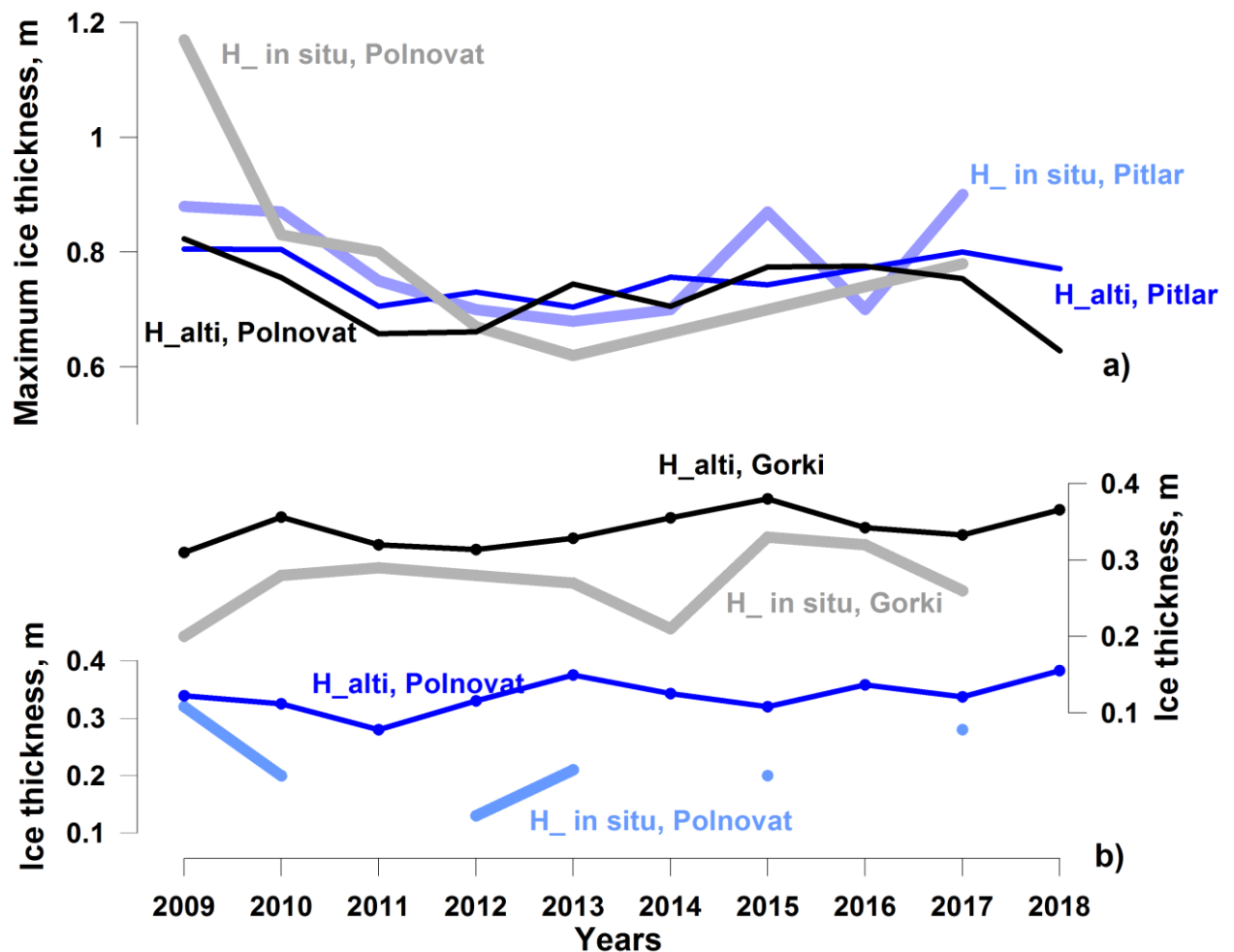


Figure 11. Interannual variability of in the ice thickness- extracted from 2D ice thickness product at the VS 237, 190 and 135 Pitlar, Gorki, and Polnovat stations, and the values observed at these gauging stations: a) maximum ice thickness and b) ice thickness on 1 December.

555

6.2.4 Winter ice bridge roads operation forecast

In many regions with seasonal ice cover, frozen rivers enhance the interconnection and supply of many small, and even some large, cities. Many remote villages that are linked in summer to supply centres only via expensive aircraft or boat transport can directly access the primary main-land transport arteries built on frozen-ground and lake/river ice. The importance-value of the ice roads is the highest for the Arctic regions where the construction of permanent bridges is restrained by the presence of permafrost and its destabilisation.

560

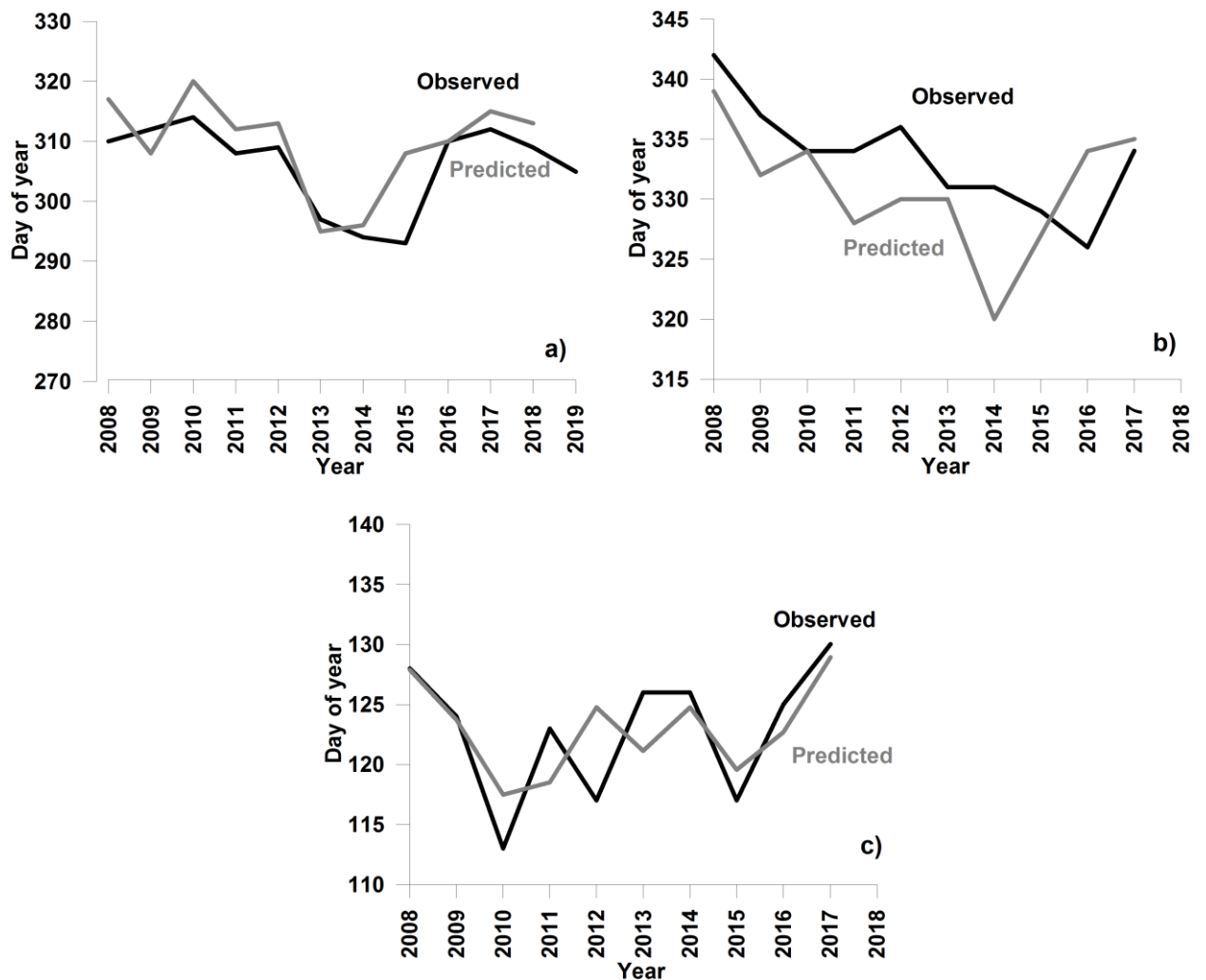
A good example is Salekhard City located on the Ob River near the polar circle in the zone of discontinuous permafrost. The city has 50,000 inhabitants and is supplied primarily via the Northern Railway, which connects the small town of Labytnangi on the left bank of the Ob River with the European part of Russia and the main-key supply centres. Merchandise from Labytnangi are-is delivered to Salekhard by ferry. Every winter, an ice road is constructed to ensure the transport of goods and people. Owing to security reasons, the ferry ceases operation after the appearance of the first ice. The ice road construction (ice artificially growing of ice thickness-via pumping of water onto the ice surface) begins when the ice thickness attains a minimum allowed value of 0.20-0.25 m (Instructions on Safety Organisation, 1969). The traffic of light vehicles is allowed-authorised when the ice

565

570

thickness exceeds 0.30 m. According to information kindly provided by the State Traffic Service of Yamalo-Nenetsky Autonomous District (Russia), the ice road operation usually starts 3-4 weeks after the beginning of freezing, with an average opening of 30 November to 1 December. The road operation closes gradually, starting ~~from by limiting of~~ the lorry load in the middle of April until fully halted at the beginning of May. The ferry connection is restored approximately ~~three-3~~ weeks later. Between the ferry and the ice road operation, the connection is ensured via a hovercraft boat only for a limited number of passengers or for emergencies.

The ~~D~~dates of the autumnal halt of ferry operation for 2010-2018 agreed ~~very remarkably~~ well with those of the first ice occurrence on ~~the~~ four northernmost tracks of the Jason satellite, located 65-75 km south of the city (Figure 12a). For the short-term forecast, the satellite observations in the area of VSs 112 and 187 are especially good and allow for the prediction of the end of ferry operations ~~with a 5-day error expressed as RMSE~~ (Table 4). We ~~further~~ assumed that ~~an the~~ average ~~dates value of the dates~~ when ~~the~~ satellite derived *Hice* at the four northernmost VSs reaches 0.30 m may provide an estimate for the road-opening date. These dates were extracted from the spatiotemporally smoothed maps and compared with the dates ~~that the~~ ice road ~~was~~ opened, as provided by the State Traffic Service. The mean ~~absolute~~ difference between ~~the~~ satellite and observed dates was ~~three-3~~ days ~~and the RMSE was 5 days. Despite the low mean error, the quality of the forecast was not satisfactory. The predicted dates were consistently earlier than the actual dates of the road opening (Figure 12b). Moreover, in for~~ half of the years, the predictions differed from ~~the~~ observations by more than ~~five-5~~ days (11 days maximum), ~~and the correlation between the predicted and observed dates was not significant.~~



590

Figure 12. Observed and predicted from the altimetric satellite observations dates of Salekhard a) ferry closing and ice road ~~ab~~ opening and ~~cb~~ closing.

Table 4. Scores for the evaluation of accuracy of the prediction of ferry closing and ice road opening and closing dates in Salekhard City.

<u>Statistic</u>	<u>Ferry closing</u>	<u>Ice road opening</u>	<u>Ice road closing</u>
<u>Mean, (DOI)*</u>	<u>309/305*</u>	<u>330/332*</u>	<u>123/122*</u>
<u>Standard deviation, (days)*</u>	<u>8/8*</u>	<u>5/5*</u>	<u>4/6*</u>
<u>RMSE, (days)</u>	<u>5</u>	<u>5</u>	<u>3</u>
<u>Mean absolute difference, (days)</u>	<u>-4</u>	<u>3</u>	<u>0</u>
<u>Correlation coefficient</u>	<u>0.83</u>	<u>0.46</u>	<u>0.70</u>
<u>P-value</u>	<u>0.005</u>	<u>0.185</u>	<u>0.023</u>

* Mean and standard deviation are given for predicted (nominator) and observed (denominator) dates.

For the predicting the dates, when the ice road at Salekhard ceases its operation, the ice road was closed before the predicted dates of the breakup onset detected by the altimeter; therefore, the use of the northernmost VSs was not possible ~~as traffic on the ice road closes before the altimeter detects the breakup onset on this reach.~~ However, the satellite observations of the breakup onset at the VSs located in the upper reaches can provide the necessary information. Using the altimetric retrievals of the breakup start for the entire set of 48 VSs, for each year, we searched the date when at least two altimetric breakup onsets (AMO2) were detected within the entire 400 km river reaches. This date served as a predictor of the date of the ice-road closure at Salekhard. The correlation between the AMO2 and observations ~~is~~ was significant (p-value = 0.025) with a correlation coefficient of 0.70 (Figure 13a). Using the linear equation~~After applying a correction to AMO2~~ computed from the relationship ~~shown~~ provided in Figure 13a, one can obtain a forecast date of the ice-road closer at Salekhard (Figure 12c). ~~and evaluate the residual difference between forecasted This~~ The uncertainty in the obtained forecast, expressed as RMSE, ~~is three~~ was 3 days (Table 4). ~~The leading time of the forecast can be determined from the plot shown in Figure 13b. It varies from four days (for late breakup start) to 22 days (for early breakup start).~~

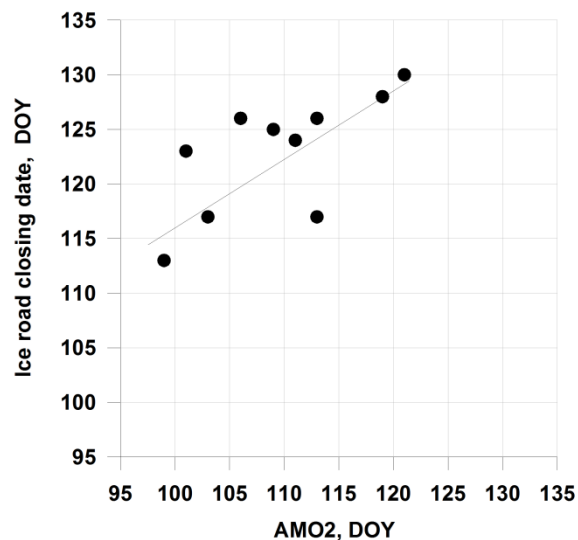


Figure 13. Relation between the altimetric breakup onset dates (AMO2) and those observed ~~at-for the~~ Salekhard ice road closure dates expressed in days of year (DOY).

615

7 Discussion

7.1 Factors affecting ~~altimetric backscatter signal ice thickness retrievals from altimetry~~

Various factors can affect the radar return echoes and, consequently, the accuracy of the river ice thickness retrievals. One source of uncertainty could originate from the underestimation of the role of snow ~~-on-the~~ ice in the microwave signal scattering (King et al., 2013, 2015). However, Willatt et al. (2011) ~~showed-demonstrated~~ that the Ku-band electromagnetic wave scattering caused by snow at nadir is low, and in our study, we neglected the presence of snow on ice. Using the precipitation data from the nearest meteorological station, we noted that not all heavy snow accumulation episodes affected the backscatter over the river ice. In several cases, snowfall resulted in backscatter changes ~~in-the-order-of~~ approximately 1.5 dB. The smoothing procedure applied to the cumulative $\Delta Sig0/\Delta t$ series helped to eliminate this effect. Moreover, after adding the in-situ snow depth to the ice thickness, we noted that the $H_{ice} - \Sigma(\Delta Sig0/\Delta t)$ power relationship becomes weaker.

625

Another factor potentially affecting the backscatter value over freshwater ice is the ice roughness at the ice-water interface (Atwood et al., 2015). The roughness of the ice bottom on the rivers is expected to be high at the beginning of the freeze-up period in bridging areas, where floes juxtapose and accumulate underneath. Any rough boundary dissipates the signal of nadir-looking radar instruments, resulting in a decrease in backscatter. Further congelation of the inter-floes volume ~~as well as~~ ice growth both lead to the levelling of the ice low boundary. We suggest that the under-ice current may also contribute to the ice bottom levelling at the Ku-band radar wavelength scales (~1-1.5 cm). This levelling would increase the radar return power during winter. However, we did not find evidence of this process in the backscatter time series (see Figure 3a). Either the levelling effect is weak and is masked by high volumetric scattering of the radar echo within the thickening ice, or at the location of our VSs, the ice ~~juxtaposition juxtaposing~~ (and consequently the ice-bottom roughness) is ~~inconsequential unimportant~~. Future investigations with dedicated in-situ observations on river ice texture evolution are ~~needed-necessary~~ to understand the effect of bottom roughness on the radar altimeter return signals.

630

Ice internal layering is also ~~important-for~~ key factor in the scattering of radar signals (Legrésy et al., 1997; Nilsson et al., 2015; Slater et al., 2019). Under the climate conditions of north-western Siberia, ice layering (characterised by dense reflective icy surfaces) is rare, as the air temperature of winter warming episodes never approaches the melting point. Daily positive temperatures lasting several hours can occur starting from the end of March in the southern part of the study area and 1-2 weeks later ~~to-in~~ the northern part. During this time of the year, the ice ~~was-is~~ well developed and almost reaches its maximum thickness. Layering can also occur after river water floods the ice surface through cracks. According to the in-situ observations at the gauging stations, this phenomenon was observed in the last several years at the end of the ice season in the southern part of the study area. Both warming episodes and flooding events lead to a backscatter increase ~~in-the-order-of~~ approximately 1-5 dB and make the altimetric ice thickness retrievals difficult by the end of the ice season. The highest underestimation of H_{ice} (0.15-0.20 m) was observed in such cases.

640

645

The internal ice structure can also affect the backscatter value, for example, via air bubble inclusion (Gunn et al., 2018). During ice formation, jamming and ridging can occur in Arctic rivers, resulting in the formation of air pockets. Ridging is rare near the gauging stations on the Ob River. However, there is no information about the state of the ice ~~at-in~~ other ungauged reaches, including the areas covered by the VSs. We ~~can-could~~ only speculate that

650

ridging/hummocking might be one of the reasons for the high difference in the coefficients of Equation (31) determined for VS109 and for the lower accuracy of the *Hice* retrievals at this station compared to the northern virtual stations. On Landsat_8 images acquired for two springs in 2019/04/25 and 2015/05/01 (not shown), the irregular spatial ice structure in the area of VS109 indirectly confirms our hypothesis. More studies involving the simultaneous analysis of SAR imagery ~~exhibiting~~ ~~showing~~ ice field irregularities (Unterschultz et al., 2009) and altimetric signals could help to clarify this issue.

7.2. Drawbacks and potential improvement of algorithms

Manual retrievals of ice phenology provided accurate estimates of the dates of the first appearance of ice (with 90% accuracy considering 10 days difference) and the dates of the beginning of ice melt (with 88% accuracy considering 10 days difference) on the Ob River. This accuracy is comparable with errors of 0-43 days and 66-97% and 76-99% accuracy obtained with other satellite sensors and reported in a summary review dedicated to lake ice (Murfitt et al., 2021). The automated retrievals of the Ob River ice demonstrated lower accuracy than the manual retrievals with several possible explanations. Because the radar footprint over rivers is heterogeneous and is affected by signals from the frozen/unfrozen state of land/river/floodplain lakes, there are numerous variations in the behaviour of backscatter, especially at the beginning and end of winter. The automated routine misses some temporal *Sig0* behaviour types, and detection is less accurate than that from the visual analysis of *Sig0* time series. The high difference between the manual and automated retrievals for the ice melt period is likely related to the approach used for adjusting the spring peak selection based on mean summer ΔTB . In the manual selection of peaks, the ΔTB criteria were used in fewer cases than in the automated selection (see Section 5.1 for explications). It is likely that the ΔTB criteria were not valid for all virtual stations because of their configuration (presence of oxbow lakes, fens, secondary branches, and others) affects the summer ΔTB values differently. A detailed study of the reasons for the multi-peaky backscatter and brightness temperature variability in different VS configurations could help to discover more universal criteria and improve the automated routine. The development of a multi-satellite (combination of altimetry missions) and multi-sensor approaches (combination of altimetry with SAR and optical sensors) could help to improve the accuracy of the phenology date retrievals as well as to enhance the spatiotemporal resolution of the product.

The 0.07-0.18 m accuracy of the altimetry-based ice thickness estimates is also comparable with the accuracy reported in the rare studies dedicated to satellite retrievals of freshwater ice thickness. The SAR-based retrievals for three Canadian rivers achieved a 0.09 m accuracy (Mermoz et al., 2012). For lake ice, the reported accuracy (expressed as RMSE) reached 0.20 m for microwave retrievals (Khang et al., 2014) and 0.12-0.40 m for altimetric retrievals (Beckers et al., 2017).

~~In spite of the potential for climate change monitoring, we cannot recommend the use of the current (prototype) version of the ice thickness altimetric product for winter road opening forecasts, as it seems that for many locations we overestimate the thickness at the beginning of the freeze-up period (see Figure 10b).~~ The inaccurate detection of ice onset can affect the accuracy of the ice thickness estimates, especially at the beginning of freeze-up. Another reason ~~of~~ for ~~the~~ uncertainties is the multi-peak character of the winter backscatter recession curve and the residual noise that could remain in the backscatter time series after applying the LOESS filter. Fore example, t~~This occurred~~ at VS12 where a polynya persisted until March in at least ~~four~~ 4 years of the study period, producing a noisy recession curve (see Figure 3a) and a high dispersion of points around the 1:1 relation line on the Halti - Hinsitu scatterplot (Figure 9).

695 Several improvements are proposed for future studies. First, an improvement in the detection accuracy for the
freeze-up algorithm is envisagednecessary. In our algorithmapproach, the ice thickness estimation starts from the
date of the first ice (bank ice or frazil ice floes) appearance. Usually, the river reaches in the area of the VSs at this
time of the year are not fully frozen. The detection of the date of the first consolidated ice (i.e. fully frozen reaches)
700 using other satellite sensors may help to reduce the errors in the retrievals in a low range of ice thickness. A second
improvement would involve the use of other parameters of the altimetric radar waveform instead of (or in-a
complement to) the backscatter coefficient. As shown in Figure 3b, the main peak of the radar waveform decreases
as the ice grows. We suggest that the amplitude of the main peak or the area under this peak may produce stronger
relationships with the in-situ ice observations than with the backscatter coefficient alone. During winter, the main
peak is the most variable part of the waveform. This peak corresponds to the return signals from the ice bottom
705 (Beckers et al., 2017). The other part of the waveform records the return signal from the surrounding (off-nadir)
areas and also contributes to the total value of the backscatter coefficient. Any temporal changes in the state of the
surrounding areas that are different from the statethat in the near-nadir area (e.g. ice flooding or off-nadir polynya)
lead to backscatter changes that are not related to ice growth. Consequently, the use of waveform parameters related
to the main peak could reduce the errors in the ice thickness estimates. Unfortunately, these parameters are not
710 directly provided in the AVISO+ Jason GDR product, but they could potentially be estimated from the initial
waveforms.

7.3. Ice road operation forecasting : problems and perspectives

As noted in Section 6.4.3, at the beginning of freezing, the errors in the Hice retrievals are quite high, and the ice
715 thickness is often overestimated (see Fig 11b). Based on this factTherefore, and considering the weak correlation
between the observed and predicted dates, we conclude that at present the predicting algorithm and the ice thickness
product are currently not sufficiently accurate for the operational forecasting of the ice road opening forecast.
Nevertheless, their accuracy is sufficient for the assessment of climate impacts as we captured an overall trend for
an earlier opening of the road demonstrated by both in situ and altimetric time series the interannual variability of
720 dates of ice road opening (Figure 12ba). Moreover, the altimetric product is accurate enough for the operational
prediction of ferry and ice road closing dates at Salekhard.

The example of the Salekhard ice road case study aimed at to demonstrate the of capacity of the satellite
product for applications in the socioeconomic domain. Only the most evident parameters derived from the product
(ice onset dates, date of first or second consecutive upper reach melt onset, date when ice thickness reaches 0.30 m)
725 were tested. It is likely that other product-derived parameters may have higher predictive capacity. Their
elaboration and testing will be the subject of future study.

The prediction algorithm for the Salekhard ice road operation dates can benefit from the incorporation of other
satellites. The current altimetric product does not cover the Salekhard river reach. The northernmost Jason tracks are
located 65 km south of the ice road. As the melting progresses from the southern upper reaches, the use of the
730 predictor for ice road-closing related to these reaches was evident and successful. However, the freezing on the Ob
River progresses from the northern lower reaches, which are not covered by the Jason tracks. Our assumption that
the ice growth dynamics in area of the northernmost Jason tracks and those in the area of the ice road are similar
may not be fully correct and may be another reason for the low accuracy in forecasting the dates of the ice road
opening. We expect that predictors elaborated from satellites (altimetric or other) observing river reaches north of
735 Salekhard City may help to improve the accuracy in forecasting the ice road opening dates. Other improvements can

740 be expected from an extension of the current product with retrievals from prior altimetric satellites of the same series: TOPEX/Poseidon (1992-2002) and Jason 1 (2001-2012). This time-period extension will elongate the time series used for the ice road forecast test and will make it possible to create a robust forecasting algorithm with well-defined margins of applicability. Unfortunately, this was not possible to accomplish in this study due to the short time series of available simultaneous observations.

7.34 Potential application of radar altimetry to other rivers

745 One of the main advantages of satellite altimetry compared ~~to~~ with imaging SAR is the relative ease in processing their measurements over the large hemispheric-scale domain. ~~As~~ Because the developed algorithm for the ice phenology dates ~~algorithm~~ is independent of the availability of in-situ observations, it can be directly applied to other rivers. The ~~main~~ primary limitation of the algorithm would be the minimum width of the river, which, from our experience, is ~~limited by~~ 100-200 m. The algorithm can be also applied to lakes and bogs, ~~as~~ because the temporal variability of the backscatter over these surfaces is similar to that described in Section 3. However, the
750 algorithm would need an additional adjustment and verification for rivers with unstable winter ice cover, such as those at mid latitudes ~~for example~~, as well as in areas of frequent ~~occurrence of~~ rain-on-snow/ice episodes.

Unfortunately, similar to the proposed ~~imaging~~-SAR-based methods (Unterschultz et al., 2009; Mermoz et al., 2014), the availability of ground truth data is indispensable for our ice thickness retrieval algorithm. Nevertheless, we demonstrated that for the ~~sufficiently~~-long river reaches, the obtained empirical relations between the in-situ
755 data and satellite backscatter measurements are quite ~~close to each other~~ similar at for different river segments. We suggest that the use of $\Delta Sig0/\Delta t$, instead of the absolute value of $Sig0$, allows ~~for~~ the minimisation of the perturbing effect of the surrounding banks (i.e. local morphological conditions). The characteristics of the surrounding banks affects the backscatter values at the beginning of the freeze-up period (i.e. ice onset). The effect of the initial ice conditions was thus reduced. The unification of the relations and ~~its~~ the application to other reaches and other rivers
760 is ~~likely~~ possible when using $\Delta Sig0/\Delta t$. However, further investigations are ~~needed~~ necessary to assess the impact of ice textures and types on the parameters of the retrieval equation. Hence, the combination of data from imaging SAR (providing information on ice type) and altimetric satellite missions could be beneficial.

8 Conclusions

765 The low number of in situ observations and their general infeasibility to cover vast areas as well as ~~the~~ the decreasing number of ~~in situ~~ observational sites and degradation of the quality of their time series ~~is~~ are good arguments for furthering the development of satellite remote sensing methods for freshwater ice monitoring. The present study demonstrates ~~for the first time~~ the potential of satellite radar altimetry for monitoring river ice parameters, such as freeze-up, and breakup dates, and ice thickness, for a large Arctic river.

770 An algorithm based on the analysis of temporal changes of backscatter coefficients and the detection of the first peak preceding the winter backscatter recession from the Jason-2 and Jason-3 satellite altimeters provides an estimation of the river ice onset with an accuracy of ± 10 days (corresponding to the 10-day satellite overpass frequency) in 90% of the cases (manual routine). River ice breakup consists of two phases: thermal degradation and mechanical breakup. By identifying a peak ~~of~~ in the backscatter in spring, ~~the~~ the algorithm can detect the beginning of
775 thermal degradation well, with the same accepted accuracy of ± 10 days for 88% of the cases. River ice thickness was retrieved from altimetric backscatter measurements via simple empirical relations hip with in-situ observations.

using 10 years of simultaneous in situ observations from 5 stations. The accuracy of the thickness retrievals (expressed as RMSE) ranges from 0.07 to 0.18 m (or 7-18% considering the average ice thickness at the end of ice season).

780 The Spatiotemporal interpolation and smoothing of satellite-derived river ice thickness retrieved for 48 VSs along the 400 km reaches of the Lower Ob River allowed for the elaboration of weekly maps generalised in the form of an annual spatiotemporal product. The ice thickness time series can be extracted for any location and used for climate change monitoring and ice road operational purposes. Using ~~this the~~ first version of the product, we ~~showed demonstrated~~ that the ~~uncertainties in predicting the~~ dates of ~~ferry closing and ice road opening and closing of the ice road~~ near Salekhard City ~~(expressed as RMSE) are 3-5 days. can be predicted from altimetric ice onset retrievals with an accuracy of four days. Errors in the prediction of dates of ice road closure were within three days.~~ Despite these promising results, we ~~consider-perceived~~ that the current (prototype) version of the product is not sufficiently mature for operational use ~~as-because~~ it overestimates ~~the~~ ice thickness at the beginning of the ice season. The accurate estimation of ice thickness is critical for safety. However, the algorithm and product could be significantly
790 improved in the future through a multi-mission and multi-instrument (optical ~~-or~~ SAR imagers) approach. ~~We are confident that w~~With the use of the Copernicus satellite altimeters Sentinel-3A and 3B, ~~an improvement in~~ the retrieval of ~~the~~ ice thickness can be ~~madeimproved~~. These satellite missions carry more advanced altimetric SAR instruments with footprints representing a narrow band and return signals that are less contaminated by land than signals from the conventional Jason instrument. Although the nominal repeat frequency of the Sentinel-3 satellites
795 (27 days) is not suitable for operational applications, they provide five overpasses within a 25 km distance around the Salekhard City ice road, ~~and~~; thus, the temporal resolution of ~~the~~ observations may be significantly improved. The combination of ~~the~~ data from the Jason and Sentinel-3 missions could be ~~fruitful~~beneficial.

The Salekhard ice road is ~~very-exceptionally~~ well instrumented, monitored, and maintained by local authorities, ~~thanks due~~ to the high demand for its use and high merchandise flow. In other regions, ice roads connecting small
800 cities and villages are less monitored, and access to operational information is poor. Moreover, many intermittent and unofficial river crossings are developed each year by ~~the~~ local people, ~~and~~ the lack of information on the state of ice ~~often~~ results in accidents and requires intervention by the emergency service. The demonstrated capability of the first version of the altimetric river ice product as a supporting tool for the ice road operations on the Ob River is quite promising. Further product improvements and the development of sophisticated prediction criteria for road
805 operations that could be adapted to other reaches of the Ob River are planned.

Acknowledgements. The authors express their gratitude to the staff of the State Traffic Service of Yamalo-Nenetsky Autonomous District (Russia) for providing the valuable information about ice road operation. The authors would also like to thank the two anonymous referees for their thorough and constructive comments.

810 **Funding.** This research was made possible with support from RFBR project No. 18-05-60021-Arctic, ESA (EO Science for Society Element) LIAM project (Contract No. 4000130930/20/I-DT) and ESA CCI Lakes+ (Contract No. 4000125030/18/I-NB –CCI+ PHASE1 – NEW ECVS - Lakes); the approbation of results was carried out in the framework of Governmental Program of Water Problems Institute, Russian Academy of Sciences, No. 0147-2019-
815 0004.

Author contribution. All authors contributed to the data collection, algorithm development, analysis and presentation of results equally.

Declaration of Interests. The authors declare no competing interests.

820 **References**

- Agafonova, S.A., and Vasilenko, A.N.: Hazardous ice phenomena in rivers of the Russian arctic zone under current climate conditions and the safety of water use, *Geography, Environment, Sustainability*, 13, 2: 43–51, doi.org/10.24057/2071-9388-2020-12, 2020.
- Atwood, D. K., Gunn, G. E., Roussi, C., Wu, J., Duguay, C.R., and Sarabandi, K.: Microwave backscatter from Arctic lake ice and polarimetric implications, *IEEE Transactions on Geosciences and Remote Sensing*, 53, 11: 5972–5982, doi:10.1109/TGRS.2015.2429917, 2015.
- Antonova, S., Duguay, C.R., Käab, A., Heim, B., Langer, M., Westermann, S., and Boike, J.: Monitoring ice phenology and bedfast ice in lakes of the Lena River Delta using TerraSAR-X backscatter and coherence time series, *Remote Sensing*, 8(11): 903, doi:10.3390/rs8110903, 2016.
- 830 Bamber, J. L.: Ice sheet altimeter processing scheme, *International Journal of Remote Sensing*, 15, 4: 925 – 938, doi.org/10.1080/01431169408954125, 1994.
- Beaton, A., Whaley, R., Corston, K., and Kenny, F.: Identifying historic river ice breakup timing using MODIS and Google Earth Engine in support of operational flood monitoring in Northern Ontario, *Remote Sensing of Environment*, 224: 352–364, doi.org/10.1016/j.rse.2019.02.011, 2019.
- 835 Beckers J. F., Casey, J.A., and Haas, C.: Retrievals of lake ice thickness from Great Slave Lake and Great Bear Lake using CryoSat-2, *IEEE Transactions on Geoscience and Remote Sensing*, 55, 7: 3708-3720, doi: 10.1109/TGRS.2017.2677583, 2017.
- Beltaos, S.: Hydrodynamic characteristics and effects of river waves caused by ice jam releases, *Cold Regions Science and Technology* 85: 42–55, dx.doi.org/10.1016/j.coldregions.2012.08.003, 2013.
- 840 Beltaos S., Carter T., Rowsell R., and DePalma S.G.S.: Erosion potential of dynamic ice breakup in Lower Athabasca River. Part I: Field measurements and initial quantification, *Cold Regions Science and Technology*, 149: 16-28, doi.org/10.1016/j.coldregions.2018.01.013, 2018.
- Berry, P. A. M., Garlick, J. D., Freeman, J. A., and Mathers, E. L.: Global inland water monitoring from multi-mission altimetry, *Geophysical research letter* 32: L16401, doi: 10.1029/2005GL022814, 2005.
- 845 Brown G.S.: The average impulse response of a rough surface and its applications. *IEEE Journal of Ocean Engineering*, 2 : 67-74, 10.1109/JOE.1977.1145328, 1977.
- Chaouch, N., Temimi, M., Romanov, P., Cabrera, R., McKillop, G., and Khanbilvardi, R.: An automated algorithm for river ice monitoring over the Susquehanna River using the MODIS data, *Hydrological Processes*, 28: 62–73, doi.org/10.1002/hyp.9548, 2014.
- 850 Chu, T. and Lindenschmidt, K.-E.: Integration of space-borne and air-borne data in monitoring river ice processes in the Slave River, Canada, *Remote Sensing of Environment*, 181: 65-81, doi.org/10.1016/j.rse.2016.03.041, 2016.
- Cooley, S. W. and Pavelsky, T.M.: Spatial and temporal patterns in Arctic river ice breakup revealed by automated ice detection from MODIS imagery, *Remote Sensing of Environment*. 175: 310–322, doi.org/10.1016/j.rse.2016.01.004, 2016.
- 855 Du, J., Kimball, J.S., Duguay, C.R., Kim, Y., and Watts, J.: Satellite microwave assessment of Northern Hemisphere lake ice phenology from 2002 to 2015, *The Cryosphere*, 11: 47–63, doi:10.5194/tc-11-47-2017, 2017.

- Duguay, C.R., Bernier, M., Gauthier, Y., and Kouraev, A.: Remote sensing of lake and river ice. In *Remote Sensing of the Cryosphere*, Edited by M. Tedesco. Wiley-Blackwell (Oxford, UK), 273-306, ISBN-13:978-1118368855, 2015.
- 860 Duguay, C.R., Pultz, T.J., Lafleur, P.M., and Drai, D.: RADARSAT backscatter characteristics of ice growing on shallow sub-arctic lakes, Churchill, Manitoba, Canada, *Hydrological Processes*, 16, 8: 1631-1644, doi: 10.1002/hyp.1026, 2002.
- Duguay, C.R., Zakharova, E.A., Kouraev, A.V., Kheyrollah Pour, H., and Hoekstra, M.: Retrieval of ice thickness on large northern lakes from Jason-2 data, POLAR2018: Abstract Proceedings, Open Science Conference, Davos, Switzerland, 19-23 June, Abstract No. 2638, p. 46, 2018.
- 865 ESA: ENVISAT RA2/MWR Product Handbook, RA2/MWR Products User Guide, 2002.
- Ettema, R.: Review of alluvial-channel responses to river ice, *Journal of Cold Regions Engineering*, 16: 191–217, doi.org/10.1061/(ASCE)0887-381X(2002)16:4(191), 2002.
- Fu L.-L., and Cazenave A.: *Satellite Altimetry and Earth Sciences: A Handbook of Techniques and Applications*, Elsevier, Nov 9 : 463, ISBN0080516580, 9780080516585, 1991.
- 870 Ginzburg, B.M.: Probabilistic characteristics of freeze-up and breakup dates on rivers and reservoirs of the Soviet Union. Leningrad, Hydrometeoizdat, 110p., 1973.
- Guerreiro K., Fleury, S., Zakharova, E., Rémy, F., and Kouraev, A.: Potential for estimation of snow depth on Arctic sea ice from CryoSat-2 and SARAL/AltiKa missions, *Remote Sensing of Environment*, 186: 339-349, https://doi.org/10.1016/j.rse.2016.07.013, 2016.
- 875 Gunn G. E., Duguay, C. R., Brown, L. C., King, J. M. L., Atwood, D., and Kasurak, A.: Freshwater lake ice thickness derived using surface-based X- and Ku-band FMCW scatterometers, *Cold Regions Science and Technology*, 120: 115–126, doi.org/10.1016/j.coldregions.2015.09.012, 2015.
- Gunn, G.E., Duguay, C.R., Atwood, D.K., King, J., and Toose, P.: Observing scattering mechanisms of bubbled freshwater lake ice using polarimetric RADARSAT-2 (C-band) and UW-Scat (X- and Ku-bands), *IEEE Transactions on Geoscience and Remote Sensing*, 56, 5, doi: 10.1109/TGRS.2017.2786158 , 2018.
- 880 Instructions on Safety Organisation of rivers' and lakes' crossing, RD 34.03.221, INFORMENRGO, Moscow, 1969.
- Jeffries M.O. , Morris, K., and Kozlenko, N.: Chapter 4 - ice characteristics and processes, and remote sensing of frozen Rivers and lakes. C.R. Duguay, A. Pietroniro (Eds.), *Remote Sensing in Northern Hydrology: Measuring Environmental Change*, American Geophysical Union, Washington, DC : 63-90, ISBN-13:978-0-87590-428-3, 2005.
- 885 Kang K.-K., Duguay, C.R., Lemmetyinen, J., and Gel, Y.: Estimation of ice thickness on large northern lakes from AMSR-E brightness temperature measurements, *Remote Sensing of Environment*, 150: 1-19, doi.org/10.1016/j.rse.2014.04.016, 2014.
- 890 Kang, K-K., Duguay, C. R., and Howell, S. E. L.: Estimating ice phenology on large northern lakes from AMSR-E: Algorithm development and application to Great Bear Lake and Great Slave Lake, Canada, *The Cryosphere*, 6: 235-254, doi:10.5194/tc-6-235-2012, 2012.
- Kheyrollah Pour, H., Duguay, C.R., Scott, A., and Kang, K.-K.: Improvement of lake ice thickness retrieval from MODIS satellite data using a thermodynamic model, *IEEE Transactions on Geoscience and Remote Sensing*, 55, 10: 5956-5965, doi: 10.1109/TGRS.2017.2718533, 2017.
- 895 King, J.M.L., Kelly, R., Kasurak, A., Duguay, C., Gunn, G., and Mead, J.B.: UW-Scat - ground-based dual frequency scatterometry for observation of snow processes, *IEEE Geoscience and Remote Sensing Letters*, 10, 3: 528-532, doi: 10.1109/LGRS.2012.2212177, 2013.

- King, J.M.L., Kelly, R., Kasurak, A., Duguay, C., Gunn, G., Rutter, N., Watts, T., and Derksen, C.: Spatio-temporal influence of tundra snow properties on Ku-band (17.2 GHz) backscatter, *Journal of Glaciology*, 61, 226: 267–279, doi: 10.3189/2015JoG14J020, 2015.
- 900 Kouraev, A.V., Zakharova, E.A., Samain, O., Mognard, N.M., and Cazenave, A.: Ob' River discharge from TOPEX/Poseidon satellite altimetry (1992–2002), *Remote Sensing of Environment*, 93, 1: 238–245, doi.org/10.1016/j.rse.2004.07.007, 2005.
- 905 Kouraev, A.V., Zakharova, E.A., Rémy, F., and Suknev, A.Y.: Study of Lake Baikal ice cover from radar altimetry and in situ observations, *Marine Geodesy, Special issue on SARAL/AltiKa*, 38 (sup1): 477–486, doi.org/10.1080/01490419.2015.1008155, 2015.
- Kouraev, A.V., Semovski, S.V., Shimaraev, M., Mognard, N.M., Legrésy, B., and Rémy F.: Observations of Lake Baikal ice from satellite altimetry and radiometry, *Remote Sensing of Environment*, 108: 240–253, 910 doi.org/10.1016/j.rse.2006.11.010, 2007.
- Kurtz, N. T., Galin, N., and Studinger, M.: An improved CryoSat-2 sea ice freeboard retrieval algorithm through the use of waveform fitting, *The Cryosphere*, 8: 1217–1237, https://doi.org/10.5194/tc-8-1217-2014, 2014.
- Leconte, R, Daly, S., Gauthier, Y., Yankielun, N., Bérubé, F., and Bernier, M.: A controlled experiment to retrieve freshwater ice characteristics from an FM-CW radar system, *Cold Regions Science and Technology*, 55, 2: 212–915 220, 2009.
- Larue, F., Picard, G., Aublanc, J., Arnaud, L., Robledano-Perez, A., Le Meur, E., Favier, V., Jourdain, B., Savarino, J., and Thibaut, P.: Radar altimeter waveform simulations in Antarctica with the Snow Microwave Radiative Transfer Model (SMRT), *Remote Sensing of Environment*, 263, doi:10.1016/j.rse.2021.112534, 2021.
- Legrésy, B., and Rémy, F.: Surface characteristics of the Antarctic ice sheet and altimetric observations, *Journal of 920 Glaciology*, 43, 14: 265–275, doi.org/10.3189/S002214300000321X, 1997.
- Mermoz, S., Allain, S., Bernier, M., and Pottier, E.: Investigation of Radarsat-2 and TerraSAR-X data for river ice classification, *IEEE International Geoscience and Remote Sensing Symposium*, Cape Town, II-29-II-32, doi: 10.1109/IGARSS.2009.5417991, 2009.
- Mermoz S., Allain-Bailhache, S., Bernier, M., Pottier, E., van der Sanden, J.J., and Chokmani, K.: Retrieval of river 925 ice thickness from C-band PolSAR data, *IEEE Transactions on Geoscience and Remote Sensing*, 52, 6: 3052–3062, doi: 10.1109/TGRS.2013.2269014, 2014.
- Michailovsky, C. I., McEnnis, S., Berry, P. A. M., Smith, R., and Bauer-Gottwein, P.: River monitoring from satellite radar altimetry in the Zambezi river basin, *Hydrology and Earth System Science*, 16, 7: 2181–2192, doi:10.5194/hess-16-2181-2012, 2012.
- 930 Morse, B. and Hicks, F.: Advances in river ice hydrology 1999–2003, *Hydrological Processes*, 19: 247–263, doi: 10.1002/hyp.5768, 2005.
- Muhammad, P., Duguay, C.R., Kang, K.-K.: Monitoring ice break-up on the Mackenzie River using remote sensing, *The Cryosphere*, 10: 569–584, doi:10.5194/tc-10-569-2016, 2016.
- Murfitt, J. and Duguay, C.R.: 50 years of lake ice research from active microwave remote sensing: Progress and 935 prospects, *Remote Sensing of Environment*, 264: 112616, https://doi.org/10.1016/j.rse.2021.112616, 2021.
- Nilsson, J., Vallelonga, P., Simonsen, S.B., Sorensen, L.S., Forsberg, R., Dahl-Jensen, D., Hirabayashi, M., Goto-Azuma, K., Hvidberg, C.S., Kjaer, H.A., and Satow, K.: Greenland 2012 melt event effects on CryoSat-2 radar altimetry, *Geophysical Research Letters*, 42: 3919–3926, doi: 10.1002/2015GL063296, 2015.
- Picard, R. and Cook, R.: Cross-validation of regression models, *Journal of the American Statistical Association*, 79: 940 575–583, doi.org/10.2307/2288403, 1984.

- Pavelsky, T. M. and Smith, L. C.: Spatial and temporal patterns in Arctic river ice breakup observed with MODIS and AVHRR time series, *Remote Sensing of Environment*, 93: 328–338, doi:10.1016/j.rse.2004.07.018, 2004.
- Prowse, T.D.: River-ice ecology: part B. Biological aspects, *Journal of Cold Regions Engineering* 15: 17–33, doi.org/10.1061/(ASCE)0887-381X(2001)15:1(17), 2001.
- 945 Prowse, T., Alfredsen, K., Beltaos, S., Bonsal, B., Duguay, C., Korhola, A., McNamara, J., Pienitz, R., Vincent, W.F., Vuglinsky, V., and Weyhenmeyer, G.A.: Past and future changes in Arctic lake and river ice, *AMBIO*, 40: 53–62, doi: 10.1007/s13280-011-0216-7, 2011a.
- Prowse, T., Alfredsen, K., Beltaos, S., Bonsal, B., Bowden, W., Duguay, C., Korhola, A., McNamara, J., Vincent, W.F., Vuglinsky, V., Anthony, K., and Weyhenmeyer, G.A.: Effects of changes in Arctic lake and river ice, 950 *AMBIO* 40: 63–74, doi.org/10.1007/s13280-011-0217-6, 2011b.
- Prowse, T.D., Bonsal, B.R., Duguay, C.R., and Lacroix, M.P.: River-ice break-up/freeze-up: A review of climatic drivers, historical trends, and future predictions, *Annals of Glaciology*, 46: 443-451, 2007.
- Rémy, F., Flament, T., Blarel, F., Benveniste, J.: Radar altimetry measurements over Antarctic ice sheet: a focus on antenna polarization and change in backscatter problems, *Advances in Space Research*, 50: 998-1006, 10.1016/j.asr.2012.04.003, 2012.
- 955 Slater, T., Shepherd, A., McMillan, M., Armitage, T. W. K., Ootosaka, I., and Arthern, R. J.: Compensating changes in the penetration depth of pulse-limited radar altimetry over the Greenland ice sheet, *IEEE Transactions on Geoscience and Remote Sensing*, 57, 12: 9633-9642, doi: 10.1109/TGRS.2019.2928232, 2019.
- Sobiech, J. and Dierking, W.: Observing lake- and river-ice decay with SAR: advantages and limitations of the unsupervised k-means classification approach, *Ann. Glaciol.*, 54: 65–72, doi:10.3189/2013AoG62A037, 2013.
- 960 Sun, W. and Trevor, B.: A stacking ensemble learning framework for annual river ice breakup dates, *Journal of Hydrology*, 561: 636-650. doi.org/10.1016/j.jhydrol.2018.04.008. 2018.
- Ulaby, F. T., Moore, R. K. , and Fung, A. K.: *Microwave Remote Sensing: Active and Passive, Radar Remote Sensing and Surface Scattering and Emission Theory*, vol. 2. Norwood, MA, USA: Addison-Wesley, 1986.
- 965 Unterschultz, K., van der Sanden, J., and Hicks, F.: Potential of RADARSAT-1 for the monitoring of river ice: Results of a case study on the Athabasca River at Fort McMurray, Canada, *Cold Regions Science and Technology*, 55: 238–248, doi:10.1016/j.coldregions.2008.02.003, 2009.
- van der Sanden J., Drouin, H., and Geldsetzer, T.: An automated procedure to map breaking river ice with C-band HH SAR data, *Remote Sensing of Environment*, 252: 112119, https://doi.org/10.1016/j.rse.2020.112119, 2021.
- 970 Vuglinsky, V. and Valatin, D.: Changes in ice cover duration and maximum ice thickness for rivers and lakes in the Asian part of Russia, *Natural Resources*, 9: 73-87. <https://doi.org/10.4236/nr.2018.93006>, 2018.
- Willatt, R., Laxon, S., Giles, K., Cullen, R., Haas, C., and Helm, V.: Ku-band radar penetration into snow cover on Arctic sea ice using airborne data, *Annals of Glaciology*, 52, 57: 197–205, doi.org/10.3189/172756411795931589 2011.
- 975 Zakharova, E.A., Kouraev, A.V., Rémy, F., Zemtsov, V.A., and Kirpotin, S.N.: Seasonal variability of the Western Siberia wetlands from satellite radar altimetry, *Journal of Hydrology*, 512: 366–378. doi.org/10.1016/j.jhydrol.2014.03.002, 2014.
- Zakharova E.A., Krylenko, I.N., and Kouraev, A.V.: Use of non-polar orbiting satellite radar altimeters of the Jason series for estimation of river input to the Arctic Ocean, *Journal of Hydrology*, 568: 322-333, 980 doi.org/10.1016/j.jhydrol.2018.10.068, 2019.

Zakharova, E.A., Nielsen, K., Kamenev, G., and Kouraev, A.: River discharge estimation from radar altimetry: Assessment of satellite performance, river scales and methods, *Journal of Hydrology*, 583: 124561, doi.org/10.1016/j.jhydrol.2020.124561, 2020.

985 Zhang, F., Li, Z., and Lindenschmidt, K.-E.: Potential of RADARSAT-2 to improve ice thickness calculations in remote, poorly accessible areas: A case study on the Slave River, Canada, *Canadian Journal of Remote Sensing*, 45(2): 234-245, doi: 10.1080/07038992.2019.1567304, 2019.