

Record summer rains in 2019 led to massive loss of surface and cave ice in SE Europe

Aurel Perşoiu^{1,2,3}, Nenad Buzjak^{4*}, Alexandru Onaca^{5*}, Christos Pennos^{6*}, Yorgos Sotiriadis^{7*}, Monica Ionita⁸, Stavros Zachariadis⁹, Michael Styllas¹⁰, Jure Kosutnik¹¹, Alexandru Hegyi^{5,12}, Valerija Butorac⁴

- 5 ¹Emil Racoviță Institute of Speleology, Romanian Academy, Cluj Napoca, 400006, Romania
²Stable Isotope Laboratory, Ștefan cel Mare University, Suceava, 720229, Romania
³Romanian Institute of Science and Technology, Cluj Napoca, 400022, Romania
⁴Department of Geography, Faculty of Science, University of Zagreb, Zagreb, 10000, Croatia
⁵Department of Geography, West University, Timișoara, 300223, Romania
10 ⁶Department of Earth Science, University of Bergen, Bergen, 5020, Norway
⁷Department of Geography, Aegean University, Mytilene, 81100, Greece
⁸Alfred Wegener Institute, Helmholtz Center for Polar and Marine Research, Bremerhaven, 27515, Germany
⁹Department of History and Archeology, Aristotle University of Thessaloniki, Thessaloniki, 54636, Greece
¹⁰École Polytechnique Fédérale de Lausanne, Lausanne, 1015-CH, Switzerland
15 ¹¹University of Nova Gorica, Nova Gorica, 5000, Slovenia
¹²Department of History and Archaeology, University of Cyprus, Nicosia, CY-1678, Cyprus
*Authors with equal contribution

Correspondence to: Aurel Perşoiu (aurel.persoiu@gmail.com)

Abstract. Glaciers worldwide are shrinking at an accelerated rate as the climate changes in response to anthropogenic influence. While increasing air temperature is the main factor behind glacier mass loss, changing atmospheric circulation patterns and the distribution of precipitation also plays a role, though these are not as well understood. Furthermore, while the [response](#) of surface glaciers (from large polar ice sheets to small alpine glaciers) to climatic changes is well documented and continuously monitored, little to nothing is known about [how](#) cave glaciers (perennial ice accumulations in rock-hosted caves) [react](#) to atmospheric warming. In this context, we present [here](#) the response of cave and surface glaciers in SE Europe to [the](#) extreme precipitation events occurring between May and July 2019 in SE Europe. [Surface glaciers in the northern Balkan Peninsula lost between 17 and 19 % of their total area, while cave glaciers in Croatia, Greece, Romania and Slovenia lost ice at levels higher than any recorded by instrumental observations during the past decades. The melting was likely the result of large amount of warm water delivered directly on the surface of the glaciers leading to rapid reduction of ice covered area of surface glaciers and thickness of cave ones.](#) As climate models predict that such extreme precipitation events are set to increase in frequency and intensity, the presence of cave glaciers in SE Europe and the paleoclimatic information they host may be lost in the near future. Moreover, the same projected continuous warming and increase in precipitation extremes could pose an additional threat to the Alpine glaciers in southern Europe, resulting in faster than predicted melting.

20
25
30

Deleted: Unprecedented

Deleted: related to record summer rains in 2019

Deleted: mass balance

Deleted: relatively

Deleted: the response of

Deleted: synoptic conditions in summer 2019. Our investigation shows that...

Deleted: led to catastrophic loss of ice at levels unprecedented during the last century...

1 Introduction

The recent *IPCC Special Report on the ocean and cryosphere in a changing climate* highlighted the worldwide shrinking of the cryosphere, with ice sheets, mountain glaciers, snow cover and Arctic sea ice all losing mass (IPCC, 2019). Rising temperatures account for most of the recent widespread ice loss (Marzeion et al., 2014) and climate models suggest that warming will continue leading to unabated glacier melting over the next decades. Small glaciers are most impacted by this recent melting, with climate scenarios suggesting losses of up to 80 % by the end of this century (IPCC, 2019) for glaciers in several regions, including Central Europe. [Both mountain and cave glaciers are sensitive indicators of climate change \(Oerlemans, 2005; Kern and Persoiu, 2013\), but while most studies aimed to understand the response of glaciers to past, present and future climate changes, comparatively less attention has been devoted to the role of short-term weather variability and extreme events in ice mass and volume changes \(e.g., Hughes, 2008\). Nevertheless, the cited IPCC report does not include information either on glaciers in SE Europe, the region hosting Europe’s southernmost surface perennial ice bodies \(Snezhnika and Banski Suhodol glacierets, in the Pirin Mountains, Bulgaria\) or on the dynamics of perennial ice accumulations in caves \(hereafter “ice caves”\).](#)

Ice caves occur in mountain regions across the Northern Hemisphere, between 30° N and 77° N, and from sea level to 3300 m above sea level (a.s.l.), in areas where a combination of favorable cave morphology, local topography and climatic conditions allow for the perennial accumulation and preservation of ice (Persoiu and Lauritzen, 2018). [With few exceptions, most ice caves have a single entrance and descendant morphology, this configuration resulting in a unique type of climate, with underground air temperature following external one during winter and being largely independent during summer when external weather-induced temperature changes are not transferred to the cave environment \(e.g., Persoiu et al., 2011a\). These characteristics result in extremely variable winter and very stable summer thermal conditions; consequently, ice caves can be described as experiencing weather in winter months and climate during the summer ones.](#) The accumulation of cave ice is the result of either snow diagenesis or freezing of water, or a combination of these (Persoiu and Pazdur, 2011). Snow diagenesis occurs at the bottom of vertical shafts, in which snow falls and accumulates during winter months. In such caves, ice forms [as a combination of snow diagenesis \(compaction under its weight\) and freezing of meltwater from the surface of the snowpack. Freezing of water occurs in caves with descending morphology \(usually caves with entrances at their upper parts only\), in which negative air temperatures result in freezing of infiltration water \(Luetscher and Jeannin, 2004\). As a direct consequence of the descending cave morphology, negative air temperatures occur throughout the year resulting in continuous accumulation and preservation of ice. Several studies have shown that in caves in Europe, these accumulations of ice are older than 1000 years \(Spötl et al., 2014; Gradziński et al., 2016; Kern et al., 2018a; Kern et al., 2018b\), preserving important insights on past environmental variability. Over the past decade, various proxies in cave ice have been used to reconstruct temperature variability during the Holocene \(Persoiu et al., 2017; Sancho et al., 2018; Badaluta et al., 2020\), vegetation dynamics \(Feurdean et al., 2011; Leunda et al., 2019\) and atmospheric composition \(Kern et al., 2009; Kern et al., 2011\). Additionally, other studies have targeted the microbial and fungal communities harbored by cave ice, identifying](#)

Deleted: Nevertheless, the cited IPCC report does not include information either on glaciers in SE Europe, the region hosting Europe’s southernmost glaciers (Snezhnika and Banski Suhodol glaciers, in the Pirin Mountains, Bulgaria) or on the dynamics of perennial ice accumulations in caves. The latter are the least visible and investigated components of the global cryosphere....

Deleted: two

Deleted: by

Deleted: such

Deleted: ice

Deleted: Kern, 2018

Deleted: clues

dormant new species (Brad et al., 2018; Itcus et al., 2019; Paun et al., 2019; Mondini et al., 2019). [All these studies have targeted only a handful of ice caves, with the vast majority of existing ones harboring a yet unexplored wealth of information \(Persoiu and Lauritzen, 2018\).](#)

90 Whereas ice loss in surface glaciers is mostly due to melting related to rising temperatures (e.g., Marzeion et al., 2014), cave ice ablation is primarily due to drip water delivering heat to the ice ([Luetscher et al., 2005](#); Persoiu et al., 2011a; [Colucci et al., 2016](#)). Therefore, whereas the projected increase in air temperature in mountain areas would result in enhanced mass loss for surface glaciers, the same rising temperatures might only marginally affect ice mass balance in caves. [Monitoring studies in ice caves has been done sporadically since the mid-20th century \(Racovita, 1994; Luetscher et al., 2005; Persoiu and](#)

95 [Pazdur, 2011; Kern and Persoiu, 2013\), the results showing that reduction of winter precipitation and increase of winter temperatures are the main drivers behind loss of ice, with summer temperatures having a negligible role. Additionally, studies of perennial ice deposits in caves in Norway, Romania and Switzerland have suggested that above average summer precipitation might play an important role in the overall mass balance of cave glaciers \(Stoffel et al., 2009; Feurdean et al., 2011, Lauritzen et al., 2018\).](#)

100 Most of the caves hosting perennial ice are found in central and southeastern Europe, a region that has experienced some of the fastest loss of glacier ice (Zemp et al., 2019, Sommer et al., 2020) over the past decades. [Climate models suggest for this region](#) a mixed response to the general global warming, albeit with a general decrease in annual precipitation, an increase in winter precipitation and in the frequency and intensity of extreme summer precipitation events ([Giorgi et al., 2011](#); Planton et al., 2012, [Giorgi et al., 2016](#); [Topál et al., 2020](#)). Consequently, cave ice deposits are facing the risk of disappearing

105 completely within a decade (Kern and Persoiu, 2013; Kern and Thomas, 2014), leading to the irreparable loss of the diverse records of past climate, environmental conditions and microbial life (with unique antibacterial potential) they record. While accumulation is a slow process (~1-20 cm/year), annual ablation rates could reach values double or even triple of that ([Kern and Thomas, 2014](#), Lauritzen et al., 2018). [Further, both cave ice deposits and surface small glaciers or glacierets \(Kumar, 2011\) are particularly sensitive to both long-term climatic changes and short-term weather variability \(Braithwaite and](#)

110 [Raper, 2007; Hughes, 2008; Brown et al., 2010; Colucci and Guglielmin, 2015\).](#)

In this context, we present the response of surface and cave glaciers in eastern and southeastern Europe to the weather conditions in summer 2019. We have studied ice caves in Greece, Croatia, Romania, Slovenia and two surface glacierets in Bulgaria and analyzed the [ice level and volume changes](#) in response to [weather patterns during](#) the spring and early summer of 2019, a period characterized by anomalous atmospheric circulation corroborated with extreme [\(in terms of amount and](#)

115 [intensity\) summer rainfall events.](#)

2 Glaciers in central and southeastern Europe

Our investigation targeted [surface and cave glaciers in](#) central and southeastern Europe (Fig. 1), a region which hosts numerous ice caves in the rugged karst topography of the Carpathian, Dinaric and Rhodope Mountains, including [four of the](#)

Deleted: For this region, c

Deleted: Kern et al., 2013

Deleted: here

Deleted: winter 2018-2019 and

Deleted: ice mass balance

Deleted: climatic conditions during the 2018-2019 winter season and weather patterns during

Deleted: heavy winter snowfall, extremely high summer temperatures and ...

Deleted: C

Deleted: S

Deleted: -E

Deleted: the five

largest underground glaciers in the world (Buzjak et al., 2018; Mihevc, 2018; Pennos et al., 2018; Persoiu and Lauritzen, 2018).

135 *Scărișoara Ice Cave* (46°29'23.64" N, 22°48'37.68" E, [Fig. 2a](#)) is located in the Western Carpathian Mountains (Romania), at 1165 m above sea level (a.s.l.). The cave opens to the surface through a ~60 m wide, 47 m deep shaft which continues with a wide chamber that hosts one of the largest (>100,000 m³) and oldest (>10,500 years) underground glaciers in the world (Persoiu et al., 2017; [Persoiu and Onac, 2019](#)). This ice body primarily formed by freezing of liquid water every early winter, adding a layer of up to 20 cm of newly formed ice to the existing ice body each year. The [changes in the volume](#) of the ice [are](#) controlled by the amount of water available [for freezing](#) in autumn and early winter and by the melting occurring due to rainwater infiltrating inside the cave in summer. Monitoring of ice [level changes begun in 1947](#) (Persoiu and Pazdur, 2011) [and](#) showed a rapid melt of ice during the 1950s due to changes in the morphology of the ice block, followed by [alternating periods of ice growth and loss, superimposed on a moderate melting tendency afterwards](#).

140 *Chionotrypa Cave* (Mt. Falakro, hereafter *Chionotrypa Falakro*, 41°17'39.9" N, 24°05'24.2" E, [Fig. 2b](#)) is a 111 m deep alpine cave located at 2080 m a.s.l. in the Rhodope Mountains, northern Greece (Pennos et al., 2018). The entrance of the cave is through a 50 m wide, 65 m deep shaft that [enables](#) snow to accumulate at its base in winter. A 3 m high, 15 m wide opening at the bottom of the eastern wall of the shaft allows access to the lower chambers of the cave. At the bottom of the shaft and continuing through the opening, a 30 m snow and ice deposit has accumulated. The upper 3 m of the deposit consists of compacted snow, while the lower part is solid, layered ice, incorporating rocks and organic matter from the surface.

150 *Chionotrypa cave* (Mt. Olympus, hereafter *Chionotrypa Olympus*, 40°05'18.7" N, 22°21'55.5" E, [Fig. 2c](#)) is located on the eastern slopes of Olympus Mountain (Greece), at 2560 m a.s.l. Its entrance is ca. 6.6 by 8 m wide, leading through a vertical shaft to a snow and ice mass ca. 20 m thick. In winter up to 5 m of snow can accumulate on top the existing ice block, but it usually melts during spring and summer, the level of ice reaching a minimum in September (Pennos et al., 2018).

155 *Crna Ledenica* ([43°20'52.98" N, 17°3'5.36" E, Fig. 2d](#)) cave is located in the Biokovo Mountains (southern Croatia), 6 km from the Adriatic Sea. The cave has four vertical entrances located at elevations between 1477 and 1503 m a.s.l. (Buzjak et al., 2018): two northern (15x10 m and 7.5x5 m), [a middle](#) (5x4 m) and [a southern](#) (11x6 m) [one](#). These wide entrances ensure a constant snow accumulation at the bottom of a 60 m long, 25 m wide chamber, as well as cold air circulation during winter (HBSD, 2019, last access: 25 May 2020). The snow, firm and ice deposit occupies an area of about ~450 m², its thickness ranging from 12 m below the northern and middle entrances to 0.5 m in the more distal parts of the cave. The upper part of the deposit is covered by fresh snow and organic matter collapsing from the surface during winter. Deeper in the cave, the snow is [transformed](#) to firm and finally layered ice with embedded rock particles and organic matter. The mass balance of the ice deposit is controlled by the circulation of cold air between the cave's chamber and the four entrances, snow accumulation and water inflow during warmer, wetter periods (from spring to early autumn).

Deleted: mass balance

Deleted: is

Deleted: dynamics

Deleted: since

Deleted: equilibrium conditions since ~1975, with net annual accumulation or ablation rates between 0 and 5 cm.

Deleted: (

Deleted:)

Deleted: allows

Deleted: for a large amount of

Deleted: (

Deleted:)

Deleted: one

Deleted: one

Deleted: metamorphosed

180 *Velika ledena jama v Paradani* (Fig. 2e) is located on Trnovski gozd karst plateau in western Slovenia (45°59'19.70 "N, 13°
50'40.24" E). The cave is 6534 meters long and 858 meters deep with the main entrance located at 1135 m a.s.l. The
entrance opens at the bottom of a doline and leads to a series of interconnected halls, with the first and second containing the
perennial ice block. This block has a layered structure, including clear ice alternating with detritus derived from the surface,
and it changes from firn to congelation ice with increased distance from the entrance. The maximum depth of the ice block is
unknown, but is estimated to an average of 3 meters, suggesting a maximum volume of 8,000 m³ (Mihevc, 2018). The main
185 ice growth periods are in winter (as snow accumulates in the entrance doline) and spring, when snowmelt water freezes to
form congelation ice. The main ice loss occurs in summer and autumn following heavy infiltration of rainwater.

In addition to these underground glaciers, we have also studied Europe's two southernmost glaciers, *Snezhnika* and *Banski
Suhodol*, located in the Pirin Mountains (Bulgaria) below the northern cliffs of Vihren (2914 m) and Kutelo (2908 m) peaks
(Gachev et al., 2016). *Snezhnika glacier* (41°46'09" N; 23°24'12" E) is located on an eastward-facing slope and lies at
190 2440-2490 m a.s.l., whereas *Banski Suhodol* (41°46'09" N; 23°23'40" E) faces north and lies at 2620-2700 m a.s.l. Both
glaciers are a legacy of the Little Ice Age (Hughes, 2009) and occupy less than 1 ha (Grunewald and Scheithauer, 2010)
with recent geophysical investigations revealing maximum ice thickness of 14 m and 17 m, for *Snezhnika* and *Banski
Suhodol*, respectively (Onaca et al., 2019).

3 Methods

195 In 2018, we initiated a research program aimed to preserve the climate memory of vanishing Eastern Mediterranean
subterranean glaciers. Ice levels in caves were measured against fixed points on the cave walls and/or estimated using
photogrammetry (table 1).

In Scărișoara Ice Cave, ice level changes were recorded monthly using a dual approach (Fig. 3, Table 1). Firstly, the distance
between a fixed point in the rock ceiling directly above the ice (B_0 in Fig. 3) and the ice surface was measured using a ruler
200 and secondly, ice level changes at the surface of the ice block were measured on a metal ruler embedded in the ice. The
precision was better than 0.3 mm in both cases. The ice level variations at the surface are measured relative to the level of ice
in April 1982 (A_0 in Fig. 3) when the ruler was placed in the ice (Racoviță, 1994). The results of the first sets of
measurements record the distance between the surface of the ice at any given moment (B_1 and B_2 in Fig. 3) and the rock
ceiling, thus being the sum of changes at the surface (climate and weather induced) as well as bottom (induced by basal
205 melting) of the ice block, whereas the later registers only the changes of ice level at the surface of the ice block (A_1 and A_2 in
Fig. 3). Subtracting the latter from the first enabled us to disentangle changes at the surface likely resulting from the
influence of external meteorological conditions from basal melting, estimated to be around 1.5 cm/year (Persoiu, 2005). For
the purpose of this study, ice level changes induced by external meteorological conditions were considered. Changes in ice
volume were continuously monitored in *Velika ledena jama v Paradani* since September 2009, with the method of wall to ice

Deleted: s

Deleted: mass balance changes were

Deleted: we measured that

Formatted: Subscript

Deleted: and a fixed point in the rock ceiling directly above the ice

Deleted: we measured the surface

Deleted: against a marker

Formatted: Subscript

Formatted: Subscript

Formatted: Subscript

Deleted: of the ice block

Deleted:

Formatted: Subscript

Formatted: Subscript

Deleted: enables

Deleted: external climate

Deleted: changes at the bottom, the later influence by long-term basal melting, independent of climatic conditions. ...

distance measurements (similar to Scărișoara Ice Cave above) made twice annually. In Chionotrypa Falakro, Chionotrypa Olympos and Crna Lednica, annual ice level fluctuations were intermittently recorded at the end of the ablation period over the past five years. In Chionotrypa Falakro, photographs of the upper surface of the ice and snow body taken from the same spot at the end of the ablation period were compared in order to visually estimate the ice level changes. The errors associated with these measurements are less than 0.3 cm in Scărișoara and Velika ledena jama v Paradani is better than 0.3 cm/measurement, and are estimated to between 10 and 20 cm in Chionotrypa Falakro, Chionotrypa Olympos and Crna Lednica (Table 1). The errors for the 2019 ice level changes are estimated between 1 and 25 % (Table 1), lower where rulers were used and higher where the presence of snow precluded precise measurements and/or estimates.

To analyze in detail the surface changes of Snezhnika and Banski Suhodol glaciers, two UAV (DJI Phantom 4 Pro drone equipped with 20 megapixel camera) surveys were performed at the end of the ablation season (October 2018 and September 2019). The drone survey was designed to cover the glacierets and their surroundings. For flight planning and mission control we used DJI Ground Station Pro software. The flight height was set at 200 m and the images were collected every three seconds along parallel lines with an overlap of 80 %. Among camera locations, ground control points (GCPs) were used for both glacierets (five for Snezhnika glacier and eight for Banski Suhodol glacier) to georeference the digital surface models and the orthophotos. The GCPs were measured with a high accuracy Hiper V Topcon real-time kinematic (RTK) positioning system. The images were processed in Agisoft Photoscan Professional by using the following workflow: 1. Alignment and match of photos at the highest accuracy, 2. Analysis of the sparse cloud, 3. Import and setting of the GCPs on each camera and the free-network bundle adjustment, 4. Generation of the referenced dense cloud with medium accuracy settings and moderate depth filter, 5. Generation of mesh and textures, 6. Creation of the Digital Surface Model, 7. Creation of the orthophotomosaic. Using the above-mentioned workflow, high-resolution digital surface models were created for both glacierets (table 2).

As most of the investigated caves are located far from meteorological stations, or existing station data covers inappropriate time periods for this study, we extracted meteorological data from the E-OBS dataset (Cornes et al., 2018). The E-OBS data set builds on the European Climate Assessment and Dataset (ECA&D), which is a database of daily meteorological station observations across Europe. The station based data used to develop the gridded E-OBS data set are subjected to quality control and homogeneity test, thus, all series are checked for inhomogeneities. Nevertheless, the database is still prone to uncertainties related to the measurements and the spatial interpolation. Compared to previous versions of the E-OBS dataset, the one used in this study is based on 100 realizations of each daily field (e.g. precipitation, daily mean temperature, daily maximum temperature and daily minimum temperature). The spread of the E-OBS dataset is calculated as the difference between the 5th and 95th percentiles over the 100 realizations to provide a measure indicate of the 90% uncertainty range. For the current study we use the ensemble mean (the mean over the 100 realizations), which provides a "best guess" value. To look at the intensity and magnitude of the summer precipitation we use the highest 5-day precipitation amount (RX5day), which was computed based on the EOBS-v20e data set (Cornes et al., 2018), with a spatial resolution of 0.1 x 0.1. The ranking maps of 2019 were made for RX5day using the six first ranks. The rank maps are obtained by comparing the

Deleted: Cave (

Deleted: Mountain)

Deleted: ,

Deleted:

Formatted: Font: Not Italic

Deleted: Changes in ice volume are continuously monitored in Ledena jama v Paradani since September 2009, with the method of wall to ice distance measurements made twice annually. ...

Deleted: High-density point clouds and high-resolution orthophotos produced from the drone surveys were further processed with Agisoft Photoscan Professional software using the Structure from Motion (SfM) algorithm to generate a digital elevation model (DEM) with 22.5 cm pixel⁻¹ resolution and an orthophoto-mosaic with 2.8 cm pixel⁻¹ resolution for Snezhnika glacier, and a DEM with a 18.7 cm pixel⁻¹ resolution and an orthophoto with a 4.6 cm pixel⁻¹ resolution for Banski Suhodol glacier....

magnitude of the variable of each month (May–July 2019 for the present study) relative to the same month in each year from 1950. A rank of one implies record-breaking precipitation in 2019; a rank of two indicates that 2019 had the second most extreme value in that month (since 1950) etc.

In order to understand the role of large scale circulation patterns in determining specific weather types, we have computed the anomalies of the mean air temperature (TT) and geopotential height at 500 mb (Z500) and we analyzed the conditions of snow cover and extreme precipitation (monthly maximum consecutive 5-day precipitation, RX5day) for both the ice accumulation (December 2018–February 2019) and ablation (May–July 2019) periods. The monthly mean temperature was extracted from the E-OBS data set (Cornes et al., 2018). The Z500 file was extracted from the NCEP/NCAR 40-year reanalysis project (Kalnay et al., 1996). The snow cover data were provided by MODIS/Terra Snow Cover Monthly L3 Global 0.05Deg CMG, Version 6 (Hall et al., 2006).

4 Results

4.1 Ice level and area changes

Ice level was constant in *Scărișoara Ice Cave* between July 2018 and September 2018 when a shallow lake started to form on top of the ice block. The water of this lake froze in early December 2018, adding a layer of 15 cm to the existing ice.

Heavy snowfall in the 2018-2019 winter and subsequent melt in spring 2019 led to rapid infiltration of large volumes of water inside the cave, resulting in ca. 5 cm of ice being formed in the still undercooled cave environment. Between May and July 2019, the ice level in *Scărișoara Ice Cave* dropped by ca. 35 cm (Fig. 4), due to continuous infiltration of surficial warm water. This catastrophic melt event spread across the entire upper surface of the 3000 m² ice block, resulting in the loss of ca. 1050 m³ of ice.

In *Chionotrypa Falakro*, a gradual decrease of the ice volume was evident since 2014, reaching a minimum in September 2019 (Fig. 5). The ice level at the bottom of the entrance shaft fell ~3 m and receded ~1 m from the cave walls between July 2018 and September 2019. A rough estimation suggests that >600 m³ of cave ice were lost during this period.

In *Chionotrypa Olympus*, the mass balance of the snow and ice deposit was strongly positive in winter 2018/2019, but steadily decreased in summer 2019. Compared to the situation in 2018, ice and snow were lost both at the surface of the deposit and in the rimayes surrounding it, amounting to a loss of ca. 5-10 % (15–30 m³) of the total ice volume.

In *Crna Ledenica* observations in 2019 show that following the cold and wet 2018–2019 winter large amounts of fresh snow accumulated below the entrance shafts. Further, meltwater infiltration in spring originating in thick winter snowpack led to the development of numerous ice speleothems and ice crusts. However, heavy summer rains and subsequent infiltration of warm water resulted in the complete melting of these ice crusts by September 2019. The ice-covered area and the total volume of perennial ice also retreated in summer 2019. In some parts of the cave, the ice thickness dropped by up to ~2 m, and the total area covered by perennial ice and snow dropped by ca. 200 m², resulting in a loss of about 150-200 m³ during summer 2019.

Deleted: As most of the investigated caves are located far from meteorological stations, or existing station data covers inappropriate time periods for this study, we extracted meteorological data from the E-OBS dataset (Cornes et al., 2018). In order to link climatic parameters with large scale circulation patterns, we have computed the anomalies of the mean air temperature (TT) and geopotential height at 500 mb (Z500) and we analyzed the conditions of snow cover and extreme precipitation (monthly maximum consecutive 5-day precipitation, RX5day) for both the ice accumulation (December 2018–February 2019) and ablation (May–July 2019) periods. The Z500 file was extracted from the NCEP/NCAR 40-year reanalysis project (Kalnay et al., 1996). The snow cover data were provided by MODIS/Terra Snow Cover Monthly L3 Global 0.05Deg CMG, Version 6 (Hall et al., 2006). The Highest 5-day precipitation amount (RX5day) was computed based on the E-OBS-v20e data set (Cornes et al., 2018). The ranking maps of 2019 were made for RX5day using the six first ranks. The rank maps are obtained by comparing the magnitude of the variable of each month (May–July 2019 for the present study) relative to the same month in each year from 1950. A rank of one implies record-breaking precipitation in 2019; a rank of two indicates that 2019 had the second most extreme value in that month (since 1950) etc.

Deleted: mass balance

Deleted: 2

Deleted: Cave (Mt. Falakro)

Deleted: 3

Deleted: Cave (Mt. Olympus)

330 The deeper parts of *Velika ledena jama v Paradani* cave were less affected by ice volume loss, compared with the entrance area. The ice slope connecting the inner part of the cave with the entrance has retreated by several meters towards the cave's entrance and an almost continuous surface of broken host rock developed on the former ice surface. Since June 2013 the ice surface lowered by 220 centimeters, of which 41 centimeters were lost between June 2018 and June 2019.

Deleted: *Ledena jama v Paradani*

335 In October 2018, Snezhnika glacier^{et} extended over 5700 m², compared with 4600 m² in September 2019 (Figs. 6a and 6b), while Banski Suhodol glacier^{et} extended over 11600 m² in October 2018 (Fig. 6c) and 9600 m² in September 2019 (Fig. 6d). Between 1959 and 2008 Snezhnika glacier^{et} lost almost half of its surface (from 13000 to 7000 m², Grunewald and Scheithauer, 2010), and between 2008 and 2018 lost another 1300 m² while during 2019, it lost 1100 m². The average annual loss of Snezhnika glacier^{et} between 1959 and 2018 was rather constant between 122 and 130 m² year⁻¹, but dramatically increased by one order one of magnitude (1100 m² year⁻¹) in 2018-2019. Aerial footage indicates a general retreat at the lower end of the two glaciers and the increase in the width of the rimaye separating them from the cirque headwall (Fig. 6). Additionally, in 2019 a small glaciated area became separated from the main ice body of the Banski Suhodol glacier^{et}, and two more indentations are likely to cause rapid disintegration of the main ice body in the near future (Fig. 6d). Between 2018 and 2019 the terminus of both glacierets shows significant loss of ice. The mean retreat of the terminus was 3.4 m at Snezhnika and 5.8 m at Banski Suhodol (Fig. 7). The difference in ice surface elevation between 2018 and 2019 for Snezhnika glacier^{et} ranges between 0.2 and 1 m, exceeding 1.2 m in the southwestern part (Fig. 7c), while for Banski Suhodol, more than half of the ice surface lowered by more than 1 m (Fig. 7d).

Deleted: 4A

Deleted: 4B

Deleted: 4C

Deleted: 4D

Deleted: retreat

Deleted: 4D

4.2 Meteorological data

350 Meteorological data (Fig. 8) show that 2019 was exceptionally wet in SE Europe. At all investigated sites, precipitation amounts exceeded the long-term (1971–2000) average by more than 150 %. Following a relatively dry early spring (compared to the 1971–2000 average), precipitation amount started to increase in April 2019, peaking in May, June and July (Fig. 8). Overall, in May 2019 all the analyzed cave ice locations received more than 100 % of the climatological mean precipitation for the respective month, with Crma Ledenica and Chionotrypa Falakro, receiving more than 250 % and 200 %, respectively.

Deleted: Summarizing the observations above, in 2019 two distinct and exceptional periods of ice mass balance changes were identified: 1) important (in terms of volume) growth of underground ice and snow deposits between December 2018 and February 2019, especially in those caves in which direct snow accumulation occurs; and 2) rapid and massive loss of cave ice, starting in May 2019.

Deleted: 5

Deleted: 5

Deleted: (

Deleted:)

355 In December 2018, the geopotential height anomalies at 500 mb level were characterized by a wave-train like structure with negative Z500 anomalies (indicative of a low-pressure system) over the central North Atlantic Basin, positive Z500 anomalies (indicative of a high-pressure system) over the central part of Europe extending northwards, and negative Z500 anomalies over the eastern part of Europe (Fig. 9a). The low-pressure system over eastern Europe, which was carrying moist air from the Black Sea together with cold and dry air from the north, led to snowfall events over the high altitudes in the Carpathian Mountains and some parts in Ukraine (Fig. 9b). Overall, December 2018 was warmer than normal over the whole European region with some exceptions in the Alpine areas and Bulgaria (Fig. 9c).

Deleted: 6

Deleted: E

Deleted: 6

Deleted: d

Deleted: 6g

360 In January 2019, the large-scale atmospheric circulation was characterized by a dipole-like structure with positive Z500 anomalies centered over the central North Atlantic basin and negative Z500 anomalies centered over Europe (Fig. 9b). This

Deleted: 6b

dipole-like structure led to several episodes of snowfall in the Alps and the Carpathian Mountains, due to the advection of northerly cold air from the Arctic region coupled with moist and warm air intrusions from the Atlantic basin. In January 2019 most of central and eastern Europe were snow covered (Fig. 9c) and the Alpine region was up to 5 °C colder than normal (Fig. 9f).

Deleted: C

Deleted: E

Deleted: 6e

Deleted: 6h

390 In February 2019, the prevailing large-scale atmospheric circulation was reversed compared to the previous month. A low-pressure system prevailed over the central part of the North Atlantic basin, while Europe was under the influence of a high-pressure system (Fig. 9g), resulting in dry and warm weather (Fig. 9i). Snow was present only over the mountain regions in the Alps and the Carpathian Mountains (Fig. 9h). Overall, February 2019 was exceptionally warm in the northern and eastern part of Europe (European State of the Climate, 2019).

Deleted: 6c

Deleted: 6i

Deleted: 6f

395 In May 2019, the central and southeastern parts of Europe were characterized by below average air temperatures. The prevailing large-scale atmospheric circulation featured a Rossby wave guide with negative Z500 anomalies over the eastern U.S. coast, positive Z500 anomalies over the central North Atlantic basin and western part of Europe, negative Z500 anomalies over the eastern part of Europe and positive Z500 anomalies over Russia (Fig. 10a). Concurrently, Italy, the Alpine regions, Croatia and the northwestern part of Romania experienced extreme rainfall (Fig. 10b). Rainfall records were
400 broken over small areas in the Alps and Ukraine (Fig. 10c). Most of the intense and record-breaking rainfall was recorded over the regions where the investigated glaciers are located (Fig. 1).

Deleted: 7a

Deleted: 7b

Deleted: 7c

In June 2019 most of the European continent was under the influence of a high-pressure system (Fig. 10d) that led to the advection of warm and dry air from Africa and subsequent development of record-breaking heat wave over the southeastern and central parts of Europe (European State of the Climate, 2019). June 2019 was dry over large areas of Europe, with some small exceptions over the Alpine region and the southeastern region (Fig. 10e), with record rainfalls in Bulgaria and Greece limited to relatively small areas (Fig. 10f). The precipitation in the southern part of Europe was mainly occurring during heavy thunderstorms, resulting in one-day rainfall amounts of ~50 mm/day locally.

Deleted: 7

Deleted: -

405 As in June 2019, in July 2019 most of Western Europe was under the influence of a high-pressure system (Fig. 10g) and was very dry over large parts of Europe (particularly the western half). Wetter conditions, with enhanced rainfall, were recorded in southeastern Europe (including Croatia and Slovenia). The rainfall over these regions was mainly due to heavy thunderstorms (Fig. 10h).

Deleted: 7

Deleted: 7

Deleted: 7

410 As in June 2019, in July 2019 most of Western Europe was under the influence of a high-pressure system (Fig. 10g) and was very dry over large parts of Europe (particularly the western half). Wetter conditions, with enhanced rainfall, were recorded in southeastern Europe (including Croatia and Slovenia). The rainfall over these regions was mainly due to heavy thunderstorms (Fig. 10h).

Deleted: 7

5 Discussion

All ice caves in the investigated region are located well below the 0 °C MAAT (Mean Annual Air Temperature) isotherm. Contrary to high-altitude glaciers, underground glaciers have both the accumulation and ablation zones in the same location, in most cases at the bottom of vertical shafts where snow and ice accumulates in winter but also melts in summer (e.g. Persoiu and Lauritzen, 2018), thus making them extremely sensitive to both short and long term climatic changes, and especially to heat delivered by warm rainwater.

435 The 2018-2019 winter was extremely favorable for ice accumulation in caves in SE Europe, following widespread snowfall (Fig. 9e) that likely resulted in thick snow cover on the ground (Fig. 11) and consequently contributed to positive mass balance of cave and surface glaciers. In January 2019, heavy snowfalls in the eastern half of Europe (e.g., Fig. 9e) resulted in large accumulation of snow in Chionotrypa Falakro, Chionotrypa Olympus, and Crna Ledena caves (as observed in the field) and likely on the surface glaciers in Bulgaria. In Romania and Slovenia, higher than average temperatures in February 2019 (Fig. 9j) led to the rapid melt of the surface snowpack resulting in melt water infiltration in Scărișoara Ice Cave and Velika ledena jama v Paradani, where thermal conditions were still negative, resulting in rapid formation of ice layers (Persoiu et al., 2011b). Ice level measurements indicate that a 15 cm thick layer of ice was added to the upper surface of the ice block in Scărișoara Ice Cave, exceeding the mean annual growth for the 2000-2018 period (Persoiu and Pazdur, 2011; Persoiu, 2018). Overall, in the 2018-2019 winter northerly cold air advection and westerly and southerly moisture transport (Fig. 9) resulted in rapid ice accretion in caves in SE Europe, both as direct snow accumulation and water freezing.

445 However, winter ice accumulation was counterbalanced in 2019 spring and summer, when higher than average precipitation led to rapid cave ice ablation, in Crna Ledena and Chionotrypa Falakro caves as well as at glacierets in Bulgaria. At all these locations precipitation amounts between May and July 2019 exceeded the multiannual mean (Fig. 10), mainly during extreme thunderstorm events (Figs. 10b, e, h). These extreme events delivered large volumes of warm water directly on the surface of cave and surface glaciers, leading to rapid melting. In the case of Scărișoara Ice Cave, and Velika ledena jama v Paradani, where the main ice blocks are not located directly below the caves' entrance shafts, similarly extreme summer thunderstorms (Figs. 8 and 10) resulted in high volumes of water entering the caves through fissures in the host rock as percolating water. This led to widespread melting of ice, resulting in the loss of about 35 cm of ice over the entire surface (>2000 m²) of the ice block (Fig. 4). On Mt. Olympus, summer 2019 was warm and dry (Fig. 10). In Chionotrypa Olympus, the surface of the ice is just 6 m below the cave entrance (Pennos et al., 2018) and thus the cave ice deposit responds to climatic variability in a manner similar to surface glaciers. The thermal inversion layer inside this shallow entrance shaft was easily destroyed during the prolonged warm spell, triggering the rapid melt of the surface and sides of the glacier; however, lack of precise measurements prevent us from estimating a figure for the volume of lost ice.

455 Cave ice deposits are prone to rapid disintegration once melt-water channels start to develop on their surface, channels that 1) drain away water before it would freeze to form new layers of ice (Persoiu and Pazdur, 2011) and 2) enhance melting and fragmentation leading to rapid loss of ice (e.g., Lauritzen et al., 2018). The cumulative ice loss in summer 2019 for the four analyzed caves is ~1300 m³. This loss adds to the long-term worldwide melting of cave ice (Kern and Persoiu, 2013), but it is unprecedented over the past century (Fig. 12). Several studies (Kern et al., 2009; Persoiu and Pazdur, 2011) of long-term links between ice mass balance and climate in caves have shown that cave glaciers have a non-linear response to air temperature changes, extreme warming events playing an insignificant role in the melting of ice, with warm water infiltration and the length of the warm season being by far the most important factors causing melting. Similar observations were made by Colucci et al. (2016) in the southern Alps, where rapid and massive loss of cave ice was documented as a

460

465

- Deleted: December 2018 and
- Deleted: s
- Deleted: 6b,
- Deleted: 6
- Deleted: the
- Deleted: (
- Deleted:)
- Deleted: (
- Deleted:)
- Deleted: 6
- Deleted: Ledena jama v Paradani
- Deleted:
- Deleted: 6
- Deleted: Contrary
- Deleted: .
- Deleted: the 2019 extremely
- Deleted: wet late spring and summer
- Deleted: . Direct rain-on-snow events resulted in heavy mass loss
- Deleted: (Croatia)
- Deleted: (
- Deleted:)
- Deleted: in
- Deleted: the surface glaciers in Bulgaria
- Deleted: three
- Deleted: 5
- Deleted: 7
- Deleted: (Romania)
- Deleted: Ledena jama v Paradani (Slovenia)
- Deleted: 5
- Deleted: 7
- Deleted: , leading to enhanced melting through heat delivered to the surface of the glaciers by ...
- Deleted: (Persoiu and Onac, 2019)
- Deleted: (Chionotrypa cave)
- Deleted: 7
- Deleted: this cave
- Deleted: glacier
- Deleted: .

505 [result of melting under the influence of warm water advection delivered by extreme \(in terms of amount and intensity\) precipitation events.](#)

[A behavior similar to the ice caves in Greece and Croatia where the ice and snow deposits are directly influenced by external weather and climatic conditions](#) was observed [for the Snezhnika and Banski Suhodol glacierets.](#) [The rapid melting of these glacierets was accelerated by the warm and moist conditions resulting from turbulent heat fluxes near the surface of the ice](#) (Marks et al., 1998; Pomeroy et al., 2016), [in addition to the heat delivered directly by rainwater.](#) The relative area loss of Snezhnika glacieret was $\sim 0.94\% \text{ a}^{-1}$ between 1959 and 2008, similar to the average global value of $1\% \text{ a}^{-1}$ (Vaughan et al., 2012), but increased to $1.86\% \text{ a}^{-1}$ between 2008 and 2018 and $19.3\% \text{ a}^{-1}$ [in 2019.](#) For Banski Suhodol glacieret, the relative area loss between 2018 and 2019 was close to that of Snezhnika glacieret at $17.2\% \text{ a}^{-1}$. [The dramatic increase in area loss, coupled with overall shallow thickness of these glaciers makes them especially vulnerable to rapid disintegration.](#) The equilibrium line altitude for surface glaciers and glacierets in southeast Europe is well above the highest peaks (Hughes, 2018) so they are in a continuous ice mass loss, with extreme events like the one we have described threatening their survival. Extrapolating our data, episodes of rapid summer melt induced by similar extreme events, either heat waves (Hughes, 2008) or precipitation (this study) could result in the loss of surface ice in the coming decade. Similarly to the glacierets we investigated,

520 [perennial snow patches on Mt. Olympus, remnants of glaciers from the last glacial cycle \(Styllas et al., 2018\), began to disintegrate in 2019 under the prolonged heat wave.](#) These cases mirror recent findings from SW Europe, where Moreno et al. (2020) have shown that glaciers surviving warm periods of the past 2000 years are rapidly melting, being at the risk of disappearing within the coming decade(s).

[All surface glaciers in southern Europe are out of balance with present-day climatic conditions, but the slow melting occurring at their termini results in gradual re-equilibration with local climatic conditions \(Zekollari et al., 2020\).](#) However, 525 recent rapid warming leads to an increase in the altitude of the $0\text{ }^{\circ}\text{C}$ isotherm (Rottler et al., 2019) thus further increasing the imbalance between glaciers and climate and enhanced melting. Our results suggest that, adding to the melting under increased temperatures, heavy summer precipitation events result in enhanced melting of both cave and surface glaciers. With increasing temperatures, the altitudinal rise of the $0\text{ }^{\circ}\text{C}$ isotherm (Rubel et al., 2017) would bring more glaciated terrain under warming conditions, and thus yet more susceptible to heat transfer during heavy summer thunderstorms and extreme 530 summer heat waves. Accelerated warming of the Arctic (Holland and Bitz, 2003) would result in meridional amplification and slower propagation of the Rossby waves, leading to an increase in the frequency of blocking conditions and associated extreme events (Francis and Vavrus, 2012; Liu et al., 2012; Screen and Simonds, 2014). The increased frequency, duration and intensity of both heat waves (e.g., Spinoni et al., 2015) and heavy rainfall events (Púček et al., 2017; Rädler et al., 2019) [in southeast Europe](#) would thus lead to a higher ablation rate of surface and cave glaciers than that expected from increased 535 temperatures alone. Especially vulnerable are cave glaciers, already located in areas subject to both warming and extreme summer thunderstorms, and surface glaciers close to the 0 ° isotherm, thus resulting in the loss of ice faster than predicted by the most recent estimates (IPCC, 2019; Paul et al., 2020).

Deleted:

Deleted: similar

Deleted: in the case of the surface of

Deleted: s

Deleted: , where, in addition to the heat delivered directly by rainwater, melting was enhanced

Deleted: enhanced

Deleted: .

Deleted: .

Deleted: between 2018 and

Deleted: s

Deleted: .

Deleted: Cave ice deposits are similarly prone to rapid disintegration once melt-water channels start to develop on their surface, channels that 1) drain away water before it would freeze to form new layers of ice (Persoiu and Pazdur, 2011) and 2) enhance melting and fragmentation leading to rapid loss of ice (e.g., Lauritzen et al., 2018). The cumulative ice loss in summer 2019 for the four analyzed caves is $\sim 1300 \text{ m}^3$. This loss ad to the long-term worldwide melting of cave ice (Kern and Persoiu, 2013), but it is unprecedented over the past century (Fig. 8). Several studies (Kern et al., 2009; Persoiu and Pazdur, 2011) of long-term links between ice mass balance and climate in caves have shown that cave glaciers have a non-linear response to air temperature changes, extreme warming events playing an insignificant role in the melting of ice, with warm water infiltration and the length of the warm season being by far the most important factors causing melting.

565 **6 Conclusions and outlook**

We have investigated the response of cave and surface glaciers to extreme summer rain events in SE Europe during 2019 and unraveled unprecedented ice mass loss over the observational period. Surface glaciers in the northern Balkans lost on average nearly one fifth of their surface in a single summer, a rate at which mountains in SE Europe could be glacier free by the end of the decade (2030 CE). The ice mass losses are related to enhanced melting resulting from outsized amounts of water reaching the caves and delivering large amounts of heat directly to the ice. The synoptic conditions leading to these extreme events were induced by the persistence of blocking conditions over Western Europe leading to extreme heat waves in southern Europe and record-breaking amounts of rainfall. While cave and surface glaciers in mountains across Europe are sensitive to increasing temperature, we showed here that extreme summer rains led to rapid melting and disintegration of ice bodies, rendering them even more sensitive to temperature changes. As climate models suggest future changes in the dynamics of Rossby waves leading to more extreme events, disappearance of both surface and cave glaciers in SE Europe (and elsewhere) will occur earlier than predicted.

The ongoing and predicted loss of recently accumulated ice threatens the possibility to accurately reconstruct past climate variability using various proxies harbored in cave ice. In order to generate (semi) quantitative reconstructions it is crucial to collect ice that grew during the instrumental period (the last ~50-100 years) and compare the reconstructed variables with measure ones. The accelerated melting of ice is quickly reducing the possibility to perform such studies, thus leading to the additional loss of invaluable climatic information.

Data availability. The E-OBS data set was downloaded from the European Union's Earth observation programme available at https://surfobs.climate.copernicus.eu/dataaccess/access_eobs.php#datafiles (last access on December 18, 2020). The snow depth data was provided by Deutscher Wetterdienst (www.dwd.de, last access on December 18, 2020).

Author contributions. AP designed the study and wrote the manuscript with input from all authors. MI analyzed the climate data. CP, YS and SZ collected data and YS reconstructed the dynamics of ice in Chionotrypa Cave (Falakro), NB and VB made measurements in Crna Ledenica Cave, MS collected data from Chionotrypa Cave (Olympus), JK measured ice dynamics in Velika ledena jama v Paradani and AO and AH collected and analyzed data from the surface glaciers in Bulgaria.

Competing interests. The authors declare that they have no conflict of interest.

Acknowledgments. The work behind this article would not have been possible without fieldwork support from Nina Marić, Željko Marunčić Bospor, Ioanna Mylona, Tasos Polihroniadis and Matea Talaja. We thank Toni Tursić-Franky for hosting

Deleted: (the last 120 years)

Deleted: .

Deleted: our observations show

us during fieldwork in Croatia and the Administration of the Apuseni National Park (Romania) and the Public Institution Biokovo Nature Park (Croatia) for the continuing support. The Ephorate of Palaeoanthropology and Speleology of the Greek Ministry of Culture is thanked for providing access to Chionotrypa Cave. Fieldwork in Greece and Croatia was partly supported by the International Union of Speleology. AP was financially supported by UEFISCDI Romania through grant no. PN-III-P1-1.1-TE-2016-2210. [MI is supported by Helmholtz funding through the joint program "Changing Earth - Sustaining our Future" \(PoF IV\) of the AWI. Funding by the AWI Strategy Fund Project - PalEX and by the Helmholtz Climate Initiative - REKLIM is gratefully acknowledged.](#) AO received financial support from the Ministry of Research and Innovation, CNCS - UEFISCDI, project number PN-III-P1-1.1-PD-2016-0172, within PNCDI III and AH was financially supported by the Romanian grant PNIII28 PFE BID. The research leading to these results has received funding from the EEA Grants 2014-2021, under Project contract no. 3/2019 (KARSTHIVES). [IP-SP project SPIRIT251220 provided support during the revision of the manuscript.](#) We thank dr. Sevasti Modestou who kindly agreed to check the language and spelling of the manuscript. Ketil Isaksen, Zoltán Kern and two anonymous reviewers provided useful comments that helped us reshape the manuscript.

References

- 615 [Badaluta, C. A., Persoiu, A., Ionita, M., and Piotrowska, N.: Stable isotopes in cave ice suggest summer temperatures in east-central Europe are linked to Atlantic Multidecadal Oscillation variability, *Clim. Past*, 16 \(6\), 2445-2458, <https://doi.org/10.5194/cp-16-2445-2020>, 2020.](#)
- Barnes, E. A., and Polvani, L. M.: CMIP5 Projections of Arctic Amplification, of the North American/North Atlantic Circulation, and of their relationship, *J. Climate*, 28, 5254-5271, <https://doi.org/10.1175/jcli-d-14-00589.1>, 2015.
- 620 Brad, T., Itcus, C., Pascu, M.-D., Persoiu, A., Hillebrand-Voiculescu, A., Iancu, L., and Purcarea, C.: Fungi in perennial ice from Scărișoara Ice Cave (Romania), *Sci. Rep.*, 8, 10096, <https://doi.org/10.1038/s41598-018-28401-1>, 2018.
- [Braithwaite, R. J., and Raper, S. C. B.: Glaciological conditions in seven contrasting regions estimated with the degree-day model, *Ann. Glaciol.*, 46, 296–302, <https://doi.org/10.3189/172756407782871206>, 2007.](#)
- [Brown, J., Harper, J. and Humphrey, N.: Cirque glacier sensitivity to 21st century warming: Sperry Glacier, Rocky Mountains, USA, *Glob. Planet. Change* 74, 91–98, <https://doi.org/10.1016/j.gloplacha.2010.09.001>, 2010.](#)
- 625 Buzjak, N., Bočić, N., Paar, D., Bakšić, D., and Dubovečak, V.: Ice caves in Croatia, in: Ice caves, edited by: Persoiu, A. and Lauritzen, S. E., [Elsevier, Amsterdam, the Netherlands](#), 335-369, <https://doi.org/10.1016/B978-0-12-811739-2.00016-4>, 2018.
- [Colucci, R. R., and Guglielmin, M.: Precipitation–temperature changes and evolution of a small glacier in the southeastern European Alps during the last 90 years, *Int. J. Climatol.*, 35, 2783-2797, <https://doi.org/10.1002/joc.4172>, 2015.](#)
- 630 [Colucci, R. R., Fontana, D., Forte, E., Potleca, M., and Guglielmin, M.: Response of ice caves to weather extremes in the southeastern Alps, Europe, *Geomorphology*, 261, 1-11, <http://doi.org/10.1016/j.geomorph.2016.02.017>, 2016.](#)

Deleted:

Deleted: MI acknowledges support from the AWI Strategy Fund Project - PalEX and by the Helmholtz Climate Initiative – REKLIM.

Deleted: This work was supported by a grant of Ministry of Research and Innovation, CNCS - UEFISCDI, project number PN-III-P4-ID-PCCF-2016-0016, within PNCDI III. ...

Deleted: s

Deleted: and 4/2019 (GROUNDWATERISK)

- Cornes, R., Van der Schrier, G., Van den Besselaar, E. J. M., and Jones, P. D.: An Ensemble Version of the E-OBS Temperature and Precipitation Datasets, *J. Geophys. Res.*, 123, 9391–9409, <https://doi.org/10.1029/2017JD028200>, 2018.
- European State of the Climate 2019 summary, Copernicus Climate Change Service, <https://doi.org/10.24381/zw9t-hx58>.
- 645 Feurdean, A., Persoiu, A., Pazdur, A., and Onac, B. P.: Evaluating the palaeoecological potential of pollen recovered from ice in caves: a case study from Scarisoara Ice Cave, Romania, *Rev. Palaeobot. Palyno.*, 165, 1–10, <https://doi.org/10.1016/j.revpalbo.2011.01.007>, 2011.
- Francis, J. A., and Vavrus, S. J.: Evidence linking Arctic amplification to extreme weather in mid-latitudes, *Geophys. Res. Lett.*, 39, L06801, <https://doi.org/10.1029/2012GL051000>, 2012.
- 650 Gachev, E., Stoyanov, K., and Gikov, A.: Small glaciers on the Balkan Peninsula: state and changes in the last several years, *Quat. Int.*, 415, 33–54, <https://doi.org/10.1016/j.quaint.2015.10.042>, 2016.
- [Giorgi, F., Im, E. S., Coppola, E., Diffenbaugh, N. S., Gao, X. J., Mariotti, L., and Shi, Y.: Higher Hydroclimatic Intensity with Global Warming, *J. Climate*, 24, 5309–5324, <https://doi.org/10.1175/2011JCLI3979.1>, 2011.](#)
- [Giorgi, F., Torma, C., Coppola, E., Ban, N., Schär, C., and Somot, S.: Enhanced summer convective rainfall at Alpine high elevations in response to climate warming, *Nat. Geosci.*, 9, 584–589, <https://doi.org/10.1038/ngeo2761>, 2016.](#)
- 655 [Gradziński, M., Hereman, H., Peresviet-Soltan, A., Zelinka, J., and Jelonek, M.: Radiocarbon dating of fossil bats from Dobšina Ice Cave \(Slovakia\) and potential palaeoclimatic implications, *Ann. Soc. Geol. Pol.*, 86, 341–350, <https://doi.org/10.14241/asgp.2016.016>, 2016.](#)
- Grunewald, K. and Scheithauer, J.: Europe’s southernmost glaciers: response and adaptation to climate change, *J. Glaciol.*, 56 (195), 129–142, <https://doi.org/10.3189/002214310791190947>, 2010.
- 660 Hall, D. K. and Riggs, G. A.: MODIS/Terra Snow Cover Monthly L3 Global 0.05Deg CMG; Version 6; NASA National Snow and Ice Data Center Distributed Active Archive Center: Boulder, Co, USA, 2006.
- [Hughes, P. D.: Response of a Montenegro glacier to extreme summer heatwaves in 2003 and 2007, *Geogr. Ann.*, 90A \(4\), 259–267, <https://doi.org/10.1111/j.1468-0459.2008.00344.x>, 2008.](#)
- 665 [Hughes, P. D.: Little Ice Age glaciers and climate in the Mediterranean mountains: a new analysis, *Cuadern. Investig. Geográfica*, 44 \(1\), 15–45, <https://doi.org/10.18172/cig.3362>, 2018.](#)
- Hughes, P. D.: Little Ice Age glaciers in the Balkans: low altitude glaciation enabled by cooler temperatures and local topoclimatic controls, *Earth Surf. Process. Land.*, 35, 229–241, <https://doi.org/10.1002/esp.1916>, 2009.
- HBSD: Crna ledenica - HR00366, Ministry of Environmental Protection and Energy: Information System for Nature Conservation - Cadastre of Speleological Objects of the Republic of Croatia, <http://natura2000.dzpz.hr/speleo/>, Last read 22 May 2020.
- 670 Holland, M. M. and Bitz C. M.: Polar amplification of climate change in coupled models, *Clim. Dynam.*, 21, 221–232, <https://doi.org/10.1007/s00382-003-0332-6>, 2003.

- IPCC: Summary for Policymakers, in: IPCC special report on the ocean and cryosphere in a changing climate, edited by: Pörtner, H.-O., Roberts, D. C., Masson-Delmotte, V., Zhai, P., Tignor, M., Poloczanska, E., Mintenbeck, K., Nicolai, M., Okem, A., Petzold, J., Rama, B., and Weyer, N., 2019.
- Itcus, C., Pascu, M. D., Lavin, P., Persoiu, A., Iancu, L., and Purcarea, C.: Bacterial and archaeal community structures in perennial cave ice, *Sci. Rep.*, 8, 15671, <https://doi.org/10.1038/s41598-018-34106-2>, 2018.
- Kalnay, E., Kanamitsu, M., Kistler, R., Collins, W., Deaven, D., Gandin, L., Iredell, M., Saha, S., White, G., Woollen, J., Zhu, Y., Leetmaa, A., Reynolds, R., Chelliah, M., Ebisuzaki, W., Higgins, W., Janowiak, J., Mo, K. C., Ropelewski, C., Wang, J., Jenne, R., and Joseph, D.: The NCEP/NCAR 40-year reanalysis project, *B. Am. Meteorol. Soc.*, 77, 437–470, [https://doi.org/10.1175/1520-0477\(1996\)077<0437:TNYRP>2.0.CO;2](https://doi.org/10.1175/1520-0477(1996)077<0437:TNYRP>2.0.CO;2), 1996.
- Kern, Z. and Persoiu, A.: Cave ice - the imminent loss of untapped mid-latitude cryospheric palaeoenvironmental archives, *Quaternary Sci. Rev.*, 67, 1-7, <https://doi.org/10.1016/j.quascirev.2013.01.008>, 2013.
- Kern, Z. and Thomas, S.: Ice level changes from seasonal to decadal time-scales observed in lava tubes, Lava Beds National Monument, NE California, USA, *Geogr. Fis. Din. Quat.*, 37 (2), 151–162, <https://doi.org/10.4461/GFDQ.2014.37.14>, 2014.
- Kern, Z., Molnár, M., Svingor, É., Persoiu, A., and Nagy, B.: High-resolution, well-preserved tritium record in the ice of Borțig Ice Cave (Bihor Mts., Romania), *The Holocene*, 19 (5), 729-736, <https://doi.org/10.1177/0959683609105296>, 2009.
- Kern, Z., Széles, E., Horvatinčić, N., Főrizs, I., Bočić, N., and Nagy, B.: Glaciochemical investigations of the ice deposit of Vukušić Ice Cave, Velebit Mountain, Croatia, *The Cryosphere*, 5, 485-494, <https://doi.org/10.5194/tc-5-485-2011>, 2011.
- [Kern, Z., Palcsu, L., Pavuza, R., and Molnár, M.: Age estimates on the deposition of the Cave ice block in the Saarlhütte Dachstein-Mammoth Cave \(Mammothhöhle, Austria\) based on ³H and ¹⁴C. *Radiocarbon*, 60, 1379-1389. https://doi.org/10.1017/RDC.2018.96, 2018.](https://doi.org/10.1017/RDC.2018.96)
- Kern, Z., Bočić, N., and Sipos, G.: Radiocarbon-Dated vegetal remains from the cave ice deposits of Velebit Mountain, Croatia, *Radiocarbon*, 60, 1391-1402, <https://doi.org/10.1017/RDC.2018.108>, 2018.
- [Kumar, R.: Glacieret, in: Encyclopedia of Snow, Ice and Glaciers, edited by: Singh, V. P., Singh, P., and Haritashya, U. K., Springer Netherlands, Dordrecht, 436-436. https://doi.org/10.1007/978-90-481-2642-2_203, 2011.](https://doi.org/10.1007/978-90-481-2642-2_203)
- Lauritzen, S.-E., Baastad, L., and Engelién, J.: Ice Caves in Norway, Fennoscandia and the Arctic, in: Ice caves, edited by: Persoiu, A. and Lauritzen, S. E., Elsevier, Amsterdam, the Netherlands, 479-492, <https://doi.org/10.1016/B978-0-12-811739-2.00023-1>, 2018.
- Leunda, M., González-Sampériz, P., Gil-Romera, G., Bartolomé, M., Belmonte-Ribas, Á., Gómez-García, D., Kaltenrieder, P., Rubiales, J. M., Schwörer, C., Tinner, W., Morales-Molino, C., and Sancho, C.: Ice cave reveals environmental forcing of long-term Pyrenean tree line dynamics, *J. Ecol.*, 107, 814-828, <https://doi.org/10.1111/1365-2745.13077>, 2019.

Deleted: Kern, Z., Dating cave ice deposits, in: Ice caves, edited by: Persoiu, A. and Lauritzen, S. E., 109-122. <https://doi.org/10.1016/B978-0-12-811739-2.00005-X>, 2018.

- 710 Liu, J., Curry, J., and Wang, H.: Impact of declining Arctic sea ice on winter snowfall, *Proc. Natl. Acad. Sci. USA*, 109, 4074–4079, <https://doi.org/10.1073/pnas.1114910109>, 2012.
- [Luetscher, M. and Jeannin, P.: A process-based classification of alpine ice caves, *Theor. Appl. Karst.*, 17, 5–10, 2004.](#)
- [Luetscher, M., Jeannin, P.-Y., and Haeblerli, W.: Ice caves as an indicator of winter climate evolution: a case study from the Jura Mountains, *The Holocene*, 15, 982–993, 10.1191/0959683605hl872ra, 2005.](#)
- 715 Marks, D., Kimball, J., Tingey, D., and Link, T.: The sensitivity of snowmelt processes to climate conditions and forest cover during rain-on-snow: a case study of the 1996 Pacific Northwest flood, *Hydrol. Proc.*, 12, 1569–1587, [https://doi.org/10.1002/\(SICI\)1099-1085\(199808/09\)12:10/11<1569::AID-HYP682>3.0.CO;2-L](https://doi.org/10.1002/(SICI)1099-1085(199808/09)12:10/11<1569::AID-HYP682>3.0.CO;2-L), 1998.
- Marzeion, B., Jarosch, A. H., and Gregory, J. M.: Feedbacks and mechanisms affecting the global sensitivity of glaciers to climate change, *The Cryosphere*, 8 (1), 59–71, <https://doi.org/10.5194/tc-8-59-2014>, 2014.
- 720 Mihevc, A.: Ice caves in Slovenia, in: Ice caves, edited by: Perşoiu, A. and Lauritzen, S. E., [Elsevier, Amsterdam, the Netherlands](#), 691–703, <https://doi.org/10.1016/B978-0-12-811739-2.00030-9>, 2018.
- Mondini, A., Donhauser, J., Itcus, C., Marin, C., Persoiu, A., Lavin, P., Frey, B., and Purcarea, C.: High-throughput sequencing of fungal communities across the perennial ice block of Scărișoara Ice Cave, *Ann. Glaciol.*, 59, 134–146, <https://doi.org/10.1017/aog.2019.6>, 2019.
- 725 Moreno, A., Bartolomé, M., López-Moreno, J. I., Pey, J., Corella, P., García-Orellana, J., Sancho, C., Leunda, M., Gil-Romera, G., González-Sampériz, P., Pérez-Mejías, C., Navarro, F., Otero-García, J., Lapazaran, J., Alonso-González, E., Cid, C., López-Martínez, J., Oliva-Urcia, B., Faria, S. H., Sierra, M. J., Millán, R., Querol, X., Alastuey, A., and García-Ruiz, J. M.: The case of a southern European glacier disappearing under recent warming that survived Roman and Medieval warm periods, *The Cryosphere Discuss.*, 2020, 1–29, <https://doi.org/10.5194/tc-2020-107>, 2020.
- 730 [Orlemans, J.: Extracting a climate signal from 169 glacier records, *Science*, 308 \(5722\), 675–677, <https://doi.org/10.1126/science.1107046>, 2005.](#)
- Onaca, A., Ardelean, A., Ardelean, F., Gachev, E., Magori, B., and Sirbu, F.: Ice thickness and internal structure of two small glaciers in the Pirin Mountains (Bulgaria) assessed by geophysical investigations, In: *Proceedings of the 20th Congress of the International Union for Quaternary Research (INQUA)*, Dublin, 25–31 July, P-2845, 2019.
- 735 Paul, F., Rastner, P., Azzoni, R. S., Diolaiuti, G., Fugazza, D., Le Bris, R., Nemeč, J., Rabatel, A., Ramusovic, M., Schwaizer, G., and Smiraglia, C.: Glacier shrinkage in the Alps continues unabated as revealed by a new glacier inventory from Sentinel-2, *Earth Syst. Sci. Data*, 12, 1805–1821, <https://doi.org/10.5194/essd-12-1805-2020>, 2020.
- Paun, V. I., Icaza, G., Lavin, P., Marin, C., Tudorache, A., Persoiu, A., Dorador, C., and Purcarea, C.: Total and Potentially Active Bacterial Communities Entrapped in a Late Glacial Through Holocene Ice Core From Scarisoara Ice Cave, Romania, *Front. Microbiol.*, 10, <https://doi.org/10.3389/fmicb.2019.01193>, 2019.
- 740 Pennos, C., Styllas, M., Sotiriadis, Y., and Vaxevanopoulos, M.: Ice caves in Greece, in: Ice caves, edited by: Perşoiu, A. and Lauritzen, S. E., [Elsevier, Amsterdam, the Netherlands](#), 385–397, <https://doi.org/10.1016/B978-0-12-811739-2.00018-8>, 2018.

- 745 [Persoiu, A.: Evidence of basal melting of the ice block from Scărișoara Ice Cave. In *Glacier Caves and Glacial Karst in High Mountains and Polar Regions*, edited by Mavlyudov, B. R., Institute of Geography of the Russian Academy of Sciences, Moscow, 109-112, 2005.](#)
- [Persoiu, A.: Ice dynamics in caves, in *Ice caves*, edited by: Persoiu, A. and Lauritzen, S. E., Elsevier, Amsterdam, the Netherlands, 97-108, <https://doi.org/10.1016/B978-0-12-811739-2.00034-6>, 2018.](#)
- Persoiu, A. and Lauritzen, S. E. (Eds.): *Ice caves*, Elsevier, Amsterdam, the Netherlands, 2018.
- 750 Persoiu, A. and Onac, B.P.: Ice caves in Romania, in: *Cave and Karst Systems of Romania*, edited by: Ponta, G. M. L. and Onac, B. P., 455-465, https://doi.org/10.1007/978-3-319-90747-5_52, 2019.
- Persoiu, A. and Pazdur, A.: Ice genesis and its long-term mass balance and dynamics in Scărișoara Ice Cave, Romania, *The Cryosphere*, 5 (1), 45-53, <https://doi.org/10.5194/tc-5-45-2011>, 2011.
- Persoiu, A., Onac, B.P., and Persoiu, I.: The interplay between air temperature and ice dynamics in Scărișoara Ice Cave, Romania, *Acta Carsologica*, 40 (3), 445-456, <https://doi.org/10.3986/ac.v40i3.4>, 2011a.
- Persoiu, A., Onac, B. P., Wynn, J., Bojar, A.-V., and Holmgren K: Stable isotopes behavior during cave ice formation by water freezing in Scărișoara Ice Cave, *J. Geophys. Res. – Atmos.*, 116, D02111. <https://doi.org/10.1029/2010JD014477>, 2011b.
- Persoiu, A., Onac, B. P., Wynn, J. G., Blaauw, M., Ionita, M., and Hansson, M.: Holocene winter climate variability in Central and Eastern Europe, *Sci. Rep.*, 7, 1196, <https://doi.org/10.1038/s41598-017-01397-w>, 2017.
- Planton, S., Lionello, P., Artale, V., Aznar, R., Carrillo, A., Colin, J., Congedi, L., Dubois, C., Elizalde, A., Gualdi, S., Hertig, E., Jacobeit, J., Jordà, G., Li, L., Mariotti, A., Piani, C., Ruti, P., Sanchez-Gomez, E., Sannino, G., Sevault, F., Somot, S., and Tsimplis, M.: 8 - The Climate of the Mediterranean Region in Future Climate Projections, in: *The Climate of the Mediterranean Region*, Elsevier, Oxford, 449-502, 2012.
- 765 Pomeroy, J. W., Fang, X., and Marks, D. G.: The cold rain-on-snow event of June 2013 in the Canadian Rockies — characteristics and diagnosis, *Hydrol. Proc.*, 30, 2899-2914, <https://doi.org/10.1002/hyp.10905>, 2016.
- Půčik, T., Groenemeijer, P., Rädler, A. T., Tjissen, L., Nikulin, G., Prein, A. F., van Meijgaard, E., Fealy, R., Jacob, D., and Teichmann, C.: Future changes in European severe convection environments in a regional climate model ensemble, *J. Clim.*, 30, 6771-6794, <https://doi.org/10.1175/JCLI-D-16-0777.1>, 2017.
- 770 [Racoviță, G.: Bilan climatique de la grotte glacière de Scărișoara, dresse sur dix années d'observations, *Trav. Inst. Spéol. «E. Racovitza»*, XXXIII, 107-158, 1994.](#)
- Rädler, A. T., Groenemeijer, P. H., Faust, E., Sausen, R., and Půčik, T.: Frequency of severe thunderstorms across Europe expected to increase in the 21st century due to rising instability, *npj Clim. Atmos. Sci.*, 2, 30, <https://doi.org/10.1038/s41612-019-0083-7>, 2019.
- 775 Rottler, E., Kormann, C., Francke, T., and Bronstert, A.: Elevation-dependent warming in the Swiss Alps 1981–2017: Features, forcings and feedbacks, *Int. J. Climatol.*, 39 (5), 2556–2568. <https://doi.org/10.1002/joc.5970>, 2019.

- Rubel, F., Brugger, K., Haslinger, K., and Auer, I.: The climate of the European Alps: Shift of very high resolution Köppen-Geiger climate zones 1800-2100, *Meteorolo. Z.*, 26, 115-125, <https://doi.org/10.1127/metz/2016/0816>, 2017.
- 780 [Rusu, T., Racoviță, G., and Coman, D.: Contribution à l'étude du complexe karstique de Scărișoara. *Ann. Spéléol.*, 25, 383-408, 1970.](#)
- Sancho, C., Belmonte, Á., Bartolomé, M., Moreno, A., Leunda, M., and López-Martínez, J.: Middle-to-late Holocene palaeoenvironmental reconstruction from the A294 ice-cave record (Central Pyrenees, northern Spain), *Earth Planet. Sci. Lett.*, 484, 135-144, <https://doi.org/10.1016/j.epsl.2017.12.027>, 2018.
- 785 Screen, J. A., and Simmonds, I.: Amplified mid-latitude planetary waves favour particular regional weather extremes. *Nat. Clim. Change*, 4, 704–709, <https://doi.org/10.1038/nclimate2271>, 2014.
- Sommer, C., Malz, P., Seehaus, T. C., Lippl, S., Zemp, M., and Braun, M. H.: Rapid glacier retreat and downwasting throughout the European Alps in the early 21st century, *Nat. Comm.*, 11, 3209, <https://doi.org/10.1038/s41467-020-16818-0>, 2020.
- Spinoni, J., Lakatos, M., Szentimrey, T., Bihari, Z., Szalai, S., Vogt, J., and Antofie, T.: Heat and cold waves trends in the Carpathian Region from 1961 to 2010, *Int. J. Climat.*, 35, 4197-4209, <https://doi.org/10.1002/joc.4279>, 2015.
- 790 Spötl, C., Reimer, P. J., and Luetscher, M.: Long-term mass balance of perennial firn and ice in an Alpine cave (Austria): constraints from radiocarbon-dated wood fragments. *The Holocene* 24, 165–175, <https://doi.org/10.1177/0959683613515729>, 2014.
- 795 [Stoffel, M., Luetscher, M., Bollschweiler, M., and Schlatter, F.: Evidence of NAO control on subsurface ice accumulation in a 1200 yr old cave-ice sequence, *St. Livres ice cave, Switzerland, Quat. Res.*, 72, 16-26, <https://doi.org/10.1016/j.yqres.2009.03.002>, 2009.](#)
- Styllas, M. N., Schimmelpfennig, I., Benedetti, L., Ghilardi, M., Aumaitre, G., Bourlès, D., and Keddadouche, K.: Late-glacial and Holocene history of the northeast Mediterranean mountain glaciers - New insights from in situ-produced ³⁶Cl-based cosmic ray exposure dating of paleo-glacier deposits on Mount Olympus, Greece, *Quaternary Sci. Rev.*, 193, 244-265, <https://doi.org/10.1016/j.quascirev.2018.06.020>, 2018.
- 800 Vaughan, D. G., Comiso, J. C., Allison, I., Carrasco, J., Kaser, G., Kwok, R., Mote, P., Murray, T., Paul, F., Ren, J., Rignot, E., Solomina, O., Steffen, K., and Zhang, T.: Observations: Cryosphere, in: *Climate Change 2013: Physical Science Basis. Contribution of Working Group I to the Fifth Assessment Report of the Intergovernmental Panel on Climate Change*, edited by: Stocker, T. F., Qin, D., Plattner, G.-K., Tignor, M., Allen, S. K., Boschung, J., Nauels, A., Xia, Y., Bex, V., and Midgley, P. M., Cambridge University Press, Cambridge, UK, and New York, NY, USA, 317–382, 2013.
- 805 Zekollari, H., Huss, M., and Farinotti, D.: On the Imbalance and Response Time of Glaciers in the European Alps, *Geophys. Res. Lett.*, 47, e2019GL085578, <https://doi.org/10.1029/2019GL085578>, 2020.
- Zemp, M., Huss, M., Thibert, E., Eckert, N., McNabb, R., Huber, J., Barandun, M., Machguth, H., Nussbaumer, S. U., Gärtnert-Roer, I., Thomson, L., Paul, F., Maussion, F., Kutuzov, S., and Cogley, J. G.: Global glacier mass changes and

810 their contributions to sea-level rise from 1961 to 2016, *Nature*, 568, 382-386, <https://doi.org/10.1038/s41586-019-1071-0>,
2019.

815

820

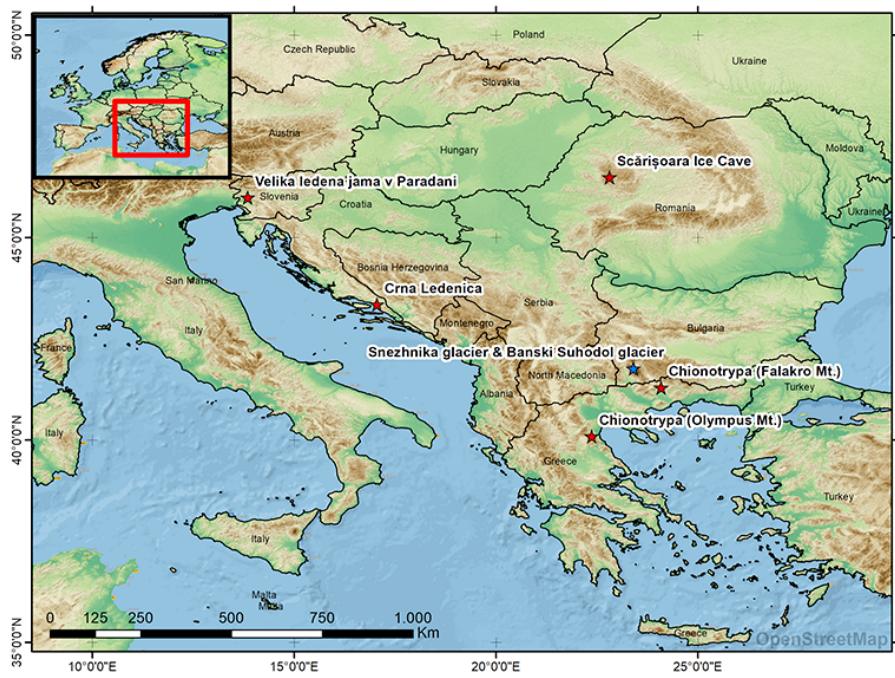
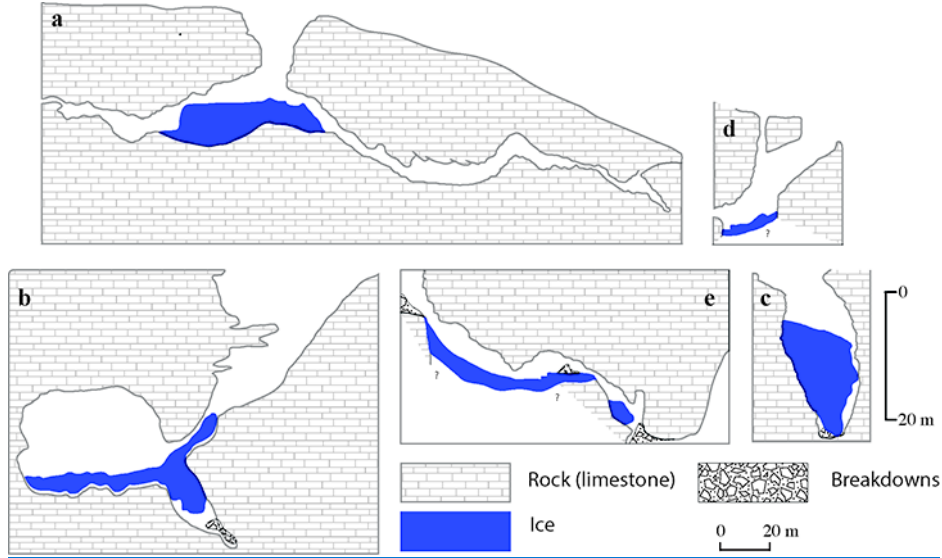


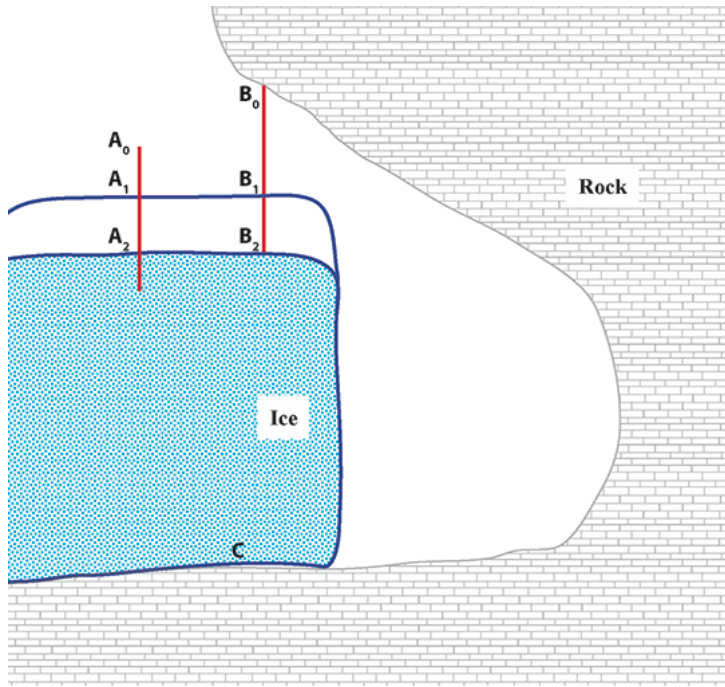
Figure 1. Location of investigated **ice cave** (red stars) and surface glaciers (blue star). Base map © OpenStreetMap contributors 2020 distributed under a Creative Commons BY-SA License.

830

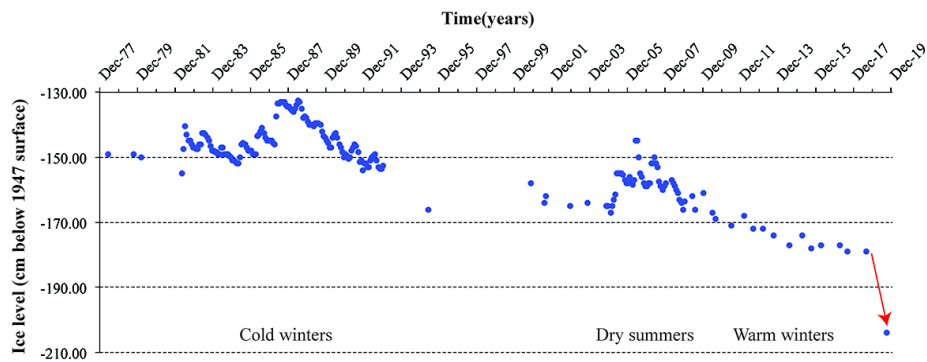


835 [Figure 2. Cross-sections through the investigated caves: a\) Scărișoara Ice Cave \(map by T. Rusu, modified from Rusu et al., 1970\), b\) Crna Ledenica \(map by N. Buzjak\), c\) Chionotrvopa Falakro \(map by Y. Sotiriadis, modified from Pennos et al., 2018\), d\) Velika ledena jama v Paradani \(modified from a map by Kunaver Pave\), 3\) Chionotrvopa Olympos \(map by M. Vaxevanopoulos, modified from Pennos et al., 2018\) All maps share a similar scale \(on the bottom of the panel\), except Chionotrvopa Olympos, for which a separate vertical scale \(half the size of the previous one\) on the right of the figure applies.](#)

840



845 [Figure 3. Ice level changes measurements in ice caves. The scale in A is fixed in ice and it moves together with it as basal melting \(C\) affects the base of the glacier. Consequently, measurements of the \$A_0\$ - \$A_1\$ and \$A_0\$ - \$A_2\$ distances give a measure of changes in ice level at the surface only. \$B_0\$ is a fixed pint in the rock ceiling above the ice. The \$B_0\$ - \$B_1\$ and \$B_0\$ - \$B_2\$ distances record ice level changes at the surface of the ice block *plus* changes at the bottom.](#)



850

Figure 4: Upper surface ice level changes of the glacier in Scărișoara Ice cave, Romania, between 1975 and 2019 (updated from Perșoiu and Pazdur, 2011). The red arrow points to the unprecedented annual melt in 2019.

Deleted: 2

855

860

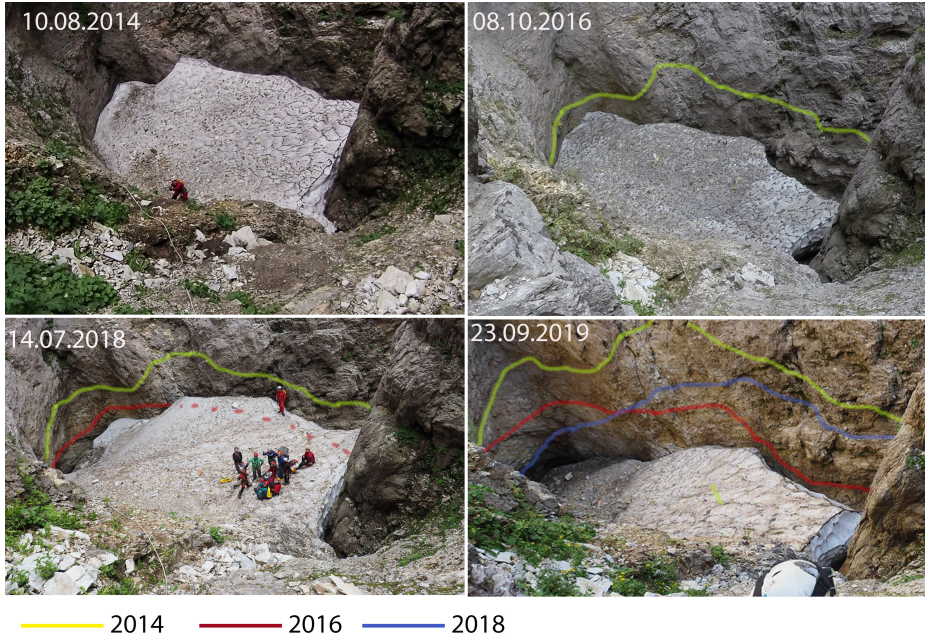
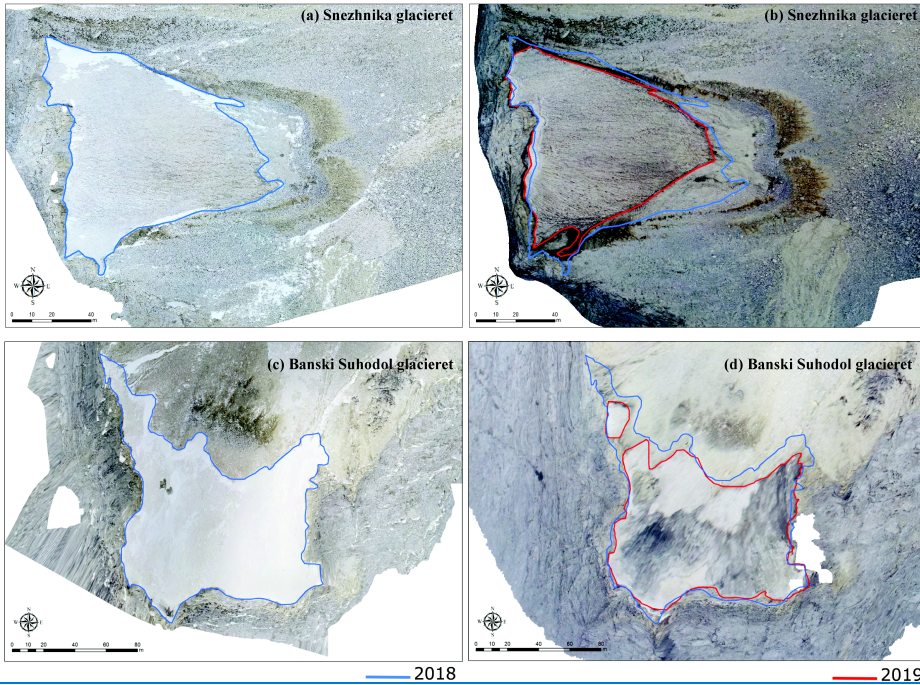


Figure 5. Changes in the surface morphology of snow and ice in Chionotrypa Cave (Falakro Mountain, Greece) since 2014.

Deleted: 3

Deleted: 6



870

Figure 6. Orthomosaics showing ice surface changes for Snezhnika (a and b) and Banski Suhodol glacierets (c and d), Bulgaria, between 2018 (a and c) and 2019 (b and d).

- Deleted: 4
- Deleted: I
- Deleted: A
- Deleted: B
- Deleted: s
- Deleted: C
- Deleted: D
- Deleted: A
- Deleted: C
- Deleted: B
- Deleted: D

875

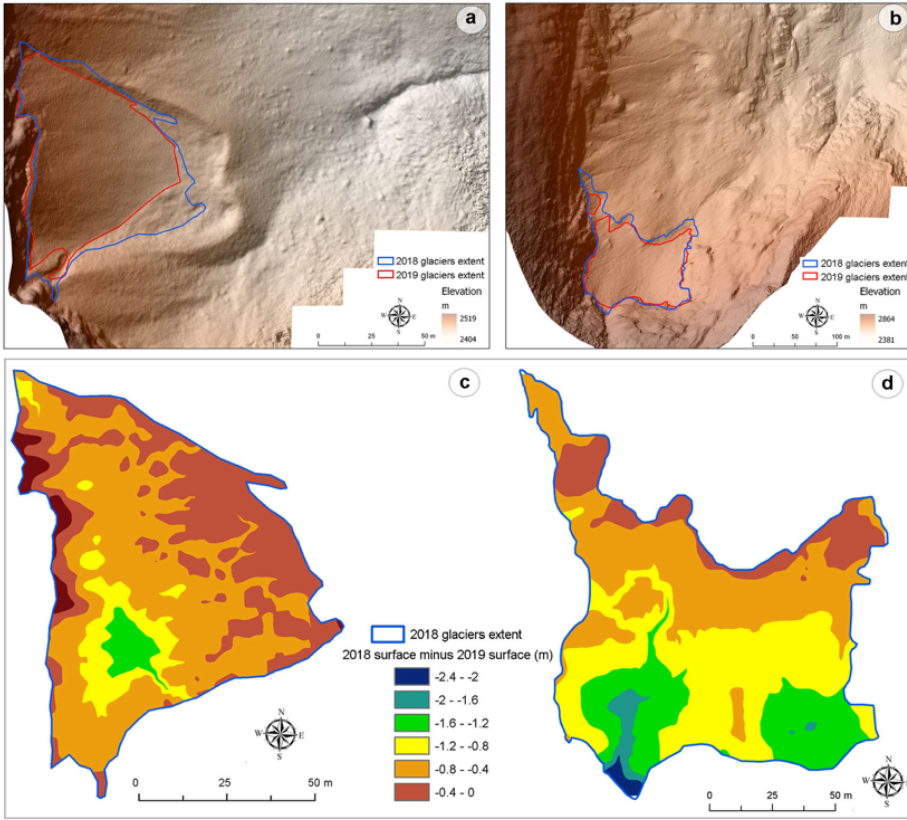
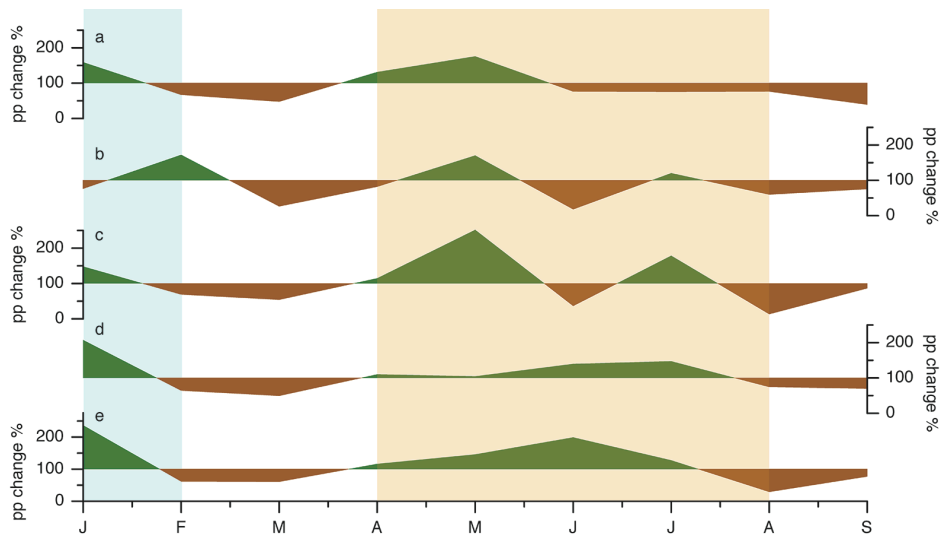


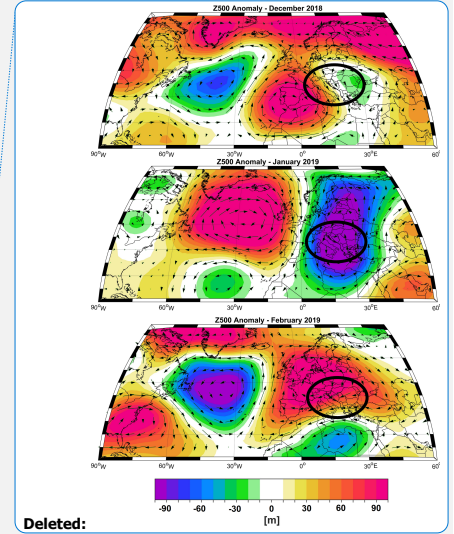
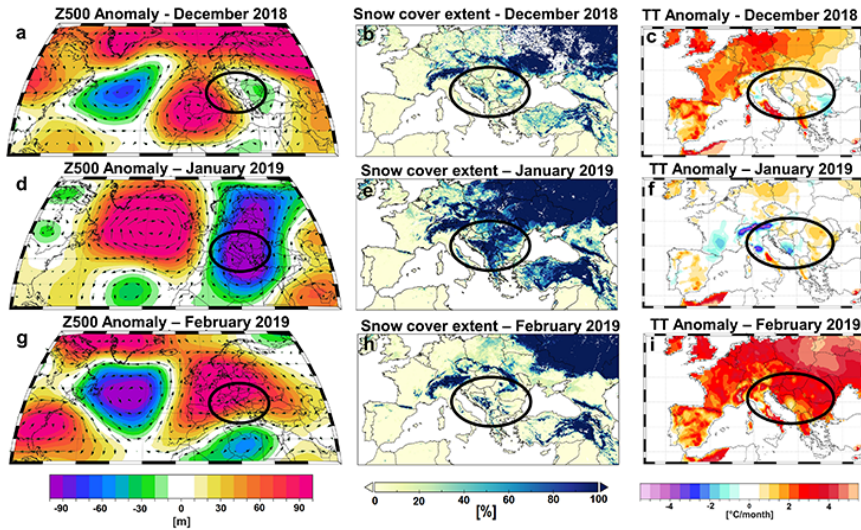
Figure 7. Digital elevation models of Snezhnika (a) and Banski Suhodol (b) glaciarets in 2019 and changes in ice surface elevation between 2018 and 2019 at Snezhnika (c) and Banski Suhodol (d) glaciarets.



895 **Figure 8. Monthly precipitation amount recorded from January to September 2019 at a) Scărișoara Ice Cave (ROU),**
b) Velika ledena jama v Paradani (SLO), c) Crna Ledenica (CRO), d) Vihren (BG) and 3) Chionotrypa (Falakro,
GRE). The data is shown in percentage deviation from the 1971-2000 average (represented by the 100 % mark).
Green shading on the charts indicates precipitation above average and brown shading indicates precipitation below
average. The blue rectangle shows the period of ice accumulation and the orange rectangle the ice ablation period of
the investigated glaciers.
 900

Deleted: 5

905



Deleted:

Deleted: 6

Deleted: f

Figure 9. Left column: Geopotential height anomalies at 500mb level (Z500) [a) December 2018; d) January 2019 and g) February 2019]. Middle column: snow cover extent across Europe [b) December 2018; e) January 2019 and h) February 2019]. Right column: mean air temperature anomalies [c) December 2018; f) January 2019 and i) February 2019]. For all the analyzed variables the anomalies are computed relative to the climatological period 1971 – 2000. Black ellipses indicate the study area.

910

915

920

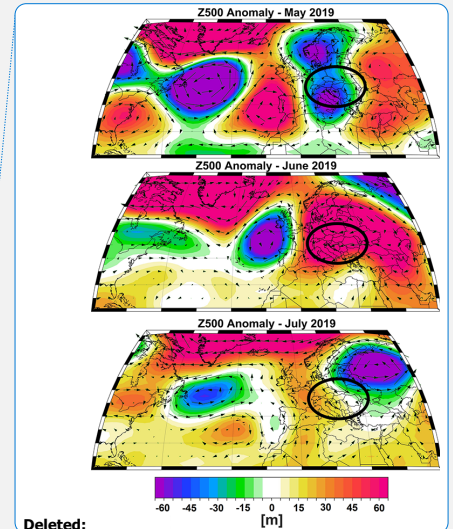
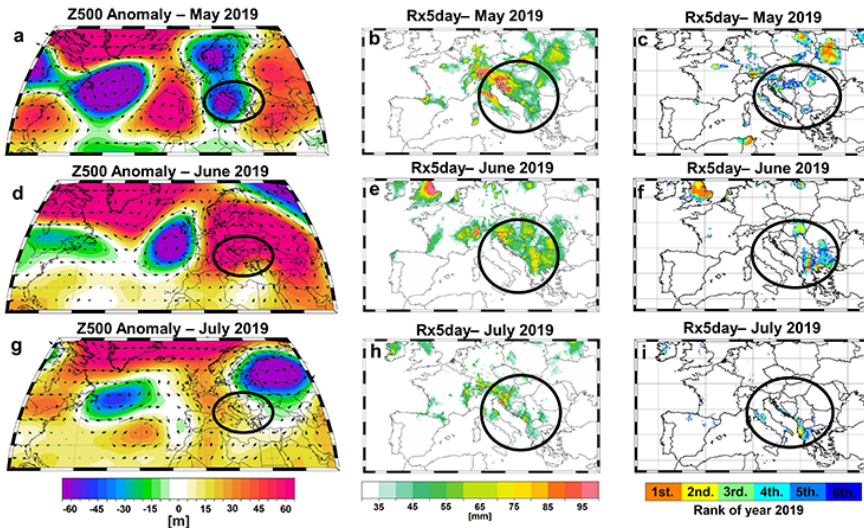


Figure 10. Left column: Geopotential height anomalies at 500mb level (Z500) [a] May 2019; d) June 2019 and g) July 2019]; Middle column - Highest 5-day precipitation amount (RX5day) [b] May 2019; e) June 2019 and h) July 2019] and right column – Top-six ranking of 2019 monthly RX5day [c] May 2019; f) June 2019 and i) July 2019]. A score of 1 represents the wettest month since 1950, a score of 2 represents the second wettest, and so on; all ranks greater than 6 are shown in white. Analyzed period: 1950–2015. For the Z500 the anomalies are computed relative to the period 1971 – 2000. Black ellipses indicate the study area.

Deleted: 7

925

930

935

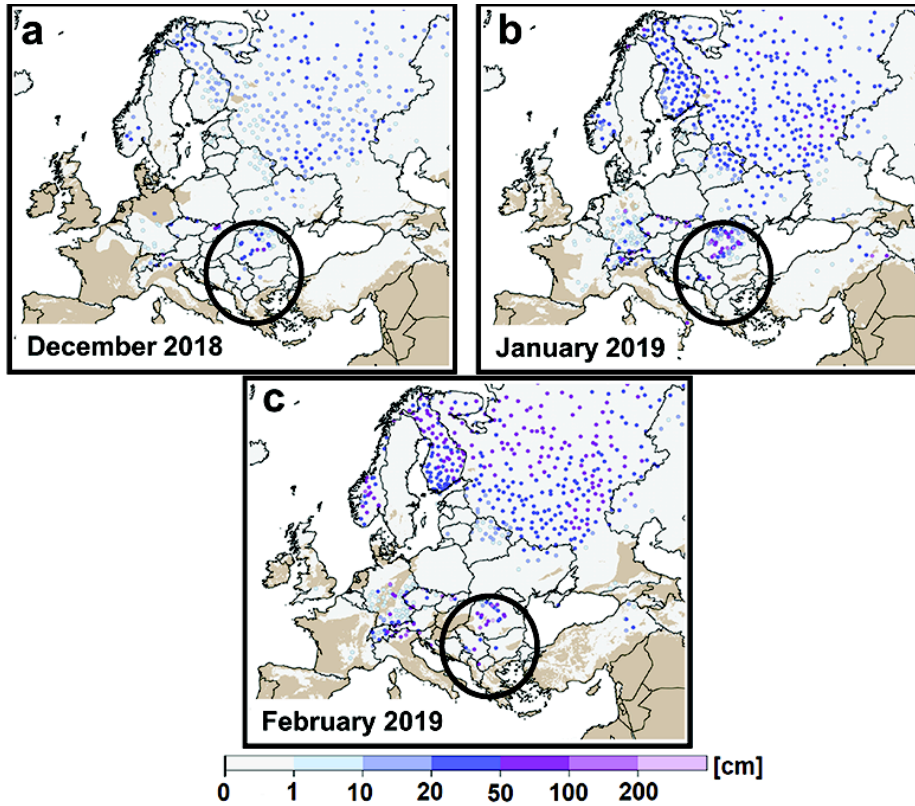


Figure 11. Snow depth in Europe in 2018-2019 winter. The black circle marks the study area. Snow depth data was provided by Deutscher Wetterdienst (www.dwd.de, last access on December 18, 2020).

940

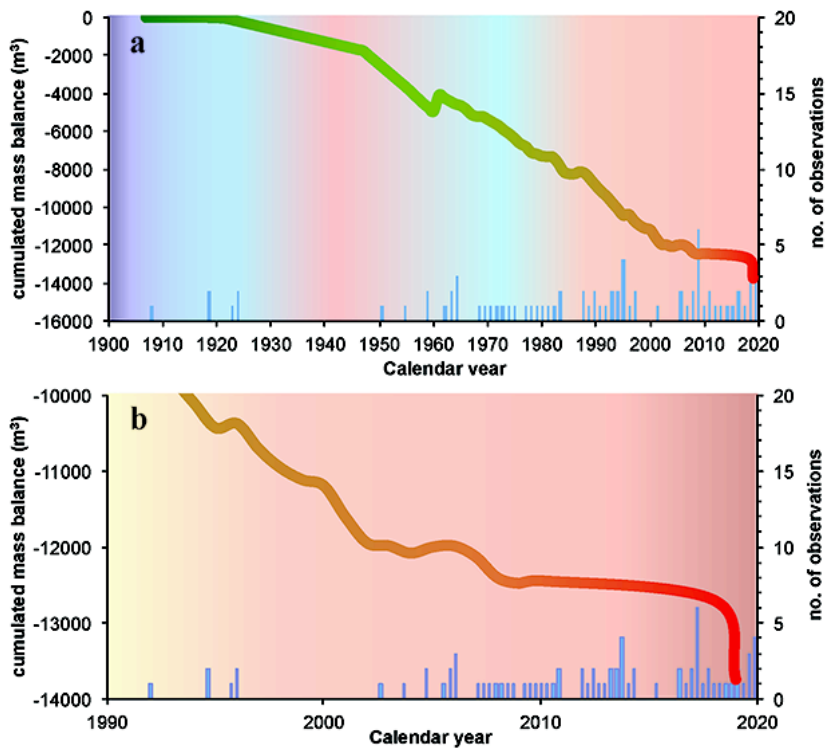


Figure 12. Cumulative ice volume loss for European cave glaciers since 1900 (panel a, modified from Kern and Perşoiu, 2013) and over the past 30 years (panel b). Blue bars indicate the number of observations (caves) and the background colors show the average global temperature changes (red – warm, blue – cold).

Deleted: 8

Table 1. Uncertainties of ice level measurements and 2019 ice loss determination.

	<u>Method</u>	<u>Measurement uncertainty in cm and % (percentage calculated for the ice loss measured in 2019)</u>
<u>Scărișoara Ice Cave</u>	<u>Ruler</u>	<u>0.3 cm (<1 %)</u>
<u>Velika ledena jama v Paradani</u>	<u>Ruler</u>	<u>0.3 cm (<1 %)</u>
<u>Chionotrypa Falakro</u>	<u>Photogrametry</u>	<u>30 cm (10 %)</u>
<u>Chionotrypa Olympos</u>	<u>Estimated</u>	<u>50 cm (25 %)</u>
<u>Crna Ledenica</u>	<u>Photogrametry</u>	<u>20 cm (10 %)</u>

Table 2. Characteristics of the digital surface models and ortophotos obtained for Snezhnika and Banski Suhodol glacierets.

<u>Glacieret</u>	<u>Date of UAV flight</u>	<u>DSM resolution (cm)</u>	<u>Ortophoto Resolution (cm)</u>	<u>Mean error DSM (cm)</u>	<u>Mean error Ortophoto (cm)</u>
<u>Snezhnika</u>	<u>28.10.2018</u>	<u>5</u>	<u>2.1</u>	<u>1.5</u>	<u>0.2</u>
	<u>6.09.2019</u>	<u>22.5</u>	<u>2.8</u>	<u>2.1</u>	<u>0.3</u>
<u>Banski Suhodol</u>	<u>29.10.2018</u>	<u>10.6</u>	<u>4.9</u>	<u>1.9</u>	<u>0.3</u>
	<u>5.09.2019</u>	<u>18.7</u>	<u>4.6</u>	<u>1.6</u>	<u>0.2</u>