

Simulations of Firn Processes over the Greenland and Antarctic Ice Sheets: 1980–2021

Brooke Medley¹, Thomas A. Neumann¹, H. Jay Zwally^{1,2}, Benjamin E. Smith³, and C. Max Stevens^{1,4}

¹Cryospheric Sciences Laboratory, NASA Goddard Space Flight Center, Greenbelt, MD, 20771, USA.

5 ²University of Maryland – College Park, College Park, MD, 20742, USA.

³Applied Physics Laboratory, University of Washington, Seattle, WA, 98105, USA.

⁴Earth System Science Interdisciplinary Center, University of Maryland, College Park, MD, 20740, USA.

Correspondence to: Brooke Medley (brooke.c.medley@nasa.gov)

Abstract. Conversion of altimetry-derived ice-sheet volume change to mass requires an understanding of the evolution of the combined ice and air content within the firn column. In the absence of suitable techniques to observe the changes to the firn column across the entirety of an ice sheet, the firn column processes are typically modelled. Here, we present new simulations of firn processes over the Greenland and Antarctic Ice Sheets using the Community Firn Model and atmospheric reanalysis variables for more than four decades. A dataset of more than 250 measured depth-density profiles from both ice sheets provides the basis of the calibration of the dry-snow densification scheme. The resulting scheme results in a reduction in the rate of densification, relative to a commonly used semi-empirical model, through a decreased dependence on the accumulation rate, a proxy for overburden stress. The modelled firn column runoff, when combined with atmospheric variables from MERRA-2, generates realistic mean integrated surface mass balance values for the Greenland (+398 Gt yr⁻¹) and Antarctic (+2606 Gt yr⁻¹) ice sheets when compared to published model-ensemble means. We find that seasonal volume changes associated with firn air content are on average approximately 2.5 times larger than those associated with surface mass balance for the AIS and 1.5 times larger for the GrIS; however, when averaged over multiple years, ice and air-volume fluctuations within the firn column are of comparable magnitudes. Between 1996 and 2019, the Greenland Ice Sheet lost nearly 4% of its firn air content indicating a reduction in the total meltwater retention capability. Nearly all (94%) of the meltwater produced over the Antarctic Ice Sheet is retained within the firn column through infiltration and refreezing.

1 Introduction

25 One of the most robust methods for measuring ice-sheet mass balance uses satellite altimetry (Shepherd et al., 2012, 2018) to measure changes in surface height through time and ultimately provide ice-sheet-wide volume change estimates (Helm et al., 2014; Paolo et al., 2015; Pritchard et al., 2009; Zwally et al., 2005, 2015). Interpretation of volume changes, however, requires ancillary information because there are several processes that generate height changes observable by satellite altimeters (Ligtenberg et al., 2011; Smith et al., 2020). The measured surface height change is a combination of signals, which reflect processes that involve ice or solid-earth mass change, or even no mass change at all. Even if we remove the

30

solid-earth processes, partitioning the remaining ice-sheet-volume change to the appropriate material densities remains a challenge. Specifically, volume change due to ice dynamics represents a change at the density of ice (917 kg m^{-3}) whereas surface processes (snowfall, sublimation, melt) typically (but not always) represent change under much lower densities ($200 \text{ kg m}^{-3} - 600 \text{ kg m}^{-3}$) (Zwally et al., 2015). Additionally, the role of surface processes in observed volume change varies substantially in space and time, yet remains largely unmeasured. Here, we present techniques that use modelling to constrain surface mass balance and firn processes over both the Greenland and Antarctic Ice Sheets (GrIS and AIS, respectively) for improved mass balance studies. Specifically, we provide details on a new approach to densification model calibration, an investigation of relevant spatial and temporal scales, uncertainty quantification, and a model of initial density.

In our modelling, we divide the ice sheets into two vertical layers of different material density, referred to hereinafter as the firn and ice columns. Typically extending tens to over hundred meters down from the surface (Ligtenberg et al., 2011), the firn column represents snow that has fallen, was subsequently buried, and is undergoing densification, yet remains less dense than ice. The rate at which firn compacts varies and is dependent on its age, the weight of snow pressing down on it from above, temperature, and meltwater infiltration and refreezing. The ice column begins at a depth where material density becomes constant (917 kg m^{-3}) and terminates at the bed. In a constant climate, the annually averaged upward vertical velocity of the surface due to snow accumulation is perfectly balanced by ablation, compaction of the firn column, transformation to solid ice, and finally divergence of the underlying ice column (Zwally and Li, 2002), and the thicknesses of the firn and ice columns remain constant. In this scenario, height change is zero.

The firn column is constantly evolving due to a changing climate, across all timescales, and the deviations in snow accumulation, meltwater production, and temperature from steady-state conditions drive changes in the firn layer thickness. The goal of this work is to simulate these changes in the firn column over the past 40+ years (1980–2021) using a firn densification model and atmospheric reanalysis climate forcing to determine its manifestation in altimetry-derived ice-sheet height change and the subsequent height change correction for mass balance studies.

1.1 Ice-Sheet Height and Mass Change

Changes in ice-sheet surface height reflect the integrated signal of several processes, some of which are related to ice or solid-earth mass change and others that reflect no mass change at all. Thus, we must decompose the full signal into various components in order to derive the quantity of interest; here, we are focusing on ice mass change.

Observed height change (dh/dt) is defined as:

$$\frac{dh}{dt} = \frac{dh_f}{dt} + \frac{dh_i}{dt} + \frac{dh_e}{dt}, \quad (1)$$

where f , i , e represent the component of dh/dt resulting from changes in firn processes, solid-ice processes, and solid-earth movement, respectively. Here, dh/dt is the surface height change; however, this value is not synonymous with actual height fluctuations of the full-ice-sheet column change (dh_I/dt). Solid-earth uplift or subsidence impacts measured height changes yet reflect changes in bedrock elevation in response to current and past ice-mass changes rather than ice-thickness

changes alone. This signal must be removed in order to isolate the height change due to combined firm and ice processes, dh_I/dt :

$$65 \quad \frac{dh_I}{dt} = \frac{dh}{dt} - \frac{dh_e}{dt} = \frac{dh_f}{dt} + \frac{dh_i}{dt}. \quad (2)$$

Height changes that manifest from solid-ice processes (dh_i/dt) result from ice dynamical change over grounded ice, but over floating ice, there is an additional component due to sub-ice-shelf melt. These processes are difficult to observe or quantify; thus, we can approximate the solid-ice changes by further reworking Eq. (2) to remove the firm-column height change signal (dh_f/dt) from the total ice-sheet column change (dh_I/dt):

$$70 \quad \frac{dh_i}{dt} = \frac{dh_I}{dt} - \frac{dh_f}{dt}, \quad (3)$$

which provides the groundwork for determining ice-sheet mass balance. If the role of firm processes in ice-sheet height change is adequately modeled, we can isolate the contribution due to ice dynamical changes, which are easily converted to mass because the material is assumed to be solid ice (917 kg m^{-3}). Ice sheet mass balance estimates remain highly sensitive to small errors in the height change measurements and the modelled firm thickness signal.

75 Firm column changes, however, have a complicated relationship with mass change. Height changes due to variable rates of compaction of the firm column do not reflect a change in mass but impact the observed ice-sheet height variations through changes in volume and density. Meltwater production is more ambiguous: when it can infiltrate the firm and refreeze, there is no resulting mass change, but when infiltration is impeded and meltwater runs off, there is mass change. The effect of net snow accumulation always reflects a change in mass and can be positive or negative. As a result, the conversion between
80 height, volume, and ultimately mass change requires understanding the material density of each component, which is neither constant in time nor space.

Rather than partition firm column changes by its individual components (see above), we divide total firm-column height change into changes in the thickness of ice and the air thickness: surface mass balance (SMB) and firm air content (FAC), respectively. Specifically, we define dh_f/dt as:

$$85 \quad \frac{dh_f}{dt} = \frac{dh_{SMB}}{dt} + \frac{dh_{FAC}}{dt}, \quad (4)$$

where dh_{SMB}/dt and dh_{FAC}/dt represent height change fluctuations due to SMB and FAC. These components are defined below. These two components are not independent of one another: snow accumulates at the surface as a mixture of ice and air. We elect to partition firm height change into ice and air components for two reasons: (1) to better support ice-sheet altimetry studies and allow for removal of non-ice-mass change from the observed volume changes and (2) to partially
90 isolate the firm modeling effort presented here from the reanalysis-generated surface mass balance variables used as forcing. Apart from surface runoff, the latter ensures that we take the SMB signal directly from the reanalysis model without modification, so the focus of the modeling work presented is almost entirely on dh_{FAC}/dt ; however, we do provide analysis of dh_{SMB}/dt for completeness.

1.1.1 Surface Mass Balance

95 The SMB is the summation of mass fluxes at the surface, including precipitation (solid and liquid), evaporation/sublimation, and runoff (Lenaerts et al., 2019). Here, we do not account for blowing snow processes that likely impact local-scale SMB; however, these processes comprise an overall small percentage of total SMB (Van Wessem et al., 2018). Specifically,

$$SMB = Sn + Ra - Ev - Ru, \quad (5)$$

where Sn is snowfall, Ra is rainfall, Ev is evaporation/sublimation, and Ru is runoff. All are in units of m ice-equivalent
100 (i.e.) per year.

1.1.2 Firn Air Content

The FAC or depth-integrated porosity represents the integrated volume of air within the entire firn column and is defined as:

$$FAC = \int_0^{z_{\rho_i}} \frac{(\rho_i - \rho(z))}{\rho_i} dz, \quad (6)$$

where ρ_i is the density of ice, z_{ρ_i} is the depth in meters at which the density of ice is reached, and $\rho(z)$ is the density at a
105 given depth. The FAC is in units of meters of air.

2 Materials and Methods

We simulated firn column processes over both the GrIS and AIS using the Community Firn Model (CFM) framework (Stevens et al., 2020), forced by reanalysis climate variables. These simulations are referred to as GSFC-FDMv1.2. First, we provide specifics relating to the CFM as well as our methodology for calibration, spin-up, and implementation. We then
110 describe our selected climate forcing from NASA's Modern-Era Retrospective analysis for Research and Applications, Version 2 (MERRA-2) used in our simulations. Third, we discuss the differences between GSFC-FDMv1.2 and its earlier versions, v1 and v0, the latter of which was used in Smith et al. (2020) and Adusumilli et al. (2020). Finally, we provide details regarding our uncertainty assessment as well as our SMB evaluation approach.

2.1 Firn Densification Modeling: GSFC-FDMv1.2

115 2.1.1 The Community Firn Model

The Community Firn Model was built as a resource to the glaciology community, consisting of a modular, open-source framework for Lagrangian modeling of several firn and firn-air related processes (Stevens et al., 2020). The CFM allows the user to select the processes and/or physics of each simulation. The core CFM modules contain physics for firn density and temperature evolution; however, there are several modules for additional processes that the user can implement. For the
120 GSFC-FDMv1.2 simulations, we use modules for grain-size evolution, meltwater percolation and refreezing, and sublimation. Grain-size evolution is simulated for testing purposes and not considered realistic. The user also has several options of firn densification physics from which to choose. Several of the models are calibrated using climate forcing from

an RCM, atmospheric reanalysis, or even satellite-derived products, which means that any biases in these climate variables will bias the calibration coefficients in the firn densification model. Thus, it is necessary to have consistent climate forcing
125 between the calibration and actual model runs, so we perform our own densification model calibration (Sect. 2.1.3). Finally, we use a simple bucket scheme for simulating meltwater percolation and refreezing; while the CFM contains a choice of physics of varying complexity, recent work by Verjans et al. (2019) suggests there is currently no evidence that the higher-order models perform better. Here, we use CFM v1.1.6 (Stevens et al., 2020, 2021).

2.1.2 Model Spin-up

130 To ensure that we do not impose any unwanted transients in our simulations, we must have a sufficiently long spin-up interval during which most of the firn column is refreshed. Due to variable snow accumulation rates across the ice sheets, the time required to fully refresh the firn column can vary significantly. Thus, we impose a variable spin-up time that is dependent on the long-term mean climate. Specifically, we use the Herron & Langway (1980) densification model to approximate the depth to the bottom of the firn column (delineated at a density of 910 kg m^{-3}) using the long-term reference
135 snow accumulation, temperature, and surface density (see Section 2.1.5). This depth is divided by a burial rate (snowfall – sublimation – melt) to estimate the time needed to refresh the firn column for a given site. Spin-up intervals typically span 300 to 7,000 years in the Antarctic and 200 to 1,500 years for Greenland. In regions with no net accumulation (snowfall < sublimation + melt), no spin-up is implemented. Rather, the simulations begin with a solid-ice column allowing the model to simulate seasonal snowfall, snowmelt, and runoff.

140 The CFM has the option to impose a dry-snow spin-up; however, this solution would build a firn column that is in dynamic equilibrium under dry conditions only. If melt were then imposed, meltwater processes would create large negative dh_f/dt and dh_{FAC}/dt that are not realistic. Instead, we only apply a 30-year spin-up to build a dry firn column. We next repeat a baseline reference climate interval (RCI) time series the number of times required to match the estimated spin-up time described above. For example, if a location needs an 800-year spin-up and the RCI is 40 years, the latter is repeated twenty
145 times. If the spin-up time required is not divisible by the RCI interval, we round up to the next integer to exceed the required spin-up time. The CFM is then run using this synthetic time series to generate a firn column that is in dynamic equilibrium with the climate under both dry and wet conditions over the RCI. For GrIS, we use a baseline RCI of January 1, 1980 – December 31, 1995, which we assume is representative of a longer-term mean climate state. The GrIS underwent a significant increase in temperatures and meltwater production after 1995 (see Sect. 3.2.1). For Antarctica, we define the
150 baseline RCI as January 1, 1980 – December 31, 2019 because there were no appreciable shifts in climate during that time and to remain consistent with prior GSFC-FDM simulations. We discuss the selection of RCI for both ice sheets in the Sect. 3.2 and explore the limitations of the approach in the Sect. 4.

2.1.3 Densification Model and Calibration

We use a subset of 256 published firn depth-density profiles from both the GrIS and AIS as the basis of our calibration procedure and perform a single calibration that is representative of both ice sheets. The density-profile dataset is described in Appendix A. The Arthern et al. (2010) dry-snow densification model provides the physical basis for our GSFC-FDMv1.2 simulations. Specifically, modelled dry-snow densification rates are separated into two stages that during which the parcels experience different compaction processes and that are defined by the density of the parcel:

$$\frac{d\rho}{dt} = c_0(\rho_i - \rho); \rho \leq 550 \frac{kg}{m^3}, \quad (7)$$

$$\frac{d\rho}{dt} = c_1(\rho_i - \rho); \rho > 550 \frac{kg}{m^3}, \quad (8)$$

where the densification rate coefficients for stage 1 and stage 2 (c_0 and c_1) are defined as a function of the total mass above a given firn parcel (\dot{b} : defined as the mean accumulation rate in ice equivalence, m.i.e. yr⁻¹, experienced since that parcel was deposited), the temperature of the parcel in Kelvin, T , and the mean annual temperature, \bar{T} :

$$c_0 = 0.07 \dot{b}^{\alpha_0} g \exp\left(\frac{-E_{c_0}}{RT} + \frac{E_g}{R\bar{T}}\right), \quad (9)$$

$$c_1 = 0.03 \dot{b}^{\alpha_1} g \exp\left(\frac{-E_{c_1}}{RT} + \frac{E_g}{R\bar{T}}\right), \quad (10)$$

where g is the gravitational acceleration constant (9.8 m s⁻²), the activation energy for lattice diffusion commonly used for ice is $E_{c_0} = E_{c_1} = 60$ kJ mol⁻¹ (Cuffey and Paterson, 2010), E_g is the activation energy for grain growth (42.4 kJ mol⁻¹), R is the gas constant (8.314 J K⁻¹ mol⁻¹), and the exponential dependence of overburden is $\alpha_0 = \alpha_1 = 1$ (Arthern et al., 2010). Thus, the dry densification rate experienced by a given firn parcel varies in time and based on ρ , \dot{b} , and T within a single stage of densification.

To begin the calibration procedure, we first run the model in its original form at 226 calibration sites across Greenland and Antarctica (Figure 1). The number of model calibration runs is less than the actual number of observations (256) as some fall within the same grid cell (e.g., several observations from the vicinity of Summit, Greenland). All 256 observations are used. Unlike other calibration efforts (Kuipers Munneke et al., 2015; Li and Zwally, 2004, 2011; Ligtenberg et al., 2011), the calibration procedure presented here treats dry-firn densification from both ice sheets together, forming a single calibration parameterization, which benefits from a much wider range of climate conditions than if each ice sheet was treated individually.

The logarithm of the firn density profile with depth is approximately linear, largely for stage 2 (Herron and Langway, 1980). More discussion on use of a logarithmic density profile is in Appendix B. For each calibration site, we compare the slopes of the logarithmic density versus depth for the two stages of densification between observations (C_0^O , C_1^O) and the equivalent model output (C_0^M , C_1^M) using the original Arthern et al. (2010) model configuration (Eqns. 7–10) forced by the RCI. Both the density measurements and model output are binned into half-meter depth increments to obtain similar sampling intervals.

After binning, the slopes are estimated. Because density measurements are noisy, we determine the slopes in an iterative fashion, removing individual density measurements with residuals to the linear model larger than 3-sigma, recalculating the linear model, and repeating until all residuals are less than 3-sigma (i.e., an iterative 3-sigma edit). Calibration sites were not used in a given stage if they either (1) did not contain more than 7 data points for that stage prior to the 3-sigma edit, (2) did not span more than 5 meters in depth, (3) the final linear model produced a slope that was not significant ($p > 0.01$), or (4) encountered significant melt (mean annual surface melt exceeds 1% of the mean annual snow accumulation). The latter ensures that we are only calibrating to dry-snow densification. Our final calibration dataset contains 141 depth-density profiles spanning stage 1 and 76 spanning stage 2. Note, there are fewer profiles for stage 2 because not every density profile extends to stage-2 densities. There are a limited number of sites used in the calibration from Greenland because most of them cannot fully reflect dry snow conditions (i.e., they do not meet the aforementioned melt criterion) (Figure 1). The ratios (R_0, R_1) of the observed slopes (C_0^O, C_1^O) to the modeled slopes (C_0^M, C_1^M) provide the necessary correction (or calibration coefficient) for each site as described below.

Rather than develop a new physical form for calibration, we optimize two parameters within the Arthern et al. (2010) model: the exponential dependence on the mean annual accumulation rate since the parcel was deposited and the activation energy for creep. Arthern et al. (2010) found evidence that the activation energy is not well constrained for the sites investigated, suggesting that the physical processes at play under various conditions are not fully understood. Similarly, Ligtenberg et al. (2011) and Kuipers Munneke et al. (2015), found that the Arthern et al. (2010) model required additional dependence on snow accumulation to best fit observations. Thus, we elect to calibrate the parameters relating to variations in snow accumulation (α_0, α_1) and temperature (E_{c_0}, E_{c_1}) for each stage of densification. This choice of calibration parameters is also important because the climate forcing contains unknown biases, which can be partially overcome through calibration. Thus, the calibrated model presented here (along with all others) is only relevant when used with the same climate forcing (see Sect. 2.2).

We define our calibration coefficients for the two stages of densification (R_0, R_1) as a function of the mean accumulation rate (\bar{b}) and temperature (\bar{T}):

$$R_0 = \frac{C_0^O}{C_0^M} = \bar{b}^{\beta_0} \exp\left(\frac{-E_0}{R\bar{T}_0}\right), \quad (11)$$

$$R_1 = \frac{C_1^O}{C_1^M} = \bar{b}^{\beta_1} \exp\left(\frac{-E_1}{R\bar{T}_1}\right). \quad (12)$$

We solve for β and E using a least-squares fit regression model (intercept = 0) with the climate forcing, \bar{b} and \bar{T} , as predictor variables and our calibration coefficient, R , as the response variable. We force the intercept to zero to minimize overdetermination and allow the changes in the Arthern et al. (2010) functional form to be linked to a physical control (e.g., overburden, temperature) rather than a bulk bias shift. We first linearize Eq. (11) and (12):

$$\ln(R_0) = \beta_0 \ln(\bar{b}) - E_0 \left(\frac{1}{R\bar{T}_0}\right), \quad (13)$$

$$\ln(R_1) = \beta_1 \ln(\bar{b}) - E_1 \left(\frac{1}{R\bar{T}_1} \right). \quad (14)$$

215 To generate \bar{b} , we calculate the mean accumulation rate for each parcel since its deposition and take the average for each stage of densification. For stage 2, the firn column is effectively isothermal, so we substitute in Eq. (14) the mean temperature of all firn parcels with a density greater than 550 kg m^{-3} , \bar{T}_1 . Parcels undergoing stage 1 densification incur much larger fluctuations in temperature, especially near the surface. Prior versions of GSFC-FDM used a mean effective temperature within stage 1 to capture the non-linear relationship between temperature and compaction rates; however, that practice was abandoned after further evaluation against daily simulations suggest more refinement to the CFM is required to use an effective temperature (Appendix C). Thus, as is done for stage 2, we use the mean temperature of all firn parcels with a density less than 550 kg m^{-3} , \bar{T}_0 , in Eq. (13) to calibrate stage 1 densification.

We finally iteratively solve for β_0 , β_1 , E_0 , and E_1 ; however, only a single iteration was sufficient for both stages. To determine the uncertainties in our parameterization, we use the Monte Carlo method to explore the impact of uncertainties in the predictors. Specifically, we perform $n = 10,000$ least-squares-fit regression models (intercept = 0) using randomly perturbed predictors and predictands. The uncertainty in the modelled predictors (\bar{T}_0 , \bar{T}_1 , \bar{b} , C_0^M , C_1^M) are derived from their variability in time (i.e., are randomly sampled in time), and the uncertainty in the observed predictands (C_0^O , C_1^O) are derived from the uncertainty in the logarithmic linear fit, which represents a Gaussian spread. Our final parameters are the mean of all 10,000 regression models, and their uncertainties are equal to the 2-sigma deviations. We find the optimal parameters for Eq. (11) and (12) are:

$$\beta_0 = -0.09 \pm 0.03, \quad \beta_1 = -0.356 \pm 0.017, \quad E_0 = -500 \pm 300 \text{ J mol}^{-1}, \quad E_1 = -3130 \pm 100 \text{ J mol}^{-1}. \quad (15)$$

These calibrated parameters when plugged into Eqns. 11–12 provide the calibration coefficients for the two stages of densification, which scale the densification rate provided by the original Arthern et al. (2010) rate model (Figure 2). The calibration largely finds reduced rates of densification during stage 1, especially at higher accumulation rates. For stage 2, the modelled compaction at the coldest and driest sites will increase while compaction at sites experiencing moderate to high accumulation rates ($> \sim 100 \text{ mm i.e. yr}^{-1}$) will decrease, largely as a function of the accumulation rate.

Combining Eq. 9–12, 15, we define our densification rate coefficients as:

$$c_0 = R_0 0.07 \dot{b} g \exp\left(\frac{-60000}{RT} + \frac{42400}{R\bar{T}}\right), \quad (16)$$

$$c_1 = R_1 0.03 \dot{b} g \exp\left(\frac{-60000}{RT} + \frac{42400}{R\bar{T}}\right), \quad (17)$$

240 which requires certain assumptions. Specifically, we assume that $\bar{b} \approx \dot{b}$ and $\bar{T}_0 \approx \bar{T}_1 \approx T$. Concerning the former, because the CFM defines \dot{b} as the mean accumulation rate after deposition of a parcel, \dot{b} approaches \bar{b} with depth. Near the surface, \dot{b} of a parcel can differ from \bar{b} , however, the expectation is that integrated across all parcels, the deviation is negligible. The same is true for \bar{T}_0 and \bar{T}_1 : the firn pack reaches thermal equilibrium with depth, so the temperature of a parcel will deviate from the mean closer to the surface, but with increasing depth T approaches \bar{T}_1 . While these assumptions

245 are valid for deeper firm, they are practical simplifications within the upper part where deviations in the integrated accumulation rate and temperature from the mean exist. The expectation is that in a column integrated sense, the impact is minimized. Therefore, Eq. 11–12, 15, 16–17 and the aforementioned assumptions produced newly calibrated parameters for use with Eq. 9–10:

$$\alpha_0 = 0.91, \alpha_1 = 0.644, E_{c_0} = 59500 \text{ J mol}^{-1}, E_{c_1} = 56870 \text{ J mol}^{-1}. \quad (18)$$

250 The dry compaction model used in the GSFC-FDMv1.2 simulations presented here is summarized by Eq. 7–10 and 18. We note that the new parameters in Eq. 18 are similar to those developed by Verjans et al. (2020) despite substantial differences in the techniques used to complete the calibration. Model performance is discussed in Sect. 2.4.

2.1.4 Spatial Domain

For Greenland, we define the ice boundary using the Greenland Mapping Project (GIMP) ice mask posted at 90-meter spatial resolution (Howat et al., 2014). We identified approximately 13,200 of the 12.5 km GSFC-FDMv1.2 pixels as ice if any of the GIMP pixels within were flagged as ice. For integrated SMB determination, we scale each pixel by the area of ice within based on the GIMP ice mask; the total ice sheet area along with the peripheral ice not connected to the main ice sheet is $1.78 \times 10^6 \text{ km}^2$. The grid cells with positive net accumulation (i.e., snowfall – sublimation – meltwater > 0), a condition required to build a firm column, amount to just over 9,000. About 4,100 grid cells did not meet the requirements to sustain a firm column, and their seasonal snowfall, melt, and runoff are simulated as described in Sect. 2.1.2.

For Antarctica, we use the drainage basins at 1-kilometer resolution defined by Zwally et al. (2012). We identified any of its 12.5 km pixels that contain an ice-flagged pixel from Zwally et al. (2012) as ice, resulting in just over 88,300 ice-covered pixels. We assume all the pixels are 100% ice-covered, which is equivalent in area to $13.6 \times 10^6 \text{ km}^2$ (grounded ice sheet area: $12.1 \times 10^6 \text{ km}^2$). Most meet the positive net accumulation condition to sustain a firm column (87,800). To improve efficiency, we do not simulate firm column processes for each grid cell. Rather, we investigate the similarities in atmospheric forcing between neighboring pixels to eliminate redundant simulations. If a cell has a neighbor where its: (1) mean annual temperature is consistent within 0.75 K, (2) the root mean square difference (RMSD) in snowfall-minus-sublimation is less than 10% of the mean annual snowfall-minus-sublimation, (3) the RMSD in skin temperature is less than 0.25 K, and (4) the RMSD in meltwater production is less than 5% of the mean annual meltwater production, then we do not run a simulation for that grid cell. These selection criteria reduce the number of simulations to 38,200. With these criteria, the fine spatial resolution is preserved in coastal regions where climate gradients are strong and is coarsened in the interior where correlation length scales are quite large (Figure 3). Once the subset of simulations was complete, we linearly interpolated the runoff and FAC time series to fill the ~88,300 ice-covered cells.

2.1.5 Initial (Surface) Density

275 Because of the low accumulation rates over the ice sheets and the coarse (5 days) time resolution of our simulations, we anticipate significant reworking of the initial, low-density surface snowpack. Ideally, the imposed initial density would vary in time based on the ambient climate conditions; however, there are few studies that focus on the temporal evolution of freshly fallen snow over the ice sheets (e.g., Groot Zwaaftink et al., 2013). Thus, we focus rather on improving the bulk (or time-invariant) initial density for each grid cell based on the mean annual climate conditions as done by Helsen et al. (2008) and Kuipers Munneke et al. (2015). This approach means that on average we will approximate the surface density well, but we accept that there might be significant deviation from this bulk density over shorter timescales.

To build a model of initial density (ρ_0), we estimate initial densities from 233 depth-density profiles (stage 1) by finding the surface-intercept of a linear fit to the logarithm of density versus depth (Figure 1). These represent the best-fit of the initial density to the observed density profile and include sites that are both dry and wet, resulting in a larger number of useable stage 1 profiles than for the dry-snow densification calibration (Sect. 2.1.3; $n = 141$). We then trained a Gaussian Process Regression model to predict the observed initial densities using the mean annual MERRA-2 surface climate (snow accumulation, air temperature, total wind speed, and specific humidity) of which air temperature had the largest impact on prediction. The 233 initial densities were split into a training ($n = 187$) and testing ($n = 46$) partition, the latter of which provides an assessment of model performance. The model results are shown in Figure 4: while we capture nearly 50% of the variability within the testing partition ($r^2 = 0.46$), predicted densities remain too high at the lowest densities. The ρ_0 used in GSFC-FDMv1.2 are displayed in Figure 1. The upper and lower 5% of the initial densities span 327–387 kg m⁻³ for the GrIS and 350–417 kg m⁻³ for the AIS with respective median values of 369 and 382 kg m⁻³. For Greenland, we find higher densities around the periphery, which is in line with other studies (Machguth et al., 2016a; Fausto et al., 2018; Kuipers Munneke et al., 2015); however, the lower end of our distribution is biased high, which will have implications on the modeled firn air content.

2.2 MERRA-2

MERRA-2 is a global atmospheric reanalysis developed at the Global Modelling and Assimilation Office (GMAO) at NASA Goddard Space Flight Center (Gelaro et al., 2017). Atmospheric variables are provided at 0.625° longitude x 0.5° latitude resolution and span the satellite era (1980–present). Here, we use the MERRA-2 snowfall, total precipitation, evaporation, 2-meter air temperature, and skin temperature at hourly resolution and land ice runoff flux at monthly resolution covering January 1, 1980 to September 30, 2021 (GMAO, 2015a,b,c). At the $\pm 70^\circ$ latitude bands, the model has a resolution of 24 km x 56 km, which is too coarse to resolve steep coastal topography such as the Antarctic Peninsula or the GrIS ablation zone. Thus, we rely on offline, 12.5 km ‘replay’ MERRA-2 runs over both the GrIS and AIS to improve representation of regions of steeply sloping topography.

305 MERRA-2 employs the Incremental Analysis Update (IAU) scheme of Bloom et al. (1996). The IAU uses predictor and
 corrector model forward integrations where differences with observations are first computed in the predictor segment, and
 then added as an additional forcing term in the corrector run. It may be noted that an entirely different global model may
 employ the IAU scheme to correct to MERRA-2 innovation variables every 6 hr, a process referred to as “replay” (e.g.,
 Mapes and Bacmeister, 2012). The MERRA-2 12-km replay integration (M2R12K) was produced as part of the NASA
 310 Downscaling Project (Tian et al., 2017), and covers the period December 1999 to November 2015. A non-hydrostatic
 version of the GEOS model was used in the replay integration with an output grid spacing of 1/8 degree by 1/8 degree, but
 with the same vertical resolution as the original MERRA-2. The atmospheric model was modified to repartition large-scale
 and convective processes, and the analysis increment was filtered to allow for features of a higher resolution than resolved in
 the original MERRA-2 analysis grid.

315 The high resolution M2R12K only span fifteen years, so it cannot be used as direct forcing of the firm densification model.
 Rather, we retain the seasonal magnitudes in the atmospheric variables from the M2R12K to provide hybridized MERRA-2
 output. First, the MERRA-2 output is oversampled to the M2R12K grid. We then determine the 2000–2014 monthly means
 in MERRA-2 and remove them from the full MERRA-2 record (1980–2021). The 2000–2014 M2R12K monthly means are
 then added to the MERRA-2 residuals to form the hybridized MERRA-2 atmospheric variables. In such a manner, the
 320 magnitude of the gradients in precipitation and temperature from the high resolution M2R12K are transferred to the coarse
 MERRA-2 output. Figure 5 and Figure 6 show the mean annual net accumulation (snowfall-minus-sublimation) and skin
 temperature, respectively, for the GrIS and AIS. For simplicity, we hereinafter refer to the hybridized MERRA-2 as
 MERRA-2.

While the variables are provided at hourly resolution, to maximize computational efficiency, we perform the firm simulations
 325 at a resolution of five days. The 5-day MERRA-2 time series are built by averaging the hourly data over 5-day intervals.
 Although MERRA-2 includes meltwater processes, only net runoff is retained. Thus, we use a degree-day approach to build
 gridded meltwater time series, which is described in Sect. 2.2.1.

2.2.1 Degree-day Model

For both ice sheets, we used a simple model to generate meltwater fluxes for input into the CFM. Specifically, meltwater
 330 production (m) was estimated using a calibrated degree-day model (e.g., van den Broeke et al., 2010):

$$m = DDF \times \sum_t (T_{2m} - T_0) \Delta t ; T_{2m} > T_0. \quad (19)$$

Melt was activated when the 2-meter air temperature (T_{2m}) exceeded a calibrated temperature threshold (T_0); the exceedance
 is then scaled by the calibrated degree-day factor ($DDF: \frac{kg}{m^2 hr K}$) to generate the magnitude of melt. Here, we used hourly
 temperatures ($\Delta t = 1 \text{ hour}$) to estimate five-day ($t = 5 \text{ days}$) meltwater production. While degree-day models traditionally

335 use $\Delta t = 1$ day, we used a finer temporal resolution to ensure more realistic meltwater production, but ultimately, melt was accumulated over a five-day window.

We calibrated our melt model for Antarctica using a calibration data set of surface meltwater fluxes (Trusel et al., 2013a) that span the 1999 to 2009 melt seasons, which are linearly interpolated to our 12.5 km grid. Rather than calibrate our model to 5-day meltwater fluxes, we optimized correspondence of annual meltwater production between the model and calibration

340 data and set $t = 1$ year. For each grid cell, we quantified the DDF that best relates the annual accumulated exceedance of T_{2m} over a predetermined threshold, T_0 , which does not vary in space. To evaluate which temperature threshold yielded the best model, we calculated DDF under a wide range of T_0 (265–273 K) at quarter-degree intervals. To eliminate unrealistic DDF , we set all DDF in the upper 1% to the 99th percentile factor. We evaluated the performance of these models in reproducing the annual time series of Antarctic-wide meltwater production as compared to our calibration data set (Trusel et

345 al., 2013a). Specifically, we compared on a grid-cell basis their ability to reproduce interannual variability (r^2) and to minimize mismatch ($RMSE$) with the observations. Giving equal weight to the aforementioned, we found the ice-sheet-wide mean r^2 and $RMSE$ for each threshold and selected the latter that maximizes the normalized distance between the two evaluators (Figure 7a). This approach selected a threshold that lies in between the threshold if determined by one evaluator alone. For Antarctica, we used $T_0 = 270.25$ K.

350 We estimated a temperature threshold over the GrIS using a similar approach. While we used observation-based calibration data set over Antarctica, a similar data set does not exist for Greenland, so we instead used independent model output as the basis of our calibration. Specifically, we used the 1980–2014 annual meltwater rates from the MARv3.5.2 regional climate model (RCM) (Fettweis et al., 2017). Although this product provides sub-annual resolution, we opted to calibrate to annual meltwater production once more. In such a manner, the short timescale meltwater fluxes were driven by MERRA-2, but the

355 calibration to annual RCM output ensured that the simple model remains aligned with realistic annual magnitudes from MAR. For Greenland, we found a threshold, identical to Antarctic, of $T_0 = 270.25$ K (Figure 7b).

For both ice sheets, the temperature threshold is below freezing, which suggests either (1) a cold bias in MERRA-2 or (2) too strong melt within the calibration data sets. The former has been found over Greenland (Hearty III et al., 2018) and Antarctica (Gossart et al., 2019; Huai et al., 2019) for summer months, but we cannot eliminate the latter as a contributor to

360 the sub-freezing threshold as well, which we discuss more Sect. 4. We assess the realism of the calibrated GrIS DDF by plotting the mean values over 250 m elevation bins. Moving into the interior, we would expect lower DDF s as the surface is typically bright snow, whereas lower elevations are more likely to exhibit bare ice and lower albedos, which would yield higher DDF s. For Greenland, the relationship between elevation and DDF exhibits high values at lower elevations, which drop off to a near stable value around 1500 m, above which the values rapidly increase (Figure 8). We assume that the stable

365 values around $0.13 \text{ kg m}^{-2} \text{ hr}^{-1}$ are likely more representative of expected values moving upward into the dry snow zone than the values obtained by allowing the DDF s to unrealistically rise. Above 1500 m, DDF s are capped at $0.13 \text{ kg m}^{-2} \text{ hr}^{-1} \text{ K}^{-1}$ while calibrated values below that cap are untouched. The lower and upper 5% DDF bounds over the GrIS are 0.06 and 0.21

kg m⁻² hr⁻¹ K⁻¹. For Antarctica, we cannot take a similar approach as its geometry and the presence of large floating ice shelves complicates the interpretation of the relationship between the *DDF* and elevation. Thus, since majority of melting occurs over the ice shelves, we use typical values from the ice shelves to limit *DDF* over the higher elevations of the grounded ice sheet. Specifically, we found the 95% bounds of *DDF*s over the ice shelves. If a *DDF* is less than the lower bound, we set it to zero, and if it is larger than the upper bound, we cap it at that upper bound. The lower and upper bounds for $T_0 = 270.25 K$ are 0.01 and 0.18 kg m⁻² hr⁻¹ K⁻¹ with a mean of 0.06 kg m⁻² hr⁻¹ K⁻¹. These modified *DDF*s are then used to generate 5-day meltwater production using Eq. (19) with a temperature threshold of $T_0 = 270.25 K$ (Figure 9). The meltwater production model implemented is a source of substantial uncertainty within our results; development of a surface energy balance scheme within the CFM is underway and will provide a more robust representation of meltwater fluxes in the future.

2.3 Improvement from GSFC-FDMv0 and v1

The results presented here build off prior simulations, GSFC-FDMv0 and v1, detailed in a previous publication (Smith et al., 2020; Medley et al., 2020). We have since incorporated major improvements to the GSFC-FDMv1.2, which we outline below. GSFC-FDMv1.2 includes:

1. a spatially variable initial density (ρ_0 ; see Sect. 2.1.5), whereas v0 used a constant 350 kg m⁻³; v1 used a spatially varying initial density. The formulation was not physically realistic, however, as it only used northward wind and not eastward winds as predictors. For v1.2, we also include more observations, even those where wet firm processes occur, whereas in v0 and v1, the observations used were limited to largely dry-firm conditions, which reduced the mismatch in modeled initial densities around the periphery of the GrIS with observations.
2. calibration of the dry snow/firm compaction model that limits the inclusion of observations based on the ratio of mean annual meltwater production to snowfall (see Sect. 2.1.3). The calibration approach for v0 did not discard observations based on their exposure to liquid water processes. This change in v1 and v1.2 should lead to an improvement in the representation of dry compaction;
3. a more robust approach to handling mass fluxes at the surface. The CFM underwent a significant update between v0 and v1, including allowing the explicit removal of mass via sublimation and also inclusion of rainfall. For v0, sublimation was handled by aggregating the accumulation from neighboring time steps until positive thereby still accounting for sublimation but at the cost of smoothing out the accumulation signal. Rainfall was not included in v0. For v1 and v1.2, mass via rainfall can now be added to the total liquid volume present and become subject to liquid water processes;
4. an improved meltwater model. The degree-day approach for both v0 and v1 are the same; however, the v0 model was built using skin temperature, which cannot exceed 273.15 K and will not capture the large temperature deviations above freezing, especially in Greenland. For v1, we use 2-meter air temperature (see

Sect. 2.2.1), which is a more robust approach; however, extreme *DDF* values, largely in the interior, resulted in unrealistic melt rates. Thus, for v1.2, we capped *DDF*s based on realistic dry-snow values, which should improve meltwater fluxes in the nearly dry interior of the GrIS;

5. runoff as an output. The older CFM version used for v0 did allow for melt, percolation, and refreezing, but did not provide runoff as an output. Thus, we are now able to calculate surface mass balance using v1 and v1.2;
6. an error analysis of the dry snow calibration coefficients, which was not completed in v0 or v1. This exercise provides part of the basis for estimating total uncertainty in FAC and its evolution in time as well as total height and volume change;
7. a time resolution of 5 days for both the GrIS and AIS. The prior versions (v0 and v1) ran subsets of the AIS at 5, 10, and 20 days, depending on their mean climate. Within v1.2, the entire AIS is run at 5-day resolution.

2.4 Model Performance

To evaluate the model improvement through our calibration procedure (Sect. 2.1.3), we evaluate the uncalibrated and calibrated model abilities to capture the slopes of the logarithmic density versus depth for both stages against the calibration data set. We found that the mean absolute error (MAE) in modeled slopes for both stages was reduced by nearly one half after calibration, and the explained variance between observed and modeled was significantly increased in stage 2 (Figure 10). The mean observed slope is 0.067 m^{-1} for stage 1 and 0.030 m^{-1} for stage 2. After calibration, the MAE in modeled slope reduces from 0.021 m^{-1} to 0.013 m^{-1} for stage 1 and from 0.009 m^{-1} to 0.005 m^{-1} for stage 2 (Figure 10). The calibration relies heavily on modification to the accumulation rate (i.e., overburden) component of densification for both stages. Modification to the temperature dependence is necessary for stage 2 and of very minor importance for stage 1. For both stages, densification rates are reduced under increasingly high accumulations, although the changes are more dramatic for stage 2. Densification due to temperature fluctuations during stage 2 is increased especially at colder temperatures. Ligtenberg et al. (2011) and Kuipers Munneke et al. (2015) similarly found that the semi-empirical Arthern et al. (2010) model mostly overestimated the rate of densification and found an empirical link with the accumulation rate.

We would ideally prefer to perform an evaluation of modeled firn densification rates, but a substantial number of published observations is lacking. Here, we further evaluate the ability of GSFC-FDMv1.2 to reproduce the observed densities in our full data set of sites that are in both dry and wet conditions. Most of these observations were used in the calibration; however, those with significant melt were excluded (see Sect. 2.1.3). Thus, we break out our evaluation into sites exhibiting zero, moderate, and high melt rates, quantified by their ratio to net snowfall. Specifically, these are respectively defined as 0%, less than 10%, and more than 10% of the mean annual snowfall, and we evaluate the modelled mean absolute error in reproducing depth-density observations (Figure 11). The error increases with larger melt fractions, especially for stage 1 where the impact of melt is stronger. Because most of these observations are included in the calibration, we report them as interquartile ranges and assume the upper bounds are more representative of a realistic error for each group. For stage 1, we expect density errors of 14.0 to 25.5 kg m^{-3} for dry snow/firn, 23.5 to 45.6 kg m^{-3} for moderate melt fractions, and 65.8 to

100.1 kg m⁻³ for high melt fractions. For stage 2, we expect density errors of 9.7 to 24.6 kg m⁻³ for dry snow/firn, 15.6 to
435 42.3 kg m⁻³ for moderate melt fractions, and 31.5 to 73.2 kg m⁻³ for high melt fractions. We note here that we assume that
each observation was taken on January 1, 1980 for comparison with the model, which likely introduces additional error.

If we evaluate the bias in our model-derived density profiles for each stage, we find that with increasing melt, the modeled
profiles exhibit a more positive bias (*bias = model – observation*). Specifically, the median stage 1 bias under melt
scenarios of 0%, less than 10%, and more than 10% of the mean annual snowfall are 7.9 kg m⁻³, 29.8 kg m⁻³, and 58.9 kg m⁻³,
440 ³, respectively. The respective biases for stage 2 are 7.7 kg m⁻³, 21.5 kg m⁻³, and 39.6 kg m⁻³. These biases suggest that the
model likely underestimates the FAC or overestimates the density in regions of strong melt.

2.5 Uncertainty Analysis

2.5.1 Firn Air Content, Surface Mass Balance, and Height Change

We estimated the uncertainty in the total FAC and its variability through time through ensemble perturbation runs of the
445 CFM at select locations over each ice sheet. Specifically, we completed principal component analysis (PCA) on the 5-day
climate time series of critical importance to our simulations: SMB and temperature. We then found the principal
components that account for 95% of the variability for both SMB and temperature. This selection yielded 41 PCs for SMB
and 4 for temperature for AIS and 14 and 4 for GrIS, respectively. We then correlated each individual PC time series with
the equivalent time series at every grid cell over the respective ice sheet. The grid cell with the largest correlation with the
450 PC was selected as a perturbation site. As such, we had 45 sites for AIS and 18 sites for GrIS. We used these locations
because they are the most representative of the forcing time series across the entire ice sheet. PCA analysis of melt was not
performed because it is determined by the temperature (Sect. 2.2.1).

For each of the calibration sites, we ran the CFM 100 times, each time applying 11 perturbations to the climate forcing
variables, CFM parameters, and the reference climate interval. Each of perturbations sampled 2-sigma uncertainty bounds
455 assuming a Gaussian distribution except for the choice of reference climate interval and the parameterization for the thermal
conductivity of ice. Table 1 details each perturbation, their sampling window, and any references. For each of the 100
perturbations, we sampled the 2-sigma Gaussian distribution error in the modelled initial density (ρ_0) and the calibration
parameters ($\alpha_0, \alpha_1, E_{c_0}, E_{c_1}$) and perturb the CFM parameters. We also sampled from approximated errors in the mean snow
accumulation rate ($Sn + Ev$), Rainfall (Ra), Melt (Me), and skin temperature, and then scaled the original MERRA-2 time
460 series to modify the climate forcing used. Finally, we randomly selected our choice of the parameterization of the thermal
conductivity of firn from 7 different models within the CFM and our choice of the end of the reference climate interval.
Each calibration-site perturbations were sampled independently of others resulting in 4500 and 1800 unique CFM runs for
the AIS and GrIS.

We assessed uncertainties by taking the standard deviation of the mean FAC for each of the 100 perturbations over the entire
465 time series for a given site. We next used mean annual climate parameters (snow accumulation, rain, melt, and temperature)

for each site (the original, non-perturbed MERRA-2 mean values) to predict the standard deviations in FAC. We first break the regression into two groups based on the ratio of the mean annual liquid water content (melt + rain) divided by the mean annual snowfall. This ratio is defined as the liquid-to-solid ratio (LSR). We create two uncertainty models in FAC: one for $LSR < 0$ or $LSR \geq 1$ and another for $0 \leq LSR < 1$. The latter approximates the existence of a firm column where the mass of snowfall received outweighs the combination of meltwater production and rainfall. The former is indicative of conditions that are not suitable for firm development: a negative LSR suggests net sublimation (i.e., no solid accumulation) and an LSR greater than 1 reflects conditions where liquid processes outweigh the solid limiting formation of a firm column. Therefore, locations with $LSR < 0$ or $LSR \geq 1$ conditions experience only transient snow or firm pack, so we estimate the uncertainty in the mean FAC by simply taking the standard deviation of the FAC time series. Combining results from both AIS and GrIS where $0 \leq LSR < 1$, we developed a linear regression model to approximate uncertainty in the mean annual FAC. We found that mean snow accumulation, \bar{b} , and skin temperature, \bar{T} , provide a robust prediction (Figure 12) of the 1-sigma uncertainties in mean FAC, $\sigma_{\overline{FAC}}$:

$$\sigma_{\overline{FAC}} = 15.1 + 0.78 \bar{b} - 0.055 \bar{T}, \quad 0 \leq LSR < 1 \quad (20)$$

$$\sigma_{\overline{FAC}} = \sigma_{FAC}, \quad LSR < 0 \text{ or } LSR \geq 1 \quad (21)$$

Using Eqs. 20–21, we estimated the 2-sigma uncertainty in the mean FAC ($2\sigma_{\overline{FAC}}$) for the GrIS and AIS, which yields typical values ranging from 0.2 to 3.9 m for the GrIS and from 2.8 to 6.4 m for the AIS (lower and upper 5% bounds). Colder temperatures and higher accumulation rates produce larger uncertainties in FAC. Melt, rainfall, and the LSR were not significant predictors of $\sigma_{\overline{FAC}}$ where $0 \leq LSR < 1$, so they were excluded from the prediction.

To quantify the uncertainty in FAC variability through time, we used the same set of perturbations and estimate the standard deviation in FAC change for each of the 100 perturbation runs over every 5-day time step, producing a time series of standard deviations. We then scaled the standard deviation in 5-day FAC change by dividing them by absolute value of the mean 5-day FAC change, yielding a time series of standard deviations relative to the absolute value of the mean FAC change. Finally, we calculated the median scaled standard deviation over the entire time series to approximate the typical uncertainties in FAC change, which was done for each of the perturbation sites. We were unable to quantify a relationship between the relative error in FAC change and the mean climate forcing even when separating between sites that experience melt and those that do not. Rather, the relative uncertainty in 5-day FAC change ($\sigma_{dh_{FAC}/dt}$) did not largely change between sites, so we use the mean relative error for all sites:

$$\sigma_{dh_{FAC}/dt} = 0.134 |dh_{FAC}/dt|, \quad (21)$$

where dh_{FAC}/dt is the firm thickness change due to changes in FAC in units of meters per unit time. We use the results of our SMB evaluation to assess the uncertainty in total thickness change due to SMB (Sect. 3.4). We found the median absolute bias when comparing our mean annual SMB to a series of observations for each ice sheet. Specifically, we found a 1-sigma uncertainty of 14% and 23% for GrIS and AIS, respectively:

$$\sigma_{dh_{SMB}/dt} = 0.14 |dh_{SMB}/dt|, \quad GrIS \quad (22)$$

$$\sigma_{dh_{SMB}/dt} = 0.23 |dh_{SMB}/dt|, \quad AIS \quad (23)$$

500 where dh_{SMB}/dt is the SMB induced height change in units of meters per time. Future work would likely involve developing a more comprehensive assessment of SMB against observations to quantify SMB uncertainties. For instance, SMB over the AIS is largely biased at lower accumulation rates, so uncertainty development in the future could explore more complex relationships under different climate conditions or even explore spatial biases. All uncertainties listed in the publication are expressed as their 2-sigma equivalent.

505 **2.5.2 Surface Mass Balance**

We evaluated our SMB estimates through comparison with *in situ* measurements from across both ice sheets. For the AIS, we attempted to replicate the analyses as presented by Mottram et al. (2021) to ease comparisons of our performance against a suite of state-of-the-art SMB models. We used a new compilation of SMB observations from Wang et al. (2021), excluding those from Dattler et al. (2019) and Medley et al. (2013). The former study generated SMB using airborne
510 shallow radar; however, because of the lack of age constraint of the observed radar horizons, the layers were dated in a way to allow the derived SMB estimates match the large-scale MERRA-2 mean. Thus, the Dattler et al. (2019) dataset is dependent on the MERRA-2 SMB and is excluded. The Medley et al. (2013) dataset was not used because it was excluded in the Mottram et al. (2021) evaluation, which cited the challenge in evaluating a coarsely resolved SMB dataset against finely resolved radar-derived measurements. We performed a separate analysis that includes the Medley et al. (2013)
515 dataset.

After filtering the observations as described in Mottram et al. (2021) by limiting observations to the 1950–2018 interval, we arrived at a total number used in the evaluation of 16,427. We use a reference interval of 1987–2015 to match Mottram et al. (2021). For SMB observations that fall entirely within the reference interval, we compared the observation against the model mean SMB over the contemporaneous period. For the observations that cover years outside of the reference interval,
520 we used those that span more than 5 years and compare the mean against the mean SMB over the reference interval. We also used the same aggregation approach by (1) interpolating the modelled SMB values to the location of the SMB observation and (2) averaging all the interpolated model values and observations that fall within the same grid cell. We do not do the comparison on the same common grid as Mottram et al. (2021), but rather use the 12.5 km grid used in this analysis. The final number of aggregated observations for comparison against modeled SMB was 1,037 (1,207 if the
525 Medley et al. (2013) dataset is included).

For the GrIS, we performed a similar analysis as with the AIS using ice core observations of SMB compiled by Fettweis et al. (Fettweis et al., 2020) and PROMICE (v2020) SMB observations compiled by Machguth et al. (2016b), filtering the latter to observations of greater than 3 months with a start date after 1980. We also used an ensemble mean of 13 SMB models (GrSMBMIP) to add context to the evaluation (Fettweis et al., 2020). For each observation, we linearly interpolated the
530 model value to the observation location, repeating for the GSFC and GrSMBMIP observations. To minimize bias imparted by poor spatial sampling, we accumulated and averaged all the observations and their associated model values into the 12.5

km grid used in this study, as done in Mottram et al (2021). We compared the observations to the models in three ways. First, we determined the mean GSFC SMB over the exact observation interval. Second, to ease comparison with GrSMBMIP, we calculated annual GSFC mean SMB and took the mean GSFC annual SMB of the years the observation interval covered (referred to as GSFC/ANN). Third, we perform the same as the latter with the GrSMBMIP ensemble (referred to as GrSMBMIP/ANN). The final number of aggregated observations for comparison against GSFC, GSFC/ANN, and GrSMBMIP/ANN was 312. Results from the SMB evaluation follow in Sect. 3.4 and provide the basis of our SMB uncertainty analysis in Sect. 2.5.1.

3. Results

540 3.1 Firn Air Content

During the RCI, the average firn air content over the GrIS was 16.1 meters (the mean 2-sigma FAC uncertainty was 3.0 m), but it varied quite substantially in space (Figure 13a) from 0.1 to 24.4 meters (lower and upper 5% bounds). The 2-sigma FAC uncertainty varied from 0.3 to 3.9 meters (Figure 13c). The peripheral ice contained less FAC with an average of 1.9 meters (the mean 2-sigma FAC uncertainty was 0.7 m), yet, like the GrIS, there was a substantial range (0.1–14.3 m; 2-sigma FAC uncertainty: 0.1–2.6 m). Between September 1, 1996 and September 1, 2021, the mean loss of FAC over the GrIS was 3.7%, however, local losses up to 100% exist while the majority ranged between a loss of 17.0% to a gain of 1.7%. These change estimates were based on locations where the mean annual RCI SMB was greater than zero (i.e., a firn column exists). We note that our surface density model likely overpredicts the initial density value at the lowest density values (Figure 4), which suggests that the model might underpredict total FAC where the modeled initial densities are the lowest (Figure 1). We attempted to account for this bias within our uncertainty analysis by perturbing the initial density (Sect. 2.5.1).

Because of the much colder conditions, the AIS firn column contains substantially more air than the GrIS. The average FAC during the RCI for the AIS was 24.2 meters (the mean 2-sigma FAC uncertainty was 4.7 m), which typically ranges in space between 15.2 and 36.6 meters (2-sigma FAC uncertainty: 2.9–6.4 m) (Figure 13b,d). Floating ice has a lower average FAC (17.2 m) than the grounded ice (25.1 m) because of higher temperatures and increased meltwater production.

3.2 Surface Mass Balance

The net mass flux at the surface of an ice sheet is referred to as the surface mass balance (SMB; Eq. 5) and is typically presented in units of mass per unit time. Here, we use gigatons per year (Gt yr^{-1}) to refer to area-integrated values and meters of ice equivalence per year (m i.e. yr^{-1}) for local values (i.e., grid cell). We also present total meltwater production, Me . The excess $Ra + Me$ over Ru is retained within the firn column in either a solid or liquid state.

3.2.1 Greenland Ice Sheet and Peripheral Ice

Over the RCI (1980–1995), the mean annual SMB of the GrIS was $411 \pm 102 \text{ Gt yr}^{-1}$ (± 1 standard deviation), which was comprised of $617 \pm 62 \text{ Gt yr}^{-1}$ in net accumulation ($S_n + E_v$), $25 \pm 5 \text{ Gt yr}^{-1}$ in rainfall, and $231 \pm 58 \text{ Gt yr}^{-1}$ in runoff (Figure 14). Total meltwater production averaged $361 \pm 68 \text{ Gt yr}^{-1}$, suggesting that the firn column accommodated 40% of all liquid water at the surface ($R_a + M_e$). The average local SMB was $0.25 \text{ m i.e. yr}^{-1}$; however, it typically ranged from -0.67 to $+0.94 \text{ m i.e. yr}^{-1}$ (lower and upper 5% bounds) where approximately 11% of the ice sheet by area experienced $SMB < 0$. The largest positive SMB ($+3.9 \text{ m i.e. yr}^{-1}$) was found in the snowfall-rich Southeastern GrIS, while the largest negative SMB ($-5.6 \text{ m i.e. yr}^{-1}$) was found along the most coastal portion of the Southwestern GrIS. Such large magnitudes, however, are extremely atypical. The RCI is ideally representative of long-term steady-state conditions; we find that for the GrIS neither SMB nor any of its components nor skin temperatures experienced a significant trend over our chosen RCI (p-values > 0.3 ; Figure 14b). We also used a two-sample t-test to evaluate whether the variables from the RCI are sampled from a population with different means than after the RCI (1996–2021). We found no significant difference in annual means for SMB and $S_n + E_v$ between the intervals during and after the RCI; however, rainfall, meltwater production, and skin temperatures are most likely elevated post-RCI (p-values < 0.05). Because our spin-up involves repeating the RCI until the entire column is refreshed, our choice of RCI (1980–1995) should not generate non-physical transients in our firn simulations.

After 2003, the mean annual SMB for the GrIS was $354 \pm 117 \text{ Gt yr}^{-1}$, a reduction of 57 Gt yr^{-1} as compared to the RCI. Insignificant increases in solid and liquid precipitation (21 Gt yr^{-1}) were outweighed by a strong increase in meltwater production (107 Gt yr^{-1}) and ultimately runoff (78 Gt yr^{-1}). The firn column only accommodated 38% of liquid water present at the surface, suggesting decreased firn-air storage. The ablation zone grew in area by 30%, covering 14% of the entire GrIS. After the major melt event of 2012 when GrIS experienced its second lowest SMB ($+143 \text{ Gt yr}^{-1}$) over the 40-year interval, sharp reductions in runoff coupled with above normal net precipitation allowed the SMB to recover between 2013 and 2018. In 2019, however, the GrIS incurred its lowest annual SMB ($+139 \text{ Gt yr}^{-1}$) due to a combination of well-below average precipitation and well-above average melt.

The SMB of Greenland peripheral ice was never positive over the entire 1980–2021 period with a mean of $-54 \pm 22 \text{ Gt yr}^{-1}$ and $-73 \pm 22 \text{ Gt yr}^{-1}$ during the RCI and after 2003, respectively. After 2003, like the GrIS, the peripheral ice bodies experienced minimal precipitation gains (5 Gt yr^{-1}) in conjunction with moderate increases in melt and runoff (both 24 Gt yr^{-1}). Over the entire 40-year record, the firn only accommodated $\sim 19\%$ of all liquid water, indicating that the majority of Greenland's peripheral ice is bare ice. Local SMB over the RCI ranges from -3.5 to $+1.0 \text{ m i.e. yr}^{-1}$ with a mean of $-0.89 \text{ m i.e. yr}^{-1}$. As expected, 78% of the peripheral ice experienced $SMB < 0$.

3.2.2 Antarctic Ice Sheet

The SMB of the AIS is nearly entirely controlled by snowfall (Figure 15). Of the 2606 ± 145 Gt yr⁻¹ annual mass gain over the RCI (1980–2019), net accumulation ($Sn + Ev$) accounts for 2605 ± 146 Gt yr⁻¹ whereas rainfall contributed a mere 6 ± 3 Gt yr⁻¹ and runoff removed only 6 ± 4 Gt yr⁻¹. Meltwater production does exist (96 ± 30 Gt yr⁻¹), however, majority (94%) is retained within the firn column. Local SMB is predominantly positive with a mean of $+0.21$ m i.e. yr⁻¹, and values commonly span $+0.04$ to $+0.73$ m i.e. yr⁻¹ (lower and upper 5% bounds). Approximately 0.5% of the ice sheet by area exhibited mean annual $SMB < 0$. The maximum SMB of $+6.11$ m i.e. yr⁻¹ was found along the spine of the western Antarctic Peninsula, whereas the minimum of -0.55 m i.e. yr⁻¹ was found at the Northwestern corner of the Ross Ice Shelf. Net snow accumulation, rainfall, runoff, and skin temperatures did not experience significant trends (p-values > 0.4) over the RCI. Meltwater production exhibited a significant negative trend (-1.1 Gt yr⁻²; p-value = 0.01); however, because of the extremely small contribution relative to net accumulation (Figure 15b) and its highly localized spatial distribution, the choice of RCI is justified.

Most mass gains over the AIS occur in the form of net accumulation over the grounded ice sheet (2148 ± 127 Gt yr⁻¹), whereas floating ice accumulates 457 ± 27 Gt yr⁻¹. Although not substantial, meltwater production over floating ice (66 ± 19 Gt yr⁻¹) was on average double that over grounded ice (31 ± 11 Gt yr⁻¹). Nearly all this meltwater is retained within the firn column as runoff averages 1 Gt yr⁻¹ and 5 Gt yr⁻¹ for grounded and floating ice, respectively. We note that the area of grounded (12.1×10^6 km²) ice is and order of magnitude larger than floating (1.5×10^6 km²) ice.

3.3 Height and Volume Change

The combined fluctuations in SMB and FAC drive the total ice-sheet volume changes due to surface processes, yet only the former constitutes an actual mass change. We evaluate the relative contributions of mass (SMB) and air (FAC) at seasonal and multi-annual timescales. When propagating errors, we account for the variable correlation in time and space.

3.3.1 Greenland Ice Sheet

The seasonal cycles of the SMB and FAC components of ice-sheet-wide volume change averaged over the RCI are 125 km³ and 215 km³, respectively (Figure 16a), indicating that changes in the FAC are nearly 2x larger than SMB at sub-annual timescales. When combined, this volume change translates into ice-sheet-wide average height change of 20 cm due to seasonal variability of surface processes. During the RCI, volume increases until May when it typically reaches its maximum and rapidly decreases to its minimum in August, bringing the ice sheet effectively back in balance (i.e., net zero change) as by design. After the RCI, the GrIS on average experienced an annual net volume loss of 74 km³ by September due to both FAC (31 km³) and SMB (43 km³); however, that average is skewed largely by two extreme years in 2012 and 2019 when the GrIS lost 564 km³ and 575 km³, respectively (Figure 16c). Although FAC exhibits a larger seasonal cycle, the contribution to ice-sheet-wide volume change over longer timescales (i.e., several years) is smaller for the FAC than

SMB (Figure 16b). Between September 1, 2003 and September 1, 2021, SMB anomalies and FAC changes contributed to a decrease in GrIS volume of $1554 \pm 245 \text{ km}^3$ ($86.3 \pm 13.6 \text{ km}^3 \text{ yr}^{-1}$): $353 \pm 140 \text{ km}^3$ due to FAC (Figure 17) and $1202 \pm 117 \text{ km}^3$ due to SMB.

625 3.3.2 Antarctic Ice Sheet

The seasonal component of height change due to surface processes alone averages to just over 5 cm when averaged over the entire AIS (Figure 18c), which is one-fourth that of the GrIS (20 cm). Due to its large area, however, the seasonal volume change amounts to 724 km^3 . The change in FAC is more than 2.5 times larger than SMB and dominates the seasonal signal, amounting to 535 km^3 in seasonal change (Figure 18a), which is larger than the seasonal signal of 340 km^3 from Ligtenberg et al. (2012). While the maximum and minimum volume changes due to SMB occurs in October and February, respectively, those due to FAC variability occur one month later (November and March). Between March 31, 2003 and March 31, 2021, the AIS has grown in volume by $1511 \pm 493 \text{ km}^3$ from surface processes alone of which $1047 \pm 243 \text{ km}^3$ resulted from FAC changes (Figure 19) and $464 \pm 248 \text{ km}^3$ from SMB. In sum, surface processes contributed $+84 \pm 27 \text{ km}^3 \text{ yr}^{-1}$ to the volume of the AIS since 2003, a number that is vastly overshadowed by the seasonal cycle. Because the RCI encompassed the entire 635 1980–2019 interval, the height and volume changes in our model experiments begin and return to zero at the end of 2019 (i.e., no height change over the entire RCI).

3.4 Surface Mass Balance Evaluation

To contextualize the SMB values derived here from MERRA-2 and the CFM, we perform SMB evaluation against observations inspired by two recent SMB model intercomparison exercises for the AIS (Mottram et al., 2021) and GrIS 640 (Fettweis et al., 2020).

3.4.1 Greenland Ice Sheet

The comparison between observations and modeled SMB for the GrIS indicates that our model performs similar to several of the models within the GrSMBMIP exercise. Figure 20 shows the performance of the GSFC/ANN comparison against the GrSMBMIP/ANN, and Table 2 provides the statistical comparison with the observations. We note here that the GrSMBMIP 645 ensemble mean resolved SMB better than any individual model within the ensemble, so we expect the GSFC model to have lower performance metrics than the ensemble. The GSFC model reproduces observed SMB under near equal performance as GrSMBMIP for $\text{SMB} > \sim -2 \text{ kg m}^{-2} \text{ yr}^{-1}$, but experiences more spread from the observations at higher melt rates. Table 2 indicates that while the net bias of the GSFC/ANN model is comparable to the GrSMBMIP/ANN, the GSFC model experiences higher spread from the observations ($\text{RMSE} = 0.35 \text{ kg m}^{-2} \text{ yr}^{-1}$), which indicates partly diminished performance 650 in capturing the spatial variability.

Using the $n = 312$ observation-model comparison pairs (Figure 20 and Table 2), we approximate the uncertainty in the GSFC modeled SMB in a relative sense. Specifically, we found the absolute bias for each pair, $\text{bias} =$

655 $|(model - observation)/model|$, and assigned an uncertainty in modeled SMB equal to the median absolute bias, which is less sensitive to outliers than the mean. The typical relative bias for GrIS is 14%, which we employ as the 1-sigma uncertainty in SMB (Sect. 2.5.1; Eq. 22).

We also directly compare the GrSMBMIP ensemble mean annual SMB with our GSFC results in Figure 21 over the common 1980–2012 interval, interpolating our model results onto the GrSMBMIP grid. The GSFC model exhibits elevated SMB over the interior relative to the GrSMBMIP ensemble mean with variable differences in sign around the periphery (i.e., exhibits positive and negative differences). The statistical summary in Table 2 suggests that over the entire ice sheet, the 660 GSFC model has a slightly higher SMB. The annual mean SMB from the GrSMBMIP of 347 Gt yr^{-1} is smaller than the GSFC mean of 383 Gt yr^{-1} . The GrSMBMIP ensemble mean SMB trend is -7.2 Gt yr^{-2} whereas our GSFC results have a slightly less negative trend of -4.5 Gt yr^{-1} , which falls within the entire ensemble spread (-3.1 to -12.9 Gt yr^{-2}). We also compare runoff values between the GrSMBMIP ensemble mean (328 Gt yr^{-1}) and GSFC (304 Gt yr^{-1}), which suggests our runoff estimates are more muted than some models, and the GSFC trend (5.4 Gt yr^{-1}) is less positive than GrSMBMIP 665 ensemble (8.0 Gt yr^{-1}), but still falls within the ensemble spread (4.0 to 13.4 Gt yr^{-1}). These findings suggest that GSFC SMB is on average larger than the ensemble mean because of larger snow accumulation and less runoff, which is also evidenced by the differences across the interior in Figure 21. The difference in SMB trend from the ensemble average is largely sourced from a difference in runoff trends as snowfall exhibits no trend in both.

Finally, we compare our degree-day model annual melt rates with those used to train our model (i.e., MARv3.5.2; Figure 670 22). The time series have a high correlation ($r^2 = 0.94$); however, there agreement in magnitude differs between the RCI and post-RCI. The MARv3.5.2 produces a stronger increase in melt than our degree-day model. This difference could stem from multiple sources including (1) a weaker increase in temperature within the MERRA-2 model, (2) our capping of melt factors above 1500 m (see Sect. 2.2.1), and (3) our final selection of the temperature threshold. Over the contemporaneous interval (1980–2014), we find that MARv3.5.2, MERRA-2, and our GSFC GrIS runoff values average 303, 306, and 274 Gt 675 yr^{-1} . While GSFC the values derived in this study are lower than the training data set and the MERRA-2 model, we note that the older GSFC-FDMv1 model, along with a newer version of MAR, showed poor performance when compared with ICESat-2 derived surface height changes in the low-melt, high-elevation portions of the ice sheet over the summer melt seasons of 2019 and 2020 (Smith et al., 2022). The same study found that our new degree-day model parameterization with reduced runoff presented here performed better than v1, which averaged 307 Gt yr^{-1} of runoff from 1980 through 2014. 680 Thus, recent data suggest our modifications to the degree-day model better replicated observations; however, meltwater flux and its ultimate fate is at present the largest discrepancy between the SMB and FAC models and is the largest source of uncertainty in our results.

3.4.2 Antarctic Ice Sheet

Replicating the analysis within Mottram et al. (2021) was more straightforward, so we present analysis that allows for direct 685 comparison with their results. Figure 23 compares all SMB observations with the GSFC modelled SMB, and statistics of the

evaluation are presented in Table 3, broken down into different categories as done by Mottram et al. (2021). Considering the AIS as a whole, GSFC SMB has a very small positive mean bias ($6 \text{ kg m}^{-2} \text{ yr}^{-1}$) as compared to larger, negative biases from the ensemble of models in Mottram et al. (2021). Otherwise, the performance is very similar. Table 3 suggests that the GSFC SMB over ice shelves is remarkably good as compared to the Mottram et al. (2021) ensemble that suggests most models underestimate SMB. Notable differences between the GSFC SMB and the ensemble from Mottram et al. (2021) include: (1) smaller SMB bias at lower elevations than the ensemble, (2) similar performances over mid-elevations, and (3) larger, positive bias in GSFC SMB at the highest elevations ($> 2800 \text{ m}$) where snowfall is the lowest. We observe this bias in Figure 23 as well where the GSFC SMB values fall above the 1:1 line for the lowest observed SMB values. Thus, we find that the GSFC SMB performs well over the ice shelves and coastal grounded ice sheet, but likely overestimates SMB in the dry interior (Figure 24). As done with the GrIS, we assigned an uncertainty in modeled SMB equal to the median absolute bias between the observation pairs ($n = 1201$), which yielded a relative uncertainty of 23% for the AIS, providing the 1-sigma uncertainty in SMB within our uncertainty analysis (Sect. 2.5.1; Eq. 23).

The 1980–2010 mean annual GSFC SMB is $2,615 \text{ Gt yr}^{-1}$, which is larger than the Mottram et al. (2021) ensemble mean of $2,483 \text{ Gt yr}^{-1}$ but remains within the ensemble spread ($2,023\text{--}2,752 \text{ Gt yr}^{-1}$). For the grounded ice sheet, the mean GSFC SMB is $2,165 \text{ Gt yr}^{-1}$, which is also within the model spread ($1,743\text{--}2,323 \text{ Gt yr}^{-1}$) and similar to the ensemble mean of $2,073 \text{ Gt yr}^{-1}$. The fact that both the grounded and total AIS SMB are larger in the GSFC model than the ensemble average is not surprising given that: (1) most of the ensemble models have a negative bias over ice shelves and (2) the GSFC model has a positive bias over the interior of the ice sheet. In fact, the GSFC SMB over the ice shelves is 450 Gt yr^{-1} a value that is only exceeded by two models within the ensemble. The integrated GSFC SMB did not exhibit any trends through time, which is also evident in the ensemble of models from Mottram et al. (2021). We note that we use a different grid than within Mottram et al. (2021), which could have a large impact on integrated SMB (Hansen et al., 2022).

Finally, we compare our degree-day model annual melt rates with those used to train our model (i.e., Trusel et al. (2013b); Figure 25). We also our annual melt fluxes against two regional climate models (Van Wessem et al., 2018; Agosta et al., 2019) to provide a longer context because the QSCAT observations cover only a decade. By design, our degree-day model best matched the magnitude of the observations from Trusel et al. (2013b). The contemporaneous (1981–2016) mean annual melt rates from our degree-day model, RACMO2.3p2, and MARv3.6.4 are 99, 107, and 83 Gt yr^{-1} . We note that the annual means are accumulated over each melt season, so the degree-day model begins in 1981, which spans July 1, 1980 to June 30, 1981. All melt fluxes are calculated in the same fashion. The degree-day model annual melt corresponds closest with RACMO2.3p2 ($r^2 = 0.72$), followed by MARv3.6.4 ($r^2 = 0.56$). The time series from the two RCM's show a similar correspondence ($r^2 = 0.73$). These three models similarly agree on very low runoff amounts (6, 1, and 2 Gt yr^{-1} , respectively); however, the MERRA-2 land ice runoff is nearly an order of magnitude larger (68 Gt yr^{-1}). The annual runoff from our degree day model and MERRA-2 significantly correlate in time ($r^2 = 0.65$). Thus, there is a discrepancy between the firn and regional climate modeling runoff and the reanalysis-derived runoff over the Antarctic Ice Sheet. Without

meltwater fluxes directly from MERRA-2, we cannot determine whether this is related to the snow model within the
720 MERRA-2 framework or whether MERRA-2 predicts larger melt fluxes than our degree-day model leading to more runoff.

4 Discussion and conclusion

We present simulations of GrIS and AIS firn processes using the CFM forced by MERRA-2 atmospheric reanalysis data spanning more than 40 years. Specifically, we calibrate the Arthern et al. (2010) firn densification model through modification of its dependence on overburden and temperature. The resulting model reduces the rates of densification,
725 largely in response to the overburden, which is approximated by the mean accumulation rate. Modification to the temperature dependence was necessary for the second stage of densification, which is in line with other studies that found the accumulation rate as a key parameter in model calibration (Kuipers Munneke et al., 2015; Ligtenberg et al., 2011). Our calibration differs, however, as we derive the form of our calibration using the original form of the Arthern et al. (2010) densification equation, which provides adjusted model parameters that best fit observed depth-density profiles and the
730 MERRA-2 climate conditions. Additionally, we calibrate the model using observations from both ice sheets, resulting in one set of adjusted parameters. It is important to note that the adjustments to the densification model parameters reflect missing physical processes as well as persistent biases within the climate forcing (e.g., if the forcing exhibited a cold bias). Thus, application of these adjustments when using a different climate forcing is not recommended. Future work will investigate use of alternative calibration equations to assess its impact on the resulting volume changes.

735 The surface density parameterization is also dependent on the mean annual climate conditions derived from MERRA-2, so any biases will manifest in the derived coefficients. We note that while the model does a satisfactory job of reproducing moderate to high surface densities ($325\text{--}415\text{ kg m}^{-3}$), it appears insufficient at capturing the lowest observed densities. Thus, our model potentially overestimates the initial density, predominantly over GrIS, which leads to an underestimation of the FAC. We do perturb the initial density in our uncertainty CFM runs, so we expect our FAC errors to reflect this lack of
740 constraint. More exploration into the density of new snow accumulations and their subsequent evolution over short time scales (hours to days) and across several locations is necessary to improve this simple density model. While new snow accumulation is often very low density, these values cannot be directly applied to the firn densification model which models density evolution over coarse time steps (5 days) during which the snow can undergo rapid densification. Thus, the GSFC-FDMv1.2 does not account for sub-time-step surface density evolution and requires a bulk density representative of snowfall
745 that has been exposed at the surface for several days. We note that the Arthern et al. (2010) densification model was not developed for densification at very low densities, so even with a more realistic fresh snow density, the model as presented here and in Arthern et al. (2010) would not adequately reproduce densification of freshly fallen snow. Future improvements in the time resolution of the simulations as well as observations of the rapid evolution of new snow accumulation should provide important future improvements to the model presented. Furthermore, the modeled surface density does not evolve in

750 time, which is likely an oversimplification, but future work will evaluate the potential to capture seasonal initial density in future versions of the GSFC-FDM.

We next review other limitations of the work we have presented, which will be the focus of future work. The choice of running the model at 5-day time steps was a subjective choice, based on the need for computational efficiency. The firm is subject to diurnal changes in temperature and melt that our model is not capable of resolving; however, we attempt to capture much of the signal at 5-day windows through accumulating fluxes at hourly resolution such as melt and snow accumulation. In the prior simulations, we used an effective mean temperature to try to capture the non-linear impact of the large diurnal fluctuations in temperature and their resulting impact on the densification rate. We abandoned that effort (see Sect. 2.1.3 and Appendix C) given its degraded performance when compared against simulations performed at 1-day time steps. Future work preserving both the physical and effective temperature means through time will help us better understand if we can adequately capture the sub-time-step temperature impact on densification moving forward.

760 While we indicate that our choice of RCI was our best attempt at capturing the long-term mean conditions, it remains a partly subjective choice that does have an ultimate impact on our results and interpretation. The challenge for all firm modeling efforts is that the firm column was built of 10s to 1000s of years of snow accumulation, yet we only have a spatiotemporally complete understanding of polar climate conditions arguably since the beginning of the satellite era (1979 and onwards). Thus, we make assumptions regarding how that firm column will respond to modern conditions without knowledge of the recent past. Studies suggest variable spatial trends in both snow accumulation rates (Medley and Thomas, 2019; Thomas et al., 2017) and air temperatures (Steig et al., 2009; Nicolas and Bromwich, 2014; Bromwich et al., 2013) over the AIS, which are not considered in this work. Thus, we expect our results as a lower bound for trends, and future work investigating the impact of these reconstructed trends would help to quantify the resulting uncertainty in height changes due to long-term climate change. Deviations from observed height changes thus reflect both errors in firm modeling efforts as well as unknown trends due to a lack of constraint on recent climate, impacting results over both ice sheets.

Meltwater fluxes as well as their ultimate fate remain the largest source of uncertainty in our firm modeling effort. Our simple degree-day model of melt was employed due to the absence of MERRA-2 meltwater flux output. At present, the CFM does not have an energy balance model subroutine, although it is in preparation, so future versions of GSFC-FDM will use a physically based melt model. Comparisons against the degree-day model training data, as well as other RCM results, suggest that we are capturing a significant portion of the annual signal (Figure 22 and Figure 25). The total magnitude of melt is less than the training dataset for the GrIS, which might be due to an overestimation of melt within the RCM used to train our model, a cold bias in the MERRA-2 air temperatures, or some combination of both. Thus, the runoff produced by GSFC-FDMv1.2 is on the lower end of several existing SMB models for the GrIS and exhibits a smaller increase in runoff through time. We note that a recent study by Smith et al. (2022) found that the older melt model used for GSFC-FDMv1.1, as well as a more recent version of MAR than used in this study (i.e., MARv3.11.5; Amory et al. (2021)), systematically overpredicted the height changes within the heigh-elevation pats of the ice sheet particularly in association with melt events. After capping the unrealistic melt factors above 1500 m, the melt model in v1.2 yields a better match of the firm height

changes with satellite altimetry. Because this comparison only covers 2 melt seasons, the evaluation suggests improvement, but comparison against more melt event/seasons is necessary to fully evaluate this improvement and highlight other potential future improvements.

While not the focus of the work, one important output from the GSFC-FDMv1.2 simulation is surface runoff, which allows us to estimate ice sheet SMB. The mean annual GrIS SMB is comparable to SMB estimates from an ensemble of models of varying complexity (Fettweis et al., 2020). Our estimates of the 1980–2012 GrIS mean annual SMB (383 ± 111 Gt yr⁻¹) and runoff (304 ± 86 Gt yr⁻¹) are similar to the ensemble averages (347 ± 111 Gt yr⁻¹ and 328 ± 101 Gt yr⁻¹, respectively). The lower runoff derived in this study along with slightly larger snow accumulation rates account for the larger SMB. Comparison with an accompanying Antarctic model ensemble suggests that our AIS SMB estimate for grounded and floating ice is larger than most models: Mottram et al. (2021) found the ensemble mean of AIS SMB of 2483 Gt yr⁻¹ (range: 2023–2752 Gt yr⁻¹), which is less than our estimate of 2606 Gt yr⁻¹. We note, however, that the evaluation in Mottram et al. (2021) of each model against observations suggests they each contain a negative bias (i.e., the modeled SMB is typically less than the observed).

Deviations in SMB from its mean over the RCI result in ice-sheet height and volume fluctuations; however, these SMB deviations along with changes in temperature also modulate the total air content within the firn column, amplifying the mass-related height and volume fluctuations. Thus, the SMB impact on height change is twofold: both imposing a change in mass as well as a change in air (e.g., fresh snowfall is a matrix of ice and air), which means that the fluctuations in SMB and FAC change are strongly correlated. We keep height changes due to mass separated from those due to air because (1) of the relevance to interpretation of satellite derived height changes and (2) we want to separate the climate model impact (SMB) from the firn model impact (FAC). While the SMB and FAC contributions to total firn volume change over multiannual time scales are somewhat comparable, the seasonal signal is dominated by FAC for both ice sheets. This difference suggests that 63% for the GrIS and 74% for the AIS of sub annual volume fluctuations are in response to a change in the air content rather than actual mass change. Thus, determination of seasonal mass change using satellite altimetry requires a substantial FAC correction, highlighting the importance of firn densification and the atmospheric models that force the FDMs, especially when investigating shorter intervals of change as not being mindful of the seasonal cycles of SMB and FAC can generate large biases.

Finally, we briefly note the differences between the GrIS GSFC results for v1.1 and v1.2 (differences were negligible over the AIS). The largest difference is the muted FAC change through time integrated over the GrIS (Figure 16b). This change is partly due to the improved surface density model that yields lower densities over the interior and higher densities around the periphery, which led to a larger increase in firn air over the interior in response to additional snowfall and a smaller decrease in firn air in the percolation zone (Figure 17). Other factors include the modification of the melt regime at high elevations, which acted to reduce total meltwater fluxes in the interior, reducing the FAC losses due to melt. Finally, the overestimation of density (or underestimation of FAC) at sites with high melt would potentially generate FAC change biased low as there is less air to lose when melt occurs. Thus, substantial FAC loss occurs along the periphery of GrIS, but those

820 losses are partly balanced by gains in the interior. Small changes in the surface density and liquid water processes yield measurable changes in FAC and SMB, and their uncertainty limits our ability to constrain mass balance estimates from satellite altimetry. Thus, future work constraining melt, its routing, and the initial density and their spatiotemporal evolution is necessary and should be a priority.

825 The time series of firm height and volume change, split into its respective SMB (ice) and FAC (air) components, provide the data necessary to isolate the ice-dynamical change from the changes observed using airborne and satellite altimeters. Future work improving the representation of the near surface climate, initial density, and especially liquid water processes within firm column should improve future iterations of GSFC-FDM modeled firm volume changes. Because of the challenges in measuring firm processes, future evaluations of firm densification model representation will likely rely on direct comparisons with altimetry-derived volume changes.

Appendix A. Density Data

830 The calibration depth-density data were compiled through combination of the SUMup datasets (Koenig and Montgomery, 2018; Montgomery et al., 2018) and other compiled sources that are listed in Table A1.

Table A1. Locations and sources of the depth-density profiles used in model calibration.

ID	Name	Latitude	Longitude	Elevation	Source
1	US-ITASE-99-1	-80.62	-122.63	1350	Mayewski and Dixon (2013)
2	US-ITASE-99-2	-81.2	-126.17	1040	Mayewski and Dixon (2013)
3	US_ITASE-00-1 A	-79.3831	-111.239	1791	Mayewski and Dixon (2013)
4	US_ITASE-00-2 C	-78.733	-111.4966	1675	Mayewski and Dixon (2013)
5	US_ITASE-00-3 D	-78.433	-115.9172	1742	Mayewski and Dixon (2013)
6	US_ITASE-00-4 E	-78.0829	-120.0764	1697	Mayewski and Dixon (2013)
7	US_ITASE-00-5 F	-77.683	-123.995	1828	Mayewski and Dixon (2013)
8	US_ITASE-00-6 H	-78.3325	-124.484	1639	Mayewski and Dixon (2013)
9	US_ITASE-00-7 I	-79.133	-122.267	1495	Mayewski and Dixon (2013)
10	US_ITASE-01-1	-79.1597	-104.9672	1842	Mayewski and Dixon (2013)
11	US_ITASE-01-2	-77.8436	-102.9103	1336	Mayewski and Dixon (2013)
12	US_ITASE-01-3	-78.1202	-95.6463	1620	Mayewski and Dixon (2013)
13	US_ITASE-01-4	-77.6116	-92.2483	1483	Mayewski and Dixon (2013)
14	US_ITASE-01-5	-77.0593	-89.1376	1239	Mayewski and Dixon (2013)
15	US_ITASE-01-6	-76.0973	-89.0177	1228	Mayewski and Dixon (2013)
16	US_ITASE-02-1	-82.00099	-110.00816	1746	Mayewski and Dixon (2013)
17	US_ITASE-02-2	-83.500781	-104.98681	1957	Mayewski and Dixon (2013)
18	US_ITASE-02-3	-85.000451	-104.99531	2396	Mayewski and Dixon (2013)
19	US_ITASE-02-4	-86.5025	-107.9903	2586	Mayewski and Dixon (2013)
20	US_ITASE-02-5	-88.002153	-107.98333	2747	Mayewski and Dixon (2013)
21	US_ITASE-02-6 (SPRESSO)	-89.93325	144.39383	2808	Mayewski and Dixon (2013)
22	US_ITASE-03-1	-86.84	95.31	3124.2	Mayewski and Dixon (2013)
23	US_ITASE-03-3	-82.08	101.96	3444.24	Mayewski and Dixon (2013)
24	US_ITASE-03-4	-81.65	122.6	2965.704	Mayewski and Dixon (2013)

25	US_ITASE-03-6	-80.39	138.92	2392.68	Mayewski and Dixon (2013)
26	US_ITASE-03-7	-77.88	158.66	2264.616	Mayewski and Dixon (2013)
27	US_ITASE-06-1	-77.880222	158.45822	2365	Mayewski and Dixon (2013)
28	US_ITASE-06-2	-77.761944	153.38139	2277	Mayewski and Dixon (2013)
29	US_ITASE-06-3	-79.0362	149.6803	2241	Mayewski and Dixon (2013)
30	US_ITASE-07-1	-81.658	136.084	2450	Mayewski and Dixon (2013)
31	US_ITASE-07-2	-84.39507	140.6308	2645	Mayewski and Dixon (2013)
32	US_ITASE-07-3	-85.781889	145.71948	2817	Mayewski and Dixon (2013)
33	US_ITASE-07-4	-88.50953	178.53079	3090	Mayewski and Dixon (2013)
34	PARCA-NASA EAST A	75.0	-30	2631	Mosley-Thompson et al. (2001)
35	PARCA-NASA EAST B	75.0	-30	2631	Mosley-Thompson et al. (2001)
36	PARCA-S DOME B	63.149	-44.817	2850	Mosley-Thompson et al. (2001)
37	PARCA-S DOME A	63.149	-44.817	2850	Mosley-Thompson et al. (2001)
38	PARCA-S DOME A (2)	63.149	-44.817	2850	Mosley-Thompson et al. (2001)
39	PARCA-S TUNU C	69.5	-34.5	2650	Mosley-Thompson et al. (2001)
40	PARCA-S TUNU B	69.5	-34.5	2650	Mosley-Thompson et al. (2001)
41	PARCA-S TUNU A	69.5	-34.5	2650	Mosley-Thompson et al. (2001)
42	PARCA-S TUNU A (2)	69.5	-34.5	2650	Mosley-Thompson et al. (2001)
43	PARCA-N DYE 3 B (Saddle)	66	-44.501	2640	Mosley-Thompson et al. (2001)
44	PARCA-N DYE 3 A (Saddle)	66	-44.501	2640	Mosley-Thompson et al. (2001)
45	PARCA-7653 B	76	-53	2200	Mosley-Thompson et al. (2001)
46	PARCA-7653 A	76	-53	2200	Mosley-Thompson et al. (2001)
47	PARCA-7551	69.5	-34.5	2650	Mosley-Thompson et al. (2001)
48	PARCA-7247	71.926	-47.487	2277	Mosley-Thompson et al. (2001)
49	PARCA-7147	71.05	-47.23	2134	Mosley-Thompson et al. (2001)
50	NUS08-7	-74.11996	1.60049	2679.67	Pers. comm. J.R. McConnell (2017)
51	NUS08-5	-82.62929	17.87432	2544.26	Pers. comm. J.R. McConnell (2017)
52	NUS08-4	-82.8111	18.9	2551.59	Pers. comm. J.R. McConnell (2017)
53	NUS07-2	-76.06524	22.46301	3587.71	Pers. comm. J.R. McConnell (2017)
54	NUS07-5	-78.64639	35.64142	3620.05	Pers. comm. J.R. McConnell (2017)
55	NUS07-7	-82.06607	54.89009	3716.09	Pers. comm. J.R. McConnell (2017)
56	BER01C09_01	-78.3	-46.283	730	Wagenbach et al. (1994a)
57	BER02C09_02	-79.658	-45.617	940	Wagenbach et al. (1994b)
58	DML01C97_00	-78.855	-2.55	2831	Oerter et al. (1999a)
59	DML03C97_00	-74.4995	1.961167	2843-2855	Oerter et al. (1999b)
60	DML03C98_09	-74.499167	1.960833	2843-2855	Oerter et al. (2000a)
61	DML04C97_00	-74.399	7.2175	3161-3179	Oerter et al. (1999c)
62	DML05C98_06	-75.002667	0.022667	2880	Oerter et al. (2000b)
63	DML05C98_07	-74.997	0.036167	2880	Oerter et al. (2000c)
64	DML07C97_00	-75.5815	-3.430333	2669, 2680	Oerter et al. (1999e)
65	DML09C97_00	-75.933	7.213	3145-3156	Oerter et al. (1999g)
66	DML10C97_00	-75.216667	11.35	3349-3364	Oerter et al. (1999h)
67	DML11C98_03	-74.854667	-8.497	2600	Oerter et al. (2000e)
68	DML12C98_17	-75.000667	-6.498333	2680	Oerter et al. (2000f)
69	DML13C98_16	-75	-4.496333	2740	Oerter et al. (2000g)
70	DML14C98_15	-74.949167	-1.4945	2840	Oerter et al. (2000h)
71	DML15C98_14	-75.083667	2.501	2970	Oerter et al. (2000i)
72	DML07C98_31	-75.5815	-3.430333	2669-2680	Oerter et al. (2004)
73	DML08C97_00	-75.752833	3.282833	2962-2971	Oerter et al. (1999f)
74	DML16C98_13	-75.16733	5.003333	3100	Oerter et al. (2000j)
75	DML17C98_33	-75.167	6.4985	3160	Oerter et al. (2000k)

76	DML18C98_04	-75.250333	-6	2630	Oerter et al. (2000l)
77	DML19C98_05	-75.167333	-0.0995	2840	Oerter et al. (2000m)
78	DML20C98_08	-74.750667	0.999833	2830	Oerter et al. (2000n)
79	DML21C98_10	-74.667167	4.001667	2980	Oerter et al. (2000o)
80	DML22C98_11	-75.084	6.5	3160	Oerter et al. (2000p)
81	DML23C98_12	-75.250833	6.501667	3160	Oerter et al. (2000q)
82	DML24C98_18	-74.449	-9.18067	2169	Oerter et al. (2000r)
83	DML25C00_01	-75.006	0.081867	2882	Graf et al. (2002a)
84	DML26C00_03	-74.839367	0.00995	2874	Graf et al. (2002b)
85	DML27C00_04	-75.056	0.704017	2899	Graf et al. (2002c)
86	DML28C01_00	-75.0017	0.0678	2882	Oerter (2002)
87	DML60C98_02	-74.205	-9.741667	1439-1451	Oerter et al. (2000s)
88	BER11C95_25	-79.6146	-45.72433	886	Gerland and Wilhelms (1999)
89	DML05C98_32	-75.002333	0.007	2882-2892	Oerter et al. (2000d)
90	DML06C97_00	-75.000667	8.005333	2880-3246	Oerter et al. (1999d)
91	DML66C03_01	-71.110709	1.646268	1013	Anschutz and Oerter (2007)
92	DML96C07_39	-71.4083	-9.9167	655	Wilhelms (2007)
93	DML641C02_01	-71.214361	-6.79861	600	Fernandoy et al. (2010a)
94	DML651C02_03	-71.457222	-9.860722	630	Fernandoy et al. (2010b)
95	FRI0C92_246	-78.42778	-52.50639	68	Graf and Oerter (2006d)
96	FRI07C84_340	-78.60611	-55.43167	92	Graf et al. (1988)
97	FRI09C90_13	-76.98111	-52.26778	41	Graf and Oerter (2006m)
98	FRI09C90_90	-76.98111	-52.26778	41	Graf and Oerter (2006l)
99	FRI10C90_136	-77.19389	-53.14083	---	Graf and Oerter (2006f)
100	FRI11C90_235	-77.51306	-54.54667	---	Graf and Oerter (2006a)
101	FRI12C90_236	-77.9375	-55.97833	61	Graf and Oerter (2006g)
102	FRI12C92_15	-77.935	-55.936	61	Graf and Oerter (2006n)
103	FRI13C90_335	-78.30194	-56.98	64	Graf and Oerter (2006)
104	FRI14C90_336	-78.72167	-57.8475	---	Graf and Oerter (2006h)
105	FRI15C90_131	-76.95889	-54.69222	---	Graf and Oerter (2006b)
106	FRI16C90_230	-77.35783	-56.05933	---	Graf and Oerter (2006)
107	FRI17C90_231	-77.68222	-57.32639	---	Graf and Oerter (2006c)
108	FRI18C90_330	-78.03361	-58.69056	---	Graf and Oerter (2006i)
109	FRI19C90_05	-81.46306	-0.61472	---	Graf and Oerter (2006j)
110	FRI20C90_06	-81.617	-57.917	133	Graf and Oerter (2006k)
111	FRI21C90_HWF	-78.31722	-39.43472	---	Graf and Oerter (2006e)
112	FRI23C95_16	-77.99167	-51.53333	65	Graf et al. (1999p)
113	FRI24C95_15	-78.41333	-52.4733	68	Graf et al. (1999a)
114	FRI25C95_14	-78.84	-53.47333	71	Graf et al. (1999b)
115	FRI26C95_13	-79.26833	-54.20167	75	Graf et al. (1999k)
116	FRI27C95_12	-79.97	-54.89167	85	Graf et al. (1999c)
117	FRI28C95_11	-80	-55.5	93	Graf et al. (1999d)
118	FRI29C95_10	-80.43	-55.98	104	Graf et al. (1999e)
119	FRI30C95_09	-80.833333	-56.58833	107	Graf et al. (1999l)
120	FRI31C95_08	-81.21833	-57.20333	125	Graf et al. (1999m)
121	FRI32C95_07	-81.605	-57.88833	132	Graf et al. (1999h)
122	FRI33C95_06	-82.335	-57.82667	143	Graf et al. (1999f)
123	FRI34C95_03	-82.75	-58.69167	145	Graf et al. (1999g)
124	FRI35C95_01	-83.016667	-59.575	163	Graf et al. (1999i)
125	FRI36C95_02	-83.385	-60.06333	185	Graf et al. (1999n)
126	FRI37C95_05	-83.97833	-60.36	482	Graf et al. (1999o)

127	FRI38C95_04	-84.81833	-59.635	1191	Graf et al. (1999j)
128	NM033C98_01	-70.706667	-8.426667	35	Oerter et al. (2000t)
129	ngt03C93.2	73.9402	-37.6299	3040	Wilhelms (2000a)
130	ngt06C93.2	75.2504	-37.6248	2820	Wilhelms (2000b)
131	ngt14C93.2	76.617	-36.4033	2508	Wilhelms (2000c)
132	ngt27C94.2	80	-41.1374	2185	Wilhelms (2000d)
133	ngt37C95.2	77.2533	-49.2167	2598	Miller and Schwager (2000a)
134	ngt42C95.2	76.0039	-43.492	2874	Miller and Schwager (2000b)
135	NM01C82_04	-70.6167	-8.3667	28	Schlosser et al. (2002)
136	NM02C02_02	-70.655692	-8.253632	28	Fernandoy et al. (2010c)
137	SUFA 2007 Core	72.5961	-38.421972	3200	Adolph and Albert (2014)
138	PARCA-6345	63.8	-45	2730	Mosley-Thompson et al. (2001)
139	PARCA-6348	63	-48	1960	Mosley-Thompson et al. (2001)
140	PARCA-6642B	66.5	-42.5	2380	Mosley-Thompson et al. (2001)
141	PARCA-6745	67.5	-45	2250	Mosley-Thompson et al. (2001)
142	PARCA-6839	68.5	-39.5	2790	Mosley-Thompson et al. (2001)
143	PARCA-6841	68	-41	2640	Mosley-Thompson et al. (2001)
144	PARCA-6938	69	-38	2920	Mosley-Thompson et al. (2001)
145	PARCA-6939	69.6	-39	2955	Mosley-Thompson et al. (2001)
146	PARCA-6941	69.4	-41	2765	Mosley-Thompson et al. (2001)
147	PARCA-6943	69.2	-43	2500	Mosley-Thompson et al. (2001)
148	PARCA-6945	69	-45	2150	Mosley-Thompson et al. (2001)
149	PARCA-7145	71.5	-45	2615	Mosley-Thompson et al. (2001)
150	PARCA-7245	72.25	-45	2770	Mosley-Thompson et al. (2001)
151	PARCA-7249	72.2	-49.4	2170	Mosley-Thompson et al. (2001)
152	PARCA-7345	73	-45	2815	Mosley-Thompson et al. (2001)
153	PARCA-7347	73.6	-47.2	2600	Mosley-Thompson et al. (2001)
154	IC12	-70.2458	26.3349	---	Philippe et al. (2016)
155	WDC06A	-79.4828	-112.008	---	Kreutz et al. (2011)
156	FA13	66.1812	-39.0345	1563	Koenig et al. (2014)
157	GrIT (1)	73.344	-39.7235	---	Hawley et al. (2014)
158	GrIT (2)	74.01818	-40.6216	---	Hawley et al. (2014)
159	GrIT (3)	76.499883	-43.732217	2803	Hawley et al. (2014)
160	GrIT (4)	76.50235	-44.8438	---	Hawley et al. (2014)
161	GrIT (5)	77.6248	-58.5284	---	Hawley et al. (2014)
162	GrIT (6)	77.37073	-55.927	---	Hawley et al. (2014)
163	GrIT (7)	77.4492	-50.5395	---	Hawley et al. (2014)
164	NEEM2009S2	77.45	-51.06	---	Baker (2012)
165	ACT10-A	65.9671	-41.4807	1825	Miege et al. (2013)
166	ACT10-B	65.7751	-41.8672	1999	Miege et al. (2013)
167	ACT10-C	65.9997	-42.7831	2354	Miege et al. (2013)
168	DIV2010	-76.77	-101.738	1329	Medley et al. (2014)
169	PIG2010	-77.957	-95.962	1593	Medley et al. (2014)
170	THW2010	-76.952	-121.22	2020	Medley et al. (2014)
171	BYRD	-80	-120	1500	Gow (1968)
172	Camp Century	77.18333	-61.16667	1886	Kovacs et al. (1969)
173	DE08 DE08-2	-66.721944	113.19944	1250	Etheridge and Wookey (1989)
174	Dome C	-74.5	123.6667	3240	Alley (1980)
175	Dome GRIP	72.56667	-37.616667	3230	Spencer et al. (2001)
176	DSS	-66.769722	112.80694	1370	Spencer et al. (2001)
177	Dye3-11B-1984	65.18333	-43.8333	2479	Spencer et al. (2001)

178	Dye3-15B-1984	65.18333	-43.8333	2479	Spencer et al. (2001)
179	Dye3-16C-1984	65.18333	-43.8333	2479	Spencer et al. (2001)
180	Dye3-4B-1983	65.18333	-43.8333	2479	Spencer et al. (2001)
181	Dye3-5B-1984	65.18333	-43.8333	2479	Spencer et al. (2001)
182	Dye3-9B-1984	65.18333	-43.8333	2479	Spencer et al. (2001)
183	Dye3-station1-1983	65.18333	-43.8333	2479	Spencer et al. (2001)
184	Eismitte	71.75	-40.75	3000	Spencer et al. (2001)
185	Inge Lehmann	77.95	-39.18333	2407	Gow (1975)
186	Isaksson A	-72.654167	-16.645556	30	Spencer et al. (2001)
187	Isaksson C	-72.761944	-14.589722	70	Spencer et al. (2001)
188	Isaksson D	-73.456667	-12.5575	300	Spencer et al. (2001)
189	Isaksson E	-73.593889	-12.426667	700	Spencer et al. (2001)
190	Isaksson E30m	-73.6	-12.4333	700	Spencer et al. (2001)
191	Isaksson F	-73.815833	-12.210278	800	Spencer et al. (2001)
192	Isaksson G	-74.013889	-12.016389	1200	Spencer et al. (2001)
193	Isaksson G26m	-74.016667	-12.016667	1200	Spencer et al. (2001)
194	Isaksson H	-74.351889	-11.7225	1200	Spencer et al. (2001)
195	Isaksson I	-74.76667	-10.78333	2300	Spencer et al. (2001)
196	Isaksson J	-75.1	-9.5	3000	Spencer et al. (2001)
197	Isaksson 75 S2 E	-75	2	2900	Spencer et al. (2001)
198	Isaksson 74 16S0 37E shallow	-74.26667	0.616667	2700	Spencer et al. (2001)
199	Isaksson 76 32S6 08E	-76.5333	6.1333	2300	Spencer et al. (2001)
200	JARE	-70.698333	44.331667	2230	Kusunoki and Suzuki (1978)
201	JARE11	-70.698333	44.331667	2230	Kusunoki and Suzuki (1978)
202	Marie Byrd Land Traverse	-79.495	-120.0333	1544	Pirrit and Doumani (1961)
203	Mile 60	-79.00333	-119.56667	1592	Pirrit and Doumani (1961)
204	Mile 90	-78.505	-119.71667	1616	Pirrit and Doumani (1961)
205	Mile 120	-77.996667	120.01667	1690	Pirrit and Doumani (1961)
206	Mile 150	-77.496667	-120.01667	1775	Pirrit and Doumani (1961)
207	Mile 167	-77.225	-119.85	1819	Pirrit and Doumani (1961)
208	Mile 198	-76.85	-118.2333	1899	Pirrit and Doumani (1961)
209	Mile 222	-76.626667	-117.61667	1530	Pirrit and Doumani (1961)
210	Mile 258	-76.061667	-116.95	1575	Pirrit and Doumani (1961)
211	Mile 288	-75.588333	-116.45	1117	Pirrit and Doumani (1961)
212	Mile 360	-75.416667	-116.3	83	Pirrit and Doumani (1961)
213	Mile 457	-74.99333	-116.11667	849	Pirrit and Doumani (1961)
214	Mile 529	-75.786667	-118.75	1644	Pirrit and Doumani (1961)
215	Mile 565	-75.986667	-121.08333	1864	Pirrit and Doumani (1961)
216	Mile 603	-76.016667	-123.68333	2108	Pirrit and Doumani (1961)
217	Mile 639	-75.711667	-125.6333	1687	Pirrit and Doumani (1961)
218	Mile 676	-75.796667	-128.06667	2002	Pirrit and Doumani (1961)
219	Mile 711.5	-76.038333	-130.16667	1904	Pirrit and Doumani (1961)
220	Mile 747	-76.338333	-132.3	2138	Pirrit and Doumani (1961)
221	Mile 783	-76.638333	-134.5	2157	Pirrit and Doumani (1961)
222	Mile 819	-76.9	-136.86667	1844	Pirrit and Doumani (1961)
223	Mile 855	-77.15	-139.3	1498	Pirrit and Doumani (1961)
224	Mile 890	-77.358333	-141.76667	1102	Pirrit and Doumani (1961)
225	Mile 927	-77.838333	-139.95	1134	Pirrit and Doumani (1961)
226	Mile 963	-78.311667	-138.16667	1053	Pirrit and Doumani (1961)
227	Mizuho G6	-73.112778	39.758333	3005	Watanabe et al. (1997)
228	Mizuho G15	-71.19444	45.979167	2571	Watanabe et al. (1997)

229	Mizuho H15	-69.079444	40.781667	1050	Watanabe et al. (1997)
230	Mizuho S25	-69.031667	40.45556	896	Watanabe et al. (1997)
231	Ridge B-C	-82.8919	-136.6603	509	Alley (1987)
232	Site A	70.75	-35.958333	3145	Alley (1987)
233	Site A (Crete)	70.634911	-35.8200	3092	Clausen et al. (1988)
234	Site B	70.659011	-35.4788	3138	Clausen et al. (1988)
235	Site C	70.677	-35.7870	3072	Clausen et al. (1988)
236	Site D	70.639828	-35.6178	3018	Clausen et al. (1988)
237	Site E	71.759261	-35.8505	3087	Clausen et al. (1988)
238	Site F	71.492	-35.8812	3092	Clausen et al. (1988)
239	Site G	71.15495	-35.8377	3098	Clausen et al. (1988)
240	Site H	70.8651	-35.8381	3102	Clausen et al. (1988)
241	Site 2	76.98333	-56.06667	2000	Langway (1970)
242	South Pole	-90	0	2850	Spencer et al. (2001)
243	Victoria Land Traverse	-75	147	2520	Stuart and Heine (1961)
244	Station 519	-74	143	2541	Stuart and Heine (1961)
245	Station 521	-73	142	2516	Stuart and Heine (1961)
246	Station 524	-73	141	2498	Stuart and Heine (1961)
247	Station 527	-72	140	2467	Stuart and Heine (1961)
248	Station 531	-71	139	2513	Stuart and Heine (1961)
249	Station 536	-72	143	2356	Stuart and Heine (1961)
250	Station 540	-72	146	2287	Stuart and Heine (1961)
251	Station 544	-72	148	2216	Stuart and Heine (1961)
252	Station 548	-72	151	2205	Stuart and Heine (1961)
253	Station 550	-72	154	2220	Stuart and Heine (1961)
254	Station 553	-72	156	2262	Stuart and Heine (1961)
255	Station 556	-72	159	231	Stuart and Heine (1961)
256	Taylor Dome	-83.47778	-138.09694	2437	Spencer et al. (2001)
257	Upstream B	-83.47778	-138.09694	664	Alley (1987)
258	Vostok (BH-3, BH-5)	-78.46667	106.8	3502	Spencer et al. (2001)

Appendix B. Linear Fit to the Logarithmic Density Profile

We compared the fit statistics when making a linear fit to the logarithmic density profile versus a linear fit to the actual density profile for each stage of densification. Table B1 summarizes the results taken from the $n = 141$ stage 1 observations and $n = 76$ stage 2 observation (Sect. 2.1.3). The performances are nearly identical for stage 1; however, the fit to logarithmic density profile is significantly better than using the actual density data based on a two-sample t-test ($p < 0.01$).

Table B1. Fit statistics

	Logarithmic Density Profile			Density Profile		
	Lower Quartile	Median	Upper Quartile	Lower Quartile	Median	Upper Quartile
Stage 1						
RMSE (kg m ⁻³)	12.05	14.94	19.35	12.11	14.95	19.42
r^2	0.94	0.96	0.97	0.93	0.96	0.97
Stage 2						
RMSE (kg m ⁻³)	4.14	5.75	9.31	5.83	8.09	11.39
r^2	0.98	0.99	1.00	0.97	0.99	0.99

Appendix C. Discontinued Use of the Effective Mean

845 We tested how the model results are affected by the surface-temperature averaging scheme, which is needed to upscale the forcing data from its native 1-hour resolution to the desired 5-day resolution for the CFM runs.

To do so, we performed three types of model runs. In the first, we ran the CFM with 1-day time steps, using the daily MERRA-2 fields (label in Figure C1 as ‘1 day’). In the second, we ran the CFM with 5-day time steps, and the surface temperature was calculated by taking the mean temperature for each 5-day period (labeled as ‘5 day, mean T’). In the third, 850 we also ran the CFM with 5-day time steps, but we calculated the 5-day ‘effective’ mean temperature, given by:

$$T_{eff} = \frac{-Q}{R * \ln(K)}, \quad (C1)$$

with

$$K = \frac{1}{n} \sum_{j=1}^n e^{-\frac{Q}{RT_j}}, \quad (C2)$$

where n is the number of days to average over, $Q = 59.5$ kJ/mol is the activation energy, $R = 8.314$ J/mol/K, and T_j are the 855 temperatures (K) of each day of the resampling interval. The value for Q used was based on the calibrated activation energy for the prior GSFC model v1.

We ran the CFM with the 3 types of runs for two different sites (South Pole and Summit, Greenland). Figure C1 shows the Firn Air Content (FAC) change from 1980 to 2021 predicted for the two sites for each of the three model run types. Table C1 shows, for each site, the mean FAC for the entirety of each model run (Mean FAC row), the change in FAC from the start of the model run to the final time step (FAC change), and the mean modeled FAC in 2020 minus the mean modeled 860 FAC in 1980.

In both cases, the effective mean runs produce a lower total FAC than the 1-day and 5-day mean runs. The FAC change using the 5-day mean setting gives a FAC change that is closer to the 1-day value, whereas the effective mean runs predict a smaller FAC change than the 1-day runs. Thus, the use of an effective mean was abandoned; however, future work on the 865 CFM might allow for tracking of both effective mean and physical mean of the firn parcels, which might resolve these discrepancies.

870 Table C1: The mean FAC, change in FAC, and 2020 mean FAC minus 1980 mean FAC predicted for each of the three model run types, for each site. The 5-day mean T results are closer to the 1-day results than the 5-day effective T method.

Summit

	5 day, mean T	5 day, effective T	1 day
Mean FAC (m)	27.6	26.3	27.9
FAC change (m)	0.206	0.176	0.218
mean 2020 FAC- mean 1980 FAC (m)	0.185	0.155	0.193

South Pole

	5 day, mean T	5 day, effective T	1 day
Mean FAC (m)	46.8	45.5	47.3
FAC change (m)	0.066	0.063	0.073
mean 2020 FAC- mean 1980 FAC (m)	0.065	0.061	0.071

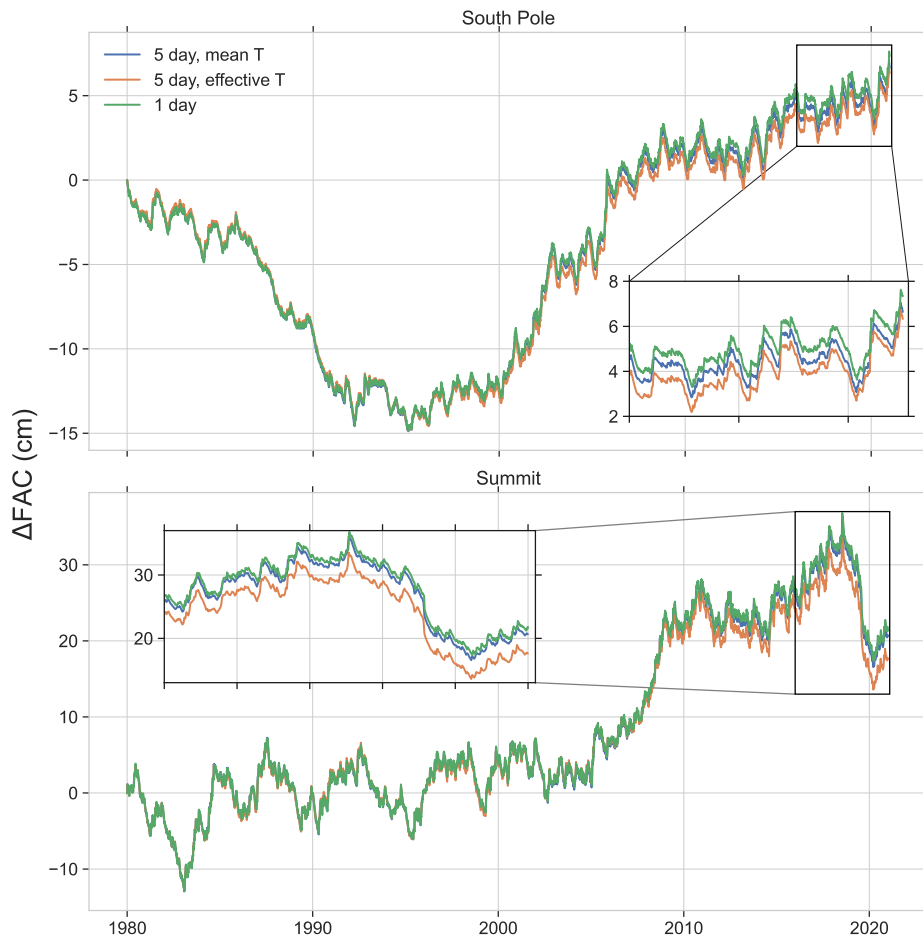


Figure C1: The change in FAC for the duration of the model run for South Pole (top) and Summit (bottom) for each of the 3 model run types.

875

Code and data availability. The NASA GSFC MERRA-2 data are available at <https://disc.gsfc.nasa.gov/>. The Community
880 Firm Model code is available at <https://github.com/UWGlaciology/CommunityFirmModel>. The GSFC-FDMv1.2 simulations
(including firn air content, surface mass balance, and its components) for both ice sheets are available on the ICESat-2
website (<insert link when live>). The GSFC-FDMv0, v1, and v1.1 FAC and SMB are also available on Zenodo (<Insert
link when live>).

Author contributions. B.M. led the GSFC-FDMv1.2 model development including calibration, processing the MERRA-2
885 climate forcing, and analyzing the output. B.M., T.A.N., H.J.Z., and B.E.S. designed the study and contributed to the
manuscript. C.M.S. wrote code for the CFM, ran model simulations, and contributed to the manuscript.

Competing interests. We declare no competing interests.

Acknowledgements. The GSFC-FDM effort was supported by the NASA ICESat-2 Project Science Office. The authors
would like to acknowledge all who have contributed to the Community Firm Model effort and made it a useful resource for
890 the community. We would also like to acknowledge Richard Cullather and Lauren Andrews who provided significant
insight into MERRA-2 and the NASA GMAO for the M2R12K data. Finally, we would like to thank Tyler Sutterley and
Susheel Adusumilli for providing feedback on the GSFC-FDMv0 and v1 output.

Review statement.

895 **References**

- Adolph, A. C. and Albert, M. R.: Gas diffusivity and permeability through the firn column at Summit, Greenland: measurements and comparison to microstructural properties, *The Cryosphere*, 8, 319–328, <https://doi.org/10.5194/tc-8-319-2014>, 2014.
- 900 Adusumilli, S., Fricker, H. A., Medley, B., Padman, L., and Siegfried, M. R.: Interannual variations in meltwater input to the Southern Ocean from Antarctic ice shelves, *Nat. Geosci.*, 1–5, <https://doi.org/10.1038/s41561-020-0616-z>, 2020.
- Agosta, C., Amory, C., Kittel, C., Orsi, A., Favier, V., Gallée, H., van den Broeke, M. R., Lenaerts, J., van Wessem, J. M., and van de Berg, W. J.: Estimation of the Antarctic surface mass balance using the regional climate model MAR (1979–2015) and identification of dominant processes, *Cryosphere*, 13, 281–296, 2019.
- 905 Alley, R. B.: *Densification and recrystallization of firn at Dome C, East Antarctica*, Institute of Polar Studies, The Ohio State University., 1980.
- Alley, R. B.: *TRANSFORMATIONS IN POLAR FIRN (GLACIOLOGY, ANTARCTICA, GREENLAND)*, The University of Wisconsin-Madison, 1987.
- Amory, C., Kittel, C., Le Toumelin, L., Agosta, C., Delhasse, A., Favier, V., and Fettweis, X.: Performance of MAR (v3. 11) in simulating the drifting-snow climate and surface mass balance of Adélie Land, East Antarctica, *Geosci. Model Dev.*, 14, 3487–3510, 2021.
- 910 Anshütz, H. and Oerter, H.: Physical properties of firn core DML66C03_01 (FB0401), <https://doi.org/10.1594/PANGAEA.609903>, 2007.
- Arthern, R. J., Vaughan, D. G., Rankin, A. M., Mulvaney, R., and Thomas, E. R.: In situ measurements of Antarctic snow compaction compared with predictions of models, *J. Geophys. Res. Earth Surf.*, 115, 2010.
- 915 Baker, I.: NEEM Firn Core 2009S2 Density and Permeability, <https://doi.org/10.18739/A2Q88G>, 2012.
- Bloom, S. C., Takacs, L. L., Silva, A. M. da, and Ledvina, D.: Data Assimilation Using Incremental Analysis Updates, *Mon. Weather Rev.*, 124, 1256–1271, [https://doi.org/10.1175/1520-0493\(1996\)124<1256:DAUIAU>2.0.CO;2](https://doi.org/10.1175/1520-0493(1996)124<1256:DAUIAU>2.0.CO;2), 1996.
- van den Broeke, M., Bus, C., Ettema, J., and Smeets, P.: Temperature thresholds for degree-day modelling of Greenland ice sheet melt rates, *Geophys. Res. Lett.*, 37, 2010.
- 920 Bromwich, D. H., Nicolas, J. P., Monaghan, A. J., Lazzara, M. A., Keller, L. M., Weidner, G. A., and Wilson, A. B.: Central West Antarctica among the most rapidly warming regions on Earth, *Nat. Geosci.*, 6, 139–145, 2013.
- Clausen, H. B., Gundestrup, N. S., Johnsen, S. J., Bindschadler, R., and Zwally, J.: Glaciological investigations in the Crete area, central Greenland: A search for a new deep-drilling site, *Ann. Glaciol.*, 10, 10–15, 1988.
- Cuffey, K. M. and Paterson, W. S. B.: *The physics of glaciers*, Academic Press, 2010.
- 925 D.M. Etheridge and C.W. Wookey: Ice core drilling at a high accumulation area of Law Dome, Antarctica, *Ice Core Dulling Proc. Third Int. Workshop Ice Drill. Technol. Grenoble-Fr. 10-14 Oct. 1988 Grenoble Cent. Natl. Rech. Sci. Lab. Glaciol. Géophysique L'Environnement*, 86–96, 1989.

- 930 Fausto, R. S., Box, J. E., Vandecrux, B., Van As, D., Steffen, K., MacFerrin, M. J., Machguth, H., Colgan, W., Koenig, L. S., and McGrath, D.: A snow density dataset for improving surface boundary conditions in Greenland ice sheet firn modeling, *Front. Earth Sci.*, 6, 51, 2018.
- Fernandoy, F., Meyer, H., Oerter, H., Wilhelms, F., Graf, W., and Schwander, J.: Annual means of $\delta^{18}\text{O}$, density, and accumulation rates of firn core DML641C02_01, <https://doi.org/10.1594/PANGAEA.753157>, 2010a.
- Fernandoy, F., Meyer, H., Oerter, H., Wilhelms, F., Graf, W., and Schwander, J.: Annual means of $\delta^{18}\text{O}$, density, and accumulation rates of firn core DML651C02_03, <https://doi.org/10.1594/PANGAEA.753158>, 2010b.
- 935 Fernandoy, F., Meyer, H., Oerter, H., Wilhelms, F., Graf, W., and Schwander, J.: Annual means of $\delta^{18}\text{O}$, deuterium, density, and accumulation rates of firn core NM02C02_02, <https://doi.org/10.1594/PANGAEA.753159>, 2010c.
- Fettweis, X., Box, J., Agosta, C., Amory, C., Kittel, C., Lang, C., van As, D., Machguth, H., and Gallée, H.: Reconstructions of the 1900–2015 Greenland ice sheet surface mass balance using the regional climate MAR model, *Cryosphere*, 11, 1015–1033, 2017.
- 940 Fettweis, X., Hofer, S., Krebs-Kanzow, U., Amory, C., Aoki, T., Berends, C. J., Born, A., Box, J. E., Delhasse, A., Fujita, K., Gierz, P., Goelzer, H., Hanna, E., Hashimoto, A., Huybrechts, P., Kapsch, M.-L., King, M. D., Kittel, C., Lang, C., Langen, P. L., Lenaerts, J. T. M., Liston, G. E., Lohmann, G., Mernild, S. H., Mikolajewicz, U., Modali, K., Mottram, R. H., Niwano, M., Noël, B., Ryan, J. C., Smith, A., Streffing, J., Tedesco, M., van de Berg, W. J., van den Broeke, M., van de Wal, R. S. W., van Kampenhout, L., Wilton, D., Wouters, B., Ziemens, F., and Zolles, T.: GrSMBMIP: intercomparison of the modelled 1980–2012 surface mass balance over the Greenland Ice Sheet, *The Cryosphere*, 14, 3935–3958, <https://doi.org/10.5194/tc-14-3935-2020>, 2020.
- 945 Gelaro, R., McCarty, W., Suárez, M. J., Todling, R., Molod, A., Takacs, L., Randles, C. A., Darmenov, A., Bosilovich, M. G., and Reichle, R.: The modern-era retrospective analysis for research and applications, version 2 (MERRA-2), *J. Clim.*, 30, 5419–5454, 2017.
- 950 Gerland, S. and Wilhelms, F.: Continuous density log of icecore BER11C95_25, <https://doi.org/10.1594/PANGAEA.227732>, 1999.
- Gossart, A., Helsen, S., Lenaerts, J. T. M., Broucke, S. V., Van Lipzig, N. P. M., and Souverijns, N.: An evaluation of surface climatology in state-of-the-art reanalyses over the Antarctic Ice Sheet, *J. Clim.*, 32, 6899–6915, 2019.
- 955 Gow, A. J.: Deep core studies of the accumulation and densification of snow at Byrd Station and Little America V, Antarctica, 1968.
- Gow, A. J.: Time-temperature dependence of sintering in perennial isothermal snowpacks, n.d.
- Graf, W. and Oerter, H.: Annual means of density, deuterium, and accumulation rates of firn core FRI11C90_235, <https://doi.org/10.1594/PANGAEA.548642>, 2006a.
- 960 Graf, W. and Oerter, H.: Annual means of density, deuterium, and accumulation rates of firn core FRI15C90_131, <https://doi.org/10.1594/PANGAEA.548646>, 2006b.
- Graf, W. and Oerter, H.: Annual means of density, deuterium, and accumulation rates of firn core FRI17C90_231, <https://doi.org/10.1594/PANGAEA.548648>, 2006c.

- Graf, W. and Oerter, H.: Annual means of density, $\delta^{18}\text{O}$, and accumulation rates of firn core FRI02C92_246, <https://doi.org/10.1594/PANGAEA.548639>, 2006d.
- 965 Graf, W. and Oerter, H.: Annual means of density, $\delta^{18}\text{O}$, deuterium, and accumulation rates of firn core FRI21C90_HWF, <https://doi.org/10.1594/PANGAEA.548652>, 2006e.
- Graf, W. and Oerter, H.: Annual means of density, $\delta^{18}\text{O}$, deuterium, tritium, and accumulation rates of firn core FRI10C90_136, <https://doi.org/10.1594/PANGAEA.548641>, 2006f.
- 970 Graf, W. and Oerter, H.: Annual means of density, $\delta^{18}\text{O}$, deuterium, tritium, and accumulation rates of firn core FRI12C90_236, <https://doi.org/10.1594/PANGAEA.548643>, 2006g.
- Graf, W. and Oerter, H.: Annual means of density, $\delta^{18}\text{O}$, deuterium, tritium, and accumulation rates of firn core FRI14C90_336, <https://doi.org/10.1594/PANGAEA.548645>, 2006h.
- Graf, W. and Oerter, H.: Annual means of density, $\delta^{18}\text{O}$, deuterium, tritium, and accumulation rates of firn core FRI18C90_330, <https://doi.org/10.1594/PANGAEA.548649>, 2006i.
- 975 Graf, W. and Oerter, H.: Annual means of density, $\delta^{18}\text{O}$, deuterium, tritium, and accumulation rates of firn core FRI19C90_05, <https://doi.org/10.1594/PANGAEA.548650>, 2006j.
- Graf, W. and Oerter, H.: Annual means of density, $\delta^{18}\text{O}$, deuterium, tritium, and accumulation rates of firn core FRI20C90_06, <https://doi.org/10.1594/PANGAEA.548651>, 2006k.
- 980 Graf, W. and Oerter, H.: Density and deuterium of firn core FRI09C90_90, <https://doi.org/10.1594/PANGAEA.548624>, 2006l.
- Graf, W. and Oerter, H.: High resolution density, conductivity, deuterium, and $\delta^{18}\text{O}$ of ice core FRI09C90_13, <https://doi.org/10.1594/PANGAEA.548743>, 2006m.
- Graf, W. and Oerter, H.: High resolution density, conductivity, deuterium, and $\delta^{18}\text{O}$ of ice core FRI12C92_15, <https://doi.org/10.1594/PANGAEA.548744>, 2006n.
- 985 Graf, W., Moser, H., Oerter, H., Reinwarth, O., and Stichler, W.: Annual means of density, $\delta^{18}\text{O}$, and accumulation rates of ice core FRI07C84_340, <https://doi.org/10.1594/PANGAEA.549170>, 1988.
- Graf, W., Reinwarth, O., Oerter, H., Mayer, C., and Lambrecht, A.: Annual means of density, $\delta^{18}\text{O}$, and accumulation rates of firn core FRI24C95_15, <https://doi.org/10.1594/PANGAEA.548505>, 1999a.
- 990 Graf, W., Reinwarth, O., Oerter, H., Mayer, C., and Lambrecht, A.: Annual means of density, $\delta^{18}\text{O}$, and accumulation rates of firn core FRI25C95_14, <https://doi.org/10.1594/PANGAEA.548506>, 1999b.
- Graf, W., Reinwarth, O., Oerter, H., Mayer, C., and Lambrecht, A.: Annual means of density, $\delta^{18}\text{O}$, and accumulation rates of firn core FRI27C95_12, <https://doi.org/10.1594/PANGAEA.548508>, 1999c.
- Graf, W., Reinwarth, O., Oerter, H., Mayer, C., and Lambrecht, A.: Annual means of density, $\delta^{18}\text{O}$, and accumulation rates of firn core FRI28C95_11, <https://doi.org/10.1594/PANGAEA.548509>, 1999d.
- 995 Graf, W., Reinwarth, O., Oerter, H., Mayer, C., and Lambrecht, A.: Annual means of density, $\delta^{18}\text{O}$, and accumulation rates of firn core FRI29C95_10, <https://doi.org/10.1594/PANGAEA.548510>, 1999e.

- Graf, W., Reinwarth, O., Oerter, H., Mayer, C., and Lambrecht, A.: Annual means of density, $\delta^{18}\text{O}$, and accumulation rates of firm core FRI33C95_06, <https://doi.org/10.1594/PANGAEA.548512>, 1999f.
- 1000 Graf, W., Reinwarth, O., Oerter, H., Mayer, C., and Lambrecht, A.: Annual means of density, $\delta^{18}\text{O}$, deuterium, and accumulation rates of firm core FRI34C95_03, <https://doi.org/10.1594/PANGAEA.548513>, 1999g.
- Graf, W., Reinwarth, O., Oerter, H., Mayer, C., and Lambrecht, A.: Annual means of density, $\delta^{18}\text{O}$, deuterium, tritium, and accumulation rates of firm core FRI32C95_07, <https://doi.org/10.1594/PANGAEA.548511>, 1999h.
- Graf, W., Reinwarth, O., Oerter, H., Mayer, C., and Lambrecht, A.: Annual means of density, $\delta^{18}\text{O}$, deuterium, tritium, and accumulation rates of firm core FRI35C95_01, <https://doi.org/10.1594/PANGAEA.548514>, 1999i.
- 1005 Graf, W., Reinwarth, O., Oerter, H., Mayer, C., and Lambrecht, A.: Annual means of density, $\delta^{18}\text{O}$, deuterium, tritium, and accumulation rates of firm core FRI38C95_04, <https://doi.org/10.1594/PANGAEA.548515>, 1999j.
- Graf, W., Reinwarth, O., Oerter, H., Mayer, C., and Lambrecht, A.: Density and $\delta^{18}\text{O}$ of firm core FRI26C95_13, <https://doi.org/10.1594/PANGAEA.548450>, 1999k.
- 1010 Graf, W., Reinwarth, O., Oerter, H., Mayer, C., and Lambrecht, A.: Density and $\delta^{18}\text{O}$ of firm core FRI30C95_09, <https://doi.org/10.1594/PANGAEA.548454>, 1999l.
- Graf, W., Reinwarth, O., Oerter, H., Mayer, C., and Lambrecht, A.: Density and $\delta^{18}\text{O}$ of firm core FRI31C95_08, <https://doi.org/10.1594/PANGAEA.548455>, 1999m.
- Graf, W., Reinwarth, O., Oerter, H., Mayer, C., and Lambrecht, A.: Density, $\delta^{18}\text{O}$, and deuterium of firm core FRI36C95_02, <https://doi.org/10.1594/PANGAEA.548460>, 1999n.
- 1015 Graf, W., Reinwarth, O., Oerter, H., Mayer, C., and Lambrecht, A.: Density, $\delta^{18}\text{O}$, and deuterium of firm core FRI37C95_05, <https://doi.org/10.1594/PANGAEA.548461>, 1999o.
- Graf, W., Reinwarth, O., Oerter, H., Mayer, C., and Lambrecht, A.: Physical and chemical analysis of firm cores from Ronne Ice Shelf, Antarctica, <https://doi.org/10.1594/PANGAEA.548620>, 1999p.
- 1020 Graf, W., Oerter, H., Reinwarth, O., Stichler, W., Wilhelms, F., Miller, H., and Mulvaney, R.: Physical properties of firm core DML25C00_01, <https://doi.org/10.1594/PANGAEA.58443>, 2002a.
- Graf, W., Oerter, H., Reinwarth, O., Stichler, W., Wilhelms, F., Miller, H., and Mulvaney, R.: Physical properties of firm core DML26C00_03, <https://doi.org/10.1594/PANGAEA.58444>, 2002b.
- Graf, W., Oerter, H., Reinwarth, O., Stichler, W., Wilhelms, F., Miller, H., and Mulvaney, R.: Physical properties of firm core DML27C00_04, <https://doi.org/10.1594/PANGAEA.58445>, 2002c.
- 1025 Groot Zwaaftink, C. D., Cagnati, A., Crepaz, A., Fierz, C., Macelloni, G., Valt, M., and Lehning, M.: Event-driven deposition of snow on the Antarctic Plateau: analyzing field measurements with SNOWPACK, *The Cryosphere*, 7, 333–347, 2013.
- 1030 Hansen, N., Simonsen, S. B., Boberg, F., Kittel, C., Orr, A., Souverijns, N., van Wessem, J. M., and Mottram, R.: Brief communication: Impact of common ice mask in surface mass balance estimates over the Antarctic ice sheet, *The Cryosphere*, 16, 711–718, 2022.

- Hawley, R. L., Courville, Z. R., Kehrl, L. M., Lutz, E. R., Osterberg, E. C., Overly, T. B., and Wong, G. J.: Recent accumulation variability in northwest Greenland from ground-penetrating radar and shallow cores along the Greenland Inland Traverse, *J. Glaciol.*, 60, 375–382, <https://doi.org/10.3189/2014JoG13J141>, 2014.
- 1035 Hearty III, T. J., Lee, J. N., Wu, D. L., Cullather, R., Blaisdell, J. M., Susskind, J., and Nowicki, S. M.: Intercomparison of surface temperatures from AIRS, MERRA, and MERRA-2 with NOAA and GC-Net weather stations at Summit, Greenland, *J. Appl. Meteorol. Climatol.*, 57, 1231–1245, 2018.
- Helm, V., Humbert, A., and Miller, H.: Elevation and elevation change of Greenland and Antarctica derived from CryoSat-2, *The Cryosphere*, 8, 1539–1559, 2014.
- 1040 Helsen, M. M., Van Den Broeke, M. R., Van De Wal, R. S., Van De Berg, W. J., Van Meijgaard, E., Davis, C. H., Li, Y., and Goodwin, I.: Elevation changes in Antarctica mainly determined by accumulation variability, *science*, 320, 1626–1629, 2008.
- Herron, M. M. and Langway, C. C.: Firn densification: an empirical model, *J. Glaciol.*, 25, 373–385, 1980.
- Howat, I. M., Negrete, A., and Smith, B. E.: The Greenland Ice Mapping Project (GIMP) land classification and surface elevation data sets, *The Cryosphere*, 8, 1509–1518, 2014.
- 1045 Huai, B., Wang, Y., Ding, M., Zhang, J., and Dong, X.: An assessment of recent global atmospheric reanalyses for Antarctic near surface air temperature, *Atmospheric Res.*, 226, 181–191, 2019.
- K. Kreutz, D. Breton, G.S. Hamilton, and B.G. Koffman: Microparticle, Conductivity, and Density Measurements from the WAIS Divide Deep Ice Core, Antarctica, <https://doi.org/10.7265/N5K07264>, 2011.
- 1050 Koenig, L. and Montgomery, L.: Surface Mass Balance and Snow Depth on Sea Ice Working Group (SUMup) snow density subdataset, Greenland and Antarctica, Arct. Data Cent. Data Set, 2018, A26D5PB2S, <https://doi.org/10.18739/A26D5PB2S>, 2018.
- Koenig, L. S., Miège, C., Forster, R. R., and Brucker, L.: Initial in situ measurements of perennial meltwater storage in the Greenland firn aquifer, *Geophys. Res. Lett.*, 41, 81–85, <https://doi.org/10.1002/2013GL058083>, 2014.
- 1055 Kovacs, A., Weeks, W. F., and Michitti, F.: Variation of some mechanical properties of polar snow, Camp Century, Greenland, Corps of Engineers, US Army Cold Regions Research and Engineering Laboratory, 1969.
- Kuipers Munneke, P., Ligtenberg, S. R. M., Noël, B. P. Y., Howat, I. M., Box, J. E., Mosley-Thompson, E., McConnell, J. R., Steffen, K., Harper, J. T., and Das, S. B.: Elevation change of the Greenland Ice Sheet due to surface mass balance and firn processes, 1960–2014, *The Cryosphere*, 9, 2009–2025, 2015.
- 1060 KusuNoKI, K. and SuzuKI, Y.: Ice coring project at Mizuho Station, East Antarctica, 1970–1975. *Mem. Natl Inst, Polar Res Spec Issue*, 10, 172, 1978.
- Langway, C. C.: Stratigraphic analysis of a deep ice core from Greenland, Geological Society of America, 1970.
- Lenaerts, J. T., Medley, B., van den Broeke, M. R., and Wouters, B.: Observing and modeling ice sheet surface mass balance, *Rev. Geophys.*, 57, 376–420, 2019.
- Li, J. and Zwally, H. J.: Modeling the density variation in the shallow firn layer, *Ann. Glaciol.*, 38, 309–313, 2004.

- 1065 Li, J. and Zwally, H. J.: Modeling of firm compaction for estimating ice-sheet mass change from observed ice-sheet elevation change, *Ann. Glaciol.*, 52, 1–7, 2011.
- Ligtenberg, S. R. M., Helsen, M. M., and Van den Broeke, M. R.: An improved semi-empirical model for the densification of Antarctic firn, *The Cryosphere*, 5, 809–819, 2011.
- Ligtenberg, S. R. M., Horwath, M., Van den Broeke, M. R., and Legrésy, B.: Quantifying the seasonal “breathing” of the Antarctic ice sheet, *Geophys. Res. Lett.*, 39, 2012.
- 1070 Machguth, H., MacFerrin, M., van As, D., Box, J. E., Charalampidis, C., Colgan, W., Fausto, R. S., Meijer, H. A., Mosley-Thompson, E., and van de Wal, R. S.: Greenland meltwater storage in firn limited by near-surface ice formation, *Nat. Clim. Change*, 6, 390–393, 2016a.
- Machguth, H., Thomsen, H. H., Weidick, A., Ahlstrøm, A. P., Abermann, J., Andersen, M. L., Andersen, S. B., Bjørk, A. A., Box, J. E., and Braithwaite, R. J.: Greenland surface mass-balance observations from the ice-sheet ablation area and local glaciers, *J. Glaciol.*, 62, 861–887, 2016b.
- Mapes, B. E. and Bacmeister, J. T.: Diagnosis of Tropical Biases and the MJO from Patterns in the MERRA Analysis Tendency Fields, *J. Clim.*, 25, 6202–6214, <https://doi.org/10.1175/JCLI-D-11-00424.1>, 2012.
- 1080 Mayewski, P.: US International Trans Antarctic Scientific Expedition (US ITASE) Glaciochemical Data, Version 2, <https://doi.org/10.7265/N51V5BXR>, 2013.
- Medley, B. and Thomas, E. R.: Increased snowfall over the Antarctic Ice Sheet mitigated twentieth-century sea-level rise, *Nat. Clim. Change*, 9, 34–39, 2019.
- Medley, B., Joughin, I., Das, S. B., Steig, E. J., Conway, H., Gogineni, S., Criscitiello, A. S., McConnell, J. R., Smith, B. E., and van den Broeke, M. R.: Airborne-radar and ice-core observations of annual snow accumulation over Thwaites Glacier, West Antarctica confirm the spatiotemporal variability of global and regional atmospheric models, *Geophys. Res. Lett.*, 40, 3649–3654, 2013.
- 1085 Medley, B., Joughin, I., Smith, B. E., Das, S. B., Steig, E. J., Conway, H., Gogineni, S., Lewis, C., Criscitiello, A. S., McConnell, J. R., van den Broeke, M. R., Lenaerts, J. T. M., Bromwich, D. H., Nicolas, J. P., and Leuschen, C.: Constraining the recent mass balance of Pine Island and Thwaites glaciers, West Antarctica, with airborne observations of snow accumulation, *The Cryosphere*, 8, 1375–1392, <https://doi.org/10.5194/tc-8-1375-2014>, 2014.
- 1090 Medley, B., Neumann, T. A., Zwally, H. J., and Smith, B. E.: Forty-year Simulations of Firn Processes over the Greenland and Antarctic Ice Sheets, *Cryosphere Discuss.*, 1–35, 2020.
- Miège, C., Forster, R. R., Box, J. E., Burgess, E. W., McConnell, J. R., Pasteris, D. R., and Spikes, V. B.: Southeast Greenland high accumulation rates derived from firn cores and ground-penetrating radar, *Ann. Glaciol.*, 54, 322–332, <https://doi.org/10.3189/2013AoG63A358>, 2013.
- 1095 Miller, H. and Schwager, M.: Density of ice core ngt37C95.2 from the North Greenland Traverse, <https://doi.org/10.1594/PANGAEA.57798>, 2000a.
- Miller, H. and Schwager, M.: Density of ice core ngt42C95.2 from the North Greenland Traverse, <https://doi.org/10.1594/PANGAEA.57655>, 2000b.

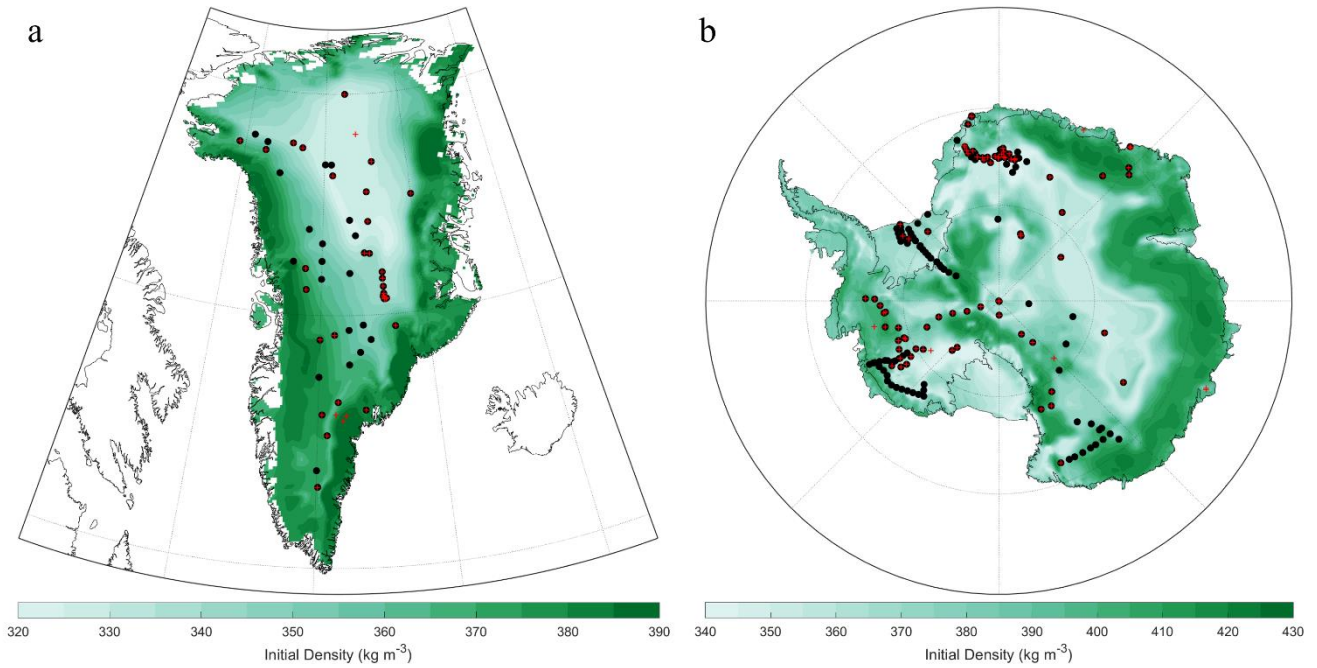
- 1100 Montgomery, L., Koenig, L., and Alexander, P.: The SUMup dataset: compiled measurements of surface mass balance components over ice sheets and sea ice with analysis over Greenland, *Earth Syst. Sci. Data*, 10, 1959–1985, 2018.
- Mosley-Thompson, E., McConnell, J. R., Bales, R. C., Li, Z., Lin, P.-N., Steffen, K., Thompson, L. G., Edwards, R., and Bathke, D.: Local to regional-scale variability of annual net accumulation on the Greenland ice sheet from PARCA cores, *J. Geophys. Res. Atmospheres*, 106, 33839–33851, <https://doi.org/10.1029/2001JD900067>, 2001.
- 1105 Mottram, R., Hansen, N., Kittel, C., van Wessem, J. M., Agosta, C., Amory, C., Boberg, F., van de Berg, W. J., Fettweis, X., and Gossart, A.: What is the surface mass balance of Antarctica? An intercomparison of regional climate model estimates, *The Cryosphere*, 15, 3751–3784, 2021.
- Nicolas, J. P. and Bromwich, D. H.: New reconstruction of Antarctic near-surface temperatures: Multidecadal trends and reliability of global reanalyses, *J. Clim.*, 27, 8070–8093, 2014.
- 1110 Oerter, H.: Density of firn core DML28C01_00, <https://doi.org/10.1594/PANGAEA.69513>, 2002.
- Oerter, H. and Graf, W.: Physical and chemical investigations on ice cores from the Filchner-Ronne Ice Shelf, <https://doi.org/10.1594/PANGAEA.548753>, 2006.
- Oerter, H., Graf, W., Wilhelms, F., Minikin, A., and Miller, H.: Physical properties of firn core DML01C97_00, <https://doi.org/10.1594/PANGAEA.58434>, 1999a.
- 1115 Oerter, H., Graf, W., Wilhelms, F., Minikin, A., and Miller, H.: Physical properties of firn core DML03C97_00, <https://doi.org/10.1594/PANGAEA.58794>, 1999b.
- Oerter, H., Graf, W., Wilhelms, F., Minikin, A., and Miller, H.: Physical properties of firn core DML04C97_00, <https://doi.org/10.1594/PANGAEA.58436>, 1999c.
- Oerter, H., Graf, W., Wilhelms, F., Minikin, A., and Miller, H.: Physical properties of firn core DML06C97_00, <https://doi.org/10.1594/PANGAEA.58796>, 1999d.
- 1120 Oerter, H., Graf, W., Wilhelms, F., Minikin, A., and Miller, H.: Physical properties of firn core DML07C97_00, <https://doi.org/10.1594/PANGAEA.58792>, 1999e.
- Oerter, H., Graf, W., Wilhelms, F., Minikin, A., and Miller, H.: Physical properties of firn core DML08C97_00, <https://doi.org/10.1594/PANGAEA.58440>, 1999f.
- 1125 Oerter, H., Graf, W., Wilhelms, F., Minikin, A., and Miller, H.: Physical properties of firn core DML09C97_00, <https://doi.org/10.1594/PANGAEA.58793>, 1999g.
- Oerter, H., Graf, W., Wilhelms, F., Minikin, A., and Miller, H.: Physical properties of firn core DML10C97_00, <https://doi.org/10.1594/PANGAEA.58442>, 1999h.
- Oerter, H., Wilhelms, F., Jung-Rothenhäusler, F., Göktas, F., Miller, H., Graf, W., and Sommer, S.: Physical properties of firn core DML03C98_09, <https://doi.org/10.1594/PANGAEA.58410>, 2000a.
- 1130 Oerter, H., Wilhelms, F., Jung-Rothenhäusler, F., Göktas, F., Miller, H., Graf, W., and Sommer, S.: Physical properties of firn core DML05C98_06, <https://doi.org/10.1594/PANGAEA.58407>, 2000b.

- Oerter, H., Wilhelms, F., Jung-Rothenhäusler, F., Göktas, F., Miller, H., Graf, W., and Sommer, S.: Physical properties of firm core DML05C98_07, <https://doi.org/10.1594/PANGAEA.58806>, 2000c.
- 1135 Oerter, H., Wilhelms, F., Jung-Rothenhäusler, F., Göktas, F., Miller, H., Graf, W., and Sommer, S.: Physical properties of firm core DML05C98_32 (B32), <https://doi.org/10.1594/PANGAEA.58815>, 2000d.
- Oerter, H., Wilhelms, F., Jung-Rothenhäusler, F., Göktas, F., Miller, H., Graf, W., and Sommer, S.: Physical properties of firm core DML11C98_03, <https://doi.org/10.1594/PANGAEA.58404>, 2000e.
- 1140 Oerter, H., Wilhelms, F., Jung-Rothenhäusler, F., Göktas, F., Miller, H., Graf, W., and Sommer, S.: Physical properties of firm core DML12C98_17, <https://doi.org/10.1594/PANGAEA.58418>, 2000f.
- Oerter, H., Wilhelms, F., Jung-Rothenhäusler, F., Göktas, F., Miller, H., Graf, W., and Sommer, S.: Physical properties of firm core DML13C98_16, <https://doi.org/10.1594/PANGAEA.58417>, 2000g.
- Oerter, H., Wilhelms, F., Jung-Rothenhäusler, F., Göktas, F., Miller, H., Graf, W., and Sommer, S.: Physical properties of firm core DML14C98_15, <https://doi.org/10.1594/PANGAEA.58416>, 2000h.
- 1145 Oerter, H., Wilhelms, F., Jung-Rothenhäusler, F., Göktas, F., Miller, H., Graf, W., and Sommer, S.: Physical properties of firm core DML15C98_14, <https://doi.org/10.1594/PANGAEA.58415>, 2000i.
- Oerter, H., Wilhelms, F., Jung-Rothenhäusler, F., Göktas, F., Miller, H., Graf, W., and Sommer, S.: Physical properties of firm core DML16C98_13, <https://doi.org/10.1594/PANGAEA.58414>, 2000j.
- Oerter, H., Wilhelms, F., Jung-Rothenhäusler, F., Göktas, F., Miller, H., Graf, W., and Sommer, S.: Physical properties of firm core DML17C98_33 (B33), <https://doi.org/10.1594/PANGAEA.58816>, 2000k.
- 1150 Oerter, H., Wilhelms, F., Jung-Rothenhäusler, F., Göktas, F., Miller, H., Graf, W., and Sommer, S.: Physical properties of firm core DML18C98_04, <https://doi.org/10.1594/PANGAEA.58405>, 2000l.
- Oerter, H., Wilhelms, F., Jung-Rothenhäusler, F., Göktas, F., Miller, H., Graf, W., and Sommer, S.: Physical properties of firm core DML19C98_05, <https://doi.org/10.1594/PANGAEA.58406>, 2000m.
- 1155 Oerter, H., Wilhelms, F., Jung-Rothenhäusler, F., Göktas, F., Miller, H., Graf, W., and Sommer, S.: Physical properties of firm core DML20C98_08, <https://doi.org/10.1594/PANGAEA.58409>, 2000n.
- Oerter, H., Wilhelms, F., Jung-Rothenhäusler, F., Göktas, F., Miller, H., Graf, W., and Sommer, S.: Physical properties of firm core DML21C98_10, <https://doi.org/10.1594/PANGAEA.58807>, 2000o.
- Oerter, H., Wilhelms, F., Jung-Rothenhäusler, F., Göktas, F., Miller, H., Graf, W., and Sommer, S.: Physical properties of firm core DML22C98_11, <https://doi.org/10.1594/PANGAEA.58800>, 2000p.
- 1160 Oerter, H., Wilhelms, F., Jung-Rothenhäusler, F., Göktas, F., Miller, H., Graf, W., and Sommer, S.: Physical properties of firm core DML23C98_12, <https://doi.org/10.1594/PANGAEA.58413>, 2000q.
- Oerter, H., Wilhelms, F., Jung-Rothenhäusler, F., Göktas, F., Miller, H., Graf, W., and Sommer, S.: Physical properties of firm core DML24C98_18, <https://doi.org/10.1594/PANGAEA.58419>, 2000r.
- 1165 Oerter, H., Wilhelms, F., Jung-Rothenhäusler, F., Göktas, F., Miller, H., Graf, W., and Sommer, S.: Physical properties of firm core DML60C98_02, <https://doi.org/10.1594/PANGAEA.58797>, 2000s.

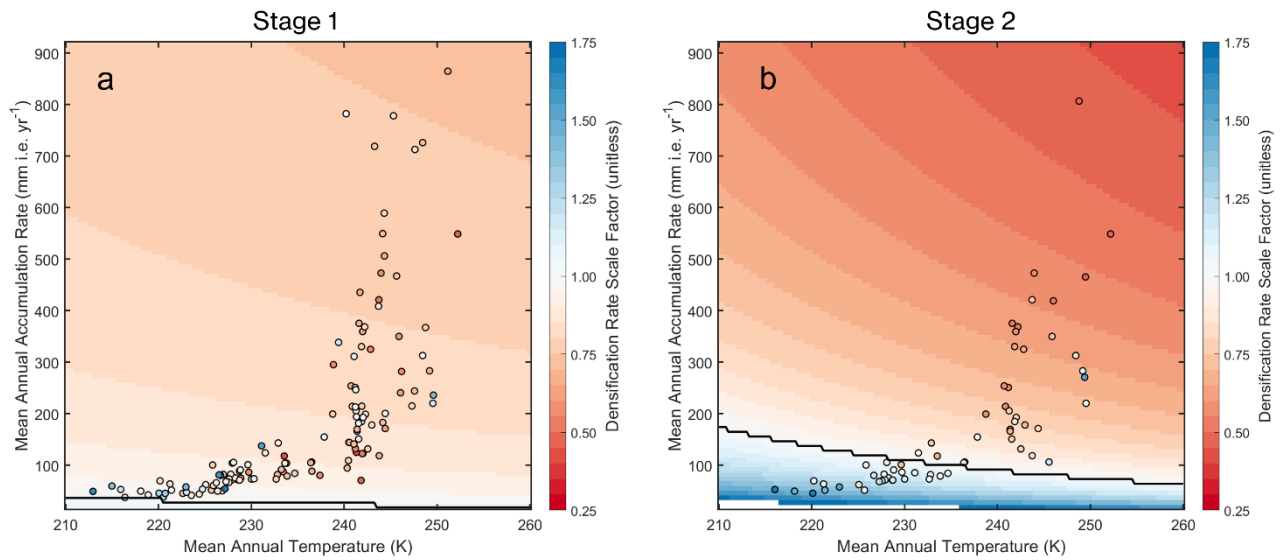
- Oerter, H., Wilhelms, F., Jung-Rothenhäusler, F., Göktaş, F., Miller, H., Graf, W., and Sommer, S.: Physical properties of firn core NM03C98_01, <https://doi.org/10.1594/PANGAEA.58799>, 2000t.
- 1170 Oerter, H., Graf, W., Meyer, H., and Wilhelms, F.: Annual means of density, accumulation rate and stable oxygen isotopes of firn core DML07C98_31 (B31), Fig 5, <https://doi.org/10.1594/PANGAEA.264593>, 2004.
- Paolo, F. S., Fricker, H. A., and Padman, L.: Volume loss from Antarctic ice shelves is accelerating, *Science*, 348, 327–331, 2015.
- 1175 Philippe, M., Tison, J.-L., Fjøsne, K., Hubbard, B., Kjær, H. A., Lenaerts, J. T. M., Drews, R., Sheldon, S. G., De Bondt, K., Claeys, P., and Pattyn, F.: Ice core evidence for a 20th century increase in surface mass balance in coastal Dronning Maud Land, East Antarctica, *The Cryosphere*, 10, 2501–2516, <https://doi.org/10.5194/tc-10-2501-2016>, 2016.
- Pirrit, J. and Doumani, G. A.: *Glaciology, Byrd Station and Marie Byrd Land Traverse, 1959-1960*, The Ohio State University Research Foundation., 1961.
- Pritchard, H. D., Arthern, R. J., Vaughan, D. G., and Edwards, L. A.: Extensive dynamic thinning on the margins of the Greenland and Antarctic ice sheets, *Nature*, 461, 971–975, 2009.
- 1180 Schlosser, E., Oerter, H., and Graf, W.: Deuterium, $\delta^{18}\text{O}$, and tritium of ice core NM01C82_04, <https://doi.org/10.1594/PANGAEA.690381>, 2002.
- Shepherd, A., Ivins, E. R., Geruo, A., Barletta, V. R., Bentley, M. J., Bettadpur, S., Briggs, K. H., Bromwich, D. H., Forsberg, R., and Galin, N.: A reconciled estimate of ice-sheet mass balance, *Science*, 338, 1183–1189, 2012.
- 1185 Shepherd, A., Ivins, E., Rignot, E., Smith, B., Van Den Broeke, M., Velicogna, I., Whitehouse, P., Briggs, K., Joughin, I., and Krinner, G.: Mass balance of the Antarctic Ice Sheet from 1992 to 2017, *Nature*, 558, 219–222, 2018.
- Smith, B., Fricker, H. A., Gardner, A. S., Medley, B., Nilsson, J., Paolo, F. S., Holschuh, N., Adusumilli, S., Brunt, K., and Csatho, B.: Pervasive ice sheet mass loss reflects competing ocean and atmosphere processes, *Science*, 368, 1239–1242, 2020.
- 1190 Smith, B. E., Medley, B., Fettweis, X., Sutterley, T., Alexander, P., Porter, D., and Tedesco, M.: Evaluating Greenland Surface-Mass-Balance and Firn-Densification Data Using ICESat-2 Altimetry, *Cryosphere Discuss.*, 1–24, 2022.
- Spencer, M. K., Alley, R. B., and Creyts, T. T.: Preliminary firn-densification model with 38-site dataset, *J. Glaciol.*, 47, 671–676, <https://doi.org/10.3189/172756501781831765>, 2001.
- Steig, E. J., Schneider, D. P., Rutherford, S. D., Mann, M. E., Comiso, J. C., and Shindell, D. T.: Warming of the Antarctic ice-sheet surface since the 1957 International Geophysical Year, *nature*, 457, 459–462, 2009.
- 1195 Stevens, C. M., Verjans, V., Lundin, J., Kahle, E. C., Horlings, A. N., Horlings, B. I., and Waddington, E. D.: The Community Firn Model (CFM) v1. 0, *Geosci. Model Dev. Discuss.*, 1–37, 2020.
- Stevens, M., Vo, H., Emmakahle, and Jboat: UWGlaciology/CommunityFirnModel: Version 1.1.6, Zenodo, <https://doi.org/10.5281/ZENODO.5719748>, 2021.
- 1200 Stuart, A. W. and Heine, A. J.: *Glaciology, Victoria Land Traverse, 1959-60*, Research Foundation, The Ohio State University, 1961.

- Thomas, E. R., Melchior Van Wessem, J., Roberts, J., Isaksson, E., Schlosser, E., Fudge, T. J., Vallelonga, P., Medley, B., Lenaerts, J., and Bertler, N.: Regional Antarctic snow accumulation over the past 1000 years, *Clim. Past*, 13, 1491–1513, 2017.
- 1205 Tian, B., Lee, H., Waliser, D. E., Ferraro, R., Kim, J., Case, J., Iguchi, T., Kemp, E., Wu, D., Putman, W., and Wang, W.: Development of a Model Performance Metric and Its Application to Assess Summer Precipitation over the U.S. Great Plains in Downscaled Climate Simulations, *J. Hydrometeorol.*, 18, 2781–2799, <https://doi.org/10.1175/JHM-D-17-0045.1>, 2017.
- Trusel, L. D., Frey, K. E., Das, S. B., Munneke, P. K., and Van Den Broeke, M. R.: Satellite-based estimates of Antarctic surface meltwater fluxes, *Geophys. Res. Lett.*, 40, 6148–6153, 2013a.
- 1210 Trusel, L. D., Frey, K. E., Das, S. B., Munneke, P. K., and Van Den Broeke, M. R.: Satellite-based estimates of Antarctic surface meltwater fluxes, *Geophys. Res. Lett.*, 40, 6148–6153, 2013b.
- Van Wessem, J. M., Jan Van De Berg, W., Noël, B. P., Van Meijgaard, E., Amory, C., Birnbaum, G., Jakobs, C. L., Krüger, K., Lenaerts, J., and Lhermitte, S.: Modelling the climate and surface mass balance of polar ice sheets using racmo2: Part 2: Antarctica (1979-2016), *Cryosphere*, 12, 1479–1498, 2018.
- 1215 Verjans, V., Leeson, A. A., Stevens, C. M., MacFerrin, M., Noël, B., and van den Broeke, M. R.: Development of physically based liquid water schemes for Greenland firn-densification models, *Cryosphere*, 13, 1819–1842, 2019.
- Verjans, V., Leeson, A. A., Nemeth, C., Stevens, C. M., Kuipers Munneke, P., Noël, B., and van Wessem, J. M.: Bayesian calibration of firn densification models, *The Cryosphere*, 14, 3017–3032, 2020.
- 1220 Wagenbach, D., Graf, W., Minikin, A., Trefzer, U., Kipfstuhl, S., Oerter, H., and Blindow, N.: Annual means of density, $\delta^{18}\text{O}$, deuterium, tritium, and accumulation rates of firn core BER01C90_01, <https://doi.org/10.1594/PANGAEA.548637>, 1994a.
- Wagenbach, D., Graf, W., Minikin, A., Trefzer, U., Kipfstuhl, S., Oerter, H., and Blindow, N.: Annual means of density, $\delta^{18}\text{O}$, deuterium, tritium, and accumulation rates of firn core BER02C90_02, <https://doi.org/10.1594/PANGAEA.548638>, 1994b.
- 1225 Watanabe, O., Shimada, W., Narita, H., Miyamoto, A., Tayuki, K., Hondoh, T., Kawamura, T., Fujita, S., Shoji, H., and Enomoto, H.: Preliminary discussion of physical properties of the Dome Fuji shallow ice core in 1993, *Antarctica*, 1997.
- Wilhelms, F.: Density of ice core ngt03C93.2 from the North Greenland Traverse, <https://doi.org/10.1594/PANGAEA.56560>, 2000a.
- Wilhelms, F.: Density of ice core ngt06C93.2 from the North Greenland Traverse, <https://doi.org/10.1594/PANGAEA.57153>, 2000b.
- 1230 Wilhelms, F.: Density of ice core ngt14C93.2 from the North Greenland Traverse, <https://doi.org/10.1594/PANGAEA.56615>, 2000c.
- Wilhelms, F.: Density of ice core ngt27C94.2 from the North Greenland Traverse, <https://doi.org/10.1594/PANGAEA.57296>, 2000d.
- Wilhelms, F.: Density of firn core DML96C07_39, <https://doi.org/10.1594/PANGAEA.615238>, 2007.

- 1235 Zwally, H. J. and Li, J.: Seasonal and interannual variations of firn densification and ice-sheet surface elevation at the Greenland summit, *J. Glaciol.*, 48, 199–207, 2002.
- Zwally, H. J., Giovinetto, M. B., Li, J., Cornejo, H. G., Beckley, M. A., Brenner, A. C., Saba, J. L., and Yi, D.: Mass changes of the Greenland and Antarctic ice sheets and shelves and contributions to sea-level rise: 1992–2002, *J. Glaciol.*, 51, 509–527, 2005.
- 1240 Zwally, H. J., Li, J., Robbins, J. W., Saba, J. L., Yi, D., Brenner, A. C., and Zwally, C. H. J.: Mass gains of the Antarctic ice sheet exceed losses, *J Glaciol*, 61, 1019–1036, 2015.



1245 Figure 1. Modeled time-invariant initial density for the (a) Greenland and (b) Antarctic Ice Sheets. These results are based on MERRA-2 mean surface climate conditions. The solid circles indicate locations that were used to train and test the initial density model (Section 2.1.5), and the red + indicates sites used in stage 2 calibration. Note the differences in color scale for Greenland and Antarctica.



1250 Figure 2. The dry-snow densification calibration coefficients for (a) stage 1, R_0 , and (b) stage 2, R_1 (Sect. 2.1.3; Eqns. 11–12, 15) plotted by the mean annual temperature and snow accumulation rate. The coefficients derived for each of the calibration sites are plotted as closed circles, colored by their scale factor (i.e., calibration coefficients). The black contour separates the region of enhanced densification (blue) from the region of reduced densification (red).

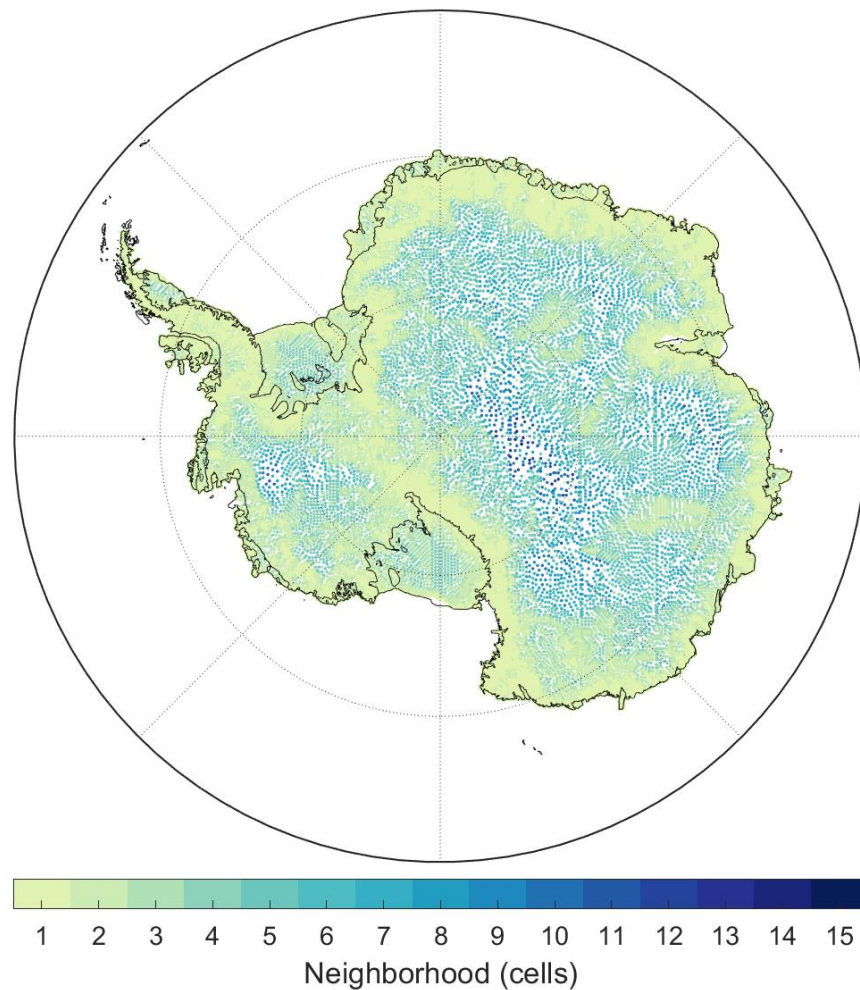


Figure 3. The Antarctic GSFC-FDM simulation locations colored by the representative size of their neighborhood. Darker colors (larger neighborhoods) with more white space (redundant simulations) indicate that the gradients in mean annual climate variables do not vary significantly over short length scales. Paler colors suggest stronger gradients with fewer redundant simulations.

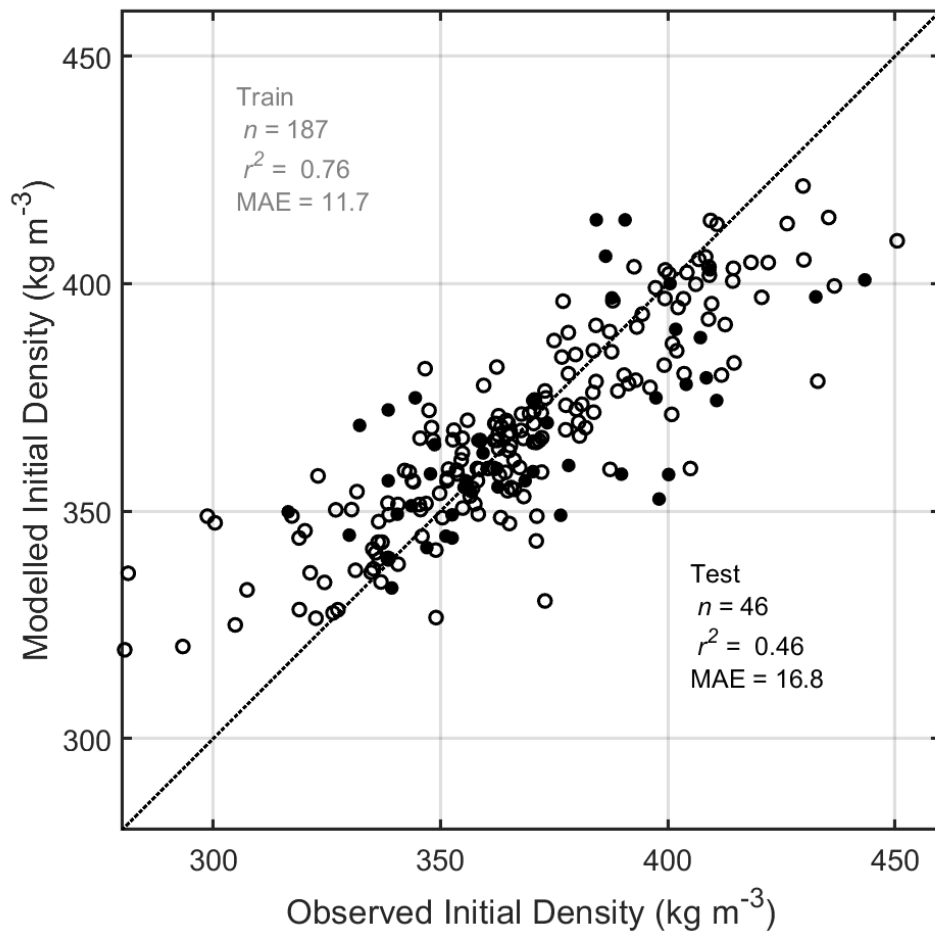
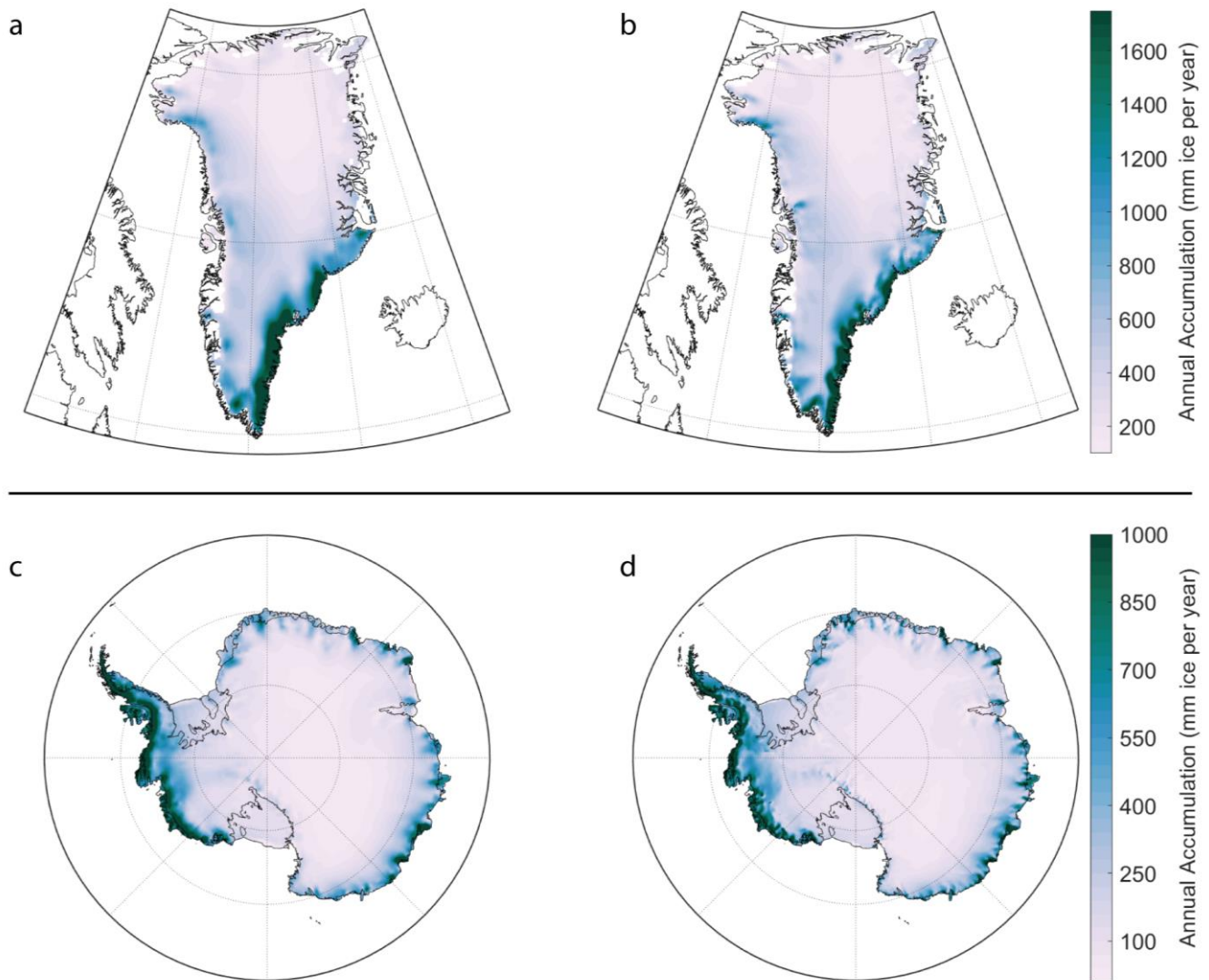
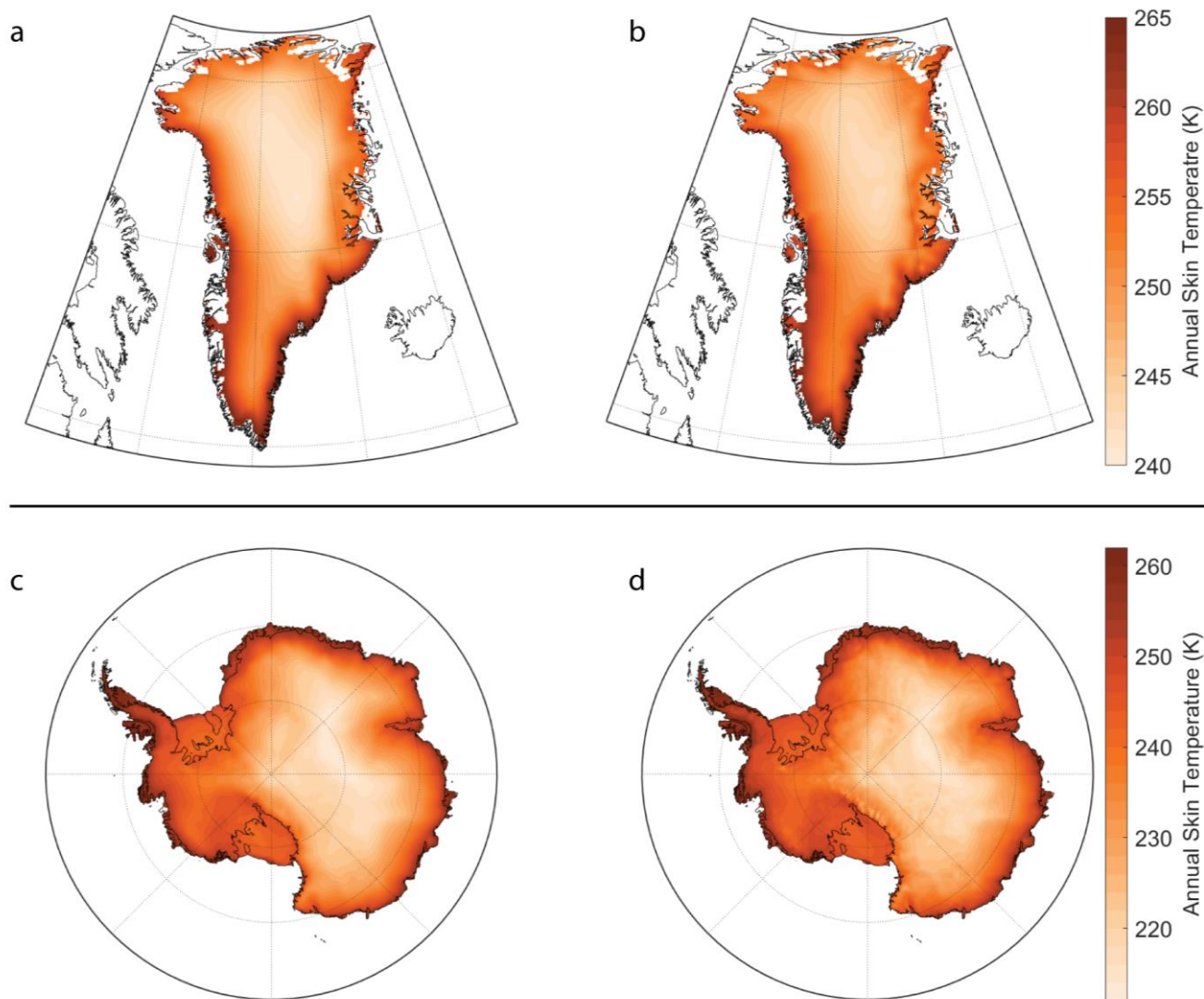


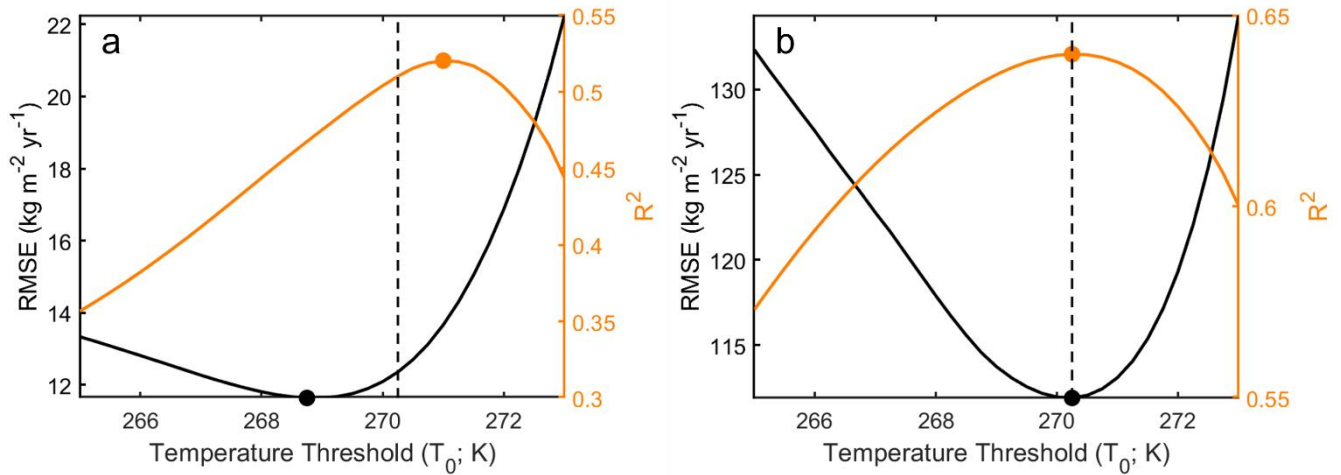
Figure 4. Comparison of observed and modeled initial densities. Solid circles indicate that they were not used in the final model development and represent an independent Testing dataset, whereas open circles represent the training partition used to build the Gaussian Process Regression Model (see Sect. 2.1.5). The statistics in black are in reference to the solid circles only (Testing partition), and those in grey reference the open circles (Training partition).



1270 Figure 5. Mean annual net accumulation (snowfall-minus-sublimation) for the Greenland (upper) and Antarctic (lower) ice sheets from MERRA-2 (a,c) and M2R12K (b,d) over their contemporaneous time span (2000–2014). Note the differences in color scale for Greenland and Antarctica.



1275 Figure 6. Mean annual skin temperature for the Greenland (upper) and Antarctic (lower) ice sheets from MERRA-2 (a,c) and M2R12K (b,d) over their contemporaneous time span (2000–2014). Note the differences in color scale for Greenland and Antarctica.



1280 Figure 7. Degree-day model evaluation for (a) Antarctica and (b) Greenland for different temperature thresholds, T_0 . The orange and black lines represent the mean r^2 and $RMSE$ of every grid cell for a given temperature threshold. The orange and black dots indicate the threshold that maximize r^2 and minimize $RMSE$, respectively. The dashed line represents the threshold selected for each ice sheet as it maximizes the distance between the two curve and yields the best model according to these evaluators. Note the differences in vertical scales.

1285

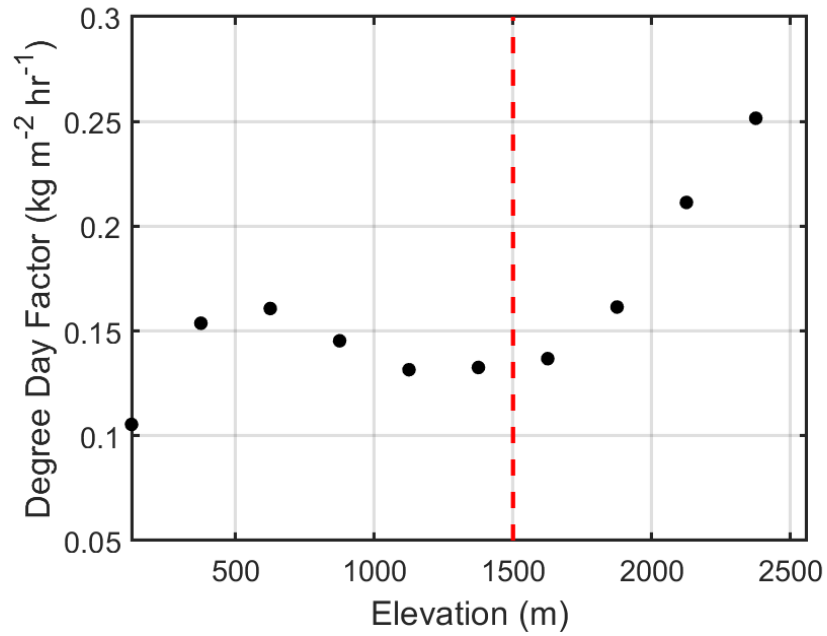


Figure 8. Mean degree-day factors over the Greenland Ice Sheet binned at 250 m elevation intervals for a temperature threshold, T_0 , of 270.25 K. We assume that degree-day factors above the vertical dashed red line at 1500 m are non-physical (i.e., too large). For all elevations greater than 1500 m, we apply a maximum degree-day factor equal to the mean within the 1290 1250-1500 m elevation bin ($0.13 \text{ kg m}^{-2} \text{hr}^{-1} \text{K}^{-1}$).

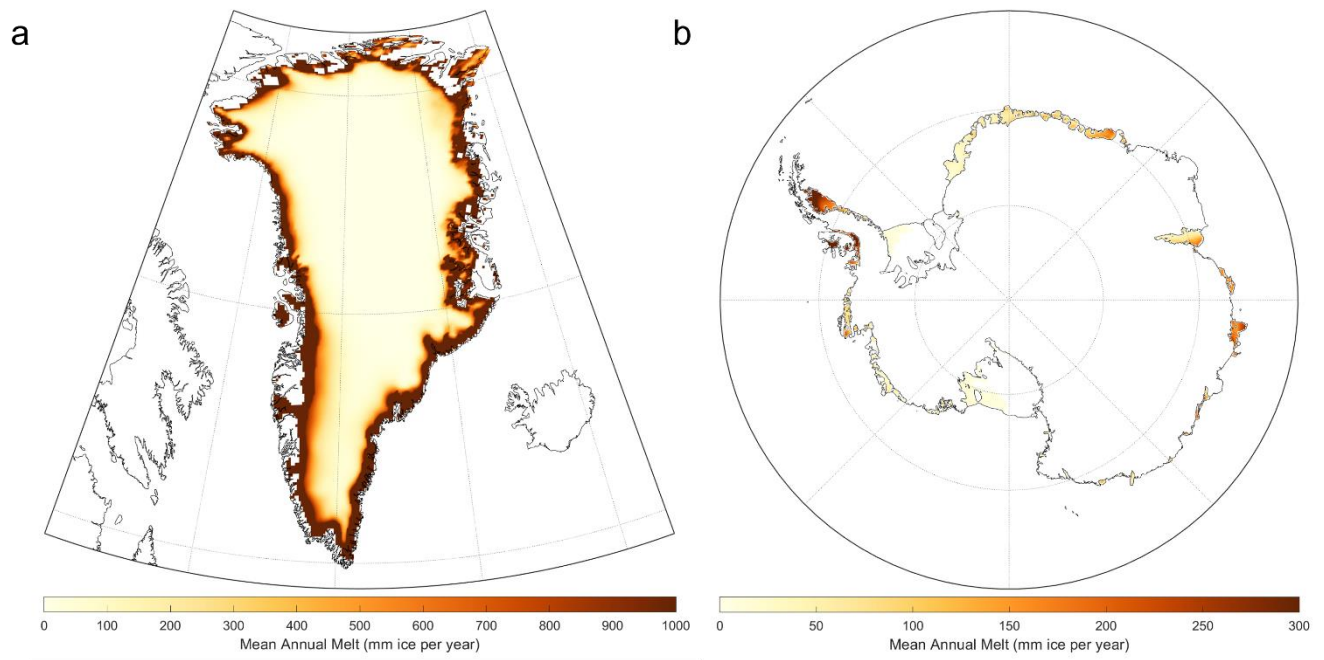


Figure 9. Mean annual meltwater fluxes for the (a) Greenland and (b) Antarctic Ice Sheets based on a degree-day approach.

1295 Note the differences in color scale for Greenland and Antarctica.

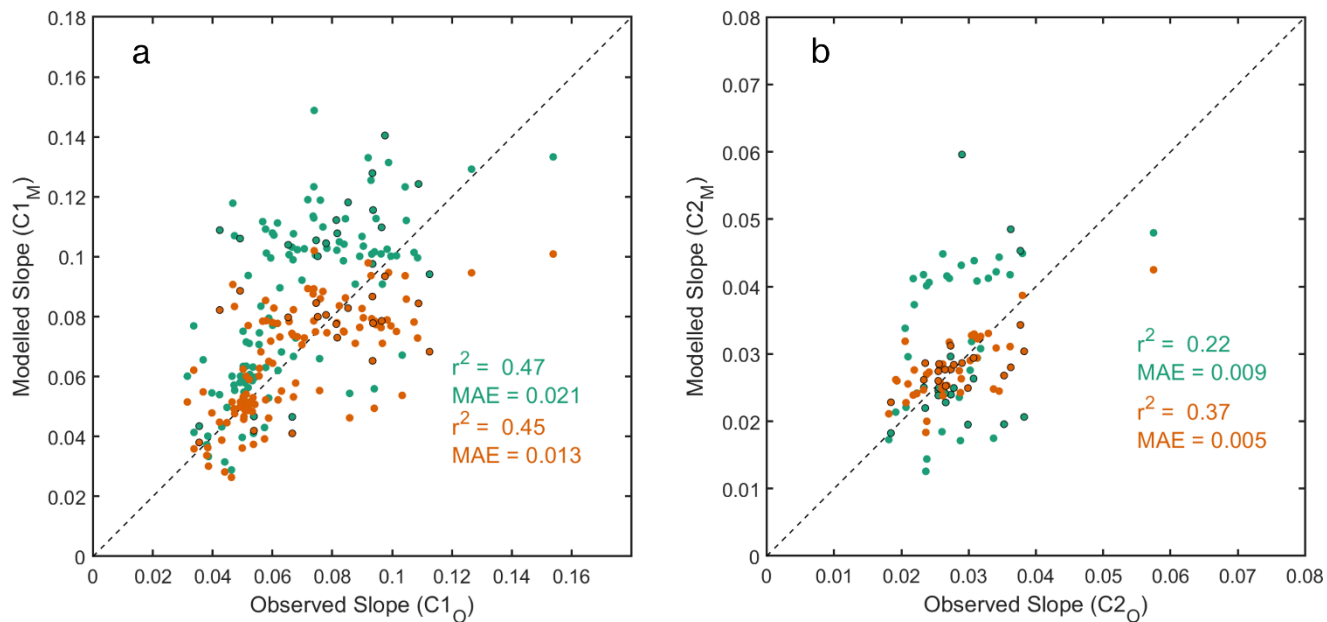
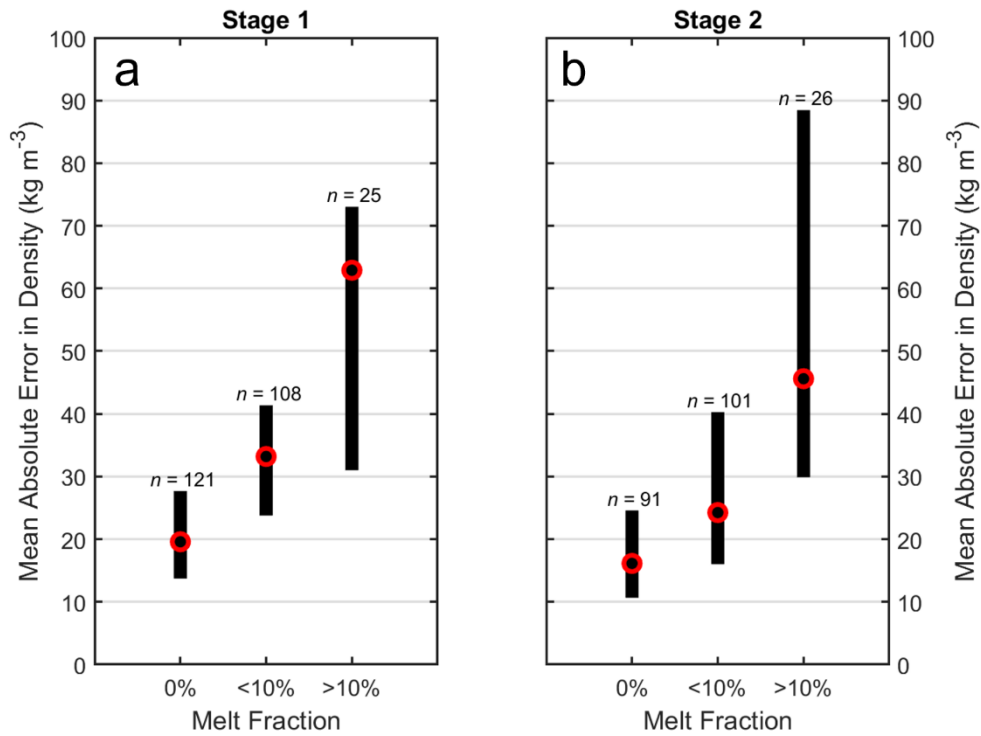


Figure 10. Comparison of observed and modeled slopes of the logarithmic density with depth for (a) stage 1 and (b) stage 2. Green circles reflect comparisons of observed slopes with those from the original densification model (Arthern et al., 2010), and the orange circles compare the same observations after calibration. Circles without an edge color are sites from Antarctica and those with a black edge are from Greenland. Summary statistics are also color coded, where r^2 is the coefficient of determination and MAE is the mean absolute error. The dashed black line is the 1:1 line. Note the differences in scale.



1305 Figure 11. Range of mean absolute errors in density for stages (a) 1 and (b) 2 of densification in relation to the total melt experienced. The number of observations that make up each distribution is listed above each bar. The black bar represents the interquartile range of the mean absolute error while the red circle represents the median. Melt fraction is defined as the ratio of mean annual melt to mean annual snow accumulation expressed as a percentage.

1310 Table 1. The 1-sigma errors in various CFM parameters and atmospheric forcing as well as other parameters that are selected at random that form the basis of the uncertainty analysis (Sect. 2.5). The perturbation developed sample randomly within the 2-sigma bounds of the Gaussian Perturbations and from a small number of Random Perturbations. The values are based either on analysis within this work or based on other references provided.

Gaussian Perturbation	1-sigma Error	Reference (if applicable)
<i>CFM parameters</i>		
Initial Density (ρ_0)	16.8 kg m ⁻³	Mean absolute error of the Test data in Fig. 3 (Sect. 2.1.5)
Ec1	150 J mol ⁻¹	1-sigma calibration uncertainty (Sect. 2.1.3; Eq. 15)
Ec2	50 J mol ⁻¹	1-sigma calibration uncertainty (Sect. 2.1.3; Eq. 15)
alpha1	0.015	1-sigma calibration uncertainty (Sect. 2.1.3; Eq. 15)
alpha2	0.0085	1-sigma calibration uncertainty (Sect. 2.1.3; Eq. 15)
<i>Atmospheric variables</i>		
Snow Accumulation (Sn+Ev)	10%	Approximate based on SMB analysis (Sect. 3.4)
Rain (Ra)	10%	
Melt (Me)	10%	
Skin Temperature	2 K	Based on Huai et al. (2019); Hearty et al. (2018)
Random Perturbation		
Thermal Conductivity	7 parameterizations ^a	GSFC-FDM v1.2 uses Calonne (2019)
RCI End Year	AIS: 2010-2020; GrIS: 1991-2000	GSFC-FDMv1.2 RCI ends inclusive of 2019 (AIS) and 1995 (GrIS)
^a Choice of 7 parameterizations within the Community Firm Model		

1315

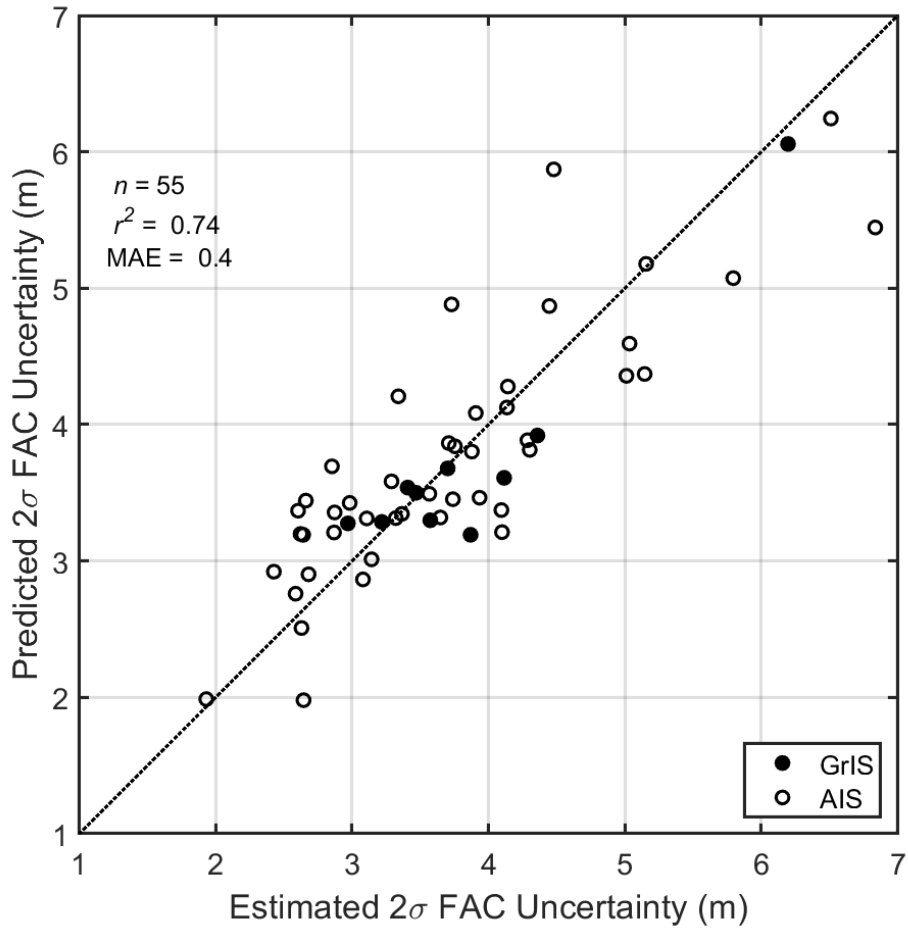


Figure 12. Comparisons of the estimated 2-sigma uncertainty in FAC for both GrIS (solid circles) and AIS (open circles) and the model prediction of the 2-sigma uncertainty derived from Eqn. 20. Performance statistics provided apply to the entire population (i.e., GrIS and AIS combined).

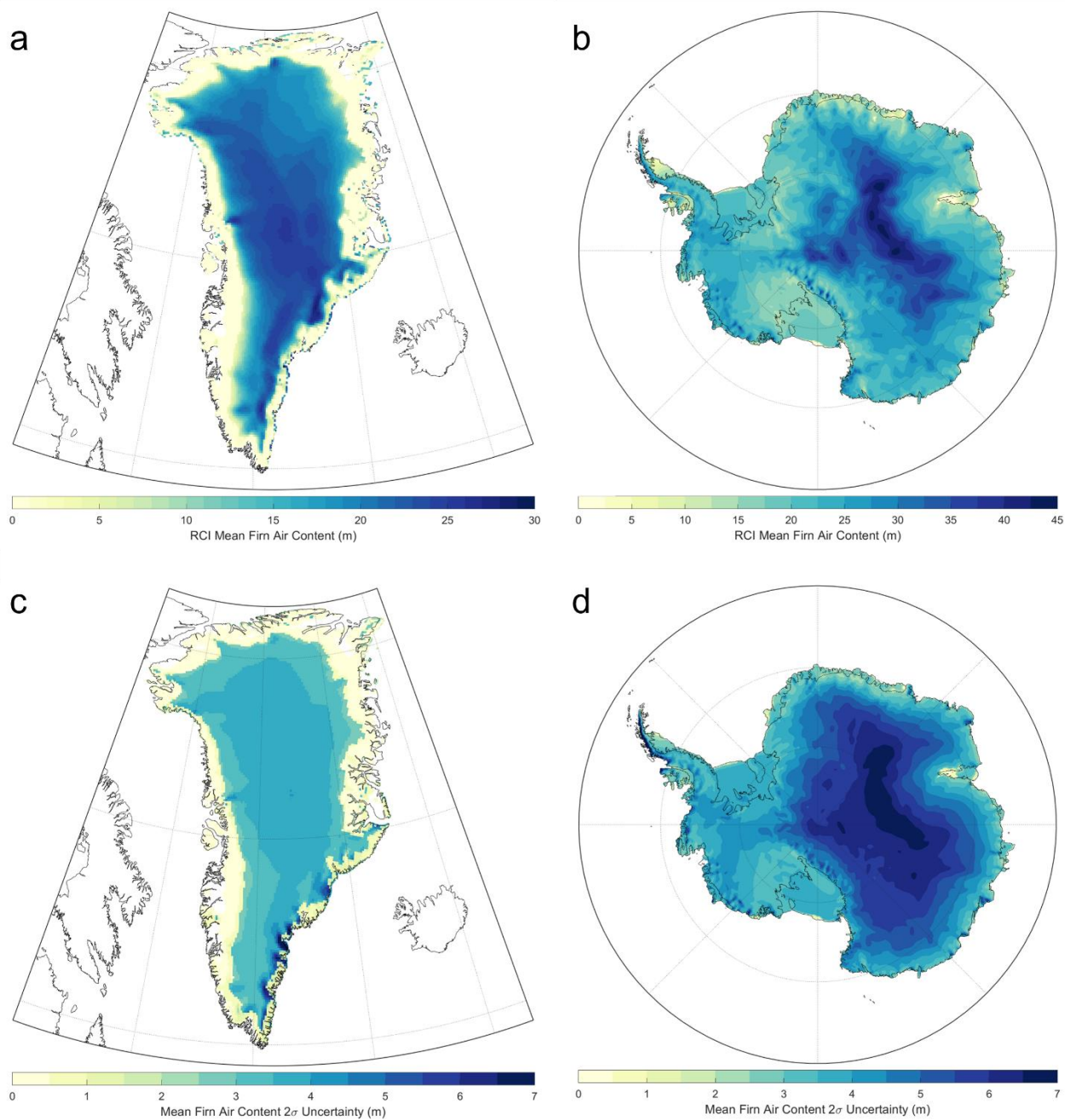
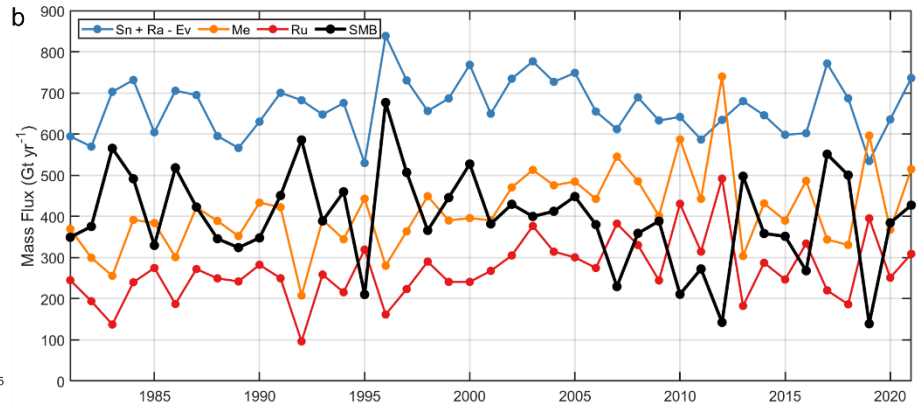
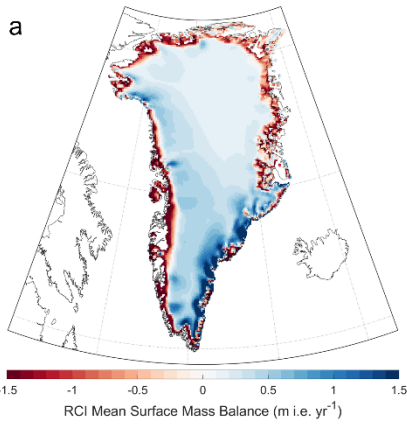


Figure 13. The mean firn air content (FAC) for the (a) Greenland Ice Sheet and (b) the Antarctic Ice Sheet over their respective reference climate intervals and (c,d) the respective 2-sigma uncertainty. Note the differences in color scale for Greenland and Antarctica and their uncertainties.



1325

Figure 14 (a) The mean annual surface mass balance of the Greenland Ice Sheet and its peripheral ice over the Reference Climate Interval (RCI: 1980–1995). (b) Time series of annual SMB (black) and its components (see Eqn. 5) for the Greenland Ice Sheet only. Net accumulation (blue) and runoff (red) are combined to make SMB. Meltwater production is in yellow. The annual values are calculated from October through September and are defined by the year of the latter.

1330

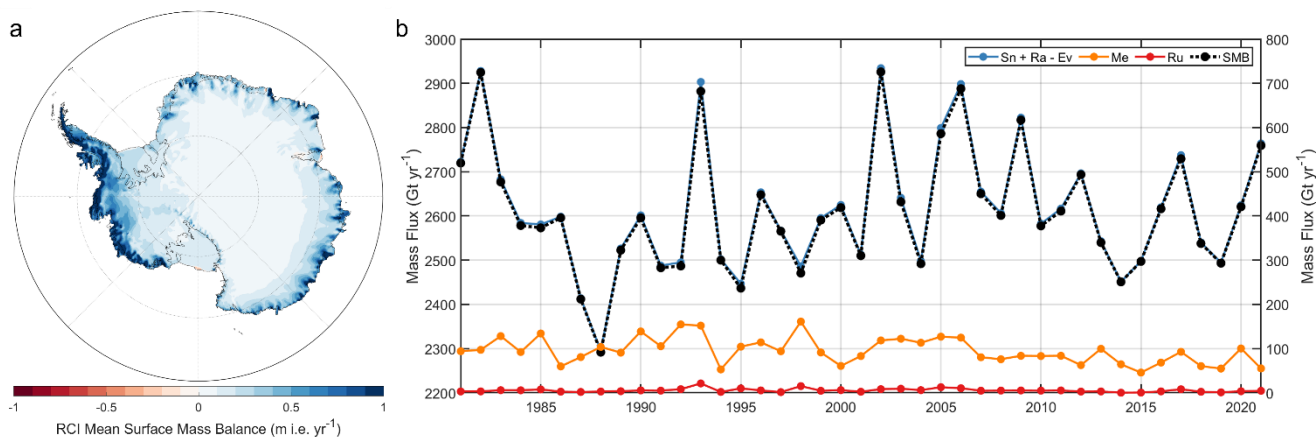
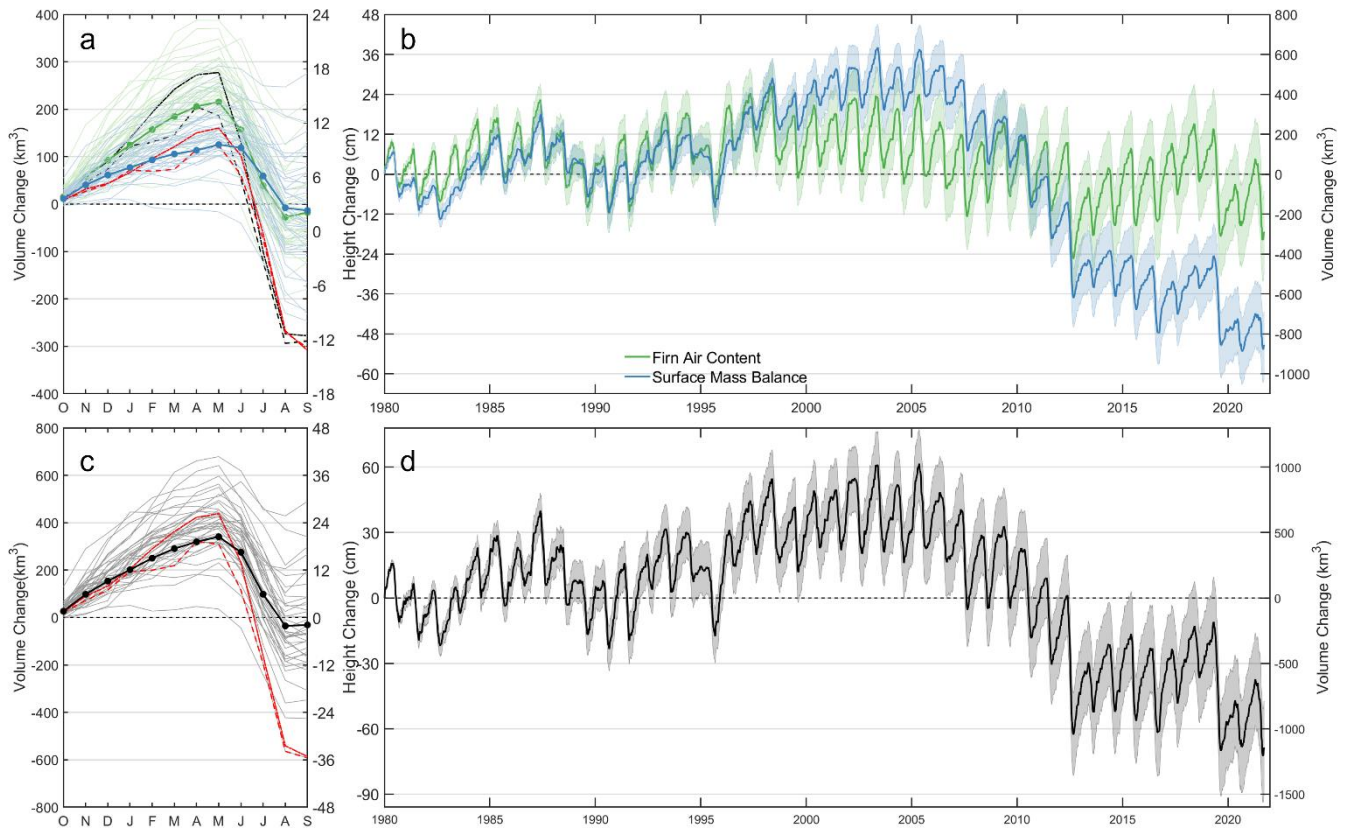


Figure 15. (a) The mean annual surface mass balance of the Antarctic Ice Sheet (AIS; floating and grounded ice) over the Reference Climate Interval (RCI: 1980–2019). (b) Time series of annual SMB and its components (see Eqn. 5) for grounded and floating AIS. SMB (black) and net accumulation (blue) use the left axis and runoff (red) and meltwater production (yellow) use the right axis. Note, the two axes span the same range (800 Gt yr^{-1}) but are shifted in magnitude. SMB is presented as a dashed line because of overlap with net accumulation. The annual values are calculated from April through March and are defined by the year of the latter.



1340 Figure 16. Height and volume change of the Greenland Ice Sheet. (a) Seasonal changes separated into surface mass balance (SMB; blue) and firm air content (FAC; green) components. The thin lines represent each year, and the thick, dotted line represents the mean over the RCI (1980–1996). The solid and dashed lines represent the 2012 and 2019 mass balance years, respectively, where the black lines represent FAC and the red lines represent SMB. (b) A forty-year time series of volume
 1345 regions represent the cumulative 2-sigma uncertainty in the volume changes, which accounts for spatial and temporal correlation in the time series. Note the differences in scale.

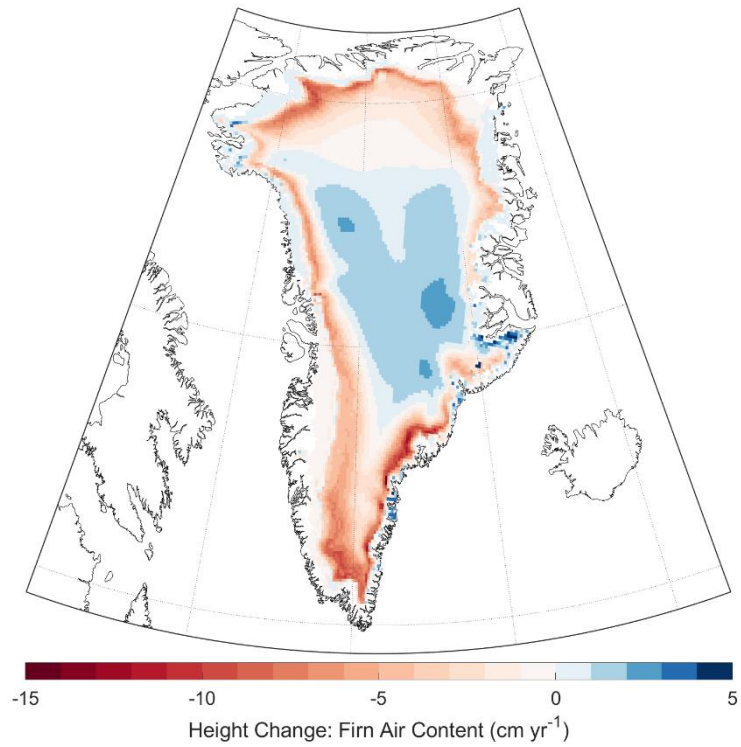
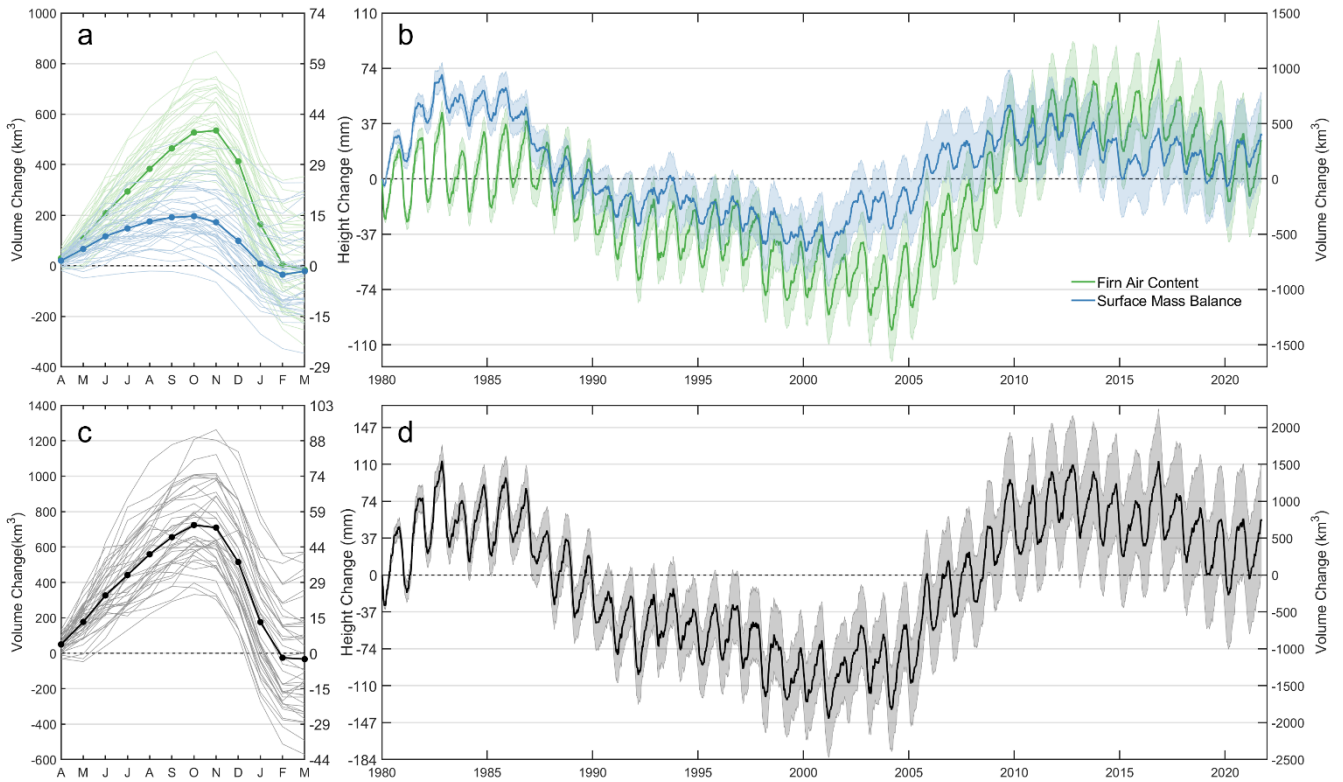
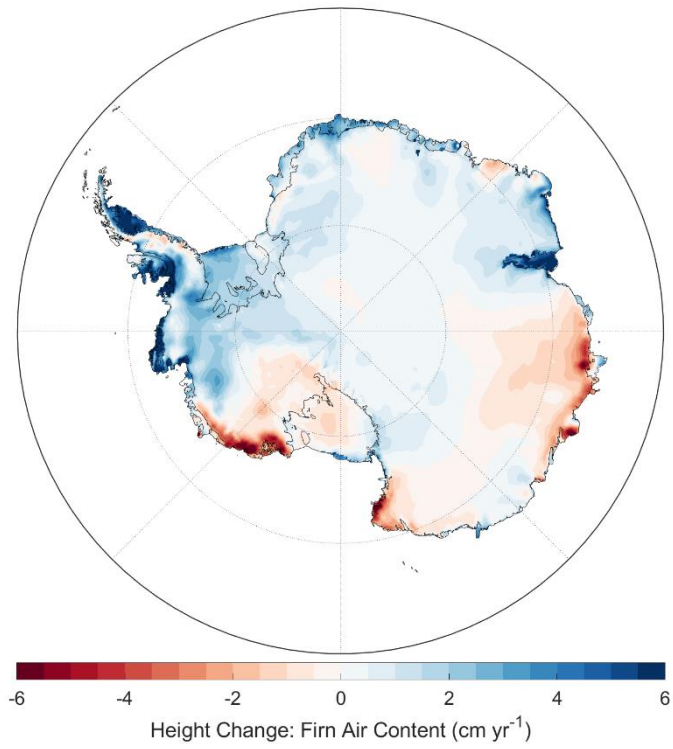


Figure 17. Rate of height change resulting from changes in firn air content over the Greenland Ice Sheet between September 1, 2003 and September 1, 2021. Note the asymmetric color bar.

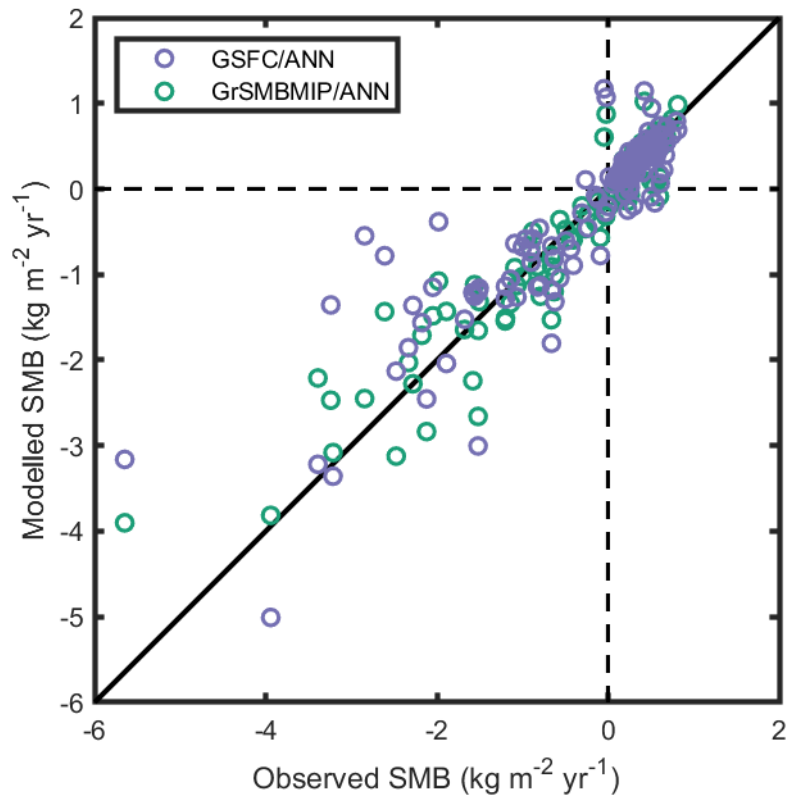


1355 Figure 18. Height and volume change of the Antarctic Ice Sheet (grounded and floating ice). (a) Seasonal changes separated into surface mass balance (SMB; blue) and firm air content (FAC; green) components. The thin lines represent each year, and the thick, dotted line represents the mean over the RCI (1980–2019). (b) A forty-year time series of volume and height change due to SMB and FAC. (c,d) The FAC and SMB combined height and volume change. The shaded regions represent the cumulative 2-sigma uncertainty in the volume changes, which accounts for spatial and temporal correlation in the time series. Note the differences in scale.



1360

Figure 19. Rate of height change resulting from changes in firn air content over the Antarctic Ice Sheet between March 31, 2003 and March 31, 2021.



1365

Figure 20. Comparison of SMB observations and the GSFC/ANN (purple) and GrSMBMIP/ANN (green) data sets for the GrIS (see Sect. 2.5.2 for the method).

1370 Table 2. Modelled GrIS SMB performance statistics against $N = 312$ observations (see Sect. 2.5.2 for description), which are plotted in

Figure 20. The final column presents a comparison ($N = 1,688,416$) between the ensemble mean annual SMB from GrSMBMIP and the GSFC mean annual SMB interpolated onto the GrSMBMIP grid that is mapped in Figure 21. N is the total number of observations used in the model comparison, μ is the mean of the observations, σ is the standard deviation, MB is the mean bias (GSFC minus Observation), $RMSE$ is the root mean square error, r is the correlation coefficient.

	N = 312; $\mu = 0.032 \text{ kg m}^{-2} \text{ yr}^{-1}$; $\sigma = 0.790 \text{ kg m}^{-2} \text{ yr}^{-1}$				N = 1,688,416
	GSFC	GSFC/ANN	GrSMBMIP/ANN		GSFC – GrSMBMIP
$MB \text{ (kg m}^{-2} \text{ yr}^{-1})$	0.01	0.02	-0.01		0.0247
$RMSE \text{ (kg m}^{-2} \text{ yr}^{-1})$	0.45	0.35	0.24		0.249
r	0.84	0.90	0.95		0.87

1375

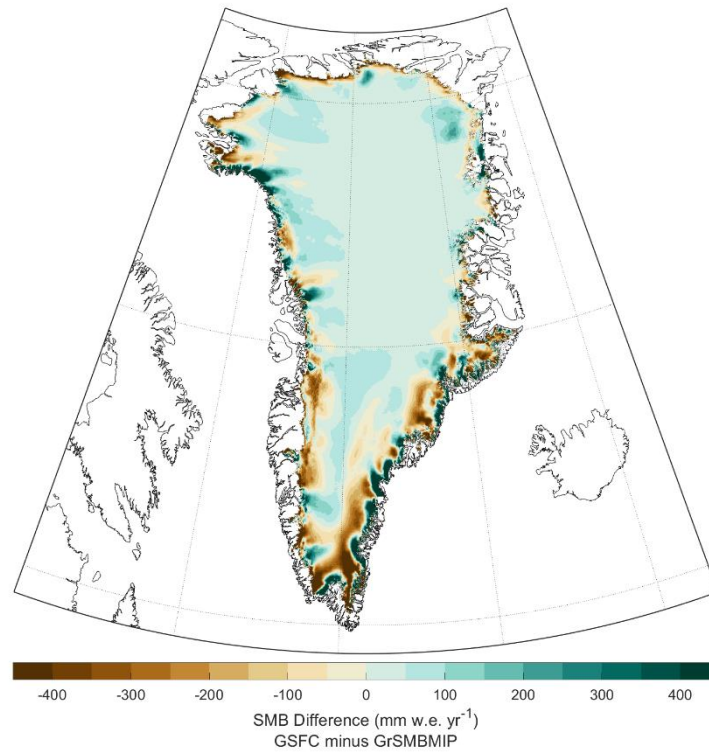
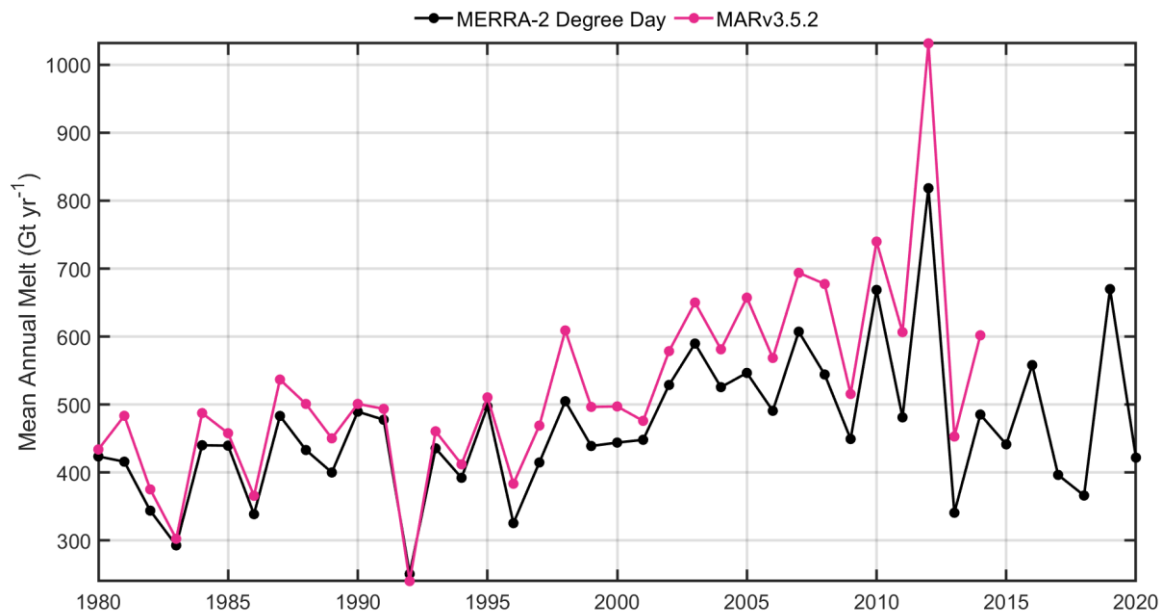
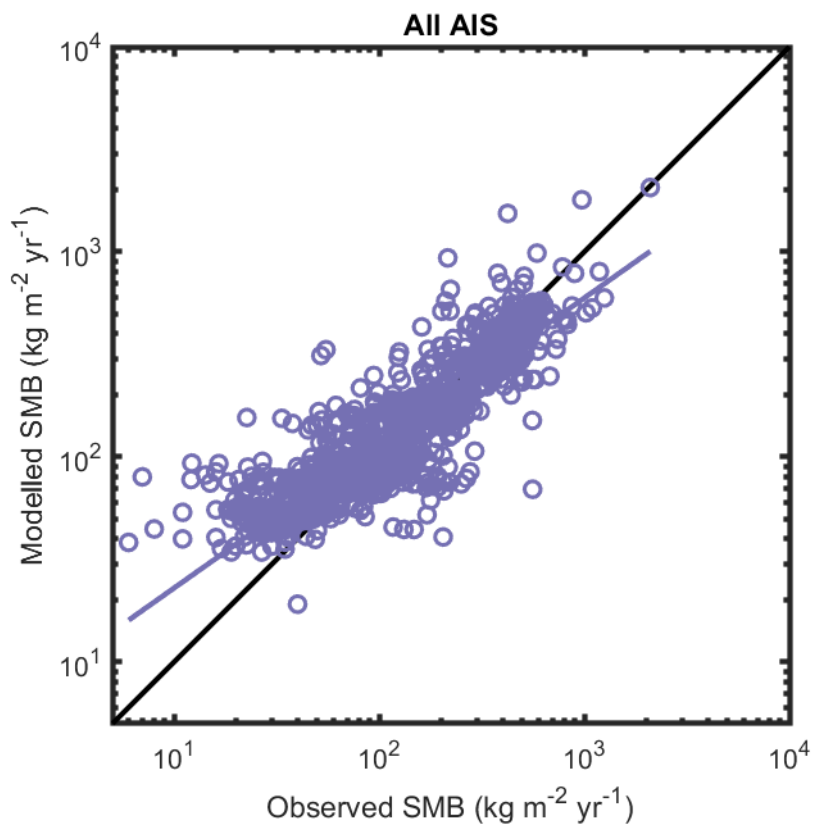


Figure 21. The difference in mean annual SMB between GSFC and the GrSMBMIP ensemble mean.



1380

Figure 22. Comparison of annual melt from the MERRA-2 degree-day model (Sect. 2.2.1) and MARv3.5.2, the model used to train the degree-day model (Fettweis et al., 2017).



1385

Figure 23. Comparison of N = 1201 observations of SMB with GSFC modelled SMB over the AIS. Note the logarithmic scale.

Table 3. A breakdown of GSFC SMB performance against observations separated into difference elevation bands to match Mottram et al. (2021) analysis. N is the total number of observations, L is the number used for the logarithmic analysis, μ is the mean of the observations, σ is the standard deviation, MB is the mean bias (Model minus Observation), $RMSE$ is the root mean square error, r is the correlation coefficient, and $rlog$ is the correlation coefficient of the logarithmic values. Values not in parentheses are our best attempt to match the Mottram et al. (2021) model-observation comparison method. Values within the parentheses also include SMB values from Medley et al. (2013), which were excluded from the Mottram et al. (2021) analysis.

	Shelves	0–1200m	1200–2200m	2200–2800m	2800–3400m	> 3400m	AIS
N	134	187 (211)	193 (333)	241	179	100	1037 (1201)
L	132	183 (207)	188 (328)	241	179	100	1026 (1190)
μ	200	212 (249)	216 (312)	90	57	37	140 (183)
σ	124	238 (247)	210 (199)	55	28	13	164 (189)
MB	1	-5 (-6)	15 (-14)	2	11	17	6 (-2)
$RMSE$	103	166 (156)	131 (112)	44	26	19	101 (98)
r	0.69	0.74 (0.79)	0.80 (0.83)	0.6	0.52	0.68	0.80 (0.86)
$rlog$	0.86	0.86 (0.89)	0.68 (0.80)	0.58	0.51	0.62	0.84 (0.89)

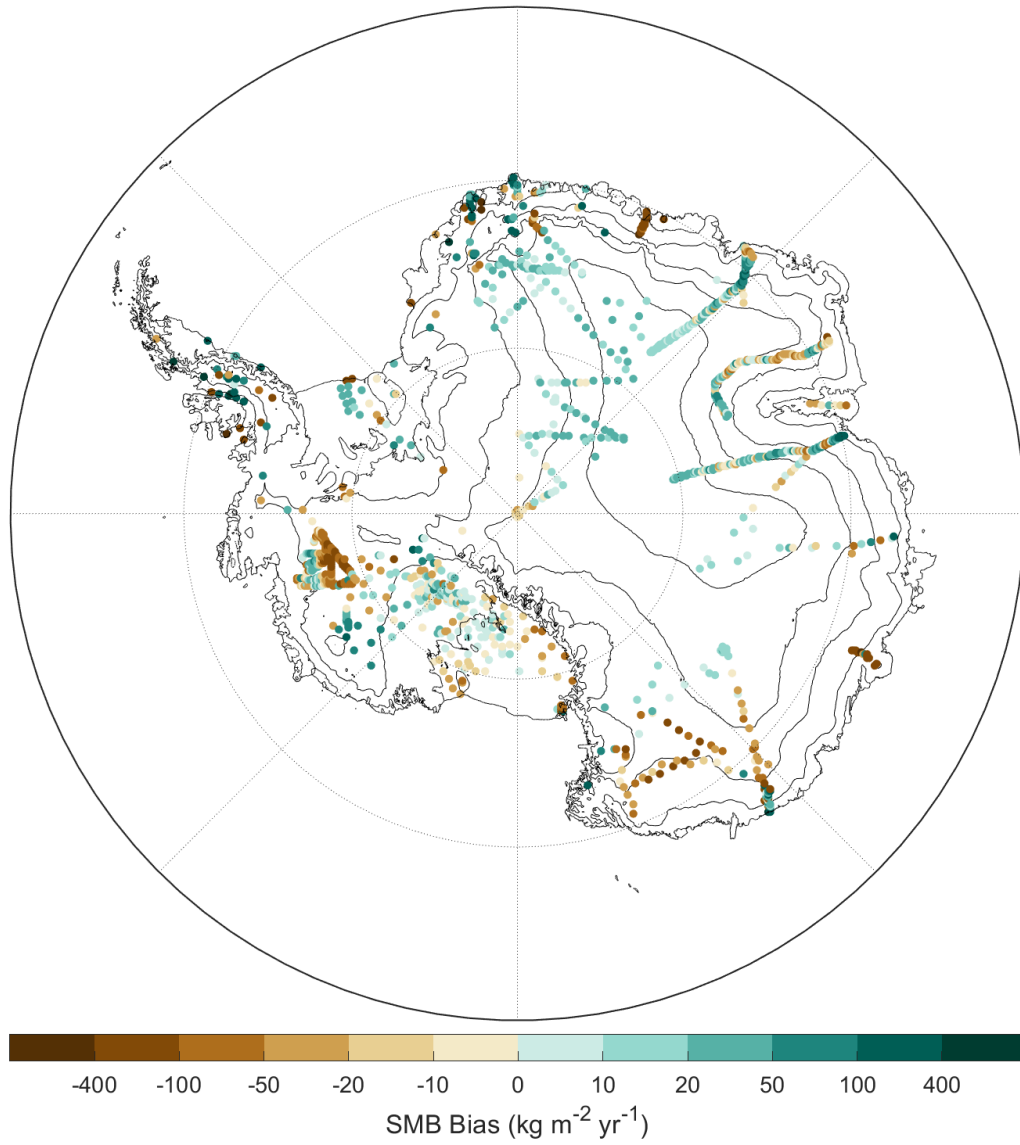


Figure 24. Difference in GSFC SMB and observations over the AIS, including the results from Medley et al. (2013) (see 1400 Section 2.5.2 for method).

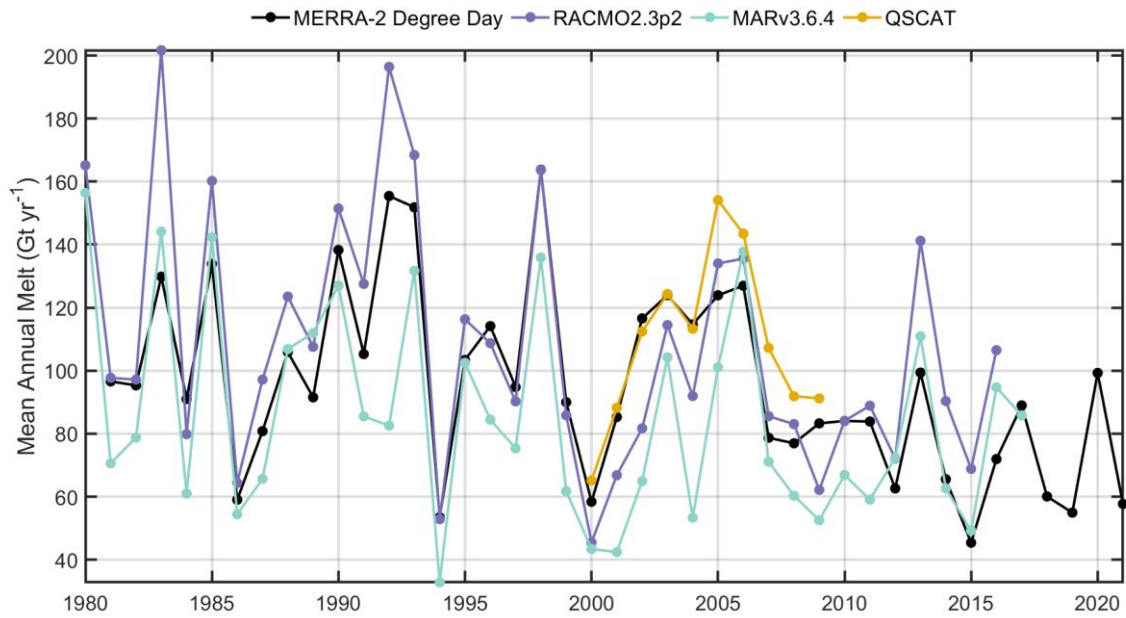


Figure 25. Comparison of annual melt from the MERRA-2 degree day model (Sect. 2.2.1) and Trusel et al. (2013b) QSCAT-derived surface meltwater fluxes used to calibrate the degree day model, as well as two regional climate models, RACMO2.3p2 (Van Wessem et al., 2018) and MARv3.6.4 (Agosta et al., 2019).