

Rapid and accurate polarimetric radar measurements of ice crystal fabric orientation at the Western Antarctic Ice Sheet (WAIS) Divide deep ice core site

Tun Jan Young¹, Carlos Martín², Poul Christoffersen¹, Dustin M. Schroeder^{3,4}, Slawek M. Tulaczyk⁵, and Eliza J. Dawson³

¹Scott Polar Research Institute, University of Cambridge, Cambridge CB2 1ER, United Kingdom

²British Antarctic Survey, Natural Environment Research Council, Cambridge CB3 0ET, United Kingdom

³Department of Geophysics, Stanford University, Stanford, CA 94305, USA

⁴Department of Electrical Engineering, Stanford University, Stanford, CA 94305, USA

⁵Department of Earth and Planetary Sciences, University of California, Santa Cruz, CA 95064, USA

Correspondence: T. J. Young (tjy22@cam.ac.uk)

Abstract. The crystal orientation fabric (COF) of ice sheets records the past history of ice sheet deformation and influences present-day ice flow dynamics. Though not widely implemented, coherent ice-penetrating radar is able to detect anisotropic COF patterns by exploiting the birefringence of ice crystals at radar frequencies, with the assumption that one of the crystallographic axes is aligned in the vertical direction. In this study, we conduct a suite of quad-polarimetric measurements consisting of four orthogonal antenna orientation combinations at the Western Antarctic Ice Sheet (WAIS) Divide Deep Ice Core site. From these measurements, we are able to quantify the azimuthal COF at this site to a depth of 1400 m at a bulk-averaged resolution of up to 15 m. Our estimates of fabric asymmetry closely match corresponding fabric estimates directly measured from the WAIS Divide Deep Ice Core. While ice core studies are often unable to determine the absolute fabric orientation due to core rotation during extraction, we are able to identify and conclude that the fabric orientation is depth-invariant to at least 1400 m, equivalent to 6700 years BP (years before 1950), and aligns closely with the modern surface strain direction at WAIS Divide. Our results support the claim that the deformation regime at WAIS Divide has not changed substantially through the majority of the Holocene. Rapid polarimetric determination of bulk COF compares well with much more laborious sample-based COF measurements from thin ice sections. Because it is the bulk-averaged COF that ultimately influences ice flow, polarimetric radar methods provide an opportunity for its accurate and widespread mapping and its incorporation into ice flow models.

1 Introduction

There is a growing need to understand the dynamics of ice sheets and how they will respond to future climate change (IPCC, 2013). The flow of ice sheets is governed by the balance between the gravitational driving stress, basal resistance to sliding, and the internal deformation of ice (Cuffey and Paterson, 2010). Past flow history influences the ice crystal orientation fabric (COF), which, in turn, influences the present-day anisotropic ice viscosity and flow field. Because ice crystals effectively reorient themselves to minimise resistance when subjected to stress, the COF of ice is reflective of long-term strain at time scales

proportional to the depth-age relationship (e.g., Alley, 1988), and has consistently been observed to align with ice deformation (Matsuoka et al., 2012). The COF of ice is also known to be influenced by perturbations in climate on a yearly timescale (Kennedy et al., 2013). Additionally, abrupt vertical changes in COF are often indicative of paleoclimatic transitions (e.g., Durand et al., 2007; Montagnat et al., 2014; Paterson, 1991). Therefore, an examination of the present-day COF can reveal
25 past changes in the stress-strain configurations associated with historical ice flow (Brisbourne et al., 2019).

Ice core analyses represent the traditional method to quantify COF within ice sheets, and remain the only direct means of ground-truth observation. However, sites suitable for ice coring are often restricted to slow-moving ($< 50 \text{ m a}^{-1}$) sections of ice sheets, and therefore only reveal a subset of the dynamics between ice flow and COF. These slow-flowing areas most likely do not encapsulate the dynamics and physical processes responsible for ice sheet stability and sea level rise. Furthermore,
30 ice core analyses are often unable to resolve the absolute direction of fabric asymmetry due to the rotation of the core in the barrel during or following extraction (Fitzpatrick et al., 2014). In contrast, ice-penetrating radar offers an alternative method to calculate anisotropic COF patterns through exploiting the birefringence of polar ice without the practical limitations of drilling. Although polarimetric radar sounding data analysis has been implemented to detect horizontally-asymmetric COF for almost half a century (e.g., Hargreaves, 1977), it has not yet been widely implemented, with the majority of radar studies
35 that measure COF variations in ice being conducted within the last fifteen years at coincident ice-coring sites for comparative analysis (Dall, 2010, 2021; Drews et al., 2012; Eisen et al., 2007; Ershadi et al., 2021; Fujita et al., 2006; Jordan et al., 2019, 2020a; Li et al., 2018; Matsuoka et al., 2003, 2009, 2012). Moreover, the majority of previous polarimetric radar studies infer COF at a coarse azimuthal resolution that is limited by the number of observations made along an acquisition plane that rotates around an azimuth centre (Brisbourne et al., 2019; Doake et al., 2002, 2003; Jordan et al., 2020c; Matsuoka et al., 2003, 2012).
40 Because the maximum azimuthal resolution that can be achieved is subject to human error in measuring the angles between each acquisition plane, there is a coarse limit to the precision of the orientation of fabric asymmetry that can be achieved through this acquisition method.

Traditionally, radar studies estimated COF through power-based analyses by investigating the periodicity of birefringent patterns in power anomaly (Fujita et al., 2006; Matsuoka et al., 2012) and phase difference measurements (Brisbourne et al.,
45 2019). Recently, Jordan et al. (2019) developed a polarimetric coherence framework that extends existing methods (Dall, 2010; Fujita et al., 2006) to quantify COF eigenvalues through estimating the relative phase between orthogonal co-polarised measurements. A follow-up study by Jordan et al. (2020c) demonstrated the validity of this framework, albeit with a coarse azimuthal resolution via the azimuthal rotational setup, from measurements obtained using an autonomous phase-sensitive radio-echo sounder (ApRES). The ApRES is a phase-sensitive frequency-modulated continuous-wave (FMCW) ground-based
50 radar system (Brennan et al., 2014) that has been gaining traction over the last five years, not only to investigate englacial polarimetry (Brisbourne et al., 2019; Jordan et al., 2020c), but also in wider radioglaciological investigations involving englacial deformation (Gillet-Chaulet et al., 2011; Kingslake et al., 2014, 2016; Nicholls et al., 2015; Young et al., 2019), englacial meltwater content (Kendrick et al., 2018; Vaňková et al., 2018), basal melting (Corr et al., 2002; Davis et al., 2018; Jenkins et al., 2006; Lindbäck et al., 2019; Marsh et al., 2016; Nicholls et al., 2015; Stewart et al., 2019; Sun et al., 2019; Vaňková
55 et al., 2020; Washam et al., 2019), and subsurface imaging (Young et al., 2018).

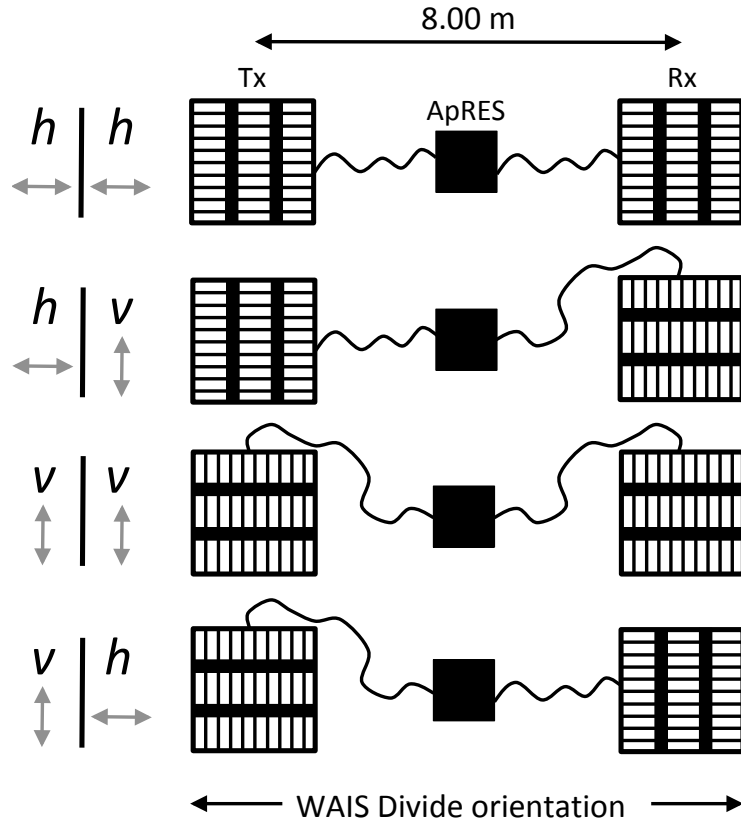


Figure 1. Four orthogonal combinations of antenna orientations used for polarimetry experiments. Antennas (Tx = transmitting, Rx = receiving) were positioned 8.00 m apart and rotated 90° in a vertical (v) or horizontal (h) orientation. The orientation nomenclature (Tx | Rx) is with respect to the electric field of the antenna (grey arrows). The antenna axis was oriented parallel with the WAIS Divide orientation.

In addition to using an azimuthal rotational setup, acquisitions can also be obtained through a combination of four orthogonal antenna orientations, from which the received signal can then be reconstructed at any azimuthal orientation (Fig. 1) (Fujita et al., 2006; Jordan et al., 2019). This quadrature- (quad-) polarised setup significantly reduces the field time required to obtain each set of acquisitions.

60 In our study, we use an ApRES and two antennas to acquire a set of quad-polarised measurements at the Western Antarctic Ice Sheet (WAIS) Divide. We apply the polarimetric coherence method to these measurements to present estimates of fabric values that closely align with previous ice core COF measurements at WAIS Divide to a depth of 1400 m at a nominal bulk-averaged resolution of 15 m. We show that, using this setup and method, our estimates of fabric asymmetry are comparable to that from ice core thin sections taken at similar depth intervals. From our results, we explicitly determine the principal axis of
65 present and past flow.

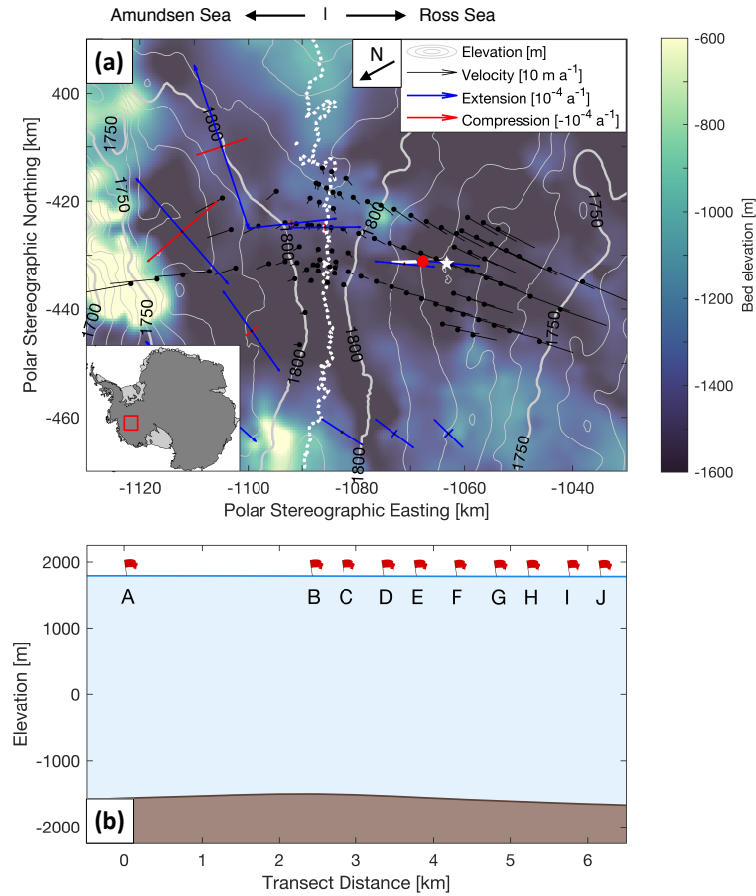


Figure 2. (a) Map of local surface (white contours, REMA, Howat et al., 2019) and bed topography (background colour, MEaSUREs BedMachine Antarctica, Morlighem et al., 2020) in the WAIS Divide area, as well as GPS-measured surface velocities (black lines, Conway and Rasmussen, 2009) and strain configurations (blue and red arrows, Matsuoka et al., 2012). The locations of the ApRES polarimetry transect (solid white line) and the results presented from Site I (red dot) in this study are shown relative to the WAIS Divide Deep Ice Core (WDC, white star). The WAIS Divide is delineated as a thick dotted white line, with ice flowing northwards towards the Amundsen Sea and southwards towards the Ross Sea. Location of (a) is shown as a red box in the map inset. (b) Surface and basal topography along the ApRES polarimetry transect showing the relative locations of the 10 ApRES measurement sites. Site A is closest to the WAIS Divide, and Site J is closest to the WDC. The results shown in Figures 4-6 depict the fabric profile of Site I.

2 Study area

The West Antarctic Ice Sheet (WAIS) divide delineates the surface topographic boundary separating ice flow towards the Ross and Amundsen Sea Embayments (Fig. 2a). A subglacial topographic saddle runs approximately orthogonal to the ice divide in the study region. Ice flow is oriented approximately SW (230°) and NNE (10°) in the Ross and Amundsen Sea catchments respectively (Conway and Rasmussen, 2009), which is offset from predicted strain configurations, especially in the Amundsen

Sea catchment (Matsuoka et al., 2012). The WAIS divide flow boundary is observed to be migrating in the direction towards the Ross Sea at 10 m a^{-1} , faster than the surface velocity of 3 m a^{-1} , the migration being attributed to differential flow dynamics in the Ross Sea catchment (Conway and Rasmussen, 2009). Despite this imbalance, the ice-divide position has likely remained on average within 5 km of its present position throughout the Holocene epoch (Koutnik et al., 2016).

10 polarimetric ApRES measurements were obtained along a 6 km transect approximately 15 – 20 km southeast of the WAIS divide in the Ross Sea embayment (Fig. 2b). A portion of our ApRES transect (Sites E to J) is spatially coincident with one of the active-source seismic profiles reported in Horgan et al. (2011). We present and analyse results from Site I in the main text body below, with equivalent results from all 10 sites available in the Supplementary Information (Fig. S1-S10). Site I ($79^\circ 25' 53'' \text{ S}$, $111^\circ 59' 15'' \text{ W}$, 1781 m a.s.l.) is approximately 5 km northeast of the location of the WAIS Divide deep ice core (WDC, $79^\circ 28' 3'' \text{ S}$, $112^\circ 5' 11'' \text{ W}$, 1766 m a.s.l.), which was completed to a total depth of 3405 m (~50 m above the ice-bed interface) (Fitzpatrick et al., 2014; Voigt et al., 2015) (Fig. 2a).

3 Theory and methods

We primarily follow a combination of three matrix-based methods—Fujita et al. (2006), Dall (2010), and Jordan et al. (2019), in which each study builds on the previous—to process the polarimetric measurements, thereby obtaining estimates of fabric anisotropy and strength. Our approach is physically justified through an effective medium model that expresses the bulk dielectric properties of anisotropic polar ice in terms of the birefringence of individual ice crystals (Fujita et al., 2006). First, we follow the framework of Fujita et al. (2006) and Brisbourne et al. (2019) in modelling the expected power anomaly and phase difference (Section 3.2) to explicate the ApRES' response to the underlying COF parameters from data collected in proximity at WAIS Divide. We then calculate the azimuthal fabric asymmetry using the polarimetric coherence methods outlined in Jordan et al. (2019, 2020c).

3.1 Electromagnetic propagation and COF representation in anisotropic ice

In an anisotropic medium such as polar ice, birefringence and anisotropic scattering are two related, but separate mechanisms that affect the polarisation and azimuthal variation in power of radar returns (Brisbourne et al., 2019). For downward-looking ice-penetrating radar, birefringence occurs as a result of a phase shift between two orthogonally-oriented waves travelling between the surface and the interior of an ice mass, the phase shift manifested in the radar return as characteristic variations with azimuth and depth in power and phase. As a result, birefringence reflects the bulk COF as and is azimuthally asymmetric in the direction of radio wave propagation. On the other hand, anisotropic scattering arises as a consequence of rapid but microscopic continuous depth variations in the orientation of the bulk COF. Therefore, the polarimetric response of radio waves is determined by the bulk (macroscopic) birefringence of the COF (Hargreaves, 1978), of which the area illuminated by the waves is a function of the radar antenna footprint through depth. The birefringence of an individual ice crystal and their

COF are related to the bulk dielectric properties of anisotropic polar ice (Appendix of Fujita et al., 2006):

$$\varepsilon(z) = \begin{bmatrix} \varepsilon'_{\perp} + \Delta\varepsilon' E_1 & 0 & 0 \\ 0 & \varepsilon'_{\perp} + \Delta\varepsilon' E_2 & 0 \\ 0 & 0 & \varepsilon'_{\perp} + \Delta\varepsilon' E_3 \end{bmatrix} \quad (1)$$

where $\varepsilon(z)$ is the bulk birefringence tensor, $\Delta\varepsilon' = \varepsilon'_{\parallel} - \varepsilon'_{\perp}$ is the crystal (microscopic) birefringence with ε'_{\parallel} and ε'_{\perp} the dielectric permittivities for polarisation planes parallel and perpendicular to each crystallographic (c)-axis. In this study, z increases with depth with x and y oriented orthogonal to z . Across the spectrum of ice-penetrating radar frequencies and ice temperatures, ε'_{\parallel} and ε'_{\perp} vary within a narrow band of 3.16–3.18 and 3.12–3.14 respectively (Fujita et al., 2000). In this study, following Jordan et al. (2020c), we assign $\varepsilon'_{\parallel} = 3.169$ and $\varepsilon'_{\perp} = 3.134$, with $\Delta\varepsilon' = 0.035$.

The tensor eigenvalue E describes the relative concentration of c -axes aligned with each principal coordinate eigenvector, with $E_1 + E_2 + E_3 = 1$ and $E_3 > E_2 > E_1$ following conventional radar notation, which is opposite to conventions normally in ice core studies ($E_1 > E_2 > E_3$). The relative proportions of E can be used to describe different fabric patterns, including (i) random (isotropic) fabrics ($E_1 \approx E_2 \approx E_3 \approx 1/3$); (ii) cluster fabrics ($E_1 \approx E_2 \ll E_3$); and (iii) vertical girdle fabrics ($E_1 \ll E_2 \approx E_3$). When ice deforms solely by vertical uniaxial compression, such as at the centre of an ice dome, the c -axes rotates towards the vertical and forms a cluster fabric; where lateral tension exists from flow extension, such as at an ice divide, the c -axes orient in a vertical girdle distribution orthogonal to the direction of strain extension (Alley, 1988). In addition, fabric strength and orientation are also influenced to some extent by perturbations in climate (Kennedy et al., 2013). Following previous studies (Fujita et al., 2006; Drews et al., 2012; Brisbourne et al., 2019; Jordan et al., 2019, 2020c), we assume that the E_3 eigenvector is aligned in the vertical direction, and the E_1 and E_2 eigenvectors are parallel to the horizontal plane. The direction of the greatest horizontal c -axis concentration through depth corresponds with the E_2 eigenvector in our notation. The E_1 eigenvector is orthogonally oriented to both the E_2 and E_3 eigenvectors, and is sometimes referred to as the “symmetry axis” (e.g., Brisbourne et al., 2019). In the case of a vertical girdle fabric, the c -axes are oriented in a girdle that is planar to the E_2 and E_3 eigenvectors, with the E_1 eigenvector indicative of the orientation of lateral flow extension at its corresponding age-depth (Brisbourne et al., 2019; Matsuoka et al., 2012).

In the horizontal plane, Equation 1 simplifies to $\varepsilon(z) = \Delta\varepsilon'(E_2 - E_1)$, where the horizontal eigenvalue difference $E_2 - E_1$ quantifies the horizontal asymmetry of the ice fabric (i.e. strength of the vertical girdle). Equation 1 directly relates both the macro- and microscopic ice fabric anisotropy to dielectric anisotropy, which serves as the basis for the radar processing methods that follow.

3.2 Modelling radio-wave signal propagation

The matrix-based formulation calculates the backscatter that is transmitted, reflected, and received at the antennas for each discrete scattering layer and azimuthal orientation:

$$S(\theta) = \left[\frac{\exp(jk_0 z)}{4\pi z} \right]^2 \cdot \left[\prod_{i=1}^N (RTR')_{\theta, \varepsilon, N+1-i} \right] \cdot [R\Gamma R']_{\theta, \beta, N} \cdot \left[\prod_{i=1}^N (RTR')_{\theta, \varepsilon, i} \right] \quad (2)$$

Equation 2 represents the polarimetric backscatter model described in Eqs. 9–12 of Fujita et al. (2006), which calculates the polarimetric backscatter for each antenna orientation combination as a function of angle (θ), anisotropic scattering ratio (β), and birefringence (ε), through all depth layers $z = i$ to the N th layer. The first term on the right hand side represents the (i) free space propagation (squared to reflect two-way wave travel). Here, $j = \sqrt{-1}$ is the imaginary number, and $k_0 = 2\pi/\lambda_0$ (rad m⁻¹) the wavenumber in a vacuum with λ_0 the wavelength in a vacuum. Besides the first expression, the second to fourth terms respectively represent three physical processes: (ii) received (upward) propagation; (iii) boundary scattering; and (iv) transmitted (downward) propagation to each boundary depth i . The rotation matrix R , with R' its transposition, is used in Equation 2 to reconstruct the theoretical signal components with respect to θ , for which the components are either T (transmission between the antennas and the scattering layer) or Γ (reflection at the scattering layer). T , Γ , and R are all 2×2 matrices and are each detailed respectively in Eqs. 5 and 6, 8, and 10 of Fujita et al. (2006), with the propagation constants required to calculate T defined specifically for the ApRES unit in Brennan et al. (2014).

In this study, anisotropic scattering is prescribed as a relative term. Following Fujita et al. (2006), β is defined as the log-scaled ($20\log_{10}$) intensity anisotropic scattering ratio between the (electric field) Fresnel reflection coefficient along the y -polarisation plane relative to its equivalent in the x -polarisation plane (respectively the (2,2) and (1,1) elements in Γ). Therefore, a β value of 0, 5, and 10 dB (for example) translates to the amount of anisotropic scattering in the y -polarisation plane being 10^0 (i.e. equal to), $10^{\frac{1}{4}}$, and $10^{\frac{1}{2}}$ times stronger than in the x -polarisation plane.

3.3 Radar data acquisition

On 25 and 26 December 2019, we conducted radar experiments at 10 sites along a 6 km transect near the WAIS Divide deep ice core (Fig. 2b). At each site, we acquired a suite of four quad-polarimetric measurements using a single-input single-output autonomous phase-sensitive radio echo sounder (ApRES; Brennan et al., 2014; Nicholls et al., 2015). The ApRES was operated with a linear up-chirp from 200 to 400 MHz over the course of 1 second, corresponding to a centre frequency of 300 MHz over a bandwidth of 200 MHz. An ensemble (burst) of 100 chirps were recorded for each polarimetric measurement. Two open-structure antennas (1 transmitting and 1 receiving) identical to those described in Nicholls et al. (2015) were used to transmit and receive each burst. Although not implemented in this study, we note that the four quad-polarimetric measurements can potentially also be obtained simultaneously in one single burst using a multiple-input multiple-output configuration (e.g., Young et al., 2018) with two transmitting and two receiving antennas.

The quad-polarimetric measurements represent the combination of orthogonal antenna orientations, where antennas were positioned in either a horizontal (h) or vertical (v) alignment with respect to the acquisition geometry. The four orientations that correspond to the four polarimetric measurements are therefore (i) hh , (ii) hv , (iii) vv , and (iv) vh , the nomenclature reflective of the transmitting and receiving antenna in respective order (Fig. 1). Measurements were conducted sequentially, and each antenna pair orientation was established simply by rotating one or both antennas by 90° with respect to their previous orientations while keeping the position of each antenna centre constant. At all sites, the h -polarisation plane (ESE; 110°) was aligned perpendicular to the transect line (NNE; 20°). We follow Brisbane et al. (2019) and assign a nominal $\pm 8^\circ$ to their orientations. The nomenclature attached to the h and v alignments are indicative of the electric field (Fig. 1) and are consistent

165 with those used in previous polarimetric ApRES studies of ice fabric (Jordan et al., 2019, 2020c, b; Ershadi et al., 2021) with the exception of Brisbourne et al. (2019), which reverses the two assignments (i.e. h in our study corresponds to v in their study, and v in our study corresponds to h in their study).

3.4 Radar data processing

170 Data were pre-processed and range-processed following procedures detailed in Stewart et al. (2019). Specifically, for each of the four bursts, the 20 noisiest chirps were culled and the remaining chirps averaged. Each resulting burst-mean was then weighted with a Blackman window, zero-padded, time-shifted to align the phase centre with the start of the signal, and Fourier-transformed. The resulting complex-valued spectra (referred to as their “complex amplitudes”) store the amplitude and the phase of the signal as the magnitude and the angle of the spectra respectively.

175 Using the four processed quad-polarised complex amplitudes, the 2×2 integrated scattering matrix S (Eq. 2) in the frame of reference can be constructed as (Doake et al., 2003):

$$S = \begin{bmatrix} s_{hh} & s_{hv} \\ s_{vh} & s_{vv} \end{bmatrix} \quad (3)$$

Equation 3 is often referred to as the Sinclair matrix. From here, we can reconstruct the ApRES received signal S from any transmission angle through the application of an azimuthal (rotational) shift of principal axes at the transmitting and receiving antennas (e.g., Mott, 2006):

$$180 \quad S(\theta) = \begin{bmatrix} \cos \theta & -\sin \theta \\ \sin \theta & \cos \theta \end{bmatrix} \begin{bmatrix} s_{hh} & s_{hv} \\ s_{vh} & s_{vv} \end{bmatrix} \begin{bmatrix} \cos \theta & \sin \theta \\ -\sin \theta & \cos \theta \end{bmatrix} \\ = \begin{bmatrix} s_{hh} \cos^2 \theta - (s_{vh} + s_{hv}) \sin \theta \cos \theta + s_{vv} \sin^2 \theta & s_{hv} \cos^2 \theta + (s_{hh} - s_{vv}) \sin \theta \cos \theta - s_{vh} \sin^2 \theta \\ s_{vh} \cos^2 \theta + (s_{hh} - s_{vv}) \sin \theta \cos \theta - s_{hv} \sin^2 \theta & s_{vv} \cos^2 \theta + (s_{vh} + s_{hv}) \sin \theta \cos \theta + s_{hh} \sin^2 \theta \end{bmatrix} \quad (4)$$

In Eq. 4, the cross-polarised measurements obtained from the ApRES are in theory geometrically congruent by the Lorentz Reciprocity Theorem (i.e. $s_{vh} = s_{hv}$) and therefore the two measurements should be identical. In practice, there will be small differences including (but not limited to): (i) manufactured differences in the beam pattern between the transmitting and receiving antenna aerials; (ii) random clutter within the transmitted media; and (iii) human error in antenna positioning (Stumpf, 2018). In our datasets, we observe minimal difference between s_{vh} and s_{hv} , although there is some additional variability seen at the near-surface (Fig. 3). Additionally, in our analyses, as well as those reported in Brisbourne et al. (2019), we find that $s_{vh} = -s_{hv}$, for reasons we have yet to identify.

190 Because the complex amplitudes retrieved from the ApRES (Eq. 4) are phasors representing the radar return signal, the phase of the signal at a given depth is simply the argument of the complex number. To avoid the typical problems of working with phase—that is, employing phase unwrapping methods for sampled data within $[0, 2\pi]$ —we calculate the phase difference with respect to azimuth:

$$\Delta\phi_{\theta,z} = \arg \left(s_{\theta+\Delta\theta/2,z} \cdot s_{\theta-\Delta\theta/2,z}^* \right) \quad (5)$$

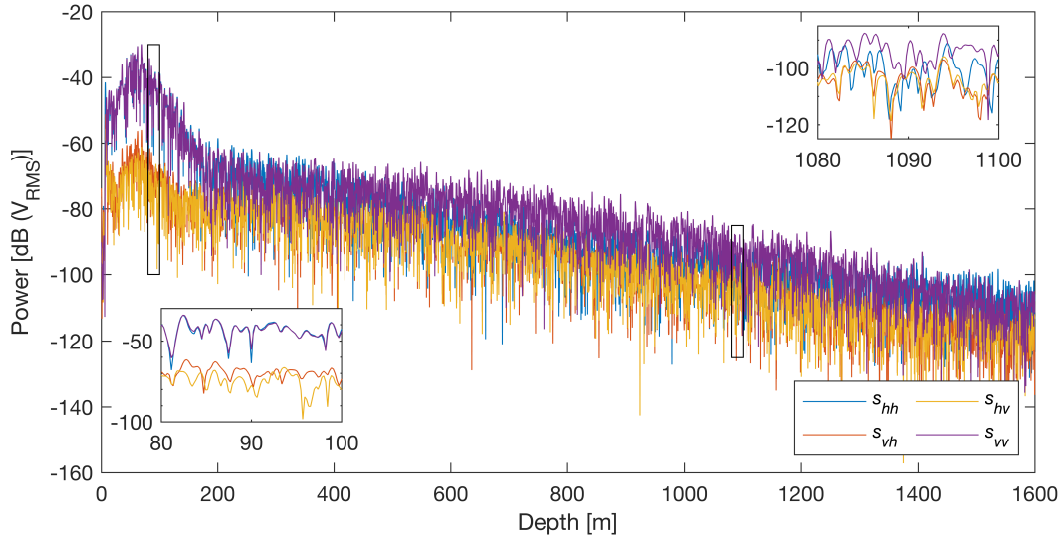


Figure 3. Mean (polarisation-averaged) power return for each antenna orientation combination acquired at Site I. Insets show magnification of power returns at two different 20 m intervals.

where the asterisk represents the complex conjugate of its respective phasor.

195 The shift in phase also results in the modulation of received power as a function of azimuth. This can be visualised by calculating the power anomaly from the resulting multipolarisation data (e.g. Eq. 7 in Matsuoka et al., 2003).

The polarimetric coherence and its corresponding phase is computed over a local window via the discrete approximation (Eq. 1 in Dall, 2010):

$$c_{hhvv}^* = \frac{\sum_{i=1}^N s_{hh,i} \cdot s_{vv,i}^*}{\sqrt{\sum_{i=1}^N |s_{hh,i}|^2} \sqrt{\sum_{i=1}^N |s_{vv,i}|^2}} \quad (6a)$$

$$200 \quad \phi_{hhvv}^* = \arg(c_{hhvv}) \quad (6b)$$

where the superscript stars in Eq. 6 account for the use of the deramped phase stored by the ApRES rather than the original received signal phase, and we do not notate this explicitly hereafter (Eq. 7 in Jordan et al., 2020c). From Eq. 6b, we can then estimate the fabric asymmetry of the underlying ice column $E_2 - E_1$ by (Eqs. 22 and 23 in Jordan et al., 2019):

$$E_2 - E_1 = \frac{c}{4\pi f_c} \frac{2\sqrt{\varepsilon}}{f(\nu) \Delta\varepsilon} \left| \frac{d\phi_{hhvv}(\alpha = 0^\circ, 90^\circ)}{dz} \right| \quad (7a)$$

$$205 \quad \frac{d\phi_{hhvv}}{dz} = \frac{R \frac{dI}{dz} - I \frac{dR}{dz}}{R^2 + I^2} \quad (7b)$$

with the associated phase error (standard deviation) estimated through the Cramér-Rao Bound, following the methods of Jordan et al. (2019). In Eq. 7b, R and I respectively represent the real and imaginary components of c_{hhvv} . $f(\nu)$ represents a reduction parameter for the birefringence of firn with respect to solid ice, with ν the firn density, as detailed in the Appendix of Jordan

et al. (2020c). Firn densities from Fig. 9a of Gregory et al. (2014) were used as values of ν . The presence of $f(\nu)$ into Eq. 7a
210 amplifies the estimated $E_2 - E_1$ values for the top ~ 100 m of the ice column.

In this study, we use a pad factor of 2 (equating to a depth resolution of 0.27 m) and an azimuthal resolution of 1° in the
phase processing steps to produce co- and cross-polarised profiles of power anomaly and phase difference (Fig. 4b,c,d). Here,
the pad factor represents the total length of the signal after zero-padding relative to the total length of the original signal. A
depth window of 15 m was used in the $hhvv$ coherence and phase estimates (Fig. 4e). We evaluated $d\phi_{hhvv}/dz$ using the real
215 and imaginary components of c_{hhvv} (Eq. 7b) and estimated its respective error following the suggested procedures in Jordan
et al. (2019), with the exception that, in substitution of the FIR filter, we used a 2-D median filter consisting of a $1^\circ \times 5$ m
matrix moved over the profile, and then a 2-D peak convolution using a Gaussian low-pass filter with the same moving matrix
dimensions (Young et al., 2018). From here, estimates of $d\phi_{hhvv}/dz$ and their respective errors for each depth bin were both
scaled using Equation 7a to then produce estimates and uncertainties for $E_2 - E_1$.

220 4 Results

4.1 Experimental results from WAIS Divide

Figure 4 shows the processed results from Site I, with equivalent results from the other 9 sites reported in the Supplementary
Information. The results shown in Figure 4 are visually representative of all 10 sites. We compare the measured results in
Fig. 4 with modelled results in Fig. 5 to parse the relative influence of birefringent propagation and anisotropic scattering on
225 the ice column. From here, we estimate the strength of the azimuthal fabric asymmetry via Eq. 7a to solve for $E_2 - E_1$ (Fig. 6).
We restrict our observations only to measurements with sufficiently high signal-to-noise ratios (SNR). We do not make any
inferences in the uppermost 20 m due to potential antenna radiation pattern effects.

The depth-azimuth variation of the radar return power anomaly in the co-polarised and cross-polarised measurements are
respectively shown in Fig. 4a and Fig. 4b, variations in the co-polarised return signal phase difference in Fig. 4c, the $hhvv$
230 signal coherence in in Fig. 4d, and variations in the $hhvv$ phase angle in Fig. 4e. Here, we observe azimuthal variations
larger than 10 dB in the observed backscatter power both in the co-polarised and cross-polarised measurements, and variations
larger than 6° in the co-polarised phase measurements. The SNR and the $hhvv$ coherence both remain relatively high for
the uppermost 1000 m, with markedly lower $hhvv$ coherence values past ~ 1200 m (Fig. 4d) and the the SNR failing to
reach the prescribed threshold past ~ 1350 m (greyed-out sections in Fig. 4a-c). The backscatter variations in the co-polarised
235 power anomaly (Fig. 4a) and $hhvv$ phase measurements (Fig. 4e) show near-reflectional symmetry at 90° at all measured
depths in our experiment reference frame, with minor deviations occurring around ~ 1000 m and ~ 1400 m. The co-polarised
phase difference measurements (Fig. 4d) show characteristic ‘four-quadrant patterns’ formed by azimuthal rotation of the
phase-difference sign reversals (Brisbourne et al., 2019) along the same reflection axis. The cross-polarised power anomaly
measurements, in contrast, show a 90° periodicity in the return power difference with a depth-constant azimuthal minima at 0°
240 and 90° (Fig. 4c).

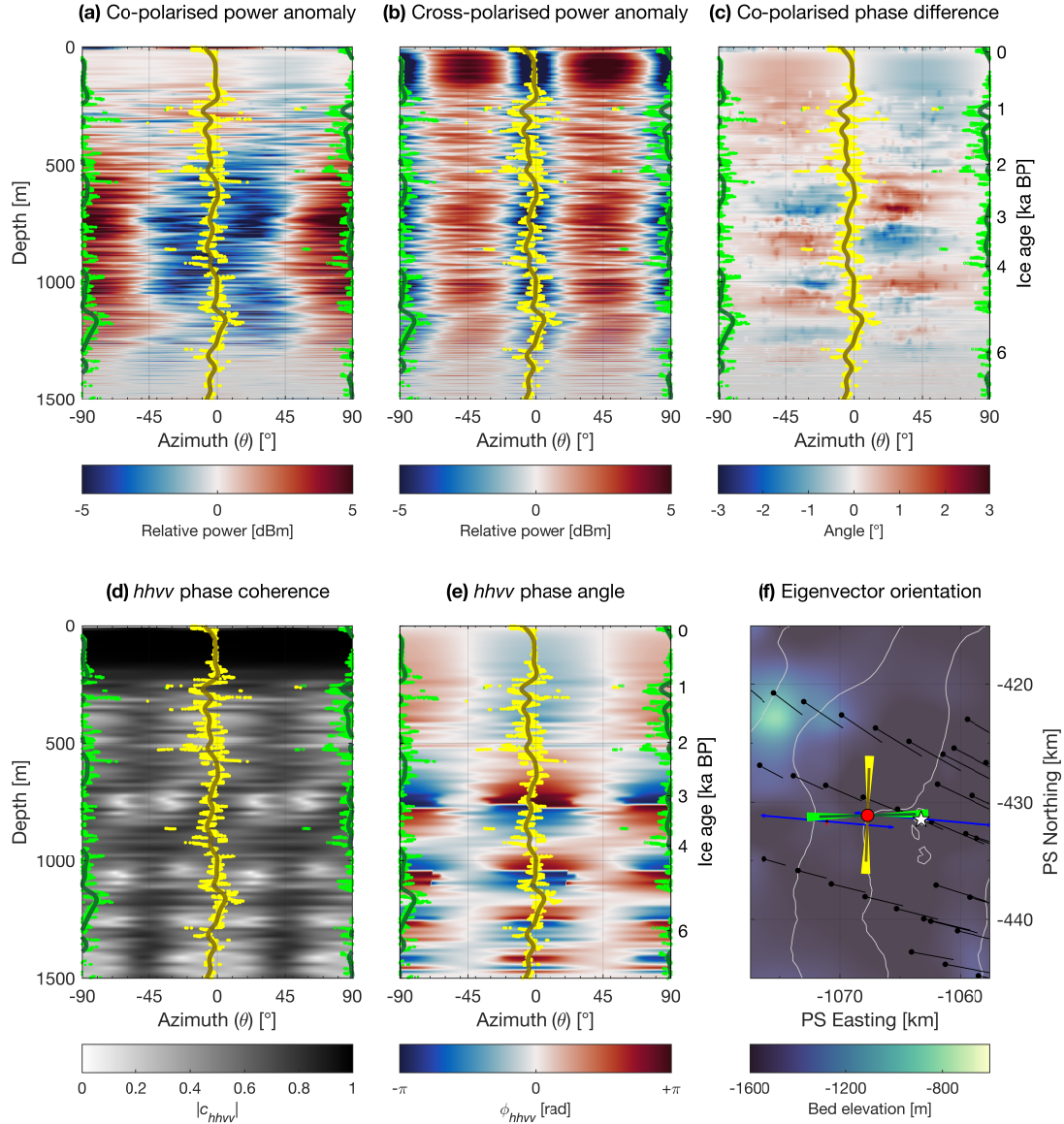


Figure 4. Polarimetric power and coherence measured using ApRES at WAIS Divide identifying the orientations of the E_1 (green) and E_2 (yellow) eigenvectors. (a) Co-polarised and (b) cross-polarised power anomaly. (c) Co-polarised phase difference. Quad-polarised ($hhvv$) (d) coherence and (e) phase angle. (f) Orientation of the E_1 and E_2 eigenvectors (dark lines) and their respective uncertainties (bright arc patches). The two eigenvector orientations (dark lines) were calculated using a Gaussian-weighted moving average of the azimuthal minima (bright dots). The depth-dependent gradient along the orientation of the E_1 eigenvector represents $E_2 - E_1$, the fabric asymmetry of the measured vertical ice column. Map shown in (f) is an inset of Fig. 2b.

By tracing the azimuthal minima in the cross-polarised power anomaly profiles through depth (Fig. 4c), we can identify the orientations of the E_1 and E_2 eigenvectors (Li et al., 2018). However, because there exists a 90° ambiguity in the cross-polarised power anomaly profiles, we rely on the sign of the gradient of the $hhvv$ phase angle (Fig. 4e) to distinguish between the two. Because the E_1 and E_2 eigenvectors align with the directions of the smallest and largest dielectric permittivities respectively, the location of the azimuthal minima resulting in a negative ϕ_{hhvv} gradient through depth indicates the direction of the E_1 eigenvector, and the azimuthal minima resulting in a positive ϕ_{hhvv} gradient indicates the direction of the E_2 eigenvector (Jordan et al., 2019). As a reminder, we are primarily interested in the orientation of the E_1 eigenvector, which is thought to be indicative of the direction of flow extension. Rounding to the nearest degree, we identify the orientations (with their associated standard deviation) of the E_1 and E_2 eigenvectors at $91^\circ (\pm 6^\circ)$ and $-3^\circ (\pm 6^\circ)$ respectively, corresponding to cardinal directions of 21° (NNE) and 107° (ESE) respectively. The standard deviations attached to the eigenvector orientations are independent of the nominal $\pm 8^\circ$ arising from human error in antenna alignment during data collection. The identified horizontal eigenvector orientations both do not significantly change azimuthal orientation (within $\pm 6^\circ$) through the observed depth range to at least 1400 m, equivalent to a depth age of 6700 years (Sigl et al., 2016). Though we similarly observe no change in azimuth beyond 1400 m, we do not extend our findings further due to the limited depth samples with sufficient SNR available within this range.

Using the same methods, the orientation of the E_1 eigenvector identified for the other nine sites ranged from 82° (Site J) to 102° (Site D) and follows a normal distribution centred at 93° with a standard deviation of $\pm 7^\circ$ (to the nearest degree) (Table S1). For Site I, our estimate of the principal axis is -7° to the nearest strain configuration (~ 5 km southwest) as estimated by Matsuoka et al. (2012), and is $+29^\circ$ from the direction of flow as estimated by Conway and Rasmussen (2009) (Fig 4f).

4.2 Comparison between observed and modelled polarimetric signals

The backscatter and phase patterns in the co-polarised measurements, as well as in the $hhvv$ coherence phase (ϕ_{hhvv}), all show variation with depth, which indicate changes in either or a combination of birefringence and anisotropy. To better understand what drives these changes, we modelled the azimuth and phase dependence of these three measurements (Fig. 5) through the matrix-based backscatter model (Eq. 2), which predicts the combined polarimetric effect of birefringent propagation and anisotropic scattering at each depth and azimuth step (1 m and 1° in the model). The birefringence in the models ($\Delta\varepsilon(z)$) was estimated through Eq. 1 by directly using eigenvalue estimates from the WAIS Divide Deep Ice Core (WDC; Fitzpatrick et al., 2014; Voigt et al., 2015) to calculate the horizontal asymmetry $E_2 - E_1$, and linearly interpolating between each defined fabric measurement depth. The eigenvalues from the ice core analysis suggest a gradual linear transition from an isotropic fabric ($E_2 - E_1 \approx 0.04$) near the ice surface to a moderately-strong girdle fabric ($E_2 - E_1 \approx 0.3$) at 1400 m depth (Fig. 6). As the orientations of the eigenvectors in the polarimetric experiment were observed to be depth-invariant, we fixed the E_1 and E_2 eigenvectors at 90° and 0° respectively, following our observations in Fig. 4. The remaining parameter, the anisotropic scattering ratio β , was simply estimated as an optimisation problem through identifying the azimuthal distance of nodes (minima) in power anomaly from the principal axis orientation at 100 m depth intervals. At each depth interval, β was estimated to the nearest integer and linearly interpolated to match the model depth step of 1 m. Beyond ~ 1300 m, where the SNR is deemed

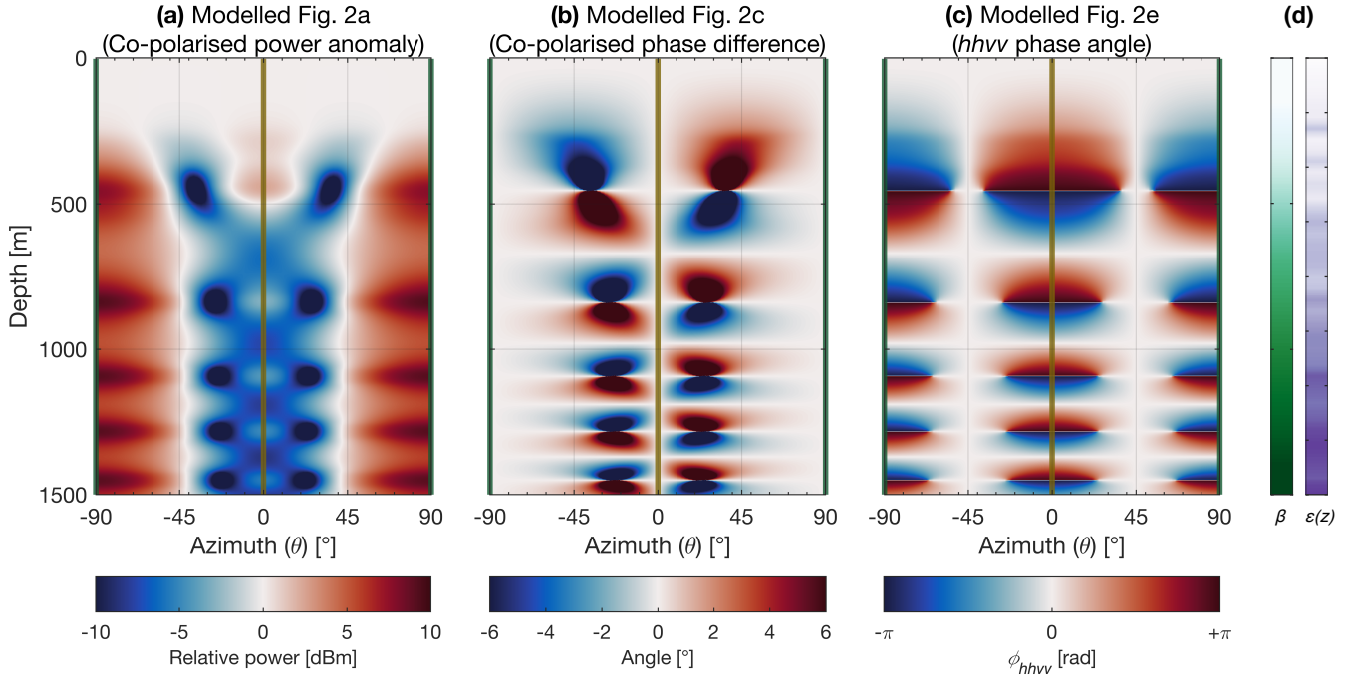


Figure 5. Modelled WDC (a) co-polarised power anomaly, (b) co-polarised phase difference, and (c) quad-polarised ($hhvv$) phase angle, corresponding to Fig. 4a, c, and e respectively. (d) Model input parameters for the ratio of anisotropic scattering (β), and birefringence ($\epsilon(z)$) through depth, the former estimated through 2-D optimisation from Fig. 4b, and the latter using eigenvalues from the WDC that specify the bulk COF (Fitzpatrick et al., 2014; Voigt et al., 2015). Value ranges for β (white to dark green) and $\epsilon(z)$ (white to dark purple) are $[0 \text{ } 15]$ dB and $[0 \text{ } 1.5 \times 10^{-2}]$ respectively. The orientation of the E_1 (dark green) and E_2 (dark yellow) eigenvectors were prescribed depth-invariant at 90° and 0° respectively following measured observations.

insufficient, we rely on the azimuthal range (width) of the alternating phase signatures in the $hhvv$ phase angle in Fig. 4e to make these estimates.

The model outputs for the co-polarised power anomaly and phase difference, as well as the $hhvv$ phase angle cases are shown in Fig. 5, and reinforces the observations of Brisbane et al. (2019), where characteristic “node pairs” in the minima of the power anomaly (Fig. 5a) are coincident with the four-quadrant vertical pair centres in the co-polarised phase difference (Fig. 5b). These centres are also coincident with the width of the asymptotic zone of similarly alternating positive and negative phase gradients in the $hhvv$ coherence phase plot (Fig. 5c) (Jordan et al., 2019). Additionally, in Fig. 5a, cruciate-shaped zones of power minima link each node pair diagonally. In all three panels, the nodes and inflexion points are either reflectionally (Fig. 5a,c) or rotationally symmetric (Fig. 5b) around the 90° principal axis. The azimuthal distance of these nodes, centres, and the width of the asymptotic zones from the principal axis are a function of the ratio of anisotropic scattering (Fig. 5d) that we do not consider in this study, the reasons behind elaborated in the Discussion (Section 5). The depth-periodicity of pattern repetition is a function of birefringence, interpreted in past observations (e.g., Brisbane et al., 2019; Drews et al., 2012) as a

radar-measured phenomenon that arises as a consequence of bulk COF (Fig. 5d). In other words, the more closely spaced the nodes and quadrants are in depth, the stronger the azimuthal fabric asymmetry.

Several minor differences observed between the measured and modelled results include: (i) a scalar reduction in the overall ranges of power anomaly and phase difference values; (ii) the absence of the upper half of the shallowest phase reversal in the measured co-polarised phase difference and phase angle profiles (Fig. 4c,e); (iii) an offset in pattern repetition (e.g., nodes, quadrants, phase reversals) that increases in depth; and (iv) an absence of noticeable patterns in the shallowest 200 m of the vertical ice column. Notwithstanding these differences, model results in Fig. 5 overall match their counterparts in Fig. 4a, c, and e to a high degree. The discrepancy between the received power returns of s_{hv} and s_{vh} (Fig. 3) as a result of a combination of human and instrumental error in the upper 200 m (Stumpf, 2018) may potentially explain some of these caveats. Otherwise, the corresponding locations and sizes of nodes in the power anomaly, quadrants in the phase difference, and asymptotic zones predicted by the model can all be observed in the measured results at 200–1400 m. Observations below 1400 m depth remain inconclusive, due to insufficient SNR present at this depth range (Fig. 3).

4.3 Estimation of azimuthal fabric asymmetry

Estimates of $E_2 - E_1$, a measure of azimuthal fabric asymmetry, were made at Site I by calculating the depth-dependent gradient of the $hhvv$ phase difference along the E_1 eigenvector (Fig. 4e) at each 15-m depth window to obtain $d\phi_{hhvv}/dz$ (Eq. 7b), and are shown alongside equivalent $E_2 - E_1$ measurements from the WDC (Fig. 6). We do not calculate $E_2 - E_1$ in the uppermost 20 m due to the antennas being subjected to near-surface non-axisymmetric antenna radiation pattern effects. Overall, fabric asymmetry estimates from ApRES match well to WDC ice core estimates, especially between 600–1200 m, where the mismatch between the two depth series averaged less than 0.02. When comparing the two independently-calculated fabric asymmetry datasets at the discrete depths at which the ice core thin sections were extracted from, the resulting correlation was moderately high between 600–1200 m ($r^2 = 0.76$), and slightly lower over the entirety of the depth series overlap to 1400 m ($r^2 = 0.60$). Both datasets show a general increase in $E_2 - E_1$ with increasing depth, with ApRES fabric measurements overall showing more variability than estimates from the WDC along their respective trends. The one exception to this positive correlation occurs between 100 and 400 m, where a small decrease in fabric asymmetry with depth can be observed in the uppermost 100 m of the ice column, where upon reaching minimum values at ~200 m, rebound and linearly increase beyond this depth. This trend is exaggerated with the inclusion of firm correction (inset in Fig. 6). Even after filtering out $E_2 - E_1$ below a $|c_{hhvv}|$ threshold of 0.3 (green asterisks in Fig. 6), ApRES measurements beyond 1200 m show a marked increase in variability that, although centred around corresponding depth values in the WDC, varied between 0.04 to 0.42. We similarly observe a sevenfold jump increase in the associated standard deviation, ranging from values averaging 0.006 at depths of 200–1200 m to 0.04 within the depth range of 1200–1400 m. There exists a small cluster of four outliers with low values ($E_2 - E_1 < 0.1$) at depths between 1250 and 1350 m with anomalously low error bars, even after initial $|c_{hhvv}|$ filtering. Setting increasingly higher $|c_{hhvv}|$ thresholds to 0.4 and 0.5 removes these outliers as well as all calculated $E_2 - E_1$ values beyond 1250 and 1100 m respectively. We do not calculate $E_2 - E_1$ from the ApRES record beyond 1400 m due to exceedingly low SNR and $|c_{hhvv}|$.

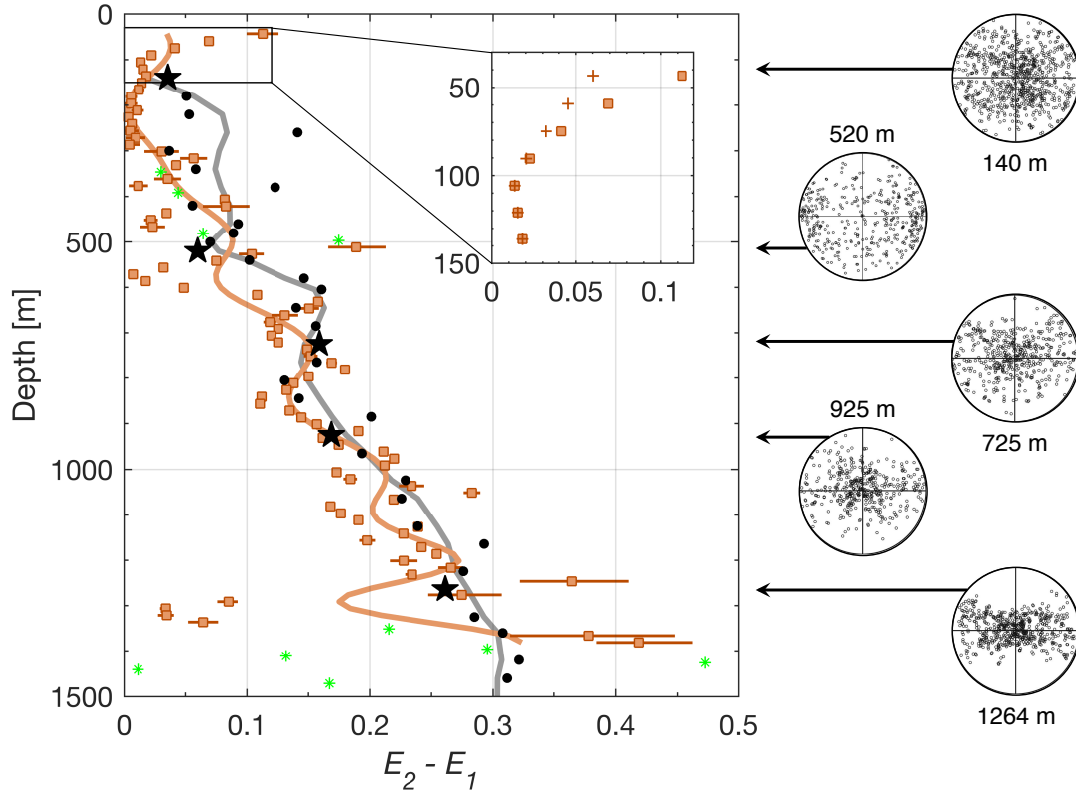


Figure 6. $E_2 - E_1$ values derived from the ApRES experiment (orange squares, with associated standard deviations) and from the WAIS Divide deep ice core (black dots, Fitzpatrick et al., 2014; Voigt et al., 2015). Smoothing curves were generated through a low pass filter on each dataset are shown in their respective colour scheme. Green asterisks display $E_2 - E_1$ values below a $|c_{hhvv}|$ threshold of 0.3. Inset displays $E_2 - E_1$ values with (orange squares) and without (orange crosses) firm correction applied to Eq. 7a. A representative selection (black stars) of horizontal Schmidt plots from which the fabric eigenvalues for the WAIS Divide deep ice core were derived from are displayed to the right of the graph (Fitzpatrick et al., 2014). In all Schmidt plots, the E_1 eigenvalue points upwards.

5 Discussion

5.1 Competing influences between anisotropic scattering and birefringence

The azimuthal dependency of backscattered power in ground-penetrating radar is a function of both anisotropic scattering and birefringence (Hargreaves, 1977). Although these two terms are related, they manifest from different electromagnetic phenomena. The birefringent propagation of radio waves arises from differences in dielectric permittivity along two axes perpendicular to the propagation direction, the two axes often referred to as the fast and slow axes or the ordinary and extraordinary axes. On the other hand, anisotropic scattering is a consequence of changes with depth in the anisotropic permittivity that may not necessarily be related to changes in crystal orientation fabric (COF) (Drews et al., 2012). Both phenomena often occur simul-

taneously, but our technique focuses on the analysis of the birefringent signals, which provides information on the bulk COF
330 (Brisbourne et al., 2019).

The power anomaly model that we use to emulate measured results (Fig. 5a) incorporate a variable anisotropic scattering
ratio β , which predicted an isotropic scattering medium at depths above 200 m that gradually increased in anisotropic scattering
until at least 1400 m, where β was estimated to be 15 dB. Drews et al. (2012) also observed azimuthal variations in backscatter
power anomaly that varied similarly through depth, the variations which they attributed to microscopic (sub-metre) depth
335 transitions in COF. The study also observed the superimposition of elongated bubbles that varied similarly with depth. While
the induced polarimetric dependence through these bubbles was calculated to be minimal, where microscopic vertically-varying
COF dominates the observed anisotropy, this effect was observed to be amplified at shallower depths. Although we calculate
COF in our analysis, we cannot confirm the mechanisms for the observed anisotropic scattering in our results, as the COF
values represent not only a bulk-depth average within the calculated depth bin but also a manifestation of the horizontal rather
340 than vertical asymmetry.

Our method applies density-dependent firn correction as suggested by Jordan et al. (2020c), which effectively reduces
the value of $\Delta\varepsilon$ by taking into account the birefringence of firn with respect to solid ice. This in turn increases the fabric
asymmetry $E_2 - E_1$ (inset of Fig. 6). We observe slight fabric asymmetry that is most apparent in the uppermost 100 m of
the ice column that is inversely proportional to depth (Fig. 6). As the applied firn correction is based upon established ice-air
345 volume fractions in the mixing relations of Looyenga (1965), we believe these corrections to be physically representative of
any fabric anisotropy within the firn layer. Separately, we are able to discount the possibility of a tilt angle between the E_3
eigenvector and the direction of radio wave propagation being the source of this observed firn asymmetry, given that the quad-
polarisation measurements were conducted using a ground-based monostatic antenna setup (Jordan et al., 2019; Matsuoka
et al., 2009). Crystal anisotropy in snow (Calonne et al., 2017) and firn (DiPrinzio et al., 2005; Fujita et al., 2009) have
350 previously been observed on multiple occasions, and is thought to be induced by perturbations in climate such as temperature,
solar radiation, winds, and deposition, where the combined effects of these variables influence the initial orientation and size
of ice crystals (Kennedy et al., 2013), potentially amplifying the resulting ice flow dynamics (Wang et al., 2018). Although
comparative studies addressing the physical origins of fabric anisotropy do not exist for the firn layer, it is likely that the
effects of prolonged firn densification on crystal rotation will induce some amount of azimuthal anisotropy within this layer
355 (Burr et al., 2017). While we cannot at this point conclusively link the observed fabric asymmetry in the uppermost 200 m of
the ice column to climate perturbations, it is certainly a plausible explanation especially given increasingly volatile climatic
conditions over the larger Western Antarctic Ice Sheet over the past century that will likely intensify in the near future (Nicolas
and Bromwich, 2011; Scott et al., 2019).

5.2 Flow history at WAIS Divide

360 With the addition of our ApRES-derived dataset, there are now three calculations of ice fabric at WAIS Divide. Each dataset
was obtained using independent methods, with the other two arising from ice core observations (Fitzpatrick et al., 2014; Voigt
et al., 2015) and sonic logging (Kluskiwicz et al., 2017). A fourth method, observed from shear-wave splitting in seismic

surveys, was conducted in the 2018 summer at WAIS Divide and results gleaned from this seismic experiment (Nakata et al., *in prep*) would likely complement observations made from the corresponding datasets as an additional independent experiment.

365 We also note that an areal radar polarimetric study was conducted at WAIS Divide by Matsuoka et al. (2012), which quantified the relative orientation of the fabric asymmetry across a $60 \text{ km} \times 150 \text{ km}$ study area, but stopped short of calculating the COF structure within their polarimetric measurements. Across the study area, they observed depth-variable azimuthal shifts that varied according to the strain regime at the corresponding age-depth period. At the WDC (their S-W24), however, their results were inconclusive due to the multiple unevenly-spaced azimuthal power maxima at depth in both radar frequency returns.

370 Our results contrast with those of Matsuoka et al. (2012) in that we observe no azimuthal ambiguity in our determination of the E_1 eigenvector orientation down to a depth of 1400 m, which translates to a depth-age of ~ 6700 years BP (before 1950), which encompasses the majority of the Holocene epoch. The depth-age of the record is short because the rates of accumulation over this time period are high in comparison to both historical rates over the same area (Fudge et al., 2013) and present-day rates over other areas across the Antarctic Ice Sheet (Koutnik et al., 2016).

375 Although the time taken to overprint a pre-existing fabric is poorly constrained, excluding those from laboratory results (Brisbourne et al., 2019), the removal of previous fabric evidence is thought to take significant time and may require anomalously strong deformation regimes (Alley, 1988). At all sites, the alignment of our identified E_1 eigenvector orientation with the observed present-day strain regime is consistent with theory relating ice flow and crystal anisotropy (Azuma, 1994). We are confident that the observed surface strain orientation likely reflects the current deformation regime, given this alignment,

380 the temporal permanence of fabric signatures, and the comparatively short depth-age of our record. Consequently, given that our ApRES measurement location is situated within 20 km from the present-day location of WAIS Divide, our observations of depth-invariant eigenvector orientations with the above deductions support the proposition that the ice divide has likely remained on average within 5 km of its present position throughout the Holocene (Koutnik et al., 2016).

5.3 Radar polarimetric methods to determine fabric strength and orientation

385 While older radar studies infer azimuthal fabric strength at broad (100s to 1000s of metres) depth resolution by investigating the depth between sequential “co-polarised nodes” (e.g., Fujita et al., 2006; Matsuoka et al., 2003, 2012), more recent studies are able to quantitatively calculate the azimuthal fabric asymmetry via the polarimetric coherence method at comparatively higher resolutions (10s of metres) (Dall, 2010; Jordan et al., 2019; Ershadi et al., 2021). In this study, using the polarimetric coherence method, we were able to achieve coherent estimates of fabric strength at depth intervals (the bulk-depth resolution) down to

390 15 m. The ability to directly validate our results with measurements from the WAIS Divide Deep Ice Core to a satisfactory degree gives confidence in our choice of processing parameters. We provide results using both methods (power anomaly/phase difference and polarimetric coherence), and use all outputs to arrive at our estimates of fabric orientation, thereby reconciling the aims of the two methods.

Jordan et al. (2019) puts forth the advantage of using polarimetric radar methods to determine the orientation of fabric,

395 especially with regards to the fact that ice core studies can only be conducted in a relative azimuthal reference frame due to the rotational spin of the core during the drilling process. Our study confirms this proposition by establishing the orientation of

the E_1 and E_2 eigenvectors through the identification of depth-local minima in the cross-polarised power anomaly measurements (Fig. 4c). In this study, we distinguished between the two eigenvectors using the polarity of the $hhvv$ phase gradient ($d\phi_{hhvv}/dz$) following Jordan et al. (2019). However, if anisotropic scattering is present, the azimuthal location of the four-
400 quadrant patterns in the co-polarised phase difference is also an effective way to discriminate between the two eigenvectors (Brisbourne et al., 2019). Here, the four-quadrant patterns are centred around the E_2 eigenvector (Fig. 4c, Fig. 5c). Although the results of Brisbourne et al. (2019) observe the patterns to instead be centred around the E_1 eigenvector, we can reconcile this discrepancy due to opposite assignments of h and v antenna alignments used between the two studies.

The cross-polarised power anomaly is generally a robust method of identifying the fabric orientation in slow-moving ice
405 (Li et al., 2018). Here, we show that this method is reasonably accurate for depth-invariant eigenvectors (Fig. 4). In the case of a gradual rotation of the fabric orientation through depth, the cross-polarised power anomaly should undergo a similarly gradual rotation (Ershadi et al., 2021). This is also true in the case of an abrupt switch in COF, as evidenced at Korff Ice Rise (Brisbourne et al., 2019), where the cross-polarised power anomaly undergoes a similarly abrupt shift in azimuth. In elementary cases, the 90° ambiguity that exists in the cross-polarised power anomaly (Li et al., 2018) can potentially be resolved from the
410 methods given in the previous paragraph. However, if the fabric orientation were to change rapidly with depth, using only the cross-polarised power anomaly to determine and distinguish between the two eigenvector orientations may produce erroneous results as demonstrated by Ershadi et al. (2021). In all cases, if the radar-derived fabric orientation is offset in azimuth from its true orientation, this mismatch will result in corresponding over- or under-estimation of azimuthal fabric asymmetry (Jordan et al., 2020b).

415 Because we did not conduct azimuthal rotational measurements at our study sites, we are unable to make a full and direct comparison between quad-polarimetric and rotational measurements in terms of their output results, and therefore are unable to advocate for one method over the other. However, a visual comparison between our results and those obtained at Site S-W24 of Matsuoka et al. (2012) show similar polarimetric power anomalies in the upper 1400 m of ice, which give us confidence in our results. Separately, comparative analyses of results obtained using both types of measurements at Korff Ice Rise (C.
420 Martín, *unpublished data*) as well as at EPICA Dronning Maud Land (Ershadi et al., 2021) reveal no structural differences between datasets. This comparative similarity may not hold in areas with more dynamic and/or complex flow, where the E_3 eigenvector is not vertically-aligned, and requires further investigation. While our estimation of the E_1 and E_2 eigenvector orientations in our measurements is to the nearest 1° , this precision reflects the angular bin size used to azimuthally reconstruct the received signal from quad-polarised data in this study, and is not synonymous with angular resolution, which instead is
425 largely dependent on human errors in positioning the antennas for each acquisition (here assumed to be $\pm 8^\circ$). However, under the assumption that the two acquisition methods do indeed produce physically equivalent datasets, then a quad-polarimetric reconstruction allows for a comparatively higher precision in identifying of the two eigenvector orientations.

The use of quad-polarised measurements is depth-limited by the signal-to-noise ratio of the cross-polarised terms (s_{hv} and s_{vh}). Our COF measurements obtained from polarimetric radar, where chirps were coherently summed during pre-processing
430 for each measurement, correlate well with equivalent ice-core measurements made at WDC to a depth of 1400 m, after which estimated values become increasingly unconstrained and the phase is dominated by noise. Given that the relative power of

the cross-polarised terms are almost a magnitude lower than that of the co-polarised terms (Fig. 3), there is a limit to the depth at which ApRES is able to make accurate COF calculations. High SNR does not always equate to high polarisation coherence (C_{hhvv}), and vice versa. It is, however, plausible that larger datasets that employ higher amounts of chirp-averaging
 435 may increase the SNR needed to extend beyond the current depth limitation of 1400 m.

5.4 Broader comparisons of geophysical methods to infer ice fabric properties

Of the methods available to quantify depth changes in ice COF, only ice core analyses are currently able to produce a fully three-dimensional set of fabric estimates, and remain the only empirical measurement of COF. Thin (~10 cm) section analyses from ice cores, while providing direct orientation estimates for the majority of grains within each section, are often conducted
 440 at depth intervals of tens of metres, with each analysis capturing the local decimetre-wide fabric regime, as is the case for the WAIS Divide deep ice core (WDC) at an average depth interval of 40 metres (Fitzpatrick et al., 2014). In contrast, waveform-based methods average out fabric properties in bulk where, for radar systems, the planar footprint of which the COF is averaged from is dependent on the radiation patterns of the radar antennas and increases linearly through depth, and can be approximated as the radius of the first Fresnel zone (Haynes et al., 2018). As the antennas used in this study have a relatively wide half-power
 445 beamwidth ($\pm 30^\circ$), the footprint of the ApRES system would have a radius of approximately 1/4 of the centre wavelength (~1 m) near the surface, but reaches to approximately 1000 m at a depth of 1500 m. Therefore, the bulk COF estimates obtained from ApRES is averaged from a much larger area at depth than near the surface. Along with the SNR, this observed scale-dependence would therefore heavily influence the accuracy and error of results, especially in areas of complex flow and deformation.

450 The COF resolution vary significantly between waveform-based methods. For example, seismic surveys generate high azimuthal resolution at the cost of depth resolution (e.g., Horgan et al., 2011; Brisbourne et al., 2019), while equivalent results from sonic logging techniques reveal the converse (e.g., Gusmeroli et al., 2012; Kluskiewicz et al., 2017). While bulk-averaging over a large amount of crystals induces higher amounts of statistical noise compared to thin-section analysis, they are better able to resolve smaller scale features and discontinuities in the observed fabric (Wilen et al., 2003). Our results using a phase-
 455 sensitive radio echo sounder, while reconstructed from orthogonal measurements, offer a compromise between azimuthal and depth precision, providing COF estimates comparable to results from the WDC at resolutions comparable to that of seismics in azimuth and sonic logging in depth.

As this study and those by Jordan et al. (2019, 2020c) show, the polarimetric coherence method measures the horizontal asymmetry of the vertical ice column through quantifying the birefringence effects from orthogonally-oriented measurements
 460 and relating this to the difference in magnitude between the E_2 and E_1 eigenvectors. As such, an obvious limitation of this method is its inability to discern azimuthally-invariant fabric such as single-cluster crystal distributions or more complex fabrics such as horizontal girdles from each other. However, given the high resolution of the results, ApRES-derived COF are directly complementary to results from sonic logging in that the former calculates the horizontal asymmetry of the fabric through quantification of $E_2 - E_1$, whilst the latter quantifies the vertical fabric asymmetry (the strength of the E_3 eigenvector) through
 465 P-wave interpretation (Kluskiewicz et al., 2017).

An obvious advantage of seismic and radar surveys, in comparison to ice coring and sonic logging, is that they can be implemented as a much smaller operation in terms of team size, cost, and field time, with ground-based radar surveys an order of magnitude even lower than that of seismics and airborne radar in all three aspects. As a reference, the quad-polarised measurements collected in this study took approximately thirty minutes inclusive of radar and antenna setup, and involved only two persons (co-authors Young and Dawson). While radar surveys can be conducted efficiently in comparison to that of seismics surveys, given the normalised eigenvalue framework in Eq. 1, radar measurements of ice fabric can at most provide information about the second order orientation tensor, which may be insufficient to describe the elastic anisotropy of ice (Sayers, 2018). In contrast, seismics wave propagation in anisotropic materials is based on a fourth-order elasticity tensor (Diez and Eisen, 2015; Sayers, 2018) that enables estimation of COF in three dimensions (albeit with a vertically-integrated value). The additional degrees of freedom enable seismic methods to distinguish azimuthally-symmetric forms of fabric anisotropy that equivalent radar methods at present cannot. A combination of these two methods can therefore reduce ambiguity in fabric estimation (Brisbourne et al., 2019), especially in areas of complex flow which have the potential to produce complex fabric. Preliminary results show that ApRES quad-polarised measurements are capable of reconstructing E_3 through inverse methods, with recovered values comparable to equivalent ice core measurements (Ershadi et al., 2021). Radar characterisation of the full fabric orientation tensor would represent a significant step forward in fabric measurements. Radar, in addition to seismics, have the ability to measure COF in a wide variety of flow regimes that may not be suitable as an ice core drilling site. In this respect, the use of one or a combination of geophysical methods has the potential to investigate more dynamic areas that reveal the complexities of ice flow, such as shear margins or grounding zones. In conclusion, as shown in our study, the use of an ApRES in conjunction with the polarimetric coherence method can produce estimates of fabric asymmetry with accuracies and intervals comparable to that of thin ice core section analyses.

6 Conclusions

Using a phase-sensitive radar and two open-structure antennas, we conducted a suite of quadrature-polarimetric measurements within the proximity of the WAIS Divide Ice Core (WDC). Using a combination of the matrix-based backscatter model (Brisbourne et al., 2019; Fujita et al., 2006) and the polarimetric coherence method (Jordan et al., 2019, 2020c), we were able to (i) quantify the horizontal asymmetry ($E_2 - E_1$) of the crystal orientation fabric (COF) to a depth of 1400 m; and (ii) unambiguously identify the fabric asymmetry to be depth invariant with the E_1 eigenvector oriented at $21^\circ \pm 8^\circ$ to the same depth of 1400 m. Our findings in (i) were conducted at an angular and depth intervals of 1° and 15 m respectively, exceeding that of ice core-derived measurements made at the WDC (Fitzpatrick et al., 2014; Voigt et al., 2015). The correlation between these two independent measurements of fabric asymmetry is moderately high over the depth range of 600–1200 m ($r^2 = 0.76$), and is slightly lower over the entire depth range to 1400 m ($r^2 = 0.60$). Our findings in (ii) are consistent with the direction of principal strain independently measured by Matsuoka et al. (2012). Our determination of depth-invariant fabric orientation to at least 1400 m, equivalent to 6700 years BP (years before 1950), covers ~59% of the Holocene epoch, which suggests that the deformation regime at WAIS Divide has not changed substantially during this period. While ice core-based measurements still

represent the only method that empirically measures COF in three dimensions, the logistics required to conduct polarimetric radar measurements to quantify fabric asymmetry are minimal and non-invasive. In this regard, polarimetric radar methods provide an opportunity for accurate and widespread profiling and mapping of bulk COF across a diverse range of flow regimes, with the potential to illuminate the role of fabric asymmetry on ice rheology.

Code and data availability. The full set of ApRES polarimetric measurements and associated processing code will shortly be made available through the UK Polar Data Centre (<https://www.bas.ac.uk/data/uk-pdc/>) shortly after this manuscript is published. Until that time, these data are available by request from the corresponding author.

Author contributions. TJY designed the polarimetric experiment with assistance from CM, who wrote the polarimetric backscatter model. TJY and EJD collected the ApRES data as part of the TIME project within the International Thwaites Glacier Collaboration. TJY processed the ApRES data, analysed the results, and wrote the manuscript with guidance from CM. All authors contributed to manuscript preparation.

Competing interests. CM is an Editor of The Cryosphere.

Acknowledgements. This work is ITGC Contribution No. ITGC-035, and is an output from the Thwaites Interdisciplinary Margin Evolution (TIME) project as part of the International Thwaites Glacier Collaboration (ITGC), supported by Natural Environment Research Council (NERC) research grant #NE/S006788/1 supporting TJY and PC, and National Science Foundation (NSF) research grant #1739027 supporting SMT and DMS. Logistics for this project were provided by the NSF-U.S. Antarctic Program and NERC-British Antarctic Survey. EJD is supported by an NSF Graduate Research Fellowship. We appreciate logistical support from the 2019/20 station leader (James King) and staff at WAIS Divide Field Camp, as well as aviation support from the United States Air National Guard and Kenn Borek Air during our field season. We thank Jake Walter, Stephen Veitch, Forrest McCarthy, and Julie Baum as fellow team members in our field season. We thank all members of the ITGC TIME project as well as Tom Jordan for insightful discussions on waveform analysis, ice fabric, and anisotropy. We similarly thank Keith Nicholls for insightful discussions as well as loaning the ApRES unit at short notice. We are grateful to Howard Conway for providing GPS-measured velocity data to contextualise our results. The authors would like to thank Martin Rongen (Johannes Gutenberg-Universität Mainz) and Reinhard Drews (University of Tübingen) for their constructive comments that improved this paper. The Schmidt plots in Figure 6 were reprinted from Figure 19 in Fitzpatrick et al. (2014) with permission from the International Glaciological Society as well as the lead author. Associated data and code will be made available in line with the policies outlined by the ITGC.

References

- Alley, R. B.: Fabrics in polar ice sheets: Development and prediction, *Science*, 240, 493–495, <https://doi.org/10.1126/science.240.4851.493>, 1988.
- Azuma, N.: A flow law for anisotropic ice and its application to ice sheets, *Earth and Planetary Science Letters*, 128, 601–614, [https://doi.org/10.1016/0012-821X\(94\)90173-2](https://doi.org/10.1016/0012-821X(94)90173-2), 1994.
- Brennan, P. V., Nicholls, K. W., Lok, L. B., and Corr, H. F. J.: Phase-sensitive FMCW radar system for high-precision Antarctic ice shelf profile monitoring, *IET Radar, Sonar & Navigation*, 8, 776–786, <https://doi.org/10.1049/iet-rsn.2013.0053>, 2014.
- Brisbourne, A. M., Martín, C., Smith, A. M., Baird, A. F., Kendall, J. M., and Kingslake, J.: Constraining Recent Ice Flow History at Korff Ice Rise, West Antarctica, Using Radar and Seismic Measurements of Ice Fabric, *Journal of Geophysical Research: Earth Surface*, 124, 175–194, <https://doi.org/10.1029/2018JF004776>, 2019.
- Burr, A., Noël, Trecourt, P., Bourcier, M., Gillet-Chaulet, F., Philip, A., and Martin, C. L.: The anisotropic contact response of viscoplastic monocrystalline ice particles, *Acta Materialia*, 132, 576–585, <https://doi.org/10.1016/j.actamat.2017.04.069>, 2017.
- Calonne, N., Montagnat, M., Matzl, M., and Schneebeli, M.: The layered evolution of fabric and microstructure of snow at Point Barnola, Central East Antarctica, *Earth and Planetary Science Letters*, 460, 293–301, <https://doi.org/10.1016/j.epsl.2016.11.041>, 2017.
- Conway, H. and Rasmussen, L. A.: Recent thinning and migration of the Western Divide, central West Antarctica, *Geophysical Research Letters*, 36, 1–5, <https://doi.org/10.1029/2009GL038072>, 2009.
- Corr, H. F. J., Jenkins, A., Nicholls, K. W., and Doake, C. S. M.: Precise measurement of changes in ice-shelf thickness by phase-sensitive radar to determine basal melt rates, *Geophysical Research Letters*, 29, 1–4, <https://doi.org/10.1029/2001GL014618>, 2002.
- Cuffey, K. and Paterson, W. S.: *The Physics of Glaciers*, Academic Press, Amsterdam, fourth edn., 2010.
- Dall, J.: Ice sheet anisotropy measured with polarimetric ice sounding radar, in: 30th International Geoscience and Remote Sensing Symposium (IGARSS 2010), pp. 2507–2510, Honolulu, HI, <https://doi.org/10.1109/IGARSS.2010.5653528>, 2010.
- Dall, J.: Estimation of crystal orientation fabric from airborne polarimetric ice sounding radar data, in: 40th International Geoscience and Remote Sensing Symposium (IGARSS 2020), pp. 2975–2978, IEEE, Waikoloa, HI, 2021.
- Davis, P. E., Jenkins, A., Nicholls, K. W., Brennan, P. V., Abrahamsen, E. P., Heywood, K. J., Dutrieux, P., Cho, K. H., and Kim, T. W.: Variability in Basal Melting Beneath Pine Island Ice Shelf on Weekly to Monthly Timescales, *Journal of Geophysical Research: Oceans*, 123, 8655–8669, <https://doi.org/10.1029/2018JC014464>, 2018.
- Diez, A. and Eisen, O.: Seismic wave propagation in anisotropic ice - Part 1: Elasticity tensor and derived quantities from ice-core properties, *Cryosphere*, 9, 367–384, <https://doi.org/10.5194/tc-9-367-2015>, 2015.
- DiPrinzio, C. L., Wilen, L. A., Alley, R. B., Fitzpatrick, J. J., Spencer, M. K., and Gow, A. J.: Fabric and texture at Siple Dome, Antarctica, *Journal of Glaciology*, 51, 281–290, <https://doi.org/10.3189/172756505781829359>, 2005.
- Doake, C. S., Corr, H. F., and Jenkins, A.: Polarization of radio waves transmitted through Antarctic ice shelves, *Annals of Glaciology*, 34, 165–170, <https://doi.org/10.3189/172756402781817572>, 2002.
- Doake, C. S. M., Corr, H. F., Jenkins, A., Nicholls, K. W., and Stewart, C. L.: Interpretation of polarimetric ice penetrating radar data over Antarctic ice shelves, in: FRISP Report, vol. 14, pp. 1–14, 2003.
- Drews, R., Eisen, O., Steinhage, D., Weikusat, I., Kipfstuhl, S., and Wilhelms, F.: Potential mechanisms for anisotropy in ice-penetrating radar data, *Journal of Glaciology*, 58, <https://doi.org/10.3189/2012JoG11J114>, 2012.

- Durand, G., Gillet-Chaulet, F., Svensson, A., Gagliardini, O., Kipfstuhl, S., Meyssonier, J., Parrenin, F., Duval, P., and Dahl-Jensen, D.: Change in ice rheology during climate variations - Implications for ice flow modelling and dating of the EPICA Dome C core, *Climate of the Past*, 3, 155–167, <https://doi.org/10.5194/cp-3-155-2007>, 2007.
- Eisen, O., Hamann, I., Kipfstuhl, S., Steinhage, D., and Wilhelms, F.: Direct evidence for continuous radar reflector originating from changes in crystal-orientation fabric, *Cryosphere*, 1, 1–10, <https://doi.org/10.5194/tc-1-1-2007>, 2007.
- Ershadi, M. R., Drews, R., Martín, C., Eisen, O., Ritz, C., Corr, H. F. J., Christmann, J., Zeising, O., Humbert, A., and Mulvaney, R.: Polarimetric radar reveals the spatial distribution of ice fabric at domes in East Antarctica, *The Cryosphere Discussions*, pp. 1–34, <https://doi.org/10.5194/tc-2020-370>, 2021.
- Fitzpatrick, J. J., Voigt, D. E., Fegyveresi, J. M., Stevens, N. T., Spencer, M. K., Cole-Dai, J., Alley, R. B., Jardine, G. E., Cravens, E. D., Wilen, L. A., Fudge, T. J., and McConnell, J. R.: Physical properties of the WAIS divide ice core, *Journal of Glaciology*, 60, 1140–1154, <https://doi.org/10.3189/2014JoG14J100>, 2014.
- Fudge, T. J., Steig, E. J., Markle, B. R., Schoenemann, S. W., Ding, Q., Taylor, K. C., McConnell, J. R., Brook, E. J., Sowers, T., White, J. W., Alley, R. B., Cheng, H., Clow, G. D., Cole-Dai, J., Conway, H., Cuffey, K. M., Edwards, J. S., Lawrence Edwards, R., Edwards, R., Fegyveresi, J. M., Ferris, D., Fitzpatrick, J. J., Johnson, J., Hargreaves, G., Lee, J. E., Maselli, O. J., Mason, W., McGwire, K. C., Mitchell, L. E., Mortensen, N., Neff, P., Orsi, A. J., Popp, T. J., Schauer, A. J., Severinghaus, J. P., Sigl, M., Spencer, M. K., Vaughn, B. H., Voigt, D. E., Waddington, E. D., Wang, X., and Wong, G. J.: Onset of deglacial warming in West Antarctica driven by local orbital forcing, *Nature*, 500, 440–444, <https://doi.org/10.1038/nature12376>, 2013.
- Fujita, S., Matsuoka, T., Ishida, T., Matsuoka, K., and Mae, S.: A summary of the complex dielectric permittivity of ice in the megahertz range and its applications for radar sounding of polar ice sheets, in: *Physics of Ice Core Records*, edited by Hondoh, T., pp. 185–212, Hokkaido University Press, Sapporo, Japan, 2000.
- Fujita, S., Maeno, H., and Matsuoka, K.: Radio-wave depolarization and scattering within ice sheets: A matrix-based model to link radar and ice-core measurements and its application, *Journal of Glaciology*, 52, 407–424, <https://doi.org/10.3189/172756506781828548>, 2006.
- Fujita, S., Okuyama, J., Hori, A., and Hondoh, T.: Metamorphism of stratified firn at Dome Fuji, Antarctica: A mechanism for local insolation modulation of gas transport conditions during bubble close off, *Journal of Geophysical Research: Earth Surface*, 114, 1–21, <https://doi.org/10.1029/2008JF001143>, 2009.
- Gillet-Chaulet, F., Hindmarsh, R. C. A., Corr, H. F. J., King, E. C., and Jenkins, A.: In-situ quantification of ice rheology and direct measurement of the Raymond Effect at Summit, Greenland using a phase-sensitive radar, *Geophysical Research Letters*, 38, <https://doi.org/10.1029/2011GL049843>, 2011.
- Gregory, S. A., Albert, M. R., and Baker, I.: Impact of physical properties and accumulation rate on pore close-off in layered firn, *Cryosphere*, 8, 91–105, <https://doi.org/10.5194/tc-8-91-2014>, 2014.
- Gusmeroli, A., Pettit, E. C., Kennedy, J. H., and Ritz, C.: The crystal fabric of ice from full-waveform borehole sonic logging, *Journal of Geophysical Research: Earth Surface*, 117, 1–13, <https://doi.org/10.1029/2012JF002343>, 2012.
- Hargreaves, N. D.: The polarization of radio signals in the radio echo sounding of ice sheets, *Journal of Physics D: Applied Physics*, 10, 1285–1304, <https://doi.org/10.1088/0022-3727/10/9/012>, 1977.
- Hargreaves, N. D.: The Radio-Frequency Birefringence of Polar Ice, *Journal of Glaciology*, 21, 301–313, <https://doi.org/10.3189/s0022143000033499>, 1978.
- Haynes, M. S., Chapin, E., and Schroeder, D. M.: Geometric power fall-off in radar sounding, *IEEE Transactions on Geoscience and Remote Sensing*, 56, 6571–6585, <https://doi.org/10.1109/TGRS.2018.2840511>, 2018.

- Horgan, H. J., Anandakrishnan, S., Alley, R. B., Burkett, P. G., and Peters, L. E.: Englacial seismic reflectivity: Imaging crystal-orientation fabric in West Antarctica, *Journal of Glaciology*, 57, 639–650, <https://doi.org/10.3189/002214311797409686>, 2011.
- Howat, I. M., Porter, C., Smith, B. E., Noh, M.-J., and Morin, P.: The Reference Elevation Model of Antarctica, *The Cryosphere*, 13, 665–674, <https://doi.org/10.5194/tc-2018-240>, 2019.
- IPCC: Climate Change 2013: The Physical Science Basis, Cambridge University Press, Cambridge, United Kingdom and New York, NY, USA, fifth edn., 2013.
- Jenkins, A., Corr, H. F. J., Nicholls, K. W., Stewart, C. L., and Doake, C. S. M.: Interactions between ice and ocean observed with phase-sensitive radar near an Antarctic ice-shelf grounding line, *Journal of Glaciology*, 52, 325–346, <https://doi.org/10.3189/172756506781828502>, 2006.
- Jordan, T. M., Schroeder, D. M., Castelletti, D., Li, J., and Dall, J.: A Polarimetric Coherence Method to Determine Ice Crystal Orientation Fabric From Radar Sounding: Application to the NEEM Ice Core Region, *IEEE Transactions on Geoscience and Remote Sensing*, pp. 1–17, <https://doi.org/10.1109/tgrs.2019.2921980>, 2019.
- Jordan, T. M., Besson, D. Z., Kravchenko, I., Latif, U., Madison, B., Nokikov, A., and Shultz, A.: Modeling ice birefringence and oblique radio wave propagation for neutrino detection at the South Pole, *Annals of Glaciology*, pp. 1–8, <https://doi.org/10.1017/aog.2020.18>, 2020a.
- Jordan, T. M., Martín, C., Brisbourne, A. M., Schroeder, D. M., and Smith, A. M.: Radar characterization of ice crystal orientation fabric and anisotropic rheology within an Antarctic ice stream, *Earth and Space Science Open Archive*, pp. 1–48, <https://doi.org/10.1002/essoar.10504765.1>, 2020b.
- Jordan, T. M., Schroeder, D. M., Elsworth, C. W., and Siegfried, M. R.: Estimation of ice fabric within Whillans Ice Stream using polarimetric phase-sensitive radar sounding, *Annals of Glaciology*, <https://doi.org/10.1017/aog.2020.6>, 2020c.
- Kendrick, A. K., Schroeder, D. M., Chu, W., Young, T. J., Christoffersen, P., Todd, J., Doyle, S. H., Box, J. E., Hubbard, A., Hubbard, B., Brennan, P. V., Nicholls, K. W., and Lok, L. B.: Surface Meltwater Impounded by Seasonal Englacial Storage in West Greenland, *Geophysical Research Letters*, pp. 474–481, <https://doi.org/10.1029/2018GL079787>, 2018.
- Kennedy, J. H., Pettit, E. C., and Di Prinzio, C. L.: The evolution of crystal fabric in ice sheets and its link to climate history, *Journal of Glaciology*, 59, 357–373, <https://doi.org/10.3189/2013JoG12J159>, 2013.
- Kingslake, J., Hindmarsh, R. C. A., Aalgeirsdóttir, G., Conway, H., Corr, H. F. J., Gillet-Chaulet, F., Martín, C., King, E. C., Mulvaney, R., and Pritchard, H. D.: Full-depth englacial vertical ice sheet velocities measured using phase-sensitive radar, *Journal of Geophysical Research F: Earth Surface*, 119, 2604–2618, <https://doi.org/10.1002/2014JF003275>, 2014.
- Kingslake, J., Martín, C., Arthern, R. J., Corr, H. F., and King, E. C.: Ice-flow reorganization in West Antarctica 2.5 kyr ago dated using radar-derived englacial flow velocities, *Geophysical Research Letters*, 43, 9103–9112, <https://doi.org/10.1002/2016GL070278>, 2016.
- Kluskievich, D., Waddington, E. D., Anandakrishnan, S., Voigt, D. E., Matsuoka, K., and McCarthy, M. P.: Sonic methods for measuring crystal orientation fabric in ice, and results from the West Antarctic ice sheet (WAIS) Divide, *Journal of Glaciology*, 63, 603–617, <https://doi.org/10.1017/jog.2017.20>, 2017.
- Koutnik, M. R., Fudge, T. J., Conway, H., Waddington, E. D., Neumann, T. A., Cuffey, K. M., Buizert, C., and Taylor, K. C.: Holocene accumulation and ice flow near the West Antarctic Ice Sheet Divide ice core site, *Journal of Geophysical Research: Earth Surface*, 121, 907–924, <https://doi.org/10.1002/2015JF003668>, 2016.

- Li, J., González, J. A., Leuschen, C., Harish, A., Gogineni, P., Montagnat, M., Weikusat, I., Rodriguez-Morales, F., and Paden, J.: Multi-channel and multi-polarization radar measurements around the NEEM site, *Cryosphere*, 12, 2689–2705, <https://doi.org/10.5194/tc-12-2689-2018>, 2018.
- Lindbäck, K., Moholdt, G., Nicholls, K. W., Hattermann, T., Pratap, B., Thamban, M., and Matsuoka, K.: Spatial and temporal variations in basal melting at Nivlisen ice shelf, East Antarctica, derived from phase-sensitive radars, *The Cryosphere*, 13, 2579–2595, <https://doi.org/10.5194/tc-13-2579-2019>, 2019.
- Looyenga, H.: Dielectric constants of heterogeneous mixtures, *Physica*, 31, 401–406, [https://doi.org/10.1016/0031-8914\(65\)90045-5](https://doi.org/10.1016/0031-8914(65)90045-5), 1965.
- Marsh, O. J., Fricker, H. A., Siegfried, M. R., and Christianson, K.: High basal melt rates initiate a channel at the grounding line of Ross Ice Shelf, Antarctica, *Geophysical Research Letters*, 43, 250–255, <https://doi.org/10.1002/2015GL066612>. Received, 2016.
- Matsuoka, K., Furukawa, T., Fujita, S., Maeno, H., Uratsuka, S., Naruse, R., and Watanabe, O.: Crystal orientation fabrics within the Antarctic ice sheet revealed by a multipolarization plane and dual-frequency radar survey, *Journal of Geophysical Research*, 108, 10, <https://doi.org/10.1029/2003JB002425>, 2003.
- Matsuoka, K., Wilen, L., Hurley, S. P., and Raymond, C. F.: Effects of birefringence within ice sheets on obliquely propagating radio waves, *IEEE Transactions on Geoscience and Remote Sensing*, 47, 1429–1443, <https://doi.org/10.1109/TGRS.2008.2005201>, 2009.
- Matsuoka, K., Power, D., Fujita, S., and Raymond, C. F.: Rapid development of anisotropic ice-crystal-alignment fabrics inferred from englacial radar polarimetry, central West Antarctica, *Journal of Geophysical Research: Earth Surface*, 117, 1–16, <https://doi.org/10.1029/2012JF002440>, 2012.
- Montagnat, M., Azuma, N., Dahl-Jensen, D., Eichler, J., Fujita, S., Gillet-Chaulet, F., Kipfstuhl, S., Samyn, D., Svensson, A., and Weikusat, I.: Fabric along the NEEM ice core, Greenland, and its comparison with GRIP and NGRIP ice cores, *Cryosphere*, 8, 1129–1138, <https://doi.org/10.5194/tc-8-1129-2014>, 2014.
- Morlighem, M., Rignot, E., Binder, T., Blankenship, D., Drews, R., Eagles, G., Eisen, O., Ferraccioli, F., Forsberg, R., Fretwell, P., Goel, V., Greenbaum, J. S., Gudmundsson, H., Guo, J., Helm, V., Hofstede, C., Howat, I., Humbert, A., Jokat, W., Karlsson, N. B., Lee, W. S., Matsuoka, K., Millan, R., Mouginot, J., Paden, J., Pattyn, F., Roberts, J., Rosier, S., Ruppel, A., Seroussi, H., Smith, E. C., Steinhage, D., Sun, B., van den Broeke, M. R., van Ommen, T. D., van Wessem, M., and Young, D. A.: Deep glacial troughs and stabilizing ridges unveiled beneath the margins of the Antarctic ice sheet, *Nature Geoscience*, 13, 132–137, <https://doi.org/10.1038/s41561-019-0510-8>, 2020.
- Mott, H.: *Remote Sensing with Polarimetric Radar*, John Wiley & Sons Inc, New York, NY, USA, <https://doi.org/10.1002/0470079819>, 2006.
- Nicholls, K. W., Corr, H. F. J., Stewart, C. L., Lok, L. B., Brennan, P. V., and Vaughan, D. G.: Instruments and methods: A ground-based radar for measuring vertical strain rates and time-varying basal melt rates in ice sheets and shelves, *Journal of Glaciology*, 61, 1079–1087, <https://doi.org/10.3189/2015JoG15J073>, 2015.
- Nicolas, J. P. and Bromwich, D. H.: Climate of West Antarctica and Influence of Marine Air Intrusions, *Journal of Climate*, 24, 49–67, <https://doi.org/10.1175/2010JCLI3522.1>, 2011.
- Paterson, W. S.: Why ice-age ice is sometimes "soft", *Cold Regions Science and Technology*, 20, 75–98, [https://doi.org/10.1016/0165-232X\(91\)90058-O](https://doi.org/10.1016/0165-232X(91)90058-O), 1991.
- Sayers, C. M.: Elastic anisotropy of polycrystalline ice with transversely isotropic and orthotropic symmetry, *Geophysical Journal International*, 215, 155–164, <https://doi.org/10.1093/gji/ggy274>, 2018.
- Scott, R. C., Nicolas, J. P., Bromwich, D. H., Norris, J. R., and Lubin, D.: Meteorological Drivers and Large-Scale Climate Forcing of West Antarctic Surface Melt, *Journal of Climate*, 32, 665–684, <https://doi.org/10.1175/JCLI-D-18-0233.1>, 2019.

- Sigl, M., Fudge, T. J., Winstrup, M., Cole-Dai, J., Ferris, D., McConnell, J. R., Taylor, K. C., Welten, K. C., Woodruff, T. E., Adolphi, F., Bisiaux, M., Brook, E. J., Buizert, C., Caffee, M. W., Dunbar, N. W., Edwards, R., Geng, L., Iverson, N., Koffman, B., Layman, L., Maselli, O. J., McGwire, K., Muscheler, R., Nishiizumi, K., Pasteris, D. R., Rhodes, R. H., and Sowers, T. A.: The WAIS Divide deep ice core WD2014 chronology - Part 2: Annual-layer counting (0-31 ka BP), *Climate of the Past*, 12, 769–786, <https://doi.org/10.5194/cp-12-769-2016>, 2016.
- Stewart, C. L., Christoffersen, P., Nicholls, K. W., Williams, M. J., and Dowdeswell, J. A.: Basal melting of Ross Ice Shelf from solar heat absorption in an ice-front polynya, *Nature Geoscience*, 12, 435–440, <https://doi.org/10.1038/s41561-019-0356-0>, 2019.
- Stumpf, M.: *Electromagnetic Reciprocity in Antenna Theory*, Wiley-IEEE Press, Hoboken, NJ, USA, 2018.
- Sun, S., Hattermann, T., Pattyn, F., Nicholls, K. W., Drews, R., and Berger, S.: Topographic Shelf Waves Control Seasonal Melting Near Antarctic Ice Shelf Grounding Lines, *Geophysical Research Letters*, 46, 9824–9832, <https://doi.org/10.1029/2019GL083881>, 2019.
- Vaňková, I., Voytenko, D., Nicholls, K. W., Xie, S., Parizek, B. R., and Holland, D. M.: Vertical Structure of Diurnal Englacial Hydrology Cycle at Helheim Glacier, East Greenland, *Geophysical Research Letters*, 45, 8352–8362, <https://doi.org/10.1029/2018GL077869>, 2018.
- Vaňková, I., Nicholls, K. W., Corr, H. F. J., Makinson, K., and Brennan, P. V.: Observations of Tidal Melt and Vertical Strain at the Filchner-Ronne Ice Shelf, Antarctica, *Journal of Geophysical Research: Earth Surface*, 125, <https://doi.org/10.1029/2019jf005280>, 2020.
- Voigt, D. E., Fitzpatrick, J. J., and Alley, R. B.: C-axis Fabric from Physical Properties Samples of the WAIS Divide Ice Core, U.S. Antarctic Program (USAP) Data Center, <https://doi.org/10.7265/N5W093VM>, 2015.
- Wang, B., Sun, B., Martin, C., Ferraccioli, F., Steinhage, D., Cui, X., and Siegert, M. J.: Summit of the East Antarctic ice sheet underlain by thick ice-crystal fabric layers linked to glacial-interglacial environmental change, *Geological Society, London, Special Publications*, 461, 131–143, <https://doi.org/10.1144/SP461.1>, 2018.
- Washam, P., Nicholls, K. W., Münchow, A., and Padman, L.: Summer surface melt thins Petermann Gletscher Ice Shelf by enhancing channelized basal melt, *Journal of Glaciology*, 65, 662–674, <https://doi.org/10.1017/jog.2019.43>, 2019.
- Wilen, L. A., Diprinzio, C. L., Alley, R. B., and Azuma, N.: Development, principles, and applications of automated ice fabric analyzers, *Microscopy Research and Technique*, 62, 2–18, <https://doi.org/10.1002/jemt.10380>, 2003.
- Young, T. J., Schroeder, D. M., Christoffersen, P., Lok, L. B., Nicholls, K. W., Brennan, P. V., Doyle, S. H., Hubbard, B., and Hubbard, A.: Resolving the internal and basal geometry of ice masses using imaging phase-sensitive radar, *Journal of Glaciology*, 64, 649–660, <https://doi.org/10.1017/jog.2018.54>, 2018.
- Young, T. J., Christoffersen, P., Doyle, S. H., Nicholls, K. W., Stewart, C. L., Hubbard, B., Hubbard, A., Lok, L. B., Brennan, P. V., Benn, D. I., Luckman, A., and Bougamont, M.: Physical Conditions of Fast Glacier Flow: 3. Seasonally-Evolving Ice Deformation on Store Glacier, West Greenland, *Journal of Geophysical Research: Earth Surface*, 124, 245–267, <https://doi.org/10.1029/2018JF004821>, 2019.